



ARKANSAS RAZORBACKS

One Final Four Appearance » 22 Postseason Appearances » 27th Season In The SEC » More Than 400 Home Wins » More Than 700 Program Victories

/// THE SERIES ///

Series Record	11-8
Fayetteville	6-2
Away	4-6
Neutral	1-0
Last 5	1-4
Neighbors versus this opponent	1-0

/// MEDIA ///



SEC Network

Talent: Courtney Lyle and Tamika Catchings



Razorback Sports Network Phil Elson & Erin Portman

Listen: Little Rock - KABZ-FM-103.7
Fayetteville - KQSM-FM-92.1
Fayetteville - KYNG-AM - 1590*
Fort Smith - KFPW-AM-1230
Fort Smith - KHGG-AM-1580*
Rogers - KURM-AM-790/FM-100.3

*Only if there are conflicts with the FM station

/// SCHEDULE & RESULTS ///

NOVEMBER (5-2)	MEDIA	W/L	SCORE
2	Northeastern St (Exh)	-	W 82-74
10	Sam Houston State	SECN+	W 65-54
12	Samford	SECN+	W 84-63
16	at RV Nebraska	BTN	L 80-69
20	at Oral Roberts	Cox Sports	W 77-66
24	UTEPI!	-	L 64-61
25	New Mexico State!	-	W 69-60
29	Abilene Christian	SECN+	W 79-65

DECEMBER (5-2)	MEDIA	W/L	SCORE
3	at Kansas*	JTV/ESPN3	L 71-60
7	Charlotte	SECN+	W 73-72
10	Tulsa	SECN+	W 67-41
17	UT Arlington	SECN+	W 91-57
21	at RV/RV Arizona St.	Tempe, Arizona	L 89-43
28	Grambling State	SECN+	W 79-62
31	Ole Miss*	SECN+	W 73-72

JANUARY (2-4)	MEDIA	W/L	SCORE
4	at #5/3 Miss State*	SEC Network	L 111-69
7	-/rv Alabama*	SEC Network	L 83-76
11	atrv/rv Georgia*	SECN+	L 78-65
14	at Auburn*	SEC Network	W 68-58
18	Florida*	SEC Network	L 65-51
21	at Missouri*+	SEC Network	- 4 p.m.
25	at S Carolina*+	SEC Network	- 5:30 p.m.
29	RV Kentucky*	SEC Network	- 6 p.m.

FEBRUARY (0-0)	MEDIA	W/L	SCORE
4	at Alabama*	SEC Network	- 1 p.m.
8	Tennessee*	SECN+	- 7 p.m.
11	Missouri*	SEC Network	- 4 p.m.
15	at Kentucky*	SECN+	- 6 p.m.
18	LSU*+	SECN+	- 2 p.m.
22	Texas A&M*	SECN+	- 7 p.m.
25	at Vanderbilt*	SECN+	- 2 p.m.
28	SEC Tournament	SECN/ESPN/2	- Nashville

MARCH (0-0)	MEDIA	W/L	SCORE
1-4	SEC Tournament	SECN/ESPN/2	- Nashville

* - Southeastern Conference Game

! - UTEP Classic (El Paso, Texas)

^ - SEC/Big 12 Challenge

+ - We Back Pat

> - Play4Kay

All home games played in Bud Walton Arena (19,200) Rankings: AP/Coaches Poll

Sign up for Mike Neighbors' newsletter and listen to his podcasts at

CoachNeighbors.com



ARKANSAS RAZORBACKS 11-8, 2-4 SEC

Head Coach: Mike Neighbors
Alma Mater: Arkansas, 1993
Record: 109-48 (5) Arkansas Record: 11-7 (1)



Columbia, Missouri



Mizzou Arena
(15,061)



4 p.m. CST



<http://bit.ly/ArkatMO>



Razorback Radio Network



<http://bit.ly/2mSk4qr>

PREVIOUS GAME

»Malica Monk scored 20+ points eight times in her career - all this season.

»Malica Monk's eight rebounds was one shy of tying her career high.

»Arkansas used just the third different starting lineup of the year with junior transfer Raven Northcross-Baker starting for an injured Devin Cosper.

»Arkansas was perfect from the line, but it was a season-low 4-for-4 effort.

»The Razorbacks forced 14 Florida turnovers and committed just eight in the game.

ABOUT ARKANSAS

»The Razorbacks are the only SEC team that does not return a double-figure scorer.

»Arkansas is 8-2 at home this season including an SEC win over Ole Miss. Arkansas has won double-digit home games 16 times and the single-season best is a 15-4 home record in 1998-99.

»Arkansas is in the midst of playing four of five games on the road. The Razorbacks had back-to-back SEC road contests at Georgia (Jan. 11) and at Auburn (Jan. 14). They hosted Florida (Jan. 18) and again go back-to-back with games at Missouri (Jan. 21) and at South Carolina (Jan. 25).

»Arkansas is **third in the SEC** and ranks **41st in the country** for fewest turnovers with just 235 this year.

»Arkansas **ranks second the SEC** and is **16th in the country** with just 12.4 turnovers per game.

»Arkansas **ranks second in the SEC** and is **10th in the country** with 505 3-point field goals attempted.

»Arkansas ranks **third in the SEC** with 7.7 3-point field goals made per game and **second** for 3-pointers made with 146.

Better Numbers

»Devin Cosper has 41 3-pointers made - 16 better than her single season best. She has scored more points (275) through 17 games than she did all of last season (187 pts/29 g).

»Cosper scored 104 points in SEC games last year - she has 63 points in four games this season.

»Jailyn Mason has made 29 3-pointers this year. She made 19 in 30 games last year.

MISSOURI TIGERS 16-2, 4-1 SEC

Head Coach: Robin Pingeton
Alma Mater: St. Ambrose, 1990
Record: 473-259 (23) MO Record: 138-102 (7)



»Malica Monk has scored 318 points in 2017-18. Her single season best was 247 points set in 27 games last year.

»Malica Monk has made 83 free throws - more makes than the two previous years combined.

»Sophomore Kiara Williams has scored 149 points this year and averages 7.8 ppg - up from 62 points and 3.1 ppg as a freshman.

»As a team, Arkansas' rebounding numbers are up from a year ago. The Razorbacks average 41.5 rpg this season, compared to 38.3 rpg a year ago.

/// STATISTICAL COMPARISONS ///

	ARKANSAS	MISSOURI
PTS / GAME	69.4	72.3
PTS ALLOWED / GAME	69.0	58.7
FG %	.371	.468
FG DEFENSE %	.395	.354
3-PT FG %	.289	.380
3-PT FG DEFENSE %	.313	.318
REB / GAME	41.5	40.1
REB ALLOWED / GAME	43.2	29.4
LEADING SCORER	Monk, 16.7	Cunningham, 18.1
LEADING REBOUNDER	Williams, 7.6	Porter, 8.9

LAST GAME STARTERS

1 RAVEN NORTHCROSS-BAKER



PPG	FG%	RPG	MIN
6.9	.212	2.9	21.1

3 MALICA MONK



PPG	FG%	RPG	APG
16.7	.366	3.9	4.0

10 KIARA WILLIAMS



PPG	FG%	RPG	BPG
7.8	.508	7.6	1.2

14 JAILYN MASON



PPG	FG%	RPG	APG
10.6	.396	4.2	2.9

22 BAILEY ZIMMERMAN



PPG	FG%	RPG	MIN
3.3	.229	3.2	22.4

WE BACK Pat

NUMERICAL ROSTER

No.	Name	Pos	Ht	Cl	Hometown/HS/Previous School
0	A'Tyanna Gaulden*	G	5-7	RSO	Ocilla, Ga./Americus Sumter HS/Florida State
1	Raven Northcross-Baker	G	5-7	Jr	Malvern, Ark./Malvern HS/Chipola College
3	Malica Monk	G	5-5	Jr	N. Little Rock, Ark./NLR HS
4	Keiryn Swenson	G/F	6-1	Jr	Wichita, Kan./Maize HS
10	Kiara Williams	F/C	6-1	So	Little Rock, Ark./LR Central HS
13	Grayce Spangler	G	5-10	Fr	Fayetteville, Ark. Fayetteville HS
14	Jailyn Mason	PG	5-9	So	Mason, Ohio/William Mason HS
20	Sydney Stout	F	6-0	So	Bixby, Okla./Bixby HS
21	Devin Cospser	G	5-10	SGr	Coffeyville, Kan./Field Kindley HS/Coffeyville CC
22	Bailey Zimmerman	G/F	6-0	Jr	St. Vincent, Ark. /Wonderview HS
24	Taylah Thomas	F	6-1	Fr	Arlington, Texas/Mansfield Timberview HS
30	Macy Weaver	F	6-3	Fr	Davis Junction, Ill./Stillman Valley HS
33	Chelsea Dungee*	G	5-11	RSO	Sapulpa, Okla./Sapulpa HS/Oklahoma
51	Brenna McClure	G	5-6	RSO	Lyons, Kansas/Lyons HS/Hutch CC

*Will not play the 2017-18 season due to NCAA transfer rules

ALPHABETICAL ROSTER

No.	Name	Twitter
21	Devin Cospser	@deviddevv__
33	Chelsea Dungee*	@ChelseaDungee22
0	A'Tyanna Gaulden*	@AtyannaGaulden
51	Brenna McClure	@mcclurebrenna
14	Jailyn Mason	@jaimason14
3	Malica Monk	@TheRealMalica
1	Raven Northcross-Baker	@ravenbaker_4
13	Grayce Spangler	@grayce_1313
20	Sydney Stout	@sydeny_stout_
4	Keiryn Swenson	@KiKi_Sweezyy
24	Taylah Thomas	@hailtaylahh
30	Macy Weaver	@macyweaver528
10	Kiara Williams	@kiara_will22
22	Bailey Zimmerman	@Bailey_Ann22

COACHING STAFF

Title	Name	Year	Alma Mater
Head Coach	Mike Neighbors	First Season	Arkansas, 1993
Assistant Coach	Todd Schaefer	First Season	Thomas More College, 1995
Assistant Coach	Lacey Goldwire	First Season	Oklahoma State, 2010
Assistant Coach	Pauline Love	First Season	Southern Miss, 2010
Director of Operations	Amber Shirey	30th Season	Arkansas, 1992
Director of Video and Scouting	Jeff Brazil	11th Season	Arkansas, 2010
Dir. of Student-Athlete Devel.	C'eira Ricketts	1st Season	Arkansas, 2015

FA-NETIK PRONUNCIATIONS

No.	Name	Pronunciation
0	A'Tyanna	AH-tee-ah-nuh
3	Malica	mal-ick-cuh
4	Keiryn	KEER-runn
10	Kiara	Key-AIR-uh
13	Grayce	GRACE
14	Jailyn	JAY-lyn
24	Taylah	TAY-luh

MARGIN OF VICTORY/DEFEAT

	1	2	3	4	5	6	7	8	9	10	11-15	16-19	20+	Record
Wins	2	-	-	-	-	-	-	-	1	1	3	1	3	11
Losses	-	-	1	-	-	-	1	-	-	-	4	-	2	8

Most First Period Points

2017-18	27	Samford (11-12-17)
All-Time	29	at Alabama (1-15-17)
Opponent	26	at Arizona State (12-21-17)

Most Third Period Points

2017-18	26	Alabama (1/7/18)*
All-Time	34	HBU (12-28-16)*
Opponent	30	at Miss State (1-4-18)*

Fewest First Period Points

2017-18	3	UTEP (11-24-17)
All-Time	3	UTEP (11-24-17)*
Opponent	6	SHSU (11-11-16)

Fewest Third Period Points

2017-18	7	Florida (1-18-18)
All-Time	7	Florida (1-18-18)*
Opponent	4	LSU (1-21-16)

Most Second Period Points

2017-18	25	at Auburn (1-14-18)*
All-Time	31	HBU (12-28-16)
Opponent	35	at #2 S. Carolina (1-3-16)

Most Fourth Period Points

2017-18	28	UT-Arlington (12-17-17)
All-Time	32	Tulsa (11-23-15)
Opponent	30	at Miss State (1-4-18)

Fewest Second Period Points

2017-18	6	at Arizona State (12-21-17)
All-Time	4	vs. Kentucky (2-17-17)
Opponent	3	at Alabama (1-15-17)

Fewest Fourth Period Points

2017-18	11	Ole Miss (12-31-17)
All-Time	5	#7 Ore. St. (11-28-15)
Opponent	10	#24 Missouri (1-17-16)*

Most First Half Points

2017-18	42	Samford (11-12-17)
All-Time	65	Tenn State (11-27-88)
Opponent	63	Texas (1-9-89)

Largest Margin of Victory

2017-18	34 (91-57)	UT-Arlington (12-17-17)
All-Time	79 (108-29)	B Wesleyan (2-18-77)
Opponent	54 (28-82)	La Tech (11-30-78)

Fewest First Half Points

2017-18	14	at Arizona State (12-21-17)
All-Time	11	at Missouri (3-1-15)*
Opponent	8	Montana State (1-5-03)

*Most Recent

RECORD FACTS

Overall	11-8
At Home (Bud Walton Arena)	8-2
On The Road Neutral	2-6 1-0
White Cardinal Anthracite Uniforms	8-2 3-6 0-0

HALFTIME/LEADS/OVERTIME

Leading at the half, home/road/neutral	8-0 (5-0/2-0/0-0)
Tied at the half, home/road/neutral	-
Trailing at the half, home/road/neutral	3-8 (2-2/0-6/1-0)
Games decided by 5 points or fewer	2-1
Games decided by 10 points or fewer	3-2
Leading at the start of the 4Q	10-1
Overtime games	-

OFFENSE

Scoring less than 50 points	0-1
Scoring 51-60 points	0-2
Scoring 61-70 points	4-4
Scoring 70+ points	7-1
2 Players Or Less in Double Figures	3-5
3 Players in Double Figures	3-3
4 Players in Double Figures	3-0
5 Players in Double Figures	2-0
When shooting 50 percent or higher	-
When shooting less than 50 percent	11-8

REBOUNDING/TURNOVERS

When outrebounding opponent	8-0
When outrebounded	2-8
When rebounds are even	1-0
When grabbing 10+ offensive reb	9-6
When forcing 15+ turnovers	7-3
When committing 10 or fewer turnovers	5-2
When committing 15+ turnovers	2-5

Months

In November	5-2
In December	5-2
In January	1-4
In February	-
In March	-



[FACEBOOK.COM/RAZORBACKWBB](https://www.facebook.com/razorbackwbb)

[@RAZORBACKWBB \(T&I\)](https://twitter.com/razorbackwbb)

[HTTP://BIT.LY/YOUTUBEKICKIN](https://bit.ly/youtubekickin)

[COACHNEIGHBORS.COM](https://www.coachneighbors.com)

NEIGHBORS' PHILOSOPHY

GRAD STUDENT DEVIN COSPER

- » Only "senior" on the team
- » Missed the opening game last season after a death in the family
- » Averaged 6.4 ppg and 2.2 rpg last season and 7.7 ppg and 2.8 rpg for her career
- » Graduated in May 2017 with a degree in broadcast journalism
- » Interned at RSN, Arkansas' broadcast studio
- » Wears the SEC graduate patch on her jersey
- » Named "Comback Student-Athlete of the Year at annual HOGSPY awards after rebounding from an injury and a death in the family



FUNCTIONALLY FAST

You will hear Mike Neighbors say this a lot. He wants his teams to play as fast as possible and still function at a high level. That may look different from possession to possession depending on what Arkansas is running.

TRUST, TALENT AND TIME

My program will be built on three things. It's very simple.

TRUST - The highest form of loyalty that has to be earned, managed and sometimes re-earned. If we don't have this, nothing will work and the stool's legs will fall off and everything will collapse.

TALENT - It doesn't mean you can dribble, shoot, pass and rebound. It's a lot of other things like the ability to engage with the fan base and willingness to sign autographs for a 10-year-old child you might be inspiring.

TIME - It's just not being on time or making time. It's how you utilize your time and who you invest your time with and be around. Trust, talent and time. Those will be our pillars.

FUN FEATURES

Both Mike Neighbors and Jailyn Mason have shoe collections. Mason's collection was featured in a story last year. It can be seen here: <http://bit.ly/2ebtLdb>

Neighbors got settled into his Fayetteville home in mid August. One of the first things he set up were his shoes.



BESIDE US

One of the things Mike Neighbors stressed when he was hired was his desire to take care of the players, the staff and the fans who have been loyal to the Razorback program. He has told our fans that he wants them to stand "Beside Us". Don't be behind us, stand next to us and go through the process of building our program.

SHOTS AND POSSESSIONS

Mike Neighbors wants a lot of shots and a lot of possessions. Here's a look at the Razorbacks shots this year. The number is often determined by pace of play and Arkansas will push the tempo.

30 AND COUNTING

This year, Arkansas director of operations Amber Shirey enters her 30th season as a Razorback. The former Amber Nicholas was a two-time All-Southwest Conference selection during her four-year playing career from 1989-92. She spent one season (1992-93) as a student coach helping Arkansas transition to the Southeastern Conference. She moved on to a graduate assistant and assistant coach from 1993-94 through the 2006-07 season. In 2007-08 Shirey transitioned to the director of operations position holding that spot until she returned to the sidelines as an assistant coach for the 2013 and 2014 seasons. She moved into her current position as the Executive Director of Operations in 2014-15. She has been a part of seven different head coach's staffs during her tenure.

GAMEDAY CARDS

Coach Neighbors hands out a Gameday Card for each home and away game. One side of the card is branded with a Razorback logo and women's basketball. The other side is a quote that is relevant to something the team has talked about or worked on that week. Check out this week's card here:



-Bear Bryant

OPPONENT

ABOUT MISSOURI

» Missouri is currently ranked No. 11 by the AP and No. 12 in the coaches poll.

» The Tigers are the first of two consecutive ranked opponents for the Razorbacks.

» Missouri has four players averaging double figures led by Sophie Cunningham at 18.1 ppg. Jordan Frericks (11.5), Amber Smith (10.3) and Cierra Porter (10.2) also average double figures.

» Missouri is 7-1 at home this year with the Tigers' only loss coming at the hands of LSU in SEC action.

» The Tigers dominate the boards and are out-rebounding opponents 40.1 rpg-29.4 rpg for a +10.6 margin. That margin jumps to +11.4 in SEC games.

» Arkansas head coach Mike Neighbors has coached against Missouri picking up a 79-66 win in 2016 at Washington.

THE LAST MEETING

» Arkansas had four players in double figures in a 67-56 loss at Missouri in the second meeting between these teams last year.

» Bailey Zimmerman had a career-high 14 points. Jessica Jackson added 12 points and Malica Monk and Jailyn Mason had 10 each for Arkansas.

» The Razorbacks forced Missouri into 14 turnovers while only committing five miscues.

» Missouri won the 3-point field goal battle, out-shooting Arkansas 13-8 from distance.

ABOUT THE SERIES

Series Record	11-8
Fayetteville	6-2
Away	4-6
Neutral	1-0
Last 5	1-4
Neighbors versus this opponent	1-0

Results

3/12/1986	AR	65	Missouri	66	Columbia (NCAA)	2/17/2013	AR	61	Missouri	40	Fayetteville
11/30/1986	AR	66	Missouri	69	Columbia	1/5/2014	AR	69	Missouri	66	Columbia
12/30/1997	AR	80	Missouri	79	Bowling Green, Ky.	3/2/2014	AR	72	Missouri	70	Fayetteville
12/19/1998	AR	80	Missouri	60	Fayetteville	1/18/2015	AR	73	Missouri	55	Fayetteville
11/22/1999	AR	83	Missouri	76	Columbia	3/1/2015	AR	41	Missouri	57	Columbia
3/18/2000	AR	89	Mo. (OT)	88	F'ville (WNIT)	1/17/2016	AR	64	#24 MO	52	Fayetteville
11/20/2000	AR	67	Missouri	79	Columbia	2/14/2016	AR	48	Missouri	69	Columbia
11/28/2007	AR	66	Missouri	53	Columbia	1/23/2017	AR	46	Missouri	60	Fayetteville
12/21/2008	AR	55	Missouri	56	Fayetteville	2/12/2017	AR	56	Missouri	67	Columbia
1/24/2013	AR	58	Missouri	50	Columbia						

IMPORTANT STATS

Tigers Rank Among SEC Leaders: Missouri is second in free throw percentage and field goal defense. They lead the league in rebounding defense, and defensive rebounding percentage and are second in rebounding margin.

In Common: Arkansas and Missouri have played two common opponents in Alabama, and Ole Miss. Arkansas split those contests while the Tigers won both.

An Arkansas Win Would ...

A win would make Arkansas:

- » give the Razorbacks their first win over a ranked opponent this year
- » snap a three-game skid to the Tigers

NOVEMBER (5-2)	MEDIA	W/L	SCORE	SERIES	NEIGHBORS
2 Northeastern St. (Exh)	-	W	82-74	2-0	1-0
10 Sam Houston State	SECN+	W	65-54	7-0	1-0
12 Samford	SECN+	W	84-63	1-0	1-0
16 at Nebraska	BTN	W	80-69	0-1	0-1
20 at Oral Roberts	Cox Sports	W	77-66	20-9	1-0
24 UTEP!	-	L	64-61	2-1	0-2
25 New Mexico State!	-	W	69-60	1-0	1-0
29 Abilene Christian	SECN+	W	79-65	1-0	1-0

DECEMBER (5-2)	MEDIA	W/L	SCORE	SERIES	NEIGHBORS
3 at Kansas*	JTW/ESPN3	L	71-60	4-4	0-1
7 Charlotte	SECN+	W	73-72	1-0	1-0
10 Tulsa	SECN+	W	67-41	21-3	1-0
17 UT Arlington	SECN+	W	91-57	7-0	1-0
21 at Arizona State	Pac-12N	L	89-43	1-1	2-5
28 Grambling State	SECN+	W	79-62	8-0	2-0
31 Ole Miss*	SECN+	W	73-72	17-26	1-0

JANUARY (1-4)	MEDIA	W/L	SCORE	SERIES	NEIGHBORS
4 at #5/3 Mississippi State*	SEC Network	L	111-69	18-19	0-2
7 Alabama*	SEC Network	L	83-76	21-15	0-1
11 at Georgia*	SECN+	L	78-65	5-31	0-1
14 at Auburn*	SEC Network	W	68-58	14-22	1-0
18 Florida*	SEC Network	L	65-51	9-28	0-1
21 at Missouri*	SEC Network	-	-	11-8	1-0
25 at South Carolina*	SEC Network	-	-	17-16	First Meeting
29 Kentucky*	SEC Network	-	-	13-21	1-0

FEBRUARY (0-0)	MEDIA	W/L	SCORE	SERIES	NEIGHBORS
4 at Alabama*	SEC Network	-	-	21-15	0-1
8 Tennessee*	SECN+	-	-	3-30	First Meeting
11 Missouri*	SEC Network	-	-	11-8	1-0
15 at Kentucky*	SECN+	-	-	13-21	1-0
18 LSU*	SECN+	-	-	16-31	First Meeting
22 Texas A&M*	SECN+	-	-	21-8	1-1
25 at Vanderbilt*	SECN+	-	-	8-24	First Meeting
28 SEC Tournament	SECN/ESPN	-	-		

MARCH (0-0)	MEDIA	W/L	SCORE	SERIES	NEIGHBORS
1-4 SEC Tournament	SECN/ESPN				

* - Southeastern Conference Game
 !-UTEP Thanksgiving Tournament (El Paso, Texas)
 ^-SEC/Big 12 Challenge
 All home games played in Bud Walton Arena (19,200)

SEC SCHEDULE

January 21 (Sunday)
 Vanderbilt at Alabama
 Ole Miss at Florida
 Auburn at Georgia
 S Carolina at Kentucky
 Arkansas at Missouri
 Miss State at Tennessee

January 22 (Monday)
 LSU at Texas A&M

January 25 (Thursday)
 Missouri at Georgia
 Alabama at Kentucky
 Florida at Miss State
 Arkansas at S Carolina
 Ole Miss at Tennessee

January 28 (Sunday)
 Alabama at Auburn
 Georgia at Florida
 Tennessee at LSU
 Miss State at Ole Miss
 Missouri at S Carolina
 Texas A&M at Vanderbilt

January 29 (Monday)
 Kentucky at Arkansas

February 1 (Thursday)
 Auburn at Kentucky
 Georgia at LSU
 Vanderbilt at Ole Miss
 Miss State at Missouri
 Texas A&M at Tennessee

February 4 (Sunday)
 Arkansas at Alabama
 Miss at Georgia
 LSU at Kentucky
 Auburn at Texas A&M
 Tennessee at Vanderbilt

February 5 (Monday)
 S Carolina at Miss State
 Florida at Missouri

February 8 (Thursday)
 S Carolina at Alabama
 Tennessee at Arkansas
 LSU at Auburn
 Miss State at Florida
 Vanderbilt at Georgia
 Kentucky at Missouri
 Ole Miss at Texas A&M

February 11 (Sunday)
 Missouri at Arkansas
 Texas A&M at LSU
 Alabama at Ole Miss
 Kentucky at Miss State
 Florida at S Carolina
 Georgia at Tennessee

February 12 (Monday)
 Vanderbilt at Auburn

February 15 (Thursday)
 Missouri at Auburn
 S Carolina at Georgia
 Arkansas at Kentucky
 Ole Miss at LSU
 Alabama at Tennessee
 Florida at Texas A&M
 Miss State at Vanderbilt

February 18 (Sunday)
 Auburn at Alabama
 LSU at Arkansas
 Vanderbilt at Florida
 Texas A&M at Miss State
 Tennessee at Missouri
 Kentucky at S Carolina

February 19 (Monday)
 Georgia at Ole Miss

February 22 (Thursday)
 Georgia at Alabama
 Texas A&M at Arkansas
 Tennessee at Florida
 Kentucky at Ole Miss
 Auburn at Miss State
 Vanderbilt at Missouri
 LSU at S Carolina

February 25 (Sunday)
 Ole Miss at Auburn
 Florida at Georgia
 Miss State at Kentucky
 Alabama at LSU
 S Carolina at Tennessee
 Missouri at Texas A&M
 Arkansas at Vanderbilt

SEC STANDINGS 1/19/18

	Conference			Overall						
	W-L	Pct.	H	A	W-L	Pct.	H	A	N	Strk
Miss State	5-0	1.000	3-0	2-0	19-0	1.000	11-0	3-0	5-0	W19
Georgia	4-1	.800	1-1	3-0	16-2	.889	9-2	7-0	0-0	W4
Missouri	4-1	.800	1-1	3-0	16-2	.889	8-1	5-0	3-1	W3
Tennessee	4-1	.800	2-0	2-1	16-2	.889	9-0	4-2	3-0	L1
S Carolina	4-2	.667	2-1	2-1	15-3	.833	8-1	5-1	2-1	W1
Texas A&M	4-2	.667	2-1	2-1	15-5	.750	10-3	4-1	1-1	W1
LSU	4-2	.667	2-1	2-1	12-5	.706	6-1	5-3	1-1	W2
Alabama	3-3	.500	1-2	2-1	13-6	.684	9-2	4-2	0-2	L2
Arkansas	2-4	.333	1-2	1-2	11-8	.579	8-2	2-6	1-0	L1
Ole Miss	1-4	.200	1-2	0-2	11-7	.611	9-2	1-4	1-1	L2
Kentucky	1-4	.200	0-2	1-2	9-10	.474	6-4	3-6	0-0	L1
Auburn	1-5	.167	1-2	0-3	10-8	.556	7-2	2-4	1-2	L5
Florida	1-5	.167	0-3	1-2	9-10	.473	5-7	3-2	1-1	W1
Vanderbilt	1-5	.167	1-3	0-2	5-15	.250	3-8	2-5	0-2	L1

MAKING A RUN ON CAREER NUMBERS

- »Devin Cospers has 731 career points ranking 42nd in program history.
- »Devin Cospers has 323 career 3-point field goal attempts ranking 12th in program history.
- »Malica Monk has 675 career points ranking 48th in program history.
- »Devin Cospers has already reached her single-season highs for 3-point field goals, 3-point field goals attempted, defensive rebounds, total rebounds and blocks.
- »Jailyn Mason has reached her single-season bests for 3-point field goals made and attempted and blocks.
- »Malica Monk has reached her single-season highs for field goals attempted, 3-point field goals made and attempted, free throws made and attempted and points.
- »Kiara Williams has reached her single-season career-bests for field goals made and attempted, 3-pointers made and attempted, free throws made and attempted, offensive, defensive and total rebounds, assists, blocks, steals and points.

THREEEEEEEEEEE

- »Arkansas has made 146 3-point field goals this year. The Razorbacks are on pace to jump into the program's top-10 for single season makes in the next couple of games.
- »The Razorbacks are averaging 7.7 3-point field goals per game. That number ranks third in the SEC.
- »Arkansas' 7.7 3-point field goals per game has the Razorbacks on pace to set a single-season program record for makes from distance.
- »The Razorbacks could also move into the program top-10 for 3-point field goals attempted. Arkansas currently has 505 attempts. That ranks second in the SEC.
- »Four Razorbacks have already set a single-season best for made 3-point field goals. That includes Devin Cospers (41), Jailyn Mason (29), Malica Monk (17), Kiara Williams (1).
- »Devin Cospers has 89 career 3-pointers. She is 15 makes away from breaking into the individual career top-10 for made 3-point field goals. Cospers has already moved into the top-15 for 3-point field goal attempts. She has 323, ranking 12th in program history.

3-POINT FIELD GOALS MADE*

1. 202 (33 games)	2000-01
2. 200 (28 games)	2005-06
3. 200 (32 games)	2008-09
4. 198 (34 games)	1998-99
5. 191 (33 games)	1997-98
6. 177 (30 games)	2013-14
177 (30 games)	2016-17
8. 169 (34 games)	2010-11
9. 167 (31 games)	2009-10
167 (33 games)	2011-12
*1985-86 to present	

3-POINT FG ATTEMPTED

1. 658 (32 games)	2008-09
2. 593 (33 games)	2000-01
3. 590 (28 games)	2005-06
4. 580 (33 games)	2011-12
5. 576 (34 games)	1998-99
6. 570 (33 games)	1997-98
7. 554 (28 games)	2003-04
8. 549 (33 games)	2012-13
9. 546 (31 games)	2009-10
10. 543 (31 games)	2006-07

LEADS AND DEFICITS

Biggest Halftime Lead	17, GSU
Biggest Halftime Lead Lost	-
Biggest Halftime Deficit	38, GSU
Biggest HT Deficit Erased	7, Char.
Biggest Overall Lead	30, Tulsa,4Q
Biggest Win Margin	26, Tulsa
Biggest Loss Margin	46, ASU
Biggest Deficit Overcome	13, SHSU

JUMP BALLS

Arkansas	6
Opponents	13

FIRST POINTS

Williams	9
Mason	5
Monk	3
Cospers	2
Monk	1 (FT)
Zimmerman	1 (FT)

BENCH POINTS

Arkansas	315
Opponent	375

DOUBLE FIGURE POINTS

Malica Monk	18
Devin Cospers	15
Jailyn Mason	11
Kiara Williams	7
Raven Northcross-Baker	3
Bailey Zimmerman	2
Taylah Thomas	1
Keiryn Swenson	1

LEADING SCORER

Monk	10
Cospers	6
Northcross-Baker	2
Mason	2
Williams	1

DOUBLE FIGURES FIRST HALF

Cospers	4
Monk	4
Williams	2
Mason	2
Northcross-Baker	1
Zimmerman	1

DOUBLE FIGURES/QUARTER

Monk	5
Cospers	3
Mason	1
Northcross-Baker	1

20/30-PLUS POINTS

Monk	7 (21, 22, 24, 22, 20, 21, 23)
Cospers	5 (21, 21, 22, 25, 24)
Northcross-Baker	1 (22)

DOUBLE FIGURE REBOUNDS

Cospers	7
Williams	6
Thomas	1

LEADING REBOUNDER

Cospers	7
Williams	7
Thomas	3
Monk	2
Zimmerman	1
Mason	1

DOUBLE DOUBLES

Devin Cospers	SHSU, ORU, NMSU, Char., Tulsa, OM, AL
Williams	NMSU, GSU, AU
Monk	GSU

5+ASSISTS/10+ ASSISTS

Monk	6/1
Mason	4/-
Northcross-Baker	1/-

FIRST OFF THE BENCH

Thomas	15
Northcross-Baker	9
Swenson	6
Williams	1

CHARGES DRAWN

Monk	4
Cospers	2
Northcross-Baker	1
Thomas	1

FORCED 10 SECOND VIOLATION

2017-18	TBA
---------	-----

FORCED SHOT CLOCK VIOLATION

2017-18	7
---------	---

FORCED INBOUND VIOLATION

2017-18	1
---------	---

AND 1

Malica Monk	10
Kiara Williams	7
Devin Cospers	6
Bailey Zimmerman	3
Jailyn Mason	1
Raven Northcross-Baker	1
Macy Weaver	1
Keiryn Swenson	1

AND 1 CONVERSIONS

Monk	8
Cospers	5
Williams	3
Bailey Zimmerman	3
Northcross-Baker	1
Swenson	1

BUZZER BEATERS

Mason	1 (ACU)
http://bit.ly/2BBy8ua	
Swenson	1 (Kansas)
Mason	1 (MSU)

- »Arkansas has made more or tied its opponent in made 3-point field goals in 13 games this season.
- »The Razorbacks have hit double-digit 3-point field goals five times this season with a high of 12 makes against UT-Arlington.
- »Arkansas set a school record for made 3-point field goals in a half with nine from distance at Auburn.

ABOUT OUR LEADER

- »One of two SEC head coaches working at their alma mater (Holly Warlick, Tennessee).
- »One of two SEC head coaches in their first season with their team (Cameron Newbauer, Florida).
- »One of five SEC head coaches who graduated from a league school (Joni Taylor, Alabama; Mathew Mitchell, Mississippi State; Nikki Fargas, Tennessee; Holly Warlick, Tennessee).
- »Is the eighth of nine Arkansas head coaches to win double figure games in their first season.
- »Is 8-2 at home and it would be the 25th time a Razorback head coach won double figure home games if the Razorbacks can get two more victories.
- »Would coach Arkansas to its 42nd season with a winning record at home (records for 43 seasons).

SETTING CAREER NUMBERS

- »Arkansas has seven returners from last season and all of them have set or tied at least one career-best number this year.
- »In the 14 career categories that are tracked on the player pages: Monk has 12 career-bests ... Swenson has three ... Williams has 14 ... Mason has eight ... Stout has one ... Cospers has 12 and Zimmerman has 14.

MONK CONTINUES TO LEAD

- »Fourteen consecutive games in double figure scoring (snapped at Miss State). Scored in double figures in 18-of-19 games including four in a row.
- »Ranks **second in the SEC** for field goal attempts (298), **eighth** for field goals made (109), **fourth** for minutes played (648.0), **10th** for free throw percent (78.3), **11th** for points per game (16.7).
- »Eight games with 20+ points with a career-best 24 at Oral Roberts.
- »Monk currently has 206 career assists. She is approaching the career top-20 (208 assists).
- »At least one 3-pointer in each of the first 10 games with a season-best two 3-pointers four times. A made 3-pointer in 13 games.
- »Thirty-two or more minutes played in 16 games including going 40 minutes on the road at Auburn.
- »Seven consecutive games with at least one steal to start the season with a season-best four steals twice (SHSU, NMSU). Sixteen games with a steal.
- »Has been perfect from the free throw line in nine games (Samford (7-7), Nebraska (3-3), UTEP (3-3), Kansas (4-4), Tulsa (4-4), UTA (12-12), ASU (2-2), AU (4-4), FL (4-4) including two in a row (AU & FL).
- »Double-figure scoring in a single quarter five times (10 | 3Q | Nebraska || 13 | 4Q | ORU) || 10 | 4Q | Kansas || 11 | 4Q | Alabama || 11 | 1Q | Florida).
- »Has 17 3-point field goals made this year. She had nine 3-pointers in her freshman and sophomore years combined.

COSPER POSTING BIG NUMBERS

- »Ten consecutive games in double figure scoring. The streak was snapped versus UTA. Fourteen games in double figures.
- »One of six active SEC players with 7+ season double-doubles.
- »Ranks **third in the SEC** with 2.28 made 3-pointers per game and 41 made 3-pointers.
- »**First in the SEC and 28th in the NCAA** in 3-point field goals attempted (144).

Devin Cospers	Communication (undergrad & Masters)
Chelsea Dungee	Rec. & Sport Management
A'Tyanna Gauden	Journalism: Broadcast
Brenna McClure	Social Work
Jailyn Mason	Journalism: News/Editorial
Malica Monk	Rec. & Sport Management
Raven Northcross-Baker	Criminal Justice
Grayce Spangler	Communication
Sydney Stout	Management
Keiryn Swenson	Accounting
Taylah Thomas	Nursing
Macy Weaver	Kinesiology
Kiara Williams	Childhood Development
Bailey Zimmerman	Apparel Merch./Product Dev.



- »SEC rankings include **sixth** for double-doubles (6), and **fifth** in field goal attempts (272).
- »Cospers's 323 3-point field goal attempts ranks 12th in the Arkansas career records. She is approaching the top-20 for 3-point field goals made and is in the top-50 for career points.
- »Five games with 20+ points this season.
- »Seven career double-doubles all set this season (SHSU, Oral Roberts, NMSU, Charlotte, Tulsa, Ole Miss, Alabama).
- »Nineteen consecutive games (last four games of 2016-17) with at least one 3-pointer. (snapped vs Alabama)
- »Double-figure scoring in a single quarter three times this year (10 | 1Q | Nebraska || 12 | 1Q | ORU || 11 | 4Q | UTEP).
- »Has scored 275 points this year - more than all of last season (187).

JAILYN MASON QUIETLY SHINNING

- »Overshadowed by the gaudy numbers tallied by Devin Cospers and Malica Monk, sophomore Jailyn Mason is also putting together a solid season.
- »She has 11 games in double figure scoring including a streak of five in a row twice this year.
- »She has four games with 5+ assists.
- »Has played multiple positions on the floor.
- »While Malica Monk is the spark plug that gets the team going, Jailyn Mason is the captain who takes control and steers the ship.
- »Made more 3-pointers through 19 games (29) than all of last year (19).

KIARA WILLIAMS STEPPING UP

- »First career double-double with 11 points and 11 rebounds versus New Mexico State. Second one against GSU with 12 points and 16 boards and third at Auburn with 15 points and 14 rebounds.
- »Six career games (all this season) with 10+ rebounds.
- »Posted a career-best 16 rebounds at Kansas, tying it versus GSU.
- »Tallied a then career-best 12 points in a win over ACU and was in double figures in the first half for the first time in her career.
- »Seven games in double figure scoring including a career-best 15 points at Auburn.

AP TOP 25 (1/15/2018)

RK	TEAM	RECORD	PTS
1	Connecticut (32)	15-0	800
2	Louisville	19-0	766
3	Mississippi State	19-0	729
4	Baylor	15-1	698
5	Notre Dame	16-2	665
6	Tennessee	16-1	630
7	Oregon	17-2	615
8	Ohio State	16-2	563
9	Texas	14-2	540
10	South Carolina	14-3	510
11	Missouri	15-2	478
12	Florida State	16-2	445
13	UCLA	13-4	419
14	Maryland	15-3	381
15	Duke	14-4	326
16	Texas A&M	14-5	272
17	West Virginia	15-3	256
18	Oregon State	13-4	236
19	Michigan	15-4	183
20	Iowa	15-3	148
21	California	13-4	123
22	Arizona State	13-5	108
23	Green Bay	14-2	99
24	Oklahoma State	12-4	96
25	Rutgers	17-3	90

Others receiving votes: Georgia 87, Stanford 51, South Florida 39, TCU 13, Villanova 9, Marquette 7, Syracuse 6, Michigan State 3, NC State 3, Belmont 2, Kansas State 2, Mercer 1, Purdue 1

USA TODAY TOP 25 COACHES POLL - 1/16/2018

Rank	School	RECORD	PTS
1	Connecticut (32)	16-0	800
2	Louisville	19-0	759
3	Mississippi State	19-0	742
4	Baylor	15-1	694
5	Notre Dame	16-2	649
6	Oregon	17-2	617
7	Tennessee	16-1	612
8	Ohio State	16-2	553
9	Texas	14-3	547
10	South Carolina	14-3	544
11	Florida State	16-2	473
12	Missouri	15-2	437
13	UCLA	13-4	418
14	Maryland	15-3	374
15	Duke	14-4	330
16	West Virginia	15-3	271
17	Texas A&M	14-5	268
18	Michigan	15-4	237
19	Oregon State	13-4	220
20	Iowa	15-3	176
21	Rutgers	17-3	133
22	Green Bay	15-2	123
23	South Florida	14-4	91
24	Georgia	16-2	76
25	Arizona State	13-5	52

Others receiving votes: Oklahoma State 48, Marquette 29, DePaul 21, California 20, Stanford 19, Syracuse 17, Villanova 12, Virginia 10, NC State 8, USC 7, TCU 7, Florida Gulf Coast 3, Purdue 1, Michigan State 1, Houston 1

TAKING CARE OF THE BALL

- »Arkansas has forced its opponents to turnover the ball more times than they have in 14 games and tied the opponent in TO's once (NMSU).
- »Arkansas has forced double digit turnovers in 16 games while committing single digit miscues in six games.
- »Arkansas has collected double digit steals in six games.
- »Arkansas **is second in the SEC** and ranks **16th in the country** averaging 12.4 turnovers per game.
- »According to HerHoopStats.com, Arkansas has a three-point rate of 39.6% which ranks 45th of 349 teams. This is the percentage 3-point shots taken by the Razorbacks. That is the best rank for the Razorbacks in the past five seasons. Second-best is 151st in 2014-15.
- »HerHoopStats.com also ranks Arkansas 60th with a 27.9 defensive rebounds per game average.

RALLY RAZORBACKS

- »The Razorbacks have had to come from behind to win in four games this year.
- »Arkansas trailed by 13 points in the second quarter against SHSU and rallied for the 11-point win at home.
- »Arkansas trailed at Oral Roberts by six points in the first quarter and came back to win by 11 points on the road.
- »The Razorbacks trailed by seven points against New Mexico State on a neutral court and rallied late to win by nine.
- »Arkansas trailed Charlotte, 37-30, at the half and the teams were tied at the end of the third quarter before the Razorbacks escaped with a one-point win.

HOW CLOSE ARE THOSE LOSSES?

- »Arkansas trailed Nebraska by three, 72-69, with 2:36 remaining in the game. Nebraska finished with a 7-0 run to win the game.
- »After going 0-for-15 in the first quarter at UTEP, the Razorbacks rallied. Arkansas trailed the Miners by one, 62-61, with :38 seconds remaining in the game. UTEP hit a jumper with :08 seconds to seal the win.
- »Arkansas trimmed the Kansas lead to four points, 57-53, at the 5:44 mark of the fourth quarter and trailed by two possessions, 66-60, with :39 seconds to go.

SHARING THE BALL

Twelve of 13 Razorbacks have scored in games this year. All have played and all have attempted a shot. Six of 12 players have recorded double figure points for the season.

BLOCKING WELL

- »Kiara Williams leads the team with 22 blocked shots through the first 18 games. Williams had only five blocks for the entire season a year ago. The sophomore record is 58 set by Sarah Watkins in 2010-11. Williams is **tied for 10th in the SEC** with 1.2 bpg.
- »As a team, Arkansas **ranks tied for 6th in the SEC** with 4.1 bpg.

DID YOU KNOW

That Arkansas head coach Mike Neighbors was cut from the Razorback baseball team? He walked on and legendary head coach Norm DiBryan nudged him in the coaching direction saying "You always seem to be in the right place but you don't always make the play."

THE SCHEDULE

Arkansas' non-conference schedule features four teams who went to the post season a year ago. Arizona State played in the first round of the NCAA Tournament while Abilene Christian, UT-Arlington and Grambling were all WNIT teams a year ago. UTA was eliminated in the first round while Abilene Christian and Grambling both reached round two.

The always-tough SEC schedule features eight NCAA Tournament teams including the NCAA Champion South Carolina and the runner up, Mississippi State. Auburn and LSU were eliminated in the first round while Kentucky, Missouri, Tennessee and Texas A&M all bowed out in round two. In addition, Alabama and Ole Miss advanced to the WNIT Tournament. That means Arkansas faces 14 teams who played in the postseason a year ago.

According to the NCAA (http://stats.ncaa.org/rankings/ranking_summary) Arkansas has the 31st toughest schedule in the country and the fifth toughest in the SEC.

DOUBLE FIGURES IN A QUARTER

Cosper

10, 10, at Nebraska

12, 10, at ORU

11, 40, at UTEP

Monk

10, 30, at Nebraska

13, 40, at ORU

10, 40, at Kansas

11, 40, Alabama

11, 10, Florida

Mason

11, 30, UTA

Northcross-Baker

12, 40, UTA

AGAINST THE POLL

This week's (Jan. 15) Associated Press poll features five SEC teams. Arkansas' schedule is headlined by No. 3 Mississippi State, followed by No. 6 Tennessee. South Carolina is No. 10, followed by No. 11 Missouri, and No. 16 Texas A&M. Arizona State is No. 22 this week and Georgia (87) is getting votes.

This week's USA Today Coaches Poll has Mississippi State at No. 3, followed by No. 7 Tennessee, No. 10 South Carolina, No. 12 Missouri, and No. 17 Texas A&M. Georgia jumps in at No. 24 and Arizona State is No. 25.

HOME SWEET HOME

» Arkansas has had just one losing home season in 41 years (prior to 2017-18)

» Arkansas is 422-139 (8-0 in '17-18) in home games including a 263-104 record in Bud Walton Arena. Arkansas was 159-35 in Barnhill Arena.

WHAT'S MY NUMBER

Transfer Chelsea Dungee has a unique background to her jersey number selection. Here is the story in her own words:

I have always played in #22. Every competitive team and school ball team I have always worn #22. #22 was the number my mom played basketball in throughout her high school career. So, I wore #22. A year ago I changed my jersey number to #33. My cousin (more like brother), Reuben, suffered a traumatic brain injury while playing in a high school football game last season and he wore jersey #33. I play in jersey #33 for Reuben. Playing with #33 on back is a reminder that 'Reub' has my back, and I have his.

QUARTER BY QUARTER SCORING

Date	Opponent	W/L	1st	2nd	1st Half	3rd	4th	2nd Half	OT	Total
Nov. 2	NE State (exh)	W, 82-74	20	15	35	18	29	47	-	82*
Nov. 10	SHSU	W, 65-54	5	18	23	23	19	41	-	65
Nov. 12	Samford	W, 84-63	27	15	42	16	26	42	-	84
Nov. 16	Nebraska	L, 80-69	19	11	30	22	17	49	-	69
Nov. 20	ORU	W, 77-66	25	15	40	16	21	37	-	77
Nov. 24	UTEP	L, 64-61	3	17	20	16	25	41	-	61
Nov. 25	New Mexico State	W, 69-60	11	12	23	24	22	46	-	69
Nov. 29	Abilene Christian	W, 79-65	20	14	34	20	25	45	-	79
Dec. 3	Kansas	L, 71-60	12	10	22	21	17	38	-	60
Dec. 7	UNC-C	W, 73-72	13	16	30	19	24	43	-	73
Dec. 10	Tulsa	W, 67-41	21	14	35	13	19	32	-	67
Dec. 17	UTA	W, 91-57	14	23	37	26	28	54	-	91
Dec. 21	Arizona State	L, 89-43	8	6	14	11	18	29	-	43
Dec. 28	Grambling State	W, 79-62	15	25	40	25	14	39	-	79

NonConf Totals			193	196	390	252	270	583	-	917
NonConf Averages			13.8	15.01	30	19.4	20.8	44.8	-	70.5
NonConf Highs			25	25	42	26	28	54	-	91
NonConf Lows			3	6	14	11	17	29	-	43

*Not included in averages

Dec. 31	Ole Miss	W, 73-72	19	18	37	25	11	36	-	73
Jan. 4	Mississippi State	L, 111-69	20	19	39	18	12	30	-	69
Jan. 7	Alabama	L, 83-76	13	16	29	26	21	47	-	76
Jan. 11	Georgia	L, 78-65	7	18	25	24	16	40	-	65
Jan. 14	Auburn	W, 68-58	16	25	41	15	12	27	-	68
Jan. 18	Florida	L, 65-51	13	15	28	7	16	23	-	51
Jan. 21	Missouri									
Jan. 25	South Carolina									
Jan. 29	Kentucky									
Feb. 4	Alabama									
Feb. 8	Tennessee									
Feb. 11	Missouri									
Feb. 15	Kentucky									
Feb. 18	LSU									
Feb. 22	Texas A&M									
Feb. 25	Vanderbilt									

SEC Totals			81	111	199	115	88	203	-	402
SEC Averages			13.5	18.5	33.2	19.2	14.7	33.8	-	67.0
SEC Highs			20	25	41	26	21	47	-	76
SEC Lows			7	15	25	7	11	23	-	51

Season Totals			269	307	579	367	358	786	-	1319
Season Averages			14.2	16.2	31.0	19.3	18.8	41.4	-	69.4
Season Highs			25	25 (2x)	42	26	28	54	-	91
Season Lows			3	6	14	7	11	23	-	43

BY STARTERS

Date	Opponent	Monk	Williams	Mason	Cosper	Zimmerman
Nov. 2	NE State (exh) - W	Monk	Williams	Mason	Cosper	Zimmerman
Nov. 10	SHSU - W	Monk	Williams	Mason	Cosper	Zimmerman
Nov. 12	Samford - W	Monk	Williams	Mason	Cosper	Zimmerman
Nov. 16	Nebraska - L	Monk	Williams	Mason	Cosper	Zimmerman
Nov. 20	ORU - W	Monk	Williams	Mason	Cosper	Zimmerman
Nov. 25	UTEP - W	Monk	Williams	Mason	Cosper	Zimmerman
Nov. 26	New Mexico State - W	Monk	Williams	Mason	Cosper	Zimmerman
Nov. 29	Abilene Christian - W	Monk	Williams	Mason	Cosper	Zimmerman
Dec. 3	Kansas - L	Monk	Williams	Mason	Cosper	Zimmerman
Dec. 7	UNC-C - W	Monk	Williams	Mason	Cosper	Zimmerman
Dec. 10	Tulsa - W	Monk	Williams	Mason	Cosper	Zimmerman
Dec. 17	UTA - W	Monk	Thomas	Mason	Cosper	Zimmerman
Dec. 21	Arizona State - L	Monk	Williams	Mason	Cosper	Zimmerman
Dec. 28	Grambling - W	Monk	Williams	Mason	Cosper	Zimmerman
Dec. 31	Ole Miss - W	Monk	Williams	Mason	Cosper	Zimmerman
Jan. 4	Mississippi State - L	Monk	Williams	Mason	Cosper	Zimmerman
Jan. 7	Alabama - L	Monk	Williams	Mason	Cosper	Zimmerman
Jan. 11	Georgia - L	Monk	Williams	Mason	Cosper	Zimmerman
Jan. 14	Auburn - W	Monk	Williams	Mason	Cosper	Zimmerman
Jan. 18	Florida - L	Monk	Williams	Mason	Northcross-Baker	Zimmerman
Jan. 21	Missouri					
Jan. 25	South Carolina					
Jan. 29	Kentucky					
Feb. 4	Alabama					
Feb. 8	Tennessee					
Feb. 11	Missouri					
Feb. 15	Kentucky					
Feb. 18	LSU					
Feb. 22	Texas A&M					
Feb. 25	Vanderbilt					

MISCELLANEOUS STATISTICS

Double-Figure Scoring Games				
Player	15-16	16-17	17-18	Career
M. Monk	3	13	18	34
K. Swenson		11	1	12
J. Mason		10	11	21
D. Cosper	15	8	15	37
B. Zimmerman		2	2	4
T. Thomas	-	-	1	1
K. Williams	-	-	7	7
R. Northcross-Baker	-	-	3	3
TOTAL	18	44	57	119

20-Point Scoring Games				
Player	15-16	16-17	17-18	Career
K. Swenson		1		1
D. Cosper	1	-	5	6
M. Monk	-	-	8	8
R. Northcross-Baker			1	1
TOTAL	1	1	12	14

Double-Figure Rebounding Games				
Player	15-16	16-17	17-18	Career
D. Cosper	-	-	7	7
T. Thomas	-	-	1	1
K. Williams	-	-	6	6
TOTAL	x	x	14	14

Double-Doubles				
Player	15-16	16-17	17-18	Career
J. Mason (pts/ast)	-	2		2
D. Cosper (pts/reb)	-	-	7	7
K. Williams (pts/reb)	-	-	3	3
M. Monk (pts/ast)	-	-	1	1
TOTAL	-	2	11	13

5+ Steals				
Player	15-16	16-17	17-18	Career
M. Monk	-	2	-	2
TOTAL	x	2	-	2

5+ Blocks				
Player	15-16	16-17	17-18	Career
TBA	-	-	-	-
TOTAL	-	x	x	x

5+ Assists				
Player	15-16	16-17	17-18	Career
M. Monk	3	4	6	13
J. Mason		6	4	10
D. Cosper		2		2
TOTAL	3	12	10	25



@RazorbackWBB STATISTICS
Arkansas Combined Team Statistics (as of Jan 18, 2018)
All games



RECORD:	OVERALL	HOME	AWAY	NEUTRAL
ALL GAMES	11-8	8-2	2-6	1-0
CONFERENCE	2-4	1-2	1-2	0-0
NON-CONFERENCE	9-4	7-0	1-4	1-0

##	Player	gp-gs	min	avg	Total		3-Point		F-Throw		Rebounds			pf	dq	a	to	blk	stl	pts	avg	
					fg-fga	fg%	3fg-fga	3fg%	ft-fga	ft%	off	def	tot									avg
03	MONK, Malica	19-19	648	34.1	109-298	.366	17-65	.262	83-106	.783	17	58	75	3.9	45	1	76	46	4	33	318	16.7
21	COSPER, Devin	18-18	571	31.7	98-272	.360	41-144	.285	38-50	.760	15	108	123	6.8	47	1	27	44	9	26	275	15.3
14	MASON, Jaily	19-19	611	32.2	80-202	.396	29-78	.372	6-9	.667	8	72	80	4.2	35	1	56	42	11	29	195	10.3
10	WILLIAMS, Kiara	19-18	375	19.7	61-120	.508	1-1	1.000	26-50	.520	61	84	145	7.6	41	1	6	19	22	21	149	7.8
01	NORTHCROSS-BAKE	19-1	401	21.1	43-129	.333	25-86	.291	20-29	.690	22	34	56	2.9	27	0	28	18	3	11	131	6.9
04	SWENSON, Keiryn	19-0	300	15.8	33-87	.379	22-65	.338	7-11	.636	15	31	46	2.4	22	0	7	18	8	5	95	5.0
24	THOMAS, Taylah	19-1	321	16.9	25-59	.424	3-9	.333	20-30	.667	38	57	95	5.0	37	1	3	16	4	5	73	3.8
22	ZIMMERMAN, Bailey	19-19	425	22.4	19-83	.229	7-49	.143	18-29	.621	27	33	60	3.2	34	1	20	22	9	8	63	3.3
20	STOUT, Sydney	9-0	40	4.4	1-6	.167	1-3	.333	3-6	.500	3	4	7	0.8	1	0	1	1	0	0	6	0.7
13	SPANGLER, Grayce	11-0	36	3.3	2-11	.182	0-5	.000	3-6	.500	1	4	5	0.5	6	0	0	4	0	0	7	0.6
30	WEAVER, Macy	13-0	69	5.3	2-7	.286	0-0	.000	3-7	.429	8	9	17	1.3	13	0	1	2	7	1	7	0.5
51	MCCLURE, Brenna	1-0	3	3.0	0-1	.000	0-0	.000	0-0	.000	0	0	0	0.0	1	0	0	0	0	0	0	0.0
Team											42	38	80		2		3					
Total.....		19	3800		473-1275	.371	146-505	.289	227-333	.682	257	532	789	41.5	311	6	225	235	77	139	1319	69.4
Opponents.....		19	3800		487-1233	.395	119-380	.313	218-304	.717	245	575	820	43.2	324	2	271	279	70	116	1311	69.0

TEAM STATISTICS	AR	OPP	Date	Opponent	Score	Att.
SCORING	1319	1311	11/10/17	SHSU	w 65-54	4719
Points per game	69.4	69.0	11/12/17	SAMFORD	w 84-63	1739
Scoring margin	+0.4	-	11/16/17	at Nebraska	L 69-80	3459
FIELD GOALS-ATT	473-1275	487-1233	11/20/17	at Oral Roberts	w 77-66	2503
Field goal pct	.371	.395	11/24/17	at UTEP	L 61-64	633
3 POINT FG-ATT	146-505	119-380	11/25/17	vs NM State	w 69-60	250
3-point FG pct	.289	.313	11/29/17	ACU	w 79-65	1132
3-pt FG made per game	7.7	6.3	12/03/17	at Kansas	L 60-71	1795
FREE THROWS-ATT	227-333	218-304	12/07/17	CHARLOTTE	w 73-72	1169
Free throw pct	.682	.717	12/10/17	TULSA	w 67-41	1821
F-Throws made per game	11.9	11.5	12/17/17	UT-ARLINGTON	w 91-57	1481
REBOUNDS	789	820	12/21/17	at Arizona State	L 43-89	1988
Rebounds per game	41.5	43.2	12/28/17	GRAMBLING	w 79-62	1388
Rebounding margin	-1.6	-	* 12/31/17	OLE MISS	w 73-72	1701
ASSISTS	225	271	* 01/04/18	at #5/3 Mississippi State	L 69-111	5398
Assists per game	11.8	14.3	* 01/07/18	ALABAMA	L 76-83	2001
TURNOVERS	235	279	* 1/11/18	at Georgia	L 65-78	2229
Turnovers per game	12.4	14.7	* 01/14/18	at Auburn	w 68-58	2210
Turnover margin	+2.3	-	* 01/18/18	FLORIDA	L 51-65	1288
Assist/turnover ratio	1.0	1.0				
STEALS	139	116				
Steals per game	7.3	6.1				
BLOCKS	77	70				
Blocks per game	4.1	3.7				
ATTENDANCE	18439	20465				
Home games-Avg/Game	10-1844	8-2527				
Neutral site-Avg/Game	-	1-250				

* - Conference game

Score by Periods	1st	2nd	3rd	4th	Totals
Arkansas	282	307	367	363	1319
Opponents	311	300	336	364	1311



@RazorbackWBB STATISTICS
Arkansas Combined Team Statistics (as of Jan 18, 2018)
Conference games only



RECORD:	OVERALL	HOME	AWAY	NEUTRAL
ALL GAMES	2-4	1-2	1-2	0-0
CONFERENCE	2-4	1-2	1-2	0-0
NON-CONFERENCE	0-0	0-0	0-0	0-0

##	Player	gp-gs	min	avg	Total		3-Point		F-Throw		Rebounds			avg	pf	dq	a	to	blk	stl	pts	avg	
					fg-fga	fg%	3fg-fga	3fg%	ft-fga	ft%	off	def	tot										
03	MONK, Malica	6-6	215	35.8	32-105	.305	4-19	.211	26-38	.684	7	20	27	4.5	18	0	19	15	2	6	94	15.7	
21	COSPER, Devin	5-5	157	31.4	22-61	.361	4-25	.160	15-17	.882	3	36	39	7.8	15	1	10	15	1	8	63	12.6	
14	MASON, Jailyn	6-6	219	36.5	30-71	.423	11-26	.423	4-4	1.000	3	21	24	4.0	14	0	15	19	4	10	75	12.5	
10	WILLIAMS, Kiara	6-6	115	19.2	21-39	.538	1-1	1.000	6-9	.667	13	26	39	6.5	12	1	2	7	6	4	49	8.2	
01	NORTHCROSS-BAKE	6-1	148	24.7	13-44	.295	7-27	.259	5-6	.833	7	11	18	3.0	7	0	8	4	2	3	38	6.3	
22	ZIMMERMAN, Bailey	6-6	130	21.7	8-25	.320	6-21	.286	8-13	.615	11	11	22	3.7	14	1	8	9	2	3	30	5.0	
04	SWENSON, Keiryn	6-0	82	13.7	9-22	.409	5-18	.278	1-1	1.000	5	5	10	1.7	7	0	1	5	3	1	24	4.0	
24	THOMAS,Taylah	6-0	115	19.2	10-23	.435	1-3	.333	3-4	.750	13	15	28	4.7	13	0	1	7	0	0	24	4.0	
13	SPANGLER, Grayce	2-0	3	1.5	2-3	.667	0-1	.000	0-1	.000	1	0	1	0.5	1	0	0	2	0	0	4	2.0	
30	WEAVER, Macy	3-0	9	3.0	0-1	.000	0-0	.000	1-2	.500	1	0	1	0.3	0	0	0	0	0	0	1	0.3	
20	STOUT, Sydney	1-0	4	4.0	0-0	.000	0-0	.000	0-0	.000	0	0	0	0.0	0	0	0	0	0	0	0	0.0	
51	MCCLURE, Brenna	1-0	3	3.0	0-1	.000	0-0	.000	0-0	.000	0	0	0	0.0	1	0	0	0	0	0	0	0.0	
Team											13	12	25		1		2						
Total.....		6	1200		147-395	.372	39-141	.277	69-95	.726	77	157	234	39.0	103	3	64	85	20	35	402	67.0	
Opponents.....		6	1200		168-394	.426	40-117	.342	91-117	.778	79	175	254	42.3	92	1	92	77	27	40	467	77.8	

TEAM STATISTICS	AR	OPP	Date	Opponent	Score	Att.
SCORING	402	467	* 12/31/17	OLE MISS	W 73-72	1701
Points per game	67.0	77.8	* 01/04/18	at #5/3 Mississippi State	L 69-111	5398
Scoring margin	-10.8	-	* 01/07/18	ALABAMA	L 76-83	2001
FIELD GOALS-ATT	147-395	168-394	* 1/11/18	at Georgia	L 65-78	2229
Field goal pct	.372	.426	* 01/14/18	at Auburn	W 68-58	2210
3 POINT FG-ATT	39-141	40-117	* 01/18/18	FLORIDA	L 51-65	1288
3-point FG pct	.277	.342	* - Conference game			
3-pt FG made per game	6.5	6.7				
FREE THROWS-ATT	69-95	91-117				
Free throw pct	.726	.778				
F-Throws made per game	11.5	15.2				
REBOUNDS	234	254				
Rebounds per game	39.0	42.3				
Rebounding margin	-3.3	-				
ASSISTS	64	92				
Assists per game	10.7	15.3				
TURNOVERS	85	77				
Turnovers per game	14.2	12.8				
Turnover margin	-1.3	-				
Assist/turnover ratio	0.8	1.2				
STEALS	35	40				
Steals per game	5.8	6.7				
BLOCKS	20	27				
Blocks per game	3.3	4.5				
ATTENDANCE	4990	9837				
Home games-Avg/Game	3-1663	3-3279				
Neutral site-Avg/Game	-	0-0				

Score by Periods	1st	2nd	3rd	4th	Totals
Arkansas	88	111	115	88	402
Opponents	94	102	129	142	467

MORE NUMBERS

MISCELLANEOUS

Opponent	T/O	2ndCh	Paint	FastB	Bench	Ties	Leads	WL	Score	Leads overcome
SHSU	15	5	28	14	13	1	1	W	65-54	trailed by 13/20-07:26
Samford	18	5	30	3	23	0	0	W	84-63	
Nebraska	12	14	32	10	11	3	1	L	69-80	lost 2 4th-0:6:21
ORU	15	6	32	18	16	1	1	W	77-66	trailed by 6 1st-04:58
UTEP	22	18	18	14	16	0	0	L	61-64	
NM State	17	16	34	13	15	2	4	W	69-60	trailed by 7 1st-01:06
ACU	28	9	20	0	25	0	1	W	79-65	trailed by 1 1st-09:21
Kansas	10	8	28	6	6	1	1	L	60-71	lost 2 1st-08:40
Charlotte	15	17	32	8	6	1	8	W	73-72	trailed by 9 3rd-9:40
Tulsa	7	13	30	6	12	0	1	W	67-41	trailed by 2 1st-09:14
UTA	23	13	26	17	42	3	2	W	91-57	trailed by 6 1st-4:54
Arizona St.	3	8	22	6	12	0	0	L	43-89	lost 2 1st-09:43
Grambling	18	11	22	3	33	0	0	W	79-62	
Ole Miss	13	10	26	10	23	0	1	W	73-72	trailed by 1 2nd-04:33
#5/3 MSU	3	4	20	11	16	1	1	L	69-111	lost 5 1st-08:28
Alabama	7	7	26	6	13	3	3	L	76-83	lost 7 3rd-02:23
Georgia	11	8	22	8	13	0	0	L	65-78	
Auburn	15	22	27	4	11	0	1	W	68-58	trailed by 2 1st-09:37
Florida	15	9	18	9	9	0	0	L	51-65	
Totals	267	203	493	166	315	16	26			
Ave/Game	14.1	10.7	25.9	8.7	16.6	0.8	1.4			

Opponent	266	201	632	96	375	19	25
Ave/Game	14.0	10.6	33.3	5.1	19.7	1.0	1.3

GAME BY GAME LEADERS

Date	Opponent	Points	Rebounds	Assists	Steals	Blocks
Nov. 10	SHSU	Monk (18)	Cosper (10)	2 Players (4)	Monk (4)	Mason (3)
Nov. 12	Samford	Monk (21)	2 Players (9)	2 Players (6)	3 Players (3)	Williams (4)
Nov. 16	Nebraska	Monk (22)	2 Players (11)	Monk (6)	Mason (4)	4 Players (2)
Nov. 20	ORU	Monk (24)	Cosper (10)	Monk (4)	Cosper (2)	2 Players (1)
Nov. 24	UTEP	Cosper (22)	Cosper (5)	Monk (5)	Cosper (4)	Weaver (4)
Nov. 25	NMSU	Monk (22)	2 Players (11)	Cosper (4)	Monk (4)	2 Players (1)
No. 29	A. Christian	2 Players (15)	Williams (8)	Mason (8)	Williams (3)	2 Players (1)
Dec. 3	Kansas	Monk (22)	Williams (16)	Monk (5)	Mason (2)	Williams (2)
Dec. 7	Charlotte	Cosper (25)	Cosper (14)	Mason (4)	Williams (4)	Williams (3)
No. 10	Tulsa	Monk (14)	Cosper (11)	Mason (6)	2 Players (1)	2 Players (2)
No. 17	UTA	RNB (22)	Williams (8)	Mason (7)	2 Players (3)	2 Players (1)
Dec. 21	Az State	Monk (12)	3 Players (4)	Monk (2)	Monk (1)	4 Players (1)
Dec. 28	Grambling	Cosper (16)	Williams (16)	Monk (10)	Monk (3)	Monk (1)
Dec. 31	Ole Miss	Cosper (18)	Cosper (11)	2 Players (4)	Cosper (4)	Williams (4)
Jan. 4	Miss State	Mason (15)	Cosper (7)	2 Players (4)	Monk (2)	3 Players (1)
Jan. 7	Alabama	Cosper (24)	Cosper (13)	Cosper (4)	Mason (3)	Mason (2)
Jan. 11	Georgia	Monk (16)	Thomas (8)	3 Players (2)	Mason (5)	Monk (1)
Jan. 14	Auburn	2 Players (15)	Williams (14)	Mason (5)	4 Players (1)	Zimmerman (1)
Jan. 18	Florida	Monk (23)	Monk (8)	Monk (4)	3 Players (1)	3 Players (1)
Jan. 21	Missouri					
Jan. 25	S Carolina					
Jan. 29	Kentucky					
Feb. 4	Alabama					
Feb. 8	Tennessee					
Feb. 11	Missouri					
Feb. 15	Kentucky					
Feb. 18	LSU					
Feb. 22	Texas A&M					
Feb. 25	Vanderbilt					

SPECIALTY STATS

Opponent	Paint	OFF TO	2ND CHANCE	FAST BREAK	BENCH
SHSU	28	15	5	14	13
Samford	30	18	5	3	23
Nebraska	32	12	14	10	11
ORU	32	15	6	18	16
UTEP	18	22	18	14	16
NMSU	34	17	16	13	15
Ab. Christian	20	28	9	0	25
Kansas	28	10	8	6	6
Charlotte	32	15	17	8	6
Tulsa	30	7	13	6	12
UTA	26	23	13	17	42
Arizona State	22	3	8	6	12
Grambling State	22	18	11	3	33
Ole Miss	26	13	10	10	23
Miss State	20	3	4	11	16
Alabama	26	7	7	6	13
Georgia	22	11	8	8	13
Auburn	27	15	22	4	11
Florida	18	15	9	9	9

[Missouri](#)
[S. Carolina](#)
[Kentucky](#)
[Alabama](#)
[Tennessee](#)
[Missouri](#)
[Kentucky](#)
[LSU](#)
[Texas A&M](#)
[Vanderbilt](#)

COMPARISON



@RazorbackWBB STATISTICS
Arkansas Team Game-by-Game Comparison (as of Jan 19, 2018)
All games



Opponent	1st	2nd	Score	Mar	Total FG	FG Pct	3-Pointers	3FG Pct	Free Throws	FT Pct	Rebounds	Assist	T/Over	Block	Steal	Fouls
SHSU	23/28	42/26	65-54	+11	25-67/20-63	.373/.317	9-33/7-27	.273/.259	6-11/7-11	.545/.636	39/51 (12)	15/10	9/15	7/5	8/3	12/14
SAMFORD	42/33	42/30	84-63	+21	29-59/23-59	.492/.390	10-27/6-22	.370/.273	16-22/11-14	.727/.786	35/34 +1	17/17	6/13	4/1	7/3	15/23
Nebraska	30/41	39/39	69-80	(11)	27-77/28-72	.351/.389	8-32/7-21	.250/.333	7-10/17-25	.700/.680	45/55 (10)	10/17	15/16	8/6	12/7	23/12
Oral Roberts	40/36	37/30	77-66	+11	29-70/22-58	.414/.379	6-23/7-22	.261/.318	13-18/15-19	.722/.789	41/41 -	8/12	4/14	2/0	5/2	18/20
UTEP	20/38	41/26	61-64	(3)	21-70/27-53	.300/.509	11-41/5-13	.268/.385	8-14/5-7	.571/.714	27/51 (24)	13/19	4/23	4/0	14/1	15/13
NM State	23/25	46/35	69-60	+9	25-70/23-67	.357/.343	6-26/4-18	.231/.222	13-24/10-14	.542/.714	55/41 +14	10/9	18/18	3/2	12/10	15/21
ACU	34/24	45/41	79-65	+14	25-68/24-69	.368/.348	10-25/11-34	.400/.324	19-27/6-11	.704/.545	44/43 +1	13/17	12/20	4/6	13/8	13/21
Kansas	22/30	38/41	60-71	(11)	22-69/25-62	.319/.403	5-27/3-15	.185/.200	11-15/18-25	.733/.720	40/50 (10)	7/9	13/15	6/5	3/8	24/17
CHARLOTTE	30/37	43/35	73-72	+1	26-75/27-74	.347/.365	9-31/5-13	.290/.385	12-24/13-20	.500/.650	45/58 (13)	11/15	10/17	5/3	10/7	19/20
TULSA	35/24	32/17	67-41	+26	25-67/16-69	.373/.232	6-29/2-16	.207/.125	11-19/7-10	.579/.700	61/39 +22	13/5	9/7	7/3	2/4	10/16
UT-ARLINGTON	37/24	54/33	91-57	+34	30-65/22-54	.462/.407	12-28/3-15	.429/.200	19-21/10-16	.905/.625	40/27 +13	19/10	14/22	2/2	11/6	21/21
Arizona State	14/52	29/37	43-89	(46)	17-57/37-73	.298/.507	4-18/12-20	.222/.600	5-6/3-6	.833/.500	35/41 (6)	7/27	23/8	4/4	1/11	12/13
GRAMBLING	40/23	39/39	79-62	+17	25-66/25-66	.379/.379	11-24/7-27	.458/.259	18-27/5-9	.667/.556	48/35 +13	18/12	13/14	1/6	6/6	11/21
OLE MISS	37/32	36/40	73-72	+1	26-61/23-55	.426/.418	8-21/7-18	.381/.389	13-20/19-26	.650/.731	38/34 +4	11/14	15/17	7/4	7/6	18/17
#5/3 Mississippi State	39/49	30/62	69-111	(42)	28-62/44-76	.452/.579	6-18/10-20	.333/.500	7-12/13-14	.583/.929	29/40 (11)	12/25	16/4	3/2	3/7	17/15
ALABAMA	29/32	47/51	76-83	(7)	26-70/26-65	.371/.400	6-21/6-18	.286/.333	18-21/25-36	.857/.694	43/44 (1)	9/12	17/14	5/7	8/9	26/19
Georgia	25/31	40/47	65-78	(13)	22-65/30-73	.338/.411	5-21/8-18	.238/.444	16-23/10-12	.696/.833	43/49 (6)	10/19	17/13	1/9	10/6	16/14
Auburn	41/17	27/41	68-58	+10	24-61/19-56	.393/.339	9-30/2-14	.300/.143	11-15/18-22	.733/.818	39/33 +6	14/7	12/15	1/4	4/8	17/18
FLORIDA	28/35	23/30	51-65	(14)	21-76/26-69	.276/.377	5-30/7-29	.167/.241	4-4/6-7	1000/.857	42/54 (12)	8/15	8/14	3/1	3/4	9/9

Note: Game totals are displayed in the format TEAM/OPPONENT for each category



@RazorbackWBB STATISTICS
Arkansas Points-Rebounds-Assists (as of Jan 19, 2018)
All games

Opponent	Date	Score	01	03	04	10	13	14	20	21	22	24	30
			NORTHCROS	MONK,MALIC	SWENSON,K	WILLIAMS,K	SPANGLER,	MASON,JAIL	STOUT,SYDN	COSPER,DE	ZIMMERMAN,	THOMAS,TA	WEAVER,MA M
SHSU	11/10/17	65-54 w	3-2-2	18-2-4	5-1-0	7-2-1	0-0-0	8-5-4	1-1-0	17-12-2	2-3-2	4-4-0	0-0-0
SAM	11/12/17	84-63 w	0-1-6	21-9-6	9-0-1	10-5-0	0-1-0	12-1-2	1-1-0	18-5-2	0-0-0	13-9-0	0-0-0
at NEB	11/16/17	69-80 L	3-4-0	22-3-6	3-3-0	6-11-1	DNP	8-5-2	DNP	21-4-0	1-0-0	5-11-1	DNP
at ORU	11/20/17	77-66 w	8-1-1	24-3-4	6-2-0	8-5-0	DNP	6-2-1	DNP	21-10-1	2-4-1	2-9-0	DNP
at UTEPW	11/24/17	61-64 L	7-2-3	10-2-5	6-2-0	1-1-0	0-0-0	8-4-2	0-0-0	22-5-0	4-3-2	1-4-0	2-3-1
vs NMSU	11/25/17	69-60 w	7-2-0	22-7-2	5-6-0	11-11-0	DNP	3-6-2	DNP	17-11-4	1-3-2	3-7-0	DNP
ACU	11/29/17	79-65 w	15-3-1	15-2-1	3-2-0	12-8-0	0-0-0	13-7-8	0-1-0	11-3-1	3-6-2	7-7-0	0-1-0
at KU	12/03/17	60-71 L	2-2-1	21-7-5	4-2-0	6-16-0	0-0-0	10-2-1	DNP	17-3-0	0-2-0	0-0-0	0-0-0
CHA	12/07/17	73-72 w	3-3-1	15-4-3	3-2-0	9-12-0	DNP	12-4-4	DNP	25-14-2	6-3-1	0-0-0	0-2-0
TLS	12/10/17	67-41 w	1-9-1	14-4-3	7-6-0	13-7-2	0-1-0	11-5-6	0-1-0	11-11-0	6-7-1	4-7-0	0-1-0
UTA	12/17/17	91-57 w	22-4-3	20-1-6	10-5-2	2-8-0	3-1-0	15-4-7	4-2-0	8-1-1	6-3-0	0-4-0	1-5-0
at ASU	12/21/17	43-89 L	8-1-1	12-2-2	2-3-1	3-4-0	0-1-0	6-4-1	0-0-0	8-1-1	2-4-1	2-3-0	0-1-0
GRAMWBB	12/28/17	79-62 w	14-4-0	10-2-10	8-2-2	12-16-0	0-0-0	8-7-1	0-1-1	16-4-3	0-0-0	8-2-1	3-3-0
OM	12/31/17	73-72 w	9-3-0	12-2-4	8-4-0	5-9-1	DNP	13-2-4	DNP	18-11-1	2-1-1	6-3-0	DNP
at MS	01/04/18	69-111 L	8-1-1	8-3-4	0-2-0	13-2-0	4-1-0	15-3-4	0-0-0	13-7-3	4-3-0	4-6-0	0-0-0
UA	01/07/18	76-83 L	2-0-2	21-4-1	9-0-0	6-7-0	0-0-0	12-6-0	DNP	24-13-4	0-2-2	2-4-0	DNP
at UGA	1/11/18	65-78 L	6-2-1	16-5-2	0-0-0	2-3-1	DNP	15-5-1	DNP	8-7-2	11-5-2	6-8-1	1-1-0
at AU	01/14/18	68-58 w	7-6-3	14-5-4	0-0-0	15-14-0	DNP	15-2-5	DNP	0-1-0	13-8-2	4-1-0	DNP
UF	01/18/18	51-65 L	6-6-1	23-8-4	7-4-1	8-4-0	DNP	5-6-1	DNP	DNP	0-3-1	2-6-0	0-0-0

THE LAST TIME A RAZORBACK TEAM ...

OFFENSE

Scored 110+	110, vs. Providence (11/16/98)
Scored 100+ points at home	101, Houston Baptist, 12-28-16
Scored 100+ points on the road	108, Baylor (3-6-91; SWC Tourn., Dallas, Texas)
Scored 90-99 points	91 vs. UTA, 12-17-17
Scored 90+ points at home	101, Houston Baptist, 12-28-16
Scored 90+ points on the road	91, (91-80 Win in 3OT, 2-10-13, at Alabama)
Scored 80-89 points	84, Samford (11-12-17)
Scored 80-89 points at home	86, Mississippi Valley State (12-28-15)
Scored 80-89 points on the road	88, Southeast Missouri (NM) (11-29-13)
Scored 70-79 points	77, Alabama, 1-7-18
Scored 70-79 points at home	73, Ole Miss, 12-31-17
Scored 70-79 points on the road	77 at Ole Miss, 1-31-13
Scored 60-69 points	68, at Auburn, 1-14-18
Was held to 50-59	51, Florida, 1-18-18
Was held to 49-40	43 at Arizona State, 12-21-17
Was held to 39-20	32, at No. 2 South Carolina (1-3-16)
Was held to 20 or less	N/A
Made 30-39 field goals	30 vs. UTA, 12-17-17
Made 20-29 field goals	21, Florida, 1-18-18
Made 10-19 field goals	17 at Arizona State, 12-21-17
Made 10 three-point field goals	11, Grambling State, 12-28-17
Did not make a three point basket (began in 1986)	0-10, at Mississippi State (L 44-47), 2-3-13
Made 30 free throws	38 at Florida (38-54); (2-22-04)
Made 15+ Free Throws	18, Grambling State, 12-28-17
Shot 40-49 or better from the field	45.2 (28-62) at #5/3 Mississippi State (1-4-18)
Shot 50-59 or better from the field	52.1 (38-73), Houston Baptist, 12-28-16
Shot 60 percent or better from the field	600 (36-60) vs. Ole Miss (W, 93-52; 3-3-13)
Held to less than 40 percent from the field	39.3% (24-61), at Auburn, 1-14-18
Held to less than 30 percent from the field	27.6% (21-76), Florida, 1-18-18
Held to less than 20 percent from the field	182 (10-55) vs. No. 6/7 Tennessee (1-8-12; L, 38-69)
Allowed opponent to shoot over 50% from the field	57.9% (44-76) at #5/3 Mississippi State (1-4-18)
Held opponent to less than 40% from the field	33.9% (19-56), at Auburn, 1-14-18
Held opponent to less than 30% from the field	23.2% (16-69), Tulsa, 12-10-17
Held opponent to less than 20% from the field in a half:	136 (3-22), First Half, Binghamton, 11-30-13
.....	200 (5-25), First Half, MVSU, 12-28-13
.....	200 (5-25), First Half, Grambling State, 12-29-14
Had 20 or more assists in a game	27, Houston Baptist, 12-28-16

DEFENSE

Allowed 100 points	111 at #5/3 Mississippi State (1-4-18)
Allowed 80+ points	83, Alabama, 1-7-18
Allowed 70-79 points	78, at Georgia, 1-11-18
Allowed 69-60 points	65, Florida, 1-18-18
Held opponent to 59-50 points	58, at Auburn, 1-14-18
Held opponent to 40-49 points	41, Tulsa, 12-10-17
Held opponent to 39-30	36, Northwestern State, 12-18-16
Held opponent under 45 points three cons. games	45, SHSU (11-8-13, W 81-45);
.....	33 ORU (11-13-13, W 91-33); 45, Furman (11-16-13, W, 74-45)
Held an SEC opponent under 50 points in 3 cons. games	47, Auburn (1-29-15, W, 52-47); 42,
.....	Alabama (2-1-15, W, 53-42);
.....	#24/21 Georgia (2-9-15, W, 54-48)
Held opponent to 29 points or less	23, Binghamton, 11-30-13
Held an opponent under 15 points in a half	13, Northwestern State, 12-18-16
Held opponent under 15 field goals	14, Houston Baptist, 12-28-16
Held opponent under 15% from three-point distance	14.3% (2-14), at Auburn, 1-14-18
Had 70+ rebounds	74, Mississippi Valley State (11-24-89)
Had 60-69 rebounds	61, Tulsa, 12-10-17
Had 50-59 rebounds	55, vs. NMSU, 11-25-17
Had five or more blocked shots in a game	7, Ole Miss, 12-31-17
Had 20 or more steals in a game	20, ORU (11-13-13)
Had 15 or more steals in a game	16, at Florida, 2-9-17
Had 20 or more turnovers in a game	23 at Arizona State, 12-21-17
Forced 20-25 or more Turnovers in a game	22 vs. UTA, 12-17-17

OTHER

Won an overtime game	91-80 Win in 3OT, 2-10-13, at Alabama
Lost an overtime game	Florida (71-66), 1-28-16
Won a double overtime game	73-72, vs. Florida (1-29-12)
Lost a double overtime game	N/A
Won a triple overtime game	91-80 Win in 3OT, 2-10-13, at Alabama
Played consecutive overtime games	1-24-16 at Auburn (lost); 1-28-16 vs Florida (lost)
Won a regular season tournament	Nugget Classic (Reno, Nev., Nov. 25-26, 2016)
Defeated a ranked team	67-61, No. 13 Texas A&M, 1-7-16; 64-59, No. 13 Tenn., 1-14-16
.....	64-52, No. 24 Missouri, 1-17-16
Defeated a ranked team on the road	57-53, at #19/18 LSU, 2-23-14; 77-76,
.....	#17/16 Iowa (Las Vegas), 12-18-14
All-time SEC win streak	8 games (1-15-12: Auburn through 2-15-12: at Auburn)
All-time SEC home win streak	5 games (1-15-12: Auburn through 2-9-12: S. Carolina)

THE LAST TIME A RAZORBACK PLAYER ...

Scored 20-24 points	23, Malica Monk, Florida, 1-18-18
Scored 25-29 points	25, Devin Cosper, Charlotte (12-6-17)
Scored 30+ points	34, Jessica Jackson, Houston Baptist, 12-28-16
Scored 20+ points seven times in a season	Jessica Jackson, 2013-14 (22 vs. MTSU, 22 at Missouri,
.....	23 at Fla., 24 at Georgia, 31 vs. Ole Miss, 23 at Kentucky,
.....	25 at LSU)
Scored 20+ points eight times in a season	Malica Monk, 2017-18 (Samford 21, Neb. 22, ORU 24, NMSU
.....	22, KU 21, UTA 20, Ala. 21, FL 23)
.....	Previous: Jessica Jackson, 2015-16
Double figures in 15 consecutive games (Season)	Jessica Jackson, 11/11/16-, LSU 1-8-17
Scored 23+ points in three consecutive games	Jessica Jackson (24 at Georgia 1-16-14,
.....	31 vs. Ole Miss 1-19-14, 23 at Kentucky 1-26-14)
Three players scored double figures in 1 game	Alabama, 1-7-18 (Cosper, Monk, Mason)
Four players scored double figures in 1 game	at Auburn, 1-14-18 (Williams, Zimmermann Monk, Mason)
Four players scored doubles figures for 4 cons. games	12-6-12 - 12-21-12; vs. Kansas, Furman, MVSU, and NSU
Five players scored double figures in 1 game	Abilene Christian (11-29-17)
.....	(Monk, Cosper, Mason, Williams, Northcross-Baker)
Made 10+ field goals in a game	10, Jessica Jackson, Kentucky, 2-16-17
Attempted 15-19 field goals in a game	Monk (17), Cosper (16), Mason (15), Alabama, 1-7-18
Attempted 20+ field goals in a game	28, Malica Monk, Florida, 1-18-18
Attempted 10 free throws in a game	12, Malica Monk vs. UTA, 12-17-17
Made 5 or more three-pointers in a game	6, Raven Northcross-Baker vs. UTA, 12-17-17
Attempted 10+ three-pointers in a game	11, Devin Cosper at Kansas, 12-3-17
Had 10-14 rebounds	14, Kiara Williams, at Auburn, 1-14-18
Had 15+ rebounds	16, Kiara Williams, Grambling State, 12-28-17
Had 10 offensive rebounds - Records go back to 05-06	11, Melissa Wolff vs. New Orleans (1-30-15)
Had 10 defensive rebounds - Records go back to 05-06	13, Devin Cosper, Alabama, 1-7-18
Had 10+ assists	10, Malica Monk, Grambling State, 12-28-17
Had 10+ assists in consecutive games	Jailyn Mason (11 vs. HBU, 12-28-16 and 10 at Ole Miss, 1-1-17)
.....	Calli Berna (11 vs. No. 10/8 KY 2/7/13 and 11 at UA 2/10/13)
Had 5+ blocks in a game	(3x) 5, Jessica Jackson (vs. ORU, 11-13-13);
.....	(No. 25 Vanderbilt, 2-20-14); (at Tulsa, 12-14-14)
Had 10 or more blocks in a game	9, Robyn Irwin vs. SMSU, 12-19-88 (school record)
Had 5 or more steals in a game	5, Malica Monk vs. NMSU, 11-25-17
Had a double-double	Kiara Williams (15/14), at Auburn, 1-14-18
Had a double-double in two straight games	2017-18: Devin Cosper (25/14) Charlotte and (11/11) Tulsa
Had two players record a double-double	Kiara Williams (12 pts/16 reb) &
.....	Malica Monk (10 pts/10 reb), Grambling State, 12-28-17
Had seven double-doubles in a season	Devin Cosper, 2017-18
.....	(SHSU, ORU, NMSU, Char., Tulsa, OM, AL)
Had 10+ double-doubles in a season	2006-07, Lauren Ervin (14)
Had a triple-double	14 pts, 13 reb, 12 asts, Ceira Ricketts vs. Auburn (1-18-09)



BENTONVILLE HS (HC)	94	
	95	
	96	
	97	
CABOT HS (HC)	98	
ARKANSAS (DIR OF OPS)	99	
	00	
TULSA (ASST)	01	
	02	
	03	
	04	
COLORADO (ASST)	05	
ARKANSAS (ASST)	06	
XAVIER (ASST)	07	X
	08	
	09	
	10	
WASHINGTON (ASST)	11	W
	12	
WASHINGTON (HC)	13	W
	14	
	15	
	16	
ARKANSAS (HC)	17	

MIKE NEIGHBORS YEAR-BY-YEAR

Year	School	Overall	Pct.	Conf.	Pct.	Conf. Finish
2013-14	Washington	20-14	.588	10-8	.556	6/Pac-12
2014-15	Washington	23-10	.697	11-7	.611	5/Pac-12
2015-16	Washington	26-11	.703	11-7	.611	5/Pac-12
2016-17	Washington	29-6	.829	15-3	.833	T2/Pac-12
2017-18	Arkansas	11-8	.579	2-4	.333	TBA
Totals	5 Years	109-49	.690	49-29	.628	

NEIGHBORS 3-1 IN BWA BEFORE THIS YEAR

As the head coach of Bentonville (Ark.) HS, Mike Neighbors went 3-0 in Bud Walton Arena in the high school play-offs. In 1997, his Tiger team defeated Bryant, Mount St. Mary's and Jonesboro to reach the state finals in Pine Bluff, Ark.

The lone loss occurred when Neighbors was an assistant coach at Tulsa. The 13th-ranked Razorbacks defeated Tulsa, 66-49, that season.

OPEN MIKE

Want to get to know Mike Neighbors in his own words? Check out the links below for stories about Mike, his hire and his dream job at Arkansas.

Mike's First 30 Days	http://bit.ly/First30
Mike's Dream Job	http://bit.ly/MNDreamJob
Mike's Press Conference	http://bit.ly/PressConfVideo

FROM ROOKIE NOD TO NAISMITH NOMINEE

In four short years Mike Neighbors went from a Spalding Maggie Dixon Division I Rookie Coach of the Year nominee in 2014, to a Naismith Women's College Coach of the Year national semifinalist in 2017.

Neighbors guided UW to an historic campaign in 2016-17 leading the Huskies to 27 wins, it's second most in program history, and he was just one shy of the all-time a school record set in 1990 (28).

Picked to place third in the Pac-12 in the preseason poll, UW tied for second in the league with a 15-3 record, it's best conference finish since 2003. The Huskies' 15 conference wins tied for third most in program history. Washington, who entered conference play with the program-best 12 non-conference wins, clinched its first-ever bye in the first round of the Pac-12 Tournament. Washington put together an 11-game win streak and a six-game win streak in Pac-12 play in 2016-17.

COACHES COACHING AT ALMA MATER

Mike Neighbors	Arkansas, 1993
Holly Warlick	Tennessee, 1981

A couple of other coaches have SEC ties. Joni Taylor is the head coach at Georgia and a 2002 graduate of Alabama. Matthew Mitchell is a 1995 graduate of Mississippi State and is the head coach at Kentucky. Nikki Fargas graduated from Tennessee in 1994 and is the head coach at LSU. Vic Schaefer is the head coach at Mississippi State and a 1984 graduate of Texas A&M.



NEIGHBORS BY THE NUMBERS

TOP 10 MOVIES

1. A Few Good Men
2. The Hunt For Red October
3. The Silence Of The Lambs
4. Hoosiers
5. Pretty Woman
6. Moneyball
7. Top Gun
8. JFK
9. The Lion King
10. Purple Rain

See the entire list here: <http://imdb.to/2royaEO>

He has 160 movies that are classified as 'thriller'. "Romance" is next with 152 followed by 69 "sport", 58 "mystery", and 32 "sci-fi".

TOP 10 SONGS

1. Sweet Child O' Mine (Guns N' Roses)
2. You Shook Me All Night Long (AC/DC)
3. Man In The Mirror (Michael Jackson)
4. Amarillo By Morning (George Strait)
5. Jessie's Girl (Rick Springfield)
6. Hysteria (Def Leppard)
7. Fishin' In The Dark (Nitty Gritty Dirt Band)
8. The Ballard of Curtis Loew (Lynyrd Skynyrd)
9. Wanted Dead Or Alive (Bon Jovi)
10. Let's Go Crazy (Prince)

TOP 10 TV SHOWS

1. West Wing (first three seasons)
2. The Wire
3. Breaking Bad
4. Seinfeld
5. The Newsroom
6. Prison Break
7. Arrested Development
8. Game of Thrones
9. The Sopranos
10. The Goldbergs

See the entire list here: <http://www.imdb.com/list/ls009377912/>

Neighbors has 16 comedies, 15 dramas and seven crime shows on the list.

Sign up for Mike Neighbors' newsletter and listen to his podcasts at

CoachNeighbors.com



MIKE NEIGHBORS DEVELOPS PLAYERS FOR THE NEXT LEVEL

Mike Neighbors has worked with 11 WNBA Draft Picks

YEAR	UNIVERSITY	PLAYER	ROUND	OVERALL	TEAM NOTE
2017	Washington	Kelsey Plum	1	1	San Antonio Spurs ! @
	Washington	Chantel Osahor	2	21	Chicago Sky ! @
2016	Washington	Talia Walton	3	29	Los Angeles Sparks ! @
	Xavier	Amber Harris	1	4	Minnesota Lynx #
2011	Xavier	Ta'Shia Phillips	1	8	Atlanta Dream #
	TAMU/UAFS	Tanisha Smith	2	22	Seattle Storm #
	Colorado	Brittany Spears	2	19	Phoenix Mercury *
2009	Arkansas	Shameka Christon	1	5	New York Liberty #
2008	Arkansas	Lauren Ervin	3	37	Connecticut Sun #
2006	Tulsa	Megan Moody	-	-	Houston Comets
					Free Agent #
2003	Tulsa	Allison Curtin	1	12	Houston Comets ! #
	Arkansas	Dana Cherry	2	23	Traded to Detroit Shock Charlotte Sting

*-Recruited but did not coach
!-At the school when player was drafted
@-Worked with player as a head coach
#-Worked with player as an assistant coach
\$-Worked with player as other (GA, etc)

FAST RISE TO ELITE RANKS

Mike Neighbors had a meteoric rise to the top as a head coach at Washington. In four seasons, he amassed 96 wins, had three NCAA Tournament appearances and reached the Final Four. Those accomplishments put him in some rare air.

FIRST FOUR YEARS AS A POWER FIVE HEAD COACH

Coach	School	Wins	NCAA Apps.	NCAA Best
Holly Warlick	Tennessee	108	4	Sweet 16
Mike Neighbors	Washington	98	3	1 Final Four
Jeff Walz	Louisville	96	3	1 Final Four
Nikki Fargas	UCLA	95	3	2nd Rnd
Vic Schaefer	Mississippi State	90	2	Sweet 16
Karen Aston	Texas	89	3	1 Elite 8
Matthew Mitchell	Kentucky	86	2	1 Elite 8
Kevin McGuff	Xavier	80	1	1 Elite 8
Dawn Staley	South Carolina	77	1	-
Brenda Frese	Minn./Maryland	72	2	-

BUILDING A FAN BASE

Mike Neighbors saw a 62.9% increase in attendance in his four seasons at Washington. Look for fan engagement to be a big part of future Razor-back programs as well.

COACHING TREE

Coach	w/Nabes	Now
Fred Castro	'14, '15, '16	HC Eastern Michigan
Adia Barnes	'14, '15	HC Arizona
Adam Call	'14	AC Eastern Michigan
Morgan Valley	'16	AC Arizona
Todd Schaefer	'16	AC Arkansas
Jasmine Lister	'16	AC DePaul



WANT TO ASK SOME GOOD QUESTIONS?

1. He has had two heart attacks
2. He keeps a lot of lists
3. His lowest moment was he eureka moment
4. He plays guitar and has a band
5. He reads really fast
6. He is an analytics nerd
7. He is a bar-game prodigy



1

RAVEN NORTHCROSS-BAKER
 Junior | 5-7 | Guard | Malvern, Arkansas
 Chipola JC | Malvern HS

CAREER HIGHS

Points	22	UTA	12-17-17
FG Made	8	UTA	12-17-17
FG Att.	12	UTEP	11-24-17
3P Made	6	UTA	12-17-17
3P Att.	8	UTA	12-17-17
FT Made	7	ACU	11-29-17
FT Att.	8	ACU	11-29-17
Off. Rebounds	3	Grambling	12-18-17
Def. Rebounds	7	Tulsa	12-10-17
Rebounds	9	Tulsa	12-10-17
Assists	6	Samford	11-12-17
Blocks	1	Florida	1-18-18*
Steals	3	UTA	12-17-17
Minutes	29	Florida	1-18-18

SEASON HIGHS

Points	22	UTA	12-17-17
FG Made	8	UTA	12-17-17
FG Att.	12	UTEP	11-24-17
3P Made	6	UTA	12-17-17
3P Att.	8	UTA	12-17-17
FT Made	7	ACU	11-29-17
FT Att.	8	ACU	11-29-17
Off. Rebounds	3	Grambling	12-18-17
Def. Rebounds	7	Tulsa	12-10-17
Rebounds	9	Tulsa	12-10-17
Assists	6	Samford	11-12-17
Blocks	1	Florida	1-18-18*
Steals	3	UTA	12-17-17
Minutes	29	Florida	1-18-18

*Most Recent

2017-18 GAME-BY-GAME STATS

Opponent	Date	gs	min	Total		3-Pointers		Free throws		Rebounds			pf	a	t/o	blk	stl	pts	avg	
				fg-fga	pct	3fg-fga	pct	ft-fa	pct	off	def	tot								avg
SHSU	11/10/17	20	1-8	.125	1-6	.167	0-0	.000	2	0	2	2.0	3	2	1	0	0	3	3.0	
SAMFORD	11/12/17	22	0-2	.000	0-2	.000	0-0	.000	0	1	1	1.5	1	6	1	0	0	0	1.5	
at Nebraska	11/16/17	18	1-4	.250	1-3	.333	0-0	.000	1	3	4	2.3	1	0	1	0	2	3	2.0	
at Oral Roberts	11/20/17	22	3-6	.500	1-4	.250	1-2	.500	0	1	1	2.0	3	1	0	0	0	8	3.5	
at UTEP	11/24/17	16	3-12	.250	0-6	.000	1-1	1.000	2	0	2	2.0	1	3	0	0	0	7	4.2	
vs NM State	11/25/17	18	2-7	.286	1-4	.250	2-4	.500	1	1	2	2.0	4	0	2	0	2	7	4.7	
ACU	11/29/17	22	3-6	.500	2-4	.500	7-8	.875	1	2	3	2.1	2	1	0	0	1	15	6.1	
at Kansas	12/03/17	14	1-6	.167	0-4	.000	0-0	.000	0	2	2	2.1	4	1	0	0	0	2	5.6	
CHARLOTTE	12/07/17	11	1-2	.500	1-2	.500	0-0	.000	0	3	3	2.2	0	1	1	0	0	3	5.3	
TULSA	12/10/17	23	0-4	.000	0-3	.000	1-4	.250	2	7	9	2.9	1	1	2	1	0	1	4.9	
UT-ARLINGTON	12/17/17	27	8-11	.727	6-8	.750	0-0	.000	2	2	4	3.0	0	3	0	0	3	22	6.5	
at Arizona State	12/21/17	19	3-8	.375	2-6	.333	0-0	.000	1	0	1	2.8	0	1	4	0	0	8	6.6	
GRAMBLING	12/28/17	21	4-9	.444	3-7	.429	3-4	.750	3	1	4	2.9	0	0	2	0	0	14	7.2	
OLE MISS	12/31/17	28	3-5	.600	1-2	.500	2-2	1.000	2	1	3	2.9	0	0	1	0	0	9	7.3	
at #5/3 Mississippi State	01/04/18	19	3-9	.333	2-6	.333	0-0	.000	0	1	1	2.8	2	1	1	0	1	8	7.3	
ALABAMA	01/07/18	27	1-5	.200	0-3	.000	0-0	.000	0	0	0	2.6	1	2	0	1	1	2	7.0	
at Georgia	1/11/18	17	2-4	.500	1-3	.333	1-2	.500	1	1	2	2.6	1	1	1	0	0	6	6.9	
at Auburn	01/14/18	28	2-10	.200	1-6	.167	2-2	1.000	2	4	6	2.8	3	3	1	0	1	7	6.9	
FLORIDA	01/18/18	* 29	2-11	.182	2-7	.286	0-0	.000	2	4	6	2.9	0	1	0	1	0	6	6.9	
Totals		1	401	43-129	.333	25-86	.291	20-29	.690	22	34	56	2.9	27	28	18	3	11	131	6.9

Games played: 19
 Minutes/game: 21.1
 Points/game: 6.9
 FG Pct: 33.3
 3FG Pct: 29.1
 FT Pct: 69.0

Rebounds/game: 2.9
 Assists/game: 1.5
 Turnovers/game: 0.9
 Assist/turnover ratio: 1.6
 Steals/game: 0.6
 Blocks/game: 0.2

NOTES

- » University of Arkansas Athletic Department Academic Honor Roll: Fall, 2017
- » 17 points in exhibition including 12 points in the first quarter.
- » Went 7-for-8 from line versus ACU.
- » Had her first 20+ point game as a Razorback with 22 points against UTA.
- » Season/career-best six 3-pointers versus UTA (6-for-8).
- » Assuming role of "Sixth Woman" and has been among the first off the bench in nine games.
- » First start as a Razorback against Florida, 1-18-18

CAREER STATS

Year	GP-GS	Min	Avg	Total			3-Point			F-Throw			Rebounds				PF	FO	Ast	TO	Blk	Stl	Pts	Avg
				FG	FGA	Pct	FG	FGA	Pct	FT	FTA	Pct	Off	Def	Tot	Avg								
2015-16*	26-14	69	2.7	97	229	.424	58	149	.389	21	33	.636	47	39	86	3.3	6	-	46	32	-	58	273	10.5
2016-17*	33-33	210	6.4	171	433	.395	77	247	.312	54	83	.651	74	77	151	4.6	9	-	77	44	3	56	473	14.3
Totals*	59-47	279	4.7	268	662	.405	135	396	.341	75	116	.647	121	116	237	4.0	15	-	123	76	3	114	746	12.6
*At Chipola Junior College																								
2017-18#	19-1	401	21.1	43	129	.333	25	86	.291	20	29	.690	22	34	56	2.9	27	0	28	18	3	11	131	6.9
TOTAL#	19-1	401	21.1	43	129	.333	25	86	.291	20	29	.690	22	34	56	2.9	27	0	28	18	3	11	131	6.9
#Arkansas																								



3

MALICA MONK
 Junior | 5-5 | Guard | NLR, Arkansas
 N. Little Rock HS

CAREER HIGHS

Points	24	ORU	11-20-17
FG Made	9	Florida	1-18-18*
FG Att.	28	Florida	1-18-18
3P Made	2	at Auburn	1-14-18*
3P Att.	6	at Auburn	1-14-18*
FT Made	12	UTA	12-17-17
FT Att.	12	UTA	12-17-17
Off. Rebounds	3	NMSU	11-15-17*
Def. Rebounds	8	Samford	11-12-17
Rebounds	9	Samford	11-12-17
Assists	10	Grambling	12-18-17
Blocks	3	LSU	1-8-17
Steals	6	Kentucky	2-16-17*
Minutes	40	at Auburn	1-14-18

SEASON HIGHS

Points	24	ORU	11-20-17
FG Made	9	Florida	1-18-18*
FG Att.	28	Florida	1-18-18
3P Made	2	at Auburn	1-14-18*
3P Att.	6	at Auburn	1-14-18*
FT Made	12	UTA	12-17-17
FT Att.	12	UTA	12-17-17
Off. Rebounds	3	Alabama	1-7-18*
Def. Rebounds	8	Samford	11-12-17
Rebounds	9	Samford	11-12-17
Assists	10	Grambling	12-18-17
Blocks	1	NMSU	11-25-17
Steals	4	NMSU	11-15-17*
Minutes	40	at Auburn	1-14-18

*Most Recent

2017-18 GAME-BY-GAME STATS

Opponent	Date	gs	min	Total		3-Pointers		Free throws		Rebounds			pf	a	t/o	blk	stl	pts	avg		
				fg-fga	pct	3fg-fga	pct	ft-fta	pct	off	def	tot								avg	
SHSU	11/10/17	*	33	7-13	.538	1-4	.250	3-4	.750	0	2	2	2.0	2	4	1	0	4	18	18.0	
SAMFORD	11/12/17	*	37	6-14	.429	2-3	.667	7-7	1.000	1	8	9	5.5	2	6	1	0	2	21	19.5	
at Nebraska	11/16/17	*	37	9-19	.474	1-4	.250	3-3	1.000	0	3	3	4.7	5	6	2	0	3	22	20.3	
at Oral Roberts	11/20/17	*	32	9-16	.563	1-3	.333	5-6	.833	0	3	3	4.3	1	4	1	0	1	24	21.3	
at UTEP	11/24/17	*	36	3-15	.200	1-6	.167	3-3	1.000	0	2	2	3.8	2	5	1	0	3	10	19.0	
vs NM State	11/25/17	*	38	9-17	.529	1-4	.250	3-7	.429	3	4	7	4.3	0	2	5	1	4	22	19.5	
ACU	11/29/17	*	29	5-14	.357	1-2	.500	4-6	.667	0	2	2	4.0	2	1	2	0	1	15	18.9	
at Kansas	12/03/17	*	32	8-20	.400	1-3	.333	4-4	1.000	3	4	7	4.4	4	5	3	0	0	21	19.1	
CHARLOTTE	12/07/17	*	38	6-18	.333	2-6	.333	1-2	.500	1	3	4	4.3	4	3	1	0	3	15	18.7	
TULSA	12/10/17	*	25	4-10	.400	2-4	.500	4-4	1.000	1	3	4	4.3	2	3	3	0	1	14	18.2	
UT-ARLINGTON	12/17/17	*	31	4-11	.364	0-2	.000	12-12	1.000	0	1	1	4.0	1	6	3	0	1	20	18.4	
at Arizona State	12/21/17	*	30	5-19	.263	0-4	.000	2-2	1.000	0	2	2	3.8	1	2	2	0	1	12	17.8	
GRAMBLING	12/28/17	*	35	2-7	.286	0-1	.000	6-8	.750	1	1	2	3.7	1	10	6	1	3	10	17.2	
OLE MISS	12/31/17	*	39	4-13	.308	0-3	.000	4-8	.500	1	1	2	3.6	1	4	3	0	1	12	16.9	
at #5/3 Mississippi State	01/04/18	*	29	3-16	.188	0-1	.000	2-4	.500	0	3	3	3.5	3	4	1	1	2	8	16.3	
ALABAMA	01/07/18	*	33	8-17	.471	1-2	.500	4-7	.571	3	1	4	3.6	4	1	6	0	0	21	16.6	
at Georgia	11/11/18	*	35	4-18	.222	0-2	.000	8-11	.727	0	5	5	3.6	3	2	3	1	2	16	16.5	
at Auburn	01/14/18	*	40	4-13	.308	2-6	.333	4-4	1.000	1	4	5	3.7	4	4	0	0	1	14	16.4	
FLORIDA	01/18/18	*	39	9-28	.321	1-5	.200	4-4	1.000	2	6	8	3.9	3	4	2	0	0	23	16.7	
Totals			19	648	109-298	.366	17-65	.262	83-106	.783	17	58	75	3.9	45	76	46	4	33	318	16.7

Games played: 19
 Minutes/game: 34.1
 Points/game: 16.7
 FG Pct: 36.6
 3FG Pct: 26.2
 FT Pct: 78.3

Rebounds/game: 3.9
 Assists/game: 4.0
 Turnovers/game: 2.4
 Assist/turnover ratio: 1.7
 Steals/game: 1.7
 Blocks/game: 0.2

NOTES

- » University of Arkansas Athletic Department Academic Honor Roll: Fall, 2017
- » 14 points, seven assists and just one turnover in exhibition game
- » Fourteen consecutive games with double figure scoring - snapped at No. 5/3 Mississippi State.
- » Eighteen games in double figure scoring this season.
- » Eight games with 20+ points.
- » Named CollegeSportsMadness.com's SEC Player of the Week (11.13.17).
- » Improved career-best with 24 points in 32 minutes at ORU
- » Had 13 points in the fourth quarter at ORU.
- » Led team in scoring nine games.
- » Six games with 5+ assists this year. Had four all of last year.
- » Career-best 10 assists and her first career double-double with 10 points and 10 assists versus Grambling State.
- » Perfect from the line in nine games including a career-best 12-for-12 against UTA.

CAREER STATS

Year	GP-GS	Min	Avg	Total			3-Point			F-Throw			Rebounds				PF	FO	Ast	TO	Blk	Stl	Pts	Avg
				FG	FGA	Pct	FG	FGA	Pct	FT	FTA	Pct	Off	Def	Tot	Avg								
2015-16	27-5	461	17.1	48	136	.353	2	10	.200	12	19	.632	6	23	29	1.1	60	2	47	44	5	23	110	4.1
2016-17	27-27	842	31.2	96	230	.417	7	25	.280	48	71	.676	29	52	81	3.0	79	2	83	59	7	62	247	9.1
2017-18	19-19	648	34.1	109	298	.366	17	65	.262	83	106	.783	17	58	75	3.9	45	1	76	46	4	33	318	16.7
TOTAL	73-51	1951	26.7	253	664	.381	26	100	.260	143	196	.730	52	133	185	2.5	184	5	206	149	16	118	675	9.2



4

KEIRYN SWENSON

Junior | 6-1 | Forward | Wichita, Kansas
Maize HS

CAREER HIGHS

Points	23	vs. HBU	12-28-16
FGM	7	vs. Navy	11-26-16
FGA	13	at Ole Miss	1-1-17
3PM	4	at Ole Miss	1-1-17
3PA	9	at Ole Miss	1-1-17
FTM	8	vs. HBU	12-28-16
FTA	9	vs. HBU	12-28-16
OREB	5	at Alabama	1-15-17*
DREB	6	vs. NSU	12-18-15*
REB	9	at Alabama	1-15-17*
AST	2	Grambling	12-18-17*
BLK	2	vs. SHSU	11-10-17*
STL	2	UTEP	11-24-17*
MIN	37	at Ole Miss	1-1-17

SEASON HIGHS

Points	10	UTA	12-17-17
FG Made	4	UTA	12-17-17
FG Att.	8	Ole Miss	12-31-17*
3P Made	3	Alabama	1-7-18*
3P Att.	6	Ole Miss	12-31-17*
FT Made	2	Grambling	12-18-17*
FT Att.	2	Grambling	12-18-17*
Off. Rebounds	3	Ole Miss	12-31-17
Def. Rebounds	4	UTA	12-17-17*
Rebounds	6	Tulsa	12-10-17*
Assists	2	Grambling	12-18-17*
Blocks	2	SHSU	11-10-17
Steals	2	UTEP	11-24-17
Minutes	26	Florida	1-18-18

*Most Recent

2017-18 GAME-BY-GAME STATS

Opponent	Date	gs	min	Total		3-Pointers		Free throws		Rebounds			pf	a	t/o	blk	stl	pts	avg	
				fg-fga	pct	3fg-fga	pct	ft-fa	pct	off	def	tot								avg
SHSU	11/10/17	18	2-8	.250	1-4	.250	0-0	.000	0	1	1	1.0	1	0	2	0	5	5.0		
SAMFORD	11/12/17	13	3-5	.600	3-4	.750	0-0	.000	0	0	0	0.5	3	1	0	0	9	7.0		
at Nebraska	11/16/17	17	1-5	.200	1-5	.200	0-0	.000	1	2	3	1.3	2	0	0	0	3	5.7		
at Oral Roberts	11/20/17	15	2-3	.667	1-2	.500	1-2	.500	0	2	2	1.5	2	0	1	0	1	6	5.8	
at UTEP	11/24/17	16	2-7	.286	2-6	.333	0-2	.000	1	1	2	1.6	0	0	1	0	2	6	5.8	
vs NM State	11/25/17	14	2-5	.400	1-4	.250	0-0	.000	2	4	6	2.3	1	0	4	0	0	5	5.7	
ACU	11/29/17	17	1-3	.333	1-2	.500	0-0	.000	1	1	2	2.3	0	0	1	0	1	3	5.3	
at Kansas	12/03/17	18	1-3	.333	1-3	.333	1-2	.500	0	2	2	2.3	1	0	1	1	0	4	5.1	
CHARLOTTE	12/07/17	13	1-5	.200	1-4	.250	0-0	.000	0	2	2	2.2	2	0	0	0	0	3	4.9	
TULSA	12/10/17	21	2-7	.286	1-5	.200	2-2	1.000	2	4	6	2.6	0	0	0	1	0	7	5.1	
UT-ARLINGTON	12/17/17	17	4-8	.500	2-4	.500	0-0	.000	1	4	5	2.8	1	2	2	0	0	10	5.5	
at Arizona State	12/21/17	15	1-3	.333	0-1	.000	0-0	.000	2	1	3	2.8	0	1	3	1	0	2	5.3	
GRAMBLING	12/28/17	24	2-3	.667	2-3	.667	2-2	1.000	0	2	2	2.8	2	2	0	0	0	8	5.5	
OLE MISS	12/31/17	12	3-8	.375	1-6	.167	1-1	1.000	3	1	4	2.9	1	0	2	1	0	8	5.6	
at #5/3 Mississippi State	01/04/18	15	0-0	.000	0-0	.000	0-0	.000	1	1	2	2.8	1	0	1	0	0	0	5.3	
ALABAMA	01/07/18	12	3-4	.750	3-4	.750	0-0	.000	0	0	0	2.6	3	0	0	1	0	9	5.5	
at Georgia	11/1/18	6	0-2	.000	0-2	.000	0-0	.000	0	0	0	2.5	0	0	1	0	0	0	5.2	
at Auburn	01/14/18	11	0-2	.000	0-2	.000	0-0	.000	0	0	0	2.3	1	0	0	0	0	0	4.9	
FLORIDA	01/18/18	26	3-6	.500	1-4	.250	0-0	.000	1	3	4	2.4	1	1	1	1	1	7	5.0	
Totals		0	300	33-87	.379	22-65	.338	7-11	.636	15	31	46	2.4	22	7	18	8	5	95	5.0

Games played: 19
Minutes/game: 15.8
Points/game: 5.0
FG Pct: 37.9
3FG Pct: 33.8
FT Pct: 63.6

Rebounds/game: 2.4
Assists/game: 0.4
Turnovers/game: 0.9
Assist/turnover ratio: 0.4
Steals/game: 0.3
Blocks/game: 0.4

NOTES

- » Saw a 206.4% increase in scoring between freshman and sophomore seasons (78 vs. 239 points).
- » **SEC Winter Academic Honor Roll** (2016-17).
- » **SEC First-Year Academic Honor Roll** (2015-16).
- » **University of Arkansas Athletic Department Academic Champion (4.0):** Fall, 2017
- » At least one 3-pointer in her first 11 games this year and in 15 games this season.
- » Season-best 10 points on 4-for-8 shooting against UTA.

CAREER STATS

Year	GP-GS	Min	Avg	Total			3-Point			F-Throw			Rebounds				PF	FO	Ast	TO	Blk	Stl	Pts	Avg
				FG	FGA	Pct	FG	FGA	Pct	FT	FTA	Pct	Off	Def	Tot	Avg								
2015-16	29-1	373	12.9	27	84	.321	5	21	.238	19	27	.704	34	34	68	2.3	26	0	7	15	4	10	78	2.7
2016-17	30-11	709	23.6	89	179	.497	31	71	.437	30	39	.769	53	71	124	4.1	56	0	15	28	17	16	239	8.0
2017-18	19-0	300	15.8	33	87	.379	22	65	.338	7	11	.636	15	31	46	2.4	22	0	7	18	8	5	95	5.0
TOTAL	78-12	1382	17.7	149	350	.426	58	157	.369	56	77	.727	102	136	238	3.1	104	0	29	61	29	31	412	5.3



10

KIARA WILLIAMS

Sophomore | 6-1 | Forward | LR, Arkansas Little Rock HS

CAREER HIGHS

Points	15	at Auburn	1-14-18
FGM	7	at Auburn	1-14-18
FGA	11	NMSU	11-25-17
3PM	1	#5 Miss St.	1-4-18
3PA	1	#5 Miss St.	1-4-18
FTM	4	Grambling	12-18-17*
FTA	11	Charlotte	12-6-17
OREB	8	Grambling	12-18-17*
DREB	11	at Kansas	12-3-17
REB	16	Grambling	12-18-17*
AST	2	Florida	1-18-18*
BLK	4	Ole Miss	12-31-17*
STL	4	Charlotte	12-6-17
MIN	29	Charlotte	12-6-17

SEASON HIGHS

Points	15	at Auburn	1-14-18
FG Made	7	at Auburn	1-14-18
FG Att.	11	NMSU	11-25-17
3P Made	1	#5 Miss St.	1-4-18
3P Att.	1	#5 Miss St.	1-4-18
FT Made	4	Grambling	12-18-17*
FT Att.	11	Charlotte	12-6-17
Off. Rebounds	8	Grambling	12-18-17*
Def. Rebounds	11	at Kansas	12-3-17
Rebounds	16	Grambling	12-18-17*
Assists	2	Florida	1-18-18*
Blocks	4	Ole Miss	12-31-17*
Steals	4	Charlotte	12-6-17
Minutes	29	Charlotte	12-6-17

*Most Recent

2017-18 GAME-BY-GAME STATS

Opponent	Date	gs	min	Total		3-Pointers		Free throws		Rebounds				pf	a	t/o	blk	stl	pts	avg	
				fg-fga	pct	3fg-fga	pct	ft-fta	pct	off	def	tot	avg								
SHSU	11/10/17	*	17	3-4	.750	0-0	.000	1-1	1.000	0	2	2	2.0	1	1	0	0	0	7	7.0	
SAMFORD	11/12/17	*	19	5-7	.714	0-0	.000	0-0	.000	1	4	5	3.5	1	0	0	4	2	10	8.5	
at Nebraska	11/16/17	*	20	3-6	.500	0-0	.000	0-0	.000	6	5	11	6.0	4	1	2	2	1	6	7.7	
at Oral Roberts	11/20/17	*	17	3-7	.429	0-0	.000	2-2	1.000	3	2	5	5.8	4	0	1	0	1	8	7.8	
at UTEP	11/24/17	*	8	0-2	.000	0-0	.000	1-2	.500	1	0	1	4.8	3	0	1	0	1	1	6.4	
vs NM State	11/25/17	*	25	5-11	.455	0-0	.000	1-3	.333	4	7	11	5.8	2	0	3	0	2	11	7.2	
ACU	11/29/17	*	20	4-6	.667	0-0	.000	4-5	.800	5	3	8	6.1	0	0	0	1	3	12	7.9	
at Kansas	12/03/17	*	28	3-6	.500	0-0	.000	0-1	.000	5	11	16	7.4	3	0	4	2	0	6	7.6	
CHARLOTTE	12/07/17	*	29	3-8	.375	0-0	.000	3-11	.273	8	4	12	7.9	3	0	0	3	4	9	7.8	
TULSA	12/10/17	*	17	6-9	.667	0-0	.000	1-4	.250	4	3	7	7.8	2	2	0	2	0	13	8.3	
UT-ARLINGTON	12/17/17	*	22	1-3	.333	0-0	.000	0-0	.000	3	5	8	7.8	4	0	0	1	2	2	7.7	
at Arizona State	12/21/17	*	16	0-2	.000	0-0	.000	3-4	.750	0	4	4	7.5	1	0	1	1	0	3	7.3	
GRAMBLING	12/28/17	*	22	4-10	.400	0-0	.000	4-8	.500	8	8	16	8.2	1	0	0	0	1	12	7.7	
OLE MISS	12/31/17	*	23	1-5	.200	0-0	.000	3-4	.750	2	7	9	8.2	5	1	0	4	1	5	7.5	
at #5/3 Mississippi State	01/04/18	*	20	5-5	1.000	1-1	1.000	2-2	1.000	0	2	2	7.8	1	0	3	1	0	13	7.9	
ALABAMA	01/07/18	*	21	3-10	.300	0-0	.000	0-0	.000	1	6	7	7.8	1	0	2	0	2	6	7.8	
at Georgia	1/11/18	*	7	1-4	.250	0-0	.000	0-0	.000	2	1	3	7.5	2	1	0	0	0	2	7.4	
at Auburn	01/14/18	*	27	7-9	.778	0-0	.000	1-3	.333	7	7	14	7.8	2	0	0	0	1	15	7.8	
FLORIDA	01/18/18	*	17	4-6	.667	0-0	.000	0-0	.000	1	3	4	7.6	1	0	2	1	0	8	7.8	
Totals			18	375	61-120	.508	1-1	1.000	26-50	.520	61	84	145	7.6	41	6	19	22	21	149	7.8

Games played: 19
 Minutes/game: 19.7
 Points/game: 7.8
 FG Pct: 50.8
 3FG Pct: 100.0
 FT Pct: 52.0

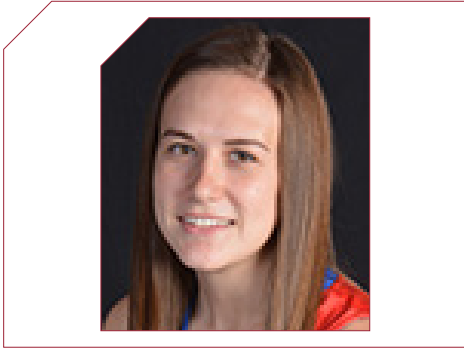
Rebounds/game: 7.6
 Assists/game: 0.3
 Turnovers/game: 1.0
 Assist/turnover ratio: 0.3
 Steals/game: 1.1
 Blocks/game: 1.2

NOTES

- » Enjoys Marvel movies.
- » Career-best four blocks against Samford. Tied that against Ole Miss in the SEC opener.
- » Posted first double-figure rebound total with 11 boards on the road at Nebraska.
- » Has scored in every game.
- » First time in her career to have double figures in the first half against ACU.
- » Career-best 16 rebounds, including 11 defensive rebounds, at Kansas.
- » Seven games in double figures.
- » Made her first career 3-point basket in the opening shot of the No. 5/3 Mississippi State game.
- » Double-Doubles: First career double-double with 11 points and 11 rebounds against New Mexico State ... Second career double-double with 12 points and tied her career-best with 16 rebounds versus Grambling State ... Third at Auburn with a career-best 15 points and 14 rebounds.

CAREER STATS

Year	GP-GS	Min	Avg	Total			3-Point			F-Throw			Rebounds				PF	FO	Ast	TO	Blk	Stl	Pts	Avg
				FG	FGA	Pct	FG	FGA	Pct	FT	FTA	Pct	Off	Def	Tot	Avg								
2016-17	20-5	227	11.4	26	48	.542	0	0	.000	10	26	.385	24	31	55	2.8	34	1	3	15	5	9	62	3.1
2017-18	19-18	375	19.7	61	120	.508	1	1	1.000	26	50	.520	61	84	145	7.6	41	1	6	19	22	21	149	7.8
TOTAL	39-23	602	15.4	87	168	.518	1	1	1.000	36	76	.474	85	115	200	5.1	75	2	9	34	27	30	211	5.4



2017-18 GAME-BY-GAME STATS

Opponent	Date	gs	min	Total		3-Pointers		Free throws		Rebounds				pf	a	t/o	blk	stl	pts	avg
				fg-fga	pct	3fg-fga	pct	ft-fta	pct	off	def	tot	avg							
GRAMBLING	12/28/17		dnp	-	-	-	-	-	-	-	-	-	-	-	-	-	-	-	-	-
OLE MISS	12/31/17		dnp	-	-	-	-	-	-	-	-	-	-	-	-	-	-	-	-	-
at #5/3 Mississippi State	01/04/18	3		0-1	.000	0-0	.000	0-0	.000	0	0	0	0.0	1	0	0	0	0	0	0.0
ALABAMA	01/07/18		dnp	-	-	-	-	-	-	-	-	-	-	-	-	-	-	-	-	-
at Georgia	1/11/18		dnp	-	-	-	-	-	-	-	-	-	-	-	-	-	-	-	-	-
at Auburn	01/14/18		dnp	-	-	-	-	-	-	-	-	-	-	-	-	-	-	-	-	-
FLORIDA	01/18/18		dnp	-	-	-	-	-	-	-	-	-	-	-	-	-	-	-	-	-
Totals		0	3	0-1	.000	0-0	.000	0-0	.000	0	0	0	0.0	1	0	0	0	0	0	0.0

Games played: 1
 Minutes/game: 3.0
 FG Pct: 0.0

12

BRENNA MCCLURE

R-Sophomore | 5-6 | Guard | Lyons, Kansas
 Lyons HS | Hutchinson CC

CAREER HIGHS

Points	-		
FG Made	-		
FG Att.	1	#5 Miss St.	1-4-18
3P Made	-		
3P Att.	-		
FT Made	-		
FT Att.	-		
Off. Rebounds	-		
Def. Rebounds	-		
Rebounds	-		
Assists	-		
Blocks	-		
Steals	-		
Minutes	3	#5 Miss St.	1-4-18

SEASON HIGHS

Points	-		
FG Made	-		
FG Att.	1	#5 Miss St.	1-4-18
3P Made	-		
3P Att.	-		
FT Made	-		
FT Att.	-		
Off. Rebounds	-		
Def. Rebounds	-		
Rebounds	-		
Assists	-		
Blocks	-		
Steals	-		
Minutes	3	#5 Miss St.	1-4-18

*Most Recent

NOTES

- » University of Arkansas Athletic Department Academic Champion (4.0): Fall, 2017
- » Joined the team as a walk-on for the spring semester.
- » Pace the Blue Dragons went 35-2, shared the Jayhawk Conference championship and won the Region VI championship to qualify for the NJCAA Tournament

CAREER STATS

Year	GP-GS	Min	Avg	Total			3-Point			F-Throw			Rebounds				PF	FO	Ast	TO	Blk	Stl	Pts	Avg
				FG	FGA	Pct	FG	FGA	Pct	FT	FTA	Pct	Off	Def	Tot	Avg								
22017-18	1-0	3	3.0	0	1	.000	0	0	.000	0	0	.000	0	0	0	0.0	1	0	0	0	0	0	0	0.0
TOTAL	1-0	3	3.0	0	1	.000	0	0	.000	0	0	.000	0	0	0	0.0	1	0	0	0	0	0	0	0.0



13

GRAYCE SPANGLER
 Freshman | 5-11 | Guard | Fayetteville, Ark.
 Fayetteville HS

CAREER HIGHS

Points	4	#5 Miss St.	1-4-18
FG Made	2	#5 Miss St.	1-4-18
FG Att.	3	#5 Miss St.	1-4-18
3P Made	-		
3P Att.	2	ACU	11-29-17
FT Made	3	UTA	12-17-17
FT Att.	3	UTA	12-17-17
Off. Rebounds	1	#5 Miss St.	1-4-18
Def. Rebounds	1	at ASU	12-21-17*
Rebounds	1	UTA	12-17-17
Assists	-		
Blocks	-		
Steals	-		
Minutes	7	at ASU	12-21-17

SEASON HIGHS

Points	4	#5 Miss St.	1-4-18
FG Made	2	#5 Miss St.	1-4-18
FG Att.	3	#5 Miss St.	1-4-18
3P Made	-		
3P Att.	2	ACU	11-29-17
FT Made	3	UTA	12-17-17
FT Att.	3	UTA	12-17-17
Off. Rebounds	1	#5 Miss St.	1-4-18
Def. Rebounds	1	at ASU	12-21-17*
Rebounds	1	UTA	12-17-17
Assists	-		
Blocks	-		
Steals	-		
Minutes	7	at ASU	12-21-17

*Most Recent

2017-18 GAME-BY-GAME STATS

Opponent	Date	gs	min	Total		3-Pointers		Free throws		Rebounds				pf	a	t/o	blk	stl	pts	avg
				fg-fga	pct	3fg-fga	pct	ft-fa	pct	off	def	tot	avg							
SHSU	11/10/17	4	0-1	.000	0-0	.000	0-2	.000	0	0	0	0.0	0	0	0	0	0	0	0.0	
SAMFORD	11/12/17	2	0-1	.000	0-1	.000	0-0	.000	0	1	1	0.5	0	0	0	0	0	0	0.0	
at Nebraska	11/16/17	dnp	-	-	-	-	-	-	-	-	-	-	-	-	-	-	-	-	-	
at Oral Roberts	11/20/17	dnp	-	-	-	-	-	-	-	-	-	-	-	-	-	-	-	-	-	
at UTEP	11/24/17	5	0-0	.000	0-0	.000	0-0	.000	0	0	0	0.3	2	0	0	0	0	0	0.0	
vs NM State	11/25/17	dnp	-	-	-	-	-	-	-	-	-	-	-	-	-	-	-	-	-	
ACU	11/29/17	6	0-2	.000	0-2	.000	0-0	.000	0	0	0	0.3	0	0	1	0	0	0	0.0	
at Kansas	12/03/17	1	0-0	.000	0-0	.000	0-0	.000	0	0	0	0.2	0	0	0	0	0	0	0.0	
CHARLOTTE	12/07/17	dnp	-	-	-	-	-	-	-	-	-	-	-	-	-	-	-	-	-	
TULSA	12/10/17	2	0-0	.000	0-0	.000	0-0	.000	0	1	1	0.3	0	0	0	0	0	0	0.0	
UT-ARLINGTON	12/17/17	3	0-1	.000	0-0	.000	3-3	1.000	0	1	1	0.4	1	0	1	0	0	3	0.4	
at Arizona State	12/21/17	7	0-1	.000	0-0	.000	0-0	.000	0	1	1	0.5	2	0	0	0	0	0	0.4	
GRAMBLING	12/28/17	3	0-2	.000	0-1	.000	0-0	.000	0	0	0	0.4	0	0	0	0	0	0	0.3	
OLE MISS	12/31/17	dnp	-	-	-	-	-	-	-	-	-	-	-	-	-	-	-	-	-	
at #5/3 Mississippi State	01/04/18	3	2-3	.667	0-1	.000	0-1	.000	1	0	1	0.5	1	0	2	0	0	4	0.7	
ALABAMA	01/07/18	0	0-0	.000	0-0	.000	0-0	.000	0	0	0	0.5	0	0	0	0	0	0	0.6	
at Georgia	11/11/18	dnp	-	-	-	-	-	-	-	-	-	-	-	-	-	-	-	-	-	
at Auburn	01/14/18	dnp	-	-	-	-	-	-	-	-	-	-	-	-	-	-	-	-	-	
FLORIDA	01/18/18	dnp	-	-	-	-	-	-	-	-	-	-	-	-	-	-	-	-	-	
Totals		0	36	2-11	.182	0-5	.000	3-6	.500	1	4	5	0.5	6	0	4	0	0	7	0.6

Games played: 11
 Minutes/game: 3.3
 Points/game: 0.6
 FG Pct: 18.2
 3FG Pct: 0.0
 FT Pct: 50.0

Rebounds/game: 0.5
 Turnovers/game: 0.4

NOTES

- » Father Shannon lettered as a linebacker (1989) and mother, Stacy, was a member of the Pom Squad at Arkansas.
- » Scored her first points as a Razorback going 3-for-3 from the line in a win over UTA.
- » Season/career-best seven minutes at Arizona State.
- » **University of Arkansas Athletic Department Academic Athletic Director's List:** Fall, 2017

CAREER STATS

Year	GP-GS	Min	Avg	Total			3-Point			F-Throw			Rebounds				PF	FO	Ast	TO	Blk	Stl	Pts	Avg
				FG	FGA	Pct	FG	FGA	Pct	FT	FTA	Pct	Off	Def	Tot	Avg								
2017-18	11-0	36	3.3	2	11	.182	0	5	.000	3	6	.500	1	4	5	0.5	6	0	0	4	0	0	7	0.6
TOTAL	11-0	36	3.3	2	11	.182	0	5	.000	3	6	.500	1	4	5	0.5	6	0	0	4	0	0	7	0.6



14

JAILYN MASON
 Sophomore | 5-9 | Guard | Mason, Ohio
 William Mason HS

CAREER HIGHS

Points	19	ORU	12-21-16
FGM	9	ORU	12-21-16
FGA	15	Alabama	1-7-18*
3PM	3	at Auburn	1-14-18*
3PA	7	Alabama	1-7-18*
FTM	3	NMSU	11-25-17*
FTA	7	NMSU	11-25-17
OREB	4	Texas Tech	12-3-16
DREB	7	Grambling	12-18-17*
REB	9	Texas Tech	12-3-16
AST	11	HBU	12-28-16
BLK	3	SHSU	11-10-17
STL	4	Nebraska	11-16-17*
MIN	40	ORU	12-21-16

SEASON HIGHS

Points	15	at Auburn	1-14-18*
FG Made	7	#5 Miss St.	1-4-18*
FG Att.	15	Alabama	1-7-18
3P Made	3	at Auburn	1-14-18*
3P Att.	7	Alabama	1-7-18*
FT Made	2	Charlotte	12-6-17
FT Att.	2	Charlotte	12-6-17*
Off. Rebounds	3	NMSU	11-25-17
Def. Rebounds	7	Grambling	12-18-17*
Rebounds	7	Grambling	12-18-17*
Assists	8	ACU	11-29-17
Blocks	3	SHSU	11-10-17
Steals	4	Nebraska	11-16-17
Minutes	40	Florida	1-18-18

*Most Recent

2017-18 GAME-BY-GAME STATS

Opponent	Date	gs	min	Total		3-Pointers		Free throws		Rebounds			pf	a	t/o	blk	stl	pts	avg		
				fg-fga	pct	3fg-fga	pct	ft-fa	pct	off	def	tot								avg	
SHSU	11/10/17	*	25	3-10	.300	2-4	.500	0-0	.000	0	5	5	5.0	0	4	1	3	1	8	8.0	
SAMFORD	11/12/17	*	35	5-11	.455	2-5	.400	0-2	.000	0	1	1	3.0	2	2	1	0	2	12	10.0	
at Nebraska	11/16/17	*	30	4-12	.333	0-2	.000	0-1	.000	0	5	5	3.7	3	2	4	0	4	8	9.3	
at Oral Roberts	11/20/17	*	32	3-9	.333	0-0	.000	0-0	.000	1	1	2	3.3	1	1	1	0	0	6	8.5	
at UTEP	11/24/17	*	24	3-9	.333	2-6	.333	0-0	.000	1	3	4	3.4	1	2	0	0	1	8	8.4	
vs NM State	11/25/17	*	28	1-8	.125	1-4	.250	0-0	.000	3	3	6	3.8	3	2	1	1	2	3	7.5	
ACU	11/29/17	*	34	5-13	.385	3-7	.429	0-0	.000	0	7	7	4.3	1	8	3	1	2	13	8.3	
at Kansas	12/03/17	*	33	4-9	.444	2-5	.400	0-0	.000	0	2	2	4.0	5	1	2	0	2	10	8.5	
CHARLOTTE	12/07/17	*	30	4-10	.400	2-6	.333	2-2	1.000	0	4	4	4.0	2	4	1	1	1	12	8.9	
TULSA	12/10/17	*	30	5-11	.455	1-4	.250	0-0	.000	0	5	5	4.1	0	6	0	0	0	11	9.1	
UT-ARLINGTON	12/17/17	*	33	7-11	.636	1-4	.250	0-0	.000	0	4	4	4.1	1	7	3	0	3	15	9.6	
at Arizona State	12/21/17	*	31	3-7	.429	0-1	.000	0-0	.000	0	4	4	4.1	0	1	5	1	0	6	9.3	
GRAMBLING	12/28/17	*	27	3-11	.273	2-4	.500	0-0	.000	0	7	7	4.3	2	1	1	0	1	8	9.2	
OLE MISS	12/31/17	*	33	5-11	.455	3-4	.750	0-0	.000	0	2	2	4.1	3	4	1	1	1	13	9.5	
at #5/3 Mississippi State	01/04/18	*	35	7-11	.636	1-1	1.000	0-0	.000	1	2	3	4.1	0	4	2	1	0	15	9.9	
ALABAMA	01/07/18	*	37	5-15	.333	2-7	.286	0-0	.000	2	4	6	4.2	4	0	4	2	3	12	10.0	
at Georgia	11/11/18	*	36	5-10	.500	1-2	.500	4-4	1.000	0	5	5	4.2	4	1	5	0	5	15	10.3	
at Auburn	01/14/18	*	38	6-12	.500	3-6	.500	0-0	.000	0	2	2	4.1	1	5	6	0	0	15	10.6	
FLORIDA	01/18/18	*	40	2-12	.167	1-6	.167	0-0	.000	0	6	6	4.2	2	1	1	0	1	5	10.3	
Totals			19	611	80-202	.396	29-78	.372	6-9	.667	8	72	80	4.2	35	56	42	11	29	195	10.3

Games played: 19
 Minutes/game: 32.2
 Points/game: 10.3
 FG Pct: 39.6
 3FG Pct: 37.2
 FT Pct: 66.7

Rebounds/game: 4.2
 Assists/game: 2.9
 Turnovers/game: 2.2
 Assist/turnover ratio: 1.3
 Steals/game: 1.5
 Blocks/game: 0.6

NOTES

- » Has a large Jordan shoe collection.
- » Would like to be a sports photographer.
- » At least one defensive rebound in each game this season.
- » Set season-best marks for field goals, field goals attempted, 3-point field goals and 3-point field goals attempted as well as for rebounds and assists against Abilene Christian.
- » Eleven games this year and five consecutive games with double-figure scoring twice this season.
- » Season-best 15 points with seven made baskets against UTA. Tied that against No. 5/3 Mississippi State and again at Auburn.

CAREER STATS

Year	GP-GS	Min	Avg	Total			3-Point			F-Throw			Rebounds				PF	FO	Ast	TO	Blk	Stl	Pts	Avg
				FG	FGA	Pct	FG	FGA	Pct	FT	FTA	Pct	Off	Def	Tot	Avg								
2016-17	30-30	894	29.8	100	256	.391	19	53	.358	7	11	.636	21	96	117	3.9	72	2	93	56	8	31	226	7.5
2017-18	19-19	611	32.2	80	202	.396	29	78	.372	6	9	.667	8	72	80	4.2	35	1	56	42	11	29	195	10.3
TOTAL	49-49	1505	30.7	180	458	.393	48	131	.366	13	20	.650	29	168	197	4.0	107	3	149	98	19	60	421	8.6



20 SYDNEY STOUT
 Sophomore | 6-0 | Forward | Bixby, Okla.
 Bixby HS

CAREER HIGHS

Points	8	HBU	12-28-16
FGM	3	HBU	12-28-16
FGA	5	HBU	12-28-16
3PM	2	HBU	12-28-16
3PA	4	HBU	12-28-16
FTM	2	Texas A&M	1-12-17
FTA	4	Texas A&M	1-12-17
OREB	1	SHSU	11-10-17*
DREB	6	HBU	12-28-16
REB	6	HBU	12-28-16
AST	1	Grambling	12-18-17*
BLK	1	ULM	11-13-16
STL	-		
MIN	15	HBU	12-28-16

SEASON HIGHS

Points	4	UTA	12-17-17
FG Made	1	UTA	12-17-17
FG Att.	2	ACU	11-29-17
3P Made	1	UTA	12-17-17
3P Att.	1	UTA	12-17-17*
FT Made	1	UTA	12-17-17*
FT Att.	2	UTA	12-17-17
Off. Rebounds	1	UTA	12-17-17*
Def. Rebounds	1	Grambling	12-18-17*
Rebounds	2	UTA	12-17-17
Assists	1	Grambling	12-18-17
Blocks	-		
Steals	-		
Minutes	6	UTA	12-17-17

*Most Recent

2017-18 GAME-BY-GAME STATS

Opponent	Date	gs	min	Total		3-Pointers		Free throws		Rebounds				pf	a	t/o	blk	stl	pts	avg
				fg-fga	pct	3fg-fga	pct	ft-fa	pct	off	def	tot	avg							
SHSU	11/10/17	6		0-1	.000	0-0	.000	1-2	.500	1	0	1	1.0	1	0	1	0	0	1	1.0
SAMFORD	11/12/17	2		0-0	.000	0-0	.000	1-2	.500	0	1	1	1.0	0	0	0	0	0	1	1.0
at Nebraska	11/16/17	dnp		-	-	-	-	-	-	-	-	-	-	-	-	-	-	-	-	-
at Oral Roberts	11/20/17	dnp		-	-	-	-	-	-	-	-	-	-	-	-	-	-	-	-	-
at UTEP	11/24/17	6		0-0	.000	0-0	.000	0-0	.000	0	0	0	0.7	0	0	0	0	0	0	0.7
vs NM State	11/25/17	dnp		-	-	-	-	-	-	-	-	-	-	-	-	-	-	-	-	-
ACU	11/29/17	3		0-2	.000	0-1	.000	0-0	.000	1	0	1	0.8	0	0	0	0	0	0	0.5
at Kansas	12/03/17	dnp		-	-	-	-	-	-	-	-	-	-	-	-	-	-	-	-	-
CHARLOTTE	12/07/17	dnp		-	-	-	-	-	-	-	-	-	-	-	-	-	-	-	-	-
TULSA	12/10/17	3		0-0	.000	0-0	.000	0-0	.000	0	1	1	0.8	0	0	0	0	0	0	0.4
UT-ARLINGTON	12/17/17	6		1-1	1.000	1-1	1.000	1-2	.500	1	1	2	1.0	0	0	0	0	0	4	1.0
at Arizona State	12/21/17	5		0-0	.000	0-0	.000	0-0	.000	0	0	0	0.9	0	0	0	0	0	0	0.9
GRAMBLING	12/28/17	5		0-2	.000	0-1	.000	0-0	.000	0	1	1	0.9	0	1	0	0	0	0	0.8
OLE MISS	12/31/17	dnp		-	-	-	-	-	-	-	-	-	-	-	-	-	-	-	-	-
at #5/3 Mississippi State	01/04/18	4		0-0	.000	0-0	.000	0-0	.000	0	0	0	0.8	0	0	0	0	0	0	0.7
ALABAMA	01/07/18	dnp		-	-	-	-	-	-	-	-	-	-	-	-	-	-	-	-	-
at Georgia	11/11/18	dnp		-	-	-	-	-	-	-	-	-	-	-	-	-	-	-	-	-
at Auburn	01/14/18	dnp		-	-	-	-	-	-	-	-	-	-	-	-	-	-	-	-	-
FLORIDA	01/18/18	dnp		-	-	-	-	-	-	-	-	-	-	-	-	-	-	-	-	-
Totals		0	40	1-6	.167	1-3	.333	3-6	.500	3	4	7	0.8	1	1	1	0	0	6	0.7

Games played: 9
 Minutes/game: 4.4
 Points/game: 0.7
 FG Pct: 16.7
 3FG Pct: 33.3
 FT Pct: 50.0

Rebounds/game: 0.8
 Assists/game: 0.1
 Turnovers/game: 0.1
 Assist/turnover ratio: 1.0

NOTES

- » SEC First-Year Academic Honor Roll (2016-17).
- » University of Arkansas Athletic Department Academic Champion (4.0): Fall, 2017

CAREER STATS

Year	GP-GS	Min	Avg	Total			3-Point			F-Throw			Rebounds				PF	FO	Ast	TO	Blk	Stl	Pts	Avg
				FG	FGA	Pct	FG	FGA	Pct	FT	FTA	Pct	Off	Def	Tot	Avg								
2016-17	15-0	72	4.8	5	14	.357	4	12	.333	2	4	.500	2	9	11	0.7	15	0	1	2	1	0	16	1.1
2017-18	9-0	40	4.4	1	6	.167	1	3	.333	3	6	.500	3	4	7	0.8	1	0	1	1	0	0	6	0.7
TOTAL	24-0	112	4.7	6	20	.300	5	15	.333	5	10	.500	5	13	18	0.8	16	0	2	3	1	0	22	0.9



21 **DEVIN COSPER**
 Grad | 5-10 | Guard | Coffeyville, Kansas
 Coffeyville CC | Field Kindley HS

CAREER HIGHS

Points	25	Charlotte	12-6-17
FG Made	9	Charlotte	12-6-17
FGA	25	Nebraska	11-16-17
3PM	6	UTEP	11-24-17
3PA	16	Nebraska	11-16-17
FTM	12	Alabama	1-7-18
FTA	12	Alabama	1-7-18
OREB	3	Charlotte	12-6-17
DREB	13	Alabama	1-7-18
REB	14	Charlotte	12-6-17*
AST	6	ORU	12-21-16
BLK	3	MVSU	12-28-15
STL	4	Ole Miss	12-31-17*
MIN	40	Charlotte	12-6-17
	42	Auburn	1-24-16 OT

SEASON HIGHS

Points	25	Charlotte	12-6-17
FG Made	9	Charlotte	12-6-17
FG Att.	25	Nebraska	11-16-17
3P Made	6	UTEP	11-24-17
3P Att.	16	Nebraska	11-16-17
FT Made	12	Alabama	1-7-18
FT Att.	12	Alabama	1-7-18
Off. Rebounds	3	Charlotte	12-6-17
Def. Rebounds	13	Alabama	1-7-18
Rebounds	14	Charlotte	12-6-17
Assists	4	Alabama	1-7-18*
Blocks	2	Tulsa	12-10-17*
Steals	4	Ole Miss	12-31-17
Minutes	40	Charlotte	12-6-17

*Most Recent

2017-18 GAME-BY-GAME STATS

Opponent	Date	gs	min	Total		3-Pointers		Free throws		Rebounds			pf	a	t/o	blk	stl	pts	avg		
				fg-fga	pct	3fg-fga	pct	ft-fa	pct	off	def	tot								avg	
SHSU	11/10/17	*	31	6-13	.462	4-11	.364	1-2	.500	2	10	12	12.0	3	2	4	1	1	17	17.0	
SAMFORD	11/12/17	*	29	5-12	.417	3-10	.300	5-5	1.000	0	5	5	8.5	2	2	1	0	1	18	17.5	
at Nebraska	11/16/17	*	34	8-25	.320	5-16	.313	0-0	.000	1	3	4	7.0	2	0	4	2	2	21	18.7	
at Oral Roberts	11/20/17	*	38	8-19	.421	3-10	.300	2-2	1.000	0	10	10	7.8	2	1	0	0	2	21	19.3	
at UTEP	11/24/17	*	31	8-17	.471	6-13	.462	0-2	.000	1	4	5	7.2	2	0	1	0	4	22	19.8	
vs NM State	11/25/17	*	39	6-17	.353	2-9	.222	3-4	.750	2	9	11	7.8	2	4	2	1	2	17	19.3	
ACU	11/29/17	*	21	4-10	.400	2-5	.400	1-2	.500	0	3	3	7.1	4	1	3	1	2	11	18.1	
at Kansas	12/03/17	*	39	5-23	.217	1-11	.091	6-8	.750	1	2	3	6.6	3	0	2	1	1	17	18.0	
CHARLOTTE	12/07/17	*	40	9-23	.391	2-7	.286	5-6	.833	3	11	14	7.4	2	2	3	0	1	25	18.8	
TULSA	12/10/17	*	29	5-16	.313	1-9	.111	0-0	.000	2	9	11	7.8	3	0	3	2	0	11	18.0	
UT-ARLINGTON	12/17/17	*	22	3-8	.375	2-6	.333	0-0	.000	0	1	1	7.2	3	1	2	0	2	8	17.1	
at Arizona State	12/21/17	*	27	3-13	.231	2-5	.400	0-0	.000	0	1	1	6.7	2	1	2	0	0	8	16.3	
GRAMBLING	12/28/17	*	34	6-15	.400	4-7	.571	0-2	.000	0	4	4	6.5	2	3	2	0	0	16	16.3	
OLE MISS	12/31/17	*	39	7-15	.467	2-5	.400	2-3	.667	1	10	11	6.8	3	1	6	1	4	18	16.4	
at #5/3 Mississippi State	01/04/18	*	32	5-13	.385	2-7	.286	1-2	.500	1	6	7	6.8	3	3	4	0	0	13	16.2	
ALABAMA	01/07/18	*	39	6-16	.375	0-5	.000	12-12	1.000	0	13	13	7.2	5	4	2	0	2	24	16.7	
at Georgia	1/11/18	*	39	4-13	.308	0-6	.000	0-0	.000	1	6	7	7.2	4	2	2	0	2	8	16.2	
at Auburn	01/14/18	*	8	0-4	.000	0-2	.000	0-0	.000	0	1	1	6.8	0	1	0	0	0	0	15.3	
FLORIDA	01/18/18	dnp	-	-	-	-	-	-	-	-	-	-	-	-	-	-	-	-	-	-	
Totals			18	571	98-272	.360	41-144	.285	38-50	.760	15	108	123	6.8	47	27	44	9	26	275	15.3

Games played: 18
 Minutes/game: 31.7
 Points/game: 15.3
 FG Pct: 36.0
 3FG Pct: 28.5
 FT Pct: 76.0

Rebounds/game: 6.8
 Assists/game: 1.5
 Turnovers/game: 2.4
 Assist/turnover ratio: 0.6
 Steals/game: 1.4
 Blocks/game: 0.5

NOTES

- » SEC First-Year Academic Honor Roll (2016).
- » SEC Academic Honor Roll (2016-17).
- » Graduated in May 2017 with degree in journalism. Currently pursuing her master's degree in sport administration.
- » Forty-five consecutive games played (snapped versus Florida, 1-18-18).
- » Nineteen consecutive games with a made 3-pointer. (snapped versus Alabama)
- » Thirty-one points with six 3-pointers in exhibition game.
- » Ten consecutive games in double figure scoring (snapped versus UTA).
- » Seven career double-doubles all this season.
- » At least one steal in 13-of-17 games this year.
- » Career-bests to 25 points and 14 rebounds against Charlotte.

CAREER STATS

Year	GP-GS	Min	Avg	Total			3-Point			F-Throw			Rebounds				PF	FO	Ast	TO	Blk	Stl	Pts	Avg
				FG	FGA	Pct	FG	FGA	Pct	FT	FTA	Pct	Off	Def	Tot	Avg								
2015-16	30-25	792	26.4	97	293	.331	25	104	.240	50	72	.694	16	83	99	3.3	57	0	42	74	5	34	269	9.0
2016-17	29-9	563	19.4	72	195	.369	23	75	.307	20	27	.741	7	58	65	2.2	43	2	45	40	6	28	187	6.4
2017-18	18-18	571	31.7	98	272	.360	41	144	.285	38	50	.760	15	108	123	6.8	47	1	27	44	9	26	275	15.3
TOTAL	77-52	1926	25.0	267	760	.351	89	323	.276	108	149	.725	38	249	287	3.7	147	3	114	158	20	88	731	9.5



22

BAILEY ZIMMERMAN
 Junior | 6-0 | Forward | St. Vincent, Arkansas
 Wonderview HS

CAREER HIGHS

Points	14	Missouri	2-12-17
FGM	4	Missouri	2-12-17*
FGA	11	Missouri	2-12-17
3PM	3	at Auburn	1-14-18*
3PA	8	at Auburn	1-14-18
FTM	4	at Auburn	1-14-18*
FTA	6	at Auburn	1-14-18*
OREB	5	at Auburn	1-14-18
DREB	6	Alabama	1-15-17
REB	8	at Auburn	1-14-18
AST	3	Kentucky	2-16-17*
BLK	3	LSU	1-8-17*
STL	2	UTEP	11-24-17*
MIN	35	at Auburn	1-14-18

SEASON HIGHS

Points	13	at Auburn	1-14-18
FG Made	3	at Auburn	1-14-18*
FG Att.	10	UTA	12-17-17
3P Made	3	at Auburn	1-14-18*
3P Att.	8	at Auburn	1-14-18
FT Made	4	at Auburn	1-14-18
FT Att.	6	at Auburn	1-14-18
Off. Rebounds	5	at Auburn	1-14-18
Def. Rebounds	5	Tulsa	12-10-17
Rebounds	8	at Auburn	1-14-18
Assists	2	at Auburn	1-14-18*
Blocks	2	Nebraska	11-16-17
Steals	2	UTEP	11-24-17*
Minutes	35	at Auburn	1-14-18

*Most Recent

2017-18 GAME-BY-GAME STATS

Opponent	Date	gs	min	Total		3-Pointers		Free throws		Rebounds				pf	a	t/o	blk	stl	pts	avg	
				fg-fga	pct	3fg-fga	pct	ft-fa	pct	off	def	tot	avg								
SHSU	11/10/17	*	27	1-7	.143	0-4	.000	0-0	.000	0	3	3	3.0	1	2	1	0	2	2	2.0	
SAMFORD	11/12/17	*	19	0-1	.000	0-1	.000	0-0	.000	0	0	0	1.5	3	0	0	0	0	0	1.0	
at Nebraska	11/16/17	*	24	0-2	.000	0-2	.000	1-2	.500	0	0	0	1.0	3	0	2	2	0	1	1.0	
at Oral Roberts	11/20/17	*	21	1-7	.143	0-3	.000	0-2	.000	1	3	4	1.8	3	1	0	1	0	2	1.3	
at UTEP	11/24/17	*	23	1-5	.200	0-3	.000	2-2	1.000	2	1	3	2.0	0	2	0	0	2	4	1.8	
vs NM State	11/25/17	*	24	0-1	.000	0-1	.000	1-2	.500	2	1	3	2.2	2	2	0	0	0	1	1.7	
ACU	11/29/17	*	25	1-4	.250	0-1	.000	1-2	.500	4	2	6	2.7	1	2	2	1	1	3	1.9	
at Kansas	12/03/17	*	24	0-1	.000	0-0	.000	0-0	.000	0	2	2	2.6	4	0	1	1	0	0	1.6	
CHARLOTTE	12/07/17	*	28	2-9	.222	1-6	.167	1-1	1.000	1	2	3	2.7	0	1	3	1	0	6	2.1	
TULSA	12/10/17	*	25	2-6	.333	0-3	.000	2-3	.667	2	5	7	3.1	0	1	0	0	0	6	2.5	
UT-ARLINGTON	12/17/17	*	20	2-10	.200	0-3	.000	2-2	1.000	2	1	3	3.1	2	0	1	0	0	6	2.8	
at Arizona State	12/21/17	*	24	1-3	.333	0-1	.000	0-0	.000	2	2	4	3.2	1	1	3	1	0	2	2.8	
GRAMBLING	12/28/17	*	11	0-2	.000	0-0	.000	0-0	.000	0	0	0	2.9	0	0	0	0	0	0	2.5	
OLE MISS	12/31/17	*	9	1-1	1.000	0-0	.000	0-0	.000	1	0	1	2.8	2	1	1	0	0	2	2.5	
at #5/3 Mississippi State	01/04/18	*	20	1-2	.500	0-1	.000	2-3	.667	0	3	3	2.8	3	0	1	0	0	4	2.6	
ALABAMA	01/07/18	*	13	0-1	.000	0-0	.000	0-0	.000	2	0	2	2.8	5	2	2	1	0	0	2.4	
at Georgia	11/11/18	*	27	3-5	.600	3-5	.600	2-4	.500	2	3	5	2.9	0	2	1	0	1	11	2.9	
at Auburn	01/14/18	*	35	3-8	.375	3-8	.375	4-6	.667	5	3	8	3.2	3	2	3	1	1	13	3.5	
FLORIDA	01/18/18	*	26	0-8	.000	0-7	.000	0-0	.000	1	2	3	3.2	1	1	1	0	1	0	3.3	
Totals			19	425	19-83	.229	7-49	.143	18-29	.621	27	33	60	3.2	34	20	22	9	8	63	3.3

Games played: 19
 Minutes/game: 22.4
 Points/game: 3.3
 FG Pct: 22.9
 3FG Pct: 14.3
 FT Pct: 62.1

Rebounds/game: 3.2
 Assists/game: 1.1
 Turnovers/game: 1.2
 Assist/turnover ratio: 0.9
 Steals/game: 0.4
 Blocks/game: 0.5

NOTES

- » SEC Academic Honor Roll (2016-17).
- » University of Arkansas Athletic Department Academic Athletic Director's List: Fall, 2017
- » Fifteen games with 20+ minutes.
- » Started 19 consecutive games this year and 20 in a row dating back to last season.
- » Career-bests for made 3-pointers (2), made and attempted free throws (4-6), offensive rebounds (5), total rebounds (8) and minutes (35) at Auburn.

CAREER STATS

Year	GP-GS	Min	Avg	Total			3-Point			F-Throw			Rebounds				PF	FO	Ast	TO	Blk	Stl	Pts	Avg
				FG	FGA	Pct	FG	FGA	Pct	FT	FTA	Pct	Off	Def	Tot	Avg								
2015-16	20-1	174	8.7	6	48	.125	4	33	.121	7	12	.583	12	9	21	1.1	9	0	4	15	2	4	23	1.2
2016-17	30-23	627	20.9	45	144	.313	24	84	.286	20	39	.513	35	80	115	3.8	46	0	28	37	10	19	134	4.5
2017-18	19-19	425	22.4	19	83	.229	7	49	.143	18	29	.621	27	33	60	3.2	34	1	20	22	9	8	63	3.3
TOTAL	69-43	1226	17.8	70	275	.255	35	166	.211	45	80	.563	74	122	196	2.8	89	1	52	74	21	31	220	3.2



24 TAYLAH THOMAS
 Freshman | 6-1 | Forward | Arlington, Texas
 Mansfield Timberview HS

CAREER HIGHS

Points	13	Samford	11-12-17
FG Made	5	Samford	11-12-17
FG Att.	6	Samford	11-12-17
3P Made	1	Ole Miss	12-31-17*
3P Att.	1	Florida	1-18-18*
FT Made	3	NMSU	11-25-17*
FT Att.	6	Samford	11-12-17
Off. Rebounds	6	Nebraska	11-16-17
Def. Rebounds	7	ORU	11-20-17 7
Rebounds	11	Nebraska	11-16-17
Assists	1	Grambling	12-18-17*
Blocks	2	Nebraska	11-16-17
Steals	2	ACU	11-29-17
Minutes	23	ORU	11-20-17

SEASON HIGHS

Points	13	Samford	11-12-17
FG Made	5	Samford	11-12-17
FG Att.	6	Samford	11-12-17
3P Made	1	Ole Miss	12-31-17*
3P Att.	1	Florida	1-18-18*
FT Made	3	NMSU	11-25-17*
FT Att.	6	Samford	11-12-17
Off. Rebounds	6	Nebraska	11-16-17
Def. Rebounds	7	ORU	11-20-17 7
Rebounds	11	Nebraska	11-16-17
Assists	1	Grambling	12-18-17*
Blocks	2	Nebraska	11-16-17
Steals	2	ACU	11-29-17
Minutes	23	ORU	11-20-17

*Most Recent

2017-18 GAME-BY-GAME STATS

Opponent	Date	gs	min	Total		3-Pointers		Free throws		Rebounds				pf	a	t/o	blk	stl	pts	avg
				fg-fga	pct	3fg-fga	pct	ft-fa	pct	off	def	tot	avg							
SHSU	11/10/17	17		2-2	1.000	0-0	.000	0-0	.000	1	3	4	4.0	0	0	0	1	0	4	4.0
SAMFORD	11/12/17	21		5-6	.833	0-1	.000	3-6	.500	2	7	9	6.5	1	0	2	0	0	13	8.5
at Nebraska	11/16/17	20		1-4	.250	0-0	.000	3-4	.750	6	5	11	8.0	3	1	0	2	0	5	7.3
at Oral Roberts	11/20/17	23		0-3	.000	0-1	.000	2-2	1.000	2	7	9	8.3	2	0	0	1	0	2	6.0
at UTEP	11/24/17	16		0-2	.000	0-1	.000	1-2	.500	2	2	4	7.4	1	0	0	0	0	1	5.0
vs NM State	11/25/17	14		0-4	.000	0-0	.000	3-4	.750	3	4	7	7.3	1	0	1	0	0	3	4.7
ACU	11/29/17	20		2-7	.286	1-1	1.000	2-4	.500	3	4	7	7.3	2	0	0	0	2	7	5.0
at Kansas	12/03/17	9		0-1	.000	0-1	.000	0-0	.000	0	0	0	6.4	0	0	0	0	0	0	4.4
CHARLOTTE	12/07/17	4		0-0	.000	0-0	.000	0-0	.000	0	0	0	5.7	3	0	0	0	1	0	3.9
TULSA	12/10/17	19		1-3	.333	1-1	1.000	1-2	.500	4	3	7	5.8	1	0	0	0	1	4	3.9
UT-ARLINGTON	12/17/17	*	11	0-0	.000	0-0	.000	0-0	.000	2	2	4	5.6	5	0	1	0	0	0	3.5
at Arizona State	12/21/17	19		1-1	1.000	0-0	.000	0-0	.000	0	3	3	5.4	3	0	3	0	0	2	3.4
GRAMBLING	12/28/17	13		3-3	1.000	0-0	.000	2-2	1.000	0	2	2	5.2	2	1	2	0	1	8	3.8
OLE MISS	12/31/17	17		2-3	.667	1-1	1.000	1-2	.500	3	0	3	5.0	2	0	1	0	0	6	3.9
at #5/3 Mississippi State	01/04/18	17		2-2	1.000	0-0	.000	0-0	.000	1	5	6	5.1	2	0	0	0	0	4	3.9
ALABAMA	01/07/18	18		0-2	.000	0-0	.000	2-2	1.000	2	2	4	5.0	3	0	1	0	0	2	3.8
at Georgia	1/11/18	29		3-9	.333	0-1	.000	0-0	.000	3	5	8	5.2	2	1	3	0	0	6	3.9
at Auburn	01/14/18	13		2-3	.667	0-0	.000	0-0	.000	1	0	1	4.9	3	0	1	0	0	4	3.9
FLORIDA	01/18/18	21		1-4	.250	0-1	.000	0-0	.000	3	3	6	5.0	1	0	1	0	0	2	3.8
Totals		1	321	25-59	.424	3-9	.333	20-30	.667	38	57	95	5.0	37	3	16	4	5	73	3.8

Games played: 19
 Minutes/game: 16.9
 Points/game: 3.8
 FG Pct: 42.4
 3FG Pct: 33.3
 FT Pct: 66.7

Rebounds/game: 5.0
 Assists/game: 0.2
 Turnovers/game: 0.8
 Assist/turnover ratio: 0.2
 Steals/game: 0.3
 Blocks/game: 0.2

NOTES

- » University of Arkansas Athletic Department Academic Athletic Director's List: Fall, 2017
- » Played high school ball for former Razorback assistant coach Kit Kyle Martin.
- » Career-best 13 points against Samford - her first double figure scoring game as a Razorback.

CAREER STATS

Year	GP-GS	Min	Avg	Total			3-Point			F-Throw			Rebounds				PF	FO	Ast	TO	Blk	Stl	Pts	Avg
				FG	FGA	Pct	FG	FGA	Pct	FT	FTA	Pct	Off	Def	Tot	Avg								
2017-18	19-1	321	16.9	25	59	.424	3	9	.333	20	30	.667	38	57	95	5.0	37	1	3	16	4	5	73	3.8
TOTAL	19-1	321	16.9	25	59	.424	3	9	.333	20	30	.667	38	57	95	5.0	37	1	3	16	4	5	73	3.8



30 MACY WEAVER
 Freshman | 6-3 | F | Davis Junction, Illinois
 Stillman Valley HS

CAREER HIGHS

Points	3	Grambling	12-18-17
FG Made	1	Grambling	12-18-17*
FG Att.	2	Grambling	12-18-17
3P Made	-		
3P Att.	-		
FT Made	1	Grambling	12-18-17*
FT Att.	2	UTA	12-17-17
Off. Rebounds	2	Grambling	12-18-17*
Def. Rebounds	4	UTA	12-17-17
Rebounds	5	UTA	12-17-17
Assists	1	UTEP	11-24-17
Blocks	4	UTEP	11-24-17
Steals	1	UTEP	11-24-17
Minutes	19	UTEP	11-24-17

SEASON HIGHS

Points	3	Grambling	12-18-17
FG Made	1	Grambling	12-18-17*
FG Att.	2	Grambling	12-18-17
3P Made	-		
3P Att.	-		
FT Made	1	Grambling	12-18-17*
FT Att.	2	UTA	12-17-17
Off. Rebounds	2	Grambling	12-18-17*
Def. Rebounds	4	UTA	12-17-17
Rebounds	5	UTA	12-17-17
Assists	1	UTEP	11-24-17
Blocks	4	UTEP	11-24-17
Steals	1	UTEP	11-24-17
Minutes	19	UTEP	11-24-17

*Most Recent

2017-18 GAME-BY-GAME STATS

Opponent	Date	gs	min	Total		3-Pointers		Free throws		Rebounds				pf	a	t/o	blk	stl	pts	avg
				fg-fga	pct	3fg-fga	pct	ft-fa	pct	off	def	tot	avg							
SHSU	11/10/17	2		0-0	.000	0-0	.000	0-0	.000	0	0	0	0.0	0	0	0	0	0	0.0	
SAMFORD	11/12/17	1		0-0	.000	0-0	.000	0-0	.000	0	0	0	0.0	0	0	0	0	0	0.0	
at Nebraska	11/16/17	dnp		-	-	-	-	-	-	-	-	-	-	-	-	-	-	-	-	
at Oral Roberts	11/20/17	dnp		-	-	-	-	-	-	-	-	-	-	-	-	-	-	-	-	
at UTEP	11/24/17	19		1-1	1.000	0-0	.000	0-0	.000	2	1	3	1.0	3	1	0	4	1	2	0.7
vs NM State	11/25/17	dnp		-	-	-	-	-	-	-	-	-	-	-	-	-	-	-	-	
ACU	11/29/17	3		0-1	.000	0-0	.000	0-0	.000	0	1	1	1.0	0	0	0	0	0	0	0.5
at Kansas	12/03/17	2		0-0	.000	0-0	.000	0-0	.000	0	0	0	0.8	0	0	0	1	0	0	0.4
CHARLOTTE	12/07/17	7		0-0	.000	0-0	.000	0-2	.000	2	0	2	1.0	3	0	1	0	0	0	0.3
TULSA	12/10/17	6		0-1	.000	0-0	.000	0-0	.000	0	1	1	1.0	1	0	0	1	0	0	0.3
UT-ARLINGTON	12/17/17	8		0-1	.000	0-0	.000	1-2	.500	1	4	5	1.5	3	0	1	1	0	1	0.4
at Arizona State	12/21/17	7		0-0	.000	0-0	.000	0-0	.000	0	1	1	1.4	2	0	0	0	0	0	0.3
GRAMBLING	12/28/17	5		1-2	.500	0-0	.000	1-1	1.000	2	1	3	1.6	1	0	0	0	0	3	0.6
OLE MISS	12/31/17	dnp		-	-	-	-	-	-	-	-	-	-	-	-	-	-	-	-	-
at #5/3 Mississippi State	01/04/18	3		0-0	.000	0-0	.000	0-0	.000	0	0	0	1.5	0	0	0	0	0	0	0.5
ALABAMA	01/07/18	dnp		-	-	-	-	-	-	-	-	-	-	-	-	-	-	-	-	-
at Georgia	11/11/18	4		0-0	.000	0-0	.000	1-2	.500	1	0	1	1.4	0	0	0	0	0	1	0.6
at Auburn	01/14/18	dnp		-	-	-	-	-	-	-	-	-	-	-	-	-	-	-	-	-
FLORIDA	01/18/18	2		0-1	.000	0-0	.000	0-0	.000	0	0	0	1.3	0	0	0	0	0	0	0.5
Totals		0	69	2-7	.286	0-0	.000	3-7	.429	8	9	17	1.3	13	1	2	7	1	7	0.5

Games played: 13
 Minutes/game: 5.3
 Points/game: 0.5
 FG Pct: 28.6
 FT Pct: 42.9

Rebounds/game: 1.3
 Assists/game: 0.1
 Turnovers/game: 0.2
 Assist/turnover ratio: 0.5
 Steals/game: 0.1
 Blocks/game: 0.5

NOTES

- » University of Arkansas Athletic Department Academic Athletic Director's List: Fall, 2017
- » First career game as a Razorback came against Sam Houston State in the opener.
- » Played 19 minutes with four blocks and solid defense at UTEP.

CAREER STATS

Year	GP-GS	Min	Avg	Total			3-Point			F-Throw			Rebounds				PF	FO	Ast	TO	Blk	Stl	Pts	Avg
				FG	FGA	Pct	FG	FGA	Pct	FT	FTA	Pct	Off	Def	Tot	Avg								
2017-18	13-0	69	5.3	2	7	.286	0	0	.000	3	7	.429	8	9	17	1.3	13	0	1	2	7	1	7	0.5
TOTAL	13-0	69	5.3	2	7	.286	0	0	.000	3	7	.429	8	9	17	1.3	13	0	1	2	7	1	7	0.5



0-A'Tyanna Gauden
RSo | G | 5-7



1-Raven Northcross-Baker
Jr | G | 5-7



3-Malica Monk
Jr | G | 5-5



4-Keiryn Swenson
Jr | G/F | 6-1



10-Kiara Williams
So | F/C | 6-1



13-Grayce Spangler
Fr | G | 5-11



14-Jailyn Mason
So | G | 5-9



20-Sydney Stout
So | F | 6-0



21-Devin Cospier
Gr. | G | 5-10



22-Bailey Zimmerman
Jr | G/F | 6-0



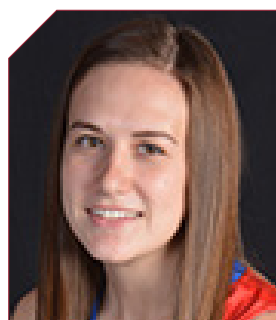
24-Taylah Thomas
Fr | F | 6-1



30-Macy Weaver
Fr | F | 6-3



33-Chelsea Dungee
RSo | G | 5-11



51-Brenna McClure
RSo | G | 5-6



Mike Neighbors
Arkansas, 1993
First Season



Lacey Goldwire
Oklahoma State, 2010
First Season



Todd Schaefer
Thomas More College, 1995
First Season



Pauline Love
Southern Miss, 2010
First Season



NOVEMBER 2, 2017

NORTHEASTERN STATE

74 82

ARKANSAS

Bud Walton Arena Fayetteville, Arkansas

Devin Cosper dropped in 31 points leading four players in double figures in exhibition action. It was the 14th-consecutive exhibition game win for Arkansas and the first under head coach Mike Neighbors.

Northeastern State Univ. 74

Table with columns: #, Player, Total, FG-FGA, 3-Ptr, FT-FTA, Rebounds, PF, TP, A TO Blk, Stl, Min. Includes team totals and shooting percentages.

Arkansas 82

Table with columns: #, Player, Total, FG-FGA, 3-Ptr, FT-FTA, Rebounds, PF, TP, A TO Blk, Stl, Min. Includes team totals and shooting percentages.

Officials: Brian Hall, Luis Gonzalez, Katie Lukanich Technical fouls: Northeastern State Univ.-None, Arkansas-None. Attendance: 1,200

Score by periods table with columns: 1st, 2nd, 3rd, 4th, Total. Includes team names and scores.

Last FG - NESU 4th-00:35, AR 4th-01:01. Largest lead - NESU by 3 3rd-09:05, AR by 13 1st-03:09. NESU led for 09:13. AR led for 24:08. Game was tied for 06:39.



NOVEMBER 12, 2017

SAMFORD

63 84

ARKANSAS

Bud Walton Arena Fayetteville, Arkansas

Career best points and rebounds for Malica Monk. Career best points for Taylah Thomas and Kiara Williams.

Samford 63 • 0-2

Table with columns: #, Player, Total, FG-FGA, 3-Ptr, FT-FTA, Rebounds, PF, TP, A TO Blk, Stl, Min. Includes team totals and shooting percentages.

Arkansas 84 • 2-0

Table with columns: #, Player, Total, FG-FGA, 3-Ptr, FT-FTA, Rebounds, PF, TP, A TO Blk, Stl, Min. Includes team totals and shooting percentages.

Officials: Scott Yarbrough, Laura Morris, Pualani Spurlock Technical fouls: Samford-None, Arkansas-None. Attendance: 1,739

Score by periods table with columns: 1st, 2nd, 3rd, 4th, Total. Includes team names and scores.

Last FG - SAM 4th-01:03, AR 4th-01:19. Largest lead - SAM None, AR by 24 4th-04:43. SAM led for 00:00. AR led for 39:37. Game was tied for 00:23.



NOVEMBER 10, 2017

SAM HOUSTON STATE

54 65

ARKANSAS

Bud Walton Arena Fayetteville, Arkansas

Elementary Day

Devin Cosper had her first Razorback double-double with 17 points and 12 rebounds in the come-from-behind win. Malica Monk's game-high 18 points ties the junior's career-best.

SHSU 54 • 0-1

Table with columns: #, Player, Total, FG-FGA, 3-Ptr, FT-FTA, Rebounds, PF, TP, A TO Blk, Stl, Min. Includes team totals and shooting percentages.

Arkansas 65 • 1-0

Table with columns: #, Player, Total, FG-FGA, 3-Ptr, FT-FTA, Rebounds, PF, TP, A TO Blk, Stl, Min. Includes team totals and shooting percentages.

Officials: Eric Brewton, Kelly Johnson, Eric Baker Technical fouls: SHSU-None, Arkansas-None. Attendance: 4,719

Estimated Actual Attendance: 4,418

Score by periods table with columns: 1st, 2nd, 3rd, 4th, Total. Includes team names and scores.

Last FG - SHSU 4th-00:38, AR 4th-02:09. Largest lead - SHSU by 13 2nd-07:26, AR by 23 4th-06:19. AR led for 19:51. AR led for 17:54. Game was tied for 01:44.

Score by periods table with columns: 1st, 2nd, 3rd, 4th, Total. Includes team names and scores.

Last FG - SHSU 4th-00:38, AR 4th-02:09. Largest lead - SHSU by 13 2nd-07:26, AR by 23 4th-06:19. AR led for 19:51. AR led for 17:54. Game was tied for 01:44.



NOVEMBER 16, 2017

ARKANSAS

69 80

NEBRASKA

Pinnacle Bank Arena Lincoln, Nebraska

Career best 22 points for Malica Monk and 21 points for Devin Cosper. Career best 11 rebounds for both Taylah Thomas and Kiara Williams. Cosper had 10 points in the first quarter and Monk had 10 in the third quarter.

Arkansas Razorbacks 69 • 2-1

Table with columns: #, Player, Total, FG-FGA, 3-Ptr, FT-FTA, Rebounds, PF, TP, A TO Blk, Stl, Min. Includes team totals and shooting percentages.

Nebraska 80 • 3-0

Table with columns: #, Player, Total, FG-FGA, 3-Ptr, FT-FTA, Rebounds, PF, TP, A TO Blk, Stl, Min. Includes team totals and shooting percentages.

Officials: Beverly Roberts, Bryan Enterline, Gina Cross Technical fouls: Arkansas Razorbacks-None, Nebraska-None. Attendance: 3,459

Score by periods table with columns: 1st, 2nd, 3rd, 4th, Total. Includes team names and scores.

Last FG - AR 4th-03:56, NEB 4th-01:18. Largest lead - AR by 2 4th-06:21, NEB by 14 2nd-06:05. AR led for 00:43. NEB led for 36:27. Game was tied for 02:49.

Score by periods table with columns: 1st, 2nd, 3rd, 4th, Total. Includes team names and scores.

Last FG - SAM 4th-01:03, AR 4th-01:19. Largest lead - SAM None, AR by 24 4th-04:43. SAM led for 00:00. AR led for 39:37. Game was tied for 00:23.



NOVEMBER 20, 2017

ARKANSAS

ORU

Mabee Arena
Tulsa, Oklahoma

77

66

Career-best 24 points for Malica Monk and career-best tying night with 21 points for Devin Cosper. Arkansas forced 14 ORU turnovers while only turning it over four times.

Arkansas 77 • 3-1

Box score for Arkansas 77 vs Oral Roberts 66. Includes player names, points, rebounds, and shooting percentages.

Summary statistics for Arkansas 77 vs Oral Roberts 66. Includes team totals for points, rebounds, and shooting percentages.

Oral Roberts 66 • 1-3

Box score for Oral Roberts 66 vs Arkansas 77. Includes player names, points, rebounds, and shooting percentages.

Summary statistics for Oral Roberts 66 vs Arkansas 77. Includes team totals for points, rebounds, and shooting percentages.

Officials: Greg Small, Nick Marshall, Michelle Kramer
Technical fouls: Arkansas-None, Oral Roberts-None.
Attendance: 2503

Score by periods table for Arkansas 77 vs Oral Roberts 66. Shows points in each quarter and total.

Last FG - AR 4th-01:52, ORU 4th-00:29.
Largest lead - AR by 14 4th-07:23, ORU by 6 1st-04:58.
AR led for 00:59, ORU led for 00:32. Game was tied for 00:29.

Points in Paint, 2nd Chance, and Fast Break statistics for Arkansas 77 vs Oral Roberts 66.



NOVEMBER 25, 2017

ARKANSAS

NEW MEXICO STATE

Don Haskins Center
El Paso, Texas

69

60

Devin Cosper with her third double-double with 17 points and 11 rebounds. Malica Monk led all scorers with 22 points. Williams posted her first career double-double with 11 points and 11 rebounds.

Arkansas 69 • 4-2

Box score for Arkansas 69 vs New Mexico State 60. Includes player names, points, rebounds, and shooting percentages.

Summary statistics for Arkansas 69 vs New Mexico State 60. Includes team totals for points, rebounds, and shooting percentages.

NM State 60 • 2-4

Box score for New Mexico State 60 vs Arkansas 69. Includes player names, points, rebounds, and shooting percentages.

Summary statistics for New Mexico State 60 vs Arkansas 69. Includes team totals for points, rebounds, and shooting percentages.

Officials: Lisa Mattingly, Beverly Roberts, Tina Napier
Technical fouls: Arkansas-None, NM State-None.
Attendance: 250

Score by periods table for Arkansas 69 vs New Mexico State 60. Shows points in each quarter and total.

Last FG - AR 4th-00:16, NMSU 4th-00:51.
Largest lead - AR by 11 3rd-03:45, NMSU by 7 1st-01:06.
AR led for 19:50, NMSU led for 19:16. Game was tied for 00:54.

Points in Paint, 2nd Chance, and Fast Break statistics for Arkansas 69 vs New Mexico State 60.



NOVEMBER 24, 2017

ARKANSAS

UTEP

Don Haskins Center
El Paso, Texas

61

64

Arkansas started the game 0-for-15 in the first quarter and made a valiant comeback that fell short. Devin Cosper reached double figures in the third quarter and she and Malica Monk were in double figures for the fifth time.

Arkansas 61 • 3-2

Box score for Arkansas 61 vs UTEP 64. Includes player names, points, rebounds, and shooting percentages.

Summary statistics for Arkansas 61 vs UTEP 64. Includes team totals for points, rebounds, and shooting percentages.

UTEP 64 • 3-0

Box score for UTEP 64 vs Arkansas 61. Includes player names, points, rebounds, and shooting percentages.

Summary statistics for UTEP 64 vs Arkansas 61. Includes team totals for points, rebounds, and shooting percentages.

Officials: Michelle Kramer, Jeremy Hohn, Rick Thorne
Technical fouls: Arkansas-None, UTEP-None.
Attendance: 633

Score by periods table for Arkansas 61 vs UTEP 64. Shows points in each quarter and total.

Last FG - AR 4th-00:38, UTEPW 4th-00:08.
Largest lead - AR None, UTEPW by 20 3rd-09:45.
AR led for 00:00, UTEPW led for 29:27. Game was tied for 00:33.

Points in Paint, 2nd Chance, and Fast Break statistics for Arkansas 61 vs UTEP 64.

NOVEMBER 29, 2017

ABILENE CHRISTIAN

ARKANSAS

Bud Walton Arena
Fayetteville, Arkansas

65

79

Five players in double figures with Devin Cosper and Malica Monk recording their seventh consecutive games in double digits ... Forced a season-best 20 turnovers ... 20-0 run in fourth quarter.

ACU 65 • 3-2

Box score for ACU 65 vs Arkansas 79. Includes player names, points, rebounds, and shooting percentages.

Summary statistics for ACU 65 vs Arkansas 79. Includes team totals for points, rebounds, and shooting percentages.

Arkansas 79 • 5-2

Box score for Arkansas 79 vs ACU 65. Includes player names, points, rebounds, and shooting percentages.

Summary statistics for Arkansas 79 vs ACU 65. Includes team totals for points, rebounds, and shooting percentages.

Officials: Mark Zentz, Bruce Morris, Pualani Spurlock
Technical fouls: ACU-None, Arkansas-COSPER, Devin; TEAM.
Attendance: 1132
Estimated Actual Attendance: 706

Score by periods table for Arkansas 79 vs ACU 65. Shows points in each quarter and total.

Last FG - ACU 4th-00:34, AR 4th-02:21.
Largest lead - ACU by 1 1st-09:21, AR by 24 4th-05:36.
ACU led for 00:21, AR led for 38:59. Game was tied for 00:40.

Points in Paint, 2nd Chance, and Fast Break statistics for ACU 65 vs Arkansas 79.



DECEMBER 3, 2017

ARKANSAS

KANSAS
Allen Fieldhouse
Lawrence, Kansas

60
71

Devin Cosper and Malica Monk made it eight games in a row with double-figure scoring. Kiara Williams posted a career-best 16 rebounds. Second consecutive game in double-figures for Jaiilyn Mason.

Arkansas 60 • 5-3

Table with columns: #, Player, FG-FGA, 3-Ptr, FT-FTA, Rebounds, PF, TP, A, TO, Blk, Stl, Min. Includes player stats for Northcross-Baker, Monk, Swenson, Williams, Spangler, Mason, Cosper, Zimmerman, Thomas, Weaver.

Kansas 71 • 7-0

Table with columns: #, Player, FG-FGA, 3-Ptr, FT-FTA, Rebounds, PF, TP, A, TO, Blk, Stl, Min. Includes player stats for Lyons, Christaloh, Osorio, Micaela, Wilson, Richardson, Cheadle, Watts, Eboni, Kopatich, Kylee, Helgren, Boric, Johnson, Tyler.

Officials: Scott Yarbrough, Jesse Dickerson, Michael McConnell. Technical fouls: Arkansas-None, Kansas-None.

Score by periods table showing 1st, 2nd, 3rd, 4th, Total scores for Arkansas and Kansas.

Last FG - AR 4th-01:10, KU 4th-03:10. Largest lead - AR by 2 1st-08:40, KU by 13 3rd-08:05. AR led for 01:17, KU led for 35:31. Game was tied for 03:03.



DECEMBER 7, 2017

CHARLOTTE

ARKANSAS
Bud Walton Arena
Fayetteville, Arkansas

72
73

Devin Cosper had a career-best 25 points and 14 rebounds in comeback win. Arkansas trailed by seven at the half and was tied at the 30 before winning.

Charlotte 72 • 3-6

Table with columns: #, Player, FG-FGA, 3-Ptr, FT-FTA, Rebounds, PF, TP, A, TO, Blk, Stl, Min. Includes player stats for Jamison-Myers, Niyila, Pearson, Linney, Ransom, Ray, Mason, Martin, Wilson, Harley, Robinson, Weaver.

Arkansas 73 • 6-3

Table with columns: #, Player, FG-FGA, 3-Ptr, FT-FTA, Rebounds, PF, TP, A, TO, Blk, Stl, Min. Includes player stats for Zimmerman, Bailey, Williams, Micaela, Mason, Cosper, Northcross-Baker, Swenson, Thomas, Weaver.

Officials: Bob Trammell, Felicia Grinter, Jesse Dickerson. Technical fouls: Charlotte-None, Arkansas-None.

Score by periods table showing 1st, 2nd, 3rd, 4th, Total scores for Charlotte and Arkansas.

Last FG - CHA 4th-00:01, AR 4th-00:53. Largest lead - CHA by 9 3rd-09:40, AR by 6 4th-00:53. CHA led for 24:48, AR led for 10:50. Game was tied for 04:22.



DECEMBER 10, 2017

TULSA

ARKANSAS
Bud Walton Arena
Fayetteville, Arkansas

41
67

Arkansas' 61 rebounds is the most since the 2014-15 season. Devin Cosper and Malica Monk have scored in double figures in all 10 games and Cosper posted back-to-back double-doubles.

Tulsa 41 • 4-6

Table with columns: #, Player, FG-FGA, 3-Ptr, FT-FTA, Rebounds, PF, TP, A, TO, Blk, Stl, Min. Includes player stats for Polk, Tatyana, Wakefield, Dickson, Lesday, Elliott, Richards, Butler, Gauden, Parker, Brady, Scales, Tyjae.

Arkansas 67 • 7-3

Table with columns: #, Player, FG-FGA, 3-Ptr, FT-FTA, Rebounds, PF, TP, A, TO, Blk, Stl, Min. Includes player stats for Zimmerman, Williams, Monk, Mason, Cosper, Northcross-Baker, Swenson, Spangler, Stout, Thomas, Weaver.

Officials: Susan Blauch, Ed Sidlasky, Damen McClure. Technical fouls: Tulsa-None, Arkansas-None.

Score by periods table showing 1st, 2nd, 3rd, 4th, Total scores for Tulsa and Arkansas.

Last FG - TULS 4th-01:07, AR 4th-03:31. Largest lead - TULS by 2 1st-09:34, AR by 30 4th-01:53. TULS led for 01:13, AR led for 38:03. Game was tied for 00:46.



DECEMBER 17, 2017

UT-ARLINGTON

ARKANSAS
Bud Walton Arena
Fayetteville, Arkansas

57
91

Raven Northcross-Baker had a career-best 22 points with 6 3-pointers leading four Razorbacks in double figures in the win over UTA.

UT-Arlington 57 • 5-5

Table with columns: #, Player, FG-FGA, 3-Ptr, FT-FTA, Rebounds, PF, TP, A, TO, Blk, Stl, Min. Includes player stats for Parker, Vandijk, McGowen, Bille, Richards, LeJune, Alexander, Machado, Evans, Johnson, Kelsey, Wright, Michaela.

Arkansas 91 • 8-3

Table with columns: #, Player, FG-FGA, 3-Ptr, FT-FTA, Rebounds, PF, TP, A, TO, Blk, Stl, Min. Includes player stats for Zimmerman, Thomas, Taylor, Mason, Jaiilyn, Cosper, Northcross-Baker, Swenson, Williams, Spangler, Stout, Weaver.

Officials: Tina Napier, Brian Garland, Eric Koch. Technical fouls: UT-Arlington-None, Arkansas-None.

Score by periods table showing 1st, 2nd, 3rd, 4th, Total scores for UT-Arlington and Arkansas.

Last FG - UTA 4th-00:36, AR 4th-00:46. Largest lead - UTA by 6 1st-04:54, AR by 34 4th-03:50. UTA led for 04:18, AR led for 31:25. Game was tied for 04:17.



DECEMBER 21, 2017

ARKANSAS 43 ARIZONA STATE 89

Wells Fargo Arena Tempe, Arizona

Malica Monk scored in double figures for the 12th consecutive game.

Arkansas 43 • 8-4

Table with columns: #, Player, Total FG-FGA, 3-Ptr FG-FGA, FT-FTA, Rebounds Off Def Tot, PF, TP, A TO Blk Stl, Min. Includes player stats for Williams, Zimmerman, Monk, Mason, etc.

Summary statistics table for Arkansas game: 1st FG %, 2nd FG %, 3rd FG %, 4th FG %, Game FG %, 3FG %, FT %, Rebounds, Points, Turnovers, Fouls, Deadball Rebounds.

Arizona State 89 • 9-3

Table with columns: #, Player, Total FG-FGA, 3-Ptr FG-FGA, FT-FTA, Rebounds Off Def Tot, PF, TP, A TO Blk Stl, Min. Includes player stats for Ekmark, Ibis, Johnson, etc.

Summary statistics table for Arizona State game: 1st FG %, 2nd FG %, 3rd FG %, 4th FG %, Game FG %, 3FG %, FT %, Rebounds, Points, Turnovers, Fouls, Deadball Rebounds.

Officials: Michol Murray, Clarke Stevens, Benny Luna Technical fouls: Arkansas-None, Arizona State-None Attendance: 1588

Score by periods table for Arkansas vs Arizona State

Points in game table for Arkansas vs Arizona State

Last FG - AR 4th-01:11, ASU 4th-00:14 Largest lead - AR by 2 1st-09:43, ASU by 50 4th-09:39 AR led for 02:20, ASU led for 36:56. Game was tied for 00:44.



DECEMBER 28, 2017

GRAMBLING STATE 62 ARKANSAS 79

Bud Walton Arena Fayetteville, Arkansas

Four players in double figures with Kiara Williams (12 pts/16 rebounds) and Malica Monk (10 pts/10 assists) posting double-doubles.

Grambling 62 • 3-8

Table with columns: #, Player, Total FG-FGA, 3-Ptr FG-FGA, FT-FTA, Rebounds Off Def Tot, PF, TP, A TO Blk Stl, Min. Includes player stats for Gideon, Neal, Hill, etc.

Summary statistics table for Grambling game: 1st FG %, 2nd FG %, 3rd FG %, 4th FG %, Game FG %, 3FG %, FT %, Rebounds, Points, Turnovers, Fouls, Deadball Rebounds.

Arkansas 79 • 9-4

Table with columns: #, Player, Total FG-FGA, 3-Ptr FG-FGA, FT-FTA, Rebounds Off Def Tot, PF, TP, A TO Blk Stl, Min. Includes player stats for Williams, Zimmerman, Monk, Mason, etc.

Summary statistics table for Arkansas game: 1st FG %, 2nd FG %, 3rd FG %, 4th FG %, Game FG %, 3FG %, FT %, Rebounds, Points, Turnovers, Fouls, Deadball Rebounds.

Officials: Missy Brooks, Marc Merritt, Kimberly Thebo Technical fouls: Grambling-None, Arkansas-None Attendance: 1388 Estimated Actual Attendance: 1,005

Score by periods table for Grambling vs Arkansas

Points in game table for Grambling vs Arkansas

Last FG - GRAMWBB 4th-01:12, AR 4th-00:44 Largest lead - GRAMWBB None, AR by 24 4th-09:52 GRAMWBB led for 00:00, AR led for 39:38. Game was tied for 00:22.

Score tied - 0 times. Lead changed - 0 times.



DECEMBER 31, 2017

OLE MISS 72 ARKANSAS 73

Bud Walton Arena Fayetteville, Arkansas

Devin Cosper had her sixth double-double with 18 points and 11 rebounds. Malica Monk and Jaiilyn Mason also scored in double figures.

Ole Miss 72 • 10-4, 0-1 SEC

Table with columns: #, Player, Total FG-FGA, 3-Ptr FG-FGA, FT-FTA, Rebounds Off Def Tot, PF, TP, A TO Blk Stl, Min. Includes player stats for Glover, Bree, Gibson, etc.

Summary statistics table for Ole Miss game: 1st FG %, 2nd FG %, 3rd FG %, 4th FG %, Game FG %, 3FG %, FT %, Rebounds, Points, Turnovers, Fouls, Deadball Rebounds.

Arkansas 73 • 10-4, 1-0 SEC

Table with columns: #, Player, Total FG-FGA, 3-Ptr FG-FGA, FT-FTA, Rebounds Off Def Tot, PF, TP, A TO Blk Stl, Min. Includes player stats for Williams, Zimmerman, Monk, Mason, etc.

Summary statistics table for Arkansas game: 1st FG %, 2nd FG %, 3rd FG %, 4th FG %, Game FG %, 3FG %, FT %, Rebounds, Points, Turnovers, Fouls, Deadball Rebounds.

Officials: Susan Blauch, Angelica Suffren, Scott Kiomfais Technical fouls: Ole Miss-None, Arkansas-TEAM Attendance: 1701 Estimated Actual Attendance: 1,261 Fouled out: Ole Miss #42, Gibson (3:22 4Q) Arkansas #10, Williams (2:48 4Q)

Score by periods table for Ole Miss vs Arkansas

Points in game table for Ole Miss vs Arkansas

Last FG - OM 4th-00:54, AR 4th-01:17 Largest lead - OM by 1 2nd-04:33, AR by 15 3rd-01:42, OM led for 01:11, AR led for 35:22. Game was tied for 03:25.



JANUARY 4, 2018

ARKANSAS 69 MISSISSIPPI STATE 111

The HUMP Starkville, Mississippi

Three players were in double figures paced by Devin Cosper with 15 points. Kiara Williams hit her first career 3-pointer to open the game and it was a 2-point, 22-20, game after the first quarter.

Arkansas 69 • 10-5 (1-1 SEC)

Table with columns: #, Player, Total FG-FGA, 3-Ptr FG-FGA, FT-FTA, Rebounds Off Def Tot, PF, TP, A TO Blk Stl, Min. Includes player stats for Kiara Williams, Malica Monk, Jaiilyn Mason, etc.

Summary statistics table for Arkansas game: 1st FG %, 2nd FG %, 3rd FG %, 4th FG %, Game FG %, 3FG %, FT %, Rebounds, Points, Turnovers, Fouls, Deadball Rebounds.

Mississippi State 111 • 16-0 (2-0 SEC)

Table with columns: #, Player, Total FG-FGA, 3-Ptr FG-FGA, FT-FTA, Rebounds Off Def Tot, PF, TP, A TO Blk Stl, Min. Includes player stats for Blair Schaeffer, Morgan William, etc.

Summary statistics table for Mississippi State game: 1st FG %, 2nd FG %, 3rd FG %, 4th FG %, Game FG %, 3FG %, FT %, Rebounds, Points, Turnovers, Fouls, Deadball Rebounds.

Officials: Gina Cross, Eric Koch, Greg Small Technical fouls: Arkansas-None, Mississippi State-None Attendance: 5398

Score by periods table for Arkansas vs Mississippi State

Points in game table for Arkansas vs Mississippi State

Last FG - AR 4th-00:14, MS 4th-00:29 Largest lead - AR by 5 1st-08:28, MS by 44 4th-00:29 AR led for 04:59, MS led for 32:47. Game was tied for 02:14.

Score tied - 5 times. Lead changed - 3 times.



JANUARY 7, 2018

ALABAMA

ARKANSAS

Bud Walton Arena Fayetteville, Arkansas

Devin Cospser recorded her seventh double-double with 24 points and 13 rebounds. Three players were in double figures with Malica Monk adding 21 points and Jaiilyn Mason scoring 12 points.

83 76



JANUARY 11, 2018

ARKANSAS

GEORGIA

Stegeman Coliseum Athens, Georgia

Bailey Zimmerman had a season-best 11 points going 3-for-3 from distance. Arkansas was within 1 point twice in the fourth quarter.

65 78

Alabama 83 • 12-4, 2-1 SEC

Player statistics table for Alabama vs Arkansas, including FG, 3-PT, FT, Rebounds, PF, TP, A, TO, Blk, Stl, Min.

Arkansas 76 • 10-6, 1-2 SEC

Player statistics table for Arkansas vs Alabama, including FG, 3-PT, FT, Rebounds, PF, TP, A, TO, Blk, Stl, Min.

Officials: Beverly Roberts, Ed Sidlasky, Bill Laranca

Technical fouls: Alabama-None. Arkansas-MASON, Jaiilyn.

Attendance: 2001

Estimated Actual Attendance: 1644

Fouled Out: Arkansas, #21 Cospser (0:12.5, 4Q); #22 Zimmerman (0:10.1, 4Q)

Score by periods table for Alabama vs Arkansas

Points in Paint table for Alabama vs Arkansas

Score tied / Lead changed table for Alabama vs Arkansas

Score tied - 5 times. Lead changed - 7 times.

Score tied - 0 times. Lead changed - 0 times.

Arkansas 65 • 10-7, 1-3 SEC

Player statistics table for Arkansas vs Georgia, including FG, 3-PT, FT, Rebounds, PF, TP, A, TO, Blk, Stl, Min.

Georgia 78 • 15-2, 3-1 SEC

Player statistics table for Georgia vs Arkansas, including FG, 3-PT, FT, Rebounds, PF, TP, A, TO, Blk, Stl, Min.

Officials: Lisa Mattingly, Amy Bonner and Frank Steratore

Technical fouls: Arkansas-None. Georgia-BLANARU, Bianca.

Attendance: 2229

Score by periods table for Georgia vs Arkansas

Points in Paint table for Georgia vs Arkansas

Score tied / Lead changed table for Georgia vs Arkansas

Score tied - 0 times. Lead changed - 0 times.

Score tied - 0 times. Lead changed - 0 times.



JANUARY 15, 2018

ARKANSAS

AUBURN

Auburn Arena Auburn, Alabama

Four players were in double figures. Kiara Williams had her third double-double. Arkansas' 41 first-half points is the second most this season and Bailey Zimmerman had a season-best with 13 pts and a career-best with 8 rebs.

68 58



JANUARY 18, 2018

FLORIDA

ARKANSAS

Bud Walton Arena Fayetteville, Arkansas

Malica Monk scored 20+ points eight times in her career - all this season with 23 points in the game. Arkansas used just the third different starting lineup of the year. Arkansas was perfect from the line, but it was a season-low 4-for-4 effort. The Razorbacks forced 14 Florida turnovers and committed just eight in the game.

65 51

Arkansas 68 • 11-7, 2-3 SEC

Player statistics table for Arkansas vs Auburn, including FG, 3-PT, FT, Rebounds, PF, TP, A, TO, Blk, Stl, Min.

Auburn 58 • 10-7, 1-4 SEC

Player statistics table for Auburn vs Arkansas, including FG, 3-PT, FT, Rebounds, PF, TP, A, TO, Blk, Stl, Min.

Officials: Scott Yarbrough, Eric Brewton, Jennifer Rezac

Technical fouls: Arkansas-None. Auburn-None.

Attendance: 2210

Unsportsmanlike foul called on Arkansas' Bailey Zimmerman (22) with 4:41 remaining in the 4th period.

Score by periods table for Arkansas vs Auburn

Points in Paint table for Arkansas vs Auburn

Score tied / Lead changed table for Arkansas vs Auburn

Score tied - 0 times. Lead changed - 1 time.

Score tied - 0 times. Lead changed - 0 times.

Florida 65 • 9-10, 1-5 SEC

Player statistics table for Florida vs Arkansas, including FG, 3-PT, FT, Rebounds, PF, TP, A, TO, Blk, Stl, Min.

Arkansas 51 • 11-8, 2-4 SEC

Player statistics table for Arkansas vs Florida, including FG, 3-PT, FT, Rebounds, PF, TP, A, TO, Blk, Stl, Min.

Officials: Susan Blauch, Denise Brooks, Kevin Pethel

Technical fouls: Florida-None. Arkansas-None.

Attendance: 1288

Estimated Actual Attendance: 840

Score by periods table for Arkansas vs Florida

Points in Paint table for Arkansas vs Florida

Score tied / Lead changed table for Arkansas vs Florida

Score tied - 0 times. Lead changed - 0 times.

Score tied - 0 times. Lead changed - 0 times.