



ARKANSAS RAZORBACKS

One Final Four Appearance » 22 Postseason Appearances » 27th Season In The SEC » More Than 400 Home Wins » More Than 700 Program Victories

/// THE SERIES ///

Series Record	13-21
Fayetteville	9-6
Away	3-13
Neutral	1-2
Last 5	0-5
Neighbors versus this opponent	1-0

/// MEDIA ///

SEC Network
Talent: Brenda VanLengen and Carol Ross

Razorback Sports Network
Phil Elson & Erin Portman
Listen: Little Rock - KABZ-FM-103.7
Fayetteville - KQSM-FM-92.1
Fayetteville - KYNG-AM - 1590*
Fort Smith - KFPW-AM-1230
Fort Smith - KHGG-AM-1580*
Rogers - KURM-AM-790/FM-100.3

*Only if there are conflicts with the FM station

/// SCHEDULE & RESULTS ///

NOVEMBER (5-2)	MEDIA	W/L	SCORE
2	Northeastern St (Exh)	-	82-74
10	Sam Houston State	SECN+	W 65-54
12	Samford	SECN+	W 84-63
16	at RV Nebraska	BTN	L 80-69
20	at Oral Roberts	Cox Sports	W 77-66
24	UTEPI!	-	L 64-61
25	New Mexico State!	-	W 69-60
29	Abilene Christian	SECN+	W 79-65

DECEMBER (5-2)	MEDIA	W/L	SCORE
3	at Kansas*	JTV/ESPN3	L 71-60
7	Charlotte	SECN+	W 73-72
10	Tulsa	SECN+	W 67-41
17	UT Arlington	SECN+	W 91-57
21	at RV/RV Arizona St.	Tempe, Arizona	L 89-43
28	Grambling State	SECN+	W 79-62
31	Ole Miss*	SECN+	W 73-72

JANUARY (1-6)	MEDIA	W/L	SCORE
4	at #5/3 Miss State*	SEC Network	L 111-69
7	-/rv Alabama*	SEC Network	L 83-76
11	at rv/rv Georgia*	SECN+	L 78-65
14	at Auburn*	SEC Network	W 68-58
18	Florida*	SEC Network	L 65-51
21	at No. 11 Missouri*+	SEC Network	L 88-54
25	at No. 9/7 S Carolina*	SEC Network	L 90-42
29	Kentucky*	SEC Network	- 6 p.m.

FEBRUARY (0-0)	MEDIA	W/L	SCORE
4	at Alabama*	SEC Network	- 1 p.m.
8	Tennessee*	SECN+	- 7 p.m.
11	Missouri*	SEC Network	- 4 p.m.
15	at Kentucky*	SECN+	- 6 p.m.
18	LSU* > (Senior Day)	SECN+	- 2 p.m.
22	Texas A&M*	SECN+	- 7 p.m.
25	at Vanderbilt*	SECN+	- 2 p.m.
28	SEC Tournament	SECN/ESPN/2	- Nashville

MARCH (0-0)	MEDIA	W/L	SCORE
1-4	SEC Tournament	SECN/ESPN/2	- Nashville

* - Southeastern Conference Game

! - UTEP Classic (El Paso, Texas)

^ - SEC/Big 12 Challenge

+ - We Back Pat

> - Play4Kay

All home games played in Bud Walton Arena (19,200) Rankings: AP/Coaches Poll

Sign up for Mike Neighbors' newsletter and listen to his podcasts at

CoachNeighbors.com



ARKANSAS RAZORBACKS 11-10, 2-6 SEC

Head Coach: Mike Neighbors
Alma Mater: Arkansas, 1993
Record: 109-49 (5) Arkansas Record: 11-8 (1)



Fayetteville, Arkansas



Bud Walton Arena (19,200)



6 p.m. CST



http://bit.ly/ArkvsKy



Razorback Radio Network



http://statb.us/b/185269

KENTUCKY WILDCATS 10-11, 2-5 SEC

Head Coach: Matthew Mitchell
Alma Mater: Mississippi State, 1995
Record: 280-140 (13) SC Record: 280-140 (11)



PREVIOUS GAME

» Graduate student Devin Cospers returned to the starting lineup at South Carolina. Cospers has missed two games with an injury.

» Malica Monk scored 12 points. She has scored in double figures in 20 of 21 games.

» Jaielyn Mason was in double figures for the 13th time this year with 10 points.

ABOUT ARKANSAS

» The Razorbacks are the only SEC team that does not return a double-figure scorer.

» Arkansas is 8-2 at home this season including an SEC win over Ole Miss. Arkansas has won double-digit home games 16 times and the single-season best is a 15-4 home record in 1998-99.

» Arkansas wrapped up a tough road stretch in which they played four of five games away from home and faced two ranked teams and a third who is now ranked.

» The Razorbacks finish with five of their last eight regular season games in Bud Walton Arena.

» Arkansas is **third in the SEC** and ranks **21st in the country** for fewest turnovers with just 256 this year.

» Arkansas ranks **second the SEC** and is **15th in the country** with just 12.2 turnovers per game.

» Arkansas ranks **second in the SEC** and is **15th in the country** with 548 3-point field goals attempted.

» Arkansas ranks **third in the SEC** with 7.4 3-point field goals made per game and **second** for 3-pointers made with 156.

Against The Best

» Arkansas is eight games into the SEC season and has faced some of the best teams in the conference - and the country.

» After playing at No. 9 South Carolina the Razorbacks have faced two ranked teams and a third who is now ranked, the top four teams in the SEC, four teams who are predicted to make the NCAA Tournament and four teams who were among the NCAA Top-16 Committee Rankings.

» It doesn't get easier either. The Razorbacks still have to play Tennessee and Texas A&M who also meet those criteria.

Monday, Monday

» Arkansas is 5-2 in Monday games in the last three seasons.

» The Razorbacks were 1-1 on Monday's last season with a win over Stetson and a loss to Missouri.

» Arkansas went 2-1 in 2015-16 with wins over Vanderbilt and Mississippi Valley State. The Razorbacks lost to Tulsa on Monday that season.

» Arkansas defeated No. 24 Georgia and Grambling State in 2014-15.

/// STATISTICAL COMPARISONS ///

	ARKANSAS	KENTUCKY
PTS / GAME	67.4	67.7
PTS ALLOWED / GAME	70.9	62.9
FG %	36.4%	41.3%
FG DEFENSE %	40.1%	39.7%
3-PT FG %	28.5%	35.4%
3-PT FG DEFENSE %	32.0%	33.1%
REB / GAME	40.6	37.2
REB ALLOWED / GAME	44.0	34.9
LEADING SCORER	Monk, 16.2 ppg	Morris, 15.7 ppg
LEADING REBOUNDER	Williams, 7.4 rpg	Rice, 6.9 rpg

LAST GAME STARTERS



3 MALICA MONK

PPG	FG%	RPG	APG
16.2	.361	3.8	3.7



10 KIARA WILLIAMS

PPG	FG%	RPG	BPG
7.8	.508	7.4	1.0



14 JAILYN MASON

PPG	FG%	RPG	APG
10.4	.404	4.0	2.8



21 DEVIN COSPERS

PPG	FG%	RPG	MIN
14.6	.356	5.5	31.3



22 BAILEY ZIMMERMAN

PPG	FG%	RPG	MIN
3.2	.221	3.1	22.4

NUMERICAL ROSTER

No.	Name	Pos	Ht	Cl	Hometown/HS/Previous School
0	A'Tyanna Gaulden*	G	5-7	RSO	Ocilla, Ga./Americus Sumter HS/Florida State
1	Raven Northcross-Baker	G	5-7	Jr	Malvern, Ark./Malvern HS/Chipola College
3	Malica Monk	G	5-5	Jr	N. Little Rock, Ark./NLR HS
4	Keiryn Swenson	G/F	6-1	Jr	Wichita, Kan./Maize HS
10	Kiara Williams	F/C	6-1	So	Little Rock, Ark./LR Central HS
12	Brenna McClure	G	5-6	RSO	Lyons, Kansas/Lyons HS/Hutch CC
13	Grayce Spangler	G	5-10	Fr	Fayetteville, Ark. Fayetteville HS
14	Jailyn Mason	PG	5-9	So	Mason, Ohio/William Mason HS
20	Sydney Stout	F	6-0	So	Bixby, Okla./Bixby HS
21	Devin Cospser	G	5-10	SGr	Coffeyville, Kan./Field Kindley HS/Coffeyville CC
22	Bailey Zimmerman	G/F	6-0	Jr	St. Vincent, Ark./Wonderview HS
24	Taylah Thomas	F	6-1	Fr	Arlington, Texas/Mansfield Timberview HS
30	Macy Weaver	F	6-3	Fr	Davis Junction, Ill./Stillman Valley HS
33	Chelsea Dungee*	G	5-11	RSO	Sapulpa, Okla./Sapulpa HS/Oklahoma

*Will not play the 2017-18 season due to NCAA transfer rules

ALPHABETICAL ROSTER

No.	Name	Twitter
21	Devin Cospser	@devidev__
33	Chelsea Dungee*	@ChelseaDungee22
0	A'Tyanna Gaulden*	@AtyannaGaulden
12	Brenna McClure	@mcclurebrenna
14	Jailyn Mason	@jaimason14
3	Malica Monk	@TheRealMalica
1	Raven Northcross-Baker	@ravenbaker_4
13	Grayce Spangler	@grayce_1313
20	Sydney Stout	@sydeny_stout_
4	Keiryn Swenson	@KiKi_Sweezyy
24	Taylah Thomas	@hailtaylahh
30	Macy Weaver	@macyweaver528
10	Kiara Williams	@kiara_will22
22	Bailey Zimmerman	@Bailey_Ann22

COACHING STAFF

Title	Name	Year	Alma Mater
Head Coach	Mike Neighbors	First Season	Arkansas, 1993
Assistant Coach	Todd Schaefer	First Season	Thomas More College, 1995
Assistant Coach	Lacey Goldwire	First Season	Oklahoma State, 2010
Assistant Coach	Pauline Love	First Season	Southern Miss, 2010
Director of Operations	Amber Shirey	30th Season	Arkansas, 1992
Director of Video and Scouting	Jeff Brazil	11th Season	Arkansas, 2010
Dir. of Student-Athlete Devel.	C'eira Ricketts	1st Season	Arkansas, 2015

FA-NETIK PRONUNCIATIONS

No.	Name	Pronunciation
0	A'Tyanna	AH-tee-ah-nuh
3	Malica	mal-ick-cuh
4	Keiryn	KEER-runn
10	Kiara	Key-AIR-uh
13	Grayce	GRACE
14	Jailyn	JAY-lyn
24	Taylah	TAY-luh

MARGIN OF VICTORY/DEFEAT

	1	2	3	4	5	6	7	8	9	10	11-15	16-19	20+	Record
Wins	2	-	-	-	-	-	-	-	1	1	3	1	3	11
Losses	-	-	1	-	-	-	1	-	-	-	4	-	4	10

Most First Period Points

2017-18	27	Samford (11-12-17)
All-Time	29	at Alabama (1-15-17)
Opponent	26	at Arizona State (12-21-17)

Most Third Period Points

2017-18	26	Alabama (1/7/18)*
All-Time	34	HBU (12-28-16)*
Opponent	30	at Miss State (1-4-18)*

Fewest First Period Points

2017-18	3	UTEP (11-24-17)
All-Time	3	UTEP (11-24-17)*
Opponent	6	SHSU (11-11-16)

Fewest Third Period Points

2017-18	7	Florida (1-18-18)
All-Time	7	Florida (1-18-18)*
Opponent	4	LSU (1-21-16)

Most Second Period Points

2017-18	25	at Auburn (1-14-18)*
All-Time	31	HBU (12-28-16)
Opponent	35	at #2 S. Carolina (1-3-16)

Most Fourth Period Points

2017-18	28	UT-Arlington (12-17-17)
All-Time	32	Tulsa (11-23-15)
Opponent	30	at Miss State (1-4-18)

Fewest Second Period Points

2017-18	6	at Arizona State (12-21-17)
All-Time	4	vs. Kentucky (2-17-17)
Opponent	3	at Alabama (1-15-17)

Fewest Fourth Period Points

2017-18	6	at No. 11 Missouri (1-21-18)
All-Time	5	#7 Ore. St. (11-28-15)
Opponent	10	#24 Missouri (1-17-16)*

Most First Half Points

2017-18	42	Samford (11-12-17)
All-Time	65	Tenn State (11-27-88)
Opponent	63	Texas (1-9-89)

Largest Margin of Victory

2017-18	34 (91-57)	UT-Arlington (12-17-17)
All-Time	79 (108-29)	B Wesleyan (2-18-77)
Opponent	54 (28-82)	La Tech (11-30-78)

Fewest First Half Points

2017-18	12	at No. 9/7 South Carolina (1-25-18)
All-Time	11	at Missouri (3-1-15)*
Opponent	8	Montana State (1-5-03)

*Most Recent

RECORD FACTS

Overall	11-10
At Home (Bud Walton Arena)	8-2
On The Road Neutral	2-8 1-0
White Cardinal Anthracite Uniforms	8-2 3-8 0-0

HALFTIME/LEADS/OVERTIME

Leading at the half, home/road/neutral	8-0 (5-0/2-0/0-0)
Tied at the half, home/road/neutral	-
Trailing at the half, home/road/neutral	3-10 (2-2/0-8/1-0)
Games decided by 5 points or fewer	2-1
Games decided by 10 points or fewer	3-2
Leading at the start of the 4Q	10-1
Overtime games	-

OFFENSE

Scoring less than 50 points	0-2
Scoring 51-60 points	0-3
Scoring 61-70 points	4-4
Scoring 70+ points	7-1
2 Players Or Less in Double Figures	3-6
3 Players in Double Figures	3-4
4 Players in Double Figures	3-0
5 Players in Double Figures	2-0
When shooting 50 percent or higher	-
When shooting less than 50 percent	11-10

REBOUNDING/TURNOVERS

When outrebounding opponent	8-0
When outrebounded	2-9
When rebounds are even	1-0
When grabbing 10+ offensive reb	9-8
When forcing 15+ turnovers	7-3
When committing 10 or fewer turnovers	5-3
When committing 15+ turnovers	2-5

Months

In November	5-2
In December	5-2
In January	1-6
In February	-
In March	-



[FACEBOOK.COM/RAZORBACKWBB](https://www.facebook.com/razorbackwbb)

[@RAZORBACKWBB \(T&I\)](https://twitter.com/RAZORBACKWBB)

[HTTP://BIT.LY/YOUTUBEKICKIN](https://bit.ly/youtubekickin)

[COACHNEIGHBORS.COM](https://www.coachneighbors.com)

NEIGHBORS' PHILOSOPHY

GRAD STUDENT DEVIN COSPER

- » Only "senior" on the team
- » Missed the opening game last season after a death in the family
- » Averaged 6.4 ppg and 2.2 rpg last season and 7.7 ppg and 2.8 rpg for her career
- » Graduated in May 2017 with a degree in broadcast journalism
- » Interned at RSN, Arkansas' broadcast studio
- » Wears the SEC graduate patch on her jersey
- » Named "Comback Student-Athlete of the Year" at annual HOGSPY awards after rebounding from an injury and a death in the family



FUNCTIONALLY FAST

You will hear Mike Neighbors say this a lot. He wants his teams to play as fast as possible and still function at a high level. That may look different from possession to possession depending on what Arkansas is running.

TRUST, TALENT AND TIME

My program will be built on three things. It's very simple.

TRUST - The highest form of loyalty that has to be earned, managed and sometimes re-earned. If we don't have this, nothing will work and the stool's legs will fall off and everything will collapse.

TALENT - It doesn't mean you can dribble, shoot, pass and rebound. It's a lot of other things like the ability to engage with the fan base and willingness to sign autographs for a 10-year-old child you might be inspiring.

TIME - It's just not being on time or making time. It's how you utilize your time and who you invest your time with and be around. Trust, talent and time. Those will be our pillars.

FUN FEATURES

Both Mike Neighbors and Jaielyn Mason have shoe collections. Mason's collection was featured in a story last year. It can be seen here: <http://bit.ly/2ebtLdb>

Neighbors got settled into his Fayetteville home in mid August. One of the first things he set up were his shoes.



BESIDE US

One of the things Mike Neighbors stressed when he was hired was his desire to take care of the players, the staff and the fans who have been loyal to the Razorback program. He has told our fans that he wants them to stand "Beside Us". Don't be behind us, stand next to us and go through the process of building our program.

SHOTS AND POSSESSIONS

Mike Neighbors wants a lot of shots and a lot of possessions. Here's a look at the Razorbacks shots this year. The number is often determined by pace of play and Arkansas will push the tempo.

30 AND COUNTING

This year, Arkansas director of operations Amber Shirey enters her 30th season as a Razorback. The former Amber Nicholas was a two-time All-Southwest Conference selection during her four-year playing career from 1989-92. She spent one season (1992-93) as a student coach helping Arkansas transition to the Southeastern Conference. She moved on to a graduate assistant and assistant coach from 1993-94 through the 2006-07 season. In 2007-08 Shirey transitioned to the director of operations position holding that spot until she returned to the sidelines as an assistant coach for the 2013 and 2014 seasons. She moved into her current position as the Executive Director of Operations in 2014-15. She has been a part of seven different head coach's staffs during her tenure.

GAMEDAY CARDS

Coach Neighbors hands out a Gameday Card for each home and away game. One side of the card is branded with a Razorback logo and women's basketball. The other side is a quote that is relevant to something the team has talked about or worked on that week. Check out this week's card here:



Be strong enough to make the right decision, not weak enough to make the convenient one.

OPPONENT

ABOUT KENTUCKY

»UK enters Monday's game after one of its best performances of the season, taking down Alabama 79-54 inside Memorial Coliseum. UK shot 64.7% from the field which was the second-best field goal percentage in a game in program history. The Wildcats had 28 points off 16 Alabama miscues,

»For the second straight game, four Wildcats scored in double figures. UK has now scored 44 points or more in the second half in back-to-back games. The Wildcats outscored Alabama 25-5 in the fourth quarter.

IMPORTANT STATS

A Thief Among Us: Kentucky's Taylor Murray leads the Wildcats and ranks fifth in the SEC in steals (48) and steals per game (2.29). As a team, the Razorbacks average 7.0 steals per game and thefts have not been a focal point for Arkansas.

Wins And Losses: Kentucky had an eight-game losing streak but snapped that with a win over Florida. The Wildcats are 2-2 in their last four games.

Arkansas is 1-6 in the month of January. The Razorbacks lost three in a row, won at Auburn, and enter today's contest on a 3-game losing streak.

Playing The Best: Ten of Kentucky's 11 losses have come at the hands of team who have been ranked or who are getting votes in the national polls. Arkansas has played back-to-back games against ranked teams and has played four SEC teams who are currently ranked.

ABOUT THE SERIES

Series Record	13-21
Fayetteville	9-6
Away	3-13
Neutral	1-2
Last 5	0-5
Neighbors versus this opponent	1-0

Results

1/15/1983	AR	43	Kentucky	77	Lexington	2/19/2004	AR	69	Kentucky	58	Fayetteville
1/24/1992	AR	74	Kentucky	75 (OT)	Lexington	2/27/2005	AR	67	Kentucky	73	Lexington
3/6/1992	AR	63	Kentucky	79	Albany, Ga.	2/12/2006	AR	50	Kentucky	79	Fayetteville
1/23/1993	AR	45	Kentucky	43	Fayetteville	2/18/2007	AR	60	Kentucky	87	Lexington
2/5/1994	AR	60	Kentucky	81	Lexington	3/1/2007	AR	57	Kentucky	72	Duluth, Ga.
2/4/1995	AR	62	Kentucky	56	Fayetteville	2/24/2008	AR	56	Kentucky	59	Fayetteville
1/28/1996	AR	65	Kentucky	69	Lexington	1/11/2009	AR	63	Kentucky	72	Lexington
1/25/1997	AR	88	Kentucky	55	Fayetteville	1/21/2010	AR	52	#25 KY	69	Lexington
2/28/1997	AR	71	Kentucky	60	Chattanooga	2/7/2010	AR	57	#18 KY	71	Fayetteville
1/31/1998	AR	79	Kentucky	63	Lexington	1/6/2011	#25 AR	78	#10 KY	67	Fayetteville
1/31/1999	AR	74	Kentucky	69 (OT)	Fayetteville	1/24/2011	AR	54	#20 KY	55	Fayetteville
1/16/2000	AR	60	Kentucky	68	Lexington	1/5/2012	AR	72	#6/7 KY	84	Lexington
2/6/2000	AR	83	Kentucky	70	Fayetteville	2/7/2013	AR	74	#8/10 KY	80 (OT)	Fayetteville
1/14/2001	AR	69	Kentucky	50	Fayetteville	1/26/2014	AR	58	#8/9 KY	68	Lexington
2/4/2001	AR	84	Kentucky	78	Lexington	2/26/2015	AR	51	#13/15 KY	56	Fayetteville
1/17/2002	AR	76	Kentucky	64	Fayetteville	2/21/2016	AR	63	#16 KY	77	Lexington
2/13/2003	AR	70	Kentucky	60	Lexington	2/16/2017	AR	62	KY	69	Fayetteville

NOVEMBER (5-2)	MEDIA	W/L	SCORE	SERIES	NEIGHBORS
2 Northeastern St. (Exh)	-	W	82-74	2-0	1-0
10 Sam Houston State	SECN+	W	65-54	7-0	1-0
12 Samford	SECN+	W	84-63	1-0	1-0
16 at Nebraska	BTN	W	80-69	0-1	0-1
20 at Oral Roberts	Cox Sports	W	77-66	20-9	1-0
24 UTEP!	-	L	64-61	2-1	0-2
25 New Mexico State!	-	W	69-60	1-0	1-0
29 Abilene Christian	SECN+	W	79-65	1-0	1-0

DECEMBER (5-2)	MEDIA	W/L	SCORE	SERIES	NEIGHBORS
3 at Kansas*	JTV/ESPN3	L	71-60	4-4	0-1
7 Charlotte	SECN+	W	73-72	1-0	1-0
10 Tulsa	SECN+	W	67-41	21-3	1-0
17 UT Arlington	SECN+	W	91-57	7-0	1-0
21 at Arizona State	Pac-12N	L	89-43	1-1	2-5
28 Grambling State	SECN+	W	79-62	8-0	2-0
31 Ole Miss*	SECN+	W	73-72	17-26	1-0

JANUARY (1-6)	MEDIA	W/L	SCORE	SERIES	NEIGHBORS
4 at #5/3 Mississippi State*	SEC Network	L	111-69	18-19	0-2
7 Alabama*	SEC Network	L	83-76	21-15	0-1
11 at Georgia*	SECN+	L	78-65	5-31	0-1
14 at Auburn*	SEC Network	W	68-58	14-22	1-0
18 Florida*	SEC Network	L	65-51	9-28	0-1
21 at No. 11 Missouri*	SEC Network	L	88-54	11-9	1-1
25 at No. 9/7 South Carolina*	SEC Network	L	90-42	17-17	0-1
29 Kentucky*	SEC Network	-	-	13-21	1-0

FEBRUARY (0-0)	MEDIA	W/L	SCORE	SERIES	NEIGHBORS
4 at Alabama*	SEC Network	-	-	21-15	0-1
8 Tennessee*	SECN+	-	-	3-30	First Meeting
11 Missouri*	SEC Network	-	-	11-8	1-0
15 at Kentucky*	SECN+	-	-	13-21	1-0
18 LSU*	SECN+	-	-	16-31	First Meeting
22 Texas A&M*	SECN+	-	-	21-8	1-1
25 at Vanderbilt*	SECN+	-	-	8-24	First Meeting
28 SEC Tournament	SECN/ESPN	-	-	-	-

MARCH (0-0)	MEDIA	W/L	SCORE	SERIES	NEIGHBORS
1-4 SEC Tournament	SECN/ESPN	-	-	-	-

* - Southeastern Conference Game
 !-UTEP Thanksgiving Tournament (El Paso, Texas)
 ^-SEC/Big 12 Challenge
 All home games played in Bud Walton Arena (19,200)

An Arkansas Win Would ...

- A win would make Arkansas:
 - »snap a three-game losing streak
 - »Make Arkansas 7-2 in Monday games over the last four seasons

SEC SCHEDULE

January 29 (Monday) Kentucky at Arkansas	Texas A&M at LSU Alabama at Ole Miss Kentucky at Miss State Florida at S Carolina Georgia at Tennessee	Kentucky at Ole Miss Auburn at Miss State Vanderbilt at Missouri LSU at S Carolina
February 1 (Thursday) Auburn at Kentucky Georgia at LSU Vanderbilt at Ole Miss Miss State at Missouri Texas A&M at Tennessee	February 12 (Monday) Vanderbilt at Auburn	February 25 (Sunday) Ole Miss at Auburn Florida at Georgia Miss State at Kentucky Alabama at LSU S Carolina at Tennessee Missouri at Texas A&M Arkansas at Vanderbilt
February 4 (Sunday) Arkansas at Alabama Miss at Georgia LSU at Kentucky Auburn at Texas A&M Tennessee at Vanderbilt	February 15 (Thursday) Missouri at Auburn S Carolina at Georgia Arkansas at Kentucky Ole Miss at LSU Alabama at Tennessee Florida at Texas A&M Miss State at Vanderbilt	
February 5 (Monday) S Carolina at Miss State Florida at Missouri	February 18 (Sunday) Auburn at Alabama LSU at Arkansas Vanderbilt at Florida Texas A&M at Miss State Tennessee at Missouri Kentucky at S Carolina	
February 8 (Thursday) S Carolina at Alabama Tennessee at Arkansas LSU at Auburn Miss State at Florida Vanderbilt at Georgia Kentucky at Missouri Ole Miss at Texas A&M	February 19 (Monday) Georgia at Ole Miss	
February 11 (Sunday) Missouri at Arkansas	February 22 (Thursday) Georgia at Alabama Texas A&M at Arkansas Tennessee at Florida	

SEC STANDINGS 1/19/18

	Conference				Overall						
	W-L	Pct.	H	A	W-L	Pct.	H	A	N	Strk	
Miss State	6-0	1.000	3-0	3-0	20-0	1.000	11-0	4-0	5-0	W20	
Georgia	5-1	.833	2-1	3-0	17-2	.895	9-2	8-0	0-0	W5	
Missouri	5-1	.833	2-1	3-0	17-2	.895	9-1	5-0	3-1	W4	
S Carolina	5-2	.714	2-1	3-1	16-3	.842	8-1	6-1	2-1	W2	
Texas A&M	5-2	.714	3-1	2-1	16-5	.762	11-3	4-1	1-1	W2	
Tennessee	4-2	.667	2-1	2-1	16-3	.842	9-1	4-2	3-0	L2	
Alabama	4-3	.571	2-2	2-1	14-6	.700	10-2	4-2	0-2	W1	
LSU	4-3	.571	2-1	3-1	12-6	.667	6-1	5-4	1-1	L1	
Arkansas	2-5	.286	1-2	1-3	11-9	.550	8-2	2-7	1-0	L2	
Florida	2-5	.286	1-3	1-2	10-10	.500	6-7	3-2	1-1	W2	
Ole Miss	1-5	.167	1-2	0-3	11-8	.579	9-2	1-5	1-1	L3	
Kentucky	1-5	.167	0-3	1-2	9-11	.450	6-5	3-6	0-0	L2	
Auburn	1-6	.143	1-2	0-4	10-9	.526	7-2	2-5	1-2	L6	
Vanderbilt	1-6	.143	1-3	0-3	5-16	.238	3-8	2-6	0-2	L2	

MAKING A RUN ON CAREER NUMBERS

- »Devin Cosper has 734 career points ranking 42nd in program history.
- »Devin Cosper has 327 career 3-point field goal attempts ranking 12th in program history.
- »Malica Monk has 698 career points ranking 46th in program history.
- »Devin Cosper has already reached her single-season highs for 3-point field goals, 3-point field goals attempted, defensive rebounds, total rebounds and blocks.
- »Jailyn Mason has reached her single-season bests for 3-point field goals made and attempted and blocks.
- »Malica Monk has reached her single-season highs for field goals attempted, 3-point field goals made and attempted, free throws made and attempted and points.
- »Kiara Williams has reached her single-season career-bests for field goals made and attempted, 3-pointers made and attempted, free throws made and attempted, offensive, defensive and total rebounds, assists, blocks, steals and points.
- »Devin Cosper has 42 3-pointers made - 17 better than her single season best. She has scored more points (278) through 21 games than she did all of last season (187 pts/29 g).
- »Cosper scored 104 points in SEC games last year - she has 66 points in games this season.
- »Jailyn Mason has made 31 3-pointers this year. She made 19 in 30 games last year.
- »Malica Monk has scored 341 points in 2017-18. Her single season best was 247 points set in 27 games last year.
- »Malica Monk has made 83 free throws - more makes than the two previous years combined.
- »Sophomore Kiara Williams has scored 163 points this year and averages 7.8 ppg - up from 62 points and 3.1 ppg as a freshman.
- »As a team, Arkansas' rebounding numbers are up from a year ago. The Razorbacks average 40.6 rpg this season, compared to 38.3 rpg a year ago.

THREEEEEEEEEEEEE

- »Arkansas has made 156 3-point field goals this year. The Razorbacks are on pace to jump into the program's top-10 for single season makes in the next couple of games.
- »The Razorbacks are averaging 7.4 3-point field goals per game. That number ranks third in the SEC.
- »Arkansas' 7.4 3-point field goals per game has the Razorbacks on pace to set a single-season program record for makes from distance.

3-POINT FIELD GOALS MADE*

1.	202 (33 games)	2000-01
2.	200 (28 games)	2005-06
3.	200 (32 games)	2008-09
4.	198 (34 games)	1998-99
5.	191 (33 games)	1997-98
6.	177 (30 games)	2013-14
	177 (30 games)	2016-17
8.	169 (34 games)	2010-11
9.	167 (31 games)	2009-10
	167 (33 games)	2011-12
	*1985-86 to present	

LEADS AND DEFICITS

Biggest Halftime Lead	17, GSU
Biggest Halftime Lead Lost	-
Biggest Halftime Deficit	38, GSU
Biggest HT Deficit Erased	7, Char.
Biggest Overall Lead	30, Tulsa,4Q
Biggest Win Margin	26, Tulsa
Biggest Loss Margin	46, ASU
Biggest Deficit Overcome	13, SHSU

JUMP BALLS

Arkansas	6
Opponents	15

FIRST POINTS

Williams	10
Mason	6
Monk	3
Cosper	2
Monk	1 (FT)
Zimmerman	1 (FT)

BENCH POINTS

Arkansas	341
Opponent	409

DOUBLE FIGURE POINTS

Malica Monk	20
Devin Cosper	15
Jailyn Mason	13
Kiara Williams	8
Raven Northcross-Baker	3
Bailey Zimmerman	2
Taylah Thomas	1
Keiryn Swenson	1

LEADING SCORER

Monk	10
Cosper	6
Mason	4
Northcross-Baker	2
Williams	2

DOUBLE FIGURES FIRST HALF

Cosper	4
Monk	4
Williams	2
Mason	2
Northcross-Baker	1
Zimmerman	1

DOUBLE FIGURES/QUARTER

Monk	5
Cosper	3
Mason	1
Northcross-Baker	1

20/30-PLUS POINTS

Monk	7 (21, 22, 24, 22, 20, 21, 23)
Cosper	5 (21, 21, 22, 25, 24)
Northcross-Baker	1 (22)

DOUBLE FIGURE REBOUNDS

Cosper	7
Williams	6
Thomas	1

LEADING REBOUNDER

Williams	8
Cosper	7
Thomas	3
Monk	2
Zimmerman	1
Mason	1

DOUBLE DOUBLES

Devin Cosper	SHSU, ORU, NMSU, Char., Tulsa, OM, AL
Williams	NMSU, GSU, AU
Monk	GSU

5+ASSISTS/10+ ASSISTS

Monk	6/1
Mason	4/-
Northcross-Baker	1/-

FIRST OFF THE BENCH

Thomas	16
Northcross-Baker	11
Swenson	6
Williams	1
Weaver	1

CHARGES DRAWN

Monk	4
Cosper	2
Stout	2
Northcross-Baker	1
Thomas	1

FORCED 10 SECOND VIOLATION

2017-18	TBA
---------	-----

FORCED SHOT CLOCK VIOLATION

2017-18	7
---------	---

FORCED INBOUND VIOLATION

2017-18	1
---------	---

AND 1

Malica Monk	10
Kiara Williams	8
Devin Cosper	6
Bailey Zimmerman	3
Macy Weaver	2
Jailyn Mason	1
Raven Northcross-Baker	1
Keiryn Swenson	1

AND 1 CONVERSIONS

Monk	8
Cosper	5
Williams	3
Bailey Zimmerman	3
Northcross-Baker	1
Swenson	1
Weaver	1

BUZZER BEATERS

Mason	1 (ACU)
http://bit.ly/2BBy8ua	
Swenson	1 (Kansas)
Mason	1 (MSU)

»The Razorbacks could also move into the program top-10 for 3-point field goals attempted. Arkansas currently has 548 attempts. That ranks second in the SEC.

»Four Razorbacks have already set a single-season best for made 3-point field goals. That includes Devin Cospers (42), Jailyn Mason (31), Malica Monk (20), Kiara Williams (1).

»Devin Cospers has 90 career 3-pointers. She is 14 makes away from breaking into the individual career top-10 for made 3-point field goals.

Cospers has already moved into the top-15 for 3-point field goal attempts. She has 327, ranking 12th in program history.

»Arkansas has made more or tied its opponent in made 3-point field goals in 13 games this season.

»The Razorbacks have hit double-digit 3-point field goals five times this season with a high of 12 makes against UT-Arlington.

»Arkansas set a school record for made 3-point field goals in a half with nine from distance at Auburn in the first 20 minutes.

3-POINT FG ATTEMPTED

1. 658 (32 games)	2008-09
2. 593 (33 games)	2000-01
3. 590 (28 games)	2005-06
4. 580 (33 games)	2011-12
5. 576 (34 games)	1998-99
6. 570 (33 games)	1997-98
7. 554 (28 games)	2003-04
8. 549 (33 games)	2012-13
9. 546 (31 games)	2009-10
10. 543 (31 games)	2006-07

ABOUT OUR LEADER

»One of two SEC head coaches working at their alma mater (Holly Warlick, Tennessee).

»One of two SEC head coaches in their first season with their team (Cameron Newbauer, Florida).

»One of five SEC head coaches who graduated from a league school (Joni Taylor, Alabama; Mathew Mitchell, Mississippi State; Nikki Fargas, Tennessee; Holly Warlick, Tennessee).

»Is the eighth of nine Arkansas head coaches to win double figure games in their first season.

»Is 8-2 at home and it would be the 25th time a Razorback head coach won double figure home games if the Razorbacks can get two more victories.

»Would coach Arkansas to its 42nd season with a winning record at home (records for 43 seasons).

SETTING CAREER NUMBERS

»Arkansas has seven returners from last season and all of them have set or tied at least one career-best number this year.

»In the 14 career categories that are tracked on the player pages: Monk has 12 career-bests ... Swenson has three ... Williams has 14 ... Mason has eight ... Stout has one ... Cospers has 12 and Zimmerman has 14.

MONK CONTINUES TO LEAD

»Fourteen consecutive games in double figure scoring (snapped at Miss State). Scored in double figures in 20-of-21 games including six in a row.

»Ranks **second in the SEC** for field goal attempts (330), **eighth** for field goals made (119), **third** for minutes played (706.0), **10th** for free throw percent (76.9), **11th** for points per game (16.2).

»Eight games with 20+ points with a career-best 24 at Oral Roberts.

»Monk currently has 208 career assists, tying for 20th all-time in program history.

»At least one 3-pointer in each of the first 10 games with a season-best two 3-pointers four times. A made 3-pointer in 14 games.

SINGLE SEASON DOUBLE FIGURE SCORING GAMES (SINCE 00-01)

Name	Number	Year
Sarah Watkins	28	2010-11
Shameka Criston	27	2003-04
Shameka Criston	27	2001-02
Shameka Criston	26	2002-03
Lauren Ervin	26	2006-07
Jessica Jackson	26	2015-16
Jessica Jackson	26	2014-15
Jessica Jackson	25	2013-14
C'eira Ricketts	25	2008-09
India Lewis	25	2002-03
Jessica Jackson	24	2016-17
C'eira Ricketts	24	2010-11
Kelsey Brooks	23	2014-15
Charity Ford	23	2009-10
Sarah Watkins	23	2012-13
India Lewis	23	2001-02
Dana Cherry	22	2001-02
Lyndsey Harris	21	2010-11
Dana Cherry	21	2002-03
Ayanna Brereton	20	2007-08
Donica Cosby	20	2006-07
MALICA MONK	20	2017-18
C'eira Ricketts	19	2011-12
Brittney Vaughn	19	2007-08
Lonnnya Bragg	19	2000-01

Devin Cospers	Communication (undergrad & Masters)
Chelsea Dungee	Rec. & Sport Management
A'Tyanna Gauden	Journalism: Broadcast
Brenna McClure	Social Work
Jailyn Mason	Journalism: News/Editorial
Malica Monk	Rec. & Sport Management
Raven Northcross-Baker	Criminal Justice
Grayce Spangler	Communication
Sydney Stout	Management
Keiryn Swenson	Accounting
Taylah Thomas	Nursing
Macy Weaver	Kinesiology
Kiara Williams	Childhood Development
Bailey Zimmerman	Apparel Merch./Product Dev.



»Thirty-two or more minutes played in 17 games including going 40 minutes on the road at Auburn.

»Seven consecutive games with at least one steal to start the season with a season-best four steals twice (SHSU, NMSU). Sixteen games with a steal.

»Has been perfect from the free throw line in nine games (Samford (7-7), Nebraska (3-3), UTEP (3-3), Kansas (4-4), Tulsa (4-4), UTA (12-12), ASU (2-2), AU (4-4), FL (4-4) including two in a row (AU & FL).

»Double-figure scoring in a single quarter five times (10 | 3Q | Nebraska || 13 | 4Q | ORU) || 10 | 4Q | Kansas || 11 | 4Q | Alabama || 11 | 1Q | Florida).

»Has 20 3-point field goals made this year. She had nine 3-pointers in her freshman and sophomore years combined.

COSPER POSTING BIG NUMBERS

»Ten consecutive games in double figure scoring. The streak was snapped versus UTA. Fourteen games in double figures.

»One of six active SEC players with 7+ season double-doubles.

»Ranks **fourth in the SEC** with 2.21 made 3-pointers per game and 42 made 3-pointers.

»**First in the SEC** in 3-point field goals attempted (148).

»SEC rankings include **sixth** for double-doubles (6), and **ninth** in field goal attempts (287).

»Cospers' 327 3-point field goal attempts ranks 12th in the Arkansas career records. She is approaching the top-20 for 3-point field goals made and is in the top-50 for career points.

»Five games with 20+ points this season.

»Seven career double-doubles all set this season (SHSU, Oral Roberts, NMSU, Charlotte, Tulsa, Ole Miss, Alabama).

»Nineteen consecutive games (last four games of 2016-17) with at least one 3-pointer. (snapped vs Alabama).

»Double-figure scoring in a single quarter three times this year (10 | 1Q | Nebraska || 12 | 1Q | ORU || 11 | 4Q | UTEP).

»Has scored 278 points this year - more than all of last season (187).

JAILYN MASON QUIETLY SHINNING

»Overshadowed by the gaudy numbers tallied by Devin Cospers and Malica Monk, sophomore Jailyn Mason is also putting together a solid season.

»She has 13 games in double figure scoring including a streak of five in a row twice this year. She is currently on a seven-game streak.

»She has four games with 5+ assists.

»Has played multiple positions on the floor.

»While Malica Monk is the spark plug that gets the team going, Jailyn Mason is the captain who takes control and steers the ship.

»Made more 3-pointers through 21 games (31) than all of last year (19).

AP TOP 25 (1/22/2018)

RK	TEAM	RECORD	PTS
1	Connecticut (32)	18-0	800
2	Mississippi State	20-0	764
3	Baylor	17-1	726
4	Louisville	20-1	703
5	Notre Dame	18-2	683
6	Texas	15-3	584
7	Oregon	18-3	568
8	Florida State	18-2	564
9	South Carolina	16-3	556
10	Tennessee	16-3	519
11	Missouri	17-2	497
12	Ohio State	16-3	450
13	UCLA	15-4	443
14	Maryland	16-3	394
15	Texas A&M	15-5	303
16	Michigan	17-4	298
17	Oregon State	14-5	270
18	Duke	15-5	223
19	Oklahoma State	14-4	204
20	West Virginia	16-4	203
21	Georgia	17-2	169
22	Green Bay	17-2	165
23	California	14-5	121
24	TCU	13-5	44
25	Arizona State	14-6	34

Others receiving votes: Stanford 33, Iowa 18, South Florida 12, NC State 12, Belmont 10, Marquette 8, Nebraska 4, Gonzaga 4, Rutgers 3, Florida Gulf Coast 3, Utah 2, Mercer 2, Purdue 1, South Dakota State 1, Virginia 1, Dayton 1
Dropped from rankings: Iowa 20, Rutgers 25

USA TODAY TOP 25 COACHES POLL - 1/23/2018

Rank	School	RECORD	PTS
1	Connecticut (32)	18-0	800
2	Mississippi State	20-0	766
3	Baylor	17-1	725
4	Louisville	20-1	688
5	Notre Dame	18-2	674
6	Texas	15-3	622
7	South Carolina	16-3	572
8	Florida State	18-2	564
9	Oregon	18-3	561
10	Tennessee	16-3	486
11	Missouri	17-2	474
12	UCLA	15-4	459
13	Maryland	17-3	454
14	Ohio State	16-4	401
15	Texas A&M	16-5	328
16	Michigan	17-4	315
17	Oregon State	14-5	250
18	Duke	15-5	229
19	West Virginia	16-4	206
20	Georgia	17-2	197
21	Green Bay	17-2	179
22	Oklahoma State	14-4	140
23	South Florida	15-5	40
24	TCU	13-5	37
25	Iowa	15-5	31

Others receiving votes: Rutgers 28, California 25, Arizona State 24, Florida Gulf Coast 19, Marquette 18, NC State 16, Virginia 15, Stanford 11, DePaul 9, Villanova 9, Miami 7, Syracuse 5, Purdue 4, Utah 3, Buffalo 3, Central Michigan 2, Princeton 2, Michigan State 1, Mercer 1

KIARA WILLIAMS STEPPING UP

- »First career double-double with 11 points and 11 rebounds versus New Mexico State. Second one against GSU with 12 points and 16 boards and third at Auburn with 15 points and 14 rebounds.
- »Six career games (all this season) with 10+ rebounds.
- »Posted a career-best 16 rebounds at Kansas, tying it versus GSU.
- »Tallied a then career-best 12 points in a win over ACU and was in double figures in the first half for the first time in her career.
- »Eight games in double figure scoring including a career-best 15 points at Auburn.

TAKING CARE OF THE BALL

- »Arkansas has forced its opponents to turnover the ball more times than they have in 15 games and tied the opponent in TO's once (NMSU).
- »Arkansas has forced double digit turnovers in 18 games while committing single digit miscues in seven games.
- »Arkansas has collected double digit steals in six games.
- »Arkansas **is second in the SEC** and ranks **15th in the country** averaging 12.2 turnovers per game.

RALLY RAZORBACKS

- »The Razorbacks have had to come from behind to win in four games this year.
- »Arkansas trailed by 13 points in the second quarter against SHSU and rallied for the 11-point win at home.
- »Arkansas trailed at Oral Roberts by six points in the first quarter and came back to win by 11 points on the road.
- »The Razorbacks trailed by seven points against New Mexico State on a neutral court and rallied late to win by nine.
- »Arkansas trailed Charlotte, 37-30, at the half and the teams were tied at the end of the third quarter before the Razorbacks escaped with a one-point win.

HOW CLOSE ARE THOSE LOSSES?

- »Arkansas trailed Nebraska by three, 72-69, with 2:36 remaining in the game. Nebraska finished with a 7-0 run to win the game.
- »After going 0-for-15 in the first quarter at UTEP, the Razorbacks rallied. Arkansas trailed the Miners by one, 62-61, with :38 seconds remaining in the game. UTEP hit a jumper with :08 seconds to seal the win.
- »Arkansas trimmed the Kansas lead to four points, 57-53, at the 5:44 mark of the fourth quarter and trailed by two possessions, 66-60, with :39 seconds to go.
- »Arkansas cut the Gator lead to single digits in the fourth quarter. The slow start was too much to overcome for the Razorbacks.

SHARING THE BALL

Twelve of 13 Razorbacks have scored in games this year. All have played and all have attempted a shot. Six of 12 players have recorded double figure points for the season.

BLOCKING WELL

- »Kiara Williams leads the team with 22 blocked shots through the first 21 games. Williams had only five blocks for the entire season a year ago. The sophomore record is 58 set by Sarah Watkins in 2010-11. Williams ranks **13th in the SEC** with 1.05 bpg.
- »As a team, Arkansas **ranks 13th in the SEC** with 4.0 bpg.

DID YOU KNOW

That Arkansas head coach Mike Neighbors was cut from the Razorback baseball team? He walked on and legendary head coach Norm DiBryan nudged him in the coaching direction saying "You always seem to be in the right place but you don't always make the play."

THE SCHEDULE

Arkansas' non-conference schedule features four teams who went to the post season a year ago. Arizona State played in the first round of the NCAA Tournament while Abilene Christian, UT-Arlington and Grambling were all WNIT teams a year ago. UTA was eliminated in the first round while Abilene Christian and Grambling both reached round two.

The always-tough SEC schedule features eight NCAA Tournament teams including the NCAA Champion South Carolina and the runner up, Mississippi State. Auburn and LSU were eliminated in the first round while Kentucky, Missouri, Tennessee and Texas A&M all bowed out in round two. In addition, Alabama and Ole Miss advanced to the WNIT Tournament. That means Arkansas faces 14 teams who played in the postseason a year ago.

According to the NCAA (http://stats.ncaa.org/rankings/ranking_summary) Arkansas has the 31st toughest schedule in the country and the fifth toughest in the SEC.

DOUBLE FIGURES IN A QUARTER

Cosper

10, 10, at Nebraska

12, 10, at ORU

11, 4Q, at UTEP

Monk

10, 3Q, at Nebraska

13, 4Q, at ORU

10, 4Q, at Kansas

11, 4Q, Alabama

11, 1Q, Florida

Mason

11, 3Q, UTA

Northcross-Baker

12, 4Q, UTA

AGAINST THE POLL

This week's (Jan. 22) Associated Press poll features six SEC teams. Arkansas' schedule is headlined by No. 2 Mississippi State, followed by No. 9 South Carolina, No. 10 Tennessee, No. 11 Missouri, No. 15 Texas A&M and No. 21 Georgia. Arizona State is No. 25 this week and Nebraska (3) is getting votes.

This week's USA Today Coaches Poll has Mississippi State at No. 2, followed by No. 7 South Carolina, No. 10 Tennessee, No. 11 Missouri, No. 15 Texas A&M and No. 20 Georgia. Arizona State is receiving votes.

HOME SWEET HOME

»Arkansas has had just one losing home season in 41 years (prior to 2017-18)

»Arkansas is 422-139 (8-0 in '17-18) in home games including a 263-104 record in Bud Walton Arena. Arkansas was 159-35 in Barnhill Arena.

WHAT'S MY NUMBER

Transfer Chelsea Dungee has a unique background to her jersey number selection. Here is the story in her own words:

I have always played in #22. Every competitive team and school ball team I have always worn #22. #22 was the number my mom played basketball in throughout her high school career. So, I wore #22. A year ago I changed my jersey number to #33. My cousin (more like brother), Reuben, suffered a traumatic brain injury while playing in a high school football game last season and he wore jersey #33. I play in jersey #33 for Reuben. Playing with #33 on back is a reminder that 'Reub' has my back, and I have his.

QUARTER BY QUARTER SCORING

Date	Opponent	W/L	1st	2nd	1st Half	3rd	4th	2nd Half	OT	Total
Nov. 2	NE State (exh)	W, 82-74	20	15	35	18	29	47	-	82*
Nov. 10	SHSU	W, 65-54	5	18	23	23	19	41	-	65
Nov. 12	Samford	W, 84-63	27	15	42	16	26	42	-	84
Nov. 16	Nebraska	L, 80-69	19	11	30	22	17	49	-	69
Nov. 20	ORU	W, 77-66	25	15	40	16	21	37	-	77
Nov. 24	UTEP	L, 64-61	3	17	20	16	25	41	-	61
Nov. 25	New Mexico State	W, 69-60	11	12	23	24	22	46	-	69
Nov. 29	Abilene Christian	W, 79-65	20	14	34	20	25	45	-	79
Dec. 3	Kansas	L, 71-60	12	10	22	21	17	38	-	60
Dec. 7	UNC-C	W, 73-72	13	16	30	19	24	43	-	73
Dec. 10	Tulsa	W, 67-41	21	14	35	13	19	32	-	67
Dec. 17	UTA	W, 91-57	14	23	37	26	28	54	-	91
Dec. 21	Arizona State	L, 89-43	8	6	14	11	18	29	-	43
Dec. 28	Grambling State	W, 79-62	15	25	40	25	14	39	-	79

NonConf Totals			193	196	390	252	270	583	-	917
NonConf Averages			13.8	15.01	30	19.4	20.8	44.8	-	70.5
NonConf Highs			25	25	42	26	28	54	-	91
NonConf Lows			3	6	14	11	17	29	-	43

*Not included in averages

Dec. 31	Ole Miss	W, 73-72	19	18	37	25	11	36	-	73
Jan. 4	Mississippi State	L, 111-69	20	19	39	18	12	30	-	69
Jan. 7	Alabama	L, 83-76	13	16	29	26	21	47	-	76
Jan. 11	Georgia	L, 78-65	7	18	25	24	16	40	-	65
Jan. 14	Auburn	W, 68-58	16	25	41	15	12	27	-	68
Jan. 18	Florida	L, 65-51	13	15	28	7	16	23	-	51
Jan. 21	No. 11 Missouri	L, 88-54	16	13	29	19	6	25	-	54
Jan. 25	No. 9 South Carolina	L, 90-42	6	6	12	20	10	30	-	42
Jan. 29	Kentucky									
Feb. 4	Alabama									
Feb. 8	Tennessee									
Feb. 11	Missouri									
Feb. 15	Kentucky									
Feb. 18	LSU									
Feb. 22	Texas A&M									
Feb. 25	Vanderbilt									

SEC Totals			110	130	240	154	104	258	-	498
SEC Averages			13.75	16.25	30.0	19.25	13.0	32.3	-	62.25
SEC Highs			20	25	41	26	21	47	-	76
SEC Lows			6	6	12	7	6	23	-	42

Season Totals			291	326	620	406	374	841	-	1415
Season Averages			13.9	15.5	29.5	19.3	17.8	40.0	-	67.4
Season Highs			25	25 (2x)	42	26	28	54	-	91
Season Lows			3	6 (2x)	12	7	6	23	-	42

BY STARTERS

Date	Opponent	Monk	Williams	Mason	Cosper	Zimmerman
Nov. 2	NE State (exh) - W	Monk	Williams	Mason	Cosper	Zimmerman
Nov. 10	SHSU - W	Monk	Williams	Mason	Cosper	Zimmerman
Nov. 12	Samford - W	Monk	Williams	Mason	Cosper	Zimmerman
Nov. 16	Nebraska - L	Monk	Williams	Mason	Cosper	Zimmerman
Nov. 20	ORU - W	Monk	Williams	Mason	Cosper	Zimmerman
Nov. 25	UTEP - W	Monk	Williams	Mason	Cosper	Zimmerman
Nov. 26	New Mexico State - W	Monk	Williams	Mason	Cosper	Zimmerman
Nov. 29	Abilene Christian - W	Monk	Williams	Mason	Cosper	Zimmerman
Dec. 3	Kansas - L	Monk	Williams	Mason	Cosper	Zimmerman
Dec. 7	UNC-C - W	Monk	Williams	Mason	Cosper	Zimmerman
Dec. 10	Tulsa - W	Monk	Williams	Mason	Cosper	Zimmerman
Dec. 17	UTA - W	Monk	Thomas	Mason	Cosper	Zimmerman
Dec. 21	Arizona State - L	Monk	Williams	Mason	Cosper	Zimmerman
Dec. 28	Grambling - W	Monk	Williams	Mason	Cosper	Zimmerman
Dec. 31	Ole Miss - W	Monk	Williams	Mason	Cosper	Zimmerman
Jan. 4	Mississippi State - L	Monk	Williams	Mason	Cosper	Zimmerman
Jan. 7	Alabama - L	Monk	Williams	Mason	Cosper	Zimmerman
Jan. 11	Georgia - L	Monk	Williams	Mason	Cosper	Zimmerman
Jan. 14	Auburn - W	Monk	Williams	Mason	Cosper	Zimmerman
Jan. 18	Florida - L	Monk	Williams	Mason	Northcross-Baker	Zimmerman
Jan. 21	No. 11 Missouri - L	Monk	Williams	Mason	Thomas	Zimmerman
Jan. 25	No. 9 South Carolina - L	Monk	Williams	Mason	Cosper	Zimmerman
Jan. 29	Kentucky					
Feb. 4	Alabama					
Feb. 8	Tennessee					
Feb. 11	Missouri					
Feb. 15	Kentucky					
Feb. 18	LSU					
Feb. 22	Texas A&M					
Feb. 25	Vanderbilt					

MISCELLANEOUS STATISTICS

Double-Figure Scoring Games				
Player	15-16	16-17	17-18	Career
M. Monk	3	13	20	36
K. Swenson		11	1	12
J. Mason		10	13	23
D. Cosper	15	8	15	37
B. Zimmerman		2	2	4
T. Thomas	-	-	1	1
K. Williams	-	-	8	8
R. Northcross-Baker	-	-	3	3
TOTAL	18	44	62	124

20-Point Scoring Games				
Player	15-16	16-17	17-18	Career
K. Swenson		1		1
D. Cosper	1	-	5	6
M. Monk	-	-	8	8
R. Northcross-Baker			1	1
TOTAL	1	1	12	14

Double-Figure Rebounding Games				
Player	15-16	16-17	17-18	Career
D. Cosper	-	-	7	7
T. Thomas	-	-	1	1
K. Williams	-	-	6	6
TOTAL	x	x	14	14

Double-Doubles				
Player	15-16	16-17	17-18	Career
J. Mason (pts/ast)	-	2		2
D. Cosper (pts/reb)	-	-	7	7
K. Williams (pts/reb)	-	-	3	3
M. Monk (pts/ast)	-	-	1	1
TOTAL	-	2	11	13

5+ Steals				
Player	15-16	16-17	17-18	Career
M. Monk	-	2	-	2
TOTAL	x	2	-	2

5+ Blocks				
Player	15-16	16-17	17-18	Career
TBA	-	-	-	-
TOTAL	-	x	x	x

5+ Assists				
Player	15-16	16-17	17-18	Career
M. Monk	3	4	6	13
J. Mason		6	4	10
D. Cosper		2		2
TOTAL	3	12	10	25



@RazorbackWBB STATISTICS
Arkansas Combined Team Statistics (as of Jan 25, 2018)
All games



RECORD:	OVERALL	HOME	AWAY	NEUTRAL
ALL GAMES	11-10	8-2	2-8	1-0
CONFERENCE	2-6	1-2	1-4	0-0
NON-CONFERENCE	9-4	7-0	1-4	1-0

##	Player	gp-gs	min	avg	Total		3-Point		F-Throw		Rebounds		pf	dq	a	to	blk	stl	pts	avg		
					fg-fga	fg%	3fg-fga	3fg%	ft-fa	ft%	off	def									tot	avg
03	MONK, Malica	21-21	706	33.6	119-330	.361	20-71	.282	83-108	.769	19	61	80	3.8	50	1	78	49	4	34	341	16.2
21	COSPER, Devin	19-19	595	31.3	99-278	.356	42-148	.284	38-52	.731	15	109	124	6.5	47	1	29	44	9	26	278	14.6
14	MASON, Jaily	21-21	674	32.1	91-225	.404	31-83	.373	6-9	.667	10	75	85	4.0	39	1	58	45	12	29	219	10.4
10	WILLIAMS, Kiara	21-20	409	19.5	67-132	.508	1-2	.500	28-53	.528	65	91	156	7.4	48	1	6	19	22	23	163	7.8
01	NORTHCROSS-BAKE	21-1	438	20.9	45-142	.317	27-94	.287	20-29	.690	24	38	62	3.0	31	0	30	21	4	12	137	6.5
04	SWENSON, Keiryn	21-0	339	16.1	36-104	.346	24-75	.320	10-16	.625	17	37	54	2.6	24	0	8	19	9	5	106	5.0
24	THOMAS, Taylah	21-2	366	17.4	27-67	.403	3-10	.300	20-30	.667	40	64	104	5.0	42	1	5	18	5	5	77	3.7
22	ZIMMERMAN, Bailey	21-21	470	22.4	21-95	.221	7-56	.125	18-31	.581	31	34	65	3.1	40	1	23	26	9	8	67	3.2
30	WEAVER, Macy	15-0	91	6.1	5-13	.385	0-0	.000	4-10	.400	11	11	22	1.5	19	0	1	4	9	1	14	0.9
20	STOUT, Sydney	11-0	54	4.9	1-6	.167	1-3	.333	3-6	.500	3	5	8	0.7	3	0	2	2	0	2	6	0.5
13	SPANGLER, Grayce	13-0	50	3.8	2-14	.143	0-6	.000	3-6	.500	1	4	5	0.4	10	0	0	5	0	1	7	0.5
12	MCCLURE, Brenna	3-0	8	2.7	0-3	.000	0-0	.000	0-0	.000	0	0	0	0.0	1	0	0	1	0	0	0	0.0
Team											47	41	88		2		3					
Total.....		21	4200		513-1409	.364	156-548	.285	233-350	.666	283	570	853	40.6	356	6	240	256	83	146	1415	67.4
Opponents.....		21	4200		546-1360	.401	136-425	.320	261-362	.721	279	646	925	44.0	347	2	309	301	85	130	1489	70.9

TEAM STATISTICS	AR	OPP	Date	Opponent	Score	Att.
SCORING	1415	1489	11/10/17	SHSU	w 65-54	4719
Points per game	67.4	70.9	11/12/17	SAMFORD	w 84-63	1739
Scoring margin	-3.5	-	11/16/17	at Nebraska	L 69-80	3459
FIELD GOALS-ATT	513-1409	546-1360	11/20/17	at Oral Roberts	w 77-66	2503
Field goal pct	.364	.401	11/24/17	at UTEP	L 61-64	633
3 POINT FG-ATT	156-548	136-425	11/25/17	vs NM State	w 69-60	250
3-point FG pct	.285	.320	11/29/17	ACU	w 79-65	1132
3-pt FG made per game	7.4	6.5	12/03/17	at Kansas	L 60-71	1795
FREE THROWS-ATT	233-350	261-362	12/07/17	CHARLOTTE	w 73-72	1169
Free throw pct	.666	.721	12/10/17	TULSA	w 67-41	1821
F-Throws made per game	11.1	12.4	12/17/17	UT-ARLINGTON	w 91-57	1481
REBOUNDS	853	925	12/21/17	at Arizona State	L 43-89	1988
Rebounds per game	40.6	44.0	12/28/17	GRAMBLING	w 79-62	1388
Rebounding margin	-3.4	-	* 12/31/17	OLE MISS	w 73-72	1701
ASSISTS	240	309	* 01/04/18	at #5/3 Mississippi State	L 69-111	5398
Assists per game	11.4	14.7	* 01/07/18	ALABAMA	L 76-83	2001
TURNOVERS	256	301	* 1/11/18	at Georgia	L 65-78	2229
Turnovers per game	12.2	14.3	* 01/14/18	at Auburn	w 68-58	2210
Turnover margin	+2.1	-	* 01/18/18	FLORIDA	L 51-65	1288
Assist/turnover ratio	0.9	1.0	* 01/21/18	at No. 11 Mizzou	L 54-88	5219
STEALS	146	130	* 01/25/18	at #9/7 South Carolina	L 42-90	12844
Steals per game	7.0	6.2				
BLOCKS	83	85				
Blocks per game	4.0	4.0				
ATTENDANCE	18439	38528				
Home games-Avg/Game	10-1844	10-3828				
Neutral site-Avg/Game	-	1-250				

* - Conference game

Score by Periods	1st	2nd	3rd	4th	Totals
Arkansas	304	326	406	379	1415
Opponents	364	342	386	397	1489



@RazorbackWBB STATISTICS
Arkansas Combined Team Statistics (as of Jan 25, 2018)
Conference games only



RECORD:	OVERALL	HOME	AWAY	NEUTRAL
ALL GAMES	2-6	1-2	1-4	0-0
CONFERENCE	2-6	1-2	1-4	0-0
NON-CONFERENCE	0-0	0-0	0-0	0-0

#	Player	gp-gs	min	avg	Total		3-Point		F-Throw		Rebounds			avg	pf	dq	a	to	blk	stl	pts	avg	
					fg-fga	fg%	3fg-fga	3fg%	ft-fga	ft%	off	def	tot										
03	MONK, Malica	8-8	273	34.1	42-137	.307	7-25	.280	26-40	.650	9	23	32	4.0	23	0	21	18	2	7	117	14.6	
14	MASON, Jailyln	8-8	282	35.2	41-94	.436	13-31	.419	4-4	1.000	5	24	29	3.6	18	0	17	22	5	10	99	12.4	
21	COSPER, Devin	6-6	181	30.2	23-67	.343	5-29	.172	15-19	.789	3	37	40	6.7	15	1	12	15	1	8	66	11.0	
10	WILLIAMS, Kiara	8-8	149	18.6	27-51	.529	1-2	.500	8-12	.667	17	33	50	6.3	19	1	2	7	6	6	63	7.9	
01	NORTHCROSS-BAKE	8-1	185	23.1	15-57	.263	9-35	.257	5-6	.833	9	15	24	3.0	11	0	10	7	3	4	44	5.5	
04	SWENSON, Keiryn	8-0	121	15.1	12-39	.308	7-28	.250	4-6	.667	7	11	18	2.3	9	0	2	6	4	1	35	4.4	
22	ZIMMERMAN, Bailey	8-8	175	21.9	10-37	.270	6-28	.214	8-15	.533	15	12	27	3.4	20	1	11	13	2	3	34	4.3	
24	THOMAS,Taylah	8-1	160	20.0	12-31	.387	1-4	.250	3-4	.750	15	22	37	4.6	18	0	3	9	1	0	28	3.5	
30	WEAVER, Macy	5-0	31	6.2	3-7	.429	0-0	.000	2-5	.400	4	2	6	1.2	6	0	0	2	2	0	8	1.6	
13	SPANGLER, Grayce	4-0	17	4.3	2-6	.333	0-2	.000	0-1	.000	1	0	1	0.3	5	0	0	3	0	1	4	1.0	
12	MCCLURE, Brenna	3-0	8	2.7	0-3	.000	0-0	.000	0-0	.000	0	0	0	0.0	1	0	0	1	0	0	0	0.0	
20	STOUT, Sydney	3-0	18	6.0	0-0	.000	0-0	.000	0-0	.000	0	1	1	0.3	2	0	1	1	0	2	0	0.0	
Team											18	15	33		1		2						
Total.....		8	1600		187-529	.353	49-184	.266	75-112	.670	103	195	298	37.2	148	3	79	106	26	42	498	62.2	
Opponents.....		8	1600		227-521	.436	57-162	.352	134-175	.766	113	246	359	44.9	115	1	130	99	42	54	645	80.6	

TEAM STATISTICS	AR	OPP	Date	Opponent	Score	Att.
SCORING	498	645	* 12/31/17	OLE MISS	W 73-72	1701
Points per game	62.2	80.6	* 01/04/18	at #5/3 Mississippi State	L 69-111	5398
Scoring margin	-18.4	-	* 01/07/18	ALABAMA	L 76-83	2001
FIELD GOALS-ATT	187-529	227-521	* 1/11/18	at Georgia	L 65-78	2229
Field goal pct	.353	.436	* 01/14/18	at Auburn	W 68-58	2210
3 POINT FG-ATT	49-184	57-162	* 01/18/18	FLORIDA	L 51-65	1288
3-point FG pct	.266	.352	* 01/21/18	at No. 11 Mizzou	L 54-88	5219
3-pt FG made per game	6.1	7.1	* 01/25/18	at #9/7 South Carolina	L 42-90	12844
FREE THROWS-ATT	75-112	134-175	* - Conference game			
Free throw pct	.670	.766				
F-Throws made per game	9.4	16.8				
REBOUNDS	298	359				
Rebounds per game	37.2	44.9				
Rebounding margin	-7.6	-				
ASSISTS	79	130				
Assists per game	9.9	16.3				
TURNOVERS	106	99				
Turnovers per game	13.3	12.4				
Turnover margin	-0.9	-				
Assist/turnover ratio	0.7	1.3				
STEALS	42	54				
Steals per game	5.3	6.8				
BLOCKS	26	42				
Blocks per game	3.3	5.3				
ATTENDANCE	4990	27900				
Home games-Avg/Game	3-1663	5-5580				
Neutral site-Avg/Game	-	0-0				

Score by Periods	1st	2nd	3rd	4th	Totals
Arkansas	110	130	154	104	498
Opponents	147	144	179	175	645

MORE NUMBERS

MISCELLANEOUS

Opponent	T/O	2ndCh	Paint	FastB	Bench	Ties	Leads	WL	Score	Leads overcome
SHSU	15	5	28	14	13	1	1	W	65-54	trailed by 13/20-07:26
Samford	18	5	30	3	23	0	0	W	84-63	
Nebraska	12	14	32	10	11	3	1	L	69-80	lost 2 4th-0:6:21
ORU	15	6	32	18	16	1	1	W	77-66	trailed by 6 1st-04:58
UTEP	22	18	18	14	16	0	0	L	61-64	
NM State	17	16	34	13	15	2	4	W	69-60	trailed by 7 1st-01:06
ACU	28	9	20	0	25	0	1	W	79-65	trailed by 1 1st-09:21
Kansas	10	8	28	6	6	1	1	L	60-71	lost 2 1st-08:40
Charlotte	15	17	32	8	6	1	8	W	73-72	trailed by 9 3rd-9:40
Tulsa	7	13	30	6	12	0	1	W	67-41	trailed by 2 1st-09:14
UTA	23	13	26	17	42	3	2	W	91-57	trailed by 6 1st-4:54
Arizona St.	3	8	22	6	12	0	0	L	43-89	lost 2 1st-09:43
Grambling	18	11	22	3	33	0	0	W	79-62	
Ole Miss	13	10	26	10	23	0	1	W	73-72	trailed by 1 2nd-04:33
#5/3 MSU	3	4	20	11	16	1	1	L	69-111	lost 5 1st-08:28
Alabama	7	7	26	6	13	3	3	L	76-83	lost 7 3rd-02:23
Georgia	11	8	22	8	13	0	0	L	65-78	
Auburn	15	22	27	4	11	0	1	W	68-58	trailed by 2 1st-09:37
Florida	15	9	18	9	9	0	0	L	51-65	
No. 11 Mizou	7	6	16	2	11	0	0	L	54-88	
#9/7 S Car	9	9	28	9	15	0	0	L	42-90	
Totals	283	218	537	177	341	16	26			
Ave/Game	13.5	10.4	25.6	8.4	16.2	0.8	1.2			
Opponent	290	236	704	112	409	19	25			
Ave/Game	13.8	11.2	33.5	5.3	19.5	0.9	1.2			

SPECIALTY STATS

Opponent	Paint	OFF TO	2ND CHANCE	FAST BREAK	BENCH
SHSU	28	15	5	14	13
Samford	30	18	5	3	23
Nebraska	32	12	14	10	11
ORU	32	15	6	18	16
UTEP	18	22	18	14	16
NMSU	34	17	16	13	15
Ab. Christian	20	28	9	0	25
Kansas	28	10	8	6	6
Charlotte	32	15	17	8	6
Tulsa	30	7	13	6	12
UTA	26	23	13	17	42
Arizona State	22	3	8	6	12
Grambling State	22	18	11	3	33
Ole Miss	26	13	10	10	23
Miss State	20	3	4	11	16
Alabama	26	7	7	6	13
Georgia	22	11	8	8	13
Auburn	27	15	22	4	11
Florida	18	15	9	9	9
No. 11 Missouri	16	7	6	2	11
No. 9 S. Carolina	28	9	9	9	15

Kentucky

Alabama

Tennessee

Missouri

Kentucky

LSU

Texas A&M

Vanderbilt

GAME BY GAME LEADERS

Date	Opponent	Points	Rebounds	Assists	Steals	Blocks
Nov. 10	SHSU	Monk (18)	Cosper (10)	2 Players (4)	Monk (4)	Mason (3)
Nov. 12	Samford	Monk (21)	2 Players (9)	2 Players (6)	3 Players (3)	Williams (4)
Nov. 16	Nebraska	Monk (22)	2 Players (11)	Monk (6)	Mason (4)	4 Players (2)
Nov. 20	ORU	Monk (24)	Cosper (10)	Monk (4)	Cosper (2)	2 Players (1)
Nov. 24	UTEP	Cosper (22)	Cosper (5)	Monk (5)	Cosper (4)	Weaver (4)
Nov. 25	NMSU	Monk (22)	2 Players (11)	Cosper (4)	Monk (4)	2 Players (1)
No. 29	A. Christian	2 Players (15)	Williams (8)	Mason (8)	Williams (3)	2 Players (1)
Dec. 3	Kansas	Monk (22)	Williams (16)	Monk (5)	Mason (2)	Williams (2)
Dec. 7	Charlotte	Cosper (25)	Cosper (14)	Mason (4)	Williams (4)	Williams (3)
No. 10	Tulsa	Monk (14)	Cosper (11)	Mason (6)	2 Players (1)	2 Players (2)
No. 17	UTA	RNB (22)	Williams (8)	Mason (7)	2 Players (3)	2 Players (1)
Dec. 21	Az State	Monk (12)	3 Players (4)	Monk (2)	Monk (1)	4 Players (1)
Dec. 28	Grambling	Cosper (16)	Williams (16)	Monk (10)	Monk (3)	Monk (1)
Dec. 31	Ole Miss	Cosper (18)	Cosper (11)	2 Players (4)	Cosper (4)	Williams (4)
Jan. 4	Miss State	Mason (15)	Cosper (7)	2 Players (4)	Monk (2)	3 Players (1)
Jan. 7	Alabama	Cosper (24)	Cosper (13)	Cosper (4)	Mason (3)	Mason (2)
Jan. 11	Georgia	Monk (16)	Thomas (8)	3 Players (2)	Mason (5)	Monk (1)
Jan. 14	Auburn	2 Players (15)	Williams (14)	Mason (5)	4 Players (1)	Zimmerman (1)
Jan. 18	Florida	Monk (23)	Monk (8)	Monk (4)	3 Players (1)	3 Players (1)
Jan. 21	No. 11 MU	2 Players (14)	Williams (7)	4 Players (2)	2 Players (1)	Weaver (1)
Jan. 25	No. 9 S Car	Mason (12)	Thomas (6)	Cosper (2)	Stout (2)	3 Players (1)
Jan. 29	Kentucky					
Feb. 4	Alabama					
Feb. 8	Tennessee					
Feb. 11	Missouri					
Feb. 15	Kentucky					
Feb. 18	LSU					
Feb. 22	Texas A&M					
Feb. 25	Vanderbilt					

COMPARISON



@RazorbackWBB STATISTICS
Arkansas Team Game-by-Game Comparison (as of Jan 25, 2018)
All games

Opponent	1st	2nd	Score	Mar	Total FG	FG Pct	3-Pointers	3FG Pct	Free Throws	FT Pct	Rebounds	Assist	T/Over	Block	Steal	Fouls
SHSU	23/28	42/26	65-54	+11	25-67/20-63	.373/.317	9-33/7-27	.273/.259	6-11/7-11	.545/.636	39/51 (12)	15/10	9/15	7/5	8/3	12/14
SAMFORD	42/33	42/30	84-63	+21	29-59/23-59	.492/.390	10-27/6-22	.370/.273	16-22/11-14	.727/.786	35/34 +1	17/17	6/13	4/1	7/3	15/23
Nebraska	30/41	39/39	69-80	(11)	27-77/28-72	.351/.389	8-32/7-21	.250/.333	7-10/17-25	.700/.680	45/55 (10)	10/17	15/16	8/6	12/7	23/12
Oral Roberts	40/36	37/30	77-66	+11	29-70/22-58	.414/.379	6-23/7-22	.261/.318	13-18/15-19	.722/.789	41/41 -	8/12	4/14	2/0	5/2	18/20
UTEP	20/38	41/26	61-64	(3)	21-70/27-53	.300/.509	11-41/5-13	.268/.385	8-14/5-7	.571/.714	27/51 (24)	13/19	4/23	4/0	14/1	15/13
NM State	23/25	46/35	69-60	+9	25-70/23-67	.357/.343	6-26/4-18	.231/.222	13-24/10-14	.542/.714	55/41 +14	10/9	18/18	3/2	12/10	15/21
ACU	34/24	45/41	79-65	+14	25-68/24-69	.368/.348	10-25/11-34	.400/.324	19-27/6-11	.704/.545	44/43 +1	13/17	12/20	4/6	13/8	13/21
Kansas	22/30	38/41	60-71	(11)	22-69/25-62	.319/.403	5-27/3-15	.185/.200	11-15/18-25	.733/.720	40/50 (10)	7/9	13/15	6/5	3/8	24/17
CHARLOTTE	30/37	43/35	73-72	+1	26-75/27-74	.347/.365	9-31/5-13	.290/.385	12-24/13-20	.500/.650	45/58 (13)	11/15	10/17	5/3	10/7	19/20
TULSA	35/24	32/17	67-41	+26	25-67/16-69	.373/.232	6-29/2-16	.207/.125	11-19/7-10	.579/.700	61/39 +22	13/5	9/7	7/3	2/4	10/16
UT-ARLINGTON	37/24	54/33	91-57	+34	30-65/22-54	.462/.407	12-28/3-15	.429/.200	19-21/10-16	.905/.625	40/27 +13	19/10	14/22	2/2	11/6	21/21
Arizona State	14/52	29/37	43-89	(46)	17-57/37-73	.298/.507	4-18/12-20	.222/.600	5-6/3-6	.833/.500	35/41 (6)	7/27	23/8	4/4	1/11	12/13
GRAMBLING	40/23	39/39	79-62	+17	25-66/25-66	.379/.379	11-24/7-27	.458/.259	18-27/5-9	.667/.556	48/35 +13	18/12	13/14	1/6	6/6	11/21
OLE MISS	37/32	36/40	73-72	+1	26-61/23-55	.426/.418	8-21/7-18	.381/.389	13-20/19-26	.650/.731	38/34 +4	11/14	15/17	7/4	7/6	18/17
#5/3 Mississippi State	39/49	30/62	69-111	(42)	28-62/44-76	.452/.579	6-18/10-20	.333/.500	7-12/13-14	.583/.929	29/40 (11)	12/25	16/4	3/2	3/7	17/15
ALABAMA	29/32	47/51	76-83	(7)	26-70/26-65	.371/.400	6-21/6-18	.286/.333	18-21/25-36	.857/.694	43/44 (1)	9/12	17/14	5/7	8/9	26/19
Georgia	25/31	40/47	65-78	(13)	22-65/30-73	.338/.411	5-21/8-18	.238/.444	16-23/10-12	.696/.833	43/49 (6)	10/19	17/13	1/9	10/6	16/14
Auburn	41/17	27/41	68-58	+10	24-61/19-56	.393/.339	9-30/2-14	.300/.143	11-15/18-22	.733/.818	39/33 +6	14/7	12/15	1/4	4/8	17/18
FLORIDA	28/35	23/30	51-65	(14)	21-76/26-69	.276/.377	5-30/7-29	.167/.241	4-4/6-7	1000/.857	42/54 (12)	8/15	8/14	3/1	3/4	9/9
No. 11 Mizzou	29/51	25/37	54-88	(34)	22-67/27-52	.328/.519	8-27/13-25	.296/.520	2-7/21-27	.286/.778	33/43 (10)	10/21	9/11	1/6	2/6	20/11
#9/7 South Carolina	12/44	30/46	42-90	(48)	18-67/32-75	.269/.427	2-16/4-20	.125/.200	4-10/22-31	.400/.710	31/62 (31)	5/17	12/11	5/9	5/8	25/12

Note: Game totals are displayed in the format TEAM/OPPONENT for each category



@RazorbackWBB STATISTICS
Arkansas Points-Rebounds-Assists (as of Jan 25, 2018)
All games

Opponent	Date	Score	01	03	04	10	12	13	14	20	21	22	24
			NORTHCROS	MONK,MALIC	SWENSON,K	WILLIAMS,K	MCCLURE,B	SPANGLER,	MASON,JAIL	STOUT,SYDN	COSPER,DE	ZIMMERMAN,	THOMAS,TA W
SHSU	11/10/17	65-54 w	3-2-2	18-2-4	5-1-0	7-2-1	DNP	0-0-0	8-5-4	1-1-0	17-12-2	2-3-2	4-4-0
SAM	11/12/17	84-63 w	0-1-6	21-9-6	9-0-1	10-5-0	DNP	0-1-0	12-1-2	1-1-0	18-5-2	0-0-0	13-9-0
at NEB	11/16/17	69-80 L	3-4-0	22-3-6	3-3-0	6-11-1	DNP	DNP	8-5-2	DNP	21-4-0	1-0-0	5-11-1
at ORU	11/20/17	77-66 w	8-1-1	24-3-4	6-2-0	8-5-0	DNP	DNP	6-2-1	DNP	21-10-1	2-4-1	2-9-0
at UTEPW	11/24/17	61-64 L	7-2-3	10-2-5	6-2-0	1-1-0	DNP	0-0-0	8-4-2	0-0-0	22-5-0	4-3-2	1-4-0
vs NMSU	11/25/17	69-60 w	7-2-0	22-7-2	5-6-0	11-11-0	DNP	DNP	3-6-2	DNP	17-11-4	1-3-2	3-7-0
ACU	11/29/17	79-65 w	15-3-1	15-2-1	3-2-0	12-8-0	DNP	0-0-0	13-7-8	0-1-0	11-3-1	3-6-2	7-7-0
at KU	12/03/17	60-71 L	2-2-1	21-7-5	4-2-0	6-16-0	DNP	0-0-0	10-2-1	DNP	17-3-0	0-2-0	0-0-0
CHA	12/07/17	73-72 w	3-3-1	15-4-3	3-2-0	9-12-0	DNP	DNP	12-4-4	DNP	25-14-2	6-3-1	0-0-0
TLS	12/10/17	67-41 w	1-9-1	14-4-3	7-6-0	13-7-2	DNP	0-1-0	11-5-6	0-1-0	11-11-0	6-7-1	4-7-0
UTA	12/17/17	91-57 w	22-4-3	20-1-6	10-5-2	2-8-0	DNP	3-1-0	15-4-7	4-2-0	8-1-1	6-3-0	0-4-0
at ASU	12/21/17	43-89 L	8-1-1	12-2-2	2-3-1	3-4-0	DNP	0-1-0	6-4-1	0-0-0	8-1-1	2-4-1	2-3-0
GRAMWBB	12/28/17	79-62 w	14-4-0	10-2-10	8-2-2	12-16-0	DNP	0-0-0	8-7-1	0-1-1	16-4-3	0-0-0	8-2-1
OM	12/31/17	73-72 w	9-3-0	12-2-4	8-4-0	5-9-1	DNP	DNP	13-2-4	DNP	18-11-1	2-1-1	6-3-0
at MS	01/04/18	69-111 L	8-1-1	8-3-4	0-2-0	13-2-0	0-0-0	4-1-0	15-3-4	0-0-0	13-7-3	4-3-0	4-6-0
UA	01/07/18	76-83 L	2-0-2	21-4-1	9-0-0	6-7-0	DNP	0-0-0	12-6-0	DNP	24-13-4	0-2-2	2-4-0
at UGA	1/11/18	65-78 L	6-2-1	16-5-2	0-0-0	2-3-1	DNP	DNP	15-5-1	DNP	8-7-2	11-5-2	6-8-1
at AU	01/14/18	68-58 w	7-6-3	14-5-4	0-0-0	15-14-0	DNP	DNP	15-2-5	DNP	0-1-0	13-8-2	4-1-0
UF	01/18/18	51-65 L	6-6-1	23-8-4	7-4-1	8-4-0	DNP	DNP	5-6-1	DNP	DNP	0-3-1	2-6-0
at MU-W	01/21/18	54-88 L	6-4-2	11-3-2	5-4-1	14-7-0	0-0-0	0-0-0	14-3-1	0-1-0	DNP	2-3-2	2-3-2
at SC	01/25/18	42-90 L	0-2-0	12-2-0	6-4-0	0-4-0	0-0-0	0-0-0	10-2-1	0-0-1	3-1-2	2-2-1	2-6-0

THE LAST TIME A RAZORBACK TEAM ...

OFFENSE

Scored 110+	110, vs. Providence (11/16/98)
Scored 100+ points at home	101, Houston Baptist, 12-28-16
Scored 100+ points on the road	108, Baylor (3-6-91); SWC Tourn., Dallas, Texas)
Scored 90-99 points	91 vs. UTA, 12-17-17
Scored 90+ points at home	101, Houston Baptist, 12-28-16
Scored 90+ points on the road	91, (91-80 Win in 3OT, 2-10-13, at Alabama)
Scored 80-89 points	84, Samford (11-12-17)
Scored 80-89 points at home	86, Mississippi Valley State (12-28-15)
Scored 80-89 points on the road	88, Southeast Missouri (NM) (11-29-13)
Scored 70-79 points	77, Alabama, 1-7-18
Scored 70-79 points at home	73, Ole Miss, 12-31-17
Scored 70-79 points on the road	77 at Ole Miss, 1-31-13
Scored 60-69 points	68, at Auburn, 1-14-18
Was held to 50-59	54, at No. 11 Missouri, 1-21-18
Was held to 49-40	42 at No. 9 South Carolina (1-25-18)
Was held to 39-20	32, at No. 2 South Carolina (1-3-16)
Was held to 20 or less	N/A
Made 30-39 field goals	30 vs. UTA, 12-17-17
Made 20-29 field goals	22, at No. 11 Missouri, 1-21-18
Made 10-19 field goals	18 at No. 9 South Carolina (1-25-18)
Made 10 three-point field goals	11, Grambling State, 12-28-17
Did not make a three point basket (began in 1986)	0-10, at Mississippi State (L 44-47), 2-3-13
Made 30 free throws	38 at Florida (38-54); (2-22-04)
Made 15+ Free Throws	18, Grambling State, 12-28-17
Shot 40-49 or better from the field	45.2 (28-62) at #5/3 Mississippi State (1-4-18)
Shot 50-59 or better from the field	52.1 (38-73), Houston Baptist, 12-28-16
Shot 60 percent or better from the field	600 (36-60) vs. Ole Miss (W, 93-52; 3-3-13)
Held to less than 40 percent from the field	32.8% (22-67), at No. 11 Missouri, 1-21-18
Held to less than 30 percent from the field	26.9% at No. 9 South Carolina (1-25-18)
Held to less than 20 percent from the field	182 (10-55) vs. No. 6/7 Tennessee (1-8-12; L, 38-69)
Allowed opponent to shoot over 50% from the field	5.9% (27-52), at No. 11 Missouri, 1-21-18
Held opponent to less than 40% from the field	33.9% (19-56), at Auburn, 1-14-18
Held opponent to less than 30% from the field	23.2% (16-69), Tulsa, 12-10-17
Held opponent to less than 20% from the field in a half:	136 (3-22), First Half, Binghamton, 11-30-13
.....	200 (5-25), First Half, MVSU, 12-28-13
.....	200 (5-25), First Half, Grambling State, 12-29-14
Had 20 or more assists in a game	27, Houston Baptist, 12-28-16

DEFENSE

Allowed 100 points	111 at #5/3 Mississippi State (1-4-18)
Allowed 80-99 points	90 at No. 9 South Carolina (1-25-18)
Allowed 70-79 points	78, at Georgia, 1-11-18
Allowed 69-60 points	65, Florida, 1-18-18
Held opponent to 59-50 points	58, at Auburn, 1-14-18
Held opponent to 40-49 points	41, Tulsa, 12-10-17
Held opponent to 39-30	36, Northwestern State, 12-18-16
Held opponent under 45 points three cons. games	45, SHSU (11-8-13, W 81-45);
.....	33 ORU (11-13-13, W 91-33); 45, Furman (11-16-13, W, 74-45)
Held an SEC opponent under 50 points in 3 cons. games	47, Auburn (1-29-15, W, 52-47); 42,
.....	Alabama (2-1-15, W, 53-42);
.....	#24/21 Georgia (2-9-15, W, 54-48)
Held opponent to 29 points or less	23, Binghamton, 11-30-13
Held an opponent under 15 points in a half	13, Northwestern State, 12-18-16
Held opponent under 15 field goals	14, Houston Baptist, 12-28-16
Held opponent under 15% from three-point distance	14.3% (2-14), at Auburn, 1-14-18
Had 70+ rebounds	74, Mississippi Valley State (11-24-89)
Had 60-69 rebounds	61, Tulsa, 12-10-17
Had 50-59 rebounds	55, vs. NMSU, 11-25-17
Had five or more blocked shots in a game	7, Ole Miss, 12-31-17
Had 20 or more steals in a game	20, ORU (11-13-13)
Had 15 or more steals in a game	16, at Florida, 2-9-17
Had 20 or more turnovers in a game	23 at Arizona State, 12-21-17
Forced 20-25 or more Turnovers in a game	22 vs. UTA, 12-17-17

OTHER

Won an overtime game	91-80 Win in 3OT, 2-10-13, at Alabama
Lost an overtime game	Florida (71-66), 1-28-16
Won a double overtime game	73-72, vs. Florida (1-29-12)
Lost a double overtime game	N/A
Won a triple overtime game	91-80 Win in 3OT, 2-10-13, at Alabama
Played consecutive overtime games	1-24-16 at Auburn (lost); 1-28-16 vs Florida (lost)
Won a regular season tournament	Nugget Classic (Reno, Nev., Nov. 25-26, 2016)
Defeated a ranked team	67-61, No. 13 Texas A&M, 1-7-16; 64-59, No. 13 Tenn., 1-14-16
.....	64-52, No. 24 Missouri, 1-17-16
Defeated a ranked team on the road	57-53, at #19/18 LSU, 2-23-14; 77-76,
.....	#17/16 Iowa (Las Vegas), 12-18-14
All-time SEC win streak	8 games (1-15-12: Auburn through 2-15-12: at Auburn)
All-time SEC home win streak	5 games (1-15-12: Auburn through 2-9-12: S. Carolina)

THE LAST TIME A RAZORBACK PLAYER ...

Scored 20-24 points	23, Malica Monk, Florida, 1-18-18
Scored 25-29 points	25, Devin Cosper, Charlotte (12-6-17)
Scored 30+ points	34, Jessica Jackson, Houston Baptist, 12-28-16
Scored 20+ points seven times in a season	Jessica Jackson, 2013-14 (22 vs. MTSU, 22 at Missouri,
.....	23 at Fla., 24 at Georgia, 31 vs. Ole Miss, 23 at Kentucky,
.....	25 at LSU)
Scored 20+ points eight times in a season	Malica Monk, 2017-18 (Samford 21, Neb. 22, ORU 24, NMSU
.....	22, KU 21, UTA 20, Ala. 21, FL 23)
.....	Previous: Jessica Jackson, 2015-16
Double figures in 15 consecutive games (Season)	Jessica Jackson, 11/11/16-, LSU 1-8-17
Scored 23+ points in three consecutive games	Jessica Jackson (24 at Georgia 1-16-14,
.....	31 vs. Ole Miss 1-19-14, 23 at Kentucky 1-26-14)
Three players scored double figures in 1 game	at No. 11 Missouri, 1-21-18 (Monk, Williams, Mason)
Four players scored double figures in 1 game	at Auburn, 1-14-18 (Williams, Zimmermann Monk, Mason)
Four players scored doubles figures for 4 cons. games	12-6-12 - 12-21-12; vs. Kansas, Furman, MVSU, and NSU
Five players scored double figures in 1 game	Abilene Christian (11-29-17)
.....	(Monk, Cosper, Mason, Williams, Northcross-Baker)
Made 10+ field goals in a game	10, Jessica Jackson, Kentucky, 2-16-17
Attempted 15-19 field goals in a game	Monk (17), Cosper (16), Mason (15), Alabama, 1-7-18
Attempted 20+ field goals in a game	28, Malica Monk, Florida, 1-18-18
Attempted 10 free throws in a game	12, Malica Monk vs. UTA, 12-17-17
Made 5 or more three-pointers in a game	6, Raven Northcross-Baker vs. UTA, 12-17-17
Attempted 10+ three-pointers in a game	11, Devin Cosper at Kansas, 12-3-17
Had 10-14 rebounds	14, Kiara Williams, at Auburn, 1-14-18
Had 15+ rebounds	16, Kiara Williams, Grambling State, 12-28-17
Had 10 offensive rebounds - Records go back to 05-06	11, Melissa Wolff vs. New Orleans (1-30-15)
Had 10 defensive rebounds - Records go back to 05-06	13, Devin Cosper, Alabama, 1-7-18
Had 10+ assists	10, Malica Monk, Grambling State, 12-28-17
Had 10+ assists in consecutive games	Jailyn Mason (11 vs. HBU, 12-28-16 and 10 at Ole Miss, 1-1-17)
.....	Calli Berna (11 vs. No. 10/8 KY 2/7/13 and 11 at UA 2/10/13)
Had 5+ blocks in a game	(3x) 5, Jessica Jackson (vs. ORU, 11-13-13);
.....	(No. 25 Vanderbilt, 2-20-14); (at Tulsa, 12-14-14)
Had 10 or more blocks in a game	9, Robyn Irwin vs. SMSU, 12-19-88 (school record)
Had 5 or more steals in a game	5, Malica Monk vs. NMSU, 11-25-17
Had a double-double	Kiara Williams (15/14), at Auburn, 1-14-18
Had a double-double in two straight games	2017-18: Devin Cosper (25/14) Charlotte and (11/11) Tulsa
Had two players record a double-double	Kiara Williams (12 pts/16 reb) &
.....	Malica Monk (10 pts/10 reb.), Grambling State, 12-28-17
Had seven double-doubles in a season	Devin Cosper, 2017-18
.....	(SHSU, ORU, NMSU, Char., Tulsa, OM, AL)
Had 10+ double-doubles in a season	2006-07, Lauren Ervin (14)
Had a triple-double	14 pts, 13 reb, 12 asts, Ceira Ricketts vs. Auburn (1-18-09)



MIKE NEIGHBORS YEAR-BY-YEAR

Year	School	Overall	Pct.	Conf.	Pct.	Conf. Finish
2013-14	Washington	20-14	.588	10-8	.556	6/Pac-12
2014-15	Washington	23-10	.697	11-7	.611	5/Pac-12
2015-16	Washington	26-11	.703	11-7	.611	5/Pac-12
2016-17	Washington	29-6	.829	15-3	.833	T2/Pac-12
2017-18	Arkansas	11-10	.523	2-7	.222	TBA
Totals	5 Years	109-51	.681	49-31	.612	

BENTONVILLE HS (HC)	94	
	95	
	96	
	97	
CABOT HS (HC)	98	
ARKANSAS (DIR OF OPS)	99	
	00	
TULSA (ASST)	01	
	02	
	03	
	04	
COLORADO (ASST)	05	
ARKANSAS (ASST)	06	
XAVIER (ASST)	07	X
	08	
	09	
	10	
WASHINGTON (ASST)	11	W
	12	
WASHINGTON (HC)	13	W
	14	
	15	
	16	
ARKANSAS (HC)	17	

NEIGHBORS 3-1 IN BWA BEFORE THIS YEAR

As the head coach of Bentonville (Ark.) HS, Mike Neighbors went 3-0 in Bud Walton Arena in the high school play-offs. In 1997, his Tiger team defeated Bryant, Mount St. Mary's and Jonesboro to reach the state finals in Pine Bluff, Ark.

The lone loss occurred when Neighbors was an assistant coach at Tulsa. The 13th-ranked Razorbacks defeated Tulsa, 66-49, that season.

OPEN MIKE

Want to get to know Mike Neighbors in his own words? Check out the links below for stories about Mike, his hire and his dream job at Arkansas.

Mike's First 30 Days	http://bit.ly/First30
Mike's Dream Job	http://bit.ly/MNDreamJob
Mike's Press Conference	http://bit.ly/PressConfVideo

FROM ROOKIE NOD TO NAISMITH NOMINEE

In four short years Mike Neighbors went from a Spalding Maggie Dixon Division I Rookie Coach of the Year nominee in 2014, to a Naismith Women's College Coach of the Year national semifinalist in 2017.

Neighbors guided UW to an historic campaign in 2016-17 leading the Huskies to 27 wins, it's second most in program history, and he was just one shy of the all-time a school record set in 1990 (28).

Picked to place third in the Pac-12 in the preseason poll, UW tied for second in the league with a 15-3 record, it's best conference finish since 2003. The Huskies' 15 conference wins tied for third most in program history. Washington, who entered conference play with the program-best 12 non-conference wins, clinched its first-ever bye in the first round of the Pac-12 Tournament. Washington put together an 11-game win streak and a six-game win streak in Pac-12 play in 2016-17.

COACHES COACHING AT ALMA MATER

Mike Neighbors	Arkansas, 1993
Holly Warlick	Tennessee, 1981

A couple of other coaches have SEC ties. Joni Taylor is the head coach at Georgia and a 2002 graduate of Alabama. Matthew Mitchell is a 1995 graduate of Mississippi State and is the head coach at Kentucky. Nikki Fargas graduated from Tennessee in 1994 and is the head coach at LSU. Vic Schaefer is the head coach at Mississippi State and a 1984 graduate of Texas A&M.



NEIGHBORS BY THE NUMBERS

TOP 10 MOVIES

1. A Few Good Men
2. The Hunt For Red October
3. The Silence Of The Lambs
4. Hoosiers
5. Pretty Woman
6. Moneyball
7. Top Gun
8. JFK
9. The Lion King
10. Purple Rain

See the entire list here: <http://imdb.to/2royaEO>

He has 160 movies that are classified as "thriller". "Romance" is next with 152 followed by 69 "sport", 58 "mystery", and 32 "sci-fi".

TOP 10 SONGS

1. Sweet Child O' Mine (Guns N' Roses)
2. You Shook Me All Night Long (AC/DC)
3. Man In The Mirror (Michael Jackson)
4. Amarillo By Morning (George Strait)
5. Jessie's Girl (Rick Springfield)
6. Hysteria (Def Leppard)
7. Fishin' In The Dark (Nitty Gritty Dirt Band)
8. The Ballard of Curtis Loew (Lynyrd Skynyrd)
9. Wanted Dead Or Alive (Bon Jovi)
10. Let's Go Crazy (Prince)

TOP 10 TV SHOWS

1. West Wing (first three seasons)
2. The Wire
3. Breaking Bad
4. Seinfeld
5. The Newsroom
6. Prison Break
7. Arrested Development
8. Game of Thrones
9. The Sopranos
10. The Goldbergs

See the entire list here: <http://www.imdb.com/list/ls009377912/>

Neighbors has 16 comedies, 15 dramas and seven crime shows on the list.

Sign up for Mike Neighbors' newsletter and listen to his podcasts at

CoachNeighbors.com



MIKE NEIGHBORS DEVELOPS PLAYERS FOR THE NEXT LEVEL

Mike Neighbors has worked with 11 WNBA Draft Picks

YEAR	UNIVERSITY	PLAYER	ROUND	OVERALL	TEAM NOTE
2017	Washington	Kelsey Plum	1	1	San Antonio Spurs ! @
	Washington	Chantel Osahor	2	21	Chicago Sky ! @
2016	Washington	Talia Walton	3	29	Los Angeles Sparks ! @
	Xavier	Amber Harris	1	4	Minnesota Lynx #
2011	Xavier	Ta'Shia Phillips	1	8	Atlanta Dream #
	TAMU/UAFS	Tanisha Smith	2	22	Seattle Storm #
	Colorado	Brittany Spears	2	19	Phoenix Mercury *
2009	Arkansas	Shameka Christon	1	5	New York Liberty #
2008	Arkansas	Lauren Ervin	3	37	Connecticut Sun #
2006	Tulsa	Megan Moody	-	-	Houston Comets
					Free Agent #
2003	Tulsa	Allison Curtin	1	12	Houston Comets ! #
	Arkansas	Dana Cherry	2	23	Traded to Detroit Shock Charlotte Sting

*-Recruited but did not coach
!-At the school when player was drafted
@-Worked with player as a head coach
#-Worked with player as an assistant coach
\$-Worked with player as other (GA, etc)

FAST RISE TO ELITE RANKS

Mike Neighbors had a meteoric rise to the top as a head coach at Washington. In four seasons, he amassed 96 wins, had three NCAA Tournament appearances and reached the Final Four. Those accomplishments put him in some rare air.

FIRST FOUR YEARS AS A POWER FIVE HEAD COACH

Coach	School	Wins	NCAA Apps.	NCAA Best
Holly Warlick	Tennessee	108	4	Sweet 16
Mike Neighbors	Washington	98	3	1 Final Four
Jeff Walz	Louisville	96	3	1 Final Four
Nikki Fargas	UCLA	95	3	2nd Rnd
Vic Schaefer	Mississippi State	90	2	Sweet 16
Karen Aston	Texas	89	3	1 Elite 8
Matthew Mitchell	Kentucky	86	2	1 Elite 8
Kevin McGuff	Xavier	80	1	1 Elite 8
Dawn Staley	South Carolina	77	1	-
Brenda Frese	Minn./Maryland	72	2	-

BUILDING A FAN BASE

Mike Neighbors saw a 62.9% increase in attendance in his four seasons at Washington. Look for fan engagement to be a big part of future Razor-back programs as well.

COACHING TREE

Coach	w/Nabes	Now
Fred Castro	'14, '15, '16	HC Eastern Michigan
Adia Barnes	'14, '15	HC Arizona
Adam Call	'14	AC Eastern Michigan
Morgan Valley	'16	AC Arizona
Todd Schaefer	'16	AC Arkansas
Jasmine Lister	'16	AC DePaul



WANT TO ASK SOME GOOD QUESTIONS?

1. He has had two heart attacks
2. He keeps a lot of lists
3. His lowest moment was he eureka moment
4. He plays guitar and has a band
5. He reads really fast
6. He is an analytics nerd
7. He is a bar-game prodigy



1

RAVEN NORTHCROSS-BAKER
 Junior | 5-7 | Guard | Malvern, Arkansas
 Chipola JC | Malvern HS

CAREER HIGHS

Points	22	UTA	12-17-17
FG Made	8	UTA	12-17-17
FG Att.	12	UTEP	11-24-17
3P Made	6	UTA	12-17-17
3P Att.	8	UTA	12-17-17
FT Made	7	ACU	11-29-17
FT Att.	8	ACU	11-29-17
Off. Rebounds	3	Grambling	12-18-17
Def. Rebounds	7	Tulsa	12-10-17
Rebounds	9	Tulsa	12-10-17
Assists	6	Samford	11-12-17
Blocks	1	Florida	1-18-18*
Steals	3	UTA	12-17-17
Minutes	29	Florida	1-18-18

SEASON HIGHS

Points	22	UTA	12-17-17
FG Made	8	UTA	12-17-17
FG Att.	12	UTEP	11-24-17
3P Made	6	UTA	12-17-17
3P Att.	8	UTA	12-17-17
FT Made	7	ACU	11-29-17
FT Att.	8	ACU	11-29-17
Off. Rebounds	3	Grambling	12-18-17
Def. Rebounds	7	Tulsa	12-10-17
Rebounds	9	Tulsa	12-10-17
Assists	6	Samford	11-12-17
Blocks	1	Florida	1-18-18*
Steals	3	UTA	12-17-17
Minutes	29	Florida	1-18-18

*Most Recent

2017-18 GAME-BY-GAME STATS

Opponent	Date	gs	min	Total		3-Pointers		Free throws		Rebounds			pf	a	t/o	blk	stl	pts	avg	
				fg-fga	pct	3fg-fga	pct	ft-fa	pct	off	def	tot								avg
SHSU	11/10/17	20	1-8	.125	1-6	.167	0-0	.000	2	0	2	2.0	3	2	1	0	0	3	3.0	
SAMFORD	11/12/17	22	0-2	.000	0-2	.000	0-0	.000	0	1	1	1.5	1	6	1	0	0	0	1.5	
at Nebraska	11/16/17	18	1-4	.250	1-3	.333	0-0	.000	1	3	4	2.3	1	0	1	0	2	3	2.0	
at Oral Roberts	11/20/17	22	3-6	.500	1-4	.250	1-2	.500	0	1	1	2.0	3	1	0	0	0	8	3.5	
at UTEP	11/24/17	16	3-12	.250	0-6	.000	1-1	1.000	2	0	2	2.0	1	3	0	0	0	7	4.2	
vs NM State	11/25/17	18	2-7	.286	1-4	.250	2-4	.500	1	1	2	2.0	4	0	2	0	2	7	4.7	
ACU	11/29/17	22	3-6	.500	2-4	.500	7-8	.875	1	2	3	2.1	2	1	0	0	1	15	6.1	
at Kansas	12/03/17	14	1-6	.167	0-4	.000	0-0	.000	0	2	2	2.1	4	1	0	0	0	2	5.6	
CHARLOTTE	12/07/17	11	1-2	.500	1-2	.500	0-0	.000	0	3	3	2.2	0	1	1	0	0	3	5.3	
TULSA	12/10/17	23	0-4	.000	0-3	.000	1-4	.250	2	7	9	2.9	1	1	2	1	0	1	4.9	
UT-ARLINGTON	12/17/17	27	8-11	.727	6-8	.750	0-0	.000	2	2	4	3.0	0	3	0	0	3	22	6.5	
at Arizona State	12/21/17	19	3-8	.375	2-6	.333	0-0	.000	1	0	1	2.8	0	1	4	0	0	8	6.6	
GRAMBLING	12/28/17	21	4-9	.444	3-7	.429	3-4	.750	3	1	4	2.9	0	0	2	0	0	14	7.2	
OLE MISS	12/31/17	28	3-5	.600	1-2	.500	2-2	1.000	2	1	3	2.9	0	0	1	0	0	9	7.3	
at #5/3 Mississippi State	01/04/18	19	3-9	.333	2-6	.333	0-0	.000	0	1	1	2.8	2	1	1	0	1	8	7.3	
ALABAMA	01/07/18	27	1-5	.200	0-3	.000	0-0	.000	0	0	0	2.6	1	2	0	1	1	2	7.0	
at Georgia	1/11/18	17	2-4	.500	1-3	.333	1-2	.500	1	1	2	2.6	1	1	1	0	0	6	6.9	
at Auburn	01/14/18	28	2-10	.200	1-6	.167	2-2	1.000	2	4	6	2.8	3	3	1	0	1	7	6.9	
FLORIDA	01/18/18	* 29	2-11	.182	2-7	.286	0-0	.000	2	4	6	2.9	0	1	0	1	0	6	6.9	
at No. 11 Mizzou	01/21/18	23	2-10	.200	2-8	.250	0-0	.000	2	2	4	3.0	1	2	2	0	1	6	6.9	
at #9/7 South Carolina	01/25/18	14	0-3	.000	0-0	.000	0-0	.000	0	2	2	3.0	3	0	1	1	0	0	6.5	
Totals		1	438	45-142	.317	27-94	.287	20-29	690	24	38	62	3.0	31	30	21	4	12	137	6.5

Games played: 21
 Minutes/game: 20.9
 Points/game: 6.5
 FG Pct: 31.7
 3FG Pct: 28.7
 FT Pct: 69.0

Rebounds/game: 3.0
 Assists/game: 1.4
 Turnovers/game: 1.0
 Assist/turnover ratio: 1.4
 Steals/game: 0.6
 Blocks/game: 0.2

NOTES

- » University of Arkansas Athletic Department Academic Honor Roll: Fall, 2017
- » 17 points in exhibition including 12 points in the first quarter.
- » Went 7-for-8 from line versus ACU.
- » Had her first 20+ point game as a Razorback with 22 points against UTA.
- » Season/career-best six 3-pointers versus UTA (6-for-8).
- » Assuming role of "Sixth Woman" and has been among the first off the bench in nine games.
- » First start as a Razorback against Florida, 1-18-18

CAREER STATS

Year	GP-GS	Min	Avg	Total			3-Point			F-Throw			Rebounds				PF	FO	Ast	TO	Blk	Stl	Pts	Avg
				FG	FGA	Pct	FG	FGA	Pct	FT	FTA	Pct	Off	Def	Tot	Avg								
2015-16*	26-14	69	2.7	97	229	.424	58	149	.389	21	33	.636	47	39	86	3.3	6	-	46	32	-	58	273	10.5
2016-17*	33-33	210	6.4	171	433	.395	77	247	.312	54	83	.651	74	77	151	4.6	9	-	77	44	3	56	473	14.3
Totals*	59-47	279	4.7	268	662	.405	135	396	.341	75	116	.647	121	116	237	4.0	15	-	123	76	3	114	746	12.6
*At Chipola Junior College																								
2017-18#	21-1	438	20.9	45	142	.317	27	94	.287	20	29	.690	24	38	62	3.0	31	0	30	21	4	12	137	6.5
TOTAL#	21-1	438	20.9	45	142	.317	27	94	.287	20	29	.690	24	38	62	3.0	31	0	30	21	4	12	137	6.5

#Arkansas



3

MALICA MONK
 Junior | 5-5 | Guard | NLR, Arkansas
 N. Little Rock HS

CAREER HIGHS

Points	24	ORU	11-20-17
FG Made	9	Florida	1-18-18*
FG Att.	28	Florida	1-18-18
3P Made	3	at No. 11 MU	1-21-18
3P Att.	6	at No. 11 MU	1-21-18*
FT Made	12	UTA	12-17-17
FT Att.	12	UTA	12-17-17
Off. Rebounds	3	NMSU	11-15-17*
Def. Rebounds	8	Samford	11-12-17
Rebounds	9	Samford	11-12-17
Assists	10	Grambling	12-18-17
Blocks	3	LSU	1-8-17
Steals	6	Kentucky	2-16-17*
Minutes	40	at Auburn	1-14-18

SEASON HIGHS

Points	24	ORU	11-20-17
FG Made	9	Florida	1-18-18*
FG Att.	28	Florida	1-18-18
3P Made	3	at No. 11 MU	1-21-18
3P Att.	6	at No. 11 MU	1-21-18*
FT Made	12	UTA	12-17-17
FT Att.	12	UTA	12-17-17
Off. Rebounds	3	Alabama	1-7-18*
Def. Rebounds	8	Samford	11-12-17
Rebounds	9	Samford	11-12-17
Assists	10	Grambling	12-18-17
Blocks	1	NMSU	11-25-17
Steals	4	NMSU	11-15-17*
Minutes	40	at Auburn	1-14-18

*Most Recent

2017-18 GAME-BY-GAME STATS

Opponent	Date	gs	min	Total		3-Pointers		Free throws		Rebounds			pf	a	t/o	blk	stl	pts	avg		
				fg-fga	pct	3fg-fga	pct	ft-fta	pct	off	def	tot								avg	
SHSU	11/10/17	*	33	7-13	.538	1-4	.250	3-4	.750	0	2	2	2.0	2	4	1	0	4	18	18.0	
SAMFORD	11/12/17	*	37	6-14	.429	2-3	.667	7-7	1.000	1	8	9	5.5	2	6	1	0	2	21	19.5	
at Nebraska	11/16/17	*	37	9-19	.474	1-4	.250	3-3	1.000	0	3	3	4.7	5	6	2	0	3	22	20.3	
at Oral Roberts	11/20/17	*	32	9-16	.563	1-3	.333	5-6	.833	0	3	3	4.3	1	4	1	0	1	24	21.3	
at UTEP	11/24/17	*	36	3-15	.200	1-6	.167	3-3	1.000	0	2	2	3.8	2	5	1	0	3	10	19.0	
vs NM State	11/25/17	*	38	9-17	.529	1-4	.250	3-7	.429	3	4	7	4.3	0	2	5	1	4	22	19.5	
ACU	11/29/17	*	29	5-14	.357	1-2	.500	4-6	.667	0	2	2	4.0	2	1	2	0	1	15	18.9	
at Kansas	12/03/17	*	32	8-20	.400	1-3	.333	4-4	1.000	3	4	7	4.4	4	5	3	0	0	21	19.1	
CHARLOTTE	12/07/17	*	38	6-18	.333	2-6	.333	1-2	.500	1	3	4	4.3	4	3	1	0	3	15	18.7	
TULSA	12/10/17	*	25	4-10	.400	2-4	.500	4-4	1.000	1	3	4	4.3	2	3	3	0	1	14	18.2	
UT-ARLINGTON	12/17/17	*	31	4-11	.364	0-2	.000	12-12	1.000	0	1	1	4.0	1	6	3	0	1	20	18.4	
at Arizona State	12/21/17	*	30	5-19	.263	0-4	.000	2-2	1.000	0	2	2	3.8	1	2	2	0	1	12	17.8	
GRAMBLING	12/28/17	*	35	2-7	.286	0-1	.000	6-8	.750	1	1	2	3.7	1	10	6	1	3	10	17.2	
OLE MISS	12/31/17	*	39	4-13	.308	0-3	.000	4-8	.500	1	1	2	3.6	1	4	3	0	1	12	16.9	
at #5/3 Mississippi State	01/04/18	*	29	3-16	.188	0-1	.000	2-4	.500	0	3	3	3.5	3	4	1	1	2	8	16.3	
ALABAMA	01/07/18	*	33	8-17	.471	1-2	.500	4-7	.571	3	1	4	3.6	4	1	6	0	0	21	16.6	
at Georgia	1/11/18	*	35	4-18	.222	0-2	.000	8-11	.727	0	5	5	3.6	3	2	3	1	2	16	16.5	
at Auburn	01/14/18	*	40	4-13	.308	2-6	.333	4-4	1.000	1	4	5	3.7	4	4	0	0	1	14	16.4	
FLORIDA	01/18/18	*	39	9-28	.321	1-5	.200	4-4	1.000	2	6	8	3.9	3	4	2	0	0	23	16.7	
at No. 11 Mizzou	01/21/18	*	31	4-12	.333	3-6	.500	0-2	.000	0	3	3	3.9	2	2	2	0	0	11	16.5	
at #9/7 South Carolina	01/25/18	*	27	6-20	.300	0-0	.000	0-0	.000	2	0	2	3.8	3	0	1	0	1	12	16.2	
Totals			21	706	119-330	.361	20-71	.282	83-108	.769	19	61	80	3.8	50	78	49	4	34	341	16.2

Games played: 21
 Minutes/game: 33.6
 Points/game: 16.2
 FG Pct: 36.1
 3FG Pct: 28.2
 FT Pct: 76.9

Rebounds/game: 3.8
 Assists/game: 3.7
 Turnovers/game: 2.3
 Assist/turnover ratio: 1.6
 Steals/game: 1.6
 Blocks/game: 0.2

NOTES

- » University of Arkansas Athletic Department Academic Honor Roll: Fall, 2017
- » 14 points, seven assists and just one turnover in exhibition game
- » Fourteen consecutive games with double figure scoring - snapped at No. 5/3 Mississippi State.
- » Twenty games in double figure scoring this season.
- » Eight games with 20+ points.
- » Named CollegeSportsMadness.com's SEC Player of the Week (11.13.17).
- » Improved career-best with 24 points in 32 minutes at ORU
- » Had 13 points in the fourth quarter at ORU.
- » Led team in scoring nine games.
- » Six games with 5+ assists this year. Had four all of last year.
- » Career-best 10 assists and her first career double-double with 10 points and 10 assists versus Grambling State.
- » Perfect from the line in nine games including a career-best 12-for-12 against UTA.

CAREER STATS

Year	GP-GS	Min	Avg	Total			3-Point			F-Throw			Rebounds				PF	FO	Ast	TO	Blk	Stl	Pts	Avg
				FG	FGA	Pct	FG	FGA	Pct	FT	FTA	Pct	Off	Def	Tot	Avg								
2015-16	27-5	461	17.1	48	136	.353	2	10	.200	12	19	.632	6	23	29	1.1	60	2	47	44	5	23	110	4.1
2016-17	27-27	842	31.2	96	230	.417	7	25	.280	48	71	.676	29	52	81	3.0	79	2	83	59	7	62	247	9.1
2017-18	21-21	706	33.6	119	330	.361	20	71	.282	83	108	.769	19	61	80	3.8	50	1	78	49	4	34	341	16.2
TOTAL	75-53	2009	26.8	263	696	.378	29	106	.274	143	198	.722	54	136	190	2.5	189	5	208	152	16	119	698	9.3



4

KEIRYN SWENSON
 Junior | 6-1 | Forward | Wichita, Kansas
 Maize HS

2017-18 GAME-BY-GAME STATS

Opponent	Date	gs	min	Total		3-Pointers		Free throws		Rebounds				pf	a	t/o	blk	stl	pts	avg
				fg-fga	pct	3fg-fga	pct	ft-fa	pct	off	def	tot	avg							
SHSU	11/10/17	18	2-8	.250	1-4	.250	0-0	.000	0	1	1	1.0	1	0	2	0	5	5.0		
SAMFORD	11/12/17	13	3-5	.600	3-4	.750	0-0	.000	0	0	0	0.5	3	1	0	0	9	7.0		
at Nebraska	11/16/17	17	1-5	.200	1-5	.200	0-0	.000	1	2	3	1.3	2	0	0	0	3	5.7		
at Oral Roberts	11/20/17	15	2-3	.667	1-2	.500	1-2	.500	0	2	2	1.5	2	0	1	0	1	6	5.8	
at UTEP	11/24/17	16	2-7	.286	2-6	.333	0-2	.000	1	1	2	1.6	0	0	1	0	2	6	5.8	
vs NM State	11/25/17	14	2-5	.400	1-4	.250	0-0	.000	2	4	6	2.3	1	0	4	0	5	5.7		
ACU	11/29/17	17	1-3	.333	1-2	.500	0-0	.000	1	1	2	2.3	0	0	1	0	1	3	5.3	
at Kansas	12/03/17	18	1-3	.333	1-3	.333	1-2	.500	0	2	2	2.3	1	0	1	1	0	4	5.1	
CHARLOTTE	12/07/17	13	1-5	.200	1-4	.250	0-0	.000	0	2	2	2.2	2	0	0	0	3	4.9		
TULSA	12/10/17	21	2-7	.286	1-5	.200	2-2	1.000	2	4	6	2.6	0	0	0	1	0	7	5.1	
UT-ARLINGTON	12/17/17	17	4-8	.500	2-4	.500	0-0	.000	1	4	5	2.8	1	2	2	0	10	5.5		
at Arizona State	12/21/17	15	1-3	.333	0-1	.000	0-0	.000	2	1	3	2.8	0	1	3	1	0	2	5.3	
GRAMBLING	12/28/17	24	2-3	.667	2-3	.667	2-2	1.000	0	2	2	2.8	2	2	0	0	0	8	5.5	
OLE MISS	12/31/17	12	3-8	.375	1-6	.167	1-1	1.000	3	1	4	2.9	1	0	2	1	0	8	5.6	
at #5/3 Mississippi State	01/04/18	15	0-0	.000	0-0	.000	0-0	.000	1	1	2	2.8	1	0	1	0	0	0	5.3	
ALABAMA	01/07/18	12	3-4	.750	3-4	.750	0-0	.000	0	0	0	2.6	3	0	0	1	0	9	5.5	
at Georgia	11/11/18	6	0-2	.000	0-2	.000	0-0	.000	0	0	0	2.5	0	0	1	0	0	0	5.2	
at Auburn	01/14/18	11	0-2	.000	0-2	.000	0-0	.000	0	0	0	2.3	1	0	0	0	0	0	4.9	
FLORIDA	01/18/18	26	3-6	.500	1-4	.250	0-0	.000	1	3	4	2.4	1	1	1	1	1	7	5.0	
at No. 11 Mizzou	01/21/18	22	2-9	.222	1-5	.200	0-0	.000	1	3	4	2.5	1	1	0	0	0	5	5.0	
at #9/7 South Carolina	01/25/18	17	1-8	.125	1-5	.200	3-5	.600	1	3	4	2.6	1	0	1	1	0	6	5.0	
Totals		0	339	36-104	.346	24-75	.320	10-16	.625	17	37	54	2.6	24	8	19	9	5	106	5.0

Games played: 21
 Minutes/game: 16.1
 Points/game: 5.0
 FG Pct: 34.6
 3FG Pct: 32.0
 FT Pct: 62.5

Rebounds/game: 2.6
 Assists/game: 0.4
 Turnovers/game: 0.9
 Assist/turnover ratio: 0.4
 Steals/game: 0.2
 Blocks/game: 0.4

CAREER HIGHS

Points	23	vs. HBU	12-28-16
FGM	7	vs. Navy	11-26-16
FGA	13	at Ole Miss	1-1-17
3PM	4	at Ole Miss	1-1-17
3PA	9	at Ole Miss	1-1-17
FTM	8	vs. HBU	12-28-16
FTA	9	vs. HBU	12-28-16
OREB	5	at Alabama	1-15-17*
DREB	6	vs. NSU	12-18-15*
REB	9	at Alabama	1-15-17*
AST	2	Grambling	12-18-17*
BLK	2	vs. SHSU	11-10-17*
STL	2	UTEP	11-24-17*
MIN	37	at Ole Miss	1-1-17

SEASON HIGHS

Points	10	UTA	12-17-17
FG Made	4	UTA	12-17-17
FG Att.	9	at Missouri	1-21-18
3P Made	3	Alabama	1-7-18*
3P Att.	6	Ole Miss	12-31-17*
FT Made	3	at S. Carolina	1-25-18
FT Att.	5	at S. Carolina	1-25-18
Off. Rebounds	3	Ole Miss	12-31-17
Def. Rebounds	4	UTA	12-17-17*
Rebounds	6	Tulsa	12-10-17*
Assists	2	Grambling	12-18-17*
Blocks	2	SHSU	11-10-17
Steals	2	UTEP	11-24-17
Minutes	26	Florida	1-18-18

*Most Recent

NOTES

- » Saw a 206.4% increase in scoring between freshman and sophomore seasons (78 vs. 239 points).
- » **SEC Winter Academic Honor Roll** (2016-17).
- » **SEC First-Year Academic Honor Roll** (2015-16).
- » **University of Arkansas Athletic Department Academic Champion (4.0):** Fall, 2017
- » At least one 3-pointer in her first 11 games this year and in 17 games this season.
- » Season-best 10 points on 4-for-8 shooting against UTA.

CAREER STATS

Year	GP-GS	Min	Avg	Total			3-Point			F-Throw			Rebounds				PF	FO	Ast	TO	Blk	Stl	Pts	Avg
				FG	FGA	Pct	FG	FGA	Pct	FT	FTA	Pct	Off	Def	Tot	Avg								
2015-16	29-1	373	12.9	27	84	.321	5	21	.238	19	27	.704	34	34	68	2.3	26	0	7	15	4	10	78	2.7
2016-17	30-11	709	23.6	89	179	.497	31	71	.437	30	39	.769	53	71	124	4.1	56	0	15	28	17	16	239	8.0
2017-18	21-0	339	16.1	36	104	.346	24	75	.320	10	16	.625	17	37	54	2.6	24	0	8	19	9	5	106	5.0
TOTAL	80-12	1421	17.8	152	367	.414	60	167	.359	59	82	.720	104	142	246	3.1	106	0	30	62	30	31	423	5.3



10

KIARA WILLIAMS

Sophomore | 6-1 | Forward | LR, Arkansas Little Rock HS

CAREER HIGHS

Points	15	at Auburn	1-14-18
FGM	7	at Auburn	1-14-18
FGA	11	NMSU	11-25-17
3PM	1	#5 Miss St.	1-4-18
3PA	1	#5 Miss St.	1-4-18
FTM	4	Grambling	12-18-17*
FTA	11	Charlotte	12-6-17
OREB	8	Grambling	12-18-17*
DREB	11	at Kansas	12-3-17
REB	16	Grambling	12-18-17*
AST	2	Florida	1-18-18*
BLK	4	Ole Miss	12-31-17*
STL	4	Charlotte	12-6-17
MIN	29	Charlotte	12-6-17

SEASON HIGHS

Points	15	at Auburn	1-14-18
FG Made	7	at Auburn	1-14-18
FG Att.	11	NMSU	11-25-17
3P Made	1	#5 Miss St.	1-4-18
3P Att.	1	#5 Miss St.	1-4-18
FT Made	4	Grambling	12-18-17*
FT Att.	11	Charlotte	12-6-17
Off. Rebounds	8	Grambling	12-18-17*
Def. Rebounds	11	at Kansas	12-3-17
Rebounds	16	Grambling	12-18-17*
Assists	2	Florida	1-18-18*
Blocks	4	Ole Miss	12-31-17*
Steals	4	Charlotte	12-6-17
Minutes	29	Charlotte	12-6-17

*Most Recent

2017-18 GAME-BY-GAME STATS

Opponent	Date	gs	min	Total		3-Pointers		Free throws		Rebounds			pf	a	t/o	blk	stl	pts	avg		
				fg-fga	pct	3fg-fga	pct	ft-fa	pct	off	def	tot								avg	
SHSU	11/10/17	*	17	3-4	.750	0-0	.000	1-1	1.000	0	2	2	2.0	1	1	0	0	7	7.0		
SAMFORD	11/12/17	*	19	5-7	.714	0-0	.000	0-0	.000	1	4	5	3.5	1	0	0	4	2	10	8.5	
at Nebraska	11/16/17	*	20	3-6	.500	0-0	.000	0-0	.000	6	5	11	6.0	4	1	2	2	1	6	7.7	
at Oral Roberts	11/20/17	*	17	3-7	.429	0-0	.000	2-2	1.000	3	2	5	5.8	4	0	1	0	1	8	7.8	
at UTEP	11/24/17	*	8	0-2	.000	0-0	.000	1-2	.500	1	0	1	4.8	3	0	1	0	1	1	6.4	
vs NM State	11/25/17	*	25	5-11	.455	0-0	.000	1-3	.333	4	7	11	5.8	2	0	3	0	2	11	7.2	
ACU	11/29/17	*	20	4-6	.667	0-0	.000	4-5	.800	5	3	8	6.1	0	0	0	1	3	12	7.9	
at Kansas	12/03/17	*	28	3-6	.500	0-0	.000	0-1	.000	5	11	16	7.4	3	0	4	2	0	6	7.6	
CHARLOTTE	12/07/17	*	29	3-8	.375	0-0	.000	3-11	.273	8	4	12	7.9	3	0	0	3	4	9	7.8	
TULSA	12/10/17	*	17	6-9	.667	0-0	.000	1-4	.250	4	3	7	7.8	2	2	0	2	0	13	8.3	
UT-ARLINGTON	12/17/17	*	22	1-3	.333	0-0	.000	0-0	.000	3	5	8	7.8	4	0	0	1	2	2	7.7	
at Arizona State	12/21/17	*	16	0-2	.000	0-0	.000	3-4	.750	0	4	4	7.5	1	0	1	1	0	3	7.3	
GRAMBLING	12/28/17	*	22	4-10	.400	0-0	.000	4-8	.500	8	8	16	8.2	1	0	0	0	1	12	7.7	
OLE MISS	12/31/17	*	23	1-5	.200	0-0	.000	3-4	.750	2	7	9	8.2	5	1	0	4	1	5	7.5	
at #5/3 Mississippi State	01/04/18	*	20	5-5	1.000	1-1	1.000	2-2	1.000	0	2	2	7.8	1	0	3	1	0	13	7.9	
ALABAMA	01/07/18	*	21	3-10	.300	0-0	.000	0-0	.000	1	6	7	7.8	1	0	2	0	2	6	7.8	
at Georgia	11/11/18	*	7	1-4	.250	0-0	.000	0-0	.000	2	1	3	7.5	2	1	0	0	0	2	7.4	
at Auburn	01/14/18	*	27	7-9	.778	0-0	.000	1-3	.333	7	7	14	7.8	2	0	0	0	1	15	7.8	
FLORIDA	01/18/18	*	17	4-6	.667	0-0	.000	0-0	.000	1	3	4	7.6	1	0	2	1	0	8	7.8	
at No. 11 Mizou	01/21/18	*	20	6-10	.600	0-0	.000	2-3	.667	3	4	7	7.6	4	0	0	0	1	14	8.2	
at #9/7 South Carolina	01/25/18	*	14	0-2	.000	0-1	.000	0-0	.000	1	3	4	7.4	3	0	0	0	1	0	7.8	
Totals			20	409	67-132	.508	1-2	.500	28-53	.528	65	91	156	7.4	48	6	19	22	23	163	7.8

Games played: 21
 Minutes/game: 19.5
 Points/game: 7.8
 FG Pct: 50.8
 3FG Pct: 50.0
 FT Pct: 52.8

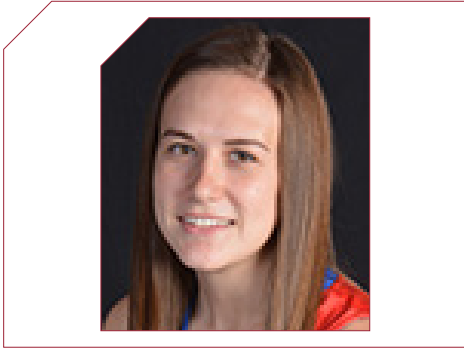
Rebounds/game: 7.4
 Assists/game: 0.3
 Turnovers/game: 0.9
 Assist/turnover ratio: 0.3
 Steals/game: 1.1
 Blocks/game: 1.0

NOTES

- » Enjoys Marvel movies.
- » Career-best four blocks against Samford. Tied that against Ole Miss in the SEC opener.
- » Posted first double-figure rebound total with 11 boards on the road at Nebraska.
- » Has scored in every game.
- » First time in her career to have double figures in the first half against ACU.
- » Career-best 16 rebounds, including 11 defensive rebounds, at Kansas.
- » Eight games in double figures.
- » Made her first career 3-point basket in the opening shot of the No. 5/3 Mississippi State game.
- » Double-Doubles: First career double-double with 11 points and 11 rebounds against New Mexico State ... Second career double-double with 12 points and tied her career-best with 16 rebounds versus Grambling State ... Third at Auburn with a career-best 15 points and 14 rebounds.

CAREER STATS

Year	GP-GS	Min	Avg	Total			3-Point			F-Throw			Rebounds				PF	FO	Ast	TO	Blk	Stl	Pts	Avg
				FG	FGA	Pct	FG	FGA	Pct	FT	FTA	Pct	Off	Def	Tot	Avg								
2016-17	20-5	227	11.4	26	48	.542	0	0	.000	10	26	.385	24	31	55	2.8	34	1	3	15	5	9	62	3.1
2017-18	21-20	409	19.5	67	132	.508	1	2	.500	28	53	.528	65	91	156	7.4	48	1	6	19	22	23	163	7.8
TOTAL	41-25	636	15.5	93	180	.517	1	2	.500	38	79	.481	89	122	211	5.1	82	2	9	34	27	32	225	5.5



2017-18 GAME-BY-GAME STATS

Opponent	Date	gs	min	Total		3-Pointers		Free throws		Rebounds				pf	a	t/o	blk	stl	pts	avg
				fg-fga	pct	3fg-fga	pct	ft-fta	pct	off	def	tot	avg							
GRAMBLING	12/28/17		dnp	-	-	-	-	-	-	-	-	-	-	-	-	-	-	-	-	-
OLE MISS	12/31/17		dnp	-	-	-	-	-	-	-	-	-	-	-	-	-	-	-	-	-
at #5/3 Mississippi State	01/04/18	3		0-1	.000	0-0	.000	0-0	.000	0	0	0	0.0	1	0	0	0	0	0	0.0
ALABAMA	01/07/18		dnp	-	-	-	-	-	-	-	-	-	-	-	-	-	-	-	-	-
at Georgia	1/11/18		dnp	-	-	-	-	-	-	-	-	-	-	-	-	-	-	-	-	-
at Auburn	01/14/18		dnp	-	-	-	-	-	-	-	-	-	-	-	-	-	-	-	-	-
FLORIDA	01/18/18		dnp	-	-	-	-	-	-	-	-	-	-	-	-	-	-	-	-	-
at No. 11 Mizzou	01/21/18	3		0-1	.000	0-0	.000	0-0	.000	0	0	0	0.0	0	0	0	0	0	0	0.0
at #9/7 South Carolina	01/25/18	2		0-1	.000	0-0	.000	0-0	.000	0	0	0	0.0	0	0	1	0	0	0	0.0
Totals		0	8	0-3	.000	0-0	.000	0-0	.000	0	0	0	0.0	1	0	1	0	0	0	0.0

Games played: 3
 Minutes/game: 2.7
 FG Pct: 0.0

Turnovers/game: 0.3

12

BRENNA MCCLURE

R-Sophomore | 5-6 | Guard | Lyons, Kansas
 Lyons HS | Hutchinson CC

CAREER HIGHS

Points	-
FG Made	-
FG Att.	1 at S Carolina1-25-18*
3P Made	-
3P Att.	-
FT Made	-
FT Att.	-
Off. Rebounds	-
Def. Rebounds	-
Rebounds	-
Assists	-
Blocks	-
Steals	-
Minutes	3at No. 11 MU 1-21-18*

SEASON HIGHS

Points	-
FG Made	-
FG Att.	1 at S Carolina1-25-18*
3P Made	-
3P Att.	-
FT Made	-
FT Att.	-
Off. Rebounds	-
Def. Rebounds	-
Rebounds	-
Assists	-
Blocks	-
Steals	-
Minutes	3 at No. 11 MU 1-21-18*

*Most Recent

NOTES

- » University of Arkansas Athletic Department Academic Champion (4.0): Fall, 2017
- » Joined the team as a walk-on for the spring semester.
- » Pace the Blue Dragons went 35-2, shared the Jayhawk Conference championship and won the Region VI championship to qualify for the NJCAA Tournament

CAREER STATS

Year	GP-GS	Min	Avg	Total			3-Point			F-Throw			Rebounds				PF	FO	Ast	TO	Blk	Stl	Pts	Avg
				FG	FGA	Pct	FG	FGA	Pct	FT	FTA	Pct	Off	Def	Tot	Avg								
2017-18	3-0	8	2.7	0	3	.000	0	0	.000	0	0	.000	0	0	0	0.0	1	0	0	1	0	0	0	0.0
TOTAL	3-0	8	2.7	0	3	.000	0	0	.000	0	0	.000	0	0	0	0.0	1	0	0	1	0	0	0	0.0



13 GRAYCE SPANGLER
 Freshman | 5-11 | Guard | Fayetteville, Ark.
 Fayetteville HS

CAREER HIGHS

Points	4	#5 Miss St.	1-4-18
FG Made	2	#5 Miss St.	1-4-18
FG Att.	3	#5 Miss St.	1-4-18
3P Made	-		
3P Att.	2	ACU	11-29-17
FT Made	3	UTA	12-17-17
FT Att.	3	UTA	12-17-17
Off. Rebounds	1	#5 Miss St.	1-4-18
Def. Rebounds	1	at ASU	12-21-17*
Rebounds	1	UTA	12-17-17
Assists	-		
Blocks	-		
Steals	1	at S Carolina	1-25-18
Minutes	9	at S Carolina	1-25-18

SEASON HIGHS

Points	4	#5 Miss St.	1-4-18
FG Made	2	#5 Miss St.	1-4-18
FG Att.	3	#5 Miss St.	1-4-18
3P Made	-		
3P Att.	2	ACU	11-29-17
FT Made	3	UTA	12-17-17
FT Att.	3	UTA	12-17-17
Off. Rebounds	1	#5 Miss St.	1-4-18
Def. Rebounds	1	at ASU	12-21-17*
Rebounds	1	UTA	12-17-17
Assists	-		
Blocks	-		
Steals	1	at S Carolina	1-25-18
Minutes	9	at S Carolina	1-25-18

*Most Recent

2017-18 GAME-BY-GAME STATS

Opponent	Date	gs	min	Total		3-Pointers		Free throws		Rebounds				pf	a	t/o	blk	stl	pts	avg
				fg-fga	pct	3fg-fga	pct	ft-fta	pct	off	def	tot	avg							
SHSU	11/10/17	4	0-1	.000	0-0	.000	0-2	.000	0	0	0	0.0	0	0	0	0	0	0	0.0	
SAMFORD	11/12/17	2	0-1	.000	0-1	.000	0-0	.000	0	1	1	0.5	0	0	0	0	0	0	0.0	
at Nebraska	11/16/17	dnp	-	-	-	-	-	-	-	-	-	-	-	-	-	-	-	-	-	
at Oral Roberts	11/20/17	dnp	-	-	-	-	-	-	-	-	-	-	-	-	-	-	-	-	-	
at UTEP	11/24/17	5	0-0	.000	0-0	.000	0-0	.000	0	0	0	0.3	2	0	0	0	0	0	0.0	
vs NM State	11/25/17	dnp	-	-	-	-	-	-	-	-	-	-	-	-	-	-	-	-	-	
ACU	11/29/17	6	0-2	.000	0-2	.000	0-0	.000	0	0	0	0.3	0	0	1	0	0	0	0.0	
at Kansas	12/03/17	1	0-0	.000	0-0	.000	0-0	.000	0	0	0	0.2	0	0	0	0	0	0	0.0	
CHARLOTTE	12/07/17	dnp	-	-	-	-	-	-	-	-	-	-	-	-	-	-	-	-	-	
TULSA	12/10/17	2	0-0	.000	0-0	.000	0-0	.000	0	1	1	0.3	0	0	0	0	0	0	0.0	
UT-ARLINGTON	12/17/17	3	0-1	.000	0-0	.000	3-3	1.000	0	1	1	0.4	1	0	1	0	0	3	0.4	
at Arizona State	12/21/17	7	0-1	.000	0-0	.000	0-0	.000	0	1	1	0.5	2	0	0	0	0	0	0.4	
GRAMBLING	12/28/17	3	0-2	.000	0-1	.000	0-0	.000	0	0	0	0.4	0	0	0	0	0	0	0.3	
OLE MISS	12/31/17	dnp	-	-	-	-	-	-	-	-	-	-	-	-	-	-	-	-	-	
at #5/3 Mississippi State	01/04/18	3	2-3	.667	0-1	.000	0-1	.000	1	0	1	0.5	1	0	2	0	0	4	0.7	
ALABAMA	01/07/18	0	0-0	.000	0-0	.000	0-0	.000	0	0	0	0.5	0	0	0	0	0	0	0.6	
at Georgia	11/11/18	dnp	-	-	-	-	-	-	-	-	-	-	-	-	-	-	-	-	-	
at Auburn	01/14/18	dnp	-	-	-	-	-	-	-	-	-	-	-	-	-	-	-	-	-	
FLORIDA	01/18/18	dnp	-	-	-	-	-	-	-	-	-	-	-	-	-	-	-	-	-	
at No. 11 Mizzou	01/21/18	5	0-2	.000	0-1	.000	0-0	.000	0	0	0	0.4	1	0	0	0	0	0	0.6	
at #9/7 South Carolina	01/25/18	9	0-1	.000	0-0	.000	0-0	.000	0	0	0	0.4	3	0	1	0	1	0	0.5	
Totals		0	50	2-14	.143	0-6	.000	3-6	.500	1	4	5	0.4	10	0	5	0	1	7	0.5

Games played: 13
 Minutes/game: 3.8
 Points/game: 0.5
 FG Pct: 14.3
 3FG Pct: 0.0
 FT Pct: 50.0

Rebounds/game: 0.4
 Turnovers/game: 0.4
 Steals/game: 0.1

NOTES

- » Father Shannon lettered as a linebacker (1989) and mother, Stacy, was a member of the Pom Squad at Arkansas.
- » Scored her first points as a Razorback going 3-for-3 from the line in a win over UTA.
- » **University of Arkansas Athletic Department Academic Athletic Director's List:** Fall, 2017

CAREER STATS

Year	GP-GS	Min	Avg	Total			3-Point			F-Throw			Rebounds				PF	FO	Ast	TO	Blk	Stl	Pts	Avg
				FG	FGA	Pct	FG	FGA	Pct	FT	FTA	Pct	Off	Def	Tot	Avg								
2017-18	13-0	50	3.8	2	14	.143	0	6	.000	3	6	.500	1	4	5	0.4	10	0	0	5	0	1	7	0.5
TOTAL	13-0	50	3.8	2	14	.143	0	6	.000	3	6	.500	1	4	5	0.4	10	0	0	5	0	1	7	0.5



14

JAILYN MASON
 Sophomore | 5-9 | Guard | Mason, Ohio
 William Mason HS

CAREER HIGHS

Points	19	ORU	12-21-16
FGM	9	ORU	12-21-16
FGA	15	Alabama	1-7-18*
3PM	3	at Auburn	1-14-18*
3PA	7	Alabama	1-7-18*
FTM	3	NMSU	11-25-17*
FTA	7	NMSU	11-25-17
OREB	4	Texas Tech	12-3-16
DREB	7	Grambling	12-18-17*
REB	9	Texas Tech	12-3-16
AST	11	HBU	12-28-16
BLK	3	SHSU	11-10-17
STL	4	Nebraska	11-16-17*
MIN	40	ORU	12-21-16

SEASON HIGHS

Points	15	at Auburn	1-14-18*
FG Made	7	#5 Miss St.	1-4-18*
FG Att.	15	Alabama	1-7-18
3P Made	3	at Auburn	1-14-18*
3P Att.	7	Alabama	1-7-18*
FT Made	2	Charlotte	12-6-17
FT Att.	2	Charlotte	12-6-17*
Off. Rebounds	3	NMSU	11-25-17
Def. Rebounds	7	Grambling	12-18-17*
Rebounds	7	Grambling	12-18-17*
Assists	8	ACU	11-29-17
Blocks	3	SHSU	11-10-17
Steals	4	Nebraska	11-16-17
Minutes	40	Florida	1-18-18

*Most Recent

2017-18 GAME-BY-GAME STATS

Opponent	Date	gs	min	Total		3-Pointers		Free throws		Rebounds			pf	a	t/o	blk	stl	pts	avg		
				fg-fga	pct	3fg-fga	pct	ft-fa	pct	off	def	tot								avg	
SHSU	11/10/17	*	25	3-10	.300	2-4	.500	0-0	.000	0	5	5	5.0	0	4	1	3	1	8	8.0	
SAMFORD	11/12/17	*	35	5-11	.455	2-5	.400	0-2	.000	0	1	1	3.0	2	2	1	0	2	12	10.0	
at Nebraska	11/16/17	*	30	4-12	.333	0-2	.000	0-1	.000	0	5	5	3.7	3	2	4	0	4	8	9.3	
at Oral Roberts	11/20/17	*	32	3-9	.333	0-0	.000	0-0	.000	1	1	2	3.3	1	1	1	0	0	6	8.5	
at UTEP	11/24/17	*	24	3-9	.333	2-6	.333	0-0	.000	1	3	4	3.4	1	2	0	0	1	8	8.4	
vs NM State	11/25/17	*	28	1-8	.125	1-4	.250	0-0	.000	3	3	6	3.8	3	2	1	1	2	3	7.5	
ACU	11/29/17	*	34	5-13	.385	3-7	.429	0-0	.000	0	7	7	4.3	1	8	3	1	2	13	8.3	
at Kansas	12/03/17	*	33	4-9	.444	2-5	.400	0-0	.000	0	2	2	4.0	5	1	2	0	2	10	8.5	
CHARLOTTE	12/07/17	*	30	4-10	.400	2-6	.333	2-2	1.000	0	4	4	4.0	2	4	1	1	1	12	8.9	
TULSA	12/10/17	*	30	5-11	.455	1-4	.250	0-0	.000	0	5	5	4.1	0	6	0	0	0	11	9.1	
UT-ARLINGTON	12/17/17	*	33	7-11	.636	1-4	.250	0-0	.000	0	4	4	4.1	1	7	3	0	3	15	9.6	
at Arizona State	12/21/17	*	31	3-7	.429	0-1	.000	0-0	.000	0	4	4	4.1	0	1	5	1	0	6	9.3	
GRAMBLING	12/28/17	*	27	3-11	.273	2-4	.500	0-0	.000	0	7	7	4.3	2	1	1	0	1	8	9.2	
OLE MISS	12/31/17	*	33	5-11	.455	3-4	.750	0-0	.000	0	2	2	4.1	3	4	1	1	1	13	9.5	
at #5/3 Mississippi State	01/04/18	*	35	7-11	.636	1-1	1.000	0-0	.000	1	2	3	4.1	0	4	2	1	0	15	9.9	
ALABAMA	01/07/18	*	37	5-15	.333	2-7	.286	0-0	.000	2	4	6	4.2	4	0	4	2	3	12	10.0	
at Georgia	11/11/18	*	36	5-10	.500	1-2	.500	4-4	1.000	0	5	5	4.2	4	1	5	0	5	15	10.3	
at Auburn	01/14/18	*	38	6-12	.500	3-6	.500	0-0	.000	0	2	2	4.1	1	5	6	0	0	15	10.6	
FLORIDA	01/18/18	*	40	2-12	.167	1-6	.167	0-0	.000	0	6	6	4.2	2	1	1	0	1	5	10.3	
at No. 11 Mizou	01/21/18	*	31	6-11	.545	2-3	.667	0-0	.000	1	2	3	4.2	2	1	3	0	0	14	10.5	
at #9/7 South Carolina	01/25/18	*	32	5-12	.417	0-2	.000	0-0	.000	1	1	2	4.0	2	1	0	1	0	10	10.4	
Totals			21	674	91-225	.404	31-83	.373	6-9	.667	10	75	85	4.0	39	58	45	12	29	219	10.4

Games played: 21
 Minutes/game: 32.1
 Points/game: 10.4
 FG Pct: 40.4
 3FG Pct: 37.3
 FT Pct: 66.7

Rebounds/game: 4.0
 Assists/game: 2.8
 Turnovers/game: 2.1
 Assist/turnover ratio: 1.3
 Steals/game: 1.4
 Blocks/game: 0.6

NOTES

- » Has a large Jordan shoe collection.
- » Would like to be a sports photographer.
- » At least one defensive rebound in each game this season.
- » Set season-best marks for field goals, field goals attempted, 3-point field goals and 3-point field goals attempted as well as for rebounds and assists against Abilene Christian.
- » Thirteen games this year and seven consecutive games with double-figure scoring.
- » Season-best 15 points with seven made baskets against UTA. Tied that against No. 5/3 Mississippi State and again at Auburn.

CAREER STATS

Year	GP-GS	Min	Avg	Total			3-Point			F-Throw			Rebounds				PF	FO	Ast	TO	Blk	Stl	Pts	Avg
				FG	FGA	Pct	FG	FGA	Pct	FT	FTA	Pct	Off	Def	Tot	Avg								
2016-17	30-30	894	29.8	100	256	.391	19	53	.358	7	11	.636	21	96	117	3.9	72	2	93	56	8	31	226	7.5
2017-18	21-21	674	32.1	91	225	.404	31	83	.373	6	9	.667	10	75	85	4.0	39	1	58	45	12	29	219	10.4
TOTAL	51-51	1568	30.7	191	481	.397	50	136	.368	13	20	.650	31	171	202	4.0	111	3	151	101	20	60	445	8.7



20 SYDNEY STOUT
 Sophomore | 6-0 | Forward | Bixby, Okla.
 Bixby HS

CAREER HIGHS

Points	8	HBU	12-28-16
FGM	3	HBU	12-28-16
FGA	5	HBU	12-28-16
3PM	2	HBU	12-28-16
3PA	4	HBU	12-28-16
FTM	2	Texas A&M	1-12-17
FTA	4	Texas A&M	1-12-17
OREB	1	SHSU	11-10-17*
DREB	6	HBU	12-28-16
REB	6	HBU	12-28-16
AST	1	at S Carolina	1-25-18*
BLK	1	ULM	11-13-16
STL	2	at S Carolina	1-25-18
MIN	15	HBU	12-28-16

SEASON HIGHS

Points	4	UTA	12-17-17
FG Made	1	UTA	12-17-17
FG Att.	2	ACU	11-29-17
3P Made	1	UTA	12-17-17
3P Att.	1	UTA	12-17-17*
FT Made	1	UTA	12-17-17*
FT Att.	2	UTA	12-17-17
Off. Rebounds	1	UTA	12-17-17*
Def. Rebounds	1	Grambling	12-18-17*
Rebounds	2	UTA	12-17-17
Assists	1	at S Carolina	1-25-18*
Blocks	-		
Steals	2	at S Carolina	1-25-18
Minutes	9	at S Carolina	1-25-18

*Most Recent

2017-18 GAME-BY-GAME STATS

Opponent	Date	gs	min	Total		3-Pointers		Free throws		Rebounds				pf	a	t/o	blk	stl	pts	avg
				fg-fga	pct	3fg-fga	pct	ft-fa	pct	off	def	tot	avg							
SHSU	11/10/17	6	0-1	.000	0-0	.000	1-2	.500	1	0	1	1.0	1	0	1	0	0	1	1.0	
SAMFORD	11/12/17	2	0-0	.000	0-0	.000	1-2	.500	0	1	1	1.0	0	0	0	0	0	1	1.0	
at Nebraska	11/16/17	dnp	-	-	-	-	-	-	-	-	-	-	-	-	-	-	-	-	-	
at Oral Roberts	11/20/17	dnp	-	-	-	-	-	-	-	-	-	-	-	-	-	-	-	-	-	
at UTEP	11/24/17	6	0-0	.000	0-0	.000	0-0	.000	0	0	0	0.7	0	0	0	0	0	0	0.7	
vs NM State	11/25/17	dnp	-	-	-	-	-	-	-	-	-	-	-	-	-	-	-	-	-	
ACU	11/29/17	3	0-2	.000	0-1	.000	0-0	.000	1	0	1	0.8	0	0	0	0	0	0	0.5	
at Kansas	12/03/17	dnp	-	-	-	-	-	-	-	-	-	-	-	-	-	-	-	-	-	
CHARLOTTE	12/07/17	dnp	-	-	-	-	-	-	-	-	-	-	-	-	-	-	-	-	-	
TULSA	12/10/17	3	0-0	.000	0-0	.000	0-0	.000	0	1	1	0.8	0	0	0	0	0	0	0.4	
UT-ARLINGTON	12/17/17	6	1-1	1.000	1-1	1.000	1-2	.500	1	1	2	1.0	0	0	0	0	0	4	1.0	
at Arizona State	12/21/17	5	0-0	.000	0-0	.000	0-0	.000	0	0	0	0.9	0	0	0	0	0	0	0.9	
GRAMBLING	12/28/17	5	0-2	.000	0-1	.000	0-0	.000	0	1	1	0.9	0	1	0	0	0	0	0.8	
OLE MISS	12/31/17	dnp	-	-	-	-	-	-	-	-	-	-	-	-	-	-	-	-	-	
at #5/3 Mississippi State	01/04/18	4	0-0	.000	0-0	.000	0-0	.000	0	0	0	0.8	0	0	0	0	0	0	0.7	
ALABAMA	01/07/18	dnp	-	-	-	-	-	-	-	-	-	-	-	-	-	-	-	-	-	
at Georgia	11/11/18	dnp	-	-	-	-	-	-	-	-	-	-	-	-	-	-	-	-	-	
at Auburn	01/14/18	dnp	-	-	-	-	-	-	-	-	-	-	-	-	-	-	-	-	-	
FLORIDA	01/18/18	dnp	-	-	-	-	-	-	-	-	-	-	-	-	-	-	-	-	-	
at No. 11 Mizzou	01/21/18	5	0-0	.000	0-0	.000	0-0	.000	0	1	1	0.8	0	0	0	0	0	0	0.6	
at #9/7 South Carolina	01/25/18	9	0-0	.000	0-0	.000	0-0	.000	0	0	0	0.7	2	1	1	0	2	0	0.5	
Totals		0	54	1-6	.167	1-3	.333	3-6	.500	3	5	8	0.7	3	2	2	0	2	6	0.5

Games played: 11
 Minutes/game: 4.9
 Points/game: 0.5
 FG Pct: 16.7
 3FG Pct: 33.3
 FT Pct: 50.0

Rebounds/game: 0.7
 Assists/game: 0.2
 Turnovers/game: 0.2
 Assist/turnover ratio: 1.0
 Steals/game: 0.2

NOTES

- » SEC First-Year Academic Honor Roll (2016-17).
- » University of Arkansas Athletic Department Academic Champion (4.0): Fall, 2017

CAREER STATS

Year	GP-GS	Min	Avg	Total			3-Point			F-Throw			Rebounds				PF	FO	Ast	TO	Blk	Stl	Pts	Avg
				FG	FGA	Pct	FG	FGA	Pct	FT	FTA	Pct	Off	Def	Tot	Avg								
2016-17	15-0	72	4.8	5	14	.357	4	12	.333	2	4	.500	2	9	11	0.7	15	0	1	2	1	0	16	1.1
2017-18	11-0	54	4.9	1	6	.167	1	3	.333	3	6	.500	3	5	8	0.7	3	0	2	2	0	2	6	0.5
TOTAL	26-0	126	4.8	6	20	.300	5	15	.333	5	10	.500	5	14	19	0.7	18	0	3	4	1	2	22	0.8



21 **DEVIN COSPER**
 Grad | 5-10 | Guard | Coffeyville, Kansas
 Coffeyville CC | Field Kindley HS

2017-18 GAME-BY-GAME STATS

Opponent	Date	gs	min	Total		3-Pointers		Free throws		Rebounds			pf	a	t/o	blk	stl	pts	avg		
				fg-fga	pct	3fg-fga	pct	ft-fa	pct	off	def	tot								avg	
SHSU	11/10/17	*	31	6-13	.462	4-11	.364	1-2	.500	2	10	12	12.0	3	2	4	1	1	17	17.0	
SAMFORD	11/12/17	*	29	5-12	.417	3-10	.300	5-5	1.000	0	5	5	8.5	2	2	1	0	1	18	17.5	
at Nebraska	11/16/17	*	34	8-25	.320	5-16	.313	0-0	.000	1	3	4	7.0	2	0	4	2	2	21	18.7	
at Oral Roberts	11/20/17	*	38	8-19	.421	3-10	.300	2-2	1.000	0	10	10	7.8	2	1	0	0	2	21	19.3	
at UTEP	11/24/17	*	31	8-17	.471	6-13	.462	0-2	.000	1	4	5	7.2	2	0	1	0	4	22	19.8	
vs NM State	11/25/17	*	39	6-17	.353	2-9	.222	3-4	.750	2	9	11	7.8	2	4	2	1	2	17	19.3	
ACU	11/29/17	*	21	4-10	.400	2-5	.400	1-2	.500	0	3	3	7.1	4	1	3	1	2	11	18.1	
at Kansas	12/03/17	*	39	5-23	.217	1-11	.091	6-8	.750	1	2	3	6.6	3	0	2	1	1	17	18.0	
CHARLOTTE	12/07/17	*	40	9-23	.391	2-7	.286	5-6	.833	3	11	14	7.4	2	2	3	0	1	25	18.8	
TULSA	12/10/17	*	29	5-16	.313	1-9	.111	0-0	.000	2	9	11	7.8	3	0	3	2	0	11	18.0	
UT-ARLINGTON	12/17/17	*	22	3-8	.375	2-6	.333	0-0	.000	0	1	1	7.2	3	1	2	0	2	8	17.1	
at Arizona State	12/21/17	*	27	3-13	.231	2-5	.400	0-0	.000	0	1	1	6.7	2	1	2	0	0	8	16.3	
GRAMBLING	12/28/17	*	34	6-15	.400	4-7	.571	0-2	.000	0	4	4	6.5	2	3	2	0	0	16	16.3	
OLE MISS	12/31/17	*	39	7-15	.467	2-5	.400	2-3	.667	1	10	11	6.8	3	1	6	1	4	18	16.4	
at #5/3 Mississippi State	01/04/18	*	32	5-13	.385	2-7	.286	1-2	.500	1	6	7	6.8	3	3	4	0	0	13	16.2	
ALABAMA	01/07/18	*	39	6-16	.375	0-5	.000	12-12	1.000	0	13	13	7.2	5	4	2	0	2	24	16.7	
at Georgia	1/11/18	*	39	4-13	.308	0-6	.000	0-0	.000	1	6	7	7.2	4	2	2	0	2	8	16.2	
at Auburn	01/14/18	*	8	0-4	.000	0-2	.000	0-0	.000	0	1	1	6.8	0	1	0	0	0	0	15.3	
FLORIDA	01/18/18	dnp	-	-	-	-	-	-	-	-	-	-	-	-	-	-	-	-	-	-	
at No. 11 Mizzou	01/21/18	dnp	-	-	-	-	-	-	-	-	-	-	-	-	-	-	-	-	-	-	
at #9/7 South Carolina	01/25/18	*	24	1-6	.167	1-4	.250	0-2	.000	0	1	1	6.5	0	2	0	0	0	3	14.6	
Totals			19	595	99-278	.356	42-148	.284	38-52	.731	15	109	124	6.5	47	29	44	9	26	278	14.6

Games played: 19
 Minutes/game: 31.3
 Points/game: 14.6
 FG Pct: 35.6
 3FG Pct: 28.4
 FT Pct: 73.1

Rebounds/game: 6.5
 Assists/game: 1.5
 Turnovers/game: 2.3
 Assist/turnover ratio: 0.7
 Steals/game: 1.4
 Blocks/game: 0.5

CAREER HIGHS

Points	25	Charlotte	12-6-17
FG Made	9	Charlotte	12-6-17
FGA	25	Nebraska	11-16-17
3PM	6	UTEP	11-24-17
3PA	16	Nebraska	11-16-17
FTM	12	Alabama	1-7-18
FTA	12	Alabama	1-7-18
OREB	3	Charlotte	12-6-17
DREB	13	Alabama	1-7-18
REB	14	Charlotte	12-6-17*
AST	6	ORU	12-21-16
BLK	3	MVSU	12-28-15
STL	4	Ole Miss	12-31-17*
MIN	40	Charlotte	12-6-17
	42	Auburn	1-24-16 OT

SEASON HIGHS

Points	25	Charlotte	12-6-17
FG Made	9	Charlotte	12-6-17
FG Att.	25	Nebraska	11-16-17
3P Made	6	UTEP	11-24-17
3P Att.	16	Nebraska	11-16-17
FT Made	12	Alabama	1-7-18
FT Att.	12	Alabama	1-7-18
Off. Rebounds	3	Charlotte	12-6-17
Def. Rebounds	13	Alabama	1-7-18
Rebounds	14	Charlotte	12-6-17
Assists	4	Alabama	1-7-18*
Blocks	2	Tulsa	12-10-17*
Steals	4	Ole Miss	12-31-17
Minutes	40	Charlotte	12-6-17

*Most Recent

NOTES

- » SEC First-Year Academic Honor Roll (2016).
- » SEC Academic Honor Roll (2016-17).
- » Graduated in May 2017 with degree in journalism. Currently pursuing her master's degree in sport administration.
- » Forty-five consecutive games played (snapped versus Florida, 1-18-18).
- » Nineteen consecutive games with a made 3-pointer. (snapped versus Alabama)
- » Thirty-one points with six 3-pointers in exhibition game.
- » Ten consecutive games in double figure scoring (snapped versus UTA).
- » Seven career double-doubles all this season.
- » At least one steal in 13-of-19 games this year.
- » Career-bests to 25 points and 14 rebounds against Charlotte.

CAREER STATS

Year	GP-GS	Min	Avg	Total			3-Point			F-Throw			Rebounds				PF	FO	Ast	TO	Blk	Stl	Pts	Avg
				FG	FGA	Pct	FG	FGA	Pct	FT	FTA	Pct	Off	Def	Tot	Avg								
2015-16	30-25	792	26.4	97	293	.331	25	104	.240	50	72	.694	16	83	99	3.3	57	0	42	74	5	34	269	9.0
2016-17	29-9	563	19.4	72	195	.369	23	75	.307	20	27	.741	7	58	65	2.2	43	2	45	40	6	28	187	6.4
2017-18	19-19	595	31.3	99	278	.356	42	148	.284	38	52	.731	15	109	124	6.5	47	1	29	44	9	26	278	14.6
TOTAL	78-53	1950	25.0	268	766	.350	90	327	.275	108	151	.715	38	250	288	3.7	147	3	116	158	20	88	734	9.4



22

BAILEY ZIMMERMAN

Junior | 6-0 | Forward | St. Vincent, Arkansas
Wonderview HS

CAREER HIGHS

Points	14	Missouri	2-12-17
FGM	4	Missouri	2-12-17*
FGA	11	Missouri	2-12-17
3PM	3	at Auburn	1-14-18*
3PA	8	at Auburn	1-14-18
FTM	4	at Auburn	1-14-18*
FTA	6	at Auburn	1-14-18*
OREB	5	at Auburn	1-14-18
DREB	6	Alabama	1-15-17
REB	8	at Auburn	1-14-18
AST	3	Kentucky	2-16-17*
BLK	3	LSU	1-8-17*
STL	2	UTEP	11-24-17*
MIN	35	at Auburn	1-14-18

SEASON HIGHS

Points	13	at Auburn	1-14-18
FG Made	3	at Auburn	1-14-18*
FG Att.	10	UTA	12-17-17
3P Made	3	at Auburn	1-14-18*
3P Att.	8	at Auburn	1-14-18
FT Made	4	at Auburn	1-14-18
FT Att.	6	at Auburn	1-14-18
Off. Rebounds	5	at Auburn	1-14-18
Def. Rebounds	5	Tulsa	12-10-17
Rebounds	8	at Auburn	1-14-18
Assists	2	at No. 11 MU	1-21-18*
Blocks	2	Nebraska	11-16-17
Steals	2	UTEP	11-24-17*
Minutes	35	at Auburn	1-14-18

*Most Recent

2017-18 GAME-BY-GAME STATS

Opponent	Date	gs	min	Total		3-Pointers		Free throws		Rebounds				pf	a	t/o	blk	stl	pts	avg	
				fg-fga	pct	3fg-fga	pct	ft-fa	pct	off	def	tot	avg								
SHSU	11/10/17	*	27	1-7	.143	0-4	.000	0-0	.000	0	3	3	3.0	1	2	1	0	2	2	2.0	
SAMFORD	11/12/17	*	19	0-1	.000	0-1	.000	0-0	.000	0	0	0	1.5	3	0	0	0	0	0	1.0	
at Nebraska	11/16/17	*	24	0-2	.000	0-2	.000	1-2	.500	0	0	0	1.0	3	0	2	2	0	1	1.0	
at Oral Roberts	11/20/17	*	21	1-7	.143	0-3	.000	0-2	.000	1	3	4	1.8	3	1	0	1	0	2	1.3	
at UTEP	11/24/17	*	23	1-5	.200	0-3	.000	2-2	1.000	2	1	3	2.0	0	2	0	0	2	4	1.8	
vs NM State	11/25/17	*	24	0-1	.000	0-1	.000	1-2	.500	2	1	3	2.2	2	2	0	0	0	1	1.7	
ACU	11/29/17	*	25	1-4	.250	0-1	.000	1-2	.500	4	2	6	2.7	1	2	2	1	1	3	1.9	
at Kansas	12/03/17	*	24	0-1	.000	0-0	.000	0-0	.000	0	2	2	2.6	4	0	1	1	0	0	1.6	
CHARLOTTE	12/07/17	*	28	2-9	.222	1-6	.167	1-1	1.000	1	2	3	2.7	0	1	3	1	0	6	2.1	
TULSA	12/10/17	*	25	2-6	.333	0-3	.000	2-3	.667	2	5	7	3.1	0	1	0	0	0	6	2.5	
UT-ARLINGTON	12/17/17	*	20	2-10	.200	0-3	.000	2-2	1.000	2	1	3	3.1	2	0	1	0	0	6	2.8	
at Arizona State	12/21/17	*	24	1-3	.333	0-1	.000	0-0	.000	2	2	4	3.2	1	1	3	1	0	2	2.8	
GRAMBLING	12/28/17	*	11	0-2	.000	0-0	.000	0-0	.000	0	0	0	2.9	0	0	0	0	0	0	2.5	
OLE MISS	12/31/17	*	9	1-1	1.000	0-0	.000	0-0	.000	1	0	1	2.8	2	1	1	0	0	2	2.5	
at #5/3 Mississippi State	01/04/18	*	20	1-2	.500	0-1	.000	2-3	.667	0	3	3	2.8	3	0	1	0	0	4	2.6	
ALABAMA	01/07/18	*	13	0-1	.000	0-0	.000	0-0	.000	2	0	2	2.8	5	2	2	1	0	0	2.4	
at Georgia	11/11/18	*	27	3-5	.600	3-5	.600	2-4	.500	2	3	5	2.9	0	2	1	0	1	11	2.9	
at Auburn	01/14/18	*	35	3-8	.375	3-8	.375	4-6	.667	5	3	8	3.2	3	2	3	1	1	13	3.5	
FLORIDA	01/18/18	*	26	0-8	.000	0-7	.000	0-0	.000	1	2	3	3.2	1	1	1	0	1	0	3.3	
at No. 11 Mizzou	01/21/18	*	28	1-8	.125	0-4	.000	0-2	.000	2	1	3	3.2	4	2	2	0	0	2	3.3	
at #9/7 South Carolina	01/25/18	*	17	1-4	.250	0-3	.000	0-0	.000	2	0	2	3.1	2	1	2	0	0	2	3.2	
Totals			21	470	21-95	.221	7-56	.125	18-31	.581	31	34	65	3.1	40	23	26	9	8	67	3.2

Games played: 21
Minutes/game: 22.4
Points/game: 3.2
FG Pct: 22.1
3FG Pct: 12.5
FT Pct: 58.1

Rebounds/game: 3.1
Assists/game: 1.1
Turnovers/game: 1.2
Assist/turnover ratio: 0.9
Steals/game: 0.4
Blocks/game: 0.4

NOTES

- » SEC Academic Honor Roll (2016-17).
- » University of Arkansas Athletic Department Academic Athletic Director's List: Fall, 2017
- » Sixteen games with 20+ minutes.
- » Started 21 consecutive games this year and 22 in a row dating back to last season.
- » Career-bests for made made and attempted free throws (4-6), offensive rebounds (5), total rebounds (8) and minutes (35) at Auburn.

CAREER STATS

Year	GP-GS	Min	Avg	Total			3-Point			F-Throw			Rebounds				PF	FO	Ast	TO	Blk	Stl	Pts	Avg
				FG	FGA	Pct	FG	FGA	Pct	FT	FTA	Pct	Off	Def	Tot	Avg								
2015-16	20-1	174	8.7	6	48	.125	4	33	.121	7	12	.583	12	9	21	1.1	9	0	4	15	2	4	23	1.2
2016-17	30-23	627	20.9	45	144	.313	24	84	.286	20	39	.513	35	80	115	3.8	46	0	28	37	10	19	134	4.5
2017-18	21-21	470	22.4	21	95	.221	7	56	.125	18	31	.581	31	34	65	3.1	40	1	23	26	9	8	67	3.2
TOTAL	71-45	1271	17.9	72	287	.251	35	173	.202	45	82	.549	78	123	201	2.8	95	1	55	78	21	31	224	3.2



24 TAYLAH THOMAS
 Freshman | 6-1 | Forward | Arlington, Texas
 Mansfield Timberview HS

CAREER HIGHS

Points	13	Samford	11-12-17
FG Made	5	Samford	11-12-17
FG Att.	6	Samford	11-12-17
3P Made	1	Ole Miss	12-31-17*
3P Att.	1	at S. Car.	1-25-18*
FT Made	3	NMSU	11-25-17*
FT Att.	6	Samford	11-12-17
Off. Rebounds	6	Nebraska	11-16-17
Def. Rebounds	7	ORU	11-20-17 7
Rebounds	11	Nebraska	11-16-17
Assists	2	at Missouri	1-21-18
Blocks	2	Nebraska	11-16-17
Steals	2	ACU	11-29-17
Minutes	29	at Georgia	1-11-18

SEASON HIGHS

Points	13	Samford	11-12-17
FG Made	5	Samford	11-12-17
FG Att.	9	at Georgia	1-11-18
3P Made	1	Ole Miss	12-31-17*
3P Att.	1	at S. Carolina	1-25-18*
FT Made	3	NMSU	11-25-17*
FT Att.	6	Samford	11-12-17
Off. Rebounds	6	Nebraska	11-16-17
Def. Rebounds	7	ORU	11-20-17 7
Rebounds	11	Nebraska	11-16-17
Assists	2	at Missouri	1-21-18
Blocks	2	Nebraska	11-16-17
Steals	2	ACU	11-29-17
Minutes	29	at Georgia	1-11-18

*Most Recent

2017-18 GAME-BY-GAME STATS

Opponent	Date	gs	min	Total		3-Pointers		Free throws		Rebounds				pf	a	t/o	blk	stl	pts	avg
				fg-fga	pct	3fg-fga	pct	ft-fta	pct	off	def	tot	avg							
SHSU	11/10/17	17		2-2	1.000	0-0	.000	0-0	.000	1	3	4	4.0	0	0	0	1	0	4	4.0
SAMFORD	11/12/17	21		5-6	.833	0-1	.000	3-6	.500	2	7	9	6.5	1	0	2	0	0	13	8.5
at Nebraska	11/16/17	20		1-4	.250	0-0	.000	3-4	.750	6	5	11	8.0	3	1	0	2	0	5	7.3
at Oral Roberts	11/20/17	23		0-3	.000	0-1	.000	2-2	1.000	2	7	9	8.3	2	0	0	1	0	2	6.0
at UTEP	11/24/17	16		0-2	.000	0-1	.000	1-2	.500	2	2	4	7.4	1	0	0	0	0	1	5.0
vs NM State	11/25/17	14		0-4	.000	0-0	.000	3-4	.750	3	4	7	7.3	1	0	1	0	0	3	4.7
ACU	11/29/17	20		2-7	.286	1-1	1.000	2-4	.500	3	4	7	7.3	2	0	0	0	2	7	5.0
at Kansas	12/03/17	9		0-1	.000	0-1	.000	0-0	.000	0	0	0	6.4	0	0	0	0	0	0	4.4
CHARLOTTE	12/07/17	4		0-0	.000	0-0	.000	0-0	.000	0	0	0	5.7	3	0	0	0	1	0	3.9
TULSA	12/10/17	19		1-3	.333	1-1	1.000	1-2	.500	4	3	7	5.8	1	0	0	0	1	4	3.9
UT-ARLINGTON	12/17/17	*	11	0-0	.000	0-0	.000	0-0	.000	2	2	4	5.6	5	0	1	0	0	0	3.5
at Arizona State	12/21/17	19		1-1	1.000	0-0	.000	0-0	.000	0	3	3	5.4	3	0	3	0	0	2	3.4
GRAMBLING	12/28/17	13		3-3	1.000	0-0	.000	2-2	1.000	0	2	2	5.2	2	1	2	0	1	8	3.8
OLE MISS	12/31/17	17		2-3	.667	1-1	1.000	1-2	.500	3	0	3	5.0	2	0	1	0	0	6	3.9
at #5/3 Mississippi State	01/04/18	17		2-2	1.000	0-0	.000	0-0	.000	1	5	6	5.1	2	0	0	0	0	4	3.9
ALABAMA	01/07/18	18		0-2	.000	0-0	.000	2-2	1.000	2	2	4	5.0	3	0	1	0	0	2	3.8
at Georgia	1/11/18	29		3-9	.333	0-1	.000	0-0	.000	3	5	8	5.2	2	1	3	0	0	6	3.9
at Auburn	01/14/18	13		2-3	.667	0-0	.000	0-0	.000	1	0	1	4.9	3	0	1	0	0	4	3.9
FLORIDA	01/18/18	21		1-4	.250	0-1	.000	0-0	.000	3	3	6	5.0	1	0	1	0	0	2	3.8
at No. 11 Mizzou	01/21/18	*	21	1-2	.500	0-0	.000	0-0	.000	0	3	3	4.9	2	2	0	0	0	2	3.8
at #9/7 South Carolina	01/25/18	24		1-6	.167	0-1	.000	0-0	.000	2	4	6	5.0	3	0	2	1	0	2	3.7
Totals		2	366	27-67	.403	3-10	.300	20-30	.667	40	64	104	5.0	42	5	18	5	5	77	3.7

Games played: 21
 Minutes/game: 17.4
 Points/game: 3.7
 FG Pct: 40.3
 3FG Pct: 30.0
 FT Pct: 66.7

Rebounds/game: 5.0
 Assists/game: 0.2
 Turnovers/game: 0.9
 Assist/turnover ratio: 0.3
 Steals/game: 0.2
 Blocks/game: 0.2

NOTES

- » University of Arkansas Athletic Department Academic Athletic Director's List: Fall, 2017
- » Played high school ball for former Razorback assistant coach Kit Kyle Martin.
- » Career-best 13 points against Samford - her first double figure scoring game as a Razorback.

CAREER STATS

Year	GP-GS	Min	Avg	Total			3-Point			F-Throw			Rebounds				PF	FO	Ast	TO	Blk	Stl	Pts	Avg
				FG	FGA	Pct	FG	FGA	Pct	FT	FTA	Pct	Off	Def	Tot	Avg								
2017-18	21-2	366	17.4	27	67	.403	3	10	.300	20	30	.667	40	64	104	5.0	42	1	5	18	5	5	77	3.7
TOTAL	21-2	366	17.4	27	67	.403	3	10	.300	20	30	.667	40	64	104	5.0	42	1	5	18	5	5	77	3.7



30 MACY WEAVER
 Freshman | 6-3 | F | Davis Junction, Illinois
 Stillman Valley HS

CAREER HIGHS

Points	3	Grambling	12-18-17
FG Made	1	Grambling	12-18-17*
FG Att.	2	Grambling	12-18-17
3P Made	-		
3P Att.	-		
FT Made	1	Grambling	12-18-17*
FT Att.	2	UTA	12-17-17
Off. Rebounds	2	Grambling	12-18-17*
Def. Rebounds	4	UTA	12-17-17
Rebounds	5	UTA	12-17-17
Assists	1	UTEP	11-24-17
Blocks	4	UTEP	11-24-17
Steals	1	UTEP	11-24-17
Minutes	19	UTEP	11-24-17

SEASON HIGHS

Points	3	Grambling	12-18-17
FG Made	1	Grambling	12-18-17*
FG Att.	2	Grambling	12-18-17
3P Made	-		
3P Att.	-		
FT Made	1	Grambling	12-18-17*
FT Att.	2	UTA	12-17-17
Off. Rebounds	2	Grambling	12-18-17*
Def. Rebounds	4	UTA	12-17-17
Rebounds	5	UTA	12-17-17
Assists	1	UTEP	11-24-17
Blocks	4	UTEP	11-24-17
Steals	1	UTEP	11-24-17
Minutes	19	UTEP	11-24-17

*Most Recent

2017-18 GAME-BY-GAME STATS

Opponent	Date	gs	min	Total		3-Pointers		Free throws		Rebounds				pf	a	t/o	blk	stl	pts	avg
				fg-fga	pct	3fg-fga	pct	ft-fa	pct	off	def	tot	avg							
SHSU	11/10/17	2		0-0	.000	0-0	.000	0-0	.000	0	0	0	0.0	0	0	0	0	0	0.0	
SAMFORD	11/12/17	1		0-0	.000	0-0	.000	0-0	.000	0	0	0	0.0	0	0	0	0	0.0		
at Nebraska	11/16/17	dnp		-	-	-	-	-	-	-	-	-	-	-	-	-	-	-		
at Oral Roberts	11/20/17	dnp		-	-	-	-	-	-	-	-	-	-	-	-	-	-	-		
at UTEP	11/24/17	19		1-1	1.000	0-0	.000	0-0	.000	2	1	3	1.0	3	1	0	4	1	2	0.7
vs NM State	11/25/17	dnp		-	-	-	-	-	-	-	-	-	-	-	-	-	-	-		
ACU	11/29/17	3		0-1	.000	0-0	.000	0-0	.000	0	1	1	1.0	0	0	0	0	0	0.5	
at Kansas	12/03/17	2		0-0	.000	0-0	.000	0-0	.000	0	0	0	0.8	0	0	0	1	0	0.4	
CHARLOTTE	12/07/17	7		0-0	.000	0-0	.000	0-2	.000	2	0	2	1.0	3	0	1	0	0	0.3	
TULSA	12/10/17	6		0-1	.000	0-0	.000	0-0	.000	0	1	1	1.0	1	0	0	1	0	0.3	
UT-ARLINGTON	12/17/17	8		0-1	.000	0-0	.000	1-2	.500	1	4	5	1.5	3	0	1	1	0	1.4	
at Arizona State	12/21/17	7		0-0	.000	0-0	.000	0-0	.000	0	1	1	1.4	2	0	0	0	0	0.3	
GRAMBLING	12/28/17	5		1-2	.500	0-0	.000	1-1	1.000	2	1	3	1.6	1	0	0	0	0	3.6	
OLE MISS	12/31/17	dnp		-	-	-	-	-	-	-	-	-	-	-	-	-	-	-		
at #5/3 Mississippi State	01/04/18	3		0-0	.000	0-0	.000	0-0	.000	0	0	0	1.5	0	0	0	0	0	0.5	
ALABAMA	01/07/18	dnp		-	-	-	-	-	-	-	-	-	-	-	-	-	-	-		
at Georgia	11/11/18	4		0-0	.000	0-0	.000	1-2	.500	1	0	1	1.4	0	0	0	0	1	0.6	
at Auburn	01/14/18	dnp		-	-	-	-	-	-	-	-	-	-	-	-	-	-	-		
FLORIDA	01/18/18	2		0-1	.000	0-0	.000	0-0	.000	0	0	0	1.3	0	0	0	0	0	0.5	
at No. 11 Mizzou	01/21/18	11		0-2	.000	0-0	.000	0-0	.000	1	2	3	1.4	3	0	0	1	0	0.5	
at #9/7 South Carolina	01/25/18	11		3-4	.750	0-0	.000	1-3	.333	2	0	2	1.5	3	0	2	1	0	7.9	
Totals		0	91	5-13	.385	0-0	.000	4-10	.400	11	11	22	1.5	19	1	4	9	1	14	0.9

Games played: 15
 Minutes/game: 6.1
 Points/game: 0.9
 FG Pct: 38.5
 FT Pct: 40.0

Rebounds/game: 1.5
 Assists/game: 0.1
 Turnovers/game: 0.3
 Assist/turnover ratio: 0.3
 Steals/game: 0.1
 Blocks/game: 0.6

NOTES

- » University of Arkansas Athletic Department Academic Athletic Director's List: Fall, 2017
- » First career game as a Razorback came against Sam Houston State in the opener.
- » Played 19 minutes with four blocks and solid defense at UTEP.

CAREER STATS

Year	GP-GS	Min	Avg	Total			3-Point			F-Throw			Rebounds				PF	FO	Ast	TO	Blk	Stl	Pts	Avg
				FG	FGA	Pct	FG	FGA	Pct	FT	FTA	Pct	Off	Def	Tot	Avg								
2017-18	15-0	91	6.1	5	13	.385	0	0	.000	4	10	.400	11	11	22	1.5	19	0	1	4	9	1	14	0.9
TOTAL	15-0	91	6.1	5	13	.385	0	0	.000	4	10	.400	11	11	22	1.5	19	0	1	4	9	1	14	0.9



0-A'Tyanna Gaulden
RSo | G | 5-7



1-Raven Northcross-Baker
Jr | G | 5-7



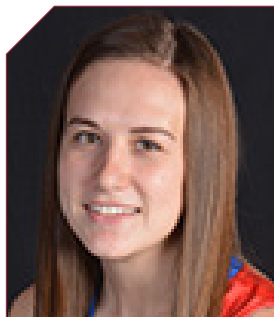
3-Malica Monk
Jr | G | 5-5



4-Keiryn Swenson
Jr | G/F | 6-1



10-Kiara Williams
So | F/C | 6-1



12-Brenna McClure
RSo | G | 5-6



13-Grayce Spangler
Fr | G | 5-11



14-Jailyn Mason
So | G | 5-9



20-Sydney Stout
So | F | 6-0



21-Devin Cospser
Gr. | G | 5-10



22-Bailey Zimmerman
Jr | G/F | 6-0



24-Taylah Thomas
Fr | F | 6-1



30-Macy Weaver
Fr | F | 6-3



33-Chelsea Dungee
RSo | G | 5-11



Mike Neighbors
Arkansas, 1993
First Season



Lacey Goldwire
Oklahoma State, 2010
First Season



Todd Schaefer
Thomas More College, 1995
First Season



Pauline Love
Southern Miss, 2010
First Season



NOVEMBER 2, 2017

NORTHEASTERN STATE

74 82

ARKANSAS

Bud Walton Arena Fayetteville, Arkansas

Devin Cosper dropped in 31 points leading four players in double figures in exhibition action. It was the 14th-consecutive exhibition game win for Arkansas and the first under head coach Mike Neighbors.

Northeastern State Univ. 74

Table with columns: #, Player, Total, 3-Ptr, Rebounds, PF, TP, A TO Blk, Stl, Min. Includes player stats for Strange, Destiny, Griffin, Miranda, Hayes, Cenia, Brooks, Tree, Eldred, Bailee, Hill, Alexis, Cunningham, Cailey, Long, Caitlyn, Blevins, Lauryn, Bertrand, Joi, Hellyer, Morgan.

Arkansas 82

Table with columns: #, Player, Total, 3-Ptr, Rebounds, PF, TP, A TO Blk, Stl, Min. Includes player stats for Williams, Kiara, ZIMMERMAN, Bailey, MONK, Malica, MASON, Jaiilyn, COSPER, Devin, NORTH-CROSS-BAKER, SWENSON, Keiryn, SPANGLER, Grayce, STOUT, Sydney, THOMAS, Taylah, WEAVER, Macy.

Officials: Brian Hall, Luis Gonzalez, Katie Lukanich. Technical fouls: Northeastern State Univ.-None, Arkansas-None. Attendance: 1,200. Estimated Actual Attendance: 816.

Score by periods table with columns: 1st, 2nd, 3rd, 4th, Total. Includes points in, off, 2nd, fast, bench.

Last FG - NESU 4th-00:35, AR 4th-01:01. Largest lead - NESU by 3 3rd-09:05, AR by 13 1st-03:09. NESU led for 09:13. AR led for 24:08. Game was tied for 06:39.



NOVEMBER 12, 2017

SAMFORD

63 84

ARKANSAS

Bud Walton Arena Fayetteville, Arkansas

Career best points and rebounds for Malica Monk. Career best points for Taylah Thomas and Kiara Williams.

Samford 63 • 0-2

Table with columns: #, Player, Total, 3-Ptr, Rebounds, PF, TP, A TO Blk, Stl, Min. Includes player stats for Olivia Crozier, Samantha Fitzgerald, Hannah Nichols, Charity Brown, Cassidy Williams, Shauntal Battle, Paige Serup, Raven Omar, Makaila Woolard, Natalie Armstrong.

Arkansas 84 • 2-0

Table with columns: #, Player, Total, 3-Ptr, Rebounds, PF, TP, A TO Blk, Stl, Min. Includes player stats for Williams, Kiara, ZIMMERMAN, Bailey, MONK, Malica, MASON, Jaiilyn, COSPER, Devin, NORTH-CROSS-BAKER, SWENSON, Keiryn, SPANGLER, Grayce, STOUT, Sydney, THOMAS, Taylah, WEAVER, Macy.

Officials: Scott Yarbrough, Laura Morris, Pualani Spurlock. Technical fouls: Samford-None, Arkansas-None. Attendance: 1,739. Estimated Actual Attendance: 1,107.

Score by periods table with columns: 1st, 2nd, 3rd, 4th, Total. Includes points in, off, 2nd, fast, bench.

Last FG - SAM 4th-01:03, AR 4th-01:19. Largest lead - SAM None, AR by 24 4th-04:43. SAM led for 00:00. AR led for 39:37. Game was tied for 00:23.



NOVEMBER 10, 2017

SAM HOUSTON STATE

54 65

ARKANSAS

Bud Walton Arena Fayetteville, Arkansas

Elementary Day

Devin Cosper had her first Razorback double-double with 17 points and 12 rebounds in the come-from-behind win. Malica Monk's game-high 18 points ties the junior's career-best.

SHSU 54 • 0-1

Table with columns: #, Player, Total, 3-Ptr, Rebounds, PF, TP, A TO Blk, Stl, Min. Includes player stats for Mckinney, Kiera, Cooper, Ashleigh, Oramas, Jennifer, Morgan, Akarian, Harrell, Rachel, Ferreria, Keivyn, Ballew, Jada, Maxwell, Dominique, Harston, Tia, Baxter, Lydia, Mickens, Amastacia.

Arkansas 65 • 1-0

Table with columns: #, Player, Total, 3-Ptr, Rebounds, PF, TP, A TO Blk, Stl, Min. Includes player stats for WILLIAMS, Kiara, ZIMMERMAN, Bailey, MONK, Malica, MASON, Jaiilyn, COSPER, Devin, NORTH-CROSS-BAKER, SWENSON, Keiryn, SPANGLER, Grayce, STOUT, Sydney, THOMAS, Taylah, WEAVER, Macy.

Officials: Eric Brewton, Kelly Johnson, Eric Baker. Technical fouls: SHSU-None, Arkansas-None. Attendance: 4,719. Estimated Actual Attendance: 4,418.

Score by periods table with columns: 1st, 2nd, 3rd, 4th, Total. Includes points in, off, 2nd, fast, bench.

Last FG - SHSU 4th-00:38, AR 4th-02:09. Largest lead - SHSU by 13 2nd-07:26, AR by 23 4th-06:10. AR led for 19:51. AR led for 17:54. Game was tied for 01:44.



NOVEMBER 16, 2017

ARKANSAS

69 80

NEBRASKA

Pinnacle Bank Arena Lincoln, Nebraska

Career best 22 points for Malica Monk and 21 points for Devin Cosper. Career best 11 rebounds for both Taylah Thomas and Kiara Williams. Cosper had 10 points in the first quarter and Monk had 10 in the third quarter.

Arkansas Razorbacks 69 • 2-1

Table with columns: #, Player, Total, 3-Ptr, Rebounds, PF, TP, A TO Blk, Stl, Min. Includes player stats for Malica Monk, Kiara Williams, Jaiilyn Mason, Devin Cosper, Bailey Zimmerman, Ra Northcross-Baker, Keiryn Swenson, Taylah Thomas.

Nebraska 80 • 3-0

Table with columns: #, Player, Total, 3-Ptr, Rebounds, PF, TP, A TO Blk, Stl, Min. Includes player stats for Hannah Whitish, Maddie Simon, Kate Cain, Taylor Kissingner, Jasmine Cincore, Emily Wood, Grace Mitchell, Bria Stallworth, Rachel Blackburn, Darrien Washington.

Officials: Beverly Roberts, Bryan Enterline, Gina Cross. Technical fouls: Arkansas Razorbacks-None, Nebraska-None. Attendance: 3,459.

Score by periods table with columns: 1st, 2nd, 3rd, 4th, Total. Includes points in, off, 2nd, fast, bench.

Last FG - AR 4th-03:56, NEB 4th-01:18. Largest lead - AR by 2 4th-06:21, NEB by 14 2nd-06:05. AR led for 00:43. NEB led for 36:27. Game was tied for 02:49.



NOVEMBER 20, 2017

ARKANSAS

ORU

Mabee Arena
Tulsa, Oklahoma

77
66

Career-best 24 points for Malica Monk and career-best tying night with 21 points for Devin Cosper. Arkansas forced 14 ORU turnovers while only turning it over four times.

Arkansas 77 • 3-1

Box score table for Arkansas vs ORU. Columns: Player, FG-FGA, 3-Ptr, FT-FTA, Rebounds, PF, TP, A TO Bk Stl, Min. Rows include WILLIAMS, Kiara; ZIMMERMAN, Bailey; MONK, Malica; MASON, Jaily; COSPER, Devin; NORTH-CROSS-BAKER, Swenson, Keiryn; THOMAS, Taylah.

Summary statistics for Arkansas vs ORU. Columns: 1st, 2nd, 3rd, 4th, Game, Deadball. Rows: FG %, 3FG %, FT %, Rebounds.

Oral Roberts 66 • 1-3

Box score table for Oral Roberts vs Arkansas. Columns: Player, FG-FGA, 3-Ptr, FT-FTA, Rebounds, PF, TP, A TO Bk Stl, Min. Rows include Ihim, Faith; Martinez, Maria; Skalin, Rachel; Garvie, Sarah; Lippe, Keri Jo; Doyle, Jordan; Mavberry, Mava; Schumacher, Regan; Gilbert, Jordan; Brotens, Montserrat.

Summary statistics for Oral Roberts vs Arkansas. Columns: 1st, 2nd, 3rd, 4th, Game, Deadball. Rows: FG %, 3FG %, FT %, Rebounds.

Officials: Greg Smail, Nick Marshall, Michelle Kramer. Technical fouls: Arkansas-None, Oral Roberts-None.

Score by periods table for Oral Roberts vs Arkansas. Columns: 1st, 2nd, 3rd, 4th, Total.

Last FG - AR 4th-01:52, ORU 4th-00:29. Largest lead - AR by 14 4th-07:23, ORU by 6 1st-04:58. AR led for 00:59, ORU led for 00:32. Game was tied for 00:29.

Points in Paint, In T/O, Off 2nd Chance, Fast Break, Bench, AR, ORU.



NOVEMBER 25, 2017

ARKANSAS
NEW MEXICO STATE

Don Haskins Center
El Paso, Texas

69
60

Devin Cosper with her third double-double with 17 points and 11 rebounds. Malica Monk led all scorers with 22 points. Williams posted her first career double-double with 11 points and 11 rebounds.

Arkansas 69 • 4-2

Box score table for Arkansas vs NM State. Columns: Player, FG-FGA, 3-Ptr, FT-FTA, Rebounds, PF, TP, A TO Bk Stl, Min. Rows include WILLIAMS, Kiara; MONK, Malica; MASON, Jaily; COSPER, Devin; ZIMMERMAN, Bailey; NORTH-CROSS-BAKER, Swenson, Keiryn; THOMAS, Taylah.

Summary statistics for Arkansas vs NM State. Columns: 1st, 2nd, 3rd, 4th, Game, Deadball. Rows: FG %, 3FG %, FT %, Rebounds.

NM State 60 • 2-4

Box score table for NM State vs Arkansas. Columns: Player, FG-FGA, 3-Ptr, FT-FTA, Rebounds, PF, TP, A TO Bk Stl, Min. Rows include Cooper, Jasmine; Pack, Gia; Salas, Brooke; Williams, Zaire; Mills, Monique; Wilmore, Pam; Childress, Tonishia; Mills, Dominique; Atkinson, Kalei; Toiolo, Jeneva.

Summary statistics for NM State vs Arkansas. Columns: 1st, 2nd, 3rd, 4th, Game, Deadball. Rows: FG %, 3FG %, FT %, Rebounds.

Officials: Lisa Mattingly, Beverly Roberts, Tina Napier. Technical fouls: Arkansas-None, NM State-None.

Score by periods table for NM State vs Arkansas. Columns: 1st, 2nd, 3rd, 4th, Total.

Last FG - AR 4th-00:16, NMSU 4th-00:51. Largest lead - AR by 11 3rd-03:45, NMSU by 7 1st-01:06. AR led for 19:50, NMSU led for 19:16. Game was tied for 00:54.

Points in Paint, In T/O, Off 2nd Chance, Fast Break, Bench, NMSU.



NOVEMBER 24, 2017

ARKANSAS

UTEP

Don Haskins Center
El Paso, Texas

61
64

Arkansas started the game 0-for-15 in the first quarter and made a valiant comeback that fell short. Devin Cosper reached double figures in the third quarter and she and Malica Monk were in double figures for the fifth time.

Arkansas 61 • 3-2

Box score table for Arkansas vs UTEP. Columns: Player, FG-FGA, 3-Ptr, FT-FTA, Rebounds, PF, TP, A TO Bk Stl, Min. Rows include WILLIAMS, Kiara; MONK, Malica; MASON, Jaily; COSPER, Devin; ZIMMERMAN, Bailey; NORTH-CROSS-BAKER, Swenson, Keiryn; SPANGLER, Grayce; STOUT, Sydney; THOMAS, Taylah; WEAVER, Macy.

Summary statistics for Arkansas vs UTEP. Columns: 1st, 2nd, 3rd, 4th, Game, Deadball. Rows: FG %, 3FG %, FT %, Rebounds.

UTEP 64 • 3-0

Box score table for UTEP vs Arkansas. Columns: Player, FG-FGA, 3-Ptr, FT-FTA, Rebounds, PF, TP, A TO Bk Stl, Min. Rows include ALEXANDER, Jordan; SEDA, Tamara; JENKINS, Jordan; HOWELL, Najala; ZEC, Katarina; PATTERSON, Roeshond; PUC, Zuzanna; COOK, Faith; FORD, Jakeira; TAPS, Rachel.

Summary statistics for UTEP vs Arkansas. Columns: 1st, 2nd, 3rd, 4th, Game, Deadball. Rows: FG %, 3FG %, FT %, Rebounds.

Officials: Michelle Kramer, Jeremy Hohn, Rick Thorne. Technical fouls: Arkansas-None, UTEP-None.

Score by periods table for UTEP vs Arkansas. Columns: 1st, 2nd, 3rd, 4th, Total.

Last FG - AR 4th-00:38, UTEPW 4th-00:08. Largest lead - AR None, UTEPW by 20 3rd-09:45. AR led for 00:00, UTEPW led for 29:27. Game was tied for 00:33.

Points in Paint, In T/O, Off 2nd Chance, Fast Break, Bench, UTEPW.

NOVEMBER 29, 2017

ABILENE CHRISTIAN
ARKANSAS

Bud Walton Arena
Fayetteville, Arkansas

65
79

Five players in double figures with Devin Cosper and Malica Monk recording their seventh consecutive games in double digits ... Forced a season-best 20 turnovers ... 20-0 run in fourth quarter.

ACU 65 • 3-2

Box score table for ACU vs Arkansas. Columns: Player, FG-FGA, 3-Ptr, FT-FTA, Rebounds, PF, TP, A TO Bk Stl, Min. Rows include ALLEN, SIERRA; ULUOCH, TAUDENCIAH; GOLIGHTLY, DOMINIQ; WRIGHT, BREANNA; WILLIAMSON, SARA; LARSON, JOSIE; HERRERA, PAM; GALINDO, KAYLA; KIRGAN, LEXI; ROWE, LAURA; MABRY, MAKAYLA; ADAMS, ALYSSA.

Summary statistics for ACU vs Arkansas. Columns: 1st, 2nd, 3rd, 4th, Game, Deadball. Rows: FG %, 3FG %, FT %, Rebounds.

Arkansas 79 • 5-2

Box score table for Arkansas vs ACU. Columns: Player, FG-FGA, 3-Ptr, FT-FTA, Rebounds, PF, TP, A TO Bk Stl, Min. Rows include WILLIAMS, Kiara; ZIMMERMAN, Bailey; MONK, Malica; MASON, Jaily; COSPER, Devin; NORTH-CROSS-BAKER, Swenson, Keiryn; SPANGLER, Grayce; STOUT, Sydney; THOMAS, Taylah; WEAVER, Macy.

Summary statistics for Arkansas vs ACU. Columns: 1st, 2nd, 3rd, 4th, Game, Deadball. Rows: FG %, 3FG %, FT %, Rebounds.

Officials: Mark Zentz, Bruce Morris, Pualani Spurlock. Technical fouls: ACU-None, Arkansas-COSPER, Devin; TEAM.

Score by periods table for Arkansas vs ACU. Columns: 1st, 2nd, 3rd, 4th, Total.

Last FG - ACU 4th-00:34, AR 4th-02:21. Largest lead - ACU by 11 1st-09:21, AR by 24 4th-05:36. ACU led for 00:21, AR led for 38:59. Game was tied for 00:40.

Points in Paint, In T/O, Off 2nd Chance, Fast Break, Bench, ACU.



DECEMBER 3, 2017

ARKANSAS

KANSAS
Allen Fieldhouse
Lawrence, Kansas

60
71

Devin Cosper and Malica Monk made it eight games in a row with double-figure scoring. Kiara Williams posted a career-best 16 rebounds. Second consecutive game in double-figures for Jaiilyn Mason.

Arkansas 60 • 5-3

Table with columns: #, Player, Total FG-FGA, 3-Ptr FG-FGA, FT-FTA, Rebounds Off Def Tot, PF, TP, A, TO, Blk, Stl, Min. Includes player stats for Northcross-Baker, Monk, Swenson, Williams, Spangler, Mason, Cosper, Zimmerman, Thomas, Weaver, and team totals.

Kansas 71 • 7-0

Table with columns: #, Player, Total FG-FGA, 3-Ptr FG-FGA, FT-FTA, Rebounds Off Def Tot, PF, TP, A, TO, Blk, Stl, Min. Includes player stats for Lyons, Christalah, Osorio, Micaela, Richardson, Chaddler, Watts, Kopatich, Helgren, Boric, Johnson, and team totals.

Officials: Scott Yarbrough, Jesse Dickerson, Michael McConnell
Technical fouls: Arkansas-None, Kansas-None.
Attendance: 1,795
FO: Arkansas #14 (0:20.8)

Score by periods table with columns: 1st, 2nd, 3rd, 4th, Total. Shows scores for Arkansas and Kansas.

Last FG - AR 4th-01:10, KU 4th-03:10.
Largest lead - AR by 2 1st-08:40, KU by 13 3rd-08:05.
AR led for 01:17, KU led for 35:31. Game was tied for 03:03.



DECEMBER 7, 2017

CHARLOTTE

ARKANSAS
Bud Walton Arena
Fayetteville, Arkansas

72
73

Devin Cosper had a career-best 25 points and 14 rebounds in comeback win. Arkansas trailed by seven at the half and was tied at the 30 before winning.

Charlotte 72 • 3-6

Table with columns: #, Player, Total FG-FGA, 3-Ptr FG-FGA, FT-FTA, Rebounds Off Def Tot, PF, TP, A, TO, Blk, Stl, Min. Includes player stats for Jamison-Myers, Pearson, Linney, Ransom, Ransom, Martin, Wilson, Harley, Robinson, and team totals.

Arkansas 73 • 6-3

Table with columns: #, Player, Total FG-FGA, 3-Ptr FG-FGA, FT-FTA, Rebounds Off Def Tot, PF, TP, A, TO, Blk, Stl, Min. Includes player stats for Zimmerman, Williams, Monk, Mason, Cosper, Northcross-Baker, Swenson, Thomas, Weaver, and team totals.

Officials: Bob Trammell, Felicia Grinter, Jesse Dickerson
Technical fouls: Charlotte-None, Arkansas-None.
Attendance: 1,169
Estimated Actual Attendance: 733
 Fouled out: Charlotte #15, Jamison-Myers (1:50, 4Q)

Score by periods table with columns: 1st, 2nd, 3rd, 4th, Total. Shows scores for Charlotte and Arkansas.

Last FG - CHA 4th-00:01, AR 4th-00:53.
Largest lead - CHA by 9 3rd-09:40, AR by 6 4th-00:53.
CHA led for 24:48, AR led for 10:50. Game was tied for 04:22.



DECEMBER 10, 2017

TULSA

ARKANSAS
Bud Walton Arena
Fayetteville, Arkansas

41
67

Arkansas' 61 rebounds is the most since the 2014-15 season. Devin Cosper and Malica Monk have scored in double figures in all 10 games and Cosper posted back-to-back double-doubles.

Tulsa 41 • 4-6

Table with columns: #, Player, Total FG-FGA, 3-Ptr FG-FGA, FT-FTA, Rebounds Off Def Tot, PF, TP, A, TO, Blk, Stl, Min. Includes player stats for Polk, Tatyana, Wakefield, Dickson, Lesca, Elliott, Richardson, Butler, Gaudlen, Parker, Brady, Scales, and team totals.

Arkansas 67 • 7-3

Table with columns: #, Player, Total FG-FGA, 3-Ptr FG-FGA, FT-FTA, Rebounds Off Def Tot, PF, TP, A, TO, Blk, Stl, Min. Includes player stats for Zimmerman, Williams, Monk, Mason, Cosper, Northcross-Baker, Swenson, Spangler, Stout, Thomas, Weaver, and team totals.

Officials: Susan Blauch, Ed Sidlasky, Damen McClure
Technical fouls: Tulsa-None, Arkansas-None.
Attendance: 1,821
Estimated Actual Attendance: 1,453

Score by periods table with columns: 1st, 2nd, 3rd, 4th, Total. Shows scores for Tulsa and Arkansas.

Last FG - TULS 4th-01:07, AR 4th-03:31.
Largest lead - TULS by 2 1st-09:34, AR by 30 4th-01:53.
TULS led for 01:15, AR led for 38:03. Game was tied for 00:46.



DECEMBER 17, 2017

UT-ARLINGTON

ARKANSAS
Bud Walton Arena
Fayetteville, Arkansas

57
91

Raven Northcross-Baker had a career-best 22 points with 6 3-pointers leading four Razorbacks in double figures in the win over UTA.

UT-Arlington 57 • 5-5

Table with columns: #, Player, Total FG-FGA, 3-Ptr FG-FGA, FT-FTA, Rebounds Off Def Tot, PF, TP, A, TO, Blk, Stl, Min. Includes player stats for Parker, VanDijk, McGowen, Bille, Richards, LeJune, Alexander, Machado, Evans, Johnson, Kelsey, Wright, and team totals.

Arkansas 91 • 8-3

Table with columns: #, Player, Total FG-FGA, 3-Ptr FG-FGA, FT-FTA, Rebounds Off Def Tot, PF, TP, A, TO, Blk, Stl, Min. Includes player stats for Zimmerman, Thomas, Monk, Mason, Cosper, Northcross-Baker, Swenson, Williams, Spangler, Stout, Weaver, and team totals.

Officials: Tina Napier, Brian Garland, Eric Koch
Technical fouls: UT-Arlington-None, Arkansas-None.
Attendance: 1,481
Estimated Actual Attendance: 1,102
 Fouled out: Arkansas #24 Thomas @ 59.8 4Q

Score by periods table with columns: 1st, 2nd, 3rd, 4th, Total. Shows scores for UT-Arlington and Arkansas.

Last FG - UTA 4th-00:36, AR 4th-00:46.
Largest lead - UTA by 6 1st-04:54, AR by 34 4th-03:50.
UTA led for 04:18, AR led for 31:25. Game was tied for 04:17.



JANUARY 7, 2018

ALABAMA

ARKANSAS

Bud Walton Arena Fayetteville, Arkansas

83

76

Devin Cospser recorded her seventh double-double with 24 points and 13 rebounds. Three players were in double figures with Malica Monk adding 21 points and Jaiilyn Mason scoring 12 points.

Alabama 83 • 12-4, 2-1 SEC

Player statistics table for Alabama vs Arkansas, including FG, 3-Ptr, FT, Rebounds, PF, TP, A, TO, Blk, Stl, Min.

Arkansas 76 • 10-6, 1-2 SEC

Player statistics table for Arkansas vs Alabama, including FG, 3-Ptr, FT, Rebounds, PF, TP, A, TO, Blk, Stl, Min.

Officials: Beverly Roberts, Ed Sidlasky, Bill Laranca Technical fouls: Alabama-None. Arkansas-MASON, Jaiilyn.

Attendance: 2001 Estimated Actual Attendance: 1644 Fouled Out: Arkansas, #21 Cospser (0:12.5, 4Q); #22 Zimmerman (0:10.1, 4Q)

Score by periods table for Alabama vs Arkansas

Last FG - UA 4th-00:41, AR 4th-00:23. Largest lead - UA by 9 4th-00:28, AR by 7 3rd-02:23. UA led for 20:01. AR led for 15:20. Game was tied for 04:39.

Points, In Paint, Off T/O, 2nd Chance, Fast Break, Bench statistics for Alabama vs Arkansas



JANUARY 11, 2018

ARKANSAS

GEORGIA

Stegeman Coliseum Athens, Georgia

65

78

Bailey Zimmerman had a season-best 11 points going 3-for-3 from distance. Arkansas was within 1 point twice in the fourth quarter.

Arkansas 65 • 10-7, 1-3 SEC

Player statistics table for Arkansas vs Georgia, including FG, 3-Ptr, FT, Rebounds, PF, TP, A, TO, Blk, Stl, Min.

Georgia 78 • 15-2, 3-1 SEC

Player statistics table for Georgia vs Arkansas, including FG, 3-Ptr, FT, Rebounds, PF, TP, A, TO, Blk, Stl, Min.

Officials: Lisa Mattingly, Amy Bonner and Frank Steratore Technical fouls: Arkansas-None. Georgia-BLANARU, Bianca.

Attendance: 2229

Score by periods table for Georgia vs Arkansas

Last FG - AR 4th-02:40, UGA 4th-02:59. Largest lead - AR None, UGA by 18 2nd-05:42. AR led for 00:00. UGA led for 38:05. Game was tied for 01:44.

Points, In Paint, Off T/O, 2nd Chance, Fast Break, Bench statistics for Georgia vs Arkansas



JANUARY 15, 2018

ARKANSAS

AUBURN

Auburn Arena Auburn, Alabama

68

58

Four players were in double figures. Kiara Williams had her third double-double. Arkansas' 41 first-half points is the second most this season and Bailey Zimmerman had a season-best with 13 pts and a career-best with 8 rebs.

Arkansas 68 • 11-7, 2-3 SEC

Player statistics table for Arkansas vs Auburn, including FG, 3-Ptr, FT, Rebounds, PF, TP, A, TO, Blk, Stl, Min.

Auburn 58 • 10-7, 1-4 SEC

Player statistics table for Auburn vs Arkansas, including FG, 3-Ptr, FT, Rebounds, PF, TP, A, TO, Blk, Stl, Min.

Officials: Scott Yarbrough, Eric Brewton, Jennifer Rezac Technical fouls: Arkansas-None. Auburn-None.

Attendance: 2210 Unsportsmanlike foul called on Arkansas' Bailey Zimmerman (22) with 4:41 remaining in the 4th period.

Score by periods table for Auburn vs Arkansas

Last FG - AR 4th-00:38, AU 4th-01:58. Largest lead - AR by 24 2nd-01:07, AU by 2 1st-09:37. AR led for 38:51. AU led for 00:36. Game was tied for 00:23.

Points, In Paint, Off T/O, 2nd Chance, Fast Break, Bench statistics for Auburn vs Arkansas



JANUARY 18, 2018

FLORIDA

ARKANSAS

Bud Walton Arena Fayetteville, Arkansas

65

51

Malica Monk scored 20+ points eight times in her career - all this season with 23 points in the game. Arkansas used just the third different starting lineup of the year. Arkansas was perfect from the line, but it was a season-low 4-for-4 effort. The Razorbacks forced 14 Florida turnovers and committed just eight in the game.

Florida 65 • 9-10, 1-5 SEC

Player statistics table for Florida vs Arkansas, including FG, 3-Ptr, FT, Rebounds, PF, TP, A, TO, Blk, Stl, Min.

Arkansas 51 • 11-8, 2-4 SEC

Player statistics table for Arkansas vs Florida, including FG, 3-Ptr, FT, Rebounds, PF, TP, A, TO, Blk, Stl, Min.

Officials: Susan Blauch, Denise Brooks, Kevin Pethel Technical fouls: Florida-None. Arkansas-None.

Attendance: 1288

Estimated Actual Attendance: 840

Score by periods table for Arkansas vs Florida

Last FG - UF 4th-00:23, AR 4th-03:18. Largest lead - UF by 18 3rd-00:26, AR None. UF led for 39:27. AR led for 00:00. Game was tied for 00:23.

Points, In Paint, Off T/O, 2nd Chance, Fast Break, Bench statistics for Arkansas vs Florida



JANUARY 21, 2018

ARKANSAS 54
No. 11 MISSOURI 88
 Mizzou Arena
 Columbia, Missouri

Malica Monk scored in double figures for the 19th time. Arkansas allowed a season-high 13 opponent 3-point field goals. Jaiilyn Mason and Kiara Williams led the team with 14 points each.

Arkansas 54 • 11-9 (2-5)

#	Player	Total			3-Ptr			Rebounds			PF	TP	A	TO	Blk	Stl	Min
		FG-FGA	FG-FGA	FT-FTA	FG-FGA	FG-FGA	FT-FTA	Off	Def	Tot							
03	MONK, Malica	4-12	3-6	0-2	0	3	3	2	11	2	2	0	0	31			
10	WILLIAMS, Kiara	6-10	0-0	2-3	3	4	7	4	14	0	0	0	1	20			
14	MASON, Jaiilyn	6-11	2-3	0-0	1	2	3	2	14	1	3	0	0	31			
22	ZIMMERMAN, Bailey	1-8	0-4	0-2	2	1	3	4	2	2	2	0	0	28			
24	THOMAS, Taylah	1-2	0-0	0-0	0	3	3	2	2	0	0	0	0	21			
01	NORTHCROSS-BAKER,	2-10	2-8	0-0	2	2	4	1	6	2	2	0	1	23			
04	SWENSON, Keiryn	2-9	1-5	0-0	1	3	4	1	5	1	0	0	0	22			
12	MCCLURE, Brenna	0-1	0-0	0-0	0	0	0	0	0	0	0	0	0	3			
13	SPANGLER, Grayce	0-2	0-1	0-0	0	0	0	1	0	0	0	0	0	5			
20	STOUT, Sydney	0-0	0-0	0-0	0	1	1	0	0	0	0	0	0	5			
30	WEAVER, Macy	0-2	0-0	0-0	1	2	3	3	0	0	0	0	1	11			
	Team				2	0	2										
	Totals	22-67	8-27	2-7	12	21	33	20	54	10	9	1	2	200			

1st - FG %: 7-16 43.8% 2nd: 5-17 29.4% 3rd: 7-20 35.0% 4th: 3-14 21.4% Game: 22-67 32.8% Deadball Rebounds 2
 3FG %: 2-6 33.3% 3-8 37.5% 3-9 33.3% 0-4 0.0% 8-27 29.6%
 FT %: 0-0 0.0% 0-2 0.0% 2-3 66.7% 0-2 0.0%

No. 11 Mizzou 88 • 17-2 (5-1)

#	Player	Total			3-Ptr			Rebounds			PF	TP	A	TO	Blk	Stl	Min
		FG-FGA	FG-FGA	FT-FTA	FG-FGA	FG-FGA	FT-FTA	Off	Def	Tot							
03	CUNNINGHAM, Sophie	4-8	2-5	12-14	0	3	3	3	22	3	2	0	0	30			
05	ALDRIDGE, Lauren	3-6	3-6	4-4	1	0	1	1	13	4	0	0	1	27			
20	MICHAEL, Kayla	6-8	1-1	0-0	2	1	3	0	13	0	0	0	0	22			
22	FREERICKS, Jordan	4-8	0-0	4-7	2	6	8	2	12	4	2	2	1	21			
23	SMITH, Amber	3-6	1-2	0-0	1	10	11	0	7	4	2	2	3	27			
01	WINFREY, Kelsey	0-0	0-0	1-2	1	1	2	0	1	0	0	0	0	3			
02	ROUNDTREE, Jordan	2-3	2-3	0-0	0	4	4	0	6	2	1	0	0	18			
10	GREEN, Nadia	0-0	0-0	0-0	0	1	1	1	0	0	2	0	0	6			
12	BROWN, Elle	0-0	0-0	0-0	0	1	1	0	0	0	0	0	0	3			
13	SCHUCHTS, Hannah	0-3	0-2	0-0	0	2	2	0	3	0	2	0	0	16			
24	CHAVIS, Jordan	4-6	4-6	0-0	0	1	1	2	12	1	0	0	0	19			
34	TAHANE, Emmanuelle	1-4	0-0	0-0	0	1	1	2	2	0	1	0	1	8			
	Team				0	5	5										
	Totals	27-52	13-25	21-27	7	36	43	11	88	21	11	6	6	200			

1st - FG %: 9-11 81.8% 2nd: 6-13 46.2% 3rd: 8-17 47.1% 4th: 4-11 36.4% Game: 27-52 51.9% Deadball Rebounds 3
 3FG %: 3-4 75.0% 3-5 60.0% 4-10 40.0% 3-6 50.0% 13-25 52.0%
 FT %: 7-8 87.5% 8-9 88.9% 3-6 50.0% 3-4 75.0% 21-27 77.8%

Officials: Tina Napier, Frank Steratore, Angelica Suffren
 Technical fouls: Arkansas-None. No. 11 Mizzou-None.
 Attendance: 5219

Score by periods	1st	2nd	3rd	4th	Total
Arkansas	16	13	19	6	54
No. 11 Mizzou	28	23	23	14	88

Points	In	Off	2nd	Fast	Bench
AR	16	7	6	2	11
MU-W	28	9	7	10	21

Last FG - AR 4th-04:17, MU-W 4th-01:40.
 Largest lead - AR None, MU-W by 34 4th-01:40.
 AR led for 00:00. MU-W led for 39:42. Game was tied for 00:18.

Score tied - 0 times.
 Lead changed - 0 times.



JANUARY 29, 2018

KENTUCKY TBA
ARKANSAS TBA
 Bud Walton Arena
 Fayetteville, Arkansas

TBA



JANUARY 25, 2018

ARKANSAS 42
No. 9 SOUTH CAROLINA 90
 Colonel Life Arena
 Columbia, South Carolina

Jaiilyn Mason (12) and Malica Monk (10) both scored in double figures for the Razorbacks.

Arkansas 42 • 11-10, 2-6

#	Player	Total			3-Ptr			Rebounds			PF	TP	A	TO	Blk	Stl	Min
		FG-FGA	FG-FGA	FT-FTA	FG-FGA	FG-FGA	FT-FTA	Off	Def	Tot							
10	WILLIAMS, Kiara	0-2	0-1	0-0	1	3	4	3	0	0	0	0	1	14			
22	ZIMMERMAN, Bailey	1-4	0-3	0-0	2	0	2	2	2	2	1	2	0	17			
03	MONK, Malica	6-20	0-0	0-0	2	0	2	3	12	0	1	0	1	27			
14	MASON, Jaiilyn	5-12	0-2	0-0	1	1	2	2	10	1	0	1	0	32			
21	COSPER, Devin	1-6	1-4	0-2	0	1	1	0	3	2	0	0	0	24			
01	NORTHCROSS-BAKER,	0-3	0-0	0-0	0	2	2	3	0	0	1	1	0	14			
04	SWENSON, Keiryn	1-8	1-5	3-5	1	3	4	1	6	0	1	1	0	17			
12	MCCLURE, Brenna	0-1	0-0	0-0	0	0	0	0	0	0	1	0	0	2			
13	SPANGLER, Grayce	0-1	0-0	0-0	0	0	0	3	0	0	1	0	1	9			
20	STOUT, Sydney	0-0	0-0	0-0	0	0	0	2	0	1	1	0	2	9			
24	THOMAS, Taylah	1-6	0-1	0-0	2	4	6	3	2	0	2	1	0	24			
30	WEAVER, Macy	3-4	0-0	1-3	2	0	2	3	7	0	2	1	0	11			
	Team				3	3	6										
	Totals	18-67	2-16	4-10	14	17	31	25	42	5	12	5	5	200			

1st - FG %: 3-17 17.6% 2nd: 3-16 18.8% 3rd: 9-22 40.9% 4th: 3-12 25.0% Game: 18-67 26.9% Deadball Rebounds 4,2
 3FG %: 0-3 0.0% 0-5 0.0% 2-6 33.3% 0-2 0.0% 2-16 12.5%
 FT %: 0-0 0.0% 0-0 0.0% 2-3 66.7% 4-10 40.0%

#9/7 South Carolina 90 • 17-3, 6-2

#	Player	Total			3-Ptr			Rebounds			PF	TP	A	TO	Blk	Stl	Min
		FG-FGA	FG-FGA	FT-FTA	FG-FGA	FG-FGA	FT-FTA	Off	Def	Tot							
22	WILSON, A'ja	11-19	0-1	5-6	6	7	13	3	27	3	3	7	0	26			
35	JENNINGS, Alexis	9-9	0-0	4-6	3	7	10	0	22	1	0	1	1	23			
04	CLINEY, Doniyah	2-8	0-1	3-3	2	3	5	1	7	4	1	0	0	35			
10	JACKSON, Bianca	5-14	2-7	4-5	2	1	3	2	16	1	2	0	2	30			
52	HARRIS, Tyasha	1-6	1-4	2-4	3	10	13	1	5	6	3	0	1	31			
00	PATRICK, Victoria	1-9	1-7	1-2	1	0	1	0	4	0	1	0	1	21			
23	WILLIAMS, LaDazhia	2-5	0-0	0-0	4	0	4	2	4	0	0	1	0	15			
24	GRISSETT, LeLe	1-5	0-0	3-5	3	4	7	3	5	2	1	0	3	19			
	Team				3	3	6										
	Totals	32-75	4-20	22-31	27	35	62	12	90	17	11	9	8	200			

1st - FG %: 11-20 55.0% 2nd: 7-18 38.9% 3rd: 9-21 42.9% 4th: 5-16 31.3% Game: 32-75 42.7% Deadball Rebounds 6,2
 3FG %: 1-4 25.0% 3-7 42.9% 0-6 0.0% 0-3 0.0% 32-75 42.7%
 FT %: 2-3 66.7% 2-3 66.7% 9-12 75.0% 9-13 69.2%

Officials: Jesse Dickerson, Roy Gulbeyan, Ed Sidlasky
 Technical fouls: Arkansas-None. #9/7 South Carolina-None.
 Attendance: 12844
 Game Time 1:45

Score by periods	1st	2nd	3rd	4th	Total
Arkansas	6	6	20	10	42
#9/7 South Carolina	25	19	27	19	90

Points	In	Off	2nd	Fast	Bench
AR	28	9	9	9	15
SC	44	15	28	6	13

Last FG - AR 4th-02:21, SC 4th-02:38.
 Largest lead - AR None, SC by 48 4th-00:25.
 AR led for 00:00. SC led for 39:49. Game was tied for 00:11.

Score tied - 0 times.
 Lead changed - 0 times.