



# ARKANSAS RAZORBACKS

One Final Four Appearance » 22 Postseason Appearances » 27th Season In The SEC » More Than 400 Home Wins » More Than 700 Program Victories

### /// THE SERIES ///

Series Record	16-31
Fayetteville	9-13
Away	7-15
Neutral	0-3
Last 5	3-2
Neighbors versus this opponent	First Meeting

### /// MEDIA ///

**SEC Network Plus**  
Talent: Brett Dolan and TBA

**Razorback Sports Network**  
**Phil Elson & Erin Portman**  
Listen: Little Rock - KABZ-FM-103.7  
Fayetteville - KQSM-FM-92.1  
Fayetteville - KYNG-AM - 1590\*  
Fort Smith - KFPW-AM-1230  
Fort Smith - KHGG-AM-1580\*  
Rogers - KURM-AM-790/FM-100.3

\*Only if there are conflicts with the FM station

### /// SCHEDULE & RESULTS ///

NOVEMBER (5-2)	MEDIA	W/L	SCORE
2	Northeastern St (Exh)	-	82-74
10	Sam Houston State	SECN+	W 65-54
12	Samford	SECN+	W 84-63
16	at RV Nebraska	BTN	L 80-69
20	at Oral Roberts	Cox Sports	W 77-66
24	UTEPI!	-	L 64-61
25	New Mexico State!	-	W 69-60
29	Abilene Christian	SECN+	W 79-65

DECEMBER (5-2)	MEDIA	W/L	SCORE
3	at Kansas*	JTV/ESPN3	L 71-60
7	Charlotte	SECN+	W 73-72
10	Tulsa	SECN+	W 67-41
17	UT Arlington	SECN+	W 91-57
21	at RV/RV Arizona St.	Tempe, Arizona	L 89-43
28	Grambling State	SECN+	W 79-62
31	Ole Miss*	SECN+	W 73-72

JANUARY (1-7)	MEDIA	W/L	SCORE
4	at #5/3 Miss State*	SEC Network	L 111-69
7	-/rv Alabama*	SEC Network	L 83-76
11	at rv/rv Georgia*	SECN+	L 78-65
14	at Auburn*	SEC Network	W 68-58
18	Florida*	SEC Network	L 65-51
21	at No. 11 Missouri*+	SEC Network	L 88-54
25	at No. 9/7 S Carolina*	SEC Network	L 90-42
29	Kentucky*	SEC Network	L 76-65.

FEBRUARY (1-3)	MEDIA	W/L	SCORE
4	at Alabama*	SEC Network	W 74-66
8	No. 11 Tennessee*	SECN+	L 90-85
11	No. 13 Missouri*	SEC Network	L 84-58
15	at Kentucky*	SECN+	L 78-57
18	LSU*> (Senior Day)	SECN+	- 2 p.m.
22	No. 14 Texas A&M*	SECN+	- 7 p.m.
25	at Vanderbilt*	SECN+	- 2 p.m.
28	SEC Tournament	SECN/ESPN/2	- Nashville

MARCH (0-0)	MEDIA	W/L	SCORE
1-4	SEC Tournament	SECN/ESPN/2	- Nashville

\* - Southeastern Conference Game

! - UTEP Classic (El Paso, Texas)

^ - SEC/Big 12 Challenge

+ - We Back Pat

> - Play4Kay

All home games played in Bud Walton Arena (19,200) Rankings: AP/Coaches Poll

Sign up for Mike Neighbors' newsletter and listen to his podcasts at

**CoachNeighbors.com**



## ARKANSAS RAZORBACKS

Head Coach: Mike Neighbors  
Alma Mater: Arkansas, 1993  
Record: 110-53 (5) Arkansas Record: 12-14 (1)



## LSU TIGERS

Head Coach: Nikki Fargas  
Alma Mater: Tennessee, 1994  
Record: 202-118 (10) At LSU: 130-90 (7)



Fayetteville, Arkansas



Bud Walton Arena



2 p.m. CST



http://bit.ly/ArkvsLSU



Razorback Radio Network



http://statb.us/b/185272

### PREVIOUS GAME

»Arkansas has had seven games with double digit 3-point field goals and 16 games with more 3-point field goals than its opponent.

»Malica Monk has scored in double figures in 24 games.

»Jailyn Mason has scored in double figures in 17 games.

»Bailey Zimmerman has scored in double figures in five games this season including three of her last four games.

### From Distance

»The Razorbacks have had seven games with 10+ 3-point field goals made including a season-best 12 against UTA

»Arkansas has had 16 games with more and one game with the same number of 3-pointers.

»Arkansas has had six games with 30+ 3PTFGA and one with 40+. Fifteen attempts at Alabama is the season low.

»Arkansas has allowed only five opponents double digit makes from distance.

## SENIOR DAY

»Arkansas will honor it's seniors today. Graduate student Devin Cospers wraps up her Razorback playing career this season.

»Managers Tanner Holt and Jarrett Lowrimore, student athletic trainer Lauren Lundquist and student strength and conditioning coach Kaisa Bank are also graduating this May.

### ABOUT ARKANSAS

»The Razorbacks are the only SEC team that does not return a double-figure scorer.

»Arkansas **ranks second in the SEC** and is **19th in the country** with 673 3-point field goals attempted.

»Arkansas ranks **third in the SEC** with 7.7 3-point field goals made per game and for 3-pointers made with 200.

### Taking Care of the Ball

»Arkansas has forced its opponents to turnover the ball more times than they have in 18 games and tied the opponent in TO's once (NMSU).

»Arkansas has forced double digit turnovers in 23 games while committing single digit miscues in nine games.

»Arkansas has collected double digit steals in eight games.

»Arkansas is **second in the SEC** and ranks **18th in the country** for fewest turnovers with just 310.

»Arkansas **ranks second the SEC** and is **13th in the country** with just 11.9 turnovers per game. Arkansas forces 14.36 turnovers per game.

### /// STATISTICAL COMPARISONS ///

	ARKANSAS	LSU
PTS / GAME	67.5	66.5
PTS ALLOWED / GAME	72.4	60.1
FG %	36.9%	43.2%
FG DEFENSE %	41.4%	40.8%
3-PT FG %	29.7%	28.8%
3-PT FG DEFENSE %	34.0%	27.8%
REB / GAME	38.5	36.1
REB ALLOWED / GAME	43.4	35.1
LEADING SCORER	Monk, 15.9	Jackson, 18.0
LEADING REBOUNDER	Williams, 7.0	Mitchell, 7.8

## LAST GAME STARTERS



### 3 MALICA MONK

PPG FG% RPG APG

15.0 35.8% 3.5 3.7



### 10 KIARA WILLIAMS

PPG FG% RPG BPG

7.3 49.7% 7.0 1.0



### 14 JAILYN MASON

PPG FG% RPG APG

10.8 40.7% 4.0 2.8



### 21 DEVIN COSPERS

PPG FG% RPG MIN

14.8 37.3% 5.9 31.0



### 22 BAILEY ZIMMERMAN

PPG FG% RPG MIN

4.5 27.0% 3.3 24.3

## NUMERICAL ROSTER

No.	Name	Pos	Ht	Cl	Hometown/HS/Previous School
0	A'Tyanna Gaulden*	G	5-7	RSO	Ocilla, Ga./Americus Sumter HS/Florida State
1	Raven Northcross-Baker	G	5-7	Jr	Malvern, Ark./Malvern HS/Chipola College
3	Malica Monk	G	5-5	Jr	N. Little Rock, Ark./NLR HS
4	Keiryn Swenson	G/F	6-1	Jr	Wichita, Kan. /Maize HS
10	Kiara Williams	F/C	6-1	So	Little Rock, Ark./LR Central HS
12	Brenna McClure	G	5-6	RSO	Lyons, Kansas/Lyons HS/Hutch CC
13	Grayce Spangler	G	5-10	Fr	Fayetteville, Ark. Fayetteville HS
14	Jailyn Mason	PG	5-9	So	Mason, Ohio/William Mason HS
20	Sydney Stout	F	6-0	So	Bixby, Okla./Bixby HS
21	Devin Cospser	G	5-10	Gr	Coffeyville, Kan./Field Kindley HS/Coffeyville CC
22	Bailey Zimmerman	G/F	6-0	Jr	St. Vincent, Ark. /Wonderview HS
24	Taylah Thomas	F	6-1	Fr	Arlington, Texas/Mansfield Timberview HS
30	Macy Weaver	F	6-3	Fr	Davis Junction, Ill./Stillman Valley HS
33	Chelsea Dungee*	G	5-11	RSO	Sapulpa, Okla./Sapulpa HS/Oklahoma

\*Will not play the 2017-18 season due to NCAA transfer rules

## ALPHABETICAL ROSTER

No.	Name	Twitter
21	Devin Cospser	@deviddevv__
33	Chelsea Dungee*	@ChelseaDungee22
0	A'Tyanna Gaulden*	@AtyannaGaulden
12	Brenna McClure	@mcclurebrenna
14	Jailyn Mason	@jaimason14
3	Malica Monk	@TheRealMalica
1	Raven Northcross-Baker	@ravenbaker_4
13	Grayce Spangler	@grayce_1313
20	Sydney Stout	@sydeny_stout_
4	Keiryn Swenson	@KiKi_Sweezyy
24	Taylah Thomas	@hailtaylahh
30	Macy Weaver	@macyweaver528
10	Kiara Williams	@kiara_will22
22	Bailey Zimmerman	@Bailey_Ann22

## COACHING STAFF

Title	Name	Year	Alma Mater
Head Coach	Mike Neighbors	First Season	Arkansas, 1993
Assistant Coach	Todd Schaefer	First Season	Thomas More College, 1995
Assistant Coach	Lacey Goldwire	First Season	Oklahoma State, 2010
Assistant Coach	Pauline Love	First Season	Southern Miss, 2010
Director of Operations	Amber Shirey	30th Season	Arkansas, 1992
Director of Video and Scouting	Jeff Brazil	11th Season	Arkansas, 2010
Dir. of Student-Athlete Devel.	C'eira Ricketts	1st Season	Arkansas, 2015

## FA-NETIK PRONUNCIATIONS

No.	Name	Pronunciation
0	A'Tyanna	AH-tee-ah-nuh
3	Malica	mal-ick-cuh
4	Keiryn	KEER-runn
10	Kiara	Key-AIR-uh
13	Grayce	GRACE
14	Jailyn	JAY-lyn
24	Taylah	TAY-luh

## MARGIN OF VICTORY/DEFEAT

	1	2	3	4	5	6	7	8	9	10	11-15	16-19	20+	Record
Wins	2	-	-	-	-	-	-	1	1	1	3	1	3	12
Losses	-	-	1	-	1	-	1	-	-	-	5	-	6	1

### Most First Period Points

2017-18	27	Samford (11-12-17)
All-Time	29	at Alabama (1-15-17)
Opponent	33	No. 15 Missouri (2-12-18)

### Most Third Period Points

2017-18	26	Alabama (1/7/18)*
All-Time	34	HBU (12-28-16)*
Opponent	30	at Miss State (1-4-18)*

### Fewest First Period Points

2017-18	3	UTEP (11-24-17)
All-Time	3	UTEP (11-24-17)*
Opponent	6	SHSU (11-11-16)

### Fewest Third Period Points

2017-18	7	Florida (1-18-18)
All-Time	7	Florida (1-18-18)*
Opponent	4	LSU (1-21-16)

### Most Second Period Points

2017-18	25	at Auburn (1-14-18)*
All-Time	31	HBU (12-28-16)
Opponent	35	at #2 S. Carolina (1-3-16)

### Most Fourth Period Points

2017-18	28	No. 11 Tennessee (2-8-18)
All-Time	32	Tulsa (11-23-15)
Opponent	33	Alabama (1-7-18)

### Fewest Second Period Points

2017-18	6	at Arizona State (12-21-17)
All-Time	4	vs. Kentucky (2-17-17)
Opponent	3	at Alabama (1-15-17)

### Fewest Fourth Period Points

2017-18	6	at No. 11 Missouri (1-21-18)
All-Time	5	#7 Ore. St. (11-28-15)
Opponent	10	#24 Missouri (1-17-16)*

### Most First Half Points

2017-18	42	Samford (11-12-17)
All-Time	65	Tenn State (11-27-88)
Opponent	63	Texas (1-9-89)

### Largest Margin of Victory

2017-18	34 (91-57)	UT-Arlington (12-17-17)
All-Time	79 (108-29)	B Wesleyan (2-18-77)
Opponent	54 (28-82)	La Tech (11-30-78)

### Fewest First Half Points

2017-18	12	at No. 9/7 South Carolina (1-25-18)
All-Time	11	at Missouri (3-1-15)*
Opponent	8	Montana State (1-5-03)

### \*Most Recent

## RECORD FACTS

Overall	12-14
At Home (Bud Walton Arena)	8-5
On The Road   Neutral	3-9   1-0
White   Cardinal   Anthracite Uniforms	8-5   4-8   0-1

## HALFTIME/LEADS/OVERTIME

Leading at the half, home/road/neutral	9-0 (5-0/3-0/0-0)
Tied at the half, home/road/neutral	-
Trailing at the half, home/road/neutral	3-14 (2-5/0-9/1-0)
Games decided by 5 points or fewer	2-2
Games decided by 10 points or fewer	4-2
Leading at the start of the 4Q	11-1
Overtime games	-

## OFFENSE

Scoring less than 50 points	0-2
Scoring 51-60 points	0-5
Scoring 61-70 points	4-5
Scoring 70+ points	8-2
2 Players Or Less in Double Figures	3-7
3 Players in Double Figures	3-7
4 Players in Double Figures	4-0
5 Players in Double Figures	2-0
When shooting 50 percent or higher	-
When shooting less than 50 percent	12-14

## REBOUNDING/TURNOVERS

When outrebounding opponent	8-0
When outrebounded	3-12
When rebounds are even	1-0
When grabbing 10+ offensive reb	9-10
When forcing 15+ turnovers	8-4
When committing 10 or fewer turnovers	5-6
When committing 15+ turnovers	2-6

## Months

In November	5-2
In December	5-2
In January	1-7
In February	1-3
In March	-



[FACEBOOK.COM/RAZORBACKWBB](https://www.facebook.com/razorbackwbb)

[@RAZORBACKWBB \(T&I\)](https://twitter.com/RAZORBACKWBB)

[HTTP://BIT.LY/YOUTUBEKICKIN](https://bit.ly/youtubekickin)

[COACHNEIGHBORS.COM](https://www.coachneighbors.com)

# NEIGHBORS' PHILOSOPHY

## GRAD STUDENT DEVIN COSPER

- » Only "senior" on the team
- » Missed the opening game last season after a death in the family
- » Averaged 6.4 ppg and 2.2 rpg last season and 7.7 ppg and 2.8 rpg for her career
- » Graduated in May 2017 with a degree in broadcast journalism
- » Interned at RSN, Arkansas' broadcast studio
- » Wears the SEC graduate patch on her jersey
- » Named "Comback Student-Athlete of the Year" at annual HOGSPY awards after rebounding from an injury and a death in the family



## FUNCTIONALLY FAST

You will hear Mike Neighbors say this a lot. He wants his teams to play as fast as possible and still function at a high level. That may look different from possession to possession depending on what Arkansas is running.

## TRUST, TALENT AND TIME

My program will be built on three things. It's very simple.

**TRUST** - The highest form of loyalty that has to be earned, managed and sometimes re-earned. If we don't have this, nothing will work and the stool's legs will fall off and everything will collapse.

**TALENT** - It doesn't mean you can dribble, shoot, pass and rebound. It's a lot of other things like the ability to engage with the fan base and willingness to sign autographs for a 10-year-old child you might be inspiring.

**TIME** - It's just not being on time or making time. It's how you utilize your time and who you invest your time with and be around. Trust, talent and time. Those will be our pillars.

## FUN FEATURES

Both Mike Neighbors and Jaielyn Mason have shoe collections. Mason's collection was featured in a story last year. It can be seen here: <http://bit.ly/2ebtLdb>

Neighbors got settled into his Fayetteville home in mid August. One of the first things he set up were his shoes.



## BESIDE US

One of the things Mike Neighbors stressed when he was hired was his desire to take care of the players, the staff and the fans who have been loyal to the Razorback program. He has told our fans that he wants them to stand "Beside Us". Don't be behind us, stand next to us and go through the process of building our program.

## SHOTS AND POSSESSIONS

Mike Neighbors wants a lot of shots and a lot of possessions. Here's a look at the Razorbacks shots this year. The number is often determined by pace of play and Arkansas will push the tempo.

## 30 AND COUNTING

This year, Arkansas director of operations Amber Shirey enters her 30th season as a Razorback. The former Amber Nicholas was a two-time All-Southwest Conference selection during her four-year playing career from 1989-92. She spent one season (1992-93) as a student coach helping Arkansas transition to the Southeastern Conference. She moved on to a graduate assistant and assistant coach from 1993-94 through the 2006-07 season. In 2007-08 Shirey transitioned to the director of operations position holding that spot until she returned to the sidelines as an assistant coach for the 2013 and 2014 seasons. She moved into her current position as the Executive Director of Operations in 2014-15. She has been a part of seven different head coach's staffs during her tenure.

## GAMEDAY CARDS

Coach Neighbors hands out a Gameday Card for each home and away game. One side of the card is branded with a Razorback logo and women's basketball. The other side is a quote that is relevant to something the team has talked about or worked on that week. Check out this week's card here:





# OPPONENT

## ABOUT LSU

»The Tigers have been giant-killers this season knocking off nationally ranked Missouri, Tennessee, Georgia and Texas A&M. They also have road SEC wins at Missouri, Florida, and Kentucky.

»Chloe Jackson leads the team in scoring averaging 18.0 points per game. Raigyne Louis is next with 16.6 ppg. Ayana Mitchell is the team's leading rebounder with 7.8 boards per game.

»LSU averages 3.3 3-point field goals per game but that number jumps to 4.3 in SEC games.

»Jackson improves to 20.5 ppg and Louis to 17.2 ppg in league games while Ayana Mitchell also contributes double figures with 11.1 ppg.

## IMPORTANT STATS

**The SEC Stats:** The Tigers are second in th SEC in steals per game (9.6) and 3-point field goal defense (28.8). They rank third in steals (99), and turnover margin (4.26).

**3-Point Range:** Arkansas ranks among the SEC leaders in 3-point shooting while LSU ranks in the top of the conference for 3-point field goal defense. Should be an interesting match-up.

## ABOUT THE SERIES

Series Record	16-31
Fayetteville	9-13
Away	7-15
Neutral	0-3
Last 5	3-2
Neighbors versus this opponent	First Meeting

## An Arkansas Win Would ...

- »be the first against LSU for Mike Neighbors as a head coach.
- »snap a three-game losing streak.
- »give the Razorbacks four conference wins. A win coupled with an Auburn loss at Alabama, will move Arkansas up in the standings.

## SEC SCHEDULE

February 18 (Sunday)	February 22 (Thursday)	February 25 (Sunday)
Auburn at Alabama	Georgia at Alabama	Ole Miss at Auburn
LSU at Arkansas	Texas A&M at Arkansas	Florida at Georgia
Vanderbilt at Florida	Tennessee at Florida	Miss State at Kentucky
Texas A&M at Miss State	Kentucky at Ole Miss	Alabama at LSU
Tennessee at Missouri	Auburn at Miss State	S Carolina at Tennessee
Kentucky at S Carolina	Vanderbilt at Missouri	Missouri at Texas A&M
	LSU at S Carolina	Arkansas at Vanderbilt
February 19 (Monday)		
Georgia at Ole Miss		

NOVEMBER (5-2)	MEDIA	W/L	SCORE	SERIES	NEIGHBORS
2 Northeastern St. (Exh)	-	W	82-74	2-0	1-0
10 Sam Houston State	SECN+	W	65-54	7-0	1-0
12 Samford	SECN+	W	84-63	1-0	1-0
16 at Nebraska	BTN	W	80-69	0-1	0-1
20 at Oral Roberts	Cox Sports	W	77-66	20-9	1-0
24 UTEP!	-	L	64-61	2-1	0-2
25 New Mexico State!	-	W	69-60	1-0	1-0
29 Abilene Christian	SECN+	W	79-65	1-0	1-0

DECEMBER (5-2)	MEDIA	W/L	SCORE	SERIES	NEIGHBORS
4 at Kansas^	JTV/ESPN3	L	71-60	4-4	0-1
7 Charlotte	SECN+	W	73-72	1-0	1-0
10 Tulsa	SECN+	W	67-41	21-3	1-0
17 UT Arlington	SECN+	W	91-57	7-0	1-0
21 at Arizona State	Pac-12N	L	89-43	1-1	2-5
28 Grambling State	SECN+	W	79-62	8-0	2-0
31 Ole Miss*	SECN+	W	73-72	17-26	1-0

JANUARY (1-7)	MEDIA	W/L	SCORE	SERIES	NEIGHBORS
4 at #5/3 Mississippi State*	SEC Network	L	111-69	18-19	0-2
7 Alabama*	SEC Network	L	83-76	21-15	0-1
11 at Georgia*	SECN+	L	78-65	5-31	0-1
14 at Auburn*	SEC Network	W	68-58	14-22	1-0
18 Florida*	SEC Network	L	65-51	9-28	0-1
21 at No. 11 Missouri*	SEC Network	L	88-54	11-10	1-2
25 at No. 9/7 South Carolina*	SEC Network	L	90-42	17-17	0-1
29 Kentucky*	SEC Network	L	76-65	13-23	1-2

FEBRUARY (1-2)	MEDIA	W/L	SCORE	SERIES	NEIGHBORS
4 at Alabama*	SEC Network	W	74-66	22-15	1-1
8 No. 11 Tennessee*	SECN+	L	90-85	3-30	0-1
12 No. 13 Missouri*	SEN+	L	84-58	11-10	1-2
15 at Kentucky*	SECN+	L	78-57	13-23	1-2
18 LSU*	SECN+	-	-	16-31	First Meeting
22 No. 14 Texas A&M*	SECN+	-	-	21-8	1-1
25 at Vanderbilt*	SECN+	-	-	8-24	First Meeting
28 SEC Tournament	SECN/ESPN	-	-	-	-

MARCH (0-0)	MEDIA	W/L	SCORE	SERIES	NEIGHBORS
1-4 SEC Tournament	SECN/ESPN	-	-	-	-

\* - Southeastern Conference Game  
 !-UTEP Thanksgiving Tournament (El Paso, Texas)  
 ^-SEC/Big 12 Challenge  
 All home games played in Bud Walton Arena (19,200)

Below is the breakdown of the 2018 SEC Tournament seeds *if the season ended on February 15.*

Seeding	Record	Games Remaining
1. Mississippi State^	13-0	AM, AU, @UK
2. South Carolina	10-3	UK, LS, @UT
3. LSU*	9-4	@AR, @SC, UA
4. Tennessee*	9-4	@MO, @UF, SC
5. Texas A&M*	9-4	@MS, @AR, MO
6. Georgia*	9-4	@UM, @UA, UF
7. Missouri*	9-4	UT, VU, @AM
8. Alabama	6-7	AU, UG, @LS
9. Kentucky	5-8	@SC, @UM, MS
10. Auburn	4-9	@UA, @MS, UM
11. Arkansas	3-10	LSU, AM, @VU
12. Vanderbilt%	2-11	@UF, @MO, AR
13. Florida%	2-11	VU, UT, @UG
14. Ole Miss	1-11	UG, UK, @AU

^— MS has clinched the No. 1 seed.  
 \*— Among the tied teams, competition between them (LS 4-1, UT 2-2, AM 2-3, UG 1-2, MO 0-2).  
 %— UF & VU have not played. The next tie breaker would be versus other seeds which is broken against their next common opponent, Vanderbilt (VU 1-0, UF 0-1).



**SEC STANDINGS 2/16/18**

	Conference				Overall						
	W-L	Pct.	H	A	W-L	Pct.	H	A	N	Strk	
Miss State	13-0	1.000	6-0	7-0	27-0	1.000	14-0	8-0	5-0	W27	
S Carolina	10-3	.769	5-1	5-2	21-5	.808	11-2	8-2	2-1	W3	
LSU	9-4	.692	6-1	3-3	17-7	.708	10-1	6-5	1-1	W2	
Tennessee	9-4	.692	5-2	4-2	21-5	.808	12-2	6-3	3-0	L1	
Texas A&M	9-4	.692	6-1	3-3	20-7	.741	14-3	5-3	1-1	W1	
Georgia	9-4	.692	5-2	4-2	21-5	.808	13-3	8-2	0-0	L2	
Missouri	9-4	.692	4-2	5-2	21-5	.808	10-2	7-2	4-1	W4	
Alabama	6-7	.462	2-4	4-3	16-10	.615	10-4	6-4	0-2	W2	
Kentucky	5-8	.385	3-4	2-4	13-14	.481	9-6	4-8	0-0	W1	
Auburn	4-9	.308	4-3	0-6	13-12	.520	10-3	2-7	1-2	L1	
Arkansas	3-10	.231	1-5	2-5	12-14	.462	8-5	3-9	1-0	L3	
Florida	2-11	.154	1-5	1-6	10-16	.385	6-9	3-6	1-1	L6	
Vanderbilt	2-11	.154	1-6	1-5	6-21	.222	3-11	3-8	0-2	L4	
Ole Miss	1-12	.077	1-5	0-7	11-15	.423	9-5	1-9	1-1	L10	

**MAKING A RUN ON CAREER NUMBERS**

- » Devin Cospser has 810 career points ranking 34th in program history.
- » Devin Cospser has 360 career 3-point field goal attempts ranking 11th in program history.
- » Malica Monk has 771 career points ranking 37th in program history.
- » Devin Cospser has reached her single-season highs for field goals, field goal attempts, 3-point field goals, 3-point field goals attempted, offensive and defensive rebounds, total rebounds, blocks and points.
- » Jailyn Mason has reached her single-season bests for 3-point field goals made and attempted, free throws made, blocks and points.
- » Malica Monk has reached her single-season highs for field goals made and attempted, 3-point field goals made and attempted, free throws made and attempted, defensive rebounds, total rebounds, assists and points.
- » Kiara Williams has reached her single-season career-bests for field goals made and attempted, 3-pointers made and attempted, free throws made and attempted, offensive, defensive and total rebounds, assists, blocks, steals and points.
- » Bailey Zimmerman has reached her single-season best for made free throws, offensive rebounds, blocks and minutes played.
- » Devin Cospser has 56 3-pointers made this season - 33 better than her single season best. She has scored more points (351) this year than she did all of last season (187 pts/29 g).
- » Cospser scored 104 points in SEC games last year - she tied that through 10 games this season.
- » Jailyn Mason has made 40 3-pointers this year. She made 19 in 30 games last year.
- » Malica Monk has scored 414 points in 2017-18. Her single season best was 247 points set in 27 games last year.
- » Malica Monk has made 97 free throws - more makes than the two previous years combined.
- » Sophomore Kiara Williams has scored 191 points this year and averages 7.3 ppg - up from 62 points and 3.1 ppg as a freshman.

**THREEEEEEEEEEE**

- » Arkansas has made 200 3-point field goals this year. The Razorbacks jumped into the program's top-10 for single season makes.
- » The Razorbacks are averaging 7.6 3-point field goals per game. That number ranks third in the SEC.
- » Arkansas' 7.7 3-point field goals per game has the Razorbacks on pace to set a single-season program record for makes from distance (3 games x 7.7 = 23.1 | 200 + 23.1 = 223.1).

**3-POINT FIELD GOALS MADE**

1. 202 (33 games)	2000-01
2. <b>200 (26 games) 2017-18</b>	
200 (28 games)	2005-06
200 (32 games)	2008-09
5. 198 (34 games)	1998-99
6. 191 (33 games)	1997-98
7. 177 (30 games)	2013-14
177 (30 games)	2016-17
9. 169 (34 games)	2010-11
10. 167 (31 games)	2009-10
167 (33 games)	2011-12

**LEADS AND DEFICITS**

Biggest Halftime Lead	17, GSU
Biggest Halftime Lead Lost	-
Biggest Halftime Deficit	38, GSU
Biggest HT Deficit Erased	7, Char.
Biggest Overall Lead	30, Tulsa,4Q
Biggest Win Margin	26, Tulsa
Biggest Loss Margin	46, ASU
Biggest Deficit Overcome	13, SHSU

**JUMP BALLS**

Arkansas	6
Opponents	20

**FIRST POINTS**

Williams	12
Mason	7
Monk	4
Cospser	2
Zimmerman	1
Monk	1 (FT)
Zimmerman	1 (FT)
Williams	1 (FT)

**DOUBLE FIGURE POINTS**

Malica Monk	24
Devin Cospser	18
Jailyn Mason	17
Kiara Williams	9
Bailey Zimmerman	5
Raven Northcross-Baker	3
Taylah Thomas	1
Keiryn Swenson	1

**LEADING SCORER**

Monk	10
Cospser	9
Mason	6
Northcross-Baker	2
Williams	2

**DOUBLE FIGURES FIRST HALF**

Cospser	6
Monk	4
Williams	2
Mason	2
Northcross-Baker	1
Zimmerman	1

**DOUBLE FIGURES/QUARTER**

Monk	5
Cospser	3
Mason	1
Northcross-Baker	1

**20/30-PLUS POINTS**

Monk	8 (21, 22, 24, 22, 20, 21, 23, 25)
Cospser	6 (21, 21, 22, 25, 24, 29)
Northcross-Baker	1 (22)

**DOUBLE FIGURE REBOUNDS**

Cospser	7
Williams	7
Thomas	1

**LEADING REBOUNDER**

Williams	10
Cospser	7
Thomas	4
Monk	2
Zimmerman	1
Mason	1

**DOUBLE DOUBLES**

Devin Cospser	SHSU, ORU, NMSU, Char., Tulsa, OM, AL
Williams	NMSU, GSU, AU
Monk	GSU

**5+ASSISTS/10+ ASSISTS**

Monk	8/1
Mason	5/-
Northcross-Baker	1/-

**FIRST OFF THE BENCH**

Thomas	21
Northcross-Baker	11
Swenson	6
Williams	1
Weaver	1

**CHARGES DRAWN**

Monk	5
Northcross-Baker	3
Cospser	2
Stout	2
Thomas	1
Swenson	1
Williams	1

**FORCED 10 SECOND VIOLATION**

2017-18	TBA
---------	-----

**FORCED SHOT CLOCK VIOLATION**

2017-18	9
---------	---

**FORCED INBOUND VIOLATION**

2017-18	1
---------	---

**AND 1**

Malica Monk	12
Kiara Williams	11
Devin Cospser	6
Bailey Zimmerman	5
Macy Weaver	2
Jailyn Mason	1
Raven Northcross-Baker	1
Keiryn Swenson	1

**AND 1 CONVERSIONS**

Monk	9
Cospser	5
Bailey Zimmerman	4
Williams	4
Northcross-Baker	1
Swenson	1
Weaver	1

**BUZZER BEATERS**

Mason	3 (ACU, MSU, KY)
<a href="http://bit.ly/2BBY8ua">http://bit.ly/2BBY8ua</a>	
Swenson	1 (Kansas)

»The Razorbacks moved into the program's top-10 for 3-point field goals attempted earlier this year. Arkansas took over the top spot with 36 attempts at Kentucky setting the program record.

»Four Razorbacks have already set a single-season best for made 3-point field goals. That includes Devin Cospser (56), Jailyn Mason (40), Malica Monk (31), Kiara Williams (1).

»Devin Cospser has 104 career 3-pointers.

She broke into the career top 10 with two makes against No. 15 Missouri. She currently ranks tied for 13th in program history.

»Arkansas has made more or tied its opponent in made 3-point field goals in 17 games this season.

»The Razorbacks have hit double-digit 3-point field goals seven times this season with a high of 12 makes against UT-Arlington.

»Arkansas set a school record for made 3-point field goals in a half with nine from distance at Auburn in the first 20 minutes.

#### 3-POINT FG ATTEMPTED

1. 673 (26 games)	2017-18
2. 658 (32 games)	2008-09
3. 593 (33 games)	2000-01
4. 590 (28 games)	2005-06
5. 580 (33 games)	2011-12
6. 576 (34 games)	1998-99
7. 570 (33 games)	1997-98
8. 554 (28 games)	2003-04
9. 549 (33 games)	2012-13
10. 546 (31 games)	2009-10

#### THREE-POINT GOALS

NAME (CAREER)	YR	GP	3PM
1. Wendi Willits (97-01) *	4	131	316
2. Lyndsay Harris (09-12)	4	123	283
3. Kimberly Wilson (93-97) **	4	120	267
India Lewis (99-03) **	4	128	267
5. Jessica Jackson (14-17)	4	120	198
6. Christy Smith (94-98)	4	111	156
7. Shameka Christon (00-04)	4	123	144
8. Calli Berna (12-15)	4	128	133
9. Rochelle Vaughn (02-06)	4	120	127
10. Amber Nicholas (88-92)	4	117	121
11. Sytia Messer (95-99)	4	128	112
12. Dom. Washington (05-07)	2	59	109
13. Charity Ford (07-10)	4	117	104
<b>Devin Cospser (16-18)</b>	<b>3</b>	<b>83</b>	<b>104</b>

\* -- Third in SEC history \*\* -- T7 in SEC history

#### ABOUT OUR LEADER

»One of two SEC head coaches working at their alma mater (Holly Warlick, Tennessee).

»One of two SEC head coaches in their first season with their team (Cameron Newbauer, Florida).

»One of five SEC head coaches who graduated from a league school (Joni Taylor, Alabama; Mathew Mitchell, Mississippi State; Nikki Fargas, Tennessee; Holly Warlick, Tennessee).

»Is the eighth of nine Arkansas head coaches to win double figure games in their first season.

»Is 8-4 at home and it would be the 25th time a Razorback head coach won double figure home games if the Razorbacks can get two more victories.

»Would coach Arkansas to its 42nd season with a winning record at home (records for 43 seasons).

#### PERSONAL BESTS

»Arkansas has seven returners from last season and all of them have set or tied at least one career-best number this year.

»In the 14 career categories that are tracked on the player pages: Monk has 12 career-bests ... Swenson has three ... Williams has 14 ... Mason has eight ... Stout has one ... Cospser has 13 and Zimmerman has 14.

#### MONK CONTINUES TO LEAD

»Fourteen consecutive games in double figure scoring (snapped at Miss State). Scored in double figures in 24-of-26 games including a streak of nine in a row that ended against No. 15 Missouri.

»Ranks **second in the SEC** for field goal attempts (399), **tied for fifth** for minutes played (880), **13th** for free throw percent (78.2), **13th** for points per game (15.9).

»Nine games with 20+ points with a career-best 25 against No. 11 Tennessee.

»Monk currently has 227 career assists, ranking 21st all-time in program history.

Devin Cospser	Communication (undergrad & Masters)
Chelsea Dungee	Rec. & Sport Management
A'Tyanna Gauden	Journalism: Broadcast
Brenna McClure	Social Work
Jailyn Mason	Journalism: News/Editorial
Malica Monk	Rec. & Sport Management
Raven Northcross-Baker	Criminal Justice
Grayce Spangler	Communication
Sydney Stout	Management
Keiryn Swenson	Accounting
Taylah Thomas	Nursing
Macy Weaver	Kinesiology
Kiara Williams	Childhood Development
Bailey Zimmerman	Apparel Merch./Product Dev.



»At least one 3-pointer in each of the first 10 games with a career-best four 3-pointers versus No. 11 Tennessee and at Kentucky. A made 3-pointer in 18 games.

»Thirty-two or more minutes played in 21 games including going 40 minutes on the road at Auburn.

»Seven consecutive games with at least one steal to start the season with a season-best four steals three times (SHSU, NMSU, ALA). Eighteen games with a steal.

»Has been perfect from the free throw line in 11 games (Samford (7-7), Nebraska (3-3), UTEP (3-3), Kansas (4-4), Tulsa (4-4), UTA (12-12), ASU (2-2), AU (4-4), FL (4-4), KY (6-6), AL (4-4)).

»Double-figure scoring in a single quarter five times (10 | 3Q | Nebraska || 13 | 4Q | ORU) || 10 | 4Q | Kansas || 11 | 4Q | Alabama || 11 | 1Q | Florida).

»Has 31 3-point field goals made this year. She had nine 3-pointers in her freshman and sophomore years combined.

#### COSPER POSTING BIG NUMBERS

»Ten consecutive games in double figure scoring. The streak was snapped versus UTA. Seventeen games in double figures.

»One of six active SEC players with 7+ season double-doubles.

»Ranks **fourth in the SEC** with 2.33 made 3-pointers per game and **fifth** with 56 made 3-pointers.

»**First in the SEC** in 3-point field goals attempted (181).

»SEC rankings include **sixth** for double-doubles (6).

»Seven games with 20+ points this season.

»Seven career double-doubles all set this season (SHSU, Oral Roberts, NMSU, Charlotte, Tulsa, Ole Miss, Alabama).

»Nineteen consecutive games (last four games of 2016-17) with at least one 3-pointer. (snapped vs Alabama).

»Double-figure scoring in a single quarter three times this year (10 | 1Q | Nebraska || 12 | 1Q | ORU || 11 | 4Q | UTEP).

»Has scored 354 points this year - more than all of last season (187).

#### JAILYN MASON QUIETLY SHINNING

»Overshadowed by the gaudy numbers tallied by Devin Cospser and Malica Monk, sophomore Jailyn Mason is also putting together a solid season.

»She has 17 games in double figure scoring including a streak of five in a row twice this year and an eight-game streak that was snapped at Alabama

»She has five games with 5+ assists.

»Has played multiple positions on the floor.

»While Malica Monk is the spark plug that gets the team going, Jailyn Mason is the captain who takes control and steers the ship.

»Made more 3-pointers through 26 games (40) than all of last year (19).

**AP TOP 25 (2/12/2018)**

RK	TEAM	RECORD	PTS
1	Connecticut (32)	24-0	800
2	Mississippi State	26-0	765
3	Baylor	23-1	731
4	Louisville	25-1	702
5	Notre Dame	23-2	682
6	Texas	20-4	614
7	UCLA	21-4	562
8	South Carolina	20-5	559
9	Oregon	23-4	558
10	Maryland	22-3	537
11	Tennessee	21-4	493
12	Florida State	21-4	453
13	Missouri	19-5	382
14	Stanford	18-8	352
15	Oregon State	19-6	322
16	Ohio State	20-6	268
17	Duke	20-6	266
17	Texas A&M	19-7	266
19	Green Bay	22-2	241
20	Georgia	21-4	238
21	Oklahoma State	18-6	169
22	South Florida	20-5	144
23	Michigan	20-7	62
24	Belmont	24-3	53
25	NC State	20-6	44

Others receiving votes: LSU 28, Nebraska 22, West Virginia 20, Dayton 11, Central Michigan 10, Mercer 7, TCU 6, Arizona State 6, DePaul 5, Miami 5, Gonzaga 3, Iowa 3, UAB 2, Villanova 2, California 2, USC 2, Minnesota 2, Quinnipiac 1

Dropped from rankings: TCU 24, Arizona State 25

**USA TODAY TOP 25 COACHES POLL - 2/13/2018**

Rank	School	RECORD	PTS
1	Connecticut (32)	25-0	800
2	Mississippi State	26-0	766
3	Baylor	23-1	733
4	Notre Dame	23-2	685
5	Louisville	25-2	680
6	Texas	20-4	633
7	UCLA	21-4	593
8	South Carolina	20-5	572
9	Maryland	22-3	548
10	Oregon	23-4	532
11	Tennessee	21-4	470
12	Florida State	21-4	451
13	Missouri	20-5	390
14	Oregon State	19-6	359
15	Green Bay	22-2	292
16	Duke	20-6	277
17	Ohio State	20-6	272
18	Texas A&M	19-7	267
19	Georgia	21-4	216
20	Stanford	18-8	209
21	South Florida	20-5	201
22	Oklahoma State	18-6	115
23	Michigan	20-7	110
24	DePaul	20-6	48
25	NC State	20-6	41

Others receiving votes: West Virginia 30, Mercer 25, Florida Gulf Coast 20, Central Michigan 17, Virginia 11, Miami 10, Syracuse 7, TCU 5, Buffalo 3, LSU 3, Marquette 3, Belmont 2, Nebraska 1, Villanova 1, Houston 1, Quinnipiac 1

**KIARA WILLIAMS STEPPING UP**

- »First career double-double with 11 points and 11 rebounds versus New Mexico State. Second one against GSU with 12 points and 16 boards and third at Auburn with 15 points and 14 rebounds.
- »Seven career games (all this season) with 10+ rebounds.
- »Posted a career-best 16 rebounds at Kansas, tying it versus GSU.
- »Tallied a then career-best 12 points in a win over ACU and was in double figures in the first half for the first time in her career.
- »Nine games in double figure scoring including a career-best 15 points at Auburn.

**SHARING THE BALL**

Twelve of 13 Razorbacks have scored in games this year. All have played and all have attempted a shot. Six of 12 players have recorded double figure points for the season.

**BLOCKING WELL**

- »Kiara Williams leads the team with 25 blocked shots through 26 games. Williams had only five blocks for the entire season a year ago. The sophomore record is 58 set by Sarah Watkins in 2010-11. Williams ranks **15th in the SEC** with 0.96 bpg.
- »As a team, Arkansas **ranks eighth in the SEC** with 3.5 bpg.

**DID YOU KNOW**

That Arkansas head coach Mike Neighbors was cut from the Razorback baseball team? He walked on and legendary head coach Norm DiBryan nudged him in the coaching direction saying "You always seem to be in the right place but you don't always make the play."

**THE SCHEDULE**

Arkansas' non-conference schedule features four teams who went to the post season a year ago. Arizona State played in the first round of the NCAA Tournament while Abilene Christian, UT-Arlington and Grambling were all WNIT teams a year ago. UTA was eliminated in the first round while Abilene Christian and Grambling both reached round two.

The always-tough SEC schedule features eight NCAA Tournament teams including the NCAA Champion South Carolina and the runner up, Mississippi State. Auburn and LSU were eliminated in the first round while Kentucky, Missouri, Tennessee and Texas A&M all bowed out in round two. In addition, Alabama and Ole Miss advanced to the WNIT Tournament. That means Arkansas faces 14 teams who played in the postseason a year ago.

According to the NCAA ([http://stats.ncaa.org/rankings/ranking\\_summary](http://stats.ncaa.org/rankings/ranking_summary)) Arkansas has the 33rd toughest schedule in the country.

**DOUBLE FIGURES IN A QUARTER**

- Cosper  
1Q, 10, at Nebraska | 12, 1Q, at ORU | 11, 4Q, at UTEP | 10, 4Q, Tennessee
- Monk  
10, 3Q, at Nebraska | 13, 4Q, at ORU | 10, 4Q, at Kansas | 11, 4Q, Alabama | 11, 1Q, Florida  
12, 4Q Tennessee
- Mason  
11, 3Q, UTA
- Northcross-Baker  
12, 4Q, UTA

**AGAINST THE POLL**

This week's (Feb. 12) Associated Press poll features six SEC teams. Arkansas' schedule is headlined by No. 2 Mississippi State, followed by No. 8 South Carolina, No. 11 Tennessee, No. 13 Missouri, No. 17 Texas A&M, and No. 20 Georgia. LSU (28), Nebraska (22), Arizona State (6) getting votes.

This week's USA Today Coaches Poll has Mississippi State at No. 2, followed by No. 8 South Carolina, No. 11 Tennessee, No. 13 Missouri, No. 18 Texas A&M, and No. 19 Georgia. LSU (3) and Nebraska (1) are getting votes.



## **HOME SWEET HOME**

---

- »Arkansas has had just one losing home season in 41 years (prior to 2017-18)
- »Arkansas is 422-144 (8-5 in '17-18) in home games including a 263-109 record in Bud Walton Arena. Arkansas was 159-35 in Barnhill Arena.

## **WHAT'S MY NUMBER**

---

Transfer Chelsea Dungee has a unique background to her jersey number selection. Here is the story in her own words:

*I have always played in #22. Every competitive team and school ball team I have always worn #22. #22 was the number my mom played basketball in throughout her high school career. So, I wore #22.*

*A year ago I changed my jersey number to #33. My cousin (more like brother), Reuben, suffered a traumatic brain injury while playing in a high school football game last season and he wore jersey #33. I play in jersey #33 for Reuben. Playing with #33 on back is a reminder that 'Reub' has my back, and I have his.*

## QUARTER BY QUARTER SCORING

Date	Opponent	W/L	1st	2nd	1st Half	3rd	4th	2nd Half	OT	Total
Nov. 2	NE State (exh)	W, 82-74	20	15	35	18	29	47	-	82*
Nov. 10	SHSU	W, 65-54	5	18	23	23	19	41	-	65
Nov. 12	Samford	W, 84-63	27	15	42	16	26	42	-	84
Nov. 16	Nebraska	L, 80-69	19	11	30	22	17	49	-	69
Nov. 20	ORU	W, 77-66	25	15	40	16	21	37	-	77
Nov. 24	UTEP	L, 64-61	3	17	20	16	25	41	-	61
Nov. 25	New Mexico State	W, 69-60	11	12	23	24	22	46	-	69
Nov. 29	Abilene Christian	W, 79-65	20	14	34	20	25	45	-	79
Dec. 3	Kansas	L, 71-60	12	10	22	21	17	38	-	60
Dec. 7	UNC-C	W, 73-72	13	16	30	19	24	43	-	73
Dec. 10	Tulsa	W, 67-41	21	14	35	13	19	32	-	67
Dec. 17	UTA	W, 91-57	14	23	37	26	28	54	-	91
Dec. 21	Arizona State	L, 89-43	8	6	14	11	18	29	-	43
Dec. 28	Grambling State	W, 79-62	15	25	40	25	14	39	-	79

<b>NonConf Totals</b>			193	196	390	252	270	583	-	917
<b>NonConf Averages</b>			13.8	15.01	30	19.4	20.8	44.8	-	70.5
<b>NonConf Highs</b>			25	25	42	26	28	54	-	91
<b>NonConf Lows</b>			3	6	14	11	17	29	-	43

\*Not included in averages

Dec. 31	Ole Miss	W, 73-72	19	18	37	25	11	36	-	73
Jan. 4	No. 5 Mississippi State	L, 111-69	20	19	39	18	12	30	-	69
Jan. 7	Alabama	L, 83-76	13	16	29	26	21	47	-	76
Jan. 11	Georgia	L, 78-65	7	18	25	24	16	40	-	65
Jan. 14	Auburn	W, 68-58	16	25	41	15	12	27	-	68
Jan. 18	Florida	L, 65-51	13	15	28	7	16	23	-	51
Jan. 21	No. 11 Missouri	L, 88-54	16	13	29	19	6	25	-	54
Jan. 25	No. 9 South Carolina	L, 90-42	6	6	12	20	10	30	-	42
Jan. 29	Kentucky	L, 76-65	14	12	26	15	24	39	-	65
Feb. 4	Alabama	W, 74-66	19	21	40	18	16	34	-	74
Feb. 8	Tennessee	L, 90-85	20	16	36	21	28	49	-	85
Feb. 11	No. 13 Missouri	L, 84-58	14	15	29	16	13	29	-	58
Feb. 15	Kentucky	L, 78-57	20	12	32	15	10	25	-	57
Feb. 18	LSU									
Feb. 22	Texas A&M									
Feb. 25	Vanderbilt									

<b>SEC Totals</b>			197	206	403	239	195	434	-	839
<b>SEC Averages</b>			15.1	15.8	31.0	18.4	15.0	33.4	-	64.5
<b>SEC Highs</b>			20 (3x)	25	41	26	28	49	-	85
<b>SEC Lows</b>			6	6	12	7	6	23	-	42

<b>Season Totals</b>			379	402	783	491	465	1017	-	1754
<b>Season Averages</b>			14.6	15.5	30.1	18.9	17.9	39.1	-	67.5
<b>Season Highs</b>			25	25 (2x)	42	26	28 (2x)	54	-	91
<b>Season Lows</b>			3	6 (2x)	12	7	6	23	-	42

## BY STARTERS

Date	Opponent	Monk	Williams	Mason	Cosper	Zimmerman
Nov. 2	NE State (exh) - W	Monk	Williams	Mason	Cosper	Zimmerman
Nov. 10	SHSU - W	Monk	Williams	Mason	Cosper	Zimmerman
Nov. 12	Samford - W	Monk	Williams	Mason	Cosper	Zimmerman
Nov. 16	Nebraska - L	Monk	Williams	Mason	Cosper	Zimmerman
Nov. 20	ORU - W	Monk	Williams	Mason	Cosper	Zimmerman
Nov. 25	UTEP - W	Monk	Williams	Mason	Cosper	Zimmerman
Nov. 26	New Mexico State - W	Monk	Williams	Mason	Cosper	Zimmerman
Nov. 29	Abilene Christian - W	Monk	Williams	Mason	Cosper	Zimmerman
Dec. 3	Kansas - L	Monk	Williams	Mason	Cosper	Zimmerman
Dec. 7	UNC-C - W	Monk	Williams	Mason	Cosper	Zimmerman
Dec. 10	Tulsa - W	Monk	Williams	Mason	Cosper	Zimmerman
Dec. 17	UTA - W	Monk	Thomas	Mason	Cosper	Zimmerman
Dec. 21	Arizona State - L	Monk	Williams	Mason	Cosper	Zimmerman
Dec. 28	Grambling - W	Monk	Williams	Mason	Cosper	Zimmerman
Dec. 31	Ole Miss - W	Monk	Williams	Mason	Cosper	Zimmerman
Jan. 4	NO. 5 Miss State - L	Monk	Williams	Mason	Cosper	Zimmerman
Jan. 7	Alabama - L	Monk	Williams	Mason	Cosper	Zimmerman
Jan. 11	Georgia - L	Monk	Williams	Mason	Cosper	Zimmerman
Jan. 14	Auburn - W	Monk	Williams	Mason	Cosper	Zimmerman
Jan. 18	Florida - L	Monk	Williams	Mason	Northcross-Baker	Zimmerman
Jan. 21	No. 11 Missouri - L	Monk	Williams	Mason	Thomas	Zimmerman
Jan. 25	No. 9 South Carolina - L	Monk	Williams	Mason	Cosper	Zimmerman
Jan. 29	Kentucky - L	Monk	Williams	Mason	Cosper	Zimmerman
Feb. 4	Alabama - W	Monk	Williams	Mason	Cosper	Zimmerman
Feb. 8	Tennessee - L	Monk	Williams	Mason	Cosper	Zimmerman
Feb. 11	No. 1 Missouri - L	Monk	Williams	Mason	Cosper	Zimmerman
Feb. 15	Kentucky - L	Monk	Williams	Mason	Cosper	Zimmerman
Feb. 18	LSU					
Feb. 22	Texas A&M					
Feb. 25	Vanderbilt					

## MISCELLANEOUS STATISTICS

Double-Figure Scoring Games				
Player	15-16	16-17	17-18	Career
M. Monk	3	13	24	40
K. Swenson		11	1	12
J. Mason		10	17	27
D. Cosper	15	8	17	40
B. Zimmerman		2	5	7
T. Thomas	-	-	1	1
K. Williams	-	-	9	9
R. Northcross-Baker	-	-	3	3
<b>TOTAL</b>	<b>18</b>	<b>44</b>	<b>77</b>	<b>139</b>

20-Point Scoring Games				
Player	15-16	16-17	17-18	Career
K. Swenson		1		1
D. Cosper	1	-	7	8
M. Monk	-	-	9	9
R. Northcross-Baker			1	1
<b>TOTAL</b>	<b>1</b>	<b>1</b>	<b>15</b>	<b>17</b>

Double-Figure Rebounding Games				
Player	15-16	16-17	17-18	Career
D. Cosper	-	-	7	7
T. Thomas	-	-	1	1
K. Williams	-	-	7	7
<b>TOTAL</b>	<b>x</b>	<b>x</b>	<b>15</b>	<b>15</b>

Double-Doubles				
Player	15-16	16-17	17-18	Career
J. Mason (pts/ast)	-	2		2
D. Cosper (pts/reb)	-	-	7	7
K. Williams (pts/reb)	-	-	3	3
M. Monk (pts/ast)	-	-	1	1
<b>TOTAL</b>	<b>-</b>	<b>2</b>	<b>11</b>	<b>13</b>

5+ Steals				
Player	15-16	16-17	17-18	Career
M. Monk	-	2	-	2
<b>TOTAL</b>	<b>x</b>	<b>2</b>	<b>-</b>	<b>2</b>

5+ Blocks				
Player	15-16	16-17	17-18	Career
TBA	-	-	-	-
<b>TOTAL</b>	<b>-</b>	<b>x</b>	<b>x</b>	<b>x</b>

5+ Assists				
Player	15-16	16-17	17-18	Career
M. Monk	3	4	9	16
J. Mason		6	5	11
D. Cosper		2		2
<b>TOTAL</b>	<b>3</b>	<b>12</b>	<b>14</b>	<b>29</b>



**@RazorbackWBB STATISTICS**  
**Arkansas Combined Team Statistics (as of Feb 15, 2018)**  
**All games**



<b>RECORD:</b>	<b>OVERALL</b>	<b>HOME</b>	<b>AWAY</b>	<b>NEUTRAL</b>
ALL GAMES	12-14	8-5	3-9	1-0
CONFERENCE	3-10	1-5	2-5	0-0
NON-CONFERENCE	9-4	7-0	1-4	1-0

##	Player	gp-gs	min	avg	Total			3-Point		F-Throw		Rebounds				pf	dq	a	to	blk	stl	pts	avg
					fg-fga	fg%	3fg-fga	3fg%	ft-fta	ft%	off	def	tot	avg									
03	MONK, Malica	26-26	880	33.8	143-399	.358	31-97	.320	97-124	.782	19	71	90	3.5	60	1	97	60	6	41	414	15.9	
21	COSPER, Devin	24-24	745	31.0	126-338	.373	56-181	.309	46-64	.719	18	124	142	5.9	64	2	35	53	10	33	354	14.8	
14	MASON, Jaily	26-26	850	32.7	114-280	.407	40-106	.377	14-17	.824	14	89	103	4.0	48	1	73	55	12	32	282	10.8	
10	WILLIAMS, Kiara	26-25	493	19.0	79-159	.497	1-2	.500	32-62	.516	79	102	181	7.0	58	1	7	21	25	26	191	7.3	
01	NORTHCROSS-BAKE	26-1	504	19.4	47-158	.297	28-107	.262	21-31	.677	25	42	67	2.6	41	1	41	26	4	15	143	5.5	
04	SWENSON, Keiryn	25-0	378	15.1	39-115	.339	25-83	.301	14-20	.700	21	40	61	2.4	25	0	8	21	9	5	117	4.7	
22	ZIMMERMAN, Bailey	26-26	631	24.3	38-141	.270	15-76	.197	27-44	.614	40	45	85	3.3	51	1	33	33	10	12	118	4.5	
24	THOMAS, Taylah	26-2	457	17.6	37-84	.440	3-10	.300	21-34	.618	44	79	123	4.7	51	1	5	23	5	7	98	3.8	
30	WEAVER, Macy	18-0	122	6.8	7-16	.438	0-0	.000	9-20	.450	14	13	27	1.5	27	0	1	5	10	1	23	1.3	
13	SPANGLER, Grayce	15-0	57	3.8	2-14	.143	0-6	.000	4-10	.400	1	4	5	0.3	12	0	1	5	0	1	8	0.5	
20	STOUT, Sydney	14-0	70	5.0	1-7	.143	1-4	.250	3-6	.500	3	5	8	0.6	3	0	3	2	0	2	6	0.4	
12	MCCLURE, Brenna	5-0	13	2.6	0-4	.000	0-1	.000	0-0	.000	0	0	0	0.0	1	0	2	2	0	0	0	0.0	
Team											54	55	109		3		4						
Total.....		26	5200		633-1715	.369	200-673	.297	288-432	.667	332	669	1001	38.5	444	8	306	310	91	175	1754	67.5	
Opponents.....		26	5200		687-1658	.414	169-512	.330	340-461	.738	340	788	1128	43.4	426	3	386	369	101	163	1883	72.4	

TEAM STATISTICS	AR	OPP	Date	Opponent	Score	Att.
SCORING	1754	1883	11/10/17	SHSU	w 65-54	4719
Points per game	67.5	72.4	11/12/17	SAMFORD	w 84-63	1739
Scoring margin	-5.0	-	11/16/17	at Nebraska	L 69-80	3459
FIELD GOALS-ATT	633-1715	687-1658	11/20/17	at Oral Roberts	w 77-66	2503
Field goal pct	.369	.414	11/24/17	at UTEP	L 61-64	633
3 POINT FG-ATT	200-673	169-512	11/25/17	vs NM State	w 69-60	250
3-point FG pct	.297	.330	11/29/17	ACU	w 79-65	1132
3-pt FG made per game	7.7	6.5	12/03/17	at Kansas	L 60-71	1795
FREE THROWS-ATT	288-432	340-461	12/07/17	CHARLOTTE	w 73-72	1169
Free throw pct	.667	.738	12/10/17	TULSA	w 67-41	1821
F-Throws made per game	11.1	13.1	12/17/17	UT-ARLINGTON	w 91-57	1481
REBOUNDS	1001	1128	12/21/17	at Arizona State	L 43-89	1988
Rebounds per game	38.5	43.4	12/28/17	GRAMBLING	w 79-62	1388
Rebounding margin	-4.9	-	* 12/31/17	OLE MISS	w 73-72	1701
ASSISTS	306	386	* 01/04/18	at #5/3 Mississippi State	L 69-111	5398
Assists per game	11.8	14.8	* 01/07/18	ALABAMA	L 76-83	2001
TURNOVERS	310	369	* 1/11/18	at Georgia	L 65-78	2229
Turnovers per game	11.9	14.2	* 01/14/18	at Auburn	w 68-58	2210
Turnover margin	+2.3	-	* 01/18/18	FLORIDA	L 51-65	1288
Assist/turnover ratio	1.0	1.0	* 01/21/18	at Missouri	L 54-88	5219
STEALS	175	163	* 01/25/18	at #9/7 South Carolina	L 42-90	12844
Steals per game	6.7	6.3	* 01/29/18	KENTUCKY	L 65-76	1313
BLOCKS	91	101	* 2/4/18	at Alabama	w 74-66	2265
Blocks per game	3.5	3.9	* 02/08/18	NO. 11 TENNESSEE	L 85-90	1446
ATTENDANCE	22964	46099	* 02/12/18	MISSOURI	L 58-84	1766
Home games-Avg/Game	13-1766	12-3821	* 02/15/18	at Kentucky	L 57-78	5306
Neutral site-Avg/Game	-	1-250				

\* = Conference game

Score by Periods	1st	2nd	3rd	4th	Totals
Arkansas	391	402	491	470	1754
Opponents	473	433	485	492	1883





**@RazorbackWBB STATISTICS**  
**Arkansas Combined Team Statistics (as of Feb 15, 2018)**  
**Conference games only**



<b>RECORD:</b>	<b>OVERALL</b>	<b>HOME</b>	<b>AWAY</b>	<b>NEUTRAL</b>
ALL GAMES	3-10	1-5	2-5	0-0
CONFERENCE	3-10	1-5	2-5	0-0
NON-CONFERENCE	0-0	0-0	0-0	0-0

#	Player	gp-gs	min	avg	Total		3-Point		F-Throw		Rebounds			pf	dq	a	to	blk	stl	pts	avg		
					fg-fga	fg%	3fg-fga	3fg%	ft-fga	ft%	off	def	tot										
03	MONK, Malica	13-13	447	34.4	66-206	.320	18-51	.353	40-56	.714	9	33	42	3.2	33	0	40	29	4	14	190	14.6	
21	COSPER, Devin	11-11	331	30.1	50-127	.394	19-62	.306	23-31	.742	6	52	58	5.3	32	2	18	24	2	15	142	12.9	
14	MASON, Jailyn	13-13	458	35.2	64-149	.430	22-54	.407	12-12	1.000	9	38	47	3.6	27	0	32	32	5	13	162	12.5	
10	WILLIAMS, Kiara	13-13	233	17.9	39-78	.500	1-2	.500	12-21	.571	31	44	75	5.8	29	1	3	9	9	9	91	7.0	
22	ZIMMERMAN, Bailey	13-13	336	25.8	27-83	.325	14-48	.292	17-28	.607	24	23	47	3.6	31	1	21	20	3	7	85	6.5	
01	NORTHCROSS-BAKE	13-1	251	19.3	17-73	.233	10-48	.208	6-8	.750	10	19	29	2.2	21	1	21	12	3	7	50	3.8	
04	SWENSON, Keiryn	12-0	160	13.3	15-50	.300	8-36	.222	8-10	.800	11	14	25	2.1	10	0	2	8	4	1	46	3.8	
24	THOMAS,Taylah	13-1	251	19.3	22-48	.458	1-4	.250	4-8	.500	19	37	56	4.3	27	0	3	14	1	2	49	3.8	
30	WEAVER, Macy	8-0	62	7.8	5-10	.500	0-0	.000	7-15	.467	7	4	11	1.4	14	0	0	3	3	0	17	2.1	
13	SPANGLER, Grayce	6-0	24	4.0	2-6	.333	0-2	.000	1-5	.200	1	0	1	0.2	7	0	1	3	0	1	5	0.8	
12	MCCLURE, Brenna	5-0	13	2.6	0-4	.000	0-1	.000	0-0	.000	0	0	0	0.0	1	0	2	2	0	0	0	0.0	
20	STOUT, Sydney	6-0	34	5.7	0-1	.000	0-1	.000	0-0	.000	0	1	1	0.2	2	0	2	1	0	2	0	0.0	
Team											25	29	54		2		3						
Total.....		13	2600		307-835	.368	93-309	.301	130-194	.670	152	294	446	34.3	236	5	145	160	34	71	837	64.4	
Opponents.....		13	2600		368-819	.449	90-249	.361	213-274	.777	174	388	562	43.2	194	2	207	167	58	87	1039	79.9	

TEAM STATISTICS	AR	OPP	Date	Opponent	Score	Att.
SCORING	837	1039	* 12/31/17	OLE MISS	w 73-72	1701
Points per game	64.4	79.9	* 01/04/18	at #5/3 Mississippi State	L 69-111	5398
Scoring margin	-15.5	-	* 01/07/18	ALABAMA	L 76-83	2001
FIELD GOALS-ATT	307-835	368-819	* 1/11/18	at Georgia	L 65-78	2229
Field goal pct	.368	.449	* 01/14/18	at Auburn	w 68-58	2210
3 POINT FG-ATT	93-309	90-249	* 01/18/18	FLORIDA	L 51-65	1288
3-point FG pct	.301	.361	* 01/21/18	at Missouri	L 54-88	5219
3-pt FG made per game	7.2	6.9	* 01/25/18	at #9/7 South Carolina	L 42-90	12844
FREE THROWS-ATT	130-194	213-274	* 01/29/18	KENTUCKY	L 65-76	1313
Free throw pct	.670	.777	* 2/4/18	at Alabama	w 74-66	2265
F-Throws made per game	10.0	16.4	* 02/08/18	NO. 11 TENNESSEE	L 85-90	1446
REBOUNDS	446	562	* 02/12/18	MISSOURI	L 58-84	1766
Rebounds per game	34.3	43.2	* 02/15/18	at Kentucky	L 57-78	5306
Rebounding margin	-8.9	-				
ASSISTS	145	207				
Assists per game	11.2	15.9				
TURNOVERS	160	167				
Turnovers per game	12.3	12.8				
Turnover margin	+0.5	-				
Assist/turnover ratio	0.9	1.2				
STEALS	71	87				
Steals per game	5.5	6.7				
BLOCKS	34	58				
Blocks per game	2.6	4.5				
ATTENDANCE	9515	35471				
Home games-Avg/Game	6-1586	7-5067				
Neutral site-Avg/Game	-	0-0				

\* = Conference game

Score by Periods	1st	2nd	3rd	4th	Totals
Arkansas	197	206	239	195	837
Opponents	256	235	278	270	1039

# MORE NUMBERS

## MISCELLANEOUS

Opponent	T/O	2ndCh	Paint	FastB	Bench	Ties	Leads	WL	Score	Leads overcome
SHSU	15	5	28	14	13	1	1	W	65-54	trailed by 13/20-07:26
Samford	18	5	30	3	23	0	0	W	84-63	
Nebraska	12	14	32	10	11	3	1	L	69-80	lost 2 4th-0:6:21
ORU	15	6	32	18	16	1	1	W	77-66	trailed by 6 1st-04:58
UTEP	22	18	18	14	16	0	0	L	61-64	
NM State	17	16	34	13	15	2	4	W	69-60	trailed by 7 1st-01:06
ACU	28	9	20	0	25	0	1	W	79-65	trailed by 1 1st-09:21
Kansas	10	8	28	6	6	1	1	L	60-71	lost 2 1st-08:40
Charlotte	15	17	32	8	6	1	8	W	73-72	trailed by 9 3rd-9:40
Tulsa	7	13	30	6	12	0	1	W	67-41	trailed by 2 1st-09:14
UTA	23	13	26	17	42	3	2	W	91-57	trailed by 6 1st-4:54
Arizona St.	3	8	22	6	12	0	0	L	43-89	lost 2 1st-09:43
Grambling	18	11	22	3	33	0	0	W	79-62	
Ole Miss	13	10	26	10	23	0	1	W	73-72	trailed by 1 2nd-04:33
#5/3 MSU	3	4	20	11	16	1	1	L	69-111	lost 5 1st-08:28
Alabama	7	7	26	6	13	3	3	L	76-83	lost 7 3rd-02:23
Georgia	11	8	22	8	13	0	0	L	65-78	
Auburn	15	22	27	4	11	0	1	W	68-58	trailed by 2 1st-09:37
Florida	15	9	18	9	9	0	0	L	51-65	
#11 Mizzou	7	6	16	2	11	0	0	L	54-88	
#9/7 S Car	9	9	28	9	15	0	0	L	42-90	
Kentucky	17	9	20	2	10	1	1	L	65-76	lost 5 1st-06:09
Alabama	16	10	36	4	9	1	1	W	74-66	trailed by 1 1st-03:10
#11 Tenn	24	12	32	29	5	3	6	L	85-90	lost 2 1st-05:14
No. 13 Mo	15	5	16	2	17	0	0	L	58-84	
Kentucky	10	16	12	0	7	1	1	L	57-78	lost 1 1st-00:04

Totals 365 270 653 214 389 22 35  
Ave/Game 14.0 10.4 25.1 8.2 15.0 0.8 1.3

Opponent 354 304 878 131 523 24 34  
Ave/Game 13.6 11.7 33.8 5.0 20.1 0.9 1.3

## GAME BY GAME LEADERS

Date	Opponent	Points	Rebounds	Assists	Steals	Blocks
Nov. 10	SHSU	Monk (18)	Cosper (10)	2 Players (4)	Monk (4)	Mason (3)
Nov. 12	Samford	Monk (21)	2 Players (9)	2 Players (6)	3 Players (3)	Williams (4)
Nov. 16	Nebraska	Monk (22)	2 Players (11)	Monk (6)	Mason (4)	4 Players (2)
Nov. 20	ORU	Monk (24)	Cosper (10)	Monk (4)	Cosper (2)	2 Players (1)
Nov. 24	UTEP	Cosper (22)	Cosper (5)	Monk (5)	Cosper (4)	Weaver (4)
Nov. 25	NMSU	Monk (22)	2 Players (11)	Cosper (4)	Monk (4)	2 Players (1)
No. 29	A. Christian	2 Players (15)	Williams (8)	Mason (8)	Williams (3)	2 Players (1)
Dec. 3	Kansas	Monk (22)	Williams (16)	Monk (5)	Mason (2)	Williams (2)
Dec. 7	Charlotte	Cosper (25)	Cosper (14)	Mason (4)	Williams (4)	Williams (3)
No. 10	Tulsa	Monk (14)	Cosper (11)	Mason (6)	2 Players (1)	2 Players (2)
No. 17	UTA	RNB (22)	Williams (8)	Mason (7)	2 Players (3)	2 Players (1)
Dec. 21	Az State	Monk (12)	3 Players (4)	Monk (2)	Monk (1)	4 Players (1)
Dec. 28	Grambling	Cosper (16)	Williams (16)	Monk (10)	Monk (3)	Monk (1)
Dec. 31	Ole Miss	Cosper (18)	Cosper (11)	2 Players (4)	Cosper (4)	Williams (4)
Jan. 4	Miss State	Mason (15)	Cosper (7)	2 Players (4)	Monk (2)	3 Players (1)
Jan. 7	Alabama	Cosper (24)	Cosper (13)	Cosper (4)	Mason (3)	Mason (2)
Jan. 11	Georgia	Monk (16)	Thomas (8)	3 Players (2)	Mason (5)	Monk (1)
Jan. 14	Auburn	2 Players (15)	Williams (14)	Mason (5)	4 Players (1)	Zimmerman (1)
Jan. 18	Florida	Monk (23)	Monk (8)	Monk (4)	3 Players (1)	3 Players (1)
Jan. 21	No. 15 MU	2 Players (14)	Williams (7)	4 Players (2)	2 Players (1)	Weaver (1)
Jan. 25	No. 9 S Car	Mason (12)	Thomas (6)	Cosper (2)	Stout (2)	3 Players (1)
Jan. 29	Kentucky	Cosper (17)	Williams (7)	Monk (6)	Zimmerman (2)	3 Players (1)
Feb. 4	Alabama	Cosper (21)	Thomas (6)	2 Players (3)	Monk (4)	Zimmerman (1)
Feb. 8	Tennessee	Cosper (29)	Williams (10)	2 Players (5)	2 Players (3)	Williams (2)
Feb. 11	No. 13 MU	Mason (15)	Thomas (7)	Mason (3)	N.Baker (2)	2 Players (1)
Feb. 15	Kentucky	Mason (18)	Zimmerman (6)	Monk (5)	Cosper (2)	0
Feb. 18	LSU					
Feb. 22	Texas A&M					
Feb. 25	Vanderbilt					

## SPECIALTY STATS

Opponent	Paint	OFF TO	2ND CHANCE	FAST BREAK	BENCH
SHSU	28	15	5	14	13
Samford	30	18	5	3	23
Nebraska	32	12	14	10	11
ORU	32	15	6	18	16
UTEP	18	22	18	14	16
NMSU	34	17	16	13	15
Ab. Christian	20	28	9	0	25
Kansas	28	10	8	6	6
Charlotte	32	15	17	8	6
Tulsa	30	7	13	6	12
UTA	26	23	13	17	42
Arizona State	22	3	8	6	12
Grambling State	22	18	11	3	33
Ole Miss	26	13	10	10	23
Miss State	20	3	4	11	16
Alabama	26	7	7	6	13
Georgia	22	11	8	8	13
Auburn	27	15	22	4	11
Florida	18	15	9	9	9
No. 11 Missouri	16	7	6	2	11
No. 9 S. Carolina	28	9	9	9	15
Kentucky	20	17	9	2	10
Alabama	36	16	10	4	9
Tennessee	32	24	12	29	5
Missouri	16	15	5	2	17
Kentucky	12	10	16	0	7

LSU  
Texas A&M  
Vanderbilt

# COMPARISON

Opponent	1st	2nd	Score	Mar	Total FG	FG Pct	3-Pointers	3FG Pct	Free Throws	FT Pct	Rebounds	Assist	T/Over	Block	Steal	Fouls
SHSU	23/28	42/26	65-54	+11	25-67/20-63	.373/.317	9-33/7-27	.273/.259	6-11/7-11	.545/.636	39/51 (12)	15/10	9/15	7/5	8/3	12/14
SAMFORD	42/33	42/30	84-63	+21	29-59/23-59	.492/.390	10-27/6-22	.370/.273	16-22/11-14	.727/.786	35/34 +1	17/17	6/13	4/1	7/3	15/23
Nebraska	30/41	39/39	69-80	(11)	27-77/28-72	.351/.389	8-32/7-21	.250/.333	7-10/17-25	.700/.680	45/55 (10)	10/17	15/16	8/6	12/7	23/12
Oral Roberts	40/36	37/30	77-66	+11	29-70/22-58	.414/.379	6-23/7-22	.261/.318	13-18/15-19	.722/.789	41/41 -	8/12	4/14	2/0	5/2	18/20
UTEP	20/38	41/26	61-64	(3)	21-70/27-53	.300/.509	11-41/5-13	.268/.385	8-14/5-7	.571/.714	27/51 (24)	13/19	4/23	4/0	14/1	15/13
NM State	23/25	46/35	69-60	+9	25-70/23-67	.357/.343	6-26/4-18	.231/.222	13-24/10-14	.542/.714	55/41 +14	10/9	18/18	3/2	12/10	15/21
ACU	34/24	45/41	79-65	+14	25-68/24-69	.368/.348	10-25/11-34	.400/.324	19-27/6-11	.704/.545	44/43 +1	13/17	12/20	4/6	13/8	13/21
Kansas	22/30	38/41	60-71	(11)	22-69/25-62	.319/.403	5-27/3-15	.185/.200	11-15/18-25	.733/.720	40/50 (10)	7/9	13/15	6/5	3/8	24/17
CHARLOTTE	30/37	43/35	73-72	+1	26-75/27-74	.347/.365	9-31/5-13	.290/.385	12-24/13-20	.500/.650	45/58 (13)	11/15	10/17	5/3	10/7	19/20
TULSA	35/24	32/17	67-41	+26	25-67/16-69	.373/.232	6-29/2-16	.207/.125	11-19/7-10	.579/.700	61/39 +22	13/5	9/7	7/3	2/4	10/16
UT-ARLINGTON	37/24	54/33	91-57	+34	30-65/22-54	.462/.407	12-28/3-15	.429/.200	19-21/10-16	.905/.625	40/27 +13	19/10	14/22	2/2	11/6	21/21
Arizona State	14/52	29/37	43-89	(46)	17-57/37-73	.298/.507	4-18/12-20	.222/.600	5-6/3-6	.833/.500	35/41 (6)	7/27	23/8	4/4	1/11	12/13
GRAMBLING	40/23	39/39	79-62	+17	25-66/25-66	.379/.379	11-24/7-27	.458/.259	18-27/5-9	.667/.556	48/35 +13	18/12	13/14	1/6	6/6	11/21
OLE MISS	37/32	36/40	73-72	+1	26-61/23-55	.426/.418	8-21/7-18	.381/.389	13-20/19-26	.650/.731	38/34 +4	11/14	15/17	7/4	7/6	18/17
#5/3 Mississippi State	39/49	30/62	69-111	(42)	28-62/44-76	.452/.579	6-18/10-20	.333/.500	7-12/13-14	.583/.929	29/40 (11)	12/25	16/4	3/2	3/7	17/15
ALABAMA	29/32	47/51	76-83	(7)	26-70/26-65	.371/.400	6-21/6-18	.286/.333	18-21/25-36	.857/.694	43/44 (1)	9/12	17/14	5/7	8/9	26/19
Georgia	25/31	40/47	65-78	(13)	22-65/30-73	.338/.411	5-21/8-18	.238/.444	16-23/10-12	.696/.833	43/49 (6)	10/19	17/13	1/9	10/6	16/14
Auburn	41/17	27/41	68-58	+10	24-61/19-56	.393/.339	9-30/2-14	.300/.143	11-15/18-22	.733/.818	39/33 +6	14/7	12/15	1/4	4/8	17/18
FLORIDA	28/35	23/30	51-65	(14)	21-76/26-69	.276/.377	5-30/7-29	.167/.241	4-4/6-7	1000/.857	42/54 (12)	8/15	8/14	3/1	3/4	9/9
Missouri	29/51	25/37	54-88	(34)	22-67/27-52	.328/.519	8-27/13-25	.296/.520	2-7/21-27	.286/.778	33/43 (10)	10/21	9/11	1/6	2/6	20/11
#9/7 South Carolina	12/44	30/46	42-90	(48)	18-67/32-75	.269/.427	2-16/4-20	.125/.200	4-10/22-31	.400/.710	31/62 (31)	5/17	12/11	5/9	5/8	25/12
KENTUCKY	26/43	39/33	65-76	(11)	21-56/27-59	.375/.458	9-28/5-11	.321/.455	14-17/17-22	.824/.773	33/35 (2)	15/14	18/13	3/2	3/12	19/17
Alabama	40/26	34/40	74-66	+8	28-60/24-57	.467/.421	6-15/1-10	.400/.100	12-15/17-24	.800/.708	33/39 (6)	9/7	13/15	1/1	8/9	22/17
NO. 11 TENNESSEE	36/43	49/47	85-90	(5)	31-65/31-64	.477/.484	11-23/9-23	.478/.391	12-19/19-25	.632/.760	26/45 (19)	16/24	10/19	2/5	11/6	20/13
MISSOURI	29/49	29/35	58-84	(26)	19-56/30-58	.339/.517	7-23/11-24	.304/.458	13-22/13-14	.591/.929	25/40 (15)	11/18	6/11	2/4	4/2	12/18
Kentucky	32/39	25/39	57-78	(21)	21-69/29-60	.304/.483	11-36/7-19	.306/.368	4-9/13-14	.444/.929	31/44 (13)	15/14	7/10	0/4	3/4	15/14

Note: Game totals are displayed in the format TEAM/OPPONENT for each category

# PTS, REB, AST

Opponent	Date	Score	01	03	04	10	12	13	14	20	21	22	24	30	
			NORTHCROS	MONK,MALIC	SWENSON,K	WILLIAMS,K	MCCLURE,B	SPANGLER,	MASON,JAIL	STOUT,SYDN	COSPER,DE	ZIMMERMAN,	THOMAS,TA	WEAVER,MA	
SHSU	11/10/17	65-54	w	3-2-2	18-2-4	5-1-0	7-2-1	DNP	0-0-0	8-5-4	1-1-0	17-12-2	2-3-2	4-4-0	0-0-0
SAM	11/12/17	84-63	w	0-1-6	21-9-6	9-0-1	10-5-0	DNP	0-1-0	12-1-2	1-1-0	18-5-2	0-0-0	13-9-0	0-0-0
at NEB	11/16/17	69-80	L	3-4-0	22-3-6	3-3-0	6-11-1	DNP	DNP	8-5-2	DNP	21-4-0	1-0-0	5-11-1	DNP
at ORU	11/20/17	77-66	w	8-1-1	24-3-4	6-2-0	8-5-0	DNP	DNP	6-2-1	DNP	21-10-1	2-4-1	2-9-0	DNP
at UTEPW	11/24/17	61-64	L	7-2-3	10-2-5	6-2-0	1-1-0	DNP	0-0-0	8-4-2	0-0-0	22-5-0	4-3-2	1-4-0	2-3-1
vs NMSU	11/25/17	69-60	w	7-2-0	22-7-2	5-6-0	11-11-0	DNP	DNP	3-6-2	DNP	17-11-4	1-3-2	3-7-0	DNP
ACU	11/29/17	79-65	w	15-3-1	15-2-1	3-2-0	12-8-0	DNP	0-0-0	13-7-8	0-1-0	11-3-1	3-6-2	7-7-0	0-1-0
at KU	12/03/17	60-71	L	2-2-1	21-7-5	4-2-0	6-16-0	DNP	0-0-0	10-2-1	DNP	17-3-0	0-2-0	0-0-0	0-0-0
CHA	12/07/17	73-72	w	3-3-1	15-4-3	3-2-0	9-12-0	DNP	DNP	12-4-4	DNP	25-14-2	6-3-1	0-0-0	0-2-0
TLS	12/10/17	67-41	w	1-9-1	14-4-3	7-6-0	13-7-2	DNP	0-1-0	11-5-6	0-1-0	11-11-0	6-7-1	4-7-0	0-1-0
UTA	12/17/17	91-57	w	22-4-3	20-1-6	10-5-2	2-8-0	DNP	3-1-0	15-4-7	4-2-0	8-1-1	6-3-0	0-4-0	1-5-0
at ASU	12/21/17	43-89	L	8-1-1	12-2-2	2-3-1	3-4-0	DNP	0-1-0	6-4-1	0-0-0	8-1-1	2-4-1	2-3-0	0-1-0
GRAMWB	12/28/17	79-62	w	14-4-0	10-2-10	8-2-2	12-16-0	DNP	0-0-0	8-7-1	0-1-1	16-4-3	0-0-0	8-2-1	3-3-0
OM	12/31/17	73-72	w	9-3-0	12-2-4	8-4-0	5-9-1	DNP	DNP	13-2-4	DNP	18-11-1	2-1-1	6-3-0	DNP
at MS	01/04/18	69-111	L	8-1-1	8-3-4	0-2-0	13-2-0	0-0-0	4-1-0	15-3-4	0-0-0	13-7-3	4-3-0	4-6-0	0-0-0
UA	01/07/18	76-83	L	2-0-2	21-4-1	9-0-0	6-7-0	DNP	0-0-0	12-6-0	DNP	24-13-4	0-2-2	2-4-0	DNP
at UGA	1/11/18	65-78	L	6-2-1	16-5-2	0-0-0	2-3-1	DNP	DNP	15-5-1	DNP	8-7-2	11-5-2	6-8-1	1-1-0
at AU	01/14/18	68-58	w	7-6-3	14-5-4	0-0-0	15-14-0	DNP	DNP	15-2-5	DNP	0-1-0	13-8-2	4-1-0	DNP
UF	01/18/18	51-65	L	6-6-1	23-8-4	7-4-1	8-4-0	DNP	DNP	5-6-1	DNP	DNP	0-3-1	2-6-0	0-0-0
at MU-W	01/21/18	54-88	L	6-4-2	11-3-2	5-4-1	14-7-0	0-0-0	0-0-0	14-3-1	0-1-0	DNP	2-3-2	2-3-2	0-3-0
at SC	01/25/18	42-90	L	0-2-0	12-2-0	6-4-0	0-4-0	0-0-0	0-0-0	10-2-1	0-0-1	3-1-2	2-2-1	2-6-0	7-2-0
UK	01/29/18	65-76	L	3-3-2	11-2-6	2-1-0	6-7-0	DNP	DNP	13-3-3	0-0-0	17-5-1	8-5-3	4-1-0	1-1-0
at UA	2/4/18	74-66	w	3-0-3	17-5-1	2-2-0	10-5-0	DNP	DNP	6-5-3	DNP	21-3-1	11-2-1	4-6-0	DNP
UT	02/08/18	85-90	L	0-1-4	25-1-5	DNP	9-10-0	DNP	DNP	11-3-5	DNP	29-3-0	6-3-2	5-3-0	DNP
MU-W	02/12/18	58-84	L	0-0-1	6-0-2	5-3-0	0-0-0	0-0-2	1-0-0	15-3-3	0-0-1	6-3-1	14-4-1	6-7-0	5-2-0
at UK	02/15/18	57-78	L	0-1-1	14-2-5	2-1-0	3-3-1	0-0-0	0-0-1	18-4-1	0-0-0	3-4-3	12-6-3	2-2-0	3-2-0



## THE LAST TIME A RAZORBACK TEAM ...

### OFFENSE

Scored 110+ .....	110, vs. Providence (11/16/98)
Scored 100+ points at home .....	101, Houston Baptist, 12-28-16
Scored 100+ points on the road .....	108, Baylor (3-6-91; SWC Tourn., Dallas, Texas)
Scored 90-99 points .....	91 vs. UTA, 12-17-17
Scored 90+ points at home .....	101, Houston Baptist, 12-28-16
Scored 90+ points on the road .....	91, (91-80 Win in 3OT, 2-10-13, at Alabama)
Scored 80-89 points .....	85, No. 11 Tennessee, 2-8-18
Scored 80-89 points at home .....	86, Mississippi Valley State (12-28-15)
Scored 80-89 points on the road .....	88, Southeast Missouri (NM) (11-29-13)
Scored 70-79 points .....	74, at Alabama, 2-4-18
Scored 70-79 points at home .....	73, Ole Miss, 12-31-17
Scored 70-79 points on the road .....	77 at Ole Miss, 1-31-13
Scored 60-69 points .....	65, Kentucky, 1-29-18
Was held to 50-59 .....	57, at Kentucky, 2-15-18
Was held to 49-40 .....	42 at No. 9 South Carolina (1-25-18)
Was held to 39-20 .....	32, at No. 2 South Carolina (1-3-16)
Was held to 20 or less .....	N/A
Made 30-39 field goals .....	31, No. 11 Tennessee, 2-8-18
Made 20-29 field goals .....	21, at Kentucky, 2-15-18
Made 10-19 field goals .....	19, No. 15 Missouri, 2-12-18
Made 10 three-point field goals .....	11, No. 11 Tennessee, 2-8-18
Did not make a three point basket (began in 1986) .....	0-10, at Mississippi State (L 44-47), 2-3-13
Made 30 free throws .....	38 at Florida (38-54); (2-22-04)
Made 15+ Free Throws .....	18, Grambling State, 12-28-17
Shot 40-49 or better from the field .....	47.7% (31-65) No. 11 Tennessee, 2-8-18
Shot 50-59 or better from the field .....	52.1 (38-73), Houston Baptist, 12-28-16
Shot 60 percent or better from the field .....	600 (36-60) vs. Ole Miss (W, 93-52; 3-3-13)
Held to less than 40 percent from the field .....	30.4% (21-69), at Kentucky, 2-15-18
Held to less than 30 percent from the field .....	26.9% at No. 9 South Carolina (1-25-18)
Held to less than 20 percent from the field .....	182 (10-55) vs. No. 6/7 Tennessee (1-8-12; L, 38-69)
Allowed opponent to shoot over 50% from the field .....	51.7% (30-58), No. 15 Missouri, 2-12-18
Held opponent to less than 40% from the field .....	33.9% (19-56), at Auburn, 1-14-18
Held opponent to less than 30% from the field .....	23.2% (16-69), Tulsa, 12-10-17
Held opponent to less than 20% from the field in a half: .....	136 (3-22), First Half, Binghamton, 11-30-13
.....	200 (5-25), First Half, MVSU, 12-28-13
.....	200 (5-25), First Half, Grambling State, 12-29-14
Had 20 or more assists in a game .....	27, Houston Baptist, 12-28-16

### DEFENSE

Allowed 100 points .....	111 at #5/3 Mississippi State (1-4-18)
Allowed 80-99 points .....	84, No. 15 Missouri, 2-12-18
Allowed 70-79 points .....	78, at Kentucky, 2-15-18
Allowed 69-60 points .....	66, at Alabama, 2-4-18
Held opponent to 59-50 points .....	58, at Auburn, 1-14-18
Held opponent to 40-49 points .....	41, Tulsa, 12-10-17
Held opponent to 39-30 .....	36, Northwestern State, 12-18-16
Held opponent under 45 points three cons. games .....	45, SHSU (11-8-13, W 81-45);
.....	33 ORU (11-13-13, W 91-33); 45, Furman (11-16-13, W, 74-45)
Held an SEC opponent under 50 points in 3 cons. games .....	47, Auburn (1-29-15, W, 52-47); 42,
.....	Alabama (2-1-15, W, 53-42);
.....	#24/21 Georgia (2-9-15, W, 54-48)
Held opponent to 29 points or less .....	23, Binghamton, 11-30-13
Held an opponent under 15 points in a half .....	13, Northwestern State, 12-18-16
Held opponent under 15 field goals .....	14, Houston Baptist, 12-28-16
Held opponent under 15% from three-point distance .....	14.3% (2-14), at Auburn, 1-14-18
Had 70+ rebounds .....	74, Mississippi Valley State (11-24-89)
Had 60-69 rebounds .....	61, Tulsa, 12-10-17
Had 50-59 rebounds .....	55, vs. NMSU, 11-25-17
Had five or more blocked shots in a game .....	7, Ole Miss, 12-31-17
Had 20 or more steals in a game .....	20, ORU (11-13-13)
Had 15 or more steals in a game .....	16, at Florida, 2-9-17
Had 20 or more turnovers in a game .....	23 at Arizona State, 12-21-17
Forced 20-25 or more Turnovers in a game .....	22 vs. UTA, 12-17-17

### OTHER

Won an overtime game .....	91-80 Win in 3OT, 2-10-13, at Alabama
Lost an overtime game .....	Florida (71-66), 1-28-16
Won a double overtime game .....	73-72, vs. Florida (1-29-12)
Lost a double overtime game .....	N/A
Won a triple overtime game .....	91-80 Win in 3OT, 2-10-13, at Alabama
Played consecutive overtime games .....	1-24-16 at Auburn (lost); 1-28-16 vs Florida (lost)
Won a regular season tournament .....	Nugget Classic (Reno, Nev., Nov. 25-26, 2016)
Defeated a ranked team .....	67-61, No. 13 Texas A&M, 1-7-16; 64-59, No. 13 Tenn., 1-14-16
.....	64-52, No. 24 Missouri, 1-17-16
Defeated a ranked team on the road .....	57-53, at #19/18 LSU, 2-23-14; 77-76,
.....	#17/16 Iowa (Las Vegas), 12-18-14
All-time SEC win streak .....	8 games (1-15-12: Auburn through 2-15-12: at Auburn)
All-time SEC home win streak .....	5 games (1-15-12: Auburn through 2-9-12: S. Carolina)

### THE LAST TIME A RAZORBACK PLAYER ...

Scored 20-24 points .....	21, Devin Cosper at Alabama, 2-4-18
Scored 25-29 points .....	29, Devin Cosper, No. 11 Tennessee, 2-8-18
.....	25, Malica Monk, No. 11 Tennessee, 2-8-18
Scored 30+ points .....	34, Jessica Jackson, Houston Baptist, 12-28-16
Scored 20+ points nine times in a season .....	Malica Monk, 2017-18 (Samford 21, Neb. 22, ORU 24, NMSU
.....	22, KU 21, UTA 20, Ala. 21, FL 23, Tenn 25)
Double figures in 15 consecutive games (Season) .....	Jessica Jackson, 11/11/16, LSU 1-8-17
Scored 23+ points in three consecutive games .....	Jessica Jackson (24 at Georgia 1-16-14,
.....	31 vs. Ole Miss 1-19-14, 23 at Kentucky 1-26-14)
Three players scored double figures in 1 game .....	at Kentucky, 2-15-18 (Monk, Mason, Zimmerman)
Four players scored double figures in 1 game .....	at Alabama, 2-4-18 (Cosper, Monk, Williams, Zimmerman)
Four players scored doubles figures for 4 cons. games .....	12-6-12 - 12-21-12; vs. Kansas, Furman, MVSU, and NSU
Five players scored double figures in 1 game .....	Abilene Christian (11-29-17)
.....	(Monk, Cosper, Mason, Williams, Northcross-Baker)
Made 10+ field goals in a game .....	10, Devin Cosper, No. 11 Tennessee, 2-8-18
Attempted 15-19 field goals in a game .....	Devin Cosper (16) at Alabama, 2-4-18
Attempted 20+ field goals in a game .....	28, Malica Monk, Florida, 1-18-18
Attempted 10 free throws in a game .....	12, Malica Monk vs. UTA, 12-17-17
Made 5 or more three-pointers in a game .....	6, Devin Cosper, No. 11 Tennessee, 2-8-18
Attempted 10+ three-pointers in a game .....	10, Malica Monk, at Kentucky, 2-15-18
Had 10-14 rebounds .....	10, Kiara Williams, No. 11 Tennessee, 2-8-18
Had 15+ rebounds .....	16, Kiara Williams, Grambling State, 12-28-17
Had 10 offensive rebounds - Records go back to 05-06 .....	11, Melissa Wolff vs. New Orleans (1-30-15)
Had 10 defensive rebounds - Records go back to 05-06 .....	13, Devin Cosper, Alabama, 1-7-18
Had 10+ assists .....	10, Malica Monk, Grambling State, 12-28-17
Had 10+ assists in consecutive games .....	Jailyn Mason (11 vs. HBU, 12-28-16 and 10 at Ole Miss, 1-1-17)
.....	Calli Berna (11 vs. No. 10/8 KY 2/7/13 and 11 at UA 2/10/13)
Had 5+ blocks in a game .....	(3x) 5, Jessica Jackson (vs. ORU, 11-13-13);
.....	(No. 25 Vanderbilt, 2-20-14); (at Tulsa, 12-14-14)
Had 10 or more blocks in a game .....	9, Robyn Irwin vs. SMSU, 12-19-88 (school record)
Had 5 or more steals in a game .....	5, Malica Monk vs. NMSU, 11-25-17
Had a double-double .....	Kiara Williams (15/14), at Auburn, 1-14-18
Had a double-double in two straight games .....	2017-18: Devin Cosper (25/14) Charlotte and (11/11) Tulsa
Had two players record a double-double .....	Kiara Williams (12 pts/16 reb) &
.....	Malica Monk (10 pts/10 reb.), Grambling State, 12-28-17
Had seven double-doubles in a season .....	Devin Cosper, 2017-18
.....	(SHSU, ORU, NMSU, Char., Tulsa, OM, AL)
Had 10+ double-doubles in a season .....	2006-07, Lauren Ervin (14)
Had a triple-double .....	14 pts, 13 reb, 12 asts, C'eira Ricketts vs. Auburn (1-18-09)



### MIKE NEIGHBORS YEAR-BY-YEAR

Year	School	Overall	Pct.	Conf.	Pct.	Conf. Finish
2013-14	Washington	20-14	.588	10-8	.556	6/Pac-12
2014-15	Washington	23-10	.697	11-7	.611	5/Pac-12
2015-16	Washington	26-11	.703	11-7	.611	5/Pac-12
2016-17	Washington	29-6	.829	15-3	.833	T2/Pac-12
2017-18	Arkansas	12-14	.462	3-10	.231	TBA
<b>Totals</b>	<b>5 Years</b>	<b>110-55</b>	<b>.667</b>	<b>50-35</b>	<b>.588</b>	

BENTONVILLE HS (HC)	94	
	95	
	96	
	97	
CABOT HS (HC)	98	
ARKANSAS (DIR OF OPS)	99	
	00	
TULSA (ASST)	01	
	02	
	03	
	04	
COLORADO (ASST)	05	
ARKANSAS (ASST)	06	
XAVIER (ASST)	07	X
	08	
	09	
	10	
WASHINGTON (ASST)	11	W
	12	
WASHINGTON (HC)	13	W
	14	
	15	
	16	
ARKANSAS (HC)	17	

### NEIGHBORS 3-1 IN BWA BEFORE THIS YEAR

As the head coach of Bentonville (Ark.) HS, Mike Neighbors went 3-0 in Bud Walton Arena in the high school play-offs. In 1997, his Tiger team defeated Bryant, Mount St. Mary's and Jonesboro to reach the state finals in Pine Bluff, Ark.

The lone loss occurred when Neighbors was an assistant coach at Tulsa. The 13th-ranked Razorbacks defeated Tulsa, 66-49, that season.

### OPEN MIKE

Want to get to know Mike Neighbors in his own words? Check out the links below for stories about Mike, his hire and his dream job at Arkansas.

Mike's First 30 Days	<a href="http://bit.ly/First30">http://bit.ly/First30</a>
Mike's Dream Job	<a href="http://bit.ly/MNDreamJob">http://bit.ly/MNDreamJob</a>
Mike's Press Conference	<a href="http://bit.ly/PressConfVideo">http://bit.ly/PressConfVideo</a>

### FROM ROOKIE NOD TO NAISMITH NOMINEE

In four short years Mike Neighbors went from a Spalding Maggie Dixon Division I Rookie Coach of the Year nominee in 2014, to a Naismith Women's College Coach of the Year national semifinalist in 2017.

Neighbors guided UW to an historic campaign in 2016-17 leading the Huskies to 27 wins, it's second most in program history, and he was just one shy of the all-time a school record set in 1990 (28).

Picked to place third in the Pac-12 in the preseason poll, UW tied for second in the league with a 15-3 record, it's best conference finish since 2003. The Huskies' 15 conference wins tied for third most in program history. Washington, who entered conference play with the program-best 12 non-conference wins, clinched its first-ever bye in the first round of the Pac-12 Tournament. Washington put together an 11-game win streak and a six-game win streak in Pac-12 play in 2016-17.

### COACHES COACHING AT ALMA MATER

Mike Neighbors	Arkansas, 1993
Holly Warlick	Tennessee, 1981

A couple of other coaches have SEC ties. Joni Taylor is the head coach at Georgia and a 2002 graduate of Alabama. Matthew Mitchell is a 1995 graduate of Mississippi State and is the head coach at Kentucky. Nikki Fargas graduated from Tennessee in 1994 and is the head coach at LSU. Vic Schaefer is the head coach at Mississippi State and a 1984 graduate of Texas A&M.



# NEIGHBORS BY THE NUMBERS

## TOP 10 MOVIES

1. A Few Good Men
2. The Hunt For Red October
3. The Silence Of The Lambs
4. Hoosiers
5. Pretty Woman
6. Moneyball
7. Top Gun
8. JFK
9. The Lion King
10. Purple Rain

See the entire list here: <http://imdb.to/2royaEO>

He has 160 movies that are classified as 'thriller'. "Romance" is next with 152 followed by 69 "sport", 58 "mystery", and 32 "sci-fi".

## TOP 10 SONGS

1. Sweet Child O' Mine (Guns N' Roses)
2. You Shook Me All Night Long (AC/DC)
3. Man In The Mirror (Michael Jackson)
4. Amarillo By Morning (George Strait)
5. Jessie's Girl (Rick Springfield)
6. Hysteria (Def Leppard)
7. Fishin' In The Dark (Nitty Gritty Dirt Band)
8. The Ballard of Curtis Loew (Lynyrd Skynyrd)
9. Wanted Dead Or Alive (Bon Jovi)
10. Let's Go Crazy (Prince)

## TOP 10 TV SHOWS

1. West Wing (first three seasons)
2. The Wire
3. Breaking Bad
4. Seinfeld
5. The Newsroom
6. Prison Break
7. Arrested Development
8. Game of Thrones
9. The Sopranos
10. The Goldbergs

See the entire list here: <http://www.imdb.com/list/ls009377912/>

Neighbors has 16 comedies, 15 dramas and seven crime shows on the list.

Sign up for Mike Neighbors' newsletter and listen to his podcasts at

**CoachNeighbors.com**



## MIKE NEIGHBORS DEVELOPS PLAYERS FOR THE NEXT LEVEL

Mike Neighbors has worked with 11 WNBA Draft Picks

YEAR	UNIVERSITY	PLAYER	ROUND	OVERALL	TEAM NOTE
2017	Washington	Kelsey Plum	1	1	San Antonio Spurs ! @
	Washington	Chantel Osahor	2	21	Chicago Sky ! @
2016	Washington	Talia Walton	3	29	Los Angeles Sparks ! @
	Xavier	Amber Harris	1	4	Minnesota Lynx #
2011	Xavier	Ta'Shia Phillips	1	8	Atlanta Dream #
	TAMU/UAFS	Tanisha Smith	2	22	Seattle Storm #
	Colorado	Brittany Spears	2	19	Phoenix Mercury *
2009	Arkansas	Shameka Christon	1	5	New York Liberty #
2008	Arkansas	Lauren Ervin	3	37	Connecticut Sun #
2006	Tulsa	Megan Moody	-	-	Houston Comets
					Free Agent #
2003	Tulsa	Allison Curtin	1	12	Houston Comets ! #
	Arkansas	Dana Cherry	2	23	Traded to Detroit Shock Charlotte Sting

\*-Recruited but did not coach  
!-At the school when player was drafted  
@-Worked with player as a head coach  
#-Worked with player as an assistant coach  
\$-Worked with player as other (GA, etc)

## FAST RISE TO ELITE RANKS

Mike Neighbors had a meteoric rise to the top as a head coach at Washington. In four seasons, he amassed 96 wins, had three NCAA Tournament appearances and reached the Final Four. Those accomplishments put him in some rare air.

## FIRST FOUR YEARS AS A POWER FIVE HEAD COACH

Coach	School	Wins	NCAA Apps.	NCAA Best
Holly Warlick	Tennessee	108	4	Sweet 16
<b>Mike Neighbors</b>	<b>Washington</b>	<b>98</b>	<b>3</b>	<b>1 Final Four</b>
Jeff Walz	Louisville	96	3	1 Final Four
Nikki Fargas	UCLA	95	3	2nd Rnd
Vic Schaefer	Mississippi State	90	2	Sweet 16
Karen Aston	Texas	89	3	1 Elite 8
Matthew Mitchell	Kentucky	86	2	1 Elite 8
Kevin McGuff	Xavier	80	1	1 Elite 8
Dawn Staley	South Carolina	77	1	-
Brenda Frese	Minn./Maryland	72	2	-

## BUILDING A FAN BASE

Mike Neighbors saw a 62.9% increase in attendance in his four seasons at Washington. Look for fan engagement to be a big part of future Razor-back programs as well.

## COACHING TREE

Coach	w/Nabes	Now
Fred Castro	'14, '15, '16	HC Eastern Michigan
Adia Barnes	'14, '15	HC Arizona
Adam Call	'14	AC Eastern Michigan
Morgan Valley	'16	AC Arizona
Todd Schaefer	'16	AC Arkansas
Jasmine Lister	'16	AC DePaul



## WANT TO ASK SOME GOOD QUESTIONS?

1. He has had two heart attacks
2. He keeps a lot of lists
3. His lowest moment was he eureka moment
4. He plays guitar and has a band
5. He reads really fast
6. He is an analytics nerd
7. He is a bar-game prodigy





1

**RAVEN NORTHCROSS-BAKER**  
 Junior | 5-7 | Guard | Malvern, Arkansas  
 Chipola JC | Malvern HS

**CAREER HIGHS**

Points	22	UTA	12-17-17
FG Made	8	UTA	12-17-17
FG Att.	12	UTEP	11-24-17
3P Made	6	UTA	12-17-17
3P Att.	8	UTA	12-17-17
FT Made	7	ACU	11-29-17
FT Att.	8	ACU	11-29-17
Off. Rebounds	3	Grambling	12-18-17
Def. Rebounds	7	Tulsa	12-10-17
Rebounds	9	Tulsa	12-10-17
Assists	6	Samford	11-12-17
Blocks	1	Florida	1-18-18*
Steals	3	UTA	12-17-17
Minutes	29	Florida	1-18-18

**SEASON HIGHS**

Points	22	UTA	12-17-17
FG Made	8	UTA	12-17-17
FG Att.	12	UTEP	11-24-17
3P Made	6	UTA	12-17-17
3P Att.	8	UTA	12-17-17
FT Made	7	ACU	11-29-17
FT Att.	8	ACU	11-29-17
Off. Rebounds	3	Grambling	12-18-17
Def. Rebounds	7	Tulsa	12-10-17
Rebounds	9	Tulsa	12-10-17
Assists	6	Samford	11-12-17
Blocks	1	Florida	1-18-18*
Steals	3	UTA	12-17-17
Minutes	29	Florida	1-18-18

\*Most Recent

**2017-18 GAME-BY-GAME STATS**

Opponent	Date	gs	min	Total		3-Pointers		Free throws		Rebounds			pf	a	t/o	blk	stl	pts	avg	
				fg-fga	pct	3fg-fga	pct	ft-fa	pct	off	def	tot								avg
SHSU	11/10/17	20	1-8	.125	1-6	.167	0-0	.000	2	0	2	2.0	3	2	1	0	0	3	3.0	
SAMFORD	11/12/17	22	0-2	.000	0-2	.000	0-0	.000	0	1	1	1.5	1	6	1	0	0	0	1.5	
at Nebraska	11/16/17	18	1-4	.250	1-3	.333	0-0	.000	1	3	4	2.3	1	0	1	0	2	3	2.0	
at Oral Roberts	11/20/17	22	3-6	.500	1-4	.250	1-2	.500	0	1	1	2.0	3	1	0	0	0	8	3.5	
at UTEP	11/24/17	16	3-12	.250	0-6	.000	1-1	1.000	2	0	2	2.0	1	3	0	0	0	7	4.2	
vs NM State	11/25/17	18	2-7	.286	1-4	.250	2-4	.500	1	1	2	2.0	4	0	2	0	2	7	4.7	
ACU	11/29/17	22	3-6	.500	2-4	.500	7-8	.875	1	2	3	2.1	2	1	0	0	1	15	6.1	
at Kansas	12/03/17	14	1-6	.167	0-4	.000	0-0	.000	0	2	2	2.1	4	1	0	0	0	2	5.6	
CHARLOTTE	12/07/17	11	1-2	.500	1-2	.500	0-0	.000	0	3	3	2.2	0	1	1	0	0	3	5.3	
TULSA	12/10/17	23	0-4	.000	0-3	.000	1-4	.250	2	7	9	2.9	1	1	2	1	0	1	4.9	
UT-ARLINGTON	12/17/17	27	8-11	.727	6-8	.750	0-0	.000	2	2	4	3.0	0	3	0	0	3	22	6.5	
at Arizona State	12/21/17	19	3-8	.375	2-6	.333	0-0	.000	1	0	1	2.8	0	1	4	0	0	8	6.6	
GRAMBLING	12/28/17	21	4-9	.444	3-7	.429	3-4	.750	3	1	4	2.9	0	0	2	0	0	14	7.2	
OLE MISS	12/31/17	28	3-5	.600	1-2	.500	2-2	1.000	2	1	3	2.9	0	0	1	0	0	9	7.3	
at #5/3 Mississippi State	01/04/18	19	3-9	.333	2-6	.333	0-0	.000	0	1	1	2.8	2	1	1	0	1	8	7.3	
ALABAMA	01/07/18	27	1-5	.200	0-3	.000	0-0	.000	0	0	0	2.6	1	2	0	1	1	2	7.0	
at Georgia	1/11/18	17	2-4	.500	1-3	.333	1-2	.500	1	1	2	2.6	1	1	1	0	0	6	6.9	
at Auburn	01/14/18	28	2-10	.200	1-6	.167	2-2	1.000	2	4	6	2.8	3	3	1	0	1	7	6.9	
FLORIDA	01/18/18	* 29	2-11	.182	2-7	.286	0-0	.000	2	4	6	2.9	0	1	0	1	0	6	6.9	
at Missouri	01/21/18	23	2-10	.200	2-8	.250	0-0	.000	2	2	4	3.0	1	2	2	0	1	6	6.9	
at #9/7 South Carolina	01/25/18	14	0-3	.000	0-0	.000	0-0	.000	0	2	2	3.0	3	0	1	1	0	0	6.5	
KENTUCKY	01/29/18	14	1-5	.200	0-3	.000	1-2	.500	0	3	3	3.0	1	2	2	0	0	3	6.4	
at Alabama	2/4/18	21	1-4	.250	1-3	.333	0-0	.000	0	0	0	2.8	3	3	1	0	1	3	6.2	
NO. 11 TENNESSEE	02/08/18	6	0-0	.000	0-0	.000	0-0	.000	1	0	1	2.8	5	4	1	0	0	0	6.0	
MISSOURI	02/12/18	21	0-6	.000	0-6	.000	0-0	.000	0	0	0	2.6	1	1	1	0	2	0	5.7	
at Kentucky	02/15/18	4	0-1	.000	0-1	.000	0-0	.000	0	1	1	2.6	0	1	0	0	0	0	5.5	
Totals		1	504	47-158	.297	28-107	.262	21-31	.677	25	42	67	2.6	41	41	26	4	15	143	5.5

Games played: 26  
 Minutes/game: 19.4  
 Points/game: 5.5  
 FG Pct: 29.7  
 3FG Pct: 26.2  
 FT Pct: 67.7

Rebounds/game: 2.6  
 Assists/game: 1.6  
 Turnovers/game: 1.0  
 Assist/turnover ratio: 1.6  
 Steals/game: 0.6  
 Blocks/game: 0.2

**NOTES**

- » University of Arkansas Athletic Department Academic Honor Roll: Fall, 2017
- » 17 points in exhibition including 12 points in the first quarter.
- » Went 7-for-8 from line versus ACU.
- » Had her first 20+ point game as a Razorback with 22 points against UTA.
- » Season/career-best six 3-pointers versus UTA (6-for-8).
- » Assuming role of "Sixth Woman" and has been among the first off the bench in nine games.
- » First start as a Razorback against Florida, 1-18-18

**CAREER STATS**

Year	GP-GS	Min	Avg	Total			3-Point			F-Throw			Rebounds				PF	FO	Ast	TO	Blk	Stl	Pts	Avg
				FG	FGA	Pct	FG	FGA	Pct	FT	FTA	Pct	Off	Def	Tot	Avg								
2015-16*	26-14	69	2.7	97	229	.424	58	149	.389	21	33	.636	47	39	86	3.3	6	-	46	32	-	58	273	10.5
2016-17*	33-33	210	6.4	171	433	.395	77	247	.312	54	83	.651	74	77	151	4.6	9	-	77	44	3	56	473	14.3
Totals*	59-47	279	4.7	268	662	.405	135	396	.341	75	116	.647	121	116	237	4.0	15	-	123	76	3	114	746	12.6
*At Chipola Junior College																								
2017-18#	26-1	504	19.4	47	158	.297	28	107	.262	21	31	.677	25	42	67	2.6	41	1	41	26	4	15	143	5.5
TOTAL#	26-1	504	19.4	47	158	.297	28	107	.262	21	31	.677	25	42	67	2.6	41	1	41	26	4	15	143	5.5

#Arkansas





3

**MALICA MONK**  
 Junior | 5-5 | Guard | NLR, Arkansas  
 N. Little Rock HS

**CAREER HIGHS**

Points	25	No. 11 Tenn.	2-8-18
FG Made	9	No. 11 Tenn.	2-8-18*
FG Att.	28	Florida	1-18-18
3P Made	4	at Kentucky	2-15-18*
3P Att.	10	at Kentucky	2-15-18
FT Made	12	UTA	12-17-17
FT Att.	12	UTA	12-17-17
Off. Rebounds	3	NMSU	11-15-17*
Def. Rebounds	8	Samford	11-12-17
Rebounds	9	Samford	11-12-17
Assists	10	Grambling	12-18-17
Blocks	3	LSU	1-8-17
Steals	6	Kentucky	2-16-17*
Minutes	40	at Auburn	1-14-18

**SEASON HIGHS**

Points	25	No. 11 Tenn.	2-8-18
FG Made	9	No. 11 Tenn.	2-8-18*
FG Att.	28	Florida	1-18-18
3P Made	4	at Kentucky	2-15-18
3P Att.	10	at Kentucky	2-15-18
FT Made	12	UTA	12-17-17
FT Att.	12	UTA	12-17-17
Off. Rebounds	3	Alabama	1-7-18*
Def. Rebounds	8	Samford	11-12-17
Rebounds	9	Samford	11-12-17
Assists	10	Grambling	12-18-17
Blocks	1	NMSU	11-25-17
Steals	4	NMSU	11-15-17*
Minutes	40	at Auburn	1-14-18

\*Most Recent

**2017-18 GAME-BY-GAME STATS**

Opponent	Date	gs	min	Total		3-Pointers		Free throws		Rebounds				pf	a	t/o	blk	stl	pts	avg	
				fg-fga	pct	3fg-fga	pct	ft-fta	pct	off	def	tot	avg								
SHSU	11/10/17	*	33	7-13	.538	1-4	.250	3-4	.750	0	2	2	2.0	2	4	1	0	4	18	18.0	
SAMFORD	11/12/17	*	37	6-14	.429	2-3	.667	7-7	1.000	1	8	9	5.5	2	6	1	0	2	21	19.5	
at Nebraska	11/16/17	*	37	9-19	.474	1-4	.250	3-3	1.000	0	3	3	4.7	5	6	2	0	3	22	20.3	
at Oral Roberts	11/20/17	*	32	9-16	.563	1-3	.333	5-6	.833	0	3	3	4.3	1	4	1	0	1	24	21.3	
at UTEP	11/24/17	*	36	3-15	.200	1-6	.167	3-3	1.000	0	2	2	3.8	2	5	1	0	3	10	19.0	
vs NM State	11/25/17	*	38	9-17	.529	1-4	.250	3-7	.429	3	4	7	4.3	0	2	5	1	4	22	19.5	
ACU	11/29/17	*	29	5-14	.357	1-2	.500	4-6	.667	0	2	2	4.0	2	1	2	0	1	15	18.9	
at Kansas	12/03/17	*	32	8-20	.400	1-3	.333	4-4	1.000	3	4	7	4.4	4	5	3	0	0	21	19.1	
CHARLOTTE	12/07/17	*	38	6-18	.333	2-6	.333	1-2	.500	1	3	4	4.3	4	3	1	0	3	15	18.7	
TULSA	12/10/17	*	25	4-10	.400	2-4	.500	4-4	1.000	1	3	4	4.3	2	3	3	0	1	14	18.2	
UT-ARLINGTON	12/17/17	*	31	4-11	.364	0-2	.000	12-12	1.000	0	1	1	4.0	1	6	3	0	1	20	18.4	
at Arizona State	12/21/17	*	30	5-19	.263	0-4	.000	2-2	1.000	0	2	2	3.8	1	2	2	0	1	12	17.8	
GRAMBLING	12/28/17	*	35	2-7	.286	0-1	.000	6-8	.750	1	1	2	3.7	1	10	6	1	3	10	17.2	
OLE MISS	12/31/17	*	39	4-13	.308	0-3	.000	4-8	.500	1	1	2	3.6	1	4	3	0	1	12	16.9	
at #5/3 Mississippi State	01/04/18	*	29	3-16	.188	0-1	.000	2-4	.500	0	3	3	3.5	3	4	1	1	2	8	16.3	
ALABAMA	01/07/18	*	33	8-17	.471	1-2	.500	4-7	.571	3	1	4	3.6	4	1	6	0	0	21	16.6	
at Georgia	1/11/18	*	35	4-18	.222	0-2	.000	8-11	.727	0	5	5	3.6	3	2	3	1	2	16	16.5	
at Auburn	01/14/18	*	40	4-13	.308	2-6	.333	4-4	1.000	1	4	5	3.7	4	4	0	0	1	14	16.4	
FLORIDA	01/18/18	*	39	9-28	.321	1-5	.200	4-4	1.000	2	6	8	3.9	3	4	2	0	0	23	16.7	
at Missouri	01/21/18	*	31	4-12	.333	3-6	.500	0-2	.000	0	3	3	3.9	2	2	2	0	0	11	16.5	
at #9/7 South Carolina	01/25/18	*	27	6-20	.300	0-0	.000	0-0	.000	2	0	2	3.8	3	0	1	0	1	12	16.2	
KENTUCKY	01/29/18	*	35	2-10	.200	1-6	.167	6-6	1.000	0	2	2	3.7	3	6	2	1	0	11	16.0	
at Alabama	2/4/18	*	37	5-12	.417	2-3	.667	5-5	1.000	0	5	5	3.8	4	1	4	0	4	17	16.0	
NO. 11 TENNESSEE	02/08/18	*	39	9-21	.429	4-4	1.000	3-4	.750	0	1	1	3.7	1	5	4	0	2	25	16.4	
MISSOURI	02/12/18	*	28	3-9	.333	0-3	.000	0-1	.000	0	0	0	3.5	0	2	0	1	1	6	16.0	
at Kentucky	02/15/18	*	35	5-17	.294	4-10	.400	0-0	.000	0	2	2	3.5	2	5	1	0	0	14	15.9	
Totals			26	880	143-399	.358	31-97	.320	97-124	.782	19	71	90	3.5	60	97	60	6	41	414	15.9

Games played: 26  
 Minutes/game: 33.8  
 Points/game: 15.9  
 FG Pct: 35.8  
 3FG Pct: 32.0  
 FT Pct: 78.2

Rebounds/game: 3.5  
 Assists/game: 3.7  
 Turnovers/game: 2.3  
 Assist/turnover ratio: 1.6  
 Steals/game: 1.6  
 Blocks/game: 0.2

**NOTES**

- » University of Arkansas Athletic Department Academic Honor Roll: Fall, 2017
- » 14 points, seven assists and just one turnover in exhibition game
- » Fourteen consecutive games with double figure scoring - snapped at No. 5/3 Mississippi State.
- » Twenty-four games in double figure scoring this season.
- » Nine games with 20+ points including a career-best 25 points against No. 11 Tennessee.
- » Named CollegeSportsMadness.com's SEC Player of the Week (11.13.17).
- » Had 13 points in the fourth quarter at ORU.
- » Led team in scoring nine games.
- » Eight games with 5+ assists this year. Had four all of last year.
- » Career-best 10 assists and her first career double-double with 10 points and 10 assists versus Grambling State.
- » Perfect from the line in 10 games including a career-best 12-for-12 against UTA.

**CAREER STATS**

Year	GP-GS	Min	Avg	Total			3-Point			F-Throw			Rebounds				PF	FO	Ast	TO	Blk	Stl	Pts	Avg
				FG	FGA	Pct	FG	FGA	Pct	FT	FTA	Pct	Off	Def	Tot	Avg								
2015-16	27-5	461	17.1	48	136	.353	2	10	.200	12	19	.632	6	23	29	1.1	60	2	47	44	5	23	110	4.1
2016-17	27-27	842	31.2	96	230	.417	7	25	.280	48	71	.676	29	52	81	3.0	79	2	83	59	7	62	247	9.1
2017-18	26-26	880	33.8	143	399	.358	31	97	.320	97	124	.782	19	71	90	3.5	60	1	97	60	6	41	414	15.9
TOTAL	80-58	2183	27.3	287	765	.375	40	132	.303	157	214	.734	54	146	200	2.5	199	5	227	163	18	126	771	9.6



4

**KEIRYN SWENSON**

Junior | 6-1 | Forward | Wichita, Kansas  
Maize HS

**CAREER HIGHS**

Points	23	vs. HBU	12-28-16
FGM	7	vs. Navy	11-26-16
FGA	13	at Ole Miss	1-1-17
3PM	4	at Ole Miss	1-1-17
3PA	9	at Ole Miss	1-1-17
FTM	8	vs. HBU	12-28-16
FTA	9	vs. HBU	12-28-16
OREB	5	at Alabama	1-15-17*
DREB	6	vs. NSU	12-18-15*
REB	9	at Alabama	1-15-17*
AST	2	Grambling	12-18-17*
BLK	2	vs. SHSU	11-10-17*
STL	2	UTEP	11-24-17*
MIN	37	at Ole Miss	1-1-17

**SEASON HIGHS**

Points	10	UTA	12-17-17
FG Made	4	UTA	12-17-17
FG Att.	9	at Missouri	1-21-18
3P Made	3	Alabama	1-7-18*
3P Att.	6	Ole Miss	12-31-17*
FT Made	3	at S. Carolina	1-25-18
FT Att.	5	at S. Carolina	1-25-18
Off. Rebounds	3	Ole Miss	12-31-17
Def. Rebounds	4	UTA	12-17-17*
Rebounds	6	Tulsa	12-10-17*
Assists	2	Grambling	12-18-17*
Blocks	2	SHSU	11-10-17
Steals	2	UTEP	11-24-17
Minutes	26	Florida	1-18-18

\*Most Recent

**2017-18 GAME-BY-GAME STATS**

Opponent	Date	gs	min	Total		3-Pointers		Free throws		Rebounds				pf	a	t/o	blk	stl	pts	avg
				fg-fga	pct	3fg-fga	pct	ft-fa	pct	off	def	tot	avg							
SHSU	11/10/17	18	2-8	.250	1-4	.250	0-0	.000	0	1	1	1.0	1	0	2	0	5	5.0		
SAMFORD	11/12/17	13	3-5	.600	3-4	.750	0-0	.000	0	0	0	0.5	3	1	0	0	9	7.0		
at Nebraska	11/16/17	17	1-5	.200	1-5	.200	0-0	.000	1	2	3	1.3	2	0	0	0	3	5.7		
at Oral Roberts	11/20/17	15	2-3	.667	1-2	.500	1-2	.500	0	2	2	1.5	2	0	1	0	1	6	5.8	
at UTEP	11/24/17	16	2-7	.286	2-6	.333	0-2	.000	1	1	2	1.6	0	0	1	0	2	6	5.8	
vs NM State	11/25/17	14	2-5	.400	1-4	.250	0-0	.000	2	4	6	2.3	1	0	4	0	5	5.7		
ACU	11/29/17	17	1-3	.333	1-2	.500	0-0	.000	1	1	2	2.3	0	0	1	0	1	3	5.3	
at Kansas	12/03/17	18	1-3	.333	1-3	.333	1-2	.500	0	2	2	2.3	1	0	1	1	0	4	5.1	
CHARLOTTE	12/07/17	13	1-5	.200	1-4	.250	0-0	.000	0	2	2	2.2	2	0	0	0	3	4.9		
TULSA	12/10/17	21	2-7	.286	1-5	.200	2-2	1.000	2	4	6	2.6	0	0	0	1	0	7	5.1	
UT-ARLINGTON	12/17/17	17	4-8	.500	2-4	.500	0-0	.000	1	4	5	2.8	1	2	2	0	10	5.5		
at Arizona State	12/21/17	15	1-3	.333	0-1	.000	0-0	.000	2	1	3	2.8	0	1	3	1	0	2	5.3	
GRAMBLING	12/28/17	24	2-3	.667	2-3	.667	2-2	1.000	0	2	2	2.8	2	2	0	0	0	8	5.5	
OLE MISS	12/31/17	12	3-8	.375	1-6	.167	1-1	1.000	3	1	4	2.9	1	0	2	1	0	8	5.6	
at #5/3 Mississippi State	01/04/18	15	0-0	.000	0-0	.000	0-0	.000	1	1	2	2.8	1	0	1	0	0	0	5.3	
ALABAMA	01/07/18	12	3-4	.750	3-4	.750	0-0	.000	0	0	0	2.6	3	0	0	1	0	9	5.5	
at Georgia	11/11/18	6	0-2	.000	0-2	.000	0-0	.000	0	0	0	2.5	0	0	1	0	0	0	5.2	
at Auburn	01/14/18	11	0-2	.000	0-2	.000	0-0	.000	0	0	0	2.3	1	0	0	0	0	0	4.9	
FLORIDA	01/18/18	26	3-6	.500	1-4	.250	0-0	.000	1	3	4	2.4	1	1	1	1	1	7	5.0	
at Missouri	01/21/18	22	2-9	.222	1-5	.200	0-0	.000	1	3	4	2.5	1	1	0	0	0	5	5.0	
at #9/7 South Carolina	01/25/18	17	1-8	.125	1-5	.200	3-5	.600	1	3	4	2.6	1	0	1	1	0	6	5.0	
KENTUCKY	01/29/18	10	1-3	.333	0-2	.000	0-0	.000	0	1	1	2.5	0	0	2	0	0	2	4.9	
at Alabama	2/4/18	4	0-1	.000	0-1	.000	2-2	1.000	1	1	2	2.5	0	0	0	0	0	2	4.8	
NO. 11 TENNESSEE	02/08/18	dnp	-	-	-	-	-	-	-	-	-	-	-	-	-	-	-	-	-	
MISSOURI	02/12/18	12	1-3	.333	1-2	.500	2-2	1.000	2	1	3	2.5	0	0	0	0	0	5	4.8	
at Kentucky	02/15/18	13	1-4	.250	0-3	.000	0-0	.000	1	0	1	2.4	1	0	0	0	0	2	4.7	
Totals		0	378	39-115	.339	25-83	.301	14-20	.700	21	40	61	2.4	25	8	21	9	5	117	4.7

Games played: 25  
Minutes/game: 15.1  
Points/game: 4.7  
FG Pct: 33.9  
3FG Pct: 30.1  
FT Pct: 70.0

Rebounds/game: 2.4  
Assists/game: 0.3  
Turnovers/game: 0.8  
Assist/turnover ratio: 0.4  
Steals/game: 0.2  
Blocks/game: 0.4

**NOTES**

- » Saw a 206.4% increase in scoring between freshman and sophomore seasons (78 vs. 239 points).
- » **SEC Winter Academic Honor Roll** (2016-17).
- » **SEC First-Year Academic Honor Roll** (2015-16).
- » **University of Arkansas Athletic Department Academic Champion (4.0):** Fall, 2017
- » At least one 3-pointer in her first 11 games this year and in 18 games this season.
- » Season-best 10 points on 4-for-8 shooting against UTA.

**CAREER STATS**

Year	GP-GS	Min	Avg	Total			3-Point			F-Throw			Rebounds				PF	FO	Ast	TO	Blk	Stl	Pts	Avg
				FG	FGA	Pct	FG	FGA	Pct	FT	FTA	Pct	Off	Def	Tot	Avg								
2015-16	29-1	373	12.9	27	84	.321	5	21	.238	19	27	.704	34	34	68	2.3	26	0	7	15	4	10	78	2.7
2016-17	30-11	709	23.6	89	179	.497	31	71	.437	30	39	.769	53	71	124	4.1	56	0	15	28	17	16	239	8.0
2017-18	25-0	378	15.1	39	115	.339	25	83	.301	14	20	.700	21	40	61	2.4	25	0	8	21	9	5	117	4.7
TOTAL	84-12	1460	17.4	155	378	.410	61	175	.349	63	86	.733	108	145	253	3.0	107	0	30	64	30	31	434	5.2



10

**KIARA WILLIAMS**

Sophomore | 6-1 | Forward | LR, Arkansas Little Rock HS

**CAREER HIGHS**

Points	15	at Auburn	1-14-18
FGM	7	at Auburn	1-14-18
FGA	11	NMSU	11-25-17
3PM	1	#5 Miss St.	1-4-18
3PA	1	#5 Miss St.	1-4-18
FTM	4	Grambling	12-18-17*
FTA	11	Charlotte	12-6-17
OREB	8	Grambling	12-18-17*
DREB	11	at Kansas	12-3-17
REB	16	Grambling	12-18-17*
AST	2	Florida	1-18-18*
BLK	4	Ole Miss	12-31-17*
STL	4	Charlotte	12-6-17
MIN	29	Charlotte	12-6-17

**SEASON HIGHS**

Points	15	at Auburn	1-14-18
FG Made	7	at Auburn	1-14-18
FG Att.	11	NMSU	11-25-17
3P Made	1	#5 Miss St.	1-4-18
3P Att.	1	#5 Miss St.	1-4-18
FT Made	4	Grambling	12-18-17*
FT Att.	11	Charlotte	12-6-17
Off. Rebounds	8	Grambling	12-18-17*
Def. Rebounds	11	at Kansas	12-3-17
Rebounds	16	Grambling	12-18-17*
Assists	2	Florida	1-18-18*
Blocks	4	Ole Miss	12-31-17*
Steals	4	Charlotte	12-6-17
Minutes	29	Charlotte	12-6-17

\*Most Recent

**2017-18 GAME-BY-GAME STATS**

Opponent	Date	gs	min	Total		3-Pointers		Free throws		Rebounds			pf	a	t/o	blk	stl	pts	avg		
				fg-fga	pct	3fg-fga	pct	ft-fa	pct	off	def	tot								avg	
SHSU	11/10/17	*	17	3-4	.750	0-0	.000	1-1	1.000	0	2	2	2.0	1	1	0	0	7	7.0		
SAMFORD	11/12/17	*	19	5-7	.714	0-0	.000	0-0	.000	1	4	5	3.5	1	0	0	4	2	10	8.5	
at Nebraska	11/16/17	*	20	3-6	.500	0-0	.000	0-0	.000	6	5	11	6.0	4	1	2	2	1	6	7.7	
at Oral Roberts	11/20/17	*	17	3-7	.429	0-0	.000	2-2	1.000	3	2	5	5.8	4	0	1	0	1	8	7.8	
at UTEP	11/24/17	*	8	0-2	.000	0-0	.000	1-2	.500	1	0	1	4.8	3	0	1	0	1	1	6.4	
vs NM State	11/25/17	*	25	5-11	.455	0-0	.000	1-3	.333	4	7	11	5.8	2	0	3	0	2	11	7.2	
ACU	11/29/17	*	20	4-6	.667	0-0	.000	4-5	.800	5	3	8	6.1	0	0	0	1	3	12	7.9	
at Kansas	12/03/17	*	28	3-6	.500	0-0	.000	0-1	.000	5	11	16	7.4	3	0	4	2	0	6	7.6	
CHARLOTTE	12/07/17	*	29	3-8	.375	0-0	.000	3-11	.273	8	4	12	7.9	3	0	0	3	4	9	7.8	
TULSA	12/10/17	*	17	6-9	.667	0-0	.000	1-4	.250	4	3	7	7.8	2	2	0	2	0	13	8.3	
UT-ARLINGTON	12/17/17	*	22	1-3	.333	0-0	.000	0-0	.000	3	5	8	7.8	4	0	0	1	2	2	7.7	
at Arizona State	12/21/17	*	16	0-2	.000	0-0	.000	3-4	.750	0	4	4	7.5	1	0	1	1	0	3	7.3	
GRAMBLING	12/28/17	*	22	4-10	.400	0-0	.000	4-8	.500	8	8	16	8.2	1	0	0	0	1	12	7.7	
OLE MISS	12/31/17	*	23	1-5	.200	0-0	.000	3-4	.750	2	7	9	8.2	5	1	0	4	1	5	7.5	
at #5/3 Mississippi State	01/04/18	*	20	5-5	1.000	1-1	1.000	2-2	1.000	0	2	2	7.8	1	0	0	3	1	0	13	7.9
ALABAMA	01/07/18	*	21	3-10	.300	0-0	.000	0-0	.000	1	6	7	7.8	1	0	2	0	2	6	7.8	
at Georgia	11/11/18	*	7	1-4	.250	0-0	.000	0-0	.000	2	1	3	7.5	2	1	0	0	0	2	7.4	
at Auburn	01/14/18	*	27	7-9	.778	0-0	.000	1-3	.333	7	7	14	7.8	2	0	0	0	1	15	7.8	
FLORIDA	01/18/18	*	17	4-6	.667	0-0	.000	0-0	.000	1	3	4	7.6	1	0	2	1	0	8	7.8	
at Missouri	01/21/18	*	20	6-10	.600	0-0	.000	2-3	.667	3	4	7	7.6	4	0	0	0	1	14	8.2	
at #9/7 South Carolina	01/25/18	*	14	0-2	.000	0-1	.000	0-0	.000	1	3	4	7.4	3	0	0	1	0	7.8		
KENTUCKY	01/29/18	*	19	3-7	.429	0-0	.000	0-1	.000	4	3	7	7.4	2	0	0	1	0	6	7.7	
at Alabama	2/4/18	*	18	5-7	.714	0-0	.000	0-1	.000	2	3	5	7.3	3	0	1	0	0	10	7.8	
NO. 11 TENNESSEE	02/08/18	*	28	3-6	.500	0-0	.000	3-5	.600	6	4	10	7.4	1	0	0	2	3	9	7.8	
MISSOURI	02/12/18	*	4	0-1	.000	0-0	.000	0-0	.000	0	0	0	7.1	2	0	0	0	0	0	7.5	
at Kentucky	02/15/18	*	15	1-6	.167	0-0	.000	1-2	.500	2	1	3	7.0	2	1	1	0	0	3	7.3	
Totals			25	493	79-159	.497	1-2	.500	32-62	.516	79	102	181	7.0	58	7	21	25	26	191	7.3

Games played: 26  
 Minutes/game: 19.0  
 Points/game: 7.3  
 FG Pct: 49.7  
 3FG Pct: 50.0  
 FT Pct: 51.6

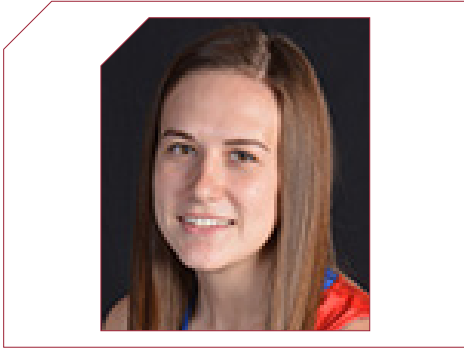
Rebounds/game: 7.0  
 Assists/game: 0.3  
 Turnovers/game: 0.8  
 Assist/turnover ratio: 0.3  
 Steals/game: 1.0  
 Blocks/game: 1.0

**NOTES**

- » Enjoys Marvel movies.
- » Career-best four blocks against Samford. Tied that against Ole Miss in the SEC opener.
- » Posted first double-figure rebound total with 11 boards on the road at Nebraska.
- » Has scored in 25 of 26 games.
- » First time in her career to have double figures in the first half against ACU.
- » Career-best 16 rebounds, including 11 defensive rebounds, at Kansas.
- » Nine games in double figures. Six games with double-digit rebounds.
- » Made her first career 3-point basket in the opening shot of the No. 5/3 Mississippi State game.
- » Double-Doubles: First career double-double with 11 points and 11 rebounds against New Mexico State ... Second career double-double with 12 points and tied her career-best with 16 rebounds versus Grambling State ... Third at Auburn with a career-best 15 points and 14 rebounds.

**CAREER STATS**

Year	GP-GS	Min	Avg	Total			3-Point			F-Throw			Rebounds				PF	FO	Ast	TO	Blk	Stl	Pts	Avg
				FG	FGA	Pct	FG	FGA	Pct	FT	FTA	Pct	Off	Def	Tot	Avg								
2016-17	20-5	227	11.4	26	48	.542	0	0	.000	10	26	.385	24	31	55	2.8	34	1	3	15	5	9	62	3.1
2017-18	26-25	493	19.0	79	159	.497	1	2	.500	32	62	.516	79	102	181	7.0	58	1	7	21	25	26	191	7.3
TOTAL	46-30	720	15.7	105	207	.507	1	2	.500	42	88	.477	103	133	236	5.1	92	2	10	36	30	35	253	5.5



**12** **BRENNA MCCLURE**  
 R-Sophomore | 5-6 | Guard | Lyons, Kansas  
 Lyons HS | Hutchinson CC

CAREER HIGHS			
Points	-		
FG Made	-		
FG Att.	1	at No. 9 SC	1-25-18*
3P Made	-		
3P Att.	1	at Kentucky	2-15-18
FT Made	-		
FT Att.	-		
Off. Rebounds	-		
Def. Rebounds	-		
Rebounds	-		
Assists	2	No. 13 MU	2-12-18
Blocks	-		
Steals	-		
Minutes	4	No. 13 MU	2-12-18

SEASON HIGHS			
Points	-		
FG Made	-		
FG Att.	1	at No. 9 SC	1-25-18*
3P Made	-		
3P Att.	1	at Kentucky	2-15-18
FT Made	-		
FT Att.	-		
Off. Rebounds	-		
Def. Rebounds	-		
Rebounds	-		
Assists	2	No. 13 MU	2-12-18
Blocks	-		
Steals	-		
Minutes	4	No. 13 MU	2-12-18

\*Most Recent

## 2017-18 GAME-BY-GAME STATS

Opponent	Date	gs	min	Total		3-Pointers		Free throws		Rebounds				pf	a	t/o	blk	stl	pts	avg
				fg-fga	pct	3fg-fga	pct	ft-fta	pct	off	def	tot	avg							
GRAMBLING	12/28/17		dnp	-	-	-	-	-	-	-	-	-	-	-	-	-	-	-	-	-
OLE MISS	12/31/17		dnp	-	-	-	-	-	-	-	-	-	-	-	-	-	-	-	-	-
at #5/3 Mississippi State	01/04/18	3		0-1	.000	0-0	.000	0-0	.000	0	0	0	0.0	1	0	0	0	0	0	0.0
ALABAMA	01/07/18		dnp	-	-	-	-	-	-	-	-	-	-	-	-	-	-	-	-	-
at Georgia	1/11/18		dnp	-	-	-	-	-	-	-	-	-	-	-	-	-	-	-	-	-
at Auburn	01/14/18		dnp	-	-	-	-	-	-	-	-	-	-	-	-	-	-	-	-	-
FLORIDA	01/18/18		dnp	-	-	-	-	-	-	-	-	-	-	-	-	-	-	-	-	-
at Missouri	01/21/18	3		0-1	.000	0-0	.000	0-0	.000	0	0	0	0.0	0	0	0	0	0	0	0.0
at #9/7 South Carolina	01/25/18	2		0-1	.000	0-0	.000	0-0	.000	0	0	0	0.0	0	0	1	0	0	0	0.0
KENTUCKY	01/29/18		dnp	-	-	-	-	-	-	-	-	-	-	-	-	-	-	-	-	-
at Alabama	2/4/18		dnp	-	-	-	-	-	-	-	-	-	-	-	-	-	-	-	-	-
NO. 11 TENNESSEE	02/08/18		dnp	-	-	-	-	-	-	-	-	-	-	-	-	-	-	-	-	-
MISSOURI	02/12/18	4		0-0	.000	0-0	.000	0-0	.000	0	0	0	0.0	0	2	1	0	0	0	0.0
at Kentucky	02/15/18	1		0-1	.000	0-1	.000	0-0	.000	0	0	0	0.0	0	0	0	0	0	0	0.0
Totals		0	13	0-4	.000	0-1	.000	0-0	.000	0	0	0	0.0	1	2	2	0	0	0	0.0

Games played: 5  
 Minutes/game: 2.6  
 FG Pct: 0.0  
 3FG Pct: 0.0

Assists/game: 0.4  
 Turnovers/game: 0.4  
 Assist/turnover ratio: 1.0

## NOTES

- » University of Arkansas Athletic Department Academic Champion (4.0): Fall, 2017
- » Joined the team as a walk-on for the spring semester.
- » Pace the Blue Dragons went 35-2, shared the Jayhawk Conference championship and won the Region VI championship to qualify for the NJCAA Tournament

## CAREER STATS

Year	GP-GS	Min	Avg	Total			3-Point			F-Throw			Rebounds				PF	FO	Ast	TO	Blk	Stl	Pts	Avg
				FG	FGA	Pct	FG	FGA	Pct	FT	FTA	Pct	Off	Def	Tot	Avg								
2017-18	5-0	13	2.6	0	4	.000	0	1	.000	0	0	.000	0	0	0	0.0	1	0	2	2	0	0	0	0.0
TOTAL	5-0	13	2.6	0	4	.000	0	1	.000	0	0	.000	0	0	0	0.0	1	0	2	2	0	0	0	0.0





13

**GRAYCE SPANGLER**

Freshman | 5-11 | Guard | Fayetteville, Ark.  
Fayetteville HS

**CAREER HIGHS**

Points	4	#5 Miss St.	1-4-18
FG Made	2	#5 Miss St.	1-4-18
FG Att.	3	#5 Miss St.	1-4-18
3P Made	-		
3P Att.	2	ACU	11-29-17
FT Made	3	UTA	12-17-17
FT Att.	4	No. 13 MU	2-12-18
Off. Rebounds	1	#5 Miss St.	1-4-18
Def. Rebounds	1	at ASU	12-21-17*
Rebounds	1	UTA	12-17-17
Assists	1	at Kentucky	2-15-18
Blocks	-		
Steals	1	at S Carolina	1-25-18
Minutes	9	at S Carolina	1-25-18

**SEASON HIGHS**

Points	4	#5 Miss St.	1-4-18
FG Made	2	#5 Miss St.	1-4-18
FG Att.	3	#5 Miss St.	1-4-18
3P Made	-		
3P Att.	2	ACU	11-29-17
FT Made	3	UTA	12-17-17
FT Att.	4	No. 13 MU	2-12-18
Off. Rebounds	1	#5 Miss St.	1-4-18
Def. Rebounds	1	at ASU	12-21-17*
Rebounds	1	UTA	12-17-17
Assists	1	at Kentucky	2-15-18
Blocks	-		
Steals	1	at S Carolina	1-25-18
Minutes	9	at S Carolina	1-25-18

\*Most Recent

**2017-18 GAME-BY-GAME STATS**

Opponent	Date	gs	min	Total		3-Pointers		Free throws		Rebounds				pf	a	t/o	blk	stl	pts	avg
				fg-fga	pct	3fg-fga	pct	ft-fa	pct	off	def	tot	avg							
SHSU	11/10/17	4	0-1	.000	0-0	.000	0-2	.000	0	0	0	0.0	0	0	0	0	0	0	0.0	
SAMFORD	11/12/17	2	0-1	.000	0-1	.000	0-0	.000	0	1	1	0.5	0	0	0	0	0	0.0		
at Nebraska	11/16/17	dnp	-	-	-	-	-	-	-	-	-	-	-	-	-	-	-	-		
at Oral Roberts	11/20/17	dnp	-	-	-	-	-	-	-	-	-	-	-	-	-	-	-	-		
at UTEP	11/24/17	5	0-0	.000	0-0	.000	0-0	.000	0	0	0	0.3	2	0	0	0	0	0.0		
vs NM State	11/25/17	dnp	-	-	-	-	-	-	-	-	-	-	-	-	-	-	-	-		
ACU	11/29/17	6	0-2	.000	0-2	.000	0-0	.000	0	0	0	0.3	0	0	1	0	0	0.0		
at Kansas	12/03/17	1	0-0	.000	0-0	.000	0-0	.000	0	0	0	0.2	0	0	0	0	0	0.0		
CHARLOTTE	12/07/17	dnp	-	-	-	-	-	-	-	-	-	-	-	-	-	-	-	-		
TULSA	12/10/17	2	0-0	.000	0-0	.000	0-0	.000	0	1	1	0.3	0	0	0	0	0	0.0		
UT-ARLINGTON	12/17/17	3	0-1	.000	0-0	.000	3-3	1.000	0	1	1	0.4	1	0	1	0	0	3.0		
at Arizona State	12/21/17	7	0-1	.000	0-0	.000	0-0	.000	0	1	1	0.5	2	0	0	0	0	0.4		
GRAMBLING	12/28/17	3	0-2	.000	0-1	.000	0-0	.000	0	0	0	0.4	0	0	0	0	0	0.3		
OLE MISS	12/31/17	dnp	-	-	-	-	-	-	-	-	-	-	-	-	-	-	-	-		
at #5/3 Mississippi State	01/04/18	3	2-3	.667	0-1	.000	0-1	.000	1	0	1	0.5	1	0	2	0	0	4.7		
ALABAMA	01/07/18	0	0-0	.000	0-0	.000	0-0	.000	0	0	0	0.5	0	0	0	0	0	0.6		
at Georgia	11/11/18	dnp	-	-	-	-	-	-	-	-	-	-	-	-	-	-	-	-		
at Auburn	01/14/18	dnp	-	-	-	-	-	-	-	-	-	-	-	-	-	-	-	-		
FLORIDA	01/18/18	dnp	-	-	-	-	-	-	-	-	-	-	-	-	-	-	-	-		
at Missouri	01/21/18	5	0-2	.000	0-1	.000	0-0	.000	0	0	0	0.4	1	0	0	0	0	0.6		
at #9/7 South Carolina	01/25/18	9	0-1	.000	0-0	.000	0-0	.000	0	0	0	0.4	3	0	1	0	1	0.5		
KENTUCKY	01/29/18	dnp	-	-	-	-	-	-	-	-	-	-	-	-	-	-	-	-		
at Alabama	2/4/18	dnp	-	-	-	-	-	-	-	-	-	-	-	-	-	-	-	-		
NO. 11 TENNESSEE	02/08/18	dnp	-	-	-	-	-	-	-	-	-	-	-	-	-	-	-	-		
MISSOURI	02/12/18	5	0-0	.000	0-0	.000	1-4	.250	0	0	0	0.4	1	0	0	0	0	1.0		
at Kentucky	02/15/18	2	0-0	.000	0-0	.000	0-0	.000	0	0	0	0.3	1	1	0	0	0	0.5		
Totals		0	57	2-14	.143	0-6	4-10	.400	1	4	5	0.3	12	1	5	0	1	8	0.5	

Games played: 15  
Minutes/game: 3.8  
Points/game: 0.5  
FG Pct: 14.3  
3FG Pct: 0.0  
FT Pct: 40.0

Rebounds/game: 0.3  
Assists/game: 0.1  
Turnovers/game: 0.3  
Assist/turnover ratio: 0.2  
Steals/game: 0.1

**NOTES**

- » Father Shannon lettered as a linebacker (1989) and mother, Stacy, was a member of the Pom Squad at Arkansas.
- » Scored her first points as a Razorback going 3-for-3 from the line in a win over UTA.
- » **University of Arkansas Athletic Department Academic Athletic Director's List:** Fall, 2017

**CAREER STATS**

Year	GP-GS	Min	Avg	Total			3-Point			F-Throw			Rebounds				PF	FO	Ast	TO	Blk	Stl	Pts	Avg
				FG	FGA	Pct	FG	FGA	Pct	FT	FTA	Pct	Off	Def	Tot	Avg								
2017-18	15-0	57	3.8	2	14	.143	0	6	.000	4	10	.400	1	4	5	0.3	12	0	1	5	0	1	8	0.5
TOTAL	15-0	57	3.8	2	14	.143	0	6	.000	4	10	.400	1	4	5	0.3	12	0	1	5	0	1	8	0.5



14

**JAILYN MASON**  
 Sophomore | 5-9 | Guard | Mason, Ohio  
 William Mason HS

**CAREER HIGHS**

Points	19	ORU	12-21-16
FGM	9	No. 11 Tenn.	2-8-18*
FGA	21	No. 11 Tenn.	2-8-18
3PM	4	at Kentucky	2-15-18
3PA	8	at Kentucky	2-15-18
FTM	4	No. 13 MU	2-12-18*
FTA	4	No. 13 MU	2-12-18*
OREB	4	Texas Tech	12-3-16
DREB	7	Grambling	12-18-17*
REB	9	Texas Tech	12-3-16
AST	11	HBU	12-28-16
BLK	3	SHSU	11-10-17
STL	5	at Georgia	1-11-18
MIN	40	ORU	12-21-16

**SEASON HIGHS**

Points	18	at Kentucky	2-15-18
FG Made	9	No. 11 Tenn.	2-8-18
FG Att.	21	No. 11 Tenn.	2-8-18
3P Made	4	at Kentucky	2-15-18
3P Att.	8	at Kentucky	2-15-18
FT Made	4	No. 13 MU	2-12-18*
FT Att.	4	No. 13 MU	2-12-18*
Off. Rebounds	3	NMSU	11-25-17
Def. Rebounds	7	Grambling	12-18-17*
Rebounds	7	Grambling	12-18-17*
Assists	8	ACU	11-29-17
Blocks	3	SHSU	11-10-17
Steals	5	at Georgia	1-11-18
Minutes	40	Florida	1-18-18

\*Most Recent

**2017-18 GAME-BY-GAME STATS**

Opponent	Date	gs	min	Total		3-Pointers		Free throws		Rebounds			pf	a	t/o	blk	stl	pts	avg		
				fg-fga	pct	3fg-fga	pct	ft-fa	pct	off	def	tot								avg	
SHSU	11/10/17	*	25	3-10	.300	2-4	.500	0-0	.000	0	5	5	5.0	0	4	1	3	1	8	8.0	
SAMFORD	11/12/17	*	35	5-11	.455	2-5	.400	0-2	.000	0	1	1	3.0	2	2	1	0	2	12	10.0	
at Nebraska	11/16/17	*	30	4-12	.333	0-2	.000	0-1	.000	0	5	5	3.7	3	2	4	0	4	8	9.3	
at Oral Roberts	11/20/17	*	32	3-9	.333	0-0	.000	0-0	.000	1	1	2	3.3	1	1	1	0	0	6	8.5	
at UTEP	11/24/17	*	24	3-9	.333	2-6	.333	0-0	.000	1	3	4	3.4	1	2	0	0	1	8	8.4	
vs NM State	11/25/17	*	28	1-8	.125	1-4	.250	0-0	.000	3	3	6	3.8	3	2	1	1	2	3	7.5	
ACU	11/29/17	*	34	5-13	.385	3-7	.429	0-0	.000	0	7	7	4.3	1	8	3	1	2	13	8.3	
at Kansas	12/03/17	*	33	4-9	.444	2-5	.400	0-0	.000	0	2	2	4.0	5	1	2	0	2	10	8.5	
CHARLOTTE	12/07/17	*	30	4-10	.400	2-6	.333	2-2	1.000	0	4	4	4.0	2	4	1	1	1	12	8.9	
TULSA	12/10/17	*	30	5-11	.455	1-4	.250	0-0	.000	0	5	5	4.1	0	6	0	0	0	11	9.1	
UT-ARLINGTON	12/17/17	*	33	7-11	.636	1-4	.250	0-0	.000	0	4	4	4.1	1	7	3	0	3	15	9.6	
at Arizona State	12/21/17	*	31	3-7	.429	0-1	.000	0-0	.000	0	4	4	4.1	0	1	5	1	0	6	9.3	
GRAMBLING	12/28/17	*	27	3-11	.273	2-4	.500	0-0	.000	0	7	7	4.3	2	1	1	0	1	8	9.2	
OLE MISS	12/31/17	*	33	5-11	.455	3-4	.750	0-0	.000	0	2	2	4.1	3	4	1	1	1	13	9.5	
at #5/3 Mississippi State	01/04/18	*	35	7-11	.636	1-1	1.000	0-0	.000	1	2	3	4.1	0	4	2	1	0	15	9.9	
ALABAMA	01/07/18	*	37	5-15	.333	2-7	.286	0-0	.000	2	4	6	4.2	4	0	4	2	3	12	10.0	
at Georgia	1/11/18	*	36	5-10	.500	1-2	.500	4-4	1.000	0	5	5	4.2	4	1	5	0	5	15	10.3	
at Auburn	01/14/18	*	38	6-12	.500	3-6	.500	0-0	.000	0	2	2	4.1	1	5	6	0	0	15	10.6	
FLORIDA	01/18/18	*	40	2-12	.167	1-6	.167	0-0	.000	0	6	6	4.2	2	1	1	0	1	5	10.3	
at Missouri	01/21/18	*	31	6-11	.545	2-3	.667	0-0	.000	1	2	3	4.2	2	1	3	0	0	14	10.5	
at #9/7 South Carolina	01/25/18	*	32	5-12	.417	0-2	.000	0-0	.000	1	1	2	4.0	2	1	0	1	0	10	10.4	
KENTUCKY	01/29/18	*	34	4-10	.400	3-6	.500	2-2	1.000	1	2	3	4.0	1	3	1	0	0	13	10.5	
at Alabama	2/4/18	*	34	3-8	.375	0-0	.000	0-0	.000	1	4	5	4.0	3	3	3	0	1	6	10.3	
NO. 11 TENNESSEE	02/08/18	*	39	4-11	.364	1-6	.167	2-2	1.000	0	3	3	4.0	3	5	3	0	1	11	10.4	
MISSOURI	02/12/18	*	33	5-12	.417	1-3	.333	4-4	1.000	1	2	3	4.0	0	3	1	0	0	15	10.6	
at Kentucky	02/15/18	*	36	7-14	.500	4-8	.500	0-0	.000	1	3	4	4.0	2	1	2	0	1	18	10.8	
Totals			26	850	114-280	.407	40-106	.377	14-17	.824	14	89	103	4.0	48	73	55	12	32	282	10.8

Games played: 26  
 Minutes/game: 32.7  
 Points/game: 10.8  
 FG Pct: 40.7  
 3FG Pct: 37.7  
 FT Pct: 82.4

Rebounds/game: 4.0  
 Assists/game: 2.8  
 Turnovers/game: 2.1  
 Assist/turnover ratio: 1.3  
 Steals/game: 1.2  
 Blocks/game: 0.5

**NOTES**

- » Has a large Jordan shoe collection.
- » Would like to be a sports photographer.
- » At least one defensive rebound in each game this season.
- » Set season-best marks for field goals, field goals attempted, 3-point field goals and 3-point field goals attempted as well as for rebounds and assists against Abilene Christian.
- » Seventeen games this year with double-figure scoring.
- » Season-best 18 points on the road at Kentucky. Went 7-for-14 with a career-best four 3-point field goals.

**CAREER STATS**

Year	GP-GS	Min	Avg	Total			3-Point			F-Throw			Rebounds				PF	FO	Ast	TO	Blk	Stl	Pts	Avg
				FG	FGA	Pct	FG	FGA	Pct	FT	FTA	Pct	Off	Def	Tot	Avg								
2016-17	30-30	894	29.8	100	256	.391	19	53	.358	7	11	.636	21	96	117	3.9	72	2	93	56	8	31	226	7.5
2017-18	26-26	850	32.7	114	280	.407	40	106	.377	14	17	.824	14	89	103	4.0	48	1	73	55	12	32	282	10.8
TOTAL	56-56	1744	31.1	214	536	.399	59	159	.371	21	28	.750	35	185	220	3.9	120	3	166	111	20	63	508	9.1



**20 SYDNEY STOUT**  
 Sophomore | 6-0 | Forward | Bixby, Okla.  
 Bixby HS

### CAREER HIGHS

Points	8	HBU	12-28-16
FGM	3	HBU	12-28-16
FGA	5	HBU	12-28-16
3PM	2	HBU	12-28-16
3PA	4	HBU	12-28-16
FTM	2	Texas A&M	1-12-17
FTA	4	Texas A&M	1-12-17
OREB	1	SHSU	11-10-17*
DREB	6	HBU	12-28-16
REB	6	HBU	12-28-16
AST	1	No. 13 MU	2-12-18*
BLK	1	ULM	11-13-16
STL	2	at S Carolina	1-25-18
MIN	15	HBU	12-28-16

### SEASON HIGHS

Points	4	UTA	12-17-17
FG Made	1	UTA	12-17-17
FG Att.	2	ACU	11-29-17
3P Made	1	UTA	12-17-17
3P Att.	1	Kentucky	1-29-18*
FT Made	1	UTA	12-17-17*
FT Att.	2	UTA	12-17-17
Off. Rebounds	1	UTA	12-17-17*
Def. Rebounds	1	Grambling	12-18-17*
Rebounds	2	UTA	12-17-17
Assists	1	No. 13 MU	2-12-18*
Blocks	-		
Steals	2	at S Carolina	1-25-18
Minutes	9	at S Carolina	1-25-18

\*Most Recent

## 2017-18 GAME-BY-GAME STATS

Opponent	Date	gs	min	Total		3-Pointers		Free throws		Rebounds				pf	a	t/o	blk	stl	pts	avg
				fg-fga	pct	3fg-fga	pct	ft-fa	pct	off	def	tot	avg							
SHSU	11/10/17	6	0-1	.000	0-0	.000	1-2	.500	1	0	1	1.0	1	0	1	0	0	1	1.0	
SAMFORD	11/12/17	2	0-0	.000	0-0	.000	1-2	.500	0	1	1	1.0	0	0	0	0	0	1	1.0	
at Nebraska	11/16/17	dnp	-	-	-	-	-	-	-	-	-	-	-	-	-	-	-	-	-	
at Oral Roberts	11/20/17	dnp	-	-	-	-	-	-	-	-	-	-	-	-	-	-	-	-	-	
at UTEP	11/24/17	6	0-0	.000	0-0	.000	0-0	.000	0	0	0	0.7	0	0	0	0	0	0	0.7	
vs NM State	11/25/17	dnp	-	-	-	-	-	-	-	-	-	-	-	-	-	-	-	-	-	
ACU	11/29/17	3	0-2	.000	0-1	.000	0-0	.000	1	0	1	0.8	0	0	0	0	0	0	0.5	
at Kansas	12/03/17	dnp	-	-	-	-	-	-	-	-	-	-	-	-	-	-	-	-	-	
CHARLOTTE	12/07/17	dnp	-	-	-	-	-	-	-	-	-	-	-	-	-	-	-	-	-	
TULSA	12/10/17	3	0-0	.000	0-0	.000	0-0	.000	0	1	1	0.8	0	0	0	0	0	0	0.4	
UT-ARLINGTON	12/17/17	6	1-1	1.000	1-1	1.000	1-2	.500	1	1	2	1.0	0	0	0	0	0	4	1.0	
at Arizona State	12/21/17	5	0-0	.000	0-0	.000	0-0	.000	0	0	0	0.9	0	0	0	0	0	0	0.9	
GRAMBLING	12/28/17	5	0-2	.000	0-1	.000	0-0	.000	0	1	1	0.9	0	1	0	0	0	0	0.8	
OLE MISS	12/31/17	dnp	-	-	-	-	-	-	-	-	-	-	-	-	-	-	-	-	-	
at #5/3 Mississippi State	01/04/18	4	0-0	.000	0-0	.000	0-0	.000	0	0	0	0.8	0	0	0	0	0	0	0.7	
ALABAMA	01/07/18	dnp	-	-	-	-	-	-	-	-	-	-	-	-	-	-	-	-	-	
at Georgia	11/11/18	dnp	-	-	-	-	-	-	-	-	-	-	-	-	-	-	-	-	-	
at Auburn	01/14/18	dnp	-	-	-	-	-	-	-	-	-	-	-	-	-	-	-	-	-	
FLORIDA	01/18/18	dnp	-	-	-	-	-	-	-	-	-	-	-	-	-	-	-	-	-	
at Missouri	01/21/18	5	0-0	.000	0-0	.000	0-0	.000	0	1	1	0.8	0	0	0	0	0	0	0.6	
at #9/7 South Carolina	01/25/18	9	0-0	.000	0-0	.000	0-0	.000	0	0	0	0.7	2	1	1	0	2	0	0.5	
KENTUCKY	01/29/18	6	0-1	.000	0-1	.000	0-0	.000	0	0	0	0.7	0	0	0	0	0	0	0.5	
at Alabama	2/4/18	dnp	-	-	-	-	-	-	-	-	-	-	-	-	-	-	-	-	-	
NO. 11 TENNESSEE	02/08/18	dnp	-	-	-	-	-	-	-	-	-	-	-	-	-	-	-	-	-	
MISSOURI	02/12/18	7	0-0	.000	0-0	.000	0-0	.000	0	0	0	0.6	0	1	0	0	0	0	0.5	
at Kentucky	02/15/18	3	0-0	.000	0-0	.000	0-0	.000	0	0	0	0.6	0	0	0	0	0	0	0.4	
Totals		0	70	1-7	.143	1-4	.250	3-6	.500	3	5	8	0.6	3	3	2	0	2	6	0.4

Games played: 14  
 Minutes/game: 5.0  
 Points/game: 0.4  
 FG Pct: 14.3  
 3FG Pct: 25.0  
 FT Pct: 50.0

Rebounds/game: 0.6  
 Assists/game: 0.2  
 Turnovers/game: 0.1  
 Assist/turnover ratio: 1.5  
 Steals/game: 0.1

### NOTES

- » SEC First-Year Academic Honor Roll (2016-17).
- » University of Arkansas Athletic Department Academic Champion (4.0): Fall, 2017

## CAREER STATS

Year	GP-GS	Min	Avg	Total			3-Point			F-Throw			Rebounds				PF	FO	Ast	TO	Blk	Stl	Pts	Avg
				FG	FGA	Pct	FG	FGA	Pct	FT	FTA	Pct	Off	Def	Tot	Avg								
2016-17	15-0	72	4.8	5	14	.357	4	12	.333	2	4	.500	2	9	11	0.7	15	0	1	2	1	0	16	1.1
2017-18	14-0	70	5.0	1	7	.143	1	4	.250	3	6	.500	3	5	8	0.6	3	0	3	2	0	2	6	0.4
TOTAL	29-0	142	4.9	6	21	.286	5	16	.313	5	10	.500	5	14	19	0.7	18	0	4	4	1	2	22	0.8



**21** **DEVIN COSPER**  
 Grad | 5-10 | Guard | Coffeyville, Kansas  
 Coffeyville CC | Field Kindley HS

### CAREER HIGHS

Points	29	No. 11 Tenn.	2-8-18
FG Made	10	No. 11 Tenn.	2-8-18
FGA	25	at Nebraska	11-16-17
3PM	6	No. 11 Tenn.	2-8-18*
3PA	16	at Nebraska	11-16-17
FTM	12	Alabama	1-7-18
FTA	12	Alabama	1-7-18
OREB	3	Charlotte	12-6-17
DREB	13	Alabama	1-7-18
REB	14	Charlotte	12-6-17*
AST	6	ORU	12-21-16
BLK	3	MVSU	12-28-15
STL	4	Ole Miss	12-31-17*
MIN	40	Charlotte	12-6-17
	42	Auburn	1-24-16 OT

### SEASON HIGHS

Points	29	No. 11 Tenn.	2-8-18
FG Made	10	No. 11 Tenn.	2-8-18
FG Att.	25	at Nebraska	11-16-17
3P Made	6	No. 11 Tenn.	2-8-18*
3P Att.	16	at Nebraska	11-16-17
FT Made	12	Alabama	1-7-18
FT Att.	12	Alabama	1-7-18
Off. Rebounds	3	Charlotte	12-6-17
Def. Rebounds	13	Alabama	1-7-18
Rebounds	14	Charlotte	12-6-17
Assists	4	Alabama	1-7-18*
Blocks	2	Tulsa	12-10-17*
Steals	4	Ole Miss	12-31-17
Minutes	40	Charlotte	12-6-17

\*Most Recent

## 2017-18 GAME-BY-GAME STATS

Opponent	Date	gs	min	Total		3-Pointers		Free throws		Rebounds			pf	a	t/o	blk	stl	pts	avg		
				fg-fga	pct	3fg-fga	pct	ft-fta	pct	off	def	tot								avg	
SHSU	11/10/17	*	31	6-13	.462	4-11	.364	1-2	.500	2	10	12	12.0	3	2	4	1	1	17	17.0	
SAMFORD	11/12/17	*	29	5-12	.417	3-10	.300	5-5	1.000	0	5	5	8.5	2	2	1	0	1	18	17.5	
at Nebraska	11/16/17	*	34	8-25	.320	5-16	.313	0-0	.000	1	3	4	7.0	2	0	4	2	2	21	18.7	
at Oral Roberts	11/20/17	*	38	8-19	.421	3-10	.300	2-2	1.000	0	10	10	7.8	2	1	0	0	2	21	19.3	
at UTEP	11/24/17	*	31	8-17	.471	6-13	.462	0-2	.000	1	4	5	7.2	2	0	1	0	4	22	19.8	
vs NM State	11/25/17	*	39	6-17	.353	2-9	.222	3-4	.750	2	9	11	7.8	2	4	2	1	2	17	19.3	
ACU	11/29/17	*	21	4-10	.400	2-5	.400	1-2	.500	0	3	3	7.1	4	1	3	1	2	11	18.1	
at Kansas	12/03/17	*	39	5-23	.217	1-11	.091	6-8	.750	1	2	3	6.6	3	0	2	1	1	17	18.0	
CHARLOTTE	12/07/17	*	40	9-23	.391	2-7	.286	5-6	.833	3	11	14	7.4	2	2	3	0	1	25	18.8	
TULSA	12/10/17	*	29	5-16	.313	1-9	.111	0-0	.000	2	9	11	7.8	3	0	3	2	0	11	18.0	
UT-ARLINGTON	12/17/17	*	22	3-8	.375	2-6	.333	0-0	.000	0	1	1	7.2	3	1	2	0	2	8	17.1	
at Arizona State	12/21/17	*	27	3-13	.231	2-5	.400	0-0	.000	0	1	1	6.7	2	1	2	0	0	8	16.3	
GRAMBLING	12/28/17	*	34	6-15	.400	4-7	.571	0-2	.000	0	4	4	6.5	2	3	2	0	0	16	16.3	
OLE MISS	12/31/17	*	39	7-15	.467	2-5	.400	2-3	.667	1	10	11	6.8	3	1	6	1	4	18	16.4	
at #5/3 Mississippi State	01/04/18	*	32	5-13	.385	2-7	.286	1-2	.500	1	6	7	6.8	3	3	4	0	0	13	16.2	
ALABAMA	01/07/18	*	39	6-16	.375	0-5	.000	12-12	1.000	0	13	13	7.2	5	4	2	0	2	24	16.7	
at Georgia	1/11/18	*	39	4-13	.308	0-6	.000	0-0	.000	1	6	7	7.2	4	2	2	0	2	8	16.2	
at Auburn	01/14/18	*	8	0-4	.000	0-2	.000	0-0	.000	0	1	1	6.8	0	1	0	0	0	0	15.3	
FLORIDA	01/18/18	dnp	-	-	-	-	-	-	-	-	-	-	-	-	-	-	-	-	-	-	
at Missouri	01/21/18	dnp	-	-	-	-	-	-	-	-	-	-	-	-	-	-	-	-	-	-	
at #9/7 South Carolina	01/25/18	*	24	1-6	.167	1-4	.250	0-2	.000	0	1	1	6.5	0	2	0	0	0	3	14.6	
KENTUCKY	01/29/18	*	26	6-12	.500	3-6	.500	2-2	1.000	2	3	5	6.5	3	1	4	1	0	17	14.8	
at Alabama	2/4/18	*	34	8-16	.500	3-7	.429	2-2	1.000	0	3	3	6.3	4	1	2	0	1	21	15.0	
NO. 11 TENNESSEE	02/08/18	*	36	10-14	.714	6-9	.667	3-6	.500	1	2	3	6.3	4	1	0	3	29	15.7		
MISSOURI	02/12/18	*	18	2-6	.333	2-4	.500	0-0	.000	0	3	3	6.0	2	1	1	0	1	6	15.3	
at Kentucky	02/15/18	*	36	1-12	.083	0-7	.000	1-2	.500	0	4	4	5.9	3	3	1	0	2	3	14.8	
Totals			24	745	126-338	.373	56-181	.309	46-64	.719	18	124	142	5.9	64	35	53	10	33	354	14.8

Games played: 24  
 Minutes/game: 31.0  
 Points/game: 14.8  
 FG Pct: 37.3  
 3FG Pct: 30.9  
 FT Pct: 71.9

Rebounds/game: 5.9  
 Assists/game: 1.5  
 Turnovers/game: 2.2  
 Assist/turnover ratio: 0.7  
 Steals/game: 1.4  
 Blocks/game: 0.4

### NOTES

- » SEC First-Year Academic Honor Roll (2016).
- » SEC Academic Honor Roll (2016-17).
- » Graduated in May 2017 with degree in journalism. Currently pursuing her master's degree in sport administration.
- » Forty-five consecutive games played (snapped versus Florida, 1-18-18).
- » Nineteen consecutive games with a made 3-pointer. (snapped versus Alabama)
- » Thirty-one points with six 3-pointers in exhibition game.
- » Ten consecutive games in double figure scoring (snapped versus UTA).
- » Seventeen games with double-figure points.
- » Seven career double-doubles all this season.
- » At least one steal in 17-of-24 games this year.
- » Career-best 29 points against No. 11 Tennessee going 10-for-14 and 6-for-9 from distance.
- » Perfect from the free throw line four times (Samford [5-5]; ORU [2-2] Alabama [12-12]; Kentucky [2-2]).

## CAREER STATS

Year	GP-GS	Min	Avg	Total			3-Point			F-Throw			Rebounds				PF	FO	Ast	TO	Blk	Stl	Pts	Avg
				FG	FGA	Pct	FG	FGA	Pct	FT	FTA	Pct	Off	Def	Tot	Avg								
2015-16	30-25	792	26.4	97	293	.331	25	104	.240	50	72	.694	16	83	99	3.3	57	0	42	74	5	34	269	9.0
2016-17	29-9	563	19.4	72	195	.369	23	75	.307	20	27	.741	7	58	65	2.2	43	2	45	40	6	28	187	6.4
2017-18	24-24	745	31.0	126	338	.373	56	181	.309	46	64	.719	18	124	142	5.9	64	2	35	53	10	33	354	14.8
TOTAL	83-58	2100	25.3	295	826	.357	104	360	.289	116	163	.712	41	265	306	3.7	164	4	122	167	21	95	810	9.8





22

**BAILEY ZIMMERMAN**

Junior | 6-0 | Forward | St. Vincent, Arkansas  
Wonderview HS

**CAREER HIGHS**

Points	14	No. 13 MU	2-12-18*
FG Made	4	at Kentucky	2-15-18*
FG Att.	11	No. 11 Tenn.	2-8-18*
3P Made	3	at Kentucky	2-15-18*
3P Att.	8	at Auburn	1-14-18
FT Made	4	at Auburn	1-14-18*
FT Att.	6	at Auburn	1-14-18*
Off. Rebounds	5	at Auburn	1-14-18
Def. Rebounds	6	Alabama	1-15-17
Rebounds	8	at Auburn	1-14-18
Assists	3	at Kentucky	2-15-18*
Blocks	3	LSU	1-8-17*
Steals	2	Kentucky	1-29-18*
Minutes	40	No. 11 Tenn.	2-8-18

**SEASON HIGHS**

Points	14	No. 13 MU	2-12-18
FG Made	4	at Kentucky	2-15-18*
FG Att.	11	No. 11 Tenn.	2-8-18*
3P Made	3	at Kentucky	2-15-18*
3P Att.	8	at Auburn	1-14-18
FT Made	4	at Auburn	1-14-18
FT Att.	6	at Auburn	1-14-18
Off. Rebounds	5	at Auburn	1-14-18
Def. Rebounds	5	Tulsa	12-10-17
Rebounds	8	at Auburn	1-14-18
Assists	3	at Kentucky	2-15-18*
Blocks	2	Nebraska	11-16-17
Steals	2	Kentucky	1-29-18*
Minutes	40	No. 11 Tenn.	2-8-18

\*Most Recent

**2017-18 GAME-BY-GAME STATS**

Opponent	Date	gs	min	Total		3-Pointers		Free throws		Rebounds				pf	a	t/o	blk	stl	pts	avg	
				fg-fga	pct	3fg-fga	pct	ft-fa	pct	off	def	tot	avg								
SHSU	11/10/17	*	27	1-7	.143	0-4	.000	0-0	.000	0	3	3	3.0	1	2	1	0	2	2	2.0	
SAMFORD	11/12/17	*	19	0-1	.000	0-1	.000	0-0	.000	0	0	0	1.5	3	0	0	0	0	0	1.0	
at Nebraska	11/16/17	*	24	0-2	.000	0-2	.000	1-2	.500	0	0	0	1.0	3	0	2	2	0	1	1.0	
at Oral Roberts	11/20/17	*	21	1-7	.143	0-3	.000	0-2	.000	1	3	4	1.8	3	1	0	1	0	2	1.3	
at UTEP	11/24/17	*	23	1-5	.200	0-3	.000	2-2	1.000	2	1	3	2.0	0	2	0	0	2	4	1.8	
vs NM State	11/25/17	*	24	0-1	.000	0-1	.000	1-2	.500	2	1	3	2.2	2	2	0	0	0	1	1.7	
ACU	11/29/17	*	25	1-4	.250	0-1	.000	1-2	.500	4	2	6	2.7	1	2	2	1	1	3	1.9	
at Kansas	12/03/17	*	24	0-1	.000	0-0	.000	0-0	.000	0	2	2	2.6	4	0	1	1	0	0	1.6	
CHARLOTTE	12/07/17	*	28	2-9	.222	1-6	.167	1-1	1.000	1	2	3	2.7	0	1	3	1	0	6	2.1	
TULSA	12/10/17	*	25	2-6	.333	0-3	.000	2-3	.667	2	5	7	3.1	0	1	0	0	0	6	2.5	
UT-ARLINGTON	12/17/17	*	20	2-10	.200	0-3	.000	2-2	1.000	2	1	3	3.1	2	0	1	0	0	6	2.8	
at Arizona State	12/21/17	*	24	1-3	.333	0-1	.000	0-0	.000	2	2	4	3.2	1	1	3	1	0	2	2.8	
GRAMBLING	12/28/17	*	11	0-2	.000	0-0	.000	0-0	.000	0	0	0	2.9	0	0	0	0	0	0	2.5	
OLE MISS	12/31/17	*	9	1-1	1.000	0-0	.000	0-0	.000	1	0	1	2.8	2	1	1	0	0	2	2.5	
at #5/3 Mississippi State	01/04/18	*	20	1-2	.500	0-1	.000	2-3	.667	0	3	3	2.8	3	0	1	0	0	4	2.6	
ALABAMA	01/07/18	*	13	0-1	.000	0-0	.000	0-0	.000	2	0	2	2.8	5	2	2	1	0	0	2.4	
at Georgia	11/11/18	*	27	3-5	.600	3-5	.600	2-4	.500	2	3	5	2.9	0	2	1	0	1	11	2.9	
at Auburn	01/14/18	*	35	3-8	.375	3-8	.375	4-6	.667	5	3	8	3.2	3	2	3	1	1	13	3.5	
FLORIDA	01/18/18	*	26	0-8	.000	0-7	.000	0-0	.000	1	2	3	3.2	1	1	1	0	1	0	3.3	
at Missouri	01/21/18	*	28	1-8	.125	0-4	.000	0-2	.000	2	1	3	3.2	4	2	2	0	0	2	3.3	
at #9/7 South Carolina	01/25/18	*	17	1-4	.250	0-3	.000	0-0	.000	2	0	2	3.1	2	1	2	0	0	2	3.2	
KENTUCKY	01/29/18	*	30	2-6	.333	2-4	.500	2-2	1.000	3	2	5	3.2	1	3	5	0	2	8	3.4	
at Alabama	2/4/18	*	30	4-9	.444	0-1	.000	3-3	1.000	1	1	2	3.1	4	1	2	1	1	11	3.7	
NO. 11 TENNESSEE	02/08/18	*	40	3-11	.273	0-4	.000	0-0	.000	1	2	3	3.1	2	2	0	0	1	6	3.8	
MISSOURI	02/12/18	*	32	4-10	.400	3-5	.600	3-5	.600	1	3	4	3.2	3	1	0	0	0	14	4.2	
at Kentucky	02/15/18	*	29	4-10	.400	3-6	.500	1-3	.333	3	3	6	3.3	1	3	0	0	0	12	4.5	
<b>Totals</b>			26	631	38-141	.270	15-76	.197	27-44	614	40	45	85	3.3	51	33	33	10	12	118	4.5

Games played: 26  
Minutes/game: 24.3  
Points/game: 4.5  
FG Pct: 27.0  
3FG Pct: 19.7  
FT Pct: 61.4

Rebounds/game: 3.3  
Assists/game: 1.3  
Turnovers/game: 1.3  
Assist/turnover ratio: 1.0  
Steals/game: 0.5  
Blocks/game: 0.4

**NOTES**

- » SEC Academic Honor Roll (2016-17).
- » University of Arkansas Athletic Department Academic Athletic Director's List: Fall, 2017
- » Twenty games with 20+ minutes.
- » Started 26 consecutive games this year and 27 in a row dating back to last season.
- » Career-bests for points with 14 against No. 13 Missouri.
- » Double figures in six games including three games in a row.

**CAREER STATS**

Year	GP-GS	Min	Avg	Total			3-Point			F-Throw			Rebounds				PF	FO	Ast	TO	Blk	Stl	Pts	Avg
				FG	FGA	Pct	FG	FGA	Pct	FT	FTA	Pct	Off	Def	Tot	Avg								
2015-16	20-1	174	8.7	6	48	.125	4	33	.121	7	12	.583	12	9	21	1.1	9	0	4	15	2	4	23	1.2
2016-17	30-23	627	20.9	45	144	.313	24	84	.286	20	39	.513	35	80	115	3.8	46	0	28	37	10	19	134	4.5
2017-18	26-26	631	24.3	38	141	.270	15	76	.197	27	44	.614	40	45	85	3.3	51	1	33	33	10	12	118	4.5
<b>TOTAL</b>	<b>76-50</b>	<b>1432</b>	<b>18.8</b>	<b>89</b>	<b>333</b>	<b>.267</b>	<b>43</b>	<b>193</b>	<b>.223</b>	<b>54</b>	<b>95</b>	<b>.568</b>	<b>87</b>	<b>134</b>	<b>221</b>	<b>2.9</b>	<b>106</b>	<b>1</b>	<b>65</b>	<b>85</b>	<b>22</b>	<b>35</b>	<b>275</b>	<b>3.6</b>



**24 TAYLAH THOMAS**  
 Freshman | 6-1 | Forward | Arlington, Texas  
 Mansfield Timberview HS

### CAREER HIGHS

Points	13	Samford	11-12-17
FG Made	5	Samford	11-12-17
FG Att.	9	at Georgia	1-11-18
3P Made	1	Ole Miss	12-31-17*
3P Att.	1	at S. Car.	1-25-18*
FT Made	3	NMSU	11-25-17*
FT Att.	6	Samford	11-12-17
Off. Rebounds	6	Nebraska	11-16-17
Def. Rebounds	7	ORU	11-20-17 7
Rebounds	11	Nebraska	11-16-17
Assists	2	at Missouri	1-21-18
Blocks	2	Nebraska	11-16-17
Steals	2	ACU	11-29-17
Minutes	29	at Georgia	1-11-18

### SEASON HIGHS

Points	13	Samford	11-12-17
FG Made	5	Samford	11-12-17
FG Att.	9	at Georgia	1-11-18
3P Made	1	Ole Miss	12-31-17*
3P Att.	1	at S. Carolina	1-25-18*
FT Made	3	NMSU	11-25-17*
FT Att.	6	Samford	11-12-17
Off. Rebounds	6	Nebraska	11-16-17
Def. Rebounds	7	ORU	11-20-17 7
Rebounds	11	Nebraska	11-16-17
Assists	2	at Missouri	1-21-18
Blocks	2	Nebraska	11-16-17
Steals	2	ACU	11-29-17
Minutes	29	at Georgia	1-11-18

\*Most Recent

## 2017-18 GAME-BY-GAME STATS

Opponent	Date	gs	min	Total		3-Pointers		Free throws		Rebounds				pf	a	t/o	blk	stl	pts	avg
				fg-fga	pct	3fg-fga	pct	ft-fta	pct	off	def	tot	avg							
SHSU	11/10/17	17	2-2	1.000	0-0	.000	0-0	.000	1	3	4	4.0	0	0	0	1	0	4	4.0	
SAMFORD	11/12/17	21	5-6	.833	0-1	.000	3-6	.500	2	7	9	6.5	1	0	2	0	0	13	8.5	
at Nebraska	11/16/17	20	1-4	.250	0-0	.000	3-4	.750	6	5	11	8.0	3	1	0	2	0	5	7.3	
at Oral Roberts	11/20/17	23	0-3	.000	0-1	.000	2-2	1.000	2	7	9	8.3	2	0	0	1	0	2	6.0	
at UTEP	11/24/17	16	0-2	.000	0-1	.000	1-2	.500	2	2	4	7.4	1	0	0	0	0	1	5.0	
vs NM State	11/25/17	14	0-4	.000	0-0	.000	3-4	.750	3	4	7	7.3	1	0	1	0	0	3	4.7	
ACU	11/29/17	20	2-7	.286	1-1	1.000	2-4	.500	3	4	7	7.3	2	0	0	0	2	7	5.0	
at Kansas	12/03/17	9	0-1	.000	0-1	.000	0-0	.000	0	0	0	6.4	0	0	0	0	0	0	4.4	
CHARLOTTE	12/07/17	4	0-0	.000	0-0	.000	0-0	.000	0	0	0	5.7	3	0	0	0	1	0	3.9	
TULSA	12/10/17	19	1-3	.333	1-1	1.000	1-2	.500	4	3	7	5.8	1	0	0	0	1	4	3.9	
UT-ARLINGTON	12/17/17	*	11	0-0	.000	0-0	.000	0-0	.000	2	2	4	5.6	5	0	1	0	0	3.5	
at Arizona State	12/21/17	19	1-1	1.000	0-0	.000	0-0	.000	0	3	3	5.4	3	0	3	0	0	2	3.4	
GRAMBLING	12/28/17	13	3-3	1.000	0-0	.000	2-2	1.000	0	2	2	5.2	2	1	2	0	1	8	3.8	
OLE MISS	12/31/17	17	2-3	.667	1-1	1.000	1-2	.500	3	0	3	5.0	2	0	1	0	0	6	3.9	
at #5/3 Mississippi State	01/04/18	17	2-2	1.000	0-0	.000	0-0	.000	1	5	6	5.1	2	0	0	0	0	4	3.9	
ALABAMA	01/07/18	18	0-2	.000	0-0	.000	2-2	1.000	2	2	4	5.0	3	0	1	0	0	2	3.8	
at Georgia	1/11/18	29	3-9	.333	0-1	.000	0-0	.000	3	5	8	5.2	2	1	3	0	0	6	3.9	
at Auburn	01/14/18	13	2-3	.667	0-0	.000	0-0	.000	1	0	1	4.9	3	0	1	0	0	4	3.9	
FLORIDA	01/18/18	21	1-4	.250	0-1	.000	0-0	.000	3	3	6	5.0	1	0	1	0	0	2	3.8	
at Missouri	01/21/18	*	21	1-2	.500	0-0	.000	0-0	.000	0	3	3	4.9	2	2	0	0	0	2	3.8
at #9/7 South Carolina	01/25/18	24	1-6	.167	0-1	.000	0-0	.000	2	4	6	5.0	3	0	2	1	0	2	3.7	
KENTUCKY	01/29/18	16	2-2	1.000	0-0	.000	0-0	.000	0	1	1	4.8	3	0	1	0	1	4	3.7	
at Alabama	2/4/18	22	2-3	.667	0-0	.000	0-2	.000	2	4	6	4.8	1	0	0	0	0	4	3.7	
NO. 11 TENNESSEE	02/08/18	12	2-2	1.000	0-0	.000	1-2	.500	0	3	3	4.8	3	0	1	0	1	5	3.8	
MISSOURI	02/12/18	21	3-7	.429	0-0	.000	0-0	.000	1	6	7	4.8	1	0	1	0	0	6	3.8	
at Kentucky	02/15/18	20	1-3	.333	0-0	.000	0-0	.000	1	1	2	4.7	1	0	2	0	0	2	3.8	
Totals		2	457	37-84	.440	3-10	.300	21-34	.618	44	79	123	4.7	51	5	23	5	7	98	3.8

Games played: 26  
 Minutes/game: 17.6  
 Points/game: 3.8  
 FG Pct: 44.0  
 3FG Pct: 30.0  
 FT Pct: 61.8

Rebounds/game: 4.7  
 Assists/game: 0.2  
 Turnovers/game: 0.9  
 Assist/turnover ratio: 0.2  
 Steals/game: 0.3  
 Blocks/game: 0.2

## NOTES

- » University of Arkansas Athletic Department Academic Athletic Director's List: Fall, 2017
- » Played high school ball for former Razorback assistant coach Kit Kyle Martin.
- » Career-best 13 points against Samford - her first double figure scoring game as a Razorback.

## CAREER STATS

Year	GP-GS	Min	Avg	Total			3-Point			F-Throw			Rebounds				PF	FO	Ast	TO	Blk	Stl	Pts	Avg
				FG	FGA	Pct	FG	FGA	Pct	FT	FTA	Pct	Off	Def	Tot	Avg								
2017-18	26-2	457	17.6	37	84	.440	3	10	.300	21	34	.618	44	79	123	4.7	51	1	5	23	5	7	98	3.8
TOTAL	26-2	457	17.6	37	84	.440	3	10	.300	21	34	.618	44	79	123	4.7	51	1	5	23	5	7	98	3.8



**30 MACY WEAVER**  
 Freshman | 6-3 | F | Davis Junction, Illinois  
 Stillman Valley HS

### CAREER HIGHS

Points	7	#9/7 SC	1-25-18
FG Made	3	#9/7 SC	1-25-18
FG Att.	4	#9/7 SC	1-25-18
3P Made	-		
3P Att.	-		
FT Made	3	No. 13 MU	2-12-18
FT Att.	6	No. 13 MU	2-12-18
Off. Rebounds	2	at Kentucky	2-15-18*
Def. Rebounds	4	UTA	12-17-17
Rebounds	5	UTA	12-17-17
Assists	1	UTEP	11-24-17
Blocks	4	UTEP	11-24-17
Steals	1	UTEP	11-24-17
Minutes	19	UTEP	11-24-17

### SEASON HIGHS

Points	7	#9/7 SC	1-25-18
FG Made	3	#9/7 SC	1-25-18
FG Att.	4	#9/7 SC	1-25-18
3P Made	-		
3P Att.	-		
FT Made	3	No. 13 MU	2-12-18
FT Att.	6	No. 13 MU	2-12-18
Off. Rebounds	2	at Kentucky	2-15-18*
Def. Rebounds	4	UTA	12-17-17
Rebounds	5	UTA	12-17-17
Assists	1	UTEP	11-24-17
Blocks	4	UTEP	11-24-17
Steals	1	UTEP	11-24-17
Minutes	19	UTEP	11-24-17

\*Most Recent

## 2017-18 GAME-BY-GAME STATS

Opponent	Date	gs	min	Total		3-Pointers		Free throws		Rebounds				pf	a	t/o	blk	stl	pts	avg
				fg-fga	pct	3fg-fga	pct	ft-fa	pct	off	def	tot	avg							
SHSU	11/10/17	2		0-0	.000	0-0	.000	0-0	.000	0	0	0	0.0	0	0	0	0	0	0.0	
SAMFORD	11/12/17	1		0-0	.000	0-0	.000	0-0	.000	0	0	0	0.0	0	0	0	0	0	0.0	
at Nebraska	11/16/17	dnp		-	-	-	-	-	-	-	-	-	-	-	-	-	-	-	-	
at Oral Roberts	11/20/17	dnp		-	-	-	-	-	-	-	-	-	-	-	-	-	-	-	-	
at UTEP	11/24/17	19		1-1	1.000	0-0	.000	0-0	.000	2	1	3	1.0	3	1	0	4	1	2	0.7
vs NM State	11/25/17	dnp		-	-	-	-	-	-	-	-	-	-	-	-	-	-	-	-	
ACU	11/29/17	3		0-1	.000	0-0	.000	0-0	.000	0	1	1	1.0	0	0	0	0	0	0	0.5
at Kansas	12/03/17	2		0-0	.000	0-0	.000	0-0	.000	0	0	0	0.8	0	0	0	1	0	0	0.4
CHARLOTTE	12/07/17	7		0-0	.000	0-0	.000	0-2	.000	2	0	2	1.0	3	0	1	0	0	0	0.3
TULSA	12/10/17	6		0-1	.000	0-0	.000	0-0	.000	0	1	1	1.0	1	0	0	1	0	0	0.3
UT-ARLINGTON	12/17/17	8		0-1	.000	0-0	.000	1-2	.500	1	4	5	1.5	3	0	1	1	0	1	0.4
at Arizona State	12/21/17	7		0-0	.000	0-0	.000	0-0	.000	0	1	1	1.4	2	0	0	0	0	0	0.3
GRAMBLING	12/28/17	5		1-2	.500	0-0	.000	1-1	1.000	2	1	3	1.6	1	0	0	0	0	3	0.6
OLE MISS	12/31/17	dnp		-	-	-	-	-	-	-	-	-	-	-	-	-	-	-	-	-
at #5/3 Mississippi State	01/04/18	3		0-0	.000	0-0	.000	0-0	.000	0	0	0	1.5	0	0	0	0	0	0	0.5
ALABAMA	01/07/18	dnp		-	-	-	-	-	-	-	-	-	-	-	-	-	-	-	-	-
at Georgia	11/11/18	4		0-0	.000	0-0	.000	1-2	.500	1	0	1	1.4	0	0	0	0	0	1	0.6
at Auburn	01/14/18	dnp		-	-	-	-	-	-	-	-	-	-	-	-	-	-	-	-	-
FLORIDA	01/18/18	2		0-1	.000	0-0	.000	0-0	.000	0	0	0	1.3	0	0	0	0	0	0	0.5
at Missouri	01/21/18	11		0-2	.000	0-0	.000	0-0	.000	1	2	3	1.4	3	0	0	1	0	0	0.5
at #9/7 South Carolina	01/25/18	11		3-4	.750	0-0	.000	1-3	.333	2	0	2	1.5	3	0	2	1	0	7	0.9
KENTUCKY	01/29/18	10		0-0	.000	0-0	.000	1-2	.500	1	0	1	1.4	4	0	1	0	0	1	0.9
at Alabama	2/4/18	dnp		-	-	-	-	-	-	-	-	-	-	-	-	-	-	-	-	-
NO. 11 TENNESSEE	02/08/18	dnp		-	-	-	-	-	-	-	-	-	-	-	-	-	-	-	-	-
MISSOURI	02/12/18	15		1-2	.500	0-0	.000	3-6	.500	0	2	2	1.5	2	0	0	1	0	5	1.2
at Kentucky	02/15/18	6		1-1	1.000	0-0	.000	1-2	.500	2	0	2	1.5	2	0	0	0	0	3	1.3
Totals		0	122	7-16	.438	0-0	.000	9-20	.450	14	13	27	1.5	27	1	5	10	1	23	1.3

Games played: 18  
 Minutes/game: 6.8  
 Points/game: 1.3  
 FG Pct: 43.8  
 FT Pct: 45.0

Rebounds/game: 1.5  
 Assists/game: 0.1  
 Turnovers/game: 0.3  
 Assist/turnover ratio: 0.2  
 Steals/game: 0.1  
 Blocks/game: 0.6

## NOTES

- » University of Arkansas Athletic Department Academic Athletic Director's List: Fall, 2017
- » First career game as a Razorback came against Sam Houston State in the opener.
- » Played 19 minutes with four blocks and solid defense at UTEP.
- » Posted a career-best 3-for-6 performance from the free throw line against No. 13 Missouri.

## CAREER STATS

Year	GP-GS	Min	Avg	Total			3-Point			F-Throw			Rebounds				PF	FO	Ast	TO	Blk	Stl	Pts	Avg
				FG	FGA	Pct	FG	FGA	Pct	FT	FTA	Pct	Off	Def	Tot	Avg								
2017-18-18	0	122	6.8	7	16	.438	0	0	.000	9	20	.450	14	13	27	1.5	27	0	1	5	10	1	23	1.3
TOTAL	18-0	122	6.8	7	16	.438	0	0	.000	9	20	.450	14	13	27	1.5	27	0	1	5	10	1	23	1.3





**0-A'Tyanna Gaulden**  
RSo | G | 5-7



**1-Raven Northcross-Baker**  
Jr | G | 5-7



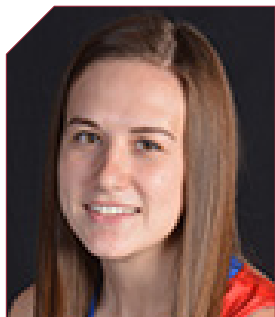
**3-Malica Monk**  
Jr | G | 5-5



**4-Keiryn Swenson**  
Jr | G/F | 6-1



**10-Kiara Williams**  
So | F/C | 6-1



**12-Brenna McClure**  
RSo | G | 5-6



**13-Grayce Spangler**  
Fr | G | 5-11



**14-Jailyn Mason**  
So | G | 5-9



**20-Sydney Stout**  
So | F | 6-0



**21-Devin Cospser**  
Gr. | G | 5-10



**22-Bailey Zimmerman**  
Jr | G/F | 6-0



**24-Taylah Thomas**  
Fr | F | 6-1



**30-Macy Weaver**  
Fr | F | 6-3



**33-Chelsea Dungee**  
RSo | G | 5-11



**Mike Neighbors**  
Arkansas, 1993  
First Season



**Lacey Goldwire**  
Oklahoma State, 2010  
First Season



**Todd Schaefer**  
Thomas More College, 1995  
First Season



**Pauline Love**  
Southern Miss, 2010  
First Season





NOVEMBER 2, 2017

NORTHEASTERN STATE

ARKANSAS

Bud Walton Arena Fayetteville, Arkansas

Devin Cosper dropped in 31 points leading four players in double figures in exhibition action. It was the 14th-consecutive exhibition game win for Arkansas and the first under head coach Mike Neighbors.

74 82

Northeastern State Univ. 74

Table with columns: #, Player, Total, FG-FGA, 3-Ptr, FT-FTA, Rebounds, PF, TP, A TO Blk, Stl, Min. Includes player stats for Strange, Destiny, Griffin, Miranda, Hayes, Cenia, Brooks, Tree, Eldred, Bailee, Hill, Alexis, Cunningham, Cailey, Long, Caitlyn, Blevins, Lauryn, Bertrand, Joi, Hellyer, Morgan, and Team.

Summary statistics for Northeastern State Univ. 74 vs Arkansas 82, including FG%, 3-Ptr%, FT%, Rebounds, PF, TP, A TO Blk, Stl, Min, and Deadball Rebounds.

Arkansas 82

Table with columns: #, Player, Total, FG-FGA, 3-Ptr, FT-FTA, Rebounds, PF, TP, A TO Blk, Stl, Min. Includes player stats for Williams, Kiara, Zimmerman, Bailey, Monk, Malica, Mason, Jaiilyn, Cosper, Devin, Northcross-Baker, Swenson, Keiryn, Spangler, Grayce, Stout, Sydney, Thomas, Taylah, Weaver, Macy, and Team.

Summary statistics for Arkansas 82 vs Northeastern State Univ. 74, including FG%, 3-Ptr%, FT%, Rebounds, PF, TP, A TO Blk, Stl, Min, and Deadball Rebounds.

Officials: Brian Hall, Luis Gonzalez, Katie Lukanich. Technical fouls: Northeastern State Univ.-None, Arkansas-None. Attendance: 1,200. Estimated Actual Attendance: 816. Score by periods table and Points in Paint table.

Last FG - NESU 4th-00:35, AR 4th-01:01. Largest lead - NESU by 3 3rd-09:05, AR by 13 1st-03:09. NESU led for 09:13. AR led for 24:08. Game was tied for 06:39.



NOVEMBER 12, 2017

SAMFORD

ARKANSAS

Bud Walton Arena Fayetteville, Arkansas

Career best points and rebounds for Malica Monk. Career best points for Taylah Thomas and Kiara Williams.

63 84

Samford 63 • 0-2

Table with columns: #, Player, Total, FG-FGA, 3-Ptr, FT-FTA, Rebounds, PF, TP, A TO Blk, Stl, Min. Includes player stats for Olivia Crozier, Samantha Fitzgerald, Hannah Nichols, Charity Brown, Cassidy Williams, Shaunta Battle, Paige Serup, Raven Omar, Makaila Woolard, Natalie Armstrong, and Team.

Summary statistics for Samford 63 vs Arkansas 84, including FG%, 3-Ptr%, FT%, Rebounds, PF, TP, A TO Blk, Stl, Min, and Deadball Rebounds.

Arkansas 84 • 2-0

Table with columns: #, Player, Total, FG-FGA, 3-Ptr, FT-FTA, Rebounds, PF, TP, A TO Blk, Stl, Min. Includes player stats for Williams, Kiara, Zimmerman, Bailey, Monk, Malica, Mason, Jaiilyn, Cosper, Devin, Northcross-Baker, Swenson, Keiryn, Spangler, Grayce, Stout, Sydney, Thomas, Taylah, Weaver, Macy, and Team.

Summary statistics for Arkansas 84 vs Samford 63, including FG%, 3-Ptr%, FT%, Rebounds, PF, TP, A TO Blk, Stl, Min, and Deadball Rebounds.

Officials: Scott Yarbrough, Laura Morris, Pualani Spurlock. Technical fouls: Samford-None, Arkansas-None. Attendance: 1,739. Estimated Actual Attendance: 1,107. Score by periods table and Points in Paint table.

Last FG - SAM 4th-01:03, AR 4th-01:19. Largest lead - SAM None, AR by 24 4th-04:43. SAM led for 00:00. AR led for 39:37. Game was tied for 00:23.



NOVEMBER 10, 2017

SAM HOUSTON STATE

ARKANSAS

Bud Walton Arena Fayetteville, Arkansas

Elementary Day

Devin Cosper had her first Razorback double-double with 17 points and 12 rebounds in the come-from-behind win. Malica Monk's game-high 18 points ties the junior's career-best.

54 65

SHSU 54 • 0-1

Table with columns: #, Player, Total, FG-FGA, 3-Ptr, FT-FTA, Rebounds, PF, TP, A TO Blk, Stl, Min. Includes player stats for Mckinney, Kiera, Cooper, Ashleigh, Oramas, Jennifer, Morgan, Akarian, Harrell, Rachel, Ferreria, Keiryn, Ballew, Jada, Maxwell, Dominique, Harston, Tia, Baxter, Lydia, Mickens, Amastacia, and Team.

Summary statistics for SHSU 54 vs Arkansas 65, including FG%, 3-Ptr%, FT%, Rebounds, PF, TP, A TO Blk, Stl, Min, and Deadball Rebounds.

Arkansas 65 • 1-0

Table with columns: #, Player, Total, FG-FGA, 3-Ptr, FT-FTA, Rebounds, PF, TP, A TO Blk, Stl, Min. Includes player stats for Williams, Kiara, Zimmerman, Bailey, Monk, Malica, Mason, Jaiilyn, Cosper, Devin, Northcross-Baker, Swenson, Keiryn, Spangler, Grayce, Stout, Sydney, Thomas, Taylah, Weaver, Macy, and Team.

Summary statistics for Arkansas 65 vs SHSU 54, including FG%, 3-Ptr%, FT%, Rebounds, PF, TP, A TO Blk, Stl, Min, and Deadball Rebounds.

Officials: Eric Brewton, Kelly Johnson, Eric Baker. Technical fouls: SHSU-None, Arkansas-None. Attendance: 4,719. Estimated Actual Attendance: 4,418.

Score by periods table and Points in Paint table for Arkansas 65 vs SHSU 54.

Last FG - SHSU 4th-00:38, AR 4th-02:09. Largest lead - SHSU by 13 2nd-07:26, AR by 23 4th-06:19. SHSU led for 19:51. AR led for 17:04. Game was tied for 01:44.



NOVEMBER 16, 2017

ARKANSAS

NEBRASKA

Pinnacle Bank Arena Lincoln, Nebraska

Career best 22 points for Malica Monk and 21 points for Devin Cosper. Career best 11 rebounds for both Taylah Thomas and Kiara Williams. Cosper had 10 points in the first quarter and Monk had 10 in the third quarter.

69 80

Arkansas Razorbacks 69 • 2-1

Table with columns: #, Player, Total, FG-FGA, 3-Ptr, FT-FTA, Rebounds, PF, TP, A TO Blk, Stl, Min. Includes player stats for Malica Monk, Kiara Williams, Jaiilyn Mason, Devin Cosper, Bailey Zimmerman, Ra Northcross-Baker, Keiryn Swenson, and Taylah Thomas.

Summary statistics for Arkansas Razorbacks 69 vs Nebraska 80, including FG%, 3-Ptr%, FT%, Rebounds, PF, TP, A TO Blk, Stl, Min, and Deadball Rebounds.

Nebraska 80 • 3-0

Table with columns: #, Player, Total, FG-FGA, 3-Ptr, FT-FTA, Rebounds, PF, TP, A TO Blk, Stl, Min. Includes player stats for Hannah Whitish, Maddie Simon, Kate Cain, Taylor Kissingner, Jasmine Cincore, Emily Wood, Grace Mitchell, Bria Stallworth, Rachel Blackburn, and Darrien Washington.

Summary statistics for Nebraska 80 vs Arkansas Razorbacks 69, including FG%, 3-Ptr%, FT%, Rebounds, PF, TP, A TO Blk, Stl, Min, and Deadball Rebounds.

Officials: Beverly Roberts, Bryan Enterline, Gina Cross. Technical fouls: Arkansas Razorbacks-None, Nebraska-None. Attendance: 3,459. Score by periods table and Points in Paint table.

Last FG - AR 4th-03:56, NEB 4th-01:18. Largest lead - AR by 2 4th-06:21, NEB by 14 2nd-06:05. AR led for 00:43. NEB led for 36:27. Game was tied for 02:49.



NOVEMBER 20, 2017

ARKANSAS

ORU

Mabee Arena  
Tulsa, Oklahoma

77  
66

Career-best 24 points for Malica Monk and career-best tying night with 21 points for Devin Cosper. Arkansas forced 14 ORU turnovers while only turning it over four times.

Arkansas 77 • 3-1

Summary table for Arkansas 77 vs ORU 66. Columns include Total, 3-Ptr, Rebounds, PF, TP, A TO Bk Stl, and Min. Rows list individual players and team totals.

Statistical breakdown table for Arkansas 77 vs ORU 66. Columns include 1st, 2nd, 3rd, 4th, Game, and Deadball. Rows include FG%, 3FG%, FT%, and Rebounds.

Oral Roberts 66 • 1-3

Summary table for Oral Roberts 66 vs Arkansas 77. Columns include Total, 3-Ptr, Rebounds, PF, TP, A TO Bk Stl, and Min. Rows list individual players and team totals.

Statistical breakdown table for Oral Roberts 66 vs Arkansas 77. Columns include 1st, 2nd, 3rd, 4th, Game, and Deadball. Rows include FG%, 3FG%, FT%, and Rebounds.

Officials: Greg Smail, Nick Marshall, Michelle Kramer  
Technical fouls: Arkansas-None, Oral Roberts-None.  
Attendance: 2503

Score by periods table for Arkansas 77 vs Oral Roberts 66. Columns include 1st, 2nd, 3rd, 4th, Total. Rows include Arkansas and Oral Roberts.

Last FG - AR 4th-01:52, ORU 4th-00:29.  
Largest lead - AR by 14 4th-07:23, ORU by 6 1st-04:58.  
AR led for 00:59, ORU led for 00:32. Game was tied for 00:29.

Points in Paint, Off T/O, 2nd Chance, Fast Break, Bench. Rows include AR and ORU.



NOVEMBER 25, 2017

ARKANSAS

NEW MEXICO STATE

Don Haskins Center  
El Paso, Texas

69  
60

Devin Cosper with her third double-double with 17 points and 11 rebounds. Malica Monk led all scorers with 22 points. Williams posted her first career double-double with 11 points and 11 rebounds.

Arkansas 69 • 4-2

Summary table for Arkansas 69 vs NM State 60. Columns include Total, 3-Ptr, Rebounds, PF, TP, A TO Bk Stl, and Min. Rows list individual players and team totals.

Statistical breakdown table for Arkansas 69 vs NM State 60. Columns include 1st, 2nd, 3rd, 4th, Game, and Deadball. Rows include FG%, 3FG%, FT%, and Rebounds.

NM State 60 • 2-4

Summary table for NM State 60 vs Arkansas 69. Columns include Total, 3-Ptr, Rebounds, PF, TP, A TO Bk Stl, and Min. Rows list individual players and team totals.

Statistical breakdown table for NM State 60 vs Arkansas 69. Columns include 1st, 2nd, 3rd, 4th, Game, and Deadball. Rows include FG%, 3FG%, FT%, and Rebounds.

Officials: Lisa Mattingly, Beverly Roberts, Tina Napier  
Technical fouls: Arkansas-None, NM State-None.  
Attendance: 250

Score by periods table for Arkansas 69 vs NM State 60. Columns include 1st, 2nd, 3rd, 4th, Total. Rows include Arkansas and NM State.

Last FG - AR 4th-00:16, NMSU 4th-00:51.  
Largest lead - AR by 11 3rd-03:45, NMSU by 7 1st-01:06.  
AR led for 19:50, NMSU led for 19:16. Game was tied for 00:54.

Points in Paint, Off T/O, 2nd Chance, Fast Break, Bench. Rows include AR and NMSU.



NOVEMBER 24, 2017

ARKANSAS

UTEP

Don Haskins Center  
El Paso, Texas

61  
64

Arkansas started the game 0-for-15 in the first quarter and made a valiant comeback that fell short. Devin Cosper reached double figures in the third quarter and she and Malica Monk were in double figures for the fifth time.

Arkansas 61 • 3-2

Summary table for Arkansas 61 vs UTEP 64. Columns include Total, 3-Ptr, Rebounds, PF, TP, A TO Bk Stl, and Min. Rows list individual players and team totals.

Statistical breakdown table for Arkansas 61 vs UTEP 64. Columns include 1st, 2nd, 3rd, 4th, Game, and Deadball. Rows include FG%, 3FG%, FT%, and Rebounds.

UTEP 64 • 3-0

Summary table for UTEP 64 vs Arkansas 61. Columns include Total, 3-Ptr, Rebounds, PF, TP, A TO Bk Stl, and Min. Rows list individual players and team totals.

Statistical breakdown table for UTEP 64 vs Arkansas 61. Columns include 1st, 2nd, 3rd, 4th, Game, and Deadball. Rows include FG%, 3FG%, FT%, and Rebounds.

Officials: Michelle Kramer, Jeremy Hohn, Rick Thorne  
Technical fouls: Arkansas-None, UTEP-None.  
Attendance: 633

Score by periods table for Arkansas 61 vs UTEP 64. Columns include 1st, 2nd, 3rd, 4th, Total. Rows include Arkansas and UTEP.

Last FG - AR 4th-00:38, UTEPW 4th-00:08.  
Largest lead - AR None, UTEPW by 20 3rd-09:45.  
AR led for 00:00, UTEPW led for 39:27. Game was tied for 00:33.

Points in Paint, Off T/O, 2nd Chance, Fast Break, Bench. Rows include AR and UTEPW.

NOVEMBER 29, 2017

ABILENE CHRISTIAN

ARKANSAS

Bud Walton Arena  
Fayetteville, Arkansas

65  
79

Five players in double figures with Devin Cosper and Malica Monk recording their seventh consecutive games in double digits ... Forced a season-best 20 turnovers ... 20-0 run in fourth quarter.

ACU 65 • 3-2

Summary table for ACU 65 vs Arkansas 79. Columns include Total, 3-Ptr, Rebounds, PF, TP, A TO Bk Stl, and Min. Rows list individual players and team totals.

Statistical breakdown table for ACU 65 vs Arkansas 79. Columns include 1st, 2nd, 3rd, 4th, Game, and Deadball. Rows include FG%, 3FG%, FT%, and Rebounds.

Arkansas 79 • 5-2

Summary table for Arkansas 79 vs ACU 65. Columns include Total, 3-Ptr, Rebounds, PF, TP, A TO Bk Stl, and Min. Rows list individual players and team totals.

Statistical breakdown table for Arkansas 79 vs ACU 65. Columns include 1st, 2nd, 3rd, 4th, Game, and Deadball. Rows include FG%, 3FG%, FT%, and Rebounds.

Officials: Mark Zentz, Bruce Morris, Pualani Spurlock  
Technical fouls: ACU-None, Arkansas-COSPER, Devin; TEAM.  
Attendance: 1132  
Estimated Actual Attendance: 706

Score by periods table for Arkansas 79 vs ACU 65. Columns include 1st, 2nd, 3rd, 4th, Total. Rows include ACU and Arkansas.

Last FG - ACU 4th-00:34, AR 4th-02:21.  
Largest lead - ACU by 1 1st-09:21, AR by 24 4th-05:36.  
ACU led for 00:21, AR led for 38:59. Game was tied for 00:40.

Points in Paint, Off T/O, 2nd Chance, Fast Break, Bench. Rows include ACU and AR.





DECEMBER 3, 2017

ARKANSAS

KANSAS

Allen Fieldhouse
Lawrence, Kansas

60
71

Devin Cosper and Malica Monk made it eight games in a row with double-figure scoring. Kiara Williams posted a career-best 16 rebounds. Second consecutive game in double-figures for Jaiilyn Mason.

Arkansas 60 • 5-3

Statistical table for Arkansas vs Kansas. Columns include Player, Total, FG-FGA, 3-Ptr, FT-FTA, Rebounds, PF, TP, A, TO, Blk, Stl, Min. Rows list individual players and team totals.

Kansas 71 • 7-0

Statistical table for Kansas vs Arkansas. Columns include Player, Total, FG-FGA, 3-Ptr, FT-FTA, Rebounds, PF, TP, A, TO, Blk, Stl, Min. Rows list individual players and team totals.

Officials: Scott Yarbrough, Jesse Dickerson, Michael McConnell
Technical fouls: Arkansas-None. Kansas-None.

Attendance: 1,795

FO: Arkansas #14 (0:20.8)

Score by periods table with columns for 1st, 2nd, 3rd, 4th, and Total periods.

Last FG - AR 4th-01:10, KU 4th-03:10. Largest lead - AR by 2 1st-08:40, KU by 13 3rd-08:05. AR led for 01:17, KU led for 35:31. Game was tied for 03:03.



DECEMBER 10, 2017

TULSA

ARKANSAS

Bud Walton Arena
Fayetteville, Arkansas

41
67

Arkansas' 61 rebounds is the most since the 2014-15 season. Devin Cosper and Malica Monk have scored in double figures in all 10 games and Cosper posted back-to-back double-doubles.

Tulsa 41 • 4-6

Statistical table for Tulsa vs Arkansas. Columns include Player, Total, FG-FGA, 3-Ptr, FT-FTA, Rebounds, PF, TP, A, TO, Blk, Stl, Min. Rows list individual players and team totals.

Arkansas 67 • 7-3

Statistical table for Arkansas vs Tulsa. Columns include Player, Total, FG-FGA, 3-Ptr, FT-FTA, Rebounds, PF, TP, A, TO, Blk, Stl, Min. Rows list individual players and team totals.

Officials: Susan Blauch, Ed Sidlasky, Damen McClure
Technical fouls: Tulsa-None. Arkansas-None.

Attendance: 1821

Estimated Actual Attendance: 1,453

Score by periods table with columns for 1st, 2nd, 3rd, 4th, and Total periods.

Last FG - TULS 4th-01:07, AR 4th-03:31. Largest lead - TULS by 2 1st-09:34, AR by 30 4th-01:53. TULS led for 01:11, AR led for 38:03. Game was tied for 00:46.



DECEMBER 7, 2017

CHARLOTTE

ARKANSAS

Bud Walton Arena
Fayetteville, Arkansas

72
73

Devin Cosper had a career-best 25 points and 14 rebounds in comeback win. Arkansas trailed by seven at the half and was tied at the 30 before winning.

Charlotte 72 • 3-6

Statistical table for Charlotte vs Arkansas. Columns include Player, Total, FG-FGA, 3-Ptr, FT-FTA, Rebounds, PF, TP, A, TO, Blk, Stl, Min. Rows list individual players and team totals.

Arkansas 73 • 6-3

Statistical table for Arkansas vs Charlotte. Columns include Player, Total, FG-FGA, 3-Ptr, FT-FTA, Rebounds, PF, TP, A, TO, Blk, Stl, Min. Rows list individual players and team totals.

Officials: Bob Trammell, Felicia Grinter, Jesse Dickerson
Technical fouls: Charlotte-None. Arkansas-None.

Attendance: 1169

Estimated Actual Attendance: 733

Fouled out: Charlotte #15, Jamison-Myers (1:50, 4Q)

Score by periods table with columns for 1st, 2nd, 3rd, 4th, and Total periods.

Last FG - CHA 4th-00:01, AR 4th-00:53. Largest lead - CHA by 9 3rd-09:40, AR by 6 4th-00:53. CHA led for 24:48, AR led for 10:50. Game was tied for 04:22.



DECEMBER 17, 2017

UT-ARLINGTON

ARKANSAS

Bud Walton Arena
Fayetteville, Arkansas

57
91

Raven Northcross-Baker had a career-best 22 points with 6 3-pointers leading four Razorbacks in double figures in the win over UTA.

UT-Arlington 57 • 5-5

Statistical table for UT-Arlington vs Arkansas. Columns include Player, Total, FG-FGA, 3-Ptr, FT-FTA, Rebounds, PF, TP, A, TO, Blk, Stl, Min. Rows list individual players and team totals.

Arkansas 91 • 8-3

Statistical table for Arkansas vs UT-Arlington. Columns include Player, Total, FG-FGA, 3-Ptr, FT-FTA, Rebounds, PF, TP, A, TO, Blk, Stl, Min. Rows list individual players and team totals.

Officials: Tina Napier, Brian Garland, Eric Koch
Technical fouls: UT-Arlington-None. Arkansas-None.

Attendance: 1481

Estimated Actual Attendance: 1,102

Fouled out: Arkansas #24 Thomas #59.8 4Q

Score by periods table with columns for 1st, 2nd, 3rd, 4th, and Total periods.

Last FG - UTA 4th-00:36, AR 4th-00:46. Largest lead - UTA by 6 1st-04:54, AR by 34 4th-03:50. UTA led for 04:18, AR led for 31:25. Game was tied for 04:17.

Score tied - 0 times. Lead changed - 1 time.

Score tied - 5 times. Lead changed - 3 times.



DECEMBER 21, 2017

ARKANSAS 43 ARIZONA STATE 89

Wells Fargo Arena Tempe, Arizona

Malica Monk scored in double figures for the 12th consecutive game.

Arkansas 43 • 8-4

Table with columns: #, Player, Total, FG-FGA, 3-PT, FT-FTA, Rebounds, PF, TP, A, TO, Blk, Stl, Min. Includes player stats for Williams, Kiarra, Zimmerman, Bailey, Monk, Malica, Mason, Jaiilyn, Cosper, Devin, Northcross-Baker, Swenson, Keiryn, Spangler, Grayce, Stout, Sydney, Thomas, Taylah, Weaver, Macy.

Summary statistics for Arkansas: 1st FG %, 3FG %, FT %, 2nd 3-18, 3rd 4-15, 4th 6-15, Game 17-57, 50.0% Rebounds.

Arizona State 89 • 9-3

Table with columns: #, Player, Total, FG-FGA, 3-PT, FT-FTA, Rebounds, PF, TP, A, TO, Blk, Stl, Min. Includes player stats for Ekmark, Courtney, Ibis, Kiarra, Johnson-Chapman, Richardson, Reili, Ryan, Robbi, Russell, Kiarra, Elera, Sophia, Sanders, Birelyanna, Ruben, Eva, Rudin, Jamie.

Summary statistics for Arizona State: 1st FG %, 3FG %, FT %, 2nd 11-16, 3rd 9-17, 4th 7-17, Game 37-73, 50.7% Rebounds.

Officials: Michol Murray, Clarke Stevens, Benny Luna. Technical fouls: Arkansas-None, Arizona State-None. Attendance: 1588.

Score by periods table with columns: 1st, 2nd, 3rd, 4th, Total. Shows scores for Arkansas and Arizona State.

Last FG - AR 4th-01:11, ASU 4th-00:14. Largest lead - AR by 2 1st-09:43, ASU by 50 4th-09:39. AR led for 02:20, ASU led for 36:56. Game was tied for 00:44.



DECEMBER 28, 2017

GRAMBLING STATE 62 ARKANSAS 79

Bud Walton Arena Fayetteville, Arkansas

Four players in double figures with Kiara Williams (12 pts/16 rebounds) and Malica Monk (10 pts/10 assists) posting double-doubles.

Grambling 62 • 3-8

Table with columns: #, Player, Total, FG-FGA, 3-PT, FT-FTA, Rebounds, PF, TP, A, TO, Blk, Stl, Min. Includes player stats for Gideon, Kailyn, Neal, Monisha, Hill, Shakyla, Jeans, Laneisha, Coleman, Justice, Parsons, Takerria, Williams, Ariel, Mckinney, Deja, Taylor, Darae, Jones, Jekalen, Torian, Jazmine, Williams, Alexus.

Summary statistics for Grambling: 1st FG %, 3FG %, FT %, 2nd 5-18, 3rd 8-19, 4th 8-16, Game 25-66, 37.9% Rebounds.

Arkansas 79 • 9-4

Table with columns: #, Player, Total, FG-FGA, 3-PT, FT-FTA, Rebounds, PF, TP, A, TO, Blk, Stl, Min. Includes player stats for Williams, Kiarra, Zimmerman, Bailey, Monk, Malica, Mason, Jaiilyn, Cosper, Devin, Northcross-Baker, Swenson, Keiryn, Spangler, Grayce, Stout, Sydney, Thomas, Taylah, Weaver, Macy.

Summary statistics for Arkansas: 1st FG %, 3FG %, FT %, 2nd 8-24, 3rd 8-16, 4th 4-13, Game 25-66, 37.9% Rebounds.

Officials: Missy Brooks, Marc Merritt, Kimberly Thebo. Technical fouls: Grambling-None, Arkansas-None. Attendance: 1388. Estimated Actual Attendance: 1,005.

Score by periods table with columns: 1st, 2nd, 3rd, 4th, Total. Shows scores for Grambling and Arkansas.

Last FG - GRAMWBB 4th-01:12, AR 4th-00:44. Largest lead - GRAMWBB None, AR by 24 4th-09:52. GRAMWBB led for 00:00, AR led for 39:38. Game was tied for 00:22.



DECEMBER 31, 2017

OLE MISS 72 ARKANSAS 73

Bud Walton Arena Fayetteville, Arkansas

Devin Cosper had her sixth double-double with 18 points and 11 rebounds. Malica Monk and Jaiilyn Mason also scored in double figures.

Ole Miss 72 • 10-4, 0-1 SEC

Table with columns: #, Player, Total, FG-FGA, 3-PT, FT-FTA, Rebounds, PF, TP, A, TO, Blk, Stl, Min. Includes player stats for Glover, Bree, Gibson, Shelby, Nixon, Chyna, Muhammad, Madinah, Alston, Alissa, Muhate, Cecilia, Johnson, Barbara, Rodgers, Kate, Lewis, Torri, Taylor, Promise.

Summary statistics for Ole Miss: 1st FG %, 3FG %, FT %, 2nd 6-16, 3rd 6-17, 4th 7-9, Game 23-55, 41.8% Rebounds.

Arkansas 73 • 10-4, 1-0 SEC

Table with columns: #, Player, Total, FG-FGA, 3-PT, FT-FTA, Rebounds, PF, TP, A, TO, Blk, Stl, Min. Includes player stats for Williams, Kiarra, Zimmerman, Bailey, Monk, Malica, Mason, Jaiilyn, Cosper, Devin, Northcross-Baker, Swenson, Keiryn, Thomas, Taylah.

Summary statistics for Arkansas: 1st FG %, 3FG %, FT %, 2nd 6-19, 3rd 10-17, 4th 3-12, Game 26-61, 42.6% Rebounds.

Officials: Susan Blauch, Angelica Suffren, Scott Kiomfias. Technical fouls: Ole Miss-None, Arkansas-TEAM. Attendance: 1701. Estimated Actual Attendance: 1,261. Fouled out: Ole Miss #42, Gibson (3:22 4Q). Arkansas #10, Williams (2:48 4Q).

Score by periods table with columns: 1st, 2nd, 3rd, 4th, Total. Shows scores for Ole Miss and Arkansas.

Last FG - OM 4th-00:54, AR 4th-01:17. Largest lead - OM by 1 2nd-04:33, AR by 15 3rd-01:42. OM led for 01:11, AR led for 35:22. Game was tied for 02:25.



JANUARY 4, 2018

ARKANSAS 69 MISSISSIPPI STATE 111

The HUMP Starkville, Mississippi

Three players were in double figures paced by Devin Cosper with 15 points. Kiara Williams hit her first career 3-pointer to open the game and it was a 2-point, 22-20, game after the first quarter.

Arkansas 69 • 10-5 (1-1 SEC)

Table with columns: #, Player, Total, FG-FGA, 3-PT, FT-FTA, Rebounds, PF, TP, A, TO, Blk, Stl, Min. Includes player stats for Kiara Williams, Malica Monk, Jaiilyn Mason, Devin Cosper, Bailey Zimmerman, Ra Northcross-Baker, Keiryn Swenson, Grayce Spangler, Sydney Stout, Taylah Thomas, Macy Weaver, Brenna McClure.

Summary statistics for Arkansas: 1st FG %, 3FG %, FT %, 2nd 8-17, 3rd 7-13, 4th 5-14, Game 28-62, 35.7% Rebounds.

Mississippi State 111 • 16-0 (2-0 SEC)

Table with columns: #, Player, Total, FG-FGA, 3-PT, FT-FTA, Rebounds, PF, TP, A, TO, Blk, Stl, Min. Includes player stats for Teaira McCowan, Blair Schaeffer, Morgan William, Roshunda Johnson, Victoria Vivians, Jazzmyn Holmes, Nyah Tate, Bre'Amber Scott, Jordan Danberry, Zion Campbell, Chloe Bibby.

Summary statistics for Mississippi State: 1st FG %, 3FG %, FT %, 2nd 10-20, 3rd 12-17, 4th 12-17, Game 44-76, 57.9% Rebounds.

Officials: Gina Cross, Eric Koch, Greg Small. Technical fouls: Arkansas-None, Mississippi State-None. Attendance: 5398.

Score by periods table with columns: 1st, 2nd, 3rd, 4th, Total. Shows scores for Arkansas and Mississippi State.

Last FG - AR 4th-00:14, MS 4th-00:29. Largest lead - AR by 5 1st-08:28, MS by 44 4th-00:29. AR led for 04:59, MS led for 32:47. Game was tied for 02:14.





JANUARY 7, 2018

ALABAMA

ARKANSAS

Bud Walton Arena Fayetteville, Arkansas

Devin Cosper recorded her seventh double-double with 24 points and 13 rebounds. Three players were in double figures with Malica Monk adding 21 points and Jaiilyn Mason scoring 12 points.

83 76



JANUARY 11, 2018

ARKANSAS

GEORGIA

Stegeman Coliseum Athens, Georgia

Bailey Zimmerman had a season-best 11 points going 3-for-3 from distance. Arkansas was within 1 point twice in the fourth quarter.

65 78

Alabama 83 • 12-4, 2-1 SEC

Player statistics table for Alabama vs Arkansas, including FG, 3-PT, FT, Rebounds, PF, TP, A, TO, Blk, Stl, Min.

Arkansas 76 • 10-6, 1-2 SEC

Player statistics table for Arkansas vs Alabama, including FG, 3-PT, FT, Rebounds, PF, TP, A, TO, Blk, Stl, Min.

Officials: Beverly Roberts, Ed Sidlasky, Bill Laranca

Technical fouls: Alabama-None. Arkansas-MASON, Jaiilyn.

Attendance: 2001

Estimated Actual Attendance: 1644

Fouled Out: Arkansas, #21 Cosper (0:12.5, 4Q); #22 Zimmerman (0:10.1, 4Q)

Score by periods table for Alabama vs Arkansas

Points in Paint table for Alabama vs Arkansas

Score tied - 5 times. Lead changed - 7 times.

Score tied - 0 times. Lead changed - 0 times.

Arkansas 65 • 10-7, 1-3 SEC

Player statistics table for Arkansas vs Georgia, including FG, 3-PT, FT, Rebounds, PF, TP, A, TO, Blk, Stl, Min.

Georgia 78 • 15-2, 3-1 SEC

Player statistics table for Georgia vs Arkansas, including FG, 3-PT, FT, Rebounds, PF, TP, A, TO, Blk, Stl, Min.

Officials: Lisa Mattingly, Amy Bonner and Frank Steratore

Technical fouls: Arkansas-None. Georgia-BLANARU, Bianca.

Attendance: 2229

Estimated Actual Attendance: 1644

Fouled Out: Arkansas, #21 Cosper (0:12.5, 4Q); #22 Zimmerman (0:10.1, 4Q)

Score by periods table for Georgia vs Arkansas

Points in Paint table for Georgia vs Arkansas

Score tied - 0 times. Lead changed - 0 times.

Score tied - 0 times. Lead changed - 0 times.



JANUARY 15, 2018

ARKANSAS

AUBURN

Auburn Arena Auburn, Alabama

Four players were in double figures. Kiara Williams had her third double-double. Arkansas' 41 first-half points is the second most this season and Bailey Zimmerman had a season-best with 13 pts and a career-best with 8 rebs.

68 58



JANUARY 18, 2018

FLORIDA

ARKANSAS

Bud Walton Arena Fayetteville, Arkansas

Malica Monk scored 20+ points eight times in her career - all this season with 23 points in the game. Arkansas used just the third different starting lineup of the year. Arkansas was perfect from the line, but it was a season-low 4-for-4 effort. The Razorbacks forced 14 Florida turnovers and committed just eight in the game.

65 51

Arkansas 68 • 11-7, 2-3 SEC

Player statistics table for Arkansas vs Auburn, including FG, 3-PT, FT, Rebounds, PF, TP, A, TO, Blk, Stl, Min.

Auburn 58 • 10-7, 1-4 SEC

Player statistics table for Auburn vs Arkansas, including FG, 3-PT, FT, Rebounds, PF, TP, A, TO, Blk, Stl, Min.

Officials: Scott Yarbrough, Eric Brewton, Jennifer Rezac

Technical fouls: Arkansas-None. Auburn-None.

Attendance: 2210

Unsportsmanlike foul called on Arkansas' Bailey Zimmerman (22) with 4:41 remaining in the 4th period.

Score by periods table for Auburn vs Arkansas

Points in Paint table for Auburn vs Arkansas

Score tied - 0 times. Lead changed - 1 time.

Score tied - 0 times. Lead changed - 0 times.

Florida 65 • 9-10, 1-5 SEC

Player statistics table for Florida vs Arkansas, including FG, 3-PT, FT, Rebounds, PF, TP, A, TO, Blk, Stl, Min.

Arkansas 51 • 11-8, 2-4 SEC

Player statistics table for Arkansas vs Florida, including FG, 3-PT, FT, Rebounds, PF, TP, A, TO, Blk, Stl, Min.

Officials: Susan Blauch, Denise Brooks, Kevin Pethel

Technical fouls: Florida-None. Arkansas-None.

Attendance: 1288

Estimated Actual Attendance: 840

Score by periods table for Arkansas vs Florida

Points in Paint table for Arkansas vs Florida

Score tied - 0 times. Lead changed - 0 times.

Score tied - 0 times. Lead changed - 0 times.



JANUARY 21, 2018

ARKANSAS 54 88 No. 11 MISSOURI

Mizzou Arena Columbia, Missouri

Malica Monk scored in double figures for the 19th time. Arkansas allowed a season-high 13 opponent 3-point field goals. Jaiilyn Mason and Kiara Williams led the team with 14 points each.

Arkansas 54 • 11-9 (2-5)

Player statistics table for Arkansas vs Missouri, including FG, 3-Ptr, FT, Rebounds, PF, TP, A, TO, Blk, Stl, Min.

1st - FG %: 7-16 43.8% 2nd: 5-17 29.4% 3rd: 7-20 35.0% 4th: 3-14 21.4% Game: 22-67 32.8% Deadball Rebounds 2

No. 11 Mizzou 88 • 17-2 (5-1)

Player statistics table for No. 11 Mizzou vs Arkansas, including FG, 3-Ptr, FT, Rebounds, PF, TP, A, TO, Blk, Stl, Min.

1st - FG %: 9-11 81.8% 2nd: 6-13 46.2% 3rd: 8-17 47.1% 4th: 4-11 36.4% Game: 27-52 51.9% Deadball Rebounds 3

Officials: Tina Napier, Frank Steratore, Angelica Suffren Technical fouls: Arkansas-None. No. 11 Mizzou-None.

Score by periods table for Arkansas vs Missouri

Points in Paint table for Arkansas vs Missouri

Last FG - AR 4th-04:17, MU-W 4th-01:40. Largest lead - AR None, MU-W by 34 4th-01:40. AR led for 00:00. MU-W led for 39:42. Game was tied for 00:18.



JANUARY 25, 2018

ARKANSAS 42 90 No. 9 SOUTH CAROLINA

Colonel Life Arena Columbia, South Carolina

Jaiilyn Mason (22) and Malica Monk (10) both scored in double figures for the Razorbacks.

Arkansas 42 • 11-10, 2-6

Player statistics table for Arkansas vs South Carolina, including FG, 3-Ptr, FT, Rebounds, PF, TP, A, TO, Blk, Stl, Min.

1st - FG %: 3-17 17.6% 2nd: 3-16 18.8% 3rd: 9-22 40.9% 4th: 3-12 25.0% Game: 18-67 26.9% Deadball Rebounds 4,2

#9/7 South Carolina 90 • 17-3, 6-2

Player statistics table for #9/7 South Carolina vs Arkansas, including FG, 3-Ptr, FT, Rebounds, PF, TP, A, TO, Blk, Stl, Min.

1st - FG %: 11-20 55.0% 2nd: 7-18 38.9% 3rd: 9-21 42.9% 4th: 5-16 31.3% Game: 32-75 42.7% Deadball Rebounds 6,2

Officials: Jesse Dickerson, Roy Gulbeyan, Ed Sidlasky Technical fouls: Arkansas-None. #9/7 South Carolina-None.

Score by periods table for #9/7 South Carolina vs Arkansas

Points in Paint table for #9/7 South Carolina vs Arkansas

Last FG - AR 4th-02:21, SC 4th-02:38. Largest lead - AR None, SC by 48 4th-00:25. AR led for 00:00. SC led for 39:49. Game was tied for 00:11.



JANUARY 29, 2018

KENTUCKY 76 65 ARKANSAS

Bud Walton Arena Fayetteville, Arkansas

Three players scored in double figures led by Devin Cosper with 17 points. Mason had 13 and Monk 11.

Kentucky 76 • 11-11, 3-5 SEC

Player statistics table for Kentucky vs Arkansas, including FG, 3-Ptr, FT, Rebounds, PF, TP, A, TO, Blk, Stl, Min.

1st - FG %: 9-16 56.3% 2nd: 9-16 56.3% 3rd: 6-15 40.0% 4th: 3-12 25.0% Game: 27-59 45.8% Deadball Rebounds 3

Arkansas 65 • 11-11, 2-7 SEC

Player statistics table for Arkansas vs Kentucky, including FG, 3-Ptr, FT, Rebounds, PF, TP, A, TO, Blk, Stl, Min.

1st - FG %: 5-13 38.5% 2nd: 3-11 27.3% 3rd: 4-17 23.5% 4th: 9-15 60.0% Game: 21-56 37.5% Deadball Rebounds 2,2

Officials: Beverly Roberts, Bryan Enterline, Susan Blach Technical fouls: Kentucky-None. Arkansas-TEAM.

Score by periods table for Kentucky vs Arkansas

Points in Paint table for Kentucky vs Arkansas

Last FG - UK 4th-01:54, AR 4th-00:43. Largest lead - UK by 28 3rd-02:51, AR by 5 1st-06:09. UK led for 35:28. AR led for 02:49. Game was tied for 01:43.

FEBRUARY 4, 2018

ARKANSAS 74 66 ALABAMA

Coleman Coliseum Tuscaloosa, Alabama

Devin Cosper scored 21 points leading four Razorbacks in double figures. Malica Monk had 17, Bailey Zimmerman added 11 and Kiara Williams had 10 points for Arkansas in the win.

Arkansas 42 • 11-10, 2-6

Player statistics table for Arkansas vs Alabama, including FG, 3-Ptr, FT, Rebounds, PF, TP, A, TO, Blk, Stl, Min.

1st - FG %: 3-17 17.6% 2nd: 3-16 18.8% 3rd: 9-22 40.9% 4th: 3-12 25.0% Game: 18-67 26.9% Deadball Rebounds 4,2

#9/7 South Carolina 90 • 17-3, 6-2

Player statistics table for #9/7 South Carolina vs Arkansas, including FG, 3-Ptr, FT, Rebounds, PF, TP, A, TO, Blk, Stl, Min.

1st - FG %: 11-20 55.0% 2nd: 7-18 38.9% 3rd: 9-21 42.9% 4th: 5-16 31.3% Game: 32-75 42.7% Deadball Rebounds 6,2

Officials: Jesse Dickerson, Roy Gulbeyan, Ed Sidlasky Technical fouls: Arkansas-None. #9/7 South Carolina-None.

Score by periods table for #9/7 South Carolina vs Arkansas

Points in Paint table for #9/7 South Carolina vs Arkansas

Last FG - AR 4th-02:21, SC 4th-02:38. Largest lead - AR None, SC by 48 4th-00:25. AR led for 00:00. SC led for 39:49. Game was tied for 00:11.



FEBRUARY 8, 2018

NO. 11 TENNESSEE

ARKANSAS

Bud Walton Arena Fayetteville, Arkansas

Devin Cosper and Malica Monk posted career-best point totals and Bailey Zimmerman had a career-high 40 minutes played.

90 85

No. 11 Tennessee 90 • 20-4, 8-3 SEC

Box score for Tennessee vs Arkansas, Feb 8, 2018. Includes player stats and team totals.

Arkansas 85 • 12-12, 3-8 SEC

Box score for Arkansas vs Tennessee, Feb 8, 2018. Includes player stats and team totals.

Officials: Scott Yarbrough, Carla Fountain, Frank Steratore. Attendance: 1446.

Score by periods table for Tennessee vs Arkansas.

Last FG - UT 4th-03:37, AR 4th-00:03. Largest lead - UT by 10 2nd-02:39, AR by 2 1st-05:14.



FEBRUARY 15, 2018

ARKANSAS

KENTUCKY

Memorial Coliseum Lexington, Kentucky

Arkansas has had seven games with double digit 3-point field goals and 16 games with more 3-point field goals than its opponent.

57 78

Arkansas 57 • 12-14, 3-10 SEC

Box score for Arkansas vs Kentucky, Feb 15, 2018. Includes player stats and team totals.

Kentucky 78 • 13-14, 5-8 SEC

Box score for Kentucky vs Arkansas, Feb 15, 2018. Includes player stats and team totals.

Officials: Brian Hall, Felicia Grinter, Kevin Pethrel. Attendance: 5305.

Score by periods table for Kentucky vs Arkansas.

Last FG - AR 4th-01:41, UK 4th-00:56. Largest lead - AR by 1 1st-00:04, UK by 21 4th-04:26.



FEBRUARY 12, 2018

No. 13 MISSOURI

ARKANSAS

Bud Walton Arena Fayetteville, Arkansas

Junior Bailey Zimmerman tied her career-best with 14 points. Her three 3-pointers also ties her career high. Jaiilyn Mason scored in double figures for the 16th time this season.

84 58

Missouri 84 • 20-5, 8-4 SEC

Box score for Missouri vs Arkansas, Feb 12, 2018. Includes player stats and team totals.

Arkansas 58 • 12-13, 3-9 SEC

Box score for Arkansas vs Missouri, Feb 12, 2018. Includes player stats and team totals.

Officials: Beverly Roberts, Jesse Dickerson, Eric Koch. Attendance: 1766.

Score by periods table for Missouri vs Arkansas.

Last FG - MU-W 4th-02:05, AR 4th-01:44. Largest lead - MU-W by 31 4th-04:31, AR None.



FEBRUARY 18, 2018

LSU

ARKANSAS

Bud Walton Arena Fayetteville, Arkansas

TBA

TBA TBA

Last FG - AR 4th-01:41, UK 4th-00:56. Largest lead - AR by 1 1st-00:04, UK by 21 4th-04:26.