



ARKANSAS STATE BASEBALL

AStateRedWolves.com // @ASateBaseball // @TommyRaffo22

Media Contact: Caleb Garner // rgarnier@astate.edu // 870.972.2707



GAMES 32-33

at #4 Arkansas
April 19-20

2022 SCHEDULE

7-24 OVERALL | 2-12 SBC
5-13 H | 2-11 A | 0-0 N

FEBRUARY

18	at Samford	L 8-9
19	at Samford	L 4-11
20	at Samford	L 0-11
22	at #3 Ole Miss	L 5-15 (5)

MARCH

1	MISS. VALLEY STATE	W 17-2 (7)
2	MISS. VALLEY STATE	W 13-3 (7)
4	ILLINOIS STATE	W 8-6
5	ILLINOIS STATE - 1	W 2-1
5	ILLINOIS STATE - 2	L 1-7
8	SEMO	L 6-14
9	SOUTHERN ILLINOIS	L 5-12
13	at Missouri State - 1	L 3-12
13	at Missouri State - 2	L 1-7
15	MEMPHIS	L 7-9
18	#15 TEXAS STATE*	L 7-13
19	#15 TEXAS STATE*	L 1-2
20	#15 TEXAS STATE*	L 4-5
23	at Southern Illinois	L 5-6
25	at Georgia Southern*	L 4-7
26	at Georgia Southern*	L 2-12
27	at Georgia Southern*	L 6-7
29	CENTRAL ARKANSAS	W 4-3 (11)

APRIL

1	COASTAL CAROLINA*	L 0-4
2	COASTAL CAROLINA*	L 4-5
3	COASTAL CAROLINA*	L 8-16
5	at SEMO	L 5-8
8	LOUISIANA*	L 0-10
9	LOUISIANA*	L 3-5
10	LOUISIANA*	L 4-7 (10)
14	at Little Rock*	W 6-5
15	at Little Rock*	W 7-6
16	at Little Rock*	Canceled (rain)
19	at #4 Arkansas	6:30 PM
20	at #4 Arkansas	4 PM
22	TROY*	6 PM
23	TROY*	6 PM
24	TROY*	1 PM
29	at UT Arlington*	6:30 PM
30	at UT Arlington*	2 PM

MAY

1	at UT Arlington*	1 PM
6	at South Alabama*	6 PM
7	at South Alabama*	6 PM
8	at South Alabama*	1 PM
10	at Memphis*	6 PM
13	GEORGIA STATE*	6 PM
14	GEORGIA STATE*	6 PM
15	GEORGIA STATE*	1 PM
17	OLE MISS	6 PM
19	at ULM*	6 PM
20	at ULM*	6 PM
21	at ULM*	1 PM
24-29	SBC Tournament^	TBA

* - Sun Belt Conference Game

^ - Montgomery, Ala. (Riverwalk Stadium)



ARKANSAS STATE RED WOLVES

(7-24 | 2-12 Sun Belt Conference)

Head Coach..... Tommy Raffo

Career Record..... 337-380-1/14th Season

A-State Record..... Same



#4 ARKANSAS RAZORBACKS

(28-7 | 11-4 SEC)

Head Coach..... Dave Van Horn

Career Record..... 1,149-577/29th Season

UA Record..... 778-409/20th Season

PROBABLE STARTERS (2022 STATS)

Game 1..... RHP Carter Holt (0-1, 8.10 ERA, 16.2 IP, 18 K/9 BB)

Game 2..... TBA

PROBABLE STARTERS (2022 STATS)

Game 1..... RHP Kole Ramage (1-2, 4.50 ERA, 28.0 IP, 33 K/9 BB)

Game 2..... TBA

THE MATCHUPS (2022 STATISTICS)

A-STATE	OFFENSE	ARKANSAS	A-STATE	PITCHING/DEF.	ARKANSAS
.249	Batting	.283	6.51	ERA	3.42
.355	Slugging	.493	264.0	IP	308.0
.348	On-Base Pct.	.394	0	Complete Games	0
.39	Doubles	.68	3	Saves	12
.3	Triples	.10	259/172	K/BB	376/120
.21	Home Runs	.53	.294	Opp./BAvg.	.220
.266/136	K/Walks	.273/188	.950	Fielding %	.986
9-12	SB-SBA	34-37	9	Double Plays	26

SERIES INFORMATION

Date:..... Tuesday-Wednesday, April 19-20, 2022

First Pitch:..... 6:30 PM (Tues.)/4 PM (Wed.)

Location:..... Fayetteville, Ark.

Venue:..... Baum-Walker Stadium

TV:..... SEC Network+

PxP:..... Brett Dolan

Analyst:..... Troy Eklund

Radio:..... EAB Red Wolves Sports Network

Station:..... The Ticket Radio Network

95.3/96.9/AM 970 KNEA & 104.1 KBRI

PxP:..... Matt Stolz

Live Stats:..... AStateStats.com

Series History vs UA:..... Arkansas leads 1-0

Record in Jonesboro:..... -

Record in Fayetteville:..... 1-0

Record in Neutral Venues:..... -

Last Meeting:..... May 11, 2021 | Fayetteville

Result:..... L 8-4

LEADING OFF

◆ Arkansas State is currently in its 29th season at Tomlinson Stadium-Kell Field, which was completed in 1993.

◆ Arkansas State is facing in-state foe Arkansas for just the second and third times in the history of the two programs. The inaugural meeting was held May 21 of last season with the Razorbacks taking an 8-4 victory.

◆ Tommy Raffo is in his 14th season at the helm of the A-State baseball program.

◆ A-State is entering Tuesday's contest after taking both games in a shortened Sun Belt Conference series at Little Rock. Saturday's series finale was canceled due to weather after the Red Wolves claimed the first two games.

◆ A-State has recorded 17 sacrifice flies so far this season, including a school-record six on March 1 against Mississippi Valley State. Last season, the Red Wolves totaled 19 sac flies in 49 contests. Jaylon Deshazier is currently tied for second in the Sun Belt with six. The Pine Bluff native also ranks third on the team with 19 RBI.

◆ Sophomore Cooper Tremmel has reached base safely in 12 consecutive games.

WHAT'S INSIDE

Roster/Quick Facts	2
Stat Rankings/Scorecard Summary	3
Series History	4
Notes	4-9
Head Coach Tommy Raffo	10
National Polls/Honors & Awards	11
The Last Time It Happened	12
Win-Loss Breakdown	12
Around the Sun Belt	13
Player Season/Career Bests	14-17
Player Season/Career Stats	18-21
2022 Statistics	22-27
2022 Photo Roster	28

BY THE NUMBERS

7

Sophomore Jared Toler leads the Red Wolves with seven home runs entering the week.

12

Twelve games with 10 or more strikeouts for the Arkansas State baseball pitching staff.

17

Sacrifice flies through 31 games this season, fourth in the Sun Belt, after having just 19 all of last season.



NUMERICAL ROSTER

No.	Name	B/T	Pos.	Yr.	Ht.	Wt.	Hometown/Last School
1	Eli Davis	L/L	OF	Jr.	6-1	195	Brighton, Tenn. (Brighton HS)
2	Jaylon Deshazier	R/R	OF	Sr.	6-2	225	Pine Bluff, Ark. (Pine Bluff HS)
3	Garrett Olson	R/R	INF	Jr.	5-9	180	Lincoln, Neb. (Southeast [Neb.] CC)
4	Jared Toler	L/R	INF	So.	6-1	200	Benton, Ark. (Harmony Grove HS)
5	Jonathan Baldelli	R/R	RHP	Sr.	5-9	160	Bartlett, Tenn. (Christian Brothers)
6	Blake McCutchen	R/R	INF	Sr.	6-0	165	Cabot, Ark. (Dyersburg State CC)
7	Justin Medlin	L/L	LHP/1B	Sr.	6-0	220	Ripley, Miss. (Middle Tennessee State)
8	Cason Tollett	R/R	C	RFr.	6-1	210	Little Rock, Ark. (Arkansas)
9	Ben Klutts	R/R	INF	Sr.	6-3	220	Poteau, Okla. (Carl Albert State College)
10	Jacob Hager	R/R	OF/INF	So.	6-0	215	Festus, Mo. (Lutheran HS South)
11	Brandon Hager	R/R	C	So.	6-0	250	Festus, Mo. (Lutheran HS South)
12	Phillip Bryant	R/R	RHP	RSo.	5-10	185	Little Rock, Ark. (Kansas City CC)
13	Walker Williams	L/L	LHP	RFr.	5-10	180	Springdale, Ark. (Shiloh Christian HS)
14	Tyler Jeans	R/R	RHP	Jr.	6-4	210	Texarkana, Ark. (Pleasant Grove HS)
15	Tristen Jamison	R/R	INF	So.	6-2	170	Nashville, Ark. (National Park College)
16	Brandon Anderson	R/R	RHP	Sr.	6-2	215	Omaha, Neb. (Neosho CC)
17	Wil French	S/R	INF	Fr.	5-10	175	Jonesboro, Ark. (Valley View HS)
18	Will Nash	R/R	RHP	Sr.	5-11	210	Wheatley, Ark. (Southwest Tenn. St. CC)
19	John Hoskyn	R/R	C	So.	6-0	235	Stuttgart, Ark. (Stuttgart HS)
20	Carter Holt	R/R	RHP	Sr.	6-5	260	Jackson, Tenn. (Jackson Christian)
21	Sam Fagan	R/R	OF	RFr.	6-3	210	Jonesboro, Ark. (Valley View HS)
22	Kyler Carmack	R/R	OF/RHP	Fr.	6-1	180	Cabot, Ark. (Cabot HS)
23	Will Gross	R/R	RHP	So.	5-10	235	Mountain Home, Ark. (Mountain Home HS)
24	Brandon Ulmer	L/R	OF	So.	5-10	180	Booneville, Ark. (Booneville HS)
25	Max Charlton	R/R	RHP	So.	6-1	200	Lenexa, Kan. (St. James Academy)
27	Austin Brock	L/L	LHP	Jr.	5-11	170	Senath, Mo. (Three Rivers College)
28	Jake Algee	R/R	RHP	So.	6-0	190	Brookland, Ark. (Brookland HS)
29	Kevin Wiseman	R/R	RHP	RJr.	6-1	210	Axtell, Texas (Wagner)
30	Daedrick Cail	R/R	INF/OF	Fr.	6-1	220	Marion, Ark. (Marion HS)
31	Jackson Harris	R/R	INF	Fr.	6-1	215	Texarkana, Ark. (Arkansas HS)
32	Mickey Coyne	L/L	1B/LHP	Jr.	6-2	205	Reno, Nev. (Sierra College)
33	Brandon Hudson	R/R	RHP	Jr.	6-5	180	Roland, Ark. (Northern Okla. College Enid)
34	Sawyer Bentley	R/R	RHP	Fr.	6-0	175	Jonesboro, Ark. (Jonesboro HS)
35	Treshon Paschal	R/R	RHP	Jr.	6-2	190	Springdale, Ark. (Crowder College)
36	Will Gilmer	R/R	RHP	So.	6-0	200	Sikeston, Mo. (Sikeston HS)
37	Dawson Chester	R/R	INF	Fr.	5-10	200	Pocahontas, Ark. (Pocahontas HS)
38	Ty Gordon	L/L	1B/OF	Fr.	5-10	215	Nashville, Ark. (Nashville HS)
39	Jakob Frederick	L/L	LHP	Jr.	5-8	170	Sacramento, Calif. (Sierra College)
40	Cooper Tremmel	L/R	OF/C	So.	6-0	190	Lakeland, Tenn. (Volunteer State CC)
41	Cross Jumper	R/R	OF/RHP	Fr.	6-2	200	Jonesboro, Ark. (Jonesboro HS/Tennessee)

COACHING STAFF/SUPPORT

Tommy Raffo	Head Coach	14th Season - Mississippi State (1990)
Alan Dunn	Pitching Coach	First Season - UAB (1991)
Drew LaBounty	Assistant Coach/Recruiting Coordinator	First Season - South Alabama (2018)
Zach George	Volunteer Assistant	Second Season - Arkansas State (2015)
Bryce Bartlett	Student Assistant	First Season - Arkansas State (2021)
Dylan Owens	Director of Operations	First Season
Gabe Mason	Athletics Performance	First Season
Lorenzo Soto	Sports Medicine	Second Season
Spencer Funderburg	Manager	Third Season
Carson Spargo	Manager	First Season

QUICK FACTS

THE UNIVERSITY

Location Jonesboro, Ark.
 Founded 1909
 Enrollment 14,085
 Colors Scarlet & Black
 Nickname Red Wolves
 Conference Sun Belt
 President Dr. Charles Welch
 Chancellor Dr. Kelly Damphousse
 VC/Intercollegiate Athletics Tom Bowen
 Athletics Department Phone 870-972-3880
 Ticket Office Phone 870-972-2781

PROGRAM HISTORY

First year of Baseball 1922
 All-time record 1,425-1,744-10 (.450)
 All-time SBC record 343-454-2 (.431)
 SBC Regular Season Championships 0
 SBC Tournament Championships 1 (1994)
 NCAA appearances 4 (Last: 1994)

2022 TEAM

Letterwinners Ret./Lost 21/17
 Position Starters Ret./Lost (40+ starts) 4/4
 Pitchers Ret./Lost 12/8
 Newcomers 18
 2021 19-30 (H: 10-7/A: 8-22/N: 1-1)
 2021 Sun Belt Finish 10-14/5th-West

MEDIA RELATIONS

Baseball Contact Caleb Garner
 E-mail RGarner@astate.edu
 Work phone 870-972-2707
 Cell Phone 870-316-3382
 Website AStateRedWolves.com

SOCIAL MEDIA

Twitter @AStateBaseball
 Facebook Facebook.com/AStateBaseball
 Instagram @AStateBaseball

PRO-NUN-SEE-AY-SHUNS

Jaylon **DESHAZIER** Duh-SHAY-zure
 Cason **TOLLETT** TAH-let
 Ben **KLUTTS** like a clumsy person (klutz)
 John **HOSKYN** HOSS-kin
 Sam **FAGAN** FAY-gan
 Brandon **ULMER** ULL-mer
 Max **CHARLTON** CHARL-ton
 Jake **ALGEE** like "algae" the aquatic plant
 Mickey **COYNE** Like the currency
TRESHON PASCHAL TRAY-shon PASS-cal
 Cooper **TREMMEL** TREM-ull

WHERE THE RED WOLVES RANK (NCAA/SBC) - AS OF 4/18

OFFENSE	STAT	SBC	NCAA
Base on Balls	136	9	182
Batting Average	.249	11	249
Doubles	39	12	288
Doubles/Game	1.26	12	284
Hit by Pitch	28	12	246
Hits	254	12	270
Home Runs	21	10	224
Home Runs/Game	0.68	10	214
On-Base Percentage	.348	10	236
Runs	150	12	273
Sacrifice Bunts	18	6	60
Sacrifice Flies	17	4	53
Scoring (Runs/Game)	4.8	11	266
Slugging Percentage	.355	10	262
Stolen Bases	9	12	290
Stolen Bases/Game	0.29	12	290
Triples	3	10	265
Triples/Game	0.10	10	267

PITCHING	STAT	SBC	NCAA
Earned Run Average	6.51	11	231
Hit Batters	40	6	135
Hits Allowed/9 Inn.	10.64	11	235
Shutouts	-	-	-
Strikeout/Walk Ratio	1.51	12	238
Strikeouts/9 Innings	8.8	6	127
WHIP	1.83	12	257
Walks Allowed/9 Inn.	5.86	12	267

DEFENSE	STAT	SBC	NCAA
Double Plays	9	12	291
Double Plays/Game	0.29	12	292
Fielding Percentage	.950	12	274

INDIVIDUAL RANKINGS

OFFENSE	STAT	SBC	NCAA
Sacrifice Bunts			
Wil French	5	T6	T55
Mickey Coyne	4	T8	T104
Eli Davis	4	T8	T104

Sacrifice Bunts/Game			
Wil French	0.16	6	70
Eli Davis	0.14	9	100

Sacrifice Flies			
Jaylon Deshazier	6	T2	T5
Ben Klutts	4	T3	T48

PITCHING	STAT	SBC	NCAA
Games Started			
Justin Medlin	9	T2	T21

Saves			
Kevin Wiseman	2	T13	T228
Tyler Jeans	1	T23	T395

SCORECARD SUMMARIES

2022 statistics listed | Based on previous games

Pos.	Name	Elig.	B/T	Ht./Wt.	Avg.	R	H	RBI	Notes
C	Brandon Hager	So.	R/R	6-0/250	.250	6	14	9	
Hitting a team-leading .333 in Sun Belt Conference play									
1B	Jared Toler	So.	L/R	6-1/200	.264	20	29	25	
Team leader in homers (7) and RBI (25); homered on Friday at Little Rock									
2B	Daedrick Cail	Fr.	R/R	6-1/220	.317	17	33	13	
Did not play this past weekend at Little Rock									
SS	Wil French	Fr.	S/R	5-10/175	.236	22	26	7	
Opening-day leadoff man & starter at shortstop; Team-leading 22 runs scored & team-best 18 walks drawn									
3B	Ben Klutts	Sr.	R/R	6-3/220	.263	21	30	21	
2021 First Team All-SBC; Preseason All-Sun Belt; homered at Little Rock on Friday									
LF	Jaylon Deshazier	Sr.	R/R	6-2/220	.297	15	33	19	
Hit 2-for-4 with a run at Little Rock on Friday									
CF	Brandon Ulmer	So.	L/R	5-10/180	.067	2	1	1	
Starting centerfielder in eight of last nine games; first RBI of the season on April 15 at Little Rock									
RF	Cooper Tremmel	So.	L/R	6-0/190	.247	12	22	10	
12-game on-base streak; reached base 3 times at Little Rock on Friday									
DH	Jacob Hager	So.	R/R	6-0/215	.346	13	18	5	
Team leader in hitting (.346); went 2-for-4 with 2 runs scored at Little Rock on April 14									

PITCHING PROBABLES

* - Game started



20 | Carter Holt | Sr. | RHP

TBA

Quick Stats

	W-L	ERA	BAA	IP	K/BB
2022	0-1	8.10	.299	16.2	18/9
CAREER	5-8	6.23	.289	146.0	102/67

Last 3 Appearances

3/4/22 Illinois State* W, 8-6
5.0 IP, 6 H, 4 R (2 ER), 4 K, 1 BB (ND)

3/13/22 at Missouri State* L, 3-12
2.0 IP, 5 H, 7 R (4 ER), 3 K, 2 BB (L)

4/10/22 Louisiana* L, 4-7 (10)
5.0 IP, 7 H, 4 R (1 ER), 5 K, 0 BB (ND)



-VS-



SERIES HISTORY

Arkansas leads 1-0

- ▶ Arkansas State and Arkansas have only played once in the history of the two programs, meeting last season in Fayetteville.
- ▶ The Red Wolves hung tough with the top-ranked Razorbacks, keeping the game scoreless through the first four and a half innings before Arkansas erupted for five runs in the fifth. A-State battled back with a three-run eighth, but fell 8-4.

SERIES RECORD

In Jonesboro	-
In Fayetteville	0-1
Neutral Sites	-
Current Overall Streak:	UA W1
Longest A-State Win Streak:	-
Longest Arkansas Win Streak	1 Game
Largest A-State Win:	-
Largest Arkansas Win:	4 (8-4) 5/11/2021

ALL-TIME MEETINGS

Date	Year	Score	Result
May 11	2021	4-8	aL

LOOKING AHEAD



NEXT OPPONENT:
vs Troy

DatesApril 22-24, 2022
TV.....ESPN+
Site Jonesboro, Ark.
2022 Record..... 23-12 (9-6 SBC)
Head Coach Skylar Meade
Record at TROY 23-12/1st Season
Overall Same

SERIES RECORD

Games	52
Record	16-36
In Jonesboro	3-18
In Troy	8-13
At Neutral Site	5-5
Last Meeting	May 25, 2021 W 9-6
Current Streak	A-State W2

LAST FIVE MEETINGS

Date	Year	Score	Result
March 17	2019	10-4	aW
May 14	2021	4-12	aL
May 15	2021	1-3	aL
May 16	2021	9-5	aW
May 25	2021	9-6	nW

SETTING THE STAGE

- ▶ Arkansas State concludes its Natural State road swing with a two-game midweek series at consensus top-10 foe Arkansas. Both games will be broadcast live on SEC Network+, while the radio broadcasts can be heard on The Ticket Radio Network (95.3/96.9/104.1/970 AM). There, you may listen to the recently-victorious "Voice of the Red Wolves" Matt Stolz.

ABOUT THE RAZORBACKS

- ▶ Arkansas enters this week's midweek series with a 28-7 overall mark (11-4 SEC) after sweeping 15th-ranked LSU this past weekend in Fayetteville. The Razorbacks are 23-3 at Baum-Walker Stadium this season and have won five consecutive games. This week's rankings saw them ranked as high as second nationally.
- ▶ The Razorbacks are one of the nation's top fielding teams, ranking third with an SEC-best .986 fielding percentage. Arkansas
- ▶ Arkansas is hitting .283 on the year as a team, which is 11th in the SEC, but has drawn 188 total walks so far (2nd SEC/20th NCAA). **Michael Turner** owns a team-best .344 average and is slugging .560 with five homers, 10 doubles and 32 RBI. **Cayden Wallace** has tallied a team-leading 45 hits and team-best 34 RBI while **Braydon Webb** has belted nine long balls. Preseason All-American infielder **Robert Moore** slashes .238/.434/.400 with 11 doubles.
- ▶ On the mound, the Razorbacks boast a team ERA of 3.42, which is third-best in the SEC and 11th nationally, while allowing 7.19 hits per 9 innings (3rd SEC/8th NCAA). Tuesday's starting pitcher, **Kole Ramage**, is second on the team in saves (3) and is making his second start of the season.
- ▶ Both teams share similar results against common opponents this season... The Razorbacks opened the season by taking two of three against Illinois State, with the Red Wolves taking 2 of 3 from the Redbirds a few weeks later. Both teams are also undefeated on the year against both Central Arkansas and Little Rock.

TEAM NOTES

LAST TIME OUT

- ▶ Arkansas State claimed the weekend series on Friday at Little Rock, defeating the Trojans 7-6 after **Jaylon Deshazier** scored the go-ahead run on a wild pitch in the top of the ninth. A-State weathered a late game-tying push by the Trojans for the second day in a row, but **Tyler Jeans** finished the game for the second day in a row to seal the series victory.
- ▶ The Red Wolves took an early 5-0 lead with five runs in the second inning and led 6-3 before the Trojans scored three unanswered to tie it. Both **Ben Klutts** and **Jared Toler** homered, while Toler, Deshazier and **Garrett Olson** all registered multiple hits.

NATURAL STATE SUCCESS

- ▶ In three games against foes from the state of Arkansas, Arkansas State has found some success, going 3-0 in a trio of one-run games.
- ▶ The Red Wolves defeated Central Arkansas 4-3 in 11 innings on March 29 before taking two games at Little Rock by 6-5 and 7-6 margins. A-State originally had a home three-game series against Arkansas-Pine Bluff scheduled in February in Jonesboro, but an ice storm had other plans and wiped out the three-game set.

CLOSE ONES

- ▶ The Red Wolves have played a bunch of close contests so far this season.
- ▶ A-State has had 16 games this season that were decided in the final few frames, including 13 decided in the eighth or ninth innings or later.

"EXTRA! EXTRA!"

- ▶ Arkansas State earned its first extra-inning win since 2019 on earlier this season in its 4-3 11-inning victory over Central Arkansas. A-State also went to extras in its series finale against Louisiana, falling 7-4 in 10 innings.
- ▶ The Red Wolves played in just one game that went to extras last season, while playing none in 2020 and four in 2019.

TOUGH START TO LEAGUE PLAY

- ▶ In its first four Sun Belt Conference series, Arkansas State has faced four opponents ranked inside the top 50 of the RPI at the time of competition.
- ▶ A-State opened up with Texas State (15th), then faced Georgia Southern (11), Coastal Carolina (38) and Louisiana (44).

"THE TOM EFFECT"

- ▶ Arkansas State's home ballpark, Tomlinson Stadium, tends to be pitcher-friendly confines, with the wind often blowing in towards home plate. A-State totaled 60 home runs last season, but 42 of those came on the road and just 18 at home (30 percent). The Red Wolves gave up 58 big flies a season ago, but just 14 came in 17 games at "The Tom." (24.1 percent).
- ▶ This year, nine of A-State's 21 home runs have come in Jonesboro, while just seven of opposing teams' 29 big flies.

ROAD WOLVES

- ▶ Arkansas State will see America's highways and byways a good bit down the stretch of the regular season, with only seven home games left on the docket in the scheduled 23 remaining contests.
- ▶ Nine of the next 12 games are on the road, but five of those 12 are inside the Natural State. A-State returns home after its two-game series against the Razorbacks to host Troy in a three-game set. Then, the Red Wolves embark on a seven-game road swing.

HITTING STREAKS

	PLAYER	Current	Season	Career
4	Jared Toler	4	9	9
40	Cooper Tremmel	4	6	6
17	Wil French	4	4	4
9	Ben Klutts	3	7	11
2	Jaylon Deshazier	3	5	9
30	Daedrick Cail	2	12	12
11	Brandon Hager	2	4	4
3	Garrett Olson	2	2	2
1	Eli Davis	1	3	3
10	Jacob Hager	-	10	10
32	Mickey Coyne	-	7	7
15	Tristen Jamison	-	3	3
8	Cason Tollett	-	2	2
6	Blake McCutchen	-	1	5
24	Brandon Ulmer	-	1	1
7	Justin Medlin	-	1	1
19	John Hoskyn	-	-	2

ON-BASE STREAKS

	PLAYER	Current	Season	Career
40	Cooper Tremmel	12	12	12
2	Jaylon Deshazier	7	20	24
4	Jared Toler	7	12	20
11	Brandon Hager	6	6	6
17	Wil French	5	7	7
9	Ben Klutts	4	10	14
30	Daedrick Cail	2	12	12
10	Jacob Hager	2	10	10
1	Eli Davis	2	5	5
3	Garrett Olson	2	2	4
32	Mickey Coyne	1	7	7
8	Cason Tollett	-	5	5
15	Tristen Jamison	-	3	3
6	Blake McCutchen	-	2	6
24	Brandon Ulmer	-	2	2
21	Sam Fagan	-	1	1
7	Justin Medlin	-	1	2
19	John Hoskyn	-	-	2

BIG INNINGS (4+ RUNS/9+ BATTERS TO THE PLATE)

DATE	OPPONENT	Inning	Runs	At Bat
2/18	at Samford	7	4	10
3/1	Mississippi Valley State	4	3	10
		5	4	9
		6	7	13
3/2	Mississippi Valley State	5	7	11
3/4	Illinois State	8	5	10
3/18	#15 Texas State	1	6	10
4/3	Coastal Carolina	8	5	9
4/5	at Southeast Missouri	6	4	9
4/15	at Little Rock	2	5	9

OFFENSIVE/POSITION PLAYER NOTES

"BENNY & THE JETS"

- ▶ Third baseman **Ben Klutts** is looking to live up to the preseason hype he's getting after a First Team All-Sun Belt nod in 2021. Klutts was named Preseason All-Sun Belt, as well as being tabbed to Perfect Game's Preseason All-SBC squad. *Collegiate Baseball* went even a step further, naming him as its pick to be the league's Player of the Year when it's all said and done.
- ▶ D1 Baseball also listed Klutts as the 45th-best third baseman in its preseason rankings of Top 50 Third Basemen.
- ▶ The Poteau, Okla., native hit .320 as a junior last season with seven home runs and 28 RBI, upping that average to .340 in conference play.
- ▶ Klutts was one of just 44 players in college baseball named to the preseason watch list for the Bobby Bragan Collegiate Slugger Award.
- ▶ Klutts is one of 30 Division I players and just two from the Sun Belt named to the Senior CLASS Award candidate list.

"YOUNG, SCRAPPY & HUNGRY"

- ▶ Several young Red Wolves have made their debuts this season, including **Wil French**, **Daedrick Cail** and **Cooper Tremmel**, who have become consistent staples in the lineup.
- ▶ French, a Jonesboro native, was an Opening Day starter at shortstop and hit leadoff, while Cail has entrenched himself at second base since the second game of the year. Tremmel has shown his versatility, seeing time in the outfield and behind the plate, as well as at DH.
- ▶ French has started in every game this season at shortstop, while Cail is tied for the team lead in hits (33).

"MY SACRIFICE"

- ▶ An absolute jam by Creed, yes. But this is talking about how effective Arkansas State has been early on this season at the sacrifice game.
- ▶ A-State tallied a school-record SIX sacrifice flies on March 1 versus Mississippi Valley State - just one shy of matching the Division I record set in 2004 by Arkansas. Three of those came off the bat of Jaylon Deshazier, who is third nationally with six entering the weekend.
- ▶ The Red Wolves have 17 sac flies this year, which is fourth in the Sun Belt Conference, after having just 19 total last season.

TOLER RANKED AMONG TOP 2023 DRAFT PROSPECTS IN THE 'BELT'

- ▶ Sophomore first baseman **Jared Toler** received some preseason hype from D1 Baseball, being listed as one of the top 20 players out of the Sun Belt for the 2023 MLB Draft. The Benton, Ark., native came in at No. 18 - the No. 2 infielder.
- ▶ Toler hit .226 as a freshman last year, drawing 36 starts at first. Coaches are hoping that an increased plate discipline from the fall leads to a strong second year, as he looks to cut down on his 41/22 K-to-BB walk ratio.
- ▶ He has looked the part early this season, tallying 29 hits and a team-best seven home runs, over tripling last season's total (2). Toler has also already surpassed last season's RBI total (12), driving in a team-best 25 already this season.

JD CLIMBING THE CHARTS

- ▶ **Jaylon Deshazier** is nearing the top 10 in program history in career home runs. Deshazier enters the week with 18 career jacks, needing just three to tie for ninth alongside **Kyle MacDonald** (2018-19), **Chris Rich** (2004-05) and **Brad Burkhead** (2004-05) with 20.
- ▶ He also enters the weekend with 116 career RBI - passing **Austin Baker** (2013-16) to rank eighth in school history. He needs just 10 to match **Jeremy Brown** (2015-18) for seventh. The full top 10 is on **PAGE 6**.
- ▶ Deshazier also enters the week 22nd among Division I active career leaders in sacrifice flies (13). He is 50th in the NCAA among all divisions.

"THREE'S COMPANY"

- ▶ Arkansas State has scored three or more runs in 18 innings so far this season, including 10 "big innings," defined as four-plus runs or nine batters sent to the plate in a frame.

HOT DOG! HOT DOG! HOT DIGGITY DOG!

- ▶ It's the **Mickey (Coyne)** Clubhouse!
- ▶ Coyne has made himself comfortable in the A-State lineup and seeing time at first base as well as in the outfield, along with a few pitching appearances. The Reno, Nev., native is hitting .275 after starting the season hitting just .182.

MULTI-RBI GAMES

	PLAYER	2	3	4	5+	2022	TOTAL
4	Jared Toler	7	2	-	-	9	10
9	Ben Klutts	4	2	-	-	6	15
2	Jaylon Deshazier	2	1	1	-	4	28
30	Daedrick Cail	2	1	-	-	3	3
11	Brandon Hager	1	1	-	-	2	2
40	Cooper Tremmel	1	1	-	-	2	2
1	Eli Davis	1	-	-	-	1	6
3	Garrett Olson	1	-	-	-	1	3
10	Jacob Hager	1	-	-	-	1	1
32	Mickey Coyne	1	-	-	-	1	1
8	Cason Tollett	-	1	-	-	1	1
6	Blake McCutchen	-	-	-	-	-	3
19	John Hoskyn	-	-	-	-	-	1
	TOTAL	21	9	1	0	31	

MULTI-HIT GAMES

	PLAYER	2	3	4	5+	2022	TOTAL
9	Ben Klutts	9	1	-	-	10	36
30	Daedrick Cail	8	2	-	-	10	10
2	Jaylon Deshazier	5	2	-	-	7	35
4	Jared Toler	5	-	1	-	6	14
17	Wil French	5	-	-	-	5	5
40	Cooper Tremmel	2	1	-	-	3	3
32	Mickey Coyne	3	-	-	-	3	3
10	Jacob Hager	2	1	-	-	3	3
11	Brandon Hager	3	-	-	-	3	3
3	Garrett Olson	2	-	-	-	2	7
8	Cason Tollett	1	-	-	-	1	1
15	Tristen Jamison	1	-	-	-	1	1
7	Justin Medlin	1	-	-	-	1	1
6	Blake McCutchen	-	-	-	-	-	6
1	Eli Davis	-	-	-	-	-	1
	TOTAL	47	7	1	0	55	

TWO-OUT RBI

	PLAYER	2022	Career
9	Ben Klutts	9	15
2	Jaylon Deshazier	8	30
40	Cooper Tremmel	8	8
30	Daedrick Cail	6	6
4	Jared Toler	5	10
32	Mickey Coyne	5	5
11	Brandon Hager	3	3
17	Wil French	3	3
3	Garrett Olson	2	2
8	Cason Tollett	2	2
6	Blake McCutchen	1	7
1	Eli Davis	1	1
10	Jacob Hager	1	1
19	John Hoskyn	-	3
	TOTAL	54	

DINGER DERBY

Below is a listing of all home runs for the 2022 season.

No.	Date	Opponent	Player	Inn.	On Base	Outs
1	2/18	at Samford	Brandon Hager (1)	2	1	2
2			Cason Tollett (1)	6	0	1
3	2/19	at Samford	Jacob Hager (1)	5	1	0
4			Garrett Olson (1)	8	1	2
5	2/23	at #3 Ole Miss	Ben Klutts (1)	5*	0	0
6	3/4	Illinois State	Jared Toler (1)	5*	0	0
7	3/5	Illinois State - 1	Ben Klutts (2)	3	0	1
8	3/8	SEMO	Ben Klutts (3)	1	1	1
9	3/9	Southern Illinois	Jared Toler (2)	9	1	2
10	3/13	at Missouri State - 2	Eli Davis (1)	3*	0	0
11	3/15	Memphis	Jared Toler (3)	1	1	0
12			Daedrick Cail (1)	2*	0	0
13	3/20	#15 Texas State	Jared Toler (4)	1	1	0
14	3/23	at Southern Illinois	Brandon Hager (2)	4#	2	0
15			Jared Toler (5)	5	0	1
16	3/27	at Georgia Southern	Brandon Hager (3)	5*	0	0
17	3/29	Central Arkansas	Cooper Tremmel (1)	6	1	2
18	4/2	Coastal Carolina	Ben Klutts (4)	6*	0	0
19	4/5	at SEMO	Jared Toler (6)	6	2	1
20	4/15	at Little Rock	Ben Klutts (5)	2	1	2
21			Jared Toler (7)	6*	0	0

21 home runs in 2022

* - HR led off an inning | ^ - Leadoff HR (top/bottom 1st) | # - pinch-hit HR

CAREER HOME RUNS

Player	SOLO	2R	3R	GS	Total
Jaylon Deshazier	7	8	1	2	18
Ben Klutts	11	3	-	-	14
Jared Toler	6	2	1	-	9
Garrett Olson	2	1	1	-	4
Brandon Hager	1	1	1	-	3
Eli Davis	2	-	-	-	2
Blake McCutchen	-	-	1	-	1
Justin Medlin	1	-	-	-	1
Cason Tollett	1	-	-	-	1
Jacob Hager	-	1	-	-	1
Daedrick Cail	1	-	-	-	1
Cooper Tremmel	-	1	-	-	1

RUNS BATTED IN - CAREER

No.	Player	Years	RBI
1	Joe Schrimpf	2014-17	146
2	Todd Baumgartner	2008-11	139
3	Aaron New	1996-98	137
4	Matt Burgess	2014-16	136
5	Ryan Emery	2010-13	134
6	Murray Watts	2008-10	133
7	Jeremy Brown	2015-18	126
8	Jaylon Deshazier	2018-pr.	116
9	Austin Baker	2013-16	112
10	Zach George	2011-15	108

PITCHING NOTES

THE OLD AND THE NEW

- ▶ Arkansas State's pitching staff features a strong mix of both old and new faces this season, led by new pitching coach **Alan Dunn**, who was hired over the summer after a successful 10-year stint at LSU. One of the most respected pitching minds in college baseball, Dunn was the 2015 *Collegiate Baseball* National Pitching Coach of the Year and was part of nine NCAA Tournament teams in Baton Rouge.
- ▶ A-State returns all three weekend starters from last season in **Brandon Hudson**, **Will Nash** and **Carter Holt**, as well as midweek staple **Tyler Jeans**.
- ▶ The Red Wolves boast several new faces on the bump, including **Justin Medlin**, who had a stand-out fall en route to contending for a role in the starting rotation. A-State also bolstered its corps of lefties after playing most of last season without a single left-handed arm.
- ▶ The Scarlet and Black lost a pair of key back-end bullpen arms from last season in Jack Jumper and Kollin Stone, but made up for it by bringing in flamethrower **Treshon Paschal** and former Wagner closer **Kevin Wiseman**.
- ▶ Also new for this season comes to Tomlinson Stadium itself, in the form of a brand-new bullpen area in right-center field, removing the Red Wolves' "arm barn" from out of the field of play. It features FOUR regulation mounds and 90 feet of space, with ample room for video angles, as well as a plyo wall for pitchers to begin their warmups.

ARMS OUTTA THE 'BARN

- ▶ Arkansas State went to the bullpen early and often against Mississippi Valley State to begin the month of March, with 13 combined pitchers seeing mound time in relief in the two seven-inning contests.
- ▶ They were strong, too, only allowing two runs on eight scattered hits.
- ▶ A-State had some strong work out of its relievers in two wins over Illinois State earlier this season, allowing just two earned runs in 8 1/3 innings in those two victories. **Kevin Wiseman** showed electric stuff in the ninth, recording a pair of quick saves in those wins.

RING 'EM UP!

- ▶ Arkansas State's improved its strikeout numbers this season drastically - 259 through 31 games compared to 207 last season over the same stretch. A-State has struck out 10 or more batters in 12 games so far, having done it just six times all of last year.
- ▶ During A-State's first Sun Belt series versus Texas State, the Red Wolves' starting pitching was key to that production, striking out 18 while walking just three. **Justin Medlin** punched out seven against Texas State on Friday, while **Jakob Frederick** K'd six in a pair of starts and did not allow a walk. **Will Nash** performed well on Saturday against the Bobcats, striking out five to two walks. All three pitched 5-plus innings on the weekend.

#PITCHERSWHORAKE

- ▶ Shohei Ohtani may be the best two-way player in baseball right now, but Arkansas State's **Justin Medlin** has proved he can both pitch and hit at a high caliber this season.
- ▶ A two-way standout in high school and junior college, Medlin has worked his way into A-State's Friday-night starter role and made his 2022 debut at the plate on Saturday versus Coastal Carolina, going 2-for-4 with a double.
- ▶ Oh yeah, and he hits without batting gloves so that's just an added bonus.

AUSTIN 3:16

- ▶ No, not the glass-shattering sound of Stone Cold Steve Austin ("WHAT?!"). This is in reference to the recent performances of left-handed reliever **Austin Brock**.
- ▶ The JUCO transfer from the Missouri bootheel (Senath) leads A-State with a 2.25 ERA in 12 innings over 12 appearances.

HOLT-ING IT DOWN

- ▶ **Carter Holt** made an impressive return to the mound after being sidelined with a hand injury for the last few weeks. The Jackson, Tenn., native took the bump for his first start in exactly 28 days and looked like he did on Sundays last season, striking out five and walking none in five complete innings.
- ▶ Holt was a solid game 3 starter for the Red Wolves a season ago, giving the Scarlet and Black a strong chance to win every time out. In fact, A-State was 8-1 in his last nine outings of 2021. He registered seven straight outings of five innings or more, including five straight with six frames.

REAL, COMFORTABLE (TYLER) JEANS.

- ▶ **Tyler Jeans** was key in the late innings for Arkansas State this past weekend at Little Rock, finishing out both contests, earning a win and his first career save.
- ▶ Jeans started the season in the rotation, but moved to the bullpen, where he's been solid, lowering his ERA from 13.50 to 5.68 entering Tuesday. In his last 13.2 innings pitched, Jeans has allowed five runs (3.29 ERA) with 9 strikeouts.

STARTING PITCHING BREAKDOWN

Date	Opponent	Pitcher	ER	IP	Result	W/L/ND
2/18	at Samford	Carter Holt	7	3.2	L 8-9	ND
2/19	at Samford	Justin Medlin	3	3.1	L 4-11	L (1)
2/20	at Samford	Tyler Jeans	6	4.0	L 0-11	L (1)
2/23	at #3 Ole Miss	Walker Williams	5	2.0	L 5-15	L (1)
3/1	Miss. Valley State	Carter Holt	1	1.0	W 17-2	ND
3/2	Miss. Valley State	Tyler Jeans	1	1.0	W 13-3	ND
3/4	Illinois State	Carter Holt	2	5.0	W 8-6	ND
3/5	Illinois State [1]	Tyler Jeans	0	4.2	W 2-1	ND
3/5	Illinois State [2]	Justin Medlin	1	5.0	L 1-7	L (2)
3/8	SEMO	Will Nash	4	3.0	L 6-14	ND
3/9	Southern Illinois	Justin Medlin	0	2.0	L 5-12	ND
3/13	at Missouri State [1]	Carter Holt	4	2.0	L 3-12	L (1)
3/13	at Missouri State [2]	Justin Medlin	1	4.0	L 1-7	ND
3/15	Memphis	Jakob Frederick	3	1.0	L 7-9	ND
3/18	#15 Texas State	Justin Medlin	2	6.0	L 7-13	ND
3/19	#15 Texas State	Will Nash	2	5.0	L 1-2	L (1)
3/20	#15 Texas State	Jakob Frederick	1	6.0	L 4-5	ND
3/23	at Southern Illinois	Brandon Hudson	0	1.0	L 5-6	L (1)
3/25	at Georgia Southern	Justin Medlin	4	6.0	L 4-7	ND
3/26	at Georgia Southern	Will Nash	5	4.0	L 2-12	L (2)
3/27	at Georgia Southern	Jakob Frederick	2	5.0	L 6-7	ND
3/29	Central Arkansas	Treshon Paschal	1	3.0	W 4-3 (11)	ND
4/1	Coastal Carolina	Justin Medlin	2	6.0	L 0-4	L (3)
4/2	Coastal Carolina	Will Nash	1	5.0	L 4-5	L (3)
4/3	Coastal Carolina	Jakob Frederick	6	4.0	L 8-16	L (1)
4/5	at SEMO	Treshon Paschal	4	2.1	L 5-8	ND
4/8	Louisiana	Justin Medlin	7	5.0	L 0-10	L (4)
4/9	Louisiana	Will Nash	1	6.0	L 3-5	ND
4/10	Louisiana	Carter Holt	1	4.0	L 4-7 (10)	ND
4/14	at Little Rock	Justin Medlin	1	5.1	W 6-5	ND
4/15	at Little Rock	Will Nash	4	6.0	W 7-6	ND
4/19	at #4 Arkansas	-	-	-	-	-
4/20	at #4 Arkansas	-	-	-	-	-

BULLPEN DECISIONS

Below is a breakdown of bullpen decisions (win/loss/save/hold/blown save)

Date	Opponent	Pitcher	IP	ER	Result
2/18	at Samford	Brandon Anderson	1.0	0	Loss (1)
3/1	Miss. Valley State	Walker Williams	1.0	0	Win (1)
3/2	Miss. Valley State	Treshon Paschal	1.0	0	Win (1)
		Jake Algee	1.0	0	Hold (1)
3/4	Illinois State	Walker Williams	1.0	1	Win (2)
		Kevin Wiseman	1.0	0	Save (1)
3/5	Illinois State [1]	Will Nash	2.0	0	Win (1)
		Brandon Anderson	1.1	0	Hold (1)
		Kevin Wiseman	1.0	0	Save (2)
3/8	SEMO	Treshon Paschal	1.0	2	Loss (1)
3/9	Southern Illinois	Tyler Jeans	1.0	0	Loss (1)
3/13	at Missouri State [2]	Tyler Jeans	0.0	3	Loss (2)
3/15	Memphis	Brandon Hudson	1.0	3	Loss (1)
3/18	#15 Texas State	Brandon Anderson	0.0	3	Loss (2)
3/20	#15 Texas State	Brandon Anderson	1.1	2	Blown save (1)
		Kevin Wiseman	1.2	1	Loss (1)
3/26	at Georgia Southern	Max Charlton	0.2	3	Loss (1)
3/27	at Georgia Southern	Tyler Jeans	2.0	1	Hold (1)
		Brandon Anderson	1.2	2	Loss (3)
3/29	Central Arkansas	Austin Brock	1.0	0	Hold
		Phillip Bryant	2.0	1	Blown save (1)
		Jonathan Baldelli	1.0	0	Win (1)
4/5	at SEMO	Austin Brock	2.0	0	Loss (1)
4/9	Louisiana	Kevin Wiseman	1.0	0	Loss (2)
4/10	Louisiana	Tyler Jeans	3.0	3	Loss (3)
4/14	at Little Rock	Brandon Anderson	1.2	0	Win (1)
		Kevin Wiseman	1.0	1	Hold (1)
		Tyler Jeans	1.0	1	Save (1)
4/15	at Little Rock	Jonathan Baldelli	1.1	2	Blown save (1)
		Tyler Jeans	1.2	0	Win (1)

Hold = Reliever enters game in save situation and hands over that lead to another reliever while recording at least one out; One of two conditions must be met in order to credit with a hold: 1) He enters with a lead of 3 runs or less & maintains that lead while recording at least one out, or 2) He enters the game with the tying run on-deck, at the plate on on the bases and records an out before handing over to another reliever.

COMPARISONS FROM 2021 (THRU 31 GAMES)

Below is a table showing a comparison of Arkansas State baseball through 31 games in 2021 to the first 31 games of this season.

Statistic	2021	2022
Record	10-21	7-24
Batting Average	.255	.249
Runs	177	150
Hits	267	254
Runs Batted In	157	136
Slugging Percentage	.397	.355
On Base Percentage	.361	.348
Times Struck Out	309	266
Sacrifice Flies	12	17
Earned Run Average	8.46	6.51
Hits Allowed	322	312
Runs Allowed	270	240
Earned Runs Allowed	242	191
Walks Allowed	194	172
Strikeouts	207	259
Batting Average Against	.304	.294
Pickoffs	2	6

RUN SUPPORT

Pitcher (Total Starts)	Runs	Per Start
Jakob Frederick (4)	13	3.3
Carter Holt (5)	14	2.8
Will Nash (6)	14	2.3
Walker Williams (1)	2	2.0
Justin Medlin (9)	14	1.6
Tyler Jeans (3)	2	0.7
Treshon Paschal (2)	0	0.0

2022 PITCHER BREAKDOWN

	Starters	Relievers
W-L-S	0-12	7-12-3
ERA	6.03	6.92
Innings Pitched	122.1	141.2
Hits Allowed	158	154
Runs Allowed	105	135
Earned Runs Allowed	82	109
Strikeouts	105	154
Walks Allowed	56	116

GAMES STARTED

Pitcher	2022	Career
Justin Medlin	9	14
Carter Holt	5	30
Tyler Jeans	3	7
Will Nash	6	19
Jakob Frederick	4	4
Treshon Paschal	2	2
Brandon Hudson	1	11
Walker Williams	1	1
Kevin Wiseman	-	3
Max Charlton	-	2

QUALITY STARTS

Pitcher (Total Starts)	Quality Starts	Record
Justin Medlin (9)	2	0-2
Will Nash (6)	1	0-1
Jakob Frederick (4)	1	0-1

MISCELLANEOUS NOTES

NEW LOOK 'BELT COMING SOON...

- The 2022 season marks the end of an era for a pair of Sun Belt Conference schools, as Little Rock departs for the Ohio Valley Conference and UT Arlington heads to the WAC in July.
- The Sun Belt Conference is set to add four new members before the 2023-24 athletic year. James Madison is already set to join the league in 2022 from the Colonial Athletic Association, while Conference USA members Southern Miss, Marshall and Old Dominion are set to join before the 2022-23 academic year.

"HOME GROWN"

- Arkansas State's 2022 roster is full of homegrown talent not just from the state of Arkansas, but the Northeast Arkansas region as well as the nearby Missouri bootheel and Memphis metro area.
- A total of 24 Red Wolves hail from the Natural State, including four Craighead County natives: Wil French (Jonesboro), Sam Fagan (Jonesboro), Jake Algee (Brookland), Sawyer Bentley and Cross Jumper (Jonesboro)

"THE REST IS STILL UNWRITTEN..."

- This season, we're going to add random unwritten rules of the game of baseball, straight out of Paul Dickson's "The Unwritten Rules of Baseball."

Teammates should never mention a no-hitter or perfect game to the pitcher when they realize what is at stake.


THANKS FOR READING!

- If you've made it this far, congratulate yourself! Keep reading, because some knowledge is about to be dropped...
- There is actually a word for someone giving an opinion on something they know nothing about... an "ultracrepidarian" is someone who voices thoughts beyond their expertise.
- Ketchup was once prescribed as a medicine for indigestion back in 1834. Now, it can be a cause of indigestion. Oh, how the tables turn.
- There are 293 different ways to make change for a dollar.
- Minnie Mouse's actual first name is Minerva.
- Brunch was invented as a way of curing hangovers.
- Arkansas State is undefeated in the games it does not lose.

IN-SEASON BIRTHDAYS

Ben Klutts	February 22
Carter Holt	April 13
Bryce Bartlett	April 14
Tyler Jeans	May 11
Walker Williams	May 20


LAST MEETING VS ARKANSAS



2021 Arkansas Baseball

Arkansas State at #1 Arkansas

May 11, 2021 at Fayetteville, Ark. (Baum-Walker Stadium)



Arkansas State 4 (16-25)

Arkansas 8 (37-9)

Player	ab	r	h	bb	so	po	a	lob	wp	sb	cs	st	lf	Player	ab	r	h	bb	so	po	a	lob	wp	sb	cs	st	lf
Tipton, Drew c	4	1	0	1	1	3	0	0	208					Zack Gregory if	2	1	0	0	1	1	0	2	250				
Hicks, Liam c	5	1	1	0	0	2	8	0	1	383				Ethan Bates if	1	0	0	0	0	0	0	0	269				
Kluttz, Ben 3b	3	1	1	0	1	0	2	2	0	323				Braydon Webb if	0	0	0	0	0	0	0	0	447				
Duncan, Tyler rf	4	1	1	2	0	2	1	0	1	314				Matt Goodheart dh	3	1	0	0	2	0	0	0	304				
Deshazier, Jaylon if	2	0	0	0	1	2	1	0	0	257				Cayden Wallace rf	3	2	1	4	1	2	1	0	303				
Culver, Sky-Lar dh	3	0	0	1	2	0	0	0	231					Brady Slavens 1b	3	2	1	1	2	0	6	0	301				
McCutchen, Blake ss	4	0	1	1	0	2	0	0	276					Christian Franklin cf	5	0	1	1	0	1	3	0	482				
Toler, Jared 1b	4	0	0	0	0	2	6	1	5	189				Robert Moore 2b	4	1	1	0	0	1	1	0	288				
Olson, Garrett 2b	3	0	0	0	1	1	3	0	211					Cullen Smith 3b	4	0	2	1	0	0	2	0	277				
Huber, Will ph	1	0	0	0	0	0	0	0	194					Jalen Battles ss	3	0	0	1	1	4	1	2	255				
Jeans, Tyler p	0	0	0	0	0	0	0	0	0					Dylan Leach c	3	1	1	0	1	1	1	1	257				
Anderson, Brandon p	0	0	0	0	0	0	0	0	0					Jaxon Wiggins p	0	0	0	0	0	0	0	0	0				
Albat, Josh p	0	0	0	0	0	0	0	0	0					Heston Toile p	0	0	0	0	0	0	0	0	0				
Gehler, Max p	0	0	0	0	0	0	0	0	0					Lael Lockhart p	0	0	0	0	0	0	0	0	0				
Algee, Jake p	0	0	0	0	0	0	0	0	0					Kole Ramage p	0	0	0	0	0	0	0	0	0				
Stone, Kolin p	0	0	0	0	0	0	0	0	0					Elijah Trest p	0	0	0	0	0	0	0	0	0				
Totals	33	4	4	3	4	12	24	6	7					Zebulon Vermillion p	0	0	0	0	0	0	0	0	0				
														Zack Morris p	0	0	0	0	0	0	0	0	0				
														Ryan Costeu p	0	0	0	0	0	0	0	0	0				
														Connor Noland p	0	0	0	0	0	0	0	0	0				
														Totals	31	8	7	7	8	7	27	5	9				

Score by Innings

Arkansas State

Arkansas

E - Klutts(11); Gehler(1); Smith(6); Battles(9); LOB - A-State 7; Arkansas 9, 2B - Duncan(11); McCutchen(6); Slavens(9); Franklin(4); Smith(26). HR - Wallace(10). HBP - Deshaizer; Gregory; Wallace.

Arkansas State	ip	h	r	er	bb	so	bp	lf	np	era	Arkansas	ip	h	r	er	bb	so	bp	lf	np	era	
Jeans, Tyler	4.0	3	5	5	6	4	15	22	79	7.53		Jaxon Wiggins	2.0	1	0	0	0	3	7	7	31	3.86
Anderson, Brandon	2.0	1	0	0	0	2	7	7	27	6.75		Heston Toile	1.0	0	0	0	0	1	3	10	6.00	
Albat, Josh	0.0	1	2	2	1	0	1	2	7	13.00		Lael Lockhart	2.0	0	0	0	0	3	6	6	22	4.57
Gehler, Max	1.0	2	1	0	5	5	5	16	27	0.00		Kole Ramage	1.0	0	0	0	1	2	3	4	18	6.86
Algee, Jake	0.2	0	0	0	1	0	2	4	21	6.00		Elijah Trest	0.2	1	1	1	1	3	5	14	3.60	
Stone, Kolin	0.1	0	0	0	0	1	1	1	4	4.95		Zebulon Vermillion	0.1	0	0	0	0	0	1	1	4	4.66
												Zack Morris	0.2	2	3	0	0	5	5	25	4.30	
												Ryan Costeu	0.1	0	0	0	2	2	4	25	4.71	
												Connor Noland	1.0	0	0	0	0	2	3	17	10.57	

Win - Lockhart (2-2). Loss - Jeans (1-3). Save - None.

WP - Gehler(1). HBP - by Jeans (Gregory); by Trest (Deshaizer); by Algee (Wallace); BK - Albat(1). Inherited runners scored: Anderson 1/1; Gehler 1/1; Stone 2/0; Vermillion 2/0; Costeu 1/1. Pitches/strikes: Jeans 79/40; Anderson 27/15; Albat 7/2; Gehler 16/11; Algee 21/12; Stone 4/3; Wiggins 31/20; Toile 10/9; Lockhart 22/16; Ramage 18/9; Trest 14/7; Vermillion 4/3; Morris 25/15; Costeu 16/15; Noland 17/10.

Umpires - HP: Jason Blackburn 1B: Chris Coskey 2B: Joshua Schepis 3B: Michael Mazzarisi

Start: 6:32 pm Time: 3:10 Attendance: 7645

Weather: Rainy and cool

2022 ARKANSAS STATE SERIES-BY-SERIES BREAKDOWN

HITTING														
Opponent	W-L	Avg.	AB	R	H	2B	3B	HR	RBI	SLG%	BB	SO	OB%	SB-A
at Samford	0-3	.243	103	12	25	2	0	4	10	.379	10	25	.313	0-0
Illinois State	2-1	.273	99	11	27	6	0	2	11	.394	11	21	.348	1-1
at Missouri State	0-2	.224	67	4	15	3	0	1	4	.313	5	22	.307	0-0
#15 Texas State	0-3	.178	90	12	16	3	0	1	9	.244	12	24	.288	0-0
at Georgia Southern	0-3	.262	107	12	28	3	1	1	11	.336	10	27	.333	2-2
Coastal Carolina	0-3	.212	99	12	21	2	0	1	10	.263	9	36	.301	1-1
Louisiana	0-3	.216	102	7	22	1	1	0	7	.245	13	23	.316	1-1
at Little Rock	2-0	.311	74	13	23	4	0	2	12	.446	10	18	.402	0-0

PITCHING														
Opponent	W-L-S	ERA	IP	H	R	ER	BB	SO	2B	3B	HR	B/Avg.	WP	HBP
at Samford	0-3-0	10.88	24.0	30	31	29	20	21	6	1	8	.306	3	5
Illinois State	2-1-2	3.67	27.0	25	14	11	16	23	3	0	0	.240	4	3
at Missouri State	0-2-0	8.44	16.0	21	19	15	12	23	5	1	4	.304	2	5
#15 Texas State	0-3-0	5.33	27.0	31	20	16	11	28	9	0	1	.279	4	5
at Georgia Southern	0-3-0	8.03	24.2	38	26	22	21	17	5	2	4	.352	4	6
Coastal Carolina	0-3-0	7.00	27.0	29	25	21	19	20	7	0	2	.299	4	2
Louisiana	0-3-0	4.50	28.0	32	22	14	14	20	9	0	0	.291	3	2
at Little Rock	2-0-1	5.50	18.0	23	11	11	6	18	5	1	2	.311	1	0

"JUST SITTING OUT HERE WATCHING AIRPLANES"

Due to Tomlinson Stadium's close proximity to the Jonesboro Municipal Airport, there has been a tally of in-game flyovers for A-State home games since March 20. The aircraft has to fly over the vicinity of The Tom between the first pitch and the final out. In the event of a weather delay, the clock stops. Below is a breakdown of in-game flyovers.

Date/Opponent	Number of flyovers
March 20 vs Texas State	11
March 29 vs Central Arkansas	0 (high winds)
April 1 vs Coastal Carolina	0
April 2 vs Coastal Carolina	1
April 3 vs Coastal Carolina	2
April 8 vs Louisiana	0
April 9 vs Louisiana	2
April 10 vs Louisiana	0 (high winds)

AND EMERGENCY VEHICLES

Tomlinson Stadium is also near a main road in Jonesboro known as Red Wolf Boulevard, so we also keep track of emergency vehicles en route to



22 TOMMY RAFFO

Head Coach | 14th Season

Mississippi State (1990)

Career Record: 337-380-1 (.470)



THE RAFFO FILE

PERSONAL

Hometown: Jacksonville, Fla.
Wife: Paula
Children: Claudia, Anna & Ford
College: Mississippi State, 1990

PLAYING CAREER

1987-1990 Mississippi State
 1990 Miami Miracle
 1991-92 Cincinnati Reds
 Organization
 1993 St. Paul Saints

COACHING CAREER

1994-97 Mississippi State (vol. asst.)
 1998-2008 Mississippi State (asst.)
 2009-Present Arkansas State

RAFFO YEAR BY YEAR

As a Head Coach (14 seasons)

Year	School	Record
2009	Arkansas State	23-30
2010	Arkansas State	30-28
2011	Arkansas State	27-31-1
2012	Arkansas State	34-23
2013	Arkansas State	28-31
2014	Arkansas State	32-27
2015	Arkansas State	27-30
2016	Arkansas State	29-29
2017	Arkansas State	28-27
2018	Arkansas State	20-32
2019	Arkansas State	26-29
2020	Arkansas State	7-9
2021	Arkansas State	19-30
2022	Arkansas State	7-24

As an Assistant (15 seasons)

Year	School	Record
1994-2008	Mississippi State	570-349

COACHING HONORS

- 2012 Sun Belt Conference Ron Maestri Coach of the Year
- 2007 Fellowship of Christian Athletes SEC Coach of the Year

MISCELLANEOUS

- ABCA Division I All-America & Coach of the Year Committee (2013-pres.; chair 2018-pres.)

- Named head coach at Arkansas State following the 2008 season after serving as an assistant coach at Mississippi State from 1994-2008 under coaches Pat McMahon and Ron Polk.
- Fifth head coach in A-State baseball history since 1947.
- 2012 Ron Maestri Sun Belt Conference Coach of the Year.
- Owens a 17-16 record in Sun Belt Conference Tournament play. From 1999 until Raffo's arrival, A-State went 1-18 in the SBC Tournament.
- A-State is the only program to win two games at the conference tournament in every year from 2010-17.
- Has had 17 players drafted since arriving in 2019 and has sent 22 players to the minor leagues and higher. Two players - Daniel Wright and Tyler Zuber - have reached the Major Leagues during his tenure.
- In 2021, A-State boasted one of the top power outputs in program history, launching a Raffo-era record 60 homers. The team finished strong after a rough 3-12 start, going 16-18 the rest of the way.

MILESTONE VICTORIES

WIN	DATE	RESULT
1	2/20/2009	A-State 4, Texas State 3
50	5/14/2010	A-State 5, Troy 4
100	4/13/2012	W, 5-0, vs Western Kentucky
150	3/11/2014	W, 27-7 at Murray State
200	5/21/2015	A-State 6, Georgia Southern 1
250	4/22/2017	A-State 12, South Alabama 10
300	4/16/2019	A-State 8, Southeast Missouri 4

RAFFO VS 2022 OPPONENTS

	W/L	Home	Away	Neutral
Arkansas	0-1	--	0-1	--
Central Arkansas	6-3	4-0	2-3	--
Coastal Carolina	2-10	0-6	2-4	--
Georgia Southern	7-15	4-5	2-10	1-0
Georgia State	7-9	3-2	2-7	2-0
Illinois State	7-9	6-7	1-2	--
Little Rock	34-15	18-8	16-7	--
Louisiana	16-27	7-11	7-14	2-2
Memphis	11-12	6-5	5-7	--
MVSU	7-1	7-1	--	--
Missouri State	9-14	7-5	2-9	--
Ole Miss	4-22	4-8	0-14	--
SEMO	12-12	8-6	4-6	--
South Alabama	16-22	10-11	4-8	2-3
Southern Illinois	8-6	6-4	2-2	--
Texas State	14-13	6-6	6-6	2-1
Troy	16-27	3-12	8-10	5-5
ULM	22-15	11-7	11-7	0-1
UT Arlington	7-19	1-8	4-6	2-5



POLL WATCH

BASEBALL AMERICA

Rank	Team	W-L	Prev.
1	Tennessee	33-3	1
2	Oklahoma State	26-10	3
3	Oregon State	27-7	5
4	Arkansas	28-7	7
5	Miami (Fla.)	28-8	2
6	Stanford	20-11	11
7	Southern Miss	27-8	14
8	Virginia	27-9	6
9	Florida State	22-13	19
10	Oregon	24-11	21
11	Virginia Tech	23-9	NR
12	Gonzaga	23-9	15
13	Louisville	24-11	9
14	Notre Dame	21-8	10
15	TCU	24-12	NR
16	UCLA	23-11	13
17	Texas Tech	26-12	4
18	Georgia	26-10	12
19	Georgia Southern	24-11	NR
20	Texas	26-12	8
21	Texas State	28-9	18
22	Maryland	29-7	22
23	Auburn	24-10	17
24	Wofford	27-9	25
25	Dallas Baptist	23-12	20

D1 BASEBALL

Rank	Team	W-L	Prev.
1	Tennessee	33-3	1
2	Oregon State	27-7	3
3	Oklahoma State	26-10	5
4	Arkansas	28-7	6
5	Miami (Fla.)	28-8	2
6	Southern Miss	27-8	11
7	Stanford	20-11	22
8	Virginia Tech	23-9	21
9	Texas Tech	27-12	4
10	Texas	26-12	7
11	Virginia	27-9	8
12	Gonzaga	23-9	14
13	UCLA	24-11	12
14	Georgia	26-10	13
15	UConn	28-7	18
16	Louisville	24-11	9
17	Texas State	28-9	19
18	Notre Dame	21-8	10
19	Auburn	24-12	17
20	Oregon	24-11	NR
21	TCU	24-12	NR
22	LSU	23-12	15
23	Dallas Baptist	23-12	16
24	Maryland	29-7	NR
25	Georgia Southern	24-11	NR

COLLEGIATE BASEBALL

Rank	Team	W-L	Prev.
1	Tennessee	33-3	1
2	Arkansas	28-7	6
3	Oklahoma State	26-10	4
4	Miami (Fla.)	28-8	2
5	Vanderbilt	25-10	11
6	Stanford	20-11	15
7	Oregon State	27-7	16
8	Rutgers	30-6	22
9	Texas State	28-9	18
10	Oregon	24-11	21
11	Louisville	24-11	3
12	UCLA	24-11	9
13	UC Santa Barbara	24-8	19
14	UConn	28-7	25
15	Southern Miss	27-8	27
16	Virginia	27-9	5
17	Notre Dame	21-8	7
18	Texas	26-12	10
19	Arizona	24-12	12
20	Georgia	26-10	13
21	Auburn	24-12	14
22	TCU	24-12	NR
23	N.C. State	23-11	NR
24	Florida State	22-13	NR
25	Central Michigan	23-10	30
26	Cal Poly	22-13	26
27	Texas A&M	22-13	NR
28	West Virginia	22-12	24
29	Gonzaga	23-9	28
30	Grand Canyon	25-12	29

PERFECT GAME

Rank	Team	W-L	Prev.
1	Tennessee	33-3	1
2	Oregon State	27-7	5
3	Oklahoma State	26-10	3
4	Arkansas	28-7	9
5	Southern Miss	27-8	11
6	Miami (Fla.)	28-8	2
7	Gonzaga	23-9	10
8	UConn	28-7	14
9	Virginia Tech	23-9	17
10	TCU	24-12	21
11	Texas	26-12	7
12	Oregon	24-11	12
13	Notre Dame	21-8	13
14	Virginia	27-9	8
15	Texas Tech	27-12	6
16	Grand Canyon	25-12	23
17	Florida State	22-13	NR
18	Stanford	20-11	NR
19	Vanderbilt	25-10	24
20	UCLA	24-11	13
21	Rutgers	30-6	NR
22	Louisville	24-11	12
23	Georgia	26-10	16
24	LSU	23-12	15
25	Auburn	24-12	19

NCBWA

Rank	Team	W-L	Prev.
1	Tennessee	33-3	1
2	Oregon State	27-7	2
3	Arkansas	28-7	4
4	Oklahoma State	26-10	7
5	Miami (Fla.)	28-8	3
6	Southern Miss	27-8	15
7	Texas	26-12	6
8	Stanford	20-11	18
9	Texas Tech	27-12	5
10	Gonzaga	23-9	16
11	Virginia	27-9	8
12	Georgia	26-10	10
13	UConn	28-7	21
14	Notre Dame	21-8	9
15	UCLA	24-11	13
16	Virginia Tech	23-9	28
17	Louisville	24-11	11
18	Texas State	28-9	24
19	Maryland	29-7	22
20	Vanderbilt	25-10	17
21	TCU	24-12	26
22	Oregon	24-11	RV
23	LSU	23-12	12
24	Dallas Baptist	23-12	19
25	Auburn	24-12	23
26	Florida State	22-13	29
27	Arizona	24-12	14
28	Rutgers	30-6	RV
29	Georgia Southern	24-11	RV
30	Mercer	31-5	NR

USA TODAY/COACHES

Rank	Team	W-L	Prev.
1	Tennessee (30)	33-3	1
2	Oregon State (11)	27-7	2
3	Arkansas	28-7	5
4	Oklahoma State	26-10	6
5	Miami (Fla.)	28-8	3
6	Southern Miss	27-8	14
7	Texas	26-12	7
8	Texas Tech	27-12	4
9	Virginia	27-9	8
10	Georgia	26-10	10
11	Gonzaga	23-9	15
12	Stanford	20-11	23
13	Virginia Tech	23-9	NR
14	UCLA	24-11	13
15	Notre Dame	21-8	9
16	UConn	28-7	21
17	Texas State	28-9	20
18	Louisville	24-11	11
19	Vanderbilt	25-10	17
20	TCU	24-12	RV
21	Maryland	29-7	24
22	Auburn	24-12	22
23	Oregon	24-11	RV
23	LSU	23-12	12
25	Dallas Baptist	23-12	RV

2022 HONORS AND AWARDS

#4 Jared Toler

D1 Baseball 2023 Top 20 SBC Prospects - No. 18

#8 Cason Tollett

Perfect Game 2023 Top Prospects - No. 11

D1 Baseball 2022 Top 40 SBC Prospects - No. 32

Buster Posey National Collegiate Catcher of the Year Watch List

#9 Ben Klutts

Collegiate Baseball Preseason Sun Belt Player of the Year

Perfect Game Preseason All-Sun Belt Conference

D1 Baseball Preseason Top 50 Third Basemen - No. 45

Preseason All-Sun Belt Conference

Bobby Bragan Collegiate Slugger Award Watch List

Senior CLASS Award Candidate (one of 30 athletes)

#25 Max Charlton

D1 Baseball 2023 Top 20 SBC Prospects - No. 18

#29 Kevin Wiseman

D1 Baseball 2022 Top 40 SBC Prospects - No. 34



THE LAST TIME...

An A-State Team...

Swept a three-game series	April 30-May 2, 2021 at Austin Peay
Swept a non-conference three-game series	April 30-May 2, 2021 at Austin Peay
Swept a three-game SBC series	April 1-3, 2021 vs Little Rock
Played an extra-inning game	April 10, 2022 vs Louisiana (L 4-7 [10])
Won an extra-inning game	March 29, 2022 vs Central Arkansas (4-3 [11])
Shut out an SBC opponent in consecutive games	March 23, 1996 vs Jacksonville (DH)
Won a game on a walk-off hit	March 29, 2022 vs Central Arkansas (Mickey Coyne)
Won a game on a walk-off home run	Feb. 24, 2019 vs Valparaiso (Alex Howard)
Won a game on a walk-off sac fly	May 15, 2015 vs Little Rock (Stuart Levy)
Won a game on a walk-off fielder's choice	April 24, 2016 vs ULM (Neil Lambert)
Won a game on a walk-off wild pitch	March 15, 2016 vs SIU
Won a game on a walk-off hit-by-pitch	Feb. 20, 2018 vs SMO (Jacob Jablonski)
Shut out an opponent	May 8, 2021 vs Georgia Southern [DH-1] (4-0)
Was shut out	April 8, 2022 vs Louisiana (10-0)
Shut out a Sun Belt opponent	May 8, 2021 vs Georgia Southern [DH-1] (4-0)
Was shut out by a Sun Belt opponent	April 8, 2022 vs Louisiana (10-0)
Beat a ranked opponent	Feb. 29, 2020 at #18 Dallas Baptist (11-7)
Won a series against a ranked opponent	March 28-30, 2018 vs #30 Coastal Carolina
Won 10+ consecutive games	1993
Won 9-straight Sun Belt Conference games	1997
Won 10-straight games at home	1995 (14)

An A-State Offense Had...

10+ runs	13 vs Mississippi Valley State (March 2, 2022)
20+ runs	May 4, 2019 vs Appalachian State (27-8)
30+ runs	March 24, 2018 vs ULM (31-7)
15+ hits	16 at #9 Ole Miss (May 4, 2021)
20+ hits	Feb. 26, 2020 vs Mississippi Valley State (21)
5+ doubles	5 vs Mississippi Valley State (March 2, 2022)
8+ doubles	8 vs SMO (April 4, 2017)
3+ triples	3 at South Alabama (April 28, 2018)
5+ home runs	April 10, 2005 vs Little Rock (8)
Back-to-back home runs	April 30, 2021 at Austin Peay (Will Huber/Drew Tipton)
10+ walks	15 vs Mississippi Valley State (March 1, 2022)
5+ Hit-by-Pitch	6 vs Mississippi Valley State (March 1, 2022)
5+ stolen bases	6 vs Valparaiso (Feb. 25, 2019)
8+ stolen bases	8 vs Georgia State (April 9, 2017)

An A-State Batter Had...

Led off a game with a home run	Drew Tipton at Texas State (April 23, 2021)
Hit for the cycle	Ryan Hudgins vs UT Martin (April 17, 2007)
Walk-Off Hit	Justin Felix vs Little Rock (May 19, 2017)
Walk-Off Home Run	Alex Howard vs Valparaiso (Feb. 24, 2019)
7 at-bats	Three players at ULM (March 24, 2018)
6+ at-bats	Three players at #9 Ole Miss (May 4, 2021)
6 hits	Jaylon Deshazier vs Mississippi Valley State (Feb. 26, 2020)
5 hits	Winston Welch vs Louisiana (March 29, 2018)
7 runs	Austin Baker (7) at Murray State (March 11, 2014)
5+ runs	Liam Hicks (5) vs Mississippi Valley State (Feb. 26, 2020)
3+ doubles	Alex Howard (3) vs Missouri State (March 10, 2019)
2 triples	Garrett Rucker at Northwestern State (Feb. 26, 2017)
A grand slam	Tyler Duncan at Texas State (April 25, 2021)
A pinch-hit home run	Brandon Hager at Southern Illinois (March 23, 2022)
2 home runs	Liam Hicks at Austin Peay (May 2, 2021)
3 home runs	Austin Baker at Murray State (March 11, 2014)
An inside-the-park home run	Tyler Duncan at Louisiana (April 11, 2021)
7+ RBI	Jaylon Deshazier (7) at New Orleans (March 3, 2018)
5+ RBI	Jake Gish (5) at Louisiana (April 11, 2021)
10+ Total Bases	Jaylon Deshazier - 10 vs Mississippi Valley State (Feb. 26, 2020)
3+ Stolen Bases	Drew Tipton - 3 at Troy (March 17, 2019)
Walked four times	Justin Felix & Jake Bakamus vs Little Rock (May 19, 2017)
Hit safely in 20+ straight games	Cody Pace (20 - 2009)

An A-State Pitcher...

Threw a no-hitter	Taylor Fowler vs Northwestern (Feb. 19, 2005)
Threw a complete game	Will Nash at Troy (May 15, 2021)
Threw a complete-game shutout	Chandler Hawkins vs Troy (May 23, 2014 - 7 inn.)
Recorded 10+ Strikeouts	Brandon Anderson - 13 vs Mississippi Valley State (Feb. 25, 2020)
Recorded a three-inning save	Jack Jumper at Texas State (April 25, 2021)

An A-State Defense/Pitching Staff...

Struck out 10+ batters	10 at Little Rock (April 14, 2022)
Struck out 15+ batters	16 vs Southern Illinois (March 9, 2022)
Struck out 20+ batters	21 at Georgia Southern (March 20, 2015)
Did not allow a walk	Feb. 28, 2020 at Dallas Baptist
Turned 3+ Double Plays	3 at Troy (May 16, 2021)
Turned a triple play	March 15, 2013 vs Little Rock

A-STATE'S WIN-LOSS BREAKDOWN

Overall	7-24
vs. Top-5 Teams	0-1
vs. Top-10 Teams	
vs. Top-25 Teams	0-3
Non-Conference	5-12
Sun Belt Conference	2-12
At Home	5-13
On the Road	2-11
In Day Games	4-14
In Night Games	3-10
vs Teams .500 or better	4-21
vs Teams Worse than .500	3-2
vs. Left-Handed starter	1-4
vs. Right-Handed starter	7-20
When Starter Receives Decision	0-12
When Reliever Receives Decision	7-12
When Starter Goes 5+ innings	3-11
When Starter Goes <5 innings	4-13
When Scoring First	2-9
When Opponent Scores First	5-15
When Leading After 6 Innings	5-4
When Trailing After 6 Innings	1-18
When Tied After 6 Innings	1-1
When Leading After 8 Innings	4-1
When Trailing After 8 Innings	0-19
When Tied After 8 Innings	1-3
When Leading After 9 Innings	4-0
When Trailing After 9 Innings	0-22
When Tied After 9 Innings	1-1
In One-Run Games	4-6
In Two-Run Games	1-2
In 5+ Run Games	2-12
Weekend Series W-L-T	2-6-0
Series Sweeps/Times Swept	0/6
When Scoring 0-2 Runs	1-7
When Scoring 3-5 Runs	1-11
When Scoring 6-9 Runs	3-6
When Scoring 10+ Runs	2-0
Shutouts/Times Shutout	0/3
In Extra Innings	1-1
When Opponent Scores 4 Runs or Less	4-2
When Opponent Scores 5 Runs or More	3-22
When Out-Hitting Opponent	6-4
When Out-Hit By Opponent	1-17
When Hits Are Equal	0-2
When Hitting a Home Run	4-12
When Opponent Hits a Home Run	1-14
When Errorless	4-1
When Committing One Error	1-10
When Committing 2+ Errors	2-13
When Opponent Is Errorless	1-10
When Opponent Commits One Error	3-11
When Opponent Commits 2+ Errors	3-3
Game 1 of Weekend	2-6
Game 2 of Weekend	2-6
Game 3 of Weekend	0-6
Monday	
Tuesday	2-3
Wednesday	1-3
Thursday	1-0
Friday	2-5
Saturday	1-6
Sunday	0-7

AROUND THE SUN BELT

2022 SUN BELT CONFERENCE STANDINGS

TEAM	SBC	Pct.	GB	Overall	Pct.	Home	Away	Neutral	Last 10	Streak
#17 Texas State	12-3	.800	-	28-9	.757	16-5	12-4	-	7-3	W5
#25 Georgia Southern	11-4	.733	1.0	24-11	.686	15-3	8-8	1-0	7-3	W4
Georgia State	10-5	.667	2.0	23-13	.639	16-2	7-10	0-1	7-3	L3
Troy	9-6	.600	3.0	23-12	.657	16-5	7-7	-	5-5	L1
South Alabama	9-6	.600	3.0	22-12	.647	14-2	8-9	0-1	6-4	W1
Louisiana	9-6	.600	3.0	20-15	.571	13-7	7-5	0-3	7-3	W1
Coastal Carolina	8-6-1	.567	3.5	19-13-1	.591	11-6-1	8-7	-	6-4	W3
Little Rock	6-8	.429	5.5	16-15	.516	14-9	2-6	-	5-5	L3
ULM	5-9-1	.367	6.5	12-21-1	.368	5-12	7-9-1	-	4-6	L1
UT Arlington	4-11	.267	8.0	11-25	.306	9-11	2-13	0-1	2-8	L7
Appalachian State	3-12	.200	9.0	11-22	.333	4-9	6-12	1-1	1-9	L3
Arkansas State	2-12	.143	9.5	7-24	.226	5-13	2-11	-	2-8	W2

SCHEDULE/RESULTS

Tuesday, April 19

Kennesaw State at Georgia State	3 p.m.
Appalachian State at Wake Forest	5 p.m.
Coastal Carolina at Charlotte	
Little Rock at Louisiana Tech	
South Alabama at Southeastern Louisiana	6 p.m.
UTSA at #17 Texas State	
UT Arlington at #21 TCU	
Arkansas State at #4 Arkansas	6:30 p.m.
Louisiana at #22 LSU	

Wednesday, April 20

Arkansas State at #4 Arkansas	4 p.m.
#25 Georgia Southern at Florida State	6 p.m.
McNeese at ULM	

Friday-Sunday, April 22-24

Appalachian State at ULM
Troy at Arkansas State
UT Arlington at Coastal Carolina
#25 Georgia Southern at South Alabama
Louisiana at Georgia State
Little Rock at #17 Texas State

PLAYER/PITCHER OF THE WEEK

PLAYER OF THE WEEK
2/22 Connor Kimple - Louisiana
3/1 Eric Brown - Coastal Carolina
3/8 Dalton Shuffield - Texas State
3/15 Cameron Jones - Georgia State
3/22 Luke Boynton - Georgia State
3/29 Tyler Johnson - Coastal Carolina
4/5 Max Ryerson - Georgia State
4/12 Easton Kirk - Troy
4/19 --ANNOUNCED TUESDAY--

PITCHER OF THE WEEK

2/22 Xander Hamilton - App State
3/1 Zeke Wood - Texas State
3/8 Miles Smith - South Alabama
3/15 Jeff Wilson - Louisiana
3/22 Garrett Gainous - Troy
3/29 Bo Bonds - Louisiana
4/5 Levi Wells - Texas State
4/12 Garrett Gainous - Troy
4/19 --ANNOUNCED TUESDAY--



PRESEASON COACHES POLL/ALL-SUN BELT CONFERENCE

PRESEASON COACHES POLL

1. South Alabama (7) - 139
2. Georgia Southern - 118
3. Coastal Carolina (3) - 117
- T3. Louisiana (2) - 117
5. UT Arlington - 78
6. Troy - 74
7. Texas State - 71
8. Little Rock - 63
9. ULM - 59
10. Appalachian State - 38
11. Georgia State - 34
12. Arkansas State - 28

PRESEASON ALL-SUN BELT CONFERENCE

SP - Miles Smith, South Alabama
 SP - Hayden Arnold, Little Rock
 SP - Tyler Tuthill, App State
 RP - Brandon Talley, Louisiana
 C - Caleb Bartolero, Troy
 1B - Jason Swan, Georgia Southern
 2B - Luke Drumheller, App State
 SS - Eric Brown, Coastal Carolina
3B - Ben Klutts, Arkansas State
 OF - Christian Avant, Georgia Southern
 OF - Josh Smith, Georgia State
 OF - Rigsby Mosley, Troy
 UT - Cameron Jones, Georgia State
 DH - Noah Ledford, Georgia Southern

PRESEASON PLAYER OF THE YEAR

Eric Brown, Coastal Carolina

PRESEASON PITCHER OF THE YEAR

Miles Smith, South Alabama

HITTER SEASON & CAREER BESTS

#1 ELI DAVIS | OF | L/L | JR | BRIGHTON, TENN.

	SEASON	CAREER
Hits	1, 12x, MR: vs Louisiana (4/10/22)	3, 3x, MR: vs App State (5/4/19)
Runs	2, 2x, MR: vs Mississippi Valley State (3/2/22)	3, 2x, MR: vs App State (5/4/19)
RBI	2 vs Mississippi Valley State (3/2/22)	3 at Georgia Southern (5/11/19)
Walks	2 vs Coastal Carolina (4/2/22)	3 vs App State (5/4/19)
HR	1 at Missouri State - 2 (3/13/22)	1, 2x, MR: at Missouri State - 2 (3/13/22)
Strikeouts	3 at Southern Illinois (3/23/22)	3 at Southern Illinois (3/23/22)
Stolen Bases	2 vs Mississippi Valley State (3/2/22)	2 vs Mississippi Valley State (3/2/22)
Assists	1, 2x, MR: at Georgia Southern (3/27/22)	1, 4x, MR: at Georgia Southern (3/27/22)

#2 JAYLON DESHAZIER | OF | R/R | SR | PINE BLUFF, ARK.

	SEASON	CAREER
Hits	3, 2x, MR: at Georgia Southern (3/27/22)	6 vs Mississippi Valley State (2/26/20)
Runs	2, 2x, MR: at Southern Illinois (3/23/22)	4 vs Appalachian State (5/4/19)
RBI	4 vs Mississippi Valley State (3/1/22)	7 at New Orleans (3/3/18)
Walks	2 at Southern Illinois (3/23/22)	3 at Abilene Christian (3/7/21)
HR	--	2 vs ULM (5/21/21)
Strikeouts	3 at Little Rock (4/14/22)	4 at Dallas Baptist (2/28/20)
Stolen Bases	1 at Georgia Southern (3/27/22)	1 at Georgia Southern (3/27/22)
Assists	1, 3x, MR: at Little Rock (4/15/22)	2 at Stephen F. Austin (2/17/19)

#3 GARRETT OLSON | INF | R/R | LINCOLN, NEB.

	SEASON	CAREER
Hits	2, 2x, MR: at Little Rock (4/15/22)	2, 7x, MR: at Little Rock (4/15/22)
Runs	2 at Little Rock (4/14/22)	3 at Illinois State (3/28/21)
RBI	2 at Samford (2/19/22)	3 vs ULM (5/20/21)
Walks	1 at Little Rock (4/14/22)	3 at Illinois State (3/28/21)
HR	1 at Samford (2/19/22)	1, 4x, MR: at Samford (2/19/22)
Strikeouts	2, 2x, MR: at Little Rock (4/15/22)	4 vs Little Rock (4/1/21)
Stolen Bases	1 at Georgia Southern (3/26/22)	1 at Georgia Southern (3/26/22)
Assists	2 at Little Rock (4/15/22)	6, 2x, MR: at Texas State (4/25/21)

#4 JARED TOLER | 1B | L/R | BENTON, ARK.

	SEASON	CAREER
Hits	4 vs Mississippi Valley State (3/2/22)	4 vs Mississippi Valley State (3/2/22)
Runs	3 vs Mississippi Valley State (3/1/22)	4 at Oklahoma (3/14/21)
RBI	3, 2x, MR: at SEMO (4/5/22)	4 at Austin Peay (4/30/21)
Walks	2, 3x, MR: vs Texas State (3/19/22)	3 at Illinois State (3/28/21)
HR	1, 7x, MR: at Little Rock (4/15/22)	1, 9x, MR: at Little Rock (4/15/22)
Strikeouts	4 vs Coastal Carolina (4/2/22)	5 at Louisiana (4/11/21)
Stolen Bases	--	1 at Abilene Christian (3/7/21)
Assists	2 vs Mississippi Valley State (3/1/22)	2 vs Mississippi Valley State (3/1/22)

#6 BLAKE McCUTCHEN | INF/OF | R/R | CABOT, ARK.

	SEASON	CAREER
Hits	1 at Southern Illinois (3/23/22)	4 at Texas State (4/25/21)
Runs	1, 2x, MR: vs Coastal Carolina (4/2/22)	4 at Texas State (4/25/21)
RBI	1 vs Mississippi Valley State (3/1/22)	3, 2x, MR: at Texas State (4/25/21)
Walks	1, 4x, MR: at Southern Illinois (3/23/22)	1, 10x, MR: at Southern Illinois (3/23/22)
HR	--	1 at Texas State (4/25/21)
Strikeouts	1, 2x, MR: vs Coastal Carolina (4/1/22)	3, 2x, MR: vs UT Arlington (5/27/21)
Stolen Bases	--	1, 5x, MR: vs UT Arlington (5/27/21)
Assists	2 at Samford (2/18/22)	6 at Appalachian State (3/20/21)

#7 JUSTIN MEDLIN | 1B/P | L/L | RIPLEY, MISS.

	SEASON	CAREER
Hits	2 vs Coastal Carolina (4/2/22)	2 vs Coastal Carolina (4/2/22)
Runs	--	1, 2x, MR: vs Old Dominion (5/27/21)
RBI	--	1, 2x, MR: vs Old Dominion (5/27/21)
Walks	--	2 at UAB (3/27/21)
HR	--	1 at Southern Miss (5/9/21)
Strikeouts	2 vs Coastal Carolina (4/3/22)	2 vs Coastal Carolina (4/3/22)
Stolen Bases	--	--
Assists	3 vs Louisiana (4/8/22)	3 vs Louisiana (4/8/22)

#8 CASON TOLLETT | C | R/R | LITTLE ROCK, ARK.

	SEASON	CAREER
Hits	2 vs Illinois State (3/4/22)	2 vs Illinois State (3/4/22)
Runs	2 vs Illinois State (3/4/22)	2 vs Illinois State (3/4/22)
RBI	3 vs Texas State (3/18/22)	3 vs Texas State (3/18/22)
Walks	2 vs Memphis (3/15/22)	2 vs Memphis (3/15/22)
HR	1 at Samford (2/18/22)	1 at Samford (2/18/22)
Strikeouts	3 vs Southern Illinois (3/9/22)	3 vs Southern Illinois (3/9/22)
Stolen Bases	--	--
Assists	1, 6x, MR: vs Texas State (3/20/22)	1, 6x, MR: vs Texas State (3/20/22)

#9 BEN KLUTTS | INF | R/R | POTEAU, OKLA.

	SEASON	CAREER
Hits	3 at Little Rock (4/14/22)	4 at Texas State (4/24/21)
Runs	2, 2x, MR: vs SEMO (3/8/22)	4 at Louisiana (4/11/21)
RBI	3, 2x, MR: vs Illinois State (3/4/22)	3, 2x, MR: vs Illinois State (3/4/22)
Walks	2, 2x, MR: vs Memphis (3/15/22)	2, 4x, MR: vs Memphis (3/15/22)
HR	1, 5x, MR: at Little Rock (4/15/22)	1, 14x, MR: at Little Rock (4/15/22)
Strikeouts	3 vs Central Arkansas (3/29/22)	3, 4x, MR: vs Central Arkansas (3/29/22)
Stolen Bases	1 vs Mississippi Valley State (3/2/22)	1 vs Mississippi Valley State (3/2/22)
Assists	6, 2x, MR: vs Louisiana (4/8/22)	6, 2x, MR: vs Louisiana (4/8/22)

#10 JACOB HAGER | OF/INF | R/R | FESTUS, MO.

	SEASON	CAREER
Hits	3 at Samford (2/19/22)	3 at Samford (2/19/21)
Runs	3 vs Mississippi Valley State (3/1/22)	3 vs Mississippi Valley State (3/1/22)
RBI	2 at Samford (2/19/22)	2 at Samford (2/19/21)
Walks	2, 2x, MR: vs Memphis (3/15/22)	2, 2x, MR: vs Memphis (3/15/22)
HR	1 at Samford (2/19/22)	1 at Samford (2/19/21)
Strikeouts	2, 3x, MR: at Little Rock (4/15/22)	2, 3x, MR: at Little Rock (4/15/22)
Stolen Bases	--	--
Assists	--	2, 2x, MR: at Abilene Christian (3/5/21)

#11 BRANDON HAGER | C/1B | R/R | FESTUS, MO.

	SEASON	CAREER
Hits	2, 3x, MR: vs Louisiana (4/8/22)	2, 3x, MR: vs Louisiana (4/8/22)
Runs	2 at Georgia Southern (3/27/22)	2, 3x, MR: at Georgia Southern (3/27/22)
RBI	3 at Southern Illinois (3/23/22)	3 at Southern Illinois (3/23/22)
Walks	3 at Little Rock (4/15/22)	3 at Little Rock (4/15/22)
HR	1, 3x, MR: at Georgia Southern (3/27/22)	1, 3x, MR: at Georgia Southern (3/27/22)
Strikeouts	2 at Georgia Southern (3/26/22)	2, 3x, MR: at Georgia Southern (3/26/22)
Stolen Bases	--	1 at Oklahoma (3/14/21)
Assists	3 vs Louisiana (4/10/22)	3 vs Louisiana (4/10/22)

#15 TRISTEN JAMISON | INF/OF | R/R | NASHVILLE, ARK.

	SEASON	CAREER
Hits	2 at Georgia Southern (3/26/22)	2 at Georgia Southern (3/26/22)
Runs	--	--
RBI	1 at Georgia Southern (3/27/22)	1 at Georgia Southern (3/27/22)
Walks	1 vs Mississippi Valley State (3/1/22)	1 vs Mississippi Valley State (3/1/22)
HR	--	--
Strikeouts	3 vs Coastal Carolina (4/1/22)	3 vs Coastal Carolina (4/1/22)
Stolen Bases	--	--
Assists	--	--

#17 WIL FRENCH | INF | S/R | JONESBORO, ARK.

	SEASON	CAREER
Hits	2, 5x, MR: at Little Rock (4/14/22)	2, 5x, MR: at Little Rock (4/14/22)
Runs	3 vs Mississippi Valley State (3/2/22)	3 vs Mississippi Valley State (3/2/22)
RBI	1, 7x, MR: at Little Rock (4/15/22)	1, 7x, MR: at Little Rock (4/15/22)
Walks	2, 6x, MR: vs Louisiana (4/8/22)	2, 6x, MR: vs Louisiana (4/8/22)
HR	--	--
Strikeouts	3, 2x, MR: at Little Rock (4/14/22)	3, 2x, MR: at Little Rock (4/14/22)
Stolen Bases	1, 4x, MR: vs Louisiana (4/8/22)	1, 4x, MR: vs Louisiana (4/8/22)
Assists	5, 3x, MR: vs Louisiana (4/8/22)	5, 3x, MR: vs Louisiana (4/8/22)

HITTER SEASON & CAREER BESTS

#19 JOHN HOSKYN | C | R/R | STUTTGART, ARK.

	SEASON	CAREER
Hits	--	1, 3x, MR: at Louisiana (4/11/21)
Runs	--	--
RBI	--	3 at Louisiana (4/11/21)
Walks	--	1 at Illinois State (3/26/21)
HR	--	--
Strikeouts	2 vs Louisiana (4/8/22)	2, 2x, MR: vs Louisiana (4/8/22)
Stolen Bases	--	--
Assists	--	--

#21 SAM FAGAN | OF | R/R | JONESBORO, ARK.

	SEASON	CAREER
Hits	--	--
Runs	--	--
RBI	1 vs Southern Illinois (3/9/22)	1 vs Southern Illinois (3/9/22)
Walks	1 vs Coastal Carolina (4/1/22)	1 vs Coastal Carolina (4/1/22)
HR	--	--
Strikeouts	1, 5x, MR: vs Coastal Carolina (4/1/22)	1, 5x, MR: vs Coastal Carolina (4/1/22)
Stolen Bases	--	--
Assists	--	--

#22 KYLER CARMACK | OF | R/R | CABOT, ARK.

	SEASON	CAREER
Hits	--	--
Runs	--	--
RBI	--	--
Walks	--	--
HR	--	--
Strikeouts	--	--
Stolen Bases	--	--
Assists	--	--

#24 BRANDON ULMER | OF | L/R | BOONEVILLE, ARK.

	SEASON	CAREER
Hits	1, 2x, MR: at Georgia Southern (3/27/22)	1, 4x, MR: at Georgia Southern (3/27/22)
Runs	1 vs Mississippi Valley State (3/2/22)	1, 3x, MR: vs Mississippi Valley State (3/2/22)
RBI	1 at Little Rock (4/15/22)	1, 2x, MR: at Little Rock (4/15/22)
Walks	1, 4x, MR: vs Louisiana (4/8/22)	1, 5x, MR: vs Louisiana (4/8/22)
HR	--	--
Strikeouts	2, 3x, MR: vs Louisiana (4/8/22)	2, 4x, MR: vs Louisiana (4/8/22)
Stolen Bases	--	--
Assists	--	--

#30 DAEDRICK CAIL | INF | R/R | MARION, ARK.

	SEASON	CAREER
Hits	3, 2x, MR: at Georgia Southern (3/27/22)	3, 2x, MR: at Georgia Southern (3/27/22)
Runs	2, 2x, MR: vs Coastal Carolina (4/3/22)	2, 2x, MR: vs Coastal Carolina (4/3/22)
RBI	3 vs Coastal Carolina (4/3/22)	3 vs Coastal Carolina (4/3/22)
Walks	2, 2x, MR: vs Coastal Carolina (4/3/22)	2, 2x, MR: vs Coastal Carolina (4/3/22)
HR	1 vs Memphis (3/15/22)	1 vs Memphis (3/15/22)
Strikeouts	2, 3x, MR: at SEMO (4/5/22)	2, 3x, MR: at SEMO (4/5/22)
Stolen Bases	--	--
Assists	4 at Missouri State - 2 (3/13/22)	4 at Missouri State - 2 (3/13/22)

#31 JACKSON HARRIS | INF | R/R | TEXARKANA, ARK.

	SEASON	CAREER
Hits	--	--
Runs	--	--
RBI	--	--
Walks	--	--
HR	--	--
Strikeouts	--	--
Stolen Bases	--	--
Assists	--	--

#32 MICKEY COYNE | UT | L/L | RENO, NEV.

	SEASON	CAREER
Hits	2, 3x, MR: at SEMO (4/5/22)	2, 3x, MR: at SEMO (4/5/22)
Runs	1, 5x, MR: vs Louisiana (4/9/22)	1, 5x, MR: vs Louisiana (4/9/22)
RBI	2 vs Coastal Carolina (4/3/22)	2 vs Coastal Carolina (4/3/22)
Walks	1, 7x, MR: at Little Rock (4/15/22)	1, 7x, MR: at Little Rock (4/15/22)
HR	--	--
Strikeouts	2, 4x, MR: at SEMO (4/5/22)	2, 4x, MR: at SEMO (4/5/22)
Stolen Bases	--	--
Assists	1, 3x, MR: vs Louisiana (4/9/22)	1, 3x, MR: vs Louisiana (4/9/22)

#37 DAWSON CHESTER | INF | R/R | POCAHONTAS, ARK.

	SEASON	CAREER
Hits	--	--
Runs	--	--
RBI	--	--
Walks	--	--
HR	--	--
Strikeouts	--	--
Stolen Bases	--	--
Assists	--	--

#38 TY GORDON | 1B/OF | L/L | NASHVILLE, ARK.

	SEASON	CAREER
Hits	--	--
Runs	--	--
RBI	--	--
Walks	--	--
HR	--	--
Strikeouts	--	--
Stolen Bases	--	--
Assists	--	--

#40 COOPER TREMMEL | OF/C | L/R | LAKELAND, TENN.

	SEASON	CAREER
Hits	3 vs Louisiana (4/10/22)	3 vs Louisiana (4/10/22)
Runs	1, 12x, MR: at Little Rock (4/15/22)	1, 12x, MR: at Little Rock (4/15/22)
RBI	3 vs Mississippi Valley State (3/1/22)	3 vs Mississippi Valley State (3/1/22)
Walks	3 vs Mississippi Valley State (3/1/22)	3 vs Mississippi Valley State (3/1/22)
HR	1 vs Central Arkansas (3/29/22)	1 vs Central Arkansas (3/29/22)
Strikeouts	3 at Samford (2/18/22)	3 at Samford (2/18/22)
Stolen Bases	--	--
Assists	3 vs Mississippi Valley State (3/2/22)	3 vs Mississippi Valley State (3/2/22)



PITCHER SEASON & CAREER BESTS

#5 JONATHAN BALDELLI | RHP | SR | BARTLETT, TENN.

SEASON	CAREER
IP (Start) --	8.1 at West Florida (3/20/21)
IP (Relief) 2.0 vs Louisiana (4/10/22)	2.0, 3x, MR: vs Louisiana (4/10/22)
Strikeouts 2, 2x, MR: vs Central Arkansas (3/29/22)	7, 3x, MR: at West Florida (3/20/21)
Walks 1, 4x, MR: vs Memphis (3/15/22)	6 vs Southwest Baptist (2/1/20)
Hits Allowed 4 at Southern Illinois (3/23/22)	14 vs Mississippi College (4/11/21)
Runs Allowed 2, 3x, MR: at Little Rock (4/15/22)	9, 2x, MR: at West Georgia (5/1/21)
ER Allowed 2, 2x, MR: at Little Rock (4/15/22)	9 at Delta State (2/21/20)

#7 JUSTIN MEDLIN | LHP | SR | RIPLEY, MISS.

SEASON	CAREER
IP (Start) 6.0, 3x, MR: vs Coastal Carolina (4/1/22)	6.0, 3x, MR: vs Coastal Carolina (4/1/22)
IP (Relief) 1.0 vs Mississippi Valley State (3/1/22)	2.2 vs Louisiana Tech (4/30/21)
Strikeouts 8 at Georgia Southern (3/25/22)	8 at Georgia Southern (3/25/22)
Walks 4 vs Illinois State - 2 (3/5/22)	4, 2x, MR: vs Illinois State - 2 (3/5/22)
Hits Allowed 9 vs Louisiana (4/8/22)	9 vs Louisiana (4/8/22)
Runs Allowed 8 vs Louisiana (4/8/22)	8 vs Louisiana (4/8/22)
ER Allowed 7 vs Louisiana (4/8/22)	7 vs Louisiana (4/8/22)

#12 PHILLIP BRYANT | RHP | RSO | LITTLE ROCK, ARK.

SEASON	CAREER
IP (Relief) 2.0, 3x, MR: vs Central Arkansas (3/29/22)	2.0, 3x MR: vs Central Arkansas (3/29/22)
Strikeouts 4 vs Southern Illinois (3/9/22)	4 vs Southern Illinois (3/9/22)
Walks 3 vs Central Arkansas (3/29/22)	3, 4x, MR: vs Central Arkansas (3/29/22)
Hits Allowed 2, 3x, MR: vs Louisiana (4/8/22)	3, 2x, MR: at Mississippi State (4/13/21)
Runs Allowed 3 at Samford (2/20/22)	5 at Mississippi State (4/13/21)
ER Allowed 3 at Samford (2/20/22)	5 at Mississippi State (4/13/21)

#13 WALKER WILLIAMS | LHP | RFR | SPRINGDALE, ARK.

SEASON	CAREER
IP (Start) 2.0 at Ole Miss (2/23/22)	2.0 at Ole Miss (2/23/22)
IP (Relief) 1.1 at Southern Illinois (3/23/22)	4.0 at Oklahoma (3/14/21)
Strikeouts 3 vs Illinois State (3/4/22)	3, 2x, MR: vs Illinois State (3/4/22)
Walks 4 at Ole Miss (2/23/22)	4, 2x, MR: at Ole Miss (2/23/22)
Hits Allowed 4 at Ole Miss (2/23/22)	4, 2x, MR: at Ole Miss (2/23/22)
Runs Allowed 5 at Ole Miss (2/23/22)	5 at Ole Miss (2/23/22)
ER Allowed 5 at Ole Miss (2/23/22)	5 at Ole Miss (2/23/22)

#14 TYLER JEANS | RHP | RJR | TEXARKANA, ARK.

SEASON	CAREER
IP (Start) 4.2 vs Illinois State - 1 (3/5/22)	4.2 vs Illinois State - 1 (3/5/22)
IP (Relief) 3.0, 3x, MR: vs Louisiana (4/10/22)	4.1 at Illinois State (3/26/21)
Strikeouts 2, 6x, MR: at Little Rock (4/15/22)	7 vs Little Rock (4/2/21)
Walks 3, 4x, MR: vs Louisiana (4/10/22)	6 at Arkansas (5/11/21)
Hits Allowed 8 at Samford (2/20/22)	8 at Samford (2/20/22)
Runs Allowed 7 at Samford (2/20/22)	7 at Samford (2/20/22)
ER Allowed 6 at Samford (2/20/22)	6 at Samford (2/20/22)

#16 BRANDON ANDERSON | RHP | SR | OMAHA, NEB.

SEASON	CAREER
IP (Start) --	6.0 vs Mississippi Valley State (2/25/20)
IP (Relief) 1.2, 3x, MR: at Little Rock (4/14/22)	4.0 vs ULM (5/22/21)
Strikeouts 4 at Little Rock (4/14/22)	13 vs Mississippi Valley State (2/25/20)
Walks 5 at Georgia Southern (3/27/22)	5 at Georgia Southern (3/27/22)
Hits Allowed 2, 4x, MR: vs Louisiana (4/9/22)	8 at Oklahoma (3/15/21)
Runs Allowed 3, 2x, MR: vs Coastal Carolina (4/3/22)	7 at Oklahoma (3/15/21)
ER Allowed 3, 2x, MR: vs Coastal Carolina (4/3/22)	7 at Oklahoma (3/15/21)

#18 WILL NASH | RHP | SR | WHEATLEY, ARK.

SEASON	CAREER
IP (Start) 6.0, 2x, MR: at Little Rock (4/15/22)	8.0 vs Troy (5/15/21)
IP (Relief) 2.0, 2x, MR: at Missouri State - 1 (3/13/22)	6.1 vs UT Arlington (5/27/21)
Strikeouts 6, 2x, MR: vs Louisiana (4/9/22)	6, 3x, MR: vs Louisiana (4/9/22)
Walks 6 at Georgia Southern (3/26/22)	6 at Georgia Southern (3/26/22)
Hits Allowed 8 at Little Rock (4/15/22)	8 at Little Rock (4/15/22)
Runs Allowed 5 at Georgia Southern (3/26/22)	6 vs ULM (5/21/21)
ER Allowed 5 at Georgia Southern (3/26/22)	6 vs ULM (5/21/21)

#20 CARTER HOLT | RHP | SR | JACKSON, TENN.

SEASON	CAREER
IP (Start) 5.0, 2x, MR: vs Louisiana (4/10/22)	7.0 vs Mississippi Valley State (2/26/19)
IP (Relief) --	4.0 at Missouri (2/20/18)
Strikeouts 5, 2x, MR: vs Louisiana (4/10/22)	10 vs Mississippi Valley State (2/26/19)
Walks 5 at Samford (2/18/22)	5 at Samford (2/18/22)
Hits Allowed 7 vs Louisiana (4/10/22)	12 at Ole Miss (2/20/19)
Runs Allowed 7, 2x, MR: at Missouri State - 1 (3/13/22)	10 at Ole Miss (2/20/19)
ER Allowed 7 at Samford (2/18/22)	10 at Ole Miss (2/20/19)

#22 KYLER CARMACK | RHP | FR | CABOT, ARK.

SEASON	CAREER
Innings Pitched --	--
Strikeouts --	--
Walks --	--
Hits Allowed --	--
Runs Allowed --	--
ER Allowed --	--

#23 WILL GROSS | RHP | SO | MOUNTAIN HOME, ARK.

SEASON	CAREER
IP (Relief) --	1.1 at Abilene Christian (3/5/21)
Strikeouts --	1 at Abilene Christian (3/5/21)
Walks --	9 at Abilene Christian (3/5/21)
Hits Allowed --	5 at Abilene Christian (3/5/21)
Runs Allowed --	12 at Abilene Christian (3/5/21)
ER Allowed --	12 at Abilene Christian (3/5/21)

#25 MAX CHARLTON | RHP | SO | LENEXA, KAN.

SEASON	CAREER
IP (Start) --	3.2 vs Missouri State (3/10/21)
IP (Relief) 2.0, 4x, MR: vs Louisiana (4/8/22)	3.0 at Central Arkansas (4/20/21)
Strikeouts 2, 7x, MR: vs Louisiana (4/8/22)	4 at Central Arkansas (4/20/21)
Walks 2 at Georgia Southern (3/25/22)	3 at Ole Miss (5/4/21)
Hits Allowed 2, 6x, MR: vs Coastal Carolina (4/3/22)	7 at Illinois State (3/26/21)
Runs Allowed 3, 2x, MR: at Georgia Southern (3/25/22)	7 at Ole Miss (5/4/21)
ER Allowed 3 at Georgia Southern (3/25/22)	4 vs UT Martin (2/27/21)

#27 AUSTIN BROCK | LHP | JR | SENATH, MO.

SEASON	CAREER
IP (Relief) 2.0, 2x, MR: at SEMO (4/5/22)	2.0, 2x, MR: at SEMO (4/5/22)
Strikeouts 3, 2x, MR: at SEMO (4/5/22)	3, 2x, MR: at SEMO (4/5/22)
Walks 3 vs Coastal Carolina (4/2/22)	3 vs Coastal Carolina (4/2/22)
Hits Allowed 4 at Southern Illinois (3/23/22)	4 at Southern Illinois (3/23/22)
Runs Allowed 3 at SEMO (4/5/22)	3 at SEMO (4/5/22)
ER Allowed 2 at Little Rock (4/14/22)	2 at Little Rock (4/14/22)

#28 JAKE ALGEE | RHP | SO | BROOKLAND, ARK.

SEASON	CAREER
IP (Relief) 2.0, 2x, MR: vs Central Arkansas (3/29/22)	4.0 at Louisiana (4/10/21)
Strikeouts 4 at Missouri State - 1 (3/13/22)	4, 2x, MR: at Missouri State - 1 (3/13/22)
Walks 3 vs Coastal Carolina (4/2/22)	3, 2x, MR: vs Coastal Carolina (4/2/22)
Hits Allowed 3, 2x, MR: vs Texas State (3/18/22)	4, 2x, MR: at Ole Miss (5/4/21)
Runs Allowed 4 at Ole Miss (2/23/22)	4, 2x, MR: at Ole Miss (2/23/22)
ER Allowed 4 at Ole Miss (2/23/22)	4, 2x, MR: at Ole Miss (2/23/22)

#29 KEVIN WISEMAN | RHP | RJR | AXTELL, TEXAS

SEASON	CAREER
IP (Start) --	3.1 at North Carolina Central (2/18/18)
IP (Relief) 1.2 vs Texas State (3/20/22)	4.1 at Bryant (4/3/21)
Strikeouts 3 vs Texas State (3/20/22)	6 at Merrimack (4/18/21)
Walks 2 vs Louisiana (4/9/22)	5, 4x, MR: at Fairleigh Dickinson (3/21/21)
Hits Allowed 4 vs Coastal Carolina (4/3/22)	5 at Mount St. Mary's (4/25/21)
Runs Allowed 5 vs Coastal Carolina (4/3/22)	6 at Virginia (3/6/19)
ER Allowed 5 vs Coastal Carolina (4/3/22)	6 at Virginia (3/6/19)

PITCHER SEASON & CAREER BESTS

#32 MICKEY COYNE | LHP | JR | RENO, NEV.

	SEASON	CAREER
IP (Relief)	0.2 vs Memphis (3/15/22)	0.2 vs Memphis (3/15/22)
Strikeouts	1 vs Memphis (3/15/22)	1 vs Memphis (3/15/22)
Walks	2 vs Memphis (3/15/22)	2 vs Memphis (3/15/22)
Hits Allowed	1, 2x, MR: vs Memphis (3/15/22)	1, 2x, MR: vs Memphis (3/15/22)
Runs Allowed	2 vs Southern Illinois (3/9/22)	2 vs Southern Illinois (3/9/22)
ER Allowed	2 vs Southern Illinois (3/9/22)	2 vs Southern Illinois (3/9/22)

#33 BRANDON HUDSON | RHP | JR | ROLAND, ARK.

	SEASON	CAREER
IP (Start)	1.0 at Southern Illinois (3/23/22)	7.0 vs Georgia Southern (5/7/21)
IP (Relief)	1.0, 5x, MR: vs Louisiana (4/8/22)	2.2 at Oklahoma (3/14/21)
Strikeouts	1, 6x, MR: at Georgia Southern (3/26/22)	6, 2x, MR: vs UT Arlington (4/16/21)
Walks	3 vs Memphis (3/15/22)	4, 2x, MR: at Louisiana (4/9/21)
Hits Allowed	3 at Samford (2/19/22)	7, 2x, MR: at Troy (5/14/21)
Runs Allowed	3, 4x, MR: at Southern Illinois (3/23/22)	6 vs UT Arlington (5/27/21)
ER Allowed	3, 3x, MR: vs Memphis (3/15/22)	5 at Troy (5/14/21)

#34 SAWYER BENTLEY | RHP | FR | JONESBORO, ARK.

	SEASON	CAREER
Innings Pitched	--	--
Strikeouts	--	--
Walks	--	--
Hits Allowed	--	--
Runs Allowed	--	--
ER Allowed	--	--

#35 TRESHON PASCHAL | RHP | JR | SPRINGDALE, ARK.

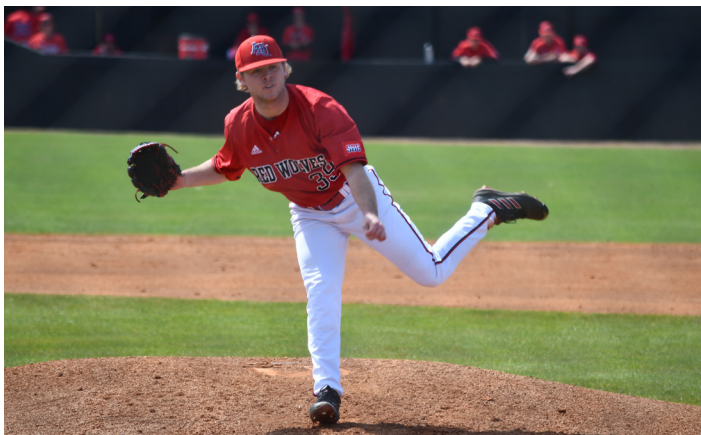
	SEASON	CAREER
IP (Start)	3.0 vs Central Arkansas (3/29/22)	3.0 vs Central Arkansas (3/29/22)
IP (Relief)	1.1 vs Illinois State - 2 (3/5/22)	1.1 vs Illinois State - 2 (3/5/22)
Strikeouts	3, 2x, MR: at SEMO (4/5/22)	3, 2x, MR: at SEMO (4/5/22)
Walks	4 vs SEMO (3/8/22)	4 vs SEMO (3/8/22)
Hits Allowed	6 at SEMO (4/5/22)	6 at SEMO (4/5/22)
Runs Allowed	4 at SEMO (4/5/22)	4 at SEMO (4/5/22)
ER Allowed	4 at SEMO (4/5/22)	4 at SEMO (4/5/22)

#36 WILL GILMER | RHP | SO | SIKESTON, MO.

	SEASON	CAREER
IP (Relief)	0.2 at Georgia Southern (3/26/22)	4.1 vs Missouri State (3/10/21)
Strikeouts	2 at Georgia Southern (3/26/22)	3, 2x, MR: at Texas State (4/23/21)
Walks	2, 2x, MR: at Georgia Southern (3/26/22)	3 at Illinois State (3/28/21)
Hits Allowed	2 at Georgia Southern (3/26/22)	5, 2x, MR: at Oklahoma (3/14/21)
Runs Allowed	4 at Georgia Southern (3/26/22)	6, 2x, MR: at App State (3/21/21)
ER Allowed	4 at Georgia Southern (3/26/22)	6 at App State (3/21/21)

#39 JAKOB FREDERICK | LHP | JR | SACRAMENTO, CALIF.

	SEASON	CAREER
IP (Start)	6.0 vs Texas State (3/20/22)	6.0 vs Texas State (3/20/22)
IP (Relief)	1.0, 3x, MR: at Missouri State - 1 (3/13/22)	1.0, 3x, MR: at Missouri State - 1 (3/13/22)
Strikeouts	5 vs Texas State (3/20/22)	5 vs Texas State (3/20/22)
Walks	3 at Samford (2/19/22)	3 at Samford (2/19/22)
Hits Allowed	8, 2x, MR: vs Coastal Carolina (4/3/22)	8, 2x, MR: vs Coastal Carolina (4/3/22)
Runs Allowed	6 vs Coastal Carolina (4/3/22)	6 vs Coastal Carolina (4/3/22)
ER Allowed	6 vs Coastal Carolina (4/3/22)	vs Coastal Carolina (4/3/22)



2022 PLAYER CAREER STATISTICS

1 ELI DAVIS | OF | 6-0 | 195 | JR | L/L | BRIGHTON, TENN. | BRIGHTON HS

Year	avg	gp-gs	ab	r	h	2b	3b	hr	rbi	tb	slg%	bb	hbp	so	gdp	ob%	sf	sh	sb-att	po	a	e	fld%
2019	.207	39-24	111	21	23	6	1	1	11	34	.306	14	1	26	1	.302	0	1	4-5	65	2	5	.931
2020	.100	12-2	20	1	2	0	0	0	2	2	.100	1	0	5	0	.143	0	0	0-0	6	0	0	1.000
2021	.125	13-0	8	0	1	0	0	0	0	1	.125	0	0	4	0	.125	0	0	1-1	0	0	1	.000
2022	.222	28-21	54	8	12	1	0	1	7	16	.296	9	2	27	0	.343	2	4	2-2	50	2	1	.981
TOTAL	.197	92-47	193	30	38	7	1	2	20	53	.275	24	3	62	1	.293	2	5	7-8	121	4	7	.947

2 JAYLON DESHAZIER | OF | 6-2 | 225 | SR | R/R | PINE BLUFF, ARK. | PINE BLUFF HS

Year	avg	gp-gs	ab	r	h	2b	3b	hr	rbi	tb	slg%	bb	hbp	so	gdp	ob%	sf	sh	sb-att	po	a	e	fld%
2018	.214	30-19	70	14	15	2	0	3	15	26	.371	6	0	26	2	.276	0	0	0-0	18	0	4	.818
2019	.244	51-49	164	30	40	10	1	5	30	67	.409	20	3	52	2	.332	3	0	0-0	89	5	2	.979
2020	.220	16-15	59	6	13	2	0	3	14	24	.407	4	0	17	2	.266	1	0	0-0	21	0	0	1.000
2021	.273	48-48	176	26	48	5	1	7	38	76	.432	22	5	54	4	.364	3	0	0-0	90	4	5	.949
2022	.297	31-31	111	15	33	2	1	0	19	37	.333	12	4	28	0	.368	6	0	1-2	59	3	6	.912
TOTAL	.257	176-162	580	91	149	21	3	18	116	230	.397	64	12	177	10	.336	13	0	1-2	277	12	17	.944

3 GARRETT OLSON | INF | 5-9 | 180 | JR | R/R | LINCOLN, NEB. | SOUTHEAST (NEB.) CC

Year	avg	gp-gs	ab	r	h	2b	3b	hr	rbi	tb	slg%	bb	hbp	so	gdp	ob%	sf	sh	sb-att	po	a	e	fld%
2021	.200	29-23	75	15	15	2	1	3	9	28	.373	8	2	35	0	.287	2	5	0-0	38	59	5	.951
2022	.227	11-3	22	4	5	1	0	1	2	9	.409	1	0	9	0	.261	0	0	1-1	3	4	1	.875
TOTAL	.206	40-26	97	19	20	3	1	4	11	37	.381	9	2	44	0	.282	2	5	1-1	41	63	6	.945

4 JARED TOLER | 1B | 6-1 | 200 | SO | L/R | BENTON, ARK. | HARMONY GROVE HS

Year	avg	gp-gs	ab	r	h	2b	3b	hr	rbi	tb	slg%	bb	hbp	so	gdp	ob%	sf	sh	sb-att	po	a	e	fld%
2021	.226	41-36	133	26	30	7	0	2	12	43	.323	22	3	41	3	.348	0	4	1-1	269	10	3	.989
2022	.264	29-28	110	20	29	5	0	7	25	55	.500	10	2	36	3	.331	2	1	0-0	139	4	5	.966
TOTAL	.243	70-64	243	46	59	12	0	9	37	98	.403	32	5	77	6	.340	2	5	1-1	408	14	8	.981

5 JONATHAN BALDELLI | RHP | 5-9 | 160 | SR | R/R | BARTLETT, TENN. | CHRISTIAN BROTHERS

Year	era	w-l	app	qs	cq	sho	sv	ip	h	r	er	bb	so	2b	3b	hr	bf	bavg	wp	hbp	bk	sfa	sha
2018*	10.12	1-0	16	0	0	0/0	1	16.0	23	20	18	10	13	6	2	2	101	.271	6	4	1	2	0
2019*	7.71	1-5	15	6	0	0/0	0	37.1	55	39	32	18	20	10	5	0	226	.288	17	10	1	4	3
2020*	9.00	1-3	5	5	1	0/0	0	22.0	32	27	22	13	19	6	1	2	145	.262	7	6	0	3	1
2021*	5.86	2-8	12	12	1	0/0	0	70.2	88	57	46	31	46	15	1	5	384	.263	11	9	0	3	7
2022	3.95	1-0	14	0	0	0/0	0	13.2	14	8	6	4	12	6	0	0	59	.275	4	2	0	1	1
TOTAL	3.95	1-0	14	0	0	0/0	0	13.2	14	8	6	4	12	6	0	0	59	.275	4	2	0	1	1
All*	6.99	6-16	62	23	2	0/0	1	159.2	212	151	124	76	110	43	9	9	915	.271	45	31	2	13	12

* Statistics from prior team/school

6 BLAKE McCUTCHEN | INF | 6-0 | 165 | SR | R/R | CABOT, ARK. | DYERSBURG STATE (TENN.) CC

Year	avg	gp-gs	ab	r	h	2b	3b	hr	rbi	tb	slg%	bb	hbp	so	gdp	ob%	sf	sh	sb-att	po	a	e	fld%
2021	.275	44-42	149	19	41	6	1	1	17	52	.349	6	9	35	1	.339	1	6	5-6	77	94	11	.940
2022	.063	15-2	16	2	1	0	0	0	1	1	.063	4	1	3	1	.286	0	0	0-0	10	3	0	1.000
TOTAL	.255	59-44	165	21	42	6	1	1	18	53	.321	10	10	38	2	.333	1	6	5-6	87	97	11	.944

7 JUSTIN MEDLIN | LHP/1B | 6-0 | 220 | SR | L/L | RIPLEY, MISS. | MIDDLE TENNESSEE

Year	avg	gp-gs	ab	r	h	2b	3b	hr	rbi	tb	slg%	bb	hbp	so	gdp	ob%	sf	sh	sb-att	po	a	e	fld%
2020*	.091	9-7	11	0	1	0	0	0	0	1	.091	0	0	3	0	.091	0	0	0-0	1	1	1	.667
2021*	.286	12-1	7	2	2	1	0	1	2	6	.857	3	0	3	0	.500	0	0	0-1	0	0	0	.000
2022	.250	2-2	8	0	2	1	0	0	0	3	.375	0	0	3	0	.250	0	0	0-0	0	9	1	.900
TOTAL	.250	2-2	8	0	2	1	0	0	0	3	.375	0	0	3	0	.250	0	0	0-0	0	9	1	.900
All*	.192	23-10	26	2	5	2	0	1	2	10	.385	3	0	9	0	.276	0	0	0-1	1	10	2	.846

Year	era	w-l	app	qs	cq	sho	sv	ip	h	r	er	bb	so	2b	3b	hr	bf	bavg	wp	hbp	bk	sfa	sha
2020*	7.30	1-3	4	4	0	0/1	0	12.1	11	11	10	9	10	1	1	2	0	.229	2	3	0	0	0
2021*	10.57	0-0	6	1	0	0/0	0	7.2	9	10	9	5	6	3	1	1	0	.300	3	2	0	1	0
2022	4.33	0-4	10	9	0	0/0	0	43.2	48	24	21	21	42	11	1	3	200	.286	2	1	0	2	8
TOTAL	4.33	0-4	10	9	0	0/0	0	43.2	48	24	21	21	42	11	1	3	200	.286	2	1	0	2	8
All*	5.65	1-7	20	14	0	0/1	0	63.2	68	45	40	35	58	15	3	6	200	.276	7	6	0	3	8

* Statistics from prior team/school

2022 PLAYER CAREER STATISTICS

8 CASON TOLLETT | C | 6-1 | 210 | RFR | R/R | LITTLE ROCK, ARK. | ARKANSAS

Year	avg	gp-gs	ab	r	h	2b	3b	hr	rbi	tb	slg%	bb	hbp	so	gdp	ob%	sf	sh	sb-att	po	a	e	fld%
2020*	.000	1-0	1	0	0	0	0	0	0	0	.000	0	0	0	0	.000	0	0	0-0	0	0	0	.000
2022	.151	17-17	53	4	8	3	0	1	7	14	.264	4	1	11	3	.224	0	0	0-0	98	6	3	.972
TOTAL	.151	17-17	53	4	8	3	0	1	7	14	.264	4	1	11	3	.224	0	0	0-0	98	6	3	.972
All*	.148	18-17	54	4	8	3	0	1	7	14	.259	4	1	11	3	.220	0	0	0-0	98	6	3	.972

* Statistics from prior team/school

9 BEN KLUTTS | INF | 6-3 | 220 | SR | R/R | POTEAU, OKLA. | CARL ALBERT STATE COLLEGE

Year	avg	gp-gs	ab	r	h	2b	3b	hr	rbi	tb	slg%	bb	hbp	so	gdp	ob%	sf	sh	sb-att	po	a	e	fld%
2020	.364	16-16	66	16	24	2	1	2	10	34	.515	6	4	11	1	.447	0	0	0-1	9	33	4	.913
2021	.320	49-49	197	35	63	16	1	7	28	102	.518	14	15	48	5	.400	4	0	0-2	42	75	11	.914
2022	.263	31-31	114	21	30	6	1	5	21	53	.465	16	6	21	2	.371	4	0	1-1	23	50	6	.924
TOTAL	.310	96-96	377	72	117	24	3	14	59	189	.501	36	25	80	8	.399	8	0	1-4	74	158	21	.917

10 JACOB HAGER | OF/INF | 6-0 | 215 | SO | R/R | FESTUS, MO. | LUTHERAN SOUTH HS

Year	avg	gp-gs	ab	r	h	2b	3b	hr	rbi	tb	slg%	bb	hbp	so	gdp	ob%	sf	sh	sb-att	po	a	e	fld%
2021	.125	10-2	8	2	1	0	0	0	0	1	.125	1	0	4	0	.222	0	0	0-0	4	6	2	.833
2022	.346	21-15	52	13	18	4	0	1	5	25	.481	9	0	12	1	.443	0	0	0-0	13	0	1	.929
TOTAL	.317	31-17	60	15	19	4	0	1	5	26	.433	10	0	16	1	.414	0	0	0-0	17	6	3	.885

11 BRANDON HAGER | C | 6-1 | 250 | SO | R/R | FESTUS, MO. | LUTHERAN SOUTH HS

Year	avg	gp-gs	ab	r	h	2b	3b	hr	rbi	tb	slg%	bb	hbp	so	gdp	ob%	sf	sh	sb-att	po	a	e	fld%
2021	.129	16-8	31	7	4	2	0	0	2	6	.194	6	1	12	2	.289	0	0	1-1	23	1	1	.960
2022	.250	21-14	56	6	14	0	1	3	9	25	.446	12	1	13	2	.391	0	0	0-1	87	10	3	.970
TOTAL	.207	37-22	87	13	18	2	1	3	11	31	.356	18	2	25	4	.355	0	0	1-2	110	11	4	.968

12 PHILLIP BRYANT | RHP | 5-10 | 185 | RSO | R/R | LITTLE ROCK, ARK. | KANSAS CITY CC

Year	era	w-l	app	qs	cq	sho	sv	ip	h	r	er	bb	so	2b	3b	hr	bf	bavg	wp	hbp	bk	sfa	sha
2021	16.43	0-0	9	0	0	0/0	0	7.2	11	15	14	14	9	2	0	4	51	.333	3	2	1	1	1
2022	5.11	0-0	10	0	0	0/0	0	12.1	8	8	7	14	16	3	0	0	61	.190	2	4	0	1	0
TOTAL	9.45	0-0	19	0	0	0/0	0	20.0	19	23	21	28	25	5	0	4	112	.253	5	6	1	2	1

13 WALKER WILLIAMS | LHP | 5-10 | 180 | RFR | L/L | SPRINGDALE, ARK. | SHILOH CHRISTIAN HS

Year	era	w-l	app	qs	cq	sho	sv	ip	h	r	er	bb	so	2b	3b	hr	bf	bavg	wp	hbp	bk	sfa	sha
2021	10.38	2-0	6	0	0	0/0	0	8.2	12	10	10	6	5	3	0	0	46	.308	0	0	0	1	0
2022	12.10	2-1	10	1	0	0/0	0	9.2	16	15	13	13	7	2	0	1	59	.372	3	2	0	1	0
TOTAL	11.29	4-1	16	1	0	0/0	0	18.1	28	25	23	19	12	5	0	1	105	.341	3	2	0	2	0

14 TYLER JEANS | RHP | 6-4 | 210 | RJR | R/R | TEXARKANA, ARK. | NORTHEAST TEXAS CC

Year	era	w-l	app	qs	cq	sho	sv	ip	h	r	er	bb	so	2b	3b	hr	bf	bavg	wp	hbp	bk	sfa	sha
2021	7.75	1-4	15	4	0	0/2	0	33.2	39	35	29	31	32	4	0	4	175	.289	6	3	1	3	3
2022	5.68	1-4	12	3	0	0/0	1	25.1	32	24	16	17	15	9	1	3	127	.314	5	4	0	3	3
TOTAL	6.86	2-8	27	7	0	0/2	1	59.0	71	59	45	48	47	13	1	7	302	.300	11	7	1	6	6

15 TRISTEN JAMISON | OF/INF | 6-2 | 170 | SO | R/R | NASHVILLE, ARK. | NATIONAL PARK COLLEGE

Year	avg	gp-gs	ab	r	h	2b	3b	hr	rbi	tb	slg%	bb	hbp	so	gdp	ob%	sf	sh	sb-att	po	a	e	fld%
2022	.200	12-5	25	0	5	0	0	0	1	5	.200	1	1	10	0	.259	0	0	0-0	6	0	0	1.000
TOTAL	.200	12-5	25	0	5	0	0	0	1	5	.200	1	1	10	0	.259	0	0	0-0	6	0	0	1.000

16 BRANDON ANDERSON | RHP | 6-2 | 215 | SR | R/R | OMAHA, NEB. | NEOSHO COUNTY CC

Year	era	w-l	app	qs	cq	sho	sv	ip	h	r	er	bb	so	2b	3b	hr	bf	bavg	wp	hbp	bk	sfa	sha
2020	6.30	1-1	3	3	0	0/0	0	10.0	8	8	7	7	17	2	0	0	45	.222	4	1	0	0	1
2021	7.31	1-4	10	4	0	0/0	0	28.1	34	23	23	14	20	9	2	1	133	.304	3	3	1	2	2
2022	8.10	1-3	13	0	0	0/0	0	13.1	13	15	12	13	18	0	1	1	67	.260	2	4	1	0	0
TOTAL	7.32	3-8	26	7	0	0/0	0	51.2	55	46	42	34	55	11	3	2	245	.278	9	8	2	2	3

17 WIL FRENCH | INF | 5-10 | 175 | FR | S/R | JONESBORO, ARK. | VALLEY VIEW HS

Year	avg	gp-gs	ab	r	h	2b	3b	hr	rbi	tb	slg%	bb	hbp	so	gdp	ob%	sf	sh	sb-att	po	a	e	fld%
2022	.236	31-31	110	22	26	5	0	0	7	31	.282	18	2	17	3	.348	2	5	4-5	31	65	8	.923
TOTAL	.236	31-31	110	22	26	5	0	0	7	31	.282	18	2	17	3	.348	2	5	4-5	31	65	8	.923

2022 PLAYER CAREER STATISTICS

18 WILL NASH | RHP | 5-11 | 210 | SR | R/R | WHEATLEY, ARK. | SOUTHWEST TENNESSEE STATE CC

Year	era	w-l	app	qs	cq	sho	sv	ip	h	r	er	bb	so	2b	3b	hr	bf	bavq	wp	hbp	bk	sfa	sha
2020	1.32	0-0	4	1	0	0/0	0	13.2	5	5	2	3	13	3	0	0	54	.106	2	1	1	2	1
2021	4.11	3-6	13	12	1	0/2	0	65.2	63	30	30	23	42	11	2	8	282	.249	6	2	0	2	2
2022	6.25	1-3	11	6	0	0/0	0	36.0	45	28	25	24	35	10	2	9	175	.308	2	2	0	1	2
TOTAL	4.45	4-9	28	19	1	0/2	0	115.1	113	63	57	50	90	24	4	17	511	.253	10	5	1	5	5

19 JOHN HOSKYN | C | 6-0 | 235 | SO | R/R | STUTTGART, ARK. | STUTTGART HS

Year	avg	gp-gs	ab	r	h	2b	3b	hr	rbi	tb	slg%	bb	hbp	so	gdp	ob%	sf	sh	sb-att	po	a	e	fld%
2021	.333	6-3	9	0	3	1	0	0	3	4	.444	1	0	4	0	.400	0	0	0-0	2	0	0	1.000
2022	.000	3-0	5	0	0	0	0	0	0	0	.000	0	0	3	0	.000	0	0	0-0	6	0	0	1.000
TOTAL	.214	9-3	14	0	3	1	0	0	3	4	.286	1	0	7	0	.267	0	0	0-0	8	0	0	1.000

20 CARTER HOLT | RHP | 6-5 | 260 | SR | R/R | JACKSON, TENN. | JACKSON CHRISTIAN SCHOOL

Year	era	w-l	app	qs	cq	sho	sv	ip	h	r	er	bb	so	2b	3b	hr	bf	bavq	wp	hbp	bk	sfa	sha
2018	6.80	1-3	13	6	0	0/0	0	42.1	47	39	32	28	20	11	0	6	204	.294	5	9	0	1	6
2019	6.75	0-1	8	7	0	0/0	0	22.2	24	18	17	15	23	5	1	1	110	.264	2	3	1	0	1
2021	5.18	4-3	13	12	0	0/0	0	64.1	78	45	37	15	41	15	1	10	294	.292	9	9	0	2	1
2022	8.10	0-1	5	5	0	0/0	0	16.2	23	24	15	9	18	3	0	4	92	.299	1	5	2	1	0
TOTAL	6.23	5-8	39	30	0	0/0	0	146.0	172	126	101	67	102	34	2	21	700	.289	17	26	3	4	8

21 SAM FAGAN | OF | 6-3 | 210 | RFR | R/R | JONESBORO, ARK. | VALLEY VIEW HS

Year	avg	gp-gs	ab	r	h	2b	3b	hr	rbi	tb	slg%	bb	hbp	so	gdp	ob%	sf	sh	sb-att	po	a	e	fld%
2022	.000	9-1	10	0	0	0	0	0	1	0	.000	1	0	5	0	.091	0	0	0-0	9	0	0	1.000
TOTAL	.000	9-1	10	0	0	0	0	0	1	0	.000	1	0	5	0	.091	0	0	0-0	9	0	0	1.000

23 WILL GROSS | RHP | 5-10 | 235 | SO | R/R | MOUNTAIN HOME, ARK. | MOUNTAIN HOME HS

Year	era	w-l	app	qs	cq	sho	sv	ip	h	r	er	bb	so	2b	3b	hr	bf	bavq	wp	hbp	bk	sfa	sha
2021	81.00	0-0	1	0	0	0/0	0	1.1	5	12	12	9	1	0	0	0	18	.556	2	0	0	0	0
TOTAL	81.00	0-0	1	0	0	0/0	0	1.1	5	12	12	9	1	0	0	0	18	.556	2	0	0	0	0

24 BRANDON ULMER | OF | 5-10 | 180 | SO | L/R | BOONEVILLE, ARK. | BOONEVILLE HS

Year	avg	gp-gs	ab	r	h	2b	3b	hr	rbi	tb	slg%	bb	hbp	so	gdp	ob%	sf	sh	sb-att	po	a	e	fld%
2021	.222	6-1	9	2	2	0	0	0	1	2	.222	1	0	4	0	.300	0	0	0-0	0	0	0	.000
2022	.067	24-11	30	1	2	0	0	0	1	2	.067	4	1	13	1	.200	0	1	0-0	31	0	0	1.000
TOTAL	.103	30-12	39	3	4	0	0	0	2	4	.103	5	1	17	1	.222	0	1	0-0	31	0	0	1.000

25 MAX CHARLTON | RHP | 6-2 | 200 | SO | R/R | LENEXA, KAN. | ST. JAMES ACADEMY

Year	era	w-l	app	qs	cq	sho	sv	ip	h	r	er	bb	so	2b	3b	hr	bf	bavq	wp	hbp	bk	sfa	sha
2021	10.24	0-2	12	2	0	0/0	0	19.1	39	34	22	11	19	6	0	1	116	.386	2	3	1	1	0
2022	4.42	0-1	14	0	0	0/0	0	18.1	17	10	9	8	18	3	0	0	79	.258	7	0	1	4	1
TOTAL	7.41	0-3	26	2	0	0/0	0	37.2	56	44	31	19	37	9	0	1	195	.335	9	3	2	5	1

27 AUSTIN BROCK | LHP | 5-11 | 170 | JR | L/L | SENATH, MO. | THREE RIVERS COLLEGE

Year	era	w-l	app	qs	cq	sho	sv	ip	h	r	er	bb	so	2b	3b	hr	bf	bavq	wp	hbp	bk	sfa	sha
TOTAL	.000	0-0	0	0	0	0/0	0	0	0	0	.000	0	0	0	0	.000	0	0	0-0	0	1	0	1.000

28 JAKE ALGEE | RHP | 6-0 | 190 | SO | R/R | BROOKLAND, ARK. | BROOKLAND HS

Year	era	w-l	app	qs	cq	sho	sv	ip	h	r	er	bb	so	2b	3b	hr	bf	bavq	wp	hbp	bk	sfa	sha
2021	6.67	0-2	20	0	0	0/0	0	29.2	27	22	22	18	17	4	0	5	137	.241	4	4	2	1	2
2022	8.25	0-0	11	0	0	0/0	0	12.0	15	14	11	8	12	6	0	0	65	.306	2	6	0	1	1
TOTAL	7.13	0-2	31	0	0	0/0	0	41.2	42	36	33	26	29	10	0	5	202	.261	6	10	2	2	3

29 KEVIN WISEMAN | RHP | 6-1 | 210 | RJR | R/R | AXTELL, TEXAS | WAGNER

Year	era	w-l	app	qs	cq	sho	sv	ip	h	r	er	bb	so	2b	3b	hr	bf	bavq	wp	hbp	bk	sfa	sha
2018*	6.75	1-3	5	2	0	0/0	0	13.1	11	10	10	11	10	0	0	0	61	.244	3	2	0	2	1
2019*	8.64	0-1	6	1	0	0/0	0	8.1	6	8	8	13	10	1	0	0	44	.200	3	1	0	0	0
2020*	6.35	0-0	4	0	0	0/0	2	5.2	4	4	4	8	11	1	0	0	29	.200	2	0	0	1	0
2021*	4.56	2-3	11	0	0	0/0	4	25.2	22	14	13	16	38	9	0	2	119	.220	1	1	0	1	1
2022	6.35	0-2	12	0	0	0/0	2	11.1	13	10	8	6	17	2	0	0	55	.283	1	1	0	2	0
TOTAL	6.35	0-2	12	0	0	0/0	2	11.1	13	10	8	6	17	2	0	0	55	.283	1	1	0	2	0
All*	6.02	3-9	38	3	0	0/0	8	64.1	56	46	43	54	86	13	0	2	308	.232	10	5	0	6	2

* Statistics from prior team/school

2022 PLAYER CAREER STATISTICS

30 DAEDRICK CAIL | INF/OF | 6-1 | 220 | FR | R/R | MARION, ARK. | MARION HS

Year	avg	gp-gs	ab	r	h	2b	3b	hr	rbi	tb	slg%	bb	hbp	so	gdp	ob%	sf	sh	sb-att	po	a	e	fld%
2022	.317	28-27	104	17	33	6	0	1	13	42	.404	14	2	21	3	.405	1	0	0-0	55	46	8	.927
TOTAL	.317	28-27	104	17	33	6	0	1	13	42	.404	14	2	21	3	.405	1	0	0-0	55	46	8	.927

31 JACKSON HARRIS | INF | 6-1 | 215 | FR | R/R | TEXARKANA, ARK. | ARKANSAS HS

32 MICKEY COYNE | 1B/LHP | 6-2 | 205 | JR | L/L | RENO, NEV. | SIERRA COLLEGE (CALIF.)

Year	avg	gp-gs	ab	r	h	2b	3b	hr	rbi	tb	slg%	bb	hbp	so	gdp	ob%	sf	sh	sb-att	po	a	e	fld%
2022	.275	21-12	51	5	14	1	0	0	7	15	.294	7	4	13	0	.403	0	4	0-0	66	3	2	.972
TOTAL	.275	21-12	51	5	14	1	0	0	7	15	.294	7	4	13	0	.403	0	4	0-0	66	3	2	.972

Year	era	w-l	app	qs	cq	sho	sv	ip	h	r	er	bb	so	2b	3b	hr	bf	bavg	wp	hbp	bk	sfa	sha
2022	36.00	0-0	3	0	0	0/0	0	1.0	2	4	4	3	1	0	0	0	9	.400	0	1	0	0	0
TOTAL	36.00	0-0	3	0	0	0/0	0	1.0	2	4	4	3	1	0	0	0	9	.400	0	1	0	0	0

33 BRANDON HUDSON | RHP | 6-5 | 180 | JR | R/R | ROLAND, ARK. | NORTHERN OKLAHOMA COLLEGE - ENID

Year	era	w-l	app	qs	cq	sho	sv	ip	h	r	er	bb	so	2b	3b	hr	bf	bavg	wp	hbp	bk	sfa	sha
2021	5.10	5-3	15	10	0	0/0	0	54.2	58	39	31	32	36	9	2	8	262	.266	7	7	0	2	3
2022	13.50	0-2	10	1	0	0/0	0	7.1	11	14	11	5	6	2	0	1	43	.355	0	4	1	2	1
TOTAL	6.10	5-5	25	11	0	0/0	0	62.0	69	53	42	37	42	11	2	9	305	.277	7	11	1	4	4

34 SAWYER BENTLEY | RHP | 6-0 | 175 | FR | R/R | JONESBORO, ARK. | JONESBORO HS

35 TRESHON PASCHAL | RHP | 6-2 | 190 | JR | R/R | SPRINGDALE, ARK. | CROWDER COLLEGE

Year	era	w-l	app	qs	cq	sho	sv	ip	h	r	er	bb	so	2b	3b	hr	bf	bavg	wp	hbp	bk	sfa	sha
2022	9.00	1-1	9	2	0	0/0	0	11.0	13	11	11	8	13	3	0	2	55	.277	0	0	0	0	0
TOTAL	9.00	1-1	9	2	0	0/0	0	11.0	13	11	11	8	13	3	0	2	55	.277	0	0	0	0	0

36 WILL GILMER | RHP | 6-0 | 200 | RSO | R/R | SIKESTON, MO. | JEFFERSON COLLEGE

Year	era	w-l	app	qs	cq	sho	sv	ip	h	r	er	bb	so	2b	3b	hr	bf	bavg	wp	hbp	bk	sfa	sha
2021	12.64	1-0	11	0	0	0/0	0	15.2	20	24	22	14	10	5	0	4	82	.313	6	3	0	1	0
2022	36.00	0-0	2	0	0	0/0	0	1.0	2	4	4	4	2	0	0	0	10	.400	3	1	0	0	0
TOTAL	14.04	1-0	13	0	0	0/0	0	16.2	22	28	26	18	12	5	0	4	92	.319	9	4	0	1	0

37 DAWSON CHESTER | INF | 5-10 | 200 | FR | R/R | POCAHONTAS, ARK. | POCAHONTAS HS

38 TY GORDON | INF/OF | 5-10 | 215 | FR | L/L | NASHVILLE, ARK. | NASHVILLE HS

39 JAKOB FREDERICK | LHP | 5-8 | 170 | JR | L/L | SACRAMENTO, CALIF. | SIERRA COLLEGE (CALIF.)

Year	era	w-l	app	qs	cq	sho	sv	ip	h	r	er	bb	so	2b	3b	hr	bf	bavg	wp	hbp	bk	sfa	sha
2022	6.98	0-1	8	4	0	0/0	0	19.1	27	18	15	4	10	6	1	4	88	.338	3	3	0	1	0
TOTAL	6.98	0-1	8	4	0	0/0	0	19.1	27	18	15	4	10	6	1	4	88	.338	3	3	0	1	0

40 COOPER TREMMEL | OF/C | 6-0 | 190 | SO | L/R | ARLINGTON, TENN. | VOLUNTEER STATE CC

Year	avg	gp-gs	ab	r	h	2b	3b	hr	rbi	tb	slg%	bb	hbp	so	gdp	ob%	sf	sh	sb-att	po	a	e	fld%
2022	.247	28-28	89	12	22	4	0	1	10	29	.326	14	1	21	2	.356	0	3	0-0	99	10	4	.965
TOTAL	.247	28-28	89	12	22	4	0	1	10	29	.326	14	1	21	2	.356	0	3	0-0	99	10	4	.965

2022 OVERALL STATISTICS

Record: 7-24 Home: 5-13 Away: 2-11 Sun Belt: 2-12

Player	avg	gp-gs	ab	r	h	2b	3b	hr	rbi	tb	slg%	bb	hp	so	gdp	ob%	sf	sh	sb-att	po	a	e	fld%
10 Hager, Jacob	.346	21-15	52	13	18	4	0	1	5	25	.481	9	0	12	1	.443	0	0	0-0	13	0	1	.929
30 Cail, Daedrick	.317	28-27	104	17	33	6	0	1	13	42	.404	14	2	21	3	.405	1	0	0-0	55	46	8	.927
2 Deshazier, Jaylon	.297	31-31	111	15	33	2	1	0	19	37	.333	12	4	28	0	.368	6	0	1-2	59	3	6	.912
32 Coyne, Mickey	.275	21-12	51	5	14	1	0	0	7	15	.294	7	4	13	0	.403	0	4	0-0	66	3	2	.972
4 Toler, Jared	.264	29-28	110	20	29	5	0	7	25	55	.500	10	2	36	3	.331	2	1	0-0	139	4	5	.966
9 Klutts, Ben	.263	31-31	114	21	30	6	1	5	21	53	.465	16	6	21	2	.371	4	0	1-1	23	50	6	.924
11 Hager, Brandon	.250	21-14	56	6	14	0	1	3	9	25	.446	12	1	13	2	.391	0	0	0-1	87	10	3	.970
40 Tremmel, Cooper	.247	28-28	89	12	22	4	0	1	10	29	.326	14	1	21	2	.356	0	3	0-0	99	10	4	.965
17 French, Wil	.236	31-31	110	22	26	5	0	0	7	31	.282	18	2	17	3	.348	2	5	4-5	31	65	8	.923
1 Davis, Eli	.222	28-21	54	8	12	1	0	1	7	16	.296	9	2	27	0	.343	2	4	2-2	50	2	1	.981
8 Tollett, Cason	.151	17-17	53	4	8	3	0	1	7	14	.264	4	1	11	3	.224	0	0	0-0	98	6	3	.972
7 Medlin, Justin	.250	2-2	8	0	2	1	0	0	0	3	.375	0	0	3	0	.250	0	0	0-0	0	9	1	.900
3 Olson, Garrett	.227	11-3	22	4	5	1	0	1	2	9	.409	1	0	9	0	.261	0	0	1-1	3	4	1	.875
15 Jamison, Tristen	.200	12-5	25	0	5	0	0	0	1	5	.200	1	1	10	0	.259	0	0	0-0	6	0	0	1.000
24 Ulmer, Brandon	.067	24-11	30	1	2	0	0	0	1	2	.067	4	1	13	1	.200	0	1	0-0	31	0	0	1.000
6 McCutchen, Blake	.063	15-2	16	2	1	0	0	0	1	1	.063	4	1	3	1	.286	0	0	0-0	10	3	0	1.000
21 Fagan, Sam	.000	9-1	10	0	0	0	0	0	1	0	.000	1	0	5	0	.091	0	0	0-0	9	0	0	1.000
19 Hoskyn, John	.000	3-0	5	0	0	0	0	0	0	0	.000	0	0	3	0	.000	0	0	0-0	6	0	0	1.000
16 Anderson, Brandon	.000	1-0	0	0	0	0	0	0	0	0	.000	0	0	0	0	.000	0	0	0-0	1	3	1	.800
Totals	.249	31	1020	150	254	39	3	21	136	362	.355	136	28	266	21	.348	17	18	9-12	792	247	55	.950
Opponents	.294	31	1060	240	312	69	7	29	208	482	.455	172	40	259	7	.406	20	16	77-98	810	246	28	.974

LOB - Team (259), Opp (276). DPs turned - Team (9), Opp (24). IBB - Team (2), Klutts 1, Cail 1, Opp (7). Picked off - Tollett 1.

(All games Sorted by Earned run avg)

Player	era	w-l	app	gs	cq	sho	sv	ip	h	r	er	bb	so	2b	3b	hr	b/avg	wp	hp	bk	sfa	sha
7 Medlin, Justin	4.33	0-4	10	9	0	0/0	0	43.2	48	24	21	21	42	11	1	3	.286	2	1	0	2	8
18 Nash, Will	6.25	1-3	11	6	0	0/0	0	36.0	45	28	25	24	35	10	2	9	.308	2	2	0	1	2
27 Brock, Austin	2.25	0-1	12	0	0	0/0	0	12.0	13	9	3	11	17	3	1	1	.250	1	0	0	0	1
5 Baldelli, Jonathan	3.95	1-0	14	0	0	0/0	0	13.2	14	8	6	4	12	6	0	0	.275	4	2	0	1	1
25 Charlton, Max	4.42	0-1	14	0	0	0/0	0	18.1	17	10	9	8	18	3	0	0	.258	7	0	1	4	1
12 Bryant, Phillip	5.11	0-0	10	0	0	0/0	0	12.1	8	8	7	14	16	3	0	0	.190	2	4	0	1	0
14 Jeans, Tyler	5.68	1-4	12	3	0	0/0	1	25.1	32	24	16	17	15	9	1	3	.314	5	4	0	3	1
29 Wiseman, Kevin	6.35	0-2	12	0	0	0/0	2	11.1	13	10	8	6	17	2	0	0	.283	1	1	0	2	0
39 Frederick, Jakob	6.98	0-1	8	4	0	0/0	0	19.1	27	18	15	4	10	6	1	4	.338	3	3	0	1	0
20 Holt, Carter	8.10	0-1	5	5	0	0/0	0	16.2	23	24	15	9	18	3	0	4	.299	1	5	2	1	0
16 Anderson, Brandon	8.10	1-3	13	0	0	0/0	0	13.1	13	15	12	13	18	0	1	1	.260	2	4	1	0	0
28 Algee, Jake	8.25	0-0	11	0	0	0/0	0	12.0	15	14	11	8	12	6	0	0	.306	2	6	0	1	1
35 Paschal, Treshon	9.00	1-1	9	2	0	0/0	0	11.0	13	11	11	8	13	3	0	2	.277	0	0	0	0	0
13 Williams, Walker	12.10	2-1	10	1	0	0/0	0	9.2	16	15	13	13	7	2	0	1	.372	3	2	0	1	0
33 Hudson, Brandon	13.50	0-2	10	1	0	0/0	0	7.1	11	14	11	5	6	2	0	1	.355	0	4	1	2	1
32 Coyne, Mickey	36.00	0-0	3	0	0	0/0	0	1.0	2	4	4	3	1	0	0	0	.400	0	1	0	0	0
36 Gilmer, Will	36.00	0-0	2	0	0	0/0	0	1.0	2	4	4	4	2	0	0	0	.400	3	1	0	0	0
Totals	6.51	7-24	31	31	0	0/0	3	264.0	312	240	191	172	259	69	7	29	.294	38	40	5	20	16
Opponents	4.47	24-7	31	31	0	3/3	9	270.0	254	150	134	136	266	39	3	21	.249	41	28	1	17	18

PB - Team (9), Tremmel 7, Tollett 2, Opp (7). Pickoffs - Team (6), Anderson 2, Baldelli 1, Bryant 1, Jeans 1, Tremmel 1, Opp (1). SBA/ATT - Hager, B. (28-34), Tremmel (27-32), Tollett (22-28), Nash (10-13), Jeans (8-11), Medlin (8-10), Anderson (8-9), Paschal (6-7), Wiseman (7-7), Frederick (4-6), Algee (5-6), Bryant (5-6), Holt (6-6), Hudson (5-5), Charlton (1-4), Baldelli (0-3), Brock (1-2), Williams (2-2), Gilmer (1-1).

2022 SUN BELT CONFERENCE-ONLY STATISTICS

Record: 2-12 Home: 0-9 Away: 2-3 Sun Belt: 2-12

Player	avg	gp-gs	ab	r	h	2b	3b	hr	rbi	tb	slg%	bb	hp	so	gdp	ob%	sf	sh	sb-att	po	a	e	fld%
11 Hager, Brandon	.333	9-8	30	3	10	0	0	1	3	13	.433	6	1	6	0	.459	0	0	0-0	48	5	2	.964
30 Cail, Daedrick	.300	12-12	50	9	15	3	0	0	9	18	.360	5	1	9	1	.375	0	0	0-0	29	21	3	.943
2 Deshazier, Jaylon	.291	14-14	55	6	16	0	1	0	6	18	.327	3	2	16	0	.344	1	0	1-1	30	1	4	.886
1 Davis, Eli	.240	13-8	25	3	6	1	0	0	1	7	.280	5	1	11	0	.387	0	1	0-0	27	1	1	.966
40 Tremmel, Cooper	.238	13-13	42	5	10	0	0	0	2	10	.238	6	0	11	2	.333	0	3	0-0	39	5	2	.957
32 Coyne, Mickey	.233	10-8	30	2	7	0	0	0	3	7	.233	4	2	6	0	.361	0	2	0-0	41	3	2	.957
17 French, Wil	.216	14-14	51	8	11	2	0	0	3	13	.255	5	0	9	1	.286	0	4	2-2	16	37	5	.914
9 Klutts, Ben	.212	14-14	52	7	11	2	1	2	8	21	.404	7	2	10	1	.317	2	0	0-0	11	31	2	.955
4 Toler, Jared	.170	13-12	47	6	8	0	0	2	8	14	.298	5	2	19	0	.278	0	0	0-0	66	0	1	.985
24 Ulmer, Brandon	.056	11-6	18	0	1	0	0	0	1	1	.056	2	0	8	0	.150	0	0	0-0	18	0	0	1.000
<hr/>																							
10 Hager, Jacob	.364	5-2	11	3	4	2	0	0	0	6	.545	2	0	2	0	.462	0	0	0-0	0	0	0	.000
3 Olson, Garrett	.250	6-3	16	3	4	1	0	0	0	5	.313	1	0	5	0	.294	0	0	1-1	2	3	0	1.000
7 Medlin, Justin	.250	2-2	8	0	2	1	0	0	0	3	.375	0	0	3	0	.250	0	0	0-0	0	6	1	.857
15 Jamison, Tristen	.214	4-4	14	0	3	0	0	0	1	3	.214	0	1	6	0	.267	0	0	0-0	2	0	0	1.000
8 Tollett, Cason	.143	5-5	14	0	2	1	0	0	4	3	.214	1	0	3	2	.200	0	0	0-0	33	3	1	.973
6 McCutchen, Blake	.000	5-0	3	1	0	0	0	0	0	0	.000	1	0	1	0	.250	0	0	0-0	0	0	0	.000
21 Fagan, Sam	.000	3-1	3	0	0	0	0	0	0	0	.000	1	0	1	0	.250	0	0	0-0	5	0	0	1.000
19 Hoskyn, John	.000	1-0	3	0	0	0	0	0	0	0	.000	0	0	2	0	.000	0	0	0-0	6	0	0	1.000
Totals	.233	14	472	56	110	13	2	5	49	142	.301	54	12	128	7	.325	3	10	4-4	374	128	26	.951
Opponents	.306	14	500	104	153	35	3	9	87	221	.442	71	15	103	2	.401	10	12	39-49	381	118	10	.980

LOB - Team (114), Opp (130). DPs turned - Team (4), Opp (9). IBB - Team (1), Klutts 1, Opp (4). Picked off - Tollett 1.

(Sun Belt games only Sorted by Earned run avg)

Player	era	w-l	app	gs	cg	sho	sv	ip	h	r	er	bb	so	2b	3b	hr	b/avg	wp	hp	bk	sfa	sha
18 Nash, Will	4.50	0-3	5	5	0	0/0	0	26.0	29	16	13	13	23	5	2	3	.284	1	1	0	1	2
7 Medlin, Justin	5.08	0-2	5	5	0	0/0	0	28.1	34	19	16	10	25	7	1	1	.309	0	0	0	2	8
39 Frederick, Jakob	5.40	0-1	3	3	0	0/0	0	15.0	22	12	9	0	7	5	0	3	.344	2	1	0	0	0
<hr/>																						
33 Hudson, Brandon	0.00	0-0	3	0	0	0/0	0	2.0	1	0	0	0	1	0	0	0	.167	0	0	1	1	0
20 Holt, Carter	1.80	0-0	1	1	0	0/0	0	5.0	7	4	1	0	5	1	0	0	.304	0	0	0	1	0
27 Brock, Austin	3.18	0-0	5	0	0	0/0	0	5.2	4	5	2	8	5	2	0	1	.174	0	0	0	0	1
14 Jeans, Tyler	3.29	1-1	6	0	0	0/0	1	13.2	11	5	5	8	9	6	0	0	.220	2	3	0	1	0
5 Baldelli, Jonathan	3.38	0-0	4	0	0	0/0	0	5.1	4	2	2	0	2	1	0	0	.235	1	0	0	0	0
35 Paschal, Treshon	6.75	0-0	2	0	0	0/0	0	1.1	1	1	1	1	2	0	0	0	.200	0	0	0	0	0
13 Williams, Walker	6.75	0-0	3	0	0	0/0	0	1.1	4	1	1	1	0	1	0	0	.500	0	0	0	0	0
28 Algee, Jake	9.00	0-0	2	0	0	0/0	0	2.0	3	4	2	4	3	2	0	0	.333	1	1	0	0	0
12 Bryant, Phillip	11.57	0-0	3	0	0	0/0	0	2.1	4	3	3	4	2	1	0	0	.364	0	3	0	0	0
25 Charlton, Max	12.00	0-1	5	0	0	0/0	0	6.0	9	8	8	5	5	2	0	0	.409	4	0	1	3	1
16 Anderson, Brandon	14.21	1-2	6	0	0	0/0	0	6.1	8	11	10	10	6	0	0	1	.320	2	4	1	0	0
29 Wiseman, Kevin	17.18	0-2	4	0	0	0/0	0	3.2	10	9	7	5	6	2	0	0	.476	0	1	0	1	0
36 Gilmer, Will	54.00	0-0	1	0	0	0/0	0	0.2	2	4	4	2	2	0	0	0	.500	3	1	0	0	0
Totals	6.06	2-12	14	14	0	0/0	1	124.2	153	104	84	71	103	35	3	9	.306	16	15	3	10	12
Opponents	3.40	12-2	14	14	0	2/2	3	127.0	110	56	48	54	128	13	2	5	.233	14	12	1	3	10

PB - Team (6), Tremmel 6, Opp (4). Pickoffs - Team (1), Anderson 1, Opp (1). SBA/ATT - Hager, B. (19-22), Tremmel (12-14), Tollett (8-11), Medlin (7-8), Nash (6-8), Anderson (6-7), Frederick (4-5), Jeans (4-5), Wiseman (4-4), Bryant (2-2), Brock (1-2), Baldelli (0-2), Holt (1-1), Gilmer (1-1), Paschal (1-1), Charlton (0-1), Algee (1-1), Hudson (1-1).



2022 GAME RESULTS

Date	Opponent	Score	Inns	Overall	Sun Belt	Pitcher of record	Attend	Time
Feb 18, 2022	at Samford	L 8-9	9	0-1-0	0-0-0	Anderson (L 0-1)	753	3:26
Feb 19, 2022	at Samford	L 4-11	9	0-2-0	0-0-0	Medlin (L 0-1)	873	3:19
Feb 20, 2022	at Samford	L 0-11	9	0-3-0	0-0-0	Jeans (L 0-1)	811	2:53
Feb 23, 2022	at #2 Ole Miss	L 5-15	5	0-4-0	0-0-0	Williams (L 0-1)	8653	2:35
Mar 01, 2022	MISS. VALLEY STATE	w 17-2	7	1-4-0	0-0-0	Williams (W 1-1)	292	2:50
Mar 02, 2022	MISS. VALLEY STATE	w 13-3	7	2-4-0	0-0-0	Paschal (W 1-0)	151	2:41
Mar 04, 2022	ILLINOIS STATE	w 8-6	9	3-4-0	0-0-0	Williams (W 2-1)	309	3:12
Mar 05, 2022	ILLINOIS STATE-1	w 2-1	9	4-4-0	0-0-0	Nash (W 1-0)	757	2:33
Mar 05, 2022	ILLINOIS STATE-2	L 1-7	9	4-5-0	0-0-0	Medlin (L 0-2)	757	3:06
Mar 08, 2022	SOUTHEAST MISSOURI	L 6-14	9	4-6-0	0-0-0	Paschal (L 1-1)	63	3:45
Mar 09, 2022	SOUTHERN ILLINOIS	L 5-12	9	4-7-0	0-0-0	Jeans (L 0-2)	177	3:31
Mar 13, 2022	at Missouri State-1	L 3-12	9	4-8-0	0-0-0	Holt (L 0-1)	438	2:49
Mar 13, 2022	at Missouri State-2	L 1-7	9	4-9-0	0-0-0	Jeans (L 0-3)	438	2:54
Mar 15, 2022	MEMPHIS	L 7-9	9	4-10-0	0-0-0	Hudson (L 0-1)	871	3:50
* Mar 18, 2022	#15 TEXAS STATE	L 7-13	9	4-11-0	0-1-0	Anderson (L 0-2)	188	3:25
* Mar 19, 2022	#15 TEXAS STATE	L 1-2	9	4-12-0	0-2-0	Nash (L 1-1)	249	2:35
* Mar 20, 2022	#15 TEXAS STATE	L 4-5	9	4-13-0	0-3-0	Wiseman (L 0-1)	246	3:02
Mar 23, 2022	at Southern Illinois	L 5-6	9	4-14-0	0-3-0	Hudson (L 0-2)	50	3:35
* Mar 25, 2022	at Georgia Southern	L 4-7	9	4-15-0	0-4-0	Charlton (L 0-1)	1697	3:20
* Mar 26, 2022	at Georgia Southern	L 2-12	9	4-16-0	0-5-0	Nash (L 1-2)	2055	3:06
* Mar 27, 2022	at Georgia Southern	L 6-7	9	4-17-0	0-6-0	Anderson (L 0-3)	1662	3:25
Mar 29, 2022	CENTRAL ARKANSAS	w 4-3	(11)	5-17-0	0-6-0	Baldelli (W 1-0)	328	3:28
* Apr 01, 2022	COASTAL CAROLINA	L 0-4	9	5-18-0	0-7-0	Medlin (L 0-3)	338	2:41
* Apr 02, 2022	COASTAL CAROLINA	L 4-5	9	5-19-0	0-8-0	Nash (L 1-3)	295	3:38
* Apr 03, 2022	COASTAL CAROLINA	L 8-16	9	5-20-0	0-9-0	Frederick (L 0-1)	309	3:38
Apr 05, 2022	at Southeast Missouri	L 5-8	9	5-21-0	0-9-0	Brock (L 0-1)	400	3:00
* Apr 08, 2022	LOUISIANA	L 0-10	9	5-22-0	0-10-0	Medlin (L 0-4)	353	3:10
* Apr 09, 2022	LOUISIANA	L 3-5	9	5-23-0	0-11-0	Wiseman (L 0-2)	297	3:04
* Apr 10, 2022	LOUISIANA	L 4-7	(10)	5-24-0	0-12-0	Jeans (L 0-4)	255	3:19
* Apr 14, 2022	at Little Rock	w 6-5	9	6-24-0	1-12-0	Anderson (W 1-3)	358	3:33
* Apr 15, 2022	at Little Rock	w 7-6	9	7-24-0	2-12-0	Jeans (W 1-4)	387	3:06

* = Conference game

() extra inning game



2022 TEAM GAME-BY-GAME

2022 ARKANSAS STATE BASEBALL
Team Game-by-Game for Arkansas State (as of Apr 15, 2022)
Batting (All games)

Date	Opponent	ab	r	h	rbi	2b	3b	hr	tb	bb	ibb	sb	cs	hbp	sac	sf	gdp	k	po	a	e	lob	avg
Feb 18	at Samford	37	8	9	6	1	0	2	16	3	0	0	0	1	0	1	0	10	24	7	3	7	.243
Feb 19	at Samford	35	4	11	4	1	0	2	18	3	0	0	0	0	0	0	3	4	24	4	2	7	.278
Feb 20	at Samford	31	0	5	0	0	0	0	5	4	0	0	0	0	0	0	2	11	24	7	2	8	.243
Feb 23	at Ole Miss	20	5	6	5	0	0	1	9	6	0	0	0	1	0	2	0	9	13	3	1	9	.252
Mar 01	MISS. VALLEY STATE	19	17	7	14	3	0	0	10	15	0	0	0	6	0	6	1	1	21	5	2	11	.268
Mar 02	MISS. VALLEY STATE	31	13	14	11	5	0	0	19	6	0	3	1	0	2	1	0	4	21	9	0	8	.301
Mar 04	ILLINOIS STATE	35	8	12	8	3	0	1	18	7	0	1	0	1	0	0	1	7	27	4	2	11	.308
Mar 05	ILLINOIS STATE	33	2	8	2	1	0	1	12	1	0	0	0	0	0	0	0	9	27	10	1	8	.299
Mar 05	ILLINOIS STATE	31	1	7	1	2	0	0	9	3	0	0	0	0	0	1	2	5	27	14	1	7	.290
Mar 08	SOUTHEAST MISSOURI	36	6	9	6	1	0	1	13	1	0	0	0	0	0	1	0	7	27	4	3	5	.286
Mar 09	SOUTHERN ILLINOIS	34	5	9	5	2	0	1	14	4	0	0	0	1	0	1	0	8	27	7	3	8	.284
Mar 13	at Missouri State	34	3	7	3	2	0	0	9	4	0	0	0	0	0	0	2	9	24	7	1	8	.277
Mar 13	at Missouri State	33	1	8	1	1	0	1	12	1	0	0	0	3	1	0	1	13	24	6	1	10	.274
Mar 15	MEMPHIS	33	7	6	7	0	0	2	12	11	0	0	0	0	2	0	0	8	27	8	1	12	.267
*Mar 18	TEXAS STATE	31	7	5	5	1	0	0	6	4	0	0	0	1	1	0	1	7	27	9	5	3	.260
*Mar 19	TEXAS STATE	28	1	5	1	0	0	0	5	3	0	0	0	0	2	0	1	7	27	8	1	5	.255
*Mar 20	TEXAS STATE	31	4	6	3	2	0	1	11	5	0	0	0	1	2	0	1	10	27	6	2	8	.252
Mar 23	at Southern Illinois	32	5	7	5	0	0	2	13	6	0	1	1	1	0	1	0	10	24	9	3	8	.250
*Mar 25	at Georgia Southern	35	4	8	3	1	1	0	11	2	0	0	0	1	0	0	0	11	24	8	0	7	.249
*Mar 26	at Georgia Southern	35	2	7	2	1	0	0	8	2	0	1	0	0	0	0	0	11	24	9	1	8	.246
*Mar 27	at Georgia Southern	37	6	13	6	1	0	1	17	6	1	1	0	1	0	1	1	5	26	14	2	12	.252
Mar 29	CENTRAL ARKANSAS	40	4	9	4	1	0	1	13	2	1	0	0	2	3	0	0	14	33	10	0	11	.250
*Apr 01	COASTAL CAROLINA	30	0	3	0	0	0	0	3	2	0	0	0	1	0	0	0	11	27	10	1	6	.244
*Apr 02	COASTAL CAROLINA	34	4	9	4	2	0	1	14	4	0	1	0	0	1	1	0	14	27	7	1	9	.245
*Apr 03	COASTAL CAROLINA	35	8	9	6	0	0	0	9	3	0	0	0	3	1	0	1	11	27	9	2	7	.246
Apr 05	at Southeast Missouri	34	5	10	5	3	1	1	18	5	0	0	1	0	0	0	2	9	24	5	3	7	.248
*Apr 08	LOUISIANA	30	0	4	0	0	0	0	4	6	0	1	0	0	0	0	0	11	27	12	1	9	.244
*Apr 09	LOUISIANA	34	3	7	3	1	0	0	8	3	0	0	0	0	0	0	0	4	27	11	5	7	.242
*Apr 10	LOUISIANA	38	4	11	4	0	1	0	13	4	0	0	0	2	2	0	1	8	30	15	5	12	.244
*Apr 14	at Little Rock	39	6	13	6	2	0	0	15	2	0	0	0	1	0	1	1	9	27	5	0	10	.248
*Apr 15	at Little Rock	35	7	10	6	2	0	2	18	8	0	0	0	1	1	0	0	9	27	5	0	11	.249
Totals		1020	150	254	136	39	3	21	362	136	2	9	3	28	18	17	21	266	792	247	55	259	.249

STARTING LINEUPS BY POSITION

Date	Opponent	No.	Record	C	1B	2B	3B	SS	LF	CF	RF	DH
2/18	at Samford	1	0-1	Tollett	Toler	McCutchen	Klutts	French	J. Hager	Deshazier	Tremmel	B. Hager
2/19	at Samford	2	0-1	Tollett	Toler	McCutchen	Klutts	French	Deshazier	Davis	J. Hager	B. Hager
2/20	at Samford	3	0-1	Tollett	Toler	Cail	Klutts	French	Deshazier	Davis	J. Hager	Tremmel
2/23	at #3 Ole Miss	4	0-1	Tollett	Toler	Cail	Klutts	French	J. Hager	Deshazier	Tremmel	B. Hager
3/1	Mississippi Valley State	5	1-0	Tremmel	Toler	Cail	Klutts	French	Deshazier	Davis	J. Hager	B. Hager
3/2	Mississippi Valley State	6	1-0	Tremmel	Toler	Cail	Klutts	French	Deshazier	Davis	J. Hager	Coyne
3/4	Illinois State	7	1-0	Tollett	Toler	Cail	Klutts	French	Deshazier	Davis	Tremmel	J. Hager
3/5	Illinois State [DH-1]	3	1-1	Tollett	Toler	Cail	Klutts	French	Deshazier	Davis	J. Hager	Tremmel
3/5	Illinois State [DH-2]	8	0-1	Tremmel	Toler	Cail	Klutts	French	Deshazier	Davis	J. Hager	Tollett
3/8	Southeast Missouri	7	1-1	Tollett	Toler	Cail	Klutts	French	Deshazier	Davis	Tremmel	J. Hager
3/9	Southern Illinois	8	0-2	Tremmel	Toler	Cail	Klutts	French	Deshazier	Davis	J. Hager	Tollett
3/13	at Missouri State [DH-1]	9	0-1	Tollett	Toler	Cail	Klutts	French	Deshazier	Ulmer	Davis	Tremmel
3/13	at Missouri State [DH-2]	10	0-1	Tollett	Coyne	Cail	Klutts	French	Deshazier	Ulmer	Davis	Toler
3/15	Memphis	7	1-2	Tollett	Toler	Cail	Klutts	French	Deshazier	Davis	Tremmel	J. Hager
3/18	#15 Texas State	11	0-1	Tollett	Toler	Cail	Klutts	French	Deshazier	Davis	Tremmel	Coyne
3/19	#15 Texas State	12	0-1	Tollett	Toler	Cail	Klutts	French	Deshazier	Davis	Tremmel	Jamison
3/20	#15 Texas State	11	0-2	Tollett	Toler	Cail	Klutts	French	Deshazier	Davis	Tremmel	Coyne
3/23	at Southern Illinois	13	0-1	Tremmel	Toler	Cail	Klutts	French	Deshazier	Ulmer	Davis	J. Hager
3/25	at Georgia Southern	14	0-1	Tollett	Toler	Cail	Klutts	French	Deshazier	Davis	Tremmel	B. Hager
3/26	at Georgia Southern	15	0-1	B. Hager	Toler	Cail	Klutts	French	Deshazier	Davis	Jamison	Olson
3/27	at Georgia Southern	16	0-1	B. Hager	Coyne	Cail	Klutts	French	Deshazier	Davis	Tremmel	Jamison
3/29	Central Arkansas	17	1-0	B. Hager	Coyne	Cail	Klutts	French	Deshazier	Ulmer	Tremmel	Jamison
4/1	Coastal Carolina	18	0-1	Tremmel	Coyne	Cail	Klutts	French	Deshazier	Ulmer	Fagan	Jamison
4/2	Coastal Carolina	20	0-1	Tremmel	Toler	Cail	Klutts	French	Deshazier	Davis	Coyne	Medlin
4/3	Coastal Carolina	20	0-2	Tremmel	Toler	Cail	Klutts	French	Deshazier	Davis	Coyne	Medlin
4/5	at Southeast Missouri	21	0-1	B. Hager	Coyne	Cail	Klutts	French	Deshazier	Ulmer	Tremmel	Toler
4/8	Louisiana	22	0-1	Tollett	Toler	Cail	Klutts	French	Deshazier	Ulmer	Tremmel	B. Hager
4/9	Louisiana	21	0-2	B. Hager	Coyne	Cail	Klutts	French	Deshazier	Ulmer	Tremmel	Toler
4/10	Louisiana	21	0-3	B. Hager	Coyne	Cail	Klutts	French	Deshazier	Ulmer	Tremmel	Toler
4/14	at Little Rock	22	1-0	B. Hager	Toler	Olson	Klutts	French	Deshazier	Ulmer	Tremmel	J. Hager
4/15	at Little Rock	22	2-0	B. Hager	Toler	Olson	Klutts	French	Deshazier	Ulmer	Tremmel	J. Hager

STARTING LINEUPS BY BATTING ORDER

Date	Opponent	No.	Record	1	2	3	4	5	6	7	8	9
2/18	at Samford	1	0-1	French	Klutts	Toler	Tollett	Deshazier	Tremmel	B. Hager	McCutchen	J. Hager
2/19	at Samford	2	0-1	French	Klutts	Toler	Tollett	Deshazier	B. Hager	McCutchen	Davis	J. Hager
2/20	at Samford	3	0-1	French	Klutts	Toler	Tollett	Deshazier	Tremmel	Cail	Davis	J. Hager
2/23	at #3 Ole Miss	4	0-1	French	Toler	Klutts	Tollett	Deshazier	Tremmel	B. Hager	Cail	J. Hager
3/1	Mississippi Valley State	5	1-0	French	Toler	Klutts	Deshazier	Tremmel	B. Hager	Cail	Davis	J. Hager
3/2	Mississippi Valley State	6	1-0	French	Toler	Klutts	Deshazier	Tremmel	Coyne	Cail	Davis	J. Hager
3/4	Illinois State	7	1-0	French	Toler	Klutts	Tollett	Deshazier	Tremmel	Cail	Davis	J. Hager
3/5	Illinois State (DH-1)	7	2-0	French	Toler	Klutts	Tollett	Deshazier	Tremmel	Cail	Davis	J. Hager
3/5	Illinois State (DH-2)	7	2-1	French	Toler	Klutts	Tollett	Deshazier	Tremmel	Cail	Davis	J. Hager
3/8	Southeast Missouri	7	2-2	French	Toler	Klutts	Tollett	Deshazier	Tremmel	Cail	Davis	J. Hager
3/9	Southern Illinois	7	2-3	French	Toler	Klutts	Tollett	Deshazier	Tremmel	Cail	Davis	J. Hager
3/13	at Missouri State (DH-1)	8	0-1	French	Cail	Klutts	Toler	Deshazier	Tremmel	Tollett	Davis	Ulmer
3/13	at Missouri State (DH-2)	9	0-1	French	Cail	Klutts	Toler	Deshazier	Coyne	Tollett	Davis	Ulmer
3/15	Memphis	10	0-1	French	Toler	Klutts	Tollett	Deshazier	Tremmel	Cail	J. Hager	Davis
3/18	#15 Texas State	11	0-1	French	Klutts	Toler	Deshazier	Cail	Tremmel	Coyne	Tollett	Davis
3/19	#15 Texas State	12	0-1	French	Klutts	Toler	Deshazier	Cail	Tremmel	Jamison	Tollett	Davis
3/20	#15 Texas State	13	0-1	French	Toler	Klutts	Deshazier	Cail	Tremmel	Coyne	Tollett	Davis
3/23	at Southern Illinois	14	0-1	Cail	Toler	Klutts	Deshazier	Tremmel	J. Hager	French	Ulmer	Davis
3/25	at Georgia Southern	15	0-1	Cail	French	Klutts	Toler	Deshazier	B. Hager	Tremmel	Tollett	Davis
3/26	at Georgia Southern	16	0-1	Cail	French	Klutts	Toler	Deshazier	B. Hager	Olson	Jamison	Davis
3/27	at Georgia Southern	17	0-1	Cail	Coyne	Klutts	Deshazier	B. Hager	Jamison	French	Tremmel	Davis
3/29	Central Arkansas	18	1-0	Cail	Coyne	Klutts	Deshazier	B. Hager	Jamison	French	Tremmel	Ulmer
4/1	Coastal Carolina	19	0-1	Cail	Coyne	Klutts	Deshazier	Jamison	French	Tremmel	Fagan	Ulmer
4/2	Coastal Carolina	20	0-1	Cail	Coyne	Klutts	Toler	Deshazier	Tremmel	French	Medlin	Davis
4/3	Coastal Carolina	21	0-1	Cail	Coyne	Klutts	Medlin	Deshazier	Tremmel	French	Toler	Davis
4/5	at Southeast Missouri	22	0-1	Cail	Coyne	Klutts	B. Hager	Toler	Deshazier	French	Tremmel	Ulmer
4/8	Louisiana	23	0-1	Cail	Toler	Klutts	B. Hager	Deshazier	Tremmel	French	Tollett	Ulmer
4/9	Louisiana	24	0-1	Cail	Coyne	Klutts	B. Hager	Toler	Deshazier	Tremmel	French	Ulmer
4/10	Louisiana	24	0-2	Cail	Coyne	Klutts	B. Hager	Toler	Deshazier	Tremmel	French	Ulmer
4/14	at Little Rock	25	1-0	Toler	J. Hager	Klutts	B. Hager	Deshazier	Tremmel	Olson	Ulmer	French
4/15	at Little Rock	25	2-0	Toler	J. Hager	Klutts	B. Hager	Deshazier	Tremmel	Olson	Ulmer	French

PHOTO ROSTER



1 ELI DAVIS
JR | OF | 6-0 | 195 | L/L
BRIGHTON, TENN.
BRIGHTON HS



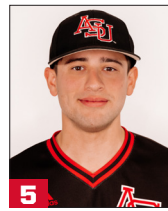
2 JAYLON DESHAZIER
SR | OF | 6-2 | 225 | R/R
PINE BLUFF, ARK.
PINE BLUFF HS



3 GARRETT OLSON
JR | INF | 5-9 | 180 | R/R
LINCOLN, NEB.
SOUTHEAST CC (Neb.)



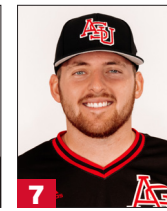
4 JARED TOLER
SO | 1B | 6-1 | 200 | L/R
BENTON, ARK.
HARMONY GROVE HS



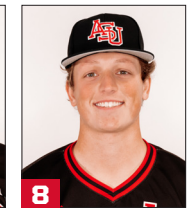
5 JONATHAN BALDELLI
SR | RHP | 5-9 | 160 | R/R
BARTLETT, TENN.
CHRISTIAN BROTHERS



6 BLAKE MCCUTCHEN
SR | INF | 6-0 | 165 | R/R
CABOT, ARK.
DYERSBURG STATE CC



7 JUSTIN MEDLIN
SR | 1B/LHP | 6-0 | 220 | L/L
RIPLEY, MISS.
MIDDLE TENNESSEE



8 CASON TOLLETT
RFR | C | 6-1 | 210 | R/R
LITTLE ROCK, ARK.
ARKANSAS



9 BEN KLUTTS
SR | INF | 6-3 | 220 | R/R
POTEAU, OKLA.
CARL ALBERT STATE CC



10 JACOB HAGER
SO | INF/OF | 6-0 | 215 | R/R
FESTUS, MO.
LUTHERAN HS SOUTH



11 BRANDON HAGER
SO | C/1B | 6-0 | 250 | R/R
FESTUS, MO.
LUTHERAN HS SOUTH



12 PHILLIP BRYANT
RSD | RHP | 5-10 | 185 | R/R
LITTLE ROCK, ARK.
KANSAS CITY CC



13 WALKER WILLIAMS
RFR | LHP | 5-10 | 180 | L/L
SPRINGDALE, ARK.
SHILOH CHRISTIAN HS



14 TYLER JEANS
JR | RHP | 6-4 | 210 | R/R
TEXARKANA, ARK.
NORTHEAST TEXAS CC



15 TRISTEN JAMISON
SO | INF | 6-2 | 170 | R/R
NASHVILLE, ARK.
NATIONAL PARK COLL.



16 BRANDON ANDERSON
SR | RHP | 6-2 | 215 | R/R
OMAHA, NEB.
NEOSHO CC



17 WIL FRENCH
FR | INF | 5-10 | 175 | S/R
JONESBORO, ARK.
VALLEY VIEW HS



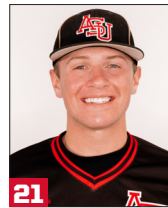
18 WILL NASH
SR | RHP | 5-11 | 210 | R/R
WHEATLEY, ARK.
SW TENN. STATE CC



19 JOHN HOSKYN
SO | C | 6-0 | 235 | R/R
STUTTGART, ARK.
STUTTGART HS



20 CARTER HOLT
SR | RHP | 6-5 | 260 | R/R
JACKSON, TENN.
JACKSON CHRISTIAN



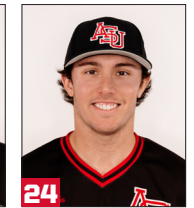
21 SAM FAGAN
RFR | OF | 6-3 | 210 | R/R
JONESBORO, ARK.
VALLEY VIEW HS



22 KYLER CARMACK
FR | OF/RHP | 6-1 | 180 | R/R
CABOT, ARK.
CABOT HS



23 WILL GROSS
SO | RHP | 5-10 | 235 | R/R
MOUNTAIN HOME, ARK.
MOUNTAIN HOME HS



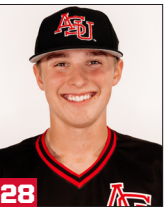
24 BRANDON ULMER
SO | OF | 5-10 | 180 | L/R
BOONEVILLE, ARK.
BOONEVILLE HS



25 MAX CHARLTON
SO | RHP | 6-1 | 200 | R/R
LENEXA, KAN.
ST. JAMES ACADEMY



27 AUSTIN BROCK
JR | LHP | 5-11 | 170 | L/L
SENATH, MO.
THREE RIVERS COLL.



28 JAKE ALGEE
SO | RHP | 6-0 | 190 | R/R
BROOKLAND, ARK.
BROOKLAND HS



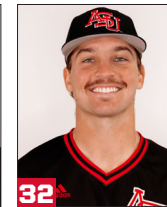
29 KEVIN WISEMAN
RJR | RHP | 6-1 | 210 | R/R
AXTELL, TEXAS
WAGNER



30 DAEDRICK CAIL
FR | INF | 6-1 | 220 | R/R
MARION, ARK.
MARION HS



31 JACKSON HARRIS
FR | INF | 6-1 | 215 | R/R
TEXARKANA, ARK.
ARKANSAS HS



32 MICKEY COYNE
JR | LHP/1B | 6-2 | 205 | L/L
RENO, NEV.
SIERRA COLLEGE



33 BRANDON HUDSON
JR | RHP | 6-5 | 180 | R/R
ROLAND, ARK.
NORTHERN OKLAHOMA
COLLEGE-ENID



34 SAWYER BENTLEY
FR | RHP | 6-0 | 175 | R/R
JONESBORO, ARK.
JONESBORO HS



35 TRESHON PASCHAL
JR | RHP | 6-2 | 190 | R/R
SPRINGDALE, ARK.
CROWDER COLLEGE



36 WILL GILMER
RSD | RHP | 6-0 | 200 | R/R
SIKESTON, MO.
JEFFERSON COLLEGE



37 DAWSON CHESTER
FR | INF | 5-10 | 200 | R/R
POCAHONTAS, ARK.
POCAHONTAS HS



38 TY GORDON
FR | 1B/OF | 5-11 | 215 | L/L
NASHVILLE, ARK.
NASHVILLE HS



39 JAKOB FREDERICK
JR | LHP | 5-8 | 170 | L/L
SACRAMENTO, CALIF.
SIERRA COLLEGE



40 COOPER TREMMEL
SO | OF/C | 6-0 | 190 | L/R
LAKELAND, TENN.
VOLUNTEER STATE CC



41 CROSS JUMPER
FR | OF/RHP | 6-2 | 200 | R/R
JONESBORO, ARK.
TENNESSEE