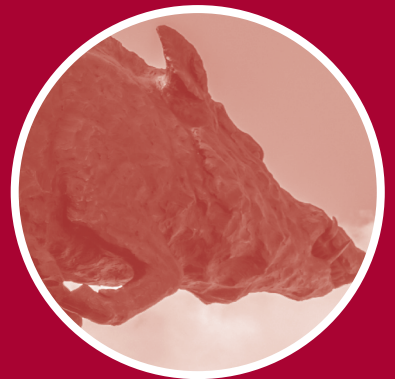
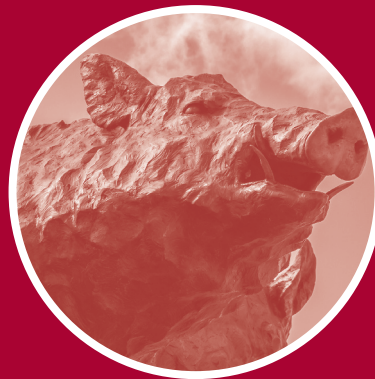


# RAZORBACKS

## ACADEMIC CALENDAR & PLANNER 2024-25



& GENE JONES FAMILY  
NT-ATHLETE SUCCESS CENTER



[ARKANSASRAZORBACKS.com](http://ARKANSASRAZORBACKS.com)



Dear Razorback Student-Athlete:

Welcome to the University of Arkansas! Last year, was another successful collective year with five SEC Championships, two NCAA Championships, and thirteen top-25 national finishes. We look forward to continuing to build on the momentum of that tremendous year as we prepare for the 2024-25 academic year.

For those of you who are returning to our program, we are glad you are back with us. We look forward to continuing that momentum. For those new to campus, we are excited you are here and now officially part of the Razorback Family.

Please know that more than 300 coaches, administrators, staff members and campus officials are ready to assist you along the way. Whether it is encouraging you in your academic and athletic pursuits, or helping foster your continued personal growth, the focus of our team is providing opportunities for student-athlete success. In the end, that daily commitment adds up to graduation, championships and most importantly the realization of our mission to Build Champions and Razorbacks for Life!

This handbook will provide a framework for you regarding the policies and services available to maximize your experience as a student-athlete, as well as assist in your managing your day-to-day academic and athletic schedules.

If you have any questions regarding the information outlined in this handbook or about any aspect of your student-athlete experience, I encourage you to reach out to your coach, your sport administrator or any member of our athletics staff. We want to do everything we can to ensure that your experience as Razorback student-athlete experience is a rewarding and memorable one.

Good luck as the 2024-25 academic year gets underway. This promises to be another great year for Razorback Athletics.

Go Hogs!

Hunter Yurachek  
Vice Chancellor  
Director of Athletics



**University of Arkansas**  
**Department of Athletics**

P.O. Box 7777

Broyles Athletic Center  
Fayetteville, AR 72702-7777

479-575-6533

F: 479-575-4859

**ARKANSASRAZORBACKS.COM**

# TABLE OF CONTENTS

Section	Page
ARKANSAS FIGHT SONG AND ALMA MATER .....	4
ACADEMIC CALENDAR FOR 2024-25 .....	5
RAZORBACK ATHLETICS: VISION, FOCUS & MISSION .....	6
UNIVERSITY OF ARKANSAS DIVERSITY VALUES STATEMENT .....	7
DEPARTMENT OF ATHLETICS INCLUSION STATEMENT .....	7
HOG UNITED.....	7
CAMPUS RESOURCES .....	8
ATHLETIC DEPARTMENT ADMINISTRATION (Director's Cabinet ) .....	9
ATHLETIC DEPARTMENT ADMINISTRATION (Senior Staff) .....	10
OFFICE OF STUDENT-ATHLETE SUCCESS STAFF .....	11
OFFICE OF STUDENT-ATHLETE SUCCESS (OSAS): ACADEMICS .....	13
OSAS Mission Statement .....	13
Academic Services.....	13
What We Offer .....	13
Academic Counselors .....	13
Learning Specialists.....	13
Tutoring .....	13
Student Learning Outcomes .....	13
Course Registration.....	14
Change of Registration/Dropping & Adding Courses/Declaring Major .....	14
Study Hall .....	14
Tutors for Student-Athletes .....	14
Grade Monitoring.....	15
Confidentiality, Shared Information & Personal Counseling.....	16
Academic Honesty .....	16
Academic Eligibility for Intercollegiate Competition .....	16
University of Arkansas Academic Regulations.....	17
Regulations Concerning Academic Standing and Eligibility.....	17
University of Arkansas Academic Standing .....	17
Academic Suspension .....	18
Academic Dismissal .....	18
Returning after Dismissal.....	18
Center for Educational Access .....	18
FLAGSHIP (STUDENT-ATHLETE EXPERIENCE) .....	19
Flagship Purpose Statement .....	19
Flagship Staff .....	19
Flagship Programs .....	19
Career Development .....	19
Brand Management.....	19
Community Engagement .....	19
Student-Athlete Advisory Committee (SAAC) .....	20
W.H.O.L.E. (Women Helping Others Lead & Empower) Women .....	20
International Hogs.....	20
Black Leadership Athletic Committee (BLAC) .....	20
Financial Education .....	21
Healthy Choices .....	21
Housing & Dining Services.....	21
NCAA and SEC Student-Athlete Awards & Graduate Scholarships .....	21

<b>STUDENT-ATHLETE CONDUCT .....</b>	<b>23</b>
Standards of Conduct .....	23
Disciplinary Procedures.....	24
Sportsmanship .....	25
Conduct, Player Appearance & Alcohol.....	25
Travel Rules .....	25
Grievance Policy .....	25
<b>TITLE IX .....</b>	<b>27</b>
<b>COMPLIANCE.....</b>	<b>29</b>
Complimentary Tickets and Admission Benefits .....	29
Countable Athletically-Related Activity .....	29
Weekly Hour Limitations - Outside of Playing Season .....	30
Required Athletically Related Activities .....	30
Student-Athlete Time Management Plan .....	30
Automobile Registration .....	30
Student Host Responsibilities .....	31
Amateurism.....	31
Gambling & Bribery.....	31
Extra Benefits .....	32
Financial Aid & Athletic Scholarship Policies .....	32
Student-Athlete Employment .....	34
Transfer Process for Razorback Student-Athletes .....	34
<b>COMMUNICATIONS OFFICE INFORMATION .....</b>	<b>34</b>
Media Interview Best Practices.....	34
Social Networking Best Practices .....	35
<b>ATHLETIC TRAINING.....</b>	<b>37</b>
Athletic Training Staff.....	37
Athletic Training Rooms .....	37
Medical Care Providers.....	37
Primary Care Sports Medicine/Orthopedic Physicians .....	38
Surgical Care .....	38
Cardiology.....	38
Preseason Physicals .....	38
Injury/Illness Policy .....	38
Specialists and Second Opinions.....	39
Pre-Existing Injuries or Conditions .....	39
Close-Out Screening.....	39
Mental Health and Performance .....	39
Sports Performance and Nutrition.....	39
Dental & Eye Care .....	39
Medical Appointments & Excuses.....	40
Medical Expenses .....	40
Changes To Primary Insurance Coverage.....	40
Prescription Medication & Supplements .....	40
Privacy Information .....	41
Pregnancy Policy .....	41
Athletic Department Contacts & University Resources .....	42
Reporting .....	42
Participation While Pregnant .....	42
Medical Care .....	42
Scholarship & Aid .....	42
Federal Laws.....	43
Eating Disorder Policy.....	43
Sexual Harassment/Assault/Misconduct.....	43
<b>CONCUSSION MANAGEMENT PLAN .....</b>	<b>43</b>



Concussion Management Team .....	43
Definition of Sports Related Concussion .....	44
Independent Medical Care .....	44
Preseason Education .....	44
Pre-Participation Assessment .....	45
Recognition and Diagnosis of Concussion .....	45
Initial Suspected Concussion Evaluation .....	45
Post-Concussion Management .....	46
Return-to-Learn Management.....	46
Return-to-Sport Management .....	47
Reduce Head Impact Exposure.....	47
Steps To Reduce Exposure To Head Injuries .....	47
Sickle Cell Trait Policy .....	48
Sickle Cell Trait Testing .....	48
<b>UNIVERSITY OF ARKANSAS DRUG AND ALCOHOL EDUCATION AND TESTING PROGRAM .....</b>	<b>48</b>
Prohibited Substances .....	49
Nutritional & Dietary Supplements .....	51
Requirements for Positive Drug Tests	
(For ALL Drugs - Performance Enhancing , Non-Performance Enhancing Drugs; or	
“Street Drugs” .....	51
Secondary Testing & Education Guidelines .....	52
<b>MENTAL HEALTH AND PERFORMANCE.....</b>	<b>54</b>
<b>UNIVERSITY OF ARKANSAS SPORTS NUTRITION .....</b>	<b>54</b>
Program Overview .....	54
Services Offered .....	54
Dietary Supplement Policy.....	55
<b>STRENGTH AND CONDITIONING .....</b>	<b>55</b>
A. Strength and Conditioning Facilities.....	55
B. Student-Athlete Conduct.....	56

## **Arkansas Fight Song**

Hit that line! Hit that line!  
Keep on going!  
Take that ball right  
down the field!  
Give a cheer. Rah! Rah!  
Never fear. Rah! Rah!  
Arkansas will never yield!  
On your toes, Razorbacks,  
to the finish,  
carry on with all your might!  
For it's A-A-A-R-K-A-N-S-A-S  
for Arkansas!  
Fight! Fight! Fi-i-i-ight!

## **The Arkansas Alma Mater**

Pure as the dawn on the brow of thy beauty,  
Watches thy Soul  
from the mountains of God.  
Over the fates of thy children departed,  
Far from the land  
where their footsteps have trod.  
Beacon of hope in the ways dreary lighted,  
Pride of our hearts that are loyal and true.  
From those who adore unto one who  
adores us,  
Mother of Mothers, we sing unto you.





ACADEMIC CALENDAR • VISION, FOCUS & MISSION • UNIVERSITY OF ARKANSAS DIVERSITY VALUES STATEMENT • DEPARTMENT OF ATHLETICS INCLUSION STATEMENT • HOGS UNITED • CAMPUS RESOURCES • ATHLETIC DEPARTMENT ADMINISTRATION  
OFFICE OF STUDENT-ATHLETE SUCCESS STAFF/FLAGSHIP (NIL) STAFF





# UNIVERSITY OF ARKANSAS ACADEMIC CALENDAR

## FALL INTERSESSION 2024

August 5	Classes Begin
August 15	Last Day of Classes
August 16	Final Exams

## Fall 2024

August 19	Classes Begin
September 2	Labor Day Holiday
October 8	First 8-Week Session Ends
October 9	Second 8-Week Session Begins
October 14-15	Fall Break
November 27-29	Thanksgiving Holiday
December 5	Last Day of Classes
December 6	Reading Day
December 9-13	Final Exams
December 14	Commencement

## SPRING INTERSESSION 2025

January 2	Classes Begin
January 10	Last Day of Classes
January 11	Final Exams

## Spring 2025

January 13	Classes Begin
January 20	Martin Luther King Holiday
March 4	First 8-Week Session Ends
March 5	Second 8-Week Session Begins
March 24-28	Spring Break
May 1	Last Day of Classes
May 2	Reading Day
May 5-9	Final Exams
May 10	Commencement

## SUMMER INTERSESSION 2025

May 12	Classes Begin
May 22	Last Day of Classes
May 23	Final Exams

## SUMMER 2025 10-WEEK SESSION

May 26	Memorial Day Holiday
May 27	Classes Begin
July 4	Independence Day Holiday
August 1	Last Day of Classes

## SUMMER 2025 FIRST 5-WEEK SESSION

May 26	Memorial Day Holiday
May 27	Classes Begin
June 27	Last Day of Classes

## SUMMER 2025 SECOND 5-WEEK SESSION

June 30	Classes Begin
July 4	Independence Day Holiday
August 21	Last Day of Classes

## SUMMER 2024 8-WEEK SESSION

May 26	Memorial Day Holiday
May 27	Classes Begin
July 4	Independence Day Holiday
July 17	Last Day of Classes

# RAZORBACK ATHLETICS: VISION, FOCUS & MISSION

## OUR VISION:

*To Be The BEST*

## OUR FOCUS:

*Student-Athlete Success*

## OUR MISSION:

*Building CHAMPIONS and Razorbacks for Life*

## OUR SHARED HUMANITY VALUES STATEMENT

We care about the safety, health and well-being of those around us. We support an open exchange of ideas and respect the unique perspectives and contributions that each of us provides. As a community of individuals, our diversity is our strength. We help nourish an inclusive environment where equity, opportunity, representation and civility are valued. Respecting our differences creates better understanding of our shared humanity, the foundation of our mission to build a better world.

## DEPARTMENT OF ATHLETICS INCLUSION STATEMENT

The University of Arkansas Department of Athletics is responsible and accountable for reflecting the goals and values of the University of Arkansas. The Department of Athletics will not tolerate discrimination of any form and strives to maintain an inclusive and equitable environment for student-athletes, employees, and fans.



Hogs UNITED is a collaborative effort between the student-athletes, coaches, and staff at the University of Arkansas Department of Athletics. This effort is aimed at promoting ***education***, ***advocacy***, and ***action*** in the areas of diversity, equity, inclusive excellence, and belonging.

The mission of Hogs UNITED aligns with the University of Arkansas' work on Belonging, and we will communicate that throughout the Department of Athletics. The University of Arkansas states, when you feel a sense of Belonging, you are part of something greater than yourself, where your voice matters, and you are encouraged to learn from diverse experiences. Further, the U of A is committed to being an employer of choice by building an environment where everyone feels a sense of belonging and works toward a meaningful purpose.

Hogs UNITED is focused on concerns and topics within the areas of diversity, equity, inclusive excellence, and belonging. Additional areas of focus include hiring and retention of individuals from marginalized or underserved groups, messaging from the Department of Athletics around topics of diversity and inclusion, working in conjunction with the Human Resources Manager and the Title IX Officer, and keeping up with and supporting relevant research on the topics of diversity, equity, inclusive excellence, and belonging within athletic settings.

Hogs UNITED is comprised of staff members, coaches, and student-athletes who meet regularly throughout the year and are excited by this work and dedicated to active allyship. Hogs UNITED supports and develops affinity groups within the department as affinity groups are a starting point for open discussion around a variety of topics within diversity, equity, inclusive excellence, and belonging.

Departmental engagement is aimed at increasing support for the student-athletes in the areas of diversity, equity, inclusive excellence, and belonging. Individuals may be asked to serve as mentors for current student-athletes, guest speakers, and representatives of the Hogs UNITED mission to those outside of the Department of Athletics.

By providing structure to these diversity, equity, inclusive excellence, and belonging, Razorback Athletics will have a united and unified front when it comes to addressing issues of equity *and* equality in our department, on our campus, and within our community.

## CAMPUS RESOURCES

Academic Advising Departments	Website	Campus Address	Phone
Dale Bumpers College of Agricultural Food & Life Sciences	<a href="https://bumperscollege.uark.edu/">https://bumperscollege.uark.edu/</a>	202 Agricultural, Food & Life Sciences	575-2252
Fay Jones School of Architecture	<a href="https://fayjones.uark.edu/">https://fayjones.uark.edu/</a>	120 Vol Walker Hall	575-4945
J. William Fulbright College of Arts & Sciences	<a href="https://fulbright.uark.edu/">https://fulbright.uark.edu/</a>	526 Old Main	575-4801
Sam M. Walton College of Business	<a href="https://walton.uark.edu/">https://walton.uark.edu/</a>	220 N. McIlroy Ave. Ste.301	575-5949
College of Education and Health Professions	<a href="https://coehp.uark.edu/">https://coehp.uark.edu/</a>	324 Graduate Education Building	575-3208
College of Engineering	<a href="https://engineering.uark.edu/">https://engineering.uark.edu/</a>	4183 Bell Engineering Center	575-7455
Campus Departments	Website	Campus Address	Phone
Campus Card Office	<a href="https://campuscardoffice.uark.edu/">https://campuscardoffice.uark.edu/</a>	ARKU 427	575-7563
Campus Dining	<a href="https://union.uark.edu/resources-and-services/retail-and-dining.php">https://union.uark.edu/resources-and-services/retail-and-dining.php</a>	ARKU 634	575-2146
Career Development Center	<a href="http://career.uark.edu/cdc/">http://career.uark.edu/cdc/</a>	ARKU 607	575-2805
Cashier's Office	<a href="https://treasurernet.uark.edu/student_accounts.aspx">https://treasurernet.uark.edu/student_accounts.aspx</a>	ARKU 214	575-5651
Center for Educational Access	<a href="https://cea.uark.edu/">https://cea.uark.edu/</a>	ARKU 209	575-3104
Computing Services	<a href="https://its.uark.edu/">https://its.uark.edu/</a>	ADSB 220	575-2901
Enhanced Learning Center	<a href="https://success.uark.edu/">https://success.uark.edu/</a>	470 N. Campus Drive	575-3174
Financial Aid	<a href="https://finaid.uark.edu/">https://finaid.uark.edu/</a>	HUNT 114	575-3806
Health Center Pat Walker	<a href="https://health.uark.edu/">https://health.uark.edu/</a>	525 N. Garland Ave.	575-4451
International Students & Scholars	<a href="https://international-students.uark.edu/">https://international-students.uark.edu/</a>	HOLC 104	575-5003
Multicultural Center	<a href="https://multicultural.uark.edu/">https://multicultural.uark.edu/</a>	ARKU 404	575-8405
Off-Campus Student Services	<a href="https://offcampus.uark.edu/">https://offcampus.uark.edu/</a>	ARKU 632	575-7351
Office of Student Accountability	<a href="https://ethics.uark.edu/">https://ethics.uark.edu/</a>	Pomfret Hall B 110	575-5170
On-Campus Employment (International Students & Scholars)	<a href="https://international-students.uark.edu/visas-and-immigration/f-students/employment-authorization/on-campus.php">https://international-students.uark.edu/visas-and-immigration/f-students/employment-authorization/on-campus.php</a>	Gearhart Hall 213	575-4401
Police Department	<a href="https://uapd.uark.edu/">https://uapd.uark.edu/</a>	155 S. Razorback Road	575-2222
Student Success	<a href="https://success.uark.edu/">https://success.uark.edu/</a>	470 N. Campus Walk	575-3174
Razorback Tickets	<a href="http://www.arkansasrazorbacks.com/student-tickets/">http://www.arkansasrazorbacks.com/student-tickets/</a>	1295SRazorbackRd,SuiteB	575-5151
Registrar's Office	<a href="https://registrar.uark.edu/">https://registrar.uark.edu/</a>	HUNT 146	575-5451
Safe Ride	<a href="https://parking.uark.edu/transit-services/safe-ride/index.php">https://parking.uark.edu/transit-services/safe-ride/index.php</a>	ADSB 131	575-SAFE
Scholarship	<a href="https://scholarships.uark.edu/">https://scholarships.uark.edu/</a>	HUNT 114	575-4464
Student Government	<a href="https://asg.uark.edu/">https://asg.uark.edu/</a>	ARKU A-669	575-5255
Transit & Parking	<a href="https://parking.uark.edu/">https://parking.uark.edu/</a>	ADSB 131	575-PARK
Treasurer's Office	<a href="https://treasurernet.uark.edu/">https://treasurernet.uark.edu/</a>	640 N. Garland Ave, Suite 108	575-5651
University Housing	<a href="http://housing.uark.edu/">http://housing.uark.edu/</a>	960 W. Douglas St.	575-4687
University Libraries	<a href="https://libraries.uark.edu/">https://libraries.uark.edu/</a>	365 N. McIlroy Ave	575-4104



# ATHLETIC DEPARTMENT ADMINISTRATION

## DIRECTOR'S CABINET



**HUNTER YURACHEK**  
*Vice Chancellor/Director of Athletics*  
*Sports Administrator: Football*  
575-7641  
athldir@uark.edu



**DERITA RATCLIFFE DAWKINS**  
*Vice Chancellor/Deputy AD: Student-Athlete Wellness/SWA*  
*Sport Administrator: Women's Basketball, Men's Cross Country and Track & Field, Women's Cross Country and Track & Field*  
575-7520  
dratclif@uark.edu



**DAN TRUMP**  
*Deputy AD: Integrity & Student-Athlete Success*  
*Sports Administrator: Softball, Swimming & Diving*  
575-7966  
dtrump@uark.edu



**RICK THORPE**  
*Deputy AD: External Engagement*  
*Sport Administrator: Football, Men's Tennis, Women's Tennis*  
575-3466  
rthorpe@uark.edu



**MARK TRANTHAM, SR.**  
*Sr. Associate AD: Capitol Projects, Facility Maintenance, Grounds & Equipment*  
*Sport Administrator: Men's Basketball, Men's Golf, Women's Golf*  
575-2666  
mtran@uark.edu



**KAT DEVENPORT**  
*Chief of Staff*  
*Sport Administrator: Gymnastics, Soccer*  
575-7953  
kemoffe@uark.edu



**CRAIG TIGGES**  
*Sr. Associate AD/Chief Financial Officer*  
tigges@uark.edu



**KEVIN TRAINOR**  
*Sr. Associate AD: Public Relations/Formal Student-Athlete Engagement*  
*Sport Administrator: Baseball, Volleyball*  
575-6959  
ktrainor@uark.edu



**TAYLOR MCGILLIS, SR.**  
*Sr. Associate AD: Marketing & Brand Development*  
*Sport Administrator: Baseball, Volleyball*  
575-3313  
trmcgill@uark.edu



**MATT MCCOY**  
*Sr. Associate General Counsel for Athletics*  
575-5401  
mbmccoy@uark.edu



**RYAN WHITE**  
*Executive Director of Razorback Foundation*  
443-9000  
rwhite@razorbackfoundation.com

## SENIOR STAFF



**CHRIS BADER**

*Associate AD: Mental Health & Performance. ADID*  
479-409-7216  
cbader@uark.edu



**ELVIS MOYA**

*Associate AD: Community Outreach & Fan Engagement*  
*Assistant Sport Administrator: Gymnastics*  
575-6055  
ejmoya@uark.edu



**FELECIA SAINÉ**

*Associate AD: Academics & Student-Athlete Development*  
*Assistant Sport Administrator: Men's Cross Country and Track & Field,*  
*Women's Cross Country and Track & Field*  
575-4424  
fsaine@uark.edu



**JULIE CAIN**

*Associate AD: Event Management*  
575-3134  
jcain@uark.edu



**JUSTIN MALAND**

*Associate AD: Capital Projects & Technology*  
575-6768  
jmaland@uark.edu



**KYLE PARKINSON**

*Associate AD: Communications*  
575-2752  
kparkin@uark.edu



**MICHELLE GLOVER**

*Assistant AD: Broadcast Services*  
575-3618  
mlglover@uark.edu



**PATRICK DALE**

*Associate AD: Facilities Management*  
575-6575  
pddale@uark.edu



**PETE HEIM**

*Associate AD: Ticket Sales & Operations*  
*Assistant Sport Administrator: Men's Tennis, Women's Tennis*  
575-6344  
peteheim@uark.edu



**TRACEY STEHLIK**

*Associate AD: Compliance*  
575-6738  
stehlik@uark.edu



**TRICIA MATYSAK**

*Associate AD: Sports Medicine*  
*Assistant Sport Administrator: Swimming & Diving*  
575-4809  
tmatysak@uark.edu

**ATHLETIC DEPARTMENT ADMINISTRATION**  
**OFFICE OF STUDENT-ATHLETE SUCCESS STAFF**



**FELECIA SAINÉ**  
*Associate AD: Academics & Student-Athlete Development*  
236-7935  
[fsaine@uark.edu](mailto:fsaine@uark.edu)



**TAMESHA MUSE**  
*Director of Academics (Women's Basketball & Soccer)*  
236-2384  
[tgreenl@uark.edu](mailto:tgreenl@uark.edu)



**CHRISTOPHER EVANS**  
*Director of Academics (Football)*  
445-7185  
[ce016@uark.edu](mailto:ce016@uark.edu)



**CHRISTINE SCHEETS**  
*Director of Educational Enrichment Services*  
200-8217  
[cscheets@uark.edu](mailto:cscheets@uark.edu)



**JUSTIN JOHNSON**  
*Director of Student-Athlete Development/Flagship*  
236-4388  
[jjjohns@uark.edu](mailto:jjjohns@uark.edu)



**TBD**  
*Assistant Director of Academics (Football & Gymnastics)*  
TBD  
TBD



**JACOB HOOPS**  
*Assistant Director of Academics (Men's Basketball and Women's Tennis)*  
313-2077  
[jhoops@uark.edu](mailto:jhoops@uark.edu)



**LAUREN HAWKINS**  
*Assistant Director of Student-Athlete Experience*  
380-8322  
[lh059@uark.edu](mailto:lh059@uark.edu)



**RICHARD SMITH**  
*Assistant Director of Educational Enrichment Services*  
249-7258  
[rxs09@uark.edu](mailto:rxs09@uark.edu)

**ATHLETIC DEPARTMENT ADMINISTRATION**  
**OFFICE OF STUDENT-ATHLETE SUCCESS STAFF**



**JONATHAN BURGESS**

*Assistant Director of Academics (Baseball & Women's Track & Field)*  
396-9996  
[jb156@uark.edu](mailto:jb156@uark.edu)



**MAERYS JOSEPH**

*Academic Counselor (Men's Track & Field & Women's Golf)*  
249-7545  
[mcatee@uark.edu](mailto:mcatee@uark.edu)



**MEGAN WHOBREY**

*Academic Counselor (Swimming & Diving, Softball & Volleyball)*  
387-8825  
[mwhobrey@uark.edu](mailto:mwhobrey@uark.edu)



**RILEY VANDERVEEN**

*Academic Counselor (Football & Men's Tennis)*  
TBD  
[rv007@uark.edu](mailto:rv007@uark.edu)



**FORREST BARNES**

*Student-Athlete Experience Coordinator*  
236-4370  
[forrestb@uark.edu](mailto:forrestb@uark.edu)



**TREVOR WILLIAMSON**

*Tutor Coordinator/Academic Counselor (Men's Golf)*  
595-9113  
[tpwillia@uark.edu](mailto:tpwillia@uark.edu)



**BRILEY VICKERS**

*Learning Specialist*  
236-6921  
[bjvickers@uark.edu](mailto:bjvickers@uark.edu)



**MISTI CESEÑA**

*Athletic Academic Services Manager*  
900-4407  
[mceseña@uark.edu](mailto:mceseña@uark.edu)



**TBD**

*Administrative Specialist*  
TBD  
TBD





OFFICE OF STUDENT-ATHLETE SUCCESS (OSAS): ACADEMICS • OFFICE OF STUDENT-ATHLETE SUCCESS (OSAS):  
STUDENT-ATHLETE DEVELOPMENT • NAME, IMAGE AND LIKENESS (NIL) GUIDELINES • STUDENT-ATHLETE CONDUCT  
TITLE IX • COMPLIANCE • COMMUNICATIONS





# **“OFFICE OF STUDENT-ATHLETE SUCCESS**

The Office of Student-Athlete Success (OSAS) is comprised of the Student-Athlete Development and Academic Services units. Both units work collaboratively to empower Razorback student-athletes to reach their fullest potential.

## **OSAS Mission Statement**

The Office of Student-Athlete Success (OSAS) empowers individuals through holistic programming as students, athletes, and leaders while promoting integrity, diversity, and achievement.

## **ACADEMIC SERVICES**

### **WHAT WE OFFER**

Academic Services is comprised of academic counselors, learning specialists, tutor coordinator and graduate assistants committed to helping students reach their academic goals. We help students juggle the personal, social, academic and athletic demands at the University of Arkansas. Educational Enrichment Services provides additional support to student-athletes who may be at-risk academically, underprepared for college, have been diagnosed with a learning disability and/or are English Language Learners (ELL). The Athletic Department believes firmly that the foremost goal of every student-athlete is to reach their fullest potential and graduate. To that end, we provide our student-athletes with the necessary resources to achieve that goal.

### **ACADEMIC COUNSELORS**

Each academic counselor is charged with helping students master certain skills that ultimately result in graduation and aspiring to achieve a personal best.

- Work with specific teams and serve as the liaison between professors and coaches
- Assist with time management skills, personal responsibility, and direct student-athletes to various campus resources
- Mold student-athlete's schedules to fit NCAA requirements while balancing athletic obligations
- Work closely with the Eligibility staff to ensure students are working toward completing a degree as well as maintaining eligibility
- Correspond with faculty/professors regarding class absences due to competitions, sickness, etc.

### **Learning Specialists**

The Educational Enrichment Services (EES) program is designed to facilitate both the personal and academic development of the student-athlete. The overall goal is to develop the skills and the drive needed for student-athletes to reach their individual academic and personal goals.

- EES encourages skill building, accommodation management, and academic assistance in conjunction with individual needs
- Learning specialists work one-on-one with student-athletes during weekly meetings
- The Director of Educational Enrichment Services coordinates with Academic Counselors to screen and work with student-athletes that may benefit from these services”
- EES acts as a liaison to Center for Educational Access (CEA). For more information on the CEA, please see the end of the OSAS section.
- Assistive technologies include but are not limited to: “Live Scribe Pens”
- EES offers H.O.G Hall/Team study halls: Objective-based study hall where students work with specialized learning assistants at a ratio of no more than 3:1 in order to help students effectively for their classes each week

### **Tutoring**

- We have a full-time Tutor Coordinator on staff who hires, trains, and evaluates each tutor
- Tutoring appointments are one-on-one sessions that be can scheduled on a one-time or reoccurring basis (group sessions are available upon requests)
- We have an expansive tutor staff who reflect the following:
- 3.0 minimum GPA required along with 4 hours of professionalization training each term
- Recommendations from faculty and staff
- Undergraduate, Masters, PhD students, and NWA community members

## **STUDENT LEARNING OUTCOMES**

### **Throughout Student-Athlete College Experience**

- Maintain good academic standing and successfully complete an average of 12 credit hours per semester for undergraduates and 9 credit hours per semester for graduate students
- Understand your degree requirements and track your degree progress
- Understand continuing education requirements

### **First Year**

- Partner with your Academic Counselor to develop a graduation plan
- Complete mandatory study requirements
- Complete University Year One requirements and attend Razorback Ready Orientation

### **Second Year**

- Re-visit graduation plan for your remaining requirements

### **Third Year**

- Conduct a degree audit with your on campus academic adviser to make sure you are on track to graduate

### **Graduating Year**

- Apply to graduate on the Registrar's Website: <http://registrar.uark.edu/968.php>
- Celebrate completion of degree

## **COURSE REGISTRATION**

Student-athletes must know the name and office schedule of their faculty or professional academic advisors in their degree programs. Students risk loss of academic progress toward the degree if they are advised for courses by anyone other than the faculty member or academic advisor assigned to them by their academic dean's office.

The role of the academic counselor staff in course selection and registration is to help students prepare for the faculty/professional advising session, with regard to athletic eligibility and travel. To that end, the three largest colleges on campus participate mobile advising for student-athletes - Fulbright College of Arts and Sciences, College of Education and Health Professions, and Walton College of Business.

### **Change of Registration/Dropping and Adding Courses/Declaring Major**

The following specific procedure must be carried out BEFORE a student-athlete may change registration or declare a major:

1. Get approval from the academic counselor staff.
2. Consult with the academic advisor and obtain proper faculty and college signatures.
3. Consult with the student-athlete's coaching staff.
4. If both academic and athletic requirements can be met despite changes, the student may complete the process.

Failure to follow these four steps, in proper order, may result in loss of athletic eligibility, financial aid and/or degree progress.

### **Study Hall**

General rules for study hall:

- Be respectful to ALL staff and tutors (Contact your academic counselor if you have any problems)
- Maintain an environment that is conducive to learning (low noise, etc)

### **Tutors for Student-Athletes**

Educational Enrichment Services (EES) provides tutorial support for all student-athletes. The department has a long tradition of providing a strong tutorial program that ensures the highest level of achievement for our student-athletes. We are committed to attracting and maintaining the best tutorial staff on the campus.

The tutors provided by EES are generally University of Arkansas undergraduate and graduate students. These tutors are knowledgeable of the subjects they tutor and are part of the campus community. They have gone through an application and screening process and have been approved by the Tutor Coordinator. In addition, they have received specific training that prepares them to continue our tradition of excellent service to our student-athletes. In addition, all tutors receive an NCAA rules orientation each semester.

All University Core courses will be supported by both scheduled and by-appointment tutors. For more advanced and specialized courses (i.e. upper division engineering, sciences, etc.), every effort will be made to obtain a qualified tutor, but this is not guaranteed. The students making the requests are responsible for allowing staff adequate time to recruit a tutor on campus. Should a student identify a prospective tutor (teaching assistant, lab instructor, or acquaintance), an academic staff member must pre-approve that tutor's employment. Additionally, tutors must apply and go through the proper employment and screening procedures. If this policy is not followed to the letter, the Tutor Coordinator will not approve payment for that tutor.

Student-athletes may access tutors through their academic counselor in the Bogle Academic Center. For the convenience of student-athletes, a roster of scheduled tutors will be posted in the academic center. Students requiring or requesting tutorial sessions should contact their Academic Counselor.

If a student-athlete, coach, or other staff member has questions or concerns about the EES Tutorial Program, they should be addressed to the Associate Athletic Director for Academic Services, Director of Academics, or the Tutor Coordinator.



**All tutor requests, changes to appointments, and cancellations must be submitted via email to your academic counselor by 4:00 pm the day prior to the appointment** (for example, if you have an appointment at 6:00 pm on Tuesday, you must request it be cancelled by 4:00 pm on Monday). If you submit a cancellation or change request late, it will not be granted. Any cancellations will result in a no show (for example).

All student-athletes, tutors, and staff are required to carefully adhere to the following Academic Center Tutor Policies:

- Students may not make their own arrangements with prospective tutors. If a student has a suggestion for a good prospect, they should work through the Tutor Coordinator to enlist that tutor's help.
- A STUDENT-ATHLETE MAY NOT CONTACT a tutor make their own arrangements for an appointment. You must contact your Academic Counselor or Tutor Coordinator. You or your tutor cannot cancel or change the appointment. Any changes must also go through your Academic Counselor or Tutor Coordinator.
- All tutors and students will follow the University of Arkansas policies regarding Academic Honesty. If a tutor or student fails to abide by University of Arkansas, Southeastern Conference, or NCAA rules, both student and tutor will be referred to University Judicial Board and /or to the appropriate compliance staff.
- Student-athletes cannot work with any graded assignments with their tutors. This includes homework, quizzes, and tests. Open-note tests are also not allowed.
- Student-athletes are not to ask tutors to do any portion of an assignment no matter what the circumstances may be.
- Student-athletes are not to ask tutors to prepare or type any portion of a document for them. Students should not work on typing papers in tutoring sessions. Instead, students should print out a copy of their paper to review with their tutors. Tutors can only help with grammatical issues but not with actual content editing.
- Tutors employed by EES may not provide student-athletes with special study materials not otherwise available to students generally.
- Tutors are not to touch any part of the computer during a tutoring session.
- Tutors may not provide meals, photocopying, or transportation for student-athletes. To do so would constitute an "extra benefit" in violation of NCAA rules. If a student-athlete or tutor has a question about whether or not an activity constitutes an extra benefit, he/she should consult the Associate Athletic Director for Academic Services, Director of Academics or a member of the compliance staff at 479-575-4108.
- Student-athletes and tutors should see the Director of Educational Enrichment Services, Tutor Coordinator, the Director of Academics, Associate Athletic Director for Academic Services, or the Compliance Director whenever they have questions concerning Academic Honesty.
- Student-athletes and tutors are to maintain a professional relationship. The conduct of tutors will be monitored and must at all times meet the standards of the University of Arkansas Sexual Harassment Policy. Student-athletes and tutors are encouraged to come to the Director of Academics or Associate Athletic Director for Academic Services should any instances of misconduct arise during or around a tutorial session. Any instances of a tutor providing alcohol to underage students will result in termination in addition to Judicial Board referral.
- If you miss a tutoring appointment, resulting in a no show you will be fined the cost of the session, per appointment missed. Your first miss will be a free miss, but any miss after the initial miss will result in a fine. If you do not arrive within the first 10 minutes of the appointment, you will be contacted.
- Please be sure to bring your book and notes to tutoring sessions. Coming unprepared to sessions will result in a no show.

### **Grade Monitoring**

Each student-athlete is responsible for knowing how grades are awarded in each course. Course syllabus should be consulted for conflicts with travel schedules. The Academic Services staff will be available to help students set grade goals for each course.

During the course of each semester, academic progress reports will be sought from the instructors of student-athletes as needed to assist in monitoring academic progress. Accurate estimation of performance is an essential element of academic success in college. It is expected that each studentathlete will keep the Academic Services staff and his/her coach fully informed of grades throughout the semester.

### **Confidentiality, Shared Information and Personal Counseling**

Information regarding a student's academic progress or use of academic support services will be shared among parties with a "right and need to know." These persons may be coaches, college faculty, Academic Services staff and Athletic Department Administrators.

Students may expect that personal information shared with the Academic Services staff in a counseling session will remain confidential, provided the student is not in danger of hurting him/herself or others.

If personal counseling is requested, the Academic Services staff will immediately coordinate with the Mental Health and Performance staff.

### **Academic Honesty**

Failure to adhere to the University's policies regarding acts of academic dishonesty will not be tolerated by the Athletic Department. The definition, procedures and sanctions regarding academic honesty are outlined in the University of Arkansas Student Conduct Code and are reviewed frequently with all student-athletes.

### **Academic Eligibility for Intercollegiate Competition**

The goal of the Athletic Department is to have each student-athlete pursue and obtain an academic degree. Each student-athlete is required to meet all general University and specific college requirements, as well as the eligibility rules of the NCAA and Southeastern Conference. Although academic progress and eligibility are monitored by the Office of the Registrar and the NCAA Faculty Representative, it is the student's responsibility to understand and follow all guidelines listed below. If questions arise, students should contact the Academic Services staff.

- Undergraduate student-athletes must be accepted for enrollment as a full-time degree student registered for at least twelve (12) semester hours. **IF YOU DROP BELOW THE MINIMUM 12-HOUR LOAD YOU IMMEDIATELY WILL BECOME INELIGIBLE TO PRACTICE AND COMPETE!**
- An entering freshman must be a "qualifier" as defined in NCAA Bylaw 14.02.11.1 in order to practice, compete and receive financial aid during the freshman year.
- Student-athletes must pass twenty-four (24) hours of degree credit prior to the start of the second year of college enrollment. Seventy-five per cent (75%) of these hours (18 credit hours) must be earned during the regular fall and spring semesters of the academic year. Only 6 credit hours (25%) may be earned in summer sessions for use toward satisfactory progress.
- NCAA continuing eligibility bylaws require that the following degree progress percentages are met during your career:
  - o Student-athletes entering their second year of collegiate enrollment are required to have 90 percent of the minimum grade-point average necessary (1.80) to graduate. Upon entering the fifth semester, the student-athlete must also have completed 40% of degree requirements.
  - o The student-athlete must designate a program of studies leading toward a specific baccalaureate degree by the beginning of the fifth semester of enrollment.
  - o Student-athletes entering their third year of collegiate enrollment are required to present 95 percent of the minimum grade-point average necessary (1.90) to graduate. Upon entering the seventh semester, the student-athlete must also have completed 60% of degree requirements.
  - o Student-athletes entering their fourth or subsequent year of collegiate enrollment are required to present 100 percent of the minimum grade point average (2.00) necessary to graduate.
  - o Entering the ninth semester, the student-athlete must also have completed 80% of degree requirements.
- Student-athletes who are academically eligible during a semester are academically eligible between semesters until the first day of classes of the succeeding term. Students who have been academically ineligible during a semester remain so until grades, which make them eligible, are officially received in the Registrar's Office.
- These requirements apply to transfer students as well as continuing students.
- Continuing student-athletes who become academically ineligible may not compete or travel with the team.
- Students who plan to take courses elsewhere during the summer term, **MUST SEE THE ACADEMIC COUNSELOR AS SOON AS POSSIBLE BEFORE ENROLLING IN THOSE COURSES** to determine if such courses will count toward eligibility and to complete the proper course approval

forms. The student must make arrangements for the University of Arkansas Registrar's Office to receive an official transcript of all transfer hours.

- The Southeastern Conference requires that a total of not more than six (6) semester hours of correspondence, extension course and transfer credit in any given twelve-month period may be used to fulfill the minimum satisfactory-progress requirements.
- The Southeastern Conference and NCAA require that any student-athlete must pass at least six (6) non-remedial, degree credit hours in the semester preceding SEC and NCAA Championships

### **University of Arkansas Academic Regulations**

Each student must review the Undergraduate Studies Catalog for their year of enrollment at <http://catalog.uark.edu/undergraduatecatalog/>. All important university requirements are contained in this publication, including the academic honesty policy, rules pertaining to academic probation, suspension and dismissal.

Student-athletes are responsible for reviewing the University academic calendar as published each semester. A posted notice of important dates, such as registration weeks and drop dates will appear in the Bogle Academic Center. Please review the schedule of classes on UA Connect before advising sessions.

### **Regulations Concerning Academic Standing and Eligibility**

Student-athletes are subject to the NCAA's bylaws governing continuing eligibility. In addition, they are subject to the Academic Standing Policies of the University of Arkansas.

To briefly summarize that policy, if a student's cumulative GPA falls to a point where he/she is placed on "Academic Warning," and he/she then fails to post the required term GPA, that student will be suspended from full-time enrollment. The student would then be ineligible for athletic competition.

A summary of the University's policy follows. Individual colleges or programs have the discretion to set academic admission and continuation standards for specific programs that are higher than University standards. If students have questions or concerns about the University's Academic Standing Policy, please see the Academic Center Staff.

### **University of Arkansas Academic Standing**

A student's academic status at the University is determined at the end of each term of enrollment (fall, spring, or summer) on the basis of the student's cumulative and/or term grade-point average (GPA) and number of hours attempted. The student's academic status governs his or her re-enrollment status and determines any conditions associated with re-enrollment or denial of enrollment for a subsequent term. Normally, students are notified of their status individually by the University shortly after the end of each term. However, this policy statement is the formal notification to all students of the conditions that determine academic status and the consequences for each term, regardless of individual notification.

#### **Good Status**

Upon initial admission and during a student's first term of enrollment, except for students conditionally admitted on academic probation, the student is in good status. A student remains in, or returns to, good academic status at the end of any term when the cumulative GPA is at or above the required minimum of 2.0.

#### **Academic Probation**

When a student's cumulative grade-point average at the end of any fall, spring, or summer term is less than a 2.00, the student will be placed on academic probation.

#### **Removal from Academic Probation**

When a student's cumulative GPA at the end of any fall, spring, or summer term is a 2.00 or above, he or she will be removed from academic probation.

#### **First-Year Freshmen**

First-year freshmen who have less than a 2.00 cumulative grade-point average at the end of their first semester of enrollment are considered at risk. During the first six weeks of their second semester, these at risk students must, at a minimum, consult with an academic advisor to develop a plan to get off of probation before being eligible to register for their third semester courses.

#### **Continuing on Academic Probation**

The semester grade point average a student on probation must earn to continue on probation and avoid suspension depends on the cumulative grade hours attempted, and is in the probation chart.

### Academic Probation Chart

Placed on Probation if Cumulative GPA is	Cumulative grade hours attempted (excludes grades of W)	To continue on Probation the student needs a:	To be removed from Probation the student needs a:
< 2.00	4 – 30	Semester GPA $\geq$ 1.80	Cumulative GPA $\geq$ 2.00
< 2.00	> 30	Semester GPA $\geq$ 2.00	Cumulative GPA $\geq$ 2.00

### Academic Suspension

A student on academic probation who does not earn the minimum required term GPA will be academically suspended. No student may be suspended who has not spent the prior term of enrollment on academic probation. A student on academic suspension will be on academic leave from the university for one major semester (Spring or Fall) and all contiguous summer and intersessions from the close of the term which resulted in the suspension. Thus, a student suspended at the end of a spring semester would not be eligible to enroll until the next spring semester, and a student suspended at the end of a fall semester would not be eligible to enroll until the next fall semester. The first enrollment when returning from suspension may not be in an intersession.

A student returning to the University after a suspension period must apply for readmission. A student who has attended another institution since last attendance at the University must meet the same admission requirements as a transfer student, and must present a 2.00 cumulative GPA on all college work attempted at the other institution.

A student who returns to the University after an academic suspension is continued on probation and must make a semester grade-point average of at least 2.00 for each semester, summer or intersession until he or she is removed from probation. Failure to do so will result in academic dismissal.

Students who have set out for one major semester after the term of the suspension may apply for readmission to the University. A student who does not earn credit from another institution may be readmitted on academic probation following suspension. A student who earns credit from another institution(s) during or subsequent to the suspension must apply to the University for admission as a transfer student and, if readmitted, will be on academic probation following suspension.

### Academic Dismissal

A student who returns to the University after an academic suspension is continued on probation and must make a semester grade-point average of at least 2.00 for each fall, spring, or summer term until he or she is removed from probation. Failure to do so will result in academic dismissal.

### Returning After Dismissal

The duration of dismissal is indefinite, and the student may reenter the University only by favorable action of the Academic Standards Committee. A favorable decision by the committee is unlikely within two years of the dismissal. Self-paced courses taken through the Global Campus at the University or at another university by a student who has been academically dismissed may be submitted as evidence of academic competence on a petition to the Academic Standards Committee for readmission. It is strongly recommended that students meet with an academic advisor to develop a plan for returning from dismissal.

A student who reenters the University by favorable action of the Academic Standards Committee after an academic dismissal is continued on probation and must make a semester grade-point average of at least 2.00 for each semester until the cumulative GPA reaches 2.00 and he or she is removed from probation. Failure to do so will result in academic dismissal.

### Center for Educational Access

The Center for Educational Access (CEA) serves as the central campus resource for students with disabilities. Working in partnership with students, faculty, and staff, the goal of the CEA is to provide reasonable accommodation requests for qualified students with disabilities and to ensure equal access to all university programs and activities.

To be eligible for reasonable accommodations, a student must qualify as a person with a disability under Section 504 of the Rehabilitation Act of 1973 or Title II of the Americans with Disabilities Act of 1990 and be registered with CEA.

The CEA also provides other auxiliary aids and services to registered and qualified students with disabilities such as alternative print formats, sign language interpretation, and assistive computer technology equipment and training.

The CEA works closely with academic departments and other university departments to ensure that the University of Arkansas provides a welcoming, responsive, and meaningful experience for all students.

## FLAGSHIP (STUDENT-ATHLETE EXPERIENCE)

Purpose Statement: Supporting the departmental mission of building Champions and Razorbacks for Life, Flagship equips our student-athletes with the skills and information necessary to succeed today and in the future.

Our Programming efforts include:

- Career Development
  - Career Education
  - Networking
  - Career Placement
- Brand Management
  - Name, Image & Likeness
  - Financial Education
  - Rules Education
- Community Engagement
  - Youth Literacy
  - Healthy Lifestyle
  - Underserved Communities

Our Program Promise:

**“We strive to provide every student-athlete with a remarkable and meaningful experience in every program, every time.”**

The **staff members** of the Flagship Department are:

- **Justin Johnson**, Director of Student-Athlete Development/Flagship  
jjjohns@uark.edu  
479-236-4388
- **Lauren Hawkins**, Assistant Director of Student-Athlete Experience  
lh059@uark.edu  
479-380-8332
- **Forrest Barnes**, Student-Athlete Experience Coordinator  
forrestb@uark.edu  
479-236-4370

### FLAGSHIP PROGRAMS

#### CAREER DEVELOPMENT

The Career Development pillar is focused on career education, opportunities to connect with employers and alumni, and career placement. Our staff guides, coaches and supports student-athletes to explore interests, create a course for their future, and gain practical experiences necessary to transition from their college career into a professional career. Our Career Development programming prepares student-athletes for traditional careers, professional sports, and/or graduate school.

Our student-athletes have the opportunity to develop job-searching skills leading to employment, meaningful careers and service to society. Through workshop series, on-site company visits, and networking events, student-athletes can practice hands-on professional skills to construct an attention getting resume, prepare for interviews and have success on the job. Student-athletes can also participate in dining etiquette events to garner proper dining skills while interacting with potential employers and for formal dining environments. Specifically created for our student-athletes, the Razorback Ready Career and Personal Development Plan provides an outline to assist them in preparing for life after graduation. Student-athletes complete various career activities each academic year that will lead to success when they graduate.

#### BRAND MANAGEMENT

The Brand Management pillar is focused on educating student-athletes about Name, Image, and Likeness opportunities, connecting them with potential partners, and helping them navigate the NIL landscape. Our staff guides, coaches, and supports student-athletes to understand their personal brand, create strategies to leverage their NIL, and gain practical experiences necessary to benefit from NIL opportunities while maintaining their athletic and academic commitments. Our student-athletes have the opportunity to develop skills in brand building, marketing, and personal finance management leading to successful NIL deals and long-term career opportunities. Through workshop series, on-site company visits, and networking events, student-athletes can practice hands-on skills to build an attention-getting personal brand, negotiate contracts, and maintain professionalism in their engagements.

#### COMMUNITY ENGAGEMENT

The Student-Athlete Development department provides community engagement opportunities for student-athletes to give back to the



community and to enhance their relationship building skills. Our programming focuses on the focal areas of Youth Literacy, Healthy Life-styles, and Underserved Communities. The student-athletes have impacted over 100 organizations through the programs listed below.

- RazorCalls: Student-athletes engage with elementary school students across the state of Arkansas via Zoom to answer questions, read books, and call the Hogs together. Studentathletes who are from Arkansas join these calls with their former elementary schools.
- Book Hogs: Student-athletes visit the 9 Fayetteville elementary schools to promote reading. Student-athletes speak to K-4th graders to encourage them to read 360-minutes during the month of February to become a Book Hog member. Grand Prize Winners have lunch with a student-athlete from their favorite team.
- Healthy Hogs: Student-athletes visit the 9 Fayetteville and 2 Farmington elementary schools to promote prioritizing their health and physical fitness during the Fall semester.
- Shop with the Razorbacks: Student-athletes raise money to take 10 local elementary school kids holiday shopping. Each kid receives a \$100.00 gift card to shop while being escorted by student-athletes.
- Special Olympics Area Game @ Ramay Jr. High School: Student-athletes assist the Special Olympians with stretching, help them get each station ready, and cheer for them during their events.
- Razorback Canned Food Drive @ Walmart Super Center: Student-athletes visit the Walmart Super Center on Martin Luther King Drive to collect canned food products. Donations collected are distributed to local agencies that support underserved residents of Northwest Arkansas.
- Children's Fun Run: Student-athletes volunteer passing out medals for kids participating in running events and the football throwing contest for kids ranging from 1st to 8th grade students.
- The Fearless Food Fight: The Pack Shack and Blue Cross Blue Shield, along with staff members and student-athletes, gather in Bud Walton Arena to pack meals that feed various underserved communities in Northwest Arkansas.

#### STUDENT-ATHLETE ADVISORY COMMITTEE (SAAC)

The Student-Athlete Advisory Committee (SAAC) is comprised of leaders from each team who represent their fellow student-athletes and act as liaisons to the University of Arkansas, Athletic Department, SEC and NCAA. Through SAAC, valuable opportunities are provided for all student-athletes to grow through personal development, leadership development and community engagement, while improving the overall student-athlete experience for now and the future.

The 2024-2025 Student-Athlete Advisory Committee (SAAC) Executive Committee Members are:

- *President:* Maddie Jones – Gymnastics
- *Vice President & Chair, HOGSPY Awards:* Zoi Evans – Volleyball
- *Secretary:* Tucker Holland – Baseball
- *Marketing Chair:* Allie Thome – Swimming & Diving
- *Community Engagement Chair:* Van Fitch – Soccer
- *Campus Outreach Chair:* Brandon Battle – Men's Track & Field

#### W.H.O.L.E. (Women Helping Others Lead & Empower) WOMEN

The group creates an environment where our female student-athletes can create authentic relationships that promote empowerment, self-esteem, and unity. This a group for female student-athletes facilitated by the female staff of the Office of Student-Athlete Success (OSAS).

#### INTERNATIONAL HOGS

Designed to promote an engaging environment that international student-athletes can consider home. Our staff encourages the celebration of their heritage and culture, as well as provides support by connecting our students with campus and community resources needed to successfully navigate campus and the community.

#### BLACK LEADERSHIP ATHLETIC COMMITTEE (BLAC)

The purpose of this group is to create a sense belonging for all black-identified student-athletes within the athletic department by fostering an inclusive environment that elevates their collective and individual voices while enhancing their overall experience and creating opportunities for education and engagement.

The 2024-2025 Black Leadership Athletic Committee (BLAC) Executive Committee Members are:

- *Activism Chair:* Jada Lawson – Volleyball
- *Campus Involvement Chair:* Romani Thurman – Volleyball



- *Community Engagement Chair:* Imani Carpenter – Women's Track & Field
- *Marketing Chair:* Brandon Battle – Men's Track & Field

### FINANCIAL EDUCATION

Each team will have an opportunity to receive financial education each academic year. Topics range from personal banking, credit cards, budgeting, taxes, etc.

### HEALTHY CHOICES

Specialized programming surrounding the topics of drug and alcohol abuse, addressing risky behaviors, sexual assault, and bystander accountability are addressed in this area.

### **HOUSING AND DINING SERVICES**

Student-athletes who live in on-campus housing are responsible for following the rules and policies established by University Housing. It is important that you respect the privacy and rights of your suitemates. It is also important that you respect the authority of the Residential Assistant (RA) who is responsible for your area. At the end of the semester, be sure to follow the appropriate check-out procedure. If you have any questions regarding on-campus housing, contact Lydia Haj, Compliance Coordinator at 575-4673.

Failure to comply with the policies or disrespectful behavior toward another student, an RA, or any University staff member could result in you being referred to the Office of Standards and Conduct. Student-athletes living on campus must have a meal plan for the fall and spring semesters; it is optional for the summer.

For students who will be living off-campus, check out the website: [www.offcampushousing.uark.edu](http://www.offcampushousing.uark.edu) for useful information.

### **NCAA & SEC STUDENT-ATHLETE AWARDS & GRADUATE SCHOLARSHIPS**

There are many awards, postgraduate scholarships, and career development opportunities available through the National Collegiate Athletic Association (NCAA), as well as the Southeastern Conference (SEC). Requirements for these programs vary, but most of them involve accomplishments in academics, athletics, service, and leadership. The Student-Athlete Development Coordinator, Krista K. Smith, will provide information about these programs, but feel free to ask any one of the Student-Athlete Development staff members questions. Examples of the NCAA/SEC programs that are available include:

#### NCAA

- The NCAA Career in Sports Forum is a three-day event through which selected student-athletes will explore and be educated on careers in sports with a primary focus on intercollegiate athletics. Student-athletes will have completed his/her sixth semester prior to the Forum. This Forum is provided to student-athletes at no cost. The NCAA will cover airfare, lodging and meals during the Forum. Through the use of dual tracks, participants will examine key functions of a coach or administrator role within sports. Foundational skills such as communication, networking, recruiting, managing culture, transitioning, and budgeting will be covered with participants. Student-athletes will also have the opportunity to network and interview key members in the NCAA and intercollegiate athletics.
- The NCAA Elite 90 Award recognizes the true essence of the student-athlete by honoring the individual who has reached the pinnacle of competition at the national championship level in his or her sport, while also achieving the highest academic standard among his or her peers. The Elite 90 is presented to the student-athlete with the highest cumulative grade-point average participating at the finals site for each of the NCAA's 90 championships.
- The NCAA Ethnic Minority and Women's Enhancement Graduate Scholarship for Careers in Athletics is awarded to 13 ethnic minorities and 13 female college graduates who will be entering their initial year of postgraduate studies. Each award recipient will receive \$10,000 for one year of full-time graduate study at an NCAA member institution. The applicant must be seeking admission or have been accepted into a sports administration or other program that will help the applicant obtain a career in intercollegiate athletics, such as athletics administrator, coach, athletic trainer or other career that provides a direct service to intercollegiate athletics.
- The NCAA Today's Top 10 Award honors ten outstanding senior student-athletes. The nominees must be a varsity letter-winner, have a minimum of a 3.300 GPA, and have excelled in their sport.
- The NCAA Woman of the Year award honors female student-athletes who have distinguished themselves throughout their collegiate career in the areas of academic achievement, athletics excellence, community service and leadership.
- The NCAA Postgraduate Scholarship awards up to 126 postgraduate scholarships annually, 63 for men and 63 for women. The scholarships are awarded to student-athletes who excel academically and athletically and who are at least in their final year of intercollegiate athletics

competition. The one-time grants of \$10,000 each are awarded for fall sports, winter sports and spring sports. Each sports season (fall, winter, and spring), there are 21 scholarships available for men and 21 scholarships available for women. The scholarships are one-time, non-renewable grants.

- The NCAA Student-Athlete Leadership Forum engages a diverse and dynamic representation of student-athletes, coaches, faculty and administrators in customized sessions that will enhance personal awareness and leadership skills needed to impact student-athlete development at the campus and conference level, and beyond the collegiate realm. The Director of Athletics and Student-Athlete Development staff may select one female and one male student-athlete who are in good academic standing, demonstrates a desire to lead and has athletic eligibility within the academic year.
- The NCAA Jim McKay Postgraduate Scholarship Program awards one male and one female student-athlete a one-time \$10,000 scholarship in recognition for outstanding academic achievement and potential to make a major contribution in the sports communication industry. Student-athletes considered for this scholarship demonstrate the highest level of professional integrity with an element of compassion. Must have (1) a 3.5 minimum grade point average; (2) competed as a member of an NCAA varsity team; (3) enrolled or committed to enrolling in a graduate degree program; and (4) evidenced superior character and leadership.
- The NCAA Walter Byers Postgraduate Scholarship Program annually awards one male and one female student-athlete a postgraduate scholarship in recognition of outstanding academic achievement and potential success in postgraduate study. The stipend for each scholarship is \$24,000 for an academic year and the grant may be renewed for a second year. To be eligible: (1) must have a 3.5 minimum grade point average or higher; (2) be a graduating senior or enrolled, or have intentions to enroll, in graduate study at an NCAA member institution at a professionally accredited law school, medical school, or the equivalent; (3) have demonstrated that participation in athletics and community service has been a positive influence on nominee's personal and intellectual development.
- The Honda Collegiate Women Sports Award is an annual award given to the best collegiate female athlete in each of twelve sports. There are four nominees for each sport, and the twelve winners of the Honda Award are automatically in the running for the Honda-Broderick Cup award, as the Collegiate Woman Athlete of the Year. The Honda-Broderick Cup winners are selected for superior athletics skills, leadership abilities, academic excellence and eagerness to participate in community service.
- The John McLendon Memorial Minority Postgraduate Scholarship Award is presented to 5 senior-level minority students who intend to pursue a graduate degree in athletics administration. Each recipient will receive a \$10,000 grant. Among the criteria will be (1) full-time status as a senior at the time of nomination OR an undergraduate degree with two years' work experience, preferably in athletics administration; (2) minimum grade point average of 3.0 (on a 4.0 scale); (3) official classification as a minority as defined by federal guidelines; (4) intention to attend graduate school to earn a degree in athletics administration; and (5) involvement on the college/university or community level.

## SEC

- The Brad Davis Community Service Postgraduate Scholarship is awarded annually to recognize outstanding and meritorious community service achievements to one male and one female student-athlete. The scholarship award, in a one-time, non-renewable disbursement of \$7,500. Student-Athletes are nominated by the Office of Student-Athlete Scholarship and Awards Committee. Final selections are made by SEC faculty athletic representatives from each of the SEC member institutions. In total, the SEC awards 28 Brad Davis Community Service Postgraduate Scholarships each year.
- The H. Boyd McWhorter Postgraduate Scholarship is awarded annually to recognize outstanding academic and athletic achievements of one male and one female student-athlete during the student-athlete's entire college career. The scholarship award, in a one-time, nonrenewable disbursement of \$10,000. Student-Athletes are nominated by the Office of Student-Athlete Scholarship and Awards Committee. Final selections are made by SEC faculty athletic representatives from each of the SEC member institutions. In total, the SEC awards 28 Brad Davis Community Service Postgraduate Scholarships each year.

## STUDENT-ATHLETE CONDUCT

Participation in intercollegiate athletics at the University of Arkansas is a privilege and a unique opportunity during your college experience. As a student-athlete, you benefit from athletics by developing your potential as a skilled performer, being a productive team member, and most importantly, growing emotionally, socially, and intellectually. You have the opportunity to develop the strong character traits that can come to those who successfully meet the challenges inherent in sport at the highest levels. For the purposes of this conduct code, a student-athlete is defined as any member of a Razorback team (scholarship and non-scholarship).

As it is with all privileges, there are conditions or qualifications to the exercise of the privilege to participate in athletics at the University of Arkansas. Student-athletes must conduct themselves, on and off of the field, as positive role models who exemplify good behavior. Privilege means that student-athletes are held by both the University and society-at-large to a higher and stricter code of behavior or conduct than other University students who do not participate in athletics. An inescapable part of NCAA Division I athletics is high visibility, and as a result there is a greater responsibility that goes with participation in those activities.

The University expects you to train and strive for your highest degree of athletic excellence, to demonstrate academic honesty and integrity, and to conduct yourself as a responsible citizen. You are required to comply with the National Collegiate Athletic Association (NCAA) by-laws and Southeastern Conference (SEC) rules and regulations regarding acceptable and unacceptable conduct for participants in intercollegiate athletic competition. You are also responsible for compliance with the University of Arkansas Student Code of Conduct, as well as other campus policies, governing all academic work and student conduct at the University. This policy appears in the appendix of each year's Catalog of Studies published by the University of Arkansas. Finally, being a student-athlete at the University of Arkansas presupposes and unconditionally requires a resolute commitment to the principles and policies that are embodied in the student-athlete conduct code that follows.

If you have any questions at any time about the Student-Athlete Conduct Code, contact your sport administrator or the Deputy Athletics Director for Integrity & Student Success.

### Standards of Conduct

As a student-athlete at the University of Arkansas, you are a public figure often subject to much scrutiny by the public. As such, you are responsible for representing the University in the most positive way. Your behavior must be exemplary at all times and meet the expectations of your teammates, coaches, the University, and the public at-large. You must also conduct yourself in such a way as not to impair the welfare or the educational opportunities of others in the University community. Student-athletes, coaches, and all others associated with the University of Arkansas Athletic Department should adhere to such fundamental values as respect, fairness, civility, honesty, and responsibility.

The concept of "misconduct" is to be interpreted broadly and within the protective spirit of the purpose of this Code. Misconduct is subject to disciplinary action within the Athletic Department, and includes, but is not limited to, the following specifications:

- Violation of civil or criminal laws of any State.
- Violation of the University of Arkansas Student Conduct Code, and other campus policies, including the University of Arkansas Sexual Assault and Sexual Harassment Policy (Fayetteville Policy and Procedure 418.1)
- Gambling on athletic events of any kind, giving information about your team to gamblers or "bookies" that might be helpful to them in their illegal activities, or participation, either directly or indirectly, in bribery involving intercollegiate competition or attempting in any way to improperly or illegally influence the outcome of an athletic contest
- Noncompliance with the University's Student Alcohol Policy as enacted by the Board of the University on February 22, 1974
- Violation of NCAA banned substances, alcohol, and tobacco policies
- Repeated violation of team rules, including but not limited to:
  - o Conduct reflecting negatively on the team, athletic program and University
  - o Absenteeism from practices, meetings or competition
  - o Tardiness from practices, meetings or competition
  - o Excessive class absences that are not the result of illness, injury or team travel which is described in the Office of Student-Athlete Success (OSAS) attendance policy
  - o Noncompliance with team dress codes
  - o Failure to comply with prescribed treatment for athletic injury
  - o Failure to maintain proper decorum during team travel
  - o Noncompliance with team policies regarding conduct, player appearance, and the use of alcohol, drug and tobacco products
  - o Noncompliance with departmental policies listed within this student-athlete handbook
  - o Unethical conduct

NCAA bylaws state that unethical conduct by a student-athlete may include, but is not limited to, the following:

- Refusal to furnish information relevant to an investigation of a possible violation of an NCAA regulation when requested to do so by the NCAA or the individual's institution
- Knowing involvement in arranging for fraudulent academic credit or false transcripts for a prospective or an enrolled student-athlete
- Knowing involvement in offering or providing a prospective or an enrolled student-athlete an improper inducement or extra benefit or improper financial aid
- Knowingly furnishing the NCAA or the individual's institution false or misleading information concerning the individual's involvement in or knowledge of matters relevant to a possible violation of an NCAA regulation
- Receipt of benefits by an institutional staff member for facilitating or arranging a meeting between a student-athlete and an agent, financial advisor or a representative of an agent or advisor (e.g., "runner")

## **Disciplinary Procedures**

### **1. Temporary Suspension**

The Athletic Department reserves the right to take necessary and appropriate action to protect the safety and well-being of its sponsored teams and the University community. Therefore, a student-athlete may be suspended temporarily by the athletic director or his/her administrative designee for a period of up to seven (7) business days. A temporary suspension is to be immediately effective without prior notice whenever there is evidence that the student-athlete's continued presence on the team would constitute a threat to him/her, others, or to normal team operation. During the suspension, an administrative review will be initiated and disciplinary sanction(s) imposed if warranted. The student-athlete will be notified in writing of any disciplinary sanction(s).

### **2. Administrative Review**

If information is received by the athletic department suggesting that a student-athlete may have violated (a) civil or criminal law, (b) the University of Arkansas Student Code of Conduct, or other campus policy, (c) the Athletic Department Student-Athlete Conduct Code, or (e) NCAA or SEC rules and regulations the athletic director or his/her administrative designee will conduct an administrative review of the situation. If, upon evaluation, it appears that evidence exists to warrant further action, athletic director or his/her administrative designee shall impose a disciplinary sanction(s).

### **3. Disciplinary Sanctions**

Subsequent to the administrative review, the director of athletics or his/her administrative designee will determine which disciplinary sanction(s) will be imposed. Sanctions may include the following:

- Reprimand: The student-athlete is warned in writing that further misconduct may result in more severe disciplinary sanctions. The student-athlete may also be restricted from specific activities and/or have other conditions imposed.
- Suspension: Separation of the student-athlete from the team for any or all activities for a specified period of time
- Dismissal: Permanent separation of the student-athlete from the team and intercollegiate athletics at the University. Dismissal may also ultimately include the withdrawal of the student-athlete's athletic scholarship by the University Scholarship and Financial Aid Committee.

### **4. Appeal Process**

The athletic director or his/her administrative designee has the authority to impose sanctions for violations of the Student-Athlete Conduct Code. The following procedures shall be the appeal process for a student-athlete who wishes to oppose his/her disciplinary sanction(s). During the appeal process the sanction(s) will remain in place.

- A. The student-athlete must appeal the disciplinary sanction(s) in writing within seven (7) business days of being notified of the sanction(s). The written statement should be submitted to the athletic director's office.
- B. The student-athlete conduct appeals committee will consist of the Faculty Athletic Representative (FAR), and at least two of the following:
  - Athletic Director
  - Athletic Director administrative designee(s)
  - Sport Administrator
  - Senior Woman Administrator (SWA)
- C. The student-athlete conduct appeals committee will review the written appeal and may also schedule an in-person meeting with the student-athlete if the committee deems it necessary.
- D. The student-athlete conduct appeals committee will notify the student-athlete in writing of its decision within seven (7) business days.
- E. The decision of the appeals committee is final. The withdrawal of an athletic scholarship may be upheld by the appeals committee, but only the University Scholarship and Financial Aid Committee may impose that sanction.

The focus of the inquiry in disciplinary proceedings shall be the innocence or guilt of the student-athlete accused of violating the Student-Athlete Conduct Code. Formal rules of evidence shall not be applicable nor shall deviations from prescribed procedures necessarily invalidate a decision or proceeding unless significant prejudice to the student-athlete or University may result.

## Sportsmanship

Sportsmanlike conduct means more than the absence of negative actions in public. The NCAA bases its existence on the concept of integrity and fair competition among its membership. The University of Arkansas Athletic Department prides itself in this area as reflected by the sportsmanship of administrators, support staff, coaches, and student-athletes alike. As a Razorback student-athlete, you must continue to uphold the virtues of good sportsmanship through your approach to competitive situations, actions during contests, and attitudes toward winning and losing. Fellow students and community supporters hold you in high esteem, so the sportsmanlike manner in which you conduct yourself is an integral part of this process. Problems in this area will be dealt with individually and could result in a disciplinary sanction.

Sportsmanship guidelines include:

- Communicate appropriately with officials and opponents on routine matters during athletic events
- Maintain control during emotionally charged situations, including assisting a teammate who appears to be losing control
- React in a positive manner to an aggressive action by an opponent
- Treat all players, officials, and coaches with respect and courtesy
- Uphold all standards and regulations expected of participants
- Accept victory and defeat with class
- Respect and accept the decisions of the coach; student-athletes should direct questions to the coach in private and follow appropriate channels to voice their concerns
- Exhibit dignity in manner and dress while representing the University both on and off the playing field

## Conduct, Student-Athlete Appearance, and Alcohol

Student-athlete conduct and dress policies applicable to team travel and home events shall be established by the coach and ensure that student-athletes conduct themselves in a manner positively reflecting upon the reputation of the University of Arkansas.

***Student-athletes shall refrain from drinking alcoholic beverages while representing the University of Arkansas at competitive events, while traveling to or from such events, or at official social events related to such competition.***

## Travel Rules

The head coach will establish rules for specifics of team travel. The coach will provide these to student-athletes at the beginning of their season of competition. In general, there are certain expectations for student-athletes while representing the University away from campus.

Sports schedules are designed to provide student-athletes with the highest caliber of competition and to prepare them to compete for Southeastern Conference and NCAA national championships. As such, travel is a key part of such scheduling. Student-athletes should learn to manage their time on the road and to keep their instructors abreast of their travel schedule.

Athletes are expected to travel to and from away sites with the team. Only under special mitigating circumstances are individuals allowed to travel separately from the team. University insurance requires that student-athletes travel with the team in official vehicles at all times.

***Whenever you travel as a team, you are representing the University of Arkansas. Your actions and behavior are a direct reflection on the university and the intercollegiate athletic department. Make sure you make a positive impression and promote personal integrity and ethical conduct at all times.***

## Grievance Policy

As a University of Arkansas student, matters involving allegations of unlawful harassment (including sexual harassment), discrimination and/or retaliation should be reported to the university's Office of Equal Opportunity and Compliance, and matters involving alleged failure to provide reasonable accommodations for a disability should be pursued through the grievance process described on the university's Center for Educational Access website.

The University of Arkansas Athletic Department is committed to resolving all complaints or grievances brought to its attention in the most equitable fashion possible for all persons concerned. Any concern that you may have will be treated seriously, quickly, and confidentially. The following procedure should be followed.

1. Any student-athlete with a complaint or grievance involving an athletic team, coach, department staff member, or policy should first discuss and attempt to resolve the complaint or grievance with the person(s) involved. All persons involved in the situation should make every attempt to resolve the problem as promptly as possible.
2. If a satisfactory resolution cannot be reached by the persons directly involved, the student-athlete or person with the complaint

should contact their sport administrator, Senior Woman Administrator (SWA) or Assistant AD for SA Development & Administration. After discussing the situation and concerns, a resolution plan will be determined. Everyone who has been identified as being able to assist in the resolution of the conflict will be contacted and included in the procedure.

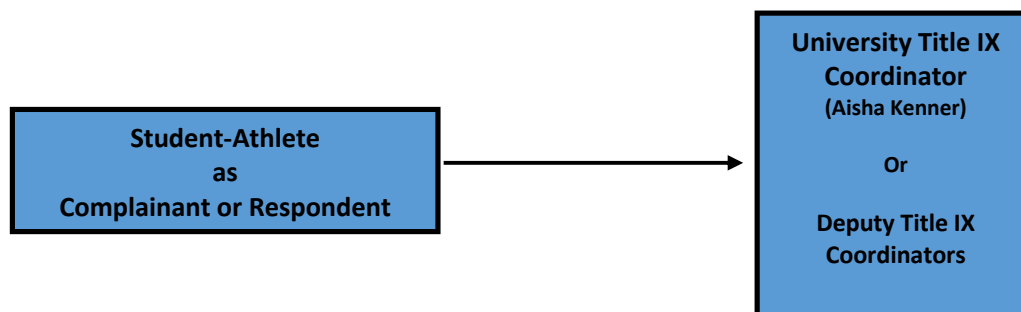
3. If the complaint is not resolved at this level, the grievant and their sport administrator, Senior Woman Administrator (SWA) or Assistant AD for SA Development & Administration will direct the grievance to the Athletic Director who will interview the persons involved. The sport administrator, Senior Woman Administrator (SWA) or Assistant AD for SA Development & Administration may also determine that a formal meeting involving all relevant parties is necessary. Within five (5) business days the sport administrator, Senior Woman Administrator (SWA) or Assistant AD for SA Development & Administration will inform all persons in writing of the decision.



## TITLE IX PROCESS – STUDENT VERSION

**In the case of an emergency, immediately call 911 or University of Arkansas Police Department at (479) 575-2222.**

- If it is not an emergency, student-athletes are **STRONGLY ENCOURAGED** to report all Title IX related matters **DIRECTLY** to the Title IX Coordinator or designated Deputy Title IX Coordinators. (Contact Information Below)



### STUDENT-ATHLETE CAMPUS RESOURCES

#### **Title IX Office**

1 University of Arkansas  
Administration Building 427  
Office: (479) 575-7111 (voice)  
[titleix@uark.edu](mailto:titleix@uark.edu)

#### **Staff:**

Danielle Williams, Associate Vice Chancellor and Executive Director, Equal Opportunity, Compliance and Title IX  
Monica Holland, Interim Title IX Coordinator  
Wayne Bell, Deputy Title IX Coordinator for Case Investigations  
C.J. Moseby, Title IX & Equal Opportunity Investigator  
Katy Adams, Equal Opportunity & Title IX Case Investigator  
Brandee Flack, Title IX Case Investigator  
Heather Cato, Title IX & Equal Opportunity Investigator

#### **Deputy Title IX Coordinators**

Derita Ratcliff-Dawkins, Assistant Vice Chancellor/Deputy AD: Student-Athlete Wellness/ SWA  
(479)-575-7520  
[dratclif@uark.edu](mailto:dratclif@uark.edu)  
  
Laura James, Director of the Center for Educational Access  
(479) 575 -3104  
[lauraj@uark.edu](mailto:lauraj@uark.edu)  
  
Katherine Devenport, Athletic Department Chief of Staff  
(479) 575-7953  
[kemoffe@uark.edu](mailto:kemoffe@uark.edu)

#### **University of Arkansas Police Department**

155 S. Razorback Road  
(479) 575-2222

#### **STAR Central Office**

Pat Walker Health Center

Dr. Mary Wyandt-Hiebert  
Director of STAR Central  
(479) 575-7252

**Counseling and Psychological Services (CAPS)**

Pat Walker Health Center  
(479) 575-4451

**Office of Student Accountability**

Pomfret Hall B 110  
(479) 575-5170

**U of A Cares**

325 Administration Building  
(479) 575-5004

**Assistant AD for Mental Health and Performance**

Dr. Chris Bader  
Jerry & Gene Jones Family Student-Athlete Success Center  
(479) 409-7216

## COMPLIANCE

The University of Arkansas Department of Athletics Compliance Office is committed to a comprehensive compliance program that educates administrators, staff personnel, coaches, student-athletes and representatives of athletic interest about the importance of adhering to NCAA, SEC, and institutional rules and regulations.

The goals of the Compliance Office are to:

- Establish institutional policies and procedures to prevent violations of NCAA and SEC rules;
- Maintain a high level of integrity and ethical conduct;
- Develop an atmosphere where the Compliance Office is utilized as a means of education and prevention of rule violations; and
- Establish clear lines of communication throughout the University on compliance-related issues.

### **Complimentary Tickets and Admission Benefits**

The University of Arkansas Department of Athletics follows NCAA and SEC rules regarding the use of complimentary tickets by student-athletes. The department may provide four complimentary admissions for each regular season home contest to a student-athlete in the sport in which the individual participates. Comp ticket requests are done through ARMS and must be entered before the specified deadline. Some sports may have additional requirements and guidelines.

All Razorback student-athletes may be admitted to all other athletics events. Please note, pass list privileges can be revoked if you allow another individual to use your student I.D. and privileges for tickets. Some sports may have additional team rules or guidelines where the use of this complimentary admission may be revoked.

All Razorback student-athletes should note the following actions are IMPERMISSIBLE:

- Hard Tickets. Complimentary admissions shall be provided only through a pass list for individuals designated by the student-athletes. Hard tickets shall not be issued.
- Sale of Complimentary Admissions. You may not receive payment from any source for your complimentary admissions and may not exchange or assign them for any item of value (e.g., cash, loan, free services, clothing, etc.).
- Payment to Third Party. Individuals designated by you to receive complimentary admissions are not permitted to receive any type of payment for these admissions or to exchange or assign them for any item of value. Receipt of payment for complimentary admissions by such designated individuals is prohibited and considered an extra benefit.
- Sale above Face Value. You may not purchase tickets for an intercollegiate athletics event from the University of Arkansas and then sell the tickets at a price greater than their face value.

Any of the above mentioned actions by a student-athlete could declare him or her ineligible for intercollegiate athletics competition.

### **Countable Athletically-Related Activity (“CARA”)**

There are daily and weekly limitations on the amount of time a coaching staff member can require student-athletes to participate in countable athletically related activities (e.g., practice, competition, film sessions, etc.). Athletically-related activities that count toward applicable limitations include any required activity with an athletics purpose involving student-athletes and is at the direction of, or supervised by one or more of an institution’s coaching staff (including strength and conditioning coaches).

#### Examples of Countable Athletically-Related Activities

The following activities are considered countable:

- Coach initiated athletic meetings or athletics meetings required by a coach;
- Competition and associated activities, regardless of their length, count as 3 hours;
  - Countable athletically related activities are prohibited after competition.
- Field, floor, or on-court activity;
- Setting up offensive and defensive alignments;
- Required weight training and conditioning activities;
- Required participation in camps/clinics;
- Participation outside the regular season in required individual skill-related instructional activities with a member of the coaching staff;
- Discussion or review of game film; and
- Punishment (e.g., morning runs).

#### *Daily and Weekly Hour Limitations—Playing Season*

A student-athlete’s participation in countable athletically related activities shall be limited to a maximum of four hours per day and 20 hours per week.

### *Required Day Off—Playing Season*

During the playing season, all countable athletically related activities shall be prohibited during one calendar day per week, except during participation in one conference and postseason championship and any postseason licensed bowl games or National Invitation Tournaments, and during participation in NCAA championships.

### **Weekly Hour Limitations—Outside the Playing Season**

*Sports other than Football:* Outside of the playing season, from the institution's first day of classes of the academic year to one week prior to the beginning of the institution's final examination period at the conclusion of the academic year, only a student-athlete's participation in required weight training, conditioning and skill-related instruction shall be permitted. A student-athlete's participation in such activities shall be limited to a maximum of eight hours per week with not more than four hours per week spent on skill-related workouts. All countable athletically related activities outside the playing season are prohibited one week prior to the beginning of the final examination period for the applicable academic term through the conclusion of each student athlete's final exams.

*Bowl Subdivision Football (FBS).* Activities occurring outside the regular or spring seasons are limited to required weight-training, conditioning and the review of game film. A student-athlete's participation in such activities shall be limited to a maximum of eight hours per week, of which no more than two hours per week may be spent on the viewing of film.

### *Required Days Off—Outside of the Playing Season*

Outside the playing season during the academic year, all required athletically related activities are prohibited during two calendar days per week.

As a Razorback student-athlete, it is your responsibility to help us monitor the rules and regulations regarding countable athletically related activity. During the academic year we will periodically ask you to provide us information regarding the amount of time you are putting toward the items listed above. If you ever feel as if you are going over the permissible amount of hours of countable athletically related activity, please let us know by contacting the Compliance Office.

### **Required Athletically Related Activities ("RARA")**

Required athletically related activities are any activities, including CARA, that are required as a student-athlete. RARA (that is not considered CARA) does not count toward the daily and weekly time limitations.

### Examples of Required Athletically Related Activities include, but are not limited to:

- Compliance meetings
- Promotional activities/fundraising activities (if required)
- Required recruiting activities (e.g., student host for a recruit)
- CHAMPS/Life Skills meetings (if required)
- Community service activities (if required)
- Traveling to/from competition
- Media activities (if required)
- Team building (if required)

### **Student-Athlete Time Management Plan**

In an effort to provide greater predictability and transparency in student-athletes' upcoming athletic schedules, coaching staffs will be responsible for distributing schedules to the student-athletes on their roster throughout the year. The schedules shall include, all CARA, RARA, and days off. If changes to the previously established schedule occur, student-athletes shall be provided adequate notice (24-hours) of those changes.

There will be an annual end-of-year review of each sport's time management plan. The institution's director of athletics, faculty athletics representative, the sport's head coach and at least one student-athlete representative shall be involved in the review. The review shall include, at a minimum, an evaluation of the extent to which the student-athletes were free from all athletically related activities, other than those initiated by student-athletes, during the required eight-hour overnight period and all required days off. The findings of each annual review shall be reviewed by the institution's president or chancellor.

For further information, please contact the Compliance Office.

### **Automobile Registration**

All student-athletes must fill out an Automobile Registration Form at the University of Arkansas. This form is to be filled out in its entirety regardless of whether you have a vehicle on campus or not. All relevant information, including purchaser and insurance information should be included. The form should be updated if any of the originally reported information changes. In addition to the

Automobile Registration Form, student-athletes must complete the Loaner Car Form if they have temporary use of a different vehicle (e.g., loaner car, rent car, borrowing a family member's car, etc.). These forms are maintained in the Compliance Office and can also be found in the ARMS Student-Athlete Portal.

### Student Host Responsibilities

When a prospective student-athlete visits the University of Arkansas, you may be asked to serve as a student host. If you are a student-athlete host, it is permissible to provide you with a maximum of \$60 per person for the entire visit. This money is to cover all actual costs of entertaining the prospect, and their family members, excluding the cost of meals and admission to campus athletics events. These funds may not be used for the purchase of souvenirs, such as t-shirts or other institutional mementos. In addition, you cannot transport a prospect outside a thirty (30) mile radius from campus and cannot allow any in-person contacts to occur between alumnus and/or boosters.

As current student-athletes, you are a resource who can provide valuable information about the University's campus and athletic lifestyle. Therefore, you have an important role in recruiting. ***The University of Arkansas Athletic Department does not encourage, condone, or allow the use of alcohol by a host or a recruit during a prospective student-athlete's visit to our campus.*** It is our mission to provide a safe, fun, and informative environment to all prospective student-athletes. Coaching staffs will notify prospective student-athletes prior to their campus official visit that this will be an "alcohol free" visit. When accepting the role of student host, all students are expected to comply with NCAA, SEC, departmental, and team policies. Using alcohol is neither an expectation nor a requirement for showing a prospect a "good time." Allowing or encouraging a recruit to drink alcohol, leaving him or her unattended at a social gathering, or getting into a car with someone who has been drinking is subject to disciplinary sanctions. It is very important to remember that most prospects are minors (under 21) in the eyes of the law.

Your enthusiasm for being a student-athlete at the University of Arkansas, along with your team's vision for success, is the most important thing you can share with a prospective teammate.

### Amateurism

An individual loses amateur status and will not be eligible for intercollegiate competition in a particular sport if the individual:

- (a) Uses his or her athletics skill (directly or indirectly) for pay in any form in that sport;
- (b) Accepts a promise of pay even if such pay is to be received following completion of intercollegiate athletics participation;
- (c) Signs a contract or commitment of any kind to play professional athletics, regardless of its legal enforceability or any consideration received;
- (d) Receives, directly or indirectly, a salary, reimbursement of expenses or any other form of financial assistance from a professional sports organization based on athletics skill or participation, except as permitted by NCAA rules and regulations;
- (e) Competes on any professional athletics team (limited exceptions apply)
- (f) After initial full-time collegiate enrollment, enters into a professional draft; or
- (g) Enters into an agreement with an agent.

To compete as a student-athlete, it is essential that you know the NCAA rules related to professional sports and sport agents. Any violation of the following rules could produce severe negative consequences for you and the University of Arkansas:

- A student-athlete **may not** agree, either orally or in writing, to be represented by an agent or organization in the marketing of his/her athletic abilities or reputation until after the completion of his/her last intercollegiate contest, including postseason games.
- A student-athlete or representative **may not** negotiate or sign a playing contract in any sport in which the student-athlete intends to compete professionally or to market the name or image of the student-athlete.
- A student-athlete **may not** accept expenses or gifts of any kind (including meals and transportation) from an agent (or anyone else) who wishes to provide services for the student-athlete. Such payment is not allowed since it would be compensation based on athletic skills and a preferential benefit not available to other students.
- A student-athlete **may not** receive preferential benefits or treatment (e.g., loans with a deferred payback basis) because of his/her reputation, skill or potential as a professional athlete.
- A student-athlete **may not** retain professional services for personal reasons at less than the normal charge from a University of Arkansas athletic booster. If you have any questions regarding amateurism and/or professional sports agents, contact the Compliance Office.

### Gambling and Bribery

Gambling on the outcome of athletic contests is all too prevalent in our society, and can have a devastating effect on student-athletes if they choose to engage in such an activity. NCAA rules prohibit student-athletes, coaches and staff members from participating in any sports gambling activities.

Specifically, the NCAA rules prohibit sports wagering on any institutional practice or any competition (intercollegiate, amateur or professional) in a sport that is an NCAA-sponsored sport.



In order to adhere to the NCAA's strict policy on gambling and to protect a student-athlete's eligibility, a student-athlete **may not**:

- Provide information to individuals involved in organized gambling activities concerning intercollegiate athletic competition;
- Solicit a bet on any intercollegiate athletic team;
- Accept a bet on any intercollegiate athletic team;
- Solicit or accept a bet on any intercollegiate competition for any item that has tangible value (e.g., cash, shirt, dinner); or
- Participate in any gambling activity that involves intercollegiate or professional athletics through a bookmaker, a parlay card or any other method employed by organized gambling.

Any of the above mentioned actions by a student-athlete could declare him or her ineligible for intercollegiate athletic competition and/or permanently lose all remaining regular-season and postseason eligibility in all sports. In addition to awareness of gambling and bribery rules, student-athletes are responsible for reporting any offers of gifts, money, or favors in exchange for supplying team information or for attempting to alter the outcome of any contest. Student-athletes should contact their coach or other departmental personnel when questions concerning appropriate release of team information occur.

***Remember that participation in gambling or sports wagering/bribery can result in disciplinary actions by the University of Arkansas, NCAA, and SEC.***

### **Extra Benefits**

An extra benefit is considered to be anything that is provided to a student-athlete that is not available to the general student body of the university he/she attends. Therefore, the description of an extra benefit will change from university to university. However, you should assume the following items are extra benefits that cannot be provided to student-athletes:

- Special discounts, payment arrangements, or credit on purchases or services (e.g., airline tickets, clothing, dry cleaning);
- Arrangement for employment of relatives or friends of an enrolled student-athlete;
- Free or reduced-cost professional services;
- Use of telephone without charge for long distance phone calls;
- Free or reduced rates for services from an establishment owned by a representative of athletics interest (e.g., movie tickets, dinners, or other entertainment);
- Cash or loan of money;
- Guarantee of bail or bond;
- Use of an automobile;
- Loan or arrangements for a loan by signing or cosigning for the note;
- Preferential treatment, benefits or services for athletic skills or pay-back potential as a future professional athlete;
- Use of personal properties (e.g., boats, summer homes, private land, cars, stereos);
- Receive more than the allotted number of complimentary admissions; or
- Use of University telephones, telephone credit cards for free, fax machines and copiers.

To determine whether the benefit is permissible to receive, check with the Compliance Office or your head coach rather than putting your eligibility in jeopardy. Receipt of an extra benefit can render you ineligible for intercollegiate competition. Please see NIL section for guidelines about receiving benefits in exchange for the use of your name, image or likeness.

### **Financial Aid and Athletic Scholarship Policies**

The goals of the athletic scholarship program at the University of Arkansas are to provide financial assistance to deserving student-athletes and to ensure that the awarding of such aid is consistent with the regulations of the NCAA, the SEC, and the primary educational values of the University. Athletic scholarships are awarded only to those individuals showing exceptional athletic promise who meet academic standards and maintain academic progress.

Financial aid may not exceed the student's total cost of attendance for each term of enrollment. Types of financial aid include athletic scholarships, any other types of scholarships, grants, loans, other federal financial aid, state aid, work-study earnings, and tuition discounts/waiver. Off-campus employment earnings are not countable as institutional financial aid.

#### Eligibility

To be eligible for an athletic scholarship, a student-athlete must meet all applicable NCAA and SEC requirements. Please see the section on academic eligibility for more information.

#### Terms and Duration

A Financial Aid Agreement defines the terms and duration of an athletic scholarship and the mutual responsibilities of the University of Arkansas and the student-athlete to the particular sport for which the aid is granted when he/she signs a financial aid agreement. An Athletic Scholarship may be awarded for a period of one year or up to five years. One-year athletic scholarships are awarded in equal amounts for each semester of the academic year, provided the student-athlete meets all NCAA, Conference and University requirements governing athletic financial aid.

### Reduction or Cancellation of Athletic Scholarship

The University **MAY NOT** reduce or non-renew institutional athletic aid of a student-athlete who receives athletic financial aid in their initial year of full-time enrollment at the UA. Additionally, institutional athletic aid **MAY NOT** be reduced or canceled during the period of award on the basis of a student-athlete's athletic ability or contribution to a team's success; an injury, illness, physical or mental medical condition that prevents participation in athletics, or for any other athletics reason.

Institutional athletic aid **MAY** be reduced or canceled immediately during the period of award if the recipient:

- Renders him/herself academically ineligible for intercollegiate competition;
- Fraudulently misrepresents any information on an application, letter of intent, or financial aid agreement;
- Engages in serious misconduct warranting substantial disciplinary penalty;
- Voluntarily withdraws from a sport for personal reasons; however, the recipient's financial aid may not be awarded to another student-athlete in the academic term in which the aid was reduced or canceled. A student-athlete who voluntarily withdraws from a sport may have his/her athletic aid terminated and/or prorated immediately;
- Enters the NCAA Transfer Portal;
- Fails to maintain APR requirements; or
- Violates a documented institutional, athletics department or team policy.

### Procedures For Renewal, Nonrenewal, or Gradated Renewal of Athletic Scholarship

A student-athlete who received a one-year athletic scholarship in the previous year and has remaining eligibility in their sport, must be issued a renewal financial aid agreement or written notification of non-renewal **on or before July 1**. In the event of non-renewal or reduction of aid, the procedures for appeal are described below. Multi-year agreements that are still in effect do not require a renewal notice unless the agreement expires and the student-athlete has remaining eligibility in their sport.

### Renewal of Athletic Scholarship

An athletic scholarship may be awarded for a maximum of five years provided the student is eligible for athletic financial aid. However, athletic aid may not be awarded for a period of less than one academic year except for certain exceptions including final semester or mid-year enrollment. (Bylaw 15.3.3.1)

### Reduction and Non-renewal Appeal Process

For those student-athletes whose athletic aid is recommended to be non-renewed for the ensuing academic year or reduced or canceled during the period of award, the Financial Aid Office provides written notification as well as the opportunity for a hearing and how to initiate the appeal process. Carrying out the appeal process is the responsibility of the Financial Aid Office and its standing University Financial Aid Appeals Committee (15.3.2.3).

### **Razorback Success Incentive/Alston Award**

To qualify for the award, you must:

1. Be an active member of your team roster at the time of award disbursement. Active members include medically disqualified student-athletes and student-athletes who exhausted their eligibility and/or graduated within the NCAA five-year eligibility clock. Student-athletes who have entered the transfer portal, quit the team, been removed from the team, or withdrawn from school are considered inactive.
2. Complete applicable percentage of degree completion benchmarks, including grade point average and hours earned towards your degree at the end of each term (must meet minimum NCAA eligibility requirements).
3. Be in good academic standing with the University of Arkansas, the SEC, and the NCAA. No lost NCAA Academic Progress Rate points (APR) from the previous semester.
4. Conduct yourself in a manner to maintain good standing on campus and within the community.
5. Complete the Student-Athlete Development Razorback Ready activities and assignments (4 total per academic year). See below for the required activities and assignments by your year of collegiate enrollment.
6. First-semester University of Arkansas non-athletic scholarship student-athletes are not eligible for the award. Non-athletic scholarship student-athletes will be eligible for this award at the conclusion of their 2nd full term semester (Fall or Spring) on the team roster, based on the criteria listed above.

Please ensure that you have accurate information in your student account, including your contact information, address, and direct deposit information. Also note that due to state, federal, and institutional regulations, you may not be able to receive the entire award disbursed to you if:

1. You have a federal student loan,
2. You receive an Arkansas Challenge grant,
3. You have an institutional scholarship (not an athletic scholarship), and/or
4. You have a current outstanding balance on your student account.

### **Student-Athlete Employment**

NCAA legislation allows all student-athletes the opportunity to earn legitimate employment income in combination with athletics. Earnings from a student-athlete's on- and off-campus employment is exempt and is not counted in determining a student-athlete's full grant-in-aid or in the institution's financial aid limitations, provided:

- The student-athlete is compensated only for work actually performed.
- The student-athlete is compensated at a rate commensurate with the going rate in that locality for similar services.

The student-athlete should contact the Compliance Office if there are any questions and/or to begin the employment approval process.

### **Transfer Process for Razorback Student-Athletes (Subject to Change)**

Procedure for student-athletes to notify the UA of transfer: If a student-athlete wishes to transfer to another institution, he or she may initiate the notification of transfer process by providing the Razorback Compliance Office with a written notification of transfer at any time. The Razorback Compliance Office shall enter the student-athlete's information into the national transfer database within two business days of receipt of a written notification of transfer from the student-athlete if they are within the permissible transfer window for their sport or meet a legislated exception.

Written Notification of Transfer and its Potential Impact on a Student-Athlete's Athletic Financial Aid: If a student-athlete provides written notification of transfer to the institution during a regular academic term, the institution may reduce or cancel the student-athlete's athletic financial aid at the end of the regular academic term in which written notification of transfer was received. If a student-athlete provides written notification of transfer to the institution between regular academic terms (winter break, summer break), the institution may reduce or cancel the athletic financial aid immediately.

Services and Benefits Available for student-athletes who provide the UA with a written notification of transfer: A student-athlete who has provided the UA with a written notification of transfer shall still have access to academic support services.

## **COMMUNICATIONS OFFICE INFORMATION**

The University of Arkansas Athletics Communications Office provides guidance for student-athletes, coaches and staff in the promotion of the University and Razorback brands through interaction with local, regional and national media and on social media.

Sometime during your collegiate athletic career, you may be asked to conduct an interview with a member of the media. It may be after you've hit the winning basket, hit a game-winning home run or set a record. It may be after you've missed a putt that would have won the conference championship for your team. It may be for a feature article about you in either the local newspaper or your hometown paper. Whatever the case, dealing with the media is an important aspect of college athletics.

### **MEDIA INTERVIEW BEST PRACTICES**

The following best practices have been established by the Communications Office to help you prepare and train to work with members of the media and the interview process. The University of Arkansas and the Athletics Department recognizes and supports the student-athletes' rights to freedom of speech, expression and association in all manners of communication. Please keep in mind that members of the Communications staff are always available to assist you in matters regarding the media. We want your experiences with the media to be as positive and helpful as possible.

Here are some best practices related to your representation of Razorback Athletics:

- The Communications Office is available to schedule interviews (phone, in person, teleconference, etc.). If the interview has not been set up by the Communications Office, you have the option to politely remind the reporter to contact the Communications Office first and we will be happy to schedule the interview in a time that doesn't conflict with other obligations you may have. This includes media attempting to contact you on your phone, via e-mail or on any of your social media platforms.
- Please do not agree to an interview that will conflict with class or team-related functions (meetings, practices, games, etc.). Most interviews will be attempted to be scheduled prior to or following practices or in a designated time established by your coach or what best fits your schedule. If the interview is scheduled for times other than around practice or events, please be on time. If there is a problem, please let your coach or someone from the Communications staff know so the interview can be rescheduled.
- In an effort to maintain your privacy, the Communications staff will not release your telephone number or email address without your permission. While you are free to distribute your personal information to whomever you choose, it is not recommended to distribute your personal cell phone or contact information to others, including members of the media.
- Dress appropriately for all interviews. You should anticipate that all interviews will include a photo and/or video. Media are often multi-tasking and will use the interview on social media, in print and online, which will likely include photos and/or video.
- Introduce yourself to the reporter/media member (in a one-on-one interview). Understand each question and think through

- your reply. If you don't understand a question, ask the interviewer to repeat it or clarify it.
- Situations arise in which a student-athlete will be asked about a controversial situation. Your Communications contact is available to brief you prior to the interview and offer guidance, as needed, on potential questions.
  - A reminder, you do not have to answer a question if you do not wish to do so. A simple response such as "I'd rather not discuss that," can answer the question in a positive manner so that it does not appear that the question is being dodged. Seek counsel from a Communications staff member if you are uncomfortable with the questions, answers or general tone of the interview.
  - Be aware of questions that may lead you to, directly or indirectly, second-guess your coaching staff or your teammates. While delivered in the context of an answer to a specific question, your response may be construed in a different manner. If asked "why do you think Player X missed that shot/catch, etc." one potential response might be "That might be a question better directed to Player X."
  - Post-event interviews are strongly recommended. Most of us are happy to talk after a great win but it is more difficult to answer questions after a loss. The Communications Office will make every effort to make these media appearances as brief and as positive as possible. The Communications Office is available to assist you in preparation for difficult questions that may be asked and may offer suggestions on transitioning to points that you would like to make.
  - Interviews provide an opportunity for you to share your personal thoughts and opinions on a variety of topics. However, just like actions on the field/court, the words you share can have an impact on you, your teammates and your program.

Here are a few things to consider when formulating your responses:

- o Impact my responses may have on my team, teammates and coaches.
- o Assume all interviews and conversations are "on the record." Many media outlets run entire interviews on their websites and on social media channels. Do not say something you would not be comfortable with being quoted or broadcast on TV and social media outlets.
- o Public criticism of officials by administrators, coaches or student-athletes may result in disciplinary action by the Southeastern Conference.
- o Negative comments, especially after a loss, may be viewed as bad sportsmanship.
- o Often times, sarcasm or inside jokes, are misunderstood outside the interview.
- o You are a public figure representing the University of Arkansas and the Razorback Athletic Department.

If a problem with a member of the media arises, please bring it to the attention of the Communications staff as soon as possible. For more information on working with the media at the University of Arkansas, please contact the Communications Staff at 479-575-2751 or your specific sport's Communications contact.

## **SOCIAL NETWORKING BEST PRACTICES**

As you begin participation in another athletic season, the University of Arkansas Athletics Department wants to make sure you are aware of our social networking guidelines. The University of Arkansas and the Athletics Department recognize and support the student-athletes' rights to freedom of speech, expression and association in all manners of communication, including the use of social networks. Nothing in these guidelines is intended to impinge on any right you may have to engage in protected conduct.

In this context, however, each student-athlete must remember that playing and competing for the University of Arkansas is a privilege. As a student-athlete, you represent the University of Arkansas and Razorbacks Athletics and you are expected to portray yourself, your team and the university in a positive manner at all times.

Below you will find our social networking best practices which provide strategies for social networking site usage:

- Everything you post is public information – any text or photo placed online is completely out of your control the moment it is placed online – even if you limit who can follow you. Information (including pictures, videos and comments) may be accessible even after you remove it. Once you post a photo or comment on a social networking site, that photo or comment becomes the property of the site and may be searchable even after you remove it.
- It is recommended that you exclusively maintain your account information. Allowing others access to your account opens another door for something to go wrong. Changing your password once in a while is also a good practice so you know you are the only one with that login information.
- What you post may affect your future. Many employers and college admissions officers review social networking sites as part of their overall evaluation of an applicant. Carefully consider how you want people to perceive you before you give them a chance to misinterpret your information (including pictures, videos, comments, accounts followed and posters).
  - o Your old posts from high school, junior high or earlier still exist so any inappropriate language or visuals that you used as a minor can be brought to light if you do not go back and delete them. The Communications staff is available to answer any questions you may have about this.
- Similar to comments made in person, the University of Arkansas Athletics Department will not tolerate disrespectful comments and behavior online, such as:

- o Derogatory language or remarks that may harm your teammates or coaches; other University of Arkansas student-athletes, teachers or coaches; and student-athletes, coaches or representatives of other schools, including comments that may disrespect our opponents.
- o Incriminating photos or statements depicting violence; hazing; sexual harassment; full or partial nudity; inappropriate gestures; vandalism, stalking; underage drinking, selling, possessing or using controlled substances; or any other inappropriate behaviors.
- o Creating a serious danger to the safety of another person or making a credible threat of serious physical or emotional injury to another person.
- o Indicating knowledge of an unreported school or team violation—regardless if the violation was unintentional or intentional.
- A few other points to keep in mind include:
  - o You cannot post any information that is proprietary to the Athletic Department which is not public information such as tentative or future schedules, or information that is sensitive or personal in nature, such as travel plans and itineraries. You are responsible for knowing the Department's Confidential and Proprietary Information Policy.
  - o You are personally liable for any copyright violations committed, such as posting photographs, audio or video that is not your personal property. This includes the use of the trademarks of the University of Arkansas.
  - o You are personally responsible for anything you share or repost from others or other sites that is perceived as defamatory, negative, illegal or inappropriate. You may be subject to criminal or civil penalties similar in nature to those you face if you had originally posted the content.
  - o You are personally liable for any violations of other student's or student-athlete's privacy rights, especially those that fall under federal privacy laws (FERPA or HIPPA) or that violate University of Arkansas student codes of conduct or codes of computing practices.
  - o You should not post your home address, local address, social security number, phone number(s), birth date or other personal information such as your whereabouts or your plans.
  - o For your safety and NCAA compliance purposes, coaches and athletic department administrators can and do monitor social media.

The online social network sites are NOT a place where you can say and do whatever you want without repercussions. The information you post on a social networking site is considered public information.





ATHLETIC TRAINING • CONCUSSION MANAGEMENT PLAN • DRUG AND ALCOHOL EDUCATION  
MENTAL HEALTH & PERFORMANCE • SPORTS NUTRITION • STRENGTH AND CONDITIONING





## ATHLETIC TRAINING

The University of Arkansas Sports Medicine staff is committed to provide each Razorback Student-Athlete with state-of-the-art medical care. The goal of our sports medicine program is to assist every athlete in staying healthy and injury free. The athletic training staff, in conjunction with our team physicians, will coordinate the delivery of professional and comprehensive preventative, treatment, rehabilitation, and counseling services. There are specific guidelines the Athletic Department, team physicians, athletic trainers, coaches, and athletes follow to comply with NCAA, SEC and University rules and regulations. A summary of those guidelines are within this handbook. Please familiarize yourself with the following information and do not hesitate to ask questions if you are unsure of how to access appropriate health care.

### Athletic Training Staff

The sports medicine staff is comprised of full-time certified athletic trainers and numerous student assistants. The athletic teams are covered by the following staff:

Tricia Matysak, Associate Athletic Director of Sports Medicine  
Dave Polanski, Associate Director of Sports Medicine (Football)  
Simone Rush, Head Athletic Trainer (Women's Basketball/Golf)  
Matt Townsend, Head Athletic Trainer (Men's Basketball/Golf)  
Anthony Alaniz, Associate Athletic Trainer (Women's Cross Country/Track & Field)  
Dawn Didier, Associate Athletic Trainer (Soccer)  
Tamaria Hibbler, Associate Athletic Trainer (Football)  
Kaitlyn Hocutt, Associate Athletic Trainer (Gymnastics)  
Andrew Kreis, Associate Athletic Trainer (Softball)  
Nicole Tira, Director, Associate Athletic Trainer (Cross Country/Track & Field)  
Katelin Wollner, Associate Athletic Trainer (Volleyball)  
Corey Wood, Associate Athletic Trainer (Baseball)  
Kyle Wingier, Senior Assistant Athletic Trainer (Football)  
Joey Carroll, Assistant Athletic Trainer (Men's Tennis/Spirit Squads)  
TBD, Assistant Athletic Trainer (Football)  
Chris Coover, Assistant Athletic Trainer (Football)  
Laura Lynn, Assistant Athletic Trainer (Swimming & Diving)  
Morgan Pook, Assistant Athletic Trainer (Swimming & Diving)  
Jessica Price, Assistant Athletic Trainer (Cross Country/Track & Field)  
Juliet Tunberg, Assistant Athletic Trainer (Women's Tennis/Spirit Squads)

### Athletic Training Rooms

Athletic teams will receive care from the sports medicine staff in the athletic training rooms located in the Fred W. Smith Football Center, Barnhill Arena, Marsha and Marty Martin Basketball Performance Center, Frank O'Mara Track and Field High Performance Center, and J.B. and Johnelle Hunt Family Baseball Development Center. There are also designated satellite athletic training rooms available pre- and post-practice and during competition. Each main athletic training room provides services the following teams:

#### Barnhill Arena Athletic Training Room

Gymnastics

Soccer

Softball

Swimming and Diving

Volleyball

#### Frank O'Mara Track and Field High Performance Center

Men's and Women's Cross Country

Men's and Women's Track and Field

#### Fred W. Smith Football Athletic Training Room

Football

#### Marsha and Marty Martin Basketball Performance Center Athletic Training Room

Tennis

Men's & Women's Basketball

Men's & Women's Golf

Spirit Squads

#### J.B. and Johnelle Hunt Family Baseball Development Center

Baseball

### Medical Care Providers

The University of Arkansas recognizes that it takes a TEAM of healthcare professionals across many different disciplines to work together to provide care for their student-athletes. After the athletic training staff evaluates an injured or ill athlete, specific guidelines are followed for medical referrals. **Only athletic trainers may make referrals.**

The staff and physicians of University of Arkansas Medical Science (UAMS) have partnered together with the University of Arkansas Athletic Department to provide outstanding medical care for student-athletes. The following is a brief description of the three tenets of care and their areas of responsibilities:

### **Primary Care Sports Medicine / Orthopedic Physicians**

UAMS's primary care sports medicine and orthopedic physicians provide the medical services for the Arkansas Razorback Athletic Department. They specialize in sports-related injuries/illnesses and orthopedic surgeries. Specifically, the following primary care sports medicine physicians and orthopedic surgeons serve the student athletes and the University of Arkansas athletic department:

Wes Cox, MD	Director of Primary Care Sports Medicine, Orthopedic Surgeon, UAMS
Ramon Ylanan, MD	Director of Primary Care Sports Medicine, Primary Care Sports Medicine, UAMS
TBD	Primary Care Sports Medicine, UAMS
Lauren Poindexter, MD	Primary Care Sports Medicine, UAMS
Shea Brannon, MD	Hand Surgeon, UAMS
Tyler CarlLee, MD	Sports Surgeon, UAMS
Navin Kilambi, MD	Sports Surgeon, UAMS
Rob Martin, MD	Foot/Ankle Surgeon, UAMS
Brad Reeves, MD	Sports Surgeon, UAMS
Chad Songy, MD	Shoulder/Elbow Surgeon, UAMS

Additionally, a Mid-level Practitioner, Valerie Whitson, PA-C, works on campus in the south end zone of Reynolds Razorback Stadium under the supervision of the above-named physicians to provide daily care and coverage.

### **Surgical Care**

Northwest Physicians Specialty Hospital and Arkansas Children's Hospital are the area's finest free-standing inpatient and outpatient surgical centers providing the UA athletes with superb confidential care.

### **Cardiology**

UAMS Health Cardiology Clinic and Walker Heart Institute Cardiovascular Clinic offers comprehensive testing services to the Razorback Student Athletes, including on-campus physical exams, EKG interpretation and screening echocardiograms. Specifically, the following cardiologist serves as the cardiology physician for the Athletic Department:

Dr. John Paul Mounsey	UAMS Health Cardiology Clinic
Dr. Scott Chism	Walker Heart Institute Cardiovascular Clinic

### **Preseason Physicals**

All entering student-athletes are required to complete several forms and have a physical examination. All student-athletes must pass the physical examination before being allowed to participate. All physicals will consist of primary care exam (medical history, blood pressure, pulses, auscultations, etc.); vision exam; orthopedic exam; EKG; screening echocardiograms; blood work-up (including sickle cell testing); urinalysis (including possible drug test); SWAY baseline; and impact baseline. Other follow up medical referral and/or auxiliary services or testing may be required as per the medical staff.

All returning student-athletes will also undergo preseason physical examinations each year. They will consist of the primary care exam and any additional testing or services deemed necessary.

All student athletes trying out as a walk-on for a University of Arkansas athletic team must present a passed physical within 6 months of the try-out date and the physical must include sickle cell testing results. The University of Arkansas will not be responsible for any injury that may occur during the try-out period. The Student-Athlete will be responsible for any related medical bills associated with an injury during their try-out if injury does occur. If a Student-Athlete is accepted to the team, then they must pass a physical exam given by the University of Arkansas Sports Medicine Physicians. If there are medical costs associated with this physical exam, the Student-Athlete will be responsible for all costs.

### **Injury/Illness Policy**

*Student-athletes must report all injuries or illnesses including those NOT athletically related to the Sports Medicine Staff.* If the injury occurred during practice or competition, the athlete should see the team's Athletic Trainer as soon as possible. Student-athletes must be honest and direct with the medical staff caring for them. Costs pertaining to an injury and/or illness not reported in a timely manner may be the responsibility of the Student-Athlete and/or his/her parent(s) / guardian(s).

*All student-athletes who are ill or injured should report to the Athletic Training Room each day for treatment at the time designated by the Sports Medicine Staff.* This policy will be in effect throughout the academic year, regardless of sport and whether that sport is "in season." Athletes should follow the treatment and rehabilitation plan prescribed, advise the athletic trainers if there is any problem or reason why they cannot follow the plan, and report any changes in their condition.

### **Specialists and Second Opinions**

In the instance the Team Physician and/or Athletic Training Staff feels that a Student-Athlete should be referred to a specialist outside of our network of physicians, the Sports Medicine Staff will make the necessary arrangements and may or may not assume any fees occurred. **Should the Student-Athlete decide to see another physician or obtain a second opinion without the prior referral from the Team Physician and/or the appropriate Athletic Trainer, the Student-Athlete is financially responsible for any fees incurred. A coach cannot refer a Student-Athlete to a physician.** All second opinions and referrals will be handled through the University of Arkansas Sports Medicine Department **ONLY**. In addition, the final decision on whether or not an athlete may participate in either practice or competition will rest solely with the University of Arkansas Sports Medicine Staff.

Consultations between the student-athlete's parents and the attending physician will be arranged upon the parent's request. All decisions regarding medical approval for participation in athletics, however, rest with the Sports Medicine Staff.

Physicians in other specialty areas are also available to our Team Physicians for consultations. A Team Physician and a Staff Athletic Trainer will coordinate all consultation appointments. The consulting physician will evaluate the athlete's injury and prepare a report for our Team Physician who will then determine the appropriate course of action for the injured athlete to follow.

### **Pre-Existing Injuries or Conditions**

The University of Arkansas Athletic Department **will not** be responsible for medical care related to pre-existing injuries or conditions that occurred prior to joining a University of Arkansas athletic team. The student athlete is financially responsible for any fees incurred during the physical exam process as it relates to the pre-existing injury. Disqualification from participation due to that pre-existing problem is at the discretion of the University of Arkansas Medical Staff. Failure to report and document pre-existing problems releases the University of Arkansas Athletics Department from any liability in the event of aggravation or worsening of the initial injury.

The University of Arkansas Athletic Department will not be financially responsible for medications for long term pre-existing conditions such as asthma, allergies, ADD/ADHD, diabetes, and acne unless the condition affects the student-athlete's ability to participate. The sports medicine staff is available to assist the athlete in ordering and coordinating the administration of the medication, but the Athletics Department may not be financially responsible for those medications.

It's especially important for athletes that have been prescribed medication for ADD/ADHD to have proper comprehensive clinical evaluation (referencing DSM-IV criteria). The evaluation should include supporting documentation using the following ADHD rating scale(s) (Connors, ASRS, CAARS). These evaluations are necessary so that student athletes are compliant with NCAA drug testing requirements. (For more information on the ADHD/ADD referral process please consult your athletic trainer).

### **Close-Out Screening**

Upon graduation, transferring, or otherwise terminating an athletic career at the University of Arkansas, all athletes must meet with their team athletic trainer to review their medical history. Student-athletes that have not fully recovered from an injury sustained while playing must also meet with the team physician. It is the student-athlete's responsibility to request this meeting within **15 days** after their participation has been completed. Failure to do so will disallow future bills relating to existing injuries to be paid by the University of Arkansas. The Student-Athlete and/or athletic trainer may request an examination by a Team Physician to determine the status of the injured Student-Athlete. If surgery or further treatment of an athletic related injury is required, it must be performed within 6 months of leaving the team. No procedure will be paid for unless coordinated through the University of Arkansas Athletic Training Department. The University of Arkansas will not be financially responsible for an injury or condition that is not documented in the athlete's permanent medical file.

### **Mental Health and Performance**

The University of Arkansas Athletics Department is committed to providing the most current psychological resources to our student athletes. As such, student athletes may take advantage of sport/performance mental skills enhancement (e.g., imagery training, goal setting) training or counseling services. The Director of Clinical and Sport Psychology provides mental skills training and counseling services to any student athlete who wishes to use this resource. Meetings regarding either domain can be set up by directly contacting Dr. Chris Bader, Director of Clinical and Sport Psychology (479-409-7216; cbader@uark.edu), or through your Athletic Trainer. Dr. Bader's office is 220 in the Jones Student-Athlete Center. Meetings can be individual, small group, or team based.

### **Sports Performance and Nutrition**

The Athletic Training Staff, Strength and Conditioning Staff, Performance Nutrition Staff and Director of Clinical and Sport Psychologist jointly manage the nutritional counseling needs of the student-athletes. Please refer to the nutritional guidelines section of the student athlete handbook for further details.

### **Dental and Eye Care**

The University of Arkansas Athletic Department is only responsible for dental injuries that occur during organized practice or competition. All such dental appointments must be made through the Athletic Training Staff.



The University of Arkansas Athletic Department will purchase contacts or sports glasses if they are needed by the Student-Athlete to participate in sport. Regular glasses cannot be provided. If the Student-Athlete wants additional features (i.e. contact tinting), the athlete is responsible for the charges.

### **Medical Appointments and Excuses**

The following rules apply regarding medical appointments:

- **Never** be late or miss a class, practice, or meeting because of a medical appointment unless you have been cleared to do so **prior** to such session by the Athletic Trainer for your sport.
- Inform the athletic training staff if a treatment session and/or a physician appointment conflict with class, weight room, or practice times as soon as possible so adjustments can be arranged.

A medical excuse will only be issued to a Student-Athlete after the above process has been followed and as the care of the illness or injury dictates. When appropriate, the medical excuse should be obtained from the medical provider from which the medical excuse is needed. In all instances, the Student-Athlete should notify the athletic training staff of any conflicts with their academic responsibilities. If this cannot be avoided, the Student-Athlete should notify the appropriate personnel (teachers, academic counselors, weight room staff, etc.) as soon as possible. As per University policy, the acceptance of a medical excuse is at the discretion of the student-athletes instructor.

### **Medical Expenses**

#### Non-Sport Related Injury / Illness Procedures:

The University of Arkansas Athletic Department may or may not assume financial responsibility for injuries and illnesses that are not directly related to participation in the intercollegiate athletics program at the discretion of the Director of Sports Medicine and/or the Director of Athletics and/or his/her designee. These injuries or procedures may include but are not limited the following elective procedures: General Dentistry, Wisdom Teeth Extraction, Orthodontics, Tonsillectomy, Cosmetic Procedures/Surgeries, Dermatological Issues/Procedures, Obstetrics, Termination of Pregnancy, Glasses if receiving contacts, Refractive Eye Surgery, Septal Deviation, Pre-existing Illnesses and Injuries, Vasectomy, Tubal ligation, Hormone treatment and Breast Procedures. Such injuries and/or illnesses must take place during the student-athlete's primary competitive in-season, non-traditional season, and/or off-season and must be serious enough to preclude the student-athlete's participation in his/her sport.

#### Missed Doctor's Appointment Policy:

Student-athletes who are late and/or fail to show-up for scheduled appointments with the team physician, medical consultants, and/or diagnostic tests / procedures will be financially responsible for any and all charges resulting from the missed appointment. In addition, the Student-Athlete may be responsible for rescheduling the appointment and providing his / her own transportation.

#### "Out-of-town" Rehabilitation / Illness Procedures:

At times, it may be necessary for Student-Athletes to utilize an "out-of-town" physical therapy facility or hospital services. In such situations, permission must be granted from the Director of Sports Medicine and/or his/her designee. Such referrals must come from University of Arkansas Sports Medicine personnel. If a Student-Athlete decides to utilize rehabilitation / hospital services without authorization from University of Arkansas Sports Medicine personnel, the Student-Athlete and/or the student athlete's parent(s) / guardian(s) may be financially responsible for any and all medical bills incurred.

### **Changes to Primary Insurance Coverage**

With any material change in coverage or expiration of coverage, the parent, guardian, or Student-Athlete (if self-insured) agrees to notify the University of Arkansas of this development and update the insurance information on file with the University of Arkansas. For any material changes in coverage, expiration, or lack of coverage contact the following:

Carrie Robinson, Insurance Coordinator  
University of Arkansas Sports Medicine  
P.O. Box 7777  
Fayetteville, AR 72702  
Office: (479) 445-6881  
Fax: (479) 575-3334  
E-mail: clobins@uark.edu

### **Prescription Medication and Supplements**

Student-athletes must report all medications taken to the Sports Medicine Staff. Your athletic training staff can assist you in filling your prescription medications. However, the University of Arkansas Athletic Department may not be financially responsible for medications prescribed for any pre-existing medical conditions or non-athletically injury or illness unless the condition affects the student athlete's ability to participate.

If you are injured or ill, do not assume that the condition is the same as someone else's. Many athletes have allergies to certain medications. Do not take anything that is not prescribed specifically for you. Medications also may react with other medicines, food, and/or alcohol. Make sure directions are followed exactly. When a medication is prescribed, it will work only if taken regularly and properly as prescribed. All questions regarding your medication should be directed to the Sports Medicine Staff.

The Registered Dietitian, Sports Medicine Staff, and Strength and Conditioning Staff work collectively to monitor Student-athlete's supplement and medication use. Student-athletes must be cautious of using supplements or medications available through commercial outlets as many contain substances banned by the NCAA. The University of Arkansas Registered Dietitian, Sports Medicine Staff, and Strength and Conditioning Staff are responsible for any and all supplement recommendations. Student-athletes must not use any supplement or medication that have been purchased or given to them by someone other than the Registered Dietitian, Sports Medicine Staff or Strength and Conditioning Staff without permission from the Registered Dietitian or Sports Medicine Staff. Always report all supplements and medications you are taking to your Registered Dietitian or Sports Medicine Staff. The Student-Athlete is responsible for knowing what is contained in any supplement that he or she may take.

### **Privacy Information**

The intent of the University of Arkansas Athletic Department Athletic Training Room (ATR) is to provide appropriate and necessary medical care for each Student-Athlete as part of our Intercollegiate Athletics Program. In this regard, communication must be open between the athletic training staff and healthcare providers allowing for continuity in the care provided to our student-athletes.

The Family Educational Rights and Privacy Act (FERPA or Buckley Amendment) is a federal law that protects the privacy of student education records. This law applies to the University of Arkansas, including personnel dealing with certain information concerning student-athletes. The Health Insurance Portability and Accountability Act of 1996 (HIPPA) is a federal law designed to protect the privacy of the patient's health information created, received, or maintained by a health care provider. HIPPA may apply to the healthcare providers (including physicians) who independently contract with the University of Arkansas Athletic Department as well as the University Health Center. Each healthcare provider may have separate privacy procedures.

Under FERPA, you have the right to decline a request for the release of your student education records (including covered medical information), except to the extent that release of your information is required or authorized by law without your consent (See University wide Administrative Memorandum 515.1). Pursuant to your authorization, we may use or disclose your medical information for proper treatment of injury/illness by athletic training staff and healthcare providers (including physicians), for payment of healthcare services (i.e. billing information) and/or for professional development (i.e. comparison studies about injury/illness). Furthermore, with your authorization, we may release and discuss your medical information with parents, academic staff, instructors, coaches, sports information, media, talent scouts, professional and/or amateur sports organization representatives, your primary insurance company, the university's excess insurance company, business office personnel and/or university accounts payable department.

Your rights apply to all medical information acquired while you are enrolled at the University of Arkansas. You may request, in writing, that we may not disclose/release any medical information for certain cases or circumstances. However, FERPA allows the disclosure of medical records, without consent, to university officials with a legitimate educational interest, to other universities to which a Student-Athlete is transferring and/or to appropriate officials in cases of health and safety emergencies, among other circumstances. You have the right to request access to or a copy of your medical file. If you feel the information in the file is incorrect or incomplete, you have the right to request that we amend the records.

The athletic training staff may require from your healthcare provider certain medical information in order for our staff to continue with appropriate care necessary for any specific incidents for which you have obtained medical treatment or advice. To enable our staff to obtain the appropriate medical information about you, we will provide a Medical Referral Form to sign authorizing the release of medical records and information permitting your physician(s) to release your pertinent medical information to our athletic training staff in compliance with the HIPPA regulations. Upon completion of the medical referral form, we will assume you consent to the release of medical information to the parties indicated for the duration of your association with the Athletic Department at the University of Arkansas or until the revocation of this authorization in writing.

### **Pregnancy Policy**

The University of Arkansas ("UA") Department of Athletics is committed to the personal health and development of all Razorback student-athletes and to the educational mission of the UA. We strive to provide an environment that respects all pregnancy and parenting decisions and urges all participants to work cooperatively toward degree completion. This policy sets forth the protections that should be provided for pregnant and parenting students, including those with pregnancy related conditions. It also prohibits retaliation against any student or employee who expresses concerns about issues related to the enforcement of this Pregnancy Policy. ***The department wants to protect the physical and psychological health of all student-athletes, along with their ability to complete their degree programs.***

In the event a Student-Athlete discloses a pregnancy, the Student-Athlete will be referred to the UA Title IX Coordinator and the UA Sports Medicine Staff. The UA Sports Medicine Staff will offer support to the Student-Athlete and will assist the Student-Athlete with

referrals for further counseling and evaluations pertaining to her pregnancy. The UA Team Physician will be responsible for coordinating medical care and determining the participation status for the Student-Athlete.

*UA Department of Athletics personnel, including coaches, shall not influence or give personal opinions regarding the choices a pregnant Student-Athlete may have or may make.*

**Athletic Department Contacts and UA Resources**

If you would like to review the Pregnancy Policy in its entirety, if you have any questions about the Pregnancy Policy or if you are seeking resources for yourself or a pregnant Student-Athlete **please contact your athletic trainer first**. You may also contact the following UA Department of Athletics personnel and campus for resources:

Valerie Whitson (S-A Clinic PA) .....	479- 334-7056
Chris Bader (Assistant AD for Mental Health & Performance) .....	479-409-7216
Felecia Saine (Associate AD for Academics/S-A Development) .....	479-575-4424
Trish Matysak (Associate AD for Sports Medicine) .....	479-575-4809
Tracey Stehlik (Associate AD for Compliance).....	479-575-6738
Danielle L. Williams (Associate Vice Chan. & Executive Director, Equal Opportunity, Compliance & Title IX).....	<a href="mailto:titleix@uark.edu">titleix@uark.edu</a>
Pat Walker Health Center Women’s Health Clinic.....	479-575-4478
U of A Counseling and Psychological Services (CAPS).....	479-575-5276

**Reporting**

Our department will work to create an environment which encourages the Student-Athlete to voluntarily reveal her pregnancy and his or her parenting status, for our institution to provide optimal support for physical and mental health with professional health care. The UA Department of Athletics will not require any Student-Athlete to reveal pregnancy or parenting status to coaches or teammates.

No personnel from the UA Athletic Department will publicly release personally identifiable health information about pregnancy without written, timely authorization from the Student-Athlete.

Teammates of pregnant student-athletes or UA Department of Athletics personnel may report their concerns to the team physician or to a UA-designated Department of Athletics representative trained in pregnancy and parenting support options.

**Participation While Pregnant**

A pregnant or parenting student-athlete’s physician will only be required to certify physical and emotional fitness as a condition for participating in athletics when such certification is required of student-athletes who experience other temporary disabilities.

Pregnant or parenting student-athletes will be allowed to participate on the team, including all team-related activities, unless the student-athlete’s physician or other medical caregivers, including team physicians, certify that full or limited participation is not medically safe.

Medical decisions regarding the need for and the nature of limitations on sports participation rest with the Student-Athlete and her medical professionals. Where the opinions or recommendations of these professionals differ from those of the Team Physician or athletic trainers, coaches should defer to the student-athlete’s health care providers who are obstetricians or other experts in pregnancy or related conditions.

The Department of Athletics will help the pregnant or parenting Student-Athlete plan for her continued academic progress, in accordance with the UA’s educational mission.

Medically necessary absences from team activities due to pregnancy shall be considered excused absences.

*No coach or other UA Department of Athletics personnel shall suggest to any Student-Athlete that his or her continued participation on a team will be affected in any way by pregnancy or parental or marital status.*

**Medical Care**

The UA Department of Athletics can provide health benefits for pregnancy, including counseling, physical examinations, medical treatment, medication, and rehabilitation expenses, to the same degree that student-athletes who experience other temporary disabilities are provided these benefits.

**Scholarship and Aid**

The UA Department of Athletics will not terminate or reduce a student-athlete’s athletics aid because of the student- athlete’s pregnancy, marital or parental status during the term of the award.

The UA Department of Athletics will renew a pregnant, formerly pregnant, or parenting student-athlete’s award, so long as the Student-Athlete is in good standing academically, remains engaged with the UA Department of Athletics and meets NCAA eligibility standards. Returning students may be evaluated athletically in the same manner as any other team member to determine their specific position on the team.

## **Federal Laws**

Title IX of the Education Amendments of 1972 bars discrimination based on sex, which includes the guarantee of equal educational opportunity to pregnant and parenting students. This means that our student-athletes cannot be discriminated against because of their parental or marital status, pregnancy, childbirth, false pregnancy, termination of pregnancy or recovery there from. In addition, a student's medical information may be protected by other federal laws. Some actions that may be permissible under NCAA rules are impermissible under federal law, and our institution adheres to federal law.

## **Eating Disorder/Disordered Eating Policy**

Eating disorders are often an expression of underlying emotional distress. Disordered eating behaviors will likely impair athletic performance, increase the risk of injury and negatively impact one's quality of life. Decreased energy (caloric) intake and fluid and electrolyte imbalance can result in decreased endurance, strength, reaction time, speed, and ability to concentrate. Because the body initially adapts to these changes, a decrease in performance may not be seen for a few months, and athletes may falsely believe disordered eating practices are harmless. Food restriction and purging can result not only in menstrual dysfunction and potentially irreversible bone loss but also in psychological and other medical complications. This can include depression, fluid and electrolyte imbalance, changes in the cardiovascular, endocrine, gastrointestinal, and thermoregulatory systems. Psychological counseling (via the department's Director of Clinical and Sport Psychology) and nutritional consults (via the department's Director of Sports Performance Nutrition) are available and should be utilized.

## **Sexual Harassment/Assault/Misconduct**

The University of Arkansas Athletics Department follows the University of Arkansas' policy on sexual harassment. The full policy may be found at <http://oeoc.uark.edu>. Supervisors, administrators, and staff must report complaints by student-athletes to the University's Title IX Coordinator. Subject to the other provisions of the University's Sexual Harassment Policy and the requirements of law, every possible effort will be made to ensure that any information received as part of the University's resolution and complaint procedures is treated discreetly. All parties to the complaint will be asked to assist in treating the complaint confidentially. The University's obligation to investigate and to prevent claims of sexual harassment/assault/misconduct means that it is not possible to guarantee that complaints of sexual harassment will be handled confidentially. The Student-Athlete will also have access to medical care and counseling.

# **CONCUSSION MANAGEMENT PLAN**

The University of Arkansas is committed to protecting the health of and providing a safe environment for each of its participating NCAA student-athletes. To this end, and in accordance with NCAA legislation, The University of Arkansas has adopted the following Concussion Management Plan for all of the student-athletes. This protocol identifies expectations for institutional concussion management practices as they relate to (1) the definition of sport-related concussion; (2) independent medical care; (3) preseason education; (4) pre-participation assessment; (5) recognition and diagnosis; (6) initial suspected concussion evaluation; (7) post-concussion management; (8) return-to-learn management; (9) return-to-sport management; (10) reducing head impact exposure; and (11) written certificate of compliance signed by the athletics health care administrator and others.

## **Concussion Management Team**

A multi-disciplinary team will be responsible for employing the protocols outlined in this document are assigned respective roles in mild traumatic brain injury/concussion management. Each concussion is different and may not require the services of all of the team members listed below. The head sports medicine physician will be responsible for referrals to the team members as the need arises. All individuals who will serve these roles will receive and review this policy at least once per year.

- **Head Sports Medicine Physician (Dr. Ramon Ylanan)** will have final clearance on all concussions. He will supervise stepwise progression and he will serve as the final authority on a student-athlete's return-to-learn and return-to-play.
- **Sports Medicine Physicians (Assigned by team)** will also diagnose and treat mild traumatic brain injuries. They will communicate with Dr. Ramon Ylanan regarding final clearance.
- **Team Orthopedic Physicians** may diagnose mild traumatic brain injuries and will defer to Dr. Ramon Ylanan for final clearance.
- **Nurse Practitioner (Valerie Whitson)** will recognize mild traumatic brain injuries, will refer student-athletes to their respective team physicians if they show symptoms of concussion, and will defer to Dr. Ramon Ylanan for final clearance.
- **Athletic Training Staff (Assigned by Team)** will recognize and treat mild traumatic brain injuries, will refer student-athletes to a team physician if they show symptoms of concussion, and will defer to Dr. Ramon Ylanan for final clearance.
- **Neuropsychologist (Dr. Sarah Downing)** will consult as a specialist in IMPACT interpretation and concussion rehabilitation.
- **Neurosurgeon (Dr. Larry Armstrong)** will consult as a specialist in brain, spinal cord and peripheral nerves injuries will be involved with complicated mild traumatic brain injuries.

- **Academic Counselor/Learning Specialist (Assigned by Team)** under the direction of the head sports medicine physician will be the point person on campus to help navigate return-to-learn activities with student-athletes and will coordinate compliance activities with campus disability services, ensuring ADAAA compliance.
- **Director of Clinical and Sport Psychology (Chris Bader Ph.D.)** will help navigate return-to-learn activities and cognitive management.
- **Faculty Athletics Representative (Paul Adams)** will help navigate complex return-to-learn cases, as needed.

### Definition of Sports Related Concussion

There is no uniform definition of concussion. The Consensus Statement on Concussion in Sport, which resulted from the 6th international conference on concussion in sport, defines sport-related concussion as follows:

Sport-related concussion is a traumatic brain injury caused by a direct blow to the head, neck or body resulting in an impulsive force being transmitted to the brain that occurs in sports and exercise-related activities. This initiates a neurotransmitter and metabolic cascade, with possible axonal injury, blood flow change and inflammation affecting the brain. Symptoms and signs may present immediately, or evolve over minutes or hours, and commonly resolve within days, but may be prolonged.

No abnormality is seen on standard structural neuroimaging studies (computed tomography or magnetic resonance imaging T1- and T2-weighted images), but in the research setting, abnormalities may be present on functional, blood flow or metabolic imaging studies. Sport-related concussion results in a range of clinical symptoms and signs that may or may not involve loss of consciousness. The clinical symptoms and signs of concussion cannot be explained solely by (but may occur concomitantly with) drug, alcohol, or medication use, other injuries (such as cervical injuries, peripheral vestibular dysfunction) or other comorbidities (such as psychological factors or coexisting medical conditions).

### Independent Medical Care

As required by NCAA Independent Medical Care legislation, team physicians and athletic trainers shall have unchallengeable autonomous authority to determine medical management and return-to-activity decisions, including those pertaining to concussion and head trauma injuries, for all student-athletes.

### Preseason Education

Participation in sport may result in injury or illness, including concussions. A concussion or Mild Traumatic Brain Injury (MTBI) is defined in section one of this plan.

All student-athletes will be provided and allowed an opportunity to discuss concussion educational material (e.g., the NCAA Concussion Education Fact Sheet) or other applicable material and will be required to sign an acknowledgement, on an annual basis and prior to participation, that they have been provided, reviewed and understood the concussion education material. Further, they will sign a statement in which they accept the responsibility for reporting their injuries and illnesses to the medical staff, including signs and symptoms of concussions (Appendix A). Student-athletes will be given take-home educational materials (e.g., the NCAA Concussion Fact Sheet) and will acknowledge in writing that they have read and understand the materials.

Student-athletes are responsible for reporting their injuries and illnesses to the medical staff; including signs and symptoms of concussions (MTBIs). Signs and symptoms include, but are not limited to:

Vomiting	Sensitivity to light	Sadness
Imbalance	Sensitivity to noise	Fatigue
Dizziness	Numbness/tingling	Difficulty remembering
Nervousness	Headache	Difficulty concentrating
Nausea	Drowsiness	Loss of consciousness

Signs and symptoms must be reported to the University of Arkansas Sports Medicine staff immediately upon onset, before the continuation of any activity. The sports medicine physicians will supervise the stepwise progression through the recovery plan. The final decision for return to learn and return to play rests with head sports medicine physician and is unchallengeable.

Selected staff members will read, understand and follow required educational materials and protocols related to concussions and will actively participate in these protocols. All members of the coaching, strength and conditioning, and athletic training staffs will receive educational materials (e.g., the NCAA Concussion Fact Sheet) to assist in identifying the signs and symptoms of concussion. Coaches will be given the concussion management plan, their role within the plan will be identified and they will be required to sign an acknowledgement of their receipt and understanding of concussion education and protocols (Appendix B). Team physicians (Appendix C), athletic trainers (Appendix D) sport administrators (Appendix F) and the director of athletics (Appendix E) also will receive these materials and all will acknowledge in writing that they have read and understood them.



## **Pre-Participation Assessment**

All student-athletes will undergo a pre-participation baseline concussion assessment. This assessment assumes individualized medical care, which means: Each athlete and each injury are different. Depending on the severity of prior injuries, the number of concussions, other individual concerns and based on the developing state of science, the team physician/primary health care provider should review each athlete's history and consider discussing with the student-athlete concerns about concussion and repetitive head impact as warranted, including potential risks and benefits from playing sport. Such discussion allows the athlete to make an informed decision about their participation in sport. Baseline testing will be appropriately employed and documented as part of the required protocol for all student-athletes. Upon arrival to campus all student-athletes are required to complete baseline testing prior to their first practice and the same assessment tools will be used post-injury at appropriate time intervals. These tests include--but are not limited to--recording concussion and/or brain injury history, neurologic disorder, and mental health symptoms and disorders in the preparticipation physical. Balance testing, reaction time testing, symptom evaluation and cognitive assessment using SWAY and/or computerized neuropsychological screening (Impact).

The team physician will determine pre-participation clearance and/or the need for additional consultation or testing and will consider a new baseline concussion assessment at mid-year or beyond for any student-athlete with a documented concussion, especially those with complicated or multiple concussion history. Importantly, baseline testing may inform post-injury evaluation; however, student-athletes who have suffered a concussion may perform at the same level or even better than their baseline testing, as motivation and other factors may differ in post-concussion testing. Ultimately, baseline testing serves as one of many potential factors in making a clinical decision.

After the initial baseline testing each athlete will retake the SWAY yearly prior to competitive season. If they are diagnosed with a concussion at any time during the season. The student-athlete will retake both SWAY and ImpACT baseline test in the off season.

## **Recognition and Diagnosis of Concussion**

To assure appropriate recognition and diagnosis of concussion, medical personnel with training in the diagnosis, treatment, and initial management of acute concussions (athletic trainers & team physicians) will be physically present at all NCAA varsity competitions in the following contact / collision sports available at the University of Arkansas: Baseball, Men's and Women's Basketball, Diving, Football, Gymnastics, Pole Vault, Women's Soccer, Softball and Volleyball.

**NOTE:** To be present means to be on site at the campus or arena of the competition. Medical personnel may be from either team or may be independently contracted for the event.

Further, medical personnel with training in the diagnosis, treatment and initial management of acute concussion will be "available" at all NCAA varsity practices in the following contact / collision sports available at the University of Arkansas: Baseball, Men's and Women's Basketball, Diving, Football, Gymnastics, Pole Vault, Women's Soccer, Softball, and Volleyball.

**NOTE:** To be available means that, at a minimum, medical personnel can be contacted at any time during the practice via telephone, messaging, email, beeper or other immediate communication means and that the case can be discussed through such communication, and immediate arrangements can be made for the athlete to be evaluated.

Any student-athlete that exhibits signs, symptoms or behaviors consistent with concussion must be removed from practice or competition for evaluation. Examples of signs that warrant immediate removal from the field include: actual or suspected loss of consciousness, seizure, tonic posturing, ataxia, poor balance, confusion, behavioral changes, amnesia).

Concussion evaluation:

- Must be evaluated by an athletic trainer or team physician (or physician designee) with concussion experience.
- Allow ample time (e.g., 10-15 minutes) when conducting a multi-modal screen to evaluate a potential concussion.
- Must be removed from practice/play for that calendar day if concussion is confirmed or suspected.
- May only return to play the same day if the athletic trainer, team physician or physician designee determines that concussion is no longer suspected after evaluation. Even in such cases, consider next day follow-up assessment because initial symptoms may not appear for several hours.

## **Initial Suspected Concussion Evaluation**

The initial concussion evaluation must include an immediate assessment/neurological screen for "red flags" or observable signs (as noted in the Concussion Emergency Action Plan below). The assessment may include a multi-modal evaluation as clinically indicated such as:

- Clinical assessment to rule out cervical spine trauma, skull fracture, intracranial bleed or other catastrophic injury.
- Symptom assessment. (SWAY and/or brief symptom checklist)
- Physical and neurological exam. (Eye tracking, finger-to-nose test)
- Cognitive assessment. (SWAY, MADDOX Questions, Serial 3's &/or 7's)
- Balance exam. (SWAY, or MBESS)

#### Concussion Emergency Action Plan:

A student-athlete must be immediately removed from play and assessed for possible transport to a local hospital/trauma center when any of the following signs/symptoms/behaviors are present:

- Neck pain or tenderness.
- Seizure or convulsion.
- Double vision.
- Loss of consciousness.
- Weakness or tingling/burning in more than one arm or in the legs.
- Deteriorating conscious state.
- Vomiting.
- Severe or increasing headache.
- Increasingly restless, agitated or combative.
- Glasgow Coma Scale Score <15.
- Visible deformity of the skull

In consultation with the head sports medicine physician, the athletic training staff and the sports medicine physicians will work together to order additional testing (e.g. imaging, neuropsychiatric testing and referrals) as needed and outline a plan for return-to-learn and return-to-play. The sports medicine physicians will supervise stepwise progression to recovery. The final decision for return-to-learn and return-to-play rests with the head sports medicine physician and is unchallengeable.

If a student-athlete is diagnosed with a concussion, the student-athlete will be removed from participation and shall not return to activity on that day. The University of Arkansas will have a physician with experience in the management of concussion either on-site or on-call for all home athletic events. At all times, a physician with experience in the management of concussions will be available for phone consultation.

#### Post-Concussion Management

Evaluation by the athletic trainer and team physician will determine whether the Student-Athlete is safe to go home or should be taken to the hospital. Serial evaluation and monitoring for deterioration following injury will be conducted. Student-athletes diagnosed with a concussion will be given written instructions on management of concussions and monitoring for deterioration after they leave the site of evaluation. Optimally, this will be done by roommates, significant others, family, guardians or anyone expected to be staying with student-athlete. Student-athletes will receive the document outlined in (Appendix H) before they are released from the site of the assessment.

Serial evaluations for the Student-Athlete diagnosed with a concussion will continue throughout the course of the injury. In the acute and subacute phase of the injury the management plan will include monitoring the following:

- Symptom evaluation (SWAYor ImPACT or CP Screen)
- Immediate and delayed memory (Sway or ImPACT)
- Concentration (SWAY or ImPACT)
- Orthostatic vital signs
- Cervical spine assessment
- Neurological evaluation
- Balance and tandem gait assessment (SWAY)
- Modified VOMS

In addition, in the subacute phase the team physician may consider evaluating for the following, as clinically indicated:

- Screen for fear, anxiety or depression or other mental health issues.
- Screen for sleep disturbance.
- Graded aerobic exercise testing.

For all student-athletes diagnosed with concussion the following steps will be initiated as tolerated:

- Consideration of symptom-limited, light aerobic physical activity within 24-48 hours (e.g., walking).
- Consideration of reduced screen use in the first 48 hours after injury.

Also, any student-athlete with atypical presentation or persisting symptoms > 4 weeks will be re-evaluated by a physician in order to consider additional diagnoses, best management options, and consideration of referral. Additional diagnoses include but are not limited to: fatigue and/or sleep disorder; migraine or other headache disorders; mental health symptoms and disorders; ocular dysfunction; cervical and vestibular dysfunction; cognitive impairment and autonomic dysfunction including orthostatic intolerance and postural orthostatic tachycardia syndrome; pain.

#### Return-to-Learn Management

Most student-athletes have a full return-to-learn with no additional academic support by approximately 10 days post-injury, but the academic schedule of a concussed Student-Athlete may need some modification in the first one to two weeks following a concussion. In

such cases, the athletic trainer and academic counselor will work together following the direction of the head sports medicine physician to handle academic modifications through recovery. An individualized plan may be documented to include remaining at home until light cognitive activity can be tolerated, along with gradual return to the classroom. More complex cases of prolonged return-to-learn will be managed by a multi-disciplinary concussion management team. If cases are prolonged, campus resources will be identified by the learning specialist and accommodations will be made in compliance with ADAAA through the Office of Disabilities Services as needed.

The academic services staff will communicate with faculty to make them aware of injuries and the related symptoms that student-athletes may experience. Student-athletes will refrain from all classroom activity the same day as a concussion. Possible modification to classroom activity to allow cognitive rest, providing adequate time for recovery, while allowing the Student-Athlete to participate in some classroom activity, also may be necessary. When the Student-Athlete resumes class, faculty will be aware that their academic performance may suffer during the recovery process and that student-athletes should progress to the classroom and studying activities as tolerated. Please refer to (Appendix I) for a sample return-to-learn letter.

Final authority to return-to-learn will reside with the head sports medicine physician who will continue re-evaluation of the Student-Athlete until symptoms resolve. If symptoms are persistent or worsen with academic challenges, further modifications may be recommended by the head sports medicine physician and/or any member of the multidisciplinary team.

### **Return-to-Sport Management**

Unrestricted return-to-sport should not occur prior to unrestricted return-to-learn for concussions diagnosed while the Student-Athlete is enrolled in classes. Complete rest and isolation should be avoided, even for the initial 24-48 hours. Relative rest is important in the first 24 hours. Final determination of unrestricted return-to-sport will be made by the head sports medicine physician or their medically qualified designee following implementation of an individualized, supervised stepwise progression management plan that includes:

Step 1. Symptom-limited activities of daily living.

Step 2. Aerobic exercise with light resistance training as tolerated [no more than mild or brief (<1 hour) exacerbation of symptoms].

2a. Light (up to approximately 55% maximum heart rate); then

2b. Moderate (up to approximately 70% maximum heart rate).

Step 3. Individual sport-specific exercise and activity without any increased risk of inadvertent head impact exposure.

*Proceed to step 4 only after resolution of signs and symptoms related to the current concussion, including with and after physical exertion.*

Step 4. Non-contact practice with progressive resistance training.

Step 5. Unrestricted practice or training.

Step 6. Unrestricted return-to-sport.

The above stepwise progression will be supervised by the athletic trainer or team physician with expertise in concussion management, with it being typical for each step in the progression to last at least 24 hours.

NOTE: If at any point the Student-Athlete becomes symptomatic (more symptomatic than baseline), the head sports medicine physician or designee will be notified, and adjustments will be made to the return-to-sport progression. \* For example, testing stops with an increase of more than 2 points on a 0 to 10 point scale when compared with the pre-exercise resting value.

As with all conditions, no one clinical factor can be used to either diagnose concussions or determine when return to activities is safe after concussion. Symptoms, clinical evaluation, diagnostic studies and testing such as neuropsychological tests all must be weighed in the decision. Clinical judgment will make the final determination. Those student-athletes with prolonged symptoms may require additional evaluation. These student-athletes may need additional referral for vestibular therapy, learning disorders, mental health disorders, sleep deprivation and nutritional disorders.

### **Reduce Head Impact Exposure**

The University of Arkansas is committed to protecting the health of and providing a safe environment for each of its participating NCAA student-athletes. To this end and in accordance with NCAA association-wide policy, The University of Arkansas will reduce Student-Athlete head impact exposure in a manner consistent with Interassociation Recommendations: Preventing Catastrophic Injury and Death in Collegiate Athletes and Consensus statement on concussion in sport: the 6th International Conference on Concussion in Sport. For example:

- The University of Arkansas teams will adhere to existing ethical standards in all practices and competitions.
- Using playing or protective equipment (including the helmet) as a weapon will be prohibited during all practices and competitions.
- Deliberately inflicting injury on another player will be prohibited in all practices and competitions.
- All playing and protective equipment (including helmets), as applicable, will meet relevant equipment safety standards and related certification requirements.

- The University of Arkansas will keep the head out of blocking and tackling in contact/collision, helmeted practices and competitions.
- The University of Arkansas will emphasize education of proper technique to reduce head impact exposure for all contact and collision sports, with special emphasis in pre-season.
- The University of Arkansas will adhere to policies and rules in sport that limit the number and duration of contact practices and activities in contact-collision sports.
- Consideration of participation in neuromuscular training warm-up programs.

### Sickle Cell Trait Policy

The sickle cell trait is defined as follows:

- Sickle cell trait is an inherited condition of the oxygen-carrying protein, hemoglobin, in the red blood cells
- Sickle cell trait is a common condition (more than three million Americans)
- Although sickle cell trait is most predominant in African Americans and those of Mediterranean, Middle Eastern, Indian, Caribbean, and South and Central American ancestry, persons of all races and ancestry may test positive for sickle cell trait
- Sickle cell trait is usually benign, but during intense, sustained exercise, hypoxia (lack of oxygen) in the muscles may cause sickling of red blood cells (red blood cells changing from a normal disc shape to a crescent or “sickle” shape), which can accumulate in the bloodstream and “logjam” blood vessels, leading to collapse from the rapid breakdown of muscles starved of blood
- Likely sickling settings include timed runs, all-out exertion of any type for 2 – 3 continuous minutes without a rest period, intense drills and other spurts of exercise after prolonged conditioning exercises, and other extreme conditioning sessions
- Common signs and symptoms of a sickle cell emergency include, but are not limited to increased pain and weakness in the working muscles (especially the legs, buttocks, and/or low back); cramping type pain of muscles; soft, flaccid muscle tone; and/or immediate symptoms with no early warning signs

### Sickle Cell Trait Testing

The NCAA mandates that all NCAA student-athletes have knowledge of their sickle cell trait status before the Student-Athlete participates in any intercollegiate athletics event, including strength and conditioning sessions, practices, competitions, etc. The University of Arkansas Athletics Department offers sickle cell trait screening in the form of a blood test to all student-athletes as part of the pre-participation physical examination process. Testing will be conducted and reported to a University of Arkansas Team Physician at a designated laboratory facility.

## UNIVERSITY OF ARKANSAS DRUG AND ALCOHOL EDUCATION AND TESTING PROGRAM

The University of Arkansas Athletic Department recognizes the use of illegal drugs and alcohol poses a serious threat to the physical and psychological well-being of student-athletes. Student-athletes should be fully aware of the individual harm that alcohol and drugs including dietary supplements, may cause, and the negative impact on their performance both athletically and academically.

The National Collegiate Athletic Association (“NCAA”) requires all student-athletes under its jurisdiction to be placed under its drug testing policies and program. This NCAA program includes year-round drug testing on-campus as well as at NCAA Championship Events. The University of Arkansas has established a comprehensive drug education and screening program to ensure both the health and safety of our student-athletes and compliance with the NCAA drug use regulations. The purpose of this program’s operation is based on the following guidelines:

1. **Education:** Education will be provided to the student-athletes to ensure awareness of the physiological, psychological, and legal ramifications of drug misuse.
2. **Prevention:** This program has been developed with the intent of preventing student-athletes from drug experimentation, misuse, and chemical dependency. Testing is a necessary and effective drug use prevention tool for student-athletes who are committed to success on and off the field.
3. **Rehabilitation:** Measures will be used to assist in the treatment and rehabilitation of student-athletes who test positive for drug use so that they may safely and fully participate in academics and athletics while reducing personal, family, and social disruption.

The University of Arkansas Athletic Department’s Drug and Alcohol Education and Testing Program shall be as follows:

1. **Who can be tested:** All scholarship and non-scholarship student-athletes on the institution’s squad list, spirit squad, and any former student-athlete who has exhausted their eligibility but is still receiving financial aid.
2. **Consent:** Each student-athlete will receive a written copy of the Department of Athletics “Drug and Alcohol Education and Drug Testing Program” (“Program”) and a Consent and Notification Form (“Form”) on which the student-athlete, through their signature, shall acknowledge receipt, understanding, and agreement to comply fully with the Program. The student-athlete’s signature on the Form shall also serve as consent

to take a urinalysis as required at the sole discretion of the University, the Southeastern Conference, or the NCAA and as consent to the release of the test results to a limited and pre-defined number of individuals. Signing of the Form is a precondition for participation in intercollegiate athletics at the University.

3. **Methods of Selection for Testing:** Drug testing will be conducted randomly and multiple times throughout the calendar year, including summer. Selection for drug-testing may be based upon (but not limited to) the following examples:
  - Random Test: All student-athletes may be randomly selected by the drug testing administrator (Associate Athletics Director for Sports Medicine) or the drug testing committee members ("the committee"- Deputy Athletics Director for Integrity & Student-Athlete Success, Assistant Athletics Director for Mental Health and Performance, Assistant Athletics Director for Sports Performance Nutrition, Head Team Physician, Head Athletic Trainer, and Associate Athletics Director for Sports Medicine).
  - Team Testing: A team may be tested throughout the calendar year without notice by the drug test administrator or the committee.
  - Testing for Reasonable Suspicion: A test may be given, without prior notice, to a team or an individual based on reasonable suspicion by the drug testing administrator or the committee that a student-athlete has used, possessed, manufactured, distributed, and/or sold any substance on the NCAA banned drug class list.
4. **Notification:** The Department of Athletics reserves the right to conduct drug testing without prior notice. If notification is given, it will take place no more than twenty-four (24) hours before the scheduled test.
5. **Collection Methods:** The Athletic Department will be utilizing a medical laboratory agency and/or an allied medical health care professional for collection and screening of samples.
6. **Confidentiality:** Every effort will be made to insure the confidentiality of the test results. Disclosure of testing results will be provided to those persons identified in the Requirements for Positive Drug Tests portion of this program and as identified in the notification Form.
7. **Specimen Manipulation:** If a student-athlete is suspected of manipulation, adulteration, or dilution an other specimen sample will be requested under the guidance of a certified collector immediately. Any confirmed sighting of manipulation or dilution of a student-athlete's specimen will automatically be considered a positive test.
8. **Attendance:** Failure to attend a drug test or not providing a specimen according to protocol will automatically count as a positive test.
9. A positive test result at an NCAA, USADA, WADA sanctioned test, will count as a positive University of Arkansas test, in sequence.
10. If a student-athlete tests positive due to prescribed medication use, which is deemed medically necessary for a diagnosed condition, the NCAA Drug-Testing Exceptions Procedures will be followed.
11. An individual has the right to appeal a positive test result. Appeals can be performed at any stage through out the process, and all appeals must be made to the Appeals Committee
  - If a student-athlete believes the results of a drug test are incorrect or if they believe the educational guidelines should not be imposed, the student-athlete may file a written appeal to the Committee. The written appeal must be submitted within five (5) business days after the student-athlete has been notified of the results of the drug test. The appeal must include any information which might change the factual findings of the test result or the sanctions. The Committee will review the information submitted by the student-athlete and may reconsider the educational guidelines if the Committee believes a basis exists for the appeal. The Committee shall make the final decision regarding the appeal within five (5) business days and will notify the student-athlete in writing of its decision. During the appeals process all educational guidelines will be deferred pending the outcome of the appeal. Should the appeal findings uphold the positive test results and guidelines, the required educational guidelines shall be enforced immediately.
12. Based on NCAA Bylaw 13.1.1.3.7, the institution at which the student-athlete tested positive for use of a banned substance must report the test to the institution to which the student-athlete is transferring.
13. Based on NCAA Bylaw 18.4.1.4.7 for Non-NCAA Athletics Organization's Positive Drug Test, the Board of Governors shall authorize methods for drug testing any student-athlete who has disclosed in the student-athlete statement (see Bylaw 12.7.2.1) a positive drug test administered by a non-NCAA athletics organization that has adopted the World Anti-Doping Agency ("WADA") code. A student-athlete under a drug-testing suspension from a national or international sports governing body that has adopted the WADA code shall not participate in NCAA intercollegiate competition for the duration of the suspension.

### Prohibited Substances

The student-athlete is prohibited from use, possession, manufacture, distribution, and/or sale of any substance on the NCAA banned drug class list. This list is comprised of substances that are reported to be performance enhancing and/or potentially harmful to the student-athlete. Please note, that this is not an exhaustive list of substances.



**Departmental drug tests may include these, and other substances deemed to be performance enhancing and/or potentially harmful to student-athlete health and wellbeing including but not limited to cannabinoids.**

The NCAA bans the following drug classes:

1. Stimulants.
2. Anabolic agents.
3. Alcohol and beta blockers (banned for rifle only).
4. Diuretics and masking agents.
5. Narcotics.
6. Peptide hormones, growth factors, related substances, and mimetics.
7. Hormone and metabolic modulators.
8. Beta-2 agonists.

Substances and Methods Subject to Restrictions:

- Blood and gene doping
- Local Anesthetics (permitted under some conditions)
- Manipulation of Urine Samples
- Tampering of urine samples
- Beta-2 Agonists (permitted only by inhalation with prescription)
- Caffeine if concentrations in urine exceed 15 micrograms/ml

Drug Classes	Examples of Substances in Each Class	
Stimulants	Amphetamine (Adderall) Caffeine (Guarana) Cocaine Dimethylbutylamine (DMBA; AMP) Dimethylhexylamine (DMHA; Octodrine) Ephedrine Heptaminol Hordenine Methamphetamine	Methylhexanamine (DMAA; Forthane) Methylphenidate (Ritalin) Mephedrone (bath salts) Modafinil Octopamine Phenethylamines (PEAs) Phentermine Synephrine (bitter orange)
	<i>Exceptions: Phenylephrine and Pseudoephedrine are not banned.</i>	
Anabolic Agents	Androstenedione Boldenone Clenbuterol Clostebol DHCMT (Oral Turinabol) DHEA (7-Keto) Drostanolone Epitrenbolone Etiocholanolone Methandienone	Methasterone Nandrolone (19-nortestosterone) Norandrostenedione Oxandrolone SARMs [Ligandrol (LGD-4033); Ostarine; RAD140; S-23] Stanozolol Stenbolone Testosterone Trenbolone
Alcohol and Beta Blockers (Banned for rifle only)	Alcohol Atenolol Metoprolol Nadolol	Pindolol Propranolol Timolol
Diuretics and Masking Agents	Bumetanide Spironolactone (Canrenone) Chlorothiazide Furosemide	Hydrochlorothiazide Probenecid Triamterene Trichlormethiazide
	<i>Exceptions: Finasteride is not banned.</i>	

Drug Classes Continued	Examples of Substances in Each Class	
Narcotics	Buprenorphine Dextromoramide Diamorphine (heroin) Fentanyl, and its derivatives Hydrocodone Hydromorphone Methadone	Morphine Nicomorphine Oxycodone Oxymorphone Pentazocine Pethidine
Peptide Hormones, growth factors, related substances and mimetics	Growth hormone (hGH) Human Chorionic Gonadotropin (hCG) Erythropoietin (EPO)	Methasterone IGF-1 (colostrum; deer antler velvet) Ibutamoren (MK-677)
	Exceptions: Insulin, Synthroid and Forteo are not banned.	
Hormone and Metabolic Modulators	Anti-Estrogen (Fulvestrant) Aromatase Inhibitors [Anastrozole (Arimidex); ATD (androstatrienedione); Formestane; Letrozole] PPAR-d [GW1516 (Cardarine); GW0742] SERMS [Clomiphene (Clomid); Raloxifene (Evista); Tamoxifen (Nolvadex)]	
Beta-2 Agonists	Bambuterol Formoterol Higenamine	Norcoclaurine Salbutamol Salmeterol

Any substance that is chemically/pharmacologically related to one of the above drug classes or substances, even if it is not listed as an example, is also banned. Additional examples of banned drugs can be found at [www.ncaa.org/drugtesting](http://www.ncaa.org/drugtesting). For more information on banned substances, please refer to The National Center for Drug Free Sport website ([www.drugfreesport.com](http://www.drugfreesport.com)), the Dietary Supplement Resource Exchange Center website ([www.drugfreesport.com/rec](http://www.drugfreesport.com/rec)), and the NCAA website ([www.ncaa.org](http://www.ncaa.org))

### **Nutritional/Dietary Supplements**

The Athletic Department may provide dietary supplements in accordance with NCAA Bylaw 16.5.2.7 which states: An institution may provide permissible nutritional supplements to a student-athlete for the purpose of providing additional calories and electrolytes. Permissible nutritional supplements do not contain any NCAA banned substances and are identified according to the following classes: carbohydrate/electrolyte drinks, energy bars, carbohydrate boosters, protein supplements, vitamins, and minerals omega 3 fatty acids.

In addition, the U.S. Food and Drug Administration (FDA) does not strictly regulate the supplement industry; therefore, purity and safety of nutritional/dietary supplements cannot be guaranteed, and it is important for the student-athlete to understand that many nutritional/dietary supplements contain NCAA banned substances. Impure supplements may be unsafe and possibly lead to a positive drug test. The use of any supplement that does not meet the NCAA standards and is not provided by the Athletics Department's Sports Nutrition and/or Athletic Training Staff is at the student-athlete's own risk.

### **Requirements for Positive Drug Tests**

**(For ALL Drugs – Performance Enhancing; Non-Performance Enhancing Drugs; or “Street Drugs”)**

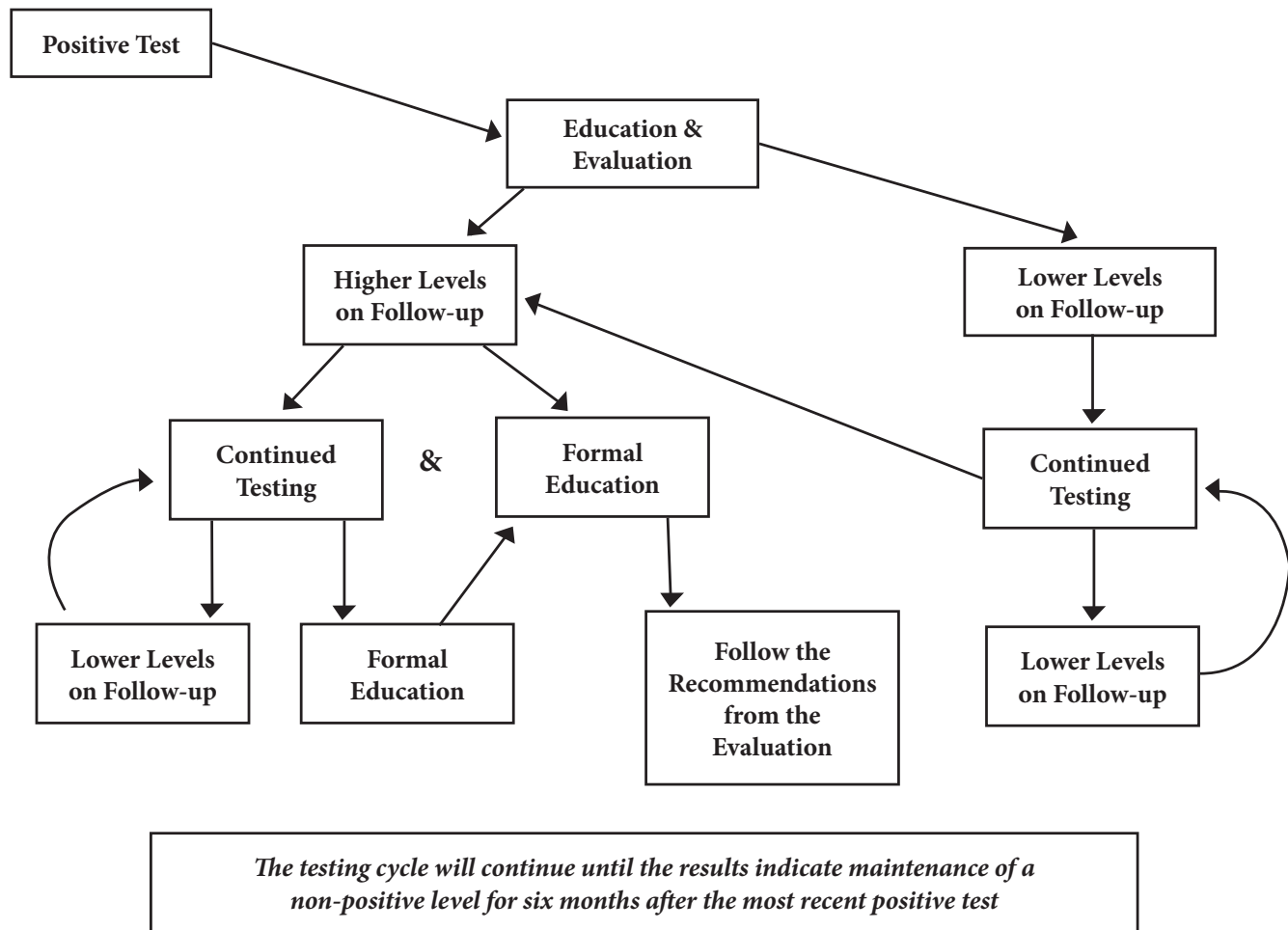
The Athletic Department expects all student-athletes to comply with this program. If any student-athlete fails to abide by the Program, the following guidelines will apply. Positive test results are summarized below:

#### Initial Positive Testing & Education Guidelines

The initial positive test guidelines are implemented following a first positive result or breach of protocol from split-sampling collection method:

- A letter from the Drug Testing Administrator to notify the student-athlete of the positive test result.
- The following individuals will be notified of the test results by an initial phone call and follow up letter:
  - a. Athletic Director or their designee
  - b. Sport Administrator or their designee

- c. Head Coach or their designee
- d. Head Sports Medicine Professional or their designee
- e. Head Mental Health Professional or their designee
- f. Head Team Physician or their designee
- g. Head Compliance Professional or their designee
- h. Parent and/or Legal Guardian
- i. Other identified individuals with a legitimate need to know
- Flowchart:



- Mandatory drug education counseling will be arranged by a member of the mental health team. This counseling shall involve an initial evaluation period along with sessions with a counselor. The duration of counseling will be determined by the lead mental health professional in the department. Failure to complete required counseling may result in disciplinary actions.
- The student-athlete will be follow-up tested at any time for as long as is deemed appropriate by the Director of Athletics or their designee.
- During follow up testing, a student-athlete must demonstrate a continual decrease in the positive substance levels to avoid this test from being interpreted and acted upon as an additional positive test result.
- A positive test for another banned substance OR increased levels of the previously positive banned substance will result in the student-athlete being more formally evaluated for a substance use disorder.
- Subject to the approval of the Athletic Director or their designee, each Head Coach has the right to adopt and enforce stricter penalties than those set forth in this Program.
- The Head Team Physician or their designee has the right to suspend practice or competition for the student-athlete if they deem it is necessary for the health and safety of the student-athlete.

### **Secondary Testing & Education Guidelines**

Once the Initial Testing & Education Guidelines have been exhausted with continued positive test results and/or evidence that use has not slowed or stopped, or the recommendation from the formal evaluation indicate a need, the Secondary Testing & Education Guidelines will be implemented.

The Secondary Testing & Education Guidelines include but are not limited to:

- A notice of the situational factors at hand being sent to the Athletic Director, Head Coach, Sport Administrator, and parent/guardian of the student-athlete.
- A meeting with the Care Team – consisting of the Drug Testing Administrator or their designee, the Athletic Director or their designee, the Head Team Physician or their designee, the Head Mental Health Professional or their designee, the student-athlete, a representative of the student-athlete's choosing, and a representative of the team's choosing.
  - o At this meeting, further treatment and participation options will be discussed with the group mentioned above with the outcome being a formal Behavioral Care Plan signed by all in attendance with consequences clearly spelled out and responsible parties designated.
  - o The Behavioral Care Plan will spell out all consequences of a failure to comply scenario as well as consequences should the student-athlete show improvement in this area. The consequences may include time loss in participation of sport.

## MENTAL HEALTH & PERFORMANCE

The University of Arkansas Athletics Department is committed to providing the highest quality psychological care and resources to Razorback student-athletes. The office of Mental Health & Performance (MHP) is staffed by three full-time licensed mental health clinicians (a psychologist/sport psychologist, a licensed professional counselor, and a licensed certified social worker) who have experience working with athletes and student-athletes at the highest levels of competition. Additionally, the office will periodically include graduate student interns as trainees.

The focus of MHP is to provide individual, small group, and team psychological care and performance enhancement services to the student-athletes at the University of Arkansas. We do that by taking an outreach-based approach to our services wherein our counselors attend practices and competitions for the teams with whom they work, and they take an active role in the overall operations of the Athletic Department.

All services to the student-athletes are confidential, free, and unlimited. We begin our contact with the student-athletes when they arrive on campus, and we administer a brief pre-participation questionnaire in order to gain some insight into who our student-athletes are and what potential concerns they may have about their time at the University of Arkansas.

Additionally, the MHP staff is committed to emotional wellness education and training for the Athletics Department (staff, coaches, and student athletes). The goal of this education and training is to promote a positive attitude toward mental health within the Department, on campus, and in the larger Fayetteville community.

Student-athletes may set up meetings regarding any topic in the following ways:

1. By contacting our staff directly. Scan the QR code below for contact information:



2. Through the team Athletic Trainer or Strength & Conditioning Coach
3. Through anyone on the coaching or administrative staff for their sport
4. Through the Student-Athlete Development staff, the Educational Enrichment Staff, or the Student-Athlete Success staffs

## UNIVERSITY OF ARKANSAS SPORTS NUTRITION

### PROGRAM OVERVIEW

Proper nutrition habits are an integral part of optimal performance and overall health. The University of Arkansas Sports Nutrition Department is committed to the overall development and success of all Razorback student-athletes by providing a high level of well-rounded nutrition services.

### SERVICES OFFERED

#### Sports Nutrition Center

The Sports Nutrition Center is a full service dining facility operated by a culinary team that is trained in understanding the nutritional needs of high level athletes. Menus are strategically designed to accommodate all University of Arkansas athletes' nutritional needs, accounting for vigorous training, competition and academic schedules. For the student-athletes on the go, The Sports Nutrition Center is also equipped with a Grab'N'Go Window which allows student-athletes to not only pick up items to take with them, but also preorder items in advance.

In addition to the service offered within the Sports Nutrition Center, student-athletes have access to additional fueling programs, including weight room performance fueling stations and the Red Card restaurant plan. These are facilitated by the Sports Nutrition Staff and are available to all competing student-athletes.



### **Nutritional Counseling**

Individual counseling appointments, team seminars, and team workshops with the Sports Nutrition Staff are available to all student-athletes. Student-athletes may be referred for nutritional counseling by members of the Sports Medicine, Strength and Conditioning and team staffs. Student-athletes may also request nutritional counseling at any time.

### **Nutrition Education**

The University of Arkansas Athletic Department is committed to the education of student-athletes in nutrition for optimal performance and overall health. Providing our student-athletes with the knowledge to make sound nutrition decisions will not only impact their athletic performance, but also their academic success. Nutrition education, in the form of grocery store tours, cooking classes, and team presentations are available to all student-athletes and teams. During these sessions, topics such as pre work out fueling, post work out recovery nutrition, hydration, and meal planning will be covered.

### **Special Dietary Needs**

The Department of Sports Nutrition acknowledges there are individuals with specific dietary needs and is currently equipped to accommodate those dietary needs. In order to best provide the necessary nutrition to those student-athletes, a student-athlete should contact a member of the Sports Nutrition staff to discuss his/her individual needs.

## **DIETARY SUPPLEMENT POLICY**

The University of Arkansas Athletic Department is committed to providing student-athletes resources for questions related to the use of dietary supplements and banned substances. All student-athletes inquiring about the personal use of dietary supplements should be encouraged to consult with their Sports Dietitian, his/her sport athletic trainer or strength coach to discuss the potential uses, benefits and side effects of the supplement. Student-athletes who choose to individually purchase and use dietary supplements should know that nutritional supplements carry a risk of contamination and the potential for a failed drug test which may result in the loss of eligibility.

**Disclaimer:** In recognition of the support provided by the NCAA, the University of Arkansas Athletic Department utilizes Drug Free Sport as a resource for further information on dietary supplements.

### **Sports Nutrition Staff:**

- Karla Horsfall, Assistant Athletics Director of Sport Performance Nutrition – Men's and Women's Track & Field/Cross Country
- Brooks Gillerlain, Director of Football Nutrition – Football
- Ben Tarnowski, Sports Dietitian – Baseball and Women's Soccer
- Charlotte McIntyre, Sports Dietitian – Men's and Women's Basketball, Men's and Women's Tennis
- Emily Stokes, Sports Nutrition Fellow – Swim & Dive, and Volleyball
- Piper Ertz, Sports Nutrition Fellow – Gymnastics, Men's and Women's Golf and Softball
- Molly Overstreet, Sports Nutrition Operations Coordinator

### **Sports Nutrition Center Leadership Team**

- Tim Walsh – Executive Chef
- Jesse Abasolo – Sous Chef

## **STRENGTH AND CONDITIONING POLICIES**

### **A. STRENGTH AND CONDITIONING FACILITIES**

Strength and conditioning facilities, including Walker Indoor Pavilion, Sutton Weight Room, Basketball Performance Center Weight Room, Tyson Weight Room & Walker training centers, are to be monitored by assigned strength and conditioning coaches or alternate strength and conditioning coaches at all times when athletes are present.

No incoming student-athlete will be allowed to participate in any activity within the strength & conditioning facilities until they have been cleared by Sports Medicine staff, Compliance staff and an Equipment Manager (issued gear).

Former University of Arkansas athletes that are currently on a professional roster or preparing for training camp/competition will not be permitted to train during current student-athlete training hours. The designated time will vary by semester and is at the discretion of the strength and conditioning facilities supervisor. Professional athletes will be required to sign a form releasing the university and employees of any liability, should injury occur while training in University of Arkansas facilities.

Former University of Arkansas athletes that have no future in professional sports and have not been placed on a coaching staff at the University of Arkansas must find an alternate facility for their fitness training at the end of the academic year following completion of their eligibility.

### **1. Scheduling Walker Indoor Pavilion**

The indoor facility will be scheduled through Arek Olsen with a reservation form. Teams using the indoor facility must do so with the understanding that if inclement weather forced football practice/ workout inside, they would need to relinquish the facility for the remainder of said practice/workout. Student-athletes must make sure that all equipment is returned to its proper place and any trash left behind is picked up.

### **2. Walker Training Center**

The Walker weight room will be closed during football practice. Olympic sports may utilize the Walker training center if the workout was scheduled through the Head Olympic Strength Coach Whitney Smith and agreed on by the Head Football Strength Coach Ben Sowders.

### **3. O'Mara Weight Room**

The O'Mara Weight Room will be closed during practice hours unless previously scheduled with Track/Cross Country Strength Coach, Mat Clark. All athletes (including professionals) must attend previously scheduled training sessions as we will not host open gym hours. All equipment needs to be returned to the correct location before leaving the weight room. No phones or headphones will be allowed on the floor during team lifts, and athletes must leave all items they aren't using for their lift (backpacks, extra shoes, clothes, books etc.) in the locker room. Straps, wraps, and a water bottle are acceptable. Belts and chalk provided. Please mix any powder drinks in the locker room to avoid messes on the weight room floor. No children are allowed in while athletes are lifting for their own safety and the safety of those lifting weights.

### **4. Strength and Conditioning Center- The Buckley and Kim Blew Family**

The Strength and Conditioning Center will be closed during practice hours unless previously scheduled with Director of Baseball Strength and Conditioning Coach, Hunter Bell. All athletes (including professionals) must attend previously scheduled training sessions as we will not host open gym hours. All equipment needs to be returned to the correct location before leaving the weight room. No phones or headphones will be allowed on the floor during team lifts, and athletes must leave all items they aren't using for their lift (backpacks, extra shoes, clothes, books etc.) in the locker room.

## **B. STUDENT-ATHLETE CONDUCT**

Every training center on campus has inherent risks, and student-athletes must follow all rules of conduct to insure a safe training environment. The right to use these facilities and receive expert instruction from strength and conditioning staff is a privilege and is contingent on the acceptance/adherence to the following policies:

### **STRENGTH AND CONDITIONING POLICIES**

#### **Training Guidelines:**

- Prior to participation, all athletes must attend an orientation on common risks involved in strength training, the proper execution of various exercises, and the possible consequences if proper technique is not employed.
- If an athlete has an injury that inhibits a portion of the workout, the athlete must receive a modified program outlining which movements are to be avoided and which ones may be substituted.

#### **Lifting Reminders:**

- Athletes should never place bars, plates, dumbbells, etc. on any upholstery.
- Athletes are required to use collars on the end of the bars.
- No one should barbell back squat outside the multi-rack and must be over the spotter bars on the double-sided racks.
- Bumper plates are required when outside the rack and on the platforms for all exercises.
- Athletes must not wear leather weight belts when the belts could contact equipment upholstery.

- Athletes should never set plates or DB's on the floor or lean them against equipment or walls. Athletes should return dumbbells to the rack in the proper order. Athletes should not drop or throw either weights or dumbbells.
- Athletes should wear proper training attire, particularly athletic shoes, at all times.
- Metal jewelry such as loose necklaces, bracelets, hanging earrings, and watches should not be worn while training.
- Proper spotting techniques should be implemented when necessary.
- Athletes should attempt to minimize chalk powder on the floor.
- No headgear, hats, bandanas, etc.

#### **Weight Room Reminders:**

- No student-athletes will park in staff lot.
- Athletes will not have electronic communication devices in the weight room unless using them for instructional matters and approved by the respective strength coach.
- Athletes should show respect for equipment and facilities at all times; spitting in weight room or defacing the facility is not tolerated and will result in immediate consequence to be determined by the strength and conditioning coach.
- The weight room requires concentration. Horseplay, loud or offensive language, or temper tantrums are to be controlled.
- The staff office areas are off limits to athletes unless permission is given.
- Only the University of Arkansas issued clothing is acceptable. Shoes must be tied. Sports bras are not to be worn as tops. All shorts must be an appropriate length as determined by the strength coach.
- Athletes should immediately report any facility-related injury, or facility/equipment irregularity to the supervisor.
- Tobacco, food, chewing gum, glass bottles, cans, alcohol, drugs and banned substances are not allowed in the weight room; plastic water bottles with caps are acceptable and encouraged.
- Supervisors are not responsible for users' personal belongings; either lost or stolen items. Any items left in the cubby area will be removed at the end of each day and placed in a lost & found. Items left in the lost & found at the end of the semester will be sent to Goodwill.
- Equipment leaving the weight room must be checked out from and recorded by the supervisor.
- The use of headphones is permitted in the cardio area only.
- Athletes should keep feet off the walls.

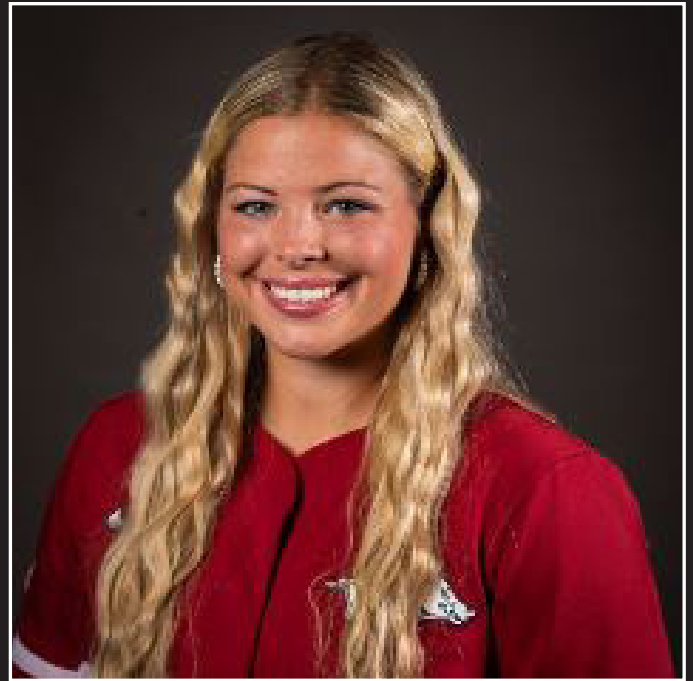






**RAZORBACK CHAMPION FOR LIFE**

*Bea Franklin*



**RAZORBACK CHAMPION FOR LIFE**

*Hannah Gammill*

# RAZORBACK READY

## CAREER & PERSONAL DEVELOPMENT PLAN

### FRESHMAN YEAR

**FINANCIAL EDUCATION** - ATTEND FINANCIAL EDUCATION WORKSHOP TO LEARN ABOUT BUDGETING, TAXES, INVESTING, ETC.

**1 ON 1** - MEET INDIVIDUALLY WITH S/A DEVELOPMENT STAFF TO DISCUSS CAREER PLANS

**LEADERSHIP OR DIVERSITY** - ATTEND SAAC MEETING, WHOLE WOMEN, BLAC EVENT, OR HOGS UNITED EVENT

**COMMUNITY ENGAGEMENT** - COMPLETE ONE COMMUNITY ENGAGEMENT ACTIVITY

### SOPHOMORE YEAR

**FINANCIAL EDUCATION** - ATTEND FINANCIAL EDUCATION WORKSHOP TO LEARN ABOUT BUDGETING, TAXES, INVESTING, ETC.

**LINKEDIN** - CREATE LINKEDIN PROFILE

**BRAND DEVELOPMENT** - ATTEND PERSONAL BRANDING SEMINAR, MEDIA TRAINING, TAKE PROFESSIONAL HEADSHOT, ETC.

**COMMUNITY ENGAGEMENT** - COMPLETE ONE COMMUNITY ENGAGEMENT ACTIVITY

### JUNIOR YEAR

**FINANCIAL EDUCATION** - ATTEND FINANCIAL EDUCATION WORKSHOP TO LEARN ABOUT BUDGETING, TAXES, INVESTING, ETC.

**RESUME** - CREATE/UPDATE RESUME

**NETWORKING** - ATTEND NETWORKING NIGHT, H.O.G.S. WALK SYMPOSIUM, CAMPUS CAREER FAIR, ETC.

**COMMUNITY ENGAGEMENT** - COMPLETE ONE COMMUNITY ENGAGEMENT ACTIVITY

### SENIOR YEAR

**FINANCIAL EDUCATION** - ATTEND FINANCIAL EDUCATION WORKSHOP TO LEARN ABOUT BUDGETING, TAXES, INVESTING, ETC.

**1 ON 1** - MEET INDIVIDUALLY WITH S/A DEVELOPMENT STAFF TO DISCUSS CAREER PLANS

**NETWORKING** - ATTEND NETWORKING NIGHT, H.O.G.S. WALK SYMPOSIUM, CAMPUS CAREER FAIR, ETC.

**COMMUNITY ENGAGEMENT** - COMPLETE ONE COMMUNITY ENGAGEMENT ACTIVITY



**RAZORBACKS**

STUDENT-ATHLETE  
DEVELOPMENT

### Credits

*This handbook was produced by  
University of Arkansas Intercollegiate Athletics*





**RAZORBACK GRADUATES**  
**FALL CLASS OF 2023**  
**SPRING CLASS OF 2024**