

ARKANSAS[®]

VOLLEYBALL

COMMUNICATIONS CONTACT: ZACH LAWSON | E: ZLAWSON@UARK.EDU | O: 479/575-7089 | c: 479/595-2358

RESULTS/SCHEDULE

OVERALL: 17-10 / CONFERENCE: 7-8
H: 9-4 / A: 4-6 / N: 4-0

AUGUST

28	McNeese State!	W, 3-0
29	Army West Point!	W, 3-1
29	(rv) Kansas!	L, 1-3

SEPTEMBER

4	vs. Louisiana Tech#	W, 3-0
4	at SIUE#	W, 3-0
5	vs. Northern Kentucky#	W, 3-1
11	Northwestern State%	W, 3-0
12	Southeast Missouri%	W, 3-0
12	UT Arlington%	W, 3-0
18	at Creighton&	L, 0-3
19	vs. (rv) Kansas State&	W, 3-2
19	vs. #11 Wisconsin&	W, 3-2
23	at LSU* [ESPN]	W, 3-2
27	at (rv) Texas A&M*	W, 3-1

OCTOBER

4	#9 Florida* [SEC Network]	W, 3-2
7	at #20 Kentucky* [SEC Network]	L, 0-3
11	at Tennessee*	L, 1-3
18	Ole Miss* [SEC Network]	L, 2-3
23	at #15 Florida* [SEC Network]	L, 0-3
25	at South Carolina*	L, 1-3
30	Auburn*	W, 3-2

NOVEMBER

1	Alabama* [SEC Network]	L, 2-3
6	at Ole Miss*	L, 1-3
8	at Mississippi State*	W, 3-0
11	LSU* [SEC Network]	W, 3-0
15	Georgia*	W, 3-0
18	(rv) Missouri* [ESPN]	L, 0-3
22	at Auburn*	1:30 p.m.
25	South Carolina*	7 p.m.
28	Texas A&M*	1:30 p.m.

DECEMBER

4-6	NCAA 1st/2nd Rounds	TBA
11-12	NCAA Regionals	TBA
17 & 19	NCAA Championship	TBA

! - Arkansas Invitational | # - Cougar Classic |
% - Razorback Invitational | & - Creighton Classic |
* - SEC match

All times Central and subject to change
All home matches played at Barnhill Arena (8,500)



COMING UP

S-E-C SEASON

AUBURN TIGERS

RECORD: 15-11/7-7 SEC
RANK: NR
ALL-TIME SERIES: ARKANSAS, 35-8
LAST MEETING: ARK, 3-2 (10/30/15)



SOUTH CAROLINA GAMECOCKS

RECORD: 11-16/4-10 SEC
RANK: NR
ALL-TIME SERIES: ARKANSAS, 23-11
LAST MEETING: SC, 3-1 (10/25/15)



TEXAS A&M AGGIES

RECORD: 20-6/13-2 SEC
RANK: 25
ALL-TIME SERIES: TEXAS A&M, 4-2
LAST MEETING: ARK, 3-1 (9/27/15)



BROADCAST INFORMATION

TV: None
INTERNET: ESPN3/WatchESPN
LIVE STATS: ARKANSASRAZORBACKS.COM

RAZORBACK NOTES

300

With 11 kills vs. Missouri (Nov. 18), Pilar Victoria became the fifth Razorback in program history to record 300 kills during an SEC season. Doing so in just 15 matches, she enters the weekend averaging 20 kills per league match this year. The program's SEC single-season mark of 355 kills was set by Jasmine Norton in 2009.

SWEEP VICTORY

With its win over Georgia (Nov. 15), Arkansas posted its third-consecutive sweep in SEC play for the first time since the 2011 season. During the streak, the Razorbacks also had straight-set wins over Mississippi State and LSU.

CLICKING ON ALL CYLINDERS

The Razorback offense posted a .380 hitting percentage in wins over LSU and Georgia. The team's .383 mark against Georgia (Nov. 15) is its high during the SEC season, replacing the .376 figure established in the previous match vs. LSU. Junior Adrien Wohlschlaeger averaged 12.00 assists per set during the week.

AN OFFENSIVE APPROACH

Entering the weekend, junior Pilar Victoria is sixth in the NCAA with 4.75 kills per set and ranks eighth with 5.24 points per set. She leads the SEC in both categories. Victoria has reached 20 or more kills in 11 matches, including three 30-kill performances. She is 16 kills shy of becoming the ninth Razorback with 500 in a single season.

WHERE IS EVERYTHING?

QUICK FACTS/DOUBLE-DOUBLES	2
TEAM PICTURE/ROSTER	3
THE SEC/MATCH STARTERS	4
RECORD BY SITUATION	5
ATTENDANCE/MILESTONES	6
SEASON/CAREER HIGHS	7-8
TEAM MATCH-BY-MATCH	9
SEASON/SEC STATISTICS	10-11

THE BREAKDOWN

ARKANSAS VS AUBURN

.248	Hitting %	.199
13.15	Kills/Set	13.35
12.49	Assists/Set	12.54
13.36	Digs/Set	15.76
2.37	Blocks/Set	1.88
0.97	Aces/Set	1.17

ARKANSAS VS SOUTH CAROLINA

.248	Hitting %	.212
13.15	Kills/Set	13.02
12.49	Assists/Set	12.12
13.36	Digs/Set	14.96
2.37	Blocks/Set	2.08
0.97	Aces/Set	1.19

ARKANSAS VS TEXAS A&M

.248	Hitting %	.273
13.15	Kills/Set	14.05
12.49	Assists/Set	13.15
13.36	Digs/Set	13.86
2.37	Blocks/Set	2.51
0.97	Aces/Set	0.86

MILESTONE WATCH

CHASING 500 KILLS (SINGLE SEASON)

1. Krystal Osborne (1995)	676
...	
6. Denise Baez (1995)	538
7. Sara Kincaid (2003)	528
8. Meredith Hays (2014)	521
9. Kim Storey (1998)	515
10. Jessica Dorrell (2007)	507
11. Eftila Tanellari (2001)	491
12. Jasmine Norton (2009)	487
13. Pilar Victoria (2015)	484

WHAT THEY SAID...

"We're just taking it one match at a time. This last stretch is a tough one. Everyone is playing for position in the SEC standings and in the eyes of the NCAA Tournament committee. We just have to get back to work and get ready for Missouri, but we're excited about what we did today."

- Head Coach Robert Pulliza,
after 3-0 win vs. Georgia (Nov. 15) in Fayetteville

ARKANSAS VOLLEYBALL QUICK FACTS

UNIVERSITY INFORMATION

Location _____ Fayetteville, Ark.
 Founded _____ March 27, 1871
 Enrollment _____ 25,237
 Nickname _____ Razorbacks
 School Colors _____ Cardinal, White
 Affiliation _____ NCAA Division I
 Conference _____ Southeastern (SEC)
 Chancellor _____ Daniel E. Ferritor (*interim Aug. 1*)
 Vice Chancellor/Director of Athletics _____ Jeff Long
 Faculty Athletic Representative _____ Sharon Hunt
 University Website _____ www.uark.edu
 Athletics Website _____ ArkansasRazorbacks.com

TEAM INFORMATION

2014 Overall Record _____ 15-16
 Conference Record _____ 9-9
 SEC Finish _____ 6th Overall
 Home Record _____ 9-7
 Away Record _____ 4-7
 Neutral Record _____ 2-2
 Letterwinners Returning/Lost _____ 12/8
 Starters Returning/Lost _____ 5+L/1
 Newcomers _____ 5

COACHING STAFF

Head Coach _____ Robert Pulliza/Ball State, 1996
 Record at Arkansas _____ 122-121 (Eighth Season)
 Career Record _____ Same
 Assoc. Head Coach _____ Carol Price-Torok/Texas A&M, 2004 (Eighth)
 Assistant Coach _____ Sarah Rumely/Kentucky, 2010 (First)
 Dir. of Operations _____ Allison Wack/Wisconsin, 2011 (First)
 Volleyball Office Phone _____ 479/575-4587

TEAM HISTORY

First Year of Volleyball _____ 1994
 All-Time Record _____ 438-282 (.609)/21 Seasons
 All-Time SEC Record _____ 226-149 (.603)
 SEC Championships/Last _____ 1 (Tournament)/1997
 NCAA Appearances/Last _____ 11/2013

ARKANSAS COMMUNICATIONS

Asst AD for Communications _____ Patrick Pierson
 Associate Director _____ David Beall
 Associate Director _____ Jeri Thorpe
 Assistant Director _____ Brett Brecheisen
 Assistant Director _____ Joy Ekema-Agbaw
 Assistant Director (VB Contact) _____ Zach Lawson
 Lawson Office _____ 479-575-7089
 Lawson Cell _____ 479-595-2358
 Lawson E-mail _____ zlawson@uark.edu
 Intern _____ Kelsey Emmons
 Intern _____ Bryan Fyalkowski
 Intern _____ Brandon Langlois
 Graphic Designer _____ Christine Zambetti
 Secretary _____ Mary Lynn Gibson

Mailing Address

UA Communications
 PO Box 7777
 Fayetteville, Ark. 72702-777

Shipping Address

UA Communications
 131 Barnhill Arena
 Fayetteville, Ark. 72701
 Office: 479-575-2751

HARBIN IS HEATING UP

In the Razorbacks' last four matches, junior Danielle Harbin is hitting .500 while averaging 3.67 kills per set. The run includes season-high tying 13 kills against Georgia (Nov. 15) and Mississippi State (Nov. 8). Defensively, she's been as effective with 1.25 blocks per set during the hot streak.

EFFECTIVE & EFFICIENT

Junior middle blocker Breana Jones has seven or more kills in 12 matches this season and is hitting .469 (113-16-207) with 2.51 kills per set in those matches. She enters the weekend second in the SEC and seventh in the NCAA with her .434 hitting percentage.

BALANCE AGAINST THE REBELS

For the fifth time this season, Arkansas had three players with 10+ kills in the team's four-set loss at Ole Miss (Nov. 6). Pilar Victoria had 21 kills followed by 13 from Breana Jones and 12 from Chanell Clark-Bibbs. Defensively, the team had seven players with five or more digs.

READY FOR A RALLY

For the 12th time in program history, Arkansas erased an 0-2 deficit with its five-set win over Auburn (Oct. 30). It was the fourth time under head coach Robert Pulliza. Overall, six of the 12 comeback wins have come against SEC opponents.

GOING FOR 30 (AGAIN)

For the third time this season, junior Pilar Victoria eclipsed the 30 mark with a 32-kill performance against Auburn (Oct. 30). All three instances have come during SEC play. She is one of just two attackers in the country this season with multiple 30-kill performances.

DIG BABY DIG

In tying her season high with 13 digs against Auburn (Oct. 30), senior Monica Bollinger tied former teammate Ray-mariely Santos for 12th place on the program's all-time digs list. It was her fifth double-digit effort of the season. Bollinger is 47 digs shy of the program's career top 10.

FORTADO SUFFERS SEASON-ENDING INJURY

Senior Liz Fortado suffered a season-ending knee injury in Arkansas' match at Florida (Oct. 23). Selected as a team captain, she closes out her Razorback career as a member of the program's 500-kill club and was instrumental to the

2015 DOUBLE-DOUBLES

1. Pilar Victoria | 24k, 11d vs. Army | Aug. 29
2. Bailee Hankenson | 40a, 10d vs. Kansas | Aug. 29
3. Pilar Victoria | 13k, 15d vs. Kansas | Aug. 29
4. Pilar Victoria | 13k, 10d vs. Louisiana Tech | Sept. 4
5. Pilar Victoria | 10k, 10d vs. SE Missouri | Sept. 12
6. Pilar Victoria | 20k, 17d vs. Kansas State | Sept. 19
7. Pilar Victoria | 16k, 13d vs. #11 Wisconsin | Sept. 19
8. Pilar Victoria | 30k, 19d at LSU | Sept. 23
9. Adrien Wohlschlaeger | 65a, 14d at LSU | Sept. 23
10. Pilar Victoria | 13k, 11d at #20 Kentucky | Oct. 7
11. Pilar Victoria | 35k, 11d vs. Ole Miss | Oct. 22
12. Pilar Victoria | 19k, 13d at South Carolina | Oct. 25
13. Pilar Victoria | 32k, 10d vs. Auburn | Oct. 30
14. Pilar Victoria | 24k, 14d vs. Alabama | Nov. 1
15. Adrien Wohlschlaeger | 50a, 11d vs. Alabama | Nov. 1
16. Pilar Victoria | 11k, 12d vs. Missouri | Nov. 18

Season Tally > Hankenson (1), Victoria (13),
 Wohlschlaeger (2)

Career Tally > Hankenson (8), Victoria (13),
 Wohlschlaeger (2)

Razorbacks' 2012 and 2013 NCAA Tournament teams.

AN ALL-TIME PERFORMANCE

Junior Pilar Victoria registered a career-high 35 kills in five sets against Ole Miss (Oct. 18), posting a .342 hitting percentage in the process. The 35 kills is the No. 2 single-match showing in program history, and marked her second match of the season with 30+ kills.

BUILDING A WALL

Arkansas put up a season-high 20.0 total team blocks against Ole Miss (Oct. 18). The effort tied the No. 7 figure in program history and was the most by Arkansas since 2007. Nine players had at least one block including seven each for Chanell Clark-Bibbs and Ana Sofia Jusino.

NELLIE MILESTONES

With her eighth kill vs. Ole Miss (Oct. 18), senior Chanell Clark-Bibbs tallied the 500th kill of her Razorback career. She also reached the 200-block milestone with her sixth block of the match. Clark-Bibbs is the 30th player in program history to reach 500 kills, and the second to do so



2015 Razorback Seniors (l-r) | Liz Fortado, Monica Bollinger and Chanell Clark-Bibbs



2015 ARKANSAS RAZORBACKS | Front Row (l-r): Kimi Davis, Kori Ortiz, Bailee Hankenson, Adrien Wohlschlaeger, Monica Bollinger, Pilar Victoria, Blakelee Dunagin, Okiana Valle, Chanell Clark-Bibbs; Back Row (l-r): Ana Sofia Jusino, Breana Jones, Savannah Voelzke, Barbara Dapic, Liz Fortado, Fernanda Güitron, Daneille Harbin. (Not pictured: Juliette Fidon)

#	Name	Pos.	Ht.	Class/Exp.	Hometown/Previous
1	Chanell Clark-Bibbs	MB	6-1	Sr./1L	Houston, Texas/Georgia Tech
2	Breana Jones	MB	6-2	Jr./2L	Peachtree City, Ga./McIntosh HS
3	Danielle Harbin	OH/MB	6-1	Jr./2L	Mobile, Ala./McGill-Toolen HS
5	Juliette Fidon	OH	6-1	Fr./HS	Paris, France/Toulouse
6	Fernanda Güitron	OPP	6-0	Fr./HS	Guadalajara, Mexico/Jose Vasconcelos
8	Bailee Hankenson	S	5-9	Soph./1L	Decatur, Ind./Bellmont HS
9	Liz Fortado	OPP	6-2	Sr./3L	Flower Mound, Texas/Marcus HS
10	Monica Bollinger	L/DS	5-9	Sr./3L	St. Louis, Mo./Rockwood Summit HS
11	Kimi Davis	L/DS	5-5	Fr./HS	Rogers, Ark./Rogers
12	Okiana Valle	L/DS	5-2	Fr./HS	Barceloneta, Puerto Rico/Christian Military
13	Blakelee Dunagin	MB	6-0	Soph./1L	Rogers, Ark./Heritage HS
14	Adrien Wohlschlaeger	S	6-0	Jr./2L	Conroe, Texas/Conroe
15	Savannah Voelzke	OH	6-0	Jr./2L	Longview, Texas/Spring Hill HS
17	Kori Ortiz	L/DS	5-5	Soph./1L	Southlake, Texas/Carroll HS
18	Barbara Dapic	OH/OPP	6-3	Jr./2L	Split, Croatia/OK Brda
19	Ana Sofia Jusino	MB	6-2	Jr./2L	Toa Baja, Puerto Rico/Timber Creek HS
21	Pilar Victoria	OH	5-11	Jr./TR	Caguas, Puerto Rico/Texas

Staff | Head Coach Robert Pulliza, Associate Head Coach Carol Price-Torok, Assistant Coach Sarah Rumely,
Director of Operations Allison Wack, Team Manager Kelley Goldberg

Pronunciation Guide

Chanell Clark-Bibbs	shuh-NELL
Breana Jones	breë-ON-uh
Juliette Fidon	fee-doan
Fernanda Güitron	ge-troan
Okiana Valle	OH-key-on-uh VY-yay
Blakelee Dunagin	DONE-uh-gen
Adrien Wohlschlaeger	wole-SHLAY-gur
Savannah Voelzke	VOLE-ski
Barbara Dapic	Jah-pitch
Ana Sofia Jusino	JU-see-no
Robert Pulliza	Puh-lee-zuh
Carol Price-Torok	TORÉ-ock
Sarah Rumely	RUM-lee

Roster Breakdown

BY CLASS

Seniors – 3 (Bollinger, Clark-Bibbs, Fortado); Juniors – 7 (Dapic, Harbin, Jones, Jusino, Victoria, Voelzke, Wohlschlaeger); Sophomores – 3 (Dunagin, Hankenson, Ortiz); Freshmen – 4 (Davis, Fidon, Güitron, Valle)

BY POSITION

OH/OPP – 7 (Dapic, Fidon, Fortado, Güitron, Harbin, Victoria, Voelzke); MB – 4 (Clark-Bibbs, Dunagin, Jones, Jusino); S – 2 (Hankenson, Wohlschlaeger); L/DS – 4 (Bollinger, Davis, Ortiz, Valle).

BY STATE/COUNTRY

Alabama – 1 (Harbin); Arkansas – 2 (Davis, Dunagin); Croatia – 1 (Dapic); France – 1 (Fidon); Georgia – 1 (Jones); Indiana – 1 (B. Hankenson); Mexico – 1 (Güitron); Missouri – 1 (Bollinger); Puerto Rico – 3 (Jusino, Valle, Victoria); Texas – 5 (Clark-Bibbs, Fortado, Ortiz, Voelzke, Wohlschlaeger)

SEC STANDINGS

School	SEC	Overall	Streak
Texas A&M (rv)	13-2	20-6	W11
Missouri (rv)	12-3	24-4	W4
#14 Florida	12-4	20-5	W2
#19 Kentucky	11-4	18-9	L2
Alabama	8-6	14-14	W1
Ole Miss	7-7	21-8	W1
Auburn	7-7	15-11	L1
ARKANSAS	7-8	17-10	L1
Tennessee	6-10	20-11	L5
LSU	5-9	9-16	L5
South Carolina	4-10	11-16	W1
Mississippi State	3-11	14-14	L4
Georgia	0-14	5-21	L14

SEC SCHEDULE/RESULTS

Wednesday, November 18

Missouri at Arkansas [ESPN]	MIZ, 3-0
#19 Kentucky at #25 Texas A&M [SEC]	TAMU, 3-0

Friday, November 20

#14 Florida at LSU [SEC]	5 p.m.
Ole Miss at Auburn	5:30 p.m.
Mississippi State at South Carolina [SEC+]	6 p.m.
Alabama at Georgia	6 p.m.

Sunday, November 22

Alabama at South Carolina [SEC+]	12:30 p.m.
#15 Florida at Texas A&M [SEC]	1 p.m.
Arkansas at Auburn [SEC+]	1:30 p.m.
#18 Kentucky at LSU [SEC+]	1:30 p.m.
Missouri at Ole Miss [SEC+]	1:30 p.m.
Mississippi State at Georgia [SEC]	5 p.m.

Wednesday, November 25

Georgia at #19 Kentucky [SEC+]	6 p.m.
LSU at Mississippi State [SEC+]	6 p.m.
#25 Texas A&M at Missouri [SEC+]	6:30 p.m.
South Carolina at Arkansas [SEC+]	7 p.m.
Ole Miss at Alabama [SEC]	7:30 p.m.
Auburn at Tennessee [SEC]	8 p.m.

Friday, November 27

LIU Brooklyn at #14 Florida [SEC+]	2 p.m.
Ole Miss at Mississippi State [SEC+]	2 p.m.
Georgia at Tennessee	6 p.m.
Auburn at #19 Kentucky [SEC+]	6 p.m.
South Carolina at Missouri [SEC+]	6:30 p.m.
LSU at Alabama [SEC+]	7 p.m.

Saturday, November 28

#25 Texas A&M at Arkansas [SEC+]	1:30 p.m.
----------------------------------	-----------

ALL TIMES CENTRAL

this season (Liz Fortado).

ANOTHER TOP-10 CROWD

Arkansas' Oct. 18 match vs. Ole Miss was played in front of 1,269 fans, the 10th-largest home crowd in program history. It was the third top-10 attendance figure of the year. Overall, nine of the top 10 home crowds have come since the start of the 2010 season.

WHAT A START

With their win over No. 9 Florida (Oct. 4), the Razorbacks improved to 13-2 overall and 3-0 in SEC play. The 13-2 start tied the best start in program history (1998) while Arkansas was 3-0 in league play for the first time since 2003. The win was also the Razorbacks' first vs. Florida since 2007.

JOINING THE NATION'S BEST

Breaking a 15-year absence, the Razorbacks entered the Oct. 5 release of the AVCA coaches' poll as the No. 22 team in the country. Arkansas had been receiving votes in the previous two polls and last appeared in the top 25 in the final ranking of the 1999 season.

SEPTEMBER SUCCESS

For just the sixth time in program history, and for the first time since 2002, the Razorbacks won 10 matches in one month with their 10-1 record in September. In the month, Arkansas played six teams (5-1) that played in last year's NCAA Tournament.

DUO EARNS SEC HONORS

Pilar Victoria earned SEC Player of the Week honors (Sept. 28) after averaging 5.56 kills per set, 3.11 digs per set and 6.11 points per set in road wins over LSU and Texas A&M. For the second time this year, Adrien Wohlschlaeger was named SEC Setter of the Week with 12.67 assists per set behind a career-high 65 assists against LSU.

GOING THE DISTANCE (AGAIN)

For a third-consecutive match, Arkansas found itself in a fifth set and came away with the win over LSU (Sept. 23) in the team's SEC opener. It marked the eighth time Arkansas played three-straight five setters. Arkansas is 7-1 in SEC openers under head coach Robert Pulliza.

30-KILL CLUB

Pilar Victoria became the seventh Razorback in program history with 30 kills when she reached the milestone in the SEC opener at LSU (Sept. 23). She is the first to do so since Kelli Stipanovich in 2011, and just the second Razorback with 30 kills in a road match (Krystal Osborne).

CLOSING TIME

In the win at LSU (Sept. 23), the Razorbacks hit .632 (13-1-19) in the fifth set to clinch the SEC opener. During its run of five-set wins, Arkansas hit .394 in the decisive sets against K-State, Wisconsin and LSU.

NELLIE!

Chanell Clark-Bibbs earned espnW National Player of the Week honors (Sept. 23) after hitting .443 with 3.85 kills per set and 1.31 blocks per set at the Creighton Classic. She totaled 50 kills during the weekend including a career-high 24 kills in Arkansas' win over No. 11 Wisconsin. She also tied a career high with eight total blocks against Kansas State.

MORE THAN A FRESHMAN

On the heels of a weekend highlighted by 26 digs against Kansas State, libero Okiana Valle was recognized as the SEC Freshman and Player of the Week (Sept. 21). She averaged 3.92 digs per set at the Creighton Classic and helped the defense total 95 digs against K-State which is the most by the program since 2006.

SUPER SATURDAY

The Razorbacks capped their non-conference slate with a pair of top-30 victories Sept. 19 at the Creighton Classic.

STARTERS: MATCH-BY-MATCH

McNeese State
Army
Kansas
vs Louisiana Tech
at SIUE
vs Northern Kentucky
Northwestern State
Southeast Missouri
UT Arlington
at Creighton
vs Kansas State
vs #11 Wisconsin
at LSU*
at Texas A&M*
#9 Florida*
at #20 Kentucky*
at Tennessee*
Ole Miss*
at #15 Florida*
at South Carolina*
Auburn*
Alabama*
at Ole Miss*
at Mississippi State*
LSU*
Georgia*
Missouri*
at Auburn*
South Carolina*
Texas A&M*

Clark-Bibbs, Jones, Hankenson, Fortado, Valle, Victoria, Ortiz (L)
Clark-Bibbs, Jones, Hankenson, Fortado, Valle, Victoria, Ortiz (L)
Clark-Bibbs, Jones, Hankenson, Fortado, Valle, Victoria, Ortiz (L)
Clark-Bibbs, Jones, Hankenson, Fortado, Ortiz, Victoria, Valle (L)
Clark-Bibbs, Jones, Fortado, Wohlschlaeger, Ortiz, Victoria, Valle (L)
Clark-Bibbs, Jones, Fortado, Wohlschlaeger, Ortiz, Victoria, Valle (L)
Clark-Bibbs, Jones, Fortado, Wohlschlaeger, Ortiz, Victoria, Valle (L)
Clark-Bibbs, Jones, Fortado, Wohlschlaeger, Ortiz, Victoria, Valle (L)
Clark-Bibbs, Jones, Fortado, Wohlschlaeger, Ortiz, Victoria, Valle (L)
Clark-Bibbs, Jones, Fortado, Wohlschlaeger, Ortiz, Victoria, Valle (L)
Clark-Bibbs, Fortado, Wohlschlaeger, Ortiz, Jusino, Victoria, Valle (L)
Clark-Bibbs, Fortado, Wohlschlaeger, Ortiz, Jusino, Victoria, Valle (L)
Clark-Bibbs, Fortado, Wohlschlaeger, Ortiz, Jusino, Victoria, Valle (L)
Clark-Bibbs, Fortado, Wohlschlaeger, Ortiz, Jusino, Victoria, Valle (L)
Clark-Bibbs, Jones, Fortado, Wohlschlaeger, Ortiz, Victoria, Valle (L)
Clark-Bibbs, Jones, Fortado, Wohlschlaeger, Ortiz, Victoria, Valle (L)
Clark-Bibbs, Jones, Fortado, Wohlschlaeger, Ortiz, Victoria, Valle (L)
Clark-Bibbs, Jones, Hankenson, Bollinger, Ortiz, Victoria, Valle (L)
Clark-Bibbs, Bollinger, Wohlschlaeger, Voelzke, Jusino, Victoria, Valle (L)
Clark-Bibbs, Jones, Bollinger, Wohlschlaeger, Ortiz, Victoria, Valle (L)
Clark-Bibbs, Jones, Bollinger, Wohlschlaeger, Ortiz, Victoria, Valle (L)
Jones, Harbin, Wohlschlaeger, Ortiz, Jusino, Victoria, Valle (L)
Clark-Bibbs, Jones, Harbin, Wohlschlaeger, Ortiz, Victoria, Valle (L)
Jones, Harbin, Hankenson, Ortiz, Jusino, Victoria, Valle (L)
Jones, Harbin, Wohlschlaeger, Ortiz, Jusino, Victoria, Valle (L)
Jones, Harbin, Wohlschlaeger, Ortiz, Jusino, Victoria, Valle (L)

AVCA TOP 25 (WEEK 12 - NOVEMBER 16)

Rank	Team	Record	LW
1	Southern California (47)	27-1	2
2	Washington (10)	24-2	3
3	Minnesota (7)	23-3	4
4	Penn State	24-3	1
5	Texas	22-2	5
6	Nebraska	22-4	8
7	Stanford	18-6	6
8	Hawai'i	23-1	7
9	Kansas^	23-2	10
10	Wisconsin^	20-6	11
11	UCLA	21-5	9
12	BYU	23-3	12
13	Colorado State	22-3	13
14	Florida^	20-5	15
15	Purdue	20-7	17
16	Ohio State	21-7	14
17	Louisville	21-5	22
18	Illinois	18-9	16
19	Kentucky^	18-8	18
20	Florida State	20-7	20
21	Western Kentucky	28-3	24
22	North Carolina	17-8	25
23	Arizona	17-11	19
24	Arizona State	19-8	21
25	Texas A&M^	19-6	RV

Receiving Votes: Colorado, SMU, Arkansas State, Missouri^, San Diego, Michigan, Creighton^, Long Beach State

^ - 2015 opponent

SEC PRESEASON COACHES' POLL

- | | |
|--------------------|-----------------------|
| 1. Florida (12) | 8. Ole Miss |
| 2. Alabama (1) | 9. Auburn |
| 3. Kentucky | 10. Georgia |
| 4. Texas A&M | 11. South Carolina |
| 5. ARKANSAS | 12. Mississippi State |
| 6. LSU | 13. Tennessee |
| 7. Missouri | |

PRESEASON ALL-SEC TEAM

Krystal Rivers, Alabama (OPP | R-Jr.)
Chanell Clark-Bibbs, Arkansas (MB | Sr.)
 Rhamat Alhassan, Florida (MB | Soph.)
 Mackenzie Dagostino, Florida (S | Sr.)
 Alex Holston, Florida (OPP | Jr.)
 Morgan Bergren, Kentucky (S | Jr.)
 Nakeyta Clair, Ole Miss (MB | Sr.)
 Carly Kan, Missouri (OH | Jr.)
 Shelby Sullivan, Texas A&M (MB | Sr.)



In a pair of five-set thrillers, Arkansas knocked off No. 11 Wisconsin and Kansas State, which was one spot out of that week's AVCA Top 25. The win over the Badgers gave the program its first win over a top-15 opponent since 2007 (def. No. 5 Florida in Fayetteville).

NOTHING HITS THE FLOOR

In its five-set win over Kansas State (Sept. 19), the defense picked up a season-high 95 digs. The effort was led by a career-high 26 digs by Okiana Valle who paced a quartet of Razorbacks with at least 10 digs. Kori Ortiz also tallied a career high with 18 digs in the match. The display marks the most digs by Arkansas since 2006 and currently stands as the 13th-best effort in program history.

OFF TO A GOOD START

Arkansas' 10 wins entering SEC play match the program high for wins going into conference play. The run of wins included top-30 victories over No. 11 Wisconsin and Kansas State and a six-match winning streak which ties the longest streak under head coach Robert Pulliza.

SEC SETTER OF THE WEEK

After averaging 12.33 assists per set and setting the team to a .327 hitting percentage, junior Adrien Wohlschlaeger was named the SEC Setter of the Week (Sept. 14). She had a career-high 44 assists in a sweep of UT Arlington (Sept. 12) and is now 7-1 as the starting setter.

RAZORBACK INVITATIONAL CHAMPIONS

Arkansas posted three straight-set victories in winning the Razorback Invitational. Pilar Victoria was named the MVP, Okiana Valle earned Outstanding Libero honors while Chanell Clark-Bibbs and Liz Fortado were selected to the all-tournament team. Arkansas had wins over Northwestern State, Southeast Missouri and UT Arlington.

CAREER HIGH FOR DAPIC

In the team's win over UT Arlington (Sept. 12), junior Barbara Dapic registered a career-high 12 kills, surpassing her previous best of 11 kills against Creighton in the first round of the 2013 NCAA Tournament.

PRESSURE FROM THE SERVICE LINE

Arkansas tallied 19 service aces during its weekend run to the Razorback Invitational title. Chanell Clark-Bibbs led the way with six aces, followed closely by four each from Barbara Dapic and Okiana Valle. Clark-Bibbs has at least one ace in four-straight matches.

SIUE COUGAR CLASSIC CHAMPS

With an undefeated run through Louisiana Tech, Northern Kentucky and host SIUE, the Razorbacks claimed the title at the Cougar Classic in Edwardsville, Ill. Chanell Clark-Bibbs (.489, 2.80 k/s) was named the tournament MVP while Pilar Victoria (.255, 4.10 k/s, 2.30 d/s) earned a spot on the all-tournament team.

OFFENSIVE OUTBURST VS LA TECH

Arkansas posted a season-high .416 hitting percentage in sweeping Louisiana Tech (Sept. 4). The figure stands as the No. 12 overall showing in program history and the seventh best against a non-conference opponent, and was Arkansas' highest since hitting .434 against Ole Miss in 2013.

ARKANSAS INVITATIONAL ALL-TOURNAMENT

Chanell Clark-Bibbs (.417, 2.64 k/s, 1.09 b/s) and Pilar Victoria (4.45 k/s, 3.18 d/s, two double-doubles) were named to the Arkansas Invitational All-Tournament Team. Victoria reached 10+ kills in each match.

ON THE WAY TO 500

With her second kill against Army West Point (Aug. 29), Liz Fortado recorded the 400th kill of her career, and enters the Creighton Classic just 43 shy of reaching 500. She had

WHAT HAPPENS WHEN...

OVERALL	17-10
SEC	7-8
HOME	9-4
AWAY	4-6
NEUTRAL	4-0
VS RANKED OPPONENTS	2-2

BY SETS

THREE SETS	9-4
FOUR SETS	3-4
FIVE SETS	5-2
WIN FIRST SET	13-4
LOSE FIRST SET	4-6
WIN SECOND SET	13-2
LOSE SECOND SET	4-8
WIN FIRST TWO SETS	10-0
LOSE FIRST TWO SETS	1-4
SPLIT FIRST TWO SETS	6-6

STATISTICAL

MORE KILLS THAN OPPONENT	13-2
FEWER KILLS THAN OPPONENT	4-8
KILLS ARE TIED	0-0
MORE DIGS THAN OPPONENT	11-3
FEWER DIGS THAN OPPONENT	6-5
DIGS ARE TIED	0-1
MORE BLOCKS THAN OPPONENT	12-3
FEWER BLOCKS THAN OPPONENT	4-5
BLOCKS ARE TIED	1-2
MORE ACES THAN OPPONENT	10-2
FEWER ACES THAN OPPONENT	7-8
ACES ARE TIED	0-0
HIGHER HITTING PCT	14-2
LOWER HITTING PCT	3-8
HITTING PCT TIED	0-0

HITTING PERCENTAGE

.400 OR BETTER	1-0
.300-.399	5-0
.200-.299	10-4
.100-.199	1-5
.000-.099	0-1
NEGATIVE	0-0

OPPONENT HITTING PERCENTAGE

.400 OR BETTER	0-1
.300-.399	0-1
.200-.299	7-8
.100-.199	3-0
.000-.099	5-0
NEGATIVE	2-0

BY DAY

TUESDAY	0-0
WEDNESDAY	2-2
THURSDAY	0-0
FRIDAY	5-3
SATURDAY	6-1
SUNDAY	4-4

BY MONTH

AUGUST	2-1
SEPTEMBER	10-1
OCTOBER	2-5
NOVEMBER	3-3
DECEMBER	0-0

BY THE NUMBERS | BARNHILL ATTENDANCE

Top Single-Match Attendance

1.	3,015 vs. #13 Florida	9-14-12
2.	2,349 vs. South Carolina	11-19-14
3.	1,672 vs. Missouri	10-02-13
4.	1,463 vs. Tennessee State	8-29-14
5.	1,407 vs. #15 Colorado State	8-26-11
6.	1,362 vs. #5 Florida*	11-22-98
7.	1,342 vs. McNeese State	8-28-15
8.	1,284 vs. Kansas	8-29-15
9.	1,272 vs. Oklahoma	9-7-10
10.	1,269 vs. Ole Miss	10-18-15

* - 1998 SEC Tournament

Year-by-Year Attendance Totals

Year	# of Matches	Total	Avg.
1994	15	6,548	437
1995	13	6,194	477
1996	18	8,296	461
1997	15	8,101	540
1998	19	13,299	700
1999	14	6,315	451
2000	17	7,499	441
2001	11	5,794	527
2002	16	7,127	451
2003	11	5,683	517
2004	14	8,254	590
2005	14	9,365	669
2006	14	9,817	701
2007	16	10,919	682
2008	14	9,086	649
2009	14	10,316	737
2010	14	11,855	847
2011	14	12,903	922
2012	18	18,297	1,016
2013	15	13,047	870
2014	16	15,265	954
2015	13	12,884	991

2015 AWARDS & HONORS

Chanell Clark-Bibbs

Preseason All-SEC

Arkansas Invitational All-Tournament

SIUE Cougar Classic All-Tournament (MVP)

Razorback Invitational All-Tournament

Creighton Classic All-Tournament

espnW National Player of the Week (Sept. 23)

Liz Fortado

Razorback Invitational All-Tournament

Okiana Valle

Razorback Invitational All-Tournament (Libero)

SEC Freshman & Player of the Week (Sept. 21)

Pilar Victoria

Arkansas Invitational All-Tournament

SIUE Cougar Classic All-Tournament

Razorback Invitational All-Tournament (MVP)

SEC Offensive Player & Player of the Week (Sept. 28)

HERO Sports Gem of the Week (Oct. 7)

SEC Offensive Player of the Week (Nov. 2)

Adrien Wohlschlaeger

SEC Setter of the Week (Sept. 14)

SEC Setter of the Week (Sept. 28)

MILESTONE WATCH

Monica Bollinger (L/DS | Sr.)

Looking for: 991 digs (career top 10)

Current Total: 944

Needs: 47

Chanell Clark-Bibbs (MB | Sr.)

Looking for: 591 kills (career top 25)

Current Total: 551

Needs: 40

Looking for: 244 blocks (career top 20)

Current Total: 229

Needs: 15

Barbara Dapic (OH/OPP | Jr.)

Looking for: 300 kills (career)

Current Total: 316

Reached: 10/30 vs. Alabama

Looking for: 150 blocks (career)

Current Total: 119

Needs: 31

Liz Fortado (OPP | Sr.)

Looking for: 500 kills (career)

Current Total: 504

Reached: 10/11 at Tennessee

Breana Jones (MB | Soph.)

Looking for: 300 kills (career)

Current Total: 319

Reached: 11/6 at Ole Miss

Ana Sofia Jusino (MB | Soph.)

Looking for: 300 kills (career)

Current Total: 288

Needs: 12

Looking for: 244 blocks (career top 20)

Current Total: 237

Needs: 7

Pilar Victoria (OH | Jr.)

Looking for: 500 kills (single season)

Current Total: 484

Needs: 16

a season-high 16 kills against the Black Knights.

WELCOME TO BARNHILL

In a continuing trend of re-writing the attendance records list, the Razorback fans tallied the seventh- and eighth-largest crowds in program history (see page 6). Five of the top-10 home crowds at Barnhill Arena have come during a season-opening weekend.

SEASON OPENERS

With their straight-set win over McNeese State, the Razorbacks posted their fourth-straight win in a season opener. The program is now 15-7 overall in the first match of the year.

SEC PRESEASON POLL

Arkansas was picked to finish fifth in the SEC preseason coaches' poll. Receiving 88 points, the Razorbacks trailed only Florida, Alabama, Kentucky and Texas A&M in the vote.

CLARK-BIBBS EARNS PRESEASON SPOT

With her selection to the Preseason All-SEC Team, senior Chanell Clark-Bibbs is the program's first preseason pick since Jasmine Norton was named prior to the 2012 season. Clark-Bibbs ranked among the top 20 in three stat categories in the SEC as a junior in 2014.

OTHER SIDE OF THE NET

Arkansas' schedule features nine top-50 RPI opponents and 13 matches against teams that played in last year's NCAA Tournament. The Creighton Classic begins a stretch of seven straight against NCAA Tournament teams.

PULLIZA WITH TEAM PUERTO RICO

Razorback head coach Robert Pulliza served as an assistant coach for the Puerto Rico National Team over the summer, helping the team qualify for the FIVB World Grand Prix Group 2 finals and advance to the country's first-ever medal rounds at the XVII Pan American Games in Toronto.

#GLOBALHOGS

The Razorbacks' roster features five countries with student-athletes from Croatia (Dapic), France (Fidon), Mexico, (Güitron), Puerto Rico (Jusino, Valle, Victoria) and the United States.

THE ROSTER: RETURNERS

Arkansas' roster features 12 returners from last year with seniors Monica Bollinger, Chanell Clark-Bibbs and Liz Fortado; juniors Barbara Dapic, Danielle Harbin, Breana Jones, Ana Sofia Jusino, Pilar Victoria, Savannah Voelzke and Adrien Wohlschlaeger; and sophomores Blakelee Dunagin, Bailee Hankenson and Kori Ortiz.

THE ROSTER: NEWCOMERS

The Razorbacks' five-member class of newcomers features junior transfer Pilar Victoria (Texas) and freshmen Kimi Davis, Juliette Fidon, Fernanda Güitron and Okiana Valle.

THE STAFF

Head coach Robert Pulliza returns for his eighth season at the helm of the Razorback Volleyball program and is joined by associate head coach Carol Price-Torok who is also in her eighth year at Arkansas. Sarah Rumely is in her first as an assistant coach with Allison Wack joining the staff this spring as the director of operations.

SEASON/CAREER HIGHS

#1 CHANELL CLARK-BIBBS | SR | MB

SEASON HIGHS

Hitting % .727 (9-1-11) vs. NW State | 9-11-15
 Kills 24 vs. #11 Wisconsin | 9-19-15
 Attempts 42 vs. #9 Florida | 10-4-15
 Assists 2 vs. Kansas | 8-29-15
 Digs 8 vs. Northwestern State | 9-11-15
 Blocks 9.0 (2-7) at Texas A&M | 9-27-15
 Aces 4 vs. Northwestern State | 9-11-15

CAREER HIGHS (at Arkansas)

Hitting % .727 (9-1-11) vs. NW State | 9-11-15
 Kills 24 vs. #11 Wisconsin | 9-19-15
 Attempts 42 vs. #9 Florida | 10-4-15
 Assists 2 vs. Kansas | 8-29-15
 Digs 8 vs. Northwestern State | 9-11-15
 Blocks 9.0 (2-7) at Texas A&M | 9-27-15
 Aces 4 vs. Northwestern State | 9-11-15

#2 BREANA JONES | JR | MB

SEASON HIGHS

Hitting % .636 (7-0-11) at Miss. State | 11-8-15
 Kills 15 at South Carolina | 10-25-15
 Attempts 26 vs. Alabama | 11-1-15
 Assists 1 at Texas A&M | 9-27-15
 Digs 2 at Tennessee | 10-11-15
 Blocks 8.0 (1-7) vs. LSU | 11-11-15
 Aces --

CAREER HIGHS

Hitting % .636 (7-0-11) at Miss. State | 11-8-15
 Kills 15 at South Carolina | 10-25-15
 Attempts 26 vs. Alabama | 11-1-15
 Assists 1 at Texas A&M | 9-27-15
 Digs 5 vs. Missouri | 10-2-13
 Blocks 8.0 (1-7) vs. LSU | 11-11-15
 Aces 2 vs. Ole Miss | 11-3-13

#3 DANIELLE HARBIN | JR | OH/MB

SEASON HIGHS

Hitting % .571 (9-1-14) at Texas A&M | 9-27-15
 Kills 13 vs. Georgia | 11-15-15
 Attempts 37 vs. Kansas State | 9-19-15
 Assists 1 at Ole Miss | 11-6-15
 Digs 5 vs. Missouri | 11-18-15
 Blocks 6.0 (0-6) vs. LSU | 11-11-15
 Aces 1 vs. #9 Florida | 10-4-15

CAREER HIGHS

Hitting % .417 (14-4-24) vs. UMKC | 8-31-13
 Kills 14 vs. UMKC | 8-31-13
 Attempts 37 vs. Kansas State | 9-19-15
 Assists 1 at Ole Miss | 11-6-15
 Digs 5 vs. Missouri | 11-18-15
 Blocks 7.0 (1-6) vs. Mississippi State | 11-24-13
 Aces 1 vs. #9 Florida | 10-4-15

#8 BAILEE HANKENSON | SOPH | S

SEASON HIGHS

Hitting % .200 (4-2-10) vs. McNeese State | 8-28-15
 Kills 4 vs. McNeese State | 8-28-15
 Attempts 10 vs. McNeese State | 8-28-15
 Assists 52 vs. Army | 8-29-15
 Digs 10 vs. Kansas | 8-29-15
 Blocks 2.0 (1-1) vs. La. Tech | 9-4-15
 Aces 1 vs. Army | 8-29-15

CAREER HIGHS

Hitting % .700 (7-0-10) at #20 TAMU | 10-15-14
 Kills 7 at #20 Texas A&M | 10-15-14
 Attempts 15 at #24 Kansas | 9-20-14
 Assists 61 vs. Georgia | 10-12-14
 Digs 14 vs. Michigan | 8-30-14
 Blocks 6.0 (0-6) vs. LSU | 11-2-14
 Aces 2 vs. Mississippi State | 9-28-14

#9 LIZ FORTADO | SR | OPP

SEASON HIGHS

Hitting % .818 (9-0-11) vs. La. Tech | 9-4-15
 Kills 16 vs. Army | 8-29-15
 Attempts 27 vs. Army | 8-29-15
 Assists 1 vs. McNeese State | 8-28-15
 Digs 4 vs. McNeese State | 8-28-15
 Blocks 6.0 (0-6) vs. Southeast Missouri | 9-12-15
 Aces --

CAREER HIGHS

Hitting % .818 (9-0-11) vs. La. Tech | 9-4-15
 Kills 19 vs. South Carolina | 11-14-14
 Attempts 37 vs. South Carolina | 11-14-14
 Assists 2 at Mississippi State | 10-19-12
 Digs 5 vs. LSU | 11-2-14
 Blocks 6.0 (0-6) vs. Southeast Missouri | 9-12-15
 Aces 1 at Kentucky | 10-19-12

#10 MONICA BOLLINGER | SR | L/DS

SEASON HIGHS

Hitting % --
 Kills --
 Attempts 2 vs. #11 Wisconsin | 9-19-15
 Assists 3 vs. Ole Miss | 10-18-15
 Digs 13 vs. Auburn | 10-30-15
 Blocks --
 Aces 2 at Tennessee | 10-11-15

CAREER HIGHS

Hitting % --
 Kills 1 at Georgia | 11-9-14
 Attempts 4 vs. SMU | 9-13-14
 Assists 8 vs. Michigan | 8-30-14
 Digs 28 vs. Oral Roberts | 9-9-14
 Blocks --
 Aces 4 vs. Georgia | 10-20-13

#11 KIMI DAVIS | FR | L/DS

SEASON HIGHS

Hitting % --
 Kills --
 Attempts 2 at Mississippi State | 11-8-15
 Assists 1 vs. Georgia | 11-15-15
 Digs 5 vs. Missouri | 11-18-15
 Blocks --
 Aces --

CAREER HIGHS

Hitting % --
 Kills --
 Attempts 2 at Mississippi State | 11-8-15
 Assists 1 vs. Georgia | 11-15-15
 Digs 5 vs. Missouri | 11-18-15
 Blocks --
 Aces --

#12 OKIANA VALLE | FR | L/DS

SEASON HIGHS

Hitting % --
 Kills --
 Attempts 3 at Mississippi State | 11-8-15
 Assists 6 at Tennessee | 10-11-15
 Digs 26 vs. Kansas State | 9-19-15
 Blocks --
 Aces 4 vs. Southeast Missouri | 9-12-15

CAREER HIGHS

Hitting % --
 Kills --
 Attempts 2 vs. #9 Florida | 10-4-15
 Assists 6 at Tennessee | 10-11-15
 Digs 26 vs. Kansas State | 9-19-15
 Blocks --
 Aces 4 vs. Southeast Missouri | 9-12-15

#13 BLAKELEE DUNAGIN | SO | MB

SEASON HIGHS

Hitting % --
 Kills 1 vs. Georgia | 11-15-15
 Attempts 2 vs. Georgia | 11-15-15
 Assists --
 Digs 1 vs. Auburn | 10-30-15
 Blocks 1.0 (0-1) vs. Southeast Missouri | 9-12-15
 Aces --

CAREER HIGHS

Hitting % --
 Kills 1 vs. Georgia | 11-15-15
 Attempts 2 vs. Georgia | 11-15-15
 Assists --
 Digs 1 vs. Auburn | 10-30-15
 Blocks 1.0 (0-1) vs. Southeast Missouri | 9-12-15
 Aces --

SEASON/CAREER HIGHS

#14 ADRIEN WOHLSCHLAEGER | JR | S

SEASON HIGHS

Hitting % _____ --
 Kills _____ 5 at Tennessee | 10-11-15
 Attempts _____ 10 vs. #11 Wisconsin | 9-19-15
 Assists _____ 65 at LSU | 9-23-15
 Digs _____ 14 at LSU | 9-23-15
 Blocks _____ 6.0 (0-6) vs. Ole Miss | 10-18-15
 Aces _____ 2 vs. Alabama | 11-1-15

CAREER HIGHS

Hitting % _____ --
 Kills _____ 5 at Tennessee | 10-11-15
 Attempts _____ 10 vs. #11 Wisconsin | 9-19-15
 Assists _____ 65 at LSU | 9-23-15
 Digs _____ 14 at LSU | 9-23-15
 Blocks _____ 6.0 (0-6) vs. Ole Miss | 10-18-15
 Aces _____ 2 vs. Alabama | 11-1-15

#18 BARBARA DAPIC | JR | OH/OPP

SEASON HIGHS

Hitting % _____.462 (7-1-13) vs. McNeese State | 8-28-15
 Kills _____ 12 vs. UT Arlington | 9-12-15
 Attempts _____ 29 vs. Ole Miss | 10-18-15
 Assists _____ 1 vs. Northern Kentucky | 9-5-15
 Digs _____ 4 vs. Kansas | 8-29-15
 Blocks _____ *3.0 (0-3) vs. Georgia | 11-15-15
 Aces _____ 2 vs. Northwestern State | 9-11-15

CAREER HIGHS

Hitting % _____.667 (10-0-15) vs. Saint Louis | 9-21-13
 Kills _____ 12 vs. UT Arlington | 9-12-15
 Attempts _____ *29 vs. Ole Miss | 10-18-15
 Assists _____ *1 vs. Northern Kentucky | 9-5-15
 Digs _____ 6 at Tennessee | 11-26-14
 Blocks _____ 6.0 (0-6) at Tennessee | 11-26-14
 Aces _____ 2 vs. Northwestern State | 9-11-15

#15 SAVANNAH VOELZKE | JR | OH

SEASON HIGHS

Hitting % _____.455 (6-1-11) at Tennessee | 10-11-15
 Kills _____ 6 at Tennessee | 10-11-15
 Attempts _____ 20 at Ole Miss | 11-6-15
 Assists _____ --
 Digs _____ 7 at Ole Miss | 11-6-15
 Blocks _____ 1.0 (1-0) at Ole Miss | 11-6-15
 Aces _____ 2 at Tennessee | 10-11-15

CAREER HIGHS

Hitting % _____.692 (9-0-13) vs. Texas A&M | 11-19-14
 Kills _____ 11 vs. Mississippi State | 11-24-13
 Attempts _____ 28 vs. Mississippi State | 11-24-13
 Assists _____ 4 at #20 Texas A&M | 10-15-14
 Digs _____ *7 at Ole Miss | 11-6-15
 Blocks _____ 3.0 (1-2) vs. South Carolina | 11-22-13
 Aces _____ 3 vs. Ole Miss | 10-8-14

#19 ANA SOFIA JUSINO | JR | MB

SEASON HIGHS

Hitting % _____ --
 Kills _____ 4 vs. LSU | 11-11-15
 Attempts _____ *10 vs. LSU | 11-11-15
 Assists _____ --
 Digs _____ 3 at Mississippi State | 11-8-15
 Blocks _____ 7.0 (0-7) vs. Ole Miss | 10-18-15
 Aces _____ --

CAREER HIGHS

Hitting % _____.800 (8-0-10) vs. No. Colorado | 9-14-13
 Kills _____ 12 vs. Oral Roberts | 9-9-14
 Attempts _____ 28 vs. Kansas | 9-5-13
 Assists _____ 1 vs. New Mexico | 8-30-13
 Digs _____ 3 at Mississippi State | 11-8-15
 Blocks _____ 10.0 (1-9) vs. North Texas | 9-19-14
 Aces _____ --

#17 KORI ORTIZ | SOPH | L/DS

SEASON HIGHS

Hitting % _____ --
 Kills _____ --
 Attempts _____ *1 at #15 Florida | 10-23-15
 Assists _____ 6 vs. Army | 8-29-15
 Digs _____ 18 vs. Kansas State | 9-19-15
 Blocks _____ --
 Aces _____ *1 at Mississippi State | 11-8-15

CAREER HIGHS

Hitting % _____ --
 Kills _____ --
 Attempts _____ *2 vs. South Dakota | 9-12-14
 Assists _____ 6 vs. Army | 8-29-15
 Digs _____ 18 vs. Kansas State | 9-19-15
 Blocks _____ --
 Aces _____ *1 at Mississippi State | 11-8-15

#21 PILAR VICTORIA | JR | OH

SEASON HIGHS

Hitting % _____.481 (16-3-27) vs. Georgia | 11-15-15
 Kills _____ 35 vs. Ole Miss | 10-18-15
 Attempts _____ 79 vs. Ole Miss | 10-18-15
 Assists _____ *2 vs. Kansas State | 9-19-15
 Digs _____ 19 at LSU | 9-23-15
 Blocks _____ 6.0 (3-3) vs. Ole Miss | 10-18-15
 Aces _____ *2 vs. Alabama | 11-1-15

CAREER HIGHS (at Arkansas)

Hitting % _____.481 (16-3-27) vs. Georgia | 11-15-15
 Kills _____ 35 vs. Ole Miss | 10-18-15
 Attempts _____ 79 vs. Ole Miss | 10-18-15
 Assists _____ *2 vs. Kansas State | 9-19-15
 Digs _____ 19 at LSU | 9-23-15
 Blocks _____ 6.0 (3-3) vs. Ole Miss | 10-18-15
 Aces _____ *2 vs. Alabama | 11-1-15

*Tied, most recent listed

TEAM MATCH-BY-MATCH																	
Date	Opponent	SP	K	E	TA	Pct	A	SA	SE	RE	DIG	BS	BA	BE	Total	BHE	Points
8-28	MCNEESE STATE	3	44	15	102	.284	42	2	8	4	53	0	18	1	9.0	0	55.0
8-29	ARMY	4	63	19	136	.324	61	6	6	7	59	2	12	5	8.0	1	77.0
8-29	(rv) KANSAS	4	51	24	139	.194	48	2	3	10	69	0	6	2	3.0	3	56.0
9-4	vs Louisiana Tech	3	41	9	77	.416	41	3	7	0	34	4	8	0	8.0	2	52.0
9-4	at SIUE	3	42	19	81	.284	40	5	10	3	27	0	12	1	6.0	0	53.0
9-5	vs Northern Kentucky	4	49	18	115	.270	48	3	6	4	50	4	12	3	10.0	2	62.0
9-11	NORTHWESTERN STATE	3	36	13	69	.333	35	8	14	2	37	2	6	0	5.0	0	49.0
9-12	SOUTHEAST MISSOURI	3	36	6	82	.366	34	7	5	2	41	0	26	0	13.0	1	56.0
9-12	UT ARLINGTON	3	49	21	97	.289	44	4	5	3	32	1	4	0	3.0	0	56.0
9-18	at Creighton	3	36	21	78	.192	33	1	6	5	22	2	6	3	5.0	0	42.0
9-19	vs (rv) Kansas State	5	69	25	184	.239	67	2	4	5	95	3	24	4	15.0	4	86.0
9-19	vs #11 Wisconsin	5	66	25	152	.270	65	5	6	3	54	6	12	1	12.0	0	83.0
9-23	at LSU	5	79	30	182	.269	75	4	9	6	83	0	18	1	9.0	5	92.0
9-27	at (rv) Texas A&M	4	59	19	145	.276	57	3	7	2	52	3	20	1	13.0	0	75.0
10-4	#9 FLORIDA	5	54	32	153	.144	50	7	5	4	53	0	21	1	10.5	0	71.5
10-7	at #20 Kentucky	3	32	18	109	.128	31	2	4	4	46	0	12	2	6.0	1	40.0
10-11	at Tennessee	4	62	21	144	.285	58	7	6	4	58	0	14	1	7.0	4	76.0
10-18	OLE MISS	5	69	19	172	.291	65	2	9	4	63	5	30	5	20.0	2	91.0
10-23	at #15 Florida	3	25	19	90	.067	25	3	4	5	31	0	10	2	5.0	0	33.0
10-25	at South Carolina	4	57	22	150	.233	52	2	15	5	63	2	16	1	10.0	1	69.0
10-30	AUBURN	5	56	21	153	.229	52	3	6	5	63	2	16	1	10.0	1	69.0
11-1	ALABAMA	5	61	27	163	.209	57	8	8	7	67	0	18	3	9.0	1	78.0
11-6	at Ole Miss	4	57	30	160	.169	54	1	8	3	60	1	16	0	9.0	0	67.0
11-8	at Mississippi State	3	32	9	96	.240	30	2	4	1	38	1	16	2	9.0	0	43.0
11-11	LSU	3	40	8	85	.376	37	1	6	2	29	3	19	2	12.5	1	53.5
11-15	GEORGIA	3	43	12	81	.383	41	5	9	1	34	0	22	0	11.0	1	59.0
11-18	(rv) MISSOURI	3	33	19	104	.135	32	1	5	10	49	0	8	2	4.0	1	38.0
ARKANSAS		102	1341	521	3301	.248	1274	99	185	111	1363	41	402	44	242.0	31	1682.0
Opponent		102	1246	562	3407	.201	1152	111	215	99	1245	31	324	62	193.0	28	1550.0

SEASON HIGH | SEASON LOW



TEAM OVERALL STATISTICS

Overall record: 17-10 Conf: 7-8 Home: 9-4 Away: 4-6 Neutral: 4-0

#	Player	sp	Attack					Set		Serve			re	Dig			Blocking					points
			k	k/s	e	ta	pct	a	a/s	sa	se	sa/s		dig	dig/s	bs	ba	total	blk/s	be	bhe	
2	Breana Jones	88	161	1.83	30	302	.434	1	0.01	0	1	0.00	0	12	0.14	5	57	62	0.70	7	0	194.5
1	Chanell Clark-Bibbs	93	249	2.68	64	506	.366	10	0.11	19	30	0.20	2	63	0.68	12	96	108	1.16	8	1	328.0
9	Liz Fortado	66	114	1.73	41	277	.264	1	0.02	0	2	0.00	0	29	0.44	0	35	35	0.53	1	0	131.5
3	Danielle Harbin	74	111	1.50	47	281	.228	2	0.03	1	4	0.01	1	34	0.46	1	39	40	0.54	3	0	132.5
21	Pilar Victoria	102	484	4.75	208	1249	.221	17	0.17	23	52	0.23	22	249	2.44	9	37	46	0.45	7	3	534.5
19	Ana Sofia Jusino	74	29	0.39	13	78	.205	0	0.00	0	0	0.00	0	8	0.11	4	45	49	0.66	1	0	55.5
13	Blakelee Dunagin	7	2	0.29	1	5	.200	0	0.00	0	0	0.00	0	1	0.14	0	1	1	0.14	0	0	2.5
18	Barbara Dapic	96	141	1.47	80	413	.148	1	0.01	8	17	0.08	3	31	0.32	5	30	35	0.36	5	0	169.0
8	Bailee Hankenson	25	10	0.40	6	34	.118	181	7.24	1	3	0.04	0	32	1.28	1	7	8	0.32	2	6	15.5
15	Savannah Voelzke	25	15	0.60	10	46	.109	0	0.00	2	4	0.08	2	22	0.88	1	0	1	0.04	2	0	18.0
14	Adrien Wohlschlaeger	90	25	0.28	20	84	.060	956	10.62	6	25	0.07	0	128	1.42	3	55	58	0.64	8	20	61.5
17	Kori Ortiz	100	0	0.00	0	3	.000	29	0.29	3	9	0.03	22	213	2.13	0	0	0	0.00	0	0	3.0
11	Kimi Davis	27	0	0.00	0	2	.000	1	0.04	0	5	0.00	3	18	0.67	0	0	0	0.00	0	0	0.0
12	Okiana Valle	102	0	0.00	0	14	.000	58	0.57	23	29	0.23	31	370	3.63	0	0	0	0.00	0	1	23.0
10	Monica Bollinger	87	0	0.00	1	7	-.143	17	0.20	13	4	0.15	14	153	1.76	0	0	0	0.00	0	0	13.0
	ARKANSAS	102	1341	13.15	521	3301	.248	1274	12.49	99	185	0.97	111	1363	13.36	41	402	242.0	2.37	44	31	1682.0
	Opponents	102	1246	12.22	562	3407	.201	1152	11.29	111	215	1.09	99	1245	12.21	31	324	193.0	1.89	62	28	1550.0

Team Statistics	AR	OPP
ATTACK		
Kills	1341	1246
Errors	521	562
Total Attacks	3301	3407
Attack Pct	.248	.201
Kills/Set	13.1	12.2
SET		
Assists	1274	1152
Assists/Set	12.5	11.3
SERVE		
Aces	99	111
Errors	185	215
Aces/Set	1.0	1.1
SERVE RECEPTIONS		
Errors	111	99
Errors/Set	1.1	1.0
Attempts	1913	2075
Reception Pct	.942	.952
DEFENSE		
Digs	1363	1245
Digs/Set	13.4	12.2
BLOCKING		
Block Solo	41	31
Block Assist	402	324
Total Blocks	242.0	193.0
Blocks/Set	2.4	1.9
Block Errors	44	62
Ball handling errors	31	28
ATTENDANCE		
Total	12884	11310
Dates/Avg Per Date	13/991	10/1131
Neutral site #/Avg	4/360	
Current win streak	0	-
Home win streak	0	-

Date	Opponent	Score	Score by set	Att.
Aug 28	MCNEESE STATE	w 3-0	25-20,25-11,25-21	1342
Aug 29	ARMY	w 3-1	25-27,25-21,25-16,25-17	539
Aug 29	KANSAS	L 1-3	25-21,25-27,15-25,15-25	1284
Sep 04	vs Louisiana Tech	w 3-0	25-15,25-18,25-18	85
Sep 04	at SIUE	w 3-0	25-20,25-18,25-20	243
Sep 05	vs Northern Kentucky	w 3-1	25-21,25-18,12-25,25-11	95
Sep 11	NORTHWESTERN STATE	w 3-0	25-16,25-11,25-15	923
Sep 12	SOUTHEAST MISSOURI	w 3-0	25-7,25-16,25-10	563
Sep 12	UT ARLINGTON	w 3-0	25-18,25-21,25-18	742
cSep 18	at Creighton	L 0-3	19-25,19-25,18-25	1198
Sep 19	vs Kansas State	w 3-2	19-25,25-20,25-21,23-25,15-11	0
Sep 19	vs #11 Wisconsin	w 3-2	25-21,22-25,25-20,13-25,15-11	1262
*Sep 23	at LSU	w 3-2	25-23,26-28,26-24,20-25,15-9	1391
*Sep 27	at Texas A&M	w 3-1	21-25,25-13,27-25,25-22	1278
*Oct 04	#9 FLORIDA	w 3-2	25-23,15-25,25-19,18-25,18-16	1231
*Oct 07	at #20 Kentucky	L 0-3	23-25,12-25,21-25	1465
*Oct 11	at Tennessee	L 1-3	25-18,22-25,25-27,20-25	1331
*Oct 18	OLE MISS	L 2-3	25-27,29-27,21-25,25-14,13-15	1269
*Oct 23	at #15 Florida	L 0-3	10-25,16-25,16-25	2186
*Oct 25	at South Carolina	L 1-3	25-23,23-25,20-25,26-28	836
*Oct 30	AUBURN	w 3-2	16-25,17-25,25-21,25-19,15-11	1151
*Nov 01	ALABAMA	L 2-3	25-22,23-25,25-18,20-25,13-15	1021
*Nov 06	at Ole Miss	L 1-3	20-25,27-25,19-25,21-25	811
*Nov 08	at Mississippi State	w 3-0	25-21,25-23,29-27	571
*Nov 11	LSU	w 3-0	25-18,25-10,25-19	1231
*Nov 15	GEORGIA	w 3-0	25-17,25-16,25-14	751
*Nov 18	MISSOURI	L 0-3	23-25,18-25,19-25	837

Record in 3-set matches:9-4 • Record in 4-set matches:3-4 • Record in 5-set matches:5-2

TEAM SEC STATISTICS

Overall record: 7-8 Conf: 7-8 Home: 4-3 Away: 3-5 Neutral: 0-0

##	Player	sp	Attack					Set		Serve			re	Dig			Blocking						points
			k	k/s	e	ta	pct	a	a/s	sa	se	sa/s		dig	dig/s	bs	ba	total	blk/s	be	bhe		
2	Breana Jones	51	104	2.04	16	202	.436	1	0.02	0	1	0.00	0	6	0.12	2	41	43	0.84	5	0	126.5	
8	Bailee Hankenson	9	3	0.33	0	8	.375	33	3.67	0	1	0.00	0	6	0.67	0	2	2	0.22	2	0	4.0	
1	Chanell Clark-Bibbs	50	120	2.40	40	268	.299	3	0.06	10	17	0.20	1	33	0.66	4	54	58	1.16	2	0	161.0	
3	Danielle Harbin	57	95	1.67	38	233	.245	2	0.04	1	3	0.02	1	31	0.54	0	37	37	0.65	3	0	114.5	
21	Pilar Victoria	59	300	5.08	129	812	.211	7	0.12	12	34	0.20	11	137	2.32	4	23	27	0.46	3	2	327.5	
19	Ana Sofia Jusino	49	21	0.43	9	60	.200	0	0.00	0	0	0.00	0	8	0.16	3	31	34	0.69	0	0	39.5	
13	Blakelee Dunagin	5	2	0.40	1	5	.200	0	0.00	0	0	0.00	0	1	0.20	0	0	0	0.00	0	0	2.0	
9	Liz Fortado	23	26	1.13	13	80	.162	0	0.00	0	0	0.00	0	10	0.43	0	13	13	0.57	0	0	32.5	
18	Barbara Dapic	53	61	1.15	39	213	.103	0	0.00	1	4	0.02	2	13	0.25	1	18	19	0.36	2	0	72.0	
15	Savannah Voelzke	22	14	0.64	10	44	.091	0	0.00	2	4	0.09	2	20	0.91	1	0	1	0.05	2	0	17.0	
14	Adrien Wohlschlaeger	58	13	0.22	10	49	.061	604	10.41	4	14	0.07	0	92	1.59	2	37	39	0.67	5	15	37.5	
11	Kimi Davis	15	0	0.00	0	2	.000	1	0.07	0	4	0.00	2	13	0.87	0	0	0	0.00	0	0	0.0	
12	Okiana Valle	59	0	0.00	0	8	.000	42	0.71	13	17	0.22	15	234	3.97	0	0	0	0.00	0	1	13.0	
17	Kori Ortiz	57	0	0.00	0	2	.000	14	0.25	1	5	0.02	10	110	1.93	0	0	0	0.00	0	0	1.0	
10	Monica Bollinger	44	0	0.00	1	3	-.333	9	0.20	7	1	0.16	11	76	1.73	0	0	0	0.00	0	0	7.0	
	ARKANSAS	59	759	12.86	306	1989	.228	716	12.14	51	105	0.86	63	790	13.39	17	256	145.0	2.46	24	18	955.0	
	Opponents	59	789	13.37	328	2033	.227	722	12.24	63	122	1.07	51	795	13.47	21	196	119.0	2.02	41	15	971.0	

Team Statistics	AR	OPP
ATTACK		
Kills	759	789
Errors	306	328
Total Attacks	1989	2033
Attack Pct	.228	.227
Kills/Set	12.9	13.4
SET		
Assists	716	722
Assists/Set	12.1	12.2
SERVE		
Aces	51	63
Errors	105	122
Aces/Set	0.9	1.1
SERVE RECEPTIONS		
Errors	63	51
Errors/Set	1.1	0.9
Attempts	1172	1188
Reception Pct	.946	.957
DEFENSE		
Digs	790	795
Digs/Set	13.4	13.5
BLOCKING		
Block Solo	17	21
Block Assist	256	196
Total Blocks	145.0	119.0
Blocks/Set	2.5	2.0
Block Errors	24	41
Ball handling errors	18	15
ATTENDANCE		
Total	7491	9869
Dates/Avg Per Date	7/1070	8/1234
Neutral site #/Avg	0/0	-
Current win streak	0	-
Home win streak	0	-

Date	Opponent	Score	Score by set	Att.
*Sep 23	at LSU	w 3-2	25-23,26-28,26-24,20-25,15-9	1391
*Sep 27	at Texas A&M	w 3-1	21-25,25-13,27-25,25-22	1278
*Oct 04	#9 FLORIDA	w 3-2	25-23,15-25,25-19,18-25,18-16	1231
*Oct 07	at #20 Kentucky	L 0-3	23-25,12-25,21-25	1465
*Oct 11	at Tennessee	L 1-3	25-18,22-25,25-27,20-25	1331
*Oct 18	OLE MISS	L 2-3	25-27,29-27,21-25,25-14,13-15	1269
*Oct 23	at #15 Florida	L 0-3	10-25,16-25,16-25	2186
*Oct 25	at South Carolina	L 1-3	25-23,23-25,20-25,26-28	836
*Oct 30	AUBURN	w 3-2	16-25,17-25,25-21,25-19,15-11	1151
*Nov 01	ALABAMA	L 2-3	25-22,23-25,25-18,20-25,13-15	1021
*Nov 06	at Ole Miss	L 1-3	20-25,27-25,19-25,21-25	811
*Nov 08	at Mississippi State	w 3-0	25-21,25-23,29-27	571
*Nov 11	LSU	w 3-0	25-18,25-10,25-19	1231
*Nov 15	GEORGIA	w 3-0	25-17,25-16,25-14	751
*Nov 18	MISSOURI	L 0-3	23-25,18-25,19-25	837

Record in 3-set matches:3-3 • Record in 4-set matches:1-3 • Record in 5-set matches:3-2

ARKANSAS®

VOLLEYBALL

RADIO/TV ROSTER



1 CHANELL CLARK-BIBBS
SR | MB | HOUSTON, TEXAS



2 BREANA JONES
JR | MB | PEACHTREE CITY, GA



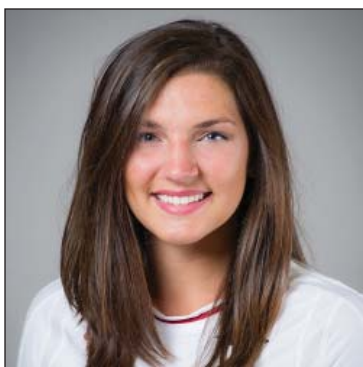
3 DANIELLE HARBIN
JR | MB/OH | MOBILE, ALA.



6 FERNANDA GUITRON
FR | OPP | GUADALAJARA, MEXICO



8 BAILEE HANKENSON
SO | S | DECATUR, IND.



9 LIZ FORTADO
SR | OPP | FLOWER MOUND, TEXAS



10 MONICA BOLLINGER
SR | L/DS | ST. LOUIS, MO.



11 KIMI DAVIS
FR | L/DS | ROGERS, ARK.



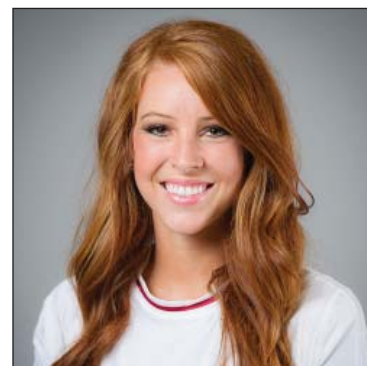
12 OKIANA VALLE
FR | L/DS | BARCELONETA, PUR



13 BLAKELEE DUNAGIN
SO | MB | ROGERS, ARK.



14 ADRIEN WOHLSCHLAEGER
JR | S | CONROE, TEXAS



15 SAVANNAH VOELZKE
JR | OH | LONGVIEW, TEXAS



17 KORI ORTIZ
SO | L/DS | SOUTHLAKE, TEXAS



18 BARBARA DAPIC
JR | OH | SPLIT, CROATIA



19 ANA SOFIA JUSINO
JR | MB | TOA BAJA, PUR



21 PILAR VICTORIA
JR | OH | CAGUAS, PUR