

# RAZORBACK Softball

## 2016 SCHEDULE/RESULTS

OVERALL: 13-16 | SEC: 0-3 | H: 6-5 | A: 0-6 | N: 7-5

DATE	OPPONENT	TIME/RESULT
F11	at Texas! [LHN]	L, 1-4
F12	vs North Dakota State! [LHN]	W, 8-4
F13	vs North Dakota State! [LHN]	L, 2-7
F13	at Texas! [LHN]	L, 5-6 (8)
F14	vs North Carolina! [LHN]	L, 0-5
F19	vs New Mexico#	W, 2-1
F19	vs George Washington#	W, 8-0 (5)
F20	vs Binghamton#	W, 12-5
F20	vs Army West Point#	L, 4-5
F21	vs Central Michigan#	W, 12-4 (5)
F27	UMKC% [SECN+]	L, 4-9
F27	Drake% [SECN+]	W, 13-4 (5)
F28	Drake%	L, 2-9
F28	UMKC%	W, 7-6
M2	Oklahoma State [SECN+]	L, 7-10
M4	Buffalo^ [SECN+]	W, 15-14
M4	Northern Iowa^ [SECN+]	L, 6-8
M5	Wright State^	W, 6-2
M5	Northern Iowa^	W, 4-3
M6	Wright State^ [SECN+]	W, 1-0
M11	at #16 Tennessee*	L, 4-18 (5)
M12	at #16 Tennessee*	L, 2-10 (5)
M12	at #16 Tennessee* [SECN]	L, 1-3
M16	Tulsa [SECN+]	L, 3-4
M18	vs New Mexico&	W, 4-3 (8)
M18	vs UNLV&	L, 4-11
M19	vs #23 Nebraska&	W, 11-10
M19	at Cal State Fullerton&	L, 1-8
M20	vs Grand Canyon&	L, 2-6
M25	#15/12 Kentucky* [SECN+]	12 p.m.
M26	#15/12 Kentucky* [SECN]	12 p.m.
M27	#15/12 Kentucky* [SECN+]	1 p.m.
M29	Missouri State [SECN+]	5 p.m.
A1	at #8/4 Texas A&M* [SECN+]	6:30 p.m.
A2	at #8/4 Texas A&M* [SECN]	5 p.m.
A3	at #8/4 Texas A&M* [SECN]	3:30 p.m.
A6	at Southeast Missouri (DH)	2:30 p.m.
A8	South Carolina* [SECN+]	6 p.m.
A9	South Carolina* [SECN+]	1 p.m.
A10	South Carolina* [SECN+]	1 p.m.
A12	at Tulsa [CST]	5 p.m.
A15	#3 Auburn* [SECN+]	6 p.m.
A16	#3 Auburn* [SECN+]	1 p.m.
A17	#3 Auburn* [SECN+]	1 p.m.
A20	#13/14 Oklahoma [SECN]	6 p.m.
A22	at Ole Miss* [SECN+]	6 p.m.
A23	at Ole Miss* [SECN]	7 p.m.
A24	at Ole Miss* [SECN+]	1 p.m.
A26	at Oklahoma State	6:30 p.m.
A29	#7/6 LSU* [SECN+]	6 p.m.
A30	#7/6 LSU* [ESPNU]	6 p.m.
M1	#7/6 LSU* [SECN+]	1 p.m.
M6	at #1 Florida* [SECN+]	5 p.m.
M7	at #1 Florida* [SECN+]	12 p.m.
M8	at #1 Florida* [SECN+]	12 p.m.

! Texas Classic | #Mary Nutter Collegiate Classic  
% Razorback Invitational | ^ Woo Pig Classic  
& Easton Tournament | \* SEC Game

All home games played at Bogle Park (1,200)  
All times central & subject to change

## ARKANSAS®

### UP NEXT

vs #15/12 KENTUCKY  
March 25-27, 2016  
Bogle Park (Fayetteville, Ark.)

### NEXT THREE OPPONENTS



#### #15/12 KENTUCKY WILDCATS

Record: 26-4, 5-1 SEC  
Series: Arkansas, 30-19  
Last Meeting: W, 8-0 (4/20/14)



#### #8/4 TEXAS A&M AGGIES

Record: 27-3, 2-1 SEC  
Series: Texas A&M, 12-0  
Last Meeting: L, 7-11 (3/30/14)



#### SOUTHEAST MISSOURI REDHAWKS

Record: 8-13  
Series: Arkansas, 3-1  
Last Meeting: L, 3-4 (4/29/15)

### BROADCAST INFORMATION

TV: SEC Network (3/26 vs UK)  
Web: SEC Network+/WatchESPN  
Live Stats: ArkansasRazorbacks.com



### WHERE CAN I FIND...

Quick Facts/Roster	2
Milestone Watch	3
What Happens When...	4
The SEC/National Rankings	5
Starters by Position	6
Overall/SEC Statistics	7-8
Box Scores	9-16
TV/Headshot Roster	13



### RECORD WATCH

With her three-run shot in the fourth inning against No. 23 Nebraska (March 19), freshman Ashley Diaz hit her 10th home run of the year and became the eighth Razorback and second freshman in program history (Devon Wallace, 2012) to reach double digits in a single season. Diaz enters the Kentucky series five homers shy of the program's single-season record.

1. Jessica Bachkora (2010)	15
Devon Wallace (2012)	15
3. Sandra Smith (2014)	14
4. Miranda Dixon (2008)	13
Devon Wallace (2013)	13
6. Miranda Dixon (2010)	12
Devon Wallace (2014)	12
8. Miranda Dixon (2009)	11
9. Samantha Buckner (2008)	10
Whitney Cloer (2009)	10
Clarisa Navarro (2012)	10
Ashley Diaz (2016)	10

### ALL-TIME SERIES: KENTUCKY

Entering the weekend series, Arkansas and Kentucky have played 49 times with the Razorbacks owning a 30-19 advantage in the all-time series. Arkansas has won 16 of 24 games played in Fayetteville. The two teams have split the eight games played at Bogle Park.

### RANKED WIN VS. NEBRASKA

With a 11-10 win over No. 23 Nebraska (March 19) at the Easton Tournament in Fullerton, Calif., the program tallied its first victory over a ranked non-conference team since 2012. The triumph also marked the 20th career victory for junior Grace Moll.

### MOLL Ks THE LOBOS

In a win over New Mexico (March 18), junior Grace Moll tied her career high of nine strikeouts at the Easton Tournament in Fullerton. She first set the mark earlier this year, also against the Lobos at the Mary Nutter Classic.

### TRIO OF HOMERS

For the sixth time this season, Arkansas hit three home runs in a game during its 11-10 win over No. 23 Nebraska

(March 18). The trio of home runs against the Huskers featured Rachel Box, Ashley Diaz and Shelby Hiers. Diaz has been involved in five of the six three-HR games.

### MANUFACTURING RUNS

Entering the team's second week of SEC play, junior Parker Pocklington leads the league with nine sacrifice bunts while freshman Ashley Diaz is tops among league players with four sac flies.

### CANFIELD TO REDSHIRT

Senior Stephanie Canfield will miss the remainder of the 2016 season. Eligible for a medical redshirt, she will maintain her stats through the first 15 games of the season and is set to return next year with 191 career hits. Canfield last played March 2 against Oklahoma State.

### NEAR NO-NO

Junior Grace Moll took a no-hitter into the seventh inning of Arkansas' March 6 win over Wright State. She struck out six and gave up just a lone single to right field with one out in the seventh. Moll was bidding for her second career no-hitter (2/21/14 vs Eastern Michigan).



2016 TEAM QUICK FACTS

TEAM INFORMATION

2015 Overall Record	16-37
2015 SEC Record	1-23
SEC Finish	13th
Home Record	1-17
Away Record	4-14
Neutral Record	11-6
Letterwinners Returning/Lost	17/9
Starters Returning/Lost	12/4
Newcomers	7

COACHING STAFF

Head Coach	Courtney Deifel (First Season)
Record at Arkansas	First Season
Career Record	27-27 (.500)
Assistant Coach	Boo De Oliveira (First Season)
Assistant Coach	Yolanda McRae (First Season)
Graduate Assistant	Shannel Blackshear (Second Season)
Volunteer Assistant	Jordan McElroy (First Season)
Director of Operations	Paige Williams (First Season)

TEAM HISTORY

First Year of Program	1997
All-Time Record	536-650-1 (.453)
All-Time SEC Record	179-354 (.336)
SEC Championships/Last	None
NCAA Appearances/Last	Six/2013

UNIVERSITY INFORMATION

Location	Fayetteville, Ark.
Founded	March 27, 1871
Enrollment	26,300
Nickname	Razorbacks
School Colors	Cardinal and White
Affiliation	NCAA Division I
Conference	Southeastern (SEC)
Chancellor	Joe Steinmetz
Vice Chancellor/Director of Athletics	Jeff Long
Faculty Athletic Representative	Sharon Hunt
University Website	www.uark.edu
Athletics Website	ArkansasRazorbacks.com

COMMUNICATIONS

Asst AD for Communications	Patrick Pierson
Associate Director	David Beall
Associate Director	Jeri Thorpe
Assistant Director	Joy Ekema-Agbaw
Assistant Director (SB Contact)	Zach Lawson
Email	zlawson@uark.edu
Office#	479-575-7089
Cell#	479-595-2358
Assistant Director	John Thomas
Intern	Bryan Fyalkowski
Intern	Brandon Langlois
Digital Strategist	Taylor McGillis
Content Strategist	Roland Liwag
Graphic Designer	Christine Zambetti
Secretary	Mary Lynn Gibson

Mailing Address  
Razorback Communications  
PO Box 7777  
Fayetteville, AR 72702-7777

Overnight Address  
Razorback Communications  
350 N. Razorback Road  
Fayetteville, AR 72701



#	NAME	POSITION	CLASS/EXP	B/T	HEIGHT	HOMETOWN/PREVIOUS
00	Carley Haizlip	OF	Fr./HS	L/R	5-8	Midlothian, Texas/Midlothian
1	Danielle Brochu	RHP	Fr./HS	R/R	5-9	Lucas, Texas/Lovejoy HS
2	Jessie Mullen	INF	Soph./1L	R/R	5-9	Niceville, Fla./Niceville
3	Parker Pocklington	INF	Jr./2L	R/R	5-4	Centralia, Wash./Centralia
4	Marley Harmon	C	Jr./1L	R/R	5-10	Kimberling City, Mo./Western Kentucky
5	Peyton Carter	RHP	Fr./HS	R/R	5-8	Paragould, Ark./Paragould
6	Tori Cooper	OF	Soph./1L	L/L	5-5	Nederland, Texas/Nederland
8	Autumn Russell	INF/OF	Soph./1L	R/R	5-7	Greenbrier, Ark./Greenbrier
10	Haydi Bugarin	INF	Fr./HS	R/R	5-3	San Antonio, Texas/East Central HS
11	Betina Beringhele	INF	Soph./TR	R/R	5-4	Culver City, Calif./Golden West College
12	Loren Krzysko	INF/OF	R-Soph./1L	R/R	5-3	Barrington, Ill./Barrington
13	Grace Moll	RHP	Jr./2L	R/R	5-9	Shelbyville, Ill./Shelbyville
14	Stephanie Canfield	OF	Sr./3L	L/R	5-9	St. Joseph, Ill./Ogden HS
15	Rachel Box	INF	R-Soph./1L	R/R	5-6	White Hall, Ark./White Hall
17	Madison Yannetti	INF	Soph./1L	R/R	5-8	Mesquite, Texas/Poteet HS
18	Ashley Diaz	INF	Fr./HS	R/R	5-10	South El Monte, Calif./South El Monte
19	Lauren Archuleta	C/INF	R-Fr./RS	R/R	5-8	Rockwall, Texas/Rockwall
21	Kylie Smith	OF	R-Soph./1L	L/L	5-4	Manhattan, Kan./Manhattan
22	Claire Clark	RHP/OF	Sr./3L	R/R	5-11	Wynne, Ark./Wynne
23	Morgan Felts	OF	Fr./HS	R/R	5-8	Conway, Ark./Conway
24	Shelby Hiers	C/OF	Jr./2L	R/R	5-7	Quitman, Ga./Brooks County HS
26	Sydney Wright	RHP	Jr./2L	R/R	5-8	Jacksonville, Fla./Bishop Snyder HS
29	Nicole Schroeder	INF	R-Jr./2L	R/R	5-10	Yorba Linda, Calif./Esperanza HS
32	Allison Stewart	RHP	Soph./1L	R/R	5-11	Olathe, Kan./East HS
44	Ileana Aleman	INF	R-Fr./RS	R/R	5-3	Pharr, Texas/PSJA North HS

COACHING/SUPPORT STAFF

Head Coach	Courtney Deifel (First Season)
Assistant Coach	Boo De Oliveira (First Season)
Assistant Coach	Yolanda McRae (First Season)
Graduate Assistant	Shannel Blackshear (Second Season)
Volunteer Assistant	Jordan McElroy (First Season)
Director of Operations	Paige Williams (First Season)
Student Manager	Katie Magness
Academic Counselor	Jacob Hoops
Athletic Trainer	Andrew Kreis
Strength and Conditioning	Todd Barbour



ROSTER BREAKDOWN

BY CLASS | Seniors - 2 (Canfield, Clark); Juniors - 6 (Harmon, Hiers, Moll, Pocklington, Schroeder, Wright); Sophomores - 9 (Beringhele, Box, Cooper, Krzysko, Mullen, Russell, Smith, Stewart, Yannetti); Freshman - 8 (Aleman, Archuleta, Brochu, Bugarin, Carter, Diaz, Felts, Haizlip).

BY STATE | Arkansas - 5 (Box, Carter, Clark, Felts, Russell); California - 3 (Beringhele, Diaz, Schroeder); Florida - 2 (Mullen, Wright); Georgia - 1 (Hiers); Illinois - 3 (Canfield, Krzysko, Moll); Kansas - 2 (Smith, Stewart); Missouri - 1 (Harmon); Texas - 7 (Aleman, Archuleta, Brochu, Bugarin, Cooper, Haizlip, Yannetti); Washington - 1 (Pocklington).

PRONUNCIATION GUIDE

Carley Haizlip	HAZE-lip
Danielle Brochu	bro-shoe
Haydi Bugarin	Heidi BOO-gair-in
Betina Beringhele	BEAR-ing-hale
Loren Krzysko	Crisco
Grace Moll	Maul
Ashley Diaz	DEE-as
Shelby Hiers	Hires
Ileana Aleman	ILL-ee-ana ALL-eh-mon
Courtney Deifel	DIE-ful

**MILESTONE WATCH**

<b>Stephanie Canfield   SR   OF</b>			
Looking for: 100 runs (career)	Current total: 96	Need: 4	
Looking for: 200 hits (career)	Current total: 191	Need: 9	
Looking for: 100 RBI (career)	Current total: 77	Need: 23	
<b>Claire Clark   SR   P/OF</b>			
Looking for: 50 hits (career)	Current total: 48	Need: 2	
Looking for: 50 runs (career)	Current total: 41	Need: 9	
<b>Shelby Hiers   JR   C/OF</b>			
Looking for: 50 runs (career)	Current total: 46	Need: 4	
Looking for: 50 hits (career)	Current total: 44	Need: 6	
<b>Grace Moll   JR   RHP</b>			
Looking for: 22 wins (#10 ARK)	Current total: 20	Need: 2	
Looking for: 200 strikeouts (career)	Current total: 191	Need: 9	
<b>Parker Pocklington   JR   INF</b>			
Looking for: 50 hits (career)	Current total: 46	Need: 4	
Looking for: 50 runs (career)	Current total: 44	Need: 6	
<b>Nicole Schroeder   JR   INF</b>			
Looking for: 20 home runs (#8 ARK)	Current total: 19	Need: 1	
Looking for: 56 walks (#8 ARK)	Current total: 55	Need: 1	

**OFFENSIVE FIREWORKS**

Arkansas scored a season-high 15 runs behind another season high of 20 hits in the team's back-and-forth win over Buffalo (March 4). The Razorbacks have scored seven or more runs in 10 games (9-1) this year including five games with at least 10 runs.

**HERE COMES A BIG INNING**

The Razorbacks' offense has generated four or more runs in nine innings this year. Three of those innings came in the team's 15-14 win over Buffalo (March 4). For the fourth time, Arkansas scored five runs in one inning during the win over the Bulls.

**MULTI-HIT GAMES FOR CANFIELD**

With her three-hit game against Oklahoma State (March 2), senior Stephanie Canfield recorded the 57th multi-hit performance of her career. It was her 12th career game with three or more hits. Canfield enters the week with 191 career hits, good for seventh in program history.

**WEEKEND WOW**

Freshman Ashley Diaz hit .900 (9-for-10) with two home runs and eight RBI during the Razorback Invitational (Feb. 27-28). With the standout performance, she added more than 140 points to her batting average.

**BREAK OUT THE BATS**

Arkansas scored 38 runs during the Mary Nutter Collegiate Classic including two games with a then-season high of 12 runs against Binghamton (Feb. 20) and Central Michigan (Feb. 21). The Razorbacks smacked 11 home runs during the weekend; all 11 came over the final four games.

**SCHROEDER INTO THE TOP 10**

With a solo shot in the top of the seventh against Army West Point (Feb. 20), redshirt junior Nicole Schroeder moved in to a tie for 10th place on the program's all-time list with her 17th career home run. She currently has 19 career home runs, good for ninth in Arkansas history.

**CALIFORNIA LOVE**

Playing back in their home state, California natives Ashley Diaz (South El Monte) and Nicole Schroeder (Yorba Linda) combined for five home runs, seven runs and 15 RBI during the Mary Nutter Collegiate Classic played at the Big League Dreams Complex in Cathedral City.

**GRAND FINALE**

With bases loaded and two outs in the bottom of the seventh inning, Shelby Hiers launched her first career grand slam to secure an 8-4 win over North Dakota State (Feb. 12) during the Texas Classic. On that night's #SCTop10, it was the No. 3 play of the day.

**SHE'S GOING THREE**

With a triple against George Washington (Feb. 19), senior Stephanie Canfield became the program's all-time leader in triples. It was her 13th career triple, breaking the record of 12 set by Dayna Huckabee (2005-08).

**LATE GAME TREND**

During its opening weekend, Arkansas scored 13 of its 16 runs after the fifth inning. In their come-from-behind win over North Dakota State (Feb. 12), the Razorbacks scored seven runs between the sixth and seventh frames.

**SURE TO BE TESTED**

With the release of their 2016 schedule, the Razorbacks are set to play 13 teams that advanced to last year's NCAA Tournament. More than half of Arkansas' scheduled games (29 of 56) are against NCAA teams. In conference play, seven of Arkansas' eight series will be played against tournament teams with four (Auburn, Florida, LSU and Tennessee) that reached the Women's College World Series.

**LEAVING HER MARK**

In addition to her chase of Arkansas' career hits mark (see *graph page 1*), Stephanie Canfield began her senior year ranked in the program's all-time top 10 in five categories: second in batting average (.349) and triples (10), fourth in on-base percentage (.396), seventh in slugging percentage (.471) and ninth in runs scored (83).

**MAKING THE BEST EVEN BETTER**

Arkansas' home facility, Bogle Park, got even better during the offseason with the installation of the fourth-largest videoboard display in college softball. The display features a 13HD pixel layout and measures approximately 14.5 feet by 43 feet wide.

**WHO'S BACK?**

The Razorbacks return nine positions players that started at least 20 games last year along including its senior duo of Stephanie Canfield and Claire Clark. All five arms on the team's pitching staff also returns for the 2016 season.

**MULTIPLE HIT GAMES**

Name	2	3	4	5+	Total
18 Ashley Diaz	10	2	-	-	12
14 Stephanie Canfield	6	2	-	-	8
15 Rachel Box	4	2	-	-	6
24 Shelby Hiers	4	1	-	-	5
8 Autumn Russell	3	1	1	-	5
29 Nicole Schroeder	4	1	-	-	5
19 Lauren Archuleta	3	1	-	-	4
6 Tori Cooper	2	1	-	-	3
17 Madison Yannetti	2	-	-	-	2
12 Loren Krzysko	1	-	-	-	1
22 Claire Clark	1	-	-	-	1
TEAM	40	11	1	0	52

CAREER > Canfield - 57; Schroeder - 14; Diaz - 12; Hiers - 8; Pocklington - 7; Russell - 9; Clark - 6; Yannetti - 5; Cooper - 5; Archuleta - 4; Box - 6; Krzysko - 2; Mullen - 2; Meinen - 1.

**MULTIPLE RBI GAMES**

Name	2	3	4	5+	Total
18 Ashley Diaz	7	4	-	-	11
29 Nicole Schroeder	5	-	1	-	6
24 Shelby Hiers	4	-	1	-	5
17 Madison Yannetti	2	2	-	-	4
15 Rachel Box	4	-	-	-	4
19 Lauren Archuleta	3	-	-	-	3
6 Tori Cooper	1	1	-	-	2
8 Autumn Russell	-	-	1	-	1
22 Claire Clark	1	-	-	-	1
14 Stephanie Canfield	1	-	-	-	1
TEAM	28	7	3	0	38

CAREER > Canfield - 15; Schroeder - 15; Diaz - 11; Clark - 9; Pocklington - 9; Hiers - 9; Yannetti - 5; Archuleta - 3; Wright - 3; Box - 5; Cooper - 3; Krzysko - 2; Mullen - 1; Russell - 1.

**HITTING STREAKS**

	Longest	Current
18 Ashley Diaz	18	-
14 Stephanie Canfield	13	1
24 Shelby Hiers	9	1
8 Autumn Russell	6	-
22 Claire Clark	5	-
17 Madison Yannetti	5	1
15 Rachel Box	4	4
3 Parker Pocklington	4	-
29 Nicole Schroeder	3	-
19 Lauren Archuleta	3	-
6 Tori Cooper	3	-
2 Jessie Mullen	3	-
10 Haydi Bugarin	2	-
0 Carley Haizlip	2	2
12 Loren Krzysko	1	-

**REACHED BASE STREAKS**

	Longest	Current
18 Ashley Diaz	18	1
14 Stephanie Canfield	13	1
24 Shelby Hiers	11	6
15 Rachel Box	8	4
8 Autumn Russell	7	-
6 Tori Cooper	6	-
29 Nicole Schroeder	6	1
22 Claire Clark	5	-
17 Madison Yannetti	5	1
3 Parker Pocklington	4	1
19 Lauren Archuleta	4	4
12 Loren Krzysko	3	-
2 Jessie Mullen	3	-
0 Carley Haizlip	2	2
10 Haydi Bugarin	2	-



## 4 | 2016 ARKANSAS SOFTBALL GAME NOTES

### WHAT HAPPENS WHEN...

<b>OVERALL</b>	13-16
SEC	0-3
HOME	6-5
AWAY	0-6
NEUTRAL	7-5
VS RANKED OPPONENTS	1-3

### GAME LENGTH

FIVE INNINGS	3-2
SIX INNINGS	0-0
SEVEN INNINGS	9-13
EXTRA INNINGS	1-1

### SITUATION

DAY GAME (BEFORE 6PM)	13-13
NIGHT GAME (6PM OR LATER)	0-3
ARKANSAS SCORES FIRST	4-5
OPPONENT SCORES FIRST	9-11
ARKANSAS SCORES IN FIRST INN.	5-5
OPPONENT SCORES IN FIRST INN.	8-6
VS RHP	11-14
VS LHP	2-2
ONE-RUN GAME	7-3
TWO-RUN GAME	0-2
5+ RUN GAME	4-8
LEADING AFTER SIX INNINGS	6-0
TRAILING AFTER SIX INNINGS	1-12
TIED AFTER SIX INNINGS	3-2

### STATISTICS

SCORES 0-2 RUNS	2-8
SCORES 3-5 RUNS	2-6
SCORES 6-9 RUNS	4-2
SCORES 10+ RUNS	5-0
OPP. SCORES 0-2 RUNS	4-0
OPP. SCORES 3-5 RUNS	6-5
OPP. SCORES 6-9 RUNS	1-7
OPP. SCORES 10+ RUNS	2-4
MORE HITS THAN OPPONENT	8-3
FEWER HITS THAN OPPONENT	2-10
HITS ARE TIED	3-3
MADE NO ERRORS	6-4
MADE ONE ERROR	3-2
MADE 2+ ERRORS	4-10

### BY DAY

SUNDAY	3-3
MONDAY	0-0
TUESDAY	0-0
WEDNESDAY	0-2
THURSDAY	0-1
FRIDAY	5-3
SATURDAY	5-7

### BY MONTH

FEBRUARY	7-7
MARCH	6-9
APRIL	0-0
MAY	0-0

### WELCOME TO FAYETTEVILLE

Arkansas welcomes seven newcomers to this year's roster including six freshmen and one sophomore transfer. The newest Razorbacks are Betina Beringhele, Danielle Brochu, Haydi Bugarin, Peyton Carter, Ashley Diaz, Morgan Felts and Carley Haizlip.

### UNDER NEW LEADERSHIP

When the Razorbacks take the field Feb. 11, it will be under the direction of first-year head coach Courtney Deifel who orchestrated a 16-game turnaround at Maryland last year. She will be joined by assistants Boo De Oliveira and Yolanda McRae. De Oliveira previously served as the pitching coach at Arizona State while McRae was part of Deifel's staff at Maryland.



**SEC STANDINGS/SCHEDULE**  
(as of March 23)

Team	SEC	Overall	Streak
#1 Florida	5-1	26-1	L1
#15 Kentucky	5-1	22-3	W6
#8 Texas A&M	2-1	23-2	W5
#16 Missouri	2-1	15-4	L1
#3 Auburn	3-3	23-3	W1
#7 LSU	3-3	23-3	W1
#17 Tennessee	3-3	20-5	W10
South Carolina	2-4	19-5	L3
Ole Miss	2-4	21-5	W1
#6 Alabama	1-2	22-4	L1
#12 Georgia	1-2	23-3	W3
Mississippi State	1-2	18-6	L3
<b>ARKANSAS</b>	<b>0-3</b>	<b>11-12</b>	<b>L3</b>

(Ranking in USA Today/NFCA Top 25 poll)



**HOME ATTENDANCE TOP 10**

**OVERALL**

#	Draw	Opponent	Date
1	1,234	#4 Alabama	5-2-2015
2	1,167*	Kentucky	5-6-2001
3	1,115	#4 Florida	3-24-2012
4	1,106	#7 Florida	5-3-2014
5	1,094	#4 Alabama	4-28-2012
6	1,078	South Carolina	4-17-2011
7	1,055	South Carolina	4-16-2011
8	1,023*	#5 Tennessee	4-1-2006
9	1,020	LSU	4-11-2009
10	1,016	#13 LSU	4-6-2013

\* - at Lady Back Yard

**AT BOGLE PARK (2009- pres.)**

#	Draw	Opponent	Date
1	1,234	#4 Alabama	5-2-2015
2	1,115	#4 Florida	3-24-2012
3	1,106	#7 Florida	5-3-2014
4	1,094	#4 Alabama	4-28-2012
5	1,078	South Carolina	4-17-2011
6	1,055	South Carolina	4-16-2011
7	1,020	LSU	4-11-2009
8	1,016	#13 LSU	4-6-2013
9	1,011	Auburn	5-5-2013
10	1,004	#4 Alabama	5-3-2015

**HOME OPENER**

#	Draw	Opponent	Date
1	961	Drake	2-27-2016
2	833*	Oklahoma	2-2-2001
3	715	#19 La.-Lafayette	3-5-2010
4	604	#24 Auburn	3-11-2011
5	518*	Oregon	2-23-2002
6	510	Ball State	2-27-2009
7	401	Butler	2-13-2014
8	373	Tennessee State	2-24-2012
9	372	Tulsa	3-10-2015
10	358*	Miss. Valley State	2-28-2004

\* - at Lady Back Yard

**USA TODAY/NFCA TOP 25**  
(Week 6 - March 22)

#	Team	Record	LW
1	Florida^ (32)	30-1	1
2	Michigan	21-2	2
3	Auburn^	26-4	3
4	Oregon	22-4	7
5	La.-Lafayette	22-2	5
6	Alabama	26-5	6
7	LSU^	25-5	4
8	Texas A&M^	27-3	11
9	James Madison	22-2	9
10	Washington	19-5	8
11	Florida State	23-3	10
12	Georgia	25-4	12
13	Oklahoma^	21-6	13
14	UCLA	18-8	14
15	Kentucky^	25-4	15
16	Missouri	20-4	17
17	Tennessee^	21-8	16
18	Arizona	20-9	18
19	Notre Dame	22-3	19
20	Baylor	23-6	20
21	Arizona State	22-9	21
22	Minnesota	19-2	22
23	Florida Atlantic	26-5	RV
24	Nebraska^	18-9	23
25	Fresno State	18-8-1	24

Receiving Votes: Oregon State, USC Upstate, USF, Tulsa^, Ohio State, UCF, Texas^, Mississippi State^, BYU, South Alabama, North Dakota State^, Ole Miss^, Utah, San Diego State.

**ESPN.COM/USA SOFTBALL TOP 25**  
(Week 6 - March 22)

#	Team	Record	LW
1	Florida^ (18)	30-1	1
2	Michigan (1)	21-2	2
3	Auburn^	26-4	3
4	Texas A&M^	27-3	10
5	La.-Lafayette	22-2	5
6	LSU^	25-5	4
7	Oregon	22-4	9
8	Alabama	26-5	6
9	James Madison	22-2	8
10	Washington	19-5	7
11	Florida State	23-3	11
12	Georgia	25-4	12
12	Kentucky^	25-4	13
14	Oklahoma^	21-6	14
15	Missouri	20-4	15
16	UCLA	18-8	17
17	Notre Dame	22-3	19
18	Arizona	20-9	18
19	Tennessee^	21-8	16
20	Baylor	23-6	20
21	Arizona State	22-9	21
22	Minnesota	19-9	22
23	Fresno State	18-8-1	24
24	Oregon State	20-6-1	23
25	Mississippi State	19-8	RV

Receiving Votes: Ohio State, USF, USC Upstate, Ole Miss^, Nebraska^, Tulsa^, Ball State, UT-Arlington, Louisville, North Dakota State^, San Diego State, Cal State Fullerton^, Utah, Florida Atlantic.

^ - 2016 opponent

*Game by Game | Starters by Position*

DATE	OPPONENT	SP	C	1B	2B	3B	SS	LF	CF	RF	DP
February 11	at Texas	Moll	Archuleta	Schroeder	Pocklington	Russell	Yannetti	Krzysko	Canfield	Hiers	Diaz
February 12	vs North Dakota State	Moll	Archuleta	Schroeder	Mullen	Russell	Yannetti	Krzysko	Canfield	Hiers	Diaz
February 13	vs North Dakota State	Carter	Hiers	Schroeder	Pocklington	Russell	Yannetti	Krzysko	Canfield	Cooper	Diaz
February 13	at Texas	Moll	Archuleta	Schroeder	Pocklington	Russell	Yannetti	Krzysko	Canfield	Hiers	Diaz
February 14	vs North Carolina	Moll	Archuleta	Schroeder	Pocklington	Russell	Yannetti	Krzysko	Canfield	Cooper	Diaz
February 19	vs New Mexico	Moll	Archuleta	Schroeder	Mullen	Russell	Yannetti	Clark	Canfield	Hiers	Diaz
February 19	vs George Washington	Clark	Archuleta	Diaz	Pocklington	Russell	Yannetti	Krzysko	Canfield	Carter	Schroeder
February 20	vs Binghamton	Moll	Archuleta	Diaz	Pocklington	Russell	Yannetti	Bugarin	Canfield	Clark	Schroeder
February 20	vs Army West Point	Carter	Archuleta	Diaz	Mullen	Russell	Yannetti	Clark	Canfield	Haizlip	Schroeder
February 21	vs Central Michigan	Clark	Archuleta	Diaz	Pocklington	Russell	Yannetti	Hiers	Canfield	Schroeder	Carter
February 27	UMKC	Moll	Archuleta	Diaz	Pocklington	Russell	Yannetti	Krzysko	Canfield	Clark	Schroeder
February 27	Drake	Clark	Archuleta	Diaz	Pocklington	Russell	Yannetti	Hiers	Canfield	Schroeder	Box
February 28	Drake	Moll	Archuleta	Diaz	Mullen	Russell	Yannetti	Hiers	Canfield	Schroeder	Box
February 28	UMKC	Clark	Archuleta	Diaz	Mullen	Russell	Yannetti	Hiers	Canfield	Schroeder	Box
March 2	Oklahoma State	Moll	Archuleta	Diaz	Pocklington	Russell	Yannetti	Hiers	Canfield	Schroeder	Box
March 4	Buffalo	Moll	Archuleta	Diaz	Mullen	Russell	Yannetti	Hiers	Clark	Schroeder	Box
March 4	Northern Iowa	Moll	Archuleta	Diaz	Pocklington	Russell	Yannetti	Hiers	Clark	Schroeder	Box
March 5	Wright State	Moll	Archuleta	Diaz	Pocklington	Russell	Yannetti	Hiers	Cooper	Schroeder	Box
March 5	Northern Iowa	Moll	Archuleta	Diaz	Pocklington	Russell	Yannetti	Hiers	Cooper	Schroeder	Box
March 6	Wright State	Moll	Archuleta	Schroeder	Pocklington	Russell	Yannetti	Hiers	Krzysko	Cooper	Box
March 11	at #16 Tennessee*	Moll	Archuleta	Diaz	Pocklington	Russell	Yannetti	Hiers	Cooper	Schroeder	Box
March 12	at #16 Tennessee*	Moll	Archuleta	Diaz	Pocklington	Russell	Yannetti	Hiers	Cooper	Schroeder	Box
March 13	at #16 Tennessee*	Moll	Archuleta	Diaz	Mullen	Russell	Yannetti	Hiers	Cooper	Schroeder	Box
March 16	Tulsa	Moll	Archuleta	Diaz	Pocklington	Russell	Yannetti	Hiers	Cooper	Schroeder	Box
March 18	vs New Mexico	Moll	Archuleta	Diaz	Pocklington	Russell	Yannetti	Hiers	Cooper	Schroeder	Box
March 18	vs UNLV	Carter	Archuleta	Diaz	Pocklington	Russell	Yannetti	Hiers	Cooper	Krzysko	Box
March 19	vs #23 Nebraska	Moll	Archuleta	Diaz	Pocklington	Russell	Yannetti	Hiers	Bugarin	Cooper	Box
March 19	at Cal State Fullerton	Moll	Archuleta	Diaz	Pocklington	Russell	Yannetti	Hiers	Bugarin	Cooper	Box
March 20	vs Grand Canyon	Moll	Archuleta	Diaz	Pocklington	Russell	Yannetti	Hiers	Bugarin	Cooper	Box
March 25	#15 Kentucky*										
March 26	#15 Kentucky*										
March 27	#15 Kentucky*										
March 29	Missouri State										
April 1	at Texas A&M*										
April 2	at Texas A&M*										
April 3	at Texas A&M*										
April 6	at Southeast Missouri - G1										
April 6	at Southeast Missouri - G2										
April 8	South Carolina*										
April 9	South Carolina*										
April 10	South Carolina*										
April 12	at Tulsa										
April 15	Auburn*										
April 16	Auburn*										
April 17	Auburn*										
April 20	Oklahoma										
April 22	at Ole Miss*										
April 23	at Ole Miss*										
April 24	at Ole Miss*										
April 26	at Oklahoma State										
April 29	LSU*										
April 30	LSU*										
May 1	LSU*										
May 6	at Florida*										
May 7	at Florida*										
May 8	at Florida*										

## 2016 Softball Statistics (Overall)

Record: 13-16 Home: 6-5 Away: 0-6 Neutral: 7-5 SEC: 0-3

Player	avg	gp-gs	ab	r	h	2b	3b	hr	rbi	tb	slg%	bb	hp	so	gdp	ob%	sf	sh	sb-att	po	a	e	fld%		
18 Ashley Diaz	.424	28-28	85	18	36	2	0	10	32	68	.800	9	0	12	0	.459	4	1	1-1	157	4	6	.964		
15 Rachel Box	.353	23-18	68	8	24	6	0	3	11	39	.574	1	1	13	0	.371	0	0	0-0	0	0	0	.000		
24 Shelby Hiers	.342	28-24	73	19	25	4	0	7	18	50	.685	10	6	9	0	.461	0	0	0-0	15	3	1	.947		
8 Autumn Russell	.290	29-29	100	22	29	2	2	0	10	35	.350	4	3	11	0	.336	0	3	8-8	21	70	4	.958		
6 Tori Cooper	.271	22-14	48	7	13	3	0	3	9	25	.521	4	0	8	0	.327	0	1	0-0	11	1	0	1.000		
19 Lauren Archuleta	.259	29-28	58	13	15	0	0	1	8	18	.310	10	0	19	0	.368	0	1	2-2	122	29	7	.956		
29 Nicole Schroeder	.250	29-25	76	12	19	4	0	6	20	41	.539	14	2	27	1	.376	1	0	0-0	89	2	3	.968		
17 Madison Yannetti	.203	29-29	74	6	15	3	0	1	14	21	.284	10	1	8	0	.299	2	3	0-0	43	67	8	.932		
3 Parker Pocklington	.190	23-22	42	8	8	1	0	2	3	15	.357	5	5	8	0	.346	0	9	0-0	46	42	2	.978		
-----																									
14 Stephanie Canfield	.471	15-15	51	13	24	1	3	0	7	31	.608	3	2	4	0	.518	0	3	2-2	16	0	0	1.000		
0 Carley Haizlip	.286	6-1	7	1	2	0	0	0	0	2	.286	2	0	0	0	.444	0	0	0-0	0	0	0	.000		
22 Claire Clark	.276	11-9	29	5	8	0	0	2	5	14	.483	1	0	6	0	.290	1	1	0-0	7	6	0	1.000		
2 Jessie Mullen	.231	7-7	13	4	3	0	0	0	0	3	.231	1	0	3	0	.286	0	0	0-0	11	18	2	.935		
12 Loren Krzysko	.147	20-9	34	2	5	0	0	0	2	5	.147	6	2	6	0	.310	0	0	1-2	14	0	0	1.000		
10 Haydi Bugarin	.133	20-4	15	5	2	0	0	0	0	2	.133	5	0	6	0	.350	0	0	0-0	6	0	1	.857		
44 Ileana Aleman	.000	3-0	3	0	0	0	0	0	0	0	.000	0	0	1	0	.000	0	0	0-0	0	0	0	.000		
23 Morgan Felts	.000	9-0	0	5	0	0	0	0	0	0	.000	0	0	0	0	.000	0	0	0-1	0	0	0	.000		
1 Danielle Brochu	.000	5-0	0	1	0	0	0	0	0	0	.000	0	0	0	0	.000	0	0	0-0	0	0	0	.000		
11 Betina Beringhele	.000	3-0	0	0	0	0	0	0	0	0	.000	0	0	0	0	.000	0	0	0-0	0	0	0	.000		
21 Kylie Smith	.000	4-0	0	2	0	0	0	0	0	0	.000	0	0	0	0	.000	0	0	0-0	0	0	0	.000		
5 Peyton Carter	.000	3-3	0	0	0	0	0	0	0	0	.000	0	0	0	0	.000	0	0	0-0	2	6	2	.800		
Totals	.294	29	776	151	228	26	5	35	139	369	.476	85	22	141	1	.376	8	22	14-16	562	283	40	.955		
Opponents	.289	29	762	179	220	36	10	15	148	321	.421	154	16	112	4	.414	9	10	46-59	563	218	33	.959		

LOB - Team (201), Opp (214). DPs turned - Team (13), Opp (5). CI - Team (2), Archuleta 2. IBB - Team (1), Schroeder 1, Opp (2). Picked off - Box 1.

## (All games Sorted by Earned run avg)

Player	era	w-l	app	gs	cg	sho	sv	ip	h	r	er	bb	so	2b	3b	hr	b/avg	wp	hp	bk	sfa	sha	
13 Grace Moll	4.53	9-13	24	22	10	1/0	0	128.1	134	103	83	104	88	18	7	6	.263	22	8	0	3	6	
22 Claire Clark	6.12	4-1	14	4	1	0/1	0	34.1	41	36	30	39	17	11	1	4	.304	9	4	0	1	3	
-----																							
5 Peyton Carter	9.21	0-2	14	3	0	0/1	0	24.1	42	38	32	11	7	6	2	4	.372	6	4	0	5	1	
32 Allison Stewart	42.00	0-0	1	0	0	0/0	0	0.1	3	2	2	0	0	1	0	1	.750	0	0	0	0	0	
Totals	5.49	13-16	29	29	11	2/1	0	187.1	220	179	147	154	112	36	10	15	.289	37	16	0	9	10	
Opponents	4.85	16-13	29	29	10	1/0	1	187.2	228	151	130	85	141	26	5	35	.294	13	22	2	8	22	

PB - Team (18), Archuleta 18, Opp (1). Pickoffs - Team (1), Archuleta 1. SBA/ATT - Archuleta (42-54), Moll (24-33), Clark (10-14), Carter (12-12), Hiers (4-4).

## 2016 Softball Statistics (Conference)

Record: 0-3 Home: 0-0 Away: 0-3 SEC: 0-3

Player	avg	gp-gs	ab	r	h	2b	3b	hr	rbi	tb	slg%	bb	hp	so	gdp	ob%	sf	sh	sb-att	po	a	e	fld%		
18 Ashley Diaz	.556	3-3	9	4	5	0	0	3	3	14	1.556	0	0	1	0	.556	0	0	0-0	21	0	2	.913		
6 Tori Cooper	.429	3-3	7	2	3	1	0	0	0	4	.571	1	0	2	0	.500	0	0	0-0	4	0	0	1.000		
15 Rachel Box	.333	3-3	9	1	3	0	0	1	2	6	.667	0	0	1	0	.333	0	0	0-0	0	0	0	.000		
24 Shelby Hiers	.250	3-3	8	0	2	0	0	0	1	2	.250	0	1	2	0	.333	0	0	0-0	0	0	0	.000		
19 Lauren Archuleta	.200	3-3	5	0	1	0	0	0	1	1	.200	1	0	1	0	.333	0	0	0-0	4	5	1	.900		
29 Nicole Schroeder	.143	3-3	7	0	1	0	0	0	0	1	.143	0	0	4	0	.143	0	0	0-0	3	0	0	1.000		
8 Autumn Russell	.000	3-3	8	0	0	0	0	0	0	0	.000	1	0	1	0	.111	0	0	0-0	0	9	1	.900		
17 Madison Yannetti	.000	3-3	5	0	0	0	0	0	0	0	.000	1	0	0	0	.167	0	1	0-0	7	7	0	1.000		
-----																									
3 Parker Pocklington	.000	2-2	4	0	0	0	0	0	0	0	.000	0	0	3	0	.000	0	0	0-0	3	3	1	.857		
2 Jessie Mullen	.000	1-1	2	0	0	0	0	0	0	0	.000	0	0	2	0	.000	0	0	0-0	1	2	0	1.000		
10 Haydi Bugarin	.000	1-0	1	0	0	0	0	0	0	0	.000	0	0	1	0	.000	0	0	0-0	0	0	0	.000		
Totals	.231	3	65	7	15	1	0	4	7	28	.431	4	1	18	0	.286	0	1	0-0	44	30	6	.925		
Opponents	.359	3	64	31	23	3	1	2	27	34	.531	23	6	3	2	.542	3	0	10-13	51	24	1	.987		

LOB - Team (13), Opp (21). DPs turned - Team (2).

## (SEC games only Sorted by Earned run avg)

Player	era	w-l	app	gs	cg	sho	sv	ip	h	r	er	bb	so	2b	3b	hr	b/avg	wp	hp	bk	sfa	sha
13 Grace Moll	7.74	0-3	3	3	1	0/0	0	12.2	17	20	14	18	3	2	1	1	.321	1	4	0	1	0
-----																						
22 Claire Clark	7.00	0-0	2	0	0	0/0	0	1.0	1	3	1	4	0	0	0	1	.333	2	1	0	0	0
5 Peyton Carter	42.00	0-0	1	0	0	0/0	0	1.0	5	8	6	1	0	1	0	0	.625	0	1	0	2	0
Totals	10.02	0-3	3	3	1	0/0	0	14.2	23	31	21	23	3	3	1	2	.359	3	6	0	3	0
Opponents	2.47	3-0	3	3	0	0/0	0	17.0	15	7	6	4	18	1	0	4	.231	0	1	0	0	1

PB - Team (1), Archuleta 1. SBA/ATT - Archuleta (10-13), Moll (6-8), Clark (2-3), Carter (2-2).









Game 13 | Drake 9, Arkansas 2

2016 Arkansas Razorbacks Softball
Drake at Arkansas
Feb 28, 2016 at Fayetteville, Ark. (Bogle Park)

Drake 9 (6-3)

Arkansas 2 (6-7)

Player ab r h rbi bb so po a lob
Wright, Kelsey 2b 5 0 1 1 0 0 4 0 1
Frank, Kennedy ss 2 0 0 0 2 0 1 1 0

Player ab r h rbi bb so po a lob
Stephanie Canfield cf 4 0 1 0 0 0 3 0 0
Autumn Russell 3b 3 1 2 0 0 0 0 1 0

Score by Innings 1 2 3 4 5 6 7 R H E
Drake 0 1 0 0 0 6 2 9 7 0

E - Moll(2). LOB - Drake 7; Arkansas 8. 2B - Finneran, K. (3). HR - Alexander, T. (2). HBP - Pena, Taryn; Russell; Hiers, SH - Jonas, G. (1); Archuleta(1). SF - Newman, N. (1); Diaz(3). SB - Frank, K. (4); Canfield(2); Russell(3). CS - Finneran, K. (1).

Drake ip h r er bb so ab bf np
Newman, Nicole 7.0 7 2 2 2 6 25 31 116

Arkansas ip h r er bb so ab bf np
Grace Moll 5.0 2 4 3 6 3 16 23 100

Win - Newman, N. (5-0). Loss - Moll (3-6). Save - None.
WP - Newman, N. (4); Moll(7). HBP - by Clark (Pena, Taryn); by Newman, N. (Hiers); by Newman, N. (Russell).
Pitches/strides: Newman, N. 116/74; Moll 100/50; Carter 13/7; Clark 38/20.

Umpires - HP: Larry Nagel 1B: Chad Stears 3B: Aaron Eller
Start: 12:30 pm Time: 2:15 Attendance: 546
Weather: 56 degrees, cloudy, 20 mph SSW
Moll faced 3 batters in the 6th.

Game 14 | Arkansas 7, Missouri-Kansas City 6

2016 Arkansas Razorbacks Softball
UMKC at Arkansas
Feb 28, 2016 at Fayetteville, Ark. (Bogle Park)

UMKC 6 (3-7)

Arkansas 7 (7-7)

Player ab r h rbi bb so po a lob avg
Parker, B. cf 3 2 1 0 1 0 2 0 0 .188
Kelley, K. dp 3 1 1 1 1 0 0 1 0 .357

Player ab r h rbi bb so po a lob avg
Stephanie Canfield cf 4 0 0 0 0 0 0 0 1 .447
Autumn Russell 3b 3 1 1 0 0 0 1 5 0 .356

Score by Innings 1 2 3 4 5 6 7 R H E
UMKC 4 0 0 0 0 0 0 6 9 0

E - Hiers(1). DP - Arkansas 1. LOB - UMKC 8; Arkansas 3. 2B - Goodwin, K. (2); Pate, R. (1); Schroeder(1). HR - Diaz(5); Schroeder(5); Archuleta(1). HBP - Byrn, M., SH - Byrn, M. (1). SB - Parker, B. (6); Russell(4).

UMKC ip h r er bb so ab bf np\_era
Pate, R. 0.0 0 0 0 0 0 0 0 - 0.00

Arkansas ip h r er bb so ab bf np\_era
Claire Clark 7.0 9 6 6 5 3 28 35 131 4.09

Win - Clark (4-0). Loss - Kelley, K. (0-4). Save - None.
WP - Clark(5); HBP - by Clark (Byrn, M.). Pitches/strides: Kelley, K. 63/39; Grove, A. 42/27; Clark 131/74.

Umpires - HP: Chad Stears 1B: Aaron Eller 3B: Larry Nagel
Start: 3:25 pm Time: 1:53 Attendance: 546
Weather: 57 degrees, cloudy, 14 mph SSW

Game 15 | Oklahoma State 10, Arkansas 7

2016 Arkansas Razorbacks Softball
Oklahoma State at Arkansas
Mar 02, 2016 at Fayetteville, Ark. (Bogle Park)

Oklahoma State 10 (6-10)

Arkansas 7 (7-8)

Player ab r h rbi bb so po a lob
Shippy, Vanessa 2b 3 1 1 1 1 0 3 2 0
Lynch, Taylor 3b 3 2 2 1 2 0 0 2 1

Player ab r h rbi bb so po a lob
Stephanie Canfield cf 4 1 3 1 0 1 1 0 0
Autumn Russell 3b 4 1 0 0 0 0 3 4 2

Score by Innings 1 2 3 4 5 6 7 R H E
Oklahoma State 0 2 1 3 0 0 4 10 10 2

E - Taylor, D. (1); Cavin, M. (1). LOB - Oklahoma St. 10; Arkansas 7. 2B - Taylor, D. (4); Hiers(3); Cooper(1). HR - Montgomery(4). SF - Shippy, V. (1); O'Donnell, R. (1). SB - Lynch, T. (1).

Oklahoma State ip h r er bb so ab bf np
Needham, Brandt 4.0 5 2 1 2 2 18 20 72

Arkansas ip h r er bb so ab bf np
Grace Moll 5.1 9 6 6 5 3 24 30 108

Win - Freeze, K. (3-4). Loss - Clark (4-1). Save - None.
WP - Needham, B. (1); Moll 2(9). Pitches/strides: Needham, B. 72/41; Freeze, K. 50/35; Moll 108/58; Clark 51/20.

Umpires - HP: Chad Stears 1B: Marvin Eaton 3B: Pat Lyon
Start: 5:00 pm Time: 2:17 Attendance: 337
Weather: 59 degrees, some sun, 18 mph S

Game 16 | Arkansas 15, Buffalo 14

2016 Arkansas Razorbacks Softball
Buffalo at Arkansas
Mar 04, 2016 at Fayetteville, Ark. (Bogle Park)

Buffalo 14 (4-7)

Arkansas 15 (8-8)

Player ab r h rbi bb so po a lob
EARNHARDT, Ashton rf 3 2 0 0 2 0 0 0 0
LALLOS, Danielle lf 3 2 1 1 2 1 2 0 2

Player ab r h rbi bb so po a lob
Autumn Russell 3b 5 2 3 4 0 0 0 0 3 0
Ashley Diaz 1b 5 1 2 3 0 1 9 0 1

Score by Innings 1 2 3 4 5 6 7 R H E
Buffalo 2 1 0 8 0 0 3 14 11 0

E - Diaz(1); Yannetti 2(6); Mullen(2). LOB - Buffalo 8; Arkansas 7. 2B - JEW(2); ROBERTSON(1); Russell(2); Box 2(2); Schroeder 2(3). 3B - Russell(1). HR - WEIMER(3); GAMBONE 2(3); Schroeder(6); Hiers(3). HBP - Hiers. SB - Archuleta(1).

Buffalo ip h r er bb so ab bf np
POWER, Ally 1.2 9 7 7 0 0 14 14 51

Arkansas ip h r er bb so ab bf np
Grace Moll 5.2 3 6 3 5 7 24 29 115

Win - Moll (4-6). Loss - POWER (0-5). Save - None.
WP - LIGHT(1); Clark(6); Moll(10). HBP - by MILLER (Hiers). Pitches/strides: POWER 51/31; LIGHT 28/18; SMITH 33/20; MILLER 21/9; BAKER 11/8; Moll 115/73; Clark 26/14; Carter 8/3; Stewart 15/8.

Umpires -
Start: 3:00 pm Time: 2:41 Attendance:
Clark faced 4 batters in the 4th.
Carter faced 2 batters in the 4th.
POWER faced 2 batters in the 7th.

Game 17 | Northern Iowa 8, Arkansas 6

2016 Arkansas Razorbacks Softball Northern Iowa at Arkansas Mar 04, 2016 at Fayetteville, Ark. (Bogle Park)

Table with 3 columns: Player, ab, r, h, rbi, bb, so, po, a, lob, avg. Rows include players like Krodinger, Brittney 3b and Arkansas players like Autumn Russell 3b.

Score by Innings table with columns 1-9, R, H, E. Shows Northern Iowa leading 8-6.

E - Wnek(6); Buchanan(2); Russell(2); Diaz(2). DP - Arkansas 1. LOB - UNI 9; Arkansas 7. 2B - Buchanan(1); Box(3); Yannetti(2). HR - Lock(2); Bailey(1); Diaz(6); Hiers(4); Cooper(1). HBP - Varriano. SF - Schroeder(1). SB - Nicholson(2). CS - Buchanan(1).

Table with 3 columns: Player, ip, h, r, er, bb, so, ab, bf, np, era. Rows include pitchers like Buchanan, Alyssa and Arkansas players like Grace Moll.

Win - Buchanan (7-2). Loss - Moll (4-7). Save - Ross (1). WP - Moll (2(1)); Carter(3). HBP - by Carter (Varriano). Pitches/strikes: Buchanan 98/59; Lange 9/8; Ross 15/10; Moll 85/49; Clark 38/19; Carter 29/19.

Umpires - HP: Brad Eberhardt 1B: Scott Thomas 3B: Brian Miller Start: 7:40 pm Time: 2:28 Attendance: 350 Weather: 54 degrees, clear, 4 mph SE

Game 18 | Arkansas 6, Wright State 2

2016 Arkansas Razorbacks Softball Wright State at Arkansas Mar 05, 2016 at Fayetteville, Ark. (Bogle Park)

Table with 3 columns: Player, ab, r, h, rbi, bb, so, po, a, lob, avg. Rows include players like SUSOR, Honnah rf and Arkansas players like Autumn Russell 3b.

Score by Innings table with columns 1-9, R, H, E. Shows Arkansas leading 6-2.

E - L. PFEFFER(4). DP - Wright State 1. LOB - Wright State 3; Arkansas 9. 2B - FLOYD(1); Box(4); Schroeder(4). 3B - Russell(2). HR - Pocklington(2). SH - K. PFEFFER(2). SF - Diaz(4).

Table with 3 columns: Player, ip, h, r, er, bb, so, ab, bf, np, era. Rows include pitchers like SHARP, Ashly and Arkansas players like Grace Moll.

Win - Moll (5-7). Loss - SHARP (3-5). Save - None. WP - Moll 2(14). PB - Archuleta(9). Pitches/strikes: SHARP 17/5; RUSSELL 15/7; WEAR 84/45; Moll 104/63.

Umpires - HP: John O'Mella 1B: Brad Eberhardt 3B: Scott Thomas Start: 3:30 pm Time: 2:02 Attendance: Weather: 69 degrees, sunny, 6 mph ENE

Game 19 | Arkansas 4, Northern Iowa 3

2016 Arkansas Razorbacks Softball Northern Iowa at Arkansas Mar 05, 2016 at Fayetteville, Ark. (Bogle Park)

Table with 3 columns: Player, ab, r, h, rbi, bb, so, po, a, lob, avg. Rows include players like Olson, Samantha rf and Arkansas players like Autumn Russell 3b.

Score by Innings table with columns 1-9, R, H, E. Shows Arkansas leading 4-3.

E - Bailey(2); Krodinger,C(3); Krodinger,B(7). DP - Arkansas 1. LOB - UNI 10; Arkansas 10. 2B - Ross(4); Wnek(5); Diaz(2). HR - Hiers(5); Cooper(2). HBP - Russell; Box. SH - Wolfe(2); Yannetti(2). SB - Kinnetz(1); Archuleta(2).

Table with 3 columns: Player, ip, h, r, er, bb, so, ab, bf, np, era. Rows include pitchers like Ross, Chelsea and Arkansas players like Grace Moll.

Win - Moll (6-7). Loss - Ross (5-3). Save - None. WP - Moll 2(16). HBP - by Ross (Russell); by Lange (Box). Pitches/strikes: Ross 84/59; Lange 37/24; Moll 117/65; Carter 19/12.

Umpires - HP: Brian Miller 1B: Troy Kuykendall 3B: Mike See Start: 6:10 pm Time: 2:12 Attendance: 701 Weather: 68 degrees, clear, 8 mph E

Game 20 | Arkansas 1, Wright State 0

2016 Arkansas Razorbacks Softball Wright State at Arkansas Mar 06, 2016 at Fayetteville, Ark. (Bogle Park)

Table with 3 columns: Player, ab, r, h, rbi, bb, so, po, a, lob, avg. Rows include players like SUSOR, Honnah rf and Arkansas players like Autumn Russell 3b.

Score by Innings table with columns 1-9, R, H, E. Shows Arkansas leading 1-0.

Note: 1 out, 2 runners LOB when the game ended.

E - FLOYD(5); DILLOW(4); MAYLE(5); Pocklington(2). LOB - Wright State 4; Arkansas 8. 2B - Box(6). SH - GUNTHER(3); Pocklington(7). SB - Russell(6). CS - Felts(2).

Table with 3 columns: Player, ip, h, r, er, bb, so, ab, bf, np, era. Rows include pitchers like WEAR, Montana and Arkansas players like Grace Moll.

Win - Moll (7-7). Loss - WEAR (2-4). Save - None. WP - Moll(18). PB - Archuleta(11). Pitches/strikes: WEAR 97/60; Moll 95/53.

Umpires - HP: Troy Kuykendall 1B: Scott Thomas 3B: John O'Mella Start: 12:30 pm Time: 1:47 Attendance: 304 Weather: 67 degrees, sunny, 23 mph S





*Game 29 | Grand Canyon 6, Arkansas 2*

**2016 Arkansas Razorbacks Softball  
Grand Canyon vs Arkansas  
Mar 20, 2016 at Fullerton, Calif. (Anderson Field 2)**

**Grand Canyon 6 (23-10)**

**Arkansas 2 (13-16)**

Player	ab	r	h	rbi	bb	so	po	a	lob	avg	Player	ab	r	h	rbi	bb	so	po	a	lob	avg
Smith, Sh ss	3	0	0	0	0	2	3	0		.418	Shelby Hiers lf	4	1	1	0	0	1	0	0	1	.338
Newbury, N 1b	4	1	1	0	1	6	1	0		.377	Autumn Russell 3b	4	0	0	0	2	1	3	4		.279
Wartman, C 2b	2	2	1	0	2	1	2	4	0	.407	Ashley Diaz 1b	0	0	0	0	1	0	2	0	0	.424
Smith, Si 3b	4	2	1	2	0	0	1	1	0	.348	Morgan Felts pr	0	1	0	0	0	0	0	0	0	-
Dowdle, M lf	4	0	0	0	2	0	0	1		.330	Nicole Schroeder 1b	1	0	0	0	2	1	8	0	0	.247
Breland, B rf	2	0	1	0	1	0	0	0	0	.333	Rachel Box dp	4	0	3	1	0	1	0	0	0	.375
Gomez, L cf	3	0	1	0	0	1	0	0	1	.341	Tori Cooper rf	4	0	0	0	0	1	1	0	1	.250
Medina, B dp	2	0	0	0	0	1	0	0	2	.312	Haydi Bugarin cf	3	0	0	0	0	2	2	0	3	.111
Gonzalez, D ph	1	0	0	0	0	1	0	0	0	.283	Madison Yannetti ss	2	0	1	0	1	0	0	2	0	.211
Hill, K c	2	1	0	0	1	0	10	0	1	.351	Betina Berlingheke pr	0	0	0	0	0	0	0	0	0	-
Nowlin, T p	0	0	0	0	0	0	0	0	0	-	Parker Pocklington 2b	1	0	0	0	0	1	1	2	0	.186
Totals	27	6	5	3	4	7	21	9	5		Lauren Archuleta c	1	0	0	0	1	1	6	1	0	.254
											Loren Krzysko ph	1	0	0	0	0	0	0	0	0	.143
											Grace Moll p	0	0	0	0	0	0	0	1	0	-
											Totals	25	2	5	1	5	10	21	9	9	

Score by Innings	1	2	3	4	5	6	7	R	H	E
Grand Canyon	0	0	4	0	0	0	2	6	5	1
Arkansas	2	0	0	0	0	0	0	2	5	2

E - Wartman, C(11); Archuleta(7); Moll(4). LOB - Grand Canyon 5; Arkansas 9. 2B - Box(6). HR - Smith, Si(4). HBP - Pocklington. SH - Smith, Sh(2); Pocklington(9). SB - Wartman, C(4); Breland, B(8).

Grand Canyon	ip	h	r	er	bb	so	ab	bf	np	era	Arkansas	ip	h	r	er	bb	so	ab	bf	np	era
Nowlin, T	7.0	5	2	2	5	10	25	32	143	2.09	Grace Moll	7.0	5	6	3	4	7	27	32	126	4.45

Win - Nowlin, T (10-3). Loss - Moll (9-13). Save - None.  
WP - Nowlin, T 2(10). HBP - by Nowlin, T (Pocklington). PB - Hill, K(2). Pitches/strikes: Nowlin, T 143/86; Moll 126/77.

Umpires - HP: Trina Comerford 1B: Robert Hough 3B: Sue Sawyer  
Start: 10:00 am Time: 2:01 Attendance:  
Weather: 62 degrees, cloudy, calm





**00 CARLEY HAIZLIP**  
FR | OF | 5-8 | L/R  
Midlothian, Texas



**1 DANIELLE BROCHU**  
FR | RHP | 5-9 | R/R  
Lucas, Texas



**2 JESSIE MULLEN**  
SOPH | INF | 5-9 | R/R  
Niceville, Fla.



**3 PARKER POCKLINGTON**  
JR | INF | 5-4 | R/R  
Centralia, Wash.



**4 MARLEY HARMON**  
JR | C | 5-10 | R/R  
Kimberling City, Mo.



**5 PEYTON CARTER**  
FR | RHP | 5-8 | R/R  
Paragould, Ark.



**6 TORI COOPER**  
SOPH | OF | 5-5 | L/L  
Nederland, Texas



**8 AUTUMN RUSSELL**  
SOPH | OF | 5-7 | R/R  
Greenbrier, Ark.



**10 HAYDI BUGARIN**  
FR | INF | 5-3 | R/R  
San Antonio, Texas



**11 BETINA BERINGHELE**  
SOPH | INF | 5-4 | R/R  
Culver City, Calif.



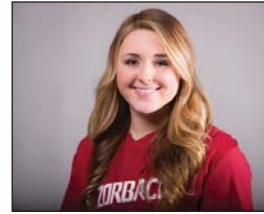
**12 LOREN KRZYSKO**  
R-SOPH | OF | 5-3 | R/R  
Barrington, Ill.



**13 GRACE MOLL**  
JR | RHP | 5-9 | R/R  
Shelbyville, Ill.



**14 STEPHANIE CANFIELD**  
SR | OF | 5-9 | L/L  
St. Joseph, Ill.



**15 RACHEL BOX**  
R-SOPH | INF | 5-6 | R/R  
White Hall, Ark.



**17 MADISON YANNETTI**  
SOPH | INF | 5-8 | R/R  
Mesquite, Texas



**18 ASHLEY DIAZ**  
FR | INF | 5-10 | R/R  
South El Monte, Calif.



**19 LAUREN ARCHULETA**  
R-FR | INF | 5-8 | R/R  
Rockwall, Texas



**21 KYLIE SMITH**  
R-SOPH | OF | 5-4 | L/L  
Manhattan, Kan.



**22 CLAIRE CLARK**  
SR | OF | 5-11 | R/R  
Wynne, Ark.



**23 MORGAN FELTS**  
FR | OF | 5-8 | R/R  
Conway, Ark.



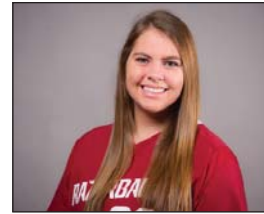
**24 SHELBY HIERS**  
JR | C | 5-7 | R/R  
Quitman, Ga.



**26 SYDNEY WRIGHT**  
JR | RHP | 5-8 | R/R  
Jacksonville, Fla.



**29 NICOLE SCHROEDER**  
R-JR | C | 5-10 | R/R  
Yorba Linda, Calif.



**32 ALLISON STEWART**  
SOPH | RHP | 5-11 | R/R  
Olathe, Kan.



**44 ILEANA ALEMAN**  
R-FR | INF | 5-3 | R/R  
Pharr, Texas



**COURTNEY DEIFEL**  
HEAD COACH  
First Season



**BOO DE OLIVEIRA**  
ASSISTANT COACH  
First Season



**YOLANDA MCRAE**  
ASSISTANT COACH  
First Season