

ARKANSAS[®]

VOLLEYBALL

COMMUNICATIONS CONTACT: ZACH LAWSON | E: zlawson@uark.edu | O: 479/575-7089 | c: 479/595-2358

RESULTS/SCHEDULE

OVERALL: 8-20 / SEC: 6-10
H: 4-7 / A: 3-9 / N: 1-4

AUGUST

26	at #14 Illinois!	L, 3-0
27	vs. Missouri State!	L, 3-0
27	vs. Xavier!	L, 3-1

SEPTEMBER

2	vs. Maryland# [CST]	L, 3-1
2	vs. Chicago State# [CST]	W, 3-1
3	at #4 Kansas# [ESPN3]	L, 3-2
8	at New Mexico%	L, 3-1
9	vs. #1 Nebraska%	L, 3-0
10	vs. Montreal% (exhibition)	W, 3-1
16	Southern Miss^	L, 3-1
16	#25 Kansas State^	L, 3-0
17	UMKC^	W, 3-1
20	at Oral Roberts [CST]	L, 3-0
25	at LSU* [SECN+]	W, 3-0
30	Missouri* [SEC Network]	L, 3-0

OCTOBER

2	at Ole Miss* [SEC Network]	L, 3-2
5	Texas A&M* [ESPNU]	L, 3-0
9	at Missouri* [SECN+]	L, 3-0
14	at #23 Kentucky*	L, 3-0
16	at Tennessee*	L, 3-1
21	Alabama* [SECN+]	L, 3-0
23	Auburn* [SECN+]	L, 3-1
26	Mississippi State* [SEC Network]	W, 3-1
30	Georgia* [SEC Network]	W, 3-2

NOVEMBER

6	at Alabama* [SEC Network]	L, 3-1
9	#24 Kentucky* [SEC Network]	L, 3-0
13	Tennessee* [SEC Network]	W, 3-0
18	at Georgia* [SECN+]	W, 3-1
20	at Mississippi State* [SECN wildcard]	W, 3-2
23	at South Carolina*	6 p.m.
26	#9 Florida* [SECN+]	1 p.m.

DECEMBER

2-3	NCAA 1st/2nd Rounds	TBA
9-10	NCAA Regional Round	TBA
15 & 17	NCAA Championship	TBA

! - Illini Classic | # - Kansas Invitational |
% - Lobo Classic | ^ - Arkansas Invitational |
* - SEC match

All times Central and subject to change
All home matches played at Barnhill Arena (8,500)



NEXT THREE

SEASON ROAD & HOME FINALES

SOUTH CAROLINA GAMECOCKS

RECORD: 18-10, 6-10 SEC
RANK: NR
ALL-TIME SERIES: ARK leads 23-12
LAST MEETING: SC, 3-2 (11/25/15)



FLORIDA GATORS

RECORD: 24-3, 14-2 SEC
RANK: 9
ALL-TIME SERIES: FLA leads 38-3
LAST MEETING: FLA, 3-0 (10/23/15)



RAZORBACK NOTES

ALL-TIME SERIES VS SOUTH CAROLINA

Arkansas leads the overall series with South Carolina, 23-12, but the Gamecocks have won the last two meetings. In matches played in Columbia, the Razorbacks have won nine of 16. Five of the last six meetings have gone at least four sets including four five setters.

LAST TIME OUT

The Razorbacks won seven of the last eight points to erase a 13-9 deficit in the fifth set to rally by Mississippi State. Behind four players with 12 or more kills, Arkansas tallied a season-high 68 kills. The Razorbacks have won three in a row and five of their last seven.

CAREER HIGHS IN STARKVILLE

Arkansas benefited from several career-high marks in the team's five-set win over Mississippi State (Nov. 20). That list includes 56 assists for freshman setter Rachel Rippee, 16 kills by senior Breana Jones and a career-tying 14 kills and 17 digs from Savannah Voelzke.

ZOO FOR HARBIN

With her fourth kill at Mississippi State (Nov. 20), Danielle Harbin became the 23rd player in program history to reach 700 career kills. She finished the match with 20 kills, her seventh 20-kill showing of the season. Harbin ranks third in the SEC and 33rd in the NCAA at 4.23 kills per set.

EVEN DISTRIBUTION

In their win over Georgia (Nov. 18), all five primary attackers had at least 10 kills. Daneille Harbin and Savannah

STATISTICAL BREAKDOWN

ARKANSAS VS SOUTH CAROLINA

.185	Hitting %	.254
11.90	Kills/Set	12.91
11.25	Assists/Set	11.92
13.83	Digs/Set	13.35
2.29	Blocks/Set	2.34
0.92	Aces/Set	1.18

ARKANSAS VS #9 FLORIDA

.185	Hitting %	.337
11.90	Kills/Set	14.31
11.25	Assists/Set	13.60
13.83	Digs/Set	14.38
2.29	Blocks/Set	2.68
0.92	Aces/Set	1.19

Voelzke tallied 14 and 11 kills, respectively, while Barbara Dapic, Breana Jones and Ana Sofia Jusino all registered 10 kills. It was the first time five Razorbacks reached double figures in kills since 2007.

BRING ON THE BLOCK

Arkansas has double-digit blocks in its last four matches and six of its last seven. Overall, the Razorbacks have 12 matches this season with 10.0 or more total team blocks. The Razorbacks enter the final week of the regular season sixth in the SEC at 2.29 blocks per set.

JONES TURNS IT ON

Senior co-captain Breana Jones has seven or more kills in 15 matches this season, 12 of which have come against SEC teams. She has 10 or more kills in seven of Arkansas' last 10 matches. Jones is hitting .338 in SEC play.

CLEAN SWINGING

Senior middle blocker Ana Sofia Jusino matched her season high with 10 kills in the Razorbacks' win at Georgia (Nov. 14). She finished the match with a .714 hitting percentage with 10 kills on 14 swings and no attack errors.

FLOOR DEFENSE VS ALABAMA

Arkansas had four players with 10 or more digs at Alabama (Nov. 6) on its way to 81 digs, an SEC-season high. Okiana Valle had a match-high 29 digs while Adrien Wohlschlaeger tied a career high with 14 digs. The team's season high for digs is 83 from a five-set match at No. 4 Kansas (Sept. 3).

WHAT HAPPENS WHEN...

OVERALL	8-20
SEC	6-10
HOME	4-7
AWAY	3-9
NEUTRAL	1-4
VS RANKED OPPONENTS	0-6

BY SETS

THREE SETS	2-11
FOUR SETS	4-7
FIVE SETS	2-2
WIN FIRST SET	2-1
LOSE FIRST SET	6-19
WIN SECOND SET	7-5
LOSE SECOND SET	1-15
WIN FIRST TWO SETS	2-0
LOSE FIRST TWO SETS	1-13
SPLIT FIRST TWO SETS	5-7

STATISTICAL

MORE KILLS THAN OPPONENT	5-4
FEWER KILLS THAN OPPONENT	2-16
KILLS ARE TIED	1-0
MORE DIGS THAN OPPONENT	7-7
FEWER DIGS THAN OPPONENT	1-13
DIGS ARE TIED	0-0
MORE BLOCKS THAN OPPONENT	6-7
FEWER BLOCKS THAN OPPONENT	2-13
BLOCKS ARE TIED	0-0
MORE ACES THAN OPPONENT	4-1
FEWER ACES THAN OPPONENT	3-16
ACES ARE TIED	1-3
HIGHER HITTING PCT	8-1
LOWER HITTING PCT	0-19
HITTING PCT TIED	0-0

HITTING PERCENTAGE

.400 OR BETTER	0-0
.300-.399	3-0
.200-.299	4-6
.100-.199	1-9
.000-.099	0-5
NEGATIVE	0-0

OPPONENT HITTING PERCENTAGE

.400 OR BETTER	0-1
.300-.399	0-5
.200-.299	3-12
.100-.199	5-2
.000-.099	0-0
NEGATIVE	0-0

BY DAY

TUESDAY	0-1
WEDNESDAY	1-3
THURSDAY	0-1
FRIDAY	2-7
SATURDAY	1-3
SUNDAY	4-5

BY MONTH

AUGUST	0-3
SEPTEMBER	3-8
OCTOBER	2-7
NOVEMBER	3-2
DECEMBER	0-0

STARTERS: MATCH-BY-MATCH

at #14 Illinois
 vs. Missouri State
 vs. Xavier
 vs. Maryland
 vs. Chicago State
 at #4 Kansas
 at New Mexico
 vs. #1 Nebraska
 vs. *Montreal (exhibition)*
 Southern Miss
 #25 Kansas State
 UMKC
 at Oral Roberts
 at LSU*
 Missouri*
 at Ole Miss*
 Texas A&M*
 at Missouri*
 at #23 Kentucky*
 at Tennessee*
 Alabama*
 Auburn*
 Mississippi State*
 Georgia*
 at Alabama*
 #24 Kentucky*
 Tennessee*
 at Georgia*
 at Mississippi State*
 at South Carolina*
 #9 Florida*

Rippee, Jones, Voelzke, Ortiz, Dapic, Jusino, Valle (L)
 Rippee, Jones, Harbin, Voelzke, Dapic, Jusino, Valle (L)
 Jones, Harbin, Wohlschlaeger, Voelzke, Dapic, Jusino, Valle (L)
 Jones, Harbin, Wohlschlaeger, Voelzke, Dapic, Jusino, Valle (L)
 Jones, Harbin, Wohlschlaeger, Voelzke, Dapic, Jusino, Valle (L)
 Jones, Harbin, Wohlschlaeger, Voelzke, Dapic, Jusino, Valle (L)
 Jones, Harbin, Wohlschlaeger, Voelzke, Dapic, Jusino, Valle (L)
 Rippee, Jones, Harbin, Guitron, Voelzke, Jusino, Valle (L)
 Rippee, Jones, Harbin, Guitron, Voelzke, Jusino, Valle (L)
 Rippee, Jones, Harbin, Voelzke, Dapic, Jusino, Valle (L)
 Rippee, Jones, Voelzke, Ortiz, Dapic, Jusino, Valle (L)
 Rippee, Jones, Harbin, Voelzke, Ortiz, Jusino, Valle (L)
 Rippee, Jones, Harbin, Voelzke, Ortiz, Jusino, Valle (L)
 Rippee, Jones, Harbin, Robinson, Voelzke, Jusino, Valle (L)
 Rippee, Jones, Harbin, Voelzke, Ortiz, Jusino, Valle (L)
 Rippee, Jones, Harbin, Robinson, Ortiz, Jusino, Valle (L)
 Rippee, Jones, Harbin, Robinson, Ortiz, Jusino, Valle (L)
 Rippee, Jones, Harbin, Robinson, Ortiz, Jusino, Valle (L)
 Rippee, Jones, Harbin, Robinson, O'Brien, Ortiz, Valle (L)
 Rippee, Jones, Harbin, Robinson, Ortiz, Jusino, Valle (L)
 Rippee, Jones, Harbin, Robinson, Ortiz, Jusino, Valle (L)
 Rippee, Jones, Harbin, Robinson, Wohlschlaeger, Jusino, Valle (L)
 Rippee, Jones, Harbin, Robinson, Wohlschlaeger, Jusino, Valle (L)
 Rippee, Jones, Harbin, Robinson, Wohlschlaeger, Jusino, Valle (L)
 Rippee, Jones, Harbin, Wohlschlaeger, Voelzke, Jusino, Valle (L)
 Rippee, Jones, Harbin, Wohlschlaeger, Voelzke, Jusino, Valle (L)
 Rippee, Jones, Harbin, Wohlschlaeger, Voelzke, Jusino, Valle (L)
 Rippee, Jones, Harbin, Wohlschlaeger, Voelzke, Jusino, Valle (L)

...AND JONES MAKES THREE

With her fourth kill at Alabama (Nov. 6), Breana Jones recorded the 500th kill of her career. She finished the match with seven kill and became the third Razorback to reach the milestone this season along with Danielle Harbin and Barbara Dapic.

HARBIN REWARDED

Senior co-captain Danielle Harbin was named SEC Offensive Player of the Week (Oct. 31) after averaging 5.56 kills per set, 3.33 digs per set and 0.78 blocks per set to go along with two double-double performances. She totaled 50 kills in wins over Mississippi State and Georgia.

THE CLOSER

Senior Barbara Dapic was clutch at the end of sets three and four against Georgia (Oct. 30). She put down the final three kills in third and had the final two kills in the fourth. Dapic finished the match with 12 kills including the 500th of her career.

COMING UP ACES

Arkansas tallied a season-high 10 service aces in its five-set win over Georgia (Oct. 30) including a career-best six aces from Rachel Rippee. The freshman setter was at the line for the final three points of the match including an ace on Arkansas' first match point.

IN THE MIDDLE

Senior middle blockers Breana Jones and Ana Sofia Jusino combined for 20 kills and 12 total blocks against Mississippi State (Oct. 26). In 30 combined swings, the pair committed just one error for a .633 hitting percentage.

RIPPEE TIES CAREER HIGH

Freshman Rachel Rippee tied her career high with 13 digs against Auburn (Oct. 23), matching her effort against No. 4 Kansas (Sept. 3). Rippee leads the Razorbacks with six double-doubles this season.

VALLE CRACKS TOP 20

With her fourth dig vs No. 23 Kentucky (Oct. 14), sophomore libero Okiana Valle moved into the program's top 20 in career digs. She has 12 matches this season with 15 or more digs including seven 20+ efforts. Valle is fourth in the SEC at 4.15 digs per set.

BUILDING BLOCKS

With a season-high eight total blocks at Tennessee (Oct. 16), Ana Sofia Jusino became the 15th player in program history with 300 career blocks. She has 12 matches this season with four or more total blocks.

CAREER HIGH FOR ROBINSON

In her second start, freshman Reagan Robinson put down a career-high nine kills at Missouri (Oct. 9). She replaced her previous best of seven kills off the bench against No. 25 Kansas State (Sept. 16).

IT'S A FIRST

Senior co-captain Danielle Harbin had 22 kills and a career-high 10 digs against Ole Miss (Oct. 2) for the first double-double of her career. She posted a career-high 18 digs against Mississippi State (Oct. 26).

SEASON HIGH FOR DAPIC

Senior Barbara Dapic put down a season-high 14 kills in a five setter at Ole Miss (Oct. 2). In the process, she posted a .409 hitting percentage against the Rebels. Dapic has six matches this year with 10 or more kills.

A GOOD (SEC) START

With a win over LSU (Sept. 25), Arkansas has won its last four SEC openers. Overall, the Razorbacks are 14-9 in SEC openers and improved to 28-18 against LSU.

SEASON-HIGH TEAM EFFICIENCY

Arkansas opened SEC play with a season-best .374 hitting percentage in a road sweep of LSU (Sept. 25). The Razorbacks had a season-low 10 attack errors in the match.





2016 ARKANSAS RAZORBACKS | Front Row (l to r): Reagan Robinson, Pilar Victoria, Kori Ortiz, Bailee Hankenson, Okiana Valle, Rachel Rippee, Adrien Wohlschlaeger. Back Row (l to r): Volunteer Assistant Andy Rynd, Head Athletic Trainer Trish Matysak, Associate Head Coach Jon Newman-Gonchar, Fernanda Güttron, Savannah Voelzke, Breana Jones, Barbara Dapic, Ana Sofia Jusino, Kelly O'Brien, Danielle Harbin, Head Coach Jason Watson, Assistant Coach Sarah Rumely, Student Manager Jonathan Roark, Student Manager Kelley Goldberg.

#	Name	Position	Height	Class/Exp.	Hometown/Previous
1	Rachel Rippee	S	6-0	Fr./HS	Springfield, Mo./Kickapoo HS
2	Breana Jones	MB	6-2	Sr./3L	Peachtree City, Ga./McIntosh HS
3	Danielle Harbin	OH/MB	6-1	Sr./3L	Mobile, Ala./McGill-Toolen Catholic HS
6	Fernanda Güttron	OPP	6-0	Fr./RS	Guadalajara, Mexico/Jose Vasconcelos
7	Reagan Robinson	OH	5-11	Fr./HS	Fayetteville, Ark./Shiloh Christian HS
8	Bailee Hankenson	S	5-9	Jr./2L	Decatur, Ind./Bellmont HS
10	Kelly O'Brien	OPP/MB	6-1	Soph./TR	Long Beach, Calif./Wyoming
12	Okiana Valle	L/DS	5-2	Soph./1L	Barceloneta, Puerto Rico/Christian Military
14	Adrien Wohlschlaeger	S	6-0	Sr./3L	Conroe, Texas/Conroe
15	Savannah Voelzke	OH	6-0	Sr./3L	Longview, Texas/Spring Hill HS
17	Kori Ortiz	L/DS	5-5	Jr./2L	Southlake, Texas/Carroll HS
18	Barbara Dapic	OH/OPP	6-3	Sr./3L	Split, Croatia/OK Brda
19	Ana Sofia Jusino	MB	6-2	Sr./3L	Toa Baja, Puerto Rico/Timber Creek HS
21	Pilar Victoria	OH	5-11	Sr./1L	Caguas, Puerto Rico/Texas

Head Coach: Jason Watson/BYU, '95 (First Season/12th Overall)
 Associate Head Coach: Jon Newman-Gonchar/Northern Arizona, '05 (First Season)
 Assistant Coach: Sarah Rumely/Kentucky, '10 (Second Season)
 Volunteer Assistant: Andy Rynd/Bowling Green, '15 (First Season)
 Director of Operations: Stephanie Preach/Arizona State, '13 (First Season)
 Student Managers: Kelley Goldberg & Jonathan Roark

How Do You Say...
 Rachel Rippee _____ rippy
 Breana Jones _____ bree-ON-uh
 Fernanda Güttron _____ Gwee-troan
 Okiana Valle _____ oak-EE-on-uh VY-yay
 Adrien Wohlschlaeger _____ wole-SHLAY-gur
 Savannah Voelzke _____ VOLE-ski
 Barbara Dapic _____ Jah-pitch
 Ana Sofia Jusino _____ WHO-see-no
 Sarah Rumely _____ RUM-lee
 Andy Rynd _____ rend

ARKANSAS VOLLEYBALL QUICK FACTS

UNIVERSITY INFORMATION

Location _____ Fayetteville, Ark.
 Founded _____ March 27, 1871
 Enrollment _____ 26,754
 Nickname _____ Razorbacks
 School Colors _____ Cardinal, White
 Affiliation _____ NCAA Division I
 Conference _____ Southeastern (SEC)
 Chancellor _____ Dr. Joseph E Steinmetz
 Vice Chancellor/Director of Athletics _____ Jeff Long
 Faculty Athletic Representative _____ Sharon Hunt
 University Website _____ www.uark.edu
 Athletics Website _____ ArkansasRazorbacks.com

TEAM INFORMATION

2015 Overall Record _____ 17-13
 Conference Record _____ 7-11
 SEC Finish _____ 9th Overall
 Home Record _____ 9-6
 Away Record _____ 4-7
 Neutral Record _____ 4-0
 Letterwinners Returning/Lost _____ 10/5
 Starters Returning/Lost _____ 5+L/3
 Newcomers _____ 3

COACHING STAFF

Head Coach _____ Jason Watson
 Record at Arkansas _____ First Season
 Career Record _____ 208-167 (.555)
 Associate Head Coach _____ Jon Newman-Gonchar
 Assistant Coach _____ Sarah Rumely
 Director of Operations _____ Stephanie Preach
 Volleyball Office Phone _____ 479/575-4587

TEAM HISTORY

First Year of Volleyball _____ 1994
 All-Time Record _____ 446-305 (.594)
 All-Time SEC Record _____ 232-162 (.589)
 SEC Championships/Last _____ 1 (Tournament)/1997
 NCAA Appearances/Last _____ 11/2013

ARKANSAS COMMUNICATIONS

Asst AD for Communications _____ Patrick Pierson
 Associate Director _____ David Beall
 Associate Director _____ Jeri Thorpe
 Assistant Director _____ Joy Ekema-Agbaw
 Assistant Director (VB Contact) _____ Zach Lawson
 Lawson Office _____ 479-575-7089
 Lawson Cell _____ 479-595-2358
 Lawson E-mail _____ zlawson@uark.edu
 Assistant Director _____ John Thomas
 Content Strategist _____ Roland Liwag
 Intern _____ Brent Hull
 Intern _____ Brandon Langlois
 Intern _____ Austin Miller
 Graphic Designer _____ Christine Zambetti
 Secretary _____ Mary Lynn Gibson

Mailing Address

UA Communications
 PO Box 7777
 Fayetteville, Ark. 72702-777

Shipping Address

UA Communications
 131 Barnhill Arena
 Fayetteville, Ark. 72701
 Office: 479-575-2751



SEASON/CAREER DOUBLE-DOUBLES

1. Rachel Rippee | 16a, 11d vs. Maryland | 9-2-16
2. Savannah Voelzke | 10k, 15d vs. Maryland | 9-2-16
3. Rachel Rippee | 23a, 13d at #4 Kansas | 9-3-16
4. Savannah Voelzke | 14k, 12d at #4 Kansas | 9-3-16
5. Adrien Wohlschlaeger | 23a, 14d at #4 Kansas | 9-3-16
6. Savannah Voelzke | 10k, 10d at New Mexico | 9-8-16
7. Rachel Rippee | 37a, 11d vs. Southern Miss | 9-16-16
8. Danielle Harbin | 22k, 10d at Ole Miss | 10-2-16
9. Savannah Voelzke | 11k, 11d at Ole Miss | 10-2-16
10. Rachel Rippee | 49a, 10d at Tennessee | 10-16-16
11. Rachel Rippee | 44a, 13d vs Auburn | 10-23-16
12. Danielle Harbin | 23k, 18d vs Miss State | 10-26-16
13. Danielle Harbin | 27k, 12d vs Georgia | 10-30-16
14. Danielle Harbin | 19k, 10d at Alabama | 11-6-16
15. Rachel Rippee | 31a, 11d at Alabama | 11-6-16
16. Savannah Voelzke | 14k, 17d at Miss State | 11-20-16

Season Tally

Rippee - 6
 Voelzke - 5
 Harbin - 4
 Wohlschlaeger - 1

Career Tally

Victoria - 15
 Hankenson - 8
 Rippee - 6
 Voelzke - 5
 Harbin - 4
 Wohlschlaeger - 4

BY THE NUMBERS | BARNHILL ATTENDANCE

Top Single-Match Attendance

1. 3,015 vs. #13 Florida 9-14-12
2. 2,349 vs. South Carolina 11-19-14
3. 1,672 vs. Missouri 10-02-13
4. 1,463 vs. Tennessee State 8-29-14
5. 1,407 vs. #15 Colorado State 8-26-11
6. 1,362 vs. #5 Florida* 11-22-98
7. 1,342 vs. McNeese State 8-28-15
8. 1,284 vs. Kansas 8-29-15
9. 1,283 vs. #25 Kansas State 9-16-16
10. 1,272 vs. Oklahoma 9-7-10

* - 1998 SEC Tournament

Year-by-Year Attendance Totals

Year	# of Matches	Total	Avg.
1994	15	6,548	437
1995	13	6,194	477
1996	18	8,296	461
1997	15	8,101	540
1998	19	13,299	700
1999	14	6,315	451
2000	17	7,499	441
2001	11	5,794	527
2002	16	7,127	451
2003	11	5,683	517
2004	14	8,254	590
2005	14	9,365	669
2006	14	9,817	701
2007	16	10,919	682
2008	14	9,086	649
2009	14	10,316	737
2010	14	11,855	847
2011	14	12,903	922
2012	18	18,297	1,016
2013	15	13,047	870
2014	16	15,265	954
2015	15	14,697	980
2016	11	9,149	832



HARBIN JOINS 25-KILL CLUB

With her effort against UMKC (Sept. 17), senior co-captain Danielle Harbin became the 18th player in program history to reach 25 (or more) kills in a match.

TOP-10 HOME CROWD

In hosting No. 25 Kansas State (Sept. 16), the Razorbacks played in front of 1,283 fans, the ninth-largest home crowd in program history. Five of the top-10 attendance figures have come over the past three seasons.

ALL-TOURNAMENT PERFORMANCE

For the second-consecutive weekend to open the season, senior co-captain Danielle Harbin earned all-tournament accolades for her work during the Kansas Invitational. She had a then-career high of 22 kills against No. 4 Kansas.

BIG BLOCK

In pushing No. 4 Kansas to five sets (Sept. 3), seniors Breana Jones and Barbara Dapic tallied career highs of 11 and 10 blocks, respectively. Jones enters the week with 14 matches of four or more total blocks.

THE GIRL IN THE DIFFERENT JERSEY

Sophomore libero Okiana Valle tallied a (then) season-high 28 digs against No. 4 Kansas (Sept. 3). In three matches at the Kansas Invitational, she averaged 5.00 digs per set.

OPENING ACT

Senior Danielle Harbin tied her then-career high with 14 kills in the season opener at No. 14 Illinois (Aug. 26), tying the mark first established as a freshman in 2012. She went on to earn Illini Classic All-Tournament Team accolades.

SEC PRESEASON VOTE

For a second-consecutive year, the Razorbacks have been picked to finish fifth in the SEC with the release of the league's preseason coaches' poll. Additionally, senior Pilar Victoria was voted to the Preseason All-SEC Team.

OH CAPTAIN, MY CAPTAIN

By way of a team vote, seniors Danielle Harbin and Breana Jones will serve as the Razorbacks' team captains. Harbin enters the year with 280 career kills while Jones posted a program-record .436 hitting percentage in 2015.

GOOD MORNING, MISS JONES

Senior co-captain Breana Jones will hold court as a student teacher four days a week this semester at Sonora Elementary in nearby Springdale, Ark. Jones carries a 3.636 cumulative GPA as an elementary education major.

SURE TO BE TESTED

This year's slate features 11 matches against nine teams that advanced to last year's NCAA Tournament including defending national champion Nebraska. Seven of Arkansas' opponents posted a top-25 RPI last season with six ranked inside the AVCA preseason top 25.

ALL-REGION TRIO

The Razorbacks return AVCA All-South Region selections middle blocker Breana Jones, outside hitter Pilar Victoria and libero Okiana Valle, who was named last year's South Region Freshman of the Year.

#SEN7ORS

Half of the Razorbacks' roster (seven of 14) consists of its senior class of Barbara Dapic, Danielle Harbin, Breana Jones, Ana Sofia Jusino, Pilar Victoria, Savannah Voelzke and Adrien Wohlschlaeger. Arkansas' junior and sophomore class have two each, along with three freshmen.

GRADUATE SALUTE

Senior middle blocker Ana Sofia Jusino is one of 11 Razorback student-athletes competing this fall that has earned their degree with remaining eligibility. In recognition, those student-athletes will wear an SEC Graduate patch on their jerseys during competition.

WATSON ERA

Jason Watson is in his first season as Arkansas' head coach and 12th overall after stops at BYU and Arizona State. He becomes the third head coach in program history. Watson comes to Fayetteville with a 200-147 career record.

JNG COACHES PAN AM TEAM

Associate head coach Jon Newman-Gonchar represented Team USA this summer as a member of the coaching staff at the Pan American Cup. The team came away with bronze during the two-week event in the Dominican Republic.

2016 ARKANSAS VOLLEYBALL MATCH NOTES

SEASON/CAREER HIGHS

#1 RACHEL RIPPEE | FR | S

SEASON HIGHS

Hitting % _____ --
 Kills _____ *3 vs. Mississippi State | 10-26-16
 Attempts _____ 7 at #23 Kentucky | 10-14-16
 Assists _____ 56 at Mississippi State | 11-20-16
 Digs _____ *13 vs. Auburn | 10-23-16
 Blocks _____ 6.0 (0-6) vs. Tennessee | 11-13-16
 Aces _____ 6 vs Georgia | 10-30-16

CAREER HIGHS

Hitting % _____ --
 Kills _____ *3 vs. Mississippi State | 10-26-16
 Attempts _____ 7 at #23 Kentucky | 10-14-16
 Assists _____ 56 at Mississippi State | 11-20-16
 Digs _____ *13 vs. Auburn | 10-23-16
 Blocks _____ 6.0 (0-6) vs. Tennessee | 11-13-16
 Aces _____ 6 vs Georgia | 10-30-16

#2 BREANA JONES | SR | MB

SEASON HIGHS

Hitting % _____ .636 (7-0-11) vs. Missouri | 9-30-16
 Kills _____ 16 at Mississippi State | 11-20-16
 Attempts _____ 32 at Georgia | 11-18-16
 Assists _____ 2 vs. UMKC | 9-17-16
 Digs _____ *4 at Tennessee | 10-16-16
 Blocks _____ 11.0 (0-11) at #4 Kansas | 9-3-16
 Aces _____ *2 at Alabama | 11-6-16

CAREER HIGHS

Hitting % _____ *.636 (7-0-11) vs. Missouri | 9-30-16
 Kills _____ 16 at Mississippi State | 11-20-16
 Attempts _____ 32 at Georgia | 11-18-16
 Assists _____ 2 vs. UMKC | 9-17-16
 Digs _____ 5 vs. Missouri | 10-2-13
 Blocks _____ 11.0 (0-11) at #4 Kansas | 9-3-16
 Aces _____ *2 at Alabama | 11-6-16

#3 DANIELLE HARBIN | SR | OH/MB

SEASON HIGHS

Hitting % _____ .357 (14-4-28) at LSU | 9-25-16
 Kills _____ 27 vs. Georgia | 10-30-16
 Attempts _____ 69 at Tennessee | 10-16-16
 Assists _____ *1 at Alabama | 11-6-16
 Digs _____ 18 vs. Mississippi State | 10-26-16
 Blocks _____ 6.0 (1-5) vs. Georgia | 10-30-16
 Aces _____ *3 at Georgia | 11-18-16

CAREER HIGHS

Hitting % _____ .417 (14-4-24) vs. UMKC | 8-31-13
 Kills _____ 27 vs. Georgia | 10-30-16
 Attempts _____ 69 at Tennessee | 10-16-16
 Assists _____ *1 at Alabama | 11-6-16
 Digs _____ 18 vs. Mississippi State | 10-26-16
 Blocks _____ 7.0 (1-6) vs. Mississippi State | 11-24-13
 Aces _____ *3 at Georgia | 11-18-16

#6 FERNANDA GUITRON | R-FR | OPP

SEASON HIGHS

Hitting % _____ .188 (5-2-16) at New Mexico | 9-8-16
 Kills _____ 5 at New Mexico | 9-8-16
 Attempts _____ 24 vs. Maryland | 9-2-16
 Assists _____ --
 Digs _____ 3 vs. Maryland | 9-2-16
 Blocks _____ *2.0 (0-2) at #4 Kansas | 9-3-16
 Aces _____ --

CAREER HIGHS

Hitting % _____ .188 (5-2-16) at New Mexico | 9-8-16
 Kills _____ 5 at New Mexico | 9-8-16
 Attempts _____ 24 vs. Maryland | 9-2-16
 Assists _____ --
 Digs _____ 3 vs. Maryland | 9-2-16
 Blocks _____ *2.0 (0-2) at #4 Kansas | 9-3-16
 Aces _____ --

#7 REAGAN ROBINSON | FR | OH

SEASON HIGHS

Hitting % _____ .238 (7-2-21) vs Alabama | 10-21-16
 Kills _____ *9 vs. Mississippi State | 10-26-16
 Attempts _____ 31 at #23 Kentucky | 10-14-16
 Assists _____ *1 vs. Georgia | 10-30-16
 Digs _____ 12 at #23 Kentucky | 10-14-16
 Blocks _____ *2.0 (0-2) at Alabama | 11-6-16
 Aces _____ *2 vs Alabama | 10-21-16

CAREER HIGHS

Hitting % _____ .238 (7-2-21) vs Alabama | 10-21-16
 Kills _____ *9 vs. Mississippi State | 10-26-16
 Attempts _____ 31 at #23 Kentucky | 10-14-16
 Assists _____ *1 vs. Georgia | 10-30-16
 Digs _____ 12 at #23 Kentucky | 10-14-16
 Blocks _____ *2.0 (0-2) at Alabama | 11-6-16
 Aces _____ *2 vs Alabama | 10-21-16

#8 BAILEE HANKENSON | JR | S

SEASON HIGHS

Hitting % _____ --
 Kills _____ --
 Attempts _____ --
 Assists _____ --
 Digs _____ --
 Blocks _____ --
 Aces _____ --

CAREER HIGHS

Hitting % _____ .700 (7-0-10) at #20 TAMU | 10-15-14
 Kills _____ 7 at #20 Texas A&M | 10-15-14
 Attempts _____ *15 at #24 Kansas | 9-20-14
 Assists _____ 61 vs. Georgia | 10-12-14
 Digs _____ 14 vs. Michigan | 8-30-14
 Blocks _____ 6.0 (0-6) vs. LSU | 11-2-14
 Aces _____ *2 vs. Mississippi State | 9-28-14

#10 KELLY O'BRIEN | SOPH | OH

SEASON HIGHS

Hitting % _____ .250 (4-2-8) vs. #1 Nebraska | 9-9-16
 Kills _____ 4 vs. #1 Nebraska | 9-9-16
 Attempts _____ 8 vs. #1 Nebraska | 9-9-16
 Assists _____ --
 Digs _____ --
 Blocks _____ 3.0 (0-3) at #23 Kentucky | 10-14-16
 Aces _____ --

CAREER HIGHS (at Arkansas)

Hitting % _____ .250 (4-2-8) vs. #1 Nebraska | 9-9-16
 Kills _____ 4 vs. #1 Nebraska | 9-9-16
 Attempts _____ 8 vs. #1 Nebraska | 9-9-16
 Assists _____ --
 Digs _____ --
 Blocks _____ 3.0 (0-3) at #23 Kentucky | 10-14-16
 Aces _____ --

#12 OKIANA VALLE | SOPH | L/DS

SEASON HIGHS

Hitting % _____ --
 Kills _____ *1 vs. #24 Kentucky | 11-9-16
 Attempts _____ *2 at Georgia | 11-18-16
 Assists _____ 9 at #4 Kansas | 9-3-16
 Digs _____ 29 at Alabama | 11-6-16
 Blocks _____ --
 Aces _____ *2 vs. Alabama | 10-21-16

CAREER HIGHS

Hitting % _____ --
 Kills _____ *1 vs. #24 Kentucky | 11-9-16
 Attempts _____ *3 vs. South Carolina | 11-25-15
 Assists _____ 9 at #4 Kansas | 9-3-16
 Digs _____ 32 vs. South Carolina | 11-25-15
 Blocks _____ --
 Aces _____ 4 vs. Southeast Missouri | 9-12-15

#14 ADRIEN WOHLSCHLAEGER | FR | S

SEASON HIGHS

Hitting % _____ --
 Kills _____ --
 Attempts _____ *1 vs. Chicago State | 9-2-16
 Assists _____ 27 vs. Chicago State | 9-2-16
 Digs _____ *14 at Alabama | 11-6-16
 Blocks _____ --
 Aces _____ 2 vs. Georgia | 10-30-16

CAREER HIGHS

Hitting % _____ --
 Kills _____ 5 at Tennessee | 10-11-15
 Attempts _____ 10 vs. #11 Wisconsin | 9-19-15
 Assists _____ 65 at LSU | 9-23-15
 Digs _____ *14 at Alabama | 11-6-16
 Blocks _____ 6.0 (0-6) vs. Ole Miss | 10-18-15
 Aces _____ *2 vs. Georgia | 10-30-16

#15 SAVANNAH VOELZKE | SR | OH

SEASON HIGHS

Hitting % _____ .448 (14-1-29) at LSU | 9-25-16
 Kills _____ *14 at Mississippi State | 11-20-16
 Attempts _____ 47 at #4 Kansas | 9-3-16
 Assists _____ *2 vs. #1 Nebraska | 9-9-16
 Digs _____ *17 at Mississippi State | 11-20-16
 Blocks _____ 5.0 (0-5) vs. Southern Miss | 9-16-16
 Aces _____ *2 at Mississippi State | 11-20-16

CAREER HIGHS

Hitting % _____ .692 (9-0-13) vs. Texas A&M | 11-19-14
 Kills _____ *14 at Mississippi State | 11-20-16
 Attempts _____ 47 at #4 Kansas | 9-3-16
 Assists _____ 4 at #20 Texas A&M | 10-15-14
 Digs _____ *17 at Mississippi State | 11-20-16
 Blocks _____ 5.0 (0-5) vs. Southern Miss | 9-16-16
 Aces _____ 3 vs. Ole Miss | 10-8-14

#17 KORI ORTIZ | JR | L/DS

SEASON HIGHS

Hitting % _____ --
 Kills _____ 1 vs. Missouri State | 8-27-16
 Attempts _____ *1 vs. Southern Miss | 9-16-16
 Assists _____ 2 vs. Southern Miss | 9-16-16
 Digs _____ 14 at Mississippi State | 11-20-16
 Blocks _____ --
 Aces _____ 1 vs. Xavier | 8-27-16

CAREER HIGHS

Hitting % _____ --
 Kills _____ 1 vs. Missouri State | 8-27-16
 Attempts _____ *2 vs. South Dakota | 9-12-14
 Assists _____ 6 vs. Army | 8-29-15
 Digs _____ 18 vs. Kansas State | 9-19-15
 Blocks _____ --
 Aces _____ *1 vs. #19 Texas A&M | 11-28-15

#18 BARBARA DAPIC | SR | OH/OPP

SEASON HIGHS

Hitting % _____ .455 (11-1-22) vs. Xavier | 8-27-16
 Kills _____ 14 at Ole Miss | 10-2-16
 Attempts _____ 34 at #4 Kansas | 9-3-16
 Assists _____ *1 vs. Texas A&M | 10-5-16
 Digs _____ 5 vs. #25 Kansas State | 9-16-16
 Blocks _____ 10.0 (0-10) at #4 Kansas | 9-3-16
 Aces _____ *1 vs. Southern Miss | 9-16-16

CAREER HIGHS

Hitting % _____ .667 (10-0-15) vs. Saint Louis | 9-21-13
 Kills _____ 16 vs. South Carolina | 11-25-15
 Attempts _____ 42 vs. South Carolina | 11-25-15
 Assists _____ *1 vs. Texas A&M | 10-5-16
 Digs _____ 6 at Tennessee | 11-26-14
 Blocks _____ 10.0 (0-10) at #4 Kansas | 9-3-16
 Aces _____ 2 vs. Northwestern State | 9-11-15



SEASON/CAREER HIGHS

#19 ANA SOFIA JUSINO | SR | MB

SEASON HIGHS

Hitting % .714 (10-0-14) at Georgia | 11-18-16
 Kills *10 at Georgia | 11-18-16
 Attempts 23 at Ole Miss | 10-2-16
 Assists --
 Digs 3 vs. Tennessee | 11-13-16
 Blocks 8.0 (1-7) at Tennessee | 10-16-16
 Aces --

CAREER HIGHS

Hitting % .800 (8-0-10) vs. No. Colorado | 9-14-13
 Kills 12 vs. Oral Roberts | 9-9-14
 Attempts 28 vs. Kansas | 9-5-13
 Assists 1 vs. New Mexico | 8-30-13
 Digs *3 vs. Tennessee | 11-13-16
 Blocks 10.0 (1-9) vs. North Texas | 9-19-14
 Aces --

#21 PILAR VICTORIA | SR | OH

SEASON HIGHS

Hitting % _____
 Kills _____
 Attempts _____
 Assists _____
 Digs _____
 Blocks _____
 Aces _____

CAREER HIGHS (at Arkansas)

Hitting % .481 (16-3-27) vs. Georgia | 11-15-15
 Kills 35 vs. Ole Miss | 10-18-15
 Attempts 79 vs. Ole Miss | 10-18-15
 Assists *2 vs. Kansas State | 9-19-15
 Digs 19 at LSU | 9-23-15
 Blocks 6.0 (3-3) vs. Ole Miss | 10-18-15
 Aces *2 vs. Alabama | 11-1-15

*Tied, most recent listed

MILESTONE WATCH

Barbara Dapic (OH/OPP | Sr.)

Looking for: 547 kills (ARK #30)
 Looking for: 200 blocks (career)

Current Total: 544
 Current Total: 190
 Needs: 3
 Needs: 10

Danielle Harbin (OH/MB | Sr.)

Looking for: 750 kills (career)
 Looking for: 450 kills (season)
 Looking for: 221 blocks (ARK #25)

Current Total: 716
 Current Total: 436
 Current Total: 210
 Needs: 34
 Needs: 14
 Needs: 11

Breana Jones (MB | Sr.)

Looking for: 547 kills (ARK #30)
 Looking for: 268 blocks (ARK #17)

Current Total: 543
 Current Total: 255
 Needs: 4
 Needs: 13

Ana Sofia Jusino (MB | Sr.)

Looking for: 450 kills (career)
 Looking for: 353 blocks (ARK #10)

Current Total: 425
 Current Total: 338
 Needs: 25
 Needs: 15

Kori Ortiz (L/DS | Jr.)

Looking for: 600 digs (career)

Current Total: 588
 Needs: 12

Rachel Rippee (S | Fr.)

Looking for: 1,000 assists (season)

Current Total: 908
 Needs: 92

Okiana Valle (L/DS | Soph.)

Looking for: 900 digs (career)

Current Total: 868
 Needs: 32



2016 ARKANSAS VOLLEYBALL MATCH NOTES

TEAM OVERALL STATS

RECORD:	OVERALL	HOME	AWAY	NEUTRAL
ALL GAMES	8-20	4-7	3-9	1-4
CONFERENCE	6-10	3-5	3-5	0-0
NON-CONFERENCE	2-10	1-2	0-4	1-4

#	Player	sp	Attack				Set		Serve			Dig			Blocking					points		
			k	k/s	e	ta	pct	a	a/s	sa	se	sa/s	re	dig	dig/s	bs	ba	total	blk/s		be	bhe
17	Kori Ortiz	97	1	0.01	0	2	.500	7	0.07	1	8	0.01	11	140	1.44	0	0	0	0.00	0	0	2.0
19	Ana Sofia Jusino	100	134	1.34	52	290	.283	0	0.00	0	0	0.00	0	15	0.15	7	92	99	0.99	7	1	187.0
2	Breana Jones	102	199	1.95	70	487	.265	7	0.07	13	30	0.13	0	47	0.46	4	98	102	1.00	8	1	265.0
12	Okiana Valle	103	2	0.02	0	9	.222	76	0.74	13	47	0.13	32	427	4.15	0	0	0	0.00	0	2	15.0
18	Barbara Dapic	101	182	1.80	80	492	.207	2	0.02	2	9	0.02	1	35	0.35	3	60	63	0.62	4	0	217.0
3	Danielle Harbin	103	436	4.23	200	1207	.196	3	0.03	11	40	0.11	28	163	1.58	15	62	77	0.75	8	0	493.0
15	Savannah Voelzke	88	175	1.99	105	614	.114	13	0.15	18	39	0.20	26	225	2.56	4	35	39	0.44	19	2	214.5
7	Reagan Robinson	50	49	0.98	34	195	.077	3	0.06	7	15	0.14	15	75	1.50	0	5	5	0.10	0	0	58.5
1	Rachel Rippee	103	24	0.23	19	79	.063	908	8.82	26	31	0.25	0	182	1.77	1	36	37	0.36	6	31	69.0
6	Fernanda Guitron	28	19	0.68	16	94	.032	0	0.00	0	1	0.00	0	13	0.46	1	9	10	0.36	2	0	24.5
10	Kelly O'Brien	8	5	0.62	5	18	.000	0	0.00	0	1	0.00	0	0	0.00	0	5	5	0.62	1	0	7.5
14	Adrien Wohlschlaeger	59	0	0.00	0	2	.000	140	2.37	4	16	0.07	1	103	1.75	0	0	0	0.00	2	6	4.0
TEAM		-	-	-	-	-	-	-	-	-	-	-	17	-	-	-	-	-	-	-	-	-
ARKANSAS		103	1226	11.90	581	3489	.185	1159	11.25	95	237	0.92	131	1425	13.83	35	402	236.0	2.29	57	43	1557.0
Opponents		103	1401	13.60	544	3600	.238	1315	12.77	131	240	1.27	95	1425	13.83	46	374	233.0	2.26	57	24	1765.0

Team Statistics	AR	OPP
ATTACK		
Kills	1226	1401
Errors	581	544
Total Attacks	3489	3600
Attack Pct	.185	.238
Kills/Set	11.9	13.6
SET		
Assists	1159	1315
Attempts	3637	3586
Assist Pct	.319	.367
Assists/Set	11.3	12.8
SERVE		
Aces	95	131
Errors	237	240
Attempts	2166	2406
Serve Pct	.891	.900
Aces/Set	0.9	1.3
SERVE RECEPTIONS		
Errors	131	95
Errors/Set	1.3	0.9
Attempts	2162	1929
Reception Pct	.939	.951
DEFENSE		
Digs	1425	1425
Digs/Set	13.8	13.8
BLOCKING		
Block Solo	35	46
Block Assist	402	374
Total Blocks	236.0	233.0
Blocks/Set	2.3	2.3
Block Errors	57	57
Ball handling errors	43	24
ATTENDANCE		
Total	9149	13464
Dates/Avg Per Date	11/832	12/1122
Neutral site #/Avg	5/225	
Current win streak	3	-
Home win streak	1	-

Date	Opponent	Score	Score by set	Att.
Aug 26	at #14 Illinois	L 0-3	19-25,13-25,22-25	2805
Aug 27	vs Missouri State	L 0-3	16-25,19-25,27-29	0
Aug 27	vs Xavier	L 1-3	17-25,25-22,14-25,21-25	0
Sep 02	vs Maryland	L 1-3	21-25,22-25,25-20,19-25	500
Sep 02	vs Chicago State	w 3-1	21-25,25-16,25-19,25-22	552
Sep 03	at #4 Kansas	L 2-3	20-25,25-23,19-25,33-31,8-15	1234
#Sep 08	at New Mexico	L 1-3	12-25,25-20,20-25,17-25	1132
#Sep 09	vs #1 Nebraska	L 0-3	19-25,15-25,21-25	75
Sep 16	SOUTHERN MISSISSIPPI	L 1-3	26-28,16-25,25-15,19-25	522
Sep 16	#25 KANSAS STATE	L 0-3	21-25,17-25,13-25	1283
Sep 17	UMKC	w 3-1	22-25,25-15,25-18,25-16	327
Sep 20	at ORU	L 0-3	22-25,21-25,27-29	1272
*Sep 25	at LSU	w 3-0	25-21,25-17,25-14	651
*Sep 30	MISSOURI	L 0-3	18-25,16-25,17-25	841
*Oct 02	at Ole Miss	L 2-3	15-25,25-20,14-25,25-20,10-15	444
*Oct 05	TEXAS A&M	L 0-3	22-25,11-25,15-25	648
*Oct 09	at Missouri	L 0-3	19-25,29-31,12-25	2203
*Oct 14	at #23 Kentucky	L 0-3	20-25,19-25,17-25	890
*Oct 16	at Tennessee	L 1-3	18-25,23-25,25-22,22-25	763
*Oct 21	ALABAMA	L 0-3	22-25,12-25,19-25	1057
*Oct 23	AUBURN	L 1-3	21-25,25-23,20-25,19-25	856
*Oct 26	MISSISSIPPI STATE	w 3-1	24-26,25-22,25-23,27-25	932
*Oct 30	GEORGIA	w 3-2	21-25,24-26,27-25,25-23,15-12	671
*Nov 06	at Alabama	L 1-3	25-22,14-25,22-25,12-25	618
*Nov 09	#24 KENTUCKY	L 0-3	21-25,17-25,19-25	741
*Nov 13	TENNESSEE	w 3-0	25-23,25-22,25-20	1271
*Nov 18	at Georgia	w 3-1	26-28,27-25,25-20,25-22	936
*Nov 20	at Mississippi State	w 3-2	26-28,25-19,21-25,25-21,16-14	516

Record in 3-set matches: 2-11
 Record in 4-set matches: 4-7
 Record in 5-set matches: 2-2

2016 ARKANSAS VOLLEYBALL MATCH NOTES

TEAM SEC STATS

RECORD:	OVERALL	HOME	AWAY	NEUTRAL
ALL GAMES	6-10	3-5	3-5	0-0
CONFERENCE	6-10	3-5	3-5	0-0
NON-CONFERENCE	0-0	0-0	0-0	0-0

#	Player	sp	Attack				Set		Serve			Dig		Blocking					points			
			k	k/s	e	ta	pct	a	a/s	sa	se	sa/s	re	dig	dig/s	bs	ba	total		blk/s	be	bhe
2	Breana Jones	58	135	2.33	33	302	.338	2	0.03	8	10	0.14	0	30	0.52	2	52	54	0.93	3	0	171.0
19	Ana Sofia Jusino	56	77	1.38	30	165	.285	0	0.00	0	0	0.00	0	8	0.14	5	51	56	1.00	2	1	107.5
18	Barbara Dapic	57	99	1.74	48	263	.194	1	0.02	0	4	0.00	1	9	0.16	0	29	29	0.51	1	0	113.5
3	Danielle Harbin	59	262	4.44	135	741	.171	3	0.05	6	20	0.10	24	114	1.93	13	34	47	0.80	4	0	298.0
12	Okiana Valle	59	1	0.02	0	7	.143	33	0.56	6	23	0.10	17	254	4.31	0	0	0	0.00	0	1	7.0
15	Savannah Voelzke	44	80	1.82	46	282	.121	5	0.11	6	13	0.14	8	97	2.20	4	15	19	0.43	12	1	97.5
7	Reagan Robinson	31	42	1.35	30	166	.072	3	0.10	6	12	0.19	12	56	1.81	0	5	5	0.16	0	0	50.5
17	Kori Ortiz	53	0	0.00	0	0	.000	3	0.06	0	6	0.00	6	88	1.66	0	0	0	0.00	0	0	0.0
14	Adrien Wohlschlaeger	32	0	0.00	0	0	.000	11	0.34	2	9	0.06	1	66	2.06	0	0	0	0.00	0	0	2.0
1	Rachel Rippee	59	16	0.27	17	61	-.016	610	10.34	15	18	0.25	0	103	1.75	1	28	29	0.49	4	19	46.0
10	Kelly O'Brien	5	1	0.20	2	7	-.143	0	0.00	0	1	0.00	0	0	0.00	0	4	4	0.80	0	0	3.0
6	Fernanda Guitron	4	1	0.25	5	12	-.333	0	0.00	0	0	0.00	0	4	1.00	0	1	1	0.25	0	0	1.5
TEAM		-	-	-	-	-	-	-	-	-	-	-	14	-	-	-	-	-	-	-	-	-
ARKANSAS		59	714	12.10	346	2006	.183	671	11.37	49	116	0.83	83	829	14.05	25	219	134.5	2.28	26	22	897.5
Opponents		59	803	13.61	315	2069	.236	750	12.71	83	138	1.41	49	806	13.66	31	208	135.0	2.29	35	11	1021.0

Team Statistics	AR	OPP
ATTACK		
Kills	714	803
Errors	346	315
Total Attacks	2006	2069
Attack Pct	.183	.236
Kills/Set	12.1	13.6
SET		
Assists	671	750
Attempts	2046	2034
Assist Pct	.328	.369
Assists/Set	11.4	12.7
SERVE		
Aces	49	83
Errors	116	138
Attempts	1241	1378
Serve Pct	.907	.900
Aces/Set	0.8	1.4
SERVE RECEPTIONS		
Errors	83	49
Errors/Set	1.4	0.8
Attempts	1238	1125
Reception Pct	.933	.956
DEFENSE		
Digs	829	806
Digs/Set	14.1	13.7
BLOCKING		
Block Solo	25	31
Block Assist	219	208
Total Blocks	134.5	135.0
Blocks/Set	2.3	2.3
Block Errors	26	35
Ball handling errors	22	11
ATTENDANCE		
Total	7017	7021
Dates/Avg Per Date	8/877	8/878
Neutral site #/Avg	0/0	-
Current win streak	3	-
Home win streak	1	-

Date	Opponent	Score	Score by set	Att.
*Sep 25	at LSU	w 3-0	25-21,25-17,25-14	651
*Sep 30	MISSOURI	L 0-3	18-25,16-25,17-25	841
*Oct 02	at Ole Miss	L 2-3	15-25,25-20,14-25,25-20,10-15	444
*Oct 05	TEXAS A&M	L 0-3	22-25,11-25,15-25	648
*Oct 09	at Missouri	L 0-3	19-25,29-31,12-25	2203
*Oct 14	at #23 Kentucky	L 0-3	20-25,19-25,17-25	890
*Oct 16	at Tennessee	L 1-3	18-25,23-25,25-22,22-25	763
*Oct 21	ALABAMA	L 0-3	22-25,12-25,19-25	1057
*Oct 23	AUBURN	L 1-3	21-25,25-23,20-25,19-25	856
*Oct 26	MISSISSIPPI STATE	w 3-1	24-26,25-22,25-23,27-25	932
*Oct 30	GEORGIA	w 3-2	21-25,24-26,27-25,25-23,15-12	671
*Nov 06	at Alabama	L 1-3	25-22,14-25,22-25,12-25	618
*Nov 09	#24 KENTUCKY	L 0-3	21-25,17-25,19-25	741
*Nov 13	TENNESSEE	w 3-0	25-23,25-22,25-20	1271
*Nov 18	at Georgia	w 3-1	26-28,27-25,25-20,25-22	936
*Nov 20	at Mississippi State	w 3-2	26-28,25-19,21-25,25-21,16-14	516

Record in 3-set matches: 2-6
 Record in 4-set matches: 2-3
 Record in 5-set matches: 2-1

RADIO/TV HEADSHOT ROSTER



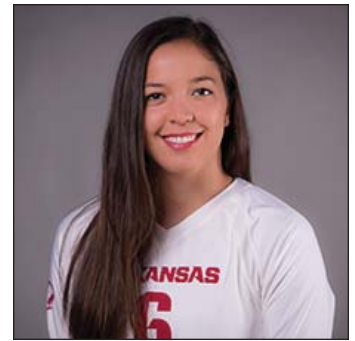
1 RACHEL RIPPEE
FR | 6-0 | S
SPRINGFIELD, MO.



2 BREANA JONES
SR | 6-2 | MB
PEACHTREE CITY, GA.



3 DANIELLE HARBIN
SR | 6-1 | OH
MOBILE, ALA.



6 FERNANDA GÜITRON
RS-FR | 6-0 | OPP
GUADALAJARA, MEXICO



7 REAGAN ROBINSON
FR | 5-11 | OH
FAYETTEVILLE, ARK.



8 BAILEE HANKENSON
JR | 5-9 | S
DECATUR, IND.



10 KELLY O'BRIEN
SOPH | 6-1 | MB
LONG BEACH, CALIF.



12 OKIANA VALLE
SOPH | 5-2 | L/DS
BARCELONETA, PUERTO RICO



14 ADRIEN WOHLSCHLAEGER
SR | 6-0 | S
CONROE, TEXAS



15 SAVANNAH VOELZKE
SR | 6-0 | OH
LONGVIEW, TEXAS



17 KORI ORTIZ
JR | 5-5 | L/DS
SOUTHLAKE, TEXAS



18 BARBARA DAPIC
SR | 6-3 | OH/OPP
SPLIT, CROATIA



19 ANA SOFIA JUSINO
SR | 6-2 | MB
TOA BAJA, PUERTO RICO



21 PILAR VICTORIA
SR | 5-11 | OH
CAGUAS, PUERTO RICO