

2017-18 SAMFORD WOMEN'S BASKETBALL

GAME NOTES

GAME 2

Samford (0-1, 0-0 SoCon) at Arkansas (1-0, 0-0 SEC)

Nov. 12, 2017, 1 p.m. (CT)

Bud Walton Arena (19,368), Fayetteville, Ark.



2017-18 SCHEDULE/RESULTS

DATE	OPPONENT	TIME
Nov. 6	Montevallo (Exh.)	W, 94-44
Nov. 10	Colorado	L, 60-71
Nov. 12	at Arkansas	1 p.m.
Nov. 17	Rhode Island	6 p.m.
Nov. 19	Alabama State	2 p.m.
Nov. 21	at Belmont	6:30 p.m.
Nov. 26	at Florida State	1 p.m.
Nov. 30	UCF	6 p.m.
Dec. 3	at Iowa	2 p.m.
Dec. 7	at UAB	6 p.m.
Dec. 9	AUM	2 p.m.
Dec. 17	Troy	2 p.m.
Dec. 19	Southern Miss.	12 p.m.
Dec. 21	vs. UTEP%	TBA
Dec. 22	at Tulane/vs. Troy%	TBA
Dec. 30	Hampton	2 p.m.
Jan. 4	at Furman*	TBA
Jan. 6	at Wofford*	1 p.m.
Jan. 13	Mercer*	2 p.m.
Jan. 18	Western Carolina*	12 p.m.
Jan. 20	UNCG*	2 p.m.
Jan. 25	at Chattanooga*	5:30 p.m.
Jan. 27	at ETSU*	1 p.m.
Feb. 1	Wofford*	6 p.m.
Feb. 3	Furman*	2 p.m.
Feb. 10	at Mercer*	1 p.m.
Feb. 15	at UNCG*	6 p.m.
Feb. 17	at Western Carolina*	TBA
Feb. 22	ETSU*	6 p.m.
Feb. 24	Chattanooga*	2 p.m.
Mar. 1-4	SoCon Tournament!	TBA

*-Southern Conference Game

%-Tulane Christmas Tournament (New Orleans, La.)

!-Asheville, N.C.

All game times are Central and subject to change

THE GAME

The Samford women's basketball team will play its first road game of the season when the Bulldogs play at Arkansas Sunday at 1 p.m. at Bud Walton Arena.

Samford enters the game with a record of 0-1. The Bulldogs opened the season with a 71-60 loss to Colorado Friday night in the Pete Hanna Center.

Arkansas is currently 1-0 on the young season. The Razorbacks earned a 65-54 home win over Sam Houston State.

THE SERIES

Samford and Arkansas have never met in women's basketball.

SAMFORD AWAY FROM HOME

This season, Samford has 14 games away from the Pete Hanna Center on its schedule, with Sunday's game marking the first of those contests. The Bulldogs will play 12 true road games and two neutral-site games.

Last season, Samford went 4-13 in games played away from the Pete Hanna Center, 3-10 in true road games and 1-3 in neutral-site contests.

SAMFORD'S PROBABLE STARTERS

No.	Name	Pos.	PPG	RPG
2	Hannah Nichols	G	15.0	12.0
12	Charity Brown	G	8.0	4.0
31	Cassidy Williams	G	0.0	0.0
32	Olivia Crozier	F	18.0	6.0
35	Samantha Fitzgerald	F	8.0	2.0

*-Starters based on last game.

2017-18 SAMFORD WOMEN'S BASKETBALL

SAMFORD'S RECORD WHEN . . .

Samford controls the tip	0-0
Opponent controls the tip	0-1
Played at home	0-1
Played on the road	0-0
Played at a neutral site	0-0
Played a team with a .500+ record	0-0
Played a team with a .500 record	0-1
Played a team with a below .500 record	0-0
Samford leads at the half	0-1
Opponent leads at the half	0-0
Tied at the half	0-0
Samford leads with five minutes left	0-1
Opponent leads with five minutes left	0-0
Tied with five minutes left	0-0
Samford leads with one minute left	0-0
Opponent leads with one minute left	0-1
Tied with one minute left	0-0
Samford outrebounds opponent	0-0
Opponent outrebounds Samford	0-1
Rebounds are equal	0-0
Samford shoots 50% or better from field	0-0
Samford shoots less than 50% from the field	0-1
Samford takes more shots	0-0
Opponent takes more shots	0-1
Shots are equal	0-0
Samford blocks more shots	0-1
Opponent blocks more shots	0-0
Blocks are equal	0-0
Samford has more turnovers	0-1
Opponent has more turnovers	0-0
Turnovers are equal	0-0
Samford has more steals	0-0
Opponent has more steals	0-1
Steals are equal	0-0
Samford bench outscores opponent's bench	0-0
Opponent bench outscores Samford's bench	0-1
Benches score the same	0-0
Samford shoots more free throws	0-0
Opponent shoots more free throws	0-1
Free throws are the same	0-0
November games	0-1
December games	0-0
January games	0-0
February games	0-0
March games	0-0
Monday games	0-0
Tuesday games	0-0
Wednesday games	0-0
Thursday games	0-0
Friday games	0-1
Saturday games	0-0
Sunday games	0-0
Overtime games	0-0

THE LAST TIME OUT

Samford opened the 2017-18 regular season with a 71-60 setback to Colorado Friday night at the Pete Hanna Center.

Olivia Crozier led Samford with a career-high 18 points. Hannah Nichols scored 15 points and grabbed a career-high 12 rebounds. Makaila Woolard added 11 points in the loss. Charity Brown dished out a career-high 12 assists for the Bulldogs.

SAMFORD AGAINST SEC TEAMS

Against the current members of the SEC, Samford has an all-time record of 6-18, though this will mark the first-ever meeting with Arkansas.

Samford has played the following SEC teams: Alabama (2-7), Auburn (0-2), Florida (0-1), Georgia (1-0), Kentucky (0-2), LSU (1-1), Ole Miss (1-0), Mississippi State (0-2), Missouri (1-0), South Carolina (0-1) and Vanderbilt (0-2).

YOUTH MOVEMENT

Samford will field a very young team this season. Samford's 13-player roster consists of five freshmen, six sophomores, one junior and one senior.

RETURNEES POST CAREER HIGHS VS COLORADO

Three Samford returnees posted career highs in three different categories during Friday night's season opener vs. Colorado.

Sophomore forward Olivia Crozier scored a career-high 18 points. Senior guard Hannah Nichols grabbed a career-high 12 rebounds and sophomore guard Charity Brown dished out a career-high 12 assists.

FRESHMAN HAS IMPRESSIVE DEBUT

Samford freshman forward Makaila Woolard turned in an impressive performance in her Samford debut Friday night against Colorado.

Woolard scored 11 points in the contest. She made 5-of-8 shots from the floor, including making her only attempt from three-point range.

2017-18 SAMFORD WOMEN'S BASKETBALL

THE LAST TIME ...

A Samford player scored 20-29 points: Jan. 19, 2017, 20 by Hannah Nichols vs. Wofford
A Samford player scored 30 or more points: Jan. 23, 2013, 31 by Jazmine Martin vs. Chattanooga
A Samford player had 10 or more rebounds: Nov. 10, 2017, 12 by Hannah Nichols vs. Colorado
A Samford player had 10 or more assists: Nov. 10, 2017, 12 by Charity Brown vs. Colorado
A Samford player blocked 5 or more shots: Jan. 10, 2015, 5 by Hannah Nichols at UNCG
A Samford player had 5 or more steals: Dec. 3, 2016, 5 by K. Blevins and S. Fitzgerald vs. Alabama A&M
A Samford player recorded a double-double: Nov. 10, 2017, Hannah Nichols, 15 pts., 12 reb. vs. Colorado
A Samford game went into overtime: Dec. 11, 2015, Indiana 65, Samford 56 in Bloomington, Ind.
A Samford player made 10 or more field goals: Dec. 30, 2016, 11 by Hannah Nichols vs. Hampton
Samford scored 80-89 points: Feb. 4, 2016, 80-49, vs. UNCG
Samford scored 90-99 points: Dec. Dec. 7, 2010, 95-59, vs Berry College
Samford scored 100 or more points: Dec. 19, 1999, 100-67 vs. Centenary
Samford failed to hit a three-pointer: Jan. 23, 2016, 0-7 vs. Chattanooga (W, 48-43)
Samford won a game by:
1: Feb. 11, 2017, 51-50, vs. Western Carolina
2-4: Mar. 2, 2017, 67-64, vs. ETSU (SoCon Tournament)
5-9: Feb. 18, 2017, 55-48, at Wofford
10-14: Nov. 30, 2016, 63-49, vs. Alabama State
15-19: Jan. 30, 2016, 58-39, at Wofford
20-24: Jan. 24 2017, 72-50, vs. Auburn-Montgomery
25-29: Feb. 14, 2015, 68-43, at Wofford
30-34: Feb. 4, 2016, 80-49, vs. UNCG
35-39: Nov. 27, 2012, 62-24, vs. AUM
40+: Nov. 15, 2015, 82-32, vs. AUM

SAMFORD AGAINST ARKANSAS TEAMS

Sunday's game marks the first time Samford has ever faced a team from the state of Arkansas.

CLIMBING THE CHARTS

Entering Sunday's game, senior guard Hannah Nichols ranks fourth in school history in both three-pointers made (195) and three-pointers attempted (526), and she ranks sixth in program history in scoring (1,094), field goals made (393) and field goals attempted (910).

A LOOK AT ARKANSAS

Arkansas enters Sunday's game with a record of 1-0. The Razorbacks opened their season with a 65-54 win over Sam Houston State Friday night.

Malika Monk led Arkansas in the win with 18 points. Devin Cosper added 17 points and 12 rebounds to the winning cause.

STATISTICAL COMPARISON

Category	SU	UA
Points Per Game	60.0	65.0
Field Goal Pct.	.453	.373
3-pt. Field Goal Pct.	.214	.273
Free Throw Pct.	.750	.545
Rebounds Per Game	34.0	39.0
Assists Per Game	18.0	15.0
Steals Per Game	6.0	8.0
Turnovers Per Game	23.0	9.0
Blocks Per Game	3.0	7.0
Pts Allowed Per Game	71.0	54.0

2017-18 SAMFORD WOMEN'S BASKETBALL

SAMFORD IN NOVEMBER GAMES

In its 20-plus seasons of women's basketball, Samford has a record of 59-45 in games played in the month of November.

Last season, Samford was 3-4 in its seven November games.

This season, Samford has seven regular-season games scheduled in the 11th month, and the Bulldogs are currently 0-1 those contests.

CONFERENCE PRESEASON PREDICTIONS

In the preseason Southern Conference polls, Samford was picked to finish sixth by both the league's head coaches and media.

2017-18 SoCon Preseason Coaches Poll

Place	School (1st)	Points
1.	Mercer (7)	49
2.	Chattanooga	40
3.	UNCG (1)	34
4.	ETSU	33
5.	Furman	28
6.	Samford	20
7.	Wofford	12
8.	Western Carolina	8

2017-18 SoCon Preseason Media Poll

Place	School (1st)	Points
1.	Mercer (9)	100
2.	Chattanooga (4)	94
3.	ETSU	67
4.	UNCG	65
5.	Furman	56
6.	Samford	35
7.	Wofford	27
8.	Western Carolina	24

PRESEASON ALL-CONFERENCE

Samford senior guard Hannah Nichols was the Bulldogs' lone representative on the preseason All-SoCon team, released by the league's coaches in October.

2017-18 QUICK FACTS

GENERAL INFORMATION

Location: Birmingham, Ala.
Year Founded: 1841
Enrollment: 5,509
Nickname: Bulldogs
School Colors: Red and Blue
Arena (Capacity): Pete Hanna Center (5,000)
Affiliation: NCAA Division I
Conference: Southern
President: Dr. Andrew Westmoreland
Alma Mater/Year: Ouachita Baptist University/1979
Director of Athletics: Martin Newton
Alma Mater/Year: Samford/1983

ATHLETIC COMMUNICATIONS

Assistant AD (WBB Contact): Joey Mullins
Office Phone: (205) 726-2799
Cell Phone: (205) 532-3477
E-mail: jmmulli1@samford.edu
Director: Zac Schrieber
Office Phone: (205) 726-2802
Cell Phone: (205) 532-3476
E-mail: zdschrie@samford.edu
SID Fax: (205) 726-2132
Website: www.samfordsports.com

HISTORY

First Year of Basketball: 1997-98
All-Time Record: 295-300, .496 (21st year)
All-Time Division I Record: 295-300, .496 (21st year)
Years in NCAA Tournament/Last: 2/2012
Last postseason Opponent: vs. Duke, NCAA Tournament, L, 47-82, Nashville, Tenn., Mar. 18, 2012

TEAM INFORMATION

2016-17 Overall Record: 12-19
2016-17 Conference Record/Finish: 4-10/6th

WOMEN'S BASKETBALL STAFF

Head Coach: Mike Morris (Belhaven, '92)
Record at Samford: 254-203 (16th year)
Career Record: 254-203 (16th year)
Assistant Coaches: Jessica Jackson (1st year, Western Carolina, '09), Ruth Ketcham (5th year, Samford, '12), Sally Higgins (2nd year, West Texas A&M, '14)

STARTING LINEUPS

Colorado	Crozier	Fitzgerald	Nichols	Brown	Williams
at Arkansas					
Rhode Island					
Alabama State					
at Belmont					
at Florida State					
UCF					
at Iowa					
at UAB					
AUM					
Troy					
Southern Miss.					
vs. UTEP					
vs. Troy/Tulane					
Hampton					
at Furman					
at Wofford					
Mercer					
Western Carolina					
UNCG					
at Chattanooga					
at ETSU					
Wofford					
Furman					
at Mercer					
at UNCG					
at Western Carolina					
ETSU					
Chattanooga					

LEADERS

Points	Rebounds	Assists	Steals	Blocks
Crozier (18)	Nichols (12)	Brown (12)	Brown (3)	Fitzgerald (2)

MISC. SCORING

SU-Opp.	Paint	Off TO	2nd Ch.	Fastbreak	Bench
Colorado	32-38	10-24	6-12	8-12	11-14
at Arkansas					
Rhode Island					
Alabama State					
at Belmont					
at Florida State					
UCF					
at Iowa					
at UAB					
AUM					
Troy					
Southern Miss.					
vs. UTEP					
vs. Troy/Tulane					
Hampton					
at Furman					
at Wofford					
Mercer					
Western Carolina					
UNCG					
at Chattanooga					
at ETSU					
Wofford					
Furman					
at Mercer					
at UNCG					
at Western Carolina					
ETSU					
Chattanooga					

NOTABLE

Samford led by 17 at halftime and by 10 entering the 4th quarter.



MIKE MORRIS HEAD COACH

Since taking over as the second head coach of Samford women's basketball in 2002, Mike Morris has taken the program to new heights.

Over the last 12 years, the Bulldogs have posted eight of the top-nine win totals in school history, including the program's only seven 20-win seasons.

Morris guided the program to back-to-back Southern Conference Tournament titles and NCAA Tournament appearances in 2011 and 2012. The team reached a national postseason tournament for the three years in a row, including a WNIT appearance in 2010.

The 2015-16 team posted Morris' seventh 20-win season, finishing the year with a mark of 20-11 and reaching the semifinals of the SoCon Tournament.

The 2010-11 Bulldogs set a school record for wins with a 25-8 record, winning the SoCon Tournament and reaching the NCAA Tournament for the first time. Despite losing two of the top players in program history, the 2011-12 team won 20 games again, and won its second-straight SoCon title and NCAA Tournament berth.

The 2009-10 team reached the finals of the Southern Conference Tournament for the first time and earned the program's first-ever national postseason appearance. The team also earned its first national postseason win with a 66-65 win over Ole Miss in the first round of the WNIT at the Pete Hanna Center.

The 2009-10 team also tied the then-school record for wins with a 23-11 overall record and a 14-6 mark in SoCon play.

In 2008-09, the Bulldogs set a school record for conference wins with a 16-4 league record in their first year in the SoCon. The team finished with an overall record of 22-7, reaching the semifinals of the SoCon Tournament.

After the season, Morris was named the 2009 SoCon Coach of the Year. The award marked the second Coach of the Year award for Morris, as he was named the Ohio Valley Conference Coach of the Year in 2006.

The 2007-08 Bulldogs set a then-school record for most wins in a season, posting a 23-9 overall record and a 15-5 record in the OVC. The Bulldogs also posted their first-ever wins over Southeastern Conference (Alabama) and Big 12 (Missouri) opponents, and reached the semifinals of the OVC Tournament for a third year in a row.

The 2006-07 season was another winning one with a record of 18-13 and another trip to the OVC semifinals.

In the 2005-06 season, Samford posted its first 20-win season, finishing with a 21-8 overall record, and the Bulldogs were 15-5 in OVC play. For the first time since joining the league in 2003, the team reached the semifinals of the OVC Tournament.

Morris has increased the team's win total in seven of his 12 seasons as head coach. In his first season (2002-03), the team won seven games, up from three the previous season. In his second season (2003-04), the Bulldogs posted 10 wins, only the second time in school history that the team managed double-digit wins. The 2004-05 squad won 13 games, and the 2005-06 team won 21 games. In 2007-08, the Bulldogs won a then-record 23 games, up from 18 in 2006-07. The 2009-10 team also won 23 games and the 2010-11 team won a school-record 25 contests.

Morris is in his 21st season overall at Samford, spending eight seasons as an assistant coach on the men's staff. While working with the men's team, Morris served as the team's top recruiter and directed Samford's summer basketball camps. He was on the bench for both Samford Atlantic Sun Championship seasons and NCAA Tournament appearances.

Before his arrival at Samford in 1994, Morris served for three years as an assistant coach under veteran coach Lenny Acuff at Belhaven College. He coached at Belhaven for two seasons before joining Acuff's staff in 1993 at Berry College in Rome, Ga. In his first year at Belhaven, the Blazers finished with the most wins in nine years, compiling a 17-16 record. The next year, Belhaven went 18-15 and hosted the first round of the NAIA District Playoffs for the first time in 20 years.

Morris played basketball for two seasons at the University of Alabama in Huntsville [UAH], where he was chosen team captain and team MVP his senior season. While at UAH, Morris was the NCAA Division II national champion in free-throw percentage, making 92.1 percent from the line. He played his first two seasons at Jefferson State Junior College in Birmingham.

The Holly Pond, Ala., native earned a B.A. in psychology from Belhaven College in 1992. He has completed 24 hours toward his master's degree in administration from Jacksonville State.

Morris is married to the former Melanie Nix of Huntsville, Ala. They have a son, Peyton, 24, and a daughter, Paige, 21.

THE MORRIS FILE

COACHING EXPERIENCE

2002-present	Head Coach Samford University
1994-2002	Men's Assistant Coach Samford University
1993-94	Assistant Coach Berry College
1991-93	Assistant Coach Belhaven College

PLAYING EXPERIENCE

1989-91	University of Alabama in Huntsville
1987-89	Jefferson State Community College

EDUCATION

1992	B.S., psychology Belhaven College
------	--------------------------------------

PERSONAL

Birthday	May 6, 1969
Hometown	Holly Pond, Alabama
Wife	Melanie
Children	Peyton (24), Paige (21)
Member	WBCA

2017-18 ROSTER

No.	Name	Pos.	Ht.	Cl.	Hometown/Previous School
2	Hannah Nichols	G	5-10	RS-Sr.	Madison, Ala./Madison County HS
3	Shauntai Battle	G/F	5-9	Fr.	Mobile, Ala./McGill-Toolen Catholic
11	Paige Serup	G	5-6	So.	Edmond, Okla./Edmond Memorial HS
12	Charity Brown	G	5-8	So.	Tuscaloosa, Ala./Sipsey Valley HS
15	Ta'Naisha Hill	G	5-7	RS-So.	Huntsville, Ala./UT Martin
21	Katie Allen	G	5-11	So.	Albertville, Ala./Albertville HS
22	Raven Omar	G	5-3	Fr.	Pinson, Ala./Clay-Chalkville HS
31	Cassidy Williams	G	5-8	Jr.	Peachtree City, Ga./McIntosh HS
32	Olivia Crozier	F	6-1	RS-So.	Madison, Ind./Madison HS
33	Makaila Woolard	F	6-0	Fr.	Dandridge, Tenn./Jefferson County HS
35	Samantha Fitzgerald	F	6-0	So.	Somerset, Ky./Southwestern HS
44	Leslie Golden	C	6-5	RS-Fr.	Columbia, Tenn./Columbia Academy
45	Natalie Armstrong	C	6-2	Fr.	Norcross, Ga./Wesleyan HS

Head Coach: Mike Morris (16th year, Belhaven, '92)

Assistant Coaches: Jessica Jackson (1st year, Western Carolina, '09), Ruth Ketcham (5th year, Samford, '12), Sally Higgins (2nd year, W. Texas A&M, '14)

ROSTER BY CLASS

FRESHMEN (5)

Natalie Armstrong
Shauntai Battle
Leslie Golden (RS)
Raven Omar
Makaila Woolard

SOPHOMORES (6)

Katie Allen
Charity Brown
Olivia Crozier (RS)
Samantha Fitzgerald
Ta'Naisha Hill (RS)
Paige Serup

JUNIORS (1)

Cassidy Williams

SENIORS (1)

Hannah Nichols

ROSTER BY STATE

ALABAMA (6)

ALBERTVILLE	Katie Allen
HUNTSVILLE	Ta'Naisha Hill
MADISON	Hanna Nichols
MOBILE	Shauntai Battle
PINSON	Raven Omar
TUSCALOOSA	Charity Brown

GEORGIA (2)

NORCROSS	Natalie Armstrong
PEACHTREE CITY	Cassidy Williams

INDIANA (1)

MADISON	Olivia Crozier
---------	----------------

KENTUCKY (1)

SOMERSET	Samantha Fitzgerald
----------	---------------------

OKLAHOMA (1)

EDMOND	Paige Serup
--------	-------------

TENNESSEE (2)

COLUMBIA	Leslie Golden
DANDRIDGE	Makaila Woolard



The 2017-18 Samford women's basketball team: Front Row L-R: Paige Serup, Charity Brown, Hannah Nichols, Head Coach Mike Morris, Ta'Naisha Hill, Cassidy Williams and Raven Omar. **Back Row L-R:** Athletic Trainer Logan Spiers, Video Coordinator Amara Mayers, Assistant Coach Ruth Ketcham, Shauntai Battle, Makaila Woolard, Natalie Armstrong, Leslie Golden, Olivia Crozier, Samantha Fitzgerald, Katie Allen, Assistant Coach Sally Higgins, Assistant Coach Jessica Jackson and Strength and Conditioning Coach Jonathan Farris.



2 HANNAH NICHOLS

Guard • 5-10 • RS-Senior
Madison, Ala. • Madison County HS

Senior (2017-18): Scored 15 points and grabbed a career-high 12 rebounds against Colorado.

Junior (2016-17): Named second team All-SoCon . . . saw action in all 31 games, including 20 starts . . . led the team in scoring, averaging 13.3 points per game . . . tied for second on the team in rebounding, grabbing 3.8 boards per contest . . . scored in double figures 24 times . . . led the team with 14 points at Georgia Tech . . . scored 12 points against Memphis . . . scored a team-high 16 points at Harvard . . . had 10 points and five rebounds at Rhode Island . . . scored 24 points against UT Martin . . . had 17 points at 20th-ranked Kentucky . . . scored 16 points against Alabama State . . . had 14 points and six rebounds against Alabama A&M . . . led the team with 16 points against UAB . . . led the team with 11 points at Wake Forest . . . scored 13 points

at Georgia . . . led the team with 18 points against UC Riverside . . . scored a career-high 29 points and tied a school record with seven made three-pointers against Hampton . . . scored 16 points against Chattanooga . . . led the team with 20 points at Wofford . . . had 15 points against Furman . . . scored 16 points against Auburn-Montgomery . . . scored 11 points and became the eighth player in program history to score 1,000 career points against UNCG . . . had 10 points against Western Carolina . . . led the team with 17 points at Furman . . . scored 10 points at Wofford . . . led the team with 19 points against Mercer . . . had 10 points and seven rebounds in the team's SoCon Tournament win over ETSU.

2015-16: Sat out the season . . . received a redshirt.

Sophomore (2014-15): Started all 30 games . . . led the team in scoring at 14.1 points per game . . . named second team All-SoCon by both the coaches and the media . . . led the team with 13 points against Alabama A&M . . . scored a team-high 17 points against North Florida . . . scored a career-high 22 points against UT Martin . . . scored 14 points at Georgia State . . . had 13 points and seven rebounds against Penn State . . . scored 14 points at Troy . . . led the team with 19 points against UAB . . . had 13 points and seven rebounds at Auburn . . . scored 14 points and grabbed nine rebounds at Tulane . . . led the team with 12 points against UCLA . . . scored 14 points against Alabama State . . . scored 12 points at Kansas . . . led the team with 12 points at Kansas State . . . scored 12 points against Auburn Montgomery . . . tied a career high with 22 points at Western Carolina . . . had 15 points and five rebounds in home win over Western Carolina . . . led the team with 21 points against Mercer . . . had 14 points and six rebounds against Wofford . . . tied a career high with 22 points against UNCG . . . scored 22 points for the second-straight game in a win at Wofford . . . had 16 points at Furman . . . scored 15 points against #20 Chattanooga . . . scored 19 points against East Tennessee State . . . scored 16 points at Mercer . . . scored nine points against Furman in the SoCon Tournament.





Freshman (2013-14): Named Southern Conference Freshman of the Year . . . finished second on the team in scoring, averaging 8.1 points per game . . . led the team in rebounding, grabbing 4.3 boards per contest . . . scored 12 points and pulled down seven rebounds in her collegiate debut at Memphis . . . scored nine points against Talladega College . . . had 14 points and six rebounds at North Florida . . . had seven points and seven rebounds in win at UNCG . . . scored seven points at Utah . . . had seven points and seven rebounds against Jacksonville State . . . had 11 points and six rebounds against Davidson . . . scored 16 points against Georgia Southern . . . scored 13 points and grabbed seven rebounds at Appalachian State . . . scored nine points at Western Carolina . . . had 12 points against Furman . . . scored 20 points against Wofford . . . had nine points and six rebounds at Chattanooga . . . had 12 points and six rebounds against Western Carolina . . . had nine points against Appalachian State . . . contributed 12 points at Wofford . . . had nine points and seven rebounds at Furman . . . scored 12 points against Chattanooga . . . scored 13 points against Elon.

High School: Named All-State Honorable Mention at Madison County High School . . . also named to the All-State Tournament Team . . . nominated for 4A Player of the Year . . . selected to play in the Alabama-Mississippi All-Star Game . . . also participated in volleyball and softball in high school.

Personal: Born January 12, 1995 . . . daughter of Bruce and Judy Nichols . . . majoring in sport administration.

CAREER BESTS

Points: 29, vs. Hampton, Dec. 30, 2016

Rebounds: 12, vs. Colorado, Nov. 10, 2017

Assists: 3 (three times), last vs. Western Carolina, Feb. 11, 2017

Hannah Nichols

Season	gp-gs	min/avg	Total		3-Point		F-Throws		Rebounds				Scoring							
			fg-fga	pct	fg-fga	pct	ft-fga	pct	off	def	tot	avg	pf	fo	ast	to	blk	stl	pts	avg
2013-14	30-1	616/20.5	88-202	.436	51-130	.392	15-29	.517	13	115	128	4.3	61	0	26	54	11	12	242	8.1
2014-15	30-30	939/31.3	150-342	.439	80-204	.392	44-55	.800	9	104	113	3.8	60	0	33	53	21	17	424	14.1
2016-17	31-20	857/27.6	148-352	.420	63-186	.339	54-83	.651	11	107	118	3.8	68	2	28	55	22	20	413	13.3
2017-18	1-1	33/33.0	7-14	.500	1-6	.167	0-0	.000	0	12	12	12.0	3	0	2	4	0	0	15	15.0
TOTAL	92-52	2445/26.6	393-910	.432	195-526	.371	113-167	.677	33	338	371	4.0	192	2	89	166	54	49	1094	11.9



11 PAIGE SERUP

Guard ▪ 5-6 ▪ Sophomore
Edmond, Okla. ▪ Edmond Memorial HS

Freshman (2016-17): Saw action in 20 games as a backup guard . . . averaged 0.9 points and 0.8 rebounds per game . . . made her collegiate debut in the win over Memphis . . . scored three points against Belmont . . . had five rebounds and three steals at Wake Forest . . . scored three points at Western Carolina . . . scored seven points and dished out two assists against Wofford.

High School: The all-time assists leader and fourth in scoring in Edmond Memorial High School history . . . named All-State as a senior . . . named All-Conference from 2014-2016 . . . also named to the state All-Tournament team from 2014-2016 . . . led all of 6A in free-throw percentage . . . averaged 12 points per game as a junior, and led her team in three-point shooting, assists, steals and free-throw percentage. . . as a sophomore, started every game and led her team to a regional semifinal appearance.

Personal: Born Dec. 17, 1997 . . . daughter of Don Serup and Dawn Lowe . . . undecided on her major at Samford.

CAREER BESTS

Points: 7, vs. Wofford, Jan. 19, 2017
Rebounds: 5, at Wake Forest, Dec. 18, 2016
Assists: 2, vs. Wofford, Jan. 19, 2017



Paige Serup

Season	gp-gs	min/avg	Total		3-Point		F-Throws		Rebounds				Scoring							
			fg-fga	pct	fg-fga	pct	ft-fa	pct	off	def	tot	avg	pf	fo	ast	to	blk	stl	pts	avg
2016-17	20-0	193/9.7	6-24	.250	4-20	.200	1-2	.500	2	13	15	0.8	19	0	6	2	0	8	17	0.9
2017-18	1-0	16/16.0	0-1	.000	0-1	.000	0-0	.000	0	1	1	1.0	1	0	1	0	0	1	0	0.0
TOTAL	21-0	209/10.0	6-25	.240	4-21	.190	1-2	.500	2	14	16	0.8	20	0	7	2	0	9	17	0.8



12 CHARITY BROWN

Guard ▪ 5-8 ▪ Sophomore
Tuscaloosa, Ala. ▪ Sipse Valley HS

Sophomore (2017-18): Dished out a career-high 12 assists against Colorado.

Freshman (2016-17): Saw action in 31 games, including 15 starts . . . averaged 3.3 points, 2.4 rebounds and 2.1 assists per game . . . made her collegiate debut at Georgia Tech . . . scored 10 points and grabbed four rebounds against Memphis . . . dished out 11 assists against UT Martin . . . had six points against Alabama State . . . had eight points, eight rebounds and five assists against Alabama A&M . . . scored 10 points at Wake Forest . . . dished out six assists at Western Carolina . . . scored eight points against Furman . . . had eight points and seven rebounds at

Mercer.

High School: A first-team All-State selection at Sipse Valley High School in Tuscaloosa . . . helped lead her team to a record of 25-6 as a senior in 2015-16 . . . as a junior, her team earned a Central Regional championship and an impressive 30-5 record . . . as a sophomore, helped lead her team to a 23-7 record.

Personal: Born May 17, 1998 . . . daughter of Samuel Brown and Cynthia Brown . . . majoring in sport administration.

CAREER BESTS

Points: 10, twice, last at Wake Forest, Dec. 18, 2016

Rebounds: 8, vs. Alabama A&M, Dec. 3, 2016

Assists: 12, vs. Colorado, Nov. 10, 2017



Charity Brown

Season	gp-gs	min/avg	Total		3-Point		F-Throws		Rebounds				Scoring							
			fg-fga	pct	fg-fga	pct	ft-fa	pct	off	def	tot	avg	pf	fo	ast	to	blk	stl	pts	avg
2016-17	31-15	655/21.1	38-137	.277	15-71	.211	11-18	.611	16	59	75	2.4	53	0	65	55	3	9	102	3.3
2017-18	1-1	37/37.0	3-9	.333	0-1	.000	2-2	1.000	1	3	4	4.0	1	0	12	5	0	3	8	8.0
TOTAL	32-16	692/21.6	41-146	.281	15-72	.208	13-20	.650	17	62	79	2.5	54	0	77	60	3	12	110	3.4



15 TA'NAISHA HILL

Guard ▪ 5-7 ▪ RS-Sophomore
Huntsville, Ala. ▪ UT Martin

Will sit out the first half of the season after transferring from UT Martin in December of 2016.

Previous College: Redshirted in 2015-16 at UT Martin . . . in 2016-17, saw action in five games before transferring to Samford . . . averaged 2.4 points and 0.8 rebounds . . . scored six points at North Carolina A&T, and six more at Western Carolina.

High School: Averaged 15.6 points, 4.7 rebounds, 4.2 assists and 1.9 steals as a senior at Huntsville High School . . . led her team to the Class 7A state semifinals . . . ranked the No. 2 senior in the state for the class of 2015 . . . named second team All-State . . . selected for the Alabama-Mississippi All-Star game . . . finished her career with 1,709 points . . . was a McDonalds All-American nominee.

Personal: Born Nov. 29, 1996 . . . daughter of Robyn Reynolds and Thabiti Hill . . . majoring in human development and family science.





21 KATIE ALLEN

Guard ▪ 5-11 ▪ Sophomore
 Albertville, Ala. ▪ Albertville HS

Freshman (2016-17): Played in 28 games, including one start . . . averaged 4.8 points and 1.5 rebounds per game . . . named to the SoCon's All-Freshman team . . . made her collegiate debut in the win over Memphis . . . scored three points at 20th-ranked Kentucky . . . had five points against Belmont . . . scored 13 points at Georgia . . . scored 15 points at Western Carolina . . . scored 11 points at UNCG . . . scored 10 points against Furman . . . scored 13 points against Auburn-Montgomery . . . scored a career-high 16 points at Mercer . . . led the team with nine points at Chattanooga.

High School: Named second team All-State as a senior and third team as a junior at Albertville High School . . . named Marshall County Player of the Year . . . holds her school's record for most points in a career, most three-pointers in a season and most three-pointers in a career . . . as a junior, she averaged 19.6 points, 10.1 rebounds and 4.9 assists per game, leading her team to the first Northeast Regional Tournament berth in 16 years.

Personal: Born Feb. 4, 1998 . . . daughter of Amy and Pat Allen . . . majoring in exercise science.

CAREER BESTS

Points: 16, at Mercer, Jan. 28, 2017

Rebounds: 6, vs. UNCG, Feb. 9, 2017

Assists: 2, vs. ETSU, Jan. 8, 2017



Katie Allen

Season	gp-gs	min/avg	Total		3-Point		F-Throws		Rebounds				Scoring							
			fg-fga	pct	fg-fga	pct	ft-fa	pct	off	def	tot	avg	pf	fo	ast	to	blk	stl	pts	avg
2016-17	28-1	372/13.3	47-119	.395	28-73	.384	12-16	.750	10	33	43	1.5	25	0	10	22	3	8	134	4.8
TOTAL	28-1	372/13.3	47-119	.395	28-73	.384	12-16	.750	10	33	43	1.5	25	0	10	22	3	8	134	4.8



31 CASSIDY WILLIAMS

Guard ▪ 5-8 ▪ Junior

Peachtree City, Ga. ▪ McIntosh HS

Sophomore (2016-17): Saw action in 25 games as a backup . . . averaged 2.4 points per game . . . scored three points and dished out three assists against Memphis . . . scored six points at 20th-ranked Kentucky . . . scored a career-high 12 points against Auburn-Montgomery . . . scored seven points at Mercer . . . had six points at Chattanooga.

Freshman (2015-16): Saw action in 24 games . . . averaged 2.2 points and 1.1 rebounds per game . . . scored six points and grabbed three rebounds in her collegiate debut at 11th-ranked Mississippi State . . . also had six points against AUM . . . had eight points and four rebounds against Shorter . . . scored six points at UT Martin . . . scored five points against Harvard . . . scored six points against Mercer.

High School: Named first team All-State as a senior at McIntosh High School in Georgia . . . named Region Player of the Year, South-Metro Player of the Year and Southern Crescent Player of the Year . . . ranked in the top 50 at the World Championship trials . . . also named second team All-State as a junior . . . also participated in lacrosse.

Personal: Born July 13, 1997 . . . daughter of Michael and Cathy Williams . . . majoring in sport administration.

CAREER BESTS

Points: 12, vs. AUM, Jan. 24, 2017

Rebounds: 5, at Georgia Tech, Dec. 13, 2015

Assists: 3, vs. Memphis, Nov. 13, 2016



Cassidy Williams

Season	gp-gs	min/avg	Total		3-Point		F-Throws		Rebounds				Scoring							
			fg-fga	pct	fg-fga	pct	ft-fa	pct	off	def	tot	avg	pf	fo	ast	to	blk	stl	pts	avg
2015-16	24-0	304/12.7	18-61	.295	14-48	.292	2-2	1.000	6	21	27	1.1	20	0	9	26	1	4	52	2.2
2016-17	25-0	296/11.8	18-52	.346	14-34	.412	9-12	.750	2	7	9	0.4	15	0	19	8	1	4	59	2.4
2017-18	1-1	22/22.0	0-5	.000	0-3	.000	0-0	.000	0	0	0	0.0	4	0	0	3	0	0	0	0.0
TOTAL	50-1	622/12.4	36-118	.305	28-85	.329	11-14	.786	8	28	36	0.7	39	0	28	37	2	8	111	2.2



32 OLIVIA CROZIER

Forward ▪ 6-1 ▪ RS-Sophomore
Madison, Ind. ▪ Madison HS

Sophomore (2017-18): Scored a career-high 18 points against Colorado.

Freshman (2016-17): Saw action in 21 games . . . averaged 1.6 points and 2.1 rebounds per game . . . made her collegiate debut at Georgia Tech, grabbing three rebounds . . . scored two points and grabbed two rebounds against Memphis . . . had six points against UT Martin . . . led the team with five rebounds at 20th-ranked Kentucky . . . had five points and a team-high seven rebounds against Belmont . . . scored six points against Auburn-Montgomery.

2015-16: Redshirted.

High School: Named All-State by the Indiana Basketball Coaches Association (IBCA) as a sophomore, junior and senior at Madison High School . . . also named Honorable Mention All-State by the IBCA as a freshman . . . named to Indiana's South All-Star team as a junior . . . named All-Hoosier Hills Conference as a sophomore, junior and senior . . . also named Hoosier Hills Conference All-Academic as a junior and senior . . . named Courier Area Player of the Year as a sophomore, junior and senior, and Courier Area Freshman of the Year . . . named Courier Area Defensive Player of the Year as a sophomore, junior and senior, and Offensive Player of the Year as a senior . . . helped lead her team to two Elite 8 appearances and one Final 4 appearance in the State Tournament . . . set school records for career rebounds (919), career blocks (178) and winningest class in school history (2011-15) . . . ranks sixth in school history in career scoring (1,168), and fourth in free throw shots taken . . . she earned 11 varsity letters in four years of high school in basketball (4), volleyball (4) and track (3) . . . was a National Honor Society member as a junior and senior.

Personal: Born Sept. 29, 1996 . . . daughter of Andy and Pam Crozier . . . majoring in nursing.

CAREER BESTS

Points: 18, vs. Colorado, Nov. 10, 2017

Rebounds: 7, vs. Belmont, Dec. 5, 2016

Assists: 3, vs. Alabama State, Nov. 30, 2016



Olivia Crozier

Season	gp-gs	min/avg	Total		3-Point		F-Throws		Rebounds				Scoring							
			fg-fga	pct	fg-fga	pct	ft-fta	pct	off	def	tot	avg	pf	fo	ast	to	blk	stl	pts	avg
2016-17	21-0	216/10.3	14-29	.483	1-5	.200	4-7	.571	10	34	44	2.1	18	0	13	13	2	2	33	1.6
2017-18	1-1	27/27.0	7-10	.700	0-0	.000	4-5	.800	2	4	6	6.0	1	0	1	3	1	0	18	18.0
TOTAL	22-1	243/11.0	21-39	.538	1-5	.200	8-12	.667	12	38	50	2.3	19	0	14	16	3	2	51	2.3



35 SAMANTHA FITZGERALD

Forward ▪ 6-0 ▪ Sophomore
Somerset, Ky. ▪ Southwestern HS

Freshman (2016-17): Named to the SoCon's All-Freshman team . . . played in all 31 games, including 23 starts . . . averaged 6.9 points and 3.8 rebounds per game . . . made her collegiate debut at Georgia Tech, scoring 11 points and leading the team with six rebounds . . . scored 15 points at Rhode Island . . . posted her first career double-double, scoring 11 points and grabbing 11 rebounds against UT Martin . . . had nine points against Alabama State . . . scored 11 points against Alabama A&M . . . had 13 points and six rebounds against UAB . . . led the team with 14 points and five rebounds at Georgia . . . scored 15 points against Chattanooga . . . scored 16 points and grabbed 14 rebounds against Auburn-Montgomery . . . scored seven points at Wof-

ford.

High School: Named first team All-State, All-Region and All-District at Southwestern High School in Kentucky . . . earned the Kentucky High School Athletic Association's athletic academic award . . . named her school's athlete of the year . . . scored over 1,000 points, and is Southwestern High School's all-time leading rebounder.

Personal: Born June 7, 1997 . . . daughter of Ginger Combs and Lee Fitzgerald . . . majoring in health sciences.

CAREER BESTS

Points: 16 (twice), last vs. ETSU, Mar. 2, 2017 (SoCon Tournament)

Rebounds: 14, vs. AUM, Jan. 24, 2017

Assists: 4, vs. Belmont, Dec. 5, 2016



Samantha Fitzgerald

Season	gp-gs	min/avg	Total		3-Point		F-Throws		Rebounds				Scoring							
			fg-fga	pct	fg-fga	pct	ft-fa	pct	off	def	tot	avg	pf	fo	ast	to	blk	stl	pts	avg
2016-17	31-23	780/25.2	82-206	.398	20-64	.313	31-43	.721	20	97	117	3.8	59	0	40	62	6	18	215	6.9
2017-18	1-1	35/35.0	2-6	.333	1-2	.500	3-4	.750	0	2	2	2.0	3	0	2	3	2	1	8	8.0
TOTAL	32-24	815/25.5	84-212	.396	21-66	.318	34-47	.723	20	99	119	3.7	62	0	42	65	8	19	223	7.0



44 LESLIE GOLDEN

Center ▪ 6-5 ▪ RS-Freshman
Columbia, Tenn. ▪ Columbia Academy

2016-17: Redshirted . . . saw no game action.

High School: Was a three-time All-District player at Columbia Academy in Tennessee . . . named All-Region as a senior . . . also named MVP of the District Tournament as a senior.

Personal: Born Nov. 21, 1997 . . . daughter of Shelli and Jason Golden . . . majoring in pre-business.





3 SHAUNTAI BATTLE
Guard/Forward ▪ 5-9
Freshman
Mobile, Ala.
McGill-Toolen Catholic

High School: Averaged 19 points per game as a senior in 2016-17 at McGill-Toolen Catholic . . . posted two 30-point games during the season, including 31 points against Foley and a career-high 34 points versus Faith Academy . . . was named first team All-State and All-Coastal following the season . . . earned All-County honors in 2015, 2016 and 2017 . . . for her career, she amassed over 1,500 points and helped McGill to a 109-24 record . . . during her time at the school McGill advanced to the state tournament in 2015, 2016 and 2017 including finishing as the 7A State runner-up in 2015 and 2016.

Personal: Born May 11, 1999 . . . daughter of Shaundra Battle and Ronnie Battle . . . majoring in sports medicine.

Shauntai Battle																				
Season	gp-gs	min/avg	Total		3-Point		F-Throws		Rebounds				Scoring							
			fg-fga	pct	fg-fga	pct	ft-fa	pct	off	def	tot	avg	pf	fo	ast	to	blk	stl	pts	avg
2017-18	1-0	8/8.0	0-0	.000	0-0	.000	0-0	.000	1	0	1	1.0	0	0	0	1	0	0	0	0.0
TOTAL	1-0	8/8.0	0-0	.000	0-0	.000	0-0	.000	1	0	1	1.0	0	0	0	1	0	0	0	0.0



22 RAVEN OMAR
Guard ▪ 5-3
Freshman
Pinson, Ala.
Clay-Chalkville HS

High School: Was a four-time All-Area selection at Clay-Chalkville High School . . . served as a team captain her junior and senior seasons . . . scored over 1,000 points in her career . . . averaged 12 points, six assists and two steals per game.

Personal: Born Nov. 3, 1998 . . . daughter of Ali and Calandra Omar . . . majoring in health sciences.

Raven Omar																				
Season	gp-gs	min/avg	Total		3-Point		F-Throws		Rebounds							Scoring				
			fg-fga	pct	fg-fga	pct	ft-fa	pct	off	def	tot	avg	pf	fo	ast	to	blk	stl	pts	avg
2017-18	1-0	4/4.0	0-0	.000	0-0	.000	0-0	.000	0	0	0	0.0	0	0	0	1	0	1	0	0.0
TOTAL	1-0	4/4.0	0-0	.000	0-0	.000	0-0	.000	0	0	0	0.0	0	0	0	1	0	1	0	0.0

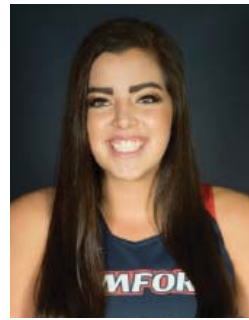


33 MAKAILA WOOLARD
Forward • 6-0
Freshman
Dandridge, Tenn.
Jefferson County HS

Freshman (2017-18): Scored 11 points in her collegiate debut against Colorado.

High School: Served a team captain as a senior at Jefferson County High School . . . named All-District and All-Conference following the season . . . as a junior averaged 12 points, 5.5 rebounds, 2.1 assists and 2.0 per game . . . also tallied 25 blocks on the season while shooting 70 percent from the free throw line . . . was named All-Conference, All-District and All-Region following her junior season . . . was on the A honor roll every year in high school and is a part of the Beta Club and National Honor Society.

Personal: Born April 24, 1999 . . . daughter of Misty Woolard and Scott Woolard . . . majoring in health sciences.



45 NATALIE ARMSTRONG
Center • 6-2
Freshman
Norcross, Ga.
Wesleyan HS

High School: Helped lead her team to a state title as a senior in 2017 . . . averaged 10 points and 8 rebounds as a junior, leading Wesleyan to a state runner-up finish, earning first-team All-Region and second-team All-County honors . . . was a key player as a sophomore in 2014-15 for Wesleyan's state championship team . . . has been on the A honor roll every year in high school and is a member of the Beta Club and National Honor Society.

Personal: Born June 18, 1999 . . . daughter of Robert and Leslie Armstrong . . . majoring in health sciences.

Makaila Woolard																				
Season	gp-gs	min/avg	Total		3-Point		F-Throws		Rebounds			Scoring								
			fg-fga	pct	fg-fga	pct	ft-fa	pct	off	def	tot	avg	pts	avg						
2017-18	1-0	17/17.0	5-8	.625	1-1	1.000	0-1	.000	0	2	2	2.0	1	0	0	3	0	0	11	11.0
TOTAL	1-0	17/17.0	5-8	.625	1-1	1.000	0-1	.000	0	2	2	2.0	1	0	0	3	0	0	11	11.0

Natalie Armstrong																				
Season	gp-gs	min/avg	Total		3-Point		F-Throws		Rebounds			Scoring								
			fg-fga	pct	fg-fga	pct	ft-fa	pct	off	def	tot	avg	pts	avg						
2017-18	1-0	1/1.0	0-0	.000	0-0	.000	0-0	.000	0	0	0	0.0	0	0	0	0	0	0	0	0.0
TOTAL	1-0	1/1.0	0-0	.000	0-0	.000	0-0	.000	0	0	0	0.0	0	0	0	0	0	0	0	0.0

RECORDS

TEAM RECORDS

Points: 101, vs. Florida Atlantic (1/9/99)
First-Half Points: 50, vs. Florida Atlantic (1/9/99)
Second-Half Points: 54, vs. Centenary (12/19/99)
vs. Troy State (3/9/00)
Field Goals Made: 39, vs. Troy State (3/9/00)
Field-Goal Attempts: 84, vs. Centenary (12/19/99)
Field-Goal Percentage: .628 (27-43), vs. Central Conn, (12/29/10)
3-Point Field Goals Made: 15, vs. East Tennessee State (11/17/07); 15 vs. Wofford (1/26/09); 15 vs. Berry College (12/7/10); 15 at Saint Peter's (12/30/10)
3-Point Field-Goal Attempts: 33, vs. Wofford (1/26/09)
3-Point Field-Goal Percentage: .727 (8-11), at Belmont (3/1/03)
Free Throws Made: 40, vs. Southeast Missouri (12/18/05)
Free Throws Attempted: 46, vs. Southeast Missouri (12/18/05)
Free-Throw Percentage (min. 10 att.): 1.000 (14-14), vs. Davidson (1/19/09); 1.000 (12-12) vs. Clemson (12/12/10); 1.000 (12-12) at St. Peter's (12/30/10)
Rebounds: 65, vs. Troy State (3/9/00)
Assists: 24, 10 times, last vs. AUM (11/15/15)
Steals: 22, vs. Troy State (2/26/98)
Blocks: 12, vs. Central Florida (1/27/00)
Turnovers: 40, at UNO (12/13/97) 40, at Fla International (2/12/98)

INDIVIDUAL GAME RECORDS

Most Points: 35, Emily London, at Davidson (1/9/10)
Most Field Goals Made: 14, Jodi Morris, at Florida Atlantic (2/25/99); Jodi Morris, vs. Campbell (3/10/00)
Most Field-Goal Attempts: 25, Aimee Cochran, vs. Georgia State (2/28/98)
Highest Field-Goal Percentage (min. 7 attempts): 1.000, Danielle Pinkston (7-7), at Troy State (1/5/98)
3-Point Field Goals Made: 7, Chelsee Insell, vs. Eastern Kentucky (2/18/06); Emily London at St. Peter's (12/30/10); **Hannah Nichols, vs. Hampton (12/30/16)**
3-Point Field-Goal Attempts: **18, Hannah Nichols vs. Mercer (2/2/15)**
Highest 3-Point Field-Goal Percentage (min. 5 attempts): 1.000 (5-5), Taylor Reece, vs. ETSU (1/31/15), Taylor Reece, vs. Furman (1/17/15)
Most Free Throws Made: 12, Chelsee Insell, vs. Tennessee State (2/26/04)
Most Free-Throw Attempts: 14, Giovanni Price, vs. Alabama (11/17/00); Giovanni Price, vs. Washington State (12/29/00); Veronica Pike, vs. Jacksonville State (1/6/04)
Highest Free-Throw Percentage (min. 8 attempts): 1.000, 15 times, most recent, Emily London (8-8), vs. Western Carolina (3/4/11)
Most Rebounds: 18, Destiney Elliott, at UT Martin (12/5/15), Cortney Moore, vs. Charleston (1/8/98)
Most Offensive Rebounds: 9, Cortney Moore, vs. Charleston (1/8/98)
Most Defensive Rebounds: 11, Destiney Elliott, at UT Martin (12/5/15), Cortney Moore, vs. Florida Atlantic (2/14/98)
Most Assists: 13, Clarissa Tomlinson, vs. Troy State (3/10/00)
Most Blocked Shots: 7, Cortney Moore, vs. Nicholls State (12/15/97)
Most Steals: 10, Aimee Cochran, vs. Troy State (2/26/98)

INDIVIDUAL SEASON RECORDS

Most Games Played: 34, Savannah Hill, Monica Maxwell, Paige Anderson, Hannah Dawson, Megan Wilderotter, Alex Crow (2009-10)
Most Games Started: 34, Savannah Hill, Monica Maxwell (2009-10)
Most Points: 535, Emily London (2010-11)
Highest Scoring Average: 18.6, Jodi Morris (1998-99)
Most Field Goals Made: 214, Jodi Morris (1999-2000)
Most Field-Goal Attempts: 428, Jodi Morris (1999-2000)
Highest Field-Goal Percentage: .530, Veronica Pike, 122-230 (2006-07)
3-Point Field Goals Made: 84, Emily London (2010-11)
3-Point Field-Goal Attempts: 204, Hannah Nichols (2014-15)
Highest 3-Point Field-Goal Percentage (min. 50 attempts): .488, Emily London, 60-123 (2007-08)
Most Free Throws Made: 117, Emily London (2010-11)
Most Free-Throw Attempts: 156, Giovanni Price (2000-01)
Highest Free-Throw Percentage (min. 50 attempts): .936, Emily London, 117-125 (2010-11)
Most Rebounds: 225, Cortney Moore (1997-98)
Most Offensive Rebounds: 88, Cortney Moore (1997-98)
Most Defensive Rebounds: 137, Cortney Moore (1997-98)
Highest Rebounding Average: 8.7, Cortney Moore (1997-98)
Most Assists: 201, Clarissa Tomlinson (1999-2000)
Highest Assist Average: 6.9, Clarissa Tomlinson (1999-2000)
Most Blocked Shots: 70, Cortney Moore (1997-98)
Highest Blocked-Shot Average: 2.7, Cortney Moore (1997-98)
Most Steals: 78, Aimee Cochran (1997-98)
Best Steal Average: 3.0, Aimee Cochran (1997-98)

INDIVIDUAL CAREER RECORDS

Most Games Played: 130, Megan Wilderotter (2005-2010)
Most Games Started: 125, Hannah Dawson (2009-13)
Most Points: 1,760, Emily London (2007-11)
Highest Scoring Average: 18.6, Jodi Morris (1998-2000)
Most Field Goals Made: 595, Savannah Hill (2007-11)
Most Field-Goal Attempts: 1,306, Alex Munday (2003-08)
Highest Field-Goal Percentage: .502, Emily London (2007-11)
3-Point Field Goals Made: 276, Emily London (2007-11)
3-Point Field-Goal Attempts: 641, Monica Maxwell (2006-10)
Highest 3-Point Field-Goal Percentage (min. 50 attempts): .474, Emily London, (276-582) (2007-11)
Most Free Throws Made: 382, Emily London (2007-11)
Most Free-Throw Attempts: 427, Veronica Pike (2003-07)
Highest Free-Throw Percentage: .897, Emily London, (382-425) (2007-11)
Most Total Rebounds: 725, Cortney Moore (1997-2001)
Most Assists: 463, Aimee Cochran (1997-2001)
Most Blocked Shots: 196, Cortney Moore (1997-2001)
Most Steals: 289, Aimee Cochran (1997-2001)

Returning players are in bold.

ALL-TIME TOP 10

POINTS

1. Emily London	1,760
2. Alex Munday	1,603
3. Savannah Hill	1,539
4. Aimee Cochran	1,247
5. Taylor Reece	1,196
6. Hannah Nichols	1,094
7. Monica Maxwell	1,072
8. Chelsea Insell	1,008
9. Hannah Dawson	915
10. Jodi Morris	912

REBOUNDS

1. Cortney Moore	725
2. Savannah Hill	686
3. Hannah Dawson	617
4. Alex Munday	612
5. Noot Pittman	535
6. Krista Stricklin	524
7. Giovanni Price	519
8. Emily London	491
9. Aimee Cochran	444
10. Taryn Towns	432

ASSISTS

1. Aimee Cochran	463
2. Savannah Hill	376
3. Clarissa Tomlinson	336
4. Cora Beth Smith	332
5. Emily London	303
6. Megan Wilderotter	294
7. Brittany Stevens	292
8. Taryn Towns	268
9. LaBrena Friend	239
10. Taylor Reece	206

BLOCKS

1. Cortney Moore	196
2. Taylor Reece	112
3. Savannah Hill	98
4. Christy Robinson	73
5. Jodi Morris	67
6. Hannah Nichols	54
7. Veronica Pike	45
8. Monica Maxwell	44
9. Clarissa Tomlinson	43
10. Giovanni Price	42

STEALS

1. Aimee Cochran	289
2. Emily London	162
3. Cora Beth Smith	153

T4. Brittany Stevens	151
T-4. Megan Wilderotter	151
T-4. Clarissa Tomlinson	151
7. Hannah Dawson	131
8. LaBrena Friend	129
9. Monica Maxwell	127
10. Taryn Towns	121

FREE THROWS MADE

1. Emily London	382
2. Alex Munday	295
3. Veronica Pike	294
4. Giovanni Price	278
5. Taryn Towns	258
6. Savannah Hill	228
7. Paige Anderson	217
8. Aimee Cochran	215
9. Chelsea Insell	202
10. Megan Wilderotter	182

FREE THROWS ATTEMPTED

1. Veronica Pike	427
2. Emily London	424
3. Giovanni Price	390
4. Alex Munday	371
5. Taryn Towns	341
6. Hannah Nichols	332
7. Aimee Cochran	312
8. Savannah Hill	305
9. Paige Anderson	260
10. Megan Wilderotter	253

3-POINTERS MADE

1. Emily London	276
2. Monica Maxwell	220
3. Chelsea Insell	202
4. Hannah Nichols	195
5. Paige Anderson	149
6. Taylor Reece	140
7. Hannah Dawson	135
8. Alex Munday	126
9. Savannah Hill	121
10. Cassidy Blevins	120

3-POINTERS ATTEMPTED

1. Monica Maxwell	641
2. Emily London	582
3. Chelsea Insell	551
4. Hannah Nichols	526
5. Hannah Dawson	407
6. Taylor Reece	389
7. Aimee Cochran	381

ALL-TIME TOP 10

8. Paige Anderson	379
9. Alex Munday	359
10. Kassidy Blevins	343

FIELD GOALS MADE

1. Savannah Hill	595
2. Alex Munday	591
3. Emily London	551
4. Aimee Cochran	460
5. Taylor Reece	447
6. Hannah Nichols	393
7. Jodi Morris	362
8. Hannah Dawson	327
9. Chelsee Insell	302
10. Veronica Pike	299

FIELD GOALS ATTEMPTED

1. Alex Munday	1,306
2. Savannah Hill	1,255
3. Aimee Cochran	1,193
4. Taylor Reece	1,104
5. Emily London	1,098
6. Hannah Nichols	910
7. Giovanni Price	832
8. Hannah Dawson	825
9. Chelsee Insell	780
10. Cora Beth Smith	774

GAMES STARTED

1. Hannah Dawson	125
2. Taylor Reece	118
3. Emily London	112
4. Savannah Hill	111
5. Brittany Stevens	110
5. Aimee Cochran	109
7. Alex Munday	99
8. Monica Maxwell	95
9. Megan Wilderotter	94
10. Chelsee Insell	92

GAMES PLAYED

1. Megan Wilderotter	130
2. Hannah Dawson	129
3. Savannah Hill	128
4. Paige Anderson	126
5. Monica Maxwell	125
6. Alex Munday	124
T-7. Taylor Reece	123
T-7. Emily London	123
T-9. Ellen Riggins	122
T-9. Jazmine Powers	122

RECORD VS ALL OPPONENTS

OPPONENT	GAMES	W	L	LAST	SITE	SCORE	Opponent	W	L	LAST	SITE	SCORE		
Alabama	9	2	7	11/18/8	A	SU 61 UA 55*	Mercer	19	5	14	3/3/17	N	MU 63, SU 52	
Alabama State	14	10	4	11/30/16	H	SU 63, ASU 49	Miami	1	0	1	11/18/5	A	UM 72SU 51	
Alabama A&M	5	4	1	12/3/16	H	SU 61, AAMU 37	Michigan State	1	0	1	12/8/0	H	MSU 63 SU 35	
Alcorn State	2	1	1	12/6/4	A	ASU 61 SU 48	Mississippi State	2	0	2	11/13/15	A	MSU 68, SU 47	
Appalachian State	15	9	6	2/10/14	H	SU 55, ASU 47	Miss Valley State	1	1	0	12/30/3	N	SU 72 MVSU 44	
Auburn	2	0	2	12/14/14	A	AU 64, SU 41	Missouri	1	1	0	11/24/7	N	SU 65 UM 49	
Auburn-Montgomery	4	4	0	1/24/17	H	SU 72, AUM 50	Missouri State	1	0	1	3/21/10	A	MSU 75 SU 54	
Austin Peay	10	7	3	2/9/8	A	SU 65APSU 56*	Montana	1	1	0	11/11/11	N	SU 59, UM 45	
Baylor	1	0	1	12/13/8	A	BU 63 SU 51	Morehead State	12	8	4	2/14/8	H	SU 57MSU 59	
Belmont	7	0	7	12/5/16	H	BU 73 SU 64	Morris Brown	1	1	0	11/30/2	N	SU 70 MB 50	
Berry College	1	1	0	12/7/10	H	SU 95 BC 59	Murray State	9	3	6	3/7/8	N	MSU 68 SU 56	
Birmingham-So	4	3	1	11/20/6	H	SU 73 BSC 66	Navy	1	0	1	11/28/98	N	USNA 63 SU 55	
Campbell	14	1	13	2/22/3	H	CU 60 SU 50	New Orleans	4	2	2	11/21/8	H	SU 58UNO 46	
Centenary	2	2	0	11/25/6	N	SU 60 CC 36	Nicholls State	3	3	0	11/27/15	N	SU 45, NSU 43	
Central Connecticut	1	1	0	12/29/10	N	SU 76 CCS 57	Norfolk State	1	1	0	11/28/9	N	SU 70 NSU 33	
Central Florida	10	2	8	2/1/3	H	UCF 71 SU 49	North Florida	2	1	1	11/24/14	H	SU 81, UNF 47	
Charleston (S.C.)	12	11	1	2/18/13	A	CC 63 SU 62	North Texas	1	1	0	11/27/9	N	SU 67 UNT 53	
Chattanooga	27	7	20	2/4/17	A	UTC 51, SU 45	Oklahoma	1	0	1	12/29/13	A	UO 66, SU 35	
Clemson	2	1	1	12/12/12	A	CU 63 SU 51	Ole Miss	1	1	0	3/18/10	H	SU 66 UM 65	
Colorado	1	0	1	11/10/17	H	CU 71, SU 60	Oregon	1	0	1	12/18/12	A	UO 72, SU 61	
Columbus State	1	0	1	12/3/98	H	CSC 78 SU 74	Penn State	1	1	0	11/30/14	N	SU 59, PSU 56*	
Cornell	1	1	0	12/29/9	N	SU 62 SU 46	Princeton	2	1	1	11/16/7	H	SU 77 PU 68	
Davidson	14	6	8	3/8/14	N	DC 55, SU 42	Providence	1	1	0	11/27/99	N	SU 73 PC 72	
Dayton	1	0	1	12/29/5	N	DU 88 SU 59	Rhode Island	1	0	1	11/21/16	A	URI 78, SU 63	
DePaul	1	0	1	11/12/11A	N	DU 86, SU 57	Rice	2	0	2	11/29/13	N	Rice 57 SU 52	
Duke	1	0	1	3/18/12	N	DU 82 SU 47	Robert Morris	1	0	1	12/30/0	N	RMC 63 SU 54	
East Tennessee	8	5	3	3/2/17	N	SU 67, ETSU 44	Saint Peter's Coll	1	1	0	12/30/10	A	SU 67 SPC 53	
Eastern Kentucky	12	6	6	3/4/8	H	SU 69 EKU 56	Shorter	1	1	0	11/21/15	H	SU 53, Shorter 33	
Eastern Illinois	8	5	3	3/1/8	A	EIU 68 SU 60	South Alabama	1	1	0	11/30/13	N	SU 70, USA 49	
Elon	15	8	7	3/2/14	H	EU 44, SU 43	South Carolina	1	0	1	12/28/6	A	USC 64 SU 56	
Evansville	2	1	1	11/15/9	A	SU 69 UE 66	South Florida	1	1	0	11/27/10	H	SU 64 USF 47	
Florida	1	0	1	12/28/11	A	UF 81 SU 56	S.E. Missouri	14	4	10	11/26/11	N	SU 63 SEMO 58	
Florida Atlantic	12	6	6	11/25/7	A	SU 70 FAU 59	Southern Mississippi	5	1	4	11/28/15	A	USM 56, SU 48	
Florida International	1	0	1	2/12/98	A	FIU 101 SU 33	Stetson	10	6	4	2/6/3	H	SU 52 Stet 48	
Florida State	3	0	3	11/11/12	A	FSU 77 SU 42	Talladega College	1	0	1	11/14/13	H	TC 50, SU 49	
Furman	19	12	7	2/16/17	A	FU 53, SU 48	UT Martin	14	5	9	12/5/15	A	UTM 52, SU 50	
Gardner-Webb	2	1	1	2/20/3	H	SU 73GWU 64	Tennessee State	11	9	2	11/24/12	H	TSU 57 SU 40	
George Washington	1	0	1	12/1/7	N	GW 64 SU 57	Tennessee Tech	13	6	7	12/6/12	A	TTU 65 SU 56	
Georgia	1	1	0	12/22/16	A	SU 65, UGA 59	Texas-San Antonio	1	0	1	12/30/4	A	UTSA 52 SU 48	
Georgia Southern	12	9	3	2/1/14	A	SU 58, GSU 43	Texas Tech	1	0	1	11/15/10	A	TTU 58 SU 42	
Georgia State	13	2	11	11/28/14	A	GSU 61, SU 56	Troy	17	7	10	11/17/15	H	SU 73, Troy 69	
Georgia Tech	4	0	4	11/11/16	A	GT 62, SU 57	Tulane	2	1	1	12/18/14	A	TU 58, SU 56	
Hampton	1	0	1	12/30-16	N	HU 63, SU 57	UAB	6	2	4	12/8/16	H	SU 52, UAB 49	
Harvard	2	0	2	11/19/16	A	HU 57, SU 52	UCLA	1	0	1	12/19/14	N	UCLA 71, SU 52	
Indiana	1	0	1	12/11/15	A	IU 65, SU 56*	UC Riverside	1	0	1	12/29/16	N	UCR 51, SU 48	
Iowa	1	0	1	12/3/6	A	UI 66 SU 60	UNC-Asheville	2	1	1	12/16/3	H	SU 53 UNCA 45	
Jacksonville	5	3	2	11/19/4	H	SU 61 JU 46	UNCG	19	13	6	2/9/17	H	UNCG 55, SU 47	
Jacksonville State	32	18	14	11/24/15	A	SU 50, JSU 39	Utah	1	0	1	12/21/13	A	Utah 69, SU 49	
Kansas	1	0	1	12/29/14	A	KU 66, SU 44	Vanderbilt	2	0	2	11/18/10	A	VU 70 SU 60	
Kansas State	1	0	1	12/30/14	A	KSU 60, SU 41	Virginia	1	0	1	12/28/9	A	UV 69 SU 60	
Kentucky	2	0	2	11/27/16	A	UK 80 SU 57	Wake Forest	1	0	1	12/18/16	A	WFU 51, SU 40	
Liberty	1	0	1	11/21/97	A	LU 85 SU 49	Washington State	1	0	1	12/29/0	N	WSU 76 SU 49	
Lipscomb	3	3	0	11/24/8	A	SU 62 LU 48	Western Carolina	20	16	4	2/11/17	H	SU 51, WCU 50	
Louisiana-Monroe	1	0	1	12/29/3	N	ULM 71 SU 57	Western Kentucky	1	0	1	11/25/11	N	WKU 58, SU 57	
LSU	2	1	1	12/28/15	A	SU 47, LSU 44	Western Michigan	1	0	1	12/31/4	N	WMU 63 SU 46	
Martin Methodist	1	1	0	1/4/3	H	SU 70 MM 58	Wofford	23	21	2	2/18/17	A	SU 55, WC 48	
Maryland	1	0	1	11/24/9	A	UM 76 SU 49	Totals	595	295	300				
McNeese State	2	2	0	11/21/9	A	SU 72MSU 58								
Memphis	3	2	1	11/16/14	A	UM 64, SU 48								

*overtime game



2017-18 Samford Women's Basketball
Samford Combined Team Statistics (as of Nov 11, 2017)
All games



RECORD:	OVERALL	HOME	AWAY	NEUTRAL
ALL GAMES	0-1	0-1	0-0	0-0
CONFERENCE	0-0	0-0	0-0	0-0
NON-CONFERENCE	0-1	0-1	0-0	0-0

#	Player	gp-gs	min	avg	Total		3-Point		F-Throw		Rebounds				pf	dq	a	to	blk	stl	pts	avg
					fg-fga	fg%	3fg-fga	3fg%	ft-fa	ft%	off	def	tot	avg								
32	Olivia Crozier	1-1	27	27.0	7-10	.700	0-0	.000	4-5	.800	2	4	6	6.0	1	0	1	3	1	0	18	18.0
02	Hannah Nichols	1-1	33	33.0	7-14	.500	1-6	.167	0-0	.000	0	12	12	12.0	3	0	2	4	0	0	15	15.0
33	Makaila Woolard	1-0	17	17.0	5-8	.625	1-1	1.000	0-1	.000	0	2	2	2.0	1	0	0	3	0	0	11	11.0
35	Samantha Fitzgerald	1-1	35	35.0	2-6	.333	1-2	.500	3-4	.750	0	2	2	2.0	3	0	2	3	2	1	8	8.0
12	Charity Brown	1-1	37	37.0	3-9	.333	0-1	.000	2-2	1.000	1	3	4	4.0	1	0	12	5	0	3	8	8.0
31	Cassidy Williams	1-1	22	22.0	0-5	.000	0-3	.000	0-0	.000	0	0	0	0.0	4	0	0	3	0	0	0	0.0
03	Shauntai Battle	1-0	8	8.0	0-0	.000	0-0	.000	0-0	.000	1	0	1	1.0	0	0	0	1	0	0	0	0.0
11	Paige Serup	1-0	16	16.0	0-1	.000	0-1	.000	0-0	.000	0	1	1	1.0	1	0	1	0	0	1	0	0.0
22	Raven Omar	1-0	4	4.0	0-0	.000	0-0	.000	0-0	.000	0	0	0	0.0	0	0	0	1	0	1	0	0.0
45	Natalie Armstrong	1-0	1	1.0	0-0	.000	0-0	.000	0-0	.000	0	0	0	0.0	0	0	0	0	0	0	0	0.0
Team											2	4	6									
Total.....		1	200		24-53	.453	3-14	.214	9-12	.750	6	28	34	34.0	14	0	18	23	3	6	60	60.0
Opponents.....		1	200		27-65	.415	6-19	.316	11-19	.579	13	25	38	38.0	19	-	12	19	1	14	71	71.0

TEAM STATISTICS	SAM	OPP	Date	Opponent	Score	Att.
SCORING	60	71	11/10/17	COLORADO	L 60-71	381
Points per game	60.0	71.0	* - Conference game			
Scoring margin	-11.0	-				
FIELD GOALS-ATT	24-53	27-65				
Field goal pct	.453	.415				
3 POINT FG-ATT	3-14	6-19				
3-point FG pct	.214	.316				
3-pt FG made per game	3.0	6.0				
FREE THROWS-ATT	9-12	11-19				
Free throw pct	.750	.579				
F-Throws made per game	9.0	11.0				
REBOUNDS	34	38				
Rebounds per game	34.0	38.0				
Rebounding margin	-4.0	-				
ASSISTS	18	12				
Assists per game	18.0	12.0				
TURNOVERS	23	19				
Turnovers per game	23.0	19.0				
Turnover margin	-4.0	-				
Assist/turnover ratio	0.8	0.6				
STEALS	6	14				
Steals per game	6.0	14.0				
BLOCKS	3	1				
Blocks per game	3.0	1.0				
ATTENDANCE	381	0				
Home games-Avg/Game	1-381	0-0				
Neutral site-Avg/Game	-	0-0				

Score by Periods	1st	2nd	3rd	4th	Totals
Samford	17	14	16	13	60
Opponents	8	6	23	34	71



2017-18 Samford Women's Basketball
Samford Season Schedule/Results & Leaders (as of Nov 11, 2017)
All games



RECORD:	OVERALL	HOME	AWAY	NEUTRAL
ALL GAMES	0-1	0-1	0-0	0-0
CONFERENCE	0-0	0-0	0-0	0-0
NON-CONFERENCE	0-1	0-1	0-0	0-0

Date	Opponent	Score	Att.	High Points	High Rebounds
11/10/17	COLORADO	60-71 L	381	(18)Olivia Crozier	(12)Hannah Nichols

* - Conference game

Attendance Summary	Games	Attend	Avg/Game
Home	1	381	381
Away	0	0	0
Neutral	0	0	0
Total	1	381	381



2017-18 Samford Women's Basketball
 Samford Season Box Score (as of Nov 11, 2017)
 All games



RECORD:	OVERALL	HOME	AWAY	NEUTRAL
ALL GAMES	0-1	0-1	0-0	0-0
CONFERENCE	0-0	0-0	0-0	0-0
NON-CONFERENCE	0-1	0-1	0-0	0-0

##	Player	gp-gs	min	avg	Total		3-Point		F-Throw		Rebounds			pf	dq	a	to	blk	stl	pts	avg	
					fg-fga	fg%	3fg-fga	3fg%	ft-fa	ft%	off	def	tot									avg
32	Olivia Crozier	1-1	27	27.0	7-10	.700	0-0	.000	4-5	.800	2	4	6	6.0	1	0	1	3	1	0	18	18.0
02	Hannah Nichols	1-1	33	33.0	7-14	.500	1-6	.167	0-0	.000	0	12	12	12.0	3	0	2	4	0	0	15	15.0
33	Makaila Woolard	1-0	17	17.0	5-8	.625	1-1	1.000	0-1	.000	0	2	2	2.0	1	0	0	3	0	0	11	11.0
35	Samantha Fitzgerald	1-1	35	35.0	2-6	.333	1-2	.500	3-4	.750	0	2	2	2.0	3	0	2	3	2	1	8	8.0
12	Charity Brown	1-1	37	37.0	3-9	.333	0-1	.000	2-2	1.000	1	3	4	4.0	1	0	12	5	0	3	8	8.0
45	Natalie Armstrong	1-0	1	1.0	0-0	.000	0-0	.000	0-0	.000	0	0	0	0.0	0	0	0	0	0	0	0	0.0
22	Raven Omar	1-0	4	4.0	0-0	.000	0-0	.000	0-0	.000	0	0	0	0.0	0	0	0	1	0	1	0	0.0
11	Paige Serup	1-0	16	16.0	0-1	.000	0-1	.000	0-0	.000	0	1	1	1.0	1	0	1	0	0	1	0	0.0
03	Shauntai Battle	1-0	8	8.0	0-0	.000	0-0	.000	0-0	.000	1	0	1	1.0	0	0	0	1	0	0	0	0.0
31	Cassidy Williams	1-1	22	22.0	0-5	.000	0-3	.000	0-0	.000	0	0	0	0.0	4	0	0	3	0	0	0	0.0
Team											2	4	6									
Total.....		1	200		24-53	.453	3-14	.214	9-12	.750	6	28	34	34.0	14	0	18	23	3	6	60	60.0
Opponents.....		1	200		27-65	.415	6-19	.316	11-19	.579	13	25	38	38.0	19	-	12	19	1	14	71	71.0

Score by Periods	1st	2nd	3rd	4th	Totals
Samford	17	14	16	13	60
Opponents	8	6	23	34	71



2017-18 Samford Women's Basketball
Samford Overall Team Statistics (as of Nov 11, 2017)
All games



TEAM STATISTICS	SAM	OPP
SCORING	60	71
Points per game	60.0	71.0
Scoring margin	-11.0	-
FIELD GOALS-ATT	24-53	27-65
Field goal pct	.453	.415
3 POINT FG-ATT	3-14	6-19
3-point FG pct	.214	.316
3-pt FG made per game	3.0	6.0
FREE THROWS-ATT	9-12	11-19
Free throw pct	.750	.579
F-Throws made per game	9.0	11.0
REBOUNDS	34	38
Rebounds per game	34.0	38.0
Rebounding margin	-4.0	-
ASSISTS	18	12
Assists per game	18.0	12.0
TURNOVERS	23	19
Turnovers per game	23.0	19.0
Turnover margin	-4.0	-
Assist/turnover ratio	0.8	0.6
STEALS	6	14
Steals per game	6.0	14.0
BLOCKS	3	1
Blocks per game	3.0	1.0
WINNING STREAK	0	-
Home win streak	0	-
ATTENDANCE	381	0
Home games-Avg/Game	1-381	0-0
Neutral site-Avg/Game	-	0-0

Score by Periods	1st	2nd	3rd	4th	Totals
Samford	17	14	16	13	60
Opponents	8	6	23	34	71



2017-18 Samford Women's Basketball
 Samford Category Leaders (as of Nov 11, 2017)
 All games



Points	G	Pts	Pts/G
Olivia Crozier	1	18	18.0
Hannah Nichols	1	15	15.0
Makaila Woolard	1	11	11.0
Charity Brown	1	8	8.0
Samantha Fitzgerald	1	8	8.0

FG Percentage	FG	Att	Pct
Olivia Crozier	7	10	.700
Makaila Woolard	5	8	.625
Hannah Nichols	7	14	.500
Samantha Fitzgerald	2	6	.333
Charity Brown	3	9	.333
Cassidy Williams	0	5	.000
Paige Serup	0	1	.000

3-Point Percentage	3FG	Att	Pct
Makaila Woolard	1	1	1.000
Samantha Fitzgerald	1	2	.500
Hannah Nichols	1	6	.167
Charity Brown	0	1	.000
Paige Serup	0	1	.000
Cassidy Williams	0	3	.000

Free Throw Percent	FG	Att	Pct
Charity Brown	2	2	1.000
Olivia Crozier	4	5	.800
Samantha Fitzgerald	3	4	.750
Makaila Woolard	0	1	.000

Scoring Average	G	Pts	Avg/G
Olivia Crozier	1	18	18.0
Hannah Nichols	1	15	15.0
Makaila Woolard	1	11	11.0
Charity Brown	1	8	8.0
Samantha Fitzgerald	1	8	8.0
Natalie Armstrong	1	0	0.0
Raven Omar	1	0	0.0
Shauntai Battle	1	0	0.0
Paige Serup	1	0	0.0
Cassidy Williams	1	0	0.0

Field Goal Attempts	G	Att	Att/G
Hannah Nichols	1	14	14.0
Olivia Crozier	1	10	10.0
Charity Brown	1	9	9.0
Makaila Woolard	1	8	8.0
Samantha Fitzgerald	1	6	6.0

Field Goals Made	G	Made	Made/G
Hannah Nichols	1	7	7.0
Olivia Crozier	1	7	7.0
Makaila Woolard	1	5	5.0
Charity Brown	1	3	3.0
Samantha Fitzgerald	1	2	2.0

3-Point FG Attempts	G	Att	Att/G
Hannah Nichols	1	6	6.0
Cassidy Williams	1	3	3.0
Samantha Fitzgerald	1	2	2.0
Paige Serup	1	1	1.0
Charity Brown	1	1	1.0
Makaila Woolard	1	1	1.0

3-Point FG Made	G	Made	Made/G
Hannah Nichols	1	1	1.0
Makaila Woolard	1	1	1.0
Samantha Fitzgerald	1	1	1.0

Free Throw Attempts	G	Att	Att/G
Olivia Crozier	1	5	5.0
Samantha Fitzgerald	1	4	4.0
Charity Brown	1	2	2.0
Makaila Woolard	1	1	1.0

Free Throws Made	G	Made	Made/G
Olivia Crozier	1	4	4.0
Samantha Fitzgerald	1	3	3.0
Charity Brown	1	2	2.0



2017-18 Samford Women's Basketball
 Samford Category Leaders (as of Nov 11, 2017)
 All games



Rebounds	G	Reb	Reb/G
Hannah Nichols	1	12	12.0
Olivia Crozier	1	6	6.0
Charity Brown	1	4	4.0
Samantha Fitzgerald	1	2	2.0
Makaila Woolard	1	2	2.0

Rebound Average	G	Reb	Avg/G
Hannah Nichols	1	12	12.0
Olivia Crozier	1	6	6.0
Charity Brown	1	4	4.0
Samantha Fitzgerald	1	2	2.0
Makaila Woolard	1	2	2.0

Offensive Rebounds	G	No.	Avg/G
Olivia Crozier	1	2	2.0
Shauntai Battle	1	1	1.0
Charity Brown	1	1	1.0

Defensive Rebounds	G	No.	Avg/G
Hannah Nichols	1	12	12.0
Olivia Crozier	1	4	4.0
Charity Brown	1	3	3.0
Samantha Fitzgerald	1	2	2.0
Makaila Woolard	1	2	2.0

Fouls	G	No.	Per/G
Cassidy Williams	1	4	4.0
Samantha Fitzgerald	1	3	3.0
Hannah Nichols	1	3	3.0
Paige Serup	1	1	1.0
Makaila Woolard	1	1	1.0
Olivia Crozier	1	1	1.0
Charity Brown	1	1	1.0

Fouls	G	No.
-------	---	-----

Assists	G	No.	Ast/G
Charity Brown	1	12	12.0
Samantha Fitzgerald	1	2	2.0
Hannah Nichols	1	2	2.0
Olivia Crozier	1	1	1.0
Paige Serup	1	1	1.0

Steals	G	No.	Stl/G
Charity Brown	1	3	3.0
Paige Serup	1	1	1.0
Samantha Fitzgerald	1	1	1.0
Raven Omar	1	1	1.0

Blocked Shots	G	No.	Blk/G
Samantha Fitzgerald	1	2	2.0
Olivia Crozier	1	1	1.0

Minutes	G	No.	Min/G
Charity Brown	1	37	37.0
Samantha Fitzgerald	1	35	35.0
Hannah Nichols	1	33	33.0
Olivia Crozier	1	27	27.0
Cassidy Williams	1	22	22.0

Turnovers	G	No.	TO/G
Charity Brown	1	5	5.0
Hannah Nichols	1	4	4.0
Makaila Woolard	1	3	3.0
Olivia Crozier	1	3	3.0
Samantha Fitzgerald	1	3	3.0
Cassidy Williams	1	3	3.0



2017-18 Samford Women's Basketball
 Samford Overall/Conference Statistics (as of Nov 11, 2017)
 All games



SUMMARY	Overall Statistics										Conference Statistics									
	gp-gs	min/g	fg%	3fg%	ft%	r/g	a/g	stl	blk	pts/g	gp-gs	min/g	fg%	3fg%	ft%	r/g	a/g	stl	blk	pts/g
Olivia Crozier	1-1	27.0	.700	.000	.800	6.0	1.0	0	1	18.0										
Hannah Nichols	1-1	33.0	.500	.167	.000	12.0	2.0	0	0	15.0										
Makaila Woolard	1-0	17.0	.625	1.000	.000	2.0	0.0	0	0	11.0										
Samantha Fitzgerald	1-1	35.0	.333	.500	.750	2.0	2.0	1	2	8.0										
Charity Brown	1-1	37.0	.333	.000	1.000	4.0	12.0	3	0	8.0										
Natalie Armstrong	1-0	1.0	.000	.000	.000	0.0	0.0	0	0	0.0										
Raven Omar	1-0	4.0	.000	.000	.000	0.0	0.0	1	0	0.0										
Paige Serup	1-0	16.0	.000	.000	.000	1.0	1.0	1	0	0.0										
Shauntai Battle	1-0	8.0	.000	.000	.000	1.0	0.0	0	0	0.0										
Cassidy Williams	1-1	22.0	.000	.000	.000	0.0	0.0	0	0	0.0										
Totals	1		.453	.214	.750	34.0	18.0	6	3	60.0	0		.000	.000	.000	0.0	0.0	0	0	0.0
Opponent	1		.415	.316	.579	38.0	12.0	14	1	71.0	0		.000	.000	.000	0.0	0.0	0	0	0.0

SCORING	Overall Statistics								Conference Statistics							
	fg-fga	fg%	3fg-fga	3fg%	ft-fta	ft%	pts	pts/g	fg-fga	fg%	3fg-fga	3fg%	ft-fta	ft%	pts	pts/g
Olivia Crozier	7-10	.700	0-0	.000	4-5	.800	18	18.0								
Hannah Nichols	7-14	.500	1-6	.167	0-0	.000	15	15.0								
Makaila Woolard	5-8	.625	1-1	1.000	0-1	.000	11	11.0								
Samantha Fitzgerald	2-6	.333	1-2	.500	3-4	.750	8	8.0								
Charity Brown	3-9	.333	0-1	.000	2-2	1.000	8	8.0								
Natalie Armstrong	0-0	.000	0-0	.000	0-0	.000	0	0.0								
Raven Omar	0-0	.000	0-0	.000	0-0	.000	0	0.0								
Paige Serup	0-1	.000	0-1	.000	0-0	.000	0	0.0								
Shauntai Battle	0-0	.000	0-0	.000	0-0	.000	0	0.0								
Cassidy Williams	0-5	.000	0-3	.000	0-0	.000	0	0.0								
Totals	24-53	.453	3-14	.214	9-12	.750	60	60.0	0-0	.000	0-0	.000	0-0	.000	0	0.0
Opponent	27-65	.415	6-19	.316	11-19	.579	71	71.0	0-0	.000	0-0	.000	0-0	.000	0	0.0

TOTALS	Overall Statistics										Conference Statistics									
	o-reb	d-reb	total	pf	fo	a	to	a/to	hi	pts	o-reb	d-reb	total	pf	fo	a	to	a/to	hi	pts
Olivia Crozier	2	4	6	1	0	1	3	0.3	18											
Hannah Nichols	0	12	12	3	0	2	4	0.5	15											
Makaila Woolard	0	2	2	1	0	0	3	0.0	11											
Samantha Fitzgerald	0	2	2	3	0	2	3	0.7	8											
Charity Brown	1	3	4	1	0	12	5	2.4	8											
Natalie Armstrong	0	0	0	0	0	0	0	0.0	0											
Raven Omar	0	0	0	0	0	0	1	0.0	0											
Paige Serup	0	1	1	1	0	1	0	0.0	0											
Shauntai Battle	1	0	1	0	0	0	1	0.0	0											
Cassidy Williams	0	0	0	4	0	0	3	0.0	0											
Totals	6	28	34	14	0	18	23	0.8	60	0	0	0	0	0	0	0	0	0.0	0	0
Opponent	13	25	38	19	-	12	19	0.6	71	0	0	0	0	-	0	0	0	0.0	0	0