



ARKANSAS RAZORBACKS

One Final Four Appearance » 22 Postseason Appearances » 27th Season In The SEC » More Than 400 Home Wins » More Than 700 Program Victories

/// THE SERIES ///

Series Record	1-0
Fayetteville	0-0
Away	1-0
Neutral	0-0
Last Meeting	Ark W 85-63, 1989
Neighbors versus this opponent	2-4

/// MEDIA ///



Pac-12 Network

Talent: Cindy Brunson and Julianne Viani



Razorback Sports Network

Phil Elson

Listen: Little Rock - KABZ-FM-103.7

Fayetteville - KOSM-FM-92.1

Fayetteville - KYNG-AM - 1590*

Fort Smith - KFPW-AM-1230

Fort Smith - KHGG-AM-1580*

Rogers - KURM-AM-790/FM-100.3

*Only if there are conflicts with the FM station

/// SCHEDULE & RESULTS ///

NOVEMBER (5-2)	MEDIA	W/L	SCORE
2 Northeastern St (Exh)	-	W	82-74
10 Sam Houston State	SECN+	W	65-54
12 Samford	SECN+	W	84-63
16 at RV Nebraska	BTN	L	80-69
20 at Oral Roberts	Cox Sports	W	77-66
24 UTEP!	-	L	64-61
25 New Mexico State!	-	W	69-60
29 Abilene Christian	SECN+	W	79-65

DECEMBER (3-1)	MEDIA	W/L	SCORE
3 at Kansas^	JTV/ESPN3	L	71-60
7 Charlotte	SECN+	W	73-72
10 Tulsa	SECN+	W	67-41
17 RV UT Arlington	SECN+	W	91-57
21 at RV/RV Arizona St.	Tempe, Arizona	-	3 p.m.
28 Grambling State	SECN+	-	7 p.m.
31 Ole Miss*	SECN+	-	2 p.m.

JANUARY (0-0)	MEDIA	W/L	SCORE
4 at No. 7/4 Miss State*	SEC Network	-	8 p.m.
7 Alabama*	SEC Network	-	3 p.m.
11 at Georgia*	SECN+	-	6 p.m.
14 at Auburn*	SEC Network	-	4 p.m.
18 RV Florida*	SEC Network	-	6 p.m.
21 at No. 16 Missouri*+	SEC Network	-	4 p.m.
25 at No. 4/2 S Carolina*+	SEC Network	-	5:30 p.m.
29 RV Kentucky*	SEC Network	-	6 p.m.

FEBRUARY (0-0)	MEDIA	W/L	SCORE
4 at RV Alabama*	SEC Network	-	1 p.m.
8 No. 14/18 Tennessee*	SECN+	-	7 p.m.
11 No. 16/16 Missouri*	SEC Network	-	4 p.m.
15 at RV/RV Kentucky*	SECN+	-	6 p.m.
18 RV LSU*+	SECN+	-	2 p.m.
22 No. 20/RV Texas A&M*	SECN+	-	7 p.m.
25 at Vanderbilt*	SECN+	-	2 p.m.
28 SEC Tournament	SECN/ESPN/2	-	Nashville

MARCH (0-0)	MEDIA	W/L	SCORE
1-4 SEC Tournament	SECN/ESPN/2	-	Nashville

* - Southeastern Conference Game

! - UTEP Classic (El Paso, Texas)

^ - SEC/Big 12 Challenge

+ - We Back Pat

> - Play4Kay

All home games played in Bud Walton Arena (19,200) Rankings: AP/Coaches Poll

Sign up for Mike Neighbors' newsletter and listen to his podcasts at

CoachNeighbors.com



ARKANSAS RAZORBACKS 8-3, 0-0 SEC

Head Coach: Mike Neighbors
Alma Mater: Arkansas, 1993
Record: 106-44 (5) Arkansas Record: 8-3 (1)



Tempe, Arizona



Wells Fargo Arena



3 p.m. CST



<http://pac12.me/2zkwmyp>



Razorback Radio Network



<http://bit.ly/2yT-fivT>

PREVIOUS GAME

»Raven Northcross-Baker scored in double figures for the second time of the season with a career-best 22 points.

»Malica Monk recorded her 11th consecutive double-figure scoring game and her sixth 20+ point game.

»Arkansas forced double figure turnovers for the 10th time in 11 games.

»Career-best 12-for-12 from the line for Malica Monk. It is the fifth time this year she has been perfect from the line.

»It is the fourth time this year Arkansas has recorded double figure 3-pointers.

»Twelve 3-pointers is a season-best and the fourth time this year the Razorbacks have had double digit baskets from distance.

»Arkansas has outrebounded its opponent in five games including Sunday, 40-27, over UTA.

»Arkansas had season bests for field goals (30, 3-pointers (12), assists (19) and tied their season-best with 19 free throws.

ABOUT ARKANSAS

»The Razorbacks are the only SEC team that does not return a double-figure scorer.

»Arkansas **leads the SEC** and ranks **eighth in the country** for fewest turnovers with just 114 this year.

»Arkansas **leads the SEC** and is **second in the country** with just 10.4 turnovers per game.

»Arkansas **leads the SEC** and is **seventh in the country** with 322 3-point field goals attempted.

»Arkansas ranks **third in the SEC** for rebounds per game (42.9), and ranks **second** in 3-point field goals made (92), and 3-point field goals per game (8.4).

STORYLINES

The Fourth Quarter Is Ours

»Much has been said about Arkansas' slow starts but just as much can be said about the play in the final 10 minutes.

»Arkansas has taken the same number or more shots than its opponent in every game and more 3-pointers in 10 of 11 games.

»Arkansas has outrebounded or had the same number of rebounds in seven games including six in a row.

ARIZONA STATE SUN DEVILS 8-3, 0-0 Pac-12

Head Coach: Charli Turner Thorne
Alma Mater: Stanford, 1988
Record: 448-276 (23) ASU Record: 408-236 (20)



»Arkansas has had the same or fewer turnovers in the fourth quarter in nine games.

»Arkansas has outscored opponents 243-186 in the final 10 minutes.

Better Numbers

»Devin Cosper has 31 3-pointers made - six better than her single season best. She has scored one more point (188) through 11 games than she did all of last season (187 pts/29 g).

»Jailyn Mason has made 16 3-pointers through 11 games. She made 19 in 30 games last year.

»Malica Monk has scored 202 points in 11 games. Her single season best is 247 points set in 27 games last year.

»Malica Monk has made 49 free throws - one more than her single season best.

/// STATISTICAL COMPARISONS ///

	ARKANSAS	AZ STATE
PTS / GAME	73.3	72.3
PTS ALLOWED / GAME	63.0	53.8
FG %	.375	.466
FG DEFENSE %	.367	.374
3-PT FG %	.286	.306
3-PT FG DEFENSE %	.278	.292
REB / GAME	42.9	39.4
REB ALLOWED / GAME	44.5	31.6
LEADING SCORER	Monk, 18.4	Ibis, 12.0
LEADING REBOUNDER	Williams, 7.8	Chapman, 7.5

LAST GAME STARTERS



3 MALICA MONK

PPG	FG%	RPG	APG
18.4	.419	4.0	4.1



14 JAILYN MASON

PPG	FG%	RPG	APG
9.6	.389	4.1	3.5



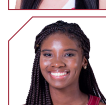
21 DEVIN COSPER

PPG	FG%	RPG	SPG
17.1	.366	7.2	1.6



22 BAILEY ZIMMERMAN

PPG	FG%	RPG	APG
2.8	.189	3.1	1.0



24 TAYLAH THOMAS

PPG	FG%	RPG	BPG
3.5	.344	5.6	0.4

NUMERICAL ROSTER

No.	Name	Pos	Ht	Cl	Hometown/HS/Previous School
0	A'Tyanna Gaulden*	G	5-7	RSo	Ocilla, Ga./Americus Sumter HS/Florida State
1	Raven Northcross-Baker	G	5-7	Fr	Malvern, Ark./Malvern HS/Chipola College
3	Malica Monk	G	5-5	Jr	N. Little Rock, Ark./NLR HS
4	Keiryn Swenson	G/F	6-1	Jr	Wichita, Kan./Maize HS
10	Kiara Williams	F/C	6-1	So	Little Rock, Ark./LR Central HS
13	Grayce Spangler	G	5-10	Fr	Fayetteville, Ark. Fayetteville HS
14	Jailyn Mason	PG	5-9	So	Mason, Ohio/William Mason HS
20	Sydney Stout	F	6-0	So	Bixby, Okla./Bixby HS
21	Devin Cospers	G	5-10	SGr	Coffeyville, Kan./Field Kindley HS/Coffeyville CC
22	Bailey Zimmerman	G/F	6-0	Jr	St. Vincent, Ark. /Wonderview HS
24	Taylah Thomas	F	6-1	Fr	Arlington, Texas/Mansfield Timberview HS
30	Macy Weaver	F	6-3	Fr	Davis Junction, Ill./Stillman Valley HS
33	Chelsea Dungee*	G	5-11	RSo	Sapulpa, Okla./Sapulpa HS/Oklahoma

*Will not play the 2017-18 season due to NCAA transfer rules

COACHING STAFF

Title	Name	Year	Alma Mater
Head Coach	Mike Neighbors	First Season	Arkansas, 1993
Assistant Coach	Todd Schaefer	First Season	Thomas More College, 1995
Assistant Coach	Lacey Goldwire	First Season	Oklahoma State, 2010
Assistant Coach	Pauline Love	First Season	Southern Miss, 2010
Director of Operations	Amber Shirey	30th Season	Arkansas, 1992
Director of Video and Scouting	Jeff Brazil	11th Season	Arkansas, 2010
Dir. of Student-Athlete Devel.	C'eira Ricketts	1st Season	Arkansas, 2015

MARGIN OF VICTORY/DEFEAT

	1	2	3	4	5	6	7	8	9	10	11-15	16-19	20+	Record
Wins	1	-	-	-	-	-	-	-	1	-	3	-	3	8
Losses	-	-	1	-	-	-	-	-	-	-	2	-	-	3

Most First Period Points

2017-18	27	Samford (11-12-17)
All-Time	29	at Alabama (1-15-17)
Opponent	25	SDSU (11-18-15)

Most Third Period Points

2017-18	26	UT-Arlington (12-17-17)
All-Time	34	HBV (12-28-16)*
Opponent	30	at Ole Miss (1-1-17)

Fewest First Period Points

2017-18	3	UTEP (11-24-17)
All-Time	3	UTEP (11-24-17)*
Opponent	6	SHSU (11-11-16)

Fewest Third Period Points

2017-18	13	Tulsa (11-10-17)
All-Time	7	Vanderbilt (1-19-17)*
Opponent	4	LSU (1-21-16)

Most Second Period Points

2017-18	23	UT-Arlington (12-17-17)
All-Time	31	HBV (12-28-16)
Opponent	35	at #2 S. Carolina (1-3-16)

Most Fourth Period Points

2017-18	28	UT-Arlington (12-17-17)
All-Time	32	Tulsa (11-23-15)
Opponent	27	Georgia (2-25-16)

Fewest Second Period Points

2017-18	10	at Kansas (12-3-17)
All-Time	4	vs. Kentucky (2-17-17)
Opponent	3	at Alabama (1-15-17)

Fewest Fourth Period Points

2017-18	17	at Kansas (12-3-17)*
All-Time	5	#7 Ore. St. (11-28-15)
Opponent	10	#24 Missouri (1-17-16)*

Most First Half Points

2017-18	42	Samford (11-12-17)
All-Time	65	Tenn State (11-27-88)
Opponent	63	Texas (1-9-89)

Largest Margin of Victory

2017-18	34 (91-57)	UT-Arlington (12-17-17)
All-Time	79 (108-29)	B Wesleyan (2-18-77)
Opponent	54 (28-82)	La Tech (11-30-78)

Fewest First Half Points

2017-18	20	UTEP (11-24-17)
All-Time	11	at Missouri (3-1-15)*
Opponent	8	Montana State (1-5-03)

*Most Recent

ALPHABETICAL ROSTER

No.	Name	Twitter
21	Devin Cospers	@devidev__
33	Chelsea Dungee*	@ChelseaDungee22
0	A'Tyanna Gaulden*	@AtyannaGaulden
14	Jailyn Mason	@jaimason14
3	Malica Monk	@TheRealMalica
1	Raven Northcross-Baker	@ravenbaker_4
13	Grayce Spangler	@grayce_1313
20	Sydney Stout	@sydeny_stout_
4	Keiryn Swenson	@KiKi_Sweezyy
24	Taylah Thomas	@hailtaylahh
30	Macy Weaver	@macyweaver528
10	Kiara Williams	@kiara_will22
22	Bailey Zimmerman	@Bailey_Ann22

FA-NETIK PRONUNCIATIONS

No.	Name	Pronunciation
0	A'Tyanna	AH-tee-ah-nuh
3	Malica	mal-ick-cuh
4	Keiryn	KY-rynn
10	Kiara	Key-AIR-uh
13	Grayce	GRACE
14	Jailyn	JAY-lyn
24	Taylah	TAY-luh

RECORD FACTS

Overall	8-3
At Home (Bud Walton Arena)	6-0
On The Road Neutral	1-3 1-0
White Cardinal Anthracite Uniforms	6-0 2-3 0-0

HALFTIME/LEADS/OVERTIME

Leading at the half, home/road/neutral	5-0 (4-0/1-0/0-0)
Tied at the half, home/road/neutral	-
Trailing at the half, home/road/neutral	3-3 (2-0/0-3/1-0)
Games decided by 5 points or fewer	1-1
Games decided by 10 points or fewer	1-0
Leading at the start of the 4Q	7-0
Overtime games	-

OFFENSE

Scoring less than 50 points	-
Scoring 51-60 points	0-1
Scoring 61-70 points	3-2
Scoring 70+ points	5-0
2 Players Or Less in Double Figures	3-2
3 Players in Double Figures	1-1
4 Players in Double Figures	2-0
5 Players in Double Figures	2-0
When shooting 50 percent or higher	-
When shooting less than 50 percent	8-3

REBOUNDING/TURNOVERS

When outrebounding opponent	5-0
When outrebounded	2-3
When rebounds are even	1-0
When grabbing 10+ offensive reb	6-3
When forcing 15+ turnovers	5-3
When committing 10 or fewer turnovers	5-1
When committing 15+ turnovers	1-1

Months

In November	5-2
In December	3-1
In January	-
In February	-
In March	-



FACEBOOK.COM/RAZORBACKWBB
@RAZORBACKWBB (T&I)
HTTP://BIT.LY/YOUTUBEKICKIN
COACHNEIGHBORS.COM

NEIGHBORS' PHILOSOPHY

GRAD STUDENT DEVIN COSPER

- »Only "senior" on the team
- »Missed the opening game last season after a death in the family
- »Averaged 6.4 ppg and 2.2 rpg last season and 7.7 ppg and 2.8 rpg for her career
- »Graduated in May 2017 with a degree in broadcast journalism
- »Interned at RSN, Arkansas' broadcast studio
- »Wears the SEC graduate patch on her jersey
- »Named "Comback Student-Athlete of the Year at annual HOGSPY awards after rebounding from an injury and a death in the family



FUNCTIONALLY FAST

You will hear Mike Neighbors say this a lot. He wants his teams to play as fast as possible and still function at a high level. That may look different from possession to possession depending on what Arkansas is running.

TRUST, TALENT AND TIME

My program will be built on three things. It's very simple.

TRUST - The highest form of loyalty that has to be earned, managed and sometimes re-earned. If we don't have this, nothing will work and the stool's legs will fall off and everything will collapse.

TALENT - It doesn't mean you can dribble, shoot, pass and rebound. It's a lot of other things like the ability to engage with the fan base and willingness to sign autographs for a 10-year-old child you might be inspiring.

TIME - It's just not being on time or making time. It's how you utilize your time and who you invest your time with and be around. Trust, talent and time. Those will be our pillars.

FUN FEATURES

Both Mike Neighbors and Jailyn Mason have shoe collections. Mason's collection was featured in a story last year. It can be seen here: <http://bit.ly/2ebtLdb>

Neighbors got settled into his Fayetteville home in mid August. One of the first things he set up were his shoes.



BESIDE US

One of the things Mike Neighbors stressed when he was hired was his desire to take care of the players, the staff and the fans who have been loyal to the Razorback program. He has told our fans that he wants them to stand "Beside Us". Don't be behind us, stand next to us and go through the process of building our program.

SHOTS AND POSSESSIONS

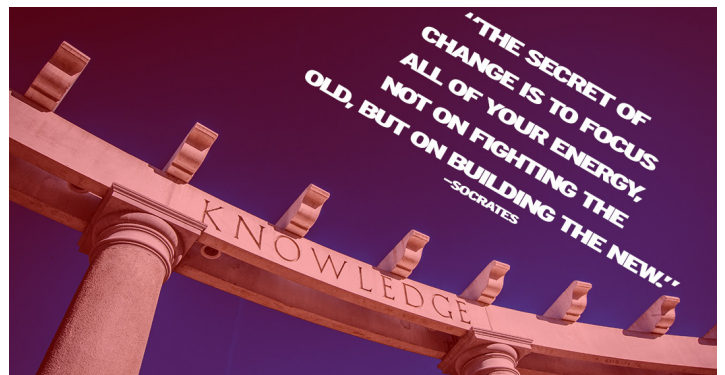
Mike Neighbors wants a lot of shots and a lot of possessions. Here's a look at the Razorbacks shots this year. The number is often determined by pace of play and Arkansas will push the tempo.

30 AND COUNTING

This year, Arkansas director of operations Amber Shirey enters her 30th season as a Razorback. The former Amber Nicholas was a two-time All-Southwest Conference selection during her four-year playing career from 1989-92. She spent one season (1992-93) as a student coach helping Arkansas transition to the Southeastern Conference. She moved on to a graduate assistant and assistant coach from 1993-94 through the 2006-07 season. In 2007-08 Shirey transitioned to the director of operations position holding that spot until she returned to the sidelines as an assistant coach for the 2013 and 2014 seasons. She moved into her current position as the Executive Director of Operations in 2014-15. She has been a part of seven different head coach's staffs during her tenure.

GAMEDAY CARDS

Coach Neighbors hands out a Gameday Card for each home and away game. One side of the card is branded with a Razorback logo and women's basketball. The other side is a quote that is relevant to something the team has talked about or worked on that week. Check out this week's card here:



OPPONENT

ABOUT ARIZONA STATE

» Arizona State is 8-3 and has won four of its last five including a 77-33 decision over Idaho on Monday.

» Three players average double digits led by Kianna Ibis at 12.0 ppg in a balanced lineup.

» Sabrina Haines (10.2 ppg) and Jamie Ruden (10.1 ppg) also average double figures. Haines, however, was lost for the season with an ACL injury.

» The Sun Devils are another tall team with seven of 11 players 6'0" or taller.

» Arizona State's three losses are to Mississippi State, Green Bay and at Florida State.

» The Sun Devils rank first in the Pac-12 for turnover margin and turnovers per game.

» Relli Richardson leads the Pac-12 and ranks fourth in the country with 4.36 assists per game.

ABOUT THE SERIES

Series Record: 1-0
In Fayetteville: 0-0
In Away: 1-0
Neutral: 0-0
Last 5: 1-0
Mike Neighbors vs.: 2-4

Results

12/2/1989 AR 85 Arizona State 63 Tempe, Ariz.

IMPORTANT STATS

From Distance: Arkansas (92) enters the game with a lot more 3-pointers than the Sun Devils (48). In fact, Razorback graduate student Devin Cosper has 31 makes from distance - just 17 fewer than Arizona State has as a team.

On The Plus Side: Arizona State is in the plus column of several season stats. They are +18.5 in scoring, +7.7 in rebounding and +5.5 in turnover margin. In fact, ASU is better statistically in every category than it's opponents this season.

Balance: Arizona State is balanced. They have three players who average double figures and three more who contribute 8+ points per game.

An Arkansas Win Would ...

A win would make Arkansas:

- » 9-3 on the year
- » 2-0 against Arizona State
- » give Arkansas its second true road win of the year

NOVEMBER (5-2)		MEDIA	W/L	SCORE	SERIES	NEIGHBORS
2	Northeastern St. (Exh)	-	W	82-74	2-0	1-0
10	Sam Houston State	SECN+	W	65-54	7-0	1-0
12	Samford	SECN+	W	84-63	1-0	1-0
16	at Nebraska	BTN	W	80-69	0-1	0-1
20	at Oral Roberts	Cox Sports	W	77-66	20-9	1-0
24	UTEP!	-	L	64-61	2-1	0-2
25	New Mexico State!	-	W	69-60	1-0	1-0
29	Abilene Christian	SECN+	W	79-65	1-0	1-0

DECEMBER (3-1)		MEDIA	W/L	SCORE	SERIES	NEIGHBORS
3	at Kansas*	JTV/ESPN3	L	71-60	4-4	0-1
7	Charlotte	SECN+	W	73-72	1-0	1-0
10	Tulsa	SECN+	W	67-41	21-3	1-0
17	UT Arlington	SECN+	W	91-57	7-0	1-0
21	at Arizona State	-	-	-	1-0	2-4
28	Grambling State	SECN+	-	-	7-0	1-0
31	Ole Miss*	SECN+	-	-	16-26	First Meeting

JANUARY (0-0)		MEDIA	W/L	SCORE	SERIES	NEIGHBORS
4	at Mississippi State*	SEC Network	-	-	18-18	0-1
7	Alabama*	SEC Network	-	-	21-14	First Meeting
11	at Georgia*	SECN+	-	-	5-31	First Meeting
14	at Auburn*	SEC Network	-	-	14-22	First Meeting
18	Florida*	SEC Network	-	-	9-27	First Meeting
21	at Missouri*	SEC Network	-	-	11-8	1-0
25	at South Carolina*	SEC Network	-	-	17-16	First Meeting
29	Kentucky*	SEC Network	-	-	13-21	1-0

FEBRUARY (0-0)		MEDIA	W/L	SCORE	SERIES	NEIGHBORS
4	at Alabama*	SEC Network	-	-	21-14	First Meeting
8	Tennessee*	SECN+	-	-	3-30	First Meeting
11	Missouri*	SEC Network	-	-	11-8	1-0
15	at Kentucky*	SECN+	-	-	13-21	1-0
18	LSU*	SECN+	-	-	16-31	First Meeting
22	Texas A&M*	SECN+	-	-	21-8	1-1
25	at Vanderbilt*	SECN+	-	-	8-24	First Meeting
28	SEC Tournament	SECN/ESPN	-	-		

MARCH (0-0)		MEDIA	W/L	SCORE	SERIES	NEIGHBORS
1-4	SEC Tournament	SECN/ESPN				

* - Southeastern Conference Game
!-UTEP Thanksgiving Tournament (El Paso, Texas)
^SEC/Big 12 Challenge
All home games played in Bud Walton Arena (19,200)

SEC COMPOSITE SCHEDULE

December 31 (Sunday) Missouri at Alabama Ole Miss at Arkansas Florida at Auburn Miss State at Georgia Tennessee at Kentucky Texas A&M at S Carolina	January 14 (Sunday) Arkansas at Auburn LSU at Florida Alabama at Miss State Tennessee at S Carolina Georgia at Texas A&M Kentucky at Vanderbilt	January 29 (Monday) Kentucky at Arkansas February 1 (Thursday) Auburn at Kentucky Georgia at LSU Vanderbilt at Ole Miss Miss State at Missouri Texas A&M at Tennessee	February 12 (Monday) Vanderbilt at Auburn February 15 (Thursday) Missouri at Auburn S Carolina at Georgia Arkansas at Kentucky Ole Miss at LSU Alabama at Tennessee Florida at Texas A&M Miss State at Vanderbilt
January 1 (Monday) Vanderbilt at LSU	January 18 (Thursday) Texas A&M at Alabama Florida at Arkansas Auburn at LSU Missouri at Ole Miss S Carolina at Vanderbilt	February 4 (Sunday) Arkansas at Alabama Miss at Georgia LSU at Kentucky Auburn at Texas A&M Tennessee at Vanderbilt	February 18 (Sunday) Auburn at Alabama LSU at Arkansas Vanderbilt at Florida Texas A&M at Miss State Tennessee at Missouri Kentucky at S Carolina
January 4 (Thursday) Alabama at Florida S Carolina at Ole Miss Arkansas at Miss State LSU at Missouri Auburn at Tennessee Kentucky at Texas A&M Georgia at Vanderbilt	January 21 (Sunday) Vanderbilt at Alabama Ole Miss at Florida Auburn at Georgia S Carolina at Kentucky Arkansas at Missouri Miss State at Tennessee	February 5 (Monday) S Carolina at Miss State Florida at Missouri	February 19 (Monday) Georgia at Ole Miss
January 7 (Sunday) Alabama at Arkansas Texas A&M at Auburn Georgia at Kentucky Miss State at LSU Florida at Ole Miss S Carolina at Missouri Vanderbilt at Tennessee	January 22 (Monday) LSU at Texas A&M	February 8 (Thursday) S Carolina at Alabama Tennessee at Arkansas LSU at Auburn Miss State at Florida Vanderbilt at Georgia Kentucky at Missouri Ole Miss at Texas A&M	February 22 (Thursday) Georgia at Alabama Texas A&M at Arkansas Tennessee at Florida Kentucky at Ole Miss Auburn at Miss State Vanderbilt at Missouri LSU at S Carolina
January 11 (Thursday) LSU at Alabama Kentucky at Florida Arkansas at Georgia Ole Miss at Miss State Auburn at S Carolina Tennessee at Texas A&M Missouri at Vanderbilt	January 25 (Thursday) Missouri at Georgia Alabama at Kentucky Florida at Miss State Arkansas at S Carolina Ole Miss at Tennessee	February 11 (Sunday) Missouri at Arkansas Texas A&M at LSU Alabama at Ole Miss Kentucky at Miss State Florida at S Carolina Georgia at Tennessee	February 25 (Sunday) Ole Miss at Auburn Florida at Georgia Miss State at Kentucky Alabama at LSU S Carolina at Tennessee Missouri at Texas A&M Arkansas at Vanderbilt
	January 28 (Sunday) Alabama at Auburn Georgia at Florida Tennessee at LSU Miss State at Ole Miss Missouri at S Carolina Texas A&M at Vanderbilt		

SEC STANDINGS 12/18/17

	Conference			Overall						
	W-L	Pct.	H	A	W-L	Pct.	H	A	N	Strk
Miss State	0-0	.000	0-0	0-0	11-0	1.000	7-0	0-0	4-0	W11
Tennessee	0-0	.000	0-0	0-0	11-0	1.000	7-0	1-0	3-0	W11
Missouri	0-0	.000	0-0	0-0	11-1	.917	5-0	2-0	4-1	W11
S Carolina	0-0	.000	0-0	0-0	10-1	.909	6-0	2-0	2-1	W4
Georgia	0-0	.000	0-0	0-0	9-1	.900	5-1	4-0	0-0	W2
Ole Miss	0-0	.000	0-0	0-0	9-2	.818	7-0	1-1	1-1	L1
Texas A&M	0-0	.000	0-0	0-0	9-2	.818	7-2	2-0	0-0	W3
Arkansas	0-0	.000	0-0	0-0	8-3	.727	6-0	1-3	1-0	W3
Alabama	0-0	.000	0-0	0-0	7-3	.700	5-0	2-1	0-2	W3
Auburn	0-0	.000	0-0	0-0	7-3	.700	4-0	2-1	1-2	W4
Kentucky	0-0	.000	0-0	0-0	8-4	.667	6-1	2-3	0-0	L3
LSU	0-0	.000	0-0	0-0	6-3	.667	3-0	2-2	1-1	W4
Florida	0-0	.000	0-0	0-0	6-4	.600	3-3	2-0	1-1	W1
Vanderbilt	0-0	.000	0-0	0-0	3-8	.273	1-3	2-3	0-2	L2

MONK CONTINUES TO LEAD

- »Eleven consecutive games in double figure scoring.
- »Ranks **fourth in the SEC** for field goal attempts (176), **sixth** for field goals made (70), **fifth** for minutes played (33.5), **fourth** for free throw percent (.845), **fifth** for points per game (18.4).
- »Six of 11 games with 20+ points with a career-best 24 at Oral Roberts.
- »At least one 3-pointer in each of the first 10 games with a season-best two 3-pointers three times.
- »Thirty-two or more minutes played in eight of 11 games.
- »Seven consecutive games with at least one steal to start the season with a season-best four steals twice (SHSU, NMSU).
- »Has been perfect from the free throw line in six games (Samford, Nebraska, UTEP, Kansas, Tulsa, UTA (12-12)).
- »Scored 18 of her 22 points against New Mexico State in the second half.
- »Double-figure scoring in a single quarter three times (10 | 3Q | Nebraska || 13 | 4Q | ORU) || 10 | 4Q | Kansas).
- »Has 13 3-point field goals made this year (12.19.17). She had nine 3-pointers in her freshman and sophomore years combined.

COSPER POSTING BIG NUMBERS

- »Ten consecutive games in double figure scoring. The streak was snapped versus UTA.
- »One of four active SEC players with 5+ season double-doubles.
- »SEC rankings include **fourth** for double-doubles (5), **first** in field goal attempts (183), **eighth** in field goals made (67), **fifth** in minutes played (353), **first in the SEC and second in the NCAA** in 3-point field goals attempted (107), **first** in 3-point field goals made (31) and **second** in 3-point field goals per game (2.82).
- »Four games with 20+ points this season.
- »Five career double-doubles all set this season (SHSU, Oral Roberts, NMSU, Tulsa).
- »Career-best 14 rebounds against Charlotte.
- »Career-best 25 points against Charlotte.
- »Made at least one 3-pointer in each game this year.
- »Fourteen consecutive games (last four games of 2016-17) with at least one 3-pointer.
- »Double-figure scoring in a single quarter three times this year (10 | 1Q | Nebraska || 12 | 1Q | ORU || 11 | 4Q | UTEP). That ties the most in a single season by a Razorback since Jessica Jackson in 2014-15.
- »Has 31 3-point field goals made this year (12.19.17) bettering her career best of 25 in a season (2015-16).
- »Has scored 188 points this year (12.19.17) - one more point than all of last season (187).

LEADS AND DEFICITS

Biggest Halftime Lead	13, UTA
Biggest Halftime Lead Lost	-
Biggest Halftime Deficit	18, UTEP
Biggest HT Deficit Erased	7, Char.
Biggest Overall Lead	30, Tulsa,4Q
Biggest Win Margin	26, Tulsa
Biggest Loss Margin	11, Kansas*
Biggest Deficit Overcome	13, SHSU

JUMP BALLS

Arkansas	5 (4-1)
Opponents	6 (3-3)

FIRST POINTS

Williams	6
Mason	3
Monk	1
Cosper	1
Zimmerman	1 (FT)

BENCH POINTS

Arkansas	206
Opponent	184

DOUBLE FIGURE POINTS

Malica Monk	11
Devin Cosper	10
Jailyn Mason	6
Kiara Williams	4
Raven Northcross-Baker	2
Taylah Thomas	1
Keiryn Swenson	1

LEADING SCORER

Monk	7
Cosper	2
Northcross-Baker	2

DOUBLE FIGURES FIRST HALF

Cosper	2
Monk	2
Mason	1
Williams	1
Northcross-Baker	1

DOUBLE FIGURES/QUARTER

Cosper	3
Monk	3
Mason	1
Northcross-Baker	1

20/30-PLUS POINTS

Monk	5 (21, 22, 24, 22, 20)
Cosper	4 (21, 21, 22, 25)
Northcross-Baker	1 (22)

DOUBLE FIGURE REBOUNDS

Cosper	5
Williams	4

Thomas	1
--------	---

LEADING REBOUNDER

Cosper	4
Williams	4
Thomas	2
Monk	1

DOUBLE DOUBLES

Devin Cosper	SHSU, ORU, NMSU, Char., Tulsa
Williams	NMSU

5+ASSISTS/10+ ASSISTS

Monk	5/-
Mason	3/-
Northcross-Baker	1/-

FIRST OFF THE BENCH

Thomas	8
Northcross-Baker	6
Swenson	5
Williams	1

CHARGES DRAWN

Monk	3
Cosper	2
Northcross-Baker	1
Thomas	1

FORCED 10 SECOND VIOLATION

2017-18	TBA
---------	-----

FORCED SHOT CLOCK VIOLATION

2017-18	4
---------	---

FORCED INBOUND VIOLATION

2017-18	TBA
---------	-----

AND 1

Malica Monk	8
Kiara Williams	4
Devin Cosper	3
Bailey Zimmerman	2
Jailyn Mason	1
Raven Northcross-Baker	1

AND 1 CONVERSIONS

Monk	7
Williams	2
Cosper	2
Bailey Zimmerman	2
Northcross-Baker	1

BUZZER BEATERS

Mason	1 (ACU)
http://bit.ly/2BBy8ua	
Swenson	1 (Kansas)

JAILYN MASON QUIETLY SHINNING

- »Overshadowed by the gaudy numbers tallied by Devin Cosper and Malica Monk, sophomore Jailyn Mason is also putting together a solid season.
- »She has six games in double figure scoring including five in a row.
- »She has three games with 5+ assists.
- »Has played multiple positions on the floor.
- »While Malica Monk is the spark plug that gets the team going, Jailyn Mason is the captain who takes control and steers the ship.

KIARA WILLIAMS STEPPING UP

- »First career double-double with 11 points and 11 rebounds versus New Mexico State.
- »Four career games (all this season) with 10+ rebounds.
- »Posted a career-best 16 rebounds at Kansas.
- »Tallied a career-best 12 points in a win over ACU and was in double figures in the first half for the first time in her career.

NEWCOMERS HAVE IMPACT

- »Freshman Taylah Thomas is still finding her way in college basketball but is already having an impact.
- »Thomas ranks fifth among SEC freshmen in rebounding with 5.8 boards per game.
- »Thomas is shooting 34.4% (11-32) and has two makes from long distance and ranks ninth among SEC freshmen.
- »Thomas is shooting 62.5% (15-24) from the line.
- »Macy Weaver has seven blocks (0.875 bpg) in eight games played and ranks tied for fifth among SEC freshmen.

TAKING CARE OF THE BALL

- »Arkansas has forced its opponents to turnover the ball more times than they have in 10 of 11 games and tied the opponent in TO's once (NMSU).
- »Arkansas has forced double digit turnovers in 10 games while committing single digit miscues in five games.
- »Arkansas has collected double digit steals in six of 11 games.
- »Arkansas **leads the SEC** and ranks **second in the country** (12/19/17) averaging 10.4 turnovers per game.
- »Arkansas ranks **third in the SEC** in turnover margin at +6.0.

FROM DISTANCE

- »Arkansas ranks **second in the SEC** with 8.4 made 3-pointers per game and in 3-point field goals made with 92.
- »Arkansas **leads the SEC** with 3-pointers attempted with 322. That mark is also **seventh in the NCAA**.

RALLY RAZORBACKS

- »The Razorbacks have had to come from behind to win in four games this year.
- »Arkansas trailed by 13 points in the second quarter against SHSU and rallied for the 11-point win at home.
- »Arkansas trailed at Oral Roberts by six points in the first quarter and came back to win by 11 points on the road.
- »The Razorbacks trailed by seven points against New Mexico State on a neutral court and rallied late to win by nine.
- »Arkansas trailed Charlotte, 37-30, at the half and the teams were tied at the end of the third quarter before the Razorbacks escaped with a one-point win.

HOW CLOSE ARE THOSE LOSSES?

- »Arkansas trailed Nebraska by three, 72-69, with 2:36 remaining in the game. Nebraska finished with a 7-0 run to win the game.

Devin Cosper
Chelsea Dungee
A'Tyanna Gaulden
Jailyn Mason
Malica Monk
Raven Northcross-Baker
Grayce Spangler
Sydney Stout
Keiryn Swenson
Taylah Thomas
Macy Weaver
Kiara Williams
Bailey Zimmerman

Communication (undergrad & Masters)
Rec. & Sport Management
Journalism: Broadcast
Journalism: News/Editorial
Rec. & Sport Management
Criminal Justice
Communication
Management
Accounting
Nursing
Kinesiology
Childhood Development
Apparel Merch./Product Dev.



- »After going 0-for-15 in the first quarter at UTEP, the Razorbacks rallied. Arkansas trailed the Miners by one, 62-61, with :38 seconds remaining in the game. UTEP hit a jumper with :08 seconds to seal the win.
- »Arkansas trimmed the Kansas lead to four points, 57-53, at the 5:44 mark of the fourth quarter and trailed by two possessions, 66-60, with :39 seconds to go.

LINEUPS

- »Arkansas' most common lineup has been Monk, Williams, Mason, Cosper and Zimmerman - the five starters in each game this year.
- »This group has played 112:21 minutes together, scored 216 points and allowed 169 points for a +47 rating and a +16.73 points per 40 minutes
- »The second most common lineup is Monk, Cosper, Thomas, Northcross-Baker and Swenson.
- »This group has played 37:01 minutes together scoring 66 points and allowing 48. This is +18 and +19:45 per 40 minutes.

SHARING THE BALL

All 11 Razorbacks have scored in the 11 games this year. All 11 have played and all have attempted a shot. Six of 11 players have recorded double figure points for the season.

BLOCKING WELL

Kiara Williams leads the team with 15 blocked shots through the first 11 games. Williams had only five blocks for the entire season a year ago.

STARTING OUT

Mike Neighbors is 8-3 to start the year. He is the eighth of nine coaches to win at least their first two games as a Razorback head coach. Eight of the nine coaches won at least seven of their first 10 games at Arkansas.

Neighbors took over the Washington program in 2013-14. He opened 0-2 that year before finishing with 20 wins with the Huskies.

DID YOU KNOW

That Arkansas head coach Mike Neighbors was cut from the Razorback baseball team? He walked on and legendary head coach Norm DiBryan nudged him in the coaching direction saying "You always seem to be in the right place but you don't always make the play."

THE SCHEDULE

Arkansas' non-conference schedule features four teams who went to the post season a year ago. Arizona State played in the first round of the NCAA Tournament while Abilene Christian, UT-Arlington and Grambling were all WNIT teams a year ago. UTA was eliminated in the first round while Abilene Christian and Grambling both reached round two.

The always-tough SEC schedule features eight NCAA Tournament teams including the NCAA Champion South Carolina and the runner up, Mississippi State. Auburn and LSU were eliminated in the first round while Kentucky, Missouri, Tennessee and Texas A&M all bowed out in round two. In addition, Alabama and Ole Miss advanced to the WNIT Tournament. That means Arkansas faces 14 teams who played in the postseason a year ago.

The SEC | What can you say? It's tough so get ready. Arkansas opens SEC play in December hosting Ole Miss on the 31st.

»The last time Arkansas opened SEC play was in the 2004-05 season at No. 16 Georgia. That was a 78-57 loss on Dec. 30.

»Arkansas has opened SEC play three times. The 2004-05 game mentioned above, 1996-97 in a 77-75 win over No. 6 Tennessee and in 1991-92, with a 79-62 loss to Georgia.

»Arkansas plays Ole Miss on Dec. 31. The Razorbacks have also played December SEC games on the 19 (Georgia), 29 (Tennessee) and 30 (at Georgia)

DOUBLE FIGURES IN A QUARTER

Cosper
10, 10, at Nebraska
12, 10, at ORU
11, 40, at UTEP

Monk
10, 30, at Nebraska
13, 40, at ORU
10, 40, at Kansas

Mason
11, 30, UTA

Northcross-Baker
12, 40, UTA

SEC OPENERS

The Ole Miss conference opener snaps a three-game streak of road league openers and it is only the 10th time since joining the SEC that Arkansas has played its first SEC game at home.

»Arkansas is 3-6 in SEC home openers

»Ole Miss is a popular first-game foe with this season marking the sixth time the Razorbacks and Rebels have met in game one.

AGAINST THE POLL

This week's (Dec. 18) Associated Press poll features five SEC teams. Arkansas' schedule is headlined by No. 4 South Carolina with No. 5 Mississippi State right on the Gamecocks' heels. Tennessee is No. 7, followed by No. 16 Missouri, and No. 19 Texas A&M. Arizona State is getting 10 votes this week with Kentucky getting two votes.

This week's USA Today Coaches Poll has Mississippi State at No. 3, followed by No. 5 South Carolina, No. 7 Tennessee, No. 16 Missouri, and No. 20 Texas A&M. Ole Miss, Kentucky and Georgia are getting votes as is Arizona State.

HOME SWEET HOME

»Arkansas has had just one losing home season in 41 years (prior to 2017-18)

»Arkansas is 420-139 (6-0 in '17-18) in home games including a 261-104 record in Bud Walton Arena. Arkansas was 159-35 in Barnhill Arena.

AP TOP 25 (12/18/2017)

RK	TEAM	RECORD	PTS
1	Connecticut (32)	8-0	800
2	Notre Dame	10-1	748
3	Louisville	13-0	740
4	South Carolina	10-1	686
5	Mississippi State	11-0	672
6	Baylor	9-1	627
7	Tennessee	11-0	620
8	Texas	9-1	595
9	West Virginia	10-0	505
10	Oregon	9-2	487
11	UCLA	8-2	467
12	Ohio State	11-2	442
13	Florida State	10-1	408
14	Duke	8-2	401
15	Maryland	10-2	365
16	Missouri	10-1	313
17	Oregon State	8-2	248
18	Stanford	6-4	218
19	Texas A&M	9-2	193
20	Villanova	9-0	189
21	Green Bay	9-1	142
22	South Florida	9-2	122
23	Michigan	10-2	114
24	California	8-2	100
25	Iowa	11-1	71

Others receiving votes: Oklahoma State 57, Syracuse 22, Oklahoma 18, Arizona State 10, Marquette 6, Rutgers 5, New Mexico 3, USC 2, Kentucky 2, Depaul 1, Ball State 1

USA TODAY TOP 25 COACHES POLL - 12/19/2017

Rank	School	RECORD	PTS
1	Connecticut (32)	8-0	800
2	Notre Dame	10-1	745
3	Mississippi State	11-0	725
4	Louisville	13-0	719
5	South Carolina	10-1	677
6	Baylor	10-1	632
7	Tennessee	11-0	595
8	Texas	9-1	571
9	West Virginia	11-0	505
10	Oregon	9-2	493
11	Ohio State	11-2	448
12	UCLA	8-2	443
13	Florida State	10-1	434
14	Maryland	10-2	382
15	Duke	8-2	374
16	Missouri	11-1	301
17	Oregon State	8-2	277
18	Villanova	9-0	222
19	South Florida	9-2	179
20	Texas A&M	9-2	160
21	Michigan	10-2	157
22	Syracuse	11-0	149
23	Green Bay	9-1	110
24	Stanford	6-5	109
25	Iowa	11-1	88

Others receiving votes: California 21, Oklahoma State 21, Depaul 18, New Mexico 12, Georgia Tech 11, Virginia Tech 6, Rutgers 4, Kentucky 3, Georgia 2, USC 2, Oklahoma 2, Miami 1, Ole Miss 1, Arizona State 1

WHAT'S MY NUMBER

Transfer Chelsea Dungee has a unique background to her jersey number selection. Here is the story in her own words:

I have always played in #22. Every competitive team and school ball team I have always worn #22. #22 was the number my mom played basketball in throughout her high school career. So, I wore #22. A year ago I changed my jersey number to #33. My cousin (more like brother), Reuben, suffered a traumatic brain injury while playing in a high school football game last season and he wore jersey #33. I play in jersey #33 for Reuben. Playing with #33 on back is a reminder that 'Reub' has my back, and I have his.

QUARTER BY QUARTER SCORING

Date	Opponent	W/L	1st	2nd	1st Half	3rd	4th	2nd Half	OT	Total
Nov. 2	NE State (exh)	W, 82-74	20	15	35	18	29	47	-	82*
Nov. 10	SHSU	W, 65-54	5	18	23	23	19	41	-	65
Nov. 12	Samford	W, 84-63	17	15	32	16	26	42	-	84
Nov. 16	Nebraska	L, 80-69	19	11	30	22	17	49	-	69
Nov. 20	ORU	W, 77-66	25	15	40	16	21	37	-	77
Nov. 24	UTEP	L, 64-61	3	17	20	16	25	41	-	61
Nov. 25	New Mexico State	W, 69-60	11	12	23	24	22	46	-	69
Nov. 29	Abilene Christian	W, 79-65	20	14	34	20	25	45	-	79
Dec. 3	Kansas	L, 71-60	12	10	22	21	17	38	-	60
Dec. 7	UNC-C	W, 73-72	13	16	30	19	24	43	-	73
Dec. 10	Tulsa	W, 67-41	21	14	35	13	19	32	-	67
Dec. 17	UTA	W, 91-57	14	23	37	26	28	54	-	91
Dec. 21	Arizona State									
Dec. 28	Grambling									
NonConf Totals			160	165	326	216	238	515	-	795
NonConf Averages			14.5	15.0	29.6	19.6	21.6	46.8	-	72.3
NonConf Highs			25	23	40	26	28	54	-	91
NonConf Lows			3	10	20	13	17	37	-	60

*Not included in averages

Dec. 31	Ole Miss
Jan. 4	Mississippi State
Jan. 7	Alabama
Jan. 11	Georgia
Jan. 14	Auburn
Jan. 18	Florida
Jan. 21	Missouri
Jan. 25	South Carolina
Jan. 29	Kentucky
Feb. 4	Alabama
Feb. 8	Tennessee
Feb. 11	Missouri
Feb. 15	Kentucky
Feb. 18	LSU
Feb. 22	Texas A&M
Feb. 25	Vanderbilt

SEC Totals
SEC Averages
SEC Highs
SEC Lows

Season Totals
Season Averages
Season Highs
Season Lows

BY STARTERS

Date	Opponent					
Nov. 2	NE State (exh) - W	Monk	Williams	Mason	Cosper	Zimmerman
Nov. 10	SHSU - W	Monk	Williams	Mason	Cosper	Zimmerman
Nov. 12	Samford - W	Monk	Williams	Mason	Cosper	Zimmerman
Nov. 16	Nebraska - L	Monk	Williams	Mason	Cosper	Zimmerman
Nov. 20	ORU - W	Monk	Williams	Mason	Cosper	Zimmerman
Nov. 25	UTEP - W	Monk	Williams	Mason	Cosper	Zimmerman
Nov. 26	New Mexico State - W	Monk	Williams	Mason	Cosper	Zimmerman
Nov. 29	Abilene Christian - W	Monk	Williams	Mason	Cosper	Zimmerman
Dec. 3	Kansas - L	Monk	Williams	Mason	Cosper	Zimmerman
Dec. 7	UNC-C - W	Monk	Williams	Mason	Cosper	Zimmerman
Dec. 10	Tulsa - W	Monk	Williams	Mason	Cosper	Zimmerman
Dec. 17	UTA - W	Monk	Thomas	Mason	Cosper	Zimmerman
Dec. 21	Arizona State					
Dec. 28	Grambling					
Dec. 31	Ole Miss					
Jan. 4	Mississippi State					
Jan. 7	Alabama					
Jan. 11	Georgia					
Jan. 14	Auburn					
Jan. 18	Florida					
Jan. 21	Missouri					
Jan. 25	South Carolina					
Jan. 29	Kentucky					
Feb. 4	Alabama					
Feb. 8	Tennessee					
Feb. 11	Missouri					
Feb. 15	Kentucky					
Feb. 18	LSU					
Feb. 22	Texas A&M					
Feb. 25	Vanderbilt					

MISCELLANEOUS STATISTICS

Double-Figure Scoring Games				
Player	15-16	16-17	17-18	Career
M. Monk	3	13	11	27
K. Swenson		11	1	12
J. Mason		10	6	16
D. Cosper	15	8	10	33
B. Zimmerman		2		2
T. Thomas	-	-	1	1
K. Williams	-	-	4	4
R. Northcross-Baker	-	-	2	2
TOTAL	18	44	35	97

20-Point Scoring Games				
Player	15-16	16-17	17-18	Career
K. Swenson		1		1
D. Cosper	1	-	4	5
M. Monk	-	-	6	6
R. Northcross-Baker			1	1
TOTAL	1	1	9	11

Double-Figure Rebounding Games				
Player	15-16	16-17	17-18	Career
D. Cosper	-	-	6	6
T. Thomas	-	-	1	1
K. Williams	-	-	4	4
TOTAL	x	x	11	11

Double-Doubles				
Player	15-16	16-17	17-18	Career
J. Mason (pts/ast)	-	2		2
D. Cosper (pts/reb)	-	-	5	5
K. Williams (pts/reb)	-	-	1	1
TOTAL	-	2	6	8

5+ Steals				
Player	15-16	16-17	17-18	Career
M. Monk	-	2	-	2
TOTAL	x	2	-	2

5+ Blocks				
Player	15-16	16-17	17-18	Career
TBA	-			
TOTAL	-	x	x	x

5+ Assists				
Player	15-16	16-17	17-18	Career
M. Monk	3	4	5	12
J. Mason		6	3	9
D. Cosper		2		2
TOTAL	3	12	8	23



@RazorbackWBB STATISTICS
Arkansas Combined Team Statistics (as of Dec 17, 2017)
All games



RECORD:	OVERALL	HOME	AWAY	NEUTRAL
ALL GAMES	8-3	6-0	1-3	1-0
CONFERENCE	0-0	0-0	0-0	0-0
NON-CONFERENCE	8-3	6-0	1-3	1-0

					Total		3-Point		F-Throw		Rebounds													
##	Player	gp-gs	min	avg	fg-fga	fg%	3fg-fga	3fg%	ft-fa	ft%	off	def	tot	avg	pf	dq	a	to	blk	stl	pts	avg		
03	MONK, Malica	11-11	368	33.5	70-167	.419	13-41	.317	49-58	.845	9	35	44	4.0	25	1	45	23	1	23	202	18.4		
21	COSPER, Devin	11-11	353	32.1	67-183	.366	31-107	.290	23-31	.742	12	67	79	7.2	28	0	13	25	8	18	188	17.1		
14	MASON, Jailyn	11-11	334	30.4	44-113	.389	16-47	.340	2-5	.400	5	40	45	4.1	19	1	39	17	6	18	106	9.6		
10	WILLIAMS, Kiara	11-10	222	20.2	36-69	.522	0-0	.000	13-29	.448	40	46	86	7.8	27	0	4	11	15	16	85	7.7		
01	NORTHCROSS-BAKE	11-0	213	19.4	23-68	.338	13-46	.283	12-19	.632	11	22	33	3.0	20	0	19	8	1	8	71	6.5		
04	SWENSON, Keiryn	11-0	179	16.3	21-59	.356	15-43	.349	4-8	.500	8	23	31	2.8	13	0	3	10	4	4	61	5.5		
24	THOMAS,Taylah	11-1	174	15.8	11-32	.344	2-6	.333	15-24	.625	25	37	62	5.6	19	1	1	4	4	4	39	3.5		
22	ZIMMERMAN, Bailey	11-11	260	23.6	10-53	.189	1-27	.037	10-16	.625	14	20	34	3.1	19	0	11	10	6	5	31	2.8		
20	STOUT, Sydney	6-0	26	4.3	1-4	.250	1-2	.500	3-6	.500	3	3	6	1.0	1	0	0	1	0	0	6	1.0		
13	SPANGLER, Grayce	7-0	23	3.3	0-5	.000	0-3	.000	3-5	.600	0	3	3	0.4	3	0	0	2	0	0	3	0.4		
30	WEAVER, Macy	8-0	48	6.0	1-4	.250	0-0	.000	1-4	.250	5	7	12	1.5	10	0	1	2	7	1	3	0.4		
	Team										21	16	37		1			1						
	Total.....	11	2200		284-757	.375	92-322	.286	135-205	.659	153	319	472	42.9	185	3	136	114	52	97	795	72.3		
	Opponents.....	11	2200		257-700	.367	60-216	.278	119-172	.692	146	344	490	44.5	198	1	140	180	33	59	693	63.0		

TEAM STATISTICS	AR	OPP
SCORING	795	693
Points per game	72.3	63.0
Scoring margin	+9.3	-
FIELD GOALS-ATT	284-757	257-700
Field goal pct	.375	.367
3 POINT FG-ATT	92-322	60-216
3-point FG pct	.286	.278
3-pt FG made per game	8.4	5.5
FREE THROWS-ATT	135-205	119-172
Free throw pct	.659	.692
F-Throws made per game	12.3	10.8
REBOUNDS	472	490
Rebounds per game	42.9	44.5
Rebounding margin	-1.6	-
ASSISTS	136	140
Assists per game	12.4	12.7
TURNOVERS	114	180
Turnovers per game	10.4	16.4
Turnover margin	+6.0	-
Assist/turnover ratio	1.2	0.8
STEALS	97	59
Steals per game	8.8	5.4
BLOCKS	52	33
Blocks per game	4.7	3.0
ATTENDANCE	12061	8640
Home games-Avg/Game	6-2010	4-2098
Neutral site-Avg/Game	-	1-250

Date	Opponent		Score	Att.
11/10/17	SHSU	w	65-54	4719
11/12/17	SAMFORD	w	84-63	1739
11/16/17	at Nebraska	L	69-80	3459
11/20/17	at Oral Roberts	w	77-66	2503
11/24/17	at UTEP	L	61-64	633
11/25/17	vs NM State	w	69-60	250
11/29/17	ACU	w	79-65	1132
12/03/17	at Kansas	L	60-71	1795
12/07/17	CHARLOTTE	w	73-72	1169
12/10/17	TULSA	w	67-41	1821
12/17/17	UT-ARLINGTON	w	91-57	1481

* - Conference game

Score by Periods	1st	2nd	3rd	4th	Totals
Arkansas	171	165	216	243	795
Opponents	180	160	166	187	693

@RazorbackWBB STATISTICS
ARKANSAS Combined Team Statistics (as of Jun 03, 2017)
Conference games

RECORD:	OVERALL	HOME	AWAY	NEUTRAL
ALL GAMES	2-14	1-7	1-7	0-0
CONFERENCE	2-14	1-7	1-7	0-0
NON-CONFERENCE	0-0	0-0	0-0	0-0

#	Player	gp-gs	min	avg	Total		3-Point		F-Throw		Rebounds				pf	dq	a	to	blk	stl	pts	avg
					fg-fga	fg%	3fg-fga	3fg%	ft-fa	ft%	off	def	tot	avg								
00	JACKSON, Jessica	15-12	457	30.5	62-189	.328	21-74	.284	36-54	.667	37	56	93	6.2	46	2	19	42	9	15	181	12.1
03	MONK, Malica	15-14	490	32.7	49-131	.374	5-18	.278	24-40	.600	18	31	49	3.3	52	1	41	38	6	38	127	8.5
14	MASON, Jaielyn	16-15	486	30.4	54-147	.367	12-36	.333	3-4	.750	7	47	54	3.4	48	2	43	36	6	18	123	7.7
04	SWENSON, Keiryn	16-9	389	24.3	43-96	.448	15-43	.349	12-17	.706	29	33	62	3.9	34	0	7	20	5	8	113	7.1
21	COSPER, Devin	16-6	321	20.1	40-107	.374	15-47	.319	9-10	.900	6	31	37	2.3	30	1	16	26	2	12	104	6.5
02	WILSON, Aaliyah	16-0	254	15.9	32-109	.294	15-50	.300	5-8	.625	12	30	42	2.6	22	0	20	34	7	6	84	5.3
35	COOLEY, Alecia	16-5	332	20.8	30-65	.462	0-0	.000	23-36	.639	27	50	77	4.8	20	0	6	16	11	3	83	5.2
22	ZIMMERMAN, Bailey	16-9	292	18.3	19-73	.260	10-41	.244	10-18	.556	18	33	51	3.2	25	0	9	20	6	5	58	3.6
10	WILLIAMS, Kiara	11-5	137	12.5	13-25	.520	0-0	.000	7-15	.467	14	14	28	2.5	20	1	2	10	3	6	33	3.0
20	STOUT, Sydney	10-0	42	4.2	1-6	.167	1-5	.200	2-4	.500	2	2	4	0.4	11	0	1	0	0	0	5	0.5
Team											36	41	77					9				
Total.....		16	3200		343-948	.362	94-314	.299	131-206	.636	206	368	574	35.9	308	7	164	251	55	111	911	56.9
Opponents.....		16	3200		366-915	.400	91-260	.350	207-308	.672	211	418	629	39.3	244	4	233	228	55	130	1030	64.4

x-Inactive player

TEAM STATISTICS	AR	OPP
SCORING	911	1030
Points per game	56.9	64.4
Scoring margin	-7.4	-
FIELD GOALS-ATT	343-948	366-915
Field goal pct	.362	.400
3 POINT FG-ATT	94-314	91-260
3-point FG pct	.299	.350
3-pt FG made per game	5.9	5.7
FREE THROWS-ATT	131-206	207-308
Free throw pct	.636	.672
F-Throws made per game	8.2	12.9
REBOUNDS	574	629
Rebounds per game	35.9	39.3
Rebounding margin	-3.4	-
ASSISTS	164	233
Assists per game	10.3	14.6
TURNOVERS	251	228
Turnovers per game	15.7	14.3
Turnover margin	-1.4	-
Assist/turnover ratio	0.7	1.0
STEALS	111	130
Steals per game	6.9	8.1
BLOCKS	55	55
Blocks per game	3.4	3.4
ATTENDANCE	11870	29592
Home games-Avg/Game	8-1484	8-3699
Neutral site-Avg/Game	-	0-0

Date	Opponent		Score	Att.
* 01/01/17	at Ole Miss	L	64-73	1280
* 01/05/17	#4 MISSISSIPPI STATE	L	51-59	1233
* 01/08/17	LSU	L	52-53	2005
* 01/12/17	at Texas A&M	L	65-90	3796
* 01/15/17	at Alabama	W	68-50	2667
* 01/19/17	VANDERBILT	W	59-56	1302
* 01/23/17	MISSOURI	L	46-60	1250
* 01/29/17	at LSU	L	46-53	2182
* 02/02/17	UGA	L	66-69	1603
* 02/05/17	#4 SOUTH CAROLINA	L	49-79	1650
* 02/09/17	at Florida	L	53-57	1441
* 02/12/17	at Missouri	L	56-67	5163
* 02/16/17	KENTUCKY	L	62-69	1142
* 02/19/17	at Tennessee	L	46-59	10613
* 02/23/17	at Vanderbilt	L	64-66	2450
* 02/26/17	AUBURN	L	64-70	1685

! = Nugget Classic (Reno, Nev.)

^ = SEC/Big 12 Challenge (Fayetteville, Ark.)

* = Conference game

\$ = SEC Tournament (Greenville, SC)

Score by Periods	1st	2nd	3rd	4th	Totals
ARKANSAS	226	206	212	267	911
Opponents	273	218	273	266	1030

MORE NUMBERS

MISCELLANEOUS

Opponent	T/O	2ndCh	Paint	FastB	Bench	Ties	Leads	WL	Score	Leads overcome
SHSU	15	5	28	14	13	1	1	W	65-54	trailed by 13/2Q-07:26
Samford	18	5	30	3	23	0	0	W	84-63	
Nebraska	12	14	32	10	11	3	1	L	69-80	lost 2 4th-0:6:21
ORU	15	6	32	18	16	1	1	W	77-66	trailed by 6 1st-04:58
UTEP	22	18	18	14	16	0	0	L	61-64	
NM State	17	16	34	13	15	2	4	W	69-60	trailed by 7 1st-01:06
ACU	28	9	20	0	25	0	1	W	79-65	trailed by 1 1st-09:21
Kansas	10	8	28	6	6	1	1	L	60-71	lost 2 1st-08:40
Charlotte	15	17	32	8	6	1	8	W	73-72	trailed by 9 3rd-9:40
Tulsa	7	13	30	6	12	0	1	W	67-41	trailed by 2 1st-09:14
UTA	23	13	26	17	42	3	2	W	91-57	trailed by 6 1st-4:54
Totals	182	124	310	109	185	12	20			
Ave/Game	16.5	11.3	28.2	9.9	16.8	1.1	1.8			
Opponent	105	110	348	54	205	9	17			
Ave/Game	9.5	10.0	31.6	4.9	18.6	0.8	1.5			

GAME BY GAME LEADERS

Date	Opponent	Points	Rebounds	Assists	Steals	Blocks
Nov. 10	SHSU	Monk (18)	Cosper (10)	2 Players (4)	Monk (4)	Mason (3)
Nov. 12	Samford	Monk (21)	2 Players (9)	2 Players (6)	3 Players (3)	Williams (4)
Nov. 16	Nebraska	Monk (22)	2 Players (11)	Monk (6)	Mason (4)	4 Players (2)
Nov. 20	ORU	Monk (24)	Cosper (10)	Monk (4)	Cosper (2)	2 Players (1)
Nov. 24	UTEP	Cosper (22)	Cosper (5)	Monk (5)	Cosper (4)	Weaver (4)
Nov. 25	NMSU	Monk (22)	2 Players (11)	Cosper (4)	Monk (4)	2 Players (1)
No. 29	A. Christian	2 Players (15)	Williams (8)	Mason (8)	Williams (3)	2 Players (1)
Dec. 3	Kansas	Monk (22)	Williams (16)	Monk (5)	Mason (2)	Williams (2)
Dec. 7	Charlotte	Cosper (25)	Cosper (14)	Mason (4)	Williams (4)	Williams (3)
No. 10	Tulsa	Monk (14)	Cosper (11)	Mason (6)	2 Players (1)	2 Players (2)
No. 17	UTA	RNB (22)	Williams (8)	Mason (7)	2 Players (3)	2 Players (1)
Dec. 21	Az State					
Dec. 28	Grambling					
Dec. 31	Ole Miss					
Jan. 4	Miss State					
Jan. 7	Alabama					
Jan. 11	Georgia					
Jan. 14	Auburn					
Jan. 18	Florida					
Jan. 21	Missouri					
Jan. 25	S Carolina					
Jan. 29	Kentucky					
Feb. 4	Alabama					
Feb. 8	Tennessee					
Feb. 11	Missouri					
Feb. 15	Kentucky					
Feb. 18	LSU					
Feb. 22	Texas A&M					
Feb. 25	Vanderbilt					

SPECIALTY STATS

Opponent	Paint	OFF TO	2ND CHANCE	FAST BREAK	BENCH
SHSU	28	15	5	14	13
Samford	30	18	5	3	23
Nebraska	32	12	14	10	11
ORU	32	15	6	18	16
UTEP	18	22	18	14	16
NMSU	34	17	16	13	15
Ab. Christian	20	28	9	0	25
Kansas	28	10	8	6	6
Charlotte	32	15	17	8	6
Tulsa	30	7	13	6	12
UTA	26	23	13	17	42

[Arizona State](#)
[Grambling St.](#)
[Ole Miss](#)
[Miss State](#)
[Alabama](#)
[Georgia](#)
[Auburn](#)
[Flordia](#)
[Missouri](#)
[S. Carolina](#)
[Kentucky](#)
[Alabama](#)
[Tennessee](#)
[Missouri](#)
[Kentucky](#)
[LSU](#)
[Texas A&M](#)
[Vanderbilt](#)

COMPARISON



@RazorbackWBB STATISTICS Arkansas Team Game-by-Game Comparison (as of Dec 18, 2017) All games



Opponent	1st	2nd	Score	Mar	Total FG	FG Pct	3-Pointers	3FG Pct	Free Throws	FT Pct	Rebounds	Assist	T/Over	Block	Steal	Fouls
SHSU	23/28	42/26	65-54	+11	25-67/20-63	.373/.317	9-33/7-27	.273/.259	6-11/7-11	.545/.636	39/51 (12)	15/10	9/15	7/5	8/3	12/14
SAMFORD	42/33	42/30	84-63	+21	29-59/23-59	.492/.390	10-27/6-22	.370/.273	16-22/11-14	.727/.786	35/34 +1	17/17	6/13	4/1	7/3	15/23
Nebraska	30/41	39/39	69-80	(11)	27-77/28-72	.351/.389	8-32/7-21	.250/.333	7-10/17-25	.700/.680	45/55 (10)	10/17	15/16	8/6	12/7	23/12
Oral Roberts	40/36	37/30	77-66	+11	29-70/22-58	.414/.379	6-23/7-22	.261/.318	13-18/15-19	.722/.789	41/41 -	8/12	4/14	2/0	5/2	18/20
UTEP	20/38	41/26	61-64	(3)	21-70/27-53	.300/.509	11-41/5-13	.268/.385	8-14/5-7	.571/.714	27/51 (24)	13/19	4/23	4/0	14/1	15/13
NM State	23/25	46/35	69-60	+9	25-70/23-67	.357/.343	6-26/4-18	.231/.222	13-24/10-14	.542/.714	55/41 +14	10/9	18/18	3/2	12/10	15/21
ACU	34/24	45/41	79-65	+14	25-68/24-69	.368/.348	10-25/11-34	.400/.324	19-27/6-11	.704/.545	44/43 +1	13/17	12/20	4/6	13/8	13/21
Kansas	22/30	38/41	60-71	(11)	22-69/25-62	.319/.403	5-27/3-15	.185/.200	11-15/18-25	.733/.720	40/50 (10)	7/9	13/15	6/5	3/8	24/17
CHARLOTTE	30/37	43/35	73-72	+1	26-75/27-74	.347/.365	9-31/5-13	.290/.385	12-24/13-20	.500/.650	45/58 (13)	11/15	10/17	5/3	10/7	19/20
TULSA	35/24	32/17	67-41	+26	25-67/16-69	.373/.232	6-29/2-16	.207/.125	11-19/7-10	.579/.700	61/39 +22	13/5	9/7	7/3	2/4	10/16
UT-ARLINGTON	37/24	54/33	91-57	+34	30-65/22-54	.462/.407	12-28/3-15	.429/.200	19-21/10-16	.905/.625	40/27 +13	19/10	14/22	2/2	11/6	21/21

Note: Game totals are displayed in the format TEAM/OPPONENT for each category



@RazorbackWBB STATISTICS Arkansas Points-Rebounds-Assists (as of Dec 18, 2017) All games

Opponent	Date	Score	01	03	04	10	13	14	20	21	22	24	30
SHSU	11/10/17	65-54 w	3-2-2	18-2-4	5-1-0	7-2-1	0-0-0	8-5-4	1-1-0	17-12-2	2-3-2	4-4-0	0-0-0
SAM	11/12/17	84-63 w	0-1-6	21-9-6	9-0-1	10-5-0	0-1-0	12-1-2	1-1-0	18-5-2	0-0-0	13-9-0	0-0-0
at NEB	11/16/17	69-80 L	3-4-0	22-3-6	3-3-0	6-11-1	DNP	8-5-2	DNP	21-4-0	1-0-0	5-11-1	DNP
at ORU	11/20/17	77-66 w	8-1-1	24-3-4	6-2-0	8-5-0	DNP	6-2-1	DNP	21-10-1	2-4-1	2-9-0	DNP
at UTEPW	11/24/17	61-64 L	7-2-3	10-2-5	6-2-0	1-1-0	0-0-0	8-4-2	0-0-0	22-5-0	4-3-2	1-4-0	2-3-1
vs NMSU	11/25/17	69-60 w	7-2-0	22-7-2	5-6-0	11-11-0	DNP	3-6-2	DNP	17-11-4	1-3-2	3-7-0	DNP
ACU	11/29/17	79-65 w	15-3-1	15-2-1	3-2-0	12-8-0	0-0-0	13-7-8	0-1-0	11-3-1	3-6-2	7-7-0	0-1-0
at KU	12/03/17	60-71 L	2-2-1	21-7-5	4-2-0	6-16-0	0-0-0	10-2-1	DNP	17-3-0	0-2-0	0-0-0	0-0-0
CHA	12/07/17	73-72 w	3-3-1	15-4-3	3-2-0	9-12-0	DNP	12-4-4	DNP	25-14-2	6-3-1	0-0-0	0-2-0
TLS	12/10/17	67-41 w	1-9-1	14-4-3	7-6-0	13-7-2	0-1-0	11-5-6	0-1-0	11-11-0	6-7-1	4-7-0	0-1-0
UTA	12/17/17	91-57 w	22-4-3	20-1-6	10-5-2	2-8-0	3-1-0	15-4-7	4-2-0	8-1-1	6-3-0	0-4-0	1-5-0

THE LAST TIME A RAZORBACK TEAM ...

OFFENSE

Scored 110+	110, vs. Providence (11/16/98)
Scored 100+ points at home	101, Houston Baptist, 12-28-16
Scored 100+ points on the road	108, Baylor (3-6-91; SWC Tourn., Dallas, Texas)
Scored 90-99 points	91 vs. UTA, 12-17-17
Scored 90+ points at home	101, Houston Baptist, 12-28-16
Scored 90+ points on the road	91, (91-80 Win in 30T, 2-10-13, at Alabama)
Scored 80-89 points	84, Samford (11-12-17)
Scored 80-89 points at home	86, Mississippi Valley State (12-28-15)
Scored 80-89 points on the road	88, Southeast Missouri (NM) (11-29-13)
Scored 70-79 points	73, Charlotte (12-6-17)
Scored 70-79 points at home	79 vs. Stetson, 11-21-16
Scored 70-79 points on the road	77 at Ole Miss, 1-31-13
Scored 60-69 points	67, Tulsa, 12-10-17
Was held to 50-59	56 at Missouri, 2-12-17
Was held to 49-40	49 v6 at Tennessee, 2-19-17
Was held to 39-20	32, at No. 2 South Carolina (1-3-16)
Was held to 20 or less	N/A
Made 30-39 field goals	30 vs. UTA, 12-17-17
Made 20-29 field goals	25, Tulsa, 12-10-17
Made 10-19 field goals	18 vs. #4 South Carolina, 2-5-17
Made 10 three-point field goals	12 vs. UTA, 12-17-17
Did not make a three point basket (began in 1986)	0-10, at Mississippi State (L 44-47), 2-3-13
Made 30 free throws	38 at Florida (38-54); (2-22-04)
Made 15+ Free Throws	19 vs. UTA, 12-17-17
Shot 40-49 or better from the field	46.2% (30-65) vs. UTA, 12-17-17
Shot 50-59 or better from the field	52.1 (38-73), Houston Baptist, 12-28-16
Shot 60 percent or better from the field600 (36-60) vs. Ole Miss (W, 93-52; 3-3-13)
Held to less than 40 percent from the field	37.3% (25-67), Tulsa, 12-10-17
Held to less than 30 percent from the field	27.7 (18-65) vs. #4 South Carolina, 2-5-17
Held to less than 20 percent from the field182 (10-55) vs. No. 6/7 Tennessee (1-8-12; L, 38-69)
Allowed opponent to shoot over 50% from the field	50.9% (27-53), at UTEP, 11-24-17
Held opponent to less than 40% from the field	36.5% (27-75) Charlotte (12-6-17)
Held opponent to less than 30% from the field	23.2% (16-69), Tulsa, 12-10-17
Held opponent to less than 20% from the field in a half:136 (3-22), First Half, Binghamton, 11-30-13
.....	.200 (5-25), First Half, MVSU, 12-28-13
.....	.200 (5-25), First Half, Grambling State, 12-29-14
Had 20 or more assists in a game	27, Houston Baptist, 12-28-16

DEFENSE

Allowed 100 points	100, #3 Connecticut (11-14-1998)
Allowed 80+ points	80, at Nebraska, 11-17-17
Allowed 70-79 points	72, Charlotte (12-6-17)
Allowed 69-60 points	65, Abilene Christian (11-29-17)
Held opponent to 59-50 points	57 vs. UTA, 12-17-17
Held opponent to 40-49 points	41, Tulsa, 12-10-17
Held opponent to 39-30	36, Northwestern State, 12-18-16
Held opponent under 45 points three cons. games	45, SHSU (11-8-13, W 81-45);
.....	33 ORU (11-13-13, W 91-33); 45, Furman (11-16-13, W, 74-45)
Held an SEC opponent under 50 points in 3 cons. games	47, Auburn (1-29-15, W, 52-47); 42,
.....	Alabama (2-1-15, W, 53-42);
.....	#24/21 Georgia (2-9-15, W, 54-48)
Held opponent to 29 points or less	23, Binghamton, 11-30-13
Held an opponent under 15 points in a half	13, Northwestern State, 12-18-16
Held opponent under 15 field goals	14, Houston Baptist, 12-28-16
Held opponent under 15% from three-point distance	12.5% (2-16), Tulsa, 12-10-17
Had 70+ rebounds	74, Mississippi Valley State (11-24-89)
Had 60-69 rebounds	61, Tulsa, 12-10-17
Had 50-59 rebounds	55, vs. NMSU, 11-25-17
Had five or more blocked shots in a game	7, Tulsa, 12-10-17
Had 20 or more steals in a game	20, ORU (11-13-13)
Had 15 or more steals in a game	16, at Florida, 2-9-17
Had 20 or more turnovers in a game	22, at LSU, 1-29-17
Forced 20-25 or more Turnovers in a game	22 vs. UTA, 12-17-17

OTHER

Won an overtime game	91-80 Win in 30T, 2-10-13, at Alabama
Lost an overtime game	Florida (71-66), 1-28-16
Won a double overtime game	73-72, vs. Florida (1-29-12)
Lost a double overtime game	N/A
Won a triple overtime game	91-80 Win in 30T, 2-10-13, at Alabama
Played consecutive overtime games	1-24-16 at Auburn (lost); 1-28-16 vs Florida (lost)
Won a regular season tournament	Nugget Classic (Reno, Nev, Nov. 25-26, 2016)
Defeated a ranked team	67-61, No. 13 Texas A&M, 1-7-16; 64-59, No. 13 Tenn., 1-14-16
.....	64-52, No. 24 Missouri, 1-17-16
Defeated a ranked team on the road	57-53, at #19/18 LSU, 2-23-14; 77-76,
.....	#17/16 Iowa (Las Vegas), 12-18-14
All-time SEC win streak	8 games (1-15-12: Auburn through 2-15-12: at Auburn)
All-time SEC home win streak	5 games (1-15-12: Auburn through 2-9-12: S. Carolina)

THE LAST TIME A RAZORBACK PLAYER ...

Scored 20-24 points	22, Raven Northcross-Baker vs. UTA, 12-17-17
.....	20, Malica Monk vs. UTA, 12-17-17
Scored 25-29 points	25, Devin Cosper, Charlotte (12-6-17)
Scored 30+ points	34, Jessica Jackson, Houston Baptist, 12-28-16
Scored 20+ points seven times in a season	Jessica Jackson, 2013-14 (22 vs. MTSU, 22 at Missouri,
.....	23 at Fla., 24 at Georgia, 31 vs. Ole Miss, 23 at Kentucky,
.....	25 at LSU)
Scored 20+ points eight times in a season	Jessica Jackson, 2015-16 (20 vs. SHSU; 24 at SDSU;
.....	29 vs. Tulsa, 22 vs. La; 22 vs. No. 5 Texas; 20 at No. 5 MSU;
.....	25 vs. #13 Tennessee; 25, vs. Alabama; 20)
Double figures in 15 consecutive games (Season)	Jessica Jackson, 11/11/16-, LSU 1-8-17
Scored 23+ points in three consecutive games	Jessica Jackson (24 at Georgia 1-16-14,
.....	31 vs. Ole Miss 1-19-14, 23 at Kentucky 1-26-14)
Three players scored double figures in 1 game	Charlotte, 12-6-17, (Casper, Monk, Mason)
Four players scored double figures in 1 game	vs. UTA, 12-17-17 (Monk, RNB, Mason, Swenson)
Four players scored doubles figures for 4 cons. games	12-6-12 - 12-21-12; vs. Kansas, Furman, MVSU, and NSU
Five players scored double figures in 1 game	Abilene Christian (11-29-17)
.....	(Monk, Cosper, Mason, Williams, Northcross-Baker)
Made 10+ field goals in a game	10, Jessica Jackson, Kentucky, 2-16-17
Attempted 15-19 field goals in a game	16, Devin Cosper, Tulsa, 12-10-17
Attempted 20+ field goals in a game	23, Devin Cosper, Charlotte (12-6-17)
Attempted 10 free throws in a game	12, Malica Monk vs. UTA, 12-17-17
Made 5 or more three-pointers in a game	6, Raven Northcross-Baker vs. UTA, 12-17-17
Attempted 10+ three-pointers in a game	11, Devin Cosper at Kansas, 12-3-17
Had 10-14 rebounds	11, Devin Cosper, Tulsa, 12-10-17
Had 15+ rebounds	16, Kiara Williams at Kansas, 12-3-17
Had 10 offensive rebounds - Records go back to 05-06	11, Melissa Wolff vs. New Orleans (1-30-15)
Had 10 defensive rebounds - Records go back to 05-06	11, Devin Cosper, Charlotte (12-6-17)
Had 10+ assists	10, Jailyn Mason, at Ole Miss, 1-1-2017
Had 10+ assists in consecutive games	Jailyn Mason (11 vs. HBU, 12-28-16 and 10 at Ole Miss, 1-1-17)
.....	Calli Berna (11 vs. No. 10/8 KY 2/7/13 and 11 at UA 2/10/13)
Had 5+ blocks in a game	(3x) 5, Jessica Jackson (vs. ORU, 11-13-13);
.....	(No. 25 Vanderbilt, 2-20-14); (at Tulsa, 12-14-14)
Had 10 or more blocks in a game	9, Robyn Irwin vs. SMSU, 12-19-88 (school record)
Had 5 or more steals in a game	5, Malica Monk vs. NMSU, 11-25-17
Had a double-double	Devin Cosper (25/14) vs. Charlotte (12-6-17)
Had a double-double in two straight games	2017-18: Devin Cosper (25/14) Charlotte and (11/11) Tulsa
Had two players record a double-double	Devin Cosper (17/11) vs. NMSU, 11-25-17
.....	Kiara Williams (11/11) vs. NMSU, 11-25-17
Had six double-doubles in a season	Melissa Wolff, 2014-15 (Nicholls, Savannah State,
.....	Richmond, Grambling State, Tennessee, Northwestern)
Had 10+ double-doubles in a season	2006-07, Lauren Ervin (14)
Had a triple-double	14 pts, 13 reb, 12 asts, C'eira Ricketts vs. Auburn (1-18-09)



MIKE NEIGHBORS YEAR-BY-YEAR

Year	School	Overall	Pct.	Conf.	Pct.	Conf. Finish
2013-14	Washington	20-14	.588	10-8	.556	6/Pac-12
2014-15	Washington	23-10	.697	11-7	.611	5/Pac-12
2015-16	Washington	26-11	.703	11-7	.611	5/Pac-12
2016-17	Washington	29-6	.829	15-3	.833	T2/Pac-12
2017-18	Arkansas	8-3	.728	TBA	TBA	TBA
Totals	5 Years	106-44	.707	47-25	.653	

NEIGHBORS 3-1 IN BWA BEFORE THIS YEAR

As the head coach of Bentonville (Ark.) HS, Mike Neighbors went 3-0 in Bud Walton Arena in the high school play-offs. In 1997, his Tiger team defeated Bryant, Mount St. Mary's and Jonesboro to reach the state finals in Pine Bluff, Ark.

The lone loss occurred when Neighbors was an assistant coach at Tulsa. The 13th-ranked Razorbacks defeated Tulsa, 66-49, that season.

OPEN MIKE

Want to get to know Mike Neighbors in his own words? Check out the links below for stories about Mike, his hire and his dream job at Arkansas.

Mike's First 30 Days	http://bit.ly/First30
Mike's Dream Job	http://bit.ly/MNDreamJob
Mike's Press Conference	http://bit.ly/PressConfVideo

FROM ROOKIE NOD TO NAISMITH NOMINEE

In four short years Mike Neighbors went from a Spalding Maggie Dixon Division I Rookie Coach of the Year nominee in 2014, to a Naismith Women's College Coach of the Year national semifinalist in 2017.

Neighbors guided UW to an historic campaign in 2016-17 leading the Huskies to 27 wins, it's second most in program history, and he was just one shy of the all-time a school record set in 1990 (28).

Picked to place third in the Pac-12 in the preseason poll, UW tied for second in the league with a 15-3 record, it's best conference finish since 2003. The Huskies' 15 conference wins tied for third most in program history. Washington, who entered conference play with the program-best 12 non-conference wins, clinched its first-ever bye in the first round of the Pac-12 Tournament. Washington put together an 11-game win streak and a six-game win streak in Pac-12 play in 2016-17.

BENTONVILLE HS (HC)	94	
	95	
	96	
	97	
CABOT HS (HC)	98	
ARKANSAS (DIR OF OPS)	99	
	00	
TULSA (ASST)	01	
	02	
	03	
	04	
COLORADO (ASST)	05	
ARKANSAS (ASST)	06	
XAVIER (ASST)	07	X
	08	
	09	
	10	
WASHINGTON (ASST)	11	W
	12	
WASHINGTON (HC)	13	W
	14	
	15	
	16	
ARKANSAS (HC)	17	

COACHES COACHING AT ALMA MATER

Mike Neighbors	Arkansas, 1993
Holly Warlick	Tennessee, 1981

A couple of other coaches have SEC ties. Joni Taylor is the head coach at Georgia and a 2002 graduate of Alabama. Matthew Mitchell is a 1995 graduate of Mississippi State and is the head coach at Kentucky. Nikki Fargas graduated from Tennessee in 1994 and is the head coach at LSU. Vic Schaefer is the head coach at Mississippi State and a 1984 graduate of Texas A&M.



NEIGHBORS BY THE NUMBERS

TOP 10 MOVIES

1. A Few Good Men
2. The Hunt For Red October
3. The Silence Of The Lambs
4. Hoosiers
5. Pretty Woman
6. Moneyball
7. Top Gun
8. JFK
9. The Lion King
10. Purple Rain

See the entire list here: <http://www.imdb.com/list/ls004320428/>

He has 160 movies that are classified as 'thriller'. "Romance" is next with 152 followed by 69 "sport", 58 "mystery", and 32 "sci-fi".

TOP 10 SONGS

1. Sweet Child O' Mine (Guns N' Roses)
2. You Shook Me All Night Long (AC/DC)
3. Man In The Mirror (Michael Jackson)
4. Amarillo By Morning (George Strait)
5. Jessie's Girl (Rick Springfield)
6. Hysteria (Def Leppard)
7. Fishin' In The Dark (Nitty Gritty Dirt Band)
8. The Ballard of Curtis Loew (Lynyrd Skynyrd)
9. Wanted Dead Or Alive (Bon Jovi)
10. Let's Go Crazy (Prince)

TOP 10 TV SHOWS

1. West Wing (first three seasons)
2. The Wire
3. Breaking Bad
4. Seinfeld
5. The Newsroom
6. Prison Break
7. Arrested Development
8. Game of Thrones
9. The Sopranos
10. The Goldbergs

See the entire list here: <http://www.imdb.com/list/ls009377912/>

Neighbors has 16 comedies, 15 dramas and seven crime shows on the list.

MIKE NEIGHBORS DEVELOPS PLAYERS FOR THE NEXT LEVEL

Mike Neighbors has worked with 11 WNBA Draft Picks

YEAR	UNIVERSITY	PLAYER	ROUND	OVERALL	TEAM NOTE
2017	Washington	Kelsey Plum	1	1	San Antonio Spurs ! @
	Washington	Chantel Osahor	2	21	Chicago Sky ! @
2016	Washington	Talia Walton	3	29	Los Angeles Sparks ! @
2011	Xavier	Amber Harris	1	4	Minnesota Lynx #
	Xavier	Ta'Shia Phillips	1	8	Atlanta Dream #
	TAMU/UAFS	Tanisha Smith	2	22	Seattle Storm #
	Colorado	Brittany Spears	2	19	Phoenix Mercury *
2009	Arkansas	Shameka Christon	1	5	New York Liberty #
2008	Arkansas	Lauren Ervin	3	37	Connecticut Sun #
2006	Tulsa	Megan Moody	-	-	Houston Comets
					Free Agent #
2003	Tulsa	Allison Curtin	1	12	Houston Comets ! #
	Arkansas	Dana Cherry	2	23	Traded to Detroit Shock Charlotte Sting

*-Recruited but did not coach

!-At the school when player was drafted

@-Worked with player as a head coach

#-Worked with player as an assistant coach

\$-Worked with player as other (GA, etc)

FAST RISE TO ELITE RANKS

Mike Neighbors had a meteoric rise to the top as a head coach at Washington. In four seasons, he amassed 96 wins, had three NCAA Tournament appearances and reached the Final Four. Those accomplishments put him in some rare air.

FIRST FOUR YEARS AS A POWER FIVE HEAD COACH

Coach	School	NCAA		NCAA Best
		Wins	Apps.	
Holly Warlick	Tennessee	108	4	Sweet 16
Mike Neighbors	Washington	98	3	1 Final Four
Jeff Walz	Louisville	96	3	1 Final Four
Nikki Fargas	UCLA	95	3	2nd Rnd
Vic Schaefer	Mississippi State	90	2	Sweet 16
Karen Aston	Texas	89	3	1 Elite 8
Matthew Mitchell	Kentucky	86	2	1 Elite 8
Kevin McGuff	Xavier	80	1	1 Elite 8
Dawn Staley	South Carolina	77	1	-
Brenda Frese	Minn./Maryland	72	2	-

BUILDING A FAN BASE

Mike Neighbors saw a 62.9% increase in attendance in his four seasons at Washington. Look for fan engagement to be a big part of future Razor-back programs as well.

COACHING TREE

Coach	w/Nabes	Now
Fred Castro	'14, '15, '16	HC Eastern Michigan
Adia Barnes	'14, '15	HC Arizona
Adam Call	'14	AC Eastern Michigan
Morgan Valley	'16	AC Arizona
Todd Schaefer	'16	AC Arkansas
Jasmine Lister	'16	AC DePaul



WANT TO ASK SOME GOOD QUESTIONS?

1. He has had two heart attacks
2. He keeps a lot of lists
3. His lowest moment was he eureka moment
4. He plays guitar and has a band
5. He reads really fast
6. He is an analytics nerd
7. He is a bar-game prodigy

Sign up for Mike Neighbors' newsletter and listen to his podcasts at

CoachNeighbors.com





Opponent	Date	gs	min	Total		3-Pointers		Free throws		Rebounds			pf	a	t/o	blk	stl	pts	avg	
				fg	pct	3fg	pct	ft	pct	off	def	tot								avg
SHSU	11/10/17		20	1-8	.125	1-6	.167	0-0	.000	2	0	2	2.0	3	2	1	0	0	3	3.0
SAMFORD	11/12/17		22	0-2	.000	0-2	.000	0-0	.000	0	1	1	1.5	1	6	1	0	0	0	1.5
at Nebraska	11/16/17		18	1-4	.250	1-3	.333	0-0	.000	1	3	4	2.3	1	0	1	0	2	3	2.0
at Oral Roberts	11/20/17		22	3-6	.500	1-4	.250	1-2	.500	0	1	1	2.0	3	1	0	0	0	8	3.5
at UTEP	11/24/17		16	3-12	.250	0-6	.000	1-1	1.000	2	0	2	2.0	1	3	0	0	0	7	4.2
vs NM State	11/25/17		18	2-7	.286	1-4	.250	2-4	.500	1	1	2	2.0	4	0	2	0	2	7	4.7
ACU	11/29/17		22	3-6	.500	2-4	.500	7-8	.875	1	2	3	2.1	2	1	0	0	1	15	6.1
at Kansas	12/03/17		14	1-6	.167	0-4	.000	0-0	.000	0	2	2	2.2	4	1	0	0	0	2	5.6
CHARLOTTE	12/07/17		11	1-2	.500	1-2	.500	0-0	.000	0	3	3	2.1	1	1	0	0	0	3	5.3
TULSA	12/10/17		23	0-4	.000	0-3	.000	1-4	.250	2	7	9	2.9	1	1	2	1	0	1	4.9
UT-ARLINGTON	12/17/17		27	8-11	.727	6-8	.750	0-0	.000	2	2	4	3.0	0	3	0	0	3	22	6.5
Totals		0	213	23-68	.338	13-46	.283	12-19	.632	11	22	33	3.0	20	19	8	1	8	71	6.5

Rebounds/game: 3.0
Assists/game: 1.7
Turnovers/game: 0.7
Assist/turnover ratio: 2.4
Steals/game: 0.7
Blocks/game: 0.1

Points	22	UTA	12-17-17
FG Made	8	UTA	12-17-17
FG Att.	12	UTEP	11-24-17
3P Made	6	UTA	12-17-17
3P Att.	8	UTA	12-17-17
FT Made	7	ACU	11-29-17
FT Att.	8	ACU	11-29-17
Off. Rebounds	2	UTA	12-17-17*
Def. Rebounds	7	Tulsa	12-10-17
Rebounds	9	Tulsa	12-10-17
Assists	6	Samford	11-12-17
Blocks	1	Tulsa	12-10-17
Steals	3	UTA	12-17-17
Minutes	27	UTA	12-17-17

Points	22	UTA	12-17-17
FG Made	8	UTA	12-17-17
FG Att.	12	UTEP	11-24-17
3P Made	6	UTA	12-17-17
3P Att.	8	UTA	12-17-17
FT Made	7	ACU	11-29-17
FT Att.	8	ACU	11-29-17
Off. Rebounds	2	UTA	12-17-17*
Def. Rebounds	7	Tulsa	12-10-17
Rebounds	9	Tulsa	12-10-17
Assists	6	Samford	11-12-17
Blocks	1	Tulsa	12-10-17
Steals	3	UTA	12-17-17
Minutes	27	UTA	12-17-17

CAREER STATS

				Total			3-Point			F-Throw			Rebounds											
Year	GP-GS	Min	Avg	FG	FGA	Pct	FG	FGA	Pct	FT	FTA	Pct	Off	Def	Tot	Avg	PF	FO	Ast	TO	Blk	Stl	Pts	Avg
2015-16*	26-14	69	2.7	97	229	.424	58	149	.389	21	33	.636	47	39	86	3.3	6	-	46	32	-	58	273	10.5
2016-17*	33-33	210	6.4	171	433	.395	77	247	.312	54	83	.651	74	77	151	4.6	9	-	77	44	3	56	473	14.3
Totals*	59-47	279	4.7	268	662	.405	135	396	.341	75	116	.647	121	116	237	4.0	15	-	123	76	3	114	746	12.6
*At Chipola Junior College																								
2017-18#	11-0	213	19.4	23	68	.338	13	46	.283	12	19	.632	11	22	33	3.0	20	0	19	8	1	8	71	6.5
TOTAL#	11-0	213	19.4	23	68	.338	13	46	.283	12	19	.632	11	22	33	3.0	20	0	19	8	1	8	71	6.5
#At Arkansas																								



3

MALICA MONK
Junior | 5-5 | Guard | NLR, Arkansas
N. Little Rock HS

CAREER HIGHS

Points	24	ORU	11-20-17
FG Made	9	NMSU	11-15-17*
FG Att.	19	Nebraska	11-16-17
3P Made	2	Tulsa	12-10-17*
3P Att.	6	Charlotte	12-6-17
FT Made	12	UTA	12-17-17
FT Att.	12	UTA	12-17-17
Off. Rebounds	3	NMSU	11-15-17*
Def. Rebounds	8	Samford	11-12-17
Rebounds	9	Samford	11-12-17
Assists	7	Memphis	11-25-16
Blocks	3	LSU	1-8-17
Steals	6	Kentucky	2-16-17*
Minutes	38	Charlotte	12-6-17*

SEASON HIGHS

Points	24	ORU	11-20-17
FG Made	9	NMSU	11-25-17*
FG Att.	20	at Kansas	12-3-17
3P Made	2	Tulsa	12-10-17*
3P Att.	6	Charlotte	12-6-17
FT Made	12	UTA	12-17-17
FT Att.	12	UTA	12-17-17
Off. Rebounds	3	at Kansas	12-3-17*
Def. Rebounds	8	Samford	11-12-17
Rebounds	9	Samford	11-12-17
Assists	6	UTA	12-17-17*
Blocks	1	NMSU	11-25-17
Steals	4	NMSU	11-15-17*
Minutes	38	Charlotte	12-6-17*

*Most Recent

2017-18 GAME-BY-GAME STATS

Opponent	Date	gs	min	Total		3-Pointers		Free throws		Rebounds				pf	a	t/o	blk	stl	pts	avg
				fg	fga	3fg	3fga	ft	fta	off	def	tot	avg							
SHSU	11/10/17	*	33	7	13	1	4	3	4	0	2	2	2.0	2	4	1	0	4	18	18.0
SAMFORD	11/12/17	*	37	6	14	2	3	7	7	1	8	9	5.5	2	6	1	0	2	21	19.5
at Nebraska	11/16/17	*	37	9	19	1	4	3	3	0	3	3	4.7	5	6	2	0	3	22	20.3
at Oral Roberts	11/20/17	*	32	9	16	1	3	5	6	0	3	3	4.3	1	4	1	0	1	24	21.3
at UTEP	11/24/17	*	36	3	15	1	6	3	3	0	2	2	3.8	2	5	1	0	3	10	19.0
vs NM State	11/25/17	*	38	9	17	1	4	3	7	3	4	7	4.3	0	2	5	1	4	22	19.5
ACU	11/29/17	*	29	5	14	1	2	6	6	0	2	2	4.0	2	1	2	0	1	15	18.9
at Kansas	12/03/17	*	32	8	20	1	3	4	4	3	4	7	4.4	4	5	3	0	0	21	19.1
CHARLOTTE	12/07/17	*	38	6	18	2	6	3	3	1	3	4	4.3	4	3	1	0	3	15	18.7
TULSA	12/10/17	*	25	4	10	2	4	5	4	1	3	4	4.3	2	3	3	0	1	14	18.2
UT-ARLINGTON	12/17/17	*	31	4	11	0	2	12	12	0	1	1	4.0	1	6	3	0	1	20	18.4
Totals			11	368	70	167	13	41	49	58	9	35	44	4.0	25	45	23	1	202	18.4

Games played: 11
Minutes/game: 33.5
Points/game: 18.4
FG Pct: 41.9
3FG Pct: 31.7
FT Pct: 84.5

Rebounds/game: 4.0
Assists/game: 4.1
Turnovers/game: 2.1
Assist/turnover ratio: 2.0
Steals/game: 2.1
Blocks/game: 0.1

NOTES

- » 14 points, seven assists and just one turnover in exhibition game
- » Eleven consecutive games with double figure scoring.
- » Six of 11 games with 20+ points.
- » Named CollegeSportsMadness.com's SEC Player of the Week (11.13.17).
- » Improved career-best with 24 points in 32 minutes at ORU
- » Had 13 points in the fourth quarter at ORU.
- » Led team in scoring eight games.
- » Five games with 5+ assists this year. Had four all of last year.

CAREER STATS

Year	GP-GS	Min	Avg	Total			3-Point			F-Throw			Rebounds				PF	FO	Ast	TO	Blk	Stl	Pts	Avg
				FG	FGA	Pct	FG	FGA	Pct	FT	FTA	Pct	Off	Def	Tot	Avg								
2015-16	27-5	461	17.1	48	136	.353	2	10	.200	12	19	.632	6	23	29	1.1	60	2	47	44	5	23	110	4.1
2016-17	27-27	842	31.2	96	230	.417	7	25	.280	48	71	.676	29	52	81	3.0	79	2	83	59	7	62	247	9.1
2017-18	11-11	368	33.5	70	167	.419	13	41	.317	49	58	.845	9	35	44	4.0	25	1	45	23	1	23	202	18.4
TOTAL	65-43	1671	25.7	214	533	.402	22	76	.289	109	148	.736	44	110	154	2.4	164	5	175	126	13	108	559	8.6



4

KEIRYN SWENSON**Junior | 6-1 | Forward | Wichita, Kansas
Maize HS****CAREER HIGHS**

Points	23	vs. HBU	12-28-16
FGM	7	vs. Navy	11-26-16
FGA	13	at Ole Miss	1-1-17
3PM	4	at Ole Miss	1-1-17
3PA	9	at Ole Miss	1-1-17
FTM	8	vs. HBU	12-28-16
FTA	9	vs. HBU	12-28-16
OREB	5	at Alabama	1-15-17*
DREB	6	vs. NSU	12-18-15*
REB	9	at Alabama	1-15-17*
AST	2	UTA	12-17-17*
BLK	2	vs. SHSU	11-10-17*
STL	2	UTEP	11-24-17*
MIN	37	at Ole Miss	1-1-17

SEASON HIGHS

Points	10	UTA	12-17-17
FG Made	4	UTA	12-17-17
FG Att.	8	UTA	12-17-17*
3P Made	3	Samford	11-12-17
3P Att.	6	UTEP	11-24-17
FT Made	2	Tulsa	12-10-17
FT Att.	2	Tulsa	12-10-17*
Off. Rebounds	2	Tulsa	12-10-17*
Def. Rebounds	4	UTA	12-17-17*
Rebounds	6	Tulsa	12-10-17*
Assists	2	UTA	12-17-17
Blocks	2	SHSU	11-10-17
Steals	2	UTEP	11-24-17
Minutes	21	Tulsa	12-10-17

*Most Recent

2017-18 GAME-BY-GAME STATS

Opponent	Date	gs	min	Total		3-Pointers		Free throws		Rebounds				pf	a	t/o	blk	stl	pts	avg
				fg-fga	pct	3fg-fga	pct	ft-fa	pct	off	def	tot	avg							
SHSU	11/10/17	18		2-8	.250	1-4	.250	0-0	.000	0	1	1	1.0	1	0	0	2	0	5	5.0
SAMFORD	11/12/17	13		3-5	.600	3-4	.750	0-0	.000	0	0	0	0.5	3	1	0	0	0	9	7.0
at Nebraska	11/16/17	17		1-5	.200	1-5	.200	0-0	.000	1	2	3	1.3	2	0	0	0	0	3	5.7
at Oral Roberts	11/20/17	15		2-3	.667	1-2	.500	1-2	.500	0	2	2	1.5	2	0	1	0	1	6	5.8
at UTEP	11/24/17	16		2-7	.286	2-6	.333	0-2	.000	1	1	2	1.6	0	0	1	0	2	6	5.8
vs NM State	11/25/17	14		2-5	.400	1-4	.250	0-0	.000	2	4	6	2.3	1	0	4	0	0	5	5.7
ACU	11/29/17	17		1-3	.333	1-2	.500	0-0	.000	1	1	2	2.3	0	0	1	0	1	3	5.3
at Kansas	12/03/17	18		1-3	.333	1-3	.333	1-2	.500	0	2	2	2.3	1	0	1	1	0	4	5.1
CHARLOTTE	12/07/17	13		1-5	.200	1-4	.250	0-0	.000	0	2	2	2.2	2	0	0	0	0	3	4.9
TULSA	12/10/17	21		2-7	.286	1-5	.200	2-2	1.000	2	4	6	2.6	0	0	0	1	0	7	5.1
UT-ARLINGTON	12/17/17	17		4-8	.500	2-4	.500	0-0	.000	1	4	5	2.8	1	2	2	0	0	10	5.5
Totals		0	179	21-59	.356	15-43	.349	4-8	.500	8	23	31	2.8	13	3	10	4	4	61	5.5

Games played: 11
Minutes/game: 16.3
Points/game: 5.5
FG Pct: 35.6
3FG Pct: 34.9
FT Pct: 50.0

Rebounds/game: 2.8
Assists/game: 0.3
Turnovers/game: 0.9
Assist/turnover ratio: 0.3
Steals/game: 0.4
Blocks/game: 0.4

NOTES

- » Saw a 206.4% increase in scoring between freshman and sophomore seasons (78 vs. 239 points).
- » **SEC Winter Academic Honor Roll** (2016-17).
- » **SEC First-Year Academic Honor Roll** (2015-16).
- » At least one 3-pointer in every game this year.
- » Season-best 10 points on 4-for-8 shooting against UTA.

CAREER STATS

Year	GP-GS	Min	Avg	Total			3-Point			F-Throw			Rebounds				PF	FO	Ast	TO	Blk	Stl	Pts	Avg
				FG	FGA	Pct	FG	FGA	Pct	FT	FTA	Pct	Off	Def	Tot	Avg								
2015-16	29-1	373	12.9	27	84	.321	5	21	.238	19	27	.704	34	34	68	2.3	26	0	7	15	4	10	78	2.7
2016-17	30-11	709	23.6	89	179	.497	31	71	.437	30	39	.769	53	71	124	4.1	56	0	15	28	17	16	239	8.0
2017-18	11-0	179	16.3	21	59	.356	15	43	.349	4	8	.500	8	23	31	2.8	13	0	3	10	4	4	61	5.5
TOTAL	70-12	1261	18.0	137	322	.425	51	135	.378	53	74	.716	95	128	223	3.2	95	0	25	53	25	30	378	5.4



10

KIARA WILLIAMSSophomore | 6-1 | Forward | LR, Arkansas
Little Rock HS**CAREER HIGHS**

Points	13	Tulsa	12-10-17
FGM	6	Tulsa	12-10-17
FGA	11	NMSU	11-25-17
3PM	-		
3PA	-		
FTM	4	ACU	11-29-17
FTA	11	Charlotte	12-6-17
OREB	8	Charlotte	12-6-17
DREB	11	at Kansas	12-3-17
REB	16	at Kansas	12-3-17
AST	2	Tulsa	12-10-17*
BLK	4	Samford	11-12-17
STL	4	Charlotte	12-6-17
MIN	29	Charlotte	12-6-17

SEASON HIGHS

Points	13	Tulsa	12-10-17
FG Made	6	Tulsa	12-10-17
FG Att.	11	NMSU	11-25-17
3P Made	-		
3P Att.	-		
FT Made	4	ACU	11-29-17
FT Att.	11	Charlotte	12-6-17
Off. Rebounds	8	Charlotte	12-6-17
Def. Rebounds	11	at Kansas	12-3-17
Rebounds	16	at Kansas	12-3-17
Assists	2	Tulsa	12-10-17
Blocks	4	Samford	11-12-17
Steals	4	Charlotte	12-6-17
Minutes	29	Charlotte	12-6-17

*Most Recent

2017-18 GAME-BY-GAME STATS

Opponent	Date	gs	min	Total		3-Pointers		Free throws		Rebounds				pf	a	t/o	blk	stl	pts	avg
				fg	fga	pct	3fg	3fga	pct	ft	fta	pct	off	def	tot	avg				
SHSU	11/10/17	*	17	3-4	.750	0-0	.000	1-1	1.000	0	2	2	2.0	1	1	0	0	0	7	7.0
SAMFORD	11/12/17	*	19	5-7	.714	0-0	.000	0-0	.000	1	4	5	3.5	1	0	0	4	2	10	8.5
at Nebraska	11/16/17	*	20	3-6	.500	0-0	.000	0-0	.000	6	5	11	6.0	4	1	2	2	1	6	7.7
at Oral Roberts	11/20/17	*	17	3-7	.429	0-0	.000	2-2	1.000	3	2	5	5.8	4	0	1	0	1	8	7.8
at UTEP	11/24/17	*	8	0-2	.000	0-0	.000	1-2	.500	1	0	1	4.8	3	0	1	0	1	1	6.4
vs NM State	11/25/17	*	25	5-11	.455	0-0	.000	1-3	.333	4	7	11	5.8	2	0	3	0	2	11	7.2
ACU	11/29/17	*	20	4-6	.667	0-0	.000	4-5	.800	5	3	8	6.1	0	0	0	1	3	12	7.9
at Kansas	12/03/17	*	28	3-6	.500	0-0	.000	0-1	.000	5	11	16	7.4	3	0	4	2	0	6	7.6
CHARLOTTE	12/07/17	*	29	3-8	.375	0-0	.000	3-11	.273	8	4	12	7.9	3	0	0	3	4	9	7.8
TULSA	12/10/17	*	17	6-9	.667	0-0	.000	1-4	.250	4	3	7	7.8	2	2	0	2	0	13	8.3
UT-ARLINGTON	12/17/17		22	1-3	.333	0-0	.000	0-0	.000	3	5	8	7.8	4	0	0	1	2	2	7.7
Totals		10	222	36-69	.522	0-0	.000	13-29	.448	40	46	86	7.8	27	4	11	15	16	85	7.7

Games played: 11
Minutes/game: 20.2
Points/game: 7.7
FG Pct: 52.2
FT Pct: 44.8Rebounds/game: 7.8
Assists/game: 0.4
Turnovers/game: 1.0
Assist/turnover ratio: 0.4
Steals/game: 1.5
Blocks/game: 1.4**NOTES**

- » Enjoys Marvel movies
- » Career-best four blocks against Samford
- » Posted first double-figure rebound total with 11 boards on the road at Nebraska
- » First career double-double with 11 points and 11 rebounds against New Mexico State
- » Has scored in all 11 games
- » First time in her career to have double figures in the first half against ACU.
- » Career-best 16 rebounds, including 11 defensive rebounds, at Kansas.
- » Career-high 13 points against Tulsa.
- » Four of 11 games in double figures.

CAREER STATS

Year	GP-GS	Min	Avg	Total			3-Point			F-Throw			Rebounds				PF	FO	Ast	TO	Blk	Stl	Pts	Avg
				FG	FGA	Pct	FG	FGA	Pct	FT	FTA	Pct	Off	Def	Tot	Avg								
2016-17	20-5	227	11.4	26	48	.542	0	0	.000	10	26	.385	24	31	55	2.8	34	1	3	15	5	9	62	3.1
2017-18	11-10	222	20.2	36	69	.522	0	0	.000	13	29	.448	40	46	86	7.8	27	0	4	11	15	16	85	7.7
TOTAL	31-15	449	14.5	62	117	.530	0	0	.000	23	55	.418	64	77	141	4.5	61	1	7	26	20	25	147	4.7



13

GRAYCE SPANGLER

Freshman | 5-11 | Guard | Fayetteville, Ark.
Fayetteville HS

CAREER HIGHS

Points	3	UTA	12-17-17
FG Made	-		
FG Att.	2	ACU	11-29-17
3P Made	-		
3P Att.	2	ACU	11-29-17
FT Made	3	UTA	12-17-17
FT Att.	3	UTA	12-17-17
Off. Rebounds	-		
Def. Rebounds	1	UTA	12-17-17*
Rebounds	1	UTA	12-17-17
Assists	-		
Blocks	-		
Steals	-		
Minutes	6	ACU	11-29-17

SEASON HIGHS

Points	3	UTA	12-17-17
FG Made	-		
FG Att.	2	ACU	11-29-17
3P Made	-		
3P Att.	2	ACU	11-29-17
FT Made	3	UTA	12-17-17
FT Att.	3	UTA	12-17-17
Off. Rebounds	-		
Def. Rebounds	1	UTA	12-17-17*
Rebounds	1	UTA	12-17-17
Assists	-		
Blocks	-		
Steals	-		
Minutes	6	ACU	11-29-17

*Most Recent

2017-18 GAME-BY-GAME STATS

Opponent	Date	gs	min	Total		3-Pointers		Free throws		Rebounds				pf	a	t/o	blk	stl	pts	avg
				fg-fga	pct	3fg-fga	pct	ft-fga	pct	off	def	tot	avg							
SHSU	11/10/17	4		0-1	.000	0-0	.000	0-2	.000	0	0	0	0.0	0	0	0	0	0	0	0.0
SAMFORD	11/12/17	2		0-1	.000	0-1	.000	0-0	.000	0	1	1	0.5	0	0	0	0	0	0	0.0
at Nebraska	11/16/17	dnp		-	-	-	-	-	-	-	-	-	-	-	-	-	-	-	-	-
at Oral Roberts	11/20/17	dnp		-	-	-	-	-	-	-	-	-	-	-	-	-	-	-	-	-
at UTEP	11/24/17	5		0-0	.000	0-0	.000	0-0	.000	0	0	0	0.3	2	0	0	0	0	0	0.0
vs NM State	11/25/17	dnp		-	-	-	-	-	-	-	-	-	-	-	-	-	-	-	-	-
ACU	11/29/17	6		0-2	.000	0-2	.000	0-0	.000	0	0	0	0.3	0	0	1	0	0	0	0.0
at Kansas	12/03/17	1		0-0	.000	0-0	.000	0-0	.000	0	0	0	0.2	0	0	0	0	0	0	0.0
CHARLOTTE	12/07/17	dnp		-	-	-	-	-	-	-	-	-	-	-	-	-	-	-	-	-
TULSA	12/10/17	2		0-0	.000	0-0	.000	0-0	.000	0	1	1	0.3	0	0	0	0	0	0	0.0
UT-ARLINGTON	12/17/17	3		0-1	.000	0-0	.000	3-3	1.000	0	1	1	0.4	1	0	1	0	0	3	0.4
Totals		0	23	0-5	.000	0-3	.000	3-5	.600	0	3	3	0.4	3	0	2	0	0	3	0.4

Games played: 7
Minutes/game: 3.3
Points/game: 0.4
FG Pct: 0.0
3FG Pct: 0.0
FT Pct: 60.0

Rebounds/game: 0.4
Turnovers/game: 0.3

NOTES

- » Father Shannon lettered as a linebacker (1989) and mother, Stacy, was a member of the Pom Squad at Arkansas.
- » Scored her first points as a Razorback going 3-for-3 from the line in a win over UTA.

CAREER STATS

Year	GP-GS	Min	Avg	Total			3-Point			F-Throw			Rebounds				PF	FO	Ast	TO	Blk	Stl	Pts	Avg
				FG	FGA	Pct	FG	FGA	Pct	FT	FTA	Pct	Off	Def	Tot	Avg								
2017-18	7-0	23	3.3	0	5	.000	0	3	.000	3	5	.600	0	3	3	0.4	3	0	0	2	0	0	3	0.4
TOTAL	7-0	23	3.3	0	5	.000	0	3	.000	3	5	.600	0	3	3	0.4	3	0	0	2	0	0	3	0.4



14

JAILYN MASON
Sophomore | 5-9 | Guard | Mason, Ohio
William Mason HS

CAREER HIGHS

Points	19	ORU	12-21-16
FGM	9	ORU	12-21-16
FGA	15	Missouri	2-12-17*
3PM	3	ACU	11-29-17*
3PA	7	ACU	11-29-17
FTM	3	NMSU	11-25-17*
FTA	7	NMSU	11-25-17
OREB	4	Texas Tech	12-3-16
DREB	7	ACU	11-29-17
REB	9	Texas Tech	12-3-16
AST	11	HBU	12-28-16
BLK	3	SHSU	11-10-17
STL	4	Nebraska	11-16-17*
MIN	40	ORU	12-21-16

SEASON HIGHS

Points	15	UTA	12-17-17
FG Made	7	UTA	12-17-17
FG Att.	13	ACU	11-29-17
3P Made	3	ACU	11-29-17
3P Att.	7	ACU	11-29-17
FT Made	2	Charlotte	12-6-17
FT Att.	2	Charlotte	12-6-17*
Off. Rebounds	3	NMSU	11-25-17
Def. Rebounds	7	ACU	11-29-17
Rebounds	7	ACU	11-29-17
Assists	8	ACU	11-29-17
Blocks	3	SHSU	11-10-17
Steals	4	Nebraska	11-16-17
Minutes	38	ORU	11-20-17

*Most Recent

2017-18 GAME-BY-GAME STATS

Opponent	Date	gs	min	Total		3-Pointers		Free throws		Rebounds				pf	a	t/o	blk	stl	pts	avg	
				fg-fga	pct	3fg-fga	pct	ft-fga	pct	off	def	tot	avg								
SHSU	11/10/17	*	25	3-10	.300	2-4	.500	0-0	.000	0	5	5	5.0	0	4	1	3	1	8	8.0	
SAMFORD	11/12/17	*	35	5-11	.455	2-5	.400	0-2	.000	0	1	1	3.0	2	2	1	0	2	12	10.0	
at Nebraska	11/16/17	*	30	4-12	.333	0-2	.000	0-1	.000	0	5	5	3.7	3	2	4	0	4	8	9.3	
at Oral Roberts	11/20/17	*	32	3-9	.333	0-0	.000	0-0	.000	1	1	2	3.3	1	1	1	0	0	6	8.5	
at UTEP	11/24/17	*	24	3-9	.333	2-6	.333	0-0	.000	1	3	4	3.4	1	2	0	0	1	8	8.4	
vs NM State	11/25/17	*	28	1-8	.125	1-4	.250	0-0	.000	3	3	6	3.8	3	2	1	1	2	3	7.5	
ACU	11/29/17	*	34	5-13	.385	3-7	.429	0-0	.000	0	7	7	4.3	1	8	3	1	2	13	8.3	
at Kansas	12/03/17	*	33	4-9	.444	2-5	.400	0-0	.000	0	2	2	4.0	5	1	2	0	2	10	8.5	
CHARLOTTE	12/07/17	*	30	4-10	.400	2-6	.333	2-2	1.000	0	4	4	4.0	2	4	1	1	1	12	8.9	
TULSA	12/10/17	*	30	5-11	.455	1-4	.250	0-0	.000	0	5	5	4.1	0	6	0	0	0	11	9.1	
UT-ARLINGTON	12/17/17	*	33	7-11	.636	1-4	.250	0-0	.000	0	4	4	4.1	1	7	3	0	3	15	9.6	
Totals			11	334	44-113	.389	16-47	.340	2-5	.400	5	40	45	4.1	19	39	17	6	18	106	9.6

Games played: 11
Minutes/game: 30.4
Points/game: 9.6
FG Pct: 38.9
3FG Pct: 34.0
FT Pct: 40.0

Rebounds/game: 4.1
Assists/game: 3.5
Turnovers/game: 1.5
Assist/turnover ratio: 2.3
Steals/game: 1.6
Blocks/game: 0.5

NOTES

- » Has a large Jordan shoe collection.
- » Would like to be a sports photographer.
- » At least one defensive rebound in each game this season.
- » Set season-best marks for field goals, field goals attempted, 3-point field goals and 3-point field goals attempted as well as for rebounds and assists against Abilene Christian
- » Six games this year and five consecutive games with double-figure scoring through UTA.
- » Season-best 15 points with seven made baskets against UTA.

CAREER STATS

Year	GP-GS	Min	Avg	Total			3-Point			F-Throw			Rebounds				PF	FO	Ast	TO	Blk	Stl	Pts	Avg
				FG	FGA	Pct	FG	FGA	Pct	FT	FTA	Pct	Off	Def	Tot	Avg								
2016-17	30-30	894	29.8	100	256	.391	19	53	.358	7	11	.636	21	96	117	3.9	72	2	93	56	8	31	226	7.5
2017-18	11-11	334	30.4	44	113	.389	16	47	.340	2	5	.400	5	40	45	4.1	19	1	39	17	6	18	106	9.6
TOTAL	41-41	1228	30.0	144	369	.390	35	100	.350	9	16	.563	26	136	162	4.0	91	3	132	73	14	49	332	8.1



20

SYDNEY STOUTSophomore | 6-0 | Forward | Bixby, Okla.
Bixby HS**CAREER HIGHS**

Points	8	HBU	12-28-16
FGM	3	HBU	12-28-16
FGA	5	HBU	12-28-16
3PM	2	HBU	12-28-16
3PA	4	HBU	12-28-16
FTM	2	Texas A&M	1-12-17
FTA	4	Texas A&M	1-12-17
OREB	1	SHSU	11-10-17*
DREB	6	HBU	12-28-16
REB	6	HBU	12-28-16
AST	1	Missouri	1-23-17
BLK	1	ULM	11-13-16
STL	-		
MIN	15	HBU	12-28-16

SEASON HIGHS

Points	4	UTA	12-17-17
FG Made	1	UTA	12-17-17
FG Att.	2	ACU	11-29-17
3P Made	1	UTA	12-17-17
3P Att.	1	UTA	12-17-17*
FT Made	1	UTA	12-17-17*
FT Att.	2	UTA	12-17-17
Off. Rebounds	1	UTA	12-17-17*
Def. Rebounds	1	UTA	12-17-17*
Rebounds	2	UTA	12-17-17
Assists	-		
Blocks	-		
Steals	-		
Minutes	6	UTA	12-17-17

*Most Recent

2017-18 GAME-BY-GAME STATS

Opponent	Date	gs	min	Total		3-Pointers		Free throws		Rebounds				pf	a	t/o	blk	stl	pts	avg
				fg-fga	pct	3fg-fga	pct	ft-fa	pct	off	def	tot	avg							
SHSU	11/10/17	6		0-1	.000	0-0	.000	1-2	.500	1	0	1	1.0	1	0	1	0	0	1	1.0
SAMFORD	11/12/17	2		0-0	.000	0-0	.000	1-2	.500	0	1	1	1.0	0	0	0	0	0	1	1.0
at Nebraska	11/16/17	dnp		-	-	-	-	-	-	-	-	-	-	-	-	-	-	-	-	-
at Oral Roberts	11/20/17	dnp		-	-	-	-	-	-	-	-	-	-	-	-	-	-	-	-	-
at UTEP	11/24/17	6		0-0	.000	0-0	.000	0-0	.000	0	0	0	0.7	0	0	0	0	0	0	0.7
vs NM State	11/25/17	dnp		-	-	-	-	-	-	-	-	-	-	-	-	-	-	-	-	-
ACU	11/29/17	3		0-2	.000	0-1	.000	0-0	.000	1	0	1	0.8	0	0	0	0	0	0	0.5
at Kansas	12/03/17	dnp		-	-	-	-	-	-	-	-	-	-	-	-	-	-	-	-	-
CHARLOTTE	12/07/17	dnp		-	-	-	-	-	-	-	-	-	-	-	-	-	-	-	-	-
TULSA	12/10/17	3		0-0	.000	0-0	.000	0-0	.000	0	1	1	0.8	0	0	0	0	0	0	0.4
UT-ARLINGTON	12/17/17	6		1-1	1.000	1-1	1.000	1-2	.500	1	1	2	1.0	0	0	0	0	0	4	1.0
Totals		0	26	1-4	.250	1-2	.500	3-6	.500	3	3	6	1.0	1	0	1	0	0	6	1.0

Games played: 6
Minutes/game: 4.3
Points/game: 1.0
FG Pct: 25.0
3FG Pct: 50.0
FT Pct: 50.0Rebounds/game: 1.0
Turnovers/game: 0.2**NOTES**

» SEC First-Year Academic Honor Roll (2016-17)

CAREER STATS

Year	GP-GS	Min	Avg	Total			3-Point			F-Throw			Rebounds				PF	FO	Ast	TO	Blk	Stl	Pts	Avg
				FG	FGA	Pct	FG	FGA	Pct	FT	FTA	Pct	Off	Def	Tot	Avg								
2016-17	15-0	72	4.8	5	14	.357	4	12	.333	2	4	.500	2	9	11	0.7	15	0	1	2	1	0	16	1.1
2017-18	6-0	26	4.3	1	4	.250	1	2	.500	3	6	.500	3	3	6	1.0	1	0	0	1	0	0	6	1.0
TOTAL	21-0	98	4.7	6	18	.333	5	14	.357	5	10	.500	5	12	17	0.8	16	0	1	3	1	0	22	1.0



21

DEVIN COSPER
Grad | 5-10 | Guard | Coffeyville, Kansas
Coffeyville CC | Field Kindley HS

CAREER HIGHS

Points	25	Charlotte	12-6-17
FG Made	9	Charlotte	12-6-17
FGA	25	Nebraska	11-16-17
3PM	6	UTEP	11-24-17
3PA	16	Nebraska	11-16-17
FTM	7	New Orleans	12-30-15
FTA	8	at Kansas	12-3-17*
OREB	3	Charlotte	12-6-17
DREB	11	Charlotte	12-6-17
REB	14	Charlotte	12-6-17*
AST	6	ORU	12-21-16
BLK	3	MVSU	12-28-15
STL	4	Vanderbilt	1-19-17*
MIN	40	Charlotte	12-6-17
	42	Auburn	1-24-16 OT

SEASON HIGHS

Points	25	Charlotte	12-6-17
FG Made	9	Charlotte	12-6-17
FG Att.	25	Nebraska	11-16-17
3P Made	6	UTEP	11-24-17
3P Att.	16	Nebraska	11-16-17
FT Made	6	at Kansas	12-3-17
FT Att.	8	at Kansas	12-3-17
Off. Rebounds	3	Charlotte	12-6-17
Def. Rebounds	11	Charlotte	12-6-17
Rebounds	14	Charlotte	12-6-17
Assists	4	NMSU	11-25-17
Blocks	2	Tulsa	12-10-17*
Steals	2	ACU	11-29-17
Minutes	40	Charlotte	12-6-17
*Most Recent			

2017-18 GAME-BY-GAME STATS

Opponent	Date	gs	min	Total		3-Pointers		Free throws		Rebounds				pf	a	t/o	blk	stl	pts	avg
				fg	fga	3fg	3fga	ft	fta	off	def	tot	avg							
SHSU	11/10/17	*	31	6-13	.462	4-11	.364	1-2	.500	2	10	12	12.0	3	2	4	1	1	17	17.0
SAMFORD	11/12/17	*	29	5-12	.417	3-10	.300	5-5	1.000	0	5	5	8.5	2	2	1	0	1	18	17.5
at Nebraska	11/16/17	*	34	8-25	.320	5-16	.313	0-0	.000	1	3	4	7.0	2	0	4	2	2	21	18.7
at Oral Roberts	11/20/17	*	38	8-19	.421	3-10	.300	2-2	1.000	0	10	10	7.8	2	1	0	0	2	21	19.3
at UTEP	11/24/17	*	31	8-17	.471	6-13	.462	0-2	.000	1	4	5	7.2	2	0	1	0	4	22	19.8
vs NM State	11/25/17	*	39	6-17	.353	2-9	.222	3-4	.750	2	9	11	7.8	2	4	2	1	2	17	19.3
ACU	11/29/17	*	21	4-10	.400	2-5	.400	1-2	.500	0	3	3	7.1	4	1	3	1	2	11	18.1
at Kansas	12/03/17	*	39	5-23	.217	1-11	.091	6-8	.750	1	2	3	6.6	3	0	2	1	1	17	18.0
CHARLOTTE	12/07/17	*	40	9-23	.391	2-7	.286	5-6	.833	3	11	14	7.4	2	2	3	0	1	25	18.8
TULSA	12/10/17	*	29	5-16	.313	1-9	.111	0-0	.000	2	9	11	7.8	3	0	3	2	0	11	18.0
UT-ARLINGTON	12/17/17	*	22	3-8	.375	2-6	.333	0-0	.000	0	1	1	7.2	3	1	2	0	2	8	17.1
Totals			11	353	67-183	.366	31-107	.290	23-31	.742	12	67	79	7.2	28	13	25	8	188	17.1

Games played: 11
Minutes/game: 32.1
Points/game: 17.1
FG Pct: 36.6
3FG Pct: 29.0
FT Pct: 74.2

Rebounds/game: 7.2
Assists/game: 1.2
Turnovers/game: 2.3
Assist/turnover ratio: 0.5
Steals/game: 1.6
Blocks/game: 0.7

NOTES

- » SEC First-Year Academic Honor Roll (2016).
- » SEC Academic Honor Roll (2016-17).
- » Graduated in May 2017 with degree in journalism. Currently pursuing her master's degree in sport administration.
- » Forty consecutive games played.
- » Fifteen consecutive games with a made 3-pointer.
- » 31 points with six 3-pointers in exhibition game.
- » Ten consecutive games in double figure scoring (snapped versus UTA).
- » Five career double-doubles all this season.
- » At least one steal in 10-fo-11 games.
- » Career-bests to 25 points and 14 rebounds against Charlotte.

CAREER STATS

Year	GP-GS	Min	Avg	Total			3-Point			F-Throw			Rebounds				PF	FO	Ast	TO	Blk	Stl	Pts	Avg
				FG	FGA	Pct	FG	FGA	Pct	FT	FTA	Pct	Off	Def	Tot	Avg								
2015-16	30-25	792	26.4	97	293	.331	25	104	.240	50	72	.694	16	83	99	3.3	57	0	42	74	5	34	269	9.0
2016-17	29-9	563	19.4	72	195	.369	23	75	.307	20	27	.741	7	58	65	2.2	43	2	45	40	6	28	187	6.4
2017-18	11-11	353	32.1	67	183	.366	31	107	.290	23	31	.742	12	67	79	7.2	28	0	13	25	8	18	188	17.1
TOTAL	70-45	1708	24.4	236	671	.352	79	286	.276	93	130	.715	35	208	243	3.5	128	2	100	139	19	80	644	9.2



22

BAILEY ZIMMERMAN
Junior | 6-0 | Forward | St. Vincent, Arkansas
Wonderview HS

CAREER HIGHS			
Points	14	Missouri	2-12-17
FGM	4	Missouri	2-12-17*
FGA	11	Missouri	2-12-17
3PM	3	Kentucky	2-16-17*
3PA	7	Butler	12-13-15
FTM	4	S. Carolina	2-5-17*
FTA	6	Missouri	2-12-17
OREB	4	ACU	11-29-17*
DREB	6	Alabama	1-15-17
REB	7	Tulsa	12-10-17*
AST	3	Kentucky	2-16-17*
BLK	3	LSU	1-8-17*
STL	2	UTEP	11-24-17*
MIN	34	Kentucky	2-16-17

SEASON HIGHS			
Points	6	UTA	12-17-17*
FG Made	2	UTA	12-17-17*
FG Att.	10	UTA	12-17-17
3P Made	1	Charlotte	12-6-17
3P Att.	6	Charlotte	12-6-17
FT Made	2	UTA	12-17-17*
FT Att.	3	Tulsa	12-10-17
Off. Rebounds	4	ACU	11-29-17*
Def. Rebounds	5	Tulsa	12-10-17
Rebounds	7	Tulsa	12-10-17
Assists	2	ACU	11-29-17*
Blocks	2	Nebraska	11-16-17
Steals	2	UTEP	11-24-17*
Minutes	28	Charlotte	12-6-17
*Most Recent			

2017-18 GAME-BY-GAME STATS

Opponent	Date	gs	min	Total		3-Pointers		Free throws		Rebounds				pf	a	t/o	blk	stl	pts	avg
				fg-fga	pct	3fg-fga	pct	ft-fa	pct	off	def	tot	avg							
SHSU	11/10/17	*	27	1-7	.143	0-4	.000	0-0	.000	0	3	3	3.0	1	2	1	0	2	2	2.0
SAMFORD	11/12/17	*	19	0-1	.000	0-1	.000	0-0	.000	0	0	0	1.5	3	0	0	0	0	0	1.0
at Nebraska	11/16/17	*	24	0-2	.000	0-2	.000	1-2	.500	0	0	0	1.0	3	0	2	2	0	1	1.0
at Oral Roberts	11/20/17	*	21	1-7	.143	0-3	.000	0-2	.000	1	3	4	1.8	3	1	0	1	0	2	1.3
at UTEP	11/24/17	*	23	1-5	.200	0-3	.000	2-2	1.000	2	1	3	2.0	0	2	0	0	2	4	1.8
vs NM State	11/25/17	*	24	0-1	.000	0-1	.000	1-2	.500	2	1	3	2.2	2	2	0	0	0	1	1.7
ACU	11/29/17	*	25	1-4	.250	0-1	.000	1-2	.500	4	2	6	2.7	1	2	2	1	1	3	1.9
at Kansas	12/03/17	*	24	0-1	.000	0-0	.000	0-0	.000	0	2	2	2.6	4	0	1	1	0	0	1.6
CHARLOTTE	12/07/17	*	28	2-9	.222	1-6	.167	1-1	1.000	1	2	3	2.7	0	1	3	1	0	6	2.1
TULSA	12/10/17	*	25	2-6	.333	0-3	.000	2-3	.667	2	5	7	3.1	0	1	0	0	0	6	2.5
UT-ARLINGTON	12/17/17	*	20	2-10	.200	0-3	.000	2-2	1.000	2	1	3	3.1	2	0	1	0	0	6	2.8
Totals		11	260	10-53	.189	1-27	.037	10-16	.625	14	20	34	3.1	19	11	10	6	5	31	2.8

Games played: 11
Minutes/game: 23.6
Points/game: 2.8
FG Pct: 18.9
3FG Pct: 3.7
FT Pct: 62.5

Rebounds/game: 3.1
Assists/game: 1.0
Turnovers/game: 0.9
Assist/turnover ratio: 1.1
Steals/game: 0.5
Blocks/game: 0.5

NOTES

- » SEC Academic Honor Roll (2016-17).
- » Ten of 11 games with 20+ minutes.
- » Started 11 consecutive games this year and 12 in a row dating back to last season.

CAREER STATS

Year	GP-GS	Min	Avg	Total			3-Point			F-Throw			Rebounds				PF	FO	Ast	TO	Blk	Stl	Pts	Avg
				FG	FGA	Pct	FG	FGA	Pct	FT	FTA	Pct	Off	Def	Tot	Avg								
2015-16	20-1	174	8.7	6	48	.125	4	33	.121	7	12	.583	12	9	21	1.1	9	0	4	15	2	4	23	1.2
2016-17	30-23	627	20.9	45	144	.313	24	84	.286	20	39	.513	35	80	115	3.8	46	0	28	37	10	19	134	4.5
2017-18	11-11	260	23.6	10	53	.189	1	27	.037	10	16	.625	14	20	34	3.1	19	0	11	10	6	5	31	2.8
TOTAL	61-35	1061	17.4	61	245	.249	29	144	.201	37	67	.552	61	109	170	2.8	74	0	43	62	18	28	188	3.1



24 **TAYLAH THOMAS**
Freshman | 6-1 | Forward | Arlington, Texas
Mansfield Timberview HS

CAREER HIGHS

Points	13	Samford	11-12-17
FG Made	5	Samford	11-12-17
FG Att.	6	Samford	11-12-17
3P Made	1	Tulsa	12-10-17*
3P Att.	1	Tulsa	12-10-17*
FT Made	3	NMSU	11-25-17*
FT Att.	6	Samford	11-12-17
Off. Rebounds	6	Nebraska	11-16-17
Def. Rebounds	7	ORU	11-20-17 7
Rebounds	11	Nebraska	11-16-17
Assists	1	Nebraska	11-16-17
Blocks	2	Nebraska	11-16-17
Steals	2	ACU	11-29-17
Minutes	23	ORU	11-20-17

SEASON HIGHS

Points	13	Samford	11-12-17
FG Made	5	Samford	11-12-17
FG Att.	6	Samford	11-12-17
3P Made	1	Tulsa	12-10-17*
3P Att.	1	Tulsa	12-10-17*
FT Made	3	NMSU	11-25-17*
FT Att.	6	Samford	11-12-17
Off. Rebounds	6	Nebraska	11-16-17
Def. Rebounds	7	ORU	11-20-17 7
Rebounds	11	Nebraska	11-16-17
Assists	1	Nebraska	11-16-17
Blocks	2	Nebraska	11-16-17
Steals	2	ACU	11-29-17
Minutes	23	ORU	11-20-17

*Most Recent

2017-18 GAME-BY-GAME STATS

Opponent	Date	gs	min	Total		3-Pointers		Free throws		Rebounds				pf	a	t/o	blk	stl	pts	avg
				fg	pct	3fg	pct	ft	pct	off	def	tot	avg							
SHSU	11/10/17	17	2-2	1.000	0-0	.000	0-0	.000	1	3	4	4.0	0	0	0	1	0	4	4.0	
SAMFORD	11/12/17	21	5-6	.833	0-1	.000	3-6	.500	2	7	9	6.5	1	0	2	0	0	13	8.5	
at Nebraska	11/16/17	20	1-4	.250	0-0	.000	3-4	.750	6	5	11	8.0	3	1	0	2	0	5	7.3	
at Oral Roberts	11/20/17	23	0-3	.000	0-1	.000	2-2	1.000	2	7	9	8.3	2	0	0	1	0	2	6.0	
at UTEP	11/24/17	16	0-2	.000	0-1	.000	1-2	.500	2	2	4	7.4	1	0	0	0	0	1	5.0	
vs NM State	11/25/17	14	0-4	.000	0-0	.000	3-4	.750	3	4	7	7.3	1	0	1	0	0	3	4.7	
ACU	11/29/17	20	2-7	.286	1-1	1.000	2-4	.500	3	4	7	7.3	2	0	0	0	2	7	5.0	
at Kansas	12/03/17	9	0-1	.000	0-1	.000	0-0	.000	0	0	0	6.4	0	0	0	0	0	0	4.4	
CHARLOTTE	12/07/17	4	0-0	.000	0-0	.000	0-0	.000	0	0	0	5.7	3	0	0	0	1	0	3.9	
TULSA	12/10/17	19	1-3	.333	1-1	1.000	1-2	.500	4	3	7	5.8	1	0	0	0	1	4	3.9	
UT-ARLINGTON	12/17/17	*	11	0-0	.000	0-0	.000	0-0	.000	2	2	4	5.6	5	0	1	0	0	3.5	
Totals		1	174	11-32	.344	2-6	.333	15-24	.625	25	37	62	5.6	19	1	4	4	4	39	3.5

Games played: 11
Minutes/game: 15.8
Points/game: 3.5
FG Pct: 34.4
3FG Pct: 33.3
FT Pct: 62.5

Rebounds/game: 5.6
Assists/game: 0.1
Turnovers/game: 0.4
Assist/turnover ratio: 0.3
Steals/game: 0.4
Blocks/game: 0.4

NOTES

- » Played high school ball for former Razorback assistant coach Kit Kyle Martin.
- » Career-best 13 points against Samford - her first double figure scoring game as a Razorback.

CAREER STATS

Year	GP-GS	Min	Avg	Total			3-Point			F-Throw			Rebounds				PF	FO	Ast	TO	Blk	Stl	Pts	Avg
				FG	FGA	Pct	FG	FGA	Pct	FT	FTA	Pct	Off	Def	Tot	Avg								
2017-18	11-1	174	15.8	11	32	.344	2	6	.333	15	24	.625	25	37	62	5.6	19	1	1	4	4	4	39	3.5
TOTAL	11-1	174	15.8	11	32	.344	2	6	.333	15	24	.625	25	37	62	5.6	19	1	1	4	4	4	39	3.5



30

MACY WEAVER

Freshman | 6-3 | F | Davis Junction, Illinois

Stillman Valley HS

CAREER HIGHS			
Points	2	UTEP	11-24-17
FG Made	1	UTEP	11-24-17
FG Att.	1	UTA	12-17-17*
3P Made	-		
3P Att.	-		
FT Made	1	UTA	12-17-17
FT Att.	2	UTA	12-17-17
Off. Rebounds	2	Charlotte	12-6-17*
Def. Rebounds	4	UTA	12-17-17
Rebounds	5	UTA	12-17-17
Assists	1	UTEP	11-24-17
Blocks	4	UTEP	11-24-17
Steals	1	UTEP	11-24-17
Minutes	19	UTEP	11-24-17

SEASON HIGHS			
Points	2	UTEP	11-24-17
FG Made	1	UTEP	11-24-17
FG Att.	1	UTA	12-17-17*
3P Made	-		
3P Att.	-		
FT Made	1	UTA	12-17-17
FT Att.	2	UTA	12-17-17
Off. Rebounds	2	Charlotte	12-6-17*
Def. Rebounds	4	UTA	12-17-17
Rebounds	5	UTA	12-17-17
Assists	1	UTEP	11-24-17
Blocks	4	UTEP	11-24-17
Steals	1	UTEP	11-24-17
Minutes	19	UTEP	11-24-17
*Most Recent			

2017-18 GAME-BY-GAME STATS

Opponent	Date	gs	min	Total		3-Pointers		Free throws		Rebounds				pf	a	t/o	blk	stl	pts	avg
				fg-fga	pct	3fg-fga	pct	ft-fita	pct	off	def	tot	avg							
SHSU	11/10/17	2		0-0	.000	0-0	.000	0-0	.000	0	0	0	0.0	0	0	0	0	0	0	0.0
SAMFORD	11/12/17	1		0-0	.000	0-0	.000	0-0	.000	0	0	0	0.0	0	0	0	0	0	0	0.0
at Nebraska	11/16/17	dnp		-	-	-	-	-	-	-	-	-	-	-	-	-	-	-	-	-
at Oral Roberts	11/20/17	dnp		-	-	-	-	-	-	-	-	-	-	-	-	-	-	-	-	-
at UTEP	11/24/17	19	1-1	1-000	0-0	.000	0-0	.000	.000	2	1	3	1.0	3	1	0	4	1	2	0.7
vs NM State	11/25/17	dnp		-	-	-	-	-	-	-	-	-	-	-	-	-	-	-	-	-
ACU	11/29/17	3	0-1	.000	0-0	.000	0-0	.000	.000	0	1	1	1.0	0	0	0	0	0	0	0.5
at Kansas	12/03/17	2	0-0	.000	0-0	.000	0-0	.000	.000	0	0	0	0.8	0	0	0	1	0	0	0.4
CHARLOTTE	12/07/17	7	0-0	.000	0-0	.000	0-2	.000	.000	2	0	2	1.0	3	0	1	0	0	0	0.3
TULSA	12/10/17	6	0-1	.000	0-0	.000	0-0	.000	.000	0	1	1	1.0	1	0	0	1	0	0	0.3
UT-ARLINGTON	12/17/17	8	0-1	.000	0-0	.000	1-2	.500	.000	1	4	5	1.5	3	0	1	1	0	1	0.4
Totals		0	48	1-4	.250	0-0	.000	1-4	.250	5	7	12	1.5	10	1	2	7	1	3	0.4

Games played: 8
Minutes/game: 6.0
Points/game: 0.4
FG Pct: 25.0
FT Pct: 25.0

Rebounds/game: 1.5
Assists/game: 0.1
Turnovers/game: 0.3
Assist/turnover ratio: 0.5
Steals/game: 0.1
Blocks/game: 0.9

NOTES

- » First career game as a Razorback came against Sam Houston State in the opener.
- » Played 19 minutes with four blocks and solid defense at UTEP.

CAREER STATS

Year	GP-GS	Min	Avg	Total			3-Point			F-Throw			Rebounds				PF	FO	Ast	TO	Blk	Stl	Pts	Avg
				FG	FGA	Pct	FG	FGA	Pct	FT	FTA	Pct	Off	Def	Tot	Avg								
2017-18	8-0	48	6.0	1	4	.250	0	0	.000	1	4	.250	5	7	12	1.5	10	0	1	2	7	1	3	0.4
TOTAL	8-0	48	6.0	1	4	.250	0	0	.000	1	4	.250	5	7	12	1.5	10	0	1	2	7	1	3	0.4



0-A'Tyanna Gaulden
RSo | G | 5-7



1-Raven Northcross-Baker
Jr | G | 5-7



3-Malica Monk
Jr | G | 5-5



4-Keiryn Swenson
Jr | G/F | 6-1



10-Kiara Williams
So | F/C | 6-1



13-Grayce Spangler
Fr | G | 5-11



14-Jailyn Mason
So | G | 5-9



20-Sydney Stout
So | F | 6-0



21-Devin Cosper
Gr. | G | 5-10



22-Bailey Zimmerman
Jr | G/F | 6-0



24-Taylah Thomas
Fr | F | 6-1



30-Macy Weaver
Fr | F | 6-3



33-Chelsea Dungee
RSo | G | 5-11



Mike Neighbors
Arkansas, 1993
First Season



Lacey Goldwire
Oklahoma State, 2010
First Season



Todd Schaefer
Thomas More College, 1995
First Season



Pauline Love
Southern Miss, 2010
First Season



NOVEMBER 2, 2017

NORTHEASTERN STATE

ARKANSAS

Bud Walton Arena
Fayetteville, Arkansas

Devin Cosper dropped in 31 points leading four players in double figures in exhibition action. It was the 14th-consecutive exhibition game win for Arkansas and the first under head coach Mike Neighbors.

74
82

Northeastern State Univ. 74

#	Player	Total		3-Ptr		Rebounds		PF	TP	A TO		Blk	Stl	Min
		FG-FGA	FT-FTA	FG-FGA	FT-FTA	Off Def Tot	PF TP							
24	Strange, Destiny	3-10	0-4	0-0	1 3 4	3 6	3 1 0	0	0	29				
12	Griffin, Miranda	6-11	5-9	0-2	1 4 5	2 17	3 0 0	0	0	27				
14	Hayes, Cenia	2-6	2-6	2-2	1 4 5	0 8	0 1 0	1	1	18				
21	Brooks, Trea	2-7	1-3	3-4	0 1 1	3 8	1 2 0	0	0	20				
23	Eldred, Bailee	7-7	1-1	2-2	2 6 8	3 7	3 2 0	2	2	20				
04	Hill, Alexis	1-2	1-2	0-2	0 0 0	3 3	1 1 0	0	0	19				
15	Cunningham, Cailey	0-2	0-1	0-0	2 0 2	0 0	1 0 0	0	0	7				
20	Long, Caitlyn	3-6	1-3	2-2	3 4 7	1 9	1 0 0	1	1	24				
32	Blevins, Lauryn	4-10	1-3	2-2	2 4 6	4 11	0 2 3	2	2	17				
33	Bertrand, Joi	0-4	0-0	2-2	1 1 2	2 2	0 4 1	1	1	12				
34	Hellyer, Morgan	1-3	1-3	0-0	1 0 1	1 3	0 1 0	0	0	7				
Team					1 4 5									
Totals		24-68	13-35	13-18	15 31 46	22	74	13 14	4	7	200			
1st - FG %:		5-17	27.9%	2nd: 6-17	47.1%	3rd: 4-14	28.6%	4th: 7-19	36.8%	Game: 24-68	35.3%	Deadball		
3FG %:		2-8	25.0%	6-11	54.5%	1-6	16.7%	4-10	40.0%	13-35	37.1%	Rebounds		
FT %:		2-2	100.0%	2-2	100.0%	4-6	66.7%	5-8	62.5%	13-18	72.2%	3,3		

Arkansas 82

#	Player	Total		3-Ptr		Rebounds		PF	TP	A TO		Blk	Stl	Min
		FG-FGA	FT-FTA	FG-FGA	FT-FTA	Off Def Tot	PF TP							
10	WILLIAMS, Kiara	2-3	0-0	1-2	4 2 6	3 5	0 0 1	0	1	13				
22	ZIMMERMAN, Bailey	0-7	0-4	0-0	2 2 4	2 0	1 2 0	1	1	30				
03	MONK, Malica	4-14	0-2	6-8	2 3 5	3 14	7 1 0	3	3	34				
14	MASON, Jaiilyn	4-12	1-3	0-0	0 7 7	1 9	3 2 1	2	3	31				
21	COSPER, Devin	6-9	3-4	1-4	1 4 5	1 31	1 2 1	2	2	29				
01	NORTHCROSS-BAKER,	4-8	3-6	6-10	1 2 3	1 17	2 1 0	4	3	23				
04	SWENSON, Keiryn	0-2	0-0	0-0	1 2 3	2 0	2 0 0	0	0	9				
13	SPANGLER, Grayce	0-1	0-0	0-0	0 0 0	0 0	0 0 0	0	0	2				
20	STOUT, Sydney	0-0	0-0	0-0	0 0 0	0 0	0 0 0	0	0	2				
24	THOMAS,Taylah	3-4	0-1	0-1	3 5 8	1 6	0 0 0	0	0	24				
30	WEAVER, Macy	0-0	0-0	0-0	2 0 2	0 0	1 0 0	0	0	3				
Team					0 3 3									
Totals		28-74	10-25	16-25	16 30 46	14	82	16 9	3	12	200			
1st - FG %:		5-17	29.4%	2nd: 4-18	22.2%	3rd: 7-18	38.9%	4th: 12-21	57.1%	Game: 28-74	37.8%	Deadball		
3FG %:		3-6	50.0%	1-3	33.3%	1-4	25.0%	5-8	62.5%	10-25	40.0%	Rebounds		
FT %:		7-10	70.0%	6-8	75.0%	3-5	60.0%	0-2	0.0%	16-25	64.0%	5,1		

Officials: Brian Hall, Luis Gonzalez, Katie Lukanich
Technical fouls: Northeastern State Univ.-None. Arkansas-None.
Attendance: 1200
Exhibition Game
Estimated Actual Attendance: 816

Score by periods	1st	2nd	3rd	4th	Total
Northeastern State Univ.	14	24	13	23	74
Arkansas	20	15	18	29	82

Last FG - NESU 4th-00:35, AR 4th-01:01.
Largest lead - NESU by 5 3rd-09:05, AR by 13 1st-03:09.
NESU led for 09:13. AR led for 24:08. Game was tied for 06:39.



NOVEMBER 12, 2017

SAMFORD

ARKANSAS

Bud Walton Arena
Fayetteville, Arkansas

Career best points and rebounds for Malica Monk. Career best points for Taylah Thomas and Kiara Williams.

63
84

Samford 63 • 0-2

#	Player	Total		3-Ptr		Rebounds		PF	TP	A TO		Blk	Stl	Min
		FG-FGA	FT-FTA	FG-FGA	FT-FTA	Off Def Tot	PF TP							
32	Olivia Crozier	5-8	0-0	0-0	2 5 7	2 10	1 1 0	0	0	22				
35	Samantha Fitzgerald	2-9	0-1	2-2	2 5 7	4 6	1 1 0	1	1	31				
02	Hannah Nichols	6-13	3-7	2-2	1 5 6	2 17	3 1 0	1	1	32				
12	Charity Brown	2-6	1-3	2-4	1 5 6	4 7	2 0 1	1	1	28				
31	Cassidy Williams	3-9	1-5	0-0	0 1 1	1 7	1 1 0	0	0	24				
03	Shaunta Battle	2-2	0-0	1-2	1 1 2	4 5	1 2 0	1	1	16				
11	Paige Serup	1-3	0-2	2-2	0 2 2	2 4	0 0 0	0	0	18				
22	Raven Omar	0-1	0-1	0-0	0 0 0	2 3	1 0 0	0	0	6				
33	Makaila Woolard	2-8	1-3	2-2	0 0 0	2 7	2 2 0	0	0	18				
45	Natalie Armstrong	0-0	0-0	0-0	0 0 0	0 0	1 2 0	0	0	5				
Team					1 2 3									
Totals		23-59	6-22	11-14	8 26 34	23	63	17 13	1	3	200			
1st - FG %:		5-13	38.5%	2nd: 7-17	41.2%	3rd: 5-13	38.5%	4th: 6-16	37.5%	Game: 23-59	39.0%	Deadball		
3FG %:		2-6	33.3%	0-3	0.0%	1-4	25.0%	3-9	33.3%	6-22	27.3%	Rebounds		
FT %:		6-6	100.0%	1-2	50.0%	2-4	50.0%	2-2	100.0%	11-14	78.6%	1,1		

Arkansas 84 • 2-0

#	Player	Total		3-Ptr		Rebounds		PF	TP	A TO		Blk	Stl	Min
		FG-FGA	FT-FTA	FG-FGA	FT-FTA	Off Def Tot	PF TP							
10	WILLIAMS, Kiara	5-7	0-0	0-0	1 4 5	1 10	0 0 4	2	2	19				
22	ZIMMERMAN, Bailey	0-1	0-1	0-0	0 0 0	3 0	0 0 0	0	0	19				
03	MONK, Malica	6-14	2-3	7-7	1 8 9	2 21	6 1 0	2	37					
14	MASON, Jaiilyn	5-11	2-5	0-2	0 1 1	2 12	2 1 0	2	35					
21	COSPER, Devin	5-12	3-10	5-5	0 5 5	2 18	2 1 0	1	29					
01	NORTHCROSS-BAKER,	0-2	0-2	0-0	0 1 1	1 0	6 1 0	0	22					
04	SWENSON, Keiryn	3-5	3-4	0-0	0 0 0	3 9	1 0 0	0	13					
13	SPANGLER, Grayce	0-1	0-1	0-0	0 1 1	0 0	0 0 0	0	2					
20	STOUT, Sydney	0-0	0-0	1-2	0 0 0	1 1	0 0 0	0	2					
24	THOMAS,Taylah	5-6	0-1	3-6	2 7 9	1 13	0 2 0	0	21					
30	WEAVER, Macy	0-0	0-0	0-0	0 0 0	0 0	0 0 0	0	1					
Team					1 2 3									
Totals		29-59	10-27	16-22	5 30 35	15	84	17 6	4	7	200			
1st - FG %:		9-13	69.2%	2nd: 6-18	33.3%	3rd: 7-16	43.8%	4th: 7-12	58.3%	Game: 29-59	49.2%	Deadball		
3FG %:		4-6	66.7%	2-9	22.2%	2-6	33.3%	10-27	37.0%	16-22	72.7%	Rebounds		
FT %:		5-6	83.3%	1-1	100.0%	1-1	100.0%	10-15	66.7%	22-27	81.5%	4		

Officials: Scott Yarbrough, Laura Morris, Pualani Spurlock
Technical fouls: Samford-None. Arkansas-None.
Attendance: 1739
Estimated Actual Attendance: 1,107

Score by periods	1st	2nd	3rd	4th	Total
Samford	18	15	13	17	63
Arkansas	27	15	16	26	84

Last FG - SAM 4th-01:03, AR 4th-01:19.
Largest lead - SAM None, AR by 24 4th-04:43.
SAM led for 00:00. AR led for 39:37. Game was tied for 00:23.



NOVEMBER 10, 2017

SAM HOUSTON STATE

ARKANSAS

Bud Walton Arena
Fayetteville, Arkansas
Elementary Day

Devin Cosper had her first Razorback double-double with 17 points and 12 rebounds in the come-from-behind win. Malica Monk's game-high 18 points ties the junior's career-best.

54
65

SHSU 54 • 0-1

#	Player	Total		3-Ptr		Rebounds		PF	TP	A		TO	Blk	Stl	Min
		FG-FGA	FT-FTA	FG-FGA	FT-FTA	Off	Def			Total					
42	McKinney, Kiera	1-4	0-0	2-4	2	3	5	1	4	2	2	2	0	0	29
35	Cooper, Ashleigh	0-3	0-0	0-0	1	3	4	4	0	1	2	1	0	0	14
01	Orramas, Jennifer	4-12	1-5	2-2	0	6	6	1	11	4	3	0	0	0	34
20	Morgan, Akarian	2-8	2-6	0-0	1	5	6	3	6	2	2	0	1	0	31
34	Harrell, Rachel	2-6	2-6	0-0	0	1	1	0	6	0	1	0	0	0	20
00	Ferriera, Keyvin	2-8	0-4	0-0	1	2	3	0	4	2	0	0	0	0	15
04	Ballew, Jada	1-4	0-2	0-0	0	1	1	0	2	0	0	0	0	0	6
05	Maxwell, Dominique	4-10	2-4	0-2	3	4	7	2	10	1	1	0	0	0	20
15	Harston, Tia	0-0	0-0	0-0	0	0	0	0	0	0	0	0	0	0	1
21	Baxter, Lydia	3-7	0-0	3-3	5	3	8	1	9	0	1	1	2	0	20
22	Mickens, Anastacia	1-1	0-0	0-0	0	6	6	2	2	0	2	1	0	0	10
Team					2	2	4								
Totals		20-63	7-27	7-11	15	36	51	14	54	10	15	5	3	20	
1st - FG %:		4-12	33.3%	2nd: 6-17	35.3%	3rd: 4-17	23.5%	4th: 6-17	35.3%	Game: 20-63		31.7%	Rebounds		
3FG %:		1-4	25.0%	2nd: 2-6	33.3%	3rd: 1-9	11.1%	4th: 3-8	37.5%	7-27		25.9%	Debut		
FT %:		0-0	0.0%	1-1	100.0%	2-2	100.0%	2-2	100.0%	7-27		25.9%	Debut		



NOVEMBER 20, 2017

ARKANSAS

ORU

Mabee Arena
Tulsa, Oklahoma

77

66

Career-best 24 points for Malica Monk and career-best tying night with 21 points for Devin Cosper. Arkansas forced 14 ORU turnovers while only turning it over four times.

Arkansas 77 • 3-1

#	Player	Total			3-Ptr			Rebounds			PF	TP	A	TO	Bk	Stl	Min
		FG	FGA	FT	FTA	Off	Def	Total									
10	WILLIAMS, Kiara	r	3-7	0-0	2-2	3	2	5	4	8	0	1	0	1	1	17	
22	ZIMMERMAN, Bailey	r	1-7	0-3	0-2	1	3	4	3	2	1	0	1	0	21		
03	MONIK, Malica	g	9-16	1-3	5-6	0	3	3	1	24	4	1	0	1	32		
14	MASON, Jaliyn	g	3-9	0-0	0-0	1	1	2	1	6	1	1	0	0	32		
21	COSPER, Devin	g	8-19	3-10	2-2	0	10	10	2	21	1	0	0	2	38		
01	NORTHCROSS-BAKER, Keiryn	g	3-6	1-4	1-2	0	1	1	3	8	1	0	0	0	22		
04	SWENSON, Keiryn	g	2-3	1-2	1-2	0	2	2	2	6	0	1	0	1	15		
24	THOMAS, Taylah	g	0-3	0-1	2-2	2	7	9	2	2	0	0	1	0	23		
Team						2	3	5									
Totals			29-70	6-23	13-18	9	32	41	18	77	8	4	2	5	200		
1st - FG %: 9-19 47.4% 2nd: 7-19 36.8% 3rd: 6-14 42.9% Game: 29-70 41.4% Deadball																	
3FG %: 3-7 42.9% 1-5 20.0% 2-8 25.0% 0-3 0.0% 6-23 26.1% Rebounds																	
FT %: 4-4 100.0% 0-2 0.0% 0-0 0.0% 0-2 0.0% 12-18 66.7% 3																	

Oral Roberts 66 • 1-3

#	Player	Total				3-Ptr			Rebounds			PF	TP	A	TO	Bk	Stl	Min
		FG	FGA	FT	FTA	Off	Def	Total										
15	Ihim, Faith	r	5-9	0-1	3-6	4	7	11	2	13	2	4	0	0	0	0	28	
44	Martinez, Maria	r	3-8	0-1	5-6	1	8	9	3	11	4	2	0	0	0	0	32	
13	Skalnik, Rachel	g	1-3	1-3	0-0	0	0	0	4	3	0	1	0	0	0	0	21	
32	Garvie, Sarah	g	4-12	4-12	0-0	0	5	5	1	12	3	2	0	0	0	0	33	
23	Uppe, Kent Jo	g	1-7	0-2	4-4	0	1	1	3	6	0	1	0	1	20			
02	Doyle, Jordan	g	0-0	0-0	0-0	0	0	0	1	0	1	0	1	0	0	1		
10	Mayberry, Maya	g	2-5	2-3	2-2	0	1	1	1	8	1	1	0	1	1	22		
20	Schumacher, Regan	g	0-1	0-0	0-0	0	1	1	0	0	0	0	0	0	0	2		
22	Gilbert, Jordan	g	1-4	0-0	0-0	1	4	5	4	2	1	2	0	0	0	20		
24	Brotons, Montserrat	g	5-9	0-0	1-1	1	3	4	1	11	1	0	0	0	0	21		
Team						0	4	4										
Totals			22-58	7-22	15-19	7	34	41	20	66	12	14	0	2	200			
1st: FG %:		8-16	50.0%	2nd: 6-14	42.9%	3rd: 5-16	31.3%	4th: 3-13	23.1%	Game: 22-58		37.9%	Deadball					
3FG %:		3-6	50.0%	1-5	20.0%	1-7	14.3%	1-5	20.0%	7-22		31.8%	Rebounds					
FT %:		2-4	50.0%	0-0	0.0%	2-4	50.0%	10-10	100.0%	15-19		78.9%	1					

Officials: Greg Small, Nick Marshall, Michelle Kramer
Technical fouls: Arkansas-None. Oral Roberts-None.
Attendance: 2503

Score by periods	1st	2nd	3rd	4th	Total
Arkansas	25	15	16	21	77
Oral Roberts	21	15	13	17	66

Last FG - AR 4th-01:52, ORU 4th-00:29.
Largest lead - AR by 14 4th-07:23, ORU by 6 1st-04:48.
AR led for 30:59, ORU led for 00:32. Game was tied for 00:29.

Score tied - 1 time.
Lead changed - 1 time.



NOVEMBER 25, 2017

ARKANSAS
NEW MEXICO STATEDon Haskins Center
El Paso, Texas

69

60

Devin Cosper with her third double-double with 17 points and 11 rebounds. Malica Monk led all scorers with 22 points. Williams posted her first career double-double with 11 points and 11 rebounds.

Arkansas 69 • 4-2

#	Player	Total			3-Ptr		Rebounds		PF	TP	A	TO	Bk	Stl	Min
		FG	FGA	FT	FTA	Off	Def	Total							
10	WILLIAMS, Kiara	r	5-11	0-0	1-3	4	7	11	2	11	0	3	0	2	25
03	MONK, Malica	g	9-17	1-4	3-7	3	4	7	0	22	2	5	1	4	38
14	MASON, Jaliyn	g	1-8	1-4	0-0	3	3	6	3	3	2	1	2	2	39
21	COSPER, Devin	g	6-17	2-9	3-4	2	9	11	2	17	4	2	1	2	39
22	ZIMMERMAN, Bailey	g	0-1	0-1	1-2	2	1	3	2	1	2	0	0	0	24
01	NORTHCROSS-BAKER,	g	2-7	1-4	2-4	1	1	2	4	7	0	2	0	2	18
04	SWENSON, Keiryn	g	2-5	1-4	0-0	2	4	6	1	5	0	4	0	0	14
24	THOMAS, Taylah	g	0-4	0-0	3-4	3	4	7	1	3	0	1	0	0	14
Team						2	0	2							
Totals			25-70	6-26	13-24	22	33	55	15	69	10	18	3	12	200
1st - FG %: 4-19 21.1% 2nd: 4-14 28.6% 3rd: 9-18 50.0% 4th: 8-19 42.1% Game: 25-70 35.7% Deadball															
3FG %: 1-7 14.3% 1-6 16.7% 3-7 42.9% 1-6 16.7% 6-26 23.1% Rebound															
FT %: 2-4 50.0% 3-3 100.0% 3-3 100.0% 5-14 35.7% 13-24 54.2% 7															

NM State 60 • 2-4

#	Player		Total		3-Ptr		Rebounds		PF	TP	A	TO	Bk	Stl	Min				
			FG-FGA	FG-FGA	FT-FTA	Off	Def	Total											
01	Cooper, Jasmine	f	1-8	0-0	2-2	2	3	5	2	4	2	2	0	1	21				
30	Pack, Gia	r	7-15	0-4	3-5	4	2	6	4	17	1	3	0	0	26				
02	Salas, Brooke	g	5-17	2-8	3-5	6	4	10	4	15	1	4	1	1	30				
12	Williams, Zaire	g	2-5	1-3	2-2	0	2	2	4	7	2	6	1	1	38				
21	Mills, Monique	g	2-6	1-2	0-0	0	2	2	1	5	2	0	0	5	33				
00	Wilmore, Pam	g	0-1	0-0	0-0	0	0	0	0	0	0	0	0	0	3				
03	Childress, Tonishia	g	0-2	0-1	0-0	0	3	3	1	0	1	1	0	1	14				
20	Mills, Dominique	g	2-4	0-0	0-0	1	3	4	2	4	0	1	0	1	16				
22	Atkinson, Kaleb	g	0-0	0-0	0-0	0	0	0	0	0	0	0	0	0	0				
33	Toilolo, Jeneva	g	4-9	0-0	0-0	0	6	6	3	8	0	1	0	0	19				
Team						1	2	3											
Totals			23-67	4-18	10-14	14	27	41	21	60	9	18	2	10	200				
1st - FG %:			8-21	38.1%	2nd:	4-15	26.7%	3rd:	6-16	37.5%	4th:	5-15	33.3%	Game:	23-67	34.3%	Deadball		
3FG %:			1-6	16.7%	0-2	0.0%	2-4	50.0%	1-6	16.7%	4-18	22.2%	Rebound						
FT %:			0-2	0.0%	0-0	0.0%	1-2	50.0%	0-10	0.0%	10-14	71.4%	1						

Officials: Lisa Mattingly, Beverly Roberts, Tina Napier
Technical fouls: Arkansas-None. NM State-None.
Attendance: 250

Score by periods	1st	2nd	3rd	4th	Total
Arkansas	11	12	24	22	69
NM State	17	8	15	20	60

Last FG - AR 4th-00:16, NMSU 4th-00:51.
Largest lead - AR by 11 3rd-03:45, NMSU by 7 1st-01:06.
AR led for 19:50, NMSU led for 19:16. Game was tied for 00:54.

Score tied - 2 times.
Lead changed - 8 times.



NOVEMBER 24, 2017

ARKANSAS

UTEP

Don Haskins Center
El Paso, Texas

61

64

Arkansas started the game 0-for-15 in the first quarter and made a valiant comeback that fell short. Devin Cosper reached double figures in the third quarter and she and Malica Monk were in double figures for the fifth time.

Arkansas 61 • 3-2

#	Player	Total	3-Ptr			Rebounds			PF	TP	A	TO	Bk	Stl	Min
		FG	FGA	FT	FTA	Off	Def	Total							
10	WILLIAMS, Kiara	r	0-2	0-0	1-2	1	0	1	3	1	0	1	0	1	8
03	MONK, Malica	f	3-15	1-6	3-3	0	2	2	10	5	1	0	1	36	
14	MASON, Jaliyn	g	3-9	2-6	0-0	1	3	4	1	8	2	0	0	1	24
21	COSPER, Devin	g	8-17	6-13	0-2	1	4	5	2	22	0	1	0	4	31
22	ZIMMERMAN, Bailey	g	1-5	0-3	2-2	2	1	3	0	4	2	0	0	2	23
01	NORTHCROSS-BAKER,	g	3-12	0-6	1-1	2	0	2	1	7	3	0	0	0	16
04	SWENSON, Keiryn	g	2-7	2-6	0-2	1	1	2	0	6	0	1	0	2	16
13	SPANGLER, Grayce	g	0-0	0-0	0-0	0	0	0	0	0	0	0	0	0	5
20	STOUT, Sydney	g	0-0	0-0	0-0	0	0	0	0	0	0	0	0	0	6
24	THOMAS, Taylah	g	0-2	0-1	1-2	2	2	4	1	1	0	0	0	0	16
30	WEAVER, Macy	g	1-1	0-0	0-0	2	1	3	3	2	1	0	4	1	19
Team						0	1	1							
Totals			21-70	11-41	8-14	12	15	27	15	61	13	4	4	14	200



DECEMBER 3, 2017

ARKANSAS

KANSAS

Allen Fieldhouse
Lawrence, Kansas

60

71

Devin Cosper and Malica Monk made it eight games in a row with double-figure scoring. Kiara Williams posted a career-best 16 rebounds. Second consecutive game in double-figures for Jaiilyn Mason.

Arkansas 60 • 5-3

#	Player	Total		3-Ptr		Rebounds			PF	TP	A TO Blk Stl					Min
		FG-FGA	FG-FGA	FT-FTA	FT-FTA	Off	Def	Tot			A	TO	Blk	Stl		
01	NORTHCROSS-BAKER, g	1-6	0-4	0-0	0-0	0	2	2	4	2	1	0	0	0	14	
03	MONK, Malica g	8-20	2-3	4-4	3	4	7	4	21	5	3	0	0	32		
04	SWENSON, Keiryn g	1-3	1-3	1-2	0	2	2	1	4	0	1	1	0	18		
10	WILLIAMS, Kiara c	3-6	0-0	0-1	5	11	16	3	6	0	4	2	0	28		
13	SPANGLER, Grayce g	0-0	0-0	0-0	0	0	0	0	0	0	0	0	0	1		
14	MASON, Jaiilyn g	4-9	2-5	0-0	0	2	2	5	10	1	2	0	2	33		
21	COSPER, Devin g	5-23	1-11	6-8	1	2	3	3	17	0	2	1	1	39		
22	ZIMMERMAN, Bailey f	0-1	0-0	0-0	0	2	2	4	0	0	1	1	0	24		
24	THOMAS, Taylah f	0-1	0-1	0-0	0	0	0	0	0	0	0	0	0	9		
30	WEAVER, Macy	0-0	0-0	0-0	0	0	0	0	0	0	0	1	0	2		
Team						4	2	6								
Totals		22-69	5-27	11-15	13	27	40	24	60	7	13	6	3	200		

1st FG %:	4-17	23.5%	2nd:	5-16	31.3%	3rd:	6-15	40.0%	4th:	5-21	23.8%	Game:	22-69	31.9%	Deadball	
3FG %:	1-5	20.0%		0-4	0.0%		2-4	50.0%		1-8	12.5%		5-27	18.5%	Rebounds	2
FT %:	3-5	60.0%		0-0						6-6	100.0%					

Kansas 71 • 7-0

#	Player	Total		3-Ptr		Rebounds			PF	TP	A TO Blk Stl					Min
		FG-FGA	FG-FGA	FT-FTA	FT-FTA	Off	Def	Tot			A	TO	Blk	Stl		
00	Lyons, Christalah g	6-17	0-3	3-6	0	4	4	3	15	3	2	1	5	28		
02	Osorio, Brianna g	2-6	0-2	4-4	0	3	8	2	8	2	7	1	1	33		
12	Wilson, Micaela f	0-2	0-1	0-0	0	3	3	0	0	1	2	0	0	8		
14	Richardson, Austin f	1-7	0-2	0-0	1	5	6	2	2	0	1	1	0	22		
22	Cheadle, Chayla g	2-5	1-2	1-2	3	2	5	2	6	2	0	0	0	28		
23	Watts, Eboni g	0-1	0-0	0-0	0	1	1	0	0	0	0	0	0	3		
23	Kopatich, Kylee g	7-14	2-5	10-11	2	2	4	3	26	1	2	1	2	38		
35	Helgren, Bailey c	2-3	0-0	0-0	2	1	3	1	4	0	0	0	0	17		
50	Boric, Sara g	0-0	0-0	0-0	0	1	1	0	0	0	0	0	0	3		
50	Johnson, Tyler g	5-7	0-0	0-0	3	2	5	3	10	0	1	1	0	20		
Team					3	7	10									
Totals		25-62	3-15	18-25	14	36	50	17	71	9	15	5	8	200		

1st FG %:	6-17	35.3%	2nd:	6-13	46.2%	3rd:	6-20	40.0%	4th:	5-12	41.7%	Game:	25-62	40.3%	Deadball	
3FG %:	1-4	25.0%		0-3	0.0%		2-2	100.0%		0-3	0.0%		3-15	20.0%	Rebounds	3
FT %:	3-5	60.0%		0-0			3-3	100.0%		10-15	66.7%		18-25	72.0%		

Officials: Scott Yarbrough, Jesse Dickerson, Michael McConnell
Technical fouls: Arkansas-None. Kansas-None.
Attendance: 1,795
FO: Arkansas #14 (0:20.8)

Score by periods	1st	2nd	3rd	4th	Total
Arkansas	12	10	21	17	60
Kansas	16	14	21	20	71

Last FG - AR 4th-01:10, KU 4th-03:10.
Largest lead - AR by 2 1st-09:40, KU by 13 3rd-08:05.
AR led for 01:17, KU led for 35:31. Game was tied for 03:03.

Points	In	Off	2nd	Fast	Bench
AR	28	10	8	6	6
KU	42	17	11	14	16

Score tied - 2 times.
Lead changed - 3 times.



DECEMBER 7, 2017

CHARLOTTE

ARKANSAS

Bud Walton Arena
Fayetteville, Arkansas

72

73

Devin Cosper had a career-best 25 points and 14 rebounds in comeback win. Arkansas trailed by seven at the half and was tied at the 30 before winning.

Charlotte 72 • 3-6

#	Player	Total		3-Ptr		Rebounds			PF	TP	A TO Blk Stl					Min
		FG-FGA	FG-FGA	FT-FTA	FT-FTA	Off	Def	Tot			A	TO	Blk	Stl		
15	JAMISON-MYERS, Nyila f	3-9	0-0	2-3	3	1	4	5	8	1	1	0	0	13		
34	PEARSON, Dara f	3-10	0-0	0-2	9	10	19	2	6	0	0	2	0	35		
03	LINNEY, Mariah g	0-3	0-0	0-0	1	1	2	2	0	2	0	0	0	9		
04	RAVENTOS, Laia g	6-18	2-3	3-4	0	6	6	2	17	6	6	1	6	35		
04	RANSOM, Amaya g	6-19	2-7	0-1	0	5	5	1	14	2	5	0	0	37		
10	MARTIN, Jada g	0-0	0-0	0-0	0	0	0	0	0	0	0	0	0	3		
13	WILSON, Octavia f	2-6	0-2	1-2	1	2	3	2	5	4	1	0	1	27		
22	HARLEY, Lauren g	2-3	0-0	3-4	0	6	6	2	7	0	1	0	0	18		
30	ROBINSON, Jaida g	5-6	1-1	4-4	1	5	6	4	15	0	3	0	0	23		
Team					3	4	7									
Totals		27-74	5-13	13-20	18	40	58	20	72	15	17	3	7	200		

1st FG %:	8-21	38.1%	2nd:	8-16	50.0%	3rd:	3-17	17.6%	4th:	8-20	40.0%	Game:	27-74	36.5%	Deadball	
3FG %:	2-4	50.0%		1-2	50.0%		0-2	0.0%		2-5	40.0%		5-13	38.5%	Rebounds	2
FT %:	0-1	0.0%		2-2	100.0%		6-10	60.0%		5-7	71.4%		13-20	65.0%		

Arkansas 73 • 6-3

#	Player	Total		3-Ptr		Rebounds			PF	TP	A TO Blk Stl					Min
		FG-FGA	FG-FGA	FT-FTA	FT-FTA	Off	Def	Tot			A	TO	Blk	Stl		
22	ZIMMERMAN, Bailey f	2-9	1-6	1-1	1	2	3	0	6	1	3	1	0	28		
10	WILLIAMS, Kiara c	3-8	0-0	3-11	8	4	12	3	9	0	0	3	4	29		
02	MONK, Malica g	6-18	2-6	1-2	1	3	4	4	15	3	1	0	3	38		
14	MASON, Jaiilyn g	4-10	2-6	2-2	0	4	4	2	12	4	1	1	1	30		
21	COSPER, Devin g	9-23	2-7	5-6	3	11	14	2	25	2	3	0	1	40		
01	NORTHCROSS-BAKER, g	1-2	1-2	0-0	0	3	3	0	3	1	1	0	0	11		
04	SWENSON, Keiryn g	1-5	1-4	0-0	0	2	2	3	0	3	0	0	0	13		
24	THOMAS, Taylah g	0-0	0-0	0-0	0	0	0	3	0	0	0	0	1	4		
30	WEAVER, Macy g	0-0	0-0	0-2	2	0	2	3	0	0	1	0	0	7		
Team					0	1	1									
Totals		26-75	9-31	12-24	15	30	45	19	73	11	10	5	10	200		

1st FG %:	5-16	31.3%	2nd:	6-22	27.3%	3rd:	7-19	36.8%	4th:	8-18	44.4%	Game:	27-74	36.5%	Deadball	
3FG %:	3-9	33.3%		2-9	22.2%		1-4	25.0%		3-9	33.3%		9-31	29.0%	Rebounds	6,4
FT %:	1-3	33.3%		2-5	40.0%		4-8	50.0%		5-8	62.5%		12-24	50.0%		

Officials: Bob Trammell, Felicia Grinter, Jesse Dickerson
Technical fouls: Charlotte-None. Arkansas-None.
Attendance: 1,169
Estimated Actual Attendance: 733
Fouled out: Charlotte #15, Jamison-Myers (1:50, 4Q)

Score by periods	1st	2nd	3rd	4th	Total
Charlotte	18	19	12	23	72
Arkansas	14	16	19	24	73

Last FG - CHA 4th-00:01, AR 4th-00:53.
Largest lead - CHA by 9 3rd-09:40, AR by 6 4th-00:53.
CHA led for 24:48, AR led for 10:50. Game was tied for 04:22.

Points	In	Off	2nd	Fast	Bench
CHA	40	8	12	6	17
AR	32	15	17	8	6

Score tied - 3 times.
Lead changed - 15 times.



DECEMBER 10, 2017

TULSA

ARKANSAS

Bud Walton Arena
Fayetteville, Arkansas

41

67

Arkansas' 61 rebounds is the most since the 2014-15 season. Devin Cosper and Malica Monk have scored in double figures in all 10 games and Cosper posted back-to-back double-doubles.

Tulsa 41 • 4-6

#	Player	Total		3-Ptr		Rebounds			PF	TP	A	TO	Blk	Stl	Min
		FG-FGA	FG-FGA	FT-FTA	Off	Def	Tot								
33	POLK, Crystal	f	4-11	0-0	0-1	4	4	8	1	8	0	2	2	0	19
02	PEREZ, Tatyana		1-8	0-3	0-0	0	1	1	0	2	2	0	0	1	23
03	WAKEFIELD, Erika	g	3-8	0-1	0-0	0	4	4	3	6	0	0	0	1	27
12	DICKSON, Shug	g	3-10	0-1	1-1	0	3	3	2	7	0	0	0	1	19
21	LESCAY, Rebecca	g	0-5	0-0	0-0	1	2	3	2	0	0	0	0	1	21
00	ELLIOTT, Kendrick		1-5	0-0	4-6	3	3	6	3	6	0	1	1	0	18
04	RICHARDS, Addison		0-1	0-1	0-0	1	1	2	0	0	0	0	0	0	6
05	BUTLER, Jasmine		2-3	0-0	0-0	1	1	2	0	4	0	0	0	0	5
10	GAULDEN, Alexis		0-3	0-2	0-0	0	2	2	3	0	2	2	0	0	15
11	PARKER, Ebony		2-7	2-6	0-0	1	1	2	1	6	1	0	0	0	20
22	BRADY, Morgan		0-6	0-2	2-2	0	1	1	2	0	0	1	0	1	15
25	SCALES, Tyjae		0-2	0-0	0-0	1	3	4	0	0	0	0	0	0	12
	Team					1	0	1			1				
	Totals		16-69	2-16	7-10	13	26	39	16	41	5	7	3	4	200