



ARKANSAS RAZORBACKS

One Final Four Appearance » 22 Postseason Appearances » 27th Season In The SEC » More Than 400 Home Wins » More Than 700 Program Victories

/// THE SERIES ///

Series Record	18-18
Fayetteville	10-6
Away	6-10
Neutral	2-2
Last Meeting	Ark. L, 59-51
Neighbors versus this opponent	0-1

/// MEDIA ///



SEC Network

Talent: Paul Sunderland and Debbie Antonelli



Razorback Sports Network

Phil Elson

Listen: Little Rock - KABZ-FM-103.7

Fayetteville - KOSM-FM-92.1

Fayetteville - KYNG-AM - 1590*

Fort Smith - KFPW-AM-1230

Fort Smith - KHGG-AM-1580*

Rogers - KURM-AM-790/FM-100.3

*Only if there are conflicts with the FM station

/// SCHEDULE & RESULTS ///

NOVEMBER (5-2)	MEDIA	W/L	SCORE
2 Northeastern St (Exh)	-	W	82-74
10 Sam Houston State	SECN+	W	65-54
12 Samford	SECN+	W	84-63
16 at RV Nebraska	BTN	L	80-69
20 at Oral Roberts	Cox Sports	W	77-66
24 UTEP!	-	L	64-61
25 New Mexico State!	-	W	69-60
29 Abilene Christian	SECN+	W	79-65

DECEMBER (5-2)	MEDIA	W/L	SCORE
3 at Kansas^	JTV/ESPN3	L	71-60
7 Charlotte	SECN+	W	73-72
10 Tulsa	SECN+	W	67-41
17 UT Arlington	SECN+	W	91-57
21 at RV/RV Arizona St.	Tempe, Arizona	L	89-43
28 Grambling State	SECN+	W	79-62
31 Ole Miss*	SECN+	W	73-72

JANUARY (0-0)	MEDIA	W/L	SCORE
4 at #5/3 Miss State*	SEC Network	-	8 p.m.
7 Alabama*	SEC Network	-	3 p.m.
11 at Georgia*	SECN+	-	6 p.m.
14 at Auburn*	SEC Network	-	4 p.m.
18 RV Florida*	SEC Network	-	6 p.m.
21 at Missouri!+	SEC Network	-	4 p.m.
25 at S Carolina!+	SEC Network	-	5:30 p.m.
29 RV Kentucky*	SEC Network	-	6 p.m.

FEBRUARY (0-0)	MEDIA	W/L	SCORE
4 at Alabama*	SEC Network	-	1 p.m.
8 Tennessee*	SECN+	-	7 p.m.
11 Missouri*	SEC Network	-	4 p.m.
15 at Kentucky*	SECN+	-	6 p.m.
18 LSU*^	SECN+	-	2 p.m.
22 Texas A&M*	SECN+	-	7 p.m.
25 at Vanderbilt*	SECN+	-	2 p.m.
28 SEC Tournament	SECN/ESPN/2	-	Nashville

MARCH (0-0)	MEDIA	W/L	SCORE
1-4 SEC Tournament	SECN/ESPN/2	-	Nashville

* - Southeastern Conference Game

! - UTEP Classic (El Paso, Texas)

^ - SEC/Big 12 Challenge

+ - We Back Pat

> - Play4Kay

All home games played in Bud Walton Arena (19,200) Rankings: AP/Coaches Poll

Sign up for Mike Neighbors' newsletter and listen to his podcasts at

CoachNeighbors.com



ARKANSAS RAZORBACKS 10-4, 1-0 SEC

Head Coach: Mike Neighbors
Alma Mater: Arkansas, 1993
Record: 108-45 (5) Arkansas Record: 10-4 (1)



#5/3 MISSISSIPPI STATE BULLDOGS 15-0, 1-0 SEC

Head Coach: Vic Schaefer
Alma Mater: x
Record: 472-217 (21) MS Record: 139-51 (6)



Starkville,
Mississippi



Humphrey
Coliseum



8 p.m. CST



<http://bit.ly/ArkMSU>



Razorback Radio
Network



<http://bit.ly/2Csag07>

PREVIOUS GAME

»Four 3-pointers ties Arkansas' 10 record for makes from distance in the frame.

»Malica Monk has scored in double figures in all 14 games. She finished with 12 points and four assists.

»Devin Cosper scored in double figures in 12 games this year.

»Devin Cosper finishes with a double-double with 18 points and 11 rebounds. It is the sixth double-double of her career - all recorded this season.

»Arkansas has forced double figure turnovers for the 12th time this year (17).

»Arkansas is 4-6 in SEC home openers.

»Three players scored in double figures lead by Devin Cosper with 18 points. Jailyn Mason added 13 points and Malica Monk had 12 points.

»Arkansas is 8-0 at home this season.

Better Numbers

»Devin Cosper has 39 3-pointers made - 14 better than her single season best. She has scored more points (230) through 14 games than she did all of last season (187 pts/29 g).

»Jailyn Mason has made 21 3-pointers through 14 games. She made 19 in 30 games last year.

»Malica Monk has scored 236 points in 14 games. Her single season best is 247 points set in 27 games last year.

»Malica Monk has made 61 free throws - more makes than all of last year.

Small Wins

»Arkansas moved up to No. 49 in this week's NCAA RPI.

»Arkansas is 8-0 at home.

»Charlie Creme lists Arkansas as one of the "First four out" in his first bracketology of the year.

/// STATISTICAL COMPARISONS ///

	ARKANSAS	MISS STATE
PTS / GAME	70.7	86.4
PTS ALLOWED / GAME	65.4	55.0
FG %	.374	.479
FG DEFENSE %	.383	.378
3-PT FG %	.299	.369
3-PT FG DEFENSE %	.306	.295
REB / GAME	42.4	39.9
REB ALLOWED / GAME	42.9	32.5
LEADING SCORER	Monk, 16.9	McCowan, 20.3
LEADING REBOUNDER	Williams, 8.2	McCowan, 12.5

LAST GAME STARTERS



3 MALICA MONK

PPG	FG%	RPG	APG
16.9	.393	3.6	4.4



10 KIARA WILLIAMS

PPG	FG%	RPG	BPG
7.5	.477	8.2	1.4



14 JAILYN MASON

PPG	FG%	RPG	APG
9.5	.387	4.1	3.2



21 DEVIN COSPER

PPG	FG%	RPG	SPG
16.4	.367	6.8	1.6



22 BAILEY ZIMMERMAN

PPG	FG%	RPG	MIN
2.5	.203	2.8	21.7

NUMERICAL ROSTER

No.	Name	Pos	Ht	Cl	Hometown/HS/Previous School
0	A'Tyanna Gaulden*	G	5-7	RSO	Ocilla, Ga./Americus Sumter HS/Florida State
1	Raven Northcross-Baker	G	5-7	Fr	Malvern, Ark./Malvern HS/Chipola College
3	Malica Monk	G	5-5	Jr	N. Little Rock, Ark./NLR HS
4	Keiryn Swenson	G/F	6-1	Jr	Wichita, Kan./Maize HS
10	Kiara Williams	F/C	6-1	So	Little Rock, Ark./LR Central HS
13	Grayce Spangler	G	5-10	Fr	Fayetteville, Ark. Fayetteville HS
14	Jailyn Mason	PG	5-9	So	Mason, Ohio/William Mason HS
20	Sydney Stout	F	6-0	So	Bixby, Okla./Bixby HS
21	Devin Cospers	G	5-10	SGr	Coffeyville, Kan./Field Kindley HS/Coffeyville CC
22	Bailey Zimmerman	G/F	6-0	Jr	St. Vincent, Ark. /Wonderview HS
24	Taylah Thomas	F	6-1	Fr	Arlington, Texas/Mansfield Timberview HS
30	Macy Weaver	F	6-3	Fr	Davis Junction, Ill./Stillman Valley HS
33	Chelsea Dungee*	G	5-11	RSO	Sapulpa, Okla./Sapulpa HS/Oklahoma
51	Brenna McClure	G	5-6	RSO	Lyons, Kansas/Lyons HS/Hutch CC

*Will not play the 2017-18 season due to NCAA transfer rules

ALPHABETICAL ROSTER

No.	Name	Twitter
21	Devin Cospers	@devidev__
33	Chelsea Dungee*	@ChelseaDungee22
0	A'Tyanna Gaulden*	@AtyannaGaulden
51	Brenna McClure	@mcclurebrenna
14	Jailyn Mason	@jaimason14
3	Malica Monk	@TheRealMalica
1	Raven Northcross-Baker	@ravenbaker_4
13	Grayce Spangler	@grayce_1313
20	Sydney Stout	@sydeny_stout_
4	Keiryn Swenson	@KiKi_Sweezyy
24	Taylah Thomas	@hailtaylahh
30	Macy Weaver	@macyweaver528
10	Kiara Williams	@kiara_will22
22	Bailey Zimmerman	@Bailey_Ann22

COACHING STAFF

Title	Name	Year	Alma Mater
Head Coach	Mike Neighbors	First Season	Arkansas, 1993
Assistant Coach	Todd Schaefer	First Season	Thomas More College, 1995
Assistant Coach	Lacey Goldwire	First Season	Oklahoma State, 2010
Assistant Coach	Pauline Love	First Season	Southern Miss, 2010
Director of Operations	Amber Shirey	30th Season	Arkansas, 1992
Director of Video and Scouting	Jeff Brazil	11th Season	Arkansas, 2010
Dir. of Student-Athlete Devel.	C'eira Ricketts	1st Season	Arkansas, 2015

MARGIN OF VICTORY/DEFEAT

	1	2	3	4	5	6	7	8	9	10	11-15	16-19	20+	Record
Wins	2	-	-	-	-	-	-	-	1	-	3	1	3	10
Losses	-	-	1	-	-	-	-	-	-	-	2	-	-1	4

Most First Period Points

2017-18	27	Samford (11-12-17)
All-Time	29	at Alabama (1-15-17)
Opponent	26	at Arizona State (12-21-17)

Most Third Period Points

2017-18	26	UT-Arlington (12-17-17)
All-Time	34	HBU (12-28-16)*
Opponent	30	at Ole Miss (1-1-17)

Fewest First Period Points

2017-18	3	UTEP (11-24-17)
All-Time	3	UTEP (11-24-17)*
Opponent	6	SHSU (11-11-16)

Fewest Third Period Points

2017-18	11	at Arizona State (12-21-17)
All-Time	7	Vanderbilt (1-19-17)*
Opponent	4	LSU (1-21-16)

Most Second Period Points

2017-18	25	Grambling State (12-27-17)
All-Time	31	HBU (12-28-16)
Opponent	35	at #2 S. Carolina (1-3-16)

Most Fourth Period Points

2017-18	28	UT-Arlington (12-17-17)
All-Time	32	Tulsa (11-23-15)
Opponent	27	Georgia (2-25-16)

Fewest Second Period Points

2017-18	6	at Arizona State (12-21-17)
All-Time	4	vs. Kentucky (2-17-17)
Opponent	3	at Alabama (1-15-17)

Fewest Fourth Period Points

2017-18	11	Ole Miss (12-31-17)
All-Time	5	#7 Ore. St. (11-28-15)
Opponent	10	#24 Missouri (1-17-16)*

Most First Half Points

2017-18	42	Samford (11-12-17)
All-Time	65	Tenn State (11-27-88)
Opponent	63	Texas (1-9-89)

Largest Margin of Victory

2017-18	34 (91-57)	UT-Arlington (12-17-17)
All-Time	79 (108-29)	B Wesleyan (2-18-77)
Opponent	54 (28-82)	La Tech (11-30-78)

Fewest First Half Points

2017-18	14	at Arizona State (12-21-17)
All-Time	11	at Missouri (3-1-15)*
Opponent	8	Montana State (1-5-03)

*Most Recent

FA-NETIK PRONUNCIATIONS

No.	Name	Pronunciation
0	A'Tyanna	AH-tee-ah-nuh
3	Malica	mal-ick-cuh
4	Keiryn	KEER-runn
10	Kiara	Key-AIR-uh
13	Grayce	GRACE
14	Jailyn	JAY-lyn
24	Taylah	TAY-luh

RECORD FACTS

Overall	10-4
At Home (Bud Walton Arena)	8-0
On The Road Neutral	1-4 1-0
White Cardinal Anthracite Uniforms	8-0 2-4 0-0

HALFTIME/LEADS/OVERTIME

Leading at the half, home/road/neutral	7-0 (5-0/1-0/0-0)
Tied at the half, home/road/neutral	-
Trailing at the half, home/road/neutral	3-4 (2-0/0-4/1-0)
Games decided by 5 points or fewer	2-1
Games decided by 10 points or fewer	2-1
Leading at the start of the 4Q	9-0
Overtime games	-

OFFENSE

Scoring less than 50 points	0-1
Scoring 51-60 points	0-1
Scoring 61-70 points	3-2
Scoring 70+ points	7-0
2 Players Or Less in Double Figures	3-3
3 Players in Double Figures	3-1
4 Players in Double Figures	2-0
5 Players in Double Figures	2-0
When shooting 50 percent or higher	-
When shooting less than 50 percent	10-4

REBOUNDING/TURNOVERS

When outrebounding opponent	7-0
When outrebounded	2-4
When rebounds are even	1-0
When grabbing 10+ offensive reb	8-3
When forcing 15+ turnovers	6-3
When committing 10 or fewer turnovers	5-1
When committing 15+ turnovers	2-2

Months

In November	5-2
In December	5-2
In January	-
In February	-
In March	-



FACEBOOK.COM/RAZORBACKWBB
@RAZORBACKWBB (T&I)
HTTP://BIT.LY/YOUTUBEKICKIN
COACHNEIGHBORS.COM

NEIGHBORS' PHILOSOPHY

GRAD STUDENT DEVIN COSPER

- »Only "senior" on the team
- »Missed the opening game last season after a death in the family
- »Averaged 6.4 ppg and 2.2 rpg last season and 7.7 ppg and 2.8 rpg for her career
- »Graduated in May 2017 with a degree in broadcast journalism
- »Interned at RSN, Arkansas' broadcast studio
- »Wears the SEC graduate patch on her jersey
- »Named "Comback Student-Athlete of the Year at annual HOGSPY awards after rebounding from an injury and a death in the family



FUNCTIONALLY FAST

You will hear Mike Neighbors say this a lot. He wants his teams to play as fast as possible and still function at a high level. That may look different from possession to possession depending on what Arkansas is running.

TRUST, TALENT AND TIME

My program will be built on three things. It's very simple.

TRUST - The highest form of loyalty that has to be earned, managed and sometimes re-earned. If we don't have this, nothing will work and the stool's legs will fall off and everything will collapse.

TALENT - It doesn't mean you can dribble, shoot, pass and rebound. It's a lot of other things like the ability to engage with the fan base and willingness to sign autographs for a 10-year-old child you might be inspiring.

TIME - It's just not being on time or making time. It's how you utilize your time and who you invest your time with and be around. Trust, talent and time. Those will be our pillars.

FUN FEATURES

Both Mike Neighbors and Jailyn Mason have shoe collections. Mason's collection was featured in a story last year. It can be seen here: <http://bit.ly/2ebtLdb>

Neighbors got settled into his Fayetteville home in mid August. One of the first things he set up were his shoes.



BESIDE US

One of the things Mike Neighbors stressed when he was hired was his desire to take care of the players, the staff and the fans who have been loyal to the Razorback program. He has told our fans that he wants them to stand "Beside Us". Don't be behind us, stand next to us and go through the process of building our program.

SHOTS AND POSSESSIONS

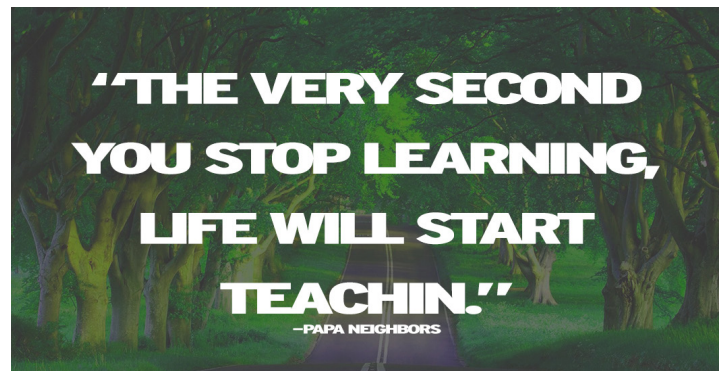
Mike Neighbors wants a lot of shots and a lot of possessions. Here's a look at the Razorbacks shots this year. The number is often determined by pace of play and Arkansas will push the tempo.

30 AND COUNTING

This year, Arkansas director of operations Amber Shirey enters her 30th season as a Razorback. The former Amber Nicholas was a two-time All-Southwest Conference selection during her four-year playing career from 1989-92. She spent one season (1992-93) as a student coach helping Arkansas transition to the Southeastern Conference. She moved on to a graduate assistant and assistant coach from 1993-94 through the 2006-07 season. In 2007-08 Shirey transitioned to the director of operations position holding that spot until she returned to the sidelines as an assistant coach for the 2013 and 2014 seasons. She moved into her current position as the Executive Director of Operations in 2014-15. She has been a part of seven different head coach's staffs during her tenure.

GAMEDAY CARDS

Coach Neighbors hands out a Gameday Card for each home and away game. One side of the card is branded with a Razorback logo and women's basketball. The other side is a quote that is relevant to something the team has talked about or worked on that week. Check out this week's card here:



OPPONENT

ABOUT #5 MISSISSIPPI STATE

- »Mississippi State is out to its third-best start in school history and is one of four undefeated programs in the country.
- »State has three players averaging double figures led by Teaira McCowan who averages a double-double with 20.3 ppg and 12.5 rpg.
- »Mississippi State is beating teams by an average of 31.4 ppg. They defeated Arizona State, a team that beat Arkansas, 65-57, in November.
- »Mississippi State leads the SEC averaging 86.4 ppg and scoring margin at +31.4 ppg. They also lead the league in assist/turnover ratio, offensive rebounds, and offensive rebound percentage.

LAST TIME

Arkansas put together a key 10-3 run in the fourth quarter pulling the Razorbacks within two points with just over four minutes to go in the game. Arkansas' defense held the Bulldogs scoreless for 4:23 in the frame but the comeback fell short when the Razorbacks were forced to foul and State made the bonus shots at the end of the game.

ABOUT THE SERIES

Series Record: 18-18
In Fayetteville: 10-6
In Away: 6-10
Neutral: 2-2
Last 5: 0-5
Mike Neighbors vs.: 0-1

Results

2/15/1992	AR	66	MSU	76	Starkville	3/3/2005	AR	80	MSU	73	Nashville
2/13/1993	AR	80	MSU	51	Fayetteville	1/5/2006	AR	66	MSU	45	Starkville
2/26/1994	AR	67	MSU	61	Starkville	1/22/2006	AR	60	MSU	58	Fayetteville
2/26/1995	AR	86	MSU	63	Fayetteville	1/7/2007	#20 AR	73	MSU	81	Starkville
1/6/1996	AR	67	MSU	77	Starkville	2/1/2007	AR	75	MSU	80	Fayetteville
1/5/1997	AR	84	MSU	67	Fayetteville	1/27/2008	AR	56	MSU	42	Fayetteville
1/15/1998	AR	80	MSU	73	Starkville	1/25/2009	AR	65	MSU	62	Starkville
1/28/1998	AR	89	MSU	70	Fayetteville	1/14/2010	AR	60	MSU	78	Fayetteville
1/14/1999	AR	85	MSU	58	Fayetteville	1/9/2011	AR	61	MSU	56	Starkville
1/28/1999	AR	60	MSU	81	Starkville	1/26/2012	AR	51	MSU	35	Starkville
2/24/1999	AR	70	MSU	79	Chattanooga	2/19/2012	AR	67	MSU	53	Fayetteville
1/20/2000	AR	56	#22 MSU	69	Starkville	2/3/2013	AR	44	MSU	47	Starkville
1/18/2001	AR	72	#21 MSU	45	Fayetteville	1/12/2014	#25 AR	50	MSU	54	Fayetteville
3/1/2001	AR	94	MSU	76	Memphis	1/8/2015	AR	57	#14/15 MSU	72	Starkville
1/24/2002	AR	82	MSU (OT)	85	Starkville	1/10/2016	AR	55	#5/6 MSU	80	Starkville
2/20/2003	AR	59	#16 MSU	72	Fayetteville	1/31/2016	AR	55	#13 MSU	65	Fayetteville
2/1/2004	AR	55	MSU	57	Starkville	1/5/2017	AR	51	#4 MSU	59	Fayetteville
3/4/2004	AR	74	MSU	79	Nashville						
1/16/2005	AR	83	MSU	71	Fayetteville						

IMPORTANT STATS

The Are Tall: Arkansas enters the game with a significant height disadvantage, especially in the paint. The inside play will be a factor in the outcome of the game.

Keep Them Off The Line: Mississippi State has been good from the free throw line. The Bulldogs are shooting 71.7% from the charity stripe making 231 bonus shots.

Rebounding Offense Favors Arkansas: Arkansas ranks fifth in the SEC while State is tied for ninth in the league for rebounding offense. Arkansas has 593 rebounds and averaged 42.4 per game while the Bulldogs have 599 with a 39.9 average (they have played 15 games).

NOVEMBER (5-2)	MEDIA	W/L	SCORE	SERIES	NEIGHBORS
2 Northeastern St. (Exh)	-	W	82-74	2-0	1-0
10 Sam Houston State	SECN+	W	65-54	7-0	1-0
12 Samford	SECN+	W	84-63	1-0	1-0
16 at Nebraska	BTN	W	80-69	0-1	0-1
20 at Oral Roberts	Cox Sports	W	77-66	20-9	1-0
24 UTEP!	-	L	64-61	2-1	0-2
25 New Mexico State!	-	W	69-60	1-0	1-0
29 Abilene Christian	SECN+	W	79-65	1-0	1-0

DECEMBER (5-2)	MEDIA	W/L	SCORE	SERIES	NEIGHBORS
3 at Kansas*	JTV/ESPN3	L	71-60	4-4	0-1
7 Charlotte	SECN+	W	73-72	1-0	1-0
10 Tulsa	SECN+	W	67-41	21-3	1-0
17 UT Arlington	SECN+	W	91-57	7-0	1-0
21 at Arizona State	Pac-12N	L	89-43	1-1	2-5
28 Grambling State	SECN+	W	79-62	8-0	2-0
31 Ole Miss*	SECN+	W	73-72	17-26	1-0

JANUARY (0-0)	MEDIA	W/L	SCORE	SERIES	NEIGHBORS
4 at #5 Mississippi State*	SEC Network	-	-	18-18	0-1
7 Alabama*	SEC Network	-	-	21-14	First Meeting
11 at Georgia*	SECN+	-	-	5-31	First Meeting
14 at Auburn*	SEC Network	-	-	14-22	First Meeting
18 Florida*	SEC Network	-	-	9-27	First Meeting
21 at Missouri*	SEC Network	-	-	11-8	1-0
25 at South Carolina*	SEC Network	-	-	17-16	First Meeting
29 Kentucky*	SEC Network	-	-	13-21	1-0

FEBRUARY (0-0)	MEDIA	W/L	SCORE	SERIES	NEIGHBORS
4 at Alabama*	SEC Network	-	-	21-14	First Meeting
8 Tennessee*	SECN+	-	-	3-30	First Meeting
11 Missouri*	SEC Network	-	-	11-8	1-0
15 at Kentucky*	SECN+	-	-	13-21	1-0
18 LSU*	SECN+	-	-	16-31	First Meeting
22 Texas A&M*	SECN+	-	-	21-8	1-1
25 at Vanderbilt*	SECN+	-	-	8-24	First Meeting
28 SEC Tournament	SECN/ESPN	-	-		

MARCH (0-0)	MEDIA	W/L	SCORE	SERIES	NEIGHBORS
1-4 SEC Tournament	SECN/ESPN				

* - Southeastern Conference Game
!-UTEP Thanksgiving Tournament (El Paso, Texas)
^-SEC/Big 12 Challenge
All home games played in Bud Walton Arena (19,200)

An Arkansas Win Would ...

- A win would make Arkansas:
- »11-4 on the year
- »give Arkansas back-to-back wins to open SEC play
- »give Arkansas a win over a ranked team

THE LAST MEETING

#4 Mississippi State 59 • 16-0, 2-0 SEC

#	Player	Total			3-Ptr			Rebounds			PF	TP	A	TO	Blk	Stl	Min	
		FG	FGA	FT	FG	FGA	FT	FTA	Off	Def								Total
03	RICHARDSON, BREANN	4	15	0	0	0	0	1	3	3	6	5	8	2	2	0	1	26
45	OKORIE, CHINWE	7	15	0	0	0	0	0	7	8	15	4	14	0	3	1	1	29
00	DILLINGHAM, DOMINIQ	0	0	0	0	0	1	2	0	1	1	0	2	1	1	3	0	28
02	WILLIAM, MORGAN	4	10	0	1	7	8	1	1	5	6	2	15	3	3	0	2	32
35	VIVIAN, VICTORIA	5	19	0	5	3	5	2	5	7	12	3	13	3	3	0	3	33
01	SCHAEFER, BLAIR	2	5	2	4	0	0	0	0	2	2	0	6	1	1	0	0	19
04	WILLIAMS, JAMESHYA	0	1	0	0	0	0	0	0	1	1	0	0	0	0	0	0	3
10	HOLMES, JAZZMUN	0	2	0	1	0	0	0	0	1	1	0	0	1	1	0	0	8
13	CHAPEL, KETARA	1	4	0	0	0	0	0	0	1	1	1	2	0	2	0	2	14
15	MCCOWAN, TEAIRA	0	2	0	0	0	0	0	1	2	3	0	1	0	1	0	1	8
	Team								5	1	6							
	Totals	23	63	2	11	11	16	1	19	31	50	21	59	12	18	2	7	200

1st FG %:	9-19	47.4%	2nd:	8-14	57.1%	3rd:	2-14	14.3%	4th:	4-16	25.0%	Game:	23-63	36.5%	Deadball	
3FG %:	0-2	0.0%		0-3	0.0%		0-2	0.0%		2-4	50.0%		2-11	18.2%	Rebounds	
FT %:	0-1	0.0%		1-1	100.0%		6-10	60.0%		4-4	100.0%		11-15	66.6%		3, 1

ARKANSAS 51 • 11-4, 0-2 SEC

#	Player	Total			3-Ptr			Rebounds			PF	TP	A	TO	Blk	Stl	Min
		FG	FGA	%	FG	FGA	%	FT	FTA	%							
00	JACKSON, Jessica	4	10	2-5	2	4	1	2	3	4	12	0	5	2	1	23	
04	SWENSON, Keiryn	1	8	0-3	0	0	3	7	1	2	1	2	1	2	1	30	
03	MONK, Malica	4	12	1-2	8	9	0	2	2	4	17	0	1	2	1	38	
14	MASON, Jailyn	0	3-12	0-0	1-2	0	3	3	5	7	2	2	2	1	35		
21	COSPER, Devin	0	2-3	0-0	2-3	1	0	1	0	6	2	2	0	0	18		
02	WILSON, Aaliyah	0	2-2	0-1	0-0	0	0	0	3	0	0	1	0	0	6		
22	ZIMMERMAN, Bailey	2	6	0-2	1-3	2	5	7	3	5	0	3	1	1	25		
35	COOLEY, Alecia	0	1-0	0-0	2-2	2	2	0	2	1	1	1	1	0	25		
	Team						3	4	7								
	Totals		16-54	3-13	16-23	12	22	34	20	51	6	17	9	7	200		

1st FG %:	3-13	23.1%	2nd:	4-13	30.8%	3rd:	6-17	35.3%	4th:	3-11	27.3%	Game:	16-54	29.6%	Deadball	
3FG %:	0-3	0.0%		1-3	33.3%		2-5	40.0%		0-2	0.0%		3-13	23.1%	Rebounds	
FT %:	5-6	83.3%		2-3	66.7%		3-5	60.0%		6-9	66.7%		16-23	69.6%		1, 1

Officials: Dee Kantner, Beverly Roberts, Cameron Inouye
Technical fouls: #4 Mississippi State-None. ARKANSAS-None.
Attendance: 1233
Estimated Actual Attendance: 809
Fouled Out Mississippi State: #3, Richardson (1:19 4Q)
Arkansas: #14, Mason (0:30 4Q)

Score by periods	1st	2nd	3rd	4th	Total
#4 Mississippi State	18	17	10	14	59
ARKANSAS	11	11	17	12	51

Last FG - MS 4th-01:42, AR 4th-05:03.
Largest lead - MS by 14 3rd-09:14, AR None.
MS led for 38:30, AR led for 00:00. Game was tied for 01:10.

Points	In	Off	2nd	Fast	Bench
MS	34	15	10	2	8
AR	18	15	12	6	7

Score tied - 0 times.
Lead changed - 0 times.

SEC STANDINGS 1/2/18

Conference				Overall						
W-L	Pct.	H	A	W-L	Pct.	H	A	N	Strk	
Miss State	1-0	1.000	0-0	1-0	15-0	1.000	8-0	2-0	5-0	W15
Tennessee	1-0	1.000	0-0	1-0	13-0	1.000	7-0	3-0	3-0	W13
Missouri	1-0	1.000	0-0	1-0	13-1	.929	7-0	3-0	3-1	W13
S Carolina	1-0	1.000	1-0	0-0	12-1	.923	7-0	3-0	2-1	W6
Auburn	1-0	1.000	1-0	0-0	10-3	.769	7-0	2-1	1-2	W7
LSU	1-0	1.000	1-0	0-0	9-3	.750	5-0	3-2	1-1	W7
Arkansas	1-0	1.000	1-0	0-0	10-4	.714	8-0	1-4	1-0	W2
Georgia	0-1	.000	0-1	0-0	12-2	.857	8-2	4-0	0-0	L1
Texas A&M	0-1	.000	0-0	0-1	11-4	.733	8-2	2-1	1-1	L1
Alabama	0-1	.000	0-1	0-0	10-4	.714	8-1	2-1	0-2	L1
Ole Miss	0-1	.000	0-0	0-1	10-4	.714	8-0	1-3	1-1	L1
Florida	0-1	.000	0-0	0-1	8-6	.571	5-4	2-1	1-1	L1
Kentucky	0-1	.000	0-1	0-0	8-7	.533	6-3	2-4	0-0	L6
Vanderbilt	0-1	.000	0-0	0-1	4-11	.267	2-5	2-4	0-2	L1

SEC ROAD OPENERS

The road has not been kind to Arkansas. The Razorbacks are 2-24 in their first road SEC game of the year. The wins came over Missouri and Ole Miss.

»Ole Miss has been the most common road SEC opener and Arkansas is 1-7 versus the Rebels in openers.

»Arkansas is 0-1 versus Mississippi State when the Bulldogs are the SEC road opener.

MONK CONTINUES TO LEAD

»Fourteen consecutive games in double figure scoring. Jessica Jackson scored in double digits in 15 consecutive games in 2016-17.

»Ranks **sixth in the SEC** for field goal attempts (226), **12th** for field goals made (81), **fourth** for minutes played (472.0), **fourth** for free throw percent (.838), **sixth** for field goal attempts (206), **eighth** for points per game (16.9).

»Six of 11 games with 20+ points with a career-best 24 at Oral Roberts.

»Monk currently has 191 assists (1.2.18). She is approaching the career top-20 (228 assists).

»At least one 3-pointer in each of the first 10 games with a season-best two 3-pointers three times. A made 3-pointer in 10 of 12 games.

»Thirty-two or more minutes played in 10 of 14 games.

»Seven consecutive games with at least one steal to start the season with a season-best four steals twice (SHSU, NMSU).

»Has been perfect from the free throw line in seven games (Samford (7-7), Nebraska (3-3), UTEP (3-3), Kansas (4-4), Tulsa (4-4), UTA (12-12), ASU (2-2).

»Double-figure scoring in a single quarter three times (10 | 3Q | Nebraska || 13 | 4Q | ORU) || 10 | 4Q | Kansas).

»Has 13 3-point field goals made this year (1.2.18). She had nine 3-pointers in her freshman and sophomore years combined.

COSPER POSTING BIG NUMBERS

»Ten consecutive games in double figure scoring. The streak was snapped versus UTA. Twelve of 14 games in double figures.

»One of seven active SEC players with 6+ season double-doubles.

»**First in the SEC** with 2.8 made 3-pointers per game. She has a league-best 39 made 3-pointers.

»**First in the SEC and seventh in the NCAA** in 3-point field goals attempted (124).

»SEC rankings include **sixth** for double-doubles (5), **second** in field goal attempts (226), **seventh** in field goals made (83), and **seventh** in minutes played (32.4 mpg).

»Cosper's 303 (1.2.18) 3-point field goal attempts ranks No. 15 in the Arkansas career records. She is approaching the top-20 for 3-point field goals made and is in the top-50 for career points.

»Four games with 20+ points this season.

LEADS AND DEFICITS

Biggest Halftime Lead	17, GSU
Biggest Halftime Lead Lost	-
Biggest Halftime Deficit	38, GSU
Biggest HT Deficit Erased	7, Char.
Biggest Overall Lead	30, Tulsa,4Q
Biggest Win Margin	26, Tulsa
Biggest Loss Margin	46, ASU
Biggest Deficit Overcome	13, SHSU

JUMP BALLS

Arkansas	6 (5-2)
Opponents	8 (4-3)

FIRST POINTS

Williams	6
Mason	4
Monk	2
Cosper	2
Monk	1 (FT)
Zimmerman	1 (FT)

BENCH POINTS

Arkansas	274
Opponent	278

DOUBLE FIGURE POINTS

Malica Monk	14
Devin Cosper	13
Jailyn Mason	6
Kiara Williams	5
Raven Northcross-Baker	3
Taylah Thomas	1
Keiryn Swenson	1

LEADING SCORER

Monk	8
Cosper	5
Northcross-Baker	2

DOUBLE FIGURES FIRST HALF

Cosper	3
Monk	2
Mason	1
Williams	1
Northcross-Baker	1

DOUBLE FIGURES/QUARTER

Cosper	3
Monk	3
Mason	1
Northcross-Baker	1

20/30-PLUS POINTS

Monk	5 (21, 22, 24, 22, 20)
Cosper	4 (21, 21, 22, 25)
Northcross-Baker	1 (22)

DOUBLE FIGURE REBOUNDS

Cosper	6
Williams	5
Thomas	1

LEADING REBOUNDER

Williams	6
Cosper	5
Thomas	2
Monk	1
Zimmerman	1
Mason	1

DOUBLE DOUBLES

Devin Cosper	SHSU, ORU, NMSU, Char., Tulsa, OM
Williams	NMSU, GSU
Monk	GSU

5+ASSISTS/10+ ASSISTS

Monk	6/1
Mason	3/-
Northcross-Baker	1/-

FIRST OFF THE BENCH

Thomas	10
Northcross-Baker	9
Swenson	6
Williams	1

CHARGES DRAWN

Monk	4
Cosper	2
Northcross-Baker	1
Thomas	1

FORCED 10 SECOND VIOLATION

2017-18	TBA
---------	-----

FORCED SHOT CLOCK VIOLATION

2017-18	5
---------	---

FORCED INBOUND VIOLATION

2017-18	TBA
---------	-----

AND 1

Malica Monk	8
Kiara Williams	6
Devin Cosper	4
Bailey Zimmerman	2
Jailyn Mason	1
Raven Northcross-Baker	1
Macy Weaver	1
Keiryn Swenson	1

AND 1 CONVERSIONS

Monk	7
Williams	3
Cosper	3
Bailey Zimmerman	2
Northcross-Baker	1
Swenson	1

BUZZER BEATERS

Mason	1 (ACU)
http://bit.ly/2BBY8ua	
Swenson	1 (Kansas)

- »Six career double-doubles all set this season (SHSU, Oral Roberts, NMSU, Charlotte, Tulsa, Ole Miss).
- »Made at least one 3-pointer in each game this year.
- »**Seventeen consecutive games** (last four games of 2016-17) with at least one 3-pointer.
- »Double-figure scoring in a single quarter three times this year (10 | 10 | Nebraska || 12 | 10 | ORU || 11 | 40 | UTEP). That ties the most in a single season by a Razorback since Jessica Jackson in 2014-15.
- »Has 39 3-point field goals made this year (1.2.18) bettering her career best of 25 in a season (2015-16).
- »Has scored 230 points this year (1.2.18) - more than all of last season (187).

JAILYN MASON QUIETLY SHINNING

- »Overshadowed by the gaudy numbers tallied by Devin Cosper and Malica Monk, sophomore Jailyn Mason is also putting together a solid season.
- »She has seven games in double figure scoring including a streak of five in a row (ACU-UTA).
- »She has three games with 5+ assists.
- »Has played multiple positions on the floor.
- »While Malica Monk is the spark plug that gets the team going, Jailyn Mason is the captain who takes control and steers the ship.

KIARA WILLIAMS STEPPING UP

- »First career double-double with 11 points and 11 rebounds versus New Mexico State. Second one against GSU with 12 points and 16 boards.
- »Five career games (all this season) with 10+ rebounds.
- »Posted a career-best 16 rebounds at Kansas, tying it versus GSU.
- »Tallied a career-best 12 points in a win over ACU and was in double figures in the first half for the first time in her career.

TAKING CARE OF THE BALL

- »Arkansas has forced its opponents to turnover the ball more times than they have in 12 of 14 games and tied the opponent in TO's once (NMSU).
- »Arkansas has forced double digit turnovers in 12 games while committing single digit miscues in five games.
- »Arkansas has collected double digit steals in six games.
- »Arkansas **leads the SEC** and ranks **eighth in the country** (1/2/18) averaging 11.8 turnovers per game.
- »Arkansas ranks **first in the SEC** in with 165 total turnovers.
- »According to HerHoopStats.com, Arkansas has a 13.4% turnover rate which ranks seventh of 349 programs. That means the Razorbacks commit a turnover on just 13.4% of the possessions that they 1) took a shot, 2) got to the foul line or 3) had a turnover.

FROM DISTANCE

- »Arkansas ranks **second in the SEC** with 8.2 made 3-pointers per game and in 3-point field goals made with 115.
- »Arkansas **leads the SEC** with 3-pointers attempted with 385. That mark is also **11th in the NCAA**.

RALLY RAZORBACKS

- »The Razorbacks have had to come from behind to win in four games this year.
- »Arkansas trailed by 13 points in the second quarter against SHSU and rallied for the 11-point win at home.
- »Arkansas trailed at Oral Roberts by six points in the first quarter and came back to win by 11 points on the road.
- »The Razorbacks trailed by seven points against New Mexico State on a neutral court and rallied late to win by nine.
- »Arkansas trailed Charlotte, 37-30, at the half and the teams were tied at

Devin Cosper
Chelsea Dungee
A'Tyanna Gaulden
Jailyn Mason
Malica Monk
Raven Northcross-Baker
Grayce Spangler
Sydney Stout
Keiryn Swenson
Taylah Thomas
Macy Weaver
Kiara Williams
Bailey Zimmerman

Communication (undergrad & Masters)
Rec. & Sport Management
Journalism: Broadcast
Journalism: News/Editorial
Rec. & Sport Management
Criminal Justice
Communication
Management
Accounting
Nursing
Kinesiology
Childhood Development
Apparel Merch./Product Dev.



the end of the third quarter before the Razorbacks escaped with a one-point win.

HOW CLOSE ARE THOSE LOSSES?

- »Arkansas trailed Nebraska by three, 72-69, with 2:36 remaining in the game. Nebraska finished with a 7-0 run to win the game.
- »After going 0-for-15 in the first quarter at UTEP, the Razorbacks rallied. Arkansas trailed the Miners by one, 62-61, with :38 seconds remaining in the game. UTEP hit a jumper with :08 seconds to seal the win.
- »Arkansas trimmed the Kansas lead to four points, 57-53, at the 5:44 mark of the fourth quarter and trailed by two possessions, 66-60, with :39 seconds to go.

LINEUPS

- »Arkansas' most common lineup has been Monk, Williams, Mason, Cosper and Zimmerman. This lineup has started 12 of 13 games.
- »This group has played 136:06 minutes together, scored 248 points and allowed 203 points for a +45 rating and a +13.23 points per 40 minutes
- »The second most common lineup is Monk, Cosper, Thomas, Northcross-Baker and Swenson.
- »This group has played 47:08 minutes together scoring 92 points and allowing 74. This is +18 and +1529 per 40 minutes.

SHARING THE BALL

Eleven of 12 Razorbacks have scored in games this year. Eleven have played and all have attempted a shot. Six of 12 players have recorded double figure points for the season.

BLOCKING WELL

Kiara Williams leads the team with 20 blocked shots through the first 13 games. Williams had only five blocks for the entire season a year ago. The sophomore record is 58 set by Sarah Watkins in 2010-11.

DID YOU KNOW

That Arkansas head coach Mike Neighbors was cut from the Razorback baseball team? He walked on and legendary head coach Norm DiBryan nudged him in the coaching direction saying "You always seem to be in the right place but you don't always make the play."

THE SCHEDULE

Arkansas' non-conference schedule features four teams who went to the post season a year ago. Arizona State played in the first round of the NCAA Tournament while Abilene Christian, UT-Arlington and Grambling were all WNIT teams a year ago. UTA was eliminated in the first round while Abilene Christian and Grambling both reached round two.

The always-tough SEC schedule features eight NCAA Tournament teams including the NCAA Champion South Carolina and the runner up, Mississippi State. Auburn and LSU were eliminated in the first round while Kentucky, Missouri, Tennessee and Texas A&M all bowed out in round two. In addition, Alabama and Ole Miss advanced to the WNIT Tournament. That means Arkansas faces 14 teams who played in the postseason a year ago.

DOUBLE FIGURES IN A QUARTER

Cosper
10, 10, at Nebraska
12, 10, at ORU
11, 40, at UTEP
Monk
10, 30, at Nebraska
13, 40, at ORU
10, 40, at Kansas
Mason
11, 30, UTA
Northcross-Baker
12, 40, UTA

AGAINST THE POLL

This week's (Jan. 1) Associated Press poll features five SEC teams. Arkansas' schedule is headlined by No. 4 South Carolina with No. 5 Mississippi State right on the Gamecocks' heels. Tennessee is No. 7, followed by No. 15 Missouri, and No. 19 Texas A&M. Arizona State jumps in the poll at No. 25 this week.

This week's USA Today Coaches Poll has Mississippi State at No. 3, followed by No. 5 South Carolina, No. 7 Tennessee, No. 15 Missouri, and No. 19 Texas A&M. Arizona State (29) (5) is getting votes.

HOME SWEET HOME

»Arkansas has had just one losing home season in 41 years (prior to 2017-18)
»Arkansas is 422-139 (8-0 in '17-18) in home games including a 263-104 record in Bud Walton Arena. Arkansas was 159-35 in Barnhill Arena.

AP TOP 25 (1/21/2018)

RK	TEAM	RECORD	PTS
1	Connecticut (32)	11-0	800
2	Notre Dame	13-1	750
3	Louisville	16-0	736
4	South Carolina	12-1	680
5	Mississippi State	15-0	677
6	Baylor	12-1	634
7	Tennessee	13-0	619
8	Texas	11-1	600
9	Oregon	13-2	515
10	Ohio State	13-2	485
11	Florida State	13-1	455
12	West Virginia	13-1	453
13	Maryland	13-2	420
14	UCLA	10-3	371
15	Missouri	13-1	362
16	Oregon State	11-2	323
17	Duke	11-3	291
18	Iowa	14-1	228
19	Texas A&M	11-4	172
20	Oklahoma State	11-2	161
21	Villanova	11-1	126
22	Michigan	12-3	105
23	California	10-3	94
24	Stanford	8-6	85
25	Arizona State	11-3	67

Others receiving votes: South Florida 65, Rutgers 47, Green Bay 46, Miami 14, New Mexico 7, Syracuse 3, Georgia Tech 3, NC State 2, Navy 1, Brown 1, Virginia Tech 1, DePaul 1

USA TODAY TOP 25 COACHES POLL - 1/2/2018

Rank	School	RECORD	PTS
1	Connecticut (32)	11-0	800
2	Notre Dame	13-1	745
3	Mississippi State	15-0	725
4	Louisville	16-0	718
5	South Carolina	12-1	676
6	Baylor	12-1	634
7	Tennessee	13-0	596
8	Texas	11-1	586
9	Oregon	13-2	529
10	Ohio State	13-2	494
11	West Virginia	13-1	466
12	Florida State	13-1	463
13	Maryland	13-2	423
14	UCLA	10-3	377
15	Missouri	13-1	353
16	Oregon State	11-2	318
17	Iowa	14-1	255
18	Duke	11-3	254
19	Texas A&M	11-4	157
20	Michigan	12-3	152
21	Villanova	11-1	144
22	South Florida	11-3	131
23	Oklahoma State	11-2	115
24	Green Bay	11-2	59
25	Rutgers	14-2	54

Others receiving votes: DePaul 42, Arizona State 29, Georgia Tech 20, Syracuse 19, California 17, New Mexico 16, Stanford 15, Miami 10, Marquette 3, NC State 3, Virginia 1, South Alabama 1

WHAT'S MY NUMBER

Transfer Chelsea Dungee has a unique background to her jersey number selection. Here is the story in her own words:

I have always played in #22. Every competitive team and school ball team I have always worn #22. #22 was the number my mom played basketball in throughout her high school career. So, I wore #22. A year ago I changed my jersey number to #33. My cousin (more like brother), Reuben, suffered a traumatic brain injury while playing in a high school football game last season and he wore jersey #33. I play in jersey #33 for Reuben. Playing with #33 on back is a reminder that 'Reub' has my back, and I have his.

QUARTER BY QUARTER SCORING

Date	Opponent	W/L	1st	2nd	1st Half	3rd	4th	2nd Half	OT	Total
Nov. 2	NE State (exh)	W, 82-74	20	15	35	18	29	47	-	82*
Nov. 10	SHSU	W, 65-54	5	18	23	23	19	41	-	65
Nov. 12	Samford	W, 84-63	17	15	32	16	26	42	-	84
Nov. 16	Nebraska	L, 80-69	19	11	30	22	17	49	-	69
Nov. 20	ORU	W, 77-66	25	15	40	16	21	37	-	77
Nov. 24	UTEP	L, 64-61	3	17	20	16	25	41	-	61
Nov. 25	New Mexico State	W, 69-60	11	12	23	24	22	46	-	69
Nov. 29	Abilene Christian	W, 79-65	20	14	34	20	25	45	-	79
Dec. 3	Kansas	L, 71-60	12	10	22	21	17	38	-	60
Dec. 7	UNC-C	W, 73-72	13	16	30	19	24	43	-	73
Dec. 10	Tulsa	W, 67-41	21	14	35	13	19	32	-	67
Dec. 17	UTA	W, 91-57	14	23	37	26	28	54	-	91
Dec. 21	Arizona State	L, 89-43	8	6	14	11	18	29	-	43
Dec. 28	Grambling State	W, 79-62	15	25	40	25	14	39	-	79
NonConf Totals			183	196	380	252	270	583	-	917
NonConf Averages			14.1	15.01	29.2	19.4	20.8	44.8	-	70.5
NonConf Highs			25	25	40 (2x)	26	28	54	-	91
NonConf Lows			3	6	14	11	17	29	-	43
*Not included in averages										
Dec. 31	Ole Miss	W, 73-72	19	18	37	25	11	36	-	73
Jan. 4	Mississippi State									
Jan. 7	Alabama									
Jan. 11	Georgia									
Jan. 14	Auburn									
Jan. 18	Florida									
Jan. 21	Missouri									
Jan. 25	South Carolina									
Jan. 29	Kentucky									
Feb. 4	Alabama									
Feb. 8	Tennessee									
Feb. 11	Missouri									
Feb. 15	Kentucky									
Feb. 18	LSU									
Feb. 22	Texas A&M									
Feb. 25	Vanderbilt									
SEC Totals			19	18	37	25	11	36	-	73
SEC Averages			19	18	37	25	11	36	-	73
SEC Highs			19	18	37	25	11	36	-	73
SEC Lows			19	18	37	25	11	36	-	73
Season Totals			202	214	417	277	281	619	-	990
Season Averages			14.4	15.3	29.8	19.8	20.1	44.2	-	70.7
Season Highs			25	25	40 (2x)	26	28	54	-	91
Season Lows			3	6	14	11	17	29	-	43

BY STARTERS

Date	Opponent						
Nov. 2	NE State (exh) - W	Monk	Williams	Mason	Cosper	Zimmerman	
Nov. 10	SHSU - W	Monk	Williams	Mason	Cosper	Zimmerman	
Nov. 12	Samford - W	Monk	Williams	Mason	Cosper	Zimmerman	
Nov. 16	Nebraska - L	Monk	Williams	Mason	Cosper	Zimmerman	
Nov. 20	ORU - W	Monk	Williams	Mason	Cosper	Zimmerman	
Nov. 25	UTEP - W	Monk	Williams	Mason	Cosper	Zimmerman	
Nov. 26	New Mexico State - W	Monk	Williams	Mason	Cosper	Zimmerman	
Nov. 29	Abilene Christian - W	Monk	Williams	Mason	Cosper	Zimmerman	
Dec. 3	Kansas - L	Monk	Williams	Mason	Cosper	Zimmerman	
Dec. 7	UNC-C - W	Monk	Williams	Mason	Cosper	Zimmerman	
Dec. 10	Tulsa - W	Monk	Williams	Mason	Cosper	Zimmerman	
Dec. 17	UTA - W	Monk	Thomas	Mason	Cosper	Zimmerman	
Dec. 21	Arizona State - L	Monk	Williams	Mason	Cosper	Zimmerman	
Dec. 28	Grambling - W	Monk	Williams	Mason	Cosper	Zimmerman	
Dec. 31	Ole Miss - W	Monk	Williams	Mason	Cosper	Zimmerman	
Jan. 4	Mississippi State						
Jan. 7	Alabama						
Jan. 11	Georgia						
Jan. 14	Auburn						
Jan. 18	Florida						
Jan. 21	Missouri						
Jan. 25	South Carolina						
Jan. 29	Kentucky						
Feb. 4	Alabama						
Feb. 8	Tennessee						
Feb. 11	Missouri						
Feb. 15	Kentucky						
Feb. 18	LSU						
Feb. 22	Texas A&M						
Feb. 25	Vanderbilt						

MISCELLANEOUS STATISTICS

Double-Figure Scoring Games				
Player	15-16	16-17	17-18	Career
M. Monk	3	13	14	30
K. Swenson		11	1	12
J. Mason		10	7	17
D. Cosper	15	8	12	35
B. Zimmerman		2		2
T. Thomas	-	-	1	1
K. Williams	-	-	5	5
R. Northcross-Baker	-	-	3	3
TOTAL	18	44	43	105
20-Point Scoring Games				
Player	15-16	16-17	17-18	Career
K. Swenson		1		1
D. Cosper	1	-	4	5
M. Monk	-	-	6	6
R. Northcross-Baker			1	1
TOTAL	1	1	9	11
Double-Figure Rebounding Games				
Player	15-16	16-17	17-18	Career
D. Cosper	-	-	6	6
T. Thomas	-	-	1	1
K. Williams	-	-	5	5
TOTAL	x	x	12	12
Double-Doubles				
Player	15-16	16-17	17-18	Career
J. Mason (pts/ast)	-	2		2
D. Cosper (pts/reb)	-	-	6	6
K. Williams (pts/reb)	-	-	2	2
M. Monk (pts/ast)	-	-	1	1
TOTAL	-	2	9	11
5+ Steals				
Player	15-16	16-17	17-18	Career
M. Monk	-	2	-	2
TOTAL	x	2	-	2
5+ Blocks				
Player	15-16	16-17	17-18	Career
TBA	-			
TOTAL	-	x	x	x
5+ Assists				
Player	15-16	16-17	17-18	Career
M. Monk	3	4	6	13
J. Mason		6	3	9
D. Cosper		2		2
TOTAL	3	12	9	24



@RazorbackWBB STATISTICS
Arkansas Combined Team Statistics (as of Dec 31, 2017)
All games



RECORD:	OVERALL	HOME	AWAY	NEUTRAL
ALL GAMES	10-4	8-0	1-4	1-0
CONFERENCE	1-0	1-0	0-0	0-0
NON-CONFERENCE	9-4	7-0	1-4	1-0

					Total		3-Point		F-Throw		Rebounds															
##	Player	gp-gs	min	avg	fg-fga	fg%	3fg-fga	3fg%	ft-fa	ft%	off	def	tot	avg	pf	dq	a	to	blk	stl	pts	avg				
03	MONK, Malica	14-14	472	33.7	81-206	.393	13-49	.265	61-76	.803	11	39	50	3.6	28	1	61	34	2	28	236	16.9				
21	COSPER, Devin	14-14	453	32.4	83-226	.367	39-124	.315	25-36	.694	13	82	95	6.8	35	0	18	35	9	22	230	16.4				
14	MASON, Jailyn	14-14	425	30.4	55-142	.387	21-56	.375	2-5	.400	5	53	58	4.1	24	1	45	24	8	20	133	9.5				
10	WILLIAMS, Kiara	14-13	283	20.2	41-86	.477	0-0	.000	23-45	.511	50	65	115	8.2	34	1	5	12	20	18	105	7.5				
01	NORTHCROSS-BAKE	14-0	281	20.1	33-90	.367	19-61	.311	17-25	.680	17	24	41	2.9	20	0	20	15	1	8	102	7.3				
04	SWENSON, Keiryn	14-0	230	16.4	27-73	.370	18-53	.340	7-11	.636	13	27	40	2.9	16	0	6	15	6	4	79	5.6				
24	THOMAS,Taylah	14-1	223	15.9	17-39	.436	3-7	.429	18-28	.643	28	42	70	5.0	26	1	2	10	4	5	55	3.9				
22	ZIMMERMAN, Bailey	14-14	304	21.7	12-59	.203	1-28	.036	10-16	.625	17	22	39	2.8	22	0	13	14	7	5	35	2.5				
20	STOUT, Sydney	8-0	36	4.5	1-6	.167	1-3	.333	3-6	.500	3	4	7	0.9	1	0	1	1	0	0	6	0.8				
30	WEAVER, Macy	10-0	60	6.0	2-6	.333	0-0	.000	2-5	.400	7	9	16	1.6	13	0	1	2	7	1	6	0.6				
13	SPANGLER, Grayce	9-0	33	3.7	0-8	.000	0-4	.000	3-5	.600	0	4	4	0.4	5	0	0	2	0	0	3	0.3				
Team											30	28	58		2			1								
Total.....		14	2800		352-941	.374	115-385	.299	171-258	.663	194	399	593	42.4	226	4	172	165	64	111	990	70.7				
Opponents.....		14	2800		342-894	.383	86-281	.306	146-213	.685	176	424	600	42.9	249	2	193	219	47	82	916	65.4				

TEAM STATISTICS	AR	OPP
SCORING	990	916
Points per game	70.7	65.4
Scoring margin	+5.3	-
FIELD GOALS-ATT	352-941	342-894
Field goal pct	.374	.383
3 POINT FG-ATT	115-385	86-281
3-point FG pct	.299	.306
3-pt FG made per game	8.2	6.1
FREE THROWS-ATT	171-258	146-213
Free throw pct	.663	.685
F-Throws made per game	12.2	10.4
REBOUNDS	593	600
Rebounds per game	42.4	42.9
Rebounding margin	-0.5	-
ASSISTS	172	193
Assists per game	12.3	13.8
TURNOVERS	165	219
Turnovers per game	11.8	15.6
Turnover margin	+3.9	-
Assist/turnover ratio	1.0	0.9
STEALS	111	82
Steals per game	7.9	5.9
BLOCKS	64	47
Blocks per game	4.6	3.4
ATTENDANCE	15150	10628
Home games-Avg/Game	8-1894	5-2076
Neutral site-Avg/Game	-	1-250

Date	Opponent	Score	Att.
11/10/17	SHSU	w 65-54	4719
11/12/17	SAMFORD	w 84-63	1739
11/16/17	at Nebraska	L 69-80	3459
11/20/17	at Oral Roberts	w 77-66	2503
11/24/17	at UTEP	L 61-64	633
11/25/17	vs NM State	w 69-60	250
11/29/17	ACU	w 79-65	1132
12/03/17	at Kansas	L 60-71	1795
12/07/17	CHARLOTTE	w 73-72	1169
12/10/17	TULSA	w 67-41	1821
12/17/17	UT-ARLINGTON	w 91-57	1481
12/21/17	at Arizona State	L 43-89	1988
12/28/17	GRAMBLING	w 79-62	1388
* 12/31/17	OLE MISS	w 73-72	1701

* - Conference game

Score by Periods	1st	2nd	3rd	4th	Totals
Arkansas	213	214	277	286	990
Opponents	231	216	225	244	916



@RazorbackWBB STATISTICS
Arkansas Combined Team Statistics (as of Dec 31, 2017)
Conference games only



RECORD:	OVERALL	HOME	AWAY	NEUTRAL
ALL GAMES	1-0	1-0	0-0	0-0
CONFERENCE	1-0	1-0	0-0	0-0
NON-CONFERENCE	0-0	0-0	0-0	0-0

##	Player	gp-gs	min	avg	Total		3-Point		F-Throw		Rebounds				pf	dq	a	to	blk	stl	pts	avg
					fg-fga	fg%	3fg-fga	3fg%	ft-fa	ft%	off	def	tot	avg								
21	COSPER, Devin	1-1	39	39.0	7-15	.467	2-5	.400	2-3	.667	1	10	11	11.0	3	0	1	6	1	4	18	18.0
14	MASON, Jaily	1-1	33	33.0	5-11	.455	3-4	.750	0-0	.000	0	2	2	2.0	3	0	4	1	1	1	13	13.0
03	MONK, Malica	1-1	39	39.0	4-13	.308	0-3	.000	4-8	.500	1	1	2	2.0	1	0	4	3	0	1	12	12.0
01	NORTHCROSS-BAKE	1-0	28	28.0	3-5	.600	1-2	.500	2-2	1.000	2	1	3	3.0	0	0	0	1	0	0	9	9.0
04	SWENSON, Keiryn	1-0	12	12.0	3-8	.375	1-6	.167	1-1	1.000	3	1	4	4.0	1	0	0	2	1	0	8	8.0
24	THOMAS,Taylah	1-0	17	17.0	2-3	.667	1-1	1.000	1-2	.500	3	0	3	3.0	2	0	0	1	0	0	6	6.0
10	WILLIAMS, Kiara	1-1	23	23.0	1-5	.200	0-0	.000	3-4	.750	2	7	9	9.0	5	1	1	0	4	1	5	5.0
22	ZIMMERMAN, Bailey	1-1	9	9.0	1-1	1.000	0-0	.000	0-0	.000	1	0	1	1.0	2	0	1	1	0	0	2	2.0
Team											1	2	3		1							
Total.....		1	200		26-61	.426	8-21	.381	13-20	.650	14	24	38	38.0	18	1	11	15	7	7	73	73.0
Opponents.....		1	200		23-55	.418	7-18	.389	19-26	.731	10	24	34	34.0	17	1	14	17	4	6	72	72.0

TEAM STATISTICS	AR	OPP
SCORING	73	72
Points per game	73.0	72.0
Scoring margin	+1.0	-
FIELD GOALS-ATT	26-61	23-55
Field goal pct	.426	.418
3 POINT FG-ATT	8-21	7-18
3-point FG pct	.381	.389
3-pt FG made per game	8.0	7.0
FREE THROWS-ATT	13-20	19-26
Free throw pct	.650	.731
F-Throws made per game	13.0	19.0
REBOUNDS	38	34
Rebounds per game	38.0	34.0
Rebounding margin	+4.0	-
ASSISTS	11	14
Assists per game	11.0	14.0
TURNOVERS	15	17
Turnovers per game	15.0	17.0
Turnover margin	+2.0	-
Assist/turnover ratio	0.7	0.8
STEALS	7	6
Steals per game	7.0	6.0
BLOCKS	7	4
Blocks per game	7.0	4.0
ATTENDANCE	1701	0
Home games-Avg/Game	1-1701	0-0
Neutral site-Avg/Game	-	0-0

Date	Opponent	Score	Att.
* 12/31/17	OLE MISS	w 73-72	1701

* - Conference game

Score by Periods	1st	2nd	3rd	4th	Totals
Arkansas	19	18	25	11	73
Opponents	14	18	18	22	72

MORE NUMBERS

MISCELLANEOUS

Opponent	T/O	2ndCh	Paint	FastB	Bench	Ties	Leads	WL	Score	Leads overcome
SHSU	15	5	28	14	13	1	1	W	65-54	trailed by 13/20-07:26
Samford	18	5	30	3	23	0	0	W	84-63	
Nebraska	12	14	32	10	11	3	1	L	69-80	lost 2 4th-0:6:21
ORU	15	6	32	18	16	1	1	W	77-66	trailed by 6 1st-04:58
UTEP	22	18	18	14	16	0	0	L	61-64	
NM State	17	16	34	13	15	2	4	W	69-60	trailed by 7 1st-01:06
ACU	28	9	20	0	25	0	1	W	79-65	trailed by 1 1st-09:21
Kansas	10	8	28	6	6	1	1	L	60-71	lost 2 1st-08:40
Charlotte	15	17	32	8	6	1	8	W	73-72	trailed by 9 3rd-9:40
Tulsa	7	13	30	6	12	0	1	W	67-41	trailed by 2 1st-09:14
UTA	23	13	26	17	42	3	2	W	91-57	trailed by 6 1st-4:54
Arizona St.	3	8	22	6	12	0	0	L	43-89	lost 2 1st-09:43
Grambling	18	11	22	3	33	0	0	W	79-62	
Ole Miss	13	10	26	10	23	0	1	W	73-72	trailed by 1 2nd-04:33
Totals	216	153	380	128	253	12	21			
Ave/Game	15.4	10.9	27.1	9.1	18.1	0.9	1.5			
Opponent	172	138	448	67	299	13	19			
Ave/Game	12.3	9.9	32.0	4.8	21.4	0.9	1.4			

GAME BY GAME LEADERS

Date	Opponent	Points	Rebounds	Assists	Steals	Blocks
Nov. 10	SHSU	Monk (18)	Cosper (10)	2 Players (4)	Monk (4)	Mason (3)
Nov. 12	Samford	Monk (21)	2 Players (9)	2 Players (6)	3 Players (3)	Williams (4)
Nov. 16	Nebraska	Monk (22)	2 Players (11)	Monk (6)	Mason (4)	4 Players (2)
Nov. 20	ORU	Monk (24)	Cosper (10)	Monk (4)	Cosper (2)	2 Players (1)
Nov. 24	UTEP	Cosper (22)	Cosper (5)	Monk (5)	Cosper (4)	Weaver (4)
Nov. 25	NMSU	Monk (22)	2 Players (11)	Cosper (4)	Monk (4)	2 Players (1)
No. 29	A. Christian	2 Players (15)	Williams (8)	Mason (8)	Williams (3)	2 Players (1)
Dec. 3	Kansas	Monk (22)	Williams (16)	Monk (5)	Mason (2)	Williams (2)
Dec. 7	Charlotte	Cosper (25)	Cosper (14)	Mason (4)	Williams (4)	Williams (3)
No. 10	Tulsa	Monk (14)	Cosper (11)	Mason (6)	2 Players (1)	2 Players (2)
No. 17	UTA	RNB (22)	Williams (8)	Mason (7)	2 Players (3)	2 Players (1)
Dec. 21	Az State	Monk (12)	3 Players (4)	Monk (2)	Monk (1)	4 Players (1)
Dec. 28	Grambling	Cosper (16)	Williams (16)	Monk (10)	Monk (3)	Monk (1)
Dec. 31	Ole Miss	Cosper (18)	Cosper (11)	2 Players (4)	Cosper (4)	Williams (4)
Jan. 4	Miss State					
Jan. 7	Alabama					
Jan. 11	Georgia					
Jan. 14	Auburn					
Jan. 18	Florida					
Jan. 21	Missouri					
Jan. 25	S Carolina					
Jan. 29	Kentucky					
Feb. 4	Alabama					
Feb. 8	Tennessee					
Feb. 11	Missouri					
Feb. 15	Kentucky					
Feb. 18	LSU					
Feb. 22	Texas A&M					
Feb. 25	Vanderbilt					

SPECIALTY STATS

Opponent	Paint	OFF TO	2ND CHANCE	FAST BREAK	BENCH
SHSU	28	15	5	14	13
Samford	30	18	5	3	23
Nebraska	32	12	14	10	11
ORU	32	15	6	18	16
UTEP	18	22	18	14	16
NMSU	34	17	16	13	15
Ab. Christian	20	28	9	0	25
Kansas	28	10	8	6	6
Charlotte	32	15	17	8	6
Tulsa	30	7	13	6	12
UTA	26	23	13	17	42
Arizona State	22	3	8	6	12
Grambling State	22	18	11	3	33
Ole Miss	26	13	10	10	23
Miss State					
Alabama					
Georgia					
Auburn					
Florida					
Missouri					
S. Carolina					
Kentucky					
Alabama					
Tennessee					
Missouri					
Kentucky					
LSU					
Texas A&M					
Vanderbilt					

COMPARISON



@RazorbackWBB STATISTICS Arkansas Team Game-by-Game Comparison (as of Dec 31, 2017) All games



Opponent	1st	2nd	Score	Mar	Total FG	FG Pct	3-Pointers	3FG Pct	Free Throws	FT Pct	Rebounds	Assist	T/Over	Block	Steal	Fouls
SHSU	23/28	42/26	65-54	+11	25-67/20-63	.373/.317	9-33/7-27	.273/.259	6-11/7-11	.545/.636	39/51 (12)	15/10	9/15	7/5	8/3	12/14
SAMFORD	42/33	42/30	84-63	+21	29-59/23-59	.492/.390	10-27/6-22	.370/.273	16-22/11-14	.727/.786	35/34 +1	17/17	6/13	4/1	7/3	15/23
Nebraska	30/41	39/39	69-80	(11)	27-77/28-72	.351/.389	8-32/7-21	.250/.333	7-10/17-25	.700/.680	45/55 (10)	10/17	15/16	8/6	12/7	23/12
Oral Roberts	40/36	37/30	77-66	+11	29-70/22-58	.414/.379	6-23/7-22	.261/.318	13-18/15-19	.722/.789	41/41 -	8/12	4/14	2/0	5/2	18/20
UTEP	20/38	41/26	61-64	(3)	21-70/27-53	.300/.509	11-41/5-13	.268/.385	8-14/5-7	.571/.714	27/51 (24)	13/19	4/23	4/0	14/1	15/13
NM State	23/25	46/35	69-60	+9	25-70/23-67	.357/.343	6-26/4-18	.231/.222	13-24/10-14	.542/.714	55/41 +14	10/9	18/18	3/2	12/10	15/21
ACU	34/24	45/41	79-65	+14	25-68/24-69	.368/.348	10-25/11-34	.400/.324	19-27/6-11	.704/.545	44/43 +1	13/17	12/20	4/6	13/8	13/21
Kansas	22/30	38/41	60-71	(11)	22-69/25-62	.319/.403	5-27/3-15	.185/.200	11-15/18-25	.733/.720	40/50 (10)	7/9	13/15	6/5	3/8	24/17
CHARLOTTE	30/37	43/35	73-72	+1	26-75/27-74	.347/.365	9-31/5-13	.290/.385	12-24/13-20	.500/.650	45/58 (13)	11/15	10/17	5/3	10/7	19/20
TULSA	35/24	32/17	67-41	+26	25-67/16-69	.373/.232	6-29/2-16	.207/.125	11-19/7-10	.579/.700	61/39 +22	13/5	9/7	7/3	2/4	10/16
UT-ARLINGTON	37/24	54/33	91-57	+34	30-65/22-54	.462/.407	12-28/3-15	.429/.200	19-21/10-16	.905/.625	40/27 +13	19/10	14/22	2/2	11/6	21/21
Arizona State	14/52	29/37	43-89	(46)	17-57/37-73	.298/.507	4-18/12-20	.222/.600	5-6/3-6	.833/.500	35/41 (6)	7/27	23/8	4/4	1/11	12/13
GRAMBLING	40/23	39/39	79-62	+17	25-66/25-66	.379/.379	11-24/7-27	.458/.259	18-27/5-9	.667/.556	48/35 +13	18/12	13/14	1/6	6/6	11/21
OLE MISS	37/32	36/40	73-72	+1	26-61/23-55	.426/.418	8-21/7-18	.381/.389	13-20/19-26	.650/.731	38/34 +4	11/14	15/17	7/4	7/6	18/17

Note: Game totals are displayed in the format TEAM/OPPONENT for each category



@RazorbackWBB STATISTICS Arkansas Points-Rebounds-Assists (as of Dec 28, 2017) All games

Opponent	Date	Score	01	03	04	10	13	14	20	21	22	24	30
SHSU	11/10/17	65-54 w	3-2-2	18-2-4	5-1-0	7-2-1	0-0-0	8-5-4	1-1-0	17-12-2	2-3-2	4-4-0	0-0-0
SAM	11/12/17	84-63 w	0-1-6	21-9-6	9-0-1	10-5-0	0-1-0	12-1-2	1-1-0	18-5-2	0-0-0	13-9-0	0-0-0
at NEB	11/16/17	69-80 L	3-4-0	22-3-6	3-3-0	6-11-1	DNP	8-5-2	DNP	21-4-0	1-0-0	5-11-1	DNP
at ORU	11/20/17	77-66 w	8-1-1	24-3-4	6-2-0	8-5-0	DNP	6-2-1	DNP	21-10-1	2-4-1	2-9-0	DNP
at UTEPW	11/24/17	61-64 L	7-2-3	10-2-5	6-2-0	1-1-0	0-0-0	8-4-2	0-0-0	22-5-0	4-3-2	1-4-0	2-3-1
vs NMSU	11/25/17	69-60 w	7-2-0	22-7-2	5-6-0	11-11-0	DNP	3-6-2	DNP	17-11-4	1-3-2	3-7-0	DNP
ACU	11/29/17	79-65 w	15-3-1	15-2-1	3-2-0	12-8-0	0-0-0	13-7-8	0-1-0	11-3-1	3-6-2	7-7-0	0-1-0
at KU	12/03/17	60-71 L	2-2-1	21-7-5	4-2-0	6-16-0	0-0-0	10-2-1	DNP	17-3-0	0-2-0	0-0-0	0-0-0
CHA	12/07/17	73-72 w	3-3-1	15-4-3	3-2-0	9-12-0	DNP	12-4-4	DNP	25-14-2	6-3-1	0-0-0	0-2-0
TLS	12/10/17	67-41 w	1-9-1	14-4-3	7-6-0	13-7-2	0-1-0	11-5-6	0-1-0	11-11-0	6-7-1	4-7-0	0-1-0
UTA	12/17/17	91-57 w	22-4-3	20-1-6	10-5-2	2-8-0	3-1-0	15-4-7	4-2-0	8-1-1	6-3-0	0-4-0	1-5-0
at ASU	12/21/17	43-89 L	8-1-1	12-2-2	2-3-1	3-4-0	0-1-0	6-4-1	0-0-0	8-1-1	2-4-1	2-3-0	0-1-0
GRAMWBB	12/28/17	79-62 w	14-4-0	10-2-10	8-2-2	12-16-0	0-0-0	8-7-1	0-1-1	16-4-3	0-0-0	8-2-1	3-3-0

THE LAST TIME A RAZORBACK TEAM ...

OFFENSE

Scored 110+	110, vs. Providence (11/16/98)
Scored 100+ points at home	101, Houston Baptist, 12-28-16
Scored 100+ points on the road	108, Baylor (3-6-91; SWC Tourn., Dallas, Texas)
Scored 90-99 points	91 vs. UTA, 12-17-17
Scored 90+ points at home	101, Houston Baptist, 12-28-16
Scored 90+ points on the road	91, (91-80 Win in 30T, 2-10-13, at Alabama)
Scored 80-89 points	84, Samford (11-12-17)
Scored 80-89 points at home	86, Mississippi Valley State (12-28-15)
Scored 80-89 points on the road	88, Southeast Missouri (NM) (11-29-13)
Scored 70-79 points	73, Ole Miss, 12-31-17
Scored 70-79 points at home	73, Ole Miss, 12-31-17
Scored 70-79 points on the road	77 at Ole Miss, 1-31-13
Scored 60-69 points	67, Tulsa, 12-10-17
Was held to 50-59	56 at Missouri, 2-12-17
Was held to 49-40	43 at Arizona State, 12-21-17
Was held to 39-20	32, at No. 2 South Carolina (1-3-16)
Was held to 20 or less	N/A
Made 30-39 field goals	30 vs. UTA, 12-17-17
Made 20-29 field goals	26, Ole Miss, 12-31-17
Made 10-19 field goals	17 at Arizona State, 12-21-17
Made 10 three-point field goals	11, Grambling State, 12-28-17
Did not make a three point basket (began in 1986)	0-10, at Mississippi State (L 44-47), 2-3-13
Made 30 free throws	38 at Florida (38-54); (2-22-04)
Made 15+ Free Throws	18, Grambling State, 12-28-17
Shot 40-49 or better from the field	42.6% (26-61), Ole Miss, 12-31-17
Shot 50-59 or better from the field	52.1 (38-73), Houston Baptist, 12-28-16
Shot 60 percent or better from the field600 (36-60) vs. Ole Miss (W, 93-52; 3-3-13)
Held to less than 40 percent from the field	37.9% (25-66), Grambling State, 12-28-17
Held to less than 30 percent from the field	29.8 (17-57) at Arizona State, 12-21-17
Held to less than 20 percent from the field182 (10-55) vs. No. 6/7 Tennessee (1-8-12; L, 38-69)
Allowed opponent to shoot over 50% from the field	50.7% (37-73) at Arizona State, 12-21-17
Held opponent to less than 40% from the field	37.9% (25-66), Grambling State, 12-28-17
Held opponent to less than 30% from the field	23.2% (16-69), Tulsa, 12-10-17
Held opponent to less than 20% from the field in a half:136 (3-22), First Half, Binghamton, 11-30-13
.....	.200 (5-25), First Half, MVSU, 12-28-13
.....	.200 (5-25), First Half, Grambling State, 12-29-14
Had 20 or more assists in a game	27, Houston Baptist, 12-28-16

DEFENSE

Allowed 100 points	100, #3 Connecticut (11-14-1998)
Allowed 80+ points	89 at Arizona State, 12-21-17
Allowed 70-79 points	72, Ole Miss, 12-31-17
Allowed 69-60 points	62, Grambling State, 12-28-17
Held opponent to 59-50 points	57 vs. UTA, 12-17-17
Held opponent to 40-49 points	41, Tulsa, 12-10-17
Held opponent to 39-30	36, Northwestern State, 12-18-16
Held opponent under 45 points three cons. games	45, SHSU (11-8-13, W 81-45);
.....	33 ORU (11-13-13, W 91-33); 45, Furman (11-16-13, W, 74-45)
Held an SEC opponent under 50 points in 3 cons. games	47, Auburn (1-29-15, W, 52-47); 42,
.....	Alabama (2-1-15, W, 53-42);
.....	#24/21 Georgia (2-9-15, W, 54-48)
Held opponent to 29 points or less	23, Binghamton, 11-30-13
Held an opponent under 15 points in a half	13, Northwestern State, 12-18-16
Held opponent under 15 field goals	14, Houston Baptist, 12-28-16
Held opponent under 15% from three-point distance	12.5% (2-16), Tulsa, 12-10-17
Had 70+ rebounds	74, Mississippi Valley State (11-24-89)
Had 60-69 rebounds	61, Tulsa, 12-10-17
Had 50-59 rebounds	55, vs. NMSU, 11-25-17
Had five or more blocked shots in a game	7, Ole Miss, 12-31-17
Had 20 or more steals in a game	20, ORU (11-13-13)
Had 15 or more steals in a game	16, at Florida, 2-9-17
Had 20 or more turnovers in a game	23 at Arizona State, 12-21-17
Forced 20-25 or more Turnovers in a game	22 vs. UTA, 12-17-17

OTHER

Won an overtime game	91-80 Win in 30T, 2-10-13, at Alabama
Lost an overtime game	Florida (71-66), 1-28-16
Won a double overtime game	73-72, vs. Florida (1-29-12)
Lost a double overtime game	N/A
Won a triple overtime game	91-80 Win in 30T, 2-10-13, at Alabama
Played consecutive overtime games	1-24-16 at Auburn (lost); 1-28-16 vs Florida (lost)
Won a regular season tournament	Nugget Classic (Reno, Nev, Nov. 25-26, 2016)
Defeated a ranked team	67-61, No. 13 Texas A&M, 1-7-16; 64-59, No. 13 Tenn., 1-14-16
.....	64-52, No. 24 Missouri, 1-17-16
Defeated a ranked team on the road	57-53, at #19/18 LSU, 2-23-14; 77-76,
.....	#17/16 Iowa (Las Vegas), 12-18-14
All-time SEC win streak	8 games (1-15-12: Auburn through 2-15-12: at Auburn)
All-time SEC home win streak	5 games (1-15-12: Auburn through 2-9-12: S. Carolina)

THE LAST TIME A RAZORBACK PLAYER ...

Scored 20-24 points	22, Raven Northcross-Baker vs. UTA, 12-17-17
.....	20, Malica Monk vs. UTA, 12-17-17
Scored 25-29 points	25, Devin Cosper, Charlotte (12-6-17)
Scored 30+ points	34, Jessica Jackson, Houston Baptist, 12-28-16
Scored 20+ points seven times in a season	Jessica Jackson, 2013-14 (22 vs. MTSU, 22 at Missouri,
.....	23 at Fla., 24 at Georgia, 31 vs. Ole Miss, 23 at Kentucky,
.....	25 at LSU)
Scored 20+ points eight times in a season	Jessica Jackson, 2015-16 (20 vs. SHSU; 24 at SDSU;
.....	29 vs. Tulsa, 22 vs. La; 22 vs. No. 5 Texas; 20 at No. 5 MSU;
.....	25 vs. #13 Tennessee; 25, vs. Alabama; 20)
Double figures in 15 consecutive games (Season)	Jessica Jackson, 11/11/16-, LSU 1-8-17
Scored 23+ points in three consecutive games	Jessica Jackson (24 at Georgia 1-16-14,
.....	31 vs. Ole Miss 1-19-14, 23 at Kentucky 1-26-14)
Three players scored double figures in 1 game	Ole Miss, 12-31-17 (Casper, Monk, Mason)
Four players scored double figures in 1 game	vs. GSU, 12-28-17 (Monk, RNB, Casper, Williams)
Four players scored doubles figures for 4 cons. games	12-6-12 - 12-21-12; vs. Kansas, Furman, MVSU, and NSU
Five players scored double figures in 1 game	Abilene Christian (11-29-17)
.....	(Monk, Casper, Mason, Williams, Northcross-Baker)
Made 10+ field goals in a game	10, Jessica Jackson, Kentucky, 2-16-17
Attempted 15-19 field goals in a game	15, Devin Cosper, Grambling State, 12-28-17
Attempted 20+ field goals in a game	23, Devin Cosper, Charlotte (12-6-17)
Attempted 10 free throws in a game	12, Malica Monk vs. UTA, 12-17-17
Made 5 or more three-pointers in a game	6, Raven Northcross-Baker vs. UTA, 12-17-17
Attempted 10+ three-pointers in a game	11, Devin Cosper at Kansas, 12-3-17
Had 10-14 rebounds	11, Devin Cosper, Ole Miss, 12-31-17
Had 15+ rebounds	16, Kiara Williams, Grambling State, 12-28-17
Had 10 offensive rebounds - Records go back to 05-06	11, Melissa Wolff vs. New Orleans (1-30-15)
Had 10 defensive rebounds - Records go back to 05-06	10, Devin Cosper, Ole Miss, 12-31-17
Had 10+ assists	10, Malica Monk, Grambling State, 12-28-17
Had 10+ assists in consecutive games	Jailyn Mason (11 vs. HBU, 12-28-16 and 10 at Ole Miss, 1-1-17)
.....	Calli Berna (11 vs. No. 10/8 KY 2/7/13 and 11 at UA 2/10/13)
Had 5+ blocks in a game	(3x) 5, Jessica Jackson (vs. ORU, 11-13-13);
.....	(No. 25 Vanderbilt, 2-20-14); (at Tulsa, 12-14-14)
Had 10 or more blocks in a game	9, Robyn Irwin vs. SMSU, 12-19-88 (school record)
Had 5 or more steals in a game	5, Malica Monk vs. NMSU, 11-25-17
Had a double-double	Devin Cosper (18 pts/11 reb), Ole Miss, 12-31-17
Had a double-double in two straight games	2017-18: Devin Cosper (25/14) Charlotte and (11/11) Tulsa
Had two players record a double-double	Kiara Williams (12 pts/16 reb) &
.....	Malica Monk (10 pts/10 reb) ., Grambling State, 12-28-17
Had six double-doubles in a season	Devin Cosper, 2017-18 (SHUS, ORU, NMSU, Char., Tulsa, OM)
Previous:	Melissa Wolff, 2014-15 (Nicholls, Savannah State,
.....	Richmond, Grambling State, Tennessee, Northwestern)
Had 10+ double-doubles in a season	2006-07, Lauren Ervin (14)
Had a triple-double	14 pts, 13 reb, 12 asts, C'eira Ricketts vs. Auburn (1-18-09)



MIKE NEIGHBORS YEAR-BY-YEAR

Year	School	Overall	Pct.	Conf.	Pct.	Conf. Finish
2013-14	Washington	20-14	.588	10-8	.556	6/Pac-12
2014-15	Washington	23-10	.697	11-7	.611	5/Pac-12
2015-16	Washington	26-11	.703	11-7	.611	5/Pac-12
2016-17	Washington	29-6	.829	15-3	.833	T2/Pac-12
2017-18	Arkansas	10-4	.714	1-0	1.000	TBA
Totals	5 Years	108-45	.706	48-25	.658	

NEIGHBORS 3-1 IN BWA BEFORE THIS YEAR

As the head coach of Bentonville (Ark.) HS, Mike Neighbors went 3-0 in Bud Walton Arena in the high school play-offs. In 1997, his Tiger team defeated Bryant, Mount St. Mary's and Jonesboro to reach the state finals in Pine Bluff, Ark.

The lone loss occurred when Neighbors was an assistant coach at Tulsa. The 13th-ranked Razorbacks defeated Tulsa, 66-49, that season.

OPEN MIKE

Want to get to know Mike Neighbors in his own words? Check out the links below for stories about Mike, his hire and his dream job at Arkansas.

Mike's First 30 Days	http://bit.ly/First30
Mike's Dream Job	http://bit.ly/MNDreamJob
Mike's Press Conference	http://bit.ly/PressConfVideo

FROM ROOKIE NOD TO NAISMITH NOMINEE

In four short years Mike Neighbors went from a Spalding Maggie Dixon Division I Rookie Coach of the Year nominee in 2014, to a Naismith Women's College Coach of the Year national semifinalist in 2017.

Neighbors guided UW to an historic campaign in 2016-17 leading the Huskies to 27 wins, it's second most in program history, and he was just one shy of the all-time a school record set in 1990 (28).

Picked to place third in the Pac-12 in the preseason poll, UW tied for second in the league with a 15-3 record, it's best conference finish since 2003. The Huskies' 15 conference wins tied for third most in program history. Washington, who entered conference play with the program-best 12 non-conference wins, clinched its first-ever bye in the first round of the Pac-12 Tournament. Washington put together an 11-game win streak and a six-game win streak in Pac-12 play in 2016-17.

BENTONVILLE HS (HC)	94	
	95	
	96	
	97	
CABOT HS (HC)	98	
ARKANSAS (DIR OF OPS)	99	
	00	
TULSA (ASST)	01	
	02	
	03	
	04	
COLORADO (ASST)	05	
ARKANSAS (ASST)	06	
XAVIER (ASST)	07	X
	08	
	09	
	10	
WASHINGTON (ASST)	11	W
	12	
WASHINGTON (HC)	13	W
	14	
	15	
	16	
ARKANSAS (HC)	17	

COACHES COACHING AT ALMA MATER

Mike Neighbors	Arkansas, 1993
Holly Warlick	Tennessee, 1981

A couple of other coaches have SEC ties. Joni Taylor is the head coach at Georgia and a 2002 graduate of Alabama. Matthew Mitchell is a 1995 graduate of Mississippi State and is the head coach at Kentucky. Nikki Fargas graduated from Tennessee in 1994 and is the head coach at LSU. Vic Schaefer is the head coach at Mississippi State and a 1984 graduate of Texas A&M.



NEIGHBORS BY THE NUMBERS

TOP 10 MOVIES

1. A Few Good Men
2. The Hunt For Red October
3. The Silence Of The Lambs
4. Hoosiers
5. Pretty Woman
6. Moneyball
7. Top Gun
8. JFK
9. The Lion King
10. Purple Rain

See the entire list here: <http://www.imdb.com/list/ls004320428/>

He has 160 movies that are classified as 'thriller'. "Romance" is next with 152 followed by 69 "sport", 58 "mystery", and 32 "sci-fi".

TOP 10 SONGS

1. Sweet Child O' Mine (Guns N' Roses)
2. You Shook Me All Night Long (AC/DC)
3. Man In The Mirror (Michael Jackson)
4. Amarillo By Morning (George Strait)
5. Jessie's Girl (Rick Springfield)
6. Hysteria (Def Leppard)
7. Fishin' In The Dark (Nitty Gritty Dirt Band)
8. The Ballard of Curtis Loew (Lynyrd Skynyrd)
9. Wanted Dead Or Alive (Bon Jovi)
10. Let's Go Crazy (Prince)

TOP 10 TV SHOWS

1. West Wing (first three seasons)
2. The Wire
3. Breaking Bad
4. Seinfeld
5. The Newsroom
6. Prison Break
7. Arrested Development
8. Game of Thrones
9. The Sopranos
10. The Goldbergs

See the entire list here: <http://www.imdb.com/list/ls009377912/>

Neighbors has 16 comedies, 15 dramas and seven crime shows on the list.

MIKE NEIGHBORS DEVELOPS PLAYERS FOR THE NEXT LEVEL

Mike Neighbors has worked with 11 WNBA Draft Picks

YEAR	UNIVERSITY	PLAYER	ROUND	OVERALL	TEAM NOTE
2017	Washington	Kelsey Plum	1	1	San Antonio Spurs ! @
	Washington	Chantel Osahor	2	21	Chicago Sky ! @
2016	Washington	Talia Walton	3	29	Los Angeles Sparks ! @
2011	Xavier	Amber Harris	1	4	Minnesota Lynx #
	Xavier	Ta'Shia Phillips	1	8	Atlanta Dream #
	TAMU/UAFS	Tanisha Smith	2	22	Seattle Storm #
	Colorado	Brittany Spears	2	19	Phoenix Mercury *
2009	Arkansas	Shameka Christon	1	5	New York Liberty #
2008	Arkansas	Lauren Ervin	3	37	Connecticut Sun #
2006	Tulsa	Megan Moody	-	-	Houston Comets
					Free Agent #
2003	Tulsa	Allison Curtin	1	12	Houston Comets ! #
	Arkansas	Dana Cherry	2	23	Traded to Detroit Shock
					Charlotte Sting

*-Recruited but did not coach

!-At the school when player was drafted

@-Worked with player as a head coach

#-Worked with player as an assistant coach

\$-Worked with player as other (GA, etc)

FAST RISE TO ELITE RANKS

Mike Neighbors had a meteoric rise to the top as a head coach at Washington. In four seasons, he amassed 96 wins, had three NCAA Tournament appearances and reached the Final Four. Those accomplishments put him in some rare air.

FIRST FOUR YEARS AS A POWER FIVE HEAD COACH

Coch	School	Wins	NCAA Apps.	NCAA Best
Holly Warlick	Tennessee	108	4	Sweet 16
Mike Neighbors	Washington	98	3	1 Final Four
Jeff Walz	Louisville	96	3	1 Final Four
Nikki Fargas	UCLA	95	3	2nd Rnd
Vic Schaefer	Mississippi State	90	2	Sweet 16
Karen Aston	Texas	89	3	1 Elite 8
Matthew Mitchell	Kentucky	86	2	1 Elite 8
Kevin McGuff	Xavier	80	1	1 Elite 8
Dawn Staley	South Carolina	77	1	-
Brenda Frese	Minn./Maryland	72	2	-

BUILDING A FAN BASE

Mike Neighbors saw a 62.9% increase in attendance in his four seasons at Washington. Look for fan engagement to be a big part of future Razor-back programs as well.

COACHING TREE

Coach	w/Nabes	Now
Fred Castro	'14, '15, '16	HC Eastern Michigan
Adia Barnes	'14, '15	HC Arizona
Adam Call	'14	AC Eastern Michigan
Morgan Valley	'16	AC Arizona
Todd Schaefer	'16	AC Arkansas
Jasmine Lister	'16	AC DePaul



WANT TO ASK SOME GOOD QUESTIONS?

1. He has had two heart attacks
2. He keeps a lot of lists
3. His lowest moment was he eureka moment
4. He plays guitar and has a band
5. He reads really fast
6. He is an analytics nerd
7. He is a bar-game prodigy

Sign up for Mike Neighbors' newsletter and listen to his podcasts at

CoachNeighbors.com





1

RAVEN NORTHCROSS-BAKER
Junior | 5-7 | Guard | Malvern, Arkansas
Chipola JC | Malvern HS

CAREER HIGHS

Points	22	UTA	12-17-17
FG Made	8	UTA	12-17-17
FG Att.	12	UTEP	11-24-17
3P Made	6	UTA	12-17-17
3P Att.	8	UTA	12-17-17
FT Made	7	ACU	11-29-17
FT Att.	8	ACU	11-29-17
Off. Rebounds	3	Grambling	12-18-17
Def. Rebounds	7	Tulsa	12-10-17
Rebounds	9	Tulsa	12-10-17
Assists	6	Samford	11-12-17
Blocks	1	Tulsa	12-10-17
Steals	3	UTA	12-17-17
Minutes	28	Ole Miss	12-31-17

SEASON HIGHS

Points	22	UTA	12-17-17
FG Made	8	UTA	12-17-17
FG Att.	12	UTEP	11-24-17
3P Made	6	UTA	12-17-17
3P Att.	8	UTA	12-17-17
FT Made	7	ACU	11-29-17
FT Att.	8	ACU	11-29-17
Off. Rebounds	3	Grambling	12-18-17
Def. Rebounds	7	Tulsa	12-10-17
Rebounds	9	Tulsa	12-10-17
Assists	6	Samford	11-12-17
Blocks	1	Tulsa	12-10-17
Steals	3	UTA	12-17-17
Minutes	28	Ole Miss	12-31-17

*Most Recent

2017-18 GAME-BY-GAME STATS

Opponent	Date	gs	min	Total		3-Pointers		Free throws		Rebounds				pf	a	t/o	blk	stl	pts	avg
				fg-fga	pct	3fg-fga	pct	ft-fta	pct	off	def	tot	avg							
SHSU	11/10/17	20		1-8	.125	1-6	.167	0-0	.000	2	0	2	2.0	3	2	1	0	0	3	3.0
SAMFORD	11/12/17	22		0-2	.000	0-2	.000	0-0	.000	0	1	1	1.5	1	6	1	0	0	0	1.5
at Nebraska	11/16/17	18		1-4	.250	1-3	.333	0-0	.000	1	3	4	2.3	1	0	1	0	2	3	2.0
at Oral Roberts	11/20/17	22		3-6	.500	1-4	.250	1-2	.500	0	1	1	2.0	3	1	0	0	0	8	3.5
at UTEP	11/24/17	16		3-12	.250	0-6	.000	1-1	1.000	2	0	2	2.0	1	3	0	0	0	7	4.2
vs NM State	11/25/17	18		2-7	.286	1-4	.250	2-4	.500	1	1	2	2.0	4	0	2	0	2	7	4.7
ACU	11/29/17	22		3-6	.500	2-4	.500	7-8	.875	1	2	3	2.1	2	1	0	0	1	15	6.1
at Kansas	12/03/17	14		1-6	.167	0-4	.000	0-0	.000	0	2	2	2.1	4	1	0	0	0	2	5.6
CHARLOTTE	12/07/17	11		1-2	.500	1-2	.500	0-0	.000	0	3	3	2.2	0	1	1	0	0	3	5.3
TULSA	12/10/17	23		0-4	.000	0-3	.000	1-4	.250	2	7	9	2.9	1	1	2	1	0	1	4.9
UT-ARLINGTON	12/17/17	27		8-11	.727	6-8	.750	0-0	.000	2	2	4	3.0	0	3	0	0	3	22	6.5
at Arizona State	12/21/17	19		3-8	.375	2-6	.333	0-0	.000	1	0	1	2.8	0	1	4	0	0	8	6.6
GRAMBLING	12/28/17	21		4-9	.444	3-7	.429	3-4	.750	3	1	4	2.9	0	0	2	0	0	14	7.2
OLE MISS	12/31/17	28		3-5	.600	1-2	.500	2-2	1.000	2	1	3	2.9	0	0	1	0	0	9	7.3
Totals		0	281	33-90	.367	19-61	.311	17-25	.680	17	24	41	2.9	20	20	15	1	8	102	7.3

Games played: 14
Minutes/game: 20.1
Points/game: 7.3
FG Pct: 36.7
3FG Pct: 31.1
FT Pct: 68.0

Rebounds/game: 2.9
Assists/game: 1.4
Turnovers/game: 1.1
Assist/turnover ratio: 1.3
Steals/game: 0.6
Blocks/game: 0.1

NOTES

- » 17 points in exhibition including 12 points in the first quarter.
- » Went 7-for-8 from line versus ACU.
- » Had her first 20+ point game as a Razorback with 22 points against UTA.
- » Season/career-best six 3-pointers versus UTA.
- » Assuming role of "Sixth Woman" and has been among the first off the bench in eight games.

CAREER STATS

Year	GP-GS	Min	Avg	Total			3-Point			F-Throw			Rebounds				PF	FO	Ast	TO	Blk	Stl	Pts	Avg
				FG	FGA	Pct	FG	FGA	Pct	FT	FTA	Pct	Off	Def	Tot	Avg								
2015-16*	26-14	69	2.7	97	229	.424	58	149	.389	21	33	.636	47	39	86	3.3	6	-	46	32	-	58	273	10.5
2016-17*	33-33	210	6.4	171	433	.395	77	247	.312	54	83	.651	74	77	151	4.6	9	-	77	44	3	56	473	14.3
Totals*	59-47	279	4.7	268	662	.405	135	396	.341	75	116	.647	121	116	237	4.0	15	-	123	76	3	114	746	12.6
*At Chipola Junior College																								
2017-18#	14-0	281	20.1	33	90	.367	19	61	.311	17	25	.680	17	24	41	2.9	20	0	20	15	1	8	102	7.3
TOTAL#	14-0	281	20.1	33	90	.367	19	61	.311	17	25	.680	17	24	41	2.9	20	0	20	15	1	8	102	7.3#At Arkansas



3

MALICA MONK
Junior | 5-5 | Guard | NLR, Arkansas
N. Little Rock HS

CAREER HIGHS

Points	24	ORU	11-20-17
FG Made	9	NMSU	11-15-17*
FG Att.	19	Nebraska	11-16-17
3P Made	2	Tulsa	12-10-17*
3P Att.	6	Charlotte	12-6-17
FT Made	12	UTA	12-17-17
FT Att.	12	UTA	12-17-17
Off. Rebounds	3	NMSU	11-15-17*
Def. Rebounds	8	Samford	11-12-17
Rebounds	9	Samford	11-12-17
Assists	10	Grambling	12-18-17
Blocks	3	LSU	1-8-17
Steals	6	Kentucky	2-16-17*
Minutes	39	Ole Miss	12-31-17

SEASON HIGHS

Points	24	ORU	11-20-17
FG Made	9	NMSU	11-25-17*
FG Att.	20	at Kansas	12-3-17
3P Made	2	Tulsa	12-10-17*
3P Att.	6	Charlotte	12-6-17
FT Made	12	UTA	12-17-17
FT Att.	12	UTA	12-17-17
Off. Rebounds	3	at Kansas	12-3-17*
Def. Rebounds	8	Samford	11-12-17
Rebounds	9	Samford	11-12-17
Assists	10	Grambling	12-18-17
Blocks	1	NMSU	11-25-17
Steals	4	NMSU	11-15-17*
Minutes	39	Ole Miss	12-31-17

*Most Recent

2017-18 GAME-BY-GAME STATS

Opponent	Date	gs	min	Total		3-Pointers		Free throws		Rebounds				pf	a	t/o	blk	stl	pts	avg	
				fg-fga	pct	3fg-fga	pct	ft-fa	pct	off	def	tot	avg								
SHSU	11/10/17	*	33	7-13	.538	1-4	.250	3-4	.750	0	2	2	2.0	2	4	1	0	4	18	18.0	
SAMFORD	11/12/17	*	37	6-14	.429	2-3	.667	7-7	1.000	1	8	9	5.5	2	6	1	0	2	21	19.5	
at Nebraska	11/16/17	*	37	9-19	.474	1-4	.250	3-3	1.000	0	3	3	4.7	5	6	2	0	3	22	20.3	
at Oral Roberts	11/20/17	*	32	9-16	.563	1-3	.333	5-6	.833	0	3	3	4.3	1	4	1	0	1	24	21.3	
at UTEP	11/24/17	*	36	3-15	.200	1-6	.167	3-3	1.000	0	2	2	3.8	2	5	1	0	3	10	19.0	
vs NM State	11/25/17	*	38	9-17	.529	1-4	.250	3-7	.429	3	4	7	4.3	0	2	5	1	4	22	19.5	
ACU	11/29/17	*	29	5-14	.357	1-2	.500	4-6	.667	0	2	2	4.0	2	1	2	0	1	15	18.9	
at Kansas	12/03/17	*	32	8-20	.400	1-3	.333	4-4	1.000	3	4	7	4.4	4	5	3	0	0	21	19.1	
CHARLOTTE	12/07/17	*	38	6-18	.333	2-6	.333	1-2	.500	1	3	4	4.3	4	3	1	0	3	15	18.7	
TULSA	12/10/17	*	25	4-10	.400	2-4	.500	4-4	1.000	1	3	4	4.3	2	3	3	0	1	14	18.2	
UT-ARLINGTON	12/17/17	*	31	4-11	.364	0-2	.000	12-12	1.000	0	1	1	4.0	1	6	3	0	1	20	18.4	
at Arizona State	12/21/17	*	30	5-19	.263	0-4	.000	2-2	1.000	0	2	2	3.8	1	2	2	0	1	12	17.8	
GRAMBLING	12/28/17	*	35	2-7	.286	0-1	.000	6-8	.750	1	1	2	3.7	1	10	6	1	3	10	17.2	
OLE MISS	12/31/17	*	39	4-13	.308	0-3	.000	4-8	.500	1	1	2	3.6	1	4	3	0	1	12	16.9	
Totals			14	472	81-206	.393	13-49	.265	61-76	.803	11	39	50	3.6	28	61	34	2	28	236	16.9

Games played: 14
Minutes/game: 33.7
Points/game: 16.9
FG Pct: 39.3
3FG Pct: 26.5
FT Pct: 80.3

Rebounds/game: 3.6
Assists/game: 4.4
Turnovers/game: 2.4
Assist/turnover ratio: 1.8
Steals/game: 2.0
Blocks/game: 0.1

NOTES

- » 14 points, seven assists and just one turnover in exhibition game
- » Fourteen consecutive games with double figure scoring.
- » Six of 12 games with 20+ points.
- » Named CollegeSportsMadness.com's SEC Player of the Week (11.13.17).
- » Improved career-best with 24 points in 32 minutes at ORU
- » Had 13 points in the fourth quarter at ORU.
- » Led team in scoring nine games.
- » Six games with 5+ assists this year. Had four all of last year.
- » Career-best 10 assists and her first career double-double with 10 points and 10 assists versus Grambling State.

CAREER STATS

Year	GP-GS	Min	Avg	Total			3-Point			F-Throw			Rebounds				PF	FO	Ast	TO	Blk	Stl	Pts	Avg
				FG	FGA	Pct	FG	FGA	Pct	FT	FTA	Pct	Off	Def	Tot	Avg								
2015-16	27-5	461	17.1	48	136	.353	2	10	.200	12	19	.632	6	23	29	1.1	60	2	47	44	5	23	110	4.1
2016-17	27-27	842	31.2	96	230	.417	7	25	.280	48	71	.676	29	52	81	3.0	79	2	83	59	7	62	247	9.1
2017-18	14-14	472	33.7	81	206	.393	13	49	.265	61	76	.803	11	39	50	3.6	28	1	61	34	2	28	236	16.9
TOTAL	68-46	1775	26.1	225	572	.393	22	84	.262	121	166	.729	46	114	160	2.4	167	5	191	137	14	113	593	8.7



4

KEIRYN SWENSON
Junior | 6-1 | Forward | Wichita, Kansas
Maize HS

CAREER HIGHS

Points	23	vs. HBU	12-28-16
FGM	7	vs. Navy	11-26-16
FGA	13	at Ole Miss	1-1-17
3PM	4	at Ole Miss	1-1-17
3PA	9	at Ole Miss	1-1-17
FTM	8	vs. HBU	12-28-16
FTA	9	vs. HBU	12-28-16
OREB	5	at Alabama	1-15-17*
DREB	6	vs. NSU	12-18-15*
REB	9	at Alabama	1-15-17*
AST	2	Grambling	12-18-17*
BLK	2	vs. SHSU	11-10-17*
STL	2	UTEP	11-24-17*
MIN	37	at Ole Miss	1-1-17

SEASON HIGHS

Points	10	UTA	12-17-17
FG Made	4	UTA	12-17-17
FG Att.	8	Ole Miss	12-31-17*
3P Made	3	Samford	11-12-17
3P Att.	6	Ole Miss	12-31-17*
FT Made	2	Grambling	12-18-17*
FT Att.	2	Grambling	12-18-17*
Off. Rebounds	3	Ole Miss	12-31-17
Def. Rebounds	4	UTA	12-17-17*
Rebounds	6	Tulsa	12-10-17*
Assists	2	Grambling	12-18-17*
Blocks	2	SHSU	11-10-17
Steals	2	UTEP	11-24-17
Minutes	24	Grambling	12-18-17

*Most Recent

2017-18 GAME-BY-GAME STATS

Opponent	Date	gs	min	Total		3-Pointers		Free throws		Rebounds				pf	a	t/o	blk	stl	pts	avg	
				fg-fga	pct	3fg-fga	pct	ft-fita	pct	off	def	tot	avg								
SHSU	11/10/17	18		2-8	.250	1-4	.250	0-0	.000	0	1	1	1.0	1	0	0	2	0	5	5.0	
SAMFORD	11/12/17	13		3-5	.600	3-4	.750	0-0	.000	0	0	0	0.5	3	1	0	0	0	9	7.0	
at Nebraska	11/16/17	17		1-5	.200	1-5	.200	0-0	.000	1	2	3	1.3	2	0	0	0	0	3	5.7	
at Oral Roberts	11/20/17	15		2-3	.667	1-2	.500	1-2	.500	0	2	2	1.5	2	0	1	0	1	6	5.8	
at UTEP	11/24/17	16		2-7	.286	2-6	.333	0-2	.000	1	1	2	1.6	0	0	1	0	2	6	5.8	
vs NM State	11/25/17	14		2-5	.400	1-4	.250	0-0	.000	2	4	6	2.3	1	0	4	0	0	5	5.7	
ACU	11/29/17	17		1-3	.333	1-2	.500	0-0	.000	1	1	2	2.3	0	0	1	0	1	3	5.3	
at Kansas	12/03/17	18		1-3	.333	1-3	.333	1-2	.500	0	2	2	2.3	1	0	1	1	0	4	5.1	
CHARLOTTE	12/07/17	13		1-5	.200	1-4	.250	0-0	.000	0	2	2	2.2	2	0	0	0	0	3	4.9	
TULSA	12/10/17	21		2-7	.286	1-5	.200	2-2	1.000	2	4	6	2.6	0	0	0	1	0	7	5.1	
UT-ARLINGTON	12/17/17	17		4-8	.500	2-4	.500	0-0	.000	1	4	5	2.8	1	2	2	0	0	10	5.5	
at Arizona State	12/21/17	15		1-3	.333	0-1	.000	0-0	.000	2	1	3	2.8	0	1	3	1	0	2	5.3	
GRAMBLING	12/28/17	24		2-3	.667	2-3	.667	2-2	1.000	0	2	2	2.8	2	2	0	0	0	8	5.5	
OLE MISS	12/31/17	12		3-8	.375	1-6	.167	1-1	1.000	3	1	4	2.9	1	0	2	1	0	8	5.6	
Totals		0	230		27-73	.370	18-53	.340	7-11	.636	13	27	40	2.9	16	6	15	6	4	79	5.6

Games played: 14
Minutes/game: 16.4
Points/game: 5.6
FG Pct: 37.0
3FG Pct: 34.0
FT Pct: 63.6

Rebounds/game: 2.9
Assists/game: 0.4
Turnovers/game: 1.1
Assist/turnover ratio: 0.4
Steals/game: 0.3
Blocks/game: 0.4

NOTES

- » Saw a 206.4% increase in scoring between freshman and sophomore seasons (78 vs. 239 points).
- » SEC Winter Academic Honor Roll (2016-17).
- » SEC First-Year Academic Honor Roll (2015-16).
- » At least one 3-pointer in her first 11 games this year and in 13 of 14 games.
- » Season-best 10 points on 4-for-8 shooting against UTA.

CAREER STATS

Year	GP-GS	Min	Avg	Total			3-Point			F-Throw			Rebounds				PF	FO	Ast	TO	Blk	Stl	Pts	Avg
				FG	FGA	Pct	FG	FGA	Pct	FT	FTA	Pct	Off	Def	Tot	Avg								
2015-16	29-1	373	12.9	27	84	.321	5	21	.238	19	27	.704	34	34	68	2.3	26	0	7	15	4	10	78	2.7
2016-17	30-11	709	23.6	89	179	.497	31	71	.437	30	39	.769	53	71	124	4.1	56	0	15	28	17	16	239	8.0
2017-18	14-0	230	16.4	27	73	.370	18	53	.340	7	11	.636	13	27	40	2.9	16	0	6	15	6	4	79	5.6
TOTAL	73-12	1312	18.0	143	336	.426	54	145	.372	56	77	.727	100	132	232	3.2	98	0	28	58	27	30	396	5.4



10

KIARA WILLIAMSSophomore | 6-1 | Forward | LR, Arkansas
Little Rock HS**CAREER HIGHS**

Points	13	Tulsa	12-10-17
FGM	6	Tulsa	12-10-17
FGA	11	NMSU	11-25-17
3PM	-		
3PA	-		
FTM	4	Grambling	12-18-17*
FTA	11	Charlotte	12-6-17
OREB	8	Grambling	12-18-17*
DREB	11	at Kansas	12-3-17
REB	16	Grambling	12-18-17*
AST	2	Tulsa	12-10-17*
BLK	4	Ole Miss	12-31-17*
STL	4	Charlotte	12-6-17
MIN	29	Charlotte	12-6-17

SEASON HIGHS

Points	13	Tulsa	12-10-17
FG Made	6	Tulsa	12-10-17
FG Att.	11	NMSU	11-25-17
3P Made	-		
3P Att.	-		
FT Made	4	Grambling	12-18-17*
FT Att.	11	Charlotte	12-6-17
Off. Rebounds	8	Grambling	12-18-17*
Def. Rebounds	11	at Kansas	12-3-17
Rebounds	16	Grambling	12-18-17*
Assists	2	Tulsa	12-10-17
Blocks	4	Ole Miss	12-31-17*
Steals	4	Charlotte	12-6-17
Minutes	29	Charlotte	12-6-17

*Most Recent

2017-18 GAME-BY-GAME STATS

Opponent	Date	gs	min	Total		3-Pointers		Free throws		Rebounds			pf	a	t/o	blk	stl	pts	avg		
				fg-fga	pct	3fg-fga	pct	ft-fita	pct	off	def	tot								avg	
SHSU	11/10/17	*	17	3-4	.750	0-0	.000	1-1	1.000	0	2	2	2.0	1	1	0	0	7	7.0		
SAMFORD	11/12/17	*	19	5-7	.714	0-0	.000	0-0	.000	1	4	5	3.5	1	0	0	4	2	10	8.5	
at Nebraska	11/16/17	*	20	3-6	.500	0-0	.000	0-0	.000	6	5	11	6.0	4	1	2	2	1	6	7.7	
at Oral Roberts	11/20/17	*	17	3-7	.429	0-0	.000	2-2	1.000	3	2	5	5.8	4	0	1	0	1	8	7.8	
at UTEP	11/24/17	*	8	0-2	.000	0-0	.000	1-2	.500	1	0	1	4.8	3	0	1	0	1	1	6.4	
vs NM State	11/25/17	*	25	5-11	.455	0-0	.000	1-3	.333	4	7	11	5.8	2	0	3	0	2	11	7.2	
ACU	11/29/17	*	20	4-6	.667	0-0	.000	4-5	.800	5	3	8	6.1	0	0	0	1	3	12	7.9	
at Kansas	12/03/17	*	28	3-6	.500	0-0	.000	0-1	.000	5	11	16	7.4	3	0	4	2	0	6	7.6	
CHARLOTTE	12/07/17	*	29	3-8	.375	0-0	.000	3-11	.273	8	4	12	7.9	3	0	0	3	4	9	7.8	
TULSA	12/10/17	*	17	6-9	.667	0-0	.000	1-4	.250	4	3	7	7.8	2	2	0	2	0	13	8.3	
UT-ARLINGTON	12/17/17		22	1-3	.333	0-0	.000	0-0	.000	3	5	8	7.8	4	0	0	1	2	2	7.7	
at Arizona State	12/21/17	*	16	0-2	.000	0-0	.000	3-4	.750	0	4	4	7.5	1	0	1	1	0	3	7.3	
GRAMBLING	12/28/17	*	22	4-10	.400	0-0	.000	4-8	.500	8	8	16	8.2	1	0	0	0	1	12	7.7	
OLE MISS	12/31/17	*	23	1-5	.200	0-0	.000	3-4	.750	2	7	9	8.2	5	1	0	4	1	5	7.5	
Totals			13	283	41-86	.477	0-0	.000	23-45	.511	50	65	115	8.2	34	5	12	20	18	105	7.5

Games played: 14
Minutes/game: 20.2
Points/game: 7.5
FG Pct: 47.7
FT Pct: 51.1Rebounds/game: 8.2
Assists/game: 0.4
Turnovers/game: 0.9
Assist/turnover ratio: 0.4
Steals/game: 1.3
Blocks/game: 1.4**NOTES**

- » Enjoys Marvel movies.
- » Career-best four blocks against Samford. Tied that against Ole Miss in the SEC opener.
- » Posted first double-figure rebound total with 11 boards on the road at Nebraska.
- » First career double-double with 11 points and 11 rebounds against New Mexico State.
- » Has scored in every game.
- » First time in her career to have double figures in the first half against ACU.
- » Career-best 16 rebounds, including 11 defensive rebounds, at Kansas.
- » Second career double-double with 12 points and tied her career-best with 16 rebounds versus Grambling State.
- » Career-high 13 points against Tulsa.
- » Five games in double figures.

CAREER STATS

Year	GP-GS	Min	Avg	Total			3-Point			F-Throw			Rebounds				PF	FO	Ast	TO	Blk	Stl	Pts	Avg
				FG	FGA	Pct	FG	FGA	Pct	FT	FTA	Pct	Off	Def	Tot	Avg								
2016-17	20-5	227	11.4	26	48	.542	0	0	.000	10	26	.385	24	31	55	2.8	34	1	3	15	5	9	62	3.1
2017-18	14-13	283	20.2	41	86	.477	0	0	.000	23	45	.511	50	65	115	8.2	34	1	5	12	20	18	105	7.5
TOTAL	34-18	510	15.0	67	134	.500	0	0	.000	33	71	.465	74	96	170	5.0	68	2	8	27	25	27	167	4.9



13

GRAYCE SPANGLERFreshman | 5-11 | Guard | Fayetteville, Ark.
Fayetteville HS**CAREER HIGHS**

Points	3	UTA	12-17-17
FG Made	-		
FG Att.	2	Grambling	12-18-17*
3P Made	-		
3P Att.	2	ACU	11-29-17
FT Made	3	UTA	12-17-17
FT Att.	3	UTA	12-17-17
Off. Rebounds	-		
Def. Rebounds	1	at ASU	12-21-17*
Rebounds	1	UTA	12-17-17
Assists	-		
Blocks	-		
Steals	-		
Minutes	7	at ASU	12-21-17

SEASON HIGHS

Points	3	UTA	12-17-17
FG Made	-		
FG Att.	2	Grambling	12-18-17*
3P Made	-		
3P Att.	2	ACU	11-29-17
FT Made	3	UTA	12-17-17
FT Att.	3	UTA	12-17-17
Off. Rebounds	-		
Def. Rebounds	1	at ASU	12-21-17*
Rebounds	1	UTA	12-17-17
Assists	-		
Blocks	-		
Steals	-		
Minutes	7	at ASU	12-21-17

*Most Recent

2017-18 GAME-BY-GAME STATS

Opponent	Date	gs	min	Total		3-Pointers		Free throws		Rebounds				pf	a	t/o	blk	stl	pts	avg
				fg-fga	pct	3fg-fga	pct	ft-fita	pct	off	def	tot	avg							
SHSU	11/10/17	4		0-1	.000	0-0	.000	0-2	.000	0	0	0	0.0	0	0	0	0	0	0	0.0
SAMFORD	11/12/17	2		0-1	.000	0-1	.000	0-0	.000	0	1	1	0.5	0	0	0	0	0	0	0.0
at Nebraska	11/16/17	dnp		-	-	-	-	-	-	-	-	-	-	-	-	-	-	-	-	-
at Oral Roberts	11/20/17	dnp		-	-	-	-	-	-	-	-	-	-	-	-	-	-	-	-	-
at UTEP	11/24/17	5		0-0	.000	0-0	.000	0-0	.000	0	0	0	0.3	2	0	0	0	0	0	0.0
vs NM State	11/25/17	dnp		-	-	-	-	-	-	-	-	-	-	-	-	-	-	-	-	-
ACU	11/29/17	6		0-2	.000	0-2	.000	0-0	.000	0	0	0	0.3	0	0	1	0	0	0	0.0
at Kansas	12/03/17	1		0-0	.000	0-0	.000	0-0	.000	0	0	0	0.2	0	0	0	0	0	0	0.0
CHARLOTTE	12/07/17	dnp		-	-	-	-	-	-	-	-	-	-	-	-	-	-	-	-	-
TULSA	12/10/17	2		0-0	.000	0-0	.000	0-0	.000	0	1	1	0.3	0	0	0	0	0	0	0.0
UT-ARLINGTON	12/17/17	3		0-1	.000	0-0	.000	3-3	1.000	0	1	1	0.4	1	0	1	0	0	3	0.4
at Arizona State	12/21/17	7		0-1	.000	0-0	.000	0-0	.000	0	1	1	0.5	2	0	0	0	0	0	0.4
GRAMBLING	12/28/17	3		0-2	.000	0-1	.000	0-0	.000	0	0	0	0.4	0	0	0	0	0	0	0.3
OLE MISS	12/31/17	dnp		-	-	-	-	-	-	-	-	-	-	-	-	-	-	-	-	-
Totals		0	33	0-8	.000	0-4	.000	3-5	.600	0	4	4	0.4	5	0	2	0	0	3	0.3

Games played: 9
Minutes/game: 3.7
Points/game: 0.3
FG Pct: 0.0
3FG Pct: 0.0
FT Pct: 60.0Rebounds/game: 0.4
Turnovers/game: 0.2**NOTES**

- » Father Shannon lettered as a linebacker (1989) and mother, Stacy, was a member of the Pom Squad at Arkansas.
- » Scored her first points as a Razorback going 3-for-3 from the line in a win over UTA.
- » Season/career-best seven minutes at Arizona State.

CAREER STATS

Year	GP-GS	Min	Avg	Total			3-Point			F-Throw			Rebounds				PF	FO	Ast	TO	Blk	Stl	Pts	Avg
				FG	FGA	Pct	FG	FGA	Pct	FT	FTA	Pct	Off	Def	Tot	Avg								
2017-18	9-0	33	3.7	0	8	.000	0	4	.000	3	5	.600	0	4	4	0.4	5	0	0	2	0	0	3	0.3
TOTAL	9-0	33	3.7	0	8	.000	0	4	.000	3	5	.600	0	4	4	0.4	5	0	0	2	0	0	3	0.3



14

JAILYN MASON**Sophomore | 5-9 | Guard | Mason, Ohio**
William Mason HS**CAREER HIGHS**

Points	19	ORU	12-21-16
FGM	9	ORU	12-21-16
FGA	15	Missouri	2-12-17*
3PM	3	Ole Miss	12-31-17*
3PA	7	ACU	11-29-17
FTM	3	NMSU	11-25-17*
FTA	7	NMSU	11-25-17
OREB	4	Texas Tech	12-3-16
DREB	7	Grambling	12-18-17*
REB	9	Texas Tech	12-3-16
AST	11	HBU	12-28-16
BLK	3	SHSU	11-10-17
STL	4	Nebraska	11-16-17*
MIN	40	ORU	12-21-16

SEASON HIGHS

Points	15	UTA	12-17-17
FG Made	7	UTA	12-17-17
FG Att.	13	ACU	11-29-17
3P Made	3	Ole Miss	12-31-17*
3P Att.	7	ACU	11-29-17
FT Made	2	Charlotte	12-6-17
FT Att.	2	Charlotte	12-6-17*
Off. Rebounds	3	NMSU	11-25-17
Def. Rebounds	7	Grambling	12-18-17*
Rebounds	7	Grambling	12-18-17*
Assists	8	ACU	11-29-17
Blocks	3	SHSU	11-10-17
Steals	4	Nebraska	11-16-17
Minutes	38	ORU	11-20-17

*Most Recent

2017-18 GAME-BY-GAME STATS

Opponent	Date	gs	min	Total		3-Pointers		Free throws		Rebounds				pf	a	t/o	blk	stl	pts	avg	
				fg-fga	pct	3fg-fga	pct	ft-fa	pct	off	def	tot	avg								
SHSU	11/10/17	*	25	3-10	.300	2-4	.500	0-0	.000	0	5	5	5.0	0	4	1	3	1	8	8.0	
SAMFORD	11/12/17	*	35	5-11	.455	2-5	.400	0-2	.000	0	1	1	3.0	2	2	1	0	2	12	10.0	
at Nebraska	11/16/17	*	30	4-12	.333	0-2	.000	0-1	.000	0	5	5	3.7	3	2	4	0	4	8	9.3	
at Oral Roberts	11/20/17	*	32	3-9	.333	0-0	.000	0-0	.000	1	1	2	3.3	1	1	1	0	0	6	8.5	
at UTEP	11/24/17	*	24	3-9	.333	2-6	.333	0-0	.000	1	3	4	3.4	1	2	0	0	1	8	8.4	
vs NM State	11/25/17	*	28	1-8	.125	1-4	.250	0-0	.000	3	3	6	3.8	3	2	1	1	2	3	7.5	
ACU	11/29/17	*	34	5-13	.385	3-7	.429	0-0	.000	0	7	7	4.3	1	8	3	1	2	13	8.3	
at Kansas	12/03/17	*	33	4-9	.444	2-5	.400	0-0	.000	0	2	2	4.0	5	1	2	0	2	10	8.5	
CHARLOTTE	12/07/17	*	30	4-10	.400	2-6	.333	2-2	1.000	0	4	4	4.0	2	4	1	1	1	12	8.9	
TULSA	12/10/17	*	30	5-11	.455	1-4	.250	0-0	.000	0	5	5	4.1	0	6	0	0	0	11	9.1	
UT-ARLINGTON	12/17/17	*	33	7-11	.636	1-4	.250	0-0	.000	0	4	4	4.1	1	7	3	0	3	15	9.6	
at Arizona State	12/21/17	*	31	3-7	.429	0-1	.000	0-0	.000	0	4	4	4.1	0	1	5	1	0	6	9.3	
GRAMBLING	12/28/17	*	27	3-11	.273	2-4	.500	0-0	.000	0	7	7	4.3	2	1	1	0	1	8	9.2	
OLE MISS	12/31/17	*	33	5-11	.455	3-4	.750	0-0	.000	0	2	2	4.1	3	4	1	1	1	13	9.5	
Totals			14	425	55-142	.387	21-56	.375	2-5	.400	5	53	58	4.1	24	45	24	8	20	133	9.5

Games played: 14
Minutes/game: 30.4
Points/game: 9.5
FG Pct: 38.7
3FG Pct: 37.5
FT Pct: 40.0Rebounds/game: 4.1
Assists/game: 3.2
Turnovers/game: 1.7
Assist/turnover ratio: 1.9
Steals/game: 1.4
Blocks/game: 0.6**NOTES**

- » Has a large Jordan shoe collection.
- » Would like to be a sports photographer.
- » At least one defensive rebound in each game this season.
- » Set season-best marks for field goals, field goals attempted, 3-point field goals and 3-point field goals attempted as well as for rebounds and assists against Abilene Christian.
- » Seven games this year and five consecutive games with double-figure scoring through UTA.
- » Season-best 15 points with seven made baskets against UTA.

CAREER STATS

Year	GP-GS	Min	Avg	Total			3-Point			F-Throw			Rebounds				PF	FO	Ast	TO	Blk	Stl	Pts	Avg
				FG	FGA	Pct	FG	FGA	Pct	FT	FTA	Pct	Off	Def	Tot	Avg								
2016-17	30-30	894	29.8	100	256	.391	19	53	.358	7	11	.636	21	96	117	3.9	72	2	93	56	8	31	226	7.5
2017-18	14-14	425	30.4	55	142	.387	21	56	.375	2	5	.400	5	53	58	4.1	24	1	45	24	8	20	133	9.5
TOTAL	44-44	1319	30.0	155	398	.389	40	109	.367	9	16	.563	26	149	175	4.0	96	3	138	80	16	51	359	8.2



20

SYDNEY STOUT
Sophomore | 6-0 | Forward | Bixby, Okla.
Bixby HS

CAREER HIGHS

Points	8	HBU	12-28-16
FGM	3	HBU	12-28-16
FGA	5	HBU	12-28-16
3PM	2	HBU	12-28-16
3PA	4	HBU	12-28-16
FTM	2	Texas A&M	1-12-17
FTA	4	Texas A&M	1-12-17
OREB	1	SHSU	11-10-17*
DREB	6	HBU	12-28-16
REB	6	HBU	12-28-16
AST	1	Grambling	12-18-17*
BLK	1	ULM	11-13-16
STL	-		
MIN	15	HBU	12-28-16

SEASON HIGHS

Points	4	UTA	12-17-17
FG Made	1	UTA	12-17-17
FG Att.	2	ACU	11-29-17
3P Made	1	UTA	12-17-17
3P Att.	1	UTA	12-17-17*
FT Made	1	UTA	12-17-17*
FT Att.	2	UTA	12-17-17
Off. Rebounds	1	UTA	12-17-17*
Def. Rebounds	1	Grambling	12-18-17*
Rebounds	2	UTA	12-17-17
Assists	1	Grambling	12-18-17
Blocks	-		
Steals	-		
Minutes	6	UTA	12-17-17

*Most Recent

2017-18 GAME-BY-GAME STATS

Opponent	Date	gs	min	Total		3-Pointers		Free throws		Rebounds				pf	a	t/o	blk	stl	pts	avg
				fg-fga	pct	3fg-fga	pct	ft-fa	pct	off	def	tot	avg							
SHSU	11/10/17	6		0-1	.000	0-0	.000	1-2	.500	1	0	1	1.0	1	0	1	0	0	1	1.0
SAMFORD	11/12/17	2		0-0	.000	0-0	.000	1-2	.500	0	1	1	1.0	0	0	0	0	0	1	1.0
at Nebraska	11/16/17	dnp		-	-	-	-	-	-	-	-	-	-	-	-	-	-	-	-	-
at Oral Roberts	11/20/17	dnp		-	-	-	-	-	-	-	-	-	-	-	-	-	-	-	-	-
at UTEP	11/24/17	6		0-0	.000	0-0	.000	0-0	.000	0	0	0	0.7	0	0	0	0	0	0	0.7
vs NM State	11/25/17	dnp		-	-	-	-	-	-	-	-	-	-	-	-	-	-	-	-	-
ACU	11/29/17	3		0-2	.000	0-1	.000	0-0	.000	1	0	1	0.8	0	0	0	0	0	0	0.5
at Kansas	12/03/17	dnp		-	-	-	-	-	-	-	-	-	-	-	-	-	-	-	-	-
CHARLOTTE	12/07/17	dnp		-	-	-	-	-	-	-	-	-	-	-	-	-	-	-	-	-
TULSA	12/10/17	3		0-0	.000	0-0	.000	0-0	.000	0	1	1	0.8	0	0	0	0	0	0	0.4
UT-ARLINGTON	12/17/17	6		1-1	1.000	1-1	1.000	1-2	.500	1	1	2	1.0	0	0	0	0	0	4	1.0
at Arizona State	12/21/17	5		0-0	.000	0-0	.000	0-0	.000	0	0	0	0.9	0	0	0	0	0	0	0.9
GRAMBLING	12/28/17	5		0-2	.000	0-1	.000	0-0	.000	0	1	1	0.9	0	1	0	0	0	0	0.8
OLE MISS	12/31/17	dnp		-	-	-	-	-	-	-	-	-	-	-	-	-	-	-	-	-
Totals		0	36	1-6	.167	1-3	.333	3-6	.500	3	4	7	0.9	1	1	1	0	0	6	0.8

Games played: 8
Minutes/game: 4.5
Points/game: 0.8
FG Pct: 16.7
3FG Pct: 33.3
FT Pct: 50.0

Rebounds/game: 0.9
Assists/game: 0.1
Turnovers/game: 0.1
Assist/turnover ratio: 1.0

NOTES

» SEC First-Year Academic Honor Roll (2016-17).

CAREER STATS

Year	GP-GS	Min	Avg	Total			3-Point			F-Throw			Rebounds				PF	FO	Ast	TO	Blk	Stl	Pts	Avg
				FG	FGA	Pct	FG	FGA	Pct	FT	FTA	Pct	Off	Def	Tot	Avg								
2016-17	15-0	72	4.8	5	14	.357	4	12	.333	2	4	.500	2	9	11	0.7	15	0	1	2	1	0	16	1.1
2017-18	8-0	36	4.5	1	6	.167	1	3	.333	3	6	.500	3	4	7	0.9	1	0	1	1	0	0	6	0.8
TOTAL	23-0	108	4.7	6	20	.300	5	15	.333	5	10	.500	5	13	18	0.8	16	0	2	3	1	0	22	1.0



21

DEVIN COSPER
Grad | 5-10 | Guard | Coffeyville, Kansas
Coffeyville CC | Field Kindley HS

CAREER HIGHS

Points	25	Charlotte	12-6-17
FG Made	9	Charlotte	12-6-17
FGA	25	Nebraska	11-16-17
3PM	6	UTEP	11-24-17
3PA	16	Nebraska	11-16-17
FTM	7	New Orleans	12-30-15
FTA	8	at Kansas	12-3-17*
OREB	3	Charlotte	12-6-17
DREB	11	Charlotte	12-6-17
REB	14	Charlotte	12-6-17*
AST	6	ORU	12-21-16
BLK	3	MVSU	12-28-15
STL	4	Ole Miss	12-31-17*
MIN	40	Charlotte	12-6-17
	42	Auburn	1-24-16 OT

SEASON HIGHS

Points	25	Charlotte	12-6-17
FG Made	9	Charlotte	12-6-17
FG Att.	25	Nebraska	11-16-17
3P Made	6	UTEP	11-24-17
3P Att.	16	Nebraska	11-16-17
FT Made	6	at Kansas	12-3-17
FT Att.	8	at Kansas	12-3-17
Off. Rebounds	3	Charlotte	12-6-17
Def. Rebounds	11	Charlotte	12-6-17
Rebounds	14	Charlotte	12-6-17
Assists	4	NMSU	11-25-17
Blocks	2	Tulsa	12-10-17*
Steals	4	Ole Miss	12-31-17
Minutes	40	Charlotte	12-6-17

*Most Recent

2017-18 GAME-BY-GAME STATS

Opponent	Date	gs	min	Total		3-Pointers		Free throws		Rebounds				pf	a	t/o	blk	stl	pts	avg				
				fg	fga	pct	3fg	3fga	pct	ft	fta	pct	off								def	tot	avg	
SHSU	11/10/17	*	31	6	13	.462	4	11	.364	1	2	.500	2	10	12	12.0	3	2	4	1	17	17.0		
SAMFORD	11/12/17	*	29	5	12	.417	3	10	.300	5	5	1.000	0	5	5	8.5	2	2	1	0	1	18	17.5	
at Nebraska	11/16/17	*	34	8	25	.320	5	16	.313	0	0	.000	1	3	4	7.0	2	0	4	2	2	21	18.7	
at Oral Roberts	11/20/17	*	38	8	19	.421	3	10	.300	2	2	1.000	0	10	10	7.8	2	1	0	0	2	21	19.3	
at UTEP	11/24/17	*	31	8	17	.471	6	13	.462	0	2	.000	1	4	5	7.2	2	0	1	0	4	22	19.8	
vs NM State	11/25/17	*	39	6	17	.353	2	9	.222	3	4	.750	2	9	11	7.8	2	4	2	1	2	17	19.3	
ACU	11/29/17	*	21	4	10	.400	2	5	.400	1	2	.500	0	3	3	7.1	4	1	3	1	2	11	18.1	
at Kansas	12/03/17	*	39	5	23	.217	1	11	.091	6	8	.750	1	2	3	6.6	3	0	2	1	1	17	18.0	
CHARLOTTE	12/07/17	*	40	9	23	.391	2	7	.286	5	6	.833	3	11	14	7.4	2	2	3	0	1	25	18.8	
TULSA	12/10/17	*	29	5	16	.313	1	9	.111	0	0	.000	2	9	11	7.8	3	0	3	2	0	11	18.0	
UT-ARLINGTON	12/17/17	*	22	3	8	.375	2	6	.333	0	0	.000	0	1	1	7.2	3	1	2	0	2	8	17.1	
at Arizona State	12/21/17	*	27	3	13	.231	2	5	.400	0	0	.000	0	1	1	6.7	2	1	2	0	0	8	16.3	
GRAMBLING	12/28/17	*	34	6	15	.400	4	7	.571	0	2	.000	0	4	4	6.5	2	3	2	0	0	16	16.3	
OLE MISS	12/31/17	*	39	7	15	.467	2	5	.400	2	3	.667	1	10	11	6.8	3	1	6	1	4	18	16.4	
Totals			14	453	83	226	.367	39	124	.315	25	36	.694	13	82	95	6.8	35	18	35	9	22	230	16.4

Games played: 14
Minutes/game: 32.4
Points/game: 16.4
FG Pct: 36.7
3FG Pct: 31.5
FT Pct: 69.4

Rebounds/game: 6.8
Assists/game: 1.3
Turnovers/game: 2.5
Assist/turnover ratio: 0.5
Steals/game: 1.6
Blocks/game: 0.6

NOTES

- » SEC First-Year Academic Honor Roll (2016).
- » SEC Academic Honor Roll (2016-17).
- » Graduated in May 2017 with degree in journalism. Currently pursuing her master's degree in sport administration.
- » Forty-three consecutive games played.
- » Eighteen consecutive games with a made 3-pointer.
- » Thirty-one points with six 3-pointers in exhibition game.
- » Ten consecutive games in double figure scoring (snapped versus UTA).
- » Six career double-doubles all this season.
- » At least one steal in 11-of-14 games this year.
- » Career-bests to 25 points and 14 rebounds against Charlotte.

CAREER STATS

Year	GP-GS	Min	Avg	Total			3-Point			F-Throw			Rebounds				PF	FO	Ast	TO	Blk	Stl	Pts	Avg
				FG	FGA	Pct	FG	FGA	Pct	FT	FTA	Pct	Off	Def	Tot	Avg								
2015-16	30-25	792	26.4	97	293	.331	25	104	.240	50	72	.694	16	83	99	3.3	57	0	42	74	5	34	269	9.0
2016-17	29-9	563	19.4	72	195	.369	23	75	.307	20	27	.741	7	58	65	2.2	43	2	45	40	6	28	187	6.4
2017-18	14-14	453	32.4	83	226	.367	39	124	.315	25	36	.694	13	82	95	6.8	35	0	18	35	9	22	230	16.4
TOTAL	73-48	1808	24.8	252	714	.353	87	303	.287	95	135	.704	36	223	259	3.5	135	2	105	149	20	84	686	9.4



22

BAILEY ZIMMERMAN
Junior | 6-0 | Forward | St. Vincent, Arkansas
Wonderview HS

CAREER HIGHS			
Points	14	Missouri	2-12-17
FGM	4	Missouri	2-12-17*
FGA	11	Missouri	2-12-17
3PM	3	Kentucky	2-16-17*
3PA	7	Butler	12-13-15
FTM	4	S. Carolina	2-5-17*
FTA	6	Missouri	2-12-17
OREB	4	ACU	11-29-17*
DREB	6	Alabama	1-15-17
REB	7	Tulsa	12-10-17*
AST	3	Kentucky	2-16-17*
BLK	3	LSU	1-8-17*
STL	2	UTEP	11-24-17*
MIN	34	Kentucky	2-16-17

SEASON HIGHS			
Points	6	UTA	12-17-17*
FG Made	2	UTA	12-17-17*
FG Att.	10	UTA	12-17-17
3P Made	1	Charlotte	12-6-17
3P Att.	6	Charlotte	12-6-17
FT Made	2	UTA	12-17-17*
FT Att.	3	Tulsa	12-10-17
Off. Rebounds	4	ACU	11-29-17*
Def. Rebounds	5	Tulsa	12-10-17
Rebounds	7	Tulsa	12-10-17
Assists	2	ACU	11-29-17*
Blocks	2	Nebraska	11-16-17
Steals	2	UTEP	11-24-17*
Minutes	28	Charlotte	12-6-17
*Most Recent			

2017-18 GAME-BY-GAME STATS

Opponent	Date	gs	min	Total		3-Pointers		Free throws		Rebounds			pf	a	t/o	blk	stl	pts	avg		
				fg	fga	pct	3fg	3fga	pct	ft	fta	pct								off	def
SHSU	11/10/17	*	27	1-7	.143	0-4	.000	0-0	.000	0	3	3	3.0	1	2	1	0	2	2.0		
SAMFORD	11/12/17	*	19	0-1	.000	0-1	.000	0-0	.000	0	0	0	1.5	3	0	0	0	0	1.0		
at Nebraska	11/16/17	*	24	0-2	.000	0-2	.000	1-2	.500	0	0	0	1.0	3	0	2	2	0	1.0		
at Oral Roberts	11/20/17	*	21	1-7	.143	0-3	.000	0-2	.000	1	3	4	1.8	3	1	0	1	0	2		
at UTEP	11/24/17	*	23	1-5	.200	0-3	.000	2-2	1.000	2	1	3	2.0	0	2	0	0	2	1.3		
vs NM State	11/25/17	*	24	0-1	.000	0-1	.000	1-2	.500	2	1	3	2.2	2	2	0	0	0	1.7		
ACU	11/29/17	*	25	1-4	.250	0-1	.000	1-2	.500	4	2	6	2.7	1	2	2	1	1	3		
at Kansas	12/03/17	*	24	0-1	.000	0-0	.000	0-0	.000	0	2	2	2.6	4	0	1	1	0	0		
CHARLOTTE	12/07/17	*	28	2-9	.222	1-6	.167	1-1	1.000	1	2	3	2.7	0	1	3	1	0	6		
TULSA	12/10/17	*	25	2-6	.333	0-3	.000	2-3	.667	2	5	7	3.1	0	1	0	0	0	6		
UT-ARLINGTON	12/17/17	*	20	2-10	.200	0-3	.000	2-2	1.000	2	1	3	3.1	2	0	1	0	0	6		
at Arizona State	12/21/17	*	24	1-3	.333	0-1	.000	0-0	.000	2	2	4	3.2	1	1	3	1	0	2		
GRAMBLING	12/28/17	*	11	0-2	.000	0-0	.000	0-0	.000	0	0	0	2.9	0	0	0	0	0	2.5		
OLE MISS	12/31/17	*	9	1-1	1.000	0-0	.000	0-0	.000	1	0	1	2.8	2	1	1	0	0	2		
Totals			14	304	12-59	.203	1-28	.036	10-16	.625	17	22	39	2.8	22	13	14	7	5	35	2.5

Games played: 14
Minutes/game: 21.7
Points/game: 2.5
FG Pct: 20.3
3FG Pct: 3.6
FT Pct: 62.5

Rebounds/game: 2.8
Assists/game: 0.9
Turnovers/game: 1.0
Assist/turnover ratio: 0.9
Steals/game: 0.4
Blocks/game: 0.5

- NOTES**
- » SEC Academic Honor Roll (2016-17).
 - » Eleven of 13 games with 20+ minutes.
 - » Started 13 consecutive games this year and 14 in a row dating back to last season.

CAREER STATS

Year	GP-GS	Min	Avg	Total			3-Point			F-Throw			Rebounds				PF	FO	Ast	TO	Blk	Stl	Pts	Avg
				FG	FGA	Pct	FG	FGA	Pct	FT	FTA	Pct	Off	Def	Tot	Avg								
2015-16	20-1	174	8.7	6	48	.125	4	33	.121	7	12	.583	12	9	21	1.1	9	0	4	15	2	4	23	1.2
2016-17	30-23	627	20.9	45	144	.313	24	84	.286	20	39	.513	35	80	115	3.8	46	0	28	37	10	19	134	4.5
2017-18	14-14	304	21.7	12	59	.203	1	28	.036	10	16	.625	17	22	39	2.8	22	0	13	14	7	5	35	2.5
TOTAL	64-38	1105	17.3	63	251	.251	29	145	.200	37	67	.552	64	111	175	2.7	77	0	45	66	19	28	192	3.0



24

TAYLAH THOMAS

Freshman | 6-1 | Forward | Arlington, Texas
Mansfield Timberview HS

CAREER HIGHS			
Points	13	Samford	11-12-17
FG Made	5	Samford	11-12-17
FG Att.	6	Samford	11-12-17
3P Made	1	Ole Miss	12-31-17*
3P Att.	1	Ole Miss	12-31-17*
FT Made	3	NMSU	11-25-17*
FT Att.	6	Samford	11-12-17
Off. Rebounds	6	Nebraska	11-16-17
Def. Rebounds	7	ORU	11-20-17 7
Rebounds	11	Nebraska	11-16-17
Assists	1	Grambling	12-18-17*
Blocks	2	Nebraska	11-16-17
Steals	2	ACU	11-29-17
Minutes	23	ORU	11-20-17

SEASON HIGHS			
Points	13	Samford	11-12-17
FG Made	5	Samford	11-12-17
FG Att.	6	Samford	11-12-17
3P Made	1	Ole Miss	12-31-17*
3P Att.	1	Ole Miss	12-31-17*
FT Made	3	NMSU	11-25-17*
FT Att.	6	Samford	11-12-17
Off. Rebounds	6	Nebraska	11-16-17
Def. Rebounds	7	ORU	11-20-17 7
Rebounds	11	Nebraska	11-16-17
Assists	1	Grambling	12-18-17*
Blocks	2	Nebraska	11-16-17
Steals	2	ACU	11-29-17
Minutes	23	ORU	11-20-17
*Most Recent			

2017-18 GAME-BY-GAME STATS

Opponent	Date	gs	min	Total		3-Pointers		Free throws		Rebounds				pf	a	t/o	blk	stl	pts	avg
				fg	fga	pct	3fg	3fga	pct	ft	fta	pct	off	def	tot	avg				
SHSU	11/10/17	17		2-2	1.000	0-0	.000	0-0	.000	1	3	4	4.0	0	0	0	1	0	4	4.0
SAMFORD	11/12/17	21		5-6	.833	0-1	.000	3-6	.500	2	7	9	6.5	1	0	2	0	0	13	8.5
at Nebraska	11/16/17	20		1-4	.250	0-0	.000	3-4	.750	6	5	11	8.0	3	1	0	2	0	5	7.3
at Oral Roberts	11/20/17	23		0-3	.000	0-1	.000	2-2	1.000	2	7	9	8.3	2	0	0	1	0	2	6.0
at UTEP	11/24/17	16		0-2	.000	0-1	.000	1-2	.500	2	2	4	7.4	1	0	0	0	0	1	5.0
vs NM State	11/25/17	14		0-4	.000	0-0	.000	3-4	.750	3	4	7	7.3	1	0	1	0	0	3	4.7
ACU	11/29/17	20		2-7	.286	1-1	1.000	2-4	.500	3	4	7	7.3	2	0	0	0	2	7	5.0
at Kansas	12/03/17	9		0-1	.000	0-1	.000	0-0	.000	0	0	0	6.4	0	0	0	0	0	0	4.4
CHARLOTTE	12/07/17	4		0-0	.000	0-0	.000	0-0	.000	0	0	0	5.7	3	0	0	0	1	0	3.9
TULSA	12/10/17	19		1-3	.333	1-1	1.000	1-2	.500	4	3	7	5.8	1	0	0	0	1	4	3.9
UT-ARLINGTON	12/17/17	*	11	0-0	.000	0-0	.000	0-0	.000	2	2	4	5.6	5	0	1	0	0	0	3.5
at Arizona State	12/21/17	19		1-1	1.000	0-0	.000	0-0	.000	0	3	3	5.4	3	0	3	0	0	2	3.4
GRAMBLING	12/28/17	13		3-3	1.000	0-0	.000	2-2	1.000	0	2	2	5.2	2	1	2	0	1	8	3.8
OLE MISS	12/31/17	17		2-3	.667	1-1	1.000	1-2	.500	3	0	3	5.0	2	0	1	0	0	6	3.9
Totals		1	223		17-39	.436	3-7	.429	18-28	.643	28	42	70	5.0	26	2	10	4	55	3.9

Games played: 14
Minutes/game: 15.9
Points/game: 3.9
FG Pct: 43.6
3FG Pct: 42.9
FT Pct: 64.3

Rebounds/game: 5.0
Assists/game: 0.1
Turnovers/game: 0.7
Assist/turnover ratio: 0.2
Steals/game: 0.4
Blocks/game: 0.3

NOTES

- » Played high school ball for former Razorback assistant coach Kit Kyle Martin.
- » Career-best 13 points against Samford - her first double figure scoring game as a Razorback.

CAREER STATS

Year	GP-GS	Min	Avg	Total			3-Point			F-Throw			Rebounds				PF	FO	Ast	TO	Blk	Stl	Pts	Avg
				FG	FGA	Pct	FG	FGA	Pct	FT	FTA	Pct	Off	Def	Tot	Avg								
2017-18	14-1	223	15.9	17	39	.436	3	7	.429	18	28	.643	28	42	70	5.0	26	1	2	10	4	5	55	3.9
TOTAL	14-1	223	15.9	17	39	.436	3	7	.429	18	28	.643	28	42	70	5.0	26	1	2	10	4	5	55	3.9



30

MACY WEAVER

Freshman | 6-3 | F | Davis Junction, Illinois

Stillman Valley HS

CAREER HIGHS			
Points	3	Grambling	12-18-17
FG Made	1	Grambling	12-18-17*
FG Att.	2	Grambling	12-18-17
3P Made	-		
3P Att.	-		
FT Made	1	Grambling	12-18-17*
FT Att.	2	UTA	12-17-17
Off. Rebounds	2	Grambling	12-18-17*
Def. Rebounds	4	UTA	12-17-17
Rebounds	5	UTA	12-17-17
Assists	1	UTEP	11-24-17
Blocks	4	UTEP	11-24-17
Steals	1	UTEP	11-24-17
Minutes	19	UTEP	11-24-17

SEASON HIGHS			
Points	3	Grambling	12-18-17
FG Made	1	Grambling	12-18-17*
FG Att.	2	Grambling	12-18-17
3P Made	-		
3P Att.	-		
FT Made	1	Grambling	12-18-17*
FT Att.	2	UTA	12-17-17
Off. Rebounds	2	Grambling	12-18-17*
Def. Rebounds	4	UTA	12-17-17
Rebounds	5	UTA	12-17-17
Assists	1	UTEP	11-24-17
Blocks	4	UTEP	11-24-17
Steals	1	UTEP	11-24-17
Minutes	19	UTEP	11-24-17
*Most Recent			

2017-18 GAME-BY-GAME STATS

Opponent	Date	gs	min	Total		3-Pointers		Free throws		Rebounds				pf	a	t/o	blk	stl	pts	avg
				fg-fga	pct	3fg-fga	pct	ft-fita	pct	off	def	tot	avg							
SHSU	11/10/17	2		0-0	.000	0-0	.000	0-0	.000	0	0	0	0.0	0	0	0	0	0	0	0.0
SAMFORD	11/12/17	1		0-0	.000	0-0	.000	0-0	.000	0	0	0	0.0	0	0	0	0	0	0	0.0
at Nebraska	11/16/17	dnp		-	-	-	-	-	-	-	-	-	-	-	-	-	-	-	-	-
at Oral Roberts	11/20/17	dnp		-	-	-	-	-	-	-	-	-	-	-	-	-	-	-	-	-
at UTEP	11/24/17	19		1-1	1.000	0-0	.000	0-0	.000	2	1	3	1.0	3	1	0	4	1	2	0.7
vs NM State	11/25/17	dnp		-	-	-	-	-	-	-	-	-	-	-	-	-	-	-	-	-
ACU	11/29/17	3		0-1	.000	0-0	.000	0-0	.000	0	1	1	1.0	0	0	0	0	0	0	0.5
at Kansas	12/03/17	2		0-0	.000	0-0	.000	0-0	.000	0	0	0	0.8	0	0	0	1	0	0	0.4
CHARLOTTE	12/07/17	7		0-0	.000	0-0	.000	0-2	.000	2	0	2	1.0	3	0	1	0	0	0	0.3
TULSA	12/10/17	6		0-1	.000	0-0	.000	0-0	.000	0	1	1	1.0	1	0	0	1	0	0	0.3
UT-ARLINGTON	12/17/17	8		0-1	.000	0-0	.000	1-2	.500	1	4	5	1.5	3	0	1	1	0	1	0.4
at Arizona State	12/21/17	7		0-0	.000	0-0	.000	0-0	.000	0	1	1	1.4	2	0	0	0	0	0	0.3
GRAMBLING	12/28/17	5		1-2	.500	0-0	.000	1-1	1.000	2	1	3	1.6	1	0	0	0	0	3	0.6
OLE MISS	12/31/17	dnp		-	-	-	-	-	-	-	-	-	-	-	-	-	-	-	-	-
Totals		0	60	2-6	.333	0-0	.000	2-5	.400	7	9	16	1.6	13	1	2	7	1	6	0.6

Games played: 10
Minutes/game: 6.0
Points/game: 0.6
FG Pct: 33.3
FT Pct: 40.0

Rebounds/game: 1.6
Assists/game: 0.1
Turnovers/game: 0.2
Assist/turnover ratio: 0.5
Steals/game: 0.1
Blocks/game: 0.7

NOTES

- » First career game as a Razorback came against Sam Houston State in the opener.
- » Played 19 minutes with four blocks and solid defense at UTEP.

CAREER STATS

Year	GP-GS	Min	Avg	Total			3-Point			F-Throw			Rebounds				PF	FO	Ast	TO	Blk	Stl	Pts	Avg
				FG	FGA	Pct	FG	FGA	Pct	FT	FTA	Pct	Off	Def	Tot	Avg								
2017-18	10-0	60	6.0	2	6	.333	0	0	.000	2	5	.400	7	9	16	1.6	13	0	1	2	7	1	6	0.6
TOTAL	10-0	60	6.0	2	6	.333	0	0	.000	2	5	.400	7	9	16	1.6	13	0	1	2	7	1	6	0.6



0-A'Tyanna Gaulden
RSo | G | 5-7



1-Raven Northcross-Baker
Jr | G | 5-7



3-Malica Monk
Jr | G | 5-5



4-Keiryn Swenson
Jr | G/F | 6-1



10-Kiara Williams
So | F/C | 6-1



13-Grayce Spangler
Fr | G | 5-11



14-Jailyn Mason
So | G | 5-9



20-Sydney Stout
So | F | 6-0



21-Devin Cosper
Gr. | G | 5-10



22-Bailey Zimmerman
Jr | G/F | 6-0



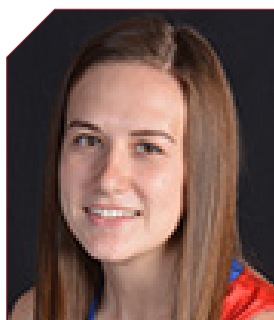
24-Taylah Thomas
Fr | F | 6-1



30-Macy Weaver
Fr | F | 6-3



33-Chelsea Dungee
RSo | G | 5-11



51-Brenna McClure
RSo | G | 5-6



Mike Neighbors
Arkansas, 1993
First Season



Lacey Goldwire
Oklahoma State, 2010
First Season



Todd Schaefer
Thomas More College, 1995
First Season



Pauline Love
Southern Miss, 2010
First Season



NOVEMBER 2, 2017

NORTHEASTERN STATE

ARKANSAS

Bud Walton Arena
Fayetteville, Arkansas

Devin Cosper dropped in 31 points leading four players in double figures in exhibition action. It was the 14th-consecutive exhibition game win for Arkansas and the first under head coach Mike Neighbors.

74
82

Northeastern State Univ. 74

#	Player	Total		3-Ptr		Rebounds		PF	TP	A	TO	Blk	Stl	Min
		FG-FGA	FT-FTA	FG-FGA	FT-FTA	Off	Def							
24	Strange, Destiny	3-10	0-4	0-0	1	3	6	3	6	3	1	0	0	29
12	Griffin, Miranda	6-11	5-9	0-2	1	4	5	2	17	3	0	0	0	27
14	Hayes, Cenia	2-6	2-6	2-2	1	4	5	0	8	0	1	0	1	18
21	Brooks, Trea	2-7	1-3	3-4	0	1	1	3	8	1	2	0	0	20
23	Eldred, Bailee	7-7	1-1	2-2	2	6	8	3	7	3	2	0	2	20
04	Hill, Alexis	1-2	1-2	0-2	0	0	0	3	3	1	1	0	0	19
15	Cunningham, Cailey	0-2	0-1	0-0	2	0	2	0	0	1	0	0	0	7
20	Long, Caitlyn	3-6	1-3	2-2	3	4	7	1	9	1	0	0	1	24
32	Blevins, Lauryn	4-10	1-3	2-2	2	4	6	4	11	0	2	3	2	17
33	Bertrand, Joi	0-4	0-0	2-2	1	1	2	2	0	4	1	1	1	12
34	Hellyer, Morgan	1-3	1-3	0-0	1	0	1	1	3	0	1	0	0	7
Team					1	4	5							
Totals		24-68	13-35	13-18	15	31	46	22	74	13	14	4	7	200
1st - FG %:		5-17	27.9%	2nd: 6-17	47.1%	3rd: 4-14	28.6%	4th: 7-19	36.8%	Game: 24-68	35.3%	Deadball		
3FG %:		2-8	25.0%	6-11	54.5%	1-6	16.7%	4-10	40.0%	13-35	37.1%	Rebounds		
FT %:		2-2	100.0%	2-2	100.0%	4-6	66.7%	5-8	62.5%	13-18	72.2%	3,3		

Arkansas 82

#	Player	Total		3-Ptr		Rebounds		PF	TP	A	TO	Blk	Stl	Min
		FG-FGA	FT-FTA	FG-FGA	FT-FTA	Off	Def							
10	WILLIAMS, Kiara	2-3	0-0	1-2	4	2	6	3	5	0	0	1	0	13
22	ZIMMERMAN, Bailey	0-7	0-4	0-0	2	2	4	2	0	1	2	0	1	30
03	MONK, Malica	4-14	0-2	6-8	2	3	5	3	14	7	1	0	3	34
14	MASON, Jailyn	4-12	1-3	0-0	0	7	7	1	9	3	2	1	2	31
21	COSPER, Devin	6-9	3-4	1-4	1	4	5	1	31	1	2	1	2	29
01	NORTHCROSS-BAKER,	4-8	3-6	6-10	1	2	3	1	17	2	1	0	4	23
04	SWENSON, Keiryn	0-2	0-0	0-0	1	2	3	2	0	2	0	0	0	9
13	SPANGLER, Grayce	0-1	0-0	0-0	0	0	0	0	0	0	0	0	0	2
20	STOUT, Sydney	0-0	0-0	0-0	0	0	0	0	0	0	0	0	0	2
24	THOMAS,Taylah	3-4	0-1	0-1	3	5	8	1	6	0	0	0	0	24
30	WEAVER, Macy	0-0	0-0	0-0	2	0	2	0	0	1	0	0	0	3
Team					0	3	3							
Totals		28-74	10-25	16-25	16	30	46	14	82	16	9	3	12	200
1st - FG %:		5-17	29.4%	2nd: 4-18	22.2%	3rd: 7-18	38.9%	4th: 12-21	57.1%	Game: 28-74	37.8%	Deadball		
3FG %:		3-6	50.0%	1-3	33.3%	1-4	25.0%	5-8	62.5%	10-25	40.0%	Rebounds		
FT %:		7-10	70.0%	6-8	75.0%	3-5	60.0%	0-2	0.0%	16-25	64.0%	5,1		

Officials: Brian Hall, Luis Gonzalez, Katie Lukanich
Technical fouls: Northeastern State Univ.-None. Arkansas-None.
Attendance: 1200
EXHIBITION GAME
Estimated Actual Attendance: 816

Score by periods	1st	2nd	3rd	4th	Total
Northeastern State Univ.	14	24	13	23	74
Arkansas	20	15	18	29	82

Last FG - NESU 4th-00:35, AR 4th-01:01.
Largest lead - NESU by 5 3rd-09:05, AR by 13 1st-03:09.
NESU led for 09:13. AR led for 24:08. Game was tied for 06:39.



NOVEMBER 12, 2017

SAMFORD

ARKANSAS

Bud Walton Arena
Fayetteville, Arkansas

Career best points and rebounds for Malica Monk. Career best points for Taylah Thomas and Kiara Williams.

63
84

Samford 63 • 0-2

#	Player	Total		3-Ptr		Rebounds		PF	TP	A	TO	Blk	Stl	Min
		FG-FGA	FT-FTA	FG-FGA	FT-FTA	Off	Def							
32	Olivia Crozier	5-8	0-0	0-0	2	5	7	2	10	1	1	0	0	22
35	Samantha Fitzgerald	2-9	0-1	2-2	2	5	7	4	6	1	1	0	1	31
02	Hannah Nichols	6-13	3-7	2-2	1	5	6	2	17	3	1	1	0	32
12	Charity Brown	2-6	1-3	2-4	1	5	6	4	7	2	0	1	1	28
31	Cassidy Williams	3-9	1-5	0-0	0	1	1	1	7	1	1	0	0	24
03	Shaunta Battle	2-2	0-0	1-2	1	1	2	4	5	1	2	0	1	16
11	Paige Serup	1-3	0-2	2-2	0	2	2	4	4	0	0	0	0	18
22	Raven Omar	0-1	0-1	0-0	0	0	0	2	0	3	1	0	0	6
33	Makaila Woolard	2-8	1-3	2-2	0	0	0	2	7	2	2	0	0	18
45	Natalie Armstrong	0-0	0-0	0-0	0	0	0	0	0	1	2	0	0	5
Team					1	2	3							
Totals		23-59	6-22	11-14	8	26	34	23	63	17	13	1	3	200
1st - FG %:		5-13	38.5%	2nd: 7-17	41.2%	3rd: 5-13	38.5%	4th: 6-16	37.5%	Game: 23-59	39.0%	Deadball		
3FG %:		2-6	33.3%	0-3	0.0%	1-4	25.0%	3-9	33.3%	6-22	27.3%	Rebounds		
FT %:		6-6	100.0%	1-2	50.0%	2-4	50.0%	2-2	100.0%	11-14	78.6%	1,1		

Arkansas 84 • 2-0

#	Player	Total		3-Ptr		Rebounds		PF	TP	A	TO	Blk	Stl	Min
		FG-FGA	FT-FTA	FG-FGA	FT-FTA	Off	Def							
10	WILLIAMS, Kiara	5-7	0-0	0-0	1	4	5	1	10	0	0	4	2	19
22	ZIMMERMAN, Bailey	0-1	0-1	0-0	0	0	0	3	0	0	0	0	0	19
03	MONK, Malica	6-14	2-3	7-7	1	8	9	2	21	6	1	0	2	37
14	MASON, Jailyn	5-11	2-5	0-2	0	1	1	2	12	2	1	0	2	35
21	COSPER, Devin	5-12	3-10	5-5	0	5	5	2	18	2	1	0	1	29
01	NORTHCROSS-BAKER,	0-2	0-2	0-0	0	1	1	1	0	6	1	0	0	22
04	SWENSON, Keiryn	3-5	3-4	0-0	0	0	0	3	9	1	0	0	0	13
13	SPANGLER, Grayce	0-1	0-1	0-0	0	1	1	0	0	0	0	0	0	2
20	STOUT, Sydney	0-0	0-0	1-2	0	1	1	0	1	0	0	0	0	2
24	THOMAS,Taylah	5-6	0-1	3-6	2	7	9	1	13	0	2	0	0	21
30	WEAVER, Macy	0-0	0-0	0-0	0	0	0	0	0	0	0	0	0	1
Team					1	2	3							
Totals		29-59	10-27	16-22	5	30	35	15	84	17	6	4	7	200
1st - FG %:		9-13	69.2%	2nd: 6-18	33.3%	3rd: 7-16	43.8%	4th: 7-12	58.3%	Game: 29-59	49.2%	Deadball		
3FG %:		4-6	66.7%	2-9	22.2%	2-6	33.3%	10-27	37.0%	16-22	72.7%	Rebounds		
FT %:		5-6	83.3%	1-1	100.0%	1-1	100.0%	0-0	0.0%					

Officials: Scott Yarbrough, Laura Morris, Pualani Spurlock
Technical fouls: Samford-None. Arkansas-None.
Attendance: 1739
Estimated Actual Attendance: 1,107

Score by periods	1st	2nd	3rd	4th	Total
Samford	18	15	13	17	63
Arkansas	27	15	16	26	84

Last FG - SAM 4th-01:03, AR 4th-01:19.
Largest lead - SAM None, AR by 24 4th-04:43.
SAM led for 00:00. AR led for 39:37. Game was tied for 00:23.



NOVEMBER 10, 2017

SAM HOUSTON STATE

ARKANSAS

Bud Walton Arena
Fayetteville, Arkansas
Elementary Day

Devin Cosper had her first Razorback double-double with 17 points and 12 rebounds in the come-from-behind win. Malica Monk's game-high 18 points ties the junior's career-best.

54
65

SHSU 54 • 0-1

#	Player	Total		3-Ptr		Rebounds		PF	TP	A	TO	Blk	Stl	Min
		FG-FGA	FT-FTA	FG-FGA	FT-FTA	Off	Def							
42	McKinney, Kiera	1-4	0-0	2-4	2	3	5	1	4	2	1	2	0	29
35	Cooper, Ashleigh	0-3	0-0	0-0	1	3	4	4	0	1	2	1	0	14
01	Orramas, Jennifer	4-12	1-5	2-2	0	6	6	1	11	4	3	0	0	34
20	Morgan, Akarian	2-8	2-6	0-0	1	5	6	3	6	2	2	0	1	31
34	Harrell, Rachel	2-6	2-6	0-0	0	1	1	0	6	0	1	0	0	20
00	Ferriera, Keyvin	2-8	0-4	0-0	1	2	3	0	4	0	2	0	0	15
04	Ballew, Jada	1-4	0-2	0-0	0	1	1	0	2	0	0	0	0	6
05	Maxwell, Dominique	4-10	2-4	0-2	3	4	7	2	10	1	1	0	0	20
15	Harston, Tia	0-0	0-0	0-0	0	0	0	0	0	0	0	0	0	1
21	Baxter, Lydia	3-7	0-0	3-3	5	3	8	1	9	0	1	1	2	20
22	Mickens, Anastacia	1-1	0-0	0-0	0	6	6	2	2	0	2	1	0	10
Team					2	2	4							
Totals		20-63	7-27	7-11	15	36	51	14	54	10	15	5	3	200
1st - FG %:		4-12	33.3%	2nd: 6-17	35.3%	3rd: 4-17	23.5%	4th: 6-17	35.3%	Game: 20-63	31.7%	Deadball		
3FG %:		1-4	25.0%	2-6	33.3%	1-9	11.1%	3-7	42.9%	7-27	25.9%	Rebound		
FT %:		1-5	20.0%	1-5	20.0%	1-5	20.0%	1-5	20.0%	10-22	45.5%	Free Throw		



NOVEMBER 20, 2017

ARKANSAS

ORU

Mabee Arena
Tulsa, Oklahoma

77

66

Career-best 24 points for Malica Monk and career-best tying night with 21 points for Devin Cosper. Arkansas forced 14 ORU turnovers while only turning it over four times.

Arkansas 77 • 3-1

#	Player	Total		3-Ptr		Rebounds			PF	TP	A	TO	Bk	Stl	Min
		FG-FGA	FG-FGA	FT-FTA	Off	Def	Tot								
10	WILLIAMS, Kiara	r	3-7	0-0	2-2	3	2	5	4	8	0	1	0	1	17
22	ZIMMERMAN, Bailey	r	1-7	0-3	0-2	1	3	4	3	2	1	0	1	0	21
03	MONK, Malica	g	9-16	1-3	5-6	0	3	3	1	24	4	1	0	1	32
14	MASON, Jaliyn	g	3-9	0-0	0-0	1	1	2	1	6	1	1	0	0	32
21	COSPER, Devin	g	8-19	3-10	2-2	0	10	10	2	21	1	0	0	2	38
01	NORTHCROSS-BAKER,	g	3-6	1-4	1-2	0	1	1	3	8	1	0	0	0	22
04	SWENSON, Keiryn	g	2-3	1-2	1-2	0	2	2	2	6	0	1	0	1	15
24	THOMAS, Taylah	g	0-3	0-1	2-2	2	7	9	2	2	0	0	1	0	23
Team						2	3	5							
Totals			29-70	6-23	13-18	9	32	41	18	77	8	4	2	5	200
1st - FG %:		9-10	40.4%	2nd:	7-19	36.8%	4th:	6-14	42.9%	Game:	29-70	41.4%	Deadball		
3FG %:		3-7	42.9%	1-5	20.0%	2-8	25.0%	0-3	0.0%	6-23	26.1%	Rebounds			
FT %:		4-4	100.0%	0-2	0.0%	0-0	0.0%	0-2	0.0%	12-18	66.7%	3			

Oral Roberts 66 • 1-3

#	Player	Total		3-Ptr		Rebounds			PF	TP	A	TO	Bk	Stl	Min
		FG-FGA	FG-FGA	FT-FTA	Off	Def	Tot								
15	Ihim, Faith	r	5-9	0-1	3-6	4	7	11	2	13	2	4	0	0	28
44	Martinez, Maria	r	3-8	0-1	5-6	1	8	9	3	11	4	2	0	0	32
13	Skalnik, Rachel	g	1-3	1-3	0-0	0	0	0	4	3	0	1	0	0	21
32	Garvie, Sarah	g	4-12	4-12	0-0	0	5	5	1	12	3	2	0	0	33
23	Uppe, Kent Jo	g	1-7	0-2	4-4	0	1	1	3	6	0	1	0	1	20
02	Doyle, Jordan	g	0-0	0-0	0-0	0	0	0	1	0	1	0	1	0	1
10	Mayberry, Maya	g	2-5	2-3	2-2	0	1	1	1	8	1	0	1	0	22
20	Schumacher, Regan	g	0-1	0-0	0-0	0	1	1	0	0	0	0	0	0	2
22	Gilbert, Jordan	g	1-4	0-0	0-0	1	4	5	4	2	1	2	0	0	20
24	Brotons, Montserrat	g	5-9	0-0	1-1	1	3	4	1	11	1	0	0	0	21
Team						0	4	4							
Totals			22-58	7-22	15-19	7	34	41	20	66	12	14	0	2	200
1st - FG %:		8-16	50.0%	2nd:	6-14	42.9%	4th:	3-13	23.1%	Game:	22-58	37.9%	Deadball		
3FG %:		3-6	50.0%	1-5	20.0%	1-7	14.3%	1-5	20.0%	7-22	31.8%	Rebounds			
FT %:		2-4	50.0%	0-0	0.0%	2-4	50.0%	10-10	100.0%	15-19	78.9%	1			

Officials: Greg Small, Nick Marshall, Michelle Kramer
Technical fouls: Arkansas-None. Oral Roberts-None.
Attendance: 2503

Score by periods	1st	2nd	3rd	4th	Total
Arkansas	25	15	16	21	77
Oral Roberts	21	15	13	17	66

Last FO - AR 4th-01:52, ORU 4th-00:29.
Largest lead - AR by 14 4th-07:23, ORU by 6 1st-04:48.
AR led for 30:59, ORU led for 00:32. Game was tied for 00:29.

Score tied - 1 time.
Lead changed - 1 time.



NOVEMBER 25, 2017

ARKANSAS NEW MEXICO STATE

Don Haskins Center
El Paso, Texas

69

60

Devin Cosper with her third double-double with 17 points and 11 rebounds. Malica Monk led all scorers with 22 points. Williams posted her first career double-double with 11 points and 11 rebounds.

Arkansas 69 • 4-2

#	Player	Total		3-Ptr		Rebounds			PF	TP	A	TO	Bk	Stl	Min
		FG-FGA	FG-FGA	FT-FTA	Off	Def	Tot								
10	WILLIAMS, Kiara	r	5-11	0-0	1-3	4	7	11	2	11	0	3	0	2	25
03	MONK, Malica	g	9-17	1-4	3-7	3	4	7	0	22	2	5	1	4	38
14	MASON, Jaliyn	g	1-8	1-4	0-0	3	3	6	3	3	2	1	2	2	28
21	COSPER, Devin	g	6-17	2-9	3-4	2	9	11	2	17	4	2	1	2	39
22	ZIMMERMAN, Bailey	g	0-1	0-1	1-2	2	1	3	2	1	2	0	0	0	24
01	NORTHCROSS-BAKER,	g	2-7	1-4	2-4	1	1	2	4	7	0	2	0	2	18
04	SWENSON, Keiryn	g	2-5	1-4	0-0	2	4	6	1	5	0	4	0	0	14
24	THOMAS, Taylah	g	0-4	0-0	3-4	3	4	7	1	3	0	1	0	0	14
Team						2	0	2							
Totals			25-70	6-26	13-24	22	33	55	15	69	10	18	3	12	200
1st - FG %:		4-19	21.1%	2nd:	4-14	28.6%	3rd:	9-18	50.0%	4th:	8-19	42.1%	Game:	25-70	35.7%
3FG %:		1-7	14.3%	1-6	16.7%	3-7	42.9%	1-6	16.7%	6-26	23.1%	Deadball			
FT %:		2-4	50.0%	3-3	100.0%	3-3	100.0%	5-14	35.7%	13-24	54.2%	7			

NM State 60 • 2-4

#	Player	Total		3-Ptr		Rebounds			PF	TP	A	TO	Bk	Stl	Min
		FG-FGA	FG-FGA	FT-FTA	Off	Def	Tot								
01	Cooper, Jasmine	r	1-8	0-0	2-2	2	3	5	2	4	2	2	0	1	21
30	Pack, Gia	r	7-15	0-4	3-5	4	2	6	4	17	1	3	0	0	26
02	Salas, Brooke	g	5-17	2-8	3-5	6	4	10	4	15	1	4	1	1	30
12	Williams, Zaire	g	2-5	1-3	2-2	0	2	2	4	7	2	6	1	1	38
21	Mills, Monique	g	2-6	1-2	0-0	0	2	2	1	5	2	0	0	5	33
00	Wilmore, Pam	g	0-1	0-0	0-0	0	0	0	0	0	0	0	0	0	3
03	Childress, Tonishia	g	0-2	0-1	0-0	0	3	3	1	0	1	1	0	1	14
20	Mills, Domonique	g	2-4	0-0	0-0	1	3	4	2	4	0	1	0	1	16
22	Atkinson, Kaleb	g	0-0	0-0	0-0	0	0	0	0	0	0	0	0	0	4
33	Toilolo, Jeneva	g	4-9	0-0	0-0	0	6	6	3	8	0	1	0	0	19
Team						1	2	3							
Totals			23-67	4-18	10-14	14	27	41	21	60	9	18	2	10	200
1st - FG %:		8-21	38.1%	2nd:	4-15	26.7%	3rd:	6-16	37.5%	4th:	5-15	33.3%	Game:	23-67	34.3%
3FG %:		1-6	16.7%	0-2	0.0%	2-4	50.0%	1-6	16.7%	4-18	22.2%	Deadball			
FT %:		0-2	0.0%	0-0	0.0%	1-2	50.0%	0-0	0.0%	10-14	71.4%	1			

Officials: Lisa Mattingly, Beverly Roberts, Tina Napier
Technical fouls: Arkansas-None. NM State-None.
Attendance: 250

Score by periods	1st	2nd	3rd	4th	Total
Arkansas	11	12	24	22	69
NM State	17	8	15	20	60

Last FG - AR 4th-00:16, NMSU 4th-00:51.
Largest lead - AR by 11 3rd-03:45, NMSU by 7 1st-01:06.
AR led for 19:50, NMSU led for 19:16. Game was tied for 00:54.

Score tied - 2 times.
Lead changed - 8 times.



NOVEMBER 24, 2017

ARKANSAS

UTEP

Don Haskins Center
El Paso, Texas

61

64

Arkansas started the game 0-for-15 in the first quarter and made a valiant comeback that fell short. Devin Cosper reached double figures in the third quarter and she and Malica Monk were in double figures for the fifth time.

Arkansas 61 • 3-2

#	Player	Total		3-Ptr		Rebounds			PF	TP	A	TO	Bk	Stl	Min
		FG-FGA	FG-FGA	FT-FTA	Off	Def	Tot								
10	WILLIAMS, Kiara	r	0-2	0-0	1-2	0	0	1	3	1	0	1	0	1	8
03	MONK, Malica	g	3-15	1-6	3-3	0	2	2	2	10	5	1	0	1	36
14	MASON, Jaliyn	g	3-9	2-6	0-0	1	3	4	1	8	2	0	0	1	24
21	COSPER, Devin	g	8-17	6-13	0-2	1	4	5	2	22	0	1	0	4	31
22	ZIMMERMAN, Bailey	g	1-5	0-3	2-2	2	1	3	0	4	2	0	0	2	23
01	NORTHCROSS-BAKER,	g	3-12	0-6	1-1	2	0	2	1	7	3	0	0	0	16
04	SWENSON, Keiryn	g	2-7	2-6	0-2	1	1	2	0	6	0	1	0	2	16
13	SPANGLER, Grayce	g	0-0	0-0	0-0	0	0	0	0	0	0	0	0	0	5
20	STOUT, Sydney	g	0-0	0-0	0-0	0	0	0	0	0	0	0	0	0	6
24	THOMAS, Taylah	g	0-2	0-1	1-2	2	2	4	1	1	0	0	0	0	16
30	WEAVER, Macy	g	1-1	0-0	0-0	2	1	3	3	2	1	0	4	1	19
Team						0	1	1							
Totals			21-70	11-41	8-14	12	15	27	15	61	13	4	4	14	200
1st - FG %:		0-15	0.0%	2nd:	7-19	36.8%	3rd:	5-17	29.4%	4th:	9-19	47.4%	Game:	21-70	30.0%
3FG %:		0-9	0.0%	2-10	20.0%	3-9	33.3%	6-13	46.2%	11-41	26.8%	Deadball			
FT %:		3-6	50.0%	1-1				1	100.0%				8-14	57.1%	



DECEMBER 3, 2017

ARKANSAS

KANSAS

Allen Fieldhouse
Lawrence, Kansas

60

71

Devin Cosper and Malica Monk made it eight games in a row with double-figure scoring. Kiara Williams posted a career-best 16 rebounds. Second consecutive game in double-figures for Jaiilyn Mason.

Arkansas 60 • 5-3

#	Player	Total		3-Ptr		Rebounds			PF	TP	A TO Blk Stl					Min
		FG-FGA	FG-FGA	FT-FTA	FT-FTA	Off	Def	Tot			A	TO	Blk	Stl		
01	NORTHCROSS-BAKER, g	1-6	0-4	0-0	0-0	0	2	2	4	2	1	0	0	0	14	
03	MONK, Malica g	8-20	2-3	4-4	3	4	7	4	21	5	3	0	0	32		
04	SWENSON, Keiryn g	1-3	1-3	1-2	0	2	2	1	4	0	1	1	0	18		
10	WILLIAMS, Kiara c	3-6	0-0	0-1	5	11	16	3	6	0	4	2	0	28		
13	SPANGLER, Grayce g	0-0	0-0	0-0	0	0	0	0	0	0	0	0	0	1		
14	MASON, Jaiilyn g	4-9	2-5	0-0	0	2	2	5	10	1	2	0	2	33		
21	COSPER, Devin g	5-23	1-11	6-8	1	2	3	3	17	0	2	1	1	39		
22	ZIMMERMAN, Bailey f	0-1	0-0	0-0	0	2	2	4	0	0	1	1	0	24		
24	THOMAS, Taylah f	0-1	0-1	0-0	0	0	0	0	0	0	0	0	0	9		
30	WEAVER, Macy	0-0	0-0	0-0	0	0	0	0	0	0	0	1	0	2		
Team						4	2	6								
Totals		22-69	5-27	11-15	13	27	40	24	60	7	13	6	3	200		
1st - FG %:		4-17	23.5%	2nd: 5-16	31.3%	3rd: 6-15	53.3%	4th: 5-21	23.8%	Game: 22-69	31.9%	Deadball				
3FG %:		1-5	12.9%	0-4	0.0%	2-4	50.0%	1-8	12.5%	5-27	18.5%	Rebounds				
FT %:		3-5	60.0%	0-0				6-6	100.0%	11-15	73.3%	2				

Kansas 71 • 7-0

#	Player	Total		3-Ptr		Rebounds			PF	TP	A TO Blk Stl					Min
		FG-FGA	FG-FGA	FT-FTA	FT-FTA	Off	Def	Tot			A	TO	Blk	Stl		
00	Lyons, Christalah g	6-17	0-3	3-6	0	4	4	3	15	3	2	1	5	28		
02	Osorio, Brianna g	2-6	0-2	4-4	0	3	8	2	8	2	7	1	1	33		
12	Wilson, Micaela g	0-2	0-1	0-0	0	3	3	0	0	1	2	0	0	8		
14	Richardson, Austin f	1-7	0-2	0-0	1	5	6	2	2	0	1	1	0	22		
22	Cheadle, Chayla g	2-5	1-2	1-2	3	2	5	2	6	2	0	0	0	28		
23	Watts, Eboni g	0-1	0-0	0-0	0	1	1	0	0	0	0	0	0	3		
23	Kopatich, Kylee g	7-14	2-5	10-11	2	2	4	3	26	1	2	1	2	38		
35	Helgren, Bailey c	2-3	0-0	0-0	2	1	3	1	4	0	0	0	0	17		
50	Boric, Sara g	0-0	0-0	0-0	0	1	1	0	0	0	0	0	0	3		
50	Johnson, Tyler g	5-7	0-0	0-0	3	2	5	3	10	0	1	1	0	20		
Team					3	7	10									
Totals		25-62	3-15	18-25	14	36	50	17	71	9	15	5	8	200		
1st - FG %:		6-17	35.3%	2nd: 6-13	46.2%	3rd: 8-20	40.0%	4th: 5-12	41.7%	Game: 25-62	40.3%	Deadball				
3FG %:		1-4	25.0%	0-3	0.0%	0-3	0.0%	3-13	23.0%	3-15	20.0%	Rebounds				
FT %:		3-5	60.0%	2-2	100.0%	3-3	100.0%	10-15	66.7%	18-25	72.0%	3				

Officials: Scott Yarbrough, Jesse Dickerson, Michael McConnell
Technical fouls: Arkansas-None. Kansas-None.
Attendance: 1,795
FO: Arkansas #14 (0:20.8)

Score by periods	1st	2nd	3rd	4th	Total
Arkansas	12	10	21	17	60
Kansas	16	14	21	20	71

Last FG - AR 4th-01:10, KU 4th-03:10.
Largest lead - AR by 2 1st-09:40, KU by 13 3rd-08:05.
AR led for 01:17, KU led for 35:31. Game was tied for 03:03.

Points	In	Off	2nd	Fast	Bench
AR	28	10	8	6	6
KU	42	17	11	14	16

Score tied - 2 times.
Lead changed - 3 times.



DECEMBER 7, 2017

CHARLOTTE

ARKANSAS

Bud Walton Arena
Fayetteville, Arkansas

72

73

Devin Cosper had a career-best 25 points and 14 rebounds in comeback win. Arkansas trailed by seven at the half and was tied at the 30 before winning.

Charlotte 72 • 3-6

#	Player	Total		3-Ptr		Rebounds			PF	TP	A TO Blk Stl					Min
		FG-FGA	FG-FGA	FT-FTA	FT-FTA	Off	Def	Tot			A	TO	Blk	Stl		
15	JAMISON-MYERS, Nyila f	3-9	0-0	2-3	3	1	4	5	8	1	1	0	0	13		
34	PEARSON, Dara f	3-10	0-0	0-2	9	10	19	2	6	0	0	2	0	35		
03	LINNEY, Mariah g	0-3	0-0	0-0	1	1	2	2	0	2	0	0	0	9		
04	RAVENTOS, Laia g	6-18	2-3	3-4	0	6	6	2	17	6	6	1	6	35		
04	RANSOM, Amaya g	6-19	2-7	0-1	0	5	5	1	14	2	5	0	0	37		
10	MARTIN, Jada g	0-0	0-0	0-0	0	0	0	0	0	0	0	0	0	3		
13	WILSON, Octavia g	2-6	0-2	1-2	1	2	3	2	5	4	1	0	1	27		
22	HARLEY, Lauren g	2-3	0-0	3-4	0	6	6	2	7	0	1	0	0	18		
30	ROBINSON, Jaida g	5-6	1-1	4-4	1	5	6	4	15	0	3	0	0	23		
Team					3	4	7									
Totals		27-74	5-13	13-20	18	40	58	20	72	15	17	3	7	200		
1st - FG %:		8-21	38.1%	2nd: 8-16	50.0%	3rd: 3-17	17.6%	4th: 8-20	40.0%	Game: 27-74	36.5%	Deadball				
3FG %:		2-4	50.0%	1-2	50.0%	0-2	0.0%	2-5	40.0%	5-13	38.5%	Rebounds				
FT %:		0-1	0.0%	2-2	100.0%	6-10	60.0%	5-7	71.4%	13-20	65.0%	2				

Arkansas 73 • 6-3

#	Player	Total		3-Ptr		Rebounds			PF	TP	A TO Blk Stl					Min
		FG-FGA	FG-FGA	FT-FTA	FT-FTA	Off	Def	Tot			A	TO	Blk	Stl		
22	ZIMMERMAN, Bailey f	2-9	1-6	1-1	1	2	3	0	6	1	3	1	0	28		
10	WILLIAMS, Kiara c	3-8	0-0	3-11	8	4	12	3	9	0	0	3	4	29		
02	MONK, Malica g	6-18	2-6	1-2	1	3	4	4	15	3	1	0	3	38		
14	MASON, Jaiilyn g	4-10	2-6	2-2	0	4	4	2	12	4	1	1	1	30		
21	COSPER, Devin g	9-23	2-7	5-6	3	11	14	2	25	2	3	0	1	40		
01	NORTHCROSS-BAKER, g	1-2	1-2	0-0	0	3	3	0	3	1	1	0	0	11		
04	SWENSON, Keiryn g	1-5	1-4	0-0	0	2	2	3	0	3	0	0	0	13		
24	THOMAS, Taylah g	0-0	0-0	0-0	0	0	0	3	0	0	0	0	1	4		
30	WEAVER, Macy g	0-0	0-0	0-2	2	0	2	3	0	0	1	0	0	7		
Team					0	1	1									
Totals		26-75	9-31	12-24	15	30	45	19	73	11	10	5	10	200		
1st - FG %:		5-16	31.3%	2nd: 6-22	27.3%	3rd: 7-19	36.8%	4th: 8-18	44.4%	Game: 26-75	34.7%	Deadball				
3FG %:		3-9	33.3%	2-9	22.2%	1-4	25.0%	3-9	33.3%	9-31	29.0%	Rebounds				
FT %:		1-3	33.3%	2-5	40.0%	4-8	50.0%	5-8	62.5%	12-24	50.0%	6,4				

Officials: Bob Trammell, Felicia Grinter, Jesse Dickerson
Technical fouls: Charlotte-None. Arkansas-None.
Attendance: 1,169
Estimated Actual Attendance: 733
Fouled out: Charlotte #15, Jamison-Myers (1:50, 4Q)

Score by periods	1st	2nd	3rd	4th	Total
Charlotte	18	19	12	23	72
Arkansas	14	16	19	24	73

Last FG - CHA 4th-00:01, AR 4th-00:53.
Largest lead - CHA by 9 3rd-09:40, AR by 6 4th-00:53.
CHA led for 24:48, AR led for 10:50. Game was tied for 04:22.

Points	In	Off	2nd	Fast	Bench
CHA	40	8	12	6	17
AR	32	15	17	8	6

Score tied - 3 times.
Lead changed - 15 times.



DECEMBER 10, 2017

TULSA

ARKANSAS

Bud Walton Arena
Fayetteville, Arkansas

41

67

Arkansas' 61 rebounds is the most since the 2014-15 season. Devin Cosper and Malica Monk have scored in double figures in all 10 games and Cosper posted back-to-back double-doubles.

Tulsa 41 • 4-6

#	Player	Total		3-Ptr		Rebounds			PF	TP	A TO Blk Stl				Min
		FG-FGA	FG-FGA	FT-FTA	Off	Def	Tot	A			TO	Blk	Stl		
33	POLK, Crystal	f	4-11	0-0	0-1	4	4	8	1	8	0	2	2	0	19
02	PEREZ, Tatyana	f	1-8	0-3	0-0	0	1	1	0	2	2	0	0	1	23
03	WAKEFIELD, Erika	g	3-8	0-1	0-0	0	4	4	3	6	0	0	0	1	27
12	DICKSON, Shug	g	3-10	0-1	1-1	0	3	3	2	7	0	0	0	1	19
21	LESCAY, Rebecca	g	0-5	0-0	0-0	1	2	3	2	0	0	0	0	1	21
00	ELLIOTT, Kendrick	g	1-5	0-0	4-6	3	3	6	3	0	1	1	0	1	18
04	RICHARDS, Addison	g	0-1	0-1	0-0	1	1	2	0	0	0	0	0	0	6
05	BUTLER, Jasmine	g	2-3	0-0	0-0	1	1	2	0	4	0	0	0	0	5
10	GAULDEN, Alexis	g	2-3	0-0	0-0	0	2	2	3	0	0	0	0	0	20
18	PARKER, Ebony	g	2-7	2-6	0-0	1	1	2	0	1	1	0	0	0	15
22	BRADY, Morgan	g	0-6	0-2	2-2	0	1	1	1	2	0	0	0	0	15
25	SCALES, Tyshe'	g	0-2	0-0	0-0	1	3	4	0	0	0	0	0	0	12
	Team					1	0	1							
	Totals		16-69	2-16	7-10	13	26	39	16	41	5	7	3	4	200
1st: FG %: 5-15 33.3% 2nd: 4-19 21.1% 3rd: 3-17 17.6% 4th: 4-13 30.8% Game: 16-69 23.2% Deadball															
3FG %: 0-3 0.0% 2-8 25.0% 2-2 0.0% 0-3 0.0% 2-16 12.5% Rebounds															
3-PT %: 0-3 0.0% 2-7 28.6% 2-7 28.6% 0-3 0.0% 2-16 12.5%															



DECEMBER 21, 2017

ARKANSAS ARIZONA STATE

Wells Fargo Arena
Tempe, Arizona

Malica Monk scored in double figures for the 12th consecutive game.

43
89



DECEMBER 28, 2017

GRAMBLING STATE ARKANSAS

Bud Walton Arena
Fayetteville, Arkansas

Four players in double figures with Kiara Williams (12 pts/16 rebounds) and Malica Monk (10 pts/10 assists) posting double-doubles.

62
79

Arkansas 43 • 8-4

#	Player	Total		3-Ptr		Rebounds		PF	TP	A	TO	Bk	Stl	Min
		FG-FGA	FG-FGA	FT-FTA	FT-FTA	Off	Def							
10	WILLIAMS, Kiara	r	0-2	0-0	3-4	0	4	4	1	3	0	1	1	16
22	ZIMMERMAN, Bailey	f	1-3	0-1	0-0	2	2	4	1	2	1	3	1	0
03	MONK, Malica	g	5-19	0-4	2-2	0	2	2	1	12	2	0	0	1
14	MASON, Jailyn	g	3-7	0-1	0-0	0	4	4	0	6	1	5	1	0
21	COSPER, Devin	g	3-13	2-5	0-0	0	1	1	2	8	1	2	0	0
01	NORTHCROSS-BAKER,	g	3-8	2-6	0-0	1	0	1	0	8	1	4	0	0
04	SWENSON, Keiryn	g	1-3	0-1	0-0	2	1	3	0	2	1	3	1	0
13	SPANGLER, Grayce	g	0-1	0-0	0-0	0	1	1	2	0	0	0	0	0
20	STOUT, Sydney	g	0-0	0-0	0-0	0	0	0	0	0	0	0	0	0
24	THOMAS,Taylah	g	1-1	0-0	0-0	0	3	3	2	0	3	0	0	0
30	WEAVER, Macy	g	0-0	0-0	0-0	0	1	1	2	0	0	0	0	0
Team						4	7	11						
Totals			17-57	4-18	5-6	9	26	35	12	43	7	23	4	1
1st - FG %:		4-9	44.4%	2nd: 3-18	16.7%	3rd: 4-15	26.7%	4th: 6-15	40.0%	Game: 17-57	29.8%	Deadball		
3FG %:		0-1	0.0%	0-5	0.0%	2-5	40.0%	2-7	28.6%	4-18	22.2%	Rebounds		1
FT %:		0-0	0.0%	0-0	0.0%	1-2	50.0%	4-4	100.0%	5-6	83.3%			

Arizona State 89 • 9-3

#	Player	Total		3-Ptr		Rebounds		PF	TP	A	TO	Bk	Stl	Min
		FG-FGA	FG-FGA	FT-FTA	FT-FTA	Off	Def							
22	Ekmarm, Courtney	f	8-13	7-10	0-0	1	2	3	2	23	0	0	1	1
42	Ibbs, Kianna	f	6-10	0-0	1-2	0	1	1	0	13	3	1	1	0
33	Johnson-Chapman, Cha	c	6-8	0-0	1-2	2	4	6	1	13	0	2	1	0
01	Richardson, Reili	g	1-6	0-2	0-0	0	4	4	0	2	9	0	0	2
11	Ryan, Robbi	g	2-8	0-0	0-0	1	1	2	2	4	5	2	0	2
04	Russell, Kiara	g	4-6	0-0	1-2	0	4	4	3	9	6	0	0	1
21	Elena, Sophia	g	1-3	0-1	0-0	4	5	9	3	2	3	2	0	2
24	Sanders, Bre'yanha	g	3-5	1-3	0-0	0	2	2	1	7	0	0	0	1
44	Rubin, Eva	g	1-2	0-0	0-0	0	1	1	0	2	0	1	0	0
52	Ruden, Jamie	g	5-12	4-4	0-0	1	2	3	1	14	1	0	1	1
Team						1	5	6						
Totals			37-73	12-20	3-6	10	31	41	13	89	27	8	4	11
1st - FG %:		10-23	43.5%	2nd: 11-16	68.8%	3rd: 9-17	52.9%	4th: 7-17	41.2%	Game: 37-73	50.7%	Deadball		
3FG %:		6-7	85.7%	3-6	50.0%	2-4	50.0%	1-3	33.3%	12-20	60.0%	Rebounds		3
FT %:		0-0	0.0%	1-2	50.0%	1-2	50.0%	1-2	50.0%	3-6	50.0%			

Officials: Michol Murray, Clarke Stevens, Benny Luna
Technical fouls: Arkansas-None. Arizona State-None.
Attendance: 1988

Score by periods	1st	2nd	3rd	4th	Total
Arkansas	8	6	11	18	43
Arizona State	26	26	21	16	89

Last FG - AR 4th-01:11, ASU 4th-00:14.
Largest lead - AR by 2 1st-09:43, ASU by 50 4th-09:39.
AR led for 02:20. ASU led for 36:56. Game was tied for 00:44.

Points	In	Off	2nd	Fast	Bench
AR	22	3	8	6	12
ASU	46	31	8	4	34

Score tied - 1 time.
Lead changed - 1 time.



DECEMBER 31, 2017

OLE MISS ARKANSAS

Bud Walton Arena
Fayetteville, Arkansas

Devin Cosper had her sixth double-double with 18 points and 11 rebounds.
Malica Monk and Jailyn Mason also scored in double figures.

72
73



JANUARY 4, 2018

ARKANSAS MISSISSIPPI STATE

The HUMP
Starkville, Mississippi

TBA

TBA
TBA

Ole Miss 72 • 10-4, 0-1 SEC

#	Player	Total		3-Ptr		Rebounds		PF	TP	A	TO	Bk	Stl	Min
		FG-FGA	FG-FGA	FT-FTA	FT-FTA	Off	Def							
01	GLOVER, BREE	f	0-0	0-0	0-0	0	7	7	3	0	3	3	1	2
42	GIBSON, SHELBY	c	9-13	0-0	3-3	3	1	4	5	21	2	3	2	0
00	NIXON, CHYNA	g	0-2	0-1	0-0	1	3	4	1	0	0	0	0	0
20	MUHAMMAD, MADINAH	g	6-14	2-5	3-4	0	1	1	0	17	0	1	0	1
25	ALSTON, ALISSA	g	5-15	3-5	5-7	0	5	5	3	18	7	2	0	1
10	MUHATE, CECILIA	g	0-0	0-0	2-2	2	1	3	0	2	1	0	0	0
12	JOHNSON, BARBARA	g	1-3	1-2	4-8	1	0	1	0	7	0	4	0	0
32	RODGERS, KATE	g	0-2	0-2	2-2	1	2	3	0	2	0	1	0	0
44	LEWIS, TORRI	g	1-3	1-3	0-0	1	0	1	4	3	1	1	0	1
55	TAYLOR, PROMISE	g	1-3	0-0	0-0	0	3	3	1	2	0	2	1	1
Team						1	2							
Totals			23-55	7-18	19-26	10	24	34	17	72	14	17	4	6
1st - FG %:		4-13	30.8%	2nd: 6-16	37.5%	3rd: 6-17	35.3%	4th: 7-9	77.8%	Game: 23-55	41.8%	Deadball		
3FG %:		2-7	28.6%	3-6	50.0%	1-4	25.0%	1-1	100.0%	7-18	38.9%	Rebounds		4
FT %:		4-4	100.0%	3-5	60.0%	5-7	71.4%	7-10	70.0%	19-26	73.1%			

Arkansas 73 • 10-4, 1-0 SEC

#	Player	Total		3-Ptr		Rebounds		PF	TP	A	TO	Bk	Stl	Min
		FG-FGA	FG-FGA	FT-FTA	FT-FTA	Off	Def							
10	WILLIAMS, Kiara	f	1-5	0-0	3-4	2	7	9	5	5	0	4	1	23
22	ZIMMERMAN, Bailey	f	1-1	0-0	0-0	1	0	1	2	2	1	1	0	0
03	MONK, Malica	g	4-13	0-3	4-8	1	1	2	1	12	4	3	0	1
14	MASON, Jailyn	g	5-11	3-4	0-0	0	2	2	3	13	4	1	1	1
21	COSPER, Devin	g	7-15	2-5	2-3	1	10	11	3	18	1	6	1	4
01	NORTHCROSS-BAKER,	g	3-5	1-2	2-2	2	1	3	0	9	0	1	0	0
04	SWENSON, Keiryn	g	3-8	1-6	1-1	3	1	4	1	8	0	1	1	0
24	THOMAS,Taylah	g	2-3	1-1	1-2	3	0	3	2	6	0	1	0	0
Team						1	2	3	1					
Totals			26-61	8-21	13-20	14	24	38	18	73	11	15	7	7
1st - FG %:		7-13	53.8%	2nd: 6-19	31.6%	3rd: 10-17	58.8%	4th: 3-12	25.0%	Game: 26-61	42.6%	Deadball		
3FG %:		4-8	50.0%	1-6	16.7%	1-6	16.7%	2-3	66.7%	8-21	38.1%	Rebounds		4
FT %:		1-2	50.0%	5-8	62.5%	4-4	100.0%	3-6	50.0%	13-20	65.0%			

Officials: Susan Blauch, Angelica Suffren, Scott Klonfals
Technical fouls: Ole Miss-None. Arkansas-TEAM.
Attendance: 1701
Estimated Actual Attendance: 1,261
Fouled out: Ole Miss #42, Gibson (3:22 4Q)
Arkansas #10, Williams (2:48 4Q)

Score by periods	1st	2nd	3rd	4th	Total
Ole Miss	14	18	18	22	72
Arkansas	19	18	25	11	73

Last FG - OM 4th-00:54, AR 4th-01:17.
Largest lead - OM by 1 2nd-04:33, AR by 15 3rd-01:42.
OM led for 01:11. AR led for 35:22. Game was tied for 03:25.

Score tied - 3 times.
Lead changed - 2 times.