



# ARKANSAS RAZORBACKS

One Final Four Appearance » 22 Postseason Appearances » 27th Season In The SEC » More Than 400 Home Wins » More Than 700 Program Victories

## /// THE SERIES ///

Series Record	21-14
Fayetteville	11-5
Away	9-7
Neutral	1-2
Last Meeting	Ark. W, 68-50
Neighbors versus this opponent	First Meeting

## /// MEDIA ///



### SEC Network

Talent: Jenn Hildreth and Steffi Sorensen



### Razorback Sports Network

Phil Elson & Erin Portman

Listen: Little Rock - KABZ-FM-103.7

Fayetteville - KQSM-FM-92.1

Fayetteville - KYNG-AM - 1590\*

Fort Smith - KFPW-AM-1230

Fort Smith - KHGG-AM-1580\*

Rogers - KURM-AM-790/FM-100.3

\*Only if there are conflicts with the FM station

## /// SCHEDULE & RESULTS ///

NOVEMBER (5-2)	MEDIA	W/L	SCORE
2 Northeastern St (Exh)	-	W	82-74
10 Sam Houston State	SECN+	W	65-54
12 Samford	SECN+	W	84-63
16 at RV Nebraska	BTN	L	80-69
20 at Oral Roberts	Cox Sports	W	77-66
24 UTEP!	-	L	64-61
25 New Mexico State!	-	W	69-60
29 Abilene Christian	SECN+	W	79-65

DECEMBER (5-2)	MEDIA	W/L	SCORE
3 at Kansas*	JTV/ESPN3	L	71-60
7 Charlotte	SECN+	W	73-72
10 Tulsa	SECN+	W	67-41
17 UT Arlington	SECN+	W	91-57
21 at RV/RV Arizona St.	Tempe, Arizona	L	89-43
28 Grambling State	SECN+	W	79-62
31 Ole Miss*	SECN+	W	73-72

JANUARY (0-1)	MEDIA	W/L	SCORE
4 at #5/3 Miss State*	SEC Network	L	111-69
7 -/rv Alabama*	SEC Network	-	3 p.m.
11 at Georgia*	SECN+	-	6 p.m.
14 at Auburn*	SEC Network	-	4 p.m.
18 RV Florida*	SEC Network	-	6 p.m.
21 at Missouri*+	SEC Network	-	4 p.m.
25 at S Carolina*+	SEC Network	-	5:30 p.m.
29 RV Kentucky*	SEC Network	-	6 p.m.

FEBRUARY (0-0)	MEDIA	W/L	SCORE
4 at Alabama*	SEC Network	-	1 p.m.
8 Tennessee*	SECN+	-	7 p.m.
11 Missouri*	SEC Network	-	4 p.m.
15 at Kentucky*	SECN+	-	6 p.m.
18 LSU*+	SECN+	-	2 p.m.
22 Texas A&M*	SECN+	-	7 p.m.
25 at Vanderbilt*	SECN+	-	2 p.m.
28 SEC Tournament	SECN/ESPN/2	-	Nashville

MARCH (0-0)	MEDIA	W/L	SCORE
1-4 SEC Tournament	SECN/ESPN/2	-	Nashville

\* - Southeastern Conference Game

! - UTEP Classic (El Paso, Texas)

^ - SEC/Big 12 Challenge

+ - We Back Pat

> - Play4Kay

All home games played in Bud Walton Arena (19,200) Rankings: AP/Coaches Poll

Sign up for Mike Neighbors' newsletter and listen to his podcasts at

**CoachNeighbors.com**



## ARKANSAS RAZORBACKS 10-5, 1-1 SEC

Head Coach: Mike Neighbors  
Alma Mater: Arkansas, 1993  
Record: 108-46 (5) Arkansas Record: 10-5 (1)



## ALABAMA 11-4, 1-1 SEC

Head Coach: Kristy Curry  
Alma Mater: NE Louisiana, 1988  
Record: 384-218 (19) AL Record: 75-69 (5)



Fayetteville,  
Arkansas



Bud Walton Arena



3 p.m. CST



<http://bit.ly/ArksvAla>



Razorback Radio  
Network



<http://statb.us/b/185267>

## PREVIOUS GAME

» Kiara Williams had 11 points at the half. It is the second time of the season/career she has been in double-digits in the first 20 minutes.

» Kiara Williams tied her career-best with 13 points.

» Devin Cosper scored 13 points, scoring in double figures for the 13th time this season.

» Jaielyn Mason finished with 15 points tying her season-best.

## ABOUT ARKANSAS

» The Razorbacks are the only SEC team that does not return a double-figure scorer.

» Arkansas is 8-0 at home this season including an SEC win over Ole Miss. Arkansas has won double-digit home games 16 times and the single-season best is a 15-4 home record in 1998-99.

» Arkansas **leads the SEC** and ranks **12th in the country** for fewest turnovers with just 165 this year.

» Arkansas **leads the SEC** and is **eighth in the country** with just 11.8 turnovers per game.

» Arkansas **leads the SEC** and is **12th in the country** with 385 3-point field goals attempted.

» Arkansas ranks **second in the SEC** with 8.2 3-point field goals made per game and for 3-pointers made with 115. (SEC/NCAA rankings 1/2/18).

## The Fourth Quarter Is Ours

» Arkansas has taken the same number or more shots than its opponent and more 3-pointers in 12 of 15 games.

» Arkansas has outrebounded or had the same number of rebounds in seven games including six in a row prior to the ASU game.

» Arkansas has had the same or fewer turnovers in the fourth quarter in nine games.

» Arkansas has outscored opponents 298-276 in the final 10 minutes.

## Small Wins

» Arkansas moved up to No. 49 in this week's NCAA RPI.

» Arkansas is 8-0 at home.

» Charlie Creme lists Arkansas as one of the "First four out" in his first bracketology of the year.

## Better Numbers

» Devin Cosper has 41 3-pointers made - 16 better than her single season best. She has scored more points (243) through 15 games than she did all of last season (187 pts/29 g).

» Jaielyn Mason has made 22 3-pointers through 15 games. She made 19 in 30 games last year.

» Malica Monk has scored 244 points in 15 games. Her single season best is 247 points set in 27 games last year.

» Malica Monk has made 63 free throws - more makes than all of last year.

## /// STATISTICAL COMPARISONS ///

	ARKANSAS	ALABAMA
PTS / GAME	70.6	68.9
PTS ALLOWED / GAME	68.5	55.1
FG %	.379	.398
FG DEFENSE %	.398	.345
3-PT FG %	.300	.264
3-PT FG DEFENSE %	.319	.275
REB / GAME	41.5	43.1
REB ALLOWED / GAME	42.7	36.7
LEADING SCORER	Monk, 16.3	Cook, 11.1
LEADING REBOUNDER	Williams, 7.8	Williams, 6.6

## LAST GAME STARTERS



### 3 MALICA MONK

PPG	FG%	RPG	APG
16.3	.378	3.5	4.3



### 10 KIARA WILLIAMS

PPG	FG%	RPG	BPG
7.9	.505	7.8	1.4



### 14 JAILYN MASON

PPG	FG%	RPG	APG
9.9	.405	4.1	3.3



### 21 DEVIN COSPER

PPG	FG%	RPG	3PFG
16.2	.368	6.8	2.7



### 22 BAILEY ZIMMERMAN

PPG	FG%	RPG	MIN
2.5	.213	2.8	21.6

## NUMERICAL ROSTER

No.	Name	Pos	Ht	Cl	Hometown/HS/Previous School
0	A'Tyanna Gaulden*	G	5-7	RSO	Ocilla, Ga./Americus Sumter HS/Florida State
1	Raven Northcross-Baker	G	5-7	Fr	Malvern, Ark./Malvern HS/Chipola College
3	Malica Monk	G	5-5	Jr	N. Little Rock, Ark./NLR HS
4	Keiryn Swenson	G/F	6-1	Jr	Wichita, Kan. /Maize HS
10	Kiara Williams	F/C	6-1	So	Little Rock, Ark./LR Central HS
13	Grayce Spangler	G	5-10	Fr	Fayetteville, Ark. Fayetteville HS
14	Jailyn Mason	PG	5-9	So	Mason, Ohio/William Mason HS
20	Sydney Stout	F	6-0	So	Bixby, Okla./Bixby HS
21	Devin Cospier	G	5-10	SGr	Coffeyville, Kan./Field Kindley HS/Coffeyville CC
22	Bailey Zimmerman	G/F	6-0	Jr	St. Vincent, Ark. /Wonderview HS
24	Taylah Thomas	F	6-1	Fr	Arlington, Texas/Mansfield Timberview HS
30	Macy Weaver	F	6-3	Fr	Davis Junction, Ill./Stillman Valley HS
33	Chelsea Dungee*	G	5-11	RSO	Sapulpa, Okla./Sapulpa HS/Oklahoma
51	Brenna McClure	G	5-6	RSO	Lyons, Kansas/Lyons HS/Hutch CC

\*Will not play the 2017-18 season due to NCAA transfer rules

## ALPHABETICAL ROSTER

No.	Name	Twitter
21	Devin Cospier	@devidevv__
33	Chelsea Dungee*	@ChelseaDungee22
0	A'Tyanna Gaulden*	@AtyannaGaulden
51	Brenna McClure	@mcclurebrenna
14	Jailyn Mason	@jaimason14
3	Malica Monk	@TheRealMalica
1	Raven Northcross-Baker	@ravenbaker_4
13	Grayce Spangler	@grayce_1313
20	Sydney Stout	@sydeny_stout_
4	Keiryn Swenson	@KiKi_Sweezyy
24	Taylah Thomas	@hailtaylahh
30	Macy Weaver	@macyweaver528
10	Kiara Williams	@kiara_will22
22	Bailey Zimmerman	@Bailey_Ann22

## COACHING STAFF

Title	Name	Year	Alma Mater
Head Coach	Mike Neighbors	First Season	Arkansas, 1993
Assistant Coach	Todd Schaefer	First Season	Thomas More College, 1995
Assistant Coach	Lacey Goldwire	First Season	Oklahoma State, 2010
Assistant Coach	Pauline Love	First Season	Southern Miss, 2010
Director of Operations	Amber Shirey	30th Season	Arkansas, 1992
Director of Video and Scouting	Jeff Brazil	11th Season	Arkansas, 2010
Dir. of Student-Athlete Devel.	C'eira Ricketts	1st Season	Arkansas, 2015

## FA-NETIK PRONUNCIATIONS

No.	Name	Pronunciation
0	A'Tyanna	AH-tee-ah-nuh
3	Malica	mal-ick-cuh
4	Keiryn	KEER-runn
10	Kiara	Key-AIR-uh
13	Grayce	GRACE
14	Jailyn	JAY-lyn
24	Taylah	TAY-luh

## MARGIN OF VICTORY/DEFEAT

	1	2	3	4	5	6	7	8	9	10	11-15	16-19	20+	Record
Wins	2	-	-	-	-	-	-	-	1	-	3	1	3	10
Losses	-	-	1	-	-	-	-	-	-	-	2	-	2	5

### Most First Period Points

2017-18	27	Samford (11-12-17)
All-Time	29	at Alabama (1-15-17)
Opponent	26	at Arizona State (12-21-17)

### Most Third Period Points

2017-18	26	UT-Arlington (12-17-17)
All-Time	34	HBU (12-28-16)*
Opponent	30	at Miss State (1-4-18)*

### Fewest First Period Points

2017-18	3	UTEP (11-24-17)
All-Time	3	UTEP (11-24-17)*
Opponent	6	SHSU (11-11-16)

### Fewest Third Period Points

2017-18	11	at Arizona State (12-21-17)
All-Time	7	Vanderbilt (1-19-17)*
Opponent	4	LSU (1-21-16)

### Most Second Period Points

2017-18	25	Grambling State (12-27-17)
All-Time	31	HBU (12-28-16)
Opponent	35	at #2 S. Carolina (1-3-16)

### Most Fourth Period Points

2017-18	28	UT-Arlington (12-17-17)
All-Time	32	Tulsa (11-23-15)
Opponent	30	at Miss State (1-4-18)

### Fewest Second Period Points

2017-18	6	at Arizona State (12-21-17)
All-Time	4	vs. Kentucky (2-17-17)
Opponent	3	at Alabama (1-15-17)

### Fewest Fourth Period Points

2017-18	11	Ole Miss (12-31-17)
All-Time	5	#7 Ore. St. (11-28-15)
Opponent	10	#24 Missouri (1-17-16)*

### Most First Half Points

2017-18	42	Samford (11-12-17)
All-Time	65	Tenn State (11-27-88)
Opponent	63	Texas (1-9-89)

### Largest Margin of Victory

2017-18	34 (91-57)	UT-Arlington (12-17-17)
All-Time	79 (108-29)	B Wesleyan (2-18-77)
Opponent	54 (28-82)	La Tech (11-30-78)

### Fewest First Half Points

2017-18	14	at Arizona State (12-21-17)
All-Time	11	at Missouri (3-1-15)*
Opponent	8	Montana State (1-5-03)

\*Most Recent

## RECORD FACTS

Overall	10-5
At Home (Bud Walton Arena)	8-0
On The Road   Neutral	1-5   1-0
White   Cardinal   Anthracite Uniforms	8-0   2-5   0-0

## HALFTIME/LEADS/OVERTIME

Leading at the half, home/road/neutral	7-0 (5-0/1-0/0-0)
Tied at the half, home/road/neutral	-
Trailing at the half, home/road/neutral	3-5 (2-0/0-5/1-0)
Games decided by 5 points or fewer	2-1
Games decided by 10 points or fewer	2-1
Leading at the start of the 4Q	9-0
Overtime games	-

## OFFENSE

Scoring less than 50 points	0-1
Scoring 51-60 points	0-1
Scoring 61-70 points	3-3
Scoring 70+ points	7-0
2 Players Or Less in Double Figures	3-3
3 Players in Double Figures	3-2
4 Players in Double Figures	2-0
5 Players in Double Figures	2-0
When shooting 50 percent or higher	-
When shooting less than 50 percent	10-4

## REBOUNDING/TURNOVERS

When outrebounding opponent	7-0
When outrebounded	2-5
When rebounds are even	1-0
When grabbing 10+ offensive reb	8-3
When forcing 15+ turnovers	6-3
When committing 10 or fewer turnovers	5-1
When committing 15+ turnovers	2-3

## Months

In November	5-2
In December	5-2
In January	0-1
In February	-
In March	-



**FACEBOOK.COM/RAZORBACKWBB**

**@RAZORBACKWBB (T&I)**

**HTTP://BIT.LY/YOUTUBEKICKIN**

**COACHNEIGHBORS.COM**

# NEIGHBORS' PHILOSOPHY

## GRAD STUDENT DEVIN COSPER

- »Only "senior" on the team
- »Missed the opening game last season after a death in the family
- »Averaged 6.4 ppg and 2.2 rpg last season and 7.7 ppg and 2.8 rpg for her career
- »Graduated in May 2017 with a degree in broadcast journalism
- »Interned at RSN, Arkansas' broadcast studio
- »Wears the SEC graduate patch on her jersey
- »Named "Comback Student-Athlete of the Year at annual HOGSPY awards after rebounding from an injury and a death in the family



## FUNCTIONALLY FAST

You will hear Mike Neighbors say this a lot. He wants his teams to play as fast as possible and still function at a high level. That may look different from possession to possession depending on what Arkansas is running.

## TRUST, TALENT AND TIME

My program will be built on three things. It's very simple.

**TRUST** - The highest form of loyalty that has to be earned, managed and sometimes re-earned. If we don't have this, nothing will work and the stool's legs will fall off and everything will collapse.

**TALENT** - It doesn't mean you can dribble, shoot, pass and rebound. It's a lot of other things like the ability to engage with the fan base and willingness to sign autographs for a 10-year-old child you might be inspiring.

**TIME** - It's just not being on time or making time. It's how you utilize your time and who you invest your time with and be around. Trust, talent and time. Those will be our pillars.

## FUN FEATURES

Both Mike Neighbors and Jailyn Mason have shoe collections. Mason's collection was featured in a story last year. It can be seen here: <http://bit.ly/2ebtLdb>

Neighbors got settled into his Fayetteville home in mid August. One of the first things he set up were his shoes.



## BESIDE US

One of the things Mike Neighbors stressed when he was hired was his desire to take care of the players, the staff and the fans who have been loyal to the Razorback program. He has told our fans that he wants them to stand "Beside Us". Don't be behind us, stand next to us and go through the process of building our program.

## SHOTS AND POSSESSIONS

Mike Neighbors wants a lot of shots and a lot of possessions. Here's a look at the Razorbacks shots this year. The number is often determined by pace of play and Arkansas will push the tempo.

## 30 AND COUNTING

This year, Arkansas director of operations Amber Shirey enters her 30th season as a Razorback. The former Amber Nicholas was a two-time All-Southwest Conference selection during her four-year playing career from 1989-92. She spent one season (1992-93) as a student coach helping Arkansas transition to the Southeastern Conference. She moved on to a graduate assistant and assistant coach from 1993-94 through the 2006-07 season. In 2007-08 Shirey transitioned to the director of operations position holding that spot until she returned to the sidelines as an assistant coach for the 2013 and 2014 seasons. She moved into her current position as the Executive Director of Operations in 2014-15. She has been a part of seven different head coach's staffs during her tenure.

## GAMEDAY CARDS

Coach Neighbors hands out a Gameday Card for each home and away game. One side of the card is branded with a Razorback logo and women's basketball. The other side is a quote that is relevant to something the team has talked about or worked on that week. Check out this week's card here:



TBA

# OPPONENT

## ABOUT ALABAMA

»Alabama held off a late charge by the Gators to pick up their first SEC win of the year. The Crimson Tide are 11-4 overall and 1-1 in the SEC.

»The Crimson Tide have two players averaging double figures led by Hannah Cook with 11.1 ppg. Ashley Williams adds 10.7 ppg and is the team's leading rebounder with 6.6 rpg.

»Bama has six players averaging 20+ minutes and five more who are getting double-figure minutes on their deep bench.

»Points in the paint were a factor in the win over Florida with Alabama outscoring the Gators 32-14 on Thursday.

»Bama's first quarter defense has been good with the Crimson Tide outscoring teams 233-185. That point total has increased in each of the next three quarters this year.

## LAST TIME

»Arkansas got a 68-50 win in Tuscaloosa last year without their leading scorer in Jessica Jackson.

»The Razorbacks used a quick start, leading 29-15 after the first quarter, to get the win.

»Then freshman Jaielyn Mason paced five Razorbacks in double figures with 15 points. She also had six rebounds and four assists. Keiryn Swenson (12), Malica Monk (11), Devin Cosper (10) and Alecia Cooley (10) also scored in double figures.

## ABOUT THE SERIES

Series Record: 21-14

In Fayetteville: 11-5

In Away: 9-7

Neutral: 1-2

Last 5: 5-0

Mike Neighbors vs.: 0-0

## Results

1/26/1980	AR	68	Bama	54	Fayetteville	3/6/2003	#23 AR	53	Bama	48	N. Little Rock
1/17/1981	AR	65	Bama	70	Tuscaloosa	2/15/2004	AR	65	Bama	68	Tuscaloosa
2/22/1992	AR	76	Bama	80	Fayetteville	2/10/2005	AR	83	Bama	68	Fayetteville
2/20/1993	AR	56	Bama	66	Tuscaloosa	1/15/2006	AR	73	Bama	75	Tuscaloosa
2/2/1994	AR	82	#15 Bama	75	Fayetteville	1/18/2007	AR	71	Bama	63	Fayetteville
12/6/1994	AR	79	#6 Bama	93	Tuscaloosa	1/17/2008	AR	63	Bama	49	Tuscaloosa
3/4/1995	#16 AR	72	#16 Bama	86	Chattanooga	2/22/2009	AR	74	Bama	69	Fayetteville
1/4/1996	#18 AR	85	#19 Bama	92 (OT)	F'ville	1/24/2010	AR	66	Bama	62 (OT)	Tusc.
2/6/1997	#17 AR	61	#7 Bama	102	Tuscaloosa	2/21/2010	AR	58	Bama	69	Fayetteville
3/1/1997	AR	63	#7 Bama	85	Chattanooga	1/16/2011	#20 AR	57	Bama	54	Tuscaloosa
1/11/1998	AR	102	Bama	90 (OT)	F'ville	2/27/2011	AR	79	Bama	92	Fayetteville
2/18/1999	AR	77	#25 Bama	73	Tuscaloosa	2/2/2012	AR (rv)	70	Bama	52	Fayetteville
2/3/2000	AR	66	Bama	62	Fayetteville	2/10/2013	AR	91	Bama	80 (3ot)	Tusc.
2/1/2001	AR	69	Bama	74	Tuscaloosa	2/13/2014	AR	75	Bama	55	Fayetteville
1/10/2002	AR	70	Bama	84	Fayetteville	2/1/2015	AR	53	Bama	42	Tuscaloosa
2/3/2002	AR	72	Bama	70	Tuscaloosa	2/18/2016	AR	69	Bama	67	Fayetteville
2/2/2003	#12 AR	59	Bama	58	Tuscaloosa	1/15/2017	AR	68	Bama	50	Tuscaloosa
3/2/2003	#21 AR	68	Bama	53	Fayetteville						

## IMPORTANT STATS

**Scoring Well:** Alabama is +13.7 ppg better than opponents this year compared to Arkansas' +2.1 scoring margin. Bama's margin dips to +1.5 in its two conference games (Missouri and Florida).

**Distance Favors Arkansas:** Arkansas has made 121 3-pointers and taken a league-leading 403 shots from distance. The Tide, in comparison, have made 66 3-pointers in 250 attempts. Hannah Cook leads the team with 23 made 3-pointers.

NOVEMBER (5-2)	MEDIA	W/L	SCORE	SERIES	NEIGHBORS
2 Northeastern St. (Exh)	-	W	82-74	2-0	1-0
10 Sam Houston State	SECN+	W	65-54	7-0	1-0
12 Samford	SECN+	W	84-63	1-0	1-0
16 at Nebraska	BTN	W	80-69	0-1	0-1
20 at Oral Roberts	Cox Sports	W	77-66	20-9	1-0
24 UTEP!	-	L	64-61	2-1	0-2
25 New Mexico State!	-	W	69-60	1-0	1-0
29 Abilene Christian	SECN+	W	79-65	1-0	1-0

DECEMBER (5-2)	MEDIA	W/L	SCORE	SERIES	NEIGHBORS
3 at Kansas^	JTV/ESPN3	L	71-60	4-4	0-1
7 Charlotte	SECN+	W	73-72	1-0	1-0
10 Tulsa	SECN+	W	67-41	21-3	1-0
17 UT Arlington	SECN+	W	91-57	7-0	1-0
21 at Arizona State	Pac-12N	L	89-43	1-1	2-5
28 Grambling State	SECN+	W	79-62	8-0	2-0
31 Ole Miss*	SECN+	W	73-72	17-26	1-0

JANUARY (0-1)	MEDIA	W/L	SCORE	SERIES	NEIGHBORS
4 at #5/3 Mississippi State*	SEC Network	L	111-69	18-19	0-2
7 Alabama*	SEC Network	-	-	21-14	First Meeting
11 at Georgia*	SECN+	-	-	5-31	First Meeting
14 at Auburn*	SEC Network	-	-	14-22	First Meeting
18 Florida*	SEC Network	-	-	9-27	First Meeting
21 at Missouri*	SEC Network	-	-	11-8	1-0
25 at South Carolina*	SEC Network	-	-	17-16	First Meeting
29 Kentucky*	SEC Network	-	-	13-21	1-0

FEBRUARY (0-0)	MEDIA	W/L	SCORE	SERIES	NEIGHBORS
4 at Alabama*	SEC Network	-	-	21-14	First Meeting
8 Tennessee*	SECN+	-	-	3-30	First Meeting
11 Missouri*	SEC Network	-	-	11-8	1-0
15 at Kentucky*	SECN+	-	-	13-21	1-0
18 LSU*	SECN+	-	-	16-31	First Meeting
22 Texas A&M*	SECN+	-	-	21-8	1-1
25 at Vanderbilt*	SECN+	-	-	8-24	First Meeting
28 SEC Tournament	SECN/ESPN	-	-		

MARCH (0-0)	MEDIA	W/L	SCORE	SERIES	NEIGHBORS
1-4 SEC Tournament	SECN/ESPN				

\* - Southeastern Conference Game

!-UTEP Thanksgiving Tournament (El Paso, Texas)

^SEC/Big 12 Challenge

All home games played in Bud Walton Arena (19,200)

**In Common:** Both Arkansas and Alabama have defeated Grambling State this season. The Razorbacks have a 79-62 win, while the Crimson Tide picked up a 73-49 victory. It is the only common non-conference opponent shared by these teams.

## An Arkansas Win Would ...

A win would make Arkansas:

»11-5 on the year

»make Arkansas 9-0 at home

»extend Arkansas' winning streak to seven consecutive over Alabama

## SEC STANDINGS 1/5/18

	Conference				Overall					
	W-L	Pct.	H	A	W-L	Pct.	H	A	N	Strk
Miss State	2-0	1.000	1-0	1-0	16-0	1.000	9-0	2-0	5-0	W16
Tennessee	2-0	1.000	1-0	1-0	14-0	1.000	8-0	3-0	3-0	W14
S Carolina	2-0	1.000	1-0	1-0	13-1	.929	7-0	4-0	2-1	W7
LSU	2-0	1.000	1-0	1-0	10-3	.769	5-0	4-2	1-1	W8
Georgia	1-1	.500	0-1	1-0	13-2	.867	8-2	5-0	0-0	W1
Missouri	1-1	.500	0-1	1-0	13-2	.867	7-1	3-0	3-1	L1
Texas A&M	1-1	.500	1-0	0-1	12-4	.750	9-2	2-1	1-1	W1
Alabama	1-1	.500	0-1	1-0	11-4	.733	8-1	3-1	0-2	W1
Auburn	1-1	.500	1-0	0-1	10-4	.714	7-0	2-2	1-2	L1
Arkansas	1-1	.500	1-0	0-1	10-5	.667	8-0	1-5	1-0	L1
Ole Miss	0-2	.000	0-1	0-1	10-5	.667	8-1	1-3	1-1	L2
Florida	0-2	.000	0-1	0-1	8-7	.533	5-5	2-1	1-1	L2
Kentucky	0-2	.000	0-1	0-1	8-8	.500	6-3	2-5	0-0	L7
Vanderbilt	0-2	.000	0-1	0-1	4-12	.250	2-6	2-4	0-2	L2

### MONK CONTINUES TO LEAD

»Fourteen consecutive games in double figure scoring (snapped at Miss State). Jessica Jackson scored in double digits in 15 consecutive games in 2016-17.

»Ranks **sixth in the SEC** for field goal attempts (222), **14th** for field goals made (84), **fourth** for minutes played (501.0), **10th** for free throw percent (.788), **sixth** for field goal attempts (222), **10th** for points per game (16.3). *NCAA stats through 1/4/18.*

»Six of 11 games with 20+ points with a career-best 24 at Oral Roberts.

»Monk currently has 195 assists (1.5.18). She is approaching the career top-20 (228 assists).

»At least one 3-pointer in each of the first 10 games with a season-best two 3-pointers three times. A made 3-pointer in 10 of 12 games.

»Thirty-two or more minutes played in 10 of 15 games.

»Seven consecutive games with at least one steal to start the season with a season-best four steals twice (SHSU, NMSU).

»Has been perfect from the free throw line in seven games (Samford (7-7), Nebraska (3-3), UTEP (3-3), Kansas (4-4), Tulsa (4-4), UTA (12-12), ASU (2-2).

»Double-figure scoring in a single quarter three times (10 | 3Q | Nebraska || 13 | 4Q | ORU) || 10 | 4Q | Kansas).

»Has 13 3-point field goals made this year (1.2.18). She had nine 3-pointers in her freshman and sophomore years combined.

### COSPER POSTING BIG NUMBERS

»Ten consecutive games in double figure scoring. The streak was snapped versus UTA. Thirteen of 15 games in double figures.

»One of seven active SEC players with 6+ season double-doubles.

»**First in the SEC** with 2.73 made 3-pointers per game. She has a league-best 41 made 3-pointers.

»**First in the SEC and 10th in the NCAA** in 3-point field goals attempted (131). *NCAA stats through 1/4/18.*

»SEC rankings include **sixth** for double-doubles (5), **second** in field goal attempts (239), **10th** in field goals made (88), and **ninth** in minutes played (32.3 mpg).

»Cospers's 310 (1.5.18) 3-point field goal attempts ranks T13 in the Arkansas career records. She is approaching the top-20 for 3-point field goals made and is in the top-50 for career points.

»Four games with 20+ points this season.

»Six career double-doubles all set this season (SHSU, Oral Roberts, NMSU, Charlotte, Tulsa, Ole Miss).

»Made at least one 3-pointer in each game this year.

»**Eighteen consecutive games** (last four games of 2016-17) with at least one 3-pointer.

»Double-figure scoring in a single quarter three times this year (10 | 1Q | Nebraska || 12 | 1Q | ORU || 11 | 4Q | UTEP). That ties the most in a single season

## LEADS AND DEFICITS

Biggest Halftime Lead	17, GSU
Biggest Halftime Lead Lost	-
Biggest Halftime Deficit	38, GSU
Biggest HT Deficit Erased	7, Char.
Biggest Overall Lead	30, Tulsa, 4Q
Biggest Win Margin	26, Tulsa
Biggest Loss Margin	46, ASU
Biggest Deficit Overcome	13, SHSU

## JUMP BALLS

Arkansas	6 (5-1)
Opponents	9 (5-4)

## FIRST POINTS

Williams	7
Mason	4
Monk	2
Cosper	2
Monk	1 (FT)
Zimmerman	1 (FT)

## BENCH POINTS

Arkansas	274
Opponent	278

## DOUBLE FIGURE POINTS

Malica Monk	14
Devin Cosper	14
Jailyn Mason	7
Kiara Williams	6
Raven Northcross-Baker	3
Taylah Thomas	1
Keiryn Swenson	1

## LEADING SCORER

Monk	8
Cosper	5
Northcross-Baker	2
Mason	1

## DOUBLE FIGURES FIRST HALF

Cosper	3
Monk	2
Williams	2
Mason	1
Northcross-Baker	1

## DOUBLE FIGURES/QUARTER

Cosper	3
Monk	3
Mason	1
Northcross-Baker	1

## 20/30-PLUS POINTS

Monk	5 (21, 22, 24, 22, 20)
Cosper	4 (21, 21, 22, 25)
Northcross-Baker	1 (22)

## DOUBLE FIGURE REBOUNDS

Cosper	6
Williams	5
Thomas	1

## LEADING REBOUNDER

Williams	6
Cosper	6
Thomas	2
Monk	1
Zimmerman	1
Mason	1

## DOUBLE DOUBLES

Devin Cosper	SHSU, ORU, NMSU, Char., Tulsa, OM
Williams	NMSU, GSU
Monk	GSU

## 5+ASSISTS/10+ ASSISTS

Monk	6/1
Mason	3/-
Northcross-Baker	1/-

## FIRST OFF THE BENCH

Thomas	11
Northcross-Baker	9
Swenson	6
Williams	1

## CHARGES DRAWN

Monk	4
Cosper	2
Northcross-Baker	1
Thomas	1

## FORCED 10 SECOND VIOLATION

2017-18	TBA
---------	-----

## FORCED SHOT CLOCK VIOLATION

2017-18	5
---------	---

## FORCED INBOUND VIOLATION

2017-18	TBA
---------	-----

## AND 1

Malica Monk	8
Kiara Williams	6
Devin Cosper	4
Bailey Zimmerman	3
Jailyn Mason	1
Raven Northcross-Baker	1
Macy Weaver	1
Keiryn Swenson	1

## AND 1 CONVERSIONS

Monk	7
Williams	3
Cosper	3
Bailey Zimmerman	3
Northcross-Baker	1
Swenson	1

## BUZZER BEATERS

Mason	1 (ACU)
<a href="http://bit.ly/2BBy8ua">http://bit.ly/2BBy8ua</a>	
Swenson	1 (Kansas)
Mason	1 (MSU)

by a Razorback since Jessica Jackson in 2014-15.

»Has 41 3-point field goals made this year (1.5.18) bettering her career best of 25 in a season (2015-16).

»Has scored 243 points this year (1.5.18) - more than all of last season (187).

### JAILYN MASON QUIETLY SHINNING

»Overshadowed by the gaudy numbers tallied by Devin Cospoer and Malica Monk, sophomore Jailyn Mason is also putting together a solid season.

»She has eight games in double figure scoring including a streak of five in a row (ACU-UTA).

»She has three games with 5+ assists.

»Has played multiple positions on the floor.

»While Malica Monk is the spark plug that gets the team going, Jailyn Mason is the captain who takes control and steers the ship.

»Made more 3-pointers through 15 games (22) than all of last year (19)

### KIARA WILLIAMS STEPPING UP

»First career double-double with 11 points and 11 rebounds versus New Mexico State. Second one against GSU with 12 points and 16 boards.

»Five career games (all this season) with 10+ rebounds.

»Posted a career-best 16 rebounds at Kansas, tying it versus GSU.

»Tallied a career-best 12 points in a win over ACU and was in double figures in the first half for the first time in her career.

»Six games in double figure scoring including tying her season-best with 13 versus No. 5/3 Mississippi State.

### TAKING CARE OF THE BALL

»Arkansas has forced its opponents to turnover the ball more times than they have in 12 of 15 games and tied the opponent in TO's once (NMSU).

»Arkansas has forced double digit turnovers in 12 games while committing single digit miscues in five games.

»Arkansas has collected double digit steals in six games.

»Arkansas is **second in the SEC** and ranks **12tg in the country** (1/4/18) averaging 12.1 turnovers per game.

»Arkansas ranks **first in the SEC** in with 181 total turnovers.

»According to HerHoopStats.com, Arkansas has a 13.8% turnover rate which ranks ninth of 349 programs. That means the Razorbacks commit a turnover on just 13.8% of the possessions that they 1) took a shot, 2) got to the foul line or 3) had a turnover.

### FROM DISTANCE

»Arkansas ranks **second in the SEC** with 8.1 made 3-pointers per game and is **third** in 3-point field goals made with 121.

»Arkansas is **second in the SEC** with 3-pointers attempted with 403. That mark is also **11th in the NCAA**.

### RALLY RAZORBACKS

»The Razorbacks have had to come from behind to win in four games this year.

»Arkansas trailed by 13 points in the second quarter against SHSU and rallied for the 11-point win at home.

»Arkansas trailed at Oral Roberts by six points in the first quarter and came back to win by 11 points on the road.

»The Razorbacks trailed by seven points against New Mexico State on a neutral court and rallied late to win by nine.

»Arkansas trailed Charlotte, 37-30, at the half and the teams were tied at the end of the third quarter before the Razorbacks escaped with a one-point win.

Devin Cospoer	Communication (undergrad & Masters)
Chelsea Dungee	Rec. & Sport Management
A'Tyanna Gauden	Journalism: Broadcast
Brenna McClure	Social Work
Jailyn Mason	Journalism: News/Editorial
Malica Monk	Rec. & Sport Management
Raven Northcross-Baker	Criminal Justice
Grayce Spangler	Communication
Sydney Stout	Management
Keiryn Swenson	Accounting
Taylah Thomas	Nursing
Macy Weaver	Kinesiology
Kiara Williams	Childhood Development
Bailey Zimmerman	Apparel Merch./Product Dev.



### HOW CLOSE ARE THOSE LOSSES?

»Arkansas trailed Nebraska by three, 72-69, with 2:36 remaining in the game. Nebraska finished with a 7-0 run to win the game.

»After going 0-for-15 in the first quarter at UTEP, the Razorbacks rallied. Arkansas trailed the Miners by one, 62-61, with :38 seconds remaining in the game. UTEP hit a jumper with :08 seconds to seal the win.

»Arkansas trimmed the Kansas lead to four points, 57-53, at the 5:44 mark of the fourth quarter and trailed by two possessions, 66-60, with :39 seconds to go.

### LINEUPS

»Arkansas' most common lineup has been Monk, Williams, Mason, Cospoer and Zimmerman. This lineup has started 12 of 13 games.

»This group has played 136:06 minutes together, scored 248 points and allowed 203 points for a +45 rating and a +13.23 points per 40 minutes

»The second most common lineup is Monk, Cospoer, Thomas, Northcross-Baker and Swenson.

»This group has played 47:08 minutes together scoring 92 points and allowing 74. This is +18 and +15.29 per 40 minutes.

### SHARING THE BALL

Twelve of 13 Razorbacks have scored in games this year. All have played and all have attempted a shot. Six of 12 players have recorded double figure points for the season.

### BLOCKING WELL

Kiara Williams leads the team with 21 blocked shots through the first 15 games. Williams had only five blocks for the entire season a year ago. The sophomore record is 58 set by Sarah Watkins in 2010-11.

### DID YOU KNOW

That Arkansas head coach Mike Neighbors was cut from the Razorback baseball team? He walked on and legendary head coach Norm DiBryan nudged him in the coaching direction saying "You always seem to be in the right place but you don't always make the play."

### THE SCHEDULE

Arkansas' non-conference schedule features four teams who went to the post season a year ago. Arizona State played in the first round of the NCAA Tournament while Abilene Christian, UT-Arlington and Grambling were all WNIT teams a year ago. UTA was eliminated in the first round while Abilene Christian and Grambling both reached round two.

The always-tough SEC schedule features eight NCAA Tournament teams including the NCAA Champion South Carolina and the runner up, Mississippi

State. Auburn and LSU were eliminated in the first round while Kentucky, Missouri, Tennessee and Texas A&M all bowed out in round two. In addition, Alabama and Ole Miss advanced to the WNIT Tournament. That means Arkansas faces 14 teams who played in the postseason a year ago.

### DOUBLE FIGURES IN A QUARTER

Cosper

1Q, 10, at Nebraska

12, 1Q, at ORU

11, 4Q, at UTEP

Monk

10, 3Q, at Nebraska

13, 4Q, at ORU

10, 4Q, at Kansas

Mason

11, 3Q, UTA

Northcross-Baker

12, 4Q, UTA

### AGAINST THE POLL

This week's (Jan. 1) Associated Press poll features five SEC teams. Arkansas' schedule is headlined by No. 4 South Carolina with No. 5 Mississippi State right on the Gamecocks' heels. Tennessee is No. 7, followed by No. 15 Missouri, and No. 19 Texas A&M. Arizona State jumps in the poll at No. 25 this week.

This week's USA Today Coaches Poll has Mississippi State at No. 3, followed by No. 5 South Carolina, No. 7 Tennessee, No. 15 Missouri, and No. 19 Texas A&M. Arizona State (29) (5) is getting votes.

### HOME SWEET HOME

»Arkansas has had just one losing home season in 41 years (prior to 2017-18)

»Arkansas is 422-139 (8-0 in '17-18) in home games including a 263-104 record in Bud Walton Arena. Arkansas was 159-35 in Barnhill Arena.

### AP TOP 25 (1/2/2018)

RK	TEAM	RECORD	PTS
1	Connecticut (32)	11-0	800
2	Notre Dame	13-1	750
3	Louisville	16-0	736
4	South Carolina	12-1	680
5	Mississippi State	15-0	677
6	Baylor	12-1	634
7	Tennessee	13-0	619
8	Texas	11-1	600
9	Oregon	13-2	515
10	Ohio State	13-2	485
11	Florida State	13-1	455
12	West Virginia	13-1	453
13	Maryland	13-2	420
14	UCLA	10-3	371
15	Missouri	13-1	362
16	Oregon State	11-2	323
17	Duke	11-3	291
18	Iowa	14-1	228
19	Texas A&M	11-4	172
20	Oklahoma State	11-2	161
21	Villanova	11-1	126
22	Michigan	12-3	105
23	California	10-3	94
24	Stanford	8-6	85
25	Arizona State	11-3	67

Others receiving votes: South Florida 65, Rutgers 47, Green Bay 46, Miami 14, New Mexico 7, Syracuse 3, Georgia Tech 3, NC State 2, Navy 1, Brown 1, Virginia Tech 1, DePaul 1

### USA TODAY TOP 25 COACHES POLL - 1/2/2018

Rank	School	RECORD	PTS
1	Connecticut (32)	11-0	800
2	Notre Dame	13-1	745
3	Mississippi State	15-0	725
4	Louisville	16-0	718
5	South Carolina	12-1	676
6	Baylor	12-1	634
7	Tennessee	13-0	596
8	Texas	11-1	586
9	Oregon	13-2	529
10	Ohio State	13-2	494
11	West Virginia	13-1	466
12	Florida State	13-1	463
13	Maryland	13-2	423
14	UCLA	10-3	377
15	Missouri	13-1	353
16	Oregon State	11-2	318
17	Iowa	14-1	255
18	Duke	11-3	254
19	Texas A&M	11-4	157
20	Michigan	12-3	152
21	Villanova	11-1	144
22	South Florida	11-3	131
23	Oklahoma State	11-2	115
24	Green Bay	11-2	59
25	Rutgers	14-2	54

Others receiving votes: DePaul 42, Arizona State 29, Georgia Tech 20, Syracuse 19, California 17, New Mexico 16, Stanford 15, Miami 10, Marquette 3, NC State 3, Virginia 1, South Alabama 1

### WHAT'S MY NUMBER

Transfer Chelsea Dungee has a unique background to her jersey number selection. Here is the story in her own words:

*I have always played in #22. Every competitive team and school ball team I have always worn #22. #22 was the number my mom played basketball in throughout her high school career. So, I wore #22. A year ago I changed my jersey number to #33. My cousin (more like brother), Reuben, suffered a traumatic brain injury while playing in a high school football game last season and he wore jersey #33. I play in jersey #33 for Reuben. Playing with #33 on back is a reminder that 'Reub' has my back, and I have his.*

QUARTER BY QUARTER SCORING

Date	Opponent	W/L	1st	2nd	1st Half	3rd	4th	2nd Half	OT	Total
Nov. 2	NE State (exh)	W, 82-74	20	15	35	18	29	47	-	82*
Nov. 10	SHSU	W, 65-54	5	18	23	23	19	41	-	65
Nov. 12	Samford	W, 84-63	17	15	32	16	26	42	-	84
Nov. 16	Nebraska	L, 80-69	19	11	30	22	17	49	-	69
Nov. 20	ORU	W, 77-66	25	15	40	16	21	37	-	77
Nov. 24	UTEP	L, 64-61	3	17	20	16	25	41	-	61
Nov. 25	New Mexico State	W, 69-60	11	12	23	24	22	46	-	69
Nov. 29	Abilene Christian	W, 79-65	20	14	34	20	25	45	-	79
Dec. 3	Kansas	L, 71-60	12	10	22	21	17	38	-	60
Dec. 7	UNC-C	W, 73-72	13	16	30	19	24	43	-	73
Dec. 10	Tulsa	W, 67-41	21	14	35	13	19	32	-	67
Dec. 17	UTA	W, 91-57	14	23	37	26	28	54	-	91
Dec. 21	Arizona State	L, 89-43	8	6	14	11	18	29	-	43
Dec. 28	Grambling State	W, 79-62	15	25	40	25	14	39	-	79

NonConf Totals	183	196	380	252	270	583	-	917
NonConf Averages	14.1	15.01	29.2	19.4	20.8	44.8	-	70.5
NonConf Highs	25	25	40 (2x)	26	28	54	-	91
NonConf Lows	3	6	14	11	17	29	-	43

\*Not included in averages

Dec. 31	Ole Miss	W, 73-72	19	18	37	25	11	36	-	73
Jan. 4	Mississippi State	L, 111-69	20	19	39	18	12	30	-	69
Jan. 7	Alabama									
Jan. 11	Georgia									
Jan. 14	Auburn									
Jan. 18	Florida									
Jan. 21	Missouri									
Jan. 25	South Carolina									
Jan. 29	Kentucky									
Feb. 4	Alabama									
Feb. 8	Tennessee									
Feb. 11	Missouri									
Feb. 15	Kentucky									
Feb. 18	LSU									
Feb. 22	Texas A&M									
Feb. 25	Vanderbilt									

SEC Totals	39	37	76	43	23	66	-	142
SEC Averages	19.5	18.5	38	21.5	11.5	33	-	71
SEC Highs	20	19	39	25	12	36	-	73
SEC Lows	19	18	37	25	11	36	-	73

Season Totals	220	233	456	295	293	649	-	1059
Season Averages	14.7	15.5	30.4	19.7	19.7	43.9	-	70.6
Season Highs	25	25	40 (2x)	26	28	54	-	91
Season Lows	3	6	14	11	11	29	-	43

BY STARTERS

Date	Opponent						
Nov. 2	NE State (exh) - W	Monk	Williams	Mason	Cosper	Zimmerman	
Nov. 10	SHSU - W	Monk	Williams	Mason	Cosper	Zimmerman	
Nov. 12	Samford - W	Monk	Williams	Mason	Cosper	Zimmerman	
Nov. 16	Nebraska - L	Monk	Williams	Mason	Cosper	Zimmerman	
Nov. 20	ORU - W	Monk	Williams	Mason	Cosper	Zimmerman	
Nov. 25	UTEP - W	Monk	Williams	Mason	Cosper	Zimmerman	
Nov. 26	New Mexico State - W	Monk	Williams	Mason	Cosper	Zimmerman	
Nov. 29	Abilene Christian - W	Monk	Williams	Mason	Cosper	Zimmerman	
Dec. 3	Kansas - L	Monk	Williams	Mason	Cosper	Zimmerman	
Dec. 7	UNC-C - W	Monk	Williams	Mason	Cosper	Zimmerman	
Dec. 10	Tulsa - W	Monk	Williams	Mason	Cosper	Zimmerman	
Dec. 17	UTA - W	Monk	Thomas	Mason	Cosper	Zimmerman	
Dec. 21	Arizona State - L	Monk	Williams	Mason	Cosper	Zimmerman	
Dec. 28	Grambling - W	Monk	Williams	Mason	Cosper	Zimmerman	
Dec. 31	Ole Miss - W	Monk	Williams	Mason	Cosper	Zimmerman	
Jan. 4	Mississippi State - L	Monk	Williams	Mason	Cosper	Zimmerman	
Jan. 7	Alabama						
Jan. 11	Georgia						
Jan. 14	Auburn						
Jan. 18	Florida						
Jan. 21	Missouri						
Jan. 25	South Carolina						
Jan. 29	Kentucky						
Feb. 4	Alabama						
Feb. 8	Tennessee						
Feb. 11	Missouri						
Feb. 15	Kentucky						
Feb. 18	LSU						
Feb. 22	Texas A&M						
Feb. 25	Vanderbilt						

MISCELLANEOUS STATISTICS

Double-Figure Scoring Games

Player	15-16	16-17	17-18	Career
M. Monk	3	13	14	30
K. Swenson		11	1	12
J. Mason		10	8	18
D. Cosper	15	8	14	36
B. Zimmerman		2		2
T. Thomas	-	-	1	1
K. Williams	-	-	6	6
R. Northcross-Baker	-	-	3	3
TOTAL	18	44	46	108

20-Point Scoring Games

Player	15-16	16-17	17-18	Career
K. Swenson		1		1
D. Cosper	1	-	4	5
M. Monk	-	-	6	6
R. Northcross-Baker			1	1
TOTAL	1	1	9	11

Double-Figure Rebounding Games

Player	15-16	16-17	17-18	Career
D. Cosper	-	-	6	6
T. Thomas	-	-	1	1
K. Williams	-	-	5	5
TOTAL	x	x	12	12

Double-Doubles

Player	15-16	16-17	17-18	Career
J. Mason (pts/ast)	-	2		2
D. Cosper (pts/reb)	-	-	6	6
K. Williams (pts/reb)	-	-	2	2
M. Monk (pts/ast)	-	-	1	1
TOTAL	-	2	9	11

5+ Steals

Player	15-16	16-17	17-18	Career
M. Monk	-	2	-	2
TOTAL	x	2	-	2

5+ Blocks

Player	15-16	16-17	17-18	Career
TBA	-			
TOTAL	-	x	x	x

5+ Assists

Player	15-16	16-17	17-18	Career
M. Monk	3	4	6	13
J. Mason		6	3	9
D. Cosper		2		2
TOTAL	3	12	9	24



**@RazorbackWBB STATISTICS**  
**Arkansas Combined Team Statistics (as of Jan 04, 2018)**  
**All games**



RECORD:	OVERALL	HOME	AWAY	NEUTRAL
ALL GAMES	10-5	8-0	1-5	1-0
CONFERENCE	1-1	1-0	0-1	0-0
NON-CONFERENCE	9-4	7-0	1-4	1-0

##	Player	gp-gs	min	avg	Total		3-Point		F-Throw		Rebounds				pf	dq	a	to	blk	stl	pts	avg
					fg-fga	fg%	3fg-fga	3fg%	ft-fa	ft%	off	def	tot	avg								
03	MONK, Malica	15-15	501	33.4	84-222	.378	13-50	.260	63-80	.788	11	42	53	3.5	31	1	65	35	3	30	244	16.3
21	COSPER, Devin	15-15	485	32.3	88-239	.368	41-131	.313	26-38	.684	14	88	102	6.8	38	0	21	39	9	22	243	16.2
14	MASON, Jailyn	15-15	460	30.7	62-153	.405	22-57	.386	2-5	.400	6	55	61	4.1	24	1	49	26	9	20	148	9.9
10	WILLIAMS, Kiara	15-14	303	20.2	46-91	.505	1-1	1.000	25-47	.532	50	67	117	7.8	35	1	5	15	21	18	118	7.9
01	NORTHCROSS-BAKE	15-0	300	20.0	36-99	.364	21-67	.313	17-25	.680	17	25	42	2.8	22	0	21	16	1	9	110	7.3
04	SWENSON, Keiryn	15-0	245	16.3	27-73	.370	18-53	.340	7-11	.636	14	28	42	2.8	17	0	6	16	6	4	79	5.3
24	THOMAS, Taylah	15-1	240	16.0	19-41	.463	3-7	.429	18-28	.643	29	47	76	5.1	28	1	2	10	4	5	59	3.9
22	ZIMMERMAN, Bailey	15-15	324	21.6	13-61	.213	1-29	.034	12-19	.632	17	25	42	2.8	25	0	13	15	7	5	39	2.6
13	SPANGLER, Grayce	10-0	36	3.6	2-11	.182	0-5	.000	3-6	.500	1	4	5	0.5	6	0	0	4	0	0	7	0.7
20	STOUT, Sydney	9-0	40	4.4	1-6	.167	1-3	.333	3-6	.500	3	4	7	0.8	1	0	1	1	0	0	6	0.7
30	WEAVER, Macy	11-0	63	5.7	2-6	.333	0-0	.000	2-5	.400	7	9	16	1.5	13	0	1	2	7	1	6	0.5
51	MCCLURE, Brenna	1-0	3	3.0	0-1	.000	0-0	.000	0-0	.000	0	0	0	0.0	1	0	0	0	0	0	0	0.0
Team											31	28	59		2		2					
Total.....		15	3000		380-1003	.379	121-403	.300	178-270	.659	200	422	622	41.5	243	4	184	181	67	114	1059	70.6
Opponents.....		15	3000		386-970	.398	96-301	.319	159-227	.700	186	454	640	42.7	264	2	218	223	49	89	1027	68.5

TEAM STATISTICS	AR	OPP	Date	Opponent	Score	Att.
SCORING	1059	1027	11/10/17	SHSU	w 65-54	4719
Points per game	70.6	68.5	11/12/17	SAMFORD	w 84-63	1739
Scoring margin	+2.1	-	11/16/17	at Nebraska	L 69-80	3459
FIELD GOALS-ATT	380-1003	386-970	11/20/17	at Oral Roberts	w 77-66	2503
Field goal pct	.379	.398	11/24/17	at UTEP	L 61-64	633
3 POINT FG-ATT	121-403	96-301	11/25/17	vs NM State	w 69-60	250
3-point FG pct	.300	.319	11/29/17	ACU	w 79-65	1132
3-pt FG made per game	8.1	6.4	12/03/17	at Kansas	L 60-71	1795
FREE THROWS-ATT	178-270	159-227	12/07/17	CHARLOTTE	w 73-72	1169
Free throw pct	.659	.700	12/10/17	TULSA	w 67-41	1821
F-Throws made per game	11.9	10.6	12/17/17	UT-ARLINGTON	w 91-57	1481
REBOUNDS	622	640	12/21/17	at Arizona State	L 43-89	1988
Rebounds per game	41.5	42.7	12/28/17	GRAMBLING	w 79-62	1388
Rebounding margin	-1.2	-	* 12/31/17	OLE MISS	w 73-72	1701
ASSISTS	184	218	* 01/04/18	at Mississippi State	L 69-111	5398
Assists per game	12.3	14.5				
TURNOVERS	181	223				
Turnovers per game	12.1	14.9				
Turnover margin	+2.8	-				
Assist/turnover ratio	1.0	1.0				
STEALS	114	89				
Steals per game	7.6	5.9				
BLOCKS	67	49				
Blocks per game	4.5	3.3				
ATTENDANCE	15150	16026				
Home games-Avg/Game	8-1894	6-2629				
Neutral site-Avg/Game	-	1-250				

\* - Conference game

Score by Periods	1st	2nd	3rd	4th	Totals
Arkansas	233	233	295	298	1059
Opponents	253	243	255	276	1027



**@RazorbackWBB STATISTICS**  
**Arkansas Combined Team Statistics (as of Jan 04, 2018)**  
**Conference games only**



RECORD:	OVERALL	HOME	AWAY	NEUTRAL
ALL GAMES	1-1	1-0	0-1	0-0
CONFERENCE	1-1	1-0	0-1	0-0
NON-CONFERENCE	0-0	0-0	0-0	0-0

##	Player	gp-gs	min	avg	Total		3-Point		F-Throw		Rebounds				pf	dq	a	to	blk	stl	pts	avg
					fg-fga	fg%	3fg-fga	3fg%	ft-fa	ft%	off	def	tot	avg								
21	COSPER, Devin	2-2	71	35.5	12-28	.429	4-12	.333	3-5	.600	2	16	18	9.0	6	0	4	10	1	4	31	15.5
14	MASON, Jailyn	2-2	68	34.0	12-22	.545	4-5	.800	0-0	.000	1	4	5	2.5	3	0	8	3	2	1	28	14.0
03	MONK, Malica	2-2	68	34.0	7-29	.241	0-4	.000	6-12	.500	1	4	5	2.5	4	0	8	4	1	3	20	10.0
10	WILLIAMS, Kiara	2-2	43	21.5	6-10	.600	1-1	1.000	5-6	.833	2	9	11	5.5	6	1	1	3	5	1	18	9.0
01	NORTHCROSS-BAKE	2-0	47	23.5	6-14	.429	3-8	.375	2-2	1.000	2	2	4	2.0	2	0	1	2	0	1	17	8.5
24	THOMAS,Taylah	2-0	34	17.0	4-5	.800	1-1	1.000	1-2	.500	4	5	9	4.5	4	0	0	1	0	0	10	5.0
04	SWENSON, Keiryn	2-0	27	13.5	3-8	.375	1-6	.167	1-1	1.000	4	2	6	3.0	2	0	0	3	1	0	8	4.0
13	SPANGLER, Grayce	1-0	3	3.0	2-3	.667	0-1	.000	0-1	.000	1	0	1	1.0	1	0	0	2	0	0	4	4.0
22	ZIMMERMAN, Bailey	2-2	29	14.5	2-3	.667	0-1	.000	2-3	.667	1	3	4	2.0	5	0	1	2	0	0	6	3.0
51	MCCLURE, Brenna	1-0	3	3.0	0-1	.000	0-0	.000	0-0	.000	0	0	0	0.0	1	0	0	0	0	0	0	0.0
20	STOUT, Sydney	1-0	4	4.0	0-0	.000	0-0	.000	0-0	.000	0	0	0	0.0	0	0	0	0	0	0	0	0.0
30	WEAVER, Macy	1-0	3	3.0	0-0	.000	0-0	.000	0-0	.000	0	0	0	0.0	0	0	0	0	0	0	0	0.0
Team											2	2	4		1		1					
Total.....		2	400		54-123	.439	14-39	.359	20-32	.625	20	47	67	33.5	35	1	23	31	10	10	142	71.0
Opponents.....		2	400		67-131	.511	17-38	.447	32-40	.800	20	54	74	37.0	32	1	39	21	6	13	183	91.5

TEAM STATISTICS	AR	OPP
SCORING	142	183
Points per game	71.0	91.5
Scoring margin	-20.5	-
FIELD GOALS-ATT	54-123	67-131
Field goal pct	.439	.511
3 POINT FG-ATT	14-39	17-38
3-point FG pct	.359	.447
3-pt FG made per game	7.0	8.5
FREE THROWS-ATT	20-32	32-40
Free throw pct	.625	.800
F-Throws made per game	10.0	16.0
REBOUNDS	67	74
Rebounds per game	33.5	37.0
Rebounding margin	-3.5	-
ASSISTS	23	39
Assists per game	11.5	19.5
TURNOVERS	31	21
Turnovers per game	15.5	10.5
Turnover margin	-5.0	-
Assist/turnover ratio	0.7	1.9
STEALS	10	13
Steals per game	5.0	6.5
BLOCKS	10	6
Blocks per game	5.0	3.0
ATTENDANCE	1701	5398
Home games-Avg/Game	1-1701	1-5398
Neutral site-Avg/Game	-	0-0

Date	Opponent		Score	Att.
* 12/31/17	OLE MISS	W	73-72	1701
* 01/04/18	at Mississippi State	L	69-111	5398

\* - Conference game

Score by Periods	1st	2nd	3rd	4th	Totals
Arkansas	39	37	43	23	142
Opponents	36	45	48	54	183

# MORE NUMBERS

## MISCELLANEOUS

Opponent	T/O	2ndCh	Paint	FastB	Bench	Ties	Leads	WL	Score	Leads overcome
SHSU	15	5	28	14	13	1	1	W	65-54	trailed by 13/20-07:26
Samford	18	5	30	3	23	0	0	W	84-63	
Nebraska	12	14	32	10	11	3	1	L	69-80	lost 2 4th-0:6:21
ORU	15	6	32	18	16	1	1	W	77-66	trailed by 6 1st-04:58
UTEP	22	18	18	14	16	0	0	L	61-64	
NM State	17	16	34	13	15	2	4	W	69-60	trailed by 7 1st-01:06
ACU	28	9	20	0	25	0	1	W	79-65	trailed by 1 1st-09:21
Kansas	10	8	28	6	6	1	1	L	60-71	lost 2 1st-08:40
Charlotte	15	17	32	8	6	1	8	W	73-72	trailed by 9 3rd-9:40
Tulsa	7	13	30	6	12	0	1	W	67-41	trailed by 2 1st-09:14
UTA	23	13	26	17	42	3	2	W	91-57	trailed by 6 1st-4:54
Arizona St.	3	8	22	6	12	0	0	L	43-89	lost 2 1st-09:43
Grambling	18	11	22	3	33	0	0	W	79-62	
Ole Miss	13	10	26	10	23	0	1	W	73-72	trailed by 1 2nd-04:33
#5/3 MSU	3	4	20	11	16	1	1	L	69-111	lost 5 1st-08:28
Totals	219	157	400	139	269	13	22			
Ave/Game	14.6	10.5	26.7	9.3	17.9	0.9	1.5			
Opponent	199	150	494	80	318	17	21			
Ave/Game	13.3	10.0	32.9	5.3	21.2	1.1	1.4			

## GAME BY GAME LEADERS

Date	Opponent	Points	Rebounds	Assists	Steals	Blocks
Nov. 10	SHSU	Monk (18)	Cosper (10)	2 Players (4)	Monk (4)	Mason (3)
Nov. 12	Samford	Monk (21)	2 Players (9)	2 Players (6)	3 Players (3)	Williams (4)
Nov. 16	Nebraska	Monk (22)	2 Players (11)	Monk (6)	Mason (4)	4 Players (2)
Nov. 20	ORU	Monk (24)	Cosper (10)	Monk (4)	Cosper (2)	2 Players (1)
Nov. 24	UTEP	Cosper (22)	Cosper (5)	Monk (5)	Cosper (4)	Weaver (4)
Nov. 25	NMSU	Monk (22)	2 Players (11)	Cosper (4)	Monk (4)	2 Players (1)
No. 29	A. Christian	2 Players (15)	Williams (8)	Mason (8)	Williams (3)	2 Players (1)
Dec. 3	Kansas	Monk (22)	Williams (16)	Monk (5)	Mason (2)	Williams (2)
Dec. 7	Charlotte	Cosper (25)	Cosper (14)	Mason (4)	Williams (4)	Williams (3)
No. 10	Tulsa	Monk (14)	Cosper (11)	Mason (6)	2 Players (1)	2 Players (2)
No. 17	UTA	RNB (22)	Williams (8)	Mason (7)	2 Players (3)	2 Players (1)
Dec. 21	Az State	Monk (12)	3 Players (4)	Monk (2)	Monk (1)	4 Players (1)
Dec. 28	Grambling	Cosper (16)	Williams (16)	Monk (10)	Monk (3)	Monk (1)
Dec. 31	Ole Miss	Cosper (18)	Cosper (11)	2 Players (4)	Cosper (4)	Williams (4)
Jan. 4	Miss State	Mason (15)	Cosper (7)	2 Players (4)	Monk (2)	3 Players (1)
Jan. 7	Alabama					
Jan. 11	Georgia					
Jan. 14	Auburn					
Jan. 18	Florida					
Jan. 21	Missouri					
Jan. 25	S Carolina					
Jan. 29	Kentucky					
Feb. 4	Alabama					
Feb. 8	Tennessee					
Feb. 11	Missouri					
Feb. 15	Kentucky					
Feb. 18	LSU					
Feb. 22	Texas A&M					
Feb. 25	Vanderbilt					

## SPECIALTY STATS

Opponent	Paint	OFF TO	2ND CHANCE	FAST BREAK	BENCH
SHSU	28	15	5	14	13
Samford	30	18	5	3	23
Nebraska	32	12	14	10	11
ORU	32	15	6	18	16
UTEP	18	22	18	14	16
NMSU	34	17	16	13	15
Ab. Christian	20	28	9	0	25
Kansas	28	10	8	6	6
Charlotte	32	15	17	8	6
Tulsa	30	7	13	6	12
UTA	26	23	13	17	42
Arizona State	22	3	8	6	12
Grambling State	22	18	11	3	33
Ole Miss	26	13	10	10	23
Miss State	20	3	4	11	16
Alabama					
Georgia					
Auburn					
Florida					
Missouri					
S. Carolina					
Kentucky					
Alabama					
Tennessee					
Missouri					
Kentucky					
LSU					
Texas A&M					
Vanderbilt					

# COMPARISON

## @RazorbackWBB STATISTICS Arkansas Team Game-by-Game (as of Jan 04, 2018) All games

### TEAM STATISTICS

Opponent	Date	Score		Total		3-Pointers		Free throws		Rebounds				pf	a	t/o	blk	stl	pts	avg
				fg-fga	pct	3fg-fga	pct	ft-fa	pct	off	def	tot	avg							
SHSU	11/10/17	65-54	W	25-67	.373	9-33	.273	6-11	.545	10	29	39	39.0	12	15	9	7	8	65	65.0
SAMFORD	11/12/17	84-63	W	29-59	.492	10-27	.370	16-22	.727	5	30	35	37.0	15	17	6	4	7	84	74.5
at Nebraska	11/16/17	69-80	L	27-77	.351	8-32	.250	7-10	.700	18	27	45	39.7	23	10	15	8	12	69	72.7
at Oral Roberts	11/20/17	77-66	W	29-70	.414	6-23	.261	13-18	.722	9	32	41	40.0	18	8	4	2	5	77	73.8
at UTEP	11/24/17	61-64	L	21-70	.300	11-41	.268	8-14	.571	12	15	27	37.4	15	13	4	4	14	61	71.2
vs NM State	11/25/17	69-60	W	25-70	.357	6-26	.231	13-24	.542	22	33	55	40.3	15	10	18	3	12	69	70.8
ACU	11/29/17	79-65	W	25-68	.368	10-25	.400	19-27	.704	17	27	44	40.9	13	13	12	4	13	79	72.0
at Kansas	12/03/17	60-71	L	22-69	.319	5-27	.185	11-15	.733	13	27	40	40.8	24	7	13	6	3	60	70.5
CHARLOTTE	12/07/17	73-72	W	26-75	.347	9-31	.290	12-24	.500	15	30	45	41.2	19	11	10	5	10	73	70.8
TULSA	12/10/17	67-41	W	25-67	.373	6-29	.207	11-19	.579	19	42	61	43.2	10	13	9	7	2	67	70.4
UT-ARLINGTON	12/17/17	91-57	W	30-65	.462	12-28	.429	19-21	.905	13	27	40	42.9	21	19	14	2	11	91	72.3
at Arizona State	12/21/17	43-89	L	17-57	.298	4-18	.222	5-6	.833	9	26	35	42.2	12	7	23	4	1	43	69.8
GRAMBLING	12/28/17	79-62	W	25-66	.379	11-24	.458	18-27	.667	18	30	48	42.7	11	18	13	1	6	79	70.5
OLE MISS	12/31/17	73-72	W	26-61	.426	8-21	.381	13-20	.650	14	24	38	42.4	18	11	15	7	7	73	70.7
at #5/3 Mississippi State	01/04/18	69-111	L	28-62	.452	6-18	.333	7-12	.583	6	23	29	41.5	17	12	16	3	3	69	70.6
Arkansas		1059		380-1003	.379	121-403	.300	178-270	.659	200	422	622	41.5	243	184	181	67	114	1059	70.6
Opponents		1027		386-970	.398	96-301	.319	159-227	.700	186	454	640	42.7	264	218	223	49	89	1027	68.5

## @RazorbackWBB STATISTICS Arkansas Points-Rebounds-Assists (as of Jan 04, 2018) All games

Opponent	Date	Score		01	03	04	10	13	14	20	21	22	24	30
				NORTHROS	MONK,MALIC	SWENSON,K	WILLIAMS,K	SPANGLER,	MASON,JAIL	STOUT,SYDN	COSPER,DE	ZIMMERMAN,	THOMAS,TA	WEAVER,MA M
SHSU	11/10/17	65-54	W	3-2-2	18-2-4	5-1-0	7-2-1	0-0-0	8-5-4	1-1-0	17-12-2	2-3-2	4-4-0	0-0-0
SAM	11/12/17	84-63	W	0-1-6	21-9-6	9-0-1	10-5-0	0-1-0	12-1-2	1-1-0	18-5-2	0-0-0	13-9-0	0-0-0
at NEB	11/16/17	69-80	L	3-4-0	22-3-6	3-3-0	6-11-1	DNP	8-5-2	DNP	21-4-0	1-0-0	5-11-1	DNP
at ORU	11/20/17	77-66	W	8-1-1	24-3-4	6-2-0	8-5-0	DNP	6-2-1	DNP	21-10-1	2-4-1	2-9-0	DNP
at UTEPW	11/24/17	61-64	L	7-2-3	10-2-5	6-2-0	1-1-0	0-0-0	8-4-2	0-0-0	22-5-0	4-3-2	1-4-0	2-3-1
vs NMSU	11/25/17	69-60	W	7-2-0	22-7-2	5-6-0	11-11-0	DNP	3-6-2	DNP	17-11-4	1-3-2	3-7-0	DNP
ACU	11/29/17	79-65	W	15-3-1	15-2-1	3-2-0	12-8-0	0-0-0	13-7-8	0-1-0	11-3-1	3-6-2	7-7-0	0-1-0
at KU	12/03/17	60-71	L	2-2-1	21-7-5	4-2-0	6-16-0	0-0-0	10-2-1	DNP	17-3-0	0-2-0	0-0-0	0-0-0
CHA	12/07/17	73-72	W	3-3-1	15-4-3	3-2-0	9-12-0	DNP	12-4-4	DNP	25-14-2	6-3-1	0-0-0	0-2-0
TLS	12/10/17	67-41	W	1-9-1	14-4-3	7-6-0	13-7-2	0-1-0	11-5-6	0-1-0	11-11-0	6-7-1	4-7-0	0-1-0
UTA	12/17/17	91-57	W	22-4-3	20-1-6	10-5-2	2-8-0	3-1-0	15-4-7	4-2-0	8-1-1	6-3-0	0-4-0	1-5-0
at ASU	12/21/17	43-89	L	8-1-1	12-2-2	2-3-1	3-4-0	0-1-0	6-4-1	0-0-0	8-1-1	2-4-1	2-3-0	0-1-0
GRAMWBB	12/28/17	79-62	W	14-4-0	10-2-10	8-2-2	12-16-0	0-0-0	8-7-1	0-1-1	16-4-3	0-0-0	8-2-1	3-3-0
OM	12/31/17	73-72	W	9-3-0	12-2-4	8-4-0	5-9-1	DNP	13-2-4	DNP	18-11-1	2-1-1	6-3-0	DNP
at MS	01/04/18	69-111	L	8-1-1	8-3-4	0-2-0	13-2-0	4-1-0	15-3-4	0-0-0	13-7-3	4-3-0	4-6-0	0-0-0

## THE LAST TIME A RAZORBACK TEAM ...

### OFFENSE

Scored 110+ .....	110, vs. Providence (11/16/98)
Scored 100+ points at home .....	101, Houston Baptist, 12-28-16
Scored 100+ points on the road .....	108, Baylor (3-6-91; SWC Tourn., Dallas, Texas)
Scored 90-99 points .....	91 vs. UTA, 12-17-17
Scored 90+ points at home .....	101, Houston Baptist, 12-28-16
Scored 90+ points on the road .....	91, (91-80 Win in 3OT, 2-10-13, at Alabama)
Scored 80-89 points .....	84, Samford (11-12-17)
Scored 80-89 points at home .....	86, Mississippi Valley State (12-28-15)
Scored 80-89 points on the road .....	88, Southeast Missouri (NM) (11-29-13)
Scored 70-79 points .....	73, Ole Miss, 12-31-17
Scored 70-79 points at home .....	73, Ole Miss, 12-31-17
Scored 70-79 points on the road .....	77 at Ole Miss, 1-31-13
Scored 60-69 points .....	69 at #5/3 Mississippi State (1-4-18)
Was held to 50-59 .....	56 at Missouri, 2-12-17
Was held to 49-40 .....	43 at Arizona State, 12-21-17
Was held to 39-20 .....	32, at No. 2 South Carolina (1-3-16)
Was held to 20 or less .....	N/A
Made 30-39 field goals .....	30 vs. UTA, 12-17-17
Made 20-29 field goals .....	28 at #5/3 Mississippi State (1-4-18)
Made 10-19 field goals .....	17 at Arizona State, 12-21-17
Made 10 three-point field goals .....	11, Grambling State, 12-28-17
Did not make a three point basket (began in 1986) .....	0-10, at Mississippi State (L 44-47), 2-3-13
Made 30 free throws .....	38 at Florida (38-54); (2-22-04)
Made 15+ Free Throws .....	18, Grambling State, 12-28-17
Shot 40-49 or better from the field .....	45.2 (28-62) at #5/3 Mississippi State (1-4-18)
Shot 50-59 or better from the field .....	52.1 (38-73), Houston Baptist, 12-28-16
Shot 60 percent or better from the field .....	600 (36-60) vs. Ole Miss (W, 93-52; 3-3-13)
Held to less than 40 percent from the field .....	37.9% (25-66), Grambling State, 12-28-17
Held to less than 30 percent from the field .....	29.8 (17-57) at Arizona State, 12-21-17
Held to less than 20 percent from the field .....	182 (10-55) vs. No. 6/7 Tennessee (1-8-12; L, 38-69)
Allowed opponent to shoot over 50% from the field .....	57.9% (44-76) at #5/3 Mississippi State (1-4-18)
Held opponent to less than 40% from the field .....	37.9% (25-66), Grambling State, 12-28-17
Held opponent to less than 30% from the field .....	23.2% (16-69), Tulsa, 12-10-17
Held opponent to less than 20% from the field in a half: .....	136 (3-22), First Half, Binghamton, 11-30-13
.....	200 (5-25), First Half, MVSU, 12-28-13
.....	200 (5-25), First Half, Grambling State, 12-29-14
Had 20 or more assists in a game .....	27, Houston Baptist, 12-28-16

### DEFENSE

Allowed 100 points .....	111 at #5/3 Mississippi State (1-4-18)
Allowed 80+ points .....	89 at Arizona State, 12-21-17
Allowed 70-79 points .....	72, Ole Miss, 12-31-17
Allowed 69-60 points .....	62, Grambling State, 12-28-17
Held opponent to 59-50 points .....	57 vs. UTA, 12-17-17
Held opponent to 40-49 points .....	41, Tulsa, 12-10-17
Held opponent to 39-30 .....	36, Northwestern State, 12-18-16
Held opponent under 45 points three cons. games .....	45, SHSU (11-8-13, W 81-45);
.....	33 ORU (11-13-13, W 91-33); 45, Furman (11-16-13, W, 74-45)
Held an SEC opponent under 50 points in 3 cons. games .....	47, Auburn (1-29-15, W, 52-47); 42,
.....	Alabama (2-1-15, W, 53-42);
.....	#24/21 Georgia (2-9-15, W, 54-48)
Held opponent to 29 points or less .....	23, Binghamton, 11-30-13
Held an opponent under 15 points in a half .....	13, Northwestern State, 12-18-16
Held opponent under 15 field goals .....	14, Houston Baptist, 12-28-16
Held opponent under 15% from three-point distance .....	12.5% (2-16), Tulsa, 12-10-17
Had 70+ rebounds .....	74, Mississippi Valley State (11-24-89)
Had 60-69 rebounds .....	61, Tulsa, 12-10-17
Had 50-59 rebounds .....	55, vs. NMSU, 11-25-17
Had five or more blocked shots in a game .....	7, Ole Miss, 12-31-17
Had 20 or more steals in a game .....	20, ORU (11-13-13)
Had 15 or more steals in a game .....	16, at Florida, 2-9-17
Had 20 or more turnovers in a game .....	23 at Arizona State, 12-21-17
Forced 20-25 or more Turnovers in a game .....	22 vs. UTA, 12-17-17

### OTHER

Won an overtime game .....	91-80 Win in 3OT, 2-10-13, at Alabama
Lost an overtime game .....	Florida (71-66), 1-28-16
Won a double overtime game .....	73-72, vs. Florida (1-29-12)
Lost a double overtime game .....	N/A
Won a triple overtime game .....	91-80 Win in 3OT, 2-10-13, at Alabama
Played consecutive overtime games .....	1-24-16 at Auburn (lost); 1-28-16 vs Florida (lost)
Won a regular season tournament .....	Nugget Classic (Reno, Nev., Nov. 25-26, 2016)
Defeated a ranked team .....	67-61, No. 13 Texas A&M, 1-7-16; 64-59, No. 13 Tenn., 1-14-16
.....	64-52, No. 24 Missouri, 1-17-16
Defeated a ranked team on the road .....	57-53, at #19/18 LSU, 2-23-14; 77-76,
.....	#17/16 Iowa (Las Vegas), 12-18-14
All-time SEC win streak .....	8 games (1-15-12: Auburn through 2-15-12: at Auburn)
All-time SEC home win streak .....	5 games (1-15-12: Auburn through 2-9-12: S. Carolina)

## THE LAST TIME A RAZORBACK PLAYER ...

Scored 20-24 points .....	22, Raven Northcross-Baker vs. UTA, 12-17-17
.....	20, Malica Monk vs. UTA, 12-17-17
Scored 25-29 points .....	25, Devin Cosper, Charlotte (12-6-17)
Scored 30+ points .....	34, Jessica Jackson, Houston Baptist, 12-28-16
Scored 20+ points seven times in a season .....	Jessica Jackson, 2013-14 (22 vs. MTSU, 22 at Missouri,
.....	23 at Fla., 24 at Georgia, 31 vs. Ole Miss, 23 at Kentucky,
.....	25 at LSU)
Scored 20+ points eight times in a season .....	Jessica Jackson, 2015-16 (20 vs. SHSU; 24 at SDSU;
.....	29 vs. Tulsa, 22 vs. La; 22 vs. No. 5 Texas; 20 at No. 5 MSU;
.....	25 vs. #13 Tennessee; 25, vs. Alabama; 20)
Double figures in 15 consecutive games (Season) .....	Jessica Jackson, 11/11/16-; LSU 1-8-17
Scored 23+ points in three consecutive games .....	Jessica Jackson (24 at Georgia 1-16-14,
.....	31 vs. Ole Miss 1-19-14, 23 at Kentucky 1-26-14)
Three players scored double figures in 1 game .....	at #5/3 Miss State (1-4-18) (Mason, Cosper, Williams)
Four players scored double figures in 1 game .....	vs. GSU, 12-28-17 (Monk, RNB, Cosper, Williams)
Four players scored doubles figures for 4 cons. games .....	12-6-12 - 12-21-12; vs. Kansas, Furman, MVSU, and NSU
Five players scored double figures in 1 game .....	Abilene Christian (11-29-17)
.....	(Monk, Cosper, Mason, Williams, Northcross-Baker)
Made 10+ field goals in a game .....	10, Jessica Jackson, Kentucky, 2-16-17
Attempted 15-19 field goals in a game .....	15, Devin Cosper, Grambling State, 12-28-17
Attempted 20+ field goals in a game .....	23, Devin Cosper, Charlotte (12-6-17)
Attempted 10 free throws in a game .....	12, Malica Monk vs. UTA, 12-17-17
Made 5 or more three-pointers in a game .....	6, Raven Northcross-Baker vs. UTA, 12-17-17
Attempted 10+ three-pointers in a game .....	11, Devin Cosper at Kansas, 12-3-17
Had 10-14 rebounds .....	11, Devin Cosper, Ole Miss, 12-31-17
Had 15+ rebounds .....	16, Kiara Williams, Grambling State, 12-28-17
Had 10 offensive rebounds - Records go back to 05-06 .....	11, Melissa Wolff vs. New Orleans (1-30-15)
Had 10 defensive rebounds - Records go back to 05-06 .....	10, Devin Cosper, Ole Miss, 12-31-17
Had 10+ assists .....	10, Malica Monk, Grambling State, 12-28-17
Had 10+ assists in consecutive games .....	Jailyn Mason (11 vs. HBU, 12-28-16 and 10 at Ole Miss, 1-1-17)
.....	Calli Berna (11 vs. No. 10/8 KY 2/7/13 and 11 at UA 2/10/13)
Had 5+ blocks in a game .....	(3x) 5, Jessica Jackson (vs. ORU, 11-13-13);
.....	(No. 25 Vanderbilt, 2-20-14); (at Tulsa, 12-14-14)
Had 10 or more blocks in a game .....	9, Robyn Irwin vs. SMSU, 12-19-88 (school record)
Had 5 or more steals in a game .....	5, Malica Monk vs. NMSU, 11-25-17
Had a double-double .....	Devin Cosper (18 pts/11 reb), Ole Miss, 12-31-17
Had a double-double in two straight games .....	2017-18: Devin Cosper (25/14) Charlotte and (11/11) Tulsa
Had two players record a double-double .....	Kiara Williams (12 pts/16 reb) &
.....	Malica Monk (10 pts/10 reb.), Grambling State, 12-28-17
Had six double-doubles in a season .....	Devin Cosper, 2017-18 (SHUS, ORU, NMSU, Char., Tulsa, OM)
Previous: .....	Melissa Wolff, 2014-15 (Nicholls, Savannah State,
.....	Richmond, Grambling State, Tennessee, Northwestern)
Had 10+ double-doubles in a season .....	2006-07, Lauren Ervin (14)
Had a triple-double .....	14 pts, 13 reb, 12 asts, Ceira Ricketts vs. Auburn (1-18-09)



#### MIKE NEIGHBORS YEAR-BY-YEAR

Year	School	Overall	Pct.	Conf.	Pct.	Conf. Finish
2013-14	Washington	20-14	.588	10-8	.556	6/Pac-12
2014-15	Washington	23-10	.697	11-7	.611	5/Pac-12
2015-16	Washington	26-11	.703	11-7	.611	5/Pac-12
2016-17	Washington	29-6	.829	15-3	.833	T2/Pac-12
2017-18	Arkansas	10-5	.667	1-1	.500	TBA
<b>Totals</b>	<b>5 Years</b>	<b>108-46</b>	<b>.701</b>	<b>48-26</b>	<b>.649</b>	

BENTONVILLE HS (HC)	94	
	95	
	96	
	97	
CABOT HS (HC)	98	
ARKANSAS (DIR OF OPS)	99	
	00	
TULSA (ASST)	01	
	02	
	03	
	04	
COLORADO (ASST)	05	
ARKANSAS (ASST)	06	
XAVIER (ASST)	07	
	08	
	09	
	10	
WASHINGTON (ASST)	11	
	12	
WASHINGTON (HC)	13	
	14	
	15	
	16	
ARKANSAS (HC)	17	

#### NEIGHBORS 3-1 IN BWA BEFORE THIS YEAR

As the head coach of Bentonville (Ark.) HS, Mike Neighbors went 3-0 in Bud Walton Arena in the high school play-offs. In 1997, his Tiger team defeated Bryant, Mount St. Mary's and Jonesboro to reach the state finals in Pine Bluff, Ark.

The lone loss occurred when Neighbors was an assistant coach at Tulsa. The 13th-ranked Razorbacks defeated Tulsa, 66-49, that season.

#### OPEN MIKE

Want to get to know Mike Neighbors in his own words? Check out the links below for stories about Mike, his hire and his dream job at Arkansas.

Mike's First 30 Days	<a href="http://bit.ly/First30">http://bit.ly/First30</a>
Mike's Dream Job	<a href="http://bit.ly/MNDreamJob">http://bit.ly/MNDreamJob</a>
Mike's Press Conference	<a href="http://bit.ly/PressConfVideo">http://bit.ly/PressConfVideo</a>

#### FROM ROOKIE NOD TO NAISMITH NOMINEE

In four short years Mike Neighbors went from a Spalding Maggie Dixon Division I Rookie Coach of the Year nominee in 2014, to a Naismith Women's College Coach of the Year national semifinalist in 2017.

Neighbors guided UW to an historic campaign in 2016-17 leading the Huskies to 27 wins, it's second most in program history, and he was just one shy of the all-time a school record set in 1990 (28).

Picked to place third in the Pac-12 in the preseason poll, UW tied for second in the league with a 15-3 record, it's best conference finish since 2003. The Huskies' 15 conference wins tied for third most in program history. Washington, who entered conference play with the program-best 12 non-conference wins, clinched its first-ever bye in the first round of the Pac-12 Tournament. Washington put together an 11-game win streak and a six-game win streak in Pac-12 play in 2016-17.

#### COACHES COACHING AT ALMA MATER

Mike Neighbors	Arkansas, 1993
Holly Warlick	Tennessee, 1981

A couple of other coaches have SEC ties. Joni Taylor is the head coach at Georgia and a 2002 graduate of Alabama. Matthew Mitchell is a 1995 graduate of Mississippi State and is the head coach at Kentucky. Nikki Fargas graduated from Tennessee in 1994 and is the head coach at LSU. Vic Schaefer is the head coach at Mississippi State and a 1984 graduate of Texas A&M.



# NEIGHBORS BY THE NUMBERS

## TOP 10 MOVIES

1. A Few Good Men
2. The Hunt For Red October
3. The Silence Of The Lambs
4. Hoosiers
5. Pretty Woman
6. Moneyball
7. Top Gun
8. JFK
9. The Lion King
10. Purple Rain

See the entire list here: <http://www.imdb.com/list/ls004320428/>

He has 160 movies that are classified as 'thriller'. "Romance" is next with 152 followed by 69 "sport", 58 "mystery", and 32 "sci-fi".

## TOP 10 SONGS

1. Sweet Child O' Mine (Guns N' Roses)
2. You Shook Me All Night Long (AC/DC)
3. Man In The Mirror (Michael Jackson)
4. Amarillo By Morning (George Strait)
5. Jessie's Girl (Rick Springfield)
6. Hysteria (Def Leppard)
7. Fishin' In The Dark (Nitty Gritty Dirt Band)
8. The Ballard of Curtis Loew (Lynyrd Skynyrd)
9. Wanted Dead Or Alive (Bon Jovi)
10. Let's Go Crazy (Prince)

## TOP 10 TV SHOWS

1. West Wing (first three seasons)
2. The Wire
3. Breaking Bad
4. Seinfeld
5. The Newsroom
6. Prison Break
7. Arrested Development
8. Game of Thrones
9. The Sopranos
10. The Goldbergs

See the entire list here: <http://www.imdb.com/list/ls009377912/>

Neighbors has 16 comedies, 15 dramas and seven crime shows on the list.

## MIKE NEIGHBORS DEVELOPS PLAYERS FOR THE NEXT LEVEL

Mike Neighbors has worked with 11 WNBA Draft Picks

YEAR	UNIVERSITY	PLAYER	ROUND	OVERALL	TEAM NOTE
2017	Washington	Kelsey Plum	1	1	San Antonio Spurs ! @
	Washington	Chantel Osahor	2	21	Chicago Sky ! @
2016	Washington	Talia Walton	3	29	Los Angeles Sparks ! @
2011	Xavier	Amber Harris	1	4	Minnesota Lynx #
	Xavier	Ta'Shia Phillips	1	8	Atlanta Dream #
	TAMU/UAFS	Tanisha Smith	2	22	Seattle Storm #
	Colorado	Brittany Spears	2	19	Phoenix Mercury *
2009	Arkansas	Shameka Christon	1	5	New York Liberty #
2008	Arkansas	Lauren Ervin	3	37	Connecticut Sun #
2006	Tulsa	Megan Moody	-	-	Houston Comets
					Free Agent #
2003	Tulsa	Allison Curtin	1	12	Houston Comets ! #
	Arkansas	Dana Cherry	2	23	Traded to Detroit Shock
					Charlotte Sting

\*-Recruited but did not coach  
!-At the school when player was drafted  
@-Worked with player as a head coach  
#-Worked with player as an assistant coach  
\$-Worked with player as other (GA, etc)

## FAST RISE TO ELITE RANKS

Mike Neighbors had a meteoric rise to the top as a head coach at Washington. In four seasons, he amassed 96 wins, had three NCAA Tournament appearances and reached the Final Four. Those accomplishments put him in some rare air.

## FIRST FOUR YEARS AS A POWER FIVE HEAD COACH

Coach	School	Wins	NCAA Apps.	NCAA Best
Holly Warlick	Tennessee	108	4	Sweet 16
<b>Mike Neighbors</b>	<b>Washington</b>	<b>98</b>	<b>3</b>	<b>1 Final Four</b>
Jeff Walz	Louisville	96	3	1 Final Four
Nikki Fargas	UCLA	95	3	2nd Rnd
Vic Schaefer	Mississippi State	90	2	Sweet 16
Karen Aston	Texas	89	3	1 Elite 8
Matthew Mitchell	Kentucky	86	2	1 Elite 8
Kevin McGuff	Xavier	80	1	1 Elite 8
Dawn Staley	South Carolina	77	1	-
Brenda Frese	Minn./Maryland	72	2	-

## BUILDING A FAN BASE

Mike Neighbors saw a 62.9% increase in attendance in his four seasons at Washington. Look for fan engagement to be a big part of future Razor-back programs as well.

## COACHING TREE

Coach	w/Nabes	Now
Fred Castro	'14, '15, '16	HC Eastern Michigan
Adia Barnes	'14, '15	HC Arizona
Adam Call	'14	AC Eastern Michigan
Morgan Valley	'16	AC Arizona
Todd Schaefer	'16	AC Arkansas
Jasmine Lister	'16	AC DePaul



## WANT TO ASK SOME GOOD QUESTIONS?

1. He has had two heart attacks
2. He keeps a lot of lists
3. His lowest moment was he eureka moment
4. He plays guitar and has a band
5. He reads really fast
6. He is an analytics nerd
7. He is a bar-game prodigy

Sign up for Mike Neighbors' newsletter and listen to his podcasts at

**CoachNeighbors.com**





## CAREER STATS



3

**MALICA MONK**  
Junior | 5-5 | Guard | NLR, Arkansas  
N. Little Rock HS

### CAREER HIGHS

Points	24	ORU	11-20-17
FG Made	9	NMSU	11-15-17*
FG Att.	19	Nebraska	11-16-17
3P Made	2	Tulsa	12-10-17*
3P Att.	6	Charlotte	12-6-17
FT Made	12	UTA	12-17-17
FT Att.	12	UTA	12-17-17
Off. Rebounds	3	NMSU	11-15-17*
Def. Rebounds	8	Samford	11-12-17
Rebounds	9	Samford	11-12-17
Assists	10	Grambling	12-18-17
Blocks	3	LSU	1-8-17
Steals	6	Kentucky	2-16-17*
Minutes	39	Ole Miss	12-31-17

### SEASON HIGHS

Points	24	ORU	11-20-17
FG Made	9	NMSU	11-25-17*
FG Att.	20	at Kansas	12-3-17
3P Made	2	Tulsa	12-10-17*
3P Att.	6	Charlotte	12-6-17
FT Made	12	UTA	12-17-17
FT Att.	12	UTA	12-17-17
Off. Rebounds	3	at Kansas	12-3-17*
Def. Rebounds	8	Samford	11-12-17
Rebounds	9	Samford	11-12-17
Assists	10	Grambling	12-18-17
Blocks	1	NMSU	11-25-17
Steals	4	NMSU	11-15-17*
Minutes	39	Ole Miss	12-31-17

\*Most Recent

## 2017-18 GAME-BY-GAME STATS

Opponent	Date	gs	min	Total		3-Pointers		Free throws		Rebounds				pf	a	t/o	blk	stl	pts	avg	
				fg-fga	pct	3fg-fga	pct	ft-fa	pct	off	def	tot	avg								
SHSU	11/10/17	*	33	7-13	.538	1-4	.250	3-4	.750	0	2	2	2.0	2	4	1	0	4	18	18.0	
SAMFORD	11/12/17	*	37	6-14	.429	2-3	.667	7-7	1.000	1	8	9	5.5	2	6	1	0	2	21	19.5	
at Nebraska	11/16/17	*	37	9-19	.474	1-4	.250	3-3	1.000	0	3	3	4.7	5	6	2	0	3	22	20.3	
at Oral Roberts	11/20/17	*	32	9-16	.563	1-3	.333	5-6	.833	0	3	3	4.3	1	4	1	0	1	24	21.3	
at UTEP	11/24/17	*	36	3-15	.200	1-6	.167	3-3	1.000	0	2	2	3.8	2	5	1	0	3	10	19.0	
vs NM State	11/25/17	*	38	9-17	.529	1-4	.250	3-7	.429	3	4	7	4.3	0	2	5	1	4	22	19.5	
ACU	11/29/17	*	29	5-14	.357	1-2	.500	4-6	.667	0	2	2	4.0	2	1	2	0	1	15	18.9	
at Kansas	12/03/17	*	32	8-20	.400	1-3	.333	4-4	1.000	3	4	7	4.4	4	5	3	0	0	21	19.1	
CHARLOTTE	12/07/17	*	38	6-18	.333	2-6	.333	1-2	.500	1	3	4	4.3	4	3	1	0	3	15	18.7	
TULSA	12/10/17	*	25	4-10	.400	2-4	.500	4-4	1.000	1	3	4	4.3	2	3	3	0	1	14	18.2	
UT-ARLINGTON	12/17/17	*	31	4-11	.364	0-2	.000	12-12	1.000	0	1	1	4.0	1	6	3	0	1	20	18.4	
at Arizona State	12/21/17	*	30	5-19	.263	0-4	.000	2-2	1.000	0	2	2	3.8	1	2	2	0	1	12	17.8	
GRAMBLING	12/28/17	*	35	2-7	.286	0-1	.000	6-8	.750	1	1	2	3.7	1	10	6	1	3	10	17.2	
OLE MISS	12/31/17	*	39	4-13	.308	0-3	.000	4-8	.500	1	1	2	3.6	1	4	3	0	1	12	16.9	
at #5/3 Mississippi State	01/04/18	*	29	3-16	.188	0-1	.000	2-4	.500	0	3	3	3.5	3	4	1	1	2	8	16.3	
Totals			15	501	84-222	.378	13-50	.260	63-80	.788	11	42	53	3.5	31	65	35	3	30	244	16.3

Games played: 15  
Minutes/game: 33.4  
Points/game: 16.3  
FG Pct: 37.8  
3FG Pct: 26.0  
FT Pct: 78.8

Rebounds/game: 3.5  
Assists/game: 4.3  
Turnovers/game: 2.3  
Assist/turnover ratio: 1.9  
Steals/game: 2.0  
Blocks/game: 0.2

## NOTES

- » 14 points, seven assists and just one turnover in exhibition game
- » Fourteen consecutive games with double figure scoring - snapped at No. 5/3 Mississippi State.
- » Six of 12 games with 20+ points.
- » Named CollegeSportsMadness.com's SEC Player of the Week (11.13.17).
- » Improved career-best with 24 points in 32 minutes at ORU
- » Had 13 points in the fourth quarter at ORU.
- » Led team in scoring nine games.
- » Six games with 5+ assists this year. Had four all of last year.
- » Career-best 10 assists and her first career double-double with 10 points and 10 assists versus Grambling State.

## CAREER STATS

Year	GP-GS	Min	Avg	Total			3-Point			F-Throw			Rebounds				PF	FO	Ast	TO	Blk	Stl	Pts	Avg
				FG	FGA	Pct	FG	FGA	Pct	FT	FTA	Pct	Off	Def	Tot	Avg								
2015-16	27-5	461	17.1	48	136	.353	2	10	.200	12	19	.632	6	23	29	1.1	60	2	47	44	5	23	110	4.1
2016-17	27-27	842	31.2	96	230	.417	7	25	.280	48	71	.676	29	52	81	3.0	79	2	83	59	7	62	247	9.1
2017-18	15-15	501	33.4	84	222	.378	13	50	.260	63	80	.788	11	42	53	3.5	31	1	65	35	3	30	244	16.3
TOTAL	69-47	1804	26.1	228	588	.388	22	85	.259	123	170	.724	46	117	163	2.4	170	5	195	138	15	115	601	8.7



4

**KEIRYN SWENSON**Junior | 6-1 | Forward | Wichita, Kansas  
Maize HS**CAREER HIGHS**

Points	23	vs. HBU	12-28-16
FGM	7	vs. Navy	11-26-16
FGA	13	at Ole Miss	1-1-17
3PM	4	at Ole Miss	1-1-17
3PA	9	at Ole Miss	1-1-17
FTM	8	vs. HBU	12-28-16
FTA	9	vs. HBU	12-28-16
OREB	5	at Alabama	1-15-17*
DREB	6	vs. NSU	12-18-15*
REB	9	at Alabama	1-15-17*
AST	2	Grambling	12-18-17*
BLK	2	vs. SHSU	11-10-17*
STL	2	UTEP	11-24-17*
MIN	37	at Ole Miss	1-1-17

**SEASON HIGHS**

Points	10	UTA	12-17-17
FG Made	4	UTA	12-17-17
FG Att.	8	Ole Miss	12-31-17*
3P Made	3	Samford	11-12-17
3P Att.	6	Ole Miss	12-31-17*
FT Made	2	Grambling	12-18-17*
FT Att.	2	Grambling	12-18-17*
Off. Rebounds	3	Ole Miss	12-31-17
Def. Rebounds	4	UTA	12-17-17*
Rebounds	6	Tulsa	12-10-17*
Assists	2	Grambling	12-18-17*
Blocks	2	SHSU	11-10-17
Steals	2	UTEP	11-24-17
Minutes	24	Grambling	12-18-17

\*Most Recent

**2017-18 GAME-BY-GAME STATS**

Opponent	Date	gs	min	Total		3-Pointers		Free throws		Rebounds				pf	a	t/o	blk	stl	pts	avg
				fg-fga	pct	3fg-fga	pct	ft-fa	pct	off	def	tot	avg							
SHSU	11/10/17	18		2-8	.250	1-4	.250	0-0	.000	0	1	1	1.0	1	0	0	2	0	5	5.0
SAMFORD	11/12/17	13		3-5	.600	3-4	.750	0-0	.000	0	0	0	0.5	3	1	0	0	0	9	7.0
at Nebraska	11/16/17	17		1-5	.200	1-5	.200	0-0	.000	1	2	3	1.3	2	0	0	0	0	3	5.7
at Oral Roberts	11/20/17	15		2-3	.667	1-2	.500	1-2	.500	0	2	2	1.5	2	0	1	0	1	6	5.8
at UTEP	11/24/17	16		2-7	.286	2-6	.333	0-2	.000	1	1	2	1.6	0	0	1	0	2	6	5.8
vs NM State	11/25/17	14		2-5	.400	1-4	.250	0-0	.000	2	4	6	2.3	1	0	4	0	0	5	5.7
ACU	11/29/17	17		1-3	.333	1-2	.500	0-0	.000	1	1	2	2.3	0	0	1	0	1	3	5.3
at Kansas	12/03/17	18		1-3	.333	1-3	.333	1-2	.500	0	2	2	2.3	1	0	1	1	0	4	5.1
CHARLOTTE	12/07/17	13		1-5	.200	1-4	.250	0-0	.000	0	2	2	2.2	2	0	0	0	0	3	4.9
TULSA	12/10/17	21		2-7	.286	1-5	.200	2-2	1.000	2	4	6	2.6	0	0	0	1	0	7	5.1
UT-ARLINGTON	12/17/17	17		4-8	.500	2-4	.500	0-0	.000	1	4	5	2.8	1	2	2	0	0	10	5.5
at Arizona State	12/21/17	15		1-3	.333	0-1	.000	0-0	.000	2	1	3	2.8	0	1	3	1	0	2	5.3
GRAMBLING	12/28/17	24		2-3	.667	2-3	.667	2-2	1.000	0	2	2	2.8	2	2	0	0	0	8	5.5
OLE MISS	12/31/17	12		3-8	.375	1-6	.167	1-1	1.000	3	1	4	2.9	1	0	2	1	0	8	5.6
at #5/3 Mississippi State	01/04/18	15		0-0	.000	0-0	.000	0-0	.000	1	1	2	2.8	1	0	1	0	0	0	5.3
Totals		0	245	27-73	.370	18-53	.340	7-11	.636	14	28	42	2.8	17	6	16	6	4	79	5.3

Games played: 15  
Minutes/game: 16.3  
Points/game: 5.3  
FG Pct: 37.0  
3FG Pct: 34.0  
FT Pct: 63.6Rebounds/game: 2.8  
Assists/game: 0.4  
Turnovers/game: 1.1  
Assist/turnover ratio: 0.4  
Steals/game: 0.3  
Blocks/game: 0.4**NOTES**

- » Saw a 206.4% increase in scoring between freshman and sophomore seasons (78 vs. 239 points).
- » **SEC Winter Academic Honor Roll** (2016-17).
- » **SEC First-Year Academic Honor Roll** (2015-16).
- » At least one 3-pointer in her first 11 games this year and in 13 of 15 games.
- » Season-best 10 points on 4-for-8 shooting against UTA.

**CAREER STATS**

Year	GP-GS	Min	Avg	Total			3-Point			F-Throw			Rebounds				PF	FO	Ast	TO	Blk	Stl	Pts	Avg
				FG	FGA	Pct	FG	FGA	Pct	FT	FTA	Pct	Off	Def	Tot	Avg								
2015-16	29-1	373	12.9	27	84	.321	5	21	.238	19	27	.704	34	34	68	2.3	26	0	7	15	4	10	78	2.7
2016-17	30-11	709	23.6	89	179	.497	31	71	.437	30	39	.769	53	71	124	4.1	56	0	15	28	17	16	239	8.0
2017-18	15-0	245	16.3	27	73	.370	18	53	.340	7	11	.636	14	28	42	2.8	17	0	6	16	6	4	79	5.3
TOTAL	74-12	1327	17.9	143	336	.426	54	145	.372	56	77	.727	101	133	234	3.2	99	0	28	59	27	30	396	5.4



10

**KIARA WILLIAMS**Sophomore | 6-1 | Forward | LR, Arkansas  
Little Rock HS**CAREER HIGHS**

Points	13	#5 Miss St.	1-4-18*
FGM	6	Tulsa	12-10-17
FGA	11	NMSU	11-25-17
3PM	1	#5 Miss St.	1-4-18
3PA	1	#5 Miss St.	1-4-18
FTM	4	Grambling	12-18-17*
FTA	11	Charlotte	12-6-17
OREB	8	Grambling	12-18-17*
DREB	11	at Kansas	12-3-17
REB	16	Grambling	12-18-17*
AST	2	Tulsa	12-10-17*
BLK	4	Ole Miss	12-31-17*
STL	4	Charlotte	12-6-17
MIN	29	Charlotte	12-6-17

**SEASON HIGHS**

Points	13	#5 Miss St.	1-4-18*
FG Made	6	Tulsa	12-10-17
FG Att.	11	NMSU	11-25-17
3P Made	1	#5 Miss St.	1-4-18
3P Att.	1	#5 Miss St.	1-4-18
FT Made	4	Grambling	12-18-17*
FT Att.	11	Charlotte	12-6-17
Off. Rebounds	8	Grambling	12-18-17*
Def. Rebounds	11	at Kansas	12-3-17
Rebounds	16	Grambling	12-18-17*
Assists	2	Tulsa	12-10-17
Blocks	4	Ole Miss	12-31-17*
Steals	4	Charlotte	12-6-17
Minutes	29	Charlotte	12-6-17

\*Most Recent

**2017-18 GAME-BY-GAME STATS**

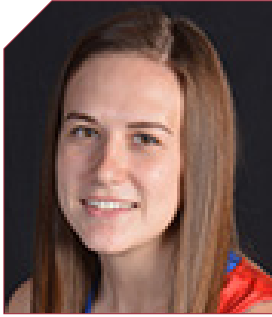
Opponent	Date	gs	min	Total		3-Pointers		Free throws		Rebounds				pf	a	t/o	blk	stl	pts	avg	
				fg-fga	pct	3fg-fga	pct	ft-fa	pct	off	def	tot	avg								
SHSU	11/10/17	*	17	3-4	.750	0-0	.000	1-1	1.000	0	2	2	2.0	1	1	0	0	0	7	7.0	
SAMFORD	11/12/17	*	19	5-7	.714	0-0	.000	0-0	.000	1	4	5	3.5	1	0	0	4	2	10	8.5	
at Nebraska	11/16/17	*	20	3-6	.500	0-0	.000	0-0	.000	6	5	11	6.0	4	1	2	2	1	6	7.7	
at Oral Roberts	11/20/17	*	17	3-7	.429	0-0	.000	2-2	1.000	3	2	5	5.8	4	0	1	0	1	8	7.8	
at UTEP	11/24/17	*	8	0-2	.000	0-0	.000	1-2	.500	1	0	1	4.8	3	0	1	0	1	1	6.4	
vs NM State	11/25/17	*	25	5-11	.455	0-0	.000	1-3	.333	4	7	11	5.8	2	0	3	0	2	11	7.2	
ACU	11/29/17	*	20	4-6	.667	0-0	.000	4-5	.800	5	3	8	6.1	0	0	0	1	3	12	7.9	
at Kansas	12/03/17	*	28	3-6	.500	0-0	.000	0-1	.000	5	11	16	7.4	3	0	4	2	0	6	7.6	
CHARLOTTE	12/07/17	*	29	3-8	.375	0-0	.000	3-11	.273	8	4	12	7.9	3	0	0	3	4	9	7.8	
TULSA	12/10/17	*	17	6-9	.667	0-0	.000	1-4	.250	4	3	7	7.8	2	2	0	2	0	13	8.3	
UT-ARLINGTON	12/17/17	*	22	1-3	.333	0-0	.000	0-0	.000	3	5	8	7.8	4	0	0	1	2	2	7.7	
at Arizona State	12/21/17	*	16	0-2	.000	0-0	.000	3-4	.750	0	4	4	7.5	1	0	1	1	0	3	7.3	
GRAMBLING	12/28/17	*	22	4-10	.400	0-0	.000	4-8	.500	8	8	16	8.2	1	0	0	0	1	12	7.7	
OLE MISS	12/31/17	*	23	1-5	.200	0-0	.000	3-4	.750	2	7	9	8.2	5	1	0	4	1	5	7.5	
at #5/3 Mississippi State	01/04/18	*	20	5-5	1.000	1-1	1.000	2-2	1.000	0	2	2	7.8	1	0	3	1	0	13	7.9	
Totals			14	303	46-91	.505	1-1	1.000	25-47	.532	50	67	117	7.8	35	5	15	21	18	118	7.9

Games played: 15  
Minutes/game: 20.2  
Points/game: 7.9  
FG Pct: 50.5  
3FG Pct: 100.0  
FT Pct: 53.2Rebounds/game: 7.8  
Assists/game: 0.3  
Turnovers/game: 1.0  
Assist/turnover ratio: 0.3  
Steals/game: 1.2  
Blocks/game: 1.4**NOTES**

- » Enjoys Marvel movies.
- » Career-best four blocks against Samford. Tied that against Ole Miss in the SEC opener.
- » Posted first double-figure rebound total with 11 boards on the road at Nebraska.
- » First career double-double with 11 points and 11 rebounds against New Mexico State.
- » Has scored in every game.
- » First time in her career to have double figures in the first half against ACU.
- » Career-best 16 rebounds, including 11 defensive rebounds, at Kansas.
- » Second career double-double with 12 points and tied her career-best with 16 rebounds versus Grambling State.
- » Career-high 13 points against Tulsa. Tied that at No. 5/3 Mississippi State.
- » Six games in double figures.
- » Made her first career 3-point basket in the opening shot of the No. 5/3 Mississippi State game.

**CAREER STATS**

Year	GP-GS	Min	Avg	Total			3-Point			F-Throw			Rebounds				PF	FO	Ast	TO	Blk	Stl	Pts	Avg
				FG	FGA	Pct	FG	FGA	Pct	FT	FTA	Pct	Off	Def	Tot	Avg								
2016-17	20-5	227	11.4	26	48	.542	0	0	.000	10	26	.385	24	31	55	2.8	34	1	3	15	5	9	62	3.1
2017-18	15-14	303	20.2	46	91	.505	1	1	1.000	25	47	.532	50	67	117	7.8	35	1	5	15	21	18	118	7.9
TOTAL	35-19	530	15.1	72	139	.518	1	1	1.000	35	73	.479	74	98	172	4.9	69	2	8	30	26	27	180	5.1



12

## BRENNA MCCLURE

R-Sophomore | 5-6 | Guard | Lyons, Kansas  
Lyons HS | Hutchinson CC

### CAREER HIGHS

Points	-		
FG Made	-		
FG Att.	1	#5 Miss St.	1-4-18
3P Made	-		
3P Att.	-		
FT Made	-		
FT Att.	-		
Off. Rebounds	-		
Def. Rebounds	-		
Rebounds	-		
Assists	-		
Blocks	-		
Steals	-		
Minutes	3	#5 Miss St.	1-4-18

### SEASON HIGHS

Points	-		
FG Made	-		
FG Att.	1	#5 Miss St.	1-4-18
3P Made	-		
3P Att.	-		
FT Made	-		
FT Att.	-		
Off. Rebounds	-		
Def. Rebounds	-		
Rebounds	-		
Assists	-		
Blocks	-		
Steals	-		
Minutes	3	#5 Miss St.	1-4-18

\*Most Recent

## 2017-18 GAME-BY-GAME STATS

Opponent	Date	gs	min	Total		3-Pointers		Free throws		Rebounds				pf	a	t/o	blk	stl	pts	avg
				fg	fga	pct	3fg	3fga	pct	ft	fta	pct	off							
GRAMBLING	12/28/17		dnp	-	-	-	-	-	-	-	-	-	-	-	-	-	-	-	-	-
OLE MISS	12/31/17		dnp	-	-	-	-	-	-	-	-	-	-	-	-	-	-	-	-	-
at #5/3 Mississippi State	01/04/18		3	0-1	.000	0-0	.000	0-0	.000	0-0	.000	0-0	0	0	0	0.0	1	0	0	0.0
Totals		0	3	0-1	.000	0-0	.000	0-0	.000	0-0	.000	0-0	0	0	0	0.0	1	0	0	0.0

Games played: 1  
Minutes/game: 3.0  
FG Pct: 0.0

## NOTES

» Joined the team as a walk-on for the spring semester.

## CAREER STATS

Year	GP-GS	Min	Avg	Total			3-Point			F-Throw			Rebounds				PF	FO	Ast	TO	Blk	Stl	Pts	Avg
				FG	FGA	Pct	FG	FGA	Pct	FT	FTA	Pct	Off	Def	Tot	Avg								
22017-18	1-0	3	3.0	0	1	.000	0	0	.000	0	0	.000	0	0	0	0.0	1	0	0	0	0	0	0	0.0
TOTAL	1-0	3	3.0	0	1	.000	0	0	.000	0	0	.000	0	0	0	0.0	1	0	0	0	0	0	0	0.0



13

## GRAYCE SPANGLER

Freshman | 5-11 | Guard | Fayetteville, Ark.  
Fayetteville HS

### CAREER HIGHS

Points	4	#5 Miss St.	1-4-18
FG Made	2	#5 Miss St.	1-4-18
FG Att.	3	#5 Miss St.	1-4-18
3P Made	-		
3P Att.	2	ACU	11-29-17
FT Made	3	UTA	12-17-17
FT Att.	3	UTA	12-17-17
Off. Rebounds	1	#5 Miss St.	1-4-18
Def. Rebounds	1	at ASU	12-21-17*
Rebounds	1	UTA	12-17-17
Assists	-		
Blocks	-		
Steals	-		
Minutes	7	at ASU	12-21-17

### SEASON HIGHS

Points	4	#5 Miss St.	1-4-18
FG Made	2	#5 Miss St.	1-4-18
FG Att.	3	#5 Miss St.	1-4-18
3P Made	-		
3P Att.	2	ACU	11-29-17
FT Made	3	UTA	12-17-17
FT Att.	3	UTA	12-17-17
Off. Rebounds	1	#5 Miss St.	1-4-18
Def. Rebounds	1	at ASU	12-21-17*
Rebounds	1	UTA	12-17-17
Assists	-		
Blocks	-		
Steals	-		
Minutes	7	at ASU	12-21-17

\*Most Recent

## 2017-18 GAME-BY-GAME STATS

Opponent	Date	gs	min	Total		3-Pointers		Free throws		Rebounds				pf	a	t/o	blk	stl	pts	avg
				fg-fga	pct	3fg-fga	pct	ft-fa	pct	off	def	tot	avg							
SHSU	11/10/17	4		0-1	.000	0-0	.000	0-2	.000	0	0	0	0.0	0	0	0	0	0	0	0.0
SAMFORD	11/12/17	2		0-1	.000	0-1	.000	0-0	.000	0	1	1	0.5	0	0	0	0	0	0	0.0
at Nebraska	11/16/17	dnp		-	-	-	-	-	-	-	-	-	-	-	-	-	-	-	-	-
at Oral Roberts	11/20/17	dnp		-	-	-	-	-	-	-	-	-	-	-	-	-	-	-	-	-
at UTEP	11/24/17	5		0-0	.000	0-0	.000	0-0	.000	0	0	0	0.3	2	0	0	0	0	0	0.0
vs NM State	11/25/17	dnp		-	-	-	-	-	-	-	-	-	-	-	-	-	-	-	-	-
ACU	11/29/17	6		0-2	.000	0-2	.000	0-0	.000	0	0	0	0.3	0	0	1	0	0	0	0.0
at Kansas	12/03/17	1		0-0	.000	0-0	.000	0-0	.000	0	0	0	0.2	0	0	0	0	0	0	0.0
CHARLOTTE	12/07/17	dnp		-	-	-	-	-	-	-	-	-	-	-	-	-	-	-	-	-
TULSA	12/10/17	2		0-0	.000	0-0	.000	0-0	.000	0	1	1	0.3	0	0	0	0	0	0	0.0
UT-ARLINGTON	12/17/17	3		0-1	.000	0-0	.000	3-3	1.000	0	1	1	0.4	1	0	1	0	0	3	0.4
at Arizona State	12/21/17	7		0-1	.000	0-0	.000	0-0	.000	0	1	1	0.5	2	0	0	0	0	0	0.4
GRAMBLING	12/28/17	3		0-2	.000	0-1	.000	0-0	.000	0	0	0	0.4	0	0	0	0	0	0	0.3
OLE MISS	12/31/17	dnp		-	-	-	-	-	-	-	-	-	-	-	-	-	-	-	-	-
at #5/3 Mississippi State	01/04/18	3		2-3	.667	0-1	.000	0-1	.000	1	0	1	0.5	1	0	2	0	0	4	0.7
Totals		0	36	2-11	.182	0-5	.000	3-6	.500	1	4	5	0.5	6	0	4	0	0	7	0.7

Games played: 10  
Minutes/game: 3.6  
Points/game: 0.7  
FG Pct: 18.2  
3FG Pct: 0.0  
FT Pct: 50.0

Rebounds/game: 0.5  
Turnovers/game: 0.4

## NOTES

- » Father Shannon lettered as a linebacker (1989) and mother, Stacy, was a member of the Pom Squad at Arkansas.
- » Scored her first points as a Razorback going 3-for-3 from the line in a win over UTA.
- » Season/career-best seven minutes at Arizona State.

## CAREER STATS

Year	GP-GS	Min	Avg	Total			3-Point			F-Throw			Rebounds				PF	FO	Ast	TO	Blk	Stl	Pts	Avg
				FG	FGA	Pct	FG	FGA	Pct	FT	FTA	Pct	Off	Def	Tot	Avg								
2017-18	10-0	36	3.6	2	11	.182	0	5	.000	3	6	.500	1	4	5	0.5	6	0	0	4	0	0	7	0.7
TOTAL	10-0	36	3.6	2	11	.182	0	5	.000	3	6	.500	1	4	5	0.5	6	0	0	4	0	0	7	0.7



14

**JAILYN MASON**Sophomore | 5-9 | Guard | Mason, Ohio  
William Mason HS**CAREER HIGHS**

Points	19	ORU	12-21-16
FGM	9	ORU	12-21-16
FGA	15	Missouri	2-12-17*
3PM	3	Ole Miss	12-31-17*
3PA	7	ACU	11-29-17
FTM	3	NMSU	11-25-17*
FTA	7	NMSU	11-25-17
OREB	4	Texas Tech	12-3-16
DREB	7	Grambling	12-18-17*
REB	9	Texas Tech	12-3-16
AST	11	HBU	12-28-16
BLK	3	SHSU	11-10-17
STL	4	Nebraska	11-16-17*
MIN	40	ORU	12-21-16

**SEASON HIGHS**

Points	15	#5 Miss St.	1-4-18*
FG Made	7	#5 Miss St.	1-4-18*
FG Att.	13	ACU	11-29-17
3P Made	3	Ole Miss	12-31-17*
3P Att.	7	ACU	11-29-17
FT Made	2	Charlotte	12-6-17
FT Att.	2	Charlotte	12-6-17*
Off. Rebounds	3	NMSU	11-25-17
Def. Rebounds	7	Grambling	12-18-17*
Rebounds	7	Grambling	12-18-17*
Assists	8	ACU	11-29-17
Blocks	3	SHSU	11-10-17
Steals	4	Nebraska	11-16-17
Minutes	38	ORU	11-20-17

\*Most Recent

**2017-18 GAME-BY-GAME STATS**

Opponent	Date	gs	min	Total		3-Pointers		Free throws		Rebounds				pf	a	t/o	blk	stl	pts	avg	
				fg-fga	pct	3fg-fga	pct	ft-fra	pct	off	def	tot	avg								
SHSU	11/10/17	*	25	3-10	.300	2-4	.500	0-0	.000	0	5	5	5.0	0	4	1	3	1	8	8.0	
SAMFORD	11/12/17	*	35	5-11	.455	2-5	.400	0-2	.000	0	1	1	3.0	2	2	1	0	2	12	10.0	
at Nebraska	11/16/17	*	30	4-12	.333	0-2	.000	0-1	.000	0	5	5	3.7	3	2	4	0	4	8	9.3	
at Oral Roberts	11/20/17	*	32	3-9	.333	0-0	.000	0-0	.000	1	1	2	3.3	1	1	1	0	0	6	8.5	
at UTEP	11/24/17	*	24	3-9	.333	2-6	.333	0-0	.000	1	3	4	3.4	1	2	0	0	1	8	8.4	
vs NM State	11/25/17	*	28	1-8	.125	1-4	.250	0-0	.000	3	3	6	3.8	3	2	1	1	2	3	7.5	
ACU	11/29/17	*	34	5-13	.385	3-7	.429	0-0	.000	0	7	7	4.3	1	8	3	1	2	13	8.3	
at Kansas	12/03/17	*	33	4-9	.444	2-5	.400	0-0	.000	0	2	2	4.0	5	1	2	0	2	10	8.5	
CHARLOTTE	12/07/17	*	30	4-10	.400	2-6	.333	2-2	1.000	0	4	4	4.0	2	4	1	1	1	12	8.9	
TULSA	12/10/17	*	30	5-11	.455	1-4	.250	0-0	.000	0	5	5	4.1	0	6	0	0	0	11	9.1	
UT-ARLINGTON	12/17/17	*	33	7-11	.636	1-4	.250	0-0	.000	0	4	4	4.1	1	7	3	0	3	15	9.6	
at Arizona State	12/21/17	*	31	3-7	.429	0-1	.000	0-0	.000	0	4	4	4.1	0	1	5	1	0	6	9.3	
GRAMBLING	12/28/17	*	27	3-11	.273	2-4	.500	0-0	.000	0	7	7	4.3	2	1	1	0	1	8	9.2	
OLE MISS	12/31/17	*	33	5-11	.455	3-4	.750	0-0	.000	0	2	2	4.1	3	4	1	1	1	13	9.5	
at #5/3 Mississippi State	01/04/18	*	35	7-11	.636	1-1	1.000	0-0	.000	1	2	3	4.1	0	4	2	1	0	15	9.9	
Totals			15	460	62-153	.405	22-57	.386	2-5	.400	6	55	61	4.1	24	49	26	9	20	148	9.9

Games played: 15  
Minutes/game: 30.7  
Points/game: 9.9  
FG Pct: 40.5  
3FG Pct: 38.6  
FT Pct: 40.0Rebounds/game: 4.1  
Assists/game: 3.3  
Turnovers/game: 1.7  
Assist/turnover ratio: 1.9  
Steals/game: 1.3  
Blocks/game: 0.6**NOTES**

- » Has a large Jordan shoe collection.
- » Would like to be a sports photographer.
- » At least one defensive rebound in each game this season.
- » Set season-best marks for field goals, field goals attempted, 3-point field goals and 3-point field goals attempted as well as for rebounds and assists against Abilene Christian.
- » Seven games this year and five consecutive games with double-figure scoring through UTA.
- » Season-best 15 points with seven made baskets against UTA. Tied that against No. 5/3 Mississippi State.

**CAREER STATS**

Year	GP-GS	Min	Avg	Total			3-Point			F-Throw			Rebounds				PF	FO	Ast	TO	Blk	Stl	Pts	Avg
				FG	FGA	Pct	FG	FGA	Pct	FT	FTA	Pct	Off	Def	Tot	Avg								
2016-17	30-30	894	29.8	100	256	.391	19	53	.358	7	11	.636	21	96	117	3.9	72	2	93	56	8	31	226	7.5
2017-18	15-15	460	30.7	62	153	.405	22	57	.386	2	5	.400	6	55	61	4.1	24	1	49	26	9	20	148	9.9
TOTAL	45-45	1354	30.1	162	409	.396	41	110	.373	9	16	.563	27	151	178	4.0	96	3	142	82	17	51	374	8.3



20

**SYDNEY STOUT**Sophomore | 6-0 | Forward | Bixby, Okla.  
Bixby HS**CAREER HIGHS**

Points	8	HBU	12-28-16
FGM	3	HBU	12-28-16
FGA	5	HBU	12-28-16
3PM	2	HBU	12-28-16
3PA	4	HBU	12-28-16
FTM	2	Texas A&M	1-12-17
FTA	4	Texas A&M	1-12-17
OREB	1	SHSU	11-10-17*
DREB	6	HBU	12-28-16
REB	6	HBU	12-28-16
AST	1	Grambling	12-18-17*
BLK	1	ULM	11-13-16
STL	-		
MIN	15	HBU	12-28-16

**SEASON HIGHS**

Points	4	UTA	12-17-17
FG Made	1	UTA	12-17-17
FG Att.	2	ACU	11-29-17
3P Made	1	UTA	12-17-17
3P Att.	1	UTA	12-17-17*
FT Made	1	UTA	12-17-17*
FT Att.	2	UTA	12-17-17
Off. Rebounds	1	UTA	12-17-17*
Def. Rebounds	1	Grambling	12-18-17*
Rebounds	2	UTA	12-17-17
Assists	1	Grambling	12-18-17
Blocks	-		
Steals	-		
Minutes	6	UTA	12-17-17
*Most Recent			

**2017-18 GAME-BY-GAME STATS**

Opponent	Date	gs	min	Total		3-Pointers		Free throws		Rebounds				pf	a	t/o	blk	stl	pts	avg
				fg-fga	pct	3fg-fga	pct	ft-fa	pct	off	def	tot	avg							
SHSU	11/10/17	6		0-1	.000	0-0	.000	1-2	.500	1	0	1	1.0	1	0	1	0	0	1	1.0
SAMFORD	11/12/17	2		0-0	.000	0-0	.000	1-2	.500	0	1	1	1.0	0	0	0	0	0	1	1.0
at Nebraska	11/16/17	dnp		-	-	-	-	-	-	-	-	-	-	-	-	-	-	-	-	-
at Oral Roberts	11/20/17	dnp		-	-	-	-	-	-	-	-	-	-	-	-	-	-	-	-	-
at UTEP	11/24/17	6		0-0	.000	0-0	.000	0-0	.000	0	0	0	0.7	0	0	0	0	0	0	0.7
vs NM State	11/25/17	dnp		-	-	-	-	-	-	-	-	-	-	-	-	-	-	-	-	-
ACU	11/29/17	3		0-2	.000	0-1	.000	0-0	.000	1	0	1	0.8	0	0	0	0	0	0	0.5
at Kansas	12/03/17	dnp		-	-	-	-	-	-	-	-	-	-	-	-	-	-	-	-	-
CHARLOTTE	12/07/17	dnp		-	-	-	-	-	-	-	-	-	-	-	-	-	-	-	-	-
TULSA	12/10/17	3		0-0	.000	0-0	.000	0-0	.000	0	1	1	0.8	0	0	0	0	0	0	0.4
UT-ARLINGTON	12/17/17	6		1-1	1.000	1-1	1.000	1-2	.500	1	1	2	1.0	0	0	0	0	0	4	1.0
at Arizona State	12/21/17	5		0-0	.000	0-0	.000	0-0	.000	0	0	0	0.9	0	0	0	0	0	0	0.9
GRAMBLING	12/28/17	5		0-2	.000	0-1	.000	0-0	.000	0	1	1	0.9	0	1	0	0	0	0	0.8
OLE MISS	12/31/17	dnp		-	-	-	-	-	-	-	-	-	-	-	-	-	-	-	-	-
at #5/3 Mississippi State	01/04/18	4		0-0	.000	0-0	.000	0-0	.000	0	0	0	0.8	0	0	0	0	0	0	0.7
Totals		0	40	1-6	.167	1-3	.333	3-6	.500	3	4	7	0.8	1	1	1	0	0	6	0.7

Games played: 9  
Minutes/game: 4.4  
Points/game: 0.7  
FG Pct: 16.7  
3FG Pct: 33.3  
FT Pct: 50.0Rebounds/game: 0.8  
Assists/game: 0.1  
Turnovers/game: 0.1  
Assist/turnover ratio: 1.0**NOTES**

» SEC First-Year Academic Honor Roll (2016-17).

**CAREER STATS**

Year	GP-GS	Min	Avg	Total			3-Point			F-Throw			Rebounds				PF	FO	Ast	TO	Blk	Stl	Pts	Avg
				FG	FGA	Pct	FG	FGA	Pct	FT	FTA	Pct	Off	Def	Tot	Avg								
2016-17	15-0	72	4.8	5	14	.357	4	12	.333	2	4	.500	2	9	11	0.7	15	0	1	2	1	0	16	1.1
2017-18	9-0	40	4.4	1	6	.167	1	3	.333	3	6	.500	3	4	7	0.8	1	0	1	1	0	0	6	0.7
TOTAL	24-0	112	4.7	6	20	.300	5	15	.333	5	10	.500	5	13	18	0.8	16	0	2	3	1	0	22	0.9



21

## DEVIN COSPERS

Grad | 5-10 | Guard | Coffeyville, Kansas  
Coffeyville CC | Field Kindley HS

### CAREER HIGHS

Points	25	Charlotte	12-6-17
FG Made	9	Charlotte	12-6-17
FGA	25	Nebraska	11-16-17
3PM	6	UTEP	11-24-17
3PA	16	Nebraska	11-16-17
FTM	7	New Orleans	12-30-15
FTA	8	at Kansas	12-3-17*
OREB	3	Charlotte	12-6-17
DREB	11	Charlotte	12-6-17
REB	14	Charlotte	12-6-17*
AST	6	ORU	12-21-16
BLK	3	MVSU	12-28-15
STL	4	Ole Miss	12-31-17*
MIN	40	Charlotte	12-6-17
	42	Auburn	1-24-16 OT

### SEASON HIGHS

Points	25	Charlotte	12-6-17
FG Made	9	Charlotte	12-6-17
FG Att.	25	Nebraska	11-16-17
3P Made	6	UTEP	11-24-17
3P Att.	16	Nebraska	11-16-17
FT Made	6	at Kansas	12-3-17
FT Att.	8	at Kansas	12-3-17
Off. Rebounds	3	Charlotte	12-6-17
Def. Rebounds	11	Charlotte	12-6-17
Rebounds	14	Charlotte	12-6-17
Assists	4	NMSU	11-25-17
Blocks	2	Tulsa	12-10-17*
Steals	4	Ole Miss	12-31-17
Minutes	40	Charlotte	12-6-17

\*Most Recent

## 2017-18 GAME-BY-GAME STATS

Opponent	Date	gs	min	Total		3-Pointers		Free throws		Rebounds				pf	a	t/o	blk	stl	pts	avg	
				fg-fga	pct	3fg-fga	pct	ft-fa	pct	off	def	tot	avg								
SHSU	11/10/17	*	31	6-13	.462	4-11	.364	1-2	.500	2	10	12	12.0	3	2	4	1	1	17	17.0	
SAMFORD	11/12/17	*	29	5-12	.417	3-10	.300	5-5	1.000	0	5	5	8.5	2	2	1	0	1	18	17.5	
at Nebraska	11/16/17	*	34	8-25	.320	5-16	.313	0-0	.000	1	3	4	7.0	2	0	4	2	2	21	18.7	
at Oral Roberts	11/20/17	*	38	8-19	.421	3-10	.300	2-2	1.000	0	10	10	7.8	2	1	0	0	2	21	19.3	
at UTEP	11/24/17	*	31	8-17	.471	6-13	.462	0-2	.000	1	4	5	7.2	2	0	1	0	4	22	19.8	
vs NM State	11/25/17	*	39	6-17	.353	2-9	.222	3-4	.750	2	9	11	7.8	2	4	2	1	2	17	19.3	
ACU	11/29/17	*	21	4-10	.400	2-5	.400	1-2	.500	0	3	3	7.1	4	1	3	1	2	11	18.1	
at Kansas	12/03/17	*	39	5-23	.217	1-11	.091	6-8	.750	1	2	3	6.6	3	0	2	1	1	17	18.0	
CHARLOTTE	12/07/17	*	40	9-23	.391	2-7	.286	5-6	.833	3	11	14	7.4	2	2	3	0	1	25	18.8	
TULSA	12/10/17	*	29	5-16	.313	1-9	.111	0-0	.000	2	9	11	7.8	3	0	3	2	0	11	18.0	
UT-ARLINGTON	12/17/17	*	22	3-8	.375	2-6	.333	0-0	.000	0	1	1	7.2	3	1	2	0	2	8	17.1	
at Arizona State	12/21/17	*	27	3-13	.231	2-5	.400	0-0	.000	0	1	1	6.7	2	1	2	0	0	8	16.3	
GRAMBLING	12/28/17	*	34	6-15	.400	4-7	.571	0-2	.000	0	4	4	6.5	2	3	2	0	0	16	16.3	
OLE MISS	12/31/17	*	39	7-15	.467	2-5	.400	2-3	.667	1	10	11	6.8	3	1	6	1	4	18	16.4	
at #5/3 Mississippi State	01/04/18	*	32	5-13	.385	2-7	.286	1-2	.500	1	6	7	6.8	3	3	4	0	0	13	16.2	
Totals			15	485	88-239	.368	41-131	.313	26-38	.684	14	88	102	6.8	38	21	39	9	22	243	16.2

Games played: 15  
Minutes/game: 32.3  
Points/game: 16.2  
FG Pct: 36.8  
3FG Pct: 31.3  
FT Pct: 68.4

Rebounds/game: 6.8  
Assists/game: 1.4  
Turnovers/game: 2.6  
Assist/turnover ratio: 0.5  
Steals/game: 1.5  
Blocks/game: 0.6

## NOTES

- » SEC First-Year Academic Honor Roll (2016).
- » SEC Academic Honor Roll (2016-17).
- » Graduated in May 2017 with degree in journalism. Currently pursuing her master's degree in sport administration.
- » Forty-four consecutive games played.
- » Nineteen consecutive games with a made 3-pointer.
- » Thirty-one points with six 3-pointers in exhibition game.
- » Ten consecutive games in double figure scoring (snapped versus UTA).
- » Six career double-doubles all this season.
- » At least one steal in 11-of-15 games this year.
- » Career-bests to 25 points and 14 rebounds against Charlotte.

## CAREER STATS

Year	GP-GS	Min	Avg	Total			3-Point			F-Throw			Rebounds				PF	FO	Ast	TO	Blk	Stl	Pts	Avg
				FG	FGA	Pct	FG	FGA	Pct	FT	FTA	Pct	Off	Def	Tot	Avg								
2015-16	30-25	792	26.4	97	293	.331	25	104	.240	50	72	.694	16	83	99	3.3	57	0	42	74	5	34	269	9.0
2016-17	29-9	563	19.4	72	195	.369	23	75	.307	20	27	.741	7	58	65	2.2	43	2	45	40	6	28	187	6.4
2017-18	15-15	485	32.3	88	239	.368	41	131	.313	26	38	.684	14	88	102	6.8	38	0	21	39	9	22	243	16.2
TOTAL	74-49	1840	24.9	257	727	.354	89	310	.287	96	137	.701	37	229	266	3.6	138	2	108	153	20	84	699	9.4



22

**BAILEY ZIMMERMAN**Junior | 6-0 | Forward | St. Vincent, Arkansas  
Wonderview HS**CAREER HIGHS**

Points	14	Missouri	2-12-17
FGM	4	Missouri	2-12-17*
FGA	11	Missouri	2-12-17
3PM	3	Kentucky	2-16-17*
3PA	7	Butler	12-13-15
FTM	4	S. Carolina	2-5-17*
FTA	6	Missouri	2-12-17
OREB	4	ACU	11-29-17*
DREB	6	Alabama	1-15-17
REB	7	Tulsa	12-10-17*
AST	3	Kentucky	2-16-17*
BLK	3	LSU	1-8-17*
STL	2	UTEP	11-24-17*
MIN	34	Kentucky	2-16-17

**SEASON HIGHS**

Points	6	UTA	12-17-17*
FG Made	2	UTA	12-17-17*
FG Att.	10	UTA	12-17-17
3P Made	1	Charlotte	12-6-17
3P Att.	6	Charlotte	12-6-17
FT Made	2	#5 Miss St.	1-4-18*
FT Att.	3	#5 Miss St.	1-4-18*
Off. Rebounds	4	ACU	11-29-17*
Def. Rebounds	5	Tulsa	12-10-17
Rebounds	7	Tulsa	12-10-17
Assists	2	ACU	11-29-17*
Blocks	2	Nebraska	11-16-17
Steals	2	UTEP	11-24-17*
Minutes	28	Charlotte	12-6-17

\*Most Recent

**2017-18 GAME-BY-GAME STATS**

Opponent	Date	gs	min	Total		3-Pointers		Free throws		Rebounds				pf	a	t/o	blk	stl	pts	avg	
				fg-fga	pct	3fg-fga	pct	ft-fra	pct	off	def	tot	avg								
SHSU	11/10/17	*	27	1-7	.143	0-4	.000	0-0	.000	0	3	3	3.0	1	2	1	0	2	2	2.0	
SAMFORD	11/12/17	*	19	0-1	.000	0-1	.000	0-0	.000	0	0	0	1.5	3	0	0	0	0	0	1.0	
at Nebraska	11/16/17	*	24	0-2	.000	0-2	.000	1-2	.500	0	0	0	1.0	3	0	2	2	0	1	1.0	
at Oral Roberts	11/20/17	*	21	1-7	.143	0-3	.000	0-2	.000	1	3	4	1.8	3	1	0	1	0	2	1.3	
at UTEP	11/24/17	*	23	1-5	.200	0-3	.000	2-2	1.000	2	1	3	2.0	0	2	0	0	2	4	1.8	
vs NM State	11/25/17	*	24	0-1	.000	0-1	.000	1-2	.500	2	1	3	2.2	2	2	0	0	0	1	1.7	
ACU	11/29/17	*	25	1-4	.250	0-1	.000	1-2	.500	4	2	6	2.7	1	2	2	1	1	3	1.9	
at Kansas	12/03/17	*	24	0-1	.000	0-0	.000	0-0	.000	0	2	2	2.6	4	0	1	1	0	0	1.6	
CHARLOTTE	12/07/17	*	28	2-9	.222	1-6	.167	1-1	1.000	1	2	3	2.7	0	1	3	1	0	6	2.1	
TULSA	12/10/17	*	25	2-6	.333	0-3	.000	2-3	.667	2	5	7	3.1	0	1	0	0	0	6	2.5	
UT-ARLINGTON	12/17/17	*	20	2-10	.200	0-3	.000	2-2	1.000	2	1	3	3.1	2	0	1	0	0	6	2.8	
at Arizona State	12/21/17	*	24	1-3	.333	0-1	.000	0-0	.000	2	2	4	3.2	1	1	3	1	0	2	2.8	
GRAMBLING	12/28/17	*	11	0-2	.000	0-0	.000	0-0	.000	0	0	0	2.9	0	0	0	0	0	0	2.5	
OLE MISS	12/31/17	*	9	1-1	1.000	0-0	.000	0-0	.000	1	0	1	2.8	2	1	1	0	0	2	2.5	
at #5/3 Mississippi State	01/04/18	*	20	1-2	.500	0-1	.000	2-3	.667	0	3	3	2.8	3	0	1	0	0	4	2.6	
Totals			15	324	13-61	.213	1-29	.034	12-19	.632	17	25	42	2.8	25	13	15	7	5	39	2.6

Games played: 15  
Minutes/game: 21.6  
Points/game: 2.6  
FG Pct: 21.3  
3FG Pct: 3.4  
FT Pct: 63.2Rebounds/game: 2.8  
Assists/game: 0.9  
Turnovers/game: 1.0  
Assist/turnover ratio: 0.9  
Steals/game: 0.3  
Blocks/game: 0.5**NOTES**

- » SEC Academic Honor Roll (2016-17).
- » Twelve of 13 games with 20+ minutes.
- » Started 15 consecutive games this year and 16 in a row dating back to last season.

**CAREER STATS**

Year	GP-GS	Min	Avg	Total			3-Point			F-Throw			Rebounds				PF	FO	Ast	TO	Blk	Stl	Pts	Avg
				FG	FGA	Pct	FG	FGA	Pct	FT	FTA	Pct	Off	Def	Tot	Avg								
2015-16	20-1	174	8.7	6	48	.125	4	33	.121	7	12	.583	12	9	21	1.1	9	0	4	15	2	4	23	1.2
2016-17	30-23	627	20.9	45	144	.313	24	84	.286	20	39	.513	35	80	115	3.8	46	0	28	37	10	19	134	4.5
2017-18	15-15	324	21.6	13	61	.213	1	29	.034	12	19	.632	17	25	42	2.8	25	0	13	15	7	5	39	2.6
TOTAL	65-39	1125	17.3	64	253	.253	29	146	.199	39	70	.557	64	114	178	2.7	80	0	45	67	19	28	196	3.0



**24** **TAYLAH THOMAS**  
Freshman | 6-1 | Forward | Arlington, Texas  
Mansfield Timberview HS

### CAREER HIGHS

Points	13	Samford	11-12-17
FG Made	5	Samford	11-12-17
FG Att.	6	Samford	11-12-17
3P Made	1	Ole Miss	12-31-17*
3P Att.	1	Ole Miss	12-31-17*
FT Made	3	NMSU	11-25-17*
FT Att.	6	Samford	11-12-17
Off. Rebounds	6	Nebraska	11-16-17
Def. Rebounds	7	ORU	11-20-17 7
Rebounds	11	Nebraska	11-16-17
Assists	1	Grambling	12-18-17*
Blocks	2	Nebraska	11-16-17
Steals	2	ACU	11-29-17
Minutes	23	ORU	11-20-17

### SEASON HIGHS

Points	13	Samford	11-12-17
FG Made	5	Samford	11-12-17
FG Att.	6	Samford	11-12-17
3P Made	1	Ole Miss	12-31-17*
3P Att.	1	Ole Miss	12-31-17*
FT Made	3	NMSU	11-25-17*
FT Att.	6	Samford	11-12-17
Off. Rebounds	6	Nebraska	11-16-17
Def. Rebounds	7	ORU	11-20-17 7
Rebounds	11	Nebraska	11-16-17
Assists	1	Grambling	12-18-17*
Blocks	2	Nebraska	11-16-17
Steals	2	ACU	11-29-17
Minutes	23	ORU	11-20-17

\*Most Recent

## 2017-18 GAME-BY-GAME STATS

Opponent	Date	gs	min	Total		3-Pointers		Free throws		Rebounds				pf	a	t/o	blk	stl	pts	avg
				fg-fga	pct	3fg-fga	pct	ft-fa	pct	off	def	tot	avg							
SHSU	11/10/17	17		2-2	1.000	0-0	.000	0-0	.000	1	3	4	4.0	0	0	0	1	0	4	4.0
SAMFORD	11/12/17	21		5-6	.833	0-1	.000	3-6	.500	2	7	9	6.5	1	0	2	0	0	13	8.5
at Nebraska	11/16/17	20		1-4	.250	0-0	.000	3-4	.750	6	5	11	8.0	3	1	0	2	0	5	7.3
at Oral Roberts	11/20/17	23		0-3	.000	0-1	.000	2-2	1.000	2	7	9	8.3	2	0	0	1	0	2	6.0
at UTEP	11/24/17	16		0-2	.000	0-1	.000	1-2	.500	2	2	4	7.4	1	0	0	0	0	1	5.0
vs NM State	11/25/17	14		0-4	.000	0-0	.000	3-4	.750	3	4	7	7.3	1	0	1	0	0	3	4.7
ACU	11/29/17	20		2-7	.286	1-1	1.000	2-4	.500	3	4	7	7.3	2	0	0	0	2	7	5.0
at Kansas	12/03/17	9		0-1	.000	0-1	.000	0-0	.000	0	0	0	6.4	0	0	0	0	0	0	4.4
CHARLOTTE	12/07/17	4		0-0	.000	0-0	.000	0-0	.000	0	0	0	5.7	3	0	0	0	1	0	3.9
TULSA	12/10/17	19		1-3	.333	1-1	1.000	1-2	.500	4	3	7	5.8	1	0	0	0	1	4	3.9
UT-ARLINGTON	12/17/17	*	11	0-0	.000	0-0	.000	0-0	.000	2	2	4	5.6	5	0	1	0	0	0	3.5
at Arizona State	12/21/17	19		1-1	1.000	0-0	.000	0-0	.000	0	3	3	5.4	3	0	3	0	0	2	3.4
GRAMBLING	12/28/17	13		3-3	1.000	0-0	.000	2-2	1.000	0	2	2	5.2	2	1	2	0	1	8	3.8
OLE MISS	12/31/17	17		2-3	.667	1-1	1.000	1-2	.500	3	0	3	5.0	2	0	1	0	0	6	3.9
at #5/3 Mississippi State	01/04/18	17		2-2	1.000	0-0	.000	0-0	.000	1	5	6	5.1	2	0	0	0	0	4	3.9
Totals		1	240	19-41	.463	3-7	.429	18-28	.643	29	47	76	5.1	28	2	10	4	5	59	3.9

Games played: 15  
Minutes/game: 16.0  
Points/game: 3.9  
FG Pct: .46.3  
3FG Pct: .42.9  
FT Pct: .64.3

Rebounds/game: 5.1  
Assists/game: 0.1  
Turnovers/game: 0.7  
Assist/turnover ratio: 0.2  
Steals/game: 0.3  
Blocks/game: 0.3

## NOTES

- » Played high school ball for former Razorback assistant coach Kit Kyle Martin.
- » Career-best 13 points against Samford - her first double figure scoring game as a Razorback.

## CAREER STATS

Year	GP-GS	Min	Avg	Total			3-Point			F-Throw			Rebounds				PF	FO	Ast	TO	Blk	Stl	Pts	Avg
				FG	FGA	Pct	FG	FGA	Pct	FT	FTA	Pct	Off	Def	Tot	Avg								
2017-18	15-1	240	16.0	19	41	.463	3	7	.429	18	28	.643	29	47	76	5.1	28	1	2	10	4	5	59	3.9
TOTAL	15-1	240	16.0	19	41	.463	3	7	.429	18	28	.643	29	47	76	5.1	28	1	2	10	4	5	59	3.9

**30**

**MACY WEAVER**  
Freshman | 6-3 | F | Davis Junction, Illinois  
Stillman Valley HS

### CAREER HIGHS

Points	3	Grambling	12-18-17
FG Made	1	Grambling	12-18-17*
FG Att.	2	Grambling	12-18-17
3P Made	-		
3P Att.	-		
FT Made	1	Grambling	12-18-17*
FT Att.	2	UTA	12-17-17
Off. Rebounds	2	Grambling	12-18-17*
Def. Rebounds	4	UTA	12-17-17
Rebounds	5	UTA	12-17-17
Assists	1	UTEP	11-24-17
Blocks	4	UTEP	11-24-17
Steals	1	UTEP	11-24-17
Minutes	19	UTEP	11-24-17

### SEASON HIGHS

Points	3	Grambling	12-18-17
FG Made	1	Grambling	12-18-17*
FG Att.	2	Grambling	12-18-17
3P Made	-		
3P Att.	-		
FT Made	1	Grambling	12-18-17*
FT Att.	2	UTA	12-17-17
Off. Rebounds	2	Grambling	12-18-17*
Def. Rebounds	4	UTA	12-17-17
Rebounds	5	UTA	12-17-17
Assists	1	UTEP	11-24-17
Blocks	4	UTEP	11-24-17
Steals	1	UTEP	11-24-17
Minutes	19	UTEP	11-24-17

\*Most Recent

## 2017-18 GAME-BY-GAME STATS

Opponent	Date	gs	min	Total		3-Pointers		Free throws		Rebounds				pf	a	t/o	blk	stl	pts	avg
				fg-fga	pct	3fg-fga	pct	ft-fa	pct	off	def	tot	avg							
SHSU	11/10/17	2		0-0	.000	0-0	.000	0-0	.000	0	0	0	0.0	0	0	0	0	0	0	0.0
SAMFORD	11/12/17	1		0-0	.000	0-0	.000	0-0	.000	0	0	0	0.0	0	0	0	0	0	0	0.0
at Nebraska	11/16/17	dnp		-	-	-	-	-	-	-	-	-	-	-	-	-	-	-	-	-
at Oral Roberts	11/20/17	dnp		-	-	-	-	-	-	-	-	-	-	-	-	-	-	-	-	-
at UTEP	11/24/17	19		1-1	1.000	0-0	.000	0-0	.000	2	1	3	1.0	3	1	0	4	1	2	0.7
vs NM State	11/25/17	dnp		-	-	-	-	-	-	-	-	-	-	-	-	-	-	-	-	-
ACU	11/29/17	3		0-1	.000	0-0	.000	0-0	.000	0	1	1	1.0	0	0	0	0	0	0	0.5
at Kansas	12/03/17	2		0-0	.000	0-0	.000	0-0	.000	0	0	0	0.8	0	0	0	1	0	0	0.4
CHARLOTTE	12/07/17	7		0-0	.000	0-0	.000	0-2	.000	2	0	2	1.0	3	0	1	0	0	0	0.3
TULSA	12/10/17	6		0-1	.000	0-0	.000	0-0	.000	0	1	1	1.0	1	0	0	1	0	0	0.3
UT-ARLINGTON	12/17/17	8		0-1	.000	0-0	.000	1-2	.500	1	4	5	1.5	3	0	1	1	0	1	0.4
at Arizona State	12/21/17	7		0-0	.000	0-0	.000	0-0	.000	0	1	1	1.4	2	0	0	0	0	0	0.3
GRAMBLING	12/28/17	5		1-2	.500	0-0	.000	1-1	1.000	2	1	3	1.6	1	0	0	0	0	3	0.6
OLE MISS	12/31/17	dnp		-	-	-	-	-	-	-	-	-	-	-	-	-	-	-	-	-
at #5/3 Mississippi State	01/04/18	3		0-0	.000	0-0	.000	0-0	.000	0	0	0	1.5	0	0	0	0	0	0	0.5
Totals		0	63	2-6	.333	0-0	.000	2-5	.400	7	9	16	1.5	13	1	2	7	1	6	0.5

Games played: 11  
Minutes/game: 5.7  
Points/game: 0.5  
FG Pct: 33.3  
FT Pct: 40.0

Rebounds/game: 1.5  
Assists/game: 0.1  
Turnovers/game: 0.2  
Assist/turnover ratio: 0.5  
Steals/game: 0.1  
Blocks/game: 0.6

## NOTES

- » First career game as a Razorback came against Sam Houston State in the opener.
- » Played 19 minutes with four blocks and solid defense at UTEP.

## CAREER STATS

Year	GP-GS	Min	Avg	Total			3-Point			F-Throw			Rebounds				PF	FO	Ast	TO	Blk	Stl	Pts	Avg
				FG	FGA	Pct	FG	FGA	Pct	FT	FTA	Pct	Off	Def	Tot	Avg								
2017-18	11-0	63	5.7	2	6	.333	0	0	.000	2	5	.400	7	9	16	1.5	13	0	1	2	7	1	6	0.5
TOTAL	11-0	63	5.7	2	6	.333	0	0	.000	2	5	.400	7	9	16	1.5	13	0	1	2	7	1	6	0.5



**0-A'Tyanna Gaulden**  
RSo | G | 5-7



**1-Raven Northcross-Baker**  
Jr | G | 5-7



**3-Malica Monk**  
Jr | G | 5-5



**4-Keiryn Swenson**  
Jr | G/F | 6-1



**10-Kiara Williams**  
So | F/C | 6-1



**13-Grayce Spangler**  
Fr | G | 5-11



**14-Jailyn Mason**  
So | G | 5-9



**20-Sydney Stout**  
So | F | 6-0



**21-Devin Cospier**  
Gr. | G | 5-10



**22-Bailey Zimmerman**  
Jr | G/F | 6-0



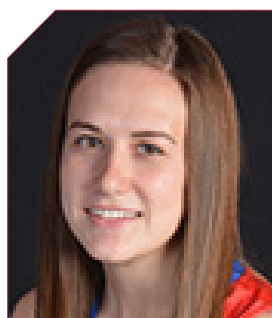
**24-Taylah Thomas**  
Fr | F | 6-1



**30-Macy Weaver**  
Fr | F | 6-3



**33-Chelsea Dungee**  
RSo | G | 5-11



**51-Brenna McClure**  
RSo | G | 5-6



**Mike Neighbors**  
Arkansas, 1993  
First Season



**Lacey Goldwire**  
Oklahoma State, 2010  
First Season



**Todd Schaefer**  
Thomas More College, 1995  
First Season



**Pauline Love**  
Southern Miss, 2010  
First Season



NOVEMBER 2, 2017

## NORTHEASTERN STATE

## ARKANSAS

Bud Walton Arena  
Fayetteville, Arkansas

Devin Cosper dropped in 31 points leading four players in double figures in exhibition action. It was the 14th-consecutive exhibition game won for Arkansas and the first under head coach Mike Neighbors.

74  
82

## Northeastern State Univ. 74

#	Player		Total	3-Ptr			Rebounds								
			FG	FGA	FT	FTA	Off	Def	Total	PF	TP	A	To	Blk	Stl
24	Strange, Destiny	f	3-10	0-4	0-0		1	3	4	3	6	3	1	0	0
22	Griffin, Miranda	g	6-11	5-9	0-2		1	4	5	2	17	3	0	0	0
14	Hayes, Cenia	g	2-6	2-6	2-2		1	4	5	0	8	0	1	0	1
21	Brooks, Tree	g	2-7	1-3	3-4		0	1	1	3	8	1	2	0	0
23	Eldred, Bailee	g	2-7	1-1	2-2		2	6	8	3	7	3	2	0	2
04	Hill, Alexis	g	1-2	1-2	0-2		0	0	0	3	3	1	0	0	1
15	Cunningham, Cailey	g	0-2	0-1	0-0		2	0	2	0	0	1	0	0	0
20	Long, Caitlyn	g	3-6	1-3	2-2		3	4	7	1	9	1	0	0	1
32	Blevins, Lauryn	g	4-10	1-3	2-2		2	4	6	4	11	0	2	3	2
33	Bertrand, Jori	g	0-4	0-0	2-2		1	2	2	2	0	4	1	0	1
24	Hellyer, Morgan	g	1-3	1-3	0-0		1	0	1	3	0	3	0	4	0
Team							1	4	5						
Totals			24-68	13-35	13-18		15	31	46	22	74	13	14	4	7
1st - FG %:		5-10	27.0%	2nd - 8-17	47.1%	3rd - 4-14	28.6%	4th - 7-19	36.8%	Game: 24-68	35.3%	Deadball			
3FG %:		2-8	25.0%	8-11	72.7%	1-6	16.7%	4-10	40.0%	13-35	37.1%	Rebounds			
FT %:		2-2	100.0%	2-2	100.0%	4-6	66.7%	5-8	62.5%	13-18	72.2%	3,3			

## Arkansas 82

#	Player	Total		3-Ptr		Rebounds				PF	TP	A TO Blk Stl				Min
		FG-FGA	FT-FTA	FG-FGA	FT-FTA	Off	Def	Total	PF							
10	WILLIAMS, Kiara	f	2-3	0-0	0-2	4	2	6	3	5	0	0	1	0	13	
22	ZIMMERMAN, Bailey	f	0-7	0-4	0-0	2	2	4	2	0	1	2	0	30		
03	MONK, Malica	g	4-14	0-2	6-8	2	3	5	3	14	7	1	0	34		
14	MASON, Jaielyn	g	4-12	1-3	0-0	0	7	7	1	9	3	2	1	31		
21	COSPER, Devin	g	11-23	6-9	3-4	1	4	5	1	31	2	1	2	29		
01	NORTHCROSS-BAKER,	g	4-8	3-6	1-0	1	2	3	1	17	2	1	0	23		
04	SWENSON, Keiryn	g	0-2	0-0	0-0	1	2	3	2	0	2	0	0	9		
13	SPANGLER, Grayce	g	0-1	0-0	0-0	0	0	0	0	0	0	0	0	2		
20	STOUT, Sydney	g	0-0	0-0	0-0	0	0	0	0	0	0	0	0	2		
24	THOMAS, Taylah	g	3-4	0-1	0-1	3	5	8	1	6	0	0	0	24		
30	WEAVER, Macy	g	0-0	0-0	0-0	2	0	2	0	0	0	1	0	3		
Team						0	3	3								
Totals			28-74	10-25	16-25	16	30	46	14	82	16	9	3	12	200	
1st - FG %:		5-17	29.4%	2nd - 4-18	22.2%	3rd - 7-18	38.9%	4th - 12-21	57.1%	Game: 28-74		37.8%	Deadball			
3FG %:		3-8	37.5%	1-5	20.0%	1-4	25.0%	5-8	62.5%	10-25		40.0%	Rebounds			
FT %:		7-10	70.0%	6-8	75.0%	3-5	60.0%	0-2	0.0%	16-25		64.0%	5,1			

Officials: Brian Hall, Luis Gonzalez, Katie Lukanich  
Technical fouls: Northeastern State Univ.-None, Arkansas-None.  
Attendance: 1,200  
Estimated Actual Attendance: 816

Score by periods	1st	2nd	3rd	4th	Total
Northeastern State Univ.	14	24	13	23	74
Arkansas	20	15	18	29	82

Last FG - NESU 4th-00:35, AR 4th-01:01.  
Largest lead - NESU by 5 3rd-09:05, AR by 13 1st-03:09.  
NESU led for 09:13. AR led for 24:08. Game was tied for 06:39.

Points	In	Off	2nd	Fast
NESU	14	6	13	2
AR	30	14	9	12

Score tied - 9 times.  
Lead changed - 6 times.



NOVEMBER 12, 2017

## SAMFORD

## ARKANSAS

Bud Walton Arena  
Fayetteville, Arkansas

Career best points and rebounds for Malica Monk. Career best points for Taylah Thomas and Kiara Williams.

63  
84

## Samford 63 • 0-2

#	Player		Total	3-Ptr	Rebounds									
			FG-FGA	FG-FGA	FT-FTA	Off	Def	Tot	PF	TP	A	To	Blk	Stl
32	Olivia Crozier	f	5-8	0-0	0-0	2	5	7	2	10	1	1	0	0
35	Samantha Fitzgerald	f	2-9	0-1	2-2	1	5	7	4	6	1	1	0	1
02	Hannah Nichols	g	6-13	3-7	2-2	1	5	6	2	17	1	1	0	32
12	Charity Brown	g	2-6	1-3	2-4	1	5	6	4	7	4	2	0	1
31	Cassidy Williams	g	3-9	1-5	0-0	0	1	1	1	7	1	1	0	28
03	Shauntal Battle		2-2	0-0	1-2	1	1	2	4	5	1	2	0	1
11	Paige Serup		1-3	0-2	2-2	0	2	2	2	4	0	0	0	0
22	Raven Omar		0-1	0-1	0-0	0	0	0	2	0	3	1	0	0
33	Makaila Woolard		2-8	1-3	2-2	0	0	0	2	7	2	2	0	0
45	Natalie Armstrong		0-0	0-0	0-0	0	0	0	0	0	1	2	0	0
	Team					1	2	3						
Totals			23-59	6-22	11-14	8	26	34	23	63	17	13	1	3

## Arkansas 84 • 2-0

#	Player		Total	3-Ptr	Off	Def	Total	PF	TP	A	TO	Blk	Stl	Min	
			FG-FGA	FG-FGA	FT-FTA										
10	WILLIAMS, Kiara	f	5-7	0-0	0-0	1	4	5	1	10	0	0	4	2	19
22	ZIMMERMAN, Bailey	f	0-1	0-1	0-0	0	0	0	3	0	0	0	0	0	19
03	MONK, Malica	g	6-14	2-3	7-7	1	8	9	2	21	6	1	0	2	37
14	MASON, Jaielyn	g	5-11	2-5	0-2	0	1	1	2	12	1	0	2	2	35
21	COSPER, Devin	g	5-12	3-10	5-5	0	5	5	2	18	2	1	0	1	29
01	NORTHCROSS-BAKER,		0-2	0-2	0-0	0	1	1	0	6	1	0	0	0	22
04	SWENSON, Keiryn		3-5	3-4	0-0	0	0	0	3	9	1	0	0	0	13
13	SPANGLER, Grayce		0-1	0-1	0-0	0	1	1	0	0	0	0	0	0	2
20	STOUT, Sydney		0-0	0-0	1-2	0	1	1	0	1	0	0	0	0	2
24	THOMAS, Taylah		5-6	0-1	3-6	2	7	9	1	13	0	2	0	0	21
30	WEAVER, Macy		0-0	0-0	0-0	0	0	0	0	0	0	0	0	0	1
Team						1	2	3							

Officials: Scott Yarbrough, Laura Morris, Paulani Spurlock  
Technical fouls: Samford-None, Arkansas-None.  
Attendance: 1,739  
Estimated Actual Attendance: 1,107

Score by periods	1st	2nd	3rd	4th	Total
Samford	18	15	13	17	63
Arkansas	27	15	16	26	84

Last FG - SAM 4th-01:03, AR 4th-01:19.  
Largest lead - SAM None, AR by 24 4th-04:43.  
SAM led for 00:00. AR led for 39:37. Game was tied for 00:23.

Score tied - 1 time.  
Lead changed - 0 times.



NOVEMBER 10, 2017

## SAM HOUSTON STATE

## ARKANSAS

Bud Walton Arena  
Fayetteville, Arkansas

Elementary Day

Devin Cosper had his first Razorback double-double with 17 points and 12 rebounds in the come-from-behind win. Malica Monk's game-high 18 points ties the junior's career best.

54  
65

## SHSU 54 • 0-1

#	Player	Total		3-Ptr		Rebounds		PF	TP	A TO Blk Stl				Min	
		FG-FGA	FT-FTA	FG-FGA	FT-FTA	Off Def Tot	PF			A	TO	Blk	Stl		
42	McKinney, Kiera	f	1-4	0-0	2-4	2	3	5	1	4	2	1	2	0	29
35	Cooper, Ashleigh	c	0-3	0-0	0-0	1	3	4	4	0	1	2	1	0	14
01	Oramas, Jennifer	g	4-12	1-5	2-2	0	6	6	4	11	4	3	0	0	34
20	Morgan, Akarian	g	2-8	2-6	0-0	1	5	6	3	6	2	2	0	1	31
24	Harrell, Rachel	g	2-6	2-6	0-0	0	1	1	0	6	0	1	0	0	20
00	Ferreira, Kevyn	g	2-8	0-4	0-0	1	2	3	0	4	0	2	0	0	15
14	Ballew, Jada	g	1-4	0-2	0-0	0	1	1	0	2	0	0	0	0	6
05	Maxwell, Dominique	g	4-10	2-4	0-2	3	4	7	2	10	1	1	0	0	20
15	Harston, Tia	g	0-0	0-0	0-0	0	0	0	0	0	0	0	0	0	1
21	Baxter, Lydia	g	3-7	0-0	3-3	5	3	8	1	9	0	0	1	2	20
22	Mickens, Anastacia	g	1-1	0-0	0-0	0	0	6	2	2	0	2	1	0	10
Team						2	2	4							
Totals			20-63	7-27	7-11	15	36	51	14	54	10	15	5	3	200
1st - FG %:		4-12	33.3%	2nd - 6-17	35.3%	3rd - 4-17	23.5%	4th - 6-17	35.3%	Game: 20-63	31.7%	Deadball			
3FG %:		1-4	25.0%	2-6	33.3%	1-9	11.1%	3-8	37.5%	7-27	25.9%	Rebounds			
FT %:		4-6	66.7%	1-1	100.0%	0-0	0.0%	2-4	50.0%	7-11	63.6%	Assists			
Arkansas 65 - 1-0															
Total			20-63	7-27	7-11										
3-Ptr															
Rebounds															



NOVEMBER 20, 2017

## ARKANSAS

## ORU

Mabee Arena  
Tulsa, Oklahoma77  
66

Career-best 24 points for Malica Monk and career-best tying night with 21 points for Devin Cosper. Arkansas forced 14 ORU turnovers while only turning it over four times.

## Arkansas 77 • 3-1

#	Player	Total			3-Ptr			Rebounds			PF	TP	A	TO	Blk	Stl	Min	
		FG-FGA	FG-FGA	FT-FTA	Off	Def	Tot	Off	Def	Tot								
10	WILLIAMS, Kiara	f	3-7	0-0	2-2	3	2	5	4	8	0	1	0	1	0	1	17	
22	ZIMMERMAN, Bailey	f	1-7	0-3	0-2	1	3	4	3	2	1	0	1	0	0	21		
03	MONK, Malica	g	9-16	1-3	5-6	0	3	3	1	24	4	1	0	0	1	32		
44	MASON, Jaielyn	g	3-9	0-0	0-0	1	1	2	1	6	1	1	0	0	0	32		
21	COSPER, Devin	g	8-19	3-10	2-2	0	10	10	2	21	1	0	0	0	2	38		
01	NORTHCROSS-BAKER,	g	3-6	1-4	1-2	0	1	1	3	8	1	0	0	0	0	22		
04	SWENSON, Keiryn	g	2-3	1-2	1-2	0	2	2	2	6	0	1	0	1	0	15		
24	THOMAS, Taylah	g	0-3	0-1	2-2	2	2	9	2	2	0	0	1	0	0	23		
Team																	Deadball Rebounds	
Totals		29-70			6-23			13-18			9 32 41			18 77				
1st FG %:		9-19		47.4%		2nd: 7-19		36.8%		3rd: 5-17		29.4%		4th: 9-19		47.4%		Game: 21-70
3FG %:		3-7		42.9%		1-5		20.0%		3-9		33.3%		6-13		46.2%		
FT %:		4-4		100.0%		0-2		0.0%		2-2		100.0%		1-1		100.0%		

## Oral Roberts 66 • 1-3

#	Player	Total	3-Ptr	Rebounds	Off	Def	TP	PF	TO	A	TO	Blk	Stl	Min	
		FG-FGA	FG-FGA	FT-FTA											
15	Ihm, Faith	f	5-9	0-1	3-6	4	7	11	2	13	2	4	0	28	
44	Martinez, Maria	f	3-8	0-1	5-6	1	8	9	3	11	4	2	0	32	
13	Skalnik, Rachel	g	1-3	1-3	0-0	0	0	4	3	0	1	0	0	21	
32	Gavie, Sarah	g	4-12	4-12	0-0	0	5	5	1	12	3	2	0	33	
30	Lippe, Keri Jo	g	1-7	0-2	4-4	0	1	1	3	6	0	1	0	20	
02	Doyle, Jordan	g	0-0	0-0	0-0	0	0	0	1	0	0	0	0	1	
10	Mayberry, Maya	g	2-5	2-3	2-2	0	1	1	1	8	1	1	0	22	
20	Schumacher, Regan	g	0-1	0-0	0-0	0	1	1	0	0	0	0	0	2	
22	Gilbert, Jordan	g	1-4	0-0	0-0	1	4	5	4	2	1	2	0	20	
24	Brotons, Montserrat	g	5-9	0-0	1-1	1	3	4	1	11	1	0	0	21	
Team					0	4	4								
Totals			22-58	7-22	15-19	7	34	41	20	66	12	14	0	2	200
1st FG %:		8-15	53.3%	2nd: 6-14	42.9%	3rd: 5-18	27.8%	4th: 3-13	23.1%	Game: 22-58		37.5%	Deadball		
3FG %:		2-4	50.0%	3-8	37.5%	1-7	14.3%	1-5	20.0%	10-10		100.0%	Rebounds		
FT %:		5-5	100.0%	0-0	0.0%	2-4	50.0%	10-10	100.0%	78.9%					

Officials: Greg Small, Nick Marshall, Michelle Kramer  
Technical fouls: Arkansas-None. Oral Roberts-None.  
Attendance: 2503

Score by periods	1st	2nd	3rd	4th	Total
Arkansas	25	15	16	21	77
Oral Roberts	21	15	13	17	66

Last FG - AR 4th-01:52, ORU 4th-00:29.  
Largest lead - AR by 14 4th-07:23, ORU by 6 1st-04:08.  
AR led for 30:59, ORU led for 08:32. Game was tied for 00:29.

Points	In	Off	2nd	Fast	Bench
Arkansas	32	15	0	10	10
ORU	28	0	2	2	21

Score tied - 1 time.  
Lead changed - 1 time.



NOVEMBER 25, 2017

## ARKANSAS

## NEW MEXICO STATE

Don Haskins Center  
El Paso, Texas69  
60

Devin Cosper with her third double-double with 17 points and 11 rebounds. Malica Monk led all scorers with 22 points. Williams posted her first career double-double with 11 points and 11 rebounds.

## Arkansas 69 • 4-2

#	Player		Total			3-Ptr			Rebounds			PF	TP	A	TO	Blk	Stl	Min		
			FG-FGA	FG-FGA	FT-FTA	Off	Def	Tot	Off	Def	Tot									
10	WILLIAMS, Kiara	f	5-11	0-0	1-3	4	7	11	2	11	0	3	0	2	2	25				
03	MONK, Malica	g	9-17	1-4	3-7	3	4	7	0	22	2	5	1	4	3	38				
14	MASON, Jaielyn	g	1-8	1-4	0-0	3	3	6	3	3	2	1	1	2	28					
21	COSPER, Devin	g	6-17	2-9	3-4	2	9	11	2	17	4	2	1	2	39					
22	ZIMMERMAN, Bailey	g	0-1	0-1	1-2	2	1	3	2	1	2	0	0	0	24					
01	NORTHCROSS-BAKER,	g	2-7	1-4	2-4	1	1	2	4	7	0	2	0	2	18					
04	SWENSON, Keiryn	g	2-5	1-4	0-0	2	4	6	1	5	0	4	0	0	14					
24	THOMAS, Taylah	g	0-4	0-0	3-4	3	4	7	1	3	0	1	0	0	14					
Team									2											
Totals			25-70			6-26			13-24			22 33 55			15 69			10 18 3 12 200		
1st FG %:			4-19		21.1%		2nd: 4-14		28.6%		3rd: 9-18		50.0%		4th: 8-19		42.1%		Game: 25-70	
3FG %:			1-7		14.3%		1-6		16.7%		3-7		42.9%		1-6		16.7%		Deadball	
FT %:			2-4		50.0%		3-3		100.0%		5-14		35.7%		13-24		54.2%		Rebounds	

## NM State 60 • 2-4

#	Player	Total	3-Ptr	Rebounds	Off	Def	TP	TP	A	TO	Blk	Stl	Min	
		FG-FGA	FG-FGA	FT-FTA										
01	Cooper, Jasmine	1-8	0-0	2-2	2	3	5	2	4	2	0	1	21	
30	Pack, Gia	7-15	0-4	3-5	4	2	6	4	17	1	3	0	26	
02	Salas, Brooke	5-17	2-8	3-5	6	4	10	4	15	1	4	1	30	
12	Williams, Zaire	2-5	1-3	2-2	0	2	2	4	7	2	6	1	38	
21	Mills, Monique	2-6	1-2	0-0	0	2	2	1	5	2	0	0	5	33
00	Wilmore, Pam	0-1	0-0	0-0	0	0	0	0	0	0	0	0	3	
03	Childress, Tonishia	0-2	0-1	0-0	0	3	3	1	0	1	1	0	14	
20	Mills, Dominique	2-4	0-0	0-0	1	3	4	2	4	0	1	0	16	
22	Atkinson, Kalei	0-0	0-0	0-0	0	0	0	0	0	0	0	0	0	+
33	Toiolo, Jeneva	4-9	0-0	0-0	0	6	6	3	8	0	1	0	0	19
Team					1	2	3							
Totals		23-67	4-18	10-14	14	27	41	21	60	9	18	2	10	200

Officials: Lisa Mattingly, Beverly Roberts, Tina Napier  
Technical fouls: Arkansas-None. NM State-None.  
Attendance: 250

Score by periods	1st	2nd	3rd	4th	Total
Arkansas	11	12	24	22	69
NM State	17	8	15	20	60

Last FG - AR 4th-00:16, NMSU 4th-00:51.  
Largest lead - AR by 11 3rd-03:45, NMSU by 7 1st-01:06.  
AR led for 19:50, NMSU led for 19:16. Game was tied for 00:54.

Points	In	Off	2nd	Fast	Bench
Arkansas	34	17	16	13	15
NMSU	30	20	17	8	12

Score tied - 2



DECEMBER 3, 2017

## ARKANSAS

### KANSAS

Allen Fieldhouse  
Lawrence, Kansas

Devin Cosper and Malica Monk made it eight games in a row with double-figure scoring. Kiara Williams posted a career-best 16 rebounds. Second consecutive game in double-figures for Jaiilyn Mason.

60  
71

#### Arkansas 60 • 5-3

#	Player	Total			3-Ptr			Rebounds			PF	TP	A	TO	Blk	Stl	Min
		FG-FGA	FG-FGA	FT-FTA	Off	Def	Tot										
01	NORTHCROSS-BAKER, g	1-6	0-4	0-0	0	2	2	4	2	1	0	0	0	0	0	14	
03	MONK, Malica g	8-20	1-3	4-4	3	4	7	4	21	5	3	0	0	0	0	32	
04	SWENSON, Keiryn g	1-3	1-3	1-2	0	2	2	1	4	0	1	1	0	0	0	18	
10	WILLIAMS, Kiara c	3-6	0-0	0-1	5	11	16	3	6	0	4	2	0	0	0	28	
13	SPANGLER, Grayce g	0-0	0-0	0-0	0	0	0	0	0	0	0	0	0	0	0	1	
14	MASON, Jaiilyn g	4-9	2-5	0-0	0	2	2	5	10	1	2	0	2	3	3	33	
21	COSPER, Devin g	5-23	1-11	6-8	1	2	3	3	17	0	2	1	1	1	1	39	
22	ZIMMERMAN, Bailey f	0-1	0-0	0-0	0	2	2	4	0	0	1	1	0	0	0	24	
24	THOMAS, Taylah g	0-1	0-1	0-0	0	0	0	0	0	0	0	0	0	0	0	9	
30	WEAVER, Macy g	0-0	0-0	0-0	0	0	0	0	0	0	0	1	0	0	0	2	
Team								4 2 6									
Totals		22-69	5-27	11-15	13	27	40	24	60	7	13	6	3	200			

1st FG %:	4-17	23.5%	2nd:	5-16	31.3%	3rd:	8-15	53.3%	4th:	5-21	23.8%	Game:	22-69	31.9%	Deadball	
3FG %:	1-8	12.5%		0-4	0.0%		3-7	42.9%		1-8	12.5%		5-27	18.5%	Rebounds	
FT %:	3-5	60.0%		0-0	0.0%		2-4	50.0%		6-6	100.0%		11-15	73.3%		2

#### Kansas 71 • 7-0

#	Player		Total	3-Ptr		Rebounds											
			FG-FGA	FG-FGA	FT-FTA	Off	Def	TO	PF	TP	A	TO	Blk	Stl	Min		
00	Lyons, Christalah	g	6-17	0-3	3-6	0	4	4	3	15	3	2	1	5	28		
02	Osoorio, Brianna	g	2-6	0-2	4-4	0	8	8	2	8	2	7	1	1	33		
12	Wilson, Micaela	g	0-2	0-1	0-0	0	3	3	0	0	1	2	0	0	8		
14	Richardson, Austin	f	1-7	0-2	0-2	1	5	6	2	2	0	1	1	0	22		
22	Cheadle, Chayla	g	2-5	1-2	1-2	3	2	5	2	6	2	0	0	0	28		
23	Watts, Ebony	g	0-1	0-0	0-0	0	1	1	0	0	0	0	0	0	3		
23	Kopatchik, Kylee	g	7-14	2-5	10-11	2	2	4	3	26	1	2	1	2	38		
35	Helgren, Bailey	c	2-3	0-0	0-0	2	1	3	1	4	0	0	0	0	17		
50	Boric, Sara	g	0-0	0-0	0-0	0	1	1	1	0	0	0	0	0	3		
55	Johnson, Tyler	g	5-7	0-0	0-0	3	2	5	3	10	0	1	1	0	20		
Team						3 10											
Totals			25-62	3-15	18-25	14	36	50	17	71	9	15	5	8	200		

1st FG %:	6-17	35.3%	2nd:	6-13	46.2%	3rd:	8-20	40.0%	4th:	5-12	41.7%	Game:	25-62	40.3%	Deadball	
3FG %:	1-4	25.0%		0-3	0.0%		2-5	40.0%		0-3	0.0%		3-15	20.0%	Rebounds	
FT %:	3-5	60.0%		2-2	100.0%		3-3	100.0%		10-15	66.7%		18-25	72.0%		3

Officials: Scott Yarbrough, Jesse Dickerson, Michael McConnell

Technical fouls: Arkansas-None. Kansas-None.

Attendance: 1,795

FO: Arkansas #14 (0:20.8)

Score by periods	1st	2nd	3rd	4th	Total
Arkansas	12	10	21	17	60
Kansas	16	14	21	20	71

Last FG - AR 4th-01:10, KU 4th-03:10.

Largest lead - AR by 2 1st-08:40, KU by 13 3rd-08:05.

AR led for 01:17, KU led for 35:31. Game was tied for 03:03.

Points	In	Off	2nd	Fast
AR	28	10	8	6
KU	42	17	11	16

Score tied - 2 times.

Lead changed - 3 times.



DECEMBER 10, 2017

## TULSA

### ARKANSAS

Bud Walton Arena  
Fayetteville, Arkansas

Arkansas' 61 rebounds is the most since the 2014-15 season. Devin Cosper and Malica Monk have scored in double figures in all 10 games and Cosper posted back-to-back double-doubles.

41  
67

#### Tulsa 41 • 4-6

#	Player	Total			3-Ptr			Rebounds			PF	TP	A	TO	Blk	Stl	Min
		FG-FGA	FG-FGA	FT-FTA	Off	Def	Tot										
33	POLK, Crystal	f	4-11	0-0	0-1	4	4	8	1	8	0	2	2	0	0	1	19
02	PEREZ, Tatyana		1-8	0-3	0-0	0	1	1	0	2	2	0	0	1	23		
03	WAKEFIELD, Erika	g	3-8	0-1	0-0	0	4	4	3	6	0	0	0	1	27		
12	DICKSON, Shug		3-10	0-1	0-1	0	3	3	2	7	0	0	0	1	19		
13	LESCAY, Rebecca	g	0-5	0-0	0-0	1	2	3	2	0	0	0	0	1	21		
01	ELLIOTT, Kendrian		1-5	0-0	4-6	3	3	6	3	6	0	1	1	0	18		
04	RICHARDS, Addison		0-1	0-1	0-0	1	1	2	0	0	0	0	0	0	6		
05	BUTLER, Jasmine		2-3	0-0	0-0	1	1	2	0	4	0	0	0	0	5		
10	GAULDEN, Alexis		0-3	0-2	0-0	0	2	2	3	0	2	2	0	0	15		
11	PARKER, Ebony		2-7	2-6	0-0	1	1	2	1	6	1	0	0	0	20		
22	BRADY, Morgan		0-6	0-2	2-2	0	1	1	1	2	0	1	0	0	15		
25	SCALES, Tyjae'		0-2	0-0	0-0	1	3	4	0	0	0	0	0	0	12		
Team						1	0	1				1					
Totals			16-69	2-16	7-10	13	26	39	16	41	5	7	3	4	200		

1st FG %:	5-15	33.3%	2nd:	4-19	21.1%	3rd:	3-17	17.6%	4th:	4-18	22.2%	Game:	16-69	23.2%	Deadball	
3FG %:	0-3	0.0%		2-8	25.0%		0-2	0.0%		0-3	0.0%		2-16	12.5%	Rebounds	
FT %:	2-3	66.7%		2-2	100.0%		1-3	33.3%		2-2	100.0%		7-10	70.0%		0,2

#### Arkansas 67 • 7-3

Arkansas 87-73																	
#	Player	Total			3-Ptr			Rebounds			PF	TP	A	TO	Blk	Stl	Min
		FG	FGA	FG-FGA	FT	FTA	Off	Def	Tot								
22	ZIMMERMAN, Bailey	f	2-6	0-3	2-3	2	5	7	0	6	1	0	0	0	0	25	
10	WILLIAMS, Kiara	c	6-9	0-0	1-4	4	3	7	2	13	2	0	2	0	17		
03	MONK, Malica	g	4-10	2-4	4-4	1	3	4	2	14	3	3	0	1	25		
14	MASON, Jaiilyn	g	5-11	1-4	0-0	0	5	5	0	11	6	0	0	0	30		
21	COSPER, Devin	g	5-16	1-9	0-0	2	9	11	3	11	0	3	2	0	29		
01	NORTHCROSS-BAKER,	g	0-4	0-3	1-4	2	7	9	1	1	1	2	1	0	23		
04	SWENSON, Keiryn	g	2-7	1-5	2-2	2	4	6	0	7	0	0	1	0	21		
13	SPANGLER, Grayce	g	0-0	0-0	0-0	0	1	1	0	0	0	0	0	0	2		
20	STOUT, Sydney	g	0-0	0-0	0-0	0	1	1	0	0	0	0	0	0	3		
24	THOMAS, Taylah	g	1-3	1-1	1-2	4	3	7	1	4	0	0	0	1	19		
30	WEAVER, Macy	g	0-1	0-0	0-0	0	1	1	0	0	0	0	1	0	6		
Team																	
Totals			25-67	6-29	11-19	19	42	61	10	67	13	9	7	2	200		

1st FG %:	7-15	46.7%	2nd:	6-19	31.6%	3rd:	8-18	44.4%	4th:	7-15	46.7%	Game:	25-67	37.3%	Deadball	
3FG %:	2-3	66.7%		1-9	11.1%		1-10	10.0%		2-7	28.6%		6-29	20.7%	Rebounds	
FT %:	5-9	55.6%		1-4	25.0%		2-2	100.0%		3-4	75.0%		11-19	57.9%		3,1

Officials: Susan Blauch, Ed Sidlasky, Darren McClure

Technical fouls: Tulsa-None. Arkansas-None.

Attendance: 1,821

Estimated Actual Attendance: 1,453

Score by periods	1st	2nd	3rd	4th	Total
Tulsa	12	12	7	10	41
Arkansas	21	14	13	19	67

Last FG - TULS 4th-01:07, AR 4th-03:31.

Largest lead - TULS by 2 1st-09:14, AR by 30 4th-01:53.

TULS led for 01:11, AR led for 38:03. Game was tied for 00:46.

Points	In	Off	2nd	Fast
TULS	16	8	7	10
AR	26	10	13	12

Score tied - 0 times.

Lead changed - 1 time.



DECEMBER 7, 2017

## CHARLOTTE

### ARKANSAS

Bud Walton Arena  
Fayetteville, Arkansas

Devin Cosper had a career-best 25 points and 14 rebounds in comeback win. Arkansas trailed by seven at the half and was tied at the 30 before winning.

72  
73

#### Charlotte 72 • 3-6

#	Player	Total			3-Ptr			Rebounds	
---	--------	-------	--	--	-------	--	--	----------	--



DECEMBER 21, 2017

**ARKANSAS**  
**ARIZONA STATE**Wells Fargo Arena  
Tempe, Arizona

Malica Monk scored in double figures for the 12th consecutive game.

**43**  
**89****Arkansas 43 • 8-4**

#	Player	Total		3-Ptr		Rebounds		PF	TP	A	TO	Blk	Stl	Min
		FG-FGA	FG-FGA	FT-FTA	FT-FTA	Off	Def							
10	WILLIAMS, Kiara	0-2	0-0	3-4	3-4	0	4	1	3	0	1	1	0	16
22	ZIMMERMAN, Bailey	1-3	0-1	0-0	0-0	2	2	4	1	2	1	3	1	24
03	MONK, Malica	5-19	0-4	2-2	0	2	2	1	12	2	2	0	1	30
14	MASON, Jailyn	3-7	0-1	0-0	0	4	4	0	6	1	5	1	0	31
21	COSPER, Devin	3-13	2-5	0-0	0	1	1	2	8	1	2	0	0	27
01	NORTHCROSS-BAKER,	3-8	2-6	0-0	0	1	0	1	0	8	1	4	0	19
04	SWENSON, Keiryn	1-3	0-1	0-0	0	2	1	3	0	2	1	3	1	15
13	SPANGLER, Grayce	0-1	0-0	0-0	0	1	1	2	0	0	0	0	0	7
20	STOUT, Sydney	0-0	0-0	0-0	0	0	0	0	0	0	0	0	0	5
24	THOMAS,Taylah	1-1	0-0	0-0	0	3	3	2	0	3	0	0	0	19
30	WEAVER, Macy	0-0	0-0	0-0	0	1	1	2	0	0	0	0	0	7
Team						4	7	11						
Totals		17-57	4-18	5-6		9	26	35	12	43	7	23	4	200
1st - FG %:		4-9	44.4%	2nd: 3-18	16.7%	3rd: 4-15	26.7%	4th: 6-15	40.0%	Game: 17-57	29.8%	Deadball		
3FG %:		0-1	0.0%	0-5	0.0%	2-5	40.0%	2-7	28.6%	4-18	22.2%	Rebounds		
FT %:		0-0	0.0%	0-0	0.0%	1-2	50.0%	4-4	100.0%	5-6	83.3%			

**Arizona State 89 • 9-3**

#	Player	Total			3-Ptr		Rebounds			PF	TP	A	TO	Blk	Stl	Min
		FG-FGA	FG-FGA	FT-FTA	Off	Def	Off	Def	Total							
22	Ekmark, Courtney	8-13	7-10	0-0	1	2	3	2	23	0	0	1	1	0	28	
42	Ibis, Kianna	6-10	0-0	1-2	0	1	1	0	13	3	1	1	0	20		
33	Johnson-Chapman, Cha	6-8	0-0	1-2	2	4	6	1	13	0	2	1	1	22		
01	Richardson, Reili	1-6	0-0	0-0	0	4	4	0	2	9	0	0	0	26		
11	Ryan, Robbi	2-8	0-0	0-0	1	1	2	2	4	5	2	0	2	24		
04	Russell, Kiara	4-6	0-0	1-2	0	4	4	3	9	6	0	0	1	24		
21	Elanga, Sophia	1-3	0-1	0-0	4	5	9	3	2	3	2	0	2	20		
24	Sanders, Bre'yanna	3-5	1-3	0-0	0	2	2	1	7	0	0	0	1	18		
44	Rubin, Eva	1-2	0-0	0-0	0	1	1	0	2	0	1	0	0	4		
52	Ruden, Jamie	5-12	4-4	0-0	1	2	3	1	14	1	0	1	1	14		
Team						1	5	6								
Totals		37-73	12-20	3-6	10	31	41	13	89	27	8	4	11	200		
1st - FG %:		10-23	43.5%	2nd: 11-16	68.8%	3rd: 9-17	52.9%	4th: 7-17	41.2%	Game: 37-73	50.7%	Deadball				
3FG %:		6-7	85.7%	3-6	50.0%	2-4	50.0%	1-3	33.3%	12-20	60.0%	Rebounds				
FT %:		0-0	0.0%	1-2	50.0%	1-2	50.0%	1-2	50.0%	3-6	50.0%					

Officials: Michol Murray, Clarke Stevens, Benny Luna  
Technical fouls: Arkansas-None, Arizona State-None.  
Attendance: 1388

Score by periods		1st	2nd	3rd	4th	Total
Arkansas		8	6	11	18	43
Arizona State		26	26	21	16	89

Last FG - AR 4th-01:11, ASU 4th-00:14.  
Largest lead - AR by 2 1st-09:43, ASU by 50 4th-09:39.  
AR led for 02:20, ASU led for 36:56. Game was tied for 00:04.

Points	In	Off	2nd	Fast	Bench
AR	Paint	Paint	Chance	Break	
22	3	8	6	12	
46	31	8	4	34	

Score tied - 1 time.  
Lead changed - 1 time.

DECEMBER 31, 2017

**OLE MISS**  
**ARKANSAS**Bud Walton Arena  
Fayetteville, ArkansasDevin Cosper had her sixth double-double with 18 points and 11 rebounds.  
Malica Monk and Jailyn Mason also scored in double figures.**72**  
**73****Ole Miss 72 • 10-4, 0-1 SEC**

#	Player	Total		3-Ptr		Rebounds		PF	TP	A	TO	Blk	Stl	Min
		FG-FGA	FG-FGA	FT-FTA	FT-FTA	Off	Def							
01	GLOVER, BREE	0-0	0-0	0-0	0	3	7	3	0	3	3	1	2	26
42	GIBSON, SHELBY	9-13	0-0	3-3	3	1	4	5	21	2	3	2	0	25
00	NIXON, CHYNA	0-2	0-1	0-0	1	3	4	1	0	0	0	0	0	6
20	MUHAMMAD, MADINAH	6-14	2-5	3-4	0	1	1	0	17	0	1	0	1	40
25	ALSTON, ALISSA	5-15	3-5	5-7	0	5	5	3	18	7	2	0	1	40
10	MUHATE, CECILIA	0-0	0-0	2-2	2	1	3	0	2	1	0	0	0	6
12	JOHNSON, BARBARA	1-3	1-2	4-8	1	0	1	0	7	0	4	0	0	15
32	RODGERS, KATE	0-2	0-2	2-2	1	2	3	0	2	0	1	0	0	11
44	LEWIS, TORRI	1-3	1-3	0-0	1	0	1	4	3	1	1	0	1	22
55	TAYLOR, PROMISE	1-3	0-0	0-0	0	3	3	1	2	0	2	1	1	9
Team						1	2							
Totals		23-55	7-18	19-26		10	24	34	17	72	14	17	4	200
1st - FG %:		4-13	30.8%	2nd: 6-16	37.5%	3rd: 6-17	35.3%	4th: 7-9	77.8%	Game: 23-55	41.8%	Deadball		
3FG %:		2-7	28.6%	3-6	50.0%	1-4	25.0%	1-1	100.0%	7-18	38.9%	Rebounds		
FT %:		4-4	100.0%	3-5	60.0%	5-7	71.4%	7-10	70.0%	19-26	73.1%			

**Arkansas 73 • 10-4, 1-0 SEC**

#	Player	Total		3-Ptr		Rebounds		PF	TP	A	TO	Blk	Stl	Min
		FG-FGA	FG-FGA	FT-FTA	FT-FTA	Off	Def							
10	WILLIAMS, Kiara	1-5	0-0	3-4	2	7	9	5	5	1	0	4	1	23
22	ZIMMERMAN, Bailey	1-1	0-0	0-0	1	0	1	2	2	1	1	0	0	9
03	MONK, Malica	4-13	0-3	4-8	1	1	2	1	12	4	1	1	1	39
14	MASON, Jailyn	5-11	3-4	0-0	0	2	2	3	13	4	1	1	1	33
21	COSPER, Devin	7-15	2-5	2-3	1	10	11	3	18	1	6	1	4	39
01	NORTHCROSS-BAKER,	3-5	1-2	2-2	2	1	3	0	9	0	1	0	0	28
04	SWENSON, Keiryn	3-8	1-6	1-1	3	1	4	1	8	0	2	1	0	12
24	THOMAS,Taylah	2-3	1-1	1-2	3	0	3	2	6	0	1	0	0	17
Team						1	2							
Totals		26-61	8-21	13-20		14	24	38	18	73	11	15	7	200
1st - FG %:		7-13	53.8%	2nd: 6-19	31.6%	3rd: 10-17	58.8%	4th: 3-12	25.0%	Game: 26-61	42.6%	Deadball		
3FG %:		4-6	66.7%	1-6	16.7%	1-4	16.7%	2-3	66.7%	8-21	38.1%	Rebounds		
FT %:		1-2	50.0%	5-8	62.5%	4-6	66.7%	3-6	50.0%	13-20	65.0%			

Officials: Susan Blauch, Angelica Suffren, Scott Kionofas  
Technical fouls: Ole Miss-None, Arkansas-TEAM.  
Attendance: 1701  
Estimated Actual Attendance: 1,261  
Fouled out: Ole Miss #42, Gibson (3:22 Q4)  
Arkansas #10, Williams (2:48 Q4)

Score by periods		1st	2nd	3rd	4th	Total
Ole Miss		14	18	18	22	72
Arkansas		19	18	25	11	73

Last FG - OM 4th-00:54, AR 4th-01:17.  
Largest lead - OM by 1 2nd-04:33, AR by 15 3rd-01:42.  
OM led for 01:11, AR led for 35:22. Game was tied for 02:25.

Points	In	Off	2nd	Fast	Bench
OM	Paint	Paint	Chance	Break	
28	21	10	0	16	
AR	26	13	10	10	23

Score tied - 3 times.  
Lead changed - 2 times.

JANUARY 4, 2018

**ARKANSAS**  
**MISSISSIPPI STATE**The HUMP  
Starkville, MississippiThree players were in double figures paced by Devin Cosper with 15 points.  
Kiara Williams hit her first career 3-pointer to open the game and it was a 2-point, 22-20, game after the first quarter.**69**  
**111****Arkansas 69 • 10-5 (1-1 SEC)**

#	Player	Total			3-Ptr		Rebounds				PF	TP	A	TO	Blk	Stl	Min
		FG	FGA	FG-FGA	FT	FTA	Off	Def	Total								
10	Kiara Williams	5	5	1	1	2	2	2	2	1	13	0	3	1	0	20	
03	Malica Monk	3	16	0	1	2	4	3	3	3	8	4	1	1	2	29	
14	Jailyn Mason	7	11	1	1	0	0	1	6	3	0	15	4	2	1	0	35
21	Devin Cosper	5	13	2	1	2	1	2	6	3	13	3	4	0	0	32	
22	Bailey Zimmerman	1	2	0	1	2	3	3	3	4	0	1	0	0	0	20	
01	Ra Northcross-Baker	3	9	2	6	0	0	0	1	1	2	8	1	0	1	19	
04	Keiryn Swenson	0	0	0	0	0	0	1	1	2	1	0	0	1	0	15	
13	Grayce Spangler	2	3	0	1	0	1	1	0	1	1	4	0	2	0	3	
20	Sydney Stout	0	0	0	0	0	0	0	0	0	0	0	0	0	0	4	
24	Taylah Thomas	2	2	0	0	0	0	1	5	6	2	4	0	0	0	17	
30	Macy Weaver	0	0	0	0	0	0	0	0	0	0	0	0	0	0	3	
51	Brenna McClure	0	1	0	0	0	0	0	0	0	1	0	0	0	0	3	
Team								1	0	1			1				
Totals		28	62	6	18	7	12	6	23	29	17	69	12	16	3	3	200
1st - FG %:		8-18	44.4%	2nd: 8-17	47.1%	3rd: 7-13	53.8%	4th: 5-14	35.7%	Game: 29-62			44.2%	Deadball Rebounds			
3FG %:		2-4	50.0%	2-7	28.6%	1-1	0.0%	2-6	33.3%	1-8			12.5%				
100%:		1-1	100.0%	1-1	100.0%	1-1	100.0%	1-1	100.0%	0-0			0.0%				