



# ARKANSAS RAZORBACKS

One Final Four Appearance » 22 Postseason Appearances » 27th Season In The SEC » More Than 400 Home Wins » More Than 700 Program Victories

## /// THE SERIES ///

Series Record	5-31
Fayetteville	3-15
Away	2-15
Neutral	0-1
Last Meeting	Ark. L, 69-66
Neighbors versus this opponent	First Meeting

## /// MEDIA ///

**SEC Network Plus**  
Talent: Matt Stewart and Angel Gray

**Razorback Sports Network**  
**Phil Elson & Erin Portman**  
Listen: Little Rock - KABZ-FM-103.7  
Fayetteville - KOSM-FM-92.1  
Fayetteville - KYNG-AM - 1590\*  
Fort Smith - KFPW-AM-1230  
Fort Smith - KHGG-AM-1580\*  
Rogers - KURM-AM-790/FM-100.3

\*Only if there are conflicts with the FM station

## /// SCHEDULE & RESULTS ///

NOVEMBER (5-2)	MEDIA	W/L	SCORE
2 Northeastern St (Exh)	-	W	82-74
10 Sam Houston State	SECN+	W	65-54
12 Samford	SECN+	W	84-63
16 at RV Nebraska	BTN	L	80-69
20 at Oral Roberts	Cox Sports	W	77-66
24 UTEP!	-	L	64-61
25 New Mexico State!	-	W	69-60
29 Abilene Christian	SECN+	W	79-65

DECEMBER (5-2)	MEDIA	W/L	SCORE
3 at Kansas^	JTV/ESPN3	L	71-60
7 Charlotte	SECN+	W	73-72
10 Tulsa	SECN+	W	67-41
17 UT Arlington	SECN+	W	91-57
21 at RV/RV Arizona St.	Tempe, Arizona	L	89-43
28 Grambling State	SECN+	W	79-62
31 Ole Miss*	SECN+	W	73-72

JANUARY (0-2)	MEDIA	W/L	SCORE
4 at #5/3 Miss State*	SEC Network	L	111-69
7 -/rv Alabama*	SEC Network	L	83-76
11 at Georgia*	SECN+	-	6 p.m.
14 at Auburn*	SEC Network	-	4 p.m.
18 RV Florida*	SEC Network	-	6 p.m.
21 at Missouri!+	SEC Network	-	4 p.m.
25 at S Carolina!+	SEC Network	-	5:30 p.m.
29 RV Kentucky*	SEC Network	-	6 p.m.

FEBRUARY (0-0)	MEDIA	W/L	SCORE
4 at Alabama*	SEC Network	-	1 p.m.
8 Tennessee*	SECN+	-	7 p.m.
11 Missouri*	SEC Network	-	4 p.m.
15 at Kentucky*	SECN+	-	6 p.m.
18 LSU*^	SECN+	-	2 p.m.
22 Texas A&M*	SECN+	-	7 p.m.
25 at Vanderbilt*	SECN+	-	2 p.m.
28 SEC Tournament	SECN/ESPN/2	-	Nashville

MARCH (0-0)	MEDIA	W/L	SCORE
1-4 SEC Tournament	SECN/ESPN/2	-	Nashville

\* - Southeastern Conference Game

! - UTEP Classic (El Paso, Texas)

^ - SEC/Big 12 Challenge

+ - We Back Pat

> - Play4Kay

All home games played in Bud Walton Arena (19,200) Rankings: AP/Coaches Poll

Sign up for Mike Neighbors' newsletter and listen to his podcasts at

**CoachNeighbors.com**



## ARKANSAS RAZORBACKS 10-6, 1-2 SEC

Head Coach: Mike Neighbors  
Alma Mater: Arkansas, 1993  
Record: 108-47 (5) Arkansas Record: 10-6 (1)



## GEORGIA BULLDOGS 14-2, 2-1 SEC

Head Coach: Kristy Curry  
Alma Mater: Alabama, 2002  
Record: 51-27 (3) GA Record: 51-27 (3)



Athens, Georgia	Stegeman Coliseum	6 p.m. CST	<a href="http://bit.ly/ArkGA">http://bit.ly/ArkGA</a>	Razorback Radio Network	<a href="http://bit.ly/2CEVDCT">http://bit.ly/2CEVDCT</a>
-----------------	-------------------	------------	---	-------------------------	---

## PREVIOUS GAME

» Devin Cospers was in double figures in the first half with 10 points in the first 20 minutes.  
» Devin Cospers scored 24 points ... her sixth career 20+ point game.  
» Devin Cospers had a career-best 12-for-12 night from the line.  
» Malica Monk finished with 21 points ... her 15th game in double figures this year and her seventh game with 20+ points.  
» Jailyn Mason scored 12 points ... her ninth double figure scoring game of the year and her third consecutive.

## ABOUT ARKANSAS

» The Razorbacks are the only SEC team that does not return a double-figure scorer.  
» Arkansas is 8-1 at home this season including an SEC win over Ole Miss. Arkansas has won double-digit home games 16 times and the single-season best is a 15-4 home record in 1998-99.  
» Arkansas plays four of its next five games on the road. The Razorbacks have back-to-back SEC road contests at Georgia (Jan. 11) and at Auburn (Jan. 14). They host Florida (Jan. 18) and again go back-to-back with games at Missouri (Jan. 21) and at South Carolina (Jan. 25).  
» Arkansas is **third in the SEC** and ranks **36th in the country** for fewest turnovers with just 196 this year.

» Arkansas **ranks third the SEC** and is **15th in the country** with just 12.4 turnovers per game.  
» Arkansas **ranks second in the SEC** and is **14th in the country** with 434 3-point field goals attempted.  
» Arkansas ranks **second in the SEC** with 7.9 3-point field goals made per game and **third** for 3-pointers made with 127.

## The Fourth Quarter Is Ours

» Arkansas has taken the same number or more shots than its opponent and more 3-pointers in 13 of 16 games.  
» Arkansas has outrebounded or had the same number of rebounds in eight games including six in a row prior to the ASU game.  
» Arkansas has had the same or fewer turnovers in the fourth quarter in nine games.

» Arkansas has outscored opponents 319-309 in the final 10 minutes.

## Better Numbers

» Devin Cospers has 41 3-pointers made - 16 better than her single season best. She has scored more points (267) through 16 games than she did all of last season (187 pts/29 g).  
» Cospers scored 104 points in SEC games last year - she has 55 points in three games this season.  
» Jailyn Mason has made 24 3-pointers through 16 games. She made 19 in 30 games last year.  
» Malica Monk has scored 265 points in 16 games. Her single season best was 247 points set in 27 games last year.  
» Malica Monk has made 67 free throws - more makes than all of last year.

## /// STATISTICAL COMPARISONS ///

	ARKANSAS	GEORGIA
PTS / GAME	70.9	72.2
PTS ALLOWED / GAME	69.4	56.8
FG %	.378	.447
FG DEFENSE %	.398	.348
3-PT FG %	.300	.354
3-PT FG DEFENSE %	.320	.335
REB / GAME	41.6	41/4
REB ALLOWED / GAME	42.8	35.1
LEADING SCORER	Cospers, 16.7	Robinson, 12.3
LEADING REBOUNDER	Williams, 7.8	Robinson, 6.9

## LAST GAME STARTERS



### 3 MALICA MONK

PPG	FG%	RPG	APG
16.6	.385	3.6	4.2



### 10 KIARA WILLIAMS

PPG	FG%	RPG	BPG
7.8	.485	7.8	1.3



### 14 JAILYN MASON

PPG	FG%	RPG	APG
10.0	.399	4.2	3.1



### 21 DEVIN COSPERS

PPG	FG%	RPG	3PG
16.7	.369	7.2	2.6



### 22 BAILEY ZIMMERMAN

PPG	FG%	RPG	MIN
2.4	.210	2.8	21.1

## NUMERICAL ROSTER

No.	Name	Pos	Ht	Cl	Hometown/HS/Previous School
0	A'Tyanna Gaulden*	G	5-7	RSO	Ocilla, Ga./Americus Sumter HS/Florida State
1	Raven Northcross-Baker	G	5-7	Jr	Malvern, Ark./Malvern HS/Chipola College
3	Malica Monk	G	5-5	Jr	N. Little Rock, Ark./NLR HS
4	Keiryn Swenson	G/F	6-1	Jr	Wichita, Kan./Maize HS
10	Kiara Williams	F/C	6-1	So	Little Rock, Ark./LR Central HS
13	Grayce Spangler	G	5-10	Fr	Fayetteville, Ark. Fayetteville HS
14	Jailyn Mason	PG	5-9	So	Mason, Ohio/William Mason HS
20	Sydney Stout	F	6-0	So	Bixby, Okla./Bixby HS
21	Devin Cospers	G	5-10	SGr	Coffeyville, Kan./Field Kindley HS/Coffeyville CC
22	Bailey Zimmerman	G/F	6-0	Jr	St. Vincent, Ark. /Wonderview HS
24	Taylah Thomas	F	6-1	Fr	Arlington, Texas/Mansfield Timberview HS
30	Macy Weaver	F	6-3	Fr	Davis Junction, Ill./Stillman Valley HS
33	Chelsea Dungee*	G	5-11	RSO	Sapulpa, Okla./Sapulpa HS/Oklahoma
51	Brenna McClure	G	5-6	RSO	Lyons, Kansas/Lyons HS/Hutch CC

\*Will not play the 2017-18 season due to NCAA transfer rules

## ALPHABETICAL ROSTER

No.	Name	Twitter
21	Devin Cospers	@devidev__
33	Chelsea Dungee*	@ChelseaDungee22
0	A'Tyanna Gaulden*	@AtyannaGaulden
51	Brenna McClure	@mcclurebrenna
14	Jailyn Mason	@jaimason14
3	Malica Monk	@TheRealMalica
1	Raven Northcross-Baker	@ravenbaker_4
13	Grayce Spangler	@grayce_1313
20	Sydney Stout	@sydeny_stout_
4	Keiryn Swenson	@KiKi_Sweezyy
24	Taylah Thomas	@hailtaylahh
30	Macy Weaver	@macyweaver528
10	Kiara Williams	@kiara_will22
22	Bailey Zimmerman	@Bailey_Ann22

## COACHING STAFF

Title	Name	Year	Alma Mater
Head Coach	Mike Neighbors	First Season	Arkansas, 1993
Assistant Coach	Todd Schaefer	First Season	Thomas More College, 1995
Assistant Coach	Lacey Goldwire	First Season	Oklahoma State, 2010
Assistant Coach	Pauline Love	First Season	Southern Miss, 2010
Director of Operations	Amber Shirey	30th Season	Arkansas, 1992
Director of Video and Scouting	Jeff Brazil	11th Season	Arkansas, 2010
Dir. of Student-Athlete Devel.	C'eira Ricketts	1st Season	Arkansas, 2015

## MARGIN OF VICTORY/DEFEAT

	1	2	3	4	5	6	7	8	9	10	11-15	16-19	20+	Record
Wins	2	-	-	-	-	-	-	-	1	-	3	1	3	10
Losses	-	-	1	-	-	-	1	-	-	-	2	-	2	6

### Most First Period Points

2017-18	27	Samford (11-12-17)
All-Time	29	at Alabama (1-15-17)
Opponent	26	at Arizona State (12-21-17)

### Most Third Period Points

2017-18	26	Alabama (1/7/18)*
All-Time	34	HBU (12-28-16)*
Opponent	30	at Miss State (1-4-18)*

### Fewest First Period Points

2017-18	3	UTEP (11-24-17)
All-Time	3	UTEP (11-24-17)*
Opponent	6	SHSU (11-11-16)

### Fewest Third Period Points

2017-18	11	at Arizona State (12-21-17)
All-Time	7	Vanderbilt (1-19-17)*
Opponent	4	LSU (1-21-16)

### Most Second Period Points

2017-18	25	Grambling State (12-27-17)
All-Time	31	HBU (12-28-16)
Opponent	35	at #2 S. Carolina (1-3-16)

### Most Fourth Period Points

2017-18	28	UT-Arlington (12-17-17)
All-Time	32	Tulsa (11-23-15)
Opponent	30	at Miss State (1-4-18)

### Fewest Second Period Points

2017-18	6	at Arizona State (12-21-17)
All-Time	4	vs. Kentucky (2-17-17)
Opponent	3	at Alabama (1-15-17)

### Fewest Fourth Period Points

2017-18	11	Ole Miss (12-31-17)
All-Time	5	#7 Ore. St. (11-28-15)
Opponent	10	#24 Missouri (1-17-16)*

### Most First Half Points

2017-18	42	Samford (11-12-17)
All-Time	65	Tenn State (11-27-88)
Opponent	63	Texas (1-9-89)

### Largest Margin of Victory

2017-18	34 (91-57)	UT-Arlington (12-17-17)
All-Time	79 (108-29)	B Wesleyan (2-18-77)
Opponent	54 (28-82)	La Tech (11-30-78)

### Fewest First Half Points

2017-18	14	at Arizona State (12-21-17)
All-Time	11	at Missouri (3-1-15)*
Opponent	8	Montana State (1-5-03)

\*Most Recent

## FA-NETIK PRONUNCIATIONS

No.	Name	Pronunciation
0	A'Tyanna	AH-tee-ah-nuh
3	Malica	mal-ick-cuh
4	Keiryn	KEER-runn
10	Kiara	Key-AIR-uh
13	Grayce	GRACE
14	Jailyn	JAY-lyn
24	Taylah	TAY-luh

## RECORD FACTS

Overall	10-6
At Home (Bud Walton Arena)	8-1
On The Road   Neutral	1-5   1-0
White   Cardinal   Anthracite Uniforms	8-1   2-5   0-0

## HALFTIME/LEADS/OVERTIME

Leading at the half, home/road/neutral	7-0 (5-0/1-0/0-0)
Tied at the half, home/road/neutral	-
Trailing at the half, home/road/neutral	3-6 (2-1/0-5/1-0)
Games decided by 5 points or fewer	2-1
Games decided by 10 points or fewer	2-2
Leading at the start of the 4Q	9-1
Overtime games	-

## OFFENSE

Scoring less than 50 points	0-1
Scoring 51-60 points	0-1
Scoring 61-70 points	3-3
Scoring 70+ points	7-1
2 Players Or Less in Double Figures	3-4
3 Players in Double Figures	3-2
4 Players in Double Figures	2-0
5 Players in Double Figures	2-0
When shooting 50 percent or higher	-
When shooting less than 50 percent	10-6

## REBOUNDING/TURNOVERS

When outrebounding opponent	7-0
When outrebounded	2-6
When rebounds are even	1-0
When grabbing 10+ offensive reb	8-4
When forcing 15+ turnovers	6-3
When committing 10 or fewer turnovers	5-1
When committing 15+ turnovers	2-4

## Months

In November	5-2
In December	5-2
In January	0-2
In February	-
In March	-



**FACEBOOK.COM/RAZORBACKWBB**  
**@RAZORBACKWBB (T&I)**  
**HTTP://BIT.LY/YOUTUBEKICKIN**  
**COACHNEIGHBORS.COM**

# NEIGHBORS' PHILOSOPHY

## GRAD STUDENT DEVIN COSPER

- »Only "senior" on the team
- »Missed the opening game last season after a death in the family
- »Averaged 6.4 ppg and 2.2 rpg last season and 7.7 ppg and 2.8 rpg for her career
- »Graduated in May 2017 with a degree in broadcast journalism
- »Interned at RSN, Arkansas' broadcast studio
- »Wears the SEC graduate patch on her jersey
- »Named "Comback Student-Athlete of the Year at annual HOGSPY awards after rebounding from an injury and a death in the family



## FUNCTIONALLY FAST

You will hear Mike Neighbors say this a lot. He wants his teams to play as fast as possible and still function at a high level. That may look different from possession to possession depending on what Arkansas is running.

## TRUST, TALENT AND TIME

My program will be built on three things. It's very simple.

**TRUST** - The highest form of loyalty that has to be earned, managed and sometimes re-earned. If we don't have this, nothing will work and the stool's legs will fall off and everything will collapse.

**TALENT** - It doesn't mean you can dribble, shoot, pass and rebound. It's a lot of other things like the ability to engage with the fan base and willingness to sign autographs for a 10-year-old child you might be inspiring.

**TIME** - It's just not being on time or making time. It's how you utilize your time and who you invest your time with and be around. Trust, talent and time. Those will be our pillars.

## FUN FEATURES

Both Mike Neighbors and Jailyn Mason have shoe collections. Mason's collection was featured in a story last year. It can be seen here: <http://bit.ly/2ebtLdb>

Neighbors got settled into his Fayetteville home in mid August. One of the first things he set up were his shoes.



## BESIDE US

One of the things Mike Neighbors stressed when he was hired was his desire to take care of the players, the staff and the fans who have been loyal to the Razorback program. He has told our fans that he wants them to stand "Beside Us". Don't be behind us, stand next to us and go through the process of building our program.

## SHOTS AND POSSESSIONS

Mike Neighbors wants a lot of shots and a lot of possessions. Here's a look at the Razorbacks shots this year. The number is often determined by pace of play and Arkansas will push the tempo.

## 30 AND COUNTING

This year, Arkansas director of operations Amber Shirey enters her 30th season as a Razorback. The former Amber Nicholas was a two-time All-Southwest Conference selection during her four-year playing career from 1989-92. She spent one season (1992-93) as a student coach helping Arkansas transition to the Southeastern Conference. She moved on to a graduate assistant and assistant coach from 1993-94 through the 2006-07 season. In 2007-08 Shirey transitioned to the director of operations position holding that spot until she returned to the sidelines as an assistant coach for the 2013 and 2014 seasons. She moved into her current position as the Executive Director of Operations in 2014-15. She has been a part of seven different head coach's staffs during her tenure.

## GAMEDAY CARDS

Coach Neighbors hands out a Gameday Card for each home and away game. One side of the card is branded with a Razorback logo and women's basketball. The other side is a quote that is relevant to something the team has talked about or worked on that week. Check out this week's card here:



# OPPONENT

## ABOUT GEORGIA

- » The Bulldogs are 14-2 overall and 2-1 in the SEC, their best start since 2014-15.
- » Georgia is 6-0 on the road and 8-2 at home this year.
- » The Bulldogs have two players who average double figures led by Caliya Robinson at 12.3 ppg. She is also the team's leading rebounder with 6.9 rpg.
- » Mackenzie Ingram also averages double figures with 11.9 ppg.
- » As a team, Georgia ranks sixth in the SEC in scoring averaging 72.2 ppg this season.
- » They are No. 4 in rebounding at 56.8 rpg.
- » Georgia is second in the SEC in blocked shots and rank first in SEC only games with 9.3 blocks per game -- three more per game than the No. 2 team.

## THE LAST MEETING



Official Basketball Box Score -- Game Totals -- Final Statistics  
**UGA vs ARKANSAS**  
02/02/17 7 p.m. at Fayetteville, Ark. (Bud Walton Arena)



**UGA 69 • 11-11, 3-6 SEC**

#	Player	Total			3-Ptr			Rebounds			PF	TP	A	T	Blk	Stl	Min
		FG	FGA	FT	FTA	Off	Def	Off	Def	Tot							
03	PAUL,STEPHANIE	1	0-4	0-2	0-0	2	4	6	2	0	1	1	0	0	0	21	
33	ENGRAM,MACKENZIE	1	2-10	0-2	3-5	2	4	6	1	7	1	2	0	0	0	20	
01	ARMBRISTER,SHANEA	g	5-11	2-5	2-2	3	5	8	0	14	3	1	0	1	0	27	
11	ROBERTS,PACHIS	g	4-7	2-2	3-4	2	9	11	3	13	3	1	1	1	1	38	
12	CLARK,HALEY	g	1-4	0-0	4-8	0	5	5	3	6	9	6	0	0	0	40	
04	ROBINSON,CALIYA	g	9-14	0-2	2-4	2	7	9	4	20	2	2	7	0	0	26	
23	WASHINGTON,HALLE	g	2-3	0-0	1-2	0	1	1	5	5	0	0	1	1	1	14	
24	COSTA,SIMONE	g	1-4	0-1	2-2	0	0	0	0	4	1	1	0	0	0	14	
Team		1 1 2															
Totals		24-57 4-14 17-27 12 36 48 18 69 20 14 9 3 200															

1st - FG %: 0-10 42.1% 2nd: 6-13 46.2% 3rd: 7-15 46.7% 4th: 3-10 30.0% Game: 24-57 42.1% Deadball Rebounds 7,2  
3PG %: 2-3 66.7% 0-2 0.0% 2-7 28.6% 0-2 0.0% 4-14 28.6%  
FT %: 0-1 0.0% 4-6 66.7% 5-8 62.5% 8-12 66.7% 17-27 63.0%

**ARKANSAS 66 • 13-9, 2-7 SEC**

#	Player	Total			3-Ptr			Rebounds			PF	TP	A	T	Blk	Stl	Min
		FG	FGA	FT	FTA	Off	Def	Off	Def	Tot							
00	JACKSON, Jessica	1	6-23	3-10	11-16	5	0	5	3	26	1	1	2	0	34		
22	ZIMMERMAN, Bailey	1	2-8	1-5	0-0	1	3	4	2	5	0	0	0	0	24		
10	WILLIAMS, Kiara	g	3-5	0-0	0-3	5	2	7	0	6	2	1	0	1	22		
03	MONK, Malica	g	3-13	0-3	1-4	1	3	4	3	7	4	3	0	3	36		
14	MASON, Jailyn	g	3-11	2-3	0-0	1	3	4	4	8	3	3	0	3	26		
02	WILSON, Aaliyah	g	1-9	0-2	0-0	2	1	3	0	2	1	0	1	0	9		
04	SWENSON, Keiryn	g	1-3	1-2	0-0	0	1	1	3	3	0	0	0	1	14		
20	STOUT, Sydney	g	0-2	0-0	0-0	1	1	2	2	0	0	0	0	0	6		
21	COSPER, Devin	g	3-5	3-4	0-0	0	2	2	5	9	1	0	1	1	24		
35	COOLEY, Alecia	g	0-0	0-0	0-0	0	0	0	1	0	0	0	0	0	5		
Team		8 7 15															
Totals		22-79 10-31 12-23 24 23 47 23 66 12 9 4 9 200															

1st - FG %: 5-21 23.8% 2nd: 6-21 28.6% 3rd: 4-16 25.0% 4th: 7-21 33.3% Game: 22-79 27.8% Deadball Rebounds 6,1  
3PG %: 3-10 30.0% 3-6 50.0% 1-7 14.3% 3-8 37.5% 10-31 32.3%  
FT %: 3-4 75.0% 1-2 50.0% 7-12 58.3% 12-23 52.2%

Officials: Beverly Roberts, Felicia Grinter, Bruce Morris  
Technical fouls: UGA-None. ARKANSAS-None.

Attendance: 1603

Estimated Actual Attendance: 589

Fouled Out: Georgia, #23 Washington (1:39 4Q)

Fouled Out: Arkansas, #21 Cosper (0:09.3 4Q)

Score by periods	1st	2nd	3rd	4th	Total
UGA	18	16	21	14	69
ARKANSAS	16	16	10	24	66

Last FG - UGA 4th-05:12, AR 4th-00:11  
Largest lead - UGA by 13 3rd-01:04, AR by 8 2nd-07:04.  
UGA led for 26:41, AR led for 10:02, Game was tied for 03:17.

## ABOUT THE SERIES

Series Record: 5-31  
In Fayetteville: 3-15  
In Away: 2-15  
Neutral: 0-1  
Last 5: 1-4  
Mike Neighbors vs.: First Meeting

## Results

12/10/1980	AR	49	GA	61	Fayetteville	2/23/2003	#15	AR	60	#13	GA	69	Athens	
3/18/1990	#22	AR	81	#7	GA	70	Athens	2/8/2004	AR	71	#16	GA	63	Fayetteville
12/19/1991	#20	AR	62	GA	79	Fayetteville	12/30/04	AR	57	#16	GA	78	Athens	
1/13/1993	AR	71	GA	91	Athens	2/23/2006	AR	80	#13	GA	86	Fayetteville		
3/5/1993	#25	AR	73	GA	84	Fayetteville	2/25/2007	AR	51	#11	GA	69	Athens	
1/8/1994	AR	64	GA	73	Fayetteville	2/7/2008	AR	58	#24	GA	72	Fayetteville		
3/4/1994	AR	62	GA	84	Fayetteville	2/8/2009	AR	77	GA	64	Athens			
1/8 1995	#24	AR	67	#11	GA	72	Athens	1/17/2010	AR	63	#6	GA	73	Fayetteville
2/24/1996	AR	54	#2	GA	87	Fayetteville	2/28/2010	AR	48	#24	GA	79	Athens	
2/23/1997	#20	AR	63	#5	GA	79	Athens	1/13/2011	#20	AR	56	GA	59	Fayetteville
1/21/1998	AR	51	#18	GA	81	Athens	2/3/2011	AR	54	#24	GA	57	(OT) Athens	
2/20/1998	AR	81	GA	86	(OT) Fville	1/1/2012	AR	57	#17/15	GA	67	Athens		
1/21/1999	AR	59	#5	GA	68	Fayetteville	1/17/2013	AR	53	#13/12	GA	57	Fayetteville	
2/21/1999	AR	82	#14	GA	98	Athens	2/21/2013	AR	34	#13/12	GA	66	Athens	
2/20/2000	AR	69	GA	72	Fayetteville	1/16/2014	AR	58	GA	60	Athens			
2/18/2001	AR	60	#5	GA	81	Athens	2/9/2015	AR	54	#24/21	GA	48	Fayetteville	
3/3/2001	AR	44	#6	GA	63	Memphis	2/25/2016	AR	57	Georgia	72	Athens		
2/24/2002	AR	66	#23	GA	45	Fayetteville	2/2/2017	AR	66	Georgia	69	Fayetteville		

NOVEMBER (5-2)		MEDIA	W/L	SCORE	SERIES	NEIGHBORS
2	Northeastern St. (Exh)	-	W	82-74	2-0	1-0
10	Sam Houston State	SECN+	W	65-54	7-0	1-0
12	Samford	SECN+	W	84-63	1-0	1-0
16	at Nebraska	BTN	W	80-69	0-1	0-1
20	at Oral Roberts	Cox Sports	W	77-66	20-9	1-0
24	UTEP!	-	L	64-61	2-1	0-2
25	New Mexico State!	-	W	69-60	1-0	1-0
29	Abilene Christian	SECN+	W	79-65	1-0	1-0

DECEMBER (5-2)		MEDIA	W/L	SCORE	SERIES	NEIGHBORS
3	at Kansas^	JTV/ESPN3	L	71-60	4-4	0-1
7	Charlotte	SECN+	W	73-72	1-0	1-0
10	Tulsa	SECN+	W	67-41	21-3	1-0
17	UT Arlington	SECN+	W	91-57	7-0	1-0
21	at Arizona State	Pac-12N	L	89-43	1-1	2-5
28	Grambling State	SECN+	W	79-62	8-0	2-0
31	Ole Miss*	SECN+	W	73-72	17-26	1-0

JANUARY (0-2)		MEDIA	W/L	SCORE	SERIES	NEIGHBORS
4	at #5/3 Mississippi State*	SEC Network	L	111-69	18-19	0-2
7	Alabama*	SEC Network	L	83-76	21-15	0-1
11	at Georgia*	SECN+	-	-	5-31	First Meeting
14	at Auburn*	SEC Network	-	-	14-22	First Meeting
18	Florida*	SEC Network	-	-	9-27	First Meeting
21	at Missouri*	SEC Network	-	-	11-8	1-0
25	at South Carolina*	SEC Network	-	-	17-16	First Meeting
29	Kentucky*	SEC Network	-	-	13-21	1-0

FEBRUARY (0-0)		MEDIA	W/L	SCORE	SERIES	NEIGHBORS
4	at Alabama*	SEC Network	-	-	21-15	0-1
8	Tennessee*	SECN+	-	-	3-30	First Meeting
11	Missouri*	SEC Network	-	-	11-8	1-0
15	at Kentucky*	SECN+	-	-	13-21	1-0
18	LSU*	SECN+	-	-	16-31	First Meeting
22	Texas A&M*	SECN+	-	-	21-8	1-1
25	at Vanderbilt*	SECN+	-	-	8-24	First Meeting
28	SEC Tournament	SECN/ESPN	-	-		

MARCH (0-0)		MEDIA	W/L	SCORE	SERIES	NEIGHBORS
1-4	SEC Tournament	SECN/ESPN				

\* - Southeastern Conference Game  
!-UTEP Thanksgiving Tournament (El Paso, Texas)  
^-SEC/Big 12 Challenge  
All home games played in Bud Walton Arena (19,200)

## IMPORTANT STATS

**Turnovers Hurt:** Arkansas has been good with the ball for much of the season but is struggling a bit in SEC play with 48 miscues in three games. Georgia has 143 steals and Arkansas will have to handle the ball better against the Bulldogs.

**Shoot it Quick:** Arkansas is going to have to get rid of the ball fast. The Bulldogs lead the SEC with 102 blocked shots - that ranks fifth in the country.

**In the SEC Top-10:** Georgia ranks in the top-5 in the SEC for blocks (1), assists (2), assist turnover ratio (4), assists per game (4), field goal percentage defense (4), scoring defense (4), scoring margin (4), and turnovers forced (4).

## An Arkansas Win Would ...

A win would make Arkansas:

- » 12-6 on the year
- » give Arkansas a road win
- » snap a two-game losing streak

## SEC STANDINGS 1/8/18

Conference				Overall						
W-L	Pct.	H	A	W-L	Pct.	H	A	N	Strk	
Miss State	3-0	1.000	1-0	2-0	17-0	1.000	9-0	3-0	5-0	W17
Tennessee	3-0	1.000	2-0	1-0	15-0	1.000	9-0	3-0	3-0	W15
Georgia	2-1	.667	0-1	2-0	14-2	.875	8-2	6-0	0-0	W2
Missouri	2-1	.667	1-1	1-0	14-2	.875	8-1	3-0	3-1	W1
S Carolina	2-1	.667	1-0	1-1	13-2	.867	7-0	4-1	2-1	L1
Texas A&M	2-1	.667	1-0	1-1	13-4	.765	9-2	3-1	1-1	W2
Alabama	2-1	.667	0-1	2-0	12-4	.750	8-1	4-1	0-2	W2
LSU	2-1	.667	1-1	1-0	10-4	.714	5-1	4-2	1-1	L1
Ole Miss	1-2	.333	1-1	0-1	11-5	.688	9-1	1-3	1-1	W1
Auburn	1-2	.333	1-1	0-1	10-5	.667	7-1	2-2	1-2	L2
Arkansas	1-2	.333	1-1	0-1	10-6	.625	8-1	1-5	1-0	L2
Florida	0-3	.000	0-1	0-2	8-8	.500	5-5	2-2	1-1	L3
Kentucky	0-3	.000	0-2	0-1	8-9	.471	6-4	2-5	0-0	L8
Vanderbilt	0-3	.000	0-1	0-2	4-13	.236	2-6	2-5	0-2	L3

## MAKING A RUN ON CAREER NUMBERS

- » Devin Cosper has 723 career points ranking 42nd in program history.
- » Devin Cosper has 315 career 3-point field goal attempts ranking 13th in program history.
- » Malica Monk has 622 career points ranking 51st in program history.
- » Devin Cosper has already reached her single-season highs for 3-point field goals, 3-point field goals attempted, defensive rebounds, total rebounds and blocks.
- » Jaielyn Mason has reached her single-season bests for 3-point field goals made and attempted and blocks.
- » Malica Monk has reached her single-season highs for field goals attempted, 3-point field goals made and attempted, free throws made and attempted and points.
- » Kiara Williams has reached her single-season career-bests for field goals made and attempted, 3-pointers made and attempted, free throws made and attempted, offensive, defensive and total rebounds, assists, blocks, steals and points.

## MONK CONTINUES TO LEAD

- » Fourteen consecutive games in double figure scoring (snapped at Miss State). Scored in double figures in 15-of-16 games this year.
- » Ranks **fourth in the SEC** for field goal attempts (239), **12th** for field goals made (92), **fifth** for minutes played (534.0), **11th** for free throw percent (.770), **12th** for points per game (16.6).
- » Seven games with 20+ points with a career-best 24 at Oral Roberts.
- » Monk currently has 196 assists (1.918). She is approaching the career top-20 (228 assists).
- » At least one 3-pointer in each of the first 10 games with a season-best two 3-pointers three times. A made 3-pointer in 11 games.
- » Thirty-two or more minutes played in 11 games.
- » Seven consecutive games with at least one steal to start the season with a season-best four steals twice (SHSU, NMSU).
- » Has been perfect from the free throw line in seven games (Samford (7-7), Nebraska (3-3), UTEP (3-3), Kansas (4-4), Tulsa (4-4), UTA (12-12), ASU (2-2).
- » Double-figure scoring in a single quarter four times (10 | 3Q | Nebraska || 13 | 4Q | ORU) || 10 | 4Q | Kansas || 11 | 4Q | Alabama).
- » Has 14 3-point field goals made this year. She had nine 3-pointers in her freshman and sophomore years combined.

## COSPER POSTING BIG NUMBERS

- » Ten consecutive games in double figure scoring. The streak was snapped versus UTA. Thirteen of 15 games in double figures.
- » One of six active SEC players with 7+ season double-doubles.
- » **Second in the SEC** with 2.56 made 3-pointers per game. She has 41 made 3-pointers.

## LEADS AND DEFICITS

Biggest Halftime Lead	17, GSU
Biggest Halftime Lead Lost	-
Biggest Halftime Deficit	38, GSU
Biggest HT Deficit Erased	7, Char.
Biggest Overall Lead	30, Tulsa, 4Q
Biggest Win Margin	26, Tulsa
Biggest Loss Margin	46, ASU
Biggest Deficit Overcome	13, SHSU

## JUMP BALLS

Arkansas	6 (5-1)
Opponents	10 (5-5)

## FIRST POINTS

Williams	8
Mason	4
Monk	2
Cosper	2
Monk	1 (FT)
Zimmerman	1 (FT)

## BENCH POINTS

Arkansas	287
Opponent	299

## DOUBLE FIGURE POINTS

Malica Monk	15
Devin Cosper	15
Jaielyn Mason	8
Kiara Williams	6
Raven Northcross-Baker	3
Taylah Thomas	1
Keiryn Swenson	1

## LEADING SCORER

Monk	8
Cosper	6
Northcross-Baker	2
Mason	1

## DOUBLE FIGURES FIRST HALF

Cosper	4
Monk	2
Williams	2
Mason	1
Northcross-Baker	1

## DOUBLE FIGURES/QUARTER

Monk	4
Cosper	3
Mason	1
Northcross-Baker	1

## 20/30-PLUS POINTS

Monk	6 (21, 22, 24, 22, 20, 21)
Cosper	5 (21, 21, 22, 25, 24)
Northcross-Baker	1 (22)

## DOUBLE FIGURE REBOUNDS

Cosper	7
Williams	5
Thomas	1

## LEADING REBOUNDER

Cosper	7
Williams	6
Thomas	2
Monk	1
Zimmerman	1
Mason	1

## DOUBLE DOUBLES

Devin Cosper	SHSU, ORU, NMSU, Char., Tulsa, OM, AL
Williams	NMSU, GSU
Monk	GSU

## 5+ASSISTS/10+ ASSISTS

Monk	6/1
Mason	3/-
Northcross-Baker	1/-

## FIRST OFF THE BENCH

Thomas	12
Northcross-Baker	9
Swenson	6
Williams	1

## CHARGES DRAWN

Monk	4
Cosper	2
Northcross-Baker	1
Thomas	1

## FORCED 10 SECOND VIOLATION

2017-18	TBA
---------	-----

## FORCED SHOT CLOCK VIOLATION

2017-18	5
---------	---

## FORCED INBOUND VIOLATION

2017-18	TBA
---------	-----

## AND 1

Malica Monk	9
Kiara Williams	6
Devin Cosper	6
Bailey Zimmerman	3
Jaielyn Mason	1
Raven Northcross-Baker	1
Macy Weaver	1
Keiryn Swenson	1

## AND 1 CONVERSIONS

Monk	7
Cosper	5
Williams	3
Bailey Zimmerman	3
Northcross-Baker	1
Swenson	1

## BUZZER BEATERS

Mason	1 (ACU)
http://bit.ly/2BBY8ua	
Swenson	1 (Kansas)
Mason	1 (MSU)

- » **First in the SEC and 14th in the NCAA** in 3-point field goals attempted (136).
- » SEC rankings include **sixth** for double-doubles (6), **second** in field goal attempts (255), **10th** in field goals made (94), and **eighth** in minutes played (32.8 mpg).
- » Cospers 315 3-point field goal attempts ranks 13th in the Arkansas career records. She is approaching the top-20 for 3-point field goals made and is in the top-50 for career points.
- » Five games with 20+ points this season.
- » Seven career double-doubles all set this season (SHSU, Oral Roberts, NMSU, Charlotte, Tulsa, Ole Miss, Alabama).
- » Nineteen consecutive games (last four games of 2016-17) with at least one 3-pointer. (snapped vs Alabama)
- » Double-figure scoring in a single quarter three times this year (10 | 10 | Nebraska || 12 | 10 | ORU || 11 | 40 | UTEP).
- » Has scored 267 points this year - more than all of last season (187).

### JAILYN MASON QUIETLY SHINNING

- » Overshadowed by the gaudy numbers tallied by Devin Cospers and Malica Monk, sophomore Jailyn Mason is also putting together a solid season.
- » She has nine games in double figure scoring including a streak of five in a row (ACU-UTA). She is currently on a three-game streak.
- » She has three games with 5+ assists.
- » Has played multiple positions on the floor.
- » While Malica Monk is the spark plug that gets the team going, Jailyn Mason is the captain who takes control and steers the ship.
- » Made more 3-pointers through 16 games (24) than all of last year (19)

### KIARA WILLIAMS STEPPING UP

- » First career double-double with 11 points and 11 rebounds versus New Mexico State. Second one against GSU with 12 points and 16 boards.
- » Five career games (all this season) with 10+ rebounds.
- » Posted a career-best 16 rebounds at Kansas, tying it versus GSU.
- » Tallied a career-best 12 points in a win over ACU and was in double figures in the first half for the first time in her career.
- » Six games in double figure scoring including tying her season-best with 13 versus No. 5/3 Mississippi State.

### TAKING CARE OF THE BALL

- » Arkansas has forced its opponents to turnover the ball more times than they have in 12 games and tied the opponent in TO's once (NMSU).
- » Arkansas has forced double digit turnovers in 13 games while committing single digit miscues in five games.
- » Arkansas has collected double digit steals in six games.
- » Arkansas is **third in the SEC** and ranks **15th in the country** averaging 12.4 turnovers per game.
- » According to HerHoopStats.com, Arkansas has a three-point rate of 39% which ranks 46th of 349 teams. This is the percentage 3-point shots taken by the Razorbacks. That is the best rank for the Razorbacks in the past five seasons. Second-best is 151st.
- » HerHoopStats.com also ranks Arkansas 57th with a 28.2 defensive rebounds per game average.

### FROM DISTANCE

- » Arkansas ranks **second in the SEC** with 7.9 made 3-pointers per game and is **third** in 3-point field goals made with 127.
- » Arkansas is **second in the SEC** with 3-pointers attempted with 424. That mark is also **14th in the NCAA**.

Devin Cospers	Communication (undergrad & Masters)
Chelsea Dungee	Rec. & Sport Management
A'Tyanna Gaulden	Journalism: Broadcast
Brenna McClure	Social Work
Jailyn Mason	Journalism: News/Editorial
Malica Monk	Rec. & Sport Management
Raven Northcross-Baker	Criminal Justice
Grayce Spangler	Communication
Sydney Stout	Management
Keiryn Swenson	Accounting
Taylah Thomas	Nursing
Macy Weaver	Kinesiology
Kiara Williams	Childhood Development
Bailey Zimmerman	Apparel Merch./Product Dev.



### RALLY RAZORBACKS

- » The Razorbacks have had to come from behind to win in four games this year.
- » Arkansas trailed by 13 points in the second quarter against SHSU and rallied for the 11-point win at home.
- » Arkansas trailed at Oral Roberts by six points in the first quarter and came back to win by 11 points on the road.
- » The Razorbacks trailed by seven points against New Mexico State on a neutral court and rallied late to win by nine.
- » Arkansas trailed Charlotte, 37-30, at the half and the teams were tied at the end of the third quarter before the Razorbacks escaped with a one-point win.

### HOW CLOSE ARE THOSE LOSSES?

- » Arkansas trailed Nebraska by three, 72-69, with 2:36 remaining in the game. Nebraska finished with a 7-0 run to win the game.
- » After going 0-for-15 in the first quarter at UTEP, the Razorbacks rallied. Arkansas trailed the Miners by one, 62-61, with :38 seconds remaining in the game. UTEP hit a jumper with :08 seconds to seal the win.
- » Arkansas trimmed the Kansas lead to four points, 57-53, at the 5:44 mark of the fourth quarter and trailed by two possessions, 66-60, with :39 seconds to go.

### LINEUPS

- » Arkansas' most common lineup has been Monk, Williams, Mason, Cospers and Zimmerman. This lineup has started 15 of 16 games.
- » This group has played 163:13 minutes together, scored 298 points and allowed 255 points for a +43 rating and a +10.54 points per 40 minutes
- » The second most common lineup is Monk, Cospers, Thomas, Northcross-Baker and Swenson.
- » This group has played 54:09 minutes together scoring 99 points and allowing 91. This is +8 and +5.91 per 40 minutes.

### SHARING THE BALL

Twelve of 13 Razorbacks have scored in games this year. All have played and all have attempted a shot. Six of 12 players have recorded double figure points for the season.

### BLOCKING WELL

Kiara Williams leads the team with 21 blocked shots through the first 16 games. Williams had only five blocks for the entire season a year ago. The sophomore record is 58 set by Sarah Watkins in 2010-11.

## DID YOU KNOW

That Arkansas head coach Mike Neighbors was cut from the Razorback baseball team? He walked on and legendary head coach Norm DiBryan nudged him in the coaching direction saying "You always seem to be in the right place but you don't always make the play."

## THE SCHEDULE

Arkansas' non-conference schedule features four teams who went to the post season a year ago. Arizona State played in the first round of the NCAA Tournament while Abilene Christian, UT-Arlington and Grambling were all WNIT teams a year ago. UTA was eliminated in the first round while Abilene Christian and Grambling both reached round two.

The always-tough SEC schedule features eight NCAA Tournament teams including the NCAA Champion South Carolina and the runner up, Mississippi State. Auburn and LSU were eliminated in the first round while Kentucky, Missouri, Tennessee and Texas A&M all bowed out in round two. In addition, Alabama and Ole Miss advanced to the WNIT Tournament. That means Arkansas faces 14 teams who played in the postseason a year ago.

## DOUBLE FIGURES IN A QUARTER

Cosper

1Q, 10, at Nebraska

12, 1Q, at ORU

11, 4Q, at UTEP

Monk

10, 3Q, at Nebraska

13, 4Q, at ORU

10, 4Q, at Kansas

11, 4Q, Alabama

Mason

11, 3Q, UTA

Northcross-Baker

12, 4Q, UTA

## AGAINST THE POLL

This week's (Jan. 8) Associated Press poll features five SEC teams. Arkansas' schedule is headlined by No. 4 Mississippi State, followed by No. 6 Tennessee both of whom are undefeated. South Carolina is No. 9, followed by No. 12 Missouri, and No. 17 Texas A&M. Arizona State is No. 18 this week and Georgia (10) and LSU (4) are both getting votes.

This week's USA Today Coaches Poll has Mississippi State at No. 3, followed by No. 6 Tennessee, No. 8 South Carolina, No. 13 Missouri, and No. 16 Texas A&M. Arizona State is No. 23 and Georgia is getting votes.

## HOME SWEET HOME

»Arkansas has had just one losing home season in 41 years (prior to 2017-18)

»Arkansas is 422-139 (8-0 in '17-18) in home games including a 263-104 record in Bud Walton Arena. Arkansas was 159-35 in Barnhill Arena.

## AP TOP 25 (1/8/2018)

RK	TEAM	RECORD	PTS
1	Connecticut (32)	13-0	800
2	Notre Dame	15-1	747
3	Louisville	18-0	741
4	Mississippi State	17-0	702
5	Baylor	14-1	661
6	Tennessee	15-0	641
7	Texas	13-1	617
8	Oregon	15-2	559
9	South Carolina	13-2	557
10	Ohio State	15-2	520
11	Maryland	15-2	476
12	Missouri	14-2	426
13	Florida State	14-2	373
14	UCLA	11-4	367
15	West Virginia	14-2	320
16	Duke	12-4	280
17	Texas A&M	13-4	275
18	Arizona State	13-3	227
18	Iowa	15-2	227
20	Oklahoma State	12-3	224
21	Rutgers	16-2	139
22	Oregon State	11-4	136
23	Michigan	13-4	115
24	California	11-4	67
25	Green Bay	12-2	51

Others receiving votes: Villanova 49, Stanford 30, South Florida 24, Syracuse 22, Georgia 10, Marquette 5, LSU 4, Utah 3, Brown 2, Ball State 1, Belmont 1, Mercer 1

Dropped from rankings: Villanova 21, Stanford 24

## USA TODAY TOP 25 COACHES POLL - 1/2/2018

Rank	School	RECORD	PTS
1	Connecticut (32)	13-0	800
2	Notre Dame	15-1	748
3	Mississippi State	17-0	731
4	Louisville	18-0	721
5	Baylor	14-1	658
6	Tennessee	15-0	626
7	Texas	13-1	601
8	South Carolina	13-2	564
9	Oregon	15-2	559
10	Ohio State	15-2	522
11	Maryland	15-2	473
12	Florida State	14-2	399
13	Missouri	14-2	382
14	UCLA	11-4	368
15	West Virginia	14-2	363
16	Texas A&M	13-4	282
17	Iowa	15-2	265
18	Duke	12-4	260
19	Rutgers	16-2	164
20	Michigan	13-4	154
21	Oregon State	11-4	148
22	Oklahoma State	12-3	143
23	Arizona State	13-3	123
24	Green Bay	12-2	102
25	South Florida	12-4	79

Others receiving votes: Syracuse 62, Villanova 40, Virginia 13, Georgia Tech 10, California 8, Marquette 8, DePaul 7, Florida Gulf Coast 4, Miami 4, Georgia 3, Stanford 2, Ball State 2, USC 1, Virginia Tech 1

## WHAT'S MY NUMBER

Transfer Chelsea Dungee has a unique background to her jersey number selection. Here is the story in her own words:

*I have always played in #22. Every competitive team and school ball team I have always worn #22. #22 was the number my mom played basketball in throughout her high school career. So, I wore #22. A year ago I changed my jersey number to #33. My cousin (more like brother), Reuben, suffered a traumatic brain injury while playing in a high school football game last season and he wore jersey #33. I play in jersey #33 for Reuben. Playing with #33 on back is a reminder that 'Reub' has my back, and I have his.*

QUARTER BY QUARTER SCORING

Date	Opponent	W/L	1st	2nd	1st Half	3rd	4th	2nd Half	OT	Total
Nov. 2	NE State (exh)	W, 82-74	20	15	35	18	29	47	-	82*
Nov. 10	SHSU	W, 65-54	5	18	23	23	19	41	-	65
Nov. 12	Samford	W, 84-63	17	15	32	16	26	42	-	84
Nov. 16	Nebraska	L, 80-69	19	11	30	22	17	49	-	69
Nov. 20	ORU	W, 77-66	25	15	40	16	21	37	-	77
Nov. 24	UTEP	L, 64-61	3	17	20	16	25	41	-	61
Nov. 25	New Mexico State	W, 69-60	11	12	23	24	22	46	-	69
Nov. 29	Abilene Christian	W, 79-65	20	14	34	20	25	45	-	79
Dec. 3	Kansas	L, 71-60	12	10	22	21	17	38	-	60
Dec. 7	UNC-C	W, 73-72	13	16	30	19	24	43	-	73
Dec. 10	Tulsa	W, 67-41	21	14	35	13	19	32	-	67
Dec. 17	UTA	W, 91-57	14	23	37	26	28	54	-	91
Dec. 21	Arizona State	L, 89-43	8	6	14	11	18	29	-	43
Dec. 28	Grambling State	W, 79-62	15	25	40	25	14	39	-	79
NonConf Totals			183	196	380	252	270	583	-	917
NonConf Averages			14.1	15.01	29.2	19.4	20.8	44.8	-	70.5
NonConf Highs			25	25	40 (2x)	26	28	54	-	91
NonConf Lows			3	6	14	11	17	29	-	43
*Not included in averages										
Dec. 31	Ole Miss	W, 73-72	19	18	37	25	11	36	-	73
Jan. 4	Mississippi State	L, 111-69	20	19	39	18	12	30	-	69
Jan. 7	Alabama	L, 83-76	13	16	29	26	21	47	-	76
Jan. 11	Georgia									
Jan. 14	Auburn									
Jan. 18	Florida									
Jan. 21	Missouri									
Jan. 25	South Carolina									
Jan. 29	Kentucky									
Feb. 4	Alabama									
Feb. 8	Tennessee									
Feb. 11	Missouri									
Feb. 15	Kentucky									
Feb. 18	LSU									
Feb. 22	Texas A&M									
Feb. 25	Vanderbilt									
SEC Totals			52	53	105	69	44	113	-	218
SEC Averages			17.3	17.7	35.0	23.0	14.7	37.7	-	72.7
SEC Highs			20	19	39	25	21	47	-	76
SEC Lows			13	16	29	18	11	30	-	76
Season Totals			233	249	485	321	314	696	-	1135
Season Averages			14.6	16.1	30.3	20.1	19.7	43.5	-	70.9
Season Highs			25	25	40 (2x)	26	28	54	-	91
Season Lows			3	6	14	11	11	29	-	43

BY STARTERS

Date	Opponent						
Nov. 2	NE State (exh) - W	Monk	Williams	Mason	Cosper	Zimmerman	
Nov. 10	SHSU - W	Monk	Williams	Mason	Cosper	Zimmerman	
Nov. 12	Samford - W	Monk	Williams	Mason	Cosper	Zimmerman	
Nov. 16	Nebraska - L	Monk	Williams	Mason	Cosper	Zimmerman	
Nov. 20	ORU - W	Monk	Williams	Mason	Cosper	Zimmerman	
Nov. 25	UTEP - W	Monk	Williams	Mason	Cosper	Zimmerman	
Nov. 26	New Mexico State - W	Monk	Williams	Mason	Cosper	Zimmerman	
Nov. 29	Abilene Christian - W	Monk	Williams	Mason	Cosper	Zimmerman	
Dec. 3	Kansas - L	Monk	Williams	Mason	Cosper	Zimmerman	
Dec. 7	UNC-C - W	Monk	Williams	Mason	Cosper	Zimmerman	
Dec. 10	Tulsa - W	Monk	Williams	Mason	Cosper	Zimmerman	
Dec. 17	UTA - W	Monk	Thomas	Mason	Cosper	Zimmerman	
Dec. 21	Arizona State - L	Monk	Williams	Mason	Cosper	Zimmerman	
Dec. 28	Grambling - W	Monk	Williams	Mason	Cosper	Zimmerman	
Dec. 31	Ole Miss - W	Monk	Williams	Mason	Cosper	Zimmerman	
Jan. 4	Mississippi State - L	Monk	Williams	Mason	Cosper	Zimmerman	
Jan. 7	Alabama - L	Monk	Williams	Mason	Cosper	Zimmerman	
Jan. 11	Georgia						
Jan. 14	Auburn						
Jan. 18	Florida						
Jan. 21	Missouri						
Jan. 25	South Carolina						
Jan. 29	Kentucky						
Feb. 4	Alabama						
Feb. 8	Tennessee						
Feb. 11	Missouri						
Feb. 15	Kentucky						
Feb. 18	LSU						
Feb. 22	Texas A&M						
Feb. 25	Vanderbilt						

MISCELLANEOUS STATISTICS

Double-Figure Scoring Games				
Player	15-16	16-17	17-18	Career
M. Monk	3	13	15	31
K. Swenson		11	1	12
J. Mason		10	9	19
D. Cosper	15	8	15	37
B. Zimmerman		2		2
T. Thomas	-	-	1	1
K. Williams	-	-	6	6
R. Northcross-Baker	-	-	3	3
TOTAL	18	44	49	111
20-Point Scoring Games				
Player	15-16	16-17	17-18	Career
K. Swenson		1		1
D. Cosper	1	-	5	6
M. Monk	-	-	7	7
R. Northcross-Baker			1	1
TOTAL	1	1	11	13
Double-Figure Rebounding Games				
Player	15-16	16-17	17-18	Career
D. Cosper	-	-	7	7
T. Thomas	-	-	1	1
K. Williams	-	-	5	5
TOTAL	x	x	13	13
Double-Doubles				
Player	15-16	16-17	17-18	Career
J. Mason (pts/ast)	-	2		2
D. Cosper (pts/reb)	-	-	7	7
K. Williams (pts/reb)	-	-	2	2
M. Monk (pts/ast)	-	-	1	1
TOTAL	-	2	10	12
5+ Steals				
Player	15-16	16-17	17-18	Career
M. Monk	-	2	-	2
TOTAL	x	2	-	2
5+ Blocks				
Player	15-16	16-17	17-18	Career
TBA	-			
TOTAL	-	x	x	x
5+ Assists				
Player	15-16	16-17	17-18	Career
M. Monk	3	4	6	13
J. Mason		6	3	9
D. Cosper		2		2
TOTAL	3	12	9	24



**@RazorbackWBB STATISTICS**  
**Arkansas Combined Team Statistics (as of Jan 07, 2018)**  
**All games**



RECORD:	OVERALL	HOME	AWAY	NEUTRAL
ALL GAMES	10-6	8-1	1-5	1-0
CONFERENCE	1-2	1-1	0-1	0-0
NON-CONFERENCE	9-4	7-0	1-4	1-0

##	Player	gp-gs	min	avg	Total		3-Point		F-Throw		Rebounds				pf	dq	a	to	blk	stl	pts	avg
					fg-fga	fg%	3fg-fga	3fg%	ft-fa	ft%	off	def	tot	avg								
21	COSPER, Devin	16-16	524	32.8	94-255	.369	41-136	.301	38-50	.760	14	101	115	7.2	43	1	25	41	9	24	267	16.7
03	MONK, Malica	16-16	534	33.4	92-239	.385	14-52	.269	67-87	.770	14	43	57	3.6	35	1	66	41	3	30	265	16.6
14	MASON, Jailyn	16-16	497	31.1	67-168	.399	24-64	.375	2-5	.400	8	59	67	4.2	28	1	49	30	11	23	160	10.0
10	WILLIAMS, Kiara	16-15	324	20.3	49-101	.485	1-1	1.000	25-47	.532	51	73	124	7.8	36	1	5	17	21	20	124	7.8
01	NORTHCROSS-BAKE	16-0	327	20.4	37-104	.356	21-70	.300	17-25	.680	17	25	42	2.6	23	0	23	16	2	10	112	7.0
04	SWENSON, Keiryn	16-0	257	16.1	30-77	.390	21-57	.368	7-11	.636	14	28	42	2.6	20	0	6	16	7	4	88	5.5
24	THOMAS,Taylah	16-1	258	16.1	19-43	.442	3-7	.429	20-30	.667	31	49	80	5.0	31	1	2	11	4	5	61	3.8
22	ZIMMERMAN, Bailey	16-16	337	21.1	13-62	.210	1-29	.034	12-19	.632	19	25	44	2.8	30	1	15	17	8	5	39	2.4
20	STOUT, Sydney	9-0	40	4.4	1-6	.167	1-3	.333	3-6	.500	3	4	7	0.8	1	0	1	1	0	0	6	0.7
13	SPANGLER, Grayce	11-0	36	3.3	2-11	.182	0-5	.000	3-6	.500	1	4	5	0.5	6	0	0	4	0	0	7	0.6
30	WEAVER, Macy	11-0	63	5.7	2-6	.333	0-0	.000	2-5	.400	7	9	16	1.5	13	0	1	2	7	1	6	0.5
51	MCCLURE, Brenna	1-0	3	3.0	0-1	.000	0-0	.000	0-0	.000	0	0	0	0.0	1	0	0	0	0	0	0	0.0
Team											35	31	66		2			2				
Total.....		16	3200		406-1073	.378	127-424	.300	196-291	.674	214	451	665	41.6	269	6	193	198	72	122	1135	70.9
Opponents.....		16	3200		412-1035	.398	102-319	.320	184-263	.700	200	484	684	42.8	283	2	230	237	56	98	1110	69.4

TEAM STATISTICS	AR	OPP
SCORING	1135	1110
Points per game	70.9	69.4
Scoring margin	+1.6	-
FIELD GOALS-ATT	406-1073	412-1035
Field goal pct	.378	.398
3 POINT FG-ATT	127-424	102-319
3-point FG pct	.300	.320
3-pt FG made per game	7.9	6.4
FREE THROWS-ATT	196-291	184-263
Free throw pct	.674	.700
F-Throws made per game	12.3	11.5
REBOUNDS	665	684
Rebounds per game	41.6	42.8
Rebounding margin	-1.2	-
ASSISTS	193	230
Assists per game	12.1	14.4
TURNOVERS	198	237
Turnovers per game	12.4	14.8
Turnover margin	+2.4	-
Assist/turnover ratio	1.0	1.0
STEALS	122	98
Steals per game	7.6	6.1
BLOCKS	72	56
Blocks per game	4.5	3.5
ATTENDANCE	17151	16026
Home games-Avg/Game	9-1906	6-2629
Neutral site-Avg/Game	-	1-250

Date	Opponent		Score	Att.
11/10/17	SHSU	w	65-54	4719
11/12/17	SAMFORD	w	84-63	1739
11/16/17	at Nebraska	L	69-80	3459
11/20/17	at Oral Roberts	w	77-66	2503
11/24/17	at UTEP	L	61-64	633
11/25/17	vs NM State	w	69-60	250
11/29/17	ACU	w	79-65	1132
12/03/17	at Kansas	L	60-71	1795
12/07/17	CHARLOTTE	w	73-72	1169
12/10/17	TULSA	w	67-41	1821
12/17/17	UT-ARLINGTON	w	91-57	1481
12/21/17	at Arizona State	L	43-89	1988
12/28/17	GRAMBLING	w	79-62	1388
* 12/31/17	OLE MISS	w	73-72	1701
* 01/04/18	at #5/3 Mississippi State	L	69-111	5398
* 01/07/18	ALABAMA	L	76-83	2001

\* - Conference game

Score by Periods	1st	2nd	3rd	4th	Totals
Arkansas	246	249	321	319	1135
Opponents	267	261	273	309	1110



**@RazorbackWBB STATISTICS**  
**Arkansas Combined Team Statistics (as of Jan 07, 2018)**  
**Conference games only**



RECORD:	OVERALL	HOME	AWAY	NEUTRAL
ALL GAMES	1-2	1-1	0-1	0-0
CONFERENCE	1-2	1-1	0-1	0-0
NON-CONFERENCE	0-0	0-0	0-0	0-0

##	Player	gp-gs	min	avg	Total		3-Point		F-Throw		Rebounds				pf	dq	a	to	blk	stl	pts	avg
					fg-fga	fg%	3fg-fga	3fg%	ft-fa	ft%	off	def	tot	avg								
21	COSPER, Devin	3-3	110	36.7	18-44	.409	4-17	.235	15-17	.882	2	29	31	10.3	11	1	8	12	1	6	55	18.3
03	MONK, Malica	3-3	101	33.7	15-46	.326	1-6	.167	10-19	.526	4	5	9	3.0	8	0	9	10	1	3	41	13.7
14	MASON, Jailyn	3-3	105	35.0	17-37	.459	6-12	.500	0-0	.000	3	8	11	3.7	7	0	8	7	4	4	40	13.3
10	WILLIAMS, Kiara	3-3	64	21.3	9-20	.450	1-1	1.000	5-6	.833	3	15	18	6.0	7	1	1	5	5	3	24	8.0
01	NORTHCROSS-BAKE	3-0	74	24.7	7-19	.368	3-11	.273	2-2	1.000	2	2	4	1.3	3	0	3	2	1	2	19	6.3
04	SWENSON, Keiryn	3-0	39	13.0	6-12	.500	4-10	.400	1-1	1.000	4	2	6	2.0	5	0	0	3	2	0	17	5.7
24	THOMAS,Taylah	3-0	52	17.3	4-7	.571	1-1	1.000	3-4	.750	6	7	13	4.3	7	0	0	2	0	0	12	4.0
13	SPANGLER, Grayce	2-0	3	1.5	2-3	.667	0-1	.000	0-1	.000	1	0	1	0.5	1	0	0	2	0	0	4	2.0
22	ZIMMERMAN, Bailey	3-3	42	14.0	2-4	.500	0-1	.000	2-3	.667	3	3	6	2.0	10	1	3	4	1	0	6	2.0
51	MCCLURE, Brenna	1-0	3	3.0	0-1	.000	0-0	.000	0-0	.000	0	0	0	0.0	1	0	0	0	0	0	0	0.0
20	STOUT, Sydney	1-0	4	4.0	0-0	.000	0-0	.000	0-0	.000	0	0	0	0.0	0	0	0	0	0	0	0	0.0
30	WEAVER, Macy	1-0	3	3.0	0-0	.000	0-0	.000	0-0	.000	0	0	0	0.0	0	0	0	0	0	0	0	0.0
Team											6	5	11		1		1					
Total.....		3	600		80-193	.415	20-60	.333	38-53	.717	34	76	110	36.7	61	3	32	48	15	18	218	72.7
Opponents.....		3	600		93-196	.474	23-56	.411	57-76	.750	34	84	118	39.3	51	1	51	35	13	22	266	88.7

TEAM STATISTICS	AR	OPP
SCORING	218	266
Points per game	72.7	88.7
Scoring margin	-16.0	-
FIELD GOALS-ATT	80-193	93-196
Field goal pct	.415	.474
3 POINT FG-ATT	20-60	23-56
3-point FG pct	.333	.411
3-pt FG made per game	6.7	7.7
FREE THROWS-ATT	38-53	57-76
Free throw pct	.717	.750
F-Throws made per game	12.7	19.0
REBOUNDS	110	118
Rebounds per game	36.7	39.3
Rebounding margin	-2.7	-
ASSISTS	32	51
Assists per game	10.7	17.0
TURNOVERS	48	35
Turnovers per game	16.0	11.7
Turnover margin	-4.3	-
Assist/turnover ratio	0.7	1.5
STEALS	18	22
Steals per game	6.0	7.3
BLOCKS	15	13
Blocks per game	5.0	4.3
ATTENDANCE	3702	5398
Home games-Avg/Game	2-1851	1-5398
Neutral site-Avg/Game	-	0-0

Date	Opponent		Score	Att.
* 12/31/17	OLE MISS	W	73-72	1701
* 01/04/18	at #5/3 Mississippi State	L	69-111	5398
* 01/07/18	ALABAMA	L	76-83	2001

\* - Conference game

Score by Periods	1st	2nd	3rd	4th	Totals
Arkansas	52	53	69	44	218
Opponents	50	63	66	87	266

# MORE NUMBERS

## MISCELLANEOUS

Opponent	T/O	2ndCh	Paint	FastB	Bench	Ties	Leads	WL	Score	Leads overcome
SHSU	15	5	28	14	13	1	1	W	65-54	trailed by 13/20-07:26
Samford	18	5	30	3	23	0	0	W	84-63	
Nebraska	12	14	32	10	11	3	1	L	69-80	lost 2 4th-0:6:21
ORU	15	6	32	18	16	1	1	W	77-66	trailed by 6 1st-04:58
UTEP	22	18	18	14	16	0	0	L	61-64	
NM State	17	16	34	13	15	2	4	W	69-60	trailed by 7 1st-01:06
ACU	28	9	20	0	25	0	1	W	79-65	trailed by 1 1st-09:21
Kansas	10	8	28	6	6	1	1	L	60-71	lost 2 1st-08:40
Charlotte	15	17	32	8	6	1	8	W	73-72	trailed by 9 3rd-9:40
Tulsa	7	13	30	6	12	0	1	W	67-41	trailed by 2 1st-09:14
UTA	23	13	26	17	42	3	2	W	91-57	trailed by 6 1st-4:54
Arizona St.	3	8	22	6	12	0	0	L	43-89	lost 2 1st-09:43
Grambling	18	11	22	3	33	0	0	W	79-62	
Ole Miss	13	10	26	10	23	0	1	W	73-72	trailed by 1 2nd-04:33
#5/3 MSU	3	4	20	11	16	1	1	L	69-111	lost 5 1st-08:28
Alabama	7	7	26	6	13	3	3	L	76-83	lost 7 3rd-02:23
Totals	226	164	426	145	282	16	25			
Ave/Game	14.1	10.2	26.6	9.1	17.6	10	1.6			
Opponent	230	165	532	84	339	19	25			
Ave/Game	14.4	10.3	33.2	52	21.2	1.2	1.6			

## GAME BY GAME LEADERS

Date	Opponent	Points	Rebounds	Assists	Steals	Blocks
Nov. 10	SHSU	Monk (18)	Cosper (10)	2 Players (4)	Monk (4)	Mason (3)
Nov. 12	Samford	Monk (21)	2 Players (9)	2 Players (6)	3 Players (3)	Williams (4)
Nov. 16	Nebraska	Monk (22)	2 Players (11)	Monk (6)	Mason (4)	4 Players (2)
Nov. 20	ORU	Monk (24)	Cosper (10)	Monk (4)	Cosper (2)	2 Players (1)
Nov. 24	UTEP	Cosper (22)	Cosper (5)	Monk (5)	Cosper (4)	Weaver (4)
Nov. 25	NMSU	Monk (22)	2 Players (11)	Cosper (4)	Monk (4)	2 Players (1)
No. 29	A. Christian	2 Players (15)	Williams (8)	Mason (8)	Williams (3)	2 Players (1)
Dec. 3	Kansas	Monk (22)	Williams (16)	Monk (5)	Mason (2)	Williams (2)
Dec. 7	Charlotte	Cosper (25)	Cosper (14)	Mason (4)	Williams (4)	Williams (3)
No. 10	Tulsa	Monk (14)	Cosper (11)	Mason (6)	2 Players (1)	2 Players (2)
No. 17	UTA	RNB (22)	Williams (8)	Mason (7)	2 Players (3)	2 Players (1)
Dec. 21	Az State	Monk (12)	3 Players (4)	Monk (2)	Monk (1)	4 Players (1)
Dec. 28	Grambling	Cosper (16)	Williams (16)	Monk (10)	Monk (3)	Monk (1)
Dec. 31	Ole Miss	Cosper (18)	Cosper (11)	2 Players (4)	Cosper (4)	Williams (4)
Jan. 4	Miss State	Mason (15)	Cosper (7)	2 Players (4)	Monk (2)	3 Players (1)
Jan. 7	Alabama	Cosper (24)	Cosper (13)	Cosper (4)	Mason (3)	Mason (2)
Jan. 11	Georgia					
Jan. 14	Auburn					
Jan. 18	Florida					
Jan. 21	Missouri					
Jan. 25	S Carolina					
Jan. 29	Kentucky					
Feb. 4	Alabama					
Feb. 8	Tennessee					
Feb. 11	Missouri					
Feb. 15	Kentucky					
Feb. 18	LSU					
Feb. 22	Texas A&M					
Feb. 25	Vanderbilt					

## SPECIALTY STATS

Opponent	Paint	OFF TO	2ND CHANCE	FAST BREAK	BENCH
SHSU	28	15	5	14	13
Samford	30	18	5	3	23
Nebraska	32	12	14	10	11
ORU	32	15	6	18	16
UTEP	18	22	18	14	16
NMSU	34	17	16	13	15
Ab. Christian	20	28	9	0	25
Kansas	28	10	8	6	6
Charlotte	32	15	17	8	6
Tulsa	30	7	13	6	12
UTA	26	23	13	17	42
Arizona State	22	3	8	6	12
Grambling State	22	18	11	3	33
Ole Miss	26	13	10	10	23
Miss State	20	3	4	11	16
Alabama	26	7	7	6	13

Georgia  
Auburn  
Florida  
Missouri  
S. Carolina  
Kentucky  
Alabama  
Tennessee  
Missouri  
Kentucky  
LSU  
Texas A&M  
Vanderbilt

# COMPARISON



**@RazorbackWBB STATISTICS**  
Arkansas Team Game-by-Game Comparison (as of Jan 07, 2018)  
**All games**



Opponent	1st	2nd	Score	Mar	Total FG	FG Pct	3-Pointers	3FG Pct	Free Throws	FT Pct	Rebounds	Assist	T/Over	Block	Steal	Fouls
SHSU	23/28	42/26	65-54	+11	25-67/20-63	.373/.317	9-33/7-27	.273/.259	6-11/7-11	.545/.636	39/51 (12)	15/10	9/15	7/5	8/3	12/14
SAMFORD	42/33	42/30	84-63	+21	29-59/23-59	.492/.390	10-27/6-22	.370/.273	16-22/11-14	.727/.786	35/34 +1	17/17	6/13	4/1	7/3	15/23
Nebraska	30/41	39/39	69-80	(11)	27-77/28-72	.351/.389	8-32/7-21	.250/.333	7-10/17-25	.700/.680	45/55 (10)	10/17	15/16	8/6	12/7	23/12
Oral Roberts	40/36	37/30	77-66	+11	29-70/22-58	.414/.379	6-23/7-22	.261/.318	13-18/15-19	.722/.789	41/41 -	8/12	4/14	2/0	5/2	18/20
UTEP	20/38	41/26	61-64	(3)	21-70/27-53	.300/.509	11-41/5-13	.268/.385	8-14/5-7	.571/.714	27/51 (24)	13/19	4/23	4/0	14/1	15/13
NM State	23/25	46/35	69-60	+9	25-70/23-67	.357/.343	6-26/4-18	.231/.222	13-24/10-14	.542/.714	55/41 +14	10/9	18/18	3/2	12/10	15/21
ACU	34/24	45/41	79-65	+14	25-68/24-69	.368/.348	10-25/11-34	.400/.324	19-27/6-11	.704/.545	44/43 +1	13/17	12/20	4/6	13/8	13/21
Kansas	22/30	38/41	60-71	(11)	22-69/25-62	.319/.403	5-27/3-15	.185/.200	11-15/18-25	.733/.720	40/50 (10)	7/9	13/15	6/5	3/8	24/17
CHARLOTTE	30/37	43/35	73-72	+1	26-75/27-74	.347/.365	9-31/5-13	.290/.385	12-24/13-20	.500/.650	45/58 (13)	11/15	10/17	5/3	10/7	19/20
TULSA	35/24	32/17	67-41	+26	25-67/16-69	.373/.232	6-29/2-16	.207/.125	11-19/7-10	.579/.700	61/39 +22	13/5	9/7	7/3	2/4	10/16
UT-ARLINGTON	37/24	54/33	91-57	+34	30-65/22-54	.462/.407	12-28/3-15	.429/.200	19-21/10-16	.905/.625	40/27 +13	19/10	14/22	2/2	11/6	21/21
Arizona State	14/52	29/37	43-89	(46)	17-57/37-73	.298/.507	4-18/12-20	.222/.600	5-6/3-6	.833/.500	35/41 (6)	7/27	23/8	4/4	1/11	12/13
GRAMBLING	40/23	39/39	79-62	+17	25-66/25-66	.379/.379	11-24/7-27	.458/.259	18-27/5-9	.667/.556	48/35 +13	18/12	13/14	1/6	6/6	11/21
OLE MISS	37/32	36/40	73-72	+1	26-61/23-55	.426/.418	8-21/7-18	.381/.389	13-20/19-26	.650/.731	38/34 +4	11/14	15/17	7/4	7/6	18/17
#5/3 Mississippi State	39/49	30/62	69-111	(42)	28-62/44-76	.452/.579	6-18/10-20	.333/.500	7-12/13-14	.583/.929	29/40 (11)	12/25	16/4	3/2	3/7	17/15
ALABAMA	29/32	47/51	76-83	(7)	26-70/26-65	.371/.400	6-21/6-18	.286/.333	18-21/25-36	.857/.694	43/44 (1)	9/12	17/14	5/7	8/9	26/19

Note: Game totals are displayed in the format TEAM/OPPONENT for each category



**@RazorbackWBB STATISTICS**  
**Arkansas Points-Rebounds-Assists (as of Jan 07, 2018)**  
**All games**

Opponent	Date	Score	01	03	04	10	13	14	20	21	22	24	30
			NORTHCROS	MONK,MALIC	SWENSON,K	WILLIAMS,K	SPANGLER,	MASON,JAIL	STOUT,SYDN	COSPER,DE	ZIMMERMAN,	THOMAS,TA	WEAVER,MA
SHSU	11/10/17	65-54	w	3-2-2	18-2-4	5-1-0	7-2-1	0-0-0	8-5-4	1-1-0	17-12-2	2-3-2	4-4-0
SAM	11/12/17	84-63	w	0-1-6	21-9-6	9-0-1	10-5-0	0-1-0	12-1-2	1-1-0	18-5-2	0-0-0	13-9-0
at NEB	11/16/17	69-80	L	3-4-0	22-3-6	3-3-0	6-11-1	DNP	8-5-2	DNP	21-4-0	1-0-0	5-11-1
at ORU	11/20/17	77-66	w	8-1-1	24-3-4	6-2-0	8-5-0	DNP	6-2-1	DNP	21-10-1	2-4-1	2-9-0
at UTEPW	11/24/17	61-64	L	7-2-3	10-2-5	6-2-0	1-1-0	0-0-0	8-4-2	0-0-0	22-5-0	4-3-2	1-4-0
vs NMSU	11/25/17	69-60	w	7-2-0	22-7-2	5-6-0	11-11-0	DNP	3-6-2	DNP	17-11-4	1-3-2	3-7-0
ACU	11/29/17	79-65	w	15-3-1	15-2-1	3-2-0	12-8-0	0-0-0	13-7-8	0-1-0	11-3-1	3-6-2	7-7-0
at KU	12/03/17	60-71	L	2-2-1	21-7-5	4-2-0	6-16-0	0-0-0	10-2-1	DNP	17-3-0	0-2-0	0-0-0
CHA	12/07/17	73-72	w	3-3-1	15-4-3	3-2-0	9-12-0	DNP	12-4-4	DNP	25-14-2	6-3-1	0-0-0
TLS	12/10/17	67-41	w	1-9-1	14-4-3	7-6-0	13-7-2	0-1-0	11-5-6	0-1-0	11-11-0	6-7-1	4-7-0
UTA	12/17/17	91-57	w	22-4-3	20-1-6	10-5-2	2-8-0	3-1-0	15-4-7	4-2-0	8-1-1	6-3-0	0-4-0
at ASU	12/21/17	43-89	L	8-1-1	12-2-2	2-3-1	3-4-0	0-1-0	6-4-1	0-0-0	8-1-1	2-4-1	2-3-0
GRAMWBB	12/28/17	79-62	w	14-4-0	10-2-10	8-2-2	12-16-0	0-0-0	8-7-1	0-1-1	16-4-3	0-0-0	8-2-1
OM	12/31/17	73-72	w	9-3-0	12-2-4	8-4-0	5-9-1	DNP	13-2-4	DNP	18-11-1	2-1-1	6-3-0
at MS	01/04/18	69-111	L	8-1-1	8-3-4	0-2-0	13-2-0	4-1-0	15-3-4	0-0-0	13-7-3	4-3-0	4-6-0
UA	01/07/18	76-83	L	2-0-2	21-4-1	9-0-0	6-7-0	0-0-0	12-6-0	DNP	24-13-4	0-2-2	2-4-0

## THE LAST TIME A RAZORBACK TEAM ...

### OFFENSE

Scored 110+ .....	110, vs. Providence (11/16/98)
Scored 100+ points at home .....	101, Houston Baptist, 12-28-16
Scored 100+ points on the road .....	108, Baylor (3-6-91; SWC Tourn., Dallas, Texas)
Scored 90-99 points .....	91 vs. UTA, 12-17-17
Scored 90+ points at home .....	101, Houston Baptist, 12-28-16
Scored 90+ points on the road .....	91, (91-80 Win in 30T, 2-10-13, at Alabama)
Scored 80-89 points .....	84, Samford (11-12-17)
Scored 80-89 points at home .....	86, Mississippi Valley State (12-28-15)
Scored 80-89 points on the road .....	88, Southeast Missouri (NM) (11-29-13)
Scored 70-79 points .....	77, Alabama, 1-7-18
Scored 70-79 points at home .....	73, Ole Miss, 12-31-17
Scored 70-79 points on the road .....	77 at Ole Miss, 1-31-13
Scored 60-69 points .....	69 at #5/3 Mississippi State (1-4-18)
Was held to 50-59 .....	56 at Missouri, 2-12-17
Was held to 49-40 .....	43 at Arizona State, 12-21-17
Was held to 39-20 .....	32, at No. 2 South Carolina (1-3-16)
Was held to 20 or less .....	N/A
Made 30-39 field goals .....	30 vs. UTA, 12-17-17
Made 20-29 field goals .....	26, Alabama, 1-7-18
Made 10-19 field goals .....	17 at Arizona State, 12-21-17
Made 10 three-point field goals .....	11, Grambling State, 12-28-17
Did not make a three point basket (began in 1986) .....	0-10, at Mississippi State (L 44-47), 2-3-13
Made 30 free throws .....	38 at Florida (38-54); (2-22-04)
Made 15+ Free Throws .....	18, Grambling State, 12-28-17
Shot 40-49 or better from the field .....	45.2 (28-62) at #5/3 Mississippi State (1-4-18)
Shot 50-59 or better from the field .....	52.1 (38-73), Houston Baptist, 12-28-16
Shot 60 percent or better from the field .....	.600 (36-60) vs. Ole Miss (W, 93-52; 3-3-13)
Held to less than 40 percent from the field .....	37.1% (26-70), Alabama, 1-7-18
Held to less than 30 percent from the field .....	29.8 (17-57) at Arizona State, 12-21-17
Held to less than 20 percent from the field .....	.182 (10-55) vs. No. 6/7 Tennessee (1-8-12; L, 38-69)
Allowed opponent to shoot over 50% from the field .....	57.9% (44-76) at #5/3 Mississippi State (1-4-18)
Held opponent to less than 40% from the field .....	37.9% (25-66), Grambling State, 12-28-17
Held opponent to less than 30% from the field .....	23.2% (16-69), Tulsa, 12-10-17
Held opponent to less than 20% from the field in a half: .....	.136 (3-22), First Half, Binghamton, 11-30-13
.....	.200 (5-25), First Half, MVSU, 12-28-13
.....	.200 (5-25), First Half, Grambling State, 12-29-14
Had 20 or more assists in a game .....	27, Houston Baptist, 12-28-16

### DEFENSE

Allowed 100 points .....	111 at #5/3 Mississippi State (1-4-18)
Allowed 80+ points .....	83, Alabama, 1-7-18
Allowed 70-79 points .....	72, Ole Miss, 12-31-17
Allowed 69-60 points .....	62, Grambling State, 12-28-17
Held opponent to 59-50 points .....	57 vs. UTA, 12-17-17
Held opponent to 40-49 points .....	41, Tulsa, 12-10-17
Held opponent to 39-30 .....	36, Northwestern State, 12-18-16
Held opponent under 45 points three cons. games .....	45, SHSU (11-8-13, W 81-45);
.....	33 ORU (11-13-13, W 91-33); 45, Furman (11-16-13, W, 74-45)
Held an SEC opponent under 50 points in 3 cons. games .....	47, Auburn (1-29-15, W, 52-47); 42,
.....	Alabama (2-1-15, W, 53-42);
.....	#24/21 Georgia (2-9-15, W, 54-48)
Held opponent to 29 points or less .....	23, Binghamton, 11-30-13
Held an opponent under 15 points in a half .....	13, Northwestern State, 12-18-16
Held opponent under 15 field goals .....	14, Houston Baptist, 12-28-16
Held opponent under 15% from three-point distance .....	12.5% (2-16), Tulsa, 12-10-17
Had 70+ rebounds .....	74, Mississippi Valley State (11-24-89)
Had 60-69 rebounds .....	61, Tulsa, 12-10-17
Had 50-59 rebounds .....	55, vs. NMSU, 11-25-17
Had five or more blocked shots in a game .....	7, Ole Miss, 12-31-17
Had 20 or more steals in a game .....	20, ORU (11-13-13)
Had 15 or more steals in a game .....	16, at Florida, 2-9-17
Had 20 or more turnovers in a game .....	23 at Arizona State, 12-21-17
Forced 20-25 or more Turnovers in a game .....	22 vs. UTA, 12-17-17

## OTHER

Won an overtime game .....	91-80 Win in 30T, 2-10-13, at Alabama
Lost an overtime game .....	Florida (71-66), 1-28-16
Won a double overtime game .....	73-72, vs. Florida (1-29-12)
Lost a double overtime game .....	N/A
Won a triple overtime game .....	91-80 Win in 30T, 2-10-13, at Alabama
Played consecutive overtime games .....	1-24-16 at Auburn (lost); 1-28-16 vs Florida (lost)
Won a regular season tournament .....	Nugget Classic (Reno, Nev., Nov. 25-26, 2016)
Defeated a ranked team .....	67-61, No. 13 Texas A&M, 1-7-16; 64-59, No. 13 Tenn., 1-14-16
.....	64-52, No. 24 Missouri, 1-17-16
Defeated a ranked team on the road .....	57-53, at #19/18 LSU, 2-23-14; 77-76,
.....	#17/16 Iowa (Las Vegas), 12-18-14
All-time SEC win streak .....	8 games (1-15-12: Auburn through 2-15-12: at Auburn)
All-time SEC home win streak .....	5 games (1-15-12: Auburn through 2-9-12: S. Carolina)

## THE LAST TIME A RAZORBACK PLAYER ...

Scored 20-24 points .....	24, Devin Cosper, Alabama, 1-7-18
.....	21, Malica Monk, Alabama, 1-7-18
Scored 25-29 points .....	25, Devin Cosper, Charlotte (12-6-17)
Scored 30+ points .....	34, Jessica Jackson, Houston Baptist, 12-28-16
Scored 20+ points seven times in a season .....	Jessica Jackson, 2013-14 (22 vs. No. 5 Texas, 22 at Missouri,
.....	23 at Fla., 24 at Georgia, 31 vs. Ole Miss, 23 at Kentucky,
.....	25 at LSU)
Scored 20+ points eight times in a season .....	Jessica Jackson, 2015-16 (20 vs. SHSU; 24 at SDSU;
.....	29 vs. Tulsa, 22 vs. La; 22 vs. No. 5 Texas; 20 at No. 5 MSU;
.....	25 vs. #13 Tennessee; 25, vs. Alabama; 20)
Double figures in 15 consecutive games (Season) .....	Jessica Jackson, 11/11/16-, LSU 1-8-17
Scored 23+ points in three consecutive games .....	Jessica Jackson (24 at Georgia 1-16-14,
.....	31 vs. Ole Miss 1-19-14, 23 at Kentucky 1-26-14)
Three players scored double figures in 1 game .....	Alabama, 1-7-18 (Casper, Monk, Mason)
Four players scored double figures in 1 game .....	vs. GSU, 12-28-17 (Monk, RNB, Cosper, Williams)
Four players scored doubles figures for 4 cons. games .....	12-6-12 - 12-21-12; vs. Kansas, Furman, MVSU, and NSU
Five players scored double figures in 1 game .....	Abilene Christian (11-29-17)
.....	(Monk, Cosper, Mason, Williams, Northcross-Baker)
Made 10+ field goals in a game .....	10, Jessica Jackson, Kentucky, 2-16-17
Attempted 15-19 field goals in a game .....	Monk (17), Cosper (16), Mason (15), Alabama, 1-7-18
Attempted 20+ field goals in a game .....	23, Devin Cosper, Charlotte (12-6-17)
Attempted 10 free throws in a game .....	12, Malica Monk vs. UTA, 12-17-17
Made 5 or more three-pointers in a game .....	6, Raven Northcross-Baker vs. UTA, 12-17-17
Attempted 10+ three-pointers in a game .....	11, Devin Cosper at Kansas, 12-3-17
Had 10-14 rebounds .....	13, Devin Cosper, Alabama, 1-7-18
Had 15+ rebounds .....	16, Kiara Williams, Grambling State, 12-28-17
Had 10 offensive rebounds - Records go back to 05-06 .....	11, Melissa Wolff vs. New Orleans (1-30-15)
Had 10 defensive rebounds - Records go back to 05-06 .....	13, Devin Cosper, Alabama, 1-7-18
Had 10+ assists .....	10, Malica Monk, Grambling State, 12-28-17
Had 10+ assists in consecutive games .....	Jailyn Mason (11 vs. HBU, 12-28-16 and 10 at Ole Miss, 1-1-17)
.....	Calli Berna (11 vs. No. 10/8 KY 2/7/13 and 11 at UA 2/10/13)
Had 5+ blocks in a game .....	(3x) 5, Jessica Jackson (vs. ORU, 11-13-13);
.....	(No. 25 Vanderbilt, 2-20-14); (at Tulsa, 12-14-14)
Had 10 or more blocks in a game .....	9, Robyn Irwin vs. SMSU, 12-19-88 (school record)
Had 5 or more steals in a game .....	5, Malica Monk vs. NMSU, 11-25-17
Had a double-double .....	Devin Cosper (18 pts/11 reb), Ole Miss, 12-31-17
Had a double-double in two straight games .....	2017-18: Devin Cosper (25/14) Charlotte and (11/11) Tulsa
Had two players record a double-double .....	Kiara Williams (12 pts/16 reb) &
.....	Malica Monk (10 pts/10 reb)., Grambling State, 12-28-17
Had seven double-doubles in a season .....	Devin Cosper, 2017-18
.....	(SHSU, ORU, NMSU, Char., Tulsa, OM, AL)
Had 10+ double-doubles in a season .....	2006-07, Lauren Ervin (14)
Had a triple-double .....	14 pts, 13 reb, 12 asts, C'eira Ricketts vs. Auburn (1-18-09)



#### MIKE NEIGHBORS YEAR-BY-YEAR

Year	School	Overall	Pct.	Conf.	Pct.	Conf. Finish
2013-14	Washington	20-14	.588	10-8	.556	6/Pac-12
2014-15	Washington	23-10	.697	11-7	.611	5/Pac-12
2015-16	Washington	26-11	.703	11-7	.611	5/Pac-12
2016-17	Washington	29-6	.829	15-3	.833	T2/Pac-12
2017-18	Arkansas	10-6	.625	1-2	.333	TBA
<b>Totals</b>	<b>5 Years</b>	<b>108-47</b>	<b>.697</b>	<b>48-27</b>	<b>.640</b>	

#### NEIGHBORS 3-1 IN BWA BEFORE THIS YEAR

As the head coach of Bentonville (Ark.) HS, Mike Neighbors went 3-0 in Bud Walton Arena in the high school play-offs. In 1997, his Tiger team defeated Bryant, Mount St. Mary's and Jonesboro to reach the state finals in Pine Bluff, Ark.

The lone loss occurred when Neighbors was an assistant coach at Tulsa. The 13th-ranked Razorbacks defeated Tulsa, 66-49, that season.

#### OPEN MIKE

Want to get to know Mike Neighbors in his own words? Check out the links below for stories about Mike, his hire and his dream job at Arkansas.

Mike's First 30 Days	<a href="http://bit.ly/First30">http://bit.ly/First30</a>
Mike's Dream Job	<a href="http://bit.ly/MNDreamJob">http://bit.ly/MNDreamJob</a>
Mike's Press Conference	<a href="http://bit.ly/PressConfVideo">http://bit.ly/PressConfVideo</a>

#### FROM ROOKIE NOD TO NAISMITH NOMINEE

In four short years Mike Neighbors went from a Spalding Maggie Dixon Division I Rookie Coach of the Year nominee in 2014, to a Naismith Women's College Coach of the Year national semifinalist in 2017.

Neighbors guided UW to an historic campaign in 2016-17 leading the Huskies to 27 wins, it's second most in program history, and he was just one shy of the all-time a school record set in 1990 (28).

Picked to place third in the Pac-12 in the preseason poll, UW tied for second in the league with a 15-3 record, it's best conference finish since 2003. The Huskies' 15 conference wins tied for third most in program history. Washington, who entered conference play with the program-best 12 non-conference wins, clinched its first-ever bye in the first round of the Pac-12 Tournament. Washington put together an 11-game win streak and a six-game win streak in Pac-12 play in 2016-17.

BENTONVILLE HS (HC)	94	
	95	
	96	
	97	
CABOT HS (HC)	98	
ARKANSAS (DIR OF OPS)	99	
	00	
TULSA (ASST)	01	
	02	
	03	
	04	
COLORADO (ASST)	05	
ARKANSAS (ASST)	06	
XAVIER (ASST)	07	X
	08	
	09	
	10	
WASHINGTON (ASST)	11	W
	12	
WASHINGTON (HC)	13	W
	14	
	15	
	16	
ARKANSAS (HC)	17	

#### COACHES COACHING AT ALMA MATER

Mike Neighbors	Arkansas, 1993
Holly Warlick	Tennessee, 1981

A couple of other coaches have SEC ties. Joni Taylor is the head coach at Georgia and a 2002 graduate of Alabama. Matthew Mitchell is a 1995 graduate of Mississippi State and is the head coach at Kentucky. Nikki Fargas graduated from Tennessee in 1994 and is the head coach at LSU. Vic Schaefer is the head coach at Mississippi State and a 1984 graduate of Texas A&M.



# NEIGHBORS BY THE NUMBERS

## TOP 10 MOVIES

1. A Few Good Men
2. The Hunt For Red October
3. The Silence Of The Lambs
4. Hoosiers
5. Pretty Woman
6. Moneyball
7. Top Gun
8. JFK
9. The Lion King
10. Purple Rain

See the entire list here: <http://www.imdb.com/list/ls004320428/>

He has 160 movies that are classified as 'thriller'. "Romance" is next with 152 followed by 69 "sport", 58 "mystery", and 32 "sci-fi".

## TOP 10 SONGS

1. Sweet Child O' Mine (Guns N' Roses)
2. You Shook Me All Night Long (AC/DC)
3. Man In The Mirror (Michael Jackson)
4. Amarillo By Morning (George Strait)
5. Jessie's Girl (Rick Springfield)
6. Hysteria (Def Leppard)
7. Fishin' In The Dark (Nitty Gritty Dirt Band)
8. The Ballard of Curtis Loew (Lynyrd Skynyrd)
9. Wanted Dead Or Alive (Bon Jovi)
10. Let's Go Crazy (Prince)

## TOP 10 TV SHOWS

1. West Wing (first three seasons)
2. The Wire
3. Breaking Bad
4. Seinfeld
5. The Newsroom
6. Prison Break
7. Arrested Development
8. Game of Thrones
9. The Sopranos
10. The Goldbergs

See the entire list here: <http://www.imdb.com/list/ls009377912/>

Neighbors has 16 comedies, 15 dramas and seven crime shows on the list.

## MIKE NEIGHBORS DEVELOPS PLAYERS FOR THE NEXT LEVEL

Mike Neighbors has worked with 11 WNBA Draft Picks

YEAR	UNIVERSITY	PLAYER	ROUND	OVERALL	TEAM NOTE
2017	Washington	Kelsey Plum	1	1	San Antonio Spurs ! @
	Washington	Chantel Osahor	2	21	Chicago Sky ! @
2016	Washington	Talia Walton	3	29	Los Angeles Sparks ! @
2011	Xavier	Amber Harris	1	4	Minnesota Lynx #
	Xavier	Ta'Shia Phillips	1	8	Atlanta Dream #
	TAMU/UAFS	Tanisha Smith	2	22	Seattle Storm #
	Colorado	Brittany Spears	2	19	Phoenix Mercury *
2009	Arkansas	Shameka Christon	1	5	New York Liberty #
2008	Arkansas	Lauren Ervin	3	37	Connecticut Sun #
2006	Tulsa	Megan Moody	-	-	Houston Comets
					Free Agent #
2003	Tulsa	Allison Curtin	1	12	Houston Comets ! #
	Arkansas	Dana Cherry	2	23	Traded to Detroit Shock
					Charlotte Sting

\*-Recruited but did not coach

!-At the school when player was drafted

@-Worked with player as a head coach

#-Worked with player as an assistant coach

\$-Worked with player as other (GA, etc)

## FAST RISE TO ELITE RANKS

Mike Neighbors had a meteoric rise to the top as a head coach at Washington. In four seasons, he amassed 96 wins, had three NCAA Tournament appearances and reached the Final Four. Those accomplishments put him in some rare air.

## FIRST FOUR YEARS AS A POWER FIVE HEAD COACH

Coch	School	Wins	NCAA Apps.	NCAA Best
Holly Warlick	Tennessee	108	4	Sweet 16
<b>Mike Neighbors</b>	<b>Washington</b>	<b>98</b>	<b>3</b>	<b>1 Final Four</b>
Jeff Walz	Louisville	96	3	1 Final Four
Nikki Fargas	UCLA	95	3	2nd Rnd
Vic Schaefer	Mississippi State	90	2	Sweet 16
Karen Aston	Texas	89	3	1 Elite 8
Matthew Mitchell	Kentucky	86	2	1 Elite 8
Kevin McGuff	Xavier	80	1	1 Elite 8
Dawn Staley	South Carolina	77	1	-
Brenda Frese	Minn./Maryland	72	2	-

## BUILDING A FAN BASE

Mike Neighbors saw a 62.9% increase in attendance in his four seasons at Washington. Look for fan engagement to be a big part of future Razor-back programs as well.

## COACHING TREE

Coach	w/Nabes	Now
Fred Castro	'14, '15, '16	HC Eastern Michigan
Adia Barnes	'14, '15	HC Arizona
Adam Call	'14	AC Eastern Michigan
Morgan Valley	'16	AC Arizona
Todd Schaefer	'16	AC Arkansas
Jasmine Lister	'16	AC DePaul



## WANT TO ASK SOME GOOD QUESTIONS?

1. He has had two heart attacks
2. He keeps a lot of lists
3. His lowest moment was he eureka moment
4. He plays guitar and has a band
5. He reads really fast
6. He is an analytics nerd
7. He is a bar-game prodigy

Sign up for Mike Neighbors' newsletter and listen to his podcasts at

**CoachNeighbors.com**





## CAREER STATS



3

**MALICA MONK****Junior | 5-5 | Guard | NLR, Arkansas  
N. Little Rock HS****CAREER HIGHS**

Points	24	ORU	11-20-17
FG Made	9	NMSU	11-15-17*
FG Att.	19	Nebraska	11-16-17
3P Made	2	Tulsa	12-10-17*
3P Att.	6	Charlotte	12-6-17
FT Made	12	UTA	12-17-17
FT Att.	12	UTA	12-17-17
Off. Rebounds	3	NMSU	11-15-17*
Def. Rebounds	8	Samford	11-12-17
Rebounds	9	Samford	11-12-17
Assists	10	Grambling	12-18-17
Blocks	3	LSU	1-8-17
Steals	6	Kentucky	2-16-17*
Minutes	39	Ole Miss	12-31-17

**SEASON HIGHS**

Points	24	ORU	11-20-17
FG Made	9	NMSU	11-25-17*
FG Att.	20	at Kansas	12-3-17
3P Made	2	Tulsa	12-10-17*
3P Att.	6	Charlotte	12-6-17
FT Made	12	UTA	12-17-17
FT Att.	12	UTA	12-17-17
Off. Rebounds	3	Alabama	1-7-18*
Def. Rebounds	8	Samford	11-12-17
Rebounds	9	Samford	11-12-17
Assists	10	Grambling	12-18-17
Blocks	1	NMSU	11-25-17
Steals	4	NMSU	11-15-17*
Minutes	39	Ole Miss	12-31-17

\*Most Recent

**2017-18 GAME-BY-GAME STATS**

Opponent	Date	gs	min	Total		3-Pointers		Free throws		Rebounds				pf	a	t/o	blk	stl	pts	avg				
				fg	fga	pct	3fg	3fga	pct	ft	fta	pct	off								def	tot	avg	
SHSU	11/10/17	*	33	7	13	.538	1	4	.250	3	4	.750	0	2	2	2.0	2	4	1	0	4	18	18.0	
SAMFORD	11/12/17	*	37	6	14	.429	2	3	.667	7	7	1.000	1	8	9	5.5	2	6	1	0	2	21	19.5	
at Nebraska	11/16/17	*	37	9	19	.474	1	4	.250	3	3	1.000	0	3	3	4.7	5	6	2	0	3	22	20.3	
at Oral Roberts	11/20/17	*	32	9	16	.563	1	3	.333	5	6	.833	0	3	3	4.3	1	4	1	0	1	24	21.3	
at UTEP	11/24/17	*	36	3	15	.200	1	6	.167	3	3	1.000	0	2	2	3.8	2	5	1	0	3	10	19.0	
vs NM State	11/25/17	*	38	9	17	.529	1	4	.250	3	7	.429	3	4	7	4.3	0	2	5	1	4	22	19.5	
ACU	11/29/17	*	29	5	14	.357	1	2	.500	4	6	.667	0	2	2	4.0	2	1	2	0	1	15	18.9	
at Kansas	12/03/17	*	32	8	20	.400	1	3	.333	4	4	1.000	3	4	7	4.4	4	5	3	0	0	21	19.1	
CHARLOTTE	12/07/17	*	38	6	18	.333	2	6	.333	1	2	.500	1	3	4	4.3	4	3	1	0	3	15	18.7	
TULSA	12/10/17	*	25	4	10	.400	2	4	.500	4	4	1.000	1	3	4	4.3	2	3	3	0	1	14	18.2	
UT-ARLINGTON	12/17/17	*	31	4	11	.364	0	2	.000	12	12	1.000	0	1	1	4.0	1	6	3	0	1	20	18.4	
at Arizona State	12/21/17	*	30	5	19	.263	0	4	.000	2	2	1.000	0	2	2	3.8	1	2	2	0	1	12	17.8	
GRAMBLING	12/28/17	*	35	2	7	.286	0	1	.000	6	8	.750	1	1	2	3.7	1	10	6	1	3	10	17.2	
OLE MISS	12/31/17	*	39	4	13	.308	0	3	.000	4	8	.500	1	1	2	3.6	1	4	3	0	1	12	16.9	
at #5/3 Mississippi State	01/04/18	*	29	3	16	.188	0	1	.000	2	4	.500	0	3	3	3.5	3	4	1	1	2	8	16.3	
ALABAMA	01/07/18	*	33	8	17	.471	1	2	.500	4	7	.571	3	1	4	3.6	4	1	6	0	0	21	16.6	
Totals			16	534	92	239	.385	14	52	.269	67	87	.770	14	43	57	3.6	35	66	41	3	30	265	16.6

Games played: 16  
Minutes/game: 33.4  
Points/game: 16.6  
FG Pct: 38.5  
3FG Pct: 26.9  
FT Pct: 77.0

Rebounds/game: 3.6  
Assists/game: 4.1  
Turnovers/game: 2.6  
Assist/turnover ratio: 1.6  
Steals/game: 1.9  
Blocks/game: 0.2

**NOTES**

- » **University of Arkansas Athletic Department Academic Honor Roll:** Fall, 2017
- » 14 points, seven assists and just one turnover in exhibition game
- » Fourteen consecutive games with double figure scoring - snapped at No. 5/3 Mississippi State.
- » Fifteen games in double figure scoring this season.
- » Seven games with 20+ points.
- » Named CollegeSportsMadness.com's SEC Player of the Week (11.13.17).
- » Improved career-best with 24 points in 32 minutes at ORU
- » Had 13 points in the fourth quarter at ORU.
- » Led team in scoring nine games.
- » Six games with 5+ assists this year. Had four all of last year.
- » Career-best 10 assists and her first career double-double with 10 points and 10 assists versus Grambling State.

**CAREER STATS**

Year	GP-GS	Min	Avg	Total			3-Point			F-Throw			Rebounds				PF	FO	Ast	TO	Blk	Stl	Pts	Avg
				FG	FGA	Pct	FG	FGA	Pct	FT	FTA	Pct	Off	Def	Tot	Avg								
2015-16	27-5	461	17.1	48	136	.353	2	10	.200	12	19	.632	6	23	29	1.1	60	2	47	44	5	23	110	4.1
2016-17	27-27	842	31.2	96	230	.417	7	25	.280	48	71	.676	29	52	81	3.0	79	2	83	59	7	62	247	9.1
2017-18	16-16	534	33.4	92	239	.385	14	52	.269	67	87	.770	14	43	57	3.6	35	1	66	41	3	30	265	16.6
TOTAL	70-48	1837	26.2	236	605	.390	23	87	.264	127	177	.718	49	118	167	2.4	174	5	196	144	15	115	622	8.9



4

## KEIRYN SWENSON

Junior | 6-1 | Forward | Wichita, Kansas  
Maize HS

### CAREER HIGHS

Points	23	vs. HBU	12-28-16
FGM	7	vs. Navy	11-26-16
FGA	13	at Ole Miss	1-1-17
3PM	4	at Ole Miss	1-1-17
3PA	9	at Ole Miss	1-1-17
FTM	8	vs. HBU	12-28-16
FTA	9	vs. HBU	12-28-16
OREB	5	at Alabama	1-15-17*
DREB	6	vs. NSU	12-18-15*
REB	9	at Alabama	1-15-17*
AST	2	Grambling	12-18-17*
BLK	2	vs. SHSU	11-10-17*
STL	2	UTEP	11-24-17*
MIN	37	at Ole Miss	1-1-17

### SEASON HIGHS

Points	10	UTA	12-17-17
FG Made	4	UTA	12-17-17
FG Att.	8	Ole Miss	12-31-17*
3P Made	3	Alabama	1-7-18*
3P Att.	6	Ole Miss	12-31-17*
FT Made	2	Grambling	12-18-17*
FT Att.	2	Grambling	12-18-17*
Off. Rebounds	3	Ole Miss	12-31-17
Def. Rebounds	4	UTA	12-17-17*
Rebounds	6	Tulsa	12-10-17*
Assists	2	Grambling	12-18-17*
Blocks	2	SHSU	11-10-17
Steals	2	UTEP	11-24-17
Minutes	24	Grambling	12-18-17

\*Most Recent

## 2017-18 GAME-BY-GAME STATS

Opponent	Date	gs	min	Total		3-Pointers		Free throws		Rebounds				pf	a	t/o	blk	stl	pts	avg
				fg-fga	pct	3fg-fga	pct	ft-fga	pct	off	def	tot	avg							
SHSU	11/10/17	18	2-8	.250	1-4	.250	0-0	.000	0	1	1	1.0	1	0	0	2	0	5	5.0	
SAMFORD	11/12/17	13	3-5	.600	3-4	.750	0-0	.000	0	0	0	0.5	3	1	0	0	0	9	7.0	
at Nebraska	11/16/17	17	1-5	.200	1-5	.200	0-0	.000	1	2	3	1.3	2	0	0	0	0	3	5.7	
at Oral Roberts	11/20/17	15	2-3	.667	1-2	.500	1-2	.500	0	2	2	1.5	2	0	1	0	1	6	5.8	
at UTEP	11/24/17	16	2-7	.286	2-6	.333	0-2	.000	1	1	2	1.6	0	0	1	0	2	6	5.8	
vs NM State	11/25/17	14	2-5	.400	1-4	.250	0-0	.000	2	4	6	2.3	1	0	4	0	0	5	5.7	
ACU	11/29/17	17	1-3	.333	1-2	.500	0-0	.000	1	1	2	2.3	0	0	1	0	1	3	5.3	
at Kansas	12/03/17	18	1-3	.333	1-3	.333	1-2	.500	0	2	2	2.3	1	0	1	1	0	4	5.1	
CHARLOTTE	12/07/17	13	1-5	.200	1-4	.250	0-0	.000	0	2	2	2.2	2	0	0	0	0	3	4.9	
TULSA	12/10/17	21	2-7	.286	1-5	.200	2-2	1.000	2	4	6	2.6	0	0	0	0	1	0	7	5.1
UT-ARLINGTON	12/17/17	17	4-8	.500	2-4	.500	0-0	.000	1	4	5	2.8	1	2	2	0	0	10	5.5	
at Arizona State	12/21/17	15	1-3	.333	0-1	.000	0-0	.000	2	1	3	2.8	0	1	3	1	0	2	5.3	
GRAMBLING	12/28/17	24	2-3	.667	2-3	.667	2-2	1.000	0	2	2	2.8	2	2	0	0	0	8	5.5	
OLE MISS	12/31/17	12	3-8	.375	1-6	.167	1-1	1.000	3	1	4	2.9	1	0	2	2	1	0	8	5.6
at #5/3 Mississippi State	01/04/18	15	0-0	.000	0-0	.000	0-0	.000	1	1	2	2.8	1	0	1	0	0	0	5.3	
ALABAMA	01/07/18	12	3-4	.750	3-4	.750	0-0	.000	0	0	0	2.6	3	0	0	1	0	9	5.5	
Totals		0	257	30-77	.390	21-57	.368	7-11	.636	14	28	42	2.6	20	6	16	7	4	88	5.5

Games played: 16  
Minutes/game: 16.1  
Points/game: 5.5  
FG Pct: 39.0  
3FG Pct: 36.8  
FT Pct: 63.6

Rebounds/game: 2.6  
Assists/game: 0.4  
Turnovers/game: 1.0  
Assist/turnover ratio: 0.4  
Steals/game: 0.3  
Blocks/game: 0.4

## NOTES

- » Saw a 206.4% increase in scoring between freshman and sophomore seasons (78 vs. 239 points).
- » **SEC Winter Academic Honor Roll** (2016-17).
- » **SEC First-Year Academic Honor Roll** (2015-16).
- » **University of Arkansas Athletic Department Academic Champion (4.0):** Fall, 2017
- » At least one 3-pointer in her first 11 games this year and in 14 of 16 games.
- » Season-best 10 points on 4-for-8 shooting against UTA.

## CAREER STATS

Year	GP-GS	Min	Avg	Total			3-Point			F-Throw			Rebounds				PF	FO	Ast	TO	Blk	Stl	Pts	Avg
				FG	FGA	Pct	FG	FGA	Pct	FT	FTA	Pct	Off	Def	Tot	Avg								
2015-16	29-1	373	12.9	27	84	.321	5	21	.238	19	27	.704	34	34	68	2.3	26	0	7	15	4	10	78	2.7
2016-17	30-11	709	23.6	89	179	.497	31	71	.437	30	39	.769	53	71	124	4.1	56	0	15	28	17	16	239	8.0
2017-18	16-0	257	16.1	30	77	.390	21	57	.368	7	11	.636	14	28	42	2.6	20	0	6	16	7	4	88	5.5
TOTAL	75-12	1339	17.9	146	340	.429	57	149	.383	56	77	.727	101	133	234	3.1	102	0	28	59	28	30	405	5.4



10

**KIARA WILLIAMS**Sophomore | 6-1 | Forward | LR, Arkansas  
Little Rock HS**CAREER HIGHS**

Points	13	#5 Miss St.	1-4-18*
FGM	6	Tulsa	12-10-17
FGA	11	NMSU	11-25-17
3PM	1	#5 Miss St.	1-4-18
3PA	1	#5 Miss St.	1-4-18
FTM	4	Grambling	12-18-17*
FTA	11	Charlotte	12-6-17
OREB	8	Grambling	12-18-17*
DREB	11	at Kansas	12-3-17
REB	16	Grambling	12-18-17*
AST	2	Tulsa	12-10-17*
BLK	4	Ole Miss	12-31-17*
STL	4	Charlotte	12-6-17
MIN	29	Charlotte	12-6-17

**SEASON HIGHS**

Points	13	#5 Miss St.	1-4-18*
FG Made	6	Tulsa	12-10-17
FG Att.	11	NMSU	11-25-17
3P Made	1	#5 Miss St.	1-4-18
3P Att.	1	#5 Miss St.	1-4-18
FT Made	4	Grambling	12-18-17*
FT Att.	11	Charlotte	12-6-17
Off. Rebounds	8	Grambling	12-18-17*
Def. Rebounds	11	at Kansas	12-3-17
Rebounds	16	Grambling	12-18-17*
Assists	2	Tulsa	12-10-17
Blocks	4	Ole Miss	12-31-17*
Steals	4	Charlotte	12-6-17
Minutes	29	Charlotte	12-6-17

\*Most Recent

**2017-18 GAME-BY-GAME STATS**

Opponent	Date	gs	min	Total		3-Pointers		Free throws		Rebounds				pf	a	t/o	blk	stl	pts	avg
				fg	pct	3fg	pct	ft	pct	off	def	tot	avg							
SHSU	11/10/17	*	17	3-4	.750	0-0	.000	1-1	1.000	0	2	2	2.0	1	1	0	0	0	7	7.0
SAMFORD	11/12/17	*	19	5-7	.714	0-0	.000	0-0	.000	1	4	5	3.5	1	0	0	4	2	10	8.5
at Nebraska	11/16/17	*	20	3-6	.500	0-0	.000	0-0	.000	6	5	11	6.0	4	1	2	2	1	6	7.7
at Oral Roberts	11/20/17	*	17	3-7	.429	0-0	.000	2-2	1.000	3	2	5	5.8	4	0	1	0	1	8	7.8
at UTEP	11/24/17	*	8	0-2	.000	0-0	.000	1-2	.500	1	0	1	4.8	3	0	1	0	1	1	6.4
vs NM State	11/25/17	*	25	5-11	.455	0-0	.000	1-3	.333	4	7	11	5.8	2	0	3	0	2	11	7.2
ACU	11/29/17	*	20	4-6	.667	0-0	.000	4-5	.800	5	3	8	6.1	0	0	0	1	3	12	7.9
at Kansas	12/03/17	*	28	3-6	.500	0-0	.000	0-1	.000	5	11	16	7.4	3	0	4	2	0	6	7.6
CHARLOTTE	12/07/17	*	29	3-8	.375	0-0	.000	3-11	.273	8	4	12	7.9	3	0	0	3	4	9	7.8
TULSA	12/10/17	*	17	6-9	.667	0-0	.000	1-4	.250	4	3	7	7.8	2	2	0	2	0	13	8.3
UT-ARLINGTON	12/17/17		22	1-3	.333	0-0	.000	0-0	.000	3	5	8	7.8	4	0	0	1	2	2	7.7
at Arizona State	12/21/17	*	16	0-2	.000	0-0	.000	3-4	.750	0	4	4	7.5	1	0	1	1	0	3	7.3
GRAMBLING	12/28/17	*	22	4-10	.400	0-0	.000	4-8	.500	8	8	16	8.2	1	0	0	0	1	12	7.7
OLE MISS	12/31/17	*	23	1-5	.200	0-0	.000	3-4	.750	2	7	9	8.2	5	1	0	4	1	5	7.5
at #5/3 Mississippi State	01/04/18	*	20	5-5	1.000	1-1	1.000	2-2	1.000	0	2	2	7.8	1	0	3	1	0	13	7.9
ALABAMA	01/07/18	*	21	3-10	.300	0-0	.000	0-0	.000	1	6	7	7.8	1	0	2	0	2	6	7.8
Totals			15	324	49-101	.485	1-1	1.000	25-47	.532	51	73	124	7.8	36	5	17	21	124	7.8

Games played: 16  
Minutes/game: 20.3  
Points/game: 7.8  
FG Pct: 48.5  
3FG Pct: 100.0  
FT Pct: 53.2Rebounds/game: 7.8  
Assists/game: 0.3  
Turnovers/game: 1.1  
Assist/turnover ratio: 0.3  
Steals/game: 1.3  
Blocks/game: 1.3**NOTES**

- » Enjoys Marvel movies.
- » Career-best four blocks against Samford. Tied that against Ole Miss in the SEC opener.
- » Posted first double-figure rebound total with 11 boards on the road at Nebraska.
- » First career double-double with 11 points and 11 rebounds against New Mexico State.
- » Has scored in every game.
- » First time in her career to have double figures in the first half against ACU.
- » Career-best 16 rebounds, including 11 defensive rebounds, at Kansas.
- » Second career double-double with 12 points and tied her career-best with 16 rebounds versus Grambling State.
- » Career-high 13 points against Tulsa. Tied that at No. 5/3 Mississippi State.
- » Six games in double figures.
- » Made her first career 3-point basket in the opening shot of the No. 5/3 Mississippi State game.

**CAREER STATS**

Year	GP-GS	Min	Avg	Total			3-Point			F-Throw			Rebounds				PF	FO	Ast	TO	Blk	Stl	Pts	Avg
				FG	FGA	Pct	FG	FGA	Pct	FT	FTA	Pct	Off	Def	Tot	Avg								
2016-17	20-5	227	11.4	26	48	.542	0	0	.000	10	26	.385	24	31	55	2.8	34	1	3	15	5	9	62	3.1
2017-18	16-15	324	20.3	49	101	.485	1	1	1.000	25	47	.532	51	73	124	7.8	36	1	5	17	21	20	124	7.8
TOTAL	36-20	551	15.3	75	149	.503	1	1	1.000	35	73	.479	75	104	179	5.0	70	2	8	32	26	29	186	5.2



12

## BRENNA MCCLURE

R-Sophomore | 5-6 | Guard | Lyons, Kansas  
Lyons HS | Hutchinson CC

### CAREER HIGHS

Points	-		
FG Made	-		
FG Att.	1	#5 Miss St.	1-4-18
3P Made	-		
3P Att.	-		
FT Made	-		
FT Att.	-		
Off. Rebounds	-		
Def. Rebounds	-		
Rebounds	-		
Assists	-		
Blocks	-		
Steals	-		
Minutes	3	#5 Miss St.	1-4-18

### SEASON HIGHS

Points	-		
FG Made	-		
FG Att.	1	#5 Miss St.	1-4-18
3P Made	-		
3P Att.	-		
FT Made	-		
FT Att.	-		
Off. Rebounds	-		
Def. Rebounds	-		
Rebounds	-		
Assists	-		
Blocks	-		
Steals	-		
Minutes	3	#5 Miss St.	1-4-18

\*Most Recent

## 2017-18 GAME-BY-GAME STATS

Opponent	Date	gs	min	Total		3-Pointers		Free throws		Rebounds				pf	a	t/o	blk	stl	pts	avg
				fg-fga	pct	3fg-fga	pct	ft-fla	pct	off	def	tot	avg							
GRAMBLING	12/28/17		dnp	-	-	-	-	-	-	-	-	-	-	-	-	-	-	-	-	
OLE MISS	12/31/17		dnp	-	-	-	-	-	-	-	-	-	-	-	-	-	-	-	-	
at #5/3 Mississippi State	01/04/18	3		0-1	.000	0-0	.000	0-0	.000	0	0	0	0.0	1	0	0	0	0	0.0	
ALABAMA	01/07/18		dnp	-	-	-	-	-	-	-	-	-	-	-	-	-	-	-	-	
Totals		0	3	0-1	.000	0-0	.000	0-0	.000	0	0	0	0.0	1	0	0	0	0	0.0	

Games played: 1  
Minutes/game: 3.0  
FG Pct: 0.0

## NOTES

- » University of Arkansas Athletic Department Academic Champion (4.0): Fall, 2017
- » Joined the team as a walk-on for the spring semester.
- » Pace the Blue Dragons went 35-2, shared the Jayhawk Conference championship and won the Region VI championship to qualify for the NJCAA Tournament

## CAREER STATS

Year	GP-GS	Min	Avg	Total			3-Point			F-Throw			Rebounds											
				FG	FGA	Pct	FG	FGA	Pct	FT	FTA	Pct	Off	Def	Tot	Avg	PF	FO	Ast	TO	Blk	Stl	Pts	Avg
22017-18	1-0	3	3.0	0	1	.000	0	0	.000	0	0	.000	0	0	0	0.0	1	0	0	0	0	0	0	0.0
TOTAL	1-0	3	3.0	0	1	.000	0	0	.000	0	0	.000	0	0	0	0.0	1	0	0	0	0	0	0	0.0



13

## GRAYCE SPANGLER

Freshman | 5-11 | Guard | Fayetteville, Ark.  
Fayetteville HS

### CAREER HIGHS

Points	4	#5 Miss St.	1-4-18
FG Made	2	#5 Miss St.	1-4-18
FG Att.	3	#5 Miss St.	1-4-18
3P Made	-		
3P Att.	2	ACU	11-29-17
FT Made	3	UTA	12-17-17
FT Att.	3	UTA	12-17-17
Off. Rebounds	1	#5 Miss St.	1-4-18
Def. Rebounds	1	at ASU	12-21-17*
Rebounds	1	UTA	12-17-17
Assists	-		
Blocks	-		
Steals	-		
Minutes	7	at ASU	12-21-17

### SEASON HIGHS

Points	4	#5 Miss St.	1-4-18
FG Made	2	#5 Miss St.	1-4-18
FG Att.	3	#5 Miss St.	1-4-18
3P Made	-		
3P Att.	2	ACU	11-29-17
FT Made	3	UTA	12-17-17
FT Att.	3	UTA	12-17-17
Off. Rebounds	1	#5 Miss St.	1-4-18
Def. Rebounds	1	at ASU	12-21-17*
Rebounds	1	UTA	12-17-17
Assists	-		
Blocks	-		
Steals	-		
Minutes	7	at ASU	12-21-17

\*Most Recent

## 2017-18 GAME-BY-GAME STATS

Opponent	Date	gs	min	Total		3-Pointers		Free throws		Rebounds				pf	a	t/o	blk	stl	pts	avg
				fg-fga	pct	3fg-fga	pct	ft-fita	pct	off	def	tot	avg							
SHSU	11/10/17	4		0-1	.000	0-0	.000	0-2	.000	0	0	0	0.0	0	0	0	0	0	0	0.0
SAMFORD	11/12/17	2		0-1	.000	0-1	.000	0-0	.000	0	1	1	0.5	0	0	0	0	0	0	0.0
at Nebraska	11/16/17	dnp		-	-	-	-	-	-	-	-	-	-	-	-	-	-	-	-	-
at Oral Roberts	11/20/17	dnp		-	-	-	-	-	-	-	-	-	-	-	-	-	-	-	-	-
at UTEP	11/24/17	5		0-0	.000	0-0	.000	0-0	.000	0	0	0	0.3	2	0	0	0	0	0	0.0
vs NM State	11/25/17	dnp		-	-	-	-	-	-	-	-	-	-	-	-	-	-	-	-	-
ACU	11/29/17	6		0-2	.000	0-2	.000	0-0	.000	0	0	0	0.3	0	0	1	0	0	0	0.0
at Kansas	12/03/17	1		0-0	.000	0-0	.000	0-0	.000	0	0	0	0.2	0	0	0	0	0	0	0.0
CHARLOTTE	12/07/17	dnp		-	-	-	-	-	-	-	-	-	-	-	-	-	-	-	-	-
TULSA	12/10/17	2		0-0	.000	0-0	.000	0-0	.000	0	1	1	0.3	0	0	0	0	0	0	0.0
UT-ARLINGTON	12/17/17	3		0-1	.000	0-0	.000	3-3	1.000	0	1	1	0.4	1	0	1	0	0	3	0.4
at Arizona State	12/21/17	7		0-1	.000	0-0	.000	0-0	.000	0	1	1	0.5	2	0	0	0	0	0	0.4
GRAMBLING	12/28/17	3		0-2	.000	0-1	.000	0-0	.000	0	0	0	0.4	0	0	0	0	0	0	0.3
OLE MISS	12/31/17	dnp		-	-	-	-	-	-	-	-	-	-	-	-	-	-	-	-	-
at #5/3 Mississippi State	01/04/18	3		2-3	.667	0-1	.000	0-1	.000	1	0	1	0.5	1	0	2	0	0	4	0.7
ALABAMA	01/07/18	0		0-0	.000	0-0	.000	0-0	.000	0	0	0	0.5	0	0	0	0	0	0	0.6
Totals		0	36	2-11	.182	0-5	.000	3-6	.500	1	4	5	0.5	6	0	4	0	0	7	0.6

Games played: 11  
Minutes/game: 3.3  
Points/game: 0.6  
FG Pct: 18.2  
3FG Pct: 0.0  
FT Pct: 50.0

Rebounds/game: 0.5  
Turnovers/game: 0.4

## NOTES

- » Father Shannon lettered as a linebacker (1989) and mother, Stacy, was a member of the Pom Squad at Arkansas.
- » Scored her first points as a Razorback going 3-for-3 from the line in a win over UTA.
- » Season/career-best seven minutes at Arizona State.
- » **University of Arkansas Athletic Department Academic Athletic Director's List:** Fall, 2017

## CAREER STATS

Year	GP-GS	Min	Avg	Total			3-Point			F-Throw			Rebounds				PF	FO	Ast	TO	Blk	Stl	Pts	Avg
				FG	FGA	Pct	FG	FGA	Pct	FT	FTA	Pct	Off	Def	Tot	Avg								
2017-18	11-0	36	3.3	2	11	.182	0	5	.000	3	6	.500	1	4	5	0.5	6	0	0	4	0	0	7	0.6
TOTAL	11-0	36	3.3	2	11	.182	0	5	.000	3	6	.500	1	4	5	0.5	6	0	0	4	0	0	7	0.6



14

**JAILYN MASON**

Sophomore | 5-9 | Guard | Mason, Ohio  
William Mason HS

**CAREER HIGHS**

Points	19	ORU	12-21-16
FGM	9	ORU	12-21-16
FGA	15	Alabama	1-7-18*
3PM	3	Ole Miss	12-31-17*
3PA	7	Alabama	1-7-18*
FTM	3	NMSU	11-25-17*
FTA	7	NMSU	11-25-17
OREB	4	Texas Tech	12-3-16
DREB	7	Grambling	12-18-17*
REB	9	Texas Tech	12-3-16
AST	11	HBU	12-28-16
BLK	3	SHSU	11-10-17
STL	4	Nebraska	11-16-17*
MIN	40	ORU	12-21-16

**SEASON HIGHS**

Points	15	#5 Miss St.	1-4-18*
FG Made	7	#5 Miss St.	1-4-18*
FG Att.	15	Alabama	1-7-18
3P Made	3	Ole Miss	12-31-17*
3P Att.	7	Alabama	1-7-18*
FT Made	2	Charlotte	12-6-17
FT Att.	2	Charlotte	12-6-17*
Off. Rebounds	3	NMSU	11-25-17
Def. Rebounds	7	Grambling	12-18-17*
Rebounds	7	Grambling	12-18-17*
Assists	8	ACU	11-29-17
Blocks	3	SHSU	11-10-17
Steals	4	Nebraska	11-16-17
Minutes	38	ORU	11-20-17

\*Most Recent

**2017-18 GAME-BY-GAME STATS**

Opponent	Date	gs	min	Total		3-Pointers		Free throws		Rebounds				pf	a	t/o	blk	stl	pts	avg	
				fg-fga	pct	3fg-fga	pct	ft-fa	pct	off	def	tot	avg								
SHSU	11/10/17	*	25	3-10	.300	2-4	.500	0-0	.000	0	5	5	5.0	0	4	1	3	1	8	8.0	
SAMFORD	11/12/17	*	35	5-11	.455	2-5	.400	0-2	.000	0	1	1	3.0	2	2	1	0	2	12	10.0	
at Nebraska	11/16/17	*	30	4-12	.333	0-2	.000	0-1	.000	0	5	5	3.7	3	2	4	0	4	8	9.3	
at Oral Roberts	11/20/17	*	32	3-9	.333	0-0	.000	0-0	.000	1	1	2	3.3	1	1	1	0	0	6	8.5	
at UTEP	11/24/17	*	24	3-9	.333	2-6	.333	0-0	.000	1	3	4	3.4	1	2	0	0	1	8	8.4	
vs NM State	11/25/17	*	28	1-8	.125	1-4	.250	0-0	.000	3	3	6	3.8	3	2	1	1	2	3	7.5	
ACU	11/29/17	*	34	5-13	.385	3-7	.429	0-0	.000	0	7	7	4.3	1	8	3	1	2	13	8.3	
at Kansas	12/03/17	*	33	4-9	.444	2-5	.400	0-0	.000	0	2	2	4.0	5	1	2	0	2	10	8.5	
CHARLOTTE	12/07/17	*	30	4-10	.400	2-6	.333	2-2	1.000	0	4	4	4.0	2	4	1	1	1	12	8.9	
TULSA	12/10/17	*	30	5-11	.455	1-4	.250	0-0	.000	0	5	5	4.1	0	6	0	0	0	11	9.1	
UT-ARLINGTON	12/17/17	*	33	7-11	.636	1-4	.250	0-0	.000	0	4	4	4.1	1	7	3	0	3	15	9.6	
at Arizona State	12/21/17	*	31	3-7	.429	0-1	.000	0-0	.000	0	4	4	4.1	0	1	5	1	0	6	9.3	
GRAMBLING	12/28/17	*	27	3-11	.273	2-4	.500	0-0	.000	0	7	7	4.3	2	1	1	0	1	8	9.2	
OLE MISS	12/31/17	*	33	5-11	.455	3-4	.750	0-0	.000	0	2	2	4.1	3	4	1	1	1	13	9.5	
at #5/3 Mississippi State	01/04/18	*	35	7-11	.636	1-1	1.000	0-0	.000	1	2	3	4.1	0	4	2	1	0	15	9.9	
ALABAMA	01/07/18	*	37	5-15	.333	2-7	.286	0-0	.000	2	4	6	4.2	4	0	4	2	3	12	10.0	
Totals			16	497	67-168	.399	24-64	.375	2-5	.400	8	59	67	4.2	28	49	30	11	23	160	10.0

Games played: 16  
Minutes/game: 31.1  
Points/game: 10.0  
FG Pct: 39.9  
3FG Pct: 37.5  
FT Pct: 40.0

Rebounds/game: 4.2  
Assists/game: 3.1  
Turnovers/game: 1.9  
Assist/turnover ratio: 1.6  
Steals/game: 1.4  
Blocks/game: 0.7

**NOTES**

- » Has a large Jordan shoe collection.
- » Would like to be a sports photographer.
- » At least one defensive rebound in each game this season.
- » Set season-best marks for field goals, field goals attempted, 3-point field goals and 3-point field goals attempted as well as for rebounds and assists against Abilene Christian.
- » Nine games this year and five consecutive games with double-figure scoring through UTA.
- » Season-best 15 points with seven made baskets against UTA. Tied that against No. 5/3 Mississippi State.

**CAREER STATS**

Year	GP-GS	Min	Avg	Total			3-Point			F-Throw			Rebounds				PF	FO	Ast	TO	Blk	Stl	Pts	Avg
				FG	FGA	Pct	FG	FGA	Pct	FT	FTA	Pct	Off	Def	Tot	Avg								
2016-17	30-30	894	29.8	100	256	.391	19	53	.358	7	11	.636	21	96	117	3.9	72	2	93	56	8	31	226	7.5
2017-18	16-16	497	31.1	67	168	.399	24	64	.375	2	5	.400	8	59	67	4.2	28	1	49	30	11	23	160	10.0
TOTAL	46-46	1391	30.2	167	424	.394	43	117	.368	9	16	.563	29	155	184	4.0	100	3	142	86	19	54	386	8.4



20

## SYDNEY STOUT

Sophomore | 6-0 | Forward | Bixby, Okla.  
Bixby HS

### CAREER HIGHS

Points	8	HBU	12-28-16
FGM	3	HBU	12-28-16
FGA	5	HBU	12-28-16
3PM	2	HBU	12-28-16
3PA	4	HBU	12-28-16
FTM	2	Texas A&M	1-12-17
FTA	4	Texas A&M	1-12-17
OREB	1	SHSU	11-10-17*
DREB	6	HBU	12-28-16
REB	6	HBU	12-28-16
AST	1	Grambling	12-18-17*
BLK	1	ULM	11-13-16
STL	-		
MIN	15	HBU	12-28-16

### SEASON HIGHS

Points	4	UTA	12-17-17
FG Made	1	UTA	12-17-17
FG Att.	2	ACU	11-29-17
3P Made	1	UTA	12-17-17
3P Att.	1	UTA	12-17-17*
FT Made	1	UTA	12-17-17*
FT Att.	2	UTA	12-17-17
Off. Rebounds	1	UTA	12-17-17*
Def. Rebounds	1	Grambling	12-18-17*
Rebounds	2	UTA	12-17-17
Assists	1	Grambling	12-18-17
Blocks	-		
Steals	-		
Minutes	6	UTA	12-17-17

\*Most Recent

## 2017-18 GAME-BY-GAME STATS

Opponent	Date	gs	min	Total		3-Pointers		Free throws		Rebounds			pf	a	t/o	blk	stl	pts	avg	
				fg-fga	pct	3fg-fga	pct	ft-fa	pct	off	def	tot								avg
SHSU	11/10/17	6		2	0-0	.000	0-0	.000	1-2	.500	1	0	1	1.0	1	0	1	0	1	1.0
SAMFORD	11/12/17	2		0	0-0	.000	0-0	.000	1-2	.500	0	1	1	1.0	0	0	0	0	1	1.0
at Nebraska	11/16/17	dnp		-	-	-	-	-	-	-	-	-	-	-	-	-	-	-	-	-
at Oral Roberts	11/20/17	dnp		-	-	-	-	-	-	-	-	-	-	-	-	-	-	-	-	-
at UTEP	11/24/17	6		0	0-0	.000	0-0	.000	0-0	.000	0	0	0	0.7	0	0	0	0	0	0.7
vs NM State	11/25/17	dnp		-	-	-	-	-	-	-	-	-	-	-	-	-	-	-	-	-
ACU	11/29/17	3		0	0-2	.000	0-1	.000	0-0	.000	1	0	1	0.8	0	0	0	0	0	0.5
at Kansas	12/03/17	dnp		-	-	-	-	-	-	-	-	-	-	-	-	-	-	-	-	-
CHARLOTTE	12/07/17	dnp		-	-	-	-	-	-	-	-	-	-	-	-	-	-	-	-	-
TULSA	12/10/17	3		0	0-0	.000	0-0	.000	0-0	.000	0	1	1	0.8	0	0	0	0	0	0.4
UT-ARLINGTON	12/17/17	6		1	1-1	1.000	1-1	1.000	1-2	.500	1	1	2	1.0	0	0	0	0	4	1.0
at Arizona State	12/21/17	5		0	0-0	.000	0-0	.000	0-0	.000	0	0	0	0.9	0	0	0	0	0	0.9
GRAMBLING	12/28/17	5		0	0-2	.000	0-1	.000	0-0	.000	0	1	1	0.9	0	1	0	0	0	0.8
OLE MISS	12/31/17	dnp		-	-	-	-	-	-	-	-	-	-	-	-	-	-	-	-	-
at #5/3 Mississippi State	01/04/18	4		0	0-0	.000	0-0	.000	0-0	.000	0	0	0	0.8	0	0	0	0	0	0.7
ALABAMA	01/07/18	dnp		-	-	-	-	-	-	-	-	-	-	-	-	-	-	-	-	-
Totals		0	40	1-6	.167	1-3	.333	3-6	.500		3	4	7	0.8	1	1	1	0	0	0.7

Games played: 9  
Minutes/game: 4.4  
Points/game: 0.7  
FG Pct: 16.7  
3FG Pct: 33.3  
FT Pct: 50.0

Rebounds/game: 0.8  
Assists/game: 0.1  
Turnovers/game: 0.1  
Assist/turnover ratio: 1.0

## NOTES

- » SEC First-Year Academic Honor Roll (2016-17).
- » University of Arkansas Athletic Department Academic Champion (4.0): Fall, 2017

## CAREER STATS

Year	GP-GS	Min	Avg	Total			3-Point			F-Throw			Rebounds				PF	FO	Ast	TO	Blk	Stl	Pts	Avg
				FG	FGA	Pct	FG	FGA	Pct	FT	FTA	Pct	Off	Def	Tot	Avg								
2016-17	15-0	72	4.8	5	14	.357	4	12	.333	2	4	.500	2	9	11	0.7	15	0	1	2	1	0	16	1.1
2017-18	9-0	40	4.4	1	6	.167	1	3	.333	3	6	.500	3	4	7	0.8	1	0	1	1	0	0	6	0.7
TOTAL	24-0	112	4.7	6	20	.300	5	15	.333	5	10	.500	5	13	18	0.8	16	0	2	3	1	0	22	0.9



21

## DEVIN COSPER

Grad | 5-10 | Guard | Coffeyville, Kansas  
Coffeyville CC | Field Kindley HS

### CAREER HIGHS

Points	25	Charlotte	12-6-17
FG Made	9	Charlotte	12-6-17
FGA	25	Nebraska	11-16-17
3PM	6	UTEP	11-24-17
3PA	16	Nebraska	11-16-17
FTM	12	Alabama	1-7-18
FTA	12	Alabama	1-7-18
OREB	3	Charlotte	12-6-17
DREB	13	Alabama	1-7-18
REB	14	Charlotte	12-6-17*
AST	6	ORU	12-21-16
BLK	3	MVSU	12-28-15
STL	4	Ole Miss	12-31-17*
MIN	40	Charlotte	12-6-17
	42	Auburn	1-24-16 OT

### SEASON HIGHS

Points	25	Charlotte	12-6-17
FG Made	9	Charlotte	12-6-17
FG Att.	25	Nebraska	11-16-17
3P Made	6	UTEP	11-24-17
3P Att.	16	Nebraska	11-16-17
FT Made	12	Alabama	1-7-18
FT Att.	12	Alabama	1-7-18
Off. Rebounds	3	Charlotte	12-6-17
Def. Rebounds	13	Alabama	1-7-18
Rebounds	14	Charlotte	12-6-17
Assists	4	Alabama	1-7-18*
Blocks	2	Tulsa	12-10-17*
Steals	4	Ole Miss	12-31-17
Minutes	40	Charlotte	12-6-17

\*Most Recent

## 2017-18 GAME-BY-GAME STATS

Opponent	Date	gs	min	Total		3-Pointers		Free throws		Rebounds				pf	a	t/o	blk	stl	pts	avg	
				fg	fga	pct	3fg	3fga	pct	ft	fta	pct	off								def
SHSU	11/10/17	*	31	6-13	.462	4-11	.364	1-2	.500	2	10	12	12.0	3	2	4	1	1	17	17.0	
SAMFORD	11/12/17	*	29	5-12	.417	3-10	.300	5-5	1.000	0	5	5	8.5	2	1	0	1	0	18	17.5	
at Nebraska	11/16/17	*	34	8-25	.320	5-16	.313	0-0	.000	1	3	4	7.0	2	0	4	2	2	21	18.7	
at Oral Roberts	11/20/17	*	38	8-19	.421	3-10	.300	2-2	1.000	0	10	10	7.8	2	1	0	0	2	21	19.3	
at UTEP	11/24/17	*	31	8-17	.471	6-13	.462	0-2	.000	1	4	5	7.2	2	0	1	0	4	22	19.8	
vs NM State	11/25/17	*	39	6-17	.353	2-9	.222	3-4	.750	2	9	11	7.8	2	4	2	1	2	17	19.3	
ACU	11/29/17	*	21	4-10	.400	2-5	.400	1-2	.500	0	3	3	7.1	4	1	3	1	2	11	18.1	
at Kansas	12/03/17	*	39	5-23	.217	1-11	.091	6-8	.750	1	2	3	6.6	3	0	2	1	1	17	18.0	
CHARLOTTE	12/07/17	*	40	9-23	.391	2-7	.286	5-6	.833	3	11	14	7.4	2	2	3	0	1	25	18.8	
TULSA	12/10/17	*	29	5-16	.313	1-9	.111	0-0	.000	2	9	11	7.8	3	0	3	2	0	11	18.0	
UT-ARLINGTON	12/17/17	*	22	3-8	.375	2-6	.333	0-0	.000	0	1	1	7.2	3	1	2	0	2	8	17.1	
at Arizona State	12/21/17	*	27	3-13	.231	2-5	.400	0-0	.000	0	1	1	6.7	2	1	2	0	0	8	16.3	
GRAMBLING	12/28/17	*	34	6-15	.400	4-7	.571	0-2	.000	0	4	4	6.5	2	3	2	0	0	16	16.3	
OLE MISS	12/31/17	*	39	7-15	.467	2-5	.400	2-3	.667	1	10	11	6.8	3	1	6	1	4	18	16.4	
at #5/3 Mississippi State	01/04/18	*	32	5-13	.385	2-7	.286	1-2	.500	1	6	7	6.8	3	3	4	0	0	13	16.2	
ALABAMA	01/07/18	*	39	6-16	.375	0-5	.000	12-12	1.000	0	13	13	7.2	5	4	2	0	2	24	16.7	
Totals			16	524	94-255	.369	41-136	.301	38-50	.760	14	101	115	7.2	43	25	41	9	24	267	16.7

Games played: 16  
Minutes/game: 32.8  
Points/game: 16.7  
FG Pct: 36.9  
3FG Pct: 30.1  
FT Pct: 76.0

Rebounds/game: 7.2  
Assists/game: 1.6  
Turnovers/game: 2.6  
Assist/turnover ratio: 0.6  
Steals/game: 1.5  
Blocks/game: 0.6

## NOTES

- » SEC First-Year Academic Honor Roll (2016).
- » SEC Academic Honor Roll (2016-17).
- » Graduated in May 2017 with degree in journalism. Currently pursuing her master's degree in sport administration.
- » Forty-five consecutive games played.
- » Nineteen consecutive games with a made 3-pointer. (snapped versus Alabama)
- » Thirty-one points with six 3-pointers in exhibition game.
- » Ten consecutive games in double figure scoring (snapped versus UTA).
- » Seven career double-doubles all this season.
- » At least one steal in 12-of-16 games this year.
- » Career-bests to 25 points and 14 rebounds against Charlotte.

## CAREER STATS

Year	GP-GS	Min	Avg	Total			3-Point			F-Throw			Rebounds				PF	FO	Ast	TO	Blk	Stl	Pts	Avg
				FG	FGA	Pct	FG	FGA	Pct	FT	FTA	Pct	Off	Def	Tot	Avg								
2015-16	30-25	792	26.4	97	293	.331	25	104	.240	50	72	.694	16	83	99	3.3	57	0	42	74	5	34	269	9.0
2016-17	29-9	563	19.4	72	195	.369	23	75	.307	20	27	.741	7	58	65	2.2	43	2	45	40	6	28	187	6.4
2017-18	16-16	524	32.8	94	255	.369	41	136	.301	38	50	.760	14	101	115	7.2	43	1	25	41	9	24	267	16.7
TOTAL	75-50	1879	25.1	263	743	.354	89	315	.283	108	149	.725	37	242	279	3.7	143	3	112	155	20	86	723	9.6



22

**BAILEY ZIMMERMAN**  
Junior | 6-0 | Forward | St. Vincent, Arkansas  
Wonderview HS

CAREER HIGHS			
Points	14	Missouri	2-12-17
FGM	4	Missouri	2-12-17*
FGA	11	Missouri	2-12-17
3PM	3	Kentucky	2-16-17*
3PA	7	Butler	12-13-15
FTM	4	S. Carolina	2-5-17*
FTA	6	Missouri	2-12-17
OREB	4	ACU	11-29-17*
DREB	6	Alabama	1-15-17
REB	7	Tulsa	12-10-17*
AST	3	Kentucky	2-16-17*
BLK	3	LSU	1-8-17*
STL	2	UTEP	11-24-17*
MIN	34	Kentucky	2-16-17

SEASON HIGHS			
Points	6	UTA	12-17-17*
FG Made	2	UTA	12-17-17*
FG Att.	10	UTA	12-17-17
3P Made	1	Charlotte	12-6-17
3P Att.	6	Charlotte	12-6-17
FT Made	2	#5 Miss St.	1-4-18*
FT Att.	3	#5 Miss St.	1-4-18*
Off. Rebounds	4	ACU	11-29-17*
Def. Rebounds	5	Tulsa	12-10-17
Rebounds	7	Tulsa	12-10-17
Assists	2	Alabama	1-7-18*
Blocks	2	Nebraska	11-16-17
Steals	2	UTEP	11-24-17*
Minutes	28	Charlotte	12-6-17
*Most Recent			

2017-18 GAME-BY-GAME STATS

Opponent	Date	gs	min	Total		3-Pointers		Free throws		Rebounds			pf	a	t/o	blk	stl	pts	avg	
				fg-fga	pct	3fg-fga	pct	ft-fa	pct	off	def	tot								avg
SHSU	11/10/17	*	27	1-7	.143	0-4	.000	0-0	.000	0	3	3	3.0	1	2	1	0	2	2.0	
SAMFORD	11/12/17	*	19	0-1	.000	0-1	.000	0-0	.000	0	0	0	1.5	3	0	0	0	0	1.0	
at Nebraska	11/16/17	*	24	0-2	.000	0-2	.000	1-2	.500	0	0	0	1.0	3	0	2	2	0	1.0	
at Oral Roberts	11/20/17	*	21	1-7	.143	0-3	.000	0-2	.000	1	3	4	1.8	3	1	0	1	0	2.3	
at UTEP	11/24/17	*	23	1-5	.200	0-3	.000	2-2	1.000	2	1	3	2.0	0	2	0	0	2	1.8	
vs NM State	11/25/17	*	24	0-1	.000	0-1	.000	1-2	.500	2	1	3	2.2	2	2	0	0	0	1.7	
ACU	11/29/17	*	25	1-4	.250	0-1	.000	1-2	.500	4	2	6	2.7	1	2	2	1	1	3.9	
at Kansas	12/03/17	*	24	0-1	.000	0-0	.000	0-0	.000	0	2	2	2.6	4	0	1	1	0	1.6	
CHARLOTTE	12/07/17	*	28	2-9	.222	1-6	.167	1-1	1.000	1	2	3	2.7	0	1	3	1	0	6.2	
TULSA	12/10/17	*	25	2-6	.333	0-3	.000	2-3	.667	2	5	7	3.1	0	1	0	0	0	6.5	
UT-ARLINGTON	12/17/17	*	20	2-10	.200	0-3	.000	2-2	1.000	2	1	3	3.1	2	0	1	0	0	6.8	
at Arizona State	12/21/17	*	24	1-3	.333	0-1	.000	0-0	.000	2	2	4	3.2	1	1	3	1	0	2.8	
GRAMBLING	12/28/17	*	11	0-2	.000	0-0	.000	0-0	.000	0	0	0	2.9	0	0	0	0	0	2.5	
OLE MISS	12/31/17	*	9	1-1	1.000	0-0	.000	0-0	.000	1	0	1	2.8	2	1	1	0	0	2.5	
at #5/3 Mississippi State	01/04/18	*	20	1-2	.500	0-1	.000	2-3	.667	0	3	3	2.8	3	0	1	0	0	4.6	
ALABAMA	01/07/18	*	13	0-1	.000	0-0	.000	0-0	.000	2	0	2	2.8	5	2	2	1	0	2.4	
Totals			16	337	13-62	.210	1-29	.034	12-19	.632	19	44	2.8	30	15	17	8	5	39	2.4

Games played: 16  
Minutes/game: 21.1  
Points/game: 2.4  
FG Pct: 21.0  
3FG Pct: 3.4  
FT Pct: 63.2

Rebounds/game: 2.8  
Assists/game: 0.9  
Turnovers/game: 1.1  
Assist/turnover ratio: 0.9  
Steals/game: 0.3  
Blocks/game: 0.5

NOTES

- » SEC Academic Honor Roll (2016-17).
- » University of Arkansas Athletic Department Academic Athletic Director's List: Fall, 2017
- » Twelve games with 20+ minutes.
- » Started 16 consecutive games this year and 17 in a row dating back to last season.

CAREER STATS

Year	GP-GS	Min	Avg	Total			3-Point			F-Throw			Rebounds				PF	FO	Ast	TO	Blk	Stl	Pts	Avg
				FG	FGA	Pct	FG	FGA	Pct	FT	FTA	Pct	Off	Def	Tot	Avg								
2015-16	20-1	174	8.7	6	48	.125	4	33	.121	7	12	.583	12	9	21	1.1	9	0	4	15	2	4	23	1.2
2016-17	30-23	627	20.9	45	144	.313	24	84	.286	20	39	.513	35	80	115	3.8	46	0	28	37	10	19	134	4.5
2017-18	16-16	337	21.1	13	62	.210	1	29	.034	12	19	.632	19	25	44	2.8	30	1	15	17	8	5	39	2.4
TOTAL	66-40	1138	17.2	64	254	.252	29	146	.199	39	70	.557	66	114	180	2.7	85	1	47	69	20	28	196	3.0



**24** **TAYLAH THOMAS**  
Freshman | 6-1 | Forward | Arlington, Texas  
Mansfield Timberview HS

### CAREER HIGHS

Points	13	Samford	11-12-17
FG Made	5	Samford	11-12-17
FG Att.	6	Samford	11-12-17
3P Made	1	Ole Miss	12-31-17*
3P Att.	1	Ole Miss	12-31-17*
FT Made	3	NMSU	11-25-17*
FT Att.	6	Samford	11-12-17
Off. Rebounds	6	Nebraska	11-16-17
Def. Rebounds	7	ORU	11-20-17 7
Rebounds	11	Nebraska	11-16-17
Assists	1	Grambling	12-18-17*
Blocks	2	Nebraska	11-16-17
Steals	2	ACU	11-29-17
Minutes	23	ORU	11-20-17

### SEASON HIGHS

Points	13	Samford	11-12-17
FG Made	5	Samford	11-12-17
FG Att.	6	Samford	11-12-17
3P Made	1	Ole Miss	12-31-17*
3P Att.	1	Ole Miss	12-31-17*
FT Made	3	NMSU	11-25-17*
FT Att.	6	Samford	11-12-17
Off. Rebounds	6	Nebraska	11-16-17
Def. Rebounds	7	ORU	11-20-17 7
Rebounds	11	Nebraska	11-16-17
Assists	1	Grambling	12-18-17*
Blocks	2	Nebraska	11-16-17
Steals	2	ACU	11-29-17
Minutes	23	ORU	11-20-17

\*Most Recent

### 2017-18 GAME-BY-GAME STATS

Opponent	Date	gs	min	Total		3-Pointers		Free throws		Rebounds				pf	a	t/o	blk	stl	pts	avg
				fg-fga	pct	3fg-fga	pct	ft-fia	pct	off	def	tot	avg							
SHSU	11/10/17	17	2-2	1.000	0-0	.000	0-0	.000	1	3	4	4.0	0	0	0	1	0	4	4.0	
SAMFORD	11/12/17	21	5-6	.833	0-1	.000	3-6	.500	2	7	9	6.5	1	0	2	0	0	13	8.5	
at Nebraska	11/16/17	20	1-4	.250	0-0	.000	3-4	.750	6	5	11	8.0	3	1	0	2	0	5	7.3	
at Oral Roberts	11/20/17	23	0-3	.000	0-1	.000	2-2	1.000	2	7	9	8.3	2	0	0	1	0	2	6.0	
at UTEP	11/24/17	16	0-2	.000	0-1	.000	1-2	.500	2	2	4	7.4	1	0	0	0	0	1	5.0	
vs NM State	11/25/17	14	0-4	.000	0-0	.000	3-4	.750	3	4	7	7.3	1	0	1	0	0	3	4.7	
ACU	11/29/17	20	2-7	.286	1-1	1.000	2-4	.500	3	4	7	7.3	2	0	0	0	2	7	5.0	
at Kansas	12/03/17	9	0-1	.000	0-1	.000	0-0	.000	0	0	0	6.4	0	0	0	0	0	0	4.4	
CHARLOTTE	12/07/17	4	0-0	.000	0-0	.000	0-0	.000	0	0	0	5.7	3	0	0	0	1	0	3.9	
TULSA	12/10/17	19	1-3	.333	1-1	1.000	1-2	.500	4	3	7	5.8	1	0	0	0	1	4	3.9	
UT-ARLINGTON	12/17/17	11	0-0	.000	0-0	.000	0-0	.000	2	2	4	5.6	5	0	1	0	0	0	3.5	
at Arizona State	12/21/17	19	1-1	1.000	0-0	.000	0-0	.000	0	3	3	5.4	3	0	3	0	0	2	3.4	
GRAMBLING	12/28/17	13	3-3	1.000	0-0	.000	2-2	1.000	0	2	2	5.2	2	1	2	0	1	8	3.8	
OLE MISS	12/31/17	17	2-3	.667	1-1	1.000	1-2	.500	3	0	3	5.0	2	0	1	0	0	6	3.9	
at #5/3 Mississippi State	01/04/18	17	2-2	1.000	0-0	.000	0-0	.000	1	5	6	5.1	2	0	0	0	0	4	3.9	
ALABAMA	01/07/18	18	0-2	.000	0-0	.000	2-2	1.000	2	2	4	5.0	3	0	1	0	0	2	3.8	
Totals		1	258	19-43	.442	3-7	.429	20-30	.667	31	49	80	5.0	31	2	11	4	5	61	3.8

Games played: 16  
Minutes/game: 16.1  
Points/game: 3.8  
FG Pct: 44.2  
3FG Pct: 42.9  
FT Pct: 66.7

Rebounds/game: 5.0  
Assists/game: 0.1  
Turnovers/game: 0.7  
Assist/turnover ratio: 0.2  
Steals/game: 0.3  
Blocks/game: 0.3

### NOTES

- » University of Arkansas Athletic Department Academic Athletic Director's List: Fall, 2017
- » Played high school ball for former Razorback assistant coach Kit Kyle Martin.
- » Career-best 13 points against Samford - her first double figure scoring game as a Razorback.

### CAREER STATS

Year	GP-GS	Min	Avg	Total			3-Point			F-Throw			Rebounds				PF	FO	Ast	TO	Blk	Stl	Pts	Avg
				FG	FGA	Pct	FG	FGA	Pct	FT	FTA	Pct	Off	Def	Tot	Avg								
2017-18	16-1	258	16.1	19	43	.442	3	7	.429	20	30	.667	31	49	80	5.0	31	1	2	11	4	5	61	3.8
TOTAL	16-1	258	16.1	19	43	.442	3	7	.429	20	30	.667	31	49	80	5.0	31	1	2	11	4	5	61	3.8



**30 MACY WEAVER**  
Freshman | 6-3 | F | Davis Junction, Illinois  
Stillman Valley HS

### CAREER HIGHS

Points	3	Grambling	12-18-17
FG Made	1	Grambling	12-18-17*
FG Att.	2	Grambling	12-18-17
3P Made	-		
3P Att.	-		
FT Made	1	Grambling	12-18-17*
FT Att.	2	UTA	12-17-17
Off. Rebounds	2	Grambling	12-18-17*
Def. Rebounds	4	UTA	12-17-17
Rebounds	5	UTA	12-17-17
Assists	1	UTEP	11-24-17
Blocks	4	UTEP	11-24-17
Steals	1	UTEP	11-24-17
Minutes	19	UTEP	11-24-17

### SEASON HIGHS

Points	3	Grambling	12-18-17
FG Made	1	Grambling	12-18-17*
FG Att.	2	Grambling	12-18-17
3P Made	-		
3P Att.	-		
FT Made	1	Grambling	12-18-17*
FT Att.	2	UTA	12-17-17
Off. Rebounds	2	Grambling	12-18-17*
Def. Rebounds	4	UTA	12-17-17
Rebounds	5	UTA	12-17-17
Assists	1	UTEP	11-24-17
Blocks	4	UTEP	11-24-17
Steals	1	UTEP	11-24-17
Minutes	19	UTEP	11-24-17

\*Most Recent

## 2017-18 GAME-BY-GAME STATS

Opponent	Date	gs	min	Total		3-Pointers		Free throws		Rebounds				pf	a	t/o	blk	stl	pts	avg
				fg-fga	pct	3fg-fga	pct	ft-fa	pct	off	def	tot	avg							
SHSU	11/10/17	2		0-0	.000	0-0	.000	0-0	.000	0	0	0	0.0	0	0	0	0	0	0	0.0
SAMFORD	11/12/17	1		0-0	.000	0-0	.000	0-0	.000	0	0	0	0.0	0	0	0	0	0	0	0.0
at Nebraska	11/16/17	dnp		-	-	-	-	-	-	-	-	-	-	-	-	-	-	-	-	-
at Oral Roberts	11/20/17	dnp		-	-	-	-	-	-	-	-	-	-	-	-	-	-	-	-	-
at UTEP	11/24/17	19	1-1	1.000		0-0	.000	0-0	.000	2	1	3	1.0	3	1	0	4	1	2	0.7
vs NM State	11/25/17	dnp		-	-	-	-	-	-	-	-	-	-	-	-	-	-	-	-	-
ACU	11/29/17	3	0-1	.000		0-0	.000	0-0	.000	0	1	1	1.0	0	0	0	0	0	0	0.5
at Kansas	12/03/17	2	0-0	.000		0-0	.000	0-0	.000	0	0	0	0.8	0	0	0	1	0	0	0.4
CHARLOTTE	12/07/17	7	0-0	.000		0-0	.000	0-2	.000	2	0	2	1.0	3	0	1	0	0	0	0.3
TULSA	12/10/17	6	0-1	.000		0-0	.000	0-0	.000	0	1	1	1.0	1	0	0	1	0	0	0.3
UT-ARLINGTON	12/17/17	8	0-1	.000		0-0	.000	1-2	.500	1	4	5	1.5	3	0	1	1	0	1	0.4
at Arizona State	12/21/17	7	0-0	.000		0-0	.000	0-0	.000	0	1	1	1.4	2	0	0	0	0	0	0.3
GRAMBLING	12/28/17	5	1-2	.500		0-0	.000	1-1	1.000	2	1	3	1.6	1	0	0	0	0	3	0.6
OLE MISS	12/31/17	dnp		-	-	-	-	-	-	-	-	-	-	-	-	-	-	-	-	-
at #5/3 Mississippi State	01/04/18	3	0-0	.000		0-0	.000	0-0	.000	0	0	0	1.5	0	0	0	0	0	0	0.5
ALABAMA	01/07/18	dnp		-	-	-	-	-	-	-	-	-	-	-	-	-	-	-	-	-
Totals		0	63	2-6	.333	0-0	.000	2-5	.400	7	9	16	1.5	13	1	2	7	1	6	0.5

Games played: 11  
Minutes/game: 5.7  
Points/game: 0.5  
FG Pct: 33.3  
FT Pct: 40.0

Rebounds/game: 1.5  
Assists/game: 0.1  
Turnovers/game: 0.2  
Assist/turnover ratio: 0.5  
Steals/game: 0.1  
Blocks/game: 0.6

## NOTES

- » University of Arkansas Athletic Department Academic Athletic Director's List: Fall, 2017
- » First career game as a Razorback came against Sam Houston State in the opener.
- » Played 19 minutes with four blocks and solid defense at UTEP.

## CAREER STATS

Year	GP-GS	Min	Avg	Total			3-Point			F-Throw			Rebounds				PF	FO	Ast	TO	Blk	Stl	Pts	Avg
				FG	FGA	Pct	FG	FGA	Pct	FT	FTA	Pct	Off	Def	Tot	Avg								
2017-18	11-0	63	5.7	2	6	.333	0	0	.000	2	5	.400	7	9	16	1.5	13	0	1	2	7	1	6	0.5
TOTAL	11-0	63	5.7	2	6	.333	0	0	.000	2	5	.400	7	9	16	1.5	13	0	1	2	7	1	6	0.5



**0-A'Tyanna Gaulden**  
RSo | G | 5-7



**1-Raven Northcross-Baker**  
Jr | G | 5-7



**3-Malica Monk**  
Jr | G | 5-5



**4-Keiryn Swenson**  
Jr | G/F | 6-1



**10-Kiara Williams**  
So | F/C | 6-1



**13-Grayce Spangler**  
Fr | G | 5-11



**14-Jailyn Mason**  
So | G | 5-9



**20-Sydney Stout**  
So | F | 6-0



**21-Devin Cosper**  
Gr. | G | 5-10



**22-Bailey Zimmerman**  
Jr | G/F | 6-0



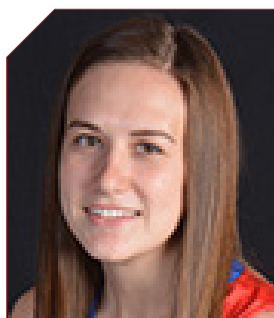
**24-Taylah Thomas**  
Fr | F | 6-1



**30-Macy Weaver**  
Fr | F | 6-3



**33-Chelsea Dungee**  
RSo | G | 5-11



**51-Brenna McClure**  
RSo | G | 5-6



**Mike Neighbors**  
Arkansas, 1993  
First Season



**Lacey Goldwire**  
Oklahoma State, 2010  
First Season



**Todd Schaefer**  
Thomas More College, 1995  
First Season



**Pauline Love**  
Southern Miss, 2010  
First Season



NOVEMBER 2, 2017

## NORTHEASTERN STATE

### ARKANSAS

Bud Walton Arena  
Fayetteville, Arkansas

Devin Cosper dropped in 31 points leading four players in double figures in exhibition action. It was the 14th consecutive exhibition game win for Arkansas and the first under head coach Mike Neighbors.

74  
82

#### Northeastern State Univ. 74

#	Player	Total		3-Ptr		Rebounds		PF	TP	A	TO	Blk	Stl	Min
		FG-FGA	FT-FTA	FG-FGA	FT-FTA	Off	Def							
24	Strange, Destiny	3-10	0-4	0-0	1	3	4	3	6	3	1	0	0	29
12	Griffin, Miranda	6-11	5-9	0-2	1	4	5	2	17	3	0	0	0	27
14	Hayes, Cenia	2-6	2-6	2-2	1	4	5	0	8	0	1	0	1	18
21	Brooks, Trea	2-7	1-3	3-4	0	1	1	3	8	1	2	0	0	20
23	Eldred, Bailee	7-7	1-1	2-2	2	6	8	3	7	3	2	0	2	20
04	Hill, Alexis	1-2	1-2	0-2	0	0	0	3	3	1	1	0	0	19
15	Cunningham, Cailey	0-2	0-1	0-0	2	0	2	0	0	1	0	0	0	7
20	Long, Caitlyn	3-6	1-3	2-2	3	4	7	1	9	1	0	0	1	24
32	Blevins, Lauryn	4-10	1-3	2-2	2	4	6	4	11	0	2	3	2	17
33	Bertrand, Joi	0-4	0-0	2-2	1	1	2	2	0	4	1	1	1	12
34	Hellyer, Morgan	1-3	1-3	0-0	1	0	1	1	3	0	1	0	0	7
Team					1	4	5							
Totals		24-68	13-35	13-18	15	31	46	22	74	13	14	4	7	200
1st - FG %:		5-17	27.9%	2nd: 6-17	47.1%	3rd: 4-14	28.6%	4th: 7-19	36.8%	Game: 24-68	35.3%	Deadball		
3FG %:		2-8	25.0%	6-11	54.5%	1-6	16.7%	4-10	40.0%	13-35	37.1%	Rebounds		
FT %:		2-2	100.0%	2-2	100.0%	4-6	66.7%	5-8	62.5%	13-18	72.2%	3,3		

#### Arkansas 82

#	Player	Total		3-Ptr		Rebounds		PF	TP	A	TO	Blk	Stl	Min
		FG-FGA	FT-FTA	FG-FGA	FT-FTA	Off	Def							
10	WILLIAMS, Kiara	2-3	0-0	1-2	4	2	6	3	5	0	0	1	0	13
22	ZIMMERMAN, Bailey	0-7	0-4	0-0	2	2	4	2	0	1	2	0	1	30
03	MONK, Malica	4-14	0-2	6-8	2	3	5	3	14	7	1	0	3	34
14	MASON, Jaiilyn	4-12	1-3	0-0	0	7	7	1	9	3	2	1	2	31
21	COSPER, Devin	6-9	3-4	1-4	1	4	5	1	31	1	2	1	2	29
01	NORTHCROSS-BAKER,	4-8	3-6	6-10	1	2	3	1	17	2	1	0	4	23
04	SWENSON, Keiryn	0-2	0-0	0-0	1	2	3	2	0	2	0	0	0	9
13	SPANGLER, Grayce	0-1	0-0	0-0	0	0	0	0	0	0	0	0	0	2
20	STOUT, Sydney	0-0	0-0	0-0	0	0	0	0	0	0	0	0	0	2
24	THOMAS,Taylah	3-4	0-1	0-1	3	5	8	1	6	0	0	0	0	24
30	WEAVER, Macy	0-0	0-0	0-0	2	0	2	0	0	1	0	0	0	3
Team					0	3	3							
Totals		28-74	10-25	16-25	16	30	46	14	82	16	9	3	12	200
1st - FG %:		5-17	29.4%	2nd: 4-18	22.2%	3rd: 7-18	38.9%	4th: 12-21	57.1%	Game: 28-74	37.8%	Deadball		
3FG %:		3-6	50.0%	1-3	33.3%	1-4	25.0%	5-8	62.5%	10-25	40.0%	Rebounds		
FT %:		7-10	70.0%	6-8	75.0%	3-5	60.0%	0-2	0.0%	16-25	64.0%	5,1		

Officials: Brian Hall, Luis Gonzalez, Katie Lukanich  
Technical fouls: Northeastern State Univ.-None. Arkansas-None.  
Attendance: 1200  
EXHIBITION GAME  
Estimated Actual Attendance: 816

Score by periods	1st	2nd	3rd	4th	Total
Northeastern State Univ.	14	24	13	23	74
Arkansas	20	15	18	29	82

Last FG - NESU 4th-00:35, AR 4th-01:01.  
Largest lead - NESU by 5 3rd-09:05, AR by 13 1st-03:09.  
NESU led for 09:13. AR led for 24:08. Game was tied for 06:39.

Points	In	Off	2nd	Fast	Bench
NESU	14	6	13	2	28
AR	30	14	9	12	23

Score tied - 9 times.  
Lead changed - 6 times.



NOVEMBER 10, 2017

## SAM HOUSTON STATE

### ARKANSAS

Bud Walton Arena  
Fayetteville, Arkansas  
Elementary Day

Devin Cosper had her first Razorback double-double with 17 points and 12 rebounds in the come-from-behind win. Malica Monk's game-high 18 points ties the junior's career-best.

54  
65

#### SHSU 54 • 0-1

#	Player	Total		3-Ptr		Rebounds		PF	TP	A	TO	Blk	Stl	Min
		FG-FGA	FT-FTA	FG-FGA	FT-FTA	Off	Def							
42	McKinney, Kiera	1-4	0-0	2-4	2	3	5	1	4	2	1	2	0	29
35	Cooper, Ashleigh	0-3	0-0	0-0	1	3	4	4	0	1	2	1	0	14
01	Orramas, Jennifer	4-12	1-5	2-2	0	6	6	1	11	4	3	0	0	34
20	Morgan, Akarian	2-8	2-6	0-0	1	5	6	3	6	2	2	0	1	31
34	Harrell, Rachel	2-6	2-6	0-0	0	1	1	0	6	0	1	0	0	20
00	Ferriera, Keyvin	2-8	0-4	0-0	1	2	3	0	4	2	0	0	1	15
04	Ballew, Jada	1-4	0-2	0-0	0	1	1	0	2	0	0	0	0	6
05	Maxwell, Dominique	4-10	2-4	0-2	3	4	7	2	10	1	1	0	0	20
15	Harston, Tia	0-0	0-0	0-0	0	0	0	0	0	0	0	0	0	1
21	Baxter, Lydia	3-7	0-0	3-3	5	3	8	1	9	0	1	1	2	20
22	Mickens, Anastacia	1-1	0-0	0-0	0	6	6	2	2	0	2	1	0	10
Team					2	2	4							
Totals		20-63	7-27	7-11	15	36	51	14	54	10	15	5	3	200
1st - FG %:		4-12	33.3%	2nd: 6-17	35.3%	3rd: 4-17	23.5%	4th: 6-17	35.3%	Game: 20-63	31.7%	Deadball		
3FG %:		1-4	25.0%	2-6	33.3%	1-1	100.0%	3-8	37.5%	7-27	25.9%	Rebounds		
FT %:		4-6	66.7%	1-1	100.0%	0-0		2-4	50.0%	7-11	63.6%	3		

#### Arkansas 65 • 1-0

#	Player	Total		3-Ptr		Rebounds		PF	TP	A	TO	Blk	Stl	Min
		FG-FGA	FT-FTA	FG-FGA	FT-FTA	Off	Def							
10	WILLIAMS, Kiara	3-4	0-0	1-1	0	2	2	1	7	1	0	0	0	17
22	ZIMMERMAN, Bailey	1-7	0-4	0-0	0	3	3	1	2	2	1	0	2	17
03	MONK, Malica	7-13	1-4	3-4	0	2	2	18	4	1	0	4	33	
14	MASON, Jaiilyn	3-10	2-4	0-0	0	5	5	0	8	4	1	3	25	
21	COSPER, Devin	6-13	4-11	1-2	2	10	12	3	17	2	4	1	31	
01	NORTHCROSS-BAKER,	1-8	1-6	0-0	2	0	2	3	3	2	1	0	0	20
04	SWENSON, Keiryn	2-8	1-4	0-0	0	1	1	1	5	0	0	2	0	18
13	SPANGLER, Grayce	0-1	0-0	0-2	0	0	0	0	0	0	0	0	0	4
20	STOUT, Sydney	0-1	0-0	1-2	1	0	1	1	1	0	1	0	0	6
24	THOMAS,Taylah	2-2	0-0	0-0	1	3	4	0	4	0	0	0	0	17
30	WEAVER, Macy	0-0	0-0	0-0	0	0	0	0	0	0	0	0	0	2
Team					4	3	7							
Totals		25-67	9-33	6-11	10	29	39	12	65	15	9	7	8	200
1st - FG %:		2-18	11.1%	2nd: 8-17	47.1%	3rd: 8-16	50.0%	4th: 7-16	43.8%	Game: 25-67	37.3%	Deadball		
3FG %:		1-11	9.1%	1-6	16.7%	1-6	16.7%	2-8	25.0%	9-33	27.3%	Rebounds		
FT %:		0-0	0.0%	1-2	50.0%	3-8	37.5%	3-7	42.9%	6-11	54.5%	1		

Officials: Eric Brewton, Kelly Johnson, Eric Baker

Technical fouls: SHSU-None. Arkansas-None.

Attendance: 4719

Estimated Actual Attendance: 4,418

Score by periods	1st	2nd	3rd	4th	Total
SHSU	13	15	9	17	54
Arkansas	5	18	23	19	65

Last FG - SHSU 4th-00:38, AR 4th-02:09.

Largest lead - SHSU by 13 2nd-07:26, AR by 23 4th-06:19.

SHSU led for 19:51. AR led for 17:54. Game was tied for 01:44.

Score tied - 2 times.

Lead changed - 2 times.



NOVEMBER 12, 2017

## SAMFORD

Bud Walton Arena  
Fayetteville, Arkansas

Career best points and rebounds for Malica Monk. Career best points for Taylah Thomas and Kiara Williams.

63  
84

#### Samford 63 • 0-2

#	Player	Total		3-Ptr		Rebounds		PF	TP	A	TO	Blk	Stl	Min
		FG-FGA	FG-FGA	FT-FTA	Off	Def	Tot							
32	Olivia Crozier	5-8	0-0	0-0	2	5	7	2	10	1	1	0	0	22
35	Samantha Fitzgerald	2-9	0-1	2-2	2	5	7	4	6	1	1	0	1	31
02	Hannah Nichols	6-13	3-7	2-2	1	5	6	2	17	3	1	1	0	32
12	Charity Brown	2-6	1-3	2-4	1	5	6	4	7	4	2	0	1	28
31	Cassidy Williams	3-9	1-5	0-0	0	1	1	1	7	1	1	0	0	24
03	Shaunta Battle	2-2	0-0	1-2	1	1	2	4	5	1	2	0	1	16
11	Paige Serup	1-3	0-2	2-2	0	2	2	2	4	0	0	0	0	18
22	Raven Omar	0-1	0-1	0-0	0	0	0	2	0	3	1	0	0	6
33	Makaila Woolard	2-8	1-3	2-2	0	0	0	2	7	2	2	0	0	18
45	Natalie Armstrong	0-0	0-0	0-0	0	0	0		0	1	2	0	0	5
	Team				1	2	3							
Totals		23-59	6-22	11-14	8	26	34	23	63	17	13	1	3	200
1st - FG: 5-13 38.5%		2nd: 7-17 41.2%		3rd: 5-13 38.5%		4th: 6-16 37.5%		Game: 23-59 39.0%						Deadball
3FG: 2-6 33.3%		0-3 0.0%		1-4 25.0%		3-9 33.3%		6-22 27.3%						Rebounds
FT: 6-10 60.0%		3-5 60.0%		3-5 60.0%		3-5 60.0%		12-19 63.2%						



NOVEMBER 20, 2017

ARKANSAS

ORU

Mabee Arena  
Tulsa, Oklahoma

77

66

Career-best 24 points for Malica Monk and career-best tying night with 21 points for Devin Cosper. Arkansas forced 14 ORU turnovers while only turning it over four times.

## Arkansas 77 • 3-1

#	Player	Total			3-Ptr			Rebounds			PF	TP	A	TO	Bk	Stl	Min
		FG	FGA	FT	FTA	Off	Def	Tot	PF	TP							
10	WILLIAMS, Kiara	3-7	0-0	2-2	3-2	5	4	9	0	1	0	1	17				
22	ZIMMERMAN, Bailey	1-7	0-3	0-2	1-3	4	3	2	1	0	1	0	21				
03	MONK, Malica	9-16	1-3	5-6	0-3	3	3	1	24	4	1	0	1	32			
14	MASON, Jaliyn	3-9	0-0	0-0	1-1	2	1	6	1	1	0	0	32				
21	COSPER, Devin	8-19	3-10	2-2	0-10	10	2	21	1	0	0	2	38				
01	NORTHCROSS-BAKER,	3-6	1-4	1-2	0-1	1	3	8	1	0	0	0	22				
04	SWENSON, Keiryn	2-3	1-2	1-2	0-2	2	2	6	0	1	0	1	15				
24	THOMAS, Taylah	0-3	0-1	2-2	2-7	9	2	2	0	0	1	0	23				
Team						2	3	5									
Totals		29-70	6-23	13-18	9-32	41	18	77	8	4	2	5	200				
1st - FG %:		9-10	40.4%	2nd: 7-19	36.8%	4th: 6-14	42.9%	Game: 29-70	41.4%	Deadball							
3FG %:		3-7	42.9%	1-5	20.0%	2-8	25.0%	0-3	0.0%	6-23	26.1%						
FT %:		4-4	100.0%	0-2	0.0%	0-0	0.0%	9-12	75.0%	12-18	66.7%						

## Oral Roberts 66 • 1-3

#	Player	Total			3-Ptr			Rebounds			PF	TP	A	TO	Bk	Stl	Min
		FG	FGA	FT	FTA	Off	Def	Tot	PF	TP							
15	Ihim, Faith	5-9	0-1	3-6	4-7	11	2	13	2	4	0	0	0	28			
44	Martinez, Maria	3-8	0-1	5-6	1-8	9	3	11	4	2	0	0	0	32			
13	Skalnik, Rachel	1-3	1-3	0-0	0-0	0	4	3	0	1	0	0	21				
32	Garvie, Sarah	4-12	4-12	0-0	0-5	5	1	12	3	2	0	0	33				
23	Uppe, Kent Jo	1-7	0-2	4-4	0-1	1	3	6	0	1	0	1	20				
02	Doyle, Jordan	0-0	0-0	0-0	0-0	0	1	0	0	1	0	0	1				
10	Mayberry, Maya	2-5	2-3	2-2	0-1	1	1	8	1	0	0	0	1	22			
20	Schumacher, Regan	0-1	0-0	0-0	0-1	1	0	0	0	0	0	0	2				
22	Gilbert, Jordan	1-4	0-0	0-0	1-4	5	4	2	1	2	0	0	20				
24	Brotons, Montserrat	5-9	0-0	1-1	1-3	4	1	11	1	0	0	0	21				
Team						0	4	4									
Totals		22-58	7-22	15-19	7-34	41	20	66	12	14	0	2	200				
1st - FG %:		8-16	50.0%	2nd: 6-14	42.9%	4th: 3-13	23.1%	Game: 22-58	37.9%	Deadball							
3FG %:		3-6	50.0%	1-7	14.3%	1-5	20.0%	7-22	31.8%	6-23	26.1%						
FT %:		2-4	50.0%	0-0	0.0%	2-4	50.0%	10-10	100.0%	15-19	78.9%						

Officials: Greg Small, Nick Marshall, Michelle Kramer  
Technical fouls: Arkansas-None. Oral Roberts-None.  
Attendance: 2503

Score by periods	1st	2nd	3rd	4th	Total
Arkansas	25	15	16	21	77
Oral Roberts	21	15	13	17	66

Last FG - AR 4th-01:52, ORU 4th-00:29.  
Largest lead - AR by 14 4th-07:23, ORU by 6 1st-04:48.  
AR led for 30:59, ORU led for 00:32. Game was tied for 00:29.

Score tied - 1 time.  
Lead changed - 1 time.



NOVEMBER 25, 2017

ARKANSAS  
NEW MEXICO STATEDon Haskins Center  
El Paso, Texas

69

60

Devin Cosper with her third double-double with 17 points and 11 rebounds. Malica Monk led all scorers with 22 points. Williams posted her first career double-double with 11 points and 11 rebounds.

## Arkansas 69 • 4-2

#	Player	Total			3-Ptr			Rebounds			PF	TP	A	TO	Bk	Stl	Min
		FG	FGA	FT	FTA	Off	Def	Tot	PF	TP							
10	WILLIAMS, Kiara	5-11	0-0	1-3	4-7	11	2	11	0	3	0	2	25				
03	MONK, Malica	9-17	1-4	3-7	3-4	7	0	22	2	5	1	4	38				
14	MASON, Jaliyn	1-8	1-4	0-0	3-3	6	3	3	2	1	2	2	39				
21	COSPER, Devin	6-17	2-9	3-4	2-9	11	2	17	4	2	1	2	39				
22	ZIMMERMAN, Bailey	0-1	0-1	1-2	2-1	3	2	1	2	0	0	0	24				
01	NORTHCROSS-BAKER,	2-7	1-4	2-4	1-1	2	4	7	0	2	0	2	18				
04	SWENSON, Keiryn	2-5	1-4	0-0	2-4	6	1	5	0	4	0	0	14				
24	THOMAS, Taylah	0-4	0-0	3-4	3-4	7	1	3	0	1	0	0	14				
Team						2	0	2									
Totals		25-70	6-26	13-24	22-33	55	15	69	10	18	3	12	200				
1st - FG %:		4-19	21.1%	2nd: 4-14	28.6%	3rd: 9-18	50.0%	4th: 8-19	42.1%	Game: 25-70	35.7%	Deadball					
3FG %:		1-7	14.3%	1-6	16.7%	3-7	42.9%	1-6	16.7%	6-26	23.1%						
FT %:		2-4	50.0%	3-3	100.0%	3-3	100.0%	5-14	35.7%	13-24	54.2%						

## NM State 60 • 2-4

#	Player	Total			3-Ptr			Rebounds			PF	TP	A	TO	Bk	Stl	Min
		FG	FGA	FT	FTA	Off	Def	Tot	PF	TP							
01	Cooper, Jasmine	1-8	0-0	2-2	2-3	5	2	4	2	2	0	1	21				
30	Pack, Gia	7-15	0-4	3-5	4-2	6	4	17	1	3	0	0	26				
02	Salas, Brooke	5-17	2-8	3-5	6-4	10	4	15	1	4	1	1	30				
12	Williams, Zaire	2-5	1-3	2-2	0-2	2	4	7	2	6	1	1	38				
21	Mills, Monique	2-6	1-2	0-0	0-2	2	1	5	2	0	0	5	33				
00	Wilmore, Pam	0-1	0-0	0-0	0-0	0	0	0	0	0	0	0	3				
03	Childress, Tonishia	0-2	0-1	0-0	0-3	3	1	0	1	1	0	1	14				
20	Mills, Domonique	2-4	0-0	0-0	1-3	4	2	4	0	1	0	1	16				
22	Atkinson, Kaleb	0-0	0-0	0-0	0-0	0	0	0	0	0	0	0	0				
33	Toilolo, Jeneva	4-9	0-0	0-0	0-6	6	3	8	0	1	0	0	19				
Team						1	2	3									
Totals		23-67	4-18	10-14	14-27	41	21	60	9	18	2	10	200				
1st - FG %:		8-21	38.1%	2nd: 4-15	26.7%	3rd: 6-16	37.5%	4th: 5-15	33.3%	Game: 23-67	34.3%	Deadball					
3FG %:		1-6	16.7%	0-2	0.0%	2-4	50.0%	1-6	16.7%	4-18	22.2%						
FT %:		0-2	0.0%	0-0	0.0%	1-2	50.0%	9-10	90.0%	10-14	71.4%						

Officials: Lisa Mattingly, Beverly Roberts, Tina Napier  
Technical fouls: Arkansas-None. NM State-None.  
Attendance: 250

Score by periods	1st	2nd	3rd	4th	Total
Arkansas	11	12	24	22	69
NM State	17	8	15	20	60

Last FG - AR 4th-00:16, NMSU 4th-00:51.  
Largest lead - AR by 11 3rd-03:45, NMSU by 7 1st-01:06.  
AR led for 19:50, NMSU led for 19:16. Game was tied for 00:54.

Score tied - 2 times.  
Lead changed - 8 times.



NOVEMBER 24, 2017

ARKANSAS

UTEP

Don Haskins Center  
El Paso, Texas

61

64

Arkansas started the game 0-for-15 in the first quarter and made a valiant comeback that fell short. Devin Cosper reached double figures in the third quarter and she and Malica Monk were in double figures for the fifth time.

## Arkansas 61 • 3-2

#	Player	Total			3-Ptr			Rebounds			PF	TP	A	TO	Bk	Stl	Min
		FG	FGA	FT	FTA	Off	Def	Tot									
10	WILLIAMS, Kiara	0-2	0-0	1-2	1	0	1	3	1	0	1	0	1	8			
03	MONK, Malica	3-15	1-6	3-3	0-2	2	2	10	5	1	0	3	36				
14	MASON, Jaliyn	3-9	2-6	0-0	1-3	4	1	8	2	0	0	1	24				
21	COSPER, Devin	8-17	6-13	0-2	1-4	5	2	22	0	1	0	4	31				
22	ZIMMERMAN, Bailey	1-5	0-3	2-2	2-1	3	0	4	2	0	0	2	23				
01	NORTHCROSS-BAKER,	3-12	0-6	1-1	2-0	2	1	7	3	0	0	0	16				
04	SWENSON, Keiryn	2-7	2-6	0-2	1-1	2	0	6	0	1	0	2	16				
13	SPANGLER, Grayce	0-0	0-0	0-0	0-0	0	0	0	0	0	0	0	5				
20	STOUT, Sydney	0-0	0-0	0-0	0-0	0	0	0	0	0	0	0	6				
24	THOMAS, Taylah	0-2	0-1	1-2	2-2	4	1	1	0	0	0	0	16				
30	WEAVER, Macy	1-1	0-0	0-0	2-1	3	3	2	1	0	4	1	19				
	Team					0	1	1									
Totals		21-70	11-41	8-14	12	15	27	15	61	13	4	14	20				



DECEMBER 3, 2017

## ARKANSAS

### KANSAS

Allen Fieldhouse  
Lawrence, Kansas

60

71

Devin Cosper and Malica Monk made it eight games in a row with double-figure scoring. Kiara Williams posted a career-best 16 rebounds. Second consecutive game in double-figures for Jaiilyn Mason.

#### Arkansas 60 • 5-3

#	Player	Total		3-Ptr		Rebounds		PF	TP	A	TO	Bk	Stl	Min
		FG-FGA	FG-FGA	FT-FTA	Off Def Tot	Off Def Tot	Off Def Tot							
01	NORTHCROSS-BAKER, f	1-6	0-4	0-0	0 2 2	4 4 2	1 0 0	0 0	14					
03	MONK, Malica g	8-20	2-3	4-4	3 4 7	4 21	5 3 0	0 0	32					
04	SWENSON, Keiryn g	1-3	1-3	1-2	0 2 2	1 4	0 1 1	0 0	18					
10	WILLIAMS, Kiara c	3-6	0-0	0-1	5 11 16	3 6	0 4 2	0 0	28					
13	SPANGLER, Grayce g	0-0	0-0	0-0	0 0 0	0 0	0 0 0	0 0	1					
14	MASON, Jaiilyn g	4-9	2-5	0-0	0 2 2	5 10	1 2 0	2 3	33					
21	COSPER, Devin g	5-23	1-11	6-8	1 2 3	3 17	0 2 1	1 39						
22	ZIMMERMAN, Bailey f	0-1	0-0	0-0	0 2 2	4 0	0 1 1	0 24						
24	THOMAS, Taylah g	0-1	0-1	0-0	0 0 0	0 0	0 0 0	0 9						
30	WEAVER, Macy g	0-0	0-0	0-0	0 0 0	0 0	0 0 0	1 0	2					
Team					4 2 6									
Totals		22-69	5-27	11-15	13 27 40	24 60	7 13 6	3 200						
1st - FG %: 41.7 23.5% 2nd: 5-16 31.3% 3rd: 6-15 40.0% 4th: 5-21 23.8% Game: 22-69 31.5% Deadball Rebounds 2														
3FG %: 1-5 20.0% 2nd: 0-4 0.0% 3rd: 2-4 50.0% 4th: 1-8 12.5% 5-27 18.9% 11-15 73.3%														
FT %: 3-5 60.0%														

#### Kansas 71 • 7-0

#	Player	Total		3-Ptr		Rebounds		PF	TP	A	TO	Bk	Stl	Min
		FG-FGA	FG-FGA	FT-FTA	Off Def Tot	Off Def Tot	Off Def Tot							
00	Lyons, Christalah g	6-17	0-3	3-6	0 4 4	3 15	3 2 1	5 28						
02	Osorio, Brianna g	2-6	0-2	4-4	0 3 3	2 8	2 7 1	1 33						
12	Wilson, Micaela f	0-2	0-1	0-0	0 3 3	0 0	1 2 0	0 8						
14	Richardson, Austin f	1-7	0-2	0-0	1 5 6	2 2	0 1 1	0 22						
22	Cheadle, Chayla g	2-5	1-2	1-2	3 2 5	2 6	2 0 0	0 28						
23	Watts, Eboni g	0-1	0-0	0-0	0 1 1	0 0	0 0 0	0 3						
23	Kopatich, Kylee g	7-14	2-5	10-11	2 2 4	3 26	1 2 1	2 38						
35	Helgren, Bailey c	2-3	0-0	0-0	2 1 3	1 4	0 0 0	0 17						
50	Boric, Sara g	0-0	0-0	0-0	0 1 1	0 0	0 0 0	0 3						
50	Johnson, Tyler g	5-7	0-0	0-0	3 2 5	3 10	0 1 1	0 20						
Team					3 7 10									
Totals		25-62	3-15	18-25	14 36 50	17 71	9 15 5	8 200						
1st - FG %: 61.7 35.3% 2nd: 6-13 46.2% 3rd: 8-20 40.0% 4th: 5-12 41.7% Game: 25-62 40.3% Deadball Rebounds 3														
3FG %: 1-4 25.0% 2nd: 0-3 0.0% 3rd: 3-3 100.0% 4th: 0-3 0.0% 5-12 41.7% 18-25 72.0%														
FT %: 3-5 60.0%														

Officials: Scott Yarbrough, Jesse Dickerson, Michael McConnell  
Technical fouls: Arkansas-None. Kansas-None.  
Attendance: 1,795  
FO: Arkansas #14 (0:20.8)

Score by periods	1st	2nd	3rd	4th	Total
Arkansas	12	10	21	17	60
Kansas	16	14	21	20	71

Last FG - AR 4th-01:10, KU 4th-03:10.  
Largest lead - AR by 2 1st-09:40, KU by 13 3rd-08:05.  
AR led for 01:17, KU led for 35:31. Game was tied for 03:03.

Points	In	Off	2nd	Fast	Bench
AR	28	10	8	6	6
KU	42	17	11	14	16

Score tied - 2 times.  
Lead changed - 3 times.



DECEMBER 7, 2017

## CHARLOTTE

### ARKANSAS

Bud Walton Arena  
Fayetteville, Arkansas

72

73

Devin Cosper had a career-best 25 points and 14 rebounds in comeback win. Arkansas trailed by seven at the half and was tied at the 30 before winning.

#### Charlotte 72 • 3-6

#	Player	Total		3-Ptr		Rebounds		PF	TP	A	TO	Bk	Stl	Min
		FG-FGA	FG-FGA	FT-FTA	Off Def Tot	Off Def Tot	Off Def Tot							
15	JAMISON-MYERS, Nyila f	3-9	0-0	2-3	3 1 4	5 8	1 1 0	0 13						
34	PEARSON, Dara f	3-10	0-0	0-2	9 10 19	2 6	0 0 2	0 35						
03	LINNEY, Mariah g	0-3	0-0	0-0	1 1 2	2 0	2 0 0	0 9						
04	RAVENTOS, Laia g	6-18	2-3	3-4	0 6 6	2 17	6 6 1	6 35						
04	RANSOM, Amaya g	6-19	2-7	0-1	0 5 5	1 14	2 5 0	0 37						
10	MARTIN, Jada g	0-0	0-0	0-0	0 0 0	0 0	0 0 0	0 3						
13	WILSON, Octavia g	2-6	0-2	1-2	1 2 3	2 5	4 1 0	1 27						
22	HARLEY, Lauren g	2-3	0-0	3-4	0 6 6	2 7	0 1 0	0 18						
30	ROBINSON, Jaida g	5-6	1-1	4-4	1 5 6	4 15	0 3 0	0 23						
Team					3 4 7									
Totals		27-74	5-13	13-20	18 40 58	20 72	15 17 3	7 200						
1st - FG %: 8-21 38.1% 2nd: 8-16 50.0% 3rd: 3-17 17.6% 4th: 8-20 40.0% Game: 27-74 36.5% Deadball Rebounds 2														
3FG %: 2-4 50.0% 2nd: 1-2 50.0% 3rd: 0-2 0.0% 4th: 2-5 40.0% 5-13 38.5%														
FT %: 0-1 0.0% 2-2 100.0% 6-10 60.0% 5-7 71.4% 13-20 65.0%														

#### Arkansas 73 • 6-3

#	Player	Total		3-Ptr		Rebounds		PF	TP	A	TO	Bk	Stl	Min
		FG-FGA	FG-FGA	FT-FTA	Off Def Tot	Off Def Tot	Off Def Tot							
22	ZIMMERMAN, Bailey f	2-9	1-6	1-1	1 2 3	0 6	1 3 1	0 28						
10	WILLIAMS, Kiara c	3-8	0-0	3-11	8 4 12	3 9	0 0 3	4 29						
02	MONK, Malica g	6-18	2-6	1-2	1 3 4	4 15	3 1 0	3 38						
14	MASON, Jaiilyn g	4-10	2-6	2-2	0 4 4	2 12	4 1 1	1 30						
21	COSPER, Devin g	9-23	2-7	5-6	3 11 14	2 25	2 3 0	1 40						
01	NORTHCROSS-BAKER, f	1-2	1-2	0-0	0 3 3	0 3	1 1 0	0 11						
04	SWENSON, Keiryn g	1-5	1-4	0-0	0 2 2	3 0	0 0 0	0 13						
24	THOMAS, Taylah g	0-0	0-0	0-0	0 0 0	3 0	0 0 0	1 4						
30	WEAVER, Macy g	0-0	0-0	0-2	2 0 2	3 0	0 1 0	0 7						
Team					0 1 1									
Totals		26-75	9-31	12-24	15 30 45	19 73	11 10 5	10 200						
1st - FG %: 5-16 31.3% 2nd: 6-22 27.3% 3rd: 7-19 36.8% 4th: 8-18 44.4% Game: 26-75 34.7% Deadball Rebounds 6,4														
3FG %: 3-9 33.3% 2nd: 2-9 22.2% 3rd: 1-4 25.0% 4th: 3-9 33.3% 9-31 29.0%														
FT %: 1-3 33.3% 2-5 40.0% 4-8 50.0% 5-8 62.5% 12-24 50.0%														

Officials: Bob Trammell, Felicia Grinter, Jesse Dickerson  
Technical fouls: Charlotte-None. Arkansas-None.  
Attendance: 1,169  
Estimated Actual Attendance: 733  
Fouled out: Charlotte #15, Jamison-Myers (1:50, 4Q)

Score by periods	1st	2nd	3rd	4th	Total
Charlotte	18	19	12	23	72
Arkansas	14	16	19	24	73

Last FG - CHA 4th-00:01, AR 4th-00:53.  
Largest lead - CHA by 9 3rd-09:40, AR by 6 4th-00:53.  
CHA led for 24:48, AR led for 10:50. Game was tied for 04:22.

Score tied - 3 times.  
Lead changed - 15 times.



DECEMBER 10, 2017

## TULSA

### ARKANSAS

Bud Walton Arena  
Fayetteville, Arkansas

41

67

Arkansas' 61 rebounds is the most since the 2014-15 season. Devin Cosper and Malica Monk have scored in double figures in all 10 games and Cosper posted back-to-back double-doubles.

#### Tulsa 41 • 4-6

#	Player	r	Total		3-Ptr		Rebounds			PF	TP	A	TO	Bk	Stl	Min
			FG-FGA	FG-FGA	FT-FTA	Off	Def	Total								
33	POLK, Crystal	f	4-11	0-0	0-1	4	4	8	1	8	0	2	2	0	0	19
02	PEREZ, Tatyana	g	1-8	0-3	0-0	0	1	1	0	2	0	2	0	1	0	23
03	WAKEFIELD, Erika	g	3-8	0-1	0-0	0	4	4	3	6	0	0	0	0	0	27
12	DICKSON, Shug	g	3-10	0-1	1-1	0	3	3	2	7	0	0	0	0	1	19
21	LESCAY, Rebecca	g	0-5	0-0	0-0	1	2	3	2	0	0	0	0	0	1	21
00	ELLIOTT, Kendrick	g	1-5	0-0	4-6	3	3	6	3	6	0	1	1	0	0	18
04	RICHARDS, Addison	g	0-1	0-1	0-0	1	1	2	0	0	0	0	0	0	0	6
05	BUTLER, Jasmine	g	2-3	0-0	0-0	1	1	2	0	4	0	0	0	0	0	5
10	GAULDEN, Alexis	g	0-3	0-2	0-0	0	2	2	3	0	2	2	0	0	0	15
11	PARKER, Ebony	g	2-7	2-6	0-0	1	1	2	1	6	1	0	0	0	0	20
22	BRADY, Torgane	g	0-6	0-2	0-2	0	1	1	1	2	0	0	0	0	0	15
25	SCALES, Tyjae'	g	0-2	0-0	2-0	1	3	4	0	0	0	0	0	0	0	12
	Team					1	0	1								
	Totals		16-69	2-16	7-10	13	26	39	16	41	5	7	3	4	200	
1st: FG %: 5-15 33.3% 2nd: 4-19 21.1% 3rd: 3-17 17.6% 4th: 4-18 22.2% Game: 16-69 23.2% Deadball																
3FG %: 2-3 66.7% 2nd: 2-8 25.0% 3rd: 0-2 0.0% 4th: 0-3 0.0% 2nd: 2-16 12.5% Rebounds																



DECEMBER 21, 2017  
**ARKANSAS** 43  
**ARIZONA STATE** 89  
Wells Fargo Arena  
Tempe, Arizona  
Malica Monk scored in double figures for the 12th consecutive game.

#### Arkansas 43 • 8-4

#	Player	Total		3-Ptr		Rebounds		PF	TP	A	TO	Bk	Stl	Min
		FG-FGA	FG-FGA	FT-FTA	FT-FTA	Off	Def							
10	WILLIAMS, Kiara	r	0-2	0-0	3-4	0	4	1	3	0	1	1	0	16
22	ZIMMERMAN, Bailey	f	1-3	0-1	0-0	2	2	4	1	2	1	3	1	0 24
03	MONK, Malica	c	5-19	0-4	2-2	0	2	1	12	2	0	0	1	30
14	MASON, Jaiilyn	g	3-7	0-1	0-0	0	4	0	6	1	5	1	0	31
21	COSPER, Devin	g	3-13	2-5	0-0	0	1	1	2	8	1	2	0	27
01	NORTHCROSS-BAKER,	g	3-8	2-6	0-0	1	0	1	0	8	1	4	0	0 19
04	SWENSON, Keiryn	g	1-3	0-1	0-0	2	1	3	0	2	1	3	1	0 15
13	SPANGLER, Grayce	g	0-1	0-0	0-0	1	1	2	0	0	0	0	0	7
20	STOUT, Sydney	g	0-0	0-0	0-0	0	0	0	0	0	0	0	0	5
24	THOMAS,Taylah	g	1-1	0-0	0-0	0	3	3	2	0	3	0	0	0 19
30	WEAVER, Macy	g	0-0	0-0	0-0	0	1	1	2	0	0	0	0	7
Team		17-57		4-18	5-6	9	26	35	12	43	7	23	4	1 200
Totals		17-57		4-18	5-6	9	26	35	12	43	7	23	4	1 200
1st - FG %:		4-9	44.4%	2nd: 3-18	16.7%	3rd: 4-15	26.7%	4th: 6-15	40.0%	Game: 17-57	29.8%	Deadball		
3FG %:		0-1	0.0%	0-3	0.0%	2-5	40.0%	2-7	28.6%	4-18	22.2%	Rebounds		
FT %:		0-0	0.0%	0-0	0.0%	1-2	50.0%	4-4	100.0%	5-6	83.3%	1		

#### Arizona State 89 • 9-3

#	Player	Total		3-Ptr		Rebounds		PF	TP	A	TO	Bk	Stl	Min
		FG-FGA	FG-FGA	FT-FTA	FT-FTA	Off	Def							
22	Ekmarm, Courtney	f	8-13	7-10	0-0	1	2	3	2	23	0	0	1	28
42	Ibisi, Kianna	f	6-10	0-0	1-2	0	1	1	0	13	3	1	1	0 20
33	Johnson-Chapman, Cha	c	6-8	0-0	1-2	2	4	6	1	13	0	2	1	1 22
01	Richardson, Reili	g	1-6	0-2	0-0	0	4	0	0	2	9	0	0	2 26
11	Ryan, Robbi	g	2-8	0-0	0-0	1	1	2	2	4	5	2	0	2 24
04	Russell, Kiara	g	4-6	0-0	1-2	0	4	4	3	9	6	0	0	1 24
21	Elenga, Sophia	g	1-3	0-1	0-0	4	5	9	3	2	3	2	0	2 20
24	Sanders, Bre'yanina	g	3-5	1-3	0-0	0	2	2	1	7	0	0	0	1 18
42	Rubin, Eva	g	1-2	0-0	0-0	0	1	1	0	2	0	1	0	0 4
52	Ruden, Jamie	g	5-12	4-4	0-0	1	2	3	1	14	1	0	1	1 14
Team		37-73		12-20	3-6	10	31	41	13	89	27	8	4	11 200
Totals		37-73		12-20	3-6	10	31	41	13	89	27	8	4	11 200
1st - FG %:		10-23	43.5%	2nd: 11-16	68.8%	3rd: 9-17	52.9%	4th: 7-17	41.2%	Game: 37-73	50.7%	Deadball		
3FG %:		6-7	85.7%	3-6	50.0%	2-4	50.0%	1-3	33.3%	12-20	60.0%	Rebounds		
FT %:		0-0	0.0%	1-2	50.0%	1-2	50.0%	1-2	50.0%	3-6	50.0%	3		

Officials: Michol Murray, Clarke Stevens, Benny Luna  
Technical fouls: Arkansas-None. Arizona State-None.  
Attendance: 1988

Score by periods	1st	2nd	3rd	4th	Total
Arkansas	8	6	11	18	43
Arizona State	26	26	21	16	89

Last FG - AR 4th-01:11, ASU 4th-00:14.  
Largest lead - AR by 2 1st-09:43, ASU by 50 4th-09:39.  
AR led for 02:20. ASU led for 36:56. Game was tied for 00:44.

Score tied - 1 time.  
Lead changed - 1 time.



DECEMBER 28, 2017  
**GRAMBLING STATE** 62  
**ARKANSAS** 79  
Bud Walton Arena  
Fayetteville, Arkansas  
Four players in double figures with Kiara Williams (12 pts/16 rebounds) and Malica Monk (10 pts/10 assists) posting double-doubles.

#### Grambling 62 • 3-8

#	Player	Total		3-Ptr		Rebounds		PF	TP	A	TO	Bk	Stl	Min
		FG-FGA	FG-FGA	FT-FTA	FT-FTA	Off	Def							
33	GIDEON, Kailyn	f	0-0	0-0	0-0	1	1	2	0	1	1	3	0	9
04	NEAL, Monisha	g	3-13	1-6	2-4	0	7	7	1	9	2	0	0	35
05	HILL, Shakyla	g	1-5	0-1	0-0	2	2	4	3	2	6	1	2	33
10	JEANS, Laneisha	g	1-4	1-4	0-0	0	4	4	2	3	0	0	0	1 14
12	COLEMAN, Justice	g	2-4	0-1	0-0	1	1	2	0	4	2	1	0	0 17
03	PARSONS, Takerra	g	2-2	0-0	0-0	0	2	2	1	4	1	1	0	0 7
11	WILLIAMS, Ariel	g	6-12	2-5	2-3	2	1	3	2	16	3	1	0	24
22	MCKINNEY, Deja	g	3-12	1-7	1-2	3	5	2	8	1	2	1	2	20
23	TAYLOR, Darae	g	0-2	0-0	0-0	0	1	1	0	0	0	1	0	0 6
24	JONES, Jekalen	g	1-1	0-0	0-0	0	0	0	0	2	0	0	0	0 5
26	TORIAN, Jazmine	g	2-6	2-3	0-0	1	1	2	4	6	0	1	0	1 20
30	WILLIAMS, Alexus	g	4-5	0-0	0-0	1	1	2	4	8	0	0	1	0 14
Team		25-66		7-27	5-9	10	25	35	21	62	12	14	6	6 200
Totals		25-66		7-27	5-9	10	25	35	21	62	12	14	6	6 200
1st - FG %:		4-13	30.8%	2nd: 5-18	27.8%	3rd: 8-19	42.1%	4th: 8-16	50.0%	Game: 25-66	37.9%	Deadball		
3FG %:		3-8	37.5%	1-5	20.0%	2-9	22.2%	1-5	20.0%	7-27	25.9%	Rebounds		
FT %:		0-0	0.0%	1-4	25.0%	2-2	100.0%	2-3	66.7%	5-9	55.6%	2,2		

#### Arkansas 79 • 9-4

#	Player	Total		3-Ptr		Rebounds		PF	TP	A	TO	Bk	Stl	Min
		FG-FGA	FG-FGA	FT-FTA	FT-FTA	Off	Def							
10	WILLIAMS, Kiara	f	4-10	0-0	4-8	8	8	16	1	12	0	0	0	1 22
22	ZIMMERMAN, Bailey	f	0-2	0-0	0-0	0	0	0	0	0	0	0	0	0 11
03	MONK, Malica	g	2-7	0-1	6-8	1	1	2	1	10	10	6	1	3 35
14	MASON, Jaiilyn	g	3-11	2-4	0-0	0	7	2	8	1	1	0	1	27
21	COSPER, Devin	g	6-15	4-7	0-2	0	4	4	2	16	3	2	0	0 34
01	NORTHCROSS-BAKER,	g	4-9	3-7	3-4	3	1	4	0	14	0	2	0	0 21
04	SWENSON, Keiryn	g	2-3	2-3	2-2	0	2	2	8	2	0	0	0	0 24
13	SPANGLER, Grayce	g	0-2	0-1	0-0	0	0	0	0	0	0	0	0	0 3
20	STOUT, Sydney	g	0-2	0-1	0-0	0	1	1	0	0	1	0	0	0 5
24	THOMAS,Taylah	g	3-3	0-0	2-2	2	2	8	1	2	0	1	1	1 13
30	WEAVER, Macy	g	1-2	0-0	1-1	2	1	3	1	3	0	0	0	0 5
Team		25-66		11-24	18-27	18	30	48	11	79	18	13	1	6 200
Totals		25-66		11-24	18-27	18	30	48	11	79	18	13	1	6 200
1st - FG %:		5-13	38.5%	2nd: 8-24	33.3%	3rd: 8-16	50.0%	4th: 4-13	30.8%	Game: 25-66	37.9%	Deadball		
3FG %:		4-9	44.4%	4-7	57.1%	3	75.0%	0-4	0.0%	11-24	45.8%	Rebounds		
FT %:		0-0	0.0%	5-9	55.6%	6-8	75.0%	6-6	100.0%	18-27	66.7%	5,3		

Officials: Missy Brooks, Marc Merritt, Kimberly Thebo  
Technical fouls: Grambling-None. Arkansas-None.  
Attendance: 1388  
Estimated Actual Attendance: 1,005

Score by periods	1st	2nd	3rd	4th	Total
Grambling	11	12	20	14	57
Arkansas	15	25	25	14	79

Last FG - GRAMWBB 4th-01:12, AR 4th-00:44.  
Largest lead - GRAMWBB None, AR by 24 4th-09:52.  
GRAMWBB led for 00:00. AR led for 39:38. Game was tied for 00:22.

Score tied - 0 times.  
Lead changed - 0 times.



DECEMBER 31, 2017  
**OLE MISS** 72  
**ARKANSAS** 73  
Bud Walton Arena  
Fayetteville, Arkansas  
Devin Cosper had her sixth double-double with 18 points and 11 rebounds.  
Malica Monk and Jaiilyn Mason also scored in double figures.

#### Ole Miss 72 • 10-4, 0-1 SEC

#	Player	Total		3-Ptr		Rebounds				PF	TP	A	TO	Blk	Stl	Min
		FG-FGA	FG-FGA	FT-FTA	Off	Def	Total									
01	GLOVER, BREE	c	0-0	0-0	0-0	0	7	7	3	0	3	3	1	2	26	
42	GIBSON, SHELBY	f	9-13	0-0	3-3	3	1	4	5	21	2	3	2	0	25	
00	NIXON, CHYNA	g	0-2	0-1	0-0	0	1	3	4	1	0	0	0	0	6	
20	MUHAMMAD, MADINAH	g	6-14	2-5	3-4	0	1	1	0	17	0	1	0	1	40	
25	ALSTON, ALISSA	g	5-15	3-5	5-7	0	5	5	3	18	7	2	0	1	40	
10	MUHATE, CECILIA	g	0-0	0-0	2-2	2	1	3	0	2	1	0	0	0	6	
12	JOHNSON, BARBARA	g	1-3	1-2	4-8	1	0	1	0	7	0	4	0	0	15	
32	RODGERS, KATE	g	0-2	0-2	2-2	1	2	3	0	2	0	1	0	0	11	
44	LEWIS, TORRI	g	1-3	1-3	0-0	1	0	1	4	3	1	1	0	1	22	
55	TAYLOR, PROMISE	g	1-3	0-0	0-0	0	3	3	1	2	0	2	1	1	9	
Team			23-55	7-18	19-26	10	24	34	17	72	14	17	4	6	200	
Totals			23-55	7-18	19-26	10	24	34	17	72	14	17	4	6	200	
1st: FG: 4-13 30.8%		2nd: 6-16 37.5%		3rd: 6-17 35.3%		4th: 7-9 77.8%		Game: 23-55 41.8%		7-18 38.9%		Deadball				
3FG: 2-7 28.6%		3-6 50.0%		1-4 25.0%		1-1 100%		19-23 82.6%		19-23 82.6%		Rebounds				
3-5 60.0%		3-5 60.0%		3-5 60.0%		3-5 60.0%		3-5 60.0%		3-5 60.0%		3-5 60.0%				



JANUARY 7, 2018

## ALABAMA ARKANSAS

Bud Walton Arena  
Fayetteville, Arkansas

83  
76

Devin Cosper recorded her seventh double-double with 24 points and 13 rebounds. Three players were in double figures with Malica Monk adding 21 points and Jaielyn Mason scoring 12 points.



JANUARY 11, 2018

## ARKANSAS GEORGIA

Stegeman Coliseum  
Athens, Georgia

TBA  
TBA

TBA

### Alabama 83 • 12-4, 2-1 SEC

#	Player	Total			3-Ptr			Rebounds			PF	TP	A	TO	Blk	Stl	Min
		FG	FGA	FT	FGA	FT	FTA	Off	Def	Tot							
01	BOLTON,QUANETRIA	f	2-9	0-2	0-0	1	4	5	1	4	1	4	1	0	2	0	20
20	WILLIAMS,ASHLEY	f	3-10	0-0	11-13	4	3	7	2	17	1	1	1	2	3	25	
03	LEWIS,JORDAN	g	5-9	2-4	6-9	0	1	1	2	18	5	2	0	0	0	30	
11	COOK,HANNAH	g	3-12	1-6	1-2	0	5	5	1	8	0	2	0	1	24		
23	WADE,SHAQUERA	g	4-5	1-1	6-8	0	4	4	3	15	1	5	1	5	33		
02	RICHARDSON,AMBER	g	0-0	0-0	0-2	0	2	2	2	0	1	0	0	0	6		
05	DA SILVA,ALANA		0-1	0-1	0-0	0	1	1	0	0	1	1	0	0	9		
13	KNIGHT,COCO		0-0	0-0	0-0	0	0	0	0	0	0	0	0	0	3		
15	KNIGHT,MEOSHONTI		1-2	1-1	1-2	0	0	0	3	4	1	0	0	0	13		
25	KNIGHT,ASHLEY		5-10	0-0	0-0	3	1	4	3	10	1	2	2	0	16		
40	WALKER,JASMINE		3-7	1-3	0-0	2	6	8	2	7	0	1	0	0	21		
Team						4	3	7									
Totals			26-65	6-18	25-36	14	30	44	19	83	12	14	7	9	200		
1st - FG %:		6-21	28.6%	2nd: 7-13	53.8%	3rd: 7-17	41.2%	4th: 6-14	42.9%	Game: 26-65	40.0%	Deadball					
3FG %:		2-7	28.6%	2-4	50.0%	1-2	50.0%	1-5	20.0%	6-18	33.3%	Rebounds					
FT %:		0-1	0.0%	2-2	100.0%	3-8	37.5%	20-25	80.0%	25-36	69.4%	5,2					

### Arkansas 76 • 10-6, 1-2 SEC

#	Player		Total		3-Ptr		Rebounds					PF	TP	A	TO	Blk	Stl	Min					
			FG	FGA	FG	FGA	FT	FTA	Off	Def	Tot												
10	WILLIAMS, Kiara	f	3-10	0-0	0-0	0-0	1	6	7	1	6	0	2	0	2	21							
22	ZIMMERMAN, Bailey	f	0-1	0-0	0-0	0-0	2	0	2	5	0	2	2	1	0	13							
03	MONK, Malica	g	8-17	1-2	4-7	3	1	4	4	21	1	6	0	0	0	33							
14	MASON, Jaielyn	g	5-15	2-7	0-0	2	4	6	4	12	0	4	2	3	37								
21	COSPER, Devin	g	6-16	0-5	12-12	0	13	13	5	24	4	2	0	2	39								
01	NORTHCROSS-BAKER,		1-5	0-3	0-0	0	0	0	1	2	2	0	1	1	27								
04	SWENSON, Keiryn		3-4	3-4	0-0	0	0	0	3	9	0	0	1	0	12								
13	SPANGLER, Grayce		0-0	0-0	0-0	0	0	0	0	0	0	0	0	0	0+								
24	THOMAS,Taylah		0-2	0-0	2-2	2	2	4	3	2	0	1	0	0	18								
Team						4	3	7															
Totals				26-70		6-21		18-21		14		29		43		26	76	9	17	5	8	200	
1st - FG %:			5-21	23.8%	2nd: 6-18			33.3%	3rd: 8-14			57.1%	4th: 7-17			41.2%	Game: 26-70			37.1%	Deadball		
3FG %:			1-9	11.1%	0-3			0.0%	3-4			75.0%	2-6			33.3%	6-21			28.6%	Rebounds		
FT %:			2-2	100.0%	4-4			100.0%	7-8			87.5%	5-7			71.4%	18-21			85.7%	1,2		

Officials: Beverly Roberts, Ed Sidlasky, Bill Larence

Technical fouls: Alabama-None. Arkansas-MASON, Jaielyn.

Attendance: 2001

Estimated Actual Attendance: 1644

Fouled Out: Arkansas, #21 Cosper (0:12.5, 4Q); #22 Zimmerman (0:10.1, 4Q)

Score by periods	1st	2nd	3rd	4th	Total
Alabama	14	18	18	33	83
Arkansas	13	16	26	21	76

Points	In	Off	2nd	Fast	Bench
Paint	38	31	15	4	21
UA	26	7	6	13	
AR	26	7	6	13	

Last FG - UA 4th-00:41, AR 4th-00:23.

Largest lead - UA by 9 4th-00:28, AR by 7 3rd-02:23.

UA led for 20:01. AR led for 15:20. Game was tied for 04:39.

Score tied - 5 times.

Lead changed - 7 times.