



# ARKANSAS RAZORBACKS

One Final Four Appearance » 22 Postseason Appearances » 27th Season In The SEC » More Than 400 Home Wins » More Than 700 Program Victories

## /// THE SERIES ///

Series Record	17-16
Fayetteville	10-6
Away	5-9
Neutral	2-1
Last 5	0-5
Neighbors versus this opponent	First Meeting

## /// MEDIA ///



### SEC Network

Talent: Paul Sunderland and Debbie Antonelli



### Razorback Sports Network

Phil Elson & Erin Portman

Listen: Little Rock - KABZ-FM-103.7

Fayetteville - KQSM-FM-92.1

Fayetteville - KYNG-AM - 1590\*

Fort Smith - KFPW-AM-1230

Fort Smith - KHGG-AM-1580\*

Rogers - KURM-AM-790/FM-100.3

\*Only if there are conflicts with the FM station

## /// SCHEDULE & RESULTS ///

NOVEMBER (5-2)	MEDIA	W/L	SCORE
2 Northeastern St (Exh)	-	W	82-74
10 Sam Houston State	SECN+	W	65-54
12 Samford	SECN+	W	84-63
16 at RV Nebraska	BTN	L	80-69
20 at Oral Roberts	Cox Sports	W	77-66
24 UTEP!	-	L	64-61
25 New Mexico State!	-	W	69-60
29 Abilene Christian	SECN+	W	79-65

DECEMBER (5-2)	MEDIA	W/L	SCORE
3 at Kansas*	JTV/ESPN3	L	71-60
7 Charlotte	SECN+	W	73-72
10 Tulsa	SECN+	W	67-41
17 UT Arlington	SECN+	W	91-57
21 at RV/RV Arizona St.	Tempe, Arizona	L	89-43
28 Grambling State	SECN+	W	79-62
31 Ole Miss*	SECN+	W	73-72

JANUARY (2-5)	MEDIA	W/L	SCORE
4 at #5/3 Miss State*	SEC Network	L	111-69
7 -/rv Alabama*	SEC Network	L	83-76
11 at rv/rv Georgia*	SECN+	L	78-65
14 at Auburn*	SEC Network	W	68-58
18 Florida*	SEC Network	L	65-51
21 at No. 11 Missouri*+	SEC Network	L	88-54
25 at S Carolina*	SEC Network	-	5:30 p.m.
29 RV Kentucky*	SEC Network	-	6 p.m.

FEBRUARY (0-0)	MEDIA	W/L	SCORE
4 at Alabama*	SEC Network	-	1 p.m.
8 Tennessee*	SECN+	-	7 p.m.
11 Missouri*	SEC Network	-	4 p.m.
15 at Kentucky*	SECN+	-	6 p.m.
18 LSU*+	SECN+	-	2 p.m.
22 Texas A&M*	SECN+	-	7 p.m.
25 at Vanderbilt*	SECN+	-	2 p.m.
28 SEC Tournament	SECN/ESPN/2	-	Nashville

MARCH (0-0)	MEDIA	W/L	SCORE
1-4 SEC Tournament	SECN/ESPN/2	-	Nashville

\* - Southeastern Conference Game

! - UTEP Classic (El Paso, Texas)

^ - SEC/Big 12 Challenge

+ - We Back Pat

> - Play4Kay

All home games played in Bud Walton Arena (19,200) Rankings: AP/Coaches Poll

Sign up for Mike Neighbors' newsletter and listen to his podcasts at

**CoachNeighbors.com**



## ARKANSAS RAZORBACKS 11-9, 2-5 SEC

Head Coach: Mike Neighbors

Alma Mater: Arkansas, 1993

Record: 109-49 (5) Arkansas Record: 11-8 (1)



Columbia, South  
Carolina



Colonial Life Arena  
(18,000)



5:30 p.m. CST



[http://es-  
.pn/2mZUcbq](http://es.pn/2mZUcbq)



Razorback Radio  
Network



[http://es-  
.pn/2mZUcbq](http://es-<br/>.pn/2mZUcbq)

## PREVIOUS GAME

»Arkansas went with just the fourth different lineup this year and the second in as many games - Monk, Williams, Mason, Zimmerman and Thomas.

»Jailyn Mason scored 14 points. It is her 12th game in double figures this season.

»Kiara Williams scored 14 points. It is her eighth game in double figures this season.

»Malica Monk recorded her 19th double-figure scoring game of the year finishing with 11 points.

»Missouri's 13 3-pointers is only the fourth time this season that Arkansas has allowed double-digit makes from distance.

»Arkansas gave up a season-high 13 3-point field goals.

## ABOUT ARKANSAS

»Arkansas has been without the services of its leading scorer and second leading rebounder for two and a half games. Graduate student Devin Cospers was injured in the first quarter at Auburn. She missed the Florida and Missouri games and is listed as day-to-day.

»The Razorbacks are the only SEC team that does not return a double-figure scorer.

»Arkansas is 8-2 at home this season including an SEC win over Ole Miss. Arkansas has won double-digit home games 16 times and the single-season best is a 15-4 home record in 1998-99.

»Arkansas is in the midst of playing four of five games on the road. The Razorbacks had back-to-back SEC road contests at Georgia (Jan. 11) and at Auburn (Jan. 14). They hosted Florida (Jan. 18) and again go back-to-back with games at No. 11 Missouri (Jan. 21) and at No. 10 South Carolina (Jan. 25).

»Arkansas is **third in the SEC** and ranks **30th in the country** for fewest turnovers with just 244 this year.

»Arkansas **ranks second the SEC** and is **15th in the country** with just 12.2 turnovers per game.

»Arkansas **ranks second in the SEC** and is **ninth in the country** with 532 3-point field goals attempted.

»Arkansas ranks **third in the SEC** with 7.7 3-point field goals made per game and **second** for 3-pointers made with 154.

## NO. 9 SOUTH CAROLINA GAMECOCKS 16-3, 5-2 SEC

Head Coach: Dawn Staley

Alma Mater: Virginia, 1992

Record: 409-163 (18) SC Record: 237-83 (10)



## Against The Best

»Arkansas is seven games into the SEC season and has faced some of the best teams in the conference - and the country.

»After playing at No. 10 South Carolina the Razorbacks will have faced two ranked teams, the top four teams in the SEC, four teams who are predicted to make the NCAA Tournament and four teams who were among the NCAA Top-16 Committee Rankings.

»It doesn't get easier either. The Razorbacks still have to play Tennessee and Texas A&M who also meet those criteria.

## /// STATISTICAL COMPARISONS ///

	ARKANSAS	S CAROLINA
PTS / GAME	68.7	82.1
PTS ALLOWED / GAME	69.9	61.4
FG %	36.9%	5-/6%
FG DEFENSE %	40.0%	37.0%
3-PT FG %	28.9%	34.6%
3-PT FG DEFENSE %	32.6%	35.6%
REB / GAME	41.1	39.7
REB ALLOWED / GAME	43.2	32.3
LEADING SCORER	Monk, 16.5 ppg	Wilson, 23.4 ppg
LEADING REBOUNDER	Williams, 7.6 rpg	Wilson, 10.9 rpg

## LAST GAME STARTERS



### 3 MALICA MONK

PPG	FG%	RPG	APG
16.5	.365	3.9	3.9



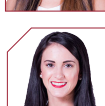
### 10 KIARA WILLIAMS

PPG	FG%	RPG	BPG
8.2	.515	7.6	1.1



### 14 JAILYN MASON

PPG	FG%	RPG	APG
10.5	.404	4.2	2.85



### 22 BAILEY ZIMMERMAN

PPG	FG%	RPG	MIN
3.3	.220	3.2	22.0



### 24 TAYLAH THOMAS

PPG	FG%	RPG	MIN
3.8	.426	4.9	17.1

## NUMERICAL ROSTER

No.	Name	Pos	Ht	Cl	Hometown/HS/Previous School
0	A'Tyanna Gaulden*	G	5-7	RSO	Ocilla, Ga./Americus Sumter HS/Florida State
1	Raven Northcross-Baker	G	5-7	Jr	Malvern, Ark./Malvern HS/Chipola College
3	Malica Monk	G	5-5	Jr	N. Little Rock, Ark./NLR HS
4	Keiryn Swenson	G/F	6-1	Jr	Wichita, Kan. /Maize HS
10	Kiara Williams	F/C	6-1	So	Little Rock, Ark./LR Central HS
13	Grayce Spangler	G	5-10	Fr	Fayetteville, Ark. Fayetteville HS
14	Jailyn Mason	PG	5-9	So	Mason, Ohio/William Mason HS
20	Sydney Stout	F	6-0	So	Bixby, Okla./Bixby HS
21	Devin Cospier	G	5-10	SGr	Coffeyville, Kan./Field Kindley HS/Coffeyville CC
22	Bailey Zimmerman	G/F	6-0	Jr	St. Vincent, Ark. /Wonderview HS
24	Taylah Thomas	F	6-1	Fr	Arlington, Texas/Mansfield Timberview HS
30	Macy Weaver	F	6-3	Fr	Davis Junction, Ill./Stillman Valley HS
33	Chelsea Dungee*	G	5-11	RSO	Sapulpa, Okla./Sapulpa HS/Oklahoma
51	Brenna McClure	G	5-6	RSO	Lyons, Kansas/Lyons HS/Hutch CC

\*Will not play the 2017-18 season due to NCAA transfer rules

## ALPHABETICAL ROSTER

No.	Name	Twitter
21	Devin Cospier	@devidevv__
33	Chelsea Dungee*	@ChelseaDungee22
0	A'Tyanna Gaulden*	@AtyannaGaulden
51	Brenna McClure	@mcclurebrenna
14	Jailyn Mason	@jaimason14
3	Malica Monk	@TheRealMalica
1	Raven Northcross-Baker	@ravenbaker_4
13	Grayce Spangler	@grayce_1313
20	Sydney Stout	@sydeny_stout_
4	Keiryn Swenson	@KiKi_Sweezyy
24	Taylah Thomas	@hailtaylahh
30	Macy Weaver	@macyweaver528
10	Kiara Williams	@kiara_will22
22	Bailey Zimmerman	@Bailey_Ann22

## COACHING STAFF

Title	Name	Year	Alma Mater
Head Coach	Mike Neighbors	First Season	Arkansas, 1993
Assistant Coach	Todd Schaefer	First Season	Thomas More College, 1995
Assistant Coach	Lacey Goldwire	First Season	Oklahoma State, 2010
Assistant Coach	Pauline Love	First Season	Southern Miss, 2010
Director of Operations	Amber Shirey	30th Season	Arkansas, 1992
Director of Video and Scouting	Jeff Brazil	11th Season	Arkansas, 2010
Dir. of Student-Athlete Devel.	C'eira Ricketts	1st Season	Arkansas, 2015

## FA-NETIK PRONUNCIATIONS

No.	Name	Pronunciation
0	A'Tyanna	AH-tee-ah-nuh
3	Malica	mal-ick-cuh
4	Keiryn	KEER-runn
10	Kiara	Key-AIR-uh
13	Grayce	GRACE
14	Jailyn	JAY-lyn
24	Taylah	TAY-luh

## MARGIN OF VICTORY/DEFEAT

	1	2	3	4	5	6	7	8	9	10	11-15	16-19	20+	Record
Wins	2	-	-	-	-	-	-	-	1	1	3	1	3	11
Losses	-	-	1	-	-	-	1	-	-	-	4	-	3	9

### Most First Period Points

2017-18	27	Samford (11-12-17)
All-Time	29	at Alabama (1-15-17)
Opponent	26	at Arizona State (12-21-17)

### Most Third Period Points

2017-18	26	Alabama (1/7/18)*
All-Time	34	HBU (12-28-16)*
Opponent	30	at Miss State (1-4-18)*

### Fewest First Period Points

2017-18	3	UTEP (11-24-17)
All-Time	3	UTEP (11-24-17)*
Opponent	6	SHSU (11-11-16)

### Fewest Third Period Points

2017-18	7	Florida (1-18-18)
All-Time	7	Florida (1-18-18)*
Opponent	4	LSU (1-21-16)

### Most Second Period Points

2017-18	25	at Auburn (1-14-18)*
All-Time	31	HBU (12-28-16)
Opponent	35	at #2 S. Carolina (1-3-16)

### Most Fourth Period Points

2017-18	28	UT-Arlington (12-17-17)
All-Time	32	Tulsa (11-23-15)
Opponent	30	at Miss State (1-4-18)

### Fewest Second Period Points

2017-18	6	at Arizona State (12-21-17)
All-Time	4	vs. Kentucky (2-17-17)
Opponent	3	at Alabama (1-15-17)

### Fewest Fourth Period Points

2017-18	6	at No. 11 Missouri (1-21-18)
All-Time	5	#7 Ore. St. (11-28-15)
Opponent	10	#24 Missouri (1-17-16)*

### Most First Half Points

2017-18	42	Samford (11-12-17)
All-Time	65	Tenn State (11-27-88)
Opponent	63	Texas (1-9-89)

### Largest Margin of Victory

2017-18	34 (91-57)	UT-Arlington (12-17-17)
All-Time	79 (108-29)	B Wesleyan (2-18-77)
Opponent	54 (28-82)	La Tech (11-30-78)

### Fewest First Half Points

2017-18	14	at Arizona State (12-21-17)
All-Time	11	at Missouri (3-1-15)*
Opponent	8	Montana State (1-5-03)

\*Most Recent

## RECORD FACTS

Overall	11-9
At Home (Bud Walton Arena)	8-2
On The Road   Neutral	2-7   1-0
White   Cardinal   Anthracite Uniforms	8-2   3-7   0-0

## HALFTIME/LEADS/OVERTIME

Leading at the half, home/road/neutral	8-0 (5-0/2-0/0-0)
Tied at the half, home/road/neutral	-
Trailing at the half, home/road/neutral	3-9 (2-2/0-7/1-0)
Games decided by 5 points or fewer	2-1
Games decided by 10 points or fewer	3-2
Leading at the start of the 4Q	10-1
Overtime games	-

## OFFENSE

Scoring less than 50 points	0-1
Scoring 51-60 points	0-3
Scoring 61-70 points	4-4
Scoring 70+ points	7-1
2 Players Or Less in Double Figures	3-5
3 Players in Double Figures	3-4
4 Players in Double Figures	3-0
5 Players in Double Figures	2-0
When shooting 50 percent or higher	-
When shooting less than 50 percent	11-9

## REBOUNDING/TURNOVERS

When outrebounding opponent	8-0
When outrebounded	2-9
When rebounds are even	1-0
When grabbing 10+ offensive reb	9-7
When forcing 15+ turnovers	7-3
When committing 10 or fewer turnovers	5-3
When committing 15+ turnovers	2-5

## Months

In November	5-2
In December	5-2
In January	1-5
In February	-
In March	-



**FACEBOOK.COM/RAZORBACKWBB**

**@RAZORBACKWBB (T&I)**

**HTTP://BIT.LY/YOUTUBEKICKIN**

**COACHNEIGHBORS.COM**

# NEIGHBORS' PHILOSOPHY

## GRAD STUDENT DEVIN COSPER

- »Only "senior" on the team
- »Missed the opening game last season after a death in the family
- »Averaged 6.4 ppg and 2.2 rpg last season and 7.7 ppg and 2.8 rpg for her career
- »Graduated in May 2017 with a degree in broadcast journalism
- »Interned at RSN, Arkansas' broadcast studio
- »Wears the SEC graduate patch on her jersey
- »Named "Comback Student-Athlete of the Year at annual HOGSPY awards after rebounding from an injury and a death in the family



## FUNCTIONALLY FAST

You will hear Mike Neighbors say this a lot. He wants his teams to play as fast as possible and still function at a high level. That may look different from possession to possession depending on what Arkansas is running.

## TRUST, TALENT AND TIME

My program will be built on three things. It's very simple.

**TRUST** - The highest form of loyalty that has to be earned, managed and sometimes re-earned. If we don't have this, nothing will work and the stool's legs will fall off and everything will collapse.

**TALENT** - It doesn't mean you can dribble, shoot, pass and rebound. It's a lot of other things like the ability to engage with the fan base and willingness to sign autographs for a 10-year-old child you might be inspiring.

**TIME** - It's just not being on time or making time. It's how you utilize your time and who you invest your time with and be around. Trust, talent and time. Those will be our pillars.

## FUN FEATURES

Both Mike Neighbors and Jailyn Mason have shoe collections. Mason's collection was featured in a story last year. It can be seen here: <http://bit.ly/2ebtLdb>

Neighbors got settled into his Fayetteville home in mid August. One of the first things he set up were his shoes.



## BESIDE US

One of the things Mike Neighbors stressed when he was hired was his desire to take care of the players, the staff and the fans who have been loyal to the Razorback program. He has told our fans that he wants them to stand "Beside Us". Don't be behind us, stand next to us and go through the process of building our program.

## SHOTS AND POSSESSIONS

Mike Neighbors wants a lot of shots and a lot of possessions. Here's a look at the Razorbacks shots this year. The number is often determined by pace of play and Arkansas will push the tempo.

## 30 AND COUNTING

This year, Arkansas director of operations Amber Shirey enters her 30th season as a Razorback. The former Amber Nicholas was a two-time All-Southwest Conference selection during her four-year playing career from 1989-92. She spent one season (1992-93) as a student coach helping Arkansas transition to the Southeastern Conference. She moved on to a graduate assistant and assistant coach from 1993-94 through the 2006-07 season. In 2007-08 Shirey transitioned to the director of operations position holding that spot until she returned to the sidelines as an assistant coach for the 2013 and 2014 seasons. She moved into her current position as the Executive Director of Operations in 2014-15. She has been a part of seven different head coach's staffs during her tenure.

## GAMEDAY CARDS

Coach Neighbors hands out a Gameday Card for each home and away game. One side of the card is branded with a Razorback logo and women's basketball. The other side is a quote that is relevant to something the team has talked about or worked on that week. Check out this week's card here:



# OPPONENT

## ABOUT SOUTH CAROLINA

»Defending National Champion South Carolina has four players averaging double figures paced by A'ja Wilson who averages a double-double with 23.4 ppg and 10.9 rpg.

»Carolina is outscoring it's opponents by +20.7 and outrebounding them by +7.4.

»Arkansas is just 1-9 since Dawn Staley took over at South Carolina. The most recent Razorback win was a 68-47 decision in Fayetteville in 2012.

»South Carolina and Arkansas have both played Ole Miss, Missouri and Auburn. Both the Gamecocks and Razorbacks defeated Ole Miss and Auburn and both have lost at Missouri. A'ja Wilson missed the Missouri game with an injury.

»South Carolina is one of just five teams in the nation shooting at least 50.0% from the field this season. The Gamecocks have posted 11 games this year above 50%.

## IMPORTANT STATS

**Free Throws In The SEC:** Arkansas is better than the Gamecocks in free throw shooting in SEC games this year. The Razorbacks are 11th shooting 69.6% while South Carolina is 13th shooting 66.4%.

**Block That Shot:** South Carolina is big and that is reflected in their blocking. They rank second in SEC-only games with 5.4 bpg. Arkansas is tied for 10th with 3.0 bpg.

**Maybe Size Doesn't Matter:** Arkansas ranks higher in SEC-only games for both offensive and defensive rebounds. The Razorbacks are eight in O-Board with 12.7 compared to South Carolina at No. 11 with 10.7 orpg. Arkansas is sixth with 25.4 drpg while South Carolina is eighth at 23.9 drpg.

## ABOUT THE SERIES

Series Record	17-16
Fayetteville	10-6
Away	5-9
Neutral	2-1
Last 5	0-5
Neighbors versus this opponent	First Meeting

## Results

2/1/1992	AR	58	SC	51	Fayetteville	1/23/2005	AR	61	SC	49	Fayetteville			
1/30/1993	AR	51	SC	76	Columbia	1/29/2006	AR	52	SC	61	Columbia			
2/12/1994	AR	87	SC	77	Fayetteville	2/8/2007	AR	69	SC	74	Fayetteville			
2/11/1995	#20	AR	63	SC	62	Columbia	2/3/2008	AR	50	SC	59	Columbia		
3/3/1995	#16	AR	80	SC	70	Chattanooga	2/12/2009	AR	58	SC	54	Fayetteville		
1/21/1996	#20	AR	66	SC	58	Fayetteville	2/14/2010	AR	72	SC	68	Columbia		
1/18/1997	#13	AR	82	SC	71	Columbia	2/6/2011	AR	62	SC	64 (OT)	Fayetteville		
1/24/1998	AR	86	SC	67	Fayetteville	2/9/2012	AR	68	SC	47	Fayetteville			
1/24/1999	AR	88	SC	80	Columbia	2/27/2012	AR	47	SC	53	Columbia			
1/27/2000	AR	87	SC	79	Fayetteville	1/27/2013	AR	40	#14/18	SC	43	Fayetteville		
1/2/2001	AR	49	SC	66	Columbia	1/2/2014	AR	51	#13/12	SC	54	Fayetteville		
1/13/2002	AR	66	#9	SC	91	Columbia	2/9/2014	AR	49	#6/7	SC	67	Columbia	
1/27/2002	AR	74	#7	SC	46	Fayetteville	2/29/2015	AR	56	#2/2	SC	73	Fayetteville	
3/1/2002	AR	79	#12	SC	61	Nashville	3/6/2015	AR	36	#3/3	SC	58	N. Little Rock	
1/12/2003	#11	AR	67	#13	SC	58	Fayetteville	1/3/2016	AR	32	#2/2	SC	85	Columbia
2/16/2003	#13	AR	59	#15	SC	83	Columbia	2/5/2017	AR	49	#4	SC	79	Fayetteville
1/18/2004	AR	66	SC	52	Columbia									

NOVEMBER (5-2)	MEDIA	W/L	SCORE	SERIES	NEIGHBORS
2 Northeastern St. (Exh)	-	W	82-74	2-0	1-0
10 Sam Houston State	SECN+	W	65-54	7-0	1-0
12 Samford	SECN+	W	84-63	1-0	1-0
16 at Nebraska	BTN	W	80-69	0-1	0-1
20 at Oral Roberts	Cox Sports	W	77-66	20-9	1-0
24 UTEP!	-	L	64-61	2-1	0-2
25 New Mexico State!	-	W	69-60	1-0	1-0
29 Abilene Christian	SECN+	W	79-65	1-0	1-0

DECEMBER (5-2)	MEDIA	W/L	SCORE	SERIES	NEIGHBORS
3 at Kansas*	JTV/ESPN3	L	71-60	4-4	0-1
7 Charlotte	SECN+	W	73-72	1-0	1-0
10 Tulsa	SECN+	W	67-41	21-3	1-0
17 UT Arlington	SECN+	W	91-57	7-0	1-0
21 at Arizona State	Pac-12N	L	89-43	1-1	2-5
28 Grambling State	SECN+	W	79-62	8-0	2-0
31 Ole Miss*	SECN+	W	73-72	17-26	1-0

JANUARY (1-5)	MEDIA	W/L	SCORE	SERIES	NEIGHBORS
4 at #5/3 Mississippi State*	SEC Network	L	111-69	18-19	0-2
7 Alabama*	SEC Network	L	83-76	21-15	0-1
11 at Georgia*	SECN+	L	78-65	5-31	0-1
14 at Auburn*	SEC Network	W	68-58	14-22	1-0
18 Florida*	SEC Network	L	65-51	9-28	0-1
21 at No. 11 Missouri*	SEC Network	L	88-54	11-9	1-1
25 at South Carolina*	SEC Network	-	-	17-16	First Meeting
29 Kentucky*	SEC Network	-	-	13-21	1-0

FEBRUARY (0-0)	MEDIA	W/L	SCORE	SERIES	NEIGHBORS
4 at Alabama*	SEC Network	-	-	21-15	0-1
8 Tennessee*	SECN+	-	-	3-30	First Meeting
11 Missouri*	SEC Network	-	-	11-8	1-0
15 at Kentucky*	SECN+	-	-	13-21	1-0
18 LSU*	SECN+	-	-	16-31	First Meeting
22 Texas A&M*	SECN+	-	-	21-8	1-1
25 at Vanderbilt*	SECN+	-	-	8-24	First Meeting
28 SEC Tournament	SECN/ESPN	-	-		

MARCH (0-0)	MEDIA	W/L	SCORE	SERIES	NEIGHBORS
1-4 SEC Tournament	SECN/ESPN				

\* - Southeastern Conference Game  
!-UTEP Thanksgiving Tournament (El Paso, Texas)  
^SEC/Big 12 Challenge  
All home games played in Bud Walton Arena (19,200)

## An Arkansas Win Would ...

A win would make Arkansas:

- »give the Razorbacks their first win over a ranked opponent this year.
- »snap a two-game losing streak this season.
- »be the first win over South Carolina since 2012 and just the season with Dawn Staley leading South Carolina.

## SEC SCHEDULE

January 25 (Thursday)  
Missouri at Georgia  
Alabama at Kentucky  
Florida at Miss State  
Arkansas at S Carolina  
Ole Miss at Tennessee

January 28 (Sunday)  
Alabama at Auburn  
Georgia at Florida  
Tennessee at LSU  
Miss State at Ole Miss  
Missouri at S Carolina  
Texas A&M at Vanderbilt

January 29 (Monday)  
Kentucky at Arkansas

February 1 (Thursday)  
Auburn at Kentucky  
Georgia at LSU  
Vanderbilt at Ole Miss  
Miss State at Missouri  
Texas A&M at Tennessee

February 4 (Sunday)  
Arkansas at Alabama  
Miss at Georgia  
LSU at Kentucky  
Auburn at Texas A&M  
Tennessee at Vanderbilt

February 5 (Monday)  
S Carolina at Miss State  
Florida at Missouri

February 8 (Thursday)  
S Carolina at Alabama  
Tennessee at Arkansas  
LSU at Auburn  
Miss State at Florida  
Vanderbilt at Georgia  
Kentucky at Missouri  
Ole Miss at Texas A&M

February 11 (Sunday)  
Missouri at Arkansas  
Texas A&M at LSU  
Alabama at Ole Miss  
Kentucky at Miss State  
Florida at S Carolina  
Georgia at Tennessee

February 12 (Monday)  
Vanderbilt at Auburn

February 15 (Thursday)  
Missouri at Auburn  
S Carolina at Georgia  
Arkansas at Kentucky  
Ole Miss at LSU  
Alabama at Tennessee  
Florida at Texas A&M  
Miss State at Vanderbilt

February 18 (Sunday)  
Auburn at Alabama  
LSU at Arkansas  
Vanderbilt at Florida  
Texas A&M at Miss State  
Tennessee at Missouri  
Kentucky at S Carolina

February 19 (Monday)  
Georgia at Ole Miss

February 22 (Thursday)  
Georgia at Alabama  
Texas A&M at Arkansas  
Tennessee at Florida  
Kentucky at Ole Miss  
Auburn at Miss State  
Vanderbilt at Missouri  
LSU at S Carolina

February 25 (Sunday)  
Ole Miss at Auburn  
Florida at Georgia  
Miss State at Kentucky  
Alabama at LSU  
S Carolina at Tennessee  
Missouri at Texas A&M  
Arkansas at Vanderbilt

## SEC STANDINGS 1/19/18

	Conference				Overall					
	W-L	Pct.	H	A	W-L	Pct.	H	A	N	Strk
Miss State	6-0	1.000	3-0	3-0	20-0	1.000	11-0	4-0	5-0	W20
Georgia	5-1	.833	2-1	3-0	17-2	.895	9-2	8-0	0-0	W5
Missouri	5-1	.833	2-1	3-0	17-2	.895	9-1	5-0	3-1	W4
S Carolina	5-2	.714	2-1	3-1	16-3	.842	8-1	6-1	2-1	W2
Texas A&M	5-2	.714	3-1	2-1	16-5	.762	11-3	4-1	1-1	W2
Tennessee	4-2	.667	2-1	2-1	16-3	.842	9-1	4-2	3-0	L2
Alabama	4-3	.571	2-2	2-1	14-6	.700	10-2	4-2	0-2	W1
LSU	4-3	.571	2-1	3-1	12-6	.667	6-1	5-4	1-1	L1
Arkansas	2-5	.286	1-2	1-3	11-9	.550	8-2	2-7	1-0	L2
Florida	2-5	.286	1-3	1-2	10-10	.500	6-7	3-2	1-1	W2
Ole Miss	1-5	.167	1-2	0-3	11-8	.579	9-2	1-5	1-1	L3
Kentucky	1-5	.167	0-3	1-2	9-11	.450	6-5	3-6	0-0	L2
Auburn	1-6	.143	1-2	0-4	10-9	.526	7-2	2-5	1-2	L6
Vanderbilt	1-6	.143	1-3	0-3	5-16	.238	3-8	2-6	0-2	L2

## MAKING A RUN ON CAREER NUMBERS

- »Devin Cosper has 731 career points ranking 42nd in program history.
- »Devin Cosper has 323 career 3-point field goal attempts ranking 12th in program history.
- »Malica Monk has 686 career points ranking 46th in program history.
- »Devin Cosper has already reached her single-season highs for 3-point field goals, 3-point field goals attempted, defensive rebounds, total rebounds and blocks.
- »Jailyn Mason has reached her single-season bests for 3-point field goals made and attempted and blocks.
- »Malica Monk has reached her single-season highs for field goals attempted, 3-point field goals made and attempted, free throws made and attempted and points.
- »Kiara Williams has reached her single-season career-bests for field goals made and attempted, 3-pointers made and attempted, free throws made and attempted, offensive, defensive and total rebounds, assists, blocks, steals and points.
- »Devin Cosper has 41 3-pointers made - 16 better than her single season best. She has scored more points (275) through 17 games than she did all of last season (187 pts/29 g).
- »Cosper scored 104 points in SEC games last year - she has 63 points in four games this season.
- »Jailyn Mason has made 31 3-pointers this year. She made 19 in 30 games last year.
- »Malica Monk has scored 329 points in 2017-18. Her single season best was 247 points set in 27 games last year.
- »Malica Monk has made 83 free throws - more makes than the two previous years combined.
- »Sophomore Kiara Williams has scored 163 points this year and averages 8.2 ppg - up from 62 points and 3.1 ppg as a freshman.
- »As a team, Arkansas' rebounding numbers are up from a year ago. The Razorbacks average 41.1 rpg this season, compared to 38.3 rpg a year ago.

## THREEEEEEEEEEEEE

- »Arkansas has made 154 3-point field goals this year. The Razorbacks are on pace to jump into the program's top-10 for single season makes in the next couple of games.
- »The Razorbacks are averaging 7.7 3-point field goals per game. That number ranks third in the SEC.
- »Arkansas' 7.7 3-point field goals per game has the Razorbacks on pace to set a single-season program record for makes from distance.

### 3-POINT FIELD GOALS MADE\*

1. 202 (33 games)	2000-01
2. 200 (28 games)	2005-06
3. 200 (32 games)	2008-09
4. 198 (34 games)	1998-99
5. 191 (33 games)	1997-98
6. 177 (30 games)	2013-14
177 (30 games)	2016-17
8. 169 (34 games)	2010-11
9. 167 (31 games)	2009-10
167 (33 games)	2011-12
*1985-86 to present	

## LEADS AND DEFICITS

Biggest Halftime Lead	17, GSU
Biggest Halftime Lead Lost	-
Biggest Halftime Deficit	38, GSU
Biggest HT Deficit Erased	7, Char.
Biggest Overall Lead	30, Tulsa, 4Q
Biggest Win Margin	26, Tulsa
Biggest Loss Margin	46, ASU
Biggest Deficit Overcome	13, SHSU

## JUMP BALLS

Arkansas	6
Opponents	14

## FIRST POINTS

Williams	10
Mason	5
Monk	3
Cosper	2
Monk	1 (FT)
Zimmerman	1 (FT)

## BENCH POINTS

Arkansas	326
Opponent	396

## DOUBLE FIGURE POINTS

Malica Monk	19
Devin Cosper	15
Jailyn Mason	12
Kiara Williams	8
Raven Northcross-Baker	3
Bailey Zimmerman	2
Taylah Thomas	1
Keiryn Swenson	1

## LEADING SCORER

Monk	10
Cosper	6
Mason	3
Northcross-Baker	2
Williams	2

## DOUBLE FIGURES FIRST HALF

Cosper	4
Monk	4
Williams	2
Mason	2
Northcross-Baker	1
Zimmerman	1

## DOUBLE FIGURES/QUARTER

Monk	5
Cosper	3
Mason	1
Northcross-Baker	1

## 20/30-PLUS POINTS

Monk	7 (21, 22, 24, 22, 20, 21, 23)
Cosper	5 (21, 21, 22, 25, 24)
Northcross-Baker	1 (22)

## DOUBLE FIGURE REBOUNDS

Cosper	7
Williams	6
Thomas	1

## LEADING REBOUNDER

Williams	8
Cosper	7
Thomas	3
Monk	2
Zimmerman	1
Mason	1

## DOUBLE DOUBLES

Devin Cosper	SHSU, ORU, NMSU, Char., Tulsa, OM, AL
Williams	NMSU, GSU, AU
Monk	GSU

## 5+ASSISTS/10+ ASSISTS

Monk	6/1
Mason	4/-
Northcross-Baker	1/-

## FIRST OFF THE BENCH

Thomas	15
Northcross-Baker	10
Swenson	6
Williams	1
Weaver	1

## CHARGES DRAWN

Monk	4
Cosper	2
Northcross-Baker	1
Thomas	1
Stout	1

## FORCED 10 SECOND VIOLATION

2017-18	TBA
---------	-----

## FORCED SHOT CLOCK VIOLATION

2017-18	7
---------	---

## FORCED INBOUND VIOLATION

2017-18	1
---------	---

## AND 1

Malica Monk	10
Kiara Williams	8
Devin Cosper	6
Bailey Zimmerman	3
Jailyn Mason	1
Raven Northcross-Baker	1
Macy Weaver	1
Keiryn Swenson	1

## AND 1 CONVERSIONS

Monk	8
Cosper	5
Williams	3
Bailey Zimmerman	3
Northcross-Baker	1
Swenson	1

## BUZZER BEATERS

Mason	1 (ACU)
<a href="http://bit.ly/2BBy8ua">http://bit.ly/2BBy8ua</a>	
Swenson	1 (Kansas)
Mason	1 (MSU)

»The Razorbacks could also move into the program top-10 for 3-point field goals attempted. Arkansas currently has 532 attempts. That ranks second in the SEC.

»Four Razorbacks have already set a single-season best for made 3-point field goals. That includes Devin Cospers (41), Jailyn Mason (31), Malica Monk (20), Kiara Williams (1).

»Devin Cospers has 89 career 3-pointers. She is 15 makes away from breaking into the individual career top-10 for made 3-point field goals. Cospers has already moved into the top-15 for 3-point field goal attempts. She has 323, ranking 12th in program history.

»Arkansas has made more or tied its opponent in made 3-point field goals in 13 games this season.

»The Razorbacks have hit double-digit 3-point field goals five times this season with a high of 12 makes against UT-Arlington.

»Arkansas set a school record for made 3-point field goals in a half with nine from distance at Auburn.

### ABOUT OUR LEADER

»One of two SEC head coaches working at their alma mater (Holly Warlick, Tennessee).

»One of two SEC head coaches in their first season with their team (Cameron Newbauer, Florida).

»One of five SEC head coaches who graduated from a league school (Joni Taylor, Alabama; Mathew Mitchell, Mississippi State; Nikki Fargas, Tennessee; Holly Warlick, Tennessee).

»Is the eighth of nine Arkansas head coaches to win double figure games in their first season.

»Is 8-2 at home and it would be the 25th time a Razorback head coach won double figure home games if the Razorbacks can get two more victories.

»Would coach Arkansas to its 42nd season with a winning record at home (records for 43 seasons).

### SETTING CAREER NUMBERS

»Arkansas has seven returners from last season and all of them have set or tied at least one career-best number this year.

»In the 14 career categories that are tracked on the player pages: Monk has 12 career-bests ... Swenson has three ... Williams has 14 ... Mason has eight ... Stout has one ... Cospers has 12 and Zimmerman has 14.

### MONK CONTINUES TO LEAD

»Fourteen consecutive games in double figure scoring (snapped at Miss State). Scored in double figures in 19-of-20 games including five in a row.

»Ranks **second in the SEC** for field goal attempts (310), **eighth** for field goals made (113), **fifth** for minutes played (679.0), **10th** for free throw percent (76.9), **11th** for points per game (16.5).

»Eight games with 20+ points with a career-best 24 at Oral Roberts.

»Monk currently has 208 career assists, tying for 20th all-time in program history.

»At least one 3-pointer in each of the first 10 games with a season-best two 3-pointers four times. A made 3-pointer in 14 games.

#### 3-POINT FG ATTEMPTED

1. 658 (32 games)	2008-09
2. 593 (33 games)	2000-01
3. 590 (28 games)	2005-06
4. 580 (33 games)	2011-12
5. 576 (34 games)	1998-99
6. 570 (33 games)	1997-98
7. 554 (28 games)	2003-04
8. 549 (33 games)	2012-13
9. 546 (31 games)	2009-10
10. 543 (31 games)	2006-07

Devin Cospers	Communication (undergrad & Masters)
Chelsea Dungee	Rec. & Sport Management
A'Tyanna Gauden	Journalism: Broadcast
Brenna McClure	Social Work
Jailyn Mason	Journalism: News/Editorial
Malica Monk	Rec. & Sport Management
Raven Northcross-Baker	Criminal Justice
Grayce Spangler	Communication
Sydney Stout	Management
Keiryn Swenson	Accounting
Taylah Thomas	Nursing
Macy Weaver	Kinesiology
Kiara Williams	Childhood Development
Bailey Zimmerman	Apparel Merch./Product Dev.



»Thirty-two or more minutes played in 16 games including going 40 minutes on the road at Auburn.

»Seven consecutive games with at least one steal to start the season with a season-best four steals twice (SHSU, NMSU). Sixteen games with a steal.

»Has been perfect from the free throw line in nine games (Samford (7-7), Nebraska (3-3), UTEP (3-3), Kansas (4-4), Tulsa (4-4), UTA (12-12), ASU (2-2), AU (4-4), FL (4-4) including two in a row (AU & FL).

»Double-figure scoring in a single quarter five times (10 | 3Q | Nebraska || 13 | 4Q | ORU) || 10 | 4Q | Kansas || 11 | 4Q | Alabama || 11 | 1Q | Florida).

»Has 20 3-point field goals made this year. She had nine 3-pointers in her freshman and sophomore years combined.

### COSPER POSTING BIG NUMBERS

»Ten consecutive games in double figure scoring. The streak was snapped versus UTA. Fourteen games in double figures.

»One of six active SEC players with 7+ season double-doubles.

»Ranks **third in the SEC** with 2.28 made 3-pointers per game and 41 made 3-pointers.

»**First in the SEC and 28th in the NCAA** in 3-point field goals attempted (144).

»SEC rankings include **sixth** for double-doubles (6), and **seventh** in field goal attempts (272).

»Cospers's 323 3-point field goal attempts ranks 12th in the Arkansas career records. She is approaching the top-20 for 3-point field goals made and is in the top-50 for career points.

»Five games with 20+ points this season.

»Seven career double-doubles all set this season (SHSU, Oral Roberts, NMSU, Charlotte, Tulsa, Ole Miss, Alabama).

»Nineteen consecutive games (last four games of 2016-17) with at least one 3-pointer. (snapped vs Alabama)

»Double-figure scoring in a single quarter three times this year (10 | 1Q | Nebraska || 12 | 1Q | ORU || 11 | 4Q | UTEP).

»Has scored 275 points this year - more than all of last season (187).

### JAILYN MASON QUIETLY SHINNING

»Overshadowed by the gaudy numbers tallied by Devin Cospers and Malica Monk, sophomore Jailyn Mason is also putting together a solid season.

»She has 12 games in double figure scoring including a streak of five in a row twice this year. She is currently on a six-game streak.

»She has four games with 5+ assists.

»Has played multiple positions on the floor.

»While Malica Monk is the spark plug that gets the team going, Jailyn Mason is the captain who takes control and steers the ship.

»Made more 3-pointers through 20 games (31) than all of last year (19).

#### SINGLE SEASON DOUBLE FIGURE SCORING GAMES (SINCE 00-01)

Name	Number	Year
Sarah Watkins	28	2010-11
Shameka Christon	27	2003-04
Shameka Christon	27	2001-02
Shameka Christon	26	2002-03
Lauren Ervin	26	2006-07
Jessica Jackson	26	2015-16
Jessica Jackson	26	2014-15
Jessica Jackson	25	2013-14
C'eira Ricketts	25	2008-09
India Lewis	25	2002-03
Jessica Jackson	24	2016-17
C'eira Ricketts	24	2010-11
Kelsey Brooks	23	2014-15
Charity Ford	23	2009-10
Sarah Watkins	23	2012-13
India Lewis	23	2001-02
Dana Cherry	22	2001-02
Lyndsey Harris	21	2010-11
Dana Cherry	21	2002-03
Ayanna Brereton	20	2007-08
Donica Cosby	20	2006-07
<b>MALICA MONK</b>	<b>19</b>	<b>2017-18</b>
C'eira Ricketts	19	2011-12
Brittney Vaughn	19	2007-08
Lonniya Bragg	19	2000-01

**AP TOP 25 (1/22/2018)**

RK	TEAM	RECORD	PTS
1	Connecticut (32)	18-0	800
2	Mississippi State	20-0	764
3	Baylor	17-1	726
4	Louisville	20-1	703
5	Notre Dame	18-2	683
6	Texas	15-3	584
7	Oregon	18-3	568
8	Florida State	18-2	564
9	South Carolina	16-3	556
10	Tennessee	16-3	519
11	Missouri	17-2	497
12	Ohio State	16-3	450
13	UCLA	15-4	443
14	Maryland	16-3	394
15	Texas A&M	15-5	303
16	Michigan	17-4	298
17	Oregon State	14-5	270
18	Duke	15-5	223
19	Oklahoma State	14-4	204
20	West Virginia	16-4	203
21	Georgia	17-2	169
22	Green Bay	17-2	165
23	California	14-5	121
24	TCU	13-5	44
25	Arizona State	14-6	34

Others receiving votes: Stanford 33, Iowa 18, South Florida 12, NC State 12, Belmont 10, Marquette 8, Nebraska 4, Gonzaga 4, Rutgers 3, Florida Gulf Coast 3, Utah 2, Mercer 2, Purdue 1, South Dakota State 1, Virginia 1, Dayton 1  
Dropped from rankings: Iowa 20, Rutgers 25

**USA TODAY TOP 25 COACHES POLL - 1/23/2018**

Rank	School	RECORD	PTS
1	Connecticut (32)	18-0	800
2	Mississippi State	20-0	766
3	Baylor	17-1	725
4	Louisville	20-1	688
5	Notre Dame	18-2	674
6	Texas	15-3	622
7	South Carolina	16-3	572
8	Florida State	18-2	564
9	Oregon	18-3	561
10	Tennessee	16-3	486
11	Missouri	17-2	474
12	UCLA	15-4	459
13	Maryland	17-3	454
14	Ohio State	16-4	401
15	Texas A&M	16-5	328
16	Michigan	17-4	315
17	Oregon State	14-5	250
18	Duke	15-5	229
19	West Virginia	16-4	206
20	Georgia	17-2	197
21	Green Bay	17-2	179
22	Oklahoma State	14-4	140
23	South Florida	15-5	40
24	TCU	13-5	37
25	Iowa	15-5	31

Others receiving votes: Rutgers 28, California 25, Arizona State 24, Florida Gulf Coast 19, Marquette 18, NC State 16, Virginia 15, Stanford 11, DePaul 9, Villanova 9, Miami 7, Syracuse 5, Purdue 4, Utah 3, Buffalo 3, Central Michigan 2, Princeton 2, Michigan State 1, Mercer 1

**KIARA WILLIAMS STEPPING UP**

- »First career double-double with 11 points and 11 rebounds versus New Mexico State. Second one against GSU with 12 points and 16 boards and third at Auburn with 15 points and 14 rebounds.
- »Six career games (all this season) with 10+ rebounds.
- »Posted a career-best 16 rebounds at Kansas, tying it versus GSU.
- »Tallied a then career-best 12 points in a win over ACU and was in double figures in the first half for the first time in her career.
- »Eight games in double figure scoring including a career-best 15 points at Auburn.

**TAKING CARE OF THE BALL**

- »Arkansas has forced its opponents to turnover the ball more times than they have in 15 games and tied the opponent in TO's once (NMSU).
- »Arkansas has forced double digit turnovers in 17 games while committing single digit miscues in seven games.
- »Arkansas has collected double digit steals in six games.
- »Arkansas **is second in the SEC** and ranks **15th in the country** averaging 12.2 turnovers per game.

**RALLY RAZORBACKS**

- »The Razorbacks have had to come from behind to win in four games this year.
- »Arkansas trailed by 13 points in the second quarter against SHSU and rallied for the 11-point win at home.
- »Arkansas trailed at Oral Roberts by six points in the first quarter and came back to win by 11 points on the road.
- »The Razorbacks trailed by seven points against New Mexico State on a neutral court and rallied late to win by nine.
- »Arkansas trailed Charlotte, 37-30, at the half and the teams were tied at the end of the third quarter before the Razorbacks escaped with a one-point win.

**HOW CLOSE ARE THOSE LOSSES?**

- »Arkansas trailed Nebraska by three, 72-69, with 2:36 remaining in the game. Nebraska finished with a 7-0 run to win the game.
- »After going 0-for-15 in the first quarter at UTEP, the Razorbacks rallied. Arkansas trailed the Miners by one, 62-61, with :38 seconds remaining in the game. UTEP hit a jumper with :08 seconds to seal the win.
- »Arkansas trimmed the Kansas lead to four points, 57-53, at the 5:44 mark of the fourth quarter and trailed by two possessions, 66-60, with :39 seconds to go.
- »Arkansas cut the Gator lead to single digits in the fourth quarter. The slow start was too much to overcome for the Razorbacks.

**SHARING THE BALL**

Twelve of 13 Razorbacks have scored in games this year. All have played and all have attempted a shot. Six of 12 players have recorded double figure points for the season.

**BLOCKING WELL**

- »Kiara Williams leads the team with 22 blocked shots through the first 18 games. Williams had only five blocks for the entire season a year ago. The sophomore record is 58 set by Sarah Watkins in 2010-11. Williams ranks **11th in the SEC** with 1.1 bpg.
- »As a team, Arkansas **ranks tied for 7th in the SEC** with 3.9 bpg.

**DID YOU KNOW**

That Arkansas head coach Mike Neighbors was cut from the Razorback baseball team? He walked on and legendary head coach Norm DiBryan nudged him in the coaching direction saying "You always seem to be in the right place but you don't always make the play."

**THE SCHEDULE**

Arkansas' non-conference schedule features four teams who went to the post season a year ago. Arizona State played in the first round of the NCAA Tournament while Abilene Christian, UT-Arlington and Grambling were all WNIT teams a year ago. UTA was eliminated in the first round while Abilene Christian and Grambling both reached round two.

The always-tough SEC schedule features eight NCAA Tournament teams including the NCAA Champion South Carolina and the runner up, Mississippi State. Auburn and LSU were eliminated in the first round while Kentucky, Missouri, Tennessee and Texas A&M all bowed out in round two. In addition, Alabama and Ole Miss advanced to the WNIT Tournament. That means Arkansas faces 14 teams who played in the postseason a year ago.

According to the NCAA ([http://stats.ncaa.org/rankings/ranking\\_summary](http://stats.ncaa.org/rankings/ranking_summary)) Arkansas has the 31st toughest schedule in the country and the fifth toughest in the SEC.

#### **DOUBLE FIGURES IN A QUARTER**

---

Cosper

1Q, 10, at Nebraska

12, 1Q, at ORU

11, 4Q, at UTEP

Monk

10, 3Q, at Nebraska

13, 4Q, at ORU

10, 4Q, at Kansas

11, 4Q, Alabama

11, 1Q, Florida

Mason

11, 3Q, UTA

Northcross-Baker

12, 4Q, UTA

#### **AGAINST THE POLL**

---

This week's (Jan. 22) Associated Press poll features six SEC teams. Arkansas' schedule is headlined by No. 2 Mississippi State, followed by No. 9 South Carolina, No. 10 Tennessee, No. 11 Missouri, No. 15 Texas A&M and No. 21 Georgia. Arizona State is No. 25 this week and Nebraska (3) is getting votes.

This week's USA Today Coaches Poll has Mississippi State at No. 2, followed by No. 7 South Carolina, No. 10 Tennessee, No. 11 Missouri, No. 15 Texas A&M and No. 20 Georgia. Arizona State is receiving votes.

#### **HOME SWEET HOME**

---

»Arkansas has had just one losing home season in 41 years (prior to 2017-18)

»Arkansas is 422-139 (8-0 in '17-18) in home games including a 263-104 record in Bud Walton Arena. Arkansas was 159-35 in Barnhill Arena.

#### **WHAT'S MY NUMBER**

---

Transfer Chelsea Dungee has a unique background to her jersey number selection. Here is the story in her own words:

*I have always played in #22. Every competitive team and school ball team I have always worn #22. #22 was the number my mom played basketball in throughout her high school career. So, I wore #22. A year ago I changed my jersey number to #33. My cousin (more like brother), Reuben, suffered a traumatic brain injury while playing in a high school football game last season and he wore jersey #33. I play in jersey #33 for Reuben. Playing with #33 on back is a reminder that 'Reub' has my back, and I have his.*

QUARTER BY QUARTER SCORING

Date	Opponent	W/L	1st	2nd	1st Half	3rd	4th	2nd Half	OT	Total
Nov. 2	NE State (exh)	W, 82-74	20	15	35	18	29	47	-	82*
Nov. 10	SHSU	W, 65-54	5	18	23	23	19	41	-	65
Nov. 12	Samford	W, 84-63	27	15	42	16	26	42	-	84
Nov. 16	Nebraska	L, 80-69	19	11	30	22	17	49	-	69
Nov. 20	ORU	W, 77-66	25	15	40	16	21	37	-	77
Nov. 24	UTEP	L, 64-61	3	17	20	16	25	41	-	61
Nov. 25	New Mexico State	W, 69-60	11	12	23	24	22	46	-	69
Nov. 29	Abilene Christian	W, 79-65	20	14	34	20	25	45	-	79
Dec. 3	Kansas	L, 71-60	12	10	22	21	17	38	-	60
Dec. 7	UNC-C	W, 73-72	13	16	30	19	24	43	-	73
Dec. 10	Tulsa	W, 67-41	21	14	35	13	19	32	-	67
Dec. 17	UTA	W, 91-57	14	23	37	26	28	54	-	91
Dec. 21	Arizona State	L, 89-43	8	6	14	11	18	29	-	43
Dec. 28	Grambling State	W, 79-62	15	25	40	25	14	39	-	79

NonConf Totals		193	196	390	252	270	583	-	917
NonConf Averages		13.8	15.01	30	19.4	20.8	44.8	-	70.5
NonConf Highs		25	25	42	26	28	54	-	91
NonConf Lows		3	6	14	11	17	29	-	43

\*Not included in averages

Dec. 31	Ole Miss	W, 73-72	19	18	37	25	11	36	-	73
Jan. 4	Mississippi State	L, 111-69	20	19	39	18	12	30	-	69
Jan. 7	Alabama	L, 83-76	13	16	29	26	21	47	-	76
Jan. 11	Georgia	L, 78-65	7	18	25	24	16	40	-	65
Jan. 14	Auburn	W, 68-58	16	25	41	15	12	27	-	68
Jan. 18	Florida	L, 65-51	13	15	28	7	16	23	-	51
Jan. 21	No. 11 Missouri	L, 88-54	16	13	29	19	6	25	-	54
Jan. 25	South Carolina									
Jan. 29	Kentucky									
Feb. 4	Alabama									
Feb. 8	Tennessee									
Feb. 11	Missouri									
Feb. 15	Kentucky									
Feb. 18	LSU									
Feb. 22	Texas A&M									
Feb. 25	Vanderbilt									

SEC Totals		97	124	228	134	94	228	-	456
SEC Averages		13.9	17.7	32.6	19.1	13.4	32.6	-	65.1
SEC Highs		20	25	41	26	21	47	-	76
SEC Lows		7	13	25	7	6	23	-	51

Season Totals		285	320	608	386	364	811	-	1373
Season Averages		14.3	16.0	30.4	19.3	18.2	40.6	-	68.7
Season Highs		25	25 (2x)	42	26	28	54	-	91
Season Lows		3	6	14	7	6	23	-	43

BY STARTERS

Date	Opponent									
Nov. 2	NE State (exh) - W	Monk	Williams		Mason		Cosper		Zimmerman	
Nov. 10	SHSU - W	Monk	Williams		Mason		Cosper		Zimmerman	
Nov. 12	Samford - W	Monk	Williams		Mason		Cosper		Zimmerman	
Nov. 16	Nebraska - L	Monk	Williams		Mason		Cosper		Zimmerman	
Nov. 20	ORU - W	Monk	Williams		Mason		Cosper		Zimmerman	
Nov. 25	UTEP - W	Monk	Williams		Mason		Cosper		Zimmerman	
Nov. 26	New Mexico State - W	Monk	Williams		Mason		Cosper		Zimmerman	
Nov. 29	Abilene Christian - W	Monk	Williams		Mason		Cosper		Zimmerman	
Dec. 3	Kansas - L	Monk	Williams		Mason		Cosper		Zimmerman	
Dec. 7	UNC-C - W	Monk	Williams		Mason		Cosper		Zimmerman	
Dec. 10	Tulsa - W	Monk	Williams		Mason		Cosper		Zimmerman	
Dec. 17	UTA - W	Monk	Thomas		Mason		Cosper		Zimmerman	
Dec. 21	Arizona State - L	Monk	Williams		Mason		Cosper		Zimmerman	
Dec. 28	Grambling - W	Monk	Williams		Mason		Cosper		Zimmerman	
Dec. 31	Ole Miss - W	Monk	Williams		Mason		Cosper		Zimmerman	
Jan. 4	Mississippi State - L	Monk	Williams		Mason		Cosper		Zimmerman	
Jan. 7	Alabama - L	Monk	Williams		Mason		Cosper		Zimmerman	
Jan. 11	Georgia - L	Monk	Williams		Mason		Cosper		Zimmerman	
Jan. 14	Auburn - W	Monk	Williams		Mason		Cosper		Zimmerman	
Jan. 18	Florida - L	Monk	Williams		Mason		Northcross-Baker		Zimmerman	
Jan. 21	No. 11 Missouri - L	Monk	Williams		Mason		Thomas		Zimmerman	
Jan. 25	South Carolina									
Jan. 29	Kentucky									
Feb. 4	Alabama									
Feb. 8	Tennessee									
Feb. 11	Missouri									
Feb. 15	Kentucky									
Feb. 18	LSU									
Feb. 22	Texas A&M									
Feb. 25	Vanderbilt									

MISCELLANEOUS STATISTICS

Double-Figure Scoring Games

Player	15-16	16-17	17-18	Career
M. Monk	3	13	19	35
K. Swenson		11	1	12
J. Mason		10	12	22
D. Cosper	15	8	15	37
B. Zimmerman		2	2	4
T. Thomas	-	-	1	1
K. Williams	-	-	8	8
R. Northcross-Baker	-	-	3	3
TOTAL	18	44	60	122

20-Point Scoring Games

Player	15-16	16-17	17-18	Career
K. Swenson		1		1
D. Cosper	1	-	5	6
M. Monk	-	-	8	8
R. Northcross-Baker			1	1
TOTAL	1	1	12	14

Double-Figure Rebounding Games

Player	15-16	16-17	17-18	Career
D. Cosper	-	-	7	7
T. Thomas	-	-	1	1
K. Williams	-	-	6	6
TOTAL	x	x	14	14

Double-Doubles

Player	15-16	16-17	17-18	Career
J. Mason (pts/ast)	-	2		2
D. Cosper (pts/reb)	-	-	7	7
K. Williams (pts/reb)	-	-	3	3
M. Monk (pts/ast)	-	-	1	1
TOTAL	-	2	11	13

5+ Steals

Player	15-16	16-17	17-18	Career
M. Monk	-	2	-	2
TOTAL	x	2	-	2

5+ Blocks

Player	15-16	16-17	17-18	Career
TBA	-			
TOTAL	-	x	x	x

5+ Assists

Player	15-16	16-17	17-18	Career
M. Monk	3	4	6	13
J. Mason		6	4	10
D. Cosper		2		2
TOTAL	3	12	10	25



**@RazorbackWBB STATISTICS**  
**Arkansas Combined Team Statistics (as of Jan 21, 2018)**  
**All games**



<b>RECORD:</b>	<b>OVERALL</b>	<b>HOME</b>	<b>AWAY</b>	<b>NEUTRAL</b>
ALL GAMES	11-9	8-2	2-7	1-0
CONFERENCE	2-5	1-2	1-3	0-0
NON-CONFERENCE	9-4	7-0	1-4	1-0

##	Player	gp-gs	min	avg	Total		3-Point		F-Throw		Rebounds				pf	dq	a	to	blk	stl	pts	avg
					fg-fga	fg%	3fg-fga	3fg%	ft-fga	ft%	off	def	tot	avg								
03	MONK, Malica	20-20	679	34.0	113-310	.365	20-71	.282	83-108	.769	17	61	78	3.9	47	1	78	48	4	33	329	16.5
21	COSPER, Devin	18-18	571	31.7	98-272	.360	41-144	.285	38-50	.760	15	108	123	6.8	47	1	27	44	9	26	275	15.3
14	MASON, Jaily	20-20	642	32.1	86-213	.404	31-81	.383	6-9	.667	9	74	83	4.2	37	1	57	45	11	29	209	10.5
10	WILLIAMS, Kiara	20-19	395	19.8	67-130	.515	1-1	1.000	28-53	.528	64	88	152	7.6	45	1	6	19	22	22	163	8.2
01	NORTHCROSS-BAKE	20-1	424	21.2	45-139	.324	27-94	.287	20-29	.690	24	36	60	3.0	28	0	30	20	3	12	137	6.9
04	SWENSON, Keiryn	20-0	322	16.1	35-96	.365	23-70	.329	7-11	.636	16	34	50	2.5	23	0	8	18	8	5	100	5.0
24	THOMAS, Taylah	20-2	342	17.1	26-61	.426	3-9	.333	20-30	.667	38	60	98	4.9	39	1	5	16	4	5	75	3.8
22	ZIMMERMAN, Bailey	20-20	453	22.7	20-91	.220	7-53	.132	18-31	.581	29	34	63	3.2	38	1	22	24	9	8	65	3.3
20	STOUT, Sydney	10-0	45	4.5	1-6	.167	1-3	.333	3-6	.500	3	5	8	0.8	1	0	1	1	0	0	6	0.6
13	SPANGLER, Grayce	12-0	41	3.4	2-13	.154	0-6	.000	3-6	.500	1	4	5	0.4	7	0	0	4	0	0	7	0.6
30	WEAVER, Macy	14-0	80	5.7	2-9	.222	0-0	.000	3-7	.429	9	11	20	1.4	16	0	1	2	8	1	7	0.5
12	MCCLURE, Brenna	2-0	6	3.0	0-2	.000	0-0	.000	0-0	.000	0	0	0	0.0	1	0	0	0	0	0	0	0.0
Team											44	38	82		2		3					
Total.....		20	4000		495-1342	.369	154-532	.289	229-340	.674	269	553	822	41.1	331	6	235	244	78	141	1373	68.7
Opponents.....		20	4000		514-1285	.400	132-405	.326	239-331	.722	252	611	863	43.2	335	2	292	290	76	122	1399	69.9

TEAM STATISTICS	AR	OPP
SCORING	1373	1399
Points per game	68.7	69.9
Scoring margin	-1.3	-
FIELD GOALS-ATT	495-1342	514-1285
Field goal pct	.369	.400
3 POINT FG-ATT	154-532	132-405
3-point FG pct	.289	.326
3-pt FG made per game	7.7	6.6
FREE THROWS-ATT	229-340	239-331
Free throw pct	.674	.722
F-Throws made per game	11.5	12.0
REBOUNDS	822	863
Rebounds per game	41.1	43.2
Rebounding margin	-2.0	-
ASSISTS	235	292
Assists per game	11.8	14.6
TURNOVERS	244	290
Turnovers per game	12.2	14.5
Turnover margin	+2.3	-
Assist/turnover ratio	1.0	1.0
STEALS	141	122
Steals per game	7.1	6.1
BLOCKS	78	76
Blocks per game	3.9	3.8
ATTENDANCE	18439	25684
Home games-Avg/Game	10-1844	9-2826
Neutral site-Avg/Game	-	1-250

Date	Opponent		Score	Att.
11/10/17	SHSU	w	65-54	4719
11/12/17	SAMFORD	w	84-63	1739
11/16/17	at Nebraska	L	69-80	3459
11/20/17	at Oral Roberts	w	77-66	2503
11/24/17	at UTEP	L	61-64	633
11/25/17	vs NM State	w	69-60	250
11/29/17	ACU	w	79-65	1132
12/03/17	at Kansas	L	60-71	1795
12/07/17	CHARLOTTE	w	73-72	1169
12/10/17	TULSA	w	67-41	1821
12/17/17	UT-ARLINGTON	w	91-57	1481
12/21/17	at Arizona State	L	43-89	1988
12/28/17	GRAMBLING	w	79-62	1388
* 12/31/17	OLE MISS	w	73-72	1701
* 01/04/18	at #5/3 Mississippi State	L	69-111	5398
* 01/07/18	ALABAMA	L	76-83	2001
* 1/11/18	at Georgia	L	65-78	2229
* 01/14/18	at Auburn	w	68-58	2210
* 01/18/18	FLORIDA	L	51-65	1288
* 01/21/18	at No. 11 Mizzou	L	54-88	5219

\* - Conference game

Score by Periods	1st	2nd	3rd	4th	Totals
Arkansas	298	320	386	369	1373
Opponents	339	323	359	378	1399



**@RazorbackWBB STATISTICS**  
**Arkansas Combined Team Statistics (as of Jan 21, 2018)**  
**Conference games only**



<b>RECORD:</b>	<b>OVERALL</b>	<b>HOME</b>	<b>AWAY</b>	<b>NEUTRAL</b>
ALL GAMES	2-5	1-2	1-3	0-0
CONFERENCE	2-5	1-2	1-3	0-0
NON-CONFERENCE	0-0	0-0	0-0	0-0

##	Player	gp-gs	min	avg	Total		3-Point		F-Throw		Rebounds				pf	dq	a	to	blk	stl	pts	avg
					fg-fga	fg%	3fg-fga	3fg%	ft-fga	ft%	off	def	tot	avg								
03	MONK, Malica	7-7	246	35.1	36-117	.308	7-25	.280	26-40	.650	7	23	30	4.3	20	0	21	17	2	6	105	15.0
14	MASON, Jailyn	7-7	250	35.7	36-82	.439	13-29	.448	4-4	1.000	4	23	27	3.9	16	0	16	22	4	10	89	12.7
21	COSPER, Devin	5-5	157	31.4	22-61	.361	4-25	.160	15-17	.882	3	36	39	7.8	15	1	10	15	1	8	63	12.6
10	WILLIAMS, Kiara	7-7	135	19.3	27-49	.551	1-1	1.000	8-12	.667	16	30	46	6.6	16	1	2	7	6	5	63	9.0
01	NORTHCROSS-BAKE	7-1	171	24.4	15-54	.278	9-35	.257	5-6	.833	9	13	22	3.1	8	0	10	6	2	4	44	6.3
22	ZIMMERMAN, Bailey	7-7	158	22.6	9-33	.273	6-25	.240	8-15	.533	13	12	25	3.6	18	1	10	11	2	3	32	4.6
04	SWENSON, Keiryn	7-0	104	14.9	11-31	.355	6-23	.261	1-1	1.000	6	8	14	2.0	8	0	2	5	3	1	29	4.1
24	THOMAS,Taylah	7-1	136	19.4	11-25	.440	1-3	.333	3-4	.750	13	18	31	4.4	15	0	3	7	0	0	26	3.7
13	SPANGLER, Grayce	3-0	8	2.7	2-5	.400	0-2	.000	0-1	.000	1	0	1	0.3	2	0	0	2	0	0	4	1.3
30	WEAVER, Macy	4-0	20	5.0	0-3	.000	0-0	.000	1-2	.500	2	2	4	1.0	3	0	0	0	1	0	1	0.3
20	STOUT, Sydney	2-0	9	4.5	0-0	.000	0-0	.000	0-0	.000	0	1	1	0.5	0	0	0	0	0	0	0	0.0
12	MCCLURE, Brenna	2-0	6	3.0	0-2	.000	0-0	.000	0-0	.000	0	0	0	0.0	1	0	0	0	0	0	0	0.0
Team											15	12	27		1		2					
Total.....		7	1400		169-462	.366	47-168	.280	71-102	.696	89	178	267	38.1	123	3	74	94	21	37	456	65.1
Opponents.....		7	1400		195-446	.437	53-142	.373	112-144	.778	86	211	297	42.4	103	1	113	88	33	46	555	79.3

TEAM STATISTICS	AR	OPP
SCORING	456	555
Points per game	65.1	79.3
Scoring margin	-14.1	-
FIELD GOALS-ATT	169-462	195-446
Field goal pct	.366	.437
3 POINT FG-ATT	47-168	53-142
3-point FG pct	.280	.373
3-pt FG made per game	6.7	7.6
FREE THROWS-ATT	71-102	112-144
Free throw pct	.696	.778
F-Throws made per game	10.1	16.0
REBOUNDS	267	297
Rebounds per game	38.1	42.4
Rebounding margin	-4.3	-
ASSISTS	74	113
Assists per game	10.6	16.1
TURNOVERS	94	88
Turnovers per game	13.4	12.6
Turnover margin	-0.9	-
Assist/turnover ratio	0.8	1.3
STEALS	37	46
Steals per game	5.3	6.6
BLOCKS	21	33
Blocks per game	3.0	4.7
ATTENDANCE	4990	15056
Home games-Avg/Game	3-1663	4-3764
Neutral site-Avg/Game	-	0-0

Date	Opponent		Score	Att.
* 12/31/17	OLE MISS	W	73-72	1701
* 01/04/18	at #5/3 Mississippi State	L	69-111	5398
* 01/07/18	ALABAMA	L	76-83	2001
* 1/11/18	at Georgia	L	65-78	2229
* 01/14/18	at Auburn	W	68-58	2210
* 01/18/18	FLORIDA	L	51-65	1288
* 01/21/18	at No. 11 Mizzou	L	54-88	5219

\* - Conference game

Score by Periods	1st	2nd	3rd	4th	Totals
Arkansas	104	124	134	94	456
Opponents	122	125	152	156	555

# MORE NUMBERS

## MISCELLANEOUS

Opponent	T/O	2ndCh	Paint	FastB	Bench	Ties	Leads	WL	Score	Leads overcome
SHSU	15	5	28	14	13	1	1	W	65-54	trailed by 13/20-07:26
Samford	18	5	30	3	23	0	0	W	84-63	
Nebraska	12	14	32	10	11	3	1	L	69-80	lost 2 4th-0:6:21
ORU	15	6	32	18	16	1	1	W	77-66	trailed by 6 1st-04:58
UTEP	22	18	18	14	16	0	0	L	61-64	
NM State	17	16	34	13	15	2	4	W	69-60	trailed by 7 1st-01:06
ACU	28	9	20	0	25	0	1	W	79-65	trailed by 1 1st-09:21
Kansas	10	8	28	6	6	1	1	L	60-71	lost 2 1st-08:40
Charlotte	15	17	32	8	6	1	8	W	73-72	trailed by 9 3rd-9:40
Tulsa	7	13	30	6	12	0	1	W	67-41	trailed by 2 1st-09:14
UTA	23	13	26	17	42	3	2	W	91-57	trailed by 6 1st-4:54
Arizona St.	3	8	22	6	12	0	0	L	43-89	lost 2 1st-09:43
Grambling	18	11	22	3	33	0	0	W	79-62	
Ole Miss	13	10	26	10	23	0	1	W	73-72	trailed by 1 2nd-04:33
#5/3 MSU	3	4	20	11	16	1	1	L	69-111	lost 5 1st-08:28
Alabama	7	7	26	6	13	3	3	L	76-83	lost 7 3rd-02:23
Georgia	11	8	22	8	13	0	0	L	65-78	
Auburn	15	22	27	4	11	0	1	W	68-58	trailed by 2 1st-09:37
Florida	15	9	18	9	9	0	0	L	51-65	
No. 11 Mizzou	7	6	16	2	11	0	0	L	54-88	
Totals	274	209	509	168	326	16	26			
Ave/Game	13.7	10.4	25.4	8.4	16.3	0.8	1.3			
Opponent	275	208	660	106	396	19	25			
Ave/Game	13.8	10.4	33.0	5.3	19.8	0.9	1.2			

## GAME BY GAME LEADERS

Date	Opponent	Points	Rebounds	Assists	Steals	Blocks
Nov. 10	SHSU	Monk (18)	Cosper (10)	2 Players (4)	Monk (4)	Mason (3)
Nov. 12	Samford	Monk (21)	2 Players (9)	2 Players (6)	3 Players (3)	Williams (4)
Nov. 16	Nebraska	Monk (22)	2 Players (11)	Monk (6)	Mason (4)	4 Players (2)
Nov. 20	ORU	Monk (24)	Cosper (10)	Monk (4)	Cosper (2)	2 Players (1)
Nov. 24	UTEP	Cosper (22)	Cosper (5)	Monk (5)	Cosper (4)	Weaver (4)
Nov. 25	NMSU	Monk (22)	2 Players (11)	Cosper (4)	Monk (4)	2 Players (1)
No. 29	A. Christian	2 Players (15)	Williams (8)	Mason (8)	Williams (3)	2 Players (1)
Dec. 3	Kansas	Monk (22)	Williams (16)	Monk (5)	Mason (2)	Williams (2)
Dec. 7	Charlotte	Cosper (25)	Cosper (14)	Mason (4)	Williams (4)	Williams (3)
No. 10	Tulsa	Monk (14)	Cosper (11)	Mason (6)	2 Players (1)	2 Players (2)
No. 17	UTA	RNB (22)	Williams (8)	Mason (7)	2 Players (3)	2 Players (1)
Dec. 21	Az State	Monk (12)	3 Players (4)	Monk (2)	Monk (1)	4 Players (1)
Dec. 28	Grambling	Cosper (16)	Williams (16)	Monk (10)	Monk (3)	Monk (1)
Dec. 31	Ole Miss	Cosper (18)	Cosper (11)	2 Players (4)	Cosper (4)	Williams (4)
Jan. 4	Miss State	Mason (15)	Cosper (7)	2 Players (4)	Monk (2)	3 Players (1)
Jan. 7	Alabama	Cosper (24)	Cosper (13)	Cosper (4)	Mason (3)	Mason (2)
Jan. 11	Georgia	Monk (16)	Thomas (8)	3 Players (2)	Mason (5)	Monk (1)
Jan. 14	Auburn	2 Players (15)	Williams (14)	Mason (5)	4 Players (1)	Zimmerman (1)
Jan. 18	Florida	Monk (23)	Monk (8)	Monk (4)	3 Players (1)	3 Players (1)
Jan. 21	No. 11 MU	2 Players (14)	Williams (7)	4 Players (2)	2 Players (1)	Weaver (1)
Jan. 25	S Carolina					
Jan. 29	Kentucky					
Feb. 4	Alabama					
Feb. 8	Tennessee					
Feb. 11	Missouri					
Feb. 15	Kentucky					
Feb. 18	LSU					
Feb. 22	Texas A&M					
Feb. 25	Vanderbilt					

## SPECIALTY STATS

Opponent	Paint	OFF TO	2ND CHANCE	FAST BREAK	BENCH
SHSU	28	15	5	14	13
Samford	30	18	5	3	23
Nebraska	32	12	14	10	11
ORU	32	15	6	18	16
UTEP	18	22	18	14	16
NMSU	34	17	16	13	15
Ab. Christian	20	28	9	0	25
Kansas	28	10	8	6	6
Charlotte	32	15	17	8	6
Tulsa	30	7	13	6	12
UTA	26	23	13	17	42
Arizona State	22	3	8	6	12
Grambling State	22	18	11	3	33
Ole Miss	26	13	10	10	23
Miss State	20	3	4	11	16
Alabama	26	7	7	6	13
Georgia	22	11	8	8	13
Auburn	27	15	22	4	11
Florida	18	15	9	9	9
No. 11 Missouri	16	7	6	2	11
S. Carolina					
Kentucky					
Alabama					
Tennessee					
Missouri					
Kentucky					
LSU					
Texas A&M					
Vanderbilt					

# COMPARISON



## @RazorbackWBB STATISTICS Arkansas Team Game-by-Game Comparison (as of Jan 21, 2018) All games



Opponent	1st	2nd	Score	Mar	Total FG	FG Pct	3-Pointers	3FG Pct	Free Throws	FT Pct	Rebounds	Assist	T/Over	Block	Steal	Fouls
SHSU	23/28	42/26	65-54	+11	25-67/20-63	.373/.317	9-33/7-27	.273/.259	6-11/7-11	.545/.636	39/51 (12)	15/10	9/15	7/5	8/3	12/14
SAMFORD	42/33	42/30	84-63	+21	29-59/23-59	.492/.390	10-27/6-22	.370/.273	16-22/11-14	.727/.786	35/34 +1	17/17	6/13	4/1	7/3	15/23
Nebraska	30/41	39/39	69-80	(11)	27-77/28-72	.351/.389	8-32/7-21	.250/.333	7-10/17-25	.700/.680	45/55 (10)	10/17	15/16	8/6	12/7	23/12
Oral Roberts	40/36	37/30	77-66	+11	29-70/22-58	.414/.379	6-23/7-22	.261/.318	13-18/15-19	.722/.789	41/41 -	8/12	4/14	2/0	5/2	18/20
UTEP	20/38	41/26	61-64	(3)	21-70/27-53	.300/.509	11-41/5-13	.268/.385	8-14/5-7	.571/.714	27/51 (24)	13/19	4/23	4/0	14/1	15/13
NM State	23/25	46/35	69-60	+9	25-70/23-67	.357/.343	6-26/4-18	.231/.222	13-24/10-14	.542/.714	55/41 +14	10/9	18/18	3/2	12/10	15/21
ACU	34/24	45/41	79-65	+14	25-68/24-69	.368/.348	10-25/11-34	.400/.324	19-27/6-11	.704/.545	44/43 +1	13/17	12/20	4/6	13/8	13/21
Kansas	22/30	38/41	60-71	(11)	22-69/25-62	.319/.403	5-27/3-15	.185/.200	11-15/18-25	.733/.720	40/50 (10)	7/9	13/15	6/5	3/8	24/17
CHARLOTTE	30/37	43/35	73-72	+1	26-75/27-74	.347/.365	9-31/5-13	.290/.385	12-24/13-20	.500/.650	45/58 (13)	11/15	10/17	5/3	10/7	19/20
TULSA	35/24	32/17	67-41	+26	25-67/16-69	.373/.232	6-29/2-16	.207/.125	11-19/7-10	.579/.700	61/39 +22	13/5	9/7	7/3	2/4	10/16
UT-ARLINGTON	37/24	54/33	91-57	+34	30-65/22-54	.462/.407	12-28/3-15	.429/.200	19-21/10-16	.905/.625	40/27 +13	19/10	14/22	2/2	11/6	21/21
Arizona State	14/52	29/37	43-89	(46)	17-57/37-73	.298/.507	4-18/12-20	.222/.600	5-6/3-6	.833/.500	35/41 (6)	7/27	23/8	4/4	1/11	12/13
GRAMBLING	40/23	39/39	79-62	+17	25-66/25-66	.379/.379	11-24/7-27	.458/.259	18-27/5-9	.667/.556	48/35 +13	18/12	13/14	1/6	6/6	11/21
OLE MISS	37/32	36/40	73-72	+1	26-61/23-55	.426/.418	8-21/7-18	.381/.389	13-20/19-26	.650/.731	38/34 +4	11/14	15/17	7/4	7/6	18/17
#5/3 Mississippi State	39/49	30/62	69-111	(42)	28-62/44-76	.452/.579	6-18/10-20	.333/.500	7-12/13-14	.583/.929	29/40 (11)	12/25	16/4	3/2	3/7	17/15
ALABAMA	29/32	47/51	76-83	(7)	26-70/26-65	.371/.400	6-21/6-18	.286/.333	18-21/25-36	.857/.694	43/44 (1)	9/12	17/14	5/7	8/9	26/19
Georgia	25/31	40/47	65-78	(13)	22-65/30-73	.338/.411	5-21/8-18	.238/.444	16-23/10-12	.696/.833	43/49 (6)	10/19	17/13	1/9	10/6	16/14
Auburn	41/17	27/41	68-58	+10	24-61/19-56	.393/.339	9-30/2-14	.300/.143	11-15/18-22	.733/.818	39/33 +6	14/7	12/15	1/4	4/8	17/18
FLORIDA	28/35	23/30	51-65	(14)	21-76/26-69	.276/.377	5-30/7-29	.167/.241	4-4/6-7	1000/.857	42/54 (12)	8/15	8/14	3/1	3/4	9/9
No. 11 Mizzou	29/51	25/37	54-88	(34)	22-67/27-52	.328/.519	8-27/13-25	.296/.520	2-7/21-27	.286/.778	33/43 (10)	10/21	9/11	1/6	2/6	20/11

Note: Game totals are displayed in the format TEAM/OPPONENT for each category



## @RazorbackWBB STATISTICS Arkansas Points-Rebounds-Assists (as of Jan 21, 2018) All games

Opponent	Date	Score	01	03	04	10	12	13	14	20	21	22	24
			NORTHGROS	MONK,MALIC	SWENSON,K	WILLIAMS,K	MCCLURE,B	SPANGLER,	MASON,JAIL	STOUT,SYDN	COSPER,DE	ZIMMERMAN,	THOMAS,TA W
SHSU	11/10/17	65-54 w	3-2-2	18-2-4	5-1-0	7-2-1	DNP	0-0-0	8-5-4	1-1-0	17-12-2	2-3-2	4-4-0
SAM	11/12/17	84-63 w	0-1-6	21-9-6	9-0-1	10-5-0	DNP	0-1-0	12-1-2	1-1-0	18-5-2	0-0-0	13-9-0
at NEB	11/16/17	69-80 L	3-4-0	22-3-6	3-3-0	6-11-1	DNP	DNP	8-5-2	DNP	21-4-0	1-0-0	5-11-1
at ORU	11/20/17	77-66 w	8-1-1	24-3-4	6-2-0	8-5-0	DNP	DNP	6-2-1	DNP	21-10-1	2-4-1	2-9-0
at UTEPW	11/24/17	61-64 L	7-2-3	10-2-5	6-2-0	1-1-0	DNP	0-0-0	8-4-2	0-0-0	22-5-0	4-3-2	1-4-0
vs NMSU	11/25/17	69-60 w	7-2-0	22-7-2	5-6-0	11-11-0	DNP	DNP	3-6-2	DNP	17-11-4	1-3-2	3-7-0
ACU	11/29/17	79-65 w	15-3-1	15-2-1	3-2-0	12-8-0	DNP	0-0-0	13-7-8	0-1-0	11-3-1	3-6-2	7-7-0
at KU	12/03/17	60-71 L	2-2-1	21-7-5	4-2-0	6-16-0	DNP	0-0-0	10-2-1	DNP	17-3-0	0-2-0	0-0-0
CHA	12/07/17	73-72 w	3-3-1	15-4-3	3-2-0	9-12-0	DNP	DNP	12-4-4	DNP	25-14-2	6-3-1	0-0-0
TLS	12/10/17	67-41 w	1-9-1	14-4-3	7-6-0	13-7-2	DNP	0-1-0	11-5-6	0-1-0	11-11-0	6-7-1	4-7-0
UTA	12/17/17	91-57 w	22-4-3	20-1-6	10-5-2	2-8-0	DNP	3-1-0	15-4-7	4-2-0	8-1-1	6-3-0	0-4-0
at ASU	12/21/17	43-89 L	8-1-1	12-2-2	2-3-1	3-4-0	DNP	0-1-0	6-4-1	0-0-0	8-1-1	2-4-1	2-3-0
GRAMWBB	12/28/17	79-62 w	14-4-0	10-2-10	8-2-2	12-16-0	DNP	0-0-0	8-7-1	0-1-1	16-4-3	0-0-0	8-2-1
OM	12/31/17	73-72 w	9-3-0	12-2-4	8-4-0	5-9-1	DNP	DNP	13-2-4	DNP	18-11-1	2-1-1	6-3-0
at MS	01/04/18	69-111 L	8-1-1	8-3-4	0-2-0	13-2-0	0-0-0	4-1-0	15-3-4	0-0-0	13-7-3	4-3-0	4-6-0
UA	01/07/18	76-83 L	2-0-2	21-4-1	9-0-0	6-7-0	DNP	0-0-0	12-6-0	DNP	24-13-4	0-2-2	2-4-0
at UGA	1/11/18	65-78 L	6-2-1	16-5-2	0-0-0	2-3-1	DNP	DNP	15-5-1	DNP	8-7-2	11-5-2	6-8-1
at AU	01/14/18	68-58 w	7-6-3	14-5-4	0-0-0	15-14-0	DNP	DNP	15-2-5	DNP	0-1-0	13-8-2	4-1-0
UF	01/18/18	51-65 L	6-6-1	23-8-4	7-4-1	8-4-0	DNP	DNP	5-6-1	DNP	DNP	0-3-1	2-6-0
at MU-W	01/21/18	54-88 L	6-4-2	11-3-2	5-4-1	14-7-0	0-0-0	0-0-0	14-3-1	0-1-0	DNP	2-3-2	2-3-2

## THE LAST TIME A RAZORBACK TEAM ...

### OFFENSE

Scored 110+ .....	110, vs. Providence (11/16/98)
Scored 100+ points at home .....	101, Houston Baptist, 12-28-16
Scored 100+ points on the road .....	108, Baylor (3-6-91; SWC Tourn., Dallas, Texas)
Scored 90-99 points .....	91 vs. UTA, 12-17-17
Scored 90+ points at home .....	101, Houston Baptist, 12-28-16
Scored 90+ points on the road .....	91, (91-80 Win in 3OT, 2-10-13, at Alabama)
Scored 80-89 points .....	84, Samford (11-12-17)
Scored 80-89 points at home .....	86, Mississippi Valley State (12-28-15)
Scored 80-89 points on the road .....	88, Southeast Missouri (NM) (11-29-13)
Scored 70-79 points .....	77, Alabama, 1-7-18
Scored 70-79 points at home .....	73, Ole Miss, 12-31-17
Scored 70-79 points on the road .....	77 at Ole Miss, 1-31-13
Scored 60-69 points .....	68, at Auburn, 1-14-18
Was held to 50-59 .....	54, at No. 11 Missouri, 1-21-18
Was held to 49-40 .....	43 at Arizona State, 12-21-17
Was held to 39-20 .....	32, at No. 2 South Carolina (1-3-16)
Was held to 20 or less .....	N/A
Made 30-39 field goals .....	30 vs. UTA, 12-17-17
Made 20-29 field goals .....	22, at No. 11 Missouri, 1-21-18
Made 10-19 field goals .....	17 at Arizona State, 12-21-17
Made 10 three-point field goals .....	11, Grambling State, 12-28-17
Did not make a three point basket (began in 1986) .....	0-10, at Mississippi State (L 44-47), 2-3-13
Made 30 free throws .....	38 at Florida (38-54); (2-22-04)
Made 15+ Free Throws .....	18, Grambling State, 12-28-17
Shot 40-49 or better from the field .....	45.2 (28-62) at #5/3 Mississippi State (1-4-18)
Shot 50-59 or better from the field .....	52.1 (38-73), Houston Baptist, 12-28-16
Shot 60 percent or better from the field .....	600 (36-60) vs. Ole Miss (W, 93-52; 3-3-13)
Held to less than 40 percent from the field .....	32.8% (22-67), at No. 11 Missouri, 1-21-18
Held to less than 30 percent from the field .....	27.6% (21-76), Florida, 1-18-18
Held to less than 20 percent from the field .....	182 (10-55) vs. No. 6/7 Tennessee (1-8-12; L, 38-69)
Allowed opponent to shoot over 50% from the field .....	5.9% (27-52), at No. 11 Missouri, 1-21-18
Held opponent to less than 40% from the field .....	33.9% (19-56), at Auburn, 1-14-18
Held opponent to less than 30% from the field .....	23.2% (16-69), Tulsa, 12-10-17
Held opponent to less than 20% from the field in a half: .....	136 (3-22), First Half, Binghamton, 11-30-13
.....	200 (5-25), First Half, MVSU, 12-28-13
.....	200 (5-25), First Half, Grambling State, 12-29-14
Had 20 or more assists in a game .....	27, Houston Baptist, 12-28-16

### DEFENSE

Allowed 100 points .....	111 at #5/3 Mississippi State (1-4-18)
Allowed 80+ points .....	88, at No. 11 Missouri, 1-21-18
Allowed 70-79 points .....	78, at Georgia, 1-11-18
Allowed 69-60 points .....	65, Florida, 1-18-18
Held opponent to 59-50 points .....	58, at Auburn, 1-14-18
Held opponent to 40-49 points .....	41, Tulsa, 12-10-17
Held opponent to 39-30 .....	36, Northwestern State, 12-18-16
Held opponent under 45 points three cons. games .....	45, SHSU (11-8-13, W 81-45);
.....	33 ORU (11-13-13, W 91-33); 45, Furman (11-16-13, W, 74-45)
Held an SEC opponent under 50 points in 3 cons. games .....	47, Auburn (1-29-15, W, 52-47); 42,
.....	Alabama (2-1-15, W, 53-42);
.....	#24/21 Georgia (2-9-15, W, 54-48)
Held opponent to 29 points or less .....	23, Binghamton, 11-30-13
Held an opponent under 15 points in a half .....	13, Northwestern State, 12-18-16
Held opponent under 15 field goals .....	14, Houston Baptist, 12-28-16
Held opponent under 15% from three-point distance .....	14.3% (2-14), at Auburn, 1-14-18
Had 70+ rebounds .....	74, Mississippi Valley State (11-24-89)
Had 60-69 rebounds .....	61, Tulsa, 12-10-17
Had 50-59 rebounds .....	55, vs. NMSU, 11-25-17
Had five or more blocked shots in a game .....	7, Ole Miss, 12-31-17
Had 20 or more steals in a game .....	20, ORU (11-13-13)
Had 15 or more steals in a game .....	16, at Florida, 2-9-17
Had 20 or more turnovers in a game .....	23 at Arizona State, 12-21-17
Forced 20-25 or more Turnovers in a game .....	22 vs. UTA, 12-17-17

### OTHER

Won an overtime game .....	91-80 Win in 3OT, 2-10-13, at Alabama
Lost an overtime game .....	Florida (71-66), 1-28-16
Won a double overtime game .....	73-72, vs. Florida (1-29-12)
Lost a double overtime game .....	N/A
Won a triple overtime game .....	91-80 Win in 3OT, 2-10-13, at Alabama
Played consecutive overtime games .....	1-24-16 at Auburn (lost); 1-28-16 vs Florida (lost)
Won a regular season tournament .....	Nugget Classic (Reno, Nev., Nov. 25-26, 2016)
Defeated a ranked team .....	67-61, No. 13 Texas A&M, 1-7-16; 64-59, No. 13 Tenn., 1-14-16
.....	64-52, No. 24 Missouri, 1-17-16
Defeated a ranked team on the road .....	57-53, at #19/18 LSU, 2-23-14; 77-76,
.....	#17/16 Iowa (Las Vegas), 12-18-14
All-time SEC win streak .....	8 games (1-15-12: Auburn through 2-15-12: at Auburn)
All-time SEC home win streak .....	5 games (1-15-12: Auburn through 2-9-12: S. Carolina)

### THE LAST TIME A RAZORBACK PLAYER ...

Scored 20-24 points .....	23, Malica Monk, Florida, 1-18-18
Scored 25-29 points .....	25, Devin Cosper, Charlotte (12-6-17)
Scored 30+ points .....	34, Jessica Jackson, Houston Baptist, 12-28-16
Scored 20+ points seven times in a season .....	Jessica Jackson, 2013-14 (22 vs. MTSU, 22 at Missouri,
.....	23 at Fla., 24 at Georgia, 31 vs. Ole Miss, 23 at Kentucky,
.....	25 at LSU)
Scored 20+ points eight times in a season .....	Malica Monk, 2017-18 (Samford 21, Neb. 22, ORU 24, NMSU
.....	22, KU 21, UTA 20, Ala. 21, FL 23)
.....	Previous: Jessica Jackson, 2015-16
Double figures in 15 consecutive games (Season) .....	Jessica Jackson, 11/11/16-, LSU 1-8-17
Scored 23+ points in three consecutive games .....	Jessica Jackson (24 at Georgia 1-16-14,
.....	31 vs. Ole Miss 1-19-14, 23 at Kentucky 1-26-14)
Three players scored double figures in 1 game .....	at No. 11 Missouri, 1-21-18 (Monk, Williams, Mason)
Four players scored double figures in 1 game .....	at Auburn, 1-14-18 (Williams, Zimmermann Monk, Mason)
Four players scored doubles figures for 4 cons. games .....	12-6-12 - 12-21-12: vs. Kansas, Furman, MVSU, and NSU
Five players scored double figures in 1 game .....	Abilene Christian (11-29-17)
.....	(Monk, Cosper, Mason, Williams, Northcross-Baker)
Made 10+ field goals in a game .....	10, Jessica Jackson, Kentucky, 2-16-17
Attempted 15-19 field goals in a game .....	Monk (17), Cosper (16), Mason (15), Alabama, 1-7-18
Attempted 20+ field goals in a game .....	28, Malica Monk, Florida, 1-18-18
Attempted 10 free throws in a game .....	12, Malica Monk vs. UTA, 12-17-17
Made 5 or more three-pointers in a game .....	6, Raven Northcross-Baker vs. UTA, 12-17-17
Attempted 10+ three-pointers in a game .....	11, Devin Cosper at Kansas, 12-3-17
Had 10-14 rebounds .....	14, Kiara Williams, at Auburn, 1-14-18
Had 15+ rebounds .....	16, Kiara Williams, Grambling State, 12-28-17
Had 10 offensive rebounds - Records go back to 05-06 .....	11, Melissa Wolff vs. New Orleans (1-30-15)
Had 10 defensive rebounds - Records go back to 05-06 .....	13, Devin Cosper, Alabama, 1-7-18
Had 10+ assists .....	10, Malica Monk, Grambling State, 12-28-17
Had 10+ assists in consecutive games .....	Jailyn Mason (11 vs. HBU, 12-28-16 and 10 at Ole Miss, 1-1-17)
.....	Calli Berna (11 vs. No. 10/8 KY 2/7/13 and 11 at UA 2/10/13)
Had 5+ blocks in a game .....	(3x) 5, Jessica Jackson (vs. ORU, 11-13-13);
.....	(No. 25 Vanderbilt, 2-20-14); (at Tulsa, 12-14-14)
Had 10 or more blocks in a game .....	9, Robyn Irwin vs. SMSU, 12-19-88 (school record)
Had 5 or more steals in a game .....	5, Malica Monk vs. NMSU, 11-25-17
Had a double-double .....	Kiara Williams (15/14), at Auburn, 1-14-18
Had a double-double in two straight games .....	2017-18: Devin Cosper (25/14) Charlotte and (11/11) Tulsa
Had two players record a double-double .....	Kiara Williams (12 pts/16 reb) &
.....	Malica Monk (10 pts/10 reb), Grambling State, 12-28-17
Had seven double-doubles in a season .....	Devin Cosper, 2017-18
.....	(SHSU, ORU, NMSU, Char., Tulsa, OM, AL)
Had 10+ double-doubles in a season .....	2006-07, Lauren Ervin (14)
Had a triple-double .....	14 pts, 13 reb, 12 asts, C'eira Ricketts vs. Auburn (1-18-09)



#### MIKE NEIGHBORS YEAR-BY-YEAR

Year	School	Overall	Pct.	Conf.	Pct.	Conf. Finish
2013-14	Washington	20-14	.588	10-8	.556	6/Pac-12
2014-15	Washington	23-10	.697	11-7	.611	5/Pac-12
2015-16	Washington	26-11	.703	11-7	.611	5/Pac-12
2016-17	Washington	29-6	.829	15-3	.833	T2/Pac-12
2017-18	Arkansas	11-9	.550	2-6	.250	TBA
<b>Totals</b>	<b>5 Years</b>	<b>109-50</b>	<b>.686</b>	<b>49-30</b>	<b>.620</b>	

BENTONVILLE HS (HC)	94	
	95	
	96	
	97	
CABOT HS (HC)	98	
ARKANSAS (DIR OF OPS)	99	
	00	
TULSA (ASST)	01	
	02	
	03	
	04	
COLORADO (ASST)	05	
ARKANSAS (ASST)	06	
XAVIER (ASST)	07	
	08	
	09	
	10	
WASHINGTON (ASST)	11	
	12	
WASHINGTON (HC)	13	
	14	
	15	
	16	
ARKANSAS (HC)	17	

#### NEIGHBORS 3-1 IN BWA BEFORE THIS YEAR

As the head coach of Bentonville (Ark.) HS, Mike Neighbors went 3-0 in Bud Walton Arena in the high school play-offs. In 1997, his Tiger team defeated Bryant, Mount St. Mary's and Jonesboro to reach the state finals in Pine Bluff, Ark.

The lone loss occurred when Neighbors was an assistant coach at Tulsa. The 13th-ranked Razorbacks defeated Tulsa, 66-49, that season.

#### OPEN MIKE

Want to get to know Mike Neighbors in his own words? Check out the links below for stories about Mike, his hire and his dream job at Arkansas.

Mike's First 30 Days	<a href="http://bit.ly/First30">http://bit.ly/First30</a>
Mike's Dream Job	<a href="http://bit.ly/MNDreamJob">http://bit.ly/MNDreamJob</a>
Mike's Press Conference	<a href="http://bit.ly/PressConfVideo">http://bit.ly/PressConfVideo</a>

#### FROM ROOKIE NOD TO NAISMITH NOMINEE

In four short years Mike Neighbors went from a Spalding Maggie Dixon Division I Rookie Coach of the Year nominee in 2014, to a Naismith Women's College Coach of the Year national semifinalist in 2017.

Neighbors guided UW to an historic campaign in 2016-17 leading the Huskies to 27 wins, it's second most in program history, and he was just one shy of the all-time a school record set in 1990 (28).

Picked to place third in the Pac-12 in the preseason poll, UW tied for second in the league with a 15-3 record, it's best conference finish since 2003. The Huskies' 15 conference wins tied for third most in program history. Washington, who entered conference play with the program-best 12 non-conference wins, clinched its first-ever bye in the first round of the Pac-12 Tournament. Washington put together an 11-game win streak and a six-game win streak in Pac-12 play in 2016-17.

#### COACHES COACHING AT ALMA MATER

Mike Neighbors	Arkansas, 1993
Holly Warlick	Tennessee, 1981

A couple of other coaches have SEC ties. Joni Taylor is the head coach at Georgia and a 2002 graduate of Alabama. Matthew Mitchell is a 1995 graduate of Mississippi State and is the head coach at Kentucky. Nikki Fargas graduated from Tennessee in 1994 and is the head coach at LSU. Vic Schaefer is the head coach at Mississippi State and a 1984 graduate of Texas A&M.



# NEIGHBORS BY THE NUMBERS

## TOP 10 MOVIES

1. A Few Good Men
2. The Hunt For Red October
3. The Silence Of The Lambs
4. Hoosiers
5. Pretty Woman
6. Moneyball
7. Top Gun
8. JFK
9. The Lion King
10. Purple Rain

See the entire list here: <http://imdb.to/2royaEO>

He has 160 movies that are classified as 'thriller'. "Romance" is next with 152 followed by 69 "sport", 58 "mystery", and 32 "sci-fi".

## TOP 10 SONGS

1. Sweet Child O' Mine (Guns N' Roses)
2. You Shook Me All Night Long (AC/DC)
3. Man In The Mirror (Michael Jackson)
4. Amarillo By Morning (George Strait)
5. Jessie's Girl (Rick Springfield)
6. Hysteria (Def Leppard)
7. Fishin' In The Dark (Nitty Gritty Dirt Band)
8. The Ballard of Curtis Loew (Lynyrd Skynyrd)
9. Wanted Dead Or Alive (Bon Jovi)
10. Let's Go Crazy (Prince)

## TOP 10 TV SHOWS

1. West Wing (first three seasons)
2. The Wire
3. Breaking Bad
4. Seinfeld
5. The Newsroom
6. Prison Break
7. Arrested Development
8. Game of Thrones
9. The Sopranos
10. The Goldbergs

See the entire list here: <http://www.imdb.com/list/ls009377912/>

Neighbors has 16 comedies, 15 dramas and seven crime shows on the list.

## MIKE NEIGHBORS DEVELOPS PLAYERS FOR THE NEXT LEVEL

Mike Neighbors has worked with 11 WNBA Draft Picks

YEAR	UNIVERSITY	PLAYER	ROUND	OVERALL	TEAM NOTE
2017	Washington	Kelsey Plum	1	1	San Antonio Spurs ! @
	Washington	Chantel Osahor	2	21	Chicago Sky ! @
2016	Washington	Talia Walton	3	29	Los Angeles Sparks ! @
2011	Xavier	Amber Harris	1	4	Minnesota Lynx #
	Xavier	Ta'Shia Phillips	1	8	Atlanta Dream #
	TAMU/UAHS	Tanisha Smith	2	22	Seattle Storm #
	Colorado	Brittany Spears	2	19	Phoenix Mercury *
2009	Arkansas	Shameka Christon	1	5	New York Liberty #
2008	Arkansas	Lauren Ervin	3	37	Connecticut Sun #
2006	Tulsa	Megan Moody	-	-	Houston Comets
					Free Agent #
2003	Tulsa	Allison Curtin	1	12	Houston Comets ! #
	Arkansas	Dana Cherry	2	23	Traded to Detroit Shock
					Charlotte Sting

\*-Recruited but did not coach

!-At the school when player was drafted

@-Worked with player as a head coach

#-Worked with player as an assistant coach

\$-Worked with player as other (GA, etc)

## FAST RISE TO ELITE RANKS

Mike Neighbors had a meteoric rise to the top as a head coach at Washington. In four seasons, he amassed 96 wins, had three NCAA Tournament appearances and reached the Final Four. Those accomplishments put him in some rare air.

## FIRST FOUR YEARS AS A POWER FIVE HEAD COACH

Coach	School	Wins	NCAA Apps.	NCAA Best
Holly Warlick	Tennessee	108	4	Sweet 16
<b>Mike Neighbors</b>	<b>Washington</b>	<b>98</b>	<b>3</b>	<b>1 Final Four</b>
Jeff Walz	Louisville	96	3	1 Final Four
Nikki Fargas	UCLA	95	3	2nd Rnd
Vic Schaefer	Mississippi State	90	2	Sweet 16
Karen Aston	Texas	89	3	1 Elite 8
Matthew Mitchell	Kentucky	86	2	1 Elite 8
Kevin McGuff	Xavier	80	1	1 Elite 8
Dawn Staley	South Carolina	77	1	-
Brenda Frese	Minn./Maryland	72	2	-

## BUILDING A FAN BASE

Mike Neighbors saw a 62.9% increase in attendance in his four seasons at Washington. Look for fan engagement to be a big part of future Razor-back programs as well.

## COACHING TREE

Coach	Years	Current Position
Fred Castro	'14, '15, '16	HC Eastern Michigan
Adia Barnes	'14, '15	HC Arizona
Adam Call	'14	AC Eastern Michigan
Morgan Valley	'16	AC Arizona
Todd Schaefer	'16	AC Arkansas
Jasmine Lister	'16	AC DePaul



## WANT TO ASK SOME GOOD QUESTIONS?

1. He has had two heart attacks
2. He keeps a lot of lists
3. His lowest moment was he eureka moment
4. He plays guitar and has a band
5. He reads really fast
6. He is an analytics nerd
7. He is a bar-game prodigy

Sign up for Mike Neighbors' newsletter and listen to his podcasts at

**CoachNeighbors.com**





## CAREER STATS



3

**MALICA MONK****Junior | 5-5 | Guard | NLR, Arkansas  
N. Little Rock HS****CAREER HIGHS**

Points	24	ORU	11-20-17
FG Made	9	Florida	1-18-18*
FG Att.	28	Florida	1-18-18
3P Made	3	at No. 11 MU	1-21-18
3P Att.	6	at No. 11 MU	1-21-18*
FT Made	12	UTA	12-17-17
FT Att.	12	UTA	12-17-17
Off. Rebounds	3	NMSU	11-15-17*
Def. Rebounds	8	Samford	11-12-17
Rebounds	9	Samford	11-12-17
Assists	10	Grambling	12-18-17
Blocks	3	LSU	1-8-17
Steals	6	Kentucky	2-16-17*
Minutes	40	at Auburn	1-14-18

**SEASON HIGHS**

Points	24	ORU	11-20-17
FG Made	9	Florida	1-18-18*
FG Att.	28	Florida	1-18-18
3P Made	3	at No. 11 MU	1-21-18
3P Att.	6	at No. 11 MU	1-21-18*
FT Made	12	UTA	12-17-17
FT Att.	12	UTA	12-17-17
Off. Rebounds	3	Alabama	1-7-18*
Def. Rebounds	8	Samford	11-12-17
Rebounds	9	Samford	11-12-17
Assists	10	Grambling	12-18-17
Blocks	1	NMSU	11-25-17
Steals	4	NMSU	11-15-17*
Minutes	40	at Auburn	1-14-18

\*Most Recent

**2017-18 GAME-BY-GAME STATS**

				Total		3-Pointers		Free throws		Rebounds											
Opponent	Date	gs	min	fg-fga	pct	3fg-fga	pct	ft-fa	pct	off	def	tot	avg	pf	a	t/o	blk	stl	pts	avg	
SHSU	11/10/17	*	33	7-13	.538	1-4	.250	3-4	.750	0	2	2	2.0	2	4	1	0	4	18	18.0	
SAMFORD	11/12/17	*	37	6-14	.429	2-3	.667	7-7	1.000	1	8	9	5.5	2	6	1	0	2	21	19.5	
at Nebraska	11/16/17	*	37	9-19	.474	1-4	.250	3-3	1.000	0	3	3	4.7	5	6	2	0	3	22	20.3	
at Oral Roberts	11/20/17	*	32	9-16	.563	1-3	.333	5-6	.833	0	3	3	4.3	1	4	1	0	1	24	21.3	
at UTEP	11/24/17	*	36	3-15	.200	1-6	.167	3-3	1.000	0	2	2	3.8	2	5	1	0	3	10	19.0	
vs NM State	11/25/17	*	38	9-17	.529	1-4	.250	3-7	.429	3	4	7	4.3	0	2	5	1	4	22	19.5	
ACU	11/29/17	*	29	5-14	.357	1-2	.500	4-6	.667	0	2	2	4.0	2	1	2	0	1	15	18.9	
at Kansas	12/03/17	*	32	8-20	.400	1-3	.333	4-4	1.000	3	4	7	4.4	4	5	3	0	0	21	19.1	
CHARLOTTE	12/07/17	*	38	6-18	.333	2-6	.333	1-2	.500	1	3	4	4.3	4	3	1	0	3	15	18.7	
TULSA	12/10/17	*	25	4-10	.400	2-4	.500	4-4	1.000	1	3	4	4.3	2	3	3	0	1	14	18.2	
UT-ARLINGTON	12/17/17	*	31	4-11	.364	0-2	.000	12-12	1.000	0	1	1	4.0	1	6	3	0	1	20	18.4	
at Arizona State	12/21/17	*	30	5-19	.263	0-4	.000	2-2	1.000	0	2	2	3.8	1	2	2	0	1	12	17.8	
GRAMBLING	12/28/17	*	35	2-7	.286	0-1	.000	6-8	.750	1	1	2	3.7	1	10	6	1	3	10	17.2	
OLE MISS	12/31/17	*	39	4-13	.308	0-3	.000	4-8	.500	1	1	2	3.6	1	4	3	0	1	12	16.9	
at #5/3 Mississippi State	01/04/18	*	29	3-16	.188	0-1	.000	2-4	.500	0	3	3	3.5	3	4	1	1	2	8	16.3	
ALABAMA	01/07/18	*	33	8-17	.471	1-2	.500	4-7	.571	3	1	4	3.6	4	1	6	0	0	21	16.6	
at Georgia	1/11/18	*	35	4-18	.222	0-2	.000	8-11	.727	0	5	5	3.6	3	2	3	1	2	16	16.5	
at Auburn	01/14/18	*	40	4-13	.308	2-6	.333	4-4	1.000	1	4	5	3.7	4	4	0	0	1	14	16.4	
FLORIDA	01/18/18	*	39	9-28	.321	1-5	.200	4-4	1.000	2	6	8	3.9	3	4	2	0	0	23	16.7	
at No. 11 Mizzou	01/21/18	*	31	4-12	.333	3-6	.500	0-2	.000	0	3	3	3.9	2	2	2	0	0	11	16.5	
Totals			20	679	113-310	.365	20-71	.282	83-108	.769	17	61	78	3.9	47	78	48	4	33	329	16.5

Games played: 20  
Minutes/game: 34.0  
Points/game: 16.5  
FG Pct: 36.5  
3FG Pct: 28.2  
FT Pct: 76.9

Rebounds/game: 3.9  
Assists/game: 3.9  
Turnovers/game: 2.4  
Assist/turnover ratio: 1.6  
Steals/game: 1.7  
Blocks/game: 0.2

**NOTES**

- » **University of Arkansas Athletic Department Academic Honor Roll:** Fall, 2017
- » 14 points, seven assists and just one turnover in exhibition game
- » Fourteen consecutive games with double figure scoring - snapped at No. 5/3 Mississippi State.
- » Nineteen games in double figure scoring this season.
- » Eight games with 20+ points.
- » Named CollegeSportsMadness.com's SEC Player of the Week (11.13.17).
- » Improved career-best with 24 points in 32 minutes at ORU
- » Had 13 points in the fourth quarter at ORU.
- » Led team in scoring nine games.
- » Six games with 5+ assists this year. Had four all of last year.
- » Career-best 10 assists and her first career double-double with 10 points and 10 assists versus Grambling State.
- » Perfect from the line in nine games including a career-best 12-for-12 against UTA.

**CAREER STATS**

Year	GP-GS	Min	Avg	Total			3-Point			F-Throw			Rebounds				PF	FO	Ast	TO	Blk	Stl	Pts	Avg
				FG	FGA	Pct	FG	FGA	Pct	FT	FTA	Pct	Off	Def	Tot	Avg								
2015-16	27-5	461	17.1	48	136	.353	2	10	.200	12	19	.632	6	23	29	1.1	60	2	47	44	5	23	110	4.1
2016-17	27-27	842	31.2	96	230	.417	7	25	.280	48	71	.676	29	52	81	3.0	79	2	83	59	7	62	247	9.1
2017-18	20-20	679	34.0	113	310	.365	20	71	.282	83	108	.769	17	61	78	3.9	47	1	78	48	4	33	329	16.5
TOTAL	74-52	1982	26.8	257	676	.380	29	106	.274	143	198	.722	52	136	188	2.5	186	5	208	151	16	118	686	9.3



4

**KEIRYN SWENSON**Junior | 6-1 | Forward | Wichita, Kansas  
Maize HS**CAREER HIGHS**

Points	23	vs. HBU	12-28-16
FGM	7	vs. Navy	11-26-16
FGA	13	at Ole Miss	1-1-17
3PM	4	at Ole Miss	1-1-17
3PA	9	at Ole Miss	1-1-17
FTM	8	vs. HBU	12-28-16
FTA	9	vs. HBU	12-28-16
OREB	5	at Alabama	1-15-17*
DREB	6	vs. NSU	12-18-15*
REB	9	at Alabama	1-15-17*
AST	2	Grambling	12-18-17*
BLK	2	vs. SHSU	11-10-17*
STL	2	UTEP	11-24-17*
MIN	37	at Ole Miss	1-1-17

**SEASON HIGHS**

Points	10	UTA	12-17-17
FG Made	4	UTA	12-17-17
FG Att.	8	Ole Miss	12-31-17*
3P Made	3	Alabama	1-7-18*
3P Att.	6	Ole Miss	12-31-17*
FT Made	2	Grambling	12-18-17*
FT Att.	2	Grambling	12-18-17*
Off. Rebounds	3	Ole Miss	12-31-17
Def. Rebounds	4	UTA	12-17-17*
Rebounds	6	Tulsa	12-10-17*
Assists	2	Grambling	12-18-17*
Blocks	2	SHSU	11-10-17
Steals	2	UTEP	11-24-17
Minutes	26	Florida	1-18-18

\*Most Recent

**2017-18 GAME-BY-GAME STATS**

Opponent	Date	gs	min	Total		3-Pointers		Free throws		Rebounds				pf	a	t/o	blk	stl	pts	avg
				fg-fga	pct	3fg-fga	pct	ft-fita	pct	off	def	tot	avg							
SHSU	11/10/17	18		2-8	.250	1-4	.250	0-0	.000	0	1	1	1.0	1	0	0	2	0	5	5.0
SAMFORD	11/12/17	13		3-5	.600	3-4	.750	0-0	.000	0	0	0	0.5	3	1	0	0	0	9	7.0
at Nebraska	11/16/17	17		1-5	.200	1-5	.200	0-0	.000	1	2	3	1.3	2	0	0	0	0	3	5.7
at Oral Roberts	11/20/17	15		2-3	.667	1-2	.500	1-2	.500	0	2	2	1.5	2	0	1	0	1	6	5.8
at UTEP	11/24/17	16		2-7	.286	2-6	.333	0-2	.000	1	1	2	1.6	0	0	1	0	2	6	5.8
vs NM State	11/25/17	14		2-5	.400	1-4	.250	0-0	.000	2	4	6	2.3	1	0	4	0	0	5	5.7
ACU	11/29/17	17		1-3	.333	1-2	.500	0-0	.000	1	1	2	2.3	0	0	1	0	1	3	5.3
at Kansas	12/03/17	18		1-3	.333	1-3	.333	1-2	.500	0	2	2	2.3	1	0	1	1	0	4	5.1
CHARLOTTE	12/07/17	13		1-5	.200	1-4	.250	0-0	.000	0	2	2	2.2	2	0	0	0	0	3	4.9
TULSA	12/10/17	21		2-7	.286	1-5	.200	2-2	1.000	2	4	6	2.6	0	0	0	1	0	7	5.1
UT-ARLINGTON	12/17/17	17		4-8	.500	2-4	.500	0-0	.000	1	4	5	2.8	1	2	2	0	0	10	5.5
at Arizona State	12/21/17	15		1-3	.333	0-1	.000	0-0	.000	2	1	3	2.8	0	1	3	1	0	2	5.3
GRAMBLING	12/28/17	24		2-3	.667	2-3	.667	2-2	1.000	0	2	2	2.8	2	2	0	0	0	8	5.5
OLE MISS	12/31/17	12		3-8	.375	1-6	.167	1-1	1.000	3	1	4	2.9	1	0	2	1	0	8	5.6
at #5/3 Mississippi State	01/04/18	15		0-0	.000	0-0	.000	0-0	.000	1	1	2	2.8	1	0	1	0	0	0	5.3
ALABAMA	01/07/18	12		3-4	.750	3-4	.750	0-0	.000	0	0	0	2.6	3	0	0	1	0	9	5.5
at Georgia	1/11/18	6		0-2	.000	0-2	.000	0-0	.000	0	0	0	2.5	0	0	1	0	0	0	5.2
at Auburn	01/14/18	11		0-2	.000	0-2	.000	0-0	.000	0	0	0	2.3	1	0	0	0	0	0	4.9
FLORIDA	01/18/18	26		3-6	.500	1-4	.250	0-0	.000	1	3	4	2.4	1	1	1	1	1	7	5.0
at No. 11 Mizzou	01/21/18	22		2-9	.222	1-5	.200	0-0	.000	1	3	4	2.5	1	1	0	0	0	5	5.0
Totals		0	322	35-96	.365	23-70	.329	7-11	.636	16	34	50	2.5	23	8	18	8	5	100	5.0

Games played: 20  
Minutes/game: 16.1  
Points/game: 5.0  
FG Pct: 36.5  
3FG Pct: 32.9  
FT Pct: 63.6Rebounds/game: 2.5  
Assists/game: 0.4  
Turnovers/game: 0.9  
Assist/turnover ratio: 0.4  
Steals/game: 0.3  
Blocks/game: 0.4**NOTES**

- » Saw a 206.4% increase in scoring between freshman and sophomore seasons (78 vs. 239 points).
- » **SEC Winter Academic Honor Roll** (2016-17).
- » **SEC First-Year Academic Honor Roll** (2015-16).
- » **University of Arkansas Athletic Department Academic Champion (4.0):** Fall, 2017
- » At least one 3-pointer in her first 11 games this year and in 16 games this season.
- » Season-best 10 points on 4-for-8 shooting against UTA.

**CAREER STATS**

Year	GP-GS	Min	Avg	Total			3-Point			F-Throw			Rebounds				PF	FO	Ast	TO	Blk	Stl	Pts	Avg
				FG	FGA	Pct	FG	FGA	Pct	FT	FTA	Pct	Off	Def	Tot	Avg								
2015-16	29-1	373	12.9	27	84	.321	5	21	.238	19	27	.704	34	34	68	2.3	26	0	7	15	4	10	78	2.7
2016-17	30-11	709	23.6	89	179	.497	31	71	.437	30	39	.769	53	71	124	4.1	56	0	15	28	17	16	239	8.0
2017-18	20-0	322	16.1	35	96	.365	23	70	.329	7	11	.636	16	34	50	2.5	23	0	8	18	8	5	100	5.0
TOTAL	79-12	1404	17.8	151	359	.421	59	162	.364	56	77	.727	103	139	242	3.1	105	0	30	61	29	31	417	5.3



10

**KIARA WILLIAMS**Sophomore | 6-1 | Forward | LR, Arkansas  
Little Rock HS**CAREER HIGHS**

Points	15	at Auburn	1-14-18
FGM	7	at Auburn	1-14-18
FGA	11	NMSU	11-25-17
3PM	1	#5 Miss St.	1-4-18
3PA	1	#5 Miss St.	1-4-18
FTM	4	Grambling	12-18-17*
FTA	11	Charlotte	12-6-17
OREB	8	Grambling	12-18-17*
DREB	11	at Kansas	12-3-17
REB	16	Grambling	12-18-17*
AST	2	Florida	1-18-18*
BLK	4	Ole Miss	12-31-17*
STL	4	Charlotte	12-6-17
MIN	29	Charlotte	12-6-17

**SEASON HIGHS**

Points	15	at Auburn	1-14-18
FG Made	7	at Auburn	1-14-18
FG Att.	11	NMSU	11-25-17
3P Made	1	#5 Miss St.	1-4-18
3P Att.	1	#5 Miss St.	1-4-18
FT Made	4	Grambling	12-18-17*
FT Att.	11	Charlotte	12-6-17
Off. Rebounds	8	Grambling	12-18-17*
Def. Rebounds	11	at Kansas	12-3-17
Rebounds	16	Grambling	12-18-17*
Assists	2	Florida	1-18-18*
Blocks	4	Ole Miss	12-31-17*
Steals	4	Charlotte	12-6-17
Minutes	29	Charlotte	12-6-17

\*Most Recent

**2017-18 GAME-BY-GAME STATS**

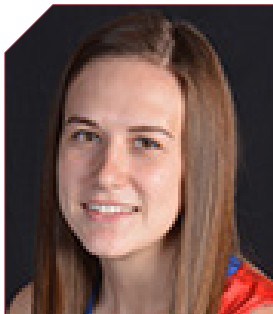
Opponent	Date	gs	min	Total		3-Pointers		Free throws		Rebounds				pf	a	t/o	blk	stl	pts	avg	
				fg-fga	pct	3fg-fga	pct	ft-fa	pct	off	def	tot	avg								
SHSU	11/10/17	*	17	3-4	.750	0-0	.000	1-1	1.000	0	2	2	2.0	1	1	0	0	0	7	7.0	
SAMFORD	11/12/17	*	19	5-7	.714	0-0	.000	0-0	.000	1	4	5	3.5	1	0	0	4	2	10	8.5	
at Nebraska	11/16/17	*	20	3-6	.500	0-0	.000	0-0	.000	6	5	11	6.0	4	1	2	2	1	6	7.7	
at Oral Roberts	11/20/17	*	17	3-7	.429	0-0	.000	2-2	1.000	3	2	5	5.8	4	0	1	0	1	8	7.8	
at UTEP	11/24/17	*	8	0-2	.000	0-0	.000	1-2	.500	1	0	1	4.8	3	0	1	0	1	1	6.4	
vs NM State	11/25/17	*	25	5-11	.455	0-0	.000	1-3	.333	4	7	11	5.8	2	0	3	0	2	11	7.2	
ACU	11/29/17	*	20	4-6	.667	0-0	.000	4-5	.800	5	3	8	6.1	0	0	0	1	3	12	7.9	
at Kansas	12/03/17	*	28	3-6	.500	0-0	.000	0-1	.000	5	11	16	7.4	3	0	4	2	0	6	7.6	
CHARLOTTE	12/07/17	*	29	3-8	.375	0-0	.000	3-11	.273	8	4	12	7.9	3	0	0	3	4	9	7.8	
TULSA	12/10/17	*	17	6-9	.667	0-0	.000	1-4	.250	4	3	7	7.8	2	2	0	2	0	13	8.3	
UT-ARLINGTON	12/17/17	*	22	1-3	.333	0-0	.000	0-0	.000	3	5	8	7.8	4	0	0	1	2	2	7.7	
at Arizona State	12/21/17	*	16	0-2	.000	0-0	.000	3-4	.750	0	4	4	7.5	1	0	1	1	0	3	7.3	
GRAMBLING	12/28/17	*	22	4-10	.400	0-0	.000	4-8	.500	8	8	16	8.2	1	0	0	0	0	1	12	7.7
OLE MISS	12/31/17	*	23	1-5	.200	0-0	.000	3-4	.750	2	7	9	8.2	5	1	0	4	1	5	7.5	
at #5/3 Mississippi State	01/04/18	*	20	5-5	1.000	1-1	1.000	2-2	1.000	0	2	2	7.8	1	0	3	1	0	13	7.9	
ALABAMA	01/07/18	*	21	3-10	.300	0-0	.000	0-0	.000	1	6	7	7.8	1	0	2	0	2	6	7.8	
at Georgia	1/11/18	*	7	1-4	.250	0-0	.000	0-0	.000	2	1	3	7.5	2	1	0	0	0	2	7.4	
at Auburn	01/14/18	*	27	7-9	.778	0-0	.000	1-3	.333	7	7	14	7.8	2	0	0	0	1	15	7.8	
FLORIDA	01/18/18	*	17	4-6	.667	0-0	.000	0-0	.000	1	3	4	7.6	1	0	2	1	0	8	7.8	
at No. 11 Mizzou	01/21/18	*	20	6-10	.600	0-0	.000	2-3	.667	3	4	7	7.6	4	0	0	0	1	14	8.2	
Totals			19	395	67-130	.515	1-1	1.000	28-53	.528	64	88	152	7.6	45	6	19	22	22	163	8.2

Games played: 20  
Minutes/game: 19.8  
Points/game: 8.2  
FG Pct: 51.5  
3FG Pct: 100.0  
FT Pct: 52.8Rebounds/game: 7.6  
Assists/game: 0.3  
Turnovers/game: 1.0  
Assist/turnover ratio: 0.3  
Steals/game: 1.1  
Blocks/game: 1.1**NOTES**

- » Enjoys Marvel movies.
- » Career-best four blocks against Samford. Tied that against Ole Miss in the SEC opener.
- » Posted first double-figure rebound total with 11 boards on the road at Nebraska.
- » Has scored in every game.
- » First time in her career to have double figures in the first half against ACU.
- » Career-best 16 rebounds, including 11 defensive rebounds, at Kansas.
- » Eight games in double figures.
- » Made her first career 3-point basket in the opening shot of the No. 5/3 Mississippi State game.
- » Double-Doubles: First career double-double with 11 points and 11 rebounds against New Mexico State ... Second career double-double with 12 points and tied her career-best with 16 rebounds versus Grambling State ... Third at Auburn with a career-best 15 points and 14 rebounds.

**CAREER STATS**

Year	GP-GS	Min	Avg	Total			3-Point			F-Throw			Rebounds				PF	FO	Ast	TO	Blk	Stl	Pts	Avg
				FG	FGA	Pct	FG	FGA	Pct	FT	FTA	Pct	Off	Def	Tot	Avg								
2016-17	20-5	227	11.4	26	48	.542	0	0	.000	10	26	.385	24	31	55	2.8	34	1	3	15	5	9	62	3.1
2017-18	20-19	395	19.8	67	130	.515	1	1	1.000	28	53	.528	64	88	152	7.6	45	1	6	19	22	22	163	8.2
TOTAL	40-24	622	15.6	93	178	.522	1	1	1.000	38	79	.481	88	119	207	5.2	79	2	9	34	27	31	225	5.6



12

## BRENNA MCCLURE

R-Sophomore | 5-6 | Guard | Lyons, Kansas  
Lyons HS | Hutchinson CC

### CAREER HIGHS

Points	-	
FG Made	-	
FG Att.	1	at No. 11 MU 1-21-18*
3P Made	-	
3P Att.	-	
FT Made	-	
FT Att.	-	
Off. Rebounds	-	
Def. Rebounds	-	
Rebounds	-	
Assists	-	
Blocks	-	
Steals	-	
Minutes	3	at No. 11 MU 1-21-18*

### SEASON HIGHS

Points	-	
FG Made	-	
FG Att.	1	at No. 11 MU 1-21-18*
3P Made	-	
3P Att.	-	
FT Made	-	
FT Att.	-	
Off. Rebounds	-	
Def. Rebounds	-	
Rebounds	-	
Assists	-	
Blocks	-	
Steals	-	
Minutes	3	at No. 11 MU 1-21-18*

\*Most Recent

## 2017-18 GAME-BY-GAME STATS

Opponent	Date	gs	min	Total		3-Pointers		Free throws		Rebounds				pf	a	t/o	blk	stl	pts	avg
				fg-fga	pct	3fg-fga	pct	ft-fta	pct	off	def	tot	avg							
GRAMBLING	12/28/17		dnp	-	-	-	-	-	-	-	-	-	-	-	-	-	-	-	-	-
OLE MISS	12/31/17		dnp	-	-	-	-	-	-	-	-	-	-	-	-	-	-	-	-	-
at #5/3 Mississippi State	01/04/18	3		0-1	.000	0-0	.000	0-0	.000	0	0	0	0	0.0	1	0	0	0	0	0.0
ALABAMA	01/07/18		dnp	-	-	-	-	-	-	-	-	-	-	-	-	-	-	-	-	-
at Georgia	1/11/18		dnp	-	-	-	-	-	-	-	-	-	-	-	-	-	-	-	-	-
at Auburn	01/14/18		dnp	-	-	-	-	-	-	-	-	-	-	-	-	-	-	-	-	-
FLORIDA	01/18/18		dnp	-	-	-	-	-	-	-	-	-	-	-	-	-	-	-	-	-
at No. 11 Mizzou	01/21/18	3		0-1	.000	0-0	.000	0-0	.000	0	0	0	0	0.0	0	0	0	0	0	0.0
Totals		0	6	0-2	.000	0-0	.000	0-0	.000	0	0	0	0	0.0	1	0	0	0	0	0.0

Games played: 2  
Minutes/game: 3.0  
FG Pct: 0.0

## NOTES

- » University of Arkansas Athletic Department Academic Champion (4.0): Fall, 2017
- » Joined the team as a walk-on for the spring semester.
- » Pace the Blue Dragons went 35-2, shared the Jayhawk Conference championship and won the Region VI championship to qualify for the NJCAA Tournament

## CAREER STATS

Year	GP-GS	Min	Avg	Total			3-Point			F-Throw			Rebounds				PF	FO	Ast	TO	Blk	Stl	Pts	Avg
				FG	FGA	Pct	FG	FGA	Pct	FT	FTA	Pct	Off	Def	Tot	Avg								
2017-18	2-0	6	3.0	0	2	.000	0	0	.000	0	0	.000	0	0	0	0.0	1	0	0	0	0	0	0	0.0
TOTAL	2-0	6	3.0	0	2	.000	0	0	.000	0	0	.000	0	0	0	0.0	1	0	0	0	0	0	0	0.0



13

**GRAYCE SPANGLER**Freshman | 5-11 | Guard | Fayetteville, Ark.  
Fayetteville HS**CAREER HIGHS**

Points	4	#5 Miss St.	1-4-18
FG Made	2	#5 Miss St.	1-4-18
FG Att.	3	#5 Miss St.	1-4-18
3P Made	-		
3P Att.	2	ACU	11-29-17
FT Made	3	UTA	12-17-17
FT Att.	3	UTA	12-17-17
Off. Rebounds	1	#5 Miss St.	1-4-18
Def. Rebounds	1	at ASU	12-21-17*
Rebounds	1	UTA	12-17-17
Assists	-		
Blocks	-		
Steals	-		
Minutes	7	at ASU	12-21-17

**SEASON HIGHS**

Points	4	#5 Miss St.	1-4-18
FG Made	2	#5 Miss St.	1-4-18
FG Att.	3	#5 Miss St.	1-4-18
3P Made	-		
3P Att.	2	ACU	11-29-17
FT Made	3	UTA	12-17-17
FT Att.	3	UTA	12-17-17
Off. Rebounds	1	#5 Miss St.	1-4-18
Def. Rebounds	1	at ASU	12-21-17*
Rebounds	1	UTA	12-17-17
Assists	-		
Blocks	-		
Steals	-		
Minutes	7	at ASU	12-21-17
*Most Recent			

**2017-18 GAME-BY-GAME STATS**

Opponent	Date	gs	min	Total		3-Pointers		Free throws		Rebounds				pf	a	t/o	blk	stl	pts	avg
				fg-fga	pct	3fg-fga	pct	ft-fa	pct	off	def	tot	avg							
SHSU	11/10/17	4		0-1	.000	0-0	.000	0-2	.000	0	0	0	0.0	0	0	0	0	0	0	0.0
SAMFORD	11/12/17	2		0-1	.000	0-1	.000	0-0	.000	0	1	1	0.5	0	0	0	0	0	0	0.0
at Nebraska	11/16/17	dnp		-	-	-	-	-	-	-	-	-	-	-	-	-	-	-	-	-
at Oral Roberts	11/20/17	dnp		-	-	-	-	-	-	-	-	-	-	-	-	-	-	-	-	-
at UTEP	11/24/17	5		0-0	.000	0-0	.000	0-0	.000	0	0	0	0.3	2	0	0	0	0	0	0.0
vs NM State	11/25/17	dnp		-	-	-	-	-	-	-	-	-	-	-	-	-	-	-	-	-
ACU	11/29/17	6		0-2	.000	0-2	.000	0-0	.000	0	0	0	0.3	0	0	1	0	0	0	0.0
at Kansas	12/03/17	1		0-0	.000	0-0	.000	0-0	.000	0	0	0	0.2	0	0	0	0	0	0	0.0
CHARLOTTE	12/07/17	dnp		-	-	-	-	-	-	-	-	-	-	-	-	-	-	-	-	-
TULSA	12/10/17	2		0-0	.000	0-0	.000	0-0	.000	0	1	1	0.3	0	0	0	0	0	0	0.0
UT-ARLINGTON	12/17/17	3		0-1	.000	0-0	.000	3-3	1.000	0	1	1	0.4	1	0	1	0	0	3	0.4
at Arizona State	12/21/17	7		0-1	.000	0-0	.000	0-0	.000	0	1	1	0.5	2	0	0	0	0	0	0.4
GRAMBLING	12/28/17	3		0-2	.000	0-1	.000	0-0	.000	0	0	0	0.4	0	0	0	0	0	0	0.3
OLE MISS	12/31/17	dnp		-	-	-	-	-	-	-	-	-	-	-	-	-	-	-	-	-
at #5/3 Mississippi State	01/04/18	3		2-3	.667	0-1	.000	0-1	.000	1	0	1	0.5	1	0	2	0	0	4	0.7
ALABAMA	01/07/18	0		0-0	.000	0-0	.000	0-0	.000	0	0	0	0.5	0	0	0	0	0	0	0.6
at Georgia	1/11/18	dnp		-	-	-	-	-	-	-	-	-	-	-	-	-	-	-	-	-
at Auburn	01/14/18	dnp		-	-	-	-	-	-	-	-	-	-	-	-	-	-	-	-	-
FLORIDA	01/18/18	dnp		-	-	-	-	-	-	-	-	-	-	-	-	-	-	-	-	-
at No. 11 Mizzou	01/21/18	5		0-2	.000	0-1	.000	0-0	.000	0	0	0	0.4	1	0	0	0	0	0	0.6
Totals		0	41	2-13	.154	0-6	.000	3-6	.500	1	4	5	0.4	7	0	4	0	0	7	0.6

Games played: 12  
Minutes/game: 3.4  
Points/game: 0.6  
FG Pct: 15.4  
3FG Pct: 0.0  
FT Pct: 50.0Rebounds/game: 0.4  
Turnovers/game: 0.3**NOTES**

- » Father Shannon lettered as a linebacker (1989) and mother, Stacy, was a member of the Pom Squad at Arkansas.
- » Scored her first points as a Razorback going 3-for-3 from the line in a win over UTA.
- » Season/career-best seven minutes at Arizona State.
- » **University of Arkansas Athletic Department Academic Athletic Director's List:** Fall, 2017

**CAREER STATS**

Year	GP-GS	Min	Avg	Total			3-Point			F-Throw			Rebounds				PF	FO	Ast	TO	Blk	Stl	Pts	Avg
				FG	FGA	Pct	FG	FGA	Pct	FT	FTA	Pct	Off	Def	Tot	Avg								
2017-18	12-0	41	3.4	2	13	.154	0	6	.000	3	6	.500	1	4	5	0.4	7	0	0	4	0	0	7	0.6
TOTAL	12-0	41	3.4	2	13	.154	0	6	.000	3	6	.500	1	4	5	0.4	7	0	0	4	0	0	7	0.6



14

**JAILYN MASON**Sophomore | 5-9 | Guard | Mason, Ohio  
William Mason HS**CAREER HIGHS**

Points	19	ORU	12-21-16
FGM	9	ORU	12-21-16
FGA	15	Alabama	1-7-18*
3PM	3	at Auburn	1-14-18*
3PA	7	Alabama	1-7-18*
FTM	3	NMSU	11-25-17*
FTA	7	NMSU	11-25-17
OREB	4	Texas Tech	12-3-16
DREB	7	Grambling	12-18-17*
REB	9	Texas Tech	12-3-16
AST	11	HBU	12-28-16
BLK	3	SHSU	11-10-17
STL	4	Nebraska	11-16-17*
MIN	40	ORU	12-21-16

**SEASON HIGHS**

Points	15	at Auburn	1-14-18*
FG Made	7	#5 Miss St.	1-4-18*
FG Att.	15	Alabama	1-7-18
3P Made	3	at Auburn	1-14-18*
3P Att.	7	Alabama	1-7-18*
FT Made	2	Charlotte	12-6-17
FT Att.	2	Charlotte	12-6-17*
Off. Rebounds	3	NMSU	11-25-17
Def. Rebounds	7	Grambling	12-18-17*
Rebounds	7	Grambling	12-18-17*
Assists	8	ACU	11-29-17
Blocks	3	SHSU	11-10-17
Steals	4	Nebraska	11-16-17
Minutes	40	Florida	1-18-18

\*Most Recent

**2017-18 GAME-BY-GAME STATS**

Opponent	Date	gs	min	Total		3-Pointers		Free throws		Rebounds				pf	a	t/o	blk	stl	pts	avg	
				fg-fga	pct	3fg-fga	pct	ft-fa	pct	off	def	tot	avg								
SHSU	11/10/17	*	25	3-10	.300	2-4	.500	0-0	.000	0	5	5	5.0	0	4	1	3	1	8	8.0	
SAMFORD	11/12/17	*	35	5-11	.455	2-5	.400	0-2	.000	0	1	1	3.0	2	2	1	0	2	12	10.0	
at Nebraska	11/16/17	*	30	4-12	.333	0-2	.000	0-1	.000	0	5	5	3.7	3	2	4	0	4	8	9.3	
at Oral Roberts	11/20/17	*	32	3-9	.333	0-0	.000	0-0	.000	1	1	2	3.3	1	1	1	0	0	6	8.5	
at UTEP	11/24/17	*	24	3-9	.333	2-6	.333	0-0	.000	1	3	4	3.4	1	2	0	0	1	8	8.4	
vs NM State	11/25/17	*	28	1-8	.125	1-4	.250	0-0	.000	3	3	6	3.8	3	2	1	1	2	3	7.5	
ACU	11/29/17	*	34	5-13	.385	3-7	.429	0-0	.000	0	7	7	4.3	1	8	3	1	2	13	8.3	
at Kansas	12/03/17	*	33	4-9	.444	2-5	.400	0-0	.000	0	2	2	4.0	5	1	2	0	2	10	8.5	
CHARLOTTE	12/07/17	*	30	4-10	.400	2-6	.333	2-2	1.000	0	4	4	4.0	2	4	1	1	1	12	8.9	
TULSA	12/10/17	*	30	5-11	.455	1-4	.250	0-0	.000	0	5	5	4.1	0	6	0	0	0	11	9.1	
UT-ARLINGTON	12/17/17	*	33	7-11	.636	1-4	.250	0-0	.000	0	4	4	4.1	1	7	3	0	3	15	9.6	
at Arizona State	12/21/17	*	31	3-7	.429	0-1	.000	0-0	.000	0	4	4	4.1	0	1	5	1	0	6	9.3	
GRAMBLING	12/28/17	*	27	3-11	.273	2-4	.500	0-0	.000	0	7	7	4.3	2	1	1	0	1	8	9.2	
OLE MISS	12/31/17	*	33	5-11	.455	3-4	.750	0-0	.000	0	2	2	4.1	3	4	1	1	1	13	9.5	
at #5/3 Mississippi State	01/04/18	*	35	7-11	.636	1-1	1.000	0-0	.000	1	2	3	4.1	0	4	2	1	0	15	9.9	
ALABAMA	01/07/18	*	37	5-15	.333	2-7	.286	0-0	.000	2	4	6	4.2	4	0	4	2	3	12	10.0	
at Georgia	1/11/18	*	36	5-10	.500	1-2	.500	4-4	1.000	0	5	5	4.2	4	1	5	0	5	15	10.3	
at Auburn	01/14/18	*	38	6-12	.500	3-6	.500	0-0	.000	0	2	2	4.1	1	5	6	0	0	15	10.6	
FLORIDA	01/18/18	*	40	2-12	.167	1-6	.167	0-0	.000	0	6	6	4.2	2	1	1	0	1	5	10.3	
at No. 11 Mizzou	01/21/18	*	31	6-11	.545	2-3	.667	0-0	.000	1	2	3	4.2	2	1	3	0	0	14	10.5	
Totals			20	642	86-213	.404	31-81	.383	6-9	.667	9	74	83	4.2	37	57	45	11	29	209	10.5

Games played: 20  
Minutes/game: 32.1  
Points/game: 10.5  
FG Pct: 40.4  
3FG Pct: 38.3  
FT Pct: 66.7Rebounds/game: 4.2  
Assists/game: 2.9  
Turnovers/game: 2.3  
Assist/turnover ratio: 1.3  
Steals/game: 1.5  
Blocks/game: 0.6**NOTES**

- » Has a large Jordan shoe collection.
- » Would like to be a sports photographer.
- » At least one defensive rebound in each game this season.
- » Set season-best marks for field goals, field goals attempted, 3-point field goals and 3-point field goals attempted as well as for rebounds and assists against Abilene Christian.
- » Twelve games this year and six consecutive games with double-figure scoring.
- » Season-best 15 points with seven made baskets against UTA. Tied that against No. 5/3 Mississippi State and again at Auburn.

**CAREER STATS**

Year	GP-GS	Min	Avg	Total			3-Point			F-Throw			Rebounds				PF	FO	Ast	TO	Blk	Stl	Pts	Avg
				FG	FGA	Pct	FG	FGA	Pct	FT	FTA	Pct	Off	Def	Tot	Avg								
2016-17	30-30	894	29.8	100	256	.391	19	53	.358	7	11	.636	21	96	117	3.9	72	2	93	56	8	31	226	7.5
2017-18	20-20	642	32.1	86	213	.404	31	81	.383	6	9	.667	9	74	83	4.2	37	1	57	45	11	29	209	10.5
TOTAL	50-50	1536	30.7	186	469	.397	50	134	.373	13	20	.650	30	170	200	4.0	109	3	150	101	19	60	435	8.7



20

## SYDNEY STOUT

Sophomore | 6-0 | Forward | Bixby, Okla.  
Bixby HS

## CAREER HIGHS

Points	8	HBU	12-28-16
FGM	3	HBU	12-28-16
FGA	5	HBU	12-28-16
3PM	2	HBU	12-28-16
3PA	4	HBU	12-28-16
FTM	2	Texas A&M	1-12-17
FTA	4	Texas A&M	1-12-17
OREB	1	SHSU	11-10-17*
DREB	6	HBU	12-28-16
REB	6	HBU	12-28-16
AST	1	Grambling	12-18-17*
BLK	1	ULM	11-13-16
STL	-		
MIN	15	HBU	12-28-16

## SEASON HIGHS

Points	4	UTA	12-17-17
FG Made	1	UTA	12-17-17
FG Att.	2	ACU	11-29-17
3P Made	1	UTA	12-17-17
3P Att.	1	UTA	12-17-17*
FT Made	1	UTA	12-17-17*
FT Att.	2	UTA	12-17-17
Off. Rebounds	1	UTA	12-17-17*
Def. Rebounds	1	Grambling	12-18-17*
Rebounds	2	UTA	12-17-17
Assists	1	Grambling	12-18-17
Blocks	-		
Steals	-		
Minutes	6	UTA	12-17-17
*Most Recent			

## 2017-18 GAME-BY-GAME STATS

Opponent	Date	gs	min	Total		3-Pointers		Free throws		Rebounds				pf	a	t/o	blk	stl	pts	avg
				fg-fga	pct	3fg-fga	pct	ft-fa	pct	off	def	tot	avg							
SHSU	11/10/17	6		0-1	.000	0-0	.000	1-2	.500	1	0	1	1.0	1	0	1	0	0	1	1.0
SAMFORD	11/12/17	2		0-0	.000	0-0	.000	1-2	.500	0	1	1	1.0	0	0	0	0	0	1	1.0
at Nebraska	11/16/17	dnp		-	-	-	-	-	-	-	-	-	-	-	-	-	-	-	-	-
at Oral Roberts	11/20/17	dnp		-	-	-	-	-	-	-	-	-	-	-	-	-	-	-	-	-
at UTEP	11/24/17	6		0-0	.000	0-0	.000	0-0	.000	0	0	0	0.7	0	0	0	0	0	0	0.7
vs NM State	11/25/17	dnp		-	-	-	-	-	-	-	-	-	-	-	-	-	-	-	-	-
ACU	11/29/17	3		0-2	.000	0-1	.000	0-0	.000	1	0	1	0.8	0	0	0	0	0	0	0.5
at Kansas	12/03/17	dnp		-	-	-	-	-	-	-	-	-	-	-	-	-	-	-	-	-
CHARLOTTE	12/07/17	dnp		-	-	-	-	-	-	-	-	-	-	-	-	-	-	-	-	-
TULSA	12/10/17	3		0-0	.000	0-0	.000	0-0	.000	0	1	1	0.8	0	0	0	0	0	0	0.4
UT-ARLINGTON	12/17/17	6		1-1	1.000	1-1	1.000	1-2	.500	1	1	2	1.0	0	0	0	0	0	4	1.0
at Arizona State	12/21/17	5		0-0	.000	0-0	.000	0-0	.000	0	0	0	0.9	0	0	0	0	0	0	0.9
GRAMBLING	12/28/17	5		0-2	.000	0-1	.000	0-0	.000	0	1	1	0.9	0	1	0	0	0	0	0.8
OLE MISS	12/31/17	dnp		-	-	-	-	-	-	-	-	-	-	-	-	-	-	-	-	-
at #5/3 Mississippi State	01/04/18	4		0-0	.000	0-0	.000	0-0	.000	0	0	0	0.8	0	0	0	0	0	0	0.7
ALABAMA	01/07/18	dnp		-	-	-	-	-	-	-	-	-	-	-	-	-	-	-	-	-
at Georgia	1/11/18	dnp		-	-	-	-	-	-	-	-	-	-	-	-	-	-	-	-	-
at Auburn	01/14/18	dnp		-	-	-	-	-	-	-	-	-	-	-	-	-	-	-	-	-
FLORIDA	01/18/18	dnp		-	-	-	-	-	-	-	-	-	-	-	-	-	-	-	-	-
at No. 11 Mizzou	01/21/18	5		0-0	.000	0-0	.000	0-0	.000	0	1	1	0.8	0	0	0	0	0	0	0.6
Totals		0	45	1-6	.167	1-3	.333	3-6	.500	3	5	8	0.8	1	1	1	0	0	6	0.6

Games played: 10  
Minutes/game: 4.5  
Points/game: 0.6  
FG Pct: 16.7  
3FG Pct: 33.3  
FT Pct: 50.0Rebounds/game: 0.8  
Assists/game: 0.1  
Turnovers/game: 0.1  
Assist/turnover ratio: 1.0

## NOTES

- » SEC First-Year Academic Honor Roll (2016-17).
- » University of Arkansas Athletic Department Academic Champion (4.0): Fall, 2017

## CAREER STATS

Year	GP-GS	Min	Avg	Total			3-Point			F-Throw			Rebounds				PF	FO	Ast	TO	Blk	Stl	Pts	Avg
				FG	FGA	Pct	FG	FGA	Pct	FT	FTA	Pct	Off	Def	Tot	Avg								
2016-17	15-0	72	4.8	5	14	.357	4	12	.333	2	4	.500	2	9	11	0.7	15	0	1	2	1	0	16	1.1
2017-18	10-0	45	4.5	1	6	.167	1	3	.333	3	6	.500	3	5	8	0.8	1	0	1	1	0	0	6	0.6
TOTAL	25-0	117	4.7	6	20	.300	5	15	.333	5	10	.500	5	14	19	0.8	16	0	2	3	1	0	22	0.9



21

## DEVIN COSPER

Grad | 5-10 | Guard | Coffeyville, Kansas  
Coffeyville CC | Field Kindley HS

### CAREER HIGHS

Points	25	Charlotte	12-6-17
FG Made	9	Charlotte	12-6-17
FGA	25	Nebraska	11-16-17
3PM	6	UTEP	11-24-17
3PA	16	Nebraska	11-16-17
FTM	12	Alabama	1-7-18
FTA	12	Alabama	1-7-18
OREB	3	Charlotte	12-6-17
DREB	13	Alabama	1-7-18
REB	14	Charlotte	12-6-17*
AST	6	ORU	12-21-16
BLK	3	MVSU	12-28-15
STL	4	Ole Miss	12-31-17*
MIN	40	Charlotte	12-6-17
	42	Auburn	1-24-16 OT

### SEASON HIGHS

Points	25	Charlotte	12-6-17
FG Made	9	Charlotte	12-6-17
FG Att.	25	Nebraska	11-16-17
3P Made	6	UTEP	11-24-17
3P Att.	16	Nebraska	11-16-17
FT Made	12	Alabama	1-7-18
FT Att.	12	Alabama	1-7-18
Off. Rebounds	3	Charlotte	12-6-17
Def. Rebounds	13	Alabama	1-7-18
Rebounds	14	Charlotte	12-6-17
Assists	4	Alabama	1-7-18*
Blocks	2	Tulsa	12-10-17*
Steals	4	Ole Miss	12-31-17
Minutes	40	Charlotte	12-6-17

\*Most Recent

## 2017-18 GAME-BY-GAME STATS

Opponent	Date	gs	min	Total		3-Pointers		Free throws		Rebounds				pf	a	t/o	blk	stl	pts	avg	
				fg-fga	pct	3fg-fga	pct	ft-fa	pct	off	def	tot	avg								
SHSU	11/10/17	*	31	6-13	.462	4-11	.364	1-2	.500	2	10	12	12.0	3	2	4	1	1	17	17.0	
SAMFORD	11/12/17	*	29	5-12	.417	3-10	.300	5-5	1.000	0	5	5	8.5	2	2	1	0	1	18	17.5	
at Nebraska	11/16/17	*	34	8-25	.320	5-16	.313	0-0	.000	1	3	4	7.0	2	0	4	2	2	21	18.7	
at Oral Roberts	11/20/17	*	38	8-19	.421	3-10	.300	2-2	1.000	0	10	10	7.8	2	1	0	0	2	21	19.3	
at UTEP	11/24/17	*	31	8-17	.471	6-13	.462	0-2	.000	1	4	5	7.2	2	0	1	0	4	22	19.8	
vs NM State	11/25/17	*	39	6-17	.353	2-9	.222	3-4	.750	2	9	11	7.8	2	4	2	1	2	17	19.3	
ACU	11/29/17	*	21	4-10	.400	2-5	.400	1-2	.500	0	3	3	7.1	4	1	3	1	2	11	18.1	
at Kansas	12/03/17	*	39	5-23	.217	1-11	.091	6-8	.750	1	2	3	6.6	3	0	2	1	1	17	18.0	
CHARLOTTE	12/07/17	*	40	9-23	.391	2-7	.286	5-6	.833	3	11	14	7.4	2	2	3	0	1	25	18.8	
TULSA	12/10/17	*	29	5-16	.313	1-9	.111	0-0	.000	2	9	11	7.8	3	0	3	2	0	11	18.0	
UT-ARLINGTON	12/17/17	*	22	3-8	.375	2-6	.333	0-0	.000	0	1	1	7.2	3	1	2	0	2	8	17.1	
at Arizona State	12/21/17	*	27	3-13	.231	2-5	.400	0-0	.000	0	1	1	6.7	2	1	2	0	0	8	16.3	
GRAMBLING	12/28/17	*	34	6-15	.400	4-7	.571	0-2	.000	0	4	4	6.5	2	3	2	0	0	16	16.3	
OLE MISS	12/31/17	*	39	7-15	.467	2-5	.400	2-3	.667	1	10	11	6.8	3	1	6	1	4	18	16.4	
at #5/3 Mississippi State	01/04/18	*	32	5-13	.385	2-7	.286	1-2	.500	1	6	7	6.8	3	3	4	0	0	13	16.2	
ALABAMA	01/07/18	*	39	6-16	.375	0-5	.000	12-12	1.000	0	13	13	7.2	5	4	2	0	2	24	16.7	
at Georgia	1/11/18	*	39	4-13	.308	0-6	.000	0-0	.000	1	6	7	7.2	4	2	2	0	2	8	16.2	
at Auburn	01/14/18	*	8	0-4	.000	0-2	.000	0-0	.000	0	1	1	6.8	0	0	1	0	0	0	15.3	
FLORIDA	01/18/18	dnp	-	-	-	-	-	-	-	-	-	-	-	-	-	-	-	-	-	-	
at No. 11 Mizzou	01/21/18	dnp	-	-	-	-	-	-	-	-	-	-	-	-	-	-	-	-	-	-	
Totals			18	571	98-272	.360	41-144	.285	38-50	.760	15	108	123	6.8	47	27	44	9	26	275	15.3

Games played: 18  
Minutes/game: 31.7  
Points/game: 15.3  
FG Pct: 36.0  
3FG Pct: 28.5  
FT Pct: 76.0

Rebounds/game: 6.8  
Assists/game: 1.5  
Turnovers/game: 2.4  
Assist/turnover ratio: 0.6  
Steals/game: 1.4  
Blocks/game: 0.5

## NOTES

- » SEC First-Year Academic Honor Roll (2016).
- » SEC Academic Honor Roll (2016-17).
- » Graduated in May 2017 with degree in journalism. Currently pursuing her master's degree in sport administration.
- » Forty-five consecutive games played (snapped versus Florida, 1-18-18).
- » Nineteen consecutive games with a made 3-pointer. (snapped versus Alabama)
- » Thirty-one points with six 3-pointers in exhibition game.
- » Ten consecutive games in double figure scoring (snapped versus UTA).
- » Seven career double-doubles all this season.
- » At least one steal in 13-of-17 games this year.
- » Career-bests to 25 points and 14 rebounds against Charlotte.

## CAREER STATS

Year	GP-GS	Min	Avg	Total			3-Point			F-Throw			Rebounds				PF	FO	Ast	TO	Blk	Stl	Pts	Avg
				FG	FGA	Pct	FG	FGA	Pct	FT	FTA	Pct	Off	Def	Tot	Avg								
2015-16	30-25	792	26.4	97	293	.331	25	104	.240	50	72	.694	16	83	99	3.3	57	0	42	74	5	34	269	9.0
2016-17	29-9	563	19.4	72	195	.369	23	75	.307	20	27	.741	7	58	65	2.2	43	2	45	40	6	28	187	6.4
2017-18	18-18	571	31.7	98	272	.360	41	144	.285	38	50	.760	15	108	123	6.8	47	1	27	44	9	26	275	15.3
TOTAL	77-52	1926	25.0	267	760	.351	89	323	.276	108	149	.725	38	249	287	3.7	147	3	114	158	20	88	731	9.5



22

**BAILEY ZIMMERMAN**Junior | 6-0 | Forward | St. Vincent, Arkansas  
Wonderview HS**CAREER HIGHS**

Points	14	Missouri	2-12-17
FGM	4	Missouri	2-12-17*
FGA	11	Missouri	2-12-17
3PM	3	at Auburn	1-14-18*
3PA	8	at Auburn	1-14-18
FTM	4	at Auburn	1-14-18*
FTA	6	at Auburn	1-14-18*
OREB	5	at Auburn	1-14-18
DREB	6	Alabama	1-15-17
REB	8	at Auburn	1-14-18
AST	3	Kentucky	2-16-17*
BLK	3	LSU	1-8-17*
STL	2	UTEP	11-24-17*
MIN	35	at Auburn	1-14-18

**SEASON HIGHS**

Points	13	at Auburn	1-14-18
FG Made	3	at Auburn	1-14-18*
FG Att.	10	UTA	12-17-17
3P Made	3	at Auburn	1-14-18*
3P Att.	8	at Auburn	1-14-18
FT Made	4	at Auburn	1-14-18
FT Att.	6	at Auburn	1-14-18
Off. Rebounds	5	at Auburn	1-14-18
Def. Rebounds	5	Tulsa	12-10-17
Rebounds	8	at Auburn	1-14-18
Assists	2	at No. 11 MU	1-21-18*
Blocks	2	Nebraska	11-16-17
Steals	2	UTEP	11-24-17*
Minutes	35	at Auburn	1-14-18

\*Most Recent

**2017-18 GAME-BY-GAME STATS**

Opponent	Date	gs	min	Total		3-Pointers		Free throws		Rebounds				pf	a	t/o	blk	stl	pts	avg		
				fg-fga	pct	3fg-fga	pct	ft-fa	pct	off	def	tot	avg									
SHSU	11/10/17	*	27	1-7	.143	0-4	.000	0-0	.000	0	3	3	3.0	1	2	1	0	2	2.0			
SAMFORD	11/12/17	*	19	0-1	.000	0-1	.000	0-0	.000	0	0	0	1.5	3	0	0	0	0	1.0			
at Nebraska	11/16/17	*	24	0-2	.000	0-2	.000	1-2	.500	0	0	0	1.0	3	0	2	2	0	1.0			
at Oral Roberts	11/20/17	*	21	1-7	.143	0-3	.000	0-2	.000	1	3	4	1.8	3	1	0	1	0	2.1			
at UTEP	11/24/17	*	23	1-5	.200	0-3	.000	2-2	1.000	2	1	3	2.0	0	2	0	0	2	1.8			
vs NM State	11/25/17	*	24	0-1	.000	0-1	.000	1-2	.500	2	1	3	2.2	2	2	0	0	0	1.7			
ACU	11/29/17	*	25	1-4	.250	0-1	.000	1-2	.500	4	2	6	2.7	1	2	2	1	1	3	1.9		
at Kansas	12/03/17	*	24	0-1	.000	0-0	.000	0-0	.000	0	2	2	2.6	4	0	1	1	0	0	1.6		
CHARLOTTE	12/07/17	*	28	2-9	.222	1-6	.167	1-1	1.000	1	2	3	2.7	0	1	3	1	0	6	2.1		
TULSA	12/10/17	*	25	2-6	.333	0-3	.000	2-3	.667	2	5	7	3.1	0	1	0	0	0	6	2.5		
UT-ARLINGTON	12/17/17	*	20	2-10	.200	0-3	.000	2-2	1.000	2	1	3	3.1	2	0	1	0	0	6	2.8		
at Arizona State	12/21/17	*	24	1-3	.333	0-1	.000	0-0	.000	2	2	4	3.2	1	1	3	1	0	2	2.8		
GRAMBLING	12/28/17	*	11	0-2	.000	0-0	.000	0-0	.000	0	0	0	2.9	0	0	0	0	0	0	2.5		
OLE MISS	12/31/17	*	9	1-1	1.000	0-0	.000	0-0	.000	1	0	1	2.8	2	1	1	0	0	2	2.5		
at #5/3 Mississippi State	01/04/18	*	20	1-2	.500	0-1	.000	2-3	.667	0	3	3	2.8	3	0	1	0	0	4	2.6		
ALABAMA	01/07/18	*	13	0-1	.000	0-0	.000	0-0	.000	2	0	2	2.8	5	2	2	1	0	0	2.4		
at Georgia	1/11/18	*	27	3-5	.600	3-5	.600	2-4	.500	2	3	5	2.9	0	2	1	0	1	11	2.9		
at Auburn	01/14/18	*	35	3-8	.375	3-8	.375	4-6	.667	5	3	8	3.2	3	2	3	1	1	13	3.5		
FLORIDA	01/18/18	*	26	0-8	.000	0-7	.000	0-0	.000	1	2	3	3.2	1	1	1	0	1	0	3.3		
at No. 11 Mizzou	01/21/18	*	28	1-8	.125	0-4	.000	0-2	.000	2	1	3	3.2	4	2	2	0	0	2	3.3		
Totals			20	453		20-91	.220	7-53	.132	18-31	581	29	34	63	3.2	38	22	24	9	8	65	3.3

Games played: 20  
Minutes/game: 22.7  
Points/game: 3.3  
FG Pct: 22.0  
3FG Pct: 13.2  
FT Pct: 58.1Rebounds/game: 3.2  
Assists/game: 1.1  
Turnovers/game: 1.2  
Assist/turnover ratio: 0.9  
Steals/game: 0.4  
Blocks/game: 0.5**NOTES**

- » SEC Academic Honor Roll (2016-17).
- » University of Arkansas Athletic Department Academic Athletic Director's List: Fall, 2017
- » Sixteen games with 20+ minutes.
- » Started 20 consecutive games this year and 21 in a row dating back to last season.
- » Career-bests for made made and attempted free throws (4-6), offensive rebounds (5), total rebounds (8) and minutes (35) at Auburn.

**CAREER STATS**

Year	GP-GS	Min	Avg	Total			3-Point			F-Throw			Rebounds				PF	FO	Ast	TO	Blk	Stl	Pts	Avg
				FG	FGA	Pct	FG	FGA	Pct	FT	FTA	Pct	Off	Def	Tot	Avg								
2015-16	20-1	174	8.7	6	48	.125	4	33	.121	7	12	.583	12	9	21	1.1	9	0	4	15	2	4	23	1.2
2016-17	30-23	627	20.9	45	144	.313	24	84	.286	20	39	.513	35	80	115	3.8	46	0	28	37	10	19	134	4.5
2017-18	20-20	453	22.7	20	91	.220	7	53	.132	18	31	.581	29	34	63	3.2	38	1	22	24	9	8	65	3.3
TOTAL	70-44	1254	17.9	71	283	.251	35	170	.206	45	82	.549	76	123	199	2.8	93	1	54	76	21	31	222	3.2



24

**TAYLAH THOMAS**Freshman | 6-1 | Forward | Arlington, Texas  
Mansfield Timberview HS**CAREER HIGHS**

Points	13	Samford	11-12-17
FG Made	5	Samford	11-12-17
FG Att.	6	Samford	11-12-17
3P Made	1	Ole Miss	12-31-17*
3P Att.	1	Florida	1-18-18*
FT Made	3	NMSU	11-25-17*
FT Att.	6	Samford	11-12-17
Off. Rebounds	6	Nebraska	11-16-17
Def. Rebounds	7	ORU	11-20-17 7
Rebounds	11	Nebraska	11-16-17
Assists	1	Grambling	12-18-17*
Blocks	2	Nebraska	11-16-17
Steals	2	ACU	11-29-17
Minutes	23	ORU	11-20-17

**SEASON HIGHS**

Points	13	Samford	11-12-17
FG Made	5	Samford	11-12-17
FG Att.	6	Samford	11-12-17
3P Made	1	Ole Miss	12-31-17*
3P Att.	1	Florida	1-18-18*
FT Made	3	NMSU	11-25-17*
FT Att.	6	Samford	11-12-17
Off. Rebounds	6	Nebraska	11-16-17
Def. Rebounds	7	ORU	11-20-17 7
Rebounds	11	Nebraska	11-16-17
Assists	1	Grambling	12-18-17*
Blocks	2	Nebraska	11-16-17
Steals	2	ACU	11-29-17
Minutes	23	ORU	11-20-17

\*Most Recent

**2017-18 GAME-BY-GAME STATS**

Opponent	Date	gs	min	Total		3-Pointers		Free throws		Rebounds				pf	a	t/o	blk	stl	pts	avg
				fg-fga	pct	3fg-fga	pct	ft-fa	pct	off	def	tot	avg							
SHSU	11/10/17	17		2-2	1.000	0-0	.000	0-0	.000	1	3	4	4.0	0	0	0	1	0	4	4.0
SAMFORD	11/12/17	21		5-6	.833	0-1	.000	3-6	.500	2	7	9	6.5	1	0	2	0	0	13	8.5
at Nebraska	11/16/17	20		1-4	.250	0-0	.000	3-4	.750	6	5	11	8.0	3	1	0	2	0	5	7.3
at Oral Roberts	11/20/17	23		0-3	.000	0-1	.000	2-2	1.000	2	7	9	8.3	2	0	0	1	0	2	6.0
at UTEP	11/24/17	16		0-2	.000	0-1	.000	1-2	.500	2	2	4	7.4	1	0	0	0	0	1	5.0
vs NM State	11/25/17	14		0-4	.000	0-0	.000	3-4	.750	3	4	7	7.3	1	0	1	0	0	3	4.7
ACU	11/29/17	20		2-7	.286	1-1	1.000	2-4	.500	3	4	7	7.3	2	0	0	0	2	7	5.0
at Kansas	12/03/17	9		0-1	.000	0-1	.000	0-0	.000	0	0	0	6.4	0	0	0	0	0	0	4.4
CHARLOTTE	12/07/17	4		0-0	.000	0-0	.000	0-0	.000	0	0	0	5.7	3	0	0	0	1	0	3.9
TULSA	12/10/17	19		1-3	.333	1-1	1.000	1-2	.500	4	3	7	5.8	1	0	0	0	1	4	3.9
UT-ARLINGTON	12/17/17	*	11	0-0	.000	0-0	.000	0-0	.000	2	2	4	5.6	5	0	1	0	0	0	3.5
at Arizona State	12/21/17	19		1-1	1.000	0-0	.000	0-0	.000	0	3	3	5.4	3	0	3	0	0	2	3.4
GRAMBLING	12/28/17	13		3-3	1.000	0-0	.000	2-2	1.000	0	2	2	5.2	2	1	2	0	1	8	3.8
OLE MISS	12/31/17	17		2-3	.667	1-1	1.000	1-2	.500	3	0	3	5.0	2	0	1	0	0	6	3.9
at #5/3 Mississippi State	01/04/18	17		2-2	1.000	0-0	.000	0-0	.000	1	5	6	5.1	2	0	0	0	0	4	3.9
ALABAMA	01/07/18	18		0-2	.000	0-0	.000	2-2	1.000	2	2	4	5.0	3	0	1	0	0	2	3.8
at Georgia	1/11/18	29		3-9	.333	0-1	.000	0-0	.000	3	5	8	5.2	2	1	3	0	0	6	3.9
at Auburn	01/14/18	13		2-3	.667	0-0	.000	0-0	.000	1	0	1	4.9	3	0	1	0	0	4	3.9
FLORIDA	01/18/18	21		1-4	.250	0-1	.000	0-0	.000	3	3	6	5.0	1	0	1	0	0	2	3.8
at No. 11 Mizzou	01/21/18	*	21	1-2	.500	0-0	.000	0-0	.000	0	3	3	4.9	2	2	0	0	0	2	3.8
Totals		2	342	26-61	.426	3-9	.333	20-30	.667	38	60	98	4.9	39	5	16	4	5	75	3.8

Games played: 20  
Minutes/game: 17.1  
Points/game: 3.8  
FG Pct: 42.6  
3FG Pct: 33.3  
FT Pct: 66.7Rebounds/game: 4.9  
Assists/game: 0.3  
Turnovers/game: 0.8  
Assist/turnover ratio: 0.3  
Steals/game: 0.3  
Blocks/game: 0.2**NOTES**

- » University of Arkansas Athletic Department Academic Athletic Director's List: Fall, 2017
- » Played high school ball for former Razorback assistant coach Kit Kyle Martin.
- » Career-best 13 points against Samford - her first double figure scoring game as a Razorback.

**CAREER STATS**

Year	GP-GS	Min	Avg	Total			3-Point			F-Throw			Rebounds				PF	FO	Ast	TO	Blk	Stl	Pts	Avg
				FG	FGA	Pct	FG	FGA	Pct	FT	FTA	Pct	Off	Def	Tot	Avg								
2017-18	20-2	342	17.1	26	61	.426	3	9	.333	20	30	.667	38	60	98	4.9	39	1	5	16	4	5	75	3.8
TOTAL	20-2	342	17.1	26	61	.426	3	9	.333	20	30	.667	38	60	98	4.9	39	1	5	16	4	5	75	3.8



30

**MACY WEAVER**  
Freshman | 6-3 | F | Davis Junction, Illinois  
Stillman Valley HS

### CAREER HIGHS

Points	3	Grambling	12-18-17
FG Made	1	Grambling	12-18-17*
FG Att.	2	Grambling	12-18-17
3P Made	-		
3P Att.	-		
FT Made	1	Grambling	12-18-17*
FT Att.	2	UTA	12-17-17
Off. Rebounds	2	Grambling	12-18-17*
Def. Rebounds	4	UTA	12-17-17
Rebounds	5	UTA	12-17-17
Assists	1	UTEP	11-24-17
Blocks	4	UTEP	11-24-17
Steals	1	UTEP	11-24-17
Minutes	19	UTEP	11-24-17

### SEASON HIGHS

Points	3	Grambling	12-18-17
FG Made	1	Grambling	12-18-17*
FG Att.	2	Grambling	12-18-17
3P Made	-		
3P Att.	-		
FT Made	1	Grambling	12-18-17*
FT Att.	2	UTA	12-17-17
Off. Rebounds	2	Grambling	12-18-17*
Def. Rebounds	4	UTA	12-17-17
Rebounds	5	UTA	12-17-17
Assists	1	UTEP	11-24-17
Blocks	4	UTEP	11-24-17
Steals	1	UTEP	11-24-17
Minutes	19	UTEP	11-24-17

\*Most Recent

## 2017-18 GAME-BY-GAME STATS

Opponent	Date	gs	min	Total		3-Pointers		Free throws		Rebounds				pf	a	t/o	blk	stl	pts	avg
				fg-fga	pct	3fg-fga	pct	ft-fa	pct	off	def	tot	avg							
SHSU	11/10/17	2		0-0	.000	0-0	.000	0-0	.000	0	0	0	0.0	0	0	0	0	0	0	0.0
SAMFORD	11/12/17	1		0-0	.000	0-0	.000	0-0	.000	0	0	0	0.0	0	0	0	0	0	0	0.0
at Nebraska	11/16/17	dnp		-	-	-	-	-	-	-	-	-	-	-	-	-	-	-	-	-
at Oral Roberts	11/20/17	dnp		-	-	-	-	-	-	-	-	-	-	-	-	-	-	-	-	-
at UTEP	11/24/17	19		1-1	1.000	0-0	.000	0-0	.000	2	1	3	1.0	3	1	0	4	1	2	0.7
vs NM State	11/25/17	dnp		-	-	-	-	-	-	-	-	-	-	-	-	-	-	-	-	-
ACU	11/29/17	3		0-1	.000	0-0	.000	0-0	.000	0	1	1	1.0	0	0	0	0	0	0	0.5
at Kansas	12/03/17	2		0-0	.000	0-0	.000	0-0	.000	0	0	0	0.8	0	0	0	1	0	0	0.4
CHARLOTTE	12/07/17	7		0-0	.000	0-0	.000	0-2	.000	2	0	2	1.0	3	0	1	0	0	0	0.3
TULSA	12/10/17	6		0-1	.000	0-0	.000	0-0	.000	0	1	1	1.0	1	0	0	1	0	0	0.3
UT-ARLINGTON	12/17/17	8		0-1	.000	0-0	.000	1-2	.500	1	4	5	1.5	3	0	1	1	0	1	0.4
at Arizona State	12/21/17	7		0-0	.000	0-0	.000	0-0	.000	0	1	1	1.4	2	0	0	0	0	0	0.3
GRAMBLING	12/28/17	5		1-2	.500	0-0	.000	1-1	1.000	2	1	3	1.6	1	0	0	0	0	3	0.6
OLE MISS	12/31/17	dnp		-	-	-	-	-	-	-	-	-	-	-	-	-	-	-	-	-
at #5/3 Mississippi State	01/04/18	3		0-0	.000	0-0	.000	0-0	.000	0	0	0	1.5	0	0	0	0	0	0	0.5
ALABAMA	01/07/18	dnp		-	-	-	-	-	-	-	-	-	-	-	-	-	-	-	-	-
at Georgia	1/11/18	4		0-0	.000	0-0	.000	1-2	.500	1	0	1	1.4	0	0	0	0	0	1	0.6
at Auburn	01/14/18	dnp		-	-	-	-	-	-	-	-	-	-	-	-	-	-	-	-	-
FLORIDA	01/18/18	2		0-1	.000	0-0	.000	0-0	.000	0	0	0	1.3	0	0	0	0	0	0	0.5
at No. 11 Mizzou	01/21/18	11		0-2	.000	0-0	.000	0-0	.000	1	2	3	1.4	3	0	0	1	0	0	0.5
Totals		0	80	2-9	.222	0-0	.000	3-7	.429	9	11	20	1.4	16	1	2	8	1	7	0.5

Games played: 14  
Minutes/game: 5.7  
Points/game: 0.5  
FG Pct: 22.2  
FT Pct: 42.9

Rebounds/game: 1.4  
Assists/game: 0.1  
Turnovers/game: 0.1  
Assist/turnover ratio: 0.5  
Steals/game: 0.1  
Blocks/game: 0.6

## NOTES

- » University of Arkansas Athletic Department Academic Athletic Director's List: Fall, 2017
- » First career game as a Razorback came against Sam Houston State in the opener.
- » Played 19 minutes with four blocks and solid defense at UTEP.

## CAREER STATS

Year	GP-GS	Min	Avg	Total			3-Point			F-Throw			Rebounds				PF	FO	Ast	TO	Blk	Stl	Pts	Avg
				FG	FGA	Pct	FG	FGA	Pct	FT	FTA	Pct	Off	Def	Tot	Avg								
2017-18	14-0	80	5.7	2	9	.222	0	0	.000	3	7	.429	9	11	20	1.4	16	0	1	2	8	1	7	0.5
TOTAL	14-0	80	5.7	2	9	.222	0	0	.000	3	7	.429	9	11	20	1.4	16	0	1	2	8	1	7	0.5



**0-A'Tyanna Gaulden**  
RSo | G | 5-7



**1-Raven Northcross-Baker**  
Jr | G | 5-7



**3-Malica Monk**  
Jr | G | 5-5



**4-Keiryn Swenson**  
Jr | G/F | 6-1



**10-Kiara Williams**  
So | F/C | 6-1



**13-Grayce Spangler**  
Fr | G | 5-11



**14-Jailyn Mason**  
So | G | 5-9



**20-Sydney Stout**  
So | F | 6-0



**21-Devin Cospser**  
Gr. | G | 5-10



**22-Bailey Zimmerman**  
Jr | G/F | 6-0



**24-Taylah Thomas**  
Fr | F | 6-1



**30-Macy Weaver**  
Fr | F | 6-3



**33-Chelsea Dungee**  
RSo | G | 5-11



**51-Brenna McClure**  
RSo | G | 5-6



**Mike Neighbors**  
Arkansas, 1993  
First Season



**Lacey Goldwire**  
Oklahoma State, 2010  
First Season



**Todd Schaefer**  
Thomas More College, 1995  
First Season



**Pauline Love**  
Southern Miss, 2010  
First Season



NOVEMBER 2, 2017

## NORTHEASTERN STATE

## ARKANSAS

Bud Walton Arena  
Fayetteville, Arkansas

Devin Cosper dropped in 31 points leading four players in double figures in exhibition action. It was the 14th-consecutive exhibition game win for Arkansas and the first under head coach Mike Neighbors.

74  
82

## Northeastern State Univ. 74

#	Player	Total		3-Ptr		Rebounds		PF	TP	A	TO	Blk	Stl	Min
		FG-FGA	FT-FTA	FG-FGA	FT-FTA	Off	Def							
24	Strange, Destiny	f	3-10	0-4	0-0	1	3	4	3	6	3	1	0	29
12	Griffin, Miranda	g	6-11	5-9	0-2	1	4	5	2	17	3	0	0	27
14	Hayes, Cenia	g	2-6	2-6	2-2	1	4	5	0	8	0	1	0	18
21	Brooks, Tree	g	2-7	1-3	3-4	0	1	1	3	8	1	2	0	20
23	Eldred, Bailee	g	2-7	1-1	2-2	2	6	8	3	7	3	2	0	20
04	Hill, Alexis	g	1-2	1-2	0-2	0	0	0	3	3	1	0	0	19
15	Cunningham, Cailey	g	0-2	0-1	0-0	2	0	2	0	0	1	0	0	7
20	Long, Caitlyn	g	3-6	1-3	2-2	3	4	7	1	9	1	0	0	24
32	Blevins, Lauryn	g	4-10	1-3	2-2	2	4	6	4	11	0	2	3	27
33	Bertrand, Jori	g	0-4	0-0	2-2	1	1	2	2	0	4	1	1	12
24	Hellyer, Morgan	g	1-3	1-3	0-0	1	0	1	1	3	0	1	0	7
Team														
Totals		24-68		13-35		13-18		15		46		22		74
1st		FG %: 5-18 27.8%		2nd		FG %: 8-17 47.1%		3rd		FG %: 4-14 28.6%		4th		FG %: 7-19 36.8%
		3FG %: 2-8 25.0%				3FG %: 1-5 20.0%				3FG %: 1-4 25.0%				3FG %: 1-5 20.0%
		FT %: 2-2 100.0%				FT %: 1-1 100.0%				FT %: 1-1 100.0%				FT %: 1-1 100.0%

## Arkansas 82

#	Player	Total		3-Ptr		Rebounds		PF	TP	A	TO	Blk	Stl	Min
		FG-FGA	FT-FTA	FG-FGA	FT-FTA	Off	Def							
10	WILLIAMS, Kiara	f	2-3	0-0	1-2	4	2	6	3	5	0	0	1	13
22	ZIMMERMAN, Bailey	f	0-7	0-4	0-0	2	2	4	2	0	1	2	0	30
03	MONK, Malica	g	4-14	0-2	6-8	2	3	5	3	14	7	1	0	34
14	MASON, Jaielyn	g	4-12	1-3	0-0	0	7	7	1	9	3	2	1	31
21	COSPER, Devin	g	11-23	6-9	3-4	1	4	5	1	31	2	1	2	29
01	NORTHCROSS-BAKER,	g	4-8	3-6	1-0	1	2	3	1	17	2	1	0	23
04	SWENSON, Keiryn	g	0-2	0-0	0-0	1	2	3	2	0	2	0	0	9
13	SPANGLER, Grayce	g	0-1	0-0	0-0	0	0	0	0	0	0	0	0	2
20	STOUT, Sydney	g	0-0	0-0	0-0	0	0	0	0	0	0	0	0	2
24	THOMAS, Taylah	g	3-4	0-1	0-1	3	5	8	1	6	0	0	0	24
30	WEAVER, Macy	g	0-0	0-0	0-0	2	0	2	0	0	1	0	0	3
Team														
Totals		28-74		10-25		16-25		16		30		14		82
1st		FG %: 5-17 29.4%		2nd		FG %: 4-18 22.2%		3rd		FG %: 7-18 38.9%		4th		FG %: 12-21 57.1%
		3FG %: 3-8 37.5%				3FG %: 1-5 20.0%				3FG %: 1-4 25.0%				3FG %: 10-25 40.0%
		FT %: 7-10 70.0%				FT %: 6-8 75.0%				FT %: 3-5 60.0%				FT %: 16-25 64.0%

Officials: Brian Hall, Luis Gonzalez, Katie Lukanich  
Technical fouls: Northeastern State Univ.-None, Arkansas-None.  
Attendance: 1,200  
Estimated Actual Attendance: 816

Score by periods	1st	2nd	3rd	4th	Total
Northeastern State Univ.	14	24	13	23	74
Arkansas	20	15	18	29	82

Last FG - NESU 4th-00:35, AR 4th-01:01.  
Largest lead - NESU by 5 3rd-09:05, AR by 13 1st-03:09.  
NESU led for 09:13, AR led for 24:08. Game was tied for 06:39.



NOVEMBER 12, 2017

## SAMFORD

## ARKANSAS

Bud Walton Arena  
Fayetteville, Arkansas

Career best points and rebounds for Malica Monk. Career best points for Taylah Thomas and Kiara Williams.

63  
84

## Samford 63 • 0-2

#	Player	Total		3-Ptr		Rebounds		PF	TP	A	TO	Blk	Stl	Min
		FG-FGA	FT-FTA	FG-FGA	FT-FTA	Off	Def							
32	Olivia Crozier	f	5-8	0-0	0-0	2	5	7	2	10	1	1	0	22
35	Samantha Fitzgerald	f	1-2	0-1	0-0	1	4	5	1	10	0	0	4	19
02	Hannah Nichols	g	6-13	3-7	2-2	1	5	6	2	17	3	1	1	32
12	Charity Brown	g	2-6	1-3	2-4	1	5	6	4	7	4	2	0	18
31	Cassidy Williams	g	3-9	1-5	0-0	0	1	1	1	7	1	1	0	24
03	Shauntal Battle	g	2-2	0-0	1-2	1	1	2	4	5	1	2	0	16
11	Paige Serup	g	1-3	0-2	2-2	0	2	2	2	4	0	0	0	8
22	Raven Omar	g	0-1	0-0	0-0	0	0	0	2	0	3	1	0	6
33	Makaila Woolard	g	2-8	1-3	2-2	0	0	0	2	7	2	2	0	18
45	Natalie Armstrong	g	0-0	0-0	0-0	0	0	0	0	0	1	2	0	5
Team														
Totals		23-59		6-22		11-14		8		26		34		63
1st		FG %: 5-13 38.5%		2nd		FG %: 7-17 41.2%		3rd		FG %: 2-13 15.4%		4th		FG %: 6-16 37.5%
		3FG %: 2-6 33.3%				3FG %: 0-3 0.0%				3FG %: 1-4 25.0%				3FG %: 3-9 33.3%
		FT %: 6-6 100.0%				FT %: 1-2 50.0%				FT %: 2-4 50.0%				FT %: 11-14 78.6%

## Arkansas 84 • 2-0

#	Player	Total		3-Ptr		Rebounds		PF	TP	A	TO	Blk	Stl	Min
		FG-FGA	FT-FTA	FG-FGA	FT-FTA	Off	Def							
10	WILLIAMS, Kiara	f	5-7	0-0	0-0	1	4	5	1	10	0	0	4	19
22	ZIMMERMAN, Bailey	f	0-1	0-1	0-0	0	0	0	3	0	0	0	0	19
03	MONK, Malica	g	6-14	2-3	7-7	1	8	9	2	21	6	1	0	37
14	MASON, Jaielyn	g	5-11	2-5	0-2	0	1	1	2	12	1	1	0	35
21	COSPER, Devin	g	5-12	3-10	5-5	0	5	5	2	18	2	1	0	29
01	NORTHCROSS-BAKER,	g	0-2	0-2	0-0	0	1	1	0	6	1	0	0	22
04	SWENSON, Keiryn	g	3-5	3-4	0-0	0	0	0	3	9	1	0	0	13
13	SPANGLER, Grayce	g	0-1	0-1	0-0	0	1	1	0	0	0	0	0	2
20	STOUT, Sydney	g	0-0	0-0	1-2	0	1	1	0	1	0	0	0	2
24	THOMAS, Taylah	g	5-6	0-1	3-6	2	7	9	1	13	0	2	0	21
30	WEAVER, Macy	g	0-0	0-0	0-0	0	0	0	0	0	0	0	0	1
Team														
Totals		29-59		10-27		16-22		5		30		15		84
1st		FG %: 9-13 69.2%		2nd		FG %: 6-18 33.3%		3rd		FG %: 7-16 43.8%		4th		FG %: 12-21 57.1%
		3FG %: 4-6 66.7%				3FG %: 2-9 22.2%				3FG %: 2-6 33.3%				3FG %: 10-27 37.0%
		FT %: 5-6 83.3%				FT %: 1-1 100.0%				FT %: 1-1 100.0%				FT %: 16-22 72.7%

Officials: Scott Yarbrough, Laura Morris, Paulani Spurlock  
Technical fouls: Samford-None, Arkansas-None.  
Attendance: 1,739  
Estimated Actual Attendance: 1,107

Score by periods	1st	2nd	3rd	4th	Total
Samford	18	15	13	17	63
Arkansas	27	15	16	26	84

Last FG - SAM 4th-01:03, AR 4th-01:19.  
Largest lead - SAM None, AR by 24 4th-04:43.  
SAM led for 00:00, AR led for 39:37. Game was tied for 00:23.



NOVEMBER 10, 2017

## SAM HOUSTON STATE

## ARKANSAS

Bud Walton Arena  
Fayetteville, Arkansas

Elementary Day

Devin Cosper had his first Razorback double-double with 17 points and 12 rebounds in the come-from-behind win. Malica Monk's game-high 18 points ties the junior's career-best.

54  
65

## SHSU 54 • 0-1

#	Player	Total		3-Ptr		Rebounds		PF	TP
---	--------	-------	--	-------	--	----------	--	----	----



NOVEMBER 20, 2017

## ARKANSAS

## ORU

Mabee Arena  
Tulsa, Oklahoma77  
66

Career-best 24 points for Malica Monk and career-best tying night with 21 points for Devin Cosper. Arkansas forced 14 ORU turnovers while only turning it over four times.

## Arkansas 77 • 3-1

#	Player	Total			3-Ptr			Rebounds			PF	TP	A	TO	Bk	Stl	Min		
		FG-FGA	FG-FGA	FT-FTA	Off	Def	Tot	Off	Def	Tot									
10	WILLIAMS, Kiara	f	3-7	0-0	2-2	3	2	5	4	8	0	1	0	1	0	1	17		
22	ZIMMERMAN, Bailey	f	1-7	0-3	0-2	1	3	4	3	2	1	0	1	0	0	21			
03	MONK, Malica	g	9-16	1-3	5-6	0	3	3	1	24	4	1	0	0	1	32			
44	MASON, Jaielyn	g	3-9	0-0	0-0	1	1	2	1	6	1	1	0	0	0	32			
21	COSPER, Devin	g	8-19	3-10	2-2	0	10	10	2	21	1	0	0	0	2	38			
01	NORTHCROSS-BAKER,	g	3-6	1-4	1-2	0	1	1	3	8	1	0	0	0	0	22			
04	SWENSON, Keiryn	g	2-3	1-2	1-2	0	2	2	2	6	0	1	0	1	0	15			
24	THOMAS, Taylah	g	0-3	0-1	2-2	2	2	9	2	2	0	0	1	0	0	23			
Team																	Deadball Rebounds		
Totals		29-70			6-23			13-18			9 32 41			18 77					
1st FG %:		9-19		47.4%		2nd: 7-19		36.8%		3rd: 7-19		36.8%		4th: 6-14		42.9%		Game: 29-70	
3FG %:		3-7		42.9%		1-5		20.0%		2-6		33.3%		1-2		50.0%		Deadball Rebounds	
FT %:		4-4		100.0%		0-2		0.0%		0-0		0.0%		0-0		0.0%			

## Oral Roberts 66 • 1-3

#	Player	Total	3-Ptr	Rebounds	Off	Def	TP	PF	TO	A	TO	Bk	Stl	Min	
		FG-FGA	FG-FGA	FT-FTA											
15	Ilim, Faith	f	5-9	0-1	3-6	4	7	11	2	13	2	4	0	28	
44	Martinez, Maria	f	3-8	0-1	5-6	1	8	9	3	11	4	2	0	32	
13	Skalnik, Rachel	g	1-3	1-3	0-0	0	0	4	3	0	1	0	0	21	
32	Gavie, Sarah	g	4-12	4-12	0-0	0	5	5	1	12	3	2	0	33	
30	Lippe, Keri Jo	g	1-7	0-2	4-4	0	1	1	3	6	0	1	0	20	
02	Doyle, Jordan	g	0-0	0-0	0-0	0	0	0	1	0	0	0	0	1	
10	Mayberry, Maya	g	2-5	2-3	2-2	0	1	1	1	8	1	1	0	22	
20	Schumacher, Regan	g	0-1	0-0	0-0	0	1	1	0	0	0	0	0	2	
22	Gilbert, Jordan	g	1-4	0-0	0-0	1	4	5	4	2	1	2	0	20	
24	Brotons, Montserrat	g	5-9	0-0	1-1	1	3	4	1	11	1	0	0	21	
Team						0	4	4							
Totals			22-58	7-22	15-19	7	34	41	20	66	12	14	0	2	200
1st FG %:		8-15	53.3%	2nd: 6-14	42.9%	3rd: 5-18	27.8%	4th: 3-13	23.1%	Game: 22-58		37.8%	Deadball		
3FG %:		2-4	50.0%	3-8	37.5%	1-7	14.3%	1-5	20.0%	Rebounds		22	31.9		
FT %:		5-5	100.0%	0-0	0.0%	2-4	50.0%	10-10	100.0%	Game: 22-58		78.9%	200		

Officials: Greg Small, Nick Marshall, Michelle Kramer  
Technical fouls: Arkansas-None. Oral Roberts-None.  
Attendance: 2503

Score by periods	1st	2nd	3rd	4th	Total
Arkansas	25	15	16	21	77
Oral Roberts	21	15	13	17	66

Last FG - AR 4th-01:52, ORU 4th-00:29.  
Largest lead - AR by 14 4th-07:23, ORU by 6 1st-04:08.  
AR led for 30:59, ORU led for 08:32. Game was tied for 00:29.

Points	In	Off	2nd	Fast	Bench
Arkansas	32	15	0	10	10
ORU	28	0	2	2	21

Score tied - 1 time.  
Lead changed - 1 time.



NOVEMBER 25, 2017

## ARKANSAS

## NEW MEXICO STATE

Don Haskins Center  
El Paso, Texas69  
60

Devin Cosper with her third double-double with 17 points and 11 rebounds. Malica Monk led all scorers with 22 points. Williams posted her first career double-double with 11 points and 11 rebounds.

## Arkansas 69 • 4-2

#	Player	Total			3-Ptr			Rebounds			PF	TP	A	TO	Bk	Stl	Min
		FG-FGA	FG-FGA	FT-FTA	Off	Def	Tot	Off	Def	Tot							
10	WILLIAMS, Kiara	f	5-11	0-0	1-3	4	7	11	2	11	0	3	0	2	2	25	
03	MONK, Malica	g	9-17	1-4	3-7	3	4	7	0	22	2	5	1	4	3	38	
14	MASON, Jaielyn	g	1-8	1-4	0-0	3	3	6	3	3	2	1	1	2	28		
21	COSPER, Devin	g	6-17	2-9	3-4	2	9	11	2	17	4	2	1	2	39		
22	ZIMMERMAN, Bailey	g	0-1	0-1	1-2	2	1	3	2	1	2	0	0	0	24		
01	NORTHCROSS-BAKER,	g	2-7	1-4	2-4	1	1	2	4	7	0	2	0	2	18		
04	SWENSON, Keiryn	g	2-5	1-4	0-0	2	4	6	1	5	0	4	0	0	14		
24	THOMAS, Taylah	g	0-4	0-0	3-4	3	4	7	1	3	0	1	0	0	14		
Team								2	0								
Totals			25-70	6-26	13-24	22	33	55	15	69	10	18	3	12	200		
1st FG %: 4-19 21.1% 2nd: 4-14 28.6% 3rd: 9-18 50.0% 4th: 8-19 42.1% Game: 25-70 35.7%																	
3FG %: 1-7 14.3% 1-6 16.7% 3-7 42.9% 1-6 16.7% Deadball																	
FT %: 2-4 50.0% 3-3 100.0% 3-3 100.0% 5-14 35.7% Rebounds																	

## NM State 60 • 2-4

#	Player		Total			3-Ptr			Rebounds			PF	TP	A	TO	Bk	Stl	Min		
			FG-FGA	FG-FGA	FT-FTA	Off	Def	Tot	Off	Def	Tot									
01	Cooper, Jasmine	f	1-8	0-0	2-2	2	3	5	2	4	2	2	0	1	21					
30	Pack, Gia	f	7-15	0-4	3-5	4	2	6	4	17	1	3	0	0	26					
02	Salas, Brooke	g	5-17	2-8	3-5	6	4	10	4	15	1	4	1	1	30					
12	Williams, Zaire	g	2-5	1-3	2-2	0	2	2	4	7	2	6	1	1	38					
21	Mills, Monique	g	2-6	1-2	0-0	0	2	2	1	5	2	0	0	5	33					
00	Wilmore, Pam		0-1	0-0	0-0	0	0	0	0	0	0	0	0	0	3					
03	Childress, Tonishia		0-2	0-1	0-0	0	3	3	1	0	1	1	0	1	14					
20	Mills, Dominique		2-4	0-0	0-0	1	3	4	2	4	0	1	0	1	16					
22	Atkinson, Kalei		0-0	0-0	0-0	0	0	0	0	0	0	0	0	0	0					
33	Toiolo, Jeneva		4-9	0-0	0-0	0	6	6	3	8	0	1	0	0	19					
Team									1 2 3											
Totals			23-67			4-18			10-14			14 27 41			21 60			9 18 2 10 20		

Officials: Lisa Mattingly, Beverly Roberts, Tina Napier  
Technical fouls: Arkansas-None. NM State-None.  
Attendance: 250

Score by periods	1st	2nd	3rd	4th	Total
Arkansas	11	12	24	22	69
NM State	17	8	15	20	60

Last FG - AR 4th-00:16, NMSU 4th-00:51.  
Largest lead - AR by 11 3rd-03:45, NMSU by 7 1st-01:06.  
AR led for 19:50, NMSU led for 19:16. Game was tied for 00:54.





DECEMBER 21, 2017

**ARKANSAS**  
**ARIZONA STATE**Wells Fargo Arena  
Tempe, Arizona

Malica Monk scored in double figures for the 12th consecutive game.

**43**  
**89****Arkansas 43 • 8-4**

#	Player	Total		3-Ptr		Rebounds		PF	TP	A	TO	Blk	Stl	Min
		FG-FGA	FG-FGA	FT-FTA	FT-FTA	Off	Def							
10	WILLIAMS, Kiara	0-2	0-0	3-4	0-0	0	4	1	3	0	1	1	0	16
22	ZIMMERMAN, Bailey	1-3	0-1	0-0	0-0	2	2	4	1	2	1	3	1	24
03	MONK, Malica	5-19	0-4	2-2	0	2	2	1	12	2	2	0	1	30
14	MASON, Jailyn	3-7	0-1	0-0	0	4	4	0	6	1	5	1	0	31
21	COSPER, Devin	3-13	2-5	0-0	0	1	1	2	8	1	2	0	0	27
01	NORTHCROSS-BAKER,	3-8	2-6	0-0	0	1	0	1	0	8	1	4	0	19
04	SWENSON, Keiryn	1-3	0-1	0-0	0	2	1	3	0	2	1	3	1	15
13	SPANGLER, Grayce	0-1	0-0	0-0	0	1	1	2	0	0	0	0	0	7
20	STOUT, Sydney	0-0	0-0	0-0	0	0	0	0	0	0	0	0	0	5
24	THOMAS,Taylah	1-1	0-0	0-0	0	3	3	2	0	3	0	0	0	19
30	WEAVER, Macy	0-0	0-0	0-0	0	1	1	2	0	0	0	0	0	7
Team						4	7	11						
Totals		17-57	4-18	5-6		9	26	35	12	43	7	23	4	200
1st - FG %:		4-9	44.4%	2nd: 3-18	16.7%	3rd: 4-15	26.7%	4th: 6-15	40.0%	Game: 17-57	29.8%	Deadball		
3FG %:		0-1	0.0%	0-5	0.0%	2-5	40.0%	2-7	28.6%	4-18	22.2%	Rebounds		
FT %:		0-0	0.0%	0-0	0.0%	1-2	50.0%	4-4	100.0%	5-6	83.3%			

**Arizona State 89 • 9-3**

#	Player	Total			3-Ptr		Rebounds				PF	TP	A	TO	Blk	Stl	Min
		FG-FGA	FG-FGA	FT-FTA	Off	Def	Total										
22	Ekmark, Courtney	8-13	7-10	0-0	1	2	3	2	23	0	0	1	1	28			
42	Ibisi, Kianna	6-10	0-0	1-2	0	1	1	0	13	3	1	1	0	20			
33	Johnson-Chapman, Cha	6-8	0-0	1-2	2	4	6	1	13	0	2	1	1	22			
01	Richardson, Reili	1-6	0-2	0-0	0	4	4	0	2	9	0	0	0	26			
11	Ryan, Robbi	2-8	0-0	0-0	1	1	2	2	4	5	2	0	2	24			
04	Russell, Kiara	4-6	0-0	1-2	0	4	4	3	9	6	0	0	1	24			
21	Elanga, Sophia	1-3	0-1	0-0	4	5	9	3	2	3	2	0	2	20			
24	Sanders, Bre'yanna	3-5	1-3	0-0	0	2	2	1	7	0	0	0	1	18			
44	Rubin, Eva	1-2	0-0	0-0	0	1	1	0	2	0	1	0	0	4			
52	Ruden, Jamie	5-12	4-4	0-0	1	2	3	1	14	1	0	1	1	14			
Team						1	5	6									
Totals		37-73	12-20	3-6	10	31	41	13	89	27	8	4	11	200			
1st FG %: 10-23 43.5%		2nd: 11-16 68.8%		3rd: 9-17 52.9%		4th: 7-17 41.2%		Game: 37-73 50.7%		Deadball							
3FG %: 6-7 85.7%		3-6 50.0%		2-4 50.0%		1-3 33.3%		12-20 60.0%		Rebounds							
FT %: 0-0 0.0%		1-2 50.0%		1-2 50.0%		1-2 50.0%		3-6 50.0%									

Officials: Michol Murray, Clarke Stevens, Benny Luna

Technical fouls: Arkansas-None, Arizona State-None

Attendance: 1588

Score by periods	1st	2nd	3rd	4th	Total
Arkansas	8	6	11	18	43
Arizona State	26	26	21	16	89

Last FG - AR 4th-01:11, ASU 4th-00:14

Largest lead - AR by 2 1st-09:43, ASU by 50 4th-09:39

AR led for 02:20, ASU led for 36:56. Game was tied for 00:44.

Points	In	Off	2nd	Fast	Bench
AR	Paint	Paint	Chance	Break	
22	3	8	6	12	
46	31	8	4	34	

Score tied - 1 time.

Lead changed - 1 time.



DECEMBER 31, 2017

**OLE MISS**  
**ARKANSAS**Bud Walton Arena  
Fayetteville, ArkansasDevin Cosper had her sixth double-double with 18 points and 11 rebounds.  
Malica Monk and Jailyn Mason also scored in double figures.**72**  
**73****Ole Miss 72 • 10-4, 0-1 SEC**

#	Player	Total		3-Ptr		Rebounds		PF	TP	A	TO	Blk	Stl	Min
		FG-FGA	FG-FGA	FT-FTA	FT-FTA	Off	Def							
01	GLOVER, BREE	0-0	0-0	0-0	0	3	7	3	0	3	3	1	2	26
42	GIBSON, SHELBY	9-13	0-0	3-3	3	1	4	5	21	2	3	2	0	25
00	NIXON, CHYNA	0-2	0-1	0-0	1	3	4	1	0	0	0	0	0	6
20	MUHAMMAD, MADINAH	6-14	2-5	3-4	0	1	1	0	17	0	1	0	1	40
25	ALSTON, ALISSA	5-15	3-5	5-7	0	5	5	3	18	7	2	0	1	40
10	MUHATE, CECILIA	0-0	0-0	2-2	2	1	3	0	2	1	0	0	0	6
12	JOHNSON, BARBARA	1-3	1-2	4-8	1	0	1	0	7	0	4	0	0	15
32	RODGERS, KATE	0-2	0-2	2-2	1	2	3	0	2	0	1	0	0	11
44	LEWIS, TORRI	1-3	1-3	0-0	1	0	1	4	3	1	1	0	1	22
55	TAYLOR, PROMISE	1-3	0-0	0-0	0	3	3	1	2	0	2	1	1	9
Team						1	2							
Totals		23-55	7-18	19-26		10	24	34	17	72	14	17	4	200
1st - FG %:		4-13	30.8%	2nd: 6-16	37.5%	3rd: 6-17	35.3%	4th: 7-9	77.8%	Game: 23-55	41.8%	Deadball		
3FG %:		2-7	28.6%	3-6	50.0%	1-4	25.0%	1-1	100.0%	7-18	38.9%	Rebounds		
FT %:		4-4	100.0%	3-5	60.0%	5-7	71.4%	7-10	70.0%	19-26	73.1%			

**Arkansas 73 • 10-4, 1-0 SEC**

#	Player	Total		3-Ptr		Rebounds		PF	TP	A	TO	Blk	Stl	Min
		FG-FGA	FG-FGA	FT-FTA	FT-FTA	Off	Def							
10	WILLIAMS, Kiara	1-5	0-0	3-4	2	7	9	5	5	1	0	4	1	23
22	ZIMMERMAN, Bailey	1-1	0-0	0-0	1	0	1	2	2	1	1	0	0	9
03	MONK, Malica	4-13	0-3	4-8	1	1	2	1	12	4	1	1	1	39
14	MASON, Jailyn	5-11	3-4	0-0	0	2	2	3	13	4	1	1	1	33
21	COSPER, Devin	7-15	2-5	2-3	1	10	13	3	18	1	6	1	4	39
01	NORTHCROSS-BAKER,	3-5	1-2	2-2	2	1	3	0	9	0	1	0	0	28
04	SWENSON, Keiryn	3-8	1-6	1-1	3	1	4	1	8	0	2	1	0	12
24	THOMAS,Taylah	2-3	1-1	1-2	3	0	3	2	6	0	1	0	0	17
Team						1	2							
Totals		26-61	8-21	13-20		14	24	38	18	73	11	15	7	200
1st - FG %:		7-13	53.8%	2nd: 6-19	31.6%	3rd: 10-17	58.8%	4th: 3-12	25.0%	Game: 26-61	42.6%	Deadball		
3FG %:		4-6	66.7%	1-6	16.7%	1-4	16.7%	2-3	66.7%	8-21	38.1%	Rebounds		
FT %:		1-2	50.0%	5-8	62.5%	4-6	66.7%	3-6	50.0%	13-20	65.0%			

Officials: Susan Blauch, Angelica Suffren, Scott Kionofas

Technical fouls: Ole Miss-None, Arkansas-TEAM

Attendance: 1701

Estimated Actual Attendance: 1,261

Fouled out: Ole Miss #42, Gibson (3:22 Q4)

Arkansas #10, Williams (2:48 Q4)

Score by periods	1st	2nd	3rd	4th	Total
Ole Miss	14	18	18	22	72
Arkansas	19	18	25	11	73

Last FG - OM 4th-00:54, AR 4th-01:17

Largest lead - OM by 1 2nd-04:33, AR by 15 3rd-01:42

OM led for 01:11, AR led for 35:22. Game was tied for 02:25.

Points	In	Off	2nd	Fast	Bench
OM	Paint	Paint	Chance	Break	
28	21	10	0	16	
AR	26	13	10	23	

Score tied - 3 times.

Lead changed - 2 times.



DECEMBER 28, 2017

**GRAMBLING STATE**  
**ARKANSAS**Bud Walton Arena  
Fayetteville, Arkansas

Four players in double figures with Kiara Williams (12 pts/16 rebounds) and Malica Monk (10 pts/10 assists) posting double-doubles.

**62**  
**79****Grambling 62 • 3-8**

#	Player	Total		3-Ptr		Rebounds				PF	TP	A	TO	Blk	Stl	Min
		FG-FGA	FG-FGA	FT-FTA	Off	Def	Total									
33	GIDEON, Kailyn	0-0	0-0	0-0	1	1	2	2	0	1	1	3	0	9		
04	NEAL, Monisha	3-13	1-6	2-4	0	7	7	1	9	2	0	0	0	35		
05	HILL, Shakyla	1-5	0-1	0-0	2	2	4	3	2	2	6	1	2	33		
10	JEANS, Laneisha	1-4	0-0	0-0	0	4	4	2	3	0	0	0	1	14		
12	COLEMAN, Justice	2-4	0-1	0-0	1	1	2	0	4	2	1	0	0	13		
03	PARSONS, Takerra	2-2	0-0	0-0	0	2	2	1	4	1	1	0	0	7		
11	WILLIAMS, Ariel	6-12	2-5	2-3	2	1	3	2	16	3	1	0	0	24		
22	MCKINNEY, Deja	3-12	1-7	1-2	2	3	5	2	8	1	2	1	2	20		
23	TAYLOR, Darae	0-2	0-0	0-0	0	1	1	0	0	0	1	0	0	6		
24	JONES, Jekalen	1-1	0-0	0-0	0	0	0	0	2	0	0	0	0	5		
25	TORTIAN, Jazmine	2-6	2-3	0-0	1	1	2	4	6	0	1	0	1	20		
30	WILLIAMS, Alexus	4-5	0-0	0-0	1	1	2	4	8	0	0	1	0	14		
	Team				0	1	1									
Totals		25-66	7-27	5-9	10	25	35	21	62	12	14	6	6	200		



JANUARY 7, 2018

## ALABAMA ARKANSAS

Bud Walton Arena  
Fayetteville, Arkansas

83  
76

Devin Cosper recorded her seventh double-double with 24 points and 13 rebounds. Three players were in double figures with Malica Monk adding 21 points and Jaielyn Mason scoring 12 points.

### Alabama 83 • 12-4, 2-1 SEC

#	Player	Total		3-Ptr		Rebounds		PF	TP	A	TO	Blk	Stl	Min
		FG-FGA	FT-FTA	FG-FGA	FT-FTA	Off	Def							
01	BOLTON,QUANETRIA	f	2-9	0-2	0-0	1	4	5	1	4	1	0	2	20
20	WILLIAMS,ASHLEY	f	3-10	0-0	11-13	4	3	7	2	17	1	1	2	25
03	LEWIS,JORDAN	f	5-9	2-4	6-9	0	1	1	2	18	5	2	0	30
11	COOK,HANNAH	g	3-12	1-6	1-2	0	5	5	1	8	0	2	0	24
23	WADE,SHAQUERA	g	4-5	1-1	6-8	0	4	4	3	15	1	5	1	33
02	RICHARDSON,AMBER	g	0-0	0-0	0-2	0	2	2	2	0	1	0	0	6
05	DA SILVA,ALANA	g	0-1	0-1	0-0	0	1	1	0	0	1	1	0	9
13	KNIGHT,COCO	g	0-0	0-0	0-0	0	0	0	0	0	0	0	0	3
25	KNIGHT,MEOSHONTI	g	1-2	1-1	1-2	0	0	0	3	4	1	0	0	13
25	KNIGHT,ASHLEY	g	5-10	0-0	0-0	3	1	4	3	10	1	2	2	16
40	WALKER,JASMINE	g	3-7	1-3	0-0	2	6	8	2	7	0	1	0	21
Team						4	3	7						
Totals			26-65	6-18	25-36	14	30	44	19	83	12	14	7	200
1st FG %:		6-21	28.6%	2nd: 7-13	53.8%	3rd: 7-17	41.2%	4th: 6-14	42.9%	Game: 26-65	40.0%	Deadball		
3FG %:		2-7	28.6%	2-4	50.0%	1-2	50.0%	1-5	20.0%	7-11	63.6%	Rebounds		
FT %:		0-1	0.0%	2-2	100.0%	3-8	37.5%	20-25	80.0%	25-36	69.4%	5,2		

### Arkansas 76 • 10-6, 1-2 SEC

#	Player	Total		3-Ptr		Rebounds		PF	TP	A	TO	Blk	Stl	Min
		FG-FGA	FT-FTA	FG-FGA	FT-FTA	Off	Def							
10	WILLIAMS, Kiara	f	3-10	0-0	0-0	1	6	7	1	6	0	2	0	21
22	ZIMMERMAN, Bailey	f	0-1	0-0	0-0	2	0	2	5	0	2	2	1	0
03	MONK, Malica	g	8-17	1-2	4-7	3	1	4	4	21	1	6	0	33
14	MASON, Jaielyn	g	5-15	2-7	0-0	2	4	6	4	12	0	4	2	37
21	COSPER, Devin	g	6-16	0-5	12-12	0	13	13	5	24	4	2	0	39
01	NORTHCROSS-BAKER,	g	1-5	0-3	0-0	0	0	0	1	2	2	0	1	27
04	SWENSON, Keiryn	g	3-4	3-4	0-0	0	0	0	3	9	0	0	1	12
13	SPANGLER, Grayce	g	0-0	0-0	0-0	0	0	0	0	0	0	0	0	0
24	THOMAS,Taylah	g	0-2	0-0	2-2	2	2	4	3	2	0	1	0	18
Team						4	3	7						
Totals			26-70	6-21	18-21	14	29	43	26	76	9	17	5	200
1st FG %:		5-21	23.8%	2nd: 6-18	33.3%	3rd: 8-14	57.1%	4th: 7-17	41.2%	Game: 26-70	37.1%	Deadball		
3FG %:		1-4	12.5%	0-3	0.0%	3-4	75.0%	2-6	33.3%	6-21	28.6%	Rebounds		
FT %:		2-2	100.0%	4-4	100.0%	7-8	87.5%	5-7	71.4%	18-21	85.7%	1,7		

Officials: Beverly Roberts, Ed Sidlasky, Bill Larence  
Technical fouls: Alabama-None. Arkansas-MASON, Jaielyn.  
Attendance: 2001  
Estimated Actual Attendance: 1644  
Fouled Out: Arkansas, #21 Cosper (0:12.5, 4Q); #22 Zimmerman (0:10.1, 4Q)

Score by periods	1st	2nd	3rd	4th	Total
Alabama	14	18	18	33	83
Arkansas	13	16	26	21	76

Last FG - UA 4th-00:41, AR 4th-00:23.  
Largest lead - UA by 9 4th-00:28, AR by 7 3rd-02:23.  
UA led for 20:01, AR led for 15:20, Game was tied for 04:39.

Points	In	Off	2nd	Fast	Bench
Points	Paint	T/O	Chance	Break	
UA	39	31	15	4	21
AR	26	7	7	6	13

Score tied - 5 times.  
Lead changed - 7 times.



JANUARY 15, 2018

## ARKANSAS AUBURN

Auburn Arena  
Auburn, Alabama

68  
58

Four players were in double figures. Kiara Williams had her third double-double. Arkansas' 41 first-half points is the second most this season and Bailey Zimmerman had a season-best with 13 pts and a career-best with 8 rebs.

### Arkansas 68 • 11-7, 2-3 SEC

#	Player	Total		3-Ptr		Rebounds		PF	TP	A	TO	Blk	Stl	Min
		FG-FGA	FT-FTA	FG-FGA	FT-FTA	Off	Def							
10	WILLIAMS, Kiara	f	7-9	0-0	1-3	7	7	14	2	15	0	0	0	27
22	ZIMMERMAN, Bailey	f	3-8	3-8	4-6	5	3	8	3	13	2	3	1	35
03	MONK, Malica	g	4-13	0-6	4-4	1	4	5	4	14	4	0	0	40
14	MASON, Jaielyn	g	6-12	3-6	0-0	0	2	2	1	15	5	6	0	38
21	COSPER, Devin	g	0-4	0-2	0-0	0	1	1	0	0	0	1	0	8
01	NORTHCROSS-BAKER,	g	2-10	1-6	2-2	2	4	6	3	7	3	1	0	28
04	SWENSON, Keiryn	g	0-2	0-2	0-0	0	0	0	1	0	0	0	0	11
24	THOMAS,Taylah	g	2-3	0-0	0-0	1	0	1	3	4	0	1	0	13
Team						1	1	2						
Totals			24-61	9-30	11-15	17	22	39	17	68	14	12	1	200
1st FG %:		5-19	26.3%	2nd: 10-17	58.8%	3rd: 4-13	30.8%	4th: 5-12	41.7%	Game: 24-61	39.3%	Deadball		
3FG %:		4-12	33.3%	5-8	62.5%	0-4	0.0%	0-6	0.0%	9-30	30.0%	Rebounds		
FT %:		2-2	100.0%	0-0	0.0%	7-8	87.5%	2-5	40.0%	11-15	73.3%	4		

### Auburn 58 • 10-7, 1-4 SEC

#	Player	Total		3-Ptr		Rebounds		PF	TP	A	TO	Blk	Stl	Min
		FG-FGA	FT-FTA	FG-FGA	FT-FTA	Off	Def							
15	Jones,Jazmine	f	1-4	0-0	0-0	4	2	6	4	2	0	1	0	30
20	Thompson,Unique	f	5-10	0-0	4-6	8	5	13	2	14	2	6	2	37
05	Jones,Emari	g	1-4	1-4	2-2	1	1	2	3	5	0	1	0	24
14	Lewis,Tiffany	g	2-7	1-5	0-0	0	1	1	3	5	2	1	1	27
33	McKay,Janiyah	g	7-15	0-0	12-14	1	4	5	1	26	2	4	0	38
00	Alexander,Daisa	g	3-15	0-5	0-0	0	3	3	3	6	1	2	0	25
04	Jackson,Abigail	g	0-0	0-0	0-0	0	0	0	0	0	0	0	0	1
12	Wright,Justice	g	0-1	0-0	0-0	0	0	0	0	0	0	0	0	2
23	Jones,Jessica	g	0-0	0-0	0-0	0	0	0	2	0	0	0	1	15
32	Toure,Sira	g	0-0	0-0	0-0	0	0	0	0	0	0	0	0	1
Team						2	1	3						
Totals			19-56	2-14	18-22	16	17	33	18	58	7	15	4	200
1st FG %:		5-12	41.7%	2nd: 2-11	18.2%	3rd: 7-16	43.8%	4th: 5-17	29.4%	Game: 19-56	33.9%	Deadball		
3FG %:		0-3	0.0%	1-3	33.3%	1-5	20.0%	2-14	14.3%	2-14	14.3%	Rebounds		
FT %:		1-2	50.0%	2-2	100.0%	7-8	87.5%	8-10	80.0%	18-22	81.8%	3,3		

Officials: Scott Yarbrough, Eric Brewton, Jennifer Rezac  
Technical fouls: Arkansas-None. Auburn-None.  
Attendance: 2210  
Unsportsmanlike foul called on Arkansas' Bailey Zimmerman (22) with 4:41 remaining in the 4th period.

Score by periods	1st	2nd	3rd	4th	Total
Arkansas	16	25	15	12	68
Auburn	11	6	22	19	58

Last FG - AR 4th-00:38, AU 4th-02:58.  
Largest lead - AR by 24 2nd-01:07, AU by 2 1st-09:37.  
AR led for 38:51, AU led for 00:36, Game was tied for 00:23.

Score tied - 0 times.  
Lead changed - 1 time.



JANUARY 11, 2018

## ARKANSAS GEORGIA

Stegeman Coliseum  
Athens, Georgia

65  
78

Bailey Zimmerman had a season-best 11 points going 3-for-3 from distance. Arkansas was within 1 point twice in the fourth quarter.

### Arkansas 65 • 10-7, 1-3 SEC

#	Player	Total		3-Ptr		Rebounds		PF	TP	A	TO	Blk	Stl	Min
		FG-FGA	FT-FTA	FG-FGA	FT-FTA	Off	Def							
10	WILLIAMS, Kiara	f	1-4	0-0	0-0	2	1	3	2	2	1	0	0	7
22	ZIMMERMAN, Bailey	f	3-5	3-5	2-4	2	3	5	0	11	2	1	0	27
03	MONK, Malica	g	4-18	0-2	8-11	0	5	5	3	16	2	3	1	35
14	MASON, Jaielyn	g	5-10	1-2	4-4	0	5	5	4	15	1	5	0	36
21	COSPER, Devin	g	4-13	0-6	0-0	1	6	7	4	8	2	2	0	39
01	NORTHCROSS-BAKER,	g	2-4	1-3	1-2	1	1	2	1	6	1	1	0	17
04	SWENSON, Keiryn	g	0-2	0-2	0-0	0	0	0	0	0	0	1	0	6
24	THOMAS,Taylah	g	3-9	0-1	0-0	3	5	8	2	6	1	3	0	29
30	WEAVER, Macy	g	0-0	0-0	1-2	1	0	1	2	1	0	0	0	4
Team						3	4	7						
Totals			22-65	5-21	16-23	13	30	43	16	65	10	17	1	200
1st FG %:		3-15	20.0%	2nd: 5-12	41.7%	3rd: 9-17	52.9%	4th: 5-21	23.8%	Game: 22-65	33.8%	Deadball		
3FG %:		0-5	0.0%	1-4	25.0%	2-3	66.7%	2-9	22.2%	5-21	23.8%	Rebounds		
FT %:		1-2	50.0%	7-11	63.6%	4-6	66.7%	16-23	69.6%	16-23	69.6%	3		

### Georgia 78 • 15-2, 3-1 SEC

#	Player
---	--------



JANUARY 21, 2018

ARKANSAS  
No. 11 MISSOURI

Mizzou Arena  
Columbia, Missouri

54  
88

Malica Monk scored in double figures for the 19th time. Arkansas allowed a season-high 13 opponent 3-point field goals. Jailyn Mason and Kiara Williams led the team with 14 points each.



JANUARY 25, 2018

ARKANSAS  
No. 10 SOUTH CAROLINA

Colonel Life Arena  
Columbia, South Carolina

TBA  
TBA

TBA

Arkansas 54 • 11-9 (2-5)

#	Player	Total			3-Ptr			Rebounds			PF	TP	A	TO	Blk	Stl	Min
		FG-FGA	FG-FGA	FT-FTA	FG-FGA	FG-FGA	FT-FTA	Off	Def	Tot							
03	MONK, Malica	* 4-12	3-6	0-2	0	3	3	2	11	2	2	0	0	31			
10	WILLIAMS, Kiara	* 6-10	0-0	2-3	3	4	7	4	14	0	0	0	1	20			
14	MASON, Jailyn	* 6-11	2-3	0-0	1	2	3	2	14	1	3	0	0	31			
22	ZIMMERMAN, Bailey	* 1-8	0-4	0-2	2	1	3	4	2	2	2	0	0	28			
24	THOMAS, Taylah	* 1-2	0-0	0-0	0	3	3	2	2	2	0	0	0	21			
01	NORTHCROSS-BAKER,	2-10	2-8	0-0	2	2	4	1	6	2	2	0	1	23			
04	SWENSON, Keiryn	2-9	1-5	0-0	1	3	4	1	5	1	0	0	0	22			
12	MCCLURE, Brenna	0-1	0-0	0-0	0	0	0	0	0	0	0	0	0	3			
13	SPANGLER, Grayce	0-2	0-1	0-0	0	0	0	1	0	0	0	0	0	5			
20	STOUT, Sydney	0-0	0-0	0-0	0	1	1	0	0	0	0	0	0	5			
30	WEAVER, Macy	0-2	0-0	0-0	1	2	3	3	0	0	0	1	0	11			
Team					2	0	2										
Totals		22-67	8-27	2-7	12	21	33	20	54	10	9	1	2	200			
1st - FG %:		7-16	43.8%	2nd: 5-17	29.4%	3rd: 7-20	35.0%	4th: 3-14	21.4%	Game: 22-67		32.8%	Deadball				
3FG %:		2-6	33.3%	3-8	37.5%	3-9	33.3%	0-4	0.0%	8-27		29.6%	Rebounds				
FT %:		0-0	0.0%	0-2	0.0%	2-3	66.7%	0-2	0.0%	2-7		28.6%	2				

No. 11 Mizzou 88 • 17-2 (5-1)

#	Player	Total			3-Ptr			Rebounds			PF	TP	A	TO	Blk	Stl	Min
		FG-FGA	FG-FGA	FT-FTA	Off	Def	Tot										
03	CUNNINGHAM, Sophie	* 4-8	2-5	12-14	0	3	3	3	22	3	2	0	0	30			
05	ALDRIDGE, Lauren	* 3-6	3-6	4-4	1	0	1	1	13	4	0	0	1	27			
20	MICHAEL, Kayla	* 6-8	1-1	0-0	2	1	3	0	13	0	0	0	0	22			
22	FRERICKS, Jordan	* 4-8	0-0	4-7	2	6	8	2	12	4	2	2	1	21			
23	SMITH, Amber	* 3-6	1-2	0-0	1	10	11	0	7	4	2	2	3	27			
01	WINFREY, Kelsey	0-0	0-0	1-2	1	1	2	0	1	0	0	0	0	3			
02	ROUNDTREE, Jordan	2-3	2-3	0-0	0	4	4	0	6	2	1	0	0	18			
10	GREEN, Nadia	0-0	0-0	0-0	0	1	1	1	0	0	2	0	0	6			
12	BROWN, Elle	0-0	0-0	0-0	0	1	1	0	0	0	0	0	0	3			
13	SCHUCHTS, Hannah	0-3	0-2	0-0	0	2	2	2	0	3	0	2	0	16			
24	CHAVIS, Jordan	4-6	4-6	0-0	0	1	1	2	12	1	0	0	0	19			
34	TAHANE, Emmanuelle	1-4	0-0	0-0	0	1	1	0	2	0	1	0	1	8			
Team					0	5	5										
Totals		27-52	13-25	21-27	7	36	43	11	88	21	11	6	6	200			
1st - FG %:		9-11	81.8%	2nd: 6-13	46.2%	3rd: 8-17	47.1%	4th: 4-11	36.4%	Game: 27-52		51.9%	Deadball				
3FG %:		3-4	75.0%	3-5	60.0%	4-10	40.0%	3-6	50.0%	13-25		52.0%	Rebounds				
FT %:		7-8	87.5%	8-9	88.9%	3-6	50.0%	3-4	75.0%	21-27		77.8%	3				

Officials: Tina Napier, Frank Steratore, Angelica Suffren

Technical fouls: Arkansas-None. No. 11 Mizzou-None.

Attendance: 5219

Score by periods	1st	2nd	3rd	4th	Total
Arkansas	16	13	19	6	54
No. 11 Mizzou	28	23	23	14	88

Last FG - AR 4th-04:17. MU-W 4th-01:40.

Largest lead - AR None. MU-W by 34 4th-01:40.

AR led for 00:00. MU-W led for 39:42. Game was tied for 00:18.

Points	In	Off	2nd	Fast	Bench
AR	16	7	6	2	11
MU-W	28	9	7	10	21

Score tied - 0 times.

Lead changed - 0 times.



JANUARY 29, 2018

KENTUCKY  
ARKANSAS

Bud Walton Arena  
Fayetteville, Arkansas

TBA  
TBA

TBA