

RAZORBACK Softball

7 NCAA Tournaments | 17 NFCA All-Region Selections | 26 All-SEC Selections

2018 SCHEDULE/RESULTS

OVERALL: 25-6 | SEC: 2-4

H: 16-1 | A: 0-4 | N: 9-1

DATE	OPPONENT	TIME/RESULT
F9	vs Kennesaw State!	Cancelled
F9	vs Nicholls!	Cancelled
F10	vs Nicholls!	Cancelled
F10	at Southeastern Louisiana! (CST)	Cancelled
F17	vs Grand Canyon#	W, 6-2
F17	vs 21 Utah#	W, 4-2
F18	vs Weber State#	W, 5-2
F18	vs Loyola Marymount#	W, 6-5
F19	vs Fordham#	W, 4-2
F23	vs Marist%	W, 15-3 (6)
F23	vs Manhattan%	W, 9-1 (6)
F24	vs Delaware%	W, 10-1 (5)
F24	vs Villanova%	W, 9-0 (5)
F25	vs McNeese%	L, 5-6
F28	Missouri State [SECN+]	W, 9-0 (5)
M2	Dartmouth^	W, 12-3 (5)
M2	Northern Colorado^	W, 9-0 (6)
M3	Dartmouth^ [SECN+]	W, 2-1
M3	Central Connecticut State^ [SECN+]	W, 7-0
M4	Northern Colorado^ [SECN+]	W, 1-0
M4	Central Connecticut State^ [SECN+]	W, 6-5
M6	at Wichita State (G1)	L, 0-1
M6	at Wichita State (G2)	Cancelled
M10	at #11 Georgia* [SEC Network]	L, 0-8 (5)
M11	at #11 Georgia* [ESPN]	L, 0-1 (9)
M12	at #11 Georgia* [SEC Network]	L, 4-5
M16	Iowa State&	W, 8-3
M16	Saint Francis (Pa.)&	W, 8-3
M17	Omaha& [SECN+]	W, 3-1
M17	Saint Francis (Pa.)& [SECN+]	W, 4-3
M18	Omaha& [SECN+]	W, 4-0
M20	UT Arlington (G1) [SECN+]	W, 6-0
M20	UT Arlington (G2) [SECN+]	W, 10-6
M23	Missouri* [SECN+]	W, 3-1
M24	Missouri* [SECN+]	L, 0-3
M25	Missouri* [SECN+]	W, 10-7
M30	Mississippi State* [SECN+]	6 p.m.
M31	Mississippi State* [SECN+]	1 p.m.
A1	Mississippi State* [SECN+]	1 p.m.
A6	at South Carolina* [SECN+]	5 p.m.
A7	at South Carolina* [SECN+]	1 p.m.
A8	at South Carolina* [SECN+]	12 p.m.
A10	at Saint Louis (G1)	2 p.m.
A10	at Saint Louis (G2)	4 p.m.
A13	Alabama* [SECN+]	6 p.m.
A14	Alabama* [ESPN]	11 a.m.
A15	Alabama* [SECN+]	1 p.m.
A20	at Auburn* [SECN+]	6 p.m.
A21	at Auburn* [SECN+]	6 p.m.
A22	at Auburn* [SECN+]	2 p.m.
A28	Ole Miss* [SEC Network]	3 p.m.
A29	Ole Miss* [ESPN]	4 p.m.
A30	Ole Miss* [SEC Network]	6 p.m.
M4	at LSU* [SEC Network/Bases Loaded]	6:30 p.m.
M5	at LSU* [SECN+]	6 p.m.
M6	at LSU* [SEC Network]	4 p.m.
M9-12	SEC Tournament	TBA
M18-20	NCAA Regionals	TBA
M24-27	NCAA Super Regionals	TBA
M31-J6	Women's College World Series	TBA

! Lion Classic | #Mary Nutter Collegiate Classic
% Madeira Beach Spring Invitational | ^ Razorback Invitational
& Wooo Pig Classic | * SEC games

All home games played at Bogle Park (1,200)
All times central & subject to change



UP NEXT

Top-25 SEC Matchup

March 30-April 1, 2018

Bogle Park (Fayetteville, Ark.)

BROADCAST INFORMATION

TV: None

Web: WatchESPN

Live Stats: ArkansasRazorbacks.com

NEXT THREE OPPONENTS



#20 MISSISSIPPI STATE BULLDOGS

Record: 28-6/3-3 SEC

Series: Miss. State, 38-26

Last Meeting: L, 3-4 (4/24/17)



#9 SOUTH CAROLINA GAMECOCKS

Record: 29-4/5-1 SEC

Series: South Carolina, 33-19

Last Meeting: W, 10-5 (4/10/16)



SAINT LOUIS BILLIKENS

Record: 16-14/2-1 Atlantic 10

Series: Arkansas, 6-0

Last Meeting: W, 5-2 (3/22/17)



WHERE CAN I FIND...

Quick Facts/Roster	2
Milestone Watch/What Happens When...	3
Bogle Park/The SEC	4
Head Coach Courtney Deifel	5
Career Top 10	6
Statistics & Starters	7-11
The Hitters & Pitchers	12-15
TV/Headshot Roster	16

HEAD TO HEAD

ARKANSAS		MISS. STATE
.298	Batting Avg.	.324
5.77	Runs/Game	6.06
39	Home Runs	32
87	Walks	80
14	Stolen Bases	41
.963	Fielding Pct.	.958
1.91	ERA	1.32
224	Strikeouts	274



ALL-TIME SERIES VS MISSISSIPPI STATE

Arkansas and Mississippi State have played 64 times prior to this weekend's series. The Razorbacks have only played Alabama and LSU more times (65). Mississippi State owns a 16-13 edge in games played in Fayetteville.

LAST TIME OUT

The Razorbacks rallied for a 10-7 win over Missouri (March 25) to secure the series win at Bogle Park. Arkansas tallied seven runs in the fifth inning to erase a 7-3 deficit. Kayla Green tied the game with a three-run homer while Autumn Buczek drove in the go-ahead run with a double to center.

WHAT AN INNING

Arkansas' seven-run fifth against Missouri (March 25) was the program's highest-scoring inning in SEC play since an eight-run inning against South Carolina in 2014. The runs came by way of five hits, three walks and an error.

CRACKING THE TOP 25

Winners in nine of their last 10 games, the Razorbacks are the No. 23 team in the USA Today/NFCA poll this week. The ranking sets up a top-25 matchup this weekend at Bogle Park with No. 20 Mississippi State heading to Fayetteville.

RPI WATCH

Taking two of three from Missouri last weekend helped the Razorbacks move up five spots to No. 25 in the most recent (March 26) NCAA RPI. All 13 SEC teams are positioned within the top 35.

A LOOK AT THE STAT SHEET

Arkansas enters the weekend with 39 home runs, good for ninth in the NCAA. The Razorbacks also carry top-50 NCAA marks in slugging percentage (.502), team ERA (1.91) and scoring (5.77 runs per game). Individually, Mary Haff ranks seventh in ERA (0.74) and 15th in strikeouts (140). Fellow freshman Hannah McEwen is tied for 21st nationally with 35 runs driven in this season.

WIN NO. 100

Arkansas' win over Missouri (March 25) doubled as win No. 100 in head coach Courtney Deifel's career. She has tallied 73 of those victories at Arkansas; the first 27 wins of her coaching career came at Maryland (2015).

BATTLE TESTED, SEC APPROVED

In the first SEC start of her career and facing the top hitting and scoring team in the nation, freshman Mary Haff limited No. 11 Georgia to five hits and an unearned run in eight-plus innings. She also registered nine strikeouts.

2018 TEAM QUICK FACTS**TEAM INFORMATION**

2017 Overall Record	31-24
2017 SEC Record	7-17
NCAA Postseason	NCAA Regional (Norman)
SEC Finish	12th
Home Record	13-8
Away Record	9-14
Neutral Record	9-2
Letterwinners Returning/Lost	18/11
Starters Returning/Lost	9/5
Newcomers	6

COACHING STAFF

Head Coach	Courtney Deifel (Third Season)
Record at Arkansas	73-69 (.514)
Career Record	100-96 (.510)
Assistant Coach	Yolanda McRae (Third Season)
Assistant Coach	Matt Meuchel (Second Season)
Volunteer Assistant	Jordan McElroy (Third Season)
Director of Operations	Paige Williams (Third Season)

TEAM HISTORY

First Year of Program	1997
All-Time Record	596-703-1 (.459)
All-Time SEC Record	189-395 (.324)
SEC Championships/Last	None
NCAA Appearances/Last	Seven/2017

UNIVERSITY INFORMATION

Location	Fayetteville, Ark.
Founded	March 27, 1871
Enrollment	27,558
Nickname	Razorbacks
School Colors	Cardinal and White
Affiliation	NCAA Division I
Conference	Southeastern (SEC)
Chancellor	Dr. Joseph E. Steinmetz
Vice Chancellor/Director of Athletics	Hunter Yurachek
Faculty Athletic Representative	Gerald Jordan
University Website	www.uark.edu
Athletics Website	ArkansasRazorbacks.com

COMMUNICATIONS

Asst AD for Communications	TBA
Associate Director	David Beall
Associate Director	Jeri Thorpe
Assistant Director	Brandon Langlois
Assistant Director (SB Contact)	Zach Lawson
Email	zlawson@uark.edu
Office#	479-575-7089
Cell#	479-595-2358
Assistant Director	John Thomas
Assistant Director	TBA
Intern	Brent Hull
Intern	Devan Lawson
Digital Strategist	Taylor McGillis
Graphic Designer	Trent Daniel
Assistant Graphic Designer	AJ Enloe
Secretary	Mary Lynn Gibson

Mailing Address
Razorback Communications
PO Box 7777
Fayetteville, AR 72702-7777

Overnight Address
Razorback Communications
350 N. Razorback Road
Fayetteville, AR 72701



#	NAME	POSITION	CLASS/EXP	B/T	HEIGHT	HOMETOWN/PREVIOUS
00	Carley Haizlip	OF	Jr./2L	L/R	5-8	Midlothian, Texas/Midlothian
2	A.J. Belans	INF	Sr./1L	R/R	5-5	Hollywood, Fla./FIU
4	Mary Haff	RHP	Fr./HS	R/R	5-10	Winter Haven, Fla./Lake Region HS
6	Tori Cooper	OF	Sr./3L	L/L	5-5	Nederland, Texas/Nederland
7	Sydney Parr	OF	Soph./1L	L/R	5-7	North Little Rock, Ark./North Little Rock
8	Autumn Buczek	INF	Sr./3L	L/R	5-7	Greenbrier, Ark./Greenbrier
9	Autumn Storms	RHP	Soph./1L	R/R	5-10	Temecula, Calif./Great Oak HS
10	Haydi Bugarin	OF	Jr./2L	R/R	5-3	San Antonio, Texas/East Central HS
12	Loren Krzysko	OF	R-Sr./3L	R/R	5-3	Barrington, Ill./Barrington
13	Kayla Green	C	Fr./HS	R/R	5-9	Temecula, Calif./Great Oak HS
16	Keely Edwards	INF	Soph./1L	R/R	5-6	Harrisburg, Ark./Harrisburg
18	Ashley Diaz	INF	Jr./2L	R/R	5-10	South El Monte, Calif./South El Monte
19	Lauren Archuleta	C	R-Jr./2L	R/R	5-8	Rockwall, Texas/Rockwall
20	Macy Brotherton	C	Soph./1L	R/R	5-9	Mena, Ark./Mena
22	Linnie Malkin	INF	Fr./HS	R/R	5-11	Broomfield, Colo./Broomfield
23	Hannah McEwen	OF	Fr./HS	L/R	5-7	San Diego, Calif./Patrick Henry HS
24	Nicole Duncan	C	Fr./HS	R/R	5-7	Centralia, Mo./Centralia
28	Sydney Benz	INF	Jr./1L	R/R	5-5	Carol Stream, Ill./Louisville
31	Caroline Hedgcock	LHP	Soph./1L	L/L	5-8	Downers Grove, Ill./South HS
32	Allison Stewart	RHP	R-Jr./2L	R/R	5-11	Olathe, Kan./East HS
33	Jada Dotson	OF	Fr./HS	R/R	5-6	White House, Tenn./Ensworth HS
34	Madelyn Brotherton	UTL	Soph./1L	R/R	5-9	Mena, Ark./Mena
55	Katie Warrick	INF/RHP	Jr./1L	R/R	6-0	Chapel Hill, Tenn./UT Martin
66	Aly Manzo	INF	Soph./1L	R/R	5-7	Roseville, Calif./Roseville

COACHING/SUPPORT STAFF

Head Coach	Courtney Deifel (Third Season)
Assistant Coach	Yolanda McRae (Third Season)
Assistant Coach	Matt Meuchel (Second Season)
Volunteer Assistant	Jordan McElroy (Third Season)
Director of Operations	Paige Williams (Third Season)

PRONUNCIATION GUIDE

Carley Haizlip	HAZE-lip
A.J. Belans	buh-LANS
Autumn Buczek	Bue-sick
Haydi Bugarin	HY-dee BOO-gair-in
Loren Krzysko	Crisco
Linnie Malkin	Mall-kin
Courtney Deifel	DIE-ful
Matt Meuchel	Michael



MILESTONE WATCH

Autumn Buczek | SR | INF

Looking for: 97 runs (ARK #8)
Looking for: 184 hits (ARK #10)

Current total: 95
Current total: 161

Needs: 2
Needs: 23

Tori Cooper | SR | OF

Looking for: 100 hits (career)
Looking for: 18 home runs (ARK #10)

Current total: 102
Current total: 16

Needs: -
Needs: 2

Ashley Diaz | JR | INF

Looking for: 22 home runs (ARK #6)
Looking for: 97 RBI (ARK #10)
Looking for: 150 hits (career)

Current total: 21
Current total: 87
Current total: 130

Needs: 1
Needs: 10
Needs: 20

Autumn Storms | SO | RHP

Looking for: 26 wins (ARK #8)
Looking for: 200 strikeouts (career)

Current total: 25
Current total: 171

Needs: 1
Needs: 29

Career Multi-Hit Games...

Autumn Buczek (40), Ashley Diaz (38), Tori Cooper (21), A.J. Belans (12), Loren Krzysko (11), Hannah McEwen (10), Haydi Bugarin (7), Lauren Archuleta (6), Katie Warrick (6), Kayla Green (5), Aly Manzo (4), Sydney Parr (4), Linnie Malkin (3)

Career Multi-RBI Games...

Ashley Diaz (25), Tori Cooper (14), A.J. Belans (11), Loren Krzysko (8), Lauren Archuleta (7), Autumn Buczek (7), Hannah McEwen (7), Katie Warrick (6), Haydi Bugarin (5), Kayla Green (4), Linnie Malkin (1), Aly Manzo (1), Sydney Parr (1)

AND THE WINNER IS...

Hannah McEwen (.500, 3 HR, 16 RBI, 7 R) was named the SEC Co-Player of the Week (March 5), becoming the third freshman in program history to earn the honor.

TWICE THE FUN

For a second time this season, Mary Haff (4-0, 0.00 ERA, 40 Ks) was named SEC Freshman of the Week (March 5). She also threw the program's seventh no-hitter and tallied a save.

NO-NO FOR STORMS

One night removed from Mary Haff's no-hitter, sophomore Autumn Storms pitched a no-hitter of her own in a win over Central Connecticut State (March 3). She established a career high of nine strikeouts in the triumph.

18 FOR 18

Junior Ashley Diaz's home run against Central Connecticut State was the 18th of her career and moved her into a tie for 10th on the program's all-time list. The two-run shot to left field cleared the outer gate at Bogle Park.

PROGRAM-BEST START

With its win over Villanova (Feb. 24), Arkansas improved to 9-0 which marked the best start in program history which previously belonged to the 2017 team (8-0).

ENJOYING THE SUNSHINE STATE

Hannah McEwen hit .579 (11-for-19) with 10 runs driven in and eight runs scored at last weekend's Madeira Beach Invitational. Six of 11 hits went for extra bases including two home runs. McEwen had at least two hits in each game and raised her batting average more than 200 points.

NICE START, MARY

Behind a 3-0 start to her career and 31 strikeouts in 18.1 innings of work, Mary Haff was named the SEC Freshman of the Week (Feb. 19). She also tallied a save and held hitters to a .095 batting average in four appearances during the Mary Nutter Collegiate Classic.

LINNIE SAYS BYE...TWICE

Freshman Linnie Malkin began her Razorback career with a home run in each of her first two at-bats. Against Grand Canyon, she opened the scoring with a two-run blast in the second and followed with a solo shot in the fourth frame.

WHO'S BACK?

The Razorbacks return three players-Belans, Buczek and Diaz-that started all 55 games in 2017. Overall, Arkansas welcomes back 18 letterwinners. Belans was named to the All-SEC Second Team while sophomore Autumn Storms was an All-SEC and All-South Region performer.

WHAT LIES AHEAD

Arkansas is set to face 11 teams ranked or receiving votes in the preseason NFCA poll including five (Alabama, Auburn, LSU, Ole Miss and Utah) that played in a Super Regional last season. The Razorbacks will also see eight players named to the USA Softball Top 50 Preseason Watch List.

THINGS ARE LOOKING UP

The Razorbacks' 31-24 record in 2017 marked a 14-win improvement from the previous year, the largest increase among teams in a Power 5 conference. It also marked the program's first 30-win campaign since 2013.

STARTING POINT

In the SEC preseason coaches' poll, Arkansas was picked to finish 10th in the league; the team had been picked 13th in the previous two seasons. The Razorbacks also start the year receiving votes in the NFCA and USA Softball polls.

BACK IN (POSTSEASON) PLAY

Arkansas snapped a three-year postseason absence with trips to the SEC and NCAA Tournament. For the sixth time in seven NCAA appearances, the Razorbacks were part of the Norman Regional and lost to eventual national champion Oklahoma in an elimination game.

TOP-25 RECRUITING CLASS

Featuring a pair of top-50 signees, Arkansas' most recent recruiting class was ranked No. 22 by FloSoftball. The new Razorbacks are Larissa Cesena (Riverside, Calif.), Taylor Greene (Milton, Ga.), Maggie Hicks (East End, Ark.), Megan Robertson (Milton, Fla.) and Sam Torres (Temecula, Calif.). Individually, Greene and Cesena are ranked No. 37 and 48, respectively.dd

WHAT HAPPENS WHEN...

OVERALL	25-6
SEC	2-4
HOME	16-1
AWAY	0-4
NEUTRAL	9-1
VS RANKED OPPONENTS	1-3

GAME LENGTH

FIVE INNINGS	4-1
SIX INNINGS	3-0
SEVEN INNINGS	18-4
EXTRA INNINGS	0-1

SITUATION

DAY GAME (BEFORE 6PM)	20-4
NIGHT GAME (6PM OR LATER)	5-2
ARKANSAS SCORES FIRST	22-1
OPPONENT SCORES FIRST	3-5
ARKANSAS SCORES IN FIRST INN.	10-0
OPPONENT SCORES IN FIRST INN.	1-1
VS RHP	23-4
VS LHP	2-2
ONE-RUN GAME	5-4
TWO-RUN GAME	4-0
5+ RUN GAME	11-1
LEADING AFTER SIX INNINGS	16-1
TRAILING AFTER SIX INNINGS	0-3
TIED AFTER SIX INNINGS	2-1

STATISTICS

SCORES 0-2 RUNS	2-4
SCORES 3-5 RUNS	7-2
SCORES 6-9 RUNS	11-0
SCORES 10+ RUNS	5-0
OPP. SCORES 0-2 RUNS	16-2
OPP. SCORES 3-5 RUNS	7-2
OPP. SCORES 6-9 RUNS	2-2
OPP. SCORES 10+ RUNS	0-0
MORE HITS THAN OPPONENT	19-3
FEWER HITS THAN OPPONENT	2-3
HITS ARE TIED	4-0
MADE NO ERRORS	6-3
MADE ONE ERROR	13-1
MADE 2+ ERRORS	6-2

BY DAY

SUNDAY	6-1
MONDAY	1-2
TUESDAY	2-0
WEDNESDAY	1-1
THURSDAY	0-0
FRIDAY	7-0
SATURDAY	8-2

BY MONTH

FEBRUARY	10-1
MARCH	15-5
APRIL	0-0
MAY	0-0



SEC STANDINGS/SCHEDULE
(as of March 28)

Team	SEC	Overall	Streak
#9 South Carolina	5-1	29-4	W4
#6 Georgia	7-2	30-3	W1
#4 Florida	7-2	28-4	W5
#13 LSU	3-2	27-5	L1
#10 Auburn	5-4	31-6	W6
#7 Tennessee	3-3	30-4	L3
#20 Mississippi State	3-3	28-6	L1
#12 Texas A&M	3-3	30-7	L3
#16 Alabama	3-3	22-8	W1
#23 ARKANSAS	2-4	25-6	W1
#19 Kentucky	2-6	19-9	L3
Ole Miss	2-7	16-12	L1
Missouri	2-7	19-17	L1

(Ranking in USA Today/NFCA Top 25 poll)



2018 SEC TOURNAMENT
 May 9-12 | Columbia, Missouri

HOME ATTENDANCE TOP 10
OVERALL

#	Draw	Opponent	Date
1	2,756	Missouri	3-24-2018
2	2,023	Georgia	5-6-2017
3	1,544	#14 Tennessee	3-18-2017
4	1,531	#9 Oklahoma	4-20-2016
5	1,276	#5 Texas A&M	4-15-2017
6	1,262	#12 LSU	4-30-2016
7	1,248	Missouri	3-23-2018
8	1,234	#4 Alabama	5-2-2015
9	1,228	Georgia	5-5-2017
10	1,167*	Kentucky	5-6-2001

* - at Lady Back Yard

AT BOGLE PARK (2009- pres.)

#	Draw	Opponent	Date
1	2,756	Missouri	3-24-2018
2	2,023	Georgia	5-6-2017
3	1,544	#14 Tennessee	3-18-2017
4	1,531	#9 Oklahoma	4-20-2016
5	1,276	#5 Texas A&M	4-15-2017
6	1,262	#12 LSU	4-30-2016
7	1,248	Missouri	3-23-2018
8	1,234	#4 Alabama	5-2-2015
9	1,228	Georgia	5-5-2017
10	1,115	#4 Florida	3-24-2012

HOME OPENER

#	Draw	Opponent	Date
1	961	Drake	2-27-2016
2	833*	Oklahoma	2-2-2001
3	715	#19 La.-Lafayette	3-5-2010
4	604	#24 Auburn	3-11-2011
5	518*	Oregon	2-23-2002
6	510	Ball State	2-27-2009
7	505	Nebraska	3-3-2017
8	401	Butler	2-13-2014
9	373	Tennessee State	2-24-2012
10	372	Tulsa	3-10-2015

* - at Lady Back Yard



As part of their 2018 schedule, the Razorbacks are set to play 25 home games at Bogle Park and will face 12 teams overall that played in last year's NCAA Tournament including five that advanced to the Super Regionals.



Courtney Deifel became the fourth head coach in program history when she was hired June 11, 2015. In two seasons at Arkansas, she has orchestrated the Razorbacks' return to postseason play, capping the 2017 campaign by earning a spot in the SEC Tournament and selection to the NCAA Tournament.

In her second season in Fayetteville, Deifel guided Arkansas to a 31-24 record which marked a 17-win improvement from the previous season, marking the largest increase in the country among Power 5 programs. The Razorbacks also tallied seven wins in SEC play, equaling the combined total from the previous three seasons. In recognition of the team's performance, Deifel was named the 2017 D1SoftballNews Coach of the Year.

From year one to two under Deifel, Arkansas' pitching staff lowered its combined ERA by more than four runs (6.98 to 2.82) and added more than 20 points to its batting average (.260 to .284). The Razorbacks also led the SEC and tied for 17th in the NCAA with 59 home runs. During the year, Arkansas earned its first national ranking since 2013 when it was slotted at No. 24 in the March 7 release ESPN/USA Softball poll.

Individually, Deifel saw two Razorbacks earn NFCA All-South Region accolades with Nicole Schroeder and Autumn Storms earning second-team and third-team honors, respectively. Storms was also named to the SEC All-Freshman Team while A.J. Belans was voted to the All-SEC Second Team. Schroeder went on to be drafted by the Akron Racers as the program's second NPF selection.

Deifel's first win over a ranked team at Arkansas came during the 2016 season when the Razorbacks knocked off No. 23 Nebraska, 11-10, during the Easton Tournament in Fullerton, Calif.; the team added five ranked wins in 2017. The 2016 campaign also saw newcomer Ashley Diaz make an immediate impact as a member of the NFCA All-South Region Second Team. She also appeared on the NFCA National Freshman of the Year Top 25 Watch List.

During her playing and coaching careers prior to coming to Arkansas, Deifel advanced to 11 NCAA Tournaments including a four-year run to the Women's College World Series (WCWS) as an All-American catcher at California that was highlighted by winning the 2002 national title.

The Bears also finished second (2003), fifth (2001) and seventh (2000) at the WCWS over her four-year run. Her postseason successes also featured a pair of Super Regionals as a graduate assistant at Oklahoma and five NCAA Regionals as an assistant at Maryland and Louisville.

As a first-year head coach, Deifel ushered in a culture of change for Maryland in 2015. Along with the program's 16-game improvement from the previous season, the Terrapins' offense show tremendous growth. Maryland finished 27th in the NCAA with 6.28 runs per game be-

DEIFEL YEAR-BY-YEAR

Year	School	Overall	Conf.	Postseason
2015	Maryland	27-27	9-14	--
2016	Arkansas	17-39	1-23	--
2017	Arkansas	31-24	7-17	NCAA Regional
2018	Arkansas	25-6	2-4	--
4 seasons		100-96	19-58	1 appearance

At Arkansas (2016-pres.): 73-69 (.514)

At Maryland (2015): 27-27 (.500)

hind 339 runs scored, up more than 150 runs from 2014. Deifel also led her team to a .309 batting average, a 40-point jump from 2014 which also ranked 57th in the NCAA.

Individually, Deifel guided three players to all-conference accolades and a pair of NFCA all-region honors. Lindsey Schmeister was an All-Big Ten first team performer while Shannon Bustillos and Erin Pronobis landed on the All-Big Ten second team. Probonis and Corey Schwartz were also named to the NFCA All-Midwest Region Third Team. Under Deifel's watch, the trio helped Maryland to single-season school records in doubles, home runs, RBI and walks.

Prior to taking the head job at Maryland, Deifel spent four seasons as an assistant coach at Louisville in which she helped the Cardinals to four NCAA appearances, the 2014 American Athletic Conference Tournament title and an overall record of 176-60 (.746). Louisville averaged 44 wins in that time with a program-record 55 wins in 2012. Her student-athletes at Louisville racked up four NFCA All-America certificates and 29 all-conference selections.

Deifel played in 285 games in her career at California, missing just three games behind the plate over her four years. As a four-year starter behind the plate, she was a 2003 All-American, two-time All-Pac 10 selection and caught seven no-hitters. She is still the program's career leader with 1,969 putouts.

Aside from her accomplishments in collegiate softball, Deifel had a successful professional career following her days at Cal. In 2004, she helped the NY/NJ Juggernaut to the National Professional Fastpitch (NPF) league title. Deifel also spent three years with LeoPalac21 in Japan that resulted in a runner-up showing and a pair of third-place finishes.

Deifel and husband Joe are the parents to two sons, Trip and Walt. The family resides in Fayetteville.

2018 TEAM HIGHS

At bats	33	Iowa State (3/16)
Runs scored	15	vs Marist (2/23)
Hits	14	vs Manhattan (2/23)
RBI	14	vs Marist (2/23)
Doubles	4	Northern Colorado (3/2)
Triples	1	Nine times
Home runs	4	Missouri State (2/28)
Walks	9	vs Marist (2/23)
Strikeouts	11	at #11 Georgia (3/12)
Sac hits	2	C. Connecticut State (3/4)
Sac flies	2	UT Arlington (3/20)
Stolen bases	4	vs Manhattan (2/23)
Hit by pitch	2	vs Grand Canyon (2/17)
Runners LOB	14	vs Manhattan (2/23)
Hit into DP	2	vs Manhattan (2/23)
	2	C. Connecticut State (3/4)
Putouts	24	at #11 Georgia (3/12)
Assists	13	vs Manhattan (2/23)
Errors	3	vs Grand Canyon (2/17)
	3	C. Connecticut State (3/4)
Passed balls	3	UT Arlington (3/20)
DPs turned	1	Six times
Innings	8.0	at #11 Georgia (3/12)
Runs allowed	8	at #11 Georgia (3/10)
Earned allowed	8	at #11 Georgia (3/10)
Walks allowed	4	Northern Colorado (3/2)
	4	UT Arlington (3/20)
Strikeouts	15	vs Fordham (2/19)
Hits allowed	10	at #11 Georgia (3/10)
	10	vs Iowa State (3/16)
	10	Missouri (3/25)
Doubles allowed	3	Dartmouth (3/2)
HRs allowed	3	at #11 Georgia (3/10)
Wild pitches	1	Seven times
Hit batters	4	vs McNeese (2/25)

2018 AWARDS & HONORS

Mary Haff

SEC Freshman of the Week (Feb. 19)

SEC Freshman of the Week (March 5)

Hannah McEwen

SEC Co-Player of the Week (March 5)



Current Razorbacks in Program Top 10

Batting Average (minimum 250 AB)

1.	.357	Devon Wallace	2012-15
2.	.347	Stephanie Canfield	2013-17
3.	.336	Clarisa Navarro	2012-14
4.	.317	Ashley Diaz	2016-18
5.	.316	Autumn Buczek	2015-18
6.	.313	Kasey Fagan	2014-15
7.	.300	Jessica Bachkora	2007-10
8.	.296	Rachel LeMaster	2004-07
9.	.294	Brett Erickson	1997,99-00
10.	.292	Dana Gulick	1997-00

Slugging Percentage (minimum 250 AB)

1.	.671	Devon Wallace	2012-15
2.	.542	Nicole Schroeder	2013-17
3.	.537	Miranda Dixon	2007-10
4.	.517	Clarisa Navarro	2012-14
5.	.505	Kasey Fagan	2014-15
6.	.505	Ashley Diaz	2016-18
7.	.475	Amanda Geile	2011-14
8.	.471	Jessica Bachkora	2007-10
9.	.466	Stephanie Canfield	2013-17
10.	.456	Sandra Smith	2006-10

On-Base Percentage (minimum 250 AB)

1.	.557	Devon Wallace	2012-15
2.	.407	Kasey Fagan	2014-15
3.	.402	Clarisa Navarro	2012-14
4.	.399	Shelby Hiers	2014-17
5.	.392	Stephanie Canfield	2013-17
6.	.391	Miranda Dixon	2007-10
7.	.384	Jessica Bachkora	2007-10
8.	.380	Nicole Schroeder	2013-17
9.	.372	Sandra Smith	2006-10
10.	.364	Ashley Diaz	2016-18

Runs Scored

1.	184	Devon Wallace	2012-15
2.	166	Jessica Bachkora	2007-10
3.	124	Kayla Johnson	2006-09
4.	119	Stephanie Canfield	2013-17
5.	119	Dana Gulick	1997-00
6.	105	Clarisa Navarro	2012-14
7.	100	Chloe Oprzedek	2011-14
8.	97	Miranda Dixon	2007-10
9.	95	Autumn Buczek	2015-18
10.	91	Shelby Hiers	2014-17

Triples

1.	15	Stephanie Canfield	2013-17
2.	12	Dayna Huckabee	2005-08
3.	10	Sheri Wahrmond	1998-00
4.	9	Jessica Bachkora	2007-10
5.	8	Chloe Oprzedek	2011-14
6.	8	Autumn Buczek	2015-18
7.	7	Danica White	1999-02
8.	6	Whitney Cloer	2006-09
9.	5	Brett Erickson	1997,99-00
10.	5	Mindy O'Malley	2003-06

Home Runs

1.	47	Devon Wallace	2012-15
2.	43	Miranda Dixon	2007-10
3.	38	Nicole Schroeder	2013-17
4.	29	Sandra Smith	2006-10
5.	24	Whitney Cloer	2006-09
6.	22	Amanda Geile	2011-14
7.	21	Chloe Oprzedek	2011-14
8.	21	Ashley Diaz	2016-18
9.	21	Jessica Bachkora	2007-10
10.	20	Dayna Huckabee	2005-08

Sacrifice Flies

1.	9	Jayne Gee	2011-14
2.	8	Courtney Breault	2010-11
3.	7	Clarisa Navarro	2012-14
4.	7	Jennifer Cirigliano	1997-00
5.	6	Sierra Bronkey	2011-15
6.	6	Sheri Wahrmond	1998-00
7.	5	Ashley Diaz	2016-18
8.	5	Whitney Cloer	2006-09
9.	5	Aly Sartini	1997-00
10.	4	Eight times	

Stolen Bases

1.	75	Rachel LeMaster (75-99)	2004-07
2.	73	Dana Gulick (73-86)	1997-00
3.	57	Jessica Bachkora (57-67)	2007-10
4.	56	Blaira Perry (56-82)	2002-06
5.	38	Mindy O'Malley (38-50)	2003-06
6.	38	Andy Wharton (38-50)	1999-02
7.	34	Stephanie Canfield (34-38)	2013-17
8.	33	Ashley Martindale (33-37)	2011-14
9.	31	Autumn Buczek (31-35)	2015-18
10.	30	Devon Wallace (30-36)	2012-15

Earned Run Average (minimum 200 IP)

1.	1.59	Heather Schlichtman	2001-04
2.	1.66	Rachel Talley	1999-02
3.	1.90	Tammy Kincaid	1997-00
4.	2.28	Autumn Storms	2017-18
5.	2.43	Jennifer Bottoms	1998-01
6.	3.04	Valanna Lyons	2002-05
7.	3.07	Katy Henry	2005-08
8.	3.13	Blaira Perry	2002-06
9.	3.14	Kimmy Beasley	2011-14
10.	3.34	Hope McLemore	2010-13

Opponent Batting Average (minimum 200 IP)

1.	.200	Heather Schlichtman	2001-04
2.	.225	Rachel Talley	1999-02
3.	.235	Tammy Kincaid	1997-00
4.	.248	Kimmy Beasley	2011-14
5.	.254	Autumn Storms	2017-18
6.	.261	Blaira Perry	2002-06
7.	.265	Hope McLemore	2010-13
8.	.265	Katy Henry	2005-08
9.	.268	Valanna Lyons	2002-05
10.	.272	Jennifer Bottoms	1998-01

Walks Per 7 IP (minimum 200 IP)

1.	1.22	Rachel Talley	1999-02
2.	1.40	Tammy Kincaid	1997-00
3.	1.46	Autumn Storms	2017-18
4.	1.71	Katy Henry	2005-08
5.	1.76	Miranda Dixon	2007-10
6.	1.91	Jennifer Bottoms	1998-01
7.	2.03	Heather Schlichtman	2001-04
8.	2.48	Hope McLemore	2010-13
9.	2.49	Chelsea Cohen	2010-13
10.	2.65	Kimmy Beasley	2011-14

Wins

1.	73	Heather Schlichtman (73-67)	2001-04
2.	72	Tammy Kincaid (72-80)	1997-00
3.	56	Katy Henry (56-68)	2005-08
4.	52	Rachel Talley (52-50)	1999-02
5.	35	Miranda Dixon (35-45)	2007-10
6.	32	Chelsea Cohen (32-27)	2010-13
7.	31	Grace Moll (31-51)	2014-17
8.	26	Hope McLemore (26-28)	2010-13
9.	26	Kimmy Beasley (26-25)	2011-14
10.	25	Autumn Storms (25-18)	2017-18

Saves

1.	9	Katy Henry	2005-08
2.	9	Rachel Talley	1999-02
3.	9	Tammy Kincaid	1997-00
4.	7	Miranda Dixon	2007-10
5.	6	Heather Schlichtman	2001-04
6.	6	Jennifer Bottoms	1998-01
7.	5	Hope McLemore	2010-13
8.	4	Autumn Storms	2017-18
9.	4	Valanna Lyons	2002-05
10.	3	Kimmy Beasley	2011-14
11.	3	Chelsea Cohen	2010-13
12.	3	Sarah Topham	2004-06

Shutouts

1.	26	Heather Schlichtman	2001-04
2.	19	Tammy Kincaid	1997-00
3.	15	Katy Henry	2005-08
4.	15	Rachel Talley	1999-02
5.	9	Jennifer Bottoms	1998-01
6.	6	Grace Moll	2014-17
7.	6	Miranda Dixon	2007-10
8.	5	Mary Haff	2018
9.	5	Chelsea Cohen	2010-13
10.	5	Hope McLemore	2010-13
11.	5	Kim Jones	2008-11

Fielding Percentage (minimum 100 chances)

1.	.996	Kayla Green	2018
2.	.992	Lisa Nieman	2002-03
3.	.990	Leslie Dixon	2008-11
4.	.989	Danica White	1999-02
5.	.989	Devon Wallace	2012-15
6.	.987	Ashley Diaz	2016-18
7.	.985	Whitney Cloer	2006-09
8.	.985	Samantha Buckner	2005-08
9.	.985	Shana Easley	2003-06
10.	.984	Jayne Gee	2011-14

Chances

1.	1697	Kim Eiben	2000-03
2.	1682	Jennifer Cirigliano	1997-00
3.	1480	Danica White	1999-02
4.	1362	Shana Easley	2003-06
5.	1251	Samantha Buckner	2005-08
6.	1241	Whitney Cloer	2006-09
7.	1157	Jayne Gee	2011-14
8.	978	Ashley Diaz	2016-18
9.	930	Sandra Smith	2006-10
10.	913	Devon Wallace	2012-15

Putouts

1.	1563	Kim Eiben	2000-03
2.	1412	Jennifer Cirigliano	1997-00
3.	1302	Danica White	1999-02
4.	1233	Shana Easley	2003-06
5.	1150	Samantha Buckner	2005-08
6.	1122	Whitney Cloer	2006-09
7.	1046	Jayne Gee	2011-14
8.	936	Ashley Diaz	2016-18
9.	880	Devon Wallace	2012-15
10.	663	Sandra Smith	2006-10

Assists

1.	558	Tiffany Woolley	1999-02
2.	458	Brett Erickson	1997,99-00
3.	400	Aly Sartini	1997-00
4.	372	Chloe Oprzedek	2011-14
5.	367	Dayna Huckabee	2005-08
6.	347	Blaira Perry	2002-06
7.	339	Tammy Kincaid	1997-00
8.	331	Autumn Buczek	2015-18
9.	306	Heather Schlichtman	2001-04
10.	305	Clarisa Navarro	2012-14

Double Plays Turned

1.	42	Kim Eiben	2000-03
2.	35	Ashley Diaz	2016-18
3.	33	Aly Sartini	1997-00
4.	32	Devon Wallace	2012-15
5.	32	Jennifer Cirigliano	1997-00
6.	31	Sandra Smith	2006-10
7.	30	Samantha Buckner	2005-08
8.	29	Tiffany Woolley	1999-02
9.	28	Jennifer Bottoms	1998-01
10.	25	Dayna Huckabee	2005-08
11.	25	Cortney Mitchell	2001-02

Season Statistics (Overall)

Record: 25-6 Home: 16-1 Away: 0-4 Neutral: 9-1 SEC: 2-4

Player	avg	gp-gs	ab	r	h	2b	3b	hr	rbi	tb	slg%	bb	hp	so	gdp	ob%	sf	sh	sb-att	po	a	e	fld%
Autumn Buczek	.364	31-31	107	23	39	4	4	0	10	51	.477	7	0	11	0	.404	0	0	6-7	26	71	9	.915
Hannah McEwen	.361	31-31	97	24	35	5	1	6	35	60	.619	11	2	6	0	.432	1	0	0-0	19	1	2	.909
Ashley Diaz	.352	31-31	91	15	32	3	0	6	25	53	.582	8	0	9	1	.400	1	0	0-0	191	4	3	.985
Haydi Bugarin	.293	31-31	75	16	22	1	2	4	16	39	.520	6	1	9	0	.345	2	0	2-3	49	39	6	.936
Loren Krzysko	.271	31-31	85	17	23	4	0	5	18	42	.494	14	2	14	1	.382	1	1	0-0	25	0	1	.962
Kayla Green	.221	30-30	86	12	19	6	0	5	16	40	.465	2	4	14	1	.269	1	1	0-0	227	20	1	.996

Carley Haizlip	1.000	17-0	1	9	1	0	0	0	0	1	1.000	1	0	0	0	1.000	0	0	0-0	0	0	0	.000
Katie Warrick	.356	17-13	45	7	16	3	0	6	11	37	.822	3	0	2	0	.396	0	0	0-0	0	1	0	1.000
Linnie Malkin	.316	18-14	38	8	12	2	0	3	8	23	.605	10	0	10	0	.458	0	0	0-0	3	0	0	1.000
Sydney Parr	.314	26-13	35	9	11	1	1	0	5	14	.400	4	0	2	0	.375	1	0	4-4	19	1	0	1.000
Aly Manzo	.311	20-13	45	7	14	3	1	1	5	22	.489	5	0	2	0	.380	0	1	0-0	5	19	0	1.000
Tori Cooper	.226	21-20	53	11	12	1	0	2	8	19	.358	7	1	5	0	.323	1	0	1-1	16	0	1	.941
A.J. Belans	.164	21-20	55	5	9	0	0	1	4	12	.218	7	0	2	1	.258	0	1	0-0	16	26	6	.875
Caroline Hedgcock	.000	4-1	3	0	0	0	0	0	0	0	.000	0	0	2	0	.000	0	0	0-0	0	2	0	1.000
Lauren Archuleta	.000	4-1	3	0	0	0	0	0	0	0	.000	0	0	0	0	.000	0	1	0-0	8	2	0	1.000
Sydney Benz	.000	4-0	2	1	0	0	0	0	0	0	.000	0	0	1	0	.000	0	0	0-0	0	0	0	.000
Jada Dotson	.000	9-0	1	3	0	0	0	0	0	0	.000	0	0	0	0	.000	0	0	1-1	0	0	0	.000
Nicole Duncan	.000	4-0	1	1	0	0	0	0	0	0	.000	0	0	0	0	.000	0	0	0-0	1	0	0	1.000
Autumn Storms	.000	1-1	0	0	0	0	0	0	0	0	.000	0	0	0	0	.000	0	0	0-0	0	21	0	1.000
Macy Brotherton	.000	1-0	0	0	0	0	0	0	0	0	.000	1	0	0	0	1.000	0	0	0-0	0	0	0	.000
Keely Edwards	.000	23-0	0	11	0	0	0	0	0	0	.000	0	0	0	0	.000	0	0	0-0	0	0	0	.000
Mary Haff	.000	1-1	0	0	0	0	0	0	0	0	.000	1	0	0	0	1.000	0	0	0-0	1	18	3	.864
Totals	.298	31	823	179	245	33	9	39	161	413	.502	87	10	89	4	.369	8	5	14-16	606	225	32	.963
Opponents	.202	31	758	75	153	19	0	15	65	217	.286	37	17	224	5	.255	1	9	12-23	558	209	49	.940

LOB - Team (196), Opp (141). DPs turned - Team (6), Opp (6).

(All games Sorted by Earned run avg)

Player	era	w-l	app	gs	cg	sho	sv	ip	h	r	er	bb	so	2b	3b	hr	b/avg	wp	hp	bk	sfa	sha
Mary Haff	0.74	15-2	21	16	9	5/1	2	104.0	45	17	11	12	140	7	0	5	.126	4	7	0	0	5
Autumn Storms	2.30	9-4	20	14	4	1/1	2	82.1	79	36	27	18	75	7	0	6	.242	2	10	0	1	3

Katie Warrick	3.94	0-0	3	0	0	0/0	0	5.1	7	5	3	2	1	1	0	2	.318	0	0	0	0	0
Caroline Hedgcock	9.48	1-0	7	1	0	0/0	1	10.1	22	17	14	5	8	4	0	2	.407	1	0	0	0	1
Totals	1.91	25-6	31	31	13	7/1	5	202.0	153	75	55	37	224	19	0	15	.202	7	17	0	1	9
Opponents	5.23	6-25	31	31	13	4/0	1	186.0	245	179	139	87	89	33	9	39	.298	15	10	0	8	5

PB - Team (11), Green 9, Duncan 2, Opp (4). Pickoffs - Team (1), Archuleta 1. SBA/ATT - Green (12-23), Storms (7-12), Haff (3-9), Hedgcock (2-2).

Season Statistics (Conference)

Record: 2-4 Home: 2-1 Away: 0-3 SEC: 2-4

Player	avg	gp-gs	ab	r	h	2b	3b	hr	rbi	tb	slg%	bb	hp	so	gdp	ob%	sf	sh	sb-att	po	a	e	fld%
Autumn Buczek	.286	6-6	21	2	6	2	1	0	4	10	.476	0	0	4	0	.286	0	0	0-0	8	11	1	.950
Loren Krzysko	.267	6-6	15	1	4	1	0	0	0	5	.333	3	1	2	0	.421	0	0	0-0	8	0	0	1.000
Ashley Diaz	.200	6-6	20	0	4	0	0	0	3	4	.200	0	0	6	0	.200	0	0	0-0	35	1	0	1.000
Hannah McEwen	.188	6-6	16	2	3	0	0	0	1	3	.188	4	0	3	0	.350	0	0	0-0	4	0	0	1.000
Katie Warrick	.176	6-6	17	1	3	1	0	1	3	7	.412	1	0	1	0	.222	0	0	0-0	0	0	0	.000
Kayla Green	.100	6-6	20	1	2	0	0	1	3	5	.250	0	0	4	0	.100	0	0	0-0	39	4	0	1.000

Haydi Bugarin	.364	6-6	11	3	4	0	1	0	1	6	.545	2	0	3	0	.462	0	0	0-0	10	9	1	.950
Tori Cooper	.273	5-4	11	2	3	0	0	1	1	6	.545	0	0	2	0	.273	0	0	0-0	4	0	1	.800
Aly Manzo	.167	4-2	6	0	1	0	0	0	0	1	.167	1	0	0	0	.286	0	1	0-0	1	2	0	1.000
A.J. Belans	.000	5-4	11	0	0	0	0	0	0	0	.000	1	0	1	1	.083	0	0	0-0	3	3	1	.857
Sydney Parr	.000	5-2	4	1	0	0	0	0	0	0	.000	0	0	0	0	.000	0	0	0-0	7	1	0	1.000
Linnie Malkin	.000	1-0	1	0	0	0	0	0	0	0	.000	0	0	1	0	.000	0	0	0-0	0	0	0	.000
Sydney Benz	.000	1-0	1	0	0	0	0	0	0	0	.000	0	0	0	0	.000	0	0	0-0	0	0	0	.000
Keely Edwards	.000	6-0	0	2	0	0	0	0	0	0	.000	0	0	0	0	.000	0	0	0-0	0	0	0	.000
Carley Haizlip	.000	2-0	0	1	0	0	0	0	0	0	.000	0	0	0	0	.000	0	0	0-0	0	0	0	.000
Jada Dotson	.000	1-0	0	1	0	0	0	0	0	0	.000	0	0	0	0	.000	0	0	0-0	0	0	0	.000
Totals	.195	6	154	17	30	4	2	3	16	47	.305	12	1	27	1	.257	0	1	0-0	119	40	5	.970
Opponents	.277	6	159	25	44	5	0	5	24	64	.403	5	2	35	1	.305	1	2	8-11	120	51	5	.972

LOB - Team (31), Opp (25). DPs turned - Team (1), Opp (1).

(SEC games only Sorted by Earned run avg)

Player	era	w-l	app	gs	cg	sho	sv	ip	h	r	er	bb	so	2b	3b	hr	b/avg	wp	hp	bk	sfa	sha
Mary Haff	1.22	2-1	4	3	2	0/0	0	23.0	15	5	4	1	22	3	0	1	.181	1	0	0	0	1
Autumn Storms	7.00	0-3	4	3	1	0/0	0	14.0	25	16	14	3	9	1	0	4	.391	0	2	0	1	1

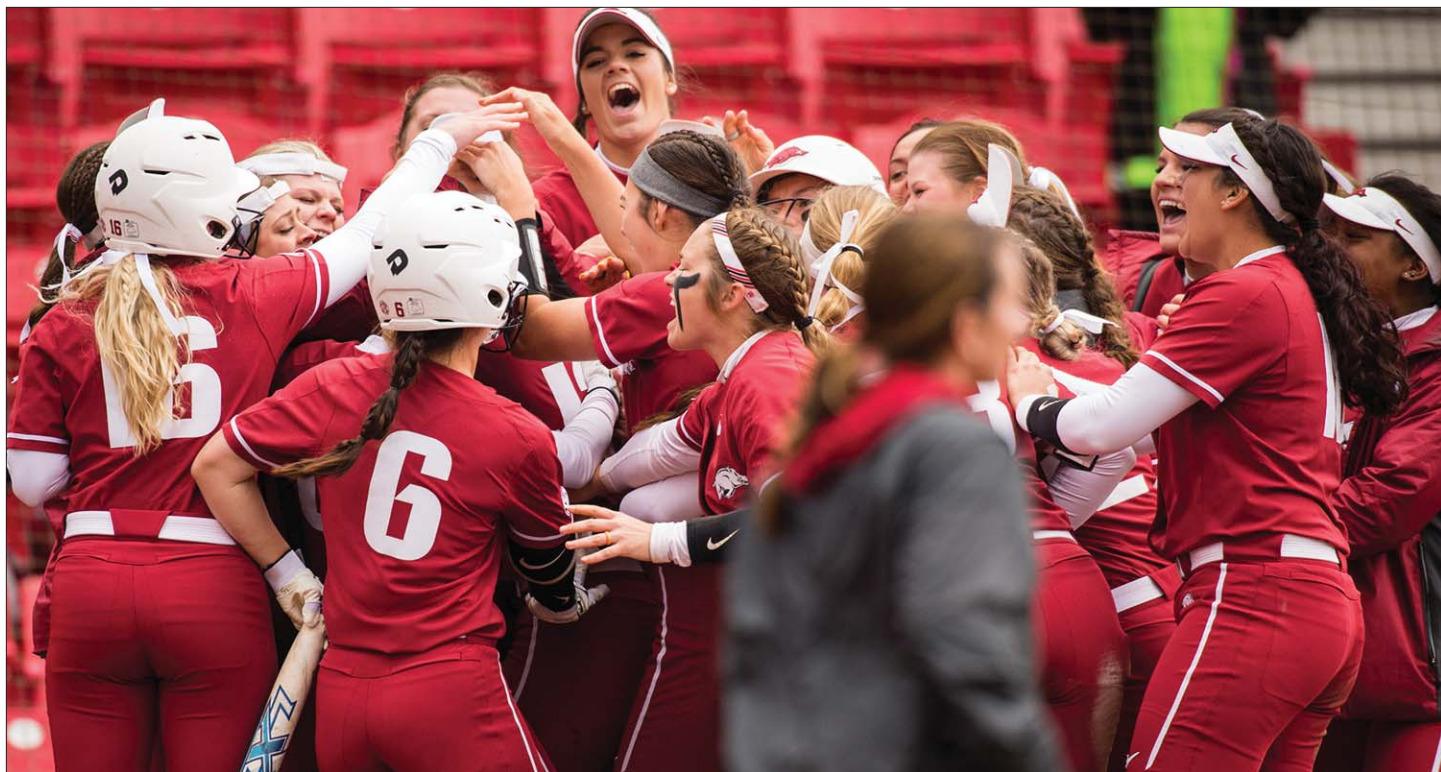
Caroline Hedgcock	10.50	0-0	1	0	0	0/0	0	2.2	4	4	4	1	4	1	0	0	.333	0	0	0	0	0
Totals	3.88	2-4	6	6	3	0/0	0	39.2	44	25	22	5	35	5	0	5	.277	1	2	0	1	2
Opponents	1.92	4-2	6	6	4	3/0	1	40.0	30	17	11	12	27	4	2	3	.195	2	1	0	0	1

PB - Team (1), Green 1. SBA/ATT - Green (8-11), Storms (5-7), Hedgcock (2-2), Haff (1-2).

2018 Home Run Tracker

#	Date	Player	Opponent	Site	# of Runs	Inning	Lineup Spot	Game Result
1	2-17-18	Linnie Malkin	Grand Canyon	Cathedral City, Calif.	2	2nd	8	W, 6-2
2!	2-17-18	Linnie Malkin	Grand Canyon	Cathedral City, Calif.	1	4th	8	W, 6-2
3!	2-17-18	Haydi Bugarin	Grand Canyon	Cathedral City, Calif.	1	4th	9	W, 6-2
4	2-17-18	Loren Krzysko	#21 Utah	Cathedral City, Calif.	1	1st	3	W, 4-2
5	2-18-18	A.J. Belans	Loyola Marymount	Cathedral City, Calif.	1	4th	4	W, 6-5
6	2-19-18	Kayla Green	Fordham	Cathedral City, Calif.	1	2nd	6	W, 4-2
7	2-19-18	Ashley Diaz	Fordham	Cathedral City, Calif.	1	6th	8	W, 4-2
8	2-23-18	Hannah McEwen	Marist	Madeira Beach, Fla.	4	4th	2	W, 15-3 (6)
9	2-23-18	Haydi Bugarin	Manhattan	Madeira Beach, Fla.	2	4th	9	W, 9-1 (6)
10	2-24-18	Kayla Green	Delaware	Madeira Beach, Fla.	2	1st	5	W, 10-1 (5)
11	2-24-18	Hannah McEwen	Delaware	Madeira Beach, Fla.	2	1st	2	W, 10-1 (5)
12	2-24-18	Linnie Malkin	Delaware	Madeira Beach, Fla.	1	2nd	6	W, 10-1 (5)
13	2-24-18	Loren Krzysko	Villanova	Madeira Beach, Fla.	3	3rd	3	W, 9-0 (5)
14	2-24-18	Kayla Green	Villanova	Madeira Beach, Fla.	1	4th	5	W, 9-0 (5)
15	2-25-18	Ashley Diaz	McNeese	Madeira Beach, Fla.	2	2nd	7	L, 5-6
16!	2-28-18	Loren Krzysko	Missouri State	Fayetteville, Ark.	1	2nd	7	W, 9-0 (5)
17!	2-28-18	Tori Cooper	Missouri State	Fayetteville, Ark.	1	2nd	8	W, 9-0 (5)
18	2-28-18	Hannah McEwen	Missouri State	Fayetteville, Ark.	4	4th	2	W, 9-0 (5)
19	2-28-18	Haydi Bugarin	Missouri State	Fayetteville, Ark.	3	5th	9	W, 9-0 (5)
20	3-2-18	Hannah McEwen	Northern Colorado	Fayetteville, Ark.	2	1st	2	W, 9-0 (6)
21	3-2-18	Kayla Green	Northern Colorado	Fayetteville, Ark.	3	3rd	4	W, 9-0 (6)
22	3-3-18	Hannah McEwen	Dartmouth	Fayetteville, Ark.	1	1st	2	W, 2-1
23	3-3-18	Loren Krzysko	C. Connecticut State	Fayetteville, Ark.	2	3rd	7	W, 7-0
24	3-4-18	Haydi Bugarin	C. Connecticut State	Fayetteville, Ark.	1	3rd	8	W, 6-5
25	3-4-18	Ashley Diaz	C. Connecticut State	Fayetteville, Ark.	2	5th	4	W, 6-5
26	3-12-18	Katie Warrick	at #11 Georgia	Athens, Ga.	2	6th	6	L, 4-5
27	3-16-18	Katie Warrick	Iowa State	Fayetteville, Ark.	2	3rd	4	W, 8-3
28	3-16-18	Katie Warrick	Iowa State	Fayetteville, Ark.	1	5th	4	W, 8-3
29	3-16-18	Hannah McEwen	Iowa State	Fayetteville, Ark.	3	6th	2	W, 8-3
30	3-16-18	Ashley Diaz	Saint Francis (Pa.)	Fayetteville, Ark.	3	3rd	3	W, 8-3
31	3-17-18	Katie Warrick	Saint Francis (Pa.)	Fayetteville, Ark.	1	2nd	4	W, 4-3
32	3-17-18	Ashley Diaz	Saint Francis (Pa.)	Fayetteville, Ark.	2	3rd	3	W, 4-3
33	3-18-18	Loren Krzysko	Omaha	Fayetteville, Ark.	4	1st	6	W, 4-0
34	3-20-18	Ashley Diaz	UT Arlington	Fayetteville, Ark.	2	1st	3	W, 6-0
35	3-20-18	Aly Manzo	UT Arlington	Fayetteville, Ark.	1	5th	5	W, 6-0
36	3-20-18	Katie Warrick	UT Arlington	Fayetteville, Ark.	1	6th	4	W, 6-0
37	3-20-18	Katie Warrick	UT Arlington	Fayetteville, Ark.	2	6th	4	W, 10-3
38	3-25-18	Tori Cooper	Missouri	Fayetteville, Ark.	1	3rd	8	W, 10-7
39	3-25-18	Kayla Green	Missouri	Fayetteville, Ark.	3	5th	6	W, 10-7

! - back-to-back | * - pinch hitter



Game by Game Starters | by Position

DATE	OPPONENT	SP	C	1B	2B	3B	SS	LF	CF	RF	DP
Fri, Feb. 9	vs Kennesaw State					Tournament Cancelled					
Fri, Feb. 9	vs Nicholls					Tournament Cancelled					
Sat, Feb. 10	vs Nicholls					Tournament Cancelled					
Sat, Feb. 10	at Southeastern Louisiana					Tournament Cancelled					
Sat, Feb. 17	vs Grand Canyon	Haff	Green	Diaz	Bugarin	Buczek	Belans	Cooper	Krzysko	McEwen	Malkin
Sat, Feb. 17	vs #21 Utah	Storms	Green	Diaz	Bugarin	Buczek	Belans	Cooper	Krzysko	McEwen	Malkin
Sun, Feb. 18	vs Weber State	Storms	Green	Diaz	Bugarin	Buczek	Belans	Cooper	Krzysko	McEwen	Malkin
Sun, Feb. 18	vs Loyola Marymount	Hedgcock	Green	Diaz	Bugarin	Buczek	Belans	Parr	Krzysko	McEwen	Cooper
Mon, Feb. 19	vs Fordham	Haff	Green	Diaz	Manzo	Buczek	Belans	Cooper	Krzysko	McEwen	Bugarin
Fri, Feb. 23	vs Marist	Haff	Green	Diaz	Manzo	Bugarin	Buczek	Cooper	Krzysko	McEwen	Malkin
Fri, Feb. 23	vs Manhattan	Storms	Green	Diaz	Bugarin	Manzo	Buczek	Cooper	Krzysko	McEwen	Malkin
Sat, Feb. 24	vs Delaware	Storms	Green	Diaz	Bugarin	Buczek	Belans	Cooper	Krzysko	McEwen	Malkin
Sat, Feb. 24	vs Villanova	Haff	Green	Diaz	Bugarin	Buczek	Belans	Parr	Krzysko	McEwen	Malkin
Sun, Feb. 25	vs McNeese	Storms	Green	Diaz	Bugarin	Buczek	Belans	Parr	Krzysko	McEwen	Malkin
Wed, Feb. 28	Missouri State	Haff	Green	Diaz	Bugarin	Buczek	Belans	Cooper	Krzysko	McEwen	Malkin
Fri, March 2	Dartmouth	Storms	Green	Diaz	Bugarin	Buczek	Belans	Cooper	Krzysko	McEwen	Malkin
Fri, March 2	Northern Colorado	Haff	Green	Diaz	Bugarin	Buczek	Belans	Cooper	Krzysko	McEwen	Malkin
Sat, March 3	Dartmouth	Haff	Green	Diaz	Bugarin	Buczek	Belans	Cooper	Krzysko	McEwen	Malkin
Sat, March 3	Central Connecticut State	Storms	Green	Diaz	Bugarin	Buczek	Belans	Cooper	Krzysko	McEwen	Malkin
Sun, March 4	Northern Colorado	Haff	Green	Diaz	Bugarin	Buczek	Belans	Cooper	Krzysko	McEwen	Malkin
Sun, March 4	Central Connecticut State	Storms	Green	Diaz	Bugarin	Buczek	Belans	Parr	Krzysko	McEwen	Cooper
Tues, March 6	at Wichita State (Game 1)	Haff	Archuleta	Diaz	Bugarin	Buczek	Belans	Cooper	Krzysko	McEwen	Manzo
Tues, March 6	at Wichita State (Game 2)					Game Cancelled					
Sat, March 10	at #11 Georgia	Storms	Green	Diaz	Bugarin	Buczek	Belans	Cooper	Krzysko	McEwen	Warrick
Sun, March 11	at #11 Georgia	Haff	Green	Diaz	Bugarin	Buczek	Belans	Cooper	Krzysko	McEwen	Warrick
Mon, March 12	at #11 Georgia	Storms	Green	Diaz	Bugarin	Buczek	Belans	Cooper	Krzysko	McEwen	Warrick
Fri, March 16	Iowa State	Haff	Green	Diaz	Bugarin	Manzo	Buczek	Parr	Krzysko	McEwen	Warrick
Fri, March 16	Saint Francis (Pa.)	Storms	Green	Diaz	Bugarin	Manzo	Buczek	Parr	Krzysko	McEwen	Warrick
Sat, March 17	Omaha	Storms	Green	Diaz	Bugarin	Manzo	Buczek	Parr	Krzysko	McEwen	Warrick
Sat, March 17	Saint Francis (Pa.)	Haff	Green	Diaz	Bugarin	Manzo	Buczek	Parr	Krzysko	McEwen	Warrick
Sun, March 18	Omaha	Haff	Green	Diaz	Bugarin	Manzo	Buczek	Parr	Krzysko	McEwen	Warrick
Tues, March 20	UT Arlington (Game 1)	Haff	Green	Diaz	Bugarin	Manzo	Buczek	Parr	Krzysko	McEwen	Warrick
Tues, March 20	UT Arlington (Game 2)	Storms	Green	Diaz	Bugarin	Manzo	Buczek	Parr	Krzysko	McEwen	Warrick
Fri, March 23	Missouri	Haff	Green	Diaz	Bugarin	Manzo	Buczek	Parr	Krzysko	McEwen	Warrick
Sat, March 24	Missouri	Storms	Green	Diaz	Bugarin	Manzo	Buczek	Parr	Krzysko	McEwen	Warrick
Sun, March 25	Missouri	Haff	Green	Diaz	Bugarin	Buczek	Belans	Cooper	Krzysko	McEwen	Warrick
Fri, March 30	Mississippi State										
Sat, March 31	Mississippi State										
Sun, April 1	Mississippi State										
Fri, April 6	at South Carolina										
Sat, April 7	at South Carolina										
Sun, April 8	at South Carolina										
Tues, April 10	at Saint Louis (Game 1)										
Tues, April 10	at Saint Louis (Game 2)										
Fri, April 13	Alabama										
Sat, April 14	Alabama										
Sun, April 15	Alabama										
Fri, April 20	at Auburn										
Sat, April 21	at Auburn										
Sun, April 22	at Auburn										
Sat, April 28	Ole Miss										
Sun, April 29	Ole Miss										
Mon, April 30	Ole Miss										
Fri, May 4	at LSU										
Sat, May 5	at LSU										
Sun, May 6	at LSU										

Game by Game Starters | by Lineup

DATE	OPPONENT	1	2	3	4	5	6	7	8	9	FX
Fri, Feb. 9	vs Kennesaw State					Tournament Cancelled					
Fri, Feb. 9	vs Nicholls					Tournament Cancelled					
Sat, Feb. 10	vs Nicholls					Tournament Cancelled					
Sat, Feb. 10	at Southeastern Louisiana					Tournament Cancelled					
Sat, Feb. 17	vs Grand Canyon	Buczek	McEwen	Krzysko	Belans	Cooper	Diaz	Green	Malkin	Bugarin	Haff
Sat, Feb. 17	vs #21 Utah	Buczek	McEwen	Krzysko	Belans	Cooper	Diaz	Green	Malkin	Bugarin	Storms
Sun, Feb. 18	vs Weber State	Buczek	McEwen	Krzysko	Belans	Cooper	Malkin	Green	Diaz	Bugarin	Storms
Sun, Feb. 18	vs Loyola Marymount	Buczek	McEwen	Krzysko	Belans	Cooper	Green	Hedgcock	Diaz	Bugarin	Parr
Mon, Feb. 19	vs Fordham	Buczek	McEwen	Krzysko	Belans	Cooper	Green	Manzo	Diaz	Bugarin	Haff
Fri, Feb. 23	vs Marist	Buczek	McEwen	Krzysko	Cooper	Green	Malkin	Diaz	Manzo	Bugarin	Haff
Fri, Feb. 23	vs Manhattan	Buczek	McEwen	Krzysko	Cooper	Green	Malkin	Manzo	Diaz	Bugarin	Storms
Sat, Feb. 24	vs Delaware	Buczek	McEwen	Krzysko	Belans	Green	Malkin	Cooper	Diaz	Bugarin	Storms
Sat, Feb. 24	vs Villanova	Buczek	McEwen	Krzysko	Belans	Green	Malkin	Diaz	Bugarin	Parr	Haff
Sun, Feb. 25	vs McNeese	Buczek	McEwen	Krzysko	Green	Belans	Malkin	Diaz	Bugarin	Parr	Storms
Wed, Feb. 28	Missouri State	Buczek	McEwen	Malkin	Green	Diaz	Belans	Krzysko	Cooper	Bugarin	Haff
Fri, March 2	Dartmouth	Buczek	McEwen	Malkin	Green	Diaz	Belans	Krzysko	Cooper	Bugarin	Storms
Fri, March 2	Northern Colorado	Buczek	McEwen	Malkin	Green	Diaz	Belans	Krzysko	Cooper	Bugarin	Haff
Sat, March 3	Dartmouth	Buczek	McEwen	Malkin	Green	Diaz	Belans	Krzysko	Cooper	Bugarin	Haff
Sat, March 3	Central Connecticut State	Buczek	McEwen	Malkin	Green	Diaz	Belans	Krzysko	Cooper	Bugarin	Storms
Sun, March 4	Northern Colorado	Buczek	McEwen	Malkin	Green	Diaz	Belans	Krzysko	Cooper	Bugarin	Haff
Sun, March 4	Central Connecticut State	Buczek	McEwen	Krzysko	Diaz	Green	Belans	Cooper	Bugarin	Parr	Storms
Tues, March 6	at Wichita State (Game 1)	Buczek	McEwen	Krzysko	Diaz	Manzo	Belans	Cooper	Archuleta	Bugarin	Haff
Tues, March 6	at Wichita State (Game 2)					Game Cancelled					
Sat, March 10	at #11 Georgia	Buczek	McEwen	Diaz	Green	Krzysko	Warrick	Cooper	Belans	Bugarin	Storms
Sun, March 11	at #11 Georgia	Buczek	McEwen	Diaz	Green	Krzysko	Warrick	Cooper	Belans	Bugarin	Haff
Mon, March 12	at #11 Georgia	Buczek	McEwen	Diaz	Green	Krzysko	Warrick	Cooper	Belans	Bugarin	Storms
Fri, March 16	Iowa State	Buczek	McEwen	Diaz	Warrick	Manzo	Krzysko	Green	Bugarin	Parr	Haff
Fri, March 16	Saint Francis (Pa.)	Buczek	McEwen	Diaz	Warrick	Manzo	Krzysko	Green	Bugarin	Parr	Storms
Sat, March 17	Omaha	Buczek	McEwen	Diaz	Warrick	Manzo	Krzysko	Green	Bugarin	Parr	Storms
Sat, March 17	Saint Francis (Pa.)	Buczek	McEwen	Diaz	Warrick	Manzo	Krzysko	Green	Bugarin	Parr	Haff
Sun, March 18	Omaha	Buczek	McEwen	Diaz	Warrick	Manzo	Krzysko	Green	Bugarin	Parr	Haff
Tues, March 20	UT Arlington (Game 1)	Buczek	McEwen	Diaz	Warrick	Manzo	Krzysko	Green	Bugarin	Parr	Haff
Tues, March 20	UT Arlington (Game 2)	Buczek	McEwen	Diaz	Warrick	Manzo	Krzysko	Green	Bugarin	Parr	Storms
Fri, March 23	Missouri	Buczek	McEwen	Diaz	Warrick	Manzo	Krzysko	Green	Bugarin	Parr	Haff
Sat, March 24	Missouri	Buczek	McEwen	Diaz	Warrick	Manzo	Krzysko	Green	Bugarin	Parr	Storms
Sun, March 25	Missouri	Buczek	McEwen	Diaz	Warrick	Krzysko	Green	Belans	Cooper	Bugarin	Haff
Fri, March 30	#20 Mississippi State										
Sat, March 31	#20 Mississippi State										
Sun, April 1	#20 Mississippi State										
Fri, April 6	at South Carolina										
Sat, April 7	at South Carolina										
Sun, April 8	at South Carolina										
Tues, April 10	at Saint Louis (Game 1)										
Tues, April 10	at Saint Louis (Game 2)										
Fri, April 13	Alabama										
Sat, April 14	Alabama										
Sun, April 15	Alabama										
Fri, April 20	at Auburn										
Sat, April 21	at Auburn										
Sun, April 22	at Auburn										
Sat, April 28	Ole Miss										
Sun, April 29	Ole Miss										
Mon, April 30	Ole Miss										
Fri, May 4	at LSU										
Sat, May 5	at LSU										
Sun, May 6	at LSU										

#2 A.J. Belans

Senior | INF | 5-5 | R/R | Hollywood, Fla. (FIU)

Season Highs

Hits	2	vs Loyola Marymount	Feb. 18, 2018
RBI	2	vs Loyola Marymount	Feb. 18, 2018
Runs	*2	vs Dartmouth	March 2, 2018
Walks	2	vs Grand Canyon	Feb. 17, 2018
AB	*4	vs McNeese	Feb. 25, 2018

Career Highs

Hits	*3	vs IUPUI	March 5, 2017
RBI	4	vs #14 Tennessee	March 17, 2017
Runs	*2	vs Dartmouth	March 2, 2018
Walks	*2	vs Grand Canyon	Feb. 17, 2018
AB	*4	vs McNeese	Feb. 25, 2018

Year	Avg	GP	GS	AB	R	H	2B	3B	HR	RBI	BB	SO	SB	ATT
2017	.295	55	55	156	20	46	12	0	8	33	16	21	0	0
2018	.164	21	20	55	5	9	0	0	1	4	7	2	0	0
TOTAL	.261	76	75	211	25	55	12	0	9	37	23	23	0	0

#8 Autumn Buczek

Senior | INF | 5-7 | L/R | Greenbrier, Ark. (Greenbrier)

Season Highs

Hits	*3	vs UT Arlington	March 20, 2018
RBI	*2	vs Missouri	March 23, 2018
Runs	3	vs UT Arlington	March 20, 2018
Walks	2	vs Weber State	Feb. 18, 2018
AB	5	vs Grand Canyon	Feb. 17, 2018

Career Highs

Hits	4	vs Central Michigan	Feb. 21, 2016
RBI	4	vs Buffalo	March 4, 2016
Runs	*3	vs UT Arlington	March 20, 2018
Walks	*2	vs Weber State	Feb. 18, 2018
AB	*5	vs Grand Canyon	Feb. 17, 2018

Year	Avg	GP	GS	AB	R	H	2B	3B	HR	RBI	BB	SO	SB	ATT
2015	.243	45	27	70	12	17	1	0	0	1	2	20	4	5
2016	.281	56	56	167	28	47	4	2	0	13	7	24	12	13
2017	.349	55	55	166	32	58	5	2	1	13	8	22	9	10
2018	.364	31	31	107	23	39	4	4	0	10	7	11	6	7
TOTAL	.316	187	169	510	95	161	14	8	1	37	24	77	31	35

#10 Haydi Bugarin

Junior | INF | 5-3 | R/R | San Antonio, Texas (East Central HS)

Season Highs

Hits	3	vs Manhattan	Feb. 23, 2018
RBI	5	vs Manhattan	Feb. 23, 2018
Runs	2	vs Manhattan	Feb. 23, 2018
Walks	*1	vs Missouri	March 25, 2018
AB	*4	vs McNeese	Feb. 25, 2018

Career Highs

Hits	3	vs Manhattan	Feb. 23, 2018
RBI	5	vs Manhattan	Feb. 23, 2018
Runs	2	vs Manhattan	Feb. 23, 2018
Walks	*2	vs #23 Nebraska	March 19, 2016
AB	*4	vs McNeese	Feb. 25, 2018

Year	Avg	GP	GS	AB	R	H	2B	3B	HR	RBI	BB	SO	SB	ATT
2016	.138	29	8	29	9	4	1	0	1	4	6	11	0	0
2017	.222	38	16	45	12	10	2	0	2	4	4	20	1	2
2018	.293	31	31	75	16	22	1	2	4	16	6	9	2	3
TOTAL	.242	98	55	149	37	36	4	2	7	24	16	40	3	5

#6 Tori Cooper

Senior | OF | 5-5 | L/L | Nederland, Texas (Nederland)

Season Highs

Hits	*2	vs Missouri	March 25, 2018
RBI	*2	vs Dartmouth	March 2, 2018
Runs	3	vs Missouri State	Feb. 28, 2018
Walks	*2	vs Dartmouth	March 2, 2018
AB	*4	vs Loyola Marymount	Feb. 18, 2018

Career Highs

Hits	*3	at #9 Alabama	March 12, 2017
RBI	6	vs San Diego	Feb. 19, 2017
Runs	*3	vs Missouri State	Feb. 28, 2018
Walks	*2	vs Dartmouth	March 2, 2018
AB	5	at #9 Alabama	March 12, 2017

Year	Avg	GP	GS	AB	R	H	2B	3B	HR	RBI	BB	SO	SB	ATT
2015	.258	39	27	62	12	16	3	0	1	5	5	16	2	2
2016	.287	47	33	108	12	31	6	0	3	11	7	25	0	0
2017	.285	53	50	151	30	43	3	2	10	40	19	35	0	0
2018	.226	21	20	53	11	12	1	0	2	8	7	5	1	1
TOTAL	.273	160	130	374	65	102	13	2	16	64	38	81	3	3

#18 Ashley Diaz

Junior | INF | 5-10 | R/R | South El Monte, Calif. (South El Monte)

Season Highs

Hits _____ *3 vs Saint Francis (Pa.) | March 16, 2018
 RBI _____ 5 vs Saint Francis (Pa.) | March 16, 2018
 Runs _____ *2 vs Dartmouth | March 2, 2018
 Walks _____ *2 vs UT Arlington | March 20, 2018
 AB _____ *4 vs Missouri | March 25, 2018

Career Highs

Hits _____ *3 vs Saint Francis (Pa.) | March 16, 2018
 RBI _____ 5 vs Saint Francis (Pa.) | March 16, 2018
 Runs _____ *2 vs Dartmouth | March 2, 2018
 Walks _____ *2 vs UT Arlington | March 20, 2018
 AB _____ *5 at #9 Alabama | March 12, 2017

Year	Avg	GP	GS	AB	R	H	2B	3B	HR	RBI	BB	SO	SB	ATT
2016	.331	53	53	160	22	53	3	0	12	41	15	32	1	1
2017	.283	55	55	159	12	45	6	1	3	21	10	24	0	0
2018	.352	31	31	91	15	32	3	0	6	25	8	9	0	0
TOTAL	.317	139	139	410	49	130	12	1	21	87	33	65	1	1

#13 Kayla Green

Freshman | C | 5-9 | R/R | Temecula, Calif. (Great Oak HS)

Season Highs

Hits _____ *2 vs Missouri | March 25, 2018
 RBI _____ *3 vs Missouri | March 25, 2018
 Runs _____ *2 vs Dartmouth | March 2, 2018
 Walks _____ *1 vs UT Arlington | March 20, 2018
 AB _____ *4 vs Missouri | March 25, 2018

Career Highs

Hits _____ *2 vs Missouri | March 25, 2018
 RBI _____ *3 vs Missouri | March 25, 2018
 Runs _____ *2 vs Dartmouth | March 2, 2018
 Walks _____ *1 vs UT Arlington | March 20, 2018
 AB _____ *4 vs Missouri | March 25, 2018

Year	Avg	GP	GS	AB	R	H	2B	3B	HR	RBI	BB	SO	SB	ATT
2018	.221	30	30	86	12	19	6	0	5	16	2	14	0	0
TOTAL	.221	30	30	86	12	19	6	0	5	16	2	14	0	0

#12 Loren Krzysko

RS Senior | OF | 5-3 | R/R | Barrington, Ill. (Barrington)

Season Highs

Hits _____ *3 vs UT Arlington | March 20, 2018
 RBI _____ 4 vs Omaha | March 18, 2018
 Runs _____ *2 vs UT Arlington | March 20, 2018
 Walks _____ *2 vs Manhattan | Feb. 23, 2018
 AB _____ *4 vs Missouri | March 25, 2018

Career Highs

Hits _____ *3 vs UT Arlington | March 20, 2018
 RBI _____ 4 vs Omaha | March 18, 2018
 Runs _____ 3 at Notre Dame | April 29, 2017
 Walks _____ *2 vs Manhattan | Feb. 23, 2018
 AB _____ *4 vs Missouri | March 25, 2018

Year	Avg	GP	GS	AB	R	H	2B	3B	HR	RBI	BB	SO	SB	ATT
2015	.182	31	21	55	5	10	3	0	0	9	10	11	0	2
2016	.205	46	26	78	8	16	4	0	1	7	8	15	1	2
2017	.339	25	19	59	13	20	3	1	2	10	7	8	0	0
2018	.271	31	31	85	17	23	4	0	5	18	14	14	0	0
TOTAL	.249	133	97	277	43	69	14	1	8	44	39	48	1	4

#22 Linnie Malkin

Freshman | INF | 5-11 | R/R | Broomfield, Colo. (Broomfield)

Season Highs

Hits _____ *2 vs McNeese | Feb. 25, 2018
 RBI _____ 3 vs Grand Canyon | Feb. 17, 2018
 Runs _____ *2 vs Villanova | Feb. 24, 2018
 Walks _____ 2 vs Villanova | Feb. 24, 2018
 AB _____ 4 vs Marist | Feb. 23, 2018

Career Highs

Hits _____ *2 vs McNeese | Feb. 25, 2018
 RBI _____ 3 vs Grand Canyon | Feb. 17, 2018
 Runs _____ *2 vs Villanova | Feb. 24, 2018
 Walks _____ 2 vs Villanova | Feb. 24, 2018
 AB _____ 4 vs Marist | Feb. 23, 2018

Year	Avg	GP	GS	AB	R	H	2B	3B	HR	RBI	BB	SO	SB	ATT
2018	.316	18	14	38	8	12	2	0	3	8	10	10	0	0
TOTAL	.316	18	14	38	8	12	2	0	3	8	10	10	0	0

#66 Aly Manzo

Sophomore | INF | 5-7 | L/R | Roseville, Calif. (Roseville)

Season Highs

Hits _____ *2 vs Iowa State | March 16, 2018
 RBI _____ 3 vs Saint Francis (Pa.) | March 16, 2018
 Runs _____ *1 vs UT Arlington | March 20, 2018
 Walks _____ *1 vs Missouri | March 23, 2018
 AB _____ *4 vs UT Arlington | March 20, 2018

Career Highs

Hits _____ *2 vs Iowa State | March 16, 2018
 RBI _____ 3 vs Saint Francis (Pa.) | March 16, 2018
 Runs _____ *1 vs UT Arlington | March 20, 2018
 Walks _____ *1 vs Missouri | March 23, 2018
 AB _____ *4 vs UT Arlington | March 20, 2018

Year	Avg	GP	GS	AB	R	H	2B	3B	HR	RBI	BB	SO	SB	ATT
2017	.000	2	0	1	1	0	0	0	0	0	0	1	0	0
2018	.311	20	13	45	7	14	3	1	1	5	5	2	0	0
TOTAL	.304	22	13	46	8	14	3	1	1	5	5	3	0	0

#23 Hannah McEwen

Freshman | OF | 5-7 | L/R | San Diego, Calif. (Patrick Henry HS)

Season Highs

Hits _____ *3 vs Northern Colorado | March 2, 2018
 RBI _____ 5 vs Marist | Feb. 23, 2018
 Runs _____ 3 vs Marist | Feb. 23, 2018
 Walks _____ *2 vs Missouri | March 25, 2018
 AB _____ 5 vs Manhattan | Feb. 23, 2018

Career Highs

Hits _____ *3 vs Northern Colorado | March 2, 2018
 RBI _____ 5 vs Marist | Feb. 23, 2018
 Runs _____ 3 vs Marist | Feb. 23, 2018
 Walks _____ *2 vs Missouri | March 25, 2018
 AB _____ 5 vs Manhattan | Feb. 23, 2018

Year	Avg	GP	GS	AB	R	H	2B	3B	HR	RBI	BB	SO	SB	ATT
2018	.361	31	31	97	24	35	5	1	6	35	11	6	0	0
TOTAL	.361	31	31	97	24	35	5	1	6	35	11	6	0	0

#7 Sydney Parr

Sophomore | OF | 5-7 | L/R | North Little Rock, Ark. (North Little Rock)

Season Highs

Hits _____ *2 vs Omaha | March 18, 2018
 RBI _____ 3 vs Villanova | Feb. 24, 2018
 Runs _____ *2 vs Omaha | March 17, 2018
 Walks _____ 2 vs Omaha | March 17, 2018
 AB _____ *3 vs UT Arlington | March 20, 2018

Career Highs

Hits _____ *2 vs Omaha | March 18, 2018
 RBI _____ 3 vs Villanova | Feb. 24, 2018
 Runs _____ *2 vs Omaha | March 17, 2018
 Walks _____ 2 vs Omaha | March 17, 2018
 AB _____ *3 vs UT Arlington | March 20, 2018

Year	Avg	GP	GS	AB	R	H	2B	3B	HR	RBI	BB	SO	SB	ATT
2017	.000	36	0	0	10	0	0	0	0	2	0	1	1	1
2018	.314	26	13	35	9	11	1	1	0	5	4	2	4	4
TOTAL	.314	62	13	35	19	11	1	1	0	5	6	2	5	5

#55 Katie Warrick

Junior | RHP/INF | 6-0 | R/R | Chapel Hill, Tenn. (UT Martin)

Season Highs

Hits _____ 4 vs Iowa State | March 16, 2018
 RBI _____ 4 vs Iowa State | March 16, 2018
 Runs _____ *2 vs UT Arlington | March 20, 2018
 Walks _____ *1 vs Missouri | March 24, 2018
 AB _____ *4 vs Missouri | March 25, 2018

Career Highs

Hits _____ 4 vs Iowa State | March 16, 2018
 RBI _____ 4 vs Iowa State | March 16, 2018
 Runs _____ *2 vs UT Arlington | March 20, 2018
 Walks _____ 2 at North Texas | Feb. 12, 2017
 AB _____ *4 vs Missouri | March 25, 2018

Year	Avg	GP	GS	AB	R	H	2B	3B	HR	RBI	BB	SO	SB	ATT
2017	.253	36	33	87	11	22	3	0	6	16	7	14	0	0
2018	.356	17	13	45	7	16	3	0	6	11	3	2	0	0
TOTAL	.288	53	46	132	18	38	6	0	12	27	10	16	0	0

#4 Mary Haff

Freshman | RHP | 5-10 | R/R | Winter Haven, Fla. (Lake Region HS)

Season Highs

Innings	8.0 at #11 Georgia March 12, 2018
Strikeouts	*12 vs Dartmouth March 3, 2018
Walks	4 vs Northern Colorado March 2, 2018
Runs Allowed	*3 (3 ER) vs Missouri March 25, 2018
No. of Pitches	121 at #11 Georgia March 12, 2018

Career Highs

Innings	8.0 at #11 Georgia March 12, 2018
Strikeouts	*12 vs Dartmouth March 3, 2018
Walks	4 vs Northern Colorado March 2, 2018
Runs Allowed	*3 (3 ER) vs Missouri March 25, 2018
No. of Pitches	121 at #11 Georgia March 12, 2018

Year	ERA	W	L	App	GS	CG	SHO	CBO	SV	IP	H	R	ER	BB	SO
2018	0.74	15	2	21	16	9	5	1	2	104.0	45	17	11	12	140
TOTAL	0.74	15	2	21	16	9	5	1	2	104.0	45	17	11	12	140

#31 Caroline Hedgcock

Sophomore | LHP | 5-8 | R/L | Downers Grove, Ill. (South HS)

Season Highs

Innings	3.0 vs Iowa State March 16, 2018
Strikeouts	4 at #11 Georgia March 10, 2018
Walks	*2 vs UT Arlington March 20, 2018
Runs Allowed	4 (4 ER) at #11 Georgia March 10, 2018
No. of Pitches	63 at #11 Georgia March 10, 2018

Career Highs

Innings	7.0 vs Tulsa April 11, 2017
Strikeouts	5 vs #2 Florida March 31, 2017
Walks	3 at Jackson State April 25, 2017
Runs Allowed	*4 (4 ER) at #11 Georgia March 10, 2018
No. of Pitches	95 at #9 Oklahoma April 5, 2017

Year	ERA	W	L	App	GS	CG	SHO	CBO	SV	IP	H	R	ER	BB	SO
2017	2.84	3	5	25	8	2	0	2	0	61.2	51	33	25	19	31
2018	9.48	1	0	7	1	0	0	0	1	10.1	22	17	14	5	8
TOTAL	3.79	4	5	32	9	2	0	2	1	72.0	73	50	39	24	39

#9 Autumn Storms

Sophomore | RHP | 5-10 | R/R | Temecula, Calif. (Greak Oak HS)

Season Highs

Innings	*7.0 vs Missouri March 24, 2018
Strikeouts	9 vs C. Connecticut State March 3, 2018
Walks	*2 vs UT Arlington March 20, 2018
Runs Allowed	5 (4 ER) at #11 Georgia March 12, 2018
No. of Pitches	117 vs UT Arlington March 20, 2018

Career Highs

Innings	8.1 at #9 Alabama March 12, 2017
Strikeouts	9 vs C. Connecticut State March 3, 2018
Walks	5 at #9 Alabama March 12, 2017
Runs Allowed	*5 (4 ER) at #11 Georgia March 12, 2018
No. of Pitches	159 at #9 Alabama March 12, 2017

Year	ERA	W	L	App	GS	CG	SHO	CBO	SV	IP	H	R	ER	BB	SO
2017	2.28	16	15	38	33	13	1	3	2	172.0	174	81	56	35	96
2018	2.30	9	4	20	14	4	1	1	2	82.1	79	36	27	18	75
TOTAL	2.28	25	19	58	47	17	2	4	4	254.1	253	117	83	53	171

#55 Katie Warrick

Junior | RHP/INF | 6-0 | R/R | Chapel Hill, Tenn. (UT Martin)

Season Highs

Innings	2.2 vs Loyola Marymount Feb. 18, 2018
Strikeouts	1 vs Loyola Marymount Feb. 18, 2018
Walks	*1 vs Saint Francis (Pa.) March 16, 2018
Runs Allowed	3 (2 ER) vs Saint Francis (Pa.) March 16, 2018
No. of Pitches	34 vs Saint Francis (Pa.) March 16, 2018

Career Highs

Innings	*4.2 vs Lamar March 4, 2017
Strikeouts	4 vs Lamar March 4, 2017
Walks	2 at #17 Kentucky March 25, 2017
Runs Allowed	4 (1 ER) vs #2 Florida April 1, 2017
No. of Pitches	54 vs Lamar March 4, 2017

Year	ERA	W	L	App	GS	CG	SHO	CBO	SV	IP	H	R	ER	BB	SO
2017	3.68	3	0	14	0	0	0	1	0	26.2	33	17	14	5	10
2018	3.94	0	0	3	0	0	0	0	0	5.1	7	5	3	2	1
TOTAL	3.72	3	0	17	0	0	0	1	0	32.0	40	22	17	7	11



00 CARLEY HAIZLIP
JR | OF | 5-8 | L/R
Midlothian, Texas



2 A.J. BELANS
SR | INF | 5-5 | R/R
Hollywood, Fla.



4 MARY HAFF
FR | RHP | 5-10 | R/R
Winter Haven, Fla.



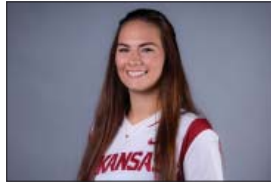
6 TORI COOPER
SR | OF | 5-5 | L/L
Nederland, Texas



7 SYDNEY PARR
SO | OF | 5-7 | L/L
North Little Rock, Ark.



8 AUTUMN BUCZEK
SR | INF | 5-7 | L/R
Greenbrier, Ark.



9 AUTUMN STORMS
SO | RHP | 5-10 | R/R
Temecula, Calif.



10 HAYDI BUGARIN
JR | OF | 5-3 | R/R
San Antonio, Texas



12 LOREN KRZYSKO
R-SR | OF | 5-3 | R/R
Barrington, Ill.



13 KAYLA GREEN
FR | C | 5-9 | R/R
Temecula, Calif.



16 KEELY EDWARDS
SO | INF | 5-9 | R/R
Harrisburg, Ark.



18 ASHLEY DIAZ
JR | INF | 5-10 | R/R
South El Monte, Calif.



19 LAUREN ARCHULETA
R-JR | C | 5-8 | R/R
Rockwall, Texas



20 MACY BROTHERTON
SO | C | 5-9 | R/R
Mena, Ark.



22 LINNIE MALKIN
FR | INF | 5-11 | R/R
Broomfield, Colo.



23 HANNAH MCEWEN
FR | OF | 5-7 | L/R
San Diego, Calif.



24 NICOLE DUNCAN
FR | C | 5-7 | R/R
Centralia, Mo.



28 SYDNEY BENZ
JR | INF | 5-5 | R/R
Carol Stream, Ill.



31 CAROLINE HEDGCOCK
SO | LHP | 5-8 | R/L
Downers Grove, Ill.



32 ALLISON STEWART
R-JR | RHP | 5-11 | R/R
Olathe, Kan.



33 JADA DOTSON
FR | OF | 5-6 | R/R
White House, Tenn.



34 MADELYN BROTHERTON
SO | INF | 5-9 | R/R
Mena, Ark.



55 KATIE WARRICK
JR | UTL | 6-0 | R/R
Chapel Hill, Tenn.



66 ALY MANZO
SO | INF | 5-7 | R/R
Roseville, Calif.



COURTNEY DEIFEL
Head Coach
3rd Season



YOLANDA MCRAE
Assistant Coach
3rd Season



MATT MEUCHEL
Assistant Coach
2nd Season



JORDAN CLARK
Volunteer Assistant Coach
3rd Season