

RAZORBACK Softball

7 NCAA Tournaments | 17 NFCA All-Region Selections | 26 All-SEC Selections

2018 SCHEDULE/RESULTS

OVERALL: 33-9 | SEC: 8-7
H: 21-2 | A: 3-6 | N: 9-1

DATE	OPPONENT	TIME/RESULT
F9	vs Kennesaw State!	Cancelled
F9	vs Nicholls!	Cancelled
F10	vs Nicholls!	Cancelled
F10	at Southeastern Louisiana! (CST)	Cancelled
F17	vs Grand Canyon#	W, 6-2
F17	vs 21 Utah#	W, 4-2
F18	vs Weber State#	W, 5-2
F18	vs Loyola Marymount#	W, 6-5
F19	vs Fordham#	W, 4-2
F23	vs Marist%	W, 15-3 (6)
F23	vs Manhattan%	W, 9-1 (6)
F24	vs Delaware%	W, 10-1 (5)
F24	vs Villanova%	W, 9-0 (5)
F25	vs McNeese%	L, 5-6
F28	Missouri State [SECN+]	W, 9-0 (5)
M2	Dartmouth^	W, 12-3 (5)
M2	Northern Colorado^	W, 9-0 (6)
M3	Dartmouth^ [SECN+]	W, 2-1
M3	Central Connecticut State^ [SECN+]	W, 7-0
M4	Northern Colorado^ [SECN+]	W, 1-0
M4	Central Connecticut State^ [SECN+]	W, 6-5
M6	at Wichita State (G1)	L, 0-1
M6	at Wichita State (G2)	Cancelled
M10	at #11 Georgia* [SEC Network]	L, 0-8 (5)
M11	at #11 Georgia* [ESPNU]	L, 0-1 (9)
M12	at #11 Georgia* [SEC Network]	L, 4-5
M16	Iowa State&	W, 8-3
M16	Saint Francis (Pa.)&	W, 8-3
M17	Omaha& [SECN+]	W, 3-1
M17	Saint Francis (Pa.)& [SECN+]	W, 4-3
M18	Omaha& [SECN+]	W, 4-0
M20	UT Arlington (G1) [SECN+]	W, 6-0
M20	UT Arlington (G2) [SECN+]	W, 10-6
M23	Missouri* [SECN+]	W, 3-1
M24	Missouri* [SECN+]	L, 0-3
M25	Missouri* [SECN+]	W, 10-7
M30	#20 Mississippi State* [SECN+]	W, 3-2
M31	#20 Mississippi State* [SECN+]	W, 6-0
A1	#20 Mississippi State* [SECN+]	W, 8-2
A6	at #12 South Carolina* [SECN+]	L, 1-2
A7	at #12 South Carolina* [SECN+]	W, 4-0
A8	at #12 South Carolina* [SECN+]	L, 2-6
A10	at Saint Louis (G1)	W, 7-0
A10	at Saint Louis (G2)	W, 5-0
A13	#15 Alabama* [SECN+]	L, 5-6
A14	#15 Alabama* [ESPNU]	W, 3-0
A15	#15 Alabama* [SECN+]	W, 6-3
A20	at #11 Auburn* [SECN+]	6 p.m.
A21	at #11 Auburn* [SECN+]	6 p.m.
A22	at #11 Auburn* [SECN+]	2 p.m.
A28	Ole Miss* [SEC Network]	3 p.m.
A29	Ole Miss* [ESPNU]	4 p.m.
A30	Ole Miss* [SEC Network]	6 p.m.
M4	at LSU* [SEC Network/Bases Loaded]	6:30 p.m.
M5	at LSU* [SECN+]	6 p.m.
M6	at LSU* [ESPNU]	3 p.m.
M9-12	SEC Tournament	TBA
M18-20	NCAA Regionals	TBA
M24-27	NCAA Super Regionals	TBA
M31-J6	Women's College World Series	TBA

! Lion Classic | #Mary Nutter Collegiate Classic
% Madeira Beach Spring Invitational | ^ Razorback Invitational
& Wooo Pig Classic | * SEC games

All home games played at Bogle Park (1,200)
All times central & subject to change



UP NEXT

On the Road at Auburn

April 20-22, 2018
Jane B. Moore Field (Auburn, Ala.)

BROADCAST INFORMATION

TV: None
Web: WatchESPN
Live Stats: ArkansasRazorbacks.com

NEXT THREE OPPONENTS



#11 AUBURN TIGERS

Record: 36-10/9-7 SEC
Series: Auburn, 36-24
Last Meeting: L, 0-10 (4/17/16)



OLE MISS REBELS

Record: 22-18/5-13 SEC
Series: Arkansas, 31-28
Last Meeting: L, 5-6 (4/24/16)



#15 LSU TIGERS

Record: 33-10/7-7 SEC
Series: LSU, 56-9
Last Meeting: L, 1-9 (5/1/16)



WHERE CAN I FIND...

Quick Facts/Roster	2
Milestone Watch/What Happens When...	3
Bogle Park/The SEC	4
Head Coach Courtney Deifel	5
Career Top 10	6
Statistics & Starters	7-11
The Hitters & Pitchers	12-15
TV/Headshot Roster	16

HEAD TO HEAD

ARKANSAS		AUBURN
.289	Batting Avg.	.291
5.45	Runs/Game	5.39
45	Home Runs	38
128	Walks	175
16	Stolen Bases	89
.963	Fielding Pct.	.977
1.87	ERA	1.11
288	Strikeouts	250



Katie Warrick

ALL-TIME SERIES VS AUBURN

This weekend's three-game series marks the first meeting in series history with both teams ranked in the top 25. The Razorbacks hit the road looking for their first win in Auburn since 2012; the program's last series win at Auburn came with a sweep during the 2001 season.

LAST TIME OUT

Arkansas posted a 6-3 win over No. 15 Alabama to secure the program's first-ever series win over the Crimson Tide. Mary Haff turned in a complete-game effort while Hannah McEwen had two hits and a pair of RBI in the win. Arkansas now has seven wins against ranked opponents this year.

RANKINGS WATCH

Reaching a program high, Arkansas is ranked No. 16 in both USA Today/NFCA and ESPN/USA Softball polls. In the most recent RPI release, the team is 17th which equals the program best from two weeks ago.

A LOOK AT THE STAT SHEET

The Razorbacks carry top-50 national marks in strikeout to walk ratio (third/6.00), home runs (117/45), team ERA (18/1.87), slugging percentage (31/0.475) and scoring (41/5.45 runs per game).

TOP FRESHMAN, PART III

On the strength of a 3-0 week including a pair of victories against No. 15 Alabama, pitcher Mary Haff was named SEC Freshman of the Week for a third time this season. She had 26 strikeouts with just three walks in 21.0 innings of work.

McEWEN SETS FRESHMAN-CLASS RBI MARK

With her two-run single in the sixth inning of Sunday's 6-3 win over Alabama, freshman Hannah McEwen established a new class record with her 43rd RBI. Junior Ashley Diaz held the mark previously with 41 RBI during her freshman campaign in 2016.

STREAKING INTO THE WEEKEND

Junior Katie Warrick enters the weekend with a hit in 19 of the Razorbacks' last 22 games including seven straight. At the top of the lineup, freshman Hannah McEwen has scored at least one run in 11 of the past 12 games including seven in a row.

ONE-HIT WONDER

Freshman Mary Haff posted her fifth and sixth one-hitters of the year with wins at No. 12 South Carolina (April 7) and Saint Louis (April 10). Against the Billikens, she had a career-high 13 strikeouts. Haff is second in the SEC and tied for 14th nationally with 185 strikeouts.

2018 TEAM QUICK FACTS

TEAM INFORMATION

2017 Overall Record _____ 31-24
 2017 SEC Record _____ 7-17
 NCAA Postseason _____ NCAA Regional (Norman)
 SEC Finish _____ 12th
 Home Record _____ 13-8
 Away Record _____ 9-14
 Neutral Record _____ 9-2
 Letterwinners Returning/Lost _____ 18/11
 Starters Returning/Lost _____ 9/5
 Newcomers _____ 6

COACHING STAFF

Head Coach _____ Courtney Deifel (Third Season)
 Record at Arkansas _____ 81-72 (.529)
 Career Record _____ 108-99 (.522)
 Assistant Coach _____ Yolanda McRae (Third Season)
 Assistant Coach _____ Matt Meuchel (Second Season)
 Volunteer Assistant _____ Jordan McElroy (Third Season)
 Director of Operations _____ Paige Williams (Third Season)

TEAM HISTORY

First Year of Program _____ 1997
 All-Time Record _____ 604-706-1 (.461)
 All-Time SEC Record _____ 195-398 (.329)
 SEC Championships/Last _____ None
 NCAA Appearances/Last _____ Seven/2017

UNIVERSITY INFORMATION

Location _____ Fayetteville, Ark.
 Founded _____ March 27, 1871
 Enrollment _____ 27,558
 Nickname _____ Razorbacks
 School Colors _____ Cardinal and White
 Affiliation _____ NCAA Division I
 Conference _____ Southeastern (SEC)
 Chancellor _____ Dr. Joseph E. Steinmetz
 Vice Chancellor/Director of Athletics _____ Hunter Yurachek
 Faculty Athletic Representative _____ Gerald Jordan
 University Website _____ www.uark.edu
 Athletics Website _____ ArkansasRazorbacks.com

COMMUNICATIONS

Asst AD for Communications _____ Kyle Parkinson
 Associate Director _____ David Beall
 Associate Director _____ Jeri Thorpe
 Assistant Director _____ Brandon Langlois
 Assistant Director (SB Contact) _____ Zach Lawson
 Email _____ zlawson@uark.edu
 Office# _____ 479-575-7089
 Cell# _____ 479-595-2358
 Assistant Director _____ Jeff Smith
 Assistant Director _____ John Thomas
 Intern _____ Brent Hull
 Intern _____ Devan Lawson
 Digital Strategist _____ Taylor McGillis
 Graphic Designer _____ Trent Daniel
 Assistant Graphic Designer _____ AJ Enloe
 Secretary _____ Mary Lynn Gibson

Mailing Address
 Razorback Communications
 PO Box 7777
 Fayetteville, AR 72702-7777

Overnight Address
 Razorback Communications
 350 N. Razorback Road
 Fayetteville, AR 72701



#	NAME	POSITION	CLASS/EXP	B/T	HEIGHT	HOMETOWN/PREVIOUS
00	Carley Haizlip	OF	Jr./2L	L/R	5-8	Midlothian, Texas/Midlothian
2	A.J. Belans	INF	Sr./1L	R/R	5-5	Hollywood, Fla./FIU
4	Mary Haff	RHP	Fr./HS	R/R	5-10	Winter Haven, Fla./Lake Region HS
6	Tori Cooper	OF	Sr./3L	L/L	5-5	Nederland, Texas/Nederland
7	Sydney Parr	OF	Soph./1L	L/R	5-7	North Little Rock, Ark./North Little Rock
8	Autumn Buczek	INF	Sr./3L	L/R	5-7	Greenbrier, Ark./Greenbrier
9	Autumn Storms	RHP	Soph./1L	R/R	5-10	Temecula, Calif./Great Oak HS
10	Haydi Bugarin	OF	Jr./2L	R/R	5-3	San Antonio, Texas/East Central HS
12	Loren Krzysko	OF	R-Sr./3L	R/R	5-3	Barrington, Ill./Barrington
13	Kayla Green	C	Fr./HS	R/R	5-9	Temecula, Calif./Great Oak HS
16	Keely Edwards	INF	Soph./1L	R/R	5-6	Harrisburg, Ark./Harrisburg
18	Ashley Diaz	INF	Jr./2L	R/R	5-10	South El Monte, Calif./South El Monte
19	Lauren Archuleta	C	R-Jr./2L	R/R	5-8	Rockwall, Texas/Rockwall
20	Macy Brotherton	C	Soph./1L	R/R	5-9	Mena, Ark./Mena
22	Linnie Malkin	INF	Fr./HS	R/R	5-11	Broomfield, Colo./Broomfield
23	Hannah McEwen	OF	Fr./HS	L/R	5-7	San Diego, Calif./Patrick Henry HS
24	Nicole Duncan	C	Fr./HS	R/R	5-7	Centralia, Mo./Centralia
28	Sydney Benz	INF	Jr./1L	R/R	5-5	Carol Stream, Ill./Louisville
31	Caroline Hedgcock	LHP	Soph./1L	L/L	5-8	Downers Grove, Ill./South HS
32	Allison Stewart	RHP	R-Jr./2L	R/R	5-11	Olathe, Kan./East HS
33	Jada Dotson	OF	Fr./HS	R/R	5-6	White House, Tenn./Ensworth HS
34	Madelyn Brotherton	UTL	Soph./1L	R/R	5-9	Mena, Ark./Mena
55	Katie Warrick	INF/RHP	Jr./1L	R/R	6-0	Chapel Hill, Tenn./UT Martin
66	Aly Manzo	INF	Soph./1L	R/R	5-7	Roseville, Calif./Roseville

COACHING/SUPPORT STAFF

Head Coach _____ Courtney Deifel (Third Season)
 Assistant Coach _____ Yolanda McRae (Third Season)
 Assistant Coach _____ Matt Meuchel (Second Season)
 Volunteer Assistant _____ Jordan McElroy (Third Season)
 Director of Operations _____ Paige Williams (Third Season)



PRONUNCIATION GUIDE

Carley Haizlip HAZE-lip
 A.J. Belans buh-LANS
 Autumn Buczek Bue-sick
 Haydi Bugarin HY-dee BOO-gair-in
 Loren Krzysko Crisco
 Linnie Malkin Mall-kin
 Courtney Deifel DIE-ful
 Matt Meuchel Michael

MILESTONE WATCH

Autumn Buczek | SR | INF

Looking for: 100 runs (ARK #7)
Looking for: 184 hits (ARK #10)

Current total: 98
Current total: 170

Needs: 2
Needs: 14

Tori Cooper | SR | OF

Looking for: 20 home runs (ARK #10)
Looking for: 124 hits (ARK #25)

Current total: 17
Current total: 111

Needs: 3
Needs: 13

Ashley Diaz | JR | INF

Looking for: 22 home runs (ARK #6)
Looking for: 97 RBI (ARK #10)
Looking for: 150 hits (career)

Current total: 21
Current total: 90
Current total: 135

Needs: 1
Needs: 7
Needs: 15

Autumn Storms | SO | RHP

Looking for: 31 wins (ARK #8)
Looking for: 200 strikeouts (career)

Current total: 28
Current total: 189

Needs: 3
Needs: 11

Career Multi-Hit Games...

Autumn Buczek (42), Ashley Diaz (38), Tori Cooper (24), A.J. Belans (14), Hannah McEwen (14), Loren Krzysko (12), Haydi Bugarin (9), Katie Warrick (8), Kayla Green (7), Lauren Archuleta (6), Aly Manzo (4), Sydney Parr (4), Linnie Malkin (3)

Career Multi-RBI Games...

Ashley Diaz (25), Tori Cooper (15), A.J. Belans (13), Hannah McEwen (9), Loren Krzysko (8), Lauren Archuleta (7), Autumn Buczek (7), Katie Warrick (7), Haydi Bugarin (5), Kayla Green (5), Linnie Malkin (1), Aly Manzo (1), Sydney Parr (1)

ONE THROUGH NINE

Arkansas is second in the SEC and tied for 11th nationally with 44 home runs. With Hannah McEwen's two-HR outing at Saint Louis (April 10), the team has now hit a home run from each spot in the lineup.

IT'S A SWEEP

The Razorbacks' sweep of No. 20 Mississippi State was the program's first in SEC play since 2013 and their first ever against a ranked opponent in a three-game series. It was also the first series win against the Bulldogs since 2010.

STORMS NAMED PITCHER OF THE WEEK

After a 2-0 week with a 0.00 ERA against Mississippi State including a complete-game shutout in game two to clinch the series, sophomore Autumn Storms was named SEC Pitcher of the Week. She is the sixth Pitcher of the Week in program history and first since the 2009 season.

13 PITCHES LATER...

On the 13th pitch of her at-bat against Mississippi State's Cassidy Knudsen, junior Katie Warrick hit her team-high seventh home run in the sixth inning of an 8-2 win (April 1) at Bogle Park. Warrick fell behind 1-2 and then fouled off five-consecutive pitches before clearing sending the ball over the wall in center field.

COMEBACK SZN

Arkansas' seven-run fifth against Missouri (March 25) was the program's highest-scoring inning in SEC play since an eight-run inning against South Carolina in 2014. The runs came by way of five hits, three walks and an error.

WIN NO. 100

Arkansas' win over Missouri (March 25) doubled as win No. 100 in head coach Courtney Deifel's career. She had 73 of those victories at Arkansas; the first 27 wins of her career came at Maryland (2015).

BATTLE TESTED, SEC APPROVED

In the first SEC start of her career and facing the top hitting and scoring team in the nation, freshman Mary Haff limited No. 11 Georgia (March 12) to five hits and an unearned run in eight-plus innings. She also registered nine strikeouts.

AND THE WINNER IS...

Hannah McEwen (.500, 3 HR, 16 RBI, 7 R) was named the

SEC Co-Player of the Week (March 5), becoming the third freshman in program history to earn the honor.

TWICE THE FUN

For a second time this season, Mary Haff (4-0, 0.00 ERA, 40 Ks) was named SEC Freshman of the Week (March 5). She also threw the program's seventh no-hitter and tallied a save.

NO-NO FOR STORMS

One night removed from Mary Haff's no-hitter, sophomore Autumn Storms pitched a no-hitter of her own in a win over Central Connecticut State (March 3). She established a career high of nine strikeouts in the triumph.

18 FOR 18

Junior Ashley Diaz's home run against Central Connecticut State was the 18th of her career and moved her into a tie for 10th on the program's all-time list. The two-run shot to left field cleared the outer gate at Bogle Park.

PROGRAM-BEST START

With its win over Villanova (Feb. 24), Arkansas improved to 9-0 which marked the best start in program history which previously belonged to the 2017 team (8-0).

ENJOYING THE SUNSHINE STATE

Hannah McEwen hit .579 (11-for-19) with 10 runs driven in and eight runs scored during the Madeira Beach Invitational. Six of 11 hits went for extra bases including two home runs. McEwen had at least two hits in each game and raised her batting average more than 200 points.

NICE START, MARY

Behind a 3-0 start to her career and 31 strikeouts in 18.1 innings of work, Mary Haff was named the SEC Freshman of the Week (Feb. 19). She also tallied a save and held hitters to a .095 batting average in four appearances during the Mary Nutter Collegiate Classic.

LINNIE SAYS BYE...TWICE

Freshman Linnie Malkin began her Razorback career with a home run in each of her first two at-bats. Against Grand Canyon, she opened the scoring with a two-run blast in the second and followed with a solo shot in the fourth frame.

WHAT HAPPENS WHEN...

OVERALL	33-9
SEC	8-7
HOME	21-2
AWAY	3-6
NEUTRAL	9-1
VS RANKED OPPONENTS	7-6

GAME LENGTH

FIVE INNINGS	4-1
SIX INNINGS	3-0
SEVEN INNINGS	26-7
EXTRA INNINGS	0-1

SITUATION

DAY GAME (BEFORE 6PM)	27-5
NIGHT GAME (6PM OR LATER)	6-4
ARKANSAS SCORES FIRST	29-3
OPPONENT SCORES FIRST	4-6
ARKANSAS SCORES IN FIRST INN.	13-2
OPPONENT SCORES IN FIRST INN.	2-1
VS RHP	31-7
VS LHP	2-2
ONE-RUN GAME	6-6
TWO-RUN GAME	4-0
5+ RUN GAME	15-1
LEADING AFTER SIX INNINGS	23-1
TRAILING AFTER SIX INNINGS	0-6
TIED AFTER SIX INNINGS	3-1

STATISTICS

SCORES 0-2 RUNS	2-6
SCORES 3-5 RUNS	11-3
SCORES 6-9 RUNS	15-0
SCORES 10+ RUNS	5-0
OPP. SCORES 0-2 RUNS	23-3
OPP. SCORES 3-5 RUNS	8-2
OPP. SCORES 6-9 RUNS	2-4
OPP. SCORES 10+ RUNS	0-0
MORE HITS THAN OPPONENT	26-4
FEWER HITS THAN OPPONENT	2-5
HITS ARE TIED	5-0
MADE NO ERRORS	9-3
MADE ONE ERROR	16-4
MADE 2+ ERRORS	8-2

BY DAY

SUNDAY	9-2
MONDAY	1-2
TUESDAY	4-0
WEDNESDAY	1-1
THURSDAY	0-0
FRIDAY	8-2
SATURDAY	10-2

BY MONTH

FEBRUARY	10-1
MARCH	17-5
APRIL	6-3
MAY	0-0



SEC STANDINGS/SCHEDULE
(as of April 17)

Team	SEC	Overall	Streak
#5 Florida	12-3	37-7	W3
#6 Georgia	11-4	37-6	W1
#9 Texas A&M	9-6	36-10	L1
#7 Tennessee	8-7	38-8	W5
#16 ARKANSAS	8-7	33-9	W2
#12 South Carolina	8-7	34-10	L3
#11 Auburn	9-8	36-10	L2
#15 LSU	7-7	33-10	W1
#17 Alabama	7-8	26-13	L2
#19 Mississippi State	6-9	33-12	W1
Missouri	6-11	24-21	W3
#20 Kentucky	4-10	26-13	W1
Ole Miss	5-13	22-18	W1

(Ranking in USA Today/NFCA Top 25 poll)



2018 SEC TOURNAMENT
May 9-12 | Columbia, Missouri

HOME ATTENDANCE TOP 10

OVERALL

#	Draw	Opponent	Date
1	2,756	Missouri	3-24-2018
2	2,023	Georgia	5-6-2017
3	1,544	#14 Tennessee	3-18-2017
4	1,531	#9 Oklahoma	4-20-2016
5	1,276	#5 Texas A&M	4-15-2017
6	1,262	#12 LSU	4-30-2016
7	1,248	Missouri	3-23-2018
8	1,234	#4 Alabama	5-2-2015
9	1,228	Georgia	5-5-2017
10	1,167*	Kentucky	5-6-2001

* - at Lady Back Yard

AT BOGLE PARK (2009- pres.)

#	Draw	Opponent	Date
1	2,756	Missouri	3-24-2018
2	2,023	Georgia	5-6-2017
3	1,544	#14 Tennessee	3-18-2017
4	1,531	#9 Oklahoma	4-20-2016
5	1,276	#5 Texas A&M	4-15-2017
6	1,262	#12 LSU	4-30-2016
7	1,248	Missouri	3-23-2018
8	1,234	#4 Alabama	5-2-2015
9	1,228	Georgia	5-5-2017
10	1,115	#4 Florida	3-24-2012

HOME OPENER

#	Draw	Opponent	Date
1	961	Drake	2-27-2016
2	833*	Oklahoma	2-2-2001
3	715	#19 La.-Lafayette	3-5-2010
4	604	#24 Auburn	3-11-2011
5	518*	Oregon	2-23-2002
6	510	Ball State	2-27-2009
7	505	Nebraska	3-3-2017
8	401	Butler	2-13-2014
9	373	Tennessee State	2-24-2012
10	372	Tulsa	3-10-2015

* - at Lady Back Yard



As part of their 2018 schedule, the Razorbacks are set to play 25 home games at Bogle Park and will face 12 teams overall that played in last year's NCAA Tournament including five that advanced to the Super Regionals.

WHO'S BACK?

The Razorbacks return three players—Belans, Buczek and Diaz—that started all 55 games in 2017. Overall, Arkansas welcomes back 18 letterwinners. Belans was named to the All-SEC Second Team while sophomore Autumn Storms was an All-SEC and All-South Region performer.

WHAT LIES AHEAD

Arkansas is set to face 11 teams ranked or receiving votes in the preseason NFCA poll including five (Alabama, Auburn, LSU, Ole Miss and Utah) that played in a Super Regional last season. The Razorbacks will also see eight players named to the USA Softball Top 50 Preseason Watch List.

THINGS ARE LOOKING UP

The Razorbacks' 31-24 record in 2017 marked a 14-win improvement from the previous year, the largest increase among teams in a Power 5 conference. It also marked the program's first 30-win campaign since 2013.

STARTING POINT

In the SEC preseason coaches' poll, Arkansas was picked to finish 10th in the league; the team had been picked 13th in the previous two seasons. The Razorbacks also start the year receiving votes in the NFCA and USA Softball polls.

BACK IN (POSTSEASON) PLAY

Arkansas snapped a three-year postseason absence with trips to the SEC and NCAA Tournament. For the sixth time in seven NCAA appearances, the Razorbacks were part of the Norman Regional and lost to eventual national champion Oklahoma in an elimination game.

TOP-25 RECRUITING CLASS

Featuring a pair of top-50 signees, Arkansas' most recent recruiting class was ranked No. 22 by FloSoftball. The new Razorbacks are Larissa Cesena (Riverside, Calif.), Taylor Greene (Milton, Ga.), Maggie Hicks (East End, Ark.), Megan Robertson (Milton, Fla.) and Sam Torres (Temecula, Calif.). Individually, Greene and Cesena are ranked No. 37 and 48, respectively.dd



Courtney Deifel became the fourth head coach in program history when she was hired June 11, 2015. In two seasons at Arkansas, she has orchestrated the Razorbacks' return to postseason play, capping the 2017 campaign by earning a spot in the SEC Tournament and selection to the NCAA Tournament.

In her second season in Fayetteville, Deifel guided Arkansas to a 31-24 record which marked a 14-win improvement from the previous season, marking the largest increase in the country among Power 5 programs. The Razorbacks also tallied seven wins in SEC play, equaling the combined total from the previous three seasons. In recognition of the team's performance, Deifel was named the 2017 D1SoftballNews Coach of the Year.

From year one to two under Deifel, Arkansas' pitching staff lowered its combined ERA by more than four runs (6.98 to 2.82) and added more than 20 points to its batting average (.260 to .284). The Razorbacks also led the SEC and tied for 17th in the NCAA with 59 home runs. During the year, Arkansas earned its first national ranking since 2013 when it was slotted at No. 24 in the March 7 release ESPN/USA Softball poll.

Individually, Deifel saw two Razorbacks earn NFCA All-South Region accolades with Nicole Schroeder and Autumn Storms earning second-team and third-team honors, respectively. Storms was also named to the SEC All-Freshman Team while A.J. Belans was voted to the All-SEC Second Team. Schroeder went on to be drafted by the Akron Racers as the program's second NPF selection.

Deifel's first win over a ranked team at Arkansas came during the 2016 season when the Razorbacks knocked off No. 23 Nebraska, 11-10, during the Easton Tournament in Fullerton, Calif.; the team added five ranked wins in 2017. The 2016 campaign also saw newcomer Ashley Diaz make an immediate impact as a member of the NFCA All-South Region Second Team. She also appeared on the NFCA National Freshman of the Year Top 25 Watch List.

During her playing and coaching careers prior to coming to Arkansas, Deifel advanced to 11 NCAA Tournaments including a four-year run to the Women's College World Series (WCWS) as an All-American catcher at California that was highlighted by winning the 2002 national title.

The Bears also finished second (2003), fifth (2001) and seventh (2000) at the WCWS over her four-year run. Her postseason successes also featured a pair of Super Regionals as a graduate assistant at Oklahoma and five NCAA Regionals as an assistant at Maryland and Louisville.

As a first-year head coach, Deifel ushered in a culture of change for Maryland in 2015. Along with the program's 16-game improvement from the previous season, the Terrapins' offense show tremendous growth. Maryland finished 27th in the NCAA with 6.28 runs per game be-

DEIFEL YEAR-BY-YEAR

Year	School	Overall	Conf.	Postseason
2015	Maryland	27-27	9-14	--
2016	Arkansas	17-39	1-23	--
2017	Arkansas	31-24	7-17	NCAA Regional
2018	Arkansas	33-9	8-7	--
4 seasons		108-99	25-61	1 appearance

At Arkansas (2016-pres.): 81-72 (.529)
At Maryland (2015): 27-27 (.500)

hind 339 runs scored, up more than 150 runs from 2014. Deifel also led her team to a .309 batting average, a 40-point jump from 2014 which also ranked 57th in the NCAA.

Individually, Deifel guided three players to all-conference accolades and a pair of NFCA all-region honors. Lindsey Schmeister was an All-Big Ten first team performer while Shannon Bustillos and Erin Pronobis landed on the All-Big Ten second team. Probonis and Corey Schwartz were also named to the NFCA All-Midwest Region Third Team. Under Deifel's watch, the trio helped Maryland to single-season school records in doubles, home runs, RBI and walks.

Prior to taking the head job at Maryland, Deifel spent four seasons as an assistant coach at Louisville in which she helped the Cardinals to four NCAA appearances, the 2014 American Athletic Conference Tournament title and an overall record of 176-60 (.746). Louisville averaged 44 wins in that time with a program-record 55 wins in 2012. Her student-athletes at Louisville racked up four NFCA All-America certificates and 29 all-conference selections.

Deifel played in 285 games in her career at California, missing just three games behind the plate over her four years. As a four-year starter behind the plate, she was a 2003 All-American, two-time All-Pac 10 selection and caught seven no-hitters. She is still the program's career leader with 1,969 putouts.

Aside from her accomplishments in collegiate softball, Deifel had a successful professional career following her days at Cal. In 2004, she helped the NY/NJ Juggernaut to the National Professional Fastpitch (NPF) league title. Deifel also spent three years with LeoPalac21 in Japan that resulted in a runner-up showing and a pair of third-place finishes.

Deifel and husband Joe are the parents to two sons, Trip and Walt. The family resides in Fayetteville.

2018 TEAM HIGHS

At bats	33	Iowa State (3/16)
Runs scored	15	vs Marist (2/23)
Hits	14	vs Manhattan (2/23)
RBI	14	vs Marist (2/23)
Doubles	4	Northern Colorado (3/2)
Triples	1	10 times
Home runs	4	Missouri State (2/28)
Walks	9	vs Marist (2/23)
	9	#20 Mississippi State (4/1)
Strikeouts	11	at #11 Georgia (3/12)
Sac hits	2	C. Connecticut State (3/4)
Sac flies	2	UT Arlington (3/20)
	2	at Saint Louis (4/10)
Stolen bases	4	vs Manhattan (2/23)
Hit by pitch	2	vs Grand Canyon (2/17)
Runners LOB	14	vs Manhattan (2/23)
Hit into DP	2	vs Manhattan (2/23)
	2	C. Connecticut State (3/4)
Putouts	24	at #11 Georgia (3/12)
Assists	13	vs Manhattan (2/23)
	13	#15 Alabama (4/13)
Errors	3	vs Grand Canyon (2/17)
	3	C. Connecticut State (3/4)
	3	#20 Mississippi State (4/1)
Passed balls	3	UT Arlington (3/20)
DPs turned	1	Eight times
Innings	8.0	at #11 Georgia (3/12)
Runs allowed	8	at #11 Georgia (3/10)
Earned allowed	8	at #11 Georgia (3/10)
Walks allowed	4	Northern Colorado (3/2)
	4	UT Arlington (3/20)
Strikeouts	15	vs Fordham (2/19)
Hits allowed	10	at #11 Georgia (3/10)
	10	vs Iowa State (3/16)
	10	Missouri (3/25)
Doubles allowed	3	Dartmouth (3/2)
HRs allowed	3	at #11 Georgia (3/10)
Wild pitches	1	Nine times
Hit batters	4	vs McNeese (2/25)

2018 AWARDS & HONORS

Mary Haff

SEC Freshman of the Week (Feb. 19)
SEC Freshman of the Week (March 5)
SEC Co-Freshman of the Week (April 17)

Hannah McEwen

SEC Co-Player of the Week (March 5)

Autumn Storms

College Sports Madness SEC Player of the Week (April 2)
SEC Pitcher of the Week (April 3)



Current Razorbacks in Program Top 10

Batting Average (minimum 250 AB)			Earned Run Average (minimum 200 IP)			Fielding Percentage (minimum 100 chances)		
1. .357	Devon Wallace	2012-15	1. 1.59	Heather Schlichtman	2001-04	1. .994	Kayla Green	2018
2. .347	Stephanie Canfield	2013-17	2. 1.66	Rachel Talley	1999-02	2. .992	Lisa Nieman	2002-03
3. .336	Clarisa Navarro	2012-14	3. 1.90	Tammy Kincaid	1997-00	3. .990	Leslie Dixon	2008-11
4. .313	Kasey Fagan	2014-15	4. 2.21	Autumn Storms	2017-18	4. .989	Danica White	1999-02
5. .310	Autumn Buczek	2015-18	5. 2.43	Jennifer Bottoms	1998-01	5. .989	Devon Wallace	2012-15
6. .309	Ashley Diaz	2016-18	6. 3.04	Valanna Lyons	2002-05	6. .987	Ashley Diaz	2016-18
7. .300	Jessica Bachkora	2007-10	7. 3.07	Katy Henry	2005-08	7. .985	Whitney Cloer	2006-09
8. .296	Rachel LeMaster	2004-07	8. 3.13	Blaire Perry	2002-06	8. .985	Samantha Buckner	2005-08
9. .294	Brett Erickson	1997,99-00	9. 3.14	Kimmy Beasley	2011-14	9. .985	Shana Easley	2003-06
10. .292	Dana Gulick	1997-00	10. 3.34	Hope McLemore	2010-13	10. .984	Jayne Gee	2011-14
Slugging Percentage (minimum 250 AB)			Opponent Batting Average (minimum 200 IP)			Chances		
1. .671	Devon Wallace	2012-15	1. .200	Heather Schlichtman	2001-04	1. 1697	Kim Eiben	2000-03
2. .542	Nicole Schroeder	2013-17	2. .225	Rachel Talley	1999-02	2. 1682	Jennifer Cirigliano	1997-00
3. .537	Miranda Dixon	2007-10	3. .235	Tammy Kincaid	1997-00	3. 1480	Danica White	1999-02
4. .517	Clarisa Navarro	2012-14	4. .248	Kimmy Beasley	2011-14	4. 1362	Shana Easley	2003-06
5. .505	Kasey Fagan	2014-15	5. .249	Autumn Storms	2017-18	5. 1251	Samantha Buckner	2005-08
6. .490	Ashley Diaz	2016-18	6. .261	Blaire Perry	2002-06	6. 1241	Whitney Cloer	2006-09
7. .475	Amanda Geile	2011-14	7. .265	Hope McLemore	2010-13	7. 1157	Jayne Gee	2011-14
8. .471	Jessica Bachkora	2007-10	8. .265	Katy Henry	2005-08	8. 1010	Ashley Diaz	2016-18
9. .466	Stephanie Canfield	2013-17	9. .268	Valanna Lyons	2002-05	9. 930	Sandra Smith	2006-10
10. .456	Sandra Smith	2006-10	10. .272	Jennifer Bottoms	1998-01	10. 913	Devon Wallace	2012-15
Runs Scored			Walks Per 7 IP (minimum 200 IP)			Putouts		
1. 184	Devon Wallace	2012-15	1. 1.22	Rachel Talley	1999-02	1. 1563	Kim Eiben	2000-03
2. 166	Jessica Bachkora	2007-10	2. 1.40	Tammy Kincaid	1997-00	2. 1412	Jennifer Cirigliano	1997-00
3. 124	Kayla Johnson	2006-09	3. 1.41	Autumn Storms	2017-18	3. 1302	Danica White	1999-02
4. 119	Stephanie Canfield	2013-17	4. 1.71	Katy Henry	2005-08	4. 1233	Shana Easley	2003-06
119	Dana Gulick	1997-00	5. 1.76	Miranda Dixon	2007-10	5. 1150	Samantha Buckner	2005-08
6. 105	Clarisa Navarro	2012-14	6. 1.91	Jennifer Bottoms	1998-01	6. 1122	Whitney Cloer	2006-09
7. 100	Chloe Oprzedek	2011-14	7. 2.03	Heather Schlichtman	2001-04	7. 1046	Jayne Gee	2011-14
8. 98	Autumn Buczek	2015-18	8. 2.48	Hope McLemore	2010-13	8. 968	Ashley Diaz	2016-18
9. 97	Miranda Dixon	2007-10	9. 2.49	Chelsea Cohen	2010-13	9. 880	Devon Wallace	2012-15
10. 91	Shelby Hiers	2014-17	10. 2.65	Kimmy Beasley	2011-14	10. 663	Sandra Smith	2006-10
Triples			Wins			Assists		
1. 15	Stephanie Canfield	2013-17	1. 73	Heather Schlichtman (73-67)	2001-04	1. 558	Tiffany Woolley	1999-02
2. 12	Dayna Huckabee	2005-08	2. 72	Tammy Kincaid (72-80)	1997-00	2. 458	Brett Erickson	1997,99-00
3. 10	Sheri Wahrmond	1998-00	3. 56	Katy Henry (56-68)	2005-08	3. 400	Aly Sartini	1997-00
4. 9	Jessica Bachkora	2007-10	4. 52	Rachel Talley (52-50)	1999-02	4. 372	Chloe Oprzedek	2011-14
5. 8	Chloe Oprzedek	2011-14	5. 35	Miranda Dixon (35-45)	2007-10	5. 367	Dayna Huckabee	2005-08
8	Autumn Buczek	2015-18	6. 32	Chelsea Cohen (32-27)	2010-13	6. 357	Autumn Buczek	2015-18
7. 7	Danica White	1999-02	7. 31	Grace Moll (31-51)	2014-17	7. 347	Blaire Perry	2002-06
8. 6	Whitney Cloer	2006-09	8. 28	Autumn Storms (28-20)	2017-18	8. 339	Tammy Kincaid	1997-00
9. 5	Brett Erickson	1997,99-00	9. 26	Hope McLemore (26-28)	2010-13	9. 306	Heather Schlichtman	2001-04
5	Mindy O'Malley	2003-06	26	Kimmy Beasley (26-25)	2011-14	10. 305	Clarisa Navarro	2012-14
Home Runs			Saves			Double Plays Turned		
1. 47	Devon Wallace	2012-15	1. 9	Katy Henry	2005-08	1. 42	Kim Eiben	2000-03
2. 43	Miranda Dixon	2007-10	9	Rachel Talley	1999-02	2. 36	Ashley Diaz	2016-18
3. 38	Nicole Schroeder	2013-17	9	Tammy Kincaid	1997-00	3. 33	Aly Sartini	1997-00
4. 29	Sandra Smith	2006-10	4. 7	Miranda Dixon	2007-10	4. 32	Devon Wallace	2012-15
5. 24	Whitney Cloer	2006-09	5. 6	Heather Schlichtman	2001-04	4. 32	Jennifer Cirigliano	1997-00
6. 22	Amanda Geile	2011-14	6	Jennifer Bottoms	1998-01	6. 31	Sandra Smith	2006-10
7. 21	Chloe Oprzedek	2011-14	7. 5	Hope McLemore	2010-13	7. 30	Samantha Buckner	2005-08
21	Ashley Diaz	2016-18	8. 4	Autumn Storms	2017-18	8. 29	Tiffany Woolley	1999-02
21	Jessica Bachkora	2007-10	4	Valanna Lyons	2002-05	9. 28	Jennifer Bottoms	1998-01
10. 20	Dayna Huckabee	2005-08	10. 3	Kimmy Beasley	2011-14	10. 25	Dayna Huckabee	2005-08
			3	Chelsea Cohen	2010-13	25	Cortney Mitchell	2001-02
			3	Sarah Topham	2004-06			
Sacrifice Flies			Shutouts					
1. 9	Jayne Gee	2011-14	1. 26	Heather Schlichtman	2001-04			
2. 8	Courtney Breault	2010-11	2. 19	Tammy Kincaid	1997-00			
3. 7	Clarisa Navarro	2012-14	3. 15	Katy Henry	2005-08			
7	Jennifer Cirigliano	1997-00	15	Rachel Talley	1999-02			
5. 6	Sierra Bronkey	2011-15	5. 9	Jennifer Bottoms	1998-01			
6	Sheri Wahrmond	1998-00	6. 8	Mary Haff	2018			
6	Ashley Diaz	2016-18	7. 6	Grace Moll	2014-17			
8. 5	Whitney Cloer	2006-09	6	Miranda Dixon	2007-10			
5	Aly Sartini	1997-00	9. 5	Chelsea Cohen	2010-13			
10. 4	Eight times		5	Hope McLemore	2010-13			
			5	Kim Jones	2008-11			
Stolen Bases								
1. 75	Rachel LeMaster (75-99)	2004-07						
2. 73	Dana Gulick (73-86)	1997-00						
3. 57	Jessica Bachkora (57-67)	2007-10						
4. 56	Blaire Perry (56-82)	2002-06						
5. 38	Mindy O'Malley (38-50)	2003-06						
38	Andy Wharton (38-50)	1999-02						
7. 34	Stephanie Canfield (34-38)	2013-17						
8. 33	Ashley Martindale (33-37)	2011-14						
9. 32	Autumn Buczek (31-35)	2015-18						
10. 30	Devon Wallace (30-36)	2012-15						

Season Statistics (Overall)

Record: 33-9 Home: 21-2 Away: 3-6 Neutral: 9-1 SEC: 8-7

Player	avg	gp-gs	ab	r	h	2b	3b	hr	rbi	tb	slg%	bb	hp	so	gdp	ob%	sf	sh	sb-att	po	a	e	fld%	
Hannah McEwen	.356	42-42	132	36	47	7	1	8	43	80	.606	16	3	9	0	.431	2	0	0-0	29	1	2	.938	
Autumn Buczek	.331	42-42	145	26	48	5	4	0	12	61	.421	12	0	15	0	.382	0	0	7-8	37	97	12	.918	
Ashley Diaz	.314	41-40	118	15	37	5	0	6	28	60	.508	11	0	11	3	.366	2	0	0-0	223	4	3	.987	
Haydi Bugarin	.298	39-39	94	20	28	4	2	4	17	48	.511	8	1	16	0	.352	2	0	2-3	59	52	11	.910	
Kayla Green	.252	41-41	115	18	29	9	1	6	24	58	.504	7	5	18	1	.315	3	1	0-0	296	22	2	.994	
Tori Cooper	.244	32-31	86	18	21	4	0	3	14	34	.395	12	1	13	0	.337	2	0	1-1	27	1	1	.966	
Loren Krzysko	.232	42-42	112	18	26	4	0	5	20	45	.402	18	2	18	1	.343	2	1	0-0	41	0	1	.976	
A.J. Belans	.212	32-31	85	9	18	1	0	2	11	25	.294	11	0	8	1	.302	0	1	0-0	26	42	7	.907	

Carley Haizlip	1.000	23-0	1	10	1	0	0	0	0	1	1.000	1	0	0	0	1.000	0	0	0-0	0	0	0	.000	
Katie Warrick	.342	28-24	79	11	27	6	0	7	18	54	.684	8	0	6	1	.398	1	0	0-0	41	2	1	.977	
Linnie Malkin	.300	20-14	40	8	12	2	0	3	8	23	.575	10	0	11	0	.440	0	0	0-0	3	0	0	1.000	
Aly Manzo	.288	25-16	52	7	15	3	1	1	7	23	.442	7	1	3	0	.383	0	2	1-1	9	19	0	1.000	
Sydney Parr	.275	34-15	40	12	11	1	1	0	5	14	.350	5	0	4	0	.348	1	0	4-4	29	2	0	1.000	
Caroline Hedgcock	.250	5-1	4	0	1	0	0	0	0	1	.250	0	0	2	0	.250	0	0	0-0	0	2	0	1.000	
Lauren Archuleta	.000	4-1	3	0	0	0	0	0	0	0	.000	0	0	0	0	.000	0	1	0-0	8	2	0	1.000	
Sydney Benz	.000	4-0	2	1	0	0	0	0	0	0	.000	0	0	1	0	.000	0	0	0-0	0	0	0	.000	
Jada Dotson	.000	11-0	1	4	0	0	0	0	0	0	.000	0	0	0	0	.000	0	0	1-1	0	0	0	.000	
Nicole Duncan	.000	5-0	1	1	0	0	0	0	0	0	.000	0	0	0	0	.000	0	0	0-0	1	0	0	1.000	
Keely Edwards	.000	34-0	0	15	0	0	0	0	0	0	.000	0	0	0	0	.000	0	0	0-0	0	0	0	.000	
Macy Brotherton	.000	1-0	0	0	0	0	0	0	0	0	.000	1	0	0	0	1.000	0	0	0-0	0	0	0	.000	
Mary Haff	.000	1-1	0	0	0	0	0	0	0	0	.000	1	0	0	0	1.000	0	0	0-0	2	22	3	.889	
Autumn Storms	.000	1-1	0	0	0	0	0	0	0	0	.000	0	0	0	0	.000	0	0	0-0	0	34	0	1.000	
Totals	.289	42	1110	229	321	51	10	45	207	527	.475	128	13	135	7	.365	15	6	16-18	831	302	43	.963	
Opponents	.197	42	1041	96	205	24	0	23	85	298	.286	48	23	288	6	.248	1	10	12-23	775	304	59	.948	

LOB - Team (268), Opp (196). DPs turned - Team (8), Opp (13).

(All games Sorted by Earned run avg)

Player	era	w-l	app	gs	cg	sho	sv	ip	h	r	er	bb	so	2b	3b	hr	b/avg	wp	hp	bk	sfa	sha
Mary Haff	1.07	20-3	29	22	14	8/1	2	143.2	69	28	22	18	185	8	0	12	.137	4	11	0	0	5
Autumn Storms	2.11	12-6	26	19	6	3/1	2	116.1	107	46	35	23	93	11	0	7	.234	4	12	0	1	4

Katie Warrick	3.94	0-0	3	0	0	0/0	0	5.1	7	5	3	2	1	1	0	2	.318	0	0	0	0	0
Caroline Hedgcock	8.40	1-0	8	1	0	0/0	1	11.2	22	17	14	5	9	4	0	2	.379	1	0	0	0	1
Totals	1.87	33-9	42	42	20	12/1	5	277.0	205	96	74	48	288	24	0	23	.197	9	23	0	1	10
Opponents	4.90	9-33	42	42	16	4/0	1	258.1	321	229	181	128	135	51	10	45	.289	23	13	0	15	6

PB - Team (11), Green 9, Duncan 2, Opp (6). Pickoffs - Team (1), Archuleta 1. SBA/ATT - Green (12-23), Storms (7-12), Haff (3-9), Hedgcock (2-2).

Season Statistics (Conference)

Record: 8-7 Home: 7-2 Away: 1-5 SEC: 8-7

Player	avg	gp-gs	ab	r	h	2b	3b	hr	rbi	tb	slg%	bb	hp	so	gdp	ob%	sf	sh	sb-att	po	a	e	fld%	
Kayla Green	.279	15-15	43	7	12	3	1	2	10	23	.535	5	1	7	0	.360	1	0	0-0	85	6	1	.989	
Katie Warrick	.273	15-15	44	5	12	4	0	2	10	22	.500	5	0	5	1	.340	1	0	0-0	30	1	1	.969	
Autumn Buczek	.269	15-15	52	4	14	3	1	0	6	19	.365	4	0	8	0	.321	0	0	0-0	17	31	3	.941	
Tori Cooper	.263	14-13	38	7	10	2	0	1	3	15	.395	4	0	9	0	.326	1	0	0-0	14	1	1	.938	
Hannah McEwen	.250	15-15	44	11	11	1	0	0	4	12	.273	9	1	6	0	.389	0	0	0-0	14	0	0	1.000	
A.J. Belans	.229	14-13	35	3	8	1	0	1	7	12	.343	4	0	6	1	.308	0	0	0-0	12	17	2	.935	
Ashley Diaz	.190	14-13	42	0	8	2	0	0	6	10	.238	1	0	8	2	.205	1	0	0-0	67	1	0	1.000	
Loren Krzysko	.158	15-15	38	2	6	1	0	0	2	7	.184	6	1	6	0	.283	1	0	0-0	23	0	0	1.000	

Haydi Bugarin	.296	13-13	27	6	8	2	1	0	1	12	.444	4	0	9	0	.387	0	0	0-0	20	22	6	.875	
Aly Manzo	.200	8-4	10	0	2	0	0	0	1	2	.200	3	1	1	0	.429	0	2	0-0	4	2	0	1.000	
Sydney Parr	.000	11-4	8	4	0	0	0	0	0	0	.000	0	0	2	0	.000	0	0	0-0	15	1	0	1.000	
Linnie Malkin	.000	2-0	2	0	0	0	0	0	0	0	.000	0	0	1	0	.000	0	0	0-0	0	0	0	.000	
Sydney Benz	.000	1-0	1	0	0	0	0	0	0	0	.000	0	0	0	0	.000	0	0	0-0	0	0	0	.000	
Keely Edwards	.000	15-0	0	4	0	0	0	0	0	0	.000	0	0	0	0	.000	0	0	0-0	0	0	0	.000	
Carley Haizlip	.000	6-0	0	1	0	0	0	0	0	0	.000	0	0	0	0	.000	0	0	0-0	0	0	0	.000	
Jada Dotson	.000	1-0	0	1	0	0	0	0	0	0	.000	0	0	0	0	.000	0	0	0-0	0	0	0	.000	
Totals	.237	15	384	55	91	19	3	6	50	134	.349	45	4	68	4	.320	5	2	0-0	302	104	15	.964	
Opponents	.230	15	395	46	91	10	0	13	44	140	.354	14	8	78	2	.270	1	3	8-11	295	127	11	.975	

LOB - Team (90), Opp (73). DPs turned - Team (3), Opp (6).

(SEC games only Sorted by Earned run avg)

Player	era	w-l	app	gs	cg	sho	sv	ip	h	r	er	bb	so	2b	3b	hr	b/avg	wp	hp	bk	sfa	sha
Mary Haff	1.89	6-2	11	8	6	2/0	0	55.2	38	16	15	5	54	4	0	8	.183	1	4	0	0	1
Autumn Storms	3.76	2-5	9	7	2	1/0	0	41.0	49	26	22	8	19	5	0	5	.287	2	4	0	1	2

Caroline Hedgcock	7.00	0-0	2	0	0	0/0	0	4.0	4	4	4	1	5	1	0	0	.250	0	0	0	0	0
Totals	2.85	8-7	15	15	8	3/0	0	100.2	91	46	41	14	78	10	0	13	.230	3	8	0	1	3
Opponents	3.06	7-8	15	15	7	3/0	1	98.1	91	55	43	45	68	19	3	6	.237	8	4	0	5	2

PB - Team (1), Green 1. SBA/ATT - Green (8-11), Storms (5-7), Hedgcock (2-2), Haff (1-2).

2018 Home Run Tracker

#	Date	Player	Opponent	Site	# of Runs	Inning	Lineup Spot	Game Result
1	2-17-18	Linnie Malkin	Grand Canyon	Cathedral City, Calif.	2	2nd	8	W, 6-2
2!	2-17-18	Linnie Malkin	Grand Canyon	Cathedral City, Calif.	1	4th	8	W, 6-2
3!	2-17-18	Haydi Bugarin	Grand Canyon	Cathedral City, Calif.	1	4th	9	W, 6-2
4	2-17-18	Loren Krzysko	#21 Utah	Cathedral City, Calif.	1	1st	3	W, 4-2
5	2-18-18	A.J. Belans	Loyola Marymount	Cathedral City, Calif.	1	4th	4	W, 6-5
6	2-19-18	Kayla Green	Fordham	Cathedral City, Calif.	1	2nd	6	W, 4-2
7	2-19-18	Ashley Diaz	Fordham	Cathedral City, Calif.	1	6th	8	W, 4-2
8	2-23-18	Hannah McEwen	Marist	Madeira Beach, Fla.	4	4th	2	W, 15-3 (6)
9	2-23-18	Haydi Bugarin	Manhattan	Madeira Beach, Fla.	2	4th	9	W, 9-1 (6)
10	2-24-18	Kayla Green	Delaware	Madeira Beach, Fla.	2	1st	5	W, 10-1 (5)
11	2-24-18	Hannah McEwen	Delaware	Madeira Beach, Fla.	2	1st	2	W, 10-1 (5)
12	2-24-18	Linnie Malkin	Delaware	Madeira Beach, Fla.	1	2nd	6	W, 10-1 (5)
13	2-24-18	Loren Krzysko	Villanova	Madeira Beach, Fla.	3	3rd	3	W, 9-0 (5)
14	2-24-18	Kayla Green	Villanova	Madeira Beach, Fla.	1	4th	5	W, 9-0 (5)
15	2-25-18	Ashley Diaz	McNeese	Madeira Beach, Fla.	2	2nd	7	L, 5-6
16!	2-28-18	Loren Krzysko	Missouri State	Fayetteville, Ark.	1	2nd	7	W, 9-0 (5)
17!	2-28-18	Tori Cooper	Missouri State	Fayetteville, Ark.	1	2nd	8	W, 9-0 (5)
18	2-28-18	Hannah McEwen	Missouri State	Fayetteville, Ark.	4	4th	2	W, 9-0 (5)
19	2-28-18	Haydi Bugarin	Missouri State	Fayetteville, Ark.	3	5th	9	W, 9-0 (5)
20	3-2-18	Hannah McEwen	Northern Colorado	Fayetteville, Ark.	2	1st	2	W, 9-0 (6)
21	3-2-18	Kayla Green	Northern Colorado	Fayetteville, Ark.	3	3rd	4	W, 9-0 (6)
22	3-3-18	Hannah McEwen	Dartmouth	Fayetteville, Ark.	1	1st	2	W, 2-1
23	3-3-18	Loren Krzysko	C. Connecticut State	Fayetteville, Ark.	2	3rd	7	W, 7-0
24	3-4-18	Haydi Bugarin	C. Connecticut State	Fayetteville, Ark.	1	3rd	8	W, 6-5
25	3-4-18	Ashley Diaz	C. Connecticut State	Fayetteville, Ark.	2	5th	4	W, 6-5
26	3-12-18	Katie Warrick	at #11 Georgia	Athens, Ga.	2	6th	6	L, 4-5
27	3-16-18	Katie Warrick	Iowa State	Fayetteville, Ark.	2	3rd	4	W, 8-3
28	3-16-18	Katie Warrick	Iowa State	Fayetteville, Ark.	1	5th	4	W, 8-3
29	3-16-18	Hannah McEwen	Iowa State	Fayetteville, Ark.	3	6th	2	W, 8-3
30	3-16-18	Ashley Diaz	Saint Francis (Pa.)	Fayetteville, Ark.	3	3rd	3	W, 8-3
31	3-17-18	Katie Warrick	Saint Francis (Pa.)	Fayetteville, Ark.	1	2nd	4	W, 4-3
32	3-17-18	Ashley Diaz	Saint Francis (Pa.)	Fayetteville, Ark.	2	3rd	3	W, 4-3
33	3-18-18	Loren Krzysko	Omaha	Fayetteville, Ark.	4	1st	6	W, 4-0
34	3-20-18	Ashley Diaz	UT Arlington	Fayetteville, Ark.	2	1st	3	W, 6-0
35	3-20-18	Aly Manzo	UT Arlington	Fayetteville, Ark.	1	5th	5	W, 6-0
36	3-20-18	Katie Warrick	UT Arlington	Fayetteville, Ark.	1	6th	4	W, 6-0
37	3-20-18	Katie Warrick	UT Arlington	Fayetteville, Ark.	2	6th	4	W, 10-3
38	3-25-18	Tori Cooper	Missouri	Fayetteville, Ark.	1	3rd	8	W, 10-7
39	3-25-18	Kayla Green	Missouri	Fayetteville, Ark.	3	5th	6	W, 10-7
40	3-31-18	A.J. Belans	#20 Mississippi State	Fayetteville, Ark.	3	4th	8	W, 6-0
41	4-1-18	Katie Warrick	#20 Mississippi State	Fayetteville, Ark.	2	6th	4	W, 8-2
42	4-10-18	Tori Cooper	Saint Louis	St. Louis, Mo.	2	5th	4	W, 7-0
43	4-10-18	Hannah McEwen	Saint Louis	St. Louis, Mo.	1	4th	1	W, 5-0
44	4-10-18	Hannah McEwen	Saint Louis	St. Louis, Mo.	3	6th	1	W, 5-0
45	4-13-18	Kayla Green	#15 Alabama	Fayetteville, Ark.	3	7th	5	L, 5-6

! - back-to-back | * - pinch hitter



Game by Game Starters | by Position

DATE	OPPONENT	SP	C	1B	2B	3B	SS	LF	CF	RF	DP
Fri, Feb. 9	vs Kennesaw State										
Fri, Feb. 9	vs Nicholls										
Sat, Feb. 10	vs Nicholls										
Sat, Feb. 10	at Southeastern Louisiana										
Sat, Feb. 17	vs Grand Canyon	Haff	Green	Diaz	Bugarin	Buczek	Belans	Cooper	Krzysko	McEwen	Malkin
Sat, Feb. 17	vs #21 Utah	Storms	Green	Diaz	Bugarin	Buczek	Belans	Cooper	Krzysko	McEwen	Malkin
Sun, Feb. 18	vs Weber State	Storms	Green	Diaz	Bugarin	Buczek	Belans	Cooper	Krzysko	McEwen	Malkin
Sun, Feb. 18	vs Loyola Marymount	Hedgcock	Green	Diaz	Bugarin	Buczek	Belans	Parr	Krzysko	McEwen	Cooper
Mon, Feb. 19	vs Fordham	Haff	Green	Diaz	Manzo	Buczek	Belans	Cooper	Krzysko	McEwen	Bugarin
Fri, Feb. 23	vs Marist	Haff	Green	Diaz	Manzo	Bugarin	Buczek	Cooper	Krzysko	McEwen	Malkin
Fri, Feb. 23	vs Manhattan	Storms	Green	Diaz	Bugarin	Manzo	Buczek	Cooper	Krzysko	McEwen	Malkin
Sat, Feb. 24	vs Delaware	Storms	Green	Diaz	Bugarin	Buczek	Belans	Cooper	Krzysko	McEwen	Malkin
Sat, Feb. 24	vs Villanova	Haff	Green	Diaz	Bugarin	Buczek	Belans	Parr	Krzysko	McEwen	Malkin
Sun, Feb. 25	vs McNeese	Storms	Green	Diaz	Bugarin	Buczek	Belans	Parr	Krzysko	McEwen	Malkin
Wed, Feb. 28	Missouri State	Haff	Green	Diaz	Bugarin	Buczek	Belans	Cooper	Krzysko	McEwen	Malkin
Fri, March 2	Dartmouth	Storms	Green	Diaz	Bugarin	Buczek	Belans	Cooper	Krzysko	McEwen	Malkin
Fri, March 2	Northern Colorado	Haff	Green	Diaz	Bugarin	Buczek	Belans	Cooper	Krzysko	McEwen	Malkin
Sat, March 3	Dartmouth	Haff	Green	Diaz	Bugarin	Buczek	Belans	Cooper	Krzysko	McEwen	Malkin
Sat, March 3	Central Connecticut State	Storms	Green	Diaz	Bugarin	Buczek	Belans	Cooper	Krzysko	McEwen	Malkin
Sun, March 4	Northern Colorado	Haff	Green	Diaz	Bugarin	Buczek	Belans	Cooper	Krzysko	McEwen	Malkin
Sun, March 4	Central Connecticut State	Storms	Green	Diaz	Bugarin	Buczek	Belans	Parr	Krzysko	McEwen	Cooper
Tues, March 6	at Wichita State (Game 1)	Haff	Archuleta	Diaz	Bugarin	Buczek	Belans	Cooper	Krzysko	McEwen	Manzo
Tues, March 6	at Wichita State (Game 2)										
Sat, March 10	at #11 Georgia	Storms	Green	Diaz	Bugarin	Buczek	Belans	Cooper	Krzysko	McEwen	Warrick
Sun, March 11	at #11 Georgia	Haff	Green	Diaz	Bugarin	Buczek	Belans	Cooper	Krzysko	McEwen	Warrick
Mon, March 12	at #11 Georgia	Storms	Green	Diaz	Bugarin	Buczek	Belans	Cooper	Krzysko	McEwen	Warrick
Fri, March 16	Iowa State	Haff	Green	Diaz	Bugarin	Manzo	Buczek	Parr	Krzysko	McEwen	Warrick
Fri, March 16	Saint Francis (Pa.)	Storms	Green	Diaz	Bugarin	Manzo	Buczek	Parr	Krzysko	McEwen	Warrick
Sat, March 17	Omaha	Storms	Green	Diaz	Bugarin	Manzo	Buczek	Parr	Krzysko	McEwen	Warrick
Sat, March 17	Saint Francis (Pa.)	Haff	Green	Diaz	Bugarin	Manzo	Buczek	Parr	Krzysko	McEwen	Warrick
Sun, March 18	Omaha	Haff	Green	Diaz	Bugarin	Manzo	Buczek	Parr	Krzysko	McEwen	Warrick
Tues, March 20	UT Arlington (Game 1)	Haff	Green	Diaz	Bugarin	Manzo	Buczek	Parr	Krzysko	McEwen	Warrick
Tues, March 20	UT Arlington (Game 2)	Storms	Green	Diaz	Bugarin	Manzo	Buczek	Parr	Krzysko	McEwen	Warrick
Fri, March 23	Missouri	Haff	Green	Diaz	Bugarin	Manzo	Buczek	Parr	Krzysko	McEwen	Warrick
Sat, March 24	Missouri	Storms	Green	Diaz	Bugarin	Manzo	Buczek	Parr	Krzysko	McEwen	Warrick
Sun, March 25	Missouri	Haff	Green	Diaz	Bugarin	Buczek	Belans	Cooper	Krzysko	McEwen	Warrick
Fri, March 30	#20 Mississippi State	Haff	Green	Diaz	Bugarin	Buczek	Belans	Cooper	Krzysko	McEwen	Warrick
Sat, March 31	#20 Mississippi State	Storms	Green	Diaz	Bugarin	Buczek	Belans	Cooper	Krzysko	McEwen	Warrick
Sun, April 1	#20 Mississippi State	Haff	Green	Diaz	Bugarin	Buczek	Belans	Cooper	Krzysko	McEwen	Warrick
Fri, April 6	at #12 South Carolina	Storms	Green	Diaz	Bugarin	Buczek	Belans	Cooper	Krzysko	McEwen	Warrick
Sat, April 7	at #12 South Carolina	Haff	Green	Warrick	Manzo	Buczek	Belans	Parr	Krzysko	McEwen	Cooper
Sun, April 8	at #12 South Carolina	Storms	Green	Warrick	Manzo	Buczek	Belans	Parr	Krzysko	McEwen	Cooper
Tues, April 10	at Saint Louis (Game 1)	Haff	Green	Warrick	Manzo	Buczek	Belans	Cooper	Krzysko	McEwen	Diaz
Tues, April 10	at Saint Louis (Game 2)	Storms	Green	Warrick	Bugarin	Buczek	Belans	Cooper	Krzysko	McEwen	Diaz
Fri, April 13	#15 Alabama	Storms	Green	Warrick	Bugarin	Buczek	Belans	Cooper	Krzysko	McEwen	Diaz
Sat, April 14	#15 Alabama	Haff	Green	Warrick	Bugarin	Buczek	Belans	Cooper	Krzysko	McEwen	Diaz
Sun, April 15	#15 Alabama	Haff	Green	Warrick	Bugarin	Buczek	Belans	Cooper	Krzysko	McEwen	Diaz
Fri, April 20	at Auburn										
Sat, April 21	at Auburn										
Sun, April 22	at Auburn										
Sat, April 28	Ole Miss										
Sun, April 29	Ole Miss										
Mon, April 30	Ole Miss										
Fri, May 4	at LSU										
Sat, May 5	at LSU										
Sun, May 6	at LSU										

Game by Game Starters | by Lineup

DATE	OPPONENT	1	2	3	4	5	6	7	8	9	FX
Fri, Feb. 9	vs Kennesaw State										
Fri, Feb. 9	vs Nicholls										
Sat, Feb. 10	vs Nicholls										
Sat, Feb. 10	at Southeastern Louisiana										
Sat, Feb. 17	vs Grand Canyon	Buczek	McEwen	Krzysko	Belans	Cooper	Diaz	Green	Malkin	Bugarin	Haff
Sat, Feb. 17	vs #21 Utah	Buczek	McEwen	Krzysko	Belans	Cooper	Diaz	Green	Malkin	Bugarin	Storms
Sun, Feb. 18	vs Weber State	Buczek	McEwen	Krzysko	Belans	Cooper	Malkin	Green	Diaz	Bugarin	Storms
Sun, Feb. 18	vs Loyola Marymount	Buczek	McEwen	Krzysko	Belans	Cooper	Green	Hedgcock	Diaz	Bugarin	Parr
Mon, Feb. 19	vs Fordham	Buczek	McEwen	Krzysko	Belans	Cooper	Green	Manzo	Diaz	Bugarin	Haff
Fri, Feb. 23	vs Marist	Buczek	McEwen	Krzysko	Cooper	Green	Malkin	Diaz	Manzo	Bugarin	Haff
Fri, Feb. 23	vs Manhattan	Buczek	McEwen	Krzysko	Cooper	Green	Malkin	Manzo	Diaz	Bugarin	Storms
Sat, Feb. 24	vs Delaware	Buczek	McEwen	Krzysko	Belans	Green	Malkin	Cooper	Diaz	Bugarin	Storms
Sat, Feb. 24	vs Villanova	Buczek	McEwen	Krzysko	Belans	Green	Malkin	Diaz	Bugarin	Parr	Haff
Sun, Feb. 25	vs McNeese	Buczek	McEwen	Krzysko	Green	Belans	Malkin	Diaz	Bugarin	Parr	Storms
Wed, Feb. 28	Missouri State	Buczek	McEwen	Malkin	Green	Diaz	Belans	Krzysko	Cooper	Bugarin	Haff
Fri, March 2	Dartmouth	Buczek	McEwen	Malkin	Green	Diaz	Belans	Krzysko	Cooper	Bugarin	Storms
Fri, March 2	Northern Colorado	Buczek	McEwen	Malkin	Green	Diaz	Belans	Krzysko	Cooper	Bugarin	Haff
Sat, March 3	Dartmouth	Buczek	McEwen	Malkin	Green	Diaz	Belans	Krzysko	Cooper	Bugarin	Haff
Sat, March 3	Central Connecticut State	Buczek	McEwen	Malkin	Green	Diaz	Belans	Krzysko	Cooper	Bugarin	Storms
Sun, March 4	Northern Colorado	Buczek	McEwen	Malkin	Green	Diaz	Belans	Krzysko	Cooper	Bugarin	Haff
Sun, March 4	Central Connecticut State	Buczek	McEwen	Krzysko	Diaz	Green	Belans	Cooper	Bugarin	Parr	Storms
Tues, March 6	at Wichita State (Game 1)	Buczek	McEwen	Krzysko	Diaz	Manzo	Belans	Cooper	Archuleta	Bugarin	Haff
Tues, March 6	at Wichita State (Game 2)										
Sat, March 10	at #11 Georgia	Buczek	McEwen	Diaz	Green	Krzysko	Warrick	Cooper	Belans	Bugarin	Storms
Sun, March 11	at #11 Georgia	Buczek	McEwen	Diaz	Green	Krzysko	Warrick	Cooper	Belans	Bugarin	Haff
Mon, March 12	at #11 Georgia	Buczek	McEwen	Diaz	Green	Krzysko	Warrick	Cooper	Belans	Bugarin	Storms
Fri, March 16	Iowa State	Buczek	McEwen	Diaz	Warrick	Manzo	Krzysko	Green	Bugarin	Parr	Haff
Fri, March 16	Saint Francis (Pa.)	Buczek	McEwen	Diaz	Warrick	Manzo	Krzysko	Green	Bugarin	Parr	Storms
Sat, March 17	Omaha	Buczek	McEwen	Diaz	Warrick	Manzo	Krzysko	Green	Bugarin	Parr	Storms
Sat, March 17	Saint Francis (Pa.)	Buczek	McEwen	Diaz	Warrick	Manzo	Krzysko	Green	Bugarin	Parr	Haff
Sun, March 18	Omaha	Buczek	McEwen	Diaz	Warrick	Manzo	Krzysko	Green	Bugarin	Parr	Haff
Tues, March 20	UT Arlington (Game 1)	Buczek	McEwen	Diaz	Warrick	Manzo	Krzysko	Green	Bugarin	Parr	Haff
Tues, March 20	UT Arlington (Game 2)	Buczek	McEwen	Diaz	Warrick	Manzo	Krzysko	Green	Bugarin	Parr	Storms
Fri, March 23	Missouri	Buczek	McEwen	Diaz	Warrick	Manzo	Krzysko	Green	Bugarin	Parr	Haff
Sat, March 24	Missouri	Buczek	McEwen	Diaz	Warrick	Manzo	Krzysko	Green	Bugarin	Parr	Storms
Sun, March 25	Missouri	Buczek	McEwen	Diaz	Warrick	Krzysko	Green	Belans	Cooper	Bugarin	Haff
Fri, March 30	#20 Mississippi State	Buczek	McEwen	Diaz	Warrick	Krzysko	Green	Cooper	Belans	Bugarin	Haff
Sat, March 31	#20 Mississippi State	Buczek	McEwen	Diaz	Warrick	Krzysko	Green	Cooper	Belans	Bugarin	Storms
Sun, April 1	#20 Mississippi State	Buczek	McEwen	Diaz	Warrick	Krzysko	Green	Cooper	Belans	Bugarin	Haff
Fri, April 6	at #12 South Carolina	Buczek	McEwen	Diaz	Warrick	Krzysko	Green	Cooper	Belans	Bugarin	Storms
Sat, April 7	at #12 South Carolina	Buczek	McEwen	Warrick	Cooper	Green	Belans	Manzo	Krzysko	Parr	Haff
Sun, April 8	at #12 South Carolina	Buczek	McEwen	Warrick	Cooper	Green	Belans	Manzo	Krzysko	Parr	Storms
Tues, April 10	at Saint Louis (Game 1)	McEwen	Buczek	Warrick	Cooper	Green	Diaz	Belans	Krzysko	Manzo	Haff
Tues, April 10	at Saint Louis (Game 2)	McEwen	Buczek	Warrick	Cooper	Green	Diaz	Belans	Krzysko	Bugarin	Storms
Fri, April 13	#15 Alabama	McEwen	Buczek	Warrick	Cooper	Green	Diaz	Belans	Krzysko	Bugarin	Storms
Sat, April 14	#15 Alabama	McEwen	Buczek	Warrick	Cooper	Green	Diaz	Belans	Krzysko	Bugarin	Haff
Sun, April 15	#15 Alabama	McEwen	Buczek	Warrick	Cooper	Green	Diaz	Belans	Krzysko	Bugarin	Haff
Fri, April 20	at Auburn										
Sat, April 21	at Auburn										
Sun, April 22	at Auburn										
Sat, April 28	Ole Miss										
Sun, April 29	Ole Miss										
Mon, April 30	Ole Miss										
Fri, May 4	at LSU										
Sat, May 5	at LSU										
Sun, May 6	at LSU										

#2 A.J. Belans

Senior | INF | 5-5 | R/R | Hollywood, Fla. (FIU)

Season Highs

Hits _____ *2 vs #15 Alabama | April 15, 2018
 RBI _____ 3 vs #20 Mississippi State | March 31, 2018
 Runs _____ *2 vs Dartmouth | March 2, 2018
 Walks _____ 2 vs Grand Canyon | Feb. 17, 2018
 AB _____ *4 at Saint Louis | April 10, 2018

Career Highs

Hits _____ *3 vs IUPUI | March 5, 2017
 RBI _____ 4 vs #14 Tennessee | March 17, 2017
 Runs _____ *2 vs Dartmouth | March 2, 2018
 Walks _____ *2 vs Grand Canyon | Feb. 17, 2018
 AB _____ *4 at Saint Louis | April 10, 2018

Year	Avg	GP	GS	AB	R	H	2B	3B	HR	RBI	BB	SO	SB	ATT
2017	.295	55	55	156	20	46	12	0	8	33	16	21	0	0
2018	.212	32	31	85	9	18	1	0	2	11	11	8	0	0
TOTAL	.266	87	86	241	29	64	13	0	10	44	27	29	0	0

#8 Autumn Buczek

Senior | INF | 5-7 | L/R | Greenbrier, Ark. (Greenbrier)

Season Highs

Hits _____ *3 vs UT Arlington | March 20, 2018
 RBI _____ *2 vs Missouri | March 23, 2018
 Runs _____ 3 vs UT Arlington | March 20, 2018
 Walks _____ *2 vs #15 Alabama | April 13, 2018
 AB _____ 5 vs Grand Canyon | Feb. 17, 2018

Career Highs

Hits _____ 4 vs Central Michigan | Feb. 21, 2016
 RBI _____ 4 vs Buffalo | March 4, 2016
 Runs _____ *3 vs UT Arlington | March 20, 2018
 Walks _____ *2 vs #15 Alabama | April 13, 2018
 AB _____ *5 vs Grand Canyon | Feb. 17, 2018

Year	Avg	GP	GS	AB	R	H	2B	3B	HR	RBI	BB	SO	SB	ATT
2015	.243	45	27	70	12	17	1	0	0	1	2	20	4	5
2016	.281	56	56	167	28	47	4	2	0	13	7	24	12	13
2017	.349	55	55	166	32	58	5	2	1	13	8	22	9	10
2018	.331	42	42	145	26	48	5	4	0	12	12	15	7	8
TOTAL	.310	198	180	548	98	170	15	8	1	39	29	81	32	36

#10 Haydi Bugarin

Junior | INF | 5-3 | R/R | San Antonio, Texas (East Central HS)

Season Highs

Hits _____ 3 vs Manhattan | Feb. 23, 2018
 RBI _____ 5 vs Manhattan | Feb. 23, 2018
 Runs _____ 2 vs Manhattan | Feb. 23, 2018
 Walks _____ *1 vs #20 Mississippi State | April 1, 2018
 AB _____ *4 vs McNeese | Feb. 25, 2018

Career Highs

Hits _____ 3 vs Manhattan | Feb. 23, 2018
 RBI _____ 5 vs Manhattan | Feb. 23, 2018
 Runs _____ 2 vs Manhattan | Feb. 23, 2018
 Walks _____ *2 vs #23 Nebraska | March 19, 2016
 AB _____ *4 vs McNeese | Feb. 25, 2018

Year	Avg	GP	GS	AB	R	H	2B	3B	HR	RBI	BB	SO	SB	ATT
2016	.138	29	8	29	9	4	1	0	1	4	6	11	0	0
2017	.222	38	16	45	12	10	2	0	2	4	4	20	1	2
2018	.298	39	39	94	20	28	4	2	4	17	8	16	2	3
TOTAL	.250	106	63	168	41	42	7	2	7	25	18	47	3	5

#6 Tori Cooper

Senior | OF | 5-5 | L/L | Nederland, Texas (Nederland)

Season Highs

Hits _____ *2 at Saint Louis | April 10, 2018
 RBI _____ 4 at Saint Louis | April 10, 2018
 Runs _____ 3 vs Missouri State | Feb. 28, 2018
 Walks _____ *2 at #12 South Carolina | April 8, 2018
 AB _____ *4 vs #15 Alabama | April 15, 2018

Career Highs

Hits _____ *3 at #9 Alabama | March 12, 2017
 RBI _____ 6 vs San Diego | Feb. 19, 2017
 Runs _____ *3 vs Missouri State | Feb. 28, 2018
 Walks _____ *2 at #12 South Carolina | April 8, 2018
 AB _____ 5 at #9 Alabama | March 12, 2017

Year	Avg	GP	GS	AB	R	H	2B	3B	HR	RBI	BB	SO	SB	ATT
2015	.258	39	27	62	12	16	3	0	1	5	5	16	2	2
2016	.287	47	33	108	12	31	6	0	3	11	7	25	0	0
2017	.285	53	50	151	30	43	3	2	10	40	19	35	0	0
2018	.244	32	31	86	18	21	4	0	3	14	12	13	1	1
TOTAL	.273	171	141	407	72	111	16	2	17	70	43	89	3	3

#18 Ashley Diaz

Junior | INF | 5-10 | R/R | South El Monte, Calif. (South El Monte)

Season Highs

Hits _____ *3 vs Saint Francis (Pa.) | March 16, 2018
 RBI _____ 5 vs Saint Francis (Pa.) | March 16, 2018
 Runs _____ *2 vs Dartmouth | March 2, 2018
 Walks _____ *2 vs UT Arlington | March 20, 2018
 AB _____ *4 vs #15 Alabama | April 13, 2018

Career Highs

Hits _____ *3 vs Saint Francis (Pa.) | March 16, 2018
 RBI _____ 5 vs Saint Francis (Pa.) | March 16, 2018
 Runs _____ *2 vs Dartmouth | March 2, 2018
 Walks _____ *2 vs UT Arlington | March 20, 2018
 AB _____ *5 at #9 Alabama | March 12, 2017

Year	Avg	GP	GS	AB	R	H	2B	3B	HR	RBI	BB	SO	SB	ATT
2016	.331	53	53	160	22	53	3	0	12	41	15	32	1	1
2017	.283	55	55	159	12	45	6	1	3	21	10	24	0	0
2018	.314	41	40	118	15	37	5	0	6	28	11	11	0	0
TOTAL	.309	149	148	437	49	135	14	1	21	90	36	67	1	1

#13 Kayla Green

Freshman | C | 5-9 | R/R | Temecula, Calif. (Great Oak HS)

Season Highs

Hits _____ *2 vs #15 Alabama | April 13, 2018
 RBI _____ 4 vs #15 Alabama | April 13, 2018
 Runs _____ *2 vs #20 Mississippi State | March 31, 2018
 Walks _____ 2 vs #20 Mississippi State | April 1, 2018
 AB _____ *4 vs #15 Alabama | April 13, 2018

Career Highs

Hits _____ *2 vs #15 Alabama | April 13, 2018
 RBI _____ 4 vs #15 Alabama | April 13, 2018
 Runs _____ *2 vs #20 Mississippi State | March 31, 2018
 Walks _____ 2 vs #20 Mississippi State | April 1, 2018
 AB _____ *4 vs #15 Alabama | April 13, 2018

Year	Avg	GP	GS	AB	R	H	2B	3B	HR	RBI	BB	SO	SB	ATT
2018	.252	41	41	115	18	29	9	1	6	24	7	18	0	0
TOTAL	.252	41	41	115	18	29	9	1	6	24	7	18	0	0

#12 Loren Krzysko

RS Senior | OF | 5-3 | R/R | Barrington, Ill. (Barrington)

Season Highs

Hits _____ *3 vs UT Arlington | March 20, 2018
 RBI _____ 4 vs Omaha | March 18, 2018
 Runs _____ *2 vs UT Arlington | March 20, 2018
 Walks _____ *2 vs Manhattan | Feb. 23, 2018
 AB _____ *4 vs Missouri | March 25, 2018

Career Highs

Hits _____ *3 vs UT Arlington | March 20, 2018
 RBI _____ 4 vs Omaha | March 18, 2018
 Runs _____ 3 at Notre Dame | April 29, 2017
 Walks _____ *2 vs Manhattan | Feb. 23, 2018
 AB _____ *4 vs Missouri | March 25, 2018

Year	Avg	GP	GS	AB	R	H	2B	3B	HR	RBI	BB	SO	SB	ATT
2015	.182	31	21	55	5	10	3	0	9	10	11	0	2	
2016	.205	46	26	78	8	16	4	0	1	7	8	15	1	2
2017	.339	25	19	59	13	20	3	1	2	10	7	8	0	0
2018	.232	42	42	112	18	26	4	0	5	20	18	18	0	0
TOTAL	.237	144	108	304	44	72	14	1	8	46	43	52	1	4

#22 Linnie Malkin

Freshman | INF | 5-11 | R/R | Broomfield, Colo. (Broomfield)

Season Highs

Hits _____ *2 vs McNeese | Feb. 25, 2018
 RBI _____ 3 vs Grand Canyon | Feb. 17, 2018
 Runs _____ *2 vs Villanova | Feb. 24, 2018
 Walks _____ 2 vs Villanova | Feb. 24, 2018
 AB _____ 4 vs Marist | Feb. 23, 2018

Career Highs

Hits _____ *2 vs McNeese | Feb. 25, 2018
 RBI _____ 3 vs Grand Canyon | Feb. 17, 2018
 Runs _____ *2 vs Villanova | Feb. 24, 2018
 Walks _____ 2 vs Villanova | Feb. 24, 2018
 AB _____ 4 vs Marist | Feb. 23, 2018

Year	Avg	GP	GS	AB	R	H	2B	3B	HR	RBI	BB	SO	SB	ATT
2018	.300	20	14	40	8	12	2	0	3	8	10	11	0	0
TOTAL	.300	20	14	40	8	12	2	0	3	8	10	11	0	0

#66 Aly Manzo

Sophomore | INF | 5-7 | L/R | Roseville, Calif. (Roseville)

Season Highs

Hits _____ *2 vs Iowa State | March 16, 2018
 RBI _____ 3 vs Saint Francis (Pa.) | March 16, 2018
 Runs _____ *1 vs UT Arlington | March 20, 2018
 Walks _____ *1 vs #15 Alabama | April 13, 2018
 AB _____ *4 vs UT Arlington | March 20, 2018

Career Highs

Hits _____ *2 vs Iowa State | March 16, 2018
 RBI _____ 3 vs Saint Francis (Pa.) | March 16, 2018
 Runs _____ *1 vs UT Arlington | March 20, 2018
 Walks _____ *1 vs #15 Alabama | April 13, 2018
 AB _____ *4 vs UT Arlington | March 20, 2018

Year	Avg	GP	GS	AB	R	H	2B	3B	HR	RBI	BB	SO	SB	ATT
2017	.000	2	0	1	1	0	0	0	0	0	0	1	0	0
2018	.288	25	16	52	7	15	3	1	1	7	7	3	1	1
TOTAL	.283	27	16	53	8	15	3	1	1	7	7	4	1	1

#23 Hannah McEwen

Freshman | OF | 5-7 | L/R | San Diego, Calif. (Patrick Henry HS)

Season Highs

Hits _____ *3 at Saint Louis | April 10, 2018
 RBI _____ 5 vs Marist | Feb. 23, 2018
 Runs _____ 3 vs Marist | Feb. 23, 2018
 Walks _____ 3 vs #20 Mississippi State | April 1, 2018
 AB _____ 5 vs Manhattan | Feb. 23, 2018

Career Highs

Hits _____ *3 at Saint Louis | April 10, 2018
 RBI _____ 5 vs Marist | Feb. 23, 2018
 Runs _____ 3 vs Marist | Feb. 23, 2018
 Walks _____ 3 vs #20 Mississippi State | April 1, 2018
 AB _____ 5 vs Manhattan | Feb. 23, 2018

Year	Avg	GP	GS	AB	R	H	2B	3B	HR	RBI	BB	SO	SB	ATT
2018	.356	42	42	132	36	47	7	1	8	43	16	9	0	0
TOTAL	.356	42	42	132	36	47	7	1	8	43	16	9	0	0

#7 Sydney Parr

Sophomore | OF | 5-7 | L/R | North Little Rock, Ark. (North Little Rock)

Season Highs

Hits _____ *2 vs Omaha | March 18, 2018
 RBI _____ 3 vs Villanova | Feb. 24, 2018
 Runs _____ *2 vs Omaha | March 17, 2018
 Walks _____ 2 vs Omaha | March 17, 2018
 AB _____ *3 vs UT Arlington | March 20, 2018

Career Highs

Hits _____ *2 vs Omaha | March 18, 2018
 RBI _____ 3 vs Villanova | Feb. 24, 2018
 Runs _____ *2 vs Omaha | March 17, 2018
 Walks _____ 2 vs Omaha | March 17, 2018
 AB _____ *3 vs UT Arlington | March 20, 2018

Year	Avg	GP	GS	AB	R	H	2B	3B	HR	RBI	BB	SO	SB	ATT
2017	.000	36	0	0	10	0	0	0	0	2	0	1	1	1
2018	.275	34	15	40	12	11	1	1	0	5	5	4	4	4
TOTAL	.275	70	15	40	22	11	1	1	0	5	7	4	5	5

#55 Katie Warrick

Junior | RHP/INF | 6-0 | R/R | Chapel Hill, Tenn. (UT Martin)

Season Highs

Hits _____ 4 vs Iowa State | March 16, 2018
 RBI _____ *4 vs #20 Mississippi State | April 1, 2018
 Runs _____ *2 vs UT Arlington | March 20, 2018
 Walks _____ *1 vs #15 Alabama | April 15, 2018
 AB _____ *4 vs #15 Alabama | April 13, 2018

Career Highs

Hits _____ 4 vs Iowa State | March 16, 2018
 RBI _____ *4 vs #20 Mississippi State | April 1, 2018
 Runs _____ *2 vs UT Arlington | March 20, 2018
 Walks _____ 2 at North Texas | Feb. 12, 2017
 AB _____ *4 vs #15 Alabama | April 13, 2018

Year	Avg	GP	GS	AB	R	H	2B	3B	HR	RBI	BB	SO	SB	ATT
2017	.253	36	33	87	11	22	3	0	6	16	7	14	0	0
2018	.342	28	24	79	11	27	6	0	7	18	8	6	0	0
TOTAL	.295	64	57	166	22	49	9	0	13	34	15	20	0	0

#4 Mary Haff

Freshman | RHP | 5-10 | R/R | Winter Haven, Fla. (Lake Region HS)

Season Highs

Innings 8.0 at #11 Georgia | March 12, 2018
 Strikeouts 13 at Saint Louis | April 10, 2018
 Walks 4 vs Northern Colorado | March 2, 2018
 Runs Allowed *4 (4 ER) at #12 South Carolina | April 8, 2018
 No. of Pitches 132 vs #20 Mississippi State | March 30, 2018

Career Highs

Innings 8.0 at #11 Georgia | March 12, 2018
 Strikeouts 13 at Saint Louis | April 10, 2018
 Walks 4 vs Northern Colorado | March 2, 2018
 Runs Allowed *4 (4 ER) at #12 South Carolina | April 8, 2018
 No. of Pitches 132 vs #20 Mississippi State | March 30, 2018

Year	ERA	W	L	App	GS	CG	SHO	CBO	SV	IP	H	R	ER	BB	SO
2018	1.07	20	3	29	22	14	8	1	2	143.2	69	28	22	18	185
TOTAL	1.07	20	3	29	22	14	8	1	2	143.2	69	28	22	18	185

#31 Caroline Hedcock

Sophomore | LHP | 5-8 | R/L | Downers Grove, Ill. (South HS)

Season Highs

Innings 3.0 vs Iowa State | March 16, 2018
 Strikeouts 4 at #11 Georgia | March 10, 2018
 Walks *2 vs UT Arlington | March 20, 2018
 Runs Allowed 4 (4 ER) at #11 Georgia | March 10, 2018
 No. of Pitches 63 at #11 Georgia | March 10, 2018

Career Highs

Innings 7.0 vs Tulsa | April 11, 2017
 Strikeouts 5 vs #2 Florida | March 31, 2017
 Walks 3 at Jackson State | April 25, 2017
 Runs Allowed *4 (4 ER) at #11 Georgia | March 10, 2018
 No. of Pitches 95 at #9 Oklahoma | April 5, 2017

Year	ERA	W	L	App	GS	CG	SHO	CBO	SV	IP	H	R	ER	BB	SO
2017	2.84	3	5	25	8	2	0	2	0	61.2	51	33	25	19	31
2018	8.40	1	0	8	1	0	0	0	1	11.2	22	17	14	5	9
TOTAL	3.72	4	5	33	9	2	0	2	1	73.1	73	50	39	24	40

#9 Autumn Storms

Sophomore | RHP | 5-10 | R/R | Temecula, Calif. (Greak Oak HS)

Season Highs

Innings *7.0 at Saint Louis | April 10, 2018
 Strikeouts 9 vs C. Connecticut State | March 3, 2018
 Walks 3 vs #15 Alabama | April 13, 2018
 Runs Allowed 6 (5 ER) vs #15 Alabama | April 13, 2018
 No. of Pitches 117 vs UT Arlington | March 20, 2018

Career Highs

Innings 8.1 at #9 Alabama | March 12, 2017
 Strikeouts 9 vs C. Connecticut State | March 3, 2018
 Walks 5 at #9 Alabama | March 12, 2017
 Runs Allowed 6 (5 ER) vs #15 Alabama | April 13, 2018
 No. of Pitches 159 at #9 Alabama | March 12, 2017

Year	ERA	W	L	App	GS	CG	SHO	CBO	SV	IP	H	R	ER	BB	SO
2017	2.28	16	15	38	33	13	1	3	2	172.0	174	81	56	35	96
2018	2.11	12	6	26	19	6	3	1	2	116.1	107	46	35	23	93
TOTAL	2.21	28	21	64	52	19	4	4	4	288.1	281	127	91	58	189

#55 Katie Warrick

Junior | RHP/INF | 6-0 | R/R | Chapel Hill, Tenn. (UT Martin)

Season Highs

Innings 2.2 vs Loyola Marymount | Feb. 18, 2018
 Strikeouts 1 vs Loyola Marymount | Feb. 18, 2018
 Walks *1 vs Saint Francis (Pa.) | March 16, 2018
 Runs Allowed 3 (2 ER) vs Saint Francis (Pa.) | March 16, 2018
 No. of Pitches 34 vs Saint Francis (Pa.) | March 16, 2018

Career Highs

Innings *4.2 vs Lamar | March 4, 2017
 Strikeouts 4 vs Lamar | March 4, 2017
 Walks 2 at #17 Kentucky | March 25, 2017
 Runs Allowed 4 (1 ER) vs #2 Florida | April 1, 2017
 No. of Pitches 54 vs Lamar | March 4, 2017

Year	ERA	W	L	App	GS	CG	SHO	CBO	SV	IP	H	R	ER	BB	SO
2017	3.68	3	0	14	0	0	0	1	0	26.2	33	17	14	5	10
2018	3.94	0	0	3	0	0	0	0	0	5.1	7	5	3	2	1
TOTAL	3.72	3	0	17	0	0	0	1	0	32.0	40	22	17	7	11



00 CARLEY HAIZLIP
JR | OF | 5-8 | L/R
Midlothian, Texas



2 A.J. BELANS
SR | INF | 5-5 | R/R
Hollywood, Fla.



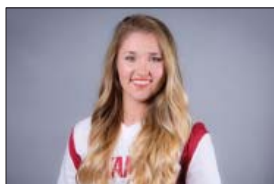
4 MARY HAFF
FR | RHP | 5-10 | R/R
Winter Haven, Fla.



6 TORI COOPER
SR | OF | 5-5 | L/L
Nederland, Texas



7 SYDNEY PARR
SO | OF | 5-7 | L/L
North Little Rock, Ark.



8 AUTUMN BUCZEK
SR | INF | 5-7 | L/R
Greenbrier, Ark.



9 AUTUMN STORMS
SO | RHP | 5-10 | R/R
Temecula, Calif.



10 HAYDI BUGARIN
JR | OF | 5-3 | R/R
San Antonio, Texas



12 LOREN KRZYSKO
R-SR | OF | 5-3 | R/R
Barrington, Ill.



13 KAYLA GREEN
FR | C | 5-9 | R/R
Temecula, Calif.



16 KEELY EDWARDS
SO | INF | 5-9 | R/R
Harrisburg, Ark.



18 ASHLEY DIAZ
JR | INF | 5-10 | R/R
South El Monte, Calif.



19 LAUREN ARCHULETA
R-JR | C | 5-8 | R/R
Rockwall, Texas



20 MACY BROTHERTON
SO | C | 5-9 | R/R
Mena, Ark.



22 LINNIE MALKIN
FR | INF | 5-11 | R/R
Broomfield, Colo.



23 HANNAH McEWEN
FR | OF | 5-7 | L/R
San Diego, Calif.



24 NICOLE DUNCAN
FR | C | 5-7 | R/R
Centralia, Mo.



28 SYDNEY BENZ
JR | INF | 5-5 | R/R
Carol Stream, Ill.



31 CAROLINE HEDGCOCK
SO | LHP | 5-8 | R/L
Downers Grove, Ill.



32 ALLISON STEWART
R-JR | RHP | 5-11 | R/R
Olathe, Kan.



33 JADA DOTSON
FR | OF | 5-6 | R/R
White House, Tenn.



34 MADELYN BROTHERTON
SO | INF | 5-9 | R/R
Mena, Ark.



55 KATIE WARRICK
JR | UTL | 6-0 | R/R
Chapel Hill, Tenn.



66 ALY MANZO
SO | INF | 5-7 | R/R
Roseville, Calif.



COURTNEY DEIFEL
Head Coach
3rd Season



YOLANDA McRAE
Assistant Coach
3rd Season



MATT MEUCHEL
Assistant Coach
2nd Season



JORDAN CLARK
Volunteer Assistant Coach
3rd Season