



RAZORBACKS

Jeri Thorpe | Associate Communications Director
P: 479-283-3344 | E: jthorpe@uark.edu | ArkansasRazorbacks.com

2018-19 ARKANSAS WOMEN'S BASKETBALL

THE SCHEDULE | 11-3, 0-0 SEC

Date	Opponent	Time/TV	TV
Oct. 29	Southwest Baptist (Exh.)	7 p.m.	W, 115-53
Nov. 1	East Central Univ. (Exh.)	7 p.m.	W, 101-46
Nov. 9	Northwestern St. (Elem. Day)	SECN+	W, 98-53
Nov. 14	at UT Arlington	ESPN+	W, 66-65
Nov. 18	No. 22 Arizona State	SECN	L, 85-83
Nov. 23	vs. Tennessee State-I	7:30 p.m.	W, 79-55
Nov. 24	vs. Pittsburgh-I	7:30 p.m.	L, 61-54
Nov. 25	vs. Wisconsin-I	7:30 p.m.	W, 69-68
Nov. 28	Oral Roberts	SECN+	W, 74-61
Dec. 2	at No. 23 Iowa State^	2 p.m.	L, 91-82
Dec. 4	Tennessee Tech	SECN+	W, 65-42
Dec. 8	at Abilene Christian	SCDN	W, 80-68
Dec. 16	Prairie View A&M	SECN+	W, 71-44
Dec. 18	Nebraska	SECN+	W, 84-80
Dec. 20	at Tulsa	CST	W, 61-59
Dec. 30	Jackson State	SECN+	W, 76-57
Jan. 3	#7/6 Mississippi State*	6 p.m.	SECN
Jan. 6	at Ole Miss*	2 p.m.	SECN
Jan. 10	at Missouri*	7 p.m.	SECN+
Jan. 13	Vanderbilt*	2 p.m.	SECN+
Jan. 21	at Tennessee*	6 p.m.	SECN
Jan. 24	Alabama* (We Back Pat)	7 p.m.	SECN+
Jan. 27	at Florida*	1 p.m.	SECN+
Jan. 31	Georgia*	7 p.m.	SECN+
Feb. 3	South Carolina*	4 p.m.	SECN
Feb. 7	at LSU*	8 p.m.	SECN
Feb. 10	Auburn* (Play4Kay)	1 p.m.	SECN
Feb. 17	at Kentucky*	1 p.m.	SECN+
Feb. 21	at Georgia*	6 p.m.	SECN+
Feb. 24	Ole Miss* (Senior Day)	3 p.m.	SECN
Feb. 28	Missouri*	8 p.m.	SECN
March 3	at Texas A&M*	4 p.m.	SECN
March 6-10	SEC Championship	TBA	SECN, ESPN
!-Music City Thanksgiving Challenge ^-Big 12/SEC Challenge			
*-SEC Contest			

GAME 15 | #7/6 Mississippi State (12-1) | Jan. 3 | Fayetteville, Ark. (Bud Walton Arena / 19,200)

SERIES

Overall	18-19
SEC	18-19
In Fayetteville	10-6
Away	6-11
Neutral	2-2
Postseason	0-0

ARKANSAS RAZORBACKS

PTS / GAME	74.6
PTS ALLOWED / GAME	63.7
FG %	.386
FG DEFENSE %	.382
3-PT FG %	.303
3-PT FG DEFENSE %	.300
REB / GAME	41.4
REB ALLOWED / GAME	44.1
LEADING SCORER	Dungee, 17.0
LEADING REBOUNDER	Williams, 8.6
LEADER IN ASSISTS	Gaulden, 36
HEAD COACH	Mike Neighbors
ARKANSAS RECORD	24-21 (2)
CAREER RECORD	122-62 (6)

MISSISSIPPI STATE BULLDOGS

PTS / GAME	92.6
PTS ALLOWED / GAME	52.1
FG %	.516
FG DEFENSE %	.341
3-PT FG %	.384
3-PT FG DEFENSE %	.313
REB / GAME	45.8
REB ALLOWED / GAME	28.8
LEADING SCORER	McCowan, 16.7
LEADING REBOUNDER	McCowan, 12.5
LEADER IN ASSISTS	Holmes, 69
HEAD COACH	Vic Schaefer
SCHOOL RECORD	173-54 (7)
CAREER RECORD	253-164 (14)

LAST FIVE MEETINGS

1/8/2015	L, 72-57	Starkville
1/10/2016	L, 80-55	Starkville
1/31/2016	L, 65-55	Fayetteville
1/5/2017	L, 59-51	Fayetteville
1/4/2018	L, 111-69	Starkville

A LOT OF OFFENSE

- Four different players (Tolfree, Monk, Dungee & Thomas) have led Arkansas in scoring.
- Three players (Dungee, Monk and Tolfree) all average double figures with 17.0 ppg, 12.9 ppg and 12.4 ppg, respectively.
- Each of those three players have scored over 170 points this season.
- Dungee, Monk and Tolfree have scored 591 of Arkansas' 968 points this season. That is 56.6% of the team's offense.
- Dungee, Monk and Tolfree have combined for 10 20+ point performances and they have 18 performances with 15 or more points.
- Dungee ranks **sixth in the SEC** followed by Monk at No. 24 and Tolfree at No. 25 (Dec. 31).
- Arkansas ranks **sixth in the SEC** averaging 74.6 points per game (Dec. 31).

SEC OPENERS

- Arkansas is 4-6 in SEC openers when the first game of conference play is at home.
- This is the first time Arkansas has opened the SEC home schedule with Mississippi State. The Razorbacks defeated MSU in the SEC road opener in 2006.
- In SEC openers: Alabama (0-2); Auburn (0-1); Florida (0-2); Georgia (0-2); LSU (0-2); Ole Miss (2-4); Mississippi State (1-0); South Carolina (1-3); Tennessee (1-5); Vanderbilt (0-1).

IN DIVISION I

- Arkansas ranks in the top-10 in Division I for free throw attempts (5th | 316), free throws made (8th | 209) and fewest turnovers per game (8th | 12.1 tpg).
- Alexis Tolfree ranks sixth with 121 3-point field goal attempts. Chelsea Dungee is ninth with 89 free throw attempts and 10th with 68 made free throws.
- Arkansas leads the SEC in free throw attempts (316), 3-point attempts (353) and fewest turnovers per game (12.1 tpg).

FOLLOW, WATCH & LISTEN



@RAZORBACKWBB

Broadcast: SECN - <https://es.pn/2BPISod>

Talent: Courtney Lyle and Tamkia Catchings

Live Scoring: <http://statb.us/e/233638>

Razorback Sports Network from IMG (Radio)

Phil Elson & Erin Portman

Fayetteville - KQSM-FM-92.1 /// KYNG-AM - 1590*

Fort Smith - KFPW-AM-1230 /// KHGG-AM-1580*

Rogers - KURM-AM-790 /// FM-100.3

*If there are conflicts on the FM station

THE LINEUP (last game starters)

ALEXIS TOLEFREE



Jr | Conway, Ark.

2 PPG 12.4 FG% .323 RPG 3.5 3-PT 34

MALICA MONK



Sr | N. Little Rock, Ark.

3 PPG 12.9 FG% .419 RPG 2.4 Ast 34

KIARA WILLIAMS



Jr | Little Rock, Ark.

10 PPG 7.0 FG% .535 RPG 8.6 BLK 20

JAILYN MASON



Jr | Mason, Ohio

14 PPG 7.1 FG% .392 RPG 3.4 Ast 32

CHELSEA DUNGEE



RSo | Sapulpa, Okla.

33 PPG 17.0 FG% .370 RPG 4.6 FT% .764

2018-19 @RAZORBACKWBB

NUMERICAL

NO.	NAME	POS	HT	CL	HOMETOWN/PREVIOUS SCHOOL	TWITTER
0	A'Tyanna Gaulden	G	5-7	RSo	Ocilla, Ga./Americus Sumter HS/Florida State	@AtyannaGaulden
1	Raven Northcross-Baker	G	5-9	Sr	Malvern, Ark./Malvern HS/Chipola College	@ravenbaker_4
2	Alexis Tolefree	G	5-8	Jr	Conway, Ark./Conway HS/Jones County JC	@a2smooth_
3	Malica Monk	G	5-5	Sr	N. Little Rock, Ark./NLR HS	@TheRealMalica
10	Kiara Williams	C	6-1	Jr	Little Rock, Ark./LR Central HS	@kiara_will22
13	Grayce Spangler	G	5-10	So	Fayetteville, Ark. Fayetteville HS	@grayce_1313
14	Jailyn Mason	PG	5-9	Jr	Mason, Ohio/William Mason HS	@UofAjbmason
20	Sydney Stout	F	6-0	Jr	Bixby, Okla./Bixby HS	@sydeny_stout_
22	Bailey Zimmerman	F	6-0	Sr	St. Vincent, Ark. /Wonderview HS	@Bailey_Ann22
23	Amber Ramirez*	G	5-9	Jr	San Antonio, Texas/Wagner HS/TCU	@yungram_
24	Taylah Thomas	F	6-1	So	Arlington, Texas/Mansfield Timberview HS	@hailtaylahh
30	Macy Weaver	F	6-3	So	Davis Junction, Ill./Stillman Valley HS	@macyweaver528
33	Chelsea Dungee	G	5-11	RSo	Sapulpa, Okla./Sapulpa HS/Oklahoma	@ChelseaDungee22
52	Rokia Doumbia	G	5-9	Fr	Bradenton, Fla./IMG Academy/Mali, Africa	@23RokiaDoumbia

*Will redshirt due to NCAA transfer rules

COACHING STAFF

Title	Name	Year	Alma Mater
Head Coach	Mike Neighbors	2nd Season	Arkansas, 1993
Assistant Coach	Todd Schaefer	2nd Season	Thomas More College, 1995
Assistant Coach	Lacey Goldwire	2nd Season	Oklahoma State, 2010
Assistant Coach	Pauline Love	2nd Season	Southern Miss, 2010
Director of Operations	Amber Shirey	31st Season	Arkansas, 1992
Director of Video and Scouting	Jeff Brazil	12th Season	Arkansas, 2010
Dir. of Student-Athlete Devel.	C'eira Ricketts	2nd Season	Arkansas, 2015

ELIGIBILITY

Seniors (3)	Juniors (5)	Sophomores (5)	Freshmen (1)
Raven Northcross-Baker	Alexis Tolefree	Chelsea Dungee	Rokia Doumbia
Malica Monk	Jailyn Mason	A'Tyanna Gaulden	
Bailey Zimmerman	Amber Ramirez*	Grayce Spangler	
	Sydney Stout	Taylah Thomas	
	Kiara Williams	Macy Weaver	

ALPHABETICAL

NO.	NAME	POS	HT	CL	MAJOR
52	Rokia Doumbia	G	5-9	Fr	Pre-Business
33	Chelsea Dungee	G	5-11	R-So	Communication
0	A'Tyanna Gaulden	G	5-7	R-So	Apparel Merchandise & Product Development
14	Jailyn Mason	PG	5-9	Jr	Journalism: News/Editorial
3	Malica Monk	G	5-5	Sr	Recreation & Sport Management
1	Raven Northcross-Baker	G	5-9	Sr	Criminal Justice and Sociology
23	Amber Ramirez	G	5-9	Jr	Criminal Justice
13	Grayce Spangler	G	5-11	So	Journalism: Broadcast
20	Sydney Stout	F	6-0	Jr	Marketing
24	Taylah Thomas	F	6-1	So	Nursing/Public Health
2	Alexis Tolefree	G	5-8	Jr	Sociology
30	Macy Weaver	F	6-3	So	Supply Chain Management
10	Kiara Williams	C	6-1	Jr	Communication
22	Bailey Zimmerman	F	6-0	Sr	Apparel Merchandise & Product Development

BY STATE

ARKANSAS	
Malica Monk	N. Little Rock
Raven Northcross-Baker	Malvern
Grayce Spangler	Fayetteville
Alexis Tolefree	Conway
Kiara Williams	Little Rock
Bailey Zimmerman	St. Vincent

GEORGIA

A'Tyanna Gaulden	Ocilla
------------------	--------

ILLINOIS

Macy Weaver	Davis Junction
-------------	----------------

OHIO

Jailyn Mason	Mason
--------------	-------

OKLAHOMA

Chelsea Dungee	Sapulpa
Sydney Stout	Bixby

TEXAS

Amber Ramirez	San Antonio
Taylah Thomas	Arlington

AFRICA

Rokia Doumbia	Mali
---------------	------

FA-NETIK

PRONUNCIATIONS

0	A'Tyanna	AH-tee-ah-nuh
3	Malica	mal-ick-cuh
10	Kiara	key-R-uh
13	Grayce	GRACE
14	Jailyn	JAY-lyn
23	Rokia Doumbia	ro-KEY-uh doom-BE-uh
24	Taylah	TAI-lah

THE SOUTHEASTERN CONFERENCE (Dec. 30, 2018)

Team	SEC					Overall				
	W-L	Pct.	H	A	W-L	Pct.	H	A	N	Strk
Kentucky	0-0	.000	0-0	0-0	13-1	.929	10-0	0-1	3-0	W4
Auburn	0-0	.000	0-0	0-0	12-1	.923	6-0	4-1	2-0	W9
Mississippi State	0-0	.000	0-0	0-0	12-1	.923	7-0	5-1	0-0	W2
Tennessee	0-0	.000	0-0	0-0	11-1	.917	7-1	2-0	2-0	W3
Texas A&M	0-0	.000	0-0	0-0	11-2	.846	7-1	2-0	2-1	W7
Arkansas	0-0	.000	0-0	0-0	11-3	.786	6-1	3-1	2-1	W6
Missouri	0-0	.000	0-0	0-0	11-3	.786	5-2	4-0	2-1	W3
LSU	0-0	.000	0-0	0-0	9-3	.750	7-2	2-1	0-0	W4
Georgia	0-0	.000	0-0	0-0	9-4	.692	8-0	0-3	1-1	W3
South Carolina	0-0	.000	0-0	0-0	8-4	.667	5-2	2-0	1-2	W4
Alabama	0-0	.000	0-0	0-0	8-5	.615	6-1	2-1	1-3	L1
Ole Miss	0-0	.000	0-0	0-0	6-8	.429	6-4	0-1	0-3	W1
Vanderbilt	0-0	.000	0-0	0-0	5-8	.385	4-2	1-3	0-3	W1
Florida	0-0	.000	0-0	0-0	4-9	.308	4-3	0-5	0-1	W1

2019 SEC Women's Basketball Tournament
March 6 - 10 • Greenville, SC
Bon Secours Wellness Arena

Wednesday, March 6
Game 1 Seed #12 vs. Seed #13 TBD
Game 2 Seed #11 vs. Seed #14 TBD

Thursday, March 7
Game 3 Seed #8 vs. Seed #9 TBD
Game 4 Game 2 winner vs. Seed #5 TBD
Game 5 Seed #10 vs. Seed #7 TBD
Game 6 Game 2 winner vs. Seed #6 TBD

Friday, March 8
Game 7 Game 3 winner vs. Seed #1 TBD
Game 8 Game 4 winner vs. Seed #4 TBD
Game 9 Game 5 winner vs. Seed #2 TBD
Game 10 Game 6 winner vs. Seed #3 TBD

Saturday, March 9
Game 11 Game 7 winner vs. Game 8 winner TBD
Game 12 Game 9 winner vs. Game 10 winner TBD

Sunday, March 10
Final Game 11 winner vs. Game 12 winner TBD

OPPONENT

→ The Bulldogs saw their 46-game winning streak in regular-season non-conference play snapped by No. 7 Oregon. Their last loss was at Texas on Dec. 2, 2015.

→ Seniors Jazzmun Holmes and Teaira McCowan have won 111-career games, 4th-most in the nation since 2015-16. Their 83 wins since 2016-17 are second only to UConn for the nation's best.

→ State has been in the AP poll 83 straight weeks, including 47 weeks in a row in the Top 10.

→ The Bulldogs are the nation's second-best scoring offense, averaging 92.6 ppg. Its 52.1 ppg allowed is eighth in the country, and they have the top scoring margin at +40.5 in Division I.

→ MSU leads the SEC in FG% (51.6%), rebounding (45.8 rpg), assist/turnover ratio (1.5), assists (19.3 apg), rebound margin (+17.0), and scoring offense (92.6).

→ The Bulldogs are first in the SEC and the NCAA with 94 blocked shots. Teaira McCowan's 37 blocks are fourth in the nation and lead the SEC.

→ Teaira McCowan has scored double figures in 18 of her last 21 games going back to last season, with 9 of those being 20-point efforts.

LAST MEETING

Official Basketball Box Score - Game Totals - Final Statistics
Arkansas vs #5/3 Mississippi State
01/04/18 8:02 p.m. at Starkville, Miss. (Humphrey Coliseum)

Arkansas 69 • 10-5 (1-1 SEC)

#	Player	Total		3-Ptr		Rebounds		PF	TP	A	TO	Blk	Stl	Min
		FG	FGA	FG	FGA	Off	Def							
11	WILLIAMS, Kiara	5-5	1-1	2-2	0	2	2	1	13	0	3	1	0	20
03	MONK, Malica	3-16	0-1	2-4	0	3	3	3	8	4	1	1	2	29
14	MASON, Jailyn	7-11	1-1	0-0	1	2	3	0	15	4	2	1	0	35
21	COSPER, Devin	5-13	2-7	1-2	1	6	7	3	13	3	4	0	0	32
22	ZIMMERMAN, Bailey	1-2	0-1	2-3	0	3	3	3	4	0	1	0	0	20
01	NORTHCROSS-BAKER,	3-9	2-6	0-0	0	1	1	2	8	1	1	0	1	19
04	SWENSON, Ketrin	0-0	0-0	0-0	1	1	2	1	0	0	1	0	0	15
13	SPANGLER, Grayce	2-3	0-1	0-1	1	0	1	1	4	0	2	0	0	3
20	STOUT, Sydney	0-0	0-0	0-0	0	0	0	0	0	0	0	0	0	4
24	THOMAS, Taylah	2-2	0-0	0-0	1	5	6	2	4	0	0	0	0	17
30	WEAVER, Macy	0-0	0-0	0-0	0	0	0	0	0	0	0	0	0	3
51	MCCLURE, Brenna	0-1	0-0	0-0	0	0	0	1	0	0	0	0	0	3
Team		1-1		0-1		0-1		1		1		0		3
Totals		28-62	6-18	7-12	6	23	29	17	69	12	16	3	3	200

1st - FG %: 8-18 44.4% 2nd: 8-17 47.1% 3rd: 7-13 53.8% 4th: 5-14 35.7% Game: 28-62 45.2% Deadball Rebounds 3
3FG %: 2-4 50.0% 3FG %: 1-1 100.0% 3FG %: 4-8 50.0% 3FG %: 0-1 0.0% 3FG %: 6-18 33.3% 3FG %: 7-12 58.3%

#5/3 Mississippi State 111 • 16-0 (2-0 SEC)

#	Player	Total		3-Ptr		Rebounds		PF	TP	A	TO	Blk	Stl	Min
		FG	FGA	FG	FGA	Off	Def							
15	Teaira McCowan	5-11	0-0	8-9	2	6	8	1	18	1	1	1	0	27
01	Blair Schaefer	5-7	4-6	0-0	0	1	1	4	14	0	0	0	0	26
02	Morgan William	8-14	1-2	1-1	0	1	1	0	18	3	1	0	0	28
11	Roshunda Johnson	6-12	1-4	0-0	0	3	3	2	13	10	0	0	3	29
35	Victoria Vivians	13-20	3-7	0-0	3	6	9	2	29	2	0	0	2	33
10	Jazzmun Holmes	1-2	0-0	2-2	0	2	2	2	4	3	1	0	1	12
20	Nyah Tate	1-1	0-0	0-0	0	0	0	0	2	0	0	0	0	2
23	Bre'Amber Scott	1-1	0-0	2-2	0	1	1	0	4	1	0	0	1	5
24	Jordan Danberry	2-4	0-0	0-0	1	2	3	1	4	3	0	0	0	15
25	Zion Campbell	1-3	0-0	1-2	1	2	3	2	2	0	0	1	0	13
55	Chloe Bibby	1-1	1-1	0-0	0	1	1	1	2	2	1	0	0	10
Team		3-5		8-8		3		5		8		2		7
Totals		44-76	10-20	13-14	10	30	40	15	111	25	4	2	7	200

1st - FG %: 10-23 43.5% 2nd: 10-20 50.0% 3rd: 13-17 76.5% 4th: 12-17 70.6% Game: 44-76 57.9% Deadball Rebounds 0
3FG %: 2-8 25.0% 3FG %: 3-3 100.0% 3FG %: 4-5 80.0% 3FG %: 6-6 100.0% 3FG %: 13-14 92.9%

Officials: Gina Cross, Eric Koch, Greg Small
Technical fouls: Arkansas-None. #5/3 Mississippi State-None.
Attendance: 5388

Score by periods					
1st	2nd	3rd	4th	Total	
Arkansas	20	19	18	12	69
#5/3 Mississippi State	22	27	30	32	111

Last FG - AR 4th-00:14, MS 4th-00:29.
Largest lead - AR by 5 1st-00:28, MS by 44 4th-00:29.
AR led for 04:59, MS led for 32:47. Game was tied for 02:14.

Points In Off 2nd Fast Bench
AR 20 3 4 11 16
MS 46 37 12 13 19

Score tied - 5 times.
Lead changed - 3 times.

SERIES RECORDS

OPPONENT	SERIES	H	A	N	LAST	NEIGHBORS AT UA
Northwestern State	14-3	10-0	0-3	4-0	H - W 98-53 (11/9/2018)	1-0 1-0
at UT-Arlington	8-0	3-0	3-0	1-0	A - W 66-65 (11/14/2018)	2-0 2-0
Arizona State	1-1	0-1	1-1	0-0	H - L 88-85 (11/18/2018)	2-6 0-2
Tennessee State-1	3-0	1-0	0-0	2-0	N - W 79-55 (11/23/2018)	1-0 1-0
Pittsburgh-1	1-1	0-0	0-0	1-1	N - L 61-54 (11/24/2018)	1-1 0-1
Wisconsin-1	2-0	1-0	0-0	2-0	H - W 69-68 (11/25/2018)	1-0 1-0
Oral Roberts	21-9	16-2	5-7	0-0	A - W 74-61 (11/28/2018)	2-0 2-0
at Iowa State-^	1-1	1-0	0-1	0-0	A - L 91-82 (12/2/2018)	0-1 0-1
Tennessee Tech	1-1	1-0	0-1	0-0	H - W 65-42 (12/4/2018)	1-0 1-0
at Abilene Christian	2-0	1-0	1-0	0-0	A - W 80-68 (12/8/2018)	2-0 2-0
Prairie View A&M	2-0	1-0	0-0	1-0	H - W 71-44 (12/17/2018)	1-0 1-0
Nebraska	1-1	1-0	0-1	0-0	A - W 84-80 (12/18/2018)	1-1 1-1
at Tulsa	22-3	10-2	12-1	0-0	A - W 61-59 (12/20/2018)	2-0 2-0
Jackson State	4-0	4-0	0-0	0-0	H - W 76-57 (12/30/2018)	1-0 1-0
Alabama	22-15	11-6	10-7	1-2	A - W 74-66 (2/4/2018)	1-1 1-1
Auburn	15-22	8-9	6-11	1-2	A - W 68-58 (1/14/2018)	1-0 1-0
Florida	9-28	5-11	3-12	1-5	H - L 65-51 (1/18/2018)	0-1 0-1
Georgia	5-32	3-15	2-16	0-1	A - L 78-65 (1/11/2018)	0-1 0-1
Kentucky	13-23	9-7	3-13	1-2	A - L 78-57 (2/15/2018)	1-2 0-2
LSU	16-32	9-14	7-15	0-3	H - L 62-57 (2/18/2018)	0-1 0-1
Ole Miss	17-26	12-5	2-16	3-5	H - W 73-72 (12/3/2017)	1-0 1-0
Mississippi State	18-19	10-6	6-11	2-2	A - L 111-69 91/4/2018	0-2 0-1
Missouri	11-10	6-3	4-7	1-0	H - L 84-58 (2/12/2018)	1-2 0-2
South Carolina	17-17	10-6	5-10	2-1	A - L 90-42 (1/25/2018)	0-1 0-1
Tennessee	3-31	2-14	1-14	0-2	H - L 90-85 (2/8/2018)	0-1 0-1
Texas A&M	21-10	11-3	8-5	2-2	N - L 82-52 (3/1/2018)	1-3 0-2
Vanderbilt	9-25	7-8	1-16	1-1	N - W 88-76 (2/28/2018)	1-1 1-1

FRONT LOADED

→ The SEC boasts great teams regardless of record or standings but Arkansas opens with a tough schedule through the first eight games in conference play.

→ First up is two-time NCAA runner-up and nationally-ranked (8 AP/7 USAT) Mississippi State.

→ We are at Missouri (Jan. 10) at Tennessee (Jan. 21) and host Georgia (Jan. 31). Missouri and Georgia have both floated in and out of the top 25 while Tennessee steps in at No. 10 in both polls (Dec. 24).

→ Arkansas also hosts Vanderbilt (Jan. 13) and Alabama (Jan. 24) but has road games at Ole Miss (Jan. 6) and Florida (Jan. 27). The Razorbacks are just 17-26 against the Rebels and have just two wins (2-16) in Oxford. Florida is equally as challenging with Arkansas trailing in the series, 9-28. We are 3-12 in Gainesville.

CONGRATS GRADUATE!

Seniors Malica Monk and Bailey Zimmerman donned a cap and gown in December as they graduated with their undergrad degrees. Monk is a rec and sport management major while Zimmerman majored in apparel merchandise and product development. Both players begin graduate school in January.



IN THE 4TH QUARTER ARKANSAS HAS ...

- Outscored opponents 285-224
- Shot .407 from the floor
- Committed fewer fouls (84-92)
- Committed fewer turnovers (32-65)
- Had more steals (39-16)
- Made more free throws (57-54)

A FREE SHOT

- Arkansas third in the SEC for made free throws with 209.
- Chelsea Dungee leads the Razorbacks shooting .764 (68-89) from the line.
- Dungee ranks ninth in the SEC in FT%.
- Dungee leads the SEC with 68 made FT. Next best is 58 makes.
- Arkansas is **fifth in the NCAA and first in the SEC** with 316 free throw attempts.
- The Razorbacks are **third in the SEC and eighth in the country** with 209 made free throws.

VERSUS THE SEC/COUNTRY

- Arkansas is **first in the SEC and eighth in the nation** averaging just 12.1 turnovers per game.
- The Razorbacks are fourth in the SEC with 64 blocked shots this year.
- Arkansas is third in the league with just 169 turnovers and fourth with a +7.4 turnover margin.
- Arkansas is third in the SEC with 140 steals.
- Chelsea Dungee **leads the SEC and is ninth in the nation** with 89 free throw attempts.
- Malica Monk ranks sixth in the league with 60 FTA.
- Chelsea Dungee **leads the SEC and is 10th in DI** with 68 made free throws.
- Alexis Tolefree is **first in the SEC and sixth in the NCAA** with 121 3-point field goal attempts.

WHAT'S HE SAYIN'?

Don't be alarmed if you don't understand what Head Coach Mike Neighbors is saying on the bench. He has a language all his own.

Coach Neighbors plays "Positionless Basketball". Instead of having guards, forwards and centers, he has Rabbits, Rackers, Locks and Dragons.



Rabbits run the floor and look to score quickly with a layup.



Rackers are the player with the ball - go to the rack.



Locks are the players who are trying to win the race to the corners



The Dragon is the last player down the court. Watch out for a long distance shot from this spot.

UNDER 10

- Arkansas has played seven of its 14 games to an under-10 point margin.
- The Razorbacks have won two games by a single point (UT-Arlington, Wisconsin). They defeated Tulsa by two and Nebraska by four.
- Arkansas lost to No. 22 Arizona State by one possession, three points.
- Arkansas lost on a neutral site to Pitt by seven points and at No. 22 Iowa State by nine points.

THE PATH TO A MILESTONE

- Malica Monk became the 28th player in program history to score 1,000 career-points. She reached the milestone with a layup in the second quarter in the win over Nebraska.
- Monk scored 110, 247 and 494 points, respectively, in each of her first three seasons.
- Monk has 180 points as a senior through 14 games - more points than she had in a complete season as a freshman.
- Monk has 16 made 3-point baskets this season. That is more than she had as a freshman (2) or a sophomore (7) in complete seasons.
- Monk has started 77 of 99 games including 72 in a row (She has missed some games with injury so the number is not consecutive).
- She has scored in double figures in 54 games, had 11 games with 20+ points and led the team in scoring in 14 games.
- Monk averages 10.4 ppg for her career and if she plays in 16 more games (every regular season game and one contest in the SEC Tournament), she will add 166 more points to her total for 1,197

OUR RECORD WHEN ...

Overall	11-3
Home	6-1
Away	3-1
Neutral	2-1
SEC	TBA
Home	-
Away	-
White Uniforms	6-2
Cardinal Uniforms	5-1
Anthracite Uniforms	-

LEADS/QUARTERS/HALFTIME/OT

Leading after the 1st quarter	6-1
Leading after the 2nd quarter/Half	6-1
Leading after the 3rd quarter	7-1
Leading at the half, home	4-0
Leading at the half, road/neutral	2-0
Tied at the half, home	1-0
Tied at the half, road/neutral	-
Trailing at the half, home	1-1
Trailing at the half, road/neutral	2-2
Games decided by 5 points or fewer	4-1
Games decided by 10 points or fewer	5-3
Leading with 5:00 left	10-0
Leading with 2:00 left	11-0
Overtime games	-

OFFENSE

Scoring less than 70 points	4-1
Scoring 70-79 points	4-0
Scoring 80-89 points	2-2
Scoring 90-99 points	1-0
Scoring 100+ points	-
2 Players Or Less in Double Figures	3-0
3 Players in Double Figures	3-1
4 Players in Double Figures	3-2
5 Players in Double Figures	1-0
More than 5 players in Double Figures	1-0 (NSU)
1 Player Scores 20+ Points	6-0
2 Players Score 20+ Points	0-2
When shooting 50 percent or higher	1-0
When shooting less than 50 percent	10-3

REBOUNDING/TURNOVERS

When outrebounding opponent	5-0
When outrebounded	5-3
When rebounds are even	1-0
When grabbing 10+ offensive reb	9-3
When forcing 15+ turnovers	10-2
When committing less than 15 turnovers	7-3
When committing 15+ turnovers	4-0

Top Scorers (Includes Ties)

Tolefree	NSU, UTA, ASU, Pitt, ACU, JSU
Monk	UTA
Dungee	TSU, Wisc., ORU, ISU, TTU, NEB, TUL
Thomas	PVAM

Top Rebounders (Includes Ties)

Williams	NSU, ASU, TSU, ORU, ISU, TTU, ACU, PVAM, NEB, TUL, JSU
Thomas	NSU, UTA, Wisc.
Zimmerman	Pitt

Months

In November	5-2
In December	6-1
In January	
In February	
In March	

career points. That would make her 20th all-time in program history.

→ If Monk were to average 12.9 points in 17 games (her 2018-19 ppg average), she would finish with 1,237 career points to rank 17th in program history.

1,000 POINT CLUB

21.	Amanda Holley (81-84)	3	94	1,154
22.	Monica Brown (83-87)	4	103	1,145
23.	Kelly Johnson (92-96)	4	113	1,109
24.	Blair Savage (89-93)	4	114	1,072
25.	Sarah Pfeifer (02-08)	6	124	1,056
26.	Kim Bunge (79-83)	4	114	1,047
27.	Lonniya Bragg (97-01)	4	129	1,036
28.	Malica Monk (16-present)	4	99	1,031
29.	Whitney Jones (05-09)	4	119	961
30.	Keira Peak (11-14)	4	126	936
31.	Charity Ford (07-10)	4	117	917
32.	Rochelle Vaughn (02-06)	4	120	894
33.	Devin Cosper (2016-18)	3	88	866
34.	Jhasmin Bowen (12-15)	4	108	861
35.	Lanell Dawson (85-87)	2	59	858
	Jailyn Mason (17-present)	3	74	666

IN COMPARISON

→ Arkansas has led six of its 14 games at the half.

→ Arkansas has outscored opponents in the second half in 10 games and tied them once.

→ Arkansas has made more free throws than its opponents in 11 games and had the same number of makes once.

→ The Razorbacks have committed 10 or fewer turnovers six times and had fewer miscues than their opponents in 12 games.

→ Arkansas has had double-figure steals in nine games.

DOUBLING UP

→ Chelsea Dungee has scored in double figures in 12 games with 20+ points seven times (Arizona State, Wisconsin, Oral Roberts, Iowa State, TTU, Neb, TUL).

→ Malica Monk has scored in double figures in 11 games while Alexis Tolefree has posted double digits seven times.

→ Dungee (7x), Monk (1x) and Tolefree (2x) have scored 20+ points this season.

→ Three players have had double figure rebounding games. Kiara Williams had 11 boards against Tennessee State, ORU and ACU. She had 10 against PVAMU & TUL. Bailey Zimmerman had 11 rebounds against Pitt & PVAMU and Taylah Thomas grabbed 12 rebounds against Wisconsin.

→ Bailey Zimmerman had the first double-double of the season and of her career with 11 points and 11 rebounds against Pitt.

NEWCOMERS CAN SCORE

→ Alexis Tolefree (6x) and Chelsea Dungee (7x) have led Arkansas in scoring.

→ Redshirt transfer Chelsea Dungee leads the team averaging 17.0 points per game.

→ Junior college transfer Alexis Tolefree is third on the team averaging 12.4 points per game.

→ Newcomers Chelsea Dungee, Alexis Tolefree, A'Tyanna Gaulden and Rokia Doumbia have scored 506 of Arkansas' 1044 points. That is 48.5% of the team's points this season.

SHE SHOOTS, SHE SCORES

→ Chelsea Dungee has been an offensive boost to the Razorback lineup this year. She leads the team in scoring - here are just a few of the numbers.

→ Nine consecutive games in double figure scoring to start the season.

→ Career-best 28 points versus Tennessee Tech.

→ Career-best 13-for-16 from the line at No. 23/22 Iowa State.

→ Seven games with 20 or more points including a streak of four consecutive games at 20 or more points scored.

→ Leads Arkansas with 17.0 points per game and 238 points scored.

→ Second on the team with 22 made 3-pointers.

→ Top guard for efficiency shooting 37.0% (74-for-200).

→ Leading free throw shooter at 76.4% with the most makes (68) and attempts (89).

→ Led the team in scoring in seven games.

BIG NUMBERS

→ Arkansas' offense is much-improved from a year ago. Several players have stepped up to lead the team at different times. Here are a few details:

→ Ten different players have scored in double figures this year.

→ Chelsea Dungee has scored in double figures in 12 games.

→ Malica Monk has scored in double figures in 11 games.

→ Alexis Tolefree has scored in double figures in nine games.

→ Jailyn Mason has double-digit points in five games.

→ Kiara Williams has four double-digit scoring performances and four double-figure rebounding games. A'Tyanna Gaulden has two games in double figures.

→ Bailey Zimmerman (1x) and Taylah Thomas (3x) have each posted double figure point totals this season.

SEC CAREER LEADERS

→ Malica Monk ranks 10th among active SEC players for career points with 1,031.

→ Kiara Williams is 12th among active SEC players with 387 career rebounds and T-8th with 54 career blocked shots.

OUR RECORD WHEN ...

MARGIN OF VICTORY/DEFEAT			
Points	Win	Loss	Total
1	2	0	2-0
2	1	0	1-0
3	0	1	0-1
4	1	0	1-0
5			
6			
7	-	1	0-1
8			
9	0	1	0-1
10			
11-15	3	0	3-0
16-19	1	0	1-0
20+	3	0	3-0

QUARTER RECORDS

Most First Period Points

2018-19	28	NSU (11-9-18)
All-Time	29	at Alabama (1-15-17)
Opponent	33	No. 15 Missouri (2-12-18)

Fewest First Period Points

2018-19	10	Nebraska (12-18-18)
All-Time	3	UTEP (11-24-17)*
Opponent	4	TTU (12-4-18)

Most Second Period Points

2018-19	28	Abilene Christian (12-8-18)*
All-Time	31	HBU (12-28-16)
Opponent	35	at #2 S. Carolina (1-3-16)

Fewest Second Period Points

2018-19	8	at Tulsa (12-20-18)*
All-Time	4	vs. Kentucky (2-17-17)
Opponent	3	at Alabama (1-15-17)

Most First Half Points

2018-19	56	NSU (11-9-18)
All-Time	65	Tenn State (11-27-88)
Opponent	63	Texas (1-9-89)

Fewest First Half Points

2018-19	18	ORU (11-28-18)*
All-Time	11	at Missouri (3-1-15)*
Opponent	8	Montana State (1-5-03)

Most Third Period Points

2018-19	31	at #22 Iowa State (12-2-18)
All-Time	34	HBU (12-28-16)*
Opponent	39	#22 Iowa State (12-2-18)

Fewest Third Period Points

2018-19	13	at Tulsa (12-20-18)
All-Time	7	Florida (1-18-18)*
Opponent	4	LSU (1-21-16)

Most Fourth Period Points

2018-19	27	Nebraska (12-18-18)
All-Time	32	Tulsa (11-23-15)
Opponent	33	Alabama (1-7-18)

Fewest Fourth Period Points

2018-19	7	TTU (12-4-18)
All-Time	5	#7 Ore. St. (11-28-15)
Opponent	10	#24 Missouri (1-17-16)*

Largest Margin of Victory

2018-19	56 (98-53)	NSU (11-9-18)
All-Time	79 (108-29)	B Wesleyan (2-18-77)
Opponent	54 (28-82)	La Tech (11-30-78)

*Most Recent

→ Malica Monk ranks fourth with 155 career steals and is ninth with 286 career assists.

HOME GROWN

- Arkansas has six in-state players on the roster this year.
- That is the most Arkansans on the team since 2010 when there were seven in-state players.
- The Razorbacks have had 113 players from the state on its rosters with Little Rock producing the most with 11 student-athletes.

GUARD HEAVY

- Arkansas has nine players who list their positions as guard or point guard and two others who are guard/forwards.
- The guard-heavy lineup allows the Razorbacks to play "Functionally Fast" - or as fast as they can while functioning at a high level.
- Look for senior Malica Monk and redshirt sophomore A'Tyanna Gualden to handle the ball a lot. Both players are fast and don't make many mistakes.

THREEEEEEE POINT BASKET

- Arkansas wants to be a 3-point shooting team.
- The Razorbacks have 107 made 3-pointers this year.
- Alexis Tolefree leads the team with 34 made 3-point baskets followed by Chelsea Dungee with 22 makes from distance.

FUNCTIONALLY FAST

- Coach Neighbors wants Arkansas to play as fast as they can function. That means move quickly but don't make a lot of mistakes and that is exactly what the Razorbacks did last year.
- Arkansas led the SEC and ranked fourth in the nation for fewest turnovers with just 360 miscues in 31 games last season.
- Play fast and don't turn it over is Arkansas' motto this year.
- Possessions are important. Arkansas has taken 1,259 shots (943 FG+316 FT) with 573 (364 FG+209 FT) makes (45.5%).
- Arkansas has turned the ball over only 169 times. The Razorbacks have played five games (Pitt, Iowa State, Tennessee Tech, Abilene Christian, PVAMU) with single-digit turnovers.

SPEAKING OF FAST

Fast starts are something that the Razorbacks want to take advantage of this season. With speed and depth, it will be one of the advantages Arkansas has against bigger teams.

Scoring in the first five minutes:	ASU 12-19 (L)	TTU 3-2 (W)
SWB 18-2 (exh)	TSU 8-9 (W)	ACU 9-5 (W)
ECU 9-4 (exh)	Pitt 8-4 (L)	PVAM 9-9 (W)
NSU 15-9 (W)	Wis 11-5 (W)	ACU 2-13 (W)
UTA 13-4 (W)	ORU 13-2 (W)	TUL 6-4 (W)
	ISU 8-11 (L)	JSU 5-5 (W)

FINISHING STRONG

Along with the fast starts, Arkansas is looking to finish strong - that is the benefit of depth late in the game.

THE POLLS

Dec. 31, 2019

AP TOP 25

RK	TEAM	RECORD	PTS
1	UConn (31)	11-0	775
2	Notre Dame	12-1	741
3	Louisville	12-0	714
4	Maryland	12-0	645
5	Oregon	11-1	641
6	Stanford	10-1	622
7	Mississippi State	12-1	586
8	Baylor	8-1	584
9	NC State	13-0	527
10	Tennessee	11-1	499
11	Oregon State	10-2	452
12	Minnesota	12-0	427
13	Texas	10-2	402
14	Syracuse	11-2	369
15	Michigan State	11-1	304
16	Kentucky	13-1	295
17	Gonzaga	12-1	234
18	California	9-2	201
19	Iowa	9-3	185
20	Marquette	10-3	183
21	Texas A&M	11-2	173
22	Arizona State	9-3	97
23	South Carolina	8-4	76
24	DePaul	9-4	72
25	Iowa State	10-2	66

Others receiving votes: Virginia Tech 59, Florida State 52, Utah 32, Miami 23, Arizona 15, Indiana 11, South Dakota 7, Auburn 4, South Dakota State 1, Central Michigan 1

Jan. 1, 2019

USA TODAY COACHES POLL

RK	TEAM	RECORD	PTS
1	UConn (31)	11-0	775
2	Notre Dame	12-1	736
3	Louisville	12-0	716
4	Maryland	12-1	668
5	Oregon	11-1	646
6	Mississippi State	12-1	595
7	Baylor	9-1	590
8	Stanford	10-1	583
9	NC State	13-0	532
10	Tennessee	11-1	502
11	Oregon State	10-2	442
12	Texas	10-2	419
13	Minnesota	12-1	370
14	Syracuse	11-2	367
15	Kentucky	13-1	310
16	Marquette	11-3	255
17	Michigan State	11-1	249
18	Gonzaga	13-1	246
19	California	9-2	210
20	Iowa	9-3	193
21	Texas A&M	11-2	126
22	Arizona State	9-3	116
23	Florida State	12-1	110
24	DePaul	10-4	81
25	Virginia Tech	13-0	67

Others receiving votes: Iowa State 32, Miami 30, South Carolina 26, UAB 18, South Alabama 13, West Virginia 9, UCF 9, Indiana 9, Missouri 8, USC 5, New Mexico 4, South Dakota 2, Central Michigan 2, Arizona 2, Tulane 2

Scoring in the final five minutes:	ASU 16-11 (L)	TTU 2-9 (W)
SWB 9-0 (exh)	TSU 14-4 (W)	ACU 4-4 (W)
ECU 17-8 (exh)	Pitt 5-8 (L)	PVAM 7-9 (W)
NSU 9-5 (W)	Wis 12-12 (W)	NEB 7-15 (W)
UTA 4-6 (W)	ORU 9-10 (W)	TUL 12-14 (W)
	ISU 5-6 (L)	JSU 15-10 (W)

SOME THINGS REMAIN THE SAME

TRUST, TALENT AND TIME

My program will be built on three things. It's very simple.

→ TRUST - The highest form of loyalty that has to be earned, managed and sometimes re-earned. If we don't have this, nothing will work and the stool's legs will fall off and everything will collapse.

→ TALENT - It doesn't mean you can dribble, shoot, pass and rebound. It's a lot of other things like the ability to engage with the fan base and willingness to sign autographs for a 10-year-old child you might be inspiring.

→ TIME - It's just not being on time or making time. It's how you utilize your time and who you invest your time with and be around.

Trust, talent and time. Those will be our pillars.

SIDE BY SIDE

→ One of the things Mike Neighbors stressed when he was hired was his desire to take care of the players, the staff and the fans who have been loyal to the Razorback program. He has told our fans that he wants them to stand "Beside Us". Don't be behind us, stand next to us and go through the process of building our program.

→ You will notice the team and coaches line up and walk side-by-side from the half court line to the baseline of every game. It is a final moment of reflection, a chance to clear your head and a reminder that we are in this together.

HOME SWEET HOME

→ Arkansas has had just one losing home season in 42 years (2009-10)

→ Arkansas is 428-147 (6-1 in '18-'19) in home games including a 269-112 record in Bud Walton Arena. Arkansas was 159-35 in Barnhill Arena.

FROM MIKE NEIGHBORS

Here is a quick look at a couple observations from head coach Mike Neighbors about this year's team:

→ We are still small. There is no getting around it - Malica Monk did not grow in the off-season. This year, Arkansas has nine guards with Monk listed at 5-5 and Grayce Spangler and Chelsea Dungee at 5-11. If you look at the four guards who return with playing experience our average height is about 5-7.

→ We may be small but we are fast. Look for Arkansas to push the tempo even more this season. Not only do the Razorbacks have individually fast players, they have a lot of them so legs should be fresh for the entire game.

→ Neighbors is looking for a high number of shot attempts versus a low number of turnovers. Turnovers are a wasted possession - you don't have a chance to score. Last season, Arkansas took 2077 shots and committed just 360 turnovers. Arkansas ranked **fifth in the SEC** in shots taken and was **first in the SEC** with just 360 turnovers.

→ Arkansas has more shot-makers this year. The Razorbacks return their leading scorer and add in a couple of redshirt players who made significant offensive contributions during the trip to Italy, the exhibitions and non-conference games.

MONK GETS PRESEASON NOD

Senior Malica Monk was selected as a Second-Team All-Southeastern Conference honoree in a vote by the league's coaches. Monk, a senior from Little Rock, Arkansas, led the Razorbacks and was 12th in the SEC averaging 15.9 points per game a year ago. Billed as one of the fastest players in the SEC, Monk also accounted for 3.4 rebounds per game, had a team-best 122 assists, made 38 3-pointers and went 114-146 from the line as a junior.

GIMMIE THE BALL

→ Malica Monk and Jailyn Mason are climbing the career assists ladder.

→ Monk began the year tied for No. 17 in program history and has 34 assists this year. She is currently No. 13 overall with 286 helps.

→ Mason jumped into the top-25 at Abilene Christian and has 217 assists.

NAME (CAREER)	YR	GP	AST
1. Amy Wright (98-02) *	4	131	717
2. Calli Berna (12-15)	4	128	667
3. Amber Nicholas (88-92)	4	117	538
4. C'eira Ricketts (09-12)	4	129	516
5. Christy Smith (94-98)	4	111	507
6. Tracy Webb (83-87)	4	117	444
7. Brittney Vaughn (04-08)	4	129	424
8. Rochelle Vaughn (02-06)	4	120	421
9. Donna Wilson (87-89)	2	58	332
Kimberly Wilson (93-97)	4	120	332
11. Cheryl Orcholski (80-84)	4	123	323
12. Juliet Jackson (86-90)	4	120	313
13. Malica Monk (16-pres.)	4	99	286
14. India Lewis (99-03)	4	128	276
15. Christi Willson (87-91)	3	87	268
Breaking in			
Jailyn Mason (2017-present)	3	75	217

*--Also ranks sixth all-time in SEC history

SPECIALTY STATS

Opponent	T/O	2ndCh	Paint	FastB	Bench	Ties	Leads	WL	Score	Leads overcome
NSU	36	14	38	11	46	0	0	W	98-53	
UTA	13	12	32	15	10	4	7	W	66-65	trailed by 7 3rd-5:11
#22 ASU	17	14	40	10	11	2	2	L	85-88	lost 2 2nd-3:43
TSU	35	12	30	19	26	1	3	W	79-55	Trailed by 5 1st-8:16
Pitt	19	10	22	10	17	1	0	L	54-61	lost 2 1st-9:40
Wis	15	11	28	6	6	2	3	W	69-68	trailed by 15 3rd-4:12
ORU	22	7	22	7	14	0	0	W	74-61	
#22 ISU	6	14	20	0	16	3	1	L	82-91	lost 2 2nd-3:40
TTU	28	13	30	4	20	0	0	W	65-42	
ACU	17	10	32	17	22	5	4	W	80-68	trailed by 5 2nd-2:58
PVAMU	14	24	36	17	36	3	2	W	71-44	trailed by 7 1st-0:16
Nebraska	25	9	24	10	11	3	5	W	84-80	trailed by 13 1st-3:30
Tulsa	16	8	26	8	8	3	7	W	61-59	trailed by 6 3rd-5:42
Jackson St.	23	7	24	10	24	6	6	W	76-57	trailed by 5 2nd-3:00

Totals	286	165	404	144	267	33	40
APG	20.4	11.8	28.9	10.3	19.1	2.4	2.9

Opponent	150	137	434	45	295	24	35
APG	10.7	9.8	31.0	3.2	21.1	1.7	2.5

BIGS KEY TRANSITION

Coach Neighbors believes that the bigs key Arkansas' transition game. If they can run the court - and Kiara Williams, Taylah Thomas and Macy Weaver can - it puts pressure on the defense. If our opponents' bigs don't get back, a guard has to pick one of our players up leaving someone open.

THE 2018 SIGNING CLASS

Signee	Pos.	Ht.	Hometown
Destinee Oberg	C	6-3	Burnsville, Minn.
Makayla Daniels	PG	5-8	Frederick, Md.
Marquesha Davis	F	6-0	Springdale, Ark.
Ginger Reece	F	5-10	Lawton, Okla.
Amber Ramirez	G	5-9	San Antonio, Texas

→ The class was ranked No. 11 by Blue Star Sports.

→ The recruiting class is ranked No. 4 in the Southeastern Conference behind powerhouses South Carolina, Tennessee and Mississippi State by All Star Girls Report. The class ranks 15th in the nation by the same service.

THE NATION'S PREMIER WBB CONFERENCE

- With nine national championships, 12 runner-up finishes, a nation-leading 38 Final Four appearances and 132 first-team All-America honors, the SEC stands firmly as the nation's premier intercollegiate women's basketball conference.
- Seven SEC teams played in the NCAA Tournament and an eighth team in the WNIT in 2018.
- Thirteen of the current SEC coaches have led teams to the NCAA Tournament, eight with their respective SEC teams.
- Eight current SEC coaches have taken teams to the Sweet 16, seven have advanced to the Elite Eight and four have gone on to the Final Four.
- Four current SEC coaches have been head coaches in the Final Four with two winning national championships.

STRONG NON-CON AS WELL

- In addition to the challenge of the SEC, Arkansas faces two additional NCAA Tournament teams in Arizona State and Nebraska in the non-conference portion of the schedule.
- Iowa State, a team Arkansas plays for the first time since 1980, is this year's Big 12/SEC Challenge opponent. The Cyclones have reached the NCAA Tournament 17 times in the last 22 years.
- Arkansas faces 14 non-conference opponents from 10 conferences ... Four of those teams finished in the top-4 in their league standings in 2018.
- The Razorbacks have faced all 14 of this year's non-conference opponents.
- Coach Neighbors is facing six of the non-conference foes for the first time as a head coach. They are: Northwestern State, Tennessee State, Iowa State, Tennessee Tech, Prairie View A&M and Jackson State.
- As a program, Arkansas is 79-22 against this year's non-conference opponents.
- Coach Neighbors is 14-9 as a HC against the non-conference schedule.

MORE EVIDENCE

- Need more evidence of the tough schedule? Arkansas ranks No. 52 in the Dec. 30 NCAA RPI poll.

STARTERS

Game	G	G	G	G	F
NSU	Northcross-Baker	Tolefree	Monk	Dungee	Williams
UTA	Mason	Tolefree	Monk	Dungee	Williams
ASU	Mason	Tolefree	Monk	Dungee	Williams
TSU	Mason	Tolefree	Monk	Dungee	Williams
PITT	Mason	Tolefree	Monk	Dungee	Williams
WISC	Mason	Tolefree	Monk	Dungee	Williams
ORU	Mason	Tolefree	Monk	Dungee	Williams
ISU	Zimmerman	Mason	Monk	Dungee	Williams
TTU	Mason	Tolefree	Monk	Dungee	Williams
ACU	Mason	Tolefree	Monk	Dungee	Williams
PVAM	Mason	Tolefree	Monk	Dungee	Williams
NEB	Mason	Tolefree	Monk	Dungee	Williams
TUL	Mason	Tolefree	Monk	Dungee	Williams
JSU	Mason	Tolefree	Monk	Dungee	William
MSU					
OM					
MO					
VU					
UT					
ALA					
FLA					
GA					
SC					
LSU					
AU					
KY					
GA					
OM					
MO					
TAMU					

RK	PREV	SCHOOL	REC	ROAD	NEUT	HOME
18	12	Mississippi St.	12-1	5-1	0-0	7-0
23	20	Kentucky	13-1	0-1	3-0	10-0
25	28	Tennessee	11-1	2-0	2-0	7-1
29	27	Auburn	12-1	3-1	2-0	6-0
38	39	Texas A&M	11-2	2-1	2-0	7-1
49	54	Missouri	11-3	4-0	2-1	5-2
52	49	Arkansas	11-3	3-1	2-1	6-1
56	62	South Carolina	8-4	2-0	1-2	5-2
62	78	LSU	9-3	2-1	0-0	7-2
94	92	Alabama	8-5	1-1	1-3	6-1
147	149	Georgia	9-4	0-3	1-1	8-0
180	178	Vanderbilt	5-8	1-3	0-3	4-2
243	228	Florida	4-9	0-5	0-1	4-3
256	255	Ole Miss	6-8	0-1	0-3	6-4

LEADS AND DEFICITS

Biggest Halftime Lead	29, NSU
Biggest Halftime Lead Lost	-
Biggest Halftime Deficit	27, Pitt
Biggest HT Deficit Erased	-
Biggest Overall Lead	46, NSU
Biggest Win Margin	45, NSU
Biggest Loss Margin	7, Pitt
Biggest Deficit Overcome	15, Wisc.

JUMP BALLS

Arkansas	3
Opponents	11

FIRST POINTS

Tolefree	NSU, ASU, TSU, ACU, PVAM
Dungee	Pitt, Wis., ACU (FT)
Monk	UTA, ISU, TUL, JSU
Williams	ISU (FT), PVAM (FT), NEB
Mason	TTU

DOUBLE FIGURE POINTS

Dungee	12
Monk	11
Tolefree	9
Mason	5
Williams	4
Thomas	3
Zimmerman	2
Gaulden	2
Doumbia	1

LEADING SCORER

Dungee	7
Tolefree	5
Zimmerman	1
Monk	1
Thomas	1

DOUBLE FIGURES FIRST HALF

Tolefree	NSU, ASU
Dungee	UTA, TTU, JSU
Monk	ACU

DOUBLE FIGURES/QUARTER

Tolefree	ASU (1Q)
Dungee	ISU (3Q-19), TTU (1Q-10), TUL (4Q-11)

20/30-PLUS POINTS

Tolefree	ASU, ACU
Dungee	ASU, Wis., ORU ISU, TTU, NEB, TUL
Monk	ISU

DOUBLE FIGURE REBOUNDS

Williams	TSU, ORU, ACU, PVAM, TUL
Zimmerman	Pitt, PVAM

LEADING REBOUNDER

Williams	10
Thomas	3
Zimmerman	2

DOUBLE DOUBLES

Zimmerman	Pitt
Williams	ACU

5+ASSISTS/10+ ASSISTS

Tolefree	Pitt
Mason	ACU

FIRST OFF THE BENCH

Thomas	12
Zimmerman	11
Gaulden	4
Doumbia	2
Mason	1
Northcross-Baker	1
Gaulden	1
Tolefree	1

CHARGES DRAWN

Gaulden	ASU
Dungee	Pitt
Tolefree	ORU (2), ACU
Monk	PVAM

FORCED 10 SECOND VIOLATION

2018-19	TBA
---------	-----

FORCED SHOT CLOCK VIOLATION

2018-19	10 (6 vs. TTU)
---------	----------------

FORCED INBOUND VIOLATION

2018-19	ASU
---------	-----

AND 1 CONVERSIONS

Dungee	6
Gaulden	2
Doumbia	2
Tolefree	1
Monk	1
Zimmerman	1
Williams	1

AND 1 MISS

Williams	3
Dungee	1
Monk	1
Gaulden	1
Tolefree	1
Northcross-Baker	1
Weaver	1

BUZZER BEATERS (UNDER 5 SEC)

Tolefree	UTA (game winner)
	Tulsa (:05, 3Q, 39-43)
Monk	Wisc (4.7 seconds, game winner)
Gaulden	ORU (:01, 1Q, 20-11)
Williams	Neb (:03, 3Q, 57-56)

SCORES BY QUARTERS

Opponent	1	2	HT	3	4	OT	Total
NSU	28/14	28/13	56/27	20/19	22/17	-	98/53
UTA	15/16	21/15	36/31	17/23	13/11	-	66/65
ASU	25/29	17/17	42/46	20/23	23/19	-	85/88
TSU	22/12	15/22	37/34	15/14	27/7	-	79/55
PITT	10/17	8/8	18/25	20/21	15/16	-	54/61
WISC	20/17	11/16	31/33	15/19	23/16	-	69/68
ORU	20/11	18/12	38/23	18/15	18/23	-	74/61
ISU	15/18	18/19	33/37	31/39	18/15	-	82/91
TTU	18/4	17/16	35/20	23/7	7/15	-	65/42
ACU	14/16	28/23	42/39	15/16	23/13	-	80/68
PVAM	13/18	13/4	26/22	21/9	24/13	-	71/44
NEB	10/15	21/21	31/36	26/20	27/24	-	84/80
TUL	18/17	8/10	26/27	13/16	22/16	-	61/59
JSU	16/15	12/13	28/28	26/9	22/20	-	76/57
MSU							
OM							
MO							
VU							
UT							
ALA							
FLA							
GA							
SC							
LSU							
AU							
KY							
GA							
OM							
MO							
TAMU							

CURRENT PLAYER DOUBLE-DOUBLES**2017-18**ZIMMERMAN, Bailey

11 pts	11 reb	Pittsburgh	11/24/18
--------	--------	------------	----------

2017-18MONK, Malica

10 pts	10 ast	Grambling	12/28/17
--------	--------	-----------	----------

WILLIAMS, Kiara

11 pts	11 reb	vs NMSU	11/25/17
12 pts	16 reb	Grambling	12/28/17
15 pts	14 reb	at Auburn	1/14/18
25 pts	10 reb	vs Vanderbilt	2/28/18
12 pts	11 reb	at Abilene Christian	12/8/18

2016-17MASON, Jailyn

10 pts	10 ast	at Ole Miss	1/1/17
10 pts	11 ast	Houston Baptist	12/28/16

THE LAST TIME ...

OFFENSE

Scored 110+	110, vs. Providence (11/16/98)
Scored 100+ points at home	101, Houston Baptist, 12-28-16
Scored 100+ points on the road	108, Baylor (3-6-91; SWC Tourn., Dallas)
Scored 90-99 points	98 vs. Northwestern State, 11-9-18
Scored 90+ points at home	98 vs. Northwestern State, 11-9-18
Scored 90+ points on the road	91, (91-80 Win in 3OT, 2-10-13, at Alabama)
Scored 80-89 points	84, Nebraska (12-18-18)
Scored 80-89 points at home	86, Mississippi Valley State (12-28-15)
Scored 80-89 points on the road	80 at Abilene Christian (12-8-18)
Scored 70-79 points	76, Jackson State, 12-30-18
Scored 70-79 points at home	74, ORU, 11-28-18
Scored 70-79 points on the road	61, at Tulsa, 12-20-18
Scored 60-69 points	66, Tennessee Tech, 12-4-18
Was held to 50-59	54, Pitt (11-24-18)
Was held to 49-40	42 at No. 9 South Carolina (1-25-18)
Was held to 39-20	32, at No. 2 South Carolina (1-3-16)
Was held to 20 or less	N/A
Made 30-39 field goals	32, No. 22 Arizona State (11-18-18)
Made 20-29 field goals	27, Jackson State, 12-30-18
Made 10-19 field goals	19, Pitt (11-24-18)
Made 10+ three-point field goals	12, Jackson State, 12-30-18
Did not make 3-pointer (since 1986)	0-10, at Miss State (L 44-47), 2-3-13
Made 30 free throws	38 at Florida (38-54); (2-22-04)
Made 15+ Free Throws	17, Nebraska (12-18-18)
Shot 40-49 or better	40.3% (27-67), Nebraska (12-18-18)
Shot 50-59 or better	57.6 (34-59) vs. Northwestern State, 11-9-18
Shot 60 % or better600 (36-60) vs. Ole Miss (W, 93-52; 3-3-13)
Held to less than 40 %	36.5% (27-74), Jackson State, 12-30-18
Held to less than 30 %	25.7% (19-17) vs Pitt (L, 61-54; 11-24-18)
Held to less than 20 %182 (10-55) vs. No. 6/7 Tennessee (1-8-12; L, 38-69)
Opponent shot over 50%	50.0% (33-66) vs. No. 15 Texas A&M (3-1-18) (SEC Tournament)
Held opponent to less than 40%	36.9% (24-65), Jackson State, 12-30-18
Held opponent to less than 30%	25.0% (18-72) Prairie View A&M (12-16-18)
Opponent shot less than 20% in a half200 (5-25), Grambling, 12-29-14 (1st)
Had 20 or more assists in a game	27, Houston Baptist, 12-28-16

DEFENSE

Allowed 100 points	104 vs. No. 17 Texas A&M (2-22-18)
Allowed 80-99 points	80, Nebraska (12-18-18)
Allowed 70-79 points	76 Vanderbilt, 2-28-18 (SEC Tournament)
Allowed 69-60 points	68 at Abilene Christian (12-8-18)
Held opponent to 59-50 points	57, Jackson State, 12-30-18
Held opponent to 40-49 points	44, Prairie View A&M (12-16-18)
Held opponent to 39-30	36, Northwestern State, 12-18-16
Held opponent under 45 points three cons. games	45, SHSU (11-8-13, W 81-45); 33 ORU (11-13-13, W 91-33); 45, Furman (11-16-13, W, 74-45)
Held an SEC opponent under 50 points in 3 cons. games	47, Auburn (1-29-15, W, 52-47); 42, Alabama (2-1-15, W, 53-42); #24/21 Georgia (2-9-15, W, 54-48)
Held opponent to 29 points or less	23, Binghamton, 11-30-13
Held an opponent under 15 points in a half	13, Northwestern State, 12-18-16
Held opponent under 15 field goals	14, Houston Baptist, 12-28-16
Held opponent under 15% from 3-point	12.5% (2-16) Prairie View A&M (12-16-18)
Had 70+ rebounds	74, Mississippi Valley State (11-24-89)
Had 60-69 rebounds	64, Prairie View A&M (12-16-18)
Had 50-59 rebounds	55, vs. NMSU, 11-25-17
Had five or more blocked shots in a game	13, Tennessee Tech, 12-4-18 (School Record)
Had 20 or more steals in a game	6, Jackson State, 12-30-18
Had 15 or more steals in a game	20, ORU (11-13-13)
Had 20 or more turnovers in a game	17, Jackson State, 12-30-18
Forced 20-25 or more Turnovers in a game	23 at Arizona State, 12-21-17
Forced 20-25 or more Turnovers in a game	28, Jackson State, 12-30-18

OTHER

Won an overtime game	91-80 Win in 3OT, 2-10-13, at Alabama
Lost an overtime game	Florida (71-66), 1-28-16
Won a double overtime game	73-72, vs. Florida (1-29-12)
Lost a double overtime game	N/A
Won a triple overtime game	91-80 Win in 3OT, 2-10-13, at Alabama
Played consecutive OT games	1-24-16 at Auburn (lost); 1-28-16 vs Florida (lost)
Won regular season tournament	Nugget Classic (Reno, Nev., Nov. 25-26, 2016)
Defeated ranked team	64-52, No. 24 Missouri, 1-17-16
Defeated a ranked team on the road	57-53, at #19/18 LSU, 2-23-14; 77-76, #17/16 Iowa (Las Vegas), 12-18-14
All-time SEC win streak	8 games (1-15-12: Auburn through 2-15-12: at Auburn)
All-time SEC home win streak	5 games (1-15-12: Auburn -- 2-9-12: S. Carolina)

A RAZORBACK PLAYER ...

Scored 20-24 points	23, Chelsea Dungee, at Tulsa, 12-20-18
Scored 25-29 points	25, Kiara Williams vs. Vanderbilt, 2-28-18 (SEC Tournament)
Scored 30+ points	34, Jessica Jackson, Houston Baptist, 12-28-16
Scored 20+ points 10 times in a season	Malica Monk, 2017-18 (Samford 21, Neb. 22, ORU 24, NMSU, 22, KU 21, UTA 20, Ala. 21, FL 23, Tenn 25, 20 VU)
Double figures in 15 cons games (Season)	Jessica Jackson, 11/11/16, LSU 1-8-17
Scored 23+ points in three cons games	Jessica Jackson (24 at Georgia 1-16-14, 31 vs. Ole Miss 1-19-14, 23 at Kentucky 1-26-14)
Three players scored double figures in 1 game	Jackson State, 12-30-18 (Tolfree, Dungee, Monk)
Four players scored double figures in 1 game	at Abilene Christian (12-8-18)
Four players scored doubles figures for 4 cons. games	Tolfree (21), Monk (18), Williams (12), Thomas (12)
Four players scored double figures in 1 game	12-6-12 - 12-21-12; vs. Kansas, Furman, MVSU, and NSU
Five players scored double figures in 1 game	Nebraska (12-18-18)
Five Starters In Double Figures	Dungee (23), Monk (16), Tolfree (13), Williams (11), Mason (11)
Seven players scored in double figures in 1 game	Nebraska (12-18-18)
Seven players scored in double figures in 1 game	Dungee (23), Monk (16), Tolfree (13), Williams (11), Mason (11)
Seven players scored in double figures in 1 game	vs. Northwestern State, 11-9-18
Made 10+ field goals in a game	(Tolfree, Gaulden, Monk, Thomas, Dombia, Dungee, Williams)
Attempted 15-19 field goals in a game	12, Chelsea Dungee vs. Tennessee Tech, 12-4-18
Attempted 20+ field goals in a game	18, Chelsea Dungee, Jackson State, 12-30-18
Attempted 10 free throws in a game	24, Chelsea Dungee, at Tulsa, 12-20-18
Made 5 or more 3-pt FG in a game	10, Chelsea Dungee, at Tulsa, 12-20-18
Attempted 10+ 3-pointers in a game	5, Malica Monk at No. 22 Iowa State, 12-2-18
Had 10-14 rebounds	10, Alexis Tolfree, Jackson State, 12-30-18
Had 15+ rebounds	10, Kiara Williams, at Tulsa, 12-20-18
Had 10 offensive reb - Records go back to 05-06	16, Kiara Williams, Grambling State, 12-28-17
Had 10 defensive reb - Records go back to 05-06	11, Melissa Wolff vs. New Orleans (1-30-15)
Had 10+ assists	13, Devin Cosper, Alabama, 1-7-18
Had 10+ assists in cons games	10, Malica Monk, Grambling State, 12-28-17
Had 5+ blocks in a game	Jailyn Mason (11 vs. HBU, 12-28-16 and 10 at Ole Miss, 1-1-17), Calli Berna (11 vs. No. 10/8 KY 2/7/13 and 11 at UA 2/10/13)
Had 10+ blocks in a game	5, Kiara Williams vs. Tennessee Tech, 12-4-18
Had 5 or more steals in a game	9, Robyn Irwin vs. SMSU, 12-19-88 (school record)
Had a double-double	5, Alexis Tolfree at Abilene Christian (12-8-18)
Had a double-double in two cons games	Kiara Williams (12/11), at Abilene Christian (12-8-18)
Had two players record a double-double	2017-18: Devin Cosper (25/14) Charlotte and (11/11) Tulsa
Had seven double-doubles in a season	Kiara Williams (12 pts/16 reb) & Malica Monk (10 pts/10 reb), Grambling State, 12-28-17
Had 10+ double-doubles in a season	Devin Cosper, 2017-18 (SHSU, ORU, NMSU, Char., Tulsa, OM, AL)
Had a triple-double	2006-07, Lauren Ervin (14)
Had a triple-double	14 pts, 13 reb, 12 asts, C'eira Ricketts vs. Auburn (1-18-09)

MORE ABOUT MIKE

Hometown: Greenwood, Ark. (Greenwood HS)
Family: Daughter Abby; Son Alec
Alma Mater: Arkansas, 1993

NEIGHBORS BY THE NUMBERS

122	Wins (122-62, 6 seasons)
11	Players drafted in the WNBA
10	Signed McDonalds' All-Americans
5	Years as a head coach
4	Postseason appearances
1	Final Four appearance



LEARN MORE

Sign up for Mike Neighbors' newsletter and listen to his podcasts at CoachNeighbors.com

NABES FAVES

TOP 10 MOVIES

1. A Few Good Men
2. The Hunt For Red October
3. The Silence Of The Lambs
4. Hoosiers
5. Pretty Woman
6. Moneyball
7. Top Gun
8. JFK
9. The Lion King
10. Purple Rain

See the entire list here: <http://imdb.to/2royaEO>

TOP 10 SONGS

1. Sweet Child O' Mine (Guns N' Roses)
2. You Shook Me All Night Long (AC/DC)
3. Man In The Mirror (Michael Jackson)
4. Amarillo By Morning (George Strait)
5. Jessie's Girl (Rick Springfield)
6. Hysteria (Def Leppard)
7. Fishin' In The Dark (Nitty Gritty Dirt Band)
8. The Ballard of Curtis Loew (Lynyrd Skynyrd)
9. Wanted Dead Or Alive (Bon Jovi)
10. Let's Go Crazy (Prince)

TOP 10 TV SHOWS

1. West Wing (first three seasons)
2. The Wire
3. Breaking Bad
4. Seinfeld
5. The Newsroom
6. Prison Break
7. Arrested Development
8. Game of Thrones
9. The Sopranos
10. The Goldbergs

Entire list: <http://www.imdb.com/list/ls009377912/>



MIKE NEIGHBORS

THE MOST INTERESTING COACH IN COLLEGE BASKETBALL

Second Season | Career Record: 122-62 (6) | Arkansas Record: 24-21 (2)

ROOKIE NOD TO NAISMITH NOMINEE

In four short years Mike Neighbors went from a Spalding Maggie Dixon Division I Rookie Coach of the Year nominee in 2014, to a Naismith Women's College Coach of the Year national semifinalist in 2017.

Neighbors guided UW to an historic campaign in 2016-17 leading the Huskies to 27 wins, it's second most in program history, and he was just one shy of the all-time a school record set in 1990 (28).

Picked to place third in the Pac-12 in the preseason poll, UW tied for second in the league with a 15-3 record, it's best conference finish since 2003. The Huskies' 15 conference wins tied for third most in program history. Washington, who entered conference play with the program-best 12 non-conference wins, clinched its first-ever bye in the first round of the Pac-12 Tournament. Washington put together an 11-game win streak and a six-game win streak in Pac-12 play in 2016-17.

TIMELINE

→ Bentonville HS Head Coach	1994-98
→ Cabot HS Head Coach	1998-99
→ Arkansas Director of Ops	1999-01
→ Tulsa Univ. Assistant Coach	2001-05
→ Univ. of Colorado Assistant Coach	2005-06
→ Univ. of Arkansas Assistant Coach	2006-07
→ Xavier Assistant Coach	2007-2011
→ Univ. of Washington Assistant Coach	2011-13
→ Univ. of Washington Head Coach	2013-17
→ Univ. of Arkansas Head Coach	2017-present

COACHING AT MY ALMA MATER

- Mike Neighbors Arkansas, 1993
- Holly Warlick Tennessee, 1981

A couple of other coaches have SEC ties. Joni Taylor is the head coach at Georgia and a 2002 graduate of Alabama. Matthew Mitchell is a 1995 graduate of Mississippi State and is the head coach at Kentucky. Nikki Fargas graduated from Tennessee in 1994 and is the head coach at LSU. Vic Schaefer is the head coach at Mississippi State and a 1984 graduate of Texas A&M.

COACHING HISTORY

University of Washington

Year	Overall	Pac-12	Finish
2013-14	20-14 (.588)	10-8 (.556)	6
2014-15	23-10 (.697)	11-7 (.611)	5
2015-16	26-11 (.703)	11-7 (.611)	5
2016-17	29-6 (.829)	15-3 (.833)	T-2

University of Arkansas

Year	Overall	SEC	Finish
2017-18	13-18 (.419)	3-13 (.188)	T-11
2018-19	11-3 (.786)	0-0	TBA

Totals 122-62 (.663) 50-39 (.562) 6 yrs

PLAYER DEVELOPMENT

YEAR	UNIVERSITY	PLAYER	ROUND	OVERALL	TEAM NOTE
2017	Washington	Kelsey Plum	1	1	San Antonio Spurs ! @
	Washington	Chantel Osahor	2	21	Chicago Sky ! @
2016	Washington	Talia Walton	3	29	Los Angeles Sparks ! @
2011	Xavier	Amber Harris	1	4	Minnesota Lynx #
	Xavier	Ta'Shia Phillips	1	8	Atlanta Dream #
	TAMU/UAFS	Tanisha Smith	2	22	Seattle Storm #
	Colorado	Brittany Spears	2	19	Phoenix Mercury *
2009	Arkansas	Shameka Christon	1	5	New York Liberty #
2008	Arkansas	Lauren Ervin	3	37	Connecticut Sun #
2006	Tulsa	Megan Moody	-	-	Houston Comets
					Free Agent #
2003	Tulsa	Allison Curtin	1	12	Houston Comets ! #
	Arkansas	Dana Cherry	2	23	Traded to Detroit Shock
					Charlotte Sting

*-Recruited but did not coach

!-At the school when player was drafted

@-Worked with player as a head coach

#-Worked with player as an assistant coach

S-Worked with player as other (GA, etc)

COACHING DEVELOPMENT

Coach	w/Nabes	Now
Fred Castro	'14, '15, '16	HC Eastern Michigan
Adia Barnes	'14, '15	HC Arizona
Adam Call	'14	AC Eastern Michigan
Morgan Valley	'16	AC Arizona
Todd Schaefer	'16	AC Arkansas
Jasmine Lister	'16	AC DePaul

THE MOST INTERESTING MAN IN COLLEGE BASKETBALL

→ Grew up with a "Big Touk": Coach is lactose intolerant and often had Coke in his bottle.

→ Blueberry Please: When he got old enough to make his own breakfast, Pop Tarts were a regular. He liked the chocolate ones as a kid but prefers frosted blueberry now.

→ Movies: His expansive movie collection includes digital, disk and VHS copies. Did you know he used to work at BlockBuster?

→ Lunch Boxes: Coach collects tin lunch boxes and has them displayed in his home. His first lunch box had KISS on it. He got it in second grade.

→ Athens City Champion: Coach stumbled upon a dart tournament while on a trip to Athens, Georgia. He joined in and was one of the two-man winning team.



IT'S BIGGER THAN THE GAME

Mike Neighbors continued his support of breast cancer awareness this year serving as a Koman Ozarks Big Wig. He headlined a team tasked to raise both money and awareness for and of breast cancer.

Former Razorback India Lewis (1999-2003) lost her battle with breast cancer in August 2018. She was just 36 years old.

NEIGHBORS VERSUS ...				
Abilene Christian	2	0	Oklahoma	1 2
Alabama	1	1	Ole Miss	1 0
Arizona	2	6	Oral Roberts	2 0
Arizona State	6	0	Oregon State	1 6
Auburn	1	0	Oregon	5 3
Boise State	1	0	Pennsylvania	1 0
BYU	1	0	Pittsburgh	1 1
California	4	3	Portland	3 1
Charlotte	1	0	Prairie View A&M	1 0
Colorado State	1	0	Saint Mary's	0 1
Colorado	9	0	Sam Houston State	1 0
CSUN	1	0	Samford	1 0
DePaul	0	1	San Diego State	2 0
Eastern Washington	1	0	San Diego	1 0
Florida State	1	0	Santa Clara	1 0
Florida	0	1	Savannah State	1 0
Fresno State	2	0	Seattle	4 0
Furman	1	0	South Carolina	0 1
Georgia	0	1	South Dakota	2 0
Grambling State	2	0	Stanford	3 5
Grand Canyon	1	0	Syracuse	0 2
Hartford	1	0	Tennessee	0 1
Hawai'i	1	0	Tennessee State	1 0
Houston	1	0	Tennessee Tech	1 0
Idaho	1	0	Texas A&M	1 3
Iowa State	0	1	Texas Tech	1 0
Jackson State	1	0	Tulsa	2 0
Kansas	0	1	UC Irvine	1 0
Kentucky	1	2	UC Riverside	2 0
Louisiana-Monroe	1	0	UCLA	4 2
LSU	0	1	USC	6 0
Maryland	1	0	Utah	7 3
Miami	0	1	UT-Arlington	2 0
Mississippi State	0	2	UTEP	0 2
Missouri	1	2	Vanderbilt	1 1
Montana State	2	0	Washington State	5 3
Nebraska	1	1	Weber State	1 0
New Mexico State	1	0	Wisconsin	2 0
Northwestern St.	2	0	Yale	1 0
Notre Dame	0	1	TOTALS	122 62



Mike Neighbors
@coachneighbors

Replying to @RazorbackWBB

While we will be fighting for all, #21 India Lewis, will never be forgotten by the Razorbacks.

8:20am · 5 Sep 2018 · Twitter for iPhone

0 A'TYANNA GAULDEN

Stat	'18-'19	Career
Double Figure Pts	2	2
Double Figure Rebs		
Double-Doubles		
5 + Assists		
5 + Blocks		
5 + Steals		
Led Team in Pts		
Led Team in Reb		
20 + Points		

1 RAVEN NORTHCROSS-BAKER

Stat	'17-'18	'18-'19	Career
Double Figure Pts	3	-	3
Double Figure Rebs			
Double-Doubles			
5 + Assists			
5 + Blocks			
5 + Steals			
Led Team in Pts	2	-	2
Led Team in Reb			
20 + Points	1	-	1

2 ALEXIS TOLEFREE

Stat	'16-'17	'17-'18	'18-'19	Career
Double Figure Pts		26	9	35*
Double Figure Rebs		-		
Double-Doubles		-		
5 + Assists		3	1	4*
5 + Blocks		-		
5 + Steals		3		
Led Team in Pts		-	6	6
Led Team in Reb				
20 + Points		18	2	20*
30/40/50+ Points		1/1/1		

*missing junior college freshman season

3 MALICA MONK

Stat	'15-'16	'16-'17	'17-'18	'18-'19	Career
Double Figure Pts	3	13	27	11	54
Double Figure Rebs					
Double-Doubles (pts/ast)	-	-	1	-	1
5 + Assists	3	4	11	-	18
5 + Blocks					
5 + Steals	-	2	-	-	2
Led Team in Pts	-	-	13	1	1
Led Team in Reb	-	-	3	-	3
20 + Points	-	-	10	1	11

10 KIARA WILLIAMS

Stat	'16-'17	'17-'18	'18-'19	Career
Double Figure Pts	-	11	4	17
Double Figure Rebs	-	8	5	13
Double-Doubles (pts/reb)	-	4	1	5
5 + Assists				
5 + Blocks	-	-	1	1
5 + Steals				
Led Team in Pts	-	4	-	4
Led Team in Reb	-	13	9	23
20 + Points	-	1	-	1

13 GRAYCE SPANGLER

Stat	'17-'18	'18-'19	Career
Double Figure Pts			
Double Figure Rebs			
Double-Doubles			
5 + Assists			
5 + Blocks			
5 + Steals			
Led Team in Pts			
Led Team in Reb			
20 + Points			

14 JAILYN MASON

Stat	'16-'17	'17-'18	'18-'19	Career
Double Figure Pts	10	19	5	34
Double Figure Rebs				
Double-Doubles (pts/ast)	2	-	-	2
5 + Assists	6	5	1	12
5 + Blocks				
5 + Steals				
Led Team in Pts	-	8	-	8
Led Team in Reb	-	1	-	1
20 + Points				

20 SYDNEY STOUT

Stat	'16-'17	'17-'18	'18-'19	Career
Double Figure Pts				
Double Figure Rebs				
Double-Doubles				
5 + Assists				
5 + Blocks				
5 + Steals				
Led Team in Pts				
Led Team in Reb				
20 + Points				

22 BAILEY ZIMMERMAN

Stat	'15-'16	'16-'17	'17-'18	'18-'19	Career
Double Figure Pts	-	2	5	2	9
Double Figure Rebs	-	-	-	2	2
Double-Doubles	-	-	-	1	1
5 + Assists					
5 + Blocks					
5 + Steals					
Led Team in Pts					
Led Team in Reb	-	-	2	2	4
20 + Points					

23 AMBER RAMIREZ

Stat	'16-'17	'17-'18	'18-'19	Career
Double Figure Pts	7	18	RS	
Double Figure Rebs	-	-		
Double-Doubles	-	-		
5 + Assists	2	7		
5 + Blocks	-	-		
5 + Steals	-	-		
Led Team in Pts	NA	NA		
Led Team in Reb	-	-		
20 + Points	-	3		
30+ Points	-	1		

24 TAYLAH THOMAS

Stat	'17-'18	'18-'19	Career
Double Figure Pts	1	3	4
Double Figure Rebs	1	1	2
Double-Doubles			
5 + Assists			
5 + Blocks			
5 + Steals			
Led Team in Pts	-	1	1
Led Team in Reb	7	3	10
20 + Points			

30 MACY WEAVER

Stat	'17-'18	'18-'19	Career
Double Figure Pts			
Double Figure Rebs			
Double-Doubles			
5 + Assists			
5 + Blocks			
5 + Steals			
Led Team in Pts			
Led Team in Reb			
20 + Points			

33 CHELSEA DUNGEE

Stat	'18-'19	Career
Double Figure Pts	12	12
Double Figure Rebs		
Double-Doubles		
5 + Assists		
5 + Blocks		
5 + Steals		
Led Team in Pts	7	7
Led Team in Reb		
20 + Points	7	7

52 ROKIA DOUMBIA

Stat	'18-'19	Career
Double Figure Pts	1	1
Double Figure Rebs		
Double-Doubles		
5 + Assists		
5 + Blocks		
5 + Steals		
Led Team in Pts		
Led Team in Reb		
20 + Points		

Career at Arkansas only



@RazorbackWBB STATISTICS

AR Combined Team Statistics (as of Dec 30, 2018)

All games



RECORD:	OVERALL	HOME	AWAY	NEUTRAL
ALL GAMES	11-3	6-1	3-1	2-1
CONFERENCE	0-0	0-0	0-0	0-0
NON-CONFERENCE	11-3	6-1	3-1	2-1

##	Player	gp-gs	min	avg	Total		3-Point		F-Throw		Rebounds				pf	dq	a	to	blk	stl	pts	avg
					fg-fga	fg%	3fg-fga	3fg%	ft-fga	ft%	off	def	tot	avg								
33	DUNGEE, Chelsea	14-14	419	29.9	74-200	.370	22-74	.297	68-89	.764	9	56	65	4.6	29	1	15	29	3	22	238	17.0
03	MONK, Malica	14-14	368	26.3	65-155	.419	16-42	.381	34-60	.567	9	24	33	2.4	39	0	34	25	2	20	180	12.9
02	TOLEFREE, Alexis	14-13	360	25.7	59-182	.324	34-121	.281	21-28	.750	9	40	49	3.5	18	0	22	23	7	27	173	12.4
14	MASON, Jaielyn	14-13	377	26.9	38-97	.392	14-36	.389	9-13	.692	10	38	48	3.4	26	0	32	22	7	16	99	7.1
10	WILLIAMS, Kiara	14-14	289	20.6	38-71	.535	0-0	.000	22-33	.667	49	72	121	8.6	30	0	7	13	20	22	98	7.0
00	GAULDEN, A'Tyanna	14-0	197	14.1	28-70	.400	0-1	.000	20-26	.769	6	18	24	1.7	15	0	36	22	2	7	76	5.4
22	ZIMMERMAN, Bailey	14-1	311	22.2	21-66	.318	13-44	.295	16-25	.640	31	40	71	5.1	20	0	5	10	10	5	71	5.1
24	THOMAS, Taylah	14-0	236	16.9	22-44	.500	0-0	.000	11-25	.440	29	51	80	5.7	18	0	2	8	3	10	55	3.9
52	DOUMBIA, Rokia	9-0	76	8.4	7-17	.412	1-6	.167	4-5	.800	2	7	9	1.0	13	0	6	10	2	3	19	2.1
30	WEAVER, Macy	6-0	35	5.8	3-6	.500	0-0	.000	3-5	.600	6	8	14	2.3	8	0	1	1	9	2	9	1.5
01	NORTHCROSS-BAKE	12-1	97	8.1	6-26	.231	4-22	.182	1-3	.333	2	6	8	0.7	10	0	7	3	0	6	17	1.4
13	SPANGLER, Grayce	5-0	19	3.8	2-8	.250	2-6	.333	0-4	.000	3	0	3	0.6	4	0	0	0	0	0	6	1.2
20	STOUT, Sydney	6-0	16	2.7	1-1	1.000	1-1	1.000	0-0	.000	1	1	2	0.3	1	0	0	0	0	0	3	0.5
Team											30	22	52				3					
Total.....		14	2800		364-943	.386	107-353	.303	209-316	.661	196	383	579	41.4	231	1	167	169	65	140	1044	74.6
Opponents.....		14	2798		334-874	.382	77-257	.300	147-231	.636	192	425	617	44.1	284	7	194	273	51	83	892	63.7

TEAM STATISTICS	AR	OPP	Date	Opponent	Score	Att.
SCORING	1044	892	11/09/18	NORTHWESTERN STATE	w 98-53	5497
Points per game	74.6	63.7	11/14/18	at UT Arlington	w 66-65	1081
Scoring margin	+10.9	-	11/18/18	NO. 22 ARIZONA STATE	L 85-88	1519
FIELD GOALS-ATT	364-943	334-874	! 11/23/18	vs Tennessee State	w 79-55	750
Field goal pct	.386	.382	! 11/24/18	vs Pittsburgh	L 54-61	225
3 POINT FG-ATT	107-353	77-257	! 11/25/18	vs Wisconsin	w 69-68	450
3-point FG pct	.303	.300	11/28/18	ORAL ROBERTS	w 74-61	1119
3-pt FG made per game	7.6	5.5	# 12/02/18	at No. 22/23 Iowa State	L 82-91	10097
FREE THROWS-ATT	209-316	147-231	12/04/18	TENNESSEE TECH	w 65-42	915
Free throw pct	.661	.636	12/08/18	at Abilene Christian	w 80-68	1288
F-Throws made per game	14.9	10.5	12/16/18	PRAIRIE VIEW A&M	w 71-44	1892
REBOUNDS	579	617	12/18/18	NEBRASKA	w 84-80	1335
Rebounds per game	41.4	44.1	12/20/18	at Tulsa	w 61-59	1222
Rebounding margin	-2.7	-	12/30/18	JACKSON STATE	w 76-57	2270
ASSISTS	167	194	!-Challenge in Music City (Nashville, Tenn.)			
Assists per game	11.9	13.9	#- Big 12/SEC Challenge (Ames, Iowa)			
TURNOVERS	169	273	+-SEC Tournament (Greenville, S.C.)			
Turnovers per game	12.1	19.5	* = Conference game			
Turnover margin	+7.4	-				
Assist/turnover ratio	1.0	0.7				
STEALS	140	83				
Steals per game	10.0	5.9				
BLOCKS	65	51				
Blocks per game	4.6	3.6				
ATTENDANCE	14547	15113				
Home games-Avg/Game	7-2078	4-3422				
Neutral site-Avg/Game	-	3-475				

Score by Periods	1st	2nd	3rd	4th	Totals
AR	244	235	280	285	1044
Opponents	219	209	240	224	892



@RazorbackWBB STATISTICS
AR Game-by-Game Highs (as of Dec 30, 2018)
All games



Opponent	Date	Score	Points	Rebounds	Assists	Steals	Blocked shots
NORTHWESTERN STATE	11/09/18	98-53	19-TOLEFREE, Alexis	9-THOMAS, Taylah WILLIAMS, Kiara	4-MONK, Malica MASON, Jailyln	3-THOMAS, Taylah	1-ZIMMERMAN, Bail WILLIAMS, Kiara MASON, Jailyln
at UT Arlington	11/14/18	66-65	18-TOLEFREE, Alexis MONK, Malica	9-THOMAS, Taylah	3-MONK, Malica	3-MASON, Jailyln TOLEFREE, Alexis	1-DUNGEE, Chelsea ZIMMERMAN, Baile WILLIAMS, Kiara TOLEFREE, Alexis
NO. 22 ARIZONA STATE	11/18/18	85-88	22-TOLEFREE, Alexis	9-WILLIAMS, Kiara	3-MASON, Jailyln	3-WILLIAMS, Kiara	None
vs Tennessee State	11/23/18	79-55	16-DUNGEE, Chelsea	11-WILLIAMS, Kiara	4-MONK, Malica	3-MONK, Malica	3-ZIMMERMAN, Bail
vs Pittsburgh	11/24/18	54-61	12-TOLEFREE, Alexis	11-ZIMMERMAN, Bail	5-TOLEFREE, Alexis	4-TOLEFREE, Alexis	2-DUNGEE, Chelsea
vs Wisconsin	11/25/18	69-68	20-DUNGEE, Chelsea	12-THOMAS, Taylah	4-GAULDEN, A'Tyan	3-DUNGEE, Chelsea WILLIAMS, Kiara	None
ORAL ROBERTS	11/28/18	74-61	21-DUNGEE, Chelsea	11-WILLIAMS, Kiara	3-MONK, Malica	2-TOLEFREE, Alexis	3-WILLIAMS, Kiara
at No. 22/23 Iowa State	12/02/18	82-91	27-DUNGEE, Chelsea	6-WILLIAMS, Kiara	3-GAULDEN, A'Tyan	2-WILLIAMS, Kiara	1-GAULDEN, A'Tyan WILLIAMS, Kiara
TENNESSEE TECH	12/04/18	65-42	28-DUNGEE, Chelsea	9-WILLIAMS, Kiara	3-GAULDEN, A'Tyan MASON, Jailyln	3-MASON, Jailyln	5-WILLIAMS, Kiara
at Abilene Christian	12/08/18	80-68	21-TOLEFREE, Alexis	11-WILLIAMS, Kiara	5-MASON, Jailyln	5-TOLEFREE, Alexis	1-WILLIAMS, Kiara TOLEFREE, Alexis MASON, Jailyln ZIMMERMAN, Baile
PRAIRIE VIEW A&M	12/16/18	71-44	11-THOMAS, Taylah	11-ZIMMERMAN, Bail	3-GAULDEN, A'Tyan DOUMBIA, Rokia	2-WILLIAMS, Kiara	3-WILLIAMS, Kiara
NEBRASKA	12/18/18	84-80	23-DUNGEE, Chelsea	9-WILLIAMS, Kiara	4-MONK, Malica MASON, Jailyln	3-WILLIAMS, Kiara	1-TOLEFREE, Alexis ZIMMERMAN, Baile WILLIAMS, Kiara
at Tulsa	12/20/18	61-59	23-DUNGEE, Chelsea	10-WILLIAMS, Kiara	3-MASON, Jailyln	3-DUNGEE, Chelsea TOLEFREE, Alexis MONK, Malica	1-THOMAS, Taylah TOLEFREE, Alexis GAULDEN, A'Tyann MASON, Jailyln
JACKSON STATE	12/30/18	76-57	17-TOLEFREE, Alexis	8-WILLIAMS, Kiara	4-GAULDEN, A'Tyan	7-DUNGEE, Chelsea	3-WILLIAMS, Kiara



@RazorbackWBB STATISTICS
AR Category Leaders (as of Dec 30, 2018)
All games

Points	G	Pts	Pts/G
DUNGEE, Chelsea	14	238	17.0
MONK, Malica	14	180	12.9
TOLEFREE, Alexis	14	173	12.4
MASON, Jailyn	14	99	7.1
WILLIAMS, Kiara	14	98	7.0
GAULDEN, A'Tyanna	14	76	5.4
ZIMMERMAN, Bailey	14	71	5.1
THOMAS, Taylah	14	55	3.9
DOUMBIA, Rokia	9	19	2.1
NORTHCROSS-BAKER, Ra	12	17	1.4
WEAVER, Macy	6	9	1.5
SPANGLER, Grayce	5	6	1.2

FG Percentage	FG	Att	Pct
STOUT, Sydney	1	1	1.000
WILLIAMS, Kiara	38	71	.535
WEAVER, Macy	3	6	.500
THOMAS, Taylah	22	44	.500
MONK, Malica	65	155	.419
DOUMBIA, Rokia	7	17	.412
GAULDEN, A'Tyanna	28	70	.400
MASON, Jailyn	38	97	.392
DUNGEE, Chelsea	74	200	.370
TOLEFREE, Alexis	59	182	.324
ZIMMERMAN, Bailey	21	66	.318
SPANGLER, Grayce	2	8	.250

3-Point Percentage	3FG	Att	Pct
STOUT, Sydney	1	1	1.000
MASON, Jailyn	14	36	.389
MONK, Malica	16	42	.381
SPANGLER, Grayce	2	6	.333
DUNGEE, Chelsea	22	74	.297
ZIMMERMAN, Bailey	13	44	.295
TOLEFREE, Alexis	34	121	.281
NORTHCROSS-BAKER, Ra	4	22	.182
DOUMBIA, Rokia	1	6	.167
GAULDEN, A'Tyanna	0	1	.000

Free Throw Percent	FG	Att	Pct
DOUMBIA, Rokia	4	5	.800
GAULDEN, A'Tyanna	20	26	.769
DUNGEE, Chelsea	68	89	.764
TOLEFREE, Alexis	21	28	.750
MASON, Jailyn	9	13	.692
WILLIAMS, Kiara	22	33	.667
ZIMMERMAN, Bailey	16	25	.640
WEAVER, Macy	3	5	.600
MONK, Malica	34	60	.567
THOMAS, Taylah	11	25	.440
NORTHCROSS-BAKER, Ra	1	3	.333
SPANGLER, Grayce	0	4	.000

Scoring Average	G	Pts	Avg/G
DUNGEE, Chelsea	14	238	17.0
MONK, Malica	14	180	12.9
TOLEFREE, Alexis	14	173	12.4
MASON, Jailyn	14	99	7.1
WILLIAMS, Kiara	14	98	7.0
GAULDEN, A'Tyanna	14	76	5.4
ZIMMERMAN, Bailey	14	71	5.1
THOMAS, Taylah	14	55	3.9
DOUMBIA, Rokia	9	19	2.1
WEAVER, Macy	6	9	1.5
NORTHCROSS-BAKER, Ra	12	17	1.4
SPANGLER, Grayce	5	6	1.2

Field Goal Attempts	G	Att	Att/G
DUNGEE, Chelsea	14	200	14.3
TOLEFREE, Alexis	14	182	13.0
MONK, Malica	14	155	11.1
MASON, Jailyn	14	97	6.9
WILLIAMS, Kiara	14	71	5.1

Field Goals Made	G	Made	Made/G
DUNGEE, Chelsea	14	74	5.3
MONK, Malica	14	65	4.6
TOLEFREE, Alexis	14	59	4.2
WILLIAMS, Kiara	14	38	2.7
MASON, Jailyn	14	38	2.7

3-Point FG Attempts	G	Att	Att/G
TOLEFREE, Alexis	14	121	8.6
DUNGEE, Chelsea	14	74	5.3
ZIMMERMAN, Bailey	14	44	3.1
MONK, Malica	14	42	3.0
MASON, Jailyn	14	36	2.6

3-Point FG Made	G	Made	Made/G
TOLEFREE, Alexis	14	34	2.4
DUNGEE, Chelsea	14	22	1.6
MONK, Malica	14	16	1.1
MASON, Jailyn	14	14	1.0
ZIMMERMAN, Bailey	14	13	0.9

Free Throw Attempts	G	Att	Att/G
DUNGEE, Chelsea	14	89	6.4
MONK, Malica	14	60	4.3
WILLIAMS, Kiara	14	33	2.4
TOLEFREE, Alexis	14	28	2.0
GAULDEN, A'Tyanna	14	26	1.9

Free Throws Made	G	Made	Made/G
DUNGEE, Chelsea	14	68	4.9
MONK, Malica	14	34	2.4
WILLIAMS, Kiara	14	22	1.6
TOLEFREE, Alexis	14	21	1.5
GAULDEN, A'Tyanna	14	20	1.4



@RazorbackWBB STATISTICS
AR Category Leaders (as of Dec 30, 2018)
All games

Rebounds	G	Reb	Reb/G
WILLIAMS, Kiara	14	121	8.6
THOMAS, Taylah	14	80	5.7
ZIMMERMAN, Bailey	14	71	5.1
DUNGEE, Chelsea	14	65	4.6
TOLEFREE, Alexis	14	49	3.5

Rebound Average	G	Reb	Avg/G
WILLIAMS, Kiara	14	121	8.6
THOMAS, Taylah	14	80	5.7
ZIMMERMAN, Bailey	14	71	5.1
DUNGEE, Chelsea	14	65	4.6
TOLEFREE, Alexis	14	49	3.5

Offensive Rebounds	G	No.	Avg/G
WILLIAMS, Kiara	14	49	3.5
ZIMMERMAN, Bailey	14	31	2.2
THOMAS, Taylah	14	29	2.1
MASON, Jailyn	14	10	0.7
MONK, Malica	14	9	0.6
DUNGEE, Chelsea	14	9	0.6
TOLEFREE, Alexis	14	9	0.6

Defensive Rebounds	G	No.	Avg/G
WILLIAMS, Kiara	14	72	5.1
DUNGEE, Chelsea	14	56	4.0
THOMAS, Taylah	14	51	3.6
ZIMMERMAN, Bailey	14	40	2.9
TOLEFREE, Alexis	14	40	2.9

Fouls	G	No.	Per/G
MONK, Malica	14	39	2.8
WILLIAMS, Kiara	14	30	2.1
DUNGEE, Chelsea	14	29	2.1
MASON, Jailyn	14	26	1.9
ZIMMERMAN, Bailey	14	20	1.4

Foulouts	G	No.
DUNGEE, Chelsea	14	1

Assists	G	No.	Ast/G
GAULDEN, A'Tyanna	14	36	2.6
MONK, Malica	14	34	2.4
MASON, Jailyn	14	32	2.3
TOLEFREE, Alexis	14	22	1.6
DUNGEE, Chelsea	14	15	1.1

Steals	G	No.	Stl/G
TOLEFREE, Alexis	14	27	1.9
DUNGEE, Chelsea	14	22	1.6
WILLIAMS, Kiara	14	22	1.6
MONK, Malica	14	20	1.4
MASON, Jailyn	14	16	1.1

Blocked Shots	G	No.	Blk/G
WILLIAMS, Kiara	14	20	1.4
ZIMMERMAN, Bailey	14	10	0.7
WEAVER, Macy	6	9	1.5
TOLEFREE, Alexis	14	7	0.5
MASON, Jailyn	14	7	0.5

Minutes	G	No.	Min/G
DUNGEE, Chelsea	14	419	29.9
MASON, Jailyn	14	377	26.9
MONK, Malica	14	368	26.3
TOLEFREE, Alexis	14	360	25.7
ZIMMERMAN, Bailey	14	311	22.2

Turnovers	G	No.	TO/G
DUNGEE, Chelsea	14	29	2.1
MONK, Malica	14	25	1.8
TOLEFREE, Alexis	14	23	1.6
GAULDEN, A'Tyanna	14	22	1.6
MASON, Jailyn	14	22	1.6



@RazorbackWBB STATISTICS
AR Team Game-by-Game Comparison (as of Dec 30, 2018)
All games



Opponent	1st	2nd	Score	Mar	Total FG	FG Pct	3-Pointers	3FG Pct	Free Throws	FT Pct	Rebounds	Assist	T/Over	Block	Steal	Fouls
NORTHWESTERN STATE	56/27	42/26	98-53	+45	34-59/19-57	.576/.333	11-23/8-21	.478/.381	19-33/7-12	.576/.583	38/34 +4	18/14	16/30	3/1	11/10	15/27
UT Arlington	36/31	30/34	66-65	+1	26-63/25-72	.413/.347	5-16/7-15	.313/.467	9-18/8-12	.500/.667	42/39 +3	8/18	19/15	4/4	10/12	20/19
NO. 22 ARIZONA STATE	42/46	43/42	85-88	(3)	32-67/31-63	.478/.492	6-19/5-16	.316/.313	15-22/21-33	.682/.636	35/43 (8)	9/16	13/17	0/2	6/6	22/21
Tennessee State	37/34	42/21	79-55	+24	23-62/17-63	.371/.270	7-20/4-17	.350/.235	26-38/17-26	.684/.654	41/53 (12)	16/11	14/23	8/3	12/8	21/27
Pittsburgh	18/25	36/36	54-61	(7)	19-74/25-52	.257/.481	7-35/2-9	.200/.222	9-17/9-14	.529/.643	40/48 (8)	11/17	8/22	3/4	10/4	14/18
Wisconsin	31/33	38/35	69-68	+1	24-65/27-63	.369/.429	5-19/7-28	.263/.250	16-28/7-13	.571/.538	44/43 +1	11/21	10/16	0/6	11/1	17/22
ORAL ROBERTS	38/23	36/38	74-61	+13	23-66/21-61	.348/.344	4-20/5-18	.200/.278	24-29/14-18	.828/.778	45/41 +4	7/8	14/19	7/1	4/8	14/23
No. 22/23 Iowa State	33/37	49/54	82-91	(9)	26-68/34-69	.382/.493	11-27/8-29	.407/.276	19-25/15-19	.760/.789	37/47 (10)	13/20	7/11	2/7	6/1	22/19
TENNESSEE TECH	35/20	30/22	65-42	+23	27-74/18-56	.365/.321	7-23/4-16	.304/.250	4-6/2-9	.667/.222	42/42 -	9/11	9/21	13/5	13/2	12/12
Abilene Christian	42/39	38/29	80-68	+12	28-65/24-54	.431/.444	10-29/5-14	.345/.357	14-20/15-20	.700/.750	33/41 (8)	16/14	8/20	4/2	13/4	17/18
PRAIRIE VIEW A&M	26/22	45/22	71-44	+27	25-76/18-72	.329/.250	3-23/2-16	.130/.125	18-26/6-11	.692/.545	64/46 +18	11/7	8/13	8/6	7/4	12/20
NEBRASKA	31/36	53/44	84-80	+4	27-67/28-61	.403/.459	13-37/9-21	.351/.429	17-23/15-23	.739/.652	37/41 (4)	16/13	10/15	3/6	8/7	20/24
Tulsa	26/27	35/32	61-59	+2	23-63/23-66	.365/.348	6-25/5-17	.240/.294	9-16/8-13	.563/.615	41/50 (9)	7/12	18/23	4/1	12/8	14/17
JACKSON STATE	28/28	48/29	76-57	+19	27-74/24-65	.365/.369	12-37/6-20	.324/.300	10-15/3-8	.667/.375	40/49 (9)	15/12	15/28	6/3	17/8	11/17

Note: Game totals are displayed in the format TEAM/OPPONENT for each category



@RazorbackWBB STATISTICS
AR Points-Rebounds-Assists (as of Dec 30, 2018)
All games

Opponent	Date	Score	00	01	02	03	10	13	14
			GAULDEN,A'	NORTHCROSS	TOLEFREE,A	MONK,MALIC	WILLIAMS,K	SPANGLER,G	MASON,JAIL
NORTHWESTERN STATE	11/09/18	98-53 w	16-2-3	0-1-2	19-3-0	12-0-4	10-9-1	0-0-0	4-4-4
at UT Arlington	11/14/18	66-65 w	2-3-1	2-3-1	18-4-0	18-8-3	4-6-0	DNP	0-1-2
NO. 22 ARIZONA STATE	11/18/18	85-88 L	9-0-0	0-0-0	22-3-2	13-4-1	8-9-2	DNP	11-4-3
vs Tennessee State	11/23/18	79-55 w	9-2-3	4-0-1	14-3-2	13-2-4	6-11-2	DNP	4-2-2
vs Pittsburgh	11/24/18	54-61 L	2-2-3	0-0-0	12-6-5	5-3-2	5-4-0	DNP	5-1-1
vs Wisconsin	11/25/18	69-68 w	1-0-4	DNP	5-2-1	13-1-3	13-8-0	DNP	12-7-1
ORAL ROBERTS	11/28/18	74-61 w	2-1-1	3-0-0	4-5-1	17-3-3	6-11-0	DNP	12-6-0
at No. 22/23 Iowa State	12/02/18	82-91 L	4-2-3	0-0-0	10-5-2	22-1-0	4-6-1	DNP	10-4-2
TENNESSEE TECH	12/04/18	65-42 w	12-5-3	0-1-0	5-2-0	2-1-1	6-9-0	0-2-0	4-2-3
at Abilene Christian	12/08/18	80-68 w	7-1-4	DNP	21-1-3	18-0-4	12-11-0	DNP	5-5-5
PRAIRIE VIEW A&M	12/16/18	71-44 w	6-4-3	5-2-0	7-4-2	8-6-1	6-10-0	0-1-0	6-1-0
NEBRASKA	12/18/18	84-80 w	0-0-3	3-0-0	13-6-2	16-1-4	10-9-1	0-0-0	11-0-4
at Tulsa	12/20/18	61-59 w	4-2-1	0-0-0	6-4-1	12-1-2	6-10-0	DNP	6-5-3
JACKSON STATE	12/30/18	76-57 w	2-0-4	0-1-3	17-1-1	11-2-2	2-8-0	6-0-0	9-6-2

Opponent	Date	Score	20	22	24	30	33	52
			STOUT,SYDN	ZIMMERMAN,	THOMAS,TAY	WEAVER,MAC	DUNGEE,CHE	DOUMBIA,RO
NORTHWESTERN STATE	11/09/18	98-53 w	0-0-0	4-4-1	11-9-0	0-0-0	11-3-3	11-1-0
at UT Arlington	11/14/18	66-65 w	DNP	4-5-0	2-9-0	DNP	16-3-1	0-0-0
NO. 22 ARIZONA STATE	11/18/18	85-88 L	DNP	2-1-0	0-2-0	DNP	20-6-1	0-1-0
vs Tennessee State	11/23/18	79-55 w	0-0-0	12-4-1	1-3-0	0-5-0	16-6-0	0-0-1
vs Pittsburgh	11/24/18	54-61 L	DNP	11-11-0	4-8-0	DNP	10-1-0	DNP
vs Wisconsin	11/25/18	69-68 w	DNP	3-4-1	2-12-0	DNP	20-5-1	0-1-0
ORAL ROBERTS	11/28/18	74-61 w	DNP	4-3-0	0-6-0	4-1-0	21-5-1	1-0-1
at No. 22/23 Iowa State	12/02/18	82-91 L	DNP	3-3-2	2-4-1	DNP	27-5-2	DNP
TENNESSEE TECH	12/04/18	65-42 w	0-1-0	7-5-0	1-2-0	0-3-0	28-5-2	0-1-0
at Abilene Christian	12/08/18	80-68 w	DNP	3-5-0	12-6-0	DNP	2-1-0	DNP
PRAIRIE VIEW A&M	12/16/18	71-44 w	3-1-0	5-11-0	11-7-0	4-3-1	8-6-1	2-4-3
NEBRASKA	12/18/18	84-80 w	0-0-0	3-7-0	5-5-1	DNP	23-5-1	DNP
at Tulsa	12/20/18	61-59 w	DNP	4-4-0	0-1-0	DNP	23-9-0	DNP
JACKSON STATE	12/30/18	76-57 w	0-0-0	6-4-0	4-6-0	1-2-0	13-5-2	5-1-1

0 A'Tyanna Gaulden | So. | 5-7 | G | Ocilla, Ga. (Americus Sumter HS) | Florida State



SEASON HIGHS

Points	16	NSU	11-9-18
FG Made	6	TTU	12-4-18*
FG Att.	16	TTU	12-4-18
3FG Made			
3FG Att.	1	Pitt	11-24-18
FT Made	5	#22 ASU	11-18-18
FT Att.	7	NSU	11-9-18
Off. Reb.	3	TTU	12-4-18
Def. Reb.	3	at UTA	11-14-18
Rebounds	5	TTU	12-4-18
Assists	4	JSU	12-30-18*
Blocks	1	at #22 ISU	12-2-18
Steals	2	NSU	11-9-18
Minutes	24	TTU	12-4-18

CAREER HIGHS

Points	16	NSU	11-9-18
FG Made	6	TTU	12-4-18*
FG Att.	16	TTU	12-4-18
3FG Made			
3FG Att.	1	Pitt	11-24-18
FT Made	5	#22 ASU	11-18-18
FT Att.	7	NSU	11-9-18
Off. Reb.	3	TTU	12-4-18
Def. Reb.	3	at UTA	11-14-18
Rebounds	5	TTU	12-4-18
Assists	4	JSU	12-30-18*
Blocks	1	at #22 ISU	12-2-18
Steals	2	NSU	11-9-18
Minutes	24	TTU	12-4-18

*Most Recent

2018-19 GAME-BY-GAME

Opponent	M	FG	3P	FT	REB	A	TO	B	S	PT
NSU	17	6	-	4	2	3	4	-	2	16
at UTA	11	1	-	-	3	1	3	-	-	2
Arizona St.	13	2	-	5	-	-	1	-	1	9
Tenn. State	19	3	-	3	2	3	-	-	-	2
Pittsburgh	11	1	-	-	2	3	-	-	1	2
Wisconsin	17	-	-	1	-	4	1	-	1	1
ORU	7	1	-	-	1	1	2	-	-	2
Iowa State	16	1	-	2	2	3	2	1	1	4
Tenn. Tech	24	6	-	-	5	3	1	-	-	12
ACU	14	2	-	3	1	4	1	-	-	7
Prairie View	18	2	-	2	4	3	1	-	-	6
Nebraska	9	-	-	-	-	3	3	-	-	-
Tulsa	10	2	-	-	2	1	1	1	-	4
Jackson St	11	1	-	-	-	4	2	-	-	2
Miss State										
Ole Miss										
Missouri										
Vanderbilt										
Tennessee										
Alabama										
Florida										
Georgia										
S. Carolina										
LSU										
Auburn										
Kentucky										
Georgia										
Ole Miss										
Missouri										
Texas A&M										
SEC Tournament										

NOTES

- One of seven players in double figures in the season opener with 16 points versus Northwestern State.
- Twelve points in 24 minutes versus Tennessee Tech. Two games with double figure points.
- Redshirted the 2017-18 season due to NCAA transfer rules.
- Played in 21 games averaging 1.1 ppg, 0.6 rpg and 1.0 apg in 5.7 minutes per game at FSU.
- As a prep player, was ranked sixth among all guard in the ESPNW 2016 recruiting class and was No. 23 overall ... Five-star player who earned Atlanta Journal Constitution Player of the Year after her senior season.

CAREER STATISTICS

Year	GP-GS	Min	Avg	FG	Total FGA	Pct	3-Point FG	3-Point FGA	3-Point Pct	F-Throw FT	F-Throw FTA	F-Throw Pct	Off	Rebounds Def	Rebounds Tot	Avg	PF	FO	Ast	TO	Blk	Stl	Pts	Avg
2015-16*	21-0	119	5.7	7	15	.467	0	0	.000	9	14	.643	2	10	12	0.6	24	1	22	15	0	13	23	1.1
2018-19	13-0	186	14.3	27	67	.403	0	1	.000	20	26	.769	6	18	24	1.8	14	0	32	20	2	7	74	5.7
TOTAL**	13-0	186	14.3	27	67	.403	0	1	.000	20	26	.769	6	18	24	1.8	14	0	32	20	2	7	74	5.7

*at Florida State | **Totals from Arkansas only

1 Raven Northcross Baker | Sr. | 5-9 | G | Malvern, Ark. (Malvern HS) | Chipola Junior College



SEASON HIGHS

Points	5	PVAM	12-16-18
FG Made	2	PVAM	12-16-18
FG Att.	6	PVAM	12-16-18
3FG Made	1	NEB	12-18-18*
3FG Att.	5	PVAM	12-16-18
FT Made	1	TSU	11-23-18
FT Att.	2	TSU	11-23-18
Off. Reb.	1	PVAM	12-16-18*
Def. Reb.	3	at UTA	11-14-18
Rebounds	3	at UTA	11-14-18
Assists	3	JSU	12-30-18
Blocks			
Steals	2	TSU	11-23-18
Minutes	16	JSU	12-30-18*

CAREER HIGHS (AT ARKANSAS)

Points	22	UTA	12-17-17
FG Made	8	UTA	12-17-17
FG Att.	13	Vanderbilt	2-28-18
3FG Made	6	UTA	12-17-17
3FG Att.	12	Vanderbilt	2-28-18
FT Made	7	ACU	11-29-17
FT Att.	8	ACU	11-29-17
Off. Reb.	3	Grambling	12-18-17
Def. Reb.	7	Tulsa	12-10-17
Rebounds	9	Tulsa	12-10-17
Assists	7	Vanderbilt	2-28-18
Blocks	1	at #9 SC	1-25-18*
Steals	3	UTA	12-17-17
Minutes	29	Florida	1-18-18

*Most Recent

2018-19 GAME-BY-GAME

Opponent	M	FG	3P	FT	REB	A	TO	B	S	PT
NSU	16	-	-	-	1	2	1	-	1	-
at UTA	10	1	-	-	3	1	-	-	-	2
Arizona St.	4	-	-	-	-	-	1	-	-	-
Tenn. State	9	1	1	1	-	1	-	-	2	4
Pittsburgh	3	-	-	-	-	-	-	-	-	-
Wisconsin	DNP									
ORU	9	1	1	-	-	-	-	-	-	3
Iowa State	2	-	-	-	-	-	-	-	-	-
Tenn. Tech	4	-	-	-	1	-	-	-	-	-
ACU	DNP									
Prairie View	12	2	1	-	3	-	1	-	1	5
Nebraska	7	1	1	-	-	-	-	-	1	3
Tulsa	5	-	-	-	-	-	-	-	-	-
Jackson St	16	-	-	-	1	3	-	-	1	-
Miss State										
Ole Miss										
Missouri										
Vanderbilt										
Tennessee										
Alabama										
Florida										
Georgia										
S. Carolina										
LSU										
Auburn										
Kentucky										
Georgia										
Ole Miss										
Missouri										
Texas A&M										
SEC Tournament										

NOTES

- Three games in double figures as a junior.
- Ten games with two or more 3-point field goals as a junior.
- Arkansas Athletics Department Honor Roll (3.0-3.49 GPA) | Fall 2017.
- 17 points in exhibition (2017) including 12 points in the first quarter.
- Had her first 20+ point game as a Razorback with 22 points against UTA as a junior.

CAREER STATISTICS

Year	GP-GS	Min	Avg	FG	Total FGA	Pct	3-Point FG	3-Point FGA	3-Point Pct	F-Throw FT	F-Throw FTA	F-Throw Pct	Off	Rebounds Def	Rebounds Tot	Avg	PF	FO	Ast	TO	Blk	Stl	Pts	Avg
2015-16*	26-14	69	2.7	97	229	.424	58	149	.389	21	33	.636	47	39	86	3.3	6	-	46	32	-	58	273	10.5
2016-17*	33-33	210	6.4	171	433	.395	77	247	.312	54	83	.651	74	77	151	4.6	9	-	77	44	3	56	473	14.3
Totals*	59-47	279	4.7	268	662	.405	135	396	.341	75	116	.647	121	116	237	4.0	15	-	123	76	3	114	746	12.6
2017-18**	31-1	603	19.5	57	193	.295	37	137	.270	22	33	.667	32	50	82	2.6	47	1	50	28	4	18	173	5.6
2018-19**	11-1	81	7.4	6	22	.273	4	18	.222	1	3	.333	2	5	7	0.6	9	0	4	3	0	5	17	1.5
TOTAL**	42-2	684	16.3	63	215	.293	41	155	.265	23	36	.639	34	55	89	2.1	56	1	54	31	4	23	190	4.5*At

Chipola Junior College **Totals are from Arkansas only.

20 - Social | @RazorbackWBB

2 Alexis Tolefree | Jr. | 5-8 | G | Conway, Ark. (Conway HS) | Jones County JC



SEASON HIGHS

Points	22	#22 ASU	11-18-18
FG Made	8	at ACU	12-8-18*
FG Att	23	Pitt	11-24-18
3FG Made	5	JSU	12-30-18*
3FG Att	16	Pitt	11-24-18
FT Made	4	NEB	12-18-18*
FT Att	6	NSU	11-9-18
Off. Reb.	2	Wisconsin	11-25-18
Def. Reb.	6	NEB	12-18-18
Rebounds	6	NEB	12-18-18*
Assists	5	Pitt	11-24-18
Blocks	2	ORU	11-28-18
Steals	5	at ACU	12-8-18
Minutes	36	at UTA	11-14-18

CAREER HIGHS

Points	22	#22 ASU	11-18-18
FG Made	8	at ACU	12-8-18*
FG Att	23	Pitt	11-24-18
3FG Made	5	JSU	12-30-18*
3FG Att	16	Pitt	11-24-18
FT Made	4	NEB	12-18-18*
FT Att	6	NSU	11-9-18
Off. Reb.	2	Wisconsin	11-25-18
Def. Reb.	6	NEB	12-18-18
Rebounds	6	NEB	12-18-18*
Assists	5	Pitt	11-24-18
Blocks	2	ORU	11-28-18
Steals	5	at ACU	12-8-18
Minutes	36	at UTA	11-14-18

*Most Recent

2018-19 GAME-BY-GAME

Opponent	M	FG	3P	FT	REB	A	TO	B	S	PT
NSU	21	5	5	4	3	-	3	-	2	19
at UTA	36	6	3	3	4	-	1	1	3	18
Arizona St.	33	8	3	3	3	2	4	-	1	22
Tenn. State	27	4	3	3	3	2	3	-	1	14
Pittsburgh	32	4	3	1	6	5	2	-	4	12
Wisconsin	17	2	1	-	2	1	1	-	-	5
ORU	26	1	-	2	5	1	2	2	2	4
Iowa State	26	4	1	1	5	2	1	-	-	10
Tenn. Tech	20	2	1	-	2	-	1	-	2	5
ACU	29	8	5	-	1	3	1	1	5	21
Prairie View	19	3	1	-	4	2	1	1	1	7
Nebraska	25	3	3	4	6	2	1	1	-	13
Tulsa	26	3	-	-	4	1	1	1	3	6
Jackson St	23	6	5	-	1	1	1	-	3	17
Miss State										
Ole Miss										
Missouri										
Vanderbilt										
Tennessee										
Alabama										
Florida										
Georgia										
S. Carolina										
LSU										
Auburn										
Kentucky										
Georgia										
Ole Miss										
Missouri										
Texas A&M										
SEC Tournament										

NOTES

- Arkansas career-best 22 points against No. 22 Arizona State.
- Scored in double figures in nine games this year.
- Two-Time Junior College All American.
- Scored 50 points (16-26) vs. Copiah-Lincoln ... 42 points at Meridian (16-22) and 31 points vs. Copiah-Lincoln (8-22, 5-14, 10-10) in 2017-18 at Jones County.
- Ranked second in the MACJC and seventh nationally in scoring.
- Ranked third in the nation in 3-point field goals per game.
- Lead team to Region 23 Title- with 50 points vs. Copiah-Lincoln.

CAREER STATISTICS

Year	GP-GS	Min	Avg	FG	Total FGA	Pct	3-Point FG	3-Point FGA	3-Point Pct	F-Throw FT	F-Throw FTA	F-Throw Pct	Off	Rebounds Def	Rebounds Tot	Avg	PF	FO	Ast	TO	Blk	Stl	Pts	Avg
2016-17*	NA																							
2017-18*	29-27	867	29.9	205	476	.431	104	286	.364	104	127	.819	19	73	92	3.2	64	0	75	58	13	58	618	21.3
2018-19**	13-12	337	25.9	53	170	.312	29	111	.261	21	28	.750	9	39	48	3.7	18	0	21	22	7	24	156	12.0
TOTAL**	13-12	337	25.9	53	170	.312	29	111	.261	21	28	.750	9	39	48	3.7	18	0	21	22	7	24	156	12.0

*at Jones County JC | **Totals from Arkansas only

3 Malica Monk | Gr. | 5-5 | G | N. Little Rock, Ark. (N. Little Rock HS)



SEASON HIGHS

Points	22	at #22 ISU	12-2-18
FG Made	8	at #22 ISU	12-2-18
FG Att	16	ORU	11-28-18
3FG Made	5	at #22 ISU	12-2-18
3FG Att	8	at #22 ISU	12-2-18
FT Made	7	ORU	11-28-18
FT Att	8	ORU	11-28-18*
Off. Reb.	3	at UTA	11-14-18
Def. Reb.	6	PVAMU	12-16-18
Rebounds	8	at UTA	11-14-18
Assists	4	NEB	12-20-18*
Blocks	1	PVAMU	12-16-18*
Steals	3	at Tulsa	12-20-18*
Minutes	33	ORU	11-28-18

CAREER HIGHS

Points	25	#11 Tennessee	2-8-18
FG Made	9	#11 Tennessee	2-8-18*
FG Att	28	Florida	1-18-18
3FG Made	5	at #22 ISU	12-2-18
3FG Att	10	at Kentucky	2-15-18
FT Made	12	UTA	12-17-17
FT Att	12	UTA	12-17-17
Off. Reb.	3	at UTA	11-14-18*
Def. Reb.	8	Samford	11-12-17
Rebounds	9	Samford	11-12-17
Assists	10	Grambling	12-18-17
Blocks	3	LSU	1-8-17
Steals	6	Kentucky	2-16-17*
Minutes	40	at Vanderbilt	2-25-18*

*Most Recent

2018-19 GAME-BY-GAME

Opponent	M	FG	3P	FT	REB	A	TO	B	S	PT
NSU	21	4	2	2	-	4	3	-	1	12
at UTA	19	7	-	4	8	3	4	-	2	18
Arizona St.	17	5	-	3	4	1	1	-	-	13
Tenn. State	21	4	1	4	2	4	3	-	3	13
Pittsburgh	31	2	-	1	3	2	1	-	2	5
Wisconsin	27	5	-	3	1	3	-	-	1	13
ORU	33	5	-	7	3	3	1	-	-	17
Iowa State	24	8	5	1	1	-	-	-	1	22
Tenn. Tech	17	1	-	-	1	1	1	1	1	2
ACU	26	6	3	3	-	4	3	-	3	18
Prairie View	22	3	-	2	6	1	1	1	1	8
Nebraska	31	7	2	-	1	4	1	-	1	16
Tulsa	30	5	1	1	1	2	4	-	3	12
Jackson St	28	3	2	3	2	2	2	-	1	11
Miss State										
Ole Miss										
Missouri										
Vanderbilt										
Tennessee										
Alabama										
Florida										
Georgia										
S. Carolina										
LSU										
Auburn										
Kentucky										
Georgia										
Ole Miss										
Missouri										
Texas A&M										
SEC Tournament										

NOTES

- Eleven games in double figures this season.
- Game winning layup helping Arkansas erase a 15-point deficit to Wisconsin.
- Career-best five 3-point field goals at No. 22 Iowa State.
- Team's leading scorer from a year ago.
- Fifty-four career games with double figure scoring including 27 as a junior and 10 as a senior.
- Eighteen career games with five or more assists.
- Arkansas Athletics Department Honor Roll (3.0-3.49 GPA) | Fall 2016, Fall 2017, Spring 2018.
- Malica Monk scored 494 points in 2017-18. Her single season best was 247 points set in 27 games in 2016-17.
- Graduated in December with a degree in Sports & Recreation Management.
- Twenty-eighth 1,000-point scorer in program history.

CAREER STATISTICS

	Total						3-Point			F-Throw			Rebounds											
Year	GP-GS	Min	Avg	FG	FGA	Pct	FG	FGA	Pct	FT	FTA	Pct	Off	Def	Tot	Avg	PF	FO	Ast	TO	Blk	Stl	Pts	Avg
2015-16	27-5	461	17.1	48	136	.353	2	10	.200	12	19	.632	6	23	29	1.1	60	2	47	44	5	23	110	4.1
2016-17	27-27	842	31.2	96	230	.417	7	25	.280	48	71	.676	29	52	81	3.0	79	2	83	59	7	62	247	9.1
2017-18	31-31	1061	34.2	171	488	.350	38	126	.302	114	146	.781	21	84	105	3.4	69	1	122	70	6	50	494	15.9
2018-19	13-13	340	26.2	62	145	.428	14	37	.378	31	56	.554	9	22	31	2.4	38	0	32	23	2	19	169	13.0
TOTAL	98-76	2704	27.6	377	999	.377	61	198	.308	205	292	.702	65	181	246	2.5	246	5	284	196	20	154	1020	10.4

10 Kiara Williams | Jr. | 6-1 | F/C | Little Rock, Ark. (Little Rock Central HS)



SEASON HIGHS

Points	13	Wisconsin	11-25-18
FG Made	5	Wisconsin	11-25-18*
FG Att.	10	Wisconsin	11-25-18
3FG Made			
3FG Att.			
FT Made	4	NEB	12-18-18*
FT Att.	7	NEB	12-18-18
Off. Reb.	5	JSU	12-30-18*
Def. Reb.	8	NEB	12-18-18*
Rebounds	11	at ACU	12-8-18*
Assists	2	TSU	11-23-18*
Blocks	5	TTU	12-4-18
Steals	3	JSU	12-30-18*
Minutes	25	#22 ASU	11-18-18

CAREER HIGHS

Points	25	Vanderbilt	2-28-18
FG Made	11	at Vanderbilt	2-28-18
FG Att.	13	at Vanderbilt	2-28-18
3FG Made	1	#5 Miss. St.	1-4-18
3FG Att.	1	#5 Miss. St.	1-4-18
FT Made	7	LSU	2-20-18
FT Att.	11	Charlotte	12-6-17
Off. Reb.	8	Grambling	12-18-17*
Def. Reb.	11	at Kansas	12-3-17
Rebounds	16	Grambling	12-18-17*
Assists	2	TSU	11-23-18*
Blocks	5	TTU	12-4-18
Steals	4	Charlotte	12-6-17
Minutes	32	Vanderbilt	2-28-18

*Most Recent

2018-19 GAME-BY-GAME

Opponent	M	FG	3P	FT	REB	A	TO	B	S	PT
NSU	19	5	-	-	9	1	2	1	1	10
at UTA	18	2	9	9	6	-	2	1	-	4
Arizona St.	25	4	-	-	9	2	1	-	3	8
Tenn. State	20	2	-	2	11	2	1	1	2	6
Pittsburgh	21	2	-	1	4	-	-	-	-	5
Wisconsin	23	5	-	3	8	-	1	-	3	13
ORU	20	2	-	2	11	-	-	3	-	6
Iowa State	23	1	-	2	6	1	-	1	2	4
Tenn. Tech	16	3	-	-	9	-	-	5	1	6
ACU	21	4	-	4	11	-	-	1	1	12
Prairie View	20	1	-	4	10	-	1	3	2	6
Nebraska	24	3	-	4	9	1	1	1	3	10
Tulsa	23	3	-	-	10	-	3	-	1	6
Jackson St	16	1	-	-	8	-	1	3	3	2
Miss State										
Ole Miss										
Missouri										
Vanderbilt										
Tennessee										
Alabama										
Florida										
Georgia										
S. Carolina										
LSU										
Auburn										
Kentucky										
Georgia										
Ole Miss										
Missouri										
Texas A&M										
SEC Tournament										

NOTES

- Career-best five blocks vs Tennessee Tech leading team to a program record 13 blocks.
- Team's leading rebounder.
- Seventeen career games in double figure scoring and 13 career games with double digit rebounds.
- Led Arkansas with a career-best 25 points in SEC Tournament win over Vanderbilt.
- Career-best 16 rebounds, including 11 defensive rebounds, twice (Kansas & Grambling).
- Five career double-doubles (four as a junior).
- Made her first career 3-point basket in the opening shot of the No. 5/3 Mississippi State game.

CAREER STATISTICS

Year	GP-GS	Min	Avg	FG	Total FGA	Pct	3-Point FG	3-Point FGA	3-Point Pct	F-Throw FT	F-Throw FTA	Pct	Off	Rebounds Def	Tot	Avg	PF	FO	Ast	TO	Blk	Stl	Pts	Avg
2016-17	20-5	227	11.4	26	48	.542	0	0	.000	10	26	.385	24	31	55	2.8	34	1	3	15	5	9	62	3.1
2017-18	31-30	602	19.4	105	201	.522	1	3	.333	43	75	.573	92	119	211	6.8	68	1	7	28	29	33	254	8.2
2018-19	13-13	273	21.0	37	66	.561	0	0	.000	22	33	.667	44	69	113	8.7	29	0	7	12	17	19	96	7.4
TOTAL	64-48	1102	17.2	168	315	.533	1	3	.333	75	134	.560	160	219	379	5.9	131	2	17	55	51	61	412	6.4

13 Grace Spangler | So. | 5-10 | G | Fayetteville, Ark. (Fayetteville HS)



SEASON HIGHS

Points	6	JSU	12-30-18
FG Made	2	JSU	12-30-18
FG Att.	4	TTU	12-4-18
3FG Made	2	JSU	12-30-18
3FG Att.	2	JSU	12-30-18*
FT Made			
FT Att.	2	JSU	12-30-18*
Off. Reb.	2	TTU	12-4-18
Def. Reb.			
Rebounds	2	TTU	12-4-18
Assists			
Blocks			
Steals			
Minutes	6	TTU	12-4-18

CAREER HIGHS

Points	6	JSU	12-30-18
FG Made	2	JSU	12-30-18*
FG Att.	4	TTU	12-4-18
3FG Made	2	JSU	12-30-18
3FG Att.	2	JSU	12-30-18*
FT Made	3	UTA	12-17-17
FT Att.	4	#13 Missouri	2-12-18
Off. Reb.	2	TTU	12-4-18
Def. Reb.	1	at ASU	12-21-17*
Rebounds	2	TTU	12-4-18
Assists	1	at Kentucky	2-15-18
Blocks	-		
Steals	1	at #9 SC	1-25-18
Minutes	9	at #9 SC	1-25-18

*Most Recent

2018-19 GAME-BY-GAME

Opponent	M	FG	3P	FT	REB	A	TO	B	S	PT
NSU	5	-	-	-	-	-	-	-	-	-
at UTA	DNP									
Arizona St.	DNP									
Tenn. State	DNP									
Pittsburgh	DNP									
Wisconsin	DNP									
ORU	DNP									
Iowa State	DNP									
Tenn. Tech	6	-	-	-	2	-	-	-	-	-
ACU	DNP									
Prairie View	5	-	-	-	1	-	-	-	-	-
Nebraska	0+	-	-	-	-	-	-	-	-	-
Tulsa	DNP									
Jackson St	3	2	2	-	-	-	-	-	-	6
Miss State										
Ole Miss										
Missouri										
Vanderbilt										
Tennessee										
Alabama										
Florida										
Georgia										
S. Carolina										
LSU										
Auburn										
Kentucky										
Georgia										
Ole Miss										
Missouri										
Texas A&M										
SEC Tournament										

NOTES

- Career-best six points in win over Jackson State to close the non-conference schedule as a sophomore.
- Arkansas Athletics Department Athletics Director's List (3.5-3.99 GPA) | Fall 2017, Spring 2018.
- Scored her first points as a Razorback going 3-for-3 from the line in a win over UTA as a freshman.
- Arkansas Ties: Father Shannon lettered as a linebacker (1989) and mother, Stacy, was a member of the Pom Squad at Arkansas

CAREER STATISTICS

Year	GP-GS	Min	Avg	FG	Total FGA	Pct	3-Point FG	3-Point FGA	3-Point Pct	F-Throw FT	F-Throw FTA	Pct	Off	Rebounds Def	Tot	Avg	PF	FO	Ast	TO	Blk	Stl	Pts	Avg
2017-18	17-0	67	3.9	2	16	.125	0	6	.000	4	10	.400	1	4	5	0.3	13	0	1	5	0	1	8	0.5
2018-19	4-0	16	4.0	0	6	.000	0	4	.000	0	2	.000	3	0	3	0.8	4	0	0	0	0	0	0	0.0
TOTAL	21-0	83	4.0	2	22	.091	0	10	.000	4	12	.333	4	4	8	0.4	17	0	1	5	0	1	8	0.4

14 Jailyn Mason | Jr. | 5-9 | G | Mason, Ohio (William Mason HS)



SEASON HIGHS

Points	12	ORU	11-28-18*
FG Made	5	Wisconsin	11-25-18*
FG Att.	14	Wisconsin	11-25-18
3FG Made	2	at Tulsa	12-20-18*
3FG Att.	4	JSU	12-30-18*
FT Made	2	ORU	11-28-18*
FT Att.	3	ORU	11-28-18
Off. Reb.	3	Wisconsin	11-25-18
Def. Reb.	5	JSU	12-30-18*
Rebounds	7	Wisconsin	11-25-18
Assists	5	at ACU	12-8-18
Blocks	2	TSU	11-23-18
Steals	7	TTU	12-4-18*
Minutes	36	at ACU	12-8-18*

CAREER HIGHS

Points	19	ORU	12-21-16
FG Made	9	No. 11 Tenn.	2-8-18*
FG Att.	21	No. 11 Tenn.	2-8-18
3FG Made	4	at Kentucky	2-15-18
3FG Att.	8	at Kentucky	2-15-18
FT Made	4	#13 Missouri	2-12-18*
FT Att.	4	#13 Missouri	2-12-18*
Off. Reb.	4	Texas Tech	12-3-16
Def. Reb.	7	Grambling	12-18-17*
Rebounds	9	Texas Tech	12-3-16
Assists	11	HBU	12-28-16
Blocks	3	SHSU	11-10-17
Steals	5	at Georgia	1-11-18
Minutes	40	Vanderbilt	2-28-18*

*Most Recent

2018-19 GAME-BY-GAME

Opponent	M	FG	3P	FT	REB	A	TO	B	S	PT
NSU	19	1	-	2	4	4	2	1	-	4
at UTA	23	-	-	-	1	2	1	-	3	-
Arizona St.	31	5	1	-	4	3	-	-	1	11
Tenn. State	22	1	-	2	2	2	4	2	1	4
Pittsburgh	21	2	1	-	1	1	1	-	1	5
Wisconsin	36	5	1	1	7	1	1	-	2	12
ORU	27	4	2	2	6	-	1	1	-	12
Iowa State	30	4	2	-	4	2	1	-	-	10
Tenn. Tech	25	1	1	1	2	3	1	1	3	4
ACU	36	2	1	-	5	5	1	1	2	5
Prairie View	22	3	-	-	1	-	1	-	1	6
Nebraska	33	4	2	1	-	4	2	-	-	11
Tulsa	34	2	2	-	5	3	3	1	1	6
Jackson St	18	4	1	-	6	2	3	-	1	9
Miss State										
Ole Miss										
Missouri										
Vanderbilt										
Tennessee										
Alabama										
Florida										
Georgia										
S. Carolina										
LSU										
Auburn										
Kentucky										
Georgia										
Ole Miss										
Missouri										
Texas A&M										
SEC Tournament										

NOTES

- Five games in double figure scoring - 34 games in her career.
- Has a Jordan shoe collection and is interning with the Athletics Department photographer.
- Member of the SEC WBB Leadership Council.
- SEC All-Freshman Team | 2017
- Two-time SEC Freshman of the Week | 2016-17
- She has 34 games in double figure scoring including a streak of five in a row twice as a sophomore and an eight-game streak that was snapped at Alabama last season.
- Scored 12 points, all in the second half, fueling a 15-point comeback win versus Wisconsin.

CAREER STATISTICS

Year	GP-GS	Min	Avg	FG	Total FGA	Pct	3-Point FG	3-Point FGA	3-Point Pct	F-Throw FT	F-Throw FTA	Pct	Off	Rebounds Def	Tot	Avg	PF	FO	Ast	TO	Blk	Stl	Pts	Avg
2016-17	30-30	894	29.8	100	256	.391	19	53	.358	7	11	.636	21	96	117	3.9	72	2	93	56	8	31	226	7.5
2017-18	31-31	1031	33.3	139	344	.404	47	130	.362	16	19	.842	17	111	128	4.1	56	1	92	67	14	34	341	11.0
2018-19	13-12	359	27.6	34	89	.382	13	32	.406	9	13	.692	9	33	42	3.2	23	0	30	19	7	15	90	6.9
TOTAL	74-73	2284	30.9	273	689	.396	79	215	.367	32	43	.744	47	240	287	3.9	151	3	215	142	29	80	657	8.9

20 Sydney Stout | Jr. | 6-0 | F | Bixby, Okla. (Bixby HS)



SEASON HIGHS

Points	3	PVAM	12-16-18
FG Made	1	PVAM	12-16-18
FG Att.	1	PVAM	12-16-18
3FG Made	1	PVAM	12-16-18
3FG Att.	1	PVAM	12-16-18
FT Made			
FT Att.			
Off. Reb.	1	PVAM	12-16-18
Def. Reb.	1	TTU	12-4-18
Rebounds	1	PVAM	12-16-18*
Assists			
Blocks			
Steals			
Minutes	5	TTU	12-4-18

CAREER HIGHS

Points	8	HBU	12-28-16
FG Made	3	HBU	12-28-16
FG Att.	5	HBU	12-28-16
3FG Made	2	HBU	12-28-16
3FG Att.	4	HBU	12-28-16
FT Made	2	Texas A&M	1-12-17
FT Att.	4	Texas A&M	1-12-17
Off. Reb.	1	SHSU	11-10-17*
Def. Reb.	6	HBU	12-28-16
Rebounds	6	HBU	12-28-16
Assists	1	#13 Missouri	2-12-18*
Blocks	1	UIM	11-13-16
Steals	2	at S. Carolina	1-25-18
Minutes	15	HBU	12-28-16

*Most Recent

2018-19 GAME-BY-GAME

Opponent	M	FG	3P	FT	REB	A	TO	B	S	PT
NSU	4	-	-	-	-	-	-	-	-	-
at UTA	DNP									
Arizona St.	DNP									
Tenn. State	1	-	-	-	-	-	-	-	-	-
Pittsburgh	DNP									
Wisconsin	DNP									
ORU	DNP									
Iowa State	DNP									
Tenn. Tech	5	-	-	-	1	-	-	-	-	-
ACU	DNP									
Prairie View	3	1	1	-	1	-	-	-	-	3
Nebraska	0+	-	-	-	-	-	-	-	-	-
Tulsa	DNP									
Jackson St	3	-	-	-	-	-	-	-	-	-
Miss State										
Ole Miss										
Missouri										
Vanderbilt										
Tennessee										
Alabama										
Florida										
Georgia										
S. Carolina										
LSU										
Auburn										
Kentucky										
Georgia										
Ole Miss										
Missouri										
Texas A&M										
SEC Tournament										

NOTES

- Arkansas Athletics Department Honor Roll (3.0-3.49 GPA) | Fall 2016.
- Arkansas Athletics Depart. Academic Champion (4.0 GPA) | Spring 2017, Fall 2017, Spring 2018.
- SEC First Year Academic Honor Roll (2016-2017)
- Plans to graduate a year early with a degree in Marketing.

CAREER STATISTICS

Year	GP-GS	Min	Avg	FG	Total FGA	Pct	3-Point FG	3-Point FGA	3-Point Pct	F-Throw FT	F-Throw FTA	Pct	Off	Rebounds Def	Tot	Avg	PF	FO	Ast	TO	Blk	Stl	Pts	Avg
2016-17	15-0	72	4.8	5	14	.357	4	12	.333	2	4	.500	2	9	11	0.7	15	0	1	2	1	0	16	1.1
2017-18	16-0	84	5.3	1	9	.111	1	6	.167	3	6	.500	4	6	10	0.6	4	0	3	3	0	3	6	0.4
2018-19	5-0	13	2.6	1	1	1.000	1	1	1.000	0	0	.000	1	1	2	0.4	1	0	0	0	0	0	3	0.6
TOTAL	36-0	169	4.7	7	24	.292	6	19	.316	5	10	.500	7	16	23	0.6	20	0	4	5	1	3	25	0.7

22 Bailey Zimmerman | Sr. | 6-0 | F | St. Vincent, Ark. (Wonderview HS)**SEASON HIGHS**

Points	12	TSU	11-23-18
FG Made	4	Pitt	11-24-18
FG Att	8	Pitt	11-24-18
3FG Made	2	JSU	12-30-18*
3FG Att	6	at #22 ISU	12-2-18
FT Made	5	PVAM	12-16-18
FT Att	6	PVAM	12-16-18*
Off. Reb.	7	Pitt	11-24-18
Def. Reb.	6	NEB	12-18-18*
Rebounds	11	PVAM	12-16-18*
Assists	2	at #22 ISU	12-2-18
Blocks	3	TSU	11-23-18
Steals	1	at Tulsa	12-20-18*
Minutes	30	at ACU	12-8-18

CAREER HIGHS

Points	14	#13 Missouri	2-12-18*
FG Made	4	Pitt	11-24-18
FG Att	11	#11 Tennessee	2-8-18*
3FG Made	3	at Kentucky	2-15-18*
3FG Att	8	at Auburn	1-14-18
FT Made	5	PVAM	12-16-18
FT Att	6	PVAM	12-16-18*
Off. Reb.	7	Pitt	11-24-18
Def. Reb.	6	NEB	12-18-18*
Rebounds	11	PVAM	12-16-18*
Assists	3	at Kentucky	2-15-18*
Blocks	3	TSU	11-23-18*
Steals	2	Kentucky	1-29-18*
Minutes	40	#11 Tennessee	2-8-18

*Most Recent

2018-19 GAME-BY-GAME

Opponent	M	FG	3P	FT	REB	A	TO	B	S	PT
NSU	17	1	1	1	4	1	-	1	-	4
at UTA	21	2	-	-	5	-	1	1	-	4
Arizona St.	21	1	-	-	1	-	1	-	-	2
Tenn. State	25	3	2	4	4	1	-	3	-	12
Pittsburgh	28	4	2	1	11	-	2	1	1	11
Wisconsin	25	1	-	1	4	1	-	-	-	3
ORU	21	1	1	1	3	-	1	-	-	4
Iowa State	29	1	1	-	3	2	1	-	-	3
Tenn. Tech	22	2	1	2	5	-	1	1	1	7
ACU	30	1	1	-	5	-	-	1	1	3
Prairie View	19	-	-	5	11	-	-	-	-	5
Nebraska	19	1	1	-	7	-	2	1	1	3
Tulsa	18	1	1	1	4	-	1	-	1	4
Jackson St	16	2	2	-	6	-	-	-	1	4
Miss State										
Ole Miss										
Missouri										
Vanderbilt										
Tennessee										
Alabama										
Florida										
Georgia										
S. Carolina										
LSU										
Auburn										
Kentucky										
Georgia										
Ole Miss										
Missouri										
Texas A&M										
SEC Tournament										

NOTES

- First career double-double with 11 points and 11 rebounds against Pitt.
- Two games as a senior in double figure scoring and two with double digit rebounds.
- SEC Academic Honor Roll | 2016-17, 2017-18.
- Arkansas Athletics Department Academic Champion (4.0 GPA) | Spring 2017.
- Arkansas Athletics Director's List (3.5-3.99 GPA) | Fall 2015, Fall 2016, Fall 2017.
- Arkansas Athletics Department Honor Roll (3.0-3.49 GPA) | Fall 2017, Spring 2018.
- Graduated in December with a degree in Apparel Merchandising.

CAREER STATISTICS

Year	GP-GS	Min	Avg	FG	Total FGA	Pct	3-Point FGA	Pct	F-Throw FTA	Pct	Off	Rebounds Def	Tot	Avg	PF	FO	Ast	TO	Blk	Stl	Pts	Avg		
2015-16	20-1	174	8.7	6	48	.125	4	.33	.121	7	12	.583	12	9	21	1.1	9	0	4	15	2	4	23	1.2
2016-17	30-23	627	20.9	45	144	.313	24	.84	.286	20	39	.513	35	80	115	3.8	46	0	28	37	10	19	134	4.5
2017-18	31-31	744	24.0	42	161	.261	18	.87	.207	28	46	.609	49	49	98	3.2	55	1	37	35	12	12	130	4.2
2018-19	13-1	295	22.7	19	61	.311	11	.41	.268	16	25	.640	29	38	67	5.2	20	0	5	10	9	5	65	5.0
TOTAL	94-56	1840	19.6	112	414	.271	57	.245	.233	71	122	.582	125	176	301	3.2	130	1	74	97	33	40	352	3.7

24 Taylah Thomas | So. | 6-1 | F | Arlington, Texas (Mansfield Timberview HS)**SEASON HIGHS**

Points	12	at ACU	12-8-18
FG Made	5	PVAM	12-16-18*
FG Att	9	PVAM	12-16-18
3FG Made			
3FG Att			
FT Made	3	Nebraska	12-18-18*
FT Att	6	NSU	11-9-18
Off. Reb.	5	NSU	11-9-18
Def. Reb.	9	Wisconsin	11-25-18
Rebounds	12	Wisconsin	11-25-18
Assists	1	Nebraska	12-18-18*
Blocks	1	at Tulsa	12-20-18*
Steals	3	NSU	11-9-18
Minutes	22	at UTA	11-14-18

CAREER HIGHS

Points	13	Samford	11-12-17
FG Made	5	PVAM	12-16-18*
FG Att	9	PVAM	12-16-18*
3FG Made	1	Ole Miss	12-31-17*
3FG Att	1	at #9 SC	1-25-18*
FT Made	3	Nebraska	12-18-18*
FT Att	6	NSU	11-9-18
Off. Reb.	6	Nebraska	11-16-17
Def. Reb.	9	Wisconsin	11-25-18
Rebounds	12	Wisconsin	11-25-18
Assists	2	at #11 Missouri	1-21-18
Blocks	2	Nebraska	11-16-17
Steals	3	NSU	11-9-18
Minutes	29	at Georgia	1-11-18

*Most Recent

2018-19 GAME-BY-GAME

Opponent	M	FG	3P	FT	REB	A	TO	B	S	PT
NSU	17	4	-	3	9	-	-	-	3	11
at UTA	22	1	-	-	9	-	2	-	1	2
Arizona St.	15	-	-	-	2	-	1	-	-	-
Tenn. State	10	-	-	1	3	-	1	1	-	1
Pittsburgh	19	2	-	-	8	-	1	-	-	4
Wisconsin	17	1	-	-	12	-	-	-	1	2
ORU	17	-	-	-	6	-	-	-	1	0
Iowa State	17	1	-	-	4	1	-	-	1	2
Tenn. Tech	15	-	-	1	2	-	-	-	-	1
ACU	19	5	-	2	6	-	1	-	-	12
Prairie View	15	5	-	1	7	-	-	-	1	11
Nebraska	16	1	-	3	5	1	-	-	2	5
Tulsa	17	-	-	-	1	-	1	1	-	-
Jackson St	20	2	-	-	6	-	-	-	1	4
Miss State										
Ole Miss										
Missouri										
Vanderbilt										
Tennessee										
Alabama										
Florida										
Georgia										
S. Carolina										
LSU										
Auburn										
Kentucky										
Georgia										
Ole Miss										
Missouri										
Texas A&M										
SEC Tournament										

NOTES

- Scored in double figures in three games.
- Was team's leading scorer against PVAMU.
- Scored 22 points in three games in Italy in August.
- Arkansas Athletics Department Athletic Director's List (3.5-3.99 GPA) | Fall 2017, Spring 2018.
- Considered one of the top power forwards out of Texas.
- Played in every game as a freshman.
- Scored in double figures four times in her career.

CAREER STATISTICS

Year	GP-GS	Min	Avg	FG	Total FGA	Pct	3-Point FGA	Pct	F-Throw FTA	Pct	Off	Rebounds Def	Tot	Avg	PF	FO	Ast	TO	Blk	Stl	Pts	Avg		
2017-18	31-2	527	17.0	44	100	.440	3	10	.300	25	42	.595	55	89	144	4.6	58	1	5	25	6	8	116	3.7
2018-19	13-0	216	16.6	20	41	.488	0	0	.000	11	25	.440	27	47	74	5.7	18	0	2	8	3	9	51	3.9
TOTAL	44-2	743	16.9	64	141	.454	3	10	.300	36	67	.537	82	136	218	5.0	76	1	7	33	9	17	167	3.8

30 Macy Weaver | So. | 6-3 | F | Davis Junction, Ill. (Stillman Valley HS)**SEASON HIGHS**

Points	4	PVAM	12-16-18*
FG Made	2	PVAM	12-16-18
FG Att.	2	PVAM	12-16-18
3FG Made			
3FG Att.			
FT Made	2	ORU	11-28-18
FT Att.	2	JSU	12-30-18*
Off. Reb.	3	TSU	11-23-18
Def. Reb.	2	JSU	12-30-18*
Rebounds	5	TSU	11-23-18
Assists	1	PVAM	12-16-18
Blocks	4	TTU	12-4-18
Steals	2	TTU	12-4-18
Minutes	10	TSU	11-23-18

CAREER HIGHS

Points	7	#9/7 SC	1-25-18
FG Made	3	#9/7 SC	1-25-18
FG Att.	4	#9/7 SC	1-25-18
3FG Made	-		
3FG Att.	-		
FT Made	3	#13 Missouri	2-12-18
FT Att.	6	#13 Missouri	2-12-18
Off. Reb.	3	TSU	11-23-18
Def. Reb.	4	UTA	12-17-17
Rebounds	5	TSU	11-23-18*
Assists	1	PVAM	12-16-18*
Blocks	4	TTU	12-4-18*
Steals	2	TTU	12-4-18*
Minutes	19	UTEP	11-24-17

*Most Recent

2018-19 GAME-BY-GAME

Opponent	M	FG	3P	FT	REB	A	TO	B	S	PT
NSU	4	-	-	-	-	-	-	-	-	-
at UTA	DNP									
Arizona St.	DNP									
Tenn. State	10	-	-	-	5	-	-	1	-	-
Pittsburgh	DNP									
Wisconsin	DNP									
ORU	3	1	-	2	1	-	1	1	-	4
Iowa State	DNP									
Tenn. Tech	9	-	-	-	3	-	-	4	2	-
ACU	DNP									
Prairie View	5	2	-	-	3	1	-	1	-	4
Nebraska	DNP									
Tulsa	DNP									
Jackson St	4	-	-	1	2	-	-	2	-	1
Miss State										
Ole Miss										
Missouri										
Vanderbilt										
Tennessee										
Alabama										
Florida										
Georgia										
S. Carolina										
LSU										
Auburn										
Kentucky										
Georgia										
Ole Miss										
Missouri										
Texas A&M										
SEC Tournament										

NOTES

- Tied career-best with four blocks in nine minutes versus Tennessee Tech.
- Played in 20 games as a freshman.
- Arkansas Athletics Department Athletic Director's List (3.5-3.99 GPA) | Fall 2017, Spring 2018.
- Played 19 minutes with four blocks and solid defense at UTEP.
- Career High seven points in 11 minutes vs South Carolina.

CAREER STATISTICS

Year	GP-GS	Min	Avg	FG	Total		3-Point			F-Throw			Rebounds				PF	FO	Ast	TO	Blk	Stl	Pts	Avg
					FGA	Pct	FG	FGA	Pct	FT	FTA	Pct	Off	Def	Tot	Avg								
2017-18	20-0	144	7.2	8	20	.400	0	0	.000	11	24	.458	16	18	34	1.7	28	0	1	5	10	3	27	1.4
2018-19	5-0	31	6.2	3	6	.500	0	0	.000	2	3	.667	6	6	12	2.4	8	0	1	1	7	2	8	1.6
TOTAL	25-0	175	7.0	11	26	.423	0	0	.000	13	27	.481	22	24	46	1.8	36	0	2	6	17	5	35	1.4

33 Chelsea Dungee | R-So. | 5-11 | G | Sapulpa, Okla. (Sapulpa HS) | University of Oklahoma**SEASON HIGHS**

Points	28	TTU	12-4-18
FG Made	12	TTU	12-4-18
FG Att.	24	at Tulsa	12-20-18
3FG Made	4	Nebraska	12-18-18*
3FG Att.	11	at Tulsa	12-20-18*
FT Made	13	at #22 ISU	12-2-18
FT Att.	16	at #22 ISU	12-2-18
Off. Reb.	1	at Tulsa	12-20-18*
Def. Reb.	8	at Tulsa	12-20-18
Rebounds	9	at Tulsa	12-20-18
Assists	3	NSU	11-9-18
Blocks	2	Pitt	11-24-18*
Steals	7	JSU	12-30-18
Minutes	37	at Tulsa	12-20-18

CAREER HIGHS

Points	28	ORU	11-28-18
FG Made	12	ORU	11-28-18
FG Att.	24	at Tulsa	12-20-18
3FG Made	4	Nebraska	12-18-18*
3FG Att.	11	at Tulsa	12-20-18*
FT Made	13	at #22 ISU	12-2-18
FT Att.	16	at #22 ISU	12-2-18
Off. Reb.	3	at Texas	1-17-17#
Def. Reb.	8	at Tulsa	12-20-18
Rebounds	9	at Tulsa	12-20-18*
Assists	5	at Texas	1-17-17#
Blocks	2	Pitt	11-24-18*
Steals	7	JSU	12-30-18
Minutes	39	vs. W. Virginia	2-7-17#

*Most Recent | #at OU

2018-19 GAME-BY-GAME

Opponent	M	FG	3P	FT	REB	A	TO	B	S	PT
NSU	22	4	2	1	3	3	1	-	-	22
at UTA	26	6	2	2	3	1	4	1	-	16
Arizona St.	24	7	2	4	6	1	1	-	-	20
Tenn. State	30	5	-	6	6	-	2	-	2	16
Pittsburgh	34	2	1	5	1	-	1	2	1	10
Wisconsin	34	5	3	7	5	1	4	-	3	20
ORU	32	7	-	7	5	1	3	-	1	21
Iowa State	33	6	2	13	5	2	2	-	1	27
Tenn. Tech	28	12	4	-	5	2	3	-	2	28
ACU	25	-	-	2	1	-	1	-	1	2
Prairie View	27	2	-	4	6	1	1	-	1	8
Nebraska	36	7	3	5	5	1	-	-	-	23
Tulsa	37	7	2	7	9	-	4	-	3	23
Jackson St	31	4	-	5	5	2	2	-	7	13
Miss State										
Ole Miss										
Missouri										
Vanderbilt										
Tennessee										
Alabama										
Florida										
Georgia										
S. Carolina										
LSU										
Auburn										
Kentucky										
Georgia										
Ole Miss										
Missouri										
Texas A&M										
SEC Tournament										

NOTES

- Double figure scoring in 12 games this year.
- Twenty-plus points eight times as a sophomore.
- Challenge in Music City All-Tournament Team.
- Redshirted the 2017-18 season at Arkansas.
- Arkansas Athletics Department Honor Roll (3.0-3.49 GPA) | Fall 2017.
- Won a gold medal with USA Basketball ... All Big 12 freshman team in 2017 ... Oklahoma Gatorade Player of the Year in 2014 ... Won a gold medal with USA basketball ... At Oklahoma- Big 12 freshman of the year.

CAREER STATISTICS

Year	GP-GS	Min	Avg	FG	Total FGA	Pct	3-Point FGA	Pct	F-Throw FTA	Pct	Off	Rebounds Def	Tot	Avg	PF	FO	Ast	TO	Blk	Stl	Pts	Avg		
2016-17*	33-18	695	21.1	81	214	.379	22	65	.338	60	74	.811	18	66	84	2.5	62	0	26	51	5	19	244	7.4
2017-18	Redshirt																							
2018-19**	13-13	388	29.8	70	182	.385	22	66	.333	63	83	.759	9	51	60	4.6	28	1	13	27	3	15	225	17.3
TOTAL**	13-13	388	29.8	70	182	.385	22	66	.333	63	83	.759	9	51	60	4.6	28	1	13	27	3	15	225	17.3

Oklahoma | **at Arkansas only

52 Rokia Doumbia | Fr. | 5-9 | G | Mali, Africa | Bradenton, Fla. (IMG Academy)



SEASON HIGHS

Points	11	NSU	11-9-18
FG Made	4	NSU	11-9-18
FG Att	6	NSU	11-9-18
3FG Made	1	NSU	11-9-18
3FG Att	2	PVAM	12-16-18*
FT Made	2	NSU	11-9-18
FT Att	3	NSU	11-9-18
Off. Reb.	1	JSU	12-30-18*
Def. Reb.	3	PVAM	12-16-18
Rebounds	4	PVAM	12-16-18
Assists	3	PVAM	12-16-18
Blocks	1	PVAM	12-16-18
Steals	1	TTU	12-4-18*
Minutes	17	NSU	11-9-18

CAREER HIGHS

Points	11	NSU	11-9-18
FG Made	4	NSU	11-9-18
FG Att	6	NSU	11-9-18
3FG Made	1	NSU	11-9-18
3FG Att	2	PVAM	12-16-18*
FT Made	2	NSU	11-9-18
FT Att	3	NSU	11-9-18
Off. Reb.	1	JSU	12-30-18*
Def. Reb.	3	PVAM	12-16-18
Rebounds	4	PVAM	12-16-18
Assists	3	PVAM	12-16-18
Blocks	1	PVAM	12-16-18
Steals	1	TTU	12-4-18*
Minutes	17	NSU	11-9-18

*Most Recent

2018-19 GAME-BY-GAME

Opponent	M	FG	3P	FT	REB	A	TO	B	S	PT
NSU	17	4	1	2	1	-	-	-	1	11
at UTA	4	-	-	-	-	-	-	-	1	-
Arizona St.	7	-	-	-	1	-	1	-	-	-
Tenn. State	6	-	-	-	-	1	-	-	-	-
Pittsburgh	DNP									
Wisconsin	4	-	-	-	1	-	1	-	-	-
ORU	5	-	-	1	-	1	2	-	-	1
Iowa State	DNP									
Tenn. Tech	9	-	-	-	1	-	1	1	1	-
ACU	DNP									
Prairie View	13	1	-	-	4	3	1	1	-	2
Nebraska	DNP									
Tulsa	DNP									
Jackson St	11	2	-	1	1	1	3	-	-	5
Miss State										
Ole Miss										
Missouri										
Vanderbilt										
Tennessee										
Alabama										
Florida										
Georgia										
S Carolina										
LSU										
Auburn										
Kentucky										
Georgia										
Ole Miss										
Missouri										
Texas A&M										
SEC Tournament										

NOTES

- Speaks three languages: French, English, Bambara.
- Left-handed.
- Originally from Mali, Africa, and attended high school at IMG Academy in Bradenton, Florida
- Four-star recruit and was a member of the U16 Mali (Africa) National Team in 2016 and 2017.
- Was the MVP of the FIBA U16 Africa Championship in 2015.

CAREER STATISTICS

Year	GP-GS	Min	Avg	FG	Total FGA	Pct	3-Point FG	3-Point FGA	3-Point Pct	FT	F-Throw FTA	Pct	Off	Rebounds Def	Tot	Avg	PF	FO	Ast	TO	Blk	Stl	Pts	Avg
2018-19	8-0	65	8.1	5	13	.385	1	5	.200	3	4	.750	1	7	8	1.0	10	0	5	7	2	3	14	1.8
TOTAL	8-0	65	8.1	5	13	.385	1	5	.200	3	4	.750	1	7	8	1.0	10	0	5	7	2	3	14	1.8

ARKANSAS SUPPORT STAFF



Amber Shirey
Director of Operations



C'eira Ricketts
Director of Student-Athlete Development



Jeff Brazil
Director of Video and Scouting



Natalie Trotter
Athletic Trainer



Todd Barbour
Strength and Conditioning Coach



Marissa Byler
Administrative Assistant



Jalen Powell
Graduate Assistant



Heather Corral
Graduate Assistant



Delaney Osborn
Manager

2018-19 @RAZORBACKWBB



A'Tyanna Gaulden
So | 5-7 | G
Ocilla, Georgia



Raven Northcross-Baker
Sr | 5-9 | G
Malvern, Arkansas



Alexis Tolefree
Jr | 5-8 | G
Conway, Arkansas



Malica Monk
Sr | 5-5 | G
North Little Rock, Arkansas



Kiara Williams
Jr | 6-1 | C
Little Rock, Arkansas



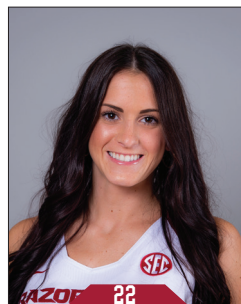
Grayce Spangler
So | 5-11 | G
Fayetteville, Arkansas



Jailyn Mason
Jr | 5-9 | G
Mason, Ohio



Sydney Stout
Jr | 6-0 | F
Bixby, Oklahoma



Bailey Zimmerman
Sr | 6-0 | F
St. Vincent, Arkansas



Amber Ramirez
Jr | 5-9 | G
San Antonio, Texas



Taylah Thomas
So | 6-1 | C
Arlington, Texas



Macy Weaver
So | 6-3 | C
Davis Junction, Illinois



Chelsea Dungee
So | 5-11 | G
Sapulpa, Oklahoma



Rokia Doumbia
Fr | 5-7 | G
Bradenton, Florida/Mali, Africa



Mike Neighbors
Head Coach
Second Season



Todd Schaefer
Assistant Coach
Second Season



Lacey Goldwire
Assistant Coach
Second Season



Pauline Love
Assistant Coach
Second Season

Official Basketball Box Score -- Game Totals -- Final Statistics
Northwestern State vs AR
11/09/18 10:30am at Fayetteville, AR Bud Walton Arena**Northwestern State 53 • 0-1**

#	Player	Total		3-Ptr		Rebounds			PF	TP	A TO Blk Stl				Min
		FG-FA	FG-FGA	FT-FTA	Off	Def	Tot	A			TO	Blk	Stl		
15	JOHNSON, JASMYN	f	2-6	2-6	0-0	3	2	5	4	6	3	1	0	5	25
22	GILLIAM, LIBBA	f	6-14	1-5	0-0	1	3	4	0	13	3	3	0	0	27
23	SCOTT, JOCELYN	f	0-6	0-0	1-2	7	5	12	2	1	0	3	0	2	20
00	GRANT, NAUTICA	g	5-8	3-5	1-2	0	2	2	3	14	2	2	0	0	33
03	THOMAS, SAMI	g	2-7	1-2	2-2	0	2	2	3	7	3	1	0	1	22
03	FREEMAN, JADA	g	1-6	0-2	0-0	0	2	2	2	2	2	5	1	1	24
04	SAVAGE, LACEE	g	0-2	0-0	2-2	1	0	1	0	2	0	2	0	0	6
13	MILLER, VICTORIA	g	0-1	0-0	0-0	0	0	0	2	0	1	0	0	0	7
20	BARNES, LEAH	g	1-1	0-0	0-0	0	0	0	3	2	0	2	0	0	9
24	BONNER, KIRA	g	2-4	1-1	0-0	1	1	2	4	5	0	2	0	1	10
32	NERO, RAVON	g	0-2	0-0	1-4	0	0	0	4	1	0	8	0	0	17
Team						1	3	4							
Totals			19-57	8-21	7-12	14	20	34	27	53	14	30	1	10	200
1st - FG %: 6-14 42.9% 2nd: 3-10 30.0% 3rd: 3-16 18.8% 4th: 7-17 41.2% Game: 19-57 33.3% Deadball															
3FG %: 2-4 50.0%															

AR 98 • 1-0

#	Player		Total		3-Ptr		Rebounds			PF	TP	A TO Blk Stl				Min
			FG-FGA	FG-FGA	FT-FTA	Off	Def	Tot	A			TO	Blk	Stl		
10	WILLIAMS, Kiara	c	0-7	0-0	0-0	5	4	9	1	10	1	2	1	1	19	
01	NORTHCROSS-BAKER,	g	5-0	0-0	0-0	1	0	1	2	0	2	1	0	1	16	
02	TOLEFREE, Alexis	g	5-11	5-10	4-6	0	3	3	0	19	0	3	0	2	21	
03	MONK, Malica	g	4-5	2-3	2-4	0	0	0	2	12	4	3	0	1	22	
33	DUNGEE, Chelsea	g	4-8	2-3	1-3	1	2	3	2	11	3	1	0	0	22	
00	GAULDEN, A'Tyanna	g	6-7	0-0	4-7	0	2	2	0	16	3	4	0	2	17	
13	SPANGLER, Grayce	g	0-1	0-1	0-0	0	0	0	2	0	0	0	0	0	5	
14	MASON, Jailyn	g	1-3	0-1	2-2	0	4	4	2	4	2	1	0	0	19	
20	STOUT, Sydney	g	0-0	0-0	0-0	0	0	0	1	0	0	0	0	0	4	
22	ZIMMERMAN, Bailey	g	1-4	1-3	1-2	0	4	4	0	4	1	0	1	0	17	
24	THOMAS, Taylah	g	4-7	0-0	3-6	5	4	9	0	11	0	0	0	3	17	
30	WEAVER, Macy	g	0-0	0-0	0-0	0	0	0	1	0	0	0	0	0	4	
52	DOUMBIA, Rokia	g	4-6	1-2	2-3	0	1	1	2	11	0	0	0	1	17	
	Team					0	2	2								
Totals			34-59	11-23	19-33	12	26	38	15	98	18	16	3	11	200	
1st - FG %:			11-19	57.9%	2nd: 9-13	69.2%	3rd: 6-13	46.2%	4th: 8-14	57.1%	Game: 34-59	57.6%	Deadball			
3FG %:			3-4	50.0%	4-6	66.7%	1-5	20.0%	3-6	50.0%	11-23	47.8%	Rebounds			
FT %:			0-0	0.0%	6-12	50.0%	7-9	77.8%	3-6	50.0%	19-33	57.6%	7,1			

Officials: Scott Yarbrough, Jennifer Rezac, Meadow Overstreet
Technical fouls: Northwestern State-None. AR-None.
Attendance: 5497
Elementary Day
Scanned Tickets: 4,889

Score by periods	1st	2nd	3rd	4th	Total
Northwestern State	14	13	9	17	53
AR	28	28	20	22	98

Official Basketball Box Score -- Game Totals -- Final Statistics
No. 22 Arizona State vs AR
11/18/18 7 p.m. at Fayetteville, Ark. (Bud Walton Arena)**No. 22 Arizona State 88 • 2-1**

#	Player		Total		3-Ptr		Rebounds			PF	TP	A TO Blk Stl				Min	
			FG-FGA	FG-FGA	FT-FTA	Off	Def	Tot	A			TO	Blk	Stl			
42	IBIS, KIANNA	f	9-14	0-1	2-2	2	3	5	2	20	1	4	1	1	27		
33	JOHNSON-CHAPMAN, C	c	3-5	0-0	0-0	3	4	7	4	6	1	0	0	1	16		
01	RICHARDSON, REILI	g	1-4	0-2	5-8	0	3	3	1	7	5	1	0	2	28		
11	RYAN, ROBBI	g	3-6	2-2	5-6	2	1	3	2	13	1	2	0	0	20		
22	EKMARK, COURTNEY	g	0-5	0-4	0-0	1	2	3	3	0	2	1	0	0	24		
00	HANSON, TAYA		2-7	1-3	0-0	1	2	3	0	5	1	0	0	0	17		
04	RUSSELL, KIANA		0-1	0-0	1-2	0	0	0	2	1	1	0	0	0	2		
05	LOERA, JAMIE		2-4	2-3	2-2	1	1	2	0	8	0	1	0	0	14		
21	ELENGA, SOPHIA		5-7	0-0	1-2	4	8	12	2	11	0	4	1	1	25		
23	MBULITO, IRIS		4-6	0-1	5-11	1	2	3	4	13	4	3	0	1	16		
32	VAN HYFTE, JAYDE		1-2	0-0	0-0	0	0	0	1	2	0	0	0	0	8		
52	RUDEN, JAMIE		1-2	0-0	0-0	0	0	0	0	2	0	0	0	0	3		
Team						0	2	2					1				
Totals			31-63	5-16	21-33	15	28	43	21	88	16	17	2	6	200		
1st - FG %:			11-19	57.9%	2nd:	5-19	26.3%	3rd:	11-16	68.8%	4th:	4-9	44.4%	Game:	31-63	49.2%	Deadball
3FG %:			2-5	40.0%		2-5	40.0%		0-1	0.0%		1-5	20.0%		5-16	31.3%	Rebounds
FT %:			5-9	55.6%		5-6	83.3%		1-2	50.0%		10-16	62.5%		21-33	63.6%	3,1

AR 85 • 2-1

#	Player		Total		3-Ptr		Rebounds			PF	TP	A TO Blk Stl				Min	
			FG-FGA	FG-FGA	FT-FTA	Off	Def	Total	A			TO	Blk	Stl			
10	WILLIAMS, Kiara	c	4-6	0-0	0-0	4	5	9	1	8	2	1	0	3	25		
02	TOLEFREE, Alexis	g	8-20	3-9	3-4	0	3	3	4	22	2	4	0	1	33		
03	MONK, Malica	g	5-14	0-1	3-8	0	4	4	4	13	1	1	0	0	27		
04	MASON, Jailyn	g	5-6	1-1	0-0	1	3	4	4	11	3	0	0	1	31		
33	DUNGEE, Chelsea	g	7-13	2-6	4-4	1	5	6	4	20	1	1	0	0	24		
00	GAULDEN, A'Tyanna	g	2-5	0-0	5-6	0	0	0	0	9	0	1	0	1	13		
01	NORTHCROSS-BAKER,	g	0-1	0-1	0-0	0	0	0	2	0	0	1	0	0	4		
22	ZIMMERMAN, Bailey	g	1-2	0-1	0-0	0	1	1	1	2	0	1	0	0	21		
24	THOMAS, Taylah	g	0-0	0-0	0-0	0	2	2	0	0	0	1	0	0	15		
52	DOUMBIA, Rokia	g	0-0	0-0	0-0	0	1	1	2	0	0	1	0	0	7		
	Team					4	1	5					1				
	Totals		32-67	6-19	15-22	10	25	35	22	85	9	13	0	6	200		
1st - FG %:			9-16	56.0%	2nd:	7-16	43.8%	3rd:	8-16	50.0%	4th:	9-19	47.4%	Game:	32-67	47.8%	Deadball
3FG %:			2-7	28.6%		0-1	0.0%		2-6	33.3%		2-5	40.0%		6-19	31.6%	Rebounds
FT %:			3-4	75.0%		3-4	75.0%		2-3	66.7%		3-6	50.0%		15-22	68.2%	3,1

Officials: Mark Zentz, Maj Forsberg, Roy Gulbeyan
Technical fouls: No. 22 Arizona State-None. AR-None.
Attendance: 1519
Total Scanned Tickets: 1,189

Score by periods	1st	2nd	3rd	4th	Total
No. 22 Arizona State	29	17	23	19	88
AR	25	17	20	23	85

Official Basketball Box Score -- Game Totals -- Final Statistics
AR vs UT Arlington
11/14/18 7:00 pm at**AR 66 • 2-0**

#	Player		Total			3-Ptr			Rebounds			PF	TP	A TO Blk Stl				Min
			FG-FGA	FG-FGA	FT-FTA	FG-FGA	FG-FGA	FT-FTA	Off	Def	Tot			A	TO	Blk	Stl	
10	WILLIAMS, Kiara	f	2-4	0-0	0-1	2	4	6	3	4	0	2	1	0	18			
02	TOLEFREE, Alexis	g	6-19	3-9	3-3	1	3	4	0	18	0	1	1	3	36			
03	MONK, Malica	g	7-15	0-2	4-8	3	5	8	4	18	3	4	0	2	29			
14	MASON, Jailyn	g	0-2	0-0	0-0	0	1	1	2	0	2	1	0	3	23			
33	DUNGEE, Chelsea	g	6-9	2-2	2-2	1	2	3	5	16	1	4	1	0	26			
00	GAULDEN, A'Tyanna	g	1-3	0-0	0-0	0	3	3	1	2	1	3	0	0	11			
01	NORTHCROSS-BAKER,	g	1-5	0-2	0-0	0	3	3	1	2	1	0	0	0	10			
22	ZIMMERMAN, Bailey	g	2-3	0-1	0-2	3	2	5	2	4	0	1	1	0	21			
24	THOMAS, Taylah	g	1-2	0-0	0-2	2	7	9	1	2	0	2	0	1	22			
52	DOUMBIA, Rokia	g	0-1	0-0	0-0	0	0	0	1	0	0	1	0	1	4			
	Team					0	0	0										
Totals			26-63	5-16	9-18	12	30	42	20	66	8	19	4	10	200			
1st - FG %:			7-13	53.8%	2nd: 7-14	50.0%	3rd: 6-19	31.6%	4th: 6-17	35.3%	Game: 26-63	41.3%	Deadball					
3FG %:			1-3	33.3%	2-5	40.0%	1-4	25.0%		25.0%	5-16	31.3%	Rebounds					
FT %:			0-0	0.0%	5-8	62.5%	4-8	50.0%	1-2	0.0%	9-18	50.0%	6,6					
UT Arlington 65 - 1-1																		

Official Basketball Box Score -- Game Totals -- Final Statistics
Pittsburgh vs Arkansas
11/24/18 7:30 p.m. at Municipal Auditorium, Nashville, Tenn.**Pittsburgh 61 • 3-4**

#	Player	Total		3-Ptr		Rebounds			PF	TP	A TO Blk Stl				Min
		FG-FGA	FG-FGA	FT-FTA	FT-FTA	Off	Def	Tot			A	TO	Blk	Stl	
01	Danielle Garven	f	4-9	0-0	4-4	1	3	4	3	12	4	6	0	0	30
11	Cara Judkins	c	4-5	0-0	0-2	2	5	7	1	8	1	2	1	0	20
13	Jasmine Whitney	g	3-6	0-2	0-0	0	7	7	4	6	5	4	1	1	36
14	Cassidy Walsh	g	1-6	0-1	4-4	1	3	4	2	6	1	2	1	0	32
13	Kyla Nelson	g	1-6	1-3	0-2	0	2	2	3	1	1	1	0	0	29
00	Jahsny Knight		3-6	0-0	0-0	0	2	2	0	6	1	0	0	2	13
10	Ismiini Prapa		0-0	0-0	0-0	0	0	0	0	0	0	2	0	0	1
14	Kauai Bradley		2-5	1-3	0-0	1	3	4	4	5	1	4	0	0	16
22	Jaala Henry		0-0	0-0	0-0	0	1	1	1	0	0	1	0	0	1
32	Kalista Walters		7-9	0-0	1-2	3	4	7	1	15	3	0	1	1	22
Team						2	8	10							
Totals			25-52	2-9	9-14	10	38	48	18	61	17	22	4	4	200
1st - FG %:		7-16	43.8%	2nd: 4-12	33.3%	3rd: 9-14	64.3%	4th: 5-10	50.0%	Game: 25-52	48.1%	Deadball			
3FG %:		1-2	50.0%	0-3	0.0%	1-3	33.3%	0-1	0.0%	2-9	22.2%	Rebounds			
FT %:		2-2	100.0%	0-0	0.0%	2-2	100.0%	5-10	50.0%	9-14	64.3%	3			

Arkansas 54 • 3-2

#	Player	Total		3-Ptr		Rebounds			PF	TP	A TO Blk Stl				Min
		FG-FGA	FG-FGA	FT-FTA	FT-FTA	Off	Def	Tot			A	TO	Blk	Stl	
10	WILLIAMS, Kiara	f	2-4	0-0	1-3	2	2	4	1	5	0	0	0	0	21
02	TOLEFREE, Alexis	g	4-23	3-16	1-2	2	4	6	3	12	5	2	0	4	32
03	MONK, Malica	g	2-12	0-4	1-2	2	1	3	3	5	2	1	0	2	31
14	MASON, Jaily	g	2-5	1-3	0-0	0	1	1	1	5	1	1	0	1	21
33	DUNGEE, Chelsea	g	2-13	1-6	5-6	0	1	1	1	10	0	1	2	1	34
00	GAULDEN, A'Tyanna		1-6	0-1	0-0	1	1	2	0	2	3	0	0	1	11
01	NORTHCROSS-BAKER,		0-0	0-0	0-0	0	0	0	1	0	0	0	0	0	3
22	ZIMMERMAN, Bailey		4-8	2-5	1-2	7	4	11	2	11	0	2	1	1	28
24	THOMAS, Taylah		2-3	0-0	0-2	3	5	8	2	4	0	1	0	0	19
Team						4	0	4							
Totals			19-74	7-35	9-17	21	19	40	14	54	11	8	3	10	200
1st - FG %:		4-18	22.2%	2nd: 4-16	25.0%	3rd: 6-17	35.3%	4th: 5-23	21.7%	Game: 19-74	25.7%	Deadball			
3FG %:		2-8	25.0%	0-5	0.0%	3-9	33.3%	2-13	15.4%	7-35	20.0%	Rebounds			
FT %:		0-0	0.0%	0-3	0.0%	5-6	83.3%	4-8	50.0%	9-17	52.9%	4			

Officials: Troy Winders, Meadow Overstreet, Erika Herriman-Camarota
Technical fouls: Pittsburgh-None. Arkansas-None.
Attendance:

Score by periods	1st	2nd	3rd	4th	Total
Pittsburgh	17	8	21	15	61
Arkansas	10	8	20	16	54

Last FG - UP 4th-01:42, AR 4th-00:21.
Largest lead - UP by 15 3rd-07:06, AR by 2 1st-09:40,
UP led for 36:21, AR led for 00:20. Game was tied for 03:00.

Points	In	Off	2nd	Fast	Bench
Paint	T/O	Chance	Break		
AR	42	4	10	2	26
UP	22	19	10	10	17

Score tied - 2 times.
Lead changed - 1 time.

Official Basketball Box Score -- Game Totals -- Final Statistics
AR vs Wisconsin
11/25/18 7:30 p.m. at Nashville, TN (Municipal Auditorium)**AR 69 • 4-2**

#	Player	Total		3-Ptr		Rebounds			PF	TP	A TO Blk Stl				Min
		FG-FGA	FG-FGA	FT-FTA	FT-FTA	Off	Def	Tot			A	TO	Blk	Stl	
10	WILLIAMS, Kiara	f	5-10	0-0	3-5	6	2	8	4	13	0	1	0	3	23
02	TOLEFREE, Alexis	g	2-9	1-6	0-0	2	0	2	0	5	1	1	0	0	17
03	MONK, Malica	g	5-11	0-0	3-8	0	1	1	1	13	3	0	0	1	27
14	MASON, Jaily	g	5-14	1-4	1-2	3	4	7	3	12	1	1	0	2	36
33	DUNGEE, Chelsea	g	5-11	3-5	7-10	1	4	5	3	20	1	4	0	3	34
00	GAULDEN, A'Tyanna		0-3	0-0	1-2	0	0	0	1	1	4	1	0	1	17
22	ZIMMERMAN, Bailey		1-5	0-4	1-1	2	2	4	2	3	1	0	0	0	25
24	THOMAS, Taylah		1-2	0-0	0-0	3	9	12	3	2	0	0	0	1	17
52	DOUMBIA, Rokia		0-0	0-0	0-0	0	1	1	0	0	0	1	0	0	4
Team						1	3	4							
Totals			24-65	5-19	16-28	18	26	44	17	69	11	10	0	11	200
1st - FG %:		8-19	42.1%	2nd: 5-12	41.7%	3rd: 5-20	25.0%	4th: 6-14	42.9%	Game: 24-65	36.9%	Deadball			
3FG %:		2-6	33.3%	0-2	0.0%	3-8	37.5%	1-3	33.3%	5-19	26.3%	Rebounds			
FT %:		2-2	100.0%	1-3	33.3%	3-4	75.0%	10-17	58.8%	16-28	57.1%	6			

Wisconsin 68 • 6-1

#	Player	Total		3-Ptr		Rebounds			PF	TP	A TO Blk Stl				Min
		FG-FGA	FG-FGA	FT-FTA	FT-FTA	Off	Def	Tot			A	TO	Blk	Stl	
11	Howard,Marsha	f	3-4	0-0	4-8	3	5	8	4	10	0	2	2	1	27
34	Lewis,Imani	f	5-8	0-0	3-5	4	8	12	3	13	2	1	0	0	31
02	Karlis,Kelly	g	0-3	0-3	0-0	1	0	1	2	0	1	1	1	0	15
10	Van Leeuwen,Kendra	g	5-14	2-6	0-0	2	6	8	3	12	12	5	0	0	33
44	Luehring,Alex	g	3-10	3-10	0-0	0	3	3	1	9	4	2	1	0	34
03	Gilreath,Suzanne		2-6	2-6	0-0	0	1	1	2	6	0	0	0	0	5
14	Laszewski, Abby		4-6	0-0	0-0	2	1	3	2	8	0	2	1	0	21
20	Bragg,Diamond		1-2	0-0	0-0	0	1	1	1	2	1	2	0	0	8
23	Hale,Jasmine		4-10	0-3	0-0	1	2	3	4	8	1	1	1	0	26
Team						1	2	3							
Totals			27-63	7-28	7-13	14	29	43	22	68	21	16	6	1	200
1st - FG %:		7-18	38.9%	2nd: 6-15	40.0%	3rd: 8-17	47.1%	4th: 6-13	46.2%	Game: 27-63	42.9%	Deadball			
3FG %:		1-9	11.1%	2-8	25.0%	2-7	28.6%	2-3	66.7%	7-28	25.0%	Rebounds			
FT %:		2-4	50.0%	1-4	25.0%	2-2	100.0%	2-3	66.7%	7-13	53.8%	2			

Officials: Felicia Grinter, Troy Winders, Neonta Williams
Technical fouls: AR-None. Wisconsin-None.
Attendance:

Score by periods	1st	2nd	3rd	4th	Total
AR	20	11	15	23	69
Wisconsin	17	16	19	16	68

Last FG - AR 4th-00:11, WIS 4th-01:04.
Largest lead - AR by 7 1st-04:45, WIS by 15 3rd-04:12.
AR led for 10:54, WIS led for 25:21. Game was tied for 03:06.

Score tied - 4 times.
Lead changed - 6 times.

Official Basketball Box Score -- Game Totals -- Final Statistics
Oral Roberts vs AR
11/28/18 7 p.m. at Fayetteville, Ark. (Bud Walton Arena)**Oral Roberts 61 • 3-4**

#	Player	Total		3-Ptr		Rebounds			PF	TP	A TO Blk Stl				Min
		FG-FGA	FG-FGA	FT-FTA	FT-FTA	Off	Def	Tot			A	TO	Blk	Stl	
21	Torrey, Rylie	f	0-6	0-5	0-0	0	1	1	4	0	0	5	1	0	26
24	Brotons, Montserrat	c	6-13	0-0	4-8	1	6	7	3	16	1	2	0	0	27
03	Kirkhart, Katie	g	1-6	0-0	0-0	1	2	3	2	2	1	3	0	1	22
10	Mayberry, Maya	g	3-12	1-5	0-0	0	3	3	5	7	2	3	0	2	30
23	Beatty, Lakota	g	2-5	1-1	0-0	1	6	7	0	5	1	1	0	1	33
13	Skalnik, Rachel		0-1	0-1	0-0	1	0	1	1	4	0	0	1	0	8
20	Schumacher, Regan		0-1	0-0	0-0	0	2	2	1	0	0	1	0	1	9
32	Garvie, Sarah		3-5	2-4	0-0	0	2	2	1	8	2	0	0	1	20
33	Lippe, KeniJo		6-12	1-2	10-10	4	5	9	3	23	1	2	0	1	25
Team						3	3	6							
Totals			21-61	5-18	14-18	11	30	41	23	61	8	19	1	8	200
1st - FG %:		5-13	38.5%	2nd: 5-12	41.7%	3rd: 5-16	31.3%	4th: 6-20	30.0%	Game: 21-61	34.4%	Deadball			
3FG %:		1-3	33.3%	1-1	100.0%	0-6	0.0%	3-9	33.3%	5-18	27.8%	Rebounds			
FT %:		0-0	0.0%	1-2	50.0%	0-6	83.3%	8-10	80.0%	14-18	77.8%	1			

AR 74 • 5-2

#	Player	Total		3-Ptr		Rebounds			PF	TP
---	--------	-------	--	-------	--	----------	--	--	----	----

Official Basketball Box Score -- Game Totals -- Final Statistics
Tennessee Tech vs AR
12/04/18 7 p.m. at Fayetteville, Ark. (Bud Walton Aren)**Tennessee Tech 42 • 5-3**

#	Player	Total		3-Ptr		Rebounds			PF	TP	A TO Blk Stl				Min
		FG-FGA	FG-FGA	FT-FTA	FT-FTA	Off	Def	Tot			A	TO	Blk	Stl	
44	CANTRELL, Lacy	f	1-5	0-0	1-2	2	7	9	0	3	0	0	1	0	16
00	HARRIS, Akia	g	2-7	0-2	1-3	0	5	5	1	5	4	1	0	1	37
02	BROCK, Jordan	g	3-10	1-4	0-0	0	2	2	0	7	2	2	0	0	28
11	ALEXANDER, Kentoria	g	2-7	1-1	0-2	2	3	5	2	5	4	5	1	1	34
14	BUCKNER, Abby	g	4-11	1-6	0-0	1	6	7	3	9	1	3	0	0	38
10	LAMB, Taylor	g	2-3	0-0	0-0	0	2	2	2	4	0	0	1	0	18
15	WILKINSON, Anacia	g	3-6	0-0	0-0	0	1	1	1	6	0	2	2	0	10
20	BRADY, Kesha	g	1-3	1-2	0-2	0	2	2	2	3	0	4	0	0	13
33	COLEMAN, Mackenzie	g	0-4	0-1	0-0	1	0	1	1	0	0	2	0	0	6
Team						6	2	8							
Totals			18-56	4-16	2-9	12	30	42	12	42	11	21	5	2	200
1st - FG %: 2-12 16.7% 2nd: 7-18 38.9% 3rd: 3-12 25.0% 4th: 6-14 42.9% Game: 18-56 32.1% Deadball Rebounds 3,1															
3FG %: 0-2 0.0% 2nd: 2-7 28.6% 3rd: 0-3 0.0% 4th: 2-4 50.0% 5th: 2-4 50.0%															
FT %: 0-0 0.0% 0-0 0.0% 1-3 33.3% 1-6 16.7% 2-9 22.2%															

AR 65 • 6-3

#	Player	Total		3-Ptr		Rebounds			PF	TP	A TO Blk Stl				Min
		FG-FGA	FG-FGA	FT-FTA	FT-FTA	Off	Def	Tot			A	TO	Blk	Stl	
10	WILLIAMS, Kiara	c	3-4	0-0	0-0	1	8	9	0	6	0	0	5	1	16
02	TOLEFREE, Alexis	g	2-11	1-8	0-0	0	2	2	0	5	0	1	0	2	20
03	MONK, Malica	g	1-3	0-0	0-0	0	1	1	2	2	1	1	1	1	17
14	MASON, Jailyn	g	1-5	1-1	1-2	1	1	2	1	4	3	1	1	3	25
33	DUNGEE, Chelsea	g	12-18	4-6	0-0	1	4	5	1	28	2	3	0	2	28
00	GAULDEN, A'Tyanna	g	6-16	0-0	0-0	3	2	5	1	12	3	1	0	0	24
01	NORTHCROSS-BAKER,	g	0-2	0-2	0-0	0	1	1	0	0	0	0	0	0	4
13	SPANGLER, Grayce	g	0-4	0-2	0-0	2	0	2	2	0	0	0	0	0	6
20	STOUT, Sydney	g	0-0	0-0	0-0	0	1	1	0	0	0	0	0	0	5
22	ZIMMERMAN, Bailey	g	2-6	1-3	2-2	1	4	5	1	7	0	1	1	1	22
24	THOMAS, Taylah	g	0-1	0-0	1-2	2	0	2	0	1	0	0	0	0	15
30	WEAVER, Macy	g	0-3	0-0	0-0	1	2	3	2	0	0	0	4	2	9
52	DOUMBIA, Rokia	g	0-1	0-1	0-0	0	1	1	2	0	0	1	1	1	9
Team						3	0	3							
Totals			27-74	7-23	4-6	15	27	42	12	65	9	9	13	13	200
1st - FG %: 7-18 38.9% 2nd: 7-17 41.2% 3rd: 10-16 62.5% 4th: 3-23 13.0% Game: 27-74 36.5% Deadball Rebounds 3,3															
3FG %: 3-8 37.5% 0-4 0.0% 3-4 75.0% 1-5 20.0% 2-4 50.0%															
FT %: 1-2 50.0% 0-0 0.0% 0-0 0.0% 0-0 0.0% 4-6 66.7%															

Officials: Denise Brooks, Michael McConnell, Mark Resch
Technical fouls: Tennessee Tech-None. AR-None.
Attendance: 915
Tickets Scanned: 502

Score by periods	1st	2nd	3rd	4th	Total
Tennessee Tech	4	16	7	15	42
AR	18	17	23	7	65

Last FG - TTU 4th-01:18, AR 4th-03:05.
Largest lead - TTU None, AR by 31 3rd-00:36.
TTU led for 00:00. AR led for 36:31. Game was tied for 03:28.

Points	In Paint	Off T/O	2nd Chance	Fast Break	Bench
TTU	22	10	5	2	13
AR	30	28	13	4	20

Score tied - 0 times.
Lead changed - 0 times.

Official Basketball Box Score -- Game Totals -- Final Statistics
Prairie View A&M vs AR
12/16/18 2 p.m. at Fayetteville, Ark. (Bud Walton Arena)**Prairie View A&M 44 • 3-5**

#	Player	Total		3-Ptr		Rebounds			PF	TP	A TO Blk Stl				Min
		FG-FGA	FG-FGA	FT-FTA	FT-FTA	Off	Def	Tot			A	TO	Blk	Stl	
20	WILLIAMS,KE'ASIA	f	3-8	0-0	0-0	6	6	12	1	6	2	1	0	1	29
23	NEALEY,LA'NEIQUE	f	2-7	0-0	0-2	3	2	5	2	4	0	2	1	1	19
05	DOBBINS,SHALA	g	2-16	0-4	3-4	1	1	2	2	7	2	2	0	1	28
10	WILLIS,BRIN	g	2-9	0-0	1-1	2	0	2	2	5	1	1	0	0	26
12	NEWMAN,DOMINIQUE	g	1-6	1-4	0-0	2	4	6	3	3	1	1	0	0	18
02	PENNIMAN,JORDYN	g	0-3	0-2	0-0	0	2	2	0	0	0	0	0	0	8
03	SHEPHERD,SIERRA	g	0-2	0-1	0-0	0	2	2	1	0	1	2	0	0	13
04	TOLBERT,KEAYNNA	g	0-2	0-2	0-0	0	1	1	1	0	0	0	0	0	3
22	TIEUEL,CHELSEA	g	1-3	1-3	0-0	0	0	0	0	3	0	0	0	0	13
24	FORD,ARTAVIA	g	4-12	0-0	0-0	0	5	5	3	8	0	2	2	0	15
30	COBB,JHYRAH	g	1-5	0-0	0-0	2	3	5	3	2	0	2	3	0	14
33	BURRELL,PASSION	g	0-0	0-0	0-0	0	0	0	0	0	0	0	0	0	4
40	CAMPBELL,MARIAH	g	2-4	0-0	2-4	0	0	0	2	6	1	0	0	1	10
Team						2	2	4							
Totals			18-72	2-16	6-11	18	28	46	20	44	7	13	6	4	200
1st - FG %: 8-25 32.0% 2nd: 2-16 12.5% 3rd: 4-17 23.5% 4th: 4-14 28.6% Game: 18-72 25.0% Deadball Rebounds 3,1															
3FG %: 1-6 16.7% 0-2 0.0% 1-6 16.7% 1-6 16.7%															
FT %: 1-4 25.0% 0-0 0.0% 1-1 100.0% 4-6 66.7%															

AR 71 • 8-3

#	Player	Total		3-Ptr		Rebounds			PF	TP	A TO Blk Stl				Min
		FG-FGA	FG-FGA	FT-FTA	FT-FTA	Off	Def	Tot			A	TO	Blk	Stl	
10	WILLIAMS, Kiara	f	1-6	0-0	4-4	6	4	10	1	6	0	1	3	2	20
02	TOLEFREE, Alexis	g	3-10	1-6	0-0	1	3	4	0	7	2	1	1	1	19
03	MONK, Malica	g	3-9	0-2	2-2	0	6	6	2	8	1	1	1	1	22
14	MASON, Jailyn	g	3-6	0-2	0-0	1	0	1	0	6	0	1	0	1	22
33	DUNGEE, Chelsea	g	2-11	0-2	4-6	1	5	6	1	8	1	1	0	1	27
00	GAULDEN, A'Tyanna	g	2-6	0-0	2-2	1	3	4	2	6	3	1	0	0	18
01	NORTHCROSS-BAKER,	g	2-6	1-5	0-1	1	1	2	2	5	0	1	0	1	12
13	SPANGLER, Grayce	g	0-1	0-1	0-2	1	0	1	0	0	0	0	0	0	5
20	STOUT, Sydney	g	1-1	1-1	0-0	1	0	1	0	3	0	0	0	0	3
22	ZIMMERMAN, Bailey	g	0-4	0-2	5-6	5	6	11	0	5	0	0	0	0	19
24	THOMAS, Taylah	g	5-9	0-0	1-2	3	4	7	2	11	0	0	1	0	15
30	WEAVER, Macy	g	2-2	0-0	0-1	2	1	3	1	4	1	0	1	0	5
52	DOUMBIA, Rokia	g	1-5	0-2	0-0	1	3	4	1	2	3	1	1	0	13
Team						3	1	4							
Totals			25-76	3-23	18-26	27	37	64	12	71	11	8	8	7	200
1st - FG %: 4-16 25.0% 2nd: 2-19 10.5% 3rd: 8-19 42.1% 4th: 11-22 50.0% Game: 25-76 32.9% Deadball Rebounds 3,1															
3FG %: 1-5 20.0% 0-7 0.0% 0-4 0.0% 1-6 16.7%															
FT %: 4-4 100.0% 9-12 75.0% 5-7 71.4%															

Officials: Karen Preato, Mark Resch, Marcus Clayton
Technical fouls: Prairie View A&M-None. AR-None.
Attendance: 1892
Tickets Scanned: 1,041

Score by periods	1st	2nd	3rd	4th	Total
Prairie View A&M	18	4	9	13	44
AR	13	13	21	24	71

Last FG - PVAM 4th-01:42, AR 4th-00:01.
Largest lead - PVAM by 7 1st-00:16, AR by 27 4th-05:10.
PVAM led for 13:08. AR led for 24:11. Game was tied for 02:41.

Points	In Paint	Off T/O	2nd Chance	Fast Break	Bench
PVAM	28	2	11	4	19
AR	36	14	24	17	36

Score tied - 4 times.
Lead changed - 3 times.

Official Basketball Box Score -- Game Totals -- Final Statistics
AR vs Abilene Christian
12/08/18 1 p.m. at Abilene, Texas (Moody Coliseum)**AR 80 • 7-3**

#	Player	*	Total			3-Ptr		Rebounds		PF	TP	A TO Blk Stl				Min
			FG-FGA	FG-FGA	FT-FTA	Off	Def	A	TO			Blk	Stl			
02	TOLEFREE, Alexis	*	8-16	5-12	0-1	1	0	1	2	21	3	1	1	5	29	
03	MONK, Malica	*	6-10	3-5	3-4	0	0	0	3	18	4	3	0	3	26	
10	WILLIAMS, Kiara	*	4-6	0-0	4-6	4	7	11	2	12	0	0	1	1	21	
14	MASON, Jailyn	*	2-8	1-4	0-0	1	4	5	1	5	5	1	1	2	36	
33	DUNGEE, Chelsea	*	0-9	0-4	2-4	0	1	1	1	2	0	1	0	1	25	
00	GAULDEN, A'Tyanna	*	2-5	0-0	3-3	0	1	1	3	7	4	1	0	0	14	
22	ZIMMERMAN, Bailey	*	1-5	1-4	0-0	3	2	5	3	0	0	1	1	1	30	
24	THOMAS, Taylah	*	5-6	0-0	2-2	2	4	6	2	12	0	1	0	0	19	
	Team					2	1	3								
Totals			28-65	10-29	14-20	13	20	33	17	80	16	8	4	13	200	
1st- FG %: 5-16 31.3% 2nd: 10-16 62.5% 3rd: 5-16 31.3% 4th: 8-17 47.1% Game: 28-65 43.1% Deadball																
3rd: 2-7 28.6% 4-8 50.0% 1-9 11.1% 2-5 40.0% 10-29 34.5% Rebounds																
FT %: 2-4 50.0% 4-4 100.0% 4-7 57.1% 4-5 80.0% 14-20 70.0%																
Athlete Center 68 x 7-2																



Official Basketball Box Score -- Game Totals -- Final Statistics
AR vs Tulsa
12/20/18 2:07 pm at Donald W. Reynolds Center (Tulsa, Okla.)



AR 61 • 10-3

#	Player	Total		3-Ptr		Rebounds			PF	TP	A TO Blk Stl				Min
		FG-FGA	FG-FGA	FT-FTA	FT-FTA	Off	Def	Tot			A	TO	Blk	Stl	
10	WILLIAMS, Kiara	c	3-5	0-0	0-1	3	7	10	3	6	0	3	0	1	23
02	TOLEFREE, Alexis	g	3-8	0-5	0-0	0	4	4	1	6	1	1	1	3	26
03	MONK, Malica	g	5-13	1-2	1-3	1	0	1	3	12	2	4	0	3	30
14	MASON, Jailyn	g	2-6	2-4	0-0	0	5	5	1	6	3	3	1	1	34
33	DUNGEE, Chelsea	g	7-24	2-11	7-10	1	8	9	3	23	0	4	0	3	37
00	GAULDEN, A'Tyanna		2-2	0-0	0-0	1	1	2	1	4	1	1	1	0	10
01	NORTHCROSS-BAKER,		0-1	0-1	0-0	0	0	0	0	0	0	0	0	0	5
22	ZIMMERMAN, Bailey		1-3	1-2	1-2	1	3	4	1	4	0	1	0	1	18
24	THOMAS, Taylah		0-1	0-0	0-0	0	1	1	1	0	0	1	1	0	17
Team						2	3	5							
Totals			23-63	6-25	9-16	9	32	41	14	61	7	18	4	12	200
1st - FG %: 7-16 43.8% 2nd: 3-16 18.8% 3rd: 4-14 28.6% 4th: 9-17 52.9% Game: 23-63 36.5% Deadball															
3FG %: 2-5 40.0% 1-7 14.3% 1-6 16.7% 2-7 28.6% 6-25 24.0% Rebounds															
FT %: 2-2 100.0% 1-2 50.0% 4-8 50.0% 2-4 50.0% 9-16 56.3% 2															

Tulsa 59 • 5-7

#	Player	Total		3-Ptr		Rebounds			PF	TP	A TO Blk Stl				Min
		FG-FGA	FG-FGA	FT-FTA	FT-FTA	Off	Def	Tot			A	TO	Blk	Stl	
32	LEWIS, Desiree	f	3-6	0-0	1-2	3	5	8	5	7	3	3	0	1	29
33	POLK, Crystal	f	7-16	0-1	6-6	2	6	8	3	20	0	4	1	1	29
11	BITTLE, Maddie	g	1-8	1-6	0-0	2	2	4	1	3	0	2	0	2	33
21	LESCAY, Rebecca	g	3-9	0-0	1-2	1	3	4	1	7	0	5	0	2	28
22	BRADY, Morgan	g	6-13	4-5	0-0	1	8	9	0	16	2	2	0	0	36
10	GAULDEN, Alexis		3-12	0-5	0-3	0	5	5	4	6	5	6	0	1	23
23	MOUTRY, Kayla		0-1	0-0	0-0	1	2	3	2	0	1	0	0	0	11
25	SCALES, Tyjae'		0-1	0-0	0-0	2	3	5	1	0	1	0	0	1	11
Team						2	2	4			1				
Totals			23-66	5-17	8-13	14	36	50	17	59	12	23	1	8	200
1st - FG %: 8-19 42.1% 2nd: 4-18 22.2% 3rd: 5-15 33.3% 4th: 6-14 42.9% Game: 23-66 34.8% Deadball															
3FG %: 1-4 25.0% 2-7 28.6% 1-3 33.3% 1-3 33.3% 5-17 29.4% Rebounds															
FT %: 0-2 0.0% 0-0 0.0% 5-5 100.0% 3-6 50.0% 8-13 61.5% 2															

Officials: Joseph Vaszily, Jeffrey Smith, Katie Lukanich
Technical fouls: AR-None, Tulsa-None.
Attendance: 1222

Score by periods	1st	2nd	3rd	4th	Total
AR	18	8	13	22	61
Tulsa	17	10	16	16	59

Last FG - AR 4th-00:08, TLS 4th-01:26.
Largest lead - AR by 6 4th-07:20, TLS by 6 3rd-05:52.
AR led for 16:00. TLS led for 15:16. Game was tied for 08:44.

Points	In	Off	2nd	Fast
Paint	26	16	8	8
AR	24	23	8	2
TLS				6

Score tied - 9 times.
Lead changed - 13 times.



Official Basketball Box Score -- Game Totals -- Final Statistics
Jackson State vs AR
12/30/18 2 p.m. at Fayetteville, Ark. (Bud Walton Arena)



Jackson State 57 • 4-7

#	Player	Total		3-Ptr		Rebounds			PF	TP	A TO Blk Stl				Min
		FG-FGA	FG-FGA	FT-FTA	FT-FTA	Off	Def	Tot			A	TO	Blk	Stl	
02	WOMACK, Antionette	f	1-4	0-0	0-2	4	2	6	4	2	0	2	1	0	24
23	HAMER, Marneisha	f	10-15	1-1	0-0	3	5	8	3	21	0	7	1	1	26
01	LUCKY, Kaisah	g	4-12	0-1	1-4	0	7	7	3	9	4	9	1	2	34
03	MITCHELL, D'Asia	g	4-16	4-13	0-0	0	4	4	2	12	0	2	0	1	27
22	REDMON, Jasmine	g	0-2	0-1	0-0	1	1	2	0	0	2	0	0	0	10
04	ELLIS, Christina	g	4-7	1-3	2-2	1	2	3	1	11	2	1	0	1	23
11	WILLIAMS, Sumer		0-1	0-0	0-0	0	3	3	1	0	2	3	0	2	20
20	TALLIE, J'niya		0-1	0-1	0-0	0	1	1	1	0	1	1	0	0	6
32	KING, Bianca		0-1	0-0	0-0	3	2	5	0	0	1	0	0	0	9
35	CAUSEY, Chelsea		1-4	0-0	0-0	1	4	5	0	2	0	2	0	0	10
42	AUGUSTINE, Shelby		0-2	0-0	0-0	1	1	2	1	0	0	1	0	1	11
Team						1	2	3							
Totals			24-65	6-20	3-8	15	34	49	17	57	12	28	3	8	200
1st - FG %: 7-19 36.8% 2nd: 6-14 42.9% 3rd: 4-12 33.3% 4th: 7-20 35.0% Game: 24-65 36.9% Deadball															
3FG %: 0-4 0.0% 1-2 50.0% 1-5 20.0% 4-9 44.4% 6-20 30.0% Rebounds															
FT %: 1-2 50.0% 0-0 0.0% 0-4 0.0% 2-2 100.0% 3-8 37.5% 2,2															

AR 76 • 11-3

#	Player	Total		3-Ptr		Rebounds			PF	TP	A TO Blk Stl				Min
		FG-FGA	FG-FGA	FT-FTA	FT-FTA	Off	Def	Tot			A	TO	Blk	Stl	
10	WILLIAMS, Kiara	c	1-5	0-0	0-0	5	3	8	1	2	0	1	3	3	16
02	TOLEFREE, Alexis	g	6-12	5-10	0-0	0	1	1	0	17	1	1	0	3	23
03	MONK, Malica	g	3-10	2-5	3-4	0	2	2	1	11	2	2	0	1	28
14	MASON, Jailyn	g	4-8	1-4	0-0	1	5	6	3	9	2	3	0	1	18
33	DUNGEE, Chelsea	g	4-18	0-8	5-6	0	5	5	1	13	2	2	0	7	31
00	GAULDEN, A'Tyanna		1-3	0-0	0-0	0	0	0	1	2	4	2	0	0	11
01	NORTHCROSS-BAKER,		0-4	0-4	0-0	0	1	1	1	0	3	0	0	1	16
13	SPANGLER, Grayce		2-2	2-2	0-2	0	0	0	0	6	0	0	0	0	3
20	STOUT, Sydney		0-0	0-0	0-0	0	0	0	0	0	0	0	0	0	3
22	ZIMMERMAN, Bailey		2-5	2-3	0-0	2	2	4	0	6	0	0	1	0	16
24	THOMAS, Taylah		2-3	0-0	0-0	2	4	6	0	4	0	0	0	1	20
30	WEAVER, Macy		0-0	0-0	1-2	0	2	2	0	1	0	0	2	0	4
52	DOUMBIA, Rokia		2-4	0-1	1-1	1	0	1	3	5	1	3	0	0	11
Team						1	3	4							
Totals			27-74	12-37	10-15	12	28	40	11	76	15	15	6	17	200
1st - FG %: 6-18 33.3% 2nd: 4-20 20.0% 3rd: 10-22 45.5% 4th: 7-14 50.0% Game: 27-74 36.5% Deadball															
3FG %: 0-8 0.0% 2-13 15.4% 6-9 66.7% 4-7 57.1% 12-37 32.4% Rebounds															
FT %: 4-4 100.0% 2-3 66.7% 0-0 0.0% 4-8 50.0% 10-15 66.7% 4,1															

Officials: Brian Hall, Missy Brooks, Kylie Galloway
Technical fouls: Jackson State-TEAM. AR-None.
Attendance: 2270
Tickets Scanned: 1,326

Score by periods	1st	2nd	3rd	4th	Total
Jackson State	15	13	9	20	57
AR	16	12	26	22	76

Last FG - JSU 4th-00:03, AR 4th-00:43.
Largest lead - JSU by 5 2nd-03:00, AR by 23 4th-02:16.
JSU led for 11:04. AR led for 22:29. Game was tied for 06:27.

Points	In	Off	2nd	Fast
Paint	28	13	6	6
JSU	24	23	7	10
AR				24

Score tied - 7 times.
Lead changed - 11 times.