



# RAZORBACKS

Jeri Thorpe | Associate Communications Director  
P: 479-283-3344 | E: jthorpe@uark.edu | ArkansasRazorbacks.com

## 2018-19 ARKANSAS WOMEN'S BASKETBALL

### THE SCHEDULE | 16-8, 5-5 SEC

Date	Opponent	Time/TV	TV
Oct. 29	Southwest Baptist (Exh.)	7 p.m.	W, 115-53
Nov. 1	East Central Univ. (Exh.)	7 p.m.	W, 101-46
Nov. 9	Northwestern St. (Elem. Day)	SECN+	W, 98-53
Nov. 14	at UT Arlington	ESPN+	W, 66-65
Nov. 18	No. 22 Arizona State	SECN	L, 85-83
Nov. 23	vs. Tennessee State-!	7:30 p.m.	W, 79-55
Nov. 24	vs. Pittsburgh-!	7:30 p.m.	L, 61-54
Nov. 25	vs. Wisconsin-!	7:30 p.m.	W, 69-68
Nov. 28	Oral Roberts	SECN+	W, 74-61
Dec. 2	at No. 23 Iowa State^	2 p.m.	L, 91-82
Dec. 4	Tennessee Tech	SECN+	W, 65-42
Dec. 8	at Abilene Christian	SCDN	W, 80-68
Dec. 16	Prairie View A&M	SECN+	W, 71-44
Dec. 18	Nebraska	SECN+	W, 84-80
Dec. 20	at Tulsa	CST	W, 61-59
Dec. 30	Jackson State	SECN+	W, 76-57
Jan. 3	#7/6 Mississippi State*	SECN	L, 93-69
Jan. 6	at Ole Miss*	SECN	W, 85-55
Jan. 10	at Missouri*	SECN+	L, 71-53
Jan. 13	Vanderbilt*	SECN+	W, 83-62
Jan. 21	at Tennessee*	SECN	W, 80-79
Jan. 24	Alabama* (We Back Pat)	SECN+	W, 72-61
Jan. 27	at Florida*	SECN+	W, 83-73
rv-Jan. 31	Georgia*	SECN+	L, 80-72
rv-Feb. 3	#16 South Carolina*	SECN	L, 87-79
Feb. 7	at LSU*	8 p.m.	SECN
Feb. 10	Auburn* (Play4Kay)	1 p.m.	SECN
Feb. 17	at Kentucky*	1 p.m.	SECN+
Feb. 21	at Georgia*	6 p.m.	SECN+
Feb. 24	Ole Miss* (Senior Day)	3 p.m.	SECN
Feb. 28	Missouri*	8 p.m.	SECN
March 3	at Texas A&M*	4 p.m.	SECN
March 6-10	SEC Championship	TBA	SECN, ESPN
!-Music City Thanksgiving Challenge ^-Big 12/SEC Challenge			
*-SEC Contest			

### GAME 25 | AUBURN (17-6, 5-5 SEC) | Feb. 10 | Fayetteville, Ark. (Bud Walton Arena, 19,200)

#### SERIES

Overall	15-22
SEC	15-20
In Fayetteville	8-9
Away	6-11
Neutral	1-2
Postseason	0-0

#### ARKANSAS RAZORBACKS

PTS / GAME	73.1
PTS ALLOWED / GAME	67.7
FG %	.387
FG DEFENSE %	.404
3-PT FG %	.303
3-PT FG DEFENSE %	.300
REB / GAME	38.6
REB ALLOWED / GAME	44.5
LEADING SCORER	Dungee, 18.0
LEADING REBOUNDER	Williams, 6.8
LEADER IN ASSISTS	Monk, 7.6
HEAD COACH	Mike Neighbors
ARKANSAS RECORD	29-26/8-18 SEC (2)
CAREER RECORD	127-67 (6)

#### AUBURN TIGERS

PTS / GAME	74.7
PTS ALLOWED / GAME	64.8
FG %	.430
FG DEFENSE %	.420
3-PT FG %	.324
3-PT FG DEFENSE %	.360
REB / GAME	35.5
REB ALLOWED / GAME	35.2
LEADING SCORER	McKay, 14.4
LEADING REBOUNDER	Thompson, 10.3
LEADER IN ASSISTS	McKay, 9.7
HEAD COACH	Terri Williams-Flournoy
SCHOOL RECORD	119-97 (7)
CAREER RECORD	262-201 (15)

#### LAST FIVE MEETINGS

1/29/2015	W, 52-47	Fayetteville
2/15/2015	W, 54-36	Auburn
1/24/2016	L, 71-60 (OT)	Auburn
2/26/2017	L, 70-64	Fayetteville
1/14/2018	W, 68-58	Auburn

#### WHAT'S GOING ON IN OUR NEIGHBORHOOD

- Second time in four years with at least five SEC wins.
- Three more wins than last season and two more SEC wins than in 2018.
- Chelsea Dungee ranks second in the SEC averaging 18.0 ppg and Malica Monk is No. 14 with 14.3 ppg. Only two other teams (Tennessee and Mississippi State) have two players in the top-14 this week.
- Dungee is No. 2 in SEC only games averaging 19.4 ppg with Monk at T-5 with 16.2 ppg. The Razorbacks are the only team in the league to have two players in the top-10 in scoring in conference-only contests.
- In league-only games | Monk is fifth with 4.2 apg, third with a 2.6 a/to ratio, and ninth shooting .829 from the line; Dungee is seventh shooting .873 from the line.

#### THE MATCHUP

- Both teams enter the game with 5-5 SEC records and are tied for sixth in the league standings.
- Auburn was picked to finish 8th overall and Arkansas 11th overall in both the media and coaches' preseason polls.
- Auburn is 4-1 in conference road games with wins at Florida, Alabama, Vanderbilt and Ole Miss.
- Arkansas also has wins over the above-mentioned SEC teams, with a fifth victory at Tennessee.
- Arkansas is just 2-3 defending Bud Walton Arena against SEC teams with home losses to No. 7 Mississippi State, No. 16 South Carolina and Georgia.
- The Razorbacks won last year's meeting in Auburn, 68-58, behind a break out performance from Bailey Zimmerman. Zimmerman had not made a 3-point basket in the season but hit three big shots from distance scoring a season-best 13 points pacing Arkansas to the road win.
- Arkansas and Auburn are 5-5 in the last 10 meetings.

### FOLLOW, WATCH & LISTEN



@RAZORBACKWBB

Broadcast: SECN (<https://es.pn/2HZxDRL>)

Talent: Sam Gore & Blair Schaefer

Live Scoring: <http://statb.us/e/233643>

Razorback Sports Network from IMG (Radio)

Phil Elson & Erin Portman

Fayetteville - KQSM-FM-92.1 /// KYNG-AM - 1590\*

Fort Smith - KFPW-AM-1230 /// KHGG-AM-1580\*

Rogers - KURM-AM-790 /// FM-100.3

\*If there are conflicts on the FM station

### THE LINEUP (last game starters)

ALEXIS TOLEFREE



Jr | Conway, Ark.

2	PPG	FG%	RPG	3-PT
	10.0	.305	2.9	50

MALICA MONK



Sr | N. Little Rock, Ark.

3	PPG	FG%	RPG	Ast
	14.3	.413	2.2	7.6

KIARA WILLIAMS



Jr | Little Rock, Ark.

10	PPG	FG%	RPG	BLK
	6.4	.561	6.8	2.8

JAILYN MASON



Jr | Mason, Ohio

14	PPG	FG%	RPG	Ast
	6.9	.389	4.0	5.0

CHELSEA DUNGEE



RSo | Sapulpa, Okla.

33	PPG	FG%	RPG	FT%
	18.0	.387	4.2	.806

## 2018-19 @RAZORBACKWBB

### NUMERICAL

NO.	NAME	POS	HT	CL	HOMETOWN/PREVIOUS SCHOOL	TWITTER
0	A'Tyanna Gaulden	G	5-7	RSo	Ocilla, Ga./Americus Sumter HS/Florida State	@AtyannaGaulden
1	Raven Northcross-Baker	G	5-9	Sr	Malvern, Ark./Malvern HS/Chipola College	@ravenbaker_4
2	Alexis Tolefree	G	5-8	Jr	Conway, Ark./Conway HS/Jones County JC	@a2smooth_
3	Malica Monk	G	5-5	Sr	N. Little Rock, Ark./NLR HS	@TheRealMalica
10	Kiara Williams	C	6-1	Jr	Little Rock, Ark./LR Central HS	@kiara_will22
13	Grayce Spangler	G	5-11	So	Fayetteville, Ark./Fayetteville HS	@grayce_1313
14	Jailyn Mason	PG	5-9	Jr	Mason, Ohio/William Mason HS	@UofAjbmason
20	Sydney Stout	F	6-0	Jr	Bixby, Okla./Bixby HS	@sydeny_stout_
22	Bailey Zimmerman	F	6-0	Sr	St. Vincent, Ark. /Wonderview HS	@Bailey_Ann22
23	Amber Ramirez*	G	5-9	Jr	San Antonio, Texas/Wagner HS/TCU	@yungram_
24	Taylah Thomas	F	6-1	So	Arlington, Texas/Mansfield Timberview HS	@hailtaylahh
30	Macy Weaver	F	6-3	So	Davis Junction, Ill./Stillman Valley HS	@macyweaver528
33	Chelsea Dungee	G	5-11	RSo	Sapulpa, Okla./Sapulpa HS/Oklahoma	@ChelseaDungee22
52	Rokia Doumbia	G	5-9	Fr	Bradenton, Fla./IMG Academy/Mali, Africa	@23RokiaDoumbia

\*Will redshirt due to NCAA transfer rules

### COACHING STAFF

Title	Name	Year	Alma Mater
Head Coach	Mike Neighbors	2nd Season	Arkansas, 1993
Assistant Coach	Todd Schaefer	2nd Season	Thomas More College, 1995
Assistant Coach	Lacey Goldwire	2nd Season	Oklahoma State, 2010
Assistant Coach	Pauline Love	2nd Season	Southern Miss, 2010
Director of Operations	Amber Shirey	31st Season	Arkansas, 1992
Director of Video and Scouting	Jeff Brazil	12th Season	Arkansas, 2010
Dir. of Student-Athlete Devel.	C'eira Ricketts	2nd Season	Arkansas, 2015

### ELIGIBILITY

Seniors (3)	Juniors (5)	Sophomores (5)	Freshmen (1)
Raven Northcross-Baker	Alexis Tolefree	Chelsea Dungee	Rokia Doumbia
Malica Monk	Jailyn Mason	A'Tyanna Gaulden	
Bailey Zimmerman	Amber Ramirez*	Grayce Spangler	
	Sydney Stout	Taylah Thomas	
	Kiara Williams	Macy Weaver	

### ALPHABETICAL

NO.	NAME	POS	HT	CL	MAJOR
52	Rokia Doumbia	G	5-9	Fr	Pre-Business
33	Chelsea Dungee	G	5-11	R-So	Communication
0	A'Tyanna Gaulden	G	5-7	R-So	Apparel Merchandise & Product Development
14	Jailyn Mason	PG	5-9	Jr	Journalism: News/Editorial
3	Malica Monk	G	5-5	Sr	Recreation & Sport Management
1	Raven Northcross-Baker	G	5-9	Sr	Criminal Justice and Sociology
23	Amber Ramirez	G	5-9	Jr	Criminal Justice
13	Grayce Spangler	G	5-11	So	Journalism: Broadcast
20	Sydney Stout	F	6-0	Jr	Marketing
24	Taylah Thomas	F	6-1	So	Nursing/Public Health
2	Alexis Tolefree	G	5-8	Jr	Sociology
30	Macy Weaver	F	6-3	So	Supply Chain Management
10	Kiara Williams	C	6-1	Jr	Communication
22	Bailey Zimmerman	F	6-0	Sr	Apparel Merchandise & Product Development

### BY STATE

#### ARKANSAS

Malica Monk	N. Little Rock
Raven Northcross-Baker	Malvern
Grayce Spangler	Fayetteville
Alexis Tolefree	Conway
Kiara Williams	Little Rock
Bailey Zimmerman	St. Vincent

#### GEORGIA

A'Tyanna Gaulden	Ocilla
------------------	--------

#### ILLINOIS

Macy Weaver	Davis Junction
-------------	----------------

#### OHIO

Jailyn Mason	Mason
--------------	-------

#### OKLAHOMA

Chelsea Dungee	Sapulpa
Sydney Stout	Bixby

#### TEXAS

Amber Ramirez	San Antonio
Taylah Thomas	Arlington

#### AFRICA

Rokia Doumbia	Mali
---------------	------

### FA-NETIK

#### PRONUNCIATIONS

0	A'Tyanna	AH-tee-ah-nuh
3	Malica	mal-ick-cuh
10	Kiara	key-R-uh
13	Grayce	GRACE
14	Jailyn	JAY-lin
23	Rokia Doumbia	ro-KEY-uh doom-BE-uh
24	Taylah	TAl-lah

## THE SOUTHEASTERN CONFERENCE

Team	SEC				Overall							2019 SEC Women's Basketball Tournament		
	W-L	Pct.	H	A	W-L	Pct.	H	A	N	Strk	RPI	March 6 - 10 • Greenville, SC Bon Secours Wellness Arena		
Mississippi State	9-0	1.000	4-0	5-0	21-1	.954	11-0	10-1	0-0	W11	7	Wednesday, March 6		
South Carolina	9-1	.900	5-0	4-1	17-5	.773	10-2	6-1	1-2	W5	15	Game 1	Seed #12 vs. Seed #13	TBD
Texas A&M	7-3	.700	3-1	4-2	18-5	.783	10-2	6-2	2-1	L1	18	Game 2	Seed #11 vs. Seed #14	TBD
Kentucky	6-4	.600	3-2	3-2	19-5	.792	13-2	3-3	3-0	W2	32	Thursday, March 7		
Missouri	6-4	.600	5-0	1-4	17-7	.708	10-2	5-4	2-1	W1	34	Game 3	Seed #8 vs. Seed #9	TBD
Arkansas	5-5	.500	2-3	3-2	16-8	.667	8-4	6-3	2-1	L3	74	Game 4	Game 2 winner vs. Seed #5	TBD
Auburn	5-5	.500	1-4	4-1	17-6	.739	7-4	8-2	2-0	L1	53	Game 5	Seed #10 vs. Seed #7	TBD
LSU	5-5	.500	3-3	2-2	14-8	.636	10-5	4-3	0-0	W2	56	Game 6	Game 2 winner vs. Seed #6	TBD
Georgia	4-5	.444	2-2	2-3	13-9	.591	10-2	2-6	1-1	L1	107	Friday, March 8		
Tennessee	4-5	.444	2-3	2-2	15-7	.682	9-5	4-2	2-0	W3	62	Game 7	Game 3 winner vs. Seed #1	TBD
Alabama	3-7	.300	2-3	1-4	11-12	.478	8-4	2-5	1-3	L2	113	Game 8	Game 4 winner vs. Seed #4	TBD
Ole Miss	2-8	.200	1-4	1-4	8-16	.333	7-8	1-5	0-3	L5	198	Game 9	Game 5 winner vs. Seed #2	TBD
Florida	2-8	.200	2-3	0-5	6-17	.261	6-6	0-10	0-1	W1	208	Game 10	Game 6 winner vs. Seed #3	TBD
Vanderbilt	1-8	.111	1-4	0-4	6-16	.273	5-6	1-7	0-3	L3	172	Saturday, March 9		
												Game 11	Game 7 winner vs. Game 8 winner	TBD
												Game 12	Game 9 winner vs. Game 10 winner	TBD
												Sunday, March 10		
												Final	Game 11 winner vs. Game 12 winner	TBD

## OPPONENT

- The Tigers are balanced this year with four players averaging double figures.
- Janiah McKay leads the team with a 14.4 ppg average followed by Unique Thompson (12.9 ppg), Daisa Alexander (11.7 ppg) and Crystal Primm (11.5 ppg).
- Unique Thompson is the team's leading rebounder averaging 10.3 boards per game.
- Arkansas has the scoring advantage, 71.0 ppg-65.3 ppg, in conference games over the Tigers but Auburn ranks ninth in the SEC in scoring defense. Auburn holds opponents to 67.5 ppg on conference play.
- Auburn leads the SEC averaging 13.1 steals per game - they are the only team in double figures.
- The Tigers are first in the SEC with a +8.4 turnover margin with Arkansas second with a +5.5 mark in conference games.
- Auburn is known for its press and fast pace.

## WHAT THE GAME MEANS

- The winner of today's game moves to six SEC wins which would tie for total wins with Kentucky and Missouri in fourth place in the SEC standings. Missouri hosts Vanderbilt and Kentucky plays at Alabama on Monday.
- If Arkansas would move into the T-4th place, they would lose the tie-breaker to Missouri (Arkansas lost at Missouri but hosts the Tigers Feb. 28). The Razorbacks play at Kentucky Feb. 7.
- Auburn lost to both Missouri and Kentucky but has one more meeting with Mizzou in February.
- The last time Arkansas had 6+ wins in the SEC was in 2015-16 (7-9). The Razorbacks had a streak of six years in a row (2010-11 through 2015-16) with at least six league wins.

## ARKANSAS IN THE SEC

- The Razorbacks are 5-5 in the SEC
- Only two winning seasons in the SEC
  - 7-4, Gary Blair, 1994-95, T4th
  - 10-6, Tom Collen, 2011-12, T4th
- Best SEC Finish is T4th (2011-12 & 1994-95)

## WHEN ARKANSAS LOOSES

- Chelsea Dungee is averaging 21.4 ppg in the eight losses.
- Dungee has scored in double figures in all eight losses. She is shooting 40% from the floor and 87.7% from the line.
- Malica Monk averages 13.4 ppg and has scored in double figures in five of the eight losses.
- Dungee and Monk have combined for 278 of Arkansas' 528 points in the losses.

## SERIES RECORDS

OPPONENT	SERIES	H	A	N	LAST	NEIGHBORS   AT UA
Northwestern State	14-3	10-0	0-3	4-0	H - W   98-53 (11/9/2018)	1-0   1-0
at UT-Arlington	8-0	3-0	3-0	1-0	A - W   66-65 (11/4/2018)	2-0   2-0
Arizona State	1-1	0-1	1-1	0-0	H - L   88-85 (11/18/2018)	2-6   0-2
Tennessee State-!	3-0	1-0	0-0	2-0	N - W   79-55 (11/23/2018)	1-0   1-0
Pittsburgh-!	1-1	0-0	0-0	1-1	N - L   61-54 (11/24/2018)	1-1   0-1
Wisconsin-!	2-0	1-0	0-0	2-0	H - W   69-68 (11/25/2018)	1-0   1-0
Oral Roberts	21-9	16-2	5-7	0-0	A - W   74-61 (11/28/2018)	2-0   2-0
at Iowa State-^	1-1	1-0	0-1	0-0	A - L   91-82 (12/2/2018)	0-1   0-1
Tennessee Tech	1-1	1-0	0-1	0-0	H - W   65-42 (12/4/2018)	1-0   1-0
at Abilene Christian	2-0	1-0	1-0	0-0	A - W   80-68 (12/8/2018)	2-0   2-0
Prairie View A&M	2-0	1-0	0-0	1-0	H - W   71-44 (12/17/2018)	1-0   1-0
Nebraska	1-1	1-0	0-1	0-0	A - W   84-80 (12/18/2018)	1-1   1-1
at Tulsa	22-3	10-2	12-1	0-0	A - W   61-59 (12/20/2018)	2-0   2-0
Jackson State	4-0	4-0	0-0	0-0	H - W   76-57 (12/30/2018)	1-0   1-0
Alabama	23-15	12-6	10-7	1-2	H - W   72-61 (1/24/2019)	2-1   2-1
<b>Auburn</b>	<b>15-22</b>	<b>8-9</b>	<b>6-11</b>	<b>1-2</b>	<b>A - W   68-58 (1/14/2018)</b>	<b>1-0   1-0</b>
Florida	10-28	5-11	4-12	1-5	A - W   83-73 (1/27/2019)	1-1   1-1
Georgia	5-33	3-16	2-16	0-1	H - L   80-72 (1/31/2019)	0-2   0-2
Kentucky	13-23	9-7	3-13	1-2	A - L   78-57 (2/15/2018)	1-2   0-2
LSU	16-33	9-14	7-16	0-3	A - L   71-34 (2/7/2019)	0-2   0-2
Ole Miss	18-26	12-5	3-16	3-5	A - W   85-55 (1/6/2019)	2-0   2-0
Mississippi State	18-20	10-7	6-11	2-2	H - L   93-69 (1/3/2019)	0-3   0-2
Missouri	11-11	6-3	4-8	1-0	A - L   71-53 (1/10/2019)	1-3   0-3
South Carolina	17-18	10-7	5-10	2-1	H - L   87-79 (2/3/2019)	0-2   0-2
Tennessee	4-31	2-14	2-14	0-2	A - W   80-79 (1/21/2019)	1-1   1-1
Texas A&M	21-10	11-3	8-5	2-2	N - L   82-52 (3/1/2018)	1-3   0-2
Vanderbilt	10-25	8-8	1-16	1-1	H - W   83-62 (1/13/2019)	2-1   2-1

## 2018 SEC Preseason Coaches Poll

- Mississippi State
- South Carolina
- Georgia
- Tennessee
- Missouri
- Texas A&M
- Kentucky
- Auburn
- LSU
- Alabama
- Arkansas
- Florida
- Vanderbilt
- Ole Miss

## 2018 SEC Preseason Media Poll

- Mississippi State
- South Carolina
- Tennessee
- Georgia
- Missouri
- Texas A&M
- Kentucky
- Auburn
- LSU
- Alabama
- Arkansas
- Florida
- Vanderbilt
- Ole Miss

**CONGRATS GRADUATES!**

Seniors Malica Monk and Bailey Zimmerman donned a cap and gown in December as they graduated with their undergrad degrees. Monk is a rec and sport management major while Zimmerman majored in apparel merchandise and product development. Both players begin graduate school in January.



**A LOT OF OFFENSE**

- Five different players (Tolfree, Monk, Dungee, Thomas & Northcross-Baker) have led Arkansas in scoring.
- Three players (Dungee, Monk and Tolfree) all average double figures with 18.0 ppg, 14.3 ppg and 10.0 ppg, respectively.
- Each of those three players have scored over 240 points this season with Dungee over 400 points and Monk over the 340-point mark.
- Dungee, Monk and Tolfree have scored 1015 of Arkansas' 1754 points this season. That is 57.8% of the team's offense.
- Dungee, Monk and Tolfree have combined for 17 20+ point performances and they have 34 performances with 15 or more points.
- Dungee ranks **second in the SEC** followed by Monk at No. 14 in scoring.
- Arkansas ranks **sixth in the SEC** averaging 73.1 points per game.
- Arkansas is 2-2 when Alexis Tolfree or Malica Monk score 20+, and 6-5 when Chelsea Dungee has 20 or more points in a game.


**BY THE NUMBERS**


- 12-1 when leading or tied (Jackson State) at the half.
- Forced double digit turnovers in every game.
- Committed 10 or fewer turnovers in 12 games.
- Made double figure 3-point field goals in eight games ... 7-1 when making 10+ from distance.
- 4-1 in one-possession games. Only loss was an 88-85 setback to No. 22 Arizona State.
- Seventeen games with the same or more made free throws that their opponent. 12-4 when making more bonus shots that their opponents.
- Shot 70% or better from the line in 12 games including a stretch of eight in a row (Miss State-SC).


**WHAT'S HE SAYIN'?**


Don't be alarmed if you don't understand what Head Coach Mike Neighbors is saying on the bench. He has a language all his own.

Coach Neighbors plays "Positionless Basketball". Instead of having guards, forwards and centers, he has Rabbits, Rackers, Locks and Dragons.

 Rabbits run the floor and look to score quickly with a layup.

 Rackers are the player with the ball - go to the rack.

 Locks are the players who are trying to win the race to the corners

 The Dragon is the last player down the court. Watch out for a long distance shot from this spot.

- Double-figure steals in 12 games this season.
- Bettered the overall and SEC win totals from a year ago.
- Won or tied the second half in 14 games.
- Nine games this season with 80+ points ... Only four games with 80+ points all of 2017-18.

**RARE AIR**

Malica Monk is one of seven players in program history to have 1000+ points, 250+ rebounds and 300+ assists for her career.

Player	Points	Rebounds	Assists
Kim Wilson (94-97)	1733	499	332
C'eira Ricketts (09-12)	1557	666	523
Current Dir. of S-A Development			
Christy Smith (95-98)	1459	294	507
Tracy Webb (84-87)	1343	388	424
Cheryl Orcholski (81-84)	1239	667	323
Amber Nicholas (89-92)	1209	428	537
Current Director of Ops			
<b>Malica Monk (16-pres.)</b>	<b>1193</b>	<b>267</b>	<b>328</b>

**GAME WINNERS**

When the game is on the line, Arkansas senior Malica Monk is at her best. Monk has hit three game-winning shots in the closing seconds this season.

- She crossed over a Tennessee defender to create separation and hit about a 12-foot jumper with 3.6 seconds remaining to give Arkansas an 80-79 win - its first road win over the Volunteers since 2012 and only the second for the Razorbacks in 16 games at Thompson-Boling Arena.
- Monk's layup with 4.7 seconds remaining completed a 15-point comeback in the Razorbacks' 69-68 win over Wisconsin on Nov. 25 during an event in Nashville, Tenn.

**OUR RECORD WHEN ...**

Overall .....	16-8
Home / Away / Neutral.....	8-4 / 6-3 / 2-1
SEC.....	5-5
Home / Away .....	1-3 / 3-2
White Uniforms.....	8-5
Cardinal Uniforms.....	8-3
Anthracite Uniforms .....	-

**LEADS/QUARTERS/HALFTIME/OT**

Leading after the 1st quarter .....	10-2
Leading after the 2nd quarter/Half .....	11-3
Leading after the 3rd quarter.....	12-1
Leading at the half, home.....	6-1
Leading at the half, road/neutral .....	5-0
Tied at the half, home .....	1-0
Tied at the half, road/neutral.....	-
Trailing at the half, home .....	1-2
Trailing at the half, road/neutral.....	2-3
Games decided by 5 points or fewer .....	5-1
Games decided by 10 points or fewer.....	7-4
Leading with 5:00 left.....	14-0
Leading with 2:00 left.....	15-0
Overtime games.....	-

**OFFENSE**

Scoring less than 70 points.....	4-4
Scoring 70-79 points.....	5-2
Scoring 80-89 points.....	6-2
Scoring 90-99 points.....	1-0
Scoring 100+ points.....	-
2 Players Or Less in Double Figures .....	3-4
3 Players in Double Figures.....	6-2
4 Players in Double Figures.....	5-2
5 Players in Double Figures .....	1-0
More than 5 players in Double Figures.....	1-0 (NSU)
1 Player Scores 20+ Points .....	7-2
2 Players Score 20+ Points.....	1-3
When shooting 50 percent or higher.....	1-0
When shooting less than 50 percent.....	14-8

**REBOUNDING/TURNOVERS**

When outrebounding opponent .....	6-0
When outrebounded .....	8-8
When rebounds are even.....	2-0
When grabbing 10+ offensive reb.....	13-5
When forcing 15+ turnovers.....	14-5
When committing less than 15 turnovers.....	12-7
When committing 15+ turnovers.....	4-1

**Top Scorers (Includes Ties)**

Tolfree.....	NSU, UTA, ASU, Pitt, ACU, JSU
Monk.....	UTA, UT, ALA, FLA
Dungee.....	TSU, WIS, ORU, ISU, TTU, NEB, TUL, MSU, OM, MU
.....	FLA, GA, SC, LSU
Thomas.....	PVAM
Northcross-Baker.....	VU

**Top Rebounders (Includes Ties)**

Williams.....	NSU, ASU, TSU, ORU, ISU, TTU, ACU, PVAM, NEB, TUL, JSU, OM
Thomas.....	NSU, UTA, WIS, MSU, MU, UT, FLA, GA, LSU
Zimmerman.....	Pitt, VU
Dungee.....	MU
Doumbia.....	VU
Mason.....	ALA, GA, SC

**Months**

In November.....	5-2
In December.....	6-1
In January.....	5-3
In February.....	0-2
In March.....	-

→ On Dec. 20 she made a layup with eight seconds remaining to give Arkansas the go-ahead points in a 61-59 win at Tulsa.

→ Tennessee's shot was the fourth game winner in Monk's career and second in an SEC game. She followed a miss with a layup at the buzzer to beat Vanderbilt 57-56 at Bud Walton Arena as a freshman three years ago.

### IN THE 4TH QUARTER ARKANSAS HAS ...

- Outscored opponents 475-433
- Won the fourth quarter in 16 games
- Shot .418 from the floor
- Committed fewer turnovers (51-98)
- Had more steals (58-27)

### TOLEFREE FOR THREE

- Alexis Tolefree has a team-best 50 3-point field goals.
- Tolefree's 50 makes from distance is the second-most since 2015-16 (Devin Cospers, 65, 2017-18).
- If Tolefree could get past Cospers' 65 it would be the most since Lyndsay Harris had 71 makes in 2010-11.
- Tolefree ranks 10th in the league shooting .276 from behind the arc.
- She is seventh in the SEC averaging 2.1 makes per game and is seventh with 50 3-point field goals.

### ARKANSAS FROM DISTANCE

- Arkansas is third in the SEC and 28th in Division I with 183 made 3-point field goals.
- The Razorbacks are first in the conference and 11th in DI with 605 attempts.
- Arkansas is fourth in the SEC and 50th in Division I averaging 7.6 made 3-pointers a game.
- In SEC-only games Arkansas is third in the league with 76 makes, second with 242 attempts and third with 7.6 made 3-pointers in a game.
- Arkansas has 183 3-point field goals through 24 games. They broke into the program team single season top-10 at Florida.

### 3-POINT FIELD GOALS MADE

1.	237 (31 games)	2017-18
2.	202 (33 games)	2000-01
3.	200 (28 games)	2005-06
4.	200 (32 games)	2008-09
5.	198 (34 games)	1998-99
6.	191 (33 games)	1997-98
7.	183 (24 games)	2018-19
8.	177 (30 games)	2013-14
	177 (30 games)	2016-17
10.	169 (34 games)	2010-11

### A FREE SHOT

- Arkansas is fourth in the SEC for made free throws with 327.
- Chelsea Dungee leads the Razorbacks shooting .806 (116-144) from the line.
- Dungee is eighth in the SEC in FT% at .806.

→ Dungee leads the SEC with 116 made free throws and is second with 144 attempts.

→ Arkansas is 28th in the NCAA and third in the SEC with 471 free throw attempts.

→ The Razorbacks are third in the SEC and 24th in the country with 327 made free throws.

### IN DIVISION I

- Arkansas ranks in the top-15 in Division I for 3-point field goal attempts (11th | 543), fewest turnovers (14th | 260), turnover margin (7th | 7.0), and turnovers per game (5th | 11.3 tpg).
- Alexis Tolefree ranks 20th with 178 3-point field goal attempts. Chelsea Dungee is 12th with 114 free throws made and 14th with 141 free throw attempts.

→ Arkansas leads the SEC in 3-point attempts (595), 3-point field goals made (183), fewest turnovers (260) and fewest turnovers per game (11.3 tpg).

### UNDER 10

- Arkansas has played 10 games to an under-10 point margin.
- The Razorbacks have won three games by a single point (UT-Arlington, Wisconsin, Tennessee). They defeated Tulsa by two and Nebraska by four.
- Arkansas lost to No. 22 Arizona State by one possession, three points.
- Arkansas lost on a neutral site to Pitt by seven points, at No. 22 Iowa State by nine points, to Georgia and South Carolina by eight points.

### CHASING LAST YEAR'S NUMBERS

- Last season, Arkansas had 47 performances of 10-14 points in a game for a single player. They had 27 performances of 15-19 points; 18 times in which players scored 20-25 points and one 26+ point performance.
- This season (24 games) Arkansas has 37 10-14 point performances. They have 23 performances with 15-19 points; 15 with 20-25 points, four 26+ point and one 30-point performances.

### THE PATH TO A MILESTONE

- Malica Monk became the 28th player in program history to score 1,000 career-points. She reached the milestone with a layup in the second quarter in the win over Nebraska.
- Monk scored 110, 247 and 494 points, respectively, in each of her first three seasons.
- Monk has 342 points as a senior through 24 games - more points than she had in a complete seasons in her first two years.
- Monk has 29 made 3-point baskets this season. That is more than she had as a freshman (2) or a sophomore (7) combined.
- Monk has started 87 of 109 games including 80 in a row (She has missed some games with injury so the number is not consecutive).

## OUR RECORD WHEN ...

### MARGIN OF VICTORY/DEFEAT

Points	Win	Loss	Total
1	3	0	3-0
2	1	0	1-0
3	0	1	0-1
4	1	0	1-0
5			
6			
7	-	1	0-1
8	0	2	0-2
9	0	1	0-1
10	1	0	1-0
11-15	4	0	4-0
16-19	1	0	1-0
20+	5	3	5-3

### QUARTER RECORDS

#### Most First Period Points

2018-19	28	Miss State (1-3-19)*
All-Time	29	at Alabama (1-15-17)
Opponent	33	No. 15 Missouri (2-12-18)

#### Fewest First Period Points

2018-19	5	at LSU (2-7-19)
All-Time	3	UTEP (11-24-17)*
Opponent	4	TTU (12-4-18)

#### Most Second Period Points

2018-19	30	at Florida (1-27-19)
All-Time	31	HBU (12-28-16)
Opponent	35	at #2 S. Carolina (1-3-16)

#### Fewest Second Period Points

2018-19	5	at LSU (2-7-19)*
All-Time	4	vs. Kentucky (2-17-17)
Opponent	3	at Alabama (1-15-17)

#### Most First Half Points

2018-19	56	NSU (11-9-18)
All-Time	65	Tenn State (11-27-88)
Opponent	63	Texas (1-9-89)

#### Fewest First Half Points

2018-19	10	at LSU (2-7-19)
All-Time	10	at LSU (2-7-19)
Opponent	8	Montana State (1-5-03)

#### Most Third Period Points

2018-19	31	at #22 Iowa State (12-2-18)
All-Time	34	HBU (12-28-16)*
Opponent	39	#22 Iowa State (12-2-18)

#### Fewest Third Period Points

2018-19	8	Miss State (1-3-19)
All-Time	7	Florida (1-18-18)*
Opponent	4	LSU (1-21-16)

#### Most Fourth Period Points

2018-19	28	Miss State (1-3-19)
All-Time	32	Tulsa (11-23-15)
Opponent	35	#16 South Carolina (2-3-19)

#### Fewest Fourth Period Points

2018-19	7	at LSU (2-7-19)*
All-Time	5	#7 Ore. St. (11-28-15)
Opponent	10	#24 Missouri (1-17-16)*

#### Largest Margin of Victory

2018-19	56 (98-53)	NSU (11-9-18)
All-Time	79 (108-29)	B Wesleyan (2-18-77)
Opponent	54 (28-82)	La Tech (11-30-78)

\*Most Recent

- She has scored in double figures in 62 games, had 14 games with 20+ points and led the team in scoring in 17 games.
- Monk averages 10.9 ppg for her career and if she plays in seven more games (every regular season game and one contest in the SEC Tournament), she will add 76 more points to her total for 1,269 career points. That would make her 17th all-time in program history.
- If Monk were to average 14.3 points in seven games (her 2018-19 ppg average), she would finish with 1,293 career points to rank 17th in program history.

**1,000 POINT CLUB**

15. Lyndsay Harris (09-12)	4	123	1,347
16. India Lewis (99-03)	4	128	1,308
17. Cheryl Orcholski (80-84)	4	123	1,239
18. Juliet Jackson (86-90)	4	120	1,213
19. Amber Nicholas (88-92)	4	117	1,209
<b>20. Malica Monk (16-present)</b>	<b>4</b>	<b>108</b>	<b>1,181</b>
21. Stephanie Bloomer (91-95)	4	105	1,159
22. Amanda Holley (81-84)	3	94	1,154
23. Monica Brown (83-87)	4	103	1,145
24. Kelly Johnson (92-96)	4	113	1,109
25. Blair Savage (89-93)	4	114	1,072
<b>T44. Jailyn Mason (17-present)</b>	<b>3</b>	<b>84</b>	<b>731</b>

**IN COMPARISON**

- Arkansas has led 14 games at the half and been tied once.
- Arkansas has outscored opponents in the second half in 14 games and tied them once.
- Arkansas has made more free throws than its opponents in 15 games and had the same number of makes twice.
- The Razorbacks have committed 10 or fewer turnovers 12 times and had fewer miscues than their opponents in 22 games (18 in a row snapped at LSU).
- Arkansas has had double-figure steals in 12 games.
- The Razorbacks have forced double figure turnovers **in every game**.

**DOUBLING UP**

- Chelsea Dungee has scored in double figures in 21 games with 20+ points 11 times (Arizona State, Wisconsin, Oral Roberts, Iowa State, TTU, NEB, TUL, MSU, FLA, GA, SC (30+)).
- Malica Monk has scored in double figures in 19 games while Alexis Tolefree has posted double digits 12 times.
- Dungee (11x), Monk (4x) and Tolefree (2x) have scored 20+ points this season.
- Three players have had double figure rebounding games. Kiara Williams had a season-best 13 rebounds at Ole Miss. She had 11 boards against Tennessee State, ORU and ACU. She had 10 against PVAMU & TUL. Bailey Zimmerman had 11 rebounds against Pitt & PVAMU and Taylah Thomas grabbed 12 rebounds against Wisconsin.
- Bailey Zimmerman had the first double-double of the season and of her career with 11 points and 11 rebounds against Pitt.

**NEWCOMERS CAN SCORE**

- Alexis Tolefree (6x) and Chelsea Dungee (11x) have led Arkansas in scoring.
- Redshirt transfer Chelsea Dungee leads the team averaging 18.0 points per game.
- Junior college transfer Alexis Tolefree is third on the team averaging 10.0 points per game.
- Newcomers Chelsea Dungee, Alexis Tolefree, A'Tyanna Gaulden and Rokia Doumbia have scored 787 of Arkansas' 1754 points. That is 44.9% of the team's points this season.

**THE POLLS**

Feb. 4, 2019

**AP TOP 25**

RK	TEAM	RECORD	PTS
1	Baylor(25)	19-1	697
2	Louisville(3)	21-1	668
3	Oregon	21-1	632
4	Notre Dame	21-2	608
5	UConn	19-2	596
6	Mississippi State	21-1	578
7	Oregon State	19-3	513
8	Marquette	19-3	483
9	NC State	21-1	470
10	Maryland	19-2	459
11	Stanford	18-3	447
12	South Carolina	16-5	352
13	Gonzaga	21-2	316
14	Texas	18-4	313
15	Syracuse	17-4	303
16	Iowa	17-5	279
17	Utah	18-3	209
18	Texas A&M	18-4	206
19	Kentucky	18-5	173
20	Arizona State	15-6	160
	Rutgers	17-5	160
22	Iowa State	17-5	150
23	Michigan State	16-5	130
24	Florida State	19-3	111
25	Miami	19-5	20

Others receiving votes: South Dakota 17, North Carolina 13, UCF 10, Missouri 7, West Virginia 5, New Mexico 4, Drake 3, California 2, Minnesota 2, Rice 2, BYU 1, Central Michigan 1

Feb. 5, 2019

**USA TODAY COACHES POLL**

RK	TEAM	RECORD	PTS
1.	Baylor (20-1)	794	1
2.	Louisville (21-1)	763	3
3.	Oregon (21-1)	711	4
4.	Notre Dame (21-2)	702	5
5.	Connecticut (19-2)	688	2
6.	Miss State (21-1)	661	6
7.	Marquette (19-3)	556	9
8.	Maryland (20-2)	553	10
9.	NC State (21-1)	527	7
10.	Oregon State (19-3)	519	11
11.	Stanford (18-3)	478	8
12.	Gonzaga (21-2)	411	13
13.	S Carolina (16-5)	350	18
14.	Syracuse (17-4)	348	16
15.	Texas (18-5)	331	14
16.	Iowa (17-5)	322	12
17.	Kentucky (18-5)	246	15
18.	Arizona State (15-6)	238	20
19.	Florida State (19-3)	218	21
20.	Utah (18-3)	196	17
21.	Michigan St. (16-5)	179	22
22.	Texas A&M (18-4)	168	24
23.	Iowa State (17-5)	131	25
24.	Rutgers (17-5)	126	19
25.	Miami (Fla.) (19-5)	76	23

Others receiving votes: South Dakota (20-3) 22; New Mexico (18-2) 18; Central Florida (19-3) 16; California (14-7) 15; North Carolina (14-9) 12; Drake (16-5) 11; Missouri (16-7) 8; DePaul (15-7) 3; West Virginia (16-5) 2; South Alabama (17-3) 1.

**SHE SHOOTS, SHE SCORES**

- Chelsea Dungee has been an offensive boost to the Razorback lineup this year. She leads the team in scoring - here are just a few of the numbers.
- Nine consecutive games in double figure scoring to start the season.
- Career-best 32 points versus #16 South Carolina.
- Career-best 13-for-16 from the line at No. 23/22 Iowa State.
- Eleven games with 20 or more points including a streak of four consecutive games at 20 or more points scored mid-season.
- Leads Arkansas with 18.0 points per game and 432 points scored.
- Second on the team with 38 made 3-pointers.
- Leading free throw shooter at 80.6% with the most makes (116) and attempts (144).
- Led the team in scoring in 13 games.

**BIG NUMBERS**

- Arkansas' offense is much-improved from a year ago. Several players have stepped up to lead the team at different times. Ten different players have scored in double figures this year.
- Chelsea Dungee has scored in double figures in 21 games.
- Malica Monk has scored in double figures in 19 games.
- Alexis Tolefree has scored in double figures in 12 games.
- Jailyn Mason has double-digit points in seven games.

→ Kiara Williams has six double-digit scoring performances and six double-figure rebounding games. A'Tyanna Gaulden has two games in double figures.

→ Taylah Thomas (5x), Bailey Zimmerman (1x), Rokia Doumbia (1x) and Raven Northcross-Baker (1x) have each posted double figure point totals this season.

## SEC CAREER LEADERS

→ Malica Monk ranks 13th among active SEC players for career points with 1,193.

→ Kiara Williams is 14th among active SEC players with 430 career rebounds and is T-9th with 62 career blocked shots.

→ Malica Monk ranks fourth with 170 career steals and is eighth with 328 career assists.

→ Monk is one of only seven players who rank in three or more of the SEC career categories.

## HOME GROWN

→ Arkansas has six in-state players on the roster this year.

→ That is the most Arkansans on the team since 2010 when there were seven in-state players.

→ The Razorbacks have had 113 players from the state on its rosters with Little Rock producing the most with 11 student-athletes.

## GUARD HEAVY

→ Arkansas has nine players who list their positions as guard or point guard and two others who are guard/forwards.

→ The guard-heavy lineup allows the Razorbacks to play "Functionally Fast" - or as fast as they can while functioning at a high level.

→ Look for senior Malica Monk and redshirt sophomore A'Tyanna Gaulden to handle the ball a lot. Both players are fast and don't make many mistakes.

## FUNCTIONALLY FAST

→ Coach Neighbors wants Arkansas to play as fast as they can function. That means move quickly but don't make a lot of mistakes and that is exactly what the Razorbacks did last year.

→ Arkansas led the SEC and ranked fourth in the nation for fewest turnovers with just 360 miscues in 31 games last season.

→ Play fast and don't turn it over is Arkansas' motto this year.

→ Possessions are important. Arkansas has taken 2,076 shots (1605 FG+471 FT) with 989 (622 FG+327 FT) makes (47.6%).

→ Arkansas has turned the ball over only 278 times. The Razorbacks have played nine games (Pitt, Iowa State, Tennessee Tech, Abilene Christian, PVAMU, MU, Tenn., Fla., SC) with single-digit turnovers and 12 games with 10 or fewer miscues.

→ Arkansas has forced double figure turnovers in every game this season.

## FINISHING STRONG

Along with the fast starts, Arkansas is looking to finish strong - that is the benefit of depth late in the game.

Scoring in the fi-	Wis 12-12 (W)	MSU 16-12 (L)	LSU 4-9 (L)
nal five minutes:	ORU 9-10 (W)	OM 19-6 (W)	AU
SWB 9-0 (exh)	ISU 5-6 (L)	MU 10-12 (L)	KY
ECU 17-8 (exh)	TTU 2-9 (W)	VU 8-11 (W)	GA
NSU 9-5 (W)	ACU 4-4 (W)	UT 13-9 (W)	OM
UTA 4-6 (W)	PVAM 7-9 (W)	AL 12-8 (W)	MO
ASU 16-11 (L)	NEB 7-15 (W)	FLA 9-7 (W)	TAMU
TSU 14-4 (W)	TUL 12-14 (W)	GA 8-11 (L)	
Pitt 5-8 (L)	JSU 15-10 (W)	SC 15-15 (L)	

## SOME THINGS REMAIN THE SAME

### TRUST, TALENT AND TIME

My program will be built on three things. It's very simple.

→ TRUST - The highest form of loyalty that has to be earned, managed and sometimes re-earned. If we don't have this, nothing will work and the stool's legs will fall off and everything will collapse.

→ TALENT - It doesn't mean you can dribble, shoot, pass and rebound. It's a lot of other things like the ability to engage with the fan base and willingness to sign autographs for a 10-year-old child you might be inspiring.

→ TIME - It's just not being on time or making time. It's how you utilize your time and who you invest your time with and be around.

Trust, talent and time. Those will be our pillars.

## SIDE BY SIDE

→ One of the things Mike Neighbors stressed when he was hired was his desire to take care of the players, the staff and the fans who have been loyal to the Razorback program. He has told our fans that he wants them to stand "Beside Us". Don't be behind us, stand next to us and go through the process of building our program.

→ You will notice the team and coaches line up and walk side-by-side from the half court line to the baseline of every game. It is a final moment of reflection, a chance to clear your head and a reminder that we are in this together.

## HOME SWEET HOME

→ Arkansas has had just one losing home season in 42 years (2009-10)

→ Arkansas is 430-150 (8-4 in '18-'19) in home games including a 271-115 record in Bud Walton Arena. Arkansas was 159-35 in Barnhill Arena.

## FROM MIKE NEIGHBORS

Here is a quick look at a couple observations from head coach Mike Neighbors about this year's team:

→ We are still small. There is no getting around it - Malica Monk did not grow in the off-season. This year, Arkansas has nine guards with Monk listed at 5-5 and Grayce Spangler and Chelsea Dungee at 5-11. If you look at the four guards who return with playing experience our average height is about 5-7.

→ We may be small but we are fast. Look for Arkansas to push the tempo even more this season. Not only do the Razorbacks have individually fast players, they have a lot of them so legs should be fresh for the entire game.

→ Neighbors is looking for a high number of shot attempts versus a low number of turnovers. Turnovers are a wasted possession - you don't have a chance to score. Last season, Arkansas took 2077 shots and committed just 360 turnovers. Arkansas ranked fifth in the SEC in shots taken and was first in the SEC with just 360 turnovers.

→ Arkansas has more shot-makers this year. The Razorbacks return their leading scorer and add in a couple of redshirt players who made significant offensive contributions during the trip to Italy, the exhibitions and non-conference games.

## MONK GETS PRESEASON NOD

Senior Malica Monk was selected as a Second-Team All-Southeastern Conference honoree in a vote by the league's coaches. Monk, a senior from Little Rock, Arkansas, led the Razorbacks and was 12th in the SEC averaging 15.9 points per game a year ago. Billed as one of the fastest players in the SEC, Monk also accounted for 3.4 rebounds per game, had a team-best 122 assists, made 38 3-pointers and went 114-146 from the line as a junior.

**GIMMIE THE BALL**

- Malica Monk and Jailyn Mason are climbing the career assists ladder.
- Monk began the year tied for No. 17 in program history and has 76 assists this year. She is currently No. 11 overall with 328 helps.
- Mason jumped into the top-25 at Abilene Christian and has 235 assists.

NAME (CAREER)	YR	GP	AST	
1. Amy Wright (98-02) *	4	131	717	*Sixth all-time in SEC history
2. Calli Berna (12-15)	4	128	667	
3. Amber Nicholas (88-92)	4	117	538	
4. C'eira Ricketts (09-12)	4	129	516	
5. Christy Smith (94-98)	4	111	507	
6. Tracy Webb (83-87)	4	117	444	
7. Brittney Vaughn (04-08)	4	129	424	
8. Rochelle Vaughn (02-06)	4	120	421	
9. Donna Wilson (87-89)	2	58	332	
Kimberly Wilson (93-97)	4	120	332	
<b>11. Malica Monk (16-pres.)</b>	<b>4</b>	<b>109</b>	<b>328</b>	
12. Cheryl Orcholski (80-84)	4	123	323	
13. Juliet Jackson (86-90)	4	120	313	
14. India Lewis (99-03)	4	128	276	
15. Christi Willson (87-91)	3	87	268	
Breaking in				
<b>Jailyn Mason (2017-present)</b>	<b>3</b>	<b>85</b>	<b>235</b>	

**SPECIALTY STATS**

Opponent	T/O	2ndCh	Paint	FastB	Bench	Ties	Leads	WL	Score	Leads overcome
NSU	36	14	38	11	46	0	0	W	98-53	
UTA	13	12	32	15	10	4	7	W	66-65	trailed by 7 3rd-5:11
#22 ASU	17	14	40	10	11	2	2	L	85-88	lost 2 2nd-3:43
TSU	35	12	30	19	26	1	3	W	79-55	trailed by 5 1st-8:16
Pitt	19	10	22	10	17	1	0	L	54-61	lost 2 1st-9:40
Wis	15	11	28	6	6	2	3	W	69-68	trailed by 15 3rd-4:12
ORU	22	7	22	7	14	0	0	W	74-61	
#22 ISU	6	14	20	0	16	3	1	L	82-91	lost 2 2nd-3:40
TTU	28	13	30	4	20	0	0	W	65-42	
ACU	17	10	32	17	22	5	4	W	80-68	trailed by 5 2nd-2:58
PVAMU	14	24	36	17	36	3	2	W	71-44	trailed by 7 1st-0:16
Nebraska	25	9	24	10	11	3	5	W	84-80	trailed by 13 1st-3:30
Tulsa	16	8	26	8	8	3	7	W	61-59	trailed by 6 3rd-5:42
Jackson St.	23	7	24	10	24	6	6	W	76-57	trailed by 5 2nd-3:00
Miss State	14	6	40	15	21	0	1	L	69-93	Lost 1 1st-8:45
Ole Miss	16	12	32	10	19	0	0	W	85-55	
Missouri	8	7	14	4	15	0	0	L	53-71	
Vanderbilt	27	15	30	10	33	1	1	W	83-62	trailed by 2 1st-9:44
Tennessee	20	14	28	9	13	1	4	W	80-79	trailed by 7 1st-5:34
Alabama	19	5	28	2	23	0	0	W	72-61	
Florida	19	6	46	14	11	2	4	W	83-73	trailed by 15 2nd-9:18
Georgia	27	7	24	14	14	4	2	L	72-80	lost 5 2nd-1:03
#16 SC	12	13	40	16	9	1	1	L	79-87	lost 12 1st-4:08
LSU	15	3	24	4	5	1	0	L	34-71	
Totals	463	253	710	242	430	43	53			
APG	19.3	10.5	29.6	10.1	17.9	1.8	2.2			
Opponent	268	261	826	107	500	32	46			
APG	11.2	10.9	34.4	4.5	20.8	1.3	1.9			

**BIGS KEY TRANSITION**

Coach Neighbors believes that the bigs key Arkansas' transition game. If they can run the court - and Kiara Williams, Taylah Thomas and Macy Weaver can - it puts pressure on the defense. If our opponents' bigs don't get back, a guard has to pick one of our players up leaving someone open.

**STARTERS**

Game	G	G	G	G	F
NSU	Northcross-Baker	Tolefree	Monk	Dungee	Williams
UTA	Mason	Tolefree	Monk	Dungee	Williams
ASU	Mason	Tolefree	Monk	Dungee	Williams
TSU	Mason	Tolefree	Monk	Dungee	Williams
PITT	Mason	Tolefree	Monk	Dungee	Williams
WISC	Mason	Tolefree	Monk	Dungee	Williams
ORU	Mason	Tolefree	Monk	Dungee	Williams
ISU	Zimmerman	Mason	Monk	Dungee	Williams
TTU	Mason	Tolefree	Monk	Dungee	Williams
ACU	Mason	Tolefree	Monk	Dungee	Williams
PVAM	Mason	Tolefree	Monk	Dungee	Williams
NEB	Mason	Tolefree	Monk	Dungee	Williams
TUL	Mason	Tolefree	Monk	Dungee	Williams
JSU	Mason	Tolefree	Monk	Dungee	Williams
MSU	Mason	Tolefree	Monk	Dungee	Williams
OM	Mason	Tolefree	Monk	Dungee	Williams
MO	Mason	Tolefree	Monk	Dungee	Williams
VU	Mason	Tolefree	Monk	Dungee	Williams
UT	Mason	Tolefree	Monk	Dungee	Williams
ALA	Mason	Tolefree	Monk	Dungee	Williams
FLA	Mason	Tolefree	Monk	Dungee	Williams
GA	Mason	Tolefree	Monk	Dungee	Williams
SC	Mason	Tolefree	Monk	Dungee	Williams
LSU	Mason	Tolefree	Monk	Dungee	Williams
AU					
KY					
GA					
OM					
MO					
TAMU					

**THE 2018 SIGNING CLASS**

Signee	Pos.	Ht.	Hometown
Destinee Oberg	C	6-3	Burnsville, Minn.
Makayla Daniels	PG	5-8	Frederick, Md.
Marquesha Davis	F	6-0	Springdale, Ark.
Ginger Reece	F	5-10	Lawton, Okla.
Amber Ramirez	G	5-9	San Antonio, Texas

- The class was ranked No. 11 by Blue Star Sports.
- The recruiting class is ranked No. 4 in the Southeastern Conference behind powerhouses South Carolina, Tennessee and Mississippi State by All Star Girls Report. The class ranks 15th in the nation by the same service.



### LEADS AND DEFICITS

Biggest Halftime Lead	29, NSU
Biggest Halftime Lead Lost	6, S. Carolina
Biggest Halftime Deficit	27, Pitt
Biggest HT Deficit Erased	-
Biggest Overall Lead	46, NSU
Biggest Win Margin	45, NSU
Biggest Loss Margin	36, LSU
Biggest Deficit Overcome	15, Wisc.

### JUMP BALLS

Arkansas	4
Opponents	20

### FIRST POINTS

Tolefree NSU, ASU, TSU, ACU, PVAM, MSU, MU	
ALA	
Dungee	Pitt, Wis., ACU (FT), VU (FT), GA
Monk	UTA, ISU, TUL, JSU, UT
Williams	ISU (FT), PVAM (FT), NEB, VU
FLA (FT), FLA, SC	
Mason	TTU, OM, LSU

### DOUBLE FIGURE POINTS

Dungee	21
Monk	20
Tolefree	12
Mason	7
Williams	6
Thomas	4
Zimmerman	2
Gaulden	2
Doumbia	1
Northcross-Baker	1

### LEADING SCORER

Dungee	14
Tolefree	5
Monk	4
Zimmerman	1
Thomas	1
Northcross-Baker	1

### DOUBLE FIGURES FIRST HALF

Tolefree	NSU, ASU, UT
Dungee	UTA, TTU, JSU, MSU, GA, SC, LSU
Monk	ACU, OM, GA, SC, LSU
Mason	OM
Northcross-Baker	VU

### DOUBLE FIGURES/QUARTER

Tolefree	ASU (1Q), UT (1Q-11)
Dungee	ISU (3Q-19), TTU (1Q-10), TUL (4Q-11)
Monk	MSU (1Q-12), SC (2Q-10   3Q-10)
	SC (1Q-11)

### 20/30-PLUS POINTS

Tolefree	ASU, ACU
Dungee	ASU, WIS, ORU, ISU, TTU, NEB, TUL
	MSU, FLA, GA, SC
Monk	ISU, UT, FLA, SC

### DOUBLE FIGURE REBOUNDS

Williams	TSU, ORU, ACU, PVAM, TUL, OM
Zimmerman	Pitt, PVAM

### LEADING REBOUNDER

Williams	11
Thomas	9
Mason	3
Zimmerman	3
Dungee	1
Doumbia	1

### DOUBLE DOUBLES

Zimmerman	Pitt
Williams	ACU, OM

### 5+ASSISTS/10+ ASSISTS

Tolefree	Pitt
Mason	ACU, UT (5)
Monk	OM, VU (9), GA (6)

### FIRST OFF THE BENCH

Zimmerman	21
Thomas	19
Gaulden	5
Doumbia	2
Mason	1
Northcross-Baker	1
Gaulden	1
Tolefree	1

### CHARGES DRAWN

Gaulden	ASU
Dungee	Pitt, MSU, OM, FLA
Tolefree	ORU (2), ACU
Monk	PVAM
Northcross-Baker	VU

### FORCED 10 SECOND VIOLATION

2018-19	TBA
---------	-----

### FORCED SHOT CLOCK VIOLATION

2018-19	15 (6 vs. TTU)
---------	----------------

### FORCED INBOUND VIOLATION

2018-19	ASU
---------	-----

### AND 1 CONVERSIONS

Dungee	11
Monk	6
Gaulden	2
Doumbia	2
Williams	2
Tolefree	1
Zimmerman	1

### AND 1 MISS

Williams	3
Dungee	1
Monk	1
Gaulden	1
Tolefree	1
Northcross-Baker	1
Weaver	1

### BUZZER BEATERS (UNDER 8 SEC)

Tolefree	UTA (game winner)
	Tulsa (:05, 3Q, 39-43)
Monk	Wisc (4.7 seconds, game winner)
	Tulsa (8.0 seconds, game winner)
	Tennessee (4.0 seconds, game winner)
	S. Carolina (5.0 seconds, 2Q, 39-33)
Gaulden	ORU (:01, 1Q, 20-11)
Williams	Neb (:03, 3Q, 57-56)
Mason	FLA (:001, 2Q, 37-35)

### SCORES BY QUARTERS

Opponent	1	2	HT	3	4	OT	Total
NSU	28/14	28/13	56/27	20/19	22/17	-	98/53
UTA	15/16	21/15	36/31	17/23	13/11	-	66/65
ASU	25/29	17/17	42/46	20/23	23/19	-	85/88
TSU	22/12	15/22	37/34	15/14	27/7	-	79/55
PITT	10/17	8/8	18/25	20/21	15/16	-	54/61
WISC	20/17	11/16	31/33	15/19	23/16	-	69/68
ORU	20/11	18/12	38/23	18/15	18/23	-	74/61
ISU	15/18	18/19	33/37	31/39	18/15	-	82/91
TTU	18/4	17/16	35/20	23/7	7/15	-	65/42
ACU	14/16	28/23	42/39	15/16	23/13	-	80/68
PVAM	13/18	13/4	26/22	21/9	24/13	-	71/44
NEB	10/15	21/21	31/36	26/20	27/24	-	84/80
TUL	18/17	8/10	26/27	13/16	22/16	-	61/59
JSU	16/15	12/13	28/28	26/9	22/20	-	76/57
MSU	17/28	16/22	33/50	8/23	28/20	-	69/93
OM	17/13	25/12	43/25	18/11	25/19	-	85/55
MO	9/15	5/19	14/34	16/15	23/22	-	53/71
VU	21/9	26/11	47/20	23/21	13/21	-	83/62
UT	20/15	20/16	40/31	23/28	17/30	-	80/79
ALA	19/13	14/16	33/29	20/17	19/15	-	72/61
FLA	7/19	30/16	37/35	28/21	18/17	-	83/73
GA	17/18	26/20	43/38	12/24	17/18	-	72/80
SC	20/16	19/17	39/33	17/19	23/35	-	79/87
LSU	5/18	5/18	10/36	17/13	7/22	-	34/71
AU							
KY							
GA							
OM							
MO							
TAMU							

### CURRENT PLAYER DOUBLE-DOUBLES

Year	Player	Points	Rebounds	Assists	Date
2017-18	ZIMMERMAN, Bailey	11 pts	11 reb		11/24/18
2017-18	MONK, Malica	10 pts	10 ast		12/28/17
	WILLIAMS, Kiara	11 pts	11 reb	vs NMSU	11/25/17
		12 pts	16 reb	Grambling	12/28/17
		15 pts	14 reb	at Auburn	1/14/18
		25 pts	10 reb	vs Vanderbilt	2/28/18
		12 pts	11 reb	at Abilene Christian	12/8/18
		13 pts	10 reb	at Ole Miss	1/6/19
2016-17	MASON, Jaielyn	10 pts	10 ast		1/1/17
		10 pts	11 ast	Houston Baptist	12/28/16

**THE LAST TIME ...**

**OFFENSE**

Scored 110+ .....	110, vs. Providence (11/16/98)
Scored 100+ points at home .....	101, Houston Baptist, 12-28-16
Scored 100+ points on the road .....	108, Baylor (3-6-91; SWC Tourn., Dallas)
Scored 90-99 points .....	98 vs. Northwestern State, 11-9-18
Scored 90+ points at home .....	98 vs. Northwestern State, 11-9-18
Scored 90+ points on the road .....	91, (91-80 Win in 3OT, 2-10-13, at Alabama)
Scored 80-89 points .....	80, at Tennessee (1-21-19)
Scored 80-89 points at home .....	86, Mississippi Valley State (12-28-15)
Scored 80-89 points on the road .....	83, at Florida (1-27-19)
Scored 70-79 points .....	79, #16 South Carolina, 2-3-19
Scored 70-79 points at home .....	74, ORU, 11-28-18
Scored 70-79 points on the road .....	61, at Tulsa, 12-20-18
Scored 60-69 points .....	69, #7/6 Mississippi State, 1-4-19
Was held to 50-59 .....	53, at Missouri, 1-10-19
Was held to 49-40 .....	42 at No. 9 South Carolina (1-25-18)
Was held to 39-20 .....	34, at LSU, 2-7-19
Was held to 20 or less .....	N/A
Made 30-39 field goals .....	32, at Ole Miss (1-6-19)
Made 20-29 field goals .....	29, #16 South Carolina, 2-3-19
Made 10-19 field goals .....	13
Made 10+ three-point field goals .....	10, Vanderbilt (1-13-19)
Did not make 3-pointer (since 1986) .....	0-10, at LSU, 2-7-19 (Previous   0-10, at Miss State (L 44-47), 2-3-13)
Made 30 free throws .....	38 at Florida (38-54); (2-22-04)
Made 15+ Free Throws .....	17, Nebraska (12-18-18)
Shot 40-49 or better .....	47.6 (30-63) at Florida (1-27-19)
Shot 50-59 or better .....	57.6 (34-59) vs. Northwestern State, 11-9-18
Shot 60 % or better .....	.600 (36-60) vs. Ole Miss (W, 93-52; 3-3-13)
Held to less than 40 % .....	39.2% (29-74), #16 South Carolina, 2-3-19
Held to less than 30 % .....	26.5% (13-49), at LSU, 2-7-19
Held to less than 20 % .....	.182 (10-55) vs. No. 6/7 Tennessee (1-8-12; L, 38-69)
Opponent shot over 50% .....	54.1% (33-61), at LSU, 2-7-19
Held opponent to less than 40% .....	40.0% (32-80), #16 South Carolina, 2-3-19
Held opponent to less than 30% .....	25.0% (18-72) Prairie View A&M (12-16-18)
Opponent shot less than 20% in a half .....	200 (5-25), Grambling, 12-29-14 (1st)
Had 20 or more assists in a game .....	27, Houston Baptist, 12-28-16

**DEFENSE**

Allowed 100 points .....	104 vs. No. 17 Texas A&M (2-22-18)
Allowed 80-99 points .....	87, #16 South Carolina, 2-3-19
Allowed 70-79 points .....	71, at LSU, 2-7-19
Allowed 69-60 points .....	61, Alabama, 1-24-19
Held opponent to 59-50 points .....	55, at Ole Miss (1-6-19)
Held opponent to 40-49 points .....	44, Prairie View A&M (12-16-18)
Held opponent to 39-30 .....	36, Northwestern State, 12-18-16
Held opponent under 45 points three cons. games .....	45, SHSU (11-8-13, W 81-45); 33 ORU (11-13-13, W 91-33); 45, Furman (11-16-13, W, 74-45)
Held an SEC opponent under 50 points in 3 cons. games .....	47, Auburn (1-29-15, W, 52-47); 42, Alabama (2-1-15, W, 53-42); #24/21 Georgia (2-9-15, W, 54-48)
Held opponent to 29 points or less .....	23, Binghamton, 11-30-13
Held an opponent under 15 points in a half .....	13, Northwestern State, 12-18-16
Held opponent under 15 field goals .....	14, Houston Baptist, 12-28-16
Held opponent under 15% from 3-point .....	12.5% (2-16) Prairie View A&M (12-16-18)
Had 70+ rebounds .....	74, Mississippi Valley State (11-24-89)
Had 60-69 rebounds .....	64, Prairie View A&M (12-16-18)
Had 50-59 rebounds .....	55, vs. NMSU, 11-25-17
Had five or more blocked shots in a game .....	13, Tennessee Tech, 12-4-18 (School Record)
Had 20 or more steals in a game .....	6, #16 South Carolina, 2-3-19
Had 15 or more steals in a game .....	20, ORU (11-13-13)
Had 20 or more turnovers in a game .....	17, Jackson State, 12-30-18
Had 20 or more turnovers in a game .....	23 at Arizona State, 12-21-17
Forced 20-25 or more Turnovers in a game .....	22, Georgia, 1-31-19

**OTHER**

Won an overtime game .....	91-80 Win in 3OT, 2-10-13, at Alabama
Lost an overtime game .....	Florida (71-66), 1-28-16
Won a double overtime game .....	73-72, vs. Florida (1-29-12)
Lost a double overtime game .....	N/A
Won a triple overtime game .....	91-80 Win in 3OT, 2-10-13, at Alabama
Played consecutive OT games .....	1-24-16 at Auburn (lost); 1-28-16 vs Florida (lost)
Won regular season tournament .....	Nugget Classic (Reno, Nev., Nov. 25-26, 2016)
Defeated ranked team .....	64-52, No. 24 Missouri, 1-17-16
Defeated a ranked team on the road .....	57-53, at #19/18 LSU, 2-23-14; 77-76, #17/16 Iowa (Las Vegas), 12-18-14
All-time SEC win streak .....	8 games (1-15-12: Auburn through 2-15-12; at Auburn)
All-time SEC home win streak .....	5 games (1-15-12: Auburn -- 2-9-12: S. Carolina)

**A RAZORBACK PLAYER ...**

Scored 20-24 points .....	23, Malica Monk, at Tennessee (1-21-19)
Scored 25-29 points .....	25, Malica Monk, #16 South Carolina, 2-3-19
Scored 30+ points .....	32, Chelsea Dungee, #16 South Carolina, 2-3-19
Scored 20+ points 10 times in a season .....	Chelsea Dungee (11x   2018-19)
Double figures in 15 cons games (Season) .....	Jessica Jackson, 11/11/16, LSU 1-8-17
Scored 23+ points in three cons games .....	Chelsea Dungee (Fla., 25; Ga., 28; SC, 32)
Three players scored double figures in 1 game .....	at Florida (1-27-19) (Dungee & Monk 25, Mason 16)
Four players scored double figures in 1 game .....	Vanderbilt (1-13-19)
Four players scored doubles figures for 4 cons. games .....	Northcross-Baker (16), Monk (15), Williams (11), Dungee (10)
Four players scored double figures in 1 game .....	vs. Kansas, Furman, MVSU, and NSU
Five players scored double figures in 1 game .....	Nebraska (12-18-18)
Five Starters In Double Figures .....	Dungee (23), Monk (16), Tolefree (13), Williams (11), Mason (11)
Seven players scored in double figures in 1 game .....	Dungee (23), Monk (16), Tolefree (13), Williams (11), Mason (11)
Seven players scored in double figures in 1 game .....	vs. Northwestern State, 11-9-18
Made 10+ field goals in a game .....	10, Chelsea Dungee, #16 South Carolina, 2-3-19
Attempted 15-19 field goals in a game .....	18, Chelsea Dungee, Georgia, 1-31-19
Attempted 20+ field goals in a game .....	21, Chelsea Dungee, #16 South Carolina, 2-3-19
Attempted 10 free throws in a game .....	10, Chelsea Dungee, at Tulsa, 12-20-18
Made 5 or more 3-pt FG in a game .....	5, Malica Monk at No. 22 Iowa State, 12-2-18
Attempted 10+ 3-pointers in a game .....	10, Alexis Tolefree, Jackson State, 12-30-18
Had 10-14 rebounds .....	10, Kiara Williams, at Ole Miss (1-6-19)
Had 15+ rebounds .....	16, Kiara Williams, Grambling State, 12-28-17
Had 10 offensive reb - Records go back to 05-06 .....	11, Melissa Wolff
Had 10 defensive reb - Records go back to 05-06 .....	vs. New Orleans (1-30-15)
Had 10 defensive reb - Records go back to 05-06 .....	13, Devin Cosper,
Had 10+ assists .....	10, Malica Monk, Grambling State, 12-28-17
Had 10+ assists in cons games .....	Jailyn Mason (11 vs. HBU, 12-28-16 and 10 at Ole
Had 5+ blocks in a game .....	Miss, 1-1-17), Calli Berna (11 vs. No. 10/8 KY 2/7/13 and 11 at UA 2/10/13)
Had 10+ blocks in a game .....	5, Kiara Williams vs. Tennessee Tech, 12-4-18
Had 5 or more steals in a game .....	9, Robyn Irwin vs. SMSU, 12-19-88 (school record)
Had a double-double .....	5, Alexis Tolefree at Abilene Christian (12-8-18)
Had a double-double in two cons games .....	Kiara Williams (12/11), at Abilene Christian (12-8-18)
Had two players record a double-double .....	2017-18: Devin Cosper (25/14)
Had seven double-doubles in a season .....	Charlotte and (11/11) Tulsa
Had seven double-doubles in a season .....	Kiara Williams (12 pts/16 reb) &
Had 10+ double-doubles in a season .....	Malica Monk (10 pts/10 reb), Grambling State, 12-28-17
Had a triple-double .....	Devin Cosper, 2017-18
Had 10+ double-doubles in a season .....	(SHSU, ORU, NMSU, Char., Tulsa, OM, AL)
Had a triple-double .....	2006-07, Lauren Ervin (14)
Had 10+ double-doubles in a season .....	14 pts, 13 reb, 12 asts, C'eira Ricketts vs. Auburn (1-18-09)

## MORE ABOUT MIKE

Hometown: Greenwood, Ark. (Greenwood HS)  
 Family: Daughter Abby; Son Alec  
 Alma Mater: Arkansas, 1993

## NEIGHBORS BY THE NUMBERS

- 127 Wins (127-67, 6 seasons)
- 11 Players drafted in the WNBA
- 10 Signed McDonalds' All-Americans
- 5 Years as a head coach
- 4 Postseason appearances
- 1 Final Four appearance



## LEARN MORE

Sign up for Mike Neighbors' newsletter and listen to his podcasts at [CoachNeighbors.com](http://CoachNeighbors.com)

## NABES FAVES

### TOP 10 MOVIES

1. A Few Good Men
2. The Hunt For Red October
3. The Silence Of The Lambs
4. Hoosiers
5. Pretty Woman
6. Moneyball
7. Top Gun
8. JFK
9. The Lion King
10. Purple Rain

See the entire list here: <http://imdb.to/2royaEO>

### TOP 10 SONGS

1. Sweet Child O' Mine (Guns N' Roses)
2. You Shook Me All Night Long (AC/DC)
3. Man In The Mirror (Michael Jackson)
4. Amarillo By Morning (George Strait)
5. Jessie's Girl (Rick Springfield)
6. Hysteria (Def Leppard)
7. Fishin' In The Dark (Nitty Gritty Dirt Band)
8. The Ballad of Curtis Loew (Lynyrd Skynyrd)
9. Wanted Dead Or Alive (Bon Jovi)
10. Let's Go Crazy (Prince)

### TOP 10 TV SHOWS

1. West Wing (first three seasons)
2. The Wire
3. Breaking Bad
4. Seinfeld
5. The Newsroom
6. Prison Break
7. Arrested Development
8. Game of Thrones
9. The Sopranos
10. The Goldbergs

Entire list: <http://www.imdb.com/list/ls009377912/>



# MIKE NEIGHBORS

## THE MOST INTERESTING COACH IN COLLEGE BASKETBALL

Second Season | Career Record: 127-67 (6) | Arkansas Record: 29-26 (2)

## ROOKIE NOD TO NAISMITH NOMINEE

In four short years Mike Neighbors went from a Spalding Maggie Dixon Division I Rookie Coach of the Year nominee in 2014, to a Naismith Women's College Coach of the Year national semifinalist in 2017.

Neighbors guided UW to an historic campaign in 2016-17 leading the Huskies to 27 wins, it's second most in program history, and he was just one shy of the all-time a school record set in 1990 (28).

Picked to place third in the Pac-12 in the preseason poll, UW tied for second in the league with a 15-3 record, it's best conference finish since 2003. The Huskies' 15 conference wins tied for third most in program history. Washington, who entered conference play with the program-best 12 non-conference wins, clinched its first-ever bye in the first round of the Pac-12 Tournament. Washington put together an 11-game win streak and a six-game win streak in Pac-12 play in 2016-17.

## TIMELINE

- Bentonville HS Head Coach 1994-98
- Cabot HS Head Coach 1998-99
- Arkansas Director of Ops 1999-01
- Tulsa Univ. Assistant Coach 2001-05
- Univ. of Colorado Assistant Coach 2005-06
- Univ. of Arkansas Assistant Coach 2006-07
- Xavier Assistant Coach 2007-2011
- Univ. of Washington Assistant Coach 2011-13
- Univ. of Washington Head Coach 2013-17
- Univ. of Arkansas Head Coach 2017-present

## COACHING AT MY ALMA MATER

- Mike Neighbors Arkansas, 1993
- Holly Warlick Tennessee, 1981

A couple of other coaches have SEC ties. Joni Taylor is the head coach at Georgia and a 2002 graduate of Alabama. Matthew Mitchell is a 1995 graduate of Mississippi State and is the head coach at Kentucky. Nikki Fargas graduated from Tennessee in 1994 and is the head coach at LSU. Vic Schaefer is the head coach at Mississippi State and a 1984 graduate of Texas A&M.

## COACHING HISTORY

### University of Washington

Year	Overall	Pac-12	Finish
2013-14	20-14 (.588)	10-8 (.556)	6
2014-15	23-10 (.697)	11-7 (.611)	5
2015-16	26-11 (.703)	11-7 (.611)	5
2016-17	29-6 (.829)	15-3 (.833)	T-2

### University of Arkansas

Year	Overall	SEC	Finish
2017-18	13-18 (.419)	3-13 (.188)	T-11
2018-19	16-8 (.667)	5-5 (.500)	TBA
Totals	127-67 (.655)	55-44 (.556)	6 yrs

## PLAYER DEVELOPMENT

YEAR	UNIVERSITY	PLAYER	ROUND	OVERALL	TEAM NOTE
2017	Washington	Kelsey Plum	1	1	San Antonio Spurs ! @
	Washington	Chantel Osahor	2	21	Chicago Sky ! @
2016	Washington	Talia Walton	3	29	Los Angeles Sparks ! @
2011	Xavier	Amber Harris	1	4	Minnesota Lynx #
	Xavier	Ta'Shia Phillips	1	8	Atlanta Dream #
	TAMU/UAFS	Tanisha Smith	2	22	Seattle Storm #
	Colorado	Brittany Spears	2	19	Phoenix Mercury *
2009	Arkansas	Shameka Christon	1	5	New York Liberty #
2008	Arkansas	Lauren Ervin	3	37	Connecticut Sun #
2006	Tulsa	Megan Moody	-	-	Houston Comets #
					Free Agent #
2003	Tulsa	Allison Curtin	1	12	Houston Comets ! #
	Arkansas	Dana Cherry	2	23	Traded to Detroit Shock Charlotte Sting

\*-Recruited but did not coach

!-At the school when player was drafted

@-Worked with player as a head coach

#-Worked with player as an assistant coach

S-Worked with player as other (GA, etc)

## COACHING DEVELOPMENT

Coach	w/Nabes	Now
Fred Castro	'14, '15, '16	HC Eastern Michigan
Adia Barnes	'14, '15	HC Arizona
Adam Call	'14	AC Eastern Michigan
Morgan Valley	'16	AC Arizona
Todd Schaefer	'16	AC Arkansas
Jasmine Lister	'16	AC DePaul

**THE MOST INTERESTING MAN IN COLLEGE BASKETBALL**

- Grew up with a "Big Touk": Coach is lactose intolerant and often had Coke in his bottle.
- Blueberry Please: When he got old enough to make his own breakfast, Pop Tarts were a regular. He liked the chocolate ones as a kid but prefers frosted blueberry now.
- Movies: His expansive movie collection includes digital, disk and VHS copies. Did you know he used to work at BlockBuster?
- Lunch Boxes: Coach collects tin lunch boxes and has them displayed in his home. His first lunch box had KISS on it. He got it in second grade.
- Athens City Champion: Coach stumbled upon a dart tournament while on a trip to Athens, Georgia. He joined in and was one of the two-man winning team.



**IT'S BIGGER THAN THE GAME**

Mike Neighbors continued his support of breast cancer awareness this year serving as a Koman Ozarks Big Wig. He headlined a team tasked to raise both money and awareness for and of breast cancer.

Former Razorback India Lewis (1999-2003) lost her battle with breast cancer in August 2018. She was just 36 years old.

NEIGHBORS VERSUS ...			
Oklahoma	1	2	
Abilene Christian	2	0	
Alabama	2	1	
Arizona State	2	6	
Arizona	6	0	
Auburn	1	0	
Boise State	1	0	
BYU	1	0	
California	4	3	
Charlotte	1	0	
Colorado State	1	0	
Colorado	9	0	
CSUN	1	0	
DePaul	0	1	
Eastern Washington	1	0	
Florida State	1	0	
Florida	1	1	
Fresno State	2	0	
Furman	1	0	
Georgia	0	2	
Grambling State	2	0	
Grand Canyon	1	0	
Hartford	1	0	
Hawai'i	1	0	
Houston	1	0	
Idaho	1	0	
Iowa State	0	1	
Jackson State	1	0	
Kansas	0	1	
Kentucky	1	2	
Louisiana-Monroe	1	0	
LSU	0	2	
Maryland	1	0	
Miami	0	1	
Mississippi State	0	3	
Missouri	1	3	
Montana State	2	0	
Nebraska	1	1	
New Mexico State	1	0	
Northwestern St.	2	0	
Notre Dame	0	1	
Ole Miss	2	0	
Oral Roberts	2	0	
Oregon State	1	6	
Oregon	5	3	
Pennsylvania	1	0	
Pittsburgh	1	1	
Portland	3	1	
Prairie View A&M	1	0	
Saint Mary's	0	1	
Sam Houston State	1	0	
Samford	1	0	
San Diego State	2	0	
San Diego	1	0	
Santa Clara	1	0	
Savannah State	1	0	
Seattle	4	0	
South Carolina	0	2	
South Dakota	2	0	
Stanford	3	5	
Syracuse	0	2	
Tennessee	1	1	
Tennessee State	1	0	
Tennessee Tech	1	0	
Texas A&M	1	3	
Texas Tech	1	0	
Tulsa	2	0	
UC Irvine	1	0	
UC Riverside	2	0	
UCLA	4	2	
USC	6	0	
Utah	7	3	
UT-Arlington	2	0	
UTEP	0	2	
Vanderbilt	2	1	
Washington State	5	3	
Weber State	1	0	
Wisconsin	2	0	
Yale	1	0	
TOTALS	127	67	



 **Mike Neighbors**  
@coachneighbors

Replying to @RazorbackWBB

While we will be fighting for all, #21 India Lewis, will never be forgotten by the Razorbacks.

8:20am · 5 Sep 2018 · Twitter for iPhone



## @RazorbackWBB STATISTICS AR Combined Team Statistics (as of Feb 07, 2019) All games



RECORD:	OVERALL	HOME	AWAY	NEUTRAL
ALL GAMES	16-8	8-4	6-3	2-1
CONFERENCE	5-5	2-3	3-2	0-0
NON-CONFERENCE	11-3	6-1	3-1	2-1

##	Player	gp-gs	min	avg	Total		3-Point		F-Throw		Rebounds				pf	dq	a	to	blk	stl	pts	avg
					fg-fga	fg%	3fg-fga	3fg%	ft-fa	ft%	off	def	tot	avg								
33	DUNGEE, Chelsea	24-24	746	31.1	139-359	.387	38-124	.306	116-144	.806	15	86	101	4.2	56	1	29	45	12	34	432	18.0
03	MONK, Malica	24-24	704	29.3	125-303	.413	29-82	.354	63-95	.663	12	40	52	2.2	60	0	76	41	6	35	342	14.3
02	TOLEFREE, Alexis	24-23	564	23.5	82-269	.305	50-180	.278	27-36	.750	12	58	70	2.9	36	0	27	34	7	38	241	10.0
14	MASON, Jailyn	24-23	682	28.4	65-167	.389	25-71	.352	11-15	.733	14	81	95	4.0	47	0	50	42	11	30	166	6.9
10	WILLIAMS, Kiara	24-24	487	20.3	60-107	.561	0-0	.000	34-58	.586	70	94	164	6.8	50	0	13	18	28	30	154	6.4
00	GAULDEN, A'Tyanna	18-0	247	13.7	35-95	.368	0-3	.000	22-28	.786	7	20	27	1.5	18	0	48	23	2	9	92	5.1
22	ZIMMERMAN, Bailey	24-1	506	21.1	32-108	.296	19-68	.279	25-39	.641	43	63	106	4.4	31	0	9	17	15	14	108	4.5
24	THOMAS, Taylah	24-0	420	17.5	44-81	.543	0-0	.000	19-34	.559	51	91	142	5.9	39	1	3	18	6	17	107	4.5
01	NORTHCROSS-BAKE	22-1	226	10.3	22-69	.319	15-56	.268	1-3	.333	3	13	16	0.7	23	0	11	11	1	12	60	2.7
52	DOUMBIA, Rokia	16-0	117	7.3	8-26	.308	2-10	.200	4-7	.571	7	13	20	1.3	20	1	7	19	2	4	22	1.4
30	WEAVER, Macy	11-0	48	4.4	5-10	.500	0-0	.000	5-8	.625	8	11	19	1.7	8	0	1	3	9	2	15	1.4
13	SPANGLER, Grayce	10-0	28	2.8	4-13	.308	4-9	.444	0-4	.000	3	0	3	0.3	9	0	0	3	1	1	12	1.2
20	STOUT, Sydney	11-0	25	2.3	1-1	1.000	1-1	1.000	0-0	.000	1	2	3	0.3	1	0	1	0	0	0	3	0.3
Team																						
Total.....		24	4800		622-1608	.387	183-604	.303	327-471	.694	299	628	927	38.6	399	3	275	278	100	226	1754	73.1
Opponents.....		24	4798		612-1513	.404	126-420	.300	274-406	.675	323	744	1067	44.5	442	8	328	437	86	139	1624	67.7

TEAM STATISTICS	AR	OPP
SCORING	1754	1624
Points per game	73.1	67.7
Scoring margin	+5.4	-
FIELD GOALS-ATT	622-1608	612-1513
Field goal pct	.387	.404
3 POINT FG-ATT	183-604	126-420
3-point FG pct	.303	.300
3-pt FG made per game	7.6	5.3
FREE THROWS-ATT	327-471	274-406
Free throw pct	.694	.675
F-Throws made per game	13.6	11.4
REBOUNDS	927	1067
Rebounds per game	38.6	44.5
Rebounding margin	-5.8	-
ASSISTS	275	328
Assists per game	11.5	13.7
TURNOVERS	278	437
Turnovers per game	11.6	18.2
Turnover margin	+6.6	-
Assist/turnover ratio	1.0	0.8
STEALS	226	139
Steals per game	9.4	5.8
BLOCKS	100	86
Blocks per game	4.2	3.6
ATTENDANCE	22491	31838
Home games-Avg/Game	12-1874	9-3379
Neutral site-Avg/Game	-	3-475

Date	Opponent	Score	Att.
11/09/18	NORTHWESTERN STATE	w 98-53	5497
11/14/18	at UT Arlington	w 66-65	1081
11/18/18	NO. 22 ARIZONA STATE	L 85-88	1519
! 11/23/18	vs Tennessee State	w 79-55	750
! 11/24/18	vs Pittsburgh	L 54-61	225
! 11/25/18	vs Wisconsin	w 69-68	450
11/28/18	ORAL ROBERTS	w 74-61	1119
# 12/02/18	at No. 22/23 Iowa State	L 82-91	10097
12/04/18	TENNESSEE TECH	w 65-42	915
12/08/18	at Abilene Christian	w 80-68	1288
12/16/18	PRAIRIE VIEW A&M	w 71-44	1892
12/18/18	NEBRASKA	w 84-80	1335
12/20/18	at Tulsa	w 61-59	1222
12/30/18	JACKSON STATE	w 76-57	2270
* 01/03/19	#7/6 MISS STATE	L 69-93	2263
* 01/06/19	at Ole Miss	w 85-55	1642
* 01/10/19	at Mizzou	L 53-71	4216
* 01/13/19	VANDERBILT	w 83-62	1553
* 01/21/19	at Tennessee	w 80-79	7259
* 01/24/19	ALABAMA	w 72-61	1375
* 01/27/19	at Florida	w 83-73	2009
* 01/31/19	GEORGIA	L 72-80	1116
* 02/03/19	#16 SOUTH CAROLINA	L 79-87	1637
* 02/07/19	at LSU	L 34-71	1599

!-Challenge in Music City (Nashville, Tenn.)  
 #- Big 12/SEC Challenge (Ames, Iowa)  
 +-SEC Tournament (Greenville, S.C.)  
 \* = Conference game

Score by Periods	1st	2nd	3rd	4th	Totals
AR	396	421	462	475	1754
Opponents	383	376	432	433	1624



**@RazorbackWBB STATISTICS**  
**AR Combined Team Statistics (as of Feb 07, 2019)**  
**Conference games only**



<b>RECORD:</b>	<b>OVERALL</b>	<b>HOME</b>	<b>AWAY</b>	<b>NEUTRAL</b>
ALL GAMES	5-5	2-3	3-2	0-0
CONFERENCE	5-5	2-3	3-2	0-0
NON-CONFERENCE	0-0	0-0	0-0	0-0

##	Player	gp-gs	min	avg	Total		3-Point		F-Throw		Rebounds				pf	dq	a	to	blk	stl	pts	avg
					fg-fga	fg%	3fg-fga	3fg%	ft-fa	ft%	off	def	tot	avg								
33	DUNGEE, Chelsea	10-10	327	32.7	65-159	.409	16-50	.320	48-55	.873	6	30	36	3.6	27	0	14	16	9	12	194	19.4
03	MONK, Malica	10-10	336	33.6	60-148	.405	13-40	.325	29-35	.829	3	16	19	1.9	21	0	42	16	4	15	162	16.2
02	TOLEFREE, Alexis	10-10	204	20.4	23-87	.264	16-59	.271	6-8	.750	3	18	21	2.1	18	0	5	11	0	11	68	6.8
14	MASON, Jailyln	10-10	305	30.5	27-70	.386	11-35	.314	2-2	1.000	4	43	47	4.7	21	0	18	20	4	14	67	6.7
10	WILLIAMS, Kiara	10-10	198	19.8	22-36	.611	0-0	.000	12-25	.480	21	22	43	4.3	20	0	6	5	8	8	56	5.6
24	THOMAS, Taylah	10-0	184	18.4	22-37	.595	0-0	.000	8-9	.889	22	40	62	6.2	21	1	1	10	3	7	52	5.2
01	NORTHCROSS-BAKE	10-0	129	12.9	16-43	.372	11-34	.324	0-0	.000	1	7	8	0.8	13	0	4	8	1	6	43	4.3
00	GAULDEN, A'Tyanna	4-0	50	12.5	7-25	.280	0-2	.000	2-2	1.000	1	2	3	0.8	3	0	12	1	0	2	16	4.0
22	ZIMMERMAN, Bailey	10-0	195	19.5	11-42	.262	6-24	.250	9-14	.643	12	23	35	3.5	11	0	4	7	5	9	37	3.7
30	WEAVER, Macy	5-0	13	2.6	2-4	.500	0-0	.000	2-3	.667	2	3	5	1.0	0	0	0	2	0	0	6	1.2
13	SPANGLER, Grayce	5-0	9	1.8	2-5	.400	2-3	.667	0-0	.000	0	0	0	0.0	5	0	0	3	1	1	6	1.2
52	DOUMBIA, Rokia	7-0	41	5.9	1-9	.111	1-4	.250	0-2	.000	5	6	11	1.6	7	1	1	9	0	1	3	0.4
20	STOUT, Sydney	5-0	9	1.8	0-0	.000	0-0	.000	0-0	.000	0	1	1	0.2	0	0	1	0	0	0	0	0.0
Team												23	34	57		1		1				
Total.....		10	2000		258-665	.388	76-251	.303	118-155	.761	103	245	348	34.8	168	2	108	109	35	86	710	71.0
Opponents.....		10	2000		278-639	.435	49-163	.301	127-175	.726	131	319	450	45.0	158	1	134	164	35	56	732	73.2

TEAM STATISTICS	AR	OPP
SCORING	710	732
Points per game	71.0	73.2
Scoring margin	-2.2	-
FIELD GOALS-ATT	258-665	278-639
Field goal pct	.388	.435
3 POINT FG-ATT	76-251	49-163
3-point FG pct	.303	.301
3-pt FG made per game	7.6	4.9
FREE THROWS-ATT	118-155	127-175
Free throw pct	.761	.726
F-Throws made per game	11.8	12.7
REBOUNDS	348	450
Rebounds per game	34.8	45.0
Rebounding margin	-10.2	-
ASSISTS	108	134
Assists per game	10.8	13.4
TURNOVERS	109	164
Turnovers per game	10.9	16.4
Turnover margin	+5.5	-
Assist/turnover ratio	1.0	0.8
STEALS	86	56
Steals per game	8.6	5.6
BLOCKS	35	35
Blocks per game	3.5	3.5
ATTENDANCE	7944	16725
Home games-Avg/Game	5-1589	5-3345
Neutral site-Avg/Game	-	0-0

Date	Opponent	Score	Att.
• 01/03/19	#7/6 MISS STATE	L 69-93	2263
• 01/06/19	at Ole Miss	W 85-55	1642
• 01/10/19	at Mizzou	L 53-71	4216
• 01/13/19	VANDERBILT	W 83-62	1553
• 01/21/19	at Tennessee	W 80-79	7259
• 01/24/19	ALABAMA	W 72-61	1375
• 01/27/19	at Florida	W 83-73	2009
• 01/31/19	GEORGIA	L 72-80	1116
• 02/03/19	#16 SOUTH CAROLINA	L 79-87	1637
• 02/07/19	at LSU	L 34-71	1599

!-Challenge in Music City (Nashville, Tenn.)  
 #- Big 12/SEC Challenge (Ames, Iowa)  
 +-SEC Tournament (Greenville, S.C.)  
 \* = Conference game

Score by Periods	1st	2nd	3rd	4th	Totals
AR	152	186	182	190	710
Opponents	164	167	192	209	732



**@RazorbackWBB STATISTICS**  
AR Game-by-Game Highs (as of Feb 07, 2019)  
All games

Opponent	Date	Score	Points	Rebounds	Assists	Steals	Blocked shots
NORTHWESTERN STATE	11/09/18	98-53	19-TOLEFREE, Alexis	9-THOMAS, Taylah WILLIAMS, Kiara	4-MONK, Malica MASON, Jailyn	3-THOMAS, Taylah	1-ZIMMERMAN, Bail WILLIAMS, Kiara MASON, Jailyn
at UT Arlington	11/14/18	66-65	18-TOLEFREE, Alexis MONK, Malica	9-THOMAS, Taylah	3-MONK, Malica	3-MASON, Jailyn TOLEFREE, Alexis	1-DUNGEE, Chelsea ZIMMERMAN, Baile WILLIAMS, Kiara TOLEFREE, Alexis
NO. 22 ARIZONA STATE	11/18/18	85-88	22-TOLEFREE, Alexis	9-WILLIAMS, Kiara	3-MASON, Jailyn	3-WILLIAMS, Kiara	None
vs Tennessee State	11/23/18	79-55	16-DUNGEE, Chelsea	11-WILLIAMS, Kiara	4-MONK, Malica	3-MONK, Malica	3-ZIMMERMAN, Bail
vs Pittsburgh	11/24/18	54-61	12-TOLEFREE, Alexis	11-ZIMMERMAN, Bail	5-TOLEFREE, Alexis	4-TOLEFREE, Alexis	2-DUNGEE, Chelsea
vs Wisconsin	11/25/18	69-68	20-DUNGEE, Chelsea	12-THOMAS, Taylah	4-GAULDEN, A'Tyan	3-DUNGEE, Chelsea WILLIAMS, Kiara	None
ORAL ROBERTS	11/28/18	74-61	21-DUNGEE, Chelsea	11-WILLIAMS, Kiara	3-MONK, Malica	2-TOLEFREE, Alexis	3-WILLIAMS, Kiara
at No. 22/23 Iowa State	12/02/18	82-91	27-DUNGEE, Chelsea	6-WILLIAMS, Kiara	3-GAULDEN, A'Tyan	2-WILLIAMS, Kiara	1-GAULDEN, A'Tyan WILLIAMS, Kiara
TENNESSEE TECH	12/04/18	65-42	28-DUNGEE, Chelsea	9-WILLIAMS, Kiara	3-GAULDEN, A'Tyan MASON, Jailyn	3-MASON, Jailyn	5-WILLIAMS, Kiara
at Abilene Christian	12/08/18	80-68	21-TOLEFREE, Alexis	11-WILLIAMS, Kiara	5-MASON, Jailyn	5-TOLEFREE, Alexis	1-WILLIAMS, Kiara TOLEFREE, Alexis MASON, Jailyn ZIMMERMAN, Baile
PRAIRIE VIEW A&M	12/16/18	71-44	11-THOMAS, Taylah	11-ZIMMERMAN, Bail	3-GAULDEN, A'Tyan DOUMBIA, Rokia	2-WILLIAMS, Kiara	3-WILLIAMS, Kiara
NEBRASKA	12/18/18	84-80	23-DUNGEE, Chelsea	9-WILLIAMS, Kiara	4-MONK, Malica MASON, Jailyn	3-WILLIAMS, Kiara	1-TOLEFREE, Alexis ZIMMERMAN, Baile WILLIAMS, Kiara
at Tulsa	12/20/18	61-59	23-DUNGEE, Chelsea	10-WILLIAMS, Kiara	3-MASON, Jailyn	3-DUNGEE, Chelsea TOLEFREE, Alexis MONK, Malica	1-THOMAS, Taylah TOLEFREE, Alexis GAULDEN, A'Tyann MASON, Jailyn
JACKSON STATE	12/30/18	76-57	17-TOLEFREE, Alexis	8-WILLIAMS, Kiara	4-GAULDEN, A'Tyan	7-DUNGEE, Chelsea	3-WILLIAMS, Kiara
#7/6 MISS STATE	01/03/19	69-93	25-DUNGEE, Chelsea	9-THOMAS, Taylah	4-MONK, Malica GAULDEN, A'Tyann	3-TOLEFREE, Alexis	4-DUNGEE, Chelsea
at Ole Miss	01/06/19	85-55	17-DUNGEE, Chelsea	10-WILLIAMS, Kiara	5-MONK, Malica	5-WILLIAMS, Kiara	1-THOMAS, Taylah
at Mizzou	01/10/19	53-71	15-DUNGEE, Chelsea	6-THOMAS, Taylah DUNGEE, Chelsea	4-MONK, Malica	2-DUNGEE, Chelsea MONK, Malica	1-MONK, Malica MASON, Jailyn
VANDERBILT	01/13/19	83-62	16-NORTHCROSS-B	7-ZIMMERMAN, Bail DOUMBIA, Rokia	9-MONK, Malica	3-NORTHCROSS-BA	1-SPANGLER, Grayc DUNGEE, Chelsea MASON, Jailyn
at Tennessee	01/21/19	80-79	23-MONK, Malica	7-THOMAS, Taylah	5-MASON, Jailyn	4-ZIMMERMAN, Bail	1-WILLIAMS, Kiara ZIMMERMAN, Baile
ALABAMA	01/24/19	72-61	16-MONK, Malica	9-MASON, Jailyn	4-MONK, Malica MASON, Jailyn	2-TOLEFREE, Alexis MONK, Malica MASON, Jailyn	1-WILLIAMS, Kiara MONK, Malica
at Florida	01/27/19	83-73	25-MONK, Malica DUNGEE, Chelsea	6-THOMAS, Taylah	4-MONK, Malica	2-MONK, Malica DUNGEE, Chelsea	2-WILLIAMS, Kiara
GEORGIA	01/31/19	72-80	28-DUNGEE, Chelsea	6-MASON, Jailyn THOMAS, Taylah	6-MONK, Malica	4-MONK, Malica	2-DUNGEE, Chelsea
#16 SOUTH CAROLINA	02/03/19	79-87	32-DUNGEE, Chelsea	7-MASON, Jailyn	3-MONK, Malica DUNGEE, Chelsea	2-MASON, Jailyn TOLEFREE, Alexis	3-ZIMMERMAN, Bail
at LSU	02/07/19	34-71	14-DUNGEE, Chelsea	6-THOMAS, Taylah	1-NORTHCROSS-BA STOUT, Sydney	2-MASON, Jailyn WILLIAMS, Kiara	1-WILLIAMS, Kiara



**@RazorbackWBB STATISTICS**  
**AR Category Leaders (as of Feb 07, 2019)**  
 All games

Points	G	Pts	Pts/G	Scoring Average	G	Pts	Avg/G
DUNGEE, Chelsea	24	432	18.0	DUNGEE, Chelsea	24	432	18.0
MONK, Malica	24	342	14.3	MONK, Malica	24	342	14.3
TOLEFREE, Alexis	24	241	10.0	TOLEFREE, Alexis	24	241	10.0
MASON, Jailyn	24	166	6.9	MASON, Jailyn	24	166	6.9
WILLIAMS, Kiara	24	154	6.4	WILLIAMS, Kiara	24	154	6.4
ZIMMERMAN, Bailey	24	108	4.5	GAULDEN, A'Tyanna	18	92	5.1
THOMAS, Taylah	24	107	4.5	ZIMMERMAN, Bailey	24	108	4.5
GAULDEN, A'Tyanna	18	92	5.1	THOMAS, Taylah	24	107	4.5
NORTHCROSS-BAKER, Ra	22	60	2.7	NORTHCROSS-BAKER, Ra	22	60	2.7
DOUMBIA, Rokia	16	22	1.4	DOUMBIA, Rokia	16	22	1.4
WEAVER, Macy	11	15	1.4	WEAVER, Macy	11	15	1.4
SPANGLER, Grayce	10	12	1.2	SPANGLER, Grayce	10	12	1.2

FG Percentage	FG	Att	Pct	Field Goal Attempts	G	Att	Att/G
STOUT, Sydney	1	1	1.000	DUNGEE, Chelsea	24	359	15.0
WILLIAMS, Kiara	60	107	.561	MONK, Malica	24	303	12.6
THOMAS, Taylah	44	81	.543	TOLEFREE, Alexis	24	269	11.2
WEAVER, Macy	5	10	.500	MASON, Jailyn	24	167	7.0
MONK, Malica	125	303	.413	ZIMMERMAN, Bailey	24	108	4.5
MASON, Jailyn	65	167	.389	Field Goals Made	G	Made	Made/G
DUNGEE, Chelsea	139	359	.387	DUNGEE, Chelsea	24	139	5.8
GAULDEN, A'Tyanna	35	95	.368	MONK, Malica	24	125	5.2
NORTHCROSS-BAKER, Ra	22	69	.319	TOLEFREE, Alexis	24	82	3.4
DOUMBIA, Rokia	8	26	.308	MASON, Jailyn	24	65	2.7
SPANGLER, Grayce	4	13	.308	WILLIAMS, Kiara	24	60	2.5
TOLEFREE, Alexis	82	269	.305				

3-Point Percentage	3FG	Att	Pct	3-Point FG Attempts	G	Att	Att/G
STOUT, Sydney	1	1	1.000	TOLEFREE, Alexis	24	180	7.5
SPANGLER, Grayce	4	9	.444	DUNGEE, Chelsea	24	124	5.2
MONK, Malica	29	82	.354	MONK, Malica	24	82	3.4
MASON, Jailyn	25	71	.352	MASON, Jailyn	24	71	3.0
DUNGEE, Chelsea	38	124	.306	ZIMMERMAN, Bailey	24	68	2.8
ZIMMERMAN, Bailey	19	68	.279	3-Point FG Made	G	Made	Made/G
TOLEFREE, Alexis	50	180	.278	TOLEFREE, Alexis	24	50	2.1
NORTHCROSS-BAKER, Ra	15	56	.268	DUNGEE, Chelsea	24	38	1.6
DOUMBIA, Rokia	2	10	.200	MONK, Malica	24	29	1.2
GAULDEN, A'Tyanna	0	3	.000	MASON, Jailyn	24	25	1.0
				ZIMMERMAN, Bailey	24	19	0.8

Free Throw Percent	FG	Att	Pct	Free Throw Attempts	G	Att	Att/G
DUNGEE, Chelsea	116	144	.806	DUNGEE, Chelsea	24	144	6.0
GAULDEN, A'Tyanna	22	28	.786	MONK, Malica	24	95	4.0
TOLEFREE, Alexis	27	36	.750	WILLIAMS, Kiara	24	58	2.4
MASON, Jailyn	11	15	.733	ZIMMERMAN, Bailey	24	39	1.6
MONK, Malica	63	95	.663	TOLEFREE, Alexis	24	36	1.5
ZIMMERMAN, Bailey	25	39	.641	Free Throws Made	G	Made	Made/G
WEAVER, Macy	5	8	.625	DUNGEE, Chelsea	24	116	4.8
WILLIAMS, Kiara	34	58	.586	MONK, Malica	24	63	2.6
DOUMBIA, Rokia	4	7	.571	WILLIAMS, Kiara	24	34	1.4
THOMAS, Taylah	19	34	.559	TOLEFREE, Alexis	24	27	1.1
NORTHCROSS-BAKER, Ra	1	3	.333	ZIMMERMAN, Bailey	24	25	1.0
SPANGLER, Grayce	0	4	.000				





@RazorbackWBB STATISTICS  
AR Category Leaders (as of Feb 07, 2019)  
All games

Rebounds	G	Reb	Reb/G	Assists	G	No.	Ast/G
WILLIAMS, Kiara	24	164	6.8	MONK, Malica	24	76	3.2
THOMAS, Taylah	24	142	5.9	MASON, Jailyn	24	50	2.1
ZIMMERMAN, Bailey	24	106	4.4	GAULDEN, A'Tyanna	18	48	2.7
DUNGEE, Chelsea	24	101	4.2	DUNGEE, Chelsea	24	29	1.2
MASON, Jailyn	24	95	4.0	TOLEFREE, Alexis	24	27	1.1

Rebound Average	G	Reb	Avg/G	Steals	G	No.	Stl/G
WILLIAMS, Kiara	24	164	6.8	TOLEFREE, Alexis	24	38	1.6
THOMAS, Taylah	24	142	5.9	MONK, Malica	24	35	1.5
ZIMMERMAN, Bailey	24	106	4.4	DUNGEE, Chelsea	24	34	1.4
DUNGEE, Chelsea	24	101	4.2	MASON, Jailyn	24	30	1.3
MASON, Jailyn	24	95	4.0	WILLIAMS, Kiara	24	30	1.3

Offensive Rebounds	G	No.	Avg/G	Blocked Shots	G	No.	Blk/G
WILLIAMS, Kiara	24	70	2.9	WILLIAMS, Kiara	24	28	1.2
THOMAS, Taylah	24	51	2.1	ZIMMERMAN, Bailey	24	15	0.6
ZIMMERMAN, Bailey	24	43	1.8	DUNGEE, Chelsea	24	12	0.5
DUNGEE, Chelsea	24	15	0.6	MASON, Jailyn	24	11	0.5
MASON, Jailyn	24	14	0.6	WEAVER, Macy	11	9	0.8

Defensive Rebounds	G	No.	Avg/G	Minutes	G	No.	Min/G
WILLIAMS, Kiara	24	94	3.9	DUNGEE, Chelsea	24	746	31.1
THOMAS, Taylah	24	91	3.8	MONK, Malica	24	704	29.3
DUNGEE, Chelsea	24	86	3.6	MASON, Jailyn	24	682	28.4
MASON, Jailyn	24	81	3.4	TOLEFREE, Alexis	24	564	23.5
ZIMMERMAN, Bailey	24	63	2.6	ZIMMERMAN, Bailey	24	506	21.1

Fouls	G	No.	Per/G	Turnovers	G	No.	TO/G
MONK, Malica	24	60	2.5	DUNGEE, Chelsea	24	45	1.9
DUNGEE, Chelsea	24	56	2.3	MASON, Jailyn	24	42	1.8
WILLIAMS, Kiara	24	50	2.1	MONK, Malica	24	41	1.7
MASON, Jailyn	24	47	2.0	TOLEFREE, Alexis	24	34	1.4
THOMAS, Taylah	24	39	1.6	GAULDEN, A'Tyanna	18	23	1.3

Foulsouts	G	No.
THOMAS, Taylah	24	1
DUNGEE, Chelsea	24	1
DOUMBIA, Rokia	16	1



**@RazorbackWBB STATISTICS**  
AR Team Game-by-Game Comparison (as of Feb 07, 2019)  
**All games**



Opponent	1st	2nd	Score	Mar	Total FG	FG Pct	3-Pointers	3FG Pct	Free Throws	FT Pct	Rebounds	Assist	T/Over	Block	Steal	Fouls
NORTHWESTERN STATE	56/27	42/26	98-53	+45	34-59/19-57	.576/.333	11-23/8-21	.478/.381	19-33/7-12	.576/.583	38/34 +4	18/14	16/30	3/1	11/10	15/27
UT Arlington	36/31	30/34	66-65	+1	26-63/25-72	.413/.347	5-16/7-15	.313/.467	9-18/8-12	.500/.667	42/39 +3	8/18	19/15	4/4	10/12	20/19
NO. 22 ARIZONA STATE	42/46	43/42	85-88	(3)	32-67/31-63	.478/.492	6-19/5-16	.316/.313	15-22/21-33	.682/.636	35/43 (8)	9/16	13/17	0/2	6/6	22/21
Tennessee State	37/34	42/21	79-55	+24	23-62/17-63	.371/.270	7-20/4-17	.350/.235	26-38/17-26	.684/.654	41/53 (12)	16/11	14/23	8/3	12/8	21/27
Pittsburgh	18/25	36/36	54-61	(7)	19-74/25-52	.257/.481	7-35/2-9	.200/.222	9-17/9-14	.529/.643	40/48 (8)	11/17	8/22	3/4	10/4	14/18
Wisconsin	31/33	38/35	69-68	+1	24-65/27-63	.369/.429	5-19/7-28	.263/.250	16-28/7-13	.571/.538	44/43 +1	11/21	10/16	0/6	11/1	17/22
ORAL ROBERTS	38/23	36/38	74-61	+13	23-66/21-61	.348/.344	4-20/5-18	.200/.278	24-29/14-18	.828/.778	45/41 +4	7/8	14/19	7/1	4/8	14/23
No. 22/23 Iowa State	33/37	49/54	82-91	(9)	26-68/34-69	.382/.493	11-27/8-29	.407/.276	19-25/15-19	.760/.789	37/47 (10)	13/20	7/11	2/7	6/1	22/19
TENNESSEE TECH	35/20	30/22	65-42	+23	27-74/18-56	.365/.321	7-23/4-16	.304/.250	4-6/2-9	.667/.222	42/42 -	9/11	9/21	13/5	13/2	12/12
Abilene Christian	42/39	38/29	80-68	+12	28-65/24-54	.431/.444	10-29/5-14	.345/.357	14-20/15-20	.700/.750	33/41 (8)	16/14	8/20	4/2	13/4	17/18
PRAIRIE VIEW A&M	26/22	45/22	71-44	+27	25-76/18-72	.329/.250	3-23/2-16	.130/.125	18-26/6-11	.692/.545	64/46 +18	11/7	8/13	8/6	7/4	12/20
NEBRASKA	31/36	53/44	84-80	+4	27-67/28-61	.403/.459	13-37/9-21	.351/.429	17-23/15-23	.739/.652	37/41 (4)	16/13	10/15	3/6	8/7	20/24
Tulsa	26/27	35/32	61-59	+2	23-63/23-66	.365/.348	6-25/5-17	.240/.294	9-16/8-13	.563/.615	41/50 (9)	7/12	18/23	4/1	12/8	14/17
JACKSON STATE	28/28	48/29	76-57	+19	27-74/24-65	.365/.369	12-37/6-20	.324/.300	10-15/3-8	.667/.375	40/49 (9)	15/12	15/28	6/3	17/8	11/17
#7/6 MISS STATE	33/50	36/43	69-93	(24)	27-72/37-75	.375/.493	3-17/3-9	.176/.333	12-15/16-22	.800/.727	31/57 (26)	10/16	10/13	8/6	8/6	13/15
Ole Miss	42/25	43/30	85-55	+30	32-67/21-64	.478/.328	12-30/3-15	.400/.200	9-11/10-13	.818/.769	39/39 -	18/6	11/15	1/4	10/8	14/20
Mizzou	14/34	39/37	53-71	(18)	19-64/27-54	.297/.500	9-31/2-10	.290/.200	6-7/15-17	.857/.882	28/45 (17)	9/13	9/17	2/0	5/4	18/14
VANDERBILT	47/20	36/42	83-62	+21	30-75/18-47	.400/.383	13-35/1-7	.371/.143	10-14/25-32	.714/.781	44/35 +9	17/8	12/23	3/5	8/4	28/12
Tennessee	40/31	40/48	80-79	+1	27-75/30-68	.360/.441	12-32/5-20	.375/.250	14-17/14-18	.824/.778	39/47 (8)	12/11	8/16	2/4	10/6	15/17
ALABAMA	33/29	39/32	72-61	+11	27-62/22-61	.435/.361	8-22/10-29	.364/.345	10-13/7-11	.769/.636	36/40 (4)	13/16	11/16	2/4	9/1	11/14
Florida	37/35	46/38	83-73	+10	30-63/27-67	.476/.403	5-22/12-37	.227/.324	18-23/7-14	.783/.500	35/43 (8)	7/17	8/15	5/0	6/6	15/20
GEORGIA	43/38	29/42	72-80	(8)	24-64/31-62	.375/.500	7-27/7-11	.259/.636	17-18/11-15	.944/.733	28/44 (16)	11/19	13/22	5/4	14/8	18/15
#16 SOUTH CAROLINA	39/33	40/54	79-87	(8)	29-74/32-80	.392/.400	7-25/5-20	.280/.250	14-19/18-24	.737/.750	42/54 (12)	9/12	9/11	6/6	7/5	20/16
LSU	10/36	24/35	34-71	(37)	13-49/33-61	.265/.541	0-10/1-5	.000/.200	8-18/4-9	.444/.444	26/46 (20)	2/16	18/16	1/2	9/8	16/15

Note: Game totals are displayed in the format TEAM/OPPONENT for each category

Won the second half 14 times and tied once ... 11-4

Won the fourth quarter in 16 games

3-Point Field Goals | 8 games with double digit 3-pointers ... 15 games with more (and one tie) made 3-point field goals than opponent ... 11-5

Assists | 15 games with double figure assists ... Nine games with more assists than opponent

Turnovers | 11 games with 10 or fewer turnovers ... Forced double figure turnovers by opponent in every game.

Steals | 12 games with double digit steals



**@RazorbackWBB STATISTICS**  
AR Points-Rebounds-Assists (as of Feb 07, 2019)  
All games

Opponent	Date	Score		00	01	02	03	10	13	14
				GAULDEN,A'	NORTHCROSS	TOLEFREE,A	MONK,MALIC	WILLIAMS,K	SPANGLER,G	MASON,JAIL
NORTHWESTERN STATE	11/09/18	98-53	w	16-2-3	0-1-2	19-3-0	12-0-4	10-9-1	0-0-0	4-4-4
at UT Arlington	11/14/18	66-65	w	2-3-1	2-3-1	18-4-0	18-8-3	4-6-0	DNP	0-1-2
NO. 22 ARIZONA STATE	11/18/18	85-88	L	9-0-0	0-0-0	22-3-2	13-4-1	8-9-2	DNP	11-4-3
vs Tennessee State	11/23/18	79-55	w	9-2-3	4-0-1	14-3-2	13-2-4	6-11-2	DNP	4-2-2
vs Pittsburgh	11/24/18	54-61	L	2-2-3	0-0-0	12-6-5	5-3-2	5-4-0	DNP	5-1-1
vs Wisconsin	11/25/18	69-68	w	1-0-4	DNP	5-2-1	13-1-3	13-8-0	DNP	12-7-1
ORAL ROBERTS	11/28/18	74-61	w	2-1-1	3-0-0	4-5-1	17-3-3	6-11-0	DNP	12-6-0
at No. 22/23 Iowa State	12/02/18	82-91	L	4-2-3	0-0-0	10-5-2	22-1-0	4-6-1	DNP	10-4-2
TENNESSEE TECH	12/04/18	65-42	w	12-5-3	0-1-0	5-2-0	2-1-1	6-9-0	0-2-0	4-2-3
at Abilene Christian	12/08/18	80-68	w	7-1-4	DNP	21-1-3	18-0-4	12-11-0	DNP	5-5-5
PRAIRIE VIEW A&M	12/16/18	71-44	w	6-4-3	5-2-0	7-4-2	8-6-1	6-10-0	0-1-0	6-1-0
NEBRASKA	12/18/18	84-80	w	0-0-3	3-0-0	13-6-2	16-1-4	10-9-1	0-0-0	11-0-4
at Tulsa	12/20/18	61-59	w	4-2-1	0-0-0	6-4-1	12-1-2	6-10-0	DNP	6-5-3
JACKSON STATE	12/30/18	76-57	w	2-0-4	0-1-3	17-1-1	11-2-2	2-8-0	6-0-0	9-6-2
#7/6 MISS STATE	01/03/19	69-93	L	6-0-4	0-2-0	11-1-0	6-1-4	4-1-0	DNP	2-1-1
at Ole Miss	01/06/19	85-55	w	4-1-4	6-0-1	4-5-1	16-0-5	13-10-1	0-0-0	16-6-3
at Mizzou	01/10/19	53-71	L	2-1-2	5-0-0	6-3-0	5-1-4	5-5-1	0-0-0	7-1-0
VANDERBILT	01/13/19	83-62	w	4-1-2	16-0-1	9-2-1	15-2-9	11-3-0	6-0-0	5-4-2
at Tennessee	01/21/19	80-79	w	DNP	3-0-0	16-3-1	23-3-3	2-2-1	DNP	7-6-5
ALABAMA	01/24/19	72-61	w	DNP	3-1-0	13-1-0	16-3-4	4-5-1	0-0-0	7-9-4
at Florida	01/27/19	83-73	w	DNP	0-0-0	2-5-1	25-4-4	8-5-0	DNP	12-5-1
GEORGIA	01/31/19	72-80	L	DNP	5-3-1	5-1-1	19-0-6	2-4-1	DNP	4-6-1
#16 SOUTH CAROLINA	02/03/19	79-87	L	DNP	5-1-0	2-0-0	25-4-3	6-5-1	DNP	5-7-1
at LSU	02/07/19	34-71	L	DNP	0-1-1	0-0-0	12-1-0	1-3-0	0-0-0	2-2-0

Opponent	Date	Score		20	22	24	30	33	52
				STOUT,SYDN	ZIMMERMAN,	THOMAS,TAY	WEAVER,MAC	DUNGEE,CHE	DOUMBIA,RO
NORTHWESTERN STATE	11/09/18	98-53	w	0-0-0	4-4-1	11-9-0	0-0-0	11-3-3	11-1-0
at UT Arlington	11/14/18	66-65	w	DNP	4-5-0	2-9-0	DNP	16-3-1	0-0-0
NO. 22 ARIZONA STATE	11/18/18	85-88	L	DNP	2-1-0	0-2-0	DNP	20-6-1	0-1-0
vs Tennessee State	11/23/18	79-55	w	0-0-0	12-4-1	1-3-0	0-5-0	16-6-0	0-0-1
vs Pittsburgh	11/24/18	54-61	L	DNP	11-11-0	4-8-0	DNP	10-1-0	DNP
vs Wisconsin	11/25/18	69-68	w	DNP	3-4-1	2-12-0	DNP	20-5-1	0-1-0
ORAL ROBERTS	11/28/18	74-61	w	DNP	4-3-0	0-6-0	4-1-0	21-5-1	1-0-1
at No. 22/23 Iowa State	12/02/18	82-91	L	DNP	3-3-2	2-4-1	DNP	27-5-2	DNP
TENNESSEE TECH	12/04/18	65-42	w	0-1-0	7-5-0	1-2-0	0-3-0	28-5-2	0-1-0
at Abilene Christian	12/08/18	80-68	w	DNP	3-5-0	12-6-0	DNP	2-1-0	DNP
PRAIRIE VIEW A&M	12/16/18	71-44	w	3-1-0	5-11-0	11-7-0	4-3-1	8-6-1	2-4-3
NEBRASKA	12/18/18	84-80	w	0-0-0	3-7-0	5-5-1	DNP	23-5-1	DNP
at Tulsa	12/20/18	61-59	w	DNP	4-4-0	0-1-0	DNP	23-9-0	DNP
JACKSON STATE	12/30/18	76-57	w	0-0-0	6-4-0	4-6-0	1-2-0	13-5-2	5-1-1
#7/6 MISS STATE	01/03/19	69-93	L	DNP	0-3-0	15-9-0	DNP	25-2-1	0-1-0
at Ole Miss	01/06/19	85-55	w	0-0-0	6-2-0	0-3-0	0-0-0	17-3-2	3-2-1
at Mizzou	01/10/19	53-71	L	0-0-0	5-2-1	0-6-0	3-1-0	15-6-1	0-0-0
VANDERBILT	01/13/19	83-62	w	0-0-0	3-7-1	4-6-0	0-4-0	10-3-1	0-7-0
at Tennessee	01/21/19	80-79	w	DNP	6-5-0	4-7-0	DNP	19-5-2	0-0-0
ALABAMA	01/24/19	72-61	w	0-0-0	5-4-2	15-7-0	0-0-0	9-2-2	0-0-0
at Florida	01/27/19	83-73	w	DNP	5-0-0	6-6-0	DNP	25-5-1	DNP
GEORGIA	01/31/19	72-80	L	DNP	5-4-0	4-6-0	DNP	28-2-1	DNP
#16 SOUTH CAROLINA	02/03/19	79-87	L	DNP	0-3-0	4-6-1	DNP	32-5-3	DNP
at LSU	02/07/19	34-71	L	0-1-1	2-5-0	0-6-0	3-0-0	14-3-0	0-1-0



**0** A'Tyanna Gauden | So. | 5-7 | G | Ocilla, Ga. (Americus Sumter HS) | Florida State

**SEASON HIGHS**

Points	16	NSU	11-9-18
FG Made	6	TTU	12-4-18*
FG Att.	16	TTU	12-4-18
3FG Made			
3FG Att.	2	at Missouri	1-10-19
FT Made	5	#22 ASU	11-18-18
FT Att.	7	NSU	11-9-18
Off. Reb.	3	TTU	12-4-18
Def. Reb.	3	at UTA	11-14-18
Rebounds	5	TTU	12-4-18
Assists	4	at Ole Miss	1-6-19*
Blocks	1	at #22 ISU	12-2-18
Steals	2	NSU	11-9-18
Minutes	24	TTU	12-4-18

**CAREER HIGHS**

Points	16	NSU	11-9-18
FG Made	6	TTU	12-4-18*
FG Att.	16	TTU	12-4-18
3FG Made			
3FG Att.	2	at Missouri	1-10-19
FT Made	5	#22 ASU	11-18-18
FT Att.	7	NSU	11-9-18
Off. Reb.	3	TTU	12-4-18
Def. Reb.	3	at UTA	11-14-18
Rebounds	5	TTU	12-4-18
Assists	4	at Ole Miss	1-6-19*
Blocks	1	at #22 ISU	12-2-18
Steals	2	NSU	11-9-18
Minutes	24	TTU	12-4-18

\*Most Recent

**SEASON | CAREER SUPERLATIVES**

Stat	'18-'19	Career
Double Figure Pts	2	2
Double Figure Rebs		
Double-Doubles		
5+ Assists		
5+ Blocks		
5+ Steals		
Led Team in Pts		
Led Team in Reb		
20+ Points		

**NOTES**

- One of seven players in double figures in the season opener with 16 points versus Northwestern State.
- Twelve points in 24 minutes versus Tennessee Tech. Two games with double figure points.
- Redshirted the 2017-18 season due to NCAA transfer rules.
- Played in 21 games averaging 1.1 ppg, 0.6 rpg and 1.0 apg in 5.7 minutes per game at FSU.
- As a prep player, was ranked sixth among all guard in the ESPNW 2016 recruiting class and was No. 23 overall ... Five-star player who earned Atlanta Journal Constitution Player of the Year after her senior season.

Opponent	Date	gs	min	Total fg-fga	pct	3-Pointers 3fg-fga	pct	Free throws ft-fta	pct	Rebounds off	def	tot	avg	pf	a	t/o	blk	stl	pts	avg
NORTHWESTERN STATE	11/09/18	17	6-7	.857	0-0	.000	4-7	.571	0	2	2	2.0	0	3	4	0	2	16	16.0	
at UT Arlington	11/14/18	11	1-3	.333	0-0	.000	0-0	.000	0	3	3	2.5	1	1	3	0	0	2	9.0	
NO. 22 ARIZONA STATE	11/18/18	13	2-5	.400	0-0	.000	5-6	.833	0	0	0	1.7	0	0	1	0	1	9	9.0	
vs Tennessee State	11/23/18	19	3-9	.333	0-0	.000	3-4	.750	0	2	2	1.8	3	3	0	0	1	9	9.0	
vs Pittsburgh	11/24/18	11	1-6	.167	0-1	.000	0-0	.000	1	1	2	1.8	0	3	0	0	1	2	7.6	
vs Wisconsin	11/25/18	17	0-3	.000	0-0	.000	1-2	.500	0	0	0	1.5	1	4	1	0	1	1	6.5	
ORAL ROBERTS	11/28/18	7	1-2	.500	0-0	.000	0-0	.000	0	1	1	1.4	0	1	2	0	0	2	5.9	
at No. 22/23 Iowa State	12/02/18	16	1-3	.333	0-0	.000	2-2	1.000	0	2	2	1.5	2	3	2	1	1	4	5.6	
TENNESSEE TECH	12/04/18	24	6-16	.375	0-0	.000	0-0	.000	3	2	5	1.9	1	3	1	0	0	12	6.3	
at Abilene Christian	12/08/18	14	2-5	.400	0-0	.000	3-3	1.000	0	1	1	1.8	3	4	1	0	0	7	6.4	
PRAIRIE VIEW A&M	12/16/18	18	2-6	.333	0-0	.000	2-2	1.000	1	3	4	2.0	2	3	1	0	0	6	6.4	
NEBRASKA	12/18/18	9	0-0	.000	0-0	.000	0-0	.000	0	0	0	1.8	0	3	3	0	0	0	5.8	
at Tulsa	12/20/18	10	2-2	1.000	0-0	.000	0-0	.000	1	1	2	1.8	1	1	1	1	0	4	5.7	
JACKSON STATE	12/30/18	11	1-3	.333	0-0	.000	0-0	.000	0	0	0	1.7	1	4	2	0	0	2	5.4	
#7/6 MISS STATE	01/03/19	16	3-9	.333	0-0	.000	0-0	.000	0	0	0	1.6	0	4	0	0	1	6	5.5	
at Ole Miss	01/06/19	13	2-4	.500	0-0	.000	0-0	.000	0	1	1	1.6	1	4	1	0	0	4	5.4	
at Mizou	01/10/19	12	1-7	.143	0-2	.000	0-0	.000	0	1	1	1.5	1	2	0	0	0	2	5.2	
VANDERBILT	01/13/19	9	1-5	.200	0-0	.000	2-2	1.000	1	0	1	1.5	1	2	0	0	1	4	5.1	
at Tennessee	01/21/19	dnp	-	-	-	-	-	-	-	-	-	-	-	-	-	-	-	-	-	-
ALABAMA	01/24/19	dnp	-	-	-	-	-	-	-	-	-	-	-	-	-	-	-	-	-	-
at Florida	01/27/19	dnp	-	-	-	-	-	-	-	-	-	-	-	-	-	-	-	-	-	-
GEORGIA	01/31/19	dnp	-	-	-	-	-	-	-	-	-	-	-	-	-	-	-	-	-	-
#16 SOUTH CAROLINA	02/03/19	dnp	-	-	-	-	-	-	-	-	-	-	-	-	-	-	-	-	-	-
at LSU	02/07/19	dnp	-	-	-	-	-	-	-	-	-	-	-	-	-	-	-	-	-	-
Totals		0	247	35-95	.368	0-3	.000	22-28	.786	7	20	27	1.5	18	48	23	2	9	92	5.1

Games played: 18  
Minutes/game: 13.7  
Points/game: 5.1  
FG Pct: .36.8  
3FG Pct: 0.0  
FT Pct: 78.6

Rebounds/game: 1.5  
Assists/game: 2.7  
Turnovers/game: 1.3  
Assist/turnover ratio: 2.1  
Steals/game: 0.5  
Blocks/game: 0.1

**CAREER STATISTICS**

Year	GP-GS	Min	Avg	FG	Total FGA	Pct	3-Point FGA	Pct	F-Throw FT	FTA	Pct	Off	Def	Tot	Avg	PF	FO	Ast	TO	Blk	Stl	Pts	Avg	
2015-16*	21-0	119	5.7	7	15	.467	0	0	.000	9	14	.643	2	10	12	0.6	24	1	22	15	0	13	23	1.1

\*at Florida State

Season	gp-gs	min/avg	fg-fga	pct	fg-fga	pct	ft-fta	pct	off	def	tot	avg	pf	fo	ast	to	blk	stl	pts	avg
2018-19	18-0	247/13.7	35-95	.368	0-3	.000	22-28	.786	7	20	27	1.5	18	0	48	23	2	9	92	5.1
TOTAL	18-0	247/13.7	35-95	.368	0-3	.000	22-28	.786	7	20	27	1.5	18	0	48	23	2	9	92	5.1



**1 Raven Northcross Baker | Sr. | 5-9 | G | Malvern, Ark. (Malvern HS) | Chipola Junior College**

**SEASON HIGHS**

Points	16	Vanderbilt	1-13-19
FG Made	6	Vanderbilt	1-13-19
FG Att.	13	Vanderbilt	1-13-19
3FG Made	4	Vanderbilt	1-13-19
3FG Att.	11	Vanderbilt	1-13-19
FT Made	1	TSU	11-23-18
FT Att.	2	TSU	11-23-18
Off. Reb.	1	PVAM	12-16-18*
Def. Reb.	3	Georgia	1-21-19*
Rebounds	3	Georgia	1-21-19*
Assists	3	JSU	12-30-18
Blocks			
Steals	3	Vanderbilt	1-13-19
Minutes	23	Vanderbilt	1-13-19

**NOTES**

- Season-best 16 points versus Vanderbilt in 2019.
- Three games in double figures as a junior.
- Ten games with two or more 3-point field goals as a junior.
- Arkansas Athletics Department Honor Roll (3.0-3.49 GPA) | Fall 2017.
- 17 points in exhibition (2017) including 12 points in the first quarter.
- Had her first 20+ point game as a Razorback with 22 points against UTA as a junior.

**CAREER HIGHS (AT ARKANSAS)**

Points	22	UTA	12-17-17
FG Made	8	UTA	12-17-17
FG Att.	13	Vanderbilt	1-13-19*
3FG Made	6	UTA	12-17-17
3FG Att.	12	Vanderbilt	2-28-18
FT Made	7	ACU	11-29-17
FT Att.	8	ACU	11-29-17
Off. Reb.	3	Grambling	12-18-17
Def. Reb.	7	Tulsa	12-10-17
Rebounds	9	Tulsa	12-10-17
Assists	7	Vanderbilt	2-28-18
Blocks	1	at #9 SC	1-25-18*
Steals	3	Vanderbilt	1-13-19*
Minutes	29	Florida	1-18-18

\*Most Recent

**SEASON | CAREER SUPERLATIVES**

Stat	'17-'18	'18-'19	Career
Double Figure Pts	3	1	4
Double Figure Rebs			
Double-Doubles			
5+ Assists			
5+ Blocks			
5+ Steals			
Led Team in Pts	2	1	3
Led Team in Reb			
20+ Points	1	-	1

Games played: 22	Rebounds/game: 0.7
Minutes/game: 10.3	Assists/game: 0.5
Points/game: 2.7	Turnovers/game: 0.5
FG Pct: 31.9	Assist/tumover ratio: 1.0
3FG Pct: 26.8	Steals/game: 0.5
FT Pct: 33.3	Blocks/game: 0.0

**CAREER STATISTICS**

Year	GP-GS	Min	Avg	Total			3-Point			F-Throw			Rebounds				PF	FO	Ast	TO	Blk	Stl	Pts	Avg
				FGA	Pct	FG	FGA	Pct	FT	FTA	Pct	Off	Def	Tot	Avg									
2015-16*	26-14	69	2.7	97	.424	58	149	.389	21	33	.636	47	39	86	3.3	6	-	46	32	-	58	273	10.5	
2016-17*	33-33	210	6.4	171	.433	395	77	.247	54	83	.651	74	77	151	4.6	9	-	77	44	3	56	473	14.3	
Totals*	59-47	279	4.7	268	.662	405	135	.341	75	116	.647	121	116	237	4.0	15	-	123	76	3	114	746	12.6	

\*Chipola Junior College

Season	gp-gs	min/avg	fg-fga	pct	fg-fga	pct	ft-fta	pct	off	def	tot	avg	pf	fo	ast	to	blk	stl	pts	avg
2017-18	31-1	603/19.5	57-193	.295	37-137	.270	22-33	.667	32	50	82	2.6	47	1	50	28	4	18	173	5.6
2018-19	22-1	226/10.3	22-69	.319	15-56	.268	1-3	.333	3	13	16	0.7	23	0	11	11	1	12	60	2.7
TOTAL	53-2	829/15.6	79-262	.302	52-193	.269	23-36	.639	35	63	98	1.8	70	1	61	39	5	30	233	4.4



2 Alexis Tolefree | Jr. | 5-8 | G | Conway, Ark. (Conway HS) | Jones County JC

SEASON HIGHS

Points	22	#22 ASU	11-18-18
FG Made	8	at ACU	12-8-18*
FG Att.	23	Pitt	11-24-18
3FG Made	5	JSU	12-30-18*
3FG Att.	16	Pitt	11-24-18
FT Made	4	NEB	12-18-18*
FT Att.	6	NSU	11-9-18
Off. Reb.	2	Wisconsin	11-25-18
Def. Reb.	6	NEB	12-18-18
Rebounds	6	NEB	12-18-18*
Assists	5	Pitt	11-24-18
Blocks	2	ORU	11-28-18
Steals	5	at ACU	12-8-18
Minutes	36	#7/6 MSU	1-3-19*

CAREER HIGHS

Points	22	#22 ASU	11-18-18
FG Made	8	at ACU	12-8-18*
FG Att.	23	Pitt	11-24-18
3FG Made	5	JSU	12-30-18*
3FG Att.	16	Pitt	11-24-18
FT Made	4	NEB	12-18-18*
FT Att.	6	NSU	11-9-18
Off. Reb.	2	Wisconsin	11-25-18
Def. Reb.	6	NEB	12-18-18
Rebounds	6	NEB	12-18-18*
Assists	5	Pitt	11-24-18
Blocks	2	ORU	11-28-18
Steals	5	at ACU	12-8-18
Minutes	36		

\*Most Recent

SEASON | CAREER SUPERLATIVES

Stat	'16-'17*	'17-18	'18-'19	Career
Double Figure Pts		26	12	38*
Double Figure Rebs		-	-	-
Double-Doubles		-	-	-
5+ Assists		3	1	4*
5+ Blocks		-	-	-
5+ Steals		3		
Led Team in Pts		-	6	6
Led Team in Reb		-	-	-
20+ Points		18	2	20*
30/40/50+ Points		1/1/1		

\*missing junior college freshman season

CAREER STATISTICS

Year	GP-GS	Min	Avg	FG	Total FGA	Pct	3-Point FGA	Pct	F-Throw FT	FTA	Pct	Off	Def	Tot	Avg	PF	FO	Ast	TO	Blk	Stl	Pts	Avg	
2016-17*	NA																							
2017-18*	29-27	867	29.9	205	476	.431	104	.286	104	127	.819	19	73	92	3.2	64	0	75	58	13	58	618	21.3	

\*at Jones County JC

Season	gp-gs	min/avg	fg-fga	pct	3fg-fga	pct	ft-fga	pct	off	def	tot	avg	pf	fo	ast	to	blk	stl	pts	avg
2018-19	24-23	564/23.5	82-269	.305	50-180	.278	27-36	.750	12	58	70	2.9	36	0	27	34	7	38	241	10.0
TOTAL	24-23	564/23.5	82-269	.305	50-180	.278	27-36	.750	12	58	70	2.9	36	0	27	34	7	38	241	10.0

NOTES

- Arkansas career-best 22 points against No. 22 Arizona State.
- Scored in double figures in 12 games this year.
- Junior College All American.
- Scored 50 points (16-26) vs. Copiah-Lincoln ... 42 points at Meridian (16-22) and 31 points vs. Copiah-Lincoln (8-22, 5-14, 10-10) in 2017-18 at Jones County.
- Ranked second in the MACJC and seventh nationally in scoring.
- Ranked third in the nation in 3-point field goals per game.
- Lead team to Region 23 Title- with 50 points vs. Copiah-Lincoln.

Opponent	Date	gs	min	Total fg-fga	pct	3fg-fga	pct	ft-fga	pct	Rebounds off	def	tot	avg	pf	a	t/o	blk	stl	pts	avg	
NORTHWESTERN STATE	11/09/18	*	21	5-11	.455	5-10	.500	4-6	.667	0	3	3	3.0	0	0	3	0	2	19	19.0	
at UT Arlington	11/14/18	*	36	6-19	.316	3-9	.333	3-3	1.000	1	3	4	3.5	0	0	1	1	3	18	18.5	
NO. 22 ARIZONA STATE	11/18/18	*	33	8-20	.400	3-9	.333	3-4	.750	0	3	3	3.3	4	2	4	0	1	22	19.7	
vs Tennessee State	11/23/18	*	27	4-12	.333	3-8	.375	3-4	.750	1	2	3	3.3	2	2	3	0	1	14	18.3	
vs Pittsburgh	11/24/18	*	32	4-23	.174	3-16	.188	1-2	.500	2	4	6	3.8	3	5	2	0	4	12	17.0	
vs Wisconsin	11/25/18	*	17	2-9	.222	1-6	.167	0-0	.000	2	0	2	3.5	0	1	1	0	0	5	15.0	
ORAL ROBERTS	11/28/18	*	26	1-8	.125	0-6	.000	2-2	1.000	0	5	5	3.7	1	1	2	2	2	4	13.4	
at No. 22/23 Iowa State	12/02/18	*	26	4-12	.333	1-5	.200	1-2	.500	1	4	5	3.9	2	2	1	0	0	10	13.0	
TENNESSEE TECH	12/04/18	*	20	2-11	.182	1-8	.125	0-0	.000	0	2	2	3.7	0	0	1	0	2	5	12.1	
at Abilene Christian	12/08/18	*	29	8-16	.500	5-12	.417	0-1	.000	1	0	1	3.4	2	3	1	1	5	21	13.0	
PRAIRIE VIEW A&M	12/16/18	*	19	3-10	.300	1-6	.167	0-0	.000	1	3	4	3.5	0	2	1	1	1	7	12.5	
NEBRASKA	12/18/18	*	25	3-11	.273	3-11	.273	4-4	1.000	0	6	6	3.7	3	2	1	1	0	13	12.5	
at Tulsa	12/20/18	*	26	3-8	.375	0-5	.000	0-0	.000	0	4	4	3.7	1	1	1	1	1	3	6	12.0
JACKSON STATE	12/30/18	*	23	6-12	.500	5-10	.500	0-0	.000	0	1	1	3.5	0	1	1	0	3	17	12.4	
#7/6 MISS STATE	01/03/19	*	36	4-13	.308	2-8	.250	1-2	.500	0	1	1	3.3	2	0	2	0	3	11	12.3	
at Ole Miss	01/06/19	*	20	2-10	.200	0-6	.000	0-0	.000	0	5	5	3.4	2	1	1	0	0	4	11.8	
at Mizzou	01/10/19	*	25	2-9	.222	2-7	.286	0-0	.000	1	2	3	3.4	0	0	1	0	0	6	11.4	
VANDERBILT	01/13/19	*	14	3-6	.500	3-5	.600	0-0	.000	0	2	2	3.3	4	1	0	0	1	9	11.3	
at Tennessee	01/21/19	*	19	5-17	.294	4-12	.333	2-2	1.000	1	2	3	3.3	2	1	1	0	1	16	11.5	
ALABAMA	01/24/19	*	26	4-8	.500	4-7	.571	1-2	.500	0	1	1	3.2	1	0	0	0	2	13	11.6	
at Florida	01/27/19	*	16	0-4	.000	0-3	.000	2-2	1.000	1	4	5	3.3	1	1	2	0	1	2	11.1	
GEORGIA	01/31/19	*	13	2-6	.333	1-4	.250	0-0	.000	0	1	1	3.2	2	1	3	0	0	5	10.9	
#16 SOUTH CAROLINA	02/03/19	*	19	1-7	.143	0-4	.000	0-0	.000	0	0	0	3.0	1	0	1	0	2	2	10.5	
at LSU	02/07/19	*	16	0-7	.000	0-3	.000	0-0	.000	0	0	0	2.9	3	0	0	0	1	0	10.0	
Totals			23	564	.305	50-180	.278	27-36	.750	12	58	70	2.9	36	27	34	7	38	241	10.0	

Games played: 24  
Minutes/game: 23.5  
Points/game: 10.0  
FG Pct: 30.5  
3FG Pct: 27.8  
FT Pct: 75.0

Rebounds/game: 2.9  
Assists/game: 1.1  
Turnovers/game: 1.4  
Assist/turnover ratio: 0.8  
Steals/game: 1.6  
Blocks/game: 0.3



**3 Malica Monk | Gr. | 5-5 | G | N. Little Rock, Ark. (N. Little Rock HS)**

**SEASON HIGHS**

Points	25	#16 S Carolina	2-3-19*
FG Made	11	at Florida	1-27-19
FG Att.	25	at Tennessee	1-21-19
3FG Made	5	at #22 ISU	12-2-18
3FG Att.	9	#16 S Carolina	2-3-19
FT Made	7	Georgia	1-21-19*
FT Att.	8	Georgia	1-21-19*
Off. Reb.	3	at UTA	11-14-18
Def. Reb.	6	PVAMU	12-16-18
Rebounds	8	at UTA	11-14-18
Assists	9	Vanderbilt	1-13-19
Blocks	1	at Florida	1-27-19*
Steals	4	Georgia	1-21-19
Minutes	40	#16 S Carolina	2-3-19*

**CAREER HIGHS**

Points	25	at Florida	1-27-19*
FG Made	11	at Florida	1-27-19
FG Att.	28	Florida	1-18-18
3FG Made	5	at #22 ISU	12-2-18
3FG Att.	10	at Kentucky	2-15-18
FT Made	12	UTA	12-17-17
FT Att.	12	UTA	12-17-17
Off. Reb.	3	at UTA	11-14-18*
Def. Reb.	8	Samford	11-12-17
Rebounds	9	Samford	11-12-17
Assists	10	Grambling	12-18-17
Blocks	3	LSU	1-8-17
Steals	6	Kentucky	2-16-17*
Minutes	40	#16 S Carolina	2-3-19*

\*Most Recent

**NOTES**

- Nineteen games in double figures this season.
- Game-winning layup helping Arkansas erase a 15-point deficit to Wisconsin.
- Game-winning shot at Tulsa with 8 seconds on the clock.
- Game-winning jumper with four seconds on clock at Tennessee for just the second win in Knoxville.
- Career-best five 3-point field goals at No. 22 Iowa State.
- Team's leading scorer from a year ago.
- Sixty-two career games with double figure scoring including 27 as a junior and 18 as a senior.
- Twenty-one career games with five or more assists.
- Arkansas Athletics Department Honor Roll (3.0-3.49 GPA) | Fall 2016, Fall 2017, Spring 2018, Fall 2018.
- Graduated in December with a degree in Sports & Recreation Management.
- Twenty-eighth 1,000-point scorer in program history.

Opponent	Date	gs	min	Total fg-fga	pct	3fg-fga	pct	ft-fa	pct	Rebounds off	def	tot	avg	pf	a	t/o	blk	stl	pts	avg	
NORTHWESTERN STATE	11/09/18	*	22	4-5	.800	2-3	.667	2-4	.500	0	0	0	0.0	2	4	3	0	1	12	12.0	
at UT Arlington	11/14/18	*	29	7-15	.467	0-2	.000	4-8	.500	3	5	8	4.0	4	3	4	0	2	18	15.0	
NO. 22 ARIZONA STATE	11/18/18	*	27	5-14	.357	0-1	.000	3-8	.375	0	4	4	4.0	4	1	1	0	0	13	14.3	
vs Tennessee State	11/23/18	*	21	4-9	.444	1-3	.333	4-7	.571	1	1	2	3.5	4	4	3	0	3	13	14.0	
vs Pittsburgh	11/24/18	*	31	2-12	.167	0-4	.000	1-2	.500	2	1	3	3.4	3	2	1	0	2	5	12.2	
vs Wisconsin	11/25/18	*	27	5-11	.455	0-0	.000	3-8	.375	0	1	1	3.0	1	3	0	0	1	13	12.3	
ORAL ROBERTS	11/28/18	*	33	5-16	.313	0-2	.000	7-8	.875	1	2	3	3.0	2	3	1	0	0	17	13.0	
at No. 22/23 Iowa State	12/02/18	*	24	8-15	.533	5-8	.625	1-2	.500	0	1	1	2.8	4	0	0	0	1	22	14.1	
TENNESSEE TECH	12/04/18	*	17	1-3	.333	0-0	.000	0-0	.000	0	1	1	2.6	2	1	1	1	1	2	12.8	
at Abilene Christian	12/08/18	*	26	6-10	.600	3-5	.600	3-4	.750	0	0	0	2.3	3	4	3	0	3	18	13.3	
PRAIRIE VIEW A&M	12/16/18	*	22	3-9	.333	0-2	.000	2-2	1.000	0	6	6	2.6	2	1	1	1	1	8	12.8	
NEBRASKA	12/18/18	*	31	7-13	.538	2-5	.400	0-0	.000	1	0	1	2.5	4	4	1	0	1	16	13.1	
at Tulsa	12/20/18	*	30	5-13	.385	1-2	.500	1-3	.333	1	0	1	2.4	3	2	4	0	3	12	13.0	
JACKSON STATE	12/30/18	*	28	3-10	.300	2-5	.400	3-4	.750	0	2	2	2.4	1	2	2	0	1	11	12.9	
#7/6 MISS STATE	01/03/19	*	23	2-10	.200	0-2	.000	2-2	1.000	1	0	1	2.3	2	4	0	0	1	6	12.4	
at Ole Miss	01/06/19	*	26	7-13	.538	2-5	.400	0-0	.000	0	0	0	2.1	2	5	1	0	0	16	12.6	
at Mizzou	01/10/19	*	29	2-12	.167	1-3	.333	0-0	.000	0	1	1	2.1	2	4	2	1	2	5	12.2	
VANDERBILT	01/13/19	*	30	6-11	.545	0-3	.000	3-4	.750	0	2	2	2.1	2	9	0	0	0	15	12.3	
at Tennessee	01/21/19	*	36	9-25	.360	3-7	.429	2-2	1.000	1	2	3	2.1	2	3	1	0	2	23	12.9	
ALABAMA	01/24/19	*	39	5-14	.357	1-3	.333	5-6	.833	0	3	3	2.2	0	4	2	1	2	16	13.1	
at Florida	01/27/19	*	40	11-16	.688	1-2	.500	2-2	1.000	0	4	4	2.2	3	4	1	1	2	25	13.6	
GEORGIA	01/31/19	*	39	5-15	.333	2-6	.333	7-8	.875	0	0	0	2.1	3	6	6	1	4	19	13.9	
#16 SOUTH CAROLINA	02/03/19	*	40	9-19	.474	3-9	.333	4-4	1.000	0	4	4	2.2	3	3	1	0	1	25	14.3	
at LSU	02/07/19	*	34	4-13	.308	0-0	.000	4-7	.571	1	0	1	2.2	2	0	2	0	1	12	14.3	
Totals			24	704	125-303	.413	29-82	.354	63-95	.663	12	40	52	2.2	60	76	41	6	35	342	14.3

Games played: 24  
 Minutes/game: 29.3  
 Points/game: 14.3  
 FG Pct: 41.3  
 3FG Pct: 35.4  
 FT Pct: 66.3

Rebounds/game: 2.2  
 Assists/game: 3.2  
 Turnovers/game: 1.7  
 Assist/turnover ratio: 1.9  
 Steals/game: 1.5  
 Blocks/game: 0.3

**SEASON | CAREER SUPERLATIVES**

Stat	'15-'16	'16-'17	'17-'18	'18-'19	Career
Double Figure Pts	3	13	27	19	62
Double Figure Rebs					
Double-Doubles (pts/ast)	-	-	1	-	1
5 + Assists	3	4	12	1	20
5 + Blocks					
5 + Steals	-	2	-	-	2
Led Team in Pts	-	-	13	4	17
Led Team in Reb	-	-	3	-	3
20 + Points	-	-	10	3	13

**CAREER STATISTICS**

Season	gp-gs	min/avg	fg-fga	pct	fg-fga	pct	ft-fa	pct	off	def	tot	avg	pf	fo	ast	to	blk	stl	pts	avg
2015-16	27-5	461/17.1	48-136	.353	2-10	.200	12-19	.632	6	23	29	1.1	60	2	47	44	5	23	110	4.1
2016-17	27-27	842/31.2	96-230	.417	7-25	.280	48-71	.676	29	52	81	3.0	79	2	83	59	7	62	247	9.1
2017-18	31-31	1061/34.2	171-488	.350	38-126	.302	114-146	.781	21	84	105	3.4	69	1	122	70	6	50	494	15.9
2018-19	24-24	704/29.3	125-303	.413	29-82	.354	63-95	.663	12	40	52	2.2	60	0	76	41	6	35	342	14.3
TOTAL	109-87	3068/28.1	440-1157	.380	76-243	.313	237-331	.716	68	199	267	2.4	268	5	328	214	24	170	1193	10.9



**10 Kiara Williams | Jr. | 6-1 | F/C | Little Rock, Ark. (Little Rock Central HS)**

**SEASON HIGHS**

Points	13	at Ole Miss	1-6-19*
FG Made	6	at Ole Miss	1-6-19
FG Att.	10	Wisconsin	11-25-18
3FG Made			
3FG Att.			
FT Made	4	NEB	12-18-18*
FT Att.	7	NEB	12-18-18
Off. Reb.	5	JSU	12-30-18*
Def. Reb.	8	NEB	12-18-18*
Rebounds	11	at ACU	12-8-18*
Assists	2	TSU	11-23-18*
Blocks	5	TTU	12-4-18
Steals	5	at Ole Miss	1-6-19
Minutes	25	at Ole Miss	1-6-19*

**CAREER HIGHS**

Points	25	Vanderbilt	2-28-18
FG Made	11	at Vanderbilt	2-28-18
FG Att.	13	at Vanderbilt	2-28-18
3FG Made	1	#5 Miss. St.	1-4-18
3FG Att.	1	#5 Miss. St.	1-4-18
FT Made	7	LSU	2-20-18
FT Att.	11	Charlotte	12-6-17
Off. Reb.	8	Grambling	12-18-17*
Def. Reb.	11	at Kansas	12-3-17
Rebounds	16	Grambling	12-18-17*
Assists	2	TSU	11-23-18*
Blocks	5	TTU	12-4-18
Steals	5	at Ole Miss	1-6-19
Minutes	32	Vanderbilt	2-28-18

\*Most Recent

**NOTES**

- Career-best five blocks vs Tennessee Tech leading team to a program record 13 blocks.
- Team's leading rebounder.
- Eighteen career games in double figure scoring and 14 career games with double digit rebounds.
- Led Arkansas with a career-best 25 points in SEC Tournament win over Vanderbilt.
- Career-best 16 rebounds, including 11 defensive rebounds, twice (Kansas & Grambling).
- Six career double-doubles (two as a senior).
- Made her first career 3-point basket in the opening shot of the No. 5/3 Mississippi State game.

Opponent	Date	gs	min	Total fg-fga pctl	3fg-fga pctl	Free throws ft-fta pctl	Rebounds off def tot avg	pf	a	t/o	blk	stl	pts	avg							
NORTHWESTERN STATE	11/09/18	*	19	5-7 .714	0-0 .000	0-0 .000	5 4 9 9.0	1	1	2	1	1	10	10.0							
at UT Arlington	11/14/18	*	18	2-4 .500	0-0 .000	0-1 .000	2 4 6 7.5	3	0	2	1	0	4	7.0							
NO. 22 ARIZONA STATE	11/18/18	*	25	4-6 .667	0-0 .000	0-0 .000	4 5 9 8.0	1	2	1	0	3	8	7.3							
vs Tennessee State	11/23/18	*	20	2-4 .500	0-0 .000	2-2 1.000	3 8 11 8.8	3	2	1	1	2	6	7.0							
vs Pittsburgh	11/24/18	*	21	2-4 .500	0-0 .000	1-3 .333	2 2 4 7.8	1	0	0	0	0	5	6.6							
vs Wisconsin	11/25/18	*	23	5-10 .500	0-0 .000	3-5 .600	6 2 8 7.8	4	0	1	0	3	13	7.7							
ORAL ROBERTS	11/28/18	*	20	2-3 .667	0-0 .000	2-2 1.000	5 6 11 8.3	4	0	0	3	0	6	7.4							
at No. 22/23 Iowa State	12/02/18	*	23	1-3 .333	0-0 .000	2-2 1.000	2 4 6 8.0	2	1	0	1	2	4	7.0							
TENNESSEE TECH	12/04/18	*	16	3-4 .750	0-0 .000	0-0 .000	1 8 9 8.1	0	0	0	5	1	6	6.9							
at Abilene Christian	12/08/18	*	21	4-6 .667	0-0 .000	4-6 .667	4 7 11 8.4	2	0	0	1	1	12	7.4							
PRAIRIE VIEW A&M	12/16/18	*	20	1-6 .167	0-0 .000	4-4 1.000	6 4 10 8.5	1	0	1	3	2	6	7.3							
NEBRASKA	12/18/18	*	24	3-4 .750	0-0 .000	4-7 .571	1 8 9 8.6	4	1	1	1	3	10	7.5							
at Tulsa	12/20/18	*	23	3-5 .600	0-0 .000	0-1 .000	3 7 10 8.7	3	0	3	0	1	6	7.4							
JACKSON STATE	12/30/18	*	16	1-5 .200	0-0 .000	0-0 .000	5 3 8 8.6	1	0	1	3	3	2	7.0							
#7/6 MISS STATE	01/03/19	*	20	1-1 .000	0-0 .000	2-2 1.000	1 0 1 8.1	0	0	1	2	0	4	6.8							
at Ole Miss	01/06/19	*	25	6-9 .667	0-0 .000	1-1 1.000	4 6 10 8.3	2	1	0	0	5	13	7.2							
at Mizzou	01/10/19	*	22	2-2 1.000	0-0 .000	1-2 .500	4 1 5 8.1	2	1	2	0	0	5	7.1							
VANDERBILT	01/13/19	*	14	5-7 .714	0-0 .000	1-2 .500	2 1 3 7.8	3	0	0	0	0	11	7.3							
at Tennessee	01/21/19	*	24	1-2 .500	0-0 .000	0-2 .000	1 1 2 7.5	1	1	0	1	0	2	7.0							
ALABAMA	01/24/19	*	18	1-3 .333	0-0 .000	2-2 1.000	1 4 5 7.4	3	1	0	1	0	4	6.9							
at Florida	01/27/19	*	15	3-6 .500	0-0 .000	2-4 .500	3 2 5 7.2	2	0	0	2	0	8	6.9							
GEORGIA	01/31/19	*	21	0-1 .000	0-0 .000	2-2 1.000	2 2 4 7.1	2	1	0	1	1	2	6.7							
#16 SOUTH CAROLINA	02/03/19	*	23	3-4 .750	0-0 .000	0-2 .000	2 3 5 7.0	3	1	1	0	0	6	6.7							
at LSU	02/07/19	*	16	0-1 .000	0-0 .000	1-6 .167	1 2 3 6.8	2	0	1	1	2	1	6.4							
<b>Totals</b>			<b>24</b>	<b>487</b>	<b>60-107</b>	<b>.561</b>	<b>0-0</b>	<b>.000</b>	<b>34-58</b>	<b>.586</b>	<b>70</b>	<b>94</b>	<b>164</b>	<b>6.8</b>	<b>50</b>	<b>13</b>	<b>18</b>	<b>28</b>	<b>30</b>	<b>154</b>	<b>6.4</b>

Games played: 24  
Minutes/game: 20.3  
Points/game: 6.4  
FG Pct: 56.1  
FT Pct: 58.6

Rebounds/game: 6.8  
Assists/game: 0.5  
Turnovers/game: 0.8  
Assist/turnover ratio: 0.7  
Steals/game: 1.3  
Blocks/game: 1.2

**SEASON | CAREER SUPERLATIVES**

Stat	'16-17	'17-18	'18-19	Career
Double Figure Pts	-	12	6	18
Double Figure Rebs	-	8	6	14
Double-Doubles (pts/reb)	-	4	2	6
5+ Assists				
5+ Blocks	-	-	1	1
5+ Steals				
Led Team in Pts	-	4	-	4
Led Team in Reb	-	13	10	23
20+ Points	-	1	-	1

**CAREER STATISTICS**

Season	gp-gs	min/avg	fg-fga pctl	fg-fga pctl	ft-fta pctl	off	def	tot	avg	pf	fo	ast	to	blk	stl	pts	avg
2016-17	20-5	227/11.4	26-48 .542	0-0 .000	10-26 .385	24	31	55	2.8	34	1	3	15	5	9	62	3.1
2017-18	31-30	602/19.4	105-201 .522	1-3 .333	43-75 .573	92	119	211	6.8	68	1	7	28	29	33	254	8.2
2018-19	24-24	487/20.3	60-107 .561	0-0 .000	34-58 .586	70	94	164	6.8	50	0	13	18	28	30	154	6.4
<b>TOTAL</b>	<b>75-59</b>	<b>1316/17.5</b>	<b>191-356 .537</b>	<b>1-3 .333</b>	<b>87-159 .547</b>	<b>186</b>	<b>244</b>	<b>430</b>	<b>5.7</b>	<b>152</b>	<b>2</b>	<b>23</b>	<b>61</b>	<b>62</b>	<b>72</b>	<b>470</b>	<b>6.3</b>





## 13 Grayce Spangler | So. | 5-10 | G | Fayetteville, Ark. (Fayetteville HS)

### SEASON HIGHS

Points	6	Vanderbilt	1-13-19*
FG Made	2	Vanderbilt	1-13-19*
FG Att.	4	TTU	12-4-18
3FG Made	2	Vanderbilt	1-13-19*
3FG Att.	2	Vanderbilt	1-13-19*
FT Made			
FT Att.	2	JSU	12-30-18*
Off. Reb.	2	TTU	12-4-18
Def. Reb.			
Rebounds	2	TTU	12-4-18
Assists			
Blocks	1	Vanderbilt	1-13-19
Steals	1	Vanderbilt	1-13-19
Minutes	6	TTU	12-4-18

### CAREER HIGHS

Points	6	Vanderbilt	1-13-19*
FG Made	2	Vanderbilt	1-13-19*
FG Att.	4	TTU	12-4-18
3FG Made	2	Vanderbilt	1-13-19*
3FG Att.	2	Vanderbilt	1-13-19*
FT Made	3	UTA	12-17-17
FT Att.	4	#13 Missouri	2-12-18
Off. Reb.	2	TTU	12-4-18
Def. Reb.	1	at ASU	12-21-17*
Rebounds	2	TTU	12-4-18
Assists	1	at Kentucky	2-15-18
Blocks	1	Vanderbilt	1-13-19
Steals	1	Vanderbilt	1-13-19*
Minutes	9	at #9 SC	1-25-18

\*Most Recent

### SEASON | CAREER SUPERLATIVES

Stat	'17-'18	'18-'19	Career
------	---------	---------	--------

- Double Figure Pts
- Double Figure Rebs
- Double-Doubles
- 5+ Assists
- 5+ Blocks
- 5+ Steals
- Led Team in Pts
- Led Team in Reb
- 20+ Points

### NOTES

- Tied season/career best with six points in three minutes versus Vanderbilt.
- Career-best six points in win over Jackson State to close the non-conference schedule as a sophomore.
- Arkansas Athletics Department Athletics Director's List (3.5-3.99 GPA) | Fall 2017, Spring 2018.
- Arkansas Athletics Department Honor Roll (3.0-3.49 GPA) | Fall 2018.
- Scored her first points as a Razorback going 3-for-3 from the line in a win over UTA as a freshman.
- Arkansas Ties: Father Shannon lettered as a linebacker (1989) and mother, Stacy, was a member of the Pom Squad at Arkansas

Opponent	Date	gs	min	Total		3-Pointers		Free throws		Rebounds				pf	a	t/o	blk	stl	pts	avg
				fg-fga	pct	3fg-fga	pct	ft-fa	pct	off	def	tot	avg							
NORTHWESTERN STATE	11/09/18	5	0-1	.000	0-1	.000	0-0	.000	0 0	0 0	0 0	0.0	2	0	0	0	0	0	0.0	
NO. 22 ARIZONA STATE	11/18/18	dnp	-	-	-	-	-	-	-	-	-	-	-	-	-	-	-	-	-	
vs Tennessee State	11/23/18	dnp	-	-	-	-	-	-	-	-	-	-	-	-	-	-	-	-	-	
vs Pittsburgh	11/24/18	dnp	-	-	-	-	-	-	-	-	-	-	-	-	-	-	-	-	-	
vs Wisconsin	11/25/18	dnp	-	-	-	-	-	-	-	-	-	-	-	-	-	-	-	-	-	
ORAL ROBERTS	11/28/18	dnp	-	-	-	-	-	-	-	-	-	-	-	-	-	-	-	-	-	
at No. 22/23 Iowa State	12/02/18	dnp	-	-	-	-	-	-	-	-	-	-	-	-	-	-	-	-	-	
TENNESSEE TECH	12/04/18	6	0-4	.000	0-2	.000	0-0	.000	2 0	2 0	2 1.0	2 0	0 0	0 0	0 0	0 0	0 0	0.0		
at Abilene Christian	12/08/18	dnp	-	-	-	-	-	-	-	-	-	-	-	-	-	-	-	-	-	
PRAIRIE VIEW A&M	12/16/18	5	0-1	.000	0-1	.000	0-2	.000	1 0	1 1.0	0 0	0 0	0 0	0 0	0 0	0 0	0 0	0.0		
NEBRASKA	12/18/18	0	0-0	.000	0-0	.000	0-0	.000	0 0	0 0	0 0.8	0 0	0 0	0 0	0 0	0 0	0 0	0.0		
at Tulsa	12/20/18	dnp	-	-	-	-	-	-	-	-	-	-	-	-	-	-	-	-	-	
JACKSON STATE	12/30/18	3	2-2	1.000	2-2	1.000	0-2	.000	0 0	0 0	0 0.6	0 0	0 0	0 0	0 0	0 0	0 0	6 1.2		
#7/6 MISS STATE	01/03/19	dnp	-	-	-	-	-	-	-	-	-	-	-	-	-	-	-	-	-	
at Ole Miss	01/06/19	1	0-0	.000	0-0	.000	0-0	.000	0 0	0 0	0 0.5	0 0	0 0	0 0	0 0	0 0	0 0	1.0		
at Mizzou	01/10/19	1	0-0	.000	0-0	.000	0-0	.000	0 0	0 0	0 0.4	0 0	0 0	0 0	0 0	0 0	0 0	0.9		
VANDERBILT	01/13/19	3	2-2	1.000	2-2	1.000	0-0	.000	0 0	0 0	0 0.4	2 2	1 1	6 1.5						
at Tennessee	01/21/19	dnp	-	-	-	-	-	-	-	-	-	-	-	-	-	-	-	-	-	
ALABAMA	01/24/19	1	0-0	.000	0-0	.000	0-0	.000	0 0	0 0	0 0.3	2 0	1 0	0 0	0 0	0 0	0 0	1.3		
at Florida	01/27/19	dnp	-	-	-	-	-	-	-	-	-	-	-	-	-	-	-	-	-	
GEORGIA	01/31/19	dnp	-	-	-	-	-	-	-	-	-	-	-	-	-	-	-	-	-	
#16 SOUTH CAROLINA	02/03/19	dnp	-	-	-	-	-	-	-	-	-	-	-	-	-	-	-	-	-	
at LSU	02/07/19	3	0-3	.000	0-1	.000	0-0	.000	0 0	0 0	0 0.3	1 0	0 0	0 0	0 0	0 0	0 0	1.2		
Totals		0	28	4-13	.308	4-9	.444	0-4	.000	3 0	3 0.3	9 0	3 1	1 1	12 1.2					

Games played: 10  
 Minutes/game: 4.8  
 Points/game: 1.2  
 FG Pct: 30.8  
 3FG Pct: 44.4  
 FT Pct: 0.0

Rebounds/game: 0.3  
 Turnovers/game: 0.3  
 Steals/game: 0.1  
 Blocks/game: 0.1

### CAREER STATISTICS

Season	gp-gs	min/avg	fg-fga	pct	fg-fga	pct	ft-fa	pct	off	def	tot	avg	pf	fo	ast	to	blk	stl	pts	avg
2017-18	17-0	67/3.9	2-16	.125	0-6	.000	4-10	.400	1	4	5	0.3	13	0	1	5	0	1	8	0.5
2018-19	10-0	28/2.8	4-13	.308	4-9	.444	0-4	.000	3	0	3	0.3	9	0	0	3	1	1	12	1.2
TOTAL	27-0	95/3.5	6-29	.207	4-15	.267	4-14	.286	4	4	8	0.3	22	0	1	8	1	2	20	0.7



**14 Jailyn Mason | Jr. | 5-9 | G | Mason, Ohio (William Mason HS)**

**SEASON HIGHS**

Points	16	at Ole Miss	1-6-19
FG Made	6	at Ole Miss	1-6-19
FG Att.	14	Wisconsin	11-25-18
3FG Made	4	at Ole Miss	1-6-19
3FG Att.	6	at Ole Miss	1-6-19
FT Made	2	ORU	11-28-18*
FT Att.	3	ORU	11-28-18
Off. Reb.	3	Wisconsin	11-25-18
Def. Reb.	9	Alabama	1-24-19
Rebounds	9	Alabama	1-24-19
Assists	5	at Tennessee	1-21-19*
Blocks	2	TSU	11-23-18
Steals	3	TTU	12-4-18*
Minutes	39	at Tennessee	1-21-19

**CAREER HIGHS**

Points	19	ORU	12-21-16
FG Made	9	No. 11 Tenn.	2-8-18*
FG Att.	21	No. 11 Tenn.	2-8-18
3FG Made	4	at Ole Miss	1-6-19*
3FG Att.	8	at Kentucky	2-15-18
FT Made	4	#13 Missouri	2-12-18*
FT Att.	4	#13 Missouri	2-12-18*
Off. Reb.	4	Texas Tech	12-3-16
Def. Reb.	9	Alabama	1-24-19
Rebounds	9	Alabama	1-24-19*
Assists	11	HBV	12-28-16
Blocks	3	SHSU	11-10-17
Steals	5	at Georgia	1-11-18
Minutes	40	Vanderbilt	2-28-18*

\*Most Recent

**NOTES**

- Seven games in double figure scoring - 36 games in her career.
- Has a Jordan shoe collection and is interning with the Athletics Department photographer.
- Member of the SEC WBB Leadership Council.
- SEC All-Freshman Team | 2017
- Two-time SEC Freshman of the Week | 2016-17
- She has 35 games in double figure scoring including a streak of five in a row twice as a sophomore and an eight-game streak that was snapped at Alabama last season.
- Scored 12 points, all in the second half, fueling a 15-point comeback win versus Wisconsin.

Opponent	Date	gs	min	Total		3-Pointers		Free throws		Rebounds				pf	a	t/o	blk	stl	pts	avg
				fg-fga	pct	3fg-fga	pct	ft-fa	pct	off	def	tot	avg							
NORTHWESTERN STATE	11/09/18	19	1-3	.333	0-1	.000	2-2	1.000	0	4	4	4.0	2	4	2	1	0	4	4.0	
at UT Arlington	11/14/18	* 23	0-2	.000	0-0	.000	0-0	.000	0	1	1	2.5	2	2	1	0	3	0	2.0	
NO. 22 ARIZONA STATE	11/18/18	* 31	5-6	.833	1-1	1.000	0-0	.000	1	3	4	3.0	4	3	0	0	1	11	5.0	
vs Tennessee State	11/23/18	* 22	1-9	.111	0-3	.000	2-2	1.000	1	1	2	2.8	1	2	4	2	1	4	4.8	
vs Pittsburgh	11/24/18	* 21	2-5	.400	1-3	.333	0-0	.000	0	1	1	2.4	1	1	1	0	1	5	4.8	
vs Wisconsin	11/25/18	* 36	5-14	.357	1-4	.250	1-2	.500	3	4	7	3.2	3	1	1	0	2	12	6.0	
ORAL ROBERTS	11/28/18	* 27	4-7	.571	2-2	1.000	2-3	.667	1	5	6	3.6	0	0	1	1	0	12	6.9	
at No. 22/23 Iowa State	12/02/18	* 30	4-10	.400	2-3	.667	0-0	.000	0	4	4	3.6	4	2	1	0	0	10	7.3	
TENNESSEE TECH	12/04/18	* 25	1-5	.200	1-1	1.000	1-2	.500	1	1	2	3.4	1	3	1	1	3	4	6.9	
at Abilene Christian	12/08/18	* 36	2-8	.250	1-4	.250	0-0	.000	1	4	5	3.6	1	5	1	1	2	5	6.7	
PRAIRIE VIEW A&M	12/16/18	* 22	3-6	.500	0-2	.000	0-0	.000	1	0	1	3.4	0	0	1	0	1	6	6.6	
NEBRASKA	12/18/18	* 33	4-8	.500	2-4	.500	1-2	.500	0	0	0	3.1	3	4	2	0	0	11	7.0	
at Tulsa	12/20/18	* 34	2-6	.333	2-4	.500	0-0	.000	0	5	5	3.2	1	3	3	1	1	6	6.9	
JACKSON STATE	12/30/18	* 18	4-8	.500	1-4	.250	0-0	.000	1	5	6	3.4	3	2	3	0	1	9	7.1	
#7/6 MISS STATE	01/03/19	* 20	1-5	.200	0-1	.000	0-0	.000	0	1	1	3.3	1	1	2	0	2	2	6.7	
at Ole Miss	01/06/19	* 29	6-11	.545	4-6	.667	0-0	.000	1	5	6	3.4	1	3	3	0	1	16	7.3	
at Mizzou	01/10/19	* 25	3-6	.500	1-4	.250	0-0	.000	0	1	1	3.3	1	0	0	1	0	7	7.3	
VANDERBILT	01/13/19	* 24	2-6	.333	1-2	.500	0-0	.000	1	3	4	3.3	1	2	1	1	0	5	7.2	
at Tennessee	01/21/19	* 39	3-8	.375	1-3	.333	0-0	.000	1	5	6	3.5	3	5	4	0	2	7	7.2	
ALABAMA	01/24/19	* 29	3-7	.429	1-4	.250	0-0	.000	0	9	9	3.8	1	4	2	0	2	7	7.2	
at Florida	01/27/19	* 36	4-8	.500	2-5	.400	2-2	1.000	0	5	5	3.8	3	1	2	1	1	12	7.4	
GEORGIA	01/31/19	* 37	2-8	.250	0-5	.000	0-0	.000	0	6	6	3.9	4	1	1	0	2	4	7.2	
#16 SOUTH CAROLINA	02/03/19	* 30	2-7	.286	1-3	.333	0-0	.000	1	6	7	4.0	4	1	3	1	2	5	7.1	
at LSU	02/07/19	* 36	1-4	.250	0-2	.000	0-0	.000	0	2	2	4.0	2	0	2	0	2	2	6.9	
Totals		23	682	65-167	.389	25-71	.352	11-15	.733	14	81	95	4.0	47	50	42	11	30	166	6.9

Games played: 24  
 Minutes/game: 28.4  
 Points/game: 6.9  
 FG Pct: 38.9  
 3FG Pct: 35.2  
 FT Pct: 73.3

Rebounds/game: 4.0  
 Assists/game: 2.1  
 Turnovers/game: 1.8  
 Assist/turnover ratio: 1.2  
 Steals/game: 1.3  
 Blocks/game: 0.5

**SEASON | CAREER SUPERLATIVES**

Stat	'16-'17	'17-'18	'18-'19	Career
Double Figure Pts	10	19	7	37
Double Figure Rebs				
Double-Doubles (pts/ast)	2	-	-	2
5+ Assists	6	5	2	13
5+ Blocks				
5+ Steals				
Led Team in Pts	-	8	-	8
Led Team in Reb	-	1	3	4
20+ Points				

**CAREER STATISTICS**

Season	gp-gs	min/avg	fg-fga	pct	fg-fga	pct	ft-fa	pct	off	def	tot	avg	pf	fo	ast	to	blk	stl	pts	avg
2016-17	30-30	894/29.8	100-256	.391	19-53	.358	7-11	.636	21	96	117	3.9	72	2	93	56	8	31	226	7.5
2017-18	31-31	1031/33.3	139-344	.404	47-130	.362	16-19	.842	17	111	128	4.1	56	1	92	67	14	34	341	11.0
2018-19	24-23	682/28.4	65-167	.389	25-71	.352	11-15	.733	14	81	95	4.0	47	0	50	42	11	30	166	6.9
TOTAL	85-84	2607/30.7	304-767	.396	91-254	.358	34-45	.756	52	288	340	4.0	175	3	235	165	33	95	733	8.6



## 20 Sydney Stout | Jr. | 6-0 | F | Bixby, Okla. (Bixby HS)

### SEASON HIGHS

Points	3	PVAM	12-16-18
FG Made	1	PVAM	12-16-18
FG Att.	1	PVAM	12-16-18
3FG Made	1	PVAM	12-16-18
3FG Att.	1	PVAM	12-16-18
FT Made			
FT Att.			
Off. Reb.	1	PVAM	12-16-18
Def. Reb.	1	TTU	12-4-18
Rebounds	1	PVAM	12-16-18*
Assists			
Blocks			
Steals			
Minutes	5	TTU	12-4-18

### CAREER HIGHS

Points	8	HBU	12-28-16
FG Made	3	HBU	12-28-16
FG Att.	5	HBU	12-28-16
3FG Made	2	HBU	12-28-16
3FG Att.	4	HBU	12-28-16
FT Made	2	Texas A&M	1-12-17
FT Att.	4	Texas A&M	1-12-17
Off. Reb.	1	SHSU	11-10-17*
Def. Reb.	6	HBU	12-28-16
Rebounds	6	HBU	12-28-16
Assists	1	#13 Missouri	2-12-18*
Blocks	1	ULM	11-13-16
Steals	2	at S. Carolina	1-25-18
Minutes	15	HBU	12-28-16

\*Most Recent

### SEASON | CAREER SUPERLATIVES

Stat	'16-'17	'17-'18	'18-'19	Career
------	---------	---------	---------	--------

- Double Figure Pts
- Double Figure Rebs
- Double-Doubles
- 5+ Assists
- 5+ Blocks
- 5+ Steals
- Led Team in Pts
- Led Team in Reb
- 20+ Points

### NOTES

- Arkansas Athletics Department Honor Roll (3.0-3.49 GPA) | Fall 2016.
- Arkansas Athletics Depart. Academic Champion (4.0 GPA) | Spring 2017, Fall 2017, Spring 2018, Fall 2018.
- SEC First Year Academic Honor Roll (2016-2017)
- Plans to graduate a year early with a degree in Marketing.

Opponent	Date	gs	min	fg-fga	pct	3fg-fga	pct	ft-fa	pct	off	def	tot	avg	pf	a	t/o	blk	stl	pts	avg
NORTHWESTERN STATE	11/09/18	4	0-0	.000	0-0	.000	0-0	.000	0	0	0	0.0	1	0	0	0	0	0	0	0.0
NO. 22 ARIZONA STATE	11/18/18	dnp	-	-	-	-	-	-	-	-	-	-	-	-	-	-	-	-	-	-
vs Tennessee State	11/23/18	1	0-0	.000	0-0	.000	0-0	.000	0	0	0	0.0	0	0	0	0	0	0	0	0.0
vs Pittsburgh	11/24/18	dnp	-	-	-	-	-	-	-	-	-	-	-	-	-	-	-	-	-	-
vs Wisconsin	11/25/18	dnp	-	-	-	-	-	-	-	-	-	-	-	-	-	-	-	-	-	-
ORAL ROBERTS	11/28/18	dnp	-	-	-	-	-	-	-	-	-	-	-	-	-	-	-	-	-	-
at No. 22/23 Iowa State	12/02/18	dnp	-	-	-	-	-	-	-	-	-	-	-	-	-	-	-	-	-	-
TENNESSEE TECH	12/04/18	5	0-0	.000	0-0	.000	0-0	.000	0	1	1	0.3	0	0	0	0	0	0	0	0.0
at Abilene Christian	12/08/18	dnp	-	-	-	-	-	-	-	-	-	-	-	-	-	-	-	-	-	-
PRAIRIE VIEW A&M	12/16/18	3	1-1	1.000	1-1	1.000	0-0	.000	1	0	1	0.5	0	0	0	0	0	0	3	0.8
NEBRASKA	12/18/18	0	0-0	.000	0-0	.000	0-0	.000	0	0	0	0.4	0	0	0	0	0	0	0	0.6
at Tulsa	12/20/18	dnp	-	-	-	-	-	-	-	-	-	-	-	-	-	-	-	-	-	-
JACKSON STATE	12/30/18	3	0-0	.000	0-0	.000	0-0	.000	0	0	0	0.3	0	0	0	0	0	0	0	0.5
#7/6 MISS STATE	01/03/19	dnp	-	-	-	-	-	-	-	-	-	-	-	-	-	-	-	-	-	-
at Ole Miss	01/06/19	1	0-0	.000	0-0	.000	0-0	.000	0	0	0	0.3	0	0	0	0	0	0	0	0.4
at Mizzou	01/10/19	1	0-0	.000	0-0	.000	0-0	.000	0	0	0	0.3	0	0	0	0	0	0	0	0.4
VANDERBILT	01/13/19	3	0-0	.000	0-0	.000	0-0	.000	0	0	0	0.2	0	0	0	0	0	0	0	0.3
at Tennessee	01/21/19	dnp	-	-	-	-	-	-	-	-	-	-	-	-	-	-	-	-	-	-
ALABAMA	01/24/19	1	0-0	.000	0-0	.000	0-0	.000	0	0	0	0.2	0	0	0	0	0	0	0	0.3
at Florida	01/27/19	dnp	-	-	-	-	-	-	-	-	-	-	-	-	-	-	-	-	-	-
GEORGIA	01/31/19	dnp	-	-	-	-	-	-	-	-	-	-	-	-	-	-	-	-	-	-
#16 SOUTH CAROLINA	02/03/19	dnp	-	-	-	-	-	-	-	-	-	-	-	-	-	-	-	-	-	-
at LSU	02/07/19	3	0-0	.000	0-0	.000	0-0	.000	0	1	1	0.3	0	1	0	0	0	0	0	0.3
Totals		0	25	1-1	1.000	1-1	1.000	0-0	.000	1	2	3	0.3	1	1	0	0	0	3	0.3

Games played: 11  
 Minutes/game: 2.3  
 Points/game: 0.3  
 FG Pct: 100.0  
 3FG Pct: 100.0

Rebounds/game: 0.3  
 Assists/game: 0.1  
 Assist/turnover ratio: 99.9

### CAREER STATISTICS

Season	gp-gs	min/avg	fg-fga	pct	fg-fga	pct	ft-fa	pct	off	def	tot	avg	pf	fo	ast	to	blk	stl	pts	avg
2016-17	15-0	72/4.8	5-14	.357	4-12	.333	2-4	.500	2	9	11	0.7	15	0	1	2	1	0	16	1.1
2017-18	16-0	84/5.3	1-9	.111	1-6	.167	3-6	.500	4	6	10	0.6	4	0	3	3	0	3	6	0.4
2018-19	11-0	25/2.3	1-1	1.000	1-1	1.000	0-0	.000	1	2	3	0.3	1	0	1	0	0	0	3	0.3
TOTAL	42-0	181/4.3	7-24	.292	6-19	.316	5-10	.500	7	17	24	0.6	20	0	5	5	1	3	25	0.6



**22 Bailey Zimmerman | Sr. | 6-0 | F | St. Vincent, Ark. (Wonderview HS)**

**SEASON HIGHS**

Points	12	TSU	11-23-18
FG Made	4	Pitt	11-24-18
FG Att.	8	Pitt	11-24-18
3FG Made	2	JSU	12-30-18*
3FG Att.	6	at #22 ISU	12-2-18
FT Made	5	PVAM	12-16-18
FT Att.	6	PVAM	12-16-18*
Off. Reb.	7	Pitt	11-24-18
Def. Reb.	6	NEB	12-18-18*
Rebounds	11	PVAM	12-16-18*
Assists	2	Alabama	1-24-19*
Blocks	3	#16 S Carolina	2-3-19*
Steals	4	at Tennessee	1-21-19
Minutes	30	at ACU	12-8-18

**CAREER HIGHS**

Points	14	#13 Missouri	2-12-18*
FG Made	4	Pitt	11-24-18
FG Att.	11	#11 Tennessee	2-8-18*
3FG Made	3	at Kentucky	2-15-18*
3FG Att.	8	at Auburn	1-14-18
FT Made	5	PVAM	12-16-18
FT Att.	6	PVAM	12-16-18*
Off. Reb.	7	Pitt	11-24-18
Def. Reb.	6	NEB	12-18-18*
Rebounds	11	PVAM	12-16-18*
Assists	3	at Kentucky	2-15-18*
Blocks	3	#16 S Carolina	2-3-19*
Steals	4	at Tennessee	1-21-19
Minutes	40	#11 Tennessee	2-8-18

\*Most Recent

**SEASON | CAREER SUPERLATIVES**

Stat	'15-'16	'16-'17	'17-'18	'18-'19	Career
Double Figure Pts	-	2	5	2	9
Double Figure Rebs	-	-	-	2	2
Double-Doubles	-	-	-	1	1
5+ Assists					
5+ Blocks					
5+ Steals					
Led Team in Pts					
Led Team in Reb	-	-	2	3	5
20+ Points					

**NOTES**

- First career double-double with 11 points and 11 rebounds against Pitt.
- Two games as a senior in double figure scoring and two with double digit rebounds.
- SEC Academic Honor Roll | 2016-17, 2017-18.
- Arkansas Athletics Department Academic Champion (4.0 GPA) | Spring 2017.
- Arkansas Athletics Director's List (3.5-3.99 GPA) | Fall 2015, Fall 2016, Fall 2017, Fall 2018.
- Arkansas Athletics Department Honor Roll (3.0-3.49 GPA) | Fall 2017, Spring 2018.
- Graduated in December with a degree in Apparel Merchandising.

Opponent	Date	gs	min	Total		3-Pointers		Free throws		Rebounds				pf	a	to	blk	stl	pts	avg
				fg-fga	pct	3fg-fga	pct	ft-fa	pct	off	def	tot	avg							
NORTHWESTERN STATE	11/09/18	17	1-4	250	1-3	.333	1-2	.500	0	4	4	4.0	0	1	0	1	0	4	4.0	
at UT Arlington	11/14/18	21	2-3	.667	0-1	.000	0-2	.000	3	2	5	4.5	2	0	1	1	0	4	4.0	
NO. 22 ARIZONA STATE	11/18/18	21	1-2	.500	0-1	.000	0-0	.000	0	1	1	3.3	1	0	1	0	0	2	3.3	
vs Tennessee State	11/23/18	25	3-5	.600	2-4	.500	4-6	.667	2	2	4	3.5	3	1	0	3	0	12	5.5	
vs Pittsburgh	11/24/18	28	4-8	.500	2-5	.400	1-2	.500	7	4	11	5.0	2	0	2	1	1	11	6.6	
vs Wisconsin	11/25/18	25	1-5	.200	0-4	.000	1-1	1.000	2	2	4	4.8	2	1	0	0	0	3	6.0	
ORAL ROBERTS	11/28/18	21	1-5	.200	1-3	.333	1-2	.500	2	1	3	4.6	0	0	1	0	0	4	5.7	
at No. 22/23 Iowa State	12/02/18	29	1-7	.143	1-6	.167	0-0	.000	2	1	3	4.4	3	2	1	0	0	3	5.4	
TENNESSEE TECH	12/04/18	22	2-6	.333	1-3	.333	2-2	1.000	1	4	5	4.4	1	0	1	1	1	7	5.6	
at Abilene Christian	12/08/18	30	1-5	.200	1-4	.250	0-0	.000	3	2	5	4.5	3	0	0	0	1	3	5.3	
PRAIRIE VIEW A&M	12/16/18	19	0-4	.000	0-2	.000	5-6	.833	5	6	11	5.1	0	0	0	0	0	5	5.3	
NEBRASKA	12/18/18	19	1-4	.250	1-3	.333	0-0	.000	1	6	7	5.3	2	0	2	1	1	3	5.1	
at Tulsa	12/20/18	18	1-3	.333	1-2	.500	1-2	.500	1	3	4	5.2	1	0	1	0	1	4	5.0	
JACKSON STATE	12/30/18	16	2-5	.400	2-3	.667	0-0	.000	2	2	4	5.1	0	0	0	1	0	6	5.1	
#7/6 MISS STATE	01/03/19	12	0-2	.000	0-1	.000	0-0	.000	0	3	3	4.9	0	0	0	0	0	0	4.7	
at Ole Miss	01/06/19	22	1-4	.250	0-2	.000	4-4	1.000	1	1	2	4.8	1	0	0	0	3	6	4.8	
at Mizzou	01/10/19	18	2-5	.400	1-3	.333	0-0	.000	1	1	2	4.6	2	1	0	0	0	5	4.8	
VANDERBILT	01/13/19	16	1-6	.167	1-3	.333	0-0	.000	4	3	7	4.7	2	1	0	0	0	3	4.7	
at Tennessee	01/21/19	25	1-4	.250	1-3	.333	3-4	.750	3	2	5	4.7	2	0	2	1	4	6	4.8	
ALABAMA	01/24/19	25	2-2	1.000	1-1	1.000	0-0	.000	0	4	4	4.7	0	2	3	0	1	5	4.8	
at Florida	01/27/19	17	1-6	.167	1-6	.167	2-4	.500	0	0	0	4.5	1	0	0	0	0	5	4.8	
GEORGIA	01/31/19	21	2-6	.333	1-2	.500	0-0	.000	1	3	4	4.5	1	0	1	1	1	5	4.8	
#16 SOUTH CAROLINA	02/03/19	21	0-4	.000	0-2	.000	0-2	.000	1	2	3	4.4	2	0	0	3	0	0	4.6	
at LSU	02/07/19	18	1-3	.333	0-1	.000	0-0	.000	1	4	5	4.4	0	0	1	0	0	2	4.5	
Totals		1	506	32-108	.296	19-68	.279	25-39	.641	43	63	106	4.4	31	9	17	15	14	108	4.5

Games played: 24  
Minutes/game: 21.1  
Points/game: 4.5  
FG Pct: 29.6  
3FG Pct: 27.9  
FT Pct: 64.1

Rebounds/game: 4.4  
Assists/game: 0.4  
Turnovers/game: 0.7  
Assist/turnover ratio: 0.5  
Steals/game: 0.6  
Blocks/game: 0.6

**CAREER STATISTICS**

Season	gp-gs	min/avg	fg-fga	pct	fg-fga	pct	ft-fa	pct	off	def	tot	avg	pf	fo	ast	to	blk	stl	pts	avg
2015-16	20-1	174/8.7	6-48	.125	4-33	.121	7-12	.583	12	9	21	1.1	9	0	4	15	2	4	23	1.2
2016-17	30-23	627/20.9	45-144	.313	24-84	.286	20-39	.513	35	80	115	3.8	46	0	28	37	10	19	134	4.5
2017-18	31-31	744/24.0	42-161	.261	18-87	.207	28-46	.609	49	49	98	3.2	55	1	37	35	12	12	130	4.2
2018-19	24-1	506/21.1	32-108	.296	19-68	.279	25-39	.641	43	63	106	4.4	31	0	9	17	15	14	108	4.5
TOTAL	105-56	2051/19.5	125-461	.271	65-272	.239	80-136	.588	139	201	340	3.2	141	1	78	104	39	49	395	3.8



## 24 Taylah Thomas | So. | 6-1 | F | Arlington, Texas (Mansfield Timberview HS)

### SEASON HIGHS

Points	15	Alabama	1-24-19*
FG Made	7	Alabama	1-24-19
FG Att.	10	Alabama	1-24-19
3FG Made			
3FG Att.			
FT Made	3	#7/6 MSU	1-3-19*
FT Att.	6	NSU	11-9-18
Off. Reb.	5	Alabama	1-24-19*
Def. Reb.	9	Wisconsin	11-25-18
Rebounds	12	Wisconsin	11-25-18
Assists	1	Nebraska	12-18-18*
Blocks	2	#7/6 MSU	1-3-18
Steals	3	Georgia	1-21-19*
Minutes	25	at Florida	1-27-19

### CAREER HIGHS

Points	15	Alabama	1-24-19*
FG Made	7	Alabama	1-24-19
FG Att.	10	Alabama	1-24-19
3FG Made	1	Ole Miss	12-31-17*
3FG Att.	1	at #9 SC	1-25-18*
FT Made	3	#7/6 MSU	1-3-19*
FT Att.	6	NSU	11-9-18*
Off. Reb.	6	Nebraska	11-16-17
Def. Reb.	9	Wisconsin	11-25-18
Rebounds	12	Wisconsin	11-25-18
Assists	2	at #11 Missouri	1-21-18
Blocks	2	#7/6 MSU	1-3-19*
Steals	3	Georgia	1-21-19*
Minutes	29	at Georgia	1-11-18

\*Most Recent

### NOTES

- Scored in double figures in five games, tying her career-best with 15 points versus Alabama.
- Was team's leading scorer against PVAMU.
- Scored 22 points in three games in Italy in August.
- Arkansas Athletics Department Athletic Director's List (3.5-3.99 GPA) | Fall 2017, Spring 2018.
- Arkansas Athletics Department Academic Honor Roll (3.0-3.49 GPA) | Fall 2018.
- Considered one of the top power forwards out of Texas.
- Played in every game of her career.
- Scored in double figures four times in her career.

Opponent	Date	gs	min	Total		3-Pointers		Free throws		Rebounds				pf	a	t/o	blk	stl	pts	avg
				fg-fga	pct	3fg-fga	pct	ft-fa	pct	off	def	tot	avg							
NORTHWESTERN STATE	11/09/18	17	4-7	.571	0-0	.000	3-6	.500	5	4	9	9.0	0	0	0	0	3	11	11.0	
at UT Arlington	11/14/18	22	1-2	.500	0-0	.000	0-2	.000	2	7	9	9.0	1	0	2	0	1	2	6.5	
NO. 22 ARIZONA STATE	11/18/18	15	0-0	.000	0-0	.000	0-0	.000	0	2	2	6.7	0	0	1	0	0	0	4.3	
vs Tennessee State	11/23/18	10	0-3	.000	0-0	.000	1-2	.500	0	3	3	5.8	1	0	1	1	0	1	3.5	
vs Pittsburgh	11/24/18	19	2-3	.667	0-0	.000	0-2	.000	3	5	8	6.2	2	0	1	0	0	4	3.6	
vs Wisconsin	11/25/18	17	1-2	.500	0-0	.000	0-0	.000	3	9	12	7.2	3	0	0	0	1	2	3.3	
ORAL ROBERTS	11/28/18	17	0-3	.000	0-0	.000	0-2	.000	2	4	6	7.0	2	0	1	0	1	0	2.9	
at No. 22/23 Iowa State	12/02/18	17	1-1	1.000	0-0	.000	0-1	.000	1	3	4	6.6	1	1	0	0	1	2	2.8	
TENNESSEE TECH	12/04/18	15	0-1	.000	0-0	.000	1-2	.500	2	0	2	6.1	0	0	0	0	0	1	2.6	
at Abilene Christian	12/08/18	19	5-6	.833	0-0	.000	2-2	1.000	2	4	6	6.1	2	0	1	0	0	12	3.5	
PRAIRIE VIEW A&M	12/16/18	15	5-9	.556	0-0	.000	1-2	.500	3	4	7	6.2	2	0	0	1	0	11	4.2	
NEBRASKA	12/18/18	16	1-3	.333	0-0	.000	3-4	.750	4	1	5	6.1	3	1	0	0	2	5	4.3	
at Tulsa	12/20/18	17	0-1	.000	0-0	.000	0-0	.000	0	1	1	5.7	1	0	1	1	0	0	3.9	
JACKSON STATE	12/30/18	20	2-3	.667	0-0	.000	0-0	.000	2	4	6	5.7	0	0	0	0	1	4	3.9	
#7/6 MISS STATE	01/03/19	20	6-7	.857	0-0	.000	3-4	.750	4	5	9	5.9	3	0	0	2	0	15	4.7	
at Ole Miss	01/06/19	11	0-0	.000	0-0	.000	0-0	.000	0	3	3	5.8	1	0	1	1	0	0	4.4	
at Mizzou	01/10/19	17	0-0	.000	0-0	.000	0-0	.000	2	4	6	5.8	3	0	1	0	1	0	4.1	
VANDERBILT	01/13/19	21	1-3	.333	0-0	.000	2-2	1.000	1	5	6	5.8	5	0	1	0	1	4	4.1	
at Tennessee	01/21/19	16	2-4	.500	0-0	.000	0-0	.000	3	4	7	5.8	1	0	0	0	0	4	4.1	
ALABAMA	01/24/19	21	7-10	.700	0-0	.000	1-1	1.000	5	2	7	5.9	1	0	1	0	1	15	4.7	
at Florida	01/27/19	25	2-4	.500	0-0	.000	2-2	1.000	1	5	6	5.9	3	0	1	0	0	6	4.7	
GEORGIA	01/31/19	18	2-3	.667	0-0	.000	0-0	.000	2	4	6	5.9	0	0	0	0	3	4	4.7	
#16 SOUTH CAROLINA	02/03/19	16	2-6	.333	0-0	.000	0-0	.000	2	4	6	5.9	1	1	1	0	1	4	4.7	
at LSU	02/07/19	19	0-0	.000	0-0	.000	0-0	.000	2	4	6	5.9	3	0	4	0	0	0	4.5	
Totals		0	420	44-81	.543	0-0	.000	19-34	.559	51	91	142	5.9	39	3	18	6	17	107	4.5

Games played: 24  
 Minutes/game: 17.5  
 Points/game: 4.5  
 FG Pct: 54.3  
 FT Pct: 55.9

Rebounds/game: 5.9  
 Assists/game: 0.1  
 Turnovers/game: 0.8  
 Assist/turnover ratio: 0.2  
 Steals/game: 0.7  
 Blocks/game: 0.3

### SEASON | CAREER SUPERLATIVES

Stat	'17-'18	'18-'19	Career
Double Figure Pts	1	4	5
Double Figure Rebs	1	1	2
Double-Doubles			
5+ Assists			
5+ Blocks			
5+ Steals			
Led Team in Pts	-	1	1
Led Team in Reb	7	6	13
20+ Points			

### CAREER STATISTICS

Season	gp-gs	min/avg	fg-fga	pct	fg-fga	pct	ft-fa	pct	off	def	tot	avg	pf	fo	ast	to	blk	stl	pts	avg
2017-18	31-2	527/17.0	44-100	.440	3-10	.300	25-42	.595	55	89	144	4.6	58	1	5	25	6	8	116	3.7
2018-19	24-0	420/17.5	44-81	.543	0-0	.000	19-34	.559	51	91	142	5.9	39	1	3	18	6	17	107	4.5
TOTAL	55-2	947/17.2	88-181	.486	3-10	.300	44-76	.579	106	180	286	5.2	97	2	8	43	12	25	223	4.1



**30** Macy Weaver | So. | 6-3 | F | Davis Junction, Ill. (Stillman Valley HS)

**SEASON HIGHS**

Points	4	PVAM	12-16-18*
FG Made	2	PVAM	12-16-18
FG Att.	2	PVAM	12-16-18
3FG Made			
3FG Att.			
FT Made	2	ORU	11-28-18
FT Att.	2	JSU	12-30-18*
Off. Reb.	3	TSU	11-23-18
Def. Reb.	3	Vanderbilt	1-13-19
Rebounds	5	TSU	11-23-18
Assists	1	PVAM	12-16-18
Blocks	4	TTU	12-4-18
Steals	2	TTU	12-4-18
Minutes	10	TSU	11-23-18

**CAREER HIGHS**

Points	7	#9/7 SC	1-25-18
FG Made	3	#9/7 SC	1-25-18
FG Att.	4	#9/7 SC	1-25-18
3FG Made	-		
3FG Att.	-		
FT Made	3	#13 Missouri	2-12-18
FT Att.	6	#13 Missouri	2-12-18
Off. Reb.	3	Vanderbilt	1-13-19*
Def. Reb.	4	UTA	12-17-17
Rebounds	5	TSU	11-23-18*
Assists	1	PVAM	12-16-18*
Blocks	4	TTU	12-4-18*
Steals	2	TTU	12-4-18*
Minutes	19	UTEP	11-24-17

\*Most Recent

**SEASON | CAREER SUPERLATIVES**

Stat	'17-'18	'18-'19	Career
------	---------	---------	--------

- Double Figure Pts
- Double Figure Rebs
- Double-Doubles
- 5+ Assists
- 5+ Blocks
- 5+ Steals
- Led Team in Pts
- Led Team in Reb
- 20+ Points

**NOTES**

- Tied career-best with four blocks in nine minutes versus Tennessee Tech.
- Played in 20 games as a freshman.
- Arkansas Athletics Department Athletic Director's List (3.5-3.99 GPA) | Fall 2017, Spring 2018.
- Arkansas Athletics Department Academic Honor Roll (3.0-3.49 GPA) | Fall 2018.
- Played 19 minutes with four blocks and solid defense at UTEP.
- Career High seven points in 11 minutes vs South Carolina.

Opponent	Date	gs	min	Total		3-Pointers		Free throws		Rebounds				pf	a	to	blk	stl	pts	avg
				fg-fga	pct	3fg-fga	pct	ft-fa	pct	off	def	tot	avg							
NORTHWESTERN STATE	11/09/18	4	0-0	.000	0-0	.000	0-0	.000	0	0	0	0.0	1	0	0	0	0	0	0.0	
NO. 22 ARIZONA STATE	11/18/18	dnp	-	-	-	-	-	-	-	-	-	-	-	-	-	-	-	-	-	
vs Tennessee State	11/23/18	10	0-0	.000	0-0	.000	0-0	.000	3	2	5	2.5	2	0	0	1	0	0	0.0	
vs Pittsburgh	11/24/18	dnp	-	-	-	-	-	-	-	-	-	-	-	-	-	-	-	-	-	
vs Wisconsin	11/25/18	dnp	-	-	-	-	-	-	-	-	-	-	-	-	-	-	-	-	-	
ORAL ROBERTS	11/28/18	3	1-1	1.000	0-0	.000	2-2	1.000	0	1	1	2.0	2	0	1	1	0	4	1.3	
at No. 22/23 Iowa State	12/02/18	dnp	-	-	-	-	-	-	-	-	-	-	-	-	-	-	-	-	-	
TENNESSEE TECH	12/04/18	9	0-3	.000	0-0	.000	0-0	.000	1	2	3	2.3	2	0	0	4	2	0	1.0	
at Abilene Christian	12/08/18	dnp	-	-	-	-	-	-	-	-	-	-	-	-	-	-	-	-	-	
PRAIRIE VIEW A&M	12/16/18	5	2-2	1.000	0-0	.000	0-1	.000	2	1	3	2.4	1	1	0	1	0	4	1.6	
NEBRASKA	12/18/18	dnp	-	-	-	-	-	-	-	-	-	-	-	-	-	-	-	-	-	
at Tulsa	12/20/18	dnp	-	-	-	-	-	-	-	-	-	-	-	-	-	-	-	-	-	
JACKSON STATE	12/30/18	4	0-0	.000	0-0	.000	1-2	.500	0	2	2	2.3	0	0	0	2	0	1	1.5	
#7/6 MISS STATE	01/03/19	dnp	-	-	-	-	-	-	-	-	-	-	-	-	-	-	-	-	-	
at Ole Miss	01/06/19	1	0-0	.000	0-0	.000	0-0	.000	0	0	0	2.0	0	0	0	0	0	0	1.3	
at Mizzou	01/10/19	1	1-1	1.000	0-0	.000	1-1	1.000	1	0	1	1.9	0	1	0	0	0	3	1.5	
VANDERBILT	01/13/19	5	0-1	.000	0-0	.000	0-0	.000	1	3	4	2.1	0	0	1	0	0	0	1.3	
at Tennessee	01/21/19	dnp	-	-	-	-	-	-	-	-	-	-	-	-	-	-	-	-	-	
ALABAMA	01/24/19	1	0-0	.000	0-0	.000	0-0	.000	0	0	0	1.9	0	0	0	0	0	0	1.2	
at Florida	01/27/19	dnp	-	-	-	-	-	-	-	-	-	-	-	-	-	-	-	-	-	
GEORGIA	01/31/19	dnp	-	-	-	-	-	-	-	-	-	-	-	-	-	-	-	-	-	
#16 SOUTH CAROLINA	02/03/19	dnp	-	-	-	-	-	-	-	-	-	-	-	-	-	-	-	-	-	
at LSU	02/07/19	5	1-2	.500	0-0	.000	1-2	.500	0	0	0	1.7	0	0	0	0	0	3	1.4	
Totals		0	48	5-10	.500	0-0	.000	5-8	.625	8	11	19	1.7	8	1	3	9	2	15	1.4

Games played: 11  
Minutes/game: 4.4  
Points/game: 1.4  
FG Pct: 50.0  
FT Pct: 62.5

Rebounds/game: 1.7  
Assists/game: 0.1  
Turnovers/game: 0.3  
Assist/turnover ratio: 0.3  
Steals/game: 0.2  
Blocks/game: 0.8

**CAREER STATISTICS**

Season	gp-gs	min/avg	fg-fga	pct	fg-fga	pct	ft-fa	pct	off	def	tot	avg	pf	fo	ast	to	blk	stl	pts	avg
2017-18	20-0	144/7.2	8-20	.400	0-0	.000	11-24	.458	16	18	34	1.7	28	0	1	5	10	3	27	1.4
2018-19	11-0	48/4.4	5-10	.500	0-0	.000	5-8	.625	8	11	19	1.7	8	0	1	3	9	2	15	1.4
TOTAL	31-0	192/6.2	13-30	.433	0-0	.000	16-32	.500	24	29	53	1.7	36	0	2	8	19	5	42	1.4



## 33 Chelsea Dungee | R-So. | 5-11 | G | Sapulpa, Okla. (Sapulpa HS) | University of Oklahoma

### SEASON HIGHS

Points	32	#16 S. Carolina	2-3-19
FG Made	12	TTU	12-4-18
FG Att.	24	at Tulsa	12-20-18
3FG Made	4	Nebraska	12-18-18*
3FG Att.	11	at Tulsa	12-20-18*
FT Made	13	at #22 ISU	12-2-18
FT Att.	16	at #22 ISU	12-2-18
Off. Reb.	2	at Florida	1-27-19*
Def. Reb.	8	at Tulsa	12-20-18
Rebounds	9	at Tulsa	12-20-18
Assists	3	#16 S. Carolina	2-3-19*
Blocks	4	#7/6 MSU	1-3-19
Steals	7	JSU	12-30-18
Minutes	37	at Florida	1-27-19*

### NOTES

- Double figure scoring in 21 games this year.
- Twenty-plus points 11 times as a sophomore ... 28 points twice in 2018-19 ... Career-best 32 points versus #16 South Carolina.
- Challenge in Music City All-Tournament Team.
- Redshirted the 2017-18 season at Arkansas.
- Arkansas Athletics Department Honor Roll (3.0-3.49 GPA) | Fall 2017, Fall 2018.
- Won a gold medal with USA Basketball ... All Big 12 freshman team in 2017 ... Oklahoma Gatorade Player of the Year in 2014 ... Won a gold medal with USA basketball ... At Oklahoma- Big 12 freshman of the year.

### CAREER HIGHS

Points	32	#16 S. Carolina	2-3-19
FG Made	12	TTU	12-4-18
FG Att.	24	at Tulsa	12-20-18
3FG Made	4	Nebraska	12-18-18*
3FG Att.	11	at Tulsa	12-20-18*
FT Made	13	at #22 ISU	12-2-18
FT Att.	16	at #22 ISU	12-2-18
Off. Reb.	2	at Florida	1-27-19*
Def. Reb.	8	at Tulsa	12-20-18
Rebounds	9	at Tulsa	12-20-18
Assists	3	#16 S. Carolina	2-3-19*
Blocks	4	#7/6 MSU	1-3-19
Steals	7	JSU	12-30-18
Minutes	37	at Florida	1-27-19*

\*Most Recent | #at OU

Opponent	Date	gs	min	Total		3-Pointers		Free throws		Rebounds				pf	a	t/o	blk	stl	pts	avg	
				fg-fga	pct	3fg-fga	pct	ft-fa	pct	off	def	tot	avg								
NORTHWESTERN STATE	11/09/18	*	22	4-8	.500	2-3	.667	1-3	.333	1	2	3	3.0	2	3	1	0	0	11	11.0	
at UT Arlington	11/14/18	*	26	6-9	.667	2-2	1.000	2-2	1.000	1	2	3	3.0	5	1	4	1	0	16	13.5	
NO. 22 ARIZONA STATE	11/18/18	*	24	7-13	.538	2-6	.333	4-4	1.000	1	5	6	4.0	4	1	1	0	0	20	15.7	
vs Tennessee State	11/23/18	*	30	5-9	.556	0-0	.000	6-9	.667	1	5	6	4.5	2	0	2	0	2	16	15.8	
vs Pittsburgh	11/24/18	*	34	2-13	.154	1-6	.167	5-6	.833	0	1	1	3.8	1	0	1	2	1	10	14.6	
vs Wisconsin	11/25/18	*	34	5-11	.455	3-5	.600	7-10	.700	1	4	5	4.0	3	1	4	0	3	20	15.5	
ORAL ROBERTS	11/28/18	*	32	7-19	.368	0-5	.000	7-7	1.000	1	4	5	4.1	0	1	3	0	1	21	16.3	
at No. 22/23 Iowa State	12/02/18	*	33	6-17	.353	2-5	.400	13-16	.813	0	5	5	4.3	4	2	2	0	1	27	17.6	
TENNESSEE TECH	12/04/18	*	28	12-18	.667	4-6	.667	0-0	.000	1	4	5	4.3	1	2	3	0	2	28	18.8	
at Abilene Christian	12/08/18	*	25	0-9	.000	0-4	.000	2-4	.500	0	1	1	4.0	1	0	1	0	1	2	17.1	
PRAIRIE VIEW A&M	12/16/18	*	27	2-11	.182	0-2	.000	4-6	.667	1	5	6	4.2	1	1	1	0	1	8	16.3	
NEBRASKA	12/18/18	*	36	7-21	.333	4-11	.364	5-6	.833	0	5	5	4.3	1	1	0	0	0	23	16.8	
at Tulsa	12/20/18	*	37	7-24	.292	2-11	.182	7-10	.700	1	8	9	4.6	3	0	4	0	3	23	17.3	
JACKSON STATE	12/30/18	*	31	4-18	.222	0-8	.000	5-6	.833	0	5	5	4.6	1	2	2	0	7	13	17.0	
#7/6 MISS STATE	01/03/19	*	37	10-23	.435	1-4	.250	4-5	.800	1	1	2	4.5	3	1	4	4	1	25	17.5	
at Ole Miss	01/06/19	*	29	5-12	.417	3-7	.429	4-4	1.000	0	3	3	4.4	3	2	1	0	0	17	17.5	
at Mizzou	01/10/19	*	34	4-17	.235	3-9	.333	4-4	1.000	0	6	6	4.5	3	1	2	0	2	15	17.4	
VANDERBILT	01/13/19	*	24	3-11	.273	2-7	.286	2-4	.500	0	3	3	4.4	2	1	1	1	1	10	16.9	
at Tennessee	01/21/19	*	33	5-11	.455	2-4	.500	7-7	1.000	1	4	5	4.4	4	2	0	0	1	19	17.1	
ALABAMA	01/24/19	*	33	4-15	.267	0-4	.000	1-2	.500	0	2	2	4.3	2	2	2	0	1	9	16.7	
at Florida	01/27/19	*	37	9-18	.500	1-5	.200	6-7	.857	2	3	5	4.3	2	1	1	0	2	25	17.0	
GEORGIA	01/31/19	*	33	9-18	.500	2-4	.500	8-8	1.000	0	2	2	4.2	3	1	1	2	2	28	17.5	
#16 SOUTH CAROLINA	02/03/19	*	33	10-21	.476	2-5	.400	10-11	.909	1	4	5	4.3	3	3	2	2	1	32	18.2	
at LSU	02/07/19	*	34	6-13	.462	0-1	.000	2-3	.667	1	2	3	4.2	2	0	2	0	1	14	18.0	
Totals			24	746	139-359	.387	38-124	.306	116-144	.806	15	86	101	4.2	56	29	45	12	34	432	18.0

Games played: 24  
 Minutes/game: 31.1  
 Points/game: 18.0  
 FG Pct: 38.7  
 3FG Pct: 30.6  
 FT Pct: 80.6

Rebounds/game: 4.2  
 Assists/game: 1.2  
 Turnovers/game: 1.9  
 Assist/turnover ratio: 0.6  
 Steals/game: 1.4  
 Blocks/game: 0.5

### SEASON | CAREER SUPERLATIVES

Stat	'18-'19	Career
Double Figure Pts	21	21
Double Figure Rebs		
Double-Doubles		
5+ Assists		
5+ Blocks		
5+ Steals		
Led Team in Pts	12	12
Led Team in Reb		
20+ Points	11	11
30+ Points	1	1

### CAREER STATISTICS

Year	GP-GS	Min	Avg	FG	Total		3-Point		F-Throw			Off	Rebounds				PF	FO	Ast	TO	Blk	Stl	Pts	Avg
					FGA	Pct	FG	FGA	Pct	FT	FTA		Pct	Def	Tot	Avg								
2016-17*	33-18	695	21.1	81	214	.379	22	65	.338	60	74	.811	18	66	84	2.5	62	0	26	51	5	19	244	7.4
2017-18	Redshirt																							
Oklahoma																								
Season	gp-gs	min/avg		fg-fga	pct	fg-fga	pct	ft-fa	pct	off	def	tot	avg	pf	fo	ast	to	blk	stl	pts	avg			
2018-19	24-24	746/31.1		139-359	.387	38-124	.306	116-144	.806	15	86	101	4.2	56	1	29	45	12	34	432	18.0			
TOTAL	24-24	746/31.1		139-359	.387	38-124	.306	116-144	.806	15	86	101	4.2	56	1	29	45	12	34	432	18.0			



**52 Rokia Doumbia | Fr. | 5-9 | G | Mali, Africa | Bradenton, Fla. (IMG Academy)**

**SEASON HIGHS**

Points	11	NSU	11-9-18
FG Made	4	NSU	11-9-18
FG Att.	6	NSU	11-9-18
3FG Made	1	at Ole Miss	1-6-19*
3FG Att.	2	Vanderbilt	1-13-19*
FT Made	2	NSU	11-9-18
FT Att.	3	NSU	11-9-18
Off. Reb.	3	Vanderbilt	1-13-19
Def. Reb.	4	Vanderbilt	1-13-19
Rebounds	7	Vanderbilt	1-13-19
Assists	3	PVAM	12-16-18
Blocks	1	PVAM	12-16-18
Steals	1	TTU	12-4-18*
Minutes	17	NSU	11-9-18

**CAREER HIGHS**

Points	11	NSU	11-9-18
FG Made	4	NSU	11-9-18
FG Att.	6	NSU	11-9-18
3FG Made	1	at Ole Miss	1-6-19*
3FG Att.	2	Vanderbilt	1-13-19*
FT Made	2	NSU	11-9-18
FT Att.	3	NSU	11-9-18
Off. Reb.	3	Vanderbilt	1-13-19
Def. Reb.	4	Vanderbilt	1-13-19
Rebounds	7	Vanderbilt	1-13-19
Assists	3	PVAM	12-16-18
Blocks	1	PVAM	12-16-18
Steals	1	TTU	12-4-18*
Minutes	17	NSU	11-9-18

\*Most Recent

**SEASON | CAREER SUPERLATIVES**

Stat	'18-'19	Career
Double Figure Pts	1	1
Double Figure Rebs		
Double-Doubles		
5+ Assists		
5+ Blocks		
5+ Steals		
Led Team in Pts		
Led Team in Reb	1	1
20+ Points		

**NOTES**

- Career-best seven rebounds against Vanderbilt.
- Speaks three languages: French, English, Bambara.
- Left-handed.
- Originally from Mali, Africa, and attended high school at IMG Academy in Bradenton, Florida
- Four-star recruit and was a member of the U16 Mali (Africa) National Team in 2016 and 2017.
- Was the MVP of the FIBA U16 Africa Championship in 2015.

Opponent	Date	gs	min	Total		3-Pointers		Free throws		Rebounds				pf	a	to	blk	stl	pts	avg
				fg-fga	pctl	3fg-fga	pctl	ft-fa	pctl	off	def	tot	avg							
NORTHWESTERN STATE	11/09/18	17	4-6	.667	1-2	.500	2-3	.667	0	1	1	1.0	2	0	0	0	1	11	11.0	
at UT Arlington	11/14/18	4	0-1	.000	0-0	.000	0-0	.000	0	0	0	0.5	1	0	1	0	1	0	5.5	
NO. 22 ARIZONA STATE	11/18/18	7	0-0	.000	0-0	.000	0-0	.000	0	1	1	0.7	2	0	1	0	0	3.7		
vs Tennessee State	11/23/18	6	0-0	.000	0-0	.000	0-0	.000	0	0	0	0.5	0	1	0	0	0	2.8		
vs Pittsburgh	11/24/18	dnp	-	-	-	-	-	-	-	-	-	-	-	-	-	-	-	-	-	
vs Wisconsin	11/25/18	4	0-0	.000	0-0	.000	0-0	.000	0	1	1	0.6	0	0	1	0	0	2.2		
ORAL ROBERTS	11/28/18	5	0-0	.000	0-0	.000	1-1	1.000	0	0	0	0.5	2	1	2	0	0	1	2.0	
at No. 22/23 Iowa State	12/02/18	dnp	-	-	-	-	-	-	-	-	-	-	-	-	-	-	-	-	-	
TENNESSEE TECH	12/04/18	9	0-1	.000	0-1	.000	0-0	.000	0	1	1	0.6	2	0	1	1	1	0	1.7	
at Abilene Christian	12/08/18	dnp	-	-	-	-	-	-	-	-	-	-	-	-	-	-	-	-	-	
PRAIRIE VIEW A&M	12/16/18	13	1-5	.200	0-2	.000	0-0	.000	1	3	4	1.0	1	3	1	1	0	2	1.8	
NEBRASKA	12/18/18	dnp	-	-	-	-	-	-	-	-	-	-	-	-	-	-	-	-	-	
at Tulsa	12/20/18	dnp	-	-	-	-	-	-	-	-	-	-	-	-	-	-	-	-	-	
JACKSON STATE	12/30/18	11	2-4	.500	0-1	.000	1-1	1.000	1	0	1	1.0	3	1	3	0	0	5	2.1	
#7/6 MISS STATE	01/03/19	6	0-0	.000	0-0	.000	0-0	.000	1	0	1	1.0	1	0	1	0	0	0	1.9	
at Ole Miss	01/06/19	8	1-1	1.000	1-1	1.000	0-2	.000	1	1	2	1.1	0	1	2	0	0	3	2.0	
at Mizzou	01/10/19	3	0-1	.000	0-0	.000	0-0	.000	0	0	0	1.0	1	0	0	0	0	0	1.8	
VANDERBILT	01/13/19	14	0-4	.000	0-2	.000	0-0	.000	3	4	7	1.5	5	0	2	0	0	0	1.7	
at Tennessee	01/21/19	2	0-2	.000	0-1	.000	0-0	.000	0	0	0	1.4	0	0	0	0	0	0	1.6	
ALABAMA	01/24/19	1	0-0	.000	0-0	.000	0-0	.000	0	0	0	1.3	0	0	0	0	0	0	1.5	
at Florida	01/27/19	dnp	-	-	-	-	-	-	-	-	-	-	-	-	-	-	-	-	-	
GEORGIA	01/31/19	dnp	-	-	-	-	-	-	-	-	-	-	-	-	-	-	-	-	-	
#16 SOUTH CAROLINA	02/03/19	dnp	-	-	-	-	-	-	-	-	-	-	-	-	-	-	-	-	-	
at LSU	02/07/19	7	0-1	.000	0-0	.000	0-0	.000	0	1	1	1.3	0	0	4	0	1	0	1.4	
Totals		0	117	8-26	.308	2-10	.200	4-7	.571	7	13	20	1.3	20	7	19	2	4	22	1.4

Games played: 16  
 Minutes/game: 7.3  
 Points/game: 1.4  
 FG Pct: 30.8  
 3FG Pct: 20.0  
 FT Pct: 57.1

Rebounds/game: 1.3  
 Assists/game: 0.4  
 Turnovers/game: 1.2  
 Assist/turnover ratio: 0.4  
 Steals/game: 0.3  
 Blocks/game: 0.1

**CAREER STATISTICS**

Season	gp-gs	min/avg	fg-fga	pctl	fg-fga	pctl	ft-fa	pctl	off	def	tot	avg	pf	fo	ast	to	blk	stl	pts	avg
2018-19	16-0	117/7.3	8-26	.308	2-10	.200	4-7	.571	7	13	20	1.3	20	1	7	19	2	4	22	1.4
TOTAL	16-0	117/7.3	8-26	.308	2-10	.200	4-7	.571	7	13	20	1.3	20	1	7	19	2	4	22	1.4





**A'Tyanna Gauden**  
So | 5-7 | G  
Ocilla, Georgia



**Raven Northcross-Baker**  
Sr | 5-9 | G  
Malvern, Arkansas



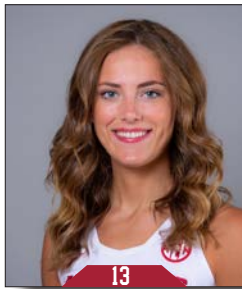
**Alexis Tolefree**  
Jr | 5-8 | G  
Conway, Arkansas



**Malica Monk**  
Sr | 5-5 | G  
North Little Rock, Arkansas



**Kiara Williams**  
Jr | 6-1 | C  
Little Rock, Arkansas



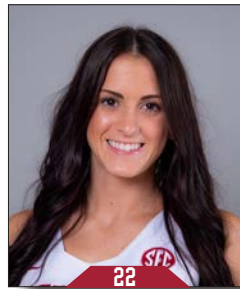
**Grayce Spangler**  
So | 5-11 | G  
Fayetteville, Arkansas



**Jailyn Mason**  
Jr | 5-9 | G  
Mason, Ohio



**Sydney Stout**  
Jr | 6-0 | F  
Bixby, Oklahoma



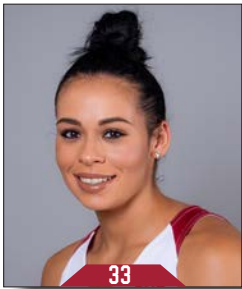
**Bailey Zimmerman**  
Sr | 6-0 | F  
St. Vincent, Arkansas



**Taylah Thomas**  
So | 6-1 | C  
Arlington, Texas



**Macy Weaver**  
So | 6-3 | C  
Davis Junction, Illinois



**Chelsea Dungee**  
So | 5-11 | G  
Sapulpa, Oklahoma



**Rokia Doumbia**  
Fr | 5-7 | G  
Bradenton, Florida/Mali, Africa



**Mike Neighbors**  
Head Coach  
Second Season



**Todd Schaefer**  
Assistant Coach  
Second Season



**Lacey Goldwire**  
Assistant Coach  
Second Season



**Pauline Love**  
Assistant Coach  
Second Season



**Amber Shirey**  
Director of Operations



**C'eira Ricketts**  
Director of Student-Athlete  
Development



**Jeff Brazil**  
Director of Video and Scouting



**Natalie Trotter**  
Athletic Trainer



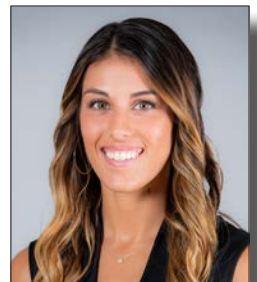
**Todd Barbour**  
Strength and Conditioning  
Coach



**Marissa Byler**  
Administrative Assistant



**Jalen Powell**  
Graduate Assistant



**Heather Corral**  
Graduate Assistant



Official Basketball Box Score -- Game Totals -- Final Statistics
Northwestern State vs AR
11/09/18 10:30am at Fayetteville, AR Bud Walton Arena



Northwestern State 53 • 0-1

Table with columns: #, Player, Total FG-FGA, 3-Ptr FG-FGA, FT-FTA, Rebounds Off Def Tot, PF, TP, A TO Blk Stl, Min. Lists player stats for Johnson, Gilliam, Scott, Grant, Thomas, Freeman, Savage, Miller, Barnes, Bonner, Nero, and Team.

Summary statistics table with columns: 1st, 2nd, 3rd, 4th, Game, Deadball, Rebounds. Includes FG%, 3FG%, FT%, and game totals.

AR 98 • 1-0

Table with columns: #, Player, Total FG-FGA, 3-Ptr FG-FGA, FT-FTA, Rebounds Off Def Tot, PF, TP, A TO Blk Stl, Min. Lists player stats for Williams, Northcross-Baker, Tolefree, Monk, Dungee, Gaulden, Spangler, Mason, Stout, Zimmerman, Thomas, Weaver, and Doumbia.

Summary statistics table with columns: 1st, 2nd, 3rd, 4th, Game, Deadball, Rebounds. Includes FG%, 3FG%, FT%, and game totals.

Officials: Scott Yarbrough, Jennifer Rezac, Meadow Overstreet
Technical fouls: Northwestern State-None. AR-None.
Attendance: 5497
Elementary Day
Scanned Tickets: 4,889

Score by periods table with columns: 1st, 2nd, 3rd, 4th, Total. Shows scores for Northwestern State and AR.



Official Basketball Box Score -- Game Totals -- Final Statistics
AR vs UT Arlington
11/14/18 7:00 pm at



AR 66 • 2-0

Table with columns: #, Player, Total FG-FGA, 3-Ptr FG-FGA, FT-FTA, Rebounds Off Def Tot, PF, TP, A TO Blk Stl, Min. Lists player stats for Williams, Tolefree, Monk, Mason, Dungee, Gaulden, Northcross-Baker, Zimmerman, Thomas, and Doumbia.

Summary statistics table with columns: 1st, 2nd, 3rd, 4th, Game, Deadball, Rebounds. Includes FG%, 3FG%, FT%, and game totals.

UT Arlington 65 • 1-1

Table with columns: #, Player, Total FG-FGA, 3-Ptr FG-FGA, FT-FTA, Rebounds Off Def Tot, PF, TP, A TO Blk Stl, Min. Lists player stats for Kelsey Johnson, Cierra Johnson, Laurynn McGowen, Lauren Billie, Brooke Alexander, Misty Dossie, Daiane Machado, Claire Chastain, Terryn Milton, Aysia Evans, and Katie Ferrell.

Summary statistics table with columns: 1st, 2nd, 3rd, 4th, Game, Deadball, Rebounds. Includes FG%, 3FG%, FT%, and game totals.

Officials: Technical fouls: AR-DUNGEE, Chelsea. UT Arlington-None.
Attendance: 1081
2018-19 Women's Basketball. Round: 0. Arkansas vs UT Arlington. Played at .

Score by periods table with columns: 1st, 2nd, 3rd, 4th, Total. Shows scores for AR and UT Arlington.

Official Basketball Box Score -- Game Totals -- Final Statistics
No. 22 Arizona State vs AR
11/18/18 7 p.m. at Fayetteville, Ark. (Bud Walton Arena)

No. 22 Arizona State 88 • 2-1

Table with columns: #, Player, Total FG-FGA, 3-Ptr FG-FGA, FT-FTA, Rebounds Off Def Tot, PF, TP, A TO Blk Stl, Min. Lists player stats for IBIS, Johnson-Chapman, Richardson, Ryan, Robbi, Ekmark, Courtney, Hanson, Russell, Loera, Elenga, Sopha, Mbulito, Iris, Van Hyfte, Jayde, Ruden, and Team.

Summary statistics table with columns: 1st, 2nd, 3rd, 4th, Game, Deadball, Rebounds. Includes FG%, 3FG%, FT%, and game totals.

AR 85 • 2-1

Table with columns: #, Player, Total FG-FGA, 3-Ptr FG-FGA, FT-FTA, Rebounds Off Def Tot, PF, TP, A TO Blk Stl, Min. Lists player stats for Williams, Tolefree, Monk, Mason, Dungee, Gaulden, Northcross-Baker, Zimmerman, Thomas, and Doumbia.

Summary statistics table with columns: 1st, 2nd, 3rd, 4th, Game, Deadball, Rebounds. Includes FG%, 3FG%, FT%, and game totals.

Officials: Mark Zentz, Maj Forsberg, Roy Gulbayan
Technical fouls: No. 22 Arizona State-None. AR-None.
Attendance: 1519
Total Scanned Tickets: 1,189

Score by periods table with columns: 1st, 2nd, 3rd, 4th, Total. Shows scores for No. 22 Arizona State and AR.



Official Basketball Box Score -- Game Totals -- Final Statistics
AR vs Tennessee State
11/23/18 7:30 p.m. at Municipal Auditorium, Nashville, Tenn.



AR 79 • 3-1

Table with columns: #, Player, Total FG-FGA, 3-Ptr FG-FGA, FT-FTA, Rebounds Off Def Tot, PF, TP, A TO Blk Stl, Min. Lists player stats for Williams, Tolefree, Monk, Mason, Dungee, Gaulden, Northcross-Baker, Stout, Zimmerman, Thomas, Weaver, and Doumbia.

Summary statistics table with columns: 1st, 2nd, 3rd, 4th, Game, Deadball, Rebounds. Includes FG%, 3FG%, FT%, and game totals.

Tennessee State 55 • 0-5

Table with columns: #, Player, Total FG-FGA, 3-Ptr FG-FGA, FT-FTA, Rebounds Off Def Tot, PF, TP, A TO Blk Stl, Min. Lists player stats for Wrightsell, Wooten, Roberts, Elliot, Sims, Young, Whister, Banner, Pizzo, Prinas, Outlow, Brunnett, and Broner.

Summary statistics table with columns: 1st, 2nd, 3rd, 4th, Game, Deadball, Rebounds. Includes FG%, 3FG%, FT%, and game totals.

Officials: D'Lynn Schertz, Erika Herriman-Camarota, Royce Blevins
Technical fouls: AR-None. Tennessee State-None.
Attendance:

Score by periods table with columns: 1st, 2nd, 3rd, 4th, Total. Shows scores for AR and Tennessee State.





Official Basketball Box Score - Game Totals - Final Statistics
Tennessee Tech vs AR
12/04/18 7 p.m. at Fayetteville, Ark. (Bud Walton Arena)



Tennessee Tech 42 • 5-3

Table with columns: Player, FG-FGA, 3-Ptr, FT-FTA, Rebounds, PF, TP, A TO Bk Stl, Min. Includes player stats for Cantrell, Lacy, Harris, Akiya, Brock, Jordan, Alexander, Kentoria, Buckner, Abby, Lamb, Taylor, Wilkinson, Anacia, Brady, Keshia, Coleman, Mackenzie, and Team totals.

1st - FG %: 2-12 16.7% 2nd: 7-18 38.9% 3rd: 3-12 25.0% 4th: 6-14 42.9% Game: 18-56 32.1% Deadball Rebounds: 3,1

AR 65 • 6-3

Table with columns: Player, FG-FGA, 3-Ptr, FT-FTA, Rebounds, PF, TP, A TO Bk Stl, Min. Includes player stats for Williams, Kiara, Tolefree, Alexis, Monk, Malica, MASON, Jaielyn, DUNGE, Chelsea, GAULDEN, A'Tyanna, NORTH-CROSS-BAKER, SPANGLER, Grayce, STOUT, Sydney, ZIMMERMAN, Bailey, THOMAS, Taylah, WEAVER, Macy, DOUMBIA, Rokia, and Team totals.

1st - FG %: 7-18 38.9% 2nd: 7-17 41.2% 3rd: 10-16 62.5% 4th: 3-23 13.0% Game: 27-74 36.5% Deadball Rebounds: 3,3

Officials: Denise Brooks, Michael McConnell, Mark Resch
Technical fouls: Tennessee Tech-None. AR-None.
Attendance: 915
Tickets Scanned: 502

Score by periods table with columns: 1st, 2nd, 3rd, 4th, Total. Tennessee Tech 42, AR 65.

Last FG - TTU 4th-01:18, AR 4th-03:05.
Largest lead - TTU None, AR by 31 3rd-00:36.
TTU led for 00:00. AR led for 36:31. Game was tied for 03:28.



Official Basketball Box Score - Game Totals - Final Statistics
Prairie View A&M vs AR
12/16/18 2 p.m. at Fayetteville, Ark. (Bud Walton Arena)



Prairie View A&M 44 • 3-5

Table with columns: Player, FG-FGA, 3-Ptr, FT-FTA, Rebounds, PF, TP, A TO Bk Stl, Min. Includes player stats for Williams, Ke'Asia, Nealey, La'Neique, DOBBS, Shala, WILLIS, ERIN, NEWMAN, DOMINIQUE, PENNIMAN, JORDYN, SHEPHERD, SIERRA, TOLBERT, KEAYNNA, TIEUEL, CHELSEA, FORD, ARTAVIA, COBB, JHYRAH, BURRELL, PASSION, CAMPBELL, MARIHAH, and Team totals.

1st - FG %: 8-25 32.0% 2nd: 2-16 12.5% 3rd: 4-17 23.5% 4th: 4-14 28.6% Game: 18-72 25.0% Deadball Rebounds: 3,1

AR 71 • 8-3

Table with columns: Player, FG-FGA, 3-Ptr, FT-FTA, Rebounds, PF, TP, A TO Bk Stl, Min. Includes player stats for Williams, Kiara, Tolefree, Alexis, Monk, Malica, MASON, Jaielyn, DUNGE, Chelsea, GAULDEN, A'Tyanna, NORTH-CROSS-BAKER, Ra, SPANGLER, Grayce, STOUT, Sydney, ZIMMERMAN, Bailey, THOMAS, Taylah, WEAVER, Macy, DOUMBIA, Rokia, and Team totals.

1st - FG %: 4-16 25.0% 2nd: 2-19 10.5% 3rd: 8-19 42.1% 4th: 11-22 50.0% Game: 25-76 32.9% Deadball Rebounds: 3,1

Officials: Karen Preato, Mark Resch, Marcus Clayton
Technical fouls: Prairie View A&M-None. AR-None.
Attendance: 1892
Tickets Scanned: 1,041

Score by periods table with columns: 1st, 2nd, 3rd, 4th, Total. Prairie View A&M 44, AR 71.

Last FG - PVAM 4th-01:42, AR 4th-00:01.
Largest lead - PVAM by 7 1st-00:16, AR by 27 4th-05:10.
PVAM led for 13:08. AR led for 24:11. Game was tied for 02:41.



Official Basketball Box Score - Game Totals - Final Statistics
AR vs Abilene Christian
12/08/18 1 p.m. at Abilene, Texas (Moody Coliseum)



AR 80 • 7-3

Table with columns: Player, FG-FGA, 3-Ptr, FT-FTA, Rebounds, PF, TP, A TO Bk Stl, Min. Includes player stats for Tolefree, Alexis, MONK, Malica, WILLIAMS, Kiara, MASON, Jaielyn, DUNGE, Chelsea, GAULDEN, A'Tyanna, ZIMMERMAN, Bailey, THOMAS, Taylah, and Team totals.

1st - FG %: 5-16 31.3% 2nd: 10-16 62.5% 3rd: 5-16 31.3% 4th: 8-17 47.1% Game: 28-65 43.1% Deadball Rebounds: 2

Abilene Christian 68 • 7-2

Table with columns: Player, FG-FGA, 3-Ptr, FT-FTA, Rebounds, PF, TP, A TO Bk Stl, Min. Includes player stats for Golightly, Dominique, Wright, Breamna, Williamson, Sara, Mabry, Makayla, Ducat, Lexie, Taylor, Jazz, Adams, Alyssa, and Team totals.

1st - FG %: 6-18 33.3% 2nd: 8-12 66.7% 3rd: 5-12 41.7% 4th: 5-12 41.7% Game: 24-54 44.4% Deadball Rebounds: 2

Officials: Britton Sherry, Shandra Twine, Stacie Blow
Technical fouls: AR-None. Abilene Christian-None.
Attendance: 1288

Score by periods table with columns: 1st, 2nd, 3rd, 4th, Total. AR 80, Abilene Christian 68.

Last FG - AR 4th-04:17, ACU 4th-02:06.
Largest lead - AR by 16 4th-03:47, ACU by 5 2nd-02:58.
AR led for 31:10. ACU led for 04:08. Game was tied for 04:37.



Official Basketball Box Score - Game Totals - Final Statistics
Nebraska vs AR
12/18/18 7 p.m. at Fayetteville, Ark. (Bud Walton Arena)



Nebraska 80 • 5-6

Table with columns: Player, FG-FGA, 3-Ptr, FT-FTA, Rebounds, PF, TP, A TO Bk Stl, Min. Includes player stats for Simon, Maddie, CAIN, KATE, WHITISH, HANNAH, ELIELY, NICEA, KISSINGER, TAYLOR, HAIBY, SAM, VEERBEK, ASHTYN, MITCHELL, GRACE, BROWN, LEIGHA, MERSHON, KAYLA, and Team totals.

1st - FG %: 4-16 25.0% 2nd: 8-16 50.0% 3rd: 7-14 50.0% 4th: 7-15 46.7% Game: 28-61 45.9% Deadball Rebounds: 2,1

AR 84 • 9-3

Table with columns: Player, FG-FGA, 3-Ptr, FT-FTA, Rebounds, PF, TP, A TO Bk Stl, Min. Includes player stats for Williams, Kiara, Tolefree, Alexis, Monk, Malica, MASON, Jaielyn, DUNGE, Chelsea, GAULDEN, A'Tyanna, NORTH-CROSS-BAKER, SPANGLER, Grayce, STOUT, Sydney, ZIMMERMAN, Bailey, THOMAS, Taylah, and Team totals.

1st - FG %: 4-18 22.2% 2nd: 7-15 46.7% 3rd: 7-16 43.8% 4th: 9-18 50.0% Game: 27-67 40.3% Deadball Rebounds: 4,2

Officials: Eric J. Brewton, Julie Krommerhoek, Pualani Spurlock
Technical fouls: Nebraska-None. AR-None.
Attendance: 1335
Tickets Scanned: 709
Fouled out: Nebraska #31, Cain (7:19 4Q); #13, Veerbeek (0:05 4 Q)

Score by periods table with columns: 1st, 2nd, 3rd, 4th, Total. Nebraska 80, AR 84.

Last FG - NEB 4th-01:22, AR 4th-00:43.
Largest lead - NEB by 13 1st-03:30, AR by 9 4th-07:19.
NEB led for 22:29. AR led for 15:32. Game was tied for 01:59.



Official Basketball Box Score -- Game Totals -- Final Statistics
AR vs Tulsa
12/20/18 2:07 pm at Donald W. Reynolds Center (Tulsa, Okla.)



AR 61 • 10-3

Box score table for AR vs Tulsa game, listing player stats for 24 players and team totals.

Summary statistics for AR vs Tulsa, including FG%, 3PT%, FT%, and game totals.

Tulsa 59 • 5-7

Box score table for Tulsa vs AR game, listing player stats for 25 players and team totals.

Summary statistics for Tulsa vs AR, including FG%, 3PT%, FT%, and game totals.

Officials: Joseph Vasizly, Jeffrey Smith, Katie Lukanich
Technical fouls: AR-None, Tulsa-None.
Attendance: 1222

Score by periods table for AR vs Tulsa.

Points in paint, off T/O, 2nd chance, fast break, bench points table for AR vs Tulsa.

Last FG - AR 4th-00:08, TLS 4th-01:26.
Largest lead - AR by 6 4th-07:20, TLS by 6 3rd-05:52.
AR led for 16:00. TLS led for 15:16. Game was tied for 08:44.

Score tied - 9 times.
Lead changed - 13 times.



Official Basketball Box Score -- Game Totals -- Final Statistics
Jackson State vs AR
12/30/18 2 p.m. at Fayetteville, Ark. (Bud Walton Arena)



Jackson State 57 • 4-7

Box score table for Jackson State vs AR game, listing player stats for 42 players and team totals.

Summary statistics for Jackson State vs AR, including FG%, 3PT%, FT%, and game totals.

AR 76 • 11-3

Box score table for AR vs Jackson State game, listing player stats for 32 players and team totals.

Summary statistics for AR vs Jackson State, including FG%, 3PT%, FT%, and game totals.

Officials: Brian Hall, Missy Brooks, Kylie Galloway
Technical fouls: Jackson State-TEAM, AR-None.
Attendance: 2270
Tickets Scanned: 1,326

Score by periods table for AR vs Jackson State.

Points in paint, off T/O, 2nd chance, fast break, bench points table for AR vs Jackson State.

Last FG - AR 4th-00:03, AR 4th-00:43.
Largest lead - AR by 5 2nd-03:00, AR by 23 4th-02:16.
AR led for 11:04. AR led for 22:29. Game was tied for 06:27.

Score tied - 7 times.
Lead changed - 11 times.



Official Basketball Box Score -- Game Totals -- Final Statistics
#7/6 Miss State vs Arkansas
01/03/19 6 p.m. at Fayetteville, Ark. (Bud Walton Arena)



#7/6 Miss State 93 • 13-1, 1-0 SEC

Box score table for #7/6 Miss State vs Arkansas game, listing player stats for 25 players and team totals.

Summary statistics for #7/6 Miss State vs Arkansas, including FG%, 3PT%, FT%, and game totals.

Arkansas 69 • 11-4, 0-1 SEC

Box score table for Arkansas vs #7/6 Miss State game, listing player stats for 52 players and team totals.

Summary statistics for Arkansas vs #7/6 Miss State, including FG%, 3PT%, FT%, and game totals.

Officials: Bryan Enterline, Maj Forsberg, Kevin Pethel
Technical fouls: #7/6 Miss State-None, Arkansas-TEAM.
Attendance: 2263
Tickets Scanned: 1535

Score by periods table for Arkansas vs #7/6 Miss State.

Points in paint, off T/O, 2nd chance, fast break, bench points table for Arkansas vs #7/6 Miss State.

Last FG - MS 4th-01:42, AR 4th-01:00.
Largest lead - MS by 34 4th-09:01, AR by 1 1st-08:45.
MS led for 39:14. AR led for 00:22. Game was tied for 00:24.

Score tied - 0 times.
Lead changed - 2 times.



Official Basketball Box Score -- Game Totals -- Final Statistics
AR vs Ole Miss
01-06-19 2 PM at Oxford, Miss. (The Pavilion at Ole Miss)



AR 85 • 12-4, 1-1 SEC

Box score table for AR vs Ole Miss game, listing player stats for 52 players and team totals.

Summary statistics for AR vs Ole Miss, including FG%, 3PT%, FT%, and game totals.

Ole Miss 55 • 6-10, 0-2 SEC

Box score table for Ole Miss vs AR game, listing player stats for 32 players and team totals.

Summary statistics for Ole Miss vs AR, including FG%, 3PT%, FT%, and game totals.

Officials: Cameron Inouye, Eric Koch, Troy Winders
Technical fouls: AR-None, Ole Miss-None.
Attendance: 1642

Score by periods table for Ole Miss vs AR.

Points in paint, off T/O, 2nd chance, fast break, bench points table for Ole Miss vs AR.

Last FG - AR 4th-02:51, OM 4th-00:03.
Largest lead - AR by 33 4th-02:51, OM None.
AR led for 35:52, OM led for 00:00. Game was tied for 03:06.

Score tied - 2 times.
Lead changed - 0 times.



