

ARKANSAS

2019 VOLLEYBALL



25 ALL-SEC SELECTIONS | 12 AVCA ALL-AMERICA SELECTIONS | 11 NCAA TOURNAMENT APPEARANCES

RESULTS/SCHEDULE

OVERALL: 5-5 | SEC: 0-0
H: 4-0 | A: 0-3 | N: 1-2

AUGUST

Saturday	17	Red-White	4:00 p.m.
Saturday	24	Red-White	2:00 p.m.
Friday	30	Northwestern State#	W, 3-0
Friday	30	Little Rock#	W, 3-0
Saturday	31	Montana State#	W, 3-2

SEPTEMBER

Thursday	5	West Virginia!	L, 0-3
Friday	6	San Diego!	L, 0-3
Saturday	7	San Diego State!	L, 2-3
Tuesday	10	Arkansas-Pine Bluff	W, 3-1
Friday	13	Maryland\$	L, 1-3
Saturday	14	Princeton\$	L, 0-3
Saturday	14	George Mason\$	W, 3-1
Thursday	19	Georgia Tech^	4 p.m.
Friday	20	NC State^	4 p.m.
Wednesday	25	at LSU*	7 p.m.
Sunday	29	at Alabama*	1 p.m.

OCTOBER

Friday	4	Texas A&M*	7 p.m.
Friday	11	Florida*	7 p.m.
Sunday	13	South Carolina*	1 p.m.
Friday	18	at Ole Miss*	8 p.m.
Sunday	20	at Mississippi State	1 p.m.
Friday	25	Missouri*	7 p.m.
Sunday	27	Auburn*	1 p.m.
Wednesday	30	at Georgia*	7 p.m.

NOVEMBER

Sunday	3	at Kentucky*	1 p.m.
Friday	8	at Texas A&M*	7 p.m.
Wednesday	13	Tennessee	5 p.m.
Sunday	17	Alabama	Noon
Friday	22	Ole Miss	7 p.m.
Sunday	24	Mississippi State	3 p.m.
Wednesday	27	at Florida	7 p.m.
Friday	29	at South Carolina	7 p.m.

- Arkansas Classic | ! - SDSU/USD Challenge

\$ - Maryland Classic | ^ - Georgia Challenge

* - SEC Match

All home matches played at Barnhill Arena (8,500)
All times central and subject to change



NEXT OPPONENTS | TALE OF THE TAPE

GEORGIA TECH (6-3, 0-0 ACC)

All-Time Series Arkansas trails, 0-5
Last Meeting Sept. 15, 2018 in Atlanta (L, 3-1)

H2H*	Arkansas	Georgia Tech
Hitting Pct.	.198	.254
Total Attacks	1194	1141
Kills/Set	12.51	14.34
Total Kills	463	459
Assists/Set	11.62	13.47
Total Assists	430	431
Digs/Set	12.19	15.59
Total Digs	451	499
Blocks/Set	2.08	1.41
Total Blocks	77.0	45.0
Aces/Set	1.81	1.19
Total Aces	67	38
Opp. Hitting Pct.	.183	.195

NC STATE (4-5, 0-0 ACC)

All-Time Series Arkansas trails, 1-2
Last Meeting Spt. 14, 2018 in Atlanta (L, 3-2)

H2H*	Arkansas	NC State
Hitting Pct.	.198	.201
Total Attacks	1194	1167
Kills/Set	12.51	12.9
Total Kills	463	413
Assists/Set	11.62	12.1
Total Assists	430	386
Digs/Set	12.19	16.4
Total Digs	451	525
Blocks/Set	2.08	1.90
Total Blocks	77.0	62.0
Aces/Set	1.81	1.30
Total Aces	67	41
Opp. Hitting Pct.	.183	.200

NEWS & NOTES

LAST TIME OUT

The Hogs were on the road last weekend on the east coast in College Park. At the Maryland Invite, Arkansas competed against the Terps as well as Ivy League member Princeton and A-10 member George Mason. After dropping the first two matches of the weekend to Maryland (22-25, 25-23, 24-26, 19-25) and Princeton (18-25, 21-25, 19-25), the Razorbacks gave a convincing performance in a 3-1 win over George Mason (25-20, 19-25, 25-20, 25-14).

SCOUTING THE COMPETITION

The Jackets (6-3) return to Georgia after a 1-2 showing at the OU Nike Invitational, picking up a win against Louisiana but dropping two four-set matches to Arizona State as well as the Sooners. Freshman middle blocker Erin Moss is currently leading the Pack and sixth in the ACC with a .383 hitting percentage. Freshman teammate Julie Bergmann is the team's kill leader, averaging 4.03 kills per set through nine games with seven double-digit kill performances.

NC State is coming off a 2-1 weekend at the Appalachian State Invitational where the Pack picked up wins over Western Carolina and Appalachian State. Junior opposite Melissa Evans led the team with an average of 4.46 kills per set, including two 20+ kill performances. Evans is the only player in the ACC with more than one 20+ kill match this season. Additionally, she has recorded double-digits in eight of the nine matches this season and has done so in six-consecutive matches.

MARYLAND ALL-TOURNAMENT TEAM

Junior transfer Devyn Wheeler averaged 2.55 kills per set over the weekend, knocking down 28 kills behind a .313 clip. Wheeler also recorded six digs and six blocks en route to an all-tournament selection.

TEAM LEADERS

Kills Per Set	Fr. Jillian Gillen 3.54 k/s 131 kills
Assists Per Set	Sr. Rachel Rippee 6.30 a/s 233 assists
Digs Per Set	So. Gracie Ryan 2.27 d/s 75 digs
Blocks Per Set	So. Ellease Crumpton 1.04 b/s 28 blocks
Aces Per Set	So. Ellease Crumpton 0.44 sa/s 12 aces

MILESTONE WATCH

Player	Looking for	Current Total	Needs
Hailey Dirriql (OH Jr.)	700 kills (career)	680	20
Elizabeth Pamphile (MB Jr.)	700 kills (career)	520	180
	260 blocks (career) (ARK #20)	222	38
Rachel Rippee (S Sr.)	5,000 assists	4,314	686
	1,000 digs	901	99



ARKANSAS VOLLEYBALL QUICK FACTS

UNIVERSITY INFORMATION

Location Fayetteville, Ark.
 Founded March 27, 1871
 Enrollment 27,558
 Nickname Razorbacks
 School Colors Cardinal, White
 Affiliation NCAA Division I
 Conference Southeastern (SEC)
 Chancellor Dr. Joseph E Steinmetz
 Vice Chancellor/Dir. of Athletics Hunter Yurachek
 Faculty Athletic Representative Gerald Jordan
 University Website www.uark.edu
 Athletics Website ArkansasRazorbacks.com

TEAM INFORMATION

2018 Overall Record 11-17
 2018 SEC Record 5-13
 SEC Finish 11th
 Home Record 7-6
 Away Record 2-10
 Neutral Record 2-1
 Letterwinners Returning/Lost 10/3
 Starters Returning/Lost 5/3
 Newcomers 6

COACHING STAFF

Head Coach Jason Watson
 Record at Arkansas 39-49 (.443)
 SEC Record 21-33 (.389)
 Career Record 239-197 (.548)
 Assistant Coach Megan Wargo-Kearney
 Assistant Coach Macey Gardner
 Director of Operations Whitney Roth
 Volleyball Office Phone 479/575-3813

TEAM HISTORY

All-Time Overall Record 477-334 (.588)
 All-Time SEC Record 247-185 (.572)
 NCAA Tournaments/Last 11/2013
 SEC Championships/Last 1 (Tournament)/1997
 First Year of Program 1994

FACILITY INFORMATION

Name Barnhill Arena
 Capacity 8,500
 Opened 1953
 All-Time Record 249-118 (.678)

ATHLETICS COMMUNICATIONS

Assoc. AD for Communications Kyle Parkinson
 Associate Director Mike Cawood
 Assistant Director Michael Minshew
 Assistant Director (VB) Jessica Roberson
 Email jr098@uark.edu
 Cell # 479-200-2432
 Assistant Director Jeff Smith
 Assistant Director John Thomas
 Assistant Director Mario Bravante
 Intern Ben Breitbach
 Intern Elishah Santiago
 Secretary Mary Lynn Gibson
 Office # 479-575-2751

Mailing Address:
 Arkansas Athletics Communications
 350 N. Razorback Road
 Fayetteville, AR 72703



2019 ARKANSAS RAZORBACKS | Front Row (L to R): Allyson Dernehl, Abigail McGee, Klaire Trainor, Savannah Downing, Jillian Gillen, lauren Evans, Gracie Ryan, Maylin Garrett; Back Row (L to R): Devyn Wheeler, Liz Pamphile, Natalie Perdue, Hailey Dirrigl, Maia Stripp, Maggie Cartwright, Rachel Rippee, Ellease Crumpton.

2019 ARKANSAS VOLLEYBALL ROSTER

#	Name	Position	Height	Class	Hometown/Previous
1	Rachel Rippee	6-0	S	SR	Springfield, Mo./Kickapoo HS
2	Savannah Downing	5-5	L	JR	Carthage, Mo./Iowa Western
3	Hailey Dirrigl	6-2	OH	JR	Phoenix, Ariz./Desert Vista HS
5	Lauren Evans	5-11	OH	SO	Grapevine, Texas/Heritage HS
6	Ellease Crumpton	6-3	MB	SO	Houston, Texas/Cypress Lakes HS
8	Liz Pamphile	6-2	MB	JR	Orlando, Fla./Edgewater HS
9	Klaire Trainor	5-10	OH	JR	Springdale, Ark./Har-Ber HS
10	Jillian Gillen	5-10	OH	FR	Stilwell, Kan./The Barstow School
11	Maggie Cartwright	6-0	OH	FR	Kimberly, Wis./Kimberly HS
13	Maylin Garrett	6-0	OH	SO	San Antonio, Texas/Antonian College Prep
15	Maia Stripp	6-3	MB	SO	Roskilde, Denmark/Holte IF
16	Devyn Wheeler	6-0	MB	JR	Carrollton, Texas/North Florida
17	Abigail McGee	5-7	S/L	FR	Jonesboro, Ark./Valley View HS
19	Natalie Perdue	6-0	OH	FR	Dallas, Texas/Richardson HS
21	Gracie Ryan	5-9	S	SO	Orlando, Fla./Bishop Moore HS
23	Allyson Dernehl	5-10	OH	JR	Sugar Land, Texas/UT Tyler

Head Coach: Jason Watson/BYU, '95 (Fourth Season/15th Overall)
 Assistant Coach: Megan Wargo-Kearney/Gettysburg College, '02 (Third Season)
 Assistant Coach: Macey Gardner-Donathan/Arizona State, '15 (First Season)
 Director of Operations: Whitney Roth/Texas A&M-Kingsville, '13 (Second Season)
 Graduate Assistant: Lexi MacLean/TCU, '18' (First Season)

How Do You Say...

Rachel Rippee rippy
 Hailey Dirrigl dur-gull
 Elizabeth Pamphile pam-feel
 Ellease Crumpton uh-lease
 Maia Stripp mya
 Allyson Dernehl dur-NAIL

TEAM STUDIES

Rachel Rippee	Childhood Education	Elementary Teacher
Savannah Downing	Biology	Diagnostic Molecular Scientist
Hailey Dirrigl	Biomedical Engineering	Researcher [Find a cure for cancer and Alzheimer's Disease]
Lauren Evans	Marketing	Working for the Dallas Cowboys or a major athletic wear company
Ellease Crumpton	Recreation & Sports Management	Live overseas as an agent
Liz Pamphile	Business Management - Organization/Leadership	Student-Athlete Development
Klaire Trainor	Elementary Education	Kindergarten Teacher
Jillian Gillen	International Business	Work in a career that involves traveling
Maggie Cartwright	Biology	
Maylin Garrett	Journalism	Broadcast Journalism with a specialty in sports
Maia Stripp	Human Nutrition	Return to Denmark for med. school to be a doctor
Devyn Wheeler	Kinesiology	Physician's Assistant
Abigail McGee	Biology	Undecided
Natalie Perdue	Biology	
Gracie Ryan	Marketing	Work for a Fortune 500 Company
Allyson Dernehl	Marketing	Sports marketing at the collegiate or pro level





WHERE THEY RANK

Headed into the fourth week of the season, Arkansas is one of 12 teams in the SEC with a .500 record or better.

MENTOR v MENTEE

Fourth-year NC State volleyball head coach Linda Hampton-Keith will see a familiar face on the Arkansas bench when the teams square off Friday, as former Arizona State head coach Jason Watson now leads the program. Hampton-Keith spent five seasons as an assistant coach at ASU under Watson's leadership before accepting the head coaching position at NCSU, spending the last three as associate head coach. The duo helped turn the Sun Devils into a perennial NCAA Tournament team and the squad reached as high as No. 5 in the AVCA Poll in their final season in Tempe. Hampton-Keith also helped the development of current Razorback assistant coach, Macey Donathan (Gardner) while she was at ASU from 2012-2015.

DOUBLING UP

Three Hogs recorded double-doubles against UAPB, Gillen, Rippee and Ryan. It's the third time this season that three hogs recorded double-doubles in the same contest, something that before this season hadn't happened since 2016. It's also been three years since four or more different Razorbacks reached double-double status at least once in a season.

ON THE HOME FRONT

Arkansas saw the most success at home last season, recording seven wins, including a sweep of its Arkansas Classic opponents and four conference wins. Of those seven home wins, only twice did the opposing team win multiple sets. Under Coach Watson, the Razorbacks are 25-17 (.595) at home.

GILLEN GOES BIG, EARNS SEC FRESHMAN OF THE WEEK

The outside hitter from Stilwell, Kansas, averaged 5.00 points, 4.36 kills and 2.36 digs per set in the Arkansas Classic this past weekend. In her opening match against Northwestern State, Gillen posted 13 kills, becoming the first Razorback with double-digit kills in her freshman debut. She then recorded her first double-double of 26 kills and 13 digs against Montana State, becoming one of only 22 Razorbacks to ever record 25+ kills in a single match. Gillen's honor is the first of its kind since 2014 and only the seventh since the award was introduced during the 2005 season.

OH CAPTAIN, MY CAPTAIN

By team vote, junior outside Hailey Dirrigl and sophomore setter Gracie Ryan will serve as the Razorbacks' captains. Dirrigl finished the 2018 season leading the Hogs in kills, while Ryan covered the defensive side as the returning leader in digs per set at 1.87.

RECORD BREAKING RIPPEE

Senior Rachel Rippee is getting ready to close the door on her career at Arkansas, but not before etching her name in the record book, over and over again. The Springfield, Mo. native is

currently in the top five in Arkansas history for: assists, assists per set, service aces, service aces per set, and sets played.

FRESH(MAN) FACES

Arkansas welcomes six newcomers—four freshmen and two transfer juniors—to this year's roster. The team's incoming class was named a Highest Honorable Mention group, just outside the top 30 by PrepVolleyball.com.

ACROSS THE NET

This year's schedule features 13 home matches at Barnhill Arena and seven opponents that played in last year's NCAA Tournament. Arkansas will play 10 matches against eight teams that were ranked inside the final RPI Top 55; six of Arkansas' opponents participated in the 2018 NCAA Volleyball Tournament. The Hogs will also see four first-time opponents this season: Arkansas - Pine Bluff, Princeton, San Diego State and West Virginia.

ACADEMIC SUCCESS

For a third-straight year, Arkansas earned an AVCA Team Academic Award for the 2018-19 season, including a special spot on the AVCA Honor Roll as well. Returning Hogs, Lauren Evans, Maylin Garrett, and Gracie Ryan were also named to the SEC First-Year Academic Honor Roll earlier this summer.

PRESEASON RANKINGS

At the conclusion of the 2018 campaign, the Razorbacks sat in 11th place in the SEC and coming into the new season, the Hogs were predicted to finish 9th in the league as voted on by the conferences' coaches.

ALL-TIME SERIES IN SERIES OPENERS

Friday's match quelled the start of the 2019 season and the 26th season opener. All-time, the Razorbacks are 17-9 in season openers and 2-2 in the same under Coach Watson.

SIDELINE ADDITIONS

In early August, Coach Watson announced that Megan Wargo-Kearney, who enters her third season with Arkansas volleyball, had been promoted to associate head coach. Coach Watson also added Macey Gardner-Donathan (Arizona State '15) to the staff as an assistant coach and Lexi MacLean (TCU '18) as a graduate assistant.

SEC STANDINGS

School	SEC	Overall	Streak
Missouri	0-0	8-0	W8
Alabama	0-0	8-1	W4
Mississippi St	0-0	8-1	W2
Texas A&M	0-0	7-1	W6
Florida	0-0	5-2	W3
Georgia	0-0	6-3	W3
Kentucky	0-0	6-3	L1
Ole Miss	0-0	6-3	W6
LSU	0-0	5-3	W1
South Carolina	0-0	5-4	L1
Arkansas	0-0	5-5	W1
Auburn	0-0	4-4	L1
Tennessee	0-0	3-4	L1

AVCA TOP 25

Rank	Team	Record	2019
1	Nebraska (37)	7-0	2
2	Stanford (23)	5-1	1
3	Texas (2)	5-1	3
4	Penn State	6-1	4
5	Baylor	7-0	5
6	Pittsburgh (1)	10-0	6
7	Minnesota (1)	4-2	8
8	Marquette	7-2	7
9	Wisconsin	4-2	9
10	Washington	7-1	12
11	Florida^	5-2	11
12	BYU	7-2	13
13	Hawai'i	9-0	18
14	Oregon	2-3	10
15	Creighton	5-3	17
16	Kentucky^	6-3	15
17	Missouri	8-0	21
18	Utah	8-2	16
19	Illinois	3-4	14
20	Southern California	5-3	20
21	Purdue	4-1	23
22	Colorado State	7-1	NR
23	Florida State	5-2	25
24	California	8-0	NR
25	Louisville	6-2	22

Others receiving votes and listed on two or more ballots: Michigan 123; Colorado 101; Illinois State 49; Washington State 44; UCF 24; Rice 21; Indiana 13; Cincinnati 12; Tennessee 11; San Diego 9; Western Kentucky 9; Coastal Carolina 6; Cal Poly 2

Six teams mentioned on only one ballot for a total of 15 combined points.

Dropped Out: Michigan 24; Colorado 19



MATCH-BY-MATCH STARTERS

Northwestern State	Rippee, Dirrigl, Pamphile, Gillen, Cartwright, Wheeler	Downing
Little Rock	Rippee, Pamphile, Gillen, Cartwright, Stripp, Wheeler	Downing
Montana State	Rippee, Evans, Crumpton, Pamphile, Gillen, Wheeler	Trainer
West Virginia	Rippee, Crumpton, Pamphile, Gillen, Cartwright, Garrett	Downing
San Diego	Rippee, Evans, Crumpton, Pamphile, Gillen, Garrett	Downing
San Diego State	Rippee, Crumpton, Pamphile, Gillen, Cartwright, Garrett	Evans
Arkansas-Pine Bluff	Rippee, Crumpton, Gillen, Cartwright, Stripp, Wheeler	Trainer
Maryland	Rippee, Pamphile, Gillen, Cartwright, Stripp, Wheeler	Downing
Princeton	Rippee, Dirrigl, Crumpton, Pamphile, Gillen, Wheeler	Evans
George Mason	Dirrigl, Crumpton, Pamphile, Gillen, Garrett, Ryan	Trainer
Georgia Tech		
NC State		
LSU*		
Alabama*		
Texas A&M*		
Florida*		
South Carolina*		
Ole Miss*		
Mississippi State*		
Missouri*		
Auburn*		
Georgia*		
Kentucky*		
Texas A&M*		
Tennessee*		
Alabama*		
Ole Miss*		
Mississippi State*		
Florida*		
South Carolina*		

2019 DOUBLE-DOUBLES

1	Maggie Cartwright	10 kills, 10 digs	vs Little Rock	8-30-19
2	Rachel Rippee	31 assists, 13 digs	vs Montana State	8-31-19
3	Jillian Gillen	26 kills, 13 digs	vs Montana State	8-31-19
4	Gracie Ryan	22 assists, 13 digs	vs Montana State	8-31-19
5	Jillian Gillen	28 Kills, 11 digs	at San Diego State	9-7-19
6	Maggie Cartwright	10 kills, 10 digs	at San Diego State	9-7-19
7	Gracie Ryan	18 assists, 12 digs	at San Diego State	9-7-19
8	Rachel Rippee	22 assists, 11 digs	vs Arkansas Pine-Bluff	9-10-19
9	Jillian Gillen	12 kills, 12 digs	vs Arkansas Pine-Bluff	9-10-19
10	Gracie Ryan	23 assists, 10 digs	vs Arkansas Pine-Bluff	9-10-19
11	Rachel Rippee	21 assists, 11 digs	vs Princeton	9-14-19
12	Gracie Ryan	15 assists, 17 digs	vs George Mason	9-14-19

Season Count: Cartwright (2), Gillen (3), Ryan (4), Rippee (3)
 Career Count: Cartwright (2), Gillen (3), Ryan (4), Rippee (27)

WHAT HAPPENS WHEN...

OVERALL	0-0
SEC	0-0
HOME	4-0
AWAY	0-3
NEUTRAL	1-2
VS RANKED OPPONENTS	0-1

BY SETS

THREE SETS	2-3
FOUR SETS	2-1
FIVE SETS	1-1
WIN FIRST SET	4-0
LOSE FIRST SET	1-5
WIN SECOND SET	2-2
LOSE SECOND SET	3-3
WIN FIRST TWO SETS	2-0
LOSE FIRST TWO SETS	1-3
SPLIT FIRST TWO SETS	2-2

STATISTICAL

MORE KILLS THAN OPPONENT	5-0
FEWER KILLS THAN OPPONENT	0-4
KILLS ARE TIED	0-1
MORE DIGS THAN OPPONENT	5-2
FEWER DIGS THAN OPPONENT	0-3
DIGS ARE TIED	0-0
MORE BLOCKS THAN OPPONENT	3-0
FEWER BLOCKS THAN OPPONENT	2-5
BLOCKS ARE TIED	0-0
MORE ACES THAN OPPONENT	3-1
FEWER ACES THAN OPPONENT	1-4
ACES ARE TIED	1-0
HIGHER HITTING PCT	5-0
LOWER HITTING PCT	0-5
HITTING PCT TIED	0-0

HITTING PERCENTAGE

.400 OR BETTER	0-0
.300-.399	0-0
.200-.299	5-2
.100-.199	0-2
.000-.099	0-0
NEGATIVE	0-1

OPPONENT HITTING PERCENTAGE

.400 OR BETTER	0-0
.300-.399	0-2
.200-.299	0-3
.100-.199	2-0
.000-.099	2-0
NEGATIVE	1-0

BY DAY

TUESDAY	1-0
WEDNESDAY	0-0
THURSDAY	0-1
FRIDAY	2-2
SATURDAY	2-2
SUNDAY	0-0

BY MONTH

AUGUST	3-0
SEPTEMBER	2-5
OCTOBER	0-0
NOVEMBER	0-0
DECEMBER	0-0



MATCH-BY-MATCH LEADERS					
OPPONENT	KILLS	ASSISTS	DIGS	BLOCKS	ACES
Northwestern State	Gillen (9) Pamphile (9)	Rippee (18)	Trainor (11)	Gillen (3)	Cartwright (2) Dirrigr (2)
Little Rock	Gillen (13)	Rippee (16)	Cartwright (10) Downing (10)	Pamphile (5)	Cartwright (2)
Montana State	Gillen (26)	Rippee (31)	Gillen (13) Rippee (13)	Crumpton (6)	Cartwright (2) Gillen (2) Crumpton (2)
West Virginia	Gillen (11)	Rippee (18)	Cartwright (7)	Crumpton (5)	Rippee (2) Gillen (2)
San Diego	Cartwright (5)	Rippee (10)	Rippee (6) Evans (5)	Crumpton (3) Pamphile (3) Garrett (3)	Rippee (1) Evans (1) Crumpton (1) Ryan (1)
San Diego State	Gillen (28)	Rippee (31)	Gillen (11)	Pamphile (4)	Crumpton (4)
Arkansas-Pine Bluff	Gillen (12)	Ryan (23)	Gillen (12)	Crump (9)	Gillen (2) Trainor (2)
Maryland	Dirrigr (15)	Rippee (34)	Evans (11)	Pamphile (4)	Evans (4)
Princeton	Dirrigr (7) Wheeler (7)	Rippee (21)	Evans (12)	Pamphile (3)	Gillen (3)
George Mason	Gillen (14)	Rippee (32)	Trainor (18)	Pamphile (6)	Crumpton (5)
Georgia Tech					
NC State					
LSU*					
Alabama*					
Texas A&M*					
Florida*					
South Carolina*					
Ole Miss*					
Mississippi State*					
Missouri*w					
Auburn*					
Georgia*					
Kentucky*					
Texas A&M*					
Tennessee*					
Alabama*					
Ole Miss*					
Mississippi State*					
Florida*					
South Carolina*					

2019 MATCH STAT LEADERS		
KILLS		
Gillen	7	
Pamphile	1	
Cartwright	1	
Dirrigr	2	
Wheeler	1	
ASSISTS		
Rippee	9	
Ryan	1	
ACES		
Cartwright	3	
Crumpton	4	
Gillen	4	
Rippee	2	
Evans	2	
Ryan	1	
Dirrigr	1	
Trainor	1	
DIGS		
Gillen	3	
Rippee	2	
Cartwright	2	
Evans	2	
Trainor	2	
Downing	1	
TOTAL BLOCKS		
Pamphile	6	
Crumpton	4	
Gillen	1	
Garrett	1	

2019 INDIVIDUAL MATCH HIGHS		
KILLS		
28	Jillian Gillen	Sept. 7 at San Diego State
ATTACKS		
62	Jillian Gillen	Aug. 31 vs Montana State
HITTING PERCENTAGE		
.440	Jillian Gillen	Sept. 7 at San Diego State
ASSISTS		
34	Rachel Rippee	Sept. 13 at Maryland
ACES		
5	Ellesee Crumpton	Sept. 14 vs George Mason
DIGS		
18	Trainor	Sept. 14 vs George Mason
BLOCK SOLOS		
1	Jillian Gillen	Aug. 31 vs Montana State
1	Ellesee Crumpton	Sept. 10 vs UAPB
1	Rachel Rippee	Sept. 13 at Maryland
1	Maia Stripp	Sept. 13 at Maryland
1	Hailey Dirrigr	Sept. 14 vs George Mason
BLOCK ASSISTS		
8	Ellesee Crumpton	Sept. 10 vs UAPB
TOTAL BLOCKS		
9	Ellesee Crumpton	Sept. 10 vs UAPB



2019 AWARDS & HONORS

JILLIAN GILLEN

Arkansas Classic MVP
SEC Freshman of the Week (Sept. 3)

RACHEL RIPPEE

Arkansas Classic All-Tournament Team

DEVYN WHEELER

Maryland Invite All-Tournament Team

WELCOME TO BARNHILL ARENA

Top Single-Match Attendance

1.	3,015 vs #13 Florida	9-14-12
2.	2,349 vs South Carolina	11-19-14
3.	1,672 vs Missouri	10-02-13
4.	1,463 vs Tennessee State	8-29-14
5.	1,428 vs Ole Miss	10-6-17
6.	1,407 vs #15 Colorado State	8-26-11
7.	1,362 vs #5 Florida*	11-22-98
8.	1,343 vs #3 Florida	9-24-17
9.	1,342 vs McNeese State	8-28-15
10.	1,284 vs Kansas	8-29-15

* - 1998 SEC Tournament

Year-by-Year Attendance Totals

Year	# of Matches	Total	Avg.
1994	15	6,548	437
1995	13	6,194	477
1996	18	8,296	461
1997	15	8,101	540
1998	19	13,299	700
1999	14	6,315	451
2000	17	7,499	441
2001	11	5,794	527
2002	16	7,127	451
2003	11	5,683	517
2004	14	8,254	590
2005	14	9,365	669
2006	14	9,817	701
2007	16	10,919	682
2008	14	9,086	649
2009	14	10,316	737
2010	14	11,855	847
2011	14	12,903	922
2012	18	18,297	1,016
2013	15	13,047	870
2014	16	15,265	954
2015	15	14,697	980
2016	11	9,149	832
2017	13	12,919	994
2018	13	8,112	624
2019			

HEAD COACH JASON WATSON | 4TH YEAR AT ARKANSAS (15TH OVERALL)



Jason Watson was named the head coach of the University of Arkansas volleyball team on January 7, 2016, to become the third head coach in program history. In 11 prior seasons as a head coach at BYU (2005-07) and Arizona State (2008-15), Watson enters the 2019 season with a 239-197 (.548) record and has guided his teams to seven NCAA Tournament selections.

Heading into his fourth season at the helm, Watson is looking to put the Hogs back in forward motion after closing out the 2018 season at 11-17. The Razorbacks are predicted to finish two spots higher in the SEC than where they finished in 2018 - one could contribute the improvement from the recognized incoming class that earned Highest Honorable Mention by PrepVolleyball.com.

In his second season in Fayetteville, the Razorbacks tallied a 10-win improvement from the previous year, finishing the campaign with a 19-11 overall record and 9-9 mark in SEC play. Arkansas' 10 wins at Barnhill Arena marked the program's highest home-win total since 2012. Arkansas finished the year at No. 47 in the season-ending RPI rankings.

Individually, senior Pilar Victoria led the NCAA with 5.47 kills per set and 6.08 points per set in 2017 and earned AVCA All-America Honorable Mention and All-SEC honors. Additionally, setter Rachel Rippee collected AVCA All-South Region Honorable Mention accolades.

The Razorbacks matched their SEC output from the previous season with a 7-11 mark in league play during Watson's first year including six wins in their last nine matches of the year. Individually, senior Danielle Harbin emerged to finish third in the SEC with 4.22 kills per set on her way to AVCA All-South Region honors.

In eight years in Tempe, Ariz., Watson transformed ASU Volleyball from a perennial sub-.500 program into a postseason regular. In his last four seasons, the Sun Devils averaged more than 19 wins per season with four-consecutive bids to the NCAA Tournament. Watson also coached a pair of All-America performers, one in each of the past two seasons, for ASU's first national honorees since 2000.

Arizona State began the 2015 campaign with a 15-0 record and reached as high as No. 5 in the AVCA Top 25 poll. The Sun Devils also opened conference play with their best start in the Pac-10/12 era with four wins including the program's first win over Stanford in 15 years.

In 2014, ASU opened the season with six straight wins on the way to a 20-14 record. The Sun Devils were ranked in each AVCA regular season poll. Making its third straight trip to the NCAA Tournament, ASU defeated Texas A&M 3-1 to advance to the second round of the Tournament for the first time since 2006.

Watson led ASU to a 19-13 overall record in 2013 including a 3-0 upset of then-NCAA defending champion Texas. The Sun Devils started the season without dropping a set in their first seven matches. Making its second consecutive NCAA Tournament appearance, ASU dropped a five-set match to BYU in the first round.

In 2012, the Sun Devil squad opened with an 11-2 record, the best start since 1992. The Sun Devils finished with 20 wins - the most in a single season at ASU since 1993. The nine conference wins equaled the most since 2000. ASU made the program's 16th appearance in the NCAA Tournament and Watson became just the fifth coach from ASU to guide the Sun Devils to a NCAA postseason berth.

Watson arrived as the head coach at ASU in 2008. In 2013, he

was also named head coach of the sand volleyball team when the sport was added to the athletics program.

In June 2015, Watson was selected by USA Volleyball to serve as the head coach of the U.S. Collegiate National Team on a six-match tour of China.

In his three seasons at the helm of the BYU program, Watson compiled a 74-18 (.804) overall record while leading BYU to three-straight NCAA Tournament appearances. During his first season as head coach, Watson was named Mountain West Conference Coach of the Year after leading his team to a 25-4 record, the program's best mark since 1998. In addition to leading BYU to the MWC regular-season title, Watson also helped lead the Cougars back to the NCAA Tournament.

In 2007, he led the Cougars to a 24-8 overall record and an Elite 8 finish in the NCAA Regional Final. His team also finished the year ranked 12th nationally, and at one point through the season, the Cougars held a rank as high as ninth in the country. No stranger to the best competition, Watson's teams have been ranked as high as eighth on RPI, showing the character and strength of the teams he builds. Never backing down from challenges are also another hallmark trait of Watson-led teams.

Prior to his head-coaching debut, Watson had amassed 11 years as an assistant coach at four universities. After an All-American playing career at BYU, Watson coached for two years under his former coach, Carl McGown, before beginning his career in women's volleyball with extremely successful stints at Kansas State, Arkansas State, and Montana State.

Watson had an All-American playing career at BYU from 1990-1994, where he was a four-year starter and two-time captain. He graduated from BYU in 1995 with a degree in physical education and sports business management after leaving his native home of Homebush, Australia.

He and his wife, Larissa, have two sons and a daughter.



2019 TEAM MATCH HIGHS

KILLS		
71	vs Montana State	Aug. 31 (W, 3-2)
ATTACKS		
173	vs Montana State	Aug. 31 (W, 3-2)
HITTING PERCENTAGE		
.271	vs George Mason (58-22-133)	Sept. 14 (W, 3-1)
ASSISTS		
63	vs Montana State	Aug. 31 (W, 3-2)
ACES		
14	at Maryland	Sept. 13 (L, 3-1)
DIGS		
68	vs Montana State	Aug. 31 (W, 3-2)
TOTAL BLOCKS		
13	vs UAPB	Sept. 10 (W, 3-1)

OF MATCHES WITH...

10+ KILLS	
Jillian Gillen	6
Maggie Cartwright	3
Devyn Wheeler	2
Hailey Dirrigl	2
Ellesee Crumpton	1
Liz Pamphile	1
Maylin Garrett	1
Maia Stripp	1
20+ KILLS	
Jillian Gillen	2
10+ ASSISTS	
Rachel Rippee	9
Gracie Ryan	7
20+ ASSISTS	
Rachel Rippee	5
Gracie Ryan	2
30+ ASSISTS	
Rachel Rippee	4
10+ DIGS	
Gracie Ryan	4
Jillian Gillen	3
Rachel Rippee	3
Maggie Cartwright	2
Klaire Trainor	3
Lauren Evans	2
Savannah Downing	1
20+ DIGS	
10+ BLOCKS	

THE LAST TIME...

THE LAST TIME ARKANSAS...	
Won a match	vs George Mason, 9/14/19
Lost a match	vs Princeton, 9/14/19
Won at home	vs UAPB, 9/10/19
Lost at home	vs Tennessee, 11/22/18
Won on the road	at Mississippi State, 10/24/18
Lost on the road	at Maryland, 9/13/19
Won 3-0	vs. Northwestern St, 8/30/19
Lost 3-0	vs Princeton, 9/14/19
Won 3-0 at home	vs. Northwestern St, 8/30/19
Lost 3-0 at home	vs. Kentucky, 11/14/18
Won 3-0 on the road	at Mississippi State, 10/24/18
Lost 3-0 on the road	vs. San Diego, 9/6/19
Won in four sets	vs George Mason, 9/14/19
Lost in four sets	at Maryland, 9/13/19
Won in five sets	vs. Montana State, 8/31/19
Lost in five sets	at SDSU, 9/7/19
Beat an SEC team	vs. Georgia, 11/9/18
Lost to an SEC team	at Alabama, 11/23/18
Beat a ranked team	vs. #9 Florida, 10/4/15
Had 70+ kills	vs Montana State (71), 8/31/19
Had 80+ kills	
Had 90+ kills	at Ole Miss (91), 10/9/98
Had 100+ kills	vs Tennessee (105), 10/6/00
Attempted 150+ attacks	vs George Mason (151), 9/14/19
Attempted 170+ attacks	vs Montana State (173), 8/31/19
Attempted 200+ attacks	vs Ole Miss (210), 10/5/18
Attempted 250+ attacks	at Pacific (254), 11/28/98

THE LAST TIME A RAZORBACK...

Had 20+ kills	Jillian Gillen (28) at SDSU, 9/7/19
Had 30+ kills	Pilar Victoria (30) vs #3 Florida, 9/24/17
Had 35+ kills	Pilar Victoria (35) vs Ole Miss, 10/18/15
Had 40+ kills	Never
Had 50+ assists	Rachel Rippee (59) vs Ole Miss, 10/29/17
Had 60+ assists	Lindsay Scanlan (60) vs Alabama, 10/9/09
Had 75+ assists	Evgeniya Rangelova (77) vs Miami (OH), 9/9/00
Had 80+ assists	Evgeniya Rangelova (88) vs Tenn, 10/6/00
Had 3 solo blocks	Liz Pamphile at Ole Miss, 10/29/17
Had 4 solo blocks	Danielle Harbin vs Kentucky, 11/9/16
Had 5 solo blocks	Jennifer Haaser at Georgia, 11/9/03
Had 20+ digs	Okiana Valle (27) vs Alabama, 10/21/18
Had 30+ digs	Okiana Valle (33) at Alabama, 11/23/18
Had 40+ digs	Never
Had 50+ digs	Never

*not including neutral matches in "road" stats



SEASON/CAREER HIGHS

#1 RACHEL RIPPEE | SR | S

SEASON HIGHS

Hitting % _____
 Kills _____ 2 vs Princeton | 9-14-19
 Attempts _____ 3 vs Princeton | 9-14-19
 Assists _____ 34 at Maryland | 9-13-19
 Digs _____ 13 vs Montana State | 8-31-19
 Blocks _____ 1.5 (1-1) at Maryland | 9-13-19
 Aces _____ 2, Twice

CAREER HIGHS

Hitting % _____
 Kills _____ *5 at South Carolina | 11-12-17
 Attempts _____ 10 at Kansas State | 8-31-17
 Assists _____ *59 at Ole Miss | 10-29-17
 Digs _____ 17 at #4 Florida | 11-10-17
 Blocks _____ 8.0 (1-7) vs Texas A&M | 11-5-17
 Aces _____ 6 vs Georgia | 10-30-16

#2 SAVANNAH DOWNING | JR | L

SEASON HIGHS

Hitting % _____
 Kills _____
 Attempts _____
 Assists _____ 6 vs Montana State | 8-31-19
 Digs _____ 10 vs Montana State | 8-31-19
 Blocks _____
 Aces _____ 1, Three Times

CAREER HIGHS

Hitting % _____
 Kills _____
 Attempts _____
 Assists _____ 6 vs Montana State | 8-31-19
 Digs _____ 10 vs Montana State | 8-31-19
 Blocks _____
 Aces _____ 1, Three Times

#3 HAILEY DIRRIGL | JR | OH

SEASON HIGHS

Hitting % _____ .625 vs Northwestern St | 8-30-19
 Kills _____ 15 at Maryland | 9-13-19
 Attempts _____ 29 at Maryland | 9-13-19
 Assists _____
 Digs _____ 8 vs George Mason | 9-14-19
 Blocks _____ 4 vs George Mason | 9-14-19
 Aces _____ 3 at Maryland | 9-13-19

CAREER HIGHS

Hitting % _____ .500 (13-3-20) vs Yale | 9-8-17
 Kills _____ 25 at Kansas | 8-26-18
 Attempts _____ 62 at Kansas | 8-26-18
 Assists _____ *1 vs Ga. Southern | 8-31-18
 Digs _____ 11 at Georgia Tech | 9-15-18
 Blocks _____ 6.0 (0-6) vs CSU Bakersfield | 8-25-17
 Aces _____ 4 at Georgia | 10-25-17

#5 LAUREN EVANS | SO | OH

SEASON HIGHS

Hitting % _____
 Kills _____ 1 vs San Diego State | 9-7-19
 Attempts _____
 Assists _____ 6 vs San Diego State | 9-7-19
 Digs _____ 12 vs Princeton | 9-14-19
 Blocks _____
 Aces _____ 4 at Maryland | 9-13-19

CAREER HIGHS

Hitting % _____ --
 Kills _____ 1 vs San Diego State | 9-7-19
 Attempts _____ 2 at Kansas | 8-26-18
 Assists _____ 6 vs San Diego State | 9-7-19
 Digs _____ 12 vs Princeton | 9-14-19
 Blocks _____ --
 Aces _____ 4, Twice

#6 ELLEASE CRUMPTON | SO | MB

SEASON HIGHS

Hitting % _____ .688 (11-0-16) vs Montana State | 8-31-19
 Kills _____ 11 vs Montana State | 8-31-19
 Attempts _____ 16 vs Montana State | 8-31-19
 Assists _____ 1 vs Montana State | 8-31-19
 Digs _____ 4 vs Montana State | 8-31-19
 Blocks _____ 9.0 (1-8) vs UAPB | 9-10-19
 Aces _____ 5 vs George Mason | 9-14-19

CAREER HIGHS

Hitting % _____ .688 vs Montana State | 8-31-19
 Kills _____ 11 vs Montana State | 8-31-19
 Attempts _____ 16 vs Montana State | 8-31-19
 Assists _____ 1 vs Montana State | 8-31-19
 Digs _____ 4 vs Montana State | 8-31-19
 Blocks _____ 9.0 (1-8) vs UAPB | 9-10-19
 Aces _____ 5 vs George Mason | 9-14-19

#8 ELIZABETH PAMPHILE | JR | MB

SEASON HIGHS

Hitting % _____ .667 (9-1-12) at Maryland | 9-13-19
 Kills _____ 12 vs George Mason | 9-14-19
 Attempts _____ 21 vs George Mason | 9-14-19
 Assists _____
 Digs _____ 2 vs San Diego State | 9-7-19
 Blocks _____ 6 (0-6) vs George Mason | 9-14-19
 Aces _____

CAREER HIGHS

Hitting % _____ .667 (9-1-12) at Maryland | 9-13-19
 Kills _____ 16 at Kansas | 8-26-18
 Attempts _____ 36 at Kansas | 8-26-18
 Assists _____ *1 vs LSU | 11-3-17
 Digs _____ *4 vs LSU | 11-3-17
 Blocks _____ 9.0 (1-8) vs Kansas | 8-24-18
 Aces _____ *2 vs Buffalo | 9-8-18

#9 KLAIRE TRAINOR | JR | OH

SEASON HIGHS

Hitting % _____
 Kills _____ 1 vs UAPB | 9-10-19
 Attempts _____ 3 vs UAPB | 9-10-19
 Assists _____ 6 vs Northwestern St | 8-30-19
 Digs _____ 18 vs George Mason | 9-14-19
 Blocks _____
 Aces _____ 2 vs UAPB | 9-10-19

CAREER HIGHS

Hitting % _____ --
 Kills _____ 4 vs ULM | 8-26-17
 Attempts _____ 15 vs ULM | 8-26-17
 Assists _____ 6 vs Northwestern St | 8-30-19
 Digs _____ 18 vs George Mason | 9-14-19
 Blocks _____ 1.0 (0-1) vs ULM | 8-26-17
 Aces _____ 2 vs UAPB | 9-10-19

#10 JILLIAN GILLEN | FR | OH

SEASON HIGHS

Hitting % _____ .440 (28-6-50) vs San Diego State | 9-7-19
 Kills _____ 28 vs San Diego State | 9-7-19
 Attempts _____ 62 vs Montana State | 8-31-19
 Assists _____ 2 vs San Diego State | 9-7-19
 Digs _____ 13 vs Montana State | 8-31-19
 Blocks _____ 3 (0-3), Twice
 Aces _____ 2, Twice

CAREER HIGHS

Hitting % _____ .440 (28-6-50) vs San Diego State | 9-7-19
 Kills _____ 28 vs San Diego State | 9-7-19
 Attempts _____ 62 vs Montana State | 8-31-19
 Assists _____ 2 vs San Diego State | 9-7-19
 Digs _____ 13 vs Montana State | 8-31-19
 Blocks _____ 3 (0-3), Twice
 Aces _____ 2, Twice

#11 MAGGIE CARTWRIGHT | FR | OH

SEASON HIGHS

Hitting % _____ .273 (10-4-22) vs Little Rock | 8-30-19
 Kills _____ 14 vs Montana State | 8-31-19
 Attempts _____ 40 vs Montana State | 8-31-19
 Assists _____ 1 vs San Diego State | 9-7-19
 Digs _____ 10 vs San Diego State | 9-7-19
 Blocks _____ 4 (0-4) vs UAPB | 9-10-19
 Aces _____ 2, Three Times

CAREER HIGHS

Hitting % _____ .273 (10-4-22) vs Little Rock | 8-30-19
 Kills _____ 14 vs Montana State | 8-31-19
 Attempts _____ 40 vs Montana State | 8-31-19
 Assists _____ 1 vs San Diego State | 9-7-19
 Digs _____ 10 vs San Diego State | 9-7-19
 Blocks _____ 4 (0-4) Aces
 2, Three Times

#13 MAYLIN GARRETT | R-FR | OH

SEASON HIGHS

Hitting % _____ .500 (10-1-18) vs UAPB | 9-10-19
 Kills _____ 10 vs UAPB | 9-10-19
 Attempts _____ 18 vs UAPB | 9-10-19
 Assists _____
 Digs _____ 2 vs San Diego | 9-6-19
 Blocks _____ 4 (0-4) vs Montana State | 8-31-19
 Aces _____

CAREER HIGHS

Hitting % _____ .500 (10-1-18) vs UAPB | 9-10-19
 Kills _____ 10 vs UAPB | 9-10-19
 Attempts _____ 18 vs UAPB | 9-10-19
 Assists _____
 Digs _____ 2 vs San Diego | 9-6-19
 Blocks _____ 4 (0-4) vs Montana State | 8-31-19
 Aces _____

#15 MAIA STRIPP | R-SO | MB

SEASON HIGHS

Hitting % _____ .588 (11-1-17) vs UAPB | 9-10-19
 Kills _____ 11 vs UAPB | 9-10-19
 Attempts _____ 17 vs UAPB | 9-10-19
 Assists _____ 2 at Maryland | 9-13-19
 Digs _____ 5 at Maryland | 9-13-19
 Blocks _____ 4 vs UAPB | 9-10-19
 Aces _____ 3 at Maryland | 9-13-19

CAREER HIGHS

Hitting % _____ .588 (11-1-17) vs UAPB | 9-10-19
 Kills _____ 11 vs UAPB | 9-10-19
 Attempts _____ 17 vs UAPB | 9-10-19
 Assists _____ 2 at Maryland | 9-13-19
 Digs _____ 5 at Maryland | 9-13-19
 Blocks _____ *6.0 (0-6) vs Buffalo | 9-8-18
 Aces _____ 3 at Maryland | 9-13-19

#16 DEVYN WHEELER | JR | MB

SEASON HIGHS

Hitting % _____ .727 (8-0-11) vs Little Rock | 8-30-19
 Kills _____ 14 at Maryland | 9-13-19
 Attempts _____ 29 at Maryland | 9-13-19
 Assists _____ 1 vs Montana State | 8-31-19
 Digs _____ 2, Twice
 Blocks _____ 3 (0-3) vs San Diego State | 9-7-19
 Aces _____ 1 vs Northwestern St | 8-30-19

CAREER HIGHS

Hitting % _____ .727 (8-0-11) vs Little Rock | 8-30-19
 Kills _____ 14 at Maryland | 9-13-19
 Attempts _____ 29 at Maryland | 9-13-19
 Assists _____ 1 vs Mntana State | 8-31-19
 Digs _____ 2, Twice
 Blocks _____ 3 (0-3) vs San Diego State | 9-7-19
 Aces _____ 1 vs Northwestern St | 8-30-19



SEASON/CAREER HIGHS

#17 ABBIGAIL MCGEE | FR | S/L

SEASON HIGHS

Hitting % _____
 Kills _____
 Attempts _____
 Assists _____
 Digs _____ 2 at Maryland | 9-13-19
 Blocks _____
 Aces _____

CAREER HIGHS

Hitting % _____
 Kills _____
 Attempts _____
 Assists _____
 Digs _____ 2 at Maryland | 9-13-19
 Blocks _____
 Aces _____

#19 NATALIE PERDUE | FR | OH

SEASON HIGHS

Hitting % _____
 Kills _____
 Attempts _____
 Assists _____
 Digs _____
 Blocks _____
 Aces _____

CAREER HIGHS

Hitting % _____
 Kills _____
 Attempts _____
 Assists _____
 Digs _____
 Blocks _____
 Aces _____

#21 GRACIE RYAN | SO | S

SEASON HIGHS

Hitting % _____
 Kills _____ 1 vs UAPB | 9-10-19
 Attempts _____ 3 vs UAPB | 9-10-19
 Assists _____ 23 vs UAPB | 9-10-19
 Digs _____ 17 vs George Mason | 9-14-19
 Blocks _____
 Aces _____ 1, Twice

CAREER HIGHS

Hitting % _____ *1.000 (3-0-3) at Florida | 11-4-18
 Kills _____ 4 vs Missouri | 9-23-18
 Attempts _____ 9 vs Missouri | 9-23-18
 Assists _____ *28 vs Ole Miss | 10-5-18
 Digs _____ 17 vs George Mason | 9-14-19
 Blocks _____ 2 vs Missouri | 9-23-18
 Aces _____ 4 vs Georgia | 11-9-18

#23 ALLYSON DERNEHL | JR | OH

SEASON HIGHS

Hitting % _____
 Kills _____ 2 vs Northwestern St | 8-30-19
 Attempts _____ 11 vs Northwestern St | 8-30-19
 Assists _____
 Digs _____ 2 vs Northwestern St | 8-30-19
 Blocks _____ 1 (0-1) vs Northwestern St | 8-30-19
 Aces _____

CAREER HIGHS

Hitting % _____
 Kills _____ 2 vs Northwestern St | 8-30-19
 Attempts _____ 11 vs Northwestern St | 8-30-19
 Assists _____
 Digs _____ 2 vs Northwestern St | 8-30-19
 Blocks _____ 1 (0-1) vs Northwestern St | 8-30-19
 Aces _____



OVERALL SEASON STATISTICS

Arkansas Combined Team Statistics (as of Sep 18, 2019)
All matches

Overall record: 5-5 Conf: 0-0 Home: 4-0 Away: 0-3 Neutral: 1-2

#	Player	sp	Attack				pct	Set		Serve			re	Dig		Blocking					points	
			k	k/s	e	ta		a	a/s	sa	se	sa/s		dig	dig/s	bs	ba	total	blk/s	be		bhe
10	Jillian Gillen	37	131	3.54	72	351	.168	6	0.16	13	15	0.35	16	74	2.00	2	13	15	0.41	1	0	152.5
16	Devyn Wheeler	37	69	1.86	19	169	.296	1	0.03	1	2	0.03	0	15	0.41	1	18	19	0.51	0	1	80.0
11	Maggie Cartwright	32	64	2.00	47	193	.088	6	0.19	6	9	0.19	11	46	1.44	0	14	14	0.44	0	0	77.0
8	Elizabeth Pamphile	33	55	1.67	28	132	.205	0	0.00	0	0	0.00	1	6	0.18	1	31	32	0.97	2	0	71.5
6	Ellease Crumpton	27	39	1.44	9	78	.385	1	0.04	12	13	0.44	0	6	0.22	1	27	28	1.04	1	0	65.5
13	Maylin Garrett	27	38	1.41	21	96	.177	0	0.00	0	0	0.00	0	6	0.22	0	14	14	0.52	1	0	45.0
3	Hailey Dirrigl	13	38	2.92	14	103	.233	0	0.00	6	5	0.46	3	13	1.00	2	5	7	0.54	0	0	48.5
15	Maia Stripp	11	15	1.36	3	29	.414	2	0.18	3	5	0.27	0	10	0.91	1	8	9	0.82	1	1	23.0
21	Gracie Ryan	33	5	0.15	3	13	.154	138	4.18	5	13	0.15	0	75	2.27	0	0	0	0.00	0	1	10.0
1	Rachel Rippee	37	4	0.11	2	8	.250	233	6.30	9	13	0.24	0	76	2.05	1	4	5	0.14	0	1	16.0
23	Allyson Dernehl	3	3	1.00	5	14	-.143	0	0.00	0	0	0.00	1	2	0.67	0	2	2	0.67	1	0	4.0
5	Lauren Evans	17	1	0.06	1	3	.000	11	0.65	7	3	0.41	12	36	2.12	0	0	0	0.00	0	0	8.0
9	Klaire Trainor	16	1	0.06	2	4	-.250	18	1.12	2	1	0.12	3	45	2.81	0	0	0	0.00	0	0	3.0
17	Abigail McGee	6	0	0.00	0	1	.000	2	0.33	0	0	0.00	0	3	0.50	0	0	0	0.00	0	0	0.0
2	Savannah Downing	22	0	0.00	0	0	.000	12	0.55	3	6	0.14	7	38	1.73	0	0	0	0.00	0	0	3.0
ARKANSAS		37	463	12.51	226	1194	.198	430	11.62	67	85	1.81	60	451	12.19	9	136	77.0	2.08	7	4	607.0
Opponents		37	400	10.81	194	1123	.183	372	10.05	60	68	1.62	67	435	11.76	10	143	81.5	2.20	14	9	541.5

Team Statistics	AR	OPP
ATTACK		
Kills	463	400
Errors	226	194
Total Attacks	1194	1123
Attack Pct	.198	.183
Kills/Set	12.5	10.8
SET		
Assists	430	372
Assists/Set	11.6	10.1
SERVE		
Aces	67	60
Errors	85	68
Aces/Set	1.8	1.6
SERVE RECEPTIONS		
Errors	60	67
Errors/Set	1.6	1.8
DEFENSE		
Digs	451	435
Digs/Set	12.2	11.8
BLOCKING		
Block Solo	9	10
Block Assist	136	143
Total Blocks	77.0	81.5
Blocks/Set	2.1	2.2
Block Errors	7	14
Ball handling errors	4	9
ATTENDANCE		
Total	1845	933
Dates/Avg Per Date	4/461	3/311
Neutral site #/Avg	3/37	-
Current win streak	1	-
Home win streak	4	-

Date	Opponent	Score	Score by set	Att.
Aug 30	LITTLE ROCK	w 3-0	25-20,25-21,25-12	767
Aug 30	NORTHWESTERN STATE	w 3-0	25-18,25-20,25-18	304
Aug 31	MONTANA STATE	w 3-2	20-25,28-30,25-15,25-18,15-13	405
Sep 05	vs West Virginia	L 0-3	17-25,20-25,22-25	111
Sep 06	at #25 San Diego	L 0-3	13-25,13-25,19-25	822
Sep 07	at San Diego State	L 2-3	24-26,25-16,19-25,25-17,12-15	111
Sep 10	UAPB	w 3-1	25-13,21-25,25-13,25-19	369
Sep 13	at Maryland	L 1-3	22-25,25-23,24-26,19-25	0
Sep 14	vs Princeton	L 0-3	18-25,21-25,19-25	0
Sep 14	vs George Mason	w 3-1	25-20,19-25,25-20,25-14	0

Record in 3-set matches:2-3 • Record in 4-set matches:2-1 • Record in 5-set matches:1-1



TEAM MATCH BY MATCH

Date	Opponent	sp	attack				set			serve				recept			dig	blocking				bhe	points	score
			k	e	ta	pct	a	ta	pct	sa	se	ta	pct	re	ta	pct		bs	ba	be	total			
Aug 30, 2019	LITTLE ROCK	3	39	13	100	.260	34	-	-	5	11	-	-	5	-	-	42	0	14	0	7.0	1	51.0	3-0
Aug 30, 2019	NORTHWESTERN STATE	3	41	17	94	.255	38	-	-	8	8	-	-	2	-	-	41	0	8	0	4.0	0	53.0	3-0
Aug 31, 2019	MONTANA STATE	5	71	35	173	.208	63	-	-	8	8	-	-	10	-	-	68	1	16	1	9.0	1	88.0	3-2
Sep 05, 2019	vs West Virginia	3	33	23	90	.111	33	-	-	4	7	-	-	5	-	-	33	1	14	0	8.0	1	45.0	0-3
Sep 06, 2019	at San Diego	3	18	20	96	-.021	17	-	-	4	5	-	-	7	-	-	31	0	12	2	6.0	0	28.0	0-3
Sep 07, 2019	at San Diego State	5	59	25	131	.260	58	-	-	8	13	-	-	0	-	-	43	0	14	1	7.0	0	74.0	2-3
Sep 10, 2019	UAPB	4	56	28	127	.220	55	-	-	6	7	-	-	5	-	-	57	1	24	2	13.0	1	75.0	3-1
Sep 13, 2019	at Maryland	4	50	21	116	.250	45	-	-	14	11	-	-	15	-	-	36	2	12	1	8.0	0	72.0	1-3
Sep 14, 2019	vs Princeton	3	37	21	114	.140	34	-	-	3	4	-	-	7	-	-	40	1	8	0	5.0	0	45.0	0-3
Sep 14, 2019	vs George Mason	4	59	23	153	.235	53	-	-	7	11	-	-	4	-	-	60	3	14	0	10.0	0	76.0	3-1
Arkansas		37	463	226	1194	.198	430	-	-	67	85	-	-	60	-	-	451	9	136	7	77.0	4	607.0	
		37	400	194	1123	.183	372	-	-	60	68	-	-	67	-	-	435	10	143	14	81.5	9	541.5	

Sets played: 37
 Kills per set: 12.51
 Assists per set: 11.62

Service aces per set: 1.81
 Digs per set: 12.19
 Blocks per set: 2.08

Points per set: 16.41
 Ball handling errors per set: 0.11
 Reception errors per set: 1.62

LAST MATCH - GEORGE MASON

##	Arkansas	S	ATTACK				SET			SERVE				RECEIVE			BLOCK				Points	
			K	E	TA	Pct	Ast	TA	Pct	SA	SE	TA	Pct	O	RE	Pct	Dig	BS	BA	BE		BHE
3	Hailey Dirrigl	4	10	3	34	.206	0	3	.000	1	2	18	.889	16	1	.941	8	1	3	0	0	13.5
6	Ellease Crumpton	4	9	2	15	.467	0	0	.000	5	3	23	.870	0	0	.000	2	0	1	0	0	14.5
8	Elizabeth Pamphile	4	12	3	21	.429	0	1	.000	0	0	0	.000	0	0	.000	1	0	6	0	0	15.0
10	Jillian Gillen	4	14	7	38	.184	2	8	.250	0	0	7	1000	28	2	.933	6	1	1	0	0	15.5
13	Maylin Garrett	2	2	4	8	-.250	0	1	.000	0	0	0	.000	0	0	.000	0	0	1	0	0	2.5
21	Gracie Ryan	4	1	0	1	1.000	15	56	.268	0	2	13	.846	0	0	.000	17	0	0	0	0	1.0
1	Rachel Rippee	4	0	0	0	.000	32	57	.561	1	3	20	.850	0	0	.000	7	0	0	0	0	1.0
9	Klaire Trainor	4	0	1	1	-1.00	4	22	.182	0	1	11	.909	26	1	.963	18	0	0	0	0	0.0
11	Maggie Cartwright	3	4	2	17	.118	0	2	.000	0	0	0	.000	1	0	1000	0	0	0	0	0	4.0
16	Devyn Wheeler	4	7	1	18	.333	0	1	.000	0	0	0	.000	0	0	.000	1	1	2	0	0	9.0
Totals		4	59	23	153	.235	53	151	.351	7	11	92	.880	71	4	.947	60	3	14	0	0	76.0

Team Attack By Set

Set	K	E	TA	Pct	Sideout	Pct
1	20	4	33	.485	16-21	76%
2	11	8	48	.062	10-24	41%
3	14	7	43	.163	12-21	57%
4	14	4	29	.345	10-14	71%
				48-80	60%	

TOTAL TEAM BLOCKS: 10.0

SET SCORES

Arkansas (3)
 George Mason (1)

	1	2	3	4	Team Records:
Arkansas	25	19	25	25	5-5
George Mason	20	25	20	14	3-6

##	George Mason	S	ATTACK				SET			SERVE				RECEIVE			BLOCK				Points	
			K	E	TA	Pct	Ast	TA	Pct	SA	SE	TA	Pct	O	RE	Pct	Dig	BS	BA	BE		BHE
1	WILLIAMS, Bailey	4	9	8	28	.036	0	6	.000	2	2	20	.900	6	0	1000	14	0	1	0	0	11.5
3	HARDY, Siron	4	16	5	35	.314	2	4	.500	0	1	9	.889	31	4	.886	11	1	1	0	0	17.5
7	CLARK, Jewel	4	3	2	11	.091	0	2	.000	1	0	12	1000	0	0	.000	4	0	7	0	0	7.5
9	NIU, ShaLi	4	7	4	35	.086	1	4	.250	1	2	13	.846	23	1	.958	7	0	7	0	0	11.5
15	DERICK, Erin	4	4	0	6	.667	31	112	.277	0	0	16	1000	0	0	.000	14	0	1	1	0	4.5
17	EHMKE, Peyton	4	2	3	16	-.062	0	0	.000	0	0	0	.000	0	0	.000	0	0	2	0	0	3.0
18	DER, Stephanie	4	0	0	0	.000	4	13	.308	0	0	10	1000	13	2	.867	12	0	0	0	0	0.0
Totals		4	41	22	131	.145	38	141	.270	4	5	80	.938	74	7	.914	62	1	19	1	0	55.5

Team Attack By Set

Set	K	E	TA	Pct	Sideout	Pct
1	10	3	25	.280	15-23	65%
2	13	5	40	.200	11-20	55%
3	9	7	38	.053	11-24	45%
4	9	7	28	.071	10-25	40%
				47-92	51%	

TOTAL TEAM BLOCKS: 10.5

Site: College Park, Md. (XFINITY Center Pav)
 Date: Sep 14, 2019 Attend: Time: 1:49
 Referees: Carla Bunner, David Carson
 Line judges: Shera Moxley, Daniel Liberto

	1	2	3	4	Total
Tie scores	9	3	6	0	18
Lead change	2	2	2	0	6



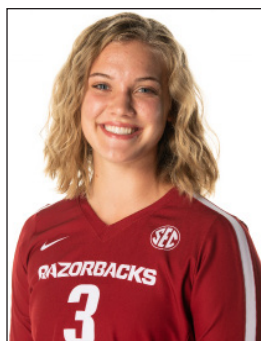
RADIO/TV HEADSHOT ROSTER



1 RACHEL RIPPEE
Sr. | S | 6-0
Springfield, Mo.



2 SAVANNAH DOWNING
Jr. | L | 5-5
Carthage, Mo.



3 HAILEY DIRRIGL
Jr. | OH | 6-2
Phoenix, Ariz.



5 LAUREN EVANS
Soph. | OH | 5-11
Colleyville, Texas



6 ELLEASE CRUMPTON
Soph. | OH | 6-3
Houston, Texas



8 ELIZABETH PAMPHILE
Jr. | MB | 6-2
Orlando, Fla.



9 KLAIRE TRAINOR
Jr. | OH | 5-10
Springdale, Ark.



10 JILLIAN GILLEN
Fr. | OH | 5-10
Stilwell, Kan.



11 MAGGIE CARTWRIGHT
Fr. | OH | 6-0
Kimberly, Wis.



13 MAYLIN GARRETT
R-Fr. | OH | 6-0
San Antonio, Texas



15 MAIA STRIPP
R-Soph. | MB | 6-3
Roskilde, Denmark



16 DEVYN WHEELER
Jr. | MB | 6-0
Carrollton, Texas



17 ABBIGAIL MCGEE
Fr. | S/L | 5-7
Jonesboro, Ark.



19 NATALIE PERDUE
Fr. | OH | 6-0
Dallas, Texas



21 GRACIE RYAN
Soph. | S | 5-9
Orlando, Fla.



23 ALLYSON DERNEHL
Jr. | OH | 5-10
Sugar Land, Texas



JASON WATSON
Head Coach
Fourth Season



MEGAN WARGO-KEARNEY
Assistant Coach
Third Season



MACEY GARDNER
Assistant Coach
First Season

