



RAZORBACKS

Mario Bravante | Associate Director of Communications
E: bravante@uark.edu | Arkansas Razorbacks.com

2019-20 WOMEN'S BASKETBALL

SCHEDULE

Date	Opponent	Time	TV/RESULT
Oct. 24	Pittsburg State (Exh.)	7 p.m.	W, 97-63
Oct. 30	Oklahoma City Univ. (Exh.)	7 p.m.	W, 77-62
Nov. 8	New Orleans (Elem. Day)	10:30 a.m.	W, 82-52
Nov. 11	McNeese State	7 p.m.	W, 101-58
Nov. 14	Oral Roberts	7 p.m.	W, 96-64
Nov. 17	Stony Brook	1 p.m.	W, 88-58
Nov. 20	Belmont	7 p.m.	W, 91-60
Nov. 24	at California	4 p.m.	L, 84-80
Nov. 29	Fordham!	3 p.m.	W, 71-59
Nov. 30	Wisconsin!	6 p.m.	W, 68-64
Dec. 7	Kansas State#	2 p.m.	SECN+
Dec. 11	Tulsa	6 p.m.	SECN
Dec. 15	Northwestern State	2 p.m.	SECN+
Dec. 21	Little Rock&	1 p.m.	
Dec. 29	UT Martin	2 p.m.	SECN+
Jan. 2	Texas A&M*	8 p.m.	SECN+
Jan. 5	at Auburn*	1 p.m.	SECN
Jan. 9	at South Carolina*	6 p.m.	SECN+
Jan. 12	Missouri*	2 p.m.	SECN
Jan. 19	at Vanderbilt*	5 p.m.	SECN
Jan. 23	Georgia*	6 p.m.	SECN
Jan. 26	Florida* (We Back Pat)	2 p.m.	SECN+
Jan. 30	at Alabama*	7 p.m.	SECN+
Feb. 2	at Missouri*	4 p.m.	SECN
Feb. 6	South Carolina*	7:30 p.m.	SECN
Feb. 9	Kentucky* (Play4Kay)	3 p.m.	ESPN2
Feb. 16	at Ole Miss*	2 p.m.	SECN
Feb. 20	Tennessee*	6 p.m.	SECN
Feb. 23	at Florida*	3 p.m.	SECN
Feb. 27	at Mississippi State*	8 p.m.	SECN
March 1	LSU*	1 p.m.	SECN+

!-Bahamas Hoopfest

#-Big 12/SEC Challenge | & - Neutral Site at Verizon Arena

*-SEC Contest

9 No. 23/23 ARKANSAS VS. KANSAS STATE | DEC. 7 | BUD WALTON ARENA

SERIES (EXH.)

Overall	2-3
SEC	N/A
Fayetteville	2-0
Away	0-3
Neutral	0-0



ARKANSAS (7-1) (SEC)

PTS / GAME	84.6
PTS ALLOWED / GAME	62.4
FG	.438
FG DEFENSE	.344
3-PT FG	.378
3-PT FG DEFENSE	.223
REB / GAME	42.5
REB ALLOWED / GAME	43.8
LEADING SCORER	Dunjee, 21.0
LEADING REBOUNDER	Thomas, 10.6
LEADER IN ASSISTS	Gaulden, 21
HEAD COACH	Mike Neighbors
ARKANSAS RECORD	42-35 (3)
CAREER RECORD	140-76 (7)

KANSAS STATE (4-3) (BIG 12)

PTS / GAME	76.0
PTS ALLOWED / GAME	56.0
FG	.441
FG DEFENSE	.327
3-PT FG	.329
3-PT FG DEFENSE	.265
REB / GAME	47.4
REB ALLOWED / GAME	35.1
LEADING SCORER	Carr, 15.6
LEADING REBOUNDER	Williams, 12.8
LEADER IN ASSISTS	Harris, 29
HEAD COACH	Jeff Mittie
SCHOOL RECORD	104-69 (6)
CAREER RECORD	557-304 (28)

NEIGHBORHOOD WATCH

- No. 23 Arkansas jumped back up in the polls this week, moving from 25 to 23 in the AP, and from 24 to 23 in the Coaches'.
- Arkansas has been ranked for the first five weeks of the season, the first time since the fall of 2002 that has happened for the Hogs.
- A large part of Arkansas' success is predicated on its Functionally Fast offense, which is currently the sixth-best attack in the country (84.6 PPG). The Hogs trail only Baylor, Maryland, DePaul, Oregon, Abilene Christian and Mississippi State.
- The Hogs' 7-1 start to this season is their best since the 2016-17 campaign, in which they opened 9-1.

BAHAMAS BOUNCEBACK

- Head Coach Mike Neighbors' squad bounced back from its first loss of the season at Cal by reeling off two straight victories at the Bahamas Hoopfest.
- The Hogs first beat Fordham in Nassau, 71-59.
- Redshirt junior guard Chelsea Dunjee was locked in from the jump in that game, going for a game-high 24 points on six of 11 shooting.
- Junior forward Taylah Thomas was huge down the stretch for the Hogs, as she scored 14 of her 15 total points in the second half, including five late in the fourth. Thomas also recorded her third-career double-double (15 pts, 13 rebounds) in the win.
- The highlight of the trip, though, was Arkansas' come-from-behind win against Wisconsin.
- Arkansas trailed the Badgers by as many as 11 in the game, and by as many as eight in the fourth quarter. Then Alexis Tolefree took over.
- She would pour in all 12 of her points in the final frame, including six of them on Arkansas' eight-point possession that would swing the game.
- All told, Arkansas would hold off Wisconsin in the final minute, grabbing the 68-64 win.

FOLLOW, WATCH & LISTEN



@RAZORBACKWBB

Broadcast: SECN+

Razorback Sports Network from IMG (Radio)

Phil Elson - <http://143.223.155.160/audio>
Fayetteville - KQSM-FM-92.1 /// KYNG-AM - 1590*
Fort Smith - KFPW-AM-1230 /// KHGG-AM-1580*
Rogers - KURM-AM-790 /// FM-100.3
*If there are conflicts on the FM station

LAST GAME'S STARTERS

ALEXIS TOLEFREE



Sr | Conway, Ark.

PPG	FG	APG	SPG
2	10.8	.426	2.1

TAYLAH THOMAS



Jr | Arlington, Texas

PPG	FG	RPG	BPG
24	7.6	.571	10.6

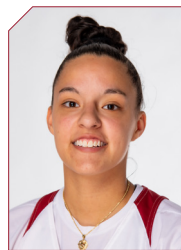
MAKAYLA DANIELS



Fr | Frederick, Md.

PPG	FG	APG	SPG
43	13.3	.523	2.1

AMBER RAMIREZ



RJr | San Antonio, Tx.

PPG	FG	3PT	APG
23	14.8	.394	.444

CHELSEA DUNJEE



RJr | Sapulpa, Okla.

PPG	FG	RPG	FT
33	21.0	.443	5.9

2019-20 @RAZORBACKWBB

NUMERICAL

NO.	NAME	POS	HT	CL	HOMETOWN/PREVIOUS SCHOOL	TWITTER
0	A'Tyanna Gaulden	G	5-7	RJr	Ocilla, Ga./Americus Sumter HS/Florida State	@AtyannaGaulden
1	Marquesha Davis	F	6-0	Fr	Springdale, Ark./Springdale HS	@MarqueshaDavis
2	Alexis Tolefree	G	5-8	Sr	Conway, Ark./Conway HS/Jones College	@a2smooth_
4	Erynn Barnum	F	6-2	RFr	Little Rock, Ark./LR Central HS	@erynnbee
10	Kiara Williams	F/C	6-1	Sr	Little Rock, Ark./LR Central HS	
13	Grayce Spangler	G	5-11	Jr	Fayetteville, Ark./Fayetteville HS	@grayce_1313
14	Jailyn Mason	G	5-9	Sr	Mason, Ohio/William Mason HS	@jaimason14
22	Avery Hughes	G	5-7	Fr	Bentonville, Ark./Bentonville HS	@averyhughes00
23	Amber Ramirez	G	5-9	RJr	San Antonio, Texas/Wagner HS/TCU	@yungram_
24	Taylah Thomas	F	6-1	Jr	Arlington, Texas/Mansfield Timberview HS	@hailtaylahh
25	Destinee Oberg	C	6-3	Fr	Burnsville, Minn./Academy of Holy Angles	@Destineeoberg
30	Macy Weaver	F	6-3	Jr	Davis Junction, Ill./Stillman Valley HS	@macyweaver528
33	Chelsea Dungee	G	5-11	RJr	Sapulpa, Okla./Sapulpa HS/Oklahoma	@chelsea_dungee
35	Ginger Reece	F	5-10	Fr	Lawton, Okla./Eisenhower HS	@ReeceGinger35
43	Makayla Daniels	G	5-8	Fr	Frederick, M.D./Frederick HS	@MakaylaDaniels5
52	Rokia Doumbia	G	5-9	So	Mali, Africa/IMG Academy	@23RokiaDoumbia

Title	Name	Year	Alma Mater
Head Coach	Mike Neighbors	3rd Season	Arkansas, 1993
Associate Head Coach	Todd Schaefer	3rd Season	Thomas More College, 1995
Assistant Coach	Pauline Love	3rd Season	Southern Miss, 2010
Assistant Coach	Chantel Osahor	1st Season	Washington, 2017
Director of Operations	Amber Shirey	26th Season	Arkansas, 1992
Director of Video and Scouting	Jeff Brazil	13th Season	Arkansas, 2010
Dir. of Student-Athlete Devel.	C'eira Ricketts	3rd Season	Arkansas, 2015

ELIGIBILITY

Seniors (3)	Juniors (6)	Sophomores (1)	Freshmen (6)
Alexis Tolefree	Chelsea Dungee	Rokia Doumbia	Erynn Barnum
Jailyn Mason	A'Tyanna Gaulden		Makayla Daniels
Kiara Williams	Grayce Spangler		Marquesha Davis
	Amber Ramierz		Avery Hughes
	Taylah Thomas		Destinee Oberg
	Macy Weaver		Ginger Reece

ALPHABETICAL

NO.	NAME	POS	HT	CL	HOMETOWN/PREVIOUS SCHOOL
4	Erynn Barnum	F	6-2	RFr	Little Rock, Ark./LR Central HS
43	Makayla Daniels	G	5-8	Fr	Frederick, M.D./Frederick HS
1	Marquesha Davis	F	6-0	Fr	Springdale, Ark./Springdale HS
52	Rokia Doumbia	G	5-9	So	Mali, Africa/IMG Academy
33	Chelsea Dungee	G	5-11	RJr	Sapulpa, Okla./Sapulpa HS/Oklahoma
0	A'Tyanna Gaulden	G	5-7	RJr	Ocilla, Ga./Americus Sumter HS/Florida State
22	Avery Hughes	G	5-7	Fr	Bentonville, Ark./Bentonville HS
14	Jailyn Mason	G	5-9	Sr	Mason, Ohio/William Mason HS
25	Destinee Oberg	C	6-3	Fr	Burnsville, Minn./Academy of Holy Angles
23	Amber Ramirez	G	5-9	RJr	San Antonio, Texas/Wagner HS/TCU
35	Ginger Reece	F	5-10	Fr	Lawton, Okla./Eisenhower HS
13	Grayce Spangler	G	5-11	Jr	Fayetteville, Ark./Fayetteville HS
24	Taylah Thomas	F	6-1	Jr	Arlington, Texas/Mansfield Timberview
2	Alexis Tolefree	G	5-8	Sr	Conway, Ark./Conway HS/Jones County JC
30	Macy Weaver	F	6-3	Jr	Davis Junction, Ill./Stillman Valley HS
10	Kiara Williams	F/C	6-1	Sr	Little Rock, Ark./Little Rock Central HS

BY STATE

ARKANSAS	
Erynn Barnum	Little Rock
Marquesha Davis	Springdale
Avery Hughes	Bentonville
Grayce Spangler	Fayetteville
Alexis Tolefree	Conway
Kiara Williams	Little Rock

GEORGIA

A'Tyanna Gaulden	Ocilla
------------------	--------

ILLINOIS

Macy Weaver	Davis Junction
-------------	----------------

MARYLAND

Makayla Daniels	Frederick
-----------------	-----------

MINNESOTA

Destinee Oberg	Burnsville
----------------	------------

OHIO

Jailyn Mason	Mason
--------------	-------

OKLAHOMA

Chelsea Dungee	Sapulpa
Ginger Reece	Lawton

TEXAS

Amber Ramirez	San Antonio
Taylah Thomas	Arlington

AFRICA

Rokia Doumbia	Mali
---------------	------

FA-NETIK

PRONUNCIATIONS

0	A'Tyanna	AH-tee-ah-nuh
1	Marquesha	Mar-QWEE-Shuh
10	Kiara	KEY-AIR-uh
13	Grayce	GRACE
14	Jailyn	JAY-lyn
23	Rokia Doumbia	ro-KEY-uh
		DOOM-b-uh
24	Taylah	TAY-luh

THE SOUTHEASTERN CONFERENCE (As of 12/6/19)

	Conference				Overall					
	W-L	Pct.	H	A	W-L	Pct.	H	A	N	Strk
Kentucky	0-0	.000	0-0	0-0	8-0	1.000	6-0	2-0	0-0	W8
Tennessee	0-0	.000	0-0	0-0	7-0	1.000	5-0	2-0	0-0	W7
LSU	0-0	.000	0-0	0-0	8-1	.889	4-1	2-0	2-0	W7
Mississippi State	0-0	.000	0-0	0-0	8-1	.889	4-0	2-0	2-1	L1
South Carolina	0-0	.000	0-0	0-0	8-1	.889	3-0	3-0	2-1	W2
Arkansas	0-0	.000	0-0	0-0	7-1	.875	5-0	0-1	1-0	W2
Texas A&M	0-0	.000	0-0	0-0	6-1	.857	4-0	2-0	0-1	W1
Florida	0-0	.000	0-0	0-0	6-2	.750	4-2	2-0	0-0	W2
Georgia	0-0	.000	0-0	0-0	6-3	.667	4-2	0-1	2-0	L1
Vanderbilt	0-0	.000	0-0	0-0	6-3	.667	5-1	1-0	0-2	W1
Alabama	0-0	.000	0-0	0-0	5-3	.625	1-2	3-0	1-1	L2
Ole Miss	0-0	.000	0-0	0-0	5-4	.556	4-1	0-2	1-1	L2
Auburn	0-0	.000	0-0	0-0	4-4	.500	2-1	1-1	1-2	W1
Missouri	0-0	.000	0-0	0-0	3-6	.333	3-2	0-2	0-2	W1

2019 SEC Preseason
Media Poll

1. South Carolina
2. Texas A&M
3. Mississippi State
4. Kentucky
5. **Arkansas**
6. Tennessee
7. Auburn
8. LSU
9. Missouri
10. Georgia
11. Alabama
12. Florida
13. Ole Miss
14. Vanderbilt

2019 SEC Preseason
Coaches' Poll

1. Texas A&M
2. South Carolina
3. Mississippi State
4. Kentucky
5. **Arkansas**
6. LSU
7. Tennessee
8. Auburn
9. Missouri
10. Georgia
11. Alabama
12. Vanderbilt
13. Ole Miss
14. Florida

THREE, FREE & CLEAN

- Coach Neighbors' 2019 Hogs have been great offensively, and a lot of that has to do with their proficiency in three areas: Three-Point Shooting, Free Throw Shooting, and Lack of Turnovers.
- Arkansas has gotten a lot of its offense from beyond the arc, where the Hogs have been elite. They are making 9.5 three-balls a game, the 14th-best mark in the NCAA and the fourth most among Power-5 teams.
- That volume paired with the team's efficiency from beyond (37.8 percent, 26th-best in the NCAA) has yielded great results in the early going for the Razorback attack.
- Neighbors' bunch has gotten a lot of its offense from the line this season, too, as they are fourth in the nation, and leading the Power 5, in free throws made (151), trailing only Troy and Denver and Penn State. The Hogs are seventh in the nation in free throw attempts (212).
- The Hogs also play an incredibly efficient style, only turning the ball over 10.9 times a game on average. That is the fourth-lowest mark in the NCAA, and the best mark among Power-5 Teams.

RUNS TO REMEMBER

- Coach Neighbors' squad has showed that it only takes a few minutes, or sometimes a few seconds, to turn a game in its favor.
- The most recent example of this came against Wisconsin in the Bahamas Hoopfest finale.
- With the Badgers leading by as much as eight in the fourth quarter, it looked like the Hogs might come up short. Then Alexis Tolefree took over.
- Her first three points of the game would make it 54-51 Badgers. After a technical foul, and two free throws from Dungee, Tolefree hit another three from the opposite corner to put the Hogs up 56-54.
- That explosive 8-0 run, one that only took 18 seconds of game time without a change in possession, turned the game on its head.
- The Hogs also had similar offensive explosions against Stony Brook and Belmont.
- The first such run this season came in the second quarter against Stony Brook, as the Hogs produced a 21-3 spurt in just over four minutes to put the game away.
- The run was keyed by the sharpshooting of redshirt junior guard Amber Ramirez, who put down four of her six threes in just two minutes and 15 seconds of clock time.
- Redshirt junior guard Chelsea Dungee got in on the act too, scoring five points on the run.
- Freshman guard Makayla Daniels also played a part, hitting a three and knocking in a free throw.
- All told, the Razorbacks would start the run up just five (30-25) and would finish it ahead by 23 (51-28).
- Against Belmont, the Hogs went on an 18-0 run to bridge the first and second periods.
- The sledgehammer was dropped from the 3:56 mark of the first quarter to the 7:23 mark in the second, when the Hogs scored 18 unanswered. Over that span, the Hogs' lead would go from 18-11 to 36-11 to effectively put the game away.
- Dungee (7), Daniels (3), Rokia Doumbia (3), A'Tyanna Gaulden (3) and Alexis Tolefree (2) all scored on the run.

ARKANSAS IN THE BIG 12/SEC CHALLENGE

- The Razorbacks are set to play in the Challenge for the sixth time.
- The Hogs are currently 2-3 all-time in the Challenge.
- The Hogs fell in last year's challenge, 91-82, at then-No. 22 Iowa State.

ESPN
W
TOP 25

CITIZEN
NAISMITH
TROPHY
WATCH LIST

THE BASKETBALL HALL OF FAME/WBCA
ANN MEYERS DRYSDALE
AWARD



FIRST TEAM



CHELSEA DUNGEE: RECORD WATCH

1,171

CAREER POINTS (21ST MOST IN ARKANSAS HISTORY)

927

POINTS IN HER ARKANSAS CAREER (29TH MOST IN ARKANSAS HISTORY)

343

CAREER FREE THROWS MADE (6TH MOST IN ARKANSAS HISTORY)

759

SINGLE-SEASON UA SCORING RECORD

229

SINGLE-SEASON UA FT RECORD

1227

SINGLE-SEASON UA MINUTES RECORD

41

MOST POINTS AGAINST A SEC OPPONENT

32

MOST POINTS IN A HALF

17

MOST POINTS IN A QUARTER

25

20+ POINT GAMES AT UA

6

30+ POINT GAMES

25

STRAIGHT DOUBLE FIGURE GAMES

103

SEC TOURNAMENT SCORING RECORD

22.6

2ND SEC ONLY GAMES IN SCORING

346

2ND SEC ONLY GAMES IN TOTAL POINTS

104-121

2ND SEC ONLY GAMES IN FTM | 2ND FTM

34.8

MINUTES PER GAME IN SEC CONTESTS

→ Dungee's 17 made free throws against Auburn is tied for the second-most in a game in the SEC.

→ Her 229 free throws in a season is the second highest total in a single season in the SEC. Wendy Scholtens, VU, 1990, holds the record with 236 makes.

→ That free throw total was also the most by anyone in the Power-5 last season. It was also the second-most nationally.

→ Dungee's 41 points against Auburn was the most points ever scored in Bud Walton Arena.

TAYLAH THOMAS: REBOUNTING MACHINE

→ Through three games, Taylah Thomas is averaging 10.6 boards a game.

→ That is the 24th best mark in the NCAA so far this season.

→ The junior forward was simply unstoppable on the glass against New Orleans, pulling down 21 rebounds in her first game of the season. She also scored 10 points to secure the double-double.

→ Thomas nearly broke Arkansas' all-time record for total rebounds in a game, but she fell one short of Shelly Wallace's record (22, vs. SMU, 2/13/88).

→ Despite falling short of the all-time milestone, Thomas shattered her career highs in total rebounds (21 vs. 12), defensive rebounds (14 vs. 9) and offensive rebounds (7 vs. 5).

→ Thomas joined exclusive company with her 20+ rebounds, becoming just the fifth Razorback ever to grab 20 or more rebounds in a game.

→ Thomas has recorded three double-doubles so far in 2019, the only three in her career.

→ She had 10 & 21 against New Orleans, 11 & 11 against McNeese State and 15 & 13 against Fordham.

WALKING BUCKET

→ Chelsea Dungee is starting to really heat up for the Razorbacks.

→ She is averaging 25.0 PPG over her last three games, and her 21.0 season average is tied for the 11th-best mark in the NCAA.

→ Because of her ability to score, Dungee is already starting to approach rarified air in terms of career scoring numbers.

→ Her 1,171 total career points already has her closing in on the Top-20 all-time, while her 927 point total from her one-year plus at Arkansas alone already has her in the Top-30.

→ She has now scored 20+ in four straight games, becoming the first Razorback to do so since she did it last season (11/25-12/4/18).

→ Going back to last season, Dungee has now scored in double-digits in 25 straight contests.

→ Dungee has scored 20+ in 25 of her 45 games since arriving in Fayetteville.

FREE THROW PHENOM

→ Dungee does a lot of her damage at the free throw line.

→ She is once again among the nation's elite at the line, as Dungee is currently second among Power-5 players in free throws made (54). She is sixth in the nation in the category.

→ Dungee is also tied for 5th in FTA (64) while leading the Power-5.

→ She shot 13 freebies against New Orleans, making ten of them. It was the eighth time in her Arkansas career where she has made 10+ free

WHAT'S HE SAYIN'?

Don't be alarmed if you don't understand what Head Coach Mike Neighbors is saying on the bench. He has a language all his own.

Coach Neighbors plays "Positionless Basketball". Instead of having guards, forwards and centers, he has Rabbits, Rackers, Locks and Dragons.



Rabbits run the floor and look to score quickly with a layup.



Rackers are the player with the ball – go to the rack.



Locks are the players who are trying to win the race to the corners



The Dragon is the last player down the court. Watch out for a long distance shot from this spot.

throws in a game.

→ Dungee also went a perfect 9-9 at the line against Cal.

→ Dungee is already nearing the free throws made career record at Arkansas, as she has made 343 freebies, good for sixth-best all time, between her season at Oklahoma and her time at Arkansas.

RAMIREZ'S RANGE

→ Redshirt junior guard Amber Ramirez has been filling it up from deep this season so far.

→ Ramirez has already made 28 treys this season, tied for eighth-most in the NCAA.

→ Ramirez has also been remarkably efficient from distance despite the volume of shots she has put up from beyond.

→ Among players that have made at least 28 three-pointers, Ramirez's 44.4 percent mark from deep ranks as the fifth-best in the nation. That efficiency and volume have helped bump Ramirez's number across the board, as her PPG (14.8) & 3PT FG Percentage (44.4) are both career-bests.

OUR RECORD WHEN ...

Overall	7-1
Home / Away / Neutral	5-0/0-1/2-0
SEC	N/A
Home / Away	N/A
White Uniforms	6-0
Cardinal Uniforms	1-1
Anthracite Uniforms	0-0

LEADS/QUARTERS/HALFTIME/OT

Leading after the 1st quarter	6-1
Leading after the 2nd quarter/Half	6-0
Leading after the 3rd quarter	6-0
Leading at the half, home	5-0
Leading at the half, road/neutral	1-0
Tied at the half, home	0-0
Tied at the half, road/neutral	0-0
Games decided by 5 points or fewer	1-1
Games decided by 10 points or fewer	0-0
Leading with 5:00 left	6-0
Leading with 2:00 left	6-0
Overtime games	0-0

OFFENSE

Scoring less than 70 points	1-0
Scoring 70-79 points	1-0
Scoring 80-89 points	2-1
Scoring 90-99 points	2-0
Scoring 100+ points	1-0
2 Players Or Less in Double Figures	0-0
3 Players in Double Figures	3-0
4 Players in Double Figures	2-1
5 Players in Double Figures	2-0
More than 5 players in Double Figures	0-0
1 Player Scores 20+ Points	5-1
2 Players Score 20+ Points	1-0
When shooting 50 percent or higher	1-0
When shooting less than 50 percent	6-1

REBOUNTING/TURNOVERS

When outrebounding opponent	3-0
When outrebounded	3-1
When rebounds are even	1-0
When grabbing 10+ offensive reb	6-0
When forcing 15+ turnovers	4-0
When committing less than 15 turnovers	7-1
When committing 15+ turnovers	0-0

Top Scorers (Includes Ties)

Dungee	NO, MCS, Belmont, Cal, Fordham, Wisc.
Daniels	ORU, Belmont
Ramirez	Stony Brook

Top Rebounders (Includes Ties)

Thomas	NO, MCS, ORU, SB, Cal, Fordham
Barnum	Stony Brook, Belmont
Ramirez	Wisconsin

Months

In November	7-1
-------------------	-----

MAKAYLA MAGIC

→ Freshman guard Makayla Daniels was simply sublime against Oral Roberts, dropping a career-high 27 points on an ultra-efficient 8 of 11 clip.

→ Daniels' 27 points were the most by an Arkansas freshman since Jessica Jackson dropped 31 on Ole Miss back in 2014 (1/19/14).

→ Daniels' 27 points matches the season-high by a Razorback (Dungee also had 27 against Wisconsin.)

→ Daniels also hit 6 of her 7 three balls, which is the second highest percentage in program history (min. 6 attempts).

→ Her six treys were also the most by a Hog this season, and the most by a Razorback since Devin Cospier hit six of them against No. 11 Tennessee (2/8/18).

→ Daniels kept it rolling against Stony Brook and Belmont, going for 13 points and 21 points, respectively.

→ For her efforts last week (Nov. 12 – Nov. 17), Daniels was named the SEC Freshman of the Week. She is the first Razorback to win the weekly honor since Jailyn Mason won it back in 2017 (January 19).

THEY GOT NEXT

→ Coach Neighbors and his staff added three highly talented players in their 2020 class.

→ The Hogs added the trio of Elauna Eaton, Rylee Langerman and Destinee McGhee, ranked by ProspectsNation.com as the 15th-best class in the nation.

→ Eaton, a five-star prospect out of Helena, Ark., and the No. 9 rated guard in the country, was named to the 2019 USA Today's First-Team All-Arkansas, the 2019 AAA 5A All-State Team and the 2018 AAA 6A All-State Team.

→ She was also recently named to the Naismith High School Trophy Girls Watch List.

→ Langerman has won two 2A State Titles, and guided her team to a 3A State Runner-up finish last season. Langerman is rated as the No. 16 guard in the class.

→ She has also been named to the LITTLEALLCITY team three years running.

→ McGhee, meanwhile, was named to the ASWA 5A First-Team All-State (Ala.) in 2019, while also getting a nod on the USA Today Second-Team All-State in 2019.

→ McGhee was rated as the No. 8 post player in the class.

PRESEASON POLLS

→ Arkansas was picked to finish fifth in the SEC's Preseason Media Poll, its highest voted finish since 1998-99.

→ South Carolina, Texas A&M, Mississippi State and Kentucky were picked to finish above the

Razorbacks.

→ The Hogs were also picked fifth in the SEC's Coaches' Poll.

→ Chelsea Dungee was placed on the SEC's Preseason First-Team by both the media and the coaches.

→ She was also one of two players to receive votes for the preseason Conference Player of the Year in both polls, joining Chennedy Carter of Texas A&M.

PROLONGED POSTSEASON

→ The Razorbacks put together one of the best postseasons in program history last season.

→ First, they went through the SEC Tournament, entering as a 10 seed and making it all the way to the championship game.

→ To get there, the Razorbacks had to beat Georgia, South Carolina and Texas A&M.

→ With their three wins in the tournament, Arkansas became the lowest seeded team ever to make it to the SEC Tournament Final.

→ Following their SEC run, the Hogs returned to Fayetteville to host three rounds of the WNIT.

→ They got two wins in Bud Walton during the WNIT, winning an OT thriller against Houston followed by a blowout of UAB. The Hogs narrowly fell to TCU in round three.

→ The Hogs' five wins in the 2019 postseason are the most since they won five straight to claim the WNIT title back in 1999.

WATCH LIST SZN

→ Dungee was recently named to the Ann Meyers Drysdale Award Preseason Watch List.

→ She is one of just 20 players in the nation to make the list, which highlights the top shooting guards in the country.

→ Dungee was also named to espnW's Top-25 Players List. She came in at No. 18.

→ The redshirt junior guard was also placed on the Wooden Award Preseason Top 30 and on the Naismith Trophy Preseason Top 50.

WELCOME TO KIARA'S BLOCK PARTY

→ Kiara Williams was great as a rim protector last season, totaling 54 blocked shots, which was the fourth-most by a Razorback in a single season.

→ Williams was just four blocks away from the top three.

→ With her performance last season, Williams is now in the Top 10 on the career blocked-shots list, with 88 denials. She is averaging a block per game over her 88 game career.

→ Part of her great season turning people away at the rim was her defensive masterpiece at Kentucky, a game in which she set a new record for blocked shots in a quarter (4).

→ Williams completely controlled the paint in that game vs. the Wildcats, finishing with 17 total rebounds and seven blocks, just two shy of the all-time single-game record.

HEART-RACIN' HOGS

→ Several of Arkansas' games last season came down to the final moments.

→ Early in the season, Alexis Tolefree drilled a midrange shot to help the Hogs escape UT Arlington with a 66-65 win.

→ Monk again came up big against Tulsa, putting down a layup in the lane to put the Hogs up 61-59 with eight seconds left.

→ Coach Neighbors' Hogs beat Tennessee on Rocky Top courtesy of clutch buckets from Chelsea Dungee and Malica Monk. Dungee got to the rack to make it 78-77 with :23 left, while Monk pulled up in the paint with :04 left to win it, 80-79.

→ Dungee buried a clutch three against Texas A&M in the semifinal at the SEC Tournament to push the Hogs to the Tournament Final.

→ That three would cap off a remarkable 17-0 run that lasted for over six minutes.

2018-19: A RECORD BREAKING SEASON

→ The 2018-19 season for the Razorback was a good one for Neighbors & Co.

→ Neighbors' bunch set the single-season scoring record (2,736 points), breaking the previous mark (2,558), which had stood since 1981-82.

→ The Razorbacks also broke the following single-season team records last year: 3 PT FG (296), 3 PT FG attempted (922), games played (37) and minutes played (7425).

THE FAB FOUR

→ Arkansas' 2018 recruiting class was the 15th-ranked group in the country.

→ They were tabbed as the fourth-best class in the SEC, trailing only powerhouses South Carolina, Tennessee and Mississippi State.

→ Daniels, a guard out of Frederick, Maryland, provides even more scoring punch from the guard spot for the Hogs.

→ Davis, a local product, brings athleticism and length to a team that will rely on her stout defense and rebounding.

→ Oberg, meanwhile, was rated as a 4.5 star prospect and the No. 6 post player in the 2019 class, giving the Hogs some size.

→ The No. 59 prospect when she committed, Reece gives the Razorbacks a forward that can stretch the floor.

OFFENSE

Scored 110+----- 110, vs. Providence (11-16-98)
 Scored 100+ points at home ----- 101, McNeese State, (11-11-19)
 Scored 100+ points on the road ----- 108, Baylor (3-6-91)
 Scored 90-99 points ----- 91 vs. Belmont (11-20-19)
 Scored 90+ points at home ----- 91 vs. Belmont (11-20-19)
 Scored 90+ points on the road ----- 91, (91-80 Win in 3OT, 2-10-13, at Alabama)
 Scored 80-89 points ----- 80 at Cal (11-24-19)
 Scored 80-89 points at home ----- 88 vs. Stony Brook (11-17-19)
 Scored 80-89 points on the road ----- 80, at Cal (1-24-19)
 Was held to 50-59----- 58 vs. No. 17 Texas A&M, 3-10-19
 Was held to 49-40----- 42 at No. 9 South Carolina (1-25-18)
 Was held to 39-20----- 34, at LSU, 2-7-19
 Was held to 20 or less ----- N/A
 Made 30-39 field goals ----- 31, at Cal (11-24-19)
 Made 20-29 field goals ----- 25 vs. Wisconsin (11-30-19)
 Made 10-19 field goals ----- 18 vs. No. 17 Texas A&M (3-10-19)
 Made 17+ three-point field goals ----- 17, Oral Roberts (11-14-19)
 Made 10+ three-point field goals ----- 15, vs. Belmont (11-20-19)
 Did not make 3-pointer (since 1986)----- 0-10, at LSU, 2-7-19
 Made 30 free throws ----- 38 at Florida (38-54); (2-22-04)
 Shot 50-59 or better ----- 56.5, 39-69, vs. McNeese State, 11-11-19
 Shot 60 or better ----- .600 (36-60) vs. Ole Miss (W, 93-52; 3-3-13)
 Held to less than 30 ----- 26.5 (13-49), at LSU, 2-7-19
 Held to less than 20 ----- .182 (10-55) vs. No. 6/7 Tennessee (1-8-12; L, 38-69)
 Opponent shot over 50 ----- 62.5 (40-64) No. 3 Mississippi State, 3-10-19
 Held opponent to less than 30 ----- 26.3 (20-76), Stony Brook, 11-17-19
 Opponent shot less than 20 in a half ----- .200 (5-25), Grambling, 12-29-14 (1st)
 Had 20 or more assists in a game ----- 27, Houston Baptist, 12-28-16

DEFENSE

Allowed 100 points----- 101 vs. No. 5 Mississippi State, 3-10-19 (SEC Tournament)
 Allowed 80-99 points----- 84 at Cal, 11-24-19
 Allowed 70-79 points----- 76 vs. Georgia, 3-7-19 (SEC Tournament)
 Held opponent to 40-49 points ----- 44, Prairie View A&M (12-16-18)
 Held opponent to 39-30 ----- 36, Northwestern State, 12-18-16
 Held an SEC opponent under 50 points in 3 cons. games ----- 47, Auburn (1-29-15,
 ----- W, 52-47); 42, Alabama (2-1-15, W, 53-42); #24/21 Georgia (2-9-15, W, 54-48)
 Held opponent to 29 points or less ----- 23, Binghamton, 11-30-13
 Held an opponent under 15 points in a half ----- 13, Northwestern State, 12-18-16
 Held opponent under 15 field goals ----- 14, Houston Baptist, 12-28-16
 Held opponent under 15 percent from 3-point ----- 12.5 (3-24), UAB, 3-24-19 (WNIT)
 Had 70+ rebounds ----- 74, Mississippi Valley State (11-24-89)
 Had 60-69 rebounds ----- 64, Prairie View A&M (12-16-18)
 Had 50-59 rebounds ----- 54, McNeese State, 11-11-19
 Had five or more blocked shots in a game ----- 9 vs. Oral Roberts, 11-14-19
 Had 20 or more steals in a game ----- 20, ORU (11-13-13)
 Had 15 or more steals in a game ----- 17, Jackson State, 12-30-18
 Had 20 or more turnovers in a game ----- 23 at Arizona State, 12-21-17
 Forced 20-25 or more Turnovers in a game ----- 21, Missouri, 2-28-19

OTHER

Won an overtime game ----- 88-80 vs. Houston, 3-21-19 (WNIT)
 Lost an overtime game ----- Florida (71-66), 1-28-16
 Won a double overtime game ----- 73-72, vs. Florida (1-29-12)
 Lost a double overtime game ----- N/A
 Won a triple overtime game ----- 91-80 Win in 3OT, 2-10-13, at Alabama
 Played consecutive OT games ----- 1-24-16 at Auburn (lost); 1-28-16 vs Florida (lost)
 Won regular season tournament ----- Nugget Classic (Reno, Nev., Nov. 25-26, 2016)
 Defeated ranked team ----- #17 South Carolina, 3-8-19 (SEC Tournament)
 Defeated a ranked team on the road --- 57-53, at #19/18 LSU, 2-23-14; 77-76, #17/16 Iowa (Las Vegas),
 12-18-14
 All-time SEC win streak ----- 8 games (1-15-12: Auburn through 2-15-12: at Auburn)
 All-time SEC home win streak ----- 5 games (1-15-12: Auburn -- 2-9-12: S. Carolina)

A RAZORBACK PLAYER ...

Scored 20-24 points ----- 24, Chelsea Dungee vs. Fordham (11-29-19)
 Scored 25-29 points ----- 27, Chelsea Dungee vs. Wisconsin (11-30-19)
 Scored 30+ points ----- 37, Chelsea Dungee vs. Houston, 3-21-19 (WNIT)
 Scored 40+ points ----- 41, Chelsea Dungee vs Auburn, 2-10-19
 Scored 20+ points 10 times in a season ----- Chelsea Dungee (19x | 2018-19)
 Double figures in 15 cons games (Season) ----- Jessica Jackson, 11/11/16, LSU 1-8-17
 ----- Chelsea Dungee, currently (25 games)
 Scored 23+ points in three cons games ----- Chelsea Dungee (@ Cal, 24, vs. FU, 24, vs. Wisc., 27)
 ----- Chelsea Dungee (Fla., 25; Ga., 28; SC, 32)
 Five players scored double figures in 1 game ----- McNeese State, 11-11-19 (WNIT)
 ----- Dungee 19, Ramirez 13, Daniels 11, Thomas 11, Barnum 11
 Five Starters In Double Figures ----- New Orleans, 11-8-19
 ----- Dungee (22), Tolefree (11), Ramirez (12), Daniels (11), Thomas (10)
 Seven players scored in double figures in 1 game ----- vs. Northwestern State, 11-9-18
 ----- (Tolefree, Gaulden, Monk, Thomas, Doumbia, Dungee, Williams)
 Made 10+ field goals in a game ----- 10, Chelsea Dungee vs. Houston, 3-21-19 (WNIT)
 Attempted 15-19 field goals in a game ----- 18, Chelsea Dungee @ Cal, 11-24-19
 Attempted 20+ field goals in a game ----- 24, Chelsea Dungee, Missouri, 2-28-19
 Attempted 10 free throws in a game ----- 11, Chelsea Dungee, Vs. Wisconsin (11-30-19)
 Made 5 or more 3-pt FG in a game ----- 5, Amber Ramirez, vs. Wisconsin (11-30-19)
 Made 5 or more 3-pt FG in a game ----- 10, Amber Ramirez, vs. Wisconsin (11-30-19)
 Had 10-14 rebounds ----- 13, Taylah Thomas vs. Fordham, 11-29-19
 Had 15-19 rebounds ----- 21, Taylah Thomas, New Orleans, 11-8-19
 Had 20+ rebounds ----- 21, Taylah Thomas, New Orleans, 11-8-19
 Had 10 offensive reb - Records go back to 05-06 ----- 11, Melissa Wolff
 ----- vs. New Orleans (1-30-15)
 Had 10+ defensive reb - Records go back to 05-06 ----- 14, Taylah Thomas, New Orleans, 11-8-19
 Had 10+ assists ----- 10, Malica Monk, Grambling State, 12-28-17
 Had 10+ assists in cons games ----- Jailyn Mason (11 vs. HBU, 12-28-16 and 10 at Ole
 ----- Miss, 1-1-17), Calli Berna (11 vs. No. 10/8 KY 2/7/13 and 11 at UA 2/10/13)
 Had 5+ blocks in a game ----- 5, Kiara Williams vs. Houston, 3-21-19 (WNIT)
 Had 10+ blocks in a game ----- 9, Robyn Irwin vs. SMSU, 12-19-88 (school record)
 Had 5 or more steals in a game ----- 5, Alexis Tolefree at Abilene Christian (12-8-18)
 Had a double-double ----- 15 (points) & 13 (reb), Taylah Thomas, Fordham, 11-29-19
 Had a double-double in two cons games ----- Taylah Thomas, New Orleans & McNeese State, 11-8/11-11-19
 ----- 10 & 21/11 & 11
 Had two players record a double-double ----- Kiara Williams (12 pts/16 reb) &
 ----- Malica Monk (10 pts/10 reb), Grambling State, 12-28-17
 Had seven double-doubles in a season ----- Devin Cosper, 2017-18
 ----- (SHSU, ORU, NMSU, Char., Tulsa, OM, AL)
 Had 10+ double-doubles in a season ----- 2006-07, Lauren Ervin (14)
 Had a triple-double ----- 14 pts, 13 reb, 12 asts, C'eira Ricketts vs. Auburn (1-18-09)

MORE ABOUT MIKE

Hometown: Greenwood, Ark. (Greenwood HS)
Family: Daughter Abby; Son Alec
Alma Mater: Arkansas, 1993

NEIGHBORS BY THE NUMBERS

133	Wins (133-74, 6 seasons)
11	Players drafted in the WNBA
10	Signed McDonalds' All-Americans
5	Years as a head coach
4	Postseason appearances
1	Final Four appearance



LEARN MORE

Sign up for Mike Neighbors' newsletter and listen to his podcasts at CoachNeighbors.com

NABES FAVES

TOP 10 MOVIES

1. A Few Good Men
2. The Hunt For Red October
3. The Silence Of The Lambs
4. Hoosiers
5. Pretty Woman
6. Moneyball
7. Top Gun
8. JFK
9. The Lion King
10. Purple Rain

See the entire list here: <http://imdb.to/2royaEO>

TOP 10 SONGS

1. Sweet Child O' Mine (Guns N' Roses)
2. You Shook Me All Night Long (AC/DC)
3. Man In The Mirror (Michael Jackson)
4. Amarillo By Morning (George Strait)
5. Jessie's Girl (Rick Springfield)
6. Hysteria (Def Leppard)
7. Fishin' In The Dark (Nitty Gritty Dirt Band)
8. The Ballad of Curtis Loew (Lynyrd Skynyrd)
9. Wanted Dead Or Alive (Bon Jovi)
10. Let's Go Crazy (Prince)

TOP 10 TV SHOWS

1. West Wing (first three seasons)
2. The Wire
3. Breaking Bad
4. Seinfeld
5. The Newsroom
6. Prison Break
7. Arrested Development
8. Game of Thrones
9. The Sopranos
10. The Goldbergs

Entire list: <http://www.imdb.com/list/ls009377912/>



MIKE NEIGHBORS

THE MOST INTERESTING COACH IN COLLEGE BASKETBALL

Third Season | Career Record: 135-74 (7) | Arkansas Record: 37-33 (3)

ROOKIE NOD TO NAISMITH NOMINEE

In four short years Mike Neighbors went from a Spalding Maggie Dixon Division I Rookie Coach of the Year nominee in 2014, to a Naismith Women's College Coach of the Year national semifinalist in 2017.

Neighbors guided UW to a historic campaign in 2016-17 leading the Huskies to 27 wins, its second most in program history, and he was just one shy of the all-time school record set in 1990 (28).

Picked to place third in the Pac-12 in the preseason poll, UW tied for second in the league with a 15-3 record, its best conference finish since 2003. The Huskies' 15 conference wins tied for third most in program history. Washington, who entered conference play with the program-best 12 non-conference wins, clinched its first-ever bye in the first round of the Pac-12 Tournament. Washington put together an 11-game win streak and a six-game win streak in Pac-12 play in 2016-17.

TIMELINE

→ Bentonville HS Head Coach	1994-98
→ Cabot HS Head Coach	1998-99
→ Arkansas Director of Ops	1999-01
→ Tulsa Univ. Assistant Coach	2001-05
→ Univ. of Colorado Assistant Coach	2005-06
→ Univ. of Arkansas Assistant Coach	2006-07
→ Xavier Assistant Coach	2007-2011
→ Univ. of Washington Assistant Coach	2011-13
→ Univ. of Washington Head Coach	2013-17
→ Univ. of Arkansas Head Coach	2017-present

COACHING AT MY ALMA MATER

→ Mike Neighbors	Arkansas, 1993
→ Kellie Harper	Tennessee, 1999

A couple of other coaches have SEC ties. Joni Taylor is the head coach at Georgia and a 2002 graduate of Alabama. Matthew Mitchell is a 1995 graduate of Mississippi State and is the head coach at Kentucky. Nikki Fargas graduated from Tennessee in 1994 and is the head coach at LSU. Vic Schaefer is the head coach at Mississippi State and a 1984 graduate of Texas A&M.

COACHING HISTORY

University of Washington	Year	Overall	Pac-12	Finish
	2013-14	20-14 (.588)	10-8 (.556)	6
	2014-15	23-10 (.697)	11-7 (.611)	5
	2015-16	26-11 (.703)	11-7 (.611)	5
	2016-17	29-6 (.829)	15-3 (.833)	T-2
UW		98-41 (.705)	47-25 (.662)	

University of Arkansas	Year	Overall	SEC	Finish
	2017-18	13-18 (.419)	3-13 (.188)	T-11
	2018-19	22-15 (.611)	6-10 (.375)	10
	2019-20	7-1 (.875)	N/A	
Ark		42-35 (.545)	9-23 (.281)	

Totals	140-76 (.648)	56-48 (.538)	7 yrs
--------	---------------	--------------	-------

PLAYER DEVELOPMENT

YEAR	UNIVERSITY	PLAYER	ROUND	OVERALL	TEAM	NOTE
2017	Washington	Kelsey Plum			1	
1	San Antonio	Spurs ! @				
	Washington	Chantel Osahor	2	21	Chicago Sky ! @	
2016	Washington	Talia Walton	3		29	
	Los Angeles	Sparks ! @				
2011	Xavier	Amber Harris	1		4	
	Minnesota	Lynx #				
	Xavier	Ta'Shia Phillips	1	8	Atlanta Dream #	
	TAMU/UAFS	Tanisha Smith	2		22	
	Seattle Storm	#				
	Colorado	Brittany Spears	2	19	Phoenix Mercury *	
2009	Arkansas	Shameka Christon			1	
5	New York	Liberty #				
2008	Arkansas	Lauren Ervin	3		37	
	Connecticut	Sun #				
2006	Tulsa	Megan Moody-			-	
	Houston	Comets				
						Free Agent #
2003	Tulsa	Allison Curtin	1		12	
	Houston	Comets ! #				
						Traded to Detroit
	Shock					
	Arkansas	Dana Cherry	2	23	Charlotte Sting	

*-Recruited but did not coach

!-At the school when player was drafted

@-Worked with player as a head coach

#-Worked with player as an assistant coach

\$-Worked with player as other (GA, etc)

COACHING DEVELOPMENT

Coach	w/Nabes	Now
Fred Castro	'14, '15, '16	HC Eastern Michigan
Adia Barnes	'14, '15	HC Arizona
Adam Call	'14	AC Eastern Michigan
Morgan Valley	'16	AC Arizona
Todd Schaefer	'16	AHC Arkansas
Jasmine Lister	'16	AC DePaul

THE MOST INTERESTING MAN IN COLLEGE BASKETBALL

- Grew up with a "Big Touk": Coach is lactose intolerant and often had Coke in his bottle.
- Blueberry Please: When he got old enough to make his own breakfast, Pop Tarts were a regular. He liked the chocolate ones as a kid but prefers frosted blueberry now.
- Movies: His expansive movie collection includes digital, disk and VHS copies. Did you know he used to work at BlockBuster?
- Lunch Boxes: Coach collects tin lunch boxes and has them displayed in his home. His first lunch box had KISS on it. He got it in second grade.
- Athens City Champion: Coach stumbled upon a dart tournament while on a trip to Athens, Georgia. He joined in and was one of the two-man winning team.
- Lunchboxes are just one of the many things Coach collects. Ask him about shoes, music, movies, guitars, figurines – just about anything!



IT'S BIGGER THAN THE GAME

Mike Neighbors continued his support of breast cancer awareness this year serving as a Koman Ozarks Big Wig. He headlined a team tasked to raise both money and awareness for and of breast cancer.

Former Razorback India Lewis (1999–2003) lost her battle with breast cancer in August 2018. She was just 36 years old.



NEIGHBORS VERSUS ...			Houston	2	0	Portland	3	1	USC	6	0
Abilene Christian	2	0	Idaho	1	0	Prairie View A&M	1	0	Utah	7	3
Alabama	2	1	Iowa State	0	1	Saint Mary's	0	1	UT-Arlington	2	0
Arizona State	2	6	Jackson State	1	0	Sam Houston State	1	0	UTEP	0	2
Arizona	6	0	Kansas	0	1	Samford	1	0	Vanderbilt	2	1
Auburn	1	1	Kentucky	1	3	San Diego State	2	0	Washington State	5	3
Delmont	1	0	Louisiana-Monroe	1	0	San Diego	1	0	Weber State	1	0
Boise State	1	0	LSU	0	2	Santa Clara	1	0	Wisconsin	3	0
BYU	1	0	McNeese State	1	0	Savannah State	1	0	Yale	1	0
California	4	4	Maryland	1	0	Seattle	4	0	TOTALS	140	76
Charlotte	1	0	Miami	0	1	South Carolina	1	2			
Colorado State	1	0	Mississippi State	0	4	South Dakota	2	0			
Colorado	9	0	Missouri	1	4	Stanford	3	5			
CSUN	1	0	Montana State	2	0	Stony Brook	1	0			
DePaul	0	1	Nebraska	1	1	Syracuse	0	2			
Eastern Washington	1	0	New Mexico State	1	0	TCU	0	1			
Florida State	1	0	New Orleans	1	0	Tennessee	1	1			
Florida	1	1	Northwestern State	1	0	Tennessee State	1	0			
Fordham	1	0	Notre Dame	0	1	Tennessee Tech	1	0			
Fresno State	2	0	Oklahoma	1	2	Texas A&M	2	4			
Furman	1	0	Ole Miss	3	0	Texas Tech	1	0			
Georgia	1	3	Oral Roberts	3	0	Tulsa	2	0			
Grambling State	2	0	Oregon State	1	6	UAB	1	0			
Grand Canyon	1	0	Oregon	5	3	UC Irvine	1	0			
Hartford	1	0	Pennsylvania	1	0	UC Riverside	2	0			
Hawai'i	1	0	Pittsburgh	1	1	UCLA	4	2			



Mike Neighbors
@coachneighbors

Replying to @RazorbackWBB

While we will be fighting for all, #21 India Lewis, will never be forgotten by the Razorbacks.

8:20am · 5 Sep 2018 · Twitter for iPhone



@RazorbackWBB STATISTICS AR Combined Team Statistics (as of Nov 30, 2019) All games



RECORD:	OVERALL	HOME	AWAY	NEUTRAL
ALL GAMES	7-1	5-0	0-1	2-0
CONFERENCE	0-0	0-0	0-0	0-0
NON-CONFERENCE	7-1	5-0	0-1	2-0

#	Player	gp-gs	min	avg	Total		3-Point		F-Throw		Rebounds				pf	dq	a	to	blk	stl	pts	avg
					fg-fga	fg%	3fg-fga	3fg%	ft-fa	ft%	off	def	tot	avg								
33	DUNGEE, Chelsea	8-8	262	32.8	51-115	.443	12-43	.279	54-64	.844	4	43	47	5.9	21	0	13	9	3	9	168	21.0
23	RAMIREZ, Amber	8-8	244	30.5	39-99	.394	28-63	.444	12-12	1.000	2	26	28	3.5	4	0	11	10	5	8	118	14.8
43	DANIELS, Makayla	8-8	184	23.0	34-65	.523	8-18	.444	30-41	.732	3	10	13	1.6	16	0	17	11	1	13	106	13.3
02	TOLEFREE, Alexis	8-8	198	24.8	29-68	.426	16-37	.432	12-14	.857	3	29	32	4.0	11	0	17	9	3	5	86	10.8
24	THOMAS, Taylah	8-8	236	29.5	24-42	.571	1-3	.333	12-18	.667	30	55	85	10.6	20	0	1	8	6	4	61	7.6
04	BARNUM, Erynn	7-0	80	11.4	14-22	.636	0-0	.000	11-20	.550	10	24	34	4.9	6	0	2	1	5	5	39	5.6
00	GAULDEN, A'Tyanna	8-0	126	15.8	10-34	.294	3-8	.375	10-18	.556	2	11	13	1.6	3	0	21	18	1	3	33	4.1
35	REECE, Ginger	6-0	44	7.3	6-17	.353	4-11	.364	2-2	1.000	3	7	10	1.7	7	0	2	4	2	3	18	3.0
01	DAVIS, Marquesha	7-0	67	9.6	7-20	.350	1-6	.167	3-10	.300	5	11	16	2.3	6	0	2	8	3	4	18	2.6
22	HUGHES, Avery	5-0	18	3.6	4-6	.667	2-3	.667	1-1	1.000	0	0	0	0.0	2	0	1	5	0	0	11	2.2
52	DOUMBIA, Rokia	8-0	118	14.8	6-23	.261	1-7	.143	3-10	.300	12	16	28	3.5	13	0	8	2	1	5	16	2.0
13	SPANGLER, Grayce	6-0	23	3.8	1-3	.333	0-2	.000	1-2	.500	0	0	0	0.0	3	0	2	1	0	0	3	0.5
Team											14	20	34				1					
Total.....		8	1600		225-514	.438	76-201	.378	151-212	.712	88	252	340	42.5	112	0	97	87	30	59	677	84.6
Opponents.....		8	1600		191-556	.344	40-179	.223	77-112	.688	124	226	350	43.8	173	3	94	122	31	38	499	62.4

TEAM STATISTICS	AR	OPP	Date	Opponent	Score	Att.
SCORING	677	499	11/08/19	NEW ORLEANS	w 82-52	6801
Points per game	84.6	62.4	11/11/19	MCNEESE	w 101-58	1238
Scoring margin	+22.3	-	11/14/19	ORAL ROBERTS	w 96-64	1430
FIELD GOALS-ATT	225-514	191-556	11/17/19	STONY BROOK	w 88-58	2045
Field goal pct	.438	.344	11/20/19	BELMONT	w 91-60	1669
3 POINT FG-ATT	76-201	40-179	11/24/19	at California	L 80-84	1032
3-point FG pct	.378	.223	11/29/19	vs Fordham	w 71-59	0
3-pt FG made per game	9.5	5.0	11/30/19	vs Wisconsin	w 68-64	350
FREE THROWS-ATT	151-212	77-112	* - Conference game			
Free throw pct	.712	.688				
F-Throws made per game	18.9	9.6				
REBOUNDS	340	350				
Rebounds per game	42.5	43.8				
Rebounding margin	-1.2	-				
ASSISTS	97	94				
Assists per game	12.1	11.8				
TURNOVERS	87	122				
Turnovers per game	10.9	15.3				
Turnover margin	+4.4	-				
Assist/turnover ratio	1.1	0.8				
STEALS	59	38				
Steals per game	7.4	4.8				
BLOCKS	30	31				
Blocks per game	3.8	3.9				
ATTENDANCE	13183	1382				
Home games-Avg/Game	5-2637	1-1032				
Neutral site-Avg/Game	-	2-175				

Score by Periods	1st	2nd	3rd	4th	Totals
AR	182	162	178	155	677
Opponents	113	121	125	140	499



@RazorbackWBB STATISTICS
AR Game-by-Game Highs (as of Dec 03, 2019)
All games



Opponent	Date	Score	Points	Rebounds	Assists	Steals	Blocked shots
NEW ORLEANS	11/08/19	82-52	22-DUNGEE, Chelsea	21-THOMAS, Taylah	4-DUNGEE, Chelsea	4-RAMIREZ, Amber DANIELS, Makayla	2-DUNGEE, Chelsea
MCNEESE	11/11/19	101-58	19-DUNGEE, Chelsea	11-THOMAS, Taylah	4-DANIELS, Makayla	2-DUNGEE, Chelsea REECE, Ginger BARNUM, Erynn	2-THOMAS, Taylah BARNUM, Erynn
ORAL ROBERTS	11/14/19	96-64	27-DANIELS, Makayla	10-THOMAS, Taylah	6-DUNGEE, Chelsea	2-DANIELS, Makayla	3-TOLEFREE, Alexis
STONY BROOK	11/17/19	88-58	26-RAMIREZ, Amber	9-THOMAS, Taylah BARNUM, Erynn	3-DANIELS, Makayla DOUMBIA, Rokia	1-GAULDEN, A'Tyan REECE, Ginger DUNGEE, Chelsea DOUMBIA, Rokia BARNUM, Erynn	1-RAMIREZ, Amber GAULDEN, A'Tyann REECE, Ginger
BELMONT	11/20/19	91-60	21-DUNGEE, Chelsea DANIELS, Makayla	8-BARNUM, Erynn	4-TOLEFREE, Alexis	2-DAVIS, Marquesha DOUMBIA, Rokia	2-BARNUM, Erynn
at California	11/24/19	80-84	24-DUNGEE, Chelsea	8-THOMAS, Taylah	6-GAULDEN, A'Tyan	2-DANIELS, Makayla TOLEFREE, Alexis	1-THOMAS, Taylah
vs Fordham	11/29/19	71-59	24-DUNGEE, Chelsea	13-THOMAS, Taylah	4-GAULDEN, A'Tyan	2-THOMAS, Taylah DUNGEE, Chelsea RAMIREZ, Amber	3-RAMIREZ, Amber
vs Wisconsin	11/30/19	68-64	27-DUNGEE, Chelsea	9-RAMIREZ, Amber	3-GAULDEN, A'Tyan	2-DANIELS, Makayla	None



@RazorbackWBB STATISTICS AR Category Leaders (as of Dec 03, 2019) All games



Points	G	Pts	Pts/G
DUNGEE, Chelsea	8	168	21.0
RAMIREZ, Amber	8	118	14.8
DANIELS, Makayla	8	106	13.3
TOLEFREE, Alexis	8	86	10.8
THOMAS, Taylah	8	61	7.6
BARNUM, Erynn	7	39	5.6
GAULDEN, A'Tyanna	8	33	4.1
DAVIS, Marquesha	7	18	2.6
REECE, Ginger	6	18	3.0
DOUMBIA, Rokia	8	16	2.0
HUGHES, Avery	5	11	2.2
SPANGLER, Grayce	6	3	0.5

FG Percentage	FG	Att	Pct
HUGHES, Avery	4	6	.667
BARNUM, Erynn	14	22	.636
THOMAS, Taylah	24	42	.571
DANIELS, Makayla	34	65	.523
DUNGEE, Chelsea	51	115	.443
TOLEFREE, Alexis	29	68	.426
RAMIREZ, Amber	39	99	.394
REECE, Ginger	6	17	.353
DAVIS, Marquesha	7	20	.350
SPANGLER, Grayce	1	3	.333
GAULDEN, A'Tyanna	10	34	.294
DOUMBIA, Rokia	6	23	.261

3-Point Percentage	3FG	Att	Pct
HUGHES, Avery	2	3	.667
RAMIREZ, Amber	28	63	.444
DANIELS, Makayla	8	18	.444
TOLEFREE, Alexis	16	37	.432
GAULDEN, A'Tyanna	3	8	.375
REECE, Ginger	4	11	.364
THOMAS, Taylah	1	3	.333
DUNGEE, Chelsea	12	43	.279
DAVIS, Marquesha	1	6	.167
DOUMBIA, Rokia	1	7	.143
SPANGLER, Grayce	0	2	.000

Free Throw Percent	FG	Att	Pct
RAMIREZ, Amber	12	12	1.000
HUGHES, Avery	1	1	1.000
REECE, Ginger	2	2	1.000
TOLEFREE, Alexis	12	14	.857
DUNGEE, Chelsea	54	64	.844
DANIELS, Makayla	30	41	.732
THOMAS, Taylah	12	18	.667
GAULDEN, A'Tyanna	10	18	.556
BARNUM, Erynn	11	20	.550
SPANGLER, Grayce	1	2	.500
DAVIS, Marquesha	3	10	.300
DOUMBIA, Rokia	3	10	.300

Scoring Average	G	Pts	Avg/G
DUNGEE, Chelsea	8	168	21.0
RAMIREZ, Amber	8	118	14.8
DANIELS, Makayla	8	106	13.3
TOLEFREE, Alexis	8	86	10.8
THOMAS, Taylah	8	61	7.6
BARNUM, Erynn	7	39	5.6
GAULDEN, A'Tyanna	8	33	4.1
REECE, Ginger	6	18	3.0
DAVIS, Marquesha	7	18	2.6
HUGHES, Avery	5	11	2.2
DOUMBIA, Rokia	8	16	2.0
SPANGLER, Grayce	6	3	0.5

Field Goal Attempts	G	Att	Att/G
DUNGEE, Chelsea	8	115	14.4
RAMIREZ, Amber	8	99	12.4
TOLEFREE, Alexis	8	68	8.5
DANIELS, Makayla	8	65	8.1
THOMAS, Taylah	8	42	5.3

Field Goals Made	G	Made	Made/G
DUNGEE, Chelsea	8	51	6.4
RAMIREZ, Amber	8	39	4.9
DANIELS, Makayla	8	34	4.3
TOLEFREE, Alexis	8	29	3.6
THOMAS, Taylah	8	24	3.0

3-Point FG Attempts	G	Att	Att/G
RAMIREZ, Amber	8	63	7.9
DUNGEE, Chelsea	8	43	5.4
TOLEFREE, Alexis	8	37	4.6
DANIELS, Makayla	8	18	2.3
REECE, Ginger	6	11	1.8

3-Point FG Made	G	Made	Made/G
RAMIREZ, Amber	8	28	3.5
TOLEFREE, Alexis	8	16	2.0
DUNGEE, Chelsea	8	12	1.5
DANIELS, Makayla	8	8	1.0
REECE, Ginger	6	4	0.7

Free Throw Attempts	G	Att	Att/G
DUNGEE, Chelsea	8	64	8.0
DANIELS, Makayla	8	41	5.1
BARNUM, Erynn	7	20	2.9
GAULDEN, A'Tyanna	8	18	2.3
THOMAS, Taylah	8	18	2.3

Free Throws Made	G	Made	Made/G
DUNGEE, Chelsea	8	54	6.8
DANIELS, Makayla	8	30	3.8
THOMAS, Taylah	8	12	1.5
TOLEFREE, Alexis	8	12	1.5
RAMIREZ, Amber	8	12	1.5



@RazorbackWBB STATISTICS
AR Category Leaders (as of Dec 03, 2019)
All games



Rebounds	G	Reb	Reb/G
THOMAS, Taylah	8	85	10.6
DUNGEE, Chelsea	8	47	5.9
BARNUM, Erynn	7	34	4.9
TOLEFREE, Alexis	8	32	4.0
DOUMBIA, Rokia	8	28	3.5
RAMIREZ, Amber	8	28	3.5

Rebound Average	G	Reb	Avg/G
THOMAS, Taylah	8	85	10.6
DUNGEE, Chelsea	8	47	5.9
BARNUM, Erynn	7	34	4.9
TOLEFREE, Alexis	8	32	4.0
DOUMBIA, Rokia	8	28	3.5
RAMIREZ, Amber	8	28	3.5

Offensive Rebounds	G	No.	Avg/G
THOMAS, Taylah	8	30	3.8
DOUMBIA, Rokia	8	12	1.5
BARNUM, Erynn	7	10	1.4
DAVIS, Marquesha	7	5	0.7
DUNGEE, Chelsea	8	4	0.5

Defensive Rebounds	G	No.	Avg/G
THOMAS, Taylah	8	55	6.9
DUNGEE, Chelsea	8	43	5.4
TOLEFREE, Alexis	8	29	3.6
RAMIREZ, Amber	8	26	3.3
BARNUM, Erynn	7	24	3.4

Fouls	G	No.	Per/G
DUNGEE, Chelsea	8	21	2.6
THOMAS, Taylah	8	20	2.5
DANIELS, Makayla	8	16	2.0
DOUMBIA, Rokia	8	13	1.6
TOLEFREE, Alexis	8	11	1.4

Foulouts	G	No.
-----------------	----------	------------

Assists	G	No.	Ast/G
GAULDEN, A'Tyanna	8	21	2.6
TOLEFREE, Alexis	8	17	2.1
DANIELS, Makayla	8	17	2.1
DUNGEE, Chelsea	8	13	1.6
RAMIREZ, Amber	8	11	1.4

Steals	G	No.	Stl/G
DANIELS, Makayla	8	13	1.6
DUNGEE, Chelsea	8	9	1.1
RAMIREZ, Amber	8	8	1.0
DOUMBIA, Rokia	8	5	0.6
BARNUM, Erynn	7	5	0.7
TOLEFREE, Alexis	8	5	0.6

Blocked Shots	G	No.	Blk/G
THOMAS, Taylah	8	6	0.8
BARNUM, Erynn	7	5	0.7
RAMIREZ, Amber	8	5	0.6
DUNGEE, Chelsea	8	3	0.4
DAVIS, Marquesha	7	3	0.4
TOLEFREE, Alexis	8	3	0.4

Minutes	G	No.	Min/G
DUNGEE, Chelsea	8	262	32.8
RAMIREZ, Amber	8	244	30.5
THOMAS, Taylah	8	236	29.5
TOLEFREE, Alexis	8	198	24.8
DANIELS, Makayla	8	184	23.0

Turnovers	G	No.	TO/G
GAULDEN, A'Tyanna	8	18	2.3
DANIELS, Makayla	8	11	1.4
RAMIREZ, Amber	8	10	1.3
DUNGEE, Chelsea	8	9	1.1
TOLEFREE, Alexis	8	9	1.1



@RazorbackWBB STATISTICS AR Player High/Low Analysis (as of Dec 03, 2019) All games



AR - INDIVIDUAL GAME HIGHS

Points	27	DUNGEE, Chelsea vs Wisconsin (11/30/19)
	27	DANIELS, Makayla vs Oral Roberts (11/14/19)
	26	RAMIREZ, Amber vs Stony Brook (11/17/19)
	24	DUNGEE, Chelsea vs Fordham (11/29/19)
	24	DUNGEE, Chelsea at California (11/24/19)
Field Goals Made	9	DUNGEE, Chelsea vs Wisconsin (11/30/19)
	8	DUNGEE, Chelsea vs Belmont (11/20/19)
	8	RAMIREZ, Amber vs Stony Brook (11/17/19)
	8	DANIELS, Makayla vs Oral Roberts (11/14/19)
Field Goal Att.	22	DUNGEE, Chelsea vs Wisconsin (11/30/19)
	18	DUNGEE, Chelsea at California (11/24/19)
FG Pct (min 5 made)	.833 (5-6)	THOMAS, Taylah vs McNeese (11/11/19)
	.778 (7-9)	THOMAS, Taylah at California (11/24/19)
3-Point FG Made	6	RAMIREZ, Amber vs Stony Brook (11/17/19)
	6	DANIELS, Makayla vs Oral Roberts (11/14/19)
3-Point FG Att.	11	RAMIREZ, Amber vs Oral Roberts (11/14/19)
	11	TOLEFREE, Alexis vs New Orleans (11/08/19)
3-Pt FG Pct (min 2 made)	1.000 (2-2)	GAULDEN, A'Tyanna vs Belmont (11/20/19)
	1.000 (2-2)	HUGHES, Avery vs Oral Roberts (11/14/19)
	1.000 (2-2)	REECE, Ginger vs McNeese (11/11/19)
Free Throws Made	10	DUNGEE, Chelsea vs New Orleans (11/08/19)
	9	DUNGEE, Chelsea vs Fordham (11/29/19)
	9	DUNGEE, Chelsea at California (11/24/19)
Free Throw Att.	13	DUNGEE, Chelsea vs New Orleans (11/08/19)
	11	DUNGEE, Chelsea vs Wisconsin (11/30/19)
FT Pct (min 3 made)	1.000 (9-9)	DUNGEE, Chelsea at California (11/24/19)
	1.000 (5-5)	TOLEFREE, Alexis vs Belmont (11/20/19)
	1.000 (4-4)	RAMIREZ, Amber vs Stony Brook (11/17/19)
	1.000 (4-4)	RAMIREZ, Amber vs McNeese (11/11/19)
	1.000 (4-4)	DUNGEE, Chelsea vs McNeese (11/11/19)
	1.000 (3-3)	TOLEFREE, Alexis vs McNeese (11/11/19)
Rebounds	21	THOMAS, Taylah vs New Orleans (11/08/19)
	13	THOMAS, Taylah vs Fordham (11/29/19)
Assists	6	GAULDEN, A'Tyanna at California (11/24/19)
	6	DUNGEE, Chelsea vs Oral Roberts (11/14/19)
Steals	4	RAMIREZ, Amber vs New Orleans (11/08/19)
	4	DANIELS, Makayla vs New Orleans (11/08/19)
Blocked Shots	3	RAMIREZ, Amber vs Fordham (11/29/19)
	3	TOLEFREE, Alexis vs Oral Roberts (11/14/19)
Turnovers	5	THOMAS, Taylah vs New Orleans (11/08/19)
	5	GAULDEN, A'Tyanna vs New Orleans (11/08/19)
Fouls	4	THOMAS, Taylah vs Wisconsin (11/30/19)
	4	DUNGEE, Chelsea vs Fordham (11/29/19)
	4	DUNGEE, Chelsea at California (11/24/19)
	4	DOUMBIA, Rokia vs Oral Roberts (11/14/19)
	4	REECE, Ginger vs McNeese (11/11/19)
Minutes	40	THOMAS, Taylah vs Wisconsin (11/30/19)
	40	DUNGEE, Chelsea at California (11/24/19)
	39	DUNGEE, Chelsea vs Wisconsin (11/30/19)
	39	RAMIREZ, Amber at California (11/24/19)
	38	RAMIREZ, Amber vs Wisconsin (11/30/19)



A'Tyanna Gaulden | R.Jr. | 5-7 | G | Ocilla, Ga. (Americus Sumter HS) | Florida State

SEASON HIGHS

Points	9	Stony Brook	11-17-19
FG Made	3	Stony Brook	11-17-19
FG Att.	6	Stony Brook	11-17-19
3FG Made	2	Belmont	11-20-19
3FG Att.	2	Belmont	11-20-19*
FT Made	3	Stony Brook	11-17-19
FT Att.	6	Stony Brook	11-17-19
Off. Reb.	1	Wisconsin	11-30-19*
Def. Reb.	2	Wisconsin	11-30-19*
Rebounds	3	Wisconsin	11-30-19*
Assists	6	@ Cal	11-24-19
Blocks	1	Stony Brook	11-17-19
Steals	1	Wisconsin	11-30-19*
Minutes	21	@ Cal	11-24-19

CAREER HIGHS

Points	16	NSU	11-9-18
FG Made	6	at Georgia	2-21-19*
FG Att.	16	TTU	12-4-18
3FG Made	2	Belmont	11-20-19
3FG Att.	2	Belmont	11-20-19*
FT Made	5	#22 ASU	11-18-18
FT Att.	7	NSU	11-9-18
Off. Reb.	3	TTU	12-4-18
Def. Reb.	3	vs. PVAM	12/16/18*
Rebounds	5	TTU	12-4-18
Assists	6	@ Cal	11-24-19
Blocks	1	Stony Brook	11-17-19*
Steals	2	at Texas A&M	3/3/19*
Minutes	24	TTU	12-4-18

*Most Recent

NOTES

- Leads the team in assists with 21 on the season.
- Dished a career-high 6 assists at Cal.
- Had her best game of the young season against Stony Brook, dropping a season-high nine points.
- Played 13 minutes in the opener, scoring five points on two of four shooting.
- Four games with double figure points a season ago.
- Redshirted the 2017-18 season due to NCAA transfer rules.
- Played in 21 games averaging 1.1 ppg, 0.6 rpg and 1.0 apg in 5.7 minutes per game at FSU.

Opponent	Date	gs	min	Total		3-Pointers		Free throws		Rebounds								pts	avg
				fg-fga	pct	3fg-fga	pct	ft-fa	pct	off	def	tot	avg	pf	a	tlo	blk	stl	
NEW ORLEANS	11/08/19	13	2-4	.500	1-2	.500	0-0	.000	0	1	1	1.0	2	2	5	0	1	5	5.0
MCNEESE	11/11/19	14	0-3	.000	0-1	.000	2-4	.500	0	2	2	1.5	0	1	4	0	0	2	3.5
ORAL ROBERTS	11/14/19	16	0-5	.000	0-0	.000	2-2	1.000	1	2	3	2.0	0	2	1	0	0	2	3.0
STONY BROOK	11/17/19	16	3-6	.500	0-1	.000	3-6	.500	0	2	2	2.0	0	2	4	1	1	9	4.5
BELMONT	11/20/19	15	2-4	.500	2-2	1.000	1-2	.500	0	2	2	2.0	0	1	1	0	0	7	5.0
at California	11/24/19	21	1-5	.200	0-0	.000	0-0	.000	0	0	0	1.7	0	6	1	0	0	2	4.5
vs Fordham	11/29/19	16	0-4	.000	0-1	.000	0-0	.000	0	0	0	1.4	1	4	0	0	0	0	3.9
vs Wisconsin	11/30/19	15	2-3	.667	0-1	.000	2-4	.500	1	2	3	1.6	0	3	2	0	1	6	4.1
Totals		0	126	10-34	.294	3-8	.375	10-18	.556	2	11	13	1.6	3	21	18	1	33	4.1

Games played: 8
Minutes/game: 15.8
Points/game: 4.1
FG Pct: 29.4
3FG Pct: 37.5
FT Pct: 55.6

Rebounds/game: 1.6
Assists/game: 2.6
Turnovers/game: 2.3
Assist/turnover ratio: 1.2
Steals/game: 0.4
Blocks/game: 0.1

SEASON | CAREER SUPERLATIVES

Stat	'18-'19	'19-'20	Career
Double Figure Pts	4		4
Double Figure Rebs			
Double-Doubles			
5 + Assists	1	1	
5 + Blocks			
5 + Steals			
Led Team in Pts			
Led Team in Reb			
20 + Points			

CAREER STATISTICS

Year	GP-GS	Min	Avg	FG	Total		Pct	FG	3-Point		Pct	FT	F-Throw		Pct	Off	Rebounds				PF	FO	Ast	TO	Blk	Stl	Pts	Avg
					FGA	Pct			FGA	Pct			FTA	Pct			Def	Tot	Avg									
2015-16*21-0	119	5.7	7	15	.467	0	0	.000	9	14	.643	2	10	12	0.6	24	1	22	15	0	13	23	1.1					

*at Florida State

Season	gp-gs	min/avg	fg-fga	pct	fg-fga	pct	ft-fa	pct	off	def	tot	avg	pf	fo	ast	to	blk	stl	pts	avg
2018-19	30-0	391/13.0	59-151	.391	2-10	.200	29-37	.784	12	28	40	1.3	28	0	75	46	2	15	149	5.0
2019-20	8-0	126/15.8	10-34	.294	3-8	.375	10-18	.556	2	11	13	1.6	3	0	21	18	1	3	33	4.1
TOTAL	38-0	517/13.6	69-185	.373	5-18	.278	39-55	.709	14	39	53	1.4	31	0	96	64	3	18	182	4.8



| Marquesha Davis | Fr. | 6-0 | F | Springdale, Ark. (Springdale HS)

SEASON HIGHS

Points	7	McNeese State	11-11-19
FG Made	3	McNeese State	11-11-19
FG Att.	6	Belmont	11-20-19
3FG Made	1	Belmont	11-20-19
3FG Att.	3	Belmont	11-20-19
FT Made	1	Belmont	11-20-19*
FT Att.	4	McNeese State	11-11-19
Off. Reb.	2	Belmont	11-20-19*
Def. Reb.	5	McNeese State	11-11-19
Rebounds	5	McNeese State	11-11-19
Assists	1	McNeese State	11-11-19
Blocks	2	Oral Roberts	11-14-19
Steals	2	Belmont	11-20-19
Minutes	16	Oral Roberts	11-14-19

CAREER HIGHS

(Same as Season Highs)

NOTES

- Was solid against McNeese State, dropping seven points while grabbing five rebounds.
- Played eight minutes during her Arkansas debut, recording a point and two rebounds.
- Honored as a First-Team All-USA Arkansas Girls Basketball selection after averaging 21.3 points and 10 rebounds a game as a senior
- Eclipsed 1,000 career points as a junior and broke Springdale High's single-season scoring and rebounding records in 2017-18
- Named an Adidas Uprising All-American Camp selection in 2017-18

Opponent	Date	gs	min	Total		3-Pointers		Free throws		Rebounds				pf	a	t/o	blk	stl	pts	avg
				fg-fga	pct	3fg-fga	pct	ft-fa	pct	off	def	tot	avg							
NEW ORLEANS	11/08/19	8	0-4	.000	0-1	.000	1-2	.500	1	1	2	2.0	0	0	1	0	0	0	1	1.0
MCNEESE	11/11/19	15	3-3	1.000	0-0	.000	1-4	.250	0	5	5	3.5	1	1	0	1	1	7	4.0	
ORAL ROBERTS	11/14/19	16	0-3	.000	0-2	.000	0-2	.000	0	1	1	2.7	3	0	2	2	0	0	2.7	
STONY BROOK	11/17/19	12	2-3	.667	0-0	.000	0-0	.000	2	2	4	3.0	1	1	3	0	0	4	3.0	
BELMONT	11/20/19	10	1-6	.167	1-3	.333	1-2	.500	2	2	4	3.2	0	0	0	0	2	4	3.2	
vs Fordham	11/29/19	5	1-1	1.000	0-0	.000	0-0	.000	0	0	0	2.7	1	0	1	0	1	2	3.0	
vs Wisconsin	11/30/19	1	0-0	.000	0-0	.000	0-0	.000	0	0	0	2.3	0	0	1	0	0	0	2.6	
Totals		0	67	7-20	.350	1-6	.167	3-10	.300	5	11	16	2.3	6	2	8	3	4	18	2.6

Games played: 7
Minutes/game: 9.6
Points/game: 2.6
FG Pct: .35.0
3FG Pct: .16.7
FT Pct: .30.0

Rebounds/game: 2.3
Assists/game: 0.3
Turnovers/game: 1.1
Assist/turnover ratio: 0.3
Steals/game: 0.6
Blocks/game: 0.4

SEASON | CAREER SUPERLATIVES

Stat '19-20 Career

- Double Figure Pts
- Double Figure Rebs
- Double-Doubles
- 5 + Assists
- 5 + Blocks
- 5 + Steals
- Led Team in Pts
- Led Team in Reb
- 20 + Points

CAREER STATISTICS

Season	gp-gs	min/avg	fg-fga	pct	fg-fga	pct	ft-fa	pct	off	def	tot	avg	pf	fo	ast	to	blk	stl	pts	avg
2019-20	7-0	67/9.6	7-20	.350	1-6	.167	3-10	.300	5	11	16	2.3	6	0	2	8	3	4	18	2.6
TOTAL	7-0	67/9.6	7-20	.350	1-6	.167	3-10	.300	5	11	16	2.3	6	0	2	8	3	4	18	2.6



2 Alexis Tolefree | Sr. | 5-8 | G | Conway, Ark. (Conway HS) | Jones College

SEASON HIGHS

Points	20	Belmont	11-20-19
FG Made	7	Oral Roberts	11-14-19
FG Att.	13	New Orleans	11-8-19
3FG Made	5	Belmont	11-20-19
3FG Att.	11	New Orleans	11-8-19
FT Made	5	Belmont	11-20-19
FT Att.	5	Belmont	11-20-19
Off. Reb.	1	@ Cal	11-24-19*
Def. Reb.	5	@ Cal	11-24-19
Rebounds	6	@ Cal	11-24-19
Assists	4	Belmont	11-20-19*
Blocks	3	Oral Roberts	11-14-19
Steals	2	@ Cal	11-24-19
Minutes	30	@ Cal	11-24-19

CAREER HIGHS

Points	22	#22 ASU	11-18-18
FG Made	8	at ACU	12-8-18*
FG Att.	23	Pitt	11-24-18
3FG Made	5	Belmont	11-20-19*
3FG Att.	16	Pitt	11-24-18
FT Made	6	Houston	3-21-19 (WNIT)
FT Att.	7	Houston	3-21-19 (WNIT)
Off. Reb.	2	at Georgia	2-21-19*
Def. Reb.	8	UAB	3-24-19
Rebounds	8	UAB	3-24-19
Assists	5	Pitt	11-24-18
Blocks	3	Oral Roberts	11-14-19*
Steals	5	at ACU	12-8-18
Minutes	36	Georgia	3-7-19

*Most Recent

NOTES

- Scored 12 fourth-quarter points against Wisconsin.
- Recorded her third-career 20+ point game against Belmont.
- Was fantastic against Oral Roberts, going for 18 points on 7 of 11 shooting. It was her 22nd career game in double figures.
- Chipped in 11 points in 26 minutes during the opener against New Orleans.
- Now has 21 career double figure games.
- Arkansas career-best 22 points against No. 22 Arizona State last season.
- Scored in double figures in 20 games this year.
- Went off against UAB from deep in round two of the WNIT, shooting 5-6 from three, which

Opponent	Date	gs	min	Total		3-Pointers		Free throws		Rebounds				pf	a	t/o	blk	stl	pts	avg	
				fg-fga	pct	3fg-fga	pct	ft-fa	pct	off	def	tot	avg								
NEW ORLEANS	11/08/19	*	26	4-13	.308	3-11	.273	0-0	.000	1	2	3	3.0	0	3	1	0	1	11	11.0	
MCNEESE	11/11/19	*	20	3-4	.750	0-0	.000	3-3	1.000	0	3	3	3.0	0	3	1	0	0	9	10.0	
ORAL ROBERTS	11/14/19	*	25	7-11	.636	4-6	.667	0-0	.000	0	4	4	3.3	0	3	0	3	1	18	12.7	
STONY BROOK	11/17/19	*	20	1-6	.167	0-2	.000	1-2	.500	1	4	5	3.8	3	1	0	0	0	3	10.3	
BELMONT	11/20/19	*	27	5-9	.556	5-8	.625	5-5	1.000	0	4	4	3.8	1	4	1	0	1	20	12.2	
at California	11/24/19	*	30	5-11	.455	1-4	.250	0-0	.000	1	5	6	4.2	3	2	2	0	2	11	12.0	
vs Fordham	11/29/19	*	21	1-8	.125	0-1	.000	0-0	.000	0	4	4	4.1	2	0	2	0	0	2	10.6	
vs Wisconsin	11/30/19	*	29	3-6	.500	3-5	.600	3-4	.750	0	3	3	4.0	2	1	2	0	0	12	10.8	
Totals			8	198	29-68	.426	16-37	.432	12-14	.857	3	29	32	4.0	11	17	9	3	5	86	10.8

Games played: 8
Minutes/game: 24.8
Points/game: 10.8
FG Pct: .426
3FG Pct: .432
FT Pct: .857

Rebounds/game: 4.0
Assists/game: 2.1
Turnovers/game: 1.1
Assist/turnover ratio: 1.9
Steals/game: 0.6
Blocks/game: 0.4

SEASON | CAREER SUPERLATIVES

Stat	'18-'19	'19-'20	Career
Double Figure Pts	20	5	25
Double Figure Rebs	-	-	-
Double-Doubles	-	-	-
5 + Assists	1	-	1
5 + Blocks	-	-	-
5 + Steals	3	-	3
Led Team in Pts	7	-	7
Led Team in Reb	2	-	2
20 + Points	2	1	3
30/40/50+ Points	-	-	-

CAREER STATISTICS

Season	gp-gs	min/avg	fg-fga	pct	fg-fga	pct	ft-fa	pct	off	def	tot	avg	pf	fo	ast	to	blk	stl	pts	avg
2018-19	37-36	891/24.1	126-390	.323	77-268	.287	49-63	.778	15	101	116	3.1	61	0	37	49	13	52	378	10.2
2019-20	8-8	198/24.8	29-68	.426	16-37	.432	12-14	.857	3	29	32	4.0	11	0	17	9	3	5	86	10.8
TOTAL	45-44	1089/24.2	155-458	.338	93-305	.305	61-77	.792	18	130	148	3.3	72	0	54	58	16	57	464	10.3



4 Erynn Barnum | RFr. | 6-2 | F | Little Rock, Ark. (Little Rock Central HS)

SEASON HIGHS

Points	11	McNeese State	11-11-19
FG Made	5	McNeese State	11-11-19
FG Att.	9	McNeese State	11-11-19
3FG Made	N/A		
3FG Att.	N/A		
FT Made	5	Oral Roberts	11-14-19
FT Att.	9	Oral Roberts	11-14-19
Off. Reb.	3	Belmont	11-20-19*
Def. Reb.	8	Stony Brook	11-17-19
Rebounds	9	Stony Brook	11-17-19
Assists	1	Oral Roberts	11-14-19
Blocks	2	Belmont	11-20-19*
Steals	2	McNeese State	11-11-19
Minutes	17	Stony Brook	11-17-19

CAREER HIGHS

Same As Season Highs

NOTES

- Grabbed a career-best nine boards against Stony Brook.
- Tallied her first assist and collected a career-high three offensive boards against ORU.
- Scored in double-figures for the first time against McNeese State, going for 11 points.
- Scored four points on 50 percent shooting to go along with three rebounds in her debut.
- Averaged 19.4 points, 7.4 rebounds, 2.2 steals and 1.8 assists per game in her final year
- Honors include a pair of all-state selections in 2017 and 2018, all-conference selections in 2016 and 2017, all-tournament team at the Fayetteville Lady Bulldog Classic, M.V.P. honors at the Camden Fairview Holiday Classic, Channel 7 Full Court Nominee, The Downtown Tip Off Club Outstanding Player of The Month, participation in the Metro Classic Game, and selection to the Mike Conley Jr. All-Star Game.

Opponent	Date	gs	min	Total		3-Pointers		Free throws		Rebounds				pf	a	t/o	blk	stl	pts	avg
				fg-fga	pct	3fg-fga	pct	ft-fga	pct	off	def	tot	avg							
NEW ORLEANS	11/08/19		6	1-2	.500	0-0	.000	2-4	.500	2	1	3	3.0	0	0	0	0	0	4	4.0
MCNEESE	11/11/19		16	5-9	.556	0-0	.000	1-2	.500	1	5	6	4.5	2	0	0	2	2	11	7.5
ORAL ROBERTS	11/14/19		17	2-4	.500	0-0	.000	5-9	.556	3	3	6	5.0	2	1	0	1	1	9	8.0
STONY BROOK	11/17/19		17	0-1	.000	0-0	.000	3-4	.750	1	8	9	6.0	0	1	0	0	1	3	6.8
BELMONT	11/20/19		14	3-3	1.000	0-0	.000	0-0	.000	3	5	8	6.4	1	0	1	2	0	6	6.6
at California	11/24/19		3	2-2	1.000	0-0	.000	0-1	.000	0	1	1	5.5	1	0	0	0	0	4	6.2
vs Fordham	11/29/19		7	1-1	1.000	0-0	.000	0-0	.000	0	1	1	4.9	0	0	0	0	1	2	5.6
Totals			0	80	14-22	.636	0-0	.000	11-20	.550	10	24	34	4.9	6	2	1	5	39	5.6

Games played: 7
Minutes/game: 11.4
Points/game: 5.6
FG Pct: 63.6
FT Pct: 55.0

Rebounds/game: 4.9
Assists/game: 0.3
Turnovers/game: 0.1
Assist/turnover ratio: 2.0
Steals/game: 0.7
Blocks/game: 0.7

SEASON | CAREER SUPERLATIVES

Stat	'19-20	Career
Double Figure Pts	1	1
Double Figure Rebs		
Double-Doubles (pts/ast)		
5 + Assists		
5 + Blocks		
5 + Steals		
Led Team in Pts		
Led Team in Reb	2	2
20 + Points		

CAREER STATISTICS

Season	gp-gs	min/avg	fg-fga	pct	fg-fga	pct	ft-fga	pct	off	def	tot	avg	pf	fo	ast	to	blk	stl	pts	avg
2019-20	7-0	80/11.4	14-22	.636	0-0	.000	11-20	.550	10	24	34	4.9	6	0	2	1	5	5	39	5.6
TOTAL	7-0	80/11.4	14-22	.636	0-0	.000	11-20	.550	10	24	34	4.9	6	0	2	1	5	5	39	5.6


10 Kiara Williams | Sr. | 6-1 | F/C | Little Rock, Ark. (Little Rock Central HS)

SEASON HIGHS

Points	N/A
FG Made	N/A
FG Att.	N/A
3FG Made	N/A
3FG Att.	N/A
FT Made	N/A
FT Att.	N/A
Off. Reb.	N/A
Def. Reb.	N/A
Rebounds	N/A
Assists	N/A
Blocks	N/A
Steals	N/A
Minutes	N/A

NOTES

- Career-best 17 rebounds and seven blocks at No. 17 Kentucky.
- Season-best 15 points at Georgia and again versus Houston in WNIT.
- Team-best five blocks vs Tennessee Tech leading team to a program record 13 blocks.
- Team's leading rebounder.
- Twenty-two career games in double figure scoring and 15 career games with double digit rebounds.
- Led Arkansas with a career-best 25 points in SEC Tournament win over Vanderbilt.
- Career-best 16 rebounds, including 11 defensive rebounds, twice (Kansas & Grambling).
- Seven career double-doubles (three as a junior).

CAREER HIGHS

Points	25	Vanderbilt	2-28-18
FG Made	11	at Vanderbilt	2-28-18
FG Att.	13	at Vanderbilt	2-28-18
3FG Made	1	#5 Miss. St.	1-4-18
3FG Att.	1	#5 Miss. St.	1-4-18
FT Made	7	LSU	2-20-18
FT Att.	11	Charlotte	12-6-17
Off. Reb.	8	Grambling	12-18-17*
Def. Reb.	11	at Kansas	12-3-17
Rebounds	17	at No. 17 Kentucky	2-17-19
Assists	2	TSU	11-23-18*
Blocks	5	TTU	12-4-18
Steals	5	Miss State	3-10-19*
Minutes	32	at No. 17 Kentucky	2-17-19*

*Most Recent

SEASON | CAREER SUPERLATIVES

Stat	'16-'17	'17-'18	'18-'19	'19-20	Career
Double Figure Pts	-	12	10		22
Double Figure Rebs	-	8	8		16
Double-Doubles (pts/reb)	-	4	3		7
5+ Assists					
5+ Blocks	-	-	2	2	
5+ Steals					
Led Team in Pts	-	4	-	4	
Led Team in Reb	-	13	16	29	

CAREER STATISTICS

Season	gp-gs	min/avg	fg-fga	pct	fg-fga	pct	ft-fa	pct	off	def	tot	avg	pf	fo	ast	to	blk	stl	pts	avg
2016-17	20-5	227/11.4	26-48	.542	0-0	.000	10-26	.385	24	31	55	2.8	34	1	3	15	5	9	62	3.1
2017-18	31-30	602/19.4	105-201	.522	1-3	.333	43-75	.573	92	119	211	6.8	68	1	7	28	29	33	254	8.2
2018-19	37-37	790/21.4	104-172	.605	0-0	.000	42-72	.583	103	140	243	6.6	88	1	20	33	54	40	250	6.8
TOTAL	88-72	1619/18.4	235-421	.558	1-3	.333	95-173	.549	219	290	509	5.8	190	3	30	76	88	82	566	6.4



13 Grayce Spangler | Jr. | 5-11 | G | Fayetteville, Ark. (Fayetteville HS)

SEASON HIGHS

Points	2	Oral Roberts	11-14-19
FG Made	1	Oral Roberts	11-14-19
FG Att.	2	McNeese State	11-11-19
3FG Made	N/A		
3FG Att.	2	McNeese State	11-11-19
FT Made	1	McNeese State	11-11-19
FT Att.	2	McNeese State	11-11-19
Off. Reb.	N/A		
Def. Reb.	N/A		
Rebounds	N/A		
Assists	1	Belmont	11-20-19*
Blocks	N/A		
Steals	N/A		
Minutes	7	McNeese State	11-11-19

CAREER HIGHS

Points	9	UAB	3-24-19
FG Made	3	UAB	3-24-19
FG Att.	5	UAB	3-24-19
3FG Made	3	UAB	3-24-19
3FG Att.	5	UAB	3-24-19
FT Made	3	UTA	12-17-17
FT Att.	4	#13 Missouri	2-12-18
Off. Reb.	2	TTU	12-4-18
Def. Reb.	1	at ASU	12-21-17*
Rebounds	2	TTU	12-4-18
Assists	1	Belmont	11-20-19*
Blocks	1	Vanderbilt	1-13-19
Steals	1	Vanderbilt	1-13-19*
Minutes	9	at #9 SC	1-25-18

*Most Recent

SEASON | CAREER SUPERLATIVES

Stat '17-'18 '18-'19 '19-20 Career

Double Figure Pts

Double Figure Rebs

Double-Doubles

5 + Assists

5 + Blocks

5 + Steals

Led Team in Pts

Led Team in Reb

20 + Points

NOTES

- Season/career best with nine points in WNIT game versus UAB.
- Arkansas Athletics Department Athletics Director's List (3.5-3.99 GPA) | Fall 2017, Spring 2018.
- Arkansas Athletics Department Honor Roll (3.0-3.49 GPA) | Fall 2018.
- Scored her first points as a Razorback going 3-for-3 from the line in a win over UTA as a freshman.
- Arkansas Ties: Father Shannon lettered as a linebacker (1989) and mother, Stacy, was a member of the Pom Squad at Arkansas

Opponent	Date	gs	min	Total		3-Pointers		Free throws		Rebounds				pf	a	t/o	blk	stl	pts	avg
				fg-fga	pct	3fg-fga	pct	ft-fa	pct	off	def	tot	avg							
NEW ORLEANS	11/08/19	2	0-0	.000	0-0	.000	0-0	.000	0-0	0	0	0	0.0	0	0	0	0	0	0	0.0
MCNEESE	11/11/19	7	0-2	.000	0-2	.000	1-2	.500	0	0	0	0.0	1	1	1	0	0	1	0.5	
ORAL ROBERTS	11/14/19	5	1-1	1.000	0-0	.000	0-0	.000	0-0	0	0	0	0.0	1	0	0	0	0	2	1.0
STONY BROOK	11/17/19	3	0-0	.000	0-0	.000	0-0	.000	0-0	0	0	0	0.0	1	0	0	0	0	0	0.8
BELMONT	11/20/19	6	0-0	.000	0-0	.000	0-0	.000	0-0	0	0	0	0.0	0	1	0	0	0	0	0.6
vs Fordham	11/29/19	0	0-0	.000	0-0	.000	0-0	.000	0-0	0	0	0	0.0	0	0	0	0	0	0	0.5
Totals		0	23	1-3	.333	0-2	.000	1-2	.500	0	0	0	0.0	3	2	1	0	0	3	0.5

Games played: 6
Minutes/game: 3.8
Points/game: 0.5
FG Pct: 33.3
3FG Pct: 0.0
FT Pct: 50.0

Assists/game: 0.3
Turnovers/game: 0.2
Assist/turnover ratio: 2.0

CAREER STATISTICS

Season	gp-gs	min/avg	fg-fga	pct	fg-fga	pct	ft-fa	pct	off	def	tot	avg	pf	fo	ast	to	blk	stl	pts	avg
2017-18	17-0	67/3.9	2-16	.125	0-6	.000	4-10	.400	1	4	5	0.3	13	0	1	5	0	1	8	0.5
2018-19	13-0	37/2.8	7-18	.389	7-14	.500	0-4	.000	3	0	3	0.2	9	0	0	3	1	1	21	1.6
2019-20	6-0	23/3.8	1-3	.333	0-2	.000	1-2	.500	0	0	0	0.0	3	0	2	1	0	0	3	0.5
TOTAL	36-0	127/3.5	10-37	.270	7-22	.318	5-16	.313	4	4	8	0.2	25	0	3	9	1	2	32	0.9



14 Jailyn Mason | Sr. | 5-9 | G | Mason, Ohio (William Mason HS)

SEASON HIGHS

Points	N/A
FG Made	N/A
FG Att.	N/A
3FG Made	N/A
3FG Att.	N/A
FT Made	N/A
FT Att.	N/A
Off. Reb.	N/A
Def. Reb.	N/A
Rebounds	N/A
Assists	N/A
Blocks	N/A
Steals	N/A
Minutes	N/A

NOTES

- Fourteen games in double figure scoring last season – 43 games in her career.
- Finished last season off strong, scoring 11 and 17 against UAB and TCU.
- Was excellent in the SEC Tournament, going for 12 against Georgia, 14 against South Carolina and 15 against Texas A&M.
- Member of the SEC WBB Leadership Council.
- SEC All-Freshman Team | 2017
- Two-time SEC Freshman of the Week | 2016-17

CAREER HIGHS

Points	19	ORU	12-21-16
FG Made	9	No. 11 Tenn.	2-8-18*
FG Att.	21	No. 11 Tenn.	2-8-18
3FG Made	4	South Carolina	3-8-19*
3FG Att.	9	Texas A&M	3-9-19
FT Made	4	#13 Missouri	2-12-18*
FT Att.	4	#13 Missouri	2-12-18*
Off. Reb.	4	Texas Tech	12-3-16
Def. Reb.	9	Alabama	1-24-19
Rebounds	9	Alabama	1-24-19*
Assists	11	HBU	12-28-16
Blocks	3	SHSU	11-10-17
Steals	5	at Georgia	1-11-18
Minutes	40	Houston	3-21-19 (WNIT)*

*Most Recent

SEASON | CAREER SUPERLATIVES

Stat	'16-'17	'17-'18	'18-'19	'19-'20	Career
Double Figure Pts	10	19	14		43
Double Figure Rebs	-	-	-		-
Double-Doubles (pts/ast)	2	-	-		2
5 + Assists	6	5	3		14
5 + Blocks	-	-	-		-
5 + Steals	-	-	-		-
Led Team in Pts	-	8	-		8
Led Team in Reb	-	1	3		4
20 + Points	-	-	-		-

CAREER STATISTICS

Season	gp-gs	min/avg	fg-fga	pct	fg-fga	pct	ft-fta	pct	off	def	tot	avg	pf	fo	ast	to	blk	stl	pts	avg
2016-17	30-29	894/29.8	100-256	.391	19-53	.358	7-11	.636	21	96	117	3.9	72	2	93	56	8	31	226	7.5
2017-18	31-31	1031/33.3	139-344	.404	47-130	.362	16-19	.842	17	111	128	4.1	56	1	92	67	14	34	341	11.0
2018-19	37-36	1111/30.0	114-277	.412	49-129	.380	17-23	.739	19	115	134	3.6	71	0	71	54	14	42	294	7.9
TOTAL	98-96	3036/31.0	353-877	.403	115-312	.369	40-53	.755	57	322	379	3.9	199	3	256	177	36	107	861	8.8



22 Avery Hughes | Fr. | 5-7 | G | Bentonville, Ark. (Bentonville HS)

SEASON HIGHS

Points	6	Oral Roberts	11-14-19
FG Made	2	Oral Roberts	11-14-19
FG Att.	2	Oral Roberts	11-14-19
3FG Made	2	Oral Roberts	11-14-19
3FG Att.	2	Oral Roberts	11-14-19
FT Made	1	Stony Brook	11-17-19
FT Att.	1	Stony Brook	11-17-19
Off. Reb.	N/A		
Def. Reb.	N/A		
Rebounds	N/A		
Assists	1	Oral Roberts	11-14-19
Blocks	N/A		
Steals	N/A		
Minutes	7	McNeese State	11-11-19

CAREER HIGHS

Same as Season Highs

NOTES

- Dropped a career-best six points on ORU on two made threes.
- Scored her first-career points against McNeese State.
- Finished her career as Bentonville's second leading scorer and set single game records for points (34) and free throws (20-for-22)
- Two-time all-conference and all-state selection leading Bentonville to the 2019 conference title and a state runner-up finish
- Honors include All-Arkansas Second-Team, All-Northwest Arkansas First-Team, Gatorade Player of the Week, two KURM Dream Team selections and team captain honors as a senior
- The first walk-on for Neighbors and his staff at Arkansas

Opponent	Date	gs	min	Total		3-Pointers		Free throws		Rebounds				pf	a	t/o	blk	stl	pts	avg
				fg-fga	pct	3fg-fga	pct	ft-fa	pct	off	def	tot	avg							
NEW ORLEANS	11/08/19	1	0-0	.000	0-0	.000	0-0	.000	0-0	0	0	0	0.0	0	0	0	0	0	0	0.0
MCNEESE	11/11/19	8	1-2	.500	0-0	.000	0-0	.000	0-0	0	0	0	0.0	1	0	3	0	0	2	1.0
ORAL ROBERTS	11/14/19	2	2-2	1.000	2-2	1.000	0-0	.000	0-0	0	0	0	0.0	0	1	0	0	0	6	2.7
STONY BROOK	11/17/19	4	1-2	.500	0-1	.000	1-1	1.000	0-0	0	0	0	0.0	1	0	0	0	0	3	2.8
BELMONT	11/20/19	3	0-0	.000	0-0	.000	0-0	.000	0-0	0	0	0	0.0	0	0	2	0	0	0	2.2
Totals		0	18	4-6	.667	2-3	.667	1-1	1.000	0	0	0	0.0	2	1	5	0	0	11	2.2

Games played: 5
Minutes/game: 3.6
Points/game: 2.2
FG Pct: 66.7
3FG Pct: 66.7
FT Pct: 100.0

Assists/game: 0.2
Turnovers/game: 1.0
Assist/turnover ratio: 0.2

SEASON | CAREER SUPERLATIVES

Stat '19-20 Career

Double Figure Pts

Double Figure Rebs

Double-Doubles

5 + Assists

5 + Blocks

5 + Steals

Led Team in Pts

Led Team in Reb

20 + Points

CAREER STATISTICS

Season	gp-gs	min/avg	fg-fga	pct	fg-fga	pct	ft-fa	pct	off	def	tot	avg	pf	fo	ast	to	blk	stl	pts	avg
2019-20	5-0	18/3.6	4-6	.667	2-3	.667	1-1	1.000	0	0	0	0.0	2	0	1	5	0	0	11	2.2
TOTAL	5-0	18/3.6	4-6	.667	2-3	.667	1-1	1.000	0	0	0	0.0	2	0	1	5	0	0	11	2.2



23 Amber Ramirez | R.Jr. | 5-9 | G | San Antonio, Texas (Wagner HS) | TCU

SEASON HIGHS

Points	26	Stony Brook	11-17-19
FG Made	8	Stony Brook	11-17-19
FG Att.	16	Fordham	11-29-19
3FG Made	6	Stony Brook	11-17-19*
3FG Att.	11	Oral Roberts	11-14-19
FT Made	4	Stony Brook	11-17-19*
FT Att.	4	Stony Brook	11-17-19*
Off. Reb.	1	Wisconsin	11-30-19*
Def. Reb.	8	Wisconsin	11-30-19
Rebounds	9	Wisconsin	11-30-19
Assists	3	Fordham	11-29-19
Blocks	3	Fordham	11-29-19
Steals	4	New Orleans	11-8-19
Minutes	39	@ Cal	11-24-19

CAREER HIGHS

Points	33	SF Louisiana	12-10-17
FG Made	11	SF Louisiana	12-10-17
FG Att.	17	SF Louisiana	12-10-17
3FG Made	11	SF Louisiana	12-10-17
3FG Att.	17	SF Louisiana	12-10-17
FT Made	9	Oklahoma	3-3-18
FT Att.	10	Oklahoma	3-3-18
Off. Reb.	1	Wisconsin	11-30-19*
Def. Reb.	8	Wisconsin	11-30-19
Rebounds	9	Wisconsin	11-30-19
Assists	7	at Kentucky	2-15-18
Blocks	1	Belmont	11-20-19*
Steals	4	New Orleans	11-8-19*
Minutes	39	@ Cal	11-24-19

*Most Recent

NOTES

- Had a breakout game against Stony Brook, torching the Seawolves for 26 points.
- Made 6 threes in that game, tying the most by a Razorback this season.
- Has been in double-figures in all four of her games played this season.
- TCU career spanned two seasons where she played in 59 games and averaged 9.6 points per game, including 10.4 ppg in 2017-18, helping the Horned Frogs reach the semifinals of the WNIT
- Shot 39.1 overall and 38.2 from beyond the arc
- Five-star recruit out of high school and is transferring to Arkansas after two seasons at TCU
- Played in the McDonald's All-American game and the Jordan Brand Classic game following her senior season at Wagner High School in San Antonio, Texas

Opponent	Date	gs	min	Total		3-Pointers		Free throws		Rebounds				pf	a	t/o	blk	stl	pts	avg	
				fg-fga	pct	3fg-fga	pct	ft-fa	pct	off	def	tot	avg								
NEW ORLEANS	11/08/19	*	30	4-10	.400	4-9	.444	0-0	.000	0	0	0	0.0	0	2	2	0	4	12	12.0	
MCNEESE	11/11/19	*	23	4-11	.364	1-4	.250	4-4	1.000	0	3	3	1.5	0	2	1	0	1	13	12.5	
ORAL ROBERTS	11/14/19	*	26	6-14	.429	5-11	.455	1-1	1.000	0	2	2	1.7	1	0	2	0	0	18	14.3	
STONY BROOK	11/17/19	*	29	8-11	.727	6-9	.667	4-4	1.000	0	2	2	1.8	1	2	0	1	0	26	17.3	
BELMONT	11/20/19	*	22	2-7	.286	1-4	.250	0-0	.000	0	2	2	1.8	0	0	0	1	0	5	14.8	
at California	11/24/19	*	39	6-15	.400	2-6	.333	1-1	1.000	1	4	5	2.3	1	1	2	0	1	15	14.8	
vs Fordham	11/29/19	*	37	4-16	.250	4-10	.400	2-2	1.000	0	5	5	2.7	0	3	3	3	2	14	14.7	
vs Wisconsin	11/30/19	*	38	5-15	.333	5-10	.500	0-0	.000	1	8	9	3.5	1	1	0	0	0	15	14.8	
Totals			8	244	39-99	.394	28-63	.444	12-12	1.000	2	26	28	3.5	4	11	10	5	8	118	14.8

Games played: 8
Minutes/game: 30.5
Points/game: 14.8
FG Pct: 39.4
3FG Pct: 44.4
FT Pct: 100.0

Rebounds/game: 3.5
Assists/game: 1.4
Turnovers/game: 1.3
Assist/turnover ratio: 1.1
Steals/game: 1.0
Blocks/game: 0.6

SEASON | CAREER SUPERLATIVES

Stat	'16-17	'17-18	'19-20	Career
Double Figure Pts	7	18	7	32
Double Figure Rebs	-	-	-	-
Double-Doubles	-	-	-	-
5 + Assists	2	7	-	9
5 + Blocks	-	-	-	-
5 + Steals	-	-	-	-
Led Ark in Pts	-	-	1	1
Led Ark in Reb	-	-	1	1
20 + Points	-	3	1	4

CAREER STATISTICS

CAREER STATISTICS																								
Year	GP-GS	Min	Avg	Total		3-Point			F-Throw			Rebounds												
				FG	FGA	Pct	FG	FGA	Pct	FT	FTA	Pct	Off	Def	Tot	Avg	PF	FO	Ast	TO	Blk	Stl	Pts	Avg
2016-17*	23-5	559	24.3	67	196	.342	39	106	.368	17	20	.850	1	45	46	2.0	35	0	32	27	11	15	190	8.3
2017-18*	36-23	896	24.9	131	311	.421	65	166	.392	48	56	.857	5	63	68	1.9	21		103	57	4	30	375	10.4
TCU Stats*																								

TCU Stats*

Season	gp-gs	min/avg	fg-fga	pct	fg-fga	pct	ft-fa	pct	off	def	tot	avg	pf	fo	ast	to	blk	stl	pts	avg
2019-20	8-8	244/30.5	39-99	.394	28-63	.444	12-12	1.000	2	26	28	3.5	4	0	11	10	5	8	118	14.8
TOTAL	8-8	244/30.5	39-99	.394	28-63	.444	12-12	1.000	2	26	28	3.5	4	0	11	10	5	8	118	14.8



24 Taylah Thomas | Jr. | 6-1 | F | Arlington, Texas (Mansfield Timberview HS)

SEASON HIGHS

Points	16	@ Cal	11-24-19
FG Made	7	@ Cal	11-24-19
FG Att.	9	@ Cal	11-24-19
3FG Made	1	Fordham	11-29-19
3FG Att.	1	Wisconsin	11-30-19
FT Made	2	@ Cal	11-24-19
FT Att.	2	@ Cal	11-24-19*
Off. Reb.	7	New Orleans	11-8-19
Def. Reb.	14	New Orleans	11-8-19
Rebounds	21	New Orleans	11-8-19
Assists	1	New Orleans	11-8-19
Blocks	2	McNeese State	11-11-19
Steals	2	Fordham	11-29-19
Minutes	40	Wisconsin	11-30-19

CAREER HIGHS

Points	16	@ Cal	11-24-19
FG Made	7	@ Cal	11-24-19*
FG Att.	10	Alabama	1-24-19
3FG Made	1	Ole Miss	12-31-17*
3FG Att.	1	McNeese State	11-11-19*
FT Made	3	Houston	3-21-19 (WNIT)*
FT Att.	6	NSU	11-9-18*
Off. Reb.	7	New Orleans	11-8-19
Def. Reb.	14	New Orleans	11-8-19
Rebounds	21	New Orleans	11-8-19
Assists	2	at #11 Missouri	1-21-18
Blocks	2	McNeese State	11-11-19*
Steals	3	Georgia	1-21-19*
Minutes	40	Wisconsin	11-30-19

*Most Recent

SEASON | CAREER SUPERLATIVES

Stat	'17-'18	'18-'19	'19-20	Career
Double Figure Pts	1	5	4	10
Double Figure Rebs	1	1	4	6
Double-Doubles			3	3
5 + Assists				
5 + Blocks				
5 + Steals				
Led Team in Pts	-	1		1
Led Team in Reb	7	9	5	21
20 + Points				

NOTES

- Recorded her third double-double of the season against Fordham (15 & 13).
- Scored a career-high 16 points against Cal.
- Recorded her second-straight double-double against McNeese State (11 points, 11 boards).
- Nearly broke the Arkansas single-game rebounding record against New Orleans, pulling down 21 rebounds.
- Recorded her first-career double-double against the Privateers (10 points, 21 rebounds).
- Logged a career-high 35 minutes in the 2019-20 season opener.

Opponent	Date	gs	min	Total		3-Pointers		Free throws		Rebounds				pf	a	t/o	blk	stl	pts	avg	
				fg-fga	pct	3fg-fga	pct	ft-fga	pct	off	def	tot	avg								
NEW ORLEANS	11/08/19	*	35	4-7	.571	0-0	.000	2-2	1.000	7	14	21	21.0	2	1	5	0	0	10	10.0	
MCNEESE	11/11/19	*	24	5-6	.833	0-1	.000	1-2	.500	3	8	11	16.0	2	0	0	2	0	11	10.5	
ORAL ROBERTS	11/14/19	*	21	0-0	.000	0-0	.000	0-2	.000	3	7	10	14.0	3	0	1	1	1	0	7.0	
STONY BROOK	11/17/19	*	23	2-5	.400	0-0	.000	1-2	.500	3	6	9	12.8	2	0	0	0	0	5	6.5	
BELMONT	11/20/19	*	23	0-3	.000	0-0	.000	0-0	.000	2	4	6	11.4	3	0	0	1	0	0	5.2	
at California	11/24/19	*	37	7-9	.778	0-0	.000	2-2	1.000	3	5	8	10.8	2	0	1	1	1	16	7.0	
vs Fordham	11/29/19	*	33	5-9	.556	1-1	1.000	4-6	.667	6	7	13	11.1	2	0	1	1	2	15	8.1	
vs Wisconsin	11/30/19	*	40	1-3	.333	0-1	.000	2-2	1.000	3	4	7	10.6	4	0	0	0	0	4	7.6	
Totals			8	236	24-42	.571	1-3	.333	12-18	.667	30	55	85	10.6	20	1	8	6	4	61	7.6

Games played: 8
Minutes/game: 29.5
Points/game: 7.6
FG Pct: 57.1
3FG Pct: 33.3
FT Pct: 66.7

Rebounds/game: 10.6
Assists/game: 0.1
Turnovers/game: 1.0
Assist/turnover ratio: 0.1
Steals/game: 0.5
Blocks/game: 0.8

CAREER STATISTICS

Season	gp-gs	min/avg	fg-fga	pct	fg-fga	pct	ft-fa	pct	off	def	tot	avg	pf	fo	ast	to	blk	stl	pts	avg
2017-18	31-2	527/17.0	44-100	.440	3-10	.300	25-42	.595	55	89	144	4.6	58	1	5	25	6	8	116	3.7
2018-19	37-0	632/17.1	51-101	.505	0-0	.000	31-52	.596	66	118	184	5.0	67	2	5	26	12	22	133	3.6
2019-20	8-8	236/29.5	24-42	.571	1-3	.333	12-18	.667	30	55	85	10.6	20	0	1	8	6	4	61	7.6
TOTAL	76-10	1395/18.4	119-243	.490	4-13	.308	68-112	.607	151	262	413	5.4	145	3	11	59	24	34	310	4.1


25 Destinee Oberg | Fr. | 6-3 | C | Burnsville, Minn. (Academy of Holy Angels)
SEASON HIGHS

Points	N/A
FG Made	N/A
FG Att.	N/A
3FG Made	N/A
3FG Att.	N/A
FT Made	N/A
FT Att.	N/A
Off. Reb.	N/A
Def. Reb.	N/A
Rebounds	N/A
Assists	N/A
Blocks	N/A
Steals	N/A
Minutes	N/A

CAREER HIGHS

Points	N/A
FG Made	N/A
FG Att.	N/A
3FG Made	N/A
3FG Att.	N/A
FT Made	N/A
FT Att.	N/A
Off. Reb.	N/A
Def. Reb.	N/A
Rebounds	N/A
Assists	N/A
Blocks	N/A
Steals	N/A
Minutes	N/A

*Most Recent

NOTES

- Despite missing her junior season with injury, Prospects Nation rated Oberg as a 4.5-star prospect, the No. 6 post player and No. 38 overall recruit in the nation for the 2019 class
- As a sophomore, Oberg and the Academy of Holy Angels played to a third-place finish at the state tournament
- She averaged 16.6 points, 9.9 rebounds, 2.5 assists and 2.1 steals per game that season

SEASON | CAREER SUPERLATIVES

Stat '19-20 Career

Double Figure Pts
 Double Figure Rebs
 Double-Doubles
 5 + Assists
 5 + Blocks
 5 + Steals
 Led Team in Pts
 Led Team in Reb
 20 + Points

CAREER STATISTICS



30 Macy Weaver | Jr. | 6-3 | F | Davis Junction, Ill. (Stillman Valley HS)

SEASON HIGHS

Points	N/A
FG Made	N/A
FG Att.	N/A
3FG Made	N/A
3FG Att.	N/A
FT Made	N/A
FT Att.	N/A
Off. Reb.	N/A
Def. Reb.	N/A
Rebounds	N/A
Assists	N/A
Blocks	N/A
Steals	N/A
Minutes	N/A

NOTES

- Tied career-best with four blocks in nine minutes versus Tennessee Tech.
- Played in 20 games as a freshman.
- Arkansas Athletics Department Athletic Director's List (3.5-3.99 GPA) | Fall 2017, Spring 2018.
- Arkansas Athletics Department Academic Honor Roll (3.0-3.49 GPA) | Fall 2018.
- Played 19 minutes with four blocks and solid defense at UTEP.
- Career High seven points in 11 minutes vs South Carolina.

CAREER HIGHS

Points	7	#9/7 SC	1-25-18
FG Made	3	#9/7 SC	1-25-18
FG Att.	4	#9/7 SC	1-25-18
3FG Made	-		
3FG Att.	-		
FT Made	3	#13 Missouri	2-12-18
FT Att.	6	#13 Missouri	2-12-18
Off. Reb.	3	Vanderbilt	1-13-19*
Def. Reb.	4	UTA	12-17-17
Rebounds	5	TSU	11-23-18*
Assists	1	PVAM	12-16-18*
Blocks	4	TTU	12-4-18*
Steals	2	TTU	12-4-18*
Minutes	19	UTEP	11-24-17

*Most Recent

SEASON | CAREER SUPERLATIVES

Stat	'17-'18	'18-'19	'19-20	Career
Double Figure Pts				
Double Figure Rebs				
Double-Doubles				
5 + Assists				
5 + Blocks				
5 + Steals				
Led Team in Pts				
Led Team in Reb				
20 + Points				

CAREER STATISTICS

Season	gp-gs	min/avg	fg-fga	pct	fg-fga	pct	ft-fa	pct	off	def	tot	avg	pf	fo	ast	to	blk	stl	pts	avg
2017-18	20-0	144/7.2	8-20	.400	0-0	.000	11-24	.458	16	18	34	1.7	28	0	1	5	10	3	27	1.4
2018-19	12-0	49/4.1	5-10	.500	0-0	.000	5-8	.625	9	11	20	1.7	8	0	1	3	9	2	15	1.3
TOTAL	32-0	193/6.0	13-30	.433	0-0	.000	16-32	.500	25	29	54	1.7	36	0	2	8	19	5	42	1.3



33 Chelsea Dungee | R.Jr. | 5-11 | G | Sapulpa, Okla. (Sapulpa HS) | University of Oklahoma

SEASON HIGHS

Points	27	Wisconsin	11-30-19
FG Made	9	Wisconsin	11-30-19
FG Att.	22	Wisconsin	11-30-19
3FG Made	3	Fordham	11-29-19*
3FG Att.	9	New Orleans	11-8-19
FT Made	10	New Orleans	11-8-19
FT Att.	13	New Orleans	11-8-19
Off. Reb.	1	Wisconsin	11-30-19*
Def. Reb.	8	New Orleans	11-8-19
Rebounds	8	New Orleans	11-8-19
Assists	6	Oral Roberts	11-14-19
Blocks	2	New Orleans	11-8-19
Steals	2	Fordham	11-29-19*
Minutes	40	@ Cal	11-24-19

NOTES

- Scored a season-high 27 points against Wisconsin.
- Played a career-high 40 minutes @ Cal.
- Dished a career-high six assists against ORU.
- Led Arkansas in scoring with 19 points against McNeese State.
- Scored 22 points against New Orleans, her 18th consecutive game in double-figures.
- Has now scored 20+ in 21 career games.
- All-SEC Second-Team & SEC All-Tournament Team | 2019
- 41 points versus Auburn with 17 points in 3Q and 15 in 4Q. That is a program record in an SEC game and three points shy of the all-time mark at Arkansas ... 41 points was the most scored by an SEC player last season.
- Won a gold medal with USA Basketball ... All Big 12 freshman team in 2017 ... Oklahoma Ga-torade Player of the Year in 2014 ... Won a gold medal with USA basketball ... At Oklahoma- Big 12 freshman of the year.

CAREER HIGHS

Points	41	Auburn	2-7-19
FG Made	12	TTU	12-4-18
FG Att.	24	Missouri	2-18-19*
3FG Made	5	Ole Miss	2-24-19
3FG Att.	12	at Missouri	2-28-19*
FT Made	17	Auburn	2-7-19
FT Att.	19	Auburn	2-7-19
Off. Reb.	2	at Texas A&M	3-3-19*
Def. Reb.	8	New Orleans	11-8-19*
Rebounds	9	at Tulsa	12-20-18
Assists	6	Oral Roberts	11-14-19
Blocks	4	#7/6 MSU	1-3-19
Steals	7	JSU	12-30-18
Minutes	40	@ Cal	11-24-19*

*Most Recent

Opponent	Date	gs	min	Total		3-Pointers		Free throws		Rebounds				pf	a	tlo	blk	stl	pts	avg	
				fg	fga	pct	3fg	3fga	pct	ft	fta	pct	off								def
NEW ORLEANS	11/08/19	*	36	5-15	.333	2-9	.222	10-13	.769	0	8	8.0	2	4	0	2	1	22	22.0		
MCNEESE	11/11/19	*	26	7-11	.636	1-3	.333	4-4	1.000	1	5	6.7	2	1	1	0	2	19	20.5		
ORAL ROBERTS	11/14/19	*	29	4-13	.308	0-3	.000	4-6	.667	1	5	6.7	2	6	1	0	1	12	17.7		
STONY BROOK	11/17/19	*	32	5-12	.417	1-5	.200	8-9	.889	1	5	6.5	3	0	1	0	1	19	18.0		
BELMONT	11/20/19	*	29	8-13	.615	3-7	.429	2-2	1.000	0	5	5.6	2	1	2	0	1	21	18.6		
at California	11/24/19	*	40	7-18	.389	1-3	.333	9-9	1.000	0	5	5.6	4	1	0	0	1	24	19.5		
vs Fordham	11/29/19	*	31	6-11	.545	3-6	.500	9-10	.900	0	5	5.9	4	0	2	1	2	24	20.1		
vs Wisconsin	11/30/19	*	39	9-22	.409	1-7	.143	8-11	.727	1	5	6.5	3	0	2	0	0	27	21.0		
Totals			8	262	51-115	.443	12-43	.279	54-64	.844	4	43	47	5.9	21	13	9	3	9	168	21.0

Games played: 8
Minutes/game: 32.8
Points/game: 21.0
FG Pct: 44.3
3FG Pct: 27.9
FT Pct: 84.4

Rebounds/game: 5.9
Assists/game: 1.6
Turnovers/game: 1.1
Assist/turnover ratio: 1.4
Steals/game: 1.1
Blocks/game: 0.4

SEASON | CAREER SUPERLATIVES

Stat	'16-17	'18-19	'19-20	Career
Double Figure Pts		34	8	42
Double Figure Rebs				
Double-Doubles				
5 + Assists		1	1	2
5 + Blocks				
5 + Steals				
Led Team in Pts		27	6	33
Led Team in Reb		6		6
20 + Points		20	5	25
30+ Points		6		6
40+ Points		1		1

CAREER STATISTICS

Year	GP-GS	Min	Avg	FG	Total		3-Point		F-Throw		Rebounds				PF	FO	Ast	TO	Blk	Stl	Pts	Avg
					FGA	Pct	FGA	Pct	FTA	Pct	Def	Tot	Avg									
2016-17*	33-18	695	21.1	81	214	.379	22	.65	74	.811	18	66	84	2.5	62	0	26	51	5	19	244	7.4
Oklahoma Stats*																						
Season	gp-gs	min/avg			fg-fga	pct	fg-fga	pct	ft-fa	pct	off	def	tot	avg	pf	fo	ast	to	blk	stl	pts	avg
2018-19	37-37	1227/33.2			232-574	.404	66-188	.351	229-275	.833	24	136	160	4.3	95	1	59	86	15	48	759	20.5
2019-20	8-8	262/32.8			51-115	.443	12-43	.279	54-64	.844	4	43	47	5.9	21	0	13	9	3	9	168	21.0
TOTAL	45-45	1489/33.1			283-689	.411	78-231	.338	283-339	.835	28	179	207	4.6	116	1	72	95	18	57	927	20.6



35 Ginger Reece | Fr. | 5-11 | F | Lawton, Okla. (Eisenhower HS)

SEASON HIGHS

Points	8	McNeese State	11-11-19
FG Made	3	McNeese State	11-11-19
FG Att.	6	Belmont	11-20-19
3FG Made	2	McNeese State	11-11-19
3FG Att.	3	Belmont	11-20-19
FT Made	2	Belmont	11-20-19
FT Att.	2	Belmont	11-20-19
Off. Reb.	2	Belmont	11-20-19
Def. Reb.	2	Stony Brook	11-17-19*
Rebounds	3	McNeese State	11-11-19
Assists	1	Stony Brook	11-17-19*
Blocks	1	Stony Brook	11-17-19*
Steals	2	McNeese State	11-11-19
Minutes	14	McNeese State	11-11-19

CAREER HIGHS

Same as Season Highs

NOTES

- Was good in limited minutes against McNeese State, drilling both of her 3PT attempts en-route to a career-high eight points.
- Scored three points in three minutes played in her Arkansas debut
- Rated the No. 59 prospect in the nation when she committed
- Honorable mention all-district selection as a sophomore and a second-team pick as a junior
- Guided Eisenhower High School to back-to-back state tournament appearances

Opponent	Date	gs	min	fg-fga	pct	3fg-fga	pct	ft-fa	pct	off	def	tot	avg	pf	a	t/o	blk	stl	pts	avg
NEW ORLEANS	11/08/19	3		1-2	.500	1-2	.500	0-0	.000	0	1	1	1.0	1	0	0	0	0	3	3.0
MCNEESE	11/11/19	14		3-4	.750	2-2	1.000	0-0	.000	1	2	3	2.0	4	0	0	1	2	8	5.5
ORAL ROBERTS	11/14/19	8		0-1	.000	0-1	.000	0-0	.000	0	1	1	1.7	0	1	2	0	0	0	3.7
STONY BROOK	11/17/19	8		1-4	.250	1-3	.333	0-0	.000	0	2	2	1.8	2	1	1	1	1	3	3.5
BELMONT	11/20/19	11		1-6	.167	0-3	.000	2-2	1.000	2	0	2	1.8	0	0	1	0	0	4	3.6
vs Fordham	11/29/19	0		0-0	.000	0-0	.000	0-0	.000	0	1	1	1.7	0	0	0	0	0	0	3.0
Totals		0	44	6-17	.353	4-11	.364	2-2	1.000	3	7	10	1.7	7	2	4	2	3	18	3.0

Games played: 6
Minutes/game: 7.3
Points/game: 3.0
FG Pct: 35.3
3FG Pct: 36.4
FT Pct: 100.0

Rebounds/game: 1.7
Assists/game: 0.3
Turnovers/game: 0.7
Assist/turnover ratio: 0.5
Steals/game: 0.5
Blocks/game: 0.3

SEASON | CAREER SUPERLATIVES

Stat '19-20 Career

- Double Figure Pts
- Double Figure Rebs
- Double-Doubles
- 5 + Assists
- 5 + Blocks
- 5 + Steals
- Led Team in Pts
- Led Team in Reb
- 20 + Points

CAREER STATISTICS

Season	gp-gs	min/avg	fg-fga	pct	fg-fga	pct	ft-fa	pct	off	def	tot	avg	pf	fo	ast	to	blk	stl	pts	avg
2019-20	6-0	44/7.3	6-17	.353	4-11	.364	2-2	1.000	3	7	10	1.7	7	0	2	4	2	3	18	3.0
TOTAL	6-0	44/7.3	6-17	.353	4-11	.364	2-2	1.000	3	7	10	1.7	7	0	2	4	2	3	18	3.0



43 Makayla Daniels | Fr. | 5-8 | G | Frederick, Md. (Frederick HS)

2018-19 SEASON HIGHS

Points	27	Oral Roberts	11-14-19
FG Made	8	Oral Roberts	11-14-19
FG Att.	11	Oral Roberts	11-14-19
3FG Made	6	Oral Roberts	11-14-19
3FG Att.	7	Oral Roberts	11-14-19
FT Made	8	Belmont	11-20-19
FT Att.	10	Belmont	11-20-19
Off. Reb.	2	Stony Brook	11-17-19
Def. Reb.	2	Fordham	11-29-19*
Rebounds	4	Stony Brook	11-17-19
Assists	4	McNeese State	11-11-19
Blocks	N/A		
Steals	4	New Orleans	11-8-19
Minutes	27	Fordham	11-29-19

CAREER HIGHS
Same as Season Highs

- NOTES
- Dropped 21 against Belmont.
 - Named SEC Freshman of the Week after standout performances against ORU and SB (11/19).
 - Was sensational against ORU, going for a career-high 27 points.
 - Also made six threes on just seven attempts.
 - Scored 11 points in her Arkansas debut in 26 minutes played.
 - Led the team in steals with four.
 - Named Maryland's Miss Basketball following her senior season at Frederick High School, averaging 21.4 points per game
 - All-time leading scorer (boy or girl) for the Cadets

Opponent	Date	gs	min	Total		3-Pointers		Free throws		Rebounds			pf	a	t/o	blk	stl	pts	avg		
				fg-fga	pct	3fg-fga	pct	ft-fa	pct	off	def	tot									
NEW ORLEANS	11/08/19	*	26	4-9	.444	0-1	.000	3-4	.750	0	1	1	1.0	2	3	0	0	4	11	11.0	
MCNEESE	11/11/19	*	18	5-8	.625	0-1	.000	1-1	1.000	0	1	1	1.0	2	4	3	0	1	11	11.0	
ORAL ROBERTS	11/14/19	*	24	8-11	.727	6-7	.857	5-6	.833	0	0	0	0.7	2	3	0	1	2	27	16.3	
STONY BROOK	11/17/19	*	20	3-6	.500	1-2	.500	6-9	.667	2	2	4	1.5	0	3	1	0	0	13	15.5	
BELMONT	11/20/19	*	25	6-10	.600	1-3	.333	8-10	.800	0	2	2	1.6	1	2	1	0	1	21	16.6	
at California	11/24/19	*	19	3-7	.429	0-1	.000	2-2	1.000	1	1	2	1.7	3	0	4	0	2	8	15.2	
vs Fordham	11/29/19	*	27	3-7	.429	0-1	.000	5-9	.556	0	2	2	1.7	3	1	1	0	1	11	14.6	
vs Wisconsin	11/30/19	*	25	2-7	.286	0-2	.000	0-0	.000	0	1	1	1.6	3	1	1	0	2	4	13.3	
Totals			8	184	34-65	.523	8-18	.444	30-41	.732	3	10	13	1.6	16	17	11	1	13	106	13.3

Games played: 8
Minutes/game: 23.0
Points/game: 13.3
FG Pct: 52.3
3FG Pct: 44.4
FT Pct: 73.2

Rebounds/game: 1.6
Assists/game: 2.1
Turnovers/game: 1.4
Assist/turnover ratio: 1.5
Steals/game: 1.6
Blocks/game: 0.1

SEASON | CAREER SUPERLATIVES

Stat	'19-20	Career
Double Figure Pts	5	5
Double Figure Rebs		
Double-Doubles		
5 + Assists		
5 + Blocks		
5 + Steals		
Led Team in Pts	2	2
Led Team in Reb		
Led Team in Ast	2	2
20 + Points	2	2

CAREER STATISTICS

Season	gp-gs	min/avg	fg-fga	pct	fg-fga	pct	ft-fa	pct	off	def	tot	avg	pf	fo	ast	to	blk	stl	pts	avg
2019-20	8-8	184/23.0	34-65	.523	8-18	.444	30-41	.732	3	10	13	1.6	16	0	17	11	1	13	106	13.3
TOTAL	8-8	184/23.0	34-65	.523	8-18	.444	30-41	.732	3	10	13	1.6	16	0	17	11	1	13	106	13.3



52 Rokia Doumbia | So. | 5-9 | G | Mali, Africa | IMG Academy

2018-19 SEASON HIGHS

Points	7	McNeese State	11-11-19
FG Made	1	Belmont	11-20-19*
FG Att.	5	McNeese State	11-11-19
3FG Made	1	New Orleans	11-8-19
3FG Att.	2	New Orleans	11-8-19
FT Made	1	Fordham	11-29-19*
FT Att.	5	McNeese State	11-11-19
Off. Reb.	4	New Orleans	11-8-19
Def. Reb.	5	McNeese State	11-11-19
Rebounds	8	McNeese State	11-11-19
Assists	3	Stony Brook	11-17-19
Blocks	1	Oral Roberts	11-14-19
Steals	2	Belmont	11-20-19
Minutes	23	Fordham	11-29-19

CAREER HIGHS

Points	11	NSU	11-9-18
FG Made	4	NSU	11-9-18
FG Att.	6	NSU	11-9-18
3FG Made	1	New Orleans	11-8-19*
3FG Att.	2	New Orleans	11-8-19*
FT Made	2	NSU	11-9-18
FT Att.	5	McNeese State	11-11-19
Off. Reb.	4	New Orleans	11-8-19
Def. Reb.	5	McNeese State	11-11-19
Rebounds	8	McNeese State	11-11-19
Assists	3	Stony Brook	11-17-19*
Blocks	1	Oral Roberts	11-14-19*
Steals	2	Belmont	11-20-19
Minutes	23	Fordham	11-29-19

*Most Recent

SEASON | CAREER SUPERLATIVES

Stat	'18-'19	'19-20	Career
Double Figure Pts	1	1	
Double Figure Rebs			
Double-Doubles			
5+ Assists			
5+ Blocks			
5+ Steals			
Led Team in Pts			
Led Team in Reb	1	1	
20+ Points			

NOTES

- Played a career-high 23 minutes against Fordham.
- Swiped a career-best two steals against Belmont.
- Posted several career highs against McNeese State, including Rebounds (8), defensive rebounds (5) and free throw attempts (5).
- Speaks three languages: French, English, Bambara.
- Originally from Mali, Africa, and attended high school at IMG Academy in Bradenton, Florida
- Four-star recruit and was a member of the U16 Mali (Africa) National Team in 2016 and 2017.
- Was the MVP of the FIBA U16 Africa Championship in 2015.

Opponent	Date	gs	min	Total		3-Pointers		Free throws		Rebounds				pf	a	t/o	blk	stl	pts	avg
				fg-fga	pct	3fg-fga	pct	ft-fga	pct	off	def	tot	avg							
NEW ORLEANS	11/08/19		14	1-3	.333	1-2	.500	0-0	.000	4	0	4	4.0	2	1	0	0	0	7	3.0
MCNEESE	11/11/19		15	3-6	.500	0-1	.000	1-5	.200	3	5	8	6.0	0	2	0	0	0	7	5.0
ORAL ROBERTS	11/14/19		11	1-2	.500	0-0	.000	0-0	.000	2	3	5	5.7	4	0	1	1	1	2	4.0
STONY BROOK	11/17/19		16	0-4	.000	0-1	.000	0-0	.000	0	2	2	4.8	2	3	1	0	1	0	3.0
BELMONT	11/20/19		15	1-3	.333	0-1	.000	1-3	.333	0	2	2	4.2	0	1	0	0	2	3	3.0
at California	11/24/19		11	0-2	.000	0-1	.000	0-0	.000	0	1	1	3.7	1	0	0	0	0	0	2.5
vs Fordham	11/29/19		23	0-1	.000	0-0	.000	1-2	.500	1	3	4	3.7	2	1	0	0	1	1	2.3
vs Wisconsin	11/30/19		13	0-2	.000	0-1	.000	0-0	.000	2	0	2	3.5	2	0	0	0	0	0	2.0
Totals		0	118	6-23	.261	1-7	.143	3-10	.300	12	16	28	3.5	13	8	2	1	5	16	2.0

Games played: 8
Minutes/game: 14.8
Points/game: 2.0
FG Pct: 26.1
3FG Pct: 14.3
FT Pct: 30.0

Rebounds/game: 3.5
Assists/game: 1.0
Turnovers/game: 0.3
Assist/turnover ratio: 4.0
Steals/game: 0.6
Blocks/game: 0.1

CAREER STATISTICS

Season	gp-gs	min/avg	fg-fga	pct	fg-fga	pct	ft-fga	pct	off	def	tot	avg	pf	fo	ast	to	blk	stl	pts	avg
2018-19	23-0	133/5.8	9-32	.281	2-13	.154	4-7	.571	9	15	24	1.0	22	1	10	20	2	4	24	1.0
2019-20	8-0	118/14.8	6-23	.261	1-7	.143	3-10	.300	12	16	28	3.5	13	0	8	2	1	5	16	2.0
TOTAL	31-0	251/8.1	15-55	.273	3-20	.150	7-17	.412	21	31	52	1.7	35	1	18	22	3	9	40	1.3



A'Tyanna Gaulden
RJr | 5-7 | G
Ocilla, Georgia



Marquesha Davis
Fr | 6-0 | G
Springdale, Arkansas



Alexis Tolefree
Sr | 5-8 | G
Conway, Arkansas



Erynn Barnum
RJR | 6-2 | F
Little Rock, Arkansas



Kiara Williams
Sr | 6-1 | F/C
Little Rock, Arkansas



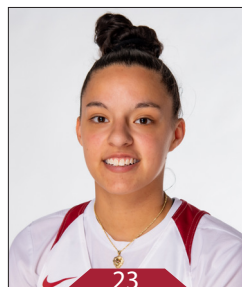
Grayce Spangler
Jr | 5-11 | G
Fayetteville, Arkansas



Jailyn Mason
Sr | 5-9 | G
Mason, Ohio



Avery Hughes
Fr | 5-7 | G
Bentonville, Arkansas



Amber Ramirez
RJr | 5-9 | G
San Antonio, Texas



Taylah Thomas
Jr | 6-1 | F
Arlington, Texas



Destinee Oberg
Fr | 6-3 | C
Burnsville, Minnesota



Macy Weaver
Jr | 6-3 | F
Davis Junction, Illinois



Chelsea Dungee
RJr | 5-11 | G
Sapulpa, Oklahoma



Ginger Reece
Fr | 5-10 | F
Lawton, Oklahoma



Makayla Daniels
Fr | 5-8 | G
Frederick, Maryland



Rokia Doumbia
So | 5-9 | G
Mali, Africa



Mike Neighbors
Head Coach
Third Season



Todd Schaefer
Associate Head Coach
Third Season



Pauline Love
Assistant Coach
Third Season



Chantel Osahor
Assistant Coach
First Season



Amber Shirey
Director of Operations



C'eira Ricketts
Director of SA Development



Jeff Brazil
Director of Video and Scouting



Natalie Trotter
Athletic Trainer

Official Basketball Box Score -- Game Totals -- Final Statistics
New Orleans vs AR
11/08/19 10:30 am atOfficial Basketball Box Score -- Game Totals -- Final Statistics
McNeese vs AR
11/11/19 7:00 pm at**New Orleans 52 • 0-2,0-0 Southlan**

##	Player	Total		3-Ptr		Rebounds			PF	TP	A TO Blk			Stl	Min
		FG-FGA	FG-FGA	FT-FTA	FT-FTA	Off	Def	Tot							
31	Asia Woods	f	2-8	0-1	0-0	1	0	1	3	4	0	0	0	1	19
32	Whitley Larry	f	4-13	0-0	1-3	3	8	11	2	9	1	2	5	0	31
03	Rehema Franklin	g	2-5	1-2	1-4	1	1	2	2	6	0	2	0	1	13
04	Vaquela Pimpton	g	4-5	2-3	0-0	2	2	4	2	10	4	3	0	2	22
05	Traya Bruce	g	1-5	1-4	0-0	0	2	2	0	3	2	3	0	1	31
01	Jada Duncantell	f	0-4	0-1	0-2	1	3	4	0	0	1	1	0	1	15
11	Annalise Brisco	f	0-0	0-0	0-0	0	0	0	2	0	0	0	0	1	6
13	Kayla Thomas	f	0-1	0-0	0-0	0	1	1	3	0	0	2	1	0	6
21	Mia Deck	f	4-9	3-4	2-2	0	2	2	13	0	3	0	0	0	21
23	Dionjhae Thomas	f	0-2	0-0	0-0	0	1	1	1	0	2	0	0	1	15
25	Mary Delgado	f	2-2	1-1	0-0	0	0	0	1	5	1	0	0	0	3
34	Kyla Malone	f	1-3	0-0	0-0	0	4	4	2	2	0	3	0	0	18
Team						1	1	2							
Totals			20-57	8-16	4-11	9	25	34	20	52	11	19	6	8	200
1st - FG %:		5-14	35.7%	2nd: 6-16	37.5%	3rd: 1-11	9.1%	4th: 8-16	50.0%	Game: 20-57	35.1%	Deadball			
3FG %:		2-5	40.0%	2-4	50.0%	0-2	0.0%	4-5	80.0%	8-16	50.0%	Rebounds			
FT %:		0-2	0.0%	0-2	0.0%	1-3	33.3%	3-4	75.0%	4-11	36.4%	5			

AR 82 • 1-0,0-0 SEC

##	Player	Total		3-Ptr		Rebounds			PF	TP	A TO Blk			Stl	Min
		FG-FGA	FG-FGA	FT-FTA	FT-FTA	Off	Def	Tot							
24	THOMAS, Taylah	f	4-7	0-0	2-2	7	14	21	2	10	1	5	0	0	35
02	TOLEFREE, Alexis	g	4-13	3-11	0-0	1	2	3	0	11	3	1	0	1	26
23	RAMIREZ, Amber	g	4-10	4-9	0-0	0	0	0	0	12	2	2	0	4	30
33	DUNGEE, Chelsea	g	5-15	2-9	10-13	0	8	8	2	22	4	0	2	1	36
43	DANIELS, Makayla	g	4-9	0-1	3-4	0	1	1	2	11	3	0	0	4	26
00	GAULDEN, A'Tyanna	f	2-4	1-2	0-0	0	1	1	2	5	2	5	0	1	13
01	DAVIS, Marquesha	f	0-4	0-1	1-2	1	1	2	0	1	0	1	0	0	8
04	BARNUM, Erynn	f	1-2	0-0	2-4	2	1	3	0	4	0	0	0	0	6
13	SPANGLER, Grayce	f	0-0	0-0	0-0	0	0	0	0	0	0	0	0	0	2
22	HUGHES, Avery	f	0-0	0-0	0-0	0	0	0	0	0	0	0	0	0	1
35	REECE, Ginger	f	1-2	1-2	0-0	0	1	1	1	3	0	0	0	0	3
52	DOUMBIA, Rokia	f	1-3	1-2	0-0	4	0	4	2	3	1	0	0	0	14
Team						4	1	5							
Totals			26-69	12-37	18-25	19	30	49	11	82	16	14	2	11	200
1st - FG %:		8-15	53.3%	2nd: 5-17	29.4%	3rd: 5-18	27.8%	4th: 8-19	42.1%	Game: 26-69	37.7%	Deadball			
3FG %:		4-8	50.0%	4-11	36.4%	2-11	18.2%	2-7	28.6%	12-37	32.4%	Rebounds			
FT %:		6-8	75.0%	0-2	0.0%	5-5	100.0%	7-10	70.0%	18-25	72.0%	6			

Officials: Kylie Galloway,Bryan Enterline,Mark Zentz
 Technical fouls: New Orleans-None. AR-None.
 Attendance: 6801
 2019-20 Women's Basketball. Round: 0. Arkansas vs New Orleans. Played at Bud W

Score by periods	1st	2nd	3rd	4th	Total
New Orleans	12	14	3	23	52
AR	26	14	17	25	82

Official Basketball Box Score -- Game Totals -- Final Statistics
Oral Roberts vs AR
11/14/19 7:00 pm atOfficial Basketball Box Score -- Game Totals -- Final Statistics
Stony Brook vs AR
11/17/19 1:00 pm at**Oral Roberts 64 • 3-1,0-0 Summit L**

##	Player	Total		3-Ptr		Rebounds			PF	TP	A TO Blk			Stl	Min
		FG-FGA	FG-FGA	FT-FTA	FT-FTA	Off	Def	Tot							
24	Montserrat Brotons	c	1-8	0-0	1-2	3	5	8	3	3	1	1	2	1	19
21	Rylie Torrey	f	3-10	1-4	1-1	2	4	6	2	8	0	2	0	0	35
23	Macy Gore	g	1-6	0-1	0-0	0	0	0	2	2	1	2	0	0	11
32	Sarah Garvie	f	1-8	1-7	0-0	0	2	2	1	3	0	2	0	0	22
33	Keni Jo Lippe	g	9-20	0-5	6-8	2	7	9	1	24	1	4	0	0	30
01	Nena Taylor	f	1-1	0-0	2-2	0	1	1	2	4	1	1	0	0	10
03	Katie Kirkhart	f	2-7	0-1	0-0	0	0	0	4	4	0	1	0	0	17
11	Gem Summers	f	5-9	0-2	0-0	1	0	1	2	10	0	0	0	2	11
13	Rachel Skalik	f	0-1	0-0	0-0	0	0	0	3	0	2	0	0	0	13
20	Regan Schumacher	f	1-1	0-0	0-0	2	2	4	2	2	0	0	0	0	18
22	Karly Gore	f	0-1	0-0	4-6	0	1	1	2	4	1	2	1	0	14
Team						6	6	12							
Totals			24-72	2-20	14-19	16	28	44	24	64	7	15	3	3	200
1st - FG %:		4-17	23.5%	2nd: 6-14	42.9%	3rd: 4-21	19.0%	4th: 10-20	50.0%	Game: 24-72	33.3%	Deadball			
3FG %:		0-4	0.0%	1-7	14.3%	0-3	0.0%	1-6	16.7%	2-20	10.0%	Rebounds			
FT %:		0-0	0.0%	7-10	70.0%	1-2	50.0%	6-7	85.7%	14-19	73.7%	2,1			

AR 96 • 3-0,0-0 SEC

##	Player	Total		3-Ptr		Rebounds			PF	TP	A TO Blk			Stl	Min
		FG-FGA	FG-FGA	FT-FTA	FT-FTA	Off	Def	Tot							
24	THOMAS, Taylah	f	0-0	0-0	0-2	3	7	10	3	0	0	1	1	1	21
02	TOLEFREE, Alexis	g	7-11	4-6	0-0	0	4	4	0	18	3	0	3	1	25
23	RAMIREZ, Amber	g	6-14	5-11	1-1	0	2	2	1	18	0	2	0	0	26
33	DUNGEE, Chelsea	g	4-13	0-3	4-6	1	5	6	2	12	6	1	0	1	29
43	DANIELS, Makayla	g	8-11	6-7	5-6	0	0	0	2	27	3	0	1	2	24
00	GAULDEN, A'Tyanna	f	0-5	0-0	2-2	1	2	3	0	2	2	1	0	0	16
01	DAVIS, Marquesha	f	0-3	0-2	0-2	0	1	1	3	0	0	2	2	0	16
04	BARNUM, Erynn	f	2-4	0-0	5-9	3	3	6	2	9	1	0	1	1	17
13	SPANGLER, Grayce	f	1-1	0-0	0-0	0	0	0	1	2	0	0	0	0	5
22	HUGHES, Avery	f	2-2	2-2	0-0	0	0	0	0	6	1	0	0	0	2
35	REECE, Ginger	f	0-1	0-1	0-0	0	1	1	0	0	1	2	0	0	8
52	DOUMBIA, Rokia	f	1-2	0-0	0-0	2	3	5	4	2	0	1	1	1	11
Team						2	4	6							
Totals			31-67	17-32	17-28	12	32	44	18	96	17	11	9	7	200
1st - FG %:		9-21	42.9%	2nd: 7-17	41.2%	3rd: 8-15	53.3%	4th: 7-14	50.0%	Game: 31-67	46.3%	Deadball			
3FG %:		6-14	42.9%	4-6	66.7%	2-5	40.0%	5-7	71.4%	17-32	53.1%	Rebounds			
FT %:		0-0	0.0%	5-9	55.6%	7-11	63.6%	5-8	62.5%	17-28	60.7%	6,3			

Officials: Blanca Burns,Roy Gulbeyan,Gina Cross
 Technical fouls: Oral Roberts-None. AR-None.
 Attendance: 1430
 2019-20 Women's Basketball. Round: 0. Arkansas vs Oral Roberts. Played at Bud

Score by periods	1st	2nd	3rd	4th	Total
Oral Roberts	8	20	9	27	64
AR	24	23	25	24	96

McNeese 58 • 1-2,0-0 Southlan

#	Player		Total		3-Ptr		Rebounds			PF	TP	A			Stl	Min
			FG-FGA	FG-FGA	FT-FTA	Off	Def	Tot	To			Blk				
02	Bre'Ashlee Jones	f	1-8	0-0	1-2	2	0	2	3	3	0	0	0	0	16	
30	Damiolola Balogun	f	3-6	0-1	0-0	0	8	8	4	6	0	1	0	0	19	
04	Rayah Haynes	g	0-5	0-2	0-0	1	2	3	4	0	3	3	0	1	27	
22	Callie Maddox	g	7-14	1-5	0-0	1	1	2	2	15	1	1	2	0	23	
25	Sky Jasper	g	2-6	0-0	0-0	2	2	4	4	4	1	1	0	1	15	
00	Lizzy Ratcliff	f	0-3	0-2	0-0	0	0	0	1	0	0	0	0	0	8	
01	Regan Bolton	f	2-13	1-11	1-2	0	2	2	4	6	2	1	0	2	25	
03	Jahquell Robinson	f	0-0	0-0	0-0	0	0	0	0	0	0	1	0	0	1	
12	Kyla Hamilton	f	1-2	0-1	0-0	0	1	1	2	2	2	0	2	0	12	
14	Delliah Van Campen	f	2-7	0-0	3-4	1	4	5	3	7	0	1	1	0	20	
20	Shaela Gardner	f	2-6	2-6	0-0	0	2	2	3	6	1	3	0	0	16	
24	Divine Tanks	f	3-12	0-0	3-3	5	0	5	0	9	1	1	1	1	18	
	Team					4	4	8								
Totals			23-82	4-28	8-11	16	26	42	30	58	11	15	3	8	200	
1st FG %: 6-23 26.1% 2nd: 4-19 21.1% 3rd: 8-19 42.1% 4th: 5-21 23.8% Game: 23-82 28.0% Deadball Rebounds 1																
3FG %: 0-5 0.0% 2nd: 2-8 25.0% 2nd: 2-9 22.2% 4th: 0-6 0.0% 4th: 4-18 22.2%																
FT %: 3-3 100.0% 2nd: 2-4 50.0% 2nd: 1-2 50.0% 4th: 2-2 100.0% 4th: 8-11 72.7%																



Official Basketball Box Score -- Game Totals -- Final Statistics

Belmont vs AR
11/20/19 7:00 pm at**Belmont 60 • 3-2,0-0 OVC**

#	Player	Total		3-Ptr		Rebounds			PF	TP	A TO		Blk	Stl	Min
		FG-FGA	FG-FGA	FT-FTA	FT-FTA	Off	Def	Tot							
20	Conley Chinn	f	0-6	0-3	0-0	3	2	5	4	0	3	3	0	1	23
30	Ellie Harmeyer	f	10-17	2-5	2-2	4	4	8	2	24	2	3	0	0	30
55	Maddie Wright	f	5-15	1-6	0-0	5	4	9	1	11	1	3	1	1	23
24	Kiki Britzman	g	3-8	0-3	2-3	3	2	5	0	8	1	2	0	0	29
31	Maura Muensterman	g	1-9	1-7	0-0	0	0	0	3	3	5	2	0	0	30
04	Macie Culbertson	g	0-3	0-1	0-0	0	3	3	1	0	0	1	0	2	15
22	Maddie Cook	g	1-3	0-0	0-0	0	2	2	5	2	1	0	0	0	11
23	Nikki Baird	g	2-3	1-2	0-0	1	1	2	0	5	0	0	0	1	11
25	Grace Smith	g	1-4	0-3	0-0	0	2	2	3	2	0	0	0	0	16
34	Cam Browning	g	2-4	1-1	0-0	1	6	7	1	5	1	2	0	0	12
Team						0	2	2				1			
Totals			25-72	6-31	4-5	17	28	45	20	60	14	17	1	5	200

1st - FG %:	5-17	29.4%	2nd: 5-18	27.8%	3rd: 9-19	47.4%	4th: 6-18	33.3%	Game: 25-72	34.7%	Deadball	
3FG %:	1-10	10.0%	1-7	14.3%	2-5	40.0%	2-9	22.2%	6-31	19.4%	Rebounds	
FT %:	0-0	0.0%	0-0	0.0%	4-5	80.0%	0-0	0.0%	4-5	80.0%	0	

AR 91 • 5-0,0-0 SEC

#	Player	Total		3-Ptr		Rebounds			PF	TP	A TO		Blk	Stl	Min
		FG-FGA	FG-FGA	FT-FTA	FT-FTA	Off	Def	Tot							
24	THOMAS, Taylah	f	0-3	0-0	0-0	2	4	6	3	0	0	0	1	0	19
02	TOLEFREE, Alexis	g	5-9	5-8	5-5	0	4	4	1	20	4	1	0	1	27
23	RAMIREZ, Amber	g	2-7	1-4	0-0	0	2	2	0	5	0	0	1	0	22
33	DUNGEE, Chelsea	g	8-13	3-7	2-2	0	5	5	1	21	1	2	0	1	29
43	DANIELS, Makayla	g	6-10	1-3	8-10	0	2	2	1	21	2	1	0	1	25
00	GAULDEN, A'Tyanna	g	2-4	2-2	1-2	0	2	2	0	7	1	1	0	0	15
01	DAVIS, Marquesha	g	1-6	1-3	1-2	2	2	4	0	4	0	0	0	2	10
04	BARNUM, Erynn	g	3-3	0-0	0-0	3	5	8	1	6	0	1	2	0	14
13	SPANGLER, Grayce	g	0-0	0-0	0-0	0	0	0	0	0	0	0	0	0	6
22	HUGHES, Avery	g	0-0	0-0	0-0	0	0	0	0	0	0	0	0	0	3
35	REECE, Ginger	g	1-6	0-3	2-2	2	0	2	0	4	0	1	0	0	11
52	DOUMBIA, Rokia	g	1-3	0-1	1-3	0	2	2	0	3	1	0	0	2	15
Team						1	2	3							
Totals			29-64	13-31	20-26	10	30	40	7	91	10	9	4	7	200

1st - FG %:	10-16	62.5%	2nd: 9-16	56.3%	3rd: 6-17	35.3%	4th: 4-15	26.7%	Game: 29-64	45.3%	Deadball	
3FG %:	5-8	62.5%	4-6	66.7%	1-8	12.5%	3-9	33.3%	13-31	41.9%	Rebounds	
FT %:	1-3	33.3%	7-8	87.5%	10-11	90.9%	2-4	50.0%	20-26	76.9%	3,1	

Officials: Pualani Spurlock, Eric Baker, Dee Kantner

Technical fouls: Belmont-None. AR-None.

Attendance: 1669

2019-20 Women's Basketball. Round: 0. Arkansas vs Belmont. Played at Bud Walto

Score by periods	1st	2nd	3rd	4th	Total
Belmont	11	11	24	14	60
AR	26	29	23	13	91

Points	In	Off	2nd	Fast	Bench
BEL	36	5	9	2	14
AR	32	18	9	20	24

Last FG - BEL 4th-02:49, AR 4th-00:38.

Largest lead - BEL None, AR by 36 3rd-08:59.

BEL led for 00:00, AR led for 39:20. Game was tied for 00:11.

Score tied - 0 times.

Lead changed - 0 times.



Official Basketball Box Score -- Game Totals -- Final Statistics

Fordham vs AR
11/29/19 3:00 pm at**Fordham 59 • 2-5,0-0 Atlantic**

#	Player	Total		3-Ptr		Rebounds			PF	TP	A TO		Blk	Stl	Min
		FG-FGA	FG-FGA	FT-FTA	FT-FTA	Off	Def	Tot							
24	Kaitlyn Downey	f	6-11	1-5	0-0	1	4	5	3	13	1	3	1	1	33
02	Anna DeWolfe	f	4-13	3-7	1-2	0	4	4	3	12	3	3	0	0	32
10	Bre Cavanaugh	g	6-17	2-10	5-5	3	9	12	4	19	2	1	0	2	39
13	Sarah Karpell	g	1-6	0-3	0-0	1	4	5	2	2	2	3	0	1	36
20	Kendell Heremaia	g	2-6	0-1	0-0	0	5	5	3	4	2	3	0	0	28
00	Zara Jillings	g	0-0	0-0	3-4	1	1	2	2	3	1	1	0	0	12
03	Katie McLoughlin	g	0-0	0-0	0-0	0	0	0	1	0	0	1	0	0	1
14	Vilisi Tavui	g	1-1	0-0	0-0	0	0	0	0	2	0	0	0	0	1
43	Megan Jonassen	g	1-5	0-0	2-2	2	1	3	3	4	0	2	0	0	20
Team						1	4	5							
Totals			21-59	6-26	11-13	9	32	41	21	59	11	17	1	4	200

1st - FG %:	4-15	26.7%	2nd: 4-15	26.7%	3rd: 5-13	38.5%	4th: 8-16	50.0%	Game: 21-59	35.6%	Deadball	
3FG %:	1-7	14.3%	1-8	12.5%	1-4	25.0%	3-7	42.9%	6-26	23.1%	Rebounds	
FT %:	0-0	0.0%	5-6	83.3%	4-5	80.0%	2-2	100.0%	11-13	84.6%	1	

AR 71 • 6-1,0-0 SEC

#	Player	Total		3-Ptr		Rebounds			PF	TP	A TO		Blk	Stl	Min
		FG-FGA	FG-FGA	FT-FTA	FT-FTA	Off	Def	Tot							
24	THOMAS, Taylah	f	5-9	1-1	4-6	6	7	13	2	15	0	1	1	2	33
02	TOLEFREE, Alexis	g	1-8	0-1	0-0	0	4	4	2	2	0	2	0	0	21
23	RAMIREZ, Amber	g	4-16	4-10	2-2	0	5	5	0	14	3	3	3	2	37
33	DUNGEE, Chelsea	g	6-11	3-6	9-10	0	5	5	4	24	0	2	1	2	31
43	DANIELS, Makayla	g	3-7	0-1	5-9	0	2	2	3	11	1	1	0	1	27
00	GAULDEN, A'Tyanna	g	0-4	0-1	0-0	0	0	0	1	0	4	0	0	0	16
01	DAVIS, Marquesha	g	1-1	0-0	0-0	0	0	0	1	2	0	1	0	1	5
04	BARNUM, Erynn	g	1-1	0-0	0-0	0	1	1	0	2	0	0	0	1	7
13	SPANGLER, Grayce	g	0-0	0-0	0-0	0	0	0	0	0	0	0	0	0	0+
35	REECE, Ginger	g	0-0	0-0	0-0	0	1	1	0	0	0	0	0	0	0+
52	DOUMBIA, Rokia	g	0-1	0-0	1-2	1	3	4	2	1	1	0	0	1	23
Team						3	1	4							
Totals			21-58	8-20	21-29	10	29	39	15	71	9	10	5	10	200

1st - FG %:	5-16	31.3%	2nd: 3-15	20.0%	3rd: 9-15	60.0%	4th: 4-12	33.3%	Game: 21-58	36.2%	Deadball	
3FG %:	4-7	57.1%	1-6	16.7%	3-6	50.0%	0-1	0.0%	8-20	40.0%	Rebounds	
FT %:	2-2	100.0%	11-15	73.3%	0-0	0.0%	8-12	66.7%	21-29	72.4%	4	

Officials: Xiomara Cruz, Marcus Taylor, Michelle DelDulco

Technical fouls: Fordham-None. AR-None.

Attendance: 350

2019-20 Women's Basketball. Round: 0. Arkansas vs Fordham. Played at .

Score by periods	1st	2nd	3rd	4th	Total
Fordham	9	14	15	21	59
AR	16	18	21	16	71

Points	In	Off	2nd	Fast	Bench
FU	20	9	4	6	9
AR	20	17	2	29	5

Last FG - FU 4th-00:44, AR 4th-03:40.

Largest lead - FU by 3 1st-09:37, AR by 20 3rd-02:16.

FU led for 05:48, AR led for 33:35. Game was tied for 00:37.

Score tied - 1 time.

Lead changed - 3 times.



Official Basketball Box Score -- Game Totals -- Final Statistics

AR vs California
11/24/19 2:00 pm at**AR 80 • 5-1,0-0 SEC**

#	Player		Total		3-Ptr	Rebounds			PF	TP	A TO		Blk	Stl	Min
			FG-FGA	FG-FGA	FT-FTA	Off	Def	Tot							
24	THOMAS, Taylah	f	7-9	0-0	2-2	3	5	8	2	16	0	1	1	1	37
02	TOLEFREE, Alexis	g	5-11	1-4	0-0	1	5	6	3	11	2	2	0	2	30
23	RAMIREZ, Amber	g	6-15	2-6	1-1	1	4	5	1	15	1	2	0	1	39
33	DUNGEE, Chelsea	g	7-18	1-3	9-9	0	5	5	4	24	1	0	0	1	40
43	DANIELS, Makayla	g	3-7	0-1	2-2	1	1	2	3	8	0	4	0	2	19
00	GAULDEN, A'Tyanna		1-5	0-0	0-0	0	0	0	0	2	6	1	0	0	21
04	BARNUM, Erynn		2-2	0-0	0-1	0	1	1	1	4	0	0	0	0	3
52	DOUMBIA, Rokia		0-2	0-1	0-0	0	1	1	1	0	0	0	0	0	11
Team						2	2	4							
Totals			31-69	4-15	14-15	8	24	32	15	80	10	1	7	200	
1st: FG %: 10-20 50.0% 2nd: 5-16 31.3% 3rd: 9-17 52.9% 4th: 7-16 43.8% Game: 31-69 44.9% Deadball															
3FG %: 2-5 40.0% 0-4 0.0% 0-4 0.0% 0-2 0.0% 4-15 26.7% Rebounds															