



Missouri - 81

Record: 7-1 (1-1)

NO.	Name	F	Min	FG			3P			FT			Rebounds			Fouls		TP	AS	TO	ST	Blocks		+/-
				M-A	M-A	M-A	OR	DR	TOT	PF	FD	OR	DR	TOT	BS	BA								
23	Jeremiah Tilmon	F	27:34	9-13	0-0	7-10	3	8	11	3	7	25	0	1	0	0	2	4						
24	Kobe Brown	F	14:00	3-4	0-0	0-0	1	5	6	4	1	6	0	0	0	0	1	3						
1	Xavier Pinson	G	32:43	5-11	1-4	12-15	1	4	5	3	6	23	4	2	0	0	1	7						
12	Dru Smith	G	26:54	2-4	2-2	0-0	0	3	3	4	2	6	1	6	2	1	0	10						
13	Mark Smith	G	34:28	3-7	2-6	3-5	1	8	9	4	3	11	0	8	1	0	0	12						
4	Javon Pickett		23:42	2-6	0-3	1-1	0	3	3	4	2	5	4	2	0	0	0	10						
5	Mitchell Smith		20:33	0-3	0-2	2-2	0	3	3	4	1	2	1	0	0	0	1	17						
2	Drew Buggs		13:03	0-1	0-0	3-4	0	4	4	3	3	3	4	2	0	0	0	7						
0	Torrence Watson		07:03	0-2	0-2	0-2	1	1	2	0	1	0	0	0	0	0	0	-5						
Team							3	2	5			0			0									
<b>Totals</b>				24-51	5-19	28-39	10	41	51	29	26	81	14	21	3	1	5	13						

Shooting By Period		
1st FG%	12-27	44.4%
3PT%	1-8	12.5%
FT%	8-15	53.3%
2nd FG%	12-24	50.0%
3PT%	4-11	36.4%
FT%	20-24	83.3%
GM FG%	24-51	47.1%
3PT%	5-19	26.3%
FT%	28-39	71.8%

Dead Ball Rebounds: 7, 1

Technical Fouls: NONE

Arkansas - 68

Record: 9-1 (1-1)

NO.	Name	F	Min	FG			3P			FT			Rebounds			Fouls		TP	AS	TO	ST	Blocks		+/-
				M-A	M-A	M-A	OR	DR	TOT	PF	FD	OR	DR	TOT	BS	BA								
11	Jalen Tate	F	29:48	3-5	1-3	1-2	0	1	1	5	2	8	1	1	0	0	0	-9						
23	Connor Vanover	F	20:15	0-11	0-5	4-4	2	5	7	3	2	4	2	0	2	2	0	0						
3	Desi Sills	G	37:26	1-10	0-4	4-6	1	3	4	3	4	6	2	0	3	0	0	-12						
4	Davonte Davis	G	19:36	2-6	0-0	0-2	3	1	4	4	1	4	0	1	3	0	0	-10						
5	Moses Moody	G	38:29	4-15	4-8	6-10	4	6	10	4	9	18	1	1	2	1	1	-11						
1	JD Notae		31:23	6-18	1-4	6-7	1	2	3	4	6	19	1	4	2	0	0	-9						
10	Jaylin Williams		17:25	3-6	1-4	1-1	1	2	3	2	4	8	0	0	1	2	0	-10						
2	Vance Jackson		01:28	0-0	0-0	0-0	0	0	0	0	0	0	0	0	0	0	0	-2						
12	Khalen Robinson		01:50	0-0	0-0	0-0	0	0	0	1	0	0	0	0	0	0	0	1						
24	Ethan Henderson		02:20	0-0	0-0	1-2	0	0	0	0	1	1	0	0	0	0	0	-3						
Team							4	0	4			0			2									
<b>Totals</b>				19-71	7-28	23-34	16	20	36	28	29	68	7	9	13	5	1	-13						

Shooting By Period		
1st FG%	8-33	24.2%
3PT%	4-15	26.7%
FT%	10-14	71.4%
2nd FG%	11-38	28.9%
3PT%	3-13	23.1%
FT%	13-20	65%
GM FG%	19-71	26.8%
3PT%	7-28	25.0%
FT%	23-34	67.6%

Dead Ball Rebounds: 5, 1

Technical Fouls: Coach 2<sup>nd</sup> 3:51 Coach 2<sup>nd</sup> 3:51

	MIZ	ARK
Biggest lead	18 (2 <sup>nd</sup> 3:24)	2 (1 <sup>st</sup> 9:16)
Best Scoring Run	6 (1 <sup>st</sup> 11:55)	8 (2 <sup>nd</sup> 1:55)
Lead Changes	2	
Times Tied	3	
Time with Lead	38:10	00:14

Points from	MIZ	ARK
Turnovers	9	15
Paint	34	22
Second Chance	9	11
Fast Breaks	9	13
Bench	10	28

	Period by Period Scoring		
	1st	2nd	TOT
MIZ	33	48	81
ARK	30	38	68



**Period 1**

**Period Starters:**

<b>ARK</b>	3 Sills D	4 Davis D	5 Moody M	11 Tate J	23 Vanover C
<b>MIZ</b>	1 Pinson X	12 Smith D	13 Smith M	23 Tilmon J	24 Brown K

Game Time	ARK	Score	Diff	MIZ
20:00	23 VANOVER C jumpball lost			23 TILMON J jumpball won
19:44		<b>0-2</b>	<b>-2</b>	23 TILMON J 2pt FG in the paint, alleyoop made (2)
19:44				1 PINSON X assist (1)
19:26	5 MOODY M foul drawn (1)			12 SMITH D foul personal (1 - 1)
19:12	23 VANOVER C 3pt FG , jump shot missed			
19:08				13 SMITH M defensive rebound (1)
19:06				23 TILMON J 2pt FG in the paint, layup blocked
19:06	5 MOODY M block (1)			
19:02				23 TILMON J offensive rebound (1)
19:02	23 VANOVER C foul shooting (1 - 1)			23 TILMON J foul drawn (1)
19:02		<b>0-3</b>	<b>-3</b>	23 TILMON J free throw 1 - 2 made (3)
19:02		<b>0-4</b>	<b>-4</b>	23 TILMON J free throw 2 - 2 made (4)
18:55	5 MOODY M 3pt FG , pull up jump shot missed			
18:49				24 BROWN K defensive rebound (1)
18:43				12 SMITH D 2pt FG in the paint, jump shot missed
18:40	5 MOODY M defensive rebound (1)			
18:29	4 DAMS D 2pt FG in the paint, layup made (2)	<b>2-4</b>	<b>-2</b>	
18:29	5 MOODY M assist (1)			
18:03	4 DAMS D steal (1)			23 TILMON J turnover lost ball (1)
17:55	5 MOODY M 2pt FG from turnover outside the paint, pull up jump shot missed			
17:52				24 BROWN K defensive rebound (2)
17:39	4 DAMS D steal (2)			13 SMITH M turnover lost ball (1)
17:33				23 TILMON J substitution out
17:33				24 BROWN K substitution out
17:33				4 PICKETT J substitution in
17:33				5 SMITH M substitution in
17:28	11 TATE J 2pt FG from turnover outside the paint, pull up jump shot made (2)	<b>4-4</b>	<b>0</b>	
17:10		<b>4-6</b>	<b>-2</b>	4 PICKETT J 2pt FG in the paint, driving layup made (2)
16:41	23 VANOVER C 2pt FG in the paint, layup missed			
16:41				5 SMITH M defensive rebound (1)
16:35				12 SMITH D turnover travel (1)
16:35	5 MOODY M substitution out			
16:35	23 VANOVER C substitution out			
16:35	1 NOTAE J substitution in			
16:35	10 WILLIAMS J substitution in			
16:35				1 PINSON X substitution out
16:35				2 BUGGS D substitution in
16:25	3 SILLS D 3pt FG from turnover, jump shot missed			
16:21				4 PICKETT J defensive rebound (1)
16:09				12 SMITH D substitution out
16:09				24 BROWN K substitution in
15:56				5 SMITH M 2pt FG in the paint, jump shot blocked
15:56	10 WILLIAMS J block (1)			
15:50	10 WILLIAMS J defensive rebound (1)			



**Missouri at Arkansas**

01/02/21 Bud Walton Arena, Fayetteville, Ark.  
2020-21 Men's Basketball

Officials: Doug Shows, Terry Wyrner, Gerald Williams

Game Time	ARK	Score	Diff	MIZ
15:34	1 NOTAE J 2pt FG in the paint, layup missed			
15:31				13 SMITH M defensive rebound (2)
15:23		<b>4-8</b>	<b>-4</b>	24 BROWN K 2pt FG in the paint, layup made (2)
15:23				4 PICKETT J assist (1)
15:12	3 SILLS D 3pt FG , jump shot missed			
15:09				2 BUGGS D defensive rebound (1)
15:05	10 WILLIAMS J steal (1)			13 SMITH M turnover lost ball (2)
15:04	10 WILLIAMS J foul drawn (1)			5 SMITH M foul personal (1 - 2)
15:04	Timeout media			
15:04	3 SILLS D substitution out			
15:04	5 MOODY M substitution in			
15:04				13 SMITH M substitution out
15:04				1 PINSON X substitution in
14:53	5 MOODY M 3pt FG from turnover, jump shot made (3)	<b>7-8</b>	<b>-1</b>	
14:53	11 TATE J assist (1)			
14:35	1 NOTAE J steal (1)			2 BUGGS D turnover bad pass (1)
14:23	11 TATE J 3pt FG from turnover, jump shot missed			
14:20				4 PICKETT J defensive rebound (2)
14:13		<b>7-10</b>	<b>-3</b>	1 PINSON X 2pt FG outside the paint, pull up jump shot made (2)
13:55	5 MOODY M 3pt FG , jump shot missed			
13:52				defensive dead ball rebound (1)
13:52	4 DAMS D foul personal (1 - 2)			4 PICKETT J foul drawn (1)
13:52	11 TATE J substitution out			
13:52	3 SILLS D substitution in			
13:52				2 BUGGS D substitution out
13:52				23 TILMON J substitution in
13:52				5 SMITH M substitution out
13:52				12 SMITH D substitution in
13:31		<b>7-12</b>	<b>-5</b>	23 TILMON J 2pt FG in the paint, dunk, made (6)
13:31				4 PICKETT J assist (2)
13:13	5 MOODY M foul drawn (2)			24 BROWN K foul personal (1 - 3)
13:13	10 WILLIAMS J substitution out			
13:13	23 VANOVER C substitution in			
13:13				24 BROWN K substitution out
13:13				13 SMITH M substitution in
13:09	4 DAMS D 2pt FG outside the paint, pull up jump shot missed			
13:09				13 SMITH M defensive rebound (3)
13:06	1 NOTAE J substitution out			
13:06	11 TATE J substitution in			
12:53				4 PICKETT J 3pt FG , jump shot missed
12:49	23 VANOVER C defensive rebound (1)			
12:32	23 VANOVER C 2pt FG outside the paint, hook shot missed			
12:28	3 SILLS D offensive rebound (1)			
12:27	3 SILLS D 2pt FG second chance in the paint, jump shot missed			
12:25				12 SMITH D defensive rebound (1)
12:23				13 SMITH M 3pt FG , jump shot missed
12:23	5 MOODY M defensive rebound (2)			
12:19	5 MOODY M foul drawn (3)			4 PICKETT J foul personal (1 - 4)
12:19	4 DAMS D substitution out			
12:19	1 NOTAE J substitution in			



Official Basketball Play by Play - First Half

**Missouri at Arkansas**

01/02/21 Bud Walton Arena, Fayetteville, Ark.  
2020-21 Men's Basketball

Game Time: 11:00 AM

Game Duration: 2:16

Attendance: 4,400

Officials: Doug Shows, Terry Wyrner, Gerald Williams

Game Time	ARK	Score	Diff	MIZ
12:19				4 PICKETT J substitution out
12:19				0 WATSON T substitution in
12:13	11 TATE J 3pt FG , jump shot missed			
12:09				23 TILMON J defensive rebound (2)
12:00				1 PINSON X2pt FG in the paint, layup missed
11:55				23 TILMON J offensive rebound (3)
11:55		<b>7-14</b>	<b>-7</b>	23 TILMON J 2pt FG second chance in the paint, dunk, made (8)
11:42	1 NOTAE J foul drawn (1)			23 TILMON J foul shooting (1 - 5)
11:42	Timeout media			
11:42	1 NOTAE J free throw 1 - 2 made (1)	<b>8-14</b>	<b>-6</b>	
11:42	1 NOTAE J free throw 2 - 2 made (2)	<b>9-14</b>	<b>-5</b>	
11:25	23 VANOVER C steal (1)			12 SMITH D turnover bad pass (2)
11:19	1 NOTAE J turnover lost ball (1)			12 SMITH D steal (1)
11:12				13 SMITH M3pt FG from turnover, jump shot missed
11:07	5 MOODY M defensive rebound (3)			
11:01	5 MOODY M3pt FG , jump shot made (6)	<b>12-14</b>	<b>-2</b>	
11:01	23 VANOVER C assist (1)			
10:35	23 VANOVER C steal (2)			12 SMITH D turnover bad pass (3)
10:30	11 TATE J turnover bad pass (1)			12 SMITH D steal (2)
10:24		<b>12-16</b>	<b>-4</b>	23 TILMON J 2pt FG fast break from turnover in the paint, layup made (10)
10:24	5 MOODY M foul shooting (1 - 3)			23 TILMON J foul drawn (2)
10:24				12 SMITH D substitution out
10:24				4 PICKETT J substitution in
10:24				0 WATSON T substitution out
10:24				24 BROWN K substitution in
10:24		<b>12-17</b>	<b>-5</b>	23 TILMON J free throw fast break 1 - 1 made (11)
10:24				23 TILMON J substitution out
10:24				5 SMITH M substitution in
10:15	1 NOTAE J 3pt FG , pull up jump shot made (5)	<b>15-17</b>	<b>-2</b>	
10:00				1 PINSON X3pt FG , jump shot missed
09:56	3 SILLS D defensive rebound (2)			
09:51	23 VANOVER C foul drawn (1)			5 SMITH M foul shooting (2 - 6)
09:51	23 VANOVER C free throw 1 - 2 made (1)	<b>16-17</b>	<b>-1</b>	
09:51	1 NOTAE J substitution out			
09:51	2 JACKSON V substitution in			
09:51				1 PINSON X substitution out
09:51				5 SMITH M substitution out
09:51				2 BUGGS D substitution in
09:51				23 TILMON J substitution in
09:51	23 VANOVER C free throw 2 - 2 made (2)	<b>17-17</b>	<b>0</b>	
09:31				4 PICKETT J turnover travel (1)
09:31	11 TATE J substitution out			
09:31	1 NOTAE J substitution in			
09:16	1 NOTAE J 2pt FG from turnover in the paint, driving layup made (7)	<b>19-17</b>	<b>2</b>	
09:02		<b>19-19</b>	<b>0</b>	24 BROWN K 2pt FG outside the paint, turnaround jump shot made (4)
08:42	1 NOTAE J 3pt FG , pull up jump shot missed			
08:38				24 BROWN K defensive rebound (3)
08:35		<b>19-21</b>	<b>-2</b>	23 TILMON J 2pt FG fast break in the paint, layup made (13)



**Missouri at Arkansas**

01/02/21 Bud Walton Arena, Fayetteville, Ark.  
2020-21 Men's Basketball

Officials: Doug Shows, Terry Wyrner, Gerald Williams

Game Time	ARK	Score	Diff	MIZ
08:35				2 BUGGS D assist (1)
08:34	1 NOTAE J foul shooting (1 - 4)			23 TILMON J foul drawn (3)
08:34	1 NOTAE J substitution out			
08:34	11 TATE J substitution in			
08:34				4 PICKETT J substitution out
08:34				12 SMITH D substitution in
08:34		<b>19-22</b>	<b>-3</b>	23 TILMON J free throw fast break 1 - 1 made (14)
08:28	23 VANOVER C 3pt FG , jump shot missed			
08:24	offensive rebound (8)			
08:23	2 JACKSON V substitution out			
08:23	1 NOTAE J substitution in			
08:14	5 MOODY M foul drawn (4)			24 BROWN K foul shooting (2 - 7)
08:14	5 MOODY M free throw 1 - 2 made (7)	<b>20-22</b>	<b>-2</b>	
08:14	23 VANOVER C substitution out			
08:14	10 WILLIAMS J substitution in			
08:14				24 BROWN K substitution out
08:14				1 PINSON X substitution in
08:14	5 MOODY M free throw 2 - 2 missed			
08:12				23 TILMON J defensive rebound (4)
08:00		<b>20-24</b>	<b>-4</b>	1 PINSON X 2pt FG in the paint, layup made (4)
07:52	10 WILLIAMS J 3pt FG , pull up jump shot missed			
07:48				2 BUGGS D defensive rebound (2)
07:32				23 TILMON J 2pt FG in the paint, layup missed
07:28	10 WILLIAMS J defensive rebound (2)			
07:24	11 TATE J 3pt FG fast break, jump shot made (5)	<b>23-24</b>	<b>-1</b>	
07:24	3 SILLS D assist (1)			
06:54	11 TATE J foul shooting (1 - 5)			13 SMITH M foul drawn (1)
06:54	Timeout media			
06:54		<b>23-25</b>	<b>-2</b>	13 SMITH M free throw 1 - 3 made (1)
06:54				13 SMITH M free throw 2 - 3 missed
06:54				offensive dead ball rebound (2)
06:54		<b>23-26</b>	<b>-3</b>	13 SMITH M free throw 3 - 3 made (2)
06:34	1 NOTAE J turnover lost ball (2)			13 SMITH M steal (1)
06:31	10 WILLIAMS J foul shooting (1 - 6)			13 SMITH M foul drawn (2)
06:31				13 SMITH M free throw fast break 1 - 2 missed
06:31				offensive dead ball rebound (3)
06:31		<b>23-27</b>	<b>-4</b>	13 SMITH M free throw fast break 2 - 2 made (3)
06:16	1 NOTAE J foul drawn (2)			13 SMITH M foul shooting (1 - 8)
06:16	1 NOTAE J free throw 1 - 2 missed			
06:16	offensive dead ball rebound (1)			
06:16	3 SILLS D substitution out			
06:16	10 WILLIAMS J substitution out			
06:16	4 DAMS D substitution in			
06:16	23 VANOVER C substitution in			
06:16				2 BUGGS D substitution out
06:16				23 TILMON J substitution out
06:16				4 PICKETT J substitution in
06:16				5 SMITH M substitution in
06:16	1 NOTAE J free throw 2 - 2 made (8)	<b>24-27</b>	<b>-3</b>	
06:03		<b>24-30</b>	<b>-6</b>	1 PINSON X 3pt FG , jump shot made (7)
06:03				12 SMITH D assist (1)



Official Basketball Play by Play - First Half

**Missouri at Arkansas**

01/02/21 Bud Walton Arena, Fayetteville, Ark.  
2020-21 Men's Basketball

Game Time: 11:00 AM

Game Duration: 2:16

Attendance: 4,400

Officials: Doug Shows, Terry Wyrner, Gerald Williams

Game Time	ARK	Score	Diff	MIZ
05:46	5 MOODY M 2pt FG in the paint, jump shot blocked			
05:46				12 SMITH D block (1)
05:42				13 SMITH M defensive rebound (4)
05:42				1 PINSON X turnover bad pass (1)
05:28	4 DAMS D 2pt FG in the paint, driving layup missed			
05:23				1 PINSON X defensive rebound (1)
05:16				4 PICKETT J 3pt FG , jump shot missed
05:13	23 VANOVER C defensive rebound (2)			
04:54	5 MOODY M foul drawn (5)			4 PICKETT J foul personal (2 - 9)
04:54	1 NOTAE J substitution out			
04:54	3 SILLS D substitution in			
04:54				4 PICKETT J substitution out
04:54				5 SMITH M substitution out
04:54				0 WATSON T substitution in
04:54				23 TILMON J substitution in
04:54	5 MOODY M 1&1 free throw 1 made (8)	<b>25-30</b>	<b>-5</b>	
04:54	5 MOODY M 1&1 free throw 2 made (9)	<b>26-30</b>	<b>-4</b>	
04:29				0 WATSON T 3pt FG , jump shot missed
04:26				23 TILMON J offensive rebound (5)
04:26	11 TATE J foul personal (2 - 7)			23 TILMON J foul drawn (4)
04:26	11 TATE J substitution out			
04:26	1 NOTAE J substitution in			
04:26				23 TILMON J 1&1 free throw 1 missed
04:25				13 SMITH M offensive rebound (5)
04:16				0 WATSON T 3pt FG second chance, jump shot missed
04:13	23 VANOVER C defensive rebound (3)			
04:04	23 VANOVER C 2pt FG in the paint, layup missed			
04:01	23 VANOVER C offensive rebound (4)			
03:59	23 VANOVER C 2pt FG second chance in the paint, layup missed			
03:57	23 VANOVER C offensive rebound (5)			
03:56	23 VANOVER C 2pt FG second chance in the paint, layup missed			
03:52	4 DAMS D offensive rebound (1)			
03:52	4 DAMS D 2pt FG second chance in the paint, layup made (4)	<b>28-30</b>	<b>-2</b>	
03:47	1 NOTAE J foul drawn (3)			12 SMITH D foul offensive (2 - 10)
03:47				12 SMITH D turnover offensive (4)
03:47				Timeout media
03:47	23 VANOVER C substitution out			
03:47	10 WILLIAMS J substitution in			
03:47				12 SMITH D substitution out
03:47				24 BROWN K substitution in
03:34	4 DAMS D turnover travel (1)			
03:20				1 PINSON X 2pt FG from turnover in the paint, layup blocked
03:20	10 WILLIAMS J block (2)			
03:20				offensive rebound (21)
03:07				23 TILMON J 2pt FG from turnover second chance in the paint, layup missed
03:05				24 BROWN K offensive rebound (4)
03:02		<b>28-32</b>	<b>-4</b>	24 BROWN K 2pt FG from turnover second chance in the paint, jump shot made (6)
02:50	1 NOTAE J 2pt FG in the paint, layup missed			



Official Basketball Play by Play - First Half

**Missouri at Arkansas**

01/02/21 Bud Walton Arena, Fayetteville, Ark.  
2020-21 Men's Basketball

Game Time: 11:00 AM

Game Duration: 2:16

Attendance: 4,400

Officials: Doug Shows, Terry Wyrner, Gerald Williams

Game Time	ARK	Score	Diff	MIZ
02:50	offensive rebound (15)			
02:49				0 WATSON T substitution out
02:49				1 PINSON X substitution out
02:49				2 BUGGS D substitution in
02:49				12 SMITH D substitution in
02:30	3 SILLS D 3pt FG second chance, jump shot missed			
02:27				23 TILMON J defensive rebound (6)
02:25	10 WILLIAMS J foul drawn (2)			13 SMITH M foul offensive (2 - 11)
02:25				13 SMITH M turnover offensive (3)
02:25				13 SMITH M substitution out
02:25				0 WATSON T substitution in
02:16	1 NOTAE J 2pt FG from turnover in the paint, floating jump shot missed			
02:13				24 BROWN K defensive rebound (5)
01:50	1 NOTAE J foul personal (2 - 8)			23 TILMON J foul drawn (5)
01:50				23 TILMON J 1&1 free throw 1 missed
01:50	defensive dead ball rebound (2)			
01:50	5 MOODY M foul drawn (6)			24 BROWN K foul personal (3 - 12)
01:50	5 MOODY M free throw 1 - 2 missed			
01:50	offensive dead ball rebound (3)			
01:50	1 NOTAE J substitution out			
01:50	12 ROBINSON K substitution in			
01:50				24 BROWN K substitution out
01:50				4 PICKETT J substitution in
01:50	5 MOODY M free throw 2 - 2 missed			
01:50				23 TILMON J defensive rebound (7)
01:24				2 BUGGS D 2pt FG outside the paint, turnaround jump shot missed
01:23				0 WATSON T offensive rebound (1)
01:20	10 WILLIAMS J foul shooting (2 - 9)			0 WATSON T foul drawn (1)
01:20				0 WATSON T free throw 1 - 2 missed
01:20				offensive dead ball rebound (4)
01:20	4 DAMS D substitution out			
01:20	1 NOTAE J substitution in			
01:20				12 SMITH D substitution out
01:20				1 PINSON X substitution in
01:20				0 WATSON T free throw 2 - 2 missed
01:19	3 SILLS D defensive rebound (3)			
00:53	3 SILLS D foul drawn (1)			2 BUGGS D foul shooting (1 - 13)
00:53	3 SILLS D free throw 1 - 2 made (1)	<b>29-32</b>	<b>-3</b>	
00:53	1 NOTAE J substitution out			
00:53	10 WILLIAMS J substitution out			
00:53	4 DAMS D substitution in			
00:53	24 HENDERSON E substitution in			
00:53	3 SILLS D free throw 2 - 2 made (2)	<b>30-32</b>	<b>-2</b>	
00:41				2 BUGGS D turnover travel (2)
00:41	4 DAMS D substitution out			
00:41	1 NOTAE J substitution in			
00:41	Timeout 30 Sec			
00:29	1 NOTAE J 2pt FG from turnover in the paint, jump shot missed			
00:24				23 TILMON J defensive rebound (8)
00:19				Timeout 30 Sec



Official Basketball Play by Play - First Half

**Missouri at Arkansas**

01/02/21 Bud Walton Arena, Fayetteville, Ark.  
2020-21 Men's Basketball

Game Time: 11:00 AM

Game Duration: 2:16

Attendance: 4,400

Officials: Doug Shows, Terry Wyrner, Gerald Williams

Game Time	ARK	Score	Diff	MIZ
00:19				0 WATSON T substitution out
00:19				2 BUGGS D substitution out
00:19				13 SMITH M substitution in
00:19				24 BROWN K substitution in
00:06	12 ROBINSON K foul personal (1 - 10)			1 PINSON X foul drawn (1)
00:06		<b>30-33</b>	<b>-3</b>	1 PINSON X free throw 1 - 2 made (8)
00:06	24 HENDERSON E substitution out			
00:06	23 VANOVER C substitution in			
00:06				13 SMITH M substitution out
00:06				23 TILMON J substitution out
00:06				24 BROWN K substitution out
00:06				0 WATSON T substitution in
00:06				2 BUGGS D substitution in
00:06				5 SMITH M substitution in
00:06				1 PINSON X free throw 2 - 2 missed
00:05	5 MOODY M defensive rebound (4)			
00:02	1 NOTAE J foul offensive (3 - 11)			2 BUGGS D foul drawn (1)
00:02	1 NOTAE J turnover offensive (3)			
00:02	1 NOTAE J substitution out			
00:02	4 DAMS D substitution in			
<b>END OF PERIOD</b>				
<b>ARK 30-33 MIZ</b>				





Missouri - 33

NO.	Name	F	Min	FG	3P	FT	Rebounds			Fouls		TP	AS	TO	ST	Blocks		+/-
				M-A	M-A	M-A	OR	DR	TOT	PF	FD					BS	BA	
23	Jeremiah Tilmon	F	14:17	5-8	0-0	4-6	3	5	8	1	5	14	0	1	0	0	1	4
24	Kobe Brown	F	09:42	3-3	0-0	0-0	1	4	5	3	0	6	0	0	0	0	0	6
1	Xavier Pinson	G	15:23	3-6	1-2	1-2	0	1	1	0	1	8	1	1	0	0	1	0
12	Dru Smith	G	13:35	0-1	0-0	0-0	0	1	1	2	0	0	1	4	2	1	0	3
13	Mark Smith	G	15:56	0-2	0-2	3-5	1	4	5	2	2	3	0	3	1	0	0	4
4	Javon Pickett		10:16	1-3	0-2	0-0	0	2	2	2	1	2	2	1	0	0	0	2
5	Mitchell Smith		05:43	0-1	0-0	0-0	0	1	1	2	0	0	0	0	0	0	1	-1
2	Drew Buggs		08:55	0-1	0-0	0-0	0	2	2	1	1	0	1	2	0	0	0	2
0	Torrence Watson		06:13	0-2	0-2	0-2	1	0	1	0	1	0	0	0	0	0	0	-5
Team							1	0	1			0		0				
<b>Totals</b>				12-27	1-8	8-15	7	20	27	13	11	33	5	12	3	1	3	3

Shooting By Period		
1st FG%	12-27	44.4%
3PT%	1-8	12.5%
FT%	8-15	53.3%
GM FG%	12-27	44.4%
3PT%	1-8	12.5%
FT%	8-15	53.3%

Dead Ball Rebounds: 3, 1

Technical Fouls: NONE

Arkansas - 30

NO.	Name	F	Min	FG	3P	FT	Rebounds			Fouls		TP	AS	TO	ST	Blocks		+/-
				M-A	M-A	M-A	OR	DR	TOT	PF	FD					BS	BA	
11	Jalen Tate	F	13:51	2-4	1-3	0-0	0	0	0	2	0	5	1	1	0	0	0	0
23	Connor Vanover	F	11:00	0-7	0-2	2-2	2	3	5	1	1	2	1	0	2	0	0	3
3	Desi Sills	G	17:26	0-4	0-3	2-2	1	2	3	0	1	2	1	0	0	0	0	-2
4	Davonte Davis	G	12:51	2-4	0-0	0-0	1	0	1	1	0	4	0	1	2	0	0	-4
5	Moses Moody	G	18:29	2-6	2-4	3-6	0	4	4	1	6	9	1	0	0	1	1	-1
1	JD Notae		14:05	2-7	1-2	3-4	0	0	0	3	3	8	0	3	1	0	0	-4
10	Jaylin Williams		08:13	0-1	0-1	0-0	0	2	2	2	2	0	0	0	1	2	0	-6
2	Vance Jackson		01:28	0-0	0-0	0-0	0	0	0	0	0	0	0	0	0	0	0	-2
12	Khalen Robinson		01:50	0-0	0-0	0-0	0	0	0	1	0	0	0	0	0	0	0	1
24	Ethan Henderson		00:47	0-0	0-0	0-0	0	0	0	0	0	0	0	0	0	0	0	0
Team							2	0	2			0		0				
<b>Totals</b>				8-33	4-15	10-14	6	11	17	11	13	30	4	5	6	3	1	-3

Shooting By Period		
1st FG%	8-33	24.2%
3PT%	4-15	26.7%
FT%	10-14	71.4%
GM FG%	8-33	24.2%
3PT%	4-15	26.7%
FT%	10-14	71.4%

Dead Ball Rebounds: 2, 1

Technical Fouls: NONE

	MIZ	ARK
Biggest lead	7 (1st 11:55)	2 (1st 9:16)
Best Scoring Run	6 (1st 11:55)	7 (1st 9:16)
Lead Changes	2	
Times Tied	3	
Time with Lead	18:10	00:14

Points from	MIZ	ARK
Turnovers	6	7
Paint	18	6
Second Chance	6	3
Fast Breaks	7	3
Bench	2	8

	Period by Period Scoring		
	1st	2nd	TOT
MIZ	33	48	81
ARK	30	38	68



**Period 2**

**Period Starters:**

<b>ARK</b>	3 Sills D	4 Davis D	5 Moody M	11 Tate J	23 Vanover C
<b>MIZ</b>	1 Pinson X	12 Smith D	13 Smith M	23 Tilmon J	24 Brown K

Game Time	ARK	Score	Diff	MIZ
20:00	12 ROBINSON K substitution out			
20:00	11 TATE J substitution in			
20:00				0 WATSON T substitution out
20:00				2 BUGGS D substitution out
20:00				4 PICKETT J substitution out
20:00				5 SMITH M substitution out
20:00				12 SMITH D substitution in
20:00				13 SMITH M substitution in
20:00				23 TILMON J substitution in
20:00				24 BROWN K substitution in
19:47	11 TATE J 2pt FG in the paint, floating jump shot made (7)	<b>32-33</b>	<b>-1</b>	
19:47	23 VANOVER C assist (2)			
19:28				24 BROWN K 2pt FG in the paint, jump shot blocked
19:28	23 VANOVER C block (1)			
19:23	11 TATE J defensive rebound (1)			
19:16	4 DAMS D 2pt FG in the paint, layup missed			
19:15	4 DAMS D offensive rebound (2)			
19:14	4 DAMS D foul drawn (1)			24 BROWN K foul shooting (4 - 1)
19:14	4 DAMS D free throw 1 - 2 missed			
19:14	offensive dead ball rebound (4)			
19:14				24 BROWN K substitution out
19:14				5 SMITH M substitution in
19:14	4 DAMS D free throw 2 - 2 missed			
19:13	5 MOODY M offensive rebound (5)			
19:12	5 MOODY M 2pt FG second chance in the paint, layup missed			
19:09				23 TILMON J defensive rebound (9)
18:49	5 MOODY M foul shooting (2 - 1)			5 SMITH M foul drawn (1)
18:49		<b>32-34</b>	<b>-2</b>	5 SMITH M free throw 1 - 2 made (1)
18:49		<b>32-35</b>	<b>-3</b>	5 SMITH M free throw 2 - 2 made (2)
18:35	4 DAMS D 2pt FG in the paint, layup missed			
18:31				1 PINSON X defensive rebound (2)
18:26		<b>32-37</b>	<b>-5</b>	23 TILMON J 2pt FG fast break in the paint, layup made (16)
18:26				1 PINSON X assist (2)
18:16	11 TATE J foul drawn (1)			1 PINSON X foul personal (1 - 2)
18:16	4 DAMS D substitution out			
18:16	1 NOTAE J substitution in			
18:15	23 VANOVER C 3pt FG, jump shot missed			
18:11				1 PINSON X defensive rebound (3)
18:03				23 TILMON J 2pt FG in the paint, layup blocked
18:03	23 VANOVER C block (2)			
17:58	1 NOTAE J defensive rebound (1)			
17:55	5 MOODY M 3pt FG fast break, jump shot made (12)	<b>35-37</b>	<b>-2</b>	
17:39	3 SILLS D steal (1)			1 PINSON X turnover bad pass (2)
17:36	5 MOODY M foul offensive (3 - 2)			12 SMITH D foul drawn (1)
17:36	5 MOODY M turnover offensive (1)			



**Missouri at Arkansas**

01/02/21 Bud Walton Arena, Fayetteville, Ark.  
2020-21 Men's Basketball

Officials: Doug Shows, Terry Wyrner, Gerald Williams

Game Time	ARK	Score	Diff	MIZ
17:36				23 TILMON J substitution out
17:36				4 PICKETT J substitution in
17:15				5 SMITH M3pt FG from turnover, jump shot missed
17:13				offensive rebound (31)
17:09				13 SMITH M3pt FG from turnover second chance, jump shot missed
17:06	1 NOTAE J defensive rebound (2)			
16:55	1 NOTAE J 3pt FG , jump shot missed			
16:52				12 SMITH D defensive rebound (2)
16:38	11 TATE J foul personal (3 - 3)			12 SMITH D foul drawn (2)
16:27		<b>35-40</b>	<b>-5</b>	12 SMITH D 3pt FG , jump shot made (3)
16:27				5 SMITH Massist (1)
16:12	23 VANOVER C 3pt FG , jump shot missed			
16:07				13 SMITH M defensive rebound (6)
15:54	3 SILLS D foul shooting (1 - 4)			1 PINSON X foul drawn (2)
15:54	Timeout media			
15:54	23 VANOVER C substitution out			
15:54	10 WILLIAMS J substitution in			
15:54				13 SMITH M substitution out
15:54				2 BUGGS D substitution in
15:54		<b>35-41</b>	<b>-6</b>	1 PINSON X free throw 1 - 2 made (9)
15:54				1 PINSON X free throw 2 - 2 missed
15:53	5 MOODY M defensive rebound (6)			
15:38	3 SILLS D 2pt FG in the paint, driving layup missed			
15:35				2 BUGGS D defensive rebound (3)
15:30	1 NOTAE J steal (2)			4 PICKETT J turnover bad pass (2)
15:25	1 NOTAE J foul drawn (4)			12 SMITH D foul personal (3 - 3)
15:25				1 PINSON X substitution out
15:25				13 SMITH M substitution in
15:12	5 MOODY M 3pt FG from turnover, jump shot missed			
15:08				13 SMITH M defensive rebound (7)
14:54	5 MOODY M foul drawn (7)			12 SMITH D foul offensive (4 - 4)
14:54				12 SMITH D turnover offensive (5)
14:54				12 SMITH D substitution out
14:54				0 WATSON T substitution in
14:44	10 WILLIAMS J foul drawn (3)			2 BUGGS D foul personal (2 - 5)
14:44				2 BUGGS D substitution out
14:44				1 PINSON X substitution in
14:37	3 SILLS D 3pt FG from turnover, jump shot missed			
14:33				0 WATSON T defensive rebound (2)
14:08				5 SMITH M 3pt FG , jump shot missed
14:05				offensive rebound (37)
14:04				5 SMITH M substitution out
14:04				23 TILMON J substitution in
14:04				0 WATSON T substitution out
14:04				24 BROWN K substitution in
13:56		<b>35-43</b>	<b>-8</b>	23 TILMON J 2pt FG second chance in the paint, alleyoop made (18)
13:56				1 PINSON X assist (3)
13:41	5 MOODY M 2pt FG in the paint, layup missed			
13:39	5 MOODY M offensive rebound (7)			
13:37	5 MOODY M 2pt FG second chance in the paint, layup missed			



**Missouri at Arkansas**

01/02/21 Bud Walton Arena, Fayetteville, Ark.  
2020-21 Men's Basketball

Officials: Doug Shows, Terry Wyrner, Gerald Williams

Game Time	ARK	Score	Diff	MIZ
13:34				4 PICKETT J defensive rebound (3)
13:22				13 SMITH M turnover out of bounds (4)
13:22	10 WILLIAMS J substitution out			
13:22	23 VANOVER C substitution in			
13:08	1 NOTAE J 2pt FG from turnover in the paint, jump shot missed			
13:05	1 NOTAE J offensive rebound (3)			
13:04	1 NOTAE J 2pt FG from turnover second chance in the paint, layup made (10)	<b>37-43</b>	<b>-6</b>	
12:47	jump ball situation			
12:38		<b>37-45</b>	<b>-8</b>	13 SMITH M 2pt FG in the paint, driving layup made (5)
12:33	3 SILLS D foul drawn (2)			13 SMITH M foul personal (3 - 6)
12:26	3 SILLS D 2pt FG in the paint, layup missed			
12:23				23 TILMON J defensive rebound (10)
12:18				1 PINSON X 2pt FG in the paint, layup missed
12:17	23 VANOVER C defensive rebound (6)			
12:17	jump ball situation			
12:07	1 NOTAE J 2pt FG in the paint, driving layup made (12)	<b>39-45</b>	<b>-6</b>	
12:06	1 NOTAE J foul drawn (5)			23 TILMON J foul shooting (2 - 7)
12:06	1 NOTAE J free throw 1 - 1 made (13)	<b>40-45</b>	<b>-5</b>	
11:44	5 MOODY M steal (1)			13 SMITH M turnover lost ball (5)
11:41	3 SILLS D foul drawn (3)			1 PINSON X foul shooting (2 - 8)
11:41	Timeout media			
11:41	3 SILLS D free throw fast break 1 - 2 missed			
11:41	offensive dead ball rebound (5)			
11:41	3 SILLS D free throw fast break 2 - 2 missed			
11:39				13 SMITH M defensive rebound (8)
11:19		<b>40-47</b>	<b>-7</b>	1 PINSON X 2pt FG in the paint, layup made (11)
11:12	23 VANOVER C 3pt FG , jump shot missed			
11:09				24 BROWN K defensive rebound (6)
11:08	23 VANOVER C foul personal (2 - 5)			24 BROWN K foul drawn (1)
10:40				4 PICKETT J 2pt FG in the paint, layup missed
10:37	23 VANOVER C defensive rebound (7)			
10:32	23 VANOVER C foul drawn (2)			4 PICKETT J foul shooting (3 - 9)
10:32	23 VANOVER C free throw fast break 1 - 2 made (3)	<b>41-47</b>	<b>-6</b>	
10:32	23 VANOVER C free throw fast break 2 - 2 made (4)	<b>42-47</b>	<b>-5</b>	
10:32				24 BROWN K substitution out
10:32				5 SMITH M substitution in
10:08		<b>42-49</b>	<b>-7</b>	23 TILMON J 2pt FG in the paint, dunk, made (20)
10:08				4 PICKETT J assist (3)
09:54	1 NOTAE J 2pt FG in the paint, layup missed			
09:52	5 MOODY M offensive rebound (8)			
09:52	5 MOODY M 2pt FG second chance in the paint, layup missed			
09:52	5 MOODY M offensive rebound (9)			
09:52	5 MOODY M foul drawn (8)			5 SMITH M foul shooting (3 - 10)
09:52	5 MOODY M free throw 1 - 2 missed			
09:52	offensive dead ball rebound (6)			
09:52	5 MOODY M free throw 2 - 2 made (13)	<b>43-49</b>	<b>-6</b>	
09:30	3 SILLS D steal (2)			13 SMITH M turnover lost ball (6)
09:29	1 NOTAE J foul offensive (4 - 6)			13 SMITH M foul drawn (3)
09:29	1 NOTAE J turnover offensive (4)			
09:11	23 VANOVER C foul personal (3 - 7)			1 PINSON X foul drawn (3)



**Missouri at Arkansas**

01/02/21 Bud Walton Arena, Fayetteville, Ark.  
2020-21 Men's Basketball

Officials: Doug Shows, Terry Wyrner, Gerald Williams

Game Time	ARK	Score	Diff	MIZ
09:11	1 NOTAE J substitution out			
09:11	4 DAMS D substitution in			
09:11		<b>43-50</b>	<b>-7</b>	1 PINSON X 1&1 free throw 1 made (12)
09:11		<b>43-51</b>	<b>-8</b>	1 PINSON X 1&1 free throw 2 made (13)
08:52	3 SILLS D 2pt FG in the paint, layup missed			
08:48				1 PINSON X defensive rebound (4)
08:45				4 PICKETT J 3pt FG , jump shot missed
08:42				1 PINSON X offensive rebound (5)
08:39				1 PINSON X 3pt FG second chance, jump shot missed
08:38				offensive dead ball rebound (5)
08:37	11 TATE J foul shooting (4 - 8)			23 TILMON J foul drawn (6)
08:37				23 TILMON J free throw 1 - 2 missed
08:37				offensive dead ball rebound (6)
08:37				1 PINSON X substitution out
08:37				2 BUGGS D substitution in
08:37		<b>43-52</b>	<b>-9</b>	23 TILMON J free throw 2 - 2 made (21)
08:13	23 VANOVER C 2pt FG in the paint, layup missed			
08:13				defensive rebound (44)
08:13	4 DAMS D substitution out			
08:13	23 VANOVER C substitution out			
08:13	1 NOTAE J substitution in			
08:13	10 WILLIAMS J substitution in			
08:13				4 PICKETT J substitution out
08:13				12 SMITH D substitution in
07:59		<b>43-55</b>	<b>-12</b>	12 SMITH D 3pt FG , jump shot made (6)
07:59				2 BUGGS D assist (2)
07:46	11 TATE J foul drawn (2)			2 BUGGS D foul personal (3 - 11)
07:46		Timeout media		
07:46	11 TATE J free throw 1 - 2 made (8)	<b>44-55</b>	<b>-11</b>	
07:46	11 TATE J free throw 2 - 2 missed			
07:45				23 TILMON J defensive rebound (11)
07:21				12 SMITH D 2pt FG in the paint, jump shot missed
07:19	5 MOODY M defensive rebound (10)			
07:14	5 MOODY M 3pt FG fast break, jump shot made (16)	<b>47-55</b>	<b>-8</b>	
07:14	3 SILLS D assist (2)			
06:55		<b>47-58</b>	<b>-11</b>	13 SMITH M 3pt FG , jump shot made (8)
06:55				2 BUGGS D assist (3)
06:39	1 NOTAE J 2pt FG in the paint, layup missed			
06:39				defensive rebound (46)
06:38				2 BUGGS D substitution out
06:38				1 PINSON X substitution in
06:22	5 MOODY M foul personal (4 - 9)			23 TILMON J foul drawn (7)
06:22		<b>47-59</b>	<b>-12</b>	23 TILMON J 1&1 free throw 1 made (22)
06:22		<b>47-60</b>	<b>-13</b>	23 TILMON J 1&1 free throw 2 made (23)
06:12	1 NOTAE J foul drawn (6)			13 SMITH M foul shooting (4 - 12)
06:12	1 NOTAE J free throw 1 - 2 made (14)	<b>48-60</b>	<b>-12</b>	
06:12	1 NOTAE J free throw 2 - 2 made (15)	<b>49-60</b>	<b>-11</b>	
06:01	3 SILLS D foul shooting (2 - 10)			1 PINSON X foul drawn (4)
06:01		<b>49-61</b>	<b>-12</b>	1 PINSON X free throw 1 - 2 made (14)
06:01		<b>49-62</b>	<b>-13</b>	1 PINSON X free throw 2 - 2 made (15)
05:54	10 WILLIAMS J 3pt FG , jump shot missed			



**Missouri at Arkansas**

01/02/21 Bud Walton Arena, Fayetteville, Ark.  
2020-21 Men's Basketball

Officials: Doug Shows, Terry Wyrner, Gerald Williams

Game Time	ARK	Score	Diff	MIZ
05:50				13 SMITH M defensive rebound (9)
05:23				1 PINSON X 3pt FG , jump shot missed
05:20	3 SILLS D defensive rebound (4)			
05:13	1 NOTAE J 2pt FG in the paint, layup missed			
05:11				5 SMITH M defensive rebound (2)
04:54		<b>49-64</b>	<b>-15</b>	23 TILMON J 2pt FG in the paint, alleyoop made (25)
04:54				1 PINSON X assist (4)
04:38	10 WILLIAMS J 3pt FG , jump shot made (3)	<b>52-64</b>	<b>-12</b>	
04:38	1 NOTAE J assist (1)			
04:03	11 TATE J foul personal (5 - 11)			1 PINSON X foul drawn (5)
04:03	11 TATE J substitution out			
04:03	4 DAMS D substitution in			
04:03				23 TILMON J substitution out
04:03				4 PICKETT J substitution in
04:03		<b>52-65</b>	<b>-13</b>	1 PINSON X free throw 1 - 2 made (16)
04:03		<b>52-66</b>	<b>-14</b>	1 PINSON X free throw 2 - 2 made (17)
03:53	1 NOTAE J 2pt FG in the paint, layup missed			
03:51	offensive rebound (32)			
03:51	Timeout media			
03:51	foul coach class A technical (12)			
03:51	turnover offensive (8)			
03:51				1 PINSON X free throw 1 - 2 missed
03:51				offensive dead ball rebound (7)
03:51		<b>52-67</b>	<b>-15</b>	1 PINSON X free throw 2 - 2 made (18)
03:51	foul coach class A technical (13)			
03:51	turnover offensive (9)			
03:51		<b>52-68</b>	<b>-16</b>	1 PINSON X free throw 1 - 2 made (19)
03:51		<b>52-69</b>	<b>-17</b>	1 PINSON X free throw 2 - 2 made (20)
03:48	5 MOODY M foul drawn (9)			5 SMITH M foul shooting (4 - 13)
03:48	5 MOODY M free throw 1 - 2 made (17)	<b>53-69</b>	<b>-16</b>	
03:48	5 MOODY M free throw 2 - 2 made (18)	<b>54-69</b>	<b>-15</b>	
03:24		<b>54-71</b>	<b>-17</b>	1 PINSON X 2pt FG in the paint, driving layup made (22)
03:24	3 SILLS D foul shooting (3 - 14)			1 PINSON X foul drawn (6)
03:24				5 SMITH M substitution out
03:24				23 TILMON J substitution in
03:24		<b>54-72</b>	<b>-18</b>	1 PINSON X free throw 1 - 1 made (23)
03:11	1 NOTAE J 2pt FG in the paint, pull up jump shot made (17)	<b>56-72</b>	<b>-16</b>	
03:08	5 MOODY M steal (2)			13 SMITH M turnover bad pass (7)
03:00	10 WILLIAMS J 3pt FG from turnover, jump shot missed			
02:57	4 DAMS D offensive rebound (3)			
02:56	10 WILLIAMS J 2pt FG from turnover second chance in the paint, driving layup made (5)	<b>58-72</b>	<b>-14</b>	
02:56	10 WILLIAMS J foul drawn (4)			4 PICKETT J foul shooting (4 - 14)
02:56	10 WILLIAMS J free throw 1 - 1 made (6)	<b>59-72</b>	<b>-13</b>	
02:56	10 WILLIAMS J substitution out			
02:56	24 HENDERSON E substitution in			
02:41	4 DAMS D steal (3)			12 SMITH D turnover lost ball (6)
02:33	24 HENDERSON E foul drawn (1)			23 TILMON J foul shooting (3 - 15)
02:33	24 HENDERSON E free throw 1 - 2 made (1)	<b>60-72</b>	<b>-12</b>	
02:33	24 HENDERSON E free throw 2 - 2 missed			
02:33	offensive rebound (34)			



**Missouri at Arkansas**

01/02/21 Bud Walton Arena, Fayetteville, Ark.  
2020-21 Men's Basketball

Officials: Doug Shows, Terry Wyrner, Gerald Williams

Game Time	ARK	Score	Diff	MIZ
02:32	24 HENDERSON E substitution out			
02:32	10 WILLIAMS J substitution in			
02:32				23 TILMON J substitution out
02:32				5 SMITH M substitution in
02:28	5 MOODY M 3pt FG second chance, jump shot missed			
02:25				5 SMITH M defensive rebound (3)
02:07				13 SMITH M 3pt FG, pull up jump shot missed
02:02	4 DAMS D defensive rebound (4)			
01:55	3 SILLS D 2pt FG in the paint, driving layup made (4)	<b>62-72</b>	<b>-10</b>	
01:54				Timeout 30 Sec
01:54	10 WILLIAMS J substitution out			
01:54	24 HENDERSON E substitution in			
01:34		<b>62-75</b>	<b>-13</b>	13 SMITH M 3pt FG, jump shot made (11)
01:34				4 PICKETT J assist (4)
01:15	3 SILLS D 2pt FG in the paint, layup missed			
01:06				12 SMITH D defensive rebound (3)
01:00	3 SILLS D steal (3)			13 SMITH M turnover lost ball (8)
00:58	3 SILLS D foul drawn (4)			1 PINSON X foul personal (3 - 16)
00:58	3 SILLS D free throw 1 - 2 made (5)	<b>63-75</b>	<b>-12</b>	
00:58				13 SMITH M substitution out
00:58				2 BUGGS D substitution in
00:58	3 SILLS D free throw 2 - 2 made (6)	<b>64-75</b>	<b>-11</b>	
00:48		<b>64-77</b>	<b>-13</b>	4 PICKETT J 2pt FG in the paint, layup made (4)
00:48				2 BUGGS D assist (4)
00:48	4 DAMS D foul shooting (2 - 15)			4 PICKETT J foul drawn (2)
00:48		<b>64-78</b>	<b>-14</b>	4 PICKETT J free throw 1 - 1 made (5)
00:48	24 HENDERSON E substitution out			
00:48	10 WILLIAMS J substitution in			
00:45	1 NOTAE J 3pt FG, jump shot missed			
00:42	10 WILLIAMS J offensive rebound (3)			
00:40	10 WILLIAMS J 2pt FG second chance in the paint, jump shot made (8)	<b>66-78</b>	<b>-12</b>	
00:40	Timeout 30 Sec			
00:40	10 WILLIAMS J substitution out			
00:40	24 HENDERSON E substitution in			
00:37	4 DAMS D foul personal (3 - 16)			2 BUGGS D foul drawn (2)
00:37				2 BUGGS D free throw 1 - 2 missed
00:37				offensive dead ball rebound (8)
00:37	24 HENDERSON E substitution out			
00:37	10 WILLIAMS J substitution in			
00:37		<b>66-79</b>	<b>-13</b>	2 BUGGS D free throw 2 - 2 made (1)
00:29	5 MOODY M 2pt FG outside the paint, jump shot missed			
00:28				2 BUGGS D defensive rebound (4)
00:28	4 DAMS D foul personal (4 - 17)			2 BUGGS D foul drawn (3)
00:28		<b>66-80</b>	<b>-14</b>	2 BUGGS D free throw 1 - 2 made (2)
00:28		<b>66-81</b>	<b>-15</b>	2 BUGGS D free throw 2 - 2 made (3)
00:24	1 NOTAE J 2pt FG fast break in the paint, driving layup made (19)	<b>68-81</b>	<b>-13</b>	
<b>END OF GAME</b>				
<b>ARK 68-81 MIZ</b>				



**Missouri at Arkansas**

01/02/21 Bud Walton Arena, Fayetteville, Ark.  
2020-21 Men's Basketball

Officials: Doug Shows, Terry Wyrner, Gerald Williams

**Missouri - 48**

NO.	Name	F	Min	FG			Rebounds			Fouls		TP	AS	TO	ST	Blocks		+/-
				M-A	M-A	M-A	OR	DR	TOT	PF	FD					BS	BA	
23	Jeremiah Tilmon	F	13:17	4-5	0-0	3-4	0	3	3	2	2	11	0	0	0	0	1	0
24	Kobe Brown	F	04:18	0-1	0-0	0-0	0	1	1	1	1	0	0	0	0	0	1	-3
1	Xavier Pinson	G	17:20	2-5	0-2	11-13	1	3	4	3	5	15	3	1	0	0	0	7
12	Dru Smith	G	13:19	2-3	2-2	0-0	0	2	2	2	2	6	0	2	0	0	0	7
13	Mark Smith	G	18:32	3-5	2-4	0-0	0	4	4	2	1	8	0	5	0	0	0	8
5	Mitchell Smith		14:50	0-2	0-2	2-2	0	2	2	2	1	2	1	0	0	0	0	18
4	Javon Pickett		13:26	1-3	0-1	1-1	0	1	1	2	1	3	2	1	0	0	0	8
2	Drew Buggs		04:08	0-0	0-0	3-4	0	2	2	2	2	3	3	0	0	0	0	5
0	Torrence Watson		00:50	0-0	0-0	0-0	0	1	1	0	0	0	0	0	0	0	0	0
Team							2	2	4			0		0				
<b>Totals</b>				12-24	4-11	20-24	3	21	24	16	15	48	9	9	0	0	2	10

Shooting By Period		
2 <sup>nd</sup> FG%	12-24	50.0%
3PT%	4-11	36.4%
FT%	20-24	83.3%
GM FG%	12-24	50.0%
3PT%	4-11	36.4%
FT%	20-24	83.3%

Dead Ball Rebounds: 4, 0

Technical Fouls: NONE

**Arkansas - 38**

NO.	Name	F	Min	FG			Rebounds			Fouls		TP	AS	TO	ST	Blocks		+/-
				M-A	M-A	M-A	OR	DR	TOT	PF	FD					BS	BA	
11	Jalen Tate	F	15:57	1-1	0-0	1-2	0	1	1	3	2	3	0	0	0	0	0	-9
23	Connor Vanover	F	09:15	0-4	0-3	2-2	0	2	2	2	1	2	1	0	0	2	0	-3
3	Desi Sills	G	20:00	1-6	0-1	2-4	0	1	1	3	3	4	1	0	3	0	0	-10
4	Davonte Davis	G	06:45	0-2	0-0	0-2	2	1	3	3	1	0	0	0	1	0	0	-6
5	Moses Moody	G	20:00	2-9	2-4	3-4	4	2	6	3	3	9	0	1	2	0	0	-10
12	Khalen Robinson		00:00															
1	JD Notae		17:18	4-11	0-2	3-3	1	2	3	1	3	11	1	1	1	0	0	-5
10	Jaylin Williams		09:12	3-5	1-3	1-1	1	0	1	0	2	8	0	0	0	0	0	-4
24	Ethan Henderson		01:33	0-0	0-0	1-2	0	0	0	0	1	1	0	0	0	0	0	-3
Team							2	0	2			0		2				
<b>Totals</b>				11-38	3-13	13-20	10	9	19	17	16	38	3	4	7	2	0	-10

Shooting By Period		
2 <sup>nd</sup> FG%	11-38	28.9%
3PT%	3-13	23.1%
FT%	13-20	65%
GM FG%	11-38	28.9%
3PT%	3-13	23.1%
FT%	13-20	65.0%

Dead Ball Rebounds: 3, 0

Technical Fouls: Coach 2<sup>nd</sup> 3:51 Coach 2<sup>nd</sup> 3:51

	MIZ	ARK
Biggest lead	18 (2 <sup>nd</sup> 3:24)	0 (1 <sup>st</sup> 20:00)
Best Scoring Run	6 (2 <sup>nd</sup> 13:56)	8 (2 <sup>nd</sup> 1:55)
Lead Changes	0	
Times Tied	0	
Time with Lead	19:47	00:00

Points from	MIZ	ARK
Turnovers	3	8
Paint	16	16
Second Chance	3	8
Fast Breaks	2	10
Bench	8	20

	Period by Period Scoring		
	1st	2nd	TOT
MIZ	33	48	81
ARK	30	38	68



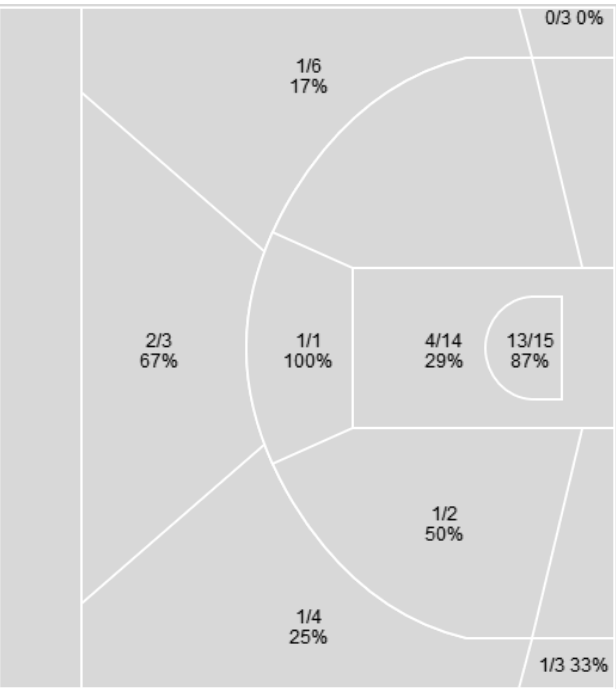
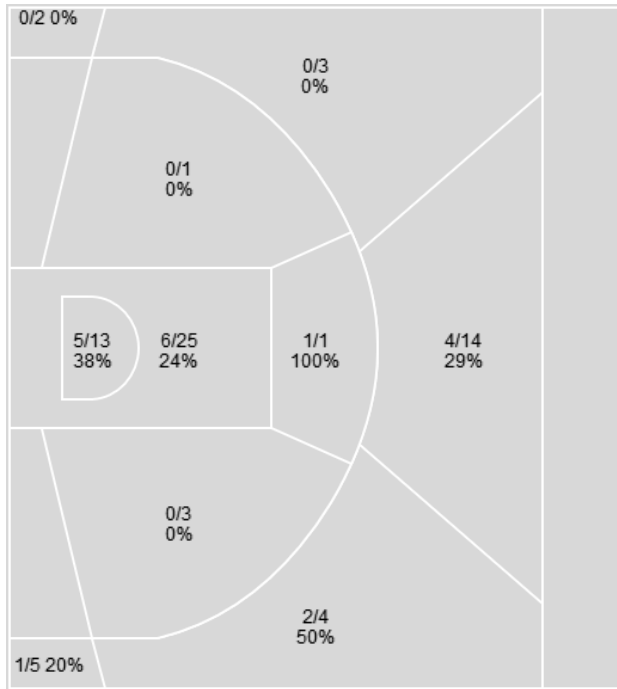


Players => All; FG Types => All; Results => All;

Players => All; FG Types => All; Results => All;

**Arkansas**

**Missouri**



Arkansas	M/A	%
Field Goals	19/71	27
2 Points	12/43	28
3 Points	7/28	25
Free Throws	23/34	68

Missouri	M/A	%
Field Goals	24/51	47
2 Points	19/32	59
3 Points	5/19	26
Free Throws	28/39	72



**Missouri at Arkansas**

01/02/21 Bud Walton Arena, Fayetteville, Ark.  
2020-21 Men's Basketball

Officials: Doug Shows, Terry Wyrner, Gerald Williams

**Missouri**

No	Name	Mins		Score		Points Diff		Points per Min		Assists		Rebounds		Steals		Turnovers	
		On	Off	On	Off	On	Off	On	Off	On	Off	On	Off	On	Off	On	Off
0	Torrence Watson	07:03	32:57	6-11	75-57	-5	18	0.85	2.28	0	14	12	39	2	1	4	17
1	Xavier Pinson	32:43	07:17	67-60	14-8	7	6	2.05	1.92	10	4	39	12	3	0	17	4
2	Drew Buggs	13:03	26:57	28-21	53-47	7	6	2.15	1.97	5	9	18	33	1	2	7	14
4	Javon Pickett	23:42	16:18	49-39	32-29	10	3	2.07	1.96	9	5	30	21	0	3	14	7
5	Mitchell Smith	20:33	19:27	50-33	31-35	17	-4	2.43	1.59	10	4	27	24	0	3	9	12
12	Dru Smith	26:54	13:06	58-48	23-20	10	3	2.16	1.76	10	4	35	16	3	0	14	7
13	Mark Smith	34:28	05:32	70-58	11-10	12	1	2.03	1.99	12	2	44	7	3	0	18	3
23	Jeremiah Tilmon	27:34	12:26	52-48	29-20	4	9	1.89	2.33	9	5	34	17	3	0	14	7
24	Kobe Brown	14:00	26:00	25-22	56-46	3	10	1.79	2.15	5	9	16	35	0	3	8	13

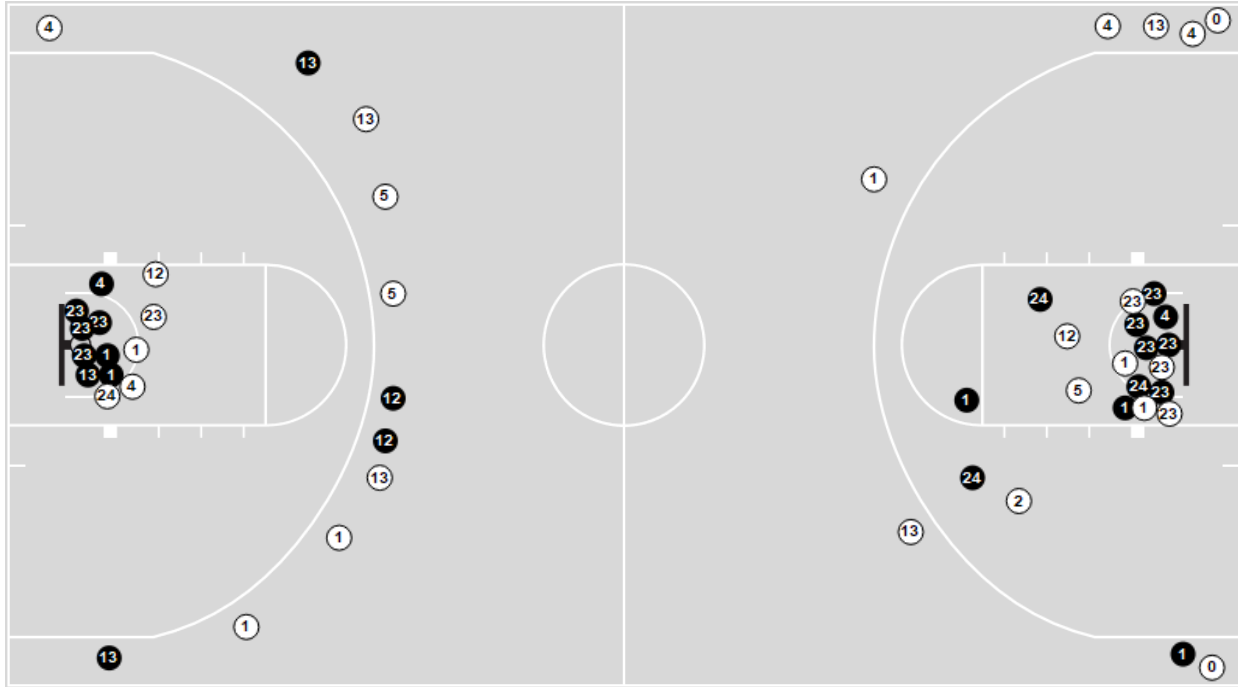
**Arkansas**

No	Name	Mins		Score		Points Diff		Points per Min		Assists		Rebounds		Steals		Turnovers	
		On	Off	On	Off	On	Off	On	Off	On	Off	On	Off	On	Off	On	Off
1	JD Notae	31:23	08:37	58-67	10-14	-9	-4	1.85	1.16	5	2	28	8	11	2	9	0
2	Vance Jackson	01:28	38:32	3-5	65-76	-2	-11	2.05	1.69	0	7	1	35	0	13	0	9
3	Desi Sills	37:26	02:34	64-76	4-5	-12	-1	1.71	1.56	6	1	35	1	12	1	9	0
4	Davonte Davis	19:36	20:24	31-41	37-40	-10	-3	1.58	1.81	3	4	19	17	7	6	3	6
5	Moses Moody	38:29	01:31	68-79	0-2	-11	-2	1.77	0.00	7	0	35	1	12	1	9	0
10	Jaylin Williams	17:25	22:35	29-39	39-42	-10	-3	1.67	1.73	4	3	12	24	4	9	4	5
11	Jalen Tate	29:48	10:12	46-55	22-26	-9	-4	1.54	2.16	7	0	24	12	10	3	5	4
12	Khalen Robinson	01:50	38:10	2-1	66-80	1	-14	1.09	1.73	0	7	2	34	0	13	1	8
23	Connor Vanover	20:15	19:45	35-35	33-46	0	-13	1.73	1.67	3	4	23	13	7	6	5	4
24	Ethan Henderson	02:20	37:40	4-7	64-74	-3	-10	1.71	1.70	0	7	1	35	2	11	0	9

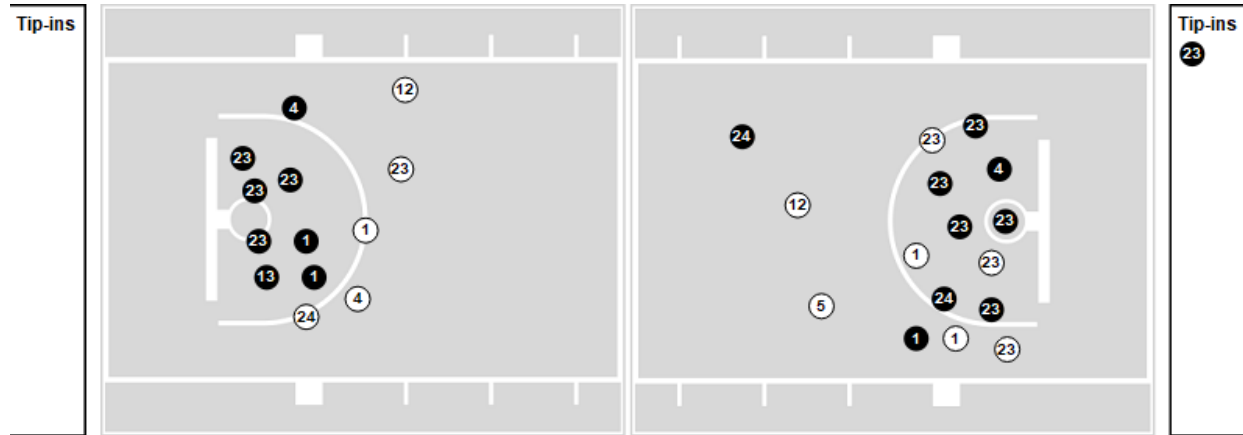


Players => All FG Types => All ; Results => All ;  
**Missouri**

**All Field Goals**



**Shots in the Paint**



● Made    ○ Missed    N - Player Number

Missouri	M/A	%
Field Goals	24/51	47
2 Points	19/32	59
3 Points	5/19	26
Free Throws	28/39	72

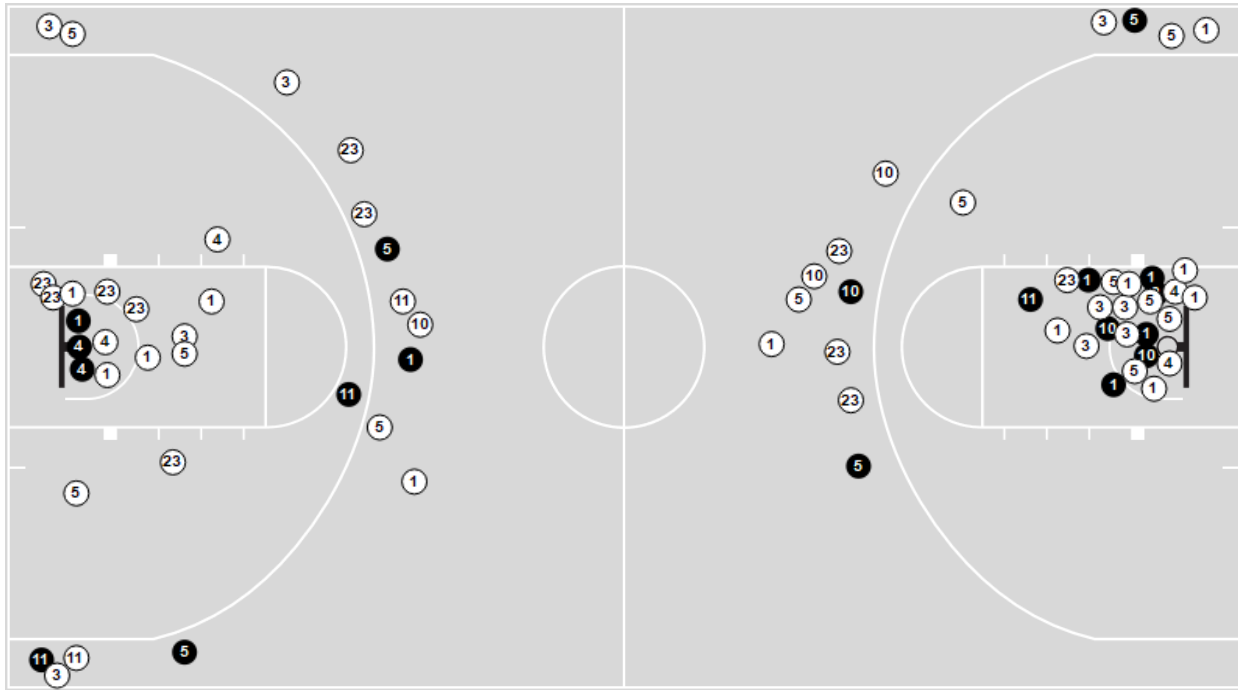
Missouri	M/A	%
Points in the Paint	34 (17 / 29)	59
Fast Break Points	9 (6/7)	86
Second Chance Points	9 (6/14)	43
Effective FG%	52	



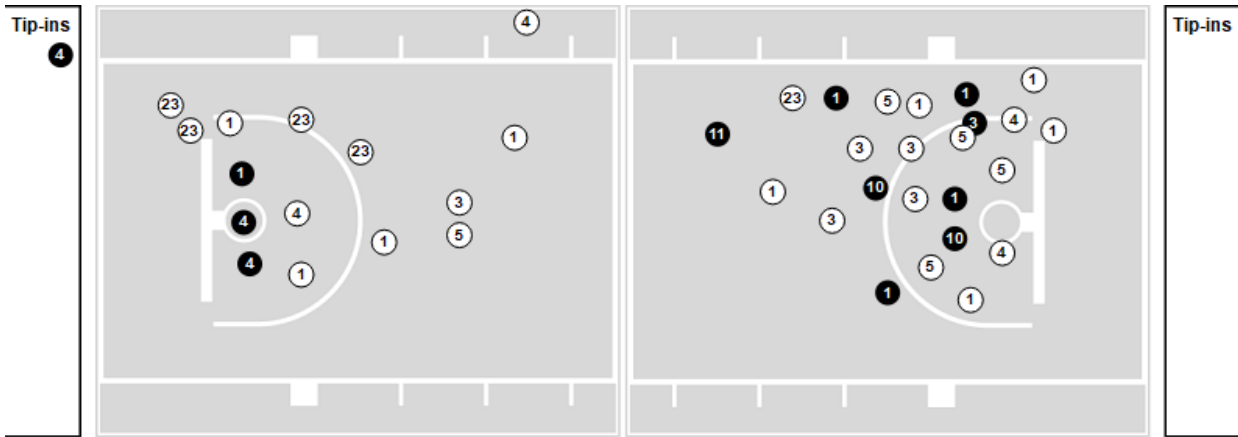
Players => All FG Types => All ; Results => All ;

**Arkansas**

**All Field Goals**



**Shots in the Paint**



● Made    ● Missed    N - Player Number

Arkansas	M/A	%
Field Goals	19/71	27
2 Points	12/43	28
3 Points	7/28	25
Free Throws	23/34	68

Arkansas	M/A	%
Points in the Paint	22 (11 / 38)	29
Fast Break Points	13 (6/8)	75
Second Chance Points	11 (7/19)	37
Effective FG%	32	



Official Basketball Rotations Summary - Final  
**Missouri at Arkansas**  
 01/02/21 Bud Walton Arena, Fayetteville, Ark.  
 2020-21 Men's Basketball

Game Time: 11:00 AM  
 Game Duration: 2:16  
 Attendance: 4,400

Officials: Doug Shows, Terry Wyrner, Gerald Williams

**Missouri**

Lineup	Quarter On	Time On	Quarter Off	Time Off	Time on Court	Score	Score Diff	Reb	Stl	Tov	Ast	PPP
1- Pinson X/ 12- Smith D/ 13- Smith M 23- Tilmon J/ 24- Brown K/	1	20:00	1	17:33	02:27	4-2	2	4	0	2	1	0.8197
1- Pinson X/ 4- Pickett J/ 5- Smith M 12- Smith D/ 13- Smith M	1	17:33	1	16:35	00:58	2-2	0	1	0	1	0	1.0000
2- Buggs D/ 4- Pickett J/ 5- Smith M 12- Smith D/ 13- Smith M	1	16:35	1	16:09	00:26	0-0	0	1	0	0	0	0.0000
2- Buggs D/ 4- Pickett J/ 5- Smith M 13- Smith M 24- Brown K/	1	16:09	1	15:04	01:05	2-0	2	2	0	1	1	0.6667
1- Pinson X/ 2- Buggs D/ 4- Pickett J/ 5- Smith M 24- Brown K/	1	15:04	1	13:52	01:12	2-3	-1	1	0	1	0	1.0000
1- Pinson X/ 4- Pickett J/ 5- Smith M 23- Tilmon J/ 24- Brown K/	1	13:52	1	13:52	00:00	0-0	0	0	0	0	0	0.0000
1- Pinson X/ 4- Pickett J/ 12- Smith D/ 23- Tilmon J/ 24- Brown K/	1	13:52	1	13:13	00:39	2-0	2	0	0	0	1	2.0000
1- Pinson X/ 4- Pickett J/ 12- Smith D/ 13- Smith M 23- Tilmon J/	1	13:13	1	12:19	00:54	0-0	0	2	0	0	0	0.0000
0- Watson T/ 1- Pinson X/ 12- Smith D/ 13- Smith M 23- Tilmon J/	1	12:19	1	10:24	01:55	4-5	-1	2	2	2	0	0.8000
0- Watson T/ 1- Pinson X/ 4- Pickett J/ 13- Smith M 23- Tilmon J/	1	10:24	1	10:24	00:00	0-0	0	0	0	0	0	0.0000
1- Pinson X/ 4- Pickett J/ 13- Smith M 23- Tilmon J/ 24- Brown K/	1	10:24	1	10:24	00:00	1-0	1	0	0	0	0	2.2727
1- Pinson X/ 4- Pickett J/ 5- Smith M 13- Smith M 24- Brown K/	1	10:24	1	09:51	00:33	0-4	-4	0	0	0	0	0.0000
2- Buggs D/ 4- Pickett J/ 13- Smith M 23- Tilmon J/ 24- Brown K/	1	09:51	1	08:34	01:17	4-3	1	1	0	1	1	1.3333
2- Buggs D/ 12- Smith D/ 13- Smith M 23- Tilmon J/ 24- Brown K/	1	08:34	1	08:14	00:20	1-1	0	0	0	0	0	2.2727
1- Pinson X/ 2- Buggs D/ 12- Smith D/ 13- Smith M 23- Tilmon J/	1	08:14	1	06:16	01:58	5-3	2	2	1	0	0	1.1905
1- Pinson X/ 4- Pickett J/ 5- Smith M 12- Smith D/ 13- Smith M	1	06:16	1	04:54	01:22	3-1	2	2	0	1	1	1.0000
0- Watson T/ 1- Pinson X/ 12- Smith D/ 13- Smith M 23- Tilmon J/	1	04:54	1	03:47	01:07	0-4	-4	2	0	1	0	0.0000
0- Watson T/ 1- Pinson X/ 13- Smith M 23- Tilmon J/ 24- Brown K/	1	03:47	1	02:49	00:58	2-0	2	2	0	0	0	2.0000
2- Buggs D/ 12- Smith D/ 13- Smith M 23- Tilmon J/ 24- Brown K/	1	02:49	1	02:25	00:24	0-0	0	1	0	1	0	0.0000
0- Watson T/ 2- Buggs D/ 12- Smith D/ 23- Tilmon J/ 24- Brown K/	1	02:25	1	01:50	00:35	0-0	0	1	0	0	0	0.0000
0- Watson T/ 2- Buggs D/ 4- Pickett J/ 12- Smith D/ 23- Tilmon J/	1	01:50	1	01:20	00:30	0-0	0	2	0	0	0	0.0000
0- Watson T/ 1- Pinson X/ 2- Buggs D/ 4- Pickett J/ 23- Tilmon J/	1	01:20	1	00:19	01:01	0-2	-2	1	0	1	0	0.0000
1- Pinson X/ 4- Pickett J/ 13- Smith M 23- Tilmon J/ 24- Brown K/	1	00:19	1	00:06	00:12	1-0	1	0	0	0	0	2.2727
0- Watson T/ 1- Pinson X/ 2- Buggs D/ 4- Pickett J/ 5- Smith M	1	00:06	2	20:00	00:07	0-0	0	0	0	0	0	0.0000
1- Pinson X/ 12- Smith D/ 13- Smith M 23- Tilmon J/ 24- Brown K/	2	20:00	2	19:14	00:46	0-2	-2	0	0	0	0	0.0000
1- Pinson X/ 5- Smith M 12- Smith D/ 13- Smith M 23- Tilmon J/	2	19:14	2	17:36	01:38	4-3	1	3	0	1	1	1.0309
1- Pinson X/ 4- Pickett J/ 5- Smith M 12- Smith D/ 13- Smith M	2	17:36	2	15:54	01:42	3-0	3	3	0	0	1	1.5000
1- Pinson X/ 2- Buggs D/ 4- Pickett J/ 5- Smith M 12- Smith D/	2	15:54	2	15:25	00:29	1-0	1	1	0	1	0	0.5319
2- Buggs D/ 4- Pickett J/ 5- Smith M 12- Smith D/ 13- Smith M	2	15:25	2	14:54	00:31	0-0	0	1	0	1	0	0.0000
0- Watson T/ 2- Buggs D/ 4- Pickett J/ 5- Smith M 13- Smith M	2	14:54	2	14:44	00:10	0-0	0	0	0	0	0	0.0000
0- Watson T/ 1- Pinson X/ 4- Pickett J/ 5- Smith M 13- Smith M	2	14:44	2	14:04	00:40	0-0	0	2	0	0	0	0.0000
0- Watson T/ 1- Pinson X/ 4- Pickett J/ 13- Smith M 23- Tilmon J/	2	14:04	2	14:04	00:00	0-0	0	0	0	0	0	0.0000
1- Pinson X/ 4- Pickett J/ 13- Smith M 23- Tilmon J/ 24- Brown K/	2	14:04	2	10:32	03:32	6-7	-1	4	0	2	1	0.8571
1- Pinson X/ 4- Pickett J/ 5- Smith M 13- Smith M 23- Tilmon J/	2	10:32	2	08:37	01:55	4-1	3	2	0	1	1	0.9259
2- Buggs D/ 4- Pickett J/ 5- Smith M 13- Smith M 23- Tilmon J/	2	08:37	2	08:13	00:24	1-0	1	1	0	0	0	2.2727
2- Buggs D/ 5- Smith M 12- Smith D/ 13- Smith M 23- Tilmon J/	2	08:13	2	06:38	01:35	6-4	2	2	0	0	2	2.0000
1- Pinson X/ 5- Smith M 12- Smith D/ 13- Smith M 23- Tilmon J/	2	06:38	2	04:03	02:35	6-5	1	2	0	0	1	1.5957
1- Pinson X/ 4- Pickett J/ 5- Smith M 12- Smith D/ 13- Smith M	2	04:03	2	03:24	00:39	7-2	5	0	0	0	0	1.9231
1- Pinson X/ 4- Pickett J/ 12- Smith D/ 13- Smith M 23- Tilmon J/	2	03:24	2	02:32	00:52	1-6	-5	0	0	2	0	0.4098
1- Pinson X/ 4- Pickett J/ 5- Smith M 12- Smith D/ 13- Smith M	2	02:32	2	00:58	01:33	3-3	0	2	0	1	1	1.0000
1- Pinson X/ 2- Buggs D/ 4- Pickett J/ 5- Smith M 12- Smith D/	2	00:58	2	00:00	00:59	6-5	1	1	0	0	1	1.8750



Official Basketball Rotations Summary - Final  
**Missouri at Arkansas**  
 01/02/21 Bud Walton Arena, Fayetteville, Ark.  
 2020-21 Men's Basketball

Game Time: 11:00 AM  
 Game Duration: 2:16  
 Attendance: 4,400

Officials: Doug Shows, Terry Wyrner, Gerald Williams

**Arkansas**

Lineup	Quarter On	Time On	Quarter Off	Time Off	Time on Court	Score	Score Diff	Reb	Stl	Tov	Ast	PPP
3- Sills D/ 4- Davis D/ 5- MbodyM 11- Tate J/ 23- Vanover C/	1	20:00	1	16:35	03:25	4-6	-2	1	2	0	1	0.6667
1- Notae J/ 3- Sills D/ 4- Davis D/ 10- Williams J/ 11- Tate J/	1	16:35	1	15:04	01:31	0-2	-2	1	1	0	0	0.0000
1- Notae J/ 4- Davis D/ 5- MbodyM 10- Williams J/ 11- Tate J/	1	15:04	1	13:52	01:12	3-2	1	0	1	0	1	1.0000
1- Notae J/ 3- Sills D/ 4- Davis D/ 5- MbodyM 10- Williams J/	1	13:52	1	13:13	00:39	0-2	-2	0	0	0	0	0.0000
1- Notae J/ 3- Sills D/ 4- Davis D/ 5- MbodyM 23- Vanover C/	1	13:13	1	13:06	00:07	0-0	0	0	0	0	0	0.0000
3- Sills D/ 4- Davis D/ 5- MbodyM 11- Tate J/ 23- Vanover C/	1	13:06	1	12:19	00:47	0-0	0	3	0	0	0	0.0000
1- Notae J/ 3- Sills D/ 5- MbodyM 11- Tate J/ 23- Vanover C/	1	12:19	1	09:51	02:28	9-5	4	2	2	2	1	1.4241
2- Jackson V/ 3- Sills D/ 5- MbodyM 11- Tate J/ 23- Vanover C/	1	09:51	1	09:31	00:20	1-0	1	0	0	0	0	2.2727
1- Notae J/ 2- Jackson V/ 3- Sills D/ 5- MbodyM 23- Vanover C/	1	09:31	1	08:34	00:57	2-4	-2	0	0	0	0	1.0000
2- Jackson V/ 3- Sills D/ 5- MbodyM 11- Tate J/ 23- Vanover C/	1	08:34	1	08:23	00:11	0-1	-1	1	0	0	0	0.0000
1- Notae J/ 3- Sills D/ 5- MbodyM 11- Tate J/ 23- Vanover C/	1	08:23	1	08:14	00:09	1-0	1	0	0	0	0	2.2727
1- Notae J/ 3- Sills D/ 5- MbodyM 10- Williams J/ 11- Tate J/	1	08:14	1	06:16	01:58	3-5	-2	1	0	1	1	0.7732
1- Notae J/ 4- Davis D/ 5- MbodyM 11- Tate J/ 23- Vanover C/	1	06:16	1	04:54	01:22	1-3	-2	1	0	0	0	0.4098
3- Sills D/ 4- Davis D/ 5- MbodyM 11- Tate J/ 23- Vanover C/	1	04:54	1	04:26	00:28	2-0	2	0	0	0	0	2.2727
1- Notae J/ 3- Sills D/ 4- Davis D/ 5- MbodyM 23- Vanover C/	1	04:26	1	03:47	00:39	2-0	2	4	0	0	0	2.0000
1- Notae J/ 3- Sills D/ 4- Davis D/ 5- MbodyM 10- Williams J/	1	03:47	1	01:50	01:57	0-2	-2	1	0	1	0	0.0000
3- Sills D/ 4- Davis D/ 5- MbodyM 10- Williams J/ 12- Robinson K/	1	01:50	1	01:20	00:30	0-0	0	0	0	0	0	0.0000
1- Notae J/ 3- Sills D/ 5- MbodyM 10- Williams J/ 12- Robinson K/	1	01:20	1	00:53	00:26	1-0	1	1	0	0	0	2.2727
3- Sills D/ 4- Davis D/ 5- MbodyM 12- Robinson K/ 24- Henderson E/	1	00:53	1	00:41	00:12	1-0	1	0	0	0	0	2.2727
1- Notae J/ 3- Sills D/ 5- MbodyM 12- Robinson K/ 24- Henderson E/	1	00:41	1	00:06	00:35	0-1	-1	0	0	0	0	0.0000
1- Notae J/ 3- Sills D/ 5- MbodyM 12- Robinson K/ 23- Vanover C/	1	00:06	1	00:02	00:05	0-0	0	1	0	1	0	0.0000
3- Sills D/ 4- Davis D/ 5- MbodyM 12- Robinson K/ 23- Vanover C/	1	00:02	2	20:00	00:02	0-0	0	0	0	0	0	0.0000
3- Sills D/ 4- Davis D/ 5- MbodyM 11- Tate J/ 23- Vanover C/	2	20:00	2	18:16	01:44	2-4	-2	3	0	0	1	0.6944
1- Notae J/ 3- Sills D/ 5- MbodyM 11- Tate J/ 23- Vanover C/	2	18:16	2	15:54	02:22	3-3	0	2	1	1	0	0.6000
1- Notae J/ 3- Sills D/ 5- MbodyM 10- Williams J/ 11- Tate J/	2	15:54	2	13:22	02:32	0-3	-3	2	1	0	0	0.0000
1- Notae J/ 3- Sills D/ 5- MbodyM 11- Tate J/ 23- Vanover C/	2	13:22	2	09:11	04:11	8-6	2	5	2	1	0	0.9901
3- Sills D/ 4- Davis D/ 5- MbodyM 11- Tate J/ 23- Vanover C/	2	09:11	2	08:13	00:58	0-3	-3	0	0	0	0	0.0000
1- Notae J/ 3- Sills D/ 5- MbodyM 10- Williams J/ 11- Tate J/	2	08:13	2	04:03	04:10	9-12	-3	2	0	0	2	1.3314
1- Notae J/ 3- Sills D/ 4- Davis D/ 5- MbodyM 10- Williams J/	2	04:03	2	02:56	01:07	7-8	-1	2	1	2	0	1.3158
1- Notae J/ 3- Sills D/ 4- Davis D/ 5- MbodyM 24- Henderson E/	2	02:56	2	02:32	00:24	1-0	1	1	1	0	0	-8.3333
1- Notae J/ 3- Sills D/ 4- Davis D/ 5- MbodyM 10- Williams J/	2	02:32	2	01:54	00:38	2-0	2	1	0	0	0	1.0000
1- Notae J/ 3- Sills D/ 4- Davis D/ 5- MbodyM 24- Henderson E/	2	01:54	2	00:48	01:06	2-6	-4	0	1	0	0	1.0638
1- Notae J/ 3- Sills D/ 4- Davis D/ 5- MbodyM 10- Williams J/	2	00:48	2	00:40	00:08	2-0	2	1	0	0	0	2.0000
1- Notae J/ 3- Sills D/ 4- Davis D/ 5- MbodyM 24- Henderson E/	2	00:40	2	00:37	00:03	0-0	0	0	0	0	0	0.0000
1- Notae J/ 3- Sills D/ 4- Davis D/ 5- MbodyM 10- Williams J/	2	00:37	2	00:00	00:37	2-3	-1	0	0	0	0	1.0000



**Missouri**

Lineup	Time	Score	Score Diff	Pts/Min	Reb	Stl	Tov	Ast	PPP
1- Pinson X/ 4- Pickett J/ 5- Smith M/ 12- Smith D/ 13- Smith M	06:14	18-8	10	2.8877	8	0	3	3	1.3196
1- Pinson X/ 5- Smith M/ 12- Smith D/ 13- Smith M/ 23- Tilmon J/	04:13	10-8	2	2.3715	5	0	1	2	1.3089
1- Pinson X/ 4- Pickett J/ 13- Smith M/ 23- Tilmon J/ 24- Brown K/	03:44	8-7	1	2.1429	4	0	2	1	1.0152
1- Pinson X/ 12- Smith D/ 13- Smith M/ 23- Tilmon J/ 24- Brown K/	03:13	4-4	0	1.2435	4	0	2	1	0.6803
0- Watson T/ 1- Pinson X/ 12- Smith D/ 13- Smith M/ 23- Tilmon J/	03:02	4-9	-5	1.3187	4	2	3	0	0.6211
1- Pinson X/ 2- Buggs D/ 12- Smith D/ 13- Smith M/ 23- Tilmon J/	01:58	5-3	2	2.5424	2	1	0	0	1.1905
1- Pinson X/ 4- Pickett J/ 5- Smith M/ 13- Smith M/ 23- Tilmon J/	01:55	4-1	3	2.0870	2	0	1	1	0.9259
1- Pinson X/ 4- Pickett J/ 12- Smith D/ 13- Smith M/ 23- Tilmon J/	01:46	1-6	-5	0.5660	2	0	2	0	0.2252
2- Buggs D/ 5- Smith M/ 12- Smith D/ 13- Smith M/ 23- Tilmon J/	01:35	6-4	2	3.7895	2	0	0	2	2.0000
1- Pinson X/ 2- Buggs D/ 4- Pickett J/ 5- Smith M/ 12- Smith D/	01:28	7-5	2	4.7727	2	0	1	1	1.3780
2- Buggs D/ 4- Pickett J/ 13- Smith M/ 23- Tilmon J/ 24- Brown K/	01:17	4-3	1	3.1169	1	0	1	1	1.3333
1- Pinson X/ 2- Buggs D/ 4- Pickett J/ 5- Smith M/ 24- Brown K/	01:12	2-3	-1	1.6667	1	0	1	0	1.0000
2- Buggs D/ 4- Pickett J/ 5- Smith M/ 13- Smith M/ 24- Brown K/	01:05	2-0	2	1.8462	2	0	1	1	0.6667
0- Watson T/ 1- Pinson X/ 2- Buggs D/ 4- Pickett J/ 23- Tilmon J/	01:01	0-2	-2	0.0000	1	0	1	0	0.0000
0- Watson T/ 1- Pinson X/ 13- Smith M/ 23- Tilmon J/ 24- Brown K/	00:58	2-0	2	2.0690	2	0	0	0	2.0000
2- Buggs D/ 4- Pickett J/ 5- Smith M/ 12- Smith D/ 13- Smith M	00:57	0-0	0	0.0000	2	0	1	0	0.0000
2- Buggs D/ 12- Smith D/ 13- Smith M/ 23- Tilmon J/ 24- Brown K/	00:44	1-1	0	1.3636	1	0	1	0	0.6944
0- Watson T/ 1- Pinson X/ 4- Pickett J/ 5- Smith M/ 13- Smith M	00:40	0-0	0	0.0000	2	0	0	0	0.0000
1- Pinson X/ 4- Pickett J/ 12- Smith D/ 23- Tilmon J/ 24- Brown K/	00:39	2-0	2	3.0769	0	0	0	1	2.0000
0- Watson T/ 2- Buggs D/ 12- Smith D/ 23- Tilmon J/ 24- Brown K/	00:35	0-0	0	0.0000	1	0	0	0	0.0000
1- Pinson X/ 4- Pickett J/ 5- Smith M/ 13- Smith M/ 24- Brown K/	00:33	0-4	-4	0.0000	0	0	0	0	0.0000
0- Watson T/ 2- Buggs D/ 4- Pickett J/ 12- Smith D/ 23- Tilmon J/	00:30	0-0	0	0.0000	2	0	0	0	0.0000
2- Buggs D/ 4- Pickett J/ 5- Smith M/ 13- Smith M/ 23- Tilmon J/	00:24	1-0	1	2.5000	1	0	0	0	2.2727
0- Watson T/ 2- Buggs D/ 4- Pickett J/ 5- Smith M/ 13- Smith M	00:10	0-0	0	0.0000	0	0	0	0	0.0000
0- Watson T/ 1- Pinson X/ 2- Buggs D/ 4- Pickett J/ 5- Smith M	00:07	0-0	0	0.0000	0	0	0	0	0.0000
1- Pinson X/ 4- Pickett J/ 5- Smith M/ 23- Tilmon J/ 24- Brown K/	00:00	0-0	0	NaN	0	0	0	0	0.0000
0- Watson T/ 1- Pinson X/ 4- Pickett J/ 13- Smith M/ 23- Tilmon J/	00:00	0-0	0	NaN	0	0	0	0	0.0000



**Missouri at Arkansas**

01/02/21 Bud Walton Arena, Fayetteville, Ark.  
2020-21 Men's Basketball

Officials: Doug Shows, Terry Wyrner, Gerald Williams

**Arkansas**

Lineup	Time	Score	Score Diff	Pts/Min	Reb	Stl	Tov	Ast	PPP
1- Notae J/ 3- Sills D/ 5- Mbody M 11- Tate J/ 23- Vanover C/	09:10	21-14	7	2.2909	9	5	4	1	1.0585
1- Notae J/ 3- Sills D/ 5- Mbody M 10- Williams J/ 11- Tate J/	08:40	12-20	-8	1.3846	5	1	1	3	0.8197
3- Sills D/ 4- Davis D/ 5- Mbody M 11- Tate J/ 23- Vanover C/	07:22	8-13	-5	1.0860	7	2	0	2	0.6270
1- Notae J/ 3- Sills D/ 4- Davis D/ 5- Mbody M 10- Williams J/	05:06	13-15	-2	2.5490	5	1	3	0	0.9448
1- Notae J/ 3- Sills D/ 4- Davis D/ 5- Mbody M 24- Henderson E/	01:33	3-6	-3	1.9355	1	2	0	0	1.7045
1- Notae J/ 3- Sills D/ 4- Davis D/ 10- Williams J/ 11- Tate J/	01:31	0-2	-2	0.0000	1	1	0	0	0.0000
1- Notae J/ 4- Davis D/ 5- Mbody M 11- Tate J/ 23- Vanover C/	01:22	1-3	-2	0.7317	1	0	0	0	0.4098
1- Notae J/ 4- Davis D/ 5- Mbody M 10- Williams J/ 11- Tate J/	01:12	3-2	1	2.5000	0	1	0	1	1.0000
1- Notae J/ 2- Jackson V/ 3- Sills D/ 5- Mbody M 23- Vanover C/	00:57	2-4	-2	2.1053	0	0	0	0	1.0000
1- Notae J/ 3- Sills D/ 4- Davis D/ 5- Mbody M 23- Vanover C/	00:46	2-0	2	2.6087	4	0	0	0	1.0000
1- Notae J/ 3- Sills D/ 5- Mbody M 12- Robinson K/ 24- Henderson E/	00:35	0-1	-1	0.0000	0	0	0	0	0.0000
2- Jackson V/ 3- Sills D/ 5- Mbody M 11- Tate J/ 23- Vanover C/	00:31	1-1	0	1.9355	1	0	0	0	2.2727
3- Sills D/ 4- Davis D/ 5- Mbody M 10- Williams J/ 12- Robinson K/	00:30	0-0	0	0.0000	0	0	0	0	0.0000
1- Notae J/ 3- Sills D/ 5- Mbody M 10- Williams J/ 12- Robinson K/	00:26	1-0	1	2.3077	1	0	0	0	2.2727
3- Sills D/ 4- Davis D/ 5- Mbody M 12- Robinson K/ 24- Henderson E/	00:12	1-0	1	5.0000	0	0	0	0	2.2727
1- Notae J/ 3- Sills D/ 5- Mbody M 12- Robinson K/ 23- Vanover C/	00:05	0-0	0	0.0000	1	0	1	0	0.0000
3- Sills D/ 4- Davis D/ 5- Mbody M 12- Robinson K/ 23- Vanover C/	00:02	0-0	0	0.0000	0	0	0	0	0.0000