



**Arkansas at Baylor**

03/29/21 Lucas Oil Stadium, Indianapolis, IN  
 NCAA Division I Men's Basketball Championship - Elite 8

Game Time: 10:03 PM  
 Game Duration: 2:05  
 Attendance: 7,519

Officials: Terry Oglesby, Jeff Clark, Paul Szec

Arkansas - 72

Record: 25-7

| NO.           | Name            | F | Min   | FG    | 3P   | FT    | Rebounds |    |     | Fouls |    | TP | AS | TO | ST | Blocks |    | +/- |
|---------------|-----------------|---|-------|-------|------|-------|----------|----|-----|-------|----|----|----|----|----|--------|----|-----|
|               |                 |   |       | M-A   | M-A  | M-A   | OR       | DR | TOT | PF    | FD |    |    |    |    | BS     | BA |     |
| 0             | Justin Smith    | F | 36:46 | 5-9   | 0-0  | 0-0   | 1        | 5  | 6   | 4     | 0  | 10 | 3  | 0  | 2  | 1      | 2  | 1   |
| 10            | Jaylin Williams | F | 15:33 | 4-5   | 0-0  | 0-0   | 3        | 1  | 4   | 1     | 2  | 8  | 0  | 1  | 0  | 1      | 0  | -19 |
| 4             | Davonte Davis   | G | 31:49 | 6-13  | 0-2  | 2-2   | 2        | 4  | 6   | 2     | 4  | 14 | 2  | 2  | 1  | 0      | 0  | -13 |
| 5             | Moses Moody     | G | 32:49 | 2-10  | 0-4  | 7-8   | 2        | 3  | 5   | 2     | 4  | 11 | 1  | 3  | 0  | 1      | 2  | -11 |
| 11            | Jalen Tate      | G | 35:07 | 3-7   | 1-1  | 6-8   | 2        | 2  | 4   | 3     | 8  | 13 | 2  | 6  | 1  | 1      | 1  | -7  |
| 1             | JD Notae        |   | 14:47 | 5-6   | 2-2  | 2-3   | 0        | 0  | 0   | 5     | 2  | 14 | 1  | 3  | 0  | 1      | 0  | 3   |
| 3             | Desi Sills      |   | 30:44 | 1-4   | 0-2  | 0-2   | 0        | 6  | 6   | 1     | 1  | 2  | 4  | 0  | 1  | 0      | 0  | 6   |
| 24            | Ethan Henderson |   | 02:25 | 0-0   | 0-0  | 0-0   | 0        | 0  | 0   | 0     | 0  | 0  | 0  | 0  | 0  | 0      | 0  | -5  |
| Team          |                 |   |       |       |      |       | 1        | 2  | 3   |       |    | 0  |    | 0  |    |        |    |     |
| <b>Totals</b> |                 |   |       | 26-54 | 3-11 | 17-23 | 11       | 23 | 34  | 18    | 21 | 72 | 13 | 15 | 5  | 5      | 5  | -9  |

| Shooting By Period  |       |       |
|---------------------|-------|-------|
| 1 <sup>st</sup> FG% | 15-24 | 62.5% |
| 3PT%                | 3-4   | 75.0% |
| FT%                 | 5-10  | 50%   |
| 2 <sup>nd</sup> FG% | 11-30 | 36.7% |
| 3PT%                | 0-7   | 0.0%  |
| FT%                 | 12-13 | 92.3% |
| GM FG%              | 26-54 | 48.1% |
| 3PT%                | 3-11  | 27.3% |
| FT%                 | 17-23 | 73.9% |

Dead Ball Rebounds: 4, 0

Technical Fouls::NONE

Baylor - 81

Record: 26-2

| NO.           | Name                        | F | Min   | FG    | 3P   | FT    | Rebounds |    |     | Fouls |    | TP | AS | TO | ST | Blocks |    | +/- |
|---------------|-----------------------------|---|-------|-------|------|-------|----------|----|-----|-------|----|----|----|----|----|--------|----|-----|
|               |                             |   |       | M-A   | M-A  | M-A   | OR       | DR | TOT | PF    | FD |    |    |    |    | BS     | BA |     |
| 0             | Flo Thamba                  | F | 12:58 | 2-3   | 0-0  | 0-0   | 2        | 2  | 4   | 1     | 3  | 4  | 1  | 0  | 0  | 0      | 1  | 1   |
| 11            | Mark Vital                  | F | 17:56 | 2-4   | 0-0  | 0-0   | 3        | 1  | 4   | 5     | 2  | 4  | 1  | 0  | 1  | 1      | 1  | 7   |
| 12            | Jared Butler                | G | 32:36 | 4-11  | 2-3  | 4-4   | 1        | 2  | 3   | 2     | 3  | 14 | 5  | 3  | 0  | 0      | 3  | 3   |
| 31            | MaCio Teague                | G | 36:42 | 8-18  | 3-7  | 3-3   | 0        | 5  | 5   | 2     | 2  | 22 | 0  | 0  | 0  | 2      | 0  | 0   |
| 45            | Davion Mitchell             | G | 28:41 | 6-11  | 0-0  | 0-3   | 0        | 1  | 1   | 3     | 3  | 12 | 6  | 1  | 1  | 0      | 0  | 17  |
| 10            | Adam Flagler                |   | 26:35 | 2-6   | 2-2  | 4-4   | 0        | 0  | 0   | 3     | 3  | 10 | 3  | 1  | 4  | 1      | 0  | 1   |
| 23            | Jonathan Tchamwa Tchatchoua |   | 24:04 | 3-3   | 0-0  | 2-3   | 3        | 3  | 6   | 2     | 2  | 8  | 0  | 1  | 0  | 1      | 0  | 10  |
| 24            | Matthew Mayer               |   | 20:28 | 3-6   | 1-3  | 0-0   | 1        | 2  | 3   | 3     | 0  | 7  | 1  | 2  | 3  | 0      | 0  | 6   |
| Team          |                             |   |       |       |      |       | 1        | 2  | 3   |       |    | 0  |    | 1  |    |        |    |     |
| <b>Totals</b> |                             |   |       | 30-62 | 8-15 | 13-17 | 11       | 18 | 29  | 21    | 18 | 81 | 17 | 9  | 9  | 5      | 5  | 9   |

| Shooting By Period  |       |       |
|---------------------|-------|-------|
| 1 <sup>st</sup> FG% | 18-32 | 56.3% |
| 3PT%                | 4-7   | 57.1% |
| FT%                 | 6-7   | 85.7% |
| 2 <sup>nd</sup> FG% | 12-30 | 40.0% |
| 3PT%                | 4-8   | 50.0% |
| FT%                 | 7-10  | 70%   |
| GM FG%              | 30-62 | 48.4% |
| 3PT%                | 8-15  | 53.3% |
| FT%                 | 13-17 | 76.5% |

Dead Ball Rebounds: 2, 1

Technical Fouls::NONE

|                  | ARK                       | BAY                        |
|------------------|---------------------------|----------------------------|
| Biggest lead     | 0 (1 <sup>st</sup> 20:00) | 18 (1 <sup>st</sup> 11:01) |
| Best Scoring Run | 9(1 <sup>st</sup> 1:05)   | 8(1 <sup>st</sup> 11:01)   |
| Lead Changes     | 0                         |                            |
| Times Tied       | 0                         |                            |
| Time with Lead   | 00:00                     | 39:44                      |

|               | ARK | BAY |
|---------------|-----|-----|
| Points from   |     |     |
| Turnovers     | 6   | 21  |
| Paint         | 40  | 36  |
| Second Chance | 11  | 10  |
| Fast Breaks   | 15  | 11  |
| Bench         | 16  | 25  |

|     | Period by Period Scoring |     |     |
|-----|--------------------------|-----|-----|
|     | 1st                      | 2nd | TOT |
| ARK | 38                       | 34  | 72  |
| BAY | 46                       | 35  | 81  |



**Period 1**

**Quarter Starters:**

|            |            |            |             |               |               |
|------------|------------|------------|-------------|---------------|---------------|
| <b>BAY</b> | 0 Thamba F | 11 Vital M | 12 Butler J | 31 Teague M   | 45 Mitchell D |
| <b>ARK</b> | 0 Smith J  | 4 Davis D  | 5 Moody M   | 10 Williams J | 11 Tate J     |

| Game Time | BAY  | Score       | Diff      | ARK   |
|-----------|--|-------------|-----------|---|
| 20:00     | 0 THAMBA F jumpball won  |             |           | 10 WILLIAMS J jumpball lost   |
| 19:44     | 45 MITCHELL D 2pt FG outside the paint, step back jump shot made (2)     | <b>2-0</b>  | <b>2</b>  |   |
| 19:22     |  |             |           | 5 MOODY M 2pt FG outside the paint, floating jump shot missed               |
| 19:18     |  |             |           | 4 DAVIS D offensive rebound (1)   |
| 19:18     |  |             |           | 4 DAVIS D 2pt FG second chance in the paint, layup missed                   |
| 19:17     | 11 VITAL M defensive rebound (1)   |             |           |   |
| 19:07     | 31 TEAGUE M 2pt FG in the paint, jump shot made (2)                      | <b>4-0</b>  | <b>4</b>  |   |
| 19:07     | 12 BUTLER J assist (1)   |             |           |   |
| 19:07     | 31 TEAGUE M foul drawn (1)   |             |           | 5 MOODY M foul shooting (1 - 1)   |
| 19:07     | 31 TEAGUE M free throw 1 - 1 made (3)                                    | <b>5-0</b>  | <b>5</b>  |   |
| 18:50     | 45 MITCHELL D foul personal (1 - 1)                                      |             |           | 4 DAVIS D foul drawn (1)  |
| 18:45     |  |             |           | 10 WILLIAMS J turnover travel (1)   |
| 18:24     | 31 TEAGUE M 2pt FG from turnover in the paint, driving layup made (5)    | <b>7-0</b>  | <b>7</b>  |   |
| 18:03     |  | <b>7-2</b>  | <b>5</b>  | 10 WILLIAMS J 2pt FG in the paint, layup made (2)                           |
| 18:03     |  |             |           | 11 TATE J assist (1)  |
| 17:41     | 11 VITAL M 2pt FG in the paint, floating jump shot missed                |             |           |   |
| 17:38     | 11 VITAL M offensive rebound (2)   |             |           |   |
| 17:31     | 31 TEAGUE M 2pt FG second chance in the paint, floating jump shot missed |             |           |   |
| 17:27     |  |             |           | 5 MOODY M defensive rebound (1)   |
| 17:16     |  |             |           | 10 WILLIAMS J 2pt FG in the paint, driving layup missed                     |
| 17:13     |  |             |           | 10 WILLIAMS J offensive rebound (1)   |
| 17:12     | 0 THAMBA F foul personal (1 - 2)   |             |           | 10 WILLIAMS J foul drawn (1)  |
| 17:12     | 0 THAMBA F substitution out  |             |           |   |
| 17:12     | 11 VITAL M substitution out  |             |           |   |
| 17:12     | 31 TEAGUE M substitution out   |             |           |   |
| 17:12     | 10 FLAGLER A substitution in   |             |           |   |
| 17:12     | 23 TCHAMWA TCHATCHOUA J substitution in                                  |             |           |   |
| 17:12     | 24 MAYER M substitution in   |             |           |   |
| 17:09     |  |             |           | 4 DAVIS D 2pt FG second chance outside the paint, floating jump shot missed |
| 17:06     | 12 BUTLER J defensive rebound (1)  |             |           |   |
| 16:52     | 12 BUTLER J 3pt FG , pull up jump shot made (3)                          | <b>10-2</b> | <b>8</b>  |   |
| 16:27     | 10 FLAGLER A steal (1)   |             |           | 11 TATE J turnover lost ball (1)  |
| 16:21     | 24 MAYER M 3pt FG fast break from turnover, jump shot made (3)           | <b>13-2</b> | <b>11</b> |   |
| 16:21     | 45 MITCHELL D assist (1)   |             |           |   |
| 16:18     |  |             |           | Timeout 30 Sec  |
| 16:18     |  |             |           | Timeout media   |
| 16:18     |  |             |           | 10 WILLIAMS J substitution out  |
| 16:18     |  |             |           | 1 NOTAE J substitution in   |
| 16:02     | 45 MITCHELL D foul shooting (2 - 3)                                      |             |           | 5 MOODY M foul drawn (1)  |
| 16:02     |  |             |           | 5 MOODY M free throw 1 - 2 missed   |



Official Basketball Play by Play - First Half

**Arkansas at Baylor**

03/29/21 Lucas Oil Stadium, Indianapolis, IN  
 NCAA Division I Men's Basketball Championship - Elite 8

**Game Time:** 10:03 PM  
**Game Duration:** 2:05  
**Attendance:** 7,519

**Officials:** Terry Oglesby, Jeff Clark, Paul Szelc

| Game Time | BAY   | Score        | Diff      | ARK   |
|-----------|---|--------------|-----------|---|
| 16:02     |   |              |           | offensive dead ball rebound (1)                   |
| 16:02     | 45 MITCHELL D substitution out  |              |           |   |
| 16:02     | 31 TEAGUE M substitution in   |              |           |   |
| 16:02     |   | <b>13-3</b>  | <b>10</b> | 5 MOODY M free throw 2 - 2 made (1)               |
| 15:45     | 23 TCHAMWA TCHATCHOUA J 2pt FG in the paint, dunk, made (2)                   | <b>15-3</b>  | <b>12</b> |   |
| 15:45     | 12 BUTLER J assist (2)  |              |           |   |
| 15:31     | 24 MAYER M steal (1)  |              |           | 4 DAVIS D turnover lost ball (1)                  |
| 15:26     | 31 TEAGUE M 3pt FG from turnover, jump shot missed                            |              |           |   |
| 15:22     |   |              |           | 4 DAVIS D defensive rebound (2)                   |
| 15:18     | 10 FLAGLER A foul personal (1 - 4)  |              |           | 4 DAVIS D foul drawn (2)                          |
| 15:18     | Timeout media   |              |           |   |
| 15:18     |   |              |           | 4 DAVIS D substitution out                        |
| 15:18     |   |              |           | 3 SILLS D substitution in                         |
| 15:17     | 24 MAYER M foul shooting (1 - 5)  |              |           | 1 NOTAE J foul drawn (1)                          |
| 15:17     |   | <b>15-4</b>  | <b>11</b> | 1 NOTAE J free throw 1 - 2 made (1)               |
| 15:17     |   | <b>15-5</b>  | <b>10</b> | 1 NOTAE J free throw 2 - 2 made (2)               |
| 15:17     |   |              |           | 5 MOODY M substitution out                        |
| 15:17     |   |              |           | 10 WILLIAMS J substitution in                     |
| 14:58     | 12 BUTLER J 2pt FG outside the paint, floating jump shot made (5)             | <b>17-5</b>  | <b>12</b> |   |
| 14:58     | 10 FLAGLER A assist (1)   |              |           |   |
| 14:29     |   | <b>17-7</b>  | <b>10</b> | 10 WILLIAMS J 2pt FG in the paint, layup made (4) |
| 14:10     | 12 BUTLER J foul drawn (1)  |              |           | 10 WILLIAMS J foul shooting (1 - 2)               |
| 14:10     | 12 BUTLER J free throw 1 - 2 made (6)   | <b>18-7</b>  | <b>11</b> |   |
| 14:10     | 12 BUTLER J free throw 2 - 2 made (7)   | <b>19-7</b>  | <b>12</b> |   |
| 13:58     |   | <b>19-9</b>  | <b>10</b> | 10 WILLIAMS J 2pt FG in the paint, dunk, made (6) |
| 13:58     |   |              |           | 0 SMITH J assist (1)                              |
| 13:42     | 24 MAYER M 2pt FG in the paint, turnaround jump shot made (5)                 | <b>21-9</b>  | <b>12</b> |   |
| 13:24     |   | <b>21-11</b> | <b>10</b> | 0 SMITH J 2pt FG in the paint, dunk, made (2)     |
| 13:24     |   |              |           | 3 SILLS D assist (1)                              |
| 13:07     | 12 BUTLER J 2pt FG in the paint, layup missed                                 |              |           |   |
| 13:04     | offensive rebound (4)   |              |           |   |
| 13:04     | 12 BUTLER J substitution out  |              |           |   |
| 13:04     | 45 MITCHELL D substitution in   |              |           |   |
| 13:04     |   |              |           | 0 SMITH J substitution out                        |
| 13:04     |   |              |           | 11 TATE J substitution out                        |
| 13:04     |   |              |           | 4 DAVIS D substitution in                         |
| 13:04     |   |              |           | 5 MOODY M substitution in                         |
| 13:04     | 24 MAYER M substitution out   |              |           |   |
| 13:04     | 11 VITAL M substitution in  |              |           |   |
| 12:56     | 31 TEAGUE M 2pt FG second chance outside the paint, floating jump shot missed |              |           |   |
| 12:53     | 23 TCHAMWA TCHATCHOUA J offensive rebound (1)                                 |              |           |   |
| 12:52     | 10 FLAGLER A 3pt FG second chance, jump shot made (3)                         | <b>24-11</b> | <b>13</b> |   |
| 12:52     | 45 MITCHELL D assist (2)  |              |           |   |
| 12:28     | 10 FLAGLER A steal (2)  |              |           | 1 NOTAE J turnover bad pass (1)                   |
| 12:17     | 11 VITAL M 2pt FG from turnover in the paint, layup made (2)                  | <b>26-11</b> | <b>15</b> |   |
| 12:17     | 45 MITCHELL D assist (3)  |              |           |   |



Official Basketball Play by Play - First Half

**Arkansas at Baylor**

03/29/21 Lucas Oil Stadium, Indianapolis, IN  
 NCAA Division I Men's Basketball Championship - Elite 8

**Game Time:** 10:03 PM  
**Game Duration:** 2:05  
**Attendance:** 7,519

**Officials:** Terry Oglesby, Jeff Clark, Paul Szelc

| Game Time | BAY  | Score        | Diff      | ARK  |
|-----------|--|--------------|-----------|--|
| 12:15     |  |              |           | Timeout 30 Sec   |
| 12:15     | Timeout media  |              |           |  |
| 12:15     |  |              |           | 1 NOTAE J substitution out   |
| 12:15     |  |              |           | 0 SMITH J substitution in  |
| 11:55     |  |              |           | 4 DAVIS D 2pt FG in the paint, layup missed                                  |
| 11:53     | 31 TEAGUE M defensive rebound (1)                                |              |           |  |
| 11:36     |  |              |           | 3 SILLS D substitution out   |
| 11:36     |  |              |           | 11 TATE J substitution in  |
| 11:27     | 31 TEAGUE M 2pt FG outside the paint, pull up jump shot made (7) | <b>28-11</b> | <b>17</b> |  |
| 11:07     | 11 VITAL M steal (1)   |              |           | 5 MOODY M turnover bad pass (1)  |
| 11:01     | 23 TCHAMWA TCHATCHOUA J foul drawn (1)                           |              |           | 0 SMITH J foul shooting (1 - 3)  |
| 11:01     | 23 TCHAMWA TCHATCHOUA J free throw fast break 1 - 2 missed       |              |           |  |
| 11:01     | offensive dead ball rebound (1)                                  |              |           |  |
| 11:01     |  |              |           | 4 DAVIS D substitution out   |
| 11:01     |  |              |           | 3 SILLS D substitution in  |
| 11:01     | 23 TCHAMWA TCHATCHOUA J free throw fast break 2 - 2 made (3)     | <b>29-11</b> | <b>18</b> |  |
| 10:44     |  |              |           | 3 SILLS D 3pt FG , jump shot missed  |
| 10:41     |  |              |           | 11 TATE J offensive rebound (1)  |
| 10:37     |  | <b>29-13</b> | <b>16</b> | 0 SMITH J 2pt FG second chance in the paint, layup made (4)                  |
| 10:37     |  |              |           | 3 SILLS D assist (2)   |
| 10:14     | 45 MITCHELL D 2pt FG outside the paint, jump shot missed         |              |           |  |
| 10:11     |  |              |           | 0 SMITH J defensive rebound (1)  |
| 10:04     |  |              |           | 11 TATE J 2pt FG outside the paint, jump shot missed                         |
| 10:00     |  |              |           | 10 WILLIAMS J offensive rebound (2)  |
| 09:55     |  | <b>29-16</b> | <b>13</b> | 11 TATE J 3pt FG second chance, jump shot made (3)                           |
| 09:55     |  |              |           | 0 SMITH J assist (2)   |
| 09:34     | 23 TCHAMWA TCHATCHOUA J 2pt FG in the paint, dunk, made (5)      | <b>31-16</b> | <b>15</b> |  |
| 09:34     | 10 FLAGLER A assist (2)  |              |           |  |
| 09:13     |  |              |           | 11 TATE J turnover bad pass (2)  |
| 09:13     | 10 FLAGLER A substitution out                                    |              |           |  |
| 09:13     | 23 TCHAMWA TCHATCHOUA J substitution out                         |              |           |  |
| 09:13     | 0 THAMBA F substitution in                                       |              |           |  |
| 09:13     | 12 BUTLER J substitution in                                      |              |           |  |
| 09:13     |  |              |           | 11 TATE J substitution out   |
| 09:13     |  |              |           | 1 NOTAE J substitution in  |
| 09:03     | 0 THAMBA F 2pt FG from turnover in the paint, dunk, made (2)     | <b>33-16</b> | <b>17</b> |  |
| 09:03     | 11 VITAL M assist (1)  |              |           |  |
| 08:47     |  | <b>33-18</b> | <b>15</b> | 1 NOTAE J 2pt FG in the paint, driving layup made (4)                        |
| 08:21     | 45 MITCHELL D foul offensive (3 - 6)                             |              |           | 10 WILLIAMS J foul drawn (2)   |
| 08:21     | 45 MITCHELL D turnover offensive (1)                             |              |           |  |
| 08:21     | 45 MITCHELL D substitution out                                   |              |           |  |
| 08:21     | 10 FLAGLER A substitution in                                     |              |           |  |
| 08:21     |  |              |           | 3 SILLS D substitution out   |
| 08:21     |  |              |           | 11 TATE J substitution in  |
| 08:07     |  | <b>33-20</b> | <b>13</b> | 11 TATE J 2pt FG from turnover outside the paint, pull up jump shot made (5) |



**Arkansas at Baylor**

03/29/21 Lucas Oil Stadium, Indianapolis, IN  
NCAA Division I Men's Basketball Championship - Elite 8

**Game Time:** 10:03 PM  
**Game Duration:** 2:05  
**Attendance:** 7,519

**Officials:** Terry Oglesby, Jeff Clark, Paul Szelc

| Game Time | BAY  | Score        | Diff      | ARK  |
|-----------|--|--------------|-----------|--|
| 08:07     |  |              |           | 1 NOTAE J assist (1)   |
| 07:52     | 31 TEAGUE M 3pt FG , jump shot made (10)                           | <b>36-20</b> | <b>16</b> |  |
| 07:52     | 10 FLAGLER A assist (3)  |              |           |  |
| 07:35     |  | <b>36-23</b> | <b>13</b> | 1 NOTAE J 3pt FG , jump shot made (7)                          |
| 07:35     |  |              |           | 0 SMITH J assist (3)   |
| 07:16     | 12 BUTLER J 2pt FG outside the paint, pull up jump shot made (9)   | <b>38-23</b> | <b>15</b> |  |
| 07:02     |  | <b>38-25</b> | <b>13</b> | 1 NOTAE J 2pt FG in the paint, driving layup made (9)          |
| 06:44     | 10 FLAGLER A 2pt FG outside the paint, turnaround jump shot missed |              |           |  |
| 06:42     | 0 THAMBA F offensive rebound (1)                                   |              |           |  |
| 06:42     | 0 THAMBA F foul drawn (1)  |              |           | 1 NOTAE J foul personal (1 - 4)                                |
| 06:42     | Timeout media  |              |           |  |
| 06:42     | 11 VITAL M substitution out  |              |           |  |
| 06:42     | 24 MAYER M substitution in   |              |           |  |
| 06:39     | 0 THAMBA F 2pt FG second chance in the paint, layup blocked        |              |           |  |
| 06:39     |  |              |           | 10 WILLIAMS J block (1)  |
| 06:36     |  |              |           | 5 MOODY M defensive rebound (2)                                |
| 06:35     |  |              |           | 5 MOODY M turnover bad pass (2)                                |
| 06:15     | 24 MAYER M 2pt FG from turnover in the paint, dunk, made (7)       | <b>40-25</b> | <b>15</b> |  |
| 06:15     | 0 THAMBA F assist (1)  |              |           |  |
| 06:00     |  | <b>40-27</b> | <b>13</b> | 11 TATE J 2pt FG outside the paint, pull up jump shot made (7) |
| 06:00     | 24 MAYER M foul shooting (2 - 7)                                   |              |           | 11 TATE J foul drawn (1)                                       |
| 06:00     |  |              |           | 5 MOODY M substitution out                                     |
| 06:00     |  |              |           | 3 SILLS D substitution in                                      |
| 06:00     |  |              |           | 11 TATE J free throw 1 - 1 missed                              |
| 05:58     | 0 THAMBA F defensive rebound (2)                                   |              |           |  |
| 05:54     | 31 TEAGUE M 3pt FG , jump shot missed                              |              |           |  |
| 05:50     |  |              |           | 10 WILLIAMS J defensive rebound (3)                            |
| 05:42     |  |              |           | 1 NOTAE J 2pt FG in the paint, driving layup missed            |
| 05:40     | 0 THAMBA F defensive rebound (3)                                   |              |           |  |
| 05:22     | 12 BUTLER J 2pt FG in the paint, layup blocked                     |              |           |  |
| 05:22     |  |              |           | 1 NOTAE J block (1)  |
| 05:18     | 12 BUTLER J offensive rebound (2)                                  |              |           |  |
| 05:17     | 0 THAMBA F 2pt FG second chance in the paint, layup made (4)       | <b>42-27</b> | <b>15</b> |  |
| 05:17     | 12 BUTLER J assist (3)   |              |           |  |
| 05:04     | 31 TEAGUE M foul personal (1 - 8)                                  |              |           | 11 TATE J foul drawn (2)                                       |
| 05:04     | 0 THAMBA F substitution out  |              |           |  |
| 05:04     | 23 TCHAMWA TCHATCHOUA J substitution in                            |              |           |  |
| 05:04     |  |              |           | 10 WILLIAMS J substitution out                                 |
| 05:04     |  |              |           | 4 DAVIS D substitution in                                      |
| 05:04     |  | <b>42-28</b> | <b>14</b> | 11 TATE J 1&1 free throw 1 made (8)                            |
| 05:04     |  | <b>42-29</b> | <b>13</b> | 11 TATE J 1&1 free throw 2 made (9)                            |
| 04:53     | 24 MAYER M 3pt FG , jump shot missed                               |              |           |  |
| 04:50     |  |              |           | 3 SILLS D defensive rebound (1)                                |
| 04:47     | 12 BUTLER J foul personal (1 - 9)                                  |              |           | 1 NOTAE J foul drawn (2)                                       |
| 04:47     |  |              |           | 1 NOTAE J 1&1 free throw 1 missed                              |
| 04:44     | 24 MAYER M defensive rebound (1)                                   |              |           |  |
| 04:17     | 12 BUTLER J turnover lost ball (1)                                 |              |           | 11 TATE J steal (1)  |
| 04:13     | 24 MAYER M steal (2)   |              |           | 11 TATE J turnover lost ball (3)                               |



Official Basketball Play by Play - First Half

**Arkansas at Baylor**

03/29/21 Lucas Oil Stadium, Indianapolis, IN  
 NCAA Division I Men's Basketball Championship - Elite 8

**Game Time:** 10:03 PM  
**Game Duration:** 2:05  
**Attendance:** 7,519

**Officials:** Terry Oglesby, Jeff Clark, Paul Szelc

| Game Time            | BAY   | Score | Diff | ARK  |
|----------------------|---|-------|------|--|
| 04:10                | 31 TEAGUE M 2pt FG fast break from turnover in the paint, layup made (12) | 44-29 | 15   |  |
| 04:10                | 24 MAYER M assist (1)   |       |      |  |
| 03:49                |   | 44-31 | 13   | 0 SMITH J 2pt FG in the paint, layup made (6)                                  |
| 03:49                |   |       |      | 3 SILLS D assist (3)   |
| 03:21                | 10 FLAGLER A 2pt FG outside the paint, jump shot missed                   |       |      |  |
| 03:18                |   |       |      | 3 SILLS D defensive rebound (2)  |
| 03:14                |   | 44-34 | 10   | 1 NOTAE J 3pt FG fast break, pull up jump shot made (12)                       |
| 03:14                |   |       |      | 3 SILLS D assist (4)   |
| 02:58                | Timeout 30 Sec  |       |      |  |
| 02:58                | Timeout media   |       |      |  |
| 02:58                | 23 TCHAMWA TCHATCHOUA J substitution out                                  |       |      |  |
| 02:58                | 11 VITAL M substitution in  |       |      |  |
| 02:54                | 11 VITAL M foul drawn (1)   |       |      | 3 SILLS D foul personal (1 - 5)  |
| 02:43                | 12 BUTLER J turnover lost ball (2)  |       |      | 4 DAVIS D steal (1)  |
| 02:39                |   | 44-36 | 8    | 4 DAVIS D 2pt FG fast break from turnover in the paint, driving layup made (2) |
| 02:18                | 24 MAYER M turnover lost ball (1)   |       |      | 0 SMITH J steal (1)  |
| 02:02                |   |       |      | Timeout 30 Sec   |
| 01:49                | 11 VITAL M foul drawn (2)   |       |      | 1 NOTAE J foul offensive (2 - 6)   |
| 01:49                |   |       |      | 1 NOTAE J turnover offensive (2)   |
| 01:49                |   |       |      | 1 NOTAE J substitution out   |
| 01:49                |   |       |      | 5 MOODY M substitution in  |
| 01:24                | 24 MAYER M 2pt FG from turnover in the paint, driving layup missed        |       |      |  |
| 01:23                |   |       |      | 3 SILLS D defensive rebound (3)  |
| 01:23                | 11 VITAL M foul personal (1 - 10)   |       |      | 3 SILLS D foul drawn (1)   |
| 01:23                |   |       |      | 3 SILLS D free throw 1 - 2 missed  |
| 01:23                |   |       |      | offensive dead ball rebound (2)  |
| 01:23                |   |       |      | 3 SILLS D free throw 2 - 2 missed  |
| 01:22                |   |       |      | 5 MOODY M offensive rebound (3)  |
| 01:21                |   |       |      | 5 MOODY M 2pt FG second chance in the paint, jump shot blocked                 |
| 01:21                | 31 TEAGUE M block (1)   |       |      |  |
| 01:17                | 24 MAYER M defensive rebound (2)  |       |      |  |
| 01:08                | 12 BUTLER J turnover bad pass (3)   |       |      | 3 SILLS D steal (1)  |
| 01:05                |   | 44-38 | 6    | 3 SILLS D 2pt FG fast break from turnover in the paint, dunk, made (2)         |
| 00:54                | 12 BUTLER J foul drawn (2)  |       |      | 11 TATE J foul shooting (1 - 7)  |
| 00:54                | 12 BUTLER J free throw 1 - 2 made (10)                                    | 45-38 | 7    |  |
| 00:54                | 12 BUTLER J free throw 2 - 2 made (11)                                    | 46-38 | 8    |  |
| 00:35                | 10 FLAGLER A steal (3)  |       |      | 11 TATE J turnover lost ball (4)   |
| 00:04                | 31 TEAGUE M 2pt FG from turnover outside the paint, jump shot missed      |       |      |  |
| 00:01                | 24 MAYER M offensive rebound (3)  |       |      |  |
| 00:00                | 24 MAYER M turnover bad pass (2)  |       |      | 0 SMITH J steal (2)  |
| <b>END OF PERIOD</b> |   |       |      |  |
| <b>BAY 46-38 ARK</b> |   |       |      |  |



**Arkansas at Baylor**

Officials: Terry Oglesby, Jeff Clark, Paul Szelc

**Arkansas - 38**

| NO.           | Name            | F | Min   | FG    | 3P  | FT   | Rebounds |    |     | Fouls |    | TP | AS | TO | ST | Blocks |    | +/- |
|---------------|-----------------|---|-------|-------|-----|------|----------|----|-----|-------|----|----|----|----|----|--------|----|-----|
|               |                 |   |       | M-A   | M-A | M-A  | OR       | DR | TOT | PF    | FD |    |    |    |    | BS     | BA |     |
| 0             | Justin Smith    | F | 19:11 | 3-3   | 0-0 | 0-0  | 0        | 1  | 1   | 1     | 0  | 6  | 3  | 0  | 2  | 0      | 0  | -3  |
| 10            | Jaylin Williams | F | 13:55 | 3-4   | 0-0 | 0-0  | 2        | 1  | 3   | 1     | 2  | 6  | 0  | 1  | 0  | 1      | 0  | -16 |
| 4             | Davonte Davis   | G | 11:49 | 1-4   | 0-0 | 0-0  | 1        | 1  | 2   | 0     | 2  | 2  | 0  | 1  | 1  | 0      | 0  | -12 |
| 5             | Moses Moody     | G | 13:36 | 0-2   | 0-0 | 1-2  | 1        | 2  | 3   | 1     | 1  | 1  | 0  | 2  | 0  | 0      | 1  | -13 |
| 11            | Jalen Tate      | G | 17:40 | 3-4   | 1-1 | 2-3  | 1        | 0  | 1   | 1     | 2  | 9  | 1  | 4  | 1  | 0      | 0  | -3  |
| 1             | JD Notae        |   | 11:27 | 4-5   | 2-2 | 2-3  | 0        | 0  | 0   | 2     | 2  | 12 | 1  | 2  | 0  | 1      | 0  | 3   |
| 3             | Desi Sills      |   | 12:22 | 1-2   | 0-1 | 0-2  | 0        | 3  | 3   | 1     | 1  | 2  | 4  | 0  | 1  | 0      | 0  | 4   |
| Team          |                 |   |       |       |     |      | 0        | 0  | 0   |       |    | 0  |    |    |    |        |    |     |
| <b>Totals</b> |                 |   |       | 15-24 | 3-4 | 5-10 | 5        | 8  | 13  | 7     | 10 | 38 | 9  | 10 | 5  | 2      | 1  | -8  |

| Shooting By Period |       |       |
|--------------------|-------|-------|
| 1st FG%            | 15-24 | 62.5% |
| 3PT%               | 3-4   | 75.0% |
| FT%                | 5-10  | 50%   |
| GM FG%             | 15-24 | 62.5% |
| 3PT%               | 3-4   | 75.0% |
| FT%                | 5-10  | 50.0% |

Dead Ball Rebounds: 2, 0

Technical Fouls::NONE

**Baylor - 46**

| NO.           | Name                        | F | Min   | FG    | 3P  | FT  | Rebounds |    |     | Fouls |    | TP | AS | TO | ST | Blocks |    | +/- |
|---------------|-----------------------------|---|-------|-------|-----|-----|----------|----|-----|-------|----|----|----|----|----|--------|----|-----|
|               |                             |   |       | M-A   | M-A | M-A | OR       | DR | TOT | PF    | FD |    |    |    |    | BS     | BA |     |
| 0             | Flo Thamba                  | F | 06:57 | 2-3   | 0-0 | 0-0 | 1        | 2  | 3   | 1     | 1  | 4  | 1  | 0  | 0  | 0      | 1  | 5   |
| 11            | Mark Vital                  | F | 12:08 | 1-2   | 0-0 | 0-0 | 1        | 1  | 2   | 1     | 2  | 2  | 1  | 0  | 1  | 0      | 0  | 6   |
| 12            | Jared Butler                | G | 16:09 | 3-5   | 1-1 | 4-4 | 1        | 1  | 2   | 1     | 2  | 11 | 3  | 3  | 0  | 0      | 1  | 3   |
| 31            | MaCio Teague                | G | 18:50 | 5-10  | 1-3 | 1-1 | 0        | 1  | 1   | 1     | 1  | 12 | 0  | 0  | 0  | 1      | 0  | 2   |
| 45            | Davion Mitchell             | G | 08:41 | 1-2   | 0-0 | 0-0 | 0        | 0  | 0   | 3     | 0  | 2  | 3  | 1  | 0  | 0      | 0  | 16  |
| 10            | Adam Flagler                |   | 16:20 | 1-3   | 1-1 | 0-0 | 0        | 0  | 0   | 1     | 0  | 3  | 3  | 0  | 3  | 0      | 0  | 3   |
| 23            | Jonathan Tchamwa Tchatchoua |   | 10:05 | 2-2   | 0-0 | 1-2 | 1        | 0  | 1   | 0     | 1  | 5  | 0  | 0  | 0  | 0      | 0  | 5   |
| 24            | Matthew Mayer               |   | 10:50 | 3-5   | 1-2 | 0-0 | 1        | 2  | 3   | 2     | 0  | 7  | 1  | 2  | 2  | 0      | 0  | 0   |
| Team          |                             |   |       |       |     |     | 1        | 0  | 1   |       |    | 0  |    |    |    |        |    |     |
| <b>Totals</b> |                             |   |       | 18-32 | 4-7 | 6-7 | 6        | 7  | 13  | 10    | 7  | 46 | 12 | 6  | 6  | 1      | 2  | 8   |

| Shooting By Period |       |       |
|--------------------|-------|-------|
| 1st FG%            | 18-32 | 56.3% |
| 3PT%               | 4-7   | 57.1% |
| FT%                | 6-7   | 85.7% |
| GM FG%             | 18-32 | 56.3% |
| 3PT%               | 4-7   | 57.1% |
| FT%                | 6-7   | 85.7% |

Dead Ball Rebounds: 1, 0

Technical Fouls::NONE

|                  | ARK                       | BAY                        |
|------------------|---------------------------|----------------------------|
| Biggest lead     | 0 (1 <sup>st</sup> 20:00) | 18 (1 <sup>st</sup> 11:01) |
| Best Scoring Run | 9(1 <sup>st</sup> 1:05)   | 8(1 <sup>st</sup> 11:01)   |
| Lead Changes     | 0                         |                            |
| Times Tied       | 0                         |                            |
| Time with Lead   | 00:00                     | 19:44                      |

|               | ARK | BAY |
|---------------|-----|-----|
| Points from   |     |     |
| Turnovers     | 6   | 14  |
| Paint         | 20  | 20  |
| Second Chance | 5   | 5   |
| Fast Breaks   | 7   | 6   |
| Bench         | 14  | 15  |

|     | Period by Period Scoring |     |     |
|-----|--------------------------|-----|-----|
|     | 1st                      | 2nd | TOT |
| ARK | 38                       | 34  | 72  |
| BAY | 46                       | 35  | 81  |



**Period 2**

**Quarter Starters:**

|            |            |            |             |               |               |
|------------|------------|------------|-------------|---------------|---------------|
| <b>BAY</b> | 0 Thamba F | 11 Vital M | 12 Butler J | 31 Teague M   | 45 Mitchell D |
| <b>ARK</b> | 0 Smith J  | 4 Davis D  | 5 Moody M   | 10 Williams J | 11 Tate J     |

| Game Time | BAY   | Score        | Diff      | ARK   |
|-----------|---|--------------|-----------|---|
| 20:00     | 10 FLAGLER A substitution out   |              |           |   |
| 20:00     | 24 MAYER M substitution out   |              |           |   |
| 20:00     | 0 THAMBA F substitution in  |              |           |   |
| 20:00     | 45 MITCHELL D substitution in   |              |           |   |
| 20:00     |   |              |           | 3 SILLS D substitution out                                      |
| 20:00     |   |              |           | 10 WILLIAMS J substitution in                                   |
| 19:51     |   |              |           | 0 SMITH J 2pt FG in the paint, floating jump shot missed        |
| 19:48     |   |              |           | 10 WILLIAMS J offensive rebound (4)                             |
| 19:48     |   | <b>46-40</b> | <b>6</b>  | 10 WILLIAMS J 2pt FG second chance in the paint, layup made (8) |
| 19:30     | 12 BUTLER J 3pt FG , jump shot made (14)                                    | <b>49-40</b> | <b>9</b>  |   |
| 19:30     | 45 MITCHELL D assist (4)  |              |           |   |
| 19:14     | 45 MITCHELL D foul drawn (1)  |              |           | 11 TATE J foul offensive (2 - 1)                                |
| 19:14     |   |              |           | 11 TATE J turnover offensive (5)                                |
| 18:52     | 31 TEAGUE M 2pt FG from turnover in the paint, floating jump shot made (14) | <b>51-40</b> | <b>11</b> |   |
| 18:42     |   |              |           | 0 SMITH J 2pt FG in the paint, layup blocked                    |
| 18:42     | 11 VITAL M block (1)  |              |           |   |
| 18:38     | 12 BUTLER J defensive rebound (3)   |              |           |   |
| 18:22     | 0 THAMBA F foul drawn (2)   |              |           | 4 DAVIS D foul personal (1 - 2)                                 |
| 18:22     |   |              |           | 10 WILLIAMS J substitution out                                  |
| 18:22     |   |              |           | 3 SILLS D substitution in                                       |
| 18:17     | 12 BUTLER J foul drawn (3)  |              |           | 4 DAVIS D foul personal (2 - 3)                                 |
| 18:00     | 45 MITCHELL D 2pt FG in the paint, driving layup missed                     |              |           |   |
| 17:57     | 11 VITAL M offensive rebound (3)  |              |           |   |
| 17:57     | 11 VITAL M 2pt FG second chance in the paint, layup blocked                 |              |           |   |
| 17:57     |   |              |           | 5 MOODY M block (1)   |
| 17:57     | 0 THAMBA F offensive rebound (4)  |              |           |   |
| 17:57     | 0 THAMBA F foul drawn (3)   |              |           | 0 SMITH J foul personal (2 - 4)                                 |
| 17:56     | 31 TEAGUE M 3pt FG second chance, jump shot missed                          |              |           |   |
| 17:52     |   |              |           | 11 TATE J defensive rebound (2)                                 |
| 17:46     |   |              |           | 5 MOODY M 3pt FG , jump shot missed                             |
| 17:44     |   |              |           | offensive dead ball rebound (3)                                 |
| 17:44     | 12 BUTLER J foul loose ball (2 - 1)   |              |           | 11 TATE J foul drawn (3)  |
| 17:42     |   | <b>51-42</b> | <b>9</b>  | 4 DAVIS D 2pt FG second chance in the paint, layup made (4)     |
| 17:42     |   |              |           | 11 TATE J assist (2)  |
| 17:15     | 45 MITCHELL D 2pt FG in the paint, driving layup made (4)                   | <b>53-42</b> | <b>11</b> |   |
| 17:15     | 12 BUTLER J assist (4)  |              |           |   |
| 16:58     | 11 VITAL M foul shooting (2 - 2)  |              |           | 5 MOODY M foul drawn (2)  |
| 16:58     |   | <b>53-43</b> | <b>10</b> | 5 MOODY M free throw 1 - 2 made (2)                             |
| 16:58     |   |              |           | 11 TATE J substitution out                                      |
| 16:58     |   |              |           | 1 NOTAE J substitution in                                       |
| 16:58     |   | <b>53-44</b> | <b>9</b>  | 5 MOODY M free throw 2 - 2 made (3)                             |
| 16:35     | 45 MITCHELL D 2pt FG in the paint, driving layup missed                     |              |           |   |





Official Basketball Play by Play - Second Half  
**Arkansas at Baylor**  
 03/29/21 Lucas Oil Stadium, Indianapolis, IN  
 NCAA Division I Men's Basketball Championship - Elite 8

**Game Time:** 10:03 PM  
**Game Duration:** 2:05  
**Attendance:** 7,519

**Officials:** Terry Oglesby, Jeff Clark, Paul Szec

| Game Time | BAY   | Score        | Diff      | ARK  |
|-----------|---|--------------|-----------|--|
| 16:35     |   |              |           | defensive rebound (16)                                     |
| 16:22     |   | <b>53-46</b> | <b>7</b>  | 1 NOTAE J 2pt FG in the paint, driving layup made (14)     |
| 15:52     | 12 BUTLER J 2pt FG outside the paint, pull up jump shot missed                          |              |           |  |
| 15:48     |   |              |           | 4 DAVIS D defensive rebound (3)                            |
| 15:46     | 11 VITAL M foul shooting (3 - 3)  |              |           | 4 DAVIS D foul drawn (3)                                   |
| 15:46     | Timeout media   |              |           |  |
| 15:46     | 0 THAMBA F substitution out   |              |           |  |
| 15:46     | 11 VITAL M substitution out   |              |           |  |
| 15:46     | 31 TEAGUE M substitution out  |              |           |  |
| 15:46     | 10 FLAGLER A substitution in  |              |           |  |
| 15:46     | 23 TCHAMWA TCHATCHOUA J substitution in   |              |           |  |
| 15:46     | 24 MAYER M substitution in  |              |           |  |
| 15:46     |   | <b>53-47</b> | <b>6</b>  | 4 DAVIS D free throw fast break 1 - 2 made (5)             |
| 15:46     |   | <b>53-48</b> | <b>5</b>  | 4 DAVIS D free throw fast break 2 - 2 made (6)             |
| 15:22     | 45 MITCHELL D 2pt FG in the paint, driving layup made (6)                               | <b>55-48</b> | <b>7</b>  |  |
| 15:22     | 45 MITCHELL D foul drawn (2)  |              |           | 1 NOTAE J foul shooting (3 - 5)                            |
| 15:21     | 45 MITCHELL D free throw 1 - 1 missed   |              |           |  |
| 15:20     |   |              |           | 0 SMITH J defensive rebound (2)                            |
| 15:06     |   |              |           | 5 MOODY M 3pt FG , step back jump shot missed              |
| 15:03     | defensive rebound (17)  |              |           |  |
| 14:43     | 24 MAYER M 3pt FG , jump shot missed  |              |           |  |
| 14:40     |   |              |           | 0 SMITH J defensive rebound (3)                            |
| 14:25     | jump ball situation   |              |           |  |
| 14:25     | 24 MAYER M steal (3)  |              |           | 5 MOODY M turnover lost ball (3)                           |
| 14:25     |   |              |           | 5 MOODY M substitution out                                 |
| 14:25     |   |              |           | 11 TATE J substitution in                                  |
| 14:01     | 12 BUTLER J 3pt FG from turnover, jump shot missed                                      |              |           |  |
| 13:58     | 23 TCHAMWA TCHATCHOUA J offensive rebound (2)   |              |           |  |
| 13:58     | 23 TCHAMWA TCHATCHOUA J 2pt FG from turnover second chance in the paint, layup made (7) | <b>57-48</b> | <b>9</b>  |  |
| 13:58     | 23 TCHAMWA TCHATCHOUA J foul drawn (2)  |              |           | 1 NOTAE J foul shooting (4 - 6)                            |
| 13:58     | 23 TCHAMWA TCHATCHOUA J free throw 1 - 1 made (8)                                       | <b>58-48</b> | <b>10</b> |  |
| 13:46     | 24 MAYER M foul personal (3 - 4)  |              |           | 4 DAVIS D foul drawn (4)                                   |
| 13:38     | 10 FLAGLER A foul drawn (1)   |              |           | 1 NOTAE J foul offensive (5 - 7)                           |
| 13:38     |   |              |           | 1 NOTAE J turnover offensive (3)                           |
| 13:38     |   |              |           | 1 NOTAE J substitution out                                 |
| 13:38     |   |              |           | 5 MOODY M substitution in                                  |
| 13:38     | 24 MAYER M substitution out   |              |           |  |
| 13:38     | 31 TEAGUE M substitution in   |              |           |  |
| 13:20     | 12 BUTLER J 2pt FG from turnover outside the paint, floating jump shot missed           |              |           |  |
| 13:17     |   |              |           | 4 DAVIS D defensive rebound (4)                            |
| 13:15     | 45 MITCHELL D steal (1)   |              |           | 4 DAVIS D turnover bad pass (2)                            |
| 13:11     | 45 MITCHELL D 2pt FG fast break from turnover in the paint, driving layup made (8)      | <b>60-48</b> | <b>12</b> |  |
| 12:52     |   |              |           | 11 TATE J 2pt FG in the paint, driving layup missed        |
| 12:49     |   |              |           | 11 TATE J offensive rebound (3)                            |
| 12:48     |   |              |           | 5 MOODY M 2pt FG second chance in the paint, layup blocked |
| 12:48     | 10 FLAGLER A block (1)  |              |           |  |
| 12:48     |   |              |           | offensive rebound (22)                                     |



Official Basketball Play by Play - Second Half  
**Arkansas at Baylor**  
 03/29/21 Lucas Oil Stadium, Indianapolis, IN  
 NCAA Division I Men's Basketball Championship - Elite 8

**Game Time:** 10:03 PM  
**Game Duration:** 2:05  
**Attendance:** 7,519

**Officials:** Terry Oglesby, Jeff Clark, Paul Szec

| Game Time | BAY  | Score        | Diff      | ARK  |
|-----------|--|--------------|-----------|--|
| 12:48     | 12 BUTLER J substitution out   |              |           |  |
| 12:48     | 11 VITAL M substitution in   |              |           |  |
| 12:47     | 10 FLAGLER A steal (4)   |              |           | 11 TATE J turnover bad pass (6)  |
| 12:26     | 10 FLAGLER A 2pt FG from turnover in the paint, driving layup missed |              |           |  |
| 12:22     |  |              |           | 5 MOODY M defensive rebound (4)  |
| 12:07     | 11 VITAL M foul personal (4 - 5)                                     |              |           | 11 TATE J foul drawn (4)   |
| 12:07     | 11 VITAL M substitution out  |              |           |  |
| 12:07     | 12 BUTLER J substitution in  |              |           |  |
| 12:03     |  | <b>60-50</b> | <b>10</b> | 4 DAVIS D 2pt FG in the paint, layup made (8)                          |
| 11:39     | 45 MITCHELL D 2pt FG in the paint, driving layup made (10)           | <b>62-50</b> | <b>12</b> |  |
| 11:22     |  | <b>62-52</b> | <b>10</b> | 0 SMITH J 2pt FG in the paint, layup made (8)                          |
| 11:22     |  |              |           | 4 DAVIS D assist (1)   |
| 11:10     | 12 BUTLER J 2pt FG in the paint, driving layup blocked               |              |           |  |
| 11:10     |  |              |           | 0 SMITH J block (1)  |
| 11:06     |  |              |           | 4 DAVIS D defensive rebound (5)  |
| 11:02     |  |              |           | 11 TATE J 2pt FG in the paint, layup blocked                           |
| 11:02     | 31 TEAGUE M block (2)  |              |           |  |
| 10:58     |  |              |           | 5 MOODY M offensive rebound (5)  |
| 10:58     |  | <b>62-54</b> | <b>8</b>  | 5 MOODY M 2pt FG second chance in the paint, layup made (5)            |
| 10:54     | Timeout 30 Sec   |              |           |  |
| 10:54     | Timeout media  |              |           |  |
| 10:54     | 10 FLAGLER A substitution out  |              |           |  |
| 10:54     | 23 TCHAMWA TCHATCHOUA J substitution out                             |              |           |  |
| 10:54     | 0 THAMBA F substitution in   |              |           |  |
| 10:54     | 24 MAYER M substitution in   |              |           |  |
| 10:39     | Timeout media  |              |           |  |
| 10:25     | 45 MITCHELL D 2pt FG outside the paint, pull up jump shot missed     |              |           |  |
| 10:22     |  |              |           | defensive rebound (26)   |
| 10:09     |  | <b>62-56</b> | <b>6</b>  | 4 DAVIS D 2pt FG in the paint, driving layup made (10)                 |
| 09:42     | 31 TEAGUE M 3pt FG , jump shot missed                                |              |           |  |
| 09:36     |  |              |           | 3 SILLS D defensive rebound (4)  |
| 09:34     |  | <b>62-58</b> | <b>4</b>  | 5 MOODY M 2pt FG fast break in the paint, layup made (7)               |
| 09:34     |  |              |           | 4 DAVIS D assist (2)   |
| 09:07     | 31 TEAGUE M foul drawn (2)   |              |           | 0 SMITH J foul shooting (3 - 8)  |
| 09:07     | 31 TEAGUE M free throw 1 - 2 made (15)                               | <b>63-58</b> | <b>5</b>  |  |
| 09:07     | 0 THAMBA F substitution out  |              |           |  |
| 09:07     | 12 BUTLER J substitution out   |              |           |  |
| 09:07     | 10 FLAGLER A substitution in   |              |           |  |
| 09:07     | 23 TCHAMWA TCHATCHOUA J substitution in                              |              |           |  |
| 09:07     | 31 TEAGUE M free throw 2 - 2 made (16)                               | <b>64-58</b> | <b>6</b>  |  |
| 08:45     |  |              |           | 5 MOODY M 2pt FG outside the paint, floating jump shot missed          |
| 08:43     |  |              |           | 4 DAVIS D offensive rebound (6)  |
| 08:43     | 10 FLAGLER A foul personal (2 - 6)                                   |              |           | 11 TATE J foul drawn (5)   |
| 08:36     |  |              |           | 0 SMITH J 2pt FG second chance in the paint, floating jump shot missed |
| 08:33     | 31 TEAGUE M defensive rebound (2)                                    |              |           |  |
| 08:29     | 10 FLAGLER A foul offensive (3 - 7)                                  |              |           | 11 TATE J foul drawn (6)   |
| 08:29     | 10 FLAGLER A turnover offensive (1)                                  |              |           |  |



Official Basketball Play by Play - Second Half  
**Arkansas at Baylor**  
 03/29/21 Lucas Oil Stadium, Indianapolis, IN  
 NCAA Division I Men's Basketball Championship - Elite 8

**Game Time:** 10:03 PM  
**Game Duration:** 2:05  
**Attendance:** 7,519

**Officials:** Terry Oglesby, Jeff Clark, Paul Szelc

| Game Time | BAY   | Score        | Diff      | ARK   |
|-----------|---|--------------|-----------|---|
| 08:03     |   |              |           | 4 DAVIS D 3pt FG from turnover, jump shot missed                |
| 07:59     | 23 TCHAMWA TCHATCHOUA J defensive rebound (3)               |              |           |   |
| 07:40     | 31 TEAGUE M 2pt FG in the paint, pull up jump shot missed   |              |           |   |
| 07:37     |   |              |           | 11 TATE J defensive rebound (4)                                 |
| 07:34     | 31 TEAGUE M foul personal (2 - 8)                           |              |           | 5 MOODY M foul drawn (3)  |
| 07:34     | Timeout media   |              |           |   |
| 07:34     |   | <b>64-59</b> | <b>5</b>  | 5 MOODY M 1&1 free throw 1 made (8)                             |
| 07:34     |   | <b>64-60</b> | <b>4</b>  | 5 MOODY M 1&1 free throw 2 made (9)                             |
| 07:19     | 45 MITCHELL D foul drawn (3)                                |              |           | 0 SMITH J foul shooting (4 - 9)                                 |
| 07:19     | 45 MITCHELL D free throw 1 - 2 missed                       |              |           |   |
| 07:19     | offensive dead ball rebound (2)                             |              |           |   |
| 07:18     | 45 MITCHELL D free throw 2 - 2 missed                       |              |           |   |
| 07:17     |   |              |           | 0 SMITH J defensive rebound (4)                                 |
| 07:00     |   |              |           | 4 DAVIS D 2pt FG outside the paint, step back jump shot missed  |
| 06:57     |   |              |           | 0 SMITH J offensive rebound (5)                                 |
| 06:55     |   |              |           | 3 SILLS D 3pt FG second chance, jump shot missed                |
| 06:52     | defensive rebound (21)                                      |              |           |   |
| 06:52     |   |              |           | 0 SMITH J substitution out                                      |
| 06:52     |   |              |           | 24 HENDERSON E substitution in                                  |
| 06:26     | 45 MITCHELL D 2pt FG in the paint, driving layup made (12)  | <b>66-60</b> | <b>6</b>  |   |
| 06:16     |   |              |           | 5 MOODY M 3pt FG , jump shot missed                             |
| 06:15     |   |              |           | offensive dead ball rebound (4)                                 |
| 06:15     | jump ball situation   |              |           |   |
| 06:15     | 10 FLAGLER A substitution out                               |              |           |   |
| 06:15     | 12 BUTLER J substitution in                                 |              |           |   |
| 06:13     |   |              |           | 3 SILLS D 2pt FG second chance in the paint, layup missed       |
| 06:10     | 23 TCHAMWA TCHATCHOUA J defensive rebound (4)               |              |           |   |
| 05:43     | 12 BUTLER J 2pt FG in the paint, floating jump shot blocked |              |           |   |
| 05:43     |   |              |           | 11 TATE J block (1)   |
| 05:41     | 23 TCHAMWA TCHATCHOUA J offensive rebound (5)               |              |           |   |
| 05:41     | turnover shot clock (8)                                     |              |           |   |
| 05:29     |   |              |           | 5 MOODY M 3pt FG from turnover, jump shot missed                |
| 05:25     | 31 TEAGUE M defensive rebound (3)                           |              |           |   |
| 05:02     | 45 MITCHELL D 2pt FG in the paint, layup missed             |              |           |   |
| 05:00     |   |              |           | 3 SILLS D defensive rebound (5)                                 |
| 04:54     |   |              |           | 11 TATE J 2pt FG in the paint, driving layup missed             |
| 04:51     | 45 MITCHELL D defensive rebound (1)                         |              |           |   |
| 04:48     | 31 TEAGUE M 3pt FG fast break, jump shot made (19)          | <b>69-60</b> | <b>9</b>  |   |
| 04:48     | 45 MITCHELL D assist (5)                                    |              |           |   |
| 04:27     | 23 TCHAMWA TCHATCHOUA J foul personal (1 - 9)               |              |           | 11 TATE J foul drawn (7)  |
| 04:27     |   |              |           | 24 HENDERSON E substitution out                                 |
| 04:27     |   |              |           | 0 SMITH J substitution in                                       |
| 04:27     |   | <b>69-61</b> | <b>8</b>  | 11 TATE J 1&1 free throw 1 made (10)                            |
| 04:27     |   |              |           | 11 TATE J 1&1 free throw 2 missed                               |
| 04:27     | defensive dead ball rebound (3)                             |              |           |   |
| 03:59     | 31 TEAGUE M 3pt FG , jump shot made (22)                    | <b>72-61</b> | <b>11</b> |   |
| 03:59     | 45 MITCHELL D assist (6)                                    |              |           |   |
| 03:43     |   |              |           | 4 DAVIS D 2pt FG outside the paint, turnaround jump shot missed |



Official Basketball Play by Play - Second Half  
**Arkansas at Baylor**  
 03/29/21 Lucas Oil Stadium, Indianapolis, IN  
 NCAA Division I Men's Basketball Championship - Elite 8

**Game Time:** 10:03 PM  
**Game Duration:** 2:05  
**Attendance:** 7,519

**Officials:** Terry Oglesby, Jeff Clark, Paul Szelc

| Game Time            | BAY   | Score        | Diff      | ARK  |
|----------------------|---|--------------|-----------|--|
| 03:39                | 23 TCHAMWA TCHATCHOUA J defensive rebound (6)                   |              |           |  |
| 03:24                | 23 TCHAMWA TCHATCHOUA J turnover lost ball (1)                  |              |           |  |
| 03:24                | Timeout media   |              |           |  |
| 03:24                | 24 MAYER M substitution out                                     |              |           |  |
| 03:24                | 11 VITAL M substitution in                                      |              |           |  |
| 03:11                |   |              |           | 4 DAVIS D 3pt FG from turnover, jump shot missed                   |
| 03:07                | 31 TEAGUE M defensive rebound (4)                               |              |           |  |
| 02:49                | 31 TEAGUE M 2pt FG outside the paint, floating jump shot missed |              |           |  |
| 02:44                | 11 VITAL M offensive rebound (4)                                |              |           |  |
| 02:44                | 11 VITAL M 2pt FG second chance in the paint, dunk, made (4)    | <b>74-61</b> | <b>13</b> |  |
| 02:32                | 11 VITAL M foul shooting (5 - 10)                               |              |           | 11 TATE J foul drawn (8)   |
| 02:31                | 11 VITAL M substitution out                                     |              |           |  |
| 02:31                | 10 FLAGLER A substitution in                                    |              |           |  |
| 02:31                |   | <b>74-62</b> | <b>12</b> | 11 TATE J free throw 1 - 3 made (11)                               |
| 02:31                |   | <b>74-63</b> | <b>11</b> | 11 TATE J free throw 2 - 3 made (12)                               |
| 02:31                |   | <b>74-64</b> | <b>10</b> | 11 TATE J free throw 3 - 3 made (13)                               |
| 02:11                | 10 FLAGLER A 2pt FG in the paint, jump shot missed              |              |           |  |
| 02:08                |   |              |           | 3 SILLS D defensive rebound (6)                                    |
| 02:01                |   |              |           | 0 SMITH J 2pt FG in the paint, layup blocked                       |
| 02:01                | 23 TCHAMWA TCHATCHOUA J block (1)                               |              |           |  |
| 01:58                | 31 TEAGUE M defensive rebound (5)                               |              |           |  |
| 01:32                | 31 TEAGUE M 2pt FG in the paint, driving layup missed           |              |           |  |
| 01:29                |   |              |           | 0 SMITH J defensive rebound (6)                                    |
| 01:19                |   | <b>74-66</b> | <b>8</b>  | 0 SMITH J 2pt FG in the paint, layup made (10)                     |
| 01:19                |   |              |           | 5 MOODY M assist (1)   |
| 00:55                | 10 FLAGLER A 3pt FG , jump shot made (6)                        | <b>77-66</b> | <b>11</b> |  |
| 00:55                | 12 BUTLER J assist (5)  |              |           |  |
| 00:48                |   | <b>77-68</b> | <b>9</b>  | 4 DAVIS D 2pt FG fast break in the paint, driving layup made (12)  |
| 00:32                | 10 FLAGLER A foul drawn (2)                                     |              |           | 11 TATE J foul personal (3 - 10)                                   |
| 00:32                | 10 FLAGLER A free throw 1 - 2 made (7)                          | <b>78-68</b> | <b>10</b> |  |
| 00:32                | 10 FLAGLER A free throw 2 - 2 made (8)                          | <b>79-68</b> | <b>11</b> |  |
| 00:26                |   | <b>79-70</b> | <b>9</b>  | 4 DAVIS D 2pt FG fast break outside the paint, jump shot made (14) |
| 00:17                | 10 FLAGLER A foul drawn (3)                                     |              |           | 5 MOODY M foul personal (2 - 11)                                   |
| 00:17                | 10 FLAGLER A free throw 1 - 2 made (9)                          | <b>80-70</b> | <b>10</b> |  |
| 00:17                | 10 FLAGLER A free throw 2 - 2 made (10)                         | <b>81-70</b> | <b>11</b> |  |
| 00:09                | 23 TCHAMWA TCHATCHOUA J foul shooting (2 - 11)                  |              |           | 5 MOODY M foul drawn (4)   |
| 00:09                |   | <b>81-71</b> | <b>10</b> | 5 MOODY M free throw 1 - 2 made (10)                               |
| 00:09                |   | <b>81-72</b> | <b>9</b>  | 5 MOODY M free throw 2 - 2 made (11)                               |
| <b>END OF GAME</b>   |   |              |           |  |
| <b>BAY 81-72 ARK</b> |   |              |           |  |



**Arkansas at Baylor**

03/29/21 Lucas Oil Stadium, Indianapolis, IN  
 NCAA Division I Men's Basketball Championship - Elite 8

Game Time: 10:03 PM  
 Game Duration: 2:05  
 Attendance: 7,519

Officials: Terry Oglesby, Jeff Clark, Paul Szelc

**Arkansas - 34**

| NO.           | Name            | F | Min   | FG    | 3P  | FT    | Rebounds |    |     | Fouls |    | TP | AS | TO | ST | Blocks |    | +/- |
|---------------|-----------------|---|-------|-------|-----|-------|----------|----|-----|-------|----|----|----|----|----|--------|----|-----|
|               |                 |   |       | M-A   | M-A | M-A   | OR       | DR | TOT | PF    | FD |    |    |    |    | BS     | BA |     |
| 0             | Justin Smith    | F | 17:35 | 2-6   | 0-0 | 0-0   | 1        | 4  | 5   | 3     | 0  | 4  | 0  | 0  | 0  | 1      | 2  | 4   |
| 10            | Jaylin Williams | F | 01:38 | 1-1   | 0-0 | 0-0   | 1        | 0  | 1   | 0     | 0  | 2  | 0  | 0  | 0  | 0      | 0  | -3  |
| 4             | Davonte Davis   | G | 20:00 | 5-9   | 0-2 | 2-2   | 1        | 3  | 4   | 2     | 2  | 12 | 2  | 1  | 0  | 0      | 0  | -1  |
| 5             | Moses Moody     | G | 19:13 | 2-8   | 0-4 | 6-6   | 1        | 1  | 2   | 1     | 3  | 10 | 1  | 1  | 0  | 1      | 1  | 2   |
| 11            | Jalen Tate      | G | 17:27 | 0-3   | 0-0 | 4-5   | 1        | 2  | 3   | 2     | 6  | 4  | 1  | 2  | 0  | 1      | 1  | -4  |
| 3             | Desi Sills      |   | 18:22 | 0-2   | 0-1 | 0-0   | 0        | 3  | 3   | 0     | 0  | 0  | 0  | 0  | 0  | 0      | 0  | 2   |
| 1             | JD Notae        |   | 03:20 | 1-1   | 0-0 | 0-0   | 0        | 0  | 0   | 3     | 0  | 2  | 0  | 1  | 0  | 0      | 0  | 0   |
| 24            | Ethan Henderson |   | 02:25 | 0-0   | 0-0 | 0-0   | 0        | 0  | 0   | 0     | 0  | 0  | 0  | 0  | 0  | 0      | 0  | -5  |
| Team          |                 |   |       |       |     |       | 1        | 2  | 3   |       |    | 0  |    |    | 0  |        |    |     |
| <b>Totals</b> |                 |   |       | 11-30 | 0-7 | 12-13 | 6        | 15 | 21  | 11    | 11 | 34 | 4  | 5  | 0  | 3      | 4  | -1  |

| Shooting By Period  |       |       |
|---------------------|-------|-------|
| 2 <sup>nd</sup> FG% | 11-30 | 36.7% |
| 3PT%                | 0-7   | 0.0%  |
| FT%                 | 12-13 | 92.3% |
| GM FG%              | 11-30 | 36.7% |
| 3PT%                | 0-7   | 0.0%  |
| FT%                 | 12-13 | 92.3% |

Dead Ball Rebounds: 2, 0

Technical Fouls::NONE

**Baylor - 35**

| NO.           | Name                        | F | Min   | FG    | 3P  | FT   | Rebounds |    |     | Fouls |    | TP | AS | TO | ST | Blocks |    | +/- |
|---------------|-----------------------------|---|-------|-------|-----|------|----------|----|-----|-------|----|----|----|----|----|--------|----|-----|
|               |                             |   |       | M-A   | M-A | M-A  | OR       | DR | TOT | PF    | FD |    |    |    |    | BS     | BA |     |
| 0             | Flo Thamba                  | F | 06:01 | 0-0   | 0-0 | 0-0  | 1        | 0  | 1   | 0     | 2  | 0  | 0  | 0  | 0  | 0      | 0  | -4  |
| 11            | Mark Vital                  | F | 05:48 | 1-2   | 0-0 | 0-0  | 2        | 0  | 2   | 4     | 0  | 2  | 0  | 0  | 0  | 1      | 1  | 1   |
| 12            | Jared Butler                | G | 16:27 | 1-6   | 1-2 | 0-0  | 0        | 1  | 1   | 1     | 1  | 3  | 2  | 0  | 0  | 0      | 2  | 0   |
| 31            | MaCio Teague                | G | 17:52 | 3-8   | 2-4 | 2-2  | 0        | 4  | 4   | 1     | 1  | 10 | 0  | 0  | 0  | 1      | 0  | -2  |
| 45            | Davion Mitchell             | G | 20:00 | 5-9   | 0-0 | 0-3  | 0        | 1  | 1   | 0     | 3  | 10 | 3  | 0  | 1  | 0      | 0  | 1   |
| 10            | Adam Flagler                |   | 10:15 | 1-3   | 1-1 | 4-4  | 0        | 0  | 0   | 2     | 3  | 7  | 0  | 1  | 1  | 1      | 0  | -2  |
| 23            | Jonathan Tchamwa Tchatchoua |   | 13:59 | 1-1   | 0-0 | 1-1  | 2        | 3  | 5   | 2     | 1  | 3  | 0  | 1  | 0  | 1      | 0  | 5   |
| 24            | Matthew Mayer               |   | 09:38 | 0-1   | 0-1 | 0-0  | 0        | 0  | 0   | 1     | 0  | 0  | 0  | 0  | 1  | 0      | 0  | 6   |
| Team          |                             |   |       |       |     |      | 0        | 2  | 2   |       |    | 0  |    |    | 1  |        |    |     |
| <b>Totals</b> |                             |   |       | 12-30 | 4-8 | 7-10 | 5        | 11 | 16  | 11    | 11 | 35 | 5  | 3  | 3  | 4      | 3  | 1   |

| Shooting By Period  |       |       |
|---------------------|-------|-------|
| 2 <sup>nd</sup> FG% | 12-30 | 40.0% |
| 3PT%                | 4-8   | 50.0% |
| FT%                 | 7-10  | 70%   |
| GM FG%              | 12-30 | 40.0% |
| 3PT%                | 4-8   | 50.0% |
| FT%                 | 7-10  | 70.0% |

Dead Ball Rebounds: 1, 1

Technical Fouls::NONE

|                  | ARK                       | BAY                       |
|------------------|---------------------------|---------------------------|
| Biggest lead     | 0 (1 <sup>st</sup> 20:00) | 13 (2 <sup>nd</sup> 2:44) |
| Best Scoring Run | 8(2 <sup>nd</sup> 9:34)   | 7(2 <sup>nd</sup> 13:11)  |
| Lead Changes     | 0                         |                           |
| Times Tied       | 0                         |                           |
| Time with Lead   | 00:00                     | 19:51                     |

|               | ARK | BAY |
|---------------|-----|-----|
| Points from   |     |     |
| Turnovers     | 0   | 7   |
| Paint         | 20  | 16  |
| Second Chance | 6   | 5   |
| Fast Breaks   | 8   | 5   |
| Bench         | 2   | 10  |

|     | Period by Period Scoring |     |     |
|-----|--------------------------|-----|-----|
|     | 1st                      | 2nd | TOT |
| ARK | 38                       | 34  | 72  |
| BAY | 46                       | 35  | 81  |



**Arkansas at Baylor**

03/29/21 Lucas Oil Stadium, Indianapolis, IN  
 NCAA Division I Men's Basketball Championship - Elite 8

**Game Time:** 10:03 PM  
**Game Duration:** 2:05  
**Attendance:** 7,519

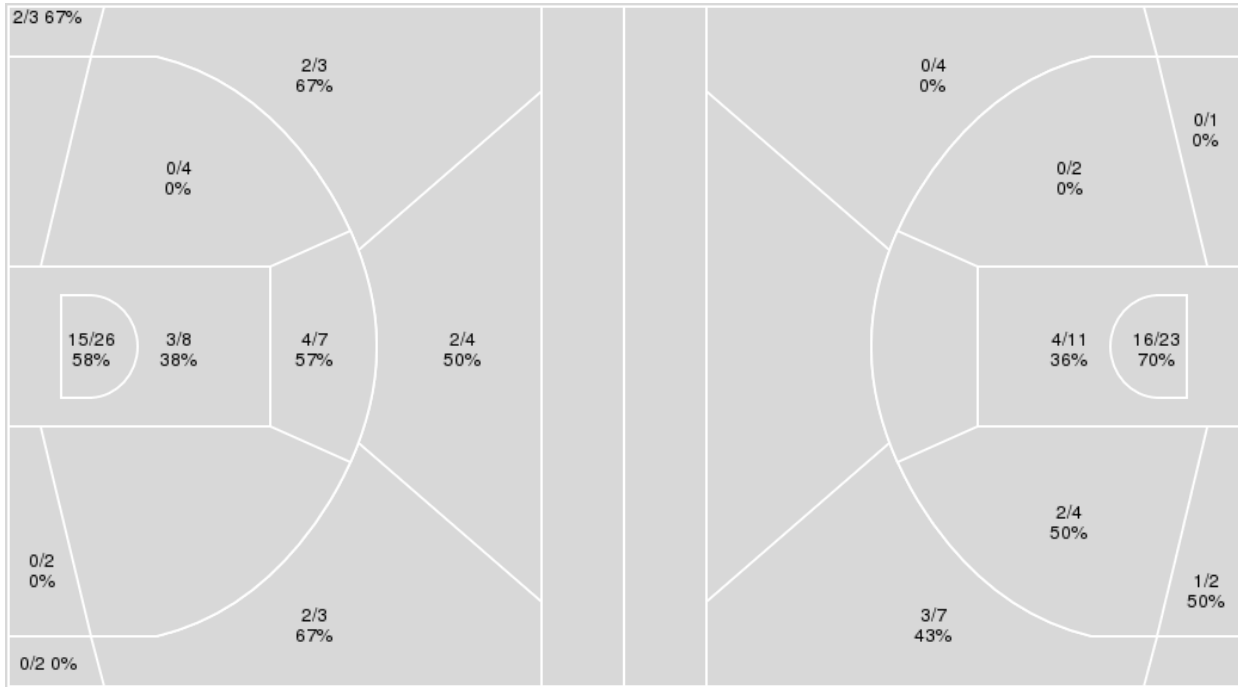
**Officials:** Terry Oglesby, Jeff Clark, Paul Szelc

{ Players => All; } FG Types => All; Results => All;

{ Players => All; } FG Types => All; Results => All;

**Baylor**

**Arkansas**



| <b>Baylor</b> | <b>M/A</b> | <b>%</b> |
|---------------|------------|----------|
| Field Goals   | 30/62      | 48       |
| 2 Points      | 22/47      | 47       |
| 3 Points      | 8/15       | 53       |
| Free Throws   | 13/17      | 76       |

| <b>Arkansas</b> | <b>M/A</b> | <b>%</b> |
|-----------------|------------|----------|
| Field Goals     | 26/54      | 48       |
| 2 Points        | 23/43      | 53       |
| 3 Points        | 3/11       | 27       |
| Free Throws     | 17/23      | 74       |



**Arkansas at Baylor**

03/29/21 Lucas Oil Stadium, Indianapolis, IN

NCAA Division I Men's Basketball Championship - Elite 8

Game Time: 10:03 PM

Game Duration: 2:05

Attendance: 7,519

Officials: Terry Oglesby, Jeff Clark, Paul Szec

**Arkansas**

| No | Name            | Mins  |       | Score   |         | Points Diff |     | Points per Min |      | Assists |     | Rebounds |     | Steals |     | Turnovers |     |
|----|-----------------|-------|-------|---------|---------|-------------|-----|----------------|------|---------|-----|----------|-----|--------|-----|-----------|-----|
|    |                 | On    | Off   | On      | Off     | On          | Off | On             | Off  | On      | Off | On       | Off | On     | Off | On        | Off |
| 0  | Justin Smith    | 36:46 | 03:14 | 72 - 71 | 0 - 10  | 1           | -10 | 1.96           | 0.00 | 13      | 0   | 33       | 1   | 5      | 0   | 14        | 1   |
| 1  | JD Notae        | 14:47 | 25:13 | 34 - 31 | 38 - 50 | 3           | -12 | 2.30           | 1.51 | 6       | 7   | 9        | 25  | 3      | 2   | 7         | 8   |
| 3  | Desi Sills      | 30:44 | 09:16 | 58 - 52 | 14 - 29 | 6           | -15 | 1.89           | 1.51 | 10      | 3   | 28       | 6   | 5      | 0   | 9         | 6   |
| 4  | Davonte Davis   | 31:49 | 08:11 | 48 - 61 | 24 - 20 | -13         | 4   | 1.51           | 2.93 | 7       | 6   | 29       | 5   | 5      | 0   | 13        | 2   |
| 5  | Moses Moody     | 32:49 | 07:11 | 57 - 68 | 15 - 13 | -11         | 2   | 1.74           | 2.09 | 9       | 4   | 31       | 3   | 2      | 3   | 12        | 3   |
| 10 | Jaylin Williams | 15:33 | 24:27 | 26 - 45 | 46 - 36 | -19         | 10  | 1.67           | 1.88 | 7       | 6   | 9        | 25  | 0      | 5   | 7         | 8   |
| 11 | Jalen Tate      | 35:07 | 04:53 | 65 - 72 | 7 - 9   | -7          | -2  | 1.85           | 1.43 | 13      | 0   | 30       | 4   | 5      | 0   | 13        | 2   |
| 24 | Ethan Henderson | 02:25 | 37:35 | 0 - 5   | 72 - 76 | -5          | -4  | 0.00           | 1.92 | 0       | 13  | 1        | 33  | 0      | 5   | 0         | 15  |

**Baylor**

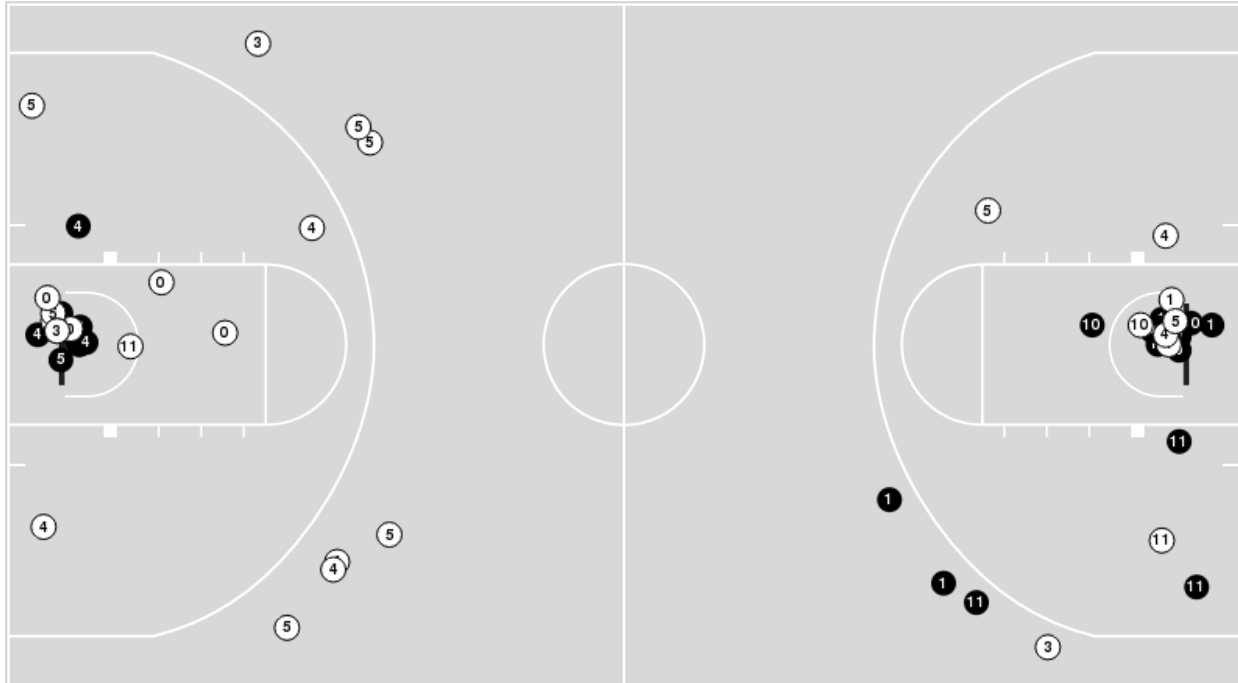
| No | Name                        | Mins  |       | Score   |         | Points Diff |     | Points per Min |      | Assists |     | Rebounds |     | Steals |     | Turnovers |     |
|----|-----------------------------|-------|-------|---------|---------|-------------|-----|----------------|------|---------|-----|----------|-----|--------|-----|-----------|-----|
|    |                             | On    | Off   | On      | Off     | On          | Off | On             | Off  | On      | Off | On       | Off | On     | Off | On        | Off |
| 0  | Flo Thamba                  | 12:58 | 27:02 | 26 - 25 | 55 - 47 | 1           | 8   | 2.01           | 2.03 | 7       | 10  | 9        | 20  | 0      | 9   | 1         | 8   |
| 10 | Adam Flagler                | 26:35 | 13:25 | 56 - 55 | 25 - 17 | 1           | 8   | 2.11           | 1.86 | 11      | 6   | 17       | 12  | 9      | 0   | 6         | 3   |
| 11 | Mark Vital                  | 17:56 | 22:04 | 35 - 28 | 46 - 44 | 7           | 2   | 1.95           | 2.08 | 8       | 9   | 12       | 17  | 4      | 5   | 5         | 4   |
| 12 | Jared Butler                | 32:36 | 07:24 | 68 - 65 | 13 - 7  | 3           | 6   | 2.09           | 1.76 | 14      | 3   | 24       | 5   | 6      | 3   | 8         | 1   |
| 23 | Jonathan Tchamwa Tchatchoua | 24:04 | 15:56 | 53 - 43 | 28 - 29 | 10          | -1  | 2.20           | 1.76 | 10      | 7   | 18       | 11  | 8      | 1   | 4         | 5   |
| 24 | Matthew Mayer               | 20:28 | 19:32 | 37 - 31 | 44 - 41 | 6           | 3   | 1.81           | 2.25 | 8       | 9   | 18       | 11  | 5      | 4   | 8         | 1   |
| 31 | MaCio Teague                | 36:42 | 03:18 | 70 - 70 | 11 - 2  | 0           | 9   | 1.91           | 3.33 | 16      | 1   | 26       | 3   | 7      | 2   | 9         | 0   |
| 45 | Davion Mitchell             | 28:41 | 11:19 | 60 - 43 | 21 - 29 | 17          | -8  | 2.09           | 1.86 | 11      | 6   | 21       | 8   | 6      | 3   | 4         | 5   |



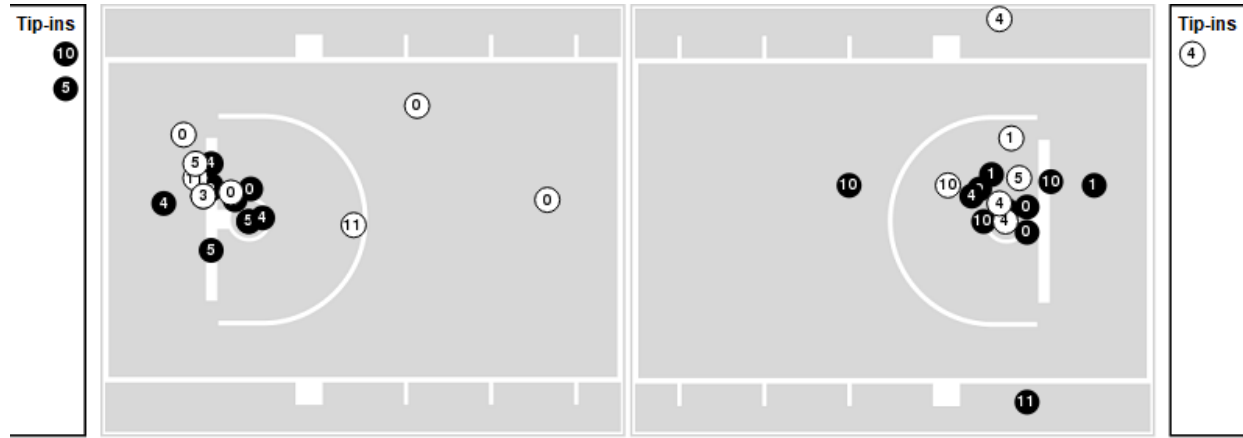
Players => AllFG Types=>AllResults=>All

**Arkansas**

**All Field Goals**



**Blow Up Chart**



● Made    ○ Missed    N - Player Number

| Arkansas    | M/A   | %  |
|-------------|-------|----|
| Field Goals | 26/54 | 48 |
| 2 Points    | 23/43 | 53 |
| 3 Points    | 3/11  | 27 |
| Free Throws | 17/23 | 74 |

| Arkansas             | M/A          | %   |
|----------------------|--------------|-----|
| Points in the Paint  | 40 (20 / 34) | 59  |
| Fast Break Points    | 15 (8/8)     | 100 |
| Second Chance Points | 11 (5/12)    | 42  |
| Effective FG%        | 51           |     |





# Arkansas at Baylor

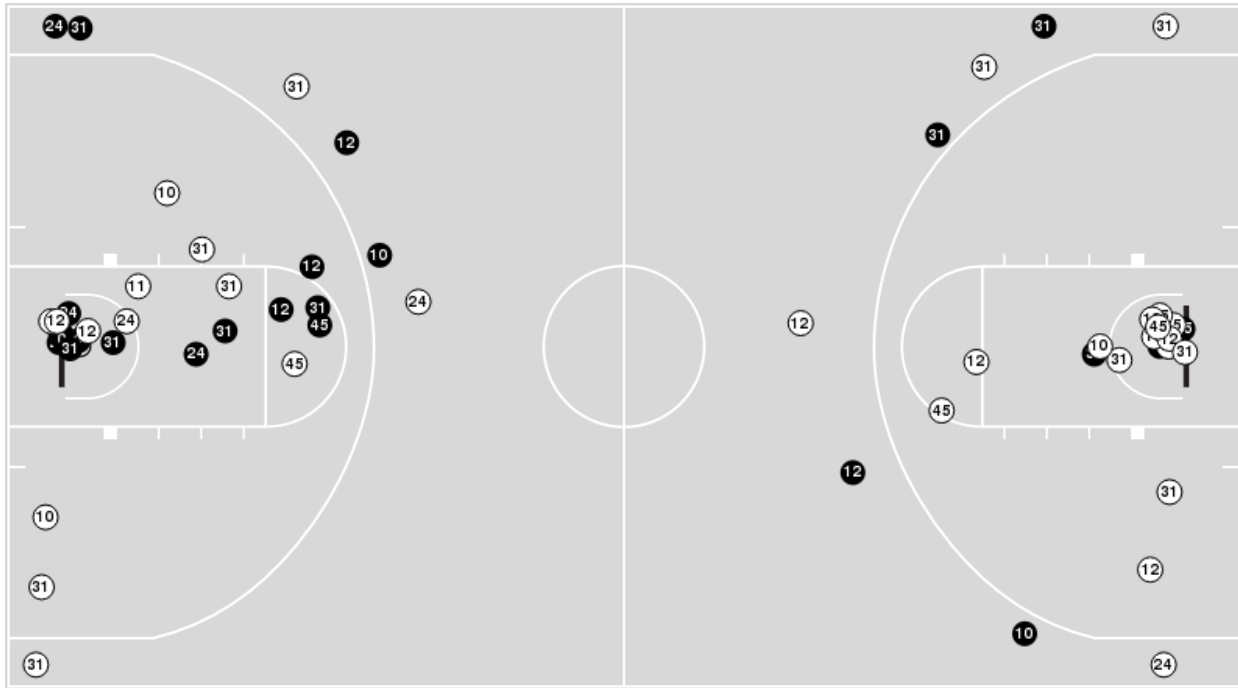
03/29/21 Lucas Oil Stadium, Indianapolis, IN  
 NCAA Division I Men's Basketball Championship - Elite 8

Officials: Terry Oglesby, Jeff Clark, Paul Szelc

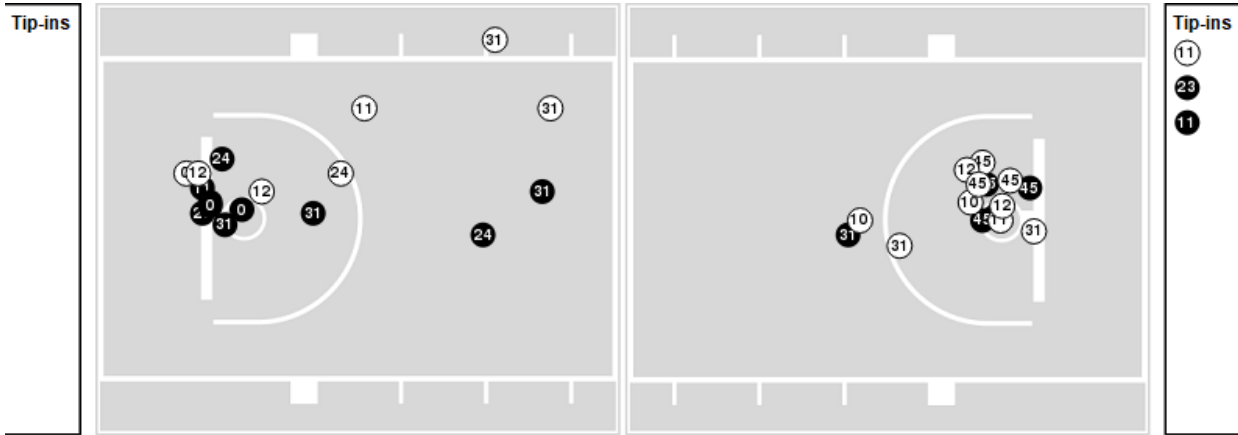
Players => AllFG Types=>AllResults=>All

## Baylor

### All Field Goals



### Blow Up Chart



● Made    ○ Missed    N - Player Number

| Baylor      | M/A   | %  |
|-------------|-------|----|
| Field Goals | 30/62 | 48 |
| 2 Points    | 22/47 | 47 |
| 3 Points    | 8/15  | 53 |
| Free Throws | 13/17 | 76 |

| Baylor               | M/A          | %  |
|----------------------|--------------|----|
| Points in the Paint  | 36 (18 / 34) | 53 |
| Fast Break Points    | 11 (5/6)     | 83 |
| Second Chance Points | 10 (5/10)    | 50 |
| Effective FG%        | 55           |    |



Official Basketball Rotations Summary - Final  
**Arkansas at Baylor**  
 03/29/21 Lucas Oil Stadium, Indianapolis, IN  
 NCAA Division I Men's Basketball Championship - Elite 8

**Game Time:** 10:03 PM  
**Game Duration:** 2:05  
**Attendance:** 7,519

**Officials:** Terry Oglesby, Jeff Clark, Paul Szelc

**Arkansas**

| Lineup   | Quarter On | Time On | Quarter Off | Time Off | Time on Court | Score | Score Diff | Reb | Stl | Tov | Ass | PPP    |
|--|------------|---------|-------------|----------|---------------|-------|------------|-----|-----|-----|-----|--------|
| 0- Smith J/ 4- Davis D/ 5- Moody M/ 10- Williams J/ 11- Tate J/  | 1          | 20:00   | 1           | 16:18    | 03:42         | 2-13  | -11        | 3   | 0   | 2   | 1   | 0.4000 |
| 0- Smith J/ 1- Notae J/ 4- Davis D/ 5- Moody M/ 11- Tate J/      | 1          | 16:18   | 1           | 15:18    | 01:00         | 1-2   | -1         | 1   | 0   | 1   | 0   | 0.5319 |
| 0- Smith J/ 1- Notae J/ 3- Sills D/ 5- Moody M/ 11- Tate J/      | 1          | 15:18   | 1           | 15:17    | 00:01         | 2-0   | 2          | 0   | 0   | 0   | 0   | 2.2727 |
| 0- Smith J/ 1- Notae J/ 3- Sills D/ 10- Williams J/ 11- Tate J/  | 1          | 15:17   | 1           | 13:04    | 02:13         | 6-6   | 0          | 0   | 0   | 0   | 2   | 2.0000 |
| 1- Notae J/ 3- Sills D/ 4- Davis D/ 5- Moody M/ 10- Williams J/  | 1          | 13:04   | 1           | 12:15    | 00:49         | 0-5   | -5         | 0   | 0   | 1   | 0   | 0.0000 |
| 0- Smith J/ 3- Sills D/ 4- Davis D/ 5- Moody M/ 10- Williams J/  | 1          | 12:15   | 1           | 11:36    | 00:39         | 0-0   | 0          | 0   | 0   | 0   | 0   | 0.0000 |
| 0- Smith J/ 4- Davis D/ 5- Moody M/ 10- Williams J/ 11- Tate J/  | 1          | 11:36   | 1           | 11:01    | 00:35         | 0-2   | -2         | 0   | 0   | 1   | 0   | 0.0000 |
| 0- Smith J/ 3- Sills D/ 5- Moody M/ 10- Williams J/ 11- Tate J/  | 1          | 11:01   | 1           | 09:13    | 01:48         | 5-3   | 2          | 3   | 0   | 1   | 2   | 1.6667 |
| 0- Smith J/ 1- Notae J/ 3- Sills D/ 5- Moody M/ 10- Williams J/  | 1          | 09:13   | 1           | 08:21    | 00:52         | 2-2   | 0          | 0   | 0   | 0   | 0   | 2.0000 |
| 0- Smith J/ 1- Notae J/ 5- Moody M/ 10- Williams J/ 11- Tate J/  | 1          | 08:21   | 1           | 06:00    | 02:21         | 9-7   | 2          | 1   | 0   | 1   | 2   | 1.8000 |
| 0- Smith J/ 1- Notae J/ 3- Sills D/ 10- Williams J/ 11- Tate J/  | 1          | 06:00   | 1           | 05:04    | 00:56         | 0-2   | -2         | 1   | 0   | 0   | 0   | 0.0000 |
| 0- Smith J/ 1- Notae J/ 3- Sills D/ 4- Davis D/ 11- Tate J/      | 1          | 05:04   | 1           | 01:49    | 03:15         | 9-2   | 7          | 2   | 3   | 2   | 2   | 1.4241 |
| 0- Smith J/ 3- Sills D/ 4- Davis D/ 5- Moody M/ 11- Tate J/      | 1          | 01:49   | 2           | 20:00    | 01:49         | 2-2   | 0          | 2   | 2   | 1   | 0   | 0.6944 |
| 0- Smith J/ 4- Davis D/ 5- Moody M/ 10- Williams J/ 11- Tate J/  | 2          | 20:00   | 2           | 18:22    | 01:38         | 2-5   | -3         | 1   | 0   | 1   | 0   | 0.6667 |
| 0- Smith J/ 3- Sills D/ 4- Davis D/ 5- Moody M/ 11- Tate J/      | 2          | 18:22   | 2           | 16:58    | 01:24         | 3-2   | 1          | 1   | 0   | 0   | 1   | 1.2295 |
| 0- Smith J/ 1- Notae J/ 3- Sills D/ 4- Davis D/ 5- Moody M/      | 2          | 16:58   | 2           | 14:25    | 02:33         | 5-2   | 3          | 4   | 0   | 1   | 0   | 1.1574 |
| 0- Smith J/ 1- Notae J/ 3- Sills D/ 4- Davis D/ 11- Tate J/      | 2          | 14:25   | 2           | 13:38    | 00:47         | 0-3   | -3         | 0   | 0   | 1   | 0   | 0.0000 |
| 0- Smith J/ 3- Sills D/ 4- Davis D/ 5- Moody M/ 11- Tate J/      | 2          | 13:38   | 2           | 06:52    | 06:46         | 12-6  | 6          | 12  | 0   | 2   | 2   | 1.1029 |
| 3- Sills D/ 4- Davis D/ 5- Moody M/ 11- Tate J/ 24- Henderson E/ | 2          | 06:52   | 2           | 04:27    | 02:25         | 0-5   | -5         | 1   | 0   | 0   | 0   | 0.0000 |
| 0- Smith J/ 3- Sills D/ 4- Davis D/ 5- Moody M/ 11- Tate J/      | 2          | 04:27   | 2           | 00:00    | 04:27         | 12-12 | 0          | 2   | 0   | 0   | 1   | 1.3216 |



**Officials:** Terry Oglesby, Jeff Clark, Paul Szelc

**Baylor**

| Lineup   | Quarter On | Time On | Quarter Off | Time Off | Time on Court | Score | Score Diff | Reb | Stl | Tov | Ass | PPP    |
|--|------------|---------|-------------|----------|---------------|-------|------------|-----|-----|-----|-----|--------|
| 0- Thamba F/ 11- Vital M/ 12- Butler J/ 31- Teague M/ 45- Mitchell D/                | 1          | 20:00   | 1           | 17:12    | 02:48         | 7-2   | 5          | 2   | 0   | 0   | 1   | 1.5766 |
| 10- Flagler A/ 12- Butler J/ 23- Tchamwa Tchatchoua J/ 24- Mayer M/ 45- Mitchell D/  | 1          | 17:12   | 1           | 16:02    | 01:10         | 6-0   | 6          | 1   | 1   | 0   | 1   | 3.0000 |
| 10- Flagler A/ 12- Butler J/ 23- Tchamwa Tchatchoua J/ 24- Mayer M/ 31- Teague M/    | 1          | 16:02   | 1           | 13:04    | 02:58         | 8-9   | -1         | 1   | 1   | 0   | 2   | 1.6393 |
| 10- Flagler A/ 23- Tchamwa Tchatchoua J/ 24- Mayer M/ 31- Teague M/ 45- Mitchell D/  | 1          | 13:04   | 1           | 13:04    | 00:00         | 0-0   | 0          | 0   | 0   | 0   | 0   | 0.0000 |
| 10- Flagler A/ 11- Vital M/ 23- Tchamwa Tchatchoua J/ 31- Teague M/ 45- Mitchell D/  | 1          | 13:04   | 1           | 09:13    | 03:51         | 10-5  | 5          | 2   | 2   | 0   | 3   | 1.7007 |
| 0- Thamba F/ 11- Vital M/ 12- Butler J/ 31- Teague M/ 45- Mitchell D/                | 1          | 09:13   | 1           | 08:21    | 00:52         | 2-2   | 0          | 0   | 0   | 1   | 1   | 1.0000 |
| 0- Thamba F/ 10- Flagler A/ 11- Vital M/ 12- Butler J/ 31- Teague M/                 | 1          | 08:21   | 1           | 06:42    | 01:39         | 5-7   | -2         | 1   | 0   | 0   | 1   | 2.5000 |
| 0- Thamba F/ 10- Flagler A/ 12- Butler J/ 24- Mayer M/ 31- Teague M/                 | 1          | 06:42   | 1           | 05:04    | 01:38         | 4-2   | 2          | 3   | 0   | 0   | 2   | 1.0000 |
| 10- Flagler A/ 12- Butler J/ 23- Tchamwa Tchatchoua J/ 24- Mayer M/ 31- Teague M/    | 1          | 05:04   | 1           | 02:58    | 02:06         | 2-7   | -5         | 1   | 1   | 1   | 1   | 0.5000 |
| 10- Flagler A/ 11- Vital M/ 12- Butler J/ 24- Mayer M/ 31- Teague M/                 | 1          | 02:58   | 2           | 20:00    | 02:58         | 2-4   | -2         | 2   | 1   | 4   | 0   | 0.3401 |
| 0- Thamba F/ 11- Vital M/ 12- Butler J/ 31- Teague M/ 45- Mitchell D/                | 2          | 20:00   | 2           | 15:46    | 04:14         | 7-8   | -1         | 3   | 0   | 0   | 2   | 1.1667 |
| 10- Flagler A/ 12- Butler J/ 23- Tchamwa Tchatchoua J/ 24- Mayer M/ 45- Mitchell D/  | 2          | 15:46   | 2           | 13:38    | 02:08         | 5-2   | 3          | 2   | 1   | 0   | 0   | 1.2887 |
| 10- Flagler A/ 12- Butler J/ 23- Tchamwa Tchatchoua J/ 31- Teague M/ 45- Mitchell D/ | 2          | 13:38   | 2           | 12:48    | 00:50         | 2-0   | 2          | 0   | 1   | 0   | 0   | 1.0000 |
| 10- Flagler A/ 11- Vital M/ 23- Tchamwa Tchatchoua J/ 31- Teague M/ 45- Mitchell D/  | 2          | 12:48   | 2           | 12:07    | 00:41         | 0-0   | 0          | 0   | 1   | 0   | 0   | 0.0000 |
| 10- Flagler A/ 12- Butler J/ 23- Tchamwa Tchatchoua J/ 31- Teague M/ 45- Mitchell D/ | 2          | 12:07   | 2           | 10:54    | 01:13         | 2-6   | -4         | 0   | 0   | 0   | 0   | 1.0000 |
| 0- Thamba F/ 12- Butler J/ 24- Mayer M/ 31- Teague M/ 45- Mitchell D/                | 2          | 10:54   | 2           | 09:07    | 01:47         | 1-4   | -3         | 0   | 0   | 0   | 0   | 0.4098 |
| 10- Flagler A/ 23- Tchamwa Tchatchoua J/ 24- Mayer M/ 31- Teague M/ 45- Mitchell D/  | 2          | 09:07   | 2           | 06:15    | 02:52         | 3-2   | 1          | 3   | 0   | 1   | 0   | 0.6944 |
| 12- Butler J/ 23- Tchamwa Tchatchoua J/ 24- Mayer M/ 31- Teague M/ 45- Mitchell D/   | 2          | 06:15   | 2           | 03:24    | 02:51         | 6-1   | 5          | 5   | 0   | 2   | 2   | 1.2000 |
| 11- Vital M/ 12- Butler J/ 23- Tchamwa Tchatchoua J/ 31- Teague M/ 45- Mitchell D/   | 2          | 03:24   | 2           | 02:31    | 00:53         | 2-0   | 2          | 2   | 0   | 0   | 0   | 2.0000 |
| 10- Flagler A/ 12- Butler J/ 23- Tchamwa Tchatchoua J/ 31- Teague M/ 45- Mitchell D/ | 2          | 02:31   | 2           | 00:00    | 02:31         | 7-11  | -4         | 1   | 0   | 0   | 1   | 1.4706 |



**Arkansas at Baylor**

03/29/21 Lucas Oil Stadium, Indianapolis, IN  
 NCAA Division I Men's Basketball Championship - Elite 8

**Game Time:** 10:03 PM  
**Game Duration:** 2:05  
**Attendance:** 7,519

**Officials:** Terry Oglesby, Jeff Clark, Paul Szelc

**Arkansas**

| Lineup   | Time  | Score | Score Diff | Pts/Min  | Reb | Stl | Tov | Ass | PPP    |
|--|-------|-------|------------|----------|-----|-----|-----|-----|--------|
| 0- Smith J/ 3- Sills D/ 4- Davis D/ 5- Moody M/ 11- Tate J/      | 14:26 | 29-22 | 7          | 2.0092   | 17  | 2   | 3   | 4   | 1.1472 |
| 0- Smith J/ 4- Davis D/ 5- Moody M/ 10- Williams J/ 11- Tate J/  | 05:55 | 4-20  | -16        | 0.6761   | 4   | 0   | 4   | 1   | 0.4444 |
| 0- Smith J/ 1- Notae J/ 3- Sills D/ 4- Davis D/ 11- Tate J/      | 04:02 | 9-5   | 4          | 2.2314   | 2   | 3   | 3   | 2   | 1.2295 |
| 0- Smith J/ 1- Notae J/ 3- Sills D/ 10- Williams J/ 11- Tate J/  | 03:09 | 6-8   | -2         | 1.9048   | 1   | 0   | 0   | 2   | 1.3514 |
| 0- Smith J/ 1- Notae J/ 3- Sills D/ 4- Davis D/ 5- Moody M/      | 02:33 | 5-2   | 3          | 1.9608   | 4   | 0   | 1   | 0   | 1.1574 |
| 3- Sills D/ 4- Davis D/ 5- Moody M/ 11- Tate J/ 24- Henderson E/ | 02:25 | 0-5   | -5         | 0.0000   | 1   | 0   | 0   | 0   | 0.0000 |
| 0- Smith J/ 1- Notae J/ 5- Moody M/ 10- Williams J/ 11- Tate J/  | 02:21 | 9-7   | 2          | 3.8298   | 1   | 0   | 1   | 2   | 1.8000 |
| 0- Smith J/ 3- Sills D/ 5- Moody M/ 10- Williams J/ 11- Tate J/  | 01:48 | 5-3   | 2          | 2.7778   | 3   | 0   | 1   | 2   | 1.6667 |
| 0- Smith J/ 1- Notae J/ 4- Davis D/ 5- Moody M/ 11- Tate J/      | 01:00 | 1-2   | -1         | 1.0000   | 1   | 0   | 1   | 0   | 0.5319 |
| 0- Smith J/ 1- Notae J/ 3- Sills D/ 5- Moody M/ 10- Williams J/  | 00:52 | 2-2   | 0          | 2.3077   | 0   | 0   | 0   | 0   | 2.0000 |
| 1- Notae J/ 3- Sills D/ 4- Davis D/ 5- Moody M/ 10- Williams J/  | 00:49 | 0-5   | -5         | 0.0000   | 0   | 0   | 1   | 0   | 0.0000 |
| 0- Smith J/ 3- Sills D/ 4- Davis D/ 5- Moody M/ 10- Williams J/  | 00:39 | 0-0   | 0          | 0.0000   | 0   | 0   | 0   | 0   | 0.0000 |
| 0- Smith J/ 1- Notae J/ 3- Sills D/ 5- Moody M/ 11- Tate J/      | 00:01 | 2-0   | 2          | 120.0000 | 0   | 0   | 0   | 0   | 2.2727 |



**Arkansas at Baylor**

03/29/21 Lucas Oil Stadium, Indianapolis, IN  
 NCAA Division I Men's Basketball Championship - Elite 8

**Game Time:** 10:03 PM  
**Game Duration:** 2:05  
**Attendance:** 7,519

**Officials:** Terry Oglesby, Jeff Clark, Paul Szelc

**Baylor**

| Lineup   | Time  | Score | Score Diff | Pts/Min | Reb | Stl | Tov | Ass | PPP    |
|--|-------|-------|------------|---------|-----|-----|-----|-----|--------|
| 0- Thamba F/ 11- Vital M/ 12- Butler J/ 31- Teague M/ 45- Mitchell D/                | 07:54 | 16-12 | 4          | 2.0253  | 5   | 0   | 1   | 4   | 1.2862 |
| 10- Flagler A/ 12- Butler J/ 23- Tchamwa Tchatchoua J/ 24- Mayer M/ 31- Teague M/    | 05:04 | 10-16 | -6         | 1.9737  | 2   | 2   | 1   | 3   | 1.1261 |
| 10- Flagler A/ 12- Butler J/ 23- Tchamwa Tchatchoua J/ 31- Teague M/ 45- Mitchell D/ | 04:34 | 11-17 | -6         | 2.4088  | 1   | 1   | 0   | 1   | 1.2557 |
| 10- Flagler A/ 11- Vital M/ 23- Tchamwa Tchatchoua J/ 31- Teague M/ 45- Mitchell D/  | 04:32 | 10-5  | 5          | 2.2059  | 2   | 3   | 0   | 3   | 1.4535 |
| 10- Flagler A/ 12- Butler J/ 23- Tchamwa Tchatchoua J/ 24- Mayer M/ 45- Mitchell D/  | 03:18 | 11-2  | 9          | 3.3333  | 3   | 2   | 0   | 1   | 1.8707 |
| 10- Flagler A/ 11- Vital M/ 12- Butler J/ 24- Mayer M/ 31- Teague M/                 | 02:58 | 2-4   | -2         | 0.6742  | 2   | 1   | 4   | 0   | 0.3401 |
| 10- Flagler A/ 23- Tchamwa Tchatchoua J/ 24- Mayer M/ 31- Teague M/ 45- Mitchell D/  | 02:52 | 3-2   | 1          | 1.0465  | 3   | 0   | 1   | 0   | 0.6944 |
| 12- Butler J/ 23- Tchamwa Tchatchoua J/ 24- Mayer M/ 31- Teague M/ 45- Mitchell D/   | 02:51 | 6-1   | 5          | 2.1053  | 5   | 0   | 2   | 2   | 1.2000 |
| 0- Thamba F/ 12- Butler J/ 24- Mayer M/ 31- Teague M/ 45- Mitchell D/                | 01:47 | 1-4   | -3         | 0.5607  | 0   | 0   | 0   | 0   | 0.4098 |
| 0- Thamba F/ 10- Flagler A/ 11- Vital M/ 12- Butler J/ 31- Teague M/                 | 01:39 | 5-7   | -2         | 3.0303  | 1   | 0   | 0   | 1   | 2.5000 |
| 0- Thamba F/ 10- Flagler A/ 12- Butler J/ 24- Mayer M/ 31- Teague M/                 | 01:38 | 4-2   | 2          | 2.4490  | 3   | 0   | 0   | 2   | 1.0000 |
| 11- Vital M/ 12- Butler J/ 23- Tchamwa Tchatchoua J/ 31- Teague M/ 45- Mitchell D/   | 00:53 | 2-0   | 2          | 2.2642  | 2   | 0   | 0   | 0   | 2.0000 |