

# ARKANSAS

W O M E N ' S B A S K E T B A L L

NOVEMBER 12 | 12:00PM

vs. UAPB

SAMARA

**SPENCER**

FORT LAUDERDALE, FL FRESHMAN GUARD





# ARKANSAS® RAZORBACKS®

FOULS	NO.	PLAYER	FIELD GOALS	3-POINT FIELD GOALS	FREE THROWS	POINTS
	1	<b>MARQUESHA DAVIS</b> G   JR   6-0   MCGEEHEE, ARK.				
	2	<b>SAMARA SPENCER</b> G   FR   5-7   FORT LAUDERDALE, FLA.				
	3	<b>ELAUNA EATON</b> G   RFR   6-0   HELENA, ARK.				
	4	<b>ERYNN BARNUM</b> F   RJR   6-2   LITTLE ROCK, ARK.				
	11	<b>RYLEE LANGERMAN</b> G   SO   5-9   NORMAN, OKLA.				
	13	<b>SASHA GOFORTH</b> G   SO   6-1   FAYETTEVILLE, ARK.				
	15	<b>ASHLYN SAGE</b> G   FR   6-2   WEATHERFORD, OKLA.				
	22	<b>AVERY HUGHES</b> G   JR   5-7   BENTONVILLE, ARK.				
	23	<b>AMBER RAMIREZ</b> G   RSR   5-9   SAN ANTONIO, TEXAS				
	24	<b>JERSEY WOLFENBARGER</b> G/F   FR   6-5   FORT SMITH, ARK.				
	25	<b>DESTINEE OBERG</b> C   JR   6-3   BURNSVILLE, MINN.				
	30	<b>MARYAM DAUDA</b> F   FR   6-4   BENTONVILLE, ARK.				
	43	<b>MAKAYLA DANIELS</b> G   JR   5-9   FREDERICK, MD.				
	55	<b>EMRIE ELLIS</b> F   FR   6-3   VANOSS, OKLA.				

**Head Coach:** Mike Neighbors

**Associate Head Coach:** Todd Schaefer **Assistant Coaches:** Pauline Love, Lacey Goldwire

## UAPB GOLDEN LIONS

FOULS	NO.	PLAYER	FIELD GOALS	3-POINT FIELD GOALS	FREE THROWS	POINTS
	1	<b>TYEISHA JUHAN</b> G   SR   5-10   JONESBORO, GEORGIA				
	2	<b>SADE HUDSON</b> G   SR   5-8   MEMPHIS, TENN.				
	3	<b>JOYCE KENNERSON</b> G   GR   5-4   PORT ARTHUR, TEXAS				
	4	<b>KOURTNEY RITTENBERRY</b> G   FR   6-1   LOGANVILLE, GA.				
	5	<b>SHEKINAH RACHEL</b> C   JR   6-2   MIAMI, FLA.				
	10	<b>KASSIDY INGRAM</b> F   JR   5-10   CARLISLE, PENN.				
	11	<b>TYLER PYBURN</b> G   JR   5-9   BLOOMING GROVE, TEXAS				
	12	<b>MARIQUITA COTTEN</b> G   SR   5-2   JACKSON, MISS.				
	20	<b>TIMIYA GUEVARA</b> G   FR   5-5   DENVER, COLO.				
	21	<b>TAKAYLYN BUSBY</b> G   SO   5-10   DALLAS, TEXAS				
	22	<b>SCHICORYIA ORR</b> G   RJR   5-7   BIRMINGHAM, ALA.				
	23	<b>KHADIJAH BROWN</b> C   GR   6-3   MIAMI, FLA.				
	24	<b>BRYANA LANGFORD</b> G   SR   5-9   BATON ROUGE, LA.				
	25	<b>KAILA WALKER</b> G   JR   5-5   LITTLE ROCK, ARK.				
	32	<b>STEPHANIE OKOWI</b> F   RFR   6-0   OAKLAND, CALIF.				
	40	<b>MORGAN CHRISTIAN</b> F   SR   5-10   MARION, ARK.				
	54	<b>MAYA PEAT</b> C   SO   6-6   CHANDLER, ARIZ.				

**Head Coach:** Dawn Thornton

**Assistant Coaches:** Nicole Mealing, Briona Brown, Nathaniel Bell

## 2021-22 Razorback Basketball Schedule

Date	Opponent	Time	TV/RESULT
Nov. 5	UAFA (Exh.)	6 p.m.	W, 114-55
Nov. 10	Tarleton State	7 p.m.	W, 85-33
Nov. 12	UAPB	12 p.m.	SECN+
Nov. 14	@ UConn	12 p.m.	SNY
Nov. 19	@ Arkansas State	7 p.m.	-
Nov. 22	SMU	7 p.m.	SECN+
Nov. 27	Sam Houston	2 p.m.	SECN+
Nov. 28	Belmont	7 p.m.	SECN+
Dec. 2	@ UCF	5 p.m.	ESPN+
Dec. 5	Cal	1 p.m.	SECN+
Dec. 9	Jackson State	7 p.m.	SECN+
Dec. 12	Little Rock	4 p.m.	SEC Network
Dec. 18	Central Arkansas!	1 p.m.	-
Dec. 21	Creighton	1 p.m.	SECN+
Dec. 30	@ Ole Miss*	6 p.m.	SECN+
Jan. 2	Tennessee*	12 p.m.	SECN/ESPN2
Jan. 6	@ Vanderbilt*	7:30 p.m.	SEC Network
Jan. 9	Missouri	2 p.m.	SECN+
Jan. 16	South Carolina*	2 p.m.	SECN/ESPN2
Jan. 20	@ Alabama*	8 p.m.	SEC Network
Jan. 23	Mississippi State*	3 p.m.	SEC Network
Jan. 27	LSU*	7:30 p.m.	SEC Network
Jan. 31	@ Tennessee*	6 p.m.	SEC Network
Feb. 3	@ Texas A&M*	8 p.m.	SEC Network
Feb. 10	Auburn*	7 p.m.	SECN+
Feb. 13	@ Missouri*	2 p.m.	SECN+
Feb. 17	@ Florida*	5 p.m.	SECN+
Feb. 20	Kentucky*	1 p.m.	SEC Network
Feb. 24	Georgia*	7 p.m.	SECN+
Feb. 27	@ Mississippi State*	5 p.m.	SEC Network

!- at Simmons Bank Arena  
\*-SEC Contest | @ SEC Tournament | All Times CT

**FACEBOOK.COM/RAZORBACKWBB**  
**@RAZORBACKWBB (Twitter/Instagram)**  
**YouTube.com: Razorback Women's Basketball**  
**Podcast: CoachNeighbors.com**



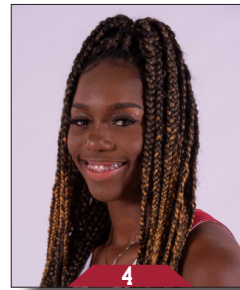
**Marquesha Davis**



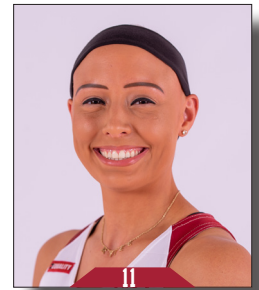
**Samara Spencer**



**Elauna Eaton**



**Erynn Barnum**



**Rylee Langerman**



**Sasha Goforth**



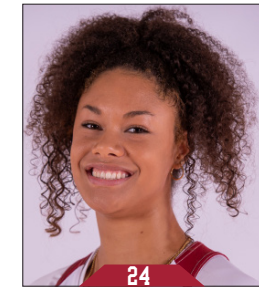
**Ashlyn Sage**



**Avery Hughes**



**Amber Ramirez**



**Jersey Wolfenbarger**



**Destinee Oberg**



**Maryam Dauda**



**Makayla Daniels**



**Emrie Ellis**



**Mike Neighbors**  
Head Coach  
Fifth Season



**Todd Schaefer**  
Associate Head Coach  
Fifth Season



**Pauline Love**  
Assistant Coach  
Fifth Season



**Lacey Goldwire**  
Assistant Coach  
Third Season



**Amber Shirey**  
Director of Operations



**C'eira Ricketts**  
Director of SA Development



**Jeff Brazil**  
Special Assistant to the HC &  
Director of Video



**Simone Rush**  
Athletic Trainer

# THANK YOU TO OUR SPONSOR



**#SIDE<sup>BY</sup>SIDE**