

# ARKANSAS

W O M E N ' S   B A S K E T B A L L

AVERY  
**HUGHES**  
BENTONVILLE, AR | JUNIOR | GUARD

DECEMBER 9 | 7:00PM  
**vs. JACKSON STATE**





# ARKANSAS® RAZORBACKS®

FOULS	NO.	PLAYER	FIELD GOALS	3-POINT FIELD GOALS	FREE THROWS	POINTS
	<b>2</b>	<b>SAMARA SPENCER</b> G   FR   5-7   FORT LAUDERDALE, FLA.				
	<b>3</b>	<b>ELAUNA EATON</b> G   RFR   6-0   HELENA, ARK.				
	<b>4</b>	<b>ERYNN BARNUM</b> F   RJR   6-2   LITTLE ROCK, ARK.				
	<b>11</b>	<b>RYLEE LANGERMAN</b> G   SO   5-9   NORMAN, OKLA.				
	<b>13</b>	<b>SASHA GOFORTH</b> G   SO   6-1   FAYETTEVILLE, ARK.				
	<b>15</b>	<b>ASHLYN SAGE</b> G   FR   6-2   WEATHERFORD, OKLA.				
	<b>22</b>	<b>AVERY HUGHES</b> G   JR   5-7   BENTONVILLE, ARK.				
	<b>23</b>	<b>AMBER RAMIREZ</b> G   RSR   5-9   SAN ANTONIO, TEXAS				
	<b>24</b>	<b>JERSEY WOLFENBARGER</b> G/F   FR   6-5   FORT SMITH, ARK.				
	<b>25</b>	<b>DESTINEE OBERG</b> C   JR   6-3   BURNSVILLE, MINN.				
	<b>30</b>	<b>MARYAM DAUDA</b> F   FR   6-4   BENTONVILLE, ARK.				
	<b>43</b>	<b>MAKAYLA DANIELS</b> G   JR   5-9   FREDERICK, MD.				
	<b>55</b>	<b>EMRIE ELLIS</b> F   FR   6-3   VANOSS, OKLA.				

**Head Coach:** Mike Neighbors

**Associate Head Coach:** Todd Schaefer **Assistant Coaches:** Pauline Love, Lacey Goldwire

# JACKSON STATE TIGERS

FOULS	NO.	PLAYER	FIELD GOALS	3-POINT FIELD GOALS	FREE THROWS	POINTS
	<b>0</b>	<b>DAJA WOODARD</b> F   RJR   6-3   MOBILE, ALA.				
	<b>1</b>	<b>TI'LAN BOLER</b> G   SO   5-11   MERIDIAN, MISS.				
	<b>2</b>	<b>MIYA CRUMP</b> F   RJR   6-1   HOUSTON, TEXAS				
	<b>4</b>	<b>AMESHYA WILLIAMS-HOLLIDAY</b> C   SR   6-4   GULFPORT, MISS.				
	<b>10</b>	<b>KESHUNA LUCKETT</b> G   JR   5-6   JACKSON, MISS.				
	<b>11</b>	<b>DAPHANE WHITE</b> C   JR   6-5   GULFPORT, MISS.				
	<b>12</b>	<b>JARIYAH COVINGTON</b> G   SR   5-5   STARKVILLE, MISS.				
	<b>14</b>	<b>AALIYAH MOSLEY</b> G   FR   5-6   MADSION, MISS.				
	<b>20</b>	<b>AREYANNA HUNTER</b> G   FR   5-6   LOUISVILLE, MISS.				
	<b>21</b>	<b>LAMIRACLE SIMS</b> F   SR   6-1   MOSS POINT, MISS.				
	<b>23</b>	<b>JA'LEAH HICKMON</b> F   FR   6-0   NEWTON, MISS.				
	<b>24</b>	<b>DAYZSHA ROGAN</b> G   SR   5-4   RIPLEY, MISS.				
	<b>25</b>	<b>ALEXIS ROBERTS</b> C   FR   6-2   NEWTON, MISS.				
	<b>34</b>	<b>KENNEDY RANSOM</b> F   FR   6-2   FLORA, MISS.				

**Head Coach:** Tomekia Reed

**Assistant Coaches:** Lashonda Cousin, Jonathan Williams, Chase Campbell

## 2021-22 Razorback Basketball Schedule

Date	Opponent	Time	TV/RESULT
Nov. 5	UAFS (Exh.)	6 p.m.	W, 114-55
Nov. 10	Tarleton State	7 p.m.	W, 85-33
Nov. 12	UAPB	12 p.m.	W, 96-53
Nov. 14	@ UConn	12 p.m.	L, 95-80
Nov. 19	@ Arkansas State	7 p.m.	W, 94-71
Nov. 22	SMU	7 p.m.	W, 65-58
Nov. 27	Sam Houston	2 p.m.	W, 92-66
Nov. 28	Belmont	7 p.m.	W, 83-63
Dec. 2	@ UCF	5 p.m.	L, 52-51
Dec. 5	Cal	1 p.m.	W, 84-67
Dec. 9	Jackson State	7 p.m.	SECN+
Dec. 12	Little Rock	4 p.m.	SEC Network
Dec. 18	Central Arkansas!	1 p.m.	-
Dec. 21	Creighton	1 p.m.	SECN+
Dec. 30	@ Ole Miss*	6 p.m.	SECN+
Jan. 2	Tennessee*	12 p.m.	SECN/ESPN2
Jan. 6	@ Vanderbilt*	7:30 p.m.	SEC Network
Jan. 9	Missouri	2 p.m.	SECN+
Jan. 16	South Carolina*	2 p.m.	SECN/ESPN2
Jan. 20	@ Alabama*	8 p.m.	SEC Network
Jan. 23	Mississippi State*	3 p.m.	SEC Network
Jan. 27	LSU*	7:30 p.m.	SEC Network
Jan. 31	@ Tennessee*	6 p.m.	SEC Network
Feb. 3	@ Texas A&M*	8 p.m.	SEC Network
Feb. 10	Auburn*	7 p.m.	SECN+
Feb. 13	@ Missouri*	2 p.m.	SECN+
Feb. 17	@ Florida*	5 p.m.	SECN+
Feb. 20	Kentucky*	1 p.m.	SEC Network
Feb. 24	Georgia*	7 p.m.	SECN+
Feb. 27	@ Mississippi State*	5 p.m.	SEC Network

!- at Simmons Bank Arena  
 \*-SEC Contest | @ SEC Tournament | All Times CT

**FACEBOOK.COM/RAZORBACKWBB**  
**@RAZORBACKWBB (Twitter/Instagram)**  
**YouTube.com: Razorback Women's Basketball**  
**Podcast: CoachNeighbors.com**



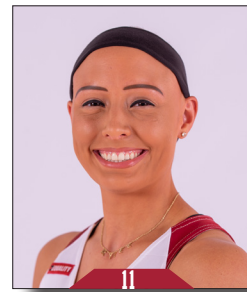
**Samara Spencer**



**Elauna Eaton**



**Erynn Barnum**



**Rylee Langerman**



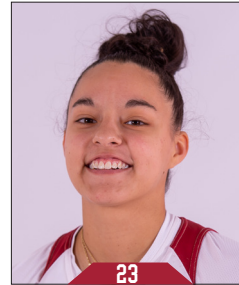
**Sasha Goforth**



**Ashlyn Sage**



**Avery Hughes**



**Amber Ramirez**



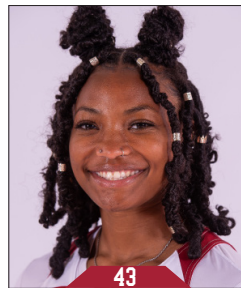
**Jersey Wolfenbarger**



**Destinee Oberg**



**Maryam Dauda**



**Makayla Daniels**



**Emrie Ellis**



**Mike Neighbors**  
Head Coach  
Fifth Season



**Todd Schaefer**  
Associate Head Coach  
Fifth Season



**Pauline Love**  
Assistant Coach  
Fifth Season



**Lacey Goldwire**  
Assistant Coach  
Third Season



**Amber Shirey**  
Director of Operations



**C'eira Ricketts**  
Director of SA Development



**Jeff Brazil**  
Special Assistant to the HC &  
Director of Video



**Simone Rush**  
Athletic Trainer

**THANK YOU TO OUR SPONSOR**



**#SIDE<sup>BY</sup>SIDE**