

# ARKANSAS

W O M E N ' S B A S K E T B A L L

AMBER  
**RAMIREZ**  
SAN ANTONIO, TX | SENIOR | GUARD

JANUARY 23 | 3:00PM  
VS. MISSISSIPPI STATE





# ARKANSAS® RAZORBACKS®

FOULS	NO.	PLAYER	FIELD GOALS	3-POINT FIELD GOALS	FREE THROWS	POINTS
	<b>2</b>	<b>SAMARA SPENCER</b> G   FR   5-7   FORT LAUDERDALE, FLA.				
	<b>3</b>	<b>ELAUNA EATON</b> G   RFR   6-0   HELENA, ARK.				
	<b>4</b>	<b>ERYNN BARNUM</b> F   RJR   6-2   LITTLE ROCK, ARK.				
	<b>11</b>	<b>RYLEE LANGERMAN</b> G   SO   5-9   NORMAN, OKLA.				
	<b>13</b>	<b>SASHA GOFORTH</b> G   SO   6-1   FAYETTEVILLE, ARK.				
	<b>15</b>	<b>ASHLYN SAGE</b> G   FR   6-2   WEATHERFORD, OKLA.				
	<b>22</b>	<b>AVERY HUGHES</b> G   JR   5-7   BENTONVILLE, ARK.				
	<b>23</b>	<b>AMBER RAMIREZ</b> G   RSR   5-9   SAN ANTONIO, TEXAS				
	<b>24</b>	<b>JERSEY WOLFENBARGER</b> G/F   FR   6-5   FORT SMITH, ARK.				
	<b>25</b>	<b>DESTINEE OBERG</b> C   JR   6-3   BURNSVILLE, MINN.				
	<b>30</b>	<b>MARYAM DAUDA</b> F   FR   6-4   BENTONVILLE, ARK.				
	<b>43</b>	<b>MAKAYLA DANIELS</b> G   JR   5-9   FREDERICK, MD.				
	<b>55</b>	<b>EMRIE ELLIS</b> F   FR   6-3   VANOSS, OKLA.				

**Head Coach:** Mike Neighbors

**Associate Head Coach:** Todd Schaefer **Assistant Coaches:** Pauline Love, Lacey Goldwire

## 2021-22 Razorback Basketball Schedule

Date	Opponent	Time	TV/RESULT
Nov. 5	UAFA (Exh.)	6 p.m.	W, 114-55
Nov. 10	Tarleton State	7 p.m.	W, 85-33
Nov. 12	UAPB	12 p.m.	W, 96-53
Nov. 14	@ UConn	12 p.m.	L, 95-80
Nov. 19	@ Arkansas State	7 p.m.	W, 94-71
Nov. 22	SMU	7 p.m.	W, 65-58
Nov. 27	Sam Houston	2 p.m.	W, 92-66
Nov. 28	Belmont	7 p.m.	W, 83-63
Dec. 2	@ UCF	5 p.m.	L, 52-51
Dec. 5	Cal	1 p.m.	W, 84-67
Dec. 9	Jackson State	7 p.m.	W, 66-62
Dec. 12	Little Rock	4 p.m.	W, 73-39
Dec. 18	Central Arkansas!	1 p.m.	W, 82-44
Dec. 21	Creighton	1 p.m.	L, 81-72
Dec. 30	@ Ole Miss*	6 p.m.	POSTPONED
Jan. 2	Tennessee*	12 p.m.	L, 70-63
Jan. 6	@ Vanderbilt*	7:30 p.m.	L, 54-51
Jan. 9	Missouri	2 p.m.	W, 83-73
Jan. 16	South Carolina*	2:30 p.m.	L, 61-52
Jan. 20	@ Alabama*	8 p.m.	SEC Network
Jan. 23	Mississippi State*	3 p.m.	SEC Network
Jan. 27	LSU*	7:30 p.m.	SEC Network
Jan. 31	@ Tennessee*	6 p.m.	SEC Network
Feb. 3	@ Texas A&M*	8 p.m.	SEC Network
Feb. 10	Auburn*	7 p.m.	SECN+
Feb. 13	@ Missouri*	2 p.m.	SECN+
Feb. 17	@ Florida*	5 p.m.	SECN+
Feb. 20	Kentucky*	1 p.m.	SEC Network
Feb. 24	Georgia*	7 p.m.	SECN+
Feb. 27	@ Mississippi State*	5 p.m.	SEC Network

!- at Simmons Bank Arena  
\*-SEC Contest | @ SEC Tournament | All Times CT

# MISSISSIPPI STATE BULLDOGS

FOULS	NO.	PLAYER	FIELD GOALS	3-POINT FIELD GOALS	FREE THROWS	POINTS
	<b>0</b>	<b>ANASTASIA HAYES</b> G   RSR   5-7   MURFREESBORO, TENN.				
	<b>1</b>	<b>MYAH TAYLOR</b> G   RSR   5-7   OLIVE BRANCH, MISS.				
	<b>2</b>	<b>JERKAILA JORDAN</b> G   SO   5-9   NEW ORLEANS, LA.				
	<b>4</b>	<b>JESSIKA CARTER</b> F/C   SR   6-5   WAVERLY HALL, GA.				
	<b>5</b>	<b>RICKEA JACKSON</b> F   JR   6-2   DETROIT, MICH.				
	<b>10</b>	<b>AISLYNN HAYES</b> G   JR   5-6   MURFREESBORO, TENN.				
	<b>12</b>	<b>MIA MOORE</b> G   FR   5-6   ALPHARETTA, GA.				
	<b>15</b>	<b>ALASIA HAYES</b> G   SO   5-7   MURFREESBORO, TENN.				
	<b>22</b>	<b>CHARLOTTE KOHL</b> C   SO   6-5   GLESSSEN, GERMANY				
	<b>23</b>	<b>CATERION THOMPSON</b> G   GR   5-11   LIMA, OHIO				
	<b>24</b>	<b>ASHLEY JONES</b> G   RJR   5-7   PHILADELPHIA, PA.				
	<b>25</b>	<b>DENAE CARTER</b> F   FR   6-0   PHILADELPHIA, PA.				
	<b>44</b>	<b>RAVEN FARLEY</b> F   GR   6-4   ELIZABETH, N.J.				

**Head Coach:** Doug Novak

**Assistant Coaches:** Eddie Benton, Malikah Willis, Bob Thornton

**FACEBOOK.COM/RAZORBACKWBB**  
**@RAZORBACKWBB (Twitter/Instagram)**  
**YouTube.com: Razorback Women's Basketball**  
**Podcast: CoachNeighbors.com**



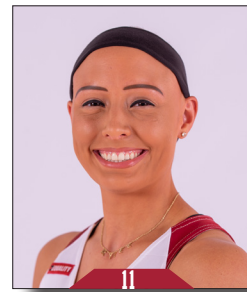
**Samara Spencer**



**Elauna Eaton**



**Erynn Barnum**



**Rylee Langerman**



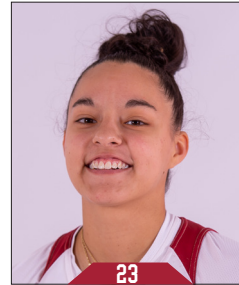
**Sasha Goforth**



**Ashlyn Sage**



**Avery Hughes**



**Amber Ramirez**



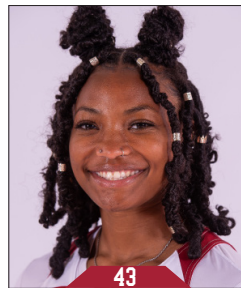
**Jersey Wolfenbarger**



**Destinee Oberg**



**Maryam Dauda**



**Makayla Daniels**



**Emrie Ellis**



**Mike Neighbors**  
Head Coach  
Fifth Season



**Todd Schaefer**  
Associate Head Coach  
Fifth Season



**Pauline Love**  
Assistant Coach  
Fifth Season



**Lacey Goldwire**  
Assistant Coach  
Third Season



**Amber Shirey**  
Director of Operations



**C'eira Ricketts**  
Director of SA Development



**Jeff Brazil**  
Special Assistant to the HC &  
Director of Video



**Simone Rush**  
Athletic Trainer

**THANK YOU TO OUR SPONSOR**



**#SIDE<sup>BY</sup>SIDE**