



# GAME NOTES

## 2022 SCHEDULE

OVERALL: 7-3 | SEC: 0-0

H: 4-1 | A: 0-0 | N: 3-2 | L10: 7-3 | TOP 25: 0-2

DATE	OPPONENT	LOCATION	TIME/RESULT
F10	vs. Rutgers!	Puerto Vallarta, Mexico	W, 4-0
F11	vs. Memphis!	Puerto Vallarta, Mexico	W, 4-3 (8)
F11	vs. Washington!	Puerto Vallarta, Mexico	L, 8-0.
F12	vs. Long Beach State!	Puerto Vallarta, Mexico	W, 10-0.
F12	vs. Washington!	Puerto Vallarta, Mexico	L, 10-5.
F17	Wichita State	Fayetteville, Ark.	Postponed
F18	Illinois^	Fayetteville, Ark.	W, 6-3
F19	Wichita State^	Fayetteville, Ark.	W, 7-4.
F19	Longwood^	Fayetteville, Ark.	W, 15-4 (5)
F20	Illinois^	Fayetteville, Ark.	L, 8-6
F20	Western Illinois^	Fayetteville, Ark.	W, 13-3 (5)
F27	Louisville%	Fayetteville, Ark.	5 p.m.
F28	Louisville%	Fayetteville, Ark.	10 a.m.
F28	Louisville	Fayetteville, Ark.	12:15 p.m.
M3	Missouri State&	Fayetteville, Ark.	5 p.m.
M4	Kennesaw State&	Fayetteville, Ark.	3:30 p.m.
M4	Kansas City&	Fayetteville, Ark.	6 p.m.
M5	Missouri State&	Fayetteville, Ark.	3 p.m.
M5	Kennesaw State&	Fayetteville, Ark.	5:30 p.m.
M6	Kansas City&	Fayetteville, Ark.	2 p.m.
M10	at Liberty	Lynchburg, Va.	3 p.m.
M11	vs. Lehigh#	Harrisonburg, Va.	10 a.m.
M11	vs. Maryland#	Harrisonburg, Va.	12:30 p.m.
M12	vs. Maryland#	Harrisonburg, Va.	9:30 a.m.
M12	at James Madison#	Harrisonburg, Va.	12 p.m.
M13	vs. Lehigh#	Harrisonburg, Va.	10 a.m.
M18	at Tennessee*	Knoxville, Tenn.	TBA
M19	at Tennessee*	Knoxville, Tenn.	TBA
M20	at Tennessee*	Knoxville, Tenn.	TBA
M26	LSU*	Fayetteville, Ark.	7:30 p.m.
M27	LSU*	Fayetteville, Ark.	12 p.m.
M28	LSU*	Fayetteville, Ark.	6 p.m.
A1	at Ole Miss*	Oxford, Miss.	TBA
A2	at Ole Miss*	Oxford, Miss.	12 p.m.
A3	at Ole Miss*	Oxford, Miss.	TBA
A5	at Central Arkansas	Conway, Ark.	6 p.m.
A8	Auburn*	Fayetteville, Ark.	TBA
A9	Auburn*	Fayetteville, Ark.	1 p.m.
A10	Auburn*	Fayetteville, Ark.	TBA
A12	SEMO	Fayetteville, Ark.	TBA
A12	SEMO	Fayetteville, Ark.	TBA
A15	Kentucky*	Fayetteville, Ark.	TBA
A16	Kentucky*	Fayetteville, Ark.	7 p.m.
A17	Kentucky*	Fayetteville, Ark.	1 p.m.
A22	at Florida*	Gainesville, Fla.	7 p.m.
A23	at Florida*	Gainesville, Fla.	1:30 p.m.
A24	at Florida*	Gainesville, Fla.	TBA
A26	Central Arkansas	Fayetteville, Ark.	TBA
A29	South Carolina*	Fayetteville, Ark.	TBA
A30	South Carolina*	Fayetteville, Ark.	TBA
M1	South Carolina*	Fayetteville, Ark.	TBA
M6	Texas A&M*	Bryan-College Station, Texas	TBA
M7	Texas A&M*	Bryan-College Station, Texas	2:30 p.m.
M8	Texas A&M*	Bryan-College Station, Texas	TBA
M10	SEC Tournament\$	Gainesville, Fla.	TBA

! Puerto Vallarta College Challenge | ^ Razorback Invitational | % Wooo Pig Classic | & Razorback Rumble | # JMU Dukes Invitational | \* SEC games | \$ SEC Tournament

Home games played at Bogle Park | Times central/subject to change

## GAME 11



FEB. 27, 2022 AT 5 P.M.. (CT)

**ARKANSAS (7-3)**

VS

**LOUISVILLE (7-3)**

## THE SERIES

Arkansas is 0-1 all-time against Louisville ... The two teams are meeting for the first time since Feb. 14, 2015 when the Razorbacks fell 11-5 in Clermont, Fla. The Razorbacks and Cardinals have four mutual opponents this season in Illinois, Western Illinois, Liberty and Kentucky.

## RAZORBACK NOTABLES

### Need to Know

Arkansas is coming off the program's first SEC regular season title (shared with Florida) last season, going 19-5 in conference play. The Razorbacks became the first team not named Florida or Alabama to win the conference's regular season title since Tennessee in 2007. On the road against league competition, the Hogs went 11-1, producing the most wins on the road during conference play by an SEC team since 2013 when the league adopted the current 24-game schedule. Arkansas posted a 43-11 overall record, recording the best win percentage (.796) and second-most total wins in program history. In the NCAA Tournament, Arkansas earned the No. 6 national need and swept the Fayetteville Regional before hosting the program's first Super Regional at Bogle Park.

### RUN KB RUN

KB Sides is making noise at the leadoff spot for the Razorbacks. Through 10 games, Sides has tallied 14 stolen bases, which leads the NCAA. Arkansas' single season stolen base record sits at 33, which was set by Dana Gulick in 1999. Additionally, Sides stole a program-record three bases in the Hogs' win over Western Illinois Feb. 20. The Alabama transfer hit two home runs over at the Razorback Invitational against Illinois, launching an inside-the-park home run to begin the weekend Feb. 18 before sending a solo shot to center in Arkansas' second game with the Illini on Feb. 20.

### Haff On Verge of 700 Strikeouts

Picher Mary Haff sits at 695 career strikeouts in a Razorback uniform heading into the Louisville series. Haff captured Arkansas' first SEC Pitcher of the Year award last season, pitching to a 26-7 record with five saves and a 1.55 ERA over 198.1 innings pitched. She struck out 198 hitters compared to just 39 walks issued. Haff was named an NFCA First Team All-American, becoming the first pitcher in program history to earn first team All-America recognition. USA Softball named Haff a Collegiate Player of the Year Top 10 Finalist. Haff was tremendous in conference play, and among pitchers who threw at least 80.0 innings, led the league in wins (11), saves (4) and appearances (19) while placing fourth in ERA (2.01) and strikeouts (79). Against Texas Tech, she hurled her second career no hitter, striking out six over 5.0 innings, and was one error away from a perfect game. Haff threw her first no-no against Northern Colorado in 2018 as a freshman and is the only pitcher in program history with multiple no-hitters. The Winter Haven, Fla. native sits atop the program's career record book tallying 81 wins and 14 saves.

### Coach of the Year

In her sixth season guiding the Arkansas softball program, head coach Courtney Deifel was named SEC Coach of the Year last season, becoming the second skipper in school history to earn the award, and first since Carrie Dever-Boaz in 1999. The Hogs began conference play winning 12 straight games, notching the fifth-best league start in SEC history and captured the program's first SEC title. The National Fastpitch Coaches Association (NFCA) awarded Deifel and the coaching staff the South Region Staff of the Year. Since Deifel took over in 2016, the Razorbacks have been ranked 55 times in the NFCA Coaches' Poll after previously being ranked only once in program history. Deifel's record in Fayetteville is 197-120 and 50-71 in SEC games. Her Razorbacks teams have qualified for the NCAA Tournament four times, the most among any coach in program history.

### Steady Veteran

Redshirt senior outfielder Hannah McEwen has been as consistent as can be for the Hogs the last four season and her name is littered throughout the program record book. McEwen ranks second in program history in batting

## BY THE NUMBERS (2022)



.308

70

73

28

16-18

4.31

.289

AVG.

RUNS

HITS

XBH

SB-ATT

ERA

OPP. AVG.

.295

68

81

33

7-18

3.53

.268



2022 TEAM QUICK FACTS

TEAM INFORMATION

2021 Overall Record	43-11
2021 SEC Record	19-5
SEC Finish	T-1st
NCAA Postseason	Super Regionals
Home Record	24-7
Away Record	18-2
Neutral Record	1-2
Student-Athletes Returning/Lost	17/10
Starters Returning/Lost	6/4
Newcomers	11

COACHING STAFF

Head Coach	Courtney Deifel (Seventh Season)
Record at Arkansas	197-120 (.621)
Career Record	221-147 (.601)
Assistant Coach	Yolanda McRae (Seventh Season)
Assistant Coach	Matt Meuchel (Sixth Season)
Volunteer Assistant	Annie Smith (Third Season)
Graduate Manager	Aly Manzo (First Season)
Graduate Manager	Tori Stafford (Second Season)
Director of Operations	Paige Williams (Sixth Season)

TEAM HISTORY

First Year of Program	1997
All-Time Record	720-754-1 (.487)
All-Time SEC Record	231-422 (.354)
SEC Championships/Last	1 (2021)
NCAA Appearances/Last	10 (2021)
Highest Preseason Rank	8/9 (2022)
Highest Preseason SEC	3rd (2022)
Highest In-Season Rank	6 (ESPN)/5 (NFCA) (Wk 14, 2021)

UNIVERSITY INFORMATION

Location	Fayetteville, Ark.
Founded	March 27, 1871
Enrollment	27,558
Nickname	Razorbacks
School Colors	Cardinal and White
Conference	Southeastern (SEC)
Interim Chancellor	Dr. Charles F. Robinson
Vice Chancellor/Director of Athletics	Hunter Yurachek
Faculty Athletic Representative	Gerald Jordan
University Website	www.uark.edu
Athletics Website	ArkansasRazorbacks.com

FACILITY INFORMATION

Home Field	Bogle Park
Opened	2009
Dimensions	(LF - 200, CF - 220, RF - 200)
Chair-back Seats	1,200

COMMUNICATIONS

Assistant Director (SB Contact)	Grace Tafolla
Associate AD for Communications	Kyle Parkinson
Email	gtafolla@uark.edu

Mailing Address  
Razorback Commuications  
PO Box 7777  
Fayetteville, AR 72702-7777

Overnight Address  
Razorback Communications  
1240 W. Leroy Pond Dr.  
Fayetteville, AR 72701

Woou Pig Classic

RAZORBACK ROSTER

#	NAME	POSITION	B/T	CLASS	HEIGHT	PREVIOUS SCHOOL	HOMETOWN
00	Kaitlyn Howard	UTL	L/L	So.	5-7	Sheridan HS	East End, Ark.
1	Raigan Kramer	INF	L/R	Fr.	5-4	Seaman HS	Topeka, Kan.
2	Valerie Ventura	INF	R/R	R-Jr.	5-6	Rio Mesa HS	Oxnard, Calif.
3	Larissa Cesena	INF/OF	L/R	R-Jr.	5-7	Martin Luther King HS	Riverside, Calif.
4	Mary Haff	RHP	R/R	R-Sr.	5-10	Lake Region HS	Winter Haven, Fla.
5	Lauren Howell	RHP	R/R	So.	5-7	Helias Catholic HS	Jefferson City, Mo.
6	Cally Kildow	UTL	R/R	So.	5-7	Gravette HS	Gravette, Ark.
7	Chenise Delce	RHP/UTL	R/R	R-Jr.	5-5	Carl Albert HS / Tulsa	Oklahoma City, Okla.
8	KB Sides	OF	L/R	R-Sr.	5-7	Sumiton Christian / Alabama	Dora, Ala.
10	Ally Sockey	INF	R/R	Fr.	5-6	Greenwood HS	Greenwood, Ark.
12	Abby Gordon	C	R/R	R-Fr.	6-0	Andale Garden Plain HS	Garden Plain, Kan.
14	Kacie Hoffmann	UTL	L/L	Fr.	5-9	Elkhorn South HS	Elkhorn, Neb.
15	Spencer Prigge	INF	L/R	Fr.	6-0	Horizon HS	Phoenix, Ariz.
16	Madi Conklin	C	R/R	Fr.	5-4	Southside HS	Fort Smith, Ark.
17	Taylor Ellsworth	C/UTL	R/R	Gr.	5-5	Georgetown HS / Texas	Georgetown, Texas
18	Marlene Friedman	INF	R/R	So.	5-5	Mater Dei HS	Huntington Beach, Calif.
21	Mallory Hardwick	UTL	L/L	Fr.	5-9	Bayard Rustin (Pa.) HS	Keller, Texas
20	Hannah Gammill	UTL	R/R	So.	5-8	Beebe HS	Beebe, Ark.
22	Linnie Malkin	OF	R/R	R-Sr.	5-11	Broomfield HS	Broomfield, Colo.
23	Hannah McEwen	OF	L/R	R-Sr.	5-7	Patrick Henry HS	San Diego, Calif.
28	Rylin Hedgecock	UTL	R/R	R-So.	5-9	Lowndes HS	Valdosta, Ga.
30	Chelsi Passage	INF	R/R	Fr.	5-3	Greenwood HS	Greenwood, Ark.
41	Danielle Gibson	INF	L/R	R-Sr.	6-0	Murrieta Valley HS / Arizona State	Murrieta, Calif.
42	Sam Torres	OF	L/L	R-Jr.	5-2	Chaparral HS	Temecula, Calif.
44	Callie Turner	RHP	L/L	R-So.	5-10	Land O'Lakes HS / Tennessee	Land O'Lakes, Fla.
72	Jenna Bloom	RHP	R/R	R-So.	5-10	Edison HS	Huntington Beach, Calif.
99	Audrie LaValley	INF	L/R	R-Jr.	5-6	Carl Albert HS / Oklahoma	Choctaw, Okla.

COACHING/SUPPORT STAFF

Head Coach	Courtney Deifel (California, 2003) - Seventh Season
Assistant Coach	Yolanda McRae (Georgia, 2004) - Seventh Season
Assistant Coach	Matt Meuchel (Arizona State, 2000) - Sixth Season
Volunteer Assistant	Annie Smith (Grinnell College, 1995) - Third Season
Director of Operations	Paige Williams (North Carolina, 2013) - Sixth Season
Graduate Manager	Tori Stafford (Tulsa, 2019) - Second Season
Graduate Manager	Aly Manzo (Arkansas, 2021) - First Season
Athletic Trainer	Andrew Kreis (Texas State, 2014) - Eighth Season
Manager	Baylee Andrews
Manager	Rachel Longmate
Manager	Parker Staggs

PRONUNCIATION GUIDE

#3 Larissa Cesena	.....Suh-SANE-ya
#6 Cally Kildow	.....Kiil-DOW
#7 Chenise Delce	.....CHEN-eeSe Del-ss
#15 Spencer Prigge	.....Prig-ee
#18 Marlene Friedman	.....FREED-man
#22 Linnie Malkin	.....Mal (like pal)-kin
#23 Hannah McEwen	.....Muh-CUE-in
Courtney Deifel	.....DIE-ful
Matt Meuchel	.....Michael
Aly Manzo	.....Allie MAHN-zo

RAZORBACKS BY STATE

**California (7)** – Valerie Ventura, Larissa Cesena, Marlene Friedman, Hannah McEwen, Danielle Gibson, Sam Torres, Jenna Bloom

**Arkansas (6)** – Madi Conklin, Kaitlyn Howard, Cally Kildow, Hannah Gammill, Chelsi Passage, Ally Sockey

**Florida (2)** – Mary Haff, Callie Turner

**Kansas (2)** – Abby Gordon, Raigan Kramer

**Oklahoma (2)** – Chenise Delce, Audrie LaValley

**Texas (2)** – Taylor Ellsworth, Mallory Hardwick

**Arizona (1)** – Spencer Prigge

**Colorado (1)** – Linnie Malkin

**Georgia (1)** – Rylin Hedgecock

**Missouri (1)** – Lauren Howell

**Nebraska (1)** – Kacie Hoffmann

**Alabama (1)** – KB Sides

RAZORBACKS BY CLASS

**Graduates (1)** – Taylor Ellsworth

**Redshirt Seniors (5)** – Danielle Gibson, Mary Haff, Linnie Malkin, Hannah McEwen, KB Sides

**Redshirt Juniors (5)** – Larissa Cesena, Chenise Delce, Audrie LaValley, Sam Torres, Valerie Ventura

**Redshirt Sophomores (3)** – Jenna Bloom, Rylin Hedgecock, Callie Turner

**Sophomores (5)** – Marlene Friedman, Hannah Gammill, Kaitlyn Howard, Lauren Howell, Cally Kildow

**Redshirt Freshmen (1)** – Abby Gordon

**Freshmen (7)** – Madi Conklin, Mallory Hardwick, Kacie Hoffmann, Raigan Kramer, Chelsi Passage, Spencer Prigge, Ally Sockey

Woou Pig Classic

average (.354), and ranks second in on-base percentage (.456), second in runs scored (166), third in walks (99), third in doubles (39), seventh in slugging percentage (.535) and eighth in hits (213) and seventh in RBI (116).

Backs Back in Bogle against Louisville

Inclement weather conditions caused the Woou Pig Classic schedule to shift a few times, but the Arkansas Razorbacks are now scheduled to play a three-game series against Louisville Feb. 27-28. The Razorbacks and Cardinals will begin the series on Feb. 27 with a 5 p.m. game before concluding the weekend with a Feb. 28 double-header scheduled to begin at 10 a.m.

Gibson, Haff named Preseason All-SEC, Third-Team All-America

Seniors Danielle Gibson and Mary Haff have been named preseason All-SEC by the league's coaches. The duo has also been named third-team preseason All-America by Softball America. Gibson slugged her way through the 2021 season, slashing .355/.408/.721 with 15 home runs and 51 RBIs to pick up NFCA Second-Team All-America honors. She also added All-SEC second team and SEC All-Defensive Team accolades to her redshirt junior campaign that helped Arkansas to its first-ever Southeastern Conference title in 2021. Haff is coming off a stellar 2021 season earning SEC co-Pitcher of the Year along with NFCA First-Team All-America and All-SEC honors. She became the first Arkansas pitcher in program history to earn SEC Pitcher of the Year status and the first pitcher at Arkansas to be named first-team All-America by the NFCA. She went 26-7 last season with five saves and a 1.55 ERA over 40 appearances, 25 starts.

Razorbacks picked to finish 3rd in SEC

The defending Southeastern Conference champion Arkansas Razorbacks have been picked to finish third in the league this season by the league's coaches. Points for the poll were awarded on a 1-2-3-4-5-6-7-8-9-10-11-12 basis. Coaches were not allowed to vote for their own team.

The Portal delivers

Arkansas dipped into the transfer portal this offseason and came away with fourth athletes that are expected to contribute this season.

Outfielder KB Sides joins the Razorbacks from Alabama. Sides was a staple in the Crimson Tide's lineup over the last three years, starting 143 games in her career. This past season she started 47 of the 48 games she played in earning NFCA Third-Team All-South Region and a spot on the SEC All-Defensive Team. She hit .314 with 11 doubles while posting a .405 on-base percentage.

Pitcher Chenise Delce transferred from Tulsa with two years eligibility. Delce produced a stellar career for the Golden Hurricane in the circle going 29-15 with a 2.12 ERA in 57 games, 47 starts, with 279 strikeouts while opponents hit just .219 against her over three years. This past year, the Oklahoma City, Oklahoma native went 8-6 with a 3.30 ERA over 19 games, 16 starts.

Pitcher Callie Turner became a Razorback in July, transferring from Tennessee with three years eligibility. The Land O'Lakes, Fla. native made 40 career appearances spanning the 2020 and 2021 seasons and posted an 18-10 record, 2.50 ERA and 103 strikeouts over 168.1 innings pitched.

Catcher Taylor Ellsworth is a graduate transfer from Texas. At Texas she played in 171 games (162 starts) earning NFCA All-Region Second Team (2021), NFCA All-Region First Team (2017), All-Big 12 First Team (2017), Big 12 All-Freshman Team (2017). As a Longhorn she totaled a .320/.387/.482 slash line with 144 hits, 25 doubles, 16 home runs, 54 walks and 89 RBI.

11 Arkansas games set for ESPN family of networks

The Razorbacks will appear on ESPN's family of networks 11 times during the regular season this spring in addition to having games available on SEC Network+. All of Arkansas' home games that will not be broadcast on ESPN's family of linear networks are scheduled to be available on SEC Network+ starting Feb. 24 against Louisville.

Date - Opponent - Time (Network)

March 6 - Kansas City - 2 p.m. (SECN)

March 26 - LSU - 7:30 p.m. (ESPN2)

March 27 - LSU - 12 p.m. (ESPN2)

March 28 - LSU - 6 p.m. (SECN)

April 2 - at Ole Miss - 12 p.m. (SECN)

April 9 - Auburn - 1 p.m. (SECN)

April 16 - Kentucky - 7 p.m. (ESPN2)

April 17 - Kentucky - 1 p.m. (SECN)

April 22 - at Florida - 7 p.m. (ESPNU)

April 23 - at Florida - 1:30 p.m. (ESPN2)

May 7 - at Texas A&M - 2:30 p.m. (SECN)

Lots Back for Backs

Arkansas brings back a lot from last year's SEC champion squad. On the mound, Mary Haff leads the way on a pitching staff that returns 258 strikeouts (78.4%) from last year. Haff's 198 led the team last year and ranked 30th nationally. Her 198.1 innings also paced the squad and are a big reason why 73.7% of last season's innings return to the circle for the Razorbacks. In the lineup, the Hogs return five players that started at least 30 games in Linnie Malkin (54), Danielle Gibson (50), Hannah McEwan (44), Hannah Gammill (38) and Sam Torres (32). Gibson's 61 hits, 16 doubles and 51 RBIs led the team and

Malkin's 18 homers led the way. The roster brings back 183 runs (62.7%), 217 hits (57.9%), 37 doubles (61.7%), 50 home runs (52.6%) and 157 RBIs (56.5%).

Talented Newbies

The Razorbacks' freshman class features four players that were ranked in the Top 50 nationally by various media outlets. Madi Conklin (No. 46 by Extra Inning Softball), Raigan Kramer (No. 28 by Extra Inning Softball), Spencer Prigge (No. 27 by FloSoftball) and Ally Sockey (No. 27 by Extra Inning Softball) lead a talented group of seven signees.

Hogs haul in many postseason awards

Pitcher Mary Haff earned SEC Co-Pitcher of the Year honors, becoming the first Arkansas pitcher to win the award in program history. Courtney Deifel garnered SEC Coach of the Year recognition, the first for Arkansas since Carie Dever-Boaz in 1999. The Razorbacks also saw Haff and infielder Braxton Burnside named to the All-SEC First Team and infielder Danielle Gibson, outfielder Hannah McEwen and pitcher Autumn Storms tabbed to the All-SEC Second team. Additionally, Gibson earned SEC All-Defensive Team recognition and pitcher Jenna Bloom was named to the All-SEC Newcomer Team. The five total selections on the first and second team is the most in a single year in program history.

Sooiie Sluggers

Three Arkansas sluggers entered the program's single-season top five leaders in home runs just last season. The top two single-season power marks in school history were both set last year by Braxton Burnside and Linnie Malkin. Danielle Gibson placed fourth with 15 homers also in 2021. As a team Arkansas obliterated the school record hitting 95 home runs. The previous team high in the Deifel era was 59 home runs in 2017, which ranks fifth in school history.

ARKANSAS SINGLE SEASON HOME RUN LEADERS

Rank	Player	Home Runs	Year
1.	Braxton Burnside	25	2021
2.	<b>Linnie Malkin</b>	<b>18</b>	<b>2021</b>
3.	Nicole Schroeder	17	2017
4.	<b>Danielle Gibson</b>	<b>15</b>	<b>2021</b>
	Devon Wallace	15	2012
	Jessica Bachkora	15	2010

ARKANSAS SINGLE SEASON TEAM HOME RUN LEADERS

Rank	Year	Home Runs
1.	<b>2021</b>	<b>95</b>
2.	2008	65
3.	2013	61

Sooiie Sluggers Continued

Arkansas opened the 2022 Razorback Invitational on Feb. 18-20, smashing 11 home runs over the weekend. The Razorbacks amassed seven home runs against Illinois over a stretch of two games. Additionally, six different Razorbacks recorded home runs during the home-opening weekend (Gammill, Gibson, Sides, McEwen, Hoffman and Ellsworth). Freshman Kacie Hoffman notched her first-career home run during her first-career start Feb. 18 vs. Illinois. KB Sides hit an inside-the-park home run against Illinois Feb. 18. The Hogs smashed home runs in four of its five games during the Razorback Invitational. Sides, Hoffman and Taylor Ellsworth each hit their first home run in an Arkansas jersey over the weekend.

Bogle Bombers

Last season, Arkansas tied for fourth nationally and led the SEC, mashing a school record 95 home runs. The team shattered the previous program record of 65 long balls hit in 2008. The total ranks 10th in the SEC record book for most home runs in a single-season and were the most hit in a single season hit by an SEC team since Tennessee clubbed 100 in 2015. In 2022, Arkansas returns hitters that accounted for 50 of last year's 95 taters, led by designated player Linnie Malkin's 18 bombs.

Experience on the Bench

In addition to head coach Courtney Deifel, who is in her eighth year as a Division I head coach, assistant coach Matt Meuchel and volunteer assistant coach Annie Smith have been head coaches at Division I programs. Meuchel spent eight seasons (2009-16) as Nevada's head coach, leading the Wolfpack to a 2009 WAC championship and NCAA Tournament berth. While in Reno, Meuchel compiled a 196-217 overall record and guided the program's transition to Mountain West Conference membership. Smith was at the helm of Georgia Southern's program from 2012-17, posting a 176-166 mark, winning two Southern Conference regular season and tournament titles. The Eagles went 51-17 under Smith in SoCon play, and she later transitioned the program to Sun Belt Conference membership.

History Made

Danielle Gibson made history on Feb. 23, 2019 when she hit four home runs and collected 10 RBI inside Bogle Park as part of a 15-3 win over SIUE. The four home runs tie a Division I record reached only four times before, but what makes Gibson special is that she hit for the home run cycle - done only twice before EVER, she is the first to do so in only four innings. Her 16 total bases and 10 RBI are tied for the second-most in NCAA history and she is the third player to record 10 RBI in SEC history.

Deifel's Success at Bogle

Beginning with Deifel's first season as head coach in 2016, Arkansas has posted a 111-45 record inside Bogle Park, with an ultra-impressive 88-19 mark over the last four seasons (2018-22). The Razorbacks set a Bogle Park record winning 27 home games in 2018, which included three wins en route to the NCAA Fayetteville Regional Championship.

Arkansas' All-Time Winningest Coaches

Head coach Courtney Deifel became the program's fastest coach to 190 wins (305 games) and is just the second coach in program history to do so.

WINNINGEST ARKANSAS HEAD COACHES

Rank	Coach	Record	Years	NCAA Appearances
1.	Carrie Dever-Boaz	244-274-1	1997-2004	2 (2000, 2002)



USA TODAY/NFCA TOP 25			
#	Team	Record	Previous Rank
1	Oklahoma (32)	10-0	1
2	Alabama	9-0	2
3	Florida State	10-0	5
4	Florida	10-0	4
5	Washington	9-1	6
6	UCLA	7-3	3
7	Virginia Tech	8-2	8
8	Arizona	7-2	9
9	Oregon	8-1	12
10	Arkansas	7-3	10
11	Oklahoma State	6-4	7
12	Kentucky	9-1	16
13	Duke	8-2	14
14	Clemson	6-3	15
15	Georgia	9-2	13
16	Missouri	8-3	17
17	Tennessee	6-3	18
18	Northwestern	7-2	NR
19	Michigan	5-4	19
20	Louisiana	6-0	20
21	Auburn	9-1	NR
22	Arizona State	7-3	23
23	Texas	5-6	11
24	LSU	6-5	21
25	USF	6-2	NR
Others Receiving Votes: UCF (46), Notre Dame (37), Stanford (20), Wichita State (15), Minnesota (14), Iowa State (11), James Madison (11), Wisconsin (8), Illinois (5), Charlotte (2), Liberty (1)			
ESPN.COM/USA SOFTBALL TOP 25			
#	Team	Record	Previous Rank
1	Oklahoma (24)	10-0	1
2	Alabama	9-0	2
3	Florida State (1)	10-0	6
4	Florida	10-0	4
5	Wasington	9-1	5
6	UCLA	7-3	3
7	Virginia Tech	8-2	8
8	Arkansas	7-3	10
9	Clemson	6-3	12
10	Arizona	7-2	11
11	Oregon	8-1	13
12	Oklahoma State	6-4	7
13	Duke	8-2	14
14	Kentucky	9-1	19
15	Northwestern	7-2	23
16	Michigan	5-4	16
17	Tennessee	6-3	15
18	Georgia	9-2	18
19	Missouri	8-3	17
20	Louisiana	6-0	20
21	Auburn	9-1	25
22	Arizona State	7-3	21
23	LSU	6-5	22
24	Texas	5-6	9
25	South Florida	6-2	NR
Others receiving votes: Texas A&M, UCF, Notre Dame, Wisconsin, Minnesota, Illinois, BYU, James Madison, San Diego State, Stanford, Baylor, Oregon State			


D1SOFTBALL.COM			
#	Team	Record	Previous Rank
1	Oklahoma	10-0	1
2	Alabama	9-0	2
3	Florida	10-0	3
4	Florida State	10-0	5
5	Washington	9-1	6
6	UCLA	7-3	4
7	Virginia Tech	8-2	8
8	Arkansas	7-3	9
9	Duke	8-2	12
10	Northwestern	7-2	21
11	Oklahoma State	6-4	7
12	Oregon	8-1	11
13	Clemson	6-3	13
14	Missouri	8-3	14
15	Kentucky	9-1	18
16	Arizona	7-2	16
17	Michigan	5-4	17
18	Louisiana	6-0	20
19	Georgia	9-2	19
20	Louisiana	6-0	20
21	Tennessee	6-3	15
22	USF	6-2	NR
23	Arizona State	7-3	22
24	BYU	8-1	NR
25	LSU	6-5	23
SOFTBALL AMERICA			
#	Team	Record	Previous Rank
1	Oklahoma	10-0	1
2	Alabama	9-0	2
3	Florida State	10-0	5
4	Florida	10-0	6
5	Wasington	9-1	7
6	UCLA	7-3	3
7	Virginia Tech	8-2	8
8	Oklahoma State	6-4	4
9	Northwestern	7-2	NR
10	Duke	7-2	9
11	Oregon	8-1	12
12	Clemson	6-3	14
13	Arizona	7-2	10
14	Arkansas	7-3	13
15	Louisiana	6-0	15
16	Kentucky	9-1	20
17	Michigan	5-4	18
18	Missouri	8-3	17
19	Tennessee	6-3	21
20	Georiga	9-2	16
21	LSU	6-5	19
22	Auburn	9-1	NR
23	USF	6-2	NR
24	Notre Dame	7-3	NR
25	Arizona State	7-3	23

ARKANSAS IN THE POLLS WEEK-BY-WEEK				
Week	NFCA	ESPN	D1	SA
Preseason	8	9	8	10
Week 1	10	10	9	13
Week 2	10	8	8	14
Week 3	-	-	-	-
Week 4	-	-	-	-
Week 5	-	-	-	-
Week 6	-	-	-	-
Week 7	-	-	-	-
Week 8	-	-	-	-
Week 9	-	-	-	-
Week 10	-	-	-	-
Week 11	-	-	-	-
Week 12	-	-	-	-
Week 13	-	-	-	-
Week 14	-	-	-	-
Final	-	-	-	-
ARKANSAS POLL FACTS				
- Under head coach Courtney Deifel the Hogs have been ranked 56 times in the USA Today/NFCA Poll. Prior to her tenture, Arkansas was ranked just one time in program history (2013).				
- The Hogs have been ranked in the USA Today/NFCA Poll in 49 of its last 50 releases, dating back to week seven of the 2018 campaign.				
- Arkansas has received a vote in the last 69 releases of the USA Today/NFCA Poll, the longest streak in program history.				
- The Razorbacks Week 14 ranking in the ESPN.com/USA Softball of No. 6 and USA Today/NFCA Poll at No. 5 are both the highest in school history.				
- Arkansas begins the 2022 season ranked in the Top 10 of all four polls.				

Wooo Pig Classic

Wooo Pig Classic

SEC WEEKLY AWARDS	
WEEK ONE	
Player: Haley Lee (Texas A&M)	
Pitcher: Shelby Lowe (Auburn), Ashley Rogers (Tennessee)	
Freshman: Lexie Delbrey (Florida)	
WEEK TWO	
Player: Erin Coffel (Kentucky)	
Pitcher: Montana Fouts (Alabama)	
Freshman: Kendra Falby (Florida)	
WEEK THREE	
Player:	
Pitcher:	
Freshman:	
WEEK FOUR	
Player:	
Pitcher:	
Freshman:	
WEEK FIVE	
Player:	
Pitcher:	
Newcomer:	
Freshman:	
WEEK SIX	
Player:	
Pitcher:	
Newcomer:	
Freshman:	
WEEK SEVEN	
Player:	
Pitcher:	
Newcomer:	
Freshman:	
WEEK EIGHT	
Player:	
Pitcher:	
Newcomer:	
Freshman:	
WEEK NINE	
Player:	
Pitcher:	
Newcomer:	
Freshman:	
WEEK TEN	
Player:	
Pitcher:	
Newcomer:	
Freshman:	
WEEK ELEVEN	
Player:	
Pitcher:	
Newcomer:	
Freshman:	
WEEK TWELVE	
Player:	
Pitcher:	
Newcomer:	
Freshman:	



# SOUTHEASTERN™

# CONFERENCE

## SEC STANDINGS (2022)

Team	SEC	Overall	Streak
Florida	0-0	.000	12-0
Texas A&M	0-0	.000	11-0
Alabama	0-0	.000	9-0
Auburn	0-0	.000	10-1
Kentucky	0-0	.000	9-1
Georgia	0-0	.000	10-2
South Carolina	0-0	.000	8-2
Ole Miss	0-0	.000	8-3
Missouri	0-0	.000	8-3
Arkansas	0-0	.000	7-3
Tennessee	0-0	.000	6-3
LSU	0-0	.000	6-5
Miss. State	0-0	.000	5-6

## SEC PRESEASON COACHES' POLL

(First-Place Votes in Parentheses)

Place	School	Points
1.	Alabama (7)	138
2.	Florida (3)	131
3.	<b>Arkansas (2)</b>	<b>124</b>
4.	Tennessee (1)	103
5.	Missouri	97
6.	LSU	93
T7.	Georgia	78
T7.	Kentucky	78
9.	Ole Miss	47
10.	Texas A&M	41
11.	Auburn	36
12.	Mississippi State	35
13.	South Carolina	13

Points for the poll were awarded on a 1-2-3-4-5-6-7-8-9-10-11-12 basis. Coaches were not allowed to vote for their own team.

SEC WEEKLY AWARDS

SEC Player of the Week - Erin Coffel (Kentucky)

SEC Pitcher of the Week - Montana Fouts (Alabama)

SEC Freshman of the Week - Kendra Falby (Florida)



Courtney Deifel became the fourth head coach in program history when she was hired on June 11, 2015, and recently completed her sixth season at Arkansas in 2021. In six seasons in Fayetteville, she has orchestrated the Razorbacks' return to postseason play and guided the program to four NCAA Tournament appearances, including three consecutive berths from 2017-19. The Hogs have qualified for the national tournament every year it has been held since 2017. Deifel has guided the program to new heights, and since her first season in 2016, the Razorbacks have been ranked 53 times in the NFCA Coaches' Poll after previously being ranked only once in program history, and led the program to its first NCAA Tournament Super Regional appearances in 2018 and 2021.

Deifel, the SEC Coach of the Year, directed the most successful year in program history in 2021 by claiming the school's first SEC regular season title and hosting NCAA Tournament Super Regionals for the first time. The team finished 43-11 (19-5 SEC), producing a school record .796 win percentage. The Hogs earned a No. 6 national ranking, the highest in program history, and captured the No. 6 national seed in the NCAA Tournament. Arkansas began conference play winning 12 straight games, notching the fifth-best league-only start in SEC history. A 19-game winning streak in non-conference action also set a school record. The Razorbacks received many postseason superlatives as infielders Braxton Burnside and Danielle Gibson, and pitcher Mary Haff were named NFCA All-Americans. Haff also took home the school's first SEC Pitcher of the Year award. Offensively, the Razorbacks shattered the school's single-season home run record, mashing 95 long balls with Burnside set the individual single-season program mark hitting 25. Deifel's 190 wins in Fayetteville rank second among all coaches in program history. The NFCA named the 2021 coaching staff the South Region's Staff of the Year.

Deifel guided the Razorbacks to a 19-6 (1-2 SEC) record in the COVID-19 shortened 2020 campaign. In the only league series of the season, the Razorbacks earned a 1-0 conference-opening victory, their first road win over Alabama since 2000. Arkansas remained in the national polls throughout the year and climbed from a preseason No. 24 ranking to the No. 19 slot in the final release of the NFCA Coaches' Poll. Junior catcher Kayla Green was honored with SEC Player of the Week recognition for the first time in her career and freshman pitcher Jenna Bloom emerged as one of the rising stars in the league, leading all freshmen in the nation striking out 10.9 hitters per seven innings.

Deifel led the Razorbacks to their third consecutive postseason appearance in 2019, earning an at-large bid to the Stillwater Regional. The Hogs finished the season 38-20 and 12-12 in SEC play. It marks the first time since 1999-00 that the Razorbacks finished the season .500 or better in conference play in back-to-back seasons. The Razorbacks garnered their highest in-season ranking during weeks one and two, coming in at 12th and 11th in the NFCA and ESPN polls respectively.

Arkansas saw two players named to the All-SEC teams, pitcher Autumn Storms was named second team and outfielder Hannah McEwen garnered first-team recognition. McEwen's first-team selection was the first for Arkansas since 2012 and only the second in program history. In year four under Coach Deifel, the Razorbacks also earned two SEC Player of the Week awards, three SEC Pitcher of the Week awards, and one USA Softball Co-Player of the Week. A record five Razorbacks were named to the NFCA All-Region teams, with Storms garnering the first, first-team selection of her career. Storms went on to be named NFCA Second Team All-American as a pitcher, the first Razorback since 2010.

Year four with Coach Deifel and the Razorback staff saw growth in all aspects as the game, including a team .288 batting average, which ranks second-highest in program record book. In fact, four of the top seven team batting averages in program history come from the Deifel era.

In the 2018 campaign, Arkansas wrapped up the year with a 42-17 (12-12 SEC) record, the third most wins in program history; and the most victories since 2000. The team earned a national seed (13) in the NCAA Tournament for the first time in program history and went 3-0 defeating DePaul and Wichita State twice to earn the Fayetteville Regional Championship on its home field. The Hogs made their first ever NCAA Super Regional appearance but fell to eventual national semifinalist, Oklahoma, in Norman. Arkansas finished 17th in the final NCAA RPI report and the coaching staff earned 2018 NFCA Division I South Region Staff of the Year.

Just two seasons removed from a one-win conference tally, Deifel guided the Razorbacks to a 12-12 mark in SEC play. As the No. 7 seed at SEC Tournament, the program made its first semifinal appearance since 2001. The Razorbacks finished the season with a 27-2 record on their home field, establishing a new program record for home wins in a single season. Part of Arkansas' home triumphs included the program's first three-game sweep of a ranked team (No. 20 Mississippi State) and its first-ever series win over Alabama.

DEIFEL YEAR-BY-YEAR				
Year	School	Overall	Conf.	Postseason
2015	Maryland	27-27	9-14	--
2016	Arkansas	17-39	1-23	--
2017	Arkansas	31-24	7-17	NCAA Regional
2018	Arkansas	42-17	12-12	NCAA Super Regional
2019	Arkansas	38-20	12-12	NCAA Regional
2020	Arkansas	19-6	1-2	--
2021	Arkansas	43-11	19-5	NCAA Super Regional
2022	Arkansas	3-2	-	--

**8 seasons**      **221-147**      **59-85**      **4 appearances**  
**At Arkansas**      **197-120**      **50-71**  
*At Arkansas (2016-pres.): 197-120 (.621)*  
*Career (2015-pres.): 221-147 (.601)*

Deifel piloted the 2017 Razorbacks to a 31-24 record and the program's first NCAA Tournament appearance since 2013. The Razorbacks improved their win total by 17 games from the previous season, marking the largest increase in the country among Power 5 programs. Arkansas also tallied seven wins in SEC play, equaling the combined total from the previous three seasons. In recognition of the team's performance, Deifel was named the 2017 D1SoftballNews Coach of the Year.

From year one to two under Deifel, Arkansas' pitching staff lowered its combined ERA by more than four runs (6.98 to 2.82) and added more than 20 points to its batting average (.260 to .284). The Razorbacks also led the SEC and tied for 17th in the NCAA with 59 home runs. During the year, Arkansas earned its first national ranking since 2013 when it was slotted at No. 24 in the March 7 release ESPN/USA Softball poll.

Individually, Deifel saw two Razorbacks earn NFCA All-South Region accolades with Nicole Schroeder and Autumn Storms earning second-team and third-team honors, respectively. Storms was also named to the SEC All-Freshman Team while A.J. Belans was voted to the All-SEC Second Team. Schroeder went on to be drafted by the Akron Racers as the program's second NPF selection.

Deifel's first win over a ranked team at Arkansas came during the 2016 season when the Razorbacks knocked off No. 23 Nebraska, 11-10, during the Easton Tournament in Fullerton, Calif.; the team added five ranked wins in 2017. The 2016 campaign also saw newcomer Ashley Diaz make an immediate impact as a member of the NFCA All-South Region Second Team and garnered NFCA National Freshman of the Year Top 25 Watch List recognition.

During her playing and coaching careers prior to coming to Arkansas, Deifel advanced to 11 NCAA Tournaments including a four-year run to the Women's College World Series (WCWS) as an All-American catcher at California that was highlighted by winning the 2002 national title. The Bears also finished second (2003), fifth (2001) and seventh (2000) at the WCWS over her four-year run. Her postseason successes also featured a pair of Super Regionals as a graduate assistant at Oklahoma and five NCAA Regionals as an assistant at Maryland and Louisville.

As a first-year head coach, Deifel ushered in a culture of change for Maryland in 2015. Along with the program's 16-game win improvement from the previous season, the Terrapins' offense showed tremendous growth. Maryland finished 27th in the NCAA with 6.28 runs per game behind 339 runs scored, up more than 150 runs from 2014. Deifel also led her team to a .309 batting average, a 40-point jump from 2014. Under Deifel's watch, the trio helped Maryland to single-season school records in doubles, home runs, RBI and walks.

Prior to taking the head job at Maryland, Deifel spent four seasons as an assistant coach at Louisville in which she helped the Cardinals to four NCAA appearances, the 2014 American Athletic Conference Tournament title and an overall record of 176-60 (.746). Louisville averaged 44 wins in that time with a program-record 55 wins in 2012. Her student-athletes at Louisville racked up four NFCA All-America certificates and 29 all-conference selections. She also spent two seasons as a graduate assistant at Oklahoma where she was a member of a staff the guided the 2008 Sooners to a 47-14 record and a Super Regional appearance.

As a player, Deifel was the starting catcher for California from 2000-03 and led the Golden Bears to four Women's College World Series appearances including a national championship run in 2002 and national runner-up showing in 2003. She appeared in 285 games missing just three behind the plate over her four seasons. As a four-year starter behind the plate, she was a 2003 All-American, two-time All-Pac 10 selection and caught seven no-hitters. She is still the program's career leader with 1,969 putouts.

Aside from her accomplishments in collegiate softball, Deifel had a successful professional career following her days at Cal. In 2004, she helped the NY/NJ Juggernaut to the National Professional Fastpitch (NPF) league title. Deifel also spent three years with LeoPalace21 in Japan that resulted in a runner-up showing and a pair of third-place finishes.

She graduated from California in 2003 with a bachelor of arts in American Business and Globalism and American Studies. Deifel earned her master's of arts in Human Relations from Oklahoma in 2008.

Deifel's sister, Amanda Scott, is currently the head softball coach at Missouri-St. Louis and won a Women's College World Series title at Fresno State in 1998.

Deifel and her husband Joe are the parents of two sons, Trip and Walt. The family resides in Fayetteville.

ALL-TIME SERIES UNDER DEIFEL *ARKANSAS ONLY					
Opponent	Series	H	A	N	
Alabama	4-9	3-3	1-5	0-1	
Arkansas-Pine Bluff	1-0	1-0			
Arizona	0-2	0-2			
Army	0-1			0-1	
Auburn	7-5	3-3	4-2		
Baylor	1-1	0-1		1-0	
Binghamton	1-0			1-0	
Boston U	4-0	4-0			
Bradley	1-1			1-1	
BYU	0-1			0-1	
Buffalo	1-0	1-0			
Cal State Fullerton	0-1		0-1		
CSUN	1-0			1-0	
Campbell	2-0	1-0	1-0		
Central Arkansas	2-0	2-0			
Central Connecticut	1-0			1-0	
Central Michigan	1-0			1-0	
Dartmouth	2-0	2-0			
Delaware	1-0			1-0	
DePaul	1-0	1-0			
Drake	3-2	3-2			
Florida	0-9	0-3	0-6		
Florida A&M	2-0			2-0	
FAU	0-1		0-1		
FGCU	1-0		1-0		
Fordham	1-0			1-0	
Furman	4-0	3-0		1-0	
George Washington	1-0			1-0	
Georgia	5-6	1-2	3-3	1-1	
Grand Canyon	1-1			1-1	
Illinois	1-1	1-1			
IUPUI	3-0	3-0			
Iowa State	1-0	1-0			
Jackson State	1-0		1-0		
Kansas	4-0	3-0	1-0		
Kansas City	4-1	3-1	1-0		
Kent State	2-0	2-0			
Kentucky	3-7	2-4	0-3	1-0	
Lamar	2-0	2-0			
Liberty	0-1	0-1			
Lipscomb	1-0			1-0	
Long Beach State	1-0			1-0	
Longwood	1-0	1-0			
Loyola Marymount	2-0			2-0	
LSU	4-8	2-4	2-4		
Manhattan	2-0	1-0		1-0	
Marist	3-0	2-0		1-0	
McNeese	3-2		3-1	0-1	
Memphis	2-0			2-0	
Mississippi State	7-2	6-0	1-2		
Missouri	5-4	3-3	2-1		
Missouri State	3-1	2-1	1-0		
Montana	0-1	0-1			
Nebraska	3-0	1-0		2-0	
Nevada	1-0	1-0			
New Mexico	2-0			2-0	
New Mexico State	1-0		1-0		
North Carolina	0-1		0-1		
North Dakota State	4-1	2-0		2-1	
North Texas	2-0		2-0		
North Carolina	0-3			0-3	
Northern Colorado	5-1	4-0		1-1	
Northern Iowa	1-1	1-1			
Northwestern State	3-0	3-0			
Notre Dame	1-1		1-1		
Oklahoma	0-5	0-1	0-4		
Oklahoma State	1-3	0-2	1-0	0-1	
Ole Miss	7-5	6-0	1-5		
Omaha	4-0	4-0			
Rutgers	2-0			2-0	
Sacramento State	1-0	1-0		1-0	
Samford	1-0			1-0	
San Diego	1-0			1-0	
SIUE	2-0	2-0			
South Carolina	7-6	3-3	4-2	0-1	
South Dakota State	2-0	2-0			
Southeast Missouri	5-1	3-1	2-0		
Saint Francis (Pa.)	2-0	2-0			
Saint Louis	3-0	3-0			
Stanford	1-0	1-0			
Tennessee	3-7	2-1	1-5	0-1	
Texas	0-2		0-2		
Texas A&M	2-7	1-2	1-5		
Texas Tech	2-0	2-0			
Tulsa	2-5	1-2	1-1	0-2	
UConn	1-0			1-0	
UIC	1-0			1-0	
ULM	1-0	1-0			
UMass Lowell	2-0			2-0	
UNLV	0-1			0-1	
Utah	1-0			1-0	
UT Arlington	5-1	2-0	3-1		
UTEP	1-0			1-0	
Villanova	3-0	2-0		1-0	
Washington	0-3			0-3	
Weber State	1-0			1-0	
Western Illinois	1-0	1-0			
Wichita State	5-1	5-0	0-1		
Wright State	2-0	2-0			
	197-120	111-45	41-57	43-18	

Wooo Pig Classic			
10+ STRIKEOUT PERFORMANCES			
No.	Pitcher	Opponent	Date
16	Mary Haff	vs. Furman	4/13/19
16	Heather Schlichtman	vs. Marshall	4/9/04
15	Mary Haff	at Tennessee	3/23/2019
15	Kimmy Beasley	Auburn	5/3/13
15	Katy Henry	vs. UTSA	2/16/07
15	Katy Henry	vs. ULM	2/25/05
15	Heather Schlichtman	vs. Auburn	3/13/04
15	Heather Schlichtman	Wichita State	3/3/01
14	Katy Henry	Kansas City	2/23/07
14	Heather Schlichtman	at Kentucky	4/24/04
14	Heather Schlichtman	vs. Mississippi Valley State	2/29/04
14	Heather Schlichtman	vs. Appalachian State	2/7/04
13	Autumn Storms	vs. Southeast Missouri	2/21/19
13	Mary Haff	at Saint Louis	4/10/18
13	Mary Haff	Lipscomb	2/10/19
13	Chelsea Cohen	Saint Louis	2/24/13
13	Katy Henry	Centenary	3/5/06
13	Heather Schlichtman	Oklahoma City	4/23/02
13	Rachel Talley	vs. Virginia Tech	2/18/01
12	Mary Haff	vs. UIC	2/15/20
12	Mary Haff	vs. Boston U	3/2/19
12	Mary Haff	vs. Omaha	2/28/19
12	Mary Haff	vs. Dartmouth	3/3/18
12	Mary Haff	vs. Northern Colorado	3/2/18
12	Mary Haff	Fordham	2/19/18
12	Kimmy Beasley	at Missouri	4/13/13
12	Kimmy Beasley	LSU	4/6/13
12	Kim Jones	vs. Rhode Island	2/13/11
12	Hope McLemore	Louisiana Tech	3/13/10
12	Miranda Dixon	vs. ULM	4/2/08
12	Katy Henry	Creighton	2/24/08
12	Katy Henry	vs. Virginia	2/9/07
12	Rachel Talley	vs. Utah	2/16/02
12	Rachel Talley	vs. FAU	3/3/01
12	Heather Schlichtman	FIU	3/2/01
12	Rachel Talley	at Auburn	4/9/99
12	Tammy Kincaid	Alabama	3/21/99
11	Mary Haff	at Central Arkansas	3/9/21
11	Autumn Storms	vs. Boston U	3/2/19
11	Grace Moll	at Southeast Missouri State	4/6/16
11	Kimmy Beasley	Kentucky	4/19/13
11	Kimmy Beasley	LSU	4/7/13
11	Katy Henry	Northwestern State	3/4/06
10	Autumn Storms	Alabama	4/10/21
10	Mary Haff	at South Carolina	3/12/21
10	Mary Haff	North Dakota State	2/25/21
10	Jenna Bloom	Kansas	3/10/20
10	Kimmy Beasley	Butler	2/13/14
10	Hope McLemore	Kentucky	4/20/13
10	Kimmy Beasley	Jacksonville State	3/2/13
10	Chelsea Cohen	ULM	2/22/13
10	Hope McLemore	at Georgia	4/2/10
10	Hope McLemore	Drake	3/6/10
10	Hope McLemore	vs. Iowa	2/12/10
10	Miranda Dixon	at Ole Miss	3/29/09
10	Miranda Dixon	vs. Cleveland State	3/7/09
10	Katy Henry	at Kentucky	4/12/08
10	Katy Henry	vs. ULM	4/2/08
10	Miranda Dixon	at South Carolina	3/3/08
10	Miranda Dixon	at South Carolina	3/3/08
10	Katy Henry	at Kansas	4/3/07
10	Katy Henry	Northern Iowa	3/3/07
10	Miranda Dixon	at Texas A&M	2/16/07
10	Katy Henry	Kansas	4/5/06
10	Katy Henry	at Florida	3/25/06
10	Katy Henry	at Ole Miss	3/21/06

TOTAL BY PITCHER	
14	Katy Henry.....2005-2008
13	Mary Haff.....2018-Present
8	Heather Schlichtman .....2001-2004
7	Kimmy Beasley.....2012-2014
5	Miranda Dixon.....2007-2010
5	Hope McLemore.....2010-2013
4	Rachel Talley.....1999-2002
3	Autumn Storms.....2017-2021
2	Chelsea Cohen.....2010-2013
1	Kim Jones.....2008-2011
1	Tammy Kincaid.....1997-2000
1	Grace Moll.....2014-2017
1	Jenna Bloom.....2020-Present

2021 AWARDS AND HONORS		
Jenna Bloom		
All-SEC Newcomer Team		
Braxton Burnside		
All-SEC First Team		
NFCA All-Region First Team		
Preseason All-SEC		
SEC Player of the Week (March 16)		
SEC Player of the Week (April 6)		
D1Softball.com Player of the Week (March 1)		
USA Softball Player of the Year Top 10 Finalist		
Hannah Gammill		
NFCA All-Region Second Team		
Danielle Gibson		
All-SEC Second Team		
NFCA All-Region First Team		
SEC All-Defensive Team		
SEC Player of the Week (March 23)		
Mary Haff		
SEC Co-Pitcher of the Year		
All-SEC First Team		
NFCA All-Region First Team		
SEC Pitcher of the Week (March 30)		
SEC Pitcher of the Week (May 4)		
USA Softball Player of the Year Top 10 Finalist		
Hannah McEwen		
All-SEC Second Team		
NFCA All-Region Third Team		
Preseason All-SEC		
Softball America Preseason Top 100 - No. 26		
JWOS Preseason All-America Third Team		
Softball America - No. 9 ranked Junior		
Autumn Storms		
All-SEC Second Team		
Preseason All-SEC		
Softball America Preseason Top 100 - No. 57		
JWOS Preseason All-America Third Team		
CAREER RECORD WATCH		
BATTING AVERAGE (MINIMUM 250 AB)		
.357	Devon Wallace	2012-15
<b>.354</b>	<b>Hannah McEwen</b>	<b>2018-pres.</b>
.347	Stephanie Canfield	2013-17
HIT BY PITCH		
31	Kim Eiben	2000-03
26	Kayla Green	2018-21
<b>23</b>	<b>Ryan Jackson</b>	<b>2019-pres.</b>
23	Jennifer Cirigliano	1997-00
RUNS SCORED		
184	Devon Wallace	2012-15
166	Jessica Bachkora	2007-10
<b>166</b>	<b>Hannah McEwen</b>	<b>2018-pres.</b>
124	Kayla Johnson	2006-09
119	Stephanie Canfield	2013-17
STRIKEOUTS		
886	Heather Schlichtman	2001-04
756	Katy Henry	2005-08
745	Tammy Kincaid	1997-00
<b>695</b>	<b>Mary Haff</b>	<b>2018-pres.</b>
608	Rachel Talley	1999-02
502	Autumn Storms	2017-21
WINS		
<b>81</b>	<b>Mary Haff</b>	<b>2018-pres.</b>
73	Heather Schlichtman	2001-04
72	Tammy Kincaid	1997-00
66	Autumn Storms	2017-21
SAVES		
<b>14</b>	<b>Mary Haff</b>	<b>2018-pres.</b>
10	Autumn Storms	2017-21
9	Katy Henry	2005-08
9	Rachel Talley	1999-02
9	Tammy Kincaid	1997-00



OPPONENT HISTORY

2-27-22	.....	<b>KANSAS</b> All-Time: H: 0-0   A: 0-0   N:
2-27/28-22	.....	<b>LOUISVILLE</b> All-Time: 0-1 H: 0-0   A: 0-0   N: 0-1
		L, 7-4, Columbus, Ga.
2-28-22	.....	<b>NEBRASKA</b> All-Time: 0-0 H: 0-0   A: 0-0   N: 0-0

SEASON HIGHS

TEAM SINGLE-GAME HIGHS (2022)	
HITTING	
At bats:.....	30- vs Illinois (Feb 20, 2022)
Runs scored:.....	15 - vs Longwood (Feb 19, 2022)
Hits:.....	13 - vs Western Illinois (Feb 20, 2022))
RBIs:.....	11 - vs Western Illinois (Feb 20, 2022)
Doubles:.....	3 - (3 times)
Triples:.....	
Home runs:.....	4 - vs Illinois (Feb. 18, 2022)
Total bases:.....	31 - vs Missouri State (April 06, 2021)
Walks:.....	8 - vs Longwood (Feb 19, 2022)
Strikeouts:.....	14 - vs Illinois (Feb.20, 2022)
Sac hits:.....	1 - (6 times)
Sac flies:.....	1 - (6 times)
Stolen bases:.....	3 - (3 times)
Hit by pitch:.....	5 - vs Baylor (Feb 21, 2021 at Lake Charles, La.)
Caught stealing:.....	1 - vs Baylor (Feb 21, 2021 at Lake Charles, La.)
Runners LOB:.....	1 - at UT Arlington (Feb 22, 2021)
Hit into DP:.....	14 - at South Carolina (Mar 13, 2021)
	5 - at McNeese (Feb 20, 2021)
FIELDING	
Putouts:.....	42 - at McNeese (Feb 20, 2021)
Assists:.....	15 - at UT Arlington (Feb 22, 2021)
Errors:.....	3 - vs Oklahoma State (Feb 11, 2021 at Monroe, La.)
	3 - vs Southeast Missouri (Feb 27, 2021)
	3 - vs Missouri (Apr 26, 2021)
Passed balls:.....	2 - (2 games)
DPs turned:.....	2 - at Auburn (April 1, 2021)
PITCHING	
Innings pitched:.....	14.0 - at McNeese (Feb 20, 2021)
Runs allowed:.....	12 - vs Oklahoma State (Feb 11, 2021 at Monroe, La.)
Earned runs:.....	8 - vs Oklahoma State (Feb 11, 2021 at Monroe, La.)
Walks allowed:.....	9 - at McNeese (Feb 21, 2021)
Strikeouts:.....	13 - vs Wichita State (Feb 19, 2022)
Hits allowed:.....	13 - vs Missouri (Apr 25, 2021)
Doubles allowed:.....	4 - vs Missouri (Apr 24, 2021)
Triples allowed:.....	1 - (5 games)
Homers allowed:.....	4 - vs Missouri (Apr 25, 2021)
Wild pitches:.....	3 - at South Carolina (Mar 13, 2021)
Hit batters:.....	2 - (7 games )
INDIVIDUAL SINGLE-GAME HIGHS (2022)	
HITTING	
At bats:.....	7 - Linnie Malkin at McNeese (Feb 20, 2021)
	7 - Ryan Jackson at McNeese (Feb 20, 2021)
Runs scored:.....	3 - (9 times)
Hits:.....	5 - Danielle Gibson at South Carolina (Mar 13, 2021)
RBIs:.....	5 - (5 times)
Doubles:.....	2 - (4 times)
Triples:.....	1 - (3 times)
Home runs:.....	2 - (10 times)
Total bases:.....	10 - Danielle Gibson vs Northwestern State (Mar 05, 2021)
	10 - Linnie Malkin vs Central Arkansas (Apr 21, 2021)
Walks:.....	4 - Linnie Malkin vs Oklahoma State (Feb 11, 2021 at Monroe, La.)
	4 - Hannah McEwen at McNeese (Feb 20, 2021)
	4 - Braxton Burnside at Auburn (April 03, 2021)
Strikeouts:.....	3 - Ryan Jackson at UT Arlington (Feb 22, 2021)
	3 - Kayla Green at Auburn (April 03, 2021)
	3 - Aly Manzo vs Alabama (April 09, 2021)
Sac hits:.....	2 - Keely Huffine vs Baylor (Feb 21, 2021 at Lake Charles, La.)
Sac flies:.....	1 - (8 times)
Stolen bases:.....	1 - (4 times)
Hit by pitch:.....	3 - Hannah Gammill at Georgia (April 17, 2021)
Caught stealing:.....	1 - Kayla Green vs Baylor (Feb 21, 2021 at Lake Charles, La.)
	1 - Audrie LaValley at UT Arlington (Feb 22, 2021)
Runners LOB:.....	8 - Danielle Gibson at Auburn (April 03, 2021)
FIELDING	
Putouts:.....	15 - Danielle Gibson at Kansas City (Mar 23, 2021)
Assists:.....	6 - Braxton Burnside at Auburn (April 02, 2021)
Errors:.....	2 - (5 times)
Passed balls:.....	2 - (2 times)
PITCHING	
Innings pitched:.....	10.0 - Mary Haff vs Liberty (Mar 16, 2021)
Runs allowed:.....	6 - Autumn Storms vs Mississippi State (Mar 27, 2021)
Earned runs:.....	5 - Mary Haff vs Alabama (April 9, 2021)
	5 - Mary Haff vs Missouri (Apr 24, 2021)
Walks allowed:.....	6 - Mary Haff at McNeese (Feb 21, 2021)
Strikeouts:.....	11 - Mary Haff at Central Arkansas (March 9, 2021)
Hits allowed:.....	8 - Mary Haff at Central Arkansas (March 9, 2021)
	8 - Mary Haff vs Central Arkansas (Apr 21, 2021)
Homers allowed:.....	8 - Mary Haff vs Missouri (Apr 26, 2021)
	2 - (9 games)

Wooo Pig Classic

THE LAST TIME

ARKANSAS - TEAM	
Defeated a ranked opponent.....	def. #14 LSU 4-1 in Baton Rouge, La. (May 3, 2021)
Defeated a Top 10 ranked opponent.....	def. #3 Alabama, 4-0 in Fayetteville, Ark. (April 10, 2021)
Highest ranked team defeated.....	def. #1 Cal, 3-2 (May 19, 2012)
Won 10 or more consecutive games.....	12 (March 19, 2021-April 3, 2021)
Longest conference win streak.....	12 (March 12, 2021-April 3, 2021)
Won 5 or more consecutive conference home games.....	6 (Mar. 19 - 28, 2021)
Won 5 or more consecutive road games.....	15 (Feb. 21-April 18, 2021)
Won in Extra Innings.....	4-3 (8) vs Memphis (Feb. 11, 2022)
Lost in Extra Innings.....	2-0 (10) vs Liberty (March 16, 2021)
Played at least 10 Innings.....	(10) L, 2-0 vs Liberty (March 16, 2021)
Played at least 11 Innings.....	(14) W, 6-4 at McNeese (Feb. 20, 2021)
Played at least 12 Innings.....	(14) W, 6-4 at McNeese (Feb. 20, 2021)
Played at least 13 Innings.....	(14) W, 6-4 at McNeese (Feb. 20, 2021)
Played 14 or more Innings.....	(14) W, 6-4 at McNeese (Feb. 20, 2021)
Lost 5 or more consecutive games.....	5 (May 6-20, 2017)
Lost 5 or more consecutive conference games.....	6 (Mar. 24-April 2, 2017)
Scored 10 or more runs in a game.....	15 vs Longwood (Feb. 19, 2022)
Scored 10 or more runs in three straight games.....	UNT Invitational (Feb. 11-12, 2017)
Scored 15 or more runs in a game.....	15 vs Longwood (Feb. 19, 2022)
Shut out back-to-back opponents.....	Manhattan and South Dakota State (May 21-22, 2021)
Shut out three straight opponents.....	North Dakota State 2x, Texas Tech (Feb. 25-26, 2021)
Was shutout (extra-inning game).....	2-0 (10) vs Liberty (March 16, 2021)
Was Shutout (7-inning game).....	1-0 vs Tennessee (May 13, 2021)
Was Shutout (5-inning game).....	8-0 at #8 Florida (April 6, 2019)
Was Shutout In Fayetteville.....	2-0 vs #3 Alabama (April 11, 2021)
Was No-Hit.....	at #1 Florida (May 16, 2016)
Was No-Hit by SEC Opponent.....	at #1 Florida (May 16, 2016)
Was No-Hit in Fayetteville.....	vs #9 Georgia (May 3, 2009)
Swept a three-game conference series.....	at #20 Georgia (April 16-18, 2021)
Swept four or more conference series ....	#20 S. Car., Ole Miss, Miss. State, #25 Auburn. #20 UGA (2021)
Swept a three-game home conference series.....	vs Mississippi State (March 26-28, 2021)
Swept a three-game road conference series.....	at #20 Georgia (April 16-18, 2021)
Swept a non-conference doubleheader.....	vs Drake (March 4, 2021)
Run ruled an opponent.....	13-3 (5) vs Western Illinois (Feb. 20, 2022)
Most consecutive run-rule wins in a season.....	6, 2014
Was run-ruled.....	L, 8-0 (6) vs #7 Washington (Feb. 12, 2022)
Hit back-to-back home runs.....	Gammill and Hoffman vs Illinois (Feb. 18, 2022)
Hit five or more home runs in a game.....	6 vs Missouri State (April 7, 2021)
Hit four or more home runs in a game.....	4 vs Illinois (Feb. 18, 2022)
Hit three or more home runs in a game.....	3 vs Illinois (Feb. 20, 2022)
Homered in five or more consecutive games.....	21 (Feb. 11-March 13, 2021)
Had 10 hits in a game.....	13 vs Missouri (April 26, 2021)
Had 15 or more hits in a game.....	18 vs Nebraska (Feb. 9, 2020)
Had 10 or more hits in 3 consecutive games.....	(4) vs Furman /UAPB (April 13-16, 2019)
Had five or more doubles in a game.....	6 vs Villanova (Feb. 29, 2020)
Had three or more triples in a game.....	
Had 10 or more RBI in a game.....	11 vs Western Illinois (Feb. 20, 2022)
No-hit the opposition, 5 innings.....	vs Texas Tech (Feb. 26, 2021)
No-hit the opposition, 6 innings.....	vs Northern Colorado (March 2, 2018)
No-hit the opposition, 7 innings.....	vs Central Connecticut (March 3, 2018)
Recorded 10 or more walks.....	11 vs #10 Oklahoma State (Feb. 11, 2021)
Left 10 or more runners on base.....	11 vs #7 Washington (Feb. 11, 2022)
Allowed 10 or more hits.....	13 vs Illinois (Feb. 20, 2022)
Allowed 10 or more runs.....	10 vs Missouri (April 25, 2021)
Allowed 10 or more earned runs.....	12 vs #18 Kentucky (March 30, 2019)
Allowed 10 or more RBI.....	10 vs Missouri (April 25, 2021)
Allowed five or more doubles.....	5 vs LSU (April 29, 2016)
Allowed three or more home runs.....	4 vs Missouri (April 25, 2021)

OPPONENT-TEAM	
Scored 10 or more runs in a game.....	10 vs Missouri (April 25, 2021)
Scored 15 or more runs in a game.....	23 (5) vs Auburn (April 16, 2016)
Had 10 or more hits in a game.....	13 vs Illinois (Feb. 20, 2022)
Had 15-19 hits in a game.....	15 vs Georgia (May 17, 2017)
Shut out Arkansas (7-inning game).....	8-0 (6) vs #7 Washington (Feb. 12, 2022)
Shut out Arkansas (5-inning game).....	L, 8-0 at #8 Florida (April 6, 2019)
Shut out Arkansas (extra-inning).....	L, 2-0 (10 inn.) vs Liberty (March 16, 2021)
Shut out Arkansas in consecutive games.....	L, 3-0/8-0 at #8 Florida (April 6, 2019)
Shut out Arkansas in Fayetteville.....	2-0 vs #3 Alabama (April 11, 2021)
Conference opponent S/O Arkansas in Fayetteville.....	2-0 vs #3 Alabama (April 11, 2021)
Conference opponent S/O Arkansas on the road.....	L, 8-0 at #8 Florida (April 6, 2019)
Won a non-conference series against Arkansas.....	
Won a conference series in Fayetteville.....	vs Missouri (April 24-26, 2021)
Swept a three-game non-conference series against Arkansas.....	Texas (March 14-16, 2015)
Swept a three-game non-conference series in Fayetteville.....	Texas (March 14-16, 2015)
Swept a three game conference series in Fayetteville.....	vs Georgia (May 5-7, 2017)
Swept a three-game conference road series against Arkansas.....	at #8 Florida (April 5-7, 2019)

ARKANSAS-INDIVIDUAL	
Hit a grand slam.....	Hannah Gammill vs Wichita State (Feb. 19, 2022)
Hit a walk-off grand slam.....	W, 6-4 Danielle Gibson vs Drake (March 4, 2021)
Hit a walk-off home run.....	W, 7-6 (8), Braxton Burnside vs. Central Arkansas (April 21, 2021)
Hit two home runs in a game.....	Linnie Malkin vs Central Arkansas (April 21, 2021)
Hit three home runs in a game.....	Danielle Gibson vs SIUE (Feb 23, 2019)
Hit four home runs in a game.....	Danielle Gibson vs SIUE (Feb 23, 2019)
Homered in consecutive games in a conf. series.....	
	Danielle Gibson (Games 1, 2) at #20 Georgia (April 16-17, 2021)
Homered in three or more consecutive games.....	
	(3) Braxton Burnside (Games 19-22) at South Carolina (March 12-14, 2021)
Hit an inside the park home run.....	KB Sides vs Illinois (Feb. 18, 2022)
Hit for the home run cycle.....	Danielle Gibson vs SIUE (Feb 23, 2019)
Had five hits in a game.....	5, Danielle Gibson at South Carolina (March 13, 2021)
Had four hits in a game.....	5, Danielle Gibson at South Carolina (March 13, 2021)
Had two doubles in a game.....	(2), Danielle Gibson vs. Rutgers (Feb 10, 2022)
Had four or more RBI in a game.....	(4) Linnie Malkin vs Central Arkansas (April 21, 2021)
Had 5 or more RBI in a game.....	(5) Danielle Gibson at #20 Georgia (April 16, 2021)
Had 10 or more RBI in a game.....	(10) Danielle Gibson vs SIUE (Feb 23, 2019)
Walked three or more times in a game.....	(4) Braxton Burnside at #25 Auburn (April 3, 2021)
Stole three bases in a game.....	(3) Shelby Hiers vs Marist (Feb. 21, 2015)
Pitched a complete game shutout.....	Mary Haff (W, 4-0) vs South Dakota State (May 21, 2021)
Had 10 or more strikeouts in a game.....	(10) Autumn Storms vs. #3 Alabama (April 10, 2021)
Gave up 10 or more hits in a game.....	(10) Mary Haff at LSU (May 4, 2018)
Gave up three or more home runs in a game.....	(3) Mary Haff at NM State (Feb. 8, 2020)
Threw a 7-inning no hitter.....	Autumn Storms vs Central Connecticut (March 3, 2018)
Threw a 5-inning no hitter.....	(5 Inn.) Mary Haff vs Texas Tech (Feb. 27, 2021)
Had 4 or more consecutive Ks in a game.....	(5) Mary Haff vs Mississippi State (March 27, 2021)

Stat Leaders and Miscellaneous Stats



Arkansas Softball  
Miscellaneous Stats for Arkansas (as of Feb 25, 2022)  
(All games)



Multiple Hit Games	2	3	4	5+	Total	Multiple RBI Games	2	3	4	5+	Total
41 Danielle Gibson	7	-	-	-	7	41 Danielle Gibson	4	-	-	-	4
17 Taylor Ellsworth	2	1	-	-	3	20 Hannah Gammill	2	1	1	-	4
23 Hannah McEwen	2	-	-	-	2	17 Taylor Ellsworth	1	1	1	-	3
42 Sam Torres	2	-	-	-	2	42 Sam Torres	2	-	-	-	2
14 Kacie Hoffmann	1	-	-	-	1	23 Hannah McEwen	1	-	-	-	1
6 Cally Kildow	1	-	-	-	1	14 Kacie Hoffmann	-	1	-	-	1
99 Audrie LaValley	1	-	-	-	1	6 Cally Kildow	1	-	-	-	1
22 Linnie Malkin	1	-	-	-	1	15 Spencer Prigge	1	-	-	-	1
20 Hannah Gammill	1	-	-	-	1	TEAM	12	3	2	0	17
TEAM	18	1	0	0	19						

Hitting Streaks	Longest	Current	Reached Base Streaks	Longest	Current
42 Sam Torres	7	7	20 Hannah Gammill	10	10
8 KB Sides	6	6	42 Sam Torres	7	7
20 Hannah Gammill	5	5	8 KB Sides	6	6
41 Danielle Gibson	5	2	41 Danielle Gibson	5	2
17 Taylor Ellsworth	4	4	23 Hannah McEwen	4	4
23 Hannah McEwen	3	3	17 Taylor Ellsworth	4	4
14 Kacie Hoffmann	3	1	14 Kacie Hoffmann	3	1
22 Linnie Malkin	2	-	22 Linnie Malkin	2	-
28 Rylin Hedgecock	2	-	28 Rylin Hedgecock	2	-
6 Cally Kildow	1	1	15 Spencer Prigge	2	-
15 Spencer Prigge	1	-	99 Audrie LaValley	2	1
99 Audrie LaValley	1	1	6 Cally Kildow	1	1
7 Chenise Delce	1	1	7 Chenise Delce	1	1



Arkansas Softball  
Game Results for Arkansas (as of Feb 25, 2022)  
(All games)



Date	Opponent	Score	Inns	Overall	SEC	Pitcher of record	Attend	Time
! Feb 10, 2022	vs Rutgers	w 4-0	7	1-0-0	0-0-0	Haff (W 1-0)	0	2:11
Feb 11, 2022	vs MemphisNew	w 4-3	(8)	2-0-0	0-0-0	Haff (W 1-0)	275	2:26
Feb 11, 2022	vs Washington	L 0-8	6	2-1-0	0-0-0	Delce (L 0-1)	376	2:00
Feb 12, 2022	vs Long Beach State	w 10-0	5	3-1-0	0-0-0	Delce (W 1-1)	275	1:41
Feb 12, 2022	vs Washington	L 5-10	7	3-2-0	0-0-0	Haff (L 2-1)	445	3:09
Feb 18, 2022	ILLINOIS	w 6-3	7	4-2-0	0-0-0	Haff (W 3-1)	1306	1:54
Feb 19, 2022	WICHITA STATE	w 7-4	7	5-2-0	0-0-0	Bloom (W 1-0)	1305	2:07
Feb 19, 2022	LONGWOOD	w 15-4	5	6-2-0	0-0-0	Haff (W 4-1)	1198	1:40
Feb 20, 2022	ILLINOIS	L 6-8	7	6-3-0	0-0-0	Haff (L 4-2)	1309	2:45
Feb 20, 2022	WESTERN ILLINOIS	w 13-3	5	7-3-0	0-0-0	Delce (W 2-1)	1181	1:40

() extra inning game

Arkansas Season Stats



Arkansas Softball  
Overall Statistics for Arkansas (as of Feb 25, 2022)  
(All games Sorted by Batting avg)



Record: 7-3 Home: 4-1 Away: 0-0 Neutral: 3-2 SEC: 0-0

Player	avg	gp-gs	ab	r	h	2b	3b	hr	rbi	tb	slg%	bb	hp	so	gdp	ob%	sf	sh	sb-att	po	a	e	fld%
41 Danielle Gibson	.556	10-10	27	9	15	4	0	2	9	25	.926	4	1	4	0	.625	0	0	0-0	51	4	1	.982
20 Hannah Gammill	.350	10-10	20	10	7	1	0	4	12	20	1.000	8	5	5	0	.606	0	0	0-0	12	20	2	.941
17 Taylor Ellsworth	.345	10-10	29	9	10	5	0	1	9	18	.621	5	2	4	0	.472	0	0	0-0	64	5	0	1.000
23 Hannah McEwen	.250	10-10	28	10	7	3	0	1	5	13	.464	5	3	6	0	.395	2	0	1-1	18	0	0	1.000
8 KB Sides	.250	10-10	28	13	7	0	0	2	3	13	.464	11	0	4	0	.450	1	0	14-14	9	0	0	1.000
99 Audrie LaValley	.150	10-10	20	4	3	1	0	0	4	4	.200	5	1	6	0	.321	2	1	0-0	17	12	1	.967
6 Cally Kildow	1.000	6-0	2	3	2	0	0	0	2	2	1.000	0	0	0	0	1.000	0	0	1-1	1	0	0	1.000
42 Sam Torres	.429	9-7	21	4	9	1	0	0	4	10	.476	3	0	2	0	.500	0	0	0-0	5	0	0	1.000
22 Linnie Malkin	.429	3-3	7	0	3	1	0	0	1	4	.571	2	0	1	0	.556	0	0	0-1	2	0	0	1.000
14 Kacie Hoffmann	.357	5-5	14	4	5	0	0	2	5	11	.786	0	2	3	0	.438	0	0	0-0	0	0	0	.000
7 Chenise Delce	.250	4-3	8	0	2	0	0	0	1	2	.250	0	0	2	0	.222	1	0	0-0	0	0	0	.000
28 Rylin Hedgecock	.250	3-3	8	0	2	0	0	0	1	2	.250	0	0	1	0	.250	0	0	0-0	0	0	0	.000
15 Spencer Prigge	.091	6-6	11	0	1	0	0	0	2	1	.091	4	0	4	0	.333	0	2	0-0	7	8	0	1.000
10 Ally Sockey	.000	8-5	10	1	0	0	0	0	0	0	.000	0	0	6	0	.000	0	0	0-0	3	5	2	.800
0 Kaitlyn Howard	.000	4-0	3	0	0	0	0	0	0	0	.000	0	0	2	0	.000	0	0	0-1	0	0	0	.000
12 Abby Gordon	.000	1-0	1	0	0	0	0	0	0	0	.000	0	0	0	0	.000	0	0	0-0	0	0	0	.000
1 Raigan Kramer	.000	1-0	0	0	0	0	0	0	0	0	.000	0	0	0	0	.000	0	0	0-0	0	0	0	.000
18 Marlene Friedman	.000	3-0	0	3	0	0	0	0	0	0	.000	0	0	0	0	.000	0	0	0-0	0	0	0	.000
Totals	.308	10	237	70	73	16	0	12	58	125	.527	47	14	50	0	.441	6	3	16-18	190	62	6	.977
Opponents	.289	10	249	43	72	15	1	8	42	113	.454	24	6	63	0	.364	1	11	4-8	172	53	15	.938

LOB - Team (66), Opp (59). DPs turned - Team (3), Opp (1). IBB - Team (1), Gibson 1, Opp (1).

(All games Sorted by Earned run avg)

Player	era	w-l	app	gs	cg	sho	sv	ip	h	r	er	bb	so	2b	3b	hr	b/avg	wp	hp	bk	sfa	sha
99 Audrie LaValley	0.00	0-0	1	1	0	0/1	0	0.0	0	0	0	0	0	0	0	0		0	0	0	0	0
4 Mary Haff	2.86	4-2	7	3	0	0/1	1	29.1	23	12	12	5	28	8	0	2	.223	0	2	0	1	5
72 Jenna Bloom	4.45	1-0	4	2	0	0/0	0	11.0	16	8	7	2	11	2	0	1	.340	1	3	0	0	3
7 Chenise Delce	5.15	2-1	7	3	0	0/2	0	17.2	26	16	13	7	20	5	0	4	.333	1	1	0	0	1
44 Callie Turner	6.30	0-0	4	1	0	0/2	0	3.1	3	3	3	8	2	0	0	0	.250	1	0	0	0	2
5 Lauren Howell	14.00	0-0	3	0	0	0/0	0	2.0	4	4	4	2	2	0	1	1	.444	2	0	0	0	0
Totals	4.31	7-3	10	10	0	2/2	1	63.1	72	43	39	24	63	15	1	8	.289	5	6	0	1	11
Opponents	7.57	3-7	10	10	1	1/0	0	57.1	73	70	62	47	50	16	0	12	.308	4	14	0	6	3

PB - Team (0), Opp (2). SBA/ATT - Ellsworth (4-8), Haff (2-4), Delce (2-3), Bloom (0-1).



Arkansas SEC Only Season Stats



Arkansas Softball  
Conference statistics for Arkansas (as of May 04, 2021)  
(SEC games only Sorted by Batting avg)



Record: 19-6 Home: 8-4 Away: 11-1 SEC: 19-6

Player	avg	ab	r	h	2b	3b	hr	rbi	tb	slr%	bb	so	cs	sf	sh	cs-err	po	e	fld%			
41 Donielle Gibson	.316	21-21	78	9	28	7	0	6	17	.416	6	0	12	0	.350	2	0	0-0	135	5	0.1000	
42 Sam Torres	.306	24-24	62	10	19	0	0	0	3	.306	9	1	15	0	.403	0	3	1-1	35	0	0.1000	
28 Hannah McEwen	.288	21-21	59	16	17	2	0	2	9	.424	17	2	9	1	.462	0	0	1-1	40	2	1.977	
25 Braxton Burnside	.286	23-23	63	18	18	4	0	10	19	.825	23	3	14	1	.494	0	0	0-0	38	42	3.964	
66 Aly Manzo	.280	24-24	61	1	14	2	0	0	4	.262	2	1	10	1	.266	0	1	0-0	12	1	0.1000	
13 Kayla Green	.227	24-24	75	10	17	3	0	6	12	.507	7	3	18	0	.318	0	1	0-0	151	8	0.1000	
22 Linnie Malkin	.192	24-24	76	6	16	1	0	6	11	.397	4	4	22	2	.267	0	0	0-0	12	1	0.1000	
16 Keely Huffine	.155	24-24	58	5	9	0	0	1	2	.207	6	2	20	0	.254	1	3	1-1	50	32	6.932	
-----																						
20 Hannah Gammill	.194	12-12	31	7	6	2	0	2	5	.452	8	5	6	0	.432	0	1	0-0	11	16	0.1000	
21 Lauren Groves	.148	5-2	7	1	1	0	0	0	2	.148	1	1	5	0	.333	0	0	0-0	0	0	0.000	
1 Ryan Jackson	.118	10-4	17	1	2	0	0	0	1	.118	1	2	4	0	.250	0	0	0-0	9	0	0.1000	
28 Rafin Haddock	.111	10-0	9	0	1	0	0	0	1	.111	1	0	2	0	.200	0	0	0-0	0	0	0.000	
3 Larissa Cesena	.100	24-0	10	3	1	1	0	0	0	.200	2	0	7	0	.250	0	1	0-0	9	0	0.1000	
2 Valerie Ventura	.100	6-5	10	0	1	0	0	0	1	.100	0	0	5	0	.100	0	0	0-0	4	12	4.818	
24 Nicole Duncan	.000	8-7	16	1	0	0	0	0	1	.000	3	2	6	0	.238	0	2	0-0	3	15	0.1000	
99 Audrie LaValley	.000	2-1	2	1	0	0	0	0	0	.000	0	1	1	0	.333	0	0	0-0	1	2	0.1000	
18 Marlene Friedman	.000	7-0	0	0	0	0	0	0	0	.000	0	0	0	0	.000	0	0	0-0	0	0	0.000	
6 Colly Kildow	.000	12-0	0	4	0	0	0	0	0	.000	0	0	0	0	.000	0	0	0-0	0	0	0.000	
Totals	.228	24	631	95	144	22	0	31	88	.259	.410	89	27	156	5	.347	3	12	3-3	516	162	14.980
Opponents	.218	24	650	61	142	26	2	17	57	.223	.343	33	16	140	6	.272	2	7	3-6	497	150	17.974

LOB - Team (170), Opp (131). DPs turned - Team (9), Opp (6). JBB - Team (7), Burnside 5, Gibson 2, Opp (1).

(SEC games only Sorted by Earned run avg)

Player	era	w-l	so	cs	on	sho	er	bb	h	r	er	bb	so	2b	3b	hr	b/avg	wrt	bb	b/sf	sho
9 Autumn Storme	1.24	4-1	12	7	2	2/2	8	46.0	35	18	8	8	31	6	0	2	.207	1	6	0	3
4 Mary Haff	2.01	11-3	19	11	7	1/1	4	87.0	63	26	25	15	79	7	1	9	.197	1	7	0	3
72 Jenna Bloom	2.41	4-1	6	5	0	0/1	0	92.0	33	11	11	7	24	11	0	4	.268	2	2	0	1
31 Allie Light	2.80	0-0	2	0	0	0/0	0	5.0	8	6	2	1	3	1	1	1	.348	1	0	0	0
5 Lauren Howell	9.33	0-0	2	1	0	0/0	0	8.0	3	6	4	2	3	1	0	1	.200	2	1	0	0
Totals	2.03	19-5	24	24	9	5/2	7	172.0	142	61	50	33	140	26	2	17	.218	7	16	0	7
Opponents	3.38	5-19	24	24	9	1/0	1	165.2	144	95	80	89	156	22	0	31	.228	7	27	0	3

PB - Team (1), Green 1, Opp (2). SBA/ATT - Green (3-6), Haff (1-2), Bloom (1-2), Light (0-1), Storme (1-1).

Home Run Tracker

	Date	Player	Opponent	Site	# of Runs	Inning	Lineup Spot	Game Result
1	2-11-2021	Braxton Burnside	Oklahoma State	Monroe, La.	2	6	2	L, 12-11
2	2-11-2021	Braxton Burnside	Oklahoma State	Monroe, La.	2	6	2	L, 12-11
3	2-20-2021	Keely Huffine	McNeese	Lake Charles, La.	2	4	2	W, 6-4 (4)
4	2-20-2021	Kayla Green!	McNeese	Lake Charles, La.	2	4	2	W, 6-4 (4)
5	2-20-2021	Linnie Malkin!	McNeese	Lake Charles, La.	2	4	2	W, 6-4 (4)
6	2-20-2021	Linnie Malkin#	McNeese	Lake Charles, La.	2	4	2	W, 6-4 (4)
7	2-20-2021	Keely Huffine	McNeese	Lake Charles, La.	2	4	2	L, 7-4
8	2-20-2021	Hannah Gammill	McNeese	Lake Charles, La.	2	4	2	W, 7-2
9	2-21-2021	Danielle Gibson	Baylor	Lake Charles, La.	2	6	2	L, 7-4
10	2-21-2021	Hannah Gammill	McNeese	Lake Charles, La.	2	6	2	W, 3-1
11	2-21-2021	Linnie Malkin	McNeese	Lake Charles, La.	2	6	2	W, 3-1
12	2-22-2021	Hannah Gammill	UTA	Arlington, Texas	2	2	2	W, 10-0
13	2-22-2021	Linnie Malkin	UTA	Arlington, Texas	2	2	2	W, 10-0
14	2-22-2021	Keely Huffine	UTA	Arlington, Texas	2	4	2	W, 10-0
15	2-22-2021	Audrie LaValley	UTA	Arlington, Texas	2	4	2	W, 10-0
16	2-22-2021	Audrie LaValley	UTA	Arlington, Texas	2	6	2	W, 4-3
17	2-22-2021	Hannah McEwen	UTA	Arlington, Texas	2	6	2	W, 4-3
18	2-25-2021	Linnie Malkin!	North Dakota State	Fayetteville, Ark.	2	1	2	W, 9-0
19	2-25-2021	Hannah Gammill!	North Dakota State	Fayetteville, Ark.	2	1	2	W, 9-0
20	2-25-2021	Braxton Burnside	North Dakota State	Fayetteville, Ark.	2	1	2	W, 8-0
21	2-26-2021	Hannah McEwen	Texas Tech	Fayetteville, Ark.	2	1	2	W, 9-0
22	2-26-2021	Linnie Malkin	Texas Tech	Fayetteville, Ark.	2	1	2	W, 9-0
23	2-26-2021	Kayla Green	Texas Tech	Fayetteville, Ark.	2	1	2	W, 9-0
24	2-26-2021	Keely Huffine	Texas Tech	Fayetteville, Ark.	2	1	2	W, 9-0
25	2-26-2021	Hannah Gammill	Texas Tech	Fayetteville, Ark.	2	2	2	W, 9-0
26	2-26-2021	Audrie LaValley	Southeast Missouri	Fayetteville, Ark.	2	2	2	W, 9-0
27	2-26-2021	Braxton Burnside	Southeast Missouri	Fayetteville, Ark.	2	2	2	W, 9-0
28	2-26-2021	Braxton Burnside	Southeast Missouri	Fayetteville, Ark.	4	2	2	W, 9-0
29	2-27-2021	Danielle Gibson	Southeast Missouri	Fayetteville, Ark.	2	6	2	W, 6-3
30	2-27-2021	Braxton Burnside	Southeast Missouri	Fayetteville, Ark.	2	6	2	W, 6-3
31	2-28-2021	Braxton Burnside	Texas Tech	Fayetteville, Ark.	2	3	2	W, 8-0
32	2-28-2021	Danielle Gibson	Texas Tech	Fayetteville, Ark.	2	3	2	W, 8-0
33	2-28-2021	Braxton Burnside	Texas Tech	Fayetteville, Ark.	2	6	2	W, 8-0
34	2-4-2021	Kayla Green	Drake	Fayetteville, Ark.	2	6	2	W, 6-3
35	2-4-2021	Danielle Gibson\$	Drake	Fayetteville, Ark.	2	6	2	W, 6-3
36	2-5-2021	Braxton Burnside	Kansas	Fayetteville, Ark.	2	5	2	W, 8-4
37	2-5-2021	Braxton Burnside!	Northwestern State	Fayetteville, Ark.	2	1	2	W, 13-6
38	2-5-2021	Danielle Gibson!	Northwestern State	Fayetteville, Ark.	2	1	2	W, 13-6
39	2-5-2021	Ryan Jackson	Northwestern State	Fayetteville, Ark.	2	1	2	W, 13-6
40	2-5-2021	Danielle Gibson	Northwestern State	Fayetteville, Ark.	2	6	2	W, 13-6
41	2-5-2021	Kayla Green	Northwestern State	Fayetteville, Ark.	2	6	2	W, 13-6
42	2-5-2021	Danielle Gibson	Northwestern State	Fayetteville, Ark.	2	6	2	W, 13-6
43	2-5-2021	Braxton Burnside	Northwestern State	Fayetteville, Ark.	2	6	2	W, 13-6
44	2-5-2021	Danielle Gibson	Northwestern State	Fayetteville, Ark.	2	6	2	W, 13-6
45	2-5-2021	Lauren Graves	Northwestern State	Fayetteville, Ark.	2	4	2	W, 4-1
46	2-5-2021	Danielle Gibson	Central Arkansas	Conway, Ark.	2	1	2	W, 4-1
47	2-5-2021	Linnie Malkin	Central Arkansas	Conway, Ark.	2	1	2	W, 4-1
48	2-12-2021	Braxton Burnside	South Carolina	Columbia, S.C.	2	9	2	W, 4-1
49	2-12-2021	Linnie Malkin	South Carolina	Columbia, S.C.	2	9	2	W, 4-1
50	2-13-2021	Braxton Burnside	South Carolina	Columbia, S.C.	2	10	2	W, 7-5 (10)
51	2-13-2021	Braxton Burnside	South Carolina	Columbia, S.C.	2	10	2	W, 7-5 (10)
52	2-14-2021	Braxton Burnside	South Carolina	Columbia, S.C.	2	4	2	W, 3-2
53	2-14-2021	Linnie Malkin	South Carolina	Columbia, S.C.	2	4	2	W, 3-2
54	2-20-2021	Hannah McEwen	Ole Miss	Fayetteville, Ark.	2	8	2	W, 3-2
55	2-20-2021	Danielle Gibson\$	Ole Miss	Fayetteville, Ark.	2	8	2	W, 3-2
56	2-21-2021	Keely Huffine\$	Ole Miss	Fayetteville, Ark.	2	8	2	W, 3-2
57	2-23-2021	Braxton Burnside	Kansas	Lawrence, Kan.	2	7	2	W, 7-4
58	2-23-2021	Linnie Malkin	Kansas	Lawrence, Kan.	2	7	2	W, 7-4
59	2-26-2021	Linnie Malkin	Mississippi State	Fayetteville, Ark.	2	4	2	W, 2-0
60	2-27-2021	Linnie Malkin	Mississippi State	Fayetteville, Ark.	2	4	2	W, 2-0
61	2-28-2021	Braxton Burnside	Mississippi State	Fayetteville, Ark.	2	14	2	W, 4-3
62	4-1-2021	Braxton Burnside	Auburn	Auburn, Ala.	2	1	2	W, 6-1
63	4-2-2021	Braxton Burnside	Auburn	Auburn, Ala.	2	1	2	W, 3-0
64	4-6-2021	Hannah Gammill	Missouri State	Fayetteville, Ark.	2	1	2	W, 9-1
65	4-6-2021	Kayla Green	Missouri State	Fayetteville, Ark.	2	1	2	W, 9-1
66	4-6-2021	Braxton Burnside	Missouri State	Fayetteville, Ark.	2	1	2	W, 9-1
67	4-6-2021	Danielle Gibson!	Missouri State	Fayetteville, Ark.	2	1	2	W, 9-1
68	4-6-2021	Linnie Malkin!	Missouri State	Fayetteville, Ark.	2	1	2	W, 9-1
69	4-6-2021	Kayla Green\$	Missouri State	Fayetteville, Ark.	2	1	2	W, 9-1
70	4-10-2021	Braxton Burnside	Alabama	Fayetteville, Ark.	2	1	2	W, 4-0
71	4-10-2021	Kayla Green	Alabama	Fayetteville, Ark.	2	1	2	W, 4-0
72	4-10-2021	Kayla Green	Alabama	Fayetteville, Ark.	2	1	2	W, 4-0
73	4-16-2021	Hannah Gammill	Georgia	Athens, Ga.	2	3	2	W, 10-0
74	4-16-2021	Kayla Green	Georgia	Athens, Ga.	2	3	2	W, 10-0
75	4-16-2021	Danielle Gibson	Georgia	Athens, Ga.	2	3	2	W, 10-0
76	4-17-2021	Danielle Gibson	Georgia	Athens, Ga.	2	3	2	W, 10-0
77	4-18-2021	Braxton Burnside	Georgia	Athens, Ga.	2	3	2	W, 10-0
78	4-18-2021	Kayla Green	Georgia	Athens, Ga.	3	3	2	W, 10-0
79	4-18-2021	Hannah McEwen	Georgia	Athens, Ga.	3	3	2	W, 10-0
80	4-21-2021	Linnie Malkin	Central Arkansas	Fayetteville, Ark.	2	8	2	W, 7-6
81	4-21-2021	Linnie Malkin	Central Arkansas	Fayetteville, Ark.	2	8	2	W, 7-6
82	4-21-2021	Braxton Burnside\$	Central Arkansas	Fayetteville, Ark.	2	8	2	W, 7-6
83	4-24-2021	Danielle Gibson	Missouri	Fayetteville, Ark.	2	3	2	L, 6-3
84	4-25-2021	Kayla Green	Missouri	Fayetteville, Ark.	2	3	2	L, 10-1
85	4-26-2021	Hannah Gammill!	Missouri	Fayetteville, Ark.	2	3	2	W, 8-4
86	4-26-2021	Danielle Gibson!	Missouri	Fayetteville, Ark.	2	3	2	W, 8-4
87	4-26-2021	Braxton Burnside	Missouri	Fayetteville, Ark.	2	3	2	W, 8-4
88	5-3-2021	Linnie Malkin!	LSU	Baton Rouge, La.	2	4	2	W, 4-1
89	5-3-2021	Kayla Green!	LSU	Baton Rouge, La.	2	4	2	W, 4-1
90	5-3-2021	Linnie Malkin	South Dakota State	Fayetteville, Ark.	2	3	2	W, 8-0
91	5-3-2021	Braxton Burnside	Stanford	Fayetteville, Ark.	2	5	2	W, 7-4
92	5-3-2021	Linnie Malkin	Stanford	Fayetteville, Ark.	2	5	2	W, 7-4
93	5-3-2021	Hannah McEwen	Arizona	Fayetteville, Ark.	2	10	2	L, 10-4
94	5-28-2021	Ally Wanzo	Arizona	Fayetteville, Ark.	2	7	2	L, 10-4
95	5-28-2021	Hannah Gammill	Long Beach State	Puerto Vallarta, Mexico	2	5	2	W, 10-5
96	5-12-2022	Hannah Gammill	Illinois	Fayetteville, Ark.	2	3	2	W, 6-3
97	5-18-2022	Danielle Gibson	Illinois	Fayetteville, Ark.	2	5	2	W, 6-3
98	5-18-2022	Hannah Gammill	Illinois	Fayetteville, Ark.	2	5	2	W, 6-3
99	5-18-2022	Kacie Hoffman	Illinois	Fayetteville, Ark.	1	5	2	W, 6-3
100	5-18-2022	KB Sides	Illinois	Fayetteville, Ark.	1	6	2	W, 6-3
101	5-19-2022	Hannah Gammill	Wichita State	Fayetteville, Ark.	4	3	2	W, 7-4
102	5-19-2022	Danielle Gibson	Wichita State	Fayetteville, Ark.	2	4	2	W, 7-4
103	5-20-2022	Hannah McEwen	Illinois	Fayetteville, Ark.	2	3	2	L, 8-6
104	5-20-2022	KB Sides	Illinois	Fayetteville, Ark.	1	3	2	L, 8-6
105	5-20-2022	Hannah Gammill	Illinois	Fayetteville, Ark.	1	5	2	L, 8-6
106	5-20-2022	Kacie Hoffman	Western Illinois	Fayetteville, Ark.	1	5	2	W, 13-3
107	5-20-2022	Taylor Ellsworth	Western Illinois	Fayetteville, Ark.	3	4	2	W, 13-3

Game by Game Starters   by Position											
Date	Opponent	SP	C	1B	2B	3B	SS	LF	CF	RF	DP
F10	Rutgers	Haff	Ellsworth	Gibson	LaValley	Gammill	Prigge	McEwen	Sides	Malkin	Hedgecock
F11	Memphis	Turner	Ellsworth	Gibson	LaValley	Gammill	Prigge	McEwen	Sides	Malkin	Hedgecock
DH	Washington	Delce	Ellsworth	Gibson	LaValley	Gammill	Prigge	McEwen	Sides	Malkin	Hedgecock
F12	Long Beach State	Delce	Ellsworth	Gibson	Sockey	Gammill	Prigge	McEwen	Sides	Torres	LaValley
DH	Washington	Haff	Ellsworth	Gibson	LaValley	Gammill	Prigge	McEwen	Sides	Torres	Delce
F17	Wichita State (Postponed)	-	-	-	-	-	-	-	-	-	-
DH	Illinois	Haff	Ellsworth	Gibson	LaValley	Gammill	Prigge	McEwen	Sides	Torres	Hoffman
F19	Wichita State	Bloom	Ellsworth	Gibson	LaValley	Gammill	Sockey	McEwen	Sides	Torres	Hoffman
DH	Longwood	Delce	Ellsworth	Gibson	LaValley	Gammill	Sockey	McEwen	Sides	Torres	Hoffman
F20	Illinois	Bloom	Ellsworth	Gibson	LaValley	Gammill	Sockey	McEwen	Sides	Torres	Hoffman
DH	Western Illinois	Delce	Ellsowrth	Gibson	LaValley	Gammill	Sockey	McEwen	Sides	Torres	Hoffman
F27	Louisville										
F28	Louisville										
DH	Louisville										
M03	Missouri State										
M04	Kennesaw State										
DH	Kansas City										
M05	Missouri State										
DH	Kennesaw State										
M06	Kansas City										
M10	Liberty										
M11	Lehigh										
DH	Maryland										
M12	Maryland										
DH	James Madison										
M13	Lehigh										
M18	Tennessee										
M19	Tennessee										
M20	Tennessee										
M25	LSU										
M26	LSU										
M27	LSU										
A01	Ole Miss										
A02	Ole Miss										
A03	Ole Miss										
A05	Central Arkansas										
A08	Auburn										
A09	Auburn										
A10	Auburn										
A15	Kentucky										
A16	Kentucky										
A17	Kentucky										
A22	Florida										
A23	Florida										
A24	Florida										
A29	South Carolina										
A30	South Carolina										
M01	South Carolina										
M06	Texas A&M										
M07	Texas A&M										
M08	Texas A&M										

Date	Opponent	1	2	3	4	5	6	7	8	9	FX
F10	Rutgers	Sides	McEwen	Ellsworth	Gibson	Gammill	Malkin	Prigge	Hedgecock	LaValley	Haff
F11	Memphis	Sides	McEwen	Ellsworth	Gibson	Gammill	Malkin	Prigge	Hedgecock	LaValley	Turner
DH	Washington	Sides	McEwen	Ellsworth	Gibson	Gammill	Malkin	Prigge	Hedgecock	LaValley	Delce
F12	Long Beach State	Sides	McEwen	Ellsworth	Gibson	Gammill	Prigge	LaValley	Torres	Sockey	Delce
DH	Washington	Sides	McEwen	Ellsworth	Gibson	Gammill	Prigge	Delce	LaValley	Torres	Haff
F17	Wichita State										
DH	Illinois	Sides	McEwen	Ellsworth	Gibson	Gammill	Hoffman	Prigge	LaValley	Torres	Haff
F19	Wichita State	Sides	McEwen	Ellsworth	Gibson	Gammill	Hoffman	Torres	LaValley	Sockey	Bloom
DH	Longwood	Sides	McEwen	Ellsworth	Gibson	Gammill	Hoffman	Torres	LaValley	Sockey	Delce
F20	Illinois	Sides	McEwen	Ellsworth	Gibson	Gammill	Hoffman	Torres	LaValley	Sockey	Bloom
DH	Western Illinois										
F27	Louisville										
F28	Louisville										
DH	Louisville										
F27	Kansas										
M01	Central Arkansas										
M03	Missouri State										
M04	Kennesaw State										
DH	Kansas City										
M05	Missouri State										
DH	Kennesaw State										
M06	Kansas City										
M10	Liberty										
M11	Lehigh										
DH	Maryland										
M12	Maryland										
DH	James Madison										
M13	Lehigh										
M18	Tennessee										
M19	Tennessee										
M20	Tennessee										
M25	LSU										
M26	LSU										
M27	LSU										
A01	Ole Miss										
A02	Ole Miss										
A03	Ole Miss										
A05	Central Arkansas										
A08	Auburn										
A09	Auburn										
A10	Auburn										
A15	Kentucky										
A16	Kentucky										
A17	Kentucky										
A22	Florida										
A23	Florida										
A24	Florida										
A29	South Carolina										
A30	South Carolina										
M01	South Carolina										
M06	Texas A&M										
M07	Texas A&M										
M08	Texas A&M										





KAITLYN HOWARD

UTL • L/L • 5-7 • Sophomore  
East End, Ark. • Sheridan HS

Wooo Pig Classic

00

SEASON HIGHS			
Category	No.	Opponent (Last)	Date
Hits	-	-	-
Doubles	-	-	-
Triples	-	-	-
Home Runs	-	-	-
Total Bases	-	-	-
RBIs	-	-	-
Runs	-	-	-
Walks	-	-	-
ABs	-	-	-

CAREER HIGHS			
Category	No.	Opponent (Last)	Date
Hits	-	-	-
Doubles	-	-	-
Triples	-	-	-
Home Runs	-	-	-
Total Bases	-	-	-
RBIs	-	-	-
Runs	-	-	-
Walks	-	-	-
ABs	-	-	-

SEASON HIGHS			
Category	No.	Opponent (Last)	Date
Innings	-	-	-
Longest Start	-	-	-
Shortest Start	-	-	-
Longest Relief	-	-	-
Hits	-	-	-
Runs	-	-	-
Earned Runs	-	-	-
Walks	-	-	-
Strikeouts	-	-	-
Pitches	-	-	-

CAREER HIGHS			
Category	No.	Opponent (Last)	Date
Innings	1.0	Northwestern St.	3/6/21
Longest Start	-	-	-
Shortest Start	-	-	-
Longest Relief	1.0	Northwestern St.	3/6/21
Hits	4	Northwestern St.	3/6/21
Runs	2	Northwestern St.	3/6/21
Earned Runs	2	Northwestern St.	3/6/21
Walks	1	Northwestern St.	3/6/21
Strikeouts	-	-	-
Pitches	29	Northwestern St.	3/6/21

Kaitlyn Howard Career Stats																								
Year	inn	out	inn	out	inn	out	inn	out	inn	out	inn	out	inn	out	inn	out	inn	out	inn	out	inn	out	inn	out
2021	14.00	14.00	1	0	0	0.00	0	1.0	4	2	2	1	0	0	0	0	0	.571	0	0	0	0	0	0
TOTAL	14.00	14.00	1	0	0	0.00	0	1.0	4	2	2	1	0	0	0	0	0	.571	0	0	0	0	0	0



RAIGAN KRAMER

INF • L/R • 5-4 • Freshman  
Topeka, Kan. • Seaman HS

Wooo Pig Classic

1

SEASON HIGHS			
Category	No.	Opponent (Last)	Date
Hits	-	-	-
Doubles	-	-	-
Triples	-	-	-
Home Runs	-	-	-
Total Bases	-	-	-
RBIs	-	-	-
Runs	-	-	-
Walks	-	-	-
ABs	-	-	-

CAREER HIGHS			
Category	No.	Opponent (Last)	Date
Hits	-	-	-
Doubles	-	-	-
Triples	-	-	-
Home Runs	-	-	-
Total Bases	-	-	-
RBIs	-	-	-
Runs	-	-	-
Walks	-	-	-
ABs	-	-	-

BIO CONTINUED

Raigan Kramer Career Stats

Year	inn	out	inn	out	inn	out	inn	out	inn	out	inn	out	inn	out	inn	out	inn	out	inn	out	inn	out	inn	out
2021	14.00	14.00	1	0	0	0.00	0	1.0	4	2	2	1	0	0	0	0	0	.571	0	0	0	0	0	0
TOTAL	14.00	14.00	1	0	0	0.00	0	1.0	4	2	2	1	0	0	0	0	0	.571	0	0	0	0	0	0



# VALERIE VENTURA

INF • R/R • 5-6 • Redshirt Junior  
Oxnard, Calif. • Rio Mesa HS

2

SEASON HIGHS			
Category	No.	Opponent (Last)	Date
Hits	-	-	-
Doubles	-	-	-
Triples	-	-	-
Home Runs	-	-	-
Total Bases	-	-	-
RBI's	-	-	-
Runs	-	-	-
Walks	-	-	-
AB's	-	-	-

CAREER HIGHS			
Category	No.	Opponent (Last)	Date
Hits	2	2x (Villanova)	2/29/20
Doubles	1	Villanova	2/29/20
Triples	-	-	-
Home Runs	-	-	-
Total Bases	3	Villanova	2/29/20
RBI's	1	8x (Ole Miss)	3/19/21
Runs	2	Villanova	2/29/20
Walks	1	2x (Marist)	2/23/20
AB's	3	8x (Kansas City)	3/23/21

## BIO CONTINUED

South Dakota State (Feb. 21).

**As a Freshman (2019):** Was granted a medical redshirt for her first season at Arkansas.

**Prior to Arkansas:** Held a career batting average of .468 for Rio Mesa High school... Recorded 102 hits, 72 RBI's, 103 runs, 17 homers while slugging .839... Batted .494 during her senior year of high school with 38 hits on 34 runs with 9 homers while slugging 1.012... Led the team to a 23-0-1 record before suffering an injury during her final season at Rio Mesa... Was named to the 2015 and 2017 First Team All-Ventura County and the First team Pacific View League... 2017 All-Tournament Team for the TNT National Tournament ...Hit a three run walk-off home run in the championship game against the Cal A's Quales for her club team... Also lettered four years for the Rio Mesa High School girls basketball team.

**Personal:** Daughter of Andy and Nancy Ventura... Has two siblings, Andrew and Krystin.

Valerie Ventura Career Stats																			
Year	avg	g	pts	ab	r	b	2b	3b	hr	rbi	tb	slg%	bb	hbp	so	gdp	sh%	sf	sb
2020	.263	24-18	38	10	10	1	0	0	6	11	.289	2	0	10	2	.300	0	3	0-0
2021	.150	16-8	20	1	3	0	0	0	2	3	.150	0	0	8	0	.150	0	0	0-0
TOTAL	.224	40-26	58	11	13	1	0	0	8	14	.241	2	0	18	2	.250	0	3	0-0



# LARISSA CESENA • Suh-SANE-ya

INF/OF • R/R • 5-7 • Redshirt Junior  
Riverside, Calif. • Martin Luther King HS

3

SEASON HIGHS			
Category	No.	Opponent (Last)	Date
Hits	-	-	-
Doubles	-	-	-
Triples	-	-	-
Home Runs	-	-	-
Total Bases	-	-	-
RBI's	-	-	-
Runs	-	-	-
Walks	-	-	-
AB's	-	-	-

CAREER HIGHS			
Category	No.	Opponent (Last)	Date
Hits	1	6x (Auburn)	4/3/21
Doubles	1	Auburn	4/3/21
Triples	-	-	-
Home Runs	-	-	-
Total Bases	2	Auburn	4/3/21
RBI's	1	(2x) Kansas City	3/23/21
Runs	2	Georgia	4/16/21
Walks	1	5x (Georgia)	4/16/21
AB's	3	2x (North Dakota St.)	2/25/21

## BIO CONTINUED

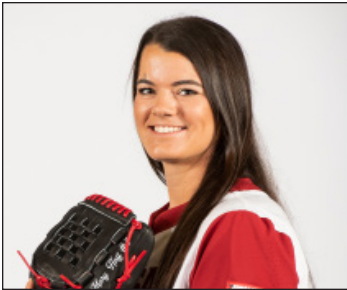
**As a Freshman (2019):** Was granted a medical redshirt for her first season at Arkansas.

**Prior to Arkansas:** Ranked No. 48 in the final FloSoftball Hot 100... Led Martin Luther King High School to four appearances to the CIF playoffs, earning team MVP honors after her junior season... As a member of the Explosion Travel ball team, was part of a top-eight finish at PGF Nationals in 2016... Was also a member of her school's track team and owns two school records.

**Persona:** Daughter of Eddie and Misti Cesena... Has two younger brothers, Seth and Luke... Aunt, Mia Cesena, played softball at Loyola Marymount (2006-09) and was a two-time all-conference selection... Majoring in Recreation and Sports Management... Goes by the nickname, Lari... Has over 55k followers on Tik Tok (@Lariluv) and post of this year's videoboard shoot has over 980k views.

Larissa Cesena Career Stats																			
Year	avg	g	pts	ab	r	b	2b	3b	hr	rbi	tb	slg%	bb	hbp	so	gdp	sh%	sf	sb
2020	.250	9-1	8	3	2	0	0	0	0	2	.250	1	0	2	0	.333	0	0	0-0
2021	.138	47-5	29	8	4	1	0	0	2	5	.172	4	1	15	0	.265	0	2	0-0
TOTAL	.162	56-6	37	11	6	1	0	0	2	7	.189	5	1	17	0	.279	0	2	0-0





# MARY HAFF

RHP • R/R • 5-10 • Redshirt Senior  
Winter Haven, Fla. • Lake Region HS

4

SEASON HIGHS			
Category	No.	Opponent (Last)	Date
Innings	6.0	Illinois	2/18/22
Longest Start	6.0	Illinois	2/18/22
Shortest Start	3.0	Longwood	2/19/21
Longest Relief	4.0	Illinois	2/20/21
Hits	8	Illinois	2/20/21
Runs	6	#7 Washington	2/12/22
Earned Runs	6	#7 Washington	2/12/22
Walks	4	#7 Washington	2/12/22
Strikeouts	6	Wichita State	2/19/22
Pitches	113	#7 Washington	2/12/22

CAREER HIGHS			
Category	No.	Opponent (Last)	Date
Innings	10.0	Liberty	3/16/21
Longest Start	10.0	Liberty	3/16/21
Shortest Start	0.1	Ole Miss	3/9/19
Longest Relief	8.2	McNeese	2/20/21
Hits	10	LSU	5/4/18
Runs	7	UTA	3/26/19
Earned Runs	5	4x (Missouri)	4/25/21
Walks	6	McNeese	2/21/21
Strikeouts	16	Furman	4/14/19
Pitches	149	McNeese	2/20/21

## BIO CONTINUED

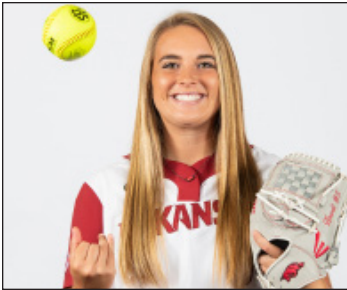
high 6.1 innings of shutout ball, allowing two hits against Montana (Feb. 22).

**As a Sophomore (2019):** Recorded seven shutouts and three one-hitter performances... Started the season throwing 20 consecutive innings without allowing a run... Recorded a career-high and tied the program single-game record with 16 strikeouts in 7.2 innings against Furman (April 14)... Posted five 10+ strikeout performances... tied for most saves in a season in school history.

**As a Freshman (2018):** 29 wins is a single-season program best... Threw the seventh no-hitter in program history in a 9-0 win over Northern Colorado (March 2)... Registered seven one-hitters ... Had 12 outings posting seven or more strikeouts coupled with one or fewer walks... Tallied three wins without allowing a run in 18.2 innings, including a pair of complete-game shutouts over DePaul (May 18) and Wichita State (May 19) in the NCAA Fayetteville Regional.

**Personal:** Daughter of Ron and Tula Haff... Majoring in Pre Med ... Broke her ankle during prime recruiting year in high school, Deifel saw her at a premier tournament in Colorado and said "I went and saw her and was like, 'Holy crap, she's still available.'"

Mary Haff Career Stats																									
Year	era	w-l	wpa	gs	cg	sho	sv	ip	h	r	er	hr	so	2b	3b	hr	bf	avg	wp	lwp	bk	sho	sho		
2018	1.51	29-7	45	31	19	11/1	2	213.1	118	53	46	44	249	16	1	20	827	.157	9	20	0	0	11		
2019	1.88	18-11	41	26	11	7/0	5	160.1	112	63	43	32	180	19	1	14	665	.190	9	29	0	2	14		
2020	1.89	4-1	13	6	1	0/1	1	37.0	32	15	10	11	40	4	2	6	157	.227	1	3	0	1	1		
2021	1.55	26-7	40	25	15	5/2	5	198.1	128	54	44	39	198	14	1	18	786	.192	2	12	0	4	11		
TOTAL	1.64	77-25	139	88	45	23/4	13	609.0	400	185	143	126	667	53	5	58	2435	.182	21	64	0	7	37		



# LAUREN HOWELL

RHP • R/R • 5-7 • Sophomore  
Jefferson City, Mo. • Helias Catholic HS

5

SEASON HIGHS			
Category	No.	Opponent (Last)	Date
Innings	2.0	Western Illinois	2/20/22
Longest Start	-	-	-
Shortest Start	-	-	-
Longest Relief	2.0	Western Illinois	2/20/22
Hits	2	Wichita State	2/19/22
Runs	3	#7 Washington	2/11/22
Earned Runs	3	#7 Washington	2/11/22
Walks	1	Western Illinois	2/20/22
Strikeouts	2	Western Illinois	2/20/22
Pitches	16	#7 Washington	2/11/22

CAREER HIGHS			
Category	No.	Opponent (Last)	Date
Innings	4.1	2x (Drake)	3/4/21
Longest Start	4.1	2x (Drake)	3/4/21
Shortest Start	3.1	McNeese	2/20/21
Longest Relief	2.2	Oklahoma State	2/11/21
Hits	6	2x (Northwestern St.)	3/5/21
Runs	4	2x (UTA)	2/22/21
Earned Runs	3	3x (UTA)	2/22/21
Walks	5	UTA	2/22/21
Strikeouts	3	Southeast Missouri	2/26/21
Pitches	85	UTA	2/22/21

## BIO CONTINUED

**Prior to Arkansas:** Finished Helias Catholic High School career with a 1.40 ERA, 47-11 record and 646 strikeouts ... Rated the No. 31 overall prospect in the 2020 class by Extralninnings and No. 40 by FloSoftball ... Tabbbed the No. 15 pitcher in her class by Extralninnings ... Named to the Class 3A All-State First Team as a sophomore and junior ... Selected to the Class 3A All-Region First team as a sophomore and junior ... Three-time First Team All-District selection ... Earned Academic All-State recognition as a junior and senior and was on the honor roll all four years of high school ... Went 4-0 inside the circle and recorded two saves over 34 innings pitched in her injury-shortened senior campaign ... Compiled a 1.44 ERA with 67 strikeouts to 12 walks ... Part of a Crusader team that captured the 2019 Class 3 state championship ... As a junior compiled a 0.64 ERA in 132 innings with 214 strikeouts ... Played travel ball for the DeMarini Aces ... Struck out 214 with a 1.50 ERA for the Aces in 2019.

**Personal:** Daughter of Jay and Rachelle Howell ... Has two younger siblings, Hayden and Harper ... Plans to major in business ... After her playing career, wants to take over the family business, Howell's Carpet ... Competed in dance and cheerleading prior to playing softball/

Lauren Howell Career Stats																									
Year	era	w-l	wpa	gs	cg	sho	sv	ip	h	r	er	hr	so	2b	3b	hr	bf	avg	wpa	bbp	hr	sho	sho		
2021	5.01	2-8	8	4	0	0/0	0	22.1	25	20	16	11	9	5	0	1	109	.288	5	4	0	0	1		
TOTAL	5.01	2-8	8	4	0	0/0	0	22.1	25	20	16	11	9	5	0	1	109	.288	5	4	0	0	1		



CALLY KILDOW • KILL-DOW

UTL • R/R • 5-7 • Sophomore  
Gravette, Ark. • Gravette HS

6

SEASON HIGHS			
Category	No.	Opponent (Last)	Date
Hits	2	Longwood	2/19/22
Doubles	-	-	-
Triples	-	-	-
Home Runs	-	-	-
Total Bases	6	Longwood	2/19/22
RBIs	2	Longwood	2/19/22
Runs	2	Longwood	2/19/22
Walks	-	-	-
ABs	2	Longwood	2/19/22

CAREER HIGHS			
Category	No.	Opponent (Last)	Date
Hits	2	Longwood	2/19/22
Doubles	-	-	-
Triples	-	-	-
Home Runs	-	-	-
Total Bases	6	Longwood	2/19/22
RBIs	2	Longwood	2/19/22
Runs	1	11x (Stanford)	5/23/21
Walks	-	-	-
ABs	2	Longwood	2/19/22

**BIO CONTINUED**

185 innings pitched in the 2017 season are the fifth most in a single season in state history ... Two-time all-state selection and 2017 MaxPreps All-American ... Was only able to play in one game her senior season due to the COVID-19 pandemic ... As a junior hit .464 (39-for-84) with seven doubles, one triple, 19 runs scored and 24 RBI over 26 games played ... Slashed .464/.473/.571 ... Made 20 pitching appearances, tossed 61 innings of work and went 4-5 with seven saves and 80 strikeouts ... Was not 100% due to an injury suffered the prior year ... Missed entire sophomore season due a broken bone which was suffered during a state tournament basketball game ... Played travel ball for the DeMarini Aces and garnered USA Elite All-American honors in 2014 ... Also played basketball for two seasons at Gravette and averaged 11.0 points per game ... Additionally competed in track and field for Gravette.

**Personal:** Has two siblings, McCoy and Sydney ... Plans on majoring in business and working in the fashion design industry after graduation.

Cally Kildow Career Stats																			
Year	Opp	W	L	T	IP	ER	BB	SO	HR	SHO	SV	WHIP	ERA	WAR	W-L	W-L	W-L	W-L	W-L
2021	28-0	0	12	0	0	0	0	0	0	0	0	.000	0.00	0	0	0	0	0	0
TOTAL	28-0	0	12	0	0	0	0	0	0	0	0	.000	0.00	0	0	0	0	0	0

BIO

**Career Accolades:** SEC First-Year Academic Honor Roll (2021)

**As a Freshman (2021):** Appeared in 28 games as a pinch runner scoring 12 runs, also saw action in two games in right field, but did not record any fielding statistics ... Made collegiate debut in the season opener, scoring a run against Oklahoma State (Feb. 11) ... Stole her first career base against Kansas (March 5) ... Scored three runs in the NCAA Tournament against Manhattan (May 21), Stanford (May 23) and Arizona (May 28).

**Prior to Arkansas:** Three-time letter winner at Gravette High School for head coach Taos Jones ...Posted a career ERA of 1.14 and a .448 batting average ... In addition to her pitching duties, played shortstop and third base ... Rated No. 57 in the FloSoftball Hot 100 and No. 121 prospect by Extralnnings ... Ranks inside the top-10 in numerous Arkansas state high school single-season records ... Her 331 strikeouts in 2017 ranks third-most in a single-season in Arkansas state history ... Her 16 shutouts in 2017 rank second all-time in a single-season and her three no-hitters that season is tied for 10th-most ... Her

GAME-BY-GAME

Arkansas Softball  
Individual Game-by-Game for Arkansas (as of Feb 25, 2022)

#6 Cally Kildow - 0 games (All games)

Date	Opponent	Pas	AB	R	H	RBI	2B	3B	HR	BB	SB	CS	HBP	SAC	SF	GDP	K	PO	A	E	Avg
Feb 10	vs Rutgers	of	0	0	0	0	0	0	0	0	0	0	0	0	0	0	0	0	0	0	.000
Feb 11	vs MemphisNew	pr/of	0	0	0	0	0	0	0	0	0	0	0	0	0	0	0	0	0	0	.000
Feb 11	vs Washington	of	0	0	0	0	0	0	0	0	0	0	0	0	0	0	0	0	0	0	.000
Feb 12	vs Long Beach Stat	pr	0	1	0	0	0	0	0	0	0	0	0	0	0	0	0	0	0	0	.000
Feb 12	vs Washington	pr	0	0	0	0	0	0	0	0	0	1	0	0	0	0	0	0	0	0	.000
Feb 19	LONGWOOD	ph/1	2	2	2	2	0	0	0	0	0	0	0	0	0	0	0	1	0	0	1.000
Totals		Dgs	2	3	2	2	0	0	0	0	0	1	0	0	0	0	0	1	0	0	1.000

On base pct. 1.000 • Slugging pct. 1.000



CHENISE DELCE

RHP/UTL • R/R • 5-5 • Redshirt Junior  
Oklahoma City, Okla. • Tulsa (Carl Albert HS)

7

SEASON HIGHS			
Category	No.	Opponent (Last)	Date
Innings	5.1	#7 Washington	2/12/22
Longest Start	5.1	#7 Washington	2/12/22
Shortest Start	2.0	Longwood	2/19/22
Longest Relief	4.0	Long Beach State	2/12/22
Hits	7	#7 Washington	2/11/22
Runs	5	#7 Washington	2/11/22
Earned Runs	3	Western Illinois	2/20/22
Walks	3	#7 Washington	2/11/22
Strikeouts	4	Western Illinois	2/20/22
Pitches	115	#7 Washington	2/11/22

CAREER HIGHS			
Category	No.	Opponent (Last)	Date
Innings	9.0*	Iowa	2/9/19
Longest Start	9.0*	Iowa	2/9/19
Shortest Start	1.0*	Memphis	4/18/21
Longest Relief	4.2*	Omaha	3/6/21
Hits	8*	USF	4/9/21
Runs	9*	Texas A&M	2/26/21
Earned Runs	7*	Texas A&M	2/26/21
Walks	6*	Texas State	2/23/20
Strikeouts	13*	East Carolina	4/23/21
Pitches	134*	Northern Iowa	3/1/19

SEASON HIGHS			
Category	No.	Opponent (Last)	Date
Hits	1	Western Illinois	2/20/22
Doubles	-	-	-
Triples	-	-	-
Home Runs	-	-	-
Total Bases	-	-	-
RBIs	1	Long Beach State	2/12/22
Runs	-	-	-
Walks	-	-	-
ABs	4	#7 Washington	2/12/22

CAREER HIGHS			
Category	No.	Opponent (Last)	Date
Hits	3*	3x (Wichita State)	4/30/21
Doubles	1*	6x (East Carolina)	4/23/21
Triples	-	-	-
Home Runs	1*	8x (Wichita State)	5/14/21
Total Bases	6*	Eastern Kentucky	2/7/20
RBIs	3*	East Carolina	4/12/19
Runs	2*	North Dakota	2/17/19
Walks	3*	East Carolina	4/23/21
ABs	4*	25x (Houston)	5/13/21

\*At Tulsa

Chenise Delce Career Stats - Arkansas Only

BIO

**Career Accolades:** First Team All-American Conference (2019, 2021), NFCA All-Region Second Team (2019, 2021), AAC All-Tournament Team (2021), AAC Rookie of the Year (2019), NFCA Freshman of the Year Top 25 Finalist (2019).

**At Tulsa (2019-21):** Played at Tulsa for three seasons (2019-21)... Named First Team All-American Athletic Conference in 2019 and 2021 ... Two-time NFCA All-Region Second Team selection in 2019 and 2021 ... 2021 AAC All-Tournament Team ... 2019 AAC Rookie of the Year ... In 2019 was a Top 25 Finalist for the NFCA Freshman of the Year award ... In 2021, led Tulsa throwing 83.0 innings and went 7-6 inside the circle with a 2.95 ERA and 107 strikeouts to 21 walks ... Ranked second in the AAC in strikeout-to-walk ratio (4.12), third in strikeouts per seven innings (8.4) and fifth in total strikeouts ... During the COVID-19 shortened 2020 season, went 6-3 in 63.0 innings pithed accumulating a 2.00 ERA and 48 strikeouts ... As a freshman in 2019, led the Tulsa staff with a 15-6 record posting a 1.63 ERA and 124 strikeouts over 141.2 innings ... Racked up three games of at least 10 strikeouts ... Shutout Arkansas in the Stillwater Regional ... Also hit for the Golden Hurricane, posted a career slash line of .268/361/.375 with 75 hits, eight home runs and 51 RBIs.

**High School:** Two-time state champion with a 5A championship as a senior at Carl Albert HS and a 6A title as a sophomore at Choctaw HS ... As a senior she recorded 233 strikeouts in 114 innings and allowed just six earned runs for a 0.36 ERA ... Also hit .435 and took home several postseason honors as she was named all-state, all-region, District 5A-1 Pitcher of the Year and first-team Big All-City by The Oklahoman ... During her other championship season as a sophomore, she piled up 257 strikeouts in 202 innings and recorded a 1.17 ERA ... For her efforts, she was named Big All-City Player of the Year, MVP of the state tournament and the District 6A-1 Pitcher of the Year ... Also played club ball for the Oklahoma Athletics.

GAME-BY-GAME

Arkansas Softball  
Individual Game-by-Game for Arkansas (as of Feb 25, 2022)

#7 Chenise Delce - 4 games (All games)

Date	Opponent	Pas	AB	R	H	RBI	2B	3B	HR	BB	SB	CS	HBP	SAC	SF	GDP	K	PO	A	E	Avg
Feb 12	vs Long Beach Stat	*dh/p	2	0	0	1	0	0	0	0	0	0	0	0	1	0	1	0	0	0	.000
Feb 12	vs Washington	*dh/p	4	0	1	0	0	0	0	0	0	0	0	0	0	0	0	0	0	0	.167
Feb 20	ILLINOIS	*ph	1	0	0	0	0	0	0	0	0	0	0	0	0	0	1	0	0	0	.143
Feb 20	WESTERN ILLINO	*p	1	0	1	0	0	0	0	0	0	0	0	0	0	0	0	0	0	0	.250
Totals		3gs	8	0	2	1	0	0	0	0	0	0	0	0	1	0	2	0	0	0	.250

On base pct. .222 • Slugging pct. .250

#7 Chenise Delce - 7 appearances (All games)

Date	Opponent	GS	IP	H	K	ER	BB	SO	2B	3B	HR	WP	BE	HBP	BB	Score	W-L	St	ERA	MP
Feb 10	vs Rutgers		2.0	0	0	0	0	3	0	0	0	0	0	1	0	4-0	0-0	0	0.00	28
Feb 11	vs Washington	*	5.1	7	5	2	3	4	1	0	0	0	0	0	1	0-8	0-1	0	1.91	115
Feb 12	vs Long Beach Stat		4.0	2	0	0	2	3	0	0	0	0	0	0	0	10-0	1-1	0	1.24	69
Feb 12	vs Washington		0.1	3	2	2	0	0	2	0	1	1	0	0	0	5-10	1-1	0	2.40	18
Feb 18	ILLINOIS		1.0	4	3	3	0	3	1	0	1	0	0	0	0	6-3	1-1	0	3.07	28
Feb 19	LONGWOOD	*	2.0	6	3	3	2	3	1	0	0	0	0	0	0	15-4	1-1	0	4.77	49
Feb 20	WESTERN ILLINO	*	3.0	4	3	3	0	4	0	0	2	0	0	0	0	13-3	2-1	0	5.15	39
Totals			3	17.2	26	16	13	7	20	5	0	4	1	0	1	153-28	2-1	0	5.15	-





# KB SIDES

OF • L/R • 5-7 • Redshirt Senior  
Dora, Ala. • Alabama (Sumiton Christian HS)

8

SEASON HIGHS			
Category	No.	Opponent (Last)	Date
Hits	1	7x (Western Illinois)	2/20/22
Doubles	-	-	-
Triples	-	-	-
Home Runs	1	2x (Illinois)	2/20/22
Total Bases	-	-	-
RBIs	1	2x (Illinois)	2/20/22
Runs	2	4x (Western Illinois)	2/20/22
Walks	3	#7 Washington	2/12/22
ABs	4	2x (Wichita State)	2/19/22
SB	3	Western Illinois	2/20/22

CAREER HIGHS			
Category	No.	Opponent (Last)	Date
Hits	3*	6x (Arkansas)	3/7/21
Doubles	2*	Kentucky	3/28/21
Triples	1*	4x (Kentucky)	5/28/21
Home Runs	1*	5x (Illinois)	2/20/22
Total Bases	5*	2x (Texas)	5/25/21
RBIs	5*	Louisville	2/23/20
Runs	4*	Murray State	2/9/19
Walks	2*	10x (Kentucky)	5/13/21
ABs	5*	2x (Mississippi State)	3/31/19

\*At Alabama

**BIO CONTINUED**  
Today Second Team All-American ... NFCA All-American ... All-State Tournament Team, ASWA First Team, 2017 NFCA Golden Shoe Award ... Won back-to-back state titles in 2015 and 2016 ... Scored the most career runs (462) and career stolen bases (401) in Alabama high school softball history.

**Personal:** Full name is Kendall Beth Sides ... Daughter of George and Lynn Sides ... Has one sister Katlyn, who played softball at UAB ... Graduated from Alabama in Spring 2021.

KB Sides Career Stats - Arkansas Only



# ALLY SOCKEY

INF • R/R • 5-6 • Freshman  
Greenwood, Ark. • Greenwood HS

10

SEASON HIGHS			
Category	No.	Opponent (Last)	Date
Hits	-	-	-
Doubles	-	-	-
Triples	-	-	-
Home Runs	-	-	-
Total Bases	-	-	-
RBIs	-	-	-
Runs	-	-	-
Walks	-	-	-
ABs	2	5x (Western Illinois)	2/20/22

CAREER HIGHS			
Category	No.	Opponent (Last)	Date
Hits	-	-	-
Doubles	-	-	-
Triples	-	-	-
Home Runs	-	-	-
Total Bases	-	-	-
RBIs	-	-	-
Runs	-	-	-
Walks	-	-	-
ABs	2	5x (Western Illinois)	2/20/22

**BIO CONTINUED**

Ally Sockey Career Stats



ABBY GORDON

C • R/R • 5-9 • Redshirt Freshman  
Garden Plain, Kan. • Andale Garden Plain HS

12

SEASON HIGHS			
Category	No.	Opponent (Last)	Date
Hits	-	-	-
Doubles	-	-	-
Triples	-	-	-
Home Runs	-	-	-
Total Bases	-	-	-
RBI's	-	-	-
Runs	-	-	-
Walks	-	-	-
ABs	1	Western Illinois	2/20/22

CAREER HIGHS			
Category	No.	Opponent (Last)	Date
Hits	-	-	-
Doubles	-	-	-
Triples	-	-	-
Home Runs	-	-	-
Total Bases	-	-	-
RBI's	-	-	-
Runs	-	-	-
Walks	-	-	-
ABs	1	Western Illinois	2/20/22

BIO CONTINUED

Abby Gordon Career Stats



KACIE HOFFMANN

UTL • L/L • 5-9 • Freshman  
Elkhorn, Neb. • Elkhorn South HS

14

SEASON HIGHS			
Category	No.	Opponent (Last)	Date
Hits	2	Longwood	2/19/22
Doubles	-	-	-
Triples	-	-	-
Home Runs	1	2x (Western Illinois)	2/20/22
Total Bases	-	-	-
RBI's	3	Longwood	2/19/22
Runs	2	Longwood	2/19/22
Walks	-	-	-
ABs	4	Illinois	2/20/22

CAREER HIGHS			
Category	No.	Opponent (Last)	Date
Hits	2	Longwood	2/19/22
Doubles	-	-	-
Triples	-	-	-
Home Runs	1	2x (Western Illinois)	2/20/22
Total Bases	-	-	-
RBI's	3	Longwood	2/19/22
Runs	2	Longwood	2/19/22
Walks	-	-	-
ABs	4	Illinois	2/20/22

BIO CONTINUED

Kacie Hoffmann Career Stats





SPENCER **PRIGGE** • Prig-EE

INF • L/R • 6-0 • Freshman  
Phoenix, Ariz. • Horizon HS

15

SEASON HIGHS			
Category	No.	Opponent (Last)	Date
Hits	1	Long Beach State	2/12/22
Doubles	-	-	-
Triples	-	-	-
Home Runs	-	-	-
Total Bases	-	-	-
RBIs	2	Long Beach State	2/12/22
Runs	-	-	-
Walks	1	4x (Washington)	2/12/22
ABs	2	5x (Washington)	2/12/22

CAREER HIGHS			
Category	No.	Opponent (Last)	Date
Hits	1	Long Beach State	2/12/22
Doubles	-	-	-
Triples	-	-	-
Home Runs	-	-	-
Total Bases	-	-	-
RBIs	2	Long Beach State	2/12/22
Runs	-	-	-
Walks	1	4x (Washington)	2/12/22
ABs	2	5x (Washington)	2/12/22

BIO CONTINUED

sport to play.

Spencer Prigge Career Stats



MADI **CONKLIN**

C • R/R • 5-4 • Freshman  
Fort Smith, Ark. • Southside HS

16

SEASON HIGHS			
Category	No.	Opponent (Last)	Date
Hits	-	-	-
Doubles	-	-	-
Triples	-	-	-
Home Runs	-	-	-
Total Bases	-	-	-
RBIs	-	-	-
Runs	-	-	-
Walks	-	-	-
ABs	-	-	-

CAREER HIGHS			
Category	No.	Opponent (Last)	Date
Hits	-	-	-
Doubles	-	-	-
Triples	-	-	-
Home Runs	-	-	-
Total Bases	-	-	-
RBIs	-	-	-
Runs	-	-	-
Walks	-	-	-
ABs	-	-	-

BIO CONTINUED

Madi Conklin Career Stats

BIO

**Prior to Arkansas:** Played at Horizon HS for head coach Jackie Coburn ... Over her career slashed .529/.638/1.187 with 99 hits, 99 runs, 95 RBIs, 16 doubles, seven triples and 31 home runs ... Slugged seven homers as a senior while hitting .386/.567/1.000 and totaling 17 hits, 15 RBI, two doubles and two triples ... Only played four games as a junior due to COVID-19 ... As a junior slashed .544/.632/1.263 with 31 hits, 28 runs, 44 RBI, six doubles, one triple and 11 home runs ... Her freshman year recorded a .603/.670/1.901 line with 47 hits, 37 runs, 31 RBI, eight doubles, four triples and 11 home runs ... Struck out just once as a freshman ... While in high school, all-region player of the year award winner and a two-time all-region first team and all-conference first team honoree ... Ranked the No. 27 player in her class by FloSoftball ... Played in the 2021 PGF All-American Game ... Played travel ball for AZ So Cal Choppers.

**Personal:** Daughter of Steve and Nithia Prigge ... Has one sister, Peyton, who is an outfielder at Utah Valley ... Plans to major in environmental sciences ... Wants to travel and visit Iceland ... Lists an interesting fact about herself that when she first started T-ball, she threw left-handed, and her parents said it was difficult to watch and considered finding her a new

GAME-BY-GAME

Arkansas Softball  
Individual Game-by-Game for Arkansas (as of Feb 25, 2022)

#15 Spencer Prigge - 6 games (All games)

Date	Opponent	Pos	AB	R	H	RBI	2B	3B	HR	BB	SB	CS	HBP	SAC	SF	GDP	K	PO	A	E	Avg
Feb 10	vs Rutgers	*ss	2	0	0	0	0	0	0	0	1	0	0	0	0	0	0	4	1	0	.000
Feb 11	vs MemphisNew	*ss	2	0	0	0	0	0	0	0	1	0	0	0	1	0	0	0	2	0	.000
Feb 11	vs Washington	*ss	2	0	0	0	0	0	0	0	0	0	0	0	0	0	2	0	1	0	.000
Feb 12	vs Long Beach Stat	*ss	2	0	1	2	0	0	0	0	1	0	0	0	0	0	0	2	2	0	.125
Feb 12	vs Washington	*ss	2	0	0	0	0	0	0	0	1	0	0	0	1	0	0	1	1	2	.100
Feb 18	ILLINOIS	*ss	1	0	0	0	0	0	0	0	0	0	0	0	0	0	1	0	0	0	.091
Totals		6gs	11	0	1	2	0	0	0	4	0	0	0	0	2	0	0	4	7	8	.091

On base pct. .333 • Slugging pct. .091



TAYLOR ELLSWORTH

C/UTL • R/R • 5-5 • Graduate  
Georgetown, Texas • Texas (Georgetown HS)

17

SEASON HIGHS			
Category	No.	Opponent (Last)	Date
Hits	3	Western Illinois	2/20/22
Doubles	1	4x (Western Illinois)	2/20/22
Triples	-	-	-
Home Runs	1	Western Illinois	2/20/22
Total Bases	-	-	-
RBI's	4	Western Illinois	2/20/22
Runs	2	3x (Western Illinois)	2/20/22
Walks	2	Longwood	2/19/22
AB's	4	3x (Western Illinois)	2/20/22

CAREER HIGHS			
Category	No.	Opponent (Last)	Date
Hits	5*	Oklahoma State	3/26/17
Doubles	2*	2x (Minnesota)	5/18/18
Triples	-	-	-
Home Runs	1*	17x (Western Illinois)	2/20/22
Total Bases	6*	4x (New Mexico)	3/20/21
RBI's	4	Western Illinois	2/20/22
Runs	2	9x (Western Illinois)	2/20/22
Walks	2	11x (Longwood)	2/19/22
AB's	5	4x (Texas State)	5/19/17

\*At Texas

**BIO CONTINUED**  
**High School:** Did not play final prep year to join the Longhorns early ... Hit .550 over three-year career at Georgetown HS, posting 21 home runs and 107 RBI ... Two-time all-state selection ... Earned District 25-5A Most Valuable Player honors.

**Personal:** Born in Austin, Texas ... Daughter of Richard and Leslie Ellsworth ... Has one sibling, Kylie.

Taylor Ellsworth Career Stats - Arkansas Only

BIO

**Career Accolades:** NFCA All-Region First Team (2017) at Texas, NFCA All-Region Second Team (2021) at Texas, All-Big 12 First Team (2017) at Texas, Big 12 All-Freshman Team (2017) at Texas.

**At Texas:** Played at Texas for five seasons (2017-21), appearing in 171 games and making 162 starts ... During her career was named NFCA All-Region Second Team (2021), NFCA All-Region First Team (2017), All-Big 12 First Team (2017), Big 12 All-Freshman Team (2017) ... In her Texas career totaled a .320/.387/.482 slash line with 144 hits, 25 doubles, 16 home runs, 54 walks and 89 RBI ... Helped Texas to a 43-11 record and Super Regional appearance in 2021, ranking second on the team with a .372 batting average and nine doubles ... Also logged a career-high 31 RBI ... Hit well in the postseason, recording a hit in five of seven NCAA Tournament games ... Played in 20 games over the 2019 and 2020 seasons due to an injury in 2019 and COVID-19 shortening the 2020 campaign ... Drew a team-best 29 walks in 2018 and started all 59 games while hitting .244 ... As a freshman in 2017, led the team and ranked fifth in the Big 12 hitting .394.

GAME-BY-GAME

Arkansas Softball  
Individual Game-by-Game for Arkansas (as of Feb 25, 2022)

#17 Taylor Ellsworth - 10 games (All games)

Date	Opponent	Pos	AB	R	H	RBI	2B	3B	HR	BB	SB	CS	HBP	SAC	SF	GDP	K	PO	A	E	Avg
Feb 10	vs Rutgers	*c	2	1	0	0	0	0	0	0	0	0	2	0	0	0	0	7	1	0	.000
Feb 11	vs MemphisNew	*c	4	0	2	3	1	0	0	0	0	0	0	0	0	0	0	7	2	0	.333
Feb 11	vs Washington	*c	3	0	0	0	0	0	0	0	0	0	0	0	0	0	1	4	0	0	.222
Feb 12	vs Long Beach Stat	*c	2	2	0	0	0	0	0	1	0	0	0	0	0	0	0	3	1	0	.182
Feb 12	vs Washington	*c	4	1	2	2	1	0	0	0	0	0	0	0	0	0	1	5	0	0	.267
Feb 18	ILLINOIS	*c	3	0	0	0	0	0	0	0	0	0	0	0	0	0	1	7	0	0	.222
Feb 19	WICHITA STATE	*c	3	1	1	0	1	0	0	1	0	0	0	0	0	0	0	12	1	0	.238
Feb 19	LONGWOOD	*c	1	2	1	0	0	0	0	2	0	0	0	0	0	0	0	8	0	0	.273
Feb 20	ILLINOIS	*c/pr	3	0	1	0	1	0	0	1	0	0	0	0	0	0	1	5	0	0	.280
Feb 20	WESTERN ILLINO	*c	4	2	3	4	1	0	1	0	0	0	0	0	0	0	0	6	0	0	.345
Totals		10gs	29	9	10	9	5	0	1	5	0	0	2	0	0	0	4	64	5	0	.345

On base pct. .472 • Slugging pct. .621



MARLENE FRIEDMAN • FREED-min

INF • R/R • 5-5 • Sophomore  
Huntington Beach, Calif. • Mater Dei HS

18

BIO

**Career Accolades:** SEC First-Year Academic Honor Roll (2021).

**As a Freshman (2021):** Played in 13 games exclusively as a pinch runner, scoring two runs ... Scored runs against Kansas (March 5) and Northwestern State (March 6).

**Prior to Arkansas:** Played at Mater Dei High School for head coaches Sean Brashear and Jessica Foley .... Won back-to-back Trinity League championships in 2018 and 2019 ... Selected to the 2020 Orange County All-Star Game ... Mater Dei was tabbed the No. 10 team in the state prior to the COVID shortened 2020 season ... As a freshman hit .333 (17-for-51) with one homer, nine RBI and five runs scored ... Named to the 2020 PGH All-American Watch List ... Played travel ball for Explosion Denio and Firecrackers Brashear.

**Personal:** Has two siblings, Donna and Meredith ... Sister Donna currently plays softball at Virginia ... Is a third-generation

GAME-BY-GAME

Arkansas Softball  
Individual Game-by-Game for Arkansas (as of Feb 25, 2022)

#18 Marlene Friedman - 3 games (All games)

Date	Opponent	Pos	AB	R	H	RBI	2B	3B	HR	BB	SB	CS	HBP	SAC	SF	GDP	K	PO	A	E	Avg
Feb 19	WICHITA STATE	pr	0	1	0	0	0	0	0	0	0	0	0	0	0	0	0	0	0	0	.000
Feb 19	LONGWOOD	pr	0	1	0	0	0	0	0	0	0	0	0	0	0	0	0	0	0	0	.000
Feb 20	ILLINOIS	pr	0	1	0	0	0	0	0	0	0	0	0	0	0	0	0	0	0	0	.000
Totals		0gs	0	3	0	0	0	0	0	0	0	0	0	0	0	0	0	0	0	0	.000

On base pct. .000 • Slugging pct. .000

BIO CONTINUED

Razorback.

Marlene Friedman Career Stats

Year	avg	g	ip	ab	r	h	2b	3b	hr	rbi	bb	so	slg%	ops	stl	cs	sf	sh	cl	cl-rt	po	a	e	fld%
2021	.000	13-0	0	2	0	0	0	0	0	0	0	0	.000	0	0	0	0	0	0-0	0	0	0	.000	
TOTAL	.000	13-0	0	2	0	0	0	0	0	0	0	0	.000	0	0	0	0	0	0-0	0	0	0	.000	





# HANNAH GAMMILL

UTL • L/L • 5-8 • Sophomore  
Beebe, Ark. • Beebe HS

20

SEASON HIGHS			
Category	No.	Opponent (Last)	Date
Hits	2	Illinois	2/18/22
Doubles	1	Longwood	2/19/22
Triples	-	-	-
Home Runs	1	4x (Illinois)	2/20/22
Total Bases	-	-	-
RBIs	4	Long Beach State	2/12/22
Runs	2	2x (Longwood)	2/19/22
Walks	2	Long Beach State	2/12/22
ABs	4	Illinois	2/20/22

CAREER HIGHS			
Category	No.	Opponent (Last)	Date
Hits	3	2x (Missouri)	4/26/21
Doubles	1	5x (Longwood)	2/19/22
Triples	-	-	-
Home Runs	1	13x (Illinois)	2/20/22
Total Bases	6	2x (Missouri)	4/26/21
RBIs	4	Long Beach State	2/12/221
Runs	3	2x (Georgia)	4/16/21
Walks	2	7x (Long Beach State)	2/12/22
ABs	6	McNeese	2/20/21

**BIO CONTINUED**

Team in 2017 ... Named to the 2020 PGF High School All-American Watchlist ... Slashed .486/.632/1.021 in 55 career games over four seasons at Beebe and collected 68 career hits, 76 RBI, 14 doubles, two triples, 19 homers and 85 runs scored ... Also played volleyball at Beebe and was an all-conference selection.

**Personal:** Daughter of Monty and Becky Gammill ... Has two siblings, David and Danielle ... Plans on majoring in nursing and wants to become a nurse anesthetist ... Enjoys going to church, hammocking, running, swimming and shopping ... Lists her eye being two different colors as something most people don't know about her.

Hannah Gammill Career Stats																			
Year	avg	g	ab	r	h	2b	3b	hr	rbi	tb	slg%	bb	k	ops	slg%	sf	sh	stl	cs
2021	.297	34-36	101	28	30	4	0	9	27	61	.604	22	16	15	0	.451	2	1	0-0
TOTAL	.297	34-36	101	28	30	4	0	9	27	61	.604	22	16	15	0	.451	2	1	0-0



# MALLORY HARDWICK

UTL • L/L • 5-9 • Freshman  
Keller, Texas • Bayard Rustin (Pa.) HS

21

SEASON HIGHS			
Category	No.	Opponent (Last)	Date
Hits	-	-	-
Doubles	-	-	-
Triples	-	-	-
Home Runs	-	-	-
Total Bases	-	-	-
RBIs	-	-	-
Runs	-	-	-
Walks	-	-	-
ABs	-	-	-

CAREER HIGHS			
Category	No.	Opponent (Last)	Date
Hits	-	-	-
Doubles	-	-	-
Triples	-	-	-
Home Runs	-	-	-
Total Bases	-	-	-
RBIs	-	-	-
Runs	-	-	-
Walks	-	-	-
ABs	-	-	-

**BIO CONTINUED**

Mallory Hardick Career Stats

Year	avg	g	ab	r	h	2b	3b	hr	rbi	tb	slg%	bb	k	ops	slg%	sf	sh	stl	cs
2021	.297	34-36	101	28	30	4	0	9	27	61	.604	22	16	15	0	.451	2	1	0-0
TOTAL	.297	34-36	101	28	30	4	0	9	27	61	.604	22	16	15	0	.451	2	1	0-0



LINNIE MALKIN • Mal (like pal)-kin

OF • R/R • 5-11 • Redshirt Senior  
Broomfield, Colo. • Broomfield HS

22

SEASON HIGHS			
Category	No.	Opponent (Last)	Date
Hits	2	Memphis	2/11/22
Doubles	1	Memphis	2/11/22
Triples	-	-	-
Home Runs	-	-	-
Total Bases	-	-	-
RBIs	1	Rutgers	2/10/22
Runs	-	-	-
Walks	1	2x (Memphis)	2/11/22
ABs	3	Memphis	2/11/22

CAREER HIGHS			
Category	No.	Opponent (Last)	Date
Hits	3	5x (Central Arkansas)	4/21/21
Doubles	1	14x (Memphis)	2/11/22
Triples	-	-	-
Home Runs	2	3x (Central Arkansas)	4/21/21
Total Bases	10	Central Arkansas	4/21/21
RBIs	5	North Dakota State	2/25/21
Runs	3	3x (Mississippi State)	3/27/21
Walks	4	Oklahoma State	2/21/21
ABs	7	McNeese	2/20/21

BIO CONTINUED

RBI... Tied for the 11th most RBI in the SEC... Tied for the team lead with eight multiple RBI games... Collected two three hit games at New Mexico State (Feb. 8) and against Bradley (Feb. 9)... Hit a grand slam against Villanova (Feb. 28)... Totaled two four RBI games against South Dakota State (Feb. 21) and Villanova (Feb. 28)... Scored a career-high three runs against Villanova (Feb. 29).

**As a Sophomore (2019):** Played in 36 games and made five starts, three as the designated player and two at third base... Lone long ball came in game-winning fashion against LSU (April 18) as she helped propel the Razorbacks to an 8-5 win.

**As a Freshman (2018):** Played in 23 games and made 14 starts... In her collegiate debut hit two home runs, drove in three runs and scored twice against Grand Canyon (Feb. 17).

**Prior to Arkansas:** Guided Broomfield HS to a state runner-up finish her senior year and registered a .603 batting average with 11 home runs, 35 RBIs and a 1.365 slugging percentage... Named the Colorado State Gatorade Player of the Year and 2016 5A Player of the Year.

Linnie Malkin Career Stats																							
Year	avg	g	pts	reb	ast	stl	blk	trf	rbi	tb	avg%	bb	k	ops	slg%	off	sb	stl-out	pos	a	e	fld%	
2018	.279	23-14	43	8	12	2	0	3	8	23	.535	10	0	12	0	.415	0	0	0-0	3	0	0	1.000
2019	.293	36-5	41	2	12	3	0	1	9	18	.439	6	1	14	1	.396	0	0	0-0	0	1	1	.500
2020	.247	25-25	73	13	18	4	0	6	24	40	.548	7	4	17	2	.345	0	0	0-0	7	2	1	.900
2021	.265	54-64	170	29	45	5	0	18	45	104	.612	18	5	38	3	.352	0	0	0-0	19	1	0	1.000
TOTAL	.266	138-98	327	52	87	14	0	28	86	185	.566	41	10	81	6	.365	0	0	0-0	29	4	2	.943



HANNAH MCEWEN

OF • L/R • 5-7 • Redshirt Senior  
San Diego, Calif. • Patrick Henry HS

23

SEASON HIGHS			
Category	No.	Opponent (Last)	Date
Hits	2	2x (Western Illinois)	2/20/22
Doubles	1	3x (Western Illinois)	2/20/22
Triples	-	-	-
Home Runs	1	Illinois	2/20/22
Total Bases	-	-	-
RBIs	2	Long Beach State	2/12/22
Runs	3	Western Illinois	2/20/22
Walks	1	5x (Western Illinois)	2/20/22
ABs	4	Illinois	2/18/22

CAREER HIGHS			
Category	No.	Opponent (Last)	Date
Hits	4	4x (LSU)	4/19/19
Doubles	2	3x (Boston U)	3/2/19
Triples	1	3x (IUPUI)	2/24/19
Home Runs	2	Saint Louis	3/10/18
Total Bases	9	Saint Louis	3/10/18
RBIs	5	Marist	2/23/18
Runs	3	7x (Western Illinois)	2/20/22
Walks	4	McNeese	2/20/21
ABs	6	Furman	4/13/19

BIO CONTINUED

hits and three runs scored against Boston U (Feb. 22)... Hit a three-run home run against Kent State (March 1).

**As a Sophomore (2019):** SEC regular season hits leader (73)... Reached base safely in 31 of 36 games against Top 75 RPI competition... Team leading .429 batting average in SEC play, third-best among SEC players... Had the longest hitting streak on the team (14 games)... First Razorback to finish regular season batting .400 or better (.402 on May 6).

**As a Freshman (2018):** Led the team in batting average (.339), slugging percentage (.582), on base percentage (.411), runs scored (45), hits (64), RBI (57), home runs (12), total bases (110) and walks (22)... 57 RBI were the most by a Razorback in a single season...Posted 5 RBIs against Marist (Feb. 23) in a 15-3 win... 18 games with multiple hits... Hit .333 in NCAA play at the NCAA Fayetteville Regional and the NCAA Norman Super Regional.

**Prior to Arkansas:** Won CIF Western League MVP honors... Registered a career-high .521 batting average and helped lead Patrick Henry High School to its second-consecutive CIF Division I runner-up finish.

Hannah McEwen Career Stats																							
Year	avg	g	pts	reb	r	b	2b	3b	hr	rbi	tb	avg%	bb	k	ops	slg%	off	sb	stl-out	pos	a	e	fld%
2018	.339	58-69	189	45	64	8	1	12	57	110	.582	22	4	13	0	.411	4	0	0-0	44	1	3	.938
2019	.386	58-68	189	43	73	12	1	2	26	93	.492	16	7	12	0	.452	3	0	0-0	64	2	6	.909
2020	.418	25-25	67	27	28	6	0	2	12	40	.587	19	5	6	0	.565	1	0	3-3	24	0	0	1.000
2021	.318	44-44	129	41	41	10	0	5	16	66	.512	35	4	14	1	.476	0	0	1-1	73	2	2	.974
TOTAL	.359	186-186	574	156	206	36	2	21	111	309	.538	94	20	45	1	.460	8	0	4-4	195	5	11	.948



RYLIN HEDGECKOCK

UTL • R/R • 5-9 • Redshirt Sophomore  
Valdosta, Ga. • Lowndes HS

28

SEASON HIGHS			
Category	No.	Opponent (Last)	Date
Hits	1	Memphis	2/11/22
Doubles	-	-	-
Triples	-	-	-
Home Runs	-	-	-
Total Bases	-	-	-
RBI's	1	Memphis	2/11/22
Runs	-	-	-
Walks	-	-	-
AB's	3	2x (Memphis)	2/11/22
CAREER HIGHS			
Category	No.	Opponent (Last)	Date
Hits	1	4x (Memphis)	2/11/22
Doubles	-	-	-
Triples	-	-	-
Home Runs	1	UTEP	2/7/20
Total Bases	4	UTEP	2/7/20
RBI's	3	UTEP	2/7/20
Runs	1	UTEP	2/7/20
Walks	1	5x (Mississippi State)	3/28/21
AB's	3	2x (Memphis)	2/11/22

**BIO CONTINUED**  
**Personal:** Daughter of Russ Hedgecock and Heather Shoup...  
Has five siblings: Tori, Bryson, Hunter, Ashley and Savannah...  
Majoring in Exercise Science.

Rylin Hedgecock Career Stats																										
Year	era	w-l	app	gs	cg	sho	sv	ip	h	r	er	hr	bb	so	2b	3b	hr	bf	wpa	wpa	bf	wpa	bf	wpa	bf	wpa
2020	2.62	0-0	3	0	0	0/1	0	2.2	8	4	1	1	4	1	0	1	17	.500	0	0	0	0	0	0	0	0
TOTAL	2.62	0-0	3	0	0	0/1	0	2.2	8	4	1	1	4	1	0	1	17	.500	0	0	0	0	0	0	0	0



CHELSI PASSAGE

INF • R/R • 5-3 • Freshman  
Greenwood, Ark. • Greenwood HS

30

SEASON HIGHS			
Category	No.	Opponent (Last)	Date
Hits	-	-	-
Doubles	-	-	-
Triples	-	-	-
Home Runs	-	-	-
Total Bases	-	-	-
RBI's	-	-	-
Runs	-	-	-
Walks	-	-	-
AB's	-	-	-

CAREER HIGHS			
Category	No.	Opponent (Last)	Date
Hits	-	-	-
Doubles	-	-	-
Triples	-	-	-
Home Runs	-	-	-
Total Bases	-	-	-
RBI's	-	-	-
Runs	-	-	-
Walks	-	-	-
AB's	-	-	-

**BIO CONTINUED**

Chelsi Passage Career Stats																									
Year	ERA	W-L	WPA	GS	CG	SHO	SV	IP	H	R	ER	HR	BB	SO	2B	3B	HR	BF	WPA	WPA	WPA	WPA	WPA	WPA	WPA
2020	2.62	0-0	3	0	0	0	0	2.2	8	4	1	1	4	1	0	1	17	.500	0	0	0	0	0	0	
TOTAL	2.62	0-0	3	0	0	0	0	2.2	8	4	1	1	4	1	0	1	17	.500	0	0	0	0	0	0	





# DANIELLE GIBSON

INF • L/R • 6-0 • Redshirt Senior  
Murrieta, Calif. • Arizona State (Murrieta Valley HS)

41

SEASON HIGHS			
Category	No.	Opponent (Last)	Date
Hits	2	7x (Western Illinois)	2/20/22
Doubles	2	Rutgers	2/10/22
Triples	-	-	-
Home Runs	1	2x (Wichita State)	2/19/22
Total Bases	-	-	-
RBlS	2	4x (Western Illinois)	2/20/22
Runs	2	3x (Wichita State)	2/19/22
Walks	1	4x (Illinois)	2/20/22
ABs	4	2x (Washington)	2/12/22

CAREER HIGHS			
Category	No.	Opponent (Last)	Date
Hits	5	South Carolina	3/13/21
Doubles	2	4x (Rutgers)	2/10/22
Triples	1	Campbell	2/8/19
Home Runs	4	SIUE	2/23/19
Total Bases	16	SIUE	2/23/19
RBlS	10	SIUE	2/23/19
Runs	4	SIUE	2/23/19
Walks	2	7x (FGCU)	2/16/20
ABs	7*	Oregon State	4/8/18

\*At Arizona State

BIO CONTINUED

**As a Sophomore (2019):** Made history when she tied the SEC record with four home runs in a game and became just the second softball player to hit for the home run cycle and the first to do it in four innings ... Only the third player in the SEC to ever record 10 RBIs in a game... 16 total bases vs. SIUE is tied for 2nd most in NCAA history... Named SEC Co-Player of the Week and USA Softball Co-Player of the Week for her performance... Led the Razorbacks with a .640 slugging percentage (6th highest single-season record), 12 home runs and 110 total bases ... Finished third on the team in batting average (.349) and on base percentage (.397)... Hit the game-winning home run in the series opener against Kentucky (March 29)... Recorded eight multiple-RBI games.

**At Arizona State (2018):** Registered 57 hits with 27 runs scored, 12 home runs, 39 RBI and 12 doubles... Led the team in home runs (12), doubles (12), extra-base hits (24), slugging percentage (.633), while on-base percentage (.417) and RBI (39) ranked second and batting average (.343) ranked third... 16 multi-hit games, and multiple home runs in two games... 14 hits through the first month of the season, including hits in 19-of-21 games from Feb. 23-March 31, going 29-for-60 and boosting her average to .432 during that time... One of three freshmen to be named to the All-PAC-12 First Team.

Danielle Gibson Career Stats - Arkansas Only																							
Year	avg	g	pts	ab	r	h	2b	3b	hr	rbi	tb	slg%	bb	k	ops	gdp	sf	sh	str-out	pos	a	e	fld%
2019	.349	55-65	172	33	60	12	1	12	45	110	.640	13	2	25	1	.397	2	0	0-0	70	7	2	.975
2020	.295	25-25	78	10	23	4	0	1	14	30	.385	7	2	9	0	.364	1	0	0-0	154	4	4	.975
2021	.355	50-60	172	32	61	16	1	15	51	124	.721	14	3	20	0	.408	2	0	0-0	316	12	2	.994
TOTAL	.341	130-130	422	75	144	32	2	28	110	264	.626	34	7	54	1	.395	5	0	0-0	540	23	8	.986

BIO

**Career Accolades:** NFCA Second Team All-American (2021) ... All-SEC Second Team (2021) ... NFCA First Team All-South Region (2021) ... NFCA Third Team All-South Region (2019) ... NFCA Second Team All-West Region (2018, \*at Arizona State) ... USA Softball Player of the Week (2019) ... SEC Player of the Week (2019, 2021) ... SEC Community Service Team (2021) ... Pac-12 All-Conference First Team (2018, \*at Arizona State) ... Pac-12 All-Freshman Team (2018, \*at Arizona State) ... NFCA Freshman of the Year Finalist (2018, \*at Arizona State).

**As a Redshirt Junior (2021):** Led the team in hits and doubles and ranked second in batting average, home runs, RBIs and slugging percentage ... 15 home runs is tied for fourth most in a single-season in program history ... Hit two grand slams against Drake and Northwestern State... First career 5-for-5 game at South Carolina (Mar 13) and reached six times with a walk ... 0.60 walks per game ranked 17th in the SEC ... During SEC-only games hit a team-high .315 (23-for-73), while also leading the squad with 23 hits and seven doubles.

**As a Junior (2020):** Started all 25 games at first base... Went on a seven game hitting streak and totaled four multi-hit games... Slammed go-ahead two run homer in the seventh inning when Arkansas was down to its final two outs in a win at New Mexico State (Feb. 8)... Tied career-high of four hits in a win at No. 9 Alabama (March 6)... Collected three two RBI games against New Mexico State (Feb. 8), Furman (Feb. 15) and Villanova (Feb. 29).

GAME-BY-GAME																							
Arkansas Softball																							
Individual Game-by-Game for Arkansas (as of Feb 25, 2022)																							
#41 Danielle Gibson - 10 games (All games)																							
Date	Opponent	Pos	AB	R	H	RBI	2B	3B	HR	BB	SB	CS	HBP	SAC	SF	GDP	K	PO	A	E	Avg		
Feb 10	vs Rutgers	*1b	3	1	2	1	2	0	0	0	0	0	0	0	0	0	0	3	1	0	.667		
Feb 11	vs MemphisNew	*1b	4	0	0	0	0	0	0	0	0	0	0	0	0	0	0	5	3	1	.286		
Feb 11	vs Washington	*1b	2	0	2	0	0	0	0	0	0	0	0	0	0	0	0	2	0	0	.444		
Feb 12	vs Long Beach Stat	*1b	2	2	2	0	0	0	0	1	0	0	0	0	0	0	0	7	0	0	.545		
Feb 12	vs Washington	*1b	4	1	2	2	0	0	0	0	0	0	0	0	0	0	0	8	0	0	.533		
Feb 18	ILLINOIS	*1b	2	2	2	2	1	0	1	1	0	0	0	0	0	0	0	6	0	0	.588		
Feb 19	WICHITA STATE	*1b	3	2	2	2	0	0	1	1	0	0	0	0	0	0	0	1	4	0	.600		
Feb 19	LONGWOOD	*1b	1	0	0	0	0	0	0	0	0	0	0	0	0	0	0	2	0	0	.571		
Feb 20	ILLINOIS	*1b	3	0	1	0	0	0	0	1	0	0	0	0	0	0	0	2	10	0	.542		
Feb 20	WESTERN ILLINO	*1b	3	1	2	2	1	0	0	0	0	1	0	0	0	0	1	4	0	0	.556		
Totals		10gs	27	9	15	9	4	0	2	4	0	0	1	0	0	0	4	51	4	1	.556		

On base pct. .625 • Slugging pct. .926



# SAM TORRES

OF • L/L • 5-2 • Redshirt Junior  
Temecula, Calif. • Chaparral HS

42

SEASON HIGHS			
Category	No.	Opponent (Last)	Date
Hits	2	2x (Illinois)	2/20/22
Doubles	1	Longwood	2/19/22
Triples	-	-	-
Home Runs	-	-	-
Total Bases	-	-	-
RBlS	2	2x (Illinois)	2/20/22
Runs	2	Longwood	2/19/22
Walks	1	3x (Western Illinois)	2/20/22
ABs	4	2x (Illinois)	2/20/22

CAREER HIGHS			
Category	No.	Opponent (Last)	Date
Hits	2	7x (Auburn)	4/3/21
Doubles	1	2x (Longwood)	2/19/22
Triples	-	-	-
Home Runs	-	-	-
Total Bases	2	8x (Auburn)	4/3/21
RBlS	3	Mississippi State	3/27/21
Runs	2	3x (Longwood)	2/19/22
Walks	1	15x (Western Illinois)	2/20/22
ABs	4	7x (Illinois)	2/20/22

BIO CONTINUED

**As a Sophomore (2020):** Appeared in 17 games primarily as a pinch runner and defensive replacement... Scored six runs... Registered two at bats and drew one walk against Montana (Feb. 22).

**As a Freshman (2019):** Appeared in 41 of 58 games and made four starts against Auburn (May 3-5) and Georgia in the SEC Tournament (May 9)... Served as a pinch runner 19 times and scored 11 runs... Made 31 appearances in the outfield, registered 18 putouts and committed one error in 19 chances.

**Prior to Arkansas:** Ranked as the No. 198 recruit in the country... Two-time Offensive MVP for Chapparral High School... Twice named to the All-Southwestern League Second Team... Earned Top Freshman accolades after hitting .494 with 39 hits in 29 games during the 2015 season... Through the first three seasons of her prep career, carried a .483 batting average with 117 hits and a .557 slugging percentage... Played travel ball for Athletics Mercado... Had a pair of top-20 PGF Nationals finishes including a seventh-place showing in 2017.

**Prior to Arkansas:** Majoring in Pre-Nursing.

Sam Torres Career Stats																							
Year	avg	g	pts	ab	r	h	2b	3b	hr	rbi	tb	slg%	bb	k	ops	gdp	sf	sh	str-out	pos	a	e	fld%
2019	.154	41-4	13	12	2	0	0	0	0	2	.154	0	0	0	0	0	0	0	0	1	.947		
2020	.000	17-0	2	6	0	0	0	0	0	0	.000	1	0	0	0	.333	0	0	0-1	3	0	0	1.000
2021	.289	41-32	90	18	26	1	0	0	4	27	.300	13	2	22	0	.390	0	5	1-1	44	0	1	.978
TOTAL	.267	99-36	105	36	28	1	0	0	4	29	.276	14	2	24	0	.364	0	6	2-3	65	0	2	.970



CALLIE TURNER

LHP • L/L • 5-10 • Redshirt Sophomore  
Land O'Lakes, Fla. • Land O'Lakes HS

44

SEASON HIGHS			
Category	No.	Opponent (Last)	Date
Innings	1.1	Memphis	2/11/22
Longest Start	1.1	Memphis	2/11/22
Shortest Start	-	-	-
Longest Relief	1.0	2x (Long Beach State)	2/12/22
Hits	2	Memphis	2/11/22
Runs	2	Memphis	2/11/22
Earned Runs	2	Memphis	2/11/22
Walks	2	4x (Longwood)	2/19/22
Strikeouts	2	Rutgers	2/11/22
Pitches	27	Rutgers	2/10/22

CAREER HIGHS			
Category	No.	Opponent (Last)	Date
Innings	7.0*	6x (Stanford)	3/8/20
Longest Start	7.0*	6x (Stanford)	3/8/20
Shortest Start	1.0*	Auburn	5/2/21
Longest Relief	3.0*	Liberty	5/22/21
Hits	8*	3x (Stanford)	3/6/20
Runs	7*	Stanford	3/6/20
Earned Runs	5*	Utah	2/14/20
Walks	6*	2x (Toledo)	3/7/20
Strikeouts	10*	Colorado State	2/13/20
Pitches	136*	Stanford	3/6/20

\*At Tennessee

BIO CONTINUED

Callie Turner Career Stats - Arkansas Only



JENNA BLOOM

RHP • R/R • 5-7 • Redshirt Sophomore  
Huntington Beach, Calif. • Edison HS

72

SEASON HIGHS			
Category	No.	Opponent (Last)	Date
Innings	4.0	Wichita State	2/19/22
Longest Start	4.0	Wichita State	2/19/22
Shortest Start	3.0	Illinois	2/20/22
Longest Relief	3.0	Memphis	2/11/22
Hits	5	2x (Illinois)	2/20/22
Runs	3	Wichita State	2/19/22
Earned Runs	2	3x (Illinois)	2/20/22
Walks	1	2x (Illinois)	2/20/22
Strikeouts	7	Wichita State	2/19/22
Pitches	73	Wichita State	2/19/22

CAREER HIGHS			
Category	No.	Opponent (Last)	Date
Innings	7.0	Kansas	3/10/20
Longest Start	7.0	Kansas	3/10/20
Shortest Start	0.2	Montana	2/22/20
Longest Relief	4.0	Villanova	2/29/20
Hits	7	Missouri	4/25/21
Runs	5	4x (Arizona)	5/28/21
Earned Runs	5	3x (Arizona)	5/28/21
Walks	3	5x (South Carolina)	3/14/21
Strikeouts	10	Kansas	3/10/20
Pitches	114	Kent State	2/28/20

BIO CONTINUED

debut in the season opener against UTEP (Feb. 7) throwing a scoreless inning of relief with a strikeout ... Recorded first career win throwing four scoreless innings while only allowing one hit and striking out six against Furman (Feb. 15) ... Struck out six consecutive hitters over 2.1 innings to earn first career save at FGCU (Feb. 16) ... Earned first career complete game shutout, striking out a career-best 10 in a 1-0 win over Kansas (March 10).

**Prior to Arkansas:** Prepped at Edison High School... Ranked No. 43 in the final FloSoftball Hot 100... During the 2019 state tournament run, struck out 24 batters in 12.1 innings of work while allowing just one earned run and led Edison to its first playoff win in two years... Against nationally-ranked Mission Viejo High School, struck out 15 batters while allowing just one hit in a five-inning 10-0 win... struck out every out of the game...

**Personal:** Daughter of Daniel and Melonie Bloom ... Has one brother, Jacob ... Mother Melonie played volleyball for San Diego State from 1992-97 ... Enjoys traveling, trying new foods and hanging out with her family.

Jenna Bloom Career Stats

Year	era	w-l	app	gs	cg	sho	sv	ip	b	r	er	hit	so	2b	3b	hr	bf	avg	wp	hbp	hit	sho	sho
2020	3.21	4-2	16	7	1	1/2	3	43.2	35	25	20	21	68	6	0	4	196	.208	4	7	0	0	2
2021	4.01	8-2	19	9	0	0/2	0	57.2	58	33	33	20	51	15	1	11	253	.260	6	3	0	2	1
TOTAL	3.66	12-4	35	16	1	1/4	3	101.1	94	58	53	41	119	21	1	15	451	.238	10	10	0	2	3





AUDRIE LAVALLEY

INF • L/R • 5-6 • Redshirt Junior  
Choctaw, Okla. • Oklahoma (Carl Albert HS)

99

SEASON HIGHS

Category	No.	Opponent (Last)	Date
Hits	1	4x (Western Illinois)	2/20/22
Doubles	1	Memphis	2/11/22
Triples	-	-	-
Home Runs	-	-	-
Total Bases	-	-	-
RBI's	1	4x (Western Illinois)	2/20/22
Runs	2	Western Illinois	2/20/22
Walks	1	5x (Western Illinois)	2/20/22
ABs	3	4x (Illinois)	2/20/22

CAREER HIGHS

Category	High	Opponent (Last)	Date
Hits	2	3x (North Dakota St.)	2/25/21
Doubles	1	3x (Memphis)	2/11/22
Triples	-	-	-
Home Runs	1	5x (UTA)	2/22/21
Total Bases	5	Furman	2/15/20
RBI's	4	Nebraska	2/9/20
Runs	2	3x (Western Illinois)	2/20/22
Walks	3	Oklahoma State	2/11/21
ABs	4	2x (Drake)	3/4/21

\*At Oklahoma

BIO CONTINUED

against Hofstra (Feb. 16)... In first Big 12 at-bat, recorded a single against Baylor (April 7)... Hit first career home run and scored two runs at Iowa State (April 28).

**Prior to Arkansas:** Earned four letters at Carl Albert High School... Named all-district and Big All-City all four seasons and earned all-state honors as a senior... Led her team to four district championships and regional titles, culminating in the 5A state title in her senior season... Spent time at shortstop and in the circle... Hit .528 during her career (.500 or better each year) with a .596 on-base percentage, 218 runs scored, 217 RBI, 52 doubles, 32 triples, 33 home runs, 78 walks to 50 strikeouts and 51 stolen bases... Threw 204.1 career innings with a 28-10 record, two saves, a 1.98 earned run average and 144 strikeouts.

**Personal:** Daughter of Joe and Renee LaValley... has two siblings, Gavin and Christina... Brother Gavin is an infielder for the Kansas City Monarchs in the independent American Association and was a fourth round draft selection out of high school (2014) by Cincinnati... Cousin, Zadie LaValley, is a sophomore infielder on Baylor's softball team and also wears No. 99... Cousin, Carter LaValley, is a redshirt freshman infielder at Oklahoma... Majoring in Recreation and Sports

Audrie LaValley Career Stats - Arkansas Only

Year	avg	g	IP	2B	3B	HR	r	h	2B	3B	HR	rbi	bb	slg%	ops	st	sb	cs	st-ctd	po	a	e	fld%
2020	.259	16-11	27	7	7	0	0	2	11	13	.481	3	1	8	0	.355	0	0	2-2	13	12	2	.926
2021	.136	23-19	44	12	6	0	0	3	9	15	.341	12	4	12	0	.367	0	1	0-1	24	15	1	.975
TOTAL	.183	39-30	71	19	13	0	0	5	20	28	.384	15	5	20	0	.363	0	1	2-3	37	27	3	.955

BIO

Career Accolades: SEC Academic Honor Roll (2021).

**As a Redshirt Sophomore (2021):** Appeared in 23 games and made 19 starts, all at second base Hit a home run in back-to-back games for the first time in her career, hitting a pair of solo bombs in a doubleheader at UTA (Feb. 22).

**As a Sophomore (2020):** Played in 16 games and made 11 starts... Scored two runs and walked twice in her Arkansas debut against UTEP (Feb. 7)... Smashed a grand slam against Nebraska for her first homer in an Arkansas jersey (Feb. 9)... Delivered the game-tying two RBI pinch hit single in the seventh inning in win over Kansas (March 10)... Collected a pair of two hit games against New Mexico State (Feb. 9) and Furman (Feb. 15).

**At Oklahoma (2019):** Played in 37 games, primarily serving as a pinch runner... Scored 16 runs, including two at Iowa State (April 28)... Recorded her first career hit with a double against Charlotte (Feb. 9)... Tallied an RBI double and scored a run

GAME-BY-GAME

Arkansas Softball  
Individual Game-by-Game for Arkansas (as of Feb 25, 2022)

#99 Audrie LaValley - 10 games (All games)

Date	Opponent	Pos	AB	R	H	RBI	2B	3B	HR	BB	SB	CS	HBP	SAC	SF	GDP	K	PO	A	E	Avg
Feb 10	vs Rutgers	*2b	3	0	0	0	0	0	0	0	0	0	0	0	0	0	0	0	0	0	.000
Feb 11	vs MemphisNew	*2b	2	1	2	0	1	0	0	1	0	0	0	0	0	0	0	5	2	0	.400
Feb 11	vs Washington	*2b	2	0	0	0	0	0	0	0	0	0	0	0	0	0	1	2	1	1	.286
Feb 12	vs Long Beach Stat	*p/dh	1	0	0	1	0	0	0	0	1	0	0	0	0	0	0	1	0	1	.250
Feb 12	vs Washington	*2b/d	1	0	0	1	0	0	0	0	1	0	0	1	1	0	0	1	2	0	.222
Feb 18	ILLINOIS	*2b	3	0	0	0	0	0	0	0	0	0	0	0	0	0	1	3	1	0	.167
Feb 19	WICHITA STATE	*2b	3	0	0	0	0	0	0	0	0	0	0	0	0	0	0	0	1	0	.133
Feb 19	LONGWOOD	*2b	1	1	0	1	0	0	0	0	1	0	0	0	1	0	0	1	0	0	.125
Feb 20	ILLINOIS	*2b	3	0	0	0	0	0	0	0	0	0	0	0	0	0	2	2	2	0	.105
Feb 20	WESTERN ILLINO	*2b	1	2	1	1	0	0	0	1	0	0	0	0	1	0	0	2	2	0	.150
Totals		10gs	20	4	3	4	1	0	0	5	0	0	1	1	2	0	6	17	12	1	.150

On base pct. .321 • Slugging pct. .200

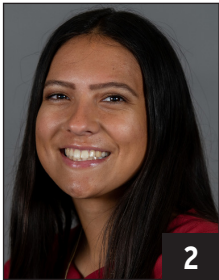
RADIO/TV ROSTER CHART



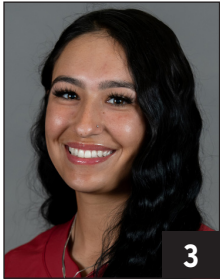
KAITLYN HOWARD  
So. • 5-7 • L/L  
UTL • East End Ark.



RAIGAN KRAMER  
Fr. • 5-4 • L/R  
INF • Topeka, Kan.



VALERIE VENTURA  
R-Jr. • 5-6 • R/R  
INF • Oxnard, Calif.



LARISSA CESENA  
R-Jr. • 5-7 • L/R  
INF/OF • Riverside, Calif.  
Suh-SANE-ya



MARY HAFF  
R-Sr. • 5-10 • R/R  
RHP • Winter Haven, Fla.



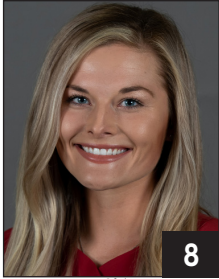
LAUREN HOWELL  
So. • 5-7 • R/R  
RHP • Jefferson City, Mo.



CALLY KILDOW  
So. • 5-7 • R/R  
UTL • Gravette, Ark.  
Kill-DOW



CHENISE DELCE  
R-Jr. • 5-5 • R/R  
RHP/UTL • Oklahoma City, Okla.  
CHEN-ee-se Del-ss



KB Sides  
R-Sr. • 5-5 • L/R  
OF • Dora, Ala.



ALLY SOCKEY  
Fr. • 5-6 • R/R  
INF • Greenwood, Ark.



ABBY GORDON  
Fr. • 6-0 • R/R  
C • Garden Plain, Kan.



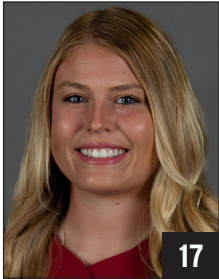
KACIE HOFFMANN  
Fr. • 5-9 • L/L  
UTL • Elkhorn, Neb.



SPENCER PRIGGE  
Fr. • 6-0 • L/R  
INF • Phoenix, Ariz.  
Prig-ee



MADI CONKLIN  
Fr. • 5-4 • R/R  
C • Fort Smith, Ark.



TAYLOR ELLSWORTH  
Gr. • 5-5 • R/R  
C/UTL • Georgetown, Texas



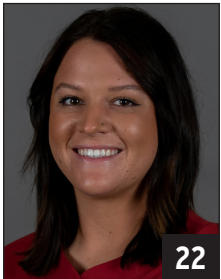
MARLENE FRIEDMAN  
So. • 5-5 • R/R  
INF • Huntington Beach, Calif.  
FREED-man



HANNAH GAMMILL  
So. • 5-8 • R/R  
INF • Beebe, Ark.



MALLORY HARDWICK  
Fr. • 5-9 • L/L  
UTL • Keller, Texas



LINNIE MALKIN  
R-Sr. • 5-11 • R/R  
OF • Broomfield, Colo.  
Mal (like pal)-kin



HANNAH MCEWEN  
R-Sr. • 5-7 • L/R  
OF • San Diego, Calif.



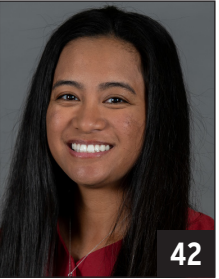
RYLIN HEDGECOCK  
R-Fr. • 5-9 • R/R  
UTL • Valdosta, Ga.



CHELSEI POSSAGE  
Fr. • 5-3 • R/R  
INF • Greenwood, Ark.



DANIELLE GIBSON  
R-Sr. • 6-0 • L/R  
INF • Murrieta, Calif.



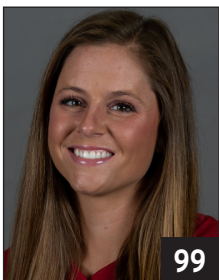
SAM TORRES  
R-Jr. • 5-2 • L/L  
OF • Temecula, Calif.



CALLIE TURNER  
R-So. • 5-10 • L/L  
LHP • Land O'Lakes, Fla.



JENNA BLOOM  
R-So. • 5-10 • R/R  
LHP • Huntington Beach, Calif.



AUDRIE LAVALLEY  
R-Jr. • 5-6 • L/R  
INF • Choctaw, Okla.



COURTNEY DEIFEL  
Head Coach • 3rd Base Coach  
Seventh Season  
DIE-full



MATT MEUCHEL  
Asst. Coach • Umpire Appeals  
Sixth Season  
Michael



ANNIE SMITH  
Vol. Asst. Coach • 1st Base Coach  
Third Season