



# RAZORBACKS®

## 2022-23 Women's Basketball Game Notes

Kylie Magar | Assistant Director, Communications  
E: kmagar@uark.edu | ArkansasRazorbacks.com

### 2022-23 SCHEDULE

Date	Opponent	Time	TV/RESULT
Nov. 2	vs. UAFS (exhibition)	7 PM	W, 92-62
Nov. 7	at UAPB	6 PM	W, 70-50
Nov. 11	Central Arkansas	10:30 AM	W, 72-34
Nov. 14	Tulsa	7 PM	W, 79-70
Nov. 17	Kent State	7 PM	SECN+
Nov. 20	at Little Rock	1 PM	ESPN+
Nov. 24	Northern Arizona	5:45 PM	ESPN3
Nov. 25	Clemson	8 PM	ESPN3
Nov. 26	Kansas State	8 PM	ESPN3
Dec. 1	Troy	7 PM	SECN+
Dec. 4	Oral Roberts	2 PM	SECN+
Dec. 8	Lamar	7 PM	SECN+
Dec. 11	Arkansas State	3 PM	SECN
Dec. 17	at Creighton	1 PM	FloHoops
Dec. 20	Oregon+	3 PM	FloHoops
Dec. 21	Ohio State or USF+	3/5:30 PM	FloHoops
Dec. 29	LSU*	6 PM	ESPN2/SECN
Jan. 1	at Kentucky*	1 PM	SECN+
Jan. 5	Florida*	7 PM	SECN+
Jan. 8	at Missouri*	2 PM	SECN+
Jan. 16	Vanderbilt*	6 PM	SECN
Jan. 19	at LSU*	8 PM	SECN
Jan. 22	at South Carolina*	2 PM	ESPN2/SECN
Jan. 26	Alabama*	6 PM	SECN
Jan. 29	Ole Miss*	4 PM	SECN
Feb. 5	at Auburn*	2 PM	SECN
Feb. 9	at Vanderbilt*	8 PM	SECN
Feb. 12	Missouri*	2 PM	SECN+
Feb. 16	Tennessee*	6 PM	SECN
Feb. 19	at Georgia*	11 AM	ESPN2/SECN
Feb. 23	at Mississippi State*	8 PM	SECN
Feb. 26	Texas A&M*	11 AM	ESPN2/SECN

\*-SEC Contest

\$-Paradise Jam (St. Thomas, U.S. Virgin Islands)

+ -San Diego Invitational (San Diego, Calif.)

### 4 ARKANSAS VS. KENT STATE | BUD WALTON ARENA | NOV. 17 | SECN+

Arkansas  
Razorbacks



VS.



Kent State  
Golden Flashes

Record ..... 3-0  
Conference Record ..... 0-0  
AP Poll ..... RV (3)  
USA Today Coaches Poll ..... RV (2)  
Head Coach ..... Mike Neighbors  
HC Record at UofA (Yrs) ..... 99-64 (6th season)  
HC Career Record (Yrs) ..... 197-105 (10th season)  
Neighbors' Record vs. Kent State ..... 0-0

Record ..... 1-1  
Conference Record ..... 0-0  
AP Poll ..... N/A  
USA Today Coaches Poll ..... N/A  
Head Coach ..... Todd Starkey  
HC Record at Kent State (Yrs) ..... 102-78 (7th season)  
HC Career Record (Yrs) ..... 267-173 (16 years)  
Starkey's Record vs. UofA ..... 0-0

### LAST STARTING 5



#### #43 MAKAYLA DANIELS

Sr. | G | 5-8 | Frederick, Md.

PPG	RPG	APG	MPG
12.3	5.7	2.7	28.1



#### #2 SAMARA SPENCER

So. | G | 5-7 | Fort Lauderdale, Fla.

PPG	RPG	APG	MPG
11.0	3.0	3.7	29.6



#### #0 SAYLOR POFFENBARGER

R-Fr. | F | 6-2 | Middletown, Md.

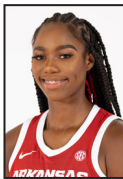
PPG	RPG	APG	MPG
5.0	8.3	2.0	28.9



#### #34 CHRISSY CARR

R-Sr. | G | 6-1 | Edern Prairie, Minn.

PPG	RPG	APG	MPG
7.0	5.7	0.0	22.6



#### #4 ERYNN BARNUM

R-Sr. | F | 6-2 | Little Rock, Ark.

PPG	RPG	APG	MPG
20.3	9.3	1.0	26.0

#### SNAPSHOT:

- Registered 19 points, 9 rebounds + 3 assists vs. TU
- Climbed to No. 29 in career scoring (1,051) in Monday's game
- Leading returning scorer & rebounder
- Has started in all 91 career collegiate games

#### SNAPSHOT:

- Tabbbed the 2022 SEC Freshman of the Year
- Delivered 13 points and four assists vs. Tulsa
- Played in 39 minutes against TU
- Led team in assists and third on team in scoring

#### SNAPSHOT:

- Transfer from UConn
- Pulled down 10 rebounds and had 3 assists vs. Tulsa
- Had 12 points and 8 rebounds at UAPB
- Third-year college freshman, believed to be one of two three-year freshmen in the country

#### SNAPSHOT:

- Graduate transfer by way of Syracuse & K-State
- Delivered 8 points & 8 rebounds vs. UCA
- Has started in 116 of 118 collegiate games
- Earned 65 double-digit scoring games and three double-doubles in her career

#### SNAPSHOT:

- Katrina McClain Preseason Watch List
- Coming off career-high 27 points vs. Tulsa
- Double-doubled (15 p, 11 r) in season debut at UAPB and followed that up with a career-high 19 points, nine rebounds and three blocks

### FOLLOW, WATCH & LISTEN



@RAZORBACKWBB

TV: SECN+

On the Call: Brett Dolan and Matt Zimmerman

Razorback Sports Network from Learfield (Radio)

Phil Elson - <http://143.223.155.160/audio>  
Fayetteville - KQSM-FM-92.1 /// KYNG-AM - 1590\*  
Fort Smith - KFPW-AM-1230 /// KHGG-AM-1580



## NEIGHBORHOOD WATCH

→ Arkansas has aced its first three tests and will look to start out the year 4-0 for the first time since the 2019-20 season (when that team eventually began the year 5-0)

→ The Razorbacks are coming off a hard-fought 79-70 win over a talented Tulsa team. Arkansas fired 11 shots from beyond the arc and outrebounded the Golden Hurricane 47-35 in the game

→ **Erynn Barnum** had a breakout game on Monday, registering a career-high 27 points with eight rebounds

→ The Razorbacks saw four players in double digits in scoring against Tulsa, with **Makayla Daniels** (19), **Samara Spencer** (13) and **Rylee Langerman** (10)

→ Thursday's game is a part of Arkansas' stint of three games in seven days before heading off to the Virgin Islands for Paradise Jam

→ The matchup versus Kent State showcases two well-accomplished coaches, as Head coach **Mike Neighbors** is going after his 100th win at Arkansas, coming into this game with a 99-64 mark on the Hill. On the other side is **Todd Starkey**, who has 100+ wins at Kent State and is bringing a veteran 1-1 team to Fayetteville

→ After three games, **Barnum** averages a near double-double with 20.3 points and 9.3 rebounds per game to lead the way in both statistical categories

→ **Samara Spencer** has a team's best 11 assists and **Rylee Langerman** leads the team in steals with eight

→ Team leads the SEC in least turnovers per game (10.7) and is second in 3-pointers/game (7.3)

→ Arkansas also is the leader in 3-point attempts per game in the SEC. The team's 39 attempts on Monday is the sixth most in a game in program history

→ The Razorbacks are No. 2 in the nation (following LSU) in free throw attempts per game with 36.3. Arkansas is also rebounding the ball remarkably well with 49.0 per game, which stands No. 4 in the league and is 24th in the nation

→ With **Neighbors** in charge, the Hogs are coming off back-to-back NCAA Tournament appearances (should be back-to-back-to-back had the COVID-19 pandemic have not cancelled the 2020 tournament) and four consecutive winning seasons. **Neighbors** also has the most wins of any collegiate coach with 10 years of experience

→ The Razorbacks were projected to finish fourth in the SEC Preseason Media Poll and tied for fifth in the SEC Preseason Coaches Poll. **Daniels** represents Arkansas on the Preseason Second Team (Coaches poll)

## HEADLINERS

→ Arkansas and Kent State are facing off for the first time since 1993 in a series that is tied, 1-1

→ With a win on Thursday, Arkansas would begin the season 4-0 for the first time since 2019-20. It would be the fifth time in the last 10 years, Arkansas will start the season at 4-0

→ **Mike Neighbors** and **Todd Starkey** have served in NCAA committees together and are facing off against one another as two head coaches for the first time in their careers

→ **Makayla Daniels** could very well become the 28th highest scorer all-time in Arkansas history. She is at 1,051 career points and needs five more to tie for No. 28 with Sarah Pfeifer (2002-08)

## SCOUTING KENT STATE ABOUT THE GOLDEN FLASHES

→ Kent State is a talented team out of the MAC, coming into Thursday's game with a 1-1 mark

→ The Golden Flashes gave Florida State a run for its money in their season opening before falling to the Seminoles, 80-71

→ Head coach **Todd Starkey** is in his seventh season at Kent, having led the Golden Flashes to a 102-78 mark during his time in Ohio

→ Kent finished 19-12 last season, which ended in a second-round WNIT appearance

→ After two games, **Katie Shumate** leads the team with 15.5 points and 6.0 rebounds per game. **Shumate** was the team's leading scorer last season with 12.1 PPG

→ **Hannah Young** has also been big on the boards with 6.0 RPG. She averaged 5.7 RPG in 2021-22

→ Kent State was picked to finish fourth in the MAC Preseason Poll

## ABOUT THE HEAD COACH

→ Head Coach **Todd Starkey** was hired as the sixth head coach of Kent State in 2016 and in that short time, he is third in school history in career wins with 101

→ **Starkey** has led the Golden Flashes to three Postseason WNIT appearances, including in 2021-22, and two MAC East Division titles

→ He was named the 2017 MAC Coach of the Year in his first season at the helm after guiding Kent State to one of the biggest turnarounds in NCAA during his first season

→ Before Kent State, the 23-coaching veteran was an assistant at Indiana, head coach at DII Lenoir-Rhyne and assistant at Monreat

## NEIGHBORS' TWEET WHEN THE MATCHUP WAS SCHEDULED

→ "Another WNIT second-round team. This one is coming off 19 wins and is returning two top scorers. Coach Starkey has built **Kent** into a team that has postseason plans every year."

## SERIES HISTORY OF KENT STATE VS. ARKANSAS

→ The Razorbacks and Golden Flashes are tied in the series, 1-1

→ The last time these two teams met was on Nov. 30, 1993, and resulted in an 86-81 loss for Arkansas on the road in Kent. Arkansas won the first game of the series in Fayetteville, 89-72 on Dec. 21, 1991

## BENCHMARK PERFORMANCES

10+ POINTS	19-20	20-21	21-22	22-23	TOT
Makayla Daniels	12	19	19	2	52
Erynn Barnum	4	9	6	3	22
Samara Spencer	-	-	20	2	22
Jersey Wolfenbarger	-	-	12	0	12
Rylee Langerman	-	0	1	1	2
Chrissy Carr	-	-	-	1	1
Maryam Dauda	-	-	-	1	1
Emrie Ellis	-	-	1	0	1
Saylor Poffenbarger	-	-	-	1	1

20+ POINTS	19-20	20-21	21-22	22-23	TOT
Makayla Daniels	2	1	5	0	8
Samara Spencer	-	-	3	0	3
Erynn Barnum	0	0	0	1	1

30+ POINTS	19-20	20-21	21-22	22-23	TOT
Makayla Daniels	0	0	2	0	2

5+ 3-POINTERS	19-20	20-21	21-22	22-23	TOT
Makayla Daniels	1	0	1	0	2
Samara Spencer	-	-	1	0	1
Rylee Langerman	-	0	1	0	1

50% FG (8 ATT.)	19-20	20-21	21-22	22-23	TOT
Makayla Daniels	4	3	10	1	18
Erynn Barnum	3	6	3	2	14
Samara Spencer	-	-	8	0	8
Jersey Wolfenbarger	-	-	6	0	6
Rylee Langerman	-	0	1	0	1

10+ REBOUNDS	19-20	20-21	21-22	22-23	TOT
Erynn Barnum	1	1	1	1	4
Jersey Wolfenbarger	-	-	2	0	2
Makayla Daniels	0	0	1	0	1
Rylee Langerman	-	0	1	0	1

15+ REBOUNDS	19-20	20-21	21-22	22-23	TOT
--------------	-------	-------	-------	-------	-----

5+ ASSISTS	19-20	20-21	21-22	22-23	TOT
Makayla Daniels	3	2	6	0	11
Samara Spencer	-	-	5	0	5

3+ BLOCKS	19-20	20-21	21-22	22-23	TOT
Erynn Barnum	3	1	0	1	5
Emrie Ellis	-	-	2	0	2
Jersey Wolfenbarger	-	-	2	0	2

5+ STEALS	19-20	20-21	21-22	22-23	TOT
Makayla Daniels	4	1	1	0	6
Erynn Barnum	0	0	2	0	2
Rylee Langerman	-	0	1	0	1
Samara Spencer	-	-	1	0	1

DOUBLE-DOUBLES	19-20	20-21	21-22	22-23	TOT
Erynn Barnum	1	1	0	1	3
Jersey Wolfenbarger	-	-	2	0	2
Makayla Daniels	0	0	1	0	1

## Stat Comparison

UA	KSU
73.7	Scoring.....74.0
51.3	Opp. Scoring.....67.0
.356	FG %......424
.322	Def. FG%......365
.268	3-pt. %......302
7.3	3-pt./gm......6.5
.560	FT%......719
49.0	Reb./gm......40.0
10.0	Assists/gm......13.0
10.7	TO/gm......14.5
+8.3	TO Margin.....-1.5
8.7	Steals/gm......4.5
3.3	Blocks/gm......2.5

## 2022-23 SOUTHEASTERN CONFERENCE STANDINGS

CONFERENCE STANDINGS												
	CONFERENCE				OVERALL					Streak	vs. T10	vs. T25
	W-L	Pct.	H	A	W-L	Pct.	H	A	N			
Alabama	0-0	.000	0-0	0-0	2-0	1.000	1-0	1-0	0-0	W2	0-0	0-0
Arkansas	0-0	.000	0-0	0-0	3-0	1.000	2-0	1-0	0-0	W3	0-0	0-0
Auburn	0-0	.000	0-0	0-0	2-0	1.000	2-0	0-0	0-0	W2	0-0	0-0
Florida	0-0	.000	0-0	0-0	2-0	1.000	2-0	0-0	0-0	W2	0-0	0-0
Georgia	0-0	.000	0-0	0-0	3-0	1.000	3-0	0-0	0-0	W3	0-0	0-0
Kentucky	0-0	.000	0-0	0-0	3-0	1.000	3-0	0-0	0-0	W3	0-0	0-0
LSU	0-0	.000	0-0	0-0	3-0	1.000	3-0	0-0	0-0	W3	0-0	0-0
Ole Miss	0-0	.000	0-0	0-0	3-0	1.000	2-0	1-0	0-0	W3	0-0	0-0
Missouri	0-0	.000	0-0	0-0	4-0	1.000	3-0	1-0	0-0	W4	0-0	0-0
South Carolina	0-0	.000	0-0	0-0	2-0	1.000	1-0	1-0	0-0	W2	0-0	1-0
Vanderbilt	0-0	.000	0-0	0-0	3-0	1.000	1-0	2-0	0-0	W3	0-0	0-0
Texas A&M	0-0	.000	0-0	0-0	2-0	1.000	2-0	0-0	0-0	W2	0-0	0-0
Mississippi State	0-0	.000	0-0	0-0	2-1	.667	2-0	0-1	0-0	L1	0-0	0-1
Tennessee	0-0	.000	0-0	0-0	1-2	.333	1-1	0-1	0-0	L1	0-0	0-2

2022-23 SEC Preseason  
Media Poll

1. South Carolina
2. Tennessee
3. LSU
4. **Arkansas**
5. Ole Miss
6. Florida
7. Kentucky
8. Mississippi State
9. Georgia
10. Alabama
11. Texas A&M
12. Missouri
13. Auburn
14. Vanderbilt

2022-23 SEC Preseason  
Coaches' Poll

1. South Carolina
2. Tennessee
3. LSU
4. Alabama
5. **Arkansas**
6. Mississippi State
7. Florida
8. Ole Miss
9. Georgia
10. Kentucky
11. Texas A&M
12. Missouri
13. Auburn
14. Vanderbilt

## LAST TIME OUT

- Arkansas pulled out a hard-fought 79-70 win over Tulsa on Monday to hand the Golden Hurricane their first loss of the season
- The Razorbacks registered 11 3-pointers and outrebounded Tulsa 47-35
- **Erynn Barnum** had one of the best performances of her career with a career-high 27 points off 10-of-12 from the field with eight rebounds
- **Makayla Daniels** followed with 19 points and nine rebounds
- **Samara Spencer** played in almost the entire game on Monday, finishing with 13 points and four assists
- **Rylee Langerman** delivered the second double-digit scoring game of her career with 10 points with five rebounds and four steals
- All eight players who saw action on the floor scored

## AN ARKANSAS WIN MEANS...

- **Mike Neighbors** will earn his 100th career win at Arkansas and 198th overall in his career
- Arkansas will start the season 4-0 for the second time in the last three years
- The Razorbacks will take the lead in the all-time series versus the Golden Flashes

## MAK ATTACK

- **Makayla Daniels** has started to heat up, tallying back-to-back double-digit scoring outings in the last two games
- Coming off 19 points off 4-of-9 shooting from 3-point with nine rebounds and three assists versus Tulsa after putting up 14 points and four assists against Central Arkansas
- Now is the No. 29 all-time leading scorer in Arkansas history with 1,051 points. She became the 31st member in the Razorbacks' final game last season in the NCAA Tournament versus Utah
- Earned a spot on the SEC Preseason Second Team, her first recognition by the league since she was SEC Freshman of the Week in 2019-20
- Last season averaged 14.0 points and a team-leading 5.3 rebounds per game in the guard spot. **Daniels** also averaged 2.9 assists and 1.8 steals per game
- Scored two 30-point games last season (32 vs. Cal and 34 vs. Creighton) to join Chelsea Dungee, Alexis Tolefree and Shameka Christon as the only Hogs with multiple 30+ point games in the same season since 2000

## NO SOPHOMORE SLUMP

- **Samara Spencer** is showing no signs of a sophomore slump after winning SEC Freshman of the Year a season ago
- No. 14 in assists per game (3.7) and 15 in assist/turnover ratio (2.2) in the SEC
- Registered 13 points and four assists in the win over Tulsa, while also playing all but 56 seconds in the contests
- Led the team (along with **Erynn Barnum**) with 15 points, while also adding four boards and four assists at UAPB
- Third among active SEC players in all-time award count after earning four SEC Freshman of the Week honors last year
- **Spencer** averaged 12.2 points, 3.7 rebounds, 3.1 assists, 1.2 steals and 30.1 minutes per game last season
- Led the team with 96 total assists last season
- Logged 20 games in double figures, three of which were 20+-point performances

## DOUBLE DOUBLEEEEE TYPE NUMBERS

- **Erynn Barnum** went off in the Razorbacks' win over Tulsa, logging a career-high 27 points, eight rebounds and two steals. Her 13 points in the fourth quarter were critical in solidifying the victory and she went 10-of-12 from the field, which also was a career best
- Head coach **Mike Neighbors** has mentioned how **Barnum** has the capability of putting up a double-double every night, and these first three games show that
- Leading the country in free throw attempts (34) and is 27th in total points and 44th in total rebounds in the NCAA
- In the SEC, she is fifth in scoring (20.3), sixth in rebounding (9.3) and seventh in field goal percentage (.618)
- She tallied 15 points and 11 rebounds for her third career double-double versus UAPB
- Followed that performance with a career-high 19 points along with nine rebounds and three blocks against Central Arkansas. She was 9-for-9 from the free throw line, which was exceptionally better than her 3-for-13 showing in the season opener at UAPB
- Longest tenured Razorback, approaching her fifth year on the team (redshirted in 2018-19)
- Coming off last season having averaged 7.6 points and 4.8 rebounds per game. She started in 10 of 22 games, missing a large chunk due to injury



## WATCH LIST SZN

→ **Erynn Barnum** was named to the Katrina McClain Award Preseason Watch List as one of the 20 best power forwards in the country  
→ She is the first Arkansas player to be a candidate for this particular award and the first Razorback on a preseason watch list since prior to the 2020-21 season

## MISMATCH PROBLEM

→ **Saylor Poffenbarger** is the textbook definition of a big guard  
→ If you need **Poffenbarger** to play any position one through five, she could handle the task. That's how versatile she is  
→ No. 10 in the SEC in rebounds per game, which is in the top 100 in the country  
→ If the shots aren't falling, she will find another way to contribute and that has shown to be fact, as she has led the team in efficiency over the past two contests  
→ Coming off a career-high 10 rebounds with three assists over Tulsa  
→ In her first collegiate start against UAPB, racked up 11 points and eight rebounds. She achieved a collegiate career-high in pretty much every statistical category in just the first game of the season  
→ Joined the team midway through last year after transferring from UConn. She was the No. 30th-ranked recruit in the 2021 class

## TRANSFER PORTAL JACKPOT

→ **Chrissy Carr** has started in all but two collegiate games she has appeared in during her fifth season, logging her 116th start on Monday  
→ Finished shy of a double-double versus Central Arkansas with eight points and eight rebounds  
→ Logged 10 points in 20 minutes against UAPB in the season opener  
→ Can be deadly from 3-point and shows great follow-through in her shots  
→ An overall well-rounded player, **Carr** can shoot, attack the basket to get to her midrange, rebound and defend. Along with her leadership, she will be able to pick up a lot of what was lost from **Sasha Goforth** absence  
→ She has averaged double digits, or near to it, all four years thus far. After averaging 9.8 PPG as a freshman and sophomore at Kansas State and a career-high 15.2 points and 4.9 rebounds per game as a junior. In her one year at Syracuse averaged 11.7 points and 4.6 boards per game, while leading the team in 3-pointers (60) and shooting 36.3 percent from deep

## TAKING ONE FOR THE TEAM

→ Being told to play in position you have never played before is quite tough, especially as a freshman in college, but **Jersey Wolfenbarger** handled that task with ease  
→ **Wolfenbarger** played down low in just about every start last season, setting her up to play against some of the best bigs in the country, including Aliyah Boston (South Carolina), Jenna Staiti (Georgia) and Tamari Key (Tennessee), but that didn't stop her production  
→ You could see her be more comfortable in her first three games of her sophomore campaign  
→ She earned seven points and seven rebounds in the season opener at UAPB and five points against Central Arkansas  
→ Last season, she had 7.6 points, 4.3 rebounds and 0.9 blocks per game, while being named to the All-SEC Freshman Team  
→ Double-doubled twice last season with 12 points and 11 rebounds at Missouri and 12 points and 10 boards at Texas A&M

## WHAT'S HE SAYIN'?

Trying to figure out what Coach Neighbors is saying on the bench? Don't worry - he has a language all his own.

Coach Neighbors plays Positionless Basketball. Instead of having guards, forwards and centers, he has Rabbits, Rackers, Locks and Dragons.



Rabbits run the floor and look to score quickly with a layup.



Rackers bring the ball up the floor, and are trying to get to the rack.



Locks, generally good three-point shooters, are trying to win the race to the corners.



The Dragon is the last player down the court, dragging behind the others.

→ High school accolades: McDonald's All-American, two-time Arkansas Gatorade Player of the Year, No. 7 overall recruit in the country and No. 1 wing player in ESPN HoopGurlz, Naismith HS Player of the Year and FIBA U19 World Cup medalist

## THE GLUE

→ **Rylee Langerman** is a hustler and team player. She is willing to do the dirty work or anything her team needs to win  
→ Often called "the glue girl" and a player you need on your team  
→ No. 7 in the SEC in total steals (8)  
→ Logged her second career double-digit scoring contest with 10 points, five boards and four steals against Tulsa  
→ In the season opener at UAPB, she totaled four points, six rebounds and four steals. She dove for at least four loose balls (something you can expect from her every game)  
→ Has easily become a fan favorite among the Hog faithful  
→ **Langerman** was named to the 2022 SEC Community Service Team. She is a role model in the NWA community and beyond, as well as a positive light to those also affected by Alopecia  
→ Her stats don't always show up in the box score, but if there's a loose ball, a ball going out of bounds or a tie-up, you can bet that she's involved  
→ Averaged 3.2 points and 3.7 rebounds across 19.2 minutes per game last season

## WAIT WILL BE WORTH IT

→ **Maryam Dauda** is primed to be one of the top bigs in the SEC in the near future. The scariest thing about her is she can not only take care of business down low, but she can shoot 3-pointers and make them too  
→ Was recovering from an ACL injury she suffered from in high school last season  
→ Delivered 10 points off 4-of-6 shooting from the field along with three rebounds against Central Arkansas  
→ Was a top player out of high school, as the No. 13 player in the country according to ESPN

## OUR RECORD WHEN ...

Overall .....	3-0
Home / Away / Neutral .....	2-0/1-0/0-0
SEC .....	0-0
Home / Away .....	0-0/0-0
White Uniforms .....	2-0
Cardinal Uniforms .....	1-0
Anthracite Uniforms .....	0-0

## LEADS/QUARTERS/HALFTIME/OT

Leading after the 1st quarter .....	3-0
Leading after the 2nd quarter/Half .....	3-0
Leading after the 3rd quarter .....	3-0
Leading at the half, home .....	2-0
Leading at the half, road/neutral .....	1-0
Tied at the half, home .....	0-0
Tied at the half, road/neutral .....	0-0
Games decided by 5 points or fewer .....	0-0
Games decided by 10 points or fewer .....	1-0
Leading with 5:00 left .....	3-0
Leading with 2:00 left .....	3-0
Overtime games .....	0-0

## OFFENSE

Scoring less than 70 points .....	0-0
Scoring 70-79 points .....	3-0
Scoring 80-89 points .....	0-0
Scoring 90-99 points .....	0-0
Scoring 100+ points .....	0-0
2 Players Or Less in Double Figures .....	0-0
3 Players in Double Figures .....	1-0
4 Players in Double Figures .....	2-0
5 Players in Double Figures .....	0-0
5+ Players in Double Figures .....	0-0
When shooting 50 percent or higher .....	0-0
When shooting less than 50 percent .....	3-0

## REBOUNDING/TURNOVERS

When outrebounding opponent .....	3-0
When outrebounded .....	0-0
When rebounds are even .....	0-0
When grabbing 10+ offensive reb .....	2-0
When forcing 15+ turnovers .....	3-0
When committing less than 15 turnovers .....	3-0
When committing 15+ turnovers .....	0-0

## Top Scorers (Includes Ties)

Barnum .....	@UAPB, UCA, TU
Spencer .....	@UABP

## Top Rebounders (Includes Ties)

Barnum .....	@UAPB, UCA
Poffenbarger .....	TU

## Months

November .....	3-0
----------------	-----



Social | @RazorbackWBB - 5



## HOMEGROWN HOGS

**ERYNN BARNUM**  
R-SR. | F | LITTLE ROCK, ARKANSAS

**LOREN LINDSEY**  
FR. | G | FAYETTEVILLE, ARKANSAS

**AVERY HUGHES**  
SR. | G | BENTONVILLE, ARKANSAS

**JERSEY WOLFENBARGER**  
SO. | G/F | FORT SMITH, ARKANSAS

**MARYAM DAUDA**  
R-FR. | F | BENTONVILLE, ARKANSAS

- The Hogs' roster is Arkansas heavy, and that starts from the top down, as Head Coach Mike Neighbors, a University of Arkansas Alum, was born and raised in Greenwood, Arkansas
- Erynn Barnum, now in her redshirt senior season, is the oldest of the Arkansas clan. Barnum was playing the best basketball of her career last season during the non-conference slate until an injury sidelined her for a large portion of the SEC slate. In her nine appearances during non-conference play, Barnum averaged 11.2 points and 5.9 rebounds per game
- Loren Lindsey is a true freshman out of Fayetteville High School. She has joined the team as a walk-on after a successful career with the Bulldogs
- Senior Avery Hughes of Bentonville was the first walk-on of the Neighbors era at Arkansas and was put on scholarship prior to last season. She played in 14 games off the bench
- Jersey Wolfenbarger is one of the highest recruited players in the program's history. The 6-5 wing ranked No. 7 in the 2021 Hoopgurlz rankings was the Arkansas Gatorade Player of the Year twice in a row. She was named to the SEC All-Freshman Team and started in 23 contests
- After having to sit out last season with an ACL injury, Maryam Dauda is destined for a great year. She was a McDonald's All-American and Jordan Brand Classic Invitee and was ranked as the top-ranked post player in the ESPN Hoopgurlz rankings
- Not pictured: Sasha Goforth (redshirting) started all 32 games, averaging 11.5 points, 4.8 rebounds and 2.1 blocks per game last year



## OKLAHOMIES

**RYLEE LANGERMAN**  
JR. | G | NORMAN, OKLAHOMA

**KARLEY JOHNSON**  
FR. | G | MUSTANG, OKLAHOMA

**EMRIE ELLIS**  
SO. | F | VANOSS, OKLAHOMA

- On the Arkansas women's basketball roster, 75 percent are either from Arkansas or its bordering state of Oklahoma
- Rylee Langerman out of Norman, Oklahoma is the eldest of the Oklahoma bunch, going into her junior year. She played in all 32 games with seven starts, averaging 3.2 points and 3.7 rebounds per game

- Emrie Ellis appeared in 27 games last season to tally 2.9 points and 2.1 boards per game along with 22 blocks. Ellis is from Vanoss, a small town in the southeastern part of the state
- Karley Johnson is a true freshman and product of Mustang, just southwest of Oklahoma City. She was a McDonald's All-American nominee
- Not pictured: Ashlyn Sage (redshirting), who played in 15 games as a freshman last season and comes to Arkansas from Weatherford, Oklahoma



## MARYLAND MAGIC

**MAKAYLA DANIELS**  
SR. | G | FREDERICK, MARYLAND

**SAYLOR POFFENBARGER**  
R-FR. | G | MIDDLETOWN, MARYLAND

- Makayla Daniels was the first ever Maryland signee in Arkansas women's basketball history
- Now, the Razorbacks have two from Little America with the addition of Saylor Poffenbarger in winter 2022
- Daniels has started in all 88 collegiate games she has appeared in, coming off last year as the leading returner in scoring and rebounding
- Poffenbarger, a UConn transfer, brings along a great deal of versatility. She was the No. 30 player in the ESPN Hoopgurlz rankings

## 2022-23 ROSTER @RAZORBACKWBB

## NUMERICAL

NO.	NAME	POS	HT	CL	HOMETOWN/PREVIOUS SCHOOL	TWITTER
0	Saylor Poffenbarger	G	6-2	R-Fr.	Middletown, Md./UConn	@saylorpoff
2	Samara Spencer	G	5-7	So.	Fort Lauderdale, Fla./St. Thomas Aquinas	@samaraaspen
4	Erynn Barnum	F	6-2	R-Sr.	Little Rock, Ark./Little Rock Central	@erynnbee_
11	Rylee Langerman	G	5-9	Jr.	Norman, Okla./Christian Heritage	@rylang2
13	Sasha Goforth*	G	6-1	Jr.	Fayetteville, Ark./Oregon State	@goforthsasha
15	Ashlyn Sage*	G	6-2	So.	Weatherford, Okla./Weatherford	@ashlynsage15
20	Karley Johnson	G	5-9	Fr.	Mustang, Okla./Mustang	@karleyjohnsonOK
21	Loren Lindsey	G	5-11	Fr.	Fayetteville, Ark./Fayetteville	@lorenbailey7766
22	Avery Hughes	G	5-7	Sr.	Bentonville, Ark./Bentonville	@averyhughes00
24	Jersey Wolfenbarger	G	6-5	So.	Fort Smith, Ark./Northside	@jerseywolf4
30	Maryam Dauda	F	6-4	R-Fr.	Bentonville, Ark./Bentonville	@maryamdada30
34	Chrissy Carr	G	6-1	R-Sr.	Eden Prairie, Minn./Syracuse	@chrissycarr4
43	Makayla Daniels	G	5-8	Sr.	Frederick, Md./Frederick	@makayladaniels5
55	Emrie Ellis	F	6-3	So.	Vanoss, Okla./Vanoss	@ellisemrie

\* Redshirting 2022-23 season

## COACHING STAFF

Title	Name	Year	Alma Mater
Head Coach	Mike Neighbors	6th Season	Arkansas, 1993
Associate Head Coach	Todd Schaefer	6th Season	Thomas More College, 1995
Assistant Coach	Pauline Love	6th Season	Southern Miss, 2010
Assistant Coach	Lacey Goldwire	4th Season	Oklahoma State, 2010
Director of Operations	Amber Shirey	35th Season	Arkansas, 1992
Special Assistant to the HC	Jeff Brazil	16th Season	Arkansas, 2010
Dir. of Student-Athlete Devel.	Jayci Stone	1st Season	Kansas State, 2008

## ELIGIBILITY

## Seniors (4)

Erynn Barnum  
Chrissy Carr  
Makayla Daniels  
Avery Hughes

## Juniors (1)

Rylee Langerman

## Sophomores (4)

Emrie Ellis  
Sasha Goforth (RS)  
Samara Spencer  
Jersey Wolfenbarger

## Freshman (5)

Maryam Dauda (RS)  
Karley Johnson  
Loren Lindsey  
Saylor Poffenbarger (RS)  
Ashlyn Sage (RS)

## ALPHABETICAL

NO.	NAME	POS	HT	CL	HOMETOWN/PREVIOUS SCHOOL
4	Erynn Barnum	F	6-2	R-Sr.	Little Rock, Ark./LR Central HS
34	Chrissy Carr	G	6-1	R-Sr.	Eden Prairie, Minn./Syracuse
43	Makayla Daniels	G	5-8	Sr.	Frederick, Md./Frederick HS
30	Maryam Dauda	F	6-4	R-Fr.	Bentonville, Ark./Bentonville HS
55	Emrie Ellis	F	6-3	So.	Vanoss, Okla./Vanoss HS
13	Sasha Goforth*	G	6-1	Jr.	Fayetteville, Ark./Oregon State
22	Avery Hughes	G	5-7	Sr.	Bentonville, Ark./Bentonville HS
20	Karley Johnson	G	5-9	Fr.	Mustang, Okla./Mustang
11	Rylee Langerman	G	5-9	Jr.	Norman, Okla./Christian Heritage HS
0	Saylor Poffenbarger	G	6-2	R-Fr.	Middletown, Md./Middletown HS/UConn
15	Ashlyn Sage*	G	6-2	So.	Weatherford, Okla./Weatherford
2	Samara Spencer	G	5-7	So.	Fort Lauderdale, Fla./St. Thomas Aquinas HS
24	Jersey Wolfenbarger	G	6-5	So.	Fort Smith, Ark./Northside HS

## BY STATE

## ARKANSAS (6)

Erynn Barnum	Little Rock
Maryam Dauda	Bentonville
Sasha Goforth	Fayetteville
Avery Hughes	Bentonville
Loren Lindsey	Fayetteville
Jersey Wolfenbarger	Fort Smith

## FLORIDA (1)

Samara Spencer	Fort Lauderdale
----------------	-----------------

## MARYLAND (2)

Makayla Daniels	Frederick
Saylor Poffenbarger	Middletown

## MINNESOTA (1)

Chrissy Carr	Manhattan (Kan.)
--------------	------------------

## OKLAHOMA (4)

Emrie Ellis	Vanoss
Rylee Langerman	Norman
Karley Johnson	Mustang
Ashlyn Sage	Weatherford

## FA-NETIK

## PRONUNCIATIONS

2 Suh-MARE-uh

30 DOW-duh

55 em-REE





## OFFENSE

Scored 110+-----	110, vs. Providence (11-16-98)
Scored 100+ points at home -----	105, vs. UCA (12-13-20)
Scored 100+ points on the road -----	108, at Ole Miss (2-16-20)   108, Baylor (3-6-91)
Scored 90-99 points -----	90, No. 12 LSU (1-27-22)
Scored 90+ points at home -----	90, No. 12 LSU (1-27-22)
Scored 90+ points on the road -----	99, at Alabama (1-20-22)
Scored 80-89 points -----	87, at Mississippi State (2-27-22)
Scored 80-89 points at home -----	83, at Missouri (2-13-22)
Scored 80-89 points on the road -----	87, at Mississippi State (2-27-22)
Was held to 50-59-----	54, vs. No. 1 South Carolina (3-4-22)
Was held to 49-40-----	42 at No. 9 South Carolina (1-25-18)
Was held to 39-20-----	34, at LSU, 2-7-19
Was held to 20 or less -----	N/A
Made 40+ field goals -----	40, vs. UCA (12-13-20)
Made 17+ three-point field goals -----	19, Alabama (2-28-21)
Made 10+ three-point field goals -----	11, vs. Tulsa (11-14-22)
Did not make 3-pointer (since 1986)-----	0-10, at LSU, (2-7-19)
Made 30 free throws -----	30 (30-39), No. 4 Baylor (12-6-20)
Made 25 free throws -----	29 (29-32), Cal (12-5-21)
Shot 50-59 or better -----	50.0, No. 12 LSU (1-27-22)
Shot 60 percent or better -----	.644 (38-59) at Ole Miss (2-16-20)
Held to less than 30 percent -----	.273 (18-66), vs. Missouri (3-3-22)
Held to less than 20 percent -----	.182 (10-55) vs. No. 6 Tennessee (1-8-12; 1, 38-69)
Had 20 or more assists in a game -----	22, vs. UCA (12-13-20)

## DEFENSE

Allowed 100 points-----	104, at No. 4 South Carolina (1-18-21)
Allowed 80-99 points-----	92, vs. Utah (3-18-22)
Held opponent to 40-49 points -----	44, vs. UCA (12-18-21)
Held opponent to 39-30 -----	34, vs. UCA (11-11-22)
Held an SEC opponent under 50 points in 3 cons. games -----	47, Auburn (1-29-15)
-----	W, 52-47; 42, Alabama (2-1-15, W, 53-42); #24/21 Georgia (2-9-15, W, 54-48)
Held opponent to 29 points or less -----	23, Binghamton, 11-30-13
Held an opponent under 15 points in a half -----	14, vs. UCA (11-11-22)
Held an opponent to 2 points in a quarter -----	2, vs. UCA (12-13-20)
Held opponent under 15 field goals -----	12, UCA (11-11-22)
Held opponent to less than 30 percent shooting -----	21.8 (12-55), vs. UXA (11-11-22)
Held opponent to less than 20 percent shooting -----	19.7 (13-66), vs. Northwestern State (12-15-19)
Held opponent under 15 percent from 3-point -----	10.5 (2-19), vs. UCA (11-11-22)
Opponent did not make a 3-pointer -----	0, Tulsa (12-11-19)
Had 70+ rebounds -----	74, Mississippi Valley State (11-24-89)
Had 60-69 rebounds -----	64, Prairie View A&M (12-16-18)
Had 50-59 rebounds -----	56, at UAPB (11-7-22)
Had 10 or more blocked shots in a game -----	11, vs. No. 1 South Carolina (3-4-22)
Had 20 or more steals in a game -----	20, ORU (11-13-13)
Had 15 or more steals in a game -----	18, vs. UT Martin (12-29-19)
Forced 25+ turnovers in a game -----	29, Oral Roberts (11-25-20)

## OTHER

Won an overtime game -----	61-52, vs. Missouri (3-3-22)
Lost an overtime game -----	86-83, at No. 7 Tennessee (1-31-22)
Won a double overtime game -----	73-72, vs. Florida (1-29-12)
Lost a double overtime game -----	N/A
Won a triple overtime game -----	91-80 Win in 3OT, 2-10-13, at Alabama
Played consecutive OT games -----	1-24-16 at Auburn (lost); 1-28-16 vs Florida (lost)
Won regular season tournament -----	Bahamas Hoopfest (Nassau, Bahamas, Nov. 29-28, 2019)
Defeated ranked team -----	90-76, vs. No. 12 LSU (1-27-22)
Defeated a ranked team on the road ---	57-53, at #19/18 LSU, 2-23-14; 77-76, #17/16 Iowa (Las Vegas), 12-18-14
All-time SEC win streak -----	8 games (1-15-12: Auburn through 2-15-12: at Auburn)
All-time SEC home win streak -----	5 games (1-15-12: Auburn -- 2-9-12: S. Carolina)
-----	5 games (1-14-21: Florida -- 2-28-21: Alabama)

## A RAZORBACK PLAYER ...

Scored 20-24 points -----	24, Amber Ramirez, vs. Utah (3-18-22)
Scored 25-29 points -----	27, Erynn Barnum, vs. Tulsa (11-14-22)
Scored 30+ points -----	30, Amber Ramirez, Auburn (2-10-22)
Scored 40+ points -----	41, Chelsea Dungee vs Auburn (2-10-19)
Scored 20+ points 10 times in a season -----	Chelsea Dungee (20x   2018-19)
-----	Chelsea Dungee (11x   2019-20)
-----	Chelsea Dungee (17x   2020-21)
Double figures in 15 consecutive games (season) -----	Jessica Jackson, 11/11/16, LSU 1-8-17
-----	Chelsea Dungee, 26 games, (2018-19 & 2019-20)
-----	Chelsea Dungee, 31 games, (2019-20 & 2020-21)
-----	Amber Ramirez, 15 games (2021-22)
Five players scored double figures in 1 game -----	at Mississippi State (2-27-22)
-----	Goforth 20, Ramirez 15, Daniels 14, Wolfenbarger 13, Spencer 12, Barnum 10
Five starters in double figures -----	at Mississippi State (2-27-22)
-----	Goforth 20, Ramirez 15, Daniels 14, Wolfenbarger 13, Spencer 12
Seven players scored in double figures in 1 game -----	vs. Northwestern State (11-9-18)
-----	(Tolefree 19, Gaulden 16, Monk 12, Dombia 11, Dungee 11, Thomas 11, Williams 10)
Made 10+ field goals in a game -----	10, Erynn Barnum, vs. Tulsa (11-14-22)
Attempted 20+ field goals in a game -----	28, Amber Ramirez, Utah (3-18-22)
Made 10 free throws in a game -----	11, Amber Ramirez, Missouri (1-9-22)
Made 7 or more 3-pt FG in a game -----	8, Amber Ramirez, Alabama (2-28-21)
Attempted 10 or more 3-pt FG in a game -----	12, Amber Ramirez, Utah (3-18-22)
Had 10-14 rebounds -----	11, Erynn Barnum, at UAPB (11-7-22)
Had 15-19 rebounds -----	21, Taylah Thomas, New Orleans, 11-8-19
Had 20+ rebounds -----	21, Taylah Thomas, New Orleans, 11-8-19
Had 10 offensive reb - Records go back to 05-06 -----	11, Melissa Wolff
-----	vs. New Orleans (1-30-15)
Had 10+ defensive reb - Records go back to 05-06 -----	11, Makayla Daniels, vs. Missouri (3-3-22)
Had 10+ assists -----	10, Destiny Slocum, at Missouri (2-4-21)
Had 10+ assists in consecutive games -----	Jailyn Mason (11 vs. HBU, 12-28-16 and 10 at Ole
-----	Miss, 1-1-17), Calli Berna (11 vs. No. 10/8 KY, 2/7/13 and 11 at UA, 2/10/13)
Had 5+ blocks in a game -----	5, Sasha Goforth, vs. Missouri (3-3-22)
Had 9+ blocks in a game -----	9, Robyn Irwin vs. SMSU, 12-19-88 (school record)
Had 5 or more steals in a game -----	6, Makayla Daniels, vs. Central Arkansas (12-18-21)
Had a double-double -----	15 points, 11 rebounds, Erynn Barnum, at UAPB (11-7-22)
Had a double-double in two consecutive games -----	Jersey Wolfenbarger, at Texas A&M, at Missouri (2022)
-----	12 & 10 at Texas A&M/12 & 11 at Missouri
Had two players record a double-double -----	Kiara Williams (12 pts/16 reb) &
-----	Malica Monk (10 pts/10 reb)., Grambling State (12-28-17)
Had seven double-doubles in a season -----	Devin Cosper, 2017-18
-----	(SHSU, ORU, NMSU, Char., Tulsa, OM, AL)
Had 10+ double-doubles in a season -----	2006-07, Lauren Ervin (14)
Had a triple-double -----	14 pts, 13 reb, 12 asts, C'eira Ricketts vs. Auburn (1-18-09)

## MORE ABOUT MIKE

Hometown: Greenwood, Ark. (Greenwood HS)  
 Family: Daughter Abby; Sons Alec, Bowen and Barrett  
 Alma Mater: Arkansas, 1993

## NEIGHBORS BY THE NUMBERS

- 194 Wins (194–105, 9 seasons)
- 5 Players drafted in the WNBA (HC)
- 14 Signed McDonalds' All-Americans
- 10 Years as a head coach
- 8 Postseason appearances
- 1 Final Four appearance



## LEARN MORE

Sign up for Mike Neighbors' newsletter and listen to his podcasts at CoachNeighbors.com

## NABES FAVES

## TOP 10 MOVIES

1. A Few Good Men
2. The Hunt For Red October
3. The Silence Of The Lambs
4. Hoosiers
5. Moneyball
6. Pretty Woman
7. Top Gun
8. JFK
9. The Lion King
10. Purple Rain

See the entire list here: <http://imdb.to/2royaEO>

## TOP 10 SONGS

1. Sweet Child O' Mine (Guns N' Roses)
2. You Shook Me All Night Long (AC/DC)
3. Man In The Mirror (Michael Jackson)
4. Amarillo By Morning (George Strait)
5. Jessie's Girl (Rick Springfield)
6. Hysteria (Def Leppard)
7. Fishin' In The Dark (Nitty Gritty Dirt Band)
8. The Ballad of Curtis Loew (Lynyrd Skynyrd)
9. Wanted Dead Or Alive (Bon Jovi)
10. Let's Go Crazy (Prince)

## TOP 10 TV SHOWS

1. West Wing (first three seasons)
2. Ted Lasso
3. The Wire
4. Breaking Bad
5. Seinfeld
6. The Newsroom
7. Prison Break
8. Arrested Development
9. Game of Thrones
10. The Goldbergs



## MIKE NEIGHBORS

THE MOST INTERESTING COACH IN COLLEGE BASKETBALL

Sixth Season | Career Record: 194-105 (10) | Arkansas Record: 96-64 (6)

Arkansas women's basketball has been transformed into a nationally recognized program in just five short years thanks to head coach Mike Neighbors. During his time back home at his alma mater, Neighbors has guided his Hogs to the best five-year period of sustained success in program history. The proof of his success, and the success of his system, lies in the numbers - Neighbors has accumulated 194 wins during his nine seasons as a head coach, which is the most of any Division I head coach who has been a head coach for nine years.

Entering his sixth season on the bench for Arkansas, the program is coming off its fourth consecutive winning season and second straight NCAA Tournament appearance (would be three had the 2020 NCAA Tournament not have been cancelled due to the COVID-19 pandemic). The Hogs' NCAA Tournament appearance in 2022 marked the first time since 2003 the program had played in back-to-back NCAA Tournaments (2002 and 2003). Arkansas finished yet another season with one of the most prolific offenses in the Southeastern Conference, leading the league in 3-pointers per game (8.1) and 3-point attempts (810), while finishing second in scoring offense (73.6 PPG). Neighbors' 2021-22 team was efficient at taking care of the basketball, leading the league in assist/turnover ratio (1.12) and fewest turnovers per game (11.1), which was fourth in the country. The Hogs were just one of six teams in the nation to commit two turnovers in a game (vs. Missouri on Jan. 9, 2022), which led the country.

Under Neighbors' leadership, Samara Spencer became the first Hog to win SEC Freshman of the Year since 2009, while Amber Ramirez was named an All-SEC Second Team choice and Jersey Wolfenbarger was tabbed to the SEC All-Freshman Team. Ramirez, who played three stellar seasons on the court as a Hog, finished the season second in 3-pointers per game (2.6) and 3-point percentage (40.2), as well as ninth in points per game (15.4) in the SEC. The Hogs were also just one of four SEC schools with 4+ players who averaged double digits (Ramirez [15.4], Makayla Daniels [14.0], Spencer [12.2] and Sasha Goforth [11.5]).

## TIMELINE

- Bentonville HS Head Coach 1994–98
- Cabot HS Head Coach 1998–99
- Arkansas Director of Ops 1999–01
- Tulsa Univ. Assistant Coach 2001–05
- Univ. of Colorado Assistant Coach 2005–06
- Univ. of Arkansas Assistant Coach 2006–07
- Xavier Assistant Coach 2007–2011
- Univ. of Washington Assistant Coach 2011–13
- Univ. of Washington Head Coach 2013–17
- Univ. of Arkansas Head Coach 2017–present

## COACHING DEVELOPMENT

Coach	w/Nabes	Now
Chantel Osahor	'20, '21	AC Oklahoma
Fred Castro	'14, '15, '16	HC Eastern Michigan
Adia Barnes	'14, '15	HC Arizona
Adam Call	'14	AC George Washington
Morgan Valley	'16	AC UConn
Todd Schaefer	'16–Pres.	AHC Arkansas

## COACHING HISTORY

Year	Overall	Pac-12	Finish
2013–14	20–14 (.588)	10–8 (.556)	6
2014–15	23–10 (.697)	11–7 (.611)	5
2015–16	26–11 (.703)	11–7 (.611)	5
2016–17	29–6 (.829)	15–3 (.833)	T-2
UW	98–41 (.705)	47–25 (.662)	

Year	Overall	SEC	Finish
2017–18	13–18 (.419)	3–13 (.188)	T-11
2018–19	22–15 (.611)	6–10 (.375)	10
2019–20	24–8 (.750)	10–6 (.625)	T3
2020–21	19–9 (.679)	9–6 (.600)	T5
2021–22	18–14 (.563)	7–9 (.438)	T8
2022–23	3–0 (1.000)	–	–
Ark	99–64 (.607)	35–44 (.443)	

Totals 197–105 (.657) 82–69 (.543) 10 yrs

## PLAYER DEVELOPMENT

YEAR	UNIVERSITY	PLAYER	ROUND	OVERALL	TEAM NOTE
2021	Arkansas	Chelsea Dungee	1	5	Dallas Wings ! @
2021	Arkansas	Destiny Slocum	2	14	Las Vegas Aces ! @
2021	Arizona	Aari McDonald	1	3	Atlanta Dream @
2017	Washington	Kelsey Plum	1	1	San Antonio Stars ! @ Las Vegas Aces Chicago Sky ! @
2016	Washington	Chantel Osahor	2	21	Los Angeles Sparks ! @
2011	Xavier	Talia Walton	3	29	Minnesota Lynx ! #
	Xavier	Amber Harris	1	4	Atlanta Dream ! #
	TAMU/UAFA	Ta'Shia Phillips	1	8	Seattle Storm #
	Colorado	Tanisha Smith	2	22	Phoenix Mercury *
2009	Arkansas	Brittany Spears	2	19	New York Liberty S
2008	Arkansas	Shameka Christon	1	5	Connecticut Sun ! #
2006	Tulsa	Lauren Ervin	3	37	Houston Comets Free Agent #
	Tulsa	Megan Moody	–	–	Houston Comets Traded to Detroit Shock
2003	Tulsa	Allison Curtin	1	12	Houston Comets ! # Traded to Detroit Shock
	Arkansas	Dana Cherry	2	23	Charlotte Sting S

\*– Signed but did not coach

!– At the school when player was drafted

@– Worked with player as a head coach

#– Worked with player as an assistant coach

\$– Worked with player as other (GA, etc)

## NABES VS. ARKANSAS HISTORY

Category	NABES	All Others In Program History
Winning Record In SEC Play	2 Seasons	2 Seasons
SEC Tourney Finals	1	0
Top 5 Wins	2	2
Weeks Ranked in AP Top 25	34	63
Top 15 WNBA Draft Picks	2	1
McDonald's AAs Signed	5	1
WBCA AAs	1	1



## THE MOST INTERESTING MAN IN COLLEGE BASKETBALL

- Movies: His expansive movie collection includes digital, disk and VHS copies. Did you know he used to work at BlockBuster? On a related note, he also collects books that have been turned into movies.
- Baseballs autographed by movie stars: Ask him about this collection – talk about some good stories.
- Lunch Boxes: Coach collects tin lunch boxes that he carried to school and has them displayed in his home. His first lunch box had KISS on it.
- Hamilton: Nabes is a huge Hamilton fan, and routinely quotes the Broadway musical to players, fans and media alike.
- Athens City Champion: Coach stumbled upon a dart tournament while on a trip to Athens, Georgia. He joined in and was one of the two–man winning team.
- Ask him about shoes, music, movies, guitars, basketball nostalgia – just about anything!



NEIGHBORS VERSUS ...	Fresno State	2	0	Northwestern State	2	0	TCU	0	1
Abilene Christian	Furman	1	0	Notre Dame	0	1	Tennessee	2	4
Alabama	Georgia	1	6	Oklahoma	1	2	Tennessee Martin	1	0
Arizona State	Grambling State	2	0	Ole Miss	5	2	Tennessee State	1	0
Arizona	Grand Canyon	1	0	Oral Roberts	4	0	Tennessee Tech	1	0
Arkansas State	Hartford	1	0	Oregon State	1	6	Texas A&M	3	8
Auburn	Hawai'i	1	0	Oregon	5	3	Texas Tech	1	0
Baylor	Houston	2	0	Pennsylvania	1	0	Tulsa	3	0
Belmont	Idaho	1	0	Pittsburgh	1	1	UAB	1	0
Boise State	Iowa State	0	1	Portland	3	1	UAPB	3	0
BYU	Jackson State	2	0	Prairie View A&M	1	0	UC Irvine	1	0
California	Kansas	0	1	Saint Mary's	0	1	UC Riverside	2	0
Central Arkansas	Kansas State	1	0	Sam Houston	2	0	UCLA	4	2
Central Florida	Kentucky	2	5	Samford	1	0	USC	6	0
Charlotte	Little Rock	3	0	San Diego State	2	0	Utah	7	4
Colorado State	Louisiana–Monroe	2	0	San Diego	1	0	UT–Arlington	2	0
Colorado	LSU	3	2	Santa Clara	1	0	UTEP	0	2
Connecticut	McNeese State	1	0	Savannah State	1	0	Vanderbilt	3	2
Creighton	Maryland	1	1	Seattle	4	0	Wake Forest	1	0
CSUN	Miami	0	1	SMU	2	0	Washington State	5	3
DePaul	Mississippi State	3	5	South Carolina	1	8	Weber State	1	0
Eastern Washington	Missouri	8	4	South Dakota	2	0	Wisconsin	3	0
Florida State	Montana State	2	0	Stanford	3	5	Wright State	0	1
Florida	Nebraska	1	1	Stony Brook	1	0	Yale	1	0
FGCU	New Mexico State	1	0	Syracuse	0	2	TOTALS	196	105
Fordham	New Orleans	1	0	Tarleton State	1	0			







## 2022-23 Arkansas Women's Basketball Combined Team Statistics All games

Page 1/1  
as of Nov 15, 2022

### Game Records

Record	Overall	Home	Away	Neutral
ALL GAMES	3-0	2-0	1-0	0-0
CONFERENCE	0-0	0-0	0-0	0-0
NON-CONFERENCE	3-0	2-0	1-0	0-0

### Score by Periods

Team	1st	2nd	3rd	4th	OT	TOT
Arkansas	55	63	49	54	0	221
Opponents	34	31	42	47	0	154

### Team Box Score

No.	Player				Total		3-Point		F-Throw		Rebounds													
		GP-GS	MIN	AVG	FG-FGA	FG%	3FG-3FGA	3FG%	FT-FTA	FT%	OFF	DEF	TOT	AVG	PF	DQ	A	TO	BLK	STL	PTS	AVG		
4	BARNUM, Erynn	3-3	78:05	26.0	21-34	.618	0-1	.000	19-34	.559	13	15	28	9.3	7	0	3	4	4	6	61	20.3		
43	DANIELS, Makayla	3-3	84:12	28.1	11-32	.344	5-11	.455	10-15	.667	5	12	17	5.7	2	0	8	4	0	5	37	12.3		
2	SPENCER, Samara	3-3	88:55	29.6	10-37	.270	4-20	.200	9-21	.429	0	9	9	3.0	9	0	11	5	0	0	33	11.0		
11	LANGERMAN, Rylee	3-0	69:51	23.3	6-13	.462	4-9	.444	7-13	.538	6	9	15	5.0	8	0	1	3	0	8	23	7.7		
34	CARR, Chrissy	3-3	67:46	22.6	6-25	.240	5-19	.263	4-4	1.000	4	13	17	5.7	1	0	0	5	1	1	21	7.0		
30	DAUDA, Maryam	3-0	41:04	13.7	6-11	.545	1-2	.500	4-7	.571	7	4	11	3.7	8	0	1	5	2	2	17	5.7		
0	POFFENBARGER, Saylor	3-3	86:34	28.9	4-23	.174	2-14	.143	5-10	.500	4	21	25	8.3	6	0	6	4	3	1	15	5.0		
24	WOLFENBARGER, Jersey	3-0	51:28	17.2	5-16	.313	1-5	.200	3-5	.600	4	4	8	2.7	5	0	0	2	0	1	14	4.7		
20	JOHNSON, Karley	1-0	02:37	2.6	0-0	.000	0-0	.000	0-0	.000	0	0	0	0.0	0	0	0	0	0	1	0	0.0		
55	ELLIS, Emrie	2-0	28:17	14.1	0-3	.000	0-1	.000	0-0	.000	1	5	6	3.0	2	0	0	0	0	1	0	0.0		
21	LINDSEY, Loren	1-0	01:11	1.2	0-0	.000	0-0	.000	0-0	.000	0	0	0	0.0	0	0	0	0	0	0	0	0.0		
Team											6	5	11											
Total		3	600		69-194	.356	22-82	.268	61-109	.560	50	97	147	49.0	48	0	30	32	10	26	221	73.7		
Opponents		3	600		56-174	.322	17-65	.262	25-56	.446	32	93	125	41.7	83	3	24	57	10	13	154	51.3		

### Team Statistics

	ARK	OPP
<b>Scoring</b>	<b>221</b>	<b>154</b>
Points per game	73.7	51.3
Scoring margin	+22.3	-
<b>Field goals-att</b>	<b>69-194</b>	<b>56-174</b>
Field goal pct	.356	.322
<b>3 point fg-att</b>	<b>22-82</b>	<b>17-65</b>
3-point FG pct	.268	.262
3-pt FG made per game	7.3	5.7
<b>Free throws-att</b>	<b>61-109</b>	<b>25-56</b>
Free throw pct	.560	.446
F-Throws made per game	20.3	8.3
<b>Rebounds</b>	<b>147</b>	<b>125</b>
Rebounds per game	49.0	41.7
Rebounding margin	+7.3	-
<b>Assists</b>	<b>30</b>	<b>24</b>
Assists per game	10.0	8.0
<b>Turnovers</b>	<b>32</b>	<b>57</b>
Turnovers per game	10.7	19.0
Turnover margin	+8.3	-
Assist/turnover ratio	0.9	0.4
<b>Steals</b>	<b>26</b>	<b>13</b>
Steals per game	8.7	4.3
<b>Blocks</b>	<b>10</b>	<b>10</b>
Blocks per game	3.3	3.3
<b>Winning streak</b>	<b>3</b>	<b>-</b>
Home win streak	2	-
<b>Attendance</b>	<b>9921</b>	<b>3128</b>
Home games-Avg/Game	2-4961	1-3128
Neutral site-Avg/Game	-	0-0

### Team Results

Date	Opponent		Score	Att.
11/07/2022	at Ark.-Pine Bluff	W	70-50	3128
11/11/2022	Central Ark.	W	72-34	7410
11/14/2022	Tulsa	W	79-70	2511



## 2022-23 Arkansas Women's Basketball Team Game-by-Game All games

Page 1/1  
as of Nov 15, 2022

				Total		3-Pointers		Free throws		Rebounds											
Opponent	Date	Score		FG-FGA	PCT	3FG-3FGA	PCT	FT-FTA	PCT	OFF	DEF	TOT	AVG	PF	A	TO	BLK	STL	PTS	AVG	
at Ark.-Pine Bluff	11/07/2022	70-50	W	22-70	.314	5-21	.238	21-46	.457	24	32	56	56.0	18	9	12	2	12	70	70.0	
Central Ark.	11/11/2022	72-34	W	22-52	.423	6-22	.273	22-35	.629	9	35	44	50.0	14	10	11	6	7	72	71.0	
Tulsa	11/14/2022	79-70	W	25-72	.347	11-39	.282	18-28	.643	17	30	47	49.0	16	11	9	2	7	79	73.7	
Total		221		69-194	.356	22-82	.268	61-109	.560	50	97	147	49.0	48	30	32	10	26	221	73.7	
Opponents		154		56-174	.322	17-65	.262	25-56	.446	32	93	125	41.7	83	24	57	10	13	154	51.3	

### Arkansas Averages

Games Played	Points/game	FG Pct	3FG Pct	FT Pct	Rebounds/game	Assists/game	Turnovers/game	Assist/Turnover ratio	Steals/game	Blocks/game
3	73.7	35.6	26.8	56.0	49.0	10.0	10.7	0.9	8.7	3.3



2022-23 Arkansas Women's Basketball  
Category Leaders  
All games

Page 1/3  
as of Nov 15, 2022

### Points

##	Player	G	Pts	Pts/G
4	Barnum, Erynn	3	61	20.3
43	Daniels, Makayla	3	37	12.3
2	Spencer, Samara	3	33	11.0
11	Langerman, Rylee	3	23	7.7
34	Carr, Chrissy	3	21	7.0
30	Dauda, Maryam	3	17	5.7
0	Poffenbarger, Saylor	3	15	5.0
24	Wolfenbarger, Jersey	3	14	4.7

### Scoring Average

##	Player	G	Pts	Pts/G
4	Barnum, Erynn	3	61	20.3
43	Daniels, Makayla	3	37	12.3
2	Spencer, Samara	3	33	11.0
11	Langerman, Rylee	3	23	7.7
34	Carr, Chrissy	3	21	7.0
30	Dauda, Maryam	3	17	5.7
0	Poffenbarger, Saylor	3	15	5.0
24	Wolfenbarger, Jersey	3	14	4.7

### Field Goal Percentage

##	Player	FG	Att	Pct
4	Barnum, Erynn	21	34	.618
30	Dauda, Maryam	6	11	.545
11	Langerman, Rylee	6	13	.462
43	Daniels, Makayla	11	32	.344
24	Wolfenbarger, Jersey	5	16	.313
2	Spencer, Samara	10	37	.270
34	Carr, Chrissy	6	25	.240
0	Poffenbarger, Saylor	4	23	.174

### Field Goal Attempts

##	Player	G	Att	Att/G
2	Spencer, Samara	3	37	12.3
4	Barnum, Erynn	3	34	11.3
43	Daniels, Makayla	3	32	10.7
34	Carr, Chrissy	3	25	8.3
0	Poffenbarger, Saylor	3	23	7.7

### Field Goals Made

##	Player	G	Made	Made/G
4	Barnum, Erynn	3	21	7.0
43	Daniels, Makayla	3	11	3.7
2	Spencer, Samara	3	10	3.3
11	Langerman, Rylee	3	6	2.0
34	Carr, Chrissy	3	6	2.0

### 3-Point FG Percentage

##	Player	3FG	Att	Pct
30	Dauda, Maryam	1	2	.500
43	Daniels, Makayla	5	11	.455
11	Langerman, Rylee	4	9	.444
34	Carr, Chrissy	5	19	.263
2	Spencer, Samara	4	20	.200
24	Wolfenbarger, Jersey	1	5	.200
0	Poffenbarger, Saylor	2	14	.143

### 3-Point FG Attempts

##	Player	G	Att	Att/G
2	Spencer, Samara	3	20	6.7
34	Carr, Chrissy	3	19	6.3
0	Poffenbarger, Saylor	3	14	4.7
43	Daniels, Makayla	3	11	3.7
11	Langerman, Rylee	3	9	3.0

### 3-Point FG Made

##	Player	G	Made	Made/G
43	Daniels, Makayla	3	5	1.7
34	Carr, Chrissy	3	5	1.7
2	Spencer, Samara	3	4	1.3
11	Langerman, Rylee	3	4	1.3
0	Poffenbarger, Saylor	3	2	0.7



## Free Throw Percentage

##	Player	Made	Att	Pct
34	Carr, Chrissy	4	4	1.000
43	Daniels, Makayla	10	15	.667
24	Wolfenbarger, Jersey	3	5	.600
30	Dauda, Maryam	4	7	.571
4	Barnum, Erynn	19	34	.559
11	Langerman, Rylee	7	13	.538
0	Poffenbarger, Saylor	5	10	.500
2	Spencer, Samara	9	21	.429

## Free Throw Attempts

##	Player	G	Att	Att/G
4	Barnum, Erynn	3	34	11.3
2	Spencer, Samara	3	21	7.0
43	Daniels, Makayla	3	15	5.0
11	Langerman, Rylee	3	13	4.3
0	Poffenbarger, Saylor	3	10	3.3

## Free Throws Made

##	Player	G	Made	Made/G
4	Barnum, Erynn	3	19	6.3
43	Daniels, Makayla	3	10	3.3
2	Spencer, Samara	3	9	3.0
11	Langerman, Rylee	3	7	2.3
0	Poffenbarger, Saylor	3	5	1.7

## Rebounds

##	Player	G	Reb	Reb/G
4	Barnum, Erynn	3	28	9.3
0	Poffenbarger, Saylor	3	25	8.3
43	Daniels, Makayla	3	17	5.7
34	Carr, Chrissy	3	17	5.7
11	Langerman, Rylee	3	15	5.0

## Assists

##	Player	G	Ast	Ast/G
2	Spencer, Samara	3	11	3.7
43	Daniels, Makayla	3	8	2.7
0	Poffenbarger, Saylor	3	6	2.0
4	Barnum, Erynn	3	3	1.0
11	Langerman, Rylee	3	1	0.3

## Rebounds Average

##	Player	G	Reb	Reb/G
4	Barnum, Erynn	3	28	9.3
0	Poffenbarger, Saylor	3	25	8.3
43	Daniels, Makayla	3	17	5.7
34	Carr, Chrissy	3	17	5.7
11	Langerman, Rylee	3	15	5.0

## Steals

##	Player	G	Stl	Stl/G
11	Langerman, Rylee	3	8	2.7
4	Barnum, Erynn	3	6	2.0
43	Daniels, Makayla	3	5	1.7
30	Dauda, Maryam	3	2	0.7
34	Carr, Chrissy	3	1	0.3

## Offensive Rebounds

##	Player	G	OReb	OReb/G
4	Barnum, Erynn	3	13	4.3
30	Dauda, Maryam	3	7	2.3
11	Langerman, Rylee	3	6	2.0
43	Daniels, Makayla	3	5	1.7
34	Carr, Chrissy	3	4	1.3

## Blocked Shots

##	Player	G	Blk	Blk/G
4	Barnum, Erynn	3	4	1.3
0	Poffenbarger, Saylor	3	3	1.0
30	Dauda, Maryam	3	2	0.7
34	Carr, Chrissy	3	1	0.3

## Defensive Rebounds

##	Player	G	DReb	DReb/G
0	Poffenbarger, Saylor	3	21	7.0
4	Barnum, Erynn	3	15	5.0
34	Carr, Chrissy	3	13	4.3
43	Daniels, Makayla	3	12	4.0
2	Spencer, Samara	3	9	3.0

## Minutes

##	Player	G	Min	Min/G
2	Spencer, Samara	3	89	29:38
0	Poffenbarger, Saylor	3	87	28:51
43	Daniels, Makayla	3	84	28:04
4	Barnum, Erynn	3	78	26:02
11	Langerman, Rylee	3	70	23:17

## Fouls

##	Player	G	PF	PF/G
2	Spencer, Samara	3	9	3.0
11	Langerman, Rylee	3	8	2.7
30	Dauda, Maryam	3	8	2.7
4	Barnum, Erynn	3	7	2.3
0	Poffenbarger, Saylor	3	6	2.0

## Turnovers

##	Player	G	TO	TO/G
2	Spencer, Samara	3	5	1.7
34	Carr, Chrissy	3	5	1.7
30	Dauda, Maryam	3	5	1.7
4	Barnum, Erynn	3	4	1.3
43	Daniels, Makayla	3	4	1.3

## Foul Outs

##	Player	G	FO
----	--------	---	----



2022-23 Arkansas Women's Basketball  
Points-rebounds-assists  
All games

Page 1/1  
as of Nov 15, 2022

Opponent	Date	Score		0	2	4	11	20	21	24	30	34	43	55
				POFFENBARG	SPENCER, SA	BARNUM, ERY	LANGERMAN,	JOHNSON, KA	LINDSEY, LO	WOLFENBARG	DAUDA, MARY	CARR, CHRIS	DANIELS, MA	ELLIS, EMRI
at Ark.-Pine Bluff	11/07/2022	70-50	W	11-8-2	15-4-4	15-11-1	4-6-0	DNP	DNP	7-7-0	4-3-1	10-3-0	4-6-1	0-2-0
Central Ark.	11/11/2022	72-34	W	2-7-1	5-2-3	19-9-2	9-4-0	0-0-0	0-0-0	5-1-0	10-5-0	8-8-0	14-2-4	0-4-0
Tulsa	11/14/2022	79-70	W	2-10-3	13-3-4	27-8-0	10-5-1	DNP	DNP	2-0-0	3-3-0	3-6-0	19-9-3	DNP



## 2022-23 Arkansas Women's Basketball Player Highs Analysis All games

Page 1/3  
as of Nov 15, 2022

### Arkansas - Individual Game Highs

POINTS	27		Erynn Barnum vs Tulsa (11/14/2022)
	19		Makayla Daniels vs Tulsa (11/14/2022)
	19		Erynn Barnum vs Central Ark. (11/11/2022)
	15		Erynn Barnum at Ark.-Pine Bluff (11/07/2022)
	15		Samara Spencer at Ark.-Pine Bluff (11/07/2022)
FIELD GOALS MADE	10		Erynn Barnum vs Tulsa (11/14/2022)
	6		Makayla Daniels vs Tulsa (11/14/2022)
	6		Erynn Barnum at Ark.-Pine Bluff (11/07/2022)
	6		Samara Spencer at Ark.-Pine Bluff (11/07/2022)
FIELD GOAL ATTEMPTS	19		Makayla Daniels vs Tulsa (11/14/2022)
	16		Samara Spencer vs Tulsa (11/14/2022)
	16		Samara Spencer at Ark.-Pine Bluff (11/07/2022)
FIELD GOAL PERCENTAGE (min 5 made)	.833	(10-12)	Erynn Barnum vs Tulsa (11/14/2022)
	.625	(5-8)	Makayla Daniels vs Central Ark. (11/11/2022)
	.625	(5-8)	Erynn Barnum vs Central Ark. (11/11/2022)
3 PT FG MADE	4		Makayla Daniels vs Tulsa (11/14/2022)
	3		Samara Spencer vs Tulsa (11/14/2022)
3 PT FG ATTEMPTS	11		Samara Spencer vs Tulsa (11/14/2022)
	9		Makayla Daniels vs Tulsa (11/14/2022)
	9		Saylor Poffenbarger at Ark.-Pine Bluff (11/07/2022)
3 PT FG PERCENTAGE (min 2 made)	.500	(2-4)	Rylee Langerman vs Central Ark. (11/11/2022)
	.444	(4-9)	Makayla Daniels vs Tulsa (11/14/2022)
FREE THROWS MADE	9		Erynn Barnum vs Central Ark. (11/11/2022)
	7		Erynn Barnum vs Tulsa (11/14/2022)
FREE THROW ATTEMPTS	13		Erynn Barnum at Ark.-Pine Bluff (11/07/2022)
	12		Erynn Barnum vs Tulsa (11/14/2022)
FREE THROW PERCENTAGE (min 3 made)	1.000	(9-9)	Erynn Barnum vs Central Ark. (11/11/2022)
	.800	(4-5)	Makayla Daniels at Ark.-Pine Bluff (11/07/2022)
REBOUNDS	11		Erynn Barnum at Ark.-Pine Bluff (11/07/2022)
	10		Saylor Poffenbarger vs Tulsa (11/14/2022)
ASSISTS	4		Samara Spencer vs Tulsa (11/14/2022)
	4		Makayla Daniels vs Central Ark. (11/11/2022)
	4		Samara Spencer at Ark.-Pine Bluff (11/07/2022)
STEALS	4		Rylee Langerman vs Tulsa (11/14/2022)
	4		Makayla Daniels vs Central Ark. (11/11/2022)
	4		Erynn Barnum at Ark.-Pine Bluff (11/07/2022)
	4		Rylee Langerman at Ark.-Pine Bluff (11/07/2022)
BLOCKED SHOTS	3		Erynn Barnum vs Central Ark. (11/11/2022)
	2		Saylor Poffenbarger vs Central Ark. (11/11/2022)
TURNOVERS	3		Chrissy Carr vs Central Ark. (11/11/2022)
	2		Chrissy Carr vs Tulsa (11/14/2022)
	2		Maryam Dauda vs Tulsa (11/14/2022)
	2		Samara Spencer vs Tulsa (11/14/2022)
	2		Makayla Daniels vs Tulsa (11/14/2022)
	2		Saylor Poffenbarger vs Central Ark. (11/11/2022)
	2		Maryam Dauda vs Central Ark. (11/11/2022)
	2		Samara Spencer vs Central Ark. (11/11/2022)
	2		Jersey Wolfenbarger at Ark.-Pine Bluff (11/07/2022)
	2		Erynn Barnum at Ark.-Pine Bluff (11/07/2022)
	2		Makayla Daniels at Ark.-Pine Bluff (11/07/2022)
	2		Saylor Poffenbarger at Ark.-Pine Bluff (11/07/2022)
	2		Rylee Langerman at Ark.-Pine Bluff (11/07/2022)
FOULS	4		Saylor Poffenbarger vs Tulsa (11/14/2022)
	4		Samara Spencer at Ark.-Pine Bluff (11/07/2022)
	4		Maryam Dauda at Ark.-Pine Bluff (11/07/2022)





0 Saylor Poffenbarger | R-Fr. | 6-2 | G | Middletown, Conn. (Middletown HS) | UConn

POFFENBARGER BENCHMARK STATS			
2022-23 SEASON HIGHS	Points	11	at UAPB 11-7-22
	FG Made	3	at UAPB 11-7-22
	FG Att.	14	at UAPB 11-7-22
	3FG Made	2	at UAPB 11-7-22
	3FG Att.	9	at UAPB 11-7-22
	FT Made	3	at UAPB 11-7-22
	FT Att.	6	at UAPB 11-7-22
	Off. Reb.	2	vs. Tulsa 11-14-22*
	Def. Reb.	8	vs. Tulsa 11-14-22
	Rebounds	10	vs. Tulsa 11-14-22
	Assists	3	vs. Tulsa 11-14-22
	Blocks	2	vs. UCA 11-11-22
	Steals	1	vs. Tulsa 11-14-22
	Minutes	31	vs. UCA 11-11-22

CAREER HIGHS	Points	11	at UAPB 11-7-22
	FG Made	3	at UAPB 11-7-22
	FG Att.	14	at UAPB 11-7-22
	3FG Made	2	at UAPB 11-7-22
	3FG Att.	9	at UAPB 11-7-22
	FT Made	3	at UAPB 11-7-22
	FT Att.	6	at UAPB 11-7-22
	Off. Reb.	2	vs. Tulsa 11-14-22*
	Def. Reb.	8	vs. Tulsa 11-14-22
	Rebounds	10	vs. Tulsa 11-14-22
	Assists	3	vs. Tulsa 11-14-22
	Blocks	2	vs. UCA 11-11-22
	Steals	1	vs. Tulsa 11-14-22
	Minutes	31	vs. UCA 11-11-22

N/A

2021-22 SEC HIGHS	Stat	22-23	Career
	Double Figure Pts	1	1
	Double Figure Rebs	1	1
	Double-Doubles	-	-
	5+ Assists	-	-
	5+ Blocks	-	-
	5+ Steals	-	-
	Led Team in Pts	-	-
	Led Team in Reb	1	1
	20+ Points	-	-
	30+ Points	-	-

NOTABLES	Stat	22-23	Career
	Double Figure Pts	1	1
	Double Figure Rebs	1	1
	Double-Doubles	-	-
	5+ Assists	-	-
	5+ Blocks	-	-
	5+ Steals	-	-
	Led Team in Pts	-	-
	Led Team in Reb	1	1
	20+ Points	-	-
	30+ Points	-	-

\* Most Recent

GAME NOTES

- Already set career-bests in points (11), rebounds (10) and blocks (2) in three games at Arkansas
- A versatile player who could play positions one through five if she needed to
- Ranks fourth in defensive rebounds (7.0) and 13th in rebounding (8.3) in the SEC
- Appeared in 12 games in her first collegiate season at UConn after enrolling in Jan. 2021
- No. 30th-ranked recruit in her class, No. 13th-ranked guard
- 2020 Ms. Maryland Basketball
- Won gold at the 2019 FIBA Americas U16 Championship

WHO IS SAYLOR POFFENBARGER?

- Majoring in recreation and sport management
- Plays for her little brother that passed away
- Comes from an athletic family: mother, Amy, played basketball at Missouri and was a huge influence on Saylor's basketball journey, and three of her brothers play football: Reese (21) – starting quarterback for U of Albany, Brittin (15) – freshman in HS football and Higgins (10) – fourth grade football player
- Played against teammate Makayla Daniels a few times and was on the same AAU team as her at one point
- Favorite movie: Legally Blonde

#0 POFFENBARGER, Saylor

Opponent	Date	GS	MIN	Total		3-Pointers		Free throws		Rebounds				PF	A	TO	BLK	STL	PTS	AVG
				FG-FGA	PCT	3FG-3FGA	PCT	FT-FTA	PCT	OFF	DEF	TOT	AVG							
at Ark.-Pine Bluff	11/07/2022	*	27:35	3-14	.214	2-9	.222	3-6	.500	2	6	8	8.0	1	2	1	0	1	11	11.0
Central Ark.	11/11/2022	*	30:24	0-5	.000	0-3	.000	2-4	.500	0	7	7	7.5	1	1	2	2	0	2	6.5
Tulsa	11/14/2022	*	28:35	1-4	.250	0-2	.000	0-0	.000	2	8	10	8.3	4	3	0	0	1	2	5.0
Totals			3 86:34	4-23	.174	2-14	.143	5-10	.500	4	21	25	8.3	6	6	4	3	1	15	5.0

Player Averages

Games Played	Minutes/game	Points/game	FG Pct	3FG Pct	FT Pct	Rebounds/game	Assists/game	Turnovers/game	Assist/Turnover ratio	Steals/game	Blocks/game
3	28.9	5.0	17.4	14.3	50.0	8.3	2.0	1.3	1.5	0.3	1.0

CAREER STATISTICS

SEASON	TEAM	GP-GS	MIN/AVG	Field Goals		3-Point		F-Throws		Rebounds				Scoring	
				FG-FGA	FG%	3FG-3FGA	3FG%	FT-FTA	FT%	OFF	DEF	TOT	AVG	PF-FO	A TO BLK STL PTS AVG
2020-21	UConn	12-0	33/2.7	2-15	.133	1-11	.091	1-1	1.000	1	3	4	0.3	2-0	0 0 1 0 6 0.5
2022-23	Ark	3-3	87/28.9	4-23	.174	2-14	.143	5-10	.500	4	21	25	8.3	6-0	6 4 3 1 15 5.0
TOTAL FOR Ark		3-3	87/28.9	4-23	.174	2-14	.143	5-10	.500	4	21	25	8.3	6-0	6 4 3 1 15 5.0
TOTAL		15-3	120/8.0	6-38	.158	3-25	.120	6-11	.545	5	24	29	1.9	8-0	6 4 4 1 21 1.4



**2** Samara Spencer | So. | 5-7 | G | Fort Lauderdale, Fla. (St. Thomas Aquinas HS)

## SPENCER BENCHMARK STATS

2022-23 SEASON HIGHS

Points	15	at UAPB	11-7-22
FG Made	6	at UAPB	11-7-22
FG Att.	16	vs. Tulsa	11-14-22*
3FG Made	3	vs. Tulsa	11-14-22
3FG Att.	11	vs. Tulsa	11-14-22
FT Made	4	vs. Tulsa	11-14-22
FT Att.	8	at UAPB	11-7-22
Off. Reb.	N/A		
Def. Reb.	4	at UAPB	11-7-22
Rebounds	4	at UAPB	11-7-22
Assists	4	vs. Tulsa	11-14-22
Blocks	N/A		
Steals	N/A		
Minutes	39	vs. Tulsa	11-14-22

CAREER HIGHS

Points	22	at Missouri	2-13-22
FG Made	9	at Florida	2-17-22*
FG Att.	21	at Missouri	2-13-22*
3FG Made	5	vs. Miss. State	1-23-22
3FG Att.	11	vs. Tulsa	11-14-22
FT Made	6	at Miss. State	2-27-22*
FT Att.	8	at UAPB	11-7-22*
Off. Reb.	2	vs. #1 SC	3-4-22*
Def. Reb.	7	at Missouri	2-13-22*
Rebounds	8	vs. #1 SC	3-4-22
Assists	6	at Miss. State	2-27-22*
Blocks	1	vs. Utah	3-18-22*
Steals	4	vs. Jackson State	12-9-21
Minutes	43	at #7 Tennessee	1-31-22

2021-22 SEC HIGHS

Points	22	at Missouri	2-13-22
FG Made	9	at Florida	2-17-22*
FG Att.	21	at Missouri	2-13-22*
3FG Made	5	vs. Miss. State	1-23-22
3FG Att.	8	at #7 Tennessee	1-31-22*
FT Made	6	at Miss. State	2-27-22*
FT Att.	8	at Miss. State	2-27-22*
Off. Reb.	2	vs. #1 SC	3-4-22*
Def. Reb.	7	at Missouri	2-13-22*
Rebounds	8	vs. #1 SC	3-4-22
Assists	6	at Miss. State	2-27-22*
Blocks	1	at Missouri	2-13-22*
Steals	2	at Ole Miss	2-22-22*
Minutes	43	at #7 Tennessee	1-31-22

NOTABLES

Stat	21-22	22-23	Career
Double Figure Pts	20	2	22
Double Figure Rebs	-	-	-
Double-Doubles	-	-	-
5+ Assists	5	-	5
5+ Blocks	-	-	-
5+ Steals	-	-	-
Led Team in Pts	5	1	6
Led Team in Reb	1	-	1
20+ Points	3	-	3
30+ Points	-	-	-

\* Most Recent

## GAME NOTES

- Coming off second double-digit game of the season with 13 points and four assists vs. Tulsa
- Her 11 3-point attempts versus Tulsa is tied for the most by an SEC player this season
- Ranks 14th in assists (3.7) and 15th in assist/turnover ratio (2.2) in the SEC
- Named 2022 SEC Freshman of the Year, first Arkansas player since 2009 (C'eria Ricketts)
- Won SEC Freshman of the Week four times last season, the most in the league
- Registered three 20-point games, including a career-high 22 points at Missouri (2/13)
- Finished third on the team in scoring and led the way in assists (96) as a freshman
- Led St. Thomas Aquinas to a state title during her senior season

## WHO IS SAMARA SPENCER?

- Majoring in recreation and sport management
- First Floridan to make up an Arkansas WBB roster since 2010
- Favorite foods: Steak or lasagna
- Favorite place to eat in Fayetteville: Tacos 4 Life
- Proudest accomplishment in basketball: winning SEC Freshman of the year last year

## #2 SPENCER, Samara

Opponent	Date	GS	MIN	Total FG-FGA	PCT	3-Pointers 3FG-3FGA	PCT	Free throws FT-FTA	PCT	Rebounds OFF DEF TOT AVG	PF	A	TO	BLK	STL	PTS	AVG
at Ark.-Pine Bluff	11/07/2022	*	31:00	6-16	.375	1-7	.143	2-8	.250	0 4 4 4.0	4	4	1	0	0	15	15.0
Central Ark.	11/11/2022	*	18:51	1-5	.200	0-2	.000	3-7	.429	0 2 2 3.0	3	3	2	0	0	5	10.0
Tulsa	11/14/2022	*	39:04	3-16	.188	3-11	.273	4-6	.667	0 3 3 3.0	2	4	2	0	0	13	11.0
<b>Totals</b>			<b>3 88:55</b>	<b>10-37</b>	<b>.270</b>	<b>4-20</b>	<b>.200</b>	<b>9-21</b>	<b>.429</b>	<b>0 9 9 3.0</b>	<b>9</b>	<b>11</b>	<b>5</b>	<b>0</b>	<b>0</b>	<b>33</b>	<b>11.0</b>

## Player Averages

Games Played	Minutes/game	Points/game	FG Pct	3FG Pct	FT Pct	Rebounds/game	Assists/game	Turnovers/game	Assist/Turnover ratio	Steals/game	Blocks/game
3	29.6	11.0	27.0	20.0	42.9	3.0	3.7	1.7	2.2	0.0	0.0

## CAREER STATISTICS

SEASON	TEAM	GP-GS	MIN/AVG	Field Goals FG-FGA	FG%	3-Point 3FG-3FGA	3FG%	F-Throws FT-FTA	FT%	Rebounds OFF DEF TOT AVG	PF-FO	A	TO	BLK	STL	Scoring PTS	AVG
2021-22	Ark	31-27	930/30.0	138-325	.425	44-128	.344	59-98	.602	18 96 114 3.7	49-0	96	82	8	36	379	12.2
2022-23	Ark	3-3	89/29.6	10-37	.270	4-20	.200	9-21	.429	0 9 9 3.0	9-0	11	5	0	0	33	11.0
<b>TOTAL</b>		<b>34-30</b>	<b>1019/30.0</b>	<b>148-362</b>	<b>.409</b>	<b>48-148</b>	<b>.324</b>	<b>68-119</b>	<b>.571</b>	<b>18 105 123 3.6</b>	<b>58-0</b>	<b>107</b>	<b>87</b>	<b>8</b>	<b>36</b>	<b>412</b>	<b>12.1</b>



4 Erynn Barnum | R-Sr. | 6-2 | F | Little Rock, Ark. (Little Rock Central HS)

2022-23 SEASON HIGHS	BARNUM BENCHMARK STATS			
	Points	27	vs. Tulsa	11-14-22
	FG Made	10	vs. Tulsa	11-14-22
	FG Att.	14	at UAPB	11-7-22
	3FG Made	N/A		
	3FG Att.	1	vs. UCA	11-11-22
	FT Made	9	vs. UCA	11-11-22
	FT Att.	13	UAPB	11-7-22
	Off. Reb.	6	at UAPB	11-7-22
	Def. Reb.	5	vs. Tulsa	11-14-22*
	Rebounds	11	at UAPB	11-7-22
	Assists	2	vs. UCA	11-11-22
	Blocks	3	vs. UCA	11-11-22
	Steals	4	at UAPB	11-7-22
	Minutes	31	vs. Tulsa	11-14-22

CAREER HIGHS	Points	27	vs. Tulsa	11-14-22
	FG Made	10	vs. Tulsa	11-14-22
	FG Att.	16	vs. SMU	11-22-21
	3FG Made	1	vs. SMU	11-22-21*
	3FG Att.	4	at #2 UConn	11-14-21
	FT Made	9	vs. UCA	11-11-22
	FT Att.	13	at UAPB	11-7-22*
	Off. Reb.	6	at UAPB	11-7-22*
	Def. Reb.	8	vs. ULM	12-3-20*
	Rebounds	12	vs. Utah	3-18-22*
	Assists	4	vs. Cal	12-5-21
	Blocks	4	vs. Little Rock	12-21-19*
	Steals	4	at UAPB	11-7-22*
	Minutes	31	vs. Tulsa	11-14-22*

2021-22 SEC HIGHS	Points	15	at Georgia	1-25-21
	FG Made	7	at Georgia	1-25-21
	FG Att.	12	vs. Georgia	1-23-20
	3FG Made	1	at Tennessee	1-31-22*
	3FG Att.	2	at Tennessee	1-31-22*
	FT Made	4	at Miss. State	2-27-22*
	FT Att.	6	at Texas A&M	2-3-22
	Off. Reb.	4	vs. Missouri	1-3-21
	Def. Reb.	6	vs. Auburn	2-10-22*
	Rebounds	9	vs. Auburn	2-10-22
	Assists	2	vs. 1/1 SC	3-4-22*
	Blocks	3	vs. Florida	1-26-20
	Steals	3	at Texas A&M	2-7-21
	Minutes	26	vs. Missouri	1-3-21

NOTABLES	Stat	19-20	20-21	21-22	22-23	Career
	Double Figure Pts	4	9	5	3	21
	Double Figure Rebs	1	1	1	1	5
	Double-Doubles	1	1	-	1	3
	5+ Assists	-	-	-	-	-
	5+ Blocks	-	-	-	-	-
	5+ Steals	-	-	-	-	-
	Led Team in Pts	1	-	3	3	7
	Led Team in Reb	4	7	7	2	20
	20+ Points	-	-	-	1	1
	30+ Points	-	-	-	-	-

\* Most Recent

GAME NOTES

- Named to Katrina McClain Preseason Watchlist, given to the best power forward in the country
- Coming off career-high 27 points with eight rebounds versus Tulsa
- Double-doubled in the season opener at Pine Bluff with 15 points and 11 rebounds
- Was close to a double-double vs. UCA, tallying a career-high 19 points and nine rebounds along with three blocks and going 9-for-9 from the free throw line
- SEC rankings: third in offensive rebounds (4.3), fifth in scoring (20.3), sixth in rebounding (9.3) and seventh in field goal percentage (.618)
- NCAA rankings: first in free throw attempts (34), 27th in points and 44th in rebounds
- Ended 2021-22 season by matching a career-high 12 rebounds vs. Utah at the NCAA Tournament
- Averaged 7.6 points, 4.8 rebounds and 17.5 minutes per game last season

WHO IS ERYNN BARNUM?

- Majoring in recreation and sport management
- Played volleyball and was player of the year in high school
- One of eight siblings
- Born in Pasadena, Calif. and moved to Little Rock when she was 6
- Favorite food: shrimp alfredo

#4 BARNUM, Erynn

Opponent	Date	GS	MIN	Total		3-Pointers		Free throws		Rebounds				PF A TO BLK STL PTS AVG						
				FG-FGA	PCT	3FG-3FGA	PCT	FT-FTA	PCT	OFF	DEF	TOT	AVG	PF	A	TO	BLK	STL	PTS	AVG
at Ark.-Pine Bluff	11/07/2022	*	25:04	6-14	.429	0-0	.000	3-13	.231	6	5	11	11.0	2	1	2	0	4	15	15.0
Central Ark.	11/11/2022	*	22:29	5-8	.625	0-1	.000	9-9	1.000	4	5	9	10.0	2	2	1	3	0	19	17.0
Tulsa	11/14/2022	*	30:32	10-12	.833	0-0	.000	7-12	.583	3	5	8	9.3	3	0	1	1	2	27	20.3
Totals		3	78:05	21-34	.618	0-1	.000	19-34	.559	13	15	28	9.3	7	3	4	4	6	61	20.3

Player Averages

Games Played	Minutes/game	Points/game	FG Pct	3FG Pct	FT Pct	Rebounds/game	Assists/game	Turnovers/game	Assist/Turnover ratio	Steals/game	Blocks/game
3	26.0	20.3	61.8	0.0	55.9	9.3	1.0	1.3	0.8	2.0	1.3

CAREER STATISTICS

				Field Goals		3-Point		F-Throws		Rebounds								Scoring		
SEASON	TEAM	GP-GS	MIN/AVG	FG-FGA	FG%	3FG-3FGA	3FG%	FT-FTA	FT%	OFF	DEF	TOT	AVG	PF-FO	A	TO	BLK	STL	PTS	AVG
2019-20	Ark	27-0	306/11.3	50-98	.510	3-7	.429	31-52	.596	31	76	107	4.0	26-0	5	11	28	15	134	5.0
2020-21	Ark	28-0	455/16.3	85-145	.586	1-7	.143	44-87	.506	34	94	128	4.6	56-0	11	30	23	21	215	7.7
2021-22	Ark	22-10	385/17.5	55-134	.410	3-16	.188	55-80	.688	35	70	105	4.8	32-0	18	26	12	20	168	7.6
2022-23	Ark	3-3	78/26.0	21-34	.618	0-1	.000	19-34	.559	13	15	28	9.3	7-0	3	4	4	6	61	20.3
TOTAL		80-13	1225/15.3	211-411	.513	7-31	.226	149-253	.589	113	255	368	4.6	121-0	37	71	67	62	578	7.2





## 11 Rylee Langerman | Jr. | 5-9 | G | Norman, Okla. (Christian Heritage HS)

### LANGERMAN BENCHMARK STATS

#### 2022-23 SEASON HIGHS

Points	10	vs. Tulsa	11-14-22
FG Made	3	vs. UCA	11-11-22
FG Att.	7	vs. Tulsa	11-14-22
3FG Made	2	vs. Tulsa	11-14-22*
3FG Att.	5	vs. Tulsa	11-14-22
FT Made	4	vs. Tulsa	11-14-22
FT Att.	6	vs. Tulsa	11-14-22
Off. Reb.	4	at UAPB	11-7-22
Def. Reb.	4	vs. UCA	11-11-22
Rebounds	6	at UAPB	11-7-22
Assists	1	vs. Tulsa	11-14-22
Blocks	N/A		
Steals	4	vs. Tulsa	11-14-22*
Minutes	25	vs. UCA	11-11-22

#### CAREER HIGHS

Points	17	vs. Missouri	1-9-22
FG Made	6	vs. Missouri	1-9-22
FG Att.	10	vs. Missouri	1-9-22
3FG Made	5	vs. Missouri	1-9-22
3FG Att.	6	vs. Missouri	1-9-22
FT Made	4	vs. Tulsa	11-14-22*
FT Att.	6	vs. Tulsa	11-14-22
Off. Reb.	5	vs. Auburn	2-10-22
Def. Reb.	7	at Texas A&M	2-3-22*
Rebounds	11	at Texas A&M	2-3-22
Assists	4	vs. UCA	12-13-20
Blocks	2	vs. Missouri	3-3-22
Steals	4	vs. Tulsa	11-14-22*
Minutes	34	at Florida	2-17-22

#### 2021-22 SEC HIGHS

Points	17	vs. Missouri	1-9-22
FG Made	6	vs. Missouri	1-9-22
FG Att.	10	vs. Missouri	1-9-22
3FG Made	5	vs. Missouri	1-9-22
3FG Att.	6	vs. Missouri	1-9-22
FT Made	2	at Missouri	2-13-22
FT Att.	2	at Missouri	2-13-22*
Off. Reb.	5	vs. Auburn	2-10-22
Def. Reb.	7	at Texas A&M	2-3-22
Rebounds	11	at Texas A&M	2-3-22
Assists	3	vs. 12/11 LSU	1-27-2
Blocks	2	vs. Missouri	3-3-22
Steals	4	at Missouri	2-13-22
Minutes	34	at Florida	2-17-22

#### NOTABLES

Stat	20-21	21-22	22-23	Career
Double Figure Pts	-	1	1	2
Double Figure Rebs	-	1	-	1
Double-Doubles	-	-	-	-
5 + Assists	-	-	-	-
5 + Blocks	-	-	-	-
5 + Steals	-	-	-	-
Led Team in Pts	-	-	-	-
Led Team in Reb	-	2	-	2
20 + Points	-	-	-	-
30+ Points	-	-	-	-

\* Most Recent

### GAME NOTES

- Logged 10 points, five rebounds and four steals against Tulsa
- Ranked 13th in steals per game (2.7) in the SEC, which is 70th in the country
- Involved in at least four tie ups at UAPB, ending the night with four points, six rebounds and four steals off the bench
- Ripped down 11 boards at Texas A&M, a new career-best
- Lit up Mizzou, going for a career-best 17 points off 5-for-6 shooting from 3-point off the bench
- Was a Swiss army knife against AState, going for eight points, six boards, three assists and three steals
- Started in four consecutive games during the middle of SEC play, ticking a career-high 34 minutes during that stretch at Florida
- Averaged 3.2 points and 3.7 rebounds across 19.2 minutes played per game last season

### WHO IS RYLEE LANGERMAN?

- Majoring in biology
- Easily a fan favorite for the work she has done in the community, serving as an inspiration
- Has a twin brother named Ryan who played basketball and golf
- Chose Arkansas because of the atmosphere and culture
- Can play the guitar
- Favorite place to eat in Fayetteville: Sassy's BBQ

#### #11 LANGERMAN, Rylee

Opponent	Date	GS	MIN	Total		3-Pointers		Free throws		Rebounds				PF	A	TO	BLK	STL	PTS	AVG
				FG-FA	PCT	3FG-3FGA	PCT	FT-FTA	PCT	OFF	DEF	TOT	AVG							
at Ark.-Pine Bluff	11/07/2022		22:50	1-1	1.000	0-0	.000	2-4	.500	4	2	6	6.0	3	0	2	0	4	4.0	
Central Ark.	11/11/2022		24:26	3-5	.600	2-4	.500	1-3	.333	0	4	4	5.0	2	0	1	0	9	6.5	
Tulsa	11/14/2022		22:35	2-7	.286	2-5	.400	4-6	.667	2	3	5	5.0	3	1	0	0	4	7.7	
Totals		0	69:51	6-13	.462	4-9	.444	7-13	.538	6	9	15	5.0	8	1	3	0	8	7.7	

#### Player Averages

Games Played	Minutes/game	Points/game	FG Pct	3FG Pct	FT Pct	Rebounds/game	Assists/game	Turnovers/game	Assist/Turnover ratio	Steals/game	Blocks/game
3	23.3	7.7	46.2	44.4	53.8	5.0	0.3	1.0	0.3	2.7	0.0

### CAREER STATISTICS

SEASON	TEAM	GP-GS	MIN/AVG	Field Goals FG-FGA FG%	3-Point 3FG-3FGA 3FG%	F-Throws FT-FTA FT%	Rebounds OFF DEF TOT AVG	Scoring PF-FO A TO BLK STL PTS AVG
2020-21	Ark	13-0	91/7.0	5-16 .313	4-10 .400	2-4 .500	2 12 14 1.1	10-0 7 9 1 1 16 1.2
2021-22	Ark	32-7	613/19.2	36-97 .371	16-50 .320	13-23 .565	41 78 119 3.7	83-2 30 31 11 28 101 3.2
2022-23	Ark	3-0	70/23.3	6-13 .462	4-9 .444	7-13 .538	6 9 15 5.0	8-0 1 3 0 8 23 7.7
<b>TOTAL</b>		<b>48-7</b>	<b>774/16.1</b>	<b>47-126 .373</b>	<b>24-69 .348</b>	<b>22-40 .550</b>	<b>49 99 148 3.1</b>	<b>101-2 38 43 12 37 140 2.9</b>


**20** Karley Johnson | Fr. | 5-9 | G | Mustang, Okla. (Mustang HS)

**JOHNSON BENCHMARK STATS**
**2022-23 SEASON HIGHS**

Points	N/A
FG Made	N/A
FG Att.	N/A
3FG Made	N/A
3FG Att.	N/A
FT Made	N/A
FT Att.	N/A
Off. Reb.	N/A
Def. Reb.	N/A
Rebounds	N/A
Assists	N/A
Blocks	N/A
Steals	1 vs. UCA 11-11-22
Minutes	3 vs. UCA 11-11-22

**CAREER HIGHS**

Points	N/A
FG Made	N/A
FG Att.	N/A
3FG Made	N/A
3FG Att.	N/A
FT Made	N/A
FT Att.	N/A
Off. Reb.	N/A
Def. Reb.	N/A
Rebounds	N/A
Assists	N/A
Blocks	N/A
Steals	1 vs. UCA 11-11-22
Minutes	3 vs. UCA 11-11-22

**2021-22 SEC HIGHS**

N/A

**NOTABLES**

Stat	22-23	Career
Double Figure Pts	-	-
Double Figure Rebs	-	-
Double-Doubles	-	-
5 + Assists	-	-
5 + Blocks	-	-
5 + Steals	-	-
Led Team in Pts	-	-
Led Team in Reb	-	-
20 + Points	-	-
30+ Points	-	-

**GAME NOTES**

- Made first collegiate appearance versus UCA, grabbing a steal in the game
- Lone member of the fall 2021 signing class
- Recognized as a 2022 McDonald's All-American nominee
- Tabbed a four-time Oklahoman's Super 5 Honorable Mention choice
- As a senior at Mustang, averaged 12.3 points, 4.3 rebounds and 3.1 assists per game
- Only needed two years to eclipse 1,000 points, doing so as a sophomore

**WHO IS KARLEY JOHNSON?**

- One of eight children
- Hidden talent: can juggle
- Favorite TV show: Criminal Minds
- Pregame ritual: puts everything on left to right
- Has English bulldogs named Roxie and Gus and a cat named Toast

**#20 JOHNSON, Karley**

				Total		3-Pointers		Free throws		Rebounds											
Opponent	Date	GS	MIN	FG-FGA	PCT	3FG-3FGA	PCT	FT-FTA	PCT	OFF	DEF	TOT	AVG	PF	A	TO	BLK	STL	PTS	AVG	
Central Ark.	11/11/2022		02:37	0-0	.000	0-0	.000	0-0	.000	0	0	0	0.0	0	0	0	0	1	0	0.0	
Totals		0	02:37	0-0	.000	0-0	.000	0-0	.000	0	0	0	0.0	0	0	0	0	1	0	0.0	

**Player Averages**

Games Played	Minutes/game	Points/game	FG Pct	3FG Pct	FT Pct	Rebounds/game	Assists/game	Turnovers/game	Assist/Turnover ratio	Steals/game	Blocks/game
1	2.6	0.0	0.0	0.0	0.0	0.0	0.0	0.0	0.0	1.0	0.0

**CAREER STATISTICS**

SEASON	TEAM	GP-GS	MIN/AVG	Field Goals		3-Point		F-Throws		Rebounds				Scoring			
				FG-FGA	FG%	3FG-3FGA	3FG%	FT-FTA	FT%	OFF	DEF	TOT	AVG	PF-FO	A	TO	BLK
2022-23	Ark	1-0	3/2.6	0-0	.000	0-0	.000	0-0	.000	0	0	0	0.0	0-0	0	0	0
<b>TOTAL</b>		<b>1-0</b>	<b>3/2.6</b>	<b>0-0</b>	<b>.000</b>	<b>0-0</b>	<b>.000</b>	<b>0-0</b>	<b>.000</b>	<b>0</b>	<b>0</b>	<b>0</b>	<b>0.0</b>	<b>0-0</b>	<b>0</b>	<b>0</b>	<b>0</b>





**21** Loren Lindsey | Fr. | 5-11 | G | Fayetteville, Ark. (Fayetteville HS)

## LINDSEY BENCHMARK STATS

2022-23 SEASON HIGHS

Points	N/A
FG Made	N/A
FG Att.	N/A
3FG Made	N/A
3FG Att.	N/A
FT Made	N/A
FT Att.	N/A
Off. Reb.	N/A
Def. Reb.	N/A
Rebounds	N/A
Assists	N/A
Blocks	N/A
Steals	N/A
Minutes	1 vs. UCA 11-11-22

CAREER HIGHS

Points	N/A
FG Made	N/A
FG Att.	N/A
3FG Made	N/A
3FG Att.	N/A
FT Made	N/A
FT Att.	N/A
Off. Reb.	N/A
Def. Reb.	N/A
Rebounds	N/A
Assists	N/A
Blocks	N/A
Steals	N/A
Minutes	1 vs. UCA 11-11-22

2021-22 SEC HIGHS

N/A
-----

NOTABLES

Stat	22-23	Career
Double Figure Pts	-	-
Double Figure Rebs	-	-
Double-Doubles	-	-
5 + Assists	-	-
5 + Blocks	-	-
5 + Steals	-	-
Led Team in Pts	-	-
Led Team in Reb	-	-
20 + Points	-	-
30+ Points	-	-

## GAME NOTES

- Made first collegiate appearance versus UCA
- One of two freshmen on the team
- Talented player out of Fayetteville high school, coming to Arkansas as a walk-on
- Tabbed to All-Conference 6A West All-Defensive Team
- Northwest Arkansas Democrat Gazette Player of the Week (Feb. 2, 2022)

## WHO IS LOREN LINDSEY?

- Finance major
- Grew up in Northwest Arkansas so it was always a dream to play for the Razorbacks, especially with her granddad, dad, uncle and cousins all playing football here
- Favorite pair of shoes she owns is her Jordans
- Favorite food is hibachi and best restaurant in Fayetteville is Kobe
- Favorite movie: Hoosiers

## #21 LINDSEY, Loren

Opponent	Date	GS	MIN	Total FG-FGA	PCT	3-Pointers 3FG-3FGA	PCT	Free throws FT-FTA	PCT	Rebounds OFF DEF TOT AVG	PF	A	TO	BLK	STL	PTS	AVG
Central Ark.	11/11/2022		01:11	0-0	.000	0-0	.000	0-0	.000	0 0 0 0.0	0	0	0	0	0	0	0.0
<b>Totals</b>		<b>0</b>	<b>01:11</b>	<b>0-0</b>	<b>.000</b>	<b>0-0</b>	<b>.000</b>	<b>0-0</b>	<b>.000</b>	<b>0 0 0 0.0</b>	<b>0</b>	<b>0</b>	<b>0</b>	<b>0</b>	<b>0</b>	<b>0</b>	<b>0.0</b>

## Player Averages

Games Played	Minutes/game	Points/game	FG Pct	3FG Pct	FT Pct	Rebounds/game	Assists/game	Turnovers/game	Assist/Turnover ratio	Steals/game	Blocks/game
1	1.2	0.0	0.0	0.0	0.0	0.0	0.0	0.0	0.0	0.0	0.0

## CAREER STATISTICS

SEASON	TEAM	GP-GS	MIN/AVG	Field Goals FG-FGA FG%	3-Point 3FG-3FGA 3FG%	F-Throws FT-FTA FT%	Rebounds OFF DEF TOT AVG	Scoring PF-FO A TO BLK STL PTS AVG
2022-23	Ark	1-0	1/1.2	0-0 .000	0-0 .000	0-0 .000	0 0 0 0.0	0-0 0 0 0 0 0 0.0
<b>TOTAL</b>		<b>1-0</b>	<b>1/1.2</b>	<b>0-0 .000</b>	<b>0-0 .000</b>	<b>0-0 .000</b>	<b>0 0 0 0.0</b>	<b>0-0 0 0 0 0 0 0.0</b>



22

## HUGHES BENCHMARK STATS

N/A

## GAME NOTES

- Played five minutes in exhibition vs. UAfS
- Former walk-on who earned a scholarship prior to the 2021-22 season
- Appeared in 12 games last season
- Made a free throw for her first points of the 2021-22 season vs. Kentucky
- Dropped a career-best six points on UAPB, hitting two threes in 2020-21
- Finished her career as Bentonville's second leading scorer and set single game records for points (34) and free throws (20-for-22)
- Honors include All-Arkansas Second-Team, All-Northwest Arkansas First-Team, Gatorade Player of the Week, two KURM Dream Team selections and team captain honors as a senior

## WHO IS AVERY HUGHES?

- Nursing major
- Her proudest accomplishment is earning a scholarship as a walk-on
- Mother played basketball at Arkansas State and she always looked up to her
- Ran track and was a two-time state champion
- Calls the Arkansas faithful the best fans in the world
- Loves playing for Coach Neighbors because he lets the team make decisions for themselves, which helps her grow into the person she wants to be

## 2022-23 SEASON HIGHS

## CAREER HIGHS

Points	6	vs. UAPB	12-21-20*
FG Made	2	vs. UAPB	12-21-20*
FG Att.	4	vs. Tulsa	12-11-19
3FG Made	2	vs. UAPB	12-21-20*
3FG Att.	3	vs. Tulsa	12-11-19
FT Made	1	vs. Kentucky	2-20-22*
FT Att.	2	vs. Kentucky	2-20-22
Off. Reb.	N/A		
Def. Reb.	1	vs. Kentucky	2-20-22*
Rebounds	1	vs. Kentucky	2-20-22*
Assists	2	vs. UAPB	12-21-20*
Blocks	N/A		
Steals	1	vs. ULM	12-3-20*
Minutes	10	vs. UAPB	12-21-20*

## 2021-22 SEC HIGHS

Points	3	vs. Alabama	2-28-21
FG Made	1	at Ole Miss	2-16-20
FG Att.	1	vs. LSU	1-27-22*
3FG Made	N/A		
3FG Att.	1	vs. LSU	1-27-22*
FT Made	3	vs. Alabama	2-28-21
FT Att.	3	vs. Alabama	2-28-21
Off. Reb.	N/A		
Def. Reb.	1	vs. Kentucky	2-20-22
Rebounds	1	vs. Kentucky	2-20-22
Assists	N/A		
Blocks	N/A		
Steals	N/A		
Minutes	4	at Vanderbilt	1-19-20

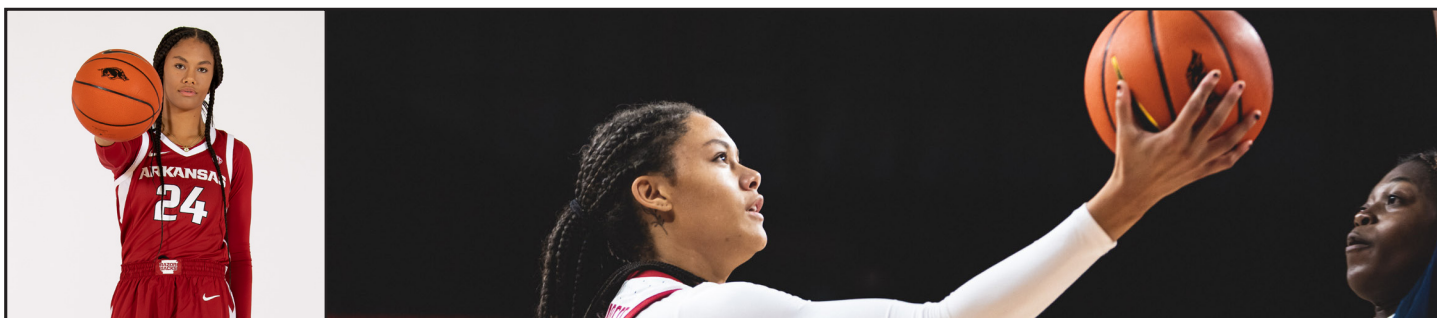
## NOTABLES

Stat	19-20	20-21	21-22	22-23	Career
Double Figure Pts	-	-	-	-	-
Double Figure Rebs	-	-	-	-	-
Double-Doubles	-	-	-	-	-
5 + Assists	-	-	-	-	-
5 + Blocks	-	-	-	-	-
5 + Steals	-	-	-	-	-
Led Team in Pts	-	-	-	-	-
Led Team in Reb	-	-	-	-	-
20 + Points	-	-	-	-	-
30+ Points	-	-	-	-	-

\* Most Recent

## CAREER STATISTICS

				Field Goals		3-Point		F-Throws		Rebounds									Scoring	
SEASON	TEAM	GP-GS	MIN/AVG	FG-FGA	FG%	3FG-3FGA	3FG%	FT-FTA	FT%	OFF	DEF	TOT	AVG	PF-FO	A	TO	BLK	STL	PTS	AVG
2019-20	Ark	14-0	50/3.6	8-16	.500	3-9	.333	1-1	1.000	0	0	0	0.0	8-0	2	8	0	0	20	1.4
2020-21	Ark	7-0	45/6.4	3-7	.429	3-6	.500	3-3	1.000	0	2	2	0.3	2-0	5	3	0	2	12	1.7
2021-22	Ark	14-0	38/2.7	0-4	.000	0-2	.000	1-2	.500	0	2	2	0.1	3-0	2	2	0	1	1	0.1
TOTAL		35-0	133/3.8	11-27	.407	6-17	.353	5-6	.833	0	4	4	0.1	13-0	9	13	0	3	33	0.9



## 24 Jersey Wolfenbarger | So. | 6-5 | G/F | Fort Smith, Ark. (Northside HS)

### WOLFENBARGER BENCHMARK STATS

#### 2022-23 SEASON HIGHS

Points	7	at UAPB	11-7-22
FG Made	2	vs. UCA	11-11-22*
FG Att.	7	at UAPB	11-7-22
3FG Made	1	vs. UCA	11-11-22
3FG Att.	3	vs. UCA	11-11-22
FT Made	3	at UAPB	11-7-22
FT Att.	4	at UAPB	11-7-22
Off. Reb.	4	at UAPB	11-7-22
Def. Reb.	3	at UAPB	11-7-22
Rebounds	7	at UAPB	11-7-22
Assists	N/A		
Blocks	N/A		
Steals	1	at UAPB	11-7-22
Minutes	21	at UAPB	11-7-22

#### CAREER HIGHS

Points	16	vs. UCA	12-18-21*
FG Made	7	vs. UCA	12-18-21
FG Att.	14	vs. #25 Georgia	2-24-22
3FG Made	3	at #7 Tennessee	1-31-22*
3FG Att.	11	at #7 Tennessee	1-31-22
FT Made	3	at UAPB	11-7-22*
FT Att.	6	at Florida	2-17-22*
Off. Reb.	4	at UAPB	11-7-22*
Def. Reb.	8	at Missouri	2-13-22
Rebounds	11	at Missouri	2-13-22
Assists	4	vs. #12 LSU	1-27-22
Blocks	3	vs. #1 SC	3-4-22
Steals	3	vs. Missouri	3-3-22*
Minutes	34	vs. Creighton	12-21-21

#### 2021-22 SEC HIGHS

Points	13	at Miss. State	2-27-22
FG Made	6	at Miss. State	2-27-22*
FG Att.	14	vs. #25 Georgia	2-24-22
3FG Made	3	at #7 Tennessee	1-31-22*
3FG Att.	11	at #7 Tennessee	1-31-22
FT Made	3	vs. Missouri	3-3-22*
FT Att.	6	at Florida	2-17-22
Off. Reb.	3	at Texas A&M	2-3-22
Def. Reb.	8	at Missouri	2-13-22
Rebounds	11	at Missouri	2-13-22
Assists	4	vs. #12 LSU	1-27-22
Blocks	3	vs. #1 SC	3-4-22
Steals	3	vs. Missouri	3-3-22*
Minutes	30	at Missouri	2-13-22

#### NOTABLES

Stat	21-22	22-23	Career
Double Figure Pts	12	-	12
Double Figure Rebs	2	-	2
Double-Doubles	2	-	2
5+ Assists	-	-	-
5+ Blocks	-	-	-
5+ Steals	-	-	-
Led Team in Pts	-	-	-
Led Team in Reb	4	-	4
20+ Points	-	-	-
30+ Points	-	-	-

\* Most Recent

### GAME NOTES

- Registered five points versus UCA in the Razorbacks' home opener
- Came off the bench at UAPB to finish with seven points and seven rebounds
- Tabbed to the SEC All-Freshman team
- Registered back-to-back double-doubles (at Missouri, 12p-11r and at Texas A&M, 12p-10r)
- Started in all SEC games she appeared in, drawing the start in 23 total games as a freshman
- Averaged 7.5 points, 4.3 rebounds, 1.1 assists and 0.9 blocks per game in her first season
- No. 7 overall recruit, and No. 1 wing player in the ESPN HoopGurlz 2021 recruiting rankings at the time of her signing and a consensus five-star player out of Northside High School
- Arkansas' first McDonald's All-American signee since 2016
- One of five finalists for the Jersey Mike's Naismith High School Player of the Year Award
- Arkansas' Gatorade Player of the year in 2020 and 2021

### WHO IS JERSEY WOLFENBARGER?

- Started playing when she was 5 at a local rec team in Missouri and her parents coached her
- Most proud accomplishments in basketball are playing for Team USA at the Fiba World Championship and being a Razorback
- Her favorite thing about last season was Coach Todd saying his favorite thing about freshmen is they become sophomores
- Chose Arkansas because of the genuine coaching staff and to play for one of the best fanbases in the SEC
- Loves all thing natural like hiking, swimming and anything outdoors

### #24 WOLFENBARGER, Jersey

#24 WOOL ENDSARKANSY jersey																								
Opponent	Date	GS	MIN	Total		3-Pointers		Free throws		Rebounds				PF		TO		BLK		STL		PTS		AVG
				FG-FGA	PCT	3FG-3FGA	PCT	FT-FTA	PCT	OFF	DEF	TOT	AVG	A	TO	BLK	STL	PTS						
at Ark.-Pine Bluff	11/07/2022		20:37	2-7	.286	0-0	.000	3-4	.750	4	3	7	7.0	1	0	2	0	1	7	7.0				
Central Ark.	11/11/2022		20:20	2-6	.333	1-3	.333	0-1	.000	0	1	1	4.0	2	0	0	0	0	5	6.0				
Tulsa	11/14/2022		10:31	1-3	.333	0-2	.000	0-0	.000	0	0	0	2.7	2	0	0	0	0	2	4.7				
Totals		0	51:28	5-16	.313	1-5	.200	3-5	.600	4	4	8	2.7	5	0	2	0	1	14	4.7				

### Player Averages

Games Played	Minutes/game	Points/game	FG Pct	3FG Pct	FT Pct	Rebounds/game	Assists/game	Turnovers/game	Assist/Turnover ratio	Steals/game	Blocks/game
3	17.2	4.7	31.3	20.0	60.0	2.7	0.0	0.7	0.0	0.3	0.0

### CAREER STATISTICS

				Field Goals		3-Point		F-Throws		Rebounds								Scoring		
SEASON	TEAM	GP-GS	MIN/AVG	FG-FGA	FG%	3FG-3FGA	3FG%	FT-FTA	FT%	OFF	DEF	TOT	AVG	PF-FO	A	TO	BLK	STL	PTS	AVG
2021-22	Ark	30-23	666/22.2	87-215	.405	17-70	.243	34-71	.479	37	93	130	4.3	76-2	32	37	27	21	225	7.5
2022-23	Ark	3-0	51/17.2	5-16	.313	1-5	.200	3-5	.600	4	4	8	2.7	5-0	0	2	0	1	14	4.7
TOTAL		33-23	718/21.8	92-231	.398	18-75	.240	37-76	.487	41	97	138	4.2	81-2	32	39	27	22	239	7.2



30 Maryam Dauda | R-Fr. | 6-4 | F | Bentonville, Ark. (Bentonville HS)

DAUDA BENCHMARK STATS			
2021-22 SEASON HIGHS	Points	10	vs. UCA 11-11-22
	FG Made	4	vs. UCA 11-11-22
	FG Att.	6	vs. UCA 11-11-22
	3FG Made	1	vs. Tulsa 11-14-22
	3FG Att.	2	vs. Tulsa 11-14-22
	FT Made	2	vs. UCA 11-7-22*
	FT Att.	4	at UAPB 11-7-22
	Off. Reb.	3	vs. UCA 11-11-22
	Def. Reb.	2	vs. UCA 11-11-22
	Rebounds	5	vs. UCA 11-11-22
CAREER HIGHS	Assists	1	at UAPB 11-7-22
	Blocks	1	vs. UCA 11-11-22*
	Steals	1	vs. UCA 11-11-22*
	Minutes	17	vs. UCA 11-11-22
	Points	10	vs. UCA 11-11-22
	FG Made	4	vs. UCA 11-11-22
	FG Att.	6	vs. UCA 11-11-22
	3FG Made	1	vs. Tulsa 11-14-22
	3FG Att.	2	vs. Tulsa 11-14-22
	FT Made	2	vs. UCA 11-7-22*
2021-22 SEC HIGHS	FT Att.	4	at UAPB 11-7-22
	Off. Reb.	3	vs. UCA 11-11-22
	Def. Reb.	2	vs. UCA 11-11-22
	Rebounds	5	vs. UCA 11-11-22
	Assists	1	at UAPB 11-7-22
	Blocks	1	vs. UCA 11-11-22*
	Steals	1	vs. UCA 11-11-22*
	Minutes	17	vs. UCA 11-11-22
	N/A		
	N/A		
NOTABLES	Stat	21-22	22-23 Career
	Double Figure Pts	-	- -
	Double Figure Rebs	-	- -
	Double-Doubles	-	- -
	5 + Assists	-	- -
	5 + Blocks	-	- -
	5 + Steals	-	- -
	Led Team in Pts	-	- -
	Led Team in Reb	-	- -
	20 + Points	-	- -
	30+ Points	-	- -

**GAME NOTES**

- Earned 10 points, five rebounds and a block and steal versus UCA
- Sat out during the 2021-22 season, recovering from ACL injury
- The 13th ranked player and top ranked post player in the ESPN HoopGurlz 2021 recruiting rankings at the time of her signing
- Consensus five star recruit out of Bentonville High School
- McDonald's All-American in 2021
- Naismith High School Player of the Year Semifinalist following her senior season
- Four-time All-Conference selection and three-time All-State selection
- Leading scorer, rebounder and shot blocker in the history of Bentonville High School

**WHO IS MARYAM DAUDA?**

- Majoring in international business
- Born in Nigeria and moved to the U.S. when she was 12
- Father played professional basketball in Belgium
- Favorite pair of shoes: Air Jordan 11 'Cool Grey'
- Favorite TV show: Gilmore Girls

#30 DAUDA, Maryam

Opponent	Date	GS	MIN	Total		3-Pointers		Free throws		Rebounds				PF A TO BLK STL PTS AVG						
				FG-FGA	PCT	3FG-3FGA	PCT	FT-FTA	PCT	OFF	DEF	TOT	AVG	PF	A	TO	BLK	STL	PTS	AVG
at Ark.-Pine Bluff	11/07/2022		14:30	1-3	.333	0-0	.000	2-4	.500	2	1	3	3.0	4	1	1	1	1	4	4.0
Central Ark.	11/11/2022		17:06	4-6	.667	0-0	.000	2-3	.667	3	2	5	4.0	3	0	2	1	1	10	7.0
Tulsa	11/14/2022		09:28	1-2	.500	1-2	.500	0-0	.000	2	1	3	3.7	1	0	2	0	0	3	5.7
Totals		0	41:04	6-11	.545	1-2	.500	4-7	.571	7	4	11	3.7	8	1	5	2	2	17	5.7

Player Averages

Games Played	Minutes/ game	Points/ game	FG Pct	3FG Pct	FT Pct	Rebounds/ game	Assists/ game	Turnovers/ game	Assist/Turnover ratio	Steals/ game	Blocks/ game
3	13.7	5.7	54.5	50.0	57.1	3.7	0.3	1.7	0.2	0.7	0.7

CAREER STATISTICS

				Field Goals		3-Point		F-Throws		Rebounds									Scoring	
SEASON	TEAM	GP-GS	MIN/AVG	FG-FGA	FG%	3FG-3FGA	3FG%	FT-FTA	FT%	OFF	DEF	TOT	AVG	PF-FO	A	TO	BLK	STL	PTS	AVG
2022-23	Ark	3-0	41/13.7	6-11	.545	1-2	.500	4-7	.571	7	4	11	3.7	8-0	1	5	2	2	17	5.7
TOTAL		3-0	41/13.7	6-11	.545	1-2	.500	4-7	.571	7	4	11	3.7	8-0	1	5	2	2	17	5.7



34 Chrissy Carr | R-Sr. | 6-1 | G | Eden Prairie, Minn. (Manhattan [Kan.]) | Syracuse

### CARR BENCHMARK STATS

2022-23 SEASON HIGHS

Points	10	at UAPB	11-7-22
FG Made	3	at UAPB	11-7-22
FG Att.	9	vs. Tulsa	11-14-22
3FG Made	2	vs. UCA	11-11-22*
3FG Att.	8	vs. Tulsa	11-14-22
FT Made	2	vs. UCA	11-11-22*
FT Att.	2	vs. UCA	11-11-22*
Off. Reb.	2	vs. Tulsa	11-14-22
Def. Reb.	8	vs. UCA	11-11-22
Rebounds	8	vs. UCA	11-11-22
Assists	N/A		
Blocks	1	vs. Tulsa	11-14-22
Steals	1	vs. UCA	11-11-22
Minutes	26	vs. UCA	11-11-22

CAREER HIGHS

Points	31	vs. TCU^	3-1-21
FG Made	9	at Kansas^	1-23-21
FG Att.	20	at West Virginia^	3-3-21*
3FG Made	5	at West Virginia^	3-3-21*
3FG Att.	13	at TCU^	2-2-20
FT Made	11	vs. TCU	3-1-21
FT Att.	12	vs. TCU^	3-1-21
Off. Reb.	4	at Kansas^	1-23-21
Def. Reb.	10	vs. Texas Tech^	2-24-21
Rebounds	15	vs. Morgan St.#	11-17-21
Assists	5	vs. Iowa State^	1-28-21
Blocks	3	vs. Louisville#	2-6-22*
Steals	4	vs. Morgan St.#	11-17-21*
Minutes	43	vs. UTRGV^	12-28-19
^ at Kansas State		# at Syracuse	

N/A

2021-22 SEC HIGHS

NOTABLES

Stat	18-19	19-20	20-21	21-22	22-23	Career
Double Figure Pts	13	13	20	18	1	65
Double Figure Rebs	-	-	2	1	-	3
Double-Doubles	-	-	2	1	-	3
5+ Assists	-	-	3	-	-	3
5+ Blocks	-	-	-	-	-	-
5+ Steals	-	-	-	-	-	-
Led Team in Pts	3	5	9	9	-	26
Led Team in Reb	2	-	6	4	-	12
20+ Points	4	4	5	-	-	13
30+ Points	-	-	1	-	-	1

\* Most Recent

### GAME NOTES

- Recorded 10 points in the start at UAPB for the season opener and pulled down six rebounds against Tulsa
- Fifth in the SEC in 3-point attempts (19)
- Was just shy of a double-double vs. UCA with eight points and eight boards
- Has tallied 65 double-digit scoring games in her career
- Across four seasons, has started in 115 of 117 career games
- Was third on the team in scoring at Syracuse (11.7 PPG)
- Her best season came in her junior year at Kansas State, averaging 15.2 points, 4.9 rebounds and 1.8 assists per game
- Career-high of 31 points against TCU (3-1-21) marked one of 13 games she has launched 20+ points

### WHO IS CHRISSY CARR?

- Wears #34 because it's #43 flipped and it was her dad's (Chris Carr) number in the NBA
- If she feels like she isn't playing well, she'll change her hair at halftime
- Chose Arkansas for family atmosphere and coaches and loved Fayetteville
- Favorite pair of shoes: Nike Dunks
- Favorite TV show: How to Get Away with Murder

### #34 CARR, Chrissy

Opponent	Date	GS	MIN	Total		3-Pointers		Free throws		Rebounds				PF		A		PTS		AVG
				FG-FGA	PCT	3FG-3FGA	PCT	FT-FTA	PCT	OFF	DEF	TOT	AVG							
at Ark.-Pine Bluff	11/07/2022	*	19:49	3-8	.375	2-5	.400	2-2	1.000	2	1	3	3.0	0	0	0	0	10	10.0	
Central Ark.	11/11/2022	*	25:25	2-8	.250	2-6	.333	2-2	1.000	0	8	8	5.5	1	0	3	0	1	8	9.0
Tulsa	11/14/2022	*	22:32	1-9	.111	1-8	.125	0-0	.000	2	4	6	5.7	0	0	2	1	0	3	7.0
<b>Totals</b>			<b>3 67:46</b>	<b>6-25</b>	<b>.240</b>	<b>5-19</b>	<b>.263</b>	<b>4-4</b>	<b>1.000</b>	<b>4</b>	<b>13</b>	<b>17</b>	<b>5.7</b>	<b>1</b>	<b>0</b>	<b>5</b>	<b>1</b>	<b>1</b>	<b>21</b>	<b>7.0</b>

### Player Averages

Games Played	Minutes/game	Points/game	FG Pct	3FG Pct	FT Pct	Rebounds/game	Assists/game	Turnovers/game	Assist/Turnover ratio	Steals/game	Blocks/game
3	22.6	7.0	24.0	26.3	100.0	5.7	0.0	1.7	0.0	0.3	0.3

### CAREER STATISTICS

CAREER STATISTICS																				
SEASON	TEAM	GP-GS	MIN/AVG	Field Goals		3-Point		F-Throws		Rebounds				Scoring						
				FG-FGA	FG%	3FG-3FGA	3FG%	FT-FTA	FT%	OFF	DEF	TOT	AVG	PF-FO	A	TO	BLK	STL	PTS	AVG
2018-19	KState	33-31	967/29.3	109-339	.322	56-194	.289	51-71	.718	22	69	91	2.8	81-1	24	68	14	30	325	9.8
2019-20	KState	29-29	796/27.5	94-316	.297	55-195	.282	40-56	.714	12	69	81	2.8	57-0	50	66	9	16	283	9.8
2020-21	KState	24-24	776/32.3	127-327	.388	55-157	.350	55-71	.775	18	100	118	4.9	50-0	43	71	9	12	364	15.2
2021-22	SU	29-29	877/30.2	117-322	.363	60-175	.343	44-48	.917	27	107	134	4.6	80-1	39	58	18	30	338	11.7
2022-23	Ark	3-3	68/22.6	6-25	.240	5-19	.263	4-4	1.000	4	13	17	5.7	1-0	0	5	1	1	21	7.0
TOTAL FOR Ark		3-3	68/22.6	6-25	.240	5-19	.263	4-4	1.000	4	13	17	5.7	1-0	0	5	1	1	21	7.0
TOTAL		118-116	3484/29.5	453-1329	.341	231-740	.312	194-250	.776	83	358	441	3.7	269-2	156	268	51	89	1331	11.3





43 Makayla Daniels | Sr. | 5-8 | G | Frederick, Md. (Frederick HS)

DANIELS BENCHMARK STATS

2022-23 SEASON HIGHS

Points	19	vs. Tulsa	11-14-22
FG Made	6	vs. Tulsa	11-14-22
FG Att.	19	vs. Tulsa	11-14-22
3FG Made	4	vs. Tulsa	11-14-22
3FG Att.	9	vs. Tulsa	11-14-22
FT Made	4	at UAPB	11-7-22
FT Att.	6	vs. UCA	11-11-22
Off. Reb.	4	vs. Tulsa	11-14-22
Def. Reb.	5	vs. Tulsa	11-14-22*
Rebounds	9	vs. Tulsa	11-14-22
Assists	4	vs. UCA	11-11-22
Blocks	N/A		
Steals	4	vs. UCA	11-11-22
Minutes	37	vs. Tulsa	11-14-22

CAREER HIGHS

Points	34	vs. Creighton	12-21-21
FG Made	11	vs. Creighton	12-21-21*
FG Att.	19	vs. Tulsa	11-14-22
3FG Made	6	vs. Oral Roberts	11-14-19
3FG Att.	9	vs. Tulsa	11-14-22
FT Made	8	vs. Belmont	11-20-19
FT Att.	10	vs. Belmont	11-20-19
Off. Reb.	5	at Vanderbilt	1-6-22
Def. Reb.	11	vs. Missouri	3-3-22
Rebounds	14	vs. Missouri	3-3-22
Assists	7	at SMU	12-9-20
Blocks	1	vs. Tarleton	11-10-21*
Steals	6	vs. UCA	12-18-21
Minutes	43	vs. Missouri	3-3-22

2021-22 SEC HIGHS

Points	21	vs. Georgia	2-24-22
FG Made	8	vs. Florida	1-26-20
FG Att.	17	vs. Missouri	3-3-22
3FG Made	3	vs. LSU	1-27-22*
3FG Att.	9	at Tennessee	1-7-21
FT Made	7	vs. LSU	1-27-22
FT Att.	8	vs. LSU	1-27-22
Off. Reb.	5	at Vanderbilt	1-6-22
Def. Reb.	11	vs. Missouri	3-3-22
Rebounds	14	vs. Missouri	3-3-22
Assists	5	vs. Auburn	3-5-20*
Blocks	1	at Auburn	2-25-21*
Steals	4	vs. Texas A&M	1-10-21*
Minutes	43	vs. Missouri	3-3-22

NOTABLES

Stat	19-20	20-21	21-22	22-23	Career
Double Figure Pts	10	18	17	2	47
Double Figure Rebs	-	-	1	-	1
Double-Doubles	-	-	1	-	1
5 + Assists	3	2	6	-	11
5 + Blocks	-	-	-	-	-
5 + Steals	1	-	1	-	2
Led Team in Pts	3	1	8	-	12
Led Team in Reb	-	1	7	-	8
20 + Points	2	1	5	-	8
30+ Points	-	-	2	-	2

\* Most Recent

GAME NOTES

- Coming off a near double-double of 19 points and nine rebounds vs. Tulsa
- Her 19 field goal attempts at Tulsa is the most in the league this season
- Climbed up to No. 29 on the all-time scoring list at Arkansas (1,051)
- Logged 14 points, four assists and four steals versus UCA
- Leading returning scorer (14.0 PPG) and rebounder (5.3 RPG) from the 2021-22 team
- After 18 points vs. Utah in NCAAAT, ended 2021-22 with 17 double-digit scoring games
- Became the 31st member of the 1,000-point club after reaching the milestone in the Hogs' tournament game against Utah
- Registered her first career double-double against Mizzou in the SECT (13 points, 14 rebounds)
- Scored 21 against #25 Georgia, her most since returning from injury
- Dropped a career-best 34 points against Creighton, her second 30+ point game of 2021-22
- Has started in all 91 collegiate games she has appeared in

WHO IS MAKAYLA DANIELS?

- Graduated college in three years
- Lived in Japan for seven years, as well as Arizona, North Carolina and Maryland
- Wears #43 because 4+3=7 and 7 is her favorite number
- One of the most interesting things about her is she loves piercings
- Favorite part about playing in Bud Walton Arena: the Hog Call

#43 DANIELS, Makayla

Opponent	Date	GS	MIN	Total		3-Pointers		Free throws		Rebounds										
				FG-FGA	PCT	3FG-3FGA	PCT	FT-FTA	PCT	OFF	DEF	TOT	AVG	PF	A	TO	BLK	STL	PTS	AVG
at Ark.-Pine Bluff	11/07/2022	*	23:11	0-5	.000	0-0	.000	4-5	.800	1	5	6	6.0	1	1	2	0	1	4	4.0
Central Ark.	11/11/2022	*	24:18	5-8	.625	1-2	.500	3-6	.500	0	2	2	4.0	0	4	0	0	4	14	9.0
Tulsa	11/14/2022	*	36:43	6-19	.316	4-9	.444	3-4	.750	4	5	9	5.7	1	3	2	0	0	19	12.3
Totals			3 84:12	11-32	.344	5-11	.455	10-15	.667	5	12	17	5.7	2	8	4	0	5	37	12.3

Player Averages

Games Played	Minutes/game	Points/game	FG Pct	3FG Pct	FT Pct	Rebounds/game	Assists/game	Turnovers/game	Assist/Turnover ratio	Steals/game	Blocks/game
3	28.1	12.3	34.4	45.5	66.7	5.7	2.7	1.3	2.0	1.7	0.0

CAREER STATISTICS

			Field Goals		3-Point		F-Throws		Rebounds											Scoring	
SEASON	TEAM	GP-GS	MIN/AVG	FG-FGA	FG%	3FG-3FGA	3FG%	FT-FTA	FT%	OFF	DEF	TOT	AVG	PF-FO	A	TO	BLK	STL	PTS	AVG	
2019-20	Ark	32-32	720/22.5	107-216	.495	25-56	.446	60-77	.779	7	48	55	1.7	67-1	77	44	2	45	299	9.3	
2020-21	Ark	28-28	801/28.6	101-256	.395	44-120	.367	78-97	.804	9	74	83	3.0	75-2	61	43	4	41	324	11.6	
2021-22	Ark	28-28	845/30.2	126-307	.410	40-136	.294	99-125	.792	51	98	149	5.3	74-1	78	42	4	50	391	14.0	
2022-23	Ark	3-3	84/28.1	11-32	.344	5-11	.455	10-15	.667	5	12	17	5.7	2-0	8	4	0	5	37	12.3	
TOTAL		91-91	2450/26.9	345-811	.425	114-323	.353	247-314	.787	72	232	304	3.3	218-4	224	133	10	141	1051	11.5	



55 Emrie Ellis | So. | 6-3 | F | Vanoss, Okla. | Vanoss HS

## ELLIS BENCHMARK STATS

2022-23 SEASON HIGHS

Points	N/A		
FG Made	N/A		
FG Att.	2	at UAPB	11-7-22
3FG Made	N/A		
3FG Att.	1	vs. UCA	11-11-22
FT Made	N/A		
FT Att.	N/A		
Off. Reb.	1	vs. UCA	11-11-22
Def. Reb.	3	vs. UCA	11-11-22
Rebounds	4	vs. UCA	11-11-22
Assists	N/A		
Blocks	N/A		
Steals	1	at UAPB	11-7-22
Minutes	15	at UAPB	11-7-22

CAREER HIGHS

Points	11	vs. Auburn	2-10-22
FG Made	4	vs. Auburn	2-10-22
FG Att.	7	vs. Auburn	2-10-22*
3FG Made	1	vs. 1/1 SC	1-17-22*
3FG Att.	3	vs. 1/1 SC	1-17-22*
FT Made	3	vs. Auburn	2-10-22
FT Att.	4	vs. Auburn	2-10-22
Off. Reb.	3	at Missouri	2-13-22
Def. Reb.	5	at Missouri	2-13-22
Rebounds	8	at Missouri	2-13-22
Assists	2	at Vanderbilt	1-6-22*
Blocks	5	vs. UAPB	11-12-21
Steals	1	vs. UCA	11-11-22*
Minutes	27	vs. Auburn	2-10-22

2021-22 SEC HIGHS

Points	11	vs. Auburn	2-10-22
FG Made	4	vs. Auburn	2-10-22
FG Att.	7	vs. Auburn	2-10-22*
3FG Made	1	vs. 1/1 SC	1-17-22
3FG Att.	3	vs. 1/1 SC	1-17-22
FT Made	3	vs. Auburn	2-10-22
FT Att.	4	vs. Auburn	2-10-22
Off. Reb.	3	at Missouri	2-13-22
Def. Reb.	5	at Missouri	2-13-22
Rebounds	8	at Missouri	2-13-22
Assists	2	vs. Vanderbilt	1-6-22*
Blocks	2	vs. Auburn	2-10-22
Steals	1	at Alabama	1-20-22
Minutes	27	vs. Auburn	2-10-22

NOTABLES

Stat	21-22	22-23	Career
Double Figure Pts	1	-	1
Double Figure Rebs	-	-	-
Double-Doubles	-	-	-
5 + Assists	-	-	-
5 + Blocks	1	-	1
5 + Steals	-	-	-
Led Team in Pts	-	-	-
Led Team in Reb	-	-	-
20 + Points	-	-	-
30+ Points	-	-	-

\* Most Recent

## GAME NOTES

- Played 15 minutes off the bench in the season opener at UAPB and followed that up with four re-bounds versus UCA
- Blocked five shots against UAPB, the most by a freshman Hog since 2014
- Played in 27 games off the bench in her debut season
- Best performance came against Auburn, tallying 11 points and five boards in 27 minutes
- No. 48 overall recruit in ASGR's 2021 recruiting rankings
- VYPE Top 100 in all four of her high school seasons
- Led the state of Oklahoma in rebounds & blocks in 2018

## WHO IS EMRIE ELLIS?

- Majoring in recreation and sport management
- Wears #55 because it was her dad's number
- Favorite thing to do in Fayetteville: swim or go to the lake
- Favorite game from last season: the team's win over Auburn
- Would tell people she wanted to be a nurse when she grew up

## #55 ELLIS, Emrie

				Total		3-Pointers		Free throws		Rebounds											
Opponent	Date	GS	MIN	FG-FGA	PCT	3FG-3FGA	PCT	FT-FTA	PCT	OFF	DEF	TOT	AVG	PF	A	TO	BLK	STL	PTS	AVG	
at Ark.-Pine Bluff	11/07/2022		15:24	0-2	.000	0-0	.000	0-0	.000	0	2	2	2.0	2	0	0	0	1	0	0.0	
Central Ark.	11/11/2022		12:53	0-1	.000	0-1	.000	0-0	.000	1	3	4	3.0	2	0	0	0	0	0	0.0	
Totals		0	28:17	0-3	.000	0-1	.000	0-0	.000	1	5	6	3.0	2	0	0	0	1	0	0.0	

## Player Averages

Games Played	Minutes/game	Points/game	FG Pct	3FG Pct	FT Pct	Rebounds/game	Assists/game	Turnovers/game	Assist/Turnover ratio	Steals/game	Blocks/game
2	14.1	0.0	0.0	0.0	0.0	3.0	0.0	0.0	0.0	0.0	0.0

## CAREER STATISTICS

SEASON	TEAM	GP-GS	MIN/AVG	Field Goals FG-FGA FG%	3-Point 3FG-3FGA 3FG%	F-Throws FT-FTA FT%	Rebounds OFF DEF TOT AVG	PF-FO	A	TO	BLK	STL	PTS	AVG
2021-22	Ark	27-0	293/10.9	33-85 .388	3-24 .125	9-13 .692	19 37 56 2.1	40-1	15	22	22	2	78	2.9
2022-23	Ark	2-0	28/14.1	0-3 .000	0-1 .000	0-0 .000	1 5 6 3.0	2-0	0	0	0	1	0	0.0
<b>TOTAL</b>		<b>29-0</b>	<b>321/11.1</b>	<b>33-88 .375</b>	<b>3-25 .120</b>	<b>9-13 .692</b>	<b>20 42 62 2.1</b>	<b>42-1</b>	<b>15</b>	<b>22</b>	<b>22</b>	<b>3</b>	<b>78</b>	<b>2.7</b>



Official Basketball Box Score - Final  
Arkansas at Ark.-Pine Bluff  
11/07/22 H.O. Clemmons Arena, Pine Bluff  
2022-23 Women's Basketball

Game Time: 6:00 PM  
Game Duration: 4:04  
Attendance: 3,128

**Officials:** Eric Baker, LaShonda Kidd, Randy Robertson

Ankassas - 70		Record: 2-0																				
NO.	Name	Min	FG M-A	FG M-A	FT M-A	Rebounds OR DR TOT	Fouls PF FD	TP	AS	TO	ST	Blocks BS BA	+/-	Shooting By Period								
4	Eryn Barnum	F 25:04	6-14	0-0	3-13	6	5	11	2	9	15	1	2	4	0	2	1st FG% 6-16 37.5%					
0	Saylor Poffenbarger	G 27:35	3-14	2-9	3-6	2	6	8	1	4	11	2	2	0	1	1	3PT% 2-8 25.0%					
2	Samara Spencer	G 31:00	6-16	1-7	2-8	0	4	4	4	15	4	1	0	0	0	0	FT% 1-6 16.7%					
34	Chrissy Carr	G 19:49	3-8	2-5	2-2	2	1	3	0	1	10	0	0	0	0	0	2nd FG% 9-24 37.5%					
43	Makayla Daniels	G 22:11	0-5	0-0	4-5	1	5	6	1	6	4	1	2	1	0	1	3PT% 3-5 60.0%					
11	Rylee Langerman	22:50	1-1	0-0	2-4	4	2	6	3	3	4	0	2	4	0	0	FT% 6-15 40.0%					
24	Jersey Wollenbarger	20:37	2-7	0-0	3-4	4	3	7	1	2	7	0	2	1	0	0	3rd FG% 5-13 38.5%					
30	Maryam Dauda	14:30	1-3	0-0	2-4	2	1	3	4	2	4	1	1	1	1	0	3PT% 0-2 0.0%					
55	Emrie Ellis	15:24	0-2	0-0	0-0	0	2	2	2	0	0	1	1	1	0	1	FT% 9-17 52.9%					
Team						3		3	6	0							4th FG% 2-17 11.8%					
Totals						22:70		5-21	21-46	24	32	56	18	31	70	9	12	12	2	5	20	3PT% 0-6 0.0%
																						FT% 5-8 62.5%
																						GM FG% 22-70 31.4%
																						3PT% 5-21 23.8%
																						FT% 21-46 45.7%
																						Dead Ball Rebounds: 13.0

Ark-Pine Bluff - 50			Record: 0-2														
NO.	NAME	Min	FG		3P	FT	Rebounds		Fouls	TP	AS	ST	Blocks		+/-		
			M-A	M-A			OR	DR					TOT	PF			FF
23	Maori Davenport	C 27:57	3-10	0-1	9-13	6	8	4	3	7	15	2	4	3	2	1	1st FG% 3-14 21.4%
2	Shayla Bouie	G 18:12	2-2	0-0	1-4	1	1	2	4	3	5	0	3	0	0	0	3PT% 1-4 25.0%
5	Jelissa Reese	G 17:06	1-4	0-1	2-2	1	0	3	4	2	4	0	0	0	0	0	FT% 3-4 75%
16	Coriah Beck	G 30:06	3-12	1-5	1-2	0	2	2	3	1	8	3	0	0	0	0	2nd FG% 2-13 15.4%
24	Raziyah Potter	C 25:38	3-10	0-1	0-2	2	2	4	4	1	6	2	4	0	1	-11	3PT% 0-7 0.0%
21	Takaylyn Busby	L 25:53	0-1	0-1	0-0	1	3	4	1	0	0	1	0	0	0	0	FT% 3-8 37.5%
54	Maya Pott	L 14:53	0-4	0-2	0-2	1	3	4	3	1	0	0	4	0	1	-19	3rd FG% 5-13 38.5%
3	Demetria Shephard	L 12:07	1-6	1-3	0-0	0	2	3	0	3	0	0	0	0	0	0	3PT% 1-3 33.3%
11	Tia Morgan	L 17:08	1-4	1-2	0-0	1	1	2	3	2	3	2	0	0	0	2	FT% 7-13 53.8%
10	Azaria Robinson	G 22:35	0-0	0-0	0-0	0	0	0	0	0	0	0	0	0	0	0	4th FG% 7-18 38.9%
33	Breanna Robinson	O 01:01	0-0	0-0	0-0	0	0	0	0	0	0	0	0	0	0	0	3PT% 1-3 33.3%
4	Kourtney Ritterberry	L 11:58	2-4	0-1	0-0	0	6	6	2	0	4	0	1	1	0	0	FT% 0-0 0%
1	Markisha Body	O 06:46	1-1	0-0	0-0	0	1	1	2	0	2	0	0	0	0	0	GM FG% 17-58 29.3%
32	Stephanie Okowi	O 01:40	0-0	0-0	0-0	0	0	0	0	0	0	0	0	0	0	-3	3PT% 3-17 17.6%
																	FT% 13-25 52.0%
Team						2	3	5		0	0						
Totals			17-58	3-17	13-25	14	35	49	32	18	50	4	22	4	5	2	-20
																	Dead Ball Rebounds: 7, 1

	ARK	UAPB	Points from		Period by Period Scoring						
Biggest lead	34 (3 <sup>rd</sup> 2:48)	1 (1 <sup>st</sup> 6:41)	Turnovers	18	7	1st	2nd	3rd	4th	TOT	
Best Scoring Run	17 (2 <sup>nd</sup> 6:19)	12 (4 <sup>th</sup> 7:28)	Paint	32	24	ARK	15	27	19	9	70
Lead Changes			Second Chance	15	11		UAPB	10	7	18	15
Times Tied	0		Fast Breaks	16	8						
Time with Lead	37:44	01:20	Bench	15	12						



Official Basketball Box Score - Final  
**Arkansas at Ark.-Pine Bluff**  
 11/07/22 H.O. Clemmons Arena, Pine Bluff  
 2022-23 Women's Basketball

Game Time: 6:00 PM  
Game Duration: 4:04  
Attendance: 3,128

**Officials:** Eric Baker, LaShonda Kidd, Randy Robertson

Arkansas - 70			Record: 2-0																		
NO.	Name		Min	FG		FT	Rebounds		Fouls	TP	AS	TO	ST	Blocks		+/-	Shooting By Period				
				M-A	P-A		O-R	D-R						T-P	B-S		B-A	1 <sup>st</sup>	FG%		
4	Eyrnn Barnum	F	25:04	6-14	0-0	3-13	6	5	11	29	15	1	2	4	0	2	18	3PT%	2-8	25.0%	
0	Saylor Poffenberger	G	27:35	3-14	2-9	3-6	2	6	8	1	4	11	2	2	0	1	1	23	FT%	1-6	16.7%
2	Samara Spencer	G	31:00	6-16	1-7	2-8	0	4	4	4	15	4	1	0	0	0	1	23	2 <sup>nd</sup> FG%	9-24	37.5%
3	Chrissy Carr	G	19:49	3-8	2-5	2-2	1	3	6	0	1	10	0	0	0	0	0	23	3PT%	3-5	60.0%
43	Makayla Daniels	G	23:11	0-5	0-0	4-5	1	5	1	6	4	1	2	1	0	1	1	29	FT%	6-15	40.0%
11	Ryley Langerman	M	22:50	1-1	0-0	2-4	4	2	6	3	3	4	0	2	4	0	0	0	3 <sup>rd</sup> FG%	5-13	38.5%
24	Jersey Wolfenburger	T	20:37	2-7	0-0	3-4	4	3	7	1	2	7	0	2	1	0	0	-2	3PT%	0-2	0.0%
30	Maryam Dauda	A	14:30	1-3	0-0	2-4	2	1	3	4	2	4	1	1	1	1	0	1	FT%	9-17	52.9%
55	Emrie Ellis	F	15:24	0-2	0-0	0-0	0	2	2	2	0	0	0	1	1	0	1	-10	4 <sup>th</sup> FG%	2-17	11.8%
Team							3	3	6		0		0					3PT%	0-6	0.0%	
Totals			22:70	5-21	21-46	24	32	56	18	31	70	9	12	12	2	5	20		FT%	5-8	62.5%
Technical Fouls:NONE																					
GM FG% 22-70 31.4%																					
3PT% 5-21 23.8%																					
FT% 21-46 45.7%																					
Dead Ball Rebounds: 13, 0																					

Ark-Pine Bluff - 50			Record: 0-2																
NO.	Name	Min	FG		3P		FT		Rebounds		Fouls		TP	AS	TO	ST	Blocks		+/-
			M/A	M-A	M/A	M-A	OR	DR	PF	FO	BS	BA							
23	Maori Davenport	C 27:57	3-10	0-1	9-13	6	8	14	3	7	15	2	4	3	2	1	2		1st FG% 3-14 21.4%
2	Shayla Bove	G 18:12	2-2	0-0	1-4	1	1	2	3	4	5	0	3	0	0	0	1	2	3PT% 1-4 25.0%
5	Jelissa Reese	G 17:06	1-4	0-1	2-2	1	2	3	4	2	4	0	0	0	0	0	0	-23	FT% 3-4 75%
15	Coriah Beck	G 30:06	3-12	1-5	1-2	0	2	2	3	1	8	0	3	0	0	0	0	-13	2nd FG% 2-13 15.4%
24	Raziya Potter	G 25:38	3-10	0-1	0-2	2	2	4	4	1	6	2	4	0	1	1	-11	3PT% 0-7 0.0%	
21	Takayyah Busby	12:53	0-1	0-1	0	1	3	4	1	0	0	0	1	0	0	0	0	-12	FT% 3-8 37.5%
54	Maya Peat	14:53	0-4	0-2	0-2	1	3	4	3	1	0	0	4	0	1	0	-19	3rd FG% 5-13 38.5%	
3	Demetria Shephard	12:07	1-6	1-3	0-0	2	2	3	3	0	3	0	0	0	0	0	0	-14	3PT% 1-3 33.3%
11	Tia Morgan	17:08	1-4	1-2	0-0	1	1	2	3	2	3	0	2	0	0	0	2	2	FT% 7-13 53.8%
10	Azaria Robinson	02:35	0-0	0-0	0-0	0	0	0	0	0	0	0	0	0	0	0	0	-1	4th FG% 7-18 38.9%
3	Brezia Robinson	01:01	0-0	0-0	0-0	0	0	0	0	0	0	0	0	0	0	0	0	0	3PT% 1-3 33.3%
4	Kourtney Rittenberry	11:58	2-4	0-1	0-0	0	6	6	2	0	4	0	1	1	1	0	0	-6	FT% 0-0 0%
1	Markisha Bove	06:46	1-1	0-0	0-0	0	1	1	2	0	2	0	0	0	0	0	0	-3	GM FG% 17-58 29.3%
32	Stephanie Okoyi	01:40	0-0	0-0	0-0	0	0	0	0	1	0	0	0	0	0	0	0	-3	3PT% 3-17 17.6%
																			FT% 13-25 52.0%
Team						2	3	5				0	0						Dead Ball Rebounds: 7.1
Totals				17-58	3-17	13-25	14	35	49	32	18	50	4	22	4	5	2	-20	

	ARK	UA PB									
Biggest lead	34 (3 <sup>rd</sup> 2:48)	11 (1 <sup>st</sup> 6:41)	Points from	ARK	UA PB	Period by Period Scoring					
Best Scoring Run	17(2 <sup>nd</sup> 6:19)	12(4 <sup>th</sup> 7:28)	Turnovers	18	7		1st	2nd	3rd	4th	TOT
Lead Changes		2	Second Chance	15	11	ARK	15	27	19	9	70
Times Tied	0		Fast Breaks	16	8						
Time with Lead	37:44	01:20	Bench	15	12	UA PB	10	7	18	15	50



Official Basketball Box Score - Final  
**Tulsa at Arkansas**  
 11/14/22 Bud Walton Arena, Fayetteville  
 2022-23 Women's Basketball

Game Time: 7:00 PM  
Game Duration: 2:04  
Attendance: 2,511

**Officials:** Dee Kanter, Michael McConnell, Talisa Green

Tulsa - 70		Record: 2-1																	
NO.	Name	Min	FG		3P		FT		Rebounds		Fouls		TP	AS	TO	Blocks		+/-	
			M	A	M	A	OR	DR	TOT	PF	FD	BS				BA			
2	Temirra Poindexter	F 36:10	9-18	2-7	1-2	0	3	3	1	4	21	3	2	0	0	0	0	1	
20	Katelyn Levings	F 27:38	5-10	1-4	0	3	4	7	5	2	11	1	1	0	4	0	1	0	
0	Katia Gallagos	G 11:55	0-0	0-0	0	0	2	2	1	0	4	1	0	0	0	0	0	0	
10	Maya Mayberry	G 34:06	6-11	4-6	1-4	0	4	4	3	5	17	2	3	0	0	0	0	-3	
11	Maddie Bittle	G 28:50	3-10	2-4	0	1	4	5	4	1	8	3	6	0	0	0	0	0	
5	Delanie Crawford	24:47	2-5	2-4	1-2	0	3	3	4	1	7	3	0	0	0	0	0	-10	
35	Ahray Young	23:21	1-6	0-3	1-4	0	2	2	1	2	3	1	1	2	0	1	0	-10	
13	Jessika Evans	09:51	1-1	1-1	0-0	2	2	4	3	0	2	0	0	0	0	0	0	-9	
30	Caroline Lyles	02:37	0-0	0-0	0	0	1	1	1	0	0	0	1	0	0	0	0	-6	
1	Cam Mathews	00:10	0-0	0-0	0-0	0	0	0	0	0	0	0	0	0	0	0	0	-1	
21	Hadley Periman	00:35	0-0	0-0	0-0	0	0	0	1	0	0	0	0	0	0	0	0	-2	
Team							0		6		0		0		0				
Totals			27:61	12-29	4-12	4	31	35	25	16	70	17	4	4	2	-9			

Shooting By Period		
1 <sup>st</sup>	FG%	6-17 35.3%
3PT%	2-7	28.6%
FT%	1-2	50%
2 <sup>nd</sup>	FG%	7-14 50.0%
3PT%	4-7	57.1%
FT%	1-6	16.7%
3 <sup>rd</sup>	FG%	4-13 30.8%
3PT%	4-8	50.0%
FT%	2-4	50%
4 <sup>th</sup>	FG%	10-17 58.8%
3PT%	2-7	28.6%
FT%	0-0	0%
GMF	FG%	27-61 44.3%
3PT%	12-29	41.4%
FT%	4-12	33.3%

Technical Fouls:NONE

Arkansas - 79																	Record: 3-0										Dead Ball Rebounds: 6, 4, 0									
NO.	Name		Min	FG	3P	FT	Rebounds			Fouls		TP	AS	TO	ST	Blocks		+/-																		
				M-A	M-A	M-A	OR	DR	TOT	PF	FO					BS	BA																			
4	Erynn Barnum	F	30:32	10-12	0-0	7-12	3	5	8	3	7	27	0	1	2	1	1	3																		
0	Saylor Poffenbarger	G	28:35	1-4	0-2	0-0	2	8	10	4	2	2	3	0	1	0	0	13																		
2	Samara Spencer	G	39:04	3-16	3-11	4-6	0	3	3	2	9	13	4	2	0	0	2	7																		
34	Chrissy Carr	G	22:32	1-9	1-8	0-0	2	4	6	0	3	3	0	2	0	1	0	7																		
43	Makayla Daniels	G	36:43	6-19	4-9	3-4	4	5	9	1	3	19	3	2	0	0	1	5																		
11	Rylee Langerman		22:35	2-7	2-5	4-6	2	3	5	3	3	10	1	0	4	0	0	1																		
30	Maryam Dauda		09:28	1-2	1-2	0-0	2	1	3	1	0	3	0	2	0	0	0	6																		
24	Jersey Wollenbarger		10:31	1-3	0-2	0-0	0	0	0	2	0	2	0	0	0	0	0	3																		
Team							2	1	3		0	0																								
Totals				25:72	11-39	18-28	17	30	47	16	25	79	11	9	7	2	4	9																		
																	Technical Fouls: NONE																			
																	Shooting By Period																			
																	1 <sup>st</sup> FG% 8-19 42.1%																			
																	3PT% 4-10 40.0%																			
																	FT% 4-6 66.7%																			
																	2 <sup>nd</sup> FG% 6-20 30.0%																			
																	3PT% 3-11 27.3%																			
																	FT% 2-2 100%																			
																	3 <sup>rd</sup> FG% 4-20 20.0%																			
																	3PT% 2-14 14.3%																			
																	FT% 3-4 75%																			
																	4 <sup>th</sup> FG% 7-13 53.8%																			
																	3PT% 2-4 50.0%																			
																	FT% 9-16 56.3%																			
																	GM FG% 25-72 34.7%																			
																	3PT% 11-39 28.2%																			
																	FT% 18-28 64.3%																			
																	Dead Ball Rebounds: 5, 3, 0, 0																			

	TU	ARK									
Biggest lead	2 (1 <sup>st</sup> 9:36)	15 (1 <sup>st</sup> 1:38)	Points from Turnovers	TU	ARK	Period by Period Scoring					
Best Scoring Run	9(2 <sup>nd</sup> 9:53)	9(1 <sup>st</sup> 1:38)	Paint	7	19	TU	1st	2nd	3rd	4th	TOT
Lead Changes	3		Second Chance	0	9		15	19	14	22	70
Times Tied	2		Fast Breaks	5	21		ARK	24	17	13	25
Time with Lead	01:11	37:07	Bench	13	15						





**Saylor Poffenbarger**  
R-Fr. | 6-2 | G  
Middletown, Md.



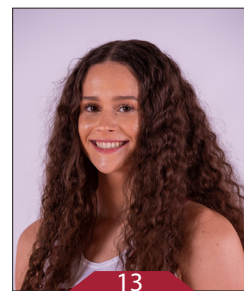
**Samara Spencer**  
So. | 5-7 | G  
Fort Lauderdale, Fla.



**Erynn Barnum**  
R-Sr. | 6-2 | F  
Little Rock, Ark.



**Rylee Langerman**  
Jr. | 5-9 | G  
Norman, Okla.



**Sasha Goforth**  
Jr. | 6-1 | G  
Fayetteville, Ark.



**Ashlyn Sage**  
So. | 6-2 | G  
Weatherford, Okla.



**Karley Johnson**  
Fr. | 5-9 | G  
Mustang, Okla.



**Loren Lindsey**  
Fr. | 5-11 | G  
Fayetteville, Ark.



**Avery Hughes**  
Sr. | 5-7 | G  
Bentonville, Ark.



**Jersey Wolfenbarger**  
So. | 6-5 | G/F  
Fort Smith, Ark.



**Maryam Dauda**  
R-Fr. | 6-4 | F  
Bentonville, Ark.



**Chrissy Carr**  
R-Sr. | 6-1 | G  
Eden Prairie, Minn.



**Makayla Daniels**  
Sr. | 5-9 | G  
Frederick, Md.



**Emrie Ellis**  
So. | 6-3 | F  
Vanoss, Okla.



**Mike Neighbors**  
Head Coach  
Sixth Season



**Todd Schaefer**  
Associate Head Coach  
Sixth Season



**Pauline Love**  
Assistant Coach  
Sixth Season



**Lacey Goldwire**  
Assistant Coach  
Fourth Season



**Amber Shirey**  
Director of Operations



**Jayci Stone**  
Director of SA Development



**Jeff Brazil**  
Special Assistant to the HC



**Simone Rush**  
Head Athletic Trainer

## TV/RADIO CHART

0		<b>Saylor Poffenbarger</b> R-Fr.   G   TR   6-2 Middletown, Md.   UConn Major: Recreation & Sport Management	<table><tr><th></th><th>GP-GS</th><th>PPG</th><th>RPG</th><th>APG</th><th>MPG</th></tr><tr><td>Season</td><td>3-3</td><td>5.0</td><td>8.3</td><td>2.0</td><td>28.9</td></tr><tr><td>Career</td><td>15-3</td><td>1.4</td><td>1.9</td><td>0.4</td><td>8.0</td></tr></table>		GP-GS	PPG	RPG	APG	MPG	Season	3-3	5.0	8.3	2.0	28.9	Career	15-3	1.4	1.9	0.4	8.0	<ul style="list-style-type: none"><li>Transferred to Arkansas in the winter of 2022</li><li>Had a +31 efficiency vs. UCA and 10 rebounds vs. Tulsa</li><li>Logged 11 points and 8 rebounds in Arkansas debut at UAPB</li><li>No. 10 in the SEC in rebounding</li><li>Appeared in 12 games in first collegiate season at UConn in 2021</li><li>No. 30th-ranked recruit in her class, No. 13th-ranked guard</li></ul>
	GP-GS	PPG	RPG	APG	MPG																	
Season	3-3	5.0	8.3	2.0	28.9																	
Career	15-3	1.4	1.9	0.4	8.0																	
2		<b>Samara Spencer</b> So.   G   1L   5-7 Fort Lauderdale, Fla.   St. Thomas Aquinas Major: Recreation & Sport Management	<table><tr><th></th><th>GP-GS</th><th>PPG</th><th>RPG</th><th>APG</th><th>MPG</th></tr><tr><td>Season</td><td>3-3</td><td>11.0</td><td>3.0</td><td>3.7</td><td>29.6</td></tr><tr><td>Career</td><td>34-30</td><td>12.1</td><td>3.6</td><td>3.1</td><td>30.0</td></tr></table>		GP-GS	PPG	RPG	APG	MPG	Season	3-3	11.0	3.0	3.7	29.6	Career	34-30	12.1	3.6	3.1	30.0	<ul style="list-style-type: none"><li>Had second double-digit scoring game this year with 13 vs. Tulsa</li><li>No. 14 in assists and 15 in ast/TO ratio (2.2) in the SEC</li><li>Named SEC Freshman of the Year, first for Arkansas since 2009</li><li>Won SEC Freshman of the Week four times last season</li><li>Has three 20-point games, including career-high 22 at Miss. State</li><li>Led St. Thomas to state title as a senior</li></ul>
	GP-GS	PPG	RPG	APG	MPG																	
Season	3-3	11.0	3.0	3.7	29.6																	
Career	34-30	12.1	3.6	3.1	30.0																	
4		<b>Erynn Barnum</b> R-Sr.   F   3L   6-2 Little Rock, Ark.   Little Rock Central Major: Recreation & Sport Management	<table><tr><th></th><th>GP-GS</th><th>PPG</th><th>RPG</th><th>APG</th><th>MPG</th></tr><tr><td>Season</td><td>3-3</td><td>20.3</td><td>9.3</td><td>1.0</td><td>26.0</td></tr><tr><td>Career</td><td>80-13</td><td>7.2</td><td>4.6</td><td>0.5</td><td>15.3</td></tr></table>		GP-GS	PPG	RPG	APG	MPG	Season	3-3	20.3	9.3	1.0	26.0	Career	80-13	7.2	4.6	0.5	15.3	<ul style="list-style-type: none"><li>Katrina McClain Preseason Watch List choice</li><li>Coming off career-high 27 points w/ 8 boards vs. Tulsa</li><li>Leading the country in free throw attempts</li><li>Fifth in scoring, sixth in rebounding and seventh in FG% (.618)</li><li>Started 10 of 24 games last season, missing portion due to injury</li><li>Matched career-high 12 boards in NCAA game vs. Utah</li><li>Longest tenured Razorback</li></ul>
	GP-GS	PPG	RPG	APG	MPG																	
Season	3-3	20.3	9.3	1.0	26.0																	
Career	80-13	7.2	4.6	0.5	15.3																	
11		<b>Rylee Langerman</b> Jr.   G   2L   5-9 Norman, Okla.   Christian Heritage Major: Biology	<table><tr><th></th><th>GP-GS</th><th>PPG</th><th>RPG</th><th>APG</th><th>MPG</th></tr><tr><td>Season</td><td>3-0</td><td>7.7</td><td>5.0</td><td>0.3</td><td>23.3</td></tr><tr><td>Career</td><td>48-7</td><td>2.9</td><td>3.1</td><td>0.8</td><td>16.1</td></tr></table>		GP-GS	PPG	RPG	APG	MPG	Season	3-0	7.7	5.0	0.3	23.3	Career	48-7	2.9	3.1	0.8	16.1	<ul style="list-style-type: none"><li>Logged 10 points, five rebounds and four steals vs. Tulsa</li><li>Opened season at UAPB with the same hustle, logging four points, six rebounds and four steals</li><li>Seventh in the SEC in total steals (8)</li><li>Appeared in all 32 games last season</li><li>Dominated vs. Mizzou for career-high 17 points (5-for-6 from 3-point)</li><li>Averaged 3.2 points and 3.7 rebounds per game last season</li></ul>
	GP-GS	PPG	RPG	APG	MPG																	
Season	3-0	7.7	5.0	0.3	23.3																	
Career	48-7	2.9	3.1	0.8	16.1																	
13		<b>Sasha Goforth</b> Jr.   G   1L   6-1 Fayetteville, Ark.   Oregon State Major: Human Development and Family Sciences	<table><tr><th></th><th>GP-GS</th><th>PPG</th><th>RPG</th><th>APG</th><th>MPG</th></tr><tr><td>Season</td><td>N/A</td><td>N/A</td><td>N/A</td><td>N/A</td><td>N/A</td></tr><tr><td>Career</td><td>52-52</td><td>11.5</td><td>4.3</td><td>1.5</td><td>29.5</td></tr></table>		GP-GS	PPG	RPG	APG	MPG	Season	N/A	N/A	N/A	N/A	N/A	Career	52-52	11.5	4.3	1.5	29.5	<ul style="list-style-type: none"><li>Won't see the floor this season, as she will be redshirting</li><li>Only Hog to start all 32 games last season</li><li>One of four players who averaged double digits in scoring, logging 11.5 points and 4.8 boards per game</li><li>Led the team with 66 blocks, third most in program history</li><li>Highly recruited player out of Fayetteville HS, No. 7 nationally</li></ul>
	GP-GS	PPG	RPG	APG	MPG																	
Season	N/A	N/A	N/A	N/A	N/A																	
Career	52-52	11.5	4.3	1.5	29.5																	
15		<b>Ashlyn Sage</b> So.   G   1L   6-2 Weatherford, Okla.   Weatherford Major: Psychology	<table><tr><th></th><th>GP-GS</th><th>PPG</th><th>RPG</th><th>APG</th><th>MPG</th></tr><tr><td>Season</td><td>N/A</td><td>N/A</td><td>N/A</td><td>N/A</td><td>N/A</td></tr><tr><td>Career</td><td>15-0</td><td>1.2</td><td>0.8</td><td>0.1</td><td>5.2</td></tr></table>		GP-GS	PPG	RPG	APG	MPG	Season	N/A	N/A	N/A	N/A	N/A	Career	15-0	1.2	0.8	0.1	5.2	<ul style="list-style-type: none"><li>Won't play in 2022-23</li><li>Started out collegiate career with a bang, going 2-of-2 from beyond the arc for six points vs. Tarleton State</li><li>Played 15 games off the bench, seven of those SEC games</li><li>No. 84 overall recruit in Premier Basketball's 2021 rankings</li></ul>
	GP-GS	PPG	RPG	APG	MPG																	
Season	N/A	N/A	N/A	N/A	N/A																	
Career	15-0	1.2	0.8	0.1	5.2																	
20		<b>Karley Johnson</b> Fr.   G   FR   5-9 Mustang, Okla.   Mustang Major: Undecided	<table><tr><th></th><th>GP-GS</th><th>PPG</th><th>RPG</th><th>APG</th><th>MPG</th></tr><tr><td>Season</td><td>1-0</td><td>0.0</td><td>0.0</td><td>0.0</td><td>2.6</td></tr><tr><td>Career</td><td>1-0</td><td>0.0</td><td>0.0</td><td>0.0</td><td>2.6</td></tr></table>		GP-GS	PPG	RPG	APG	MPG	Season	1-0	0.0	0.0	0.0	2.6	Career	1-0	0.0	0.0	0.0	2.6	<ul style="list-style-type: none"><li>Only signee in fall class</li><li>Made collegiate debut vs. UCA, tallying a steal in three minutes</li><li>Tabbed a 2022 McDonald's All-American nominee</li><li>As a senior at Mustang HS, averaged 12.3 points, 4.3 rebounds and 3.1 assists per game</li><li>Only needed two years to surpass 1,000 points in HS career</li></ul>
	GP-GS	PPG	RPG	APG	MPG																	
Season	1-0	0.0	0.0	0.0	2.6																	
Career	1-0	0.0	0.0	0.0	2.6																	
21		<b>Loren Lindsey</b> Fr.   G   FR   5-11 Fayetteville, Ark.   Fayetteville Major: Finance	<table><tr><th></th><th>GP-GS</th><th>PPG</th><th>RPG</th><th>APG</th><th>MPG</th></tr><tr><td>Season</td><td>1-0</td><td>0.0</td><td>0.0</td><td>0.0</td><td>1.2</td></tr><tr><td>Career</td><td>1-0</td><td>0.0</td><td>0.0</td><td>0.0</td><td>1.2</td></tr></table>		GP-GS	PPG	RPG	APG	MPG	Season	1-0	0.0	0.0	0.0	1.2	Career	1-0	0.0	0.0	0.0	1.2	<ul style="list-style-type: none"><li>Local standout player out of Fayetteville HS</li><li>Made collegiate debut versus UCA</li><li>Tabbed to the All-Conference 6A West All-Defensive Team</li><li>Named Northwest Arkansas Democrat Gazette Player of the Week</li><li>Led team to state semifinals in 2020 with 55-53 win and the championship game was not played due to Covid-19</li></ul>
	GP-GS	PPG	RPG	APG	MPG																	
Season	1-0	0.0	0.0	0.0	1.2																	
Career	1-0	0.0	0.0	0.0	1.2																	
22		<b>Avery Hughes</b> Sr.   G   3L   5-7 Bentonville, Ark.   Bentonville Major: Nursing	<table><tr><th></th><th>GP-GS</th><th>PPG</th><th>RPG</th><th>APG</th><th>MPG</th></tr><tr><td>Season</td><td>-</td><td>-</td><td>-</td><td>-</td><td>-</td></tr><tr><td>Career</td><td>35-0</td><td>0.9</td><td>0.1</td><td>0.3</td><td>3.8</td></tr></table>		GP-GS	PPG	RPG	APG	MPG	Season	-	-	-	-	-	Career	35-0	0.9	0.1	0.3	3.8	<ul style="list-style-type: none"><li>Former walk-on, earned a scholarship prior to 2021-22 season</li><li>Played four minutes in exhibition vs. UAfS</li><li>Appeared in 12 games last season</li><li>Best game of career came in 2020-21 vs. UAPB where she dropped two 3-pointers</li><li>Bentonville HS's second leading scorer</li></ul>
	GP-GS	PPG	RPG	APG	MPG																	
Season	-	-	-	-	-																	
Career	35-0	0.9	0.1	0.3	3.8																	
24		<b>Jersey Wolfenbarger</b> So.   F   1L   6-5 Fort Smith, Ark.   Northside Major: Psychology	<table><tr><th></th><th>GP-GS</th><th>PPG</th><th>RPG</th><th>APG</th><th>MPG</th></tr><tr><td>Season</td><td>3-0</td><td>4.7</td><td>2.7</td><td>0.0</td><td>17.2</td></tr><tr><td>Career</td><td>33-23</td><td>7.2</td><td>4.2</td><td>1.0</td><td>21.8</td></tr></table>		GP-GS	PPG	RPG	APG	MPG	Season	3-0	4.7	2.7	0.0	17.2	Career	33-23	7.2	4.2	1.0	21.8	<ul style="list-style-type: none"><li>Delivered seven points and seven rebounds off the bench at UAPB</li><li>Followed that up with five points versus UCA</li><li>Named to SEC All-Freshman Team</li><li>Recorded two double-doubles as a freshman, started in all SEC games</li><li>No. 7 overall recruit and No. 1 wing player in the ESPN HoopGurlz 2021 recruiting rankings at the time of her signing</li></ul>
	GP-GS	PPG	RPG	APG	MPG																	
Season	3-0	4.7	2.7	0.0	17.2																	
Career	33-23	7.2	4.2	1.0	21.8																	
30		<b>Maryam Dauda</b> R-Fr.   F   FR   6-4 Bentonville, Ark.   Bentonville Major: International Business	<table><tr><th></th><th>GP-GS</th><th>PPG</th><th>RPG</th><th>APG</th><th>MPG</th></tr><tr><td>Season</td><td>3-0</td><td>5.7</td><td>3.7</td><td>0.3</td><td>13.7</td></tr><tr><td>Career</td><td>3-0</td><td>5.7</td><td>3.7</td><td>0.3</td><td>13.7</td></tr></table>		GP-GS	PPG	RPG	APG	MPG	Season	3-0	5.7	3.7	0.3	13.7	Career	3-0	5.7	3.7	0.3	13.7	<ul style="list-style-type: none"><li>Sat out during 2021-22 season recovering from ACL injury</li><li>In her Arkansas &amp; collegiate debut, tallied four points &amp; three boards</li><li>Logged 10 points and five rebounds off the bench vs. UCA</li><li>13th-ranked player and top post player in the ESPN HoopGurlz 2021 recruiting class at her time of signing</li><li>Consensus five-star recruit and McDonald's All-American</li></ul>
	GP-GS	PPG	RPG	APG	MPG																	
Season	3-0	5.7	3.7	0.3	13.7																	
Career	3-0	5.7	3.7	0.3	13.7																	
34		<b>Chrissy Carr</b> R-Sr.   G   TR   6-1 Eden Prairie, Minn.   Syracuse Major: Operations Management	<table><tr><th></th><th>GP-GS</th><th>PPG</th><th>RPG</th><th>APG</th><th>MPG</th></tr><tr><td>Season</td><td>3-3</td><td>7.0</td><td>5.7</td><td>0.0</td><td>22.6</td></tr><tr><td>Career</td><td>118-116</td><td>11.3</td><td>3.7</td><td>1.3</td><td>29.5</td></tr></table>		GP-GS	PPG	RPG	APG	MPG	Season	3-3	7.0	5.7	0.0	22.6	Career	118-116	11.3	3.7	1.3	29.5	<ul style="list-style-type: none"><li>Comes to Arkansas w/ most collegiate experience (4 years)</li><li>Racked up her 65th career double-digit scoring game with 10 points in the start at UAPB</li><li>Coming off eight points and eight rebounds vs. UCA</li><li>Across five seasons, has started in all but two games in her career</li><li>Was third on team in scoring (11.7 PPG) at Syracuse</li></ul>
	GP-GS	PPG	RPG	APG	MPG																	
Season	3-3	7.0	5.7	0.0	22.6																	
Career	118-116	11.3	3.7	1.3	29.5																	
43		<b>Makayla Daniels</b> Sr.   G   3L   5-8 Frederick, Md.   Frederick Major: Recreation & Sport Management	<table><tr><th></th><th>GP-GS</th><th>PPG</th><th>RPG</th><th>APG</th><th>MPG</th></tr><tr><td>Season</td><td>3-3</td><td>12.3</td><td>5.7</td><td>2.7</td><td>28.1</td></tr><tr><td>Career</td><td>91-91</td><td>11.5</td><td>3.3</td><td>2.5</td><td>26.9</td></tr></table>		GP-GS	PPG	RPG	APG	MPG	Season	3-3	12.3	5.7	2.7	28.1	Career	91-91	11.5	3.3	2.5	26.9	<ul style="list-style-type: none"><li>All-SEC Preseason Second Team choice</li><li>Logged a near double-double of 19 points and nine boards vs. Tulsa for her second double-digit scoring game of the season</li><li>Leading returning scorer (14.0) and rebounder (5.3) from 2021-22 team</li><li>No. 29 all-time career scorer at Arkansas (1,051)</li><li>Had first career double-double against Mizzou in SECT (13p-14r)</li><li>Only player on roster to start in all collegiate game appearances</li></ul>
	GP-GS	PPG	RPG	APG	MPG																	
Season	3-3	12.3	5.7	2.7	28.1																	
Career	91-91	11.5	3.3	2.5	26.9																	
55		<b>Emrie Ellis</b> So.   F   1L   6-3 Vanoss, Okla.   Vanoss Major: Exercise Science	<table><tr><th></th><th>GP-GS</th><th>PPG</th><th>RPG</th><th>APG</th><th>MPG</th></tr><tr><td>Season</td><td>2-0</td><td>0.0</td><td>2.1</td><td>0.0</td><td>14.1</td></tr><tr><td>Career</td><td>29-0</td><td>2.7</td><td>2.1</td><td>0.5</td><td>11.1</td></tr></table>		GP-GS	PPG	RPG	APG	MPG	Season	2-0	0.0	2.1	0.0	14.1	Career	29-0	2.7	2.1	0.5	11.1	<ul style="list-style-type: none"><li>Played in 27 games during her freshman season</li><li>Logged 15 minutes at UAPB and followed that up with a four-rebound performance vs. UCA</li><li>Her five blocks vs. UAPB in 2021 was most by a freshman Hog since 2014</li><li>Had 11 points and five boards in 27 minutes vs. Auburn last year</li><li>No. 48 overall recruit in ASGR's 2021 recruiting rankings</li></ul>
	GP-GS	PPG	RPG	APG	MPG																	
Season	2-0	0.0	2.1	0.0	14.1																	
Career	29-0	2.7	2.1	0.5	11.1																	
HC		<b>Mike Neighbors</b> Sixth season, 10th overall Alma Mater: Arkansas '93	<b>Career:</b> 197-105 (10th) <b>AR:</b> 99-64 (6) <ul style="list-style-type: none"><li>Close to century marks in wins</li><li>Proud Arkansas native</li></ul>	<div>AHC</div> <div></div> <div>Todd Schaefer Sixth Season</div> <div>AC</div> <div></div> <div>Pauline Love Fourth Season</div> <div></div> <div>Lacey Goldwire Fourth Season</div>																		