



RAZORBACKS®

2022-23 Women's Basketball Game Notes

Kylie Magar | Assistant Director, Communications
E: kmagar@uark.edu | ArkansasRazorbacks.com

2022-23 SCHEDULE

Date	Opponent	Time	TV/RESULT
Nov. 2	vs. UAFA (exhibition)	7 PM	W, 92-62
Nov. 7	at UAPB	6 PM	W, 70-50
Nov. 11	Central Arkansas	10:30 AM	W, 72-34
Nov. 14	Tulsa	7 PM	W, 79-70
Nov. 17	Kent State	7 PM	W, 80-59
Nov. 20	at Little Rock	1 PM	W, 93-49
Nov. 24	Northern Arizona ^S	5:45 PM	W, 82-73
Nov. 25	Clemson ^S	8 PM	W, 76-62
Nov. 26	No. 25 Kansas State ^S	8 PM	W, 69-53
Dec. 1	Troy	7 PM	W, 87-70
Dec. 4	Oral Roberts	2 PM	W, 92-58
Dec. 8	Lamar	7 PM	W, 63-50
Dec. 11	Arkansas State	3 PM	SECN
Dec. 17	at Creighton	1 PM	FloHoops
Dec. 20	Oregon+	3 PM	FloHoops
Dec. 21	Ohio State or USF+	3/5:30 PM	FloHoops
Dec. 29	LSU*	6 PM	ESPN2/SECN
Jan. 1	at Kentucky*	1 PM	SECN+
Jan. 5	Florida*	7 PM	SECN+
Jan. 8	at Missouri*	2 PM	SECN+
Jan. 16	Vanderbilt*	6 PM	SECN
Jan. 19	at LSU*	8 PM	SECN
Jan. 22	at South Carolina*	2 PM	ESPN2/SECN
Jan. 26	Alabama*	6 PM	SECN
Jan. 29	Ole Miss*	4 PM	SECN
Feb. 5	at Auburn*	2 PM	SECN
Feb. 9	at Vanderbilt*	8 PM	SECN
Feb. 12	Missouri*	2 PM	SECN+
Feb. 16	Tennessee*	6 PM	SECN
Feb. 19	at Georgia*	11 AM	ESPN2/SECN
Feb. 23	at Mississippi State*	8 PM	SECN
Feb. 26	Texas A&M*	11 AM	ESPN2/SECN

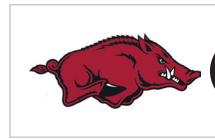
*-SEC Contest

^S-Paradise Jam (St. Thomas, U.S. Virgin Islands)

+ -San Diego Invitational (San Diego, Calif.)

12 ARKANSAS VS. ARKANSAS STATE | BUD WALTON ARENA | DEC. 11 | SECN

Arkansas
Razorbacks



VS.



Arkansas State
Red Wolves

Record 11-0
 Conference Record..... 0-0
 AP Poll 21 (21)
 USA Today Coaches Poll..... 22
 Head Coach Mike Neighbors
 HC Record at UofA (Yrs)..... 107-64 (6th season)
 HC Career Record (Yrs)..... 205-105 (10th season)
 Neighbors' Record vs. Arkansas State..... 1-0

Record 4-4
 Conference Record..... 0-0
 AP Poll N/A
 USA Today Coaches Poll..... N/A
 Head Coach Destinee Rogers
 HC Record at A-State (Yrs)..... 12-14 (2nd season)
 HC Career Record (Yrs)..... Same
 Rogers' Record vs. UofA 0-0

LAST STARTING 5



#2 SAMARA SPENCER

So. | G | 5-7 | Fort Lauderdale, Fla.

PPG	RPG	APG	MPG
15.5	4.1	4.5	30.6



#24 JERSEY WOLFENBARGER

So. | G | 6-5 | Fort Smith, Ark.

PPG	RPG	APG	MPG
4.7	4.5	0.3	18.6



#0 SAYLOR POFFENBARGER

R-Fr. | F | 6-2 | Middletown, Md.

PPG	RPG	APG	MPG
9.4	8.0	2.7	30.7



#34 CHRISSEY CARR

R-Sr. | G | 6-1 | Edern Prairie, Minn.

PPG	RPG	APG	MPG
13.3	4.4	0.3	27.3



#4 ERYNN BARNUM

R-Sr. | F | 6-2 | Little Rock, Ark.

PPG	RPG	APG	MPG
14.8	8.0	1.6	24.5

SNAPSHOT:

- Logged eighth double-digit scoring game with 17 points vs. Lamar
- Registered career-high 32 points vs. Oral Roberts
- No. 5 in assists and 8 in scoring in SEC, and No. 3 in FT attempts in NCAA
- Tabbbed the 2022 SEC Freshman of the Year

SNAPSHOT:

- Coming off 4 pts, 6 rbdns and 3 blks vs. Lamar
- Stuffed the stat sheet vs. ORU with 9 pts, 12 rbdns and 4 blks
- Earned back-to-back starts
- 2022 SEC All-Freshman Team recipient

SNAPSHOT:

- Coming off back-to-back double-doubles, logging 17 points and 12 boards vs. Lamar
- Back-to-back SEC Freshman of the Week honoree
- Has tallied 5+ assists in three of last four games
- No. 2 in def. RPG & No. 7 in rebounding in the SEC

SNAPSHOT:

- Led game with 18 points vs. Lamar
- Second in 3-ptrs/gm (2.55) and 3-pt.% (.346) in SEC
- Averaged 14.7 PPG and 5.0 RPG at the Paradise Jam where she was an All-Tournament choice
- Leads team with 28 triples

SNAPSHOT:

- Tallied eight rebounds vs. Lamar
- Katrina McClain Preseason Watch List
- Leads SEC in FG% (.667), 10th in scoring and ninth in rebounds per game
- Seventh in FG% and 17th FT attempts in NCAA

FOLLOW, WATCH & LISTEN



@RAZORBACKWBB

TV: SECN

On the Call: Tyler Denning and Holly Warlick

Razorback Sports Network from Learfield (Radio)

Phil Elson - <http://143.223.155.160/audio>
 Fayetteville - KQSM-FM-92.1 /// KYNG-AM - 1590*
 Fort Smith - KFPW-AM-1230 /// KHGG-AM-1580



NEIGHBORHOOD WATCH

- Arkansas women's basketball is a nationally ranked team, coming in at No. 21 in the week five AP Poll and No. 22 in the WBCA Coaches Poll, which is the first time the program has been ranked since the 2020-21 season
- The Razorbacks are 11-0, which continues to be the best start in the **Mike Neighbors** era at Arkansas and best for the program since 2013 (when that team started the year 13-0)
- Following a few upsets on Thursday, Arkansas is now one of 13 remaining undefeated teams in the country
- The team's 11 wins is tied with Virginia for the most in the country
- Arkansas is one of three unbeaten teams in the SEC (South Carolina and LSU the other two)
- For just the fourth time in program history, the Razorbacks have started a season 11-0 (2007: 15-0 start, 2010: 11-0 start, 2013: 13-0 start)
- Arkansas scored a season-low 63 points in their 63-50 win over Lamar, but was locked in on defense to hold the Cardinals to just 17 points on 17.2 percent shooting from the field in the second half
- The team has continued to show how any player one through five on the court can get hot at any minute, as four players are averaging double-digits in scoring
- **Samara Spencer** is the team's leading scorer with 15.5 points per game. She has also racked up 49 assists, with her 4.5 assists per game being the fifth most in the SEC
- **Saylor Poffenbarger** attacks the glass like nobody's business, leading the team with 8.0 rebounds per game with three 10+ rebound games. She also leads the team in blocks (14)
- **Erynn Barnum** and **Makayla Daniels** tie for the most steals on the team with 19. Both are averaging double digits in scoring with 14.8 points and 13.3 points per game, respectively
- **Carr** is the fourth Razorback in double digits in scoring with 13.3 points per game, while leading the team with 28 3-pointers. She is one of the best outside shooters in the SEC, second in both 3-pointers per game (2.55) and 3-point percentage (.346)
- **Barnum's** field goal percentage continues to lead the SEC at .667
- Arkansas leads the SEC in defensive rebounding percentage, which is probably the most impressive stat the team leads the league in, holding a .766 percentage
- The team is also leading the SEC in 3-pointers per game (8.3), 3-point attempts per game (26.5) and free throw attempts per game (28.45)
- Nobody in the country gets to the free throw line like the Razorbacks, as the team is leading the country in free throw attempts per game
- **Neighbors'** teams in the past few years have not been known for rebounding the ball effectively, but that has changed, as the Razorbacks have outrebounded opponents in 10 of 11 games. The team's 33.5 defensive rebounds per game is the third most in the country
- Head coach **Neighbors** earned his 200th win in late November at the Paradise Jam in the Virgin Islands versus Northern Arizona (W, 82-73) and surpassed 100 wins at Arkansas following the team's 80-59 win over Kent State
- With **Neighbors** in charge, the Hogs are coming off back-to-back NCAA Tournament appearances (should be back-to-back-to-back had the COVID-19 pandemic have not cancelled the 2020 tournament) and four consecutive winning seasons. **Neighbors** also has the most wins of any collegiate coach with 10 years of experience
- The Razorbacks were projected to finish fourth in the SEC Preseason Media Poll and tied for fifth in the SEC Preseason Coaches Poll. **Daniels** represents Arkansas on the Preseason Second Team (Coaches poll)

HEADLINERS

- Arkansas is now down to being one of 13 undefeated teams in the country
- Nobody among NCAA Division I teams has more wins than Arkansas and Virginia with 11
- Sunday's game against Arkansas State wraps up the Razorbacks' four-game homestand. Arkansas is currently on a six-game winning streak at home
- With a win, Arkansas will begin the year 12-0 for the first time since 2013 and third time in program history
- Arkansas is looking to improve to 11-0 against in-state schools since the 40+-year ban was lifted in 2020
- The two in-state schools will play each other inside of Bud Walton Arena for the first time ever
- The Razorbacks are playing a game as a ranked team for the first time since winter 2021

SCOUTING ARKANSAS STATE ABOUT THE RED WOLVES

- The Red Wolves are an even 4-4 coming into Sunday's game in Fayetteville
- Arkansas State has won four of their last six games, highlighted by dropping 100 points at McNeese State (W, 102-83) and taking down Utah State (W, 63-57)
- Mizou transfer **Izzy Higginbottom** leads the Red Wolves with 15.4 points per game, along with 37 assists and 18 steals
- **Leilani Augmon** pulls down 8.0 rebounds per game to lead the team
- Arkansas State was projected to finish ninth in the Sun Belt among 14 teams
- **Keya Patton** was picked to the Preseason All-Sun Belt First Team, while **Lauryn Pendleton** was chosen to the Third Team. Last season, **Patton** led the team with 14.3 points per game and **Pendleton** tallied 11.3 points per game along with 37 assists and 31 stelas
- The Red Wolves finished last season 12-16, 5-9 in the Sun Belt. Arkansas State lost to

BENCHMARK PERFORMANCES

10+ POINTS	19-20	20-21	21-22	22-23	TOT
Makayla Daniels	12	19	19	6	56
Samara Spencer	-	-	20	7	27
Erynn Barnum	4	9	6	7	26
Jersey Wolfenbarger	-	-	12	1	13
Chrissy Carr	-	-	-	7	7
Saylor Poffenbarger	-	-	-	5	5
Rylee Langerman	-	0	1	1	2
Maryam Dauda	-	-	-	2	2
Emrie Ellis	-	-	1	0	1

20+ POINTS	19-20	20-21	21-22	22-23	TOT
Makayla Daniels	2	1	5	1	9
Samara Spencer	-	-	3	2	5
Erynn Barnum	0	0	0	2	2

30+ POINTS	19-20	20-21	21-22	22-23	TOT
Makayla Daniels	0	0	2	0	2
Samara Spencer	-	-	0	1	1

5+ 3-POINTERS	19-20	20-21	21-22	22-23	TOT
Makayla Daniels	1	0	1	0	2
Chrissy Carr	-	-	-	1	1
Rylee Langerman	-	0	1	0	1
Samara Spencer	-	-	1	0	1

50% FG (8 ATT.)	19-20	20-21	21-22	22-23	TOT
Makayla Daniels	4	3	10	3	20
Erynn Barnum	3	6	3	5	17
Samara Spencer	-	-	8	4	12
Jersey Wolfenbarger	-	-	6	0	6
Saylor Poffenbarger	-	-	-	2	2
Chrissy Carr	-	-	-	1	1
Rylee Langerman	-	0	1	0	1

10+ REBOUNDS	19-20	20-21	21-22	22-23	TOT
Erynn Barnum	1	1	1	1	4
Saylor Poffenbarger	-	-	-	2	2
Jersey Wolfenbarger	-	-	2	1	3
Makayla Daniels	0	0	1	0	1
Rylee Langerman	-	0	1	0	1

15+ REBOUNDS	19-20	20-21	21-22	22-23	TOT
Makayla Daniels	3	2	6	1	12
Samara Spencer	-	-	5	3	8
Saylor Poffenbarger	-	-	-	3	3

3+ BLOCKS	19-20	20-21	21-22	22-23	TOT
Erynn Barnum	3	1	0	1	5
Jersey Wolfenbarger	-	-	2	2	4
Emrie Ellis	-	-	2	0	2
Saylor Poffenbarger	-	-	-	2	2

5+ STEALS	19-20	20-21	21-22	22-23	TOT
Makayla Daniels	4	1	1	0	6
Erynn Barnum	0	0	2	1	3
Rylee Langerman	-	0	1	0	1
Samara Spencer	-	-	1	0	1

DOUBLE-DOUBLES	19-20	20-21	21-22	22-23	TOT
Erynn Barnum	1	1	0	1	3
Saylor Poffenbarger	-	-	-	2	2
Jersey Wolfenbarger	-	-	2	0	2
Makayla Daniels	0	0	1	-	1

Stat Comparison

UA	A-STATE
78.5	73.4
57.1	70.9
.430	.411
.330	.411
.313	.291
8.3	6.4
.613	.661
45.4	42.6
13.5	15.4
14.6	14.9
+3.3	+1.1
7.6	8.8
4.3	3.1

2022-23 SOUTHEASTERN CONFERENCE STANDINGS

CONFERENCE STANDINGS															
CONFERENCE	CONFERENCE				OVERALL					AP				COACHES	
	W-L	Pct.	H	A	W-L	Pct.	H	A	N	Streak	vs T10	vs T25	vs T10	vs T25	
Arkansas	0-0	.000	0-0	0-0	11-0	1.000	6-0	2-0	3-0	W11	1-0	0-0	0-0	0-0	
LSU	0-0	.000	0-0	0-0	9-0	1.000	7-0	0-0	2-0	W9	0-0	0-0	0-0	0-0	
South Carolina	0-0	.000	0-0	0-0	8-0	1.000	4-0	4-0	0-0	W7	1-0	3-0	1-0	3-0	
Florida	0-0	.000	0-0	0-0	9-1	.900	6-0	1-1	2-0	W7	0-0	0-0	0-0	0-0	
Missouri	0-0	.000	0-0	0-0	9-1	.900	5-0	2-0	2-1	W3	0-0	0-1	0-1	0-1	
Kentucky	0-0	.000	0-0	0-0	7-1	.875	5-0	1-0	1-1	W3	0-0	0-1	0-0	0-1	
Georgia	0-0	.000	0-0	0-0	9-2	.818	6-1	1-0	2-1	W1	0-1	0-1	0-0	0-1	
Ole Miss	0-0	.000	0-0	0-0	7-2	.778	5-0	1-1	1-1	L1	0-0	0-1	0-0	0-1	
Mississippi State	0-0	.000	0-0	0-0	7-2	.778	6-0	0-1	1-1	W2	0-0	0-0	0-0	0-1	
Alabama	0-0	.000	0-0	0-0	6-2	.750	4-0	1-1	1-1	W4	0-0	0-1	0-0	0-1	
Auburn	0-0	.000	0-0	0-0	6-2	.750	5-0	0-1	1-1	W3	0-1	0-1	0-1	0-1	
Vanderbilt	0-0	.000	0-0	0-0	7-5	.583	4-2	3-1	0-2	W1	0-0	0-1	0-0	0-1	
Tennessee	0-0	.000	0-0	0-0	5-5	.500	4-2	0-1	1-2	W1	0-1	0-3	0-1	0-3	
Texas A&M	0-0	.000	0-0	0-0	4-4	.500	4-2	0-3	0-0	L3	0-0	0-0	0-0	0-0	

2022-23 SEC Preseason Media Poll

2022-23 SEC Preseason Media Poll	2022-23 SEC Preseason Coaches' Poll
1. South Carolina	1. South Carolina
2. Tennessee	2. Tennessee
3. LSU	3. LSU
4. Arkansas	4. Alabama
5. Ole Miss	5. Arkansas
6. Florida	6. Florida
7. Kentucky	7. Georgia
8. Mississippi State	8. Ole Miss
9. Georgia	9. Georgia
10. Alabama	10. Kentucky
11. Texas A&M	11. Texas A&M
12. Missouri	12. Missouri
13. Auburn	13. Auburn
14. Vanderbilt	14. Vanderbilt

Coastal Carolina in the first round of the Sun Belt Tournament, 91-76

ABOUT THE HEAD COACH

- **Destinee Rogers** assumed head coaching duties midway through the year last season, serving as interim coach in December before officially taking over at the helm in the final eight games of the 2021-22 season
- **Rogers** became the first African-American female head coach to win a game in school history
- Before getting into coaching, Rogers was a three-year starter at Central Arkansas. Her first coaching gig was at her alma mater as an assistant before joining the A-State staff

NEIGHBORS' TWEET WHEN THE MATCHUP WAS SCHEDULED

- "Our home schedule wraps with a final in-state opponent. Coach Rogers will lead her Red Wolves into Bud for the first time ever. Taking over as head coach mid-year, her team rallied to a strong finish and built momentum over summer. We are hoping for a record crowd for this one!!"

SERIES HISTORY OF ARKANSAS STATE VS. ARKANSAS

- Sunday's game will be the 10th of the series
- Arkansas has the slight edge in the series at 6-3
- The Razorbacks are 3-0 against the Red Wolves inside Barnhill Arena
- In last year's game, Arkansas won in Jonesboro, 94-71. **Makayla Daniels** led the team with 22 points, eight rebounds and four assists, while **Samara Spencer** had 16 points off the bench
- Prior to last year's meeting, the two teams met in the WNIT in 2005, and Arkansas lost in Jonesboro, 98-84. The game that year was the first time the two teams played since 1983

LAST TIME OUT

- Arkansas faced its toughest task thus far on Thursday, as the team defeated Lamar, 63-50, behind a season-low number in points
- The Razorbacks trailed 33-31 at halftime, the first time the team was behind at halftime this year, but was locked in on defense in the second half to hold the Cardinals to 17 points on 17.2 percent shooting in the second half
- The newcomers, **Chrissy Carr** and **Saylor Poffenbarger**, made big shots down the stretch for the Razorbacks
- **Carr** led the game with 18 points off four 3-pointers
- **Poffenbarger** earned her second consecutive double-double with a career-high 17 points and 12 rebounds along with five assists, three blocks and two steals
- **Samara Spencer** tallied 17 points and shot 16 free throws. She also added four assists
- Arkansas outrebounded its opponent for the 10th time this season with the slight edge, 37-36

AN ARKANSAS WIN MEANS...

- The Razorbacks will improve to 11-0 against in-state schools since the ban was lifted, 19-3 against other DI opponents in the state
- With a 12-0 record, the Razorbacks will continue on its best start since 2013
- Twelve wins will be the most in the NCAA for Division I teams
- The team will continue to have the most wins among SEC teams
- The Razorbacks will start the year with 12 consecutive wins for just the third time in program history
- Wins in seven straight home games for the team
- **Mike Neighbors** will continue to improve on his win total for his best start to a season at Arkansas and in his head coaching career

SAY-LING AWAY TO ANOTHER FOW TITLE

- **Saylor Poffenbarger** won her second SEC Freshman of the Week honor in consecutive weeks after averaging a near double-double of 11.5 points and 8.0 rebounds per game across the team's wins over Troy (87-70) and Oral Roberts (92-58)
- Earned her first career double-double against Oral Roberts after logging 14 points and a career-high 13 rebounds, as well as five assists and a block
- One of two players in the SEC through four weeks that has earned SEC Freshman of the Week

DO THEY GIVE OUT SEC SOPHOMORE OF THE YEAR?

- **Samara Spencer** has been showing people exactly why she was voted SEC Freshman of the Year last season, while not displaying any signs of a sophomore slump
- Dominates the paint with her speed to the basket, can get to the free throw line and can shoot the 3-pointer with great accuracy
- Tallied her eighth double-digit scoring game of the season against Lamar with 17 points. She shot 16 free throws in that game after drawing 11

fouls

→ Logged a career-high 32 points against Oral Roberts, shooting 10-of-17 from the field with a career-high six 3-pointers, while also adding three assists and three steals

→ In last week's games versus Troy and ORU, **Spencer** averaged 25.5 points and 4.5 assists per game

→ Has registered three 20+-point games this season with 22 against Kent State, 27 against Northern Arizona and 32 against ORU

→ SEC statistical rankings: first in free throw attempts (72), fifth in assists (4.45), sixth in minutes (30.62), eighth in scoring (15.45), 12th in 3-pointers per game (1.82), 13th in assist/turnover ratio (1.36) and 15th in field goal percentage (.428)

→ NCAA statistical rankings: third in free throw attempts, 29th in total assists (49), 36th in total points (170) and 37th in field goal attempts (138)

→ **Spencer** averaged 12.2 points, 3.7 rebounds, 3.1 assists, 1.2 steals and 30.1 minutes per game last season

→ Led team with 96 total assists last season

OFF TO A GREAT START

→ **Erynn Barnum** is a constant threat to the competition down low

→ Logged eight rebounds and two blocks, and contributed three assists versus Lamar

→ No. 10 among active SEC players in career blocks (75)

→ SEC statistical rankings: first in field goal percentage (.667), eighth in defensive rebounds (4.91), ninth in rebounding (7.64) and 10th in scoring (14.82)

→ NCAA statistical rankings: eighth in FG percentage, 18th in free throw attempts (63), 42nd in total rebounds (84) and 49th in total points (163)

→ Has delivered double digits in scoring in all but three games and 6+ rebounds all but two contests

→ Before the game against Tulsa, she never had a 20-point game, but is coming off back-to-back 20-point games with a career-high 27 points and eight rebounds vs. Tulsa and 20 points with six boards against Kent State

→ Registered 15 points and 11 rebounds for her third career double-double versus UAPB

→ Longest tenured Razorback, approaching her fifth year on the team (redshirted in 2018-19)

→ Last season averaged 7.6 points and 4.8 rebounds per game. She started in 10 of 22 games, missing a large chunk due to injury

WATCH LIST SZN

→ **Erynn Barnum** was named to the Katrina McClain Award Preseason Watch List as one of the 20 best power forwards in the country

→ She is the first Arkansas player to be a candidate for this particular award and the first Razorback on a preseason watch list since prior to the 2020-21 season

MAK ATTACK

→ **Makayla Daniels** is one of the most underrated players in the country

→ Won Paradise Jam Reef Tournament MVP, averaging 17.3 points, 5.7 rebounds, 2.7 assists and 2.0 steals per game

→ Delivered season-high 21 points with five rebounds against Clemson in the Virgin Islands

→ Ranked No. 25 on the all-time scoring list with 1,134 points. The next stop is No. 24, which is held by **Amanda Holley** who had

WHAT'S HE SAYIN'?

Trying to figure out what Coach Neighbors is saying on the bench? Don't worry - he has a language all his own.

Coach Neighbors plays Positionless Basketball. Instead of having guards, forwards and centers, he has Rabbits, Rackers, Locks and Dragons.



Rabbits run the floor and look to score quickly with a layup.



Rackers bring the ball up the floor, and are trying to get to the rack.



Locks, generally good three-point shooters, are trying to win the race to the corners.



The Dragon is the last player down the court, dragging behind the others.

1,154 career points

→ Sits at No. 20 on the all-time assist list (245) and is seven away to tie **Shea Henderson** (252) at No. 19

→ Has fourth most steals (155), sixth most points, sixth most assists and 19th most rebounds among active SEC players

→ SEC statistical rankings: sixth in steals (2.11), eighth in free throw percentage (.750), 13th in assists (3.22), 13th in 3-pointers per game (1.78), 15th in assist/turnover ratio (1.26) and 19th in scoring (13.33)

→ Earned a spot on the SEC Preseason Second Team, her first recognition by the league since she was SEC Freshman of the Week in 2019-20

→ Became the 31st member of the 1,000-point club in the Razorbacks' final game last season in the NCAA Tournament versus Utah

→ Last season averaged 14.0 points and a team-leading 5.3 rebounds per game in the guard spot. **Daniels** also averaged 2.9 assists and 1.8 steals per game

POFFEN OFF!

→ **Saylor Poffenbarger** is the textbook definition of a big guard. If you need her to play any position one through five, she can handle it

→ Coming off two consecutive double-doubles after logging a career-high 17 points and 12 rebounds versus Lamar. That came after registering her first double-double against Oral Roberts, where she had 14 points and a career-high 13 rebounds

→ Has been named SEC Freshman of the Week for two straight weeks, being one of two freshmen in the league through the first four weeks of the season to receive the award

→ Played well at the Paradise Jam, where she averaged 12.3 points, 6.7 rebounds, 3.0 assists and 1.0 block and steal per game throughout those three games and was named SEC Freshman of the Week

→ SEC statistical rankings: second in defensive rebounding (7.09), fifth in minutes (30.66), seventh in rebounding (8.0) and 11th in blocks

OUR RECORD WHEN ...

Overall	11-0
Home / Away / Neutral	6-0/2-0/3-0
SEC	0-0
Home / Away	0-0/0-0
White Uniforms	8-0
Cardinal Uniforms	3-0
Anthracite Uniforms	0-0

LEADS/QUARTERS/HALFTIME/OT

Leading after the 1st quarter	9-0
Leading after the 2nd quarter/Half	9-0
Leading after the 3rd quarter	9-0
Leading at the half, home	5-0
Leading at the half, road/neutral	4-0
Tied at the half, home	0-0
Tied at the half, road/neutral	1-0
Games decided by 5 points or fewer	0-0
Games decided by 10 points or fewer	2-0
Leading with 5:00 left	10-0
Leading with 2:00 left	10-0
Overtime games	0-0

OFFENSE

Scoring less than 70 points	2-0
Scoring 70-79 points	4-0
Scoring 80-89 points	3-0
Scoring 90-99 points	2-0
Scoring 100+ points	0-0
2 Players Or Less in Double Figures	0-0
3 Players in Double Figures	5-0
4 Players in Double Figures	5-0
5 Players in Double Figures	1-0
5+ Players in Double Figures	0-0
When shooting 50 percent or higher	1-0
When shooting less than 50 percent	10-0

REBOUNDING/TURNOVERS

When outrebounding opponent	10-0
When outrebounded	1-0
When rebounds are even	0-0
When grabbing 10+ offensive reb	7-0
When forcing 15+ turnovers	8-0
When committing less than 15 turnovers	7-0
When committing 15+ turnovers	4-0

Top Scorers (Includes Ties)

Barnum	@UAPB, UCA, TU
Carr	@LR, K-ST, LU
Daniels	CLEM
Spencer	@UABP, Kent, NAU, Troy, ORU

Top Rebounders (Includes Ties)

Barnum	@UAPB, UCA, @LR, NAU, CLEM, Troy
Carr	NAU
Poffenbarger	TU, @LR, CLEM, ORU, LU
Spencer	Kent, K-ST

Months

November	8-0
December	3-0

(1.27)

→ NCAA statistical rankings: No. 28 in total rebounds (88) and No. 46 in total blocks (14)
 → Joined the team midway through last year after transferring from UConn. She was the No. 30th-ranked recruit in the 2021 class

TRANSFER PORTAL JACKPOT

→ **Chrissy Carr** has started in all but two collegiate games she has appeared in during her fifth collegiate season with 100+ starts
 → Led the Lamar game with 18 points, nailing down four big 3-pointers
 → Named to the Paradise Jam All-Tournament Team, averaging 14.7 points and 5.0 rebounds per game
 → Delivered a season-high 22 points off 7-of-10 shooting and four 3-pointers at Little Rock
 → SEC statistical rankings: second in 3-pointers per game (2.55) and 3-point field goal percentage (.346)
 → NCAA statistical rankings: sixth in 3-point attempts (81), 17th in total 3-pointers (28) and 69th in 3-pointers per game (2.55)
 → An overall well-rounded player, **Carr** can shoot, attack the basket to get to her midrange, rebound and defend. She also brings a great deal of veteran leadership
 → Averaged double digits, or near to it, all four years thus far with 9.8 PPG as a freshman and sophomore at Kansas State and a career-high 15.2 points and 4.9 rebounds per game as a junior. In her one year at Syracuse, averaged 11.7 points and 4.6 boards per game, while leading the team in 3-pointers (60) and shooting 36.3 percent from deep

TAKING ONE FOR THE TEAM

→ Being told to play in a position you have never played before is quite tough, especially as a freshman in college, but **Jersey Wolfenbarger** handled that task with ease
 → Coming off her second start of the season versus Lamar, where she had four points, six rebounds, three blocks and two steals
 → Usually the sixth-man but is coming off her first start of the season against Oral Roberts, where she did not disappoint with nine points, a career-high 12 rebounds and four blocks
 → **Wolfenbarger** played down low in just about every start last season, setting her up to play against some of the best bigs in the country, including Aliyah Boston (South Carolina), Jenna Staiti (Georgia) and Tamari Key (Tennessee), but that didn't stop her production
 → Starting to feel a groove back at wing, logging a season-high 11 points off 3-of-5 3-pointers vs. Troy
 → Last season, averaged 7.6 points, 4.3 rebounds and 0.9 blocks per game and named to the All-SEC Freshman Team
 → Double-doubled twice last season with 12 points/11 rebounds at Missouri and 12 points/10 boards at Texas A&M
 → High school accolades: McDonald's All-American, two-time Arkansas Gatorade Player of the Year, No. 7 overall recruit in the country and No. 1 wing player in ESPN HoopGurlz, Naismith HS Player of the Year and FIBA U19 World Cup medalist

THE GLUE

→ **Rylee Langerman** is a hustler and team player. She is willing to do the dirty work or anything her team needs to win
 → Often called "the glue girl" and a player everyone needs on a team to be successful
 → Played the most minutes among bench players against Lamar, tallying 18 minutes, while pulling down six rebounds
 → Logged her second career double-digit scoring contest with 10 points, five boards and four steals against Tulsa
 → Diving for a loose ball is now called a "Langerman"
 → Has easily become a fan favorite
 → **Langerman** was named to the 2022 SEC Community Service Team. She is a role model in the NWA community and beyond, as well as a positive light to those also affected by Alopecia
 → Her stats don't always show up on the box score, but if there's a loose ball, a ball going out of bounds or a tie-up, you can bet she's involved
 → Averaged 3.2 points and 3.7 rebounds across 19.2 minutes per game last season

NICE, YET INTIMIDATING

→ **Maryam Dauda** is primed to be one of the top bigs in the SEC in the near future. The scariest thing about her is she can not only take care of business down low, but she can shoot 3-pointers and make them too
 → With how matchups looked, only played six minutes against Lamar
 → Tallied her second double-digit scoring game of her freshman season with 10 points, eight rebounds and two blocks against Oral Roberts
 → Recovered from an ACL injury she suffered from in high school last season
 → Was a top player out of high school, as the No. 13 player in the country according to ESPN HoopGurlz. She was also a McDonalds All-American

SE OKLAHOMA'S BEST KEPT SECRET

→ Last year's freshmen class featured **Emrie Ellis** (Vanoss), who is capable of putting up triple-double type numbers

BY THE NUMBERS

1,134 Makayla Daniels is now No. 25 on the all-time scoring list with 1,134 points. She is 20 points away from the next spot on the list

28 Arkansas is 28-11 all-time against in-state opponents and 18-3 against Division I Arkansas opponents. A 42-year ban was put in place from Arkansas schools playing against one another, but that ban broke in 2019

21 The Razorbacks have cracked the AP Top 25 Poll for the first time this season, as well as first since the 2020-21 season. Arkansas came in at No. 21

11 Arkansas has started the season 11-0, which is the best start for the program since 2013 when the Razorbacks began the year 13-0. It's also tied for the No. 1 most wins in the NCAA (with Stanford and Virginia)

GAME-BY-GAME STARTERS IN 2022-23 (ALPHABETICAL)

OPPONENT	1	2	3	4	5
UAPB	Barnum	Carr	Daniels	Poffenbarger	Spencer
Central Arkansas	Barnum	Carr	Daniels	Poffenbarger	Spencer
Tulsa	Barnum	Carr	Daniels	Poffenbarger	Spencer
Kent State	Barnum	Carr	Daniels	Poffenbarger	Spencer
Little Rock	Barnum	Carr	Daniels	Poffenbarger	Spencer
Northern Arizona	Barnum	Carr	Daniels	Poffenbarger	Spencer
Clemson	Barnum	Carr	Daniels	Poffenbarger	Spencer
Kansas State	Barnum	Carr	Daniels	Poffenbarger	Spencer
Troy	Barnum	Carr	Daniels	Poffenbarger	Spencer
Oral Roberts	Barnum	Carr	Poffenbarger	Spencer	Wolfenbarger
Lamar	Barnum	Carr	Poffenbarger	Spencer	Wolfenbarger
Arkansas State					
Creighton					
Oregon					
Ohio State/USF					
LSU					
Kentucky					
Florida					
Missouri					
Vanderbilt					
LSU					
South Carolina					
Alabama					
Ole Miss					
Auburn					
Vanderbilt					
Missouri					
Tennessee					
Georgia					
Mississippi State					
Texas A&M					

→ A part of the rotation, playing 8.2 minutes per game, but with how matchups looked against Lamar on Thursday, logged two minutes and some change

→ Her best game this season was her five points off 2-of-3 shooting and two boards at Little Rock

→ **Ellis** saw a lot of time on the court as a rookie, appearing off the bench in 27 games to average 2.9 points, 2.1 rebounds, 0.8 blocks and 10.8 minutes per game

→ Her career-best game came when the team needed her the most against Auburn last season, tallying 11 points and five boards in the thrilling win

THE FRESHIES

→ The Razorbacks welcome two true freshmen to the mix

→ **Karley Johnson** was the lone member of the fall signing class and has appeared in six games, logging her first collegiate point off a free throw shot at Little Rock

→ **Johnson** is McDonald's All-American nominee and four-time Oklahoman's Super 5 Honorable Mention choice

→ **Loren Lindsey** is a 5-11 local product by way of Fayetteville High School. She joins the team as a walk-on

→ **Lindsey** has appeared in five games this season

VETERAN PRESENCE

→ The team has three players who have been on the team for 4+ years

→ Those three student-athletes are **Erynn Barnum**, **Makayla Daniels** and **Avery Hughes**

→ Expect to see more minutes from **Hughes** this season. A former walk-on, she earned a scholarship ahead of last season. She became the first walk-on for **Coach Neighbors** and staff at Arkansas

→ **Hughes** logged a season-high four points against Troy and has appeared in five games this year

→ **Hughes** appeared in 14 games last season, 37 overall in her career. She is known for being one of the hardest workers on the team

WE LOVE SASHA

→ **Sasha Goforth** has made the decision to sit out from the game of basketball this season. She is redshirting during the 2022-23 season and is still on scholarship, engages in team activities and supports the players and coaches in many ways

→ Last season after transferring from Oregon State, Goforth was the only Hog to start in all 32 games. She logged 11.5 points, 4.8 rebounds and 2.1 blocks per game last season

BACKCOURT MATES

→ **Samara Spencer** and **Makayla Daniels** can be categorized as one of the top point guard duos in the country

→ Together this year, the two are averaging a combined 28.8 PPG, 8.8 RPG and 6.5 APG

→ The two have combined for 15 double digit scoring games and four 20+-point contests

→ Last season, they combined for 39 double digit scoring games and eight 20+ point contests

YOU JUST GOT OUTREBOUNDED

→ Arkansas teams in the past few years have not been known to be efficient at rebounding, but this year's team has flipped the script

→ Leads the SEC in defensive rebound percentage at .766

→ The Razorbacks have outrebounded opponents in 10 of their 11 games with a rebounding margin of +7.36

→ Arkansas is No. 2 in defensive rebounds (33.5), No. 3 in rebounds per game (45.36) and sixth in rebounding margin in the SEC

→ Arkansas' defensive rebounds per game is No. 3 in the NCAA, while its rebounds per game is No. 15 and rebounding margin at 52

→ Had its best rebounding performance against Oral Roberts with a season-high 57

GETTING TO THE LINE

→ Arkansas is No. 1 at free throw attempts (28.45) and No. 2 at free throw makes (17.45) per game in the SEC

→ The Razorbacks are the best in the country at getting to the free throw line, leading the NCAA in attempts, while 11th in makes

→ Arkansas had its best performance at the line at Little Rock, shooting 23-of-30 for 76.7 percent from the charity stripe

→ The Razorbacks got to the line 31 times against Lamar

33333333333333333333

→ One thing about Arkansas women's basketball that hasn't changed is the team's ability to shoot from the outside

→ Arkansas is No. 1 in the SEC in 3-pointers per game (8.3), which is 37th in the NCAA

→ The team also leads the league in attempts per game (26.5), 21st in the country

→ The Razorbacks have launched 10+ 3-pointers in four games this year with a season-high 11 against Tulsa

CLEAN GAME

→ The team has been limiting turnovers to 14.6 per game, which is a little more than **Mike Neighbors** teams in the past, but still No. 5 in the SEC

→ Arkansas has committed less than 15 turnovers in seven of 11 games

DEFENSE! CLAP! CLAP!

→ Arkansas has improved remarkably on defense from last season

→ The team holds opponents to 57.1 points per game and a defensive field goal percentage of 33.0 (fourth in the SEC and 13th in the NCAA)

→ The Razorbacks held Lamar to just 17 second-half points off 17.2 percent shooting to hold the Cardinals to 50 points, a season low for Arkansas on defense

→ Arkansas' best defensive performance this season was its showing against No. 25 Kansas State, as the team held the Wildcats to 53 points and a field goal percentage of 27.3

→ Last season, Arkansas' defense held opponents to 66.5 points per game (11th in the SEC, 242nd in NCAA) and a 39.6 field goal percentage (seventh in SEC, 160th in NCAA)

WE ARE TALL

→ Six of the 12 Razorback players are above

6 feet

→ Arkansas fans can see a lineup consist of four players above 6-0 on the roster

CLASS OF 2023 SIGNEES

→ The Razorbacks added two talented players on National Signing Day and three more papers came through on Wednesday, Nov. 16

→ This class was ranked No. 14 prior to Signing Day, according to ESPN

→ **Maryn Archer** is from Derby, Kansas and is ranked by Prep Girls as the 29th-ranked player in the nation. She is a sharpshooter and will add depth to the Razorbacks' backcourt

→ **Jenna Lawrence** will stay in Northwest Arkansas with this 6-3 forward getting ready to eclipse 2,000 points in her high school career. She is a four-star recruit and currently ranked No. 61 in the 2023 HoopGurlz Recruiting Rankings

→ **Talih Scott** is listed as the No. 11 player in the country, according to the 2023 HoopGurlz Recruiting Rankings and is a consensus 5-star guard out of North Florida. She just surpassed 2,000 points in her high school career early this week (12/5)

→ **Carly Keats** is a junior college product from Jones College and averaged 14.2 points and 4.0 assists per game as a senior in high school

→ **Cristina Sanchez** is just the seventh ever international signee in Arkansas women's basketball history. She is a member of the Spanish National Team

ARKANSAS CAREER MILESTONES

MAKAYLA DANIELS

Points: No. 25 – 1,134
Assists: No. 19 – 245
FT Perc.: No. 9 – .787
3-Point Perc.: No. 9 – .355

ERYNN BARNUM

FG Perc.: No. 8 – .536
Rebounds: 424 – 76 away from 500



2022 Paradise Jam Reef Champions



HOMEGROWN HOGS

ERYNN BARNUM
R-SR. | F | LITTLE ROCK, ARKANSAS

LOREN LINDSEY
FR. | G | FAYETTEVILLE, ARKANSAS

AVERY HUGHES
SR. | G | BENTONVILLE, ARKANSAS

JERSEY WOLFENBARGER
SO. | G/F | FORT SMITH, ARKANSAS

MARYAM DAUDA
R-FR. | F | BENTONVILLE, ARKANSAS

- The Hogs' roster is Arkansas heavy, and that starts from the top down, as Head Coach Mike Neighbors, a University of Arkansas Alum, was born and raised in Greenwood, Arkansas
- Erynn Barnum, now in her redshirt senior season, is the oldest of the Arkansas clan. Barnum was playing the best basketball of her career last season during the non-conference slate until an injury sidelined her for a large portion of the SEC slate. In her nine appearances during non-conference play, Barnum averaged 11.2 points and 5.9 rebounds per game
- Loren Lindsey is a true freshman out of Fayetteville High School. She has joined the team as a walk-on after a successful career with the Bulldogs
- Senior Avery Hughes of Bentonville was the first walk-on of the Neighbors era at Arkansas and was put on scholarship prior to last season. She played in 14 games off the bench
- Jersey Wolfenbarger is one of the highest recruited players in the program's history. The 6-5 wing ranked No. 7 in the 2021 Hoopgurlz rankings was the Arkansas Gatorade Player of the Year twice in a row. She was named to the SEC All-Freshman Team and started in 23 contests
- After having to sit out last season with an ACL injury, Maryam Dauda is destined for a great year. She was a McDonald's All-American and Jordan Brand Classic Invitee and was ranked as the top-ranked post player in the ESPN Hoopgurlz rankings
- Not pictured: Sasha Goforth (redshirting) started all 32 games, averaging 11.5 points, 4.8 rebounds and 2.1 blocks per game last year



OKLAHOMIES

RYLEE LANGERMAN
JR. | G | NORMAN, OKLAHOMA

KARLEY JOHNSON
FR. | G | MUSTANG, OKLAHOMA

EMRIE ELLIS
SO. | F | VANOSS, OKLAHOMA

- On the Arkansas women's basketball roster, 75 percent are either from Arkansas or its bordering state of Oklahoma
- Rylee Langerman out of Norman, Oklahoma is the eldest of the Oklahoma bunch, going into her junior year. She played in all 32 games with seven starts, averaging 3.2 points and 3.7 rebounds per game

- Emrie Ellis appeared in 27 games last season to tally 2.9 points and 2.1 boards per game along with 22 blocks. Ellis is from Vanoss, a small town in the southeastern part of the state
- Karley Johnson is a true freshman and product of Mustang, just southwest of Oklahoma City. She was a McDonald's All-American nominee
- Not pictured: Ashlyn Sage (redshirting), who played in 15 games as a freshman last season and comes to Arkansas from Weatherford, Oklahoma



MARYLAND MAGIC

MAKAYLA DANIELS
SR. | G | FREDERICK, MARYLAND

SAYLOR POFFENBARGER
R-FR. | G | MIDDLETOWN, MARYLAND

- Makayla Daniels was the first ever Maryland signee in Arkansas women's basketball history
- Now, the Razorbacks have two from Little America with the addition of Saylor Poffenbarger in winter 2022
- Daniels has started in all 88 collegiate games she has appeared in, coming off last year as the leading returner in scoring and rebounding
- Poffenbarger, a UConn transfer, brings along a great deal of versatility. She was the No. 30 player in the ESPN Hoopgurlz rankings

2022-23 ROSTER @RAZORBACKWBB

NUMERICAL

NO.	NAME	POS	HT	CL	HOMETOWN/PREVIOUS SCHOOL	TWITTER
0	Saylor Poffenbarger	G	6-2	R-Fr.	Middletown, Md./UConn	@saylorpoff
2	Samara Spencer	G	5-7	So.	Fort Lauderdale, Fla./St. Thomas Aquinas	@samara-spencer
4	Erynn Barnum	F	6-2	R-Sr.	Little Rock, Ark./Little Rock Central	@erynnbee_
11	Rylee Langerman	G	5-9	Jr.	Norman, Okla./Christian Heritage	@rylang2
13	Sasha Goforth*	G	6-1	Jr.	Fayetteville, Ark./Oregon State	@goforthsasha
15	Ashlyn Sage*	G	6-2	So.	Weatherford, Okla./Weatherford	@ashlynsage15
20	Karley Johnson	G	5-9	Fr.	Mustang, Okla./Mustang	@karleyjohnsonOK
21	Loren Lindsey	G	5-11	Fr.	Fayetteville, Ark./Fayetteville	@lorenbailey7766
22	Avery Hughes	G	5-7	Sr.	Bentonville, Ark./Bentonville	@averyhughes00
24	Jersey Wolfenbarger	G	6-5	So.	Fort Smith, Ark./Northside	@jerseywolf4
30	Maryam Dauda	F	6-4	R-Fr.	Bentonville, Ark./Bentonville	@maryamdauda30
34	Chrissy Carr	G	6-1	R-Sr.	Eden Prairie, Minn./Syracuse	@chrissycarr4
43	Makayla Daniels	G	5-8	Sr.	Frederick, Md./Frederick	@makayladaniels5
55	Emrie Ellis	F	6-3	So.	Vanoss, Okla./Vanoss	@ellisemrie

* Redshirting 2022-23 season

COACHING STAFF

Title	Name	Year	Alma Mater
Head Coach	Mike Neighbors	6th Season	Arkansas, 1993
Associate Head Coach	Todd Schaefer	6th Season	Thomas More College, 1995
Assistant Coach	Pauline Love	6th Season	Southern Miss, 2010
Assistant Coach	Lacey Goldwire	4th Season	Oklahoma State, 2010
Director of Operations	Amber Shirey	35th Season	Arkansas, 1992
Special Assistant to the HC	Jeff Brazil	16th Season	Arkansas, 2010
Dir. of Student-Athlete Devel.	Jayci Stone	1st Season	Kansas State, 2008

ELIGIBILITY

Seniors (4)

Erynn Barnum
Chrissy Carr
Makayla Daniels
Avery Hughes

Juniors (1)

Rylee Langerman

Sophomores (4)

Emrie Ellis
Sasha Goforth (RS)
Samara Spencer
Jersey Wolfenbarger

Freshman (5)

Maryam Dauda (RS)
Karley Johnson
Loren Lindsey
Saylor Poffenbarger (RS)
Ashlyn Sage (RS)

BY STATE

ARKANSAS (6)

Erynn Barnum Little Rock
Maryam Dauda Bentonville
Sasha Goforth Fayetteville
Avery Hughes Bentonville
Loren Lindsey Fayetteville
Jersey Wolfenbarger Fort Smith

FLORIDA (1)

Samara Spencer Fort Lauderdale

MARYLAND (2)

Makayla Daniels Frederick
Saylor Poffenbarger Middletown

MINNESOTA (1)

Chrissy Carr Manhattan (Kan.)

OKLAHOMA (4)

Emrie Ellis Vanoss
Rylee Langerman Norman
Karley Johnson Mustang
Ashlyn Sage Weatherford

ALPHABETICAL

NO.	NAME	POS	HT	CL	HOMETOWN/PREVIOUS SCHOOL
4	Erynn Barnum	F	6-2	R-Sr.	Little Rock, Ark./LR Central HS
34	Chrissy Carr	G	6-1	R-Sr.	Eden Prairie, Minn./Syracuse
43	Makayla Daniels	G	5-8	Sr.	Frederick, Md./Frederick HS
30	Maryam Dauda	F	6-4	R-Fr.	Bentonville, Ark./Bentonville HS
55	Emrie Ellis	F	6-3	So.	Vanoss, Okla./Vanoss HS
13	Sasha Goforth*	G	6-1	Jr.	Fayetteville, Ark./Oregon State
22	Avery Hughes	G	5-7	Sr.	Bentonville, Ark./Bentonville HS
20	Karley Johnson	G	5-9	Fr.	Mustang, Okla./Mustang
11	Rylee Langerman	G	5-9	Jr.	Norman, Okla./Christian Heritage HS
0	Saylor Poffenbarger	G	6-2	R-Fr.	Middletown, Md./Middletown HS/UConn
15	Ashlyn Sage*	G	6-2	So.	Weatherford, Okla./Weatherford
2	Samara Spencer	G	5-7	So.	Fort Lauderdale, Fla./St. Thomas Aquinas HS
24	Jersey Wolfenbarger	G	6-5	So.	Fort Smith, Ark./Northside HS

FA-NETIK

PRONUNCIATIONS

2 Suh-MARE-uh

30 DOW-duh

55 em-REE



OFFENSE

Scored 110+ ----- 110, vs. Providence (11-16-98)
 Scored 100+ points at home ----- 105, vs. UCA (12-13-20)
 Scored 100+ points on the road ----- 108, at Ole Miss (2-16-20) | 108, Baylor (3-6-91)
 Scored 90-99 points ----- 92, vs. Oral Roberts (12-4-22)
 Scored 90+ points at home ----- 92, vs. Oral Roberts (12-4-22)
 Scored 90+ points on the road ----- 93, at Little Rock (11-20-22)
 Scored 80-89 points ----- 87, vs. Troy (12-1-22)
 Scored 80-89 points at home ----- 87, vs. Troy (12-1-22)
 Scored 80-89 points on the road ----- 87, at Mississippi State (2-27-22)
 Was held to 50-59 ----- 54, vs. No. 1 South Carolina (3-4-22)
 Was held to 49-40 ----- 42 at No. 9 South Carolina (1-25-18)
 Was held to 39-20 ----- 34, at LSU, 2-7-19
 Was held to 20 or less ----- N/A
 Made 40+ field goals ----- 40, vs. UCA (12-13-20)
 Made 17+ three-point field goals ----- 19, vs. Alabama (2-28-21)
 Made 10+ three-point field goals ----- 10, vs. Oral Roberts (12-4-22)
 Did not make 3-pointer (since 1986) ----- 0-10, at LSU, (2-7-19)
 Made 30 free throws ----- 30 (30-39), vs. No. 4 Baylor (12-6-20)
 Made 25 free throws ----- 29 (29-32), vs. Cal (12-5-21)
 Shot 50-59 or better ----- 50.0, vs. No. 12 LSU (1-27-22)
 Shot 60 percent or better ----- .625 (30-48), vs. Little Rock (11-20-22)
 Held to less than 30 percent ----- .273 (18-66), vs. Missouri (3-3-22)
 Held to less than 20 percent ----- .182 (10-55), vs. No. 6 Tennessee (1-8-12; L, 38-69)
 Had 20 or more assists in a game ----- 20, vs. Troy (12-1-22)

DEFENSE

Allowed 100 points ----- 104, at No. 4 South Carolina (1-18-21)
 Allowed 80-99 points ----- 92, vs. Utah (3-18-22)
 Held opponent to 40-49 points ----- 49, at Little Rock (11-20-22)
 Held opponent to 39-30 ----- 34, vs. UCA (11-11-22)
 Held an SEC opponent under 50 points in 3 cons. games ----- 47, vs. Auburn (1-29-15; W, 52-47),
 ----- Alabama (2-1-15; W, 53-42), #24/21 Georgia (2-9-15; W, 54-48)
 Held opponent to 29 points or less ----- 23, vs. Binghamton, 11-30-13
 Held an opponent under 15 points in a half ----- 14, vs. UCA (11-11-22)
 Held an opponent to 2 points in a quarter ----- 2, vs. UCA (12-13-20)
 Held opponent under 15 field goals ----- 12, vs. UCA (11-11-22)
 Held opponent to less than 30 percent shooting ----- 29.6 (21-71), vs. Oral Roberts (12-4-22)
 Held opponent to less than 20 percent shooting ----- 19.7 (13-66), vs. Northwestern State (12-15-19)
 Held opponent under 15 percent from 3-point ----- 7.7 (2-26), vs. Oral Roberts (12-4-22)
 Opponent did not make a 3-pointer ----- 0, vs. Tulsa (12-11-19)
 Had 70+ rebounds ----- 74, vs. Mississippi Valley State (11-24-89)
 Had 60-69 rebounds ----- 64, vs. Prairie View A&M (12-16-18)
 Had 50-59 rebounds ----- 57, vs. Oral Roberts (12-4-22)
 Had 10 or more blocked shots in a game ----- 11, vs. No. 1 South Carolina (3-4-22)
 Had 20 or more steals in a game ----- 20, vs. ORU (11-13-13)
 Had 15 or more steals in a game ----- 18, vs. UT Martin (12-29-19)
 Forced 25+ turnovers in a game ----- 28, vs. Northern Arizona (11-24-22)

OTHER

Won an overtime game ----- 61-52, vs. Missouri (3-3-22)
 Lost an overtime game ----- 86-83, at No. 7 Tennessee (1-31-22)
 Won a double overtime game ----- 73-72, vs. Florida (1-29-12)
 Lost a double overtime game ----- N/A
 Won a triple overtime game ----- 91-80 Win in 3OT, 2-10-13, at Alabama
 Played consecutive OT games ----- 1-24-16 at Auburn (lost); 1-28-16 vs. Florida (lost)
 Won regular season tournament ----- Paradise Jam (St. Thomas, U.S. Virgin Islands, Nov. 24-26, 2022)
 Defeated ranked team ----- 69-53, vs. No. 25 Kansas State (11-26-22)
 Defeated a ranked team on the road ----- 69-53 vs. No. 25 K-State (St. Thomas, U.S.V.I)
 All-time SEC win streak ----- 8 games (1-15-12: Auburn through 2-15-12: at Auburn)
 All-time SEC home win streak ----- 5 games (1-15-12: Auburn -- 2-9-12: South Carolina)
 ----- 5 games (1-14-21: Florida -- 2-28-21: Alabama)

A RAZORBACK PLAYER ...

Scored 20-24 points ----- 21, Makayla Daniels, vs. Clemson (11-25-22)
 Scored 25-29 points ----- 27, Samara Spencer, vs. Northern Arizona (11-24-22)
 Scored 30+ points ----- 32, Samara Spencer, vs. Oral Roberts (12-4-22)
 Scored 40+ points ----- 41, Chelsea Dungee vs. Auburn (2-10-19)
 Scored 20+ points 10 times in a season ----- Chelsea Dungee (20x | 2018-19)
 ----- Chelsea Dungee (11x | 2019-20)
 ----- Chelsea Dungee (17x | 2020-21)
 Double figures in 15 consecutive games (season) ----- Jessica Jackson, 11/11/16, LSU 1-8-17
 ----- Chelsea Dungee, 26 games, (2018-19 & 2019-20)
 ----- Chelsea Dungee, 31 games, (2019-20 & 2020-21)
 ----- Amber Ramirez, 16 games (2021-22)
 Five players scored double figures in 1 game ----- vs. Troy (12-1-22)
 ----- Spencer (19), Barnum (18), Carr (14), Wolfenbarger (11), Daniels (10)
 Five starters in double figures ----- at Mississippi State (2-27-22)
 ----- Goforth 20, Ramirez 15, Daniels 14, Wolfenbarger 13, Spencer 12
 Seven players scored in double figures in 1 game ----- vs. Northwestern State (11-9-18)
 ----- (Tolefree 19, Gaulden 16, Monk 12, Doumbia 11, Dungee 11, Thomas 11, Williams 10)
 Made 10+ field goals in a game ----- 10, Samara Spencer, vs. Oral Roberts (12-4-22)
 Attempted 20+ field goals in a game ----- 21, Samara Spencer, vs. Northern Arizona (11-4-22)
 Made 10 free throws in a game ----- 11, Amber Ramirez, vs. Missouri (1-9-22)
 Made 7 or more 3-pt FG in a game ----- 8, Amber Ramirez, Alabama (2-28-21)
 Attempted 10 or more 3-pt FG in a game ----- 12, Chrissy Carr, vs. Oral Roberts (12-4-22)
 Had 10-14 rebounds ----- 12, Saylor Poffenbarger, vs. Lamar (12-8-22)
 Had 15-19 rebounds ----- 21, Taylah Thomas, vs. New Orleans, 11-8-19
 Had 20+ rebounds ----- 21, Taylah Thomas, vs. New Orleans, 11-8-19
 Had 10 offensive reb - Records go back to 05-06 ----- 11, Melissa Wolff
 ----- vs. New Orleans (1-30-15)
 Had 10+ defensive reb - Records go back to 05-06 ----- 13, Saylor Poffenbarger, vs. Oral Roberts (12-4-22)
 Had 10+ assists ----- 10, Destiny Slocum, at Missouri (2-4-21)
 Had 10+ assists in consecutive games ----- Jailyn Mason (11 vs. HBU, 12-28-16 and 10 at Ole
 ----- Miss, 1-1-17), Calli Berna (11 vs. No. 10/8 Kentucky, 2/7/13 and 11 at Alabama, 2/10/13)
 Had 5+ blocks in a game ----- 5, Sasha Goforth, vs. Missouri (3-3-22)
 Had 9+ blocks in a game ----- 9, Robyn Irwin vs. SMSU, 12-19-88 (school record)
 Had 5 or more steals in a game ----- 5, Erynn Barnum, vs. Clemson (11-25-22)
 Had a double-double ----- 17 points, 12 rebounds, Saylor Poffenbarger, vs. Lamar (12-8-22)
 Had a double-double in two consecutive games ----- Saylor Poffenbarger, vs. Oral Roberts, vs. Lamar (2022)
 ----- 14 & 13 vs. ORU/17 & 12 vs. Lamar
 Had two players record a double-double ----- Kiara Williams (12 pts/16 reb) &
 ----- Malica Monk (10 pts/10 reb), vs. Grambling State (12-28-17)
 Had seven double-doubles in a season ----- Devin Cosper, 2017-18
 ----- (SHSU, ORU, NMSU, Char., Tulsa, OM, AL)
 Had 10+ double-doubles in a season ----- 2006-07, Lauren Ervin (14)
 Had a triple-double ----- 14 pts, 13 reb, 12 asts, C'eira Ricketts vs. Auburn (1-18-09)

MORE ABOUT MIKE

Hometown: Greenwood, Ark. (Greenwood HS)
 Family: Daughter Abby; Sons Alec, Bowen and Barrett
 Alma Mater: Arkansas, 1993

NEIGHBORS BY THE NUMBERS

- 194 Wins (194-105, 9 seasons)
- 5 Players drafted in the WNBA (HC)
- 14 Signed McDonalds' All-Americans
- 10 Years as a head coach
- 8 Postseason appearances
- 1 Final Four appearance



LEARN MORE

Sign up for Mike Neighbors' news-letter and listen to his podcasts at CoachNeighbors.com

NABES FAVES

TOP 10 MOVIES

1. A Few Good Men
2. The Hunt For Red October
3. The Silence Of The Lambs
4. Hoosiers
5. Moneyball
6. Pretty Woman
7. Top Gun
8. JFK
9. The Lion King
10. Purple Rain

See the entire list here: <http://imdb.to/2royaEO>

TOP 10 SONGS

1. Sweet Child O' Mine (Guns N' Roses)
2. You Shook Me All Night Long (AC/DC)
3. Man In The Mirror (Michael Jackson)
4. Amarillo By Morning (George Strait)
5. Jessie's Girl (Rick Springfield)
6. Hysteria (Def Leppard)
7. Fishin' In The Dark (Nitty Gritty Dirt Band)
8. The Ballad of Curtis Loew (Lynyrd Skynyrd)
9. Wanted Dead Or Alive (Bon Jovi)
10. Let's Go Crazy (Prince)

TOP 10 TV SHOWS

1. West Wing (first three seasons)
2. Ted Lasso
3. The Wire
4. Breaking Bad
5. Seinfeld
6. The Newsroom
7. Prison Break
8. Arrested Development
9. Game of Thrones
10. The Goldbergs



MIKE NEIGHBORS

THE MOST INTERESTING COACH IN COLLEGE BASKETBALL
 Sixth Season | Career Record: 205-105 (10) | Arkansas Record: 107-64 (6)

Arkansas women's basketball has been transformed into a nationally recognized program in just five short years thanks to head coach Mike Neighbors. During his time back home at his alma mater, Neighbors has guided his Hogs to the best five-year period of sustained success in program history. The proof of his success, and the success of his system, lies in the numbers - Neighbors has accumulated 194 wins during his nine seasons as a head coach, which is the most of any Division I head coach who has been a head coach for nine years.

Entering his sixth season on the bench for Arkansas, the program is coming off its fourth consecutive winning season and second straight NCAA Tournament appearance (would be three had the 2020 NCAA Tournament not have been cancelled due to the COVID-19 pandemic). The Hogs' NCAA Tournament appearance in 2022 marked the first time since 2003 the program had played in back-to-back NCAA Tournaments (2002 and 2003). Arkansas finished yet another season with one of the most prolific offenses in the Southeastern Conference, leading the league in 3-pointers per game (8.1) and 3-point attempts (810), while finishing second in scoring offense (73.6 PPG). Neighbors' 2021-22 team was efficient at taking care of the basketball, leading the league in assist/turnover ratio (1.12) and fewest turnovers per game (11.1), which was fourth in the country. The Hogs were just one of six teams in the nation to commit two turnovers in a game (vs. Missouri on Jan. 9, 2022), which led the country.

Under Neighbors' leadership, Samara Spencer became the first Hog to win SEC Freshman of the Year since 2009, while Amber Ramirez was named an All-SEC Second Team choice and Jersey Wolfenbarger was tabbed to the SEC All-Freshman Team. Ramirez, who played three stellar seasons on the court as a Hog, finished the season second in 3-pointers per game (2.6) and 3-point percentage (40.2), as well as ninth in points per game (15.4) in the SEC. The Hogs were also just one of four SEC schools with 4+ players who averaged double digits (Ramirez [15.4], Makayla Daniels [14.0], Spencer [12.2] and Sasha Goforth [11.5]).

TIMELINE

- Bentonville HS Head Coach 1994-98
- Cabot HS Head Coach 1998-99
- Arkansas Director of Ops 1999-01
- Tulsa Univ. Assistant Coach 2001-05
- Univ. of Colorado Assistant Coach 2005-06
- Univ. of Arkansas Assistant Coach 2006-07
- Xavier Assistant Coach 2007-2011
- Univ. of Washington Assistant Coach 2011-13
- Univ. of Washington Head Coach 2013-17
- Univ. of Arkansas Head Coach 2017-present

COACHING DEVELOPMENT

Coach	w/Nabes	Now
Chantel Osahor	'20, '21	AC Oklahoma
Fred Castro	'14, '15, '16	HC Eastern Michigan
Adia Barnes	'14, '15	HC Arizona
Adam Call	'14	AC George Washington
Morgan Valley	'16	AC UConn
Todd Schaefer	'16-Pres.	AHC Arkansas

COACHING HISTORY

Year	Overall	Pac-12	Finish
2013-14	20-14 (.588)	10-8 (.556)	6
2014-15	23-10 (.697)	11-7 (.611)	5
2015-16	26-11 (.703)	11-7 (.611)	5
2016-17	29-6 (.829)	15-3 (.833)	T-2
UW	98-41 (.705)	47-25 (.662)	

Year	Overall	SEC	Finish
2017-18	13-18 (.419)	3-13 (.188)	T-11
2018-19	22-15 (.611)	6-10 (.375)	10
2019-20	24-8 (.750)	10-6 (.625)	T3
2020-21	19-9 (.679)	9-6 (.600)	T5
2021-22	18-14 (.563)	7-9 (.438)	T8
2022-23	10-0 (1.000)	-	-
Ark	106-64 (.624)	35-44 (.443)	

Totals	205-105 (.661)	82-69 (.543)	10 yrs
--------	----------------	--------------	--------

PLAYER DEVELOPMENT

YEAR	UNIVERSITY	PLAYER	ROUND	OVERALL	TEAM NOTE
2021	Arkansas	Chelsea Dungee	1	5	Dallas Wings ! @
2021	Arkansas	Destiny Slocum	2	14	Las Vegas Aces ! @
2021	Arizona	Aari McDonald	1	3	Atlanta Dream @
2017	Washington	Kelsey Plum	1	1	San Antonio Stars ! @ Las Vegas Aces Chicago Sky ! @
2016	Washington	Chantel Osahor	2	21	Los Angeles Sparks ! @
2011	Xavier	Talia Walton	3	29	Minnesota Lynx ! #
	Xavier	Amber Harris	1	4	Atlanta Dream ! #
	Xavier	Ta'Shia Phillips	1	8	Seattle Storm #
	TAMU/UAFS	Tanisha Smith	2	22	Phoenix Mercury *
	Colorado	Brittany Spears	2	19	New York Liberty S
2009	Arkansas	Shameka Christon	1	5	Connecticut Sun ! #
2008	Arkansas	Lauren Ervin	3	37	Houston Comets
2006	Tulsa	Megan Moody	-	-	Free Agent #
2003	Tulsa	Allison Curtin	1	12	Houston Comets ! # Traded to Detroit Shock
	Arkansas	Dana Cherry	2	23	Charlotte Sting S

*- Signed but did not coach

!- At the school when player was drafted

@- Worked with player as a head coach

#- Worked with player as an assistant coach

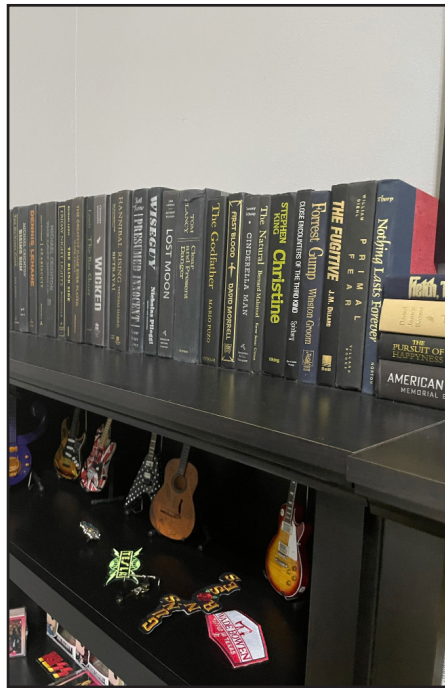
\$- Worked with player as other (GA, etc)

NABES VS. ARKANSAS HISTORY

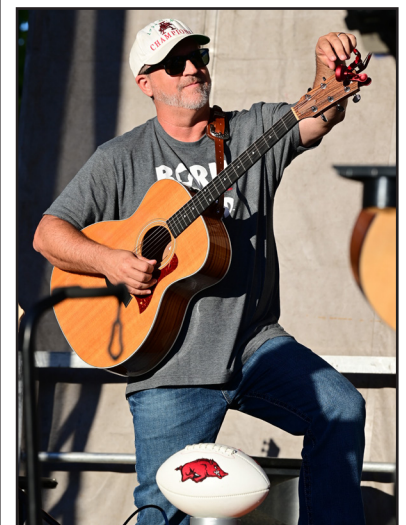
Category	NABES	All Others In Program History
Winning Record In SEC Play	2 Seasons	2 Seasons
SEC Tourney Finals	1	0
Top 5 Wins	2	2
Weeks Ranked in AP Top 25	35	63
Top 15 WNBA Draft Picks	2	1
McDonald's AAs Signed	5	1
WBCA AAs	1	1

THE MOST INTERESTING MAN IN COLLEGE BASKETBALL

- Movies: His expansive movie collection includes digital, disk and VHS copies. Did you know he used to work at BlockBuster? On a related note, he also collects books that have been turned into movies.
- Baseballs autographed by movie stars: Ask him about this collection – talk about some good stories.
- Lunch Boxes: Coach collects tin lunch boxes that he carried to school and has them displayed in his home. His first lunch box had KISS on it.
- Hamilton: Nabes is a huge Hamilton fan, and routinely quotes the Broadway musical to players, fans and media alike.
- Athens City Champion: Coach stumbled upon a dart tournament while on a trip to Athens, Georgia. He joined in and was one of the two–man winning team.
- Ask him about shoes, music, movies, guitars, basketball nostalgia – just about anything!



NEIGHBORS VERSUS ...	Fresno State	2	0	New Orleans	1	0	Tarleton State	1	0		
Abilene Christian	2	0	Furman	1	0	Northern Arizona	1	0	TCU	0	1
Alabama	5	1	Georgia	1	6	Northwestern State	2	0	Tennessee	2	4
Arizona State	2	6	Grambling State	2	0	Notre Dame	0	1	Tennessee Martin	1	0
Arizona	6	0	Grand Canyon	1	0	Oklahoma	1	2	Tennessee State	1	0
Arkansas State	1	0	Hartford	1	0	Ole Miss	5	2	Tennessee Tech	1	0
Auburn	6	1	Hawai'i	1	0	Oral Roberts	5	0	Texas A&M	3	8
Baylor	1	0	Houston	2	0	Oregon State	1	6	Texas Tech	1	0
Belmont	2	0	Idaho	1	0	Oregon	5	3	Troy	1	0
Boise State	1	0	Iowa State	0	1	Pennsylvania	1	0	Tulsa	4	0
BYU	1	0	Jackson State	2	0	Pittsburgh	1	1	UAB	1	0
California	5	4	Kansas	0	1	Portland	3	1	UAPB	3	0
Central Arkansas	3	0	Kansas State	2	0	Prairie View A&M	1	0	UC Irvine	1	0
Central Florida	0	1	Kent State	1	0	Saint Mary's	0	1	UC Riverside	2	0
Charlotte	1	0	Kentucky	2	5	Sam Houston	2	0	UCLA	4	2
Clemson	1	0	Lamar	1	0	Samford	1	0	USC	6	0
Colorado State	1	0	Little Rock	4	0	San Diego State	2	0	Utah	7	4
Colorado	9	0	Louisiana–Monroe	2	0	San Diego	1	0	UT–Arlington	2	0
Connecticut	1	1	LSU	3	2	Santa Clara	1	0	UTEP	0	2
Creighton	0	1	McNeese State	1	0	Savannah State	1	0	Vanderbilt	3	2
CSUN	1	0	Maryland	1	1	Seattle	4	0	Wake Forest	1	0
DePaul	0	1	Miami	0	1	SMU	2	0	Washington State	5	3
Eastern Washington	1	0	Mississippi State	3	5	South Carolina	1	8	Weber State	1	0
Florida State	1	0	Missouri	8	4	South Dakota	2	0	Wisconsin	3	0
Florida	3	3	Montana State	2	0	Stanford	3	5	Wright State	0	1
FGCU	1	0	Nebraska	1	1	Stony Brook	1	0	Yale	1	0
Fordham	1	0	New Mexico State	1	0	Syracuse	0	2	TOTALS	205	105





2022-23 Arkansas Women's Basketball Combined Team Statistics All games

Game Records

Record	Overall	Home	Away	Neutral
ALL GAMES	11-0	6-0	2-0	3-0
CONFERENCE	0-0	0-0	0-0	0-0
NON-CONFERENCE	11-0	6-0	2-0	3-0

Score by Periods

Team	1st	2nd	3rd	4th	OT	TOT
Arkansas	211	213	235	204	0	863
Opponents	156	130	151	191	0	628

Team Box Score

No.	Player	Total					3-Point		F-Throw		Rebounds				PF	DQ	A	TO	BLK	STL	PTS	AVG
		GP-GS	MIN	AVG	FG-FGA	FG%	3FG-3FGA	3FG%	FT-FTA	FT%	OFF	DEF	TOT	AVG								
2	SPENCER, Samara	11-11	336:46	30.6	59-138	.428	20-64	.313	32-72	.444	2	43	45	4.1	24	0	49	36	1	12	170	15.5
4	BARNUM, Erynn	11-11	269:51	24.5	62-93	.667	1-6	.167	38-63	.603	30	54	84	7.6	21	0	18	23	12	19	163	14.8
43	DANIELS, Makayla	9-9	258:18	28.7	34-85	.400	16-40	.400	36-48	.750	8	34	42	4.7	19	0	29	23	1	19	120	13.3
34	CARR, Chrissy	11-11	300:29	27.3	47-115	.409	28-81	.346	24-28	.857	12	36	48	4.4	17	0	3	13	1	3	146	13.3
0	POFFENBARGER, Saylor	11-11	337:17	30.7	34-92	.370	12-44	.273	23-35	.657	10	78	88	8.0	24	0	30	26	14	7	103	9.4
24	WOLFENBARGER, Jersey	11-2	204:29	18.6	18-57	.316	5-24	.208	11-19	.579	16	34	50	4.5	14	0	3	7	9	5	52	4.7
30	DAUDA, Maryam	11-0	166:11	15.1	20-46	.435	3-9	.333	9-15	.600	19	27	46	4.2	26	0	6	16	8	5	52	4.7
11	LANGERMAN, Rylee	11-0	204:51	18.6	12-31	.387	5-19	.263	12-23	.522	12	27	39	3.5	21	0	8	8	1	11	41	3.7
22	HUGHES, Avery	5-0	16:22	3.3	1-4	.250	0-0	.000	5-6	.833	0	0	0	0.0	3	0	1	2	0	0	7	1.4
55	ELLIS, Emrie	9-0	73:35	8.2	3-13	.231	1-4	.250	1-2	.500	1	9	10	1.1	8	0	0	5	0	1	8	0.9
20	JOHNSON, Karley	6-0	20:37	3.4	0-1	.000	0-0	.000	1-2	.500	1	1	2	0.3	0	0	1	0	0	2	1	0.2
21	LINDSEY, Loren	5-0	11:13	2.2	0-0	.000	0-0	.000	0-0	.000	0	0	0	0.0	0	0	0	0	0	0	0	0.0
Team											19	26	45					2				
Total		11	2200		290-675	.430	91-291	.313	192-313	.613	130	369	499	45.4	177	0	148	161	47	84	863	78.5
Opponents		11	2200		225-681	.330	64-228	.281	114-182	.626	113	305	418	38.0	263	8	93	197	27	66	628	57.1

Team Statistics

	ARK	OPP
Scoring	863	628
Points per game	78.5	57.1
Scoring margin	+21.4	-
Field goals-att	290-675	225-681
Field goal pct	.430	.330
3 point fg-att	91-291	64-228
3-point FG pct	.313	.281
3-pt FG made per game	8.3	5.8
Free throws-att	192-313	114-182
Free throw pct	.613	.626
F-Throws made per game	17.5	10.4
Rebounds	499	418
Rebounds per game	45.4	38.0
Rebounding margin	+7.4	-
Assists	148	93
Assists per game	13.5	8.5
Turnovers	161	197
Turnovers per game	14.6	17.9
Turnover margin	+3.3	-
Assist/turnover ratio	0.9	0.5
Steals	84	66
Steals per game	7.6	6.0
Blocks	47	27
Blocks per game	4.3	2.5
Winning streak	11	-
Home win streak	6	-
Attendance	20420	6007
Home games-Avg/Game	6-3403	2-3004
Neutral site-Avg/Game	-	3-1249

Team Results

Date	Opponent		Score	Att.
11/07/2022	at Ark.-Pine Bluff	W	70-50	3128
11/11/2022	Central Ark.	W	72-34	7410
11/14/2022	Tulsa	W	79-70	2511
11/17/2022	Kent St.	W	80-59	2265
11/20/2022	at Little Rock	W	93-49	2879
11/24/2022	vs Northern Ariz.	W	82-73	0
11/25/2022	vs Clemson	W	76-62	1724
11/26/2022	vs Kansas St.	W	69-53	2024
12/01/2022	Troy	W	87-70	3019
12/04/2022	Oral Roberts	W	92-58	2947
12/08/2022	Lamar University	W	63-50	2268



2022-23 Arkansas Women's Basketball
Team High/Low Analysis
All games

Page 1/4
as of Dec 09, 2022

Arkansas - Game Highs

POINTS	93	at Little Rock (11/20/2022)
	92	Oral Roberts (12/04/2022)
	87	Troy (12/01/2022)
	82	vs Northern Ariz. (N) (11/24/2022)
	80	Kent St. (11/17/2022)
FIELD GOALS MADE	33	Oral Roberts (12/04/2022)
	31	Troy (12/01/2022)
FIELD GOAL ATTEMPTS	74	Oral Roberts (12/04/2022)
	72	Tulsa (11/14/2022)
FIELD GOAL PERCENTAGE	.625 (30-48)	at Little Rock (11/20/2022)
	.479 (23-48)	vs Clemson (N) (11/25/2022)
3 PT FG MADE	11	Troy (12/01/2022)
	11	Tulsa (11/14/2022)
3 PT FG ATTEMPTS	39	Tulsa (11/14/2022)
	37	Troy (12/01/2022)
3 PT FG PERCENTAGE	.526 (10-19)	at Little Rock (11/20/2022)
	.391 (9-23)	vs Clemson (N) (11/25/2022)
FREE THROWS MADE	23	at Little Rock (11/20/2022)
	22	Central Ark. (11/11/2022)
FREE THROW ATTEMPTS	46	at Ark.-Pine Bluff (11/07/2022)
	35	vs Clemson (N) (11/25/2022)
	35	Central Ark. (11/11/2022)
FREE THROW PERCENTAGE	.767 (23-30)	at Little Rock (11/20/2022)
	.700 (21-30)	vs Northern Ariz. (N) (11/24/2022)
REBOUNDS	57	Oral Roberts (12/04/2022)
	56	at Ark.-Pine Bluff (11/07/2022)
ASSISTS	20	Troy (12/01/2022)
	19	Kent St. (11/17/2022)
STEALS	12	at Ark.-Pine Bluff (11/07/2022)
	9	vs Kansas St. (N) (11/26/2022)
	9	vs Clemson (N) (11/25/2022)
	9	vs Northern Ariz. (N) (11/24/2022)
BLOCKED SHOTS	9	Lamar University (12/08/2022)
	9	Oral Roberts (12/04/2022)
TURNOVERS	23	vs Clemson (N) (11/25/2022)
	22	at Little Rock (11/20/2022)
FOULS	22	at Little Rock (11/20/2022)
	19	Troy (12/01/2022)
	19	vs Clemson (N) (11/25/2022)



2022-23 Arkansas Women's Basketball Team High/Low Analysis All games

Arkansas - Game Lows

POINTS	63	Lamar University (12/08/2022)
	69	vs Kansas St. (N) (11/26/2022)
	70	at Ark.-Pine Bluff (11/07/2022)
	72	Central Ark. (11/11/2022)
	76	vs Clemson (N) (11/25/2022)
FIELD GOALS MADE	21	Lamar University (12/08/2022)
	22	Central Ark. (11/11/2022)
	22	at Ark.-Pine Bluff (11/07/2022)
FIELD GOAL ATTEMPTS	48	Lamar University (12/08/2022)
	48	vs Clemson (N) (11/25/2022)
	48	at Little Rock (11/20/2022)
FIELD GOAL PERCENTAGE	.314 (22-70)	at Ark.-Pine Bluff (11/07/2022)
	.347 (25-72)	Tulsa (11/14/2022)
3 PT FG MADE	5	vs Northern Ariz. (N) (11/24/2022)
	5	at Ark.-Pine Bluff (11/07/2022)
3 PT FG ATTEMPTS	19	at Little Rock (11/20/2022)
	21	at Ark.-Pine Bluff (11/07/2022)
3 PT FG PERCENTAGE	.217 (5-23)	vs Northern Ariz. (N) (11/24/2022)
	.238 (5-21)	at Ark.-Pine Bluff (11/07/2022)
FREE THROWS MADE	11	vs Kansas St. (N) (11/26/2022)
	11	Kent St. (11/17/2022)
FREE THROW ATTEMPTS	16	vs Kansas St. (N) (11/26/2022)
	16	Kent St. (11/17/2022)
FREE THROW PERCENTAGE	.452 (14-31)	Lamar University (12/08/2022)
	.457 (21-46)	at Ark.-Pine Bluff (11/07/2022)
REBOUNDS	37	Lamar University (12/08/2022)
	41	Troy (12/01/2022)
	41	vs Kansas St. (N) (11/26/2022)
ASSISTS	9	at Ark.-Pine Bluff (11/07/2022)
	10	Lamar University (12/08/2022)
	10	Central Ark. (11/11/2022)
STEALS	3	at Little Rock (11/20/2022)
	5	Oral Roberts (12/04/2022)
BLOCKED SHOTS	1	vs Clemson (N) (11/25/2022)
	2	at Little Rock (11/20/2022)
	2	Tulsa (11/14/2022)
	2	at Ark.-Pine Bluff (11/07/2022)
TURNOVERS	8	Oral Roberts (12/04/2022)
	9	Tulsa (11/14/2022)
FOULS	12	Kent St. (11/17/2022)
	13	Lamar University (12/08/2022)



2022-23 Arkansas Women's Basketball
Category Leaders
All games

Page 1/3
as of Dec 09, 2022

Points

##	Player	G	Pts	Pts/G
2	Spencer, Samara	11	170	15.5
4	Barnum, Erynn	11	163	14.8
34	Carr, Chrissy	11	146	13.3
43	Daniels, Makayla	9	120	13.3
0	Poffenbarger, Saylor	11	103	9.4
24	Wolfenbarger, Jersey	11	52	4.7
30	Dauda, Maryam	11	52	4.7
11	Langerman, Rylee	11	41	3.7
55	Ellis, Emrie	9	8	0.9
22	Hughes, Avery	5	7	1.4
20	Johnson, Karley	6	1	0.2

Scoring Average

##	Player	G	Pts	Pts/G
2	Spencer, Samara	11	170	15.5
4	Barnum, Erynn	11	163	14.8
43	Daniels, Makayla	9	120	13.3
34	Carr, Chrissy	11	146	13.3
0	Poffenbarger, Saylor	11	103	9.4
24	Wolfenbarger, Jersey	11	52	4.7
30	Dauda, Maryam	11	52	4.7
11	Langerman, Rylee	11	41	3.7
22	Hughes, Avery	5	7	1.4
55	Ellis, Emrie	9	8	0.9
20	Johnson, Karley	6	1	0.2

Field Goal Percentage

##	Player	FG	Att	Pct
4	Barnum, Erynn	62	93	.667
30	Dauda, Maryam	20	46	.435
2	Spencer, Samara	59	138	.428
34	Carr, Chrissy	47	115	.409
43	Daniels, Makayla	34	85	.400
11	Langerman, Rylee	12	31	.387
0	Poffenbarger, Saylor	34	92	.370
24	Wolfenbarger, Jersey	18	57	.316
22	Hughes, Avery	1	4	.250
55	Ellis, Emrie	3	13	.231

Field Goal Attempts

##	Player	G	Att	Att/G
2	Spencer, Samara	11	138	12.5
34	Carr, Chrissy	11	115	10.5
4	Barnum, Erynn	11	93	8.5
0	Poffenbarger, Saylor	11	92	8.4
43	Daniels, Makayla	9	85	9.4

Field Goals Made

##	Player	G	Made	Made/G
4	Barnum, Erynn	11	62	5.6
2	Spencer, Samara	11	59	5.4
34	Carr, Chrissy	11	47	4.3
43	Daniels, Makayla	9	34	3.8
0	Poffenbarger, Saylor	11	34	3.1

3-Point FG Percentage

##	Player	3FG	Att	Pct
43	Daniels, Makayla	16	40	.400
34	Carr, Chrissy	28	81	.346
30	Dauda, Maryam	3	9	.333
2	Spencer, Samara	20	64	.313
0	Poffenbarger, Saylor	12	44	.273
11	Langerman, Rylee	5	19	.263
55	Ellis, Emrie	1	4	.250
24	Wolfenbarger, Jersey	5	24	.208
4	Barnum, Erynn	1	6	.167

3-Point FG Attempts

##	Player	G	Att	Att/G
34	Carr, Chrissy	11	81	7.4
2	Spencer, Samara	11	64	5.8
0	Poffenbarger, Saylor	11	44	4.0
43	Daniels, Makayla	9	40	4.4
24	Wolfenbarger, Jersey	11	24	2.2

3-Point FG Made

##	Player	G	Made	Made/G
34	Carr, Chrissy	11	28	2.5
2	Spencer, Samara	11	20	1.8
43	Daniels, Makayla	9	16	1.8
0	Poffenbarger, Saylor	11	12	1.1
24	Wolfenbarger, Jersey	11	5	0.5

Free Throw Percentage

##	Player	Made	Att	Pct
34	Carr, Chrissy	24	28	.857
22	Hughes, Avery	5	6	.833
43	Daniels, Makayla	36	48	.750
0	Poffenbarger, Saylor	23	35	.657
4	Barnum, Erynn	38	63	.603
30	Dauda, Maryam	9	15	.600
24	Wolfenbarger, Jersey	11	19	.579
11	Langerman, Rylee	12	23	.522
55	Ellis, Emrie	1	2	.500
20	Johnson, Karley	1	2	.500
2	Spencer, Samara	32	72	.444

Rebounds

##	Player	G	Reb	Reb/G
0	Poffenbarger, Saylor	11	88	8.0
4	Barnum, Erynn	11	84	7.6
24	Wolfenbarger, Jersey	11	50	4.5
34	Carr, Chrissy	11	48	4.4
30	Dauda, Maryam	11	46	4.2

Rebounds Average

##	Player	G	Reb	Reb/G
0	Poffenbarger, Saylor	11	88	8.0
4	Barnum, Erynn	11	84	7.6
43	Daniels, Makayla	9	42	4.7
24	Wolfenbarger, Jersey	11	50	4.5
34	Carr, Chrissy	11	48	4.4

Offensive Rebounds

##	Player	G	OReb	OReb/G
4	Barnum, Erynn	11	30	2.7
30	Dauda, Maryam	11	19	1.7
24	Wolfenbarger, Jersey	11	16	1.5
34	Carr, Chrissy	11	12	1.1
11	Langerman, Rylee	11	12	1.1

Defensive Rebounds

##	Player	G	DReb	DReb/G
0	Poffenbarger, Saylor	11	78	7.1
4	Barnum, Erynn	11	54	4.9
2	Spencer, Samara	11	43	3.9
34	Carr, Chrissy	11	36	3.3
43	Daniels, Makayla	9	34	3.8

Fouls

##	Player	G	PF	PF/G
30	Dauda, Maryam	11	26	2.4
2	Spencer, Samara	11	24	2.2
0	Poffenbarger, Saylor	11	24	2.2
4	Barnum, Erynn	11	21	1.9
11	Langerman, Rylee	11	21	1.9

Foul Outs

##	Player	G	FO
----	--------	---	----

Free Throw Attempts

##	Player	G	Att	Att/G
2	Spencer, Samara	11	72	6.5
4	Barnum, Erynn	11	63	5.7
43	Daniels, Makayla	9	48	5.3
0	Poffenbarger, Saylor	11	35	3.2
34	Carr, Chrissy	11	28	2.5

Free Throws Made

##	Player	G	Made	Made/G
4	Barnum, Erynn	11	38	3.5
43	Daniels, Makayla	9	36	4.0
2	Spencer, Samara	11	32	2.9
34	Carr, Chrissy	11	24	2.2
0	Poffenbarger, Saylor	11	23	2.1

Assists

##	Player	G	Ast	Ast/G
2	Spencer, Samara	11	49	4.5
0	Poffenbarger, Saylor	11	30	2.7
43	Daniels, Makayla	9	29	3.2
4	Barnum, Erynn	11	18	1.6
11	Langerman, Rylee	11	8	0.7

Steals

##	Player	G	Stl	Stl/G
4	Barnum, Erynn	11	19	1.7
43	Daniels, Makayla	9	19	2.1
2	Spencer, Samara	11	12	1.1
11	Langerman, Rylee	11	11	1.0
0	Poffenbarger, Saylor	11	7	0.6

Blocked Shots

##	Player	G	Blk	Blk/G
0	Poffenbarger, Saylor	11	14	1.3
4	Barnum, Erynn	11	12	1.1
24	Wolfenbarger, Jersey	11	9	0.8
30	Dauda, Maryam	11	8	0.7
2	Spencer, Samara	11	1	0.1

Minutes

##	Player	G	Min	Min/G
0	Poffenbarger, Saylor	11	337	30:40
2	Spencer, Samara	11	337	30:37
34	Carr, Chrissy	11	300	27:19
4	Barnum, Erynn	11	270	24:32
43	Daniels, Makayla	9	258	28:42

Turnovers

##	Player	G	TO	TO/G
2	Spencer, Samara	11	36	3.3
0	Poffenbarger, Saylor	11	26	2.4
4	Barnum, Erynn	11	23	2.1
43	Daniels, Makayla	9	23	2.6
30	Dauda, Maryam	11	16	1.5



2022-23 Arkansas Women's Basketball Points-rebounds-assists All games

Opponent	Date	Score	0	2	4	11	20	21	22	24	30	34	43
			POFFENBARG	SPENCER,SA	BARNUM,ERY	LANGERMAN,	JOHNSON,KA	LINDSEY,LO	HUGHES,AVE	WOLFENBARG	DAUDA,MARY	CARR,CHRIS	DANIELS,MA
at Ark.-Pine Bluff	11/07/2022	70-50 W	11-8-2	15-4-4	15-11-1	4-6-0	DNP	DNP	DNP	7-7-0	4-3-1	10-3-0	4-6-1
Central Ark.	11/11/2022	72-34 W	2-7-1	5-2-3	19-9-2	9-4-0	0-0-0	0-0-0	DNP	5-1-0	10-5-0	8-8-0	14-2-4
Tulsa	11/14/2022	79-70 W	2-10-3	13-3-4	27-8-0	10-5-1	DNP	DNP	DNP	2-0-0	3-3-0	3-6-0	19-9-3
Kent St.	11/17/2022	80-59 W	2-6-1	22-7-7	20-6-1	5-2-2	0-1-0	DNP	0-0-1	4-6-0	6-5-1	12-4-1	9-2-5
at Little Rock	11/20/2022	93-49 W	9-9-1	11-7-6	15-9-1	3-0-0	1-0-1	0-0-0	2-0-0	6-5-1	7-4-2	22-2-0	12-3-4
vs Northern Ariz.	11/24/2022	82-73 W	13-5-2	27-4-2	7-7-2	3-2-1	DNP	DNP	DNP	2-4-0	5-4-1	7-7-0	18-6-4
vs Clemson	11/25/2022	76-62 W	15-9-1	3-5-6	14-9-1	3-0-0	DNP	DNP	DNP	1-4-1	0-3-0	19-4-1	21-5-2
vs Kansas St.	11/26/2022	69-53 W	9-6-6	6-8-4	17-4-1	0-4-0	0-0-0	0-0-0	0-0-0	1-2-0	5-4-0	18-4-0	13-6-2
Troy	12/01/2022	87-70 W	9-3-5	19-3-6	18-8-2	1-5-3	0-1-0	0-0-0	4-0-0	11-3-0	0-7-0	14-3-0	10-3-4
Oral Roberts	12/04/2022	92-58 W	14-13-5	32-2-3	6-5-4	3-5-1	0-0-0	0-0-0	1-0-0	9-12-1	10-8-1	15-5-1	DNP
Lamar University	12/08/2022	63-50 W	17-12-3	17-0-4	5-8-3	0-6-0	DNP	DNP	DNP	4-6-0	2-0-0	18-2-0	DNP

Opponent	Date	Score	55
			ELLIS,EMRI
at Ark.-Pine Bluff	11/07/2022	70-50 W	0-2-0
Central Ark.	11/11/2022	72-34 W	0-4-0
Tulsa	11/14/2022	79-70 W	DNP
Kent St.	11/17/2022	80-59 W	0-1-0
at Little Rock	11/20/2022	93-49 W	5-2-0
vs Northern Ariz.	11/24/2022	82-73 W	0-0-0
vs Clemson	11/25/2022	76-62 W	DNP
vs Kansas St.	11/26/2022	69-53 W	0-0-0
Troy	12/01/2022	87-70 W	1-0-0
Oral Roberts	12/04/2022	92-58 W	2-1-0
Lamar University	12/08/2022	63-50 W	0-0-0



2022-23 Arkansas Women's Basketball Player Highs Analysis All games

Arkansas - Individual Game Highs

POINTS	32		Samara Spencer vs Oral Roberts (12/04/2022)
	27		Samara Spencer vs Northern Ariz. (N) (11/24/2022)
	27		Erynn Barnum vs Tulsa (11/14/2022)
	22		Chrissy Carr at Little Rock (11/20/2022)
	22		Samara Spencer vs Kent St. (11/17/2022)
FIELD GOALS MADE	10		Samara Spencer vs Oral Roberts (12/04/2022)
	10		Samara Spencer vs Northern Ariz. (N) (11/24/2022)
	10		Erynn Barnum vs Tulsa (11/14/2022)
FIELD GOAL ATTEMPTS	21		Samara Spencer vs Northern Ariz. (N) (11/24/2022)
	19		Makayla Daniels vs Tulsa (11/14/2022)
FIELD GOAL PERCENTAGE (min 5 made)	1.000	(5-5)	Erynn Barnum at Little Rock (11/20/2022)
	.889	(8-9)	Erynn Barnum vs Troy (12/01/2022)
3 PT FG MADE	6		Samara Spencer vs Oral Roberts (12/04/2022)
	5		Chrissy Carr vs Clemson (N) (11/25/2022)
3 PT FG ATTEMPTS	12		Chrissy Carr vs Oral Roberts (12/04/2022)
	11		Samara Spencer vs Tulsa (11/14/2022)
3 PT FG PERCENTAGE (min 2 made)	.750	(6-8)	Samara Spencer vs Oral Roberts (12/04/2022)
	.750	(3-4)	Makayla Daniels at Little Rock (11/20/2022)
FREE THROWS MADE	9		Erynn Barnum vs Central Ark. (11/11/2022)
	8		Makayla Daniels vs Northern Ariz. (N) (11/24/2022)
FREE THROW ATTEMPTS	16		Samara Spencer vs Lamar University (12/08/2022)
	13		Erynn Barnum at Ark.-Pine Bluff (11/07/2022)
FREE THROW PERCENTAGE (min 3 made)	1.000	(9-9)	Erynn Barnum vs Central Ark. (11/11/2022)
	1.000	(5-5)	Jersey Wolfenbarger vs Oral Roberts (12/04/2022)
	1.000	(4-4)	Makayla Daniels vs Troy (12/01/2022)
	1.000	(4-4)	Chrissy Carr at Little Rock (11/20/2022)
	1.000	(3-3)	Makayla Daniels vs Kansas St. (N) (11/26/2022)
REBOUNDS	13		Saylor Poffenbarger vs Oral Roberts (12/04/2022)
	12		Saylor Poffenbarger vs Lamar University (12/08/2022)
	12		Jersey Wolfenbarger vs Oral Roberts (12/04/2022)
ASSISTS	7		Samara Spencer vs Kent St. (11/17/2022)
	6		Samara Spencer vs Troy (12/01/2022)
	6		Saylor Poffenbarger vs Kansas St. (N) (11/26/2022)
	6		Samara Spencer vs Clemson (N) (11/25/2022)
	6		Samara Spencer at Little Rock (11/20/2022)
STEALS	5		Erynn Barnum vs Clemson (N) (11/25/2022)
	4		Samara Spencer vs Northern Ariz. (N) (11/24/2022)
	4		Makayla Daniels vs Kent St. (11/17/2022)
	4		Rylee Langerman vs Tulsa (11/14/2022)
	4		Makayla Daniels vs Central Ark. (11/11/2022)
	4		Rylee Langerman at Ark.-Pine Bluff (11/07/2022)
	4		Erynn Barnum at Ark.-Pine Bluff (11/07/2022)
BLOCKED SHOTS	4		Jersey Wolfenbarger vs Oral Roberts (12/04/2022)
	3		Jersey Wolfenbarger vs Lamar University (12/08/2022)
	3		Saylor Poffenbarger vs Lamar University (12/08/2022)
	3		Maryam Dauda vs Northern Ariz. (N) (11/24/2022)
	3		Saylor Poffenbarger vs Kent St. (11/17/2022)
	3		Erynn Barnum vs Central Ark. (11/11/2022)
TURNOVERS	8		Samara Spencer vs Clemson (N) (11/25/2022)
	6		Makayla Daniels vs Clemson (N) (11/25/2022)
	6		Samara Spencer at Little Rock (11/20/2022)
FOULS	4		Samara Spencer vs Lamar University (12/08/2022)
	4		Saylor Poffenbarger vs Oral Roberts (12/04/2022)
	4		Makayla Daniels vs Troy (12/01/2022)
	4		Maryam Dauda vs Troy (12/01/2022)
	4		Makayla Daniels vs Clemson (N) (11/25/2022)
	4		Rylee Langerman vs Clemson (N) (11/25/2022)
	4		Makayla Daniels vs Northern Ariz. (N) (11/24/2022)
	4		Maryam Dauda at Little Rock (11/20/2022)
	4		Saylor Poffenbarger vs Tulsa (11/14/2022)
	4		Samara Spencer at Ark.-Pine Bluff (11/07/2022)
	4		Maryam Dauda at Ark.-Pine Bluff (11/07/2022)



0 Saylor Poffenbarger | R-Fr. | 6-2 | G | Middletown, Conn. (Middletown HS) | UConn

POFFENBARGER BENCHMARK STATS

2022-23 SEASON HIGHS

Points	17	vs. Lamar	12-8-22
FG Made	7	vs. Lamar	12-8-22
FG Att.	14	at UAPB	11-7-22
3FG Made	2	vs. Lamar	12-8-22*
3FG Att.	9	at UAPB	11-7-22
FT Made	3	vs. Oral Roberts	12-4-22*
FT Att.	6	at UAPB	11-7-22
Off. Reb.	2	vs. Lamar	12-8-22*
Def. Reb.	13	vs. Oral Roberts	12-4-22
Rebounds	13	vs. Oral Roberts	12-14-22
Assists	6	vs. #25 K-State	11-26-22
Blocks	3	vs. Lamar	12-8-22*
Steals	2	vs. Lamar	12-8-22
Minutes	38	vs. Lamar	12-8-22*

CAREER HIGHS

Points	17	vs. Lamar	12-8-22
FG Made	7	vs. Lamar	12-8-22
FG Att.	14	at UAPB	11-7-22
3FG Made	2	vs. Lamar	12-8-22*
3FG Att.	9	at UAPB	11-7-22
FT Made	3	vs. Oral Roberts	12-4-22*
FT Att.	6	at UAPB	11-7-22
Off. Reb.	2	vs. Lamar	12-8-22*
Def. Reb.	13	vs. Oral Roberts	12-4-22
Rebounds	13	vs. Oral Roberts	12-14-22
Assists	6	vs. #25 K-State	11-26-22
Blocks	3	vs. Lamar	12-8-22*
Steals	2	vs. Lamar	12-8-22
Minutes	38	vs. Lamar	12-8-22*

N/A

2021-22 SEC HIGHS

NOTABLES

Stat	22-23	Career
Double Figure Pts	5	5
Double Figure Rebs	3	3
Double-Doubles	2	2
5+ Assists	3	3
5+ Blocks	-	-
5+ Steals	-	-
Led Team in Pts	-	-
Led Team in Reb	5	5
20+ Points	-	-
30+ Points	-	-

* Most Recent

GAME NOTES

- Back-to-back SEC Freshman of the Week
- Tallied back-to-back double-doubles, logging a career-high 17 points and 12 rebounds
- Produced 14 points and a career-high 13 boards vs. ORU and career best six assists vs. #25 K-State
- A versatile player who could play positions one through five if she needed to
- Ranks second in defensive rebounds/game (7.1), fifth in minutes (30.7) and seventh in rebounds in SEC
- Believed to be one of two three-year freshmen in the country (Ellie Foster from UNI the other one)
- Enrolled early at UConn in Jan. 2021
- Won gold at the 2019 FIBA Americas U16 Championship

WHO IS SAYLOR POFFENBARGER?

- Majoring in recreation and sport management
- Plays for her little brother that passed away
- Comes from an athletic family: mother, Amy, played basketball at Missouri and was a huge influence on Saylor's basketball journey, and three of her brothers play quarterback: Reese (21) – starting quarterback for Albany, Brittin (15) – freshman in HS football and Higgins (10) – fourth grade football player
- Played against teammate Makayla Daniels a few times and was on the same AAU team as her at one point
- Favorite movie: Legally Blonde

#0 POFFENBARGER, Saylor

Opponent	Date	GS	MIN	Total		3-Pointers		Free throws		Rebounds				PF	A	TO	BLK	STL	PTS	AVG	
				FG-FGA	PCT	3FG-3FGA	PCT	FT-FTA	PCT	OFF	DEF	TOT	AVG								
at Ark.-Pine Bluff	11/07/2022	*	27:35	3-14	.214	2-9	.222	3-6	.500	2	6	8	8.0	1	2	2	1	0	11	11.0	
Central Ark.	11/11/2022	*	30:24	0-5	.000	0-3	.000	2-4	.500	0	7	7	7.5	1	1	2	0	2	6.5		
Tulsa	11/14/2022	*	28:35	1-4	.250	0-2	.000	0-0	.000	2	8	10	8.3	4	3	0	0	1	2	5.0	
Kent St.	11/17/2022	*	29:51	0-7	.000	0-3	.000	2-2	1.000	1	5	6	7.8	0	1	1	3	1	2	4.3	
at Little Rock	11/20/2022	*	27:53	3-4	.750	0-1	.000	3-4	.750	0	9	9	8.0	3	1	3	0	0	9	5.2	
vs Northern Ariz.	11/24/2022	*	31:41	4-10	.400	2-6	.333	3-4	.750	2	3	5	7.5	3	2	4	1	1	13	6.5	
vs Clemson	11/25/2022	*	37:48	5-8	.625	2-4	.500	3-4	.750	0	9	9	7.7	2	1	4	0	1	15	7.7	
vs Kansas St.	11/26/2022	*	35:26	3-8	.375	2-4	.500	1-2	.500	1	5	6	7.5	2	6	2	2	1	9	7.9	
Troy	12/01/2022	*	24:18	3-8	.375	1-4	.250	2-2	1.000	0	3	3	7.0	1	5	3	1	0	9	8.0	
Oral Roberts	12/04/2022	*	26:09	5-11	.455	1-3	.333	3-4	.750	0	13	13	7.6	4	5	0	1	0	14	8.6	
Lamar University	12/08/2022	*	37:37	7-13	.538	2-5	.400	1-3	.333	2	10	12	8.0	3	3	5	3	2	17	9.4	
Totals			11	337:17	34-92	.370	12-44	.273	23-35	.657	10	78	88	8.0	24	30	26	14	7	103	9.4

Player Averages

Games Played	Minutes/game	Points/game	FG Pct	3FG Pct	FT Pct	Rebounds/game	Assists/game	Turnovers/game	Assist/Turnover ratio	Steals/game	Blocks/game
11	30.7	9.4	37.0	27.3	65.7	8.0	2.7	2.4	1.2	0.6	1.3

CAREER STATISTICS

SEASON	TEAM	GP-GS	MIN/AVG	Field Goals		3-Point		F-Throws		Rebounds				Scoring						
				FG-FGA	FG%	3FG-3FGA	3FG%	FT-FTA	FT%	OFF	DEF	TOT	AVG	PF-FO	A	TO	BLK	STL	PTS	AVG
2020-21	UConn	12-0	33/2.7	2-15	.133	1-11	.091	1-1	1.000	1	3	4	0.3	2-0	0	0	1	0	6	0.5
2022-23	Ark	11-11	337/30.7	34-92	.370	12-44	.273	23-35	.657	10	78	88	8.0	24-0	30	26	14	7	103	9.4
TOTAL FOR Ark		11-11	337/30.7	34-92	.370	12-44	.273	23-35	.657	10	78	88	8.0	24-0	30	26	14	7	103	9.4
TOTAL		23-11	370/16.1	36-107	.336	13-55	.236	24-36	.667	11	81	92	4.0	26-0	30	26	15	7	109	4.7



2 Samara Spencer | So. | 5-7 | G | Fort Lauderdale, Fla. (St. Thomas Aquinas HS)

SPENCER BENCHMARK STATS

2022-23 SEASON HIGHS

Points	32	vs. Oral Roberts	12-4-22
FG Made	10	vs. Oral Roberts	12-4-22*
FG Att	21	vs. NAU	11-24-22
3FG Made	6	vs. Oral Roberts	12-4-22
3FG Att	11	vs. Tulsa	11-14-22
FT Made	6	vs. Lamar	12-8-22
FT Att	16	vs. Lamar	12-8-22
Off. Reb.	1	vs. Oral Roberts	12-4-22*
Def. Reb.	7	vs. #25 K-State	11-26-22*
Rebounds	8	vs. #25 K-State	11-26-22
Assists	7	vs. Kent State	11-17-22
Blocks	1	vs. Oral Roberts	12-4-22
Steals	4	vs. NAU	11-24-22
Minutes	39	vs. NAU	11-24-22*

CAREER HIGHS

Points	32	vs. Oral Roberts	12-4-22
FG Made	10	vs. Oral Roberts	12-4-22*
FG Att	21	vs. NAU	11-24-22*
3FG Made	6	vs. Oral Roberts	12-4-22
3FG Att	11	vs. Tulsa	11-14-22
FT Made	6	vs. Lamar	12-8-22
FT Att	16	vs. Lamar	12-8-22
Off. Reb.	2	vs. #1 SC	3-4-22*
Def. Reb.	7	vs. #25 K-State	11-26-22*
Rebounds	8	vs. #25 K-State	11-26-22*
Assists	7	vs. Kent State	11-17-22
Blocks	1	vs. Oral Roberts	12-4-22*
Steals	4	vs. NAU	11-24-22*
Minutes	43	at #7 Tennessee	1-31-22

2021-22 SEC HIGHS

Points	22	at Missouri	2-13-22
FG Made	9	at Florida	2-17-22*
FG Att	21	at Missouri	2-13-22*
3FG Made	5	vs. Miss. State	1-23-22
3FG Att	8	at #7 Tennessee	1-31-22*
FT Made	6	at Miss. State	2-27-22*
FT Att	8	at Miss. State	2-27-22*
Off. Reb.	2	vs. #1 SC	3-4-22*
Def. Reb.	7	at Missouri	2-13-22*
Rebounds	8	vs. #1 SC	3-4-22
Assists	6	at Miss. State	2-27-22*
Blocks	1	at Missouri	2-13-22*
Steals	2	at Ole Miss	2-22-22*
Minutes	43	at #7 Tennessee	1-31-22

NOTABLES

Stat	21-22	22-23	Career
Double Figure Pts	20	8	27
Double Figure Rebs	-	-	-
Double-Doubles	-	-	-
5+ Assists	5	4	9
5+ Blocks	-	-	-
5+ Steals	-	-	-
Led Team in Pts	5	5	10
Led Team in Reb	1	2	3
20+ Points	3	3	6
30+ Points	-	1	1

* Most Recent

GAME NOTES

- Logged eighth double digit scoring game with 17 points and drawing 11 fouls vs. Lamar
- Went off on her 20th birthday vs. Oral Roberts with a career-high 32 points off 17 shots, including a 3/4 court shot that did not count
- First in free throw attempts (72), fifth in assists (4.5), sixth in minutes (30.6), eighth in scoring (15.5), 12th in 3-pointers (1.83) and 13th in assist/turnover ratio (1.4) in the SEC
- In the NCAA, third in FT attempts, 29th in total assists (49) and 36th in total points (170)
- Named 2022 SEC Freshman of the Year, first Arkansas player since 2009 (C'eria Ricketts)
- Won SEC Freshman of the Week four times last season, the most in the league
- Has registered six career 20-point games, including three this season (one of those 30+)
- Finished third on the team in scoring and led the way in assists (96) as a freshman
- Led St. Thomas Aquinas to a state title during her senior season

WHO IS SAMARA SPENCER?

- Majoring in recreation and sport management
- First Floridan to make up an Arkansas WBB roster since 2010
- Favorite foods: Steak or lasagna
- Favorite place to eat in Fayetteville: Tacos 4 Life
- Proudest accomplishment in basketball: winning SEC Freshman of the year last year

#2 SPENCER, Samara

Opponent	Date	GS	MIN	Total		3-Pointers		Free throws		Rebounds				PF	A	TO	BLK	STL	PTS	AVG	
				FG-FGA	PCT	3FG-3FGA	PCT	FT-FTA	PCT	OFF	DEF	TOT	AVG								
at Ark.-Pine Bluff	11/07/2022	*	31:00	6-16	.375	1-7	.143	2-8	.250	0	4	4	4.0	4	4	1	0	0	15	15.0	
Central Ark.	11/11/2022	*	18:51	1-5	.200	0-2	.000	3-7	.429	0	2	2	3.0	3	2	0	0	5	10.0		
Tulsa	11/14/2022	*	39:04	3-16	.188	3-11	.273	4-6	.667	0	3	3	3.0	2	4	2	0	0	13	11.0	
Kent St.	11/17/2022	*	28:15	8-13	.615	3-6	.500	3-4	.750	0	7	7	4.0	1	7	2	0	1	22	13.8	
at Little Rock	11/20/2022	*	30:08	4-9	.444	0-4	.000	3-4	.750	0	7	7	4.6	1	6	6	0	0	11	13.2	
vs Northern Ariz.	11/24/2022	*	39:29	10-21	.476	3-7	.429	4-6	.667	0	4	4	4.5	1	2	2	0	4	27	15.5	
vs Clemson	11/25/2022	*	27:30	1-5	.200	0-2	.000	1-6	.167	0	5	5	4.6	3	6	8	0	0	3	13.7	
vs Kansas St.	11/26/2022	*	30:17	3-11	.273	0-6	.000	0-0	.000	1	7	8	5.0	3	4	3	0	3	6	12.8	
Troy	12/01/2022	*	27:47	8-15	.533	3-8	.375	0-3	.000	0	3	3	4.8	1	6	3	0	1	19	13.4	
Oral Roberts	12/04/2022	*	30:40	10-17	.588	6-8	.750	6-12	.500	1	1	2	4.5	1	3	2	1	3	32	15.3	
Lamar University	12/08/2022	*	33:45	5-10	.500	1-3	.333	6-16	.375	0	0	0	4.1	4	4	5	0	0	17	15.5	
Totals			11	336:46	59-138	.428	20-64	.313	32-72	.444	2	43	45	4.1	24	49	36	1	12	170	15.5

Player Averages

Games Played	Minutes/game	Points/game	FG Pct	3FG Pct	FT Pct	Rebounds/game	Assists/game	Turnovers/game	Assist/Turnover ratio	Steals/game	Blocks/game
11	30.6	15.5	42.8	31.3	44.4	4.1	4.5	3.3	1.4	1.1	0.1

CAREER STATISTICS

SEASON	TEAM	GP-GS	MIN/AVG	Field Goals		3-Point		F-Throws		Rebounds				Scoring						
				FG-FGA	FG%	3FG-3FGA	3FG%	FT-FTA	FT%	OFF	DEF	TOT	AVG	PF-FO	A	TO	BLK	STL	PTS	AVG
2021-22	Ark	31-27	930/30.0	138-325	.425	44-128	.344	59-98	.602	18	96	114	3.7	49-0	96	82	8	36	379	12.2
2022-23	Ark	11-11	337/30.6	59-138	.428	20-64	.313	32-72	.444	2	43	45	4.1	24-0	49	36	1	12	170	15.5
TOTAL		42-38	1267/30.2	197-463	.425	64-192	.333	91-170	.535	20	139	159	3.8	73-0	145	118	9	48	549	13.1



4 Erynn Barnum | R-Sr. | 6-2 | F | Little Rock, Ark. (Little Rock Central HS)

BARNUM BENCHMARK STATS

2022-23 SEASON HIGHS

Points	27	vs. Tulsa	11-14-22
FG Made	10	vs. Tulsa	11-14-22
FG Att.	14	at UAPB	11-7-22
3FG Made	1	vs. Kent State	11-17-22
3FG Att.	2	vs. Kent State	11-17-22
FT Made	9	vs. UCA	11-11-22
FT Att.	13	UAPB	11-7-22
Off. Reb.	6	at UAPB	11-7-22
Def. Reb.	9	at Little Rock	11-20-22
Rebounds	11	at UAPB	11-7-22
Assists	4	vs. Oral Roberts	12-4-22
Blocks	3	vs. UCA	11-11-22
Steals	5	vs. Clemson	11-25-22
Minutes	34	vs. Lamar	12-8-22

CAREER HIGHS

Points	27	vs. Tulsa	11-14-22
FG Made	10	vs. Tulsa	11-14-22
FG Att.	16	vs. SMU	11-22-21
3FG Made	1	vs. Kent State	11-17-22*
3FG Att.	4	at #2 UConn	11-14-21
FT Made	9	vs. UCA	11-11-22
FT Att.	13	at UAPB	11-7-22*
Off. Reb.	6	at UAPB	11-7-22*
Def. Reb.	9	at Little Rock	11-20-22
Rebounds	12	vs. Utah	3-18-22*
Assists	4	vs. Oral Roberts	12-4-22*
Blocks	4	vs. Little Rock	12-21-19*
Steals	5	vs. Clemson	11-25-22
Minutes	34	vs. Lamar	12-8-22

2021-22 SEC HIGHS

Points	15	at Georgia	1-25-21
FG Made	7	at Georgia	1-25-21
FG Att.	12	vs. Georgia	1-23-20
3FG Made	1	at Tennessee	1-31-22*
3FG Att.	2	at Tennessee	1-31-22*
FT Made	4	at Miss. State	2-27-22*
FT Att.	6	at Texas A&M	2-3-22
Off. Reb.	4	vs. Missouri	1-3-21
Def. Reb.	6	vs. Auburn	2-10-22*
Rebounds	9	vs. Auburn	2-10-22
Assists	2	vs. 1/1 SC	3-4-22*
Blocks	3	vs. Florida	1-26-20
Steals	3	at Texas A&M	2-7-21
Minutes	26	vs. Missouri	1-3-21

NOTABLES

Stat	19-20	20-21	21-22	22-23	Career
Double Figure Pts	4	9	5	8	26
Double Figure Rebs	1	1	1	1	5
Double-Doubles	1	1	-	1	3
5+ Assists	-	-	-	-	-
5+ Blocks	-	-	-	-	-
5+ Steals	-	-	-	1	1
Led Team in Pts	1	-	3	3	7
Led Team in Reb	4	7	7	6	24
20+ Points	-	-	-	2	2
30+ Points	-	-	-	-	-

* Most Recent

GAME NOTES

- Named to Katrina McClain Preseason Watchlist, given to the best power forward in the country
- Logged eight rebounds, three assists and two blocks against Lamar
- Registered 18 points and eight boards against Troy, her seventh time scoring 15+ points this year
- Had career-high 27 points with eight rebounds versus Tulsa
- Double-doubled in the season opener at Pine Bluff with 15 points and 11 rebounds
- No. 10 in career blocks (75) among active SEC players
- Leads the SEC in FG percentage (.667), as well as eighth in defensive rebounds (4.9), ninth in rebounding (7.6) and 10th in scoring (14.8)
- In NCAA, sits eighth in FG percentage, 18th free throw attempts, 42nd in total rebounds and 49th in points
- Ended 2021-22 season by matching a career-high 12 rebounds vs. Utah at the NCAA Tournament
- Averaged 7.6 points, 4.8 rebounds and 17.5 minutes per game last season

WHO IS ERYNN BARNUM?

- Majoring in recreation and sport management
- Played volleyball and was player of the year in high school
- Does her hair before every game
- One of eight siblings
- Born in Pasadena, Calif. and moved to Little Rock when she was 6
- Favorite food: shrimp Alfredo

#4 BARNUM, Erynn

Opponent	Date	GS	MIN	Total		3-Pointers		Free throws		Rebounds				PF	A	TO	BLK	STL	PTS	AVG	
				FG-FGA	PCT	3FG-3FGA	PCT	FT-FTA	PCT	OFF	DEF	TOT	AVG								
at Ark.-Pine Bluff	11/07/2022	*	25:04	6-14	.429	0-0	.000	3-13	.231	6	5	11	11.0	2	1	2	0	4	15	15.0	
Central Ark.	11/11/2022	*	22:29	5-8	.625	0-1	.000	9-9	1.000	4	5	9	10.0	2	2	1	3	0	19	17.0	
Tulsa	11/14/2022	*	30:32	10-12	.833	0-0	.000	7-12	.583	3	5	8	9.3	3	0	1	1	2	27	20.3	
Kent St.	11/17/2022	*	21:02	9-13	.692	1-2	.500	1-1	1.000	2	4	6	8.5	0	1	1	1	0	20	20.3	
at Little Rock	11/20/2022	*	20:40	5-5	1.000	0-0	.000	5-6	.833	0	9	9	8.6	3	1	5	1	0	15	19.2	
vs Northern Ariz.	11/24/2022	*	23:03	3-9	.333	0-1	.000	1-2	.500	3	4	7	8.3	3	2	2	0	2	7	17.2	
vs Clemson	11/25/2022	*	25:33	4-5	.800	0-0	.000	6-9	.667	2	7	9	8.4	1	1	1	1	5	14	16.7	
vs Kansas St.	11/26/2022	*	28:44	7-9	.778	0-0	.000	3-5	.600	2	2	4	7.9	1	1	3	2	3	17	16.8	
Troy	12/01/2022	*	19:10	8-9	.889	0-1	.000	2-2	1.000	3	5	8	7.9	1	2	1	0	2	18	16.9	
Oral Roberts	12/04/2022	*	19:43	3-5	.600	0-0	.000	0-0	.000	2	3	5	7.6	3	4	1	1	0	6	15.8	
Lamar University	12/08/2022	*	33:51	2-4	.500	0-1	.000	1-4	.250	3	5	8	7.6	2	3	5	2	1	5	14.8	
Totals			11	269:51	62-93	.667	1-6	.167	38-63	.603	30	54	84	7.6	21	18	23	12	19	163	14.8

Player Averages

Games Played	Minutes/game	Points/game	FG Pct	3FG Pct	FT Pct	Rebounds/game	Assists/game	Turnovers/game	Assist/Turnover ratio	Steals/game	Blocks/game
11	24.5	14.8	66.7	16.7	60.3	7.6	1.6	2.1	0.8	1.7	1.1

CAREER STATISTICS

SEASON TEAM	GP-GS	MIN/AVG	Field Goals		3-Point		F-Throws		Rebounds				Scoring						
			FG-FGA	FG%	3FG-3FGA	3FG%	FT-FTA	FT%	OFF	DEF	TOT	AVG	PF-FO	A	TO	BLK	STL	PTS	AVG
2019-20 Ark	27-0	306/11.3	50-98	.510	3-7	.429	31-52	.596	31	76	107	4.0	26-0	5	11	28	15	134	5.0
2020-21 Ark	28-0	455/16.3	85-145	.586	1-7	.143	44-87	.506	34	94	128	4.6	56-0	11	30	23	21	215	7.7
2021-22 Ark	22-10	385/17.5	55-134	.410	3-16	.188	55-80	.688	35	70	105	4.8	32-0	18	26	12	20	168	7.6
2022-23 Ark	11-11	270/24.5	62-93	.667	1-6	.167	38-63	.603	30	54	84	7.6	21-0	18	23	12	19	163	14.8
TOTAL	88-21	1417/16.1	252-470	.536	8-36	.222	168-282	.596	130	294	424	4.8	135-0	52	90	75	75	680	7.7



11 Rylee Langerman | Jr. | 5-9 | G | Norman, Okla. (Christian Heritage HS)

LANGERMAN BENCHMARK STATS

2022-23 SEASON HIGHS

Points	10	vs. Tulsa	11-14-22
FG Made	3	vs. UCA	11-11-22
FG Att.	7	vs. Tulsa	11-14-22
3FG Made	2	vs. Tulsa	11-14-22*
3FG Att.	5	vs. Tulsa	11-14-22
FT Made	4	vs. Tulsa	11-14-22
FT Att.	6	vs. Tulsa	11-14-22
Off. Reb.	4	at UAPB	11-7-22
Def. Reb.	5	vs. Lamar	12-8-22
Rebounds	6	vs. Lamar	12-8-22*
Assists	3	vs. Troy	12-1-22
Blocks	N/A		
Steals	4	vs. Tulsa	11-14-22*
Minutes	25	vs. UCA	11-11-22

CAREER HIGHS

Points	17	vs. Missouri	1-9-22
FG Made	6	vs. Missouri	1-9-22
FG Att.	10	vs. Missouri	1-9-22
3FG Made	5	vs. Missouri	1-9-22
3FG Att.	6	vs. Missouri	1-9-22
FT Made	4	vs. Tulsa	11-14-22*
FT Att.	6	vs. Tulsa	11-14-22
Off. Reb.	5	vs. Auburn	2-10-22
Def. Reb.	7	at Texas A&M	2-3-22*
Rebounds	11	at Texas A&M	2-3-22
Assists	4	vs. UCA	12-13-20
Blocks	2	vs. Missouri	3-3-22
Steals	4	vs. Tulsa	11-14-22*
Minutes	34	at Florida	2-17-22

2021-22 SEC HIGHS

Points	17	vs. Missouri	1-9-22
FG Made	6	vs. Missouri	1-9-22
FG Att.	10	vs. Missouri	1-9-22
3FG Made	5	vs. Missouri	1-9-22
3FG Att.	6	vs. Missouri	1-9-22
FT Made	2	at Missouri	2-13-22
FT Att.	2	at Missouri	2-13-22*
Off. Reb.	5	vs. Auburn	2-10-22
Def. Reb.	7	at Texas A&M	2-3-22
Rebounds	11	at Texas A&M	2-3-22
Assists	3	vs. 12/11 LSU	1-27-2
Blocks	2	vs. Missouri	3-3-22
Steals	4	at Missouri	2-13-22
Minutes	34	at Florida	2-17-22

NOTABLES

Stat	20-21	21-22	22-23	Career
Double Figure Pts	-	1	1	2
Double Figure Rebs	-	1	-	1
Double-Doubles	-	-	-	-
5+ Assists	-	-	-	-
5+ Blocks	-	-	-	-
5+ Steals	-	-	-	-
Led Team in Pts	-	-	-	-
Led Team in Reb	-	2	-	2
20+ Points	-	-	-	-
30+ Points	-	-	-	-

* Most Recent

GAME NOTES

- Glue girl on the team, known for being the player that holds everything together
- Diving for a loose ball the way Rylee does is called a "Langerman"
- Played the most minutes among bench players vs. Lamar, tallying six rebounds
- Logged 10 points, five rebounds and four steals against Tulsa
- Involved in at least four tie ups at UAPB, ending the night with four points, six rebounds and four steals off the bench
- Lit up Mizzou, going for a career-best 17 points off 5-for-6 shooting from 3-point off the bench
- Started in four consecutive games during the middle of SEC play, ticking a career-high 34 minutes during that stretch at Florida
- Averaged 3.2 points and 3.7 rebounds across 19.2 minutes played per game last season

WHO IS RYLEE LANGERMAN?

- Majoring in biology
- Easily a fan favorite for the work she has done in the community, serving as an inspiration
- Has a twin brother named Ryan who played basketball and golf
- Chose Arkansas because of the atmosphere and culture
- Can play the guitar
- Favorite place to eat in Fayetteville: Sassy's BBQ

#11 LANGERMAN, Rylee

Opponent	Date	GS	MIN	Total		3-Pointers		Free throws		Rebounds				PF	A	TO	BLK	STL	PTS	AVG
				FG-FGA	PCT	3FG-3FGA	PCT	FT-FTA	PCT	OFF	DEF	TOT	AVG							
at Ark.-Pine Bluff	11/07/2022		22:50	1-1	1.000	0-0	.000	2-4	.500	4	2	6	6.0	3	0	2	0	4	4	4.0
Central Ark.	11/11/2022		24:26	3-5	.600	2-4	.500	1-3	.333	0	4	4	5.0	2	0	1	0	0	9	6.5
Tulsa	11/14/2022		22:35	2-7	.286	2-5	.400	4-6	.667	2	3	5	5.0	3	1	0	0	4	10	7.7
Kent St.	11/17/2022		19:11	2-5	.400	1-3	.333	0-0	.000	1	1	2	4.3	1	2	1	0	0	5	7.0
at Little Rock	11/20/2022		13:45	1-1	1.000	0-0	.000	1-2	.500	0	0	0	3.4	1	0	0	0	0	3	6.2
vs Northern Ariz.	11/24/2022		20:56	1-3	.333	0-1	.000	1-2	.500	0	2	2	3.2	1	1	1	0	0	3	5.7
vs Clemson	11/25/2022		18:49	1-1	1.000	0-0	.000	1-2	.500	0	0	0	2.7	4	0	0	0	0	3	5.3
vs Kansas St.	11/26/2022		11:39	0-0	.000	0-0	.000	0-0	.000	0	4	4	2.9	2	0	0	0	0	0	4.6
Troy	12/01/2022		15:55	0-2	.000	0-2	.000	1-2	.500	1	4	5	3.1	2	3	2	0	0	1	4.2
Oral Roberts	12/04/2022		16:32	1-4	.250	0-2	.000	1-2	.500	3	2	5	3.3	2	1	0	0	2	3	4.1
Lamar University	12/08/2022		18:13	0-2	.000	0-2	.000	0-0	.000	1	5	6	3.5	0	0	1	1	1	0	3.7
Totals		0	204:51	12-31	.387	5-19	.263	12-23	.522	12	27	39	3.5	21	8	8	1	11	41	3.7

Player Averages

Games Played	Minutes/game	Points/game	FG Pct	3FG Pct	FT Pct	Rebounds/game	Assists/game	Turnovers/game	Assist/Turnover ratio	Steals/game	Blocks/game
11	18.6	3.7	38.7	26.3	52.2	3.5	0.7	0.7	1.0	1.0	0.1

CAREER STATISTICS

SEASON	TEAM	GP-GS	MIN/AVG	Field Goals		3-Point		F-Throws		Rebounds				Scoring						
				FG-FGA	FG%	3FG-3FGA	3FG%	FT-FTA	FT%	OFF	DEF	TOT	AVG	PF-FO	A	TO	BLK	STL	PTS	AVG
2020-21	Ark	13-0	91/7.0	5-16	.313	4-10	.400	2-4	.500	2	12	14	1.1	10-0	7	9	1	1	16	1.2
2021-22	Ark	32-7	613/19.2	36-97	.371	16-50	.320	13-23	.565	41	78	119	3.7	83-2	30	31	11	28	101	3.2
2022-23	Ark	11-0	205/18.6	12-31	.387	5-19	.263	12-23	.522	12	27	39	3.5	21-0	8	8	1	11	41	3.7
TOTAL		56-7	909/16.2	53-144	.368	25-79	.316	27-50	.540	55	117	172	3.1	114-2	45	48	13	40	158	2.8



20 Karley Johnson | Fr. | 5-9 | G | Mustang, Okla. (Mustang HS)

JOHNSON BENCHMARK STATS

2022-23 SEASON HIGHS

Points	1	at Little Rock	11-20-22
FG Made	N/A		
FG Att.	1	vs. Oral Roberts	12-4-22
3FG Made	N/A		
3FG Att.	N/A		
FT Made	1	at Little Rock	11-20-22
FT Att.	1	at Little Rock	11-20-22
Off. Reb.	1	vs. Troy	12-1-22
Def. Reb.	1	vs. Kent State	11-17-22
Rebounds	1	vs. Troy	12-1-22*
Assists	1	at Little Rock	11-20-22
Blocks	N/A		
Steals	1	at Little Rock	11-20-22*
Minutes	6	vs. Troy	12-1-22*

CAREER HIGHS

Points	1	at Little Rock	11-20-22
FG Made	N/A		
FG Att.	1	vs. Oral Roberts	12-4-22
3FG Made	N/A		
3FG Att.	N/A		
FT Made	1	at Little Rock	11-20-22
FT Att.	1	at Little Rock	11-20-22
Off. Reb.	1	vs. Troy	12-1-22
Def. Reb.	1	vs. Kent State	11-17-22
Rebounds	1	vs. Troy	12-1-22*
Assists	1	at Little Rock	11-20-22
Blocks	N/A		
Steals	1	at Little Rock	11-20-22*
Minutes	6	vs. Troy	12-1-22*

2021-22 SEC HIGHS

N/A

NOTABLES

Stat	22-23	Career
Double Figure Pts	-	-
Double Figure Rebs	-	-
Double-Doubles	-	-
5 + Assists	-	-
5 + Blocks	-	-
5 + Steals	-	-
Led Team in Pts	-	-
Led Team in Reb	-	-
20 + Points	-	-
30+ Points	-	-

GAME NOTES

- Scored first collegiate point at Little Rock where she had a free throw in six minutes played
- Has appeared in six of 10 games as a true freshman
- Lone member of the fall 2021 signing class
- Recognized as a 2022 McDonald's All-American nominee
- Tabbed a four-time Oklahoman's Super 5 Honorable Mention choice
- As a senior at Mustang, averaged 12.3 points, 4.3 rebounds and 3.1 assists per game
- Only needed two years to eclipse 1,000 points, doing so as a sophomore

WHO IS KARLEY JOHNSON?

- One of eight children
- Hidden talent: can juggle
- Favorite TV show: Criminal Minds
- Pregame ritual: puts everything on left to right
- Has English bulldogs named Roxie and Gus and a cat named Toast

#20 JOHNSON, Karley

Opponent	Date	GS	MIN	Total		3-Pointers		Free throws		Rebounds				PF	A	TO	BLK	STL	PTS	AVG
				FG-FGA	PCT	3FG-3FGA	PCT	FT-FTA	PCT	OFF	DEF	TOT	AVG							
Central Ark.	11/11/2022		02:37	0-0	.000	0-0	.000	0-0	.000	0	0	0	0.0	0	0	0	0	0	0	0.0
Kent St.	11/17/2022		02:33	0-0	.000	0-0	.000	0-0	.000	0	1	1	0.5	0	0	0	0	0	0	0.0
at Little Rock	11/20/2022		06:19	0-0	.000	0-0	.000	1-2	.500	0	0	0	0.3	0	1	0	0	1	1	0.3
vs Kansas St.	11/26/2022		00:47	0-0	.000	0-0	.000	0-0	.000	0	0	0	0.3	0	0	0	0	0	0	0.3
Troy	12/01/2022		05:38	0-0	.000	0-0	.000	0-0	.000	1	0	1	0.4	0	0	0	0	0	0	0.2
Oral Roberts	12/04/2022		02:43	0-1	.000	0-0	.000	0-0	.000	0	0	0	0.3	0	0	0	0	0	0	0.2
Totals		0	20:37	0-1	.000	0-0	.000	1-2	.500	1	1	2	0.3	0	1	0	0	2	1	0.2

Player Averages

Games Played	Minutes/game	Points/game	FG Pct	3FG Pct	FT Pct	Rebounds/game	Assists/game	Turnovers/game	Assist/Turnover ratio	Steals/game	Blocks/game
6	3.4	0.2	0.0	0.0	50.0	0.3	0.2	0.0	1.0	0.3	0.0

CAREER STATISTICS

SEASON	TEAM	GP-GS	MIN/AVG	Field Goals		3-Point		F-Throws		Rebounds				Scoring						
				FG-FGA	FG%	3FG-3FGA	3FG%	FT-FTA	FT%	OFF	DEF	TOT	AVG	PF-FO	A	TO	BLK	STL	PTS	AVG
2022-23	Ark	6-0	21/3.4	0-1	.000	0-0	.000	1-2	.500	1	1	2	0.3	0-0	1	0	0	2	1	0.2
TOTAL		6-0	21/3.4	0-1	.000	0-0	.000	1-2	.500	1	1	2	0.3	0-0	1	0	0	2	1	0.2



21 Loren Lindsey | Fr. | 5-11 | G | Fayetteville, Ark. (Fayetteville HS)

LINDSEY BENCHMARK STATS

2022-23 SEASON HIGHS

Points	N/A
FG Made	N/A
FG Att.	N/A
3FG Made	N/A
3FG Att.	N/A
FT Made	N/A
FT Att.	N/A
Off. Reb.	N/A
Def. Reb.	N/A
Rebounds	N/A
Assists	N/A
Blocks	N/A
Steals	N/A
Minutes	5 at Little Rock 11-20-22

CAREER HIGHS

Points	N/A
FG Made	N/A
FG Att.	N/A
3FG Made	N/A
3FG Att.	N/A
FT Made	N/A
FT Att.	N/A
Off. Reb.	N/A
Def. Reb.	N/A
Rebounds	N/A
Assists	N/A
Blocks	N/A
Steals	N/A
Minutes	5 at Little Rock 11-20-22

2021-22 SEC HIGHS

N/A

NOTABLES

Stat	22-23	Career
Double Figure Pts	-	-
Double Figure Rebs	-	-
Double-Doubles	-	-
5 + Assists	-	-
5 + Blocks	-	-
5 + Steals	-	-
Led Team in Pts	-	-
Led Team in Reb	-	-
20 + Points	-	-
30+ Points	-	-

GAME NOTES

- Played season-high five minutes at Little Rock
- Made first collegiate appearance versus UCA and has appeared in five games this season
- One of two freshmen on the team
- Talented player out of Fayetteville High School, coming to Arkansas as a walk-on
- Tabbed to All-Conference 6A West All-Defensive Team
- Northwest Arkansas Democrat Gazette Player of the Week (Feb. 2, 2022)

WHO IS LOREN LINDSEY?

- Finance major
- Grew up in Northwest Arkansas so it was always a dream to play for the Razorbacks, especially with her grandad, dad, uncle and cousins all playing football here
- Favorite pair of shoes she owns is her Jordans
- Favorite food is hibachi and best restaurant in Fayetteville is Kobe
- Favorite movie: Hoosiers

#21 LINDSEY, Loren

Opponent	Date	GS	MIN	Total		3-Pointers		Free throws		Rebounds					PF	A	TO	BLK	STL	PTS	AVG
				FG-FGA	PCT	3FG-3FGA	PCT	FT-FTA	PCT	OFF	DEF	TOT	AVG								
Central Ark.	11/11/2022		01:11	0-0	.000	0-0	.000	0-0	.000	0	0	0	0	0	0	0	0	0	0	0	0.0
at Little Rock	11/20/2022		04:56	0-0	.000	0-0	.000	0-0	.000	0	0	0	0	0	0	0	0	0	0	0	0.0
vs Kansas St.	11/26/2022		00:47	0-0	.000	0-0	.000	0-0	.000	0	0	0	0	0	0	0	0	0	0	0	0.0
Troy	12/01/2022		02:13	0-0	.000	0-0	.000	0-0	.000	0	0	0	0	0	0	0	0	0	0	0	0.0
Oral Roberts	12/04/2022		02:06	0-0	.000	0-0	.000	0-0	.000	0	0	0	0	0	0	0	0	0	0	0	0.0
Totals		0	11:13	0-0	.000	0-0	.000	0-0	.000	0	0	0	0	0	0	0	0	0	0	0	0.0

Player Averages

Games Played	Minutes/game	Points/game	FG Pct	3FG Pct	FT Pct	Rebounds/game	Assists/game	Turnovers/game	Assist/Turnover ratio	Steals/game	Blocks/game
5	2.2	0.0	0.0	0.0	0.0	0.0	0.0	0.0	0.0	0.0	0.0

CAREER STATISTICS

SEASON	TEAM	GP-GS	MIN/AVG	Field Goals		3-Point		F-Throws		Rebounds					Scoring							
				FG-FGA	FG%	3FG-3FGA	3FG%	FT-FTA	FT%	OFF	DEF	TOT	AVG	PF-FO	A	TO	BLK	STL	PTS	AVG		
2022-23	Ark	5-0	11/2.2	0-0	.000	0-0	.000	0-0	.000	0	0	0	0.0	0	0	0	0	0	0	0	0.0	
TOTAL		5-0	11/2.2	0-0	.000	0-0	.000	0-0	.000	0	0	0	0.0	0-0	0	0	0	0	0	0	0	0.0



22 Avery Hughes | Sr. | 5-7 | G | Bentonville, Ark. (Bentonville HS)

HUGHES BENCHMARK STATS

2022-23 SEASON HIGHS

Points	4	vs. Troy	12-1-22
FG Made	1	vs. Troy	12-1-22
FG Att.	2	vs. Kent State	11-17-22
3FG Made	N/A		
3FG Att.	N/A		
FT Made	2	vs. Troy	12-1-22*
FT Att.	2	vs. Oral Roberts	12-4-22*
Off. Reb.	N/A		
Def. Reb.	N/A		
Rebounds	N/A		
Assists	1	vs. Kent State	11-17-22
Blocks	N/A		
Steals	N/A		
Minutes	5	at Little Rock	11-20-22

CAREER HIGHS

Points	6	vs. UAPB	12-21-20*
FG Made	2	vs. UAPB	12-21-20*
FG Att.	4	vs. Tulsa	12-11-19
3FG Made	2	vs. UAPB	12-21-20*
3FG Att.	3	vs. Tulsa	12-11-19
FT Made	2	vs. Troy	12-1-22*
FT Att.	2	vs. Oral Roberts	12-4-22*
Off. Reb.	N/A		
Def. Reb.	1	vs. Kentucky	2-20-22*
Rebounds	1	vs. Kentucky	2-20-22*
Assists	2	vs. UAPB	12-21-20*
Blocks	N/A		
Steals	1	vs. ULM	12-3-20*
Minutes	10	vs. UAPB	12-21-20*

2021-22 SEC HIGHS

Points	3	vs. Alabama	2-28-21
FG Made	1	at Ole Miss	2-16-20
FG Att.	1	vs. LSU	1-27-22*
3FG Made	N/A		
3FG Att.	1	vs. LSU	1-27-22*
FT Made	3	vs. Alabama	2-28-21
FT Att.	3	vs. Alabama	2-28-21
Off. Reb.	N/A		
Def. Reb.	1	vs. Kentucky	2-20-22
Rebounds	1	vs. Kentucky	2-20-22
Assists	N/A		
Blocks	N/A		
Steals	N/A		
Minutes	4	at Vanderbilt	1-19-20

NOTABLES

Stat	19-20	20-21	21-22	22-23	Career
Double Figure Pts	-	-	-	-	-
Double Figure Rebs	-	-	-	-	-
Double-Doubles	-	-	-	-	-
5+ Assists	-	-	-	-	-
5+ Blocks	-	-	-	-	-
5+ Steals	-	-	-	-	-
Led Team in Pts	-	-	-	-	-
Led Team in Reb	-	-	-	-	-
20+ Points	-	-	-	-	-
30+ Points	-	-	-	-	-

* Most Recent

GAME NOTES

- Tallied four points in three minutes against Troy
- Has seven points in five game appearances this year
- Former walk-on who earned a scholarship prior to the 2021-22 season
- Appeared in 14 games last season
- Dropped a career-best six points on UAPB, hitting two threes in 2020-21
- Finished her career as Bentonville's second leading scorer and set single game records for points (34) and free throws (20-for-22)
- Honors include All-Arkansas Second-Team, All-Northwest Arkansas First-Team, Gatorade Player of the Week, two KURM Dream Team selections and team captain honors as a senior

WHO IS AVERY HUGHES?

- Nursing major
- Her proudest accomplishment is earning a scholarship as a walk-on
- Mother played basketball at Arkansas State and she always looked up to her
- Ran track and was a two-time state champion
- Calls the Arkansas faithful the best fans in the world
- Loves playing for Coach Neighbors because he lets the team make decisions for themselves, which helps her grow into the person she wants to be

#22 HUGHES, Avery

Opponent	Date	GS	MIN	Total		3-Pointers		Free throws		Rebounds				PF	A	TO	BLK	STL	PTS	AVG
				FG-FGA	PCT	3FG-3FGA	PCT	FT-FTA	PCT	OFF	DEF	TOT	AVG							
Kent St.	11/17/2022		03:17	0-2	.000	0-0	.000	0-0	.000	0	0	0	0	0	1	1	0	0	0	0.0
at Little Rock	11/20/2022		05:04	0-1	.000	0-0	.000	2-2	1.000	0	0	0	0	0	2	0	0	0	2	1.0
vs Kansas St.	11/26/2022		00:47	0-0	.000	0-0	.000	0-0	.000	0	0	0	0	0	1	0	0	0	0	0.7
Troy	12/01/2022		03:22	1-1	1.000	0-0	.000	2-2	1.000	0	0	0	0	0	0	0	0	0	4	1.5
Oral Roberts	12/04/2022		03:52	0-0	.000	0-0	.000	1-2	.500	0	0	0	0	0	0	1	0	0	1	1.4
Totals		0	16:22	1-4	.250	0-0	.000	5-6	.833	0	0	0	0	0	3	1	2	0	7	1.4

Player Averages

Games Played	Minutes/game	Points/game	FG Pct	3FG Pct	FT Pct	Rebounds/game	Assists/game	Turnovers/game	Assist/Turnover ratio	Steals/game	Blocks/game
5	3.3	1.4	25.0	0.0	83.3	0.0	0.2	0.4	0.5	0.0	0.0

CAREER STATISTICS

SEASON	TEAM	GP-GS	MIN/AVG	Field Goals		3-Point		F-Throws		Rebounds				Scoring						
				FG-FGA	FG%	3FG-3FGA	3FG%	FT-FTA	FT%	OFF	DEF	TOT	AVG	PF-FO	A	TO	BLK	STL	PTS	AVG
2019-20	Ark	14-0	50/3.6	8-16	.500	3-9	.333	1-1	1.000	0	0	0	0.0	8-0	2	8	0	0	20	1.4
2020-21	Ark	7-0	45/6.4	3-7	.429	3-6	.500	3-3	1.000	0	2	2	0.3	2-0	5	3	0	2	12	1.7
2021-22	Ark	14-0	38/2.7	0-4	.000	0-2	.000	1-2	.500	0	2	2	0.1	3-0	2	2	0	1	1	0.1
2022-23	Ark	5-0	16/3.3	1-4	.250	0-0	.000	5-6	.833	0	0	0	0.0	3-0	1	2	0	0	7	1.4
TOTAL		40-0	150/3.7	12-31	.387	6-17	.353	10-12	.833	0	4	4	0.1	16-0	10	15	0	3	40	1.0



24 Jersey Wolfenbarger | So. | 6-5 | G/F | Fort Smith, Ark. (Northside HS)

WOLFENBARGER BENCHMARK STATS

2022-23 SEASON HIGHS

Points	11	vs. Troy	12-1-22
FG Made	4	vs. Troy	12-1-22
FG Att.	9	vs. Lamar	12-8-22
3FG Made	3	vs. Troy	12-1-22
3FG Att.	5	vs. Troy	12-1-22
FT Made	5	vs. Oral Roberts	12-5-22
FT Att.	5	vs. Oral Roberts	12-5-22
Off. Reb.	4	at UAPB	11-7-22
Def. Reb.	9	vs. Oral Roberts	12-4-22
Rebounds	12	vs. Oral Roberts	12-4-22
Assists	1	vs. Oral Roberts	12-4-22*
Blocks	4	vs. Oral Roberts	12-4-22
Steals	2	vs. Lamar	12-8-22
Minutes	33	vs. Lamar	12-8-22*

CAREER HIGHS

Points	16	vs. UCA	12-18-21*
FG Made	7	vs. UCA	12-18-21
FG Att.	14	vs. #25 Georgia	2-24-22
3FG Made	3	vs. Troy	12-1-22*
3FG Att.	11	at #7 Tennessee	1-31-22
FT Made	5	vs. Oral Roberts	12-4-22
FT Att.	6	at Florida	2-17-22*
Off. Reb.	4	at UAPB	11-7-22*
Def. Reb.	9	vs. Oral Roberts	12-4-22
Rebounds	12	vs. Oral Roberts	12-4-22
Assists	4	vs. #12 LSU	1-27-22
Blocks	4	vs. Oral Roberts	12-4-22
Steals	3	vs. Missouri	3-3-22*
Minutes	34	vs. Creighton	12-21-21

2021-22 SEC HIGHS

Points	13	at Miss. State	2-27-22
FG Made	6	at Miss. State	2-27-22*
FG Att.	14	vs. #25 Georgia	2-24-22
3FG Made	3	at #7 Tennessee	1-31-22*
3FG Att.	11	at #7 Tennessee	1-31-22
FT Made	3	vs. Missouri	3-3-22*
FT Att.	6	at Florida	2-17-22
Off. Reb.	3	at Texas A&M	2-3-22
Def. Reb.	8	at Missouri	2-13-22
Rebounds	11	at Missouri	2-13-22
Assists	4	vs. #12 LSU	1-27-22
Blocks	3	vs. #1 SC	3-4-22
Steals	3	vs. Missouri	3-3-22*
Minutes	30	at Missouri	2-13-22

NOTABLES

Stat	21-22	22-23	Career
Double Figure Pts	12	1	13
Double Figure Rebs	2	1	3
Double-Doubles	2	-	2
5+ Assists	-	-	-
5+ Blocks	-	-	-
5+ Steals	-	-	-
Led Team in Pts	-	-	-
Led Team in Reb	4	-	4
20+ Points	-	-	-
30+ Points	-	-	-

* Most Recent

GAME NOTES

- Playing back at her normal position and had her vs. Oral Roberts, where she logged nine points, a career-high 12 rebounds and four blocks
- Was all over vs. Lamar with four points, six boards, three blocks and two steals
- Registered a season-high 11 points off 3-of-5 from 3-point with two blocks vs. Troy
- Tabbled to the SEC All-Freshman team
- Registered back-to-back double-doubles (at Missouri, 12p-11r and at Texas A&M, 12p-10r)
- Averaged 7.5 points, 4.3 rebounds, 1.1 assists and 0.9 blocks per game in her first season
- No. 7 overall recruit and No. 1 wing player in the ESPN HoopGurlz 2021 recruiting rankings at the time of her signing and a consensus five-star player out of Northside High School
- Arkansas' first McDonald's All-American signee since 2016
- One of five finalists for the Jersey Mike's Naismith High School Player of the Year Award
- Arkansas' Gatorade Player of the year in 2020 and 2021

WHO IS JERSEY WOLFENBARGER?

- Started playing when she was 5 at a local rec team in Missouri and her parents coached her
- Most proud accomplishments in basketball are playing for Team USA at the Fiba World Championship and being a Razorback
- Her favorite thing about last season was Coach Todd saying his favorite thing about freshmen is they become sophomores
- Chose Arkansas because of the genuine coaching staff and to play for one of the best fanbases in the SEC
- Loves all thing natural like hiking, swimming and anything outdoors

#24 WOLFENBARGER, Jersey

Opponent	Date	GS	MIN	Total		3-Pointers		Free throws		Rebounds				PF	A	TO	BLK	STL	PTS	AVG
				FG-FGA	PCT	3FG-3FGA	PCT	FT-FTA	PCT	OFF	DEF	TOT	AVG							
at Ark.-Pine Bluff	11/07/2022		20:37	2-7	.286	0-0	.000	3-4	.750	4	3	7	7.0	1	0	2	0	1	7	7.0
Central Ark.	11/11/2022		20:20	2-6	.333	1-3	.333	0-1	.000	0	1	1	4.0	2	0	0	0	0	5	6.0
Tulsa	11/14/2022		10:31	1-3	.333	0-2	.000	0-0	.000	0	0	0	2.7	2	0	0	0	0	2	4.7
Kent St.	11/17/2022		18:13	2-6	.333	0-2	.000	0-0	.000	1	5	6	3.5	1	0	0	0	1	4	4.5
at Little Rock	11/20/2022		17:05	2-6	.333	1-2	.500	1-2	.500	1	4	5	3.8	1	1	0	0	0	6	4.8
vs Northern Ariz.	11/24/2022		10:44	1-4	.250	0-2	.000	0-1	.000	1	3	4	3.8	1	0	0	0	0	2	4.3
vs Clemson	11/25/2022		10:51	0-2	.000	0-2	.000	1-2	.500	1	3	4	3.9	1	1	2	0	0	1	3.9
vs Kansas St.	11/26/2022		10:33	0-2	.000	0-1	.000	1-2	.500	0	2	2	3.6	2	0	0	0	0	1	3.5
Troy	12/01/2022		20:46	4-7	.571	3-5	.600	0-2	.000	2	1	3	3.6	1	0	0	2	1	11	4.3
Oral Roberts	12/04/2022	*	32:30	2-5	.400	0-2	.000	5-5	1.000	3	9	12	4.4	1	1	2	4	0	9	4.8
Lamar University	12/08/2022	*	32:20	2-9	.222	0-3	.000	0-0	.000	3	3	6	4.5	1	0	1	3	2	4	4.7
Totals		2	204:29	18-57	.316	5-24	.208	11-19	.579	16	34	50	4.5	14	3	7	9	5	52	4.7

Player Averages

Games Played	Minutes/game	Points/game	FG Pct	3FG Pct	FT Pct	Rebounds/game	Assists/game	Turnovers/game	Assist/Turnover ratio	Steals/game	Blocks/game
11	18.6	4.7	31.6	20.8	57.9	4.5	0.3	0.6	0.4	0.5	0.8

CAREER STATISTICS

SEASON	TEAM	GP-GS	MIN/AVG	Field Goals		3-Point		F-Throws		Rebounds				Scoring						
				FG-FGA	FG%	3FG-3FGA	3FG%	FT-FTA	FT%	OFF	DEF	TOT	AVG	PF-FO	A	TO	BLK	STL	PTS	AVG
2021-22	Ark	30-23	666/22.2	87-215	.405	17-70	.243	34-71	.479	37	93	130	4.3	76-2	32	37	27	21	225	7.5
2022-23	Ark	11-2	204/18.6	18-57	.316	5-24	.208	11-19	.579	16	34	50	4.5	14-0	3	7	9	5	52	4.7
TOTAL		41-25	871/21.2	105-272	.386	22-94	.234	45-90	.500	53	127	180	4.4	90-2	35	44	36	26	277	6.8



30 Maryam Dauda | R-Fr. | 6-4 | F | Bentonville, Ark. (Bentonville HS)

DAUDA BENCHMARK STATS

Points	10	vs. Oral Roberts	12-4-22*
FG Made	5	vs. Oral Roberts	12-4-22
FG Att.	11	vs. Oral Roberts	12-4-22
3FG Made	1	vs. #25 K-State	11-26-22*
3FG Att.	3	vs. Oral Roberts	12-4-22
FT Made	2	vs. #25 K-State	11-26-22*
FT Att.	4	vs. Kent State	11-17-22*
Off. Reb.	3	vs. Oral Roberts	12-4-22*
Def. Reb.	7	vs. Troy	12-1-22
Rebounds	8	vs. Oral Roberts	12-4-22
Assists	2	at Little Rock	11-20-22
Blocks	2	vs. Oral Roberts	12-4-22
Steals	2	vs. Lamar	12-8-22
Minutes	22	vs. Oral Roberts	12-4-22

2021-22 SEASON HIGHS

Points	10	vs. Oral Roberts	12-4-22*
FG Made	5	vs. Oral Roberts	12-4-22
FG Att.	11	vs. Oral Roberts	12-4-22
3FG Made	1	vs. #25 K-State	11-26-22*
3FG Att.	3	vs. Oral Roberts	12-4-22
FT Made	2	vs. #25 K-State	11-26-22*
FT Att.	4	vs. Kent State	11-17-22*
Off. Reb.	3	vs. Oral Roberts	12-4-22*
Def. Reb.	7	vs. Troy	12-1-22
Rebounds	8	vs. Oral Roberts	12-4-22
Assists	2	at Little Rock	11-20-22
Blocks	2	vs. Oral Roberts	12-4-22
Steals	2	vs. Lamar	12-8-22
Minutes	22	vs. Oral Roberts	12-4-22

CAREER HIGHS

N/A

2021-22 SEC HIGHS

NOTABLES

Stat	21-22	22-23	Career
Double Figure Pts	-	2	2
Double Figure Rebs	-	-	-
Double-Doubles	-	-	-
5+ Assists	-	-	-
5+ Blocks	-	-	-
5+ Steals	-	-	-
Led Team in Pts	-	-	-
Led Team in Reb	-	-	-
20+ Points	-	-	-
30+ Points	-	-	-

GAME NOTES

- Played just six minutes against Lamar
- Registered her second double-digit scoring game with 10 points and a career-high eight boards against Oral Roberts
- Earned 10 points, five rebounds and a block and steal versus UCA
- Sat out during the 2021-22 season, recovering from ACL injury
- The 13th ranked player and top ranked post player in the ESPN HoopGurlz 2021 recruiting rankings at the time of her signing
- Consensus five star recruit out of Bentonville High School
- McDonald's All-American in 2021
- Naismith High School Player of the Year Semifinalist following her senior season
- Four-time All-Conference selection and three-time All-State selection

WHO IS MARYAM DAUDA?

- Majoring in international business
- Born in Nigeria and moved to the U.S. when she was 12
- Father played professional basketball in Belgium
- Favorite pair of shoes: Air Jordan 11 'Cool Grey'
- Favorite TV show: Gilmore Girls

#30 DAUDA, Maryam

Opponent	Date	GS	MIN	Total		3-Pointers		Free throws		Rebounds				PF	A	TO	BLK	STL	PTS	AVG
				FG-FGA	PCT	3FG-3FGA	PCT	FT-FTA	PCT	OFF	DEF	TOT	AVG							
at Ark.-Pine Bluff	11/07/2022		14:30	1-3	.333	0-0	.000	2-4	.500	2	1	3	3.0	4	1	1	1	1	4	4.0
Central Ark.	11/11/2022		17:06	4-6	.667	0-0	.000	2-3	.667	3	2	5	4.0	3	0	2	1	1	10	7.0
Tulsa	11/14/2022		09:28	1-2	.500	1-2	.500	0-0	.000	2	1	3	3.7	1	0	2	0	0	3	5.7
Kent St.	11/17/2022		18:58	2-5	.400	0-0	.000	2-4	.500	2	3	5	4.0	3	1	2	0	0	6	5.8
at Little Rock	11/20/2022		14:55	3-5	.600	1-1	1.000	0-0	.000	1	3	4	4.0	4	2	2	1	1	7	6.0
vs Northern Ariz.	11/24/2022		16:23	2-3	.667	0-1	.000	1-2	.500	2	2	4	4.0	1	1	2	3	0	5	5.8
vs Clemson	11/25/2022		14:27	0-2	.000	0-0	.000	0-0	.000	2	1	3	3.9	0	0	0	0	0	0	5.0
vs Kansas St.	11/26/2022		11:16	1-2	.500	1-1	1.000	2-2	1.000	2	2	4	3.9	2	0	2	0	0	5	5.0
Troy	12/01/2022		20:50	0-6	.000	0-1	.000	0-0	.000	0	7	7	4.2	4	0	1	0	0	0	4.4
Oral Roberts	12/04/2022		22:08	5-11	.455	0-3	.000	0-0	.000	3	5	8	4.6	3	1	0	2	0	10	5.0
Lamar University	12/08/2022		06:09	1-1	1.000	0-0	.000	0-0	.000	0	0	0	4.2	1	0	2	0	2	2	4.7
Totals		0	166:11	20-46	.435	3-9	.333	9-15	.600	19	27	46	4.2	26	6	16	8	5	52	4.7

Player Averages

Games Played	Minutes/game	Points/game	FG Pct	3FG Pct	FT Pct	Rebounds/game	Assists/game	Turnovers/game	Assist/Turnover ratio	Steals/game	Blocks/game
11	15.1	4.7	43.5	33.3	60.0	4.2	0.5	1.5	0.4	0.5	0.7

CAREER STATISTICS

SEASON	TEAM	GP-GS	MIN/AVG	Field Goals		3-Point		F-Throws		Rebounds				Scoring						
				FG-FGA	FG%	3FG-3FGA	3FG%	FT-FTA	FT%	OFF	DEF	TOT	AVG	PF	FO	A	TO	BLK	STL	PTS
2022-23	Ark	11-0	166/15.1	20-46	.435	3-9	.333	9-15	.600	19	27	46	4.2	26-0	6	16	8	5	52	4.7
TOTAL		11-0	166/15.1	20-46	.435	3-9	.333	9-15	.600	19	27	46	4.2	26-0	6	16	8	5	52	4.7



34 Chrissy Carr | R-Sr. | 6-1 | G | Eden Prairie, Minn. (Manhattan [Kan.]) | Syracuse

CARR BENCHMARK STATS

Points	22	at Little Rock	11-20-22
FG Made	7	vs. #25 K-State	11-26-22*
FG Att.	17	vs. Oral Roberts	12-4-22
3FG Made	5	vs. #25 K-State	11-26-22
3FG Att.	12	vs. Oral Roberts	12-4-22
FT Made	6	vs. Lamar	12-8-22
FT Att.	8	vs. Lamar	12-8-22
Off. Reb.	3	vs. NAU	11-24-22
Def. Reb.	8	vs. UCA	11-11-22
Rebounds	8	vs. UCA	11-11-22
Assists	1	vs. Oral Roberts	12-4-22*
Blocks	1	vs. Tulsa	11-14-22
Steals	1	vs. Troy	12-1-22*
Minutes	36	vs. Lamar	12-8-22

2022-23 SEASON HIGHS

Points	31	vs. TCU^	3-1-21
FG Made	9	at Kansas^	1-23-21
FG Att.	20	at West Virginia^	3-3-21*
3FG Made	5	vs. Clemson	11-25-22*
3FG Att.	13	at TCU^	2-2-20
FT Made	11	vs. TCU^	3-1-21
FT Att.	12	vs. TCU^	3-1-21
Off. Reb.	4	at Kansas^	1-23-21
Def. Reb.	10	vs. Texas Tech^	2-24-21
Rebounds	15	vs. Morgan St.#	11-17-21
Assists	5	vs. Iowa State^	1-28-21
Blocks	3	vs. Louisville#	2-6-22*
Steals	4	vs. Morgan St.#	11-17-21*
Minutes	43	vs. UTRGV^	12-28-19
^ at Kansas State		# at Syracuse	

CAREER HIGHS

N/A

2021-22 SEC HIGHS

NOTABLES

Stat	18-19	19-20	20-21	21-22	22-23	Career
Double Figure Pts	13	13	20	18	8	72
Double Figure Rebs	-	-	2	1	-	3
Double-Doubles	-	-	2	1	-	3
5+ Assists	-	-	3	-	-	3
5+ Blocks	-	-	-	-	-	-
5+ Steals	-	-	-	-	-	-
Led Team in Pts	3	5	9	9	3	29
Led Team in Reb	2	-	6	4	1	13
20+ Points	4	4	5	-	1	14
30+ Points	-	-	1	-	-	1

* Most Recent

GAME NOTES

- Coming off five straight double-digit scoring games, most recently a game-leading 18 points vs. Lamar
- Tapped to Paradise Jam Reef All-Tournament Team, averaging 14.7 points and 5.0 rebounds per game
- Delivered 19 points off matching a career-high five triples vs. Clemson and led the K-State game with 18 points against her former team
- Logged season-high 22 points off 4-of-6 shooting from beyond the arc at Little Rock
- No. 2 in the SEC in 3-pointers per game (2.6) and 3-point percentage (.346)
- Across five seasons, has started in 124 of 126 career games
- Was third on the team in scoring at Syracuse (11.7 PPG)
- Her best season came in her junior year at Kansas State, averaging 15.2 points, 4.9 rebounds and 1.8 assists per game
- Career-high of 31 points against TCU (3-1-21) marked one of 14 games she has launched 20+ points

WHO IS CHRISSEY CARR?

- Wears #34 because it's #43 flipped and it was her dad's (Chris Carr) number in the NBA
- If she feels like she isn't playing well, she'll change her hair at halftime
- Chose Arkansas for family atmosphere and coaches and loved Fayetteville
- Favorite pair of shoes: Nike Dunks
- Favorite TV show: How to Get Away with Murder

#34 CARR, Chrissy

Opponent	Date	GS	MIN	Total		3-Pointers		Free throws		Rebounds				PF	A	TO	BLK	STL	PTS	AVG
				FG-FGA	PCT	3FG-3FGA	PCT	FT-FTA	PCT	OFF	DEF	TOT	AVG							
at Ark.-Pine Bluff	11/07/2022	*	19:49	3-8	.375	2-5	.400	2-2	1.000	2	1	3	3.0	0	0	0	0	10	10.0	
Central Ark.	11/11/2022	*	25:25	2-8	.250	2-6	.333	2-2	1.000	0	8	8	5.5	1	0	3	0	1	8	9.0
Tulsa	11/14/2022	*	22:32	1-9	.111	1-8	.125	0-0	.000	2	4	6	5.7	0	0	2	1	0	3	7.0
Kent St.	11/17/2022	*	25:55	4-7	.571	2-4	.500	2-2	1.000	0	4	4	5.3	2	1	0	0	0	12	8.3
at Little Rock	11/20/2022	*	23:57	7-10	.700	4-6	.667	4-4	1.000	1	1	2	4.6	2	0	2	0	0	22	11.0
vs Northern Ariz.	11/24/2022	*	25:46	2-8	.250	0-4	.000	3-4	.750	3	4	7	5.0	3	0	2	0	0	7	10.3
vs Clemson	11/25/2022	*	30:43	6-13	.462	5-10	.500	2-2	1.000	1	3	4	4.9	3	1	1	0	1	19	11.6
vs Kansas St.	11/26/2022	*	29:54	7-12	.583	3-8	.375	1-2	.500	0	4	4	4.8	0	0	0	0	0	18	12.4
Troy	12/01/2022	*	25:43	5-14	.357	2-9	.222	2-2	1.000	1	2	3	4.6	2	0	0	0	1	14	12.6
Oral Roberts	12/04/2022	*	35:04	6-17	.353	3-12	.250	0-0	.000	1	4	5	4.6	2	1	2	0	0	15	12.8
Lamar University	12/08/2022	*	35:42	4-9	.444	4-9	.444	6-8	.750	1	1	2	4.4	2	0	1	0	0	18	13.3
Totals		11	300:29	47-115	.409	28-81	.346	24-28	.857	12	36	48	4.4	17	3	13	1	3	146	13.3

Player Averages

Games Played	Minutes/game	Points/game	FG Pct	3FG Pct	FT Pct	Rebounds/game	Assists/game	Turnovers/game	Assist/Turnover ratio	Steals/game	Blocks/game
11	27.3	13.3	40.9	34.6	85.7	4.4	0.3	1.2	0.2	0.3	0.1

CAREER STATISTICS

SEASON	TEAM	GP-GS	MIN/AVG	Field Goals		3-Point		F-Throws		Rebounds				Scoring						
				FG-FGA	FG%	3FG-3FGA	3FG%	FT-FTA	FT%	OFF	DEF	TOT	AVG	PF-FO	A	TO	BLK	STL	PTS	AVG
2018-19	KState	33-31	967/29.3	109-339	.322	56-194	.289	51-71	.718	22	69	91	2.8	81-1	24	68	14	30	325	9.8
2019-20	KState	29-29	796/27.5	94-316	.297	55-195	.282	40-56	.714	12	69	81	2.8	57-0	50	66	9	16	283	9.8
2020-21	KState	24-24	776/32.3	127-327	.388	55-157	.350	55-71	.775	18	100	118	4.9	50-0	43	71	9	12	364	15.2
2021-22	SU	29-29	877/30.2	117-322	.363	60-175	.343	44-48	.917	27	107	134	4.6	80-1	39	58	18	30	338	11.7
2022-23	Ark	11-11	300/27.3	47-115	.409	28-81	.346	24-28	.857	12	36	48	4.4	17-0	3	13	1	3	146	13.3
TOTAL FOR Ark		11-11	300/27.3	47-115	.409	28-81	.346	24-28	.857	12	36	48	4.4	17-0	3	13	1	3	146	13.3
TOTAL		126-124	3717/29.5	494-1419	.348	254-802	.317	214-274	.781	91	381	472	3.7	285-2	159	276	51	91	1456	11.6



43 Makayla Daniels | Sr. | 5-8 | G | Frederick, Md. (Frederick HS)

DANIELS BENCHMARK STATS

Points	21	vs. Clemson	11-25-22
FG Made	6	vs. Clemson	11-25-22*
FG Att.	19	vs. Tulsa	11-14-22
3FG Made	4	vs. Tulsa	11-14-22
3FG Att.	10	vs. #25 K-State	11-26-22
FT Made	8	vs. NAU	11-24-22
FT Att.	10	vs. Clemson	11-25-22
Off. Reb.	4	vs. Tulsa	11-14-22
Def. Reb.	6	vs. #25 K-State	11-26-22
Rebounds	9	vs. Tulsa	11-14-22
Assists	5	vs. Kent State	11-17-22
Blocks	1	vs. Kent State	11-17-22
Steals	4	vs. Kent State	11-17-22*
Minutes	38	vs. #25 K-State	11-26-22

2022-23 SEASON HIGHS

Points	34	vs. Creighton	12-21-21
FG Made	11	vs. Creighton	12-21-21*
FG Att.	19	vs. Tulsa	11-14-22
3FG Made	6	vs. Oral Roberts	11-14-19
3FG Att.	10	vs. #25 K-State	11-26-22
FT Made	8	vs. Belmont	11-20-19
FT Att.	10	vs. Clemson	11-25-22*
Off. Reb.	5	at Vanderbilt	1-6-22
Def. Reb.	11	vs. Missouri	3-3-22
Rebounds	14	vs. Missouri	3-3-22
Assists	7	at SMU	12-9-20
Blocks	1	vs. Kent State	11-17-22*
Steals	6	vs. UCA	12-18-21
Minutes	43	vs. Missouri	3-3-22

CAREER HIGHS

Points	21	vs. Georgia	2-24-22
FG Made	8	vs. Florida	1-26-20
FG Att.	17	vs. Missouri	3-3-22
3FG Made	3	vs. LSU	1-27-22*
3FG Att.	9	at Tennessee	1-7-21
FT Made	7	vs. LSU	1-27-22
FT Att.	8	vs. LSU	1-27-22
Off. Reb.	5	at Vanderbilt	1-6-22
Def. Reb.	11	vs. Missouri	3-3-22
Rebounds	14	vs. Missouri	3-3-22
Assists	5	vs. Auburn	3-5-20*
Blocks	1	at Auburn	2-25-21*
Steals	4	vs. Texas A&M	1-10-21*
Minutes	43	vs. Missouri	3-3-22

2021-22 SEC HIGHS

Stat	19-20	20-21	21-22	22-23	Career
Double Figure Pts	10	18	17	7	51
Double Figure Rebs	-	-	1	-	1
Double-Doubles	-	-	1	-	1
5 + Assists	3	2	6	1	12
5 + Blocks	-	-	-	-	-
5 + Steals	1	-	1	-	2
Led Team in Pts	3	1	8	1	13
Led Team in Reb	-	1	7	-	8
20 + Points	2	1	5	1	9
30+ Points	-	-	2	-	2

NOTABLES

* Most Recent

GAME NOTES

- Sat out last two games
- Registered 10 points, all coming in the first quarter, vs. Troy with four assists
- Named Paradise Jam Reef Tournament MVP, averaging 17.3 points, 5.7 rebounds, 2.7 assists and 2.0 steals per game across those three contests
- Logged season-high 21 points off 6-of-12 shooting from the field with five rebounds vs. Clemson
- Sits at No. 25 on the all-time scoring list (1,134) and 20 in assists (245)
- No. 6 in steals (2.1), 8 in FT percentage (.750), 13 in assists (3.2), 15 in ast/to ratio (1.3) and 19 in scoring (13.3) in the SEC
- Earned a spot on the SEC Preseason Second Team
- Leading returning scorer (14.0 PPG) and rebounder (5.3 RPG) from the 2021-22 team
- Became the 31st member of the 1,000-point club last season at the NCAA Tournament vs. Utah
- Registered her first career double-double against Mizzou in the SECT (13 points, 14 rebounds)
- Dropped a career-best 34 points against Creighton, her second 30+ point game of 2021-22

WHO IS MAKAYLA DANIELS?

- Graduated college in three years
- Lived in Japan for seven years, as well as Arizona, North Carolina and Maryland
- Played with Saylor Poffenbarger's brother in AAU for a stint
- Wears #43 because 4+3=7 and 7 is her favorite number
- One of the most interesting things about her is she loves piercings
- Favorite part about playing in Bud Walton Arena: the Hog Call

#43 DANIELS, Makayla

Opponent	Date	GS	MIN	Total		3-Pointers		Free throws		Rebounds				PF	A	TO	BLK	STL	PTS	AVG
				FG-FGA	PCT	3FG-3FGA	PCT	FT-FTA	PCT	OFF	DEF	TOT	AVG							
at Ark-Pine Bluff	11/07/2022	*	23:11	0-5	.000	0-0	.000	4-5	.800	1	5	6	6.0	1	1	2	0	1	4	4.0
Central Ark.	11/11/2022	*	24:18	5-8	.625	1-2	.500	3-6	.500	0	2	2	4.0	0	4	0	0	4	14	9.0
Tulsa	11/14/2022	*	36:43	6-19	.316	4-9	.444	3-4	.750	4	5	9	5.7	1	3	2	0	0	19	12.3
Kent St.	11/17/2022	*	24:02	3-6	.500	2-3	.667	1-3	.333	1	1	2	4.8	3	5	2	1	4	9	11.5
at Little Rock	11/20/2022	*	22:29	3-4	.750	3-4	.750	3-4	.750	1	2	3	4.4	2	4	1	0	1	12	11.6
vs Northern Ariz.	11/24/2022	*	30:01	5-10	.500	0-1	.000	8-9	.889	1	5	6	4.7	4	4	4	0	2	18	12.7
vs Clemson	11/25/2022	*	34:19	6-12	.500	2-5	.400	7-10	.700	0	5	5	4.7	4	2	6	0	2	21	13.9
vs Kansas St.	11/26/2022	*	37:39	4-15	.267	2-10	.200	3-3	1.000	0	6	6	4.9	0	2	3	0	2	13	13.8
Troy	12/01/2022	*	25:36	2-6	.333	2-6	.333	4-4	1.000	0	3	3	4.7	4	4	3	0	3	10	13.3
Totals			9	258:18	.400	16-40	.400	36-48	.750	8	34	42	4.7	19	29	23	1	19	120	13.3

Player Averages

Games Played	Minutes/game	Points/game	FG Pct	3FG Pct	FT Pct	Rebounds/game	Assists/game	Turnovers/game	Assist/Turnover ratio	Steals/game	Blocks/game
9	28.7	13.3	40.0	40.0	75.0	4.7	3.2	2.6	1.3	2.1	0.1

CAREER STATISTICS

SEASON TEAM	GP-GS	MIN/AVG	Field Goals		3-Point		F-Throws		Rebounds				Scoring							
			FG-FGA	FG%	3FG-3FGA	3FG%	FT-FTA	FT%	OFF	DEF	TOT	AVG	PF-FO	A	TO	BLK	STL	PTS	AVG	
2019-20	Ark	32-32	720/22.5	107-216	.495	25-56	.446	60-77	.779	7	48	55	1.7	67-1	77	44	2	45	299	9.3
2020-21	Ark	28-28	801/28.6	101-256	.395	44-120	.367	78-97	.804	9	74	83	3.0	75-2	61	43	4	41	324	11.6
2021-22	Ark	28-28	845/30.2	126-307	.410	40-136	.294	99-125	.792	51	98	149	5.3	74-1	78	42	4	50	391	14.0
2022-23	Ark	9-9	258/28.7	34-85	.400	16-40	.400	36-48	.750	8	34	42	4.7	19-0	29	23	1	19	120	13.3
TOTAL		97-97	2624/27.1	368-864	.426	125-352	.355	273-347	.787	75	254	329	3.4	235-4	245	152	11	155	1134	11.7



55 Emrie Ellis | So. | 6-3 | F | Vanoss, Okla. | Vanoss HS

ELLIS BENCHMARK STATS

2022-23 SEASON HIGHS

Points	5	at Little Rock	11-20-22
FG Made	2	at Little Rock	11-20-22
FG Att.	3	vs. Oral Roberts	12-4-22*
3FG Made	1	at Little Rock	11-20-22
3FG Att.	1	at Little Rock	11-20-22*
FT Made	1	vs. Troy	12-1-22
FT Att.	2	vs. Troy	12-1-22
Off. Reb.	1	vs. UCA	11-11-22
Def. Reb.	3	vs. UCA	11-11-22
Rebounds	4	vs. UCA	11-11-22
Assists	N/A		
Blocks	N/A		
Steals	1	at UAPB	11-7-22
Minutes	15	at UAPB	11-7-22

CAREER HIGHS

Points	11	vs. Auburn	2-10-22
FG Made	4	vs. Auburn	2-10-22
FG Att.	7	vs. Auburn	2-10-22*
3FG Made	1	at Little Rock	11-20-22*
3FG Att.	3	vs. 1/1 SC	1-17-22*
FT Made	3	vs. Auburn	2-10-22
FT Att.	4	vs. Auburn	2-10-22
Off. Reb.	3	at Missouri	2-13-22
Def. Reb.	5	at Missouri	2-13-22
Rebounds	8	at Missouri	2-13-22
Assists	2	at Vanderbilt	1-6-22*
Blocks	5	vs. UAPB	11-12-21
Steals	1	at UAPB	11-7-22*
Minutes	27	vs. Auburn	2-10-22

2021-22 SEC HIGHS

Points	11	vs. Auburn	2-10-22
FG Made	4	vs. Auburn	2-10-22
FG Att.	7	vs. Auburn	2-10-22*
3FG Made	1	vs. 1/1 SC	1-17-22
3FG Att.	3	vs. 1/1 SC	1-17-22
FT Made	3	vs. Auburn	2-10-22
FT Att.	4	vs. Auburn	2-10-22
Off. Reb.	3	at Missouri	2-13-22
Def. Reb.	5	at Missouri	2-13-22
Rebounds	8	at Missouri	2-13-22
Assists	2	vs. Vanderbilt	1-6-22*
Blocks	2	vs. Auburn	2-10-22
Steals	1	at Alabama	1-20-22
Minutes	27	vs. Auburn	2-10-22

NOTABLES

Stat	21-22	22-23	Career
Double Figure Pts	1	-	1
Double Figure Rebs	-	-	-
Double-Doubles	-	-	-
5+ Assists	-	-	-
5+ Blocks	1	-	1
5+ Steals	-	-	-
Led Team in Pts	-	-	-
Led Team in Reb	-	-	-
20+ Points	-	-	-
30+ Points	-	-	-

* Most Recent

GAME NOTES

- Logged two minutes against Lamar
- Played nearly nine minutes versus Oral Roberts, logging a field goal
- Registered a season-high five points at Little Rock after going 2-of-3 from the field
- Has played 8+ minutes six of her eight game appearances this season
- Blocked five shots against UAPB, the most by a freshman Hog since 2014
- Played in 27 games off the bench in her debut season
- Best performance came against Auburn, tallying 11 points and five boards in 27 minutes
- VYPE Top 100 in all four of her high school seasons
- Led the state of Oklahoma in rebounds & blocks in 2018

WHO IS EMRIE ELLIS?

- Majoring in recreation and sport management
- Wears #55 because it was her dad's number
- Favorite thing to do in Fayetteville: swim or go to the lake
- Favorite game from last season: the team's win over Auburn
- Would tell people she wanted to be a nurse when she grew up

#55 ELLIS, Emrie

Opponent	Date	GS	MIN	Total		3-Pointers		Free throws		Rebounds				PF	A	TO	BLK	STL	PTS	AVG	
				FG-FGA	PCT	3FG-3FGA	PCT	FT-FTA	PCT	OFF	DEF	TOT	AVG								
at Ark.-Pine Bluff	11/07/2022		15:24	0-2	.000	0-0	.000	0-0	.000	0	2	2	2.0	2	0	0	0	1	0	0.0	
Central Ark.	11/11/2022		12:53	0-1	.000	0-1	.000	0-0	.000	1	3	4	3.0	0	0	0	0	0	0	0.0	
Kent St.	11/17/2022		08:43	0-2	.000	0-1	.000	0-0	.000	0	1	1	2.3	1	0	0	0	0	0	0.0	
at Little Rock	11/20/2022		12:49	2-3	.667	1-1	1.000	0-0	.000	0	2	2	2.3	3	0	3	0	0	5	1.3	
vs Northern Ariz.	11/24/2022		01:57	0-0	.000	0-0	.000	0-0	.000	0	0	0	1.8	0	0	1	0	0	0	1.0	
vs Kansas St.	11/26/2022		02:11	0-0	.000	0-0	.000	0-0	.000	0	0	0	1.5	1	0	1	0	0	0	0.8	
Troy	12/01/2022		08:42	0-2	.000	0-1	.000	1-2	.500	0	0	0	1.3	1	0	0	0	0	1	0.9	
Oral Roberts	12/04/2022		08:33	1-3	.333	0-0	.000	0-0	.000	0	1	1	1.3	0	0	0	0	0	2	1.0	
Lamar University	12/08/2022		02:23	0-0	.000	0-0	.000	0-0	.000	0	0	0	1.1	0	0	0	0	0	0	0.9	
Totals			0	73:35	3-13	.231	1-4	.250	1-2	.500	1	9	10	1.1	8	0	5	0	1	8	0.9

Player Averages

Games Played	Minutes/game	Points/game	FG Pct	3FG Pct	FT Pct	Rebounds/game	Assists/game	Turnovers/game	Assist/Turnover ratio	Steals/game	Blocks/game
9	8.2	0.9	23.1	25.0	50.0	1.1	0.0	0.6	0.0	0.1	0.0

CAREER STATISTICS

SEASON	TEAM	GP-GS	MIN/AVG	Field Goals		3-Point		F-Throws		Rebounds				Scoring						
				FG-FGA	FG%	3FG-3FGA	3FG%	FT-FTA	FT%	OFF	DEF	TOT	AVG	PF-FO	A	TO	BLK	STL	PTS	AVG
2021-22	Ark	27-0	293/10.9	33-85	.388	3-24	.125	9-13	.692	19	37	56	2.1	40-1	15	22	22	2	78	2.9
2022-23	Ark	9-0	74/8.2	3-13	.231	1-4	.250	1-2	.500	1	9	10	1.1	8-0	0	5	0	1	8	0.9
TOTAL		36-0	367/10.2	36-98	.367	4-28	.143	10-15	.667	20	46	66	1.8	48-1	15	27	22	3	86	2.4



Official Basketball Box Score - Final
Arkansas at Little Rock
11/20/22 Jack Stephens Center, Little Rock
2022-23 Women's Basketball

Game Time: 1:00 PM
Game Duration: 1:56
Attendance: 2,879

Officials: Ty Bills, Nadi Carey, Daniel Drake

Table with columns for NO. Name, Min, FG, 3P, FT, Rebounds, Fouls, TP, AS, TO, ST, Blocks, +/- and Shooting By Period. Includes team totals and technical fouls.

Table with columns for NO. Name, Min, FG, 3P, FT, Rebounds, Fouls, TP, AS, TO, ST, Blocks, +/- and Shooting By Period. Includes team totals and technical fouls.

Summary table with columns for ARK, LR, Points from, Turnovers, Paint, Second Chance, Fast Breaks, Bench, and Period by Period Scoring.



Official Basketball Box Score - Final
Northern Ariz. at Arkansas
11/24/22 UVI Sports and Fitness Center, Charlotte Amalie, USVI
2022 Paradise Jam Women's Basketball REEF DIVISION

Game Time: 6:45 PM
Game Duration: 2:00

Officials: Tim Resch, Tommi Paris, Sarah Williams

Table with columns for NO. Name, Min, FG, 3P, FT, Rebounds, Fouls, TP, AS, TO, ST, Blocks, +/- and Shooting By Period. Includes team totals and technical fouls.

Table with columns for NO. Name, Min, FG, 3P, FT, Rebounds, Fouls, TP, AS, TO, ST, Blocks, +/- and Shooting By Period. Includes team totals and technical fouls.

Summary table with columns for NAU, ARK, Points from, Turnovers, Paint, Second Chance, Fast Breaks, Bench, and Period by Period Scoring.



Official Basketball Box Score - Final
Arkansas at Clemson
11/25/22 UVI Sports and Fitness Center, Charlotte Amalie, USVI
2022-23 Women's Basketball

Game Time: 9:35 PM
Game Duration: 2:06
Attendance: 1,724

Officials: Mark McClenny, Brandon Entenrie, Whitley Armstrong

Table with columns for NO. Name, Min, FG, 3P, FT, Rebounds, Fouls, TP, AS, TO, ST, Blocks, +/- and Shooting By Period. Includes team totals and technical fouls.

Table with columns for NO. Name, Min, FG, 3P, FT, Rebounds, Fouls, TP, AS, TO, ST, Blocks, +/- and Shooting By Period. Includes team totals and technical fouls.

Summary table with columns for ARK, CLEM, Points from, Turnovers, Paint, Second Chance, Fast Breaks, Bench, and Period by Period Scoring.

Game Notes: 2022 U.S. Virgin Islands Paradise Jam Women's Basketball Tournament. Presented by Basketball Travelers



Official Basketball Box Score - Final
Kansas St. at Arkansas
11/25/22 UVI Sports and Fitness Center, Charlotte Amalie, USVI
2022-23 Women's Basketball

Game Time: 8:00 PM
Game Duration: 1:48
Attendance: 2,024

Officials: Ashley Gloss, Tim Resch, Tommi Paris

Table with columns for NO. Name, Min, FG, 3P, FT, Rebounds, Fouls, TP, AS, TO, ST, Blocks, +/- and Shooting By Period. Includes team totals and technical fouls.

Table with columns for NO. Name, Min, FG, 3P, FT, Rebounds, Fouls, TP, AS, TO, ST, Blocks, +/- and Shooting By Period. Includes team totals and technical fouls.

Summary table with columns for KSTATE, ARK, Points from, Turnovers, Paint, Second Chance, Fast Breaks, Bench, and Period by Period Scoring.

Game Notes: 2022 U.S. Virgin Islands Paradise Jam Women's Basketball Tournament. Presented by Basketball Travelers

TV/RADIO CHART

Number	Player	GP-GS	PPG	RPG	APG	MPG	Notes
0	Saylor Poffenbarger R-Fr. G TR 6-2 Middletown, Md. UConn Major: Recreation & Sport Management	Season: 11-11 Career: 23-11	9.4 4.7	8.0 4.0	2.7 1.3	30.7 16.1	<ul style="list-style-type: none"> Back-to-back SEC Freshman of the Week Tallied back-to-back double-doubles with career-high 17 points/12 rebounds vs. Lamar Transferred to Arkansas in the winter of 2022 No. 2 in def. rebounds/gm (7.1) and 7 in rebounds in SEC Enrolled early at UConn in Jan. 2021 Won gold at the 2019 FBI Americas U16 Championship
2	Samara Spencer So. G 1L 5-7 Fort Lauderdale, Fla. St. Thomas Aquinas Major: Recreation & Sport Management	Season: 11-11 Career: 42-38	15.5 13.1	4.1 3.8	4.5 3.5	30.2 30.2	<ul style="list-style-type: none"> Tallied eighth double-digit scoring game, 17 points vs. Lamar Logged career-high 32 points w/ 6 3-pointers on her b-day vs. ORU No. 1 in FT attempts (72), 5 in assists/gm, 8 in scoring and 12 in 3-pointers in the SEC, and third in FT attempts in the NCAA Named SEC Freshman of the Year, first for Arkansas since 2009 Won SEC Freshman of the Week four times last season Led St. Thomas to state title as a senior
4	Erynn Barnum R-Sr. F 3L 6-2 Little Rock, Ark. Little Rock Central Major: Recreation & Sport Management	Season: 11-11 Career: 88-21	14.8 7.7	7.6 4.8	1.6 0.6	24.5 16.1	<ul style="list-style-type: none"> Logged 18 points & eight boards vs. Troy and eight rebounds vs. Lamar Katrina McClain Preseason Watch List choice Averaged 12.7 PPG and 6.7 RPG w/ 10 steals at Paradise Jam Had career-high 27 points w/ 8 boards vs. Tulsa Leading SEC in FG percentage (.667), ninth in rebounding and 10th in scoring, while No. 8 in FG percentage nationally Longest tenured Razorback
11	Rylee Langerman Jr. G 2L 5-9 Norman, Okla. Christian Heritage Major: Biology	Season: 11-0 Career: 56-7	3.7 2.8	3.5 3.1	0.7 0.8	18.6 16.2	<ul style="list-style-type: none"> Matched season-high six rebounds against Lamar Logged 10 points, five rebounds and four steals vs. Tulsa Finding her shot with five 3-pointers this season Has been involved in several tie ups that have been big in games Appeared in all 32 games last season Dominated vs. Mizzou for career-high 17 points (5-for-6 from 3-point) Averaged 3.2 points and 3.7 rebounds per game last season
13	Sasha Goforth R-So. G 1L 6-1 Fayetteville, Ark. Oregon State Major: Human Development and Family Sciences	Season: N/A Career: 52-52	N/A 11.5	N/A 4.3	N/A 1.5	N/A 29.5	<ul style="list-style-type: none"> Won't see the floor this season, as she will be redshirting Only Hog to start all 32 games last season One of five players who averaged double digits in scoring, logging 11.5 points and 4.8 boards per game Led the team with 66 blocks, third most in program history Highly recruited player out of Fayetteville HS, No. 7 nationally
15	Ashlyn Sage R-Fr. G 1L 6-2 Weatherford, Okla. Weatherford Major: Psychology	Season: N/A Career: 15-0	N/A 1.2	N/A 0.8	N/A 0.1	N/A 5.2	<ul style="list-style-type: none"> Won't play in 2022-23 Started out collegiate career with a bang, going 2-of-2 from beyond the arc for six points vs. Tarleton State Played 15 games off the bench, seven of those SEC games No. 84 overall recruit in Premier Basketball's 2021 rankings
20	Karley Johnson Fr. G FR 5-9 Mustang, Okla. Mustang Major: Undecided	Season: 6-0 Career: 6-0	0.2 0.2	0.3 0.3	0.2 0.2	3.4 3.4	<ul style="list-style-type: none"> Only signee in fall class Scored first collegiate point off FT at Little Rock Made collegiate debut vs. UCA and has appeared in six games Tabbed a 2022 McDonald's All-American nominee As a senior at Mustang HS, averaged 12.3 points, 4.3 rebounds and 3.1 assists per game
21	Loren Lindsey Fr. G FR 5-11 Fayetteville, Ark. Fayetteville Major: Finance	Season: 5-0 Career: 5-0	0.0 0.0	0.0 0.0	0.0 0.0	2.2 2.2	<ul style="list-style-type: none"> Local standout player out of Fayetteville HS Made collegiate debut versus UCA and has played in five games Tabbed to the All-Conference 6A West All-Defensive Team Named Northwest Arkansas Democrat Gazette Player of the Week Led team to state semifinals in 2020 with 55-53 win, and the championship game was not played due to Covid-19
22	Avery Hughes Sr. G 3L 5-7 Bentonville, Ark. Bentonville Major: Nursing	Season: 5-0 Career: 40-0	1.4 1.0	0.0 0.1	0.2 0.3	3.3 3.7	<ul style="list-style-type: none"> Scored in her third game this year with a free throw vs. ORU Logged season-high four points in three minutes against Troy Former walk-on, earned a scholarship prior to 2021-22 season Expect more minutes played by Hughes this season Appeared in 12 games last season Bentonville HS's second leading scorer
24	Jersey Wolfenbarger So. F 1L 6-5 Fort Smith, Ark. Northside Major: Psychology	Season: 11-2 Career: 41-25	4.7 6.8	4.5 4.4	0.3 0.9	18.6 21.2	<ul style="list-style-type: none"> Coming off back-to-back starts, tallying 6 boards & 3 blocks vs. Lamar Had season-high 11 points (3-of-5 from 3-point) w/ two blocks vs. Troy Logged seven points and seven boards in opener at UAPB Named to SEC All-Freshman Team Recorded two double-doubles as a freshman, started in all SEC games No. 7 overall recruit and No. 1 wing player in the ESPN HoopGurlz 2021 recruiting rankings at the time of her signing
30	Maryam Dauda R-Fr. F FR 6-4 Bentonville, Ark. Bentonville Major: International Business	Season: 11-0 Career: 11-0	4.7 4.7	4.2 4.2	0.5 0.5	15.1 15.1	<ul style="list-style-type: none"> Sat out during 2021-22 season recovering from ACL injury Logged double-digits for second time of her young career with 10 points and a career-high eight boards vs. ORU Logged 10 points and five rebounds off the bench vs. UCA 13th-ranked player and top post player in the ESPN HoopGurlz 2021 recruiting class at her time of signing Consensus five-star recruit and McDonald's All-American
34	Chrissy Carr R-Sr. G TR 6-1 Eden Prairie, Minn. Syracuse Major: Operations Management	Season: 11-11 Career: 126-124	13.3 11.6	4.4 3.7	0.3 1.3	27.3 29.5	<ul style="list-style-type: none"> Coming off five straight double-digit scoring games with a game-leading 18 with four 3-pointers vs. Lamar Named to Paradise Jam All-Tournament Team Racked five 3's vs. Clemson & led w/ 18 vs. K-State (former team) Logged season-high 22 points at Little Rock Second in 3-pointers per game (2.6) and 3-point% (.346) in SEC Across five seasons, has started in all but two games in her career
43	Makayla Daniels Sr. G 3L 5-8 Frederick, Md. Frederick Major: Recreation & Sport Management	Season: 9-9 Career: 97-97	13.3 11.7	4.7 3.4	3.2 2.5	27.1 27.1	<ul style="list-style-type: none"> Sat out vs. Oral Roberts and Lamar No. 6 in steals, 8 in free throw percentage (.750) & 13 in assists in SEC All-SEC Preseason Second Team choice Tabbed Paradise Jam Reef Tournament MVP after tallying 17.3 points, 5.7 rebounds, 2.7 assists and 2.0 steals per game Leading returning scorer (14.0) and rebounder (5.3) from 2021-22 team No. 25 all-time career scorer at Arkansas (1,134) Only player on roster to start in all collegiate game appearances
55	Emrie Ellis So. F 1L 6-3 Vanoss, Okla. Vanoss Major: Exercise Science	Season: 9-0 Career: 36-0	0.9 2.4	1.1 1.8	0.0 0.4	8.2 10.2	<ul style="list-style-type: none"> A part of the rotation, logging season-high five points at Little Rock Appeared in 8+ minutes and had a field goal vs. ORU Played in 27 games during her freshman season Her five blocks vs. UAPB in 221 was most by a freshman Hog since 2014 Had 11 points and five boards in 27 minutes vs. Auburn last year No. 48 overall recruit in ASGR's 2021 recruiting rankings

HC **Mike Neighbors**
Sixth season, 10th overall
Alma Mater: Arkansas '93

Career: 205-105 (10th)
AR: 107-64 (6)

- Off to the best start in his collegiate coaching career
- Passed 100 wins at Arkansas and 200 in his career
- Proud Arkansas native

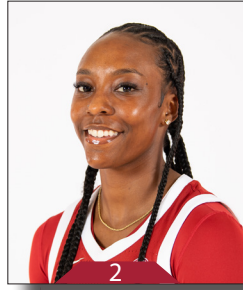
AHC **Todd Schaefer**
Sixth Season

AC **Pauline Love**
Sixth Season

Lacey Goldwire
Fourth Season



Saylor Poffenbarger
R-Fr. | 6-2 | G
Middletown, Md.



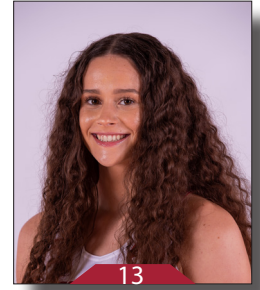
Samara Spencer
So. | 5-7 | G
Fort Lauderdale, Fla.



Erynn Barnum
R-Sr. | 6-2 | F
Little Rock, Ark.



Rylee Langerman
Jr. | 5-9 | G
Norman, Okla.



Sasha Goforth
Jr. | 6-1 | G
Fayetteville, Ark.



Ashlyn Sage
So. | 6-2 | G
Weatherford, Okla.



Karley Johnson
Fr. | 5-9 | G
Mustang, Okla.



Loren Lindsey
Fr. | 5-11 | G
Fayetteville, Ark.



Avery Hughes
Sr. | 5-7 | G
Bentonville, Ark.



Jersey Wolfenbarger
So. | 6-5 | G/F
Fort Smith, Ark.



Maryam Dauda
R-Fr. | 6-4 | F
Bentonville, Ark.



Chrissy Carr
R-Sr. | 6-1 | G
Eden Prairie, Minn.



Makayla Daniels
Sr. | 5-9 | G
Frederick, Md.



Emrie Ellis
So. | 6-3 | F
Vanoss, Okla.



Mike Neighbors
Head Coach
Sixth Season



Todd Schaefer
Associate Head Coach
Sixth Season



Pauline Love
Assistant Coach
Sixth Season



Lacey Goldwire
Assistant Coach
Fourth Season



Amber Shirey
Director of Operations



Jayci Stone
Director of SA Development



Jeff Brazil
Special Assistant to the HC



Simone Rush
Head Athletic Trainer