

13

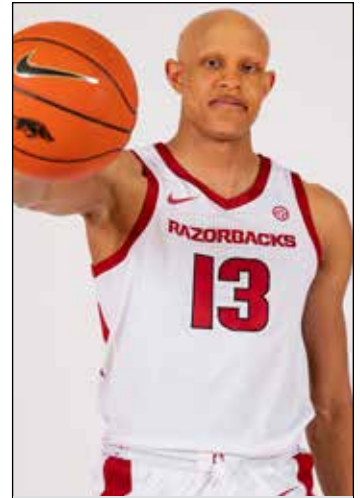
JORDAN WALSH

G/F | Fr. | 6-7 | 205 | Desoto, Texas | Link (Mo.) Academy

@jordanwalshlife

@jordanwalshlife

Including 2022-23, has **FOUR** years of collegiate eligibility
Major: TBA (Arts & Sciences)
Born on Mar. 3, 2004 in Dallas, Texas.
The son of John and Sandra Walsh



- **Consensus top 25 player overall, top-7 small forward and 5-Star**
- Played in the **McDonald's All-American** and **Jordan Brand Classic** games
- **All-American:** MaxPreps (3rd team) - Sports Illustrated (3rd team) - Jersey Mike's Naismith (HM)

• **Was on the 2022-23 preseason Julius Erving Award Watch List, which goes to the nation's top small forward**

• **FIRST 5 SEC GAMES** 1-of-17 (.059) from 3-point range

LAST 19 GAMES 11-of-32 (.344) from deep

- Was +22 in the 10-point win over Illinois and +12 in the one-point win over Kansas ... Among the regulars, was a team-best +8.52/40 min.
- Tied Anthony Black for most games played by a Razorback freshman in a season (36) ... 1 of 4 Hogs to play all 36 games in 2022-23

2022-23 HIGHLIGHTS

- **NORTH DAKOTA STATE:** Only played 18:20 due to foul trouble (and fouling out) in his collegiate debut ... However, tied for the team lead with three assists ... Was 1-of-1 FG and 2-of-2 FT.
- **FORDHAM:** Had his first double-digit scoring effort with 12 points (5-of-7 FG).
- **SOUTH DAKOTA STATE:** Was poised for a break-out game, but left the game early in the second half with an ankle injury.
- **OKLAHOMA:** Tied a then season-high with 12 points (5-of-9 FG; 2-of-5 3PT) with three rebounds and two steals ... Led the team at +11 (31:19 played)
- **BRADLEY:** Was the star of the game with a **game and career-high 18 points** (7-7 FG - 1-1 3PT) with a **career-high four steals** ... Scored seven points in an 11-0 run, including back-to-back fastbreak dunks and a 3-pointer ... Scored 16 of his 18 in the first half.
- **UNCA:** Only scored four points but his defense was stellar, helping hold Drew Pember to 1-of-7 FG.
- **@ LSU:** Scored 13 points, all in the second half to help Arkansas take a six point lead and out-score the Tigers ... Pulled down a **then career-high nine rebounds** (seven in the second half) and **blocked a career-high two shots**.
- **MISSOURI:** Had seven rebounds, three offensive, but played just 26 minutes due to foul trouble.
- **@ AUBURN:** Pulled down a **career-high 10 rebounds** with six points, two assists and a blocked shot
- **@ VANDY:** Was 0-of-6 FG, but was a team-best +10 in 16:43 played
- **@ MISSOURI:** Broke a mini slump, scoring 12 points and did not miss a shot (**4-of-4 FG; 2-2 3PT; 2-2 FT**) ... Only played 13 minutes before fouling out ... However, Arkansas was +13 with Walsh on the floor.
- **OLE MISS:** For the first time, **played all 40 minutes** ... Scored 13 points, making 5-of-9 FG / 2-of-4 3PT ... Added seven rebounds
- **TEXAS A&M:** Came off the bench to score 12 points as the Hogs out-scored A&M's bench 17-0 ... Added seven rebounds (3 offensive)
- **@ SOUTH CAROLINA:** Grabbed a **team-best and tied his career high with 10 rebounds**, including six offensive boards.
- **@ KENTUCKY:** For the second time, did not miss a shot in scoring 13 points ... (**4-of-4 FG; 1-1 3PT; 4-4 FT**).
- **FLORIDA:** Only scored five points, but hit a 3-pointer to open the second half and later had a dunk in the Hogs 17-2 run to open the half.
- **GEORGIA:** Led the team with seven rebounds (six in the second half) and scored nine points (all in the second half)
- **@ ALABAMA:** Grabbed seven rebounds and three steals, which was an SEC high, including one that led to a fastbreak dunk.
- **KENTUCKY:** Scored 10 points with seven rebounds, two assists, two steals and a blocked shot.
- **vs AUBURN (SEC):** Scored 11 points (4-of-5 FG; 3-4 FT) ... Added four rebounds and two assists
- **VS ILLINOIS (NCAA):** Was an **impressive +22 in the 10-point win** ... Scored six points with four rebounds and three steals.
- **vs KANSAS (NCAA):** Was +10 in the 1-point win ... Hit a dagger 3-pointer to give Arkansas a 52-51 lead (its first since leading 2-0) ... On a Ricky Council missed FT with 23 seconds left (and Arkansas up one), Walsh tipped the rebound, which made its way back to Council, who was fouled and made two more FT for a 3-point lead.

NATIONAL RECRUITING RANKINGS

- **#25 on the S199 All-American list**
- **ESPN** ★★★★★ #11 nation #4 SF
- **247Composite** ★★★★★ #18 nation #7 SF
- **247Sports** ★★★★★ #19 nation #7 SF
- **Rivals** ★★★★★ #24 nation #7 SF

- **Led ARK in Pts:**1
- **Led ARK in Rebs:**4
- **Led ARK in Assists:**1
- **Led ARK in Steals:**2
- **Led ARK in Blocked Shots:**0
- **Double-figure Pts:**10
- **Double-figure Rebs:**1
- **20-pt gms - 30-pt gms:**0 - 0
- **Gms with a 3PT Made:**12
- **Gms with 3+ Assists:**1
- **Gms with 3+ Steals:**4
- **Gms with 3+ Blks:**0
- **Gms with 5+ Rebs:**10

WALSH'S PERSONAL BESTS

- POINTS**
Season: 18 vs Bradley (12/17/22)
SEC: 13 (2x) LAST vs Ole Miss (01/21/23)
- FG MADE**
Season: 7 vs Bradley (12/17/22)
SEC: 6 at LSU (12/28/22)
- FG ATTEMPTED**
Season: 14 at LSU (12/28/22)
SEC: 14 at LSU (12/28/22)
- 3-POINT FG MADE**
Season: 2 (5x) LAST vs Ole Miss (01/21/23)
SEC: 2 (2x) LAAST vs Ole Miss (01/21/23)
- 3-PT FG ATTEMPTS**
Season: 8 at LSU (12/28/22)
SEC: 8 at LSU (12/28/22)
- FT MADE**
Season: 4 vs Troy (11/28/22)
SEC: 3 vs Texas A&M (01/31/23)
- FT ATTEMPTED**
Season: 5 vs Troy (11/28/22)
SEC: 4 (2x) LAST vs Texas A&M (01/31/23)
- REBOUNDS**
Season: 10 (2x) LAST at South Carolina (02/04/23)
SEC: 10 (2x) LAST at S. Carolina (02/04/23)
- ASSISTS**
Season: 3 vs North Dakota State (11/07/22)
SEC: 2 (4x) LAST at Kentucky (03/04/23)
- STEALS**
Season: 4 vs Bradley (12/17/22)
SEC: 3 at Alabama (02/25/23)
- BLOCKED SHOTS**
Season: 2 (2x) LAST at Baylor (01/28/23)
SEC: 2 at LSU (12/28/22)
- MINUTES**
Season: 40:00 vs Ole Miss (01/21/23)
SEC: 40:00 vs Ole Miss (01/21/23)

JORDAN WALSH 2022-23 GAME STATS

Opponent	Date	GS	Min	FG	FGA	Pct	3FG	3A	Pct	FT	FTA	Pct	O	D	Tot	Avg	PF	FO	A	TO	Blk	Stl	Pts	Avg	
NORTH DAKOTA ST.	11/07/22	18	1	1	1.000	0	0	0.000	2	2	1.000	0	2	2	2.0	5	1	3	0	0	0	0	4	4.0	
FORDHAM	11/11/22	*	21	5	7	.714	0	2	.000	2	3	.667	1	3	4	3.0	3	0	1	1	0	0	12	8.0	
SOUTH DAKOTA ST.	11/16/22	*	16	4	7	.571	2	4	.500	0	1	0.000	0	1	1	2.3	0	0	1	1	1	3	10	8.7	
vs Louisville	11/21/22	*	28	2	6	.333	2	5	.400	1	2	.500	0	2	2	2.3	3	0	2	2	0	1	7	8.3	
vs Creighton	11/22/22	*	36	1	5	.200	1	2	.500	2	2	1.000	0	3	3	2.4	3	0	2	2	1	1	5	7.6	
vs San Diego St.	11/23/22	*	34	3	7	.429	0	2	.000	1	2	.500	3	2	5	2.8	4	0	2	1	1	0	7	7.5	
TROY	11/28/22	*	20	1	6	.167	0	0	.000	4	5	.800	0	4	4	3.0	3	0	2	1	2	6	7.3		
SAN JOSE ST.	12/03/22	*	17	3	5	.600	0	0	.000	0	0	0.000	1	2	3	3.0	0	0	0	1	1	6	7.1		
UNC GREENSBORO	12/06/22	*	8	0	2	.000	0	2	.000	0	0	0.000	0	0	0	2.7	1	0	1	1	0	0	0	6.3	
vs Oklahoma	12/10/22	*	31	5	9	.556	2	5	.400	0	0	0.000	2	1	3	2.7	0	0	1	0	2	12	6.9		
vs Bradley	12/17/22	*	28	7	7	1.000	1	1	1.000	3	4	.750	0	3	3	2.7	5	2	1	0	0	4	18	7.9	
UNC ASHEVILLE	12/21/22	*	19	1	2	.500	0	0	.000	2	2	1.000	0	4	4	2.8	4	0	1	1	0	2	4	7.6	
at LSU	12/28/22	*	32	6	14	.429	1	8	.125	0	0	0.000	3	6	9	3.3	4	0	2	2	2	13	8.0		
MISSOURI	01/04/23	*	27	3	6	.500	0	2	.000	0	0	0.000	3	4	7	3.6	4	0	2	1	0	1	6	7.9	
at Auburn	01/07/23	*	32	2	10	.200	0	3	.000	2	4	.500	4	6	10	4.0	4	0	2	2	1	0	6	7.7	
ALABAMA	01/11/23	*	17	1	5	.200	0	1	.000	0	0	0.000	2	2	3.9	2.0	0	0	0	0	0	2	7.4		
at Vanderbilt	01/14/23		17	0	6	.000	0	3	.000	0	0	0.000	0	2	2	3.8	3	0	2	1	1	0	0	6.9	
at Missouri	01/18/23		13	4	4	1.000	2	2	1.000	2	2	1.000	0	2	2	3.7	5	1	0	1	0	0	12	7.2	
OLE MISS	01/21/23	*	40	5	9	.556	2	4	.500	1	3	.333	1	6	7	3.8	1	0	0	3	0	1	13	7.5	
LSU	01/24/23	*	25	2	6	.333	0	1	.000	0	0	0.000	0	1	1	3.7	2	0	0	1	0	0	4	7.4	
at Baylor	01/28/23	*	18	2	4	.500	0	0	.000	0	0	0.000	0	1	1	3.6	5	1	0	1	2	1	4	7.2	
TEXAS A&M	01/31/23		27	4	8	.500	1	2	.500	3	4	.750	3	4	7	3.7	3	0	1	2	0	1	12	7.4	
at South Carolina	02/04/23		33	2	6	.333	0	1	.000	0	0	0.000	6	4	10	4.0	2	0	1	1	0	4	7.3		
at Kentucky	02/07/23		22	4	4	1.000	1	1	1.000	4	4	1.000	1	0	1	3.9	4	0	0	0	1	0	13	7.5	
MISSISSIPPI ST.	02/11/23		23	1	3	.333	0	2	.000	0	0	0.000	1	0	1	3.8	0	0	1	0	1	2	2	7.3	
at Texas A&M	02/15/23		30	3	6	.500	0	1	.000	2	2	1.000	1	4	5	3.8	5	1	1	1	0	0	8	7.3	
FLORIDA	02/18/23	*	13	2	4	.500	1	1	1.000	0	0	0.000	1	1	2	3.8	1	0	0	1	0	0	5	7.2	
GEORGIA	02/21/23	*	21	2	6	.333	1	3	.333	4	5	.800	0	7	7	3.9	3	0	0	0	2	9	7.3		
at Alabama	02/25/23	*	34	2	7	.286	0	1	.000	0	0	0.000	1	6	7	4.0	5	1	1	0	3	4	7.2		
at Tennessee	02/28/23	*	24	0	4	.000	0	1	.000	1	2	.500	0	4	4	4.0	4	0	1	2	0	2	1	7.0	
KENTUCKY	03/04/23		31	4	12	.333	1	6	.167	1	3	.333	3	4	7	4.1	3	0	2	0	1	2	10	7.1	
vs Auburn (SEC)	03/09/23		21	4	5	.800	0	0	.000	3	4	.750	2	2	4	4.1	2	0	2	1	1	0	11	7.2	
vs Texas A&M (SEC)	03/10/23		24	2	4	.500	1	2	.500	2	2	1.000	0	3	3	4.1	2	0	1	1	1	1	7	7.2	
vs Illinois (NCAA)	03/16/23		27	2	8	.250	0	1	.000	2	3	.667	2	2	4	4.1	4	0	1	1	0	3	6	7.1	
vs Kansas (NCAA)	03/18/23		34	3	6	.500	1	1	1.000	3	4	.750	3	0	3	4.0	5	1	0	2	0	2	10	7.2	
vs UConn (NCAA)	03/23/23		20	1	5	.200	0	2	.000	0	1	0.000	0	0	0	3.9	1	0	1	0	1	1	2	7.1	
Totals			22	881	94	217	.433	20	72	.278	47	66	.712	43	98	141	3.9	105	8	33	37	17	40	255	7.1

JORDAN WALSH CAREER STATISTICS

Year	GP	GS	Min	Avg	FG	FCA	Pct	3FG	3FCA	Pct	FT	FTA	Pct	Off	Def	Tot	Avg	PF	FO	Ast	TO	Blk	Stl	Pts	Avg
2022-23	36	22	881	24.5	94	217	.433	20	72	.278	47	66	.712	43	98	141	3.9	105	8	33	37	17	40	255	7.1