

VOLLEYBALL

RESULTS/SCHEDULE

OVERALL: 15-2 | SEC: 5-0
H: 8-2 | A: 3-0 | N: 4-0

Aug. 25	Michigan State	W, 3-0
Aug. 27	Tulsa	W, 3-0
Aug. 30	No. 1 Wisconsin	L, 3-2
Aug. 31	No. 1 Wisconsin	L, 3-0
Sept. 1	Colorado State	W, 3-2
Sept. 3	Michigan	W, 3-0
Sept. 8	College of Charleston	W, 3-0
Sept. 8	College of Charleston	W, 3-2
Sept. 9	Troy	W, 3-1
Sept. 15	Buffalo	W, 3-0
Sept. 15	St. John's	W, 3-1
Sept. 16	Bryant	W, 3-0
Sept. 22	South Carolina	W, 3-0
Sept. 24	Texas A&M	W, 3-1
Sept. 27	No. 24 Auburn	W, 3-0
Oct. 4	LSU	W, 3-0
Oct. 8	Missouri	W, 3-1
Oct. 13	Ole Miss	Barnhill Arena
Oct. 15	Alabama	Barnhill Arena
Oct. 20	Tennessee	Knoxville, Tenn.
Oct. 22	Kentucky	Lexington, Ky.
Oct. 27	South Carolina	Columbia, SC
Oct. 29	Florida	Gainesville, Fla.
Nov. 1	Georgia	Athens, Ga.
Nov. 5	Mississippi State	Barnhill Arena
Nov. 10	Alabama	Tuscaloosa, Ala.
Nov. 15	Ole Miss	Oxford, Miss.
Nov. 19	Florida	Barnhill Arena
Nov. 22	Kentucky	Barnhill Arena
Nov. 24	Auburn	Auburn, Ala.

SCOUTING REPORT | OLE MISS



(8-9, 2-4 SEC)

All-Time Series	38-15
Series in Fayetteville	22-5
Series Under Watson	8-2
Last Meeting	W, 3-1 on 9/24/22

Coaching Staff	
Head Coach	Bre Henry
Record at Ole Miss	85-65
Career Record	132-83

Notes

- It's the Rebels' first full season under head coach Bre Henry
- Common non-conference opponents were St. John's and Tulsa, both wins for Arkansas and losses for Ole Miss
- The Rebels are holding their opponents to the fifth-lowest hitting percentage in the SEC at .182

SCOUTING REPORT | ALABAMA



(10-7, 0-6 SEC)

All-Time Series	39-17
Series in Fayetteville	14-10
Series Under Watson	7-6
Last Meeting	W, 3-0 on 11/20/22

Coaching Staff	
Head Coach	Rashinda Reed
Record at Alabama	20-27
Career Record	20-27

Notes

- In its second season under Rashinda Reed, Bama was 10-1 going into SEC play
- Alabama is in the top five in the SEC in hitting percentage (.263) and aces per set (1.85)
- Kendyl Reaugh leads the conference in aces per set at 0.52, 30 total

TEAM LEADERS

ARKANSAS

Kills Per Set	Jill Gillen	4.18	255
Assists Per Set	Hannah Hogue	11.28	688
Digs Per Set	Courtney Jackson	3.85	235
Blocks Per Set	Zoi Evans	1.03	60
Aces Per Set	Jill Gillen/Hannah Hogue	0.48	29

OLE MISS

Kills Per Set	Anna Bair	2.70	146
Assists Per Set	Aly Borellis	9.73	496
Digs Per Set	Cammy Niesen	4.45	285
Blocks Per Set	Payton Brgoch	1.05	66
Aces Per Set	Anna Bair/Sasha Ratliff	0.22	12

ALABAMA

Kills Per Set	Kendyl Reaugh	3.22	187
Assists Per Set	Callie Kieffer	10.28	596
Digs Per Set	Sydney Gholson	3.20	189
Blocks Per Set	Chaise Campbell	0.84	48
Aces Per Set	Kendyl Reaugh	0.52	30

TALE OF THE TAPE

ARKANSAS

Hitting Pct.	.278
Total Attempts	2111
Kills/Set	13.82
Total Kills	843
Assists/Set	13.05
Total Assists	796
Digs/Set	15.10
Total Digs	921
Blocks/Set	2.06
Total Blocks	125.5
Aces/Set	2.18
Total Aces	133
Opp. Hitting Pct.	.179

OLE MISS

Hitting Pct.	.224
Total Attempts	2217
Kills/Set	13.02
Total Kills	833
Assists/Set	12.23
Total Assists	783
Digs/Set	14.78
Total Digs	946
Blocks/Set	2.23
Total Blocks	142.5
Aces/Set	1.17
Total Aces	75
Opp. Hitting Pct.	.182

ALABAMA

Hitting Pct.	.263
Total Attempts	1935
Kills/Set	12.58
Total Kills	742
Assists/Set	11.86
Total Assists	700
Digs/Set	13.86
Total Digs	818
Blocks/Set	1.81
Total Blocks	106.5
Aces/Set	1.85
Total Aces	109
Opp. Hitting Pct.	.206



2023 ARKANSAS VOLLEYBALL ROSTER

#	Name	Position	Class	Height	Hometown	High School/Previous School
1	Avery Calame	OH	Sophomore	5-11	McKinney, Texas	McKinney-Boyd HS
2	Jada Lawson	OH	Junior	5-7	North Little Rock, Ark.	North Little Rock HS
3	Sania Petties	MB	Junior	6-2	Houston Texas	Mississippi State
4	Lily Dudley	OH	Freshman	5-11	Columbia, Mo.	Rock Bridge HS
5	Kylie Weeks	L	Sophomore	5-6	Elkhorn, Neb.	Elkhorn South HS
7	Taylor Head	OH	Senior	5-10	Winter Garden, Fla.	West Orange HS
8	Lo Jones	S	Freshman	5-9	Carl Junction, Mo.	Carl Junction HS
9	Aniya Madkin	OH	Freshman	6-2	Clinton, Miss.	Clinton HS
10	Jillian Gillen	OH	Graduate	5-7	Stilwell, Kan.	The Barstow School
11	Maggie Cartwright	OH	Graduate	6-0	Kimberly, Wis.	Kimberly HS
12	Hailey Schneider	L	Senior	5-9	Denton, Texas	Guyer HS
14	Rosana Hicks	OH	Junior	6-1	Fayetteville, Ark.	Fayetteville HS
15	Courtney Jackson	L	Junior	5-8	Olathe, Kan.	Olathe Northwest HS
17	Skylar Ellison	MB	Sophomore	6-1	Aledo, Texas	Aledo HS
18	Hannah Hogue	S	Junior	5-8	Fort Smith, Arkansas	Southside HS
19	Olivia Ruy	OH	Freshman	6-2	Salt Lake City, Utah	Woods Cross HS
22	Ava Roth	L	Freshman	5-6	Festus, Mo.	Jefferson HS
23	Laura Ehieze	MB	Graduate	6-0	Houston, Texas	Georgia State
44	Zoi Evans	MB	Junior	6-4	Tampa, Fla.	Wiregrass HS

Head Coach: Jason Watson/BYU, '95 (Eighth Season/19th Overall)

Associate Head Coach: Suzie Fritz/Florida Atlantic, '94 (First Season)

Assistant Coach: Lexi MacLean/TCU, '19 (First Season)

Assistant Coach: Jordan Neal/ Ouachita Baptist, '13 (First Season)

Director of Operations: Andy Rynd/Bowling Green, '15 (Second Season)

ARKANSAS VOLLEYBALL QUICK FACTS

TEAM INFORMATION

2023 Overall Record	15-2
2023 SEC Record	5-0
SEC Finish	N/A
Home Record	8-2
Away Record	2-0
Neutral Record	4-0
Starters Returning/Lost	5/2
Newcomers	7

COACHING STAFF

Head Coach	Jason Watson
Record at Arkansas	120-98 (.550)
SEC Record	66-69 (.489)
Career Record	320-246 (.565)
Associate Head Coach	Suzie Fritz
Assistant Coach	Lexi MacLean
Assistant Coach	Jordan Neal
Director of Operations	Andy Rynd
Volleyball Office Phone	479-575-3813

TEAM HISTORY

All-Time Overall Record	558-383 (.593)
All-Time SEC Record	292-221 (.569)
NCAA Tournaments/Last	12/2022
SEC Championships/Last	1 (Tournament)/1997
First Year of Program	1994

FACILITY INFORMATION

Name	Barnhill Arena
Capacity	8,500
Opened	1953
All-Time Record	286-134 (.681)

TEAM STUDIES

Avery Calame	Pre-Business
Jada Lawson	Biomedical Engineering
Sania Petties	Psychology
Lily Dudley	Interior Design
Kylie Weeks	Communication Sciences & Disorders
Taylor Head	Recreation & Sport Management
Lo Jones	Journalism
Aniya Madkin	Pre-Business
Jillian Gillen	Business Administration (MBA)
Maggie Cartwright	Recreation & Sport Management
Hailey Schneider	Exercise Science
Rosana Hicks	Anthropology
Courtney Jackson	Recreation & Sport Management
Olivia Ruy	Social Work
Ava Roth	Psychology
Laura Ehieze	Business Administration (MBA)
Zoi Evans	Recreation & Sport Management

PRONUNCIATION GUIDE

Avery Calame	<i>CAL-um</i>
Sania Petties	<i>suh-NY-uh PET-iss</i>
Aniya Madkin	<i>uh-NY-uh</i>
Rosana Hicks	<i>Rose-AH-nuh</i>
Hannah Hogue	<i>Rhymes with ROGUE</i>
Olivia Ruy	<i>WHO-ee</i>
Laura Ehieze	<i>eh-HYEH-zay</i>
Zoi Evans	<i>Zoey</i>



SEC STANDINGS

	CONF	OVERALL	HOME	ROAD	NEUTRAL
Tennessee	6-0	15-1	7-0	7-1	1-0
Arkansas	5-0	15-2	8-2	3-0	4-0
Kentucky	5-1	7-7	2-2	4-5	1-0
Auburn	4-2	14-3	7-2	4-1	3-0
Florida	4-2	12-3	6-3	5-0	1-0
Texas A&M	4-2	12-4	4-3	5-1	3-0
Missouri	3-4	11-7	6-2	4-4	1-1
LSU	2-3	7-8	4-3	0-4	3-1
Ole Miss	2-4	8-9	5-2	1-4	2-3
Georgia	1-4	10-7	5-2	3-3	2-2
Mississippi State	1-5	8-8	6-3	0-4	2-1
South Carolina	1-5	7-8	5-3	1-5	1-0
Alabama	0-6	10-7	4-3	3-3	3-1

AVCA TOP 25

Rank	Team	Record	Prev
1	Wisconsin (60)	15-0	1
2	Nebraska (4)	15-0	2
3	Stanford	13-2	3
4	Washington State	15-2	4
5	Oregon	15-2	5
6	Louisville	14-2	6
7	Texas	11-3	8
8	Pittsburgh	15-2	7
9	BYU	14-3	10
10	Tennessee	15-1	12
11	Georgia Tech	14-2	11
12	Arkansas	15-2	13
13	Penn State	12-3	14
14	Florida	12-3	9
15	Purdue	10-5	19
16	Kansas	12-4	17
17	Creighton	13-4	15
18	Dayton	18-2	20
19	Arizona State	17-1	23
20	Baylor	8-7	18
21	Houston	9-5	21
22	Auburn	14-3	T25
23	Kentucky	7-7	22
24	Minnesota	6-8	16
25	Iowa State	13-3	T25

MILESTONE WATCH

Taylor Head (OH | Senior)

Looking for: Program top 10 career kills - 10th place (1,299)
 Current Total: 1,280 Needs: 19

Courtney Jackson (L | Junior)

Looking for: Program top 10 career digs - 10th place (1,055)
 Current Total: 1,004 Needs: 51

Hannah Hogue (S | Junior)

Looking for: Program top 10 career assists - 10th place (1,508)
 Current Total: 1,322 Needs: 186

Others receiving votes and listed on two or more ballots:
 Western Kentucky 104; Ohio State 99; UCF 85; Marquette 53; Southern California 45; James Madison 30; Rice 9; UC Santa Barbara 7; Texas A&M 3

8 teams mentioned on only one ballot for a total of 43 combined points

Dropped Out: Ohio State 24

Next Poll: Oct. 16



MATCH-BY-MATCH STARTERS

8-25 vs. Michigan State	Petties, Head, Gillen, Cartwright, Hogue, Evans	Jackson
8-27 vs. Tulsa	Petties, Head, Gillen, Cartwright, Hogue, Evans	Jackson
8-30 vs. No. 1 Wisconsin	Petties, Head, Gillen, Cartwright, Hogue, Evans	Jackson
8-31 vs. No. 1 Wisconsin	Petties, Head, Gillen, Cartwright, Hogue, Evans	Jackson
9-1 vs. Colorado State	Petties, Head, Gillen, Cartwright, Hogue, Evans	Jackson
9-3 vs. Michigan	Petties, Head, Gillen, Cartwright, Hogue, Evans	Jackson
9-8 vs. College of Charleston	Petties, Head, Gillen, Cartwright, Hogue, Evans	Jackson
9-8 at Western Kentucky	Petties, Head, Gillen, Cartwright, Hogue, Evans	Jackson
9-9 vs. Troy	Petties, Head, Gillen, Cartwright, Hogue, Evans	Jackson
9-15 vs. Buffalo	Petties, Head, Gillen, Cartwright, Hogue, Evans	Jackson
9-15 at St. John's	Petties, Head, Gillen, Cartwright, Hogue, Evans	Jackson
9-16 vs. Bryant	Petties, Head, Gillen, Cartwright, Hogue, Ehieze	Jackson
9-22 vs. South Carolina	Petties, Head, Gillen, Cartwright, Hogue, Evans	Jackson
9-24 vs. Texas A&M	Petties, Head, Gillen, Cartwright, Hogue, Evans	Jackson
9-27 vs. No. 24 Auburn	Petties, Head, Gillen, Cartwright, Hogue, Evans	Jackson
10-4 at LSU	Petties, Head, Gillen, Cartwright, Hogue, Evans	Jackson
10-8 vs. Missouri	Petties, Head, Gillen, Cartwright, Hogue, Evans	Jackson

MEDIA INFORMATION**SPORTS INFORMATION /CREDENTIALS**

Arkansas Athletic Communications assistant Emily Polglaze handles the media relations duties for the Razorbacks' volleyball team. Polglaze can be reached via her cell phone at [608] 921-6741 or by email at polglaze@uark.edu.

All media members are encouraged to apply for credentials through Polglaze.

Passes may be picked up starting 60 minutes prior to match time at the press will call table located in the Southwest Corridor of Barnhill Arena.

WWW.ARKANSASRAZORBACKS.COM

Information about the Arkansas volleyball team, including player bios, game recaps and notes packets are available online at the Official Website of Arkansas Athletics, www.ArkansasRazorbacks.com.

Final box score and stat books will be available shortly following each home match.

Game-by-game stats, as well as overall stats for the entire season can also be found online.

PRACTICE TIMES/INTERVIEWS

Arkansas practices on the main floor of Barnhill Arena, team sessions generally begin at 4 p.m.

On most days, head coach Jason Watson and players are available for interviews before practice. Members of the media who wish to cover practice should contact SID Emily Polglaze for the latest practice schedule.

Requests for sit down or phone interviews must be made at least 24 hours in advance with Emily Polglaze.

POST MATCH INTERVIEWS

Interviews with players and coaches are done courtside postmatch after the team's 10-minute cooling off period. Please inform SID Emily Polglaze if you need to request a specific player.

For assistance with opposing coaches and players, touch base with that school's SID for their postmatch media procedures.

SEC MEDIA INFORMATION

Jill Skotarczak is the volleyball media relations director for the SEC and can be reached at [205] 458-3000.

Each Monday, the league will name a Player of the Week, a Defensive Player of the Week and a Freshman of the Week. The SEC Website, SECSports.com, can be accessed 24/7/365 to access updated standings, statistics and notes.

2023 DOUBLE-DOUBLES

1. Taylor Head	13 kills, 12 digs	8-25 vs. Michigan State
2. Taylor Head	13 kills, 10 digs	8-27 vs. Tulsa
3. Taylor Head	15 kills, 24 digs	8-30 vs. No. 1 Wisconsin
4. Taylor Head	23 kills, 14 digs	9-1 vs. Colorado State
5. Taylor Head	17 kills, 11 digs	9-3 vs. Michigan
6. Taylor Head	12 kills, 13 digs	9-15 at St. John's
7. Taylor Head	13 kills, 18 digs	9-22 vs. South Carolina
8. Taylor Head	15 kills, 13 digs	9-24 vs. Texas A&M
9. Taylor Head	14 kills, 14 digs	10-4 at LSU
10. Taylor Head	10 kills, 16 digs	10-8 vs. Missouri
11. Hannah Hogue	32 assists, 10 digs	8-25 vs. Michigan State
12. Hannah Hogue	37 assists, 11 digs	8-27 vs. Tulsa
13. Hannah Hogue	57 assists, 11 digs	8-30 vs. No. 1 Wisconsin
14. Hannah Hogue	50 assists, 14 digs	9-1 vs. Colorado State
15. Hannah Hogue	48 assists, 24 digs	9-8 at Western Kentucky
16. Hannah Hogue	35 assists, 13 digs	9-22 vs. South Carolina
17. Hannah Hogue	47 assists, 10 digs	10-8 vs. Missouri
18. Jill Gillen	15 kills, 14 digs	8-27 vs. Tulsa
19. Jill Gillen	22 kills, 11 digs	8-30 vs. No. 1 Wisconsin
20. Jill Gillen	15 kills, 13 digs	8-31 vs. No. 1 Wisconsin
21. Jill Gillen	19 kills, 15 digs	9-1 vs. Colorado State
22. Jill Gillen	20 kills, 11 digs	9-8 at Western Kentucky
23. Jill Gillen	19 kills, 10 digs	9-9 vs. Troy
24. Jill Gillen	11 kills, 10 digs	9-15 at St. John's
25. Jill Gillen	15 kills, 10 digs	9-22 vs. South Carolina
26. Jill Gillen	19 kills, 11 digs	9-24 vs. Texas A&M
27. Jill Gillen	15 kills, 15 digs	10-8 vs. Missouri
28. Maggie Cartwright	14 kills, 15 digs	10-8 vs. Missouri

Season Count: Head - 10, Hogue - 7, Gillen - 10, Cartwright - 1; Career Count: Head - 48, Hogue - 15, Gillen - 38, Cartwright - 13



MATCH-BY-MATCH LEADERS					
OPPONENT	KILLS	ASSISTS	DIGS	BLOCKS	ACES
Michigan State	Gillen (14)	Hogue (32)	Head (12)	Cartwright/Evans/Gillen (5)	Hogue/Petties (2)
Tulsa	Gillen (15)	Hogue (37)	Gillen (14)	Petties (4)	Head (3)
No. 1 Wisconsin	Gillen (22)	Hogue (57)	Head (24)	Petties (4)	Head (4)
No. 1 Wisconsin	Gillen (15)	Hogue (31)	Gillen (13)	Cartwright/Evans (3)	Cartwright/Gillen/Head/Hogue (1)
Colorado State	Gillen (23)	Hogue (50)	Gillen (15)	Cartwright (5)	Jackson (4)
Michigan	Head (17)	Hogue (34)	Jackson (16)	Petties (4)	Cartwright/Hogue/Petties (2)
College of Charleston	Head (14)	Hogue (42)	Jackson (19)	Petties (3)	Cartwright/Gillen/Hogue (2)
Western Kentucky	Head (21)	Hogue (48)	Cartwright (25)	Petties (8)	Head (2)
Troy	Gillen (19)	Hogue (49)	Jackson (17)	Petties (6)	Hogue (5)
Buffalo	Cartwright (16)	Hogue (36)	Jackson (12)	Evans (3)	Gillen (4)
St. John's	Cartwright/Head (12)	Hogue (38)	Jackson (16)	Evans (8)	Gillen (3)
Bryant	Gillen/Head (13)	Hogue (39)	Jackson (9)	Ehieze (4)	Gillen (4)
South Carolina	Gillen (15)	Hogue (35)	Head (18)	Petties (3)	Head (3)
Texas A&M	Gillen (19)	Hogue (44)	Head (13)	Evans (6)	Gillen/Head (2)
No. 24 Auburn	Head (10)	Hogue (31)	Jackson (16)	Petties (4)	Gillen/Head/Jackson/Lawson (2)
LSU	Gillen (15)	Hogue (38)	Head (14)	Evans (4)	Hogue (3)
Missouri	Gillen (15)	Hogue (47)	Head (16)	Evans (4)	Cartwright/Jackson (2)

MATCH STAT LEADERS			
KILLS	TOTAL BLOCKS		
Gillen 11	Petties 8		
Head 7	Evans 7		
Cartwright 2	Cartwright 2		
	Ehieze 1		
ASSISTS	Gillen 1		
Hogue 17			
	ACES		
DIGS	Head 7		
Jackson 7	Gillen 6		
Head 6	Hogue 6		
Gillen 3	Cartwright 4		
Cartwright 1	Jackson 3		
	Petties 2		
	Lawson 1		

# OF MATCHES WITH...			
10+ KILLS	10+ ASSISTS		
Head 17	Hogue 17		
Gillen 15			
Cartwright 7	20+ ASSISTS		
Petties 5	Hogue 17		
	30+ ASSISTS		
20+ KILLS	Gillen 17		
Gillen 2	Hogue 17		
Head 2			
	40+ ASSISTS		
30+ KILLS	Hogue 7		
10+ DIGS			
Jackson 15			
Gillen 11			
Head 10			
Hogue 7			
Cartwright 3			
20+ DIGS			
Cartwright 1			
Head 1			
Jackson 1			



2023 AWARDS & HONORS

Preseason All-SEC Team
Jill Gillen, Taylor Head

SEC Setter of the Week: 8/28
Hannah Hogue

SEC Co-Defensive Player of the Week: 9/11
Courtney Jackson

SEC Co-Offensive Player of the Week: 9/18
Maggie Cartwright

SEC Setter of the Week: 9/18
Hannah Hogue

SEC Setter of the Week: 9/25
Hannah Hogue

WELCOME TO BARNHILL ARENA

Top Single-Match Attendance

1.	4,299	#1 Wisconsin	Aug. 30, 2023
2.	3,015	#13 Florida	Sept. 14, 2012
3.	2,740	#1 Wisconsin	Aug. 31, 2023
4.	2,349	South Carolina	Nov. 19, 2014
5.	1,755	#19 Kentucky	Oct. 7, 2022
6.	1,751	Missouri	Oct. 8, 2023
7.	1,747	Texas A&M	Sept. 24, 2023
8.	1,717	Michigan State	Aug. 25, 2023
9.	1,672	Missouri	Oct. 2, 2013
10.	1,653	South Carolina	Sept. 22, 2023

Year-by-Year Attendance Totals

Year	# of Matches	Total	Avg.
1994	15	6,548	437
1995	13	6,194	477
1996	18	8,296	461
1997	15	8,101	540
1998	19	13,299	700
1999	14	6,315	451
2000	17	7,499	441
2001	11	5,794	527
2002	16	7,127	451
2003	11	5,683	517
2004	14	8,254	590
2005	14	9,365	669
2006	14	9,817	701
2007	16	10,919	682
2008	14	9,086	649
2009	14	10,316	737
2010	14	11,855	847
2011	14	12,903	922
2012	18	18,297	1,016
2013	15	13,047	870
2014	16	15,265	954
2015	15	14,697	980
2016	11	9,149	832
2017	13	12,919	994
2018	13	8,112	624
2019	12	7,596	633
2020	12	5,675	473
2021	12	10,590	882
2022	16	19,607	1,225
2023 (10/9)	10	19,020	1,902

HEAD COACH JASON WATSON | 8TH YEAR AT ARKANSAS (19TH OVERALL)



Jason Watson was named the third head coach of the University of Arkansas volleyball team on January 7, 2016, and has taken the program to historic heights ever since. He enters his eighth season with a 304-244 (.522) career record, 105-96 at Arkansas, and had led his teams to eight NCAA Tournament selections, the most recent in 2022.

Watson is coming off his best season yet at Arkansas in 2022. The Hogs began the year on a great note as they defeated the No. 8 Washington Huskies 3-1 at Barnhill Arena on Aug. 25. Arkansas won six of its next seven after that and re-entered the AVCA Coaches Poll for the first time in seven years on Sept. 13. The Razorbacks hosted No. 7 Georgia Tech later that week and took down the Yellow Jackets 3-1 for their highest ranked win since 2007. It marked the first time ever that Arkansas had two top 10 wins in a season, and surged the Hogs to No. 20 in the coaches poll, their highest ranking since 1999.

Arkansas continued to roll and finished the regular season 20-8, the team's second consecutive 20-win season. Their hard work paid off as the Razorbacks were selected for the NCAA Tournament for the first time since 2013, and the first time in Watson's tenure at Arkansas. The Hogs took down Utah State 3-0 in round one, their first NCAA win since 2005. They were defeated by the Oregon Ducks in round two, bringing the season record to 21-9.

The Razorbacks had two All-SEC selections in Jill Gillen and Taylor Head, and the pair was also named AVCA All-South Region. Head garnered AVCA All-America Honorable Mention status to round out postseason accolades. Both Gillen and Head had tremendous seasons for the Hogs. Gillen entered the top five in program career kills and currently sits in fourth with 1,548, while Head became the 18th member of the Arkansas 1,000-kill club on Nov. 25, 2022.

Setter Gracie Ryan concluded her Arkansas career in 2022 and finished with 3,470 assists, good for fourth in program history. She played 128 matches over her five seasons, the most of any player in the current scoring era, dating back to 2007.

Arkansas saw unprecedented fan support in 2022 as well with a new season ticket record, new total attendance record (19,607) and new average attendance record (1,225) over their 16 home matches at Barnhill Arena, statistics that both rank within the top 50 nationally.

The 2021 slate marked his first postseason appearance at Arkansas, as the team accepted a bid to the National Invitational Volleyball Championship (NIVC), in which the Hogs finished in the quarterfinals. The team posted a 20-11 overall record, its first 20-win season since 2012 and the most regular season wins since 2018. The Hogs led the SEC in service aces with 1.61 per set, and came within the top five in kills, assists, and digs.

Jillian Gillen and Courtney Jackson earned All-SEC and All-SEC Freshman Team honors and Gillen and Gracie Ryan landed on the AVCA All-South Region rosters, the second consecutive year in which Arkansas received spots on the lists. Gillen also received SEC Scholar-Athlete of the Year designation for the second time.

In his fifth season as skipper in the 2020-21 split season, Watson led the Razorbacks to 14 conference wins, the most for Arkansas since 2003. He was honored with his first-ever SEC Coach of the Year award as Gillen was named SEC Scholar-Athlete of the Year and 2020 freshman Taylor Head was named SEC Freshman of the Year. Gillen and Head also earned a spot on the All-SEC team and All-SEC Freshman Team respectively and went on to earn AVCA All-South Region recognition as well.

In 2019, the Razorbacks were predicted to finish two spots higher in the SEC than where they finished in 2018 - one could contribute the improvement from the recognized incoming class that earned Highest Honorable Mention by PrepVolleyball.com. That freshman class went on to help Arkansas finish the 2019 season at 11-17, which included a three-match winning streak to close out the home slate, highlighted by five-set wins over Alabama and Ole Miss. Watson helped recruit and sign 2019 freshman Jillian Gillen, who led the league's freshmen in kills per set (3.74) and ranked seventh among all players. Gillen racked up multiple awards, including two SEC Freshman of the Week awards, SEC All-Freshman Team honors and a spot on the 2019 VolleyballMag.com All-Freshman Team.

In his second season, Watson oversaw a 10-win improvement from the previous year with the Razorbacks finishing the 2017 campaign with a 19-11 overall record and 9-9 mark in SEC play. Arkansas' 10 wins at Barnhill Arena marked the program's highest home-win total since 2012. Arkansas also finished the year at No. 47 in the final RPI rankings.

Individually, senior Pilar Victoria led the NCAA with 5.47 kills per set and 6.08 points per set in 2017 and earned AVCA All-America Honorable Mention and All-SEC honors. Additionally, she and setter Rachel Rippee collected AVCA All-South Region Honorable Mention accolades. Away from the court, the Razorbacks combined to earn a second-consecutive AVCA Academic Team award.

The Razorbacks matched their SEC output from the previous season with a 7-11 mark in league play during Watson's first year including six wins in their last nine matches of the year. Individually, senior Danielle Harbin emerged to finish third in the SEC with 4.22 kills per set on her way to AVCA All-South Region honors.

In eight years in Tempe, Ariz., Watson transformed ASU Volleyball from a perennial sub-.500 program into a postseason regular. In his last four seasons, the Sun Devils averaged more than 19 wins per season with four-consecutive bids to the NCAA Tournament. Watson also coached a pair of All-America performers, one in each of the past two seasons, for ASU's first national honorees since 2000.

Arizona State began the 2015 campaign with a 15-0 record and reached as high as No. 5 in the AVCA Top 25 poll. The Sun Devils also opened conference play with their best start in the Pac-10/12 era with four wins including the program's first win over Stanford in 15 years.

In 2014, ASU opened the season with six straight wins on the way to a 20-14 record. The Sun Devils were ranked in each AVCA regular season poll. Making its third straight trip to the NCAA Tournament, ASU defeated Texas A&M 3-1 to advance to the second round of the Tournament for the first time since 2006.

Watson led ASU to a 19-13 overall record in 2013 including a 3-0 upset of then-NCAA defending champion Texas. The Sun Devils started the season without dropping a set in their first seven matches. Making its second consecutive NCAA Tournament appearance, ASU dropped a five-set match to BYU in the first round.

In 2012, the Sun Devil squad opened with an 11-2 record, the best start since 1992. The Sun Devils finished with 20 wins - the most in a single season at ASU since 1993. The nine conference wins equaled the most since 2000. ASU made the program's 16th appearance in the NCAA Tournament and Watson became just the fifth coach from ASU to guide the Sun Devils to a NCAA postseason berth.

Watson arrived as the head coach at ASU in 2008. In 2013, he was also named head coach of the sand volleyball team when the sport was added to the athletics program.

In June 2015, Watson was selected by USA Volleyball to serve as the head coach of the U.S. Collegiate National Team on a six-match tour of China.

In his three seasons at the helm of the BYU program, Watson compiled a 74-18 (.804) overall record while leading BYU to three-straight NCAA Tournament appearances. During his first season as head coach, Watson was named Mountain West Conference Coach of the Year after leading his team to a 25-4 record, the program's best mark since 1998. In addition to leading BYU to the MWC regular-season title, Watson also helped lead the Cougars back to the NCAA Tournament.

In 2007, he led the Cougars to a 24-8 overall record and an Elite 8 finish in the NCAA Regional Final. His team also finished the year ranked 12th nationally, and at one point through the season, the Cougars held a rank as high as ninth in the country. No stranger to the best competition, Watson's teams have been ranked as high as eighth on RPI, showing the character and strength of the teams he builds. Never backing down from challenges are also another hallmark trait of Watson-led teams.

Watson previously amassed 11 years as an assistant coach at four universities. After an All-American playing career at BYU, Watson coached for two years under his former coach, Carl McGown, before beginning his career in women's volleyball with extremely successful stints at Kansas State, Arkansas State, and Montana State.

Watson was a four-year starter at BYU from 1990-1994 and two-time captain. He graduated from BYU in 1995 with a degree in physical education and sports business management after leaving his native home of Homebush, Australia.

He and his wife, Larissa, have two sons and a daughter.



2023 TEAM MATCH HIGHS

KILLS		
69	vs. No. 1 Wisconsin	Aug. 30 (2-3)
ATTEMPTS		
181	vs. No. 1 Wisconsin	Aug. 30 (2-3)
HITTING PERCENTAGE		
.435	vs. No. 24 Auburn	Sept. 27 (3-0)
ASSISTS		
67	vs. No. 1 Wisconsin	Aug. 30 (2-3)
ACES		
15	vs. Troy	Sept. 9 (3-1)
DIGS		
88	at Western Kentucky	Sept. 8 (3-2)
TOTAL BLOCKS		
14.5	at Western Kentucky	Sept. 8 (3-2)

2023 INDIVIDUAL MATCH HIGHS

KILLS		
23	Taylor Head	Sept. 1
22	Jill Gillen	Aug. 30
21	Taylor Head	Sept. 8
ATTEMPTS		
64	Jill Gillen	Aug. 30
63	Taylor Head	Sept. 1
59	Taylor Head	Sept. 8
HITTING PERCENTAGE (at least 10 attempts)		
.727	Maggie Cartwright	Sept. 15
.643	Sania Petties	Sept. 15
.636	Sania Petties	Sept. 27
ASSISTS		
57	Hannah Hogue	Aug. 30
50	Hannah Hogue	Sept. 1
49	Hannah Hogue	Sept. 9
ACES		
5	Hannah Hogue	Sept. 9
4	Jill Gillen	Two times
4	Courtney Jackson	Sept. 1
4	Taylor Head	Aug. 30
3	Taylor Head	Two times
3	Hannah Hogue	Oct. 4
3	Courtney Jackson	Sept. 9
3	Jill Gillen	Sept. 1
DIGS		
25	Maggie Cartwright	Sept. 8
24	Courtney Jackson	Sept. 8
24	Taylor Head	Aug. 30
19	Courtney Jackson	Sept. 9
BLOCK SOLOS		
3	Jill Gillen	Aug. 25
2	Zoi Evans	Two times
1	Zoi Evans	Three times
1	Maggie Cartwright	Two times
1	Jill Gillen	Two times
1	Taylor Head	Oct. 4
1	Laura Ehieze	Sept. 16
1	Sania Petties	Sept. 9
BLOCK ASSISTS		
8	Sania Petties	Sept. 8
6	Zoi Evans	Two times
6	Sania Petties	Sept. 9
5	Maggie Cartwright	Three times
5	Zoi Evans	Three times
5	Jill Gillen	Sept. 8
5	Hannah Hogue	Sept. 8
TOTAL BLOCKS		
8	Zoi Evans (2-6)	Sept. 15
8	Sania Petties (0-8)	Sept. 8
7	Sania Petties (1-6)	Sept. 9
6	Zoi Evans (0-6)	Sept. 24
6	Zoi Evans (1-5)	Sept. 8

THE LAST TIME...

THE LAST TIME ARKANSAS...

Won a match vs. Missouri, 10/8/23
Lost a match vs. No. 1 Wisconsin, 8/31/23
Won at home vs. Missouri, 10/8/23
Lost at home vs. No. 1 Wisconsin, 8/31/23
Won on the road at LSU, 10/4/23
Lost on the road at Oregon (NCAAT), 12/3/22
Won 3-0 at LSU, 10/4/23
Lost 3-0 vs. No. 1 Wisconsin, 8/31/23
Won 3-0 at home vs. No. 24 Auburn, 9/27/23
Lost 3-0 at home vs. No. 1 Wisconsin, 8/31/23
Won 3-0 on the road at LSU, 10/4/23
Lost 3-0 on the road at No. 14 Florida, 10/30/22
Won in four sets vs. Missouri, 10/8/23
Lost in four sets at Oregon (NCAAT), 12/3/22
Won in five sets at Western Kentucky, 9/8/23
Lost in five sets vs. No. 1 Wisconsin, 8/30/23

Beat an SEC team vs. Missouri, 10/8/23
Lost to an SEC team at Georgia, 11/6/22
Beat a ranked team vs. No. 24 Auburn, 9/27/23
Had 70+ kills vs. Texas A&M (73), 10/19/22
Had 80+ kills
Had 90+ kills at Ole Miss (91), 10/9/98
Had 100+ kills vs. Tennessee (105), 10/6/00
Attempted 150+ attacks vs. Missouri (164), 10/8/23
Attempted 170+ attacks vs. No. 1 Wisconsin (181), 8/30/23
Attempted 200+ attacks vs. Ole Miss (210), 10/5/18
Attempted 250+ attacks at Pacific (254), 11/28/98

THE LAST TIME A RAZORBACK...

Had 20+ kills Taylor Head (21) at Western Kentucky, 9/8/23
Had 30+ kills Jill Gillen (33) vs. Utah State, 9/3/21
Had 35+ kills Pilar Victoria (35) vs. Ole Miss, 10/18/15
Had 40+ kills Never
Had 50+ assists Hannah Hogue (57) vs. No. 1 Wisconsin, 8/30/23
Had 60+ assists Lindsay Scanlan (60) vs. Alabama, 10/9/09
Had 75+ assists Evgeniya Rangelova (77) vs. Miami (OH), 9/9/00
Had 80+ assists Evgeniya Rangelova (88) vs. Tenn, 10/6/00
Had 3 solo blocks Jill Gillen vs. Michigan State, 8/25/23
Had 4 solo blocks Danielle Harbin vs. Kentucky, 11/9/16
Had 5 solo blocks Jennifer Haaser at Georgia, 11/9/03
Had 20+ digs Maggie Cartwright (25) at Western Kentucky, 9/8/23
Had 30+ digs Okiana Valle (33) at Alabama, 11/23/18
Had 40+ digs Never
Had 50+ digs Never

*not including neutral matches in "road" stats

WHAT HAPPENS WHEN...

Overall	15-2
SEC	5-0
Home	8-2
Away	3-0
Neutral	4-0
Vs Ranked Opponents	1-2

By Sets

Three Sets	9-1
Four Sets	4-0
Five Sets	2-1
Win First Set	14-1
Lose First Set	1-1
Win Second Set	10-0
Lose Second Set	5-2
Win First Two Sets	9-0
Lose First Two Sets	0-1
Split First Two Sets	6-1

Statistical

More Kills Than Opponent	14-0
Fewer Kills Than Opponent	1-2
Kills Are Tied	
More Digs Than Opponent	8-0
Fewer Digs Than Opponent	5-2
Digs Are Tied	2-0
More Blocks Than Opponent	9-0
Fewer Blocks Than Opponent	6-2
Blocks Are Tied	
More Aces Than Opponent	13-1
Fewer Aces Than Opponent	0-1
Aces Are Tied	2-0
Higher Hitting Pct	13-0
Lower Hitting Pct	2-2
Hitting Pct Tied	

Hitting Percentage

.400 Or Better	1-0
.300-.399	10-0
.200-.299	1-1
.100-.199	3-1
.000-.099	
Negative	

Opponent Hitting Percentage

.400 Or Better	
.300-.399	0-1
.200-.299	4-1
.100-.199	7-0
.000-.099	3-0
Negative	1-0

By Day

Tuesday	
Wednesday	2-1
Thursday	0-1
Friday	7-0
Saturday	2-0
Sunday	4-0

By Month

August	2-2
September	11-0
October	2-0
November	
December	



SEASON/CAREER HIGHS

#1 AVERY CALAME | SO | OH

SEASON HIGHS

Hitting pct _____
 Kills _____
 Attempts _____
 Assists _____
 Digs _____
 Blocks _____
 Aces _____

CAREER HIGHS

Hitting pct .276 (11-3-29) vs. Texas A&M | 10-19-22
 Kills 11 vs. Texas A&M | 10-19-22
 Attempts 29 vs. Texas A&M | 10-19-22
 Assists 2 vs. Texas A&M | 10-19-22
 Digs 12 vs. Texas A&M | 10-19-22
 Blocks 1.0 (0-1) vs. Texas A&M | 10-19-22
 Aces 2 vs. Texas A&M | 10-19-22

#4 LILY DUDLEY | FR | OH

SEASON HIGHS

Hitting pct _____
 Kills _____
 Attempts _____
 Assists _____
 Digs _____
 Blocks _____
 Aces _____

CAREER HIGHS

Hitting pct _____
 Kills _____
 Attempts _____
 Assists _____
 Digs _____
 Blocks _____
 Aces _____

#8 LO JONES | FR | S

SEASON HIGHS

Hitting pct _____
 Kills _____
 Attempts _____
 Assists _____
 Digs _____
 Blocks _____
 Aces _____

CAREER HIGHS

Hitting pct _____
 Kills _____
 Attempts _____
 Assists _____
 Digs _____
 Blocks _____
 Aces _____

#2 JADA LAWSON | JR | OH

SEASON HIGHS

Hitting pct _____
 Kills _____
 Attempts _____
 Assists _____
 Digs _____ 2, two times
 Blocks 2 vs. No. 24 Auburn | 9-27-23
 Aces 2 vs. No. 24 Auburn | 9-27-23

CAREER HIGHS

Hitting pct .400 (2-0-5) vs. Alabama St. | 9-2-22
 Kills 3 vs. Little Rock | 9-9-22
 Attempts 8 vs. Little Rock | 9-9-22
 Assists _____
 Digs 9 vs. Little Rock | 9-9-22
 Blocks _____
 Aces 2 vs. No. 24 Auburn | 9-27-23

#5 KYLIE WEEKS | SO | L

SEASON HIGHS

Hitting pct _____
 Kills _____
 Attempts _____
 Assists _____
 Digs _____ 3, two times
 Blocks _____
 Aces _____

CAREER HIGHS

Hitting pct _____
 Kills _____
 Attempts _____
 Assists _____
 Digs _____ 3, two times
 Blocks _____
 Aces _____

#9 ANIYA MADKIN | FR | OH

SEASON HIGHS

Hitting pct _____
 Kills _____
 Attempts _____
 Assists _____
 Digs _____
 Blocks _____
 Aces _____

CAREER HIGHS

Hitting pct _____
 Kills _____
 Attempts _____
 Assists _____
 Digs _____
 Blocks _____
 Aces _____

#3 SANIA PETTIES | JR | MB

SEASON HIGHS

Hitting pct .643 (9-0-14) vs. Buffalo | 9-15-23
 Kills 15 vs. Troy | 9-9-23
 Attempts 30 vs. No. 1 Wisconsin | 8-30-23
 Assists 3 vs. Buffalo | 9-15-23
 Digs _____ 4, two times
 Blocks 8.0 (0-8) at Western Kentucky | 9-8-23
 Aces _____ 2, three times

CAREER HIGHS

Hitting pct .765 (13-0-17) at Notre Dame | 8-27-22 (MSU)
 Kills 15 vs. Troy | 9-9-23
 Attempts 37 at LSU | 10-30-22 (Miss. St.)
 Assists _____ 3, two times
 Digs 9 at LSU | 10-30-22 (Miss. St.)
 Blocks 8.0 (0-8) at Western Kentucky | 9-8-23
 Aces 3 vs. Houston | 9-9-22 (Miss. St.)

#7 TAYLOR HEAD | SR | OH

SEASON HIGHS

Hitting pct .471 (17-1-34) vs. Michigan | 9-3-23
 Kills 23 vs. Colorado State | 9-1-23
 Attempts 63 vs. Colorado State | 9-1-23
 Assists 3 vs. Buffalo | 9-15-23
 Digs 24 vs. No. 1 Wisconsin | 8-30-23
 Blocks _____ 3.0, four times
 Aces 4 vs. No. 1 Wisconsin | 8-30-23

CAREER HIGHS

Hitting pct .636 (7-0-11) vs. Louisiana Tech | 8-28-21
 Kills _____ 23, three times
 Attempts 63 vs. Colorado State | 9-1-23
 Assists _____ 3, three times
 Digs 24 vs. No. 1 Wisconsin | 8-30-23
 Blocks _____ 5.0 (0-5) vs. Auburn | 10-9-21
 Aces _____ 4 vs. No. 1 Wisconsin | 8-30-23

#10 JILL GILLEN | GR | OH

SEASON HIGHS

Hitting pct .538 (15-1-26) vs. Tulsa | 8-27-23
 Kills _____ 22 vs. No. 1 Wisconsin | 8-30-23
 Attempts 64 vs. No. 1 Wisconsin | 8-30-23
 Assists _____ 2, two times
 Digs _____ 15 vs. Colorado State | 9-1-23
 Blocks _____ 5.0, two times
 Aces _____ 4, two times

CAREER HIGHS

Hitting pct .714 (11-1-14) vs. Alabama St. | 9-2-22
 Kills _____ 33 vs. Utah State | 9-3-21
 Attempts _____ 84 vs. Ole Miss | 11-22-19
 Assists _____ 4, two times
 Digs _____ 20 vs. NC State | 9-20-19
 Blocks _____ 6.0 (0-6) vs. Alabama | 11-20-22
 Aces _____ 5 vs. Alabama | 2-13-21



SEASON/CAREER HIGHS

#11 MAGGIE CARTWRIGHT | GR | OH

SEASON HIGHS

Hitting pct .727 (16-0-22) vs. Buffalo | 9-15-23
 Kills 16 vs. Buffalo | 9-15-23
 Attempts 39 vs. Colorado State | 9-1-23
 Assists 2 vs. Tulsa | 8-27-23
 Digs 25 at Western Kentucky | 9-8-23
 Blocks 5.0, four times
 Aces 2, four times

CAREER HIGHS

Hitting pct .727 (16-0-22) vs. Buffalo | 9-15-23
 Kills 21 vs. Texas A&M | 10-19-22
 Attempts 48 vs. Texas A&M | 10-19-22
 Assists 4 at Georgia | 10-3-19
 Digs 25 at Western Kentucky | 9-8-23
 Blocks 7.0, two times
 Aces 4, three times

#15 COURTNEY JACKSON | JR | L

SEASON HIGHS

Hitting pct _____
 Kills _____
 Attempts 1 vs. Troy | 9-9-23
 Assists 9, two times
 Digs 24 at Western Kentucky | 9-8-23
 Blocks _____
 Aces 4 vs. Colorado State | 9-1-23

CAREER HIGHS

Hitting pct _____
 Kills 1, two times
 Attempts 1, 11 times
 Assists 9, three times
 Digs 29 vs. Mississippi State | 11-21-21
 Blocks _____
 Aces 5 vs. No. 8 Washington | 8-27-22

#19 OLIVIA RUY | FR | OH

SEASON HIGHS

Hitting pct _____
 Kills _____
 Attempts _____
 Assists _____
 Digs _____
 Blocks _____
 Aces _____

CAREER HIGHS

Hitting pct _____
 Kills _____
 Attempts _____
 Assists _____
 Digs _____
 Blocks _____
 Aces _____

#12 HAILEY SCHNEIDER | SR | OH

SEASON HIGHS

Hitting pct _____
 Kills _____
 Attempts _____
 Assists _____
 Digs _____
 Blocks _____
 Aces _____

CAREER HIGHS

Hitting pct _____
 Kills _____
 Attempts _____
 Assists _____
 Digs _____
 Blocks _____
 Aces _____

#17 SKYLAR ELLISON | SO | OH

SEASON HIGHS

Hitting pct _____
 Kills _____
 Attempts _____
 Assists _____
 Digs _____
 Blocks _____
 Aces _____

CAREER HIGHS

Hitting pct _____
 Kills _____
 Attempts _____
 Assists _____
 Digs _____
 Blocks _____
 Aces _____

#22 AVA ROTH | FR | L

SEASON HIGHS

Hitting pct _____
 Kills _____
 Attempts _____
 Assists _____
 Digs _____
 Blocks _____
 Aces _____

CAREER HIGHS

Hitting pct _____
 Kills _____
 Attempts _____
 Assists _____
 Digs _____
 Blocks _____
 Aces _____

#14 ROSANA HICKS | SO | OH

SEASON HIGHS

Hitting pct _____
 Kills _____
 Attempts _____
 Assists _____
 Digs _____
 Blocks _____
 Aces _____

CAREER HIGHS

Hitting pct _____
 Kills _____
 Attempts 4 vs. Alabama St. | 9-2-22
 Assists _____
 Digs _____
 Blocks 1.0 (0-1) vs. Alabama St. | 9-2-22
 Aces _____

#18 HANNAH HOGUE | JR | S

SEASON HIGHS

Hitting pct _____
 Kills 1.000 (2-0-2), two times
 Kills 2, three times
 Attempts 4 at St. John's | 9-15-23
 Assists 57 vs. No. 1 Wisconsin | 8-30-23
 Digs 14, two times
 Blocks 5.0 (0-5) at Western Kentucky | 9-8-23
 Aces 5 vs. Troy | 9-9-23

CAREER HIGHS

Hitting pct _____
 Kills 1.000 (2-0-2), two times
 Kills 2, two times
 Attempts 4 at St. John's | 9-15-23
 Assists 57 vs. No. 1 Wisconsin | 8-30-23
 Digs 18 vs. NC State | 9-16-22
 Blocks 5.0 (0-5) at Western Kentucky | 9-8-23
 Aces 5 vs. Troy | 9-9-23

#23 LAURA EHIEZE | GR | MB

SEASON HIGHS

Hitting pct .333 (3-1-6) vs. Bryant | 9-16-23
 Kills 3 vs. Bryant | 9-16-23
 Attempts 3 vs. Bryant | 9-16-23
 Assists _____
 Digs _____
 Blocks 3.0 (1-3) vs. Bryant | 9-16-23
 Aces _____

CAREER HIGHS

Hitting pct _____
 Kills 10, four times (Georgia St.)
 Attempts 25, two times (Georgia St.)
 Assists 1, five times (Georgia St.)
 Digs 4 at Wofford | 9-16-22 (Georgia St.)
 Blocks 9 vs. App State | 10-1-21 (Georgia St.)
 Aces 1, two times (Georgia St.)

#44 ZOI EVANS | JR | MB

SEASON HIGHS

Hitting pct 1.000 (5-0-5) vs. No. 24 Auburn | 10-2-23
 Kills 5, two times
 Attempts 8, two times
 Assists _____
 Digs 2, two times
 Blocks 8.0 (2-6) at St. John's | 9-15-23
 Aces _____

CAREER HIGHS

Hitting pct 1.000 (5-0-5) vs. No. 24 Auburn | 10-2-23
 Kills 5, two times
 Attempts 8, two times
 Assists 3 vs. South Carolina | 11-2-22
 Digs 2, three times
 Blocks 8.0 (2-6) at St. John's | 9-15-23
 Aces _____



OVERALL SEASON STATISTICS



2023-24 Arkansas Women's Volleyball
Combined Team Statistics
All games

Page 1/1
as of Oct 08, 2023

Game Records

Overall	Conference	Home	Away	Neutral
15 - 2	5 - 0	8 - 2	3 - 0	4 - 0

Team Box Score

#	Player	SP	Attack				Set		Serve			Dig			Blocking				PTS			
			K	K/S	E	TA	PCT	A	A/S	SA	SE	SA/S	RE	DIG	DIG/S	BS	BA	TOT/S		BLK/S	BE	BHE
2	Lawson, Jada	12	0	0.00	0	0	.000	0	0.00	3	5	0.25	0	5	0.42	0	0	0	0.00	0	0	3.0
3	Petties, Sania	61	132	2.16	30	296	.345	7	0.11	9	16	0.15	0	22	0.36	1	49	50	0.82	3	0	166.5
5	Weeks, Kylie	22	0	0.00	0	1	.000	0	0.00	0	5	0.00	0	9	0.41	0	0	0	0.00	0	0	0.0
7	Head, Taylor	61	237	3.89	91	628	.232	18	0.30	27	18	0.44	19	188	3.08	2	28	30	0.49	3	1	280.0
10	Gillen, Jillian	61	255	4.18	77	626	.284	11	0.18	29	34	0.48	16	178	2.92	6	18	24	0.39	3	0	299.0
11	Cartwright, Maggie	61	166	2.72	43	418	.294	6	0.10	16	24	0.26	0	130	2.13	1	42	43	0.70	3	0	204.0
12	Schneider, Hailey	3	0	0.00	0	0	.000	0	0.00	0	2	0.00	0	0	0.00	0	0	0	0.00	0	0	0.0
15	Jackson, Courtney	61	0	0.00	1	4	-.250	66	1.08	20	14	0.33	16	235	3.85	0	0	0	0.00	0	1	20.0
18	Hogue, Hannah	61	13	0.21	4	41	.220	688	11.28	29	26	0.48	0	141	2.31	0	22	22	0.36	1	8	53.0
23	Ehizee, Laura	4	3	0.75	1	7	.286	0	0.00	0	0	0.00	0	2	0.50	1	3	4	1.00	0	0	5.5
44	Evans, Zoi	58	37	0.64	9	90	.311	0	0.00	0	0	0.00	0	11	0.19	7	53	60	1.03	1	0	70.5
ARKANSAS		61	843	13.82	256	2111	.278	796	13.05	133	144	2.18	54	921	15.10	18	215	125.5	2.06	14	10	1,101.5
Opponents		61	659	10.80	294	2039	.179	632	10.36	54	137	0.89	133	872	14.30	20	214	127	2.08	22	9	840.0

Team statistics

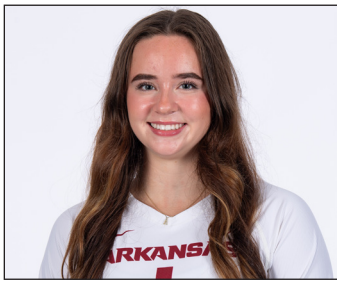
	ARK	OPP
ATTACK		
Kills	843	659
Errors	256	294
Total Attacks	2111	2039
Attack Pct	.278	.179
Kills/Set	13.82	10.80
SET		
Assists	796	632
Attempts	2072	2050
Assist Pct	.384	.308
Assists/Set	13.05	10.36
SERVE		
Aces	133	54
Errors	144	137
Attempts	1407	1152
Serve Pct	.898	.881
Aces/Set	2.18	0.89
SERVE RECEPTIONS		
Errors	54	133
Errors/Set	0.89	2.18
Attempts	1015	1263
Reception Pct	.947	.998
DEFENSE		
Digs	921	872
Digs/Set	15.10	14.30
BLOCKING		
Block solo	18	20
Block Assist	215	214
Total Blocks	125.5	127
Blocks/Set	2.06	2.08
Block Errors	14	22
Ball handling errors	10	9
ATTENDANCE		
Total	19020	3597
Dates/Avg Per Date	10/1902	3/1199
Neutral Site #/Avg	4/44	-
Current win streak	0	-
Home win streak	0	-

Team Results

Date	Opponent	Score	Score-by-set	Att.
08/25/2023	Michigan St.	W 3-0	25-19,25-16,25-10	1717
08/27/2023	Tulsa	W 3-0	25-19,25-11,25-19	1028
08/30/2023	Wisconsin	L 2-3	25-21,20-25,24-26,25-22,13-15	4299
08/31/2023	Wisconsin	L 0-3	22-25,16-25,17-25	2740
09/01/2023	Colorado St.	W 3-2	25-21,21-25,25-18,20-25,15-12	1324
09/03/2023	Michigan	W 3-0	25-16,25-17,25-23	1387
09/08/2023	vs Col. of Charleston	W 3-0	25-17,25-13,25-12	0
09/08/2023	at Western Ky.	W 3-2	25-22,17-25,20-25,25-22,15-12	2572
09/09/2023	vs Troy	W 3-1	25-14,22-25,25-22,25-16	0
09/15/2023	vs Buffalo	W 3-0	25-14,25-19,25-15	101
09/15/2023	at St. John's (NY)	W 3-1	19-25,25-16,25-17,25-21	523
09/16/2023	vs Bryant	W 3-0	25-19,25-11,25-19	73
* 09/22/2023	South Carolina	W 3-0	25-11,25-15,25-18	1653
* 09/24/2023	Texas A&M	W 3-1	25-23,21-25,25-18,25-16	1747
* 09/27/2023	Auburn	W 3-0	25-18,25-10,25-6	1374
* 10/04/2023	at LSU	W 3-0	25-20,25-19,25-20	502
* 10/08/2023	Missouri	W 3-1	25-15,19-25,25-16,25-22	1751



2023 RAZORBACK VOLLEYBALL ROSTER



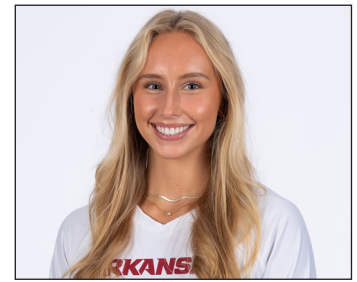
1 AVERY CALAME
So. | OH | 5-11 | McKinney, Texas



2 JADA LAWSON
Jr. | OH | 5-7 | North Little Rock, Ark.



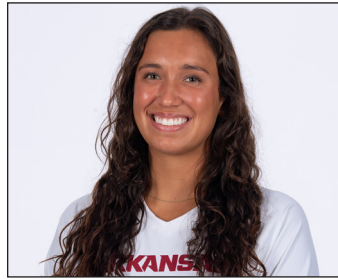
3 SANIA PETTIES
Jr. | MB | 6-1 | Houston, Texas



4 LILY DUDLEY
Fr. | OH | 5-11 | Columbia, Mo.



5 KYLIE WEEKS
So. | L | 5-6 | Elkhorn, Neb.



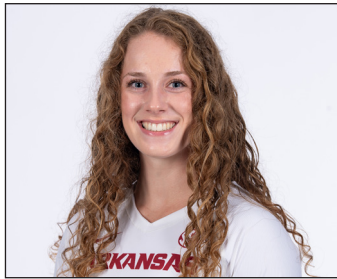
7 TAYLOR HEAD
Sr. | OH | 5-10 | Winter Garden, Fla.



9 ANIYA MADKIN
Fr. | OH | 6-2 | Clinton, Miss.



8 LO JONES
Fr. | S | 5-9 | Carl Junction, Mo.



10 JILL GILLEN
Gr. | OH | 5-7 | Stillwell, Kan.



11 MAGGIE CARTWRIGHT
Gr. | OH | 5-11 | Kimberly, Wis.



12 HAILEY SCHNEIDER
Sr. | L | 5-9 | Denton, Texas



14 ROSANA HICKS
Jr. | OH | 6-1 | Fayetteville, Ark.



15 COURTNEY JACKSON
Jr. | L | 5-9 | Olathe, Kan.



17 SKYLAR ELLISON
So. | MB | 6-1 | Aledo, Texas



18 HANNAH HOGUE
Jr. | S | 5-8 | Fort Smith, Ark.



19 OLIVIA RUY
Fr. | OH | 6-2 | Salt Lake City, Utah



22 AVA ROTH
Fr. | L | 5-6 | Festus, Mo.



23 LAURA EHIEZE
Gr. | MB | 6-0 | Houston, Texas



44 ZOI EVANS
Jr. | MB | 6-4 | Tampa, Fla.

