

VOLLEYBALL

RESULTS/SCHEDULE

OVERALL: 24-4 | SEC: 14-2
H: 12-2 | A: 8-2 | N: 4-0

Aug. 25	Michigan State	W, 3-0	
Aug. 27	Tulsa	W, 3-0	
Aug. 30	No. 1 Wisconsin	L, 3-2	
Aug. 31	No. 1 Wisconsin	L, 3-0	
Sept. 1	Colorado State	W, 3-2	
Sept. 3	Michigan	W, 3-0	
Sept. 8	College of Charleston	W, 3-0	
Sept. 8	College of Charleston	W, 3-2	
Sept. 9	Troy	W, 3-1	
Sept. 15	Buffalo	W, 3-0	
Sept. 15	St. John's	W, 3-1	
Sept. 16	Bryant	W, 3-0	
Sept. 22	South Carolina	W, 3-0	
Sept. 24	Texas A&M	W, 3-1	
Sept. 27	No. 24 Auburn	W, 3-0	
Oct. 4	LSU	W, 3-0	
Oct. 8	Missouri	W, 3-1	
Oct. 13	Ole Miss	W, 3-0	
Oct. 15	Alabama	W, 3-1	
Oct. 20	No. 12 Tennessee	W, 3-1	
Oct. 22	No. 20 Kentucky	L, 3-2	
Oct. 27	South Carolina	W, 3-1	
Oct. 29	No. 19 Florida	W, 3-0	
Nov. 1	Georgia	L, 3-0	
Nov. 5	Mississippi State	W, 3-0	
Nov. 10	Alabama	W, 3-0	
Nov. 15	Ole Miss	W, 3-2	
Nov. 19	No. 20 Florida	W, 3-2	
Nov. 22	No. 10 Kentucky		Barnhill Arena
Nov. 24	Auburn		Auburn, Ala.

SCOUTING REPORT | KENTUCKY



(17-7, 14-1 SEC)

All-Time Series	15-34
Series in Fayetteville	9-15
Series Under Watson	0-13
Last Meeting	L, 3-2 on 10/22/23

Coaching Staff

Head Coach	Craig Skinner
Record at Kentucky	441-146
Career Record	441-146

Notes

- Wednesday is the second meeting of the teams this season, the first a five-set loss for Arkansas
- While both have 14 conference wins, Tennessee is the lone SEC loss for Kentucky, Arkansas has two, at the hands of the Cats and Georgia Bulldogs
- The Hogs have never defeated the Wildcats in Jason Watson's tenure and haven't done so since 2012, a five-set victory in Fayetteville

ARKANSAS VOLLEYBALL QUICK FACTS

TEAM INFORMATION

2023 Overall Record	24-4
2023 SEC Record	14-2
SEC Finish	N/A
Home Record	12-2
Away Record	8-2
Neutral Record	4-0
Starters Returning/Lost	5/2
Newcomers	7

COACHING STAFF

Head Coach	Jason Watson
Record at Arkansas	129-100 (.563)
SEC Record	75-71 (.514)
Career Record	329-248 (.570)
Associate Head Coach	Suzie Fritz
Assistant Coach	Lexi MacLean
Assistant Coach	Jordan Neal
Director of Operations	Andy Rynd
Volleyball Office Phone	479-575-3813

TEAM HISTORY

All-Time Overall Record	567-385 (.596)
All-Time SEC Record	301-223 (.574)
NCAA Tournaments/Last	12/2022
SEC Championships/Last	1 (Tournament)/1997
First Year of Program	1994

FACILITY INFORMATION

Name	Barnhill Arena
Capacity	8,500
Opened	1953
All-Time Record	290-134 (.684)

TEAM LEADERS

ARKANSAS

Kills Per Set	Jill Gillen 4.22 435
Assists Per Set	Hannah Hogue 11.28 1162
Digs Per Set	Courtney Jackson 3.88 400
Blocks Per Set	Zoi Evans 1.12 111
Aces Per Set	Jill Gillen/Hannah Hogue 0.44 45

KENTUCKY

Kills Per Set	Brooklyn DeLeye 3.64 324
Assists Per Set	Emma Grome 12.08 1099
Digs Per Set	Eleanor Beavin 3.91 356
Blocks Per Set	Ahzani Tealer 0.88 75
Aces Per Set	Molly Tuozzo 0.30 27

TALE OF THE TAPE

ARKANSAS

Hitting Pct.	.272
Total Attempts	3651
Kills/Set	13.93
Total Kills	1435
Assists/Set	13.05
Total Assists	1344
Digs/Set	15.18
Total Digs	1564
Blocks/Set	2.09
Total Blocks	215.5
Aces/Set	1.96
Total Aces	202
Opp. Hitting Pct.	.182

KENTUCKY

Hitting Pct.	.283
Total Attempts	3118
Kills/Set	14.35
Total Kills	1306
Assists/Set	13.40
Total Assists	1219
Digs/Set	13.42
Total Digs	1221
Blocks/Set	1.89
Total Blocks	172.0
Aces/Set	1.43
Total Aces	130
Opp. Hitting Pct.	.228



NOTES & NUMBERS

Hannah Hogue Show

- Hannah Hogue was named SEC Setter of the Week for the fifth time this season on Nov. 13, the first Arkansas setter to win the award five times in one season and one of only two Arkansas players ever to win a weekly award five times in a season
- In her first season as primary setter, Hogue has shined and is third in the SEC in assists per set with 11.28, which is fifth in the country
- After eclipsing 1,000 career assists in September, Hogue also joined the program career top 10 in assists in October and has 1,796 so far
- The Fort Smith native and second-generation Razorback (dad, Gary, played baseball at Arkansas and mom, Cissie, was a cheerleader) has also shined at the service line with 0.44 aces per set, good for first in the SEC

**Rewriting History**

- The sum has also been greater than the parts for the Hogs this fall as the team achieved its best 20-match start to a season in program history at 18-2, recorded its third consecutive 20-win season, and has its most wins since 2003 with 24, also the most in one season in Jason Watson's tenure at Arkansas
- With an RPI ranking as high as seventh and the team's record, Arkansas is setting itself up to be an NCAA host site since 2016. The Hogs will also look to be the first Arkansas team to win two NCAA Tournament matches since the 1998 squad
- The Razorbacks have also seen unprecedented fan support in Fayetteville this season, with a new single match attendance record against No. 1 Wisconsin on Aug. 30 with 4,299 fans, seven of the 10 highest-attended matches in program history, season tickets up by 59 percent, and a new single season home attendance record of 25,727 (25th nationally), with one home match remaining

**Razorbacks on the Rise**

- Arkansas has now spent every week of the season ranked in the top 25, the first time that has happened for the program since 1999
- Prior to 2023, Arkansas' highest rank as a program was No. 13. The Hogs have now spent seven weeks higher than that and entered the top eight on Oct. 30
- From the preseason poll until now, the Razorbacks rose a total of 17 spots from No. 25 to their highest rank, No. 8. That ties Washington State for the most spots risen on the season, as the Cougars jumped from No. 21 to No. 4

Ace Queens

- The Razorbacks are serving at an elite level this season and check in at No. 1 in the SEC in aces per set with 1.96, which is also good for 13th nationally
- Graduate outside hitter Jill Gillen took over as the program all-time ace leader on Oct. 4 and currently has 45 on the season, a new single season career high with two matches left to go
- Arkansas also leads the SEC in total aces this season with 202, 20 more than the next-best serving team, Georgia

The 7-10 Special

- Arkansas' hitting duo of Jill Gillen and Taylor Head continue to blaze their way through the Razorback record book and garner national attention this year
- Gillen moved her way into No. 2 on the Arkansas all-time career kills list on Oct. 8 and currently has 1,983, which is the most in the current scoring era and most by any Razorback since 1997
- Head entered the program career top 10 kills list in mid-October and is currently in sixth place with 1,454
- The pair also both entered the program career top 10 in digs this season and are in fifth (Head) and sixth place (Gillen)

**Arkansas' 2023 SEC Honors****Preseason All-SEC Team**

Jill Gillen, Taylor Head

SEC Player of the Week: 11/20

Jill Gillen

SEC Player of the Week: 10/30

Hannah Hogue

SEC Offensive Player of the Week: 11/20

Jill Gillen

SEC Setter of the Week: 8/28, 9/18, 9/25, 10/30, 11/13

Hannah Hogue

SEC Co-Offensive Player of the Week: 9/18

Maggie Cartwright

SEC Co-Defensive Player of the Week: 9/11

Courtney Jackson



2023 ARKANSAS VOLLEYBALL ROSTER

#	Name	Position	Class	Height	Hometown	High School/Previous School
1	Avery Calame	OH	SO	5-11	McKinney, Texas	McKinney-Boyd HS
2	Jada Lawson	OH	JR	5-7	North Little Rock, Ark.	North Little Rock HS
3	Sania Petties	MB	JR	6-1	Houston Texas	Mississippi State
4	Lily Dudley	OH	FR	5-11	Columbia, Mo.	Rock Bridge HS
5	Kylie Weeks	L	SO	5-6	Elkhorn, Neb.	Elkhorn South HS
7	Taylor Head	OH	SR	5-10	Winter Garden, Fla.	West Orange HS
8	Lo Jones	S	FR	5-9	Carl Junction, Mo.	Carl Junction HS
9	Aniya Madkin	OH	FR	6-2	Clinton, Miss.	Clinton HS
10	Jillian Gillen	OH	GR	5-7	Stilwell, Kan.	The Barstow School
11	Maggie Cartwright	OH	GR	5-11	Kimberly, Wis.	Kimberly HS
12	Hailey Schneider	L	SR	5-9	Denton, Texas	Guyer HS
14	Rosana Hicks	OH	JR	6-1	Fayetteville, Ark.	Fayetteville HS
15	Courtney Jackson	L	JR	5-8	Olathe, Kan.	Olathe Northwest HS
17	Skyler Ellison	MB	SO	6-1	Aledo, Texas	Aledo HS
18	Hannah Hogue	S	JR	5-8	Fort Smith, Arkansas	Southside HS
19	Olivia Ruy	OH	FR	6-2	Salt Lake City, Utah	Woods Cross HS
22	Ava Roth	L	FR	5-6	Festus, Mo.	Jefferson HS
23	Laura Ehieze	MB	GR	6-0	Houston, Texas	Georgia State
44	Zoi Evans	MB	JR	6-4	Tampa, Fla.	Wiregrass HS

Head Coach: Jason Watson/BYU, '95 (Eighth Season/19th Overall)
 Associate Head Coach: Suzie Fritz/Florida Atlantic, '94 (First Season)
 Assistant Coach: Lexi MacLean/TCU, '19 (First Season)
 Assistant Coach: Jordan Neal/ Ouachita Baptist, '13 (First Season)
 Director of Operations: Andy Rynd/Bowling Green, '15 (Second Season)

PRONUNCIATION GUIDE

Avery Calame	<i>CAL-um</i>
Sania Petties	<i>suh-NY-uh PET-iss</i>
Aniya Madkin	<i>uh-NY-uh</i>
Rosana Hicks	<i>Rose-AH-nuh</i>
Hannah Hogue	<i>Rhymes with ROGUE</i>
Olivia Ruy	<i>WHO-ee</i>
Laura Ehieze	<i>eh-HYEH-zay</i>
Zoi Evans	<i>Zoey</i>

TEAM STUDIES

Avery Calame	Pre-Business
Jada Lawson	Biomedical Engineering
Sania Petties	Psychology
Lily Dudley	Interior Design
Kylie Weeks	Communication Sciences & Disorders
Taylor Head	Recreation & Sport Management
Lo Jones	Journalism
Aniya Madkin	Pre-Business
Jillian Gillen	Business Administration (MBA)
Maggie Cartwright	Recreation & Sport Management
Hailey Schneider	Exercise Science
Rosana Hicks	Anthropology
Courtney Jackson	Recreation & Sport Management
Olivia Ruy	Social Work
Ava Roth	Psychology
Laura Ehieze	Business Administration (MBA)
Zoi Evans	Recreation & Sport Management

SEC STANDINGS

	CONF	OVERALL	HOME	ROAD	NEUTRAL
Kentucky	15-1	17-7	7-2	9-5	1-0
Tennessee	14-2	23-3	11-2	11-1	1-0
Arkansas	14-2	24-4	12-2	8-2	4-0
Auburn	9-7	19-8	9-4	7-4	3-0
Florida	9-7	17-8	7-6	9-2	1-0
Missouri	9-8	17-11	11-4	5-6	1-1
Georgia	8-8	17-11	11-3	4-6	2-2
Texas A&M	7-9	15-11	6-7	6-4	3-0
LSU	6-10	11-15	6-6	2-8	3-1
Mississippi State	5-11	12-14	9-4	1-9	2-1
Ole Miss	5-12	11-17	8-4	1-10	2-3
South Carolina	4-12	10-15	7-6	2-9	1-0
Alabama	0-16	10-17	4-8	3-8	3-1

AVCA TOP 25

Rank	Team	Record	Prev
1	Nebraska (64)	27-0	1
2	Stanford	24-3	4
3	Pittsburgh	23-4	7
4	Texas	21-4	5
5	Wisconsin	24-3	3
6	Oregon	24-5	6
7	Louisville	23-4	4
8	Tennessee	23-3	8
9	Arkansas	24-4	10
10	Kentucky	17-7	12
11	Washington State	22-7	11
12	Georgia Tech	22-5	9
13	Purdue	19-8	16
14	Penn State	19-8	14
15	Kansas	21-5	17
16	BYU	22-6	13
17	Creighton	25-4	15
18	Arizona State	25-5	18
19	Dayton	31-2	19
20	Florida	17-8	20
21	Western Kentucky	29-4	22
22	Houston	17-8	21
23	Florida State	22-8	25
24	Southern California	18-10	24
25	Baylor	15-12	23

Others receiving votes and listed on two or more ballots:
 Marquette 47; UC Santa Barbara 33; Minnesota 29; Auburn 24; Utah State 17; Iowa State 16; SMU 16; Kansas State 14; Pepperdine 10

7 teams mentioned on only one ballot for a total of 35 combined points

Dropped Out: none

Next Poll: Nov. 27

MILESTONE WATCH

Maggie Cartwright (OH | Graduate)

Looking for: Program top 10 career aces - 10th place (106)
 Current Total: 102 Needs: 4

Jill Gillen (OH | Graduate)

Looking for: 2,000 career kills
 Current Total: 1,983 Needs: 17

Taylor Head (OH | Senior)

Looking for: Program top five career kills - 5th place (1,472)
 Current Total: 1,454 Needs: 18



MATCH-BY-MATCH STARTERS

8-25 vs. Michigan State	Petties, Head, Gillen, Cartwright, Hogue, Evans	Jackson
8-27 vs. Tulsa	Petties, Head, Gillen, Cartwright, Hogue, Evans	Jackson
8-30 vs. No. 1 Wisconsin	Petties, Head, Gillen, Cartwright, Hogue, Evans	Jackson
8-31 vs. No. 1 Wisconsin	Petties, Head, Gillen, Cartwright, Hogue, Evans	Jackson
9-1 vs. Colorado State	Petties, Head, Gillen, Cartwright, Hogue, Evans	Jackson
9-3 vs. Michigan	Petties, Head, Gillen, Cartwright, Hogue, Evans	Jackson
9-8 vs. College of Charleston	Petties, Head, Gillen, Cartwright, Hogue, Evans	Jackson
9-8 at Western Kentucky	Petties, Head, Gillen, Cartwright, Hogue, Evans	Jackson
9-9 vs. Troy	Petties, Head, Gillen, Cartwright, Hogue, Evans	Jackson
9-15 vs. Buffalo	Petties, Head, Gillen, Cartwright, Hogue, Evans	Jackson
9-15 at St. John's	Petties, Head, Gillen, Cartwright, Hogue, Evans	Jackson
9-16 vs. Bryant	Petties, Head, Gillen, Cartwright, Hogue, Ehieze	Jackson
9-22 vs. South Carolina	Petties, Head, Gillen, Cartwright, Hogue, Evans	Jackson
9-24 vs. Texas A&M	Petties, Head, Gillen, Cartwright, Hogue, Evans	Jackson
9-27 vs. No. 24 Auburn	Petties, Head, Gillen, Cartwright, Hogue, Evans	Jackson
10-4 at LSU	Petties, Head, Gillen, Cartwright, Hogue, Evans	Jackson
10-8 vs. Missouri	Petties, Head, Gillen, Cartwright, Hogue, Evans	Jackson
10-13 vs. Ole Miss	Petties, Head, Gillen, Cartwright, Hogue, Evans	Jackson
10-13 vs. Alabama	Petties, Head, Gillen, Cartwright, Hogue, Evans	Jackson
10-20 at No. 10 Tennessee	Petties, Head, Gillen, Cartwright, Hogue, Evans	Jackson
10-22 at No. 20 Kentucky	Petties, Head, Gillen, Cartwright, Hogue, Evans	Jackson
10-27 at South Carolina	Petties, Head, Gillen, Cartwright, Hogue, Evans	Jackson
10-29 at No. 19 Florida	Petties, Head, Gillen, Cartwright, Hogue, Evans	Jackson
11-1 at Georgia	Petties, Head, Gillen, Cartwright, Hogue, Evans	Jackson
11-5 vs. Mississippi State	Petties, Head, Gillen, Cartwright, Hogue, Evans	Jackson
11-10 at Alabama	Petties, Head, Gillen, Cartwright, Hogue, Evans	Jackson
11-15 at Ole Miss	Petties, Head, Gillen, Cartwright, Hogue, Evans	Jackson
11-19 vs. No. 20 Florida	Petties, Head, Gillen, Cartwright, Hogue, Evans	Jackson

2023 DOUBLE-DOUBLES

1. Taylor Head	13 kills, 12 digs	8-25 vs. Michigan State
2. Taylor Head	13 kills, 10 digs	8-27 vs. Tulsa
3. Taylor Head	15 kills, 24 digs	8-30 vs. No. 1 Wisconsin
4. Taylor Head	23 kills, 14 digs	9-1 vs. Colorado State
5. Taylor Head	17 kills, 11 digs	9-3 vs. Michigan
6. Taylor Head	12 kills, 13 digs	9-15 at St. John's
7. Taylor Head	13 kills, 18 digs	9-22 vs. South Carolina
8. Taylor Head	15 kills, 13 digs	9-24 vs. Texas A&M
9. Taylor Head	14 kills, 14 digs	10-4 at LSU
10. Taylor Head	10 kills, 16 digs	10-8 vs. Missouri
11. Taylor Head	13 kills, 10 digs	10-13 vs. Ole Miss
12. Taylor Head	24 kills, 21 digs	10-20 at No. 12 Tennessee
13. Taylor Head	24 kills, 18 digs	10-22 at No. 20 Kentucky
14. Taylor Head	16 kills, 11 digs	10-27 at South Carolina
15. Taylor Head	13 kills, 10 digs	11-5 vs. Mississippi State
16. Taylor Head	13 kills, 10 digs	11-10 at Alabama
17. Taylor Head	17 kills, 17 digs	11-15 at Ole Miss
18. Taylor Head	19 kills, 14 digs	11-19 vs. No. 20 Florida
19. Hannah Hogue	32 assists, 10 digs	8-25 vs. Michigan State
20. Hannah Hogue	37 assists, 11 digs	8-27 vs. Tulsa
21. Hannah Hogue	57 assists, 11 digs	8-30 vs. No. 1 Wisconsin
22. Hannah Hogue	50 assists, 14 digs	9-1 vs. Colorado State
23. Hannah Hogue	48 assists, 24 digs	9-8 at Western Kentucky
24. Hannah Hogue	35 assists, 13 digs	9-22 vs. South Carolina
25. Hannah Hogue	47 assists, 10 digs	10-8 vs. Missouri
26. Hannah Hogue	49 assists, 28 digs	10-20 at No. 12 Tennessee
27. Hannah Hogue	31 assists, 10 digs	10-29 at No. 19 Florida
28. Hannah Hogue	32 assists, 11 digs	11-5 vs. Mississippi State
29. Hannah Hogue	43 assists, 11 digs	11-10 at Alabama
30. Hannah Hogue	47 assists, 124 digs	11-15 at Ole Miss
31. Hannah Hogue	50 assists, 15 digs	11-19 vs. No. 20 Florida
32. Jill Gillen	15 kills, 14 digs	8-27 vs. Tulsa
33. Jill Gillen	22 kills, 11 digs	8-30 vs. No. 1 Wisconsin
34. Jill Gillen	15 kills, 13 digs	8-31 vs. No. 1 Wisconsin
35. Jill Gillen	19 kills, 15 digs	9-1 vs. Colorado State
36. Jill Gillen	20 kills, 11 digs	9-8 at Western Kentucky
37. Jill Gillen	19 kills, 10 digs	9-9 vs. Troy
38. Jill Gillen	11 kills, 10 digs	9-15 at St. John's
39. Jill Gillen	15 kills, 10 digs	9-22 vs. South Carolina
40. Jill Gillen	19 kills, 11 digs	9-24 vs. Texas A&M
41. Jill Gillen	15 kills, 15 digs	10-8 vs. Missouri
42. Jill Gillen	23 kills, 15 digs	10-22 at No. 20 Kentucky
43. Jill Gillen	19 kills, 11 digs	10-27 at South Carolina
44. Jill Gillen	16 kills, 10 digs	11-1 at Georgia
45. Jill Gillen	26 kills, 11 digs	11-19 vs. No. 20 Florida
46. Jill Gillen	24 kills, 16 digs	11-15 at Ole Miss
47. Maggie Cartwright	14 kills, 15 digs	10-8 vs. Missouri
48. Maggie Cartwright	13 kills, 12 digs	10-20 at No. 12 Tennessee
49. Maggie Cartwright	13 kills, 17 digs	11-19 vs. No. 20 Florida

Season Count: Head - 18, Hogue - 13, Gillen - 15, Cartwright - 3; Career Count: Head - 56, Hogue - 21, Gillen - 43, Cartwright - 15

MEDIA INFORMATION

SPORTS INFORMATION / CREDENTIALS

Arkansas Athletic Communications assistant Emily Polglaze handles the media relations duties for the Razorbacks' volleyball team. Polglaze can be reached via her cell phone at [608] 921-6741 or by email at polglaze@uark.edu.

All media members are encouraged to apply for credentials through Polglaze.

Passes may be picked up starting 60 minutes prior to match time at the press will call table located in the Southwest Corridor of Barnhill Arena.

WWW.ARKANSASRAZORBACKS.COM

Information about the Arkansas volleyball team, including player bios, game recaps and notes packets are available online at the Official Website of Arkansas Athletics, www.ArkansasRazorbacks.com.

Final box score and stat books will be available shortly following each home match.

Game-by-game stats, as well as overall stats for the entire season can also be found online.

PRACTICE TIMES/INTERVIEWS

Arkansas practices on the main floor of Barnhill Arena, team sessions generally begin at 4 p.m.

On most days, head coach Jason Watson and players are available for interviews before practice. Members of the media who wish to cover practice should contact SID Emily Polglaze for the latest practice schedule.

Requests for sit down or phone interviews must be made at least 24 hours in advance with Emily Polglaze.

POST MATCH INTERVIEWS

Interviews with players and coaches are done courtside postmatch after the team's 10-minute cooling off period. Please inform SID Emily Polglaze if you need to request a specific player.

For assistance with opposing coaches and players, touch base with that school's SID for their postmatch media procedures.

SEC MEDIA INFORMATION

Jill Skotarczak is the volleyball media relations director for the SEC and can be reached at [205] 458-3000.

Each Monday, the league will name a Player of the Week, a Defensive Player of the Week and a Freshman of the Week. The SEC Website, SECSports.com, can be accessed 24/7/365 to access updated standings, statistics and notes.



MATCH-BY-MATCH LEADERS					
OPPONENT	KILLS	ASSISTS	DIGS	BLOCKS	ACES
Michigan State	Gillen (14)	Hogue (32)	Head (12)	Cartwright/Evans/Gillen (5)	Hogue/Petties (2)
Tulsa	Gillen (15)	Hogue (37)	Gillen (14)	Petties (4)	Head (3)
No. 1 Wisconsin	Gillen (22)	Hogue (57)	Head (24)	Petties (4)	Head (4)
No. 1 Wisconsin	Gillen (15)	Hogue (31)	Gillen (13)	Cartwright/Evans (3)	Cartwright/Gillen/Head/Hogue (1)
Colorado State	Gillen (23)	Hogue (50)	Gillen (15)	Cartwright (5)	Jackson (4)
Michigan	Head (17)	Hogue (34)	Jackson (16)	Petties (4)	Cartwright/Hogue/Petties (2)
College of Charleston	Head (14)	Hogue (42)	Jackson (19)	Petties (3)	Cartwright/Gillen/Hogue (2)
Western Kentucky	Head (21)	Hogue (48)	Cartwright (25)	Petties (8)	Head (2)
Troy	Gillen (19)	Hogue (49)	Jackson (17)	Petties (6)	Hogue (5)
Buffalo	Cartwright (16)	Hogue (36)	Jackson (12)	Evans (3)	Gillen (4)
St. John's	Cartwright/Head (12)	Hogue (38)	Jackson (16)	Evans (8)	Gillen (3)
Bryant	Gillen/Head (13)	Hogue (39)	Jackson (9)	Ehieza (4)	Gillen (4)
South Carolina	Gillen (15)	Hogue (35)	Head (18)	Petties (3)	Head (3)
Texas A&M	Gillen (19)	Hogue (44)	Head (13)	Evans (6)	Gillen/Head (2)
No. 24 Auburn	Head (10)	Hogue (31)	Jackson (16)	Petties (4)	Gillen/Head/Jackson/Lawson (2)
LSU	Gillen (15)	Hogue (38)	Head (14)	Evans (4)	Hogue (3)
Missouri	Gillen (15)	Hogue (47)	Head (16)	Evans (4)	Cartwright/Jackson (2)
Ole Miss	Cartwright (14)	Hogue (42)	Jackson (13)	Hogue/Petties (3)	Cartwright (5)
Alabama	Head (18)	Hogue (47)	Jackson (19)	Evans/Petties (6)	Gillen (5)
No. 12 Tennessee	Head (24)	Hogue (49)	Hogue (28)	Evans (6)	Hogue (2)
No. 20 Kentucky	Head (24)	Hogue (52)	Head (18)	Gillen (5)	Gillen (4)
South Carolina	Gillen (19)	Hogue (48)	Jackson (16)	Evans (9)	Lawson (4)
No. 19 Florida	Cartwright/Gillen (12)	Hogue (31)	Hogue (10)	Evans (5)	Jackson (3)
Georgia	Gillen (16)	Hogue (84)	Gillen (10)	Evans (3)	Cartwright/Lawson (1)
Mississippi State	Head (13)	Hogue (32)	Jackson (16)	Evans (6)	Jackson (3)
Alabama	Gillen (15)	Hogue (43)	Jackson (21)	Evans (2)	Hogue (1)
Ole Miss	Gillen (24)	Hogue (47)	Head (17)	Evans (6)	Gillen (3)
No. 20 Florida	Gillen (26)	Hogue (50)	Jackson (20)	Petties (5)	Hogue (2)

MATCH STAT LEADERS			
KILLS		TOTAL BLOCKS	
Gillen	17	Evans	15
Head	11	Petties	11
Cartwright	4	Cartwright	2
		Gillen	2
ASSISTS		Ehieza	1
Hogue	28	Hogue	1
DIGS		ACES	
Jackson	13	Gillen	9
Head	8	Hogue	9
Gillen	4	Head	7
Hogue	2	Cartwright	6
Cartwright	1	Jackson	5
		Lawson	3
		Petties	2

# OF MATCHES WITH...			
10+ KILLS		10+ ASSISTS	
Head	27	Hogue	28
Gillen	25		
Cartwright	14	20+ ASSISTS	
Petties	8	Hogue	28
20+ KILLS		30+ ASSISTS	
Gillen	5	Hogue	28
Head	4		
30+ KILLS		40+ ASSISTS	
		Hogue	15
10+ DIGS			
Jackson	24		
Head	18		
Gillen	17		
Hogue	15		
Cartwright	6		
20+ DIGS			
Jackson	4		
Head	2		
Hogue	1		
Cartwright	1		



WELCOME TO BARNHILL ARENA

Top Single-Match Attendance

1.	4,299	#1 Wisconsin	Aug. 30, 2023
2.	3,749	#20 Florida	Nov. 19, 2023
3.	3,298	Mississippi State	Nov. 5, 2023
4.	3,015	#13 Florida	Sept. 14, 2012
5.	2,740	#1 Wisconsin	Aug. 31, 2023
6.	2,349	South Carolina	Nov. 19, 2014
7.	2,067	Ole Miss	Oct. 13, 2023
8.	1,755	#19 Kentucky	Oct. 7, 2022
9.	1,751	Missouri	Oct. 8, 2023
10.	1,747	Texas A&M	Sept. 24, 2023

Year-by-Year Attendance Totals

Year	# of Matches	Total	Avg.
1994	15	6,548	437
1995	13	6,194	477
1996	18	8,296	461
1997	15	8,101	540
1998	19	13,299	700
1999	14	6,315	451
2000	17	7,499	441
2001	11	5,794	527
2002	16	7,127	451
2003	11	5,683	517
2004	14	8,254	590
2005	14	9,365	669
2006	14	9,817	701
2007	16	10,919	682
2008	14	9,086	649
2009	14	10,316	737
2010	14	11,855	847
2011	14	12,903	922
2012	18	18,297	1,016
2013	15	13,047	870
2014	16	15,265	954
2015	15	14,697	980
2016	11	9,149	832
2017	13	12,919	994
2018	13	8,112	624
2019	12	7,596	633
2020	12	5,675	473
2021	12	10,590	882
2022	16	19,607	1,225
2023 (11-20)14		29,727	2,123

HEAD COACH JASON WATSON | 8TH YEAR AT ARKANSAS (19TH OVERALL)



Jason Watson was named the third head coach of the University of Arkansas volleyball team on January 7, 2016, and has taken the program to historic heights ever since. He enters his eighth season with a 304-244 (.522) career record, 105-96 at Arkansas, and had led his teams to eight NCAA Tournament selections, the most recent in 2022.

Watson is coming off his best season yet at Arkansas in 2022. The Hogs began the year on a great note as they defeated the No. 8 Washington Huskies 3-1 at Barnhill Arena on Aug. 25. Arkansas won six of its next seven after that and re-entered the AVCA Coaches Poll for the first time in seven years on Sept. 13. The Razorbacks hosted No. 7 Georgia Tech later that week and took down the Yellow Jackets 3-1 for their highest ranked win since 2007. It marked the first time ever that Arkansas had two top 10 wins in a season, and surged the Hogs to No. 20 in the coaches poll, their highest ranking since 1999.

Arkansas continued to roll and finished the regular season 20-8, the team's second consecutive 20-win season. Their hard work paid off as the Razorbacks were selected for the NCAA Tournament for the first time since 2013, and the first time in Watson's tenure at Arkansas. The Hogs took down Utah State 3-0 in round one, their first NCAA win since 2005. They were defeated by the Oregon Ducks in round two, bringing the season record to 21-9.

The Razorbacks had two All-SEC selections in Jill Gillen and Taylor Head, and the pair was also named AVCA All-South Region. Head garnered AVCA All-America Honorable Mention status to round out postseason accolades. Both Gillen and Head had tremendous seasons for the Hogs. Gillen entered the top five in program career kills and currently sits in fourth with 1,548, while Head became the 18th member of the Arkansas 1,000-kill club on Nov. 25, 2022.

Setter Gracie Ryan concluded her Arkansas career in 2022 and finished with 3,470 assists, good for fourth in program history. She played 128 matches over her five seasons, the most of any player in their current scoring era, dating back to 2007.

Arkansas saw unprecedented fan support in 2022 as well with a new season ticket record, new total attendance record (19,607) and new average attendance record (1,225) over their 16 home matches at Barnhill Arena, statistics that both rank within the top 50 nationally.

The 2021 slate marked his first postseason appearance at Arkansas, as the team accepted a bid to the National Invitational Volleyball Championship (NIVC), in which the Hogs finished in the quarterfinals. The team posted a 20-11 overall record, its first 20-win season since 2012 and the most regular season wins since 2018. The Hogs led the SEC in service aces with 1.61 per set, and came within the top five in kills, assists, and digs.

Jillian Gillen and Courtney Jackson earned All-SEC and All-SEC Freshman Team honors and Gillen and Gracie Ryan landed on the AVCA All-South Region rosters, the second consecutive year in which Arkansas received spots on the lists. Gillen also received SEC Scholar-Athlete of the Year designation for the second time.

In his fifth season as skipper in the 2020-21 split season, Watson led the Razorbacks to 14 conference wins, the most for Arkansas since 2003. He was honored with his first-ever SEC Coach of the Year award as Gillen was named SEC Scholar-Athlete of the Year and 2020 freshman Taylor Head was named SEC Freshman of the Year. Gillen and Head also earned a spot on the All-SEC team and All-SEC Freshman Team respectively and went on to earn AVCA All-South Region recognition as well.

In 2019, the Razorbacks were predicted to finish two spots higher in the SEC than where they finished in 2018 - one could con-

tribute the improvement from the recognized incoming class that earned Highest Honorable Mention by PrepVolleyball.com. That freshman class went on to help Arkansas finish the 2019 season at 11-17, which included a three-match winning streak to close out the home slate, highlighted by five-set wins over Alabama and Ole Miss. Watson helped recruit and sign 2019 freshman Jillian Gillen, who led the league's freshmen in kills per set (3.74) and ranked seventh among all players. Gillen racked up multiple awards, including two SEC Freshman of the Week awards, SEC All-Freshman Team honors and a spot on the 2019 VolleyballMag.com All-Freshman Team.

In his second season, Watson oversaw a 10-win improvement from the previous year with the Razorbacks finishing the 2017 campaign with a 19-11 overall record and 9-9 mark in SEC play. Arkansas' 10 wins at Barnhill Arena marked the program's highest home-win total since 2012. Arkansas also finished the year at No. 47 in the final RPI rankings.

Individually, senior Pilar Victoria led the NCAA with 5.47 kills per set and 6.08 points per set in 2017 and earned AVCA All-America Honorable Mention and All-SEC honors. Additionally, she and setter Rachel Rippee collected AVCA All-South Region Honorable Mention accolades. Away from the court, the Razorbacks combined to earn a second-consecutive AVCA Academic Team award.

The Razorbacks matched their SEC output from the previous season with a 7-11 mark in league play during Watson's first year including six wins in their last nine matches of the year. Individually, senior Danielle Harbin emerged to finish third in the SEC with 4.22 kills per set on her way to AVCA All-South Region honors.

In eight years in Tempe, Ariz., Watson transformed ASU Volleyball from a perennial sub-500 program into a postseason regular. In his last four seasons, the Sun Devils averaged more than 19 wins per season with four-consecutive bids to the NCAA Tournament. Watson also coached a pair of All-America performers, one in each of the past two seasons, for ASU's first national honorees since 2000.

Arizona State began the 2015 campaign with a 15-0 record and reached as high as No. 5 in the AVCA Top 25 poll. The Sun Devils also opened conference play with their best start in the Pac-10/12 era with four wins including the program's first win over Stanford in 15 years.

In 2014, ASU opened the season with six straight wins on the way to a 20-14 record. The Sun Devils were ranked in each AVCA regular season poll. Making its third straight trip to the NCAA Tournament, ASU defeated Texas A&M 3-1 to advance to the second round of the Tournament for the first time since 2006.

Watson led ASU to a 19-13 overall record in 2013 including a 3-0 upset of then-NCAA defending champion Texas. The Sun Devils started the season without dropping a set in their first seven matches. Making its second consecutive NCAA Tournament appearance, ASU dropped a five-set match to BYU in the first round.

In 2012, the Sun Devil squad opened with an 11-2 record, the best start since 1992. The Sun Devils finished with 20 wins - the most in a single season at ASU since 1993. The nine conference wins equaled the most since 2000. ASU made the program's 16th appearance in the NCAA Tournament and Watson became just the fifth coach from ASU to guide the Sun Devils to a NCAA postseason berth.

Watson arrived as the head coach at ASU in 2008. In 2013, he was also named head coach of the sand volleyball team when the sport was added to the athletics program.

In June 2015, Watson was selected by USA Volleyball to serve as the head coach of the U.S. Collegiate National Team on a six-match tour of China.

In his three seasons at the helm of the BYU program, Watson compiled a 74-18 (.804) overall record while leading BYU to three-straight NCAA Tournament appearances. During his first season as head coach, Watson was named Mountain West Conference Coach of the Year after leading his team to a 25-4 record, the program's best mark since 1998. In addition to leading BYU to the MWC regular-season title, Watson also helped lead the Cougars back to the NCAA Tournament.

In 2007, he led the Cougars to a 24-8 overall record and an Elite 8 finish in the NCAA Regional Final. His team also finished the year ranked 12th nationally, and at one point through the season, the Cougars held a rank as high as ninth in the country. No stranger to the best competition, Watson's teams have been ranked as high as eighth on RPI, showing the character and strength of the teams he builds. Never backing down from challenges are also another hallmark trait of Watson-led teams.

Watson previously amassed 11 years as an assistant coach at four universities. After an All-American playing career at BYU, Watson coached for two years under his former coach, Carl McGown, before beginning his career in women's volleyball with extremely successful stints at Kansas State, Arkansas State, and Montana State.

Watson was a four-year starter at BYU from 1990-1994 and two-time captain. He graduated from BYU in 1995 with a degree in physical education and sports business management after leaving his native home of Homebush, Australia.

He and his wife, Larissa, have two sons and a daughter.



2023 TEAM MATCH HIGHS

KILLS		
69	vs. No. 1 Wisconsin	Aug. 30 (2-3)
ATTEMPTS		
195	at No. 12 Tennessee	Oct. 20 (3-1)
HITTING PERCENTAGE		
.435	vs. No. 24 Auburn	Sept. 27 (3-0)
ASSISTS		
67	vs. No. 1 Wisconsin	Aug. 30 (2-3)
ACES		
15	vs. Troy	Sept. 9 (3-1)
DIGS		
89	at No. 20 Tennessee	Oct. 20 (3-1)
TOTAL BLOCKS		
14.5	at Western Kentucky	Sept. 8 (3-2)

2023 INDIVIDUAL MATCH HIGHS

KILLS		
26	Jill Gillen	Nov. 19
24	Taylor Head	Two times
24	Jill Gillen	Nov. 15
23	Jill Gillen	Oct. 22
23	Taylor Head	Sept. 1
ATTEMPTS		
65	Jill Gillen	Oct. 20
64	Jill Gillen	Three times
63	Taylor Head	Sept. 1
HITTING PERCENTAGE (at least 10 attempts)		
.727	Maggie Cartwright	Sept. 15
.643	Sania Petties	Sept. 15
.636	Sania Petties	Sept. 27
ASSISTS		
57	Hannah Hogue	Aug. 30
52	Hannah Hogue	Oct. 22
50	Hannah Hogue	Two times
ACES		
5	Jill Gillen	Oct. 15
5	Maggie Cartwright	Oct. 13
5	Hannah Hogue	Sept. 9
4	Jill Gillen	Three times
4	Jada Lawson	Oct. 27
4	Courtney Jackson	Sept. 1
4	Taylor Head	Aug. 30
3	Jill Gillen	Three times
3	Taylor Head	Two times
3	Courtney Jackson	Two times
3	Hannah Hogue	Oct. 4
DIGS		
28	Hannah Hogue	Oct. 20
25	Maggie Cartwright	Sept. 8
24	Courtney Jackson	Sept. 8
24	Taylor Head	Aug. 30
BLOCK SOLOS		
3	Jill Gillen	Aug. 25
3	Zoi Evans	Nov. 15
2	Zoi Evans	Two times
2	Zoi Evans	Two times
1	Zoi Evans	Seven times
1	Maggie Cartwright	Five times
1	Jill Gillen	Five times
1	Sania Petties	Two times
1	Taylor Head	Oct. 4
1	Laura Ehieze	Sept. 16
BLOCK ASSISTS		
8	Sania Petties	Sept. 8
8	Zoi Evans	Oct. 29
6	Zoi Evans	Two times
6	Sania Petties	Two times
5	Zoi Evans	Six times
5	Maggie Cartwright	Three times
5	Jill Gillen	Two times
5	Hannah Hogue	Sept. 8
TOTAL BLOCKS		
9	Zoi Evans (1-8)	Oct. 27
8	Zoi Evans (2-6)	Sept. 15
8	Sania Petties (0-8)	Sept. 8
7	Sania Petties (1-6)	Sept. 9
6	Zoi Evans	Six times
6	Sania Petties (0-6)	Oct. 15

THE LAST TIME...

THE LAST TIME ARKANSAS...	
Won a match vs. No. 20 Florida, 11/19/23
Lost a match at Georgia, 11/1/23
Won at home vs. No. 20 Florida, 11/19/23
Lost at home vs. No. 1 Wisconsin, 8/31/23
Won on the road at Ole Miss, 11/15/23
Lost on the road at Georgia, 11/1/23
Won 3-0 at Alabama, 11/10/23
Lost 3-0 at Georgia, 11/1/23
Won 3-0 at home vs. Mississippi State, 11/5/23
Lost 3-0 at home vs. No. 1 Wisconsin, 8/31/23
Won 3-0 on the road at Alabama, 11/10/23
Lost 3-0 on the road at Georgia, 11/1/23
Won in four sets at South Carolina, 10/27/23
Lost in four sets at Oregon (NCAAT), 12/3/22
Won in five sets vs. No. 20 Florida, 11/19/23
Lost in five sets at No. 20 Kentucky, 10/23/23

Beat an SEC team vs. No. 20 Florida, 11/19/23
Lost to an SEC team at Georgia, 11/1/23
Beat a ranked team vs. No. 20 Florida, 11/19/23
Had 70+ kills vs. Texas A&M (73), 10/19/22
Had 80+ kills
Had 90+ kills at Ole Miss (91), 10/9/98
Had 100+ kills vs. Tennessee (105), 10/6/00

Attempted 150+ attacks at Ole Miss (168), 11/15/23
Attempted 170+ attacks vs. No. 20 Florida (184), 11/19/23
Attempted 200+ attacks vs. Ole Miss (210), 10/5/18
Attempted 250+ attacks at Pacific (254), 11/28/98

THE LAST TIME A RAZORBACK...

Had 20+ kills Jill Gillen (26) vs. 20 Florida, 11/19/23
Had 30+ kills Jill Gillen (33) vs. Utah State, 9/3/21
Had 35+ kills Pilar Victoria (35) vs. Ole Miss, 10/18/15
Had 40+ kills Never
Had 50+ assists Hannah Hogue (50) vs. No. 20 Florida, 11/20/23
Had 60+ assists Lindsay Scanlan (60) vs. Alabama, 10/9/09
Had 75+ assists Evgeniya Rangelova (77) vs. Miami (OH), 9/9/00
Had 80+ assists Evgeniya Rangelova (88) vs. Tenn., 10/6/00

Had 3 solo blocks Zoi Evans at Ole Miss, 11/15/23
Had 4 solo blocks Danielle Harbin vs. Kentucky, 11/9/16
Had 5 solo blocks Jennifer Haaser at Georgia, 11/9/03
Had 20+ digs Courtney Jackson (20) vs. No 20 Florida, 11/19/23
Had 30+ digs Okiana Valle (33) at Alabama, 11/23/18
Had 40+ digs Never
Had 50+ digs Never

*not including neutral matches in "road" stats

WHAT HAPPENS WHEN...

Overall	24-4
SEC	14-2
Home	12-2
Away	8-2
Neutral	4-0
Vs Ranked Opponents	4-3

By Sets

Three Sets	13-2
Four Sets	7-0
Five Sets	4-2
Win First Set	21-2
Lose First Set	3-2
Win Second Set	15-0
Lose Second Set	9-4
Win First Two Sets	13-0
Lose First Two Sets	1-2
Split First Two Sets	10-2

Statistical

More Kills Than Opponent	23-0
Fewer Kills Than Opponent	1-4
Kills Are Tied	
More Digs Than Opponent	14-0
Fewer Digs Than Opponent	8-4
Digs Are Tied	2-0
More Blocks Than Opponent	15-0
Fewer Blocks Than Opponent	9-4
Blocks Are Tied	
More Aces Than Opponent	20-2
Fewer Aces Than Opponent	2-2
Aces Are Tied	2-0
Higher Hitting Pct	22-0
Lower Hitting Pct	2-4
Hitting Pct Tied	

Hitting Percentage

.400 Or Better	2-0
.300-.399	12-0
.200-.299	7-3
.100-.199	3-1
.000-.099	
Negative	

Opponent Hitting Percentage

.400 Or Better	
.300-.399	0-2
.200-.299	6-2
.100-.199	13-0
.000-.099	4-0
Negative	1-0

By Day

Tuesday	
Wednesday	3-2
Thursday	0-1
Friday	11-0
Saturday	2-0
Sunday	8-1

By Month

August	2-2
September	11-0
October	7-1
November	4-1
December	



SEASON/CAREER HIGHS

#1 AVERY CALAME | SO | OH

SEASON HIGHS

Hitting pct _____
 Kills _____
 Attempts _____
 Assists _____
 Digs _____
 Blocks _____
 Aces _____

CAREER HIGHS

Hitting pct .276 (11-3-29) vs. Texas A&M | 10-19-22
 Kills 11 vs. Texas A&M | 10-19-22
 Attempts 29 vs. Texas A&M | 10-19-22
 Assists 2 vs. Texas A&M | 10-19-22
 Digs 12 vs. Texas A&M | 10-19-22
 Blocks 1.0 (0-1) vs. Texas A&M | 10-19-22
 Aces 2 vs. Texas A&M | 10-19-22

#4 LILY DUDLEY | FR | OH

SEASON HIGHS

Hitting pct _____
 Kills _____
 Attempts _____
 Assists _____
 Digs _____
 Blocks _____
 Aces _____

CAREER HIGHS

Hitting pct _____
 Kills _____
 Attempts _____
 Assists _____
 Digs _____
 Blocks _____
 Aces _____

#8 LO JONES | FR | S

SEASON HIGHS

Hitting pct _____
 Kills _____
 Attempts _____
 Assists _____
 Digs _____
 Blocks _____
 Aces _____

CAREER HIGHS

Hitting pct _____
 Kills _____
 Attempts _____
 Assists _____
 Digs _____
 Blocks _____
 Aces _____

#2 JADA LAWSON | JR | OH

SEASON HIGHS

Hitting pct _____
 Kills _____
 Attempts _____
 Assists _____
 Digs _____ 2, four times
 Blocks _____ 2 vs. No. 24 Auburn | 9-27-23
 Aces _____ 4 at South Carolina | 10-27-23

CAREER HIGHS

Hitting pct .400 (2-0-5) vs. Alabama St. | 9-2-22
 Kills 3 vs. Little Rock | 9-9-22
 Attempts 8 vs. Little Rock | 9-9-22
 Assists _____
 Digs 9 vs. Little Rock | 9-9-22
 Blocks 2 vs. No. 24 Auburn | 9-27-23
 Aces 4 at South Carolina | 10-27-23

#5 KYLIE WEEKS | SO | L

SEASON HIGHS

Hitting pct _____
 Kills _____
 Attempts _____
 Assists _____
 Digs _____ 3, two times
 Blocks _____
 Aces _____

CAREER HIGHS

Hitting pct _____
 Kills _____
 Attempts _____
 Assists _____
 Digs _____ 3, two times
 Blocks _____
 Aces _____

#9 ANIYA MADKIN | FR | OH

SEASON HIGHS

Hitting pct _____
 Kills _____
 Attempts _____
 Assists _____
 Digs _____
 Blocks _____
 Aces _____

CAREER HIGHS

Hitting pct _____
 Kills _____
 Attempts _____
 Assists _____
 Digs _____
 Blocks _____
 Aces _____

#3 SANIA PETTIES | JR | MB

SEASON HIGHS

Hitting pct .643 (9-0-14) vs. Buffalo | 9-15-23
 Kills 15 vs. Troy | 9-9-23
 Attempts 30 vs. No. 1 Wisconsin | 8-30-23
 Assists 3 vs. Buffalo | 9-15-23
 Digs _____ 4, two times
 Blocks 8.0 (0-8) at Western Kentucky | 9-8-23
 Aces _____ 2, three times

CAREER HIGHS

Hitting pct .765 (13-0-17) at Notre Dame | 8-27-22 (MSU)
 Kills 15 vs. Troy | 9-9-23
 Attempts 37 at LSU | 10-30-22 (Miss. St.)
 Assists _____ 3, two times
 Digs 9 at LSU | 10-30-22 (Miss. St.)
 Blocks 8.0 (0-8) at Western Kentucky | 9-8-23
 Aces _____ 3 vs. Houston | 9-9-22 (Miss. St.)

#7 TAYLOR HEAD | SR | OH

SEASON HIGHS

Hitting pct .471 (17-1-34) vs. Michigan | 9-3-23
 Kills _____ 24, two times
 Attempts _____ 63 vs. Colorado State | 9-1-23
 Assists _____ 3 vs. Buffalo | 9-15-23
 Digs _____ 24 vs. No. 1 Wisconsin | 8-30-23
 Blocks _____ 4.0, two times
 Aces _____ 4 vs. No. 1 Wisconsin | 8-30-23

CAREER HIGHS

Hitting pct .636 (7-0-11) vs. Louisiana Tech | 8-28-21
 Kills _____ 24, two times
 Attempts _____ 63 vs. Colorado State | 9-1-23
 Assists _____ 3, three times
 Digs _____ 24 vs. No. 1 Wisconsin | 8-30-23
 Blocks _____ 5.0 (0-5) vs. Auburn | 10-9-21
 Aces _____ 4 vs. No. 1 Wisconsin | 8-30-23

#10 JILL GILLEN | GR | OH

SEASON HIGHS

Hitting pct .538 (15-1-26) vs. Tulsa | 8-27-23
 Kills _____ 26 vs. No. 20 Florida | 11-19-23
 Attempts _____ 65 at No. 12 Tennessee | 10-20-23
 Assists _____ 2, three times
 Digs _____ 16 at Ole Miss | 11-15-23
 Blocks _____ 5.0, three times
 Aces _____ 5 vs. Alabama | 10-15-23

CAREER HIGHS

Hitting pct .714 (11-1-14) vs. Alabama St. | 9-2-22
 Kills _____ 33 vs. Utah State | 9-3-21
 Attempts _____ 84 vs. Ole Miss | 11-22-19
 Assists _____ 4, two times
 Digs _____ 20 vs. NC State | 9-20-19
 Blocks _____ 6.0 (0-6) vs. Alabama | 11-20-22
 Aces _____ 5, two times



SEASON/CAREER HIGHS

#11 MAGGIE CARTWRIGHT | GR | OH

SEASON HIGHS

Hitting pct .727 (16-0-22) vs. Buffalo | 9-15-23
 Kills 16 vs. Buffalo | 9-15-23
 Attempts 44 vs. No. 20 Florida | 11-19-23
 Assists 2 vs. Tulsa | 8-27-23
 Digs 25 at Western Kentucky | 9-8-23
 Blocks 5.0, seven times
 Aces 5 vs. Ole Miss | 10-13-23

CAREER HIGHS

Hitting pct .727 (16-0-22) vs. Buffalo | 9-15-23
 Kills 21 vs. Texas A&M | 10-19-22
 Attempts 48 vs. Texas A&M | 10-19-22
 Assists 4 at Georgia | 10-3-19
 Digs 25 at Western Kentucky | 9-8-23
 Blocks 7.0, two times
 Aces 5 vs. Ole Miss | 10-13-23

#15 COURTNEY JACKSON | JR | L

SEASON HIGHS

Hitting pct _____
 Kills _____
 Attempts 1 vs. Troy | 9-9-23
 Assists 9, two times
 Digs 24 at Western Kentucky | 9-8-23
 Blocks _____
 Aces 4 vs. Colorado State | 9-1-23

CAREER HIGHS

Hitting pct _____
 Kills 1, two times
 Attempts 1, 11 times
 Assists 9, three times
 Digs 29 vs. Mississippi State | 11-21-21
 Blocks _____
 Aces 5 vs. No. 8 Washington | 8-27-22

#19 OLIVIA RUY | FR | OH

SEASON HIGHS

Hitting pct _____
 Kills _____
 Attempts _____
 Assists _____
 Digs _____
 Blocks _____
 Aces _____

CAREER HIGHS

Hitting pct _____
 Kills _____
 Attempts _____
 Assists _____
 Digs _____
 Blocks _____
 Aces _____

#12 HAILEY SCHNEIDER | SR | OH

SEASON HIGHS

Hitting pct _____
 Kills _____
 Attempts _____
 Assists _____
 Digs _____
 Blocks _____
 Aces _____

CAREER HIGHS

Hitting pct _____
 Kills _____
 Attempts _____
 Assists _____
 Digs _____
 Blocks _____
 Aces _____

#17 SKYLAR ELLISON | SO | OH

SEASON HIGHS

Hitting pct _____
 Kills _____
 Attempts _____
 Assists _____
 Digs _____
 Blocks _____
 Aces _____

CAREER HIGHS

Hitting pct _____
 Kills _____
 Attempts _____
 Assists _____
 Digs _____
 Blocks _____
 Aces _____

#22 AVA ROTH | FR | L

SEASON HIGHS

Hitting pct _____
 Kills _____
 Attempts _____
 Assists _____
 Digs _____
 Blocks _____
 Aces _____

CAREER HIGHS

Hitting pct _____
 Kills _____
 Attempts _____
 Assists _____
 Digs _____
 Blocks _____
 Aces _____

#14 ROSANA HICKS | SO | OH

SEASON HIGHS

Hitting pct _____
 Kills _____
 Attempts _____
 Assists _____
 Digs _____
 Blocks _____
 Aces _____

CAREER HIGHS

Hitting pct _____
 Kills _____
 Attempts 4 vs. Alabama St. | 9-2-22
 Assists _____
 Digs _____
 Blocks 1.0 (0-1) vs. Alabama St. | 9-2-22
 Aces _____

#18 HANNAH HOGUE | JR | S

SEASON HIGHS

Hitting pct 1.000 (2-0-2), two times
 Kills 4 vs. No. 20 Florida | 11-19-23
 Attempts 6 vs. Alabama | 10-15-23
 Assists 57 vs. No. 1 Wisconsin | 8-30-23
 Digs 28 at No. 12 Tennessee | 10-20-23
 Blocks 5.0 (0-5) at Western Kentucky | 9-8-23
 Aces 5 vs. Troy | 9-9-23

CAREER HIGHS

Hitting pct 1.000 (2-0-2), two times
 Kills 4 vs. No. 2 Florida | 11-19-23
 Attempts 6 vs. Alabama | 10-15-23
 Assists 57 vs. No. 1 Wisconsin | 8-30-23
 Digs 28 at No. 12 Tennessee | 10-20-23
 Blocks 5.0 (0-5) at Western Kentucky | 9-8-23
 Aces 5 vs. Troy | 9-9-23

#23 LAURA EHIEZE | GR | MB

SEASON HIGHS

Hitting pct .333 (3-1-6) vs. Bryant | 9-16-23
 Kills 3 vs. Bryant | 9-16-23
 Attempts 3 vs. Bryant | 9-16-23
 Assists _____
 Digs _____
 Blocks 3.0 (1-3) vs. Bryant | 9-16-23
 Aces _____

CAREER HIGHS

Hitting pct _____
 Kills 10, four times (Georgia St.)
 Attempts 25, two times (Georgia St.)
 Assists 1, five times (Georgia St.)
 Digs 4 at Wofford | 9-16-22 (Georgia St.)
 Blocks 9 vs. App State | 10-1-21 (Georgia St.)
 Aces 1, two times (Georgia St.)

#44 ZOI EVANS | JR | MB

SEASON HIGHS

Hitting pct 1.000 (5-0-5) vs. No. 24 Auburn | 10-2-23
 Kills 7 vs. Alabama | 10-15-23
 Attempts 10 at Ole Miss | 11-15-23
 Assists _____
 Digs 2, three times
 Blocks 9.0 (1-8) at South Carolina | 10-27-23
 Aces _____

CAREER HIGHS

Hitting pct 1.000 (5-0-5) vs. No. 24 Auburn | 10-2-23
 Kills 7 vs. Alabama | 10-15-23
 Attempts 10 at Ole Miss | 11-15-23
 Assists 3 vs. South Carolina | 11-2-22
 Digs 2, four times
 Blocks 9.0 (1-8) at South Carolina | 10-27-23
 Aces _____



OVERALL SEASON STATISTICS



2023-24 Arkansas Women's Volleyball
Combined Team Statistics
All games

Game Records

Overall	Conference	Home	Away	Neutral
24 - 4	14 - 2	12 - 2	8 - 2	4 - 0

Team Box Score

#	Player	SP	Attack					Set		Serve			RE	Dig		Blocking					PTS	
			K	K/S	E	TA	PCT	A	A/S	SA	SE	SA/S		DIG	DIG/S	BS	BA	TOT/S	BLK/S	BE		BHE
2	Lawson, Jada	53	0	0.00	1	1	-1.000	1	0.02	10	24	0.19	0	12	0.23	0	0	0	0.00	0	0	10.0
3	Petties, Sania	103	215	2.09	54	477	.338	9	0.09	10	16	0.10	0	26	0.25	3	79	82	0.80	4	0	267.5
5	Weeks, Kylie	23	0	0.00	0	1	.000	0	0.00	0	5	0.00	0	9	0.39	0	0	0	0.00	0	0.0	
7	Head, Taylor	103	411	3.99	145	1069	.249	29	0.28	32	32	0.31	28	325	3.16	2	45	47	0.46	4	2	467.5
10	Gillen, Jillian	103	435	4.22	135	1139	.263	19	0.18	45	62	0.44	26	290	2.82	9	37	46	0.45	6	0	507.5
11	Cartwright, Maggie	103	288	2.80	82	729	.283	11	0.11	30	41	0.29	0	218	2.12	4	69	73	0.71	6	0	356.5
12	Schneider, Hailey	3	0	0.00	0	0	.000	0	0.00	0	2	0.00	0	0	0.00	0	0	0	0.00	0	0.0	
15	Jackson, Courtney	103	0	0.00	1	6	-.167	113	1.10	30	32	0.29	23	400	3.88	0	0	0	0.00	0	3	30.0
18	Hogue, Hannah	103	24	0.23	6	77	.234	1162	11.28	45	44	0.44	0	267	2.59	0	34	34	0.33	3	11	86.0
23	Ehizee, Laura	7	3	0.43	1	8	.250	0	0.00	0	0	0.00	0	2	0.29	1	4	5	0.71	0	1	6.0
44	Evans, Zoi	99	59	0.60	16	144	.299	0	0.00	0	0	0.00	0	15	0.15	14	97	111	1.12	3	0	121.5
ARKANSAS		103	1435	13.93	441	3651	.272	1344	13.05	202	258	1.96	87	1564	15.18	33	365	215.5	2.09	26	17	1,852.5
Opponents		103	1155	11.21	517	3502	.182	1109	10.77	87	221	0.84	202	1523	14.79	46	336	214	2.08	43	10	1,456.0

Team statistics

	ARK	OPP
ATTACK		
Kills	1435	1155
Errors	441	517
Total Attacks	3651	3502
Attack Pct	.272	.182
Kills/Set	13.93	11.21
SET		
Assists	1344	1109
Attempts	3572	3520
Assist Pct	.376	.315
Assists/Set	13.05	10.77
SERVE		
Aces	202	87
Errors	258	221
Attempts	2378	1996
Serve Pct	.892	.889
Aces/Set	1.96	0.84
SERVE RECEPTIONS		
Errors	87	202
Errors/Set	0.84	1.96
Attempts	1775	2120
Reception Pct	.951	.999
DEFENSE		
Digs	1564	1523
Digs/Set	15.18	14.79
BLOCKING		
Block solo	33	46
Block Assist	365	336
Total Blocks	215.5	214
Blocks/Set	2.09	2.08
Block Errors	26	43
Ball handling errors	17	10
ATTENDANCE		
Total	29727	13182
Dates/Avg Per Date	14/2123	10/1318
Neutral Site #/Avg	4/44	-
Current win streak	0	-
Home win streak	0	-

Team Results

Date	Opponent	Score	Score-by-set	Att.
08/25/2023	Michigan St.	W 3-0	25-19,25-16,25-10	1717
08/27/2023	Tulsa	W 3-0	25-19,25-11,25-19	1028
08/30/2023	Wisconsin	L 2-3	25-21,20-25,24-26,25-22,13-15	4299
08/31/2023	Wisconsin	L 0-3	22-25,16-25,17-25	2740
09/01/2023	Colorado St.	W 3-2	25-21,21-25,25-18,20-25,15-12	1324
09/03/2023	Michigan	W 3-0	25-16,25-17,25-23	1387
09/08/2023	vs Col. of Charleston	W 3-0	25-17,25-13,25-12	0
09/08/2023	at Western Ky.	W 3-2	25-22,17-25,20-25,25-22,15-12	2572
09/09/2023	vs Troy	W 3-1	25-14,22-25,25-22,25-16	0
09/15/2023	vs Buffalo	W 3-0	25-14,25-19,25-15	101
09/15/2023	at St. John's (NY)	W 3-1	19-25,25-16,25-17,25-21	523
09/16/2023	vs Bryant	W 3-0	25-19,25-11,25-19	73
* 09/22/2023	South Carolina	W 3-0	25-11,25-15,25-18	1653
* 09/24/2023	Texas A&M	W 3-1	25-23,21-25,25-18,25-16	1747
* 09/27/2023	Auburn	W 3-0	25-18,25-10,25-6	1374
* 10/04/2023	at LSU	W 3-0	25-20,25-19,25-20	502
* 10/08/2023	Missouri	W 3-1	25-15,19-25,25-16,25-22	1751
* 10/13/2023	Ole Miss	W 3-0	25-21,25-16,25-18	2067
* 10/15/2023	Alabama	W 3-1	25-10,25-13,23-25,25-13	1593
* 10/20/2023	at Tennessee	W 3-1	25-27,25-16,25-22,25-20	1989
* 10/22/2023	at Kentucky	L 2-3	25-16,16-25,22-25,25-19,10-15	2244
* 10/27/2023	at South Carolina	W 3-1	25-19,28-30,26-24,25-21	712
* 10/29/2023	at Florida	W 3-0	25-19,25-20,25-23	3023
* 11/01/2023	at Georgia	L 0-3	22-25,19-25,22-25	587
* 11/05/2023	Mississippi St.	W 3-0	26-24,25-12,25-22	3298
* 11/10/2023	at Alabama	W 3-0	25-15,25-16,25-21	612
* 11/15/2023	at Ole Miss	W 3-2	21-25,23-25,25-21,25-15,15-8	418
* 11/19/2023	Florida	W 3-2	25-20,21-25,25-20,19-25,15-11	3749



TEAM MATCH-BY-MATCH STATISTICS



2023-24 Arkansas Women's Volleyball Team Match-by-Match All games

Main team match-by-match statistics table with columns for Date, Opponent, SP, Attack (K, E, TA, PCT), Set (A, TA, PCT), Serve (SA, SE, TA, PCT), Recept (RE, TA, PCT), Blocking (DIG, BS, BA, BE, TOTAL), BHE, POINTS, SCORE.

Team Averages

Summary table for Team Averages including Sets Played (103), Kills per set (13.93), Assists per set (13.05), Service aces per set (1.96), Digs per set (15.18), Blocks per set (2.09), Points per set (17.99), Ball handling error per set (0.17), and Reception errors per set (0.84).

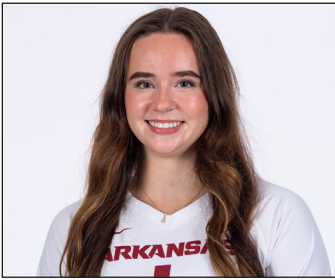
LAST TWO MATCHES

Volleyball Box Score for Arkansas vs Ole Miss (11/15/2023). Includes player statistics for 11 players, team totals, set scores, and team records.

Volleyball Box Score for Florida vs Arkansas (11/19/2023). Includes player statistics for 15 players, team totals, set scores, and team records.



2023 RAZORBACK VOLLEYBALL ROSTER



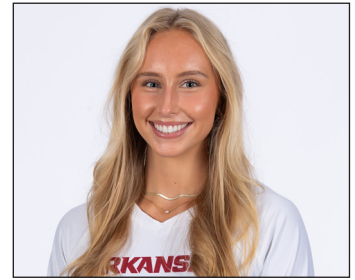
1 AVERY CALAME
So. | OH | 5-11 | McKinney, Texas



2 JADA LAWSON
Jr. | OH | 5-7 | North Little Rock, Ark.



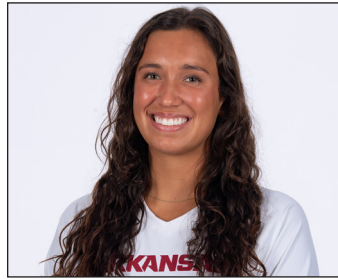
3 SANIA PETTIES
Jr. | MB | 6-1 | Houston, Texas



4 LILY DUDLEY
Fr. | OH | 5-11 | Columbia, Mo.



5 KYLIE WEEKS
So. | L | 5-6 | Elkhorn, Neb.



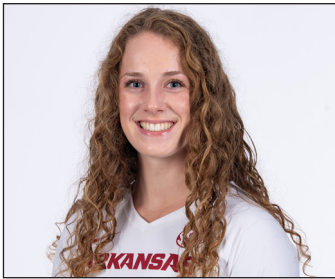
7 TAYLOR HEAD
Sr. | OH | 5-10 | Winter Garden, Fla.



9 ANIYA MADKIN
Fr. | OH | 6-2 | Clinton, Miss.



8 LO JONES
Fr. | S | 5-9 | Carl Junction, Mo.



10 JILL GILLEN
Gr. | OH | 5-7 | Stillwell, Kan.



11 MAGGIE CARTWRIGHT
Gr. | OH | 5-11 | Kimberly, Wis.



12 HAILEY SCHNEIDER
Sr. | L | 5-9 | Denton, Texas



14 ROSANA HICKS
Jr. | OH | 6-1 | Fayetteville, Ark.



15 COURTNEY JACKSON
Jr. | L | 5-9 | Olathe, Kan.



17 SKYLAR ELLISON
So. | MB | 6-1 | Aledo, Texas



18 HANNAH HOGUE
Jr. | S | 5-8 | Fort Smith, Ark.



19 OLIVIA RUY
Fr. | OH | 6-2 | Salt Lake City, Utah



22 AVA ROTH
Fr. | L | 5-6 | Festus, Mo.



23 LAURA EHIEZE
Gr. | MB | 6-0 | Houston, Texas



44 ZOI EVANS
Jr. | MB | 6-4 | Tampa, Fla.

