



# THE BLESSINGS GOLF COURSE

**DIAL 911 FROM ANY UNIVERSITY PHONE OR CELL PHONE**

**Location:** **5826 Clear Creek Blvd**

The Blessings Golf Course is located at the Blessings Golf Club off 112 N.

**AED Location:**

- Inside the Razorback practice center (far left of the clubhouse)

**Phone Locations :**

MATT TOWNSEND: 479.200.3432 (C)  
SIMONE RUSH: 479.966.7109 (C)  
SHAUNA TAYLOR (Head Women’s Coach): 479.601.5303 (C)  
BRAD MCMAKIN (Head Men’s Coach): 479.445.7481 (C)

**Directions to EMS:**

**INDOOR PRACTICE CENTER/ COACH’S OFFICE AND OUTDOOR DRIVING**

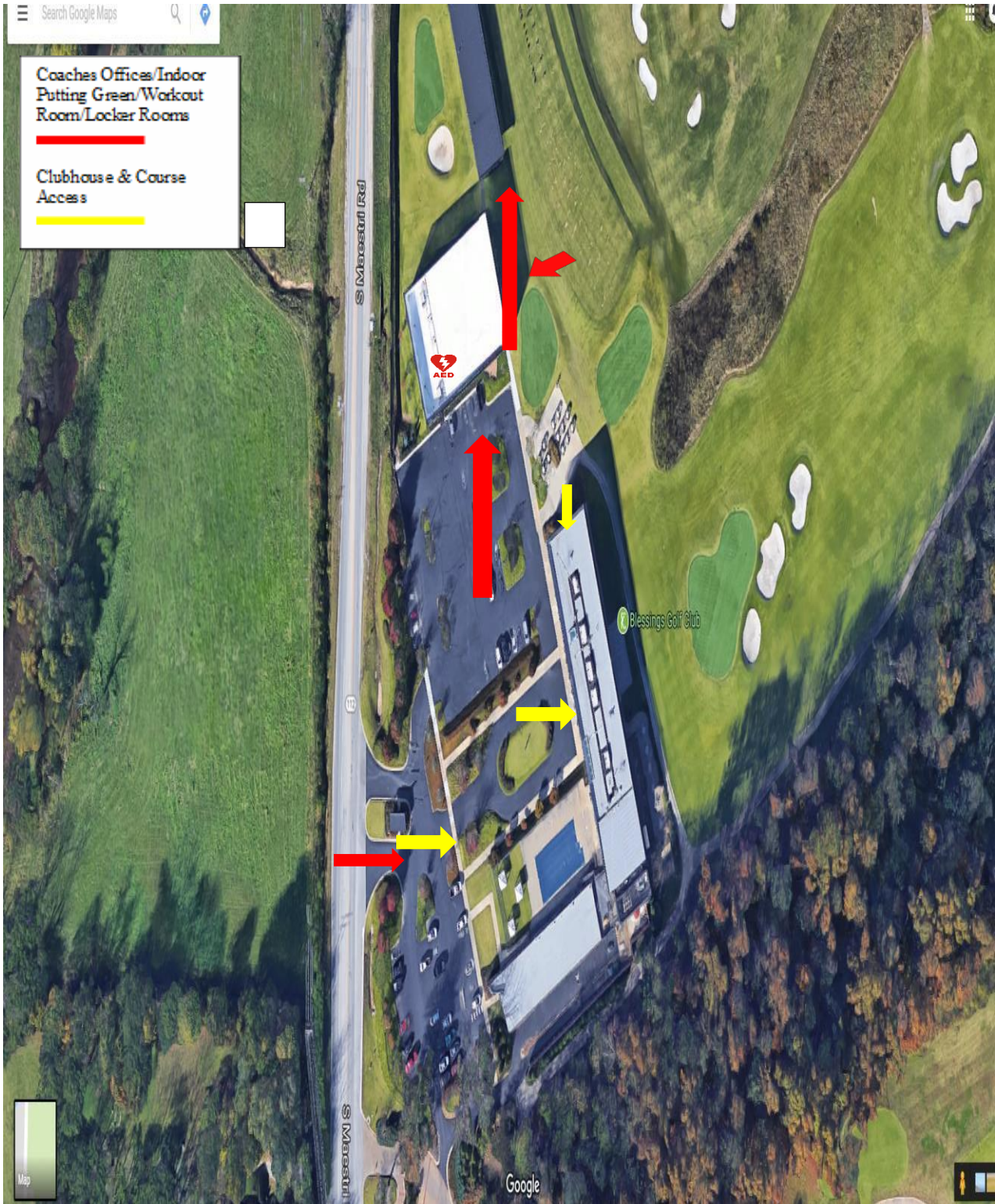
**RANGE:** Located off **Highway 112 North** of Fayetteville – Must enter via guarded entrance and proceed **Left** through parking lot to indoor practice center and the outdoor driving range.

**COURSE/CLUBHOUSE ENTRANCE:** Must enter via guarded entrance and proceed **STRAIGHT** through parking lot to clubhouse-will be directed onto course by an attendant.

**Emergency Equipment:**

**Razorback practice center**

AED	Emergency oxygen	Epi-pen	Splint Bag
2 sets of electrodes	Resuscitator	MDI	3 splints & pump
shaving kit	V-vac	Opti-chamber	blanket, rolled
Micro-shield	Pulse oximeter	Glucose tablets	Sam splint 36”
	Blood pressure cuff		4”x 5 yd ace wrap
	Stethoscope		1-1/2” athl. Tape



# ARKANSAS

SPORTS MEDICINE