

BOGLE PARK

DIAL 911 FROM ANY UNIVERSITY PHONE OR CELL PHONE

Location: **1180 W. Carlson Drive**

Bogle Park is located on the Corner of Garland and W Carlson Dr.

AED Locations:

- Inside athletic training room
- Inside the indoor facility

Phone Locations:

ANDREW KREIS: 479-200-4271 (C)

EMERGENCY PHONE: Southwest of Bogle park entrance off of W Carlson Dr. near bus stop

Directions to EMS:

PRIMARY ENTRANCE: (clubhouse area) Access from Main Gate on **Southwest** side of Stadium through the gate on the **west side** of lower level off **W Carlson Drive**.

Personnel will meet you-must have **FOB** for direct access to field and team area.

Indoor facility located within same area-west of Stadium


SECONDARY ENTRANCE: Turn into Lot 56D and head to the south side of the parking lot where personal will meet you and direct you through the gate down the ramp and to the left field entrance.

When EMS is onsite:

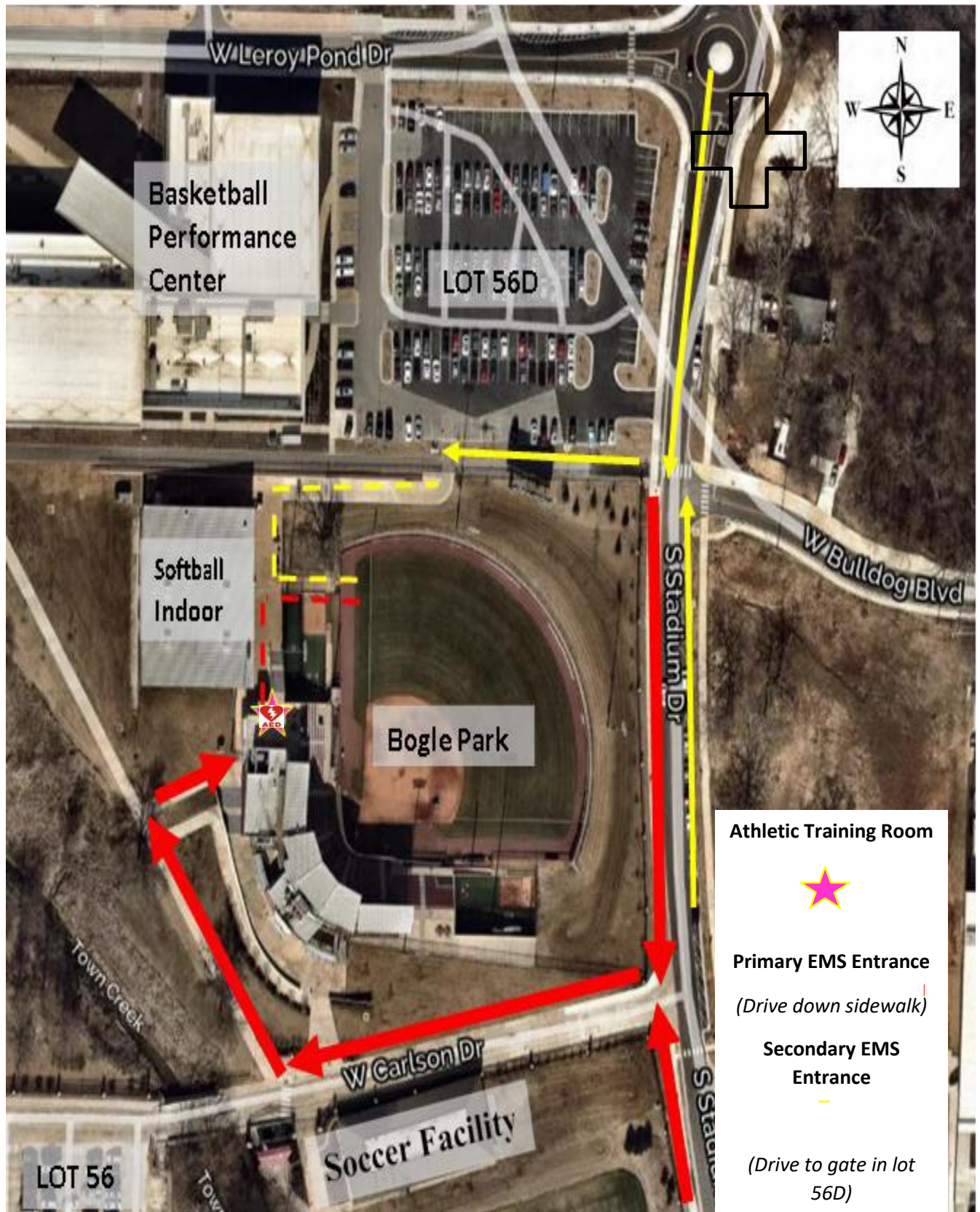
LOCATION: EMS personal will be stationed on concourse near the main gate and concession stand. Ambulance will be parked on the southwest sidewalk leading towards the clubhouse gate area. In the event transportation is needed, an addition transport ambulance will park near the southwest clubhouse gate.

Emergency Equipment:

Located in Athletic Training Room on West side of stadium

AED 	Emergency oxygen	Epi-pen	Splint Bag
2 sets of electrodes	Resuscitator	MDI	3 splints & pump
shaving kit	V-vac	Opti-chamber	blanket, rolled
Micro-shield	Pulse oximeter	Glucose tablets	Sam splint 36"
	Blood pressure cuff		4"x 5 yd ace wrap
	Stethoscope		1-1/2" athl. Tape

ARKANSAS
SPORTS MEDICINE



ARKANSAS

SPORTS MEDICINE