



CROSS COUNTRY COURSE

DIAL 911 FROM ANY UNIVERSITY PHONE OR CELL PHONE

Location: **North Jesse Dr. Fayetteville, AR 72703**

AED Locations:

- Inside finish line tent (**ONLY ON RACE DAY**)

Phone Locations :

NICOLE TIRA: 479.249.7823 (C)

ANTHONY ALANIZ: 479.396.9985 (C)

JESSICA PRICE: 479.236.6635 (C)


Directions to EMS:

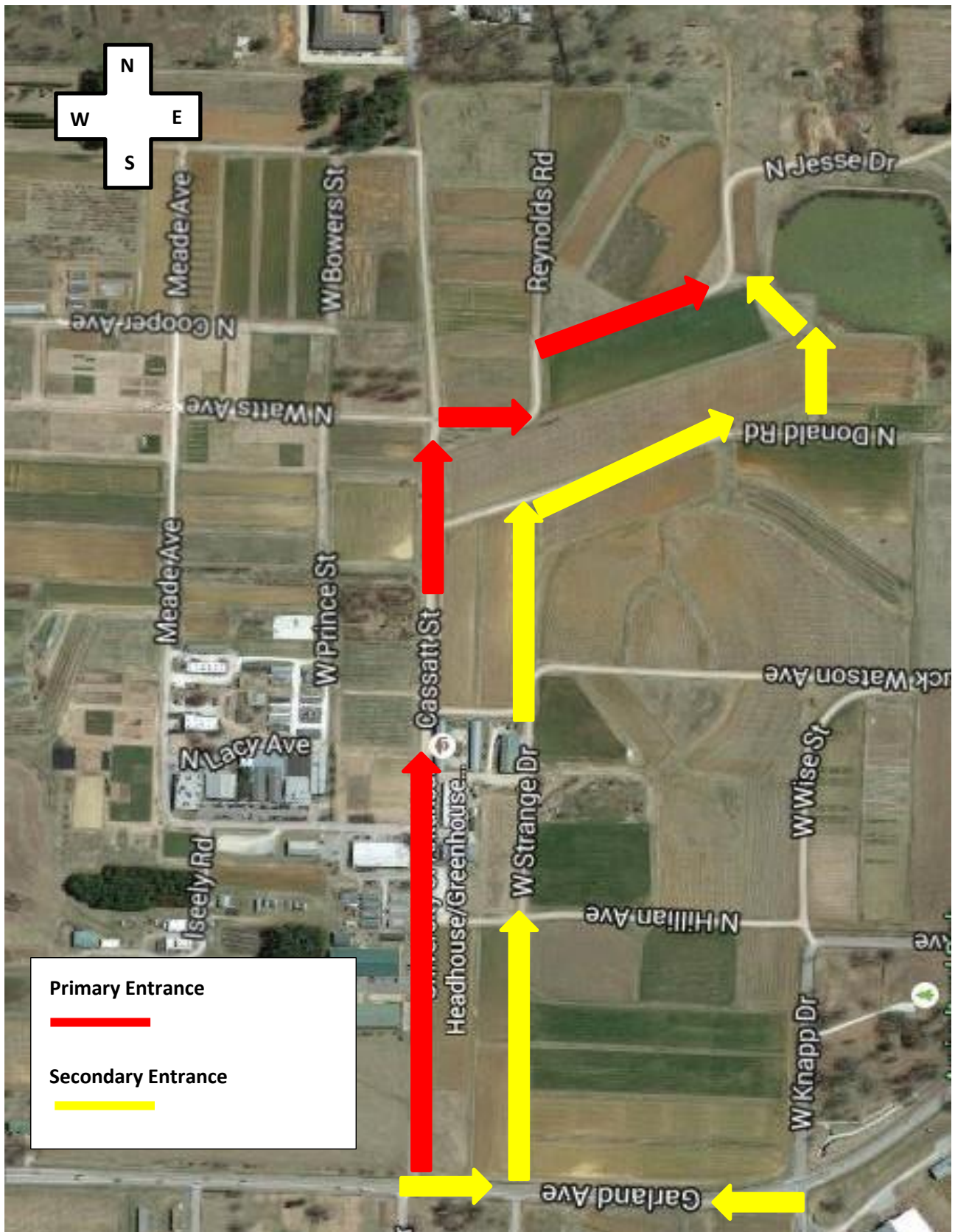
PRIMARY ENTRANCE: W Corner of Finish Line, E from Garland to Cassatt St. to gravel road Reynolds Rd. turn S to Jesse Dr. follow towards finish line (personnel will meet and direct you).

SECONDARY ENTRANCE: S Side of Observation Tower, E from Garland to Cassatt St. turn S to Donald Rd. then E to Zeb Lane and merge onto Jesse Dr. (personnel will meet and direct you).

Emergency Equipment:

Finish line tent (ONLY ON RACE DAY)

AED 	Emergency oxygen	Epi-pen	Splint Bag
2 sets of electrodes	Resuscitator	MDI	3 splints & pump
shaving kit	V-vac	Opti-chamber	blanket, rolled
Micro-shield	Pulse oximeter	Glucose tablets	Sam splint 36"
	Blood pressure cuff		4"x 5 yd ace wrap
	Stethoscope		1-1/2" athl. Tape



ARKANSAS
SPORTS MEDICINE