



# UCLA WOMEN'S BASKETBALL

UCLA Athletic Communications / J.D. Morgan Center / 325 Westwood Plaza / Los Angeles, CA 90095  
Women's Basketball Contact: Corey Mueller / [cmueller@athletics.ucla.edu](mailto:cmueller@athletics.ucla.edu) / c: (310) 749-2102

## UCLA'S LEADING SCORERS (2023-24)

No.	Player	GP	GS	MPG	PPG	RPG	APG
23	G. Jaquez	6	3	26.0	16.2	6.5	1.3
51	L. Betts	6	6	23.3	15.5	8.7	1.2
20	C. Osborne	6	6	29.6	13.7	6.7	4.5
3	L. Jones	6	5	25.7	13.7	1.7	1.7
1	K. Rice	6	6	29.7	13.5	5.3	6.8

## 2023-24 SCHEDULE

### OVERALL: 6-0

Pac-12: 0-0 | Non-Conference: 6-0  
Home: 4-0 | Away: 0-0 | Neutral: 2-0

### NOVEMBER (6-0)

Mon.	6	vs. Purdue	W, 92-49
Thurs.	9	vs. UC Riverside	W, 90-52
Sun.	12	vs. Bellarmine	W, 113-64
Fri.	17	vs. Princeton	W, 77-74
Fri.	24	UConn <sup>1</sup>	W, 78-67
Sat.	25	Niagara <sup>1</sup>	W, 97-46

### DECEMBER (0-0)

Sun.	3	@ Arkansas	12 p.m.
Thurs.	7	vs. CSUN	7 p.m.
Sun.	10	Florida State <sup>2</sup>	9 a.m.
Mon.	18	@ Ohio State	3:30 p.m.
Thurs.	21	vs. Hawai'i	1 p.m.
Sat.	30	vs. USC*	5 p.m.

### JANUARY (0-0)

Fri.	5	vs. Oregon*	7 p.m.
Sun.	7	vs. Oregon State*	1 p.m.
Sun.	14	@ USC*	2 p.m.
Fri.	19	vs. Colorado*	5 p.m.
Sun.	22	vs. Utah*	4 p.m.
Fri.	26	vs. Washington*	7 p.m.
Sun.	28	vs. Washington St.*	1 p.m.

### FEBRUARY (0-0)

Fri.	2	@ California*	7 p.m.
Sun.	4	@ Stanford*	1 p.m.
Fri.	9	vs. Arizona*	8 p.m.
Sun.	11	vs. Arizona St.*	12 p.m.
Fri.	16	@ Oregon St.*	7 p.m.
Sun.	18	@ Oregon*	2 p.m.
Thurs.	22	vs. Utah*	6:30 p.m.
Mon.	26	vs. Colorado*	6 p.m.
Thurs.	29	@ Arizona St.*	6 p.m.

### MARCH (0-0)

Sat.	2	@ Arizona*	5 p.m.
Wed.	6	Pac-12 Tournament Rd. 1	
Thurs.	7	Pac-12 Tournament Quarterfinals	
Fri.	8	Pac-12 Tournament Semifinals	
Sun.	10	Pac-12 Tournament Championship	

<sup>1</sup> Cayman Islands Classic (Grand Cayman, Cayman Islands)

<sup>2</sup> Invesco QQQ Basketball Hall of Fame Women's Showcase (Uncasville, Conn.)

\* Pac-12 Conference Game

- Home games indicated in bold

## SOCIAL MEDIA

Women's Basketball Twitter (X): [@UCLAWBB](#)  
Women's Basketball Instagram/Threads: [@UCLAWBB](#)  
Women's Basketball Facebook: [/UCLAWomensBasketball](#)  
UCLA Athletics Twitter: [@UCLAathletics](#)  
UCLA Athletics Instagram: [@UCLAathletics](#)  
UCLA Athletics Facebook: [/UCLAathletics](#)  
UCLA Athletics Website: [www.UCLABruins.com](#)  
[#GoBruins](#)

## No. 2/2 UCLA Bruins (6-0) vs. Arkansas Razorbacks (7-1)

Friday, Nov. 24 - 7:30 p.m. ET | Saturday, Nov. 25 - 1:30 p.m. ET  
George Town, Grand Cayman, Cayman Islands (John Gray Gymnasium)

### GAME INFO

Venue: Bud Walton Arena  
Location: Fayetteville, Ark.  
Tip-off Time: 12 p.m. PST / 2 p.m. CST  
TV: SEC Network+  
TV Talent: Brett Dolan, Matt Zimmerman, Jordyn Lassiter  
Radio: [ucla.leanplayer.com](#)  
Radio Talent: Dave Marcus

### THE MATCHUPS



6-0 (0-0)  
2/2

Record  
Ranking (AP/Coaches)

7-1 (0-0)  
NR/NR

### STORYLINES

## MATCHUP HISTORY: UCLA vs. ARKANSAS

The Bruins and Razorbacks have only met once in program history, facing off in the first round of the 1990 NCAA West Regional. UCLA fell to then-No. 22 Arkansas 80-90 in overtime in Fayetteville.

## LAST TIME OUT: CAYMAN ISLANDS CLASSIC (2-0)

- UCLA captured its first-ever victory over then-No. 6 UConn (W, 78-67) on Friday, Nov. 24, behind a career night from sophomore Kiki Rice. The PG had a career-high 24 points, grabbed a career-high 11 rebounds, and threw 8 assists on .600/.500/.800 shooting splits. Rice also drew a team-high six fouls in the game.
- Graduate student Charisma Osborne added 18 points (6-10 3FG), scoring only beyond the arc. Sophomore Lauren Betts (13 PTS, 7 REB, 5-7 FG) was the third Bruin in double figures; Gabriela Jaquez added 7 PTS and collected 6 REB in the win. UCLA led by as much as 23 (1:50 - Q3); UConn never held a lead in the game.
- UCLA followed up the historic win over the Huskies with a dominant victory over Niagara (W, 97-46) on Saturday, Nov. 25, to go 2-0 in the tropical showcase. Jaquez led the way with 23 PTS, 6 REB on 11-of-17 FG; sophomore Londynn Jones added 21 points (3-8 3FG, 6-6 FT), and Angela Dugalić joined the sophomores in double figures with 14 PTS (6-9 FG).
- Freshman Amanda Muse had a career night, posting single-game highs in points (9), rebounds (4) and blocks (3), shooting 5-6 from the FT line. Muse currently ranks 9th in the Pac-12 in blocks per game (1.5 BPG).

## STAC-ING UP AGAINST THE PAC

- UCLA continues to sit at its highest ranking in program history, coming in at No. 2 on both the Associated Press and USA Today Coaches Polls in week 4. There are three additional Pac-12 programs in the top 10 of the respective polls (No. 3/3 Stanford, No. 6/8 USC, No. T-7/7 Colorado), and No. 12/6 Utah sits just outside. UCLA is shooting .521 from the field (3rd, NCAA) and .406 from deep (8th, NCAA), both ranking second in the Conference. The team's 91.2 PPG also ranks second in the Pac-12 (9th NCAA) through the first three weeks. UCLA ranks 1st in the conference, 1st in the NCAA in offensive rebounding percentage (.508 OREB%), grabbing over half of the offensive boards available so far.
- The Bruins rank second in the Conference in assists per game (21.8 APG), which is fifth in the nation.
- Five Bruins are in the top 20 scorers in the Pac-12 Conference through the first three weeks of play. Jaquez leads the way with 16.2 PPG (9th, Pac-12), followed directly by Betts (15.5 PPG, 10th) and Osborne (15.2 PPG, 11th); Jones (13.7 PPG, 18th) and Rice (13.5 PPG, 19th) round out Bruins in double figures. UCLA has five players in double-digit scoring, the most in the Pac-12. Oregon and Utah each have four student-athletes in double figures.
- Betts has corralled 52 rebounds in her first six appearances with the Bruins, averaging 8.7 rebounds per game this season (23.3 MPG). The center ranks eighth in the conference in RPG.
- Sophomore Kiki Rice has thrown 41 assists in six appearances this season; her 6.8 APG ranks second in the Conference, 11th in the NCAA in assists per game.

## CHASING HISTORY - CHARISMA'S MILESTONES

- Charisma Osborne surpassed the 1,800-point milestone on her first basket of UCLA's opening game against Purdue. The shooting guard now has 1,889 points on her career, which is 4th all-time for the Bruins. Osborne tied Nirra Fields (2012-16: 134 GP; 1,867 PTS) with her final made free throw against Princeton, and passed Rehema Stephens (1989-92: 87 GP; 1,887 PTS) and Michaela Onyenwere (2017-21: 123 GP; 1,888 PTS) with her scores against Niagara on Nov. 25.
- Osborne also passed Noelle Quinn (2003-04) - 1,829 points in 107 games with the Bruins - and jumped Natalie Williams (1990-94) on opening night. Williams ended her career eighth all-time with 1,813 points.
- Maylana Martin (1996-2000; 116 GP) is third on UCLA's all-time scoring list; Martin scored 2,101 points during her UCLA career.
- Osborne has played 124 games in a Bruin uniform. Monique Billings (2014-15) holds the UCLA record for most games played: 141. Billings also is tied for the most games played during a season (37). Four Bruins (Emily Bessoir, Gabriela Jaquez, Londynn Jones and Kiki Rice) appeared in all 37 games last season, tying the record set in the 2014-15 season.

Women's Basketball SID	Corey Mueller
Cell Phone	(310) 749-2102
E-mail	cmueller@athletics.ucla.edu
Website	www.uclabruins.com

Coach Close and select student-athletes are available on a weekly basis at team practices at Pauley Pavilion or the Mo Ostin Basketball Center. The final practice before each game will be dedicated open to the media - if a game is to occur on a Friday, student-athletes and coaches will be available after the conclusion of practice Thursday for media availability. Media sessions will also take place over Zoom with advance notice.

Admission to Pauley Pavilion's press seating is by credential only. All credential requests should be made by emailing UCLA Assistant Director, Athletic Communications, Corey Mueller, at least two days (48 hours) in advance of the game. Parking instructions will also be sent. Requests can be made by contacting Mueller at any of the means listed above. Members of the media covering UCLA should request credentials for road games through Mueller via email or phone. Photographers should follow the same instructions as media members.

Media seating at UCLA Women's Basketball games will continue to be in its traditional style this season, with press seating on the floor. The Dick Enberg Press Room will be available to media members for press conferences at the conclusion of each game. Photographers will be able to shoot from a from the baseline.

Head Coach Cori Close and selected players will be available to the media in the Dick Enberg Media Room following a 10-minute cooling off period after each game. Visiting team media can be conducted in the press room, as well, or via Zoom at the opposing SID's discretion.

Founded	1919
Enrollment	45,742
Nickname	Bruins
Colors	Blue and Gold
Home Arena (capacity)	Pauley Pavilion (13,800)
Affiliation	NCAA Division I
Conference	Pac-12
Chancellor	Gene D. Block
Director of Athletics	Martin Jarmond
Athletic Dept. Phone	(310) 825-8699
Ticket Office Phone	(310) 825-2101

First Season	1974-75 (50th season)
All-Time Record	922-559 (.623)
NCAA Tournament Appearances	18/25 (seven with AIAW)
Last NCAA Tournament Appearance	2023
National Championships	1 (1978-AIAW)

2022-23 Record	27-10
2022-23 Pac-12 Record (finish)	11-7 (5th)
2022-23 Home/Road/Neutral	15-3/6-5/6-2
Letterwinners Returning/Lost	9/2
Starters Returning/Lost	4/1
Newcomers	2
Four-Year Transfers	2

No.	Name	Pos.	Ht.	Yr.	Hometown (High School/Previous School)
1	Kiki Rice	G	5-11	So.	Bethesda, Md. (Sidwell Friends School)
3	Londynn Jones	G	5-4	So.	Riverside, Calif. (Centennial)
11	Emily Bessoir	F	6-4	Sr.	Munich, Germany (Wilhelm-Hausenstein Gymnasium)
20	Charisma Osborne	G	5-9	Gr.	Moreno Valley, Calif. (Windward School)
21	Lina Sontag	F	6-3	So.	Berlin, Germany (Schadow Gymnasium)
22	Christeen Iwuala	F	6-2	So.	San Antonio, Texas (Ronald Reagan)
23	Gabriela Jaquez	F	5-11	So.	Camarillo, Calif. (Camarillo)
32	Angela Dugalić	F	6-4	Sr.	Des Plaines, Ill. (Maine West/Oregon)
33	Amanda Muse	F	6-4	Fr.	Brentwood, Calif. (Heritage)
35	Camryn Brown	G	5-11	Gr.	Lewisville, Texas (Prestonwood Christian Academy)
43	Izzy Anstey	F	6-4	Sr.	Melbourne, Victoria, Australia (Caulfield Grammar School)
51	Lauren Betts	C	6-7	So.	Centennial, Colo. (Grandview/Stanford)

No.	Name	Pos.	Ht.	Yr.	Hometown (High School/Previous School)
43	Izzy Anstey	F	6-4	Sr.	Melbourne, Victoria, Australia (Caulfield Grammar School)
11	Emily Bessoir	F	6-4	Sr.	Munich, Germany (Wilhelm-Hausenstein Gymnasium)
51	Lauren Betts	C	6-7	So.	Centennial, Colo. (Grandview/Stanford)
35	Camryn Brown	G	5-11	Gr.	Lewisville, Texas (Prestonwood Christian Academy)
32	Angela Dugalić	F	6-4	Sr.	Des Plaines, Ill. (Maine West/Oregon)
22	Christeen Iwuala	F	6-2	So.	San Antonio, Texas (Ronald Reagan)
23	Gabriela Jaquez	F	5-11	So.	Camarillo, Calif. (Camarillo)
3	Londynn Jones	G	5-4	So.	Riverside, Calif. (Centennial)
33	Amanda Muse	F	6-4	Fr.	Brentwood, Calif. (Heritage)
20	Charisma Osborne	G	5-9	Gr.	Moreno Valley, Calif. (Windward School)
1	Kiki Rice	G	5-11	So.	Bethesda, Md. (Sidwell Friends School)
21	Lina Sontag	F	6-3	So.	Berlin, Germany (Schadow Gymnasium)

Cori Close	Head Coach, 13th season	UC Santa Barbara '93
Shannon Perry-LeBeauf	Associate Head Coach, 13th season	Iowa '98
Tony Newnan	Assistant Coach, 13th season	UC Santa Barbara '92
Tasha Brown	Assistant Coach, 6th season	St. Ambrose '97
Soh Matsuura	Assistant Coach, 1st season	UCLA '20

Pam Walker	Director of Operations	UCLA '85
Stuart Hart	Athletic Performance Coach	St. Leo '98
Alexa Blatt	Athletic Trainer	Nova Southeastern '15
Caren Nicdao	Director of Creative Content	UCLA '16
Chance Huth	Director of Creative Video	Michigan State '17
Carlie Heuple	Staff Associate	UCLA '19
Corey Mueller	Sports Information Director	Northwestern '18

Izzy Anstey (AN-stee)  
Emliy Bessoir (bess-WAHR)  
Angela Dugalić (DOO-guh-leetch)  
Christeen Iwuala (ee-WALL-uh)  
Gabriela Jaquez (HAWK-ez)  
Lina Sontag (LEEN-uh SZON-tahk)

## 2023-24 UCLA WOMEN'S BASKETBALL RADIO/TV ROSTER



**1**

**KIKI RICE**

So. – Guard – 5-11  
Bethesda, Md.  
Sidwell Friends



**3**

**LONDYNN JONES**

So. – Guard – 5-4  
Riverside, Calif.  
Centennial



**11**

**EMILY BESSOIR**

Sr. – Forward – 6-4  
Munich Germany  
Wilhelm-Hausenstein Gymnasium



**20**

**CHARISMA OSBORNE**

Gr. – Guard – 5-9  
Moreno Valley, Calif.  
Windward School



**21**

**LINA SONTAG**

So. – Forward – 6-3  
Berlin, Germany  
Schadow Gymnasium



**22**

**CHRISTEEN IWUALA**

So. – Forward – 6-2  
San Antonio, Texas  
Ronald Reagan



**23**

**GABRIELA JAQUEZ**

So. – Guard – 5-11  
Camarillo, Calif.  
Camarillo



**32**

**ANGELA DUGALIC**

Sr. – Forward – 6-4  
Des Plaines, Ill.  
Maine West / Oregon



**33**

**AMANDA MUSE**

Fr. – Forward – 6-4  
Brentwood, Calif.  
Heritage



**35**

**CAMRYN BROWN**

Gr. – Guard/Forward – 5-11  
Lewisville, Texas  
Prestonwood Christian Academy



**43**

**IZZY ANSTEY**

Sr. – Forward – 6-4  
Melbourne, Victoria, Australia  
Caulfield Grammar School



**51**

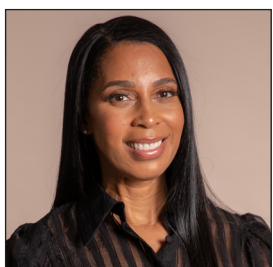
**LAUREN BETTS**

So. – Center – 6-7  
Centennial, Colo.  
Grandview / Stanford

## 2023-24 UCLA WOMEN'S BASKETBALL COACHING STAFF



**HEAD COACH**  
**CORI CLOSE**  
13th Season



**ASSOCIATE HEAD COACH**  
**SHANNON LeBEAUF**  
13th Season



**ASSISTANT COACH**  
**TONY NEWNAN**  
13th Season



**ASSISTANT COACH**  
**TASHA BROWN**  
6th Season



**ASSISTANT COACH**  
**SOH MATSUURA**  
1st Season



### AP POLL (WEEK 4 - Nov. 27)

RK	TEAM	RECORD	PTS	LAST WEEK
1	South Carolina (36)	5-0	900	1
2	<b>UCLA</b>	<b>6-0</b>	<b>855</b>	<b>2</b>
3	Stanford	7-0	803	4
4	Iowa	7-1	745	5
5	NC State	7-0	740	10
6	Southern California	5-0	643	8
T-7	LSU	7-1	625	7
	Colorado	6-1	625	3
9	Virginia Tech	5-1	585	9
10	Texas	7-0	560	12
11	UConn	4-2	541	6
12	Utah	5-1	517	10
13	Baylor	5-0	495	14
14	Kansas State	6-1	413	16
15	Florida State	5-1	409	13
16	Ohio State	5-1	406	15
17	Indiana	5-1	372	21
18	Notre Dame	5-1	367	17
19	Ole Miss	6-1	192	24
20	Tennessee	4-2	186	19
21	Mississippi State	8-0	181	25
22	Louisville	6-1	155	20
23	Marquette	6-0	76	NR
24	North Carolina	5-2	74	18
25	Princeton	4-2	58	NR

**Also receiving votes:** Washington State 55, Creighton 44, Oklahoma 20, Penn State 16, Florida Gulf Coast 10, UNLV 9, Green Bay 6, Alabama 6, Maryland 3, Gonzaga 3, Davidson 2, BYU 2, Miami 1.

**Dropped from rankings:** Washington State, Oklahoma

### USA TODAY COACHES POLL (WEEK 4 - Nov. 28)

RK	TEAM	RECORD	PTS	LAST WEEK
1	South Carolina	(5-0)	800	1
2	UCLA	(6-0)	761	2
3	Stanford	(7-0)	737	3
4	Iowa	(7-1)	669	6
5	LSU	(7-1)	604	5
6	Utah	(5-1)	582	8
7	Colorado	(6-1)	563	4
8	Southern California	(5-0)	561	10
9	Virginia Tech	(5-1)	555	9
10	North Carolina State	(7-0)	539	16
11	Texas	(7-0)	499	11
12	Connecticut	(4-2)	459	7
13	Ohio State	(5-1)	432	12
14	Notre Dame	(5-1)	367	14
15	Florida State	(5-1)	353	13
16	Baylor	(5-0)	338	18
17	Indiana	(5-1)	286	19
18	Kansas State	(6-1)	234	22
19	Louisville	(6-1)	193	15
20	Mississippi	(6-1)	181	23
21	Mississippi State	(8-0)	131	NR
22	Tennessee	(4-2)	128	21
23	Marquette	(6-0)	77	NR
24	North Carolina	(5-2)	64	17
25	Creighton	(5-1)	38	NR

**Also receiving votes:** Princeton (4-2) 36; Washington State (7-1) 34; Oklahoma (5-2) 33; Michigan (5-1) 28; Maryland (4-3) 25; Arizona (6-1) 19; Duke (4-2) 19; Miami (Fla.) (5-0) 18; UNLV (6-0) 12; Florida Gulf Coast (5-2) 8; Green Bay (4-2) 6; Gonzaga (6-2) 5; Syracuse (5-1) 4; Alabama (7-1) 1; Middle Tennessee (5-2) 1.

**Dropped from the rankings:** No. 20 Oklahoma (5-2); No. 24 Maryland (4-3); No. 25 Washington State (7-1).

### THE ROAD TO EUROBASKET 2025

- Bruin seniors Emily Bessoir and Angela Dugalić missed both the Nov. 9 contest against UC Riverside and Sunday's matchup against Bellarmine (Nov. 12, 2 p.m.) due to participation with their respective senior national teams in the FIBA Women's Eurobasket 2025 Qualifiers. Serbia went 2-0 in the tournament and Germany was 1-1 in its contests.
- Dugalić earned the start for Sunday's matchup against North Macedonia. The Serbian forward scored a team-high 17 PTS (7-14 FG, 2-6 3FG) as the national team downed Macedonia.
- Incoming freshman Elina Aarnisalo competed for Finland (1-1) – the point guard plays games Thursday and Sunday with the Finnish national team. Bruin alum Gina Conti represented Italy (2-0) at the qualifying tournament.

### RELOADING THE NO. 1 RECRUITING CLASS OF 2022

- The Bruins added 6-foot-7 center Lauren Betts from the transfer portal after the 2022-23 season. Betts adds key depth in the front court as an inside presence. The sophomore shot a team-best .602 FG% during her freshman season at Stanford, averaging 5.9 points and 3.5 rebound in just 9.7 minutes per game (33 GP).
- Betts was the No. 1 recruit in the class of 2022, edging out now-teammate Kiki Rice (No. 2 overall, No. 1 PG) in the ESPNW HoopGurlz Recruiting Class of 2022.
- Kiki Rice led the team in assists in 10 games in 2022-23 (Cal Poly, UC Riverside, Troy, No. 11/12 Tennessee, at No. 17/16 Oregon, Cal, No. 22 Arizona, Arizona State, No. 21/20 Arizona, No. 6/5 Stanford). Rice (36 starts) joined Jordin Canada (2014-15: 30 GS, 34 GP) and Lindsey Corsaro (2018-19: 34 GS, 35 GP) on the list of Bruin freshmen with 30+ starts during their rookie campaign since the 2009-10 season. Rice, Jones and Jaquez all appeared in every game of the 2022-23 season (37 GP).
- Londynn Jones scored 250 of her 317 points during conference play and the postseason. Her 47 3PM ranks third all-time for a UCLA freshman. The 5-foot-4 guard landed Pac-12 All-Freshman selections in the Coaches and Media teams, and she was also named Pac-12 Freshman of the Week on Feb. 20 after torching Cal (19 PTS, 7-12 FG, 3-4 3FG).
- Lina Sontag earned a starting spot in seven games last season. The German had 9 PTS and a team-high 8 REB against the Tigers on Nov. 25. The forward was a perfect 4-for-4 from the free throw line in the Bruins' 1-point win over the USC Trojans (Jan. 8), and she had an 11-PT, 8-REB performance in the win over Washington (Jan. 20). Sontag had an impressive 11p/6r/4a/5stl/2blk performance in the win over Oregon State (Feb. 10) and proved to be a valuable asset on the Bruin defense (37 blocks, 40 steals in 2022-23).
- Gabriela Jaquez averaged 6.3 PTS and 3.5 RPG in 37 contests and became a key contributor with her energy off the bench in the 2022-23 season. Jaquez has two starts under her belt in a Bruin uniform, and she shot 34.0% from three-point land on the season (18-for-53 FG). Jaquez scored 11 points in back-to-back games (Nov. 13 vs. Troy, Nov. 19 vs. South Dakota State) and grabbed 7 rebounds against the Jackrabbits in UCLA's first game of the Battle 4 Atlantis. Jaquez put up 12 points and grabbed 5 rebounds in the Dec. 3 win over UC Santa Barbara, then followed it up by leading the team in rebounds (9 REB) vs. Cal State Fullerton on Dec. 10. Jaquez had a season-high 15 points on Dec. 20 against Fresno State and season-high five steals at Utah (Jan. 29).
- Christeen Iwuala averaged 2.9 PPG and 3.4 RPG in 12.1 minutes per game and was named the team's "Passion Player of the Game" for her hustle plays against South Dakota State (Nov. 19), Jackson State (Nov. 25) and Fresno State (Dec. 20). Iwuala earned Pac-12 Freshman of the Week after a career game (10 PTS, 4-6 FG, 8 REB) against Cal State Fullerton (Dec. 10). Iwuala made appearances in 35 games as a freshman.

### THE BRUINS YOU DIDN'T SEE LAST YEAR

- Betts comes in as UCLA's only transfer ahead of the 2022-23 season. She was a Pac-12 regular season champion with Stanford, averaging more than eight points per game in her final 11 appearances with The Cardinal.
- Angela Dugalić will return after missing the entire 2022-23 season due to injury. The senior played all three exhibition games on UCLA's summer tour - against Senegal's A' U25 squad, Dugalić poured in 20 points on 6-of-9 shooting (4-of-5 3FG) and grabbed six boards with two blocks in the 87-59 victory. Dugalić's return is highly anticipated by Coach Cori Close, who has praised the work Dugalić has done to work on her game through injury.
- Amanda Muse joins UCLA as the lone Bruin in the class of 2027. Muse comes off an impressive senior season in which she averaged 14.5 points, 12.1 rebounds and 4.1 blocks per game. Muse was named a 2023 McDonald's All American and totaled 18 points in the all-star game.

### BRUINS IN THE POLLS (2023-24)

WEEK	AP	USA TODAY
Preseason	4	8
Week 2	3	3
Week 3	2	2
Week 4	2	2
Week 5		
Week 6		
Week 7		

WEEK	AP	USA TODAY
Week 8		
Week 9		
Week 10		
Week 11		
Week 12		
Week 13		
Week 14		

WEEK	AP	USA TODAY
Week 15		
Week 16		
Week 17		
Week 18		
Week 19		
Final		



## PRESEASON HONORS

- Osborne was named an AP All-American Honorable mention and to the Ann Meyers-Drysdale Shooting Guard of the Year Preseason Watch List. Rice joins Osborne on the 2023-24 Jersey Mike's Naismith Women's Player of the Year Watchlist.
- Betts was tabbed to the Lisa Leslie Center of the Year Award Preseason Top 20.

## NATIONAL SIGNING DAY - 2023

UCLA signed three incoming freshman to the recruiting class of 2024 on Wednesday, Nov. 8:

- Elina Aarnisalo - Helsinki, Finland
- Kendall Dudley - Sidwell Friends School (#14 overall, espnW HoopGurlz Recruiting Rankings - Class of 2024)
- Zania Socka - Sidwell Friends School (#26 overall, espnW HoopGurlz Recruiting Rankings - Class of 2024)
- Socka and Dudley are former teammates of now-Bruin Kiki Rice and all received five-star recruiting ratings.

## 2022-23 PAC-12 WEEKLY PERFORMERS

The Bruins earned four total 2022-23 Pac-12 Women's Basketball Performance Awards, presented by Nextiva, in three out of the first five weeks of the season. The Bruins earned five total awards during the 2022-23 campaign:



- **Charisma Osborne:** 2x Pac-12 Player of the Week (Nov. 21, Dec. 5)
- Her second nod marked the eighth time Osborne has been honored with a Pac-12 weekly award. Osborne matched her 2021-22 campaign when she was named Player of the Week twice.
- **Kiki Rice:** Pac-12 Freshman of the Week (Dec. 5)
- Rice earned the first Pac-12 rookie honor since Osborne was named FROW on Feb. 24, 2020.
- **Christeen Iwuala:** Pac-12 Freshman of the Week (Dec. 12)
- Iwuala posted a season-high 10-point, 8-rebound performance in the win over Cal State Fullerton (W, 64-41)
- **Londynn Jones:** Pac-12 Freshman of the Week (Feb. 20)
- Jones had a game-high 19 points in the win over Cal, shooting a scorching 3-for-4 from three-point land.
- Michaela Onyenwere was the last Bruin to earn two Freshman of the Week honors (Jan. 15, 2018 and Feb. 12, 2018), and Jordin Canada was the last UCLA player to earn two-consecutive freshman weekly awards (Jan. 12, 2015 and Jan. 19, 2015). Canada earned four weekly performance awards in her freshman campaign (2014-15).

## BRUIN FIBA PHENOMS

UCLA had six student-athletes compete in four separate FIBA tournaments during the summer of 2023.

- **FIBA Women's EuroBasket 2023:** Emily Bessoir and Lina Sontag joined Germany for the Women's EuroBasket in Slovenia over the summer. Bessoir averaged 7.1 points and 5.7 rebounds in 27.8 minutes per game, and Sontag added 4.6 points and 2.4 boards on 40.7% shooting. Germany placed sixth in the tournament, which earned them a spot in the Olympic Qualifying Tournament.
- **FIBA Women's AmeriCup - Mexico 2023:** Charisma Osborne and Lauren Betts teamed up in Mexico to help Team USA earn a silver medal at the Women's AmeriCup. Betts was second on the team in PPG (11.4) and RPG (10.9), averaging a double-double in the tournament. Osborne scored 5.1 PPG and had a team-best 3.0 assists per game.
- **FIBA U19 Women's Basketball World Cup - Spain 2023:** Kiki Rice and Londynn Jones teamed up for their third gold medal together (2023, 2022 FIBA Women's U18 Americas Championship, 2019 FIBA Women's U16 Americas Championship). Rice averaged a team-high 20.1 minutes per game, shot .429 FG%, scored 10.0 PPG, grabbed 5.0 RPG and threw 2.1 APG. Jones added 8.7 PPG in 18.4 minutes, shooting .375 from the field. The SG collected 1.9 steals per game, displaying more aggressiveness on the defense end coming into her second year in the NCAA.

## TEAM LEADERS (2023-24)

<b>MIN:</b>	K. Rice (178)
<b>MPG:</b>	K. Rice (29.8)
<b>FGM:</b>	L. Betts, G. Jaquez (39)
<b>FGA:</b>	G. Jaquez (68)
<b>FG% (min. 5 FGA):</b>	L. Betts (.780, 39-50)
<b>3FGM:</b>	C. Osborne (20)
<b>3FGA:</b>	L. Jones (47)
<b>3FG%:</b>	C. Osborne (.541, 20-37)
<b>FTM:</b>	K. Rice (17)
<b>FTA:</b>	L. Betts (21)
<b>FT%:</b>	K. Rice (.895, 17-19)
<b>ORB:</b>	L. Betts (22)
<b>DRB:</b>	L. Betts, K. Rice (30)
<b>TRB:</b>	L. Betts (52)
<b>RPG:</b>	L. Betts (8.7)
<b>AST:</b>	K. Rice (41)
<b>APG:</b>	K. Rice (6.8)
<b>BLK:</b>	L. Betts (8)
<b>STL:</b>	K. Rice (11)
<b>PTS:</b>	G. Jaquez (97)
<b>PPG:</b>	G. Jaquez (16.2)

AS OF: Dec. 1, 2023

#GoBruins



TALE OF THE TAPE (2023-24 STATS)		
UCLA		ARK
91.2	◀ SCORING OFFENSE	74.6
58.7	◀ SCORING DEFENSE	69.4
+32.5	◀ SCORING MARGIN	+9.8
.521	◀ FG%	.381
.333	FG% DEFENSE	.366
.406	◀ 3FG%	.295
.311	◀ 3FG% DEFENSE	.296
9.3	◀ 3FG MADE/GAME ▶	9.3
.784	◀ FT%	.716
47.2	◀ REBOUNDS	43.9
16.7	◀ REBOUNDING OFF.	12.1
30.5	REBOUNDING DEF. ▶	31.8
+20.7	◀ REBOUND MARGIN	+2.4
21.8	◀ ASSISTS	11.4
16.0	TURNOVERS ▶	13.3
1.4	◀ ASSIST/TO RATIO	0.9
8.0	◀ STEALS	6.3
5.0	BLOCKS ▶	6.1

HOME COURT ADVANTAGE

- UCLA startED its 2023-24 season 3-0 after a dominant opening week inside Pauley Pavilion presented by Wescom. The team claimed dominant wins over Purdue on Monday, Nov. 6, and another 90-point scoring effort over UC Riverside on Thursday, Nov. 9, before scoring 113 to claim victory over Bellarmine (Nov. 12). UCLA is 4-0 at home on the year.
- The Bruins were 15-3 at home during the 2022-23 season. UCLA's best home stretch came in 2019-20 when they claimed 11-straight home wins.
- UCLA finished 10-4 in games held at Pauley Pavilion presented by Wescom during the 2021-22 season.
- The Bruins outscored opponents 999-799 at home during the 2022-23 regular season. UCLA was +66 in the first quarter of all home games during this campaign and averaged a +12.5-point scoring margin at home.

- **FIBA U20 Women's European Championship - Craiova, Division B:** Lina Sontag played her second FIBA tournament of the summer with Germany's U20 squad. Sontag played only one game - she scored 14 points and had three assists before getting injured and sitting out the remainder of the tourney. Germany earned a bronze medal.
- **FIBA Women's Olympic Qualifying Tournament 2024 - Brazil:** Angela Dugalić, a gold medalist with the Serbian national team (Eurobasket 2021), will play for Serbia Olympic Qualifying Tournament in Belém, Brazil, on Feb. 8-11, 2024.

WNBA BRUINS

UCLA maintained a strong presence in the WNBA this past season, as the Bruins had representation on the court, the sideline, and the front office across various organizations.

- The WNBA champions, the Las Vegas Aces, had three Bruins on staff during its second-consecutive championship season. UCLA's Natalie Williams ('94) served as the team's President, Natalie Nakase ('03) was an assistant coach, and Nikki Fargas (formerly Nikki Caldwell, UCLA's HC from 2008-11) acted as the team's General Manager.
- Rebekah Gardner ('12) played only three game before sitting out for the 2023 season due to injury. She averaged 7.0 PPG, 3.7 RPG and 2.0 steals in her three appearances. Gardner was named to the 2022 WNBA All-Rookie team after contributing 8.4 points, grabbing 3.3 rebounds and snatching 1.4 steals per game in 35 appearances for the Chicago Sky.
- Michaela Onyenwere was traded to the Phoenix Mercury prior to the 2023 season. The third-year pro averaged a career-high 23.8 minutes, 8.9 points, .404 FG%, 3.7 rebounds and 0.8 steals per game in 2023.
- Jordyn Canada ('18) finished her sixth season in the W, her second with the Los Angeles Sparks, in 2023. The former Bruin guard built on a successful year in Los Angeles, averaging career highs in point (13.3 PPG), three-point percentage (.333 3FG%), free-throw percentage (.873 FT%), assists (6.0 APG) and steals (2.3 STL). Canada wa named to the 2023 WNBA All-Defensive First Team for her efforts on that end.
- Monique Billings ('18) finished her sixth season in the WNBA, all with the Atlanta Dream. Billings averaged 4.8 points and 5.0 rebounds per game in 39 appearances with the team. The Dream fell to the Dallas Wings in the first round of the 2023 WNBA playoffs.
- Noelle Quinn ('07) was named Head Coach of the Seattle Storm during the 2021 season and has guided the team to the WNBA playoffs in two of the last three seasons. The Storm won the 2020 WNBA Finals with Quinn as an assistant coach.

BRUIN SUMMER TOUR: SENEGAL AND GERMANY

- The Bruins headed overseas in late August, traveling to Senegal in Africa and Germany in Europe on the 11-day foreign tour.
- UCLA visited historical sites like Goree Island and held a basketball clinic in Senegal before playing the A' U25 national team at NBA Academy Africa.
- After departing Senegal, the Bruins landed in Berlin, hometown of sophomore Lina Sontag. The Bruins experienced immersive walking tours in the city and at the Olympic Stadium before facing off against Alba Berlin, a professional team in the German capital.
- UCLA made its final stop in Munich, Emily Bessoir's hometown. The Bruins toured Allianz Arena, home to FC Bayern Munich, and other parts of the city prior to an exhibition against TS Jahn Munchen - Bessoir's former club.
- Full coverage of the Summer Tour can be found at [https://uclabruins.com/feature/wbb\\_summer\\_tour](https://uclabruins.com/feature/wbb_summer_tour)

SUPERLATIVE TEAM STATS		
POINTS OFF TURNOVERS		
TEAM	TOTAL	PER GAME
UCLA	116	19.3
OPP	66	11.0
SECOND CHANCE POINTS		
TEAM	TOTAL	PER GAME
UCLA	99	16.5
OPP	51	8.5
POINTS IN THE PAINT		
TEAM	TOTAL	PER GAME
UCLA	264	44.0
OPP	96	16.0
FAST BREAK POINTS		
TEAM	TOTAL	PER GAME
UCLA	108	18.0
OPP	32	5.3
BENCH POINTS		
TEAM	TOTAL	PER GAME
UCLA	106	17.7
OPP	83	13.8
FREE THROW PERCENTAGE		
TEAM	FTA-FTM	PERCENT
UCLA	87-111	.784
OPP	68-98	.694
POINTS FROM 3-POINTERS		
TEAM	TOTAL	PER GAME
UCLA	168	28.0
OPP	138	23.0
POINTS FROM 2-POINTERS		
TEAM	TOTAL	PER GAME
UCLA	292	48.7
OPP	146	24.3

MISCELLANEOUS STATS (2023-24)

GAMES PLAYED

PLAYER	2023-24	CAREER
Gabriela Jaquez	6	43
Londynn Jones	6	43
Kiki Rice	6	43
Charisma Osborne	6	124
Camryn Brown	6	95
Izzy Anstey	6	38
Lauren Betts	6	39
Christeen Iwuala	5	40
Amanda Muse	4	4
Angela Dugalic	4	42
Lina Sontag	3	38
Emily Bessoir	1	60

GAMES STARTED

PLAYER	2023-24	CAREER
Charisma Osborne	6	122
Kiki Rice	6	42
Lauren Betts	6	6
Londynn Jones	5	5
Angela Dugalic	4	5
Gabriela Jaquez	3	5
Emily Bessoir		37
Camryn Brown		38
Lina Sontag		7

DOUBLE-DOUBLES

PLAYER	2023-24	CAREER
Kiki Rice	2	3
10 points, 10 assists vs. Purdue (Nov. 6, 2023)		
24 points, 11 rebounds vs. UConn (Nov. 24, 2023)		
Charisma Osborne	2	18
13 points, 11 rebounds vs. UC Riverside (Nov. 9, 2023)		
24 points, 10 rebounds vs. Bellarmine (Nov. 12, 2023)		
Lauren Betts	3	4
14 points, 15 rebounds vs. UC Riverside (Nov. 9, 2023)		
22 points, 11 rebounds vs. Bellarmine (Nov. 12, 2023)		
22 points, 10 rebounds vs. Princeton (Nov. 17, 2023)		
Gabriela Jaquez	1	1
30 points, 12 rebounds vs. Bellarmine (Nov. 12, 2023)		
Emily Bessoir		1

DOUBLE-FIGURE POINTS

PLAYER	2023-24	CAREER
Charisma Osborne	5	96
Lauren Betts	5	6
Kiki Rice	4	30
Gabriela Jaquez	4	15
Londynn Jones	4	20
Angela Dugalic	2	7
Emily Bessoir		26
Lina Sontag		3
Christeen Iwuala		1

DOUBLE-FIGURE REBOUNDS

PLAYER	2023-24	CAREER
Lauren Betts	3	4
Charisma Osborne	2	18
Gabriela Jaquez	1	1
Kiki Rice	1	1
Camryn Brown		1
Emily Bessoir		1

DOUBLE-FIGURE ASSISTS

PLAYER	2023-24	CAREER
Kiki Rice	2	3

30-PLUS POINT GAMES

PLAYER	2023-24	CAREER
Gabriela Jaquez	1	1
Charisma Osborne		4

20-PLUS POINT GAMES

PLAYER	2023-24	CAREER
Lauren Betts	3	3
Londynn Jones	3	6
Charisma Osborne	2	30
Gabriela Jaquez	2	2
Kiki Rice	1	4
Emily Bessoir		1

LED TEAM IN SCORING

PLAYER	2023-24	CAREER
Gabriela Jaquez	3	5
Lauren Betts	2	2
Kiki Rice	2	8
Londynn Jones	1	8
Charisma Osborne		46
Emily Bessoir		8

LED TEAM IN REBOUNDING

PLAYER	2023-24	CAREER
Lauren Betts	3	3
Charisma Osborne	1	25
Angela Dugalic	1	9
Kiki Rice	1	7
Gabriela Jaquez	1	1

Emily Bessoir	13
Camryn Brown	4
Gabriela Jaquez	3
Lina Sontag	3
Izzy Anstey	4

LED TEAM IN ASSISTS

PLAYER	2023-24	CAREER
Kiki Rice	4	14
Charisma Osborne	2	42
Gabriela Jaquez	1	1
Londynn Jones		4
Camryn Brown		4
Emily Bessoir		1
Lina Sontag		1

UCLA STREAKS

WINS AND LOSSES	STREAK
Overall	Won 6
Pac-12	Lost 1
Unranked Teams Anywhere	Won 6
Ranked Teams Anywhere	Won 1
Home	Won 7
Home Pac-12	Won 1
Home Non-conference	Won 28
Home Ranked Non-conference	Won 1
Home Unranked Non-conference	Won 28
Home Ranked Teams	Won 1
Home Unranked Teams	Won 5
Road	Lost 1
Road Pac-12	Lost 1
Road Non-conference	Won 1
Road Ranked Non-conference	Lost 1
Road Unranked Non-conference	Won 2
Road Ranked Teams	Lost 3
Road Unranked Teams	Won 3
Neutral	Won 2
Neutral Pac-12	Lost 1
Neutral Non-conference	Won 5
Neutral Ranked Non-conference	Won 2
Neutral Unranked Non-conference	Won 3
Neutral Ranked Teams	Won 1
Neutral Unranked Teams	Won 1

CONSECUTIVE GAMES WITH A 3-POINTER

Londynn Jones	2
Angela Dugalic	1

CONSECUTIVE GAMES WITH 10+ POINTS

Angela Dugalic	1
Gabriela Jaquez	1
Londynn Jones	1

CONSECUTIVE GAMES WITH 5+ REBOUNDS

Angela Dugalic	2
Gabriela Jaquez	2
Kiki Rice	2
Christeen Iwuala	1

CONSECUTIVE GAMES WITH 2+ ASSISTS

Charisma Osborne	12
Angela Dugalic	4
Kiki Rice	2
Lina Sontag	1

CONSECUTIVE GAMES WITH 1+ STEAL

Charisma Osborne	7
Kiki Rice	5
Angela Dugalic	2
Izzy Anstey	1
Camryn Brown	1
Christeen Iwuala	1
Londynn Jones	1
Lina Sontag	1

CONSECUTIVE GAMES STARTED (in games played)

Charisma Osborne	20
Kiki Rice	13
Lauren Betts	6
Angela Dugalic	4
Londynn Jones	2

UCLA SINGLE-GAME RECORDS

POINTS

Player	Points	Date	Opponent
Denise Curry	47	12/15/79	Oregon State
Natalie Williams	43	02/24/94	at California
Dora Dome	42	02/05/87	California
Denise Curry	40	01/20/81	Cal State Fullerton
Denise Curry	40	02/09/80	at Cal Poly Pomona
Maylana Martin	39	02/24/00	at Oregon
Ann Meyers	39	01/18/78	at Long Beach State
Rehema Stephens	39	01/18/92	at Stanford
Rehema Stephens	39	12/30/90	James Madison
Maylana Martin	38	02/20/99	at USC
Denise Curry	38	03/25/79	Tennessee
Denise Curry	38	12/15/79	Stanford
Denise Curry	38	01/16/79	LSU
Rehema Stephens	37	12/16/90	at Tennessee
Nirra Fields	36	12/28/13	Cal Poly
Nikki Blue	36	03/05/05	Arizona State
Denise Curry	36	12/26/79	BYU
Rehema Stephens	36	12/28/90	Utah
Michelle Greco	36	11/17/01	at Michigan State
Charisma Osborne	36	03/20/23	Oklahoma

REBOUNDS

Player	Rebounds	Date	Opponent
Monique Billings	25	02/19/17	Washington State
Natalie Williams	25	02/20/94	Arizona State
Denise Curry	25	03/10/78	at Long Beach State
Natalie Williams	23	02/04/94	at USC
Monique Billings	22	12/18/16	at South Carolina
Janae Hubbard	22	03/06/99	Arizona
Natalie Williams	22	03/14/92	at Oregon
Denise Curry	22	12/09/78	San José State
Natalie Williams	21	01/13/93	Oregon
Natalie Williams	21	12/29/92	Michigan State
Jasmine Dixon	20	02/27/10	at Oregon
Kisa Hughes	20	12/03/94	at Boise State
Natalie Williams	20	01/16/93	Oregon State
Ann Meyers	20	03/18/78	Stephen F. Austin

ASSISTS

Player	Assists	Date	Opponent
Jordin Canada	16	03/18/17	Boise State
Erica Gomez	16	01/05/99	Arizona State
Erica Gomez	15	12/06/95	Long Beach State
Ann Meyers	15	02/13/76	at Fresno State
Kristi Moore	15	01/31/87	at Washington State
Jordin Canada	14	02/24/18	Utah
Jordin Canada	14	12/11/16	Michigan
Nikki Blue	14	01/22/05	at California
Jordin Canada	13	02/19/18	at #8 Oregon
Jordin Canada	13	11/18/17	#3 Baylor
Jordin Canada	13	01/15/17	Oregon
Detra Lockhart	13	01/15/94	California
Mary Hegarty	13	02/04/83	at Arizona State
Charisma Osborne	12	02/28/21	USC
Kiki Rice	12	01/15/23	California
Seven Times	12		
Kiki Rice	11	11/12/23	Bellarmine

BLOCKS

Player	Blocks	Date	Opponent
Corrine Costa	7	02/08/14	at USC
Corrine Costa	7	12/21/13	Auburn
Corrine Costa	7	02/02/12	Washington
Corrine Costa	7	12/29/11	California
Monique Billings	6	01/31/16	at Utah
Corrine Costa	6	04/04/15	at West Virginia
Natalie Williams	6	03/06/92	Arizona
Monique Billings	5	01/27/17	Arizona State
Monique Billings	5	11/11/16	Pacific
Monique Billings	5	03/19/16	Hawai'i
Monique Billings	5	01/05/15	Oregon
10 Times	5		
Kiki Rice	4	02/12/23	Oregon

STEALS

Player	Steals	Date	Opponent
Sandra VanEmbricis	13	02/12/87	Arizona
Ann Meyers	12	02/25/77	at San Diego State
Jordin Canada	11	11/10/17	San José State
Nicole Anderson	10	02/05/93	Washington
Ann Meyers	10	03/18/78	Stephen F. Austin
Lisa Willis	9	12/22/05	Oregon State
Dietra Hanible	9	02/27/80	USC
Jeanne Beauprey	9	12/18/79	Oregon State
Ann Meyers	9	02/11/76	USC
22 Times	8		



## FOR THE RECORD IN 2023-24

	PAC-12	OVERALL
Tied or Leading at the end of 1Q	0-0	6-0
Tied or Leading at the end of 2Q	0-0	5-0
Tied or Leading at the end of 3Q	0-0	6-0
Trailing at the end of 1Q	0-0	0-0
Trailing at the end of 2Q	0-0	1-0
Trailing at the end of 3Q	0-0	0-0
In Overtime Games	0-0	0-0
Against Ranked Opponents	0-0	1-0
UCLA Scores 80+ Points	0-0	4-0
UCLA Scores 70-79 Points	0-0	2-0
UCLA Scores 60-69 Points	0-0	0-0
UCLA Scores Under 60 Points	0-0	0-0
Opponent Scores 80+ Points	0-0	0-0
Opponent Scores 70-79 Points	0-0	1-0
Opponent Scores 60-69 Points	0-0	2-0
Opponent Scores 50-59 Points	0-0	1-0
Opponent Scores Under 50 Points	0-0	2-0
UCLA FG% .500 or Better	0-0	4-0
UCLA FG% .450-.499	0-0	2-0
UCLA FG% .400-.449	0-0	0-0
UCLA FG% .350-.399	0-0	0-0
UCLA FG% .300-.349	0-0	0-0
UCLA FG% Less Than .300	0-0	0-0
Opponent FG% Less Than .300	0-0	1-0
Opponent FG% .300-.349	0-0	3-0
Opponent FG% .350-.399	0-0	1-0
Opponent FG% .400-.449	0-0	1-0
Opponent FG% .450-.499	0-0	0-0
Opponent FG% .500 or Better	0-0	0-0
UCLA Outshoots Opponent	0-0	6-0
UCLA Outshot by Opponent	0-0	0-0
Shooting % Tied	0-0	0-0
UCLA Makes More Free Throws	0-0	4-0
UCLA Makes Fewer Free Throws	0-0	2-0
Free Throws Are Tied	0-0	0-0
UCLA Leads In Rebounds	0-0	6-0
Opponent Leads In Rebounds	0-0	0-0
Rebounding Tied	0-0	0-0
UCLA Has Fewer Turnovers	0-0	3-0
UCLA Has More Turnovers	0-0	3-0
Turnovers Tied	0-0	0-0
Margin in Game is 1-5 Points	0-0	1-0
Margin in Game is 6-10 Points	0-0	0-0
Margin in Game is 11-19 Points	0-0	1-0
Margin in Game is 20+ Points	0-0	4-0
1 Player in Double Figures	0-0	0-0
2 Players in Double Figures	0-0	0-0
3 Players in Double Figures	0-0	2-0
4 Players in Double Figures	0-0	2-0
5 Players in Double Figures	0-0	2-0
6 Players in Double Figures	0-0	0-0
All 5 Starters in Double Figures	0-0	2-0
On Mondays	0-0	1-0
On Tuesdays	0-0	0-0
On Wednesdays	0-0	0-0
On Thursdays	0-0	1-0
On Fridays	0-0	2-0
On Saturdays	0-0	1-0
On Sundays	0-0	1-0
In November	0-0	6-0
In December	0-0	0-0
In January	0-0	0-0
In February	0-0	0-0
In March	0-0	0-0
In April	0-0	0-0

## UCLA'S 2022-23 STARTING LINEUPS

OPPONENT	1	2	3	4	5	Record
PURDUE	K. Rice	L. Jones	C. Osborne	A. Dugalic	L. Betts	1-0
UC RIVERSIDE	K. Rice	L. Jones	C. Osborne	G. Jaquez	L. Betts	2-0
BELLARMINE	K. Rice	L. Jones	C. Osborne	G. Jaquez	L. Betts	3-0
PRINCETON	K. Rice	C. Osborne	G. Jaquez	A. Dugalic	L. Betts	4-0
UCONN	K. Rice	L. Jones	C. Osborne	A. Dugalic	L. Betts	5-0
NIAGARA	K. Rice	L. Jones	C. Osborne	A. Dugalic	L. Betts	6-0

\*Pac-12 Conference game

\*\*Pac-12 Tournament game

SEASON OPENERS

YEAR	RESULT	W/L	REC.	H/A	DATE
2023-24	UCLA 92, Purdue 49	W	27-19	h	11/06/23
2022-23	UCLA 84, Cal Poly 48	W	26-19	H	11/07/22
2021-22	UCLA 78, Pepperdine 69	W	25-19	H	11/10/21
2020-21	UCLA 98, Cal State Fullerton 49	W	24-19	H	11/27/20
2019-20	UCLA 85, Weber State 45	W	23-19	H	11/05/19
2018-19	Loyola Marymount 69, UCLA 63	L	22-19	A	11/06/18
2017-18	UCLA 129, San José State 69	W	22-18	H	11/10/17
2016-17	UCLA 82, Pacific 55	W	21-18	H	11/11/16
2015-16	UCLA 73, St. John's 58	W	20-18	H	11/13/15
2014-15	James Madison 91, UCLA 87 (ot)	L	19-18	A	11/14/14
2013-14	Nebraska 77, UCLA 49	L	13-18	A	11/08/13
2012-13	UCLA 66, San Diego State 52	W	26-8	H	11/10/12
2011-12	UCLA 67, McNeese State 59	W	26-12	H	11/11/11
2010-11	UCLA 55, San Diego St. 48	W	25-12	A	11/12/10
2009-10	Illinois State 61, UCLA 55	L	24-12	N <sup>8</sup>	11/14/09
2008-09	UCLA 78, Cal State Fullerton 62	W	24-11	H	11/16/08
2007-08	UCLA 81, Cal State Northridge 69	W	23-11	A	11/14/07
2006-07	UCLA 87, UC Santa Barbara 62	W	22-11	H	11/12/06
2005-06	Baylor 93, UCLA 85	L	21-11	A	11/18/05
2004-05	TCU 65, UCLA 60	L	21-10	N <sup>7</sup>	11/19/04
2003-04	UCLA 61, UNLV 51	W	21-9	H	11/23/03
2002-03	Hawaii 70, UCLA 66	L	20-9	A	11/23/02
2001-02	UCLA 62, Liberty 55	W	20-8	N <sup>6</sup>	11/16/01
2000-01	Duke 80, UCLA 52	L	19-8	N <sup>5</sup>	11/10/00
1999-00	UCLA 69, North Carolina 65	W	19-7	N <sup>4</sup>	11/20/99
1998-99	Notre Dame 99, UCLA 82	L	18-7	A	11/14/98
1997-98	St. Mary's 83, UCLA 63	L	18-6	A	11/21/97
1996-97	UCLA 73, San Diego 61	W	18-5	A	11/23/96
1995-96	UCLA 87, San Diego 69	W	17-5	H	11/24/95
1994-95	N.C. State 58, UCLA 55	L	16-5	H	11/25/94
1993-94	UCLA 71, UCSB 54	W	16-4	H	11/27/93
1992-93	UCLA 99, CS Fullerton 66	W	15-4	H	12/02/92
1991-92	UCLA 80, Pepperdine 69	W	14-4	A	11/22/91
1990-91	Iowa 81, UCLA 52	L	13-4	A	11/24/90
1989-90	UCLA 73, Eastern Illinois 70	W	13-3	H	11/24/89
1988-89	N.C. State 67, UCLA 60	L	12-3	N <sup>1</sup>	11/25/88
1987-88	S.F. Austin 71, UCLA 61	L	12-2	N <sup>2</sup>	11/27/87
1986-87	UCLA 68, UC Irvine 58	W	12-1	N	11/30/86
1985-86	Washington 68, UCLA 50	L	11-1	N <sup>3</sup>	11/22/85
1984-85	UCLA 74, Pepperdine 49	W	11-0	H	11/24/84
1983-84	UCLA 78, Hawaii 67	W	10-0	A	11/24/83
1982-83	UCLA 96, BYU 86	W	9-0	A	11/24/82
1981-82	UCLA 83, BYU 73	W	8-0	H	11/27/81
1980-81	UCLA 96, UC Irvine 30	W	7-0	H	11/18/80
1979-80	UCLA 102, Pacific 41	W	6-0	H	12/08/79
1978-79	UCLA 73, San Francisco 58	W	5-0	H	12/01/78
1977-78	UCLA 85, San Jose State 70	W	4-0	H	12/08/77
1976-77	UCLA 83, Baylor 79	W	3-0	H	12/04/76
1975-76	UCLA 77, Sacramento State 37	W	2-0	H	12/13/75
1974-75	UCLA 106, UC Irvine 13	W	1-0	A	01/09/74

Note: 1 = at Cincinnati, OH; 2 = at Honolulu, HI; 3 = at Seattle Pacific; 4 = at Lubbock, TX; 5 = at Albuquerque, NM; 6 = East Lansing, MI; 7 = Miami, FL; 8 = Iowa City, IA

OVERTIME GAMES

Record in Overtime: 25-18; Triple Overtime: 2-0; Double Overtime: 1-2; Home Overtime: 13-6; Away Over-time: 7-9; Neutral Overtime: 5-3 \*NCAA Tournament game

DATE	RESULT	W/L
03/01/23	No. 5 UCLA 81, No. 12 Arizona State 70	W
02/03/23	No. 14 UCLA 66, No. 22 Arizona 71	L
01/27/23	No. 8 UCLA 70, No. 25 Colorado 73	L
11/21/22	No. 20 UCLA 66, Marquette 58	W
03/24/22	UCLA 82, Wyoming 81	W
01/17/21	No. 8 UCLA 68, No. 25 Washington State 66	W
02/17/20	No. 8 UCLA 83, No. 15 Oregon State 74	W
02/09/20	No. 10 UCLA 74, California 70	W
01/24/20	No. 10 UCLA 85, Washington 80	W
03/09/19	No. 20 UCLA 83, No. 6 Oregon 88 at Las Vegas	L
01/04/19	No. 18/19 California 79, UCLA 84 at Berkeley, CA	W
11/23/18	Kentucky 75, UCLA 74 in St. Thomas, U.S. Virgin Islands	L
2/24/18	UCLA 78, Utah 71 in Pauley Pavilion	W
2/19/18	No. 8 Oregon 101, UCLA 94 at Eugene, OR	L
2/16/18	No. 15 Oregon State 67, UCLA 64 at Corvallis, OR	L
03/05/16	UCLA 73, California 67 at Seattle, WA	W
12/21/15	California 108, UCLA 104 2ot at Berkeley, CA	L
11/28/15	Notre Dame 92, UCLA 84 at Freeport, Bahamas	L
11/14/14	James Madison 91, UCLA 87 at Harrisonburg, VA	L
12/16/12	UCLA 53, St. John's 52 at Jamaica, NY	W
02/02/12	UCLA 79, Washington 73 in Wooden Center	W
01/29/12	UCLA 62, Colorado 54 at Boulder, CO	W
11/18/10	UCLA 86, Notre Dame 83 2ot at South Bend, IN	W
01/06/08	California 73, UCLA 70 in Pauley Pavilion	L
12/20/06	UCLA 77, California 68 in Pauley Pavilion	W
03/06/06	UCLA 85, Stanford 76 at San Jose, CA	W
01/29/06	UCLA 90, California 87 in Pauley Pavilion	W
12/17/05	UCSB 90, UCLA 81 at Santa Barbara, CA	L
01/23/04	Stanford 78, UCLA 71 in Pauley Pavilion	L
01/20/01	UCLA 59, Arizona 56 in Pauley Pavilion	W
11/23/99	UCLA 84, Texas 77 in Pauley Pavilion	W
12/27/97	UCLA 96, Rutgers 93 in Pauley Pavilion	W
12/18/97	North Carolina 82, UCLA 78 at Chapel Hill, NC	L
11/30/97	Notre Dame 93, UCLA 91 2ot in Pauley Pavilion	L
03/09/96	Washington State 88, UCLA 81 at Pullman, WA	L

01/20/96	UCLA 89, Arizona 85 in Pauley Pavilion	W
02/10/95	Washington 57, UCLA 54 in Wooden Center	L
01/03/94	UCLA 88, Rutgers 78 in Pauley Pavilion	W
03/14/90	Arkansas 90, UCLA 80 at Fayetteville, AR*	L
01/05/87	UCLA 67, Notre Dame 65 in Pauley Pavilion	W
12/30/85	UCLA 82, North Carolina 71 in Pauley Pavilion	W
12/07/84	New Orleans 75, UCLA 73 in Pauley Pavilion	L
03/10/78	UCLA 79, Long Beach State 78 at Stanford, CA	W

20-POINT, 20-REBOUND GAMES BY THE BRUINS

Natalie Williams	32 pts., 25 reb. vs. Arizona State 2/20/94
Jasmine Dixon	31 pts., 20 reb. at Oregon, 2/27/10
Natalie Williams	28 pts., 23 reb. at USC 2/4/94
Natalie Williams	29 pts., 22 reb. vs. Oregon 3/14/92
Denise Curry	28 pts., 22 reb. vs. San Jose St. 12/9/78
Natalie Williams	27 pts., 21 reb. vs. Oregon 1/13/93
Natalie Williams	23 pts., 21 reb. vs. Michigan St. 12/29/92

BRUIN QUADRUPLE-DOUBLES

Ann Meyers	20 points, 14 rebounds, 10 assists, 10 steals vs. Stephen F. Austin, 2/18/78
------------	--

BRUIN TRIPLE-DOUBLES

<b>Charisma Osborne</b>	<b>18 points, 10 rebounds, 12 assists vs. USC, 2/26/21</b>
Japreece Dean	20 points, 11 rebounds, 10 assists vs. Yale, 11/26/19
Jordin Canada	26 points, 11 steals, 10 assists vs. San José State, 11/10/17
Jordin Canada	11 points, 10 rebounds, 12 assists vs. Southern, 11/18/16
Markel Walker	14 points, 15 rebounds, 10 assists vs. Washington State, 2/4/12
Noelle Quinn	21 points, 10 rebounds, 10 assists at Cal, 2/19/04
Erica Gomez	18 points, 11 rebounds, 10 assists vs. USC, 2/24/96
Ann Meyers	20 points, 14 rebounds, 10 assists, 10 steals vs. Stephen F. Austin, 2/18/78
Ann Meyers	14 points, 10 rebounds, 12 steals vs. San Diego State, 2/25/77

LARGEST WINNING MARGIN BY THE BRUINS

MARGIN	OPPONENT	SCORE	DATE
+97	at UC San Diego	117-20	1/11/75
+93	at UC Irvine	106-13	1/9/75
+90	Oregon State	125-35	12/11/76
+79	Arizona	122-43	1/18/80
+79	San Jose State	112-33	12/5/21
+77	at UC Riverside	92-15	1/13/75
+69	at San Francisco State	109-40	2/10/78
+66	UC Irvine	96-30	11/18/80
+66	at UNLV	99-33	2/16/75
+63	Sacramento St.(@ Honolulu)	106-43	11/24/02
+63	UC Santa Barbara	94-31	12/15/84
+63	Utah State	125-62	12/20/77

LARGEST WINNING MARGIN BY OPPONENTS

MARGIN	OPPONENT (RANK)	SCORE	DATE
-53	Long Beach State (3)	65-118	1/22/85
-47	at Utah	42-89	12/1/01
-46	at Long Beach State (4)	57-103	12/3/87
-45	Long Beach State (7)	65-110	12/15/86
-42	at Connecticut (1)	64-106	12/23/99

TOP 10 INDIVIDUAL BIG GAMES VS. THE BRUINS

NAME, SCHOOL, DATE	PTS.	FG-FGA	FT-FTA	REB.
Tina Thompson, USC, 1/27/96	49	16-22	13-13	15
Tina Gunn, BYU, 12/26/79*	45	19-33	14-15	16
LaTaunya Pollard, Long Beach St., 1/20/83	45	19-29	7-11	8
Giuliana Mendiola, Washington, 2/1/03	43	15-20	7-8	12
Pam Kelly, Louisiana Tech, 2/20/82	41	13-20	15-22	11
Penny Toler, Long Beach St., 12/3/87	41	19-29	3-4	7 AST
Carol Blazejowski, Montclair St., 3/23/78*	40	18-33	4-4	7
Svetlana Abrosimova, UConn, 11/17/98*	39	14-17	7-15	10
Kelsey Plum, Washington, 2/17/17*	39	11-21	14-15	4
Kelsey Plum, Washington, 1/8/17	39	13-26	8-8	4

\* indicates Bruin home game

THE LAST TIME...

<b>A Bruin Team Defeated a Ranked Opponent</b> UCLA vs. No. 6 UConn (78-67, 11/24/23)	<b>A Bruin Grabbed 15 or More Rebounds</b> <i>Lauren Betts</i> , 15 vs. <i>UC Riverside</i> (11/9/23)
<b>A Bruin Team Scored 100 Points</b> 113 at home vs. Bellarmine (113-64, 11/12/23)	<b>An Opponent Scored 100 Points</b> 101, by No. 8 Oregon (94-101 in OT, 2/19/18)
<b>A Bruin Scored 40 or More Points</b> Natalie Williams, 43 vs. California (2/24/94)	<b>An Opponent Scored 40 or More Points</b> 43 by Giuliana Mendiola, Washington (2/1/03)
<b>A Bruin Scored 30 or More Points</b> <i>Gabriela Jaquez</i> , 30 vs. <i>Bellarmine</i> (11/12/23)	<b>An Opponent Scored 30 or More Points</b> 31 by Paige Bueckers, UConn (11/24/23)
<b>A Bruin Grabbed 20 or More Rebounds</b> Monique Billings, 25 vs. Washington State (2/19/17)	<b>An Opponent Grabbed 20 or More Boards</b> 21 by Teaira McCowan, No. 4 Mississippi St. (3/25/18)



CORI  
CLOSE

The Michael Price Family UCLA  
Women's Head Basketball Coach  
13th Season

Cori Close was named The Michael Price Family UCLA Women's Head Basketball Coach on April 21, 2011, and is currently 262-133 (.663) overall. The 2023-24 campaign marks Close's 13th season at the helm of the Bruins.

The 2021-22 season proved to be "one of the most challenging years of [Close's] career," as the Bruins battled injuries and faced postponements and a forfeiture due to COVID-19 protocols. UCLA finished 18-13 overall, but the team managed to catch fire late in the season. Close guided the Bruins to a postseason run in the WNIT, making a trip to the semifinals before falling to South Dakota State.

Charisma Osborne and Ilmar'i Thomas earned All-Pac-12 honors in the 2021-22 campaign, as Osborne ranked third in the conference in scoring (16.4 ppg). Thomas added 15.7 points on 54.4% shooting and 5.9 rebounds per game in 31 appearances for the Bruins. UCLA graduated seven members of the 2021-22 squad, including Thomas, Natalie Chou and Chantel Horvat, who all found themselves playing professionally overseas after earning their degrees from the No. 1 public institution in America.

Close led the Bruins through an unpredictable 2020-21 season, a campaign that required Close to navigate COVID-19 protocols and a limited roster. The Bruins posted a 17-6 overall record, picking up wins against five ranked opponents. The Bruins were ranked inside the top 11 of the AP Poll throughout the season and notched the No. 5 spot in November, the highest ranking for the program since 2017. Close guided the Bruins to the Pac-12 Tournament championship game and an eventual three-seed in the NCAA Tournament. It was the sixth NCAA Tournament appearance under Close's tenure.

Close earned her 200th-career win in the Bruins' victory at Arizona State on Dec. 6, 2020. She joined Billie Moore (296-181) and Kathy Olivier (232-208) as the only coaches in program history to eclipse the 200-win milestone. Close boasts the highest winning percentage (.661) of the three (Moore -- .621, Olivier -- .527).

Michaela Onyenwere earned AP Third-Team All-American honors for the second-straight year and was selected by the New York Liberty with the sixth pick in the 2021 WNBA Draft. Onyenwere became the sixth Bruin under Close's tenure to be drafted into the WNBA, and the fifth in the last four years. Onyenwere and Charisma Osborne each picked up All-Pac-12 accolades while Emily Bessoir was tabbed to the Pac-12 All-Freshman team. Natalie Chou earned All-Pac-12 Honorable Mention recognition after averaging a career-high 9.9 points per game.

2019-20 was an historic year for Close and the Bruins. UCLA won its first 13 games of the campaign, setting a new program record for the most consecutive wins to start a season. The Bruins' win over then-No. 6 Stanford marked Close's 100th-career Pac-12 victory. A win over the Trojans in the Pac-12 Tournament quarterfinals won the Bruins the season series over their crosstown rival. UCLA would, ultimately, finish the year 26-5 and was set to host the first two rounds of the NCAA Tournament. The national postseason schedule, however, was canceled due to COVID-19.

Close helped guide the Bruins to a myriad of individual honors during the 2019-20 season. Junior Michaela Onyenwere earned AP Third Team All-America acclaim and also garnered All-Pac-12 recognition. Senior Japreece Dean also earned All-Pac-12 honors while Charisma Osborne picked up Pac-12 All-Freshman accolades. Dean was drafted with the 30th overall pick by the Chicago Sky in the 2020 WNBA Draft, becoming the fifth draft pick across Close's tenure at the helm.

The 2018-19 season saw UCLA win 13 of its last 17 games and finish fourth in a highly competitive Pac-12 Conference, and Close was ultimately named the Media Pac-12 Coach of the Year. The Bruins collected nine road wins, the most since 2012-13 when the team had 13. UCLA also had seven top-25 wins, including a pair of top-10 wins over then-ranked No. 2 Oregon and No. 9 Maryland. In UCLA's historic win over the Ducks on Feb. 22, the Bruins overcame a 22-point deficit and secured their biggest win since knocking off No. 2 Stanford in 2008. The loss for Oregon marked its only setback in Eugene that season.

UCLA, which ranked second in the NCAA in offensive rebounds per game (17.3) in 2018-19, ultimately finished 22-13 on the year, reaching the semifinals of the Pac-12 Tournament and collecting NCAA Tournament wins over Tennessee and Maryland, before falling to perennial power UCONN by a final score of 69-61. It was the fourth-straight Sweet 16 appearance for UCLA, making the Bruins one of just eight NCAA Division I programs to do so. In the final ESPN/USA Today rankings, UCLA rose 10 spots to No. 14, the highest leap by any program in the polls. Close produced her fourth WNBA draft pick as a head coach, as Kennedy Burke was picked in the second round by the Dallas Wings as the 22nd overall pick.

Close guided the Bruins to a 27-8 overall record in 2017-18, including a tie for third place in the Pac-12 with a 14-4 mark. She was named the 2018 United States Marine Corps/WBCA NCAA Division I Region 5 Coach of the Year for the second time in her career. The Bruins reached the Sweet 16 for a record extending third consecutive year and ended the season with an Elite 8 appearance for the first time since 1999, falling to No. 1 Mississippi State on March 25, 2018.

COACH CLOSE CAREER HIGHLIGHTS

- Led UCLA to five-straight NCAA Tournaments.
- One of three coaches in program history to achieve the 200-win milestone
- Coached in 21 NCAA Tournaments
- Advanced to at least the 2nd round in her last 16 NCAA Tournaments
- Teams have advanced to seven Sweet 16's and two Elite 8's
- Teams have won or shared a total of 11 conference titles
- Helped Florida State win a school record 29 games in 2010
- Helped coach 16 players drafted by WNBA teams
- Won UCLA's first-ever postseason WNIT Championship in 2015

CLOSE HEAD COACH RECORD YEAR-BY-YEAR

Year	Record	School	Conf.	Finish	Conf. Tourney	NCAA (NIT)
2023-24	6-0	UCLA	-	-	-	-
2022-23	27-10	UCLA	11-7	5th	Runner Up	Sweet 16
2021-22	18-13	UCLA	8-8	7th	Second Rd.	(Semifinals)
2020-21	17-6	UCLA	12-4	3rd	Runner-up	Second Round
2019-20	26-5	UCLA	14-4	2nd	Semifinals	Canceled
2018-19	22-13	UCLA	12-6	4th	Semifinals	Sweet 16
2017-18	27-8	UCLA	14-4	T-3rd	Semifinals	Elite 8
2016-17	25-9	UCLA	13-5	4th	Semifinals	Sweet 16
2015-16	26-9	UCLA	14-4	T-3rd	Runner-up	Sweet 16
2014-15	19-18	UCLA	8-10	6th	Second Rd.	(Champions)
2013-14	13-18	UCLA	7-11	8th	First Rd.	---
2012-13	26-8	UCLA	14-4	3rd	Runner-up	Second Round
2011-12	14-16	UCLA	9-9	T-5th	First Rd.	---
Totals	266-133, .667		135-76, .640			

RECORD VS. ALL FOES AT UCLA

School	Record	Kansas State	1-0	Rice	1-0	Virginia	2-0
American	1-0	Kentucky	0-1	Sacramento State	3-0	Washington	14-6
Air Force	1-0	Kent State	0-1	Saint John's	3-0	Washington State	15-6
Arizona	17-6	Long Beach State	1-0	Saint Joseph's	1-1	Weber State	1-0
Arizona State	17-3	LSU	0-1	Saint Mary's	2-0	West Virginia	1-1
Auburn	0-1	Louisiana Tech	1-0	Samford	1-0	Wyoming	2-0
Baylor	1-2	Loyola Marymount	3-1	San Diego	1-0	Yale	1-0
Bellarmine	1-0	Marquette	1-0	San Diego State	3-0	Totals	266-133
Boise State	1-0	Maryland	1-0	San Jose State	2-0		
California	14-9	McNeese State	1-0	Seton Hall	2-0		
Cal Poly	4-0	Miami	0-1	South Carolina	0-4		
Cal State Bakersfield	2-0	Michigan	3-0	South Dakota State	1-2		
Cincinnati	1-0	Minnesota	1-0	South Florida	0-1		
Colgate	1-0	Mississippi State	0-1	Tennessee	1-0		
Colorado	12-6	Nebraska	0-2	Tennessee Tech	1-0		
Connecticut	1-5	Niagara	1-0	Texas	2-3		
Creighton	2-0	North Carolina	0-3	Texas A&M	1-0		
CSU Bakersfield	2-0	North Carolina A&T	1-0	Toledo	1-0		
CSUN	2-1	North Carolina State	0-1	Troy	1-0		
Fordham	1-0	Northern Colorado	2-0	UCF	1-0		
Fresno State	2-0	Notre Dame	0-4	UC Irvine	2-0		
Fullerton	2-0	Oklahoma	3-1	UC Riverside	6-0		
Georgia	2-0	Oklahoma State	1-1	UC Santa Barbara	4-0		
Grand Canyon	1-0	Oregon	9-13	USC	19-7		
Hawai'i	2-0	Oregon State	9-13	USF	1-0		
Illinois-Chicago	1-0	Pacific	2-0	Utah	17-2		
Indiana	1-1	Pepperdine	3-0				
Iowa	1-0	Presbyterian College	1-0				
Jackson State	1-0	Princeton	2-0				
James Madison	1-2	Purdue	1-0				

RECORD AS ASSISTANT OR ASSOCIATE HEAD COACH

Year	Record	School	Conf.	Finish	NCAA
2010-11	24-8	Florida State	11-3	3rd	2nd Rd.
2009-10	29-6	Florida State	12-2	T-1st	Elite 8
2008-09	26-8	Florida State	12-2	T-1st	2nd Rd.
2007-08	19-14	Florida State	7-7	5th	2nd Rd.
2006-07	24-10	Florida State	10-4	4th	Sweet 16
2005-06	20-10	Florida State	10-4	4th	2nd Rd.
2004-05	24-8	Florida State	9-5	4th	2nd Rd.
2003-04	27-7	UCSB	17-1	1st	Sweet 16
2002-03	27-5	UCSB	15-1	1st	2nd Rd.
2001-02	26-6	UCSB	16-0	1st	2nd Rd.
2000-01	22-9	UCSB	12-2	1st	1st Rd.
1999-00	30-4	UCSB	15-0	1st	1st Rd.
1998-99	26-4	UCSB	15-0	1st	1st Rd.
1997-98	27-6	UCSB	14-1	1st	2nd Rd.
1996-97	24-6	UCSB	14-1	1st	1st Rd.
1995-96	24-7	UCSB	14-2	1st	---
1994-95	10-17	UCLA	5-13	T-8th	---
1993-94	15-12	UCLA	10-8	5th	---

PLAYERS COACHED BY CLOSE IN WNBA DRAFT

Year	Name	Rd	Pick	Team
2021	Michaela Onyenwere	1st	6	New York Liberty
2020	Japreece Dean	3rd	30	Chicago Sky
2019	Kennedy Burke	2nd	22	Dallas Wings
2018	Jordin Canada	1st	5	Seattle Storm
	Monique Billings	2nd	15	Atlanta Dream
2016	Nirra Fields	3rd	32	Phoenix Mercury
2010	Jacinta Monroe	1st	6	Washington Mystics
2009	Brittany Miller	2nd	18	Detroit Shock
	Tanae Davis-Cain	3rd	37	Detroit Shock
	Mara Freshour	3rd	38	Seattle Storm
2005	Kristen Mann	1st	11	Minnesota Lynx
	Roneeka Hodges	2nd	15	Houston Comets
2004	Lindsay Taylor	2nd	26	Houston Comets
2002	Kayte Christensen	3rd	40	Phoenix Mercury
2001	Erin Buescher	2nd	23	Minnesota Lynx
2000	Stacy Clinesmith	2nd	30	Sacramento Monarchs



Kiki Rice (1)

Sophomore | Guard | 5-11 | Bethesda, Md. (Sidwell Friends)

KEY NOTES ON KIKI RICE

- First Bruin freshman since Jordin Canada to score 400+ points, throw 100+ assists and make 100+ free throws. Her 121 made FTs were the second-most all-time by a freshman. Shot 7-for-8 from the charity stripe in UCLA's upset of No. 1-seed Stanford in the 2023 Pac-12 Tournament (3/3/23 - W, 69-65).
- Scored a conference-best 430 points in 37 games played during the 2022-23 campaign.
- Earned Pac-12 All-Freshman honors (Coaches and Media) and was named to the Pac-12 All-Tournament Team.
- Is a four-time gold medalist with USA Basketball (2019, 2021 and 2022), helping lead the U19 National team to a 6-0 record alongside UCLA teammate Londynn Jones at the 2023 FIBA U19 Women's World Cup in Madrid, Spain.

KIKI RICE'S GAME-BY-GAME STATISTICS (2023-24)

#1 RICE, Kiki

Opponent	Date	GS	MIN	Total		3-Pointers		Free throws		Rebounds										
				FG-FGA	PCT	3FG-3FGA	PCT	FT-FTA	PCT	OFF	DEF	TOT	AVG	PF	A	TO	BLK	STL	PTS	AVG
Purdue	11/06/2023	*	27:24	4-8	.500	2-3	.667	0-0	.000	0	4	4	4.0	3	10	4	1	3	10	10.0
UC Riverside	11/09/2023	*	34:19	6-10	.600	2-3	.667	4-4	1.000	1	3	4	4.0	0	3	4	0	0	18	14.0
Bellarmine	11/12/2023	*	25:27	2-8	.250	0-4	.000	4-4	1.000	1	5	6	4.7	3	11	1	1	3	8	12.0
Princeton	11/17/2023	*	33:24	4-8	.500	0-0	.000	5-6	.833	0	2	2	4.0	2	1	3	0	1	13	12.3
vs UConn	11/24/2023	*	37:50	9-15	.600	2-4	.500	4-5	.800	0	11	11	5.4	1	8	3	0	1	24	14.6
vs Niagara	11/25/2023	*	19:57	4-5	.800	0-1	.000	0-0	.000	0	5	5	5.3	1	8	2	0	3	8	13.5
Totals		6	178:21	29-54	.537	6-15	.400	17-19	.895	2	30	32	5.3	10	41	17	2	11	81	13.5

Player Averages

Games Played	Minutes/ game	Points/ game	FG Pct	3FG Pct	FT Pct	Rebounds/ game	Assists/ game	Turnovers/ game	Assist/Turnover ratio	Steals/ game	Blocks/ game
6	29.7	13.5	53.7	40.0	89.5	5.3	6.8	2.8	2.4	1.8	0.3

KIKI RICE'S CAREER STATISTICS

RICE, Kiki

				Field Goals		3-Point		F-Throws		Rebounds									Scoring	
SEASON	TEAM	GP-GS	MIN/AVG	FG-FGA	FG%	3FG-3FGA	3FG%	FT-FTA	FT%	OFF	DEF	TOT	AVG	PF-FO	A	TO	BLK	STL	PTS	AVG
2022-23	UCLA	37-36	1039/28.1	148-360	.411	13-60	.217	121-153	.791	54	111	165	4.5	85-3	111	61	20	45	430	11.6
2023-24	UCLA	6-6	178/29.7	29-54	.537	6-15	.400	17-19	.895	2	30	32	5.3	10-0	41	17	2	11	81	13.5
TOTAL		43-42	1217/28.3	177-414	.428	19-75	.253	138-172	.802	56	141	197	4.6	95-3	152	78	22	56	511	11.9

Single Game Highs

Statistic	Value
Points	24 vs UConn 11/24/23
Rebounds	11 vs UConn 11/24/23
Assists	12 vs California 01/15/23
Steals	4 at Oregon 12/30/22
Blocks	4 vs Oregon 02/12/23
FG Made	9 vs UConn 11/24/23
FG Attempts	19 vs Arizona 02/03/23
3FG Made	2 5 times
3FG Attempts	5 vs CSU Bakersfield 12/17/22, at Oregon 12/30/22
FT Made	12 vs Stanford 03/03/23
FT Attempts	13 vs Stanford 03/03/23

Londynn Jones (3)  
Sophomore | Guard | 5-4 | Riverside, Calif. (Centennial)

KEY NOTES ON LONDYNN JONES

- Scored 250 of her 317 points during conference play and the postseason. Her 47 3PM ranks third all-time for a UCLA freshman.
- Landed Pac-12 All-Freshman selections in the Coaches and Media teams. Also named Pac-12 Freshman of the Week on Feb. 20.
- Recorded double-digit scoring figures in 16 games, played all 37 games. Claimed UCLA's third-best all-time free throw shooting season (.897 FT%, 70-78).
- Earned her third gold medal with Team USA Basketball this summer playing with Kiki Rice for the U19 team in Spain.

LONDYNN JONES' GAME-BY-GAME STATISTICS (2023-24)

#3 JONES, Londynn

Opponent	Date	GS	MIN	Total		3-Pointers		Free throws		Rebounds											
				FG-FGA	PCT	3FG-3FGA	PCT	FT-FTA	PCT	OFF	DEF	TOT	AVG	PF	A	TO	BLK	STL	PTS	AVG	
Purdue	11/06/2023	*	26:40	6-14	.429	6-11	.545	2-2	1.000	1	2	3	3.0	2	1	1	0	1	20	20.0	
UC Riverside	11/09/2023	*	29:51	4-13	.308	3-10	.300	4-5	.800	1	1	2	2.5	1	3	4	0	1	15	17.5	
Bellarmine	11/12/2023	*	31:59	7-16	.438	5-12	.417	2-3	.667	2	1	3	2.7	2	4	0	1	1	21	18.7	
Princeton	11/17/2023		19:15	0-3	.000	0-1	.000	0-0	.000	0	0	0	2.0	3	1	2	0	0	0	14.0	
vs UConn	11/24/2023	*	19:18	1-5	.200	1-5	.200	2-2	1.000	0	1	1	1.8	2	0	2	0	0	5	12.2	
vs Niagara	11/25/2023	*	26:51	6-13	.462	3-8	.375	6-6	1.000	1	0	1	1.7	3	1	4	0	2	21	13.7	
Totals		5	153:54	24-64	.375	18-47	.383	16-18	.889	5	5	10	1.7	13	10	13	1	5	82	13.7	

Player Averages

Games Played	Minutes/ game	Points/ game	FG Pct	3FG Pct	FT Pct	Rebounds/ game	Assists/ game	Turnovers/ game	Assist/Turnover ratio	Steals/ game	Blocks/ game
6	25.7	13.7	37.5	38.3	88.9	1.7	1.7	2.2	0.8	0.8	0.2

LONDYNN JONES' CAREER STATISTICS

JONES, Londynn

				Field Goals		3-Point		F-Throws		Rebounds				Scoring						
SEASON	TEAM	GP-GS	MIN/AVG	FG-FGA	FG%	3FG-3FGA	3FG%	FT-FTA	FT%	OFF	DEF	TOT	AVG	PF-FO	A	TO	BLK	STL	PTS	AVG
2022-23	UCLA	37-0	736/19.9	100-276	.362	47-133	.353	70-78	.897	15	35	50	1.4	73-0	32	37	3	23	317	8.6
2023-24	UCLA	6-5	154/25.7	24-64	.375	18-47	.383	16-18	.889	5	5	10	1.7	13-0	10	13	1	5	82	13.7
TOTAL		43-5	890/20.7	124-340	.365	65-180	.361	86-96	.896	20	40	60	1.4	86-0	42	50	4	28	399	9.3

Single Game Highs

Statistic	Value	
Points	22	vs Southern California 01/08/23
Rebounds	5	vs Arizona 02/03/23
Assists	4	at Washington St. 01/22/23, vs Bellarmine 11/12/23
Steals	3	at Oregon 12/30/22
Blocks	1	4 times
FG Made	7	vs Arizona 02/03/23, at California 02/17/23, vs Bellarmine 11/12/23
FG Attempts	16	vs Bellarmine 11/12/23
3FG Made	6	vs Purdue 11/06/23
3FG Attempts	12	vs Bellarmine 11/12/23
FT Made	8	vs Southern California 01/08/23
FT Attempts	9	vs Southern California 01/08/23



EMILY BESSOIR (11)

Senior | Forward | 6-4 | Munich, Germany (Wilhelm-Hausenstein Gymnasium)

KEY NOTES ON EMILY BESSOIR

- Returned to action after missing the 2021-22 season due to an ACL tear, playing every game for the Bruins last season. Averaged 25.1 minutes per game, making 35 starts during the campaign.
- UCLA's third-leading scorer (9.4 PPG) during 2022-23, shooting a team-best .357 from three (team-high 61 3FGM). Also led UCLA in total rebounds (213).
- Named to Germany's Senior National Team for the Olympic Qualifying Tournament. Joined Germany for the FIBA Women's Eurobasket 2023 (7.1 PPG, 5.7 RPG).

EMILY BESSOIR'S GAME-BY-GAME STATISTICS (2023-24)

#11 BESSOIR, Emily

Opponent	Date	GS	MIN	Total		3-Pointers		Free throws		Rebounds				PF	A	TO	BLK	STL	PTS	AVG
				FG-FGA	PCT	3FG-3FGA	PCT	FT-FTA	PCT	OFF	DEF	TOT	AVG							
Purdue	11/06/2023		22:42	2-4	.500	1-3	.333	1-2	.500	1	3	4	4.0	2	3	1	0	2	6	6.0
Totals		0	22:42	2-4	.500	1-3	.333	1-2	.500	1	3	4	4.0	2	3	1	0	2	6	6.0

Player Averages

Games Played	Minutes/game	Points/game	FG Pct	3FG Pct	FT Pct	Rebounds/game	Assists/game	Turnovers/game	Assist/Turnover ratio	Steals/game	Blocks/game
1	22.7	6.0	50.0	33.3	50.0	4.0	3.0	1.0	3.0	2.0	0.0

EMILY BESSOIR'S CAREER STATISTICS

BESSOIR, Emily

				Field Goals		3-Point		F-Throws		Rebounds										Scoring	
SEASON	TEAM	GP-GS	MIN/AVG	FG-FGA	FG%	3FG-3FGA	3FG%	FT-FTA	FT%	OFF	DEF	TOT	AVG	PF-FO	A	TO	BLK	STL	PTS	AVG	
2020-21	UCLA	22-2	454/20.6	61-150	.407	20-68	.294	22-45	.489	44	71	115	5.2	55-1	22	27	16	22	164	7.5	
2022-23	UCLA	37-35	929/25.1	131-317	.413	61-171	.357	23-31	.742	77	136	213	5.8	100-4	45	34	35	24	346	9.4	
2023-24	UCLA	1-0	23/22.7	2-4	.500	1-3	.333	1-2	.500	1	3	4	4.0	2-0	3	1	0	2	6	6.0	
TOTAL		60-37	1405/23.4	194-471	.412	82-242	.339	46-78	.590	122	210	332	5.5	157-5	70	62	51	48	516	8.6	

Single Game Highs

Statistic	Value	
Points	20	vs Oregon 02/12/23
Rebounds	13	vs Arizona 03/02/23
Assists	3	8 times
Steals	4	vs UC Santa Barbara 12/09/20, vs California 12/19/20, vs Oregon 02/12/23
Blocks	3	5 times
FG Made	8	vs Oregon 02/12/23
FG Attempts	15	vs Arizona 03/02/23
3FG Made	5	at Utah 01/29/23, vs Arizona St. 03/01/23
3FG Attempts	10	vs Arizona 02/03/23
FT Made	4	vs UC Riverside 11/10/22, vs Stanford 03/03/23
FT Attempts	8	vs Cal St. Fullerton 11/27/20



CHARISMA OSBORNE (20)

Graduate Student | Guard | 5-9 | Moreno Valley, Calif. (Windward School)

KEY NOTES ON CHARISMA OSBORNE

- Enters her fifth season with the Bruins, opting to return after UCLA's Sweet 16 run in her true-senior campaign.
- Earned All-Pac-12 honors (Coaches and Media), All-Pac-12 Defensive Team Honorable Mention, and WBCA All-America Honorable Mention in 2022-23.
- Averaged a team-high 15.9 points, 5.9 rebounds and 1.4 steals per game last season.
- Opening the year on the Ann Meyers Drysdale Award watch list for her fourth-consecutive year and was named to the preseason All-Pac-12 team.
- On UCLA's all-time lists, she ranks ninth in scoring (1,798 PTS), sixth in FTM (371) and third in 3FGM (696).

CHARISMA OSBORNE’S GAME-BY-GAME STATISTICS (2022-23)

#20 OSBORNE, Charisma

Opponent	Date	GS	MIN	Total		3-Pointers		Free throws		Rebounds				PF	A	TO	BLK	STL	PTS	AVG
				FG-FGA	PCT	3FG-3FGA	PCT	FT-FTA	PCT	OFF	DEF	TOT	AVG							
Purdue	11/06/2023	*	28:21	4-7	.571	3-6	.500	0-0	.000	1	4	5	5.0	1	7	3	0	1	11	11.0
UC Riverside	11/09/2023	*	27:44	4-8	.500	3-5	.600	2-2	1.000	4	7	11	8.0	1	5	1	2	2	13	12.0
Bellarmine	11/12/2023	*	29:08	8-14	.571	6-11	.545	2-2	1.000	0	10	10	8.7	1	4	0	0	1	24	16.0
Princeton	11/17/2023	*	36:39	6-14	.429	2-4	.500	7-9	.778	0	3	3	7.3	4	3	2	0	1	21	17.3
vs UConn	11/24/2023	*	35:53	6-16	.375	6-10	.600	0-0	.000	2	2	4	6.6	2	3	3	0	1	18	17.4
vs Niagara	11/25/2023	*	20:01	1-4	.250	0-1	.000	2-2	1.000	5	2	7	6.7	1	5	2	0	3	4	15.2
Totals		6	177:46	29-63	.460	20-37	.541	13-15	.867	12	28	40	6.7	10	27	11	2	9	91	15.2

Player Averages

Games Played	Minutes/ game	Points/ game	FG Pct	3FG Pct	FT Pct	Rebounds/ game	Assists/ game	Turnovers/ game	Assist/Turnover ratio	Steals/ game	Blocks/ game
6	29.6	15.2	46.0	54.1	86.7	6.7	4.5	1.8	2.5	1.5	0.3

CHARISMA OSBORNE’S CAREER STATISTICS

OSBORNE, Charisma

			Field Goals		3-Point		F-Throws		Rebounds				Scoring						
SEASON TEAM	GP-GS	MIN/AVG	FG-FGA	FG%	3FG-3FGA	3FG%	FT-FTA	FT%	OFF	DEF	TOT	AVG	PF-FO	A	TO	BLK	STL	PTS	AVG
2019-20 UCLA	31-29	910/29.4	129-338	.382	59-177	.333	61-77	.792	89	91	180	5.8	61-0	44	38	10	46	378	12.2
2020-21 UCLA	23-23	794/34.5	129-357	.361	53-156	.340	79-91	.868	41	93	134	5.8	58-1	87	45	10	38	390	17.0
2021-22 UCLA	28-28	993/35.5	144-398	.362	59-178	.331	112-128	.875	31	113	144	5.1	49-0	108	68	6	43	459	16.4
2022-23 UCLA	36-36	1190/33.1	199-514	.387	54-185	.292	119-143	.832	59	152	211	5.9	65-0	102	67	12	52	571	15.9
2023-24 UCLA	6-6	178/29.6	29-63	.460	20-37	.541	13-15	.867	12	28	40	6.7	10-0	27	11	2	9	91	15.2
TOTAL	124-122	4066/32.8	630-1670	.377	245-733	.334	384-454	.846	232	477	709	5.7	243-1	368	229	40	188	1889	15.2

Single Game Highs

Statistic	Value
Points	36 vs Oklahoma 03/20/23
Rebounds	13 vs UC Riverside 11/10/22, at Southern California 12/15/22
Assists	12 vs Southern California 02/26/21
Steals	6 at Stanford 02/20/23
Blocks	3 at Arizona St. 12/06/20
FG Made	11 at Washington St. 02/21/20, vs Troy 11/13/22, vs Oklahoma 03/20/23
FG Attempts	25 vs Washington St. 01/17/21
3FG Made	7 vs UConn 12/11/21
3FG Attempts	16 vs UConn 12/11/21
FT Made	12 at Oregon St. 03/27/22, vs Oklahoma 03/20/23
FT Attempts	14 at Oregon St. 03/27/22

LINA SONTAG (21)

Sophomore | Forward | 6-3 | Berlin, Germany (Schadow Gymnasium)

KEY NOTES ON LINA SONTAG

- Had 37 blocks in 35 games played during the 2022-23 campaign, the third-most by a Bruin freshman. Her block total was eighth in the Pac-12 Conference among all players.
- Swiped 40 steals as she played a key part in UCLA's defense. Scored 4.9 PPG and grabbed 4.1 RPG in her freshman season.
- Played for Germany in the 2023 FIBA Women's EuroBasket, averaging 4.6 PPG, 2.4 RPG and 1.3 APG in seven appearances with the senior national team.

LINA SONTAG'S GAME-BY-GAME STATISTICS (2023-24)

2023-24 Game-by-Game Statistics																				
Opponent	Date	GS	MIN	Total		3-Pointers		Free throws		Rebounds				PF	A	TO	BLK	STL	PTS	AVG
				FG-FGA	PCT	3FG-3FGA	PCT	FT-FTA	PCT	OFF	DEF	TOT	AVG							
Princeton	11/17/2023		08:15	1-2	.500	0-0	.000	0-0	.000	1	0	1	1.0	2	0	1	2	0	2	2.0
vs UConn	11/24/2023		11:18	1-1	1.000	1-1	1.000	0-0	.000	1	0	1	1.0	2	1	1	0	0	3	2.5
vs Niagara	11/25/2023		23:52	2-5	.400	0-1	.000	0-0	.000	0	3	3	1.7	2	5	4	3	2	4	3.0
Totals		0	43:25	4-8	.500	1-2	.500	0-0	.000	2	3	5	1.7	6	6	6	5	2	9	3.0

#21 SONTAG, Lina

Opponent	Date	GS	MIN	Total		3-Pointers		Free throws		Rebounds				PF	A	TO	BLK	STL	PTS	AVG
				FG-FGA	PCT	3FG-3FGA	PCT	FT-FTA	PCT	OFF	DEF	TOT	AVG							
Princeton	11/17/2023		08:15	1-2	.500	0-0	.000	0-0	.000	1	0	1	1.0	2	0	1	2	0	2	2.0
vs UConn	11/24/2023		11:18	1-1	1.000	1-1	1.000	0-0	.000	1	0	1	1.0	2	1	1	0	0	3	2.5
vs Niagara	11/25/2023		23:52	2-5	.400	0-1	.000	0-0	.000	0	3	3	1.7	2	5	4	3	2	4	3.0
Totals		0	43:25	4-8	.500	1-2	.500	0-0	.000	2	3	5	1.7	6	6	6	5	2	9	3.0

Player Averages

Games Played	Minutes/ game	Points/ game	FG Pct	3FG Pct	FT Pct	Rebounds/ game	Assists/ game	Turnovers/ game	Assist/Turnover ratio	Steals/ game	Blocks/ game
3	14.5	3.0	50.0	50.0	0.0	1.7	2.0	2.0	1.0	0.7	1.7

LINA SONTAG'S CAREER STATISTICS

SONTAG, Lina

				Field Goals		3-Point		F-Throws		Rebounds				Scoring						
SEASON	TEAM	GP-GS	MIN/AVG	FG-FGA	FG%	3FG-3FGA	3FG%	FT-FTA	FT%	OFF	DEF	TOT	AVG	PF-FO	A	TO	BLK	STL	PTS	AVG
2022-23	UCLA	35-7	601/17.2	73-177	.412	14-54	.259	11-18	.611	54	89	143	4.1	107-7	29	58	37	40	171	4.9
2023-24	UCLA	3-0	43/14.5	4-8	.500	1-2	.500	0-0	.000	2	3	5	1.7	6-0	6	6	5	2	9	3.0
TOTAL		38-7	645/17.0	77-185	.416	15-56	.268	11-18	.611	56	92	148	3.9	113-7	35	64	42	42	180	4.7

Single Game Highs

Statistic	Value	
Points	12	vs Tennessee 11/20/22
Rebounds	8	vs Jackson St. 11/25/22, at Washington 01/20/23
Assists	5	vs Niagara 11/25/23
Steals	5	vs Oregon St. 02/10/23
Blocks	4	vs Oklahoma 03/20/23
FG Made	5	vs Tennessee 11/20/22
FG Attempts	12	vs Tennessee 11/20/22
3FG Made	2	vs Oregon St. 02/10/23, at Stanford 02/20/23, vs Tennessee 11/20/22
3FG Attempts	5	vs Oregon St. 02/10/23
FT Made	4	vs Southern California 01/08/23
FT Attempts	4	vs Southern California 01/08/23



CHRISTEEN IWUALA (22)

Sophomore | Forward | 6-2 | San Antonio, Texas (Ronald Reagan)

KEY NOTES ON CHRISTEEN IWUALA

- Scored a season-high 10 points against Cal State Fullerton (Dec. 10), shooting 4-for-6 from the field and collecting eight rebounds in the win.
- Named Pac-12 Freshman of the Week on Dec. 12, the second of three Bruins to earn the honor during the 2022-23 campaign.
- Totaled over 100 points and 100 rebounds (103 PTS, 120 REB) during her first collegiate season.

CHRISTEEN IWUALA’S GAME-BY-GAME STATISTICS (2023-24)

#22 IWUALA, Christeen

Opponent	Date	GS	MIN	Total		3-Pointers		Free throws		Rebounds				PF	A	TO	BLK	STL	PTS	AVG
				FG-FGA	PCT	3FG-3FGA	PCT	FT-FTA	PCT	OFF	DEF	TOT	AVG							
UC Riverside	11/09/2023		09:58	3-5	.600	0-0	.000	0-0	.000	2	0	2	2.0	0	0	0	0	0	6	6.0
Bellarmine	11/12/2023		09:27	2-4	.500	0-0	.000	0-0	.000	2	0	2	2.0	3	0	0	0	1	4	5.0
Princeton	11/17/2023		12:58	1-1	1.000	0-0	.000	1-2	.500	3	2	5	3.0	5	0	2	0	0	3	4.3
vs UConn	11/24/2023		05:13	0-2	.000	0-0	.000	0-0	.000	0	0	0	2.3	2	0	1	0	0	0	3.3
vs Niagara	11/25/2023		19:41	1-3	.333	0-0	.000	1-4	.250	2	3	5	2.8	3	0	1	1	1	3	3.2
Totals		0	57:17	7-15	.467	0-0	.000	2-6	.333	9	5	14	2.8	13	0	4	1	2	16	3.2

Player Averages

Games Played	Minutes/ game	Points/ game	FG Pct	3FG Pct	FT Pct	Rebounds/ game	Assists/ game	Turnovers/ game	Assist/Turnover ratio	Steals/ game	Blocks/ game
5	11.5	3.2	46.7	0.0	33.3	2.8	0.0	0.8	0.0	0.4	0.2

CHRISTEEN IWUALA’S CAREER STATISTICS

IWUALA, Christeen

				Field Goals		3-Point		F-Throws		Rebounds				Scoring						
SEASON	TEAM	GP-GS	MIN/AVG	FG-FGA	FG%	3FG-3FGA	3FG%	FT-FTA	FT%	OFF	DEF	TOT	AVG	PF-FO	A	TO	BLK	STL	PTS	AVG
2022-23	UCLA	35-0	426/12.2	42-102	.412	0-0	.000	19-28	.679	49	71	120	3.4	59-1	17	45	10	13	103	2.9
2023-24	UCLA	5-0	57/11.5	7-15	.467	0-0	.000	2-6	.333	9	5	14	2.8	13-1	0	4	1	2	16	3.2
TOTAL		40-0	484/12.1	49-117	.419	0-0	.000	21-34	.618	58	76	134	3.4	72-2	17	49	11	15	119	3.0

Single Game Highs

Statistic	Value	
Points	10	vs Cal St. Fullerton 12/10/22
Rebounds	8	vs Troy 11/13/22, vs Cal St. Fullerton 12/10/22
Assists	3	vs Arizona St. 02/05/23
Steals	2	vs Jackson St. 11/25/22, at California 02/17/23
Blocks	2	at Colorado 01/27/23, vs Tennessee 11/20/22
FG Made	4	vs Cal St. Fullerton 12/10/22
FG Attempts	6	5 times
FT Made	2	6 times
FT Attempts	4	vs Troy 11/13/22, vs Niagara 11/25/23



GABRIELA JAQUEZ (23)

Sophomore | Forward | 6-0 | Camarillo, Calif. (Camarillo)

KEY NOTES ON GABRIELA JAQUEZ

- Appeared in all 37 games for UCLA in 2022-23, making two starts. Shot a team-best .455 from the field during her freshman season.
- Led UCLA in scoring twice (13 PTS @ Washington State - Jan. 22; 14 PTS vs. Oregon State - Feb. 10), averaging 6.3 PPG on the year
- Had a season-high 5 steals at Utah on Jan. 29, collecting 32 steals throughout the year.

GABRIELA JAQUEZ’S GAME-BY-GAME STATISTICS (2023-24)

#23 JAQUEZ, Gabriela

Opponent	Date	GS	MIN	Total		3-Pointers		Free throws		Rebounds							
				FG-FGA	PCT	3FG-3FGA	PCT	FT-FTA	PCT	OFF	DEF	TOT	AVG	PF	A	TO	BLK
Purdue	11/06/2023		23:56	3-8	.375	0-1	.000	2-3	.667	3	2	5	5.0	3	0	1	0
UC Riverside	11/09/2023	*	27:16	7-14	.500	3-7	.429	1-1	1.000	2	5	7	6.0	2	1	1	0
Bellarmine	11/12/2023	*	32:56	12-19	.632	2-5	.400	4-5	.800	7	5	12	8.0	2	2	3	0
Princeton	11/17/2023	*	25:01	4-7	.571	0-1	.000	3-4	.750	0	3	3	6.8	3	3	0	0
vs UConn	11/24/2023		21:11	2-3	.667	0-1	.000	3-4	.750	1	5	6	6.6	4	1	1	0
vs Niagara	11/25/2023		25:28	11-17	.647	0-2	.000	1-2	.500	1	5	6	6.5	1	1	2	1
Totals		3	155:48	39-68	.574	5-17	.294	14-19	.737	14	25	39	6.5	15	8	8	1

Player Averages

Games Played	Minutes/ game	Points/ game	FG Pct	3FG Pct	FT Pct	Rebounds/ game	Assists/ game	Turnovers/ game	Assist/Turnover ratio	Steals/ game	Blocks/ game
6	26.0	16.2	57.4	29.4	73.7	6.5	1.3	1.3	1.0	0.8	0.2

GABRIELA JAQUEZ’S CAREER STATISTICS

JAQUEZ, Gabriela

				Field Goals		3-Point		F-Throws		Rebounds								Scoring		
SEASON	TEAM	GP-GS	MIN/AVG	FG-FGA	FG%	3FG-3FGA	3FG%	FT-FTA	FT%	OFF	DEF	TOT	AVG	PF-FO	A	TO	BLK	STL	PTS	AVG
2022-23	UCLA	37-2	645/17.4	90-198	.455	18-53	.340	36-57	.632	47	81	128	3.5	67-3	21	33	2	32	234	6.3
2023-24	UCLA	6-3	156/26.0	39-68	.574	5-17	.294	14-19	.737	14	25	39	6.5	15-0	8	8	1	5	97	16.2
TOTAL		43-5	801/18.6	129-266	.485	23-70	.329	50-76	.658	61	106	167	3.9	82-3	29	41	3	37	331	7.7

Single Game Highs

Statistic	Value	
Points	30	vs Bellarmine 11/12/23
Rebounds	12	vs Bellarmine 11/12/23
Assists	3	vs Arizona 02/03/23, vs Princeton 11/17/23
Steals	5	at Utah 01/29/23
Blocks	1	vs Oregon St. 02/10/23, vs South Carolina 03/25/23, vs Niagara 11/25/23
FG Made	12	vs Bellarmine 11/12/23
FG Attempts	19	vs Bellarmine 11/12/23
3FG Made	3	vs UC Riverside 11/09/23
3FG Attempts	7	vs UC Riverside 11/09/23
FT Made	5	vs Cal Poly 11/07/22
FT Attempts	7	vs Cal Poly 11/07/22

ANGELA DUGALIC (32)

Senior | Forward | 6-4 | Des Plaines, Ill. (Maine West / Oregon)

KEY NOTES ON ANGELA DUGALIC

- Returns to play after mising the entire 2022-23 season due to an ACL injury.
- Played in all 24 games for the Ducks in 2020-21 and helped Oregon to a Sweet 16 appearance.
- Appeared in the final 14 games of the 2021-22 season for UCLA, averaging 6.5 points per game.
- Had a double-double (13 points, 12 rebounds) against USC in the first round of the 2022 Pac-12 Championships.
- Won the European Championships with Serbia in the summer of 2021.
- Also competed in the 2021 Tokyo Olympics, helping the Serbians finish fourth overall as the team's youngest player.

ANGELA DUGALIC'S GAME-BY-GAME STATISTICS (2023-24)

#32 DUGALIĆ, Angela

Opponent	Date	GS	MIN	Total		3-Pointers		Free throws		Rebounds										
				FG-FGA	PCT	3FG-3FGA	PCT	FT-FTA	PCT	OFF	DEF	TOT	AVG	PF	A	TO	BLK	STL	PTS	AVG
Purdue	11/06/2023	*	20:44	5-8	.625	1-2	.500	2-2	1.000	1	1	2	2.0	2	2	1	0	0	13	13.0
Princeton	11/17/2023	*	27:03	2-8	.250	0-3	.000	1-2	.500	0	4	4	3.0	1	2	2	0	0	5	9.0
vs UConn	11/24/2023	*	18:45	1-7	.143	1-3	.333	0-0	.000	1	6	7	4.3	2	2	2	0	1	3	7.0
vs Niagara	11/25/2023	*	22:02	6-9	.667	2-2	1.000	0-0	.000	2	5	7	5.0	2	3	4	0	2	14	8.8
Totals		4	88:34	14-32	.438	4-10	.400	3-4	.750	4	16	20	5.0	7	9	9	0	3	35	8.8

Player Averages

Games Played	Minutes/ game	Points/ game	FG Pct	3FG Pct	FT Pct	Rebounds/ game	Assists/ game	Turnovers/ game	Assist/Turnover ratio	Steals/ game	Blocks/ game
4	22.1	8.8	43.8	40.0	75.0	5.0	2.3	2.3	1.0	0.8	0.0

ANGELA DUGALIC'S CAREER STATISTICS

DUGALIĆ, Angela

				Field Goals		3-Point		F-Throws		Rebounds												Scoring	
SEASON	TEAM	GP-GS	MIN/AVG	FG-FGA	FG%	3FG-3FGA	3FG%	FT-FTA	FT%	OFF	DEF	TOT	AVG	PF-FO	A	TO	BLK	STL	PTS	AVG			
2020-21	Oregon	24-1	295/12.3	36-85	.424	5-21	.238	5-6	.833	22	75	97	4.0	20-0	17	20	7	7	82	3.4			
2021-22	UCLA	14-0	239/17.0	39-84	.464	4-12	.333	9-21	.429	19	44	63	4.5	38-3	10	25	8	13	91	6.5			
2023-24	UCLA	4-4	89/22.1	14-32	.438	4-10	.400	3-4	.750	4	16	20	5.0	7-0	9	9	0	3	35	8.8			
TOTAL FOR UCLA		18-4	327/18.2	53-116	.457	8-22	.364	12-25	.480	23	60	83	4.6	45-3	19	34	8	16	126	7.0			
TOTAL		42-5	622/14.8	89-201	.443	13-43	.302	17-31	.548	45	135	180	4.3	65-3	36	54	15	23	208	5.0			

Single Game Highs

Statistic	Value
Points	14 vs Niagara 11/25/23
Rebounds	12 vs Southern California 03/02/22
Assists	4 vs Oregon 03/03/22
Steals	3 at Washington 12/19/20, at South Dakota St. 03/31/22
Blocks	3 vs Air Force 03/20/22
FG Made	6 vs UCLA 01/03/21, vs Niagara 11/25/23
FG Attempts	10 vs UCLA 01/03/21, vs Southern California 03/02/22
3FG Made	2 vs Southern California 03/02/22, vs Niagara 11/25/23
3FG Attempts	4 vs Seattle U 11/28/20
FT Made	3 vs Utah 02/20/22
FT Attempts	3 vs Utah 02/20/22, vs Oregon 03/03/22, at South Dakota St. 03/31/22



AMANDA MUSE (33)

Freshman | Forward | 6-4 | Brentwood, Calif. (Heritage)

KEY NOTES ON AMANDA MUSE

- UCLA's lone freshman, ranked 32nd in the espnW Rankings Class of 2023, according to the 2023 HoopGurlz Recruiting Rankings.
- Averaged 14.5 points, 12.1 rebounds and 4.1 blocks per game as a senior in 2022-23.
- Named a McDonald's All-American in 2023, recording 18 points on 6-of-7 shooting as the West won 110-102.
- Older sister, Abby, plays basketball for Boise State.

AMANDA MUSE’S GAME-BY-GAME STATISTICS (2023-24)

#33 MUSE, Amanda

Opponent	Date	GS	MIN	Total		3-Pointers		Free throws		Rebounds											
				FG-FGA	PCT	3FG-3FGA	PCT	FT-FTA	PCT	OFF	DEF	TOT	AVG	PF	A	TO	BLK	STL	PTS	AVG	
Purdue	11/06/2023		11:37	2-2	1.000	0-0	.000	0-0	.000	2	2	4	4.0	1	1	1	1	0	4	4.0	
UC Riverside	11/09/2023		14:43	1-1	1.000	0-0	.000	0-0	.000	0	1	1	2.5	0	2	0	0	0	2	3.0	
Bellarmino	11/12/2023		13:36	0-2	.000	0-0	.000	0-0	.000	0	1	1	2.0	0	1	1	2	2	0	2.0	
vs Niagara	11/25/2023		12:57	2-3	.667	0-0	.000	5-6	.833	1	3	4	2.5	2	0	1	3	0	9	3.8	
Totals		0	52:53	5-8	.625	0-0	.000	5-6	.833	3	7	10	2.5	3	4	3	6	2	15	3.8	

Player Averages

Games Played	Minutes/ game	Points/ game	FG Pct	3FG Pct	FT Pct	Rebounds/ game	Assists/ game	Turnovers/ game	Assist/Turnover ratio	Steals/ game	Blocks/ game
4	13.2	3.8	62.5	0.0	83.3	2.5	1.0	0.8	1.3	0.5	1.5

AMANDA MUSE’S CAREER STATISTICS

MUSE, Amanda

				Field Goals		3-Point		F-Throws		Rebounds									Scoring	
SEASON	TEAM	GP-GS	MIN/AVG	FG-FGA	FG%	3FG-3FGA	3FG%	FT-FTA	FT%	OFF	DEF	TOT	AVG	PF-FO	A	TO	BLK	STL	PTS	AVG
2023-24	UCLA	4-0	53/13.2	5-8	.625	0-0	.000	5-6	.833	3	7	10	2.5	3-0	4	3	6	2	15	3.8
TOTAL		4-0	53/13.2	5-8	.625	0-0	.000	5-6	.833	3	7	10	2.5	3-0	4	3	6	2	15	3.8

Single Game Highs

Statistic	Value	
Points	9	vs Niagara 11/25/23
Rebounds	4	vs Purdue 11/06/23, vs Niagara 11/25/23
Assists	2	vs UC Riverside 11/09/23
Steals	2	vs Bellarmine 11/12/23
Blocks	3	vs Niagara 11/25/23
FG Made	2	vs Purdue 11/06/23, vs Niagara 11/25/23
FG Attempts	3	vs Niagara 11/25/23
FT Made	5	vs Niagara 11/25/23
FT Attempts	6	vs Niagara 11/25/23



CAMRYN BROWN (35)

Graduate Student | Guard/Forward | 5-11 | Lewisville, Texas (Prestonwood Christian Academy)

KEY NOTES ON CAMRYN BROWN

- Returns as a graduate student for her fifth season with the Bruins.
- Started 32 of her 36 appearances in 2022-23. Set single-game career highs in points (9 vs. Arizona, Mar. 2), rebounds (10 vs. South Dakota State, Nov. 19), assists (5 at Utah, Jan. 29) and steals (5 vs. Marquette, Nov. 21).
- Recorded single-season career highs in points, rebounds, assists, blocks and steals.

CAMRYN BROWN’S GAME-BY-GAME STATISTICS (2023-24)

#35 BROWN, Camryn

Opponent	Date	GS	MIN	Total		3-Pointers		Free throws		Rebounds				PF	A	TO	BLK	STL	PTS	AVG
				FG-FGA	PCT	3FG-3FGA	PCT	FT-FTA	PCT	OFF	DEF	TOT	AVG							
Purdue	11/06/2023		12:35	0-2	.000	0-2	.000	0-0	.000	0	2	2	2.0	2	2	0	0	1	0	0.0
UC Riverside	11/09/2023		18:08	0-3	.000	0-3	.000	0-0	.000	0	3	3	2.5	1	3	3	1	0	0	0.0
Bellarmine	11/12/2023		20:14	2-6	.333	0-1	.000	0-0	.000	2	5	7	4.0	2	2	1	0	2	4	1.3
Princeton	11/17/2023		09:20	0-1	.000	0-0	.000	0-0	.000	0	0	0	3.0	2	0	1	0	0	0	1.0
vs UConn	11/24/2023		14:41	2-3	.667	1-1	1.000	0-0	.000	3	0	3	3.0	3	1	0	0	0	5	1.8
vs Niagara	11/25/2023		14:59	3-3	1.000	0-0	.000	0-0	.000	2	1	3	3.0	1	1	3	2	2	6	2.5
Totals		0	89:56	7-18	.389	1-7	.143	0-0	.000	7	11	18	3.0	11	9	8	3	5	15	2.5

Player Averages

Games Played	Minutes/ game	Points/ game	FG Pct	3FG Pct	FT Pct	Rebounds/ game	Assists/ game	Turnovers/ game	Assist/Turnover ratio	Steals/ game	Blocks/ game
6	15.0	2.5	38.9	14.3	0.0	3.0	1.5	1.3	1.1	0.8	0.5

CAMRYN BROWN’S CAREER STATISTICS

BROWN, Camryn

				Field Goals		3-Point		F-Throws		Rebounds												Scoring	
SEASON	TEAM	GP-GS	MIN/AVG	FG-FGA	FG%	3FG-3FGA	3FG%	FT-FTA	FT%	OFF	DEF	TOT	AVG	PF-FO	A	TO	BLK	STL	PTS	AVG			
2019-20	UCLA	24-1	200/8.3	16-27	.593	0-0	.000	2-7	.286	16	22	38	1.6	32-0	10	10	4	8	34	1.4			
2020-21	UCLA	12-0	219/18.3	10-28	.357	0-2	.000	4-9	.444	26	21	47	3.9	26-1	7	6	2	12	24	2.0			
2021-22	UCLA	17-6	285/16.8	17-39	.436	0-0	.000	3-5	.600	20	25	45	2.6	36-0	18	9	8	9	37	2.2			
2022-23	UCLA	36-32	753/20.9	47-109	.431	0-12	.000	13-24	.542	65	52	117	3.3	73-3	53	44	28	29	107	3.0			
2023-24	UCLA	6-0	90/15.0	7-18	.389	1-7	.143	0-0	.000	7	11	18	3.0	11-0	9	8	3	5	15	2.5			
TOTAL		95-39	1548/16.3	97-221	.439	1-21	.048	22-45	.489	134	131	265	2.8	178-4	97	77	45	63	217	2.3			

Single Game Highs

Statistic	Value	
Points	9	vs Arizona 03/02/23
Rebounds	10	vs South Dakota St. 11/19/22
Assists	5	at Utah 01/29/23
Steals	5	vs Marquette 11/21/22
Blocks	4	vs UC Irvine 03/18/22
FG Made	4	vs Colorado 02/28/20, vs Arizona 03/02/23
FG Attempts	8	vs UC Riverside 11/10/22
3FG Made	1	vs UConn 11/24/23
3FG Attempts	3	vs UC Riverside 11/10/22, vs UC Riverside 11/09/23
FT Made	2	5 times
FT Attempts	3	vs Utah 02/20/22, at Utah 01/29/23

IZZY ANSTEY (43)

Senior | Forward | 6-4 | Melbourne, Victoria, Australia (Caulfield Grammar School)

KEY NOTES ON IZZY ANSTEY

- Enters her fourth active season with the Bruins.
- Missed time to start the 2022-23 season, recovering from offseason surgery.
- Was unable to travel to the United States for the 2020-21 season due to COVID-19 travel restrictions.
- Played against Coach Close and Team USA in the 2019 U-19 World Cup while with the Australian national team.
- Father, Chris, enjoyed a 14-year career in the NBA.

IZZY ANSTEY'S GAME-BY GAME STATISTICS (2023-24)

#43 ANSTEY, Izzy

Opponent	Date	GS	MIN	Total		3-Pointers		Free throws		Rebounds				PF				PTS	
				FG-FGA	PCT	3FG-3FGA	PCT	FT-FTA	PCT	OFF	DEF	TOT	AVG	A	TO	BLK	STL	PTS	AVG
Purdue	11/06/2023		05:14	0-0	.000	0-0	.000	0-0	.000	0	0	0	0.0	1	2	1	0	0	0.0
UC Riverside	11/09/2023		11:52	2-2	1.000	0-0	.000	0-0	.000	1	5	6	3.0	3	2	1	1	0	2.0
Bellarmine	11/12/2023		09:36	0-1	.000	0-0	.000	0-0	.000	0	0	0	2.0	1	2	1	0	0	1.3
Princeton	11/17/2023		02:44	0-0	.000	0-0	.000	0-0	.000	0	0	0	1.5	0	0	0	0	0	1.0
vs UConn	11/24/2023		01:04	0-0	.000	0-0	.000	0-0	.000	0	0	0	1.2	0	0	0	0	0	0.8
vs Niagara	11/25/2023		08:50	1-1	1.000	0-0	.000	1-1	1.000	0	2	2	1.3	3	1	1	0	1	1.2
Totals		0	39:20	3-4	.750	0-0	.000	1-1	1.000	1	7	8	1.3	8	7	4	1	1	1.2

Player Averages

Games Played	Minutes/game	Points/game	FG Pct	3FG Pct	FT Pct	Rebounds/game	Assists/game	Turnovers/game	Assist/Turnover ratio	Steals/game	Blocks/game
6	6.6	1.2	75.0	0.0	100.0	1.3	1.2	0.7	1.8	0.2	0.2

IZZY ANSTEY'S CAREER STATISTICS

ANSTEY, Izzy

				Field Goals		3-Point		F-Throws		Rebounds				Scoring						
SEASON	TEAM	GP-GS	MIN/AVG	FG-FGA	FG%	3FG-3FGA	3FG%	FT-FTA	FT%	OFF	DEF	TOT	AVG	PF-FO	A	TO	BLK	STL	PTS	AVG
2021-22	UCLA	27-3	400/14.8	33-95	.347	1-1	1.000	9-21	.429	28	80	108	4.0	66-3	21	36	20	14	76	2.8
2022-23	UCLA	6-0	18/3.0	2-5	.400	0-0	.000	0-0	.000	3	2	5	0.8	7-0	2	2	1	0	4	0.7
2023-24	UCLA	6-0	39/6.6	3-4	.750	0-0	.000	1-1	1.000	1	7	8	1.3	8-0	7	4	1	1	7	1.2
TOTAL		39-3	457/11.7	38-104	.365	1-1	1.000	10-22	.455	32	89	121	3.1	81-3	30	42	22	15	87	2.2

Single Game Highs

Statistic	Value	
Points	8	at Oregon St. 01/30/22
Rebounds	13	at Colorado 01/09/22
Assists	4	vs CSUN 11/18/21
Steals	2	vs UC Irvine 03/18/22
Blocks	2	6 times
FG Made	3	at Southern California 01/23/22, vs Colorado 02/18/22, at Oregon St. 01/30/22
FG Attempts	8	vs Colorado 02/18/22
3FG Made	1	vs Utah 02/20/22
3FG Attempts	1	vs Utah 02/20/22
FT Made	3	vs UConn 12/11/21
FT Attempts	4	vs UConn 12/11/21, at Oregon St. 01/30/22



LAUREN BETTS (51)

Sophomore | Center | 6-7 | Centennial, Colo. (Grandview/Stanford)

KEY NOTES ON LAUREN BETTS

- Entering her first season with the Bruins after a season with the Stanford Cardinal.
- Played 33 games for The Cardinal, scoring 5.9 PPG on a team-best .602 FG% in just 9.6 minutes per game.
- Named Pac-12 All-Freshman Team Honorable Mention (Coaches) and Pac-12 Freshman of the Week (Feb. 13, 2023) in the 2022-23 season.
- Teamed up with Charisma Osborne at the 2023 FIBA Women's AmeriCup on Team USA's silver-medal squad. Averaged 11.4 PPG, 10.9 RPG in seven games.
- Tallest player on a UCLA roster in the Cori Close-led Bruin era since Savanna Trapp (6-9, 2013-14, DNP).

LAUREN BETTS'S GAME-BY-GAME STATISTICS (2023-24)

#51 BETTS, Lauren

Opponent	Date	GS	MIN	Total		3-Pointers		Free throws		Rebounds				PF	A	TO	BLK	STL	PTS	AVG
				FG-FGA	PCT	3FG-3FGA	PCT	FT-FTA	PCT	OFF	DEF	TOT	AVG							
Purdue	11/06/2023	*	20:47	9-11	.818	0-0	.000	2-3	.667	4	3	7	7.0	1	1	2	2	0	20	20.0
UC Riverside	11/09/2023	*	26:09	6-7	.857	0-0	.000	2-4	.500	3	12	15	11.0	0	4	2	1	0	14	17.0
Bellarmino	11/12/2023	*	27:37	9-15	.600	0-0	.000	4-7	.571	9	2	11	11.0	1	1	0	1	1	22	18.7
Princeton	11/17/2023	*	25:22	9-9	1.000	0-0	.000	4-4	1.000	3	7	10	10.8	1	1	3	1	0	22	19.5
vs UConn	11/24/2023	*	34:47	5-7	.714	0-0	.000	3-3	1.000	2	5	7	10.0	1	0	3	0	0	13	18.2
vs Niagara	11/25/2023	*	05:22	1-1	1.000	0-0	.000	0-0	.000	1	1	2	8.7	0	0	1	3	0	2	15.5
Totals		6	140:04	39-50	.780	0-0	.000	15-21	.714	22	30	52	8.7	4	7	11	8	1	93	15.5

Player Averages

Games Played	Minutes/game	Points/game	FG Pct	3FG Pct	FT Pct	Rebounds/game	Assists/game	Turnovers/game	Assist/Turnover ratio	Steals/game	Blocks/game
6	23.3	15.5	78.0	0.0	71.4	8.7	1.2	1.8	0.6	0.2	1.3

LAUREN BETTS'S CAREER STATISTICS

BETTS, Lauren

				Field Goals		3-Point		F-Throws		Rebounds				Scoring						
SEASON	TEAM	GP-GS	MIN/AVG	FG-FGA	FG%	3FG-3FGA	3FG%	FT-FTA	FT%	OFF	DEF	TOT	AVG	PF-FO	A	TO	BLK	STL	PTS	AVG
2022-23	Stan	33-0	318/9.6	80-133	.602	0-0	.000	34-60	.567	44	73	117	3.5	11-0	16	16	29	5	194	5.9
2023-24	UCLA	6-6	140/23.3	39-50	.780	0-0	.000	15-21	.714	22	30	52	8.7	4-0	7	11	8	1	93	15.5
TOTAL FOR UCLA		6-6	140/23.3	39-50	.780	0-0	.000	15-21	.714	22	30	52	8.7	4-0	7	11	8	1	93	15.5
TOTAL		39-6	458/11.7	119-183	.650	0-0	.000	49-81	.605	66	103	169	4.3	15-0	23	27	37	6	287	7.4

Single Game Highs

Statistic	Value	
Points	22	vs Bellarmine 11/12/23, vs Princeton 11/17/23
Rebounds	15	vs UC Riverside 11/09/23
Assists	4	vs UC Riverside 11/09/23
Steals	3	at Portland 11/13/22
Blocks	4	at Arizona 02/09/23
FG Made	9	vs Purdue 11/06/23, vs Bellarmine 11/12/23, vs Princeton 11/17/23
FG Attempts	15	vs Bellarmine 11/12/23
FT Made	4	5 times
FT Attempts	7	vs Bellarmine 11/12/23



# 2023-24 UCLA WBB STATISTICS

Overall: 6-0 Home: 4-0 Away: 0-0 Neutral: 2-0 Pac-12: 0-0

## UCLA Combined Team Statistics

### Game Records

Record	Overall	Home	Away	Neutral
ALL GAMES	6-0	4-0	0-0	2-0
CONFERENCE	0-0	0-0	0-0	0-0
NON-CONFERENCE	6-0	4-0	0-0	2-0

### Score by Periods

Team	1st	2nd	3rd	4th	OT	TOT
UCLA	147	115	139	146	0	547
Opponents	44	118	99	91	0	352

### Team Box Score

No.	Player				Total		3-Point		F-Throw		Rebounds											
		GP-GS	MIN	AVG	FG-FGA	FG%	3FG-3FGA	3FG%	FT-FTA	FT%	OFF	DEF	TOT	AVG	PF	DQ	A	TO	BLK	STL	PTS	AVG
23	JAQUEZ, Gabriela	6-3	155:48	26.0	39-68	.574	5-17	.294	14-19	.737	14	25	39	6.5	15	0	8	8	1	5	97	16.2
51	BETTS, Lauren	6-6	140:04	23.3	39-50	.780	0-0	.000	15-21	.714	22	30	52	8.7	4	0	7	11	8	1	93	15.5
20	OSBORNE, Charisma	6-6	177:46	29.6	29-63	.460	20-37	.541	13-15	.867	12	28	40	6.7	10	0	27	11	2	9	91	15.2
3	JONES, Londynn	6-5	153:54	25.7	24-64	.375	18-47	.383	16-18	.889	5	5	10	1.7	13	0	10	13	1	5	82	13.7
1	RICE, Kiki	6-6	178:21	29.7	29-54	.537	6-15	.400	17-19	.895	2	30	32	5.3	10	0	41	17	2	11	81	13.5
32	DUGALIĆ, Angela	4-4	88:34	22.1	14-32	.438	4-10	.400	3-4	.750	4	16	20	5.0	7	0	9	9	0	3	35	8.8
11	BESSOIR, Emily	1-0	22:42	22.7	2-4	.500	1-3	.333	1-2	.500	1	3	4	4.0	2	0	3	1	0	2	6	6.0
33	MUSE, Amanda	4-0	52:53	13.2	5-8	.625	0-0	.000	5-6	.833	3	7	10	2.5	3	0	4	3	6	2	15	3.8
22	IWUALA, Christeen	5-0	57:17	11.5	7-15	.467	0-0	.000	2-6	.333	9	5	14	2.8	13	1	0	4	1	2	16	3.2
21	SONTAG, Lina	3-0	43:25	14.5	4-8	.500	1-2	.500	0-0	.000	2	3	5	1.7	6	0	6	6	5	2	9	3.0
35	BROWN, Camryn	6-0	89:56	15.0	7-18	.389	1-7	.143	0-0	.000	7	11	18	3.0	11	0	9	8	3	5	15	2.5
43	ANSTEY, Izzy	6-0	39:20	6.6	3-4	.750	0-0	.000	1-1	1.000	1	7	8	1.3	8	0	7	4	1	1	7	1.2
Team											18	13	31					1				
Total		6	1200		202-388	.521	56-138	.406	87-111	.784	100	183	283	47.2	102	1	131	96	30	48	547	91.2
Opponents		6	1200		119-357	.333	46-148	.311	68-98	.694	62	97	159	26.5	105	4	70	93	8	41	352	58.7

### Team Statistics

	UCLA	OPP
<b>Scoring</b>	<b>547</b>	<b>352</b>
Points per game	91.2	58.7
Scoring margin	+32.5	-
<b>Field goals-att</b>	<b>202-388</b>	<b>119-357</b>
Field goal pct	.521	.333
<b>3 point fg-att</b>	<b>56-138</b>	<b>46-148</b>
3-point FG pct	.406	.311
3-pt FG made per game	9.3	7.7
<b>Free throws-att</b>	<b>87-111</b>	<b>68-98</b>
Free throw pct	.784	.694
F-Throws made per game	14.5	11.3
<b>Rebounds</b>	<b>283</b>	<b>159</b>
Rebounds per game	47.2	26.5
Rebounding margin	+20.7	-
<b>Assists</b>	<b>131</b>	<b>70</b>
Assists per game	21.8	11.7
<b>Turnovers</b>	<b>96</b>	<b>93</b>
Turnovers per game	16.0	15.5
Turnover margin	-0.5	-
Assist/turnover ratio	1.4	0.8
<b>Steals</b>	<b>48</b>	<b>41</b>
Steals per game	8.0	6.8
<b>Blocks</b>	<b>30</b>	<b>8</b>
Blocks per game	5.0	1.3
<b>Winning streak</b>	<b>6</b>	<b>-</b>
Home win streak	4	-
<b>Attendance</b>	<b>5213</b>	<b>0</b>
Home games-Avg/Game	4-1303	0-0
Neutral site-Avg/Game	-	2-300

### Team Results

Date	Opponent		Score	Att.
11/06/2023	Purdue	W	92-49	2157
11/09/2023	UC Riverside	W	90-52	1431
11/12/2023	Bellarmine	W	113-64	1625
11/17/2023	Princeton	W	77-74	0
11/24/2023	vs UConn	W	78-67	300
11/25/2023	vs Niagara	W	97-46	300

# 2023-24 UCLA WBB STATISTICS

Overall: 6-0 Home: 4-0 Away: 0-0 Neutral: 2-0 Pac-12: 0-0

## UCLA GAME-BY-GAME STATISTICS



### 2023-24 UCLA Women's Basketball Team Game-by-Game All games

Page 1/1  
as of Nov 20, 2023

				Total		3-Pointers		Free throws		Rebounds											
Opponent	Date	Score		FG-FGA	PCT	3FG-3FGA	PCT	FT-FTA	PCT	OFF	DEF	TOT	AVG	PF	A	TO	BLK	STL	PTS	AVG	
Purdue	11/06/2023	92-49	W	35-64	.547	13-28	.464	9-12	.750	16	24	40	40.0	18	29	15	4	10	92	92.0	
UC Riverside	11/09/2023	90-52	W	33-63	.524	11-28	.393	13-16	.813	14	38	52	46.0	8	23	16	5	4	90	91.0	
Bellarmine	11/12/2023	113-64	W	42-85	.494	13-33	.394	16-21	.762	25	31	56	49.3	15	27	7	5	13	113	98.3	
Princeton	11/17/2023	77-74	W	27-53	.509	2-9	.222	21-27	.778	14	24	38	46.5	23	11	16	3	2	77	93.0	
Total		372		137-265	.517	39-98	.398	59-76	.776	69	117	186	46.5	64	90	54	17	29	372	93.0	
Opponents		239		82-226	.363	30-100	.300	45-60	.750	29	66	95	23.8	70	49	57	6	25	239	59.8	

### UCLA Averages

Games Played	Points/game	FG Pct	3FG Pct	FT Pct	Rebounds/game	Assists/game	Turnovers/game	Assist/Turnover ratio	Steals/game	Blocks/game
4	93.0	51.7	39.8	77.6	46.5	22.5	13.5	1.7	7.3	4.3

# 2023-24 UCLA WBB STATISTICS

Overall: 6-0 Home: 4-0 Away: 0-0 Neutral: 2-0 Pac-12: 0-0

## GAME-BY-GAME LEADERS

### Game Records

Record	Overall	Home	Away	Neutral
ALL GAMES	6-0	4-0	0-0	2-0
CONFERENCE	0-0	0-0	0-0	0-0
NON-CONFERENCE	6-0	4-0	0-0	2-0

### Team Results

Date	Opponent		Score	Att.	High Points	High Rebounds
11/06/2023	Purdue	W	92-49	2157	(20) BETTS, Lauren (20) JONES, Londynn	(7) BETTS, Lauren
11/09/2023	UC Riverside	W	90-52	1431	(18) RICE, Kiki (18) JAQUEZ, Gabriela	(15) BETTS, Lauren
11/12/2023	Bellarmine	W	113-64	1625	(30) JAQUEZ, Gabriela	(12) JAQUEZ, Gabriela
11/17/2023	Princeton	W	77-74	0	(22) BETTS, Lauren	(10) BETTS, Lauren
11/24/2023	vs UConn	W	78-67	300	(24) RICE, Kiki	(11) RICE, Kiki
11/25/2023	vs Niagara	W	97-46	300	(23) JAQUEZ, Gabriela	(7) OSBORNE, Charisma (7) DUGALIĆ, Angela

### Attendance Summary

	Games	Attend	Avg/Game
Home	4	5213	1303
Away	0	0	0
Neutral	2	600	300
<b>Total</b>	<b>6</b>	<b>5813</b>	<b>969</b>



# 2023-24 UCLA WBB STATISTICS

Overall: 6-0 Home: 4-0 Away: 0-0 Neutral: 2-0 Pac-12: 0-0

UCLA Points-Rebounds-Assists



## 2023-24 UCLA Women's Basketball Points-rebounds-assists All games

Page 1/1  
as of Nov 29, 2023

Opponent	Date	Score		1	3	11	20	21	22	23	32	33	35	43
				RICE,KIKI	JONES,LOND	BESSOIR,EM	OSBORNE,CH	SONTAG,LIN	IWUALA,CHR	JAQUEZ,GAB	DUGALIC,AN	MUSE,AMAND	BROWN,CAMR	ANSTEY,IZZ
Purdue	11/06/2023	92-49	W	10-4-10	20-3-1	6-4-3	11-5-7	DNP	DNP	8-5-0	13-2-2	4-4-1	0-2-2	0-0-2
UC Riverside	11/09/2023	90-52	W	18-4-3	15-2-3	DNP	13-11-5	DNP	6-2-0	18-7-1	DNP	2-1-2	0-3-3	4-6-2
Bellarmine	11/12/2023	113-64	W	8-6-11	21-3-4	DNP	24-10-4	DNP	4-2-0	30-12-2	DNP	0-1-1	4-7-2	0-0-2
Princeton	11/17/2023	77-74	W	13-2-1	0-0-1	DNP	21-3-3	2-1-0	3-5-0	11-3-3	5-4-2	DNP	0-0-0	0-0-0
vs UConn	11/24/2023	78-67	W	24-11-8	5-1-0	DNP	18-4-3	3-1-1	0-0-0	7-6-1	3-7-2	DNP	5-3-1	0-0-0
vs Niagara	11/25/2023	97-46	W	8-5-8	21-1-1	DNP	4-7-5	4-3-5	3-5-0	23-6-1	14-7-3	9-4-0	6-3-1	3-2-1

Opponent	Date	Score		51
				BETTS,LAUR
Purdue	11/06/2023	92-49	W	20-7-1
UC Riverside	11/09/2023	90-52	W	14-15-4
Bellarmine	11/12/2023	113-64	W	22-11-1
Princeton	11/17/2023	77-74	W	22-10-1
vs UConn	11/24/2023	78-67	W	13-7-0
vs Niagara	11/25/2023	97-46	W	2-2-0