



JERRY AND GENE JONES STUDENT ATHLETE SUCCESS CENTER

DIAL 911 FROM ANY UNIVERSITY PHONE OR CELL PHONE

Location: **1229 W Meadow St.**

Student Athlete Success Center is located on Meadows St. next to John McConnel Stadium and across from the HPER.

AED Locations:

- Main level next to the elevator

Phone Locations :

FELECIA SAINÉ : 479.236.7935

Directions to EMS:

PRIMARY ENTRANCE: Access from **W Meadow St.** Enter through the main entrance on **W Meadow St** to the 2nd floor (**access to elevator to 1st floor**; personnel will meet and direct you).

SECONDARY ENTRANCE: Access from **W Meadow St**, turn **South** towards **Lot 55** and turn **East** into the parking lot. Enter the **Southside** of the building on the 1st floor (**access to elevator to the 2nd floor**; personnel will meet and direct you).

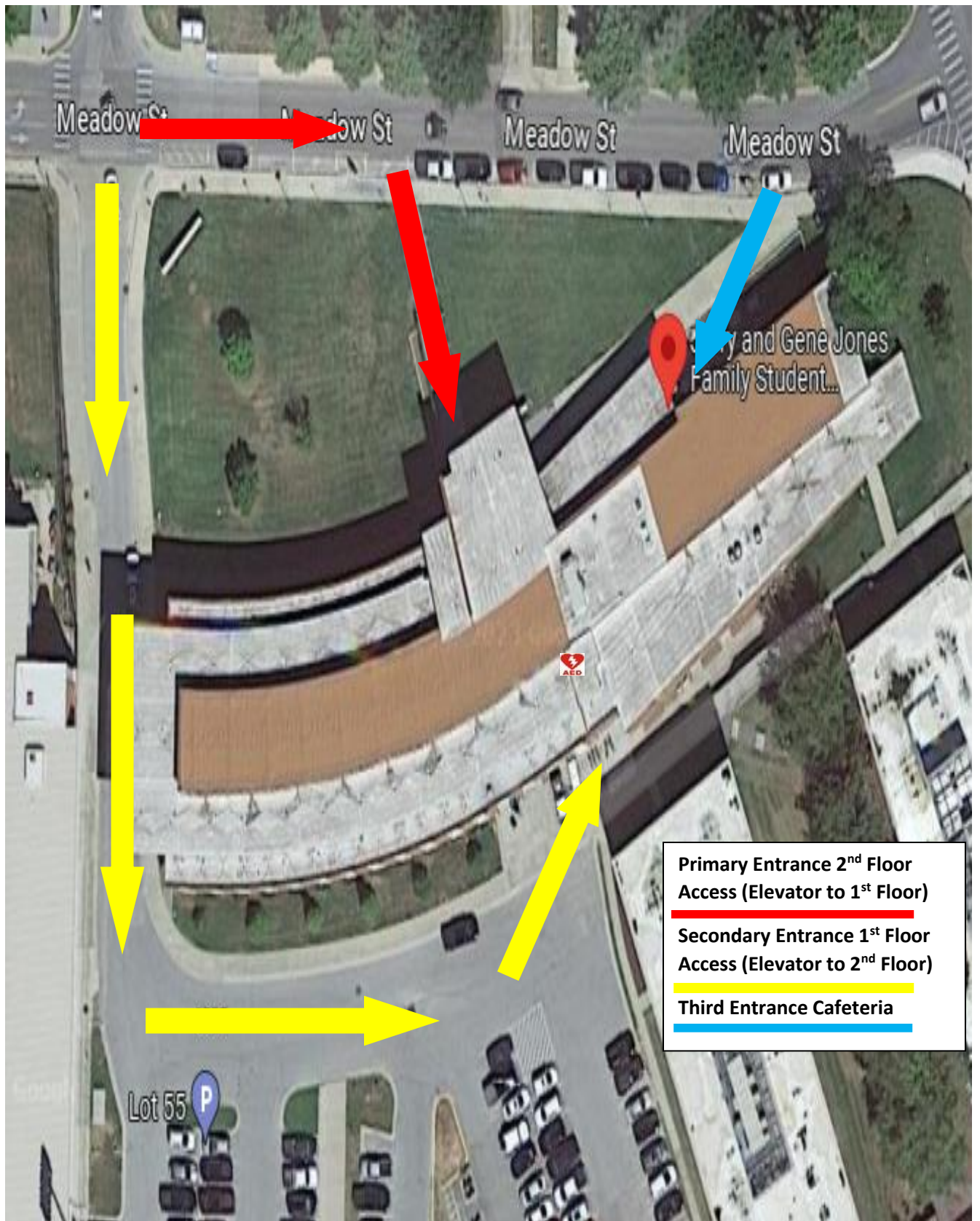
THIRD ENTRANCE: Main Access from **W Meadow St.** Enter through the **Emergency Cafeteria Entrance** (**East** of the main entrance; personnel will meet and direct you).

Emergency Equipment:

Located on Main level next to elevator

AED 

ARKANSAS
SPORTS MEDICINE



ARKANSAS
SPORTS MEDICINE