



# 2024-25 EAST TEXAS A&M LIONS WOMEN'S BASKETBALL



GAME TWO • at Arkansas • November 8 • 10:30 a.m.



**EAST TEXAS A&M LIONS (1-0)**  
AT  
**ARKANSAS RAZORBACKS (0-1)**  
Fri., November 8, 10:30 a.m.  
Fayetteville, Ark. • Bud Walton Arena



## SCOUTING THE RAZORBACKS

- Arkansas hosted Fairfield in the season opener on Monday, falling 81-67 to the Stags, who advanced to the NCAA Tournament a year ago.
- The Razorbacks went 18-15 last season and 6-10 in the SEC. In the new-look SEC, the Hogs were picked to finish 16th in the SEC by the media.
- Izzy Higginbottom scored 22 points to lead the Razorbacks against Fairfield, while Jenna Lawrence picked up a double-double with 11 points and 10 rebounds.
- This is the first documented meeting between the two programs.

## QUICK GLANCE AT THE LIONS

- The Lions led UNT Dallas by just two points after the first quarter in Monday's season opener, but went on a 20-5 run in the second quarter and rolled to a 75-50 win over the Trailblazers.
- Returners Jordyn Newsome, Cora Horvath, and Jasmine Payne led the Lions in scoring with Newsome totaling 18, Horvath scoring 12, and Payne adding 10.
- This is the first road game of the season for the Lions, who went 4-10 in true road games a year ago and is the program's first game against an SEC opponent since playing at Mississippi State in 2022-23.

## PROJECTED STARTING LINEUP

### 0 Cora Horvath

5-7 • Guard • Sophomore  
Oberwart, Austria  
Theo-Koch-Schule Grunberg

Pts	Reb	Ast	3PT%
12.0	5.0	1.0	57.1



### NOTABLE STATS AND ACCOLADES

- Sophomore from Austria, but previously played at Theo-Koch-Schule-Gruberg in Germany
- Played for under-16, under 18, under-20 Austrian National Teams
- Played 27 games a year ago, starting 13 and averaged 3.7 rebounds per game.
- Scored 12 points with five rebounds in opener

### 2 Jordyn Newsome

5-8 • Guard • Senior  
Irving, Texas  
MacArthur HS

Pts	Reb	Ast	FG%
18.0	5.0	1.0	42.9



- Enters second season with the Lions, played two years at Coastal Carolina
- 2023-24 SLC Newcomer of the Year
- 2024-25 preseason second team all-Southland
- Led the team with 18 points and five rebounds in the season-opening win over UNT Dallas, making four three-pointers

### 4 Jamy De Kock

5-11 • Guard/Forward • Junior  
Woudrichem, The Netherlands  
Laramie County CC

Pts	Reb	Ast	FG%
2.0	2.0	3.0	50.0



- Junior transfer from Laramie County CC (Wyoming), originally from The Netherlands
- Played six games a year ago before missing the rest of the season due to injury
- Made season debut in the starting lineup against UNT Dallas, scoring two points in 13 minutes played

### 5 Nykesha Sanders

5-7 • Guard • Senior  
Detroit, Mich.  
Chandler Park Acad. (Tarleton)

Pts	Reb	Stl	Bk
2.0	1.0	3.0	2.0



- Senior transfer from Tarleton, played two seasons at Paris Junior College prior to that.
- Appeared in 27 games and started four games, totaling 28 points, 21 rebounds, 40 assists, and 11 steals at TSU
- Started the game against UNT Dallas, scoring two points, while recording two steals and three blocks in 33 minutes played.

### 54 Alva Hedrich

6-2 • Forward • Junior  
Muecke, Germany  
West Virginia Tech

Pts	Reb	Ast	FG%
9.0	14.0	1.0	80.0



- Junior transfer from West Virginia Tech, originally from Germany
- Two-time Riverstates Conference team honoree at WVU Tech
- Averaged 12.7 points, nine rebounds, and 2.2 assists per game
- Totaled nine points and 14 rebounds in opener

## SCHEDULE/RESULTS

Date	Opponent	Time
11/4/24	UNT DALLAS	W, 75-50
11/8/24	at Arkansas	10:30 a.m.
11/12/24	LETOURNEAU	6:30 p.m.
11/14/24	at Baylor	7 p.m.
11/18/24	UT ARLINGTON	6:30 p.m.
11/21/24	at Texas Southern	4 p.m.
11/29/24	vs. Seattle%	Noon MST
11/30/24	at Grand Canyon%	2:30 p.m. MST
12/7/24	at Abilene Christian	1 p.m.
12/14/24	at Houston Christian*	1 p.m.
12/20/24	at UIW*	1 p.m.
1/2/25	NICHOLLS*	6:30 p.m.
1/4/25	MCNEESE*	Noon
1/9/25	at UTRGV*	6:30 p.m.
1/16/25	SOUTHEASTERN*	6:30 p.m.
1/18/25	NEW ORLEANS*	Noon
1/23/25	at SFA*	6:30 p.m.
1/25/25	at Lamar*	3 p.m.
1/30/25	A&M-CORPUS CHRISTI*	6:30 p.m.
2/1/25	NORTHWESTERN STATE*	Noon
2/6/25	at McNeese*	6 p.m.
2/8/25	at Nicholls*	1 p.m.
2/13/25	SFA*	6:30 p.m.
2/15/25	LAMAR*	Noon
2/20/25	at New Orleans*	6:30 p.m.
2/22/25	at Southeastern*	1 p.m.
2/27/25	HOUSTON CHRISTIAN*	6:30 p.m.
3/1/25	UIW*	Noon
3/5/25	at Northwestern State*	6:30 p.m.
3/10-13	SLC Tournament#	TBA

ALL CAPS indicates home games at the Field House  
\* indicates Southland Conference game  
& indicates GCU Thanksgiving Classic (Phoenix)  
# indicates Southland Tournament game (Lake Charles, La.)

### A&M-Commerce Quick Facts

Location ..... Commerce, TX  
Founded ..... 1889  
Enrollment ..... 11,580  
Nickname ..... Lions  
Colors ..... Blue and Gold  
Abbreviation ..... TAMUC  
Arena ..... The Field House  
Affiliation ..... NCAA Division I  
Conference ..... Southland  
President ..... Dr. Mark Rudin  
Athletic Director ..... Jim Curry

## MEDIA CONTACT

Avi Mehta • Assistant AD for Communications  
(732) 407-5640  
Avi.Mehta@tamuc.edu



## Head Coach Valerie King



Valerie King, a veteran collegiate coach at the Division I level was tabbed as the next women's basketball coach at East Texas A&M by Director of Athletics Jim Curry in April 2023. She is the ninth head coach in program history.

King guided the Lions to 15 wins, which is the program record under a first-year coach, and continued long-standing streaks of playing in the postseason and advanced to the SLC Tournament Semifinals for the second straight year.

She came to Commerce after spending the last seven seasons on the coaching staff at New Mexico, including serving as associate head coach for the Lobos in 2022-23.

King has had success at every level during her career as a player and coach. During her time at New Mexico the program went 141-78 (.644) and earned a postseason berth five times.

New Mexico won 20 games or more four times and won the on 2020-21 regular season title. The Lobo teams were exceptional on offense during her time in Albuquerque as UNM finished in the Top 20 nationally in three-pointers made in each of the last three seasons, finishing third in 2021-22.

Prior to New Mexico, King also worked with coach Mike Bradbury at Wright State for six years. The Raiders made five postseason appearances with King on the staff, including the NCAA Tournament in 2013-14.

Prior to Wright State, King spent three seasons on the staff at Morehead State. In 2009-10, Morehead State led the NCAA in three-pointers made per game (10.3). That year Morehead State finished 22-11.

As a player, King was a four-year starter for the University of Cincinnati from 2000-04. She ended her Bearcat career as the all-time leader in three-pointers made with 338, which was also the Conference USA record at the time and is second now.

A native of Washington Court House, Ohio, King graduated from Cincinnati with a degree in communication and earned a master's degree from Louisville in sports administration. King and her husband Brandon have two children, Camden and Emersyn.

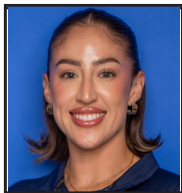
## East Texas A&M Assistants



Brechelle Beachum



Trevor Moyer



Jaedyn De La Cerda



Madi Washington

## LION RESERVES IN NUMERICAL ROSTER

**3** **Nina Horvath**  
5-8 • Guard • Sophomore  
Obertwart, Austria  
UNC Greensboro

Pts	Reb	Ast	Stl
8.0	1.0	2.0	3.0



- Sophomore transfer from UNC Greensboro, originally from Austria and twin sister with Cora Horvath.
- Appeared in 10 games and scored 23 points, one block, four steals, four rebounds, and four assists at UNCC
- Recorded eight points, three steals, and two assists in the opener against UNT Dallas

**1** **Keiori Lee**  
5-10 • Guard • Senior  
Flint, Mich.  
Avondale Senior HS (UT Arlington)

Pts	Reb	Ast	Stl
0.0	0.0	0.0	0.0



- Senior transfer from UT Arlington
- Appeared in 33 games and averaged 3.1 points, 2.6 rebounds per game, while totaling 29 assists, 16 steals, and eight blocks with the Mavericks
- Missed the season opener due to injury

**7** **J'Unti Franklin**  
5-6 • Guard • Junior  
Natchitoches, La.  
Butler CC

Pts	Reb	Ast	DReb
0.0	2.0	1.0	2.0



- Junior transfer from Butler Community College, played high school ball at Lincoln High School in Nebraska and Natchitoches Central High School in Louisiana
- Averaged six points, 3.5 rebounds, 2.1 assists per game at Butler CC
- Played 18 minutes in the win over UNT Dallas

**10** **Ahmya Boyce**  
5-6 • Guard • Senior  
Newport News, Va.  
Woodside HS (Moberly Area CC)

Pts	Reb	Ast	Stl
0.0	0.0	0.0	0.0



- Enters second season with program, a transfer from Moberly Area CC (Missouri)
- Started 43 games and appeared in 61 games at Moberly Area CC, averaging 6.1 points in junior college career
- Started all games, scoring in double digits in 19 games, eight in SLC in three-point percentage last year

**11** **Makenna Armstrong**  
6-2 • Forward • Freshman  
Rockwall, Texas  
Rockwall HS

Pts	Reb	Ast	FG%
0.0	0.0	0.0	0.0



- True freshman from Rockwall
- Did not appear in the game against UNT Dallas

**21** **Jasmine Payne**  
6-0 • Forward • Senior  
Montgomery, Ala.  
Sidney Lanier HS (Tyler JC)

Pts	Reb	Ast	Stl
10.0	5.0	0.0	0.0



- NJCAA Champion at Tyler Junior College, third year with Lions
- Appeared in 31 games and started 16 last season, including all three postseason games in the SLC Tournament
- Scored 10 off the bench against UNT Dallas along with five rebounds

**22** **Hannah Humphrey**  
5-7 • Guard • Senior  
Kendleton, Texas  
Lamar Consolidated (UTA)

Pts	Reb	Ast	DReb
3.0	5.0	0.0	3.0



- Senior transfer from UT Arlington, played two seasons at Blinn College as well
- Appeared in 32 games and averaged 4.7 points and 1.3 rebounds at UT Arlington
- NJCAA All-American at Blinn College
- Scored three points along with five rebounds in the win over UNT Dallas

**34** **Nyaluak Dak**  
6-2 • Forward • Freshman  
Lincoln, Neb.  
Lincoln Southeast HS

Pts	Reb	Ast	FG%
9.0	4.0	0.0	80.0



- True freshman from Nebraska
- Scored nine points in 12 minutes along with four rebounds and one block in the win over UNT Dallas

**44** **Trinity Moreland**  
6-2 • Forward • Junior  
Charlotte, N.C.  
Chambers HS (Gardner-Webb)

Pts	Reb	Ast	FT%
2.0	4.0	1.0	100.0



- Junior transfer from Gardner-Webb and played at Kansas City as well
- Played in 21 games and averaged 3.5 points at Gardner-Webb, played 23 games at Kansas City
- Scored two points at the line in five minutes, while grabbing four rebounds in five minutes of action against UNT Dallas

## LIONS ONLINE

Facebook: East Texas A&M Lion Athletics  
Twitter: @Lion\_WBB, @Lion\_Athletics  
Instagram: @ETAMU\_WBB, @Lion\_Athletics  
Website: www.LionAthletics.com

YouTube: Lion\_Athletics

2024-25 East Texas A&M Women's Basketball



## The King File

### Education

College ..... Cincinnati, 2004

### THE KING RESUME

Year	School	Overall	SLC
2023-24	East Texas A&M	15-16	8-10
2024-25	East Texas A&M	1-0	0-0

**Totals First Season 16-16 8-10**

### 2024-25 Southland Preseason Poll

1..... Lamar (19) ..... 236
2..... Southeastern (5) ..... 213
3..... Texas A&M-Corpus Christi ..... 200
4..... Stephen F. Austin ..... 193
5..... UIW ..... 149
<b>6..... EAST TEXAS A&amp;M ..... 112</b>
7..... Nicholls ..... 108
8..... New Orleans ..... 102
9..... UTRGV ..... 92
10..... Northwestern State ..... 67
11..... McNeese ..... 61
12..... Houston Christian ..... 51

### 2024-25 SLC Preseason All-Conference

#### FIRST TEAM

Name	School
<b>Akasha Davis</b>	<b>Lamar</b>
<b>Sabria Dean</b>	<b>Lamar</b>
<b>Lexi Alexander</b>	<b>Southeastern</b>
<b>Mireia Aguado</b>	<b>Texas A&amp;M-Corpus Christi</b>
<b>Paige Allen</b>	<b>Texas A&amp;M-Corpus Christi</b>

#### SECOND TEAM

<b>Britiya Curtis</b>	<b>Nicholls</b>
<b>Ashlyn Traylor</b>	<b>SFA</b>
<b>Taylor Bell</b>	<b>Southeastern</b>
<b>Jalencia Pierre</b>	<b>Southeastern</b>
<b>JORDYN NEWSOME</b>	<b>EAST TEXAS A&amp;M</b>

No.	Name	Pos.	Ht.	Yr.	Hometown	High / Previous School
0	Cora Horvath	So.	G	5-7	Oberwart, Austria	Theo-Koch-Schule Grünberg
1	Keiori Lee	Sr.	G	5-10	Flint, Mich.	Avondale Senior HS/UT Arlington
2	Jordyn Newsome	Sr.	G	5-8	Irving, Texas	MacArthur HS/Coastal Carolina
3	Nina Horvath	So.	G	5-8	Oberwart, Austria	Theo-Koch-Schule Grünberg/UNC Greensboro
4	Jamy De Kock	Jr.	G/F	5-11	Woudrichem, The Netherlands	CS De Hoven Schans/Laramie County CC
5	Nykesha Sanders	Sr.	G	5-7	Detroit, Mich.	Chandler Park Academy/Tarleton
7	J'Unti Franklin	Jr.	G	5-6	Natchitoches, La.	Natchitoches Central HS/Lincoln HS/Butler CC
10	Ahmya Boyce	Sr.	G	5-6	Newport News, Va.	Woodside HS/Moberly Area CC
11	Makenna Armstrong	Fr.	F	6-2	Rockwall, Texas	Rockwall HS
21	Jasmine Payne	Sr.	F	6-0	Montgomery, Ala.	Sidney Lanier HS/Tyler JC
22	Hannah Humphrey	Sr.	G	5-7	Kendleton, Texas	Lamar Consolidated HS/UT Arlington
35	Nyaluak Dak	Fr.	F	6-2	Lincoln, Neb.	Lincoln Southeast HS
44	Trinity Moreland	Jr.	F	6-2	Charlotte, N.C.	Julius L. Chambers HS/Gardner-Webb
54	Alva Hedrich	Jr.	F	6-2	Muecke, Germany	Theo-Koch-Schule Grünberg/West Virginia Tech

## COACHING STAFF

Head Coach: Valerie King (Second Season)

Assistant Coaches: Brechelle Beachum, Trevor Moyer  
Jaedyn De La Cerda

Director of Basketball Operations: Madi Washington

## Pronunciation Guide

0 - hor-VATH  
1 - key-AA-ree  
3 - hor-VATH  
4 - duh-coke  
5 - NY-key-sha  
7 - jay-ON-tee

10 - uh-MY-yeah  
35 - ny-LOCK  
54 - HEAD-rich





## 2024-25 Southland Standings

SCHOOL	CONF	PCT.	OVERALL	PCT.	STREAK
A&M-Corpus Christi	0-0	.000	1-0	1.000	W1
<b>EAST TEXAS A&amp;M</b>	<b>0-0</b>	<b>.000</b>	<b>1-0</b>	<b>1.000</b>	<b>W1</b>
Lamar	0-0	.000	1-0	1.000	W1
McNeese	0-0	.000	1-0	1.000	W1
Northwestern State	0-0	.000	1-0	1.000	W1
SFA	0-0	.000	1-0	1.000	W1
Southeastern	0-0	.000	1-0	1.000	W1
UTRGV	0-0	.000	1-0	1.000	W1
Nicholls	0-0	.000	0-0	.000	
HCU	0-0	.000	0-1	.000	L1
New Orleans	0-0	.000	0-1	.000	L1
UIW	0-0	.000	0-1	.000	L1

## Matchup By The Numbers

Lions	Category	Razorbacks
75.0	Scoring Offense	67.0
50.0	Scoring Defense	81.0
+25.0	Scoring Margin	-14.0
36.1	Field Goal Percentage	38.3
32.1	Opponent Field Goal Pct.	48.5
30.8	3-point Percentage	33.3
78.6	Free Throw Percentage	85.7
11.0	Free Throws Att./Game	12.0
50.0	Rebounds Per Game	31.0
+14.0	Rebounding Margin	-9.0
21.0	Assists Per Game	10.0
18.0	Turnovers Per Game	14.0
+4.0	Turnover Margin	-2.0
25.0	Points Off Turnovers	18.0
9.0	Steals Per Game	2.0
7.0	Blocks Per Game	4.0

## Team Notes

### Brand New Waters

- The Lions are in the third season in NCAA Division I and the Southland Conference.
- This is the first time the Lions are changing conferences in program history.
- A&M-Commerce is eligible for the NCAA Tournament in the 2026-27 season.

### Some New Threads

- On Thursday, Texas A&M University System Board of Regents approved a name change of A&M-Commerce to East Texas A&M University.
- The Lions will wear a special jersey against Arkansas in an East Texas theme.

### Slow Start, Easy Win over UNT-D

- The Lions led by just two after the first quarter against UNT-Dallas, but a 20-5 favor in the second quarter pulled the Lions ahead on their first win of the season.
- East Texas A&M has now started 1-0 in each of the last six seasons.

### Newsome Named Second Team Preseason All-SLC

- After being named the conference Newcomer of the Year last season, Jordyn Newsome was named to preseason second team all-Southland coming into the year.
- Newsome was one of the top scorers from outside the three-point arc in the conference a year ago.

### A New-Look SLC

- The Southland Conference welcomes two new members to the conference this year in SFA and UTRGV.
- The Lions have played SFA just once, while having never played UTRGV.

### Lions Picked Sixth In SLC Preseason Poll

- In the new-look Southland, the Lions were picked to finish sixth, after a fifth-place finish a year ago.
- The Lions have finished fifth or tied for fourth in both seasons in the SLC.

### King Has Got It Done

- The first season under Valerie King was historic for the Lions.
- The win over UIW in the SLC Tournament gave the Lions the most wins under a first-year coach and are the most in the Division I era.

### We Belong Here

- East Texas A&M has advanced to the semifinal round of the conference tournament for six straight seasons.
- The Lions have also won two post-season games for the fifth straight season.

### Defied the odds

- In the preseason Southland poll, the Lions were picked eighth, but finished in a tie for fifth with a conference record of 8-10.

### Top-Scoring Offense In the Southland

- The Lions finished the season averaging 69.6 points per game, which was the top scoring offense in the conference.

### Deck and Newsome earn All-Southland Recognition

- Mia Deck was named to second team all-conference by the Southland on Saturday, it is the first all-conference recognition in her career.
- Jordyn Newsome, a junior transfer from Coastal Carolina, was named the Newcomer of the Year. She is the program's first Newcomer of the Year since Lion Athletics Hall of Famer, Britney Jordan in 2006-07.
- The two honorees on the all-conference honor roll are the most for the program in the Division I era.

### A Rare Overtime Game

- The Lions went into overtime against New Orleans, which was just the second overtime game since November 2018, and first in the regular season.

### Near-Comeback against SLU

- A&M-Commerce trailed by 30 against Southeastern, before making it a five-point game.
- The 30-point comeback would have been the second-biggest in NCAA Division I history.

### Historic Win over the Cowgirls

- The Lions won by 24 points over McNeese last season on the road.
- The margin of victory is largest on the road in the Division I era and second biggest against a conference opponent.
- The margin was also the highest for the Lions since Feb. 8, 2022.

### Back-To-Back Last-Second Winners

- The Lions have scored the go-ahead basket in the last minute in the wins over Idaho and Southern Utah.
- Mia Deck scored the game-winner

at Idaho, while Ahmya Boyce had the game-winner against Southern Utah.

### Unprecedented Start to the Season

- The Lions ended non-conference play with a record of 5-5 last season.
- The five wins are most in non-conference play during the Division I era.
- The Lions had three wins over NCAA Division I opponents in non-conference play, which also surpassed the 2022-23 season.

### Lions' rain threes to beat Trailblazers

- Despite trailing by double-digits in the first half, the Lions shot 14 three pointers to pick up the win over Utah Tech.
- The win snapped a two-game losing streak and is the first win over a Division I team this season.
- Both Mary Delgado and Ahmya Boyce scored 19 in the game, with Boyce hitting six three pointers.

### Just Fell Short at the Lobos

- Mia Deck's shot just fell short at the New Mexico in the 75-74 loss to the Lobos.
- The win for A&M-Commerce would have been the second over a Division I non-conference opponent and first on the road.

### Started on a High Note

- The Lions' 2-0 to start the season was the fourth in the last five years and for the first time in the Division I era.
- The Lions last lost in the season-opening game to start the 2018-19 season.

### Ended on a High Note

- The Lions ended their Division II era with four straight NCAA Tournament appearances and won a NCAA Tournament game in each of the last two seasons.
- East Texas A&M has five NCAA postseason appearances in program history, with four coming in the last four seasons of the Division II era.

## 2024-25 SLC Players of the Week

### All Time Record

First Season: 1971-72  
 All-Time Games: 1,364  
 All-Time Record: 561-803 (.413)  
 Record at the Field House: 246-197 (.555)  
 Record on the road: 138-320 (.301)  
 Record at neutral sites: 40-56 (.417)

### Lone Star Conference

First Season: 1982-83  
 Last Season: 2021-22  
 All-Time Lone Star Conference Games: 572  
 All-Time Record: 247-325 (.432)

### Southland Conference

First Season: 2022-23  
 All-Time Southland Games: 36  
 All-Time Record: 18-18 (.500)

\*Accurate records of which games were home, away and neutral were not kept until the 1987-88 season.

## DOUBLE DOUBLES - 0



LIONS IN THE NATIONAL LANDSCAPE

AP POLL  
OCTOBER 15

Rk	School (1st Place Votes)	Record	Pts.	Prev.
1	South Carolina (27)	0-0	745	1
2	UConn (2)	0-0	708	3
3	Southern California (1)	0-0	697	5
4	Texas	0-0	641	7
5	UCLA	0-0	628	10
6	Notre Dame	0-0	614	11
7	LSU	0-0	549	6
8	Iowa State	0-0	521	25
9	NC State	0-0	510	4
10	Oklahoma	0-0	441	21
11	Duke	0-0	439	17
<b>12</b>	<b>Baylor</b>	<b>0-0</b>	<b>422</b>	<b>13</b>
13	Kansas State	0-0	390	19
14	Ohio State	0-0	372	16
15	North Carolina	0-0	285	NR
16	West Virginia	0-0	277	24
17	Louisville	0-0	250	NR
18	Maryland	0-0	227	NR
19	Florida State	0-0	191	NR
20	Ole Miss	0-0	165	NR
21	Creighton	0-0	152	23
22	Kentucky	0-0	108	NR
23	Nebraska	0-0	106	NR
24	Alabama	0-0	67	NR
25	Indiana	0-0	46	12

Others receiving votes: Iowa 37, TCU 30, Utah 24, Illinois 23, Stanford 17, Michigan St. 16, Gonzaga 16, Vanderbilt 12, South Dakota St. 7, Miami 4, Tennessee 3, Fairfield 3, Middle Tennessee 3, Georgia Tech 2, Syracuse 1, Princeton 1.

USA TODAY/WBCA POLL  
OCTOBER 24

Rk	School (2023-24 record)	Pts	Prev.	1st-place votes
1	South Carolina (38-0)	770	1	27
2	Connecticut (33-6)	734	3	3
3	Southern California (29-6)	716	6	1
4	Texas (33-5)	670	5	0
5	Notre Dame (28-7)	629	11	0
6	UCLA (27-7)	612	9	0
7	LSU (31-6)	567	7	0
8	North Carolina State (31-7)	533	4	0
9	Iowa State (21-12)	487	NR	0
10	Oklahoma (23-10)	457	20	0
11	Duke (22-12)	449	21	0
12	Baylor (26-8)	434	15	0
13	Kansas State (26-8)	407	18	0
14	Ohio State (26-6)	405	14	0
15	West Virginia (25-8)	285	25	0
16	North Carolina (20-13)	263	NR	0
17	Louisville (24-10)	261	NR	0
18	Maryland (19-14)	254	NR	0
19	Florida State (23-11)	177	NR	0
20	Creighton (26-6)	150	19	0
21	Mississippi (24-9)	135	NR	0
22	Kentucky (12-20)	106	NR	0
23	Nebraska (23-12)	92	NR	0
24	Indiana (26-6)	75	12	0
25	Alabama (24-10)	57	NR	0

Dropped out: No. 2 Iowa (34-5); No. 8 Stanford (30-6); No. 10 Oregon State (27-8); No. 13 Gonzaga (32-4); No. 16 Colorado (24-10); No. 17 Virginia Tech (25-8); No. 22 Utah (23-11); No. 23 Syracuse (24-8); No. 24 UNLV (30-3)

Others receiving votes: Gonzaga (32-4) 49; TCU (21-12) 37; Stanford (30-6) 32; Tennessee (20-13) 32; Iowa (34-5) 28; Utah (23-11) 25; South Dakota State (27-6) 22; Oregon State (27-8) 21; Princeton (25-5) 18; Colorado (24-10) 15; Virginia Tech (25-8) 10; Illinois (19-15) 9; Middle Tennessee (30-5) 8; Fairfield (31-2) 7; California (19-15) 6; Richmond (29-6) 6; Auburn (20-12) 5; Florida Gulf Coast (29-5) 4; Miami (Fla.) (19-12) 4; UNLV (30-3) 4; South Florida (19-14) 3; George Mason (23-8) 2; Cleveland State (29-6) 1; Michigan (20-14) 1; Saint Joseph's (28-6) 1

MID MAJOR TOP-25  
OCTOBER 29

Rk	School (1st Place Votes)	Record	Pts.	Prev.
1	Gonzaga (27)	0-0	768	-
2	FGCU (2)	0-0	737	-
3	Ball State (1)	0-0	689	-
4	Middle Tennessee (1)	0-0	673	-
5	Princeton	0-0	633	-
6	Drake	0-0	559	-
7	South Dakota State	0-0	543	-
8	Cleveland State	0-0	541	-
9	Columbia	0-0	526	-
10	Green Bay	0-0	502	-
11	Fairfield	0-0	422	-
12	Northern Iowa	0-0	420	-
13	James Madison	0-	387	-
14	Norfolk State	0-0	360	-
15	Belmont	0-0	322	-
16	Kent State	0-0	288	-
17	NC A&T	0-0	264	-
<b>18</b>	<b>Grand Canyon</b>	<b>0-0</b>	<b>225</b>	-
19	Hawaii	0-0	194	-
20	Troy	0-0	139	-
21	California Baptist	0-0	106	-
22	Wofford	0-0	97	-
23	Southern Indiana	0-0	93	-
<b>24</b>	<b>Lamar</b>	<b>0-0</b>	<b>79</b>	-
25	Northern Arizona	0-0	73	-

Others receiving votes: Maine 51, Harvard 42, Portland 38, UT Martin 28, UC Irvine 24, Eastern Washington 22, Loyola MD 21, High Point 19, Central Arkansas 17, Chattanooga 17, Drexel 17, Grambling 17, Jackson State 15, Montana 14, Marshall 12, **Southeastern 11**, Stony Brook 11, Buffalo 10, ULM 9, Penn 7, Bowling Green 6, Fairleigh Dickinson 5, Liberty 7, Murray State 4, **Texas A&M Corpus Christi 5**, Lipscomb 2, Missouri State 2, Montana State 2, Albany 1, Siena 1

**GAME BY GAME LOOK AT THE LIONS****GAME BY GAME STARTERS**

<u>Date</u>	<u>Opponent</u>	<u>Result</u>	<u>G</u>	<u>G</u>	<u>G</u>	<u>G</u>	<u>F</u>
<i>Nov. 4</i>	<i>UNT DALLAS</i>	<i>W, 75-50</i>	<i>Horvath</i>	<i>Newsome</i>	<i>De Kock</i>	<i>Sanders</i>	<i>Hedrich</i>

**GAME BY GAME STATS LEADERS**

<u>Date</u>	<u>Min</u>	<u>Pts</u>	<u>Reb.</u>	<u>Ast.</u>	<u>Stl.</u>	<u>Blk.</u>	<u>TO</u>	<u>PF</u>
<i>Nov. 4</i>	<i>Sanders (33)</i>	<i>Newsome (18)</i>	<i>Hedrich (14)</i>	<i>Sanders (11)</i>	<i>Sanders &amp; Horvath (3)</i>	<i>Sanders &amp; Hedrich (2)</i>	<i>Horvath (6)</i>	<i>Sanders &amp; Hedrich (2)</i>



# THE LAST TIME IT HAPPENED

## THE LAST TIME A&M-COMMERCE...

### SCORING

Team record .....16 vs. Ranger J.C. J.V. (16-44), 1972-73  
 Scored less than 50 points..... 49 at Southeastern (49-65), 1/20/23  
 50-60 points ..... 58 vs. Lamar (58-83), 3/13/24  
 61-70 points..... 66 vs. UIW (66-57), 3/12/24  
 71-80 points..... 75 vs. UNT Dallas (75-50), 11/4/24  
 81-90 points ..... 84 vs. New Orleans (84-78), 2/10/24  
 91-99 points ..... 94 at McNeese (94-70), 2/1/24  
 100+ points..... 100 vs. Midwestern State (100-68), 1/23/22  
 Team record .....128 vs. Dallas Christian (128-33), 12/29/18

### FIELD GOAL PERCENTAGE

Shot 20-29 percent .....27.9 (19-68) vs. Southeastern, 2/8/24  
 Shot 30-39 percent ..... 36.1 (26-72) vs. UNT Dallas, 11/4/24  
 Shot 40-49 percent ..... 40.3 (25-62) vs. Northwestern State, 3/6/24  
 Shot 50+ percent .....53.5 (38-71) at McNeese, 2/1/24

### THREE-POINT SHOOTING

Shot less than 10 percent.....6.7 (1-15) at Washington State, 11/29/23  
 Shot 10-19 percent .....15.0 (3-20), 12/8/23  
 Shot 20-29 percent ..... 25.0 (5-20) vs. Lamar, 3/13/24  
 Shot 30-39 percent ..... 30.8 (12-39) vs. UNT Dallas, 11/4/24  
 Shot 40-49 percent ..... 40.0 (8-20) vs. Northwestern State, 3/6/24  
 Shot 50-59 percent ..... 52.6 (10-19) at Nicholls, 2/24/24  
 Shot over 60+ percent.....63.6 (7-11) at Midwestern State, 2/13/20

### FREE THROW SHOOTING

Shot less than 50 percent..... 47.8 (11-23) at Northwestern State, 2/11/23  
 Shot 50-59 percent .....50.0 (6-12) at Houston Christian, 3/2/24  
 Shot 60-69 percent ..... 68.8 (11-16) vs. UNT Dallas, 3/13/24  
 Shot 70-79 percent .....78.6 (11-14) vs. UNT Dallas, 11/4/24  
 Shot 80-89 percent ..... 80.0 (8-10) vs. UIW, 1/11/24  
 Shot 90+ percent ..... 92.9 (13-14) vs. New Orleans, 2/16/23  
 Shot 100 percent.....(4-4) vs. Houston Christian, 1/13/24

### REBOUNDS

Had 20-29 rebounds..... 23 vs. Lamar, 11/4/24  
 Had 30-39 rebounds..... 35 at Houston Christian, 3/2/24  
 Had 40-49 rebounds .....40 vs. UIW, 3/12/24  
 Had 50-59 rebounds..... 50 vs. UNT Dallas, 11/4/24  
 Had 60+ rebounds..... 61 at Oklahoma Christian, 2/5/22

### ASSISTS

Less than 5 assists ..... 4 at Washington State, 11/29/23  
 5-10 assists ..... 7 vs. Lamar, 3/13/24  
 11-15 assists.....12 vs. Northwestern State, 3/6/24  
 16-20 assists ..... 16 at Nicholls, 2/24/24  
 21-25 assists..... 21 vs. UNT Dallas, 11/4/24  
 26+ assists..... 26 vs. LeTourneau, 11/6/23  
 Team Record ..... 36 vs. Dallas Christian, 12/29/18

### STEALS

0 steals .....vs. Southeastern, 2/18/23  
 1-5 steals ..... 4 vs. Lamar, 3/11/24  
 6-10 steals .....9 vs. UNT Dallas, 11/4/24  
 11-15 steals ..... 11 at Houston Christian, 3/2/24  
 16-19 steals ..... 19 vs. LeTourneau, 11/6/23  
 20+ steals .....22 vs. UNT-Dallas, 11/10/23  
 Team Record ..... 24 vs. Dallas Christian, 12/29/18

### BLOCKS

0 blocks ..... 0 vs. Lamar, 3/11/24  
 1-5 blocks..... 4 vs. UIW, 3/12/24  
 6-10 blocks..... 7 vs. UNT Dallas, 11/4/24

## THE LAST TIME AN A&M-COMMERCE OPPONENT...

### OPPONENT SCORING

Team record .....11 vs. Mountain View C.C. (11-92), 1974-75  
 Scored less than 50 points..... 41 vs. LeTourneau (41-96), 11/6/23  
 50-60 points ..... 50 vs. UNT Dallas (50-75), 11/4/23  
 61-70 points.....63 at Houston Christian (63-78), 3/2/24  
 71-80 points..... 74 vs. Lamar (74-58), 2/29/24  
 81-90 points ..... 83 vs. Lamar (83-58), 3/13/24  
 91-100 points..... 91 at Texas Tech (91-45), 11/17/23  
 101+points..... 111 at Washington State (111-50), 11/29/23  
 Team record .....131 vs. Mississippi College (131-41), 1975-76

### OPPONENT FIELD GOAL PERCENTAGE

Shot less than 20 percent.....16.7 (10-60) at East Central, 12/16/15  
 Shot 20-29 percent ..... 28.8 (17-59) vs. Northwestern State, 3/11/24  
 Shot 30-39 percent .....32.1 (18-56) vs. UNT Dallas, 11/4/24  
 Shot 40-49 percent .....42.1 (24-57) at Houston Christian, 3/2/24  
 Shot 50+ percent .....51.6 (32-62) vs. Lamar, 3/13/24

### OPPONENT THREE-POINT SHOOTING

Shot less than 10 percent.....8.7 (2-23) vs. UIW, 3/12/24  
 Shot 10-19 percent ..... 12.5 (2-16) vs. UNT Dallas, 11/4/24  
 Shot 20-29 percent ..... 23.5 (4-17) vs. Northwestern State, 3/6/24  
 Shot 30-39 percent ..... 36.8 (7-19) at Nicholls, 2/24/24  
 Shot 40-49 percent .....46.7 (7-15) vs. Lamar, 3/13/24  
 Shot 50+ percent ..... 53.3 (8-15) vs. Boise State, 12/20/22

### OPPONENT FREE THROW SHOOTING

Shot less than 50 percent.....44.4 (8-18) vs. Northwestern State, 3/6/24  
 Shot 50-59 percent .....57.1 (12-21) vs. Lamar, 3/13/24  
 Shot 60-69 percent ..... 61.9 (13-21) vs. UIW, 3/12/24  
 Shot 70-79 percent ..... 72.4 (21-29) vs. Northwestern State, 3/11/24  
 Shot 80-89 percent ..... 80.0 (12-15) vs. UNT Dallas, 11/4/24  
 Shot 90+ percent ..... 92.9 (13-14) vs. Nicholls, 1/27/24  
 Shot 100 percent..... 100.0 (3-3) at Washington State, 11/29/23

### OPPONENT REBOUNDS

Had 20-29 rebounds.....25 vs. UIW, 3/7/23  
 Had 30-39 rebounds.....36 vs. UNT Dallas, 11/4/24  
 Had 40-49 rebounds .....47 vs. Lamar, 3/13/24  
 Had 50-54 rebounds..... 50 vs. UIW, 3/12/24  
 Had 55+ rebounds .....71 at Texas A&M, 12/31/23

### OPPONENT ASSISTS

Less than 5 assists .....5 at McNeese, 2/1/24  
 5-10 assists .....6 vs. UNT Dallas, 11/4/24  
 11-15 assists.....14 vs. Lamar, 3/13/24  
 16-20 assists ..... 17 at Nicholls, 2/24/24  
 20-30 assists..... 21 at Texas Tech, 11/17/23  
 30+ assists ..... 30 at A&M-Corpus Christi, 2/17/24

### OPPONENT STEALS

1-5 steals .....3 vs. Northwestern State, 3/11/24  
 6-10 steals ..... 7 vs. Lamar, 3/13/24  
 11-14 steals ..... 12 vs. UNT Dallas, 11/4/24  
 15-19 steals .....15 at Nicholls, 2/20/23  
 20+ steals..... 24 at Houston, 11/15/22

### OPPONENT BLOCKS

0 blocks ..... 0 at Lamar, 1/18/24  
 1-5 blocks..... 1 vs. UNT Dallas, 11/4/24  
 6-10 blocks..... 8 vs. Northwestern State, 3/6/24



**A&M-COMMERCE'S RECORD**

..... King	
..... 2024-25 ..... ERA	
At Home.....	1-0 .....10-5
On the Road.....	0-0 .....4-10
At a Neutral Site.....	0-0 .....2-1
In overtime.....	0-0 .....0-0
In games decided by 1-3 pts.....	0-0 .....2-2
In games decided by 4-6 pts.....	0-0 .....3-0
In games decided by 7-10 pts.....	0-0 .....5-2
In games decided by 11-19 pts.....	0-0 .....2-7
In games decided by 20 or more pts.....	1-0 .....4-5
When winning the tip.....	0-0 .....5-3
When opponent wins tip.....	1-0 .....11-13
When scoring first.....	0-0 .....6-4
When opponent scores first.....	1-0 .....10-12
When leading at the half.....	1-0 .....12-1
When tied at the half.....	0-0 .....2-0
When trailing at the half.....	0-0 .....1-15
Leading with 10:00 remaining.....	1-0 .....15-1
Tied with 10:00 remaining.....	0-0 .....0-0
Trailing with 10:00 remaining.....	0-0 .....1-15
Leading with 5:00 remaining (in reg).....	1-0 .....15-1
Tied with 5:00 remaining (in reg).....	0-0 .....0-1
Trailing with 5:00 remaining (in reg).....	0-0 .....0-14
TAMUC shoots better than opponent.....	1-0 .....14-1
Opponent shoots better than TAMUC.....	0-0 .....2-15
TAMUC out-rebounds opponent.....	1-0 .....8-0
Opponent out-rebounds TAMUC.....	0-0 .....7-16
Rebounds are tied.....	0-0 .....1-0
TAMUC shoots 70% or better at foul line.....	1-0 .....10-10
TAMUC has more FT attempts.....	0-0 .....7-4
Opponent has more FT attempts.....	1-0 .....9-11
FT attempts are tied.....	0-0 .....0-1
TAMUC shoots 40% or better from three.....	0-0 .....8-3
TAMUC forces more turnovers.....	1-0 .....11-4
Opponent forces more turnovers.....	0-0 .....5-10
Turnovers are tied.....	0-0 .....0-2
TAMUC scores 90-plus.....	0-0 .....2-0
TAMUC scores 80-89.....	0-0 .....4-0
TAMUC scores 70-79.....	1-0 .....6-3
TAMUC scores 60-69.....	0-0 .....4-6
TAMUC scores 59 or less.....	0-0 .....0-7
Opponent scores 90-plus.....	0-0 .....0-2
Opponent scores 80-89.....	0-0 .....0-6
Opponent scores 70-79.....	0-0 .....6-5
Opponent scores 60-69.....	0-0 .....3-3
Opponent scores 59 or less.....	1-0 .....7-0
On Sunday.....	0-0 .....0-1
On Monday.....	1-0 .....3-0
On Tuesday.....	0-0 .....2-0
On Wednesday.....	0-0 .....1-3
On Thursday.....	0-0 .....2-6
On Friday.....	0-0 .....2-2
On Saturday.....	0-0 .....5-4
In November.....	1-0 .....4-3
In December.....	0-0 .....2-2
In January.....	0-0 .....4-4
In February.....	0-0 .....3-6
In March.....	0-0 .....4-1

**LEADS AND DEFICITS/SPECIALTY STATS**

	LG LEAD	LG DEF	SPECIALTY					LEADS	TIES	+/-
			PNT	TO	2CH	FB	BN			
<b>NOVEMBER</b>										
<b>4 UNT DALLAS</b>	<b>31</b>	<b>2</b>	<b>26</b>	<b>25</b>	<b>19</b>	<b>15</b>	<b>32</b>	<b>7</b>	<b>1</b>	<b>+25</b>



**TOP FIVE SINGLE-GAME TEAM RECORDS****Points in a game**

- 1) 128 vs. Dallas Christian, 12/29/2018
- 2) 113 vs. Arlington Baptist, 1/26/2016
- 3) 111 vs. Arlington Baptist, 1/16/2017
- 4) 110 vs. Midwestern State, 2/22/2021
- 5) 107 vs. Midwestern State, 1/4/2020

**Points in a quarter**

- 1) 39 vs. Dallas Christian, 1/22/2018
- 2) 38 at A&M-Kingsville, 1/31/2019
- 3) 37 vs. Dallas Christian, 12/29/2018  
37 vs. Midwestern State, 2/22/2021
- 4) 35 vs. Midwestern State, 1/4/2020

**Field Goals Made in a game**

- 1) 53 vs. Dallas Christian, 12/29/2018
- 2) 48 vs. Arlington Baptist, 1/26/2016
- 3) 45 vs. Arlington Baptist, 1/16/2017
- 4) 42 vs. Arlington Baptist, 1/5/2015  
42 vs. Midwestern State, 2/22/2021

**Field Goals taken in a game**

- 1) 100 at Southeastern Oklahoma, 11/12/2013
- 2) 95 vs. Dallas Christian, 12/29/2018
- 3) 92 vs. Midwestern State, 2/22/2021
- 4) 91 vs. Arlington Baptist, 1/5/2015
- 5) 90 at Eastern N.M., 1/19/2019

**Three-pointers made in a game**

- 1) 15 vs. Southwestern Oklahoma, 2/24/2007
- 2) 14 vs. LeTourneau, 11/22/2017  
14 vs. UNT-Dallas, 11/10/23  
14 vs. Utah Tech, 11/20/23
- 4) 12 at McNeese, 2/1/24  
12 vs. Tarleton State, 1/31/2015  
12 vs. Southeastern Oklahoma, 11/30/2015  
12 vs. Texas College, 11/15/2006

**Three-pointers taken in a game**

- 1) 33 vs. Midwestern State, 1/25/2018
- 2) 32 vs. Southwestern Oklahoma, 2/24/2007
- 3) 30 vs. Clayton State, 3/21/2007
- 4) 28 vs. Dallas Christian, 1/22/2018
- 5) 28 vs. Eastern N.M., 2/21/2019

**Free throws made in a game**

- 1) 35 at Eastern New Mexico, 12/8/2016  
35 at Texas Woman's, 2/16/2017
- 3) 34 vs. Tarleton State, 2/27/2007
- 4) 33 vs. Cameron, 3/1/2018  
33 at Cameron, 2/15/2020

**Free throws taken in a game**

- 1) 50 vs. Cameron, 3/1/2018
- 2) 45 vs. Southeastern Oklahoma, 1/27/2007
- 3) 44 at Eastern New Mexico, 12/8/2016
- 4) 43 at Texas Woman's, 2/16/2017
- 5) 42 at Texas Woman's, 2/10/2005

**Rebounds in a game**

- 1) 70 vs. Southern Arkansas, 11/26/2007
- 2) 63 at Southeastern Oklahoma, 11/12/2013
- 3) 62 vs. Cameron, 2/27/2008
- 4) 61 vs. Arlington Baptist, 1/16/2017  
61 at A&M-Kingsville, 2/12/2005  
61 at Oklahoma Christian, 2/5/2022

**Assists in a game**

- 1) 36 vs. Dallas Christian, 12/29/2018
- 2) 30 vs. Wiley, 11/18/2004  
30 vs. Texas Woman's, 2/3/2005
- 4) 27 vs. Dallas Christian, 1/22/2018  
27 vs. Arlington Baptist, 1/26/2016

**Steals in a game**

- 1) 24 vs. Dallas Christian, 12/29/2018  
24 vs. Univ. of Texas-Dallas, 11/19/2005
- 3) 23 vs. North Georgia College, 11/4/2006
- 4) 22 at Texas Woman's, 12/19/2019
- 5) 21 vs. Rockhurst, 11/22/2007  
21 vs. Dallas Christian, 1/22/2018

**Blocks in a game**

- 1) 10 vs. UAFS, 1/16/2020
- 2) 9 vs. St. Mary's, 2/19/22  
9 vs. Texas A&M International, 1/29/2022  
9 vs. LeTourneau, 11/16/2016  
9 vs. UT Tyler, 12/29/2007  
9 at Northwestern State, 11/21/2005  
9 vs. Wiley, 11/18/2004



# CAREER CAPSULES



Tex. A&M-Commerce Women's Basketball  
Individual Career Summaries  
All games

Page 1/7  
as of Nov 08, 2024

## BOYCE, Ahmya

		Field Goals		3-Point		F-Throws		Rebounds				Scoring								
SEASON	TEAM	GP-GS	MIN/AVG	FG-FGA	FG%	3FG-3FGA	3FG%	FT-FTA	FT%	OFF	DEF	TOT	AVG	PF-FO	A	TO	BLK	STL	PTS	AVG
2023-24	TAMC	31-31	899/29.0	131-366	.358	33-103	.320	76-95	.800	9	69	78	2.5	88-2	77	102	10	43	371	12.0
<b>TOTAL</b>		<b>31-31</b>	<b>899/29.0</b>	<b>131-366</b>	<b>.358</b>	<b>33-103</b>	<b>.320</b>	<b>76-95</b>	<b>.800</b>	<b>9</b>	<b>69</b>	<b>78</b>	<b>2.5</b>	<b>88-2</b>	<b>77</b>	<b>102</b>	<b>10</b>	<b>43</b>	<b>371</b>	<b>12.0</b>

## Single Game Highs

Statistic	Value	
Points	27	at Lamar University 01/18/24
Rebounds	6	vs Northwestern St. 03/06/24
Assists	7	at Nicholls 02/24/24, at Houston Christian 03/02/24
Steals	7	vs Southeastern La. 02/08/24
Blocks	2	vs UIW 01/11/24, vs New Orleans 02/10/24
FG Made	8	vs New Orleans 02/10/24
FG Attempts	18	at Nicholls 02/24/24, vs Northwestern St. 03/11/24
3FG Made	6	vs Utah Tech 11/20/23
3FG Attempts	9	vs Houston Christian 01/13/24
FT Made	10	at Lamar University 01/18/24
FT Attempts	11	vs New Orleans 02/10/24

## DAK, Nyaluak

		Field Goals		3-Point		F-Throws		Rebounds				Scoring								
SEASON	TEAM	GP-GS	MIN/AVG	FG-FGA	FG%	3FG-3FGA	3FG%	FT-FTA	FT%	OFF	DEF	TOT	AVG	PF-FO	A	TO	BLK	STL	PTS	AVG
2024-25	TAMC	1-0	11/11.3	4-5	.800	0-0	.000	1-2	.500	2	2	4	4.0	2-0	0	1	1	0	9	9.0
<b>TOTAL</b>		<b>1-0</b>	<b>11/11.3</b>	<b>4-5</b>	<b>.800</b>	<b>0-0</b>	<b>.000</b>	<b>1-2</b>	<b>.500</b>	<b>2</b>	<b>2</b>	<b>4</b>	<b>4.0</b>	<b>2-0</b>	<b>0</b>	<b>1</b>	<b>1</b>	<b>0</b>	<b>9</b>	<b>9.0</b>

## Single Game Highs

Statistic	Value	
Points	9	vs North Texas-Dallas 11/04/24
Rebounds	4	vs North Texas-Dallas 11/04/24
Blocks	1	vs North Texas-Dallas 11/04/24
FG Made	4	vs North Texas-Dallas 11/04/24
FG Attempts	5	vs North Texas-Dallas 11/04/24
FT Made	1	vs North Texas-Dallas 11/04/24
FT Attempts	2	vs North Texas-Dallas 11/04/24



# CAREER CAPSULES



Tex. A&M-Commerce Women's Basketball  
Individual Career Summaries  
All games

Page 2/7  
as of Nov 08, 2024

## DE KOCK, Jamy

SEASON	TEAM	GP-GS	MIN/AVG	Field Goals		3-Point		F-Throws		Rebounds				Scoring						
				FG-FGA	FG%	3FG-3FGA	3FG%	FT-FTA	FT%	OFF	DEF	TOT	AVG	PF-FO	A	TO	BLK	STL	PTS	AVG
2023-24	TAMC	6-5	111/18.4	6-18	.333	2-3	.667	9-9	1.000	6	18	24	4.0	12-1	10	8	1	3	23	3.8
2024-25	TAMC	1-1	13/13.1	1-2	.500	0-1	.000	0-0	.000	1	1	2	2.0	0-0	3	4	0	1	2	2.0
<b>TOTAL</b>		<b>7-6</b>	<b>124/17.7</b>	<b>7-20</b>	<b>.350</b>	<b>2-4</b>	<b>.500</b>	<b>9-9</b>	<b>1.000</b>	<b>7</b>	<b>19</b>	<b>26</b>	<b>3.7</b>	<b>12-1</b>	<b>13</b>	<b>12</b>	<b>1</b>	<b>4</b>	<b>25</b>	<b>3.6</b>

## Single Game Highs

Statistic	Value	
Points	14	vs LeTourneau 11/06/23
Rebounds	7	vs North Texas-Dallas 11/10/23
Assists	4	vs North Texas-Dallas 11/10/23, at New Mexico 11/15/23
Steals	2	vs LeTourneau 11/06/23
Blocks	1	at Texas Tech 11/17/23
FG Made	4	vs LeTourneau 11/06/23
FG Attempts	5	vs LeTourneau 11/06/23
3FG Made	1	vs LeTourneau 11/06/23, vs Utah Tech 11/20/23
3FG Attempts	1	4 times
FT Made	5	vs LeTourneau 11/06/23
FT Attempts	5	vs LeTourneau 11/06/23

## FRANKLIN, J'unti

SEASON	TEAM	GP-GS	MIN/AVG	Field Goals		3-Point		F-Throws		Rebounds				Scoring						
				FG-FGA	FG%	3FG-3FGA	3FG%	FT-FTA	FT%	OFF	DEF	TOT	AVG	PF-FO	A	TO	BLK	STL	PTS	AVG
2024-25	TAMC	1-0	17/16.7	0-8	.000	0-4	.000	0-0	.000	0	2	2	2.0	1-0	1	0	0	0	0	0.0
<b>TOTAL</b>		<b>1-0</b>	<b>17/16.7</b>	<b>0-8</b>	<b>.000</b>	<b>0-4</b>	<b>.000</b>	<b>0-0</b>	<b>.000</b>	<b>0</b>	<b>2</b>	<b>2</b>	<b>2.0</b>	<b>1-0</b>	<b>1</b>	<b>0</b>	<b>0</b>	<b>0</b>	<b>0</b>	<b>0.0</b>

## Single Game Highs

Statistic	Value	
Rebounds	2	vs North Texas-Dallas 11/04/24
Assists	1	vs North Texas-Dallas 11/04/24
FG Attempts	8	vs North Texas-Dallas 11/04/24
3FG Attempts	4	vs North Texas-Dallas 11/04/24



# CAREER CAPSULES



Tex. A&M-Commerce Women's Basketball  
Individual Career Summaries  
All games

Page 3/7  
as of Nov 08, 2024

## HEDRICH, Alva

				Field Goals		3-Point		F-Throws		Rebounds				Scoring						
SEASON	TEAM	GP-GS	MIN/AVG	FG-FGA	FG%	3FG-3FGA	3FG%	FT-FTA	FT%	OFF	DEF	TOT	AVG	PF-FO	A	TO	BLK	STL	PTS	AVG
2024-25	TAMC	1-1	23/23.4	4-5	.800	0-0	.000	1-1	1.000	5	9	14	14.0	3-0	1	1	2	0	9	9.0
<b>TOTAL</b>		<b>1-1</b>	<b>23/23.4</b>	<b>4-5</b>	<b>.800</b>	<b>0-0</b>	<b>.000</b>	<b>1-1</b>	<b>1.000</b>	<b>5</b>	<b>9</b>	<b>14</b>	<b>14.0</b>	<b>3-0</b>	<b>1</b>	<b>1</b>	<b>2</b>	<b>0</b>	<b>9</b>	<b>9.0</b>

## Single Game Highs

Statistic	Value	
Points	9	vs North Texas-Dallas 11/04/24
Rebounds	14	vs North Texas-Dallas 11/04/24
Assists	1	vs North Texas-Dallas 11/04/24
Blocks	2	vs North Texas-Dallas 11/04/24
FG Made	4	vs North Texas-Dallas 11/04/24
FG Attempts	5	vs North Texas-Dallas 11/04/24
FT Made	1	vs North Texas-Dallas 11/04/24
FT Attempts	1	vs North Texas-Dallas 11/04/24

## HORVATH, Cora

				Field Goals		3-Point		F-Throws		Rebounds				Scoring						
SEASON	TEAM	GP-GS	MIN/AVG	FG-FGA	FG%	3FG-3FGA	3FG%	FT-FTA	FT%	OFF	DEF	TOT	AVG	PF-FO	A	TO	BLK	STL	PTS	AVG
2023-24	TAMC	27-13	611/22.6	41-109	.376	16-46	.348	3-6	.500	9	46	55	2.0	26-0	30	30	2	20	101	3.7
2024-25	TAMC	1-1	28/27.8	4-11	.364	4-7	.571	0-0	.000	3	2	5	5.0	2-0	1	6	0	2	12	12.0
<b>TOTAL</b>		<b>28-14</b>	<b>638/22.8</b>	<b>45-120</b>	<b>.375</b>	<b>20-53</b>	<b>.377</b>	<b>3-6</b>	<b>.500</b>	<b>12</b>	<b>48</b>	<b>60</b>	<b>2.1</b>	<b>28-0</b>	<b>31</b>	<b>36</b>	<b>2</b>	<b>22</b>	<b>113</b>	<b>4.0</b>

## Single Game Highs

Statistic	Value	
Points	12	vs North Texas-Dallas 11/04/24
Rebounds	6	at A&M-Corpus Christi 02/17/24
Assists	4	vs A&M-Corpus Christi 01/25/24
Steals	3	vs LeTourneau 11/06/23, vs Southern Utah 12/05/23, at A&M-Corpus Christi 02/17/24
Blocks	1	at New Mexico 11/15/23, vs UIW 01/11/24
FG Made	4	5 times
FG Attempts	11	vs North Texas-Dallas 11/04/24
3FG Made	4	vs North Texas-Dallas 11/04/24
3FG Attempts	7	vs North Texas-Dallas 11/04/24
FT Made	1	vs Houston 12/08/23, at A&M-Corpus Christi 02/17/24, at Lamar University 01/18/24
FT Attempts	2	vs Houston 12/08/23, at Lamar University 01/18/24, at A&M-Corpus Christi 02/17/24



# CAREER CAPSULES



Tex. A&M-Commerce Women's Basketball  
Individual Career Summaries  
All games

Page 4/7  
as of Nov 08, 2024

## HORVATH, Nina

		Field Goals		3-Point		F-Throws		Rebounds				Scoring								
SEASON	TEAM	GP-GS	MIN/AVG	FG-FGA	FG%	3FG-3FGA	3FG%	FT-FTA	FT%	OFF	DEF	TOT	AVG	PF-FO	A	TO	BLK	STL	PTS	AVG
2023-24	UNCG	10-0	50/5.0	9-20	.450	3-11	.273	2-2	1.000	0	4	4	0.4	4-0	4	6	1	4	23	2.3
2024-25	TAMC	1-0	14/13.7	2-5	.400	1-2	.500	3-3	1.000	0	1	1	1.0	0-0	2	1	1	3	8	8.0
<b>TOTAL FOR TAMC</b>		<b>1-0</b>	<b>14/13.7</b>	<b>2-5</b>	<b>.400</b>	<b>1-2</b>	<b>.500</b>	<b>3-3</b>	<b>1.000</b>	<b>0</b>	<b>1</b>	<b>1</b>	<b>1.0</b>	<b>0-0</b>	<b>2</b>	<b>1</b>	<b>1</b>	<b>3</b>	<b>8</b>	<b>8.0</b>
<b>TOTAL</b>		<b>11-0</b>	<b>63/5.8</b>	<b>11-25</b>	<b>.440</b>	<b>4-13</b>	<b>.308</b>	<b>5-5</b>	<b>1.000</b>	<b>0</b>	<b>5</b>	<b>5</b>	<b>0.5</b>	<b>4-0</b>	<b>6</b>	<b>7</b>	<b>2</b>	<b>7</b>	<b>31</b>	<b>2.8</b>

## Single Game Highs

Statistic	Value	
Points	10	vs Livingstone 01/04/24
Rebounds	2	vs Converse 12/29/23
Assists	2	vs Converse 12/29/23, vs North Texas-Dallas 11/04/24
Steals	3	vs North Texas-Dallas 11/04/24
Blocks	1	at App State 11/06/23, vs North Texas-Dallas 11/04/24
FG Made	4	vs Livingstone 01/04/24
FG Attempts	7	vs Livingstone 01/04/24
3FG Made	2	vs Livingstone 01/04/24
3FG Attempts	5	vs Livingstone 01/04/24
FT Made	3	vs North Texas-Dallas 11/04/24
FT Attempts	3	vs North Texas-Dallas 11/04/24

## HUMPHREY, Hannah

		Field Goals		3-Point		F-Throws		Rebounds				Scoring								
SEASON	TEAM	GP-GS	MIN/AVG	FG-FGA	FG%	3FG-3FGA	3FG%	FT-FTA	FT%	OFF	DEF	TOT	AVG	PF-FO	A	TO	BLK	STL	PTS	AVG
2023-24	UTA	32-0	423/13.2	60-149	.403	23-70	.329	6-11	.545	9	33	42	1.3	26-0	14	22	2	18	149	4.7
2024-25	TAMC	1-0	13/12.8	1-8	.125	1-7	.143	0-0	.000	2	3	5	5.0	2-0	0	1	0	0	3	3.0
<b>TOTAL FOR TAMC</b>		<b>1-0</b>	<b>13/12.8</b>	<b>1-8</b>	<b>.125</b>	<b>1-7</b>	<b>.143</b>	<b>0-0</b>	<b>.000</b>	<b>2</b>	<b>3</b>	<b>5</b>	<b>5.0</b>	<b>2-0</b>	<b>0</b>	<b>1</b>	<b>0</b>	<b>0</b>	<b>3</b>	<b>3.0</b>
<b>TOTAL</b>		<b>33-0</b>	<b>436/13.2</b>	<b>61-157</b>	<b>.389</b>	<b>24-77</b>	<b>.312</b>	<b>6-11</b>	<b>.545</b>	<b>11</b>	<b>36</b>	<b>47</b>	<b>1.4</b>	<b>28-0</b>	<b>14</b>	<b>23</b>	<b>2</b>	<b>18</b>	<b>152</b>	<b>4.6</b>

## Single Game Highs

Statistic	Value	
Points	20	at Abilene Christian 11/29/23
Rebounds	5	at California Baptist 03/07/24, vs North Texas-Dallas 11/04/24
Assists	3	vs UTSA 11/18/23, vs N.C. A&T 11/25/23
Steals	3	at Abilene Christian 11/29/23
Blocks	1	at Abilene Christian 11/29/23, at Colorado 12/05/23
FG Made	8	at Abilene Christian 11/29/23
FG Attempts	13	at Abilene Christian 11/29/23
3FG Made	4	at South Fla. 11/06/23, at Abilene Christian 11/29/23
3FG Attempts	8	at Abilene Christian 11/29/23
FT Made	3	at California Baptist 03/07/24
FT Attempts	3	at California Baptist 03/07/24





# CAREER CAPSULES



Tex. A&M-Commerce Women's Basketball  
Individual Career Summaries  
All games

Page 5/7  
as of Nov 08, 2024

## LEE, Keiori

				Field Goals		3-Point		F-Throws		Rebounds				Scoring						
SEASON	TEAM	GP-GS	MIN/AVG	FG-FGA	FG%	3FG-3FGA	3FG%	FT-FTA	FT%	OFF	DEF	TOT	AVG	PF-FO	A	TO	BLK	STL	PTS	AVG
2023-24	UTA	33-2	495/15.0	41-128	.320	3-23	.130	18-23	.783	37	48	85	2.6	44-1	29	19	8	16	103	3.1
<b>TOTAL FOR TAMC</b>		<b>0-0</b>	<b>0/0.0</b>	<b>0-0</b>	<b>.000</b>	<b>0-0</b>	<b>.000</b>	<b>0-0</b>	<b>.000</b>	<b>0</b>	<b>0</b>	<b>0</b>	<b>0.0</b>	<b>0-0</b>	<b>0</b>	<b>0</b>	<b>0</b>	<b>0</b>	<b>0</b>	<b>0.0</b>
<b>TOTAL</b>		<b>33-2</b>	<b>495/15.0</b>	<b>41-128</b>	<b>.320</b>	<b>3-23</b>	<b>.130</b>	<b>18-23</b>	<b>.783</b>	<b>37</b>	<b>48</b>	<b>85</b>	<b>2.6</b>	<b>44-1</b>	<b>29</b>	<b>19</b>	<b>8</b>	<b>16</b>	<b>103</b>	<b>3.1</b>

## Single Game Highs

Statistic	Value	
Points	18	at Colorado 12/05/23
Rebounds	8	vs Southern Utah 03/13/24
Assists	3	vs SFA 01/06/24, vs Utah Tech 03/14/24
Steals	2	vs Utah Valley 03/02/24, vs Utah Tech 03/14/24
Blocks	2	vs Illinois St. 11/24/23
FG Made	6	at Colorado 12/05/23
FG Attempts	9	at Abilene Christian 11/29/23
3FG Made	1	at Colorado 12/05/23, vs SFA 01/06/24, at California Baptist 03/07/24
3FG Attempts	2	vs Illinois St. 11/24/23, at Colorado 12/05/23, vs California Baptist 03/15/24
FT Made	5	at Colorado 12/05/23
FT Attempts	6	at Colorado 12/05/23

## MORELAND, Trinity

				Field Goals		3-Point		F-Throws		Rebounds				Scoring						
SEASON	TEAM	GP-GS	MIN/AVG	FG-FGA	FG%	3FG-3FGA	3FG%	FT-FTA	FT%	OFF	DEF	TOT	AVG	PF-FO	A	TO	BLK	STL	PTS	AVG
2022-23	KC	23-0	120/5.2	15-27	.556	0-0	.000	14-25	.560	5	22	27	1.2	21-0	1	13	5	2	44	1.9
2023-24	GW	22-3	174/7.9	31-57	.544	2-5	.400	9-15	.600	13	30	43	2.0	39-1	3	27	9	1	73	3.3
2024-25	TAMC	1-0	5/5.3	0-0	.000	0-0	.000	2-2	1.000	1	3	4	4.0	1-0	1	0	0	0	2	2.0
<b>TOTAL FOR TAMC</b>		<b>1-0</b>	<b>5/5.3</b>	<b>0-0</b>	<b>.000</b>	<b>0-0</b>	<b>.000</b>	<b>2-2</b>	<b>1.000</b>	<b>1</b>	<b>3</b>	<b>4</b>	<b>4.0</b>	<b>1-0</b>	<b>1</b>	<b>0</b>	<b>0</b>	<b>0</b>	<b>2</b>	<b>2.0</b>
<b>TOTAL</b>		<b>46-3</b>	<b>299/6.5</b>	<b>46-84</b>	<b>.548</b>	<b>2-5</b>	<b>.400</b>	<b>25-42</b>	<b>.595</b>	<b>19</b>	<b>55</b>	<b>74</b>	<b>1.6</b>	<b>61-1</b>	<b>5</b>	<b>40</b>	<b>14</b>	<b>3</b>	<b>119</b>	<b>2.6</b>

## Single Game Highs

Statistic	Value	
Points	15	at Presbyterian 01/13/24
Rebounds	5	vs USC Upstate 01/27/24, at UNC Asheville 01/31/24
Assists	1	5 times
Steals	2	at North Dakota St. 02/16/23
Blocks	2	4 times
FG Made	6	at Presbyterian 01/13/24
FG Attempts	9	vs Longwood 01/24/24
3FG Made	1	at Presbyterian 01/13/24, at UNC Asheville 01/31/24
3FG Attempts	1	5 times
FT Made	3	vs St. Thomas (MN) 02/11/23, vs Omaha 03/06/23
FT Attempts	6	vs Omaha 03/06/23



# CAREER CAPSULES



Tex. A&M-Commerce Women's Basketball  
Individual Career Summaries  
All games

Page 6/7  
as of Nov 08, 2024

## NEWSOME, Jordyn

SEASON	TEAM	GP-GS	MIN/AVG	Field Goals		3-Point		F-Throws		Rebounds				Scoring						
				FG-FGA	FG%	3FG-3FGA	3FG%	FT-FTA	FT%	OFF	DEF	TOT	AVG	PF-FO	A	TO	BLK	STL	PTS	AVG
2021-22	CCU	24-2	354/14.8	53-107	.495	7-29	.241	22-25	.880	13	15	28	1.2	36-1	23	35	4	14	135	5.6
2022-23	CCU	29-2	222/7.6	23-62	.371	9-34	.265	10-19	.526	5	12	17	0.6	18-0	11	12	0	4	65	2.2
2023-24	TAMC	31-31	1003/32.3	130-347	.375	65-171	.380	62-79	.785	17	91	108	3.5	80-2	55	61	7	20	387	12.5
2024-25	TAMC	1-1	25/25.3	6-14	.429	4-11	.364	2-2	1.000	0	5	5	5.0	2-0	1	2	1	0	18	18.0
<b>TOTAL FOR TAMC</b>	<b>32-32</b>	<b>1028/32.1</b>	<b>136-361</b>	<b>.377</b>	<b>69-182</b>	<b>.379</b>	<b>64-81</b>	<b>.790</b>	<b>17</b>	<b>96</b>	<b>113</b>	<b>3.5</b>	<b>82-2</b>	<b>56</b>	<b>63</b>	<b>8</b>	<b>20</b>	<b>405</b>	<b>12.7</b>	
<b>TOTAL</b>	<b>85-36</b>	<b>1604/18.9</b>	<b>212-530</b>	<b>.400</b>	<b>85-245</b>	<b>.347</b>	<b>96-125</b>	<b>.768</b>	<b>35</b>	<b>123</b>	<b>158</b>	<b>1.9</b>	<b>136-3</b>	<b>90</b>	<b>110</b>	<b>12</b>	<b>38</b>	<b>605</b>	<b>7.1</b>	

## Single Game Highs

Statistic	Value	
Points	27	at Northwestern St. 02/03/24
Rebounds	8	at Nicholls 02/24/24
Assists	6	at Nicholls 02/24/24
Steals	4	vs Wesleyan (GA) 12/07/21, vs Utah Tech 11/20/23
Blocks	1	12 times
FG Made	9	at Ga. Southern 02/12/22
FG Attempts	17	at A&M-Corpus Christi 02/17/24
3FG Made	6	vs LeTourneau 11/06/23
3FG Attempts	13	vs North Texas-Dallas 11/10/23
FT Made	8	at Northwestern St. 02/03/24
FT Attempts	10	at Northwestern St. 02/03/24



# CAREER CAPSULES



Tex. A&M-Commerce Women's Basketball  
Individual Career Summaries  
All games

Page 7/7  
as of Nov 08, 2024

## PAYNE, Jasmine

SEASON	TEAM	GP-GS	MIN/AVG	Field Goals		3-Point		F-Throws		Rebounds				Scoring						
				FG-FGA	FG%	3FG-3FGA	3FG%	FT-FTA	FT%	OFF	DEF	TOT	AVG	PF-FO	A	TO	BLK	STL	PTS	AVG
2022-23	TAMC	26-0	179/6.9	16-35	.457	3-10	.300	5-15	.333	6	20	26	1.0	20-0	9	14	2	5	40	1.5
2023-24	TAMC	31-16	547/17.6	60-123	.488	0-2	.000	28-47	.596	31	82	113	3.6	48-0	14	25	8	19	148	4.8
2024-25	TAMC	1-0	18/18.0	3-10	.300	2-5	.400	2-4	.500	1	4	5	5.0	0-0	0	1	0	0	10	10.0
<b>TOTAL</b>		<b>58-16</b>	<b>744/12.8</b>	<b>79-168</b>	<b>.470</b>	<b>5-17</b>	<b>.294</b>	<b>35-66</b>	<b>.530</b>	<b>38</b>	<b>106</b>	<b>144</b>	<b>2.5</b>	<b>68-0</b>	<b>23</b>	<b>40</b>	<b>10</b>	<b>24</b>	<b>198</b>	<b>3.4</b>

## Single Game Highs

Statistic	Value	
Points	13	vs Houston Christian 01/28/23
Rebounds	11	at McNeese 02/01/24
Assists	4	vs Northwestern St. 03/06/24
Steals	3	vs LeTourneau 11/06/23
Blocks	3	vs Northwestern St. 03/06/24
FG Made	5	vs Houston Christian 01/28/23, at New Mexico 11/15/23, at McNeese 02/01/24
FG Attempts	10	vs North Texas-Dallas 11/04/24
3FG Made	2	vs Houston Christian 01/28/23, vs North Texas-Dallas 11/04/24
3FG Attempts	5	vs North Texas-Dallas 11/04/24
FT Made	3	vs Houston 12/08/23, vs A&M-Corpus Christi 01/25/24, at A&M-Corpus Christi 02/17/24
FT Attempts	4	7 times

## SANDERS, Nykesha

SEASON	TEAM	GP-GS	MIN/AVG	Field Goals		3-Point		F-Throws		Rebounds				Scoring						
				FG-FGA	FG%	3FG-3FGA	3FG%	FT-FTA	FT%	OFF	DEF	TOT	AVG	PF-FO	A	TO	BLK	STL	PTS	AVG
2023-24	TSU	27-4	325/12.0	9-39	.231	2-11	.182	8-14	.571	5	16	21	0.8	42-3	40	17	0	11	28	1.0
2024-25	TAMC	1-1	33/32.7	1-4	.250	0-2	.000	0-0	.000	1	0	1	1.0	3-0	11	1	2	3	2	2.0
<b>TOTAL FOR TAMC</b>		<b>1-1</b>	<b>33/32.7</b>	<b>1-4</b>	<b>.250</b>	<b>0-2</b>	<b>.000</b>	<b>0-0</b>	<b>.000</b>	<b>1</b>	<b>0</b>	<b>1</b>	<b>1.0</b>	<b>3-0</b>	<b>11</b>	<b>1</b>	<b>2</b>	<b>3</b>	<b>2</b>	<b>2.0</b>
<b>TOTAL</b>		<b>28-5</b>	<b>357/12.8</b>	<b>10-43</b>	<b>.233</b>	<b>2-13</b>	<b>.154</b>	<b>8-14</b>	<b>.571</b>	<b>6</b>	<b>16</b>	<b>22</b>	<b>0.8</b>	<b>45-3</b>	<b>51</b>	<b>18</b>	<b>2</b>	<b>14</b>	<b>30</b>	<b>1.1</b>

## Single Game Highs

Statistic	Value	
Points	5	at Texas Tech 11/10/23
Rebounds	5	vs UT Arlington 02/15/24
Assists	11	vs North Texas-Dallas 11/04/24
Steals	3	vs North Texas-Dallas 11/04/24
Blocks	2	vs North Texas-Dallas 11/04/24
FG Made	2	at Texas Tech 11/10/23
FG Attempts	5	at Texas Tech 11/10/23, vs UIW 12/10/23
3FG Made	1	vs California Baptist 01/11/24, vs Grand Canyon 01/13/24
3FG Attempts	2	4 times
FT Made	3	vs Howard Payne 11/06/23
FT Attempts	4	vs Howard Payne 11/06/23, at Northwestern St. 12/06/23



# **LAST TIME THESE TEAMS MET**



# A&M-COMMERCE'S LAST GAME



Official Basketball Box Score - Final  
**UNT-Dallas at Texas A&M-Commerce**  
 11/04/24 Field House, Commerce, TX  
 2024-25 Lion Women's Basketball

Game Time: 6:30 PM  
 Game Duration: 1:42  
 Attendance: 242

Officials: Ed Collopy, Tammy Williams, Erica White

UNT-Dallas - 50

Record: 0-0

NO. Name	Min	FG		3P	FT		Rebounds			Fouls		TP	AS	TO	ST	Blocks		+/-
		M-A	M-A	M-A	OR	DR	TOT	PF	FD	BS	BA							
22 De'Asia Johnson	F 25:58	5-11	0-3	5-5	2	5	7	2	3	15	1	3	3	0	0	-12		
5 Sky Dugan	G 31:37	6-17	2-8	2-4	1	4	5	2	4	16	2	7	3	0	0	-14		
20 Eryka Patton	G 34:38	7-16	0-2	3-4	2	8	10	3	3	17	1	4	4	0	0	-21		
23 Mya Bills	G 26:04	0-2	0-1	0-0	0	2	2	1	2	0	0	2	0	0	-14			
32 Sanaa Murphy-Showers	G 27:01	0-4	0-0	2-2	0	4	4	3	3	2	0	2	0	0	4	-9		
30 Alauna Moore	20:41	0-2	0-1	0-0	0	4	4	3	1	0	1	1	0	0	1	-27		
1 Lauren Pete	17:02	0-2	0-1	0-0	0	0	0	3	0	0	1	2	2	1	1	-22		
2 Kayli Carrisalez	08:27	0-1	0-0	0-0	0	0	0	0	0	0	0	0	0	0	0	-6		
44 Kayln Minor	01:35	0-0	0-0	0-0	0	0	0	0	0	0	0	1	0	0	0	2		
4 Ke'Liyah Anderson	06:57	0-1	0-0	0-0	0	1	1	0	0	0	0	0	0	0	1	-2		
Team					0	3	3			0		0						
<b>Totals</b>		18-56	2-16	12-15	5	31	36	17	16	50	6	22	12	1	7	-25		

Technical Fouls::NONE

Shooting By Period		
1 <sup>st</sup> FG%	5-12	41.7%
3PT%	1-2	50.0%
FT%	0-0	0%
2 <sup>nd</sup> FG%	2-9	22.2%
3PT%	0-0	0.0%
FT%	1-1	100%
3 <sup>rd</sup> FG%	5-15	33.3%
3PT%	1-8	12.5%
FT%	2-2	100%
4 <sup>th</sup> FG%	6-20	30.0%
3PT%	0-6	0.0%
FT%	9-12	75%
GM FG%	18-56	32.1%
3PT%	2-16	12.5%
FT%	12-15	80.0%

Dead Ball Rebounds: 2, 0

Texas A&M-Commerce - 75

Record: 1-0

NO. Name	Min	FG		3P	FT		Rebounds			Fouls		TP	AS	TO	ST	Blocks		+/-
		M-A	M-A	M-A	OR	DR	TOT	PF	FD	BS	BA							
4 Jamy De Kock	F 13:07	1-2	0-1	0-0	1	1	2	0	2	2	3	4	1	0	0	8		
54 Alva Hedrich	F 23:24	4-5	0-0	1-1	5	9	14	3	3	9	1	1	0	2	0	26		
0 Cora Horvath	G 27:46	4-11	4-7	0-0	3	2	5	2	1	12	1	6	2	0	0	27		
2 Jordyn Newsome	G 25:16	6-14	4-11	2-2	0	5	5	2	3	18	1	2	0	1	0	32		
5 Nykesha Sanders	G 32:42	1-4	0-2	0-0	1	0	1	3	1	2	11	1	3	2	0	25		
3 Nina Horvath	13:43	2-5	1-2	3-3	0	1	1	0	1	8	2	1	3	1	0	7		
21 Jasmine Payne	18:00	3-10	2-5	2-4	1	4	5	0	2	10	0	1	0	0	0	2		
22 Hannah Humphrey	12:47	1-8	1-7	0-0	2	3	5	2	1	3	0	1	0	0	0	-9		
35 Nyaluak Dak	11:18	4-5	0-0	1-2	2	2	4	2	1	9	0	1	0	1	1	-3		
7 J'Unti Franklin	16:39	0-8	0-4	0-0	0	2	2	1	0	0	1	0	0	0	0	8		
44 Trinity Moreland	05:18	0-0	0-0	2-2	1	3	4	1	2	2	1	0	0	0	0	2		
Team					0	2	2			0		0						
<b>Totals</b>		26-72	12-39	11-14	16	34	50	16	17	75	21	18	9	7	1	25		

Technical Fouls::NONE

Dead Ball Rebounds: 2, 0

	UNT D	TAMUC
Biggest lead	2 (1 <sup>st</sup> 9:44)	31 (3 <sup>rd</sup> 0:04)
Best Scoring Run	8 (2 <sup>nd</sup> 7:20)	18 (2 <sup>nd</sup> 0:41)
Lead Changes	7	
Times Tied	1	
Time with Lead	02:47	36:57

Points from	UNT D	TAMUC
Turnovers	10	25
Paint	30	26
Second Chance	8	19
Fast Breaks	8	15
Bench	0	32

	Period by Period Scoring				
	1st	2nd	3rd	4th	TOT
UNT D	11	5	13	21	50
TAMUC	13	20	27	15	75





# A&M-COMMERCE AT HOME



2024-25 Tex. A&M-Commerce Women's Basketball  
 Combined Team Statistics  
 Home games

Page 1/1  
 as of Nov 08, 2024

**Game Records**

Record	Overall	Home	Away	Neutral
ALL GAMES	1-0	1-0	0-0	0-0
CONFERENCE	0-0	0-0	0-0	0-0
NON-CONFERENCE	1-0	1-0	0-0	0-0

**Score by Periods**

Team	1st	2nd	3rd	4th	OT	TOT
Tex. A&M-Commerce	13	20	27	15	0	75
Opponents	11	5	13	21	0	50

**Team Box Score**

No.	Player				Total		3-Point		F-Throw		Rebounds											
		GP-GS	MIN	AVG	FG-FGA	FG%	3FG-3FGA	3FG%	FT-FTA	FT%	OFF	DEF	TOT	AVG	PF	DQ	A	TO	BLK	STL	PTS	AVG
2	NEWSOME, Jordyn	1-1	25:16	25.3	6-14	.429	4-11	.364	2-2	1.000	0	5	5	5.0	2	0	1	2	1	0	18	18.0
0	HORVATH, Cora	1-1	27:46	27.8	4-11	.364	4-7	.571	0-0	.000	3	2	5	5.0	2	0	1	6	0	2	12	12.0
21	PAYNE, Jasmine	1-0	18:00	18.0	3-10	.300	2-5	.400	2-4	.500	1	4	5	5.0	0	0	0	1	0	0	10	10.0
35	DAK, Nyaluak	1-0	11:18	11.3	4-5	.800	0-0	.000	1-2	.500	2	2	4	4.0	2	0	0	1	1	0	9	9.0
54	HEDRICH, Alva	1-1	23:24	23.4	4-5	.800	0-0	.000	1-1	1.000	5	9	14	14.0	3	0	1	1	2	0	9	9.0
3	HORVATH, Nina	1-0	13:43	13.7	2-5	.400	1-2	.500	3-3	1.000	0	1	1	1.0	0	0	2	1	1	3	8	8.0
22	HUMPHREY, Hannah	1-0	12:47	12.8	1-8	.125	1-7	.143	0-0	.000	2	3	5	5.0	2	0	0	1	0	0	3	3.0
44	MORELAND, Trinity	1-0	05:18	5.3	0-0	.000	0-0	.000	2-2	1.000	1	3	4	4.0	1	0	1	0	0	0	2	2.0
5	SANDERS, Nykesha	1-1	32:42	32.7	1-4	.250	0-2	.000	0-0	.000	1	0	1	1.0	3	0	11	1	2	3	2	2.0
4	DE KOCK, Jamy	1-1	13:07	13.1	1-2	.500	0-1	.000	0-0	.000	1	1	2	2.0	0	0	3	4	0	1	2	2.0
7	FRANKLIN, J'Unti	1-0	16:39	16.7	0-8	.000	0-4	.000	0-0	.000	0	2	2	2.0	1	0	1	0	0	0	0	0.0
Team												2	2									
<b>Total</b>		<b>1</b>	<b>200</b>		<b>26-72</b>	<b>.361</b>	<b>12-39</b>	<b>.308</b>	<b>11-14</b>	<b>.786</b>	<b>16</b>	<b>34</b>	<b>50</b>	<b>50.0</b>	<b>16</b>	<b>0</b>	<b>21</b>	<b>18</b>	<b>7</b>	<b>9</b>	<b>75</b>	<b>75.0</b>
<b>Opponents</b>		<b>1</b>	<b>200</b>		<b>18-56</b>	<b>.321</b>	<b>2-16</b>	<b>.125</b>	<b>12-15</b>	<b>.800</b>	<b>5</b>	<b>31</b>	<b>36</b>	<b>36.0</b>	<b>17</b>	<b>0</b>	<b>6</b>	<b>22</b>	<b>1</b>	<b>12</b>	<b>50</b>	<b>50.0</b>

**Team Statistics**

	TAMC	OPP
<b>Scoring</b>	<b>75</b>	<b>50</b>
Points per game	75.0	50.0
Scoring margin	+25.0	-
<b>Field goals-att</b>	<b>26-72</b>	<b>18-56</b>
Field goal pct	.361	.321
<b>3 point fg-att</b>	<b>12-39</b>	<b>2-16</b>
3-point FG pct	.308	.125
3-pt FG made per game	12.0	2.0
<b>Free throws-att</b>	<b>11-14</b>	<b>12-15</b>
Free throw pct	.786	.800
F-Throws made per game	11.0	12.0
<b>Rebounds</b>	<b>50</b>	<b>36</b>
Rebounds per game	50.0	36.0
Rebounding margin	+14.0	-
<b>Assists</b>	<b>21</b>	<b>6</b>
Assists per game	21.0	6.0
<b>Turnovers</b>	<b>18</b>	<b>22</b>
Turnovers per game	18.0	22.0
Turnover margin	+4.0	-
Assist/turnover ratio	1.2	0.3
<b>Steals</b>	<b>9</b>	<b>12</b>
Steals per game	9.0	12.0
<b>Blocks</b>	<b>7</b>	<b>1</b>
Blocks per game	7.0	1.0
<b>Winning streak</b>	<b>1</b>	<b>-</b>
Home win streak	1	-
<b>Attendance</b>	<b>242</b>	<b>0</b>
Home games-Avg/Game	1-242	0-0
Neutral site-Avg/Game	-	0-0

**Team Results**

Date	Opponent	Score	Att.
11/04/2024	North Texas-Dallas	W 75-50	242



# A&M-COMMERCE ON THE ROAD



2024-25 Tex. A&M-Commerce Women's Basketball  
 Combined Team Statistics  
 Away games

Page 1/1  
 as of Nov 08, 2024

**Game Records**

Record	Overall	Home	Away	Neutral
ALL GAMES	0-0	0-0	0-0	0-0
CONFERENCE	0-0	0-0	0-0	0-0
NON-CONFERENCE	0-0	0-0	0-0	0-0

**Score by Periods**

Team	1st	2nd	3rd	4th	OT	TOT
Tex. A&M-Commerce	0	0	0	0	0	0
Opponents	0	0	0	0	0	0

**Team Box Score**

No.	Player	Total			3-Point		F-Throw		Rebounds				Other									
		GP-GS	MIN	AVG	FG-FGA	FG%	3FG-3FGA	3FG%	FT-FTA	FT%	OFF	DEF	TOT	AVG	PF	DQ	A	TO	BLK	STL	PTS	AVG
Team																						
<b>Total</b>		<b>0</b>	<b>0</b>		<b>0-0</b>	<b>.000</b>	<b>0-0</b>	<b>.000</b>	<b>0-0</b>	<b>.000</b>	<b>0</b>	<b>0</b>	<b>0</b>	<b>0.0</b>	<b>0</b>	<b>0</b>	<b>0</b>	<b>0</b>	<b>0</b>	<b>0</b>	<b>0</b>	<b>0.0</b>
<b>Opponents</b>		<b>0</b>	<b>0</b>		<b>0-0</b>	<b>.000</b>	<b>0-0</b>	<b>.000</b>	<b>0-0</b>	<b>.000</b>	<b>0</b>	<b>0</b>	<b>0</b>	<b>0.0</b>	<b>0</b>	<b>0</b>	<b>0</b>	<b>0</b>	<b>0</b>	<b>0</b>	<b>0.0</b>	

**Team Statistics**

	TAMC	OPP
<b>Scoring</b>	<b>0</b>	<b>0</b>
Points per game	0.0	0.0
Scoring margin	0.0	-
<b>Field goals-att</b>	<b>0-0</b>	<b>0-0</b>
Field goal pct	.000	.000
<b>3 point fg-att</b>	<b>0-0</b>	<b>0-0</b>
3-point FG pct	.000	.000
3-pt FG made per game	0.0	0.0
<b>Free throws-att</b>	<b>0-0</b>	<b>0-0</b>
Free throw pct	.000	.000
F-Throws made per game	0.0	0.0
<b>Rebounds</b>	<b>0</b>	<b>0</b>
Rebounds per game	0.0	0.0
Rebounding margin	0.0	-
<b>Assists</b>	<b>0</b>	<b>0</b>
Assists per game	0.0	0.0
<b>Turnovers</b>	<b>0</b>	<b>0</b>
Turnovers per game	0.0	0.0
Turnover margin	0.0	-
Assist/turnover ratio	0.0	0.0
<b>Steals</b>	<b>0</b>	<b>0</b>
Steals per game	0.0	0.0
<b>Blocks</b>	<b>0</b>	<b>0</b>
Blocks per game	0.0	0.0
<b>Winning streak</b>	<b>0</b>	<b>-</b>
Home win streak	0	-
<b>Attendance</b>	<b>0</b>	<b>0</b>
Home games-Avg/Game	0-0	0-0
Neutral site-Avg/Game	-	0-0

**Team Results**

Date	Opponent	Score	Att.
------	----------	-------	------



# A&M-COMMERCE ON NEUTRAL SITES



2024-25 Tex. A&M-Commerce Women's Basketball  
 Combined Team Statistics  
 Neutral games

Page 1/1  
 as of Nov 08, 2024

**Game Records**

Record	Overall	Home	Away	Neutral
ALL GAMES	0-0	0-0	0-0	0-0
CONFERENCE	0-0	0-0	0-0	0-0
NON-CONFERENCE	0-0	0-0	0-0	0-0

**Score by Periods**

Team	1st	2nd	3rd	4th	OT	TOT
Tex. A&M-Commerce	0	0	0	0	0	0
Opponents	0	0	0	0	0	0

**Team Box Score**

No.	Player				Total		3-Point		F-Throw		Rebounds																
		GP	GS	MIN	AVG	FG	FGA	FG%	3FG	3FGA	3FG%	FT	FTA	FT%	OFF	DEF	TOT	AVG	PF	DQ	A	TO	BLK	STL	PTS	AVG	
Team																											
<b>Total</b>		<b>0</b>	<b>0</b>			<b>0-0</b>	<b>.000</b>	<b>0-0</b>	<b>.000</b>	<b>0-0</b>	<b>.000</b>	<b>0</b>	<b>0</b>	<b>0</b>	<b>0.0</b>	<b>0</b>	<b>0</b>	<b>0</b>	<b>0</b>	<b>0</b>	<b>0</b>	<b>0</b>	<b>0</b>	<b>0</b>	<b>0</b>	<b>0.0</b>	<b>0.0</b>
<b>Opponents</b>		<b>0</b>	<b>0</b>			<b>0-0</b>	<b>.000</b>	<b>0-0</b>	<b>.000</b>	<b>0-0</b>	<b>.000</b>	<b>0</b>	<b>0</b>	<b>0</b>	<b>0.0</b>	<b>0</b>	<b>0</b>	<b>0</b>	<b>0.0</b>	<b>0</b>	<b>0</b>	<b>0</b>	<b>0</b>	<b>0</b>	<b>0</b>	<b>0.0</b>	<b>0.0</b>

**Team Statistics**

	TAMC	OPP
<b>Scoring</b>	<b>0</b>	<b>0</b>
Points per game	0.0	0.0
Scoring margin	0.0	-
<b>Field goals-att</b>	<b>0-0</b>	<b>0-0</b>
Field goal pct	.000	.000
<b>3 point fg-att</b>	<b>0-0</b>	<b>0-0</b>
3-point FG pct	.000	.000
3-pt FG made per game	0.0	0.0
<b>Free throws-att</b>	<b>0-0</b>	<b>0-0</b>
Free throw pct	.000	.000
F-Throws made per game	0.0	0.0
<b>Rebounds</b>	<b>0</b>	<b>0</b>
Rebounds per game	0.0	0.0
Rebounding margin	0.0	-
<b>Assists</b>	<b>0</b>	<b>0</b>
Assists per game	0.0	0.0
<b>Turnovers</b>	<b>0</b>	<b>0</b>
Turnovers per game	0.0	0.0
Turnover margin	0.0	-
Assist/turnover ratio	0.0	0.0
<b>Steals</b>	<b>0</b>	<b>0</b>
Steals per game	0.0	0.0
<b>Blocks</b>	<b>0</b>	<b>0</b>
Blocks per game	0.0	0.0
<b>Winning streak</b>	<b>0</b>	<b>-</b>
Home win streak	0	-
<b>Attendance</b>	<b>0</b>	<b>0</b>
Home games-Avg/Game	0-0	0-0
Neutral site-Avg/Game	-	0-0

**Team Results**

Date	Opponent	Score	Att.
------	----------	-------	------



# 2023-24 SEASON STATISTICS



2024-25 Tex. A&M-Commerce Women's Basketball  
 Combined Team Statistics  
 All games

Page 1/1  
 as of Nov 08, 2024

**Game Records**

Record	Overall	Home	Away	Neutral
ALL GAMES	1-0	1-0	0-0	0-0
CONFERENCE	0-0	0-0	0-0	0-0
NON-CONFERENCE	1-0	1-0	0-0	0-0

**Score by Periods**

Team	1st	2nd	3rd	4th	OT	TOT
Tex. A&M-Commerce	13	20	27	15	0	75
Opponents	11	5	13	21	0	50

**Team Box Score**

No.	Player	Total			3-Point			F-Throw		Rebounds				Other								
		GP-GS	MIN	AVG	FG-FGA	FG%	3FG-3FGA	3FG%	FT-FTA	FT%	OFF	DEF	TOT	AVG	PF	DQ	A	TO	BLK	STL	PTS	AVG
2	NEWSOME, Jordyn	1-1	25:16	25.3	6-14	.429	4-11	.364	2-2	1.000	0	5	5	5.0	2	0	1	2	1	0	18	18.0
0	HORVATH, Cora	1-1	27:46	27.8	4-11	.364	4-7	.571	0-0	.000	3	2	5	5.0	2	0	1	6	0	2	12	12.0
21	PAYNE, Jasmine	1-0	18:00	18.0	3-10	.300	2-5	.400	2-4	.500	1	4	5	5.0	0	0	0	1	0	0	10	10.0
35	DAK, Nyaluak	1-0	11:18	11.3	4-5	.800	0-0	.000	1-2	.500	2	2	4	4.0	2	0	0	1	1	0	9	9.0
54	HEDRICH, Alva	1-1	23:24	23.4	4-5	.800	0-0	.000	1-1	1.000	5	9	14	14.0	3	0	1	1	2	0	9	9.0
3	HORVATH, Nina	1-0	13:43	13.7	2-5	.400	1-2	.500	3-3	1.000	0	1	1	1.0	0	0	2	1	1	3	8	8.0
22	HUMPHREY, Hannah	1-0	12:47	12.8	1-8	.125	1-7	.143	0-0	.000	2	3	5	5.0	2	0	0	1	0	0	3	3.0
44	MORELAND, Trinity	1-0	05:18	5.3	0-0	.000	0-0	.000	2-2	1.000	1	3	4	4.0	1	0	1	0	0	0	2	2.0
5	SANDERS, Nykesha	1-1	32:42	32.7	1-4	.250	0-2	.000	0-0	.000	1	0	1	1.0	3	0	11	1	2	3	2	2.0
4	DE KOCK, Jamy	1-1	13:07	13.1	1-2	.500	0-1	.000	0-0	.000	1	1	2	2.0	0	0	3	4	0	1	2	2.0
7	FRANKLIN, J'Unti	1-0	16:39	16.7	0-8	.000	0-4	.000	0-0	.000	0	2	2	2.0	1	0	1	0	0	0	0	0.0
Team											2		2									
<b>Total</b>		<b>1</b>	<b>200</b>		<b>26-72</b>	<b>.361</b>	<b>12-39</b>	<b>.308</b>	<b>11-14</b>	<b>.786</b>	<b>16</b>	<b>34</b>	<b>50</b>	<b>50.0</b>	<b>16</b>	<b>0</b>	<b>21</b>	<b>18</b>	<b>7</b>	<b>9</b>	<b>75</b>	<b>75.0</b>
<b>Opponents</b>		<b>1</b>	<b>200</b>		<b>18-56</b>	<b>.321</b>	<b>2-16</b>	<b>.125</b>	<b>12-15</b>	<b>.800</b>	<b>5</b>	<b>31</b>	<b>36</b>	<b>36.0</b>	<b>17</b>	<b>0</b>	<b>6</b>	<b>22</b>	<b>1</b>	<b>12</b>	<b>50</b>	<b>50.0</b>

**Team Statistics**

	TAMC	OPP
<b>Scoring</b>	<b>75</b>	<b>50</b>
Points per game	75.0	50.0
Scoring margin	+25.0	-
<b>Field goals-att</b>	<b>26-72</b>	<b>18-56</b>
Field goal pct	.361	.321
<b>3 point fg-att</b>	<b>12-39</b>	<b>2-16</b>
3-point FG pct	.308	.125
3-pt FG made per game	12.0	2.0
<b>Free throws-att</b>	<b>11-14</b>	<b>12-15</b>
Free throw pct	.786	.800
F-Throws made per game	11.0	12.0
<b>Rebounds</b>	<b>50</b>	<b>36</b>
Rebounds per game	50.0	36.0
Rebounding margin	+14.0	-
<b>Assists</b>	<b>21</b>	<b>6</b>
Assists per game	21.0	6.0
<b>Turnovers</b>	<b>18</b>	<b>22</b>
Turnovers per game	18.0	22.0
Turnover margin	+4.0	-
Assist/turnover ratio	1.2	0.3
<b>Steals</b>	<b>9</b>	<b>12</b>
Steals per game	9.0	12.0
<b>Blocks</b>	<b>7</b>	<b>1</b>
Blocks per game	7.0	1.0
<b>Winning streak</b>	<b>1</b>	<b>-</b>
Home win streak	1	-
<b>Attendance</b>	<b>242</b>	<b>0</b>
Home games-Avg/Game	1-242	0-0
Neutral site-Avg/Game	-	0-0

**Team Results**

Date	Opponent	Score	Att.
11/04/2024	North Texas-Dallas	W 75-50	242