

ARKANSAS

WOMEN'S BASKETBALL

Sunday, December 29 • 2:00 p.m. CT • SECN+ • Bud Walton Arena (19,200) • Fayetteville, Ark.

Info



SEC Network+
Josh Haley, PxP
Matt Zimmerman, Analyst



Live Stats
arkansas.statbroadcast.com

2024-25 Schedule (6-8, 0-0 SEC)

NOVEMBER

4	Fairfield	L, 81-67
8	East Texas A&M	W, 84-65
11	at Little Rock	W, 71-60 OT
14	UT-Arlington	W, 93-65
17	at #5 UCLA	L, 101-52
21	Oral Roberts	L, 94-73
24	Arkansas State	W, 76-60
29	vs. Oklahoma State^	L, 70-56
30	vs. Bowling Green^	L, 79-78

DECEMBER

5	Boston College	W, 75-64
8	SEMO	W, 84-45
15	Texas Tech	L, 75-72
18	vs. Liberty\$	L, 75-61
19	vs. Troy\$	L, 77-69
29	Central Arkansas	2:00 p.m.

JANUARY

2	LSU*	8:00 p.m.
5	at Texas*	2:00 p.m.
9	at Auburn*	6:00 p.m.
12	Tennessee*	12:00 p.m.
19	Alabama*	4:00 p.m.
23	at Vanderbilt*	6:30 p.m.
26	at Kentucky*	11:00 a.m.
30	Texas A&M*	6:30 p.m.

FEBRUARY

3	Florida*	6:00 p.m.
6	at Mississippi State*	6:30 p.m.
9	at Georgia*	11:00 a.m.
13	Ole Miss*	6:30 p.m.
20	at South Carolina*	6:00 p.m.
23	Oklahoma*	2:00 p.m.
27	Missouri*	6:30 p.m.

MARCH

2	at Texas A&M*	2:00 p.m.
5-9	SEC Tournament	Greenville, S.C.

All times Central; Home games in **BOLD**
* - SEC Game

^ - Daytona Beach Classic (Daytona, Fla.)

\$ - Cherokee Invite (Cherokee, N.C.)



VS

Central Arkansas

Arkansas

Record: 6-4 (0-0 ASUN)

Head Coach: Tony Kemper

Overall Record: 106-106

Record at Central Ark.: 27-16

Rankings: AP: NR **Coaches:** NR **NET:** 174

Record: 6-8 (0-0 SEC)

Head Coach: Mike Neighbors

Overall Record: 242-141

Record at Arkansas: 144-100

Rankings: AP: NR **Coaches:** NR **NET:** 153

Last Time's Starting Five



#2 KIKI SMITH

So. | G | 5-7 | Topeka, Kan.

PPG RPG APG MPG
11.6 2.1 2.5 32.1

SNAPSHOT:

- Paced Arkansas with 22 points in first win of the season. Went 8-9 from FG, lone miss was in 4Q. Ranks #3 in the SEC and 28th in the NCAA with 29 3s
- Named the 2024 NJCAA DI WBB Player of the Year and First Team All-American at Hutchinson CC
- Started in all 37 games, logging 17.6 points per game on 55.9 percent from the field (237-for-424), 44.4 percent from beyond the arc (82-for-103) and 79.6 percent from the free throw line (82-for-103)



#3 IZZY HIGGINBOTTOM

Sr. | G | 5-7 | Batesville, Ark.

PPG RPG APG MPG
23.4 4.1 4.1 34.8

SNAPSHOT:

- Exploded for a career-high 38 points in Arkansas' 75-64 win over Boston College. It's the most points since Chelsea Dungee dropped 41 vs. Auburn in 2019.
- Leads the SEC and ranks fourth in the NCAA in ppg (23.4). Leads the SEC and ranks No. 2 the NCAA with 100 free throws made.
- Named SEC Co-Player of the Week on Dec. 11



#23 CARLY KEATS

Jr. | G | 5-8 | Philadelpia, Miss.

PPG RPG APG MPG
7.8 1.5 0.86 23.5

SNAPSHOT:

- Had a career night against SEMO with 19 points. Tied her previous career high of 16 in the 2nd quarter alone
- Started in 10 games with 29 appearances, missing four contests with a broken nose last year
- Logged 16 points in first career start vs. Georgia, in which she played all 40 minutes



#34 JENNA LAWRENCE

So. | F | 6-3 | Melbourne, Ark.

PPG RPG APG MPG
7.8 7.0 0.29 27.2

SNAPSHOT:

- Notched back-to-back double-doubles, against Fairfield (11 pts/10 rbd) and East Texas A&M (10 pts/10 rbd). Recorded 3rd double-double (14 pts, 12 rbd) against UTA. Had career-high 21 pts vs. BGSU
- Recorded her first career double-double (11 pts/10 rbd) against Fairfield on Nov. 4
- Four-star, No. 61 ranked player - ESPNW 100



#22 VERA OJENUWA

So. | F | 6-4 | Delta State, Nigeria

PPG RPG APG MPG
8.6 7.8 0.79 24.5

SNAPSHOT:

- For Barton CC, started in 27 of 30 game appearances, averaging 13.6 points and 10.4 rebounds per game (both paced the team) with a 47.8 field goal percentage last season
- Has back-to-back double-doubles... against SEMO (13 & 14) and Texas Tech (12 & 11)
- All-Kansas Jayhawk CC Conference First Team selection at Barton

Quick Facts

GENERAL INFORMATION

Location.....	Fayetteville, Arkansas
Founded.....	1871
Enrollment.....	33,610
Nickname.....	Razorbacks
School Colors.....	Cardinal (PMS 202) and White
Conference.....	Southeastern
Arena (Capacity).....	Bud Walton Arena (19,200)
System President.....	Dr. Donald R. Bobbitt (Arkansas '80)
Chancellor.....	Dr. Charles Robinson (Houston)
Athletic Director.....	Hunter Yurachek (Guilford College '90)
SWA.....	Derita Dawkins (James Madison)
Faculty Athletic Rep.....	Dr. Paul Adams (LSU)
Sport Administrator.....	Derita Dawkins (James Madison)
Athletics Website.....	ArkansasRazorbacks.com
Ticket Office Phone.....	1-800-982-HOGS
Athletic Department Phone.....	(479) 575-6533

TEAM INFORMATION

Starters Returning/Lost.....	0/5
2023 Overall Record.....	18-15
2023 Conference Record/Finish.....	6-10/T-9th

PROGRAM HISTORY

Seasons.....	49
All-Time Record.....	879-584
SEC Record.....	180-294
Conference Championships.....	2 (SWC)
NCAA Tournament Appearances.....	13 (Last: 2022)
NCAA Tournament Record.....	14-13
SEC Tournament Appearances.....	33
SEC Tournament Record.....	19-33

COACHING/SUPPORT STAFF

Head Coach.....	Mike Neighbors (Arkansas '93)
Career Record.....	242-141
Record at Arkansas.....	144-100
Assoc. Head Coach.....	Todd Schaefer (Thomas More '95)
Assistant Coach.....	Lacey Goldwire (Oklahoma State '10)
Assistant Coach.....	Nick Bradford (Kansas '01)
Director of Operations.....	Amber Shirey (Arkansas '92)
Student-Athlete Development.....	Jayci Stone (Kansas State '08)
Athletic Trainer.....	Simone Rush (Alabama '15)
Strength & Conditioning.....	Tyler Beckman (North Dakota '13)
Video Coordinator.....	Evan Johnston (Arkansas '22)
Graduate Assistant.....	Sasha Goforth

COMMUNICATIONS

Asst. Dir. of Communications.....	Fuller Birch
Cell Phone:.....	(479) 790-9426
Office Phone:.....	(479) 575-3401
Office Fax:.....	(479) 575-7481
Office E-mail:.....	fdbirch@uark.edu
Athletics Website:.....	ArkansasRazorbacks.com
Mailing Address:.....	P.O. Box 7777, Fayetteville, AR 72702
Shipping Address:.....	350 N. Razorback Rd., Fayetteville, AR, 72701

NEIGHBORHOOD WATCH

■ Arkansas finished the season 18-15 for the program's sixth straight winning season, all under head coach Mike Neighbors, as well as the 38th winning season in program history

■ The Hogs qualified for its sixth straight postseason (if including 2020, in which the Hogs were a lock for the NCAA Tournament), also all in the Neighbors era. Those six straight appearances matched a school record with his mentor Gary Blair for most consecutive postseason berths

■ The Hogs played in the inaugural WBIT as one of 25 at-large bids. Arkansas was matched up with No. 3 seed Tulsa, who shared the title for regular season American Athletic Conference Champions

■ Arkansas was defeated 80-62 at Tulsa in the WBIT, while being limited to eight players for the fourth straight game, ending the season on a six-game losing skid

■ Makayla Daniels left her positive mark on the Arkansas program and will always be remembered as one of the best to rep the Razorbacks. In her final season, she paced the Hogs with 53 steals and 57 made 3-pointers. She is the highest scoring point guard in school history with 1,846 points, which also makes her a top five scorer. Daniels holds the school record for a program's most starts and games played with 155, as well as career minutes (4,592)

■ Daniels was selected as an All-SEC Preseason Second Team choice, as voted by the league's head coaches

■ The Hogs led the league in 3-pointers per game (8.73), which was 16th in the NCAA, 3-point attempts per game (29.36), a number that was fourth in the country, as well as turnovers per game (12.67), 22nd in the country

■ Arkansas broke the single-season program record for blocks with 172 total. The team's 5.21 blocks per game was fourth in the league and 14th in the NCAA

INSIDE THE SERIES

■ The two teams will square off for the fifth straight season and the sixth time overall. The Razorbacks own a 5-0 advantage in the all-time series record.

■ Central Arkansas will face its third power conference opponent when it comes to Fayetteville. The Sugar Bears gave up 89 points against Oklahoma State and 86 points to Kansas State earlier this season. The Hogs and Bears share two common opponents, the Cowgirls and Little Rock, who Arkansas beat 71-60 in November.

CHALLENGE WON

■ The Razorbacks snapped their two-game losing streak after taking down Boston College, 75-64, in this year's SEC/ACC Challenge. The Hogs improved to 2-0 in the Challenge with the first win coming against Florida State last

season

■ Izzy Higginbottom had a career night with new highs in points (38) and field goals (14). The senior from Batesville went 10-11 from the free throw line to help secure the win

■ Kiki Smith assisted Higginbottom with her eighth 10+ performance of the season and had 15 of the Hogs' points. The duo combined for 53 of the team's 75 points (71%)

■ Vera Ojenuwa entered double figures in rebounds for the fourth time this season and led Arkansas with 10.

SKEATS-SKEAT!!

■ Juco product Carly Keats went from being one of the first players off the bench to a starter, earning nine starting nods last season

■ After missing four games in 2023-24 with a broken nose, made her return vs. Missouri at home, having logged 11 points with two 3-pointers off the bench in 25 minutes

WHAT'S HE SAYIN'?

Trying to figure out what Coach Neighbors is saying on the bench? Don't worry - he has a language all his own.

Coach Neighbors plays Positionless Basketball. Instead of having guards, forwards and centers, he has Rabbits, Rackers, Locks and Dragons.



Rabbits run the floor and look to score quickly with a layup.



Rackers bring the ball up the floor and are trying to get to the rack.



Locks, generally good three-point shooters, are trying to win the race to the corners.



The Dragon is the last player down the court, dragging behind the others.

■ This season, Keats got hot against SEMO with a career high 19 points. She tied her previous career high of 16 points in the second quarter alone. She also set a new career high with 5 3-pointers made

■ Recorded eight double-digit scoring games and five with 3+ 3-pointers made, while scoring double digits in seven of 12 SEC contests to log 8.8 points per game in league games

■ Named an All-Region 23 Team at Jones College, making 55 3-pointers for a 34.8 percentage and averaging 9.7 points, 3.7 rebounds and 3.5 assists per game

■ Big in Jones winning its seventh straight region crown to punch a ticket to the NJCAA II Tournament and an Elite 8 appearance

REPPIN' HER HOME STATE



■ Jenna Lawrence was a four-star prospect and No. 61 overall player in the 2023 HoopGurlz Recruiting Rankings

■ Coming off her first career double-double (10 pts, 11 rbd) against Fairfield, she followed it up with another double-double (10 pts, 10 rbd) against East Texas A&M on Nov. 8 and had a career night against UT-Arlington (14 pts, 12 rbd, 4 3s)

■ Lawrence had another career night against Bowling Green, with highs in points (21) and 3s made (5)

■ In her first career start, registered a career-high 13 points, five rebounds, one assist and one block in a career-high 35 minutes played vs. Auburn in the SEC Tournament last season

■ Recorded six points and team-leading six rebounds in 21 minutes played off the bench vs. No. 1/1 South Carolina

■ Played nearly nine minutes at Missouri, nailing down a 3-pointer at the buzzer at the end of the third quarter, which put the Hogs up for good. Finished game with three points, three rebounds, two steals and one block

■ Recorded her first career double-digit scoring game with 10 points off 3-of-4 shooting from the field vs. LA Tech

■ Logged 13 3-pointers in 42 attempts for a .310 mark last season

■ Led Farmington High School to a 4A girls state championship, being named the MVP after averaging 18.7 points and 7.1 rebounds per game as a senior

IZZY MONEY

■ Senior guard Izzy Higginbottom, a transfer from Arkansas State and Batesville, Ark. native, is making an immediate impact for the Hogs

■ Higginbottom has been the Hogs' leading scorer in 11 games (Fairfield, Little Rock, UTA, UCLA, ORU, OSU, BGSU, BC, TTU, LIB, Troy) this season

■ She also leads the team and ranks third in the SEC in FT%, going 100-110 (.909) from the charity stripe. Higginbottom leads the SEC and ranks second in the NCAA in FTA (110) and ranks first in the SEC and second in the NCAA in FTM (100).

■ She's been perfect from the line in seven games (ETA&M, LR, UCLA, BGSU, SEMO, LU, Troy) this season.

■ She has cemented herself as one of the best scorers in the NCAA through the first 14 games and ranks No. 4 in the country and first in the SEC in points per game (23.4) ahead of LSU's Flau'Jae Johnson (22.0).

■ Higginbottom scored 25+ points in three straight games, dating back to Nov. 29's game against Oklahoma State. She scored 26 against the Cowgirls, 26 against Bowling Green and 38 against Boston College. Higginbottom is just the third Arkansas player to accomplish the feat in the last 25 years. Chelsea Dungee was the most recent in 2018.

■ Against Boston College, Higginbottom scored a career-high 38 points, the most points in a game for Arkansas since Dungee dropped 41 points at Auburn in 2019. It's tied for the fifth most points in an NCAA game this season and currently she has the highest scoring game among SEC players.

■ With the 38 points from the BC game and 18 points against SEMO, Higginbottom was named Co-SEC Player of the Week. She's the first Razorback to win the weekly honor since 2022.

IZZY'S A-STATE SNAPSHOT

■ Named a 2023 All-Sun Belt First Team selection following a historical junior season with the Red Wolves ... One of 10 semifinalists for the Becky Hammon Mid-Major Player of the Year ... Logged 22.2 points per game, which led the conference and was No. 8 in the NCAA, all while shooting 46.2 percent from the field and 36.7 percent from beyond the arc ... Led the league in free throws made (175), which was No. 2 in the nation during the regular season, and free throw attempts (192), seventh most in the NCAA ... Only player to average at least seven free throws per game on 90 percent efficiency from the free throw line since Elana Delle Donne in 2010-11 ... Registered seven 30+ point performances, including a career-high 35 points against South Alabama, and became a 1,000-point scorer this past season

SPANISH SPECIAL

■ Arkansas WBB's seventh-ever international player in Cristina Sanchez Cerqueira is a member of the Spanish National Team

■ Played almost nine minutes in Arkansas' first win of the season, against East Texas A&M

■ Finished the 2023-24 season with one rebound in 1.5 minutes played off the bench at Tulsa in the WBIT

■ Registered one block and played four minutes at Tennessee

■ Represents her country in 3x3 tournaments, including just recently at the FIBA 3x3 World Cup in Debrecen, Hungary

■ With Segle XXI, played in 26 games, averaging 6.4 points, 5.4 rebounds and 1.3 steals per game last season

PHENOM PHOENIX

■ 2023 Fall signee Phoenix Stotijn enrolled early in January 2024 to Arkansas, and is a member of the Netherlands National Team

■ Did not play in the second half of the season, but has been practicing with the team

■ The 5-9 combo guard of the Netherlands played for Triple Threat, logging 13.6 points, 3.6 rebounds and 1.5 steals per game in the team's eight games

■ Eighth ever international player at Arkansas

■ Made her long awaited debut on Sunday against Texas Tech. The Dutch native settled in in the second half and shot 3-6 from three and converted her lone free throw attempt. Stotijn finished with 12 points and played just over 20

OUR RECORD WHEN...

Overall	6-8
Home / Away / Neutral	5-3/1-1/0-4
SEC	
Home / Away	
White Uniforms	5-4
White w/ Pink Uniforms	
Cardinal Uniforms	1-2
Anthracite Uniforms	
Turquoise Uniforms	0-2
Pink Uniforms	

LEADS/QUARTERS/HALFTIME/OT

Leading after the 1st quarter	1-1
Leading after the 2nd quarter/Half	3-1
Leading after the 3rd quarter	4-1
Leading at the half, home	3-0
Leading at the half, road/neutral	0-1
Tied at the half, home	
Tied at the half, road/neutral	
Games decided by 5 points or fewer	0-2
Games decided by 10 points or fewer	0-2
Leading with 5:00 left	6-1
Leading with 2:00 left	5-1
Overtime games	1-0

OFFENSE

Scoring less than 70 points	0-5
Scoring 70-79 points	3-3
Scoring 80-89 points	2-0
Scoring 90-99 points	1-0
Scoring 100+ points	
2 Players Or Less in Double Figures	0-2
3 Players in Double Figures	3-5
4 Players in Double Figures	3-1
5 Players in Double Figures	
5+ Players in Double Figures	
When shooting 50 percent or higher	
When shooting less than 50 percent	6-6

REBOUNDING/TURNOVERS

When outrebounding opponent	4-0
When outrebounded	2-8
When rebounds are even	
When grabbing 10+ offensive reb	4-3
When forcing 15+ turnovers	3-2
When committing less than 15 turnovers	3-5
When committing 15+ turnovers	3-3

Top Scorers (Includes Ties)

Higginbottom ..	Fairfield, Little Rock, UTA, UCLA, ORU, OSU
	BGSU, BC, TTU, LIB, Troy
Smith	East Texas A&M
Ojenuwa	Ark. St.
Keats	SEMO

Top Rebounders (Includes Ties)

Lawrence	Fairfield, East Texas A&M, UTA, UCLA, Ark. St.
	OSU
Ojenuwa	Little Rock, ORU, Ark. St., BC, SEMO, TTU, LIB
Johnson	BGSU
Higginbottom	LIB
Sanchez-Cerqueira	Troy

Months

November	4-5
December	2-3
January	
February	
March	



minutes.

■ Her mother, Anouk, is a Dutch singer-songwriter with many albums topping the Dutch charts, most of them going Platinum and several debuting in the No. 1 position.

CONSISTENCY IN THE NEIGHBORS' ERA

■ Head coach Mike Neighbors has led the program to consistency, now entering his eighth season at the helm

■ Guided his teams to six straight postseason berths (including 2020 season, where team would have been lock for NCAA Tournament)

■ With the postseason appearance in the WBIT last season, Neighbors matched the program record of six consecutive postseason qualifications, tying with his mentor Gary Blair

UNITED NATIONS

■ The 2024-25 roster features five international players from five different countries: Phoenix Stotijn (The Netherlands), Cristina Sanchez (Spain), Pinja Paananen (Finland), Vera Ojenuwa (Nigeria) and Danika Galea (Malta).

■ How to say "Go Hogs" in each language
 Finnish: Menkää Siat
 Dutch: Ga Varkens
 Maltese: Mur Hniezer
 Spanish: ¡Vamos cerdos!

KIKI FOR THREE

■ Sophomore guard Kiki Smith has established herself as a key scoring threat for Arkansas.

■ The Topeka, Kan. native has 10+ points in 9 of 14 games and has started every game this season.

■ Smith paced Arkansas with 22 points in first win of the season against East Texas A&M. Went 8-9 from FG, lone miss was in 4Q.

■ From beyond the arc, Kiki ranks third in the SEC and 28th in the NCAA with 33 3s.

■ Named the 2024 NJCAA DI WBB Player of the Year and First Team All-American at Hutchinson CC

■ Started in all 37 games, logging 17.6 points per game on 55.9 percent from the field (237-for-424), 44.4 percent from beyond the arc (82-for-103) and 79.6 percent from the free throw line (82-for-103)

NATURAL STATE SHOWDOWNS

■ The Razorbacks are 17-1 against in-state schools since the moratorium on playing in-state schools was lifted five years ago

■ Arkansas' records against in-state schools since 2019: Little Rock (7-0), Central Arkansas (4-0), UA-Pine Bluff (3-1), Arkansas State (4-0)

■ The Hogs will face Little Rock, Arkansas State and Central Arkansas this season

SLOBBERING HOG

■ After a 17-year absence, the beloved "Slobbering Hog" logo has returned to center court for Razorback basketball.

In The Standings

	CONFERENCE				OVERALL				Streak	vs. T10	vs. T25	SEC FINISHES LAST 15 YEARS	
	W-L	Pct.	H	A	W-L	Pct.	H	A					
LSU	0-0	.000	0-0	0-0	14-0	1.000	9-0	1-0	4-0	W14	0-0	1-0	2023-24.....T9
Tennessee	0-0	.000	0-0	0-0	11-0	1.000	7-0	1-0	3-0	W11	0-0	1-0	2022-23.....8th
Alabama	0-0	.000	0-0	0-0	12-1	.923	6-0	2-1	4-0	W3	0-0	1-0	2021-22.....T8
Mississippi State	0-0	.000	0-0	0-0	12-1	.923	5-0	3-1	4-0	W4	0-0	0-0	2020-21.....T5
Texas	0-0	.000	0-0	0-0	12-1	.923	6-0	3-1	3-0	W5	1-1	1-1	2019-20.....T3
Vanderbilt	0-0	.000	0-0	0-0	12-1	.923	8-0	3-0	1-1	W5	0-0	0-0	2018-19.....10th
Kentucky	0-0	.000	0-0	0-0	11-1	.917	8-0	1-1	2-0	W3	0-0	2-1	2017-18.....T12
Oklahoma	0-0	.000	0-0	0-0	11-1	.917	6-0	3-0	2-1	W5	0-0	2-1	2016-17.....14th
South Carolina	0-0	.000	0-0	0-0	11-1	.917	5-0	1-1	5-0	W6	3-1	4-1	2015-16.....10th
Auburn	0-0	.000	0-0	0-0	9-3	.750	5-0	2-2	2-1	W4	0-0	0-1	2014-15.....T9
Ole Miss	0-0	.000	0-0	0-0	8-3	.727	6-0	1-1	1-2	W3	0-2	0-2	2013-14.....8th
Missouri	0-0	.000	0-0	0-0	10-4	.714	8-2	1-1	1-1	L1	0-0	0-0	2012-13.....T11
Florida	0-0	.000	0-0	0-0	8-5	.615	7-1	1-1	0-3	W1	0-0	0-1	2011-12.....T8
Texas A&M	0-0	.000	0-0	0-0	7-5	.583	6-2	0-1	1-2	W2	0-0	0-2	2010-11.....T4
Georgia	0-0	.000	0-0	0-0	8-6	.571	6-3	0-1	2-2	W1	0-0	0-0	2009-10.....9th
Arkansas	0-0	.000	0-0	0-0	6-8	.429	5-3	1-1	0-4	L3	0-1	0-1	2008-09.....T11

Game-by-Game Starters

OPPONENT	1	2	3	4	5
Fairfield	K. Smith	Higginbottom	Keats	Lawrence	Ojenuwa
East Texas A&M	K. Smith	Higginbottom	Keats	Lawrence	Ojenuwa
Little Rock	K. Smith	Higginbottom	Keats	Lawrence	Ojenuwa
UT-Arlington	K. Smith	Higginbottom	Keats	Lawrence	Ojenuwa
UCLA	K. Smith	Higginbottom	Keats	Lawrence	Ojenuwa
Oral Roberts	K. Smith	Higginbottom	Keats	Lawrence	Ojenuwa
Arkansas State	K. Smith	Higginbottom	Keats	Lawrence	Ojenuwa
Oklahoma State	K. Smith	Higginbottom	Keats	Lawrence	Ojenuwa
Bowling Green	K. Smith	Higginbottom	Keats	Lawrence	Ojenuwa
Boston College	K. Smith	Higginbottom	Keats	Lawrence	Ojenuwa
SEMO	K. Smith	Higginbottom	Keats	Lawrence	Ojenuwa
Texas Tech	K. Smith	Higginbottom	Keats	Lawrence	Ojenuwa
Liberty	K. Smith	Higginbottom	Keats	Lawrence	Ojenuwa
Troy	K. Smith	Higginbottom	Keats	Lawrence	Ojenuwa

Record with each lineup

K. Smith, Higginbottom, Keats, Lawrence, Ojenuwa: 6-8

■ The "Slobbering Hog" return was made possible after Arkansas AD Hunter Yurachek set out a challenge to Razorback fans to raise money for NIL to bring the logo back. Arkansas Edge, the school's NIL collective, raised \$500,000, thanks in part from a late donation and proceeds from a Justin Moore concert at the Walmart AMP, to reach the goal.



■ Best research indicates the "Slobbering Hog" made its first appearance for the 1974-75 season in Barnhill Arena for men's head coach Eddie Sutton's first season. (h/t Mike Cawood)

LUNCH & HOOPS

■ Razorback Women's Basketball fans can join Coach Mike Neighbors for his monthly Lunch and Hoops events at the Catfish Hole (4127 W. Wedington) as he talks about the season and upcoming games. The first of four Lunch and Hoops events is set for Tuesday, Nov. 19.

■ This year's luncheon dates are as follows: Tuesday, Nov. 19; Tuesday, Dec. 10; Tuesday, Jan. 14; Tuesday, Feb. 18

■ Patrons will be able to order off the menu and enjoy a variety of meal options. Doors for the luncheon will open at 11:15 a.m. and the program will begin at noon.

EXTRA! EXTRA!

■ Click [here](#) to access the Arkansas women's basketball media hub, home to press conferences and game-by-game information

■ Follow [@RazorbackComms](#) on X for news, notes, stats and info from the Razorback athletic department



2024-2025 ARKANSAS RAZORBACKS WOMEN'S BASKETBALL

No.	Name	Pos.	Class	Ht.	Hometown (Previous School)
0	Ella Rogers	G	Sr.	5-8	Granville, Ohio (Granville HS)
1	Phoenix Stotijn	G	Fr.	5-9	Amsterdam, Netherlands
2	Kiki Smith	G	So.	5-7	Topeka, Kan. (Topeka HS/Hutchinson CC)
3	Izzy Higginbottom	G	Sr.	5-7	Batesville, Ark. (Batesville HS/Missouri/Arkansas St.)
10	Cristina Sanchez Cerqueira	F	So.	6-1	Granada, Spain (Segle XXI)
15	Jada Bates	G	Fr.	6-3	Powder Springs, Ga. (McEachern HS)
16	Pinja Paananen	F	Fr.	6-2	Laukaa, Finland (Jyväskylä Basketball Academy)
20	Karley Johnson	G	Jr.	5-9	Oklahoma City, Okla. (Mustang HS)
21	Loren Lindsay	G	R-So.	5-11	Fayetteville, Ark. (Fayetteville HS)
22	Vera Ojenuwa	F	So.	6-4	Delta State, Nigeria (Orhuwhorun/Barton CC)
23	Carly Keats	G	Jr.	5-8	Philadelphia, Miss. (Neshoba Central HS/Jones College)
25	Danika Galea	C	Fr.	6-3	St. Paul's Bay, Malta
34	Jenna Lawrence	F	So.	6-3	Melbourne, Ark. (Farmington HS)
44	Maryn Archer	G	R-Fr.	5-7	Derby, Kan. (Derby HS)

COACHES AND SUPPORT STAFF

Head Coach: Mike Neighbors, 8th Season

Associate Head Coach: Todd Schaefer, 8th Season

Assistant Coach: Lacey Goldwire, 6th Season

Assistant Coach: Nick Bradford 1st Season

Director of Women's Basketball Operations: Amber Shirey, 37th Season

Director of Student-Athlete Development: Jayci Stone, 3rd Season

Special Assistant to the Head Coach/Director of Video: Evan Johnston, 2nd Season

Head Athletic Trainer: Simone Rush, 5th season

Strength & Conditioning Coach: Tyler Beckman, 4th season

PRONUNCIATION GUIDE

#1 Phoenix Stotijn	Stow-Tine
#16 Pinja Paananen	PIN-ya PAH-ne-nen
#22 Vera Ojenuwa	oh-JEN-you-wuh
#25 Danika Galea	Danica gall-EE-yuh
#44 Maryn Archer	mare-in
Laukaa, Finland	LOW (like ow)-kuh
Granada, Spain	grey-nah-duh



Last Time...

OFFENSE

Scored 110+	110, vs. Providence (11-16-98)
Scored 100+ points at home	100, vs. LA Tech (12-7-23)
Scored 100+ points on the road	108, at Ole Miss (2-16-20) 108, Baylor (3-6-91)
Scored 90-99 points	93 vs. UT-Arlington (11/14/24)
Scored 90+ points at home	93 vs. UT-Arlington (11/14/24)
Scored 90+ points on the road	93, at Little Rock (11-20-22)
Scored 80-89 points	84 vs. SEMO (12/8/24)
Scored 80-89 points at home	84 vs. SEMO (12/8/24)
Scored 80-89 points on the road	81, at Florida (2-8-23)
Scored 35+ points in a quarter	36 vs. UT-Arlington (11/14/24)
Was held to 50-59	56 vs. Oklahoma State (11/29/24)
Was held to 49-40	48, vs. Auburn (3-7-24)
Was held to 39-20	34, at LSU, 2-7-19
Was held to 20 or less	N/A
Made 40+ field goals	40, vs. Central Arkansas (12-13-20)
Made 17+ three-point field goals	19, vs. Alabama (2-28-21)
Made 10+ three-point field goals	11 vs. Bowling Green (11/30/24)
Did not make 3-pointer (since 1986)	0-10, at LSU, (2-7-19)
Made 30 free throws	30 (30-39), vs. No. 4 Baylor (12-6-20)
Made 25 free throws	25 (25-35), vs. Vanderbilt (1-16-23)
Shot 50-59 or better	55.4, vs. LA Tech (12-7-23)
Shot 60 percent or better	62.5 (30-48), vs. Little Rock (11-20-22)
Held to less than 30 percent	286 (18-63) at #5 UCLA (11/17/24)
Held to less than 20 percent	182 (10-55), vs. No. 6 Tennessee (1-8-12; L, 38-69)
Had 20 or more assists in a game	20, vs. LA Tech (3-16-23)

DEFENSE

Allowed 100 points	101 at #5 UCLA (11/17/24)
Allowed 80-99 points	94 vs. ORU (11/21/24)
Held opponent to 40-49 points	45 vs. SEMO (12/8/24)
Held opponent to 39-30	36, vs. Little Rock (11-14-23)
Held an SEC opponent under 50 points in 3 cons. games	47, vs. Auburn (1-29-15; W, 52-47), Alabama (2-1-15; W, 53-42), No. 24/21 Georgia (2-9-15; W, 54-48)
Held opponent to 29 points or less	23, vs. Binghamton, 11-30-13
Held an opponent under 15 points in a half	14, vs. Little Rock (11-14-23)
Held an opponent to 2 points in a quarter	2, vs. UCA (12-13-20)
Held opponent under 15 field goals	14, vs. Little Rock (11-14-23)
Held opponent to less than 30 percent shooting	27.0 (17-63) vs. SEMO (12/8/24)
Held opponent to less than 20 percent shooting	19.7 (13-66), vs. Northwestern State (12-15-19)
Held opponent under 15 percent from 3-point	11.1 (2-18) vs. Oklahoma State (11/29/24)
Opponent did not make a 3-pointer	0, at Kentucky (1-4-24)
Had 70+ rebounds	74, vs. Mississippi Valley State (11-24-89)
Had 60-69 rebounds	64, vs. Prairie View A&M (12-16-18)
Had 50-59 rebounds	54 vs. SEMO (12/8/24)
Had 10 or more blocked shots in a game	10 vs. Bowling Green (11/30/24)
Had 20 or more steals in a game	20, vs. ORU (11-13-13)
Had 15 or more steals in a game	18, vs. UT Martin (12-29-19)
Forced 25+ turnovers in a game	28, vs. Northern Arizona (11-24-22)

OTHER

Won an overtime game	71-60 vs. Little Rock, 11/11/24
Lost an overtime game	76-73, vs. Ole Miss (1-29-23)
Won a double overtime game	73-72, vs. Florida (1-29-12)
Lost a double overtime game	N/A
Won a triple overtime game	91-80, Win in 3OT, 2-10-13, at Alabama
Won at the buzzer	60-59, vs. Illinois (Maryam Dauda), 12-20-23
Played consecutive OT games	1-24-16 at Auburn (lost); 1-28-16 vs. Florida (lost)
Won a game after being down 15+ points	11/11/24 at Little Rock (16 point deficit)
Won regular season tournament	Paradise Jam (St. Thomas, U.S. Virgin Islands, Nov. 24-26, 2022)
Defeated ranked team	71-58, at No. 15 Florida State (11-30-23)
Defeated a ranked team on the road	71-58, at No. 15 Florida State (11-30-23)
All-time SEC win streak	8 games (1-15-12: Auburn through 2-15-12: at Auburn)
All-time SEC home win streak	5 games (1-15-12: Auburn -- 2-9-12: South Carolina)
.....	5 games (1-14-21: Florida -- 2-28-21: Alabama)

A RAZORBACK PLAYER ...

Scored 20-24 points	24, Izzy Higginbottom vs. Liberty (12/18/24)
Scored 25-29 points	26, Izzy Higginbottom vs. Texas Tech (12/15/24)
Scored 30-34 points	33, Taliah Scott, vs. Auburn (2/4/23)
Scored 35-39 points	38, Izzy Higginbottom vs. Boston College (12/5/24)
Scored 40+ points	41, Chelsea Dungee vs. Auburn (2/10/19)
Scored 25+ points in three straight games	Izzy Higginbottom (OKST 26, BGSU 26, BC 38) (2024)
Scored 20+ points 10 times in a season	Taliah Scott (13x 2023-24)
.....	Chelsea Dungee (17x 2020-21), Chelsea Dungee (11x 2019-20) & Chelsea Dungee (20x 2018-19)
Double figures in 15 consecutive games (season)	Jessica Jackson, 11/11/16, LSU 1-8-17
.....	Chelsea Dungee, 26 games, (2018-19 & 2019-20)
.....	Chelsea Dungee, 31 games, (2019-20 & 2020-21)
.....	Amber Ramirez, 16 games (2021-22)
Five players scored double figures in 1 game	vs. Missouri (2-18-24)
.....	Dauda (18), Daniels (14), Spencer (14), Poffenbarger (13), Keats (11)
Five starters in double figures	vs. Kentucky (1-25-24)
.....	Daniels (22), Dauda (16), Johnson (14), Keats (14), Spencer (13)
Seven players scored in double figures in 1 game	vs. Northwestern State (11-9-18)
.....	(Tolefree 19, Gauden 16, Monk 12, Doumbia 11, Dungee 11, Thomas 11, Williams 10)
Made 10+ field goals in a game	14, Izzy Higginbottom vs. Boston College (12/5/24)
Attempted 20+ field goals in a game	23, Izzy Higginbottom vs. Boston College (12/5/24)
Made 10+ free throws in a game	10, Izzy Higginbottom vs. Boston College (12/5/24)
Made 7 or more 3-pt FG in a game	8, Saylor Poffenbarger, at Missouri (1-28-24)
Attempted 10 or more 3-pt FG in a game	10 Kiki Smith vs. ORU (11/21/24)
Had 10-14 rebounds	14, Vera Ojenuwa vs. SEMO (12/8/24)
Had 15-19 rebounds	17, Saylor Poffenbarger, vs. Georgia (1-7-24)
Had 20+ rebounds	23, Saylor Poffenbarger, at No. 15 Florida State (11-30-23) (school record)
Had 10 offensive reb - Records go back to 05-06	11, Melissa Wolff vs. New Orleans (1-30-15)
Had 10+ defensive reb - Records go back to 05-06	10, Vera Ojenuwa vs. SEMO (12/8/24)
Had 10+ assists	11, Samara Spencer, vs. LA Tech (3-16-23)
Had 10+ assists in consecutive games	Jailyn Mason (11 vs. HBU, 12-28-16 and 10 at Ole
.....	Miss, 1-1-17) & Calli Berna (11 vs. No. 10/8 Kentucky, 2/7/13 and 11 at Alabama, 2/10/13)
Had 5+ blocks in a game	5, Jenna Lawrence vs. Bowling Green (11/30/24)
Had 10+ blocks in a game	10, Maryam Dauda, at Alabama (1-14-24) (school record)
Had 5 or more steals in a game	5, Makayla Daniels, vs. Georgia (1-7-24)
Had a double-double	12 points and 11 rebounds, Vera Ojenuwa vs. Texas Tech (12/15/24)
Had a double-double in two consecutive games	Vera Ojenuwa vs. SEMO (12/9/24) and Texas Tech (12/15/24)
.....	13 pts & 14 rbd vs. SEMO (12/8/24)/12 pts & 11 rbd vs. Texas Tech (12/15/24)
Had two players record a double-double	Samara Spencer (31 pts/14 reb) &
.....	Maryam Dauda (12 rbd/10blks), at Alabama (1-14-24)
Had seven double-doubles in a season	Saylor Poffenbarger, 8, 2023-24
.....	(MSU @FSU, LA TECH, UAPB, UIC, UGA, BAMA, @UF)
Had 10+ double-doubles in a season	2006-07, Lauren Ervin (14)
Had a triple-double	14 pts, 13 rbd, 12 asts, C'eira Ricketts vs. Auburn (1-18-09)



MORE ABOUT MIKE

Hometown: Greenwood, Ark. (Greenwood HS)
 Family: Daughter Abby; Sons Alec, Bowen and Barrett; granddaughter Emzey
 Alma Mater: Arkansas, 1993

NEIGHBORS BY THE NUMBERS

242 Wins (242-141, 12 seasons)
 16 Signed McDonalds' All-Americans
 12 Years as a head coach
 9 Postseason appearances
 5 Players drafted in the WNBA (HC)
 1 Final Four appearance

LEARN MORE

Sign up for Mike Neighbors' newsletter and listen to his podcasts at CoachNeighbors.com



NABES FAVES

TOP 10 MOVIES

1. A Few Good Men
2. The Hunt For Red October
3. The Silence Of The Lambs
4. Hoosiers
5. O Brother, Where Art Thou?
6. Moneyball
7. Top Gun
8. Zero Dark Thirty
9. The Lion King
10. Purple Rain

See the entire list here: <http://imdb.to/2roy-aEO>

TOP 10 SONGS

1. Sweet Child O' Mine (Guns N' Roses)
2. You Shook Me All Night Long (AC/DC)
3. Man In The Mirror (Michael Jackson)
4. Amarillo By Morning (George Strait)
5. Jessie's Girl (Rick Springfield)
6. Hysteria (Def Leppard)
7. Fishin' In The Dark (Nitty Gritty Dirt Band)
8. The Ballad of Curtis Loew (Lynyrd Skynyrd)
9. Wanted Dead Or Alive (Bon Jovi)
10. Let's Go Crazy (Prince)

TOP 10 TV SHOWS

1. West Wing (first three seasons)
2. Ted Lasso
3. The Wire
4. Breaking Bad
5. Seinfeld
6. The Newsroom
7. Prison Break
8. Arrested Development
9. Game of Thrones
10. The Goldbergs



MIKE NEIGHBORS

Eighth Season
 Career Record: 242-141 (12) | Arkansas Record: 144-100 (8)

Arkansas women's basketball has been transformed into a nationally recognized program in seven years thanks to head coach Mike Neighbors. During his time back home at his alma mater, Neighbors has guided his Hogs to the best seven-year period of sustained success in program history with 138 wins and six postseason qualifications in that time. The proof of his success, and the success of his system, lies in the numbers - Neighbors has accumulated 242 wins during his 12 seasons as a head coach, the most of any Power 5 head coaches in 10 or fewer seasons, as well as one of only two NCAA Division I Head Coaches.

Entering his eighth season on the bench for Arkansas, the program is coming off its sixth consecutive winning season, sixth straight postseason appearance (if including the 2020 NCAA Tournament had it not been cancelled due to the COVID-19 pandemic, as Arkansas was a lock to make the Big Dance).

In 2022-23, the Hogs started out the season 13-0, which was tied for the second-best start in program history. Going into Mid-December, the Hogs were ranked as high as No. 17 in the AP Poll. The Hogs won another SEC Tournament game in comeback fashion versus Missouri to make it to the quarterfinals and hold the best winning percentage in the SEC Tournament among all coaches in Arkansas history with an 8-6 record. Continuing into postseason, Arkansas became the automatic bid out of the SEC to the Postseason WNIT, making it to the Great 8, while being able to host three of its four games at Bud Walton Arena. Neighbors led the Hogs to two All-SEC selections, including Second Team choice Erynn Barnum, who was also on the Midseason Top 10 List for the Katrina McClain Award, as well as All-Freshman selection Saylor Poffenbarger, who broke a school record for five SEC Freshman of the Week accolades. The Hogs finished the season with 24 wins, which tied for the most in the Neighbors' era and matches the fourth most in a single season in program history. Additionally, four players averaged double digits in scoring, the most in the Southeastern Conference.

Prior to Arkansas, Neighbors guided Washington to four seasons of unprecedented success, highlighted by the 2016 NCAA Final Four and two NCAA Sweet 16 appearances. Neighbors was an assistant for the Huskies prior to this promotion and also has had stops at Xavier, Tulsa, Colorado and Arkansas as an assistant.

A native of Greenwood, Arkansas, Neighbors received his associate degree at the University of Arkansas - Fort Smith and his bachelor's degree from the University of Arkansas in 1993. Neighbors is married to Jayci Stone. He has four children, a daughter, Abby and three sons, Alec, Bowen and Barrett, as well as a granddaughter, Emzey.

TIMELINE

- Bentonville HS Head Coach 1994-98
- Cabot HS Head Coach 1998-99
- Arkansas Director of Ops 1999-01
- Tulsa Univ. Assistant Coach 2001-05
- Univ. of Colorado Assistant Coach 2005-06
- Univ. of Arkansas Assistant Coach 2006-07
- Xavier Assistant Coach 2007-11
- Univ. of Washington Assistant Coach 2011-13
- Univ. of Washington Head Coach 2013-17
- Univ. of Arkansas Head Coach 2017-present

COACHING HISTORY

University of Washington

Year	Overall	Pac-12	Finish
2013-14	20-14 (.588)	10-8 (.556)	6
2014-15	23-10 (.697)	11-7 (.611)	5
2015-16	26-11 (.703)	11-7 (.611)	5
2016-17	29-6 (.829)	15-3 (.833)	T2
UW	98-41 (.705)	47-25 (.662)	

University of Arkansas

Year	Overall	SEC	Finish
2017-18	13-18 (.419)	3-13 (.188)	T11
2018-19	22-15 (.611)	6-10 (.375)	10
2019-20	24-8 (.750)	10-6 (.625)	T3
2020-21	19-9 (.679)	9-6 (.600)	T5
2021-22	18-14 (.563)	7-9 (.438)	T8
2022-23	24-13 (.649)	7-9 (.438)	8
2023-24	18-15 (.545)	6-10 (.375)	T9
2024-25	6-8 (.429)	-	-
Ark	144-100 (.590)	48-63 (.432)	8 yrs
Totals	242-141 (.632)	96-88 (.522)	12 yrs

COACHING DEVELOPMENT

Coach	w/Nabes	Now
Adia Barnes	'14-15	HC Arizona
Adam Call	'14	AC George Washington
Morgan Valley	'16	AC UConn
Todd Schaefer	'16-Pres.	AHC Arkansas
Chelsea Dungee	'18-21	AC Troy
Evan Johnston	'18-22	Special Ast. to HC Arkansas

PLAYER DEVELOPMENT

YEAR	UNIVERSITY	PLAYER	ROUND	OVERALL	TEAM NOTE
2021	Arkansas	Chelsea Dungee	1	5	Dallas Wings ! @
2021	Arkansas	Destiny Slocum	2	14	Las Vegas Aces ! @
2021	Arizona	Aari McDonald	1	3	Atlanta Dream @
2017	Washington	Kelsey Plum	1	1	San Antonio Stars ! @ Las Vegas Aces
	Washington	Chantel Osahor	2	21	Chicago Sky ! @
2016	Washington	Talia Walton	3	29	Los Angeles Sparks ! @
2011	Xavier	Amber Harris	1	4	Minnesota Lynx ! #
	Xavier	Ta'Shia Phillips	1	8	Atlanta Dream ! #
	TAMU/UAFS	Tanisha Smith	2	22	Seattle Storm #
	Colorado	Brittany Spears	2	19	Phoenix Mercury *
2009	Arkansas	Shameka Christon	1	5	New York Liberty \$
2008	Arkansas	Lauren Ervin	3	37	Connecticut Sun ! #
2006	Tulsa	Megan Moody	-	-	Houston Comets Free Agent #
2003	Tulsa	Allison Curtin	1	12	Houston Comets ! # Traded to Detroit Shock
	Arkansas	Dana Cherry	2	23	Charlotte Sting \$

*- Signed but did not coach

!- At the school when player was drafted

@- Worked with player as a head coach

#- Worked with player as an assistant coach

\$- Worked with player as other (GA, etc)

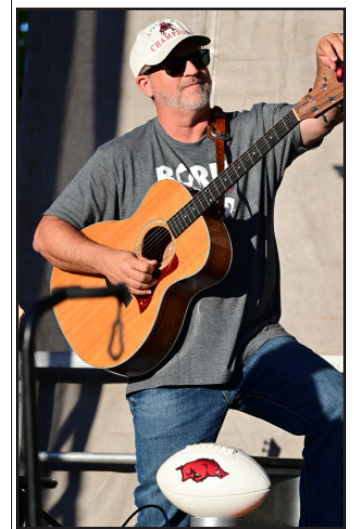


MORE NABES FACTS

- **Movies:** His expansive movie collection includes digital, disk and VHS copies. Did you know he used to work at BlockBuster? On a related note, he also collects books that have been turned into movies.
- **Baseballs autographed by movie stars:** Ask him about this collection - talk about some good stories.
- **Lunch Boxes:** Coach collects tin lunch boxes that he carried to school and has them displayed in his home. His first lunch box had KISS on it.
- **Hamilton:** Nabes is a huge Hamilton fan, and routinely quotes the Broadway musical to players, fans and media alike.
- **Athens City Champion:** Coach stumbled upon a dart tournament while on a trip to Athens, Georgia. He joined in and was one of the two-man winning team.
- **Ask him about shoes, music, movies, guitars, basketball nostalgia - just about anything!**



NEIGHBORS VS.	W	L	Fresno State	2	0	New Mexico State	1	0	Tarleton State	1	0
Abilene Christian	2	0	Furman	1	0	New Orleans	1	0	TCU	0	1
Alabama	6	3	Georgia	2	7	Northern Arizona	1	0	Tennessee	2	6
Arizona State	2	6	Grambling State	2	0	Northwestern State	2	0	Tennessee Martin	1	0
Arizona	6	0	Grand Canyon	1	0	Notre Dame	0	1	Tennessee State	1	0
Arkansas State	4	0	Hartford	1	0	Oklahoma	1	2	Tennessee Tech	1	0
Auburn	8	2	Hawai'i	1	0	Oklahoma State	0	1	Texas A&M	4	9
Baylor	1	0	Houston	2	0	Ole Miss	5	4	Texas Tech	2	1
Belmont	2	0	Idaho	1	0	Oral Roberts	5	1	Troy	1	1
Boise State	1	0	Illinois	1	0	Oregon State	1	6	Tulsa	4	1
Boston College	1	0	Iowa State	0	1	Oregon	5	4	UAB	1	0
Bowling Green	0	1	Jackson State	2	0	Pennsylvania	1	0	UAPB	3	1
BYU	1	0	Kansas	0	2	Pittsburgh	1	1	UC Irvine	1	0
California	5	4	Kansas State	2	0	Portland	3	1	UC Riverside	2	0
Central Arkansas	4	0	Kent State	1	0	Prairie View A&M	1	0	UCLA	4	4
Central Florida	0	1	Kentucky	3	6	Saint Mary's	0	1	UIC	1	0
Charlotte	1	0	Lamar	1	0	Sam Houston	2	0	UIW	1	0
Clemson	1	0	Liberty	0	1	Samford	2	0	USC	6	0
Colorado State	1	0	Little Rock	5	0	San Diego State	2	0	USF	0	1
Colorado	9	0	Louisiana-Monroe	3	0	San Diego	1	0	Utah	7	4
Connecticut	1	1	Louisiana Tech	2	0	Santa Clara	1	0	UT-Arlington	3	0
Creighton	1	1	LSU	3	5	Savannah State	1	0	UTEP	0	2
CSUN	1	0	Marquette	0	1	Seattle	4	0	Vanderbilt	4	4
DePaul	0	1	McNeese State	1	0	SEMO	1	0	Wake Forest	1	0
East Texas A&M	1	0	Maryland	1	1	SFA	1	0	Washington State	5	3
Eastern Washington	1	0	Miami	0	1	SMU	2	0	Weber State	1	0
Fairfield	0	1	Mississippi State	3	7	South Carolina	1	11	Wisconsin	4	0
Florida State	2	0	Missouri	14	4	South Dakota	2	0	Wright State	0	1
Florida	4	4	Montana State	2	0	Stanford	3	5	Yale	1	0
FGCU	1	0	Murray State	1	0	Stony Brook	1	0			
Fordham	1	0	Nebraska	1	1	Syracuse	0	2			



Last Meeting's Box Score



Official Basketball Box Score - Final
Central Ark. at Arkansas
 11/20/23 Bud Walton Arena, Fayetteville
 2023-24 Women's Basketball

Game Time: 7:00 PM
 Game Duration: 1:46
 Attendance: 4,194

Officials: Felicia Grinter, Saif Esho, Gina Catanzariti

Central Ark. - 67

Record: 2-2

NO.	Name	Min	FG	3P	FT	Rebounds			Fouls		TP	AS	TO	ST	Blocks		+/-
			M-A	M-A	M-A	OR	DR	TOT	PF	FD					BS	BA	
30	Kierra Prim	F 13:17	0-1	0-0	0-0	1	2	3	2	1	0	0	1	0	0	1	-20
42	Cheyenne Banks	F 26:38	1-3	0-0	3-4	4	5	9	3	4	5	0	1	0	0	0	-13
0	Jade Upshaw	G 24:34	6-13	4-9	0-0	0	0	0	3	1	16	3	2	1	0	0	-8
3	Randrea Wright	G 21:43	5-10	1-1	3-4	0	2	2	4	2	14	2	1	0	1	1	-10
22	Leah Mafua	G 21:39	3-8	0-3	1-1	0	2	2	5	2	7	2	2	1	0	1	-11
1	Kinley Fisher	26:50	4-8	3-6	0-0	2	2	4	1	0	11	2	5	1	0	0	-15
5	Bree Stephens	25:50	4-8	2-5	0-0	0	1	1	2	0	10	2	1	3	0	0	3
4	Cheyenne Kemp	14:06	0-3	0-1	2-2	0	2	2	2	2	2	1	2	0	0	0	-1
24	Jenna Rose Mafua	10:42	0-0	0-0	0-0	1	2	3	1	0	0	1	0	2	0	0	3
12	Destine Duckworth	08:51	0-1	0-1	2-2	1	4	5	0	1	2	0	2	0	0	0	-7
32	Elizabeth Abiara	05:24	0-0	0-0	0-0	0	2	2	0	0	0	0	0	0	0	0	9
23	Kaidyn Beckwith	00:27	0-0	0-0	0-0	0	0	0	0	0	0	0	0	0	0	0	0
Team						1	1	2			0	0					
Totals			23-55	10-26	11-13	10	25	35	23	13	67	13	17	8	1	3	-14

Shooting By Period		
1 st FG%	4-14	28.6%
3PT%	2-5	40.0%
FT%	2-2	100%
2 nd FG%	7-14	50.0%
3PT%	4-8	50.0%
FT%	3-4	75%
3 rd FG%	4-13	30.8%
3PT%	1-6	16.7%
FT%	1-1	100%
4 th FG%	8-14	57.1%
3PT%	3-7	42.9%
FT%	5-6	83.3%
GM FG%	23-55	41.8%
3PT%	10-26	38.5%
FT%	11-13	84.6%

Technical Fouls::NONE

Dead Ball Rebounds: 2, 0

Arkansas - 81

Record: 5-0

NO.	Name	Min	FG	3P	FT	Rebounds			Fouls		TP	AS	TO	ST	Blocks		+/-
			M-A	M-A	M-A	OR	DR	TOT	PF	FD					BS	BA	
30	Maryam Dauda	F 30:13	4-11	3-6	3-6	2	6	8	3	3	14	1	1	3	0	0	14
0	Taliah Scott	G 35:55	7-17	0-3	3-3	0	4	4	2	2	17	3	3	0	0	0	15
2	Samara Spencer	G 23:16	5-9	2-4	4-4	0	2	2	0	4	16	1	1	1	0	1	19
4	Saylor Poffenbarger	G 26:47	6-10	3-4	2-2	1	5	6	1	3	17	0	0	2	1	0	25
43	Makayla Daniels	G 32:54	3-6	1-4	4-7	2	1	3	3	7	11	4	3	2	0	0	22
13	Sasha Goforth	17:49	1-3	0-0	2-3	2	0	2	0	3	4	1	2	1	1	0	0
55	Emrie Ellis	09:47	0-0	0-0	2-2	1	1	2	1	1	2	0	0	0	1	0	0
10	Cristina Sánchez Cerqueira	06:27	0-0	0-0	0-0	0	0	0	2	0	0	1	0	0	0	0	0
23	Carly Keats	11:50	0-2	0-2	0-0	0	2	2	0	0	0	0	1	0	0	0	-16
34	Jenna Lawrence	05:02	0-1	0-1	0-0	1	0	1	1	0	0	0	0	0	0	0	-9
Team						2	0	2			0	0					
Totals			26-59	9-24	20-27	11	21	32	13	23	81	11	11	9	3	1	14

Shooting By Period		
1 st FG%	7-13	53.8%
3PT%	2-6	33.3%
FT%	6-10	60%
2 nd FG%	7-17	41.2%
3PT%	3-9	33.3%
FT%	2-2	100%
3 rd FG%	6-12	50.0%
3PT%	2-5	40.0%
FT%	7-8	87.5%
4 th FG%	6-17	35.3%
3PT%	2-4	50.0%
FT%	5-7	71.4%
GM FG%	26-59	44.1%
3PT%	9-24	37.5%
FT%	20-27	74.1%

Technical Fouls::NONE

Dead Ball Rebounds: 4, 1

	UCA	ARK
Biggest lead	0 (1 st 10:00)	20 (2 nd 2:59)
Best Scoring Run	12(2 nd 0:35)	9(1 st 5:42)
Lead Changes	0	
Times Tied	1	
Time with Lead	00:00	38:57

	UCA	ARK
Points from		
Turnovers	12	20
Paint	24	24
Second Chance	9	14
Fast Breaks	9	9
Bench	25	6

	Period by Period Scoring				
	1st	2nd	3rd	4th	TOT
UCA	12	21	10	24	67
ARK	22	19	21	19	81



Overall Stats

Game Records

Record	Overall	Home	Away	Neutral
ALL GAMES	6-8	5-3	1-1	0-4
CONFERENCE	0-0	0-0	0-0	0-0
NON-CONFERENCE	6-8	5-3	1-1	0-4

Score by Periods

Team	1st	2nd	3rd	4th	OT	TOT
Arkansas	220	262	265	253	11	1011
Opponents	283	220	280	228	0	1011

Team Box Score

No.	Player				Total		3-Point		F-Throw		Rebounds											
		GP-GS	MIN	AVG	FG-FGA	FG%	3FG-3FGA	3FG%	FT-FTA	FT%	OFF	DEF	TOT	AVG	PF	DQ	A	TO	BLK	STL	PTS	AVG
3	HIGGINBOTTOM, Izzy	14-14	486:37	34.8	107-231	.463	14-42	.333	100-110	.909	7	51	58	4.1	23	0	58	49	2	16	328	23.4
2	SMITH, Kiki	14-14	449:21	32.1	57-139	.410	33-80	.413	16-23	.696	6	24	30	2.1	21	0	35	34	3	9	163	11.6
22	OJENUWA, Vera	14-14	342:38	24.5	48-96	.500	1-6	.167	24-38	.632	40	69	109	7.8	44	3	11	33	9	9	121	8.6
34	LAWRENCE, Jenna	14-14	380:39	27.2	36-102	.353	22-75	.293	15-18	.833	19	79	98	7.0	18	0	4	12	18	7	109	7.8
23	KEATS, Carly	14-14	329:23	23.5	38-116	.328	20-69	.290	9-10	.900	0	21	21	1.5	3	0	12	15	3	4	105	7.5
1	STOTJIN, Phoenix	3-0	56:56	19.0	8-27	.296	5-18	.278	1-1	1.000	1	1	2	0.7	3	0	4	5	0	1	22	7.3
25	GALEA, Danika	11-0	120:46	11.0	24-40	.600	2-7	.286	10-12	.833	10	12	22	2.0	24	2	3	11	3	2	60	5.5
15	BATES, Jada	13-0	193:36	14.9	11-36	.306	8-24	.333	3-7	.429	3	14	17	1.3	5	0	6	10	5	2	33	2.5
20	JOHNSON, Karley	12-0	156:24	13.0	8-27	.296	0-5	.000	11-15	.733	11	31	42	3.5	18	0	5	6	2	7	27	2.3
16	PAANANEN, Pinja	14-0	168:26	12.0	11-30	.367	5-21	.238	2-3	.667	6	25	31	2.2	8	0	5	9	6	5	29	2.1
44	ARCHER, Maryn	8-0	22:02	2.8	2-8	.250	0-0	.000	3-6	.500	0	3	3	0.4	3	0	1	3	0	0	7	0.9
10	SÁNCHEZ CERQUEIRA, Cristina	12-0	87:47	7.3	2-12	.167	0-4	.000	3-7	.429	5	27	32	2.7	6	0	1	8	3	3	7	0.6
21	LINDSEY, Loren	5-0	22:02	4.4	0-3	.000	0-2	.000	0-0	.000	0	2	2	0.4	3	0	2	0	0	1	0	0.0
Team											26	36	62						8			
Total		14	2817		352-867	.406	110-353	.312	197-250	.788	134	395	529	37.8	179	5	147	203	54	66	1011	72.2
Opponents		14	2835		396-1003	.395	94-312	.301	125-176	.710	221	382	603	43.1	244	2	200	180	78	105	1011	72.2

Team Statistics

	AR	OPP
Scoring	1011	1011
Points per game	72.2	72.2
Scoring margin	0.0	-
Field goals-att	352-867	396-1003
Field goal pct	.406	.395
3 point fg-att	110-353	94-312
3-point FG pct	.312	.301
3-pt FG made per game	7.9	6.7
Free throws-att	197-250	125-176
Free throw pct	.788	.710
F-Throws made per game	14.1	8.9
Rebounds	529	603
Rebounds per game	37.8	43.1
Rebounding margin	-5.3	-
Assists	147	200
Assists per game	10.5	14.3
Turnovers	203	180
Turnovers per game	14.5	12.9
Turnover margin	-1.6	-
Assist/turnover ratio	0.7	1.1
Steals	66	105
Steals per game	4.7	7.5
Blocks	54	78
Blocks per game	3.9	5.6
Winning streak	0	-
Home win streak	0	-
Attendance	28719	3509
Home games-Avg/Game	8-3590	2-1755
Neutral site-Avg/Game	-	4-383

Team Results

Date	Opponent		Score	Att.
11/04/2024	Fairfield	L	67-81	2034
11/08/2024	East Texas A&M	W	84-65	12267
11/11/2024	at Little Rock	Wot	71-60	1254
11/14/2024	UT Arlington	W	93-65	2221
11/17/2024	at UCLA	L	52-101	2255
11/21/2024	Oral Roberts	L	73-94	2277
11/24/2024	Arkansas St.	W	76-60	2548
11/29/2024	vs Oklahoma St.	L	56-70	145
11/30/2024	vs Bowling Green	L	78-79	105
12/05/2024	Boston College	W	75-64	2252
12/08/2024	Southeast Mo. St.	W	84-45	2609
12/15/2024	Texas Tech	L	72-75	2511
12/18/2024	vs Liberty	L	61-75	719
12/19/2024	vs Troy	L	69-77	563



Specialty Stats

ARKANSAS/OPPONENT

Opponent	Result	Pts Off TO	Pts in Paint	2nd Chance	Fast Break	Bench	Ties	Lead Chng	Ark Largest Lead	Best Ark Run	Opp Largest Lead	Opp Best Run	Ark Led	Opp Led				
Fairfield	L, 81-67	18/21	24/40	13/9	5/17	6/32	3	1	5	6:25	1st	8-0	24	3:43	3rd	9-0	5:13	33:35
East Texas A&M	W, 84-65	9/10	28/20	6/10	14/5	12/35	0	0	26	2:26	4th	9-0	0	-	-	10-0	39:46	0:00
Little Rock	W, 71-60 OT	12/7	26/30	9/9	5/7	11/2	2	1	11	1:29	OT	11-0	16	6:03	3rd	10-0	5:22	37:34
UT-Arlington	W, 93-65	9/12	42/40	25/8	20/13	26/13	3	5	34	4:27	4th	13-0	4	7:43	1st	6-0	29:09	8:12
#5 UCLA	L, 101-52	8/27	16/54	11/28	4/18	14/27	0	0	0	10:00	1st	9-0	53	6:30	4th	12-0	0:00	39:22
Oral Roberts	L, 94-73	14/21	28/34	8/12	10/6	10/32	1	1	3	9:22	1st	7-0	25	6:05	4th	12-0	0:14	38:35
Arkansas State	W, 76-60	13/19	38/28	16/14	12/6	10/42	8	9	16	0:18	4th	9-0	6	2:51	1st	8-0	20:28	15:40
Oklahoma State	L, 70-56	15/15	24/54	6/13	4/8	5/29	3	0	0	10:00	1st	7-0	14	1:12	3rd	9-0	0:00	37:20
Bowling Green	L, 79-78	18/4	16/44	0/15	0/0	6/9	4	9	14	8:59	3rd	6-0	4	2:42	4th	8-0	31:46	5:45
Boston College	W, 75-64	18/6	36/36	10/19	19/5	5/35	3	11	11	1:22	4th	14-0	8	9:47	2nd	6-0	10:05	27:39
SEMO	W, 84-45	17/3	39/12	19/6	11/2	25/22	2	6	43	2:10	4th	26-0	12	9:26	3rd	8-0	27:53	10:28
Texas Tech	L, 75-72	20/18	30/42	18/15	5/5	17/21	4	7	8	4:16	1st	7-0	11	7:47	3rd	13-0	9:22	29:30
Liberty	L, 75-61	14/9	22/38	4/11	9/4	21/14	4	4	1	4:37	3rd	8-0	19	9:28	2nd	9-0	0:58	36:55
Troy	L, 77-69	13/13	32/44	14/12	11/24	17/17	1	2	2	8:23	3rd	8-0	10	2:42	3rd	9-0	1:28	37:02



Arkansas High/Low

Arkansas - Game Highs

POINTS	93		UT Arlington (11/14/2024)
	84		Southeast Mo. St. (12/08/2024)
	84		East Texas A&M (11/08/2024)
	78		vs Bowling Green (N) (11/30/2024)
	76		Arkansas St. (11/24/2024)
FIELD GOALS MADE	34		UT Arlington (11/14/2024)
	30		Arkansas St. (11/24/2024)
FIELD GOAL ATTEMPTS	74		UT Arlington (11/14/2024)
	73		vs Troy (N) (12/19/2024)
FIELD GOAL PERCENTAGE	.482	(27-56)	Boston College (12/05/2024)
	.482	(27-56)	vs Bowling Green (N) (11/30/2024)
3 PT FG MADE	13		UT Arlington (11/14/2024)
	11		vs Bowling Green (N) (11/30/2024)
3 PT FG ATTEMPTS	39		at UCLA (11/17/2024)
	33		vs Troy (N) (12/19/2024)
3 PT FG PERCENTAGE	.520	(13-25)	UT Arlington (11/14/2024)
	.440	(11-25)	vs Bowling Green (N) (11/30/2024)
FREE THROWS MADE	21		Southeast Mo. St. (12/08/2024)
	21		East Texas A&M (11/08/2024)
FREE THROW ATTEMPTS	26		East Texas A&M (11/08/2024)
	24		Southeast Mo. St. (12/08/2024)
FREE THROW PERCENTAGE	.929	(13-14)	vs Bowling Green (N) (11/30/2024)
	.909	(10-11)	vs Liberty (N) (12/18/2024)
REBOUNDS	56		UT Arlington (11/14/2024)
	54		Southeast Mo. St. (12/08/2024)
ASSISTS	16		Arkansas St. (11/24/2024)
	15		vs Bowling Green (N) (11/30/2024)
STEALS	9		Arkansas St. (11/24/2024)
	8		Southeast Mo. St. (12/08/2024)
	8		Boston College (12/05/2024)
BLOCKED SHOTS	10		vs Bowling Green (N) (11/30/2024)
	7		Arkansas St. (11/24/2024)
TURNOVERS	19		Texas Tech (12/15/2024)
	18		at UCLA (11/17/2024)
FOULS	22		at Little Rock (11/11/2024)
	20		at UCLA (11/17/2024)

Arkansas - Game Lows

POINTS	52		at UCLA (11/17/2024)
	56		vs Oklahoma St. (N) (11/29/2024)
	61		vs Liberty (N) (12/18/2024)
	67		Fairfield (11/04/2024)
	69		vs Troy (N) (12/19/2024)
FIELD GOALS MADE	18		at UCLA (11/17/2024)
	19		vs Oklahoma St. (N) (11/29/2024)
FIELD GOAL ATTEMPTS	53		Texas Tech (12/15/2024)
	55		vs Liberty (N) (12/18/2024)
FIELD GOAL PERCENTAGE	.286	(18-63)	at UCLA (11/17/2024)
	.322	(19-59)	vs Oklahoma St. (N) (11/29/2024)
3 PT FG MADE	3		Boston College (12/05/2024)
	4		vs Oklahoma St. (N) (11/29/2024)
3 PT FG ATTEMPTS	11		Boston College (12/05/2024)
	19		vs Oklahoma St. (N) (11/29/2024)
3 PT FG PERCENTAGE	.179	(7-39)	at UCLA (11/17/2024)
	.211	(4-19)	vs Oklahoma St. (N) (11/29/2024)
FREE THROWS MADE	9		Arkansas St. (11/24/2024)
	9		at UCLA (11/17/2024)
FREE THROW ATTEMPTS	11		vs Liberty (N) (12/18/2024)
	11		at UCLA (11/17/2024)
FREE THROW PERCENTAGE	.632	(12-19)	UT Arlington (11/14/2024)
	.700	(14-20)	vs Oklahoma St. (N) (11/29/2024)
REBOUNDS	23		vs Bowling Green (N) (11/30/2024)
	27		at UCLA (11/17/2024)
ASSISTS	6		Texas Tech (12/15/2024)
	6		vs Oklahoma St. (N) (11/29/2024)
STEALS	2		at UCLA (11/17/2024)
	2		UT Arlington (11/14/2024)
	2		at Little Rock (11/11/2024)
	2		East Texas A&M (11/08/2024)
	2		Fairfield (11/04/2024)
BLOCKED SHOTS	0		Texas Tech (12/15/2024)
	1		East Texas A&M (11/08/2024)
TURNOVERS	8		vs Bowling Green (N) (11/30/2024)
	12		Boston College (12/05/2024)
FOULS	3		Fairfield (11/04/2024)
	7		Southeast Mo. St. (12/08/2024)



Opponent High/Low Analysis

Opponent - Game Highs

POINTS	101		at UCLA (11/17/2024)
	94		Oral Roberts (11/21/2024)
	81		Fairfield (11/04/2024)
	79		vs Bowling Green (N) (11/30/2024)
	77		vs Troy (N) (12/19/2024)
FIELD GOALS MADE	37		at UCLA (11/17/2024)
	34		Oral Roberts (11/21/2024)
FIELD GOAL ATTEMPTS	84		at UCLA (11/17/2024)
	82		vs Troy (N) (12/19/2024)
FIELD GOAL PERCENTAGE	.486	(34-70)	Oral Roberts (11/21/2024)
	.485	(33-68)	Fairfield (11/04/2024)
3 PT FG MADE	13		Fairfield (11/04/2024)
	10		Southeast Mo. St. (12/08/2024)
	10		vs Bowling Green (N) (11/30/2024)
	10		Oral Roberts (11/21/2024)
	10		at UCLA (11/17/2024)
3 PT FG ATTEMPTS	35		Arkansas St. (11/24/2024)
	34		at UCLA (11/17/2024)
3 PT FG PERCENTAGE	.476	(10-21)	vs Bowling Green (N) (11/30/2024)
	.433	(13-30)	Fairfield (11/04/2024)
FREE THROWS MADE	21		Texas Tech (12/15/2024)
	17		at UCLA (11/17/2024)
FREE THROW ATTEMPTS	25		Texas Tech (12/15/2024)
	22		at UCLA (11/17/2024)
	22		at Little Rock (11/11/2024)
FREE THROW PERCENTAGE	1.000	(2-2)	Fairfield (11/04/2024)
	.889	(16-18)	Oral Roberts (11/21/2024)
REBOUNDS	65		at UCLA (11/17/2024)
	57		vs Troy (N) (12/19/2024)
ASSISTS	22		at UCLA (11/17/2024)
	21		Fairfield (11/04/2024)
STEALS	11		vs Troy (N) (12/19/2024)
	11		Texas Tech (12/15/2024)
BLOCKED SHOTS	11		vs Oklahoma St. (N) (11/29/2024)
	9		UT Arlington (11/14/2024)
TURNOVERS	18		Texas Tech (12/15/2024)
	18		Southeast Mo. St. (12/08/2024)
FOULS	21		Texas Tech (12/15/2024)
	21		Boston College (12/05/2024)
	21		UT Arlington (11/14/2024)
	21		at Little Rock (11/11/2024)

Opponent - Game Lows

POINTS	45		Southeast Mo. St. (12/08/2024)
	60		Arkansas St. (11/24/2024)
	60		at Little Rock (11/11/2024)
	64		Boston College (12/05/2024)
	65		UT Arlington (11/14/2024)
	65		East Texas A&M (11/08/2024)
FIELD GOALS MADE	17		Southeast Mo. St. (12/08/2024)
	23		Arkansas St. (11/24/2024)
FIELD GOAL ATTEMPTS	54		Texas Tech (12/15/2024)
	63		Southeast Mo. St. (12/08/2024)
FIELD GOAL PERCENTAGE	.270	(17-63)	Southeast Mo. St. (12/08/2024)
	.311	(23-74)	Arkansas St. (11/24/2024)
3 PT FG MADE	1		UT Arlington (11/14/2024)
	2		Texas Tech (12/15/2024)
	2		vs Oklahoma St. (N) (11/29/2024)
3 PT FG ATTEMPTS	10		UT Arlington (11/14/2024)
	10		at Little Rock (11/11/2024)
3 PT FG PERCENTAGE	.100	(1-10)	UT Arlington (11/14/2024)
	.111	(2-18)	vs Oklahoma St. (N) (11/29/2024)
FREE THROWS MADE	1		Southeast Mo. St. (12/08/2024)
	2		Fairfield (11/04/2024)
FREE THROW ATTEMPTS	2		Southeast Mo. St. (12/08/2024)
	2		Fairfield (11/04/2024)
FREE THROW PERCENTAGE	.409	(9-22)	at Little Rock (11/11/2024)
	.471	(8-17)	UT Arlington (11/14/2024)
REBOUNDS	29		Southeast Mo. St. (12/08/2024)
	33		Texas Tech (12/15/2024)
ASSISTS	8		at Little Rock (11/11/2024)
	9		East Texas A&M (11/08/2024)
STEALS	1		vs Bowling Green (N) (11/30/2024)
	4		at Little Rock (11/11/2024)
BLOCKED SHOTS	2		vs Bowling Green (N) (11/30/2024)
	3		vs Liberty (N) (12/18/2024)
TURNOVERS	9		at Little Rock (11/11/2024)
	9		East Texas A&M (11/08/2024)
FOULS	10		vs Liberty (N) (12/18/2024)
	11		vs Bowling Green (N) (11/30/2024)



Category Leaders

Points

##	Player	G	Pts	Pts/G
3	Higginbottom, Izzy	14	328	23.4
2	Smith, Kiki	14	163	11.6
22	Ojenuwa, Vera	14	121	8.6
34	Lawrence, Jenna	14	109	7.8
23	Keats, Carly	14	105	7.5
25	Galea, Danika	11	60	5.5
15	Bates, Jada	13	33	2.5
16	Paananen, Pinja	14	29	2.1
20	Johnson, Karley	12	27	2.3
1	Stotjin, Phoenix	3	22	7.3
44	Archer, Maryn	8	7	0.9
10	Sánchez Cerqueira, Cristina	12	7	0.6

Scoring Average

##	Player	G	Pts	Pts/G
3	Higginbottom, Izzy	14	328	23.4
2	Smith, Kiki	14	163	11.6
22	Ojenuwa, Vera	14	121	8.6
34	Lawrence, Jenna	14	109	7.8
23	Keats, Carly	14	105	7.5
1	Stotjin, Phoenix	3	22	7.3
25	Galea, Danika	11	60	5.5
15	Bates, Jada	13	33	2.5
20	Johnson, Karley	12	27	2.3
16	Paananen, Pinja	14	29	2.1
44	Archer, Maryn	8	7	0.9
10	Sánchez Cerqueira, Cristina	12	7	0.6

Field Goal Percentage

##	Player	FG	Att	Pct
25	Galea, Danika	24	40	.600
22	Ojenuwa, Vera	48	96	.500
3	Higginbottom, Izzy	107	231	.463
2	Smith, Kiki	57	139	.410
16	Paananen, Pinja	11	30	.367
34	Lawrence, Jenna	36	102	.353
23	Keats, Carly	38	116	.328
15	Bates, Jada	11	36	.306
1	Stotjin, Phoenix	8	27	.296
20	Johnson, Karley	8	27	.296
44	Archer, Maryn	2	8	.250
10	Sánchez Cerqueira, Cristina	2	12	.167

Field Goal Attempts

##	Player	G	Att	Att/G
3	Higginbottom, Izzy	14	231	16.5
2	Smith, Kiki	14	139	9.9
23	Keats, Carly	14	116	8.3
34	Lawrence, Jenna	14	102	7.3
22	Ojenuwa, Vera	14	96	6.9

Field Goals Made

##	Player	G	Made	Made/G
3	Higginbottom, Izzy	14	107	7.6
2	Smith, Kiki	14	57	4.1
22	Ojenuwa, Vera	14	48	3.4
23	Keats, Carly	14	38	2.7
34	Lawrence, Jenna	14	36	2.6

3-Point FG Percentage

##	Player	3FG	Att	Pct
2	Smith, Kiki	33	80	.413
3	Higginbottom, Izzy	14	42	.333
15	Bates, Jada	8	24	.333
34	Lawrence, Jenna	22	75	.293
23	Keats, Carly	20	69	.290
25	Galea, Danika	2	7	.286
1	Stotjin, Phoenix	5	18	.278
16	Paananen, Pinja	5	21	.238
22	Ojenuwa, Vera	1	6	.167

3-Point FG Attempts

##	Player	G	Att	Att/G
2	Smith, Kiki	14	80	5.7
34	Lawrence, Jenna	14	75	5.4
23	Keats, Carly	14	69	4.9
3	Higginbottom, Izzy	14	42	3.0
15	Bates, Jada	13	24	1.8

3-Point FG Made

##	Player	G	Made	Made/G
2	Smith, Kiki	14	33	2.4
34	Lawrence, Jenna	14	22	1.6
23	Keats, Carly	14	20	1.4
3	Higginbottom, Izzy	14	14	1.0
15	Bates, Jada	13	8	0.6



Category Leaders

Free Throw Percentage

##	Player	Made	Att	Pct
1	Stotjin, Phoenix	1	1	1.000
3	Higginbottom, Izzy	100	110	.909
23	Keats, Carly	9	10	.900
34	Lawrence, Jenna	15	18	.833
25	Galea, Danika	10	12	.833
20	Johnson, Karley	11	15	.733
2	Smith, Kiki	16	23	.696
16	Paananen, Pinja	2	3	.667
22	Ojenuwa, Vera	24	38	.632
44	Archer, Maryn	3	6	.500
15	Bates, Jada	3	7	.429
10	Sánchez Cerqueira, Cristina	3	7	.429

Rebounds

##	Player	G	Reb	Reb/G
22	Ojenuwa, Vera	14	109	7.8
34	Lawrence, Jenna	14	98	7.0
3	Higginbottom, Izzy	14	58	4.1
20	Johnson, Karley	12	42	3.5
10	Sánchez Cerqueira, Cristina	12	32	2.7

Rebounds Average

##	Player	G	Reb	Reb/G
22	Ojenuwa, Vera	14	109	7.8
34	Lawrence, Jenna	14	98	7.0
3	Higginbottom, Izzy	14	58	4.1
20	Johnson, Karley	12	42	3.5
10	Sánchez Cerqueira, Cristina	12	32	2.7

Offensive Rebounds

##	Player	G	OReb	OReb/G
22	Ojenuwa, Vera	14	40	2.9
34	Lawrence, Jenna	14	19	1.4
20	Johnson, Karley	12	11	0.9
25	Galea, Danika	11	10	0.9
3	Higginbottom, Izzy	14	7	0.5

Defensive Rebounds

##	Player	G	DReb	DReb/G
34	Lawrence, Jenna	14	79	5.6
22	Ojenuwa, Vera	14	69	4.9
3	Higginbottom, Izzy	14	51	3.6
20	Johnson, Karley	12	31	2.6
10	Sánchez Cerqueira, Cristina	12	27	2.3

Fouls

##	Player	G	PF	PF/G
22	Ojenuwa, Vera	14	44	3.1
25	Galea, Danika	11	24	2.2
3	Higginbottom, Izzy	14	23	1.6
2	Smith, Kiki	14	21	1.5
34	Lawrence, Jenna	14	18	1.3

Foul Outs

##	Player	G	FO
22	Ojenuwa, Vera	14	3
25	Galea, Danika	11	2

Free Throw Attempts

##	Player	G	Att	Att/G
3	Higginbottom, Izzy	14	110	7.9
22	Ojenuwa, Vera	14	38	2.7
2	Smith, Kiki	14	23	1.6
34	Lawrence, Jenna	14	18	1.3
20	Johnson, Karley	12	15	1.3

Free Throws Made

##	Player	G	Made	Made/G
3	Higginbottom, Izzy	14	100	7.1
22	Ojenuwa, Vera	14	24	1.7
2	Smith, Kiki	14	16	1.1
34	Lawrence, Jenna	14	15	1.1
20	Johnson, Karley	12	11	0.9

Assists

##	Player	G	Ast	Ast/G
3	Higginbottom, Izzy	14	58	4.1
2	Smith, Kiki	14	35	2.5
23	Keats, Carly	14	12	0.9
22	Ojenuwa, Vera	14	11	0.8
15	Bates, Jada	13	6	0.5

Steals

##	Player	G	Stl	Stl/G
3	Higginbottom, Izzy	14	16	1.1
2	Smith, Kiki	14	9	0.6
22	Ojenuwa, Vera	14	9	0.6
34	Lawrence, Jenna	14	7	0.5
20	Johnson, Karley	12	7	0.6

Blocked Shots

##	Player	G	Blk	Blk/G
34	Lawrence, Jenna	14	18	1.3
22	Ojenuwa, Vera	14	9	0.6
16	Paananen, Pinja	14	6	0.4
15	Bates, Jada	13	5	0.4
2	Smith, Kiki	14	3	0.2

Minutes

##	Player	G	Min	Min/G
3	Higginbottom, Izzy	14	487	34:45
2	Smith, Kiki	14	449	32:06
34	Lawrence, Jenna	14	381	27:11
22	Ojenuwa, Vera	14	343	24:28
23	Keats, Carly	14	329	23:32

Turnovers

##	Player	G	TO	TO/G
3	Higginbottom, Izzy	14	49	3.5
2	Smith, Kiki	14	34	2.4
22	Ojenuwa, Vera	14	33	2.4
23	Keats, Carly	14	15	1.1
34	Lawrence, Jenna	14	12	0.9



Player Highs Analysis

Arkansas - Individual Game Highs

POINTS	38		Izzy Higginbottom vs Boston College (12/05/2024)
	29		Izzy Higginbottom vs UT Arlington (11/14/2024)
	27		Izzy Higginbottom vs Oral Roberts (11/21/2024)
	26		Izzy Higginbottom vs Texas Tech (12/15/2024)
	26		Izzy Higginbottom vs Bowling Green (N) (11/30/2024)
	26		Izzy Higginbottom vs Oklahoma St. (N) (11/29/2024)
FIELD GOALS MADE	14		Izzy Higginbottom vs Boston College (12/05/2024)
	10		Izzy Higginbottom vs UT Arlington (11/14/2024)
FIELD GOAL ATTEMPTS	23		Izzy Higginbottom vs Boston College (12/05/2024)
	23		Izzy Higginbottom vs UT Arlington (11/14/2024)
FIELD GOAL PERCENTAGE (min 5 made)	1.000	(5-5)	Danika Galea vs Troy (N) (12/19/2024)
	.889	(8-9)	Kiki Smith vs East Texas A&M (11/08/2024)
3 PT FG MADE	5		Carly Keats vs Southeast Mo. St. (12/08/2024)
	5		Jenna Lawrence vs Bowling Green (N) (11/30/2024)
3 PT FG ATTEMPTS	12		Kiki Smith at Little Rock (11/11/2024)
	10		Jenna Lawrence vs Bowling Green (N) (11/30/2024)
	10		Kiki Smith vs Oral Roberts (11/21/2024)
	10		Carly Keats at UCLA (11/17/2024)
	10		Jenna Lawrence vs East Texas A&M (11/08/2024)
3 PT FG PERCENTAGE (min 2 made)	1.000	(2-2)	Pinja Paananen vs UT Arlington (11/14/2024)
	.800	(4-5)	Jenna Lawrence vs UT Arlington (11/14/2024)
	.800	(4-5)	Kiki Smith vs East Texas A&M (11/08/2024)
FREE THROWS MADE	13		Izzy Higginbottom vs Oral Roberts (11/21/2024)
	12		Izzy Higginbottom vs Bowling Green (N) (11/30/2024)
FREE THROW ATTEMPTS	15		Izzy Higginbottom vs Oral Roberts (11/21/2024)
	12		Izzy Higginbottom vs Bowling Green (N) (11/30/2024)
FREE THROW PERCENTAGE (min 3 made)	1.000	(12-12)	Izzy Higginbottom vs Bowling Green (N) (11/30/2024)
	1.000	(11-11)	Izzy Higginbottom at Little Rock (11/11/2024)
	1.000	(7-7)	Izzy Higginbottom vs Liberty (N) (12/18/2024)
	1.000	(5-5)	Izzy Higginbottom vs Southeast Mo. St. (12/08/2024)
	1.000	(4-4)	Izzy Higginbottom at UCLA (11/17/2024)
	1.000	(4-4)	Izzy Higginbottom vs East Texas A&M (11/08/2024)
	1.000	(4-4)	Danika Galea vs East Texas A&M (11/08/2024)
	1.000	(3-3)	Izzy Higginbottom vs Troy (N) (12/19/2024)
	1.000	(3-3)	Karley Johnson vs Southeast Mo. St. (12/08/2024)
	1.000	(3-3)	Jenna Lawrence vs Fairfield (11/04/2024)
REBOUNDS	14		Vera Ojenuwa vs Southeast Mo. St. (12/08/2024)
	12		Jenna Lawrence vs UT Arlington (11/14/2024)
ASSISTS	9		Izzy Higginbottom vs Bowling Green (N) (11/30/2024)
	7		Izzy Higginbottom vs Troy (N) (12/19/2024)
STEALS	3		Kiki Smith vs Troy (N) (12/19/2024)
	3		Izzy Higginbottom vs Texas Tech (12/15/2024)
	3		Izzy Higginbottom vs Boston College (12/05/2024)
	3		Karley Johnson vs Arkansas St. (11/24/2024)
	3		Jenna Lawrence vs Arkansas St. (11/24/2024)
BLOCKED SHOTS	5		Jenna Lawrence vs Bowling Green (N) (11/30/2024)
	3		Jenna Lawrence vs Arkansas St. (11/24/2024)
TURNOVERS	8		Kiki Smith vs Oral Roberts (11/21/2024)
	7		Vera Ojenuwa vs Liberty (N) (12/18/2024)
	7		Izzy Higginbottom vs Texas Tech (12/15/2024)
	7		Izzy Higginbottom vs Fairfield (11/04/2024)



Opponent Player Highs Analysis

Opponent - Individual Game Highs

POINTS	25		Bailey Maupin vs Texas Tech (12/15/2024)
	25		Paige Kohler vs Bowling Green (N) (11/30/2024)
	23		Zay Dyer vs Troy (N) (12/19/2024)
	23		Jalei Oglesby vs Oral Roberts (11/21/2024)
	23		Taleyah Jones vs Oral Roberts (11/21/2024)
	23		Timea Gardiner at UCLA (11/17/2024)
FIELD GOALS MADE	11		Zay Dyer vs Troy (N) (12/19/2024)
	9		Erika Porter vs Bowling Green (N) (11/30/2024)
	9		Paige Kohler vs Bowling Green (N) (11/30/2024)
	9		Jalei Oglesby vs Oral Roberts (11/21/2024)
	9		Faith Lee at Little Rock (11/11/2024)
FIELD GOAL ATTEMPTS	28		Zay Dyer vs Troy (N) (12/19/2024)
	25		Faith Lee at Little Rock (11/11/2024)
FIELD GOAL PERCENTAGE (min 5 made)	.714	(5-7)	Kilah Freelon vs Texas Tech (12/15/2024)
	.714	(5-7)	Kennedie Montue vs Arkansas St. (11/24/2024)
3 PT FG MADE	7		Paige Kohler vs Bowling Green (N) (11/30/2024)
	7		Timea Gardiner at UCLA (11/17/2024)
3 PT FG ATTEMPTS	12		Timea Gardiner at UCLA (11/17/2024)
	9		Paige Kohler vs Bowling Green (N) (11/30/2024)
	9		Taleyah Jones vs Oral Roberts (11/21/2024)
	9		Emily Robinson vs Oral Roberts (11/21/2024)
3 PT FG PERCENTAGE (min 2 made)	1.000	(2-2)	Brianna Jackson vs Troy (N) (12/19/2024)
	1.000	(2-2)	Jillian Huerter vs Fairfield (11/04/2024)
FREE THROWS MADE	9		Bailey Maupin vs Texas Tech (12/15/2024)
	8		Jasmine Shavers vs Texas Tech (12/15/2024)
FREE THROW ATTEMPTS	12		Bailey Maupin vs Texas Tech (12/15/2024)
	8		Jasmine Shavers vs Texas Tech (12/15/2024)
	8		Sug Williams at Little Rock (11/11/2024)
	8		Emerald Parker at Little Rock (11/11/2024)
FREE THROW PERCENTAGE (min 3 made)	1.000	(8-8)	Jasmine Shavers vs Texas Tech (12/15/2024)
	1.000	(5-5)	Jordan Hodges vs Liberty (N) (12/18/2024)
	1.000	(5-5)	Jalei Oglesby vs Oral Roberts (11/21/2024)
	1.000	(5-5)	Taleyah Jones vs Oral Roberts (11/21/2024)
	1.000	(4-4)	Jadyn Wooten vs Oklahoma St. (N) (11/29/2024)
	1.000	(4-4)	Jasmine Payne vs East Texas A&M (11/08/2024)
	1.000	(3-3)	Jalynn Bristow vs Texas Tech (12/15/2024)
1.000	(3-3)	Angela Dugalić at UCLA (11/17/2024)	
REBOUNDS	18		Zay Dyer vs Troy (N) (12/19/2024)
	16		Emerald Parker at Little Rock (11/11/2024)
ASSISTS	11		Elina Aarnisalo at UCLA (11/17/2024)
	9		Shaulana Wagner vs Troy (N) (12/19/2024)
	9		Amy Velasco vs Bowling Green (N) (11/30/2024)
STEALS	4		Kennedy Claybrooks vs Southeast Mo. St. (12/08/2024)
	4		Angela Dugalić at UCLA (11/17/2024)
BLOCKED SHOTS	4		Wynter Rogers vs Arkansas St. (11/24/2024)
	3		Sarengbe Sanogo vs Texas Tech (12/15/2024)
	3		Briah Hampton vs Southeast Mo. St. (12/08/2024)
	3		Tenin Magassa vs Oklahoma St. (N) (11/29/2024)
	3		Nya Threatt vs UT Arlington (11/14/2024)
TURNOVERS	6		Ruthie Udoumoh vs Oral Roberts (11/21/2024)
	5		Sarengbe Sanogo vs Texas Tech (12/15/2024)
	5		Dontavia Waggoner vs Boston College (12/05/2024)
	5		T'yana Todd vs Boston College (12/05/2024)
FOULS	5		Lexi McCully vs Southeast Mo. St. (12/08/2024)
	5		Janelle Brown vs Fairfield (11/04/2024)



Team Game-by-Game

Opponent	Date	Score		Total		3-Pointers		Free throws		Rebounds										
				FG-FGA	PCT	3FG-3FGA	PCT	FT-FTA	PCT	OFF	DEF	TOT	AVG	PF	A	TO	BLK	STL	PTS	AVG
Fairfield	11/04/2024	67-81	L	23-60	.383	9-27	.333	12-14	.857	8	23	31	31.0	3	10	14	4	2	67	67.0
East Texas A&M	11/08/2024	84-65	W	27-57	.474	9-24	.375	21-26	.808	6	40	46	38.5	10	9	16	1	2	84	75.5
at Little Rock	11/11/2024	71-60	Wot	24-63	.381	9-29	.310	14-18	.778	6	33	39	38.7	22	9	16	3	2	71	74.0
UT Arlington	11/14/2024	93-65	W	34-74	.459	13-25	.520	12-19	.632	16	40	56	43.0	15	12	14	6	2	93	78.8
at UCLA	11/17/2024	52-101	L	18-63	.286	7-39	.179	9-11	.818	7	20	27	39.8	20	11	18	3	2	52	73.4
Oral Roberts	11/21/2024	73-94	L	24-65	.369	8-22	.364	17-22	.773	12	24	36	39.2	14	11	16	3	6	73	73.3
Arkansas St.	11/24/2024	76-60	W	30-67	.448	7-27	.259	9-12	.750	11	37	48	40.4	11	16	16	7	9	76	73.7
vs Oklahoma St.	11/29/2024	56-70	L	19-59	.322	4-19	.211	14-20	.700	8	26	34	39.6	13	6	14	3	3	56	71.5
vs Bowling Green	11/30/2024	78-79	L	27-56	.482	11-25	.440	13-14	.929	3	20	23	37.8	10	15	8	10	4	78	72.2
Boston College	12/05/2024	75-64	W	27-56	.482	3-11	.273	18-23	.783	10	23	33	37.3	14	9	12	4	8	75	72.5
Southeast Mo. St.	12/08/2024	84-45	W	28-66	.424	7-25	.280	21-24	.875	14	40	54	38.8	7	12	13	5	8	84	73.5
Texas Tech	12/15/2024	72-75	L	24-53	.453	7-21	.333	17-22	.773	12	16	28	37.9	15	6	19	0	5	72	73.4
vs Liberty	12/18/2024	61-75	L	22-55	.400	7-26	.269	10-11	.909	9	21	30	37.3	12	7	14	2	7	61	72.5
vs Troy	12/19/2024	69-77	L	25-73	.342	9-33	.273	10-14	.714	12	32	44	37.8	13	14	13	3	6	69	72.2
Total		1011		352-867	.406	110-353	.312	197-250	.788	134	395	529	37.8	179	147	203	54	66	1011	72.2
Opponents		1011		396-1003	.395	94-312	.301	125-176	.710	221	382	603	43.1	244	200	180	78	105	1011	72.2

Arkansas Averages

Games Played	Points/game	FG Pct	3FG Pct	FT Pct	Rebounds/game	Assists/game	Turnovers/game	Assist/Turnover ratio	Steals/game	Blocks/game
14	72.2	40.6	31.2	78.8	37.8	10.5	14.5	0.7	4.7	3.9



Opponent Game-by-Game

Opponent	Date	Score		Total		3-Pointers		Free throws		Rebounds											
				FG-FGA	PCT	3FG-3FGA	PCT	FT-FTA	PCT	OFF	DEF	TOT	AVG	PF	A	TO	BLK	STL	PTS	AVG	
Fairfield	11/04/2024	67-81	L	33-68	.485	13-30	.433	2-2	1.000	11	29	40	40.0	17	21	12	4	8	81	81.0	
East Texas A&M	11/08/2024	84-65	W	25-80	.313	8-29	.276	7-9	.778	15	25	40	40.0	20	9	9	4	6	65	73.0	
at Little Rock	11/11/2024	71-60	Wot	24-74	.324	3-10	.300	9-22	.409	16	28	44	41.3	21	8	9	4	4	60	68.7	
UT Arlington	11/14/2024	93-65	W	28-75	.373	1-10	.100	8-17	.471	11	28	39	40.8	21	15	10	9	7	65	67.8	
at UCLA	11/17/2024	52-101	L	37-84	.440	10-34	.294	17-22	.773	29	36	65	45.6	17	22	11	5	8	101	74.4	
Oral Roberts	11/21/2024	73-94	L	34-70	.486	10-27	.370	16-18	.889	11	30	41	44.8	19	17	15	8	8	94	77.7	
Arkansas St.	11/24/2024	76-60	W	23-74	.311	9-35	.257	5-7	.714	14	28	42	44.4	14	12	14	5	9	60	75.1	
vs Oklahoma St.	11/29/2024	56-70	L	30-73	.411	2-18	.111	8-10	.800	17	31	48	44.9	17	10	10	11	8	70	74.5	
vs Bowling Green	11/30/2024	78-79	L	32-68	.471	10-21	.476	5-7	.714	16	25	41	44.4	11	19	13	2	1	79	75.0	
Boston College	12/05/2024	75-64	W	27-73	.370	6-27	.222	4-7	.571	24	20	44	44.4	21	15	17	5	9	64	73.9	
Southeast Mo. St.	12/08/2024	84-45	W	17-63	.270	10-26	.385	1-2	.500	6	23	29	43.0	20	12	18	8	8	45	71.3	
Texas Tech	12/15/2024	72-75	L	26-54	.481	2-11	.182	21-25	.840	15	18	33	42.2	21	13	18	5	11	75	71.6	
vs Liberty	12/18/2024	61-75	L	28-65	.431	4-15	.267	15-18	.833	16	24	40	42.0	10	12	13	3	7	75	71.8	
vs Troy	12/19/2024	69-77	L	32-82	.390	6-19	.316	7-10	.700	20	37	57	43.1	15	15	11	5	11	77	72.2	
Total		1011		396-1003	.395	94-312	.301	125-176	.710	221	382	603	43.1	244	200	180	78	105	1011	72.2	
Arkansas		1011		352-867	.406	110-353	.312	197-250	.788	134	395	529	37.8	179	147	203	54	66	1011	72.2	

Opponents Averages

Games Played	Points/game	FG Pct	3FG Pct	FT Pct	Rebounds/game	Assists/game	Turnovers/game	Assist/Turnover ratio	Steals/game	Blocks/game
14	72.2	39.5	30.1	71.0	43.1	14.3	12.9	1.1	7.5	5.6



Team Ranking Summary

Statistic	National Rank	Conference Rank	Value	National Leader	Value	Conference Leader	Value
Assist/Turnover Ratio (353 ranked)	231	16	0.72	Kansas St.	1.96	Kentucky	1.58
Assists Per Game (353 ranked)	314	16	10.5	Oklahoma	23.5	Oklahoma	23.5
Bench Points Per Game (353 ranked)	319	15	13.2	South Carolina	40.6	South Carolina	40.6
Blocks Per Game (353 ranked)	84	12	3.9	Kentucky	7.8	Kentucky	7.8
Field Goal Percentage (353 ranked)	183	16	40.6	Kansas St.	51.1	Texas	50.1
Field Goal Percentage Defense (353 ranked)	159	15	39.5	UCLA	31.0	Mississippi St.	31.4
Fouls Per Game (353 ranked)	5	1	12.8	NC State	12.0	Arkansas	12.8
Free Throw Attempts Per Game (353 ranked)	112	10	17.86	Jacksonville	27.18	Texas	25.85
Free Throw Percentage (353 ranked)	11	2	78.8	Kent St.	83.7	Kentucky	80.4
Free Throws Made Per Game (353 ranked)	48	5	14.07	Jacksonville	19.91	Texas	19.38
Rebound Margin (353 ranked)	306	16	-5.3	UCLA	19.3	Oklahoma	18.1
Rebounds (Defensive) Per Game (353 ranked)	47	8	28.2	Oklahoma	35.4	Oklahoma	35.4
Rebounds (Offensive) Per Game (353 ranked)	292	16	9.6	Tennessee	21.5	Tennessee	21.5
Rebounds Per Game (349 ranked)	158	14	37.79	Oklahoma	51.17	Oklahoma	51.17
Scoring Defense (353 ranked)	310	16	72.2	Ole Miss	47.2	Ole Miss	47.2
Scoring Margin (349 ranked)	215	16	0.0	Kansas St.	36.2	Texas	35.3
Scoring Offense (353 ranked)	95	14	72.2	Tennessee	97.4	Tennessee	97.4
Steals Per Game (353 ranked)	351	16	4.7	Col. of Charleston	15.4	Tennessee	14.7
Three Point Attempts Per Game (353 ranked)	44	4	25.2	Tennessee	38.3	Tennessee	38.3
Three Point Percentage (353 ranked)	165	11	31.2	Notre Dame	43.4	Missouri	39.1
Three Point Percentage Defense (353 ranked)	164	13	30.1	Bradley	18.1	Mississippi St.	23.7
Three Pointers Per Game (353 ranked)	58	4	7.9	Tennessee	12.6	Tennessee	12.6
Turnover Margin (353 ranked)	262	15	-1.64	Ohio St.	13.33	Tennessee	12.55
Turnovers Forced Per Game (353 ranked)	340	16	12.86	Col. of Charleston Tennessee	27.18 27.18	Tennessee	27.18
Turnovers Per Game (353 ranked)	69	7	14.5	Colorado St.	8.8	South Carolina	11.9
Winning Percentage (350 ranked)	235	16	42.9	8 teams tied	100.0	LSU Tennessee	100.0 100.0



Individual Ranking Summary

Statistic	Player	National Rank	Conference Rank	Value	National Leader	Value	Conference Leader	Value
Assist/Turnover Ratio (250 ranked)	Izzy Higginbottom	245	22	1.18	Maddy McDaniel, South Carolina	5.33	Maddy McDaniel, South Carolina	5.33
Assists (147 ranked)	Izzy Higginbottom	58	7	58	Serena Sundell, Kansas St.	99	Georgia Amooore, Kentucky	86
Assists Per Game (250 ranked)	Izzy Higginbottom	113	10	4.1	Katie Dinnebier, Drake Naudia Evans, LMU (CA)	7.3 7.3	Georgia Amooore, Kentucky	7.2
Blocks (128 ranked)	Jenna Lawrence	68	7	18	Sedona Prince, TCU	46	Teonni Key, Kentucky	30
Blocks Per Game (246 ranked)	Jenna Lawrence	110	11	1.29	Sedona Prince, TCU	3.83	Teonni Key, Kentucky	2.50
Double Doubles (46 ranked)	Vera Ojenuwa	46	8	4	Aneesah Morrow, LSU	12	Aneesah Morrow, LSU	12
Field Goal Attempts (147 ranked)	Izzy Higginbottom	4	1	231	Grace Larkins, South Dakota	247	Izzy Higginbottom, Arkansas	231
Field Goal Percentage (250 ranked)	Izzy Higginbottom	146	17	46.3	Raegan Beers, Oklahoma	72.1	Raegan Beers, Oklahoma	72.1
Field Goals (140 ranked)	Izzy Higginbottom	8	3	107	Audi Crooks, Iowa St.	129	Khamil Pierre, Vanderbilt	116
Free Throw Attempts (146 ranked)	Izzy Higginbottom	2	1	110	S'Mya Nichols, Kansas	131	Izzy Higginbottom, Arkansas	110
Free Throw Percentage (250 ranked)	Izzy Higginbottom	18	2	90.9	Abaigeal Babore, FDU	97.6	Georgia Amooore, Kentucky	91.7
Free Throws (139 ranked)	Izzy Higginbottom	2	1	100	S'Mya Nichols, Kansas	106	Izzy Higginbottom, Arkansas	100
Minutes Per Game (150 ranked)	Izzy Higginbottom	52	2	34.76	Amaris Baker, Drexel	38.55	Georgia Amooore, Kentucky	34.99
Points (199 ranked)	Izzy Higginbottom	1	1	328	Izzy Higginbottom, Arkansas	328	Izzy Higginbottom, Arkansas	328
Points Per Game (249 ranked)	Izzy Higginbottom	4	1	23.4	Ta'Niya Latson, Florida St.	27.2	Izzy Higginbottom, Arkansas	23.4
Rebounds (150 ranked)	Vera Ojenuwa Jenna Lawrence	53 94	8 11	109 98	Aneesah Morrow, LSU	196	Aneesah Morrow, LSU	196
Rebounds (Defensive) Per Game (29 ranked)					Tiffany Tullis, Houston Christian	9.4	Aneesah Morrow, LSU	9.1
Rebounds (Offensive) Per Game (30 ranked)					Gift Uchenna, Southern Ill.	5.4	Aneesah Morrow, LSU	4.9
Rebounds Per Game (248 ranked)	Vera Ojenuwa Jenna Lawrence	127 205	11 15	7.8 7.0	Aneesah Morrow, LSU	14.0	Aneesah Morrow, LSU	14.0
Steals (130 ranked)					Hannah Hidalgo, Notre Dame	51	Khamil Pierre, Vanderbilt	47
Steals Per Game (241 ranked)					Hannah Hidalgo, Notre Dame	4.25	Khamil Pierre, Vanderbilt	3.92
Three Point Attempts (143 ranked)	Kiki Smith Jenna Lawrence Carly Keats	66 101 133	7 8 12	80 75 69	Alyssa Durazo-Frescas, Grand Canyon	121	Aaliyah Nye, Alabama	104
Three Point Percentage (188 ranked)	Kiki Smith	59	4	41.3	Kayba Laube, UNI	53.9	Debreasha Powe, Mississippi St. Samara Spencer, Tennessee	48.3 48.3
Three Pointers (144 ranked)	Kiki Smith	32	3	33	Alyssa Durazo-Frescas, Grand Canyon	57	Aaliyah Nye, Alabama	44
Three Pointers Per Game (248 ranked)	Kiki Smith	73	7	2.36	Madison Conner, TCU	4.08	Aaliyah Nye, Alabama	3.38
Triple Doubles (4 ranked)					Olivia Miles, Notre Dame Megan McConnell, Duquesne Laura Ziegler, Saint Joseph's	2 2 2	Payton Verhulst, Oklahoma	1





ARCHER, Maryn

				Field Goals		3-Point		F-Throws		Rebounds								Scoring		
SEASON	TEAM	GP-GS	MIN/AVG	FG-FGA	FG%	3FG-3FGA	3FG%	FT-FTA	FT%	OFF	DEF	TOT	AVG	PF-FO	A	TO	BLK	STL	PTS	AVG
2024-25	AR	8-0	22/2.8	2-8	.250	0-0	.000	3-6	.500	0	3	3	0.4	3-0	1	3	0	0	7	0.9
TOTAL		8-0	22/2.8	2-8	.250	0-0	.000	3-6	.500	0	3	3	0.4	3-0	1	3	0	0	7	0.9

Single Game Highs

Statistic	Value	
Points	7	vs Southeast Mo. St. 12/08/24
Rebounds	2	vs Oral Roberts 11/21/24
Assists	1	vs Southeast Mo. St. 12/08/24
FG Made	2	vs Southeast Mo. St. 12/08/24
FG Attempts	4	vs Southeast Mo. St. 12/08/24
FT Made	3	vs Southeast Mo. St. 12/08/24
FT Attempts	4	vs Southeast Mo. St. 12/08/24

BATES, Jada

				Field Goals		3-Point		F-Throws		Rebounds								Scoring		
SEASON	TEAM	GP-GS	MIN/AVG	FG-FGA	FG%	3FG-3FGA	3FG%	FT-FTA	FT%	OFF	DEF	TOT	AVG	PF-FO	A	TO	BLK	STL	PTS	AVG
2024-25	AR	13-0	194/14.9	11-36	.306	8-24	.333	3-7	.429	3	14	17	1.3	5-0	6	10	5	2	33	2.5
TOTAL		13-0	194/14.9	11-36	.306	8-24	.333	3-7	.429	3	14	17	1.3	5-0	6	10	5	2	33	2.5

Single Game Highs

Statistic	Value	
Points	9	at UCLA 11/17/24
Rebounds	3	at Little Rock 11/11/24, vs Fairfield 11/04/24, at UCLA 11/17/24
Assists	2	vs Boston College 12/05/24, vs Fairfield 11/04/24
Steals	1	vs Boston College 12/05/24, vs Texas Tech 12/15/24
Blocks	1	5 times
FG Made	3	at UCLA 11/17/24
FG Attempts	7	at UCLA 11/17/24
3FG Made	3	at UCLA 11/17/24
3FG Attempts	7	at UCLA 11/17/24
FT Made	3	vs Texas Tech 12/15/24
FT Attempts	4	vs Texas Tech 12/15/24



**Arkansas Women's Basketball
Individual Career Summaries
All games**

GALEA, Danika

				Field Goals		3-Point		F-Throws		Rebounds									Scoring	
SEASON	TEAM	GP-GS	MIN/AVG	FG-FGA	FG%	3FG-3FGA	3FG%	FT-FTA	FT%	OFF	DEF	TOT	AVG	PF-FO	A	TO	BLK	STL	PTS	AVG
2024-25	AR	11-0	121/11.0	24-40	.600	2-7	.286	10-12	.833	10	12	22	2.0	24-2	3	11	3	2	60	5.5
TOTAL		11-0	121/11.0	24-40	.600	2-7	.286	10-12	.833	10	12	22	2.0	24-2	3	11	3	2	60	5.5

Single Game Highs

Statistic	Value	
Points	10	vs Troy 12/19/24, vs Southeast Mo. St. 12/08/24, vs UT Arlington 11/14/24
Rebounds	6	vs UT Arlington 11/14/24
Assists	1	vs Oral Roberts 11/21/24, at Little Rock 11/11/24, vs UT Arlington 11/14/24
Steals	1	vs Southeast Mo. St. 12/08/24, at Little Rock 11/11/24
Blocks	1	vs Troy 12/19/24, vs Arkansas St. 11/24/24, vs Southeast Mo. St. 12/08/24
FG Made	5	vs Troy 12/19/24
FG Attempts	7	vs UT Arlington 11/14/24
3FG Made	2	vs Liberty 12/18/24
3FG Attempts	5	vs Liberty 12/18/24
FT Made	4	vs East Texas A&M 11/08/24
FT Attempts	4	vs East Texas A&M 11/08/24

HIGGINBOTTOM, Izzy

				Field Goals		3-Point		F-Throws		Rebounds									Scoring	
SEASON	TEAM	GP-GS	MIN/AVG	FG-FGA	FG%	3FG-3FGA	3FG%	FT-FTA	FT%	OFF	DEF	TOT	AVG	PF-FO	A	TO	BLK	STL	PTS	AVG
2021-22	MO	27-0	492/18.2	56-146	.384	21-57	.368	29-31	.935	17	17	34	1.3	32-0	32	26	1	11	162	6.0
2022-23	ASU	29-25	897/30.9	163-418	.390	37-125	.296	102-112	.911	25	64	89	3.1	47-1	98	66	2	53	465	16.0
2023-24	ASU	26-25	968/37.2	183-396	.462	36-98	.367	175-192	.911	22	83	105	4.0	39-0	95	55	4	35	577	22.2
2024-25	AR	14-14	487/34.8	107-231	.463	14-42	.333	100-110	.909	7	51	58	4.1	23-0	58	49	2	16	328	23.4
TOTAL FOR AR		14-14	487/34.8	107-231	.463	14-42	.333	100-110	.909	7	51	58	4.1	23-0	58	49	2	16	328	23.4
TOTAL		96-64	2844/29.6	509-1191	.427	108-322	.335	406-445	.912	71	215	286	3.0	141-1	283	196	9	115	1532	16.0

Single Game Highs

Statistic	Value	
Points	38	vs Boston College 12/05/24
Rebounds	8	vs Arkansas St. 11/24/24, vs NIU 11/09/23
Assists	9	vs Bowling Green 11/30/24, at McNeese 11/29/22
Steals	6	at Coastal Carolina 02/02/23
Blocks	1	9 times
FG Made	14	vs Boston College 12/05/24
FG Attempts	31	at Troy 01/27/24
3FG Made	5	vs North Ala. 12/14/23
3FG Attempts	9	vs Marshall 01/28/23, vs Oklahoma 11/22/22
FT Made	19	vs Old Dominion 02/03/24
FT Attempts	20	vs Old Dominion 02/03/24



**Arkansas Women's Basketball
Individual Career Summaries
All games**

JOHNSON, Karley

				Field Goals		3-Point		F-Throws		Rebounds								Scoring		
SEASON	TEAM	GP-GS	MIN/AVG	FG-FGA	FG%	3FG-3FGA	3FG%	FT-FTA	FT%	OFF	DEF	TOT	AVG	PF-FO	A	TO	BLK	STL	PTS	AVG
2022-23	AR	10-0	26/2.6	0-1	.000	0-0	.000	1-2	.500	1	1	2	0.2	1-0	1	0	0	3	1	0.1
2023-24	AR	19-5	339/17.8	19-53	.358	8-29	.276	17-30	.567	13	21	34	1.8	29-0	5	7	1	7	63	3.3
2024-25	AR	12-0	156/13.0	8-27	.296	0-5	.000	11-15	.733	11	31	42	3.5	18-0	5	6	2	7	27	2.3
TOTAL		41-5	522/12.7	27-81	.333	8-34	.235	29-47	.617	25	53	78	1.9	48-0	11	13	3	17	91	2.2

Single Game Highs

Statistic	Value	
Points	14	vs Kentucky 01/25/24
Rebounds	10	vs UT Arlington 11/14/24
Assists	3	at Florida 02/08/24, vs Arkansas St. 11/24/24
Steals	3	vs Arkansas St. 11/24/24
Blocks	2	vs Bowling Green 11/30/24
FG Made	4	vs Kentucky 01/25/24
FG Attempts	7	at Missouri 01/28/24
3FG Made	2	vs Kentucky 01/25/24, at Tulsa 03/21/24
3FG Attempts	4	at Missouri 01/28/24, vs Vanderbilt 02/25/24
FT Made	4	vs Kentucky 01/25/24
FT Attempts	6	vs Kentucky 01/25/24

KEATS, Carly

				Field Goals		3-Point		F-Throws		Rebounds								Scoring		
SEASON	TEAM	GP-GS	MIN/AVG	FG-FGA	FG%	3FG-3FGA	3FG%	FT-FTA	FT%	OFF	DEF	TOT	AVG	PF-FO	A	TO	BLK	STL	PTS	AVG
2023-24	AR	29-10	641/22.1	64-203	.315	31-122	.254	18-23	.783	5	33	38	1.3	23-0	18	23	4	9	177	6.1
2024-25	AR	14-14	329/23.5	38-116	.328	20-69	.290	9-10	.900	0	21	21	1.5	3-0	12	15	3	4	105	7.5
TOTAL		43-24	970/22.6	102-319	.320	51-191	.267	27-33	.818	5	54	59	1.4	26-0	30	38	7	13	282	6.6

Single Game Highs

Statistic	Value	
Points	19	vs Southeast Mo. St. 12/08/24
Rebounds	5	at UCLA 11/17/24
Assists	4	vs Auburn 03/07/24
Steals	2	vs ULM 11/07/23, vs Kentucky 01/25/24, vs South Carolina 02/29/24
Blocks	2	vs UIC 12/21/23
FG Made	7	vs Georgia 01/07/24
FG Attempts	16	vs Georgia 01/07/24
3FG Made	5	vs Southeast Mo. St. 12/08/24
3FG Attempts	10	vs Little Rock 11/14/23, vs Georgia 01/07/24, at UCLA 11/17/24
FT Made	4	vs ULM 11/07/23
FT Attempts	5	vs ULM 11/07/23, vs South Carolina 02/29/24



**Arkansas Women's Basketball
Individual Career Summaries
All games**

LAWRENCE, Jenna

				Field Goals		3-Point		F-Throws		Rebounds								Scoring		
SEASON	TEAM	GP-GS	MIN/AVG	FG-FGA	FG%	3FG-3FGA	3FG%	FT-FTA	FT%	OFF	DEF	TOT	AVG	PF-FO	A	TO	BLK	STL	PTS	AVG
2023-24	AR	24-2	279/11.6	21-53	.396	13-42	.310	5-8	.625	15	46	61	2.5	25-0	5	10	10	7	60	2.5
2024-25	AR	14-14	381/27.2	36-102	.353	22-75	.293	15-18	.833	19	79	98	7.0	18-0	4	12	18	7	109	7.8
TOTAL		38-16	660/17.4	57-155	.368	35-117	.299	20-26	.769	34	125	159	4.2	43-0	9	22	28	14	169	4.4

Single Game Highs

Statistic	Value	
Points	21	vs Bowling Green 11/30/24
Rebounds	12	vs UT Arlington 11/14/24
Assists	2	at UCLA 11/17/24
Steals	3	vs Arkansas St. 11/24/24
Blocks	5	vs Bowling Green 11/30/24
FG Made	8	vs Bowling Green 11/30/24
FG Attempts	14	vs Bowling Green 11/30/24
3FG Made	5	vs Bowling Green 11/30/24
3FG Attempts	10	vs Bowling Green 11/30/24, vs East Texas A&M 11/08/24
FT Made	4	vs Troy 12/19/24
FT Attempts	5	vs Troy 12/19/24

LINDSEY, Loren

				Field Goals		3-Point		F-Throws		Rebounds								Scoring		
SEASON	TEAM	GP-GS	MIN/AVG	FG-FGA	FG%	3FG-3FGA	3FG%	FT-FTA	FT%	OFF	DEF	TOT	AVG	PF-FO	A	TO	BLK	STL	PTS	AVG
2022-23	AR	9-0	17/1.9	0-0	.000	0-0	.000	0-0	.000	0	1	1	0.1	0-0	0	0	0	0	0	0.0
2023-24	AR	1-0	4/3.6	0-0	.000	0-0	.000	0-0	.000	0	0	0	0.0	0-0	1	0	0	0	0	0.0
2024-25	AR	5-0	22/4.4	0-3	.000	0-2	.000	0-0	.000	0	2	2	0.4	3-0	2	0	0	1	0	0.0
TOTAL		15-0	42/2.8	0-3	.000	0-2	.000	0-0	.000	0	3	3	0.2	3-0	3	0	0	1	0	0.0

Single Game Highs

Statistic	Value	
Rebounds	2	vs Southeast Mo. St. 12/08/24
Assists	1	vs Little Rock 11/14/23, at UCLA 11/17/24, vs UT Arlington 11/14/24
Steals	1	vs Southeast Mo. St. 12/08/24
FG Attempts	2	vs Southeast Mo. St. 12/08/24
3FG Attempts	2	vs Southeast Mo. St. 12/08/24



OJENUWA, Vera

				Field Goals		3-Point		F-Throws		Rebounds								Scoring		
SEASON	TEAM	GP-GS	MIN/AVG	FG-FGA	FG%	3FG-3FGA	3FG%	FT-FTA	FT%	OFF	DEF	TOT	AVG	PF-FO	A	TO	BLK	STL	PTS	AVG
2024-25	AR	14-14	343/24.5	48-96	.500	1-6	.167	24-38	.632	40	69	109	7.8	44-3	11	33	9	9	121	8.6
TOTAL		14-14	343/24.5	48-96	.500	1-6	.167	24-38	.632	40	69	109	7.8	44-3	11	33	9	9	121	8.6

Single Game Highs

Statistic	Value	
Points	20	vs Arkansas St. 11/24/24
Rebounds	14	vs Southeast Mo. St. 12/08/24
Assists	2	vs Arkansas St. 11/24/24, vs East Texas A&M 11/08/24
Steals	2	vs Liberty 12/18/24, vs Oral Roberts 11/21/24
Blocks	2	at UCLA 11/17/24, vs Fairfield 11/04/24
FG Made	8	vs Arkansas St. 11/24/24
FG Attempts	12	vs Arkansas St. 11/24/24
3FG Made	1	vs Bowling Green 11/30/24
3FG Attempts	2	at UCLA 11/17/24
FT Made	6	vs East Texas A&M 11/08/24
FT Attempts	9	vs East Texas A&M 11/08/24

PAANANEN, Pinja

				Field Goals		3-Point		F-Throws		Rebounds								Scoring		
SEASON	TEAM	GP-GS	MIN/AVG	FG-FGA	FG%	3FG-3FGA	3FG%	FT-FTA	FT%	OFF	DEF	TOT	AVG	PF-FO	A	TO	BLK	STL	PTS	AVG
2024-25	AR	14-0	168/12.0	11-30	.367	5-21	.238	2-3	.667	6	25	31	2.2	8-0	5	9	6	5	29	2.1
TOTAL		14-0	168/12.0	11-30	.367	5-21	.238	2-3	.667	6	25	31	2.2	8-0	5	9	6	5	29	2.1

Single Game Highs

Statistic	Value	
Points	6	vs Bowling Green 11/30/24, vs UT Arlington 11/14/24
Rebounds	5	at Little Rock 11/11/24, vs Fairfield 11/04/24
Assists	1	5 times
Steals	1	5 times
Blocks	2	vs Southeast Mo. St. 12/08/24, vs UT Arlington 11/14/24
FG Made	2	vs Bowling Green 11/30/24, vs UT Arlington 11/14/24
FG Attempts	5	vs Bowling Green 11/30/24
3FG Made	2	vs UT Arlington 11/14/24
3FG Attempts	4	vs Arkansas St. 11/24/24
FT Made	1	vs Bowling Green 11/30/24, at UCLA 11/17/24
FT Attempts	2	vs Bowling Green 11/30/24



**Arkansas Women's Basketball
Individual Career Summaries
All games**

SMITH, Kiki

				Field Goals		3-Point		F-Throws		Rebounds				Scoring						
SEASON	TEAM	GP-GS	MIN/AVG	FG-FGA	FG%	3FG-3FGA	3FG%	FT-FTA	FT%	OFF	DEF	TOT	AVG	PF-FO	A	TO	BLK	STL	PTS	AVG
2024-25	AR	14-14	449/32.1	57-139	.410	33-80	.413	16-23	.696	6	24	30	2.1	21-0	35	34	3	9	163	11.6
TOTAL		14-14	449/32.1	57-139	.410	33-80	.413	16-23	.696	6	24	30	2.1	21-0	35	34	3	9	163	11.6

Single Game Highs

Statistic	Value	
Points	22	vs East Texas A&M 11/08/24
Rebounds	4	vs Oral Roberts 11/21/24, vs Troy 12/19/24, vs Southeast Mo. St. 12/08/24
Assists	5	vs Bowling Green 11/30/24, vs Arkansas St. 11/24/24
Steals	3	vs Troy 12/19/24
Blocks	1	vs Arkansas St. 11/24/24, vs Southeast Mo. St. 12/08/24, vs UT Arlington 11/14/24
FG Made	8	vs East Texas A&M 11/08/24
FG Attempts	18	at Little Rock 11/11/24
3FG Made	4	5 times
3FG Attempts	12	at Little Rock 11/11/24
FT Made	4	vs Oral Roberts 11/21/24, vs Boston College 12/05/24
FT Attempts	6	vs Oral Roberts 11/21/24

STOTJIN, Phoenix

				Field Goals		3-Point		F-Throws		Rebounds				Scoring						
SEASON	TEAM	GP-GS	MIN/AVG	FG-FGA	FG%	3FG-3FGA	3FG%	FT-FTA	FT%	OFF	DEF	TOT	AVG	PF-FO	A	TO	BLK	STL	PTS	AVG
2024-25	AR	3-0	57/19.0	8-27	.296	5-18	.278	1-1	1.000	1	1	2	0.7	3-0	4	5	0	1	22	7.3
TOTAL		3-0	57/19.0	8-27	.296	5-18	.278	1-1	1.000	1	1	2	0.7	3-0	4	5	0	1	22	7.3

Single Game Highs

Statistic	Value	
Points	12	vs Texas Tech 12/15/24
Rebounds	1	vs Liberty 12/18/24, vs Troy 12/19/24
Assists	2	vs Troy 12/19/24
Steals	1	vs Liberty 12/18/24
FG Made	4	vs Texas Tech 12/15/24
FG Attempts	10	vs Troy 12/19/24
3FG Made	3	vs Texas Tech 12/15/24
3FG Attempts	8	vs Troy 12/19/24
FT Made	1	vs Texas Tech 12/15/24
FT Attempts	1	vs Texas Tech 12/15/24



**Arkansas Women's Basketball
Individual Career Summaries
All games**

SÁNCHEZ CERQUEIRA, Cristina

SEASON	TEAM	GP-GS	MIN/AVG	Field Goals		3-Point		F-Throws		Rebounds				Other					Scoring	
				FG-FGA	FG%	3FG-3FGA	3FG%	FT-FTA	FT%	OFF	DEF	TOT	AVG	PF-FO	A	TO	BLK	STL	PTS	AVG
2023-24	AR	20-0	90/4.5	5-22	.227	0-4	.000	1-2	.500	6	14	20	1.0	15-0	2	6	3	0	11	0.6
2024-25	AR	12-0	88/7.3	2-12	.167	0-4	.000	3-7	.429	5	27	32	2.7	6-0	1	8	3	3	7	0.6
TOTAL		32-0	178/5.6	7-34	.206	0-8	.000	4-9	.444	11	41	52	1.6	21-0	3	14	6	3	18	0.6

Single Game Highs

Statistic	Value	
Points	4	vs Troy 12/19/24
Rebounds	9	vs Troy 12/19/24
Assists	1	vs Murray St. 11/10/23, vs Central Ark. 11/20/23, vs Southeast Mo. St. 12/08/24
Steals	2	vs Southeast Mo. St. 12/08/24
Blocks	2	vs Boston College 12/05/24
FG Made	1	7 times
FG Attempts	4	vs Troy 12/19/24
3FG Attempts	1	8 times
FT Made	2	vs Troy 12/19/24
FT Attempts	2	4 times



2024-25 Arkansas Women's Basketball
Individual Game-by-Game
All games

#1 STOTJIN, Phoenix

Opponent	Date	GS	MIN	Total		3-Pointers		Free throws		Rebounds				PF	A	TO	BLK	STL	PTS	AVG
				FG-FGA	PCT	3FG-3FGA	PCT	FT-FTA	PCT	OFF	DEF	TOT	AVG							
Texas Tech	12/15/2024		20:25	4-9	.444	3-6	.500	1-1	1.000	0	0	0	0.0	1	1	2	0	0	12	12.0
vs Liberty	12/18/2024		20:51	3-8	.375	1-4	.250	0-0	.000	1	0	1	0.5	0	1	2	0	1	7	9.5
vs Troy	12/19/2024		15:39	1-10	.100	1-8	.125	0-0	.000	0	1	1	0.7	2	2	1	0	0	3	7.3
Totals		0	56:56	8-27	.296	5-18	.278	1-1	1.000	1	1	2	0.7	3	4	5	0	1	22	7.3

Player Averages

Games Played	Minutes/game	Points/game	FG Pct	3FG Pct	FT Pct	Rebounds/game	Assists/game	Turnovers/game	Assist/Turnover ratio	Steals/game	Blocks/game
3	19.0	7.3	29.6	27.8	100.0	0.7	1.3	1.7	0.8	0.3	0.0



**2024-25 Arkansas Women's Basketball
Individual Game-by-Game
All games**

#2 SMITH, Kiki

Opponent	Date	GS	MIN	Total		3-Pointers		Free throws		Rebounds				PF	A	TO	BLK	STL	PTS	AVG	
				FG-FGA	PCT	3FG-3FGA	PCT	FT-FTA	PCT	OFF	DEF	TOT	AVG								
Fairfield	11/04/2024	*	34:16	5-10	.500	4-6	.667	0-0	.000	0	2	2	2.0	0	3	2	0	0	14	14.0	
East Texas A&M	11/08/2024	*	34:41	8-9	.889	4-5	.800	2-3	.667	0	2	2	2.0	1	1	1	0	0	22	18.0	
at Little Rock	11/11/2024	*	39:37	6-18	.333	4-12	.333	0-1	.000	0	3	3	2.3	2	0	3	0	0	16	17.3	
UT Arlington	11/14/2024	*	30:47	2-10	.200	1-5	.200	0-0	.000	1	2	3	2.5	1	3	0	1	0	5	14.3	
at UCLA	11/17/2024	*	26:52	3-7	.429	1-5	.200	1-2	.500	0	0	0	2.0	3	2	1	0	0	8	13.0	
Oral Roberts	11/21/2024	*	33:43	6-15	.400	4-10	.400	4-6	.667	1	3	4	2.3	3	2	8	0	2	20	14.2	
Arkansas St.	11/24/2024	*	32:07	5-8	.625	3-5	.600	2-2	1.000	0	1	1	2.1	0	5	4	1	0	15	14.3	
vs Oklahoma St.	11/29/2024	*	35:42	6-14	.429	2-4	.500	0-0	.000	1	2	3	2.3	2	2	0	0	0	14	14.3	
vs Bowling Green	11/30/2024	*	37:50	4-10	.400	3-6	.500	0-0	.000	0	0	0	2.0	0	5	1	0	0	11	13.9	
Boston College	12/05/2024	*	36:21	5-10	.500	1-3	.333	4-5	.800	0	1	1	1.9	2	3	5	0	1	15	14.0	
Southeast Mo. St.	12/08/2024	*	27:13	1-5	.200	0-2	.000	2-2	1.000	1	3	4	2.1	1	4	2	1	1	4	13.1	
Texas Tech	12/15/2024	*	26:55	2-8	.250	2-7	.286	0-0	.000	0	1	1	2.0	2	1	3	0	1	6	12.5	
vs Liberty	12/18/2024	*	23:21	0-4	.000	0-2	.000	0-0	.000	0	2	2	2.0	1	1	2	0	1	0	11.5	
vs Troy	12/19/2024	*	29:56	4-11	.364	4-8	.500	1-2	.500	2	2	4	2.1	3	3	2	0	3	13	11.6	
Totals			14	449:21	57-139	.410	33-80	.413	16-23	.696	6	24	30	2.1	21	35	34	3	9	163	11.6

Player Averages

Games Played	Minutes/game	Points/game	FG Pct	3FG Pct	FT Pct	Rebounds/game	Assists/game	Turnovers/game	Assist/Turnover ratio	Steals/game	Blocks/game
14	32.1	11.6	41.0	41.3	69.6	2.1	2.5	2.4	1.0	0.6	0.2



**2024-25 Arkansas Women's Basketball
Individual Game-by-Game
All games**

#3 HIGGINBOTTOM, Izzy

Opponent	Date	GS	MIN	Total		3-Pointers		Free throws		Rebounds				PF	A	TO	BLK	STL	PTS	AVG
				FG-FGA	PCT	3FG-3FGA	PCT	FT-FTA	PCT	OFF	DEF	TOT	AVG							
Fairfield	11/04/2024	*	36:02	7-17	.412	0-1	.000	8-10	.800	0	1	1	1.0	1	2	7	0	1	22	22.0
East Texas A&M	11/08/2024	*	30:48	7-11	.636	1-2	.500	4-4	1.000	1	6	7	4.0	1	3	5	0	0	19	20.5
at Little Rock	11/11/2024	*	43:13	6-14	.429	1-5	.200	11-11	1.000	0	4	4	4.0	1	6	1	1	1	24	21.7
UT Arlington	11/14/2024	*	30:04	10-23	.435	3-6	.500	6-7	.857	1	4	5	4.3	1	6	2	0	0	29	23.5
at UCLA	11/17/2024	*	33:30	5-18	.278	1-7	.143	4-4	1.000	1	2	3	4.0	2	3	3	0	0	15	21.8
Oral Roberts	11/21/2024	*	34:44	6-15	.400	2-3	.667	13-15	.867	0	2	2	3.7	1	5	2	0	1	27	22.7
Arkansas St.	11/24/2024	*	35:34	7-13	.538	0-1	.000	1-3	.333	0	8	8	4.3	1	5	3	0	2	15	21.6
vs Oklahoma St.	11/29/2024	*	33:23	8-16	.500	1-2	.500	9-10	.900	0	2	2	4.0	2	3	5	0	1	26	22.1
vs Bowling Green	11/30/2024	*	38:46	7-15	.467	0-0	.000	12-12	1.000	1	3	4	4.0	2	9	1	1	1	26	22.6
Boston College	12/05/2024	*	38:02	14-23	.609	0-1	.000	10-11	.909	0	4	4	4.0	2	2	3	0	3	38	24.1
Southeast Mo. St.	12/08/2024	*	26:56	6-15	.400	1-3	.333	5-5	1.000	0	6	6	4.2	0	3	3	0	0	18	23.5
Texas Tech	12/15/2024	*	35:12	9-14	.643	1-1	1.000	7-8	.875	0	2	2	4.0	3	1	7	0	3	26	23.8
vs Liberty	12/18/2024	*	35:07	8-18	.444	1-6	.167	7-7	1.000	2	4	6	4.2	4	3	3	0	1	24	23.8
vs Troy	12/19/2024	*	35:16	7-19	.368	2-4	.500	3-3	1.000	1	3	4	4.1	2	7	4	0	2	19	23.4
Totals			14 486:37	107-231	.463	14-42	.333	100-110	.909	7	51	58	4.1	23	58	49	2	16	328	23.4

Player Averages

Games Played	Minutes/ game	Points/ game	FG Pct	3FG Pct	FT Pct	Rebounds/ game	Assists/ game	Turnovers/ game	Assist/Turnover ratio	Steals/ game	Blocks/ game
14	34.8	23.4	46.3	33.3	90.9	4.1	4.1	3.5	1.2	1.1	0.1



**2024-25 Arkansas Women's Basketball
Individual Game-by-Game
All games**

#10 SÁNCHEZ CERQUEIRA, Cristina

Opponent	Date	GS	MIN	Total		3-Pointers		Free throws		Rebounds				Other Stats							
				FG-FGA	PCT	3FG-3FGA	PCT	FT-FTA	PCT	OFF	DEF	TOT	AVG	PF	A	TO	BLK	STL	PTS	AVG	
Fairfield	11/04/2024		00:35	0-0	.000	0-0	.000	0-0	.000	0	0	0	0.0	0	0	0	0	0	0	0	0.0
East Texas A&M	11/08/2024		08:26	0-1	.000	0-0	.000	0-0	.000	0	4	4	2.0	0	0	2	0	0	0	0	0.0
at Little Rock	11/11/2024		00:05	0-0	.000	0-0	.000	0-0	.000	0	0	0	1.3	0	0	0	0	0	0	0	0.0
UT Arlington	11/14/2024		03:54	0-0	.000	0-0	.000	0-2	.000	0	2	2	1.5	0	0	2	0	0	0	0	0.0
at UCLA	11/17/2024		02:16	0-1	.000	0-1	.000	0-0	.000	0	0	0	1.2	0	0	0	1	0	0	0	0.0
Oral Roberts	11/21/2024		01:56	1-1	1.000	0-0	.000	0-1	.000	0	1	1	1.2	0	0	2	0	0	0	2	0.3
vs Oklahoma St.	11/29/2024		01:13	0-1	.000	0-1	.000	0-0	.000	0	0	0	1.0	0	0	0	0	0	0	0	0.3
Boston College	12/05/2024		13:36	0-1	.000	0-0	.000	0-0	.000	1	4	5	1.5	1	0	0	2	1	0	0	0.3
Southeast Mo. St.	12/08/2024		11:51	0-2	.000	0-1	.000	1-2	.500	1	4	5	1.9	0	1	1	0	2	1	0	0.3
Texas Tech	12/15/2024		18:01	0-0	.000	0-0	.000	0-0	.000	1	3	4	2.1	3	0	0	0	0	0	0	0.3
vs Liberty	12/18/2024		08:53	0-1	.000	0-0	.000	0-0	.000	0	2	2	2.1	1	0	0	0	0	0	0	0.3
vs Troy	12/19/2024		17:01	1-4	.250	0-1	.000	2-2	1.000	2	7	9	2.7	1	0	1	0	0	0	4	0.6
Totals		0	87:47	2-12	.167	0-4	.000	3-7	.429	5	27	32	2.7	6	1	8	3	3	3	7	0.6

Player Averages

Games Played	Minutes/game	Points/game	FG Pct	3FG Pct	FT Pct	Rebounds/game	Assists/game	Turnovers/game	Assist/Turnover ratio	Steals/game	Blocks/game
12	7.3	0.6	16.7	0.0	42.9	2.7	0.1	0.7	0.1	0.3	0.3



**2024-25 Arkansas Women's Basketball
Individual Game-by-Game
All games**

#15 BATES, Jada

Opponent	Date	GS	MIN	Total		3-Pointers		Free throws		Rebounds				PF	A	TO	BLK	STL	PTS	AVG
				FG-FGA	PCT	3FG-3FGA	PCT	FT-FTA	PCT	OFF	DEF	TOT	AVG							
Fairfield	11/04/2024		18:10	1-4	.250	1-3	.333	0-0	.000	1	2	3	3.0	1	2	2	1	0	3	3.0
East Texas A&M	11/08/2024		14:25	1-1	1.000	1-1	1.000	0-0	.000	0	2	2	2.5	0	1	0	0	0	3	3.0
at Little Rock	11/11/2024		26:42	2-4	.500	2-3	.667	0-0	.000	1	2	3	2.7	1	0	1	1	0	6	4.0
UT Arlington	11/14/2024		18:26	2-4	.500	0-1	.000	0-1	.000	0	1	1	2.3	0	0	1	1	0	4	4.0
at UCLA	11/17/2024		23:09	3-7	.429	3-7	.429	0-0	.000	0	3	3	2.4	0	1	2	0	0	9	5.0
Oral Roberts	11/21/2024		11:54	0-2	.000	0-1	.000	0-0	.000	1	1	2	2.3	1	0	0	1	0	0	4.2
Arkansas St.	11/24/2024		09:58	0-2	.000	0-0	.000	0-0	.000	0	0	0	2.0	0	0	0	0	0	0	3.6
vs Oklahoma St.	11/29/2024		13:46	0-4	.000	0-2	.000	0-2	.000	0	0	0	1.8	0	0	1	0	0	0	3.1
vs Bowling Green	11/30/2024		02:11	0-0	.000	0-0	.000	0-0	.000	0	0	0	1.6	0	0	0	0	0	0	2.8
Boston College	12/05/2024		25:56	2-5	.400	1-3	.333	0-0	.000	0	1	1	1.5	1	2	1	0	1	5	3.0
Southeast Mo. St.	12/08/2024		17:03	0-2	.000	0-2	.000	0-0	.000	0	2	2	1.5	1	0	1	1	0	0	2.7
Texas Tech	12/15/2024		07:29	0-1	.000	0-1	.000	3-4	.750	0	0	0	1.4	0	0	1	0	1	3	2.8
vs Troy	12/19/2024		04:27	0-0	.000	0-0	.000	0-0	.000	0	0	0	1.3	0	0	0	0	0	0	2.5
Totals		0	193:36	11-36	.306	8-24	.333	3-7	.429	3	14	17	1.3	5	6	10	5	2	33	2.5

Player Averages

Games Played	Minutes/ game	Points/ game	FG Pct	3FG Pct	FT Pct	Rebounds/ game	Assists/ game	Turnovers/ game	Assist/Turnover ratio	Steals/ game	Blocks/ game
13	14.9	2.5	30.6	33.3	42.9	1.3	0.5	0.8	0.6	0.2	0.4



**2024-25 Arkansas Women's Basketball
Individual Game-by-Game
All games**

#16 PAANANEN, Pinja

Opponent	Date	GS	MIN	Total		3-Pointers		Free throws		Rebounds				PF	A	TO	BLK	STL	PTS	AVG
				FG-FGA	PCT	3FG-3FGA	PCT	FT-FTA	PCT	OFF	DEF	TOT	AVG							
Fairfield	11/04/2024		17:06	1-1	1.000	1-1	1.000	0-0	.000	2	3	5	5.0	0	1	1	1	0	3	3.0
East Texas A&M	11/08/2024		10:27	1-4	.250	0-3	.000	0-0	.000	0	2	2	3.5	0	0	0	0	0	2	2.5
at Little Rock	11/11/2024		19:14	0-4	.000	0-2	.000	0-0	.000	0	5	5	4.0	2	1	1	0	0	0	1.7
UT Arlington	11/14/2024		12:07	2-2	1.000	2-2	1.000	0-0	.000	2	2	4	4.0	2	0	2	2	0	6	2.8
at UCLA	11/17/2024		14:19	1-2	.500	0-1	.000	1-1	1.000	0	2	2	3.6	0	0	1	0	1	3	2.8
Oral Roberts	11/21/2024		04:08	1-1	1.000	0-0	.000	0-0	.000	2	0	2	3.3	1	1	0	0	0	2	2.7
Arkansas St.	11/24/2024		06:24	0-4	.000	0-4	.000	0-0	.000	0	3	3	3.3	1	0	0	1	1	0	2.3
vs Oklahoma St.	11/29/2024		15:42	1-1	1.000	0-0	.000	0-0	.000	0	3	3	3.3	1	0	1	0	1	2	2.3
vs Bowling Green	11/30/2024		25:46	2-5	.400	1-3	.333	1-2	.500	0	2	2	3.1	0	0	0	0	0	6	2.7
Boston College	12/05/2024		04:58	0-0	.000	0-0	.000	0-0	.000	0	0	0	2.8	0	1	1	0	0	0	2.4
Southeast Mo. St.	12/08/2024		16:40	1-3	.333	0-2	.000	0-0	.000	0	3	3	2.8	0	1	0	2	1	2	2.4
Texas Tech	12/15/2024		03:20	0-0	.000	0-0	.000	0-0	.000	0	0	0	2.6	0	0	2	0	0	0	2.2
vs Liberty	12/18/2024		16:09	1-2	.500	1-2	.500	0-0	.000	0	0	0	2.4	1	0	0	0	1	3	2.2
vs Troy	12/19/2024		02:07	0-1	.000	0-1	.000	0-0	.000	0	0	0	2.2	0	0	0	0	0	0	2.1
Totals		0	168:26	11-30	.367	5-21	.238	2-3	.667	6	25	31	2.2	8	5	9	6	5	29	2.1

Player Averages

Games Played	Minutes/game	Points/game	FG Pct	3FG Pct	FT Pct	Rebounds/game	Assists/game	Turnovers/game	Assist/Turnover ratio	Steals/game	Blocks/game
14	12.0	2.1	36.7	23.8	66.7	2.2	0.4	0.6	0.6	0.4	0.4



**2024-25 Arkansas Women's Basketball
Individual Game-by-Game
All games**

#20 JOHNSON, Karley

Opponent	Date	GS	MIN	Total		3-Pointers		Free throws		Rebounds				PF	A	TO	BLK	STL	PTS	AVG
				FG-FGA	PCT	3FG-3FGA	PCT	FT-FTA	PCT	OFF	DEF	TOT	AVG							
East Texas A&M	11/08/2024		14:11	0-1	.000	0-0	.000	3-4	.750	2	4	6	6.0	0	1	0	0	0	3	3.0
at Little Rock	11/11/2024		13:12	0-2	.000	0-0	.000	1-2	.500	1	1	2	4.0	4	0	1	0	0	1	2.0
UT Arlington	11/14/2024		12:39	2-4	.500	0-0	.000	2-2	1.000	3	7	10	6.0	1	0	0	0	0	6	3.3
at UCLA	11/17/2024		07:35	0-0	.000	0-0	.000	0-0	.000	0	2	2	5.0	1	0	1	0	0	0	2.5
Oral Roberts	11/21/2024		17:18	2-6	.333	0-1	.000	0-0	.000	1	2	3	4.6	3	0	0	0	1	4	2.8
Arkansas St.	11/24/2024		19:10	1-5	.200	0-2	.000	0-0	.000	1	6	7	5.0	3	3	2	0	3	2	2.7
vs Oklahoma St.	11/29/2024		20:36	1-3	.333	0-0	.000	1-2	.500	1	0	1	4.4	1	0	0	0	0	3	2.7
vs Bowling Green	11/30/2024		17:22	0-1	.000	0-1	.000	0-0	.000	0	7	7	4.8	2	1	1	2	1	0	2.4
Southeast Mo. St.	12/08/2024		07:51	1-3	.333	0-1	.000	3-3	1.000	2	1	3	4.6	0	0	1	0	0	5	2.7
Texas Tech	12/15/2024		03:55	0-0	.000	0-0	.000	0-0	.000	0	0	0	4.1	1	0	0	0	0	0	2.4
vs Liberty	12/18/2024		13:29	1-1	1.000	0-0	.000	1-2	.500	0	0	0	3.7	1	0	0	0	1	3	2.5
vs Troy	12/19/2024		09:06	0-1	.000	0-0	.000	0-0	.000	0	1	1	3.5	1	0	0	0	1	0	2.3
Totals		0	156:24	8-27	.296	0-5	.000	11-15	.733	11	31	42	3.5	18	5	6	2	7	27	2.3

Player Averages

Games Played	Minutes/game	Points/game	FG Pct	3FG Pct	FT Pct	Rebounds/game	Assists/game	Turnovers/game	Assist/Turnover ratio	Steals/game	Blocks/game
12	13.0	2.3	29.6	0.0	73.3	3.5	0.4	0.5	0.8	0.6	0.2



**2024-25 Arkansas Women's Basketball
Individual Game-by-Game
All games**

#21 LINDSEY, Loren

Opponent	Date	GS	MIN	Total		3-Pointers		Free throws		Rebounds				PF	A	TO	BLK	STL	PTS	AVG
				FG-FGA	PCT	3FG-3FGA	PCT	FT-FTA	PCT	OFF	DEF	TOT	AVG							
East Texas A&M	11/08/2024		02:00	0-1	.000	0-0	.000	0-0	.000	0	0	0	0.0	0	0	0	0	0	0	0.0
UT Arlington	11/14/2024		03:38	0-0	.000	0-0	.000	0-0	.000	0	0	0	0.0	0	1	0	0	0	0	0.0
at UCLA	11/17/2024		02:16	0-0	.000	0-0	.000	0-0	.000	0	0	0	0.0	1	1	0	0	0	0	0.0
Oral Roberts	11/21/2024		03:24	0-0	.000	0-0	.000	0-0	.000	0	0	0	0.0	1	0	0	0	0	0	0.0
Southeast Mo. St.	12/08/2024		10:44	0-2	.000	0-2	.000	0-0	.000	0	2	2	0.4	1	0	0	0	1	0	0.0
Totals		0	22:02	0-3	.000	0-2	.000	0-0	.000	0	2	2	0.4	3	2	0	0	1	0	0.0

Player Averages

Games Played	Minutes/game	Points/game	FG Pct	3FG Pct	FT Pct	Rebounds/game	Assists/game	Turnovers/game	Assist/Turnover ratio	Steals/game	Blocks/game
5	4.4	0.0	0.0	0.0	0.0	0.4	0.4	0.0	2.0	0.2	0.0



**2024-25 Arkansas Women's Basketball
Individual Game-by-Game
All games**

#22 OJENUWA, Vera

Opponent	Date	GS	MIN	Total		3-Pointers		Free throws		Rebounds				PF	A	TO	BLK	STL	PTS	AVG	
				FG-FGA	PCT	3FG-3FGA	PCT	FT-FTA	PCT	OFF	DEF	TOT	AVG								
Fairfield	11/04/2024	*	27:39	4-8	.500	0-0	.000	1-1	1.000	1	4	5	5.0	0	1	0	2	0	9	9.0	
East Texas A&M	11/08/2024	*	21:34	5-10	.500	0-0	.000	6-9	.667	2	5	7	6.0	4	2	1	0	1	16	12.5	
at Little Rock	11/11/2024	*	20:46	5-8	.625	0-0	.000	1-2	.500	2	9	11	7.7	5	1	4	0	0	11	12.0	
UT Arlington	11/14/2024	*	21:59	3-7	.429	0-0	.000	0-1	.000	3	3	6	7.3	3	1	3	1	1	6	10.5	
at UCLA	11/17/2024	*	15:20	1-4	.250	0-2	.000	2-2	1.000	2	1	3	6.4	5	1	2	2	0	4	9.2	
Oral Roberts	11/21/2024	*	31:56	3-7	.429	0-0	.000	0-0	.000	4	7	11	7.2	1	1	0	0	2	6	8.7	
Arkansas St.	11/24/2024	*	31:49	8-12	.667	0-0	.000	4-5	.800	3	7	10	7.6	4	2	4	1	0	20	10.3	
vs Oklahoma St.	11/29/2024	*	25:59	1-5	.200	0-1	.000	1-2	.500	1	5	6	7.4	4	0	3	1	1	3	9.4	
vs Bowling Green	11/30/2024	*	14:39	2-4	.500	1-1	1.000	0-0	.000	0	2	2	6.8	5	0	2	1	0	5	8.9	
Boston College	12/05/2024	*	26:57	3-5	.600	0-0	.000	2-5	.400	5	5	10	7.1	4	0	2	0	1	8	8.8	
Southeast Mo. St.	12/08/2024	*	19:24	5-7	.714	0-1	.000	3-4	.750	4	10	14	7.7	2	1	0	0	1	13	9.2	
Texas Tech	12/15/2024	*	33:20	4-9	.444	0-0	.000	4-7	.571	8	3	11	8.0	4	0	3	0	0	12	9.4	
vs Liberty	12/18/2024	*	25:49	1-4	.250	0-1	.000	0-0	.000	2	4	6	7.8	1	1	7	1	2	2	8.8	
vs Troy	12/19/2024	*	25:26	3-6	.500	0-0	.000	0-0	.000	3	4	7	7.8	2	0	2	0	0	6	8.6	
Totals			14	342:38	48-96	.500	1-6	.167	24-38	.632	40	69	109	7.8	44	11	33	9	9	121	8.6

Player Averages

Games Played	Minutes/ game	Points/ game	FG Pct	3FG Pct	FT Pct	Rebounds/ game	Assists/ game	Turnovers/ game	Assist/Turnover ratio	Steals/ game	Blocks/ game
14	24.5	8.6	50.0	16.7	63.2	7.8	0.8	2.4	0.3	0.6	0.6



**2024-25 Arkansas Women's Basketball
Individual Game-by-Game
All games**

#23 KEATS, Carly

Opponent	Date	GS	MIN	Total		3-Pointers		Free throws		Rebounds				PF	A	TO	BLK	STL	PTS	AVG	
				FG-FGA	PCT	3FG-3FGA	PCT	FT-FTA	PCT	OFF	DEF	TOT	AVG								
Fairfield	11/04/2024	*	31:32	2-10	.200	1-7	.143	0-0	.000	0	0	0	0.0	0	1	2	0	1	5	5.0	
East Texas A&M	11/08/2024	*	20:27	2-5	.400	1-3	.333	0-0	.000	0	2	2	1.0	0	0	1	1	0	5	5.0	
at Little Rock	11/11/2024	*	20:35	1-5	.200	1-3	.333	1-2	.500	0	1	1	1.0	0	0	0	0	0	4	4.7	
UT Arlington	11/14/2024	*	22:23	4-8	.500	3-6	.500	2-2	1.000	0	2	2	1.3	1	0	1	0	1	13	6.8	
at UCLA	11/17/2024	*	32:28	4-15	.267	2-10	.200	0-0	.000	0	5	5	2.0	1	1	2	0	1	10	7.4	
Oral Roberts	11/21/2024	*	22:57	2-8	.250	0-3	.000	0-0	.000	0	1	1	1.8	0	1	1	0	0	4	6.8	
Arkansas St.	11/24/2024	*	14:30	3-8	.375	2-6	.333	0-0	.000	0	0	0	1.6	0	0	1	0	0	8	7.0	
vs Oklahoma St.	11/29/2024	*	20:00	0-6	.000	0-3	.000	0-0	.000	0	1	1	1.5	0	1	2	1	0	0	6.1	
vs Bowling Green	11/30/2024	*	23:51	4-7	.571	1-4	.250	0-0	.000	0	1	1	1.4	0	0	0	1	0	9	6.4	
Boston College	12/05/2024	*	19:23	2-8	.250	1-3	.333	0-0	.000	0	0	0	1.3	0	1	0	0	0	5	6.3	
Southeast Mo. St.	12/08/2024	*	22:22	6-13	.462	5-8	.625	2-2	1.000	0	3	3	1.5	0	1	3	0	1	19	7.5	
Texas Tech	12/15/2024	*	26:07	3-7	.429	1-4	.250	2-2	1.000	0	2	2	1.5	0	3	1	0	0	9	7.6	
vs Liberty	12/18/2024	*	27:12	4-8	.500	1-3	.333	2-2	1.000	0	0	0	1.4	1	1	0	0	0	11	7.8	
vs Troy	12/19/2024	*	25:36	1-8	.125	1-6	.167	0-0	.000	0	3	3	1.5	0	2	1	0	0	3	7.5	
Totals			14	329:23	38-116	.328	20-69	.290	9-10	.900	0	21	21	1.5	3	12	15	3	4	105	7.5

Player Averages

Games Played	Minutes/game	Points/game	FG Pct	3FG Pct	FT Pct	Rebounds/game	Assists/game	Turnovers/game	Assist/Turnover ratio	Steals/game	Blocks/game
14	23.5	7.5	32.8	29.0	90.0	1.5	0.9	1.1	0.8	0.3	0.2



**2024-25 Arkansas Women's Basketball
Individual Game-by-Game
All games**

#25 GALEA, Danika

Opponent	Date	GS	MIN	Total		3-Pointers		Free throws		Rebounds				PF	A	TO	BLK	STL	PTS	AVG
				FG-FGA	PCT	3FG-3FGA	PCT	FT-FTA	PCT	OFF	DEF	TOT	AVG							
Fairfield	11/04/2024		00:35	0-0	.000	0-0	.000	0-0	.000	0	0	0	0.0	0	0	0	0	0	0	0.0
East Texas A&M	11/08/2024		10:40	0-3	.000	0-0	.000	4-4	1.000	0	1	1	0.5	3	0	3	0	0	4	2.0
at Little Rock	11/11/2024		16:54	2-2	1.000	0-0	.000	0-0	.000	0	3	3	1.3	5	1	3	0	1	4	2.7
UT Arlington	11/14/2024		14:07	4-7	.571	0-0	.000	2-2	1.000	4	2	6	2.5	4	1	1	0	0	10	4.5
at UCLA	11/17/2024		13:10	1-5	.200	0-2	.000	0-0	.000	0	0	0	2.0	5	0	2	0	0	2	4.0
Oral Roberts	11/21/2024		08:04	1-2	.500	0-0	.000	0-0	.000	0	0	0	1.7	2	1	1	0	0	2	3.7
Arkansas St.	11/24/2024		08:11	3-4	.750	0-0	.000	2-2	1.000	2	0	2	1.7	1	0	0	1	0	8	4.3
Southeast Mo. St.	12/08/2024		13:43	4-5	.800	0-0	.000	2-2	1.000	2	2	4	2.0	1	0	0	1	1	10	5.0
Texas Tech	12/15/2024		06:36	1-1	1.000	0-0	.000	0-0	.000	0	1	1	1.9	0	0	0	0	0	2	4.7
vs Liberty	12/18/2024		14:11	3-6	.500	2-5	.400	0-0	.000	1	3	4	2.1	2	0	0	0	0	8	5.0
vs Troy	12/19/2024		14:34	5-5	1.000	0-0	.000	0-2	.000	1	0	1	2.0	1	0	1	1	0	10	5.5
Totals		0	120:46	24-40	.600	2-7	.286	10-12	.833	10	12	22	2.0	24	3	11	3	2	60	5.5

Player Averages

Games Played	Minutes/game	Points/game	FG Pct	3FG Pct	FT Pct	Rebounds/game	Assists/game	Turnovers/game	Assist/Turnover ratio	Steals/game	Blocks/game
11	11.0	5.5	60.0	28.6	83.3	2.0	0.3	1.0	0.3	0.2	0.3



**2024-25 Arkansas Women's Basketball
Individual Game-by-Game
All games**

#34 LAWRENCE, Jenna

Opponent	Date	GS	MIN	Total		3-Pointers		Free throws		Rebounds				PF	A	TO	BLK	STL	PTS	AVG	
				FG-FGA	PCT	3FG-3FGA	PCT	FT-FTA	PCT	OFF	DEF	TOT	AVG								
Fairfield	11/04/2024	*	34:05	3-10	.300	2-9	.222	3-3	1.000	2	8	10	10.0	1	0	0	0	0	11	11.0	
East Texas A&M	11/08/2024	*	28:53	3-11	.273	2-10	.200	2-2	1.000	0	10	10	10.0	1	1	1	0	1	10	10.5	
at Little Rock	11/11/2024	*	24:43	2-6	.333	1-4	.250	0-0	.000	2	5	7	9.0	2	0	1	1	0	5	8.7	
UT Arlington	11/14/2024	*	26:02	5-7	.714	4-5	.800	0-0	.000	1	11	12	9.8	0	0	2	1	0	14	10.0	
at UCLA	11/17/2024	*	27:20	0-4	.000	0-4	.000	1-2	.500	2	3	5	8.8	2	2	1	0	0	1	8.2	
Oral Roberts	11/21/2024	*	27:02	2-6	.333	2-4	.500	0-0	.000	0	2	2	7.7	1	0	1	2	0	6	7.8	
Arkansas St.	11/24/2024	*	33:36	3-11	.273	2-9	.222	0-0	.000	1	9	10	8.0	1	1	1	3	3	8	7.9	
vs Oklahoma St.	11/29/2024	*	32:04	2-9	.222	1-6	.167	3-4	.750	1	10	11	8.4	3	0	1	1	0	8	7.9	
vs Bowling Green	11/30/2024	*	39:35	8-14	.571	5-10	.500	0-0	.000	1	3	4	7.9	1	0	2	5	2	21	9.3	
Boston College	12/05/2024	*	34:28	1-4	.250	0-1	.000	2-2	1.000	3	2	5	7.6	4	0	0	2	1	4	8.8	
Southeast Mo. St.	12/08/2024	*	18:22	2-5	.400	1-3	.333	0-0	.000	0	4	4	7.3	0	0	1	0	0	5	8.5	
Texas Tech	12/15/2024	*	18:39	1-4	.250	0-2	.000	0-0	.000	3	2	5	7.1	1	0	0	0	0	2	7.9	
vs Liberty	12/18/2024	*	14:58	1-3	.333	1-3	.333	0-0	.000	2	3	5	6.9	0	0	0	1	0	3	7.5	
vs Troy	12/19/2024	*	20:52	3-8	.375	1-5	.200	4-5	.800	1	7	8	7.0	1	0	1	2	0	11	7.8	
Totals			14	380:39	36-102	.353	22-75	.293	15-18	.833	19	79	98	7.0	18	4	12	18	7	109	7.8

Player Averages

Games Played	Minutes/game	Points/game	FG Pct	3FG Pct	FT Pct	Rebounds/game	Assists/game	Turnovers/game	Assist/Turnover ratio	Steals/game	Blocks/game
14	27.2	7.8	35.3	29.3	83.3	7.0	0.3	0.9	0.3	0.5	1.3



**2024-25 Arkansas Women's Basketball
Individual Game-by-Game
All games**

#44 ARCHER, Maryn

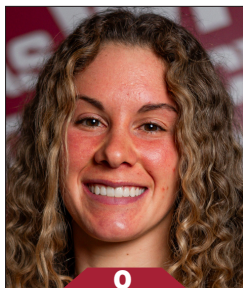
Opponent	Date	GS	MIN	Total		3-Pointers		Free throws		Rebounds				PF	A	TO	BLK	STL	PTS	AVG
				FG-FGA	PCT	3FG-3FGA	PCT	FT-FTA	PCT	OFF	DEF	TOT	AVG							
East Texas A&M	11/08/2024		03:28	0-0	.000	0-0	.000	0-0	.000	0	1	1	1.0	0	0	1	0	0	0	0.0
UT Arlington	11/14/2024		03:54	0-2	.000	0-0	.000	0-2	.000	0	0	0	0.5	2	0	0	0	0	0	0.0
at UCLA	11/17/2024		01:45	0-0	.000	0-0	.000	0-0	.000	0	0	0	0.3	0	0	0	0	0	0	0.0
Oral Roberts	11/21/2024		02:54	0-2	.000	0-0	.000	0-0	.000	0	2	2	0.8	0	0	1	0	0	0	0.0
Arkansas St.	11/24/2024		00:18	0-0	.000	0-0	.000	0-0	.000	0	0	0	0.6	0	0	0	0	0	0	0.0
vs Oklahoma St.	11/29/2024		01:35	0-0	.000	0-0	.000	0-0	.000	0	0	0	0.5	0	0	0	0	0	0	0.0
Boston College	12/05/2024		00:17	0-0	.000	0-0	.000	0-0	.000	0	0	0	0.4	0	0	0	0	0	0	0.0
Southeast Mo. St.	12/08/2024		07:51	2-4	.500	0-0	.000	3-4	.750	0	0	0	0.4	1	1	1	0	0	7	0.9
Totals		0	22:02	2-8	.250	0-0	.000	3-6	.500	0	3	3	0.4	3	1	3	0	0	7	0.9

Player Averages

Games Played	Minutes/game	Points/game	FG Pct	3FG Pct	FT Pct	Rebounds/game	Assists/game	Turnovers/game	Assist/Turnover ratio	Steals/game	Blocks/game
8	2.8	0.9	25.0	0.0	50.0	0.4	0.1	0.4	0.3	0.0	0.0



RAZORBACKS



0

Ella Rogers
Sr. | 5-8 | G
Granville, Ohio



1

Phoenix Stotijn
Fr. | 5-9 | G
Amsterdam, Netherlands



2

Kiki Smith
So. | 5-7 | G
Topeka, Kan.



3

Izzy Higginbottom
Sr. | 5-7 | G
Batesville, Ark.



10

Cristina Sánchez Cerqueira
So. | 6-1 | F
Granada, Spain



15

Jada Bates
Fr. | 6-3 | G
Powder Springs, Ga.



16

Pinja Paananen
Fr. | 6-2 | F
Laukaa, Finland



20

Karley Johnson
Jr. | 5-9 | G
Oklahoma City, Okla.



21

Loren Lindsey
R-So. | 5-11 | G
Fayetteville, Ark.



22

Vera Ojenuwa
So. | 6-4 | F
Delta State, Nigeria



23

Carly Keats
Jr. | 5-8 | G
Philadelphia, Miss.



25

Danika Galea
Fr. | 6-3 | C
St. Paul's Bay, Malta



34

Jenna Lawrence
So. | 6-3 | F
Melbourne, Ark.



44

Maryn Archer
R-Fr. | 5-7 | G
Derby, Kan.