

# ARKANSAS

## WOMEN'S BASKETBALL

Sunday, February 9, 2025 • 11:00 a.m. CT • SEC Network • Stegeman Coliseum (10,523) • Athens, Ga.

### Info



**SEC Network**  
Brenda VanLengen, PxP  
Bria Goss, Analyst



**Live Stats**  
arkansas.statbroadcast.com

### 2024-25 Schedule (9-16, 2-8 SEC)

#### NOVEMBER

4	Fairfield	L, 81-67
8	East Texas A&M	W, 84-65
11	at Little Rock	W, 71-60 OT
14	UT-Arlington	W, 93-65
17	at #5 UCLA	L, 101-52
21	Oral Roberts	L, 94-73
24	Arkansas State	W, 76-60
29	vs. Oklahoma State^	L, 70-56
30	vs. Bowling Green^	L, 79-78

#### DECEMBER

5	Boston College	W, 75-64
8	SEMO	W, 84-45
15	Texas Tech	L, 75-72
18	vs. Liberty\$	L, 75-61
19	vs. Troy\$	L, 77-69
29	Central Arkansas	W, 87-70

#### JANUARY

2	#6 LSU*	L, 98-64
5	at #5 Texas*	L, 90-56
9	at Auburn*	W, 59-58
12	#16 Tennessee*	L, 93-63
19	#19 Alabama*	L, 94-62
23	at Vanderbilt*	L, 101-60
26	at #11 Kentucky*	L, 89-69
30	Texas A&M*	W, 72-51

#### FEBRUARY

3	Florida*	L, 108-78
6	at Mississippi State*	L, 78-55
9	at Georgia*	11:00 a.m.
13	Ole Miss*	6:30 p.m.
20	at South Carolina*	6:00 p.m.
23	Oklahoma*	2:00 p.m.
27	Missouri*	6:30 p.m.

#### MARCH

2	at Texas A&M*	2:00 p.m.
5-9	SEC Tournament	Greenville, S.C.

All times Central; Home games in **BOLD**  
\* - SEC Game

^ - Daytona Beach Classic (Daytona, Fla.)

\$ - Cherokee Invite (Cherokee, N.C.)



**Georgia**

**Record:** 9-15 (1-9 SEC)  
**Head Coach:** Katie Abrahamson-Henderson  
**Overall Record:** 415-202  
**Record at Georgia:** 43-45  
**Rankings: AP: NR Coaches: NR NET: 123**



**Arkansas**

**Record:** 9-16 (2-8 SEC)  
**Head Coach:** Mike Neighbors  
**Overall Record:** 245-149  
**Record at Arkansas:** 147-108  
**Rankings: AP: NR Coaches: NR NET: 131**

**VS**

### Let's Get Into It

#### NEIGHBORHOOD WATCH

■ Arkansas has faced six ranked teams this season and five in its last 10 games: then-No. 5 UCLA, No. 6 LSU, No. 5 Texas, No. 16 Tennessee, No. 19 Alabama and No. 11 Kentucky

■ The Hogs played in two regular season tournaments this year: the Daytona Beach Classic and the Cherokee Invitational. Arkansas went a combined 0-4 with losses to Oklahoma State, Bowling Green, Liberty and Toledo.

#### INSIDE THIS MATCHUP

■ This is the 46th all-time meeting between Georgia and Arkansas. The Bulldogs lead it 38-7. The Razorbacks and Georgia last met in 2024 in Fayetteville, where Arkansas picked up a 83-43 win. The 40-point victory marked the third largest margin in an SEC game in school history. Arkansas also snapped a four-game losing streak to the Bulldogs and tallied its seventh win against Georgia in the series.

■ Arkansas' record against:  
In Fayetteville: 4-16  
In Athens: 2-19  
Neutral: 1-3

#### S.O.S

■ According to WarrenNolan.com, Arkansas posts the 14th strongest schedule in the country.

■ The only SEC team ahead of the Hogs is top-ranked South Carolina

■ 13 of Arkansas' opponents appear in the SOS top 50: #1 SC, #8 UCLA, #15 Texas, #18 TENN, #19 Texas A&M, #21 OU, #25 LSU, #29 AUB, #37 ALA, #39 MIZZ, #44 KEN, #46 TTU, #48 VAN

■ The Hogs also have the second highest opponent win percentage in the SEC at .657 (345-180), behind South Carolina's .691 (348-156)

#### ON THE A&M WIN

■ Arkansas captured its first SEC home win

after a 72-51 win against Texas A&M

■ The 21-point victory is Arkansas' largest in SEC play and the second largest margin this season behind the 27 point win over UT-Arlington

■ Mike Neighbors picked up his 50th SEC win at Arkansas

■ Izzy Higginbottom picked up her third SEC game with at least 30 points and led all scorers with 34

■ The senior also grabbed 10 rebounds and picked up her first career double-double

■ The Hogs shot an SEC-play best 48.1% (25-52) from the field

■ Arkansas sent out its third unique starting lineup this season after Kiki Smith sustained an ankle injury during practice

#### CHALLENGE WON

■ The Razorbacks snapped a two-game losing streak after taking down Boston College, 75-64, in this year's SEC/ACC Challenge. The Hogs improved to 2-0 in the Challenge with the first win coming against Florida State last season

■ Izzy Higginbottom had a career night with new highs in points (38) and field goals (14). The senior from Batesville went 10-11 from the free throw line to help secure the win

■ Kiki Smith assisted Higginbottom with her eighth 10+ performance of the season and had 15 of the Hogs' points. The duo combined for 53 of the team's 75 points (71%)

■ Vera Ojenuwa entered double figures in rebounds for the fourth time this season and led Arkansas with 10.

#### SKEATS-SKEAT!!

■ Juco product Carly Keats went from being one of the first players off the bench to a starter, earning nine starting nods last season

■ After missing four games in 2023-24 with a broken nose, made her return vs. Missouri at home, having logged 11 points with two

## Quick Facts

### GENERAL INFORMATION

Location.....Fayetteville, Arkansas  
 Founded.....1871  
 Enrollment.....33,610  
 Nickname.....Razorbacks  
 School Colors.....Cardinal (PMS 202) and White  
 Conference.....Southeastern  
 Arena (Capacity).....Bud Walton Arena (19,200)  
 System President.....Dr. Donald R. Bobbitt (Arkansas '80)  
 Chancellor.....Dr. Charles Robinson (Houston)  
 Athletic Director.....Hunter Yurachek (Guilford College '90)  
 SWA.....Derita Dawkins (James Madison)  
 Faculty Athletic Rep.....Dr. Paul Adams (LSU)  
 Sport Administrator.....Derita Dawkins (James Madison)  
 Athletics Website.....ArkansasRazorbacks.com  
 Ticket Office Phone.....1-800-982-HOGS  
 Athletic Department Phone.....(479) 575-6533

### TEAM INFORMATION

Starters Returning/Lost.....0/5  
 2023 Overall Record.....18-15  
 2023 Conference Record/Finish.....6-10/T-9th

### PROGRAM HISTORY

Seasons.....49  
 All-Time Record.....882-592  
 SEC Record.....182-302  
 Conference Championships.....2 (SWC)  
 NCAA Tournament Appearances.....13 (Last: 2022)  
 NCAA Tournament Record.....14-13  
 SEC Tournament Appearances.....33  
 SEC Tournament Record.....19-33

### COACHING/SUPPORT STAFF

Head Coach.....Mike Neighbors (Arkansas '93)  
 Career Record.....245-149  
 Record at Arkansas.....147-108  
 Assoc. Head Coach.....Todd Schaefer (Thomas More '95)  
 Assistant Coach.....Lacey Goldwire (Oklahoma State '10)  
 Assistant Coach.....Nick Bradford (Kansas '01)  
 Director of Operations.....Amber Shirey (Arkansas '92)  
 Student-Athlete Development Jayci Stone (Kansas State '08)  
 Athletic Trainer.....Simone Rush (Alabama '15)  
 Strength & Conditioning.....Tyler Beckman (North Dakota '13)  
 Video Coordinator.....Evan Johnston (Arkansas '22)  
 Graduate Assistant.....Sasha Goforth

### COMMUNICATIONS

Asst. Dir. of Communications.....Fuller Birch  
 Cell Phone:.....(479) 790-9426  
 Office Phone:.....(479) 575-3401  
 Office Fax:.....(479) 575-7481  
 Office E-mail:.....fdbirch@uark.edu  
 Athletics Website:.....ArkansasRazorbacks.com  
 Mailing Address:.....P.O. Box 7777, Fayetteville, AR 72702  
 Shipping Address:.....350 N. Razorback Rd., Fayetteville, AR, 72701



Izzy Higginbottom sits in the jump seat on one of Arkansas' charter flights. Higginbottom's dad is an aerial firefighter and also flies for the Arkansas Game and Fish Commission.

3-pointers off the bench in 25 minutes

■ This season, Keats got hot against SEMO with a career high 19 points. She tied her previous career high of 16 points in the second quarter alone. She also set a new career high with 5 3-pointers made

■ Recorded eight double-digit scoring games and five with 3+ 3-pointers made, while scoring double digits in seven of 12 SEC contests to log 8.8 points per game in league games

■ Named an All-Region 23 Team at Jones College, making 55 3-pointers for a 34.8 percentage and averaging 9.7 points, 3.7 rebounds and 3.5 assists per game

■ Big in Jones winning its seventh straight region crown to punch a ticket to the NJCAA DI Tournament and an Elite 8 appearance

### REPPIN' HER HOME STATE

■ Jenna Lawrence was a four-star prospect and No. 61 overall player in the 2023 HoopGurlz Recruiting Rankings

■ Coming off her first career double-double (10 pts, 11 rbs) against Fairfield, she followed it up with another double-double (10 pts, 10 rbs) against East Texas A&M on Nov. 8 and had a career night against UT-Arlington (14 pts, 12 rbs, 4 3s)

■ Lawrence had another career night against Bowling Green, with highs in points (21) and 3s made (5)

■ After a cold streak through the start of conference play, Lawrence went 3-9 from beyond the arc against Texas A&M and grabbed nine rebounds to finish with 11 & 9

■ In her first career start, registered a career-high 13 points, five rebounds, one assist and one block in a career-high 35 minutes played vs. Auburn in the SEC Tournament last season

■ Recorded six points and team-leading six rebounds in 21 minutes played off the bench vs. No. 1/1 South Carolina

■ Played nearly nine minutes at Missouri, nailing down a 3-pointer at the buzzer at the end of the third quarter, which put the Hogs up for good. Finished game with three points, three rebounds, two steals and one block

■ Recorded her first career double-digit scoring game with 10 points off 3-of-4 shooting from the field vs. LA Tech

■ Logged 13 3-pointers in 42 attempts for a .310 mark last season

■ Led Farmington High School to a 4A girls state championship, being named the MVP after averaging 18.7 points and 7.1 rebounds per game as a senior

### IZZY MONEY

■ Senior guard Izzy Higginbottom, a transfer from Arkansas State and Batesville, Ark. native, is making an immediate impact for the Hogs

■ Higginbottom has been the Hogs' leading scorer in 20 games (Fairfield, Little Rock, UTA, UCLA, ORU, OSU, BGSU, BC, TTU, LIB, Troy, UCA, LSU, Texas, AUB, TENN, UK, A&M, FLA, MSST) this season

■ She also leads the team and the SEC in FT%, going 185-204 (.907) from the charity stripe. Higginbottom leads the SEC and ranks fourth in the NCAA in FTA (204) and leads the NCAA with 185 FTM.

■ She's been perfect from the line in 12 games (ETA&M, LR, UCLA, BGSU, SEMO, LU, Troy, LSU, Texas, VAN, FLA, MSST) this season.

■ She has cemented herself as one of the best scorers in the NCAA through the first 25 games and ranks No. 3 in the country and first in the SEC in points per game (24.4), ahead of Vanderbilt's Mikayla Blakes (22.1).

■ Higginbottom scored 25+ points in three straight games, dating back to Nov. 29's game against Oklahoma State. She scored 26 against the Cowgirls, 26 against Bowling Green and 38 against Boston College. Higginbottom is just the third Arkansas player to accomplish the feat in the last 25 years. Chelsea Dungee was the most recent in 2018.

■ Izzy is tied for the most 25+ point games in the NCAA (14 games) with Florida State's Ta'Niya Latson:

Rk	Player	Team	Season	Count
1	Ta'Niya Latson	Florida State	2024-25	14
2	Izzy Higginbottom	Arkansas	2024-25	14
3	Grace Larkins	South Dakota	2024-25	12
4	Hannah Hidalgo	Notre Dame	2024-25	10
5	Audi Crooks	Iowa State	2024-25	10
6	Kelsey Ransom	Georgetown	2024-25	9
7	Juju Watkins	Southern California	2024-25	9
8	Yvonne Ejim	Gonzaga	2024-25	8
9	Mickayla Perdue	Cleveland State	2024-25	8
10	Khamil Pierre	Vanderbilt	2024-25	8

### WHAT'S HE SAYIN'?

Trying to figure out what Coach Neighbors is saying on the bench? Don't worry - he has a language all his own.

Coach Neighbors plays Positionless Basketball. Instead of having guards, forwards and centers, he has Rabbits, Rackers, Locks and Dragons.



Rabbits run the floor and look to score quickly with a layup.



Rackers bring the ball up the floor and are trying to get to the rack.



Locks, generally good three-point shooters, are trying to win the race to the corners.



The Dragon is the last player down the court, dragging behind the others.

■ Higginbottom also leads the SEC and ranks third in the NCAA in 30+ point games with 5.

■ Against Boston College, Higginbottom scored a career-high 38 points, then the most points in



a game for Arkansas since Dungee dropped 41 points at Auburn in 2019.

■ With the 38 points from the BC game and 18 points against SEMO, Higginbottom was named Co-SEC Player of the Week. She's the first Razorback to win the weekly honor since 2022.

■ With 26 points against Tennessee, Higginbottom had 19 straight games in double figures and is the first Hog to accomplish the feat (at least 15 straight) since Amber Ramirez did it in 2021-22.

■ Higginbottom picked up her second 30+ game of the season after she dropped 36 points at Auburn on Jan. 9. It's tied for the seventh-most points in an SEC game so far this season. It's also the seventh most by a Razorback player in an SEC game and was the most since Erynn Barnum scored 37 points against Ole Miss.

■ She dropped her 3rd 30+ point game of the season on Jan. 26 at No. 11 Kentucky and led all scorers with 32 points and followed it up with her third 30+ point game in SEC play on Jan. 30 against Texas A&M (33 points)

■ In the first game of February, against Florida, she scored her first 40 point game and became just the fourth Razorback to score 40 points in a game in program history and was four points shy of tying the single-game record. It's tied for the third-most points in an SEC game this season. She is one of 14 players in the NCAA to score at least 40 points in a game and one of 8 in the NCAA to score at least 40 points in a conference game this season. She's also tied for the eighth-highest scoring game this year.

■ She snapped her three-game 30+-point game streak, the longest in program history, after dropping 26 points at Mississippi State on Feb. 6

### IZZY IN SEC PLAY

■ Higginbottom currently has 40% of Arkansas points in SEC play (255 out of 638 points) and 60% (78 out of 130 free throws) of the Hogs' made free throws. The next closest player (Vera Ojenuwa) has 11 FTs

■ On a league scale, Higginbottom ranks second in the SEC in scoring average (25.5) behind Vanderbilt's Mikayla Blakes (26.2) and ranks first in FT% at 91.8% (78-85)

■ She also has one 40 point game, four 30+ point games and eight 25+ point games in league play. She leads the SEC in all three categories.

### IZZY & SINGLE SEASON RECORDS

■ Higginbottom is in the hunt of several single-season program records:

	Higginbottom has	Record is
Points	609 (#5)	759 C. Dungee
Avg.	24.4 (#1)	23.1 S. Wallace
FT%	.907 (#2)	.923 A. Ramirez
FTM	196 (#2)	229 C. Dungee

FTA 204 (#4) 275 C. Dungee

### TRIPLE-DOUBLE WATCH

■ Against Texas A&M on Jan. 30, Izzy Higginbottom was three assists short of Arkansas' first triple-double since 2009.

■ Higginbottom finished with 33 points, 10 rebounds and 7 assists

■ C'eira Ricketts has the program's only triple-double: 14 points, 13 rebounds and 12 assists in a 70-61 loss against SEC-champ Auburn on Jan. 18, 2009

### IZZY'S A-STATE SNAPSHOT

■ Named a 2023 All-Sun Belt First Team selection following a historical junior season with the Red Wolves ... One of 10 semifinalists for the Becky Hammon Mid-Major Player of the Year ... Logged 22.2 points per game, which led the conference and was No. 8 in the NCAA, all while shooting 46.2 percent from the field and 36.7 percent from beyond the arc ... Led the league in free throws made (175), which was No. 2 in the nation during the regular season, and free throw attempts (192), seventh most in the NCAA ... Only player to average at least seven free throws per game on 90 percent efficiency from the free throw line since Elana Delle Donne in 2010-11 ... Registered seven 30+ point performances, including a career-high 35 points against South Alabama, and became a 1,000-point scorer this past season

### SPANISH SPECIAL

■ Arkansas WBB's seventh-ever international player in Cristina Sanchez Cerqueira is a member of the Spanish National Team

■ Played almost nine minutes in Arkansas' first win of the season, against East Texas A&M

■ Netted first collegiate three pointer and recorded a career high 10 rebounds in Arkansas' win over Central Arkansas

■ Averaging 4.5 rebounds and 19.9 minutes in SEC play this season

■ Finished the 2023-24 season with one rebound in 1.5 minutes played off the bench at Tulsa in the WBIT

■ Represents her country in 3x3 tournaments, including just recently at the FIBA 3x3 World Cup in Debrecen, Hungary

■ With Segle XXI, played in 26 games, averaging 6.4 points, 5.4 rebounds and 1.3 steals per game last season

### PHENOM PHOENIX

■ 2023 Fall signee Phoenix Stotijn enrolled early in January 2024 to Arkansas, and is a member of the Netherlands National Team

■ Did not play in the second half of the 2023-24 season, but practiced with the team

■ The 5-9 combo guard of the Netherlands played for Triple Threat, logging 13.6 points, 3.6 rebounds and 1.5 steals per game in the team's eight games

■ Made her long awaited debut on Sunday against Texas Tech. The Dutch native settled in

### OUR RECORD WHEN...

Overall	9-16
Home / Away / Neutral	7-7/2-5/0-4
SEC	2-8
Home / Away	1-4/1-4
White Uniforms	7-6
White w/ Pink Uniforms	1-0
Cardinal Uniforms	1-7
Anthracite Uniforms	0-1
Turquoise Uniforms	0-2
Pink Uniforms	.....

### LEADS/QUARTERS/HALFTIME/OT

Leading after the 1st quarter	3-1
Leading after the 2nd quarter/Half	5-1
Leading after the 3rd quarter	6-1
Leading at the half, home	5-0
Leading at the half, road/neutral	0-1
Tied at the half, home	.....
Tied at the half, road/neutral	.....
Games decided by 5 points or fewer	1-2
Games decided by 10 points or fewer	1-2
Leading with 5:00 left	9-1
Leading with 2:00 left	8-1
Overtime games	1-0

### OFFENSE

Scoring less than 70 points	1-12
Scoring 70-79 points	4-4
Scoring 80-89 points	3-0
Scoring 90-99 points	1-0
Scoring 100+ points	.....
2 Players Or Less in Double Figures	2-8
3 Players in Double Figures	3-7
4 Players in Double Figures	3-1
5 Players in Double Figures	1-0
5+ Players in Double Figures	.....
When shooting 50 percent or higher	.....
When shooting less than 50 percent	9-16

### REBOUNDING/TURNOVERS

When outrebounding opponent	6-0
When outrebounded	3-15
When rebounds are even	.....
When grabbing 10+ offensive reb	5-7
When forcing 15+ turnovers	5-4
When committing less than 15 turnovers	4-8
When committing 15+ turnovers	5-8

### Top Scorers (Includes Ties)

Higginbottom	Fairfield, Little Rock, UTA, UCLA, ORU, OSU
.....	BGSU, BC, TTU, LIB, Troy, UCA, LSU, Texas, AUB, TEN,
.....	KEN, A&M, FLA, MSST
Smith	East Texas A&M, ALA
Ojenuwa	Ark. St.
Keats	SEMO, VAN

### Top Rebounders (Includes Ties)

Lawrence	Fairfield, East Texas A&M, UTA, UCLA, Ark. St.
.....	OSU, Texas, KEN
Ojenuwa	Little Rock, ORU, Ark. St., BC, SEMO, TTU, LIB,
.....	LSU, Texas, AUB, TEN, VAN, MSST
Johnson	BGSU
Higginbottom	LIB, Texas, AUB, TEN, A&M, FLA
Sanchez-Cerqueira	Troy, UCA, ALA, VAN, FLA
Keats	Texas
Galea	MSST

### Months

November	4-5
December	3-3
January	2-6
February	0-2
March	.....



in the second half and shot 3-6 from three and converted her lone free throw attempt. Stotijn finished with 12 points and played just over 20 minutes.

■ Recorded another 12 points, along with 5 rebounds, to be one of the Hogs' five players in double figures for Arkansas' win over Central Arkansas

■ Her mother, Anouk, is a Dutch singer-songwriter with many albums topping the Dutch charts, most of them going Platinum and several debuting in the No. 1 position. Dubbed the "Adele of the Netherlands" by Mike Neighbors

### CONSISTENCY IN THE NEIGHBORS' ERA

■ Head coach Mike Neighbors has led the program to consistency, now entering his eighth season at the helm

■ Guided his teams to six straight postseason berths (including 2020 season, where team would have been lock for NCAA Tournament)

■ With the postseason appearance in the WBIT last season, Neighbors matched the program record of six consecutive postseason qualifications, tying with his mentor Gary Blair

### UNITED NATIONS

■ The 2024-25 roster features five international players from five different countries: Phoenix Stotijn (The Netherlands), Cristina Sanchez (Spain), Pinja Paananen (Finland), Vera Ojenuwa (Nigeria) and Danika Galea (Malta).

■ How to say "Go Hogs" in each language  
 Finnish: Menkää Siat  
 Dutch: Ga Varkens  
 Maltese: Mur Hniezer  
 Spanish: ¡Vamos cerdos!

### KIKI FOR THREE

■ Sophomore guard Kiki Smith has established herself as a consistent scoring threat for Arkansas.

■ The Topeka, Kan. native has 10+ points in 11 of 22 games and has started in every appearance.

■ Smith paced Arkansas with 22 points in first win of the season against East Texas A&M. Went 8-9 from FG, lone miss was in 4Q. Against Alabama, Smith scored a season and game high 23 points, going 8-15 from FG and 4-9 from 3

■ From beyond the arc, Kiki ranked seventh in the SEC and 63rd in the NCAA with 47 3s before being sidelined with an ankle injury

■ Named the 2024 NJCAA DI WBB Player of the Year and First Team All-American at Hutchinson CC

■ Started in all 37 games, logging 17.6 points per game on 55.9 percent from the field (237-for-424), 44.4 percent from beyond the arc (82-for-103) and 79.6 percent from the free throw line (82-for-103)

### SLOBBERING HOG

■ After a 17-year absence, the beloved

## In The SEC Standings

	CONFERENCE					OVERALL					Streak	vs. T10	vs. T25	SEC FINISHES LAST 16 YEARS
	W-L	Pct.	H	A		W-L	Pct.	H	A	N				
South Carolina	10-0	1.000	5-0	5-0	22-1	.957	11-0	6-1	5-0	W17	5-1	9-1	2023-24.....T9	
LSU	9-1	.900	5-0	4-1	24-1	.960	15-0	5-1	4-0	W4	0-1	3-1	2022-23.....8th	
Texas	9-1	.900	5-0	4-1	23-2	.920	12-0	7-2	4-0	W7	3-2	6-2	2021-22.....T8	
Kentucky	8-1	.889	4-0	4-1	19-2	.905	12-0	5-2	2-0	W3	0-0	4-1	2020-21.....T5	
Alabama	6-4	.600	3-2	3-2	19-5	.792	10-2	5-3	4-0	W2	0-2	1-3	2019-20.....T3	
Ole Miss	6-4	.600	2-3	4-1	15-7	.682	9-3	5-2	1-2	L1	0-3	1-5	2018-19.....10th	
Vanderbilt	5-5	.500	3-2	2-3	18-6	.750	12-2	5-3	1-1	L2	0-2	2-3	2017-18.....T12	
Oklahoma	5-5	.500	3-2	2-3	17-6	.739	10-2	5-3	2-1	W1	0-3	3-5	2016-17.....14th	
Tennessee	4-5	.444	1-3	3-2	17-5	.773	10-3	4-2	3-0	W2	1-4	2-4	2015-16.....10th	
Mississippi State	4-6	.400	3-2	1-4	17-7	.708	9-2	4-5	4-0	W1	1-2	1-4	2014-15.....T9	
Auburn	3-7	.300	3-3	0-4	12-11	.522	8-4	2-6	2-1	W1	0-3	0-6	2013-14.....8th	
Florida	3-7	.300	1-4	2-3	12-12	.500	9-5	3-4	0-3	L1	0-1	0-6	2012-13.....T11	
Texas A&M	3-7	.300	3-2	0-5	10-12	.455	9-4	0-6	1-2	L4	0-4	2-7	2011-12.....T8	
Arkansas	2-8	.200	1-4	1-4	9-16	.360	7-7	2-5	0-4	L2	0-3	0-6	2010-11.....T4	
Georgia	1-9	.100	1-4	0-5	9-15	.375	7-7	0-6	2-2	L7	0-1	0-4	2009-10.....9th	
Missouri	1-9	.100	1-3	0-6	12-13	.480	10-6	1-6	1-1	L3	0-3	0-6	2008-09.....T11	

## Game-by-Game Starters

### OPPONENT

	1	2	3	4	5
Fairfield	K. Smith	Higginbottom	Keats	Lawrence	Ojenuwa
East Texas A&M	K. Smith	Higginbottom	Keats	Lawrence	Ojenuwa
Little Rock	K. Smith	Higginbottom	Keats	Lawrence	Ojenuwa
UT-Arlington	K. Smith	Higginbottom	Keats	Lawrence	Ojenuwa
UCLA	K. Smith	Higginbottom	Keats	Lawrence	Ojenuwa
Oral Roberts	K. Smith	Higginbottom	Keats	Lawrence	Ojenuwa
Arkansas State	K. Smith	Higginbottom	Keats	Lawrence	Ojenuwa
Oklahoma State	K. Smith	Higginbottom	Keats	Lawrence	Ojenuwa
Bowling Green	K. Smith	Higginbottom	Keats	Lawrence	Ojenuwa
Boston College	K. Smith	Higginbottom	Keats	Lawrence	Ojenuwa
SEMO	K. Smith	Higginbottom	Keats	Lawrence	Ojenuwa
Texas Tech	K. Smith	Higginbottom	Keats	Lawrence	Ojenuwa
Liberty	K. Smith	Higginbottom	Keats	Lawrence	Ojenuwa
Troy	K. Smith	Higginbottom	Keats	Lawrence	Ojenuwa
Central Arkansas	K. Smith	Higginbottom	Keats	Lawrence	Ojenuwa
LSU	K. Smith	Higginbottom	Keats	Lawrence	Ojenuwa
Texas	K. Smith	Higginbottom	Keats	Lawrence	Ojenuwa
Auburn	K. Smith	Higginbottom	Keats	Lawrence	Ojenuwa
Tennessee	K. Smith	Higginbottom	Keats	Lawrence	Ojenuwa
Alabama	K. Smith	Higginbottom	Keats	Lawrence	Ojenuwa
Vanderbilt	K. Smith	Higginbottom	Stotijn	Sanchez	Ojenuwa
Kentucky	K. Smith	Higginbottom	Stotijn	Sanchez	Ojenuwa
Texas A&M	Keats	Higginbottom	Stotijn	Sanchez	Ojenuwa
Florida	Johnson	Higginbottom	Stotijn	Sanchez	Ojenuwa
Mississippi State	Johnson	Higginbottom	Stotijn	Sanchez	Ojenuwa

### Record with each lineup

K. Smith, Higginbottom, Keats, Lawrence, Ojenuwa: 8-12  
 K. Smith, Higginbottom, Stotijn, Sanchez, Ojenuwa: 0-2  
 Keats, Higginbottom, Stotijn, Sanchez, Ojenuwa: 1-0  
 Johnson, Higginbottom, Stotijn, Sanchez, Ojenuwa: 0-2

"Slobbering Hog" logo has returned to center court for Razorback basketball.

■ The "Slobbering Hog" return was made possible after Arkansas AD Hunter Yurachek set out a challenge to Razorback fans to raise money for NIL to bring the logo back. Arkansas Edge, the school's NIL collective, raised \$500,000, thanks in part from a late donation and proceeds from a Justin Moore concert at the Walmart AMP, to reach the goal.

■ Best research indicates the "Slobbering Hog" made its first appearance for the 1974-75 season in Barnhill Arena for men's head coach Eddie Sutton's first season. (h/t Mike Cawood)



### AVAILABILITY REPORT

■ The SEC has implemented game-by-game availability reports for football, men's basketball, women's basketball and baseball for the 2024-25 season

■ For basketball and baseball, reports are filed the night before the game, with an update on game day.

■ Players are designated as "available," "probable," "questionable," "doubtful," or "out" before game day; and as "available," "game time decision," or "out" on game day.

■ Penalties for inaccurate or late reports range from \$25,000 - \$100,000 for football and up to \$15,000 - \$25,000 for basketball and baseball.

■ Arkansas remained fully available until Kiki Smith became the first Razorback to appear on the report prior to the Jan. 30 game against Texas A&M. Smith was listed as "questionable" in the initial report and "out" in the game day update.



**2024-2025 ARKANSAS RAZORBACKS WOMEN'S BASKETBALL**

<b>No.</b>	<b>Name</b>	<b>Pos.</b>	<b>Class</b>	<b>Ht.</b>	<b>Hometown (Previous School)</b>
0	Ella Rogers	G	Sr.	5-8	Granville, Ohio (Granville HS)
1	Phoenix Stotijn	G	Fr.	5-9	Amsterdam, Netherlands
2	Kiki Smith	G	So.	5-7	Topeka, Kan. (Topeka HS/Hutchinson CC)
3	Izzy Higginbottom	G	Sr.	5-7	Batesville, Ark. (Batesville HS/Missouri/Arkansas St.)
10	Cristina Sanchez Cerqueira	F	So.	6-1	Granada, Spain (Segle XXI)
15	Jada Bates	G	Fr.	6-3	Powder Springs, Ga. (McEachern HS)
16	Pinja Paananen	F	Fr.	6-2	Laukaa, Finland (Jyväskylä Basketball Academy)
20	Karley Johnson	G	Jr.	5-9	Oklahoma City, Okla. (Mustang HS)
21	Loren Lindsay	G	R-So.	5-11	Fayetteville, Ark. (Fayetteville HS)
22	Vera Ojenuwa	F	So.	6-4	Delta State, Nigeria (Orhuwhorun/Barton CC)
23	Carly Keats	G	Jr.	5-8	Philadelphia, Miss. (Neshoba Central HS/Jones College)
25	Danika Galea	C	Fr.	6-3	St. Paul's Bay, Malta
34	Jenna Lawrence	F	So.	6-3	Melbourne, Ark. (Farmington HS)
44	Maryn Archer	G	R-Fr.	5-7	Derby, Kan. (Derby HS)

**COACHES AND SUPPORT STAFF**

Head Coach: Mike Neighbors, 8<sup>th</sup> Season

Associate Head Coach: Todd Schaefer, 8<sup>th</sup> Season

Assistant Coach: Lacey Goldwire, 6<sup>th</sup> Season

Assistant Coach: Nick Bradford 1<sup>st</sup> Season

Director of Women's Basketball Operations: Amber Shirey, 37<sup>th</sup> Season

Director of Student-Athlete Development: Jayci Stone, 3<sup>rd</sup> Season

Special Assistant to the Head Coach/Director of Video: Evan Johnston, 2<sup>nd</sup> Season

Head Athletic Trainer: Simone Rush, 5<sup>th</sup> season

Strength & Conditioning Coach: Tyler Beckman, 4<sup>th</sup> season

**PRONUNCIATION GUIDE**

#1 Phoenix Stotijn	Stow-Tine
#16 Pinja Paananen	PIN-ya PAH-ne-nen
#22 Vera Ojenuwa	oh-JEN-you-wuh
#25 Danika Galea	Danica gall-EE-yuh
#44 Maryn Archer	mare-in
Laukaa, Finland	LOW (like ow)-kuh
Granada, Spain	grey-nah-duh



# Last Time...

## OFFENSE

Scored 110+ .....	110, vs. Providence (11-16-98)
Scored 100+ points at home .....	100, vs. LA Tech (12-7-23)
Scored 100+ points on the road .....	108, at Ole Miss (2-16-20)   108, Baylor (3-6-91)
Scored 90-99 points .....	93 vs. UT-Arlington (11/14/24)
Scored 90+ points at home .....	93 vs. UT-Arlington (11/14/24)
Scored 90+ points on the road .....	93, at Little Rock (11-20-22)
Scored 80-89 points .....	87 vs. UCA (12/29/24)
Scored 80-89 points at home .....	87 vs. UCA (12/29/24)
Scored 80-89 points on the road .....	81, at Florida (2-8-23)
Scored 35+ points in a quarter .....	36 vs. UT-Arlington (11/14/24)
Was held to 50-59 .....	55 at Mississippi State (2/6/25)
Was held to 49-40 .....	48, vs. Auburn (3-7-24)
Was held to 39-20 .....	34, at LSU, 2-7-19
Was held to 20 or less .....	N/A
Made 40+ field goals .....	40, vs. Central Arkansas (12-13-20)
Made 17+ three-point field goals .....	19, vs. Alabama (2-28-21)
Made 10+ three-point field goals .....	11 vs. UCA (12/29/24)
Did not make 3-pointer (since 1986) .....	0-10, at LSU, (2-7-19)
Made 30 free throws .....	30 (30-39), vs. No. 4 Baylor (12-6-20)
Made 25 free throws .....	25 (25-35), vs. Vanderbilt (1-16-23)
Shot 50-59 or better .....	55.4, vs. LA Tech (12-7-23)
Shot 60 percent or better .....	62.5 (30-48), vs. Little Rock (11-20-22)
Held to less than 30 percent .....	286 (18-63) at #5 UCLA (11/17/24)
Held to less than 20 percent .....	182 (10-55), vs. No. 6 Tennessee (1-8-12; L, 38-69)
Had 20 or more assists in a game .....	20, vs. LA Tech (3-16-23)

## DEFENSE

Allowed 100 points .....	108 vs. Florida (2/3/25)
Allowed 80-99 points .....	89 at #11 Kentucky (1/26/25)
Held opponent to 40-49 points .....	45 vs. SEMO (12/8/24)
Held opponent to 39-30 .....	36, vs. Little Rock (11-14-23)
Held an SEC opponent under 50 points in 3 cons. games .....	47, vs. Auburn (1-29-15; W, 52-47), Alabama (2-1-15; W, 53-42), No. 24/21 Georgia (2-9-15; W, 54-48)
Held opponent to 29 points or less .....	23, vs. Binghamton, 11-30-13
Held an opponent under 15 points in a half .....	15 vs. Texas A&M (1/30/25)
Held an opponent to 2 points in a quarter .....	2, vs. UCA (12-13-20)
Held opponent under 15 field goals .....	14, vs. Little Rock (11-14-23)
Held opponent to less than 30 percent shooting .....	27.7 (18-65) vs. Texas A&M (1/30/25)
Held opponent to less than 20 percent shooting .....	19.7 (13-66), vs. Northwestern State (12-15-19)
Held opponent under 15 percent from 3-point .....	11.1 (2-18) vs. Oklahoma State (11/29/24)
Opponent did not make a 3-pointer .....	0, at Kentucky (1-4-24)
Had 70+ rebounds .....	74, vs. Mississippi Valley State (11-24-89)
Had 60-69 rebounds .....	64, vs. Prairie View A&M (12-16-18)
Had 50-59 rebounds .....	54 vs. SEMO (12/8/24)
Had 10 or more blocked shots in a game .....	10 vs. Bowling Green (11/30/24)
Had 20 or more steals in a game .....	20, vs. ORU (11-13-13)
Had 15 or more steals in a game .....	18, vs. UT Martin (12-29-19)
Forced 25+ turnovers in a game .....	28, vs. Northern Arizona (11-24-22)

## OTHER

Won an overtime game .....	71-60 vs. Little Rock, 11/11/24
Lost an overtime game .....	76-73, vs. Ole Miss (1-29-23)
Won a double overtime game .....	73-72, vs. Florida (1-29-12)
Lost a double overtime game .....	N/A
Won a triple overtime game .....	91-80, Win in 3OT, 2-10-13, at Alabama
Won at the buzzer .....	60-59, vs. Illinois (Maryam Dauda, 12-20-23)
Played consecutive OT games .....	1-24-16 at Auburn (lost); 1-28-16 vs. Florida (lost)
Won a game after being down 15+ points .....	11/11/24 at Little Rock (16 point deficit)
Won regular season tournament .....	Paradise Jam (St. Thomas, U.S. Virgin Islands, Nov. 24-26, 2022)
Defeated ranked team .....	71-58, at No. 15 Florida State (11-30-23)
Defeated a ranked team on the road .....	71-58, at No. 15 Florida State (11-30-23)
All-time SEC win streak .....	8 games (1-15-12: Auburn through 2-15-12: at Auburn)
All-time SEC home win streak .....	5 games (1-15-12: Auburn -- 2-9-12: South Carolina)
.....	5 games (1-14-21: Florida -- 2-28-21: Alabama)

## A RAZORBACK PLAYER ...

Scored 20-24 points .....	23, Kiki Smith vs. #19 Alabama (1/19/25)
Scored 25-29 points .....	26, Izzy Higginbottom at Mississippi State (2/6/25)
Scored 30-34 points .....	33, Izzy Higginbottom vs. Texas A&M (1/30/25)
Scored 35-39 points .....	36, Izzy Higginbottom at Auburn (1/9/25)
Scored 40+ points .....	40, Izzy Higginbottom vs. Florida (2/3/25)
Scored 40+ points in an SEC game .....	40, Izzy Higginbottom vs. Florida (2/3/25)
Scored 35+ points in an SEC game .....	36, Izzy Higginbottom at Auburn (1/9/25)
Scored 30+ points in three straight games .....	Izzy Higginbottom (KEN 32, A&M 34, FLA 40) (2025)
Scored 20+ points 10 times in a season .....	Izzy Higginbottom (16x   2024-25)
Taliah Scott (13x   2023-24), Chelsea Dungee (17x   2020-21), Chelsea Dungee (11x   2019-20) & Chelsea Dungee (20x   2018-19)	
Double figures in 15 consecutive games (season) .....	Jessica Jackson, 11/11/16, LSU 1-8-17
.....	Chelsea Dungee, 26 games, (2018-19 & 2019-20)
.....	Chelsea Dungee, 31 games, (2019-20 & 2020-21)
.....	Amber Ramirez, 16 games (2021-22)
.....	Izzy Higginbottom, 19 games (2024-25)
Five players scored double figures in 1 game .....	vs. UCA (12/29/24)
.....	Higginbottom (26), Ojenuwa (12), Smith (12), Stotijn (12), Sanchez Cerqueira (10 rebs)
Five starters in double figures .....	vs. Kentucky (1-25-24)
.....	Daniels (22), Dauda (16), Johnson (14), Keats (14), Spencer (13)
Seven players scored in double figures in 1 game .....	vs. Northwestern State (11-9-18)
.....	(Tolefree 19, Gaulden 16, Monk 12, Doumbia 11, Dungee 11, Thomas 11, Williams 10)
Made 10+ field goals in a game .....	12, Izzy Higginbottom vs. Florida (2/3/25)
Attempted 20+ field goals in a game .....	25, Izzy Higginbottom vs. Florida (2/3/25)
Made 10+ free throws in a game .....	13, Izzy Higginbottom at Mississippi State (2/6/25)
Made 10+ free throws in a quarter .....	Izzy Higginbottom, 10 in the 1st quarter at Mississippi State (2/6/25)
Made 7 or more 3-pt FG in a game .....	8, Saylor Poffenbarger, at Missouri (1-28-24)
Attempted 10 or more 3-pt FG in a game .....	10, Carly Keats at Vanderbilt (1/23/25)
Had 10-14 rebounds .....	10, Izzy Higginbottom vs. Texas A&M (1/30/25)
Had 15-19 rebounds .....	17, Saylor Poffenbarger, vs. Georgia (1-7-24)
Had 20+ rebounds .....	23, Saylor Poffenbarger, at No. 15 Florida State (11-30-23) (school record)
Had 10 offensive reb - Records go back to 05-06 .....	11, Melissa Wolff vs. New Orleans (1-30-15)
Had 10+ defensive reb - Records go back to 05-06 .....	10, Vera Ojenuwa vs. SEMO (12/8/24)
Had 10+ assists .....	11, Samara Spencer, vs. LA Tech (3-16-23)
Had 10+ assists in consecutive games .....	Jailyn Mason (11 vs. HBU, 12-28-16 and 10 at Ole Miss, 1-1-17) & Calli Berna (11 vs. No. 10/8 Kentucky, 2/7/13 and 11 at Alabama, 2/10/13)
Had 5+ blocks in a game .....	5, Jenna Lawrence vs. Bowling Green (11/30/24)
Had 10+ blocks in a game .....	10, Maryam Dauda, at Alabama (1-14-24) (school record)
Had 5 or more steals in a game .....	5, Makayla Daniels, vs. Georgia (1-7-24)
Had a double-double .....	33 points and 10 rebounds, Izzy Higginbottom vs. Texas A&M (1/30/25)
Had a double-double in two consecutive games .....	Vera Ojenuwa vs. SEMO (12/9/24) and Texas Tech (12/15/24)
.....	13 pts & 14 rbd vs. SEMO (12/8/24)/12 pts & 11 rbd vs. Texas Tech (12/15/24)
Had two players record a double-double .....	Samara Spencer (31 pts/14 reb) & Maryam Dauda (12 rbd/10blks), at Alabama (1-14-24)
Had seven double-doubles in a season .....	Saylor Poffenbarger, 8, 2023-24
.....	(MSU @FSU, LA TECH, UAPB, UIC, UGA, BAMA, @UF)
Had 10+ double-doubles in a season .....	2006-07, Lauren Ervin (14)
Had a triple-double .....	14 pts, 13 rbd, 12 asts, C'eira Ricketts vs. Auburn (1-18-09)



## MORE ABOUT MIKE

Hometown: Greenwood, Ark. (Greenwood HS)  
 Family: Daughter Abby; Sons Alec, Bowen and Barrett; granddaughter Emzey  
 Alma Mater: Arkansas, 1993

## NEIGHBORS BY THE NUMBERS

245 Wins (245-149, 12 seasons)  
 16 Signed McDonalds' All-Americans  
 12 Years as a head coach  
 9 Postseason appearances  
 5 Players drafted in the WNBA (HC)  
 1 Final Four appearance

## LEARN MORE

Sign up for Mike Neighbors' newsletter and listen to his podcasts at [CoachNeighbors.com](http://CoachNeighbors.com)



## NABES FAVES

### TOP 10 MOVIES

1. A Few Good Men
2. The Hunt For Red October
3. The Silence Of The Lambs
4. Hoosiers
5. O Brother, Where Art Thou?
6. Moneyball
7. Top Gun
8. Zero Dark Thirty
9. The Lion King
10. Purple Rain

See the entire list here: <http://imdb.to/2roy-aEO>

### TOP 10 SONGS

1. Sweet Child O' Mine (Guns N' Roses)
2. You Shook Me All Night Long (AC/DC)
3. Man In The Mirror (Michael Jackson)
4. Amarillo By Morning (George Strait)
5. Jessie's Girl (Rick Springfield)
6. Hysteria (Def Leppard)
7. Fishin' In The Dark (Nitty Gritty Dirt Band)
8. The Ballad of Curtis Loew (Lynyrd Skynyrd)
9. Wanted Dead Or Alive (Bon Jovi)
10. Let's Go Crazy (Prince)

### TOP 10 TV SHOWS

1. West Wing (first three seasons)
2. Ted Lasso
3. The Wire
4. Breaking Bad
5. Seinfeld
6. The Newsroom
7. Prison Break
8. Arrested Development
9. Game of Thrones
10. The Goldbergs



# MIKE NEIGHBORS

Eighth Season  
 Career Record: 245-149 (12) | Arkansas Record: 147-108 (8)

Arkansas women's basketball has been transformed into a nationally recognized program in seven years thanks to head coach Mike Neighbors. During his time back home at his alma mater, Neighbors has guided his Hogs to the best seven-year period of sustained success in program history with 138 wins and six postseason qualifications in that time. The proof of his success, and the success of his system, lies in the numbers - Neighbors has accumulated 242 wins during his 12 seasons as a head coach, the most of any Power 5 head coaches in 10 or fewer seasons, as well as one of only two NCAA Division I Head Coaches.

Entering his eighth season on the bench for Arkansas, the program is coming off its sixth consecutive winning season, sixth straight postseason appearance (if including the 2020 NCAA Tournament had it not been cancelled due to the COVID-19 pandemic, as Arkansas was a lock to make the Big Dance).

In 2022-23, the Hogs started out the season 13-0, which was tied for the second-best start in program history. Going into Mid-December, the Hogs were ranked as high as No. 17 in the AP Poll. The Hogs won another SEC Tournament game in comeback fashion versus Missouri to make it to the quarterfinals and hold the best winning percentage in the SEC Tournament among all coaches in Arkansas history with an 8-6 record. Continuing into postseason, Arkansas became the automatic bid out of the SEC to the Post-season WNIT, making it to the Great 8, while being able to host three of its four games at Bud Walton Arena. Neighbors led the Hogs to two All-SEC selections, including Second Team choice Erynn Barnum, who was also on the Midseason Top 10 List for the Katrina McClain Award, as well as All-Freshman selection Saylor Poffenbarger, who broke a school record for five SEC Freshman of the Week accolades. The Hogs finished the season with 24 wins, which tied for the most in the Neighbors' era and matches the fourth most in a single season in program history. Additionally, four players averaged double digits in scoring, the most in the Southeastern Conference.

Prior to Arkansas, Neighbors guided Washington to four seasons of unprecedented success, highlighted by the 2016 NCAA Final Four and two NCAA Sweet 16 appearances. Neighbors was an assistant for the Huskies prior to this promotion and also has had stops at Xavier, Tulsa, Colorado and Arkansas as an assistant.

A native of Greenwood, Arkansas, Neighbors received his associate degree at the University of Arkansas - Fort Smith and his bachelor's degree from the University of Arkansas in 1993. Neighbors is married to Jayci Stone. He has four children, a daughter, Abby and three sons, Alec, Bowen and Barrett, as well as a granddaughter, Emzey.

## TIMELINE

- Bentonville HS Head Coach 1994-98
- Cabot HS Head Coach 1998-99
- Arkansas Director of Ops 1999-01
- Tulsa Univ. Assistant Coach 2001-05
- Univ. of Colorado Assistant Coach 2005-06
- Univ. of Arkansas Assistant Coach 2006-07
- Xavier Assistant Coach 2007-11
- Univ. of Washington Assistant Coach 2011-13
- Univ. of Washington Head Coach 2013-17
- Univ. of Arkansas Head Coach 2017-present

## COACHING HISTORY

### University of Washington

Year	Overall	Pac-12	Finish
2013-14	20-14 (.588)	10-8 (.556)	6
2014-15	23-10 (.697)	11-7 (.611)	5
2015-16	26-11 (.703)	11-7 (.611)	5
2016-17	29-6 (.829)	15-3 (.833)	T2
UW	98-41 (.705)	47-25 (.662)	

### University of Arkansas

Year	Overall	SEC	Finish
2017-18	13-18 (.419)	3-13 (.188)	T11
2018-19	22-15 (.611)	6-10 (.375)	10
2019-20	24-8 (.750)	10-6 (.625)	T3
2020-21	19-9 (.679)	9-6 (.600)	T5
2021-22	18-14 (.563)	7-9 (.438)	T8
2022-23	24-13 (.649)	7-9 (.438)	8
2023-24	18-15 (.545)	6-10 (.375)	T9
2024-25	9-16 (.360)	2-8 (.200)	-
Ark	147-108 (.576)	50-71 (.415)	8 yrs
Totals	245-149 (.622)	97-96 (.502)	12 yrs

## COACHING DEVELOPMENT

Coach	w/Nabes	Now
Adia Barnes	'14-15	HC Arizona
Adam Call	'14	AC George Washington
Morgan Valley	'16	AC UConn
Todd Schaefer	'16-Pres.	AHC Arkansas
Chelsea Dungee	'18-21	AC Troy
Evan Johnston	'18-22	Special Ast. to HC Arkansas

## PLAYER DEVELOPMENT

YEAR	UNIVERSITY	PLAYER	ROUND	OVERALL	TEAM NOTE
2021	Arkansas	Chelsea Dungee	1	5	Dallas Wings ! @
2021	Arkansas	Destiny Slocum	2	14	Las Vegas Aces ! @
2021	Arizona	Aari McDonald	1	3	Atlanta Dream @
2017	Washington	Kelsey Plum	1	1	San Antonio Stars ! @ Las Vegas Aces
	Washington	Chantel Osahor	2	21	Chicago Sky ! @
2016	Washington	Talia Walton	3	29	Los Angeles Sparks ! @
2011	Xavier	Amber Harris	1	4	Minnesota Lynx ! #
	Xavier	Ta'Shia Phillips	1	8	Atlanta Dream ! #
	TAMU/UAFS	Tanisha Smith	2	22	Seattle Storm #
	Colorado	Brittany Spears	2	19	Phoenix Mercury *
2009	Arkansas	Shameka Christon	1	5	New York Liberty \$
2008	Arkansas	Lauren Ervin	3	37	Connecticut Sun ! #
2006	Tulsa	Megan Moody	-	-	Houston Comets Free Agent #
2003	Tulsa	Allison Curtin	1	12	Houston Comets ! # Traded to Detroit Shock
	Arkansas	Dana Cherry	2	23	Charlotte Sting \$

\*- Signed but did not coach

!- At the school when player was drafted

@- Worked with player as a head coach

#- Worked with player as an assistant coach

\$- Worked with player as other (GA, etc)

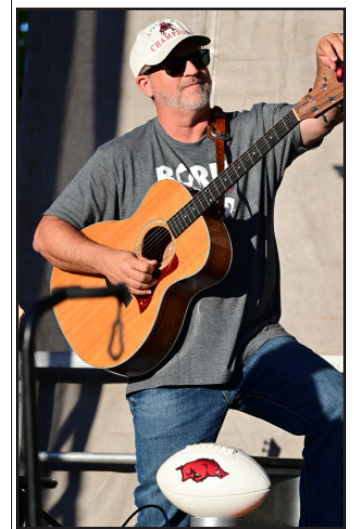


**MORE NABES FACTS**

- **Movies:** His expansive movie collection includes digital, disk and VHS copies. Did you know he used to work at BlockBuster? On a related note, he also collects books that have been turned into movies.
- **Baseballs autographed by movie stars:** Ask him about this collection - talk about some good stories.
- **Lunch Boxes:** Coach collects tin lunch boxes that he carried to school and has them displayed in his home. His first lunch box had KISS on it.
- **Hamilton:** Nabes is a huge Hamilton fan, and routinely quotes the Broadway musical to players, fans and media alike.
- **Athens City Champion:** Coach stumbled upon a dart tournament while on a trip to Athens, Georgia. He joined in and was one of the two-man winning team.
- **Ask him about shoes, music, movies, guitars, basket-ball nostalgia - just about anything!**



NEIGHBORS VS.	W - L				
Abilene Christian	2 0	Fresno State	2 0	New Mexico State	1 0
Alabama	6 4	Furman	1 0	New Orleans	1 0
Arizona State	2 6	<b>Georgia</b>	<b>2 7</b>	Northern Arizona	1 0
Arizona	6 0	Grambling State	2 0	Northwestern State	2 0
Arkansas State	4 0	Grand Canyon	1 0	Notre Dame	0 1
Auburn	9 2	Hartford	1 0	Oklahoma	1 2
Baylor	1 0	Hawai'i	1 0	Oklahoma State	0 1
Belmont	2 0	Houston	2 0	Ole Miss	5 4
Boise State	1 0	Idaho	1 0	Oral Roberts	5 1
Boston College	1 0	Illinois	1 0	Oregon State	1 6
Bowling Green	0 1	Iowa State	0 1	Oregon	5 4
BYU	1 0	Jackson State	2 0	Pennsylvania	1 0
California	5 4	Kansas	0 2	Pittsburgh	1 1
Central Arkansas	5 0	Kansas State	2 0	Portland	3 1
Central Florida	0 1	Kent State	1 0	Prairie View A&M	1 0
Charlotte	1 0	Kentucky	3 7	Saint Mary's	0 1
Clemson	1 0	Lamar	1 0	Sam Houston	2 0
Colorado State	1 0	Liberty	0 1	Samford	2 0
Colorado	9 0	Little Rock	5 0	San Diego State	2 0
Connecticut	1 1	Louisiana-Monroe	3 0	San Diego	1 0
Creighton	1 1	Louisiana Tech	2 0	Santa Clara	1 0
CSUN	1 0	LSU	3 6	Savannah State	1 0
DePaul	0 1	Marquette	0 1	Seattle	4 0
East Texas A&M	1 0	McNeese State	1 0	SEMO	1 0
Eastern Washington	1 0	Maryland	1 1	SFA	1 0
Fairfield	0 1	Miami	0 1	SMU	2 0
Florida State	2 0	Mississippi State	3 8	South Carolina	1 11
Florida	4 5	Missouri	14 4	South Dakota	2 0
FGCU	1 0	Montana State	2 0	Stanford	3 5
Fordham	1 0	Murray State	1 0	Stony Brook	1 0
		Nebraska	1 1	Syracuse	0 2
				Tarleton State	1 0
				TCU	0 1
				Tennessee	2 7
				Tennessee Martin	1 0
				Tennessee State	1 0
				Tennessee Tech	1 0
				Texas	0 1
				Texas A&M	5 9
				Texas Tech	2 1
				Troy	1 1
				Tulsa	4 1
				UAB	1 0
				UAPB	3 1
				UC Irvine	1 0
				UC Riverside	2 0
				UCLA	4 4
				UIC	1 0
				UIW	1 0
				USC	6 0
				USF	0 1
				Utah	7 4
				UT-Arlington	3 0
				UTEP	0 2
				Vanderbilt	4 5
				Wake Forest	1 0
				Washington State	5 3
				Weber State	1 0
				Wisconsin	4 0
				Wright State	0 1
				Yale	1 0





# Last Meeting's Box Score



Official Basketball Box Score - Final  
**Georgia at Arkansas**  
 01/07/24 Bud Walton Arena, Fayetteville  
 2023-24 Women's Basketball

Game Time: 1:00 PM  
 Game Duration: 1:45  
 Attendance: 3,993

Officials: Gina Cross, Kevin Pethtel, Angelica Suffren

Georgia - 43

Record: 10-5 (1-1)

NO.	Name	F	Min	FG			Rebounds			Fouls		TP	AS	TO	ST	Blocks		+/-
				M-A	3P	FT	OR	DR	TOT	PF	FD					BS	BA	
0	Zoesha Smith	F	12:55	1-4	0-0	0-0	1	1	2	1	0	2	0	0	0	0	1	-25
33	Destiny Thomas	F	19:20	0-2	0-0	1-2	2	6	8	2	1	1	0	1	0	1	0	-19
35	Javyn Nicholson	F	34:06	8-18	0-0	1-1	3	7	10	2	3	17	1	5	3	1	1	-31
11	Asia Avinger	G	16:29	2-10	1-5	2-4	0	3	3	3	2	7	1	0	1	0	0	-11
13	Stefanie Ingram	G	20:12	1-5	0-2	0-0	0	0	0	2	1	2	2	3	0	0	0	-25
12	Taniyah Thompson		22:35	2-8	0-0	0-0	1	2	3	0	1	4	2	0	0	0	0	-20
20	Jordan Cole		10:47	0-1	0-0	0-0	0	1	1	2	1	0	0	2	0	0	0	-19
1	Chloe Chapman		28:38	2-7	2-3	0-0	0	5	5	1	1	6	4	6	1	0	2	-29
10	De'Mauri Flournoy		12:37	0-5	0-3	2-2	0	0	0	2	1	2	0	1	0	0	0	-7
2	Savannah Henderson		07:05	0-1	0-1	0-0	0	0	0	1	0	0	0	0	0	0	0	-4
30	Amiya Evans		12:53	0-2	0-0	0-0	2	1	3	0	1	0	1	1	0	1	0	-10
21	Fatima Diakhate		02:23	1-1	0-0	0-0	0	0	0	1	0	2	0	0	0	0	0	0
Team							3	2	5			0		1				
<b>Totals</b>				17-64	3-14	6-9	12	28	40	17	12	43	11	20	5	3	4	-40

Shooting By Period		
1 <sup>st</sup> FG%	3-15	20.0%
3PT%	1-3	33.3%
FT%	2-2	100%
2 <sup>nd</sup> FG%	4-16	25.0%
3PT%	1-3	33.3%
FT%	0-0	0%
3 <sup>rd</sup> FG%	5-17	29.4%
3PT%	1-5	20.0%
FT%	0-2	0%
4 <sup>th</sup> FG%	5-16	31.3%
3PT%	0-3	0.0%
FT%	4-5	80%
GM FG%	17-64	26.6%
3PT%	3-14	21.4%
FT%	6-9	66.7%

Technical Fouls::NONE

Dead Ball Rebounds: 2, 2

Arkansas - 83

Record: 13-4 (1-1)

NO.	Name	F	Min	FG			Rebounds			Fouls		TP	AS	TO	ST	Blocks		+/-
				M-A	3P	FT	OR	DR	TOT	PF	FD					BS	BA	
30	Maryam Dauda	F	33:49	2-10	0-0	4-4	6	5	11	2	2	8	1	2	4	2	0	38
2	Samara Spencer	G	37:37	4-15	2-6	5-5	1	5	6	1	6	15	4	3	1	0	1	40
4	Saylor Poffenbarger	G	35:01	5-12	4-6	1-2	4	13	17	3	1	15	4	2	1	0	2	38
23	Carly Keats	G	40:00	7-16	2-10	0-0	0	1	1	2	0	16	2	1	1	0	0	40
43	Makayla Daniels	G	34:45	7-15	5-10	5-7	1	6	7	3	4	24	3	1	5	1	0	42
55	Emrie Ellis		05:09	0-0	0-0	0-0	0	0	0	0	1	0	0	0	0	0	0	2
34	Jenna Lawrence		03:38	0-1	0-1	0-0	0	0	0	0	0	0	0	0	0	0	0	2
20	Karley Johnson		05:15	1-1	1-1	2-4	0	1	1	0	3	5	0	1	0	0	0	-2
8	Bea Franklin		02:23	0-0	0-0	0-0	0	0	0	0	0	0	0	1	0	0	0	0
10	Cristina Sánchez Cerqueira		02:23	0-0	0-0	0-0	0	1	1	1	0	0	0	0	0	1	0	0
Team							4	3	7			0		0				
<b>Totals</b>				26-70	14-34	17-22	16	35	51	12	17	83	14	11	12	4	3	40

Shooting By Period		
1 <sup>st</sup> FG%	7-20	35.0%
3PT%	3-9	33.3%
FT%	7-7	100%
2 <sup>nd</sup> FG%	7-18	38.9%
3PT%	3-9	33.3%
FT%	8-9	88.9%
3 <sup>rd</sup> FG%	6-17	35.3%
3PT%	5-9	55.6%
FT%	0-2	0%
4 <sup>th</sup> FG%	6-15	40.0%
3PT%	3-7	42.9%
FT%	2-4	50%
GM FG%	26-70	37.1%
3PT%	14-34	41.2%
FT%	17-22	77.3%

Technical Fouls::NONE

Dead Ball Rebounds: 3, 1

	UGA	ARK
Biggest lead	0 (1 <sup>st</sup> 10:00)	44 (4 <sup>th</sup> 6:06)
Best Scoring Run	5(4 <sup>th</sup> 3:14)	12(3 <sup>rd</sup> 4:08)
Lead Changes	0	
Times Tied	0	
Time with Lead	00:00	39:03

Points from	UGA	ARK
Turnovers	8	21
Paint	12	24
Second Chance	12	17
Fast Breaks	9	19
Bench	14	5

	Period by Period Scoring				
	1st	2nd	3rd	4th	TOT
UGA	9	9	11	14	43
ARK	24	25	17	17	83



# Overall Stats

## Game Records

Record	Overall	Home	Away	Neutral
ALL GAMES	9-16	7-7	2-5	0-4
CONFERENCE	2-8	1-4	1-4	0-0
NON-CONFERENCE	7-8	6-3	1-1	0-4

## Score by Periods

Team	1st	2nd	3rd	4th	OT	TOT
Arkansas	385	453	453	434	11	1736
Opponents	541	449	523	428	0	1941

## Team Box Score

No.	Player				Total		3-Point		F-Throw		Rebounds											
		GP-GS	MIN	AVG	FG-FGA	FG%	3FG-3FGA	3FG%	FT-FTA	FT%	OFF	DEF	TOT	AVG	PF	DQ	A	TO	BLK	STL	PTS	AVG
3	HIGGINBOTTOM, Izzy	25-25	850:04	34.0	196-421	.466	32-82	.390	185-204	.907	12	94	106	4.2	37	1	90	98	4	30	609	24.4
2	SMITH, Kiki	22-22	641:58	29.2	81-195	.415	47-117	.402	21-29	.724	8	38	46	2.1	35	0	49	49	5	14	230	10.5
23	KEATS, Carly	23-21	545:10	23.7	68-197	.345	39-123	.317	15-16	.938	1	38	39	1.7	9	0	17	31	3	5	190	8.3
22	OJENUWA, Vera	25-25	575:31	23.0	69-151	.457	3-11	.273	36-62	.581	62	109	171	6.8	76	5	14	52	16	20	177	7.1
34	LAWRENCE, Jenna	25-20	614:07	24.6	60-171	.351	31-117	.265	16-19	.842	28	111	139	5.6	40	1	8	19	29	18	167	6.7
1	STOTJIN, Phoenix	14-5	317:09	22.7	33-107	.308	11-55	.200	10-22	.455	5	10	15	1.1	14	0	24	39	1	9	87	6.2
25	GALEA, Danika	22-0	260:49	11.9	35-62	.565	2-9	.222	13-18	.722	19	22	41	1.9	43	3	5	25	7	5	85	3.9
20	JOHNSON, Karley	23-2	320:23	13.9	21-55	.382	1-10	.100	17-24	.708	20	47	67	2.9	29	0	12	14	2	13	60	2.6
15	BATES, Jada	23-0	285:49	12.4	14-43	.326	9-27	.333	5-10	.500	4	19	23	1.0	8	0	7	13	5	4	42	1.8
10	SÁNCHEZ CERQUEIRA, Cristina	23-5	306:43	13.3	12-47	.255	3-17	.176	11-24	.458	18	71	89	3.9	30	1	7	28	3	8	38	1.7
16	PAANANEN, Pinja	22-0	218:14	9.9	12-37	.324	6-25	.240	5-7	.714	8	28	36	1.6	11	0	5	9	6	5	35	1.6
44	ARCHER, Maryn	15-0	53:19	3.6	3-12	.250	1-1	1.000	9-16	.563	1	5	6	0.4	5	0	1	5	0	2	16	1.1
21	LINDSEY, Loren	5-0	22:02	4.4	0-3	.000	0-2	.000	0-0	.000	0	2	2	0.4	3	0	2	0	0	1	0	0.0
0	ROGERS, Ella	1-0	02:21	2.4	0-0	.000	0-0	.000	0-0	.000	0	0	0	0.0	0	0	0	0	0	0	0	0.0
Team											50	55	105						19			
<b>Total</b>		<b>25</b>	<b>5014</b>		<b>604-1501</b>	<b>.402</b>	<b>185-596</b>	<b>.310</b>	<b>343-451</b>	<b>.761</b>	<b>236</b>	<b>649</b>	<b>885</b>	<b>35.4</b>	<b>340</b>	<b>11</b>	<b>241</b>	<b>401</b>	<b>81</b>	<b>134</b>	<b>1736</b>	<b>69.4</b>
<b>Opponents</b>		<b>25</b>	<b>5035</b>		<b>744-1763</b>	<b>.422</b>	<b>198-570</b>	<b>.347</b>	<b>255-359</b>	<b>.710</b>	<b>396</b>	<b>676</b>	<b>1072</b>	<b>42.9</b>	<b>436</b>	<b>3</b>	<b>395</b>	<b>337</b>	<b>130</b>	<b>211</b>	<b>1941</b>	<b>77.6</b>

## Team Statistics

	AR	OPP
<b>Scoring</b>	<b>1736</b>	<b>1941</b>
Points per game	69.4	77.6
Scoring margin	-8.2	-
<b>Field goals-att</b>	<b>604-1501</b>	<b>744-1763</b>
Field goal pct	.402	.422
<b>3 point fg-att</b>	<b>185-596</b>	<b>198-570</b>
3-point FG pct	.310	.347
3-pt FG made per game	7.4	7.9
<b>Free throws-att</b>	<b>343-451</b>	<b>255-359</b>
Free throw pct	.761	.710
F-Throws made per game	13.7	10.2
<b>Rebounds</b>	<b>885</b>	<b>1072</b>
Rebounds per game	35.4	42.9
Rebounding margin	-7.5	-
<b>Assists</b>	<b>241</b>	<b>395</b>
Assists per game	9.6	15.8
<b>Turnovers</b>	<b>401</b>	<b>337</b>
Turnovers per game	16.0	13.5
Turnover margin	-2.6	-
Assist/turnover ratio	0.6	1.2
<b>Steals</b>	<b>134</b>	<b>211</b>
Steals per game	5.4	8.4
<b>Blocks</b>	<b>81</b>	<b>130</b>
Blocks per game	3.2	5.2
<b>Winning streak</b>	<b>0</b>	<b>-</b>
Home win streak	0	-
<b>Attendance</b>	<b>46646</b>	<b>29372</b>
Home games-Avg/Game	14-3332	7-4196
Neutral site-Avg/Game	-	4-383

## Team Results

Date	Opponent		Score	Att.
11/04/2024	Fairfield	L	67-81	2034
11/08/2024	East Texas A&M	W	84-65	12267
11/11/2024	at Little Rock	Wot	71-60	1255
11/14/2024	UT Arlington	W	93-65	2221
11/17/2024	at UCLA	L	52-101	2255
11/21/2024	Oral Roberts	L	73-94	2277
11/24/2024	Arkansas St.	W	76-60	2548
11/29/2024	vs Oklahoma St.	L	56-70	145
11/30/2024	vs Bowling Green	L	78-79	105
12/05/2024	Boston College	W	75-64	2252
12/08/2024	Southeast Mo. St.	W	84-45	2609
12/15/2024	Texas Tech	L	72-75	2511
12/18/2024	vs Liberty	L	61-75	719
12/19/2024	vs Troy	L	69-77	563
12/29/2024	Central Ark.	W	87-70	2976
01/02/2025	LSU	L	64-98	3985
01/05/2025	at Texas	L	56-90	8113
01/09/2025	at Auburn	W	59-58	2791
01/12/2025	Tennessee	L	63-93	3072
01/19/2025	Alabama	L	62-94	3093
01/23/2025	at Vanderbilt	L	60-101	3500
01/26/2025	at Kentucky	L	69-89	4870
01/30/2025	Texas A&M	W	72-51	2558
02/03/2025	Florida	L	78-108	2243
02/06/2025	at Mississippi St.	L	55-78	6588



# SEC Stats

## Game Records

Record	Overall	Home	Away	Neutral
ALL GAMES	2-8	1-4	1-4	0-0
CONFERENCE	2-8	1-4	1-4	0-0
NON-CONFERENCE	0-0	0-0	0-0	0-0

## Score by Periods

Team	1st	2nd	3rd	4th	OT	TOT
Arkansas	141	170	168	159	0	638
Opponents	235	218	226	181	0	860

## Team Box Score

No.	Player				Total		3-Point		F-Throw		Rebounds											
		GP-GS	MIN	AVG	FG-FGA	FG%	3FG-3FGA	3FG%	FT-FTA	FT%	OFF	DEF	TOT	AVG	PF	DQ	A	TO	BLK	STL	PTS	AVG
3	HIGGINBOTTOM, Izzy	10-10	339:53	34.0	80-176	.455	17-38	.447	78-85	.918	3	42	45	4.5	13	1	28	47	2	12	255	25.5
23	KEATS, Carly	8-6	183:28	22.9	27-71	.380	17-49	.347	6-6	1.000	1	12	13	1.6	4	0	3	16	0	0	77	9.6
2	SMITH, Kiki	7-7	162:20	23.2	20-49	.408	10-30	.333	5-6	.833	1	11	12	1.7	14	0	9	12	1	4	55	7.9
1	STOTJIN, Phoenix	10-5	238:21	23.8	22-67	.328	5-30	.167	4-12	.333	2	5	7	0.7	11	0	16	30	1	8	53	5.3
34	LAWRENCE, Jenna	10-5	207:10	20.7	20-60	.333	9-39	.231	0-0	.000	7	29	36	3.6	21	1	3	6	10	10	49	4.9
22	OJENUWA, Vera	10-10	205:42	20.6	16-47	.340	1-4	.250	11-22	.500	21	32	53	5.3	28	2	1	17	6	9	44	4.4
20	JOHNSON, Karley	10-2	160:34	16.1	13-28	.464	1-5	.200	6-9	.667	9	16	25	2.5	11	0	7	8	0	6	33	3.3
10	SÁNCHEZ CERQUEIRA, Cristina	10-5	203:04	20.3	9-33	.273	2-12	.167	8-15	.533	11	36	47	4.7	21	1	6	20	0	5	28	2.8
25	GALEA, Danika	10-0	131:53	13.2	11-22	.500	0-2	.000	3-6	.500	8	10	18	1.8	18	1	2	14	3	2	25	2.5
44	ARCHER, Maryn	7-0	31:17	4.5	1-4	.250	1-1	1.000	6-10	.600	1	2	3	0.4	2	0	0	2	0	2	9	1.3
15	BATES, Jada	9-0	83:39	9.3	2-6	.333	0-2	.000	2-3	.667	1	4	5	0.6	2	0	1	3	0	2	6	0.7
16	PAANANEN, Pinja	7-0	47:18	6.8	1-7	.143	1-4	.250	1-2	.500	0	2	2	0.3	3	0	0	0	0	0	4	0.6
0	ROGERS, Ella	1-0	02:21	2.4	0-0	.000	0-0	.000	0-0	.000	0	0	0	0.0	0	0	0	0	0	0	0	0.0
Team											23	18	41				11					
<b>Total</b>		<b>10</b>	<b>1997</b>		<b>222-570</b>	<b>.389</b>	<b>64-216</b>	<b>.296</b>	<b>130-176</b>	<b>.739</b>	<b>88</b>	<b>219</b>	<b>307</b>	<b>30.7</b>	<b>148</b>	<b>6</b>	<b>76</b>	<b>186</b>	<b>23</b>	<b>60</b>	<b>638</b>	<b>63.8</b>
<b>Opponents</b>		<b>10</b>	<b>2000</b>		<b>324-690</b>	<b>.470</b>	<b>91-223</b>	<b>.408</b>	<b>121-168</b>	<b>.720</b>	<b>159</b>	<b>270</b>	<b>429</b>	<b>42.9</b>	<b>172</b>	<b>1</b>	<b>181</b>	<b>141</b>	<b>51</b>	<b>102</b>	<b>860</b>	<b>86.0</b>

## Team Statistics

	AR	OPP
<b>Scoring</b>	<b>638</b>	<b>860</b>
Points per game	63.8	86.0
Scoring margin	-22.2	-
<b>Field goals-att</b>	<b>222-570</b>	<b>324-690</b>
Field goal pct	.389	.470
<b>3 point fg-att</b>	<b>64-216</b>	<b>91-223</b>
3-point FG pct	.296	.408
3-pt FG made per game	6.4	9.1
<b>Free throws-att</b>	<b>130-176</b>	<b>121-168</b>
Free throw pct	.739	.720
F-Throws made per game	13.0	12.1
<b>Rebounds</b>	<b>307</b>	<b>429</b>
Rebounds per game	30.7	42.9
Rebounding margin	-12.2	-
<b>Assists</b>	<b>76</b>	<b>181</b>
Assists per game	7.6	18.1
<b>Turnovers</b>	<b>186</b>	<b>141</b>
Turnovers per game	18.6	14.1
Turnover margin	-4.5	-
Assist/turnover ratio	0.4	1.3
<b>Steals</b>	<b>60</b>	<b>102</b>
Steals per game	6.0	10.2
<b>Blocks</b>	<b>23</b>	<b>51</b>
Blocks per game	2.3	5.1
<b>Winning streak</b>	<b>0</b>	<b>-</b>
Home win streak	0	-
<b>Attendance</b>	<b>14951</b>	<b>25862</b>
Home games-Avg/Game	5-2990	5-5172
Neutral site-Avg/Game	-	0-0

## Team Results

Date	Opponent		Score	Att.
01/02/2025	LSU	L	64-98	3985
01/05/2025	at Texas	L	56-90	8113
01/09/2025	at Auburn	W	59-58	2791
01/12/2025	Tennessee	L	63-93	3072
01/19/2025	Alabama	L	62-94	3093
01/23/2025	at Vanderbilt	L	60-101	3500
01/26/2025	at Kentucky	L	69-89	4870
01/30/2025	Texas A&M	W	72-51	2558
02/03/2025	Florida	L	78-108	2243
02/06/2025	at Mississippi St.	L	55-78	6588



# Specialty Stats

## ARKANSAS/OPPONENT

Opponent	Result	Pts Off TO	Pts in Paint	2nd Chance	Fast Break	Bench	Ties	Lead Chng	Ark Largest Lead	Best Ark Run	Opp Largest Lead	Opp Best Run	Ark Led	Opp Led				
Fairfield	L, 81-67	18/21	24/40	13/9	5/17	6/32	3	1	5	6:25	1st	8-0	24	3:43	3rd	9-0	5:13	33:35
East Texas A&M	W, 84-65	9/10	28/20	6/10	14/5	12/35	0	0	26	2:26	4th	9-0	0	-	-	10-0	39:46	0:00
Little Rock	W, 71-60 OT	12/7	26/30	9/9	5/7	11/2	2	1	11	1:29	OT	11-0	16	6:03	3rd	10-0	5:22	37:34
UT-Arlington	W, 93-65	9/12	42/40	25/8	20/13	26/13	3	5	34	4:27	4th	13-0	4	7:43	1st	6-0	29:09	8:12
#5 UCLA	L, 101-52	8/27	16/54	11/28	4/18	14/27	0	0	0	10:00	1st	9-0	53	6:30	4th	12-0	0:00	39:22
Oral Roberts	L, 94-73	14/21	28/34	8/12	10/6	10/32	1	1	3	9:22	1st	7-0	25	6:05	4th	12-0	0:14	38:35
Arkansas State	W, 76-60	13/19	38/28	16/14	12/6	10/42	8	9	16	0:18	4th	9-0	6	2:51	1st	8-0	20:28	15:40
Oklahoma State	L, 70-56	15/15	24/54	6/13	4/8	5/29	3	0	0	10:00	1st	7-0	14	1:12	3rd	9-0	0:00	37:20
Bowling Green	L, 79-78	18/4	16/44	0/15	0/0	6/9	4	9	14	8:59	3rd	6-0	4	2:42	4th	8-0	31:46	5:45
Boston College	W, 75-64	18/6	36/36	10/19	19/5	5/35	3	11	11	1:22	4th	14-0	8	9:47	2nd	6-0	10:05	27:39
SEMO	W, 84-45	17/3	39/12	19/6	11/2	25/22	2	6	43	2:10	4th	26-0	12	9:26	3rd	8-0	27:53	10:28
Texas Tech	L, 75-72	20/18	30/42	18/15	5/5	17/21	4	7	8	4:16	1st	7-0	11	7:47	3rd	13-0	9:22	29:30
Liberty	L, 75-61	14/9	22/38	4/11	9/4	21/14	4	4	1	4:37	3rd	8-0	19	9:28	2nd	9-0	0:58	36:55
Troy	L, 77-69	13/13	32/44	14/12	11/24	17/17	1	2	2	8:23	3rd	8-0	10	2:42	3rd	9-0	1:28	37:02
Central Arkansas	W, 87-70	19/6	34/16	18/12	17/5	20/18	5	9	26	4:37	3rd	19-0	3	9:44	1st	6-0	32:03	5:45
LSU	L, 98-64	15/34	44/24	10/24	2/36	7/41	0	0	0	0:00	1st	8-0	49	9:46	4th	14-0	0:00	39:22
Texas	L, 90-56	8/32	22/52	4/28	5/16	13/41	2	1	2	8:44	1st	6-0	34	0:35	4th	9-0	0:22	36:42
Auburn	W, 59-58	12/20	34/26	5/14	2/9	10/7	5	1	5	4:53	4th	7-0	14	8:05	2nd	10-0	5:19	31:02
Tennessee	L, 93-63	2/28	22/40	8/21	10/22	14/29	2	2	3	7:53	1st	8-0	33	1:54	4th	9-0	2:17	36:21
Alabama	L, 94-62	9/20	18/44	7/20	0/7	20/26	2	2	3	8:01	1st	7-0	33	0:35	4th	14-0	0:19	38:11
Vanderbilt	L, 101-60	13/20	24/40	12/9	13/22	34/24	0	0	0	0:00	1st	9-0	45	3:20	4th	11-0	0:00	39:32
Kentucky	L, 89-68	7/19	18/32	6/11	1/10	30/12	0	0	0	0:00	1st	8-0	27	2:12	3rd	12-0	0:00	39:38
Texas A&M	W, 72-51	16/10	24/18	9/5	9/7	21/7	1	0	21	0:29	4th	10-0	0	0:00	1st	6-0	38:04	0:00
Florida	L, 108-78	8/6	34/50	8/13	8/22	19/43	2	1	2	9:43	1st	5-0	33	1:06	4th	13-0	0:54	38:12
Mississippi State	L, 78-55	14/27	28/44	5/15	14/12	11/17	0	0	0	10:00	1st	7-0	27	4:05	4th	10-0	0:00	39:38



# Arkansas High/Low

## Arkansas - Game Highs

<b>POINTS</b>	93		UT Arlington (11/14/2024)
	87		Central Ark. (12/29/2024)
	84		Southeast Mo. St. (12/08/2024)
	84		East Texas A&M (11/08/2024)
	78		Florida (02/03/2025)
	78		vs Bowling Green (N) (11/30/2024)
<b>FIELD GOALS MADE</b>	34		UT Arlington (11/14/2024)
	30		Central Ark. (12/29/2024)
	30		Arkansas St. (11/24/2024)
<b>FIELD GOAL ATTEMPTS</b>	76		Florida (02/03/2025)
	74		UT Arlington (11/14/2024)
<b>FIELD GOAL PERCENTAGE</b>	.482	(27-56)	Boston College (12/05/2024)
	.482	(27-56)	vs Bowling Green (N) (11/30/2024)
<b>3 PT FG MADE</b>	13		UT Arlington (11/14/2024)
	12		at Kentucky (01/26/2025)
<b>3 PT FG ATTEMPTS</b>	39		at UCLA (11/17/2024)
	33		vs Troy (N) (12/19/2024)
<b>3 PT FG PERCENTAGE</b>	.520	(13-25)	UT Arlington (11/14/2024)
	.440	(11-25)	vs Bowling Green (N) (11/30/2024)
<b>FREE THROWS MADE</b>	21		Southeast Mo. St. (12/08/2024)
	21		East Texas A&M (11/08/2024)
<b>FREE THROW ATTEMPTS</b>	26		East Texas A&M (11/08/2024)
	25		Florida (02/03/2025)
	25		Tennessee (01/12/2025)
	25		Central Ark. (12/29/2024)
<b>FREE THROW PERCENTAGE</b>	1.000	(8-8)	LSU (01/02/2025)
	.929	(13-14)	vs Bowling Green (N) (11/30/2024)
<b>REBOUNDS</b>	56		UT Arlington (11/14/2024)
	54		Southeast Mo. St. (12/08/2024)
<b>ASSISTS</b>	18		Central Ark. (12/29/2024)
	16		Arkansas St. (11/24/2024)
<b>STEALS</b>	12		at Mississippi St. (02/06/2025)
	9		LSU (01/02/2025)
	9		Arkansas St. (11/24/2024)
<b>BLOCKED SHOTS</b>	10		vs Bowling Green (N) (11/30/2024)
	7		Arkansas St. (11/24/2024)
<b>TURNOVERS</b>	26		at Vanderbilt (01/23/2025)
	25		at Texas (01/05/2025)
<b>FOULS</b>	25		at Texas (01/05/2025)
	22		at Little Rock (11/11/2024)

## Arkansas - Game Lows

<b>POINTS</b>	52		at UCLA (11/17/2024)
	55		at Mississippi St. (02/06/2025)
	56		at Texas (01/05/2025)
	56		vs Oklahoma St. (N) (11/29/2024)
	59		at Auburn (01/09/2025)
<b>FIELD GOALS MADE</b>	18		at Texas (01/05/2025)
	18		at UCLA (11/17/2024)
<b>FIELD GOAL ATTEMPTS</b>	45		at Texas (01/05/2025)
	49		Tennessee (01/12/2025)
	49		at Auburn (01/09/2025)
<b>FIELD GOAL PERCENTAGE</b>	.286	(18-63)	at UCLA (11/17/2024)
	.322	(19-59)	vs Oklahoma St. (N) (11/29/2024)
<b>3 PT FG MADE</b>	2		at Mississippi St. (02/06/2025)
	3		at Texas (01/05/2025)
	3		Boston College (12/05/2024)
<b>3 PT FG ATTEMPTS</b>	11		Boston College (12/05/2024)
	12		at Texas (01/05/2025)
<b>3 PT FG PERCENTAGE</b>	.143	(2-14)	at Mississippi St. (02/06/2025)
	.179	(7-39)	at UCLA (11/17/2024)
<b>FREE THROWS MADE</b>	4		at Vanderbilt (01/23/2025)
	8		LSU (01/02/2025)
<b>FREE THROW ATTEMPTS</b>	7		at Vanderbilt (01/23/2025)
	8		LSU (01/02/2025)
<b>FREE THROW PERCENTAGE</b>	.571	(4-7)	at Vanderbilt (01/23/2025)
	.625	(10-16)	at Auburn (01/09/2025)
<b>REBOUNDS</b>	23		vs Bowling Green (N) (11/30/2024)
	25		at Auburn (01/09/2025)
<b>ASSISTS</b>	4		at Mississippi St. (02/06/2025)
	4		at Auburn (01/09/2025)
<b>STEALS</b>	2		at UCLA (11/17/2024)
	2		UT Arlington (11/14/2024)
	2		at Little Rock (11/11/2024)
	2		East Texas A&M (11/08/2024)
	2		Fairfield (11/04/2024)
<b>BLOCKED SHOTS</b>	0		at Auburn (01/09/2025)
	0		at Texas (01/05/2025)
	0		Texas Tech (12/15/2024)
<b>TURNOVERS</b>	7		Florida (02/03/2025)
	8		vs Bowling Green (N) (11/30/2024)
<b>FOULS</b>	3		Fairfield (11/04/2024)
	7		Southeast Mo. St. (12/08/2024)



## Opponent High/Low

### Opponent - Game Highs

<b>POINTS</b>	108		Florida (02/03/2025)
	101		at Vanderbilt (01/23/2025)
	101		at UCLA (11/17/2024)
	98		LSU (01/02/2025)
	94		Alabama (01/19/2025)
94		Oral Roberts (11/21/2024)	
<b>FIELD GOALS MADE</b>	43		Florida (02/03/2025)
	39		at Vanderbilt (01/23/2025)
	39		LSU (01/02/2025)
<b>FIELD GOAL ATTEMPTS</b>	84		at UCLA (11/17/2024)
	82		vs Troy (N) (12/19/2024)
<b>FIELD GOAL PERCENTAGE</b>	.566	(43-76)	Florida (02/03/2025)
	.565	(39-69)	at Vanderbilt (01/23/2025)
<b>3 PT FG MADE</b>	13		Florida (02/03/2025)
	13		at Kentucky (01/26/2025)
	13		at Vanderbilt (01/23/2025)
	13		Central Ark. (12/29/2024)
	13		Fairfield (11/04/2024)
<b>3 PT FG ATTEMPTS</b>	35		Central Ark. (12/29/2024)
	35		Arkansas St. (11/24/2024)
<b>3 PT FG PERCENTAGE</b>	.591	(13-22)	Florida (02/03/2025)
	.520	(13-25)	at Vanderbilt (01/23/2025)
<b>FREE THROWS MADE</b>	21		Texas Tech (12/15/2024)
	19		at Auburn (01/09/2025)
	19		at Texas (01/05/2025)
<b>FREE THROW ATTEMPTS</b>	27		at Auburn (01/09/2025)
	26		at Texas (01/05/2025)
<b>FREE THROW PERCENTAGE</b>	1.000	(2-2)	Fairfield (11/04/2024)
	.889	(16-18)	Oral Roberts (11/21/2024)
<b>REBOUNDS</b>	65		at UCLA (11/17/2024)
	57		vs Troy (N) (12/19/2024)
<b>ASSISTS</b>	22		Florida (02/03/2025)
	22		at UCLA (11/17/2024)
<b>STEALS</b>	17		at Vanderbilt (01/23/2025)
	15		Tennessee (01/12/2025)
<b>BLOCKED SHOTS</b>	11		vs Oklahoma St. (N) (11/29/2024)
	10		at Kentucky (01/26/2025)
<b>TURNOVERS</b>	22		at Auburn (01/09/2025)
	18		at Mississippi St. (02/06/2025)
	18		Texas Tech (12/15/2024)
	18		Southeast Mo. St. (12/08/2024)
<b>FOULS</b>	27		Tennessee (01/12/2025)
	21		Texas Tech (12/15/2024)
	21		Boston College (12/05/2024)
	21		UT Arlington (11/14/2024)
	21		at Little Rock (11/11/2024)

### Opponent - Game Lows

<b>POINTS</b>	45		Southeast Mo. St. (12/08/2024)
	51		Texas A&M (01/30/2025)
	58		at Auburn (01/09/2025)
	60		Arkansas St. (11/24/2024)
	60		at Little Rock (11/11/2024)
<b>FIELD GOALS MADE</b>	17		Southeast Mo. St. (12/08/2024)
	18		Texas A&M (01/30/2025)
<b>FIELD GOAL ATTEMPTS</b>	47		at Auburn (01/09/2025)
	54		Texas Tech (12/15/2024)
<b>FIELD GOAL PERCENTAGE</b>	.270	(17-63)	Southeast Mo. St. (12/08/2024)
	.277	(18-65)	Texas A&M (01/30/2025)
<b>3 PT FG MADE</b>	1		at Auburn (01/09/2025)
	1		UT Arlington (11/14/2024)
<b>3 PT FG ATTEMPTS</b>	10		UT Arlington (11/14/2024)
	10		at Little Rock (11/11/2024)
<b>3 PT FG PERCENTAGE</b>	.091	(1-11)	at Auburn (01/09/2025)
	.100	(1-10)	UT Arlington (11/14/2024)
<b>FREE THROWS MADE</b>	1		Southeast Mo. St. (12/08/2024)
	2		Fairfield (11/04/2024)
<b>FREE THROW ATTEMPTS</b>	2		Southeast Mo. St. (12/08/2024)
	2		Fairfield (11/04/2024)
<b>FREE THROW PERCENTAGE</b>	.375	(3-8)	at Mississippi St. (02/06/2025)
	.409	(9-22)	at Little Rock (11/11/2024)
<b>REBOUNDS</b>	29		Southeast Mo. St. (12/08/2024)
	33		Texas Tech (12/15/2024)
<b>ASSISTS</b>	8		at Little Rock (11/11/2024)
	9		East Texas A&M (11/08/2024)
<b>STEALS</b>	1		vs Bowling Green (N) (11/30/2024)
	2		Florida (02/03/2025)
<b>BLOCKED SHOTS</b>	1		Central Ark. (12/29/2024)
	2		Texas A&M (01/30/2025)
	2		vs Bowling Green (N) (11/30/2024)
<b>TURNOVERS</b>	9		Alabama (01/19/2025)
	9		at Little Rock (11/11/2024)
	9		East Texas A&M (11/08/2024)
<b>FOULS</b>	10		vs Liberty (N) (12/18/2024)
	11		LSU (01/02/2025)
	11		vs Bowling Green (N) (11/30/2024)



## Category Leaders

### Points

##	Player	G	Pts	Pts/G
3	Higginbottom, Izzy	25	609	24.4
2	Smith, Kiki	22	230	10.5
23	Keats, Carly	23	190	8.3
22	Ojenuwa, Vera	25	177	7.1
34	Lawrence, Jenna	25	167	6.7
1	Stotjin, Phoenix	14	87	6.2
25	Galea, Danika	22	85	3.9
20	Johnson, Karley	23	60	2.6
15	Bates, Jada	23	42	1.8
10	Sánchez Cerqueira, Cristina	23	38	1.7
16	Paananen, Pinja	22	35	1.6
44	Archer, Maryn	15	16	1.1

### Scoring Average

##	Player	G	Pts	Pts/G
3	Higginbottom, Izzy	25	609	24.4
2	Smith, Kiki	22	230	10.5
23	Keats, Carly	23	190	8.3
22	Ojenuwa, Vera	25	177	7.1
34	Lawrence, Jenna	25	167	6.7
1	Stotjin, Phoenix	14	87	6.2
25	Galea, Danika	22	85	3.9
20	Johnson, Karley	23	60	2.6
15	Bates, Jada	23	42	1.8
10	Sánchez Cerqueira, Cristina	23	38	1.7
16	Paananen, Pinja	22	35	1.6
44	Archer, Maryn	15	16	1.1

### Field Goal Percentage

##	Player	FG	Att	Pct
25	Galea, Danika	35	62	.565
3	Higginbottom, Izzy	196	421	.466
22	Ojenuwa, Vera	69	151	.457
2	Smith, Kiki	81	195	.415
20	Johnson, Karley	21	55	.382
34	Lawrence, Jenna	60	171	.351
23	Keats, Carly	68	197	.345
15	Bates, Jada	14	43	.326
16	Paananen, Pinja	12	37	.324
1	Stotjin, Phoenix	33	107	.308
10	Sánchez Cerqueira, Cristina	12	47	.255
44	Archer, Maryn	3	12	.250

### Field Goal Attempts

##	Player	G	Att	Att/G
3	Higginbottom, Izzy	25	421	16.8
23	Keats, Carly	23	197	8.6
2	Smith, Kiki	22	195	8.9
34	Lawrence, Jenna	25	171	6.8
22	Ojenuwa, Vera	25	151	6.0

### Field Goals Made

##	Player	G	Made	Made/G
3	Higginbottom, Izzy	25	196	7.8
2	Smith, Kiki	22	81	3.7
22	Ojenuwa, Vera	25	69	2.8
23	Keats, Carly	23	68	3.0
34	Lawrence, Jenna	25	60	2.4

### 3-Point FG Percentage

##	Player	3FG	Att	Pct
44	Archer, Maryn	1	1	1.000
2	Smith, Kiki	47	117	.402
3	Higginbottom, Izzy	32	82	.390
15	Bates, Jada	9	27	.333
23	Keats, Carly	39	123	.317
22	Ojenuwa, Vera	3	11	.273
34	Lawrence, Jenna	31	117	.265
16	Paananen, Pinja	6	25	.240
25	Galea, Danika	2	9	.222
1	Stotjin, Phoenix	11	55	.200
10	Sánchez Cerqueira, Cristina	3	17	.176
20	Johnson, Karley	1	10	.100

### 3-Point FG Attempts

##	Player	G	Att	Att/G
23	Keats, Carly	23	123	5.3
2	Smith, Kiki	22	117	5.3
34	Lawrence, Jenna	25	117	4.7
3	Higginbottom, Izzy	25	82	3.3
1	Stotjin, Phoenix	14	55	3.9

### 3-Point FG Made

##	Player	G	Made	Made/G
2	Smith, Kiki	22	47	2.1
23	Keats, Carly	23	39	1.7
3	Higginbottom, Izzy	25	32	1.3
34	Lawrence, Jenna	25	31	1.2
1	Stotjin, Phoenix	14	11	0.8



## Category Leaders

### Free Throw Percentage

##	Player	Made	Att	Pct
23	Keats, Carly	15	16	.938
3	Higginbottom, Izzy	185	204	.907
34	Lawrence, Jenna	16	19	.842
2	Smith, Kiki	21	29	.724
25	Galea, Danika	13	18	.722
16	Paananen, Pinja	5	7	.714
20	Johnson, Karley	17	24	.708
22	Ojenuwa, Vera	36	62	.581
44	Archer, Maryn	9	16	.563
15	Bates, Jada	5	10	.500
10	Sánchez Cerqueira, Cristina	11	24	.458
1	Stotjin, Phoenix	10	22	.455

### Rebounds

##	Player	G	Reb	Reb/G
22	Ojenuwa, Vera	25	171	6.8
34	Lawrence, Jenna	25	139	5.6
3	Higginbottom, Izzy	25	106	4.2
10	Sánchez Cerqueira, Cristina	23	89	3.9
20	Johnson, Karley	23	67	2.9

### Rebounds Average

##	Player	G	Reb	Reb/G
22	Ojenuwa, Vera	25	171	6.8
34	Lawrence, Jenna	25	139	5.6
3	Higginbottom, Izzy	25	106	4.2
10	Sánchez Cerqueira, Cristina	23	89	3.9
20	Johnson, Karley	23	67	2.9

### Offensive Rebounds

##	Player	G	OReb	OReb/G
22	Ojenuwa, Vera	25	62	2.5
34	Lawrence, Jenna	25	28	1.1
20	Johnson, Karley	23	20	0.9
25	Galea, Danika	22	19	0.9
10	Sánchez Cerqueira, Cristina	23	18	0.8

### Defensive Rebounds

##	Player	G	DReb	DReb/G
34	Lawrence, Jenna	25	111	4.4
22	Ojenuwa, Vera	25	109	4.4
3	Higginbottom, Izzy	25	94	3.8
10	Sánchez Cerqueira, Cristina	23	71	3.1
20	Johnson, Karley	23	47	2.0

### Fouls

##	Player	G	PF	PF/G
22	Ojenuwa, Vera	25	76	3.0
25	Galea, Danika	22	43	2.0
34	Lawrence, Jenna	25	40	1.6
3	Higginbottom, Izzy	25	37	1.5
2	Smith, Kiki	22	35	1.6

### Foul Outs

##	Player	G	FO
22	Ojenuwa, Vera	25	5
25	Galea, Danika	22	3
3	Higginbottom, Izzy	25	1
34	Lawrence, Jenna	25	1
10	Sánchez Cerqueira, Cristina	23	1

### Free Throw Attempts

##	Player	G	Att	Att/G
3	Higginbottom, Izzy	25	204	8.2
22	Ojenuwa, Vera	25	62	2.5
2	Smith, Kiki	22	29	1.3
20	Johnson, Karley	23	24	1.0
10	Sánchez Cerqueira, Cristina	23	24	1.0

### Free Throws Made

##	Player	G	Made	Made/G
3	Higginbottom, Izzy	25	185	7.4
22	Ojenuwa, Vera	25	36	1.4
2	Smith, Kiki	22	21	1.0
20	Johnson, Karley	23	17	0.7
34	Lawrence, Jenna	25	16	0.6

### Assists

##	Player	G	Ast	Ast/G
3	Higginbottom, Izzy	25	90	3.6
2	Smith, Kiki	22	49	2.2
1	Stotjin, Phoenix	14	24	1.7
23	Keats, Carly	23	17	0.7
22	Ojenuwa, Vera	25	14	0.6

### Steals

##	Player	G	Stl	Stl/G
3	Higginbottom, Izzy	25	30	1.2
22	Ojenuwa, Vera	25	20	0.8
34	Lawrence, Jenna	25	18	0.7
2	Smith, Kiki	22	14	0.6
20	Johnson, Karley	23	13	0.6

### Blocked Shots

##	Player	G	Blk	Blk/G
34	Lawrence, Jenna	25	29	1.2
22	Ojenuwa, Vera	25	16	0.6
25	Galea, Danika	22	7	0.3
16	Paananen, Pinja	22	6	0.3
2	Smith, Kiki	22	5	0.2

### Minutes

##	Player	G	Min	Min/G
3	Higginbottom, Izzy	25	850	34:00
2	Smith, Kiki	22	642	29:11
34	Lawrence, Jenna	25	614	24:34
22	Ojenuwa, Vera	25	576	23:01
23	Keats, Carly	23	545	23:42

### Turnovers

##	Player	G	TO	TO/G
3	Higginbottom, Izzy	25	98	3.9
22	Ojenuwa, Vera	25	52	2.1
2	Smith, Kiki	22	49	2.2
1	Stotjin, Phoenix	14	39	2.8
23	Keats, Carly	23	31	1.3





## Player Highs Analysis

### Arkansas - Individual Game Highs

<b>POINTS</b>	40		Izzy Higginbottom vs Florida (02/03/2025)
	38		Izzy Higginbottom vs Boston College (12/05/2024)
	36		Izzy Higginbottom at Auburn (01/09/2025)
	33		Izzy Higginbottom vs Texas A&M (01/30/2025)
	32		Izzy Higginbottom at Kentucky (01/26/2025)
<b>FIELD GOALS MADE</b>	14		Izzy Higginbottom vs Boston College (12/05/2024)
	13		Izzy Higginbottom at Auburn (01/09/2025)
<b>FIELD GOAL ATTEMPTS</b>	25		Izzy Higginbottom vs Florida (02/03/2025)
	25		Izzy Higginbottom at Kentucky (01/26/2025)
<b>FIELD GOAL PERCENTAGE (min 5 made)</b>	1.000	(5-5)	Danika Galea vs Troy (N) (12/19/2024)
	.889	(8-9)	Kiki Smith vs East Texas A&M (11/08/2024)
<b>3 PT FG MADE</b>	5		Carly Keats vs Southeast Mo. St. (12/08/2024)
	5		Jenna Lawrence vs Bowling Green (N) (11/30/2024)
<b>3 PT FG ATTEMPTS</b>	12		Kiki Smith at Little Rock (11/11/2024)
	11		Carly Keats vs LSU (01/02/2025)
<b>3 PT FG PERCENTAGE (min 2 made)</b>	1.000	(2-2)	Pinja Paananen vs UT Arlington (11/14/2024)
	.800	(4-5)	Jenna Lawrence vs UT Arlington (11/14/2024)
	.800	(4-5)	Kiki Smith vs East Texas A&M (11/08/2024)
<b>FREE THROWS MADE</b>	13		Izzy Higginbottom at Mississippi St. (02/06/2025)
	13		Izzy Higginbottom vs Florida (02/03/2025)
	13		Izzy Higginbottom vs Oral Roberts (11/21/2024)
<b>FREE THROW ATTEMPTS</b>	15		Izzy Higginbottom vs Oral Roberts (11/21/2024)
	13		Izzy Higginbottom at Mississippi St. (02/06/2025)
	13		Izzy Higginbottom vs Florida (02/03/2025)
	13		Izzy Higginbottom vs Texas A&M (01/30/2025)
<b>FREE THROW PERCENTAGE (min 3 made)</b>	1.000	(13-13)	Izzy Higginbottom at Mississippi St. (02/06/2025)
	1.000	(13-13)	Izzy Higginbottom vs Florida (02/03/2025)
	1.000	(12-12)	Izzy Higginbottom vs Bowling Green (N) (11/30/2024)
	1.000	(11-11)	Izzy Higginbottom at Little Rock (11/11/2024)
	1.000	(8-8)	Izzy Higginbottom at Texas (01/05/2025)
	1.000	(7-7)	Izzy Higginbottom vs Liberty (N) (12/18/2024)
	1.000	(6-6)	Izzy Higginbottom vs LSU (01/02/2025)
	1.000	(5-5)	Izzy Higginbottom vs Southeast Mo. St. (12/08/2024)
	1.000	(4-4)	Carly Keats at Texas (01/05/2025)
	1.000	(4-4)	Izzy Higginbottom at UCLA (11/17/2024)
	1.000	(4-4)	Izzy Higginbottom vs East Texas A&M (11/08/2024)
	1.000	(4-4)	Danika Galea vs East Texas A&M (11/08/2024)
	1.000	(3-3)	Kiki Smith vs Alabama (01/19/2025)
	1.000	(3-3)	Izzy Higginbottom vs Troy (N) (12/19/2024)
1.000	(3-3)	Karley Johnson vs Southeast Mo. St. (12/08/2024)	
1.000	(3-3)	Jenna Lawrence vs Fairfield (11/04/2024)	
<b>REBOUNDS</b>	14		Vera Ojenuwa vs Southeast Mo. St. (12/08/2024)
	12		Jenna Lawrence vs UT Arlington (11/14/2024)
<b>ASSISTS</b>	9		Izzy Higginbottom vs Bowling Green (N) (11/30/2024)
	7		Izzy Higginbottom vs Texas A&M (01/30/2025)
	7		Izzy Higginbottom vs Troy (N) (12/19/2024)
<b>STEALS</b>	3		Izzy Higginbottom at Mississippi St. (02/06/2025)
	3		Jenna Lawrence at Texas (01/05/2025)
	3		Kiki Smith vs Troy (N) (12/19/2024)
	3		Izzy Higginbottom vs Texas Tech (12/15/2024)
	3		Izzy Higginbottom vs Boston College (12/05/2024)
	3		Karley Johnson vs Arkansas St. (11/24/2024)
	3		Jenna Lawrence vs Arkansas St. (11/24/2024)



## Opponent Player Highs Analysis

### Opponent - Individual Game Highs

<b>POINTS</b>	25		Bailey Maupin vs Texas Tech (12/15/2024)
	25		Paige Kohler vs Bowling Green (N) (11/30/2024)
	24		Mikayla Blakes at Vanderbilt (01/23/2025)
	23		Zay Dyer vs Troy (N) (12/19/2024)
	23		Jalei Oglesby vs Oral Roberts (11/21/2024)
	23		Taleyah Jones vs Oral Roberts (11/21/2024)
	23		Timea Gardiner at UCLA (11/17/2024)
<b>FIELD GOALS MADE</b>	11		Zay Dyer vs Troy (N) (12/19/2024)
	9		Erika Porter vs Bowling Green (N) (11/30/2024)
	9		Paige Kohler vs Bowling Green (N) (11/30/2024)
	9		Jalei Oglesby vs Oral Roberts (11/21/2024)
	9		Faith Lee at Little Rock (11/11/2024)
<b>FIELD GOAL ATTEMPTS</b>	28		Zay Dyer vs Troy (N) (12/19/2024)
	25		Faith Lee at Little Rock (11/11/2024)
<b>FIELD GOAL PERCENTAGE (min 5 made)</b>	.857	(6-7)	Me'Arah O'Neal vs Florida (02/03/2025)
	.778	(7-9)	Zee Spearman vs Tennessee (01/12/2025)
	.778	(7-9)	Justice Carlton at Texas (01/05/2025)
<b>3 PT FG MADE</b>	7		Paige Kohler vs Bowling Green (N) (11/30/2024)
	7		Timea Gardiner at UCLA (11/17/2024)
<b>3 PT FG ATTEMPTS</b>	12		Timea Gardiner at UCLA (11/17/2024)
	9		Kinley Fisher vs Central Ark. (12/29/2024)
	9		Bree Stephens vs Central Ark. (12/29/2024)
	9		Paige Kohler vs Bowling Green (N) (11/30/2024)
	9		Taleyah Jones vs Oral Roberts (11/21/2024)
	9		Emily Robinson vs Oral Roberts (11/21/2024)
<b>3 PT FG PERCENTAGE (min 2 made)</b>	1.000	(3-3)	Zee Spearman vs Tennessee (01/12/2025)
	1.000	(2-2)	Kenza Salgues vs Florida (02/03/2025)
	1.000	(2-2)	Daviane Mindoudi vs Florida (02/03/2025)
	1.000	(2-2)	Madison Greene at Vanderbilt (01/23/2025)
	1.000	(2-2)	Brianna Jackson vs Troy (N) (12/19/2024)
	1.000	(2-2)	Jillian Huerter vs Fairfield (11/04/2024)
<b>FREE THROWS MADE</b>	9		Bailey Maupin vs Texas Tech (12/15/2024)
	8		DeYona Gaston at Auburn (01/09/2025)
	8		Jasmine Shavers vs Texas Tech (12/15/2024)
<b>FREE THROW ATTEMPTS</b>	12		Bailey Maupin vs Texas Tech (12/15/2024)
	10		DeYona Gaston at Auburn (01/09/2025)
	10		Kyla Oldacre at Texas (01/05/2025)
<b>FREE THROW PERCENTAGE (min 3 made)</b>	1.000	(8-8)	Jasmine Shavers vs Texas Tech (12/15/2024)
	1.000	(5-5)	Jordan Hodges vs Liberty (N) (12/18/2024)
	1.000	(5-5)	Jalei Oglesby vs Oral Roberts (11/21/2024)
	1.000	(5-5)	Taleyah Jones vs Oral Roberts (11/21/2024)
	1.000	(4-4)	Georgia Amooore at Kentucky (01/26/2025)
	1.000	(4-4)	Mikayla Blakes at Vanderbilt (01/23/2025)
	1.000	(4-4)	Flau'Jae Johnson vs LSU (01/02/2025)
	1.000	(4-4)	Jadyn Wooten vs Oklahoma St. (N) (11/29/2024)
	1.000	(4-4)	Jasmine Payne vs East Texas A&M (11/08/2024)
	1.000	(3-3)	Ra Shaya Kyle vs Florida (02/03/2025)
	1.000	(3-3)	Me'Arah O'Neal vs Florida (02/03/2025)
	1.000	(3-3)	Jewel Spear vs Tennessee (01/12/2025)
	1.000	(3-3)	Mikaylah Williams vs LSU (01/02/2025)
	1.000	(3-3)	Jalynn Bristow vs Texas Tech (12/15/2024)
1.000	(3-3)	Angela Dugalić at UCLA (11/17/2024)	
<b>REBOUNDS</b>	18		Zay Dyer vs Troy (N) (12/19/2024)
	16		Emerald Parker at Little Rock (11/11/2024)



## Team Game-by-Game

Opponent	Date	Score		Total		3-Pointers		Free throws		Rebounds										
				FG-FGA	PCT	3FG-3FGA	PCT	FT-FTA	PCT	OFF	DEF	TOT	AVG	PF	A	TO	BLK	STL	PTS	AVG
Fairfield	11/04/2024	67-81	L	23-60	.383	9-27	.333	12-14	.857	8	23	31	31.0	3	10	14	4	2	67	67.0
East Texas A&M	11/08/2024	84-65	W	27-57	.474	9-24	.375	21-26	.808	6	40	46	38.5	10	9	16	1	2	84	75.5
at Little Rock	11/11/2024	71-60	Wot	24-63	.381	9-29	.310	14-18	.778	7	34	41	39.3	22	9	16	3	2	71	74.0
UT Arlington	11/14/2024	93-65	W	34-74	.459	13-25	.520	12-19	.632	16	40	56	43.5	15	12	14	6	2	93	78.8
at UCLA	11/17/2024	52-101	L	18-63	.286	7-39	.179	9-11	.818	7	20	27	40.2	20	11	18	3	2	52	73.4
Oral Roberts	11/21/2024	73-94	L	24-65	.369	8-22	.364	17-22	.773	12	24	36	39.5	14	11	16	3	6	73	73.3
Arkansas St.	11/24/2024	76-60	W	30-67	.448	7-27	.259	9-12	.750	11	37	48	40.7	11	16	16	7	9	76	73.7
vs Oklahoma St.	11/29/2024	56-70	L	19-59	.322	4-19	.211	14-20	.700	8	26	34	39.9	13	6	14	3	3	56	71.5
vs Bowling Green	11/30/2024	78-79	L	27-56	.482	11-25	.440	13-14	.929	3	20	23	38.0	10	15	8	10	4	78	72.2
Boston College	12/05/2024	75-64	W	27-56	.482	3-11	.273	18-23	.783	10	23	33	37.5	14	9	12	4	8	75	72.5
Southeast Mo. St.	12/08/2024	84-45	W	28-66	.424	7-25	.280	21-24	.875	14	40	54	39.0	7	12	13	5	8	84	73.5
Texas Tech	12/15/2024	72-75	L	24-53	.453	7-21	.333	17-22	.773	12	16	28	38.1	15	6	19	0	5	72	73.4
vs Liberty	12/18/2024	61-75	L	22-55	.400	7-26	.269	10-11	.909	9	21	30	37.5	12	7	14	2	7	61	72.5
vs Troy	12/19/2024	69-77	L	25-73	.342	9-33	.273	10-14	.714	12	32	44	37.9	13	14	13	3	6	69	72.2
Central Ark.	12/29/2024	87-70	W	30-64	.469	11-27	.407	16-25	.640	13	34	47	38.5	13	18	12	4	8	87	73.2
LSU	01/02/2025	64-98	L	24-67	.358	8-26	.308	8-8	1.000	15	17	32	38.1	15	8	21	2	9	64	72.6
at Texas	01/05/2025	56-90	L	18-45	.400	3-12	.250	17-22	.773	7	20	27	37.5	25	6	25	0	5	56	71.6
at Auburn	01/09/2025	59-58	W	22-49	.449	5-20	.250	10-16	.625	6	19	25	36.8	19	4	21	0	7	59	70.9
Tennessee	01/12/2025	63-93	L	20-49	.408	5-21	.238	18-25	.720	6	20	26	36.2	14	7	22	3	5	63	70.5
Alabama	01/19/2025	62-94	L	21-61	.344	7-19	.368	13-18	.722	11	18	29	35.9	11	8	11	4	3	62	70.1
at Vanderbilt	01/23/2025	60-101	L	24-60	.400	8-24	.333	4-7	.571	12	21	33	35.7	8	8	26	1	5	60	69.6
at Kentucky	01/26/2025	69-89	L	22-61	.361	12-29	.414	13-16	.813	4	26	30	35.5	13	11	14	4	4	69	69.6
Texas A&M	01/30/2025	72-51	W	25-52	.481	7-21	.333	15-19	.789	6	35	41	35.7	16	10	16	5	3	72	69.7
Florida	02/03/2025	78-108	L	27-76	.355	7-30	.233	17-25	.680	14	21	35	35.7	13	10	7	3	7	78	70.0
at Mississippi St.	02/06/2025	55-78	L	19-50	.380	2-14	.143	15-20	.750	7	22	29	35.4	14	4	23	1	12	55	69.4
<b>Total</b>		<b>1736</b>		<b>604-1501</b>	<b>.402</b>	<b>185-596</b>	<b>.310</b>	<b>343-451</b>	<b>.761</b>	<b>236</b>	<b>649</b>	<b>885</b>	<b>35.4</b>	<b>340</b>	<b>241</b>	<b>401</b>	<b>81</b>	<b>134</b>	<b>1736</b>	<b>69.4</b>
Opponents		1941		744-1763	.422	198-570	.347	255-359	.710	396	676	1072	42.9	436	395	337	130	211	1941	77.6

### Arkansas Averages

Games Played	Points/game	FG Pct	3FG Pct	FT Pct	Rebounds/game	Assists/game	Turnovers/game	Assist/Turnover ratio	Steals/game	Blocks/game
25	69.4	40.2	31.0	76.1	35.4	9.6	16.0	0.6	5.4	3.2



## Opponent Game-by-Game

Opponent	Date	Score		Total		3-Pointers		Free throws		Rebounds											
				FG-FGA	PCT	3FG-3FGA	PCT	FT-FTA	PCT	OFF	DEF	TOT	AVG	PF	A	TO	BLK	STL	PTS	AVG	
Fairfield	11/04/2024	67-81	L	33-68	.485	13-30	.433	2-2	1.000	11	29	40	40.0	17	21	12	4	8	81	81.0	
East Texas A&M	11/08/2024	84-65	W	25-80	.313	8-29	.276	7-9	.778	15	25	40	40.0	20	9	9	4	6	65	73.0	
at Little Rock	11/11/2024	71-60	Wot	24-74	.324	3-10	.300	9-22	.409	16	28	44	41.3	21	8	9	4	4	60	68.7	
UT Arlington	11/14/2024	93-65	W	28-75	.373	1-10	.100	8-17	.471	11	28	39	40.8	21	15	10	9	7	65	67.8	
at UCLA	11/17/2024	52-101	L	37-84	.440	10-34	.294	17-22	.773	29	36	65	45.6	17	22	11	5	8	101	74.4	
Oral Roberts	11/21/2024	73-94	L	34-70	.486	10-27	.370	16-18	.889	11	30	41	44.8	19	17	15	8	8	94	77.7	
Arkansas St.	11/24/2024	76-60	W	23-74	.311	9-35	.257	5-7	.714	14	28	42	44.4	14	12	14	5	9	60	75.1	
vs Oklahoma St.	11/29/2024	56-70	L	30-73	.411	2-18	.111	8-10	.800	17	31	48	44.9	17	10	10	11	8	70	74.5	
vs Bowling Green	11/30/2024	78-79	L	32-68	.471	10-21	.476	5-7	.714	16	25	41	44.4	11	19	13	2	1	79	75.0	
Boston College	12/05/2024	75-64	W	27-73	.370	6-27	.222	4-7	.571	24	20	44	44.4	21	15	17	5	9	64	73.9	
Southeast Mo. St.	12/08/2024	84-45	W	17-63	.270	10-26	.385	1-2	.500	6	23	29	43.0	20	12	18	8	8	45	71.3	
Texas Tech	12/15/2024	72-75	L	26-54	.481	2-11	.182	21-25	.840	15	18	33	42.2	21	13	18	5	11	75	71.6	
vs Liberty	12/18/2024	61-75	L	28-65	.431	4-15	.267	15-18	.833	16	24	40	42.0	10	12	13	3	7	75	71.8	
vs Troy	12/19/2024	69-77	L	32-82	.390	6-19	.316	7-10	.700	20	37	57	43.1	15	15	11	5	11	77	72.2	
Central Ark.	12/29/2024	87-70	W	24-70	.343	13-35	.371	9-15	.600	16	24	40	42.9	20	14	16	1	4	70	72.1	
LSU	01/02/2025	64-98	L	39-78	.500	9-23	.391	11-13	.846	21	27	48	43.2	11	21	17	6	14	98	73.7	
at Texas	01/05/2025	56-90	L	33-75	.440	5-15	.333	19-26	.731	25	21	46	43.4	16	20	12	5	11	90	74.6	
at Auburn	01/09/2025	59-58	W	19-47	.404	1-11	.091	19-27	.704	11	24	35	42.9	15	13	22	3	10	58	73.7	
Tennessee	01/12/2025	63-93	L	35-77	.455	12-34	.353	11-17	.647	21	22	43	42.9	27	20	13	3	15	93	74.7	
Alabama	01/19/2025	62-94	L	35-70	.500	11-22	.500	13-17	.765	17	29	46	43.1	16	19	9	6	5	94	75.7	
at Vanderbilt	01/23/2025	60-101	L	39-69	.565	13-25	.520	10-12	.833	11	24	35	42.7	12	21	14	4	17	101	76.9	
at Kentucky	01/26/2025	69-89	L	30-63	.476	13-28	.464	16-22	.727	10	34	44	42.7	17	17	11	10	8	89	77.5	
Texas A&M	01/30/2025	72-51	W	18-65	.277	5-22	.227	10-15	.667	14	23	37	42.5	20	10	13	2	6	51	76.3	
Florida	02/03/2025	78-108	L	43-76	.566	13-22	.591	9-11	.818	12	40	52	42.9	19	22	12	6	2	108	77.6	
at Mississippi St.	02/06/2025	55-78	L	33-70	.471	9-21	.429	3-8	.375	17	26	43	42.9	19	18	18	6	14	78	77.6	
<b>Total</b>		<b>1941</b>		<b>744-1763</b>	<b>.422</b>	<b>198-570</b>	<b>.347</b>	<b>255-359</b>	<b>.710</b>	<b>396</b>	<b>676</b>	<b>1072</b>	<b>42.9</b>	<b>436</b>	<b>395</b>	<b>337</b>	<b>130</b>	<b>211</b>	<b>1941</b>	<b>77.6</b>	
Arkansas		1736		604-1501	.402	185-596	.310	343-451	.761	236	649	885	35.4	340	241	401	81	134	1736	69.4	

### Opponents Averages

Games Played	Points/game	FG Pct	3FG Pct	FT Pct	Rebounds/game	Assists/game	Turnovers/game	Assist/Turnover ratio	Steals/game	Blocks/game
25	77.6	42.2	34.7	71.0	42.9	15.8	13.5	1.2	8.4	5.2



## Team Ranking Summary

Statistic	National Rank	Conference Rank	Value	National Leader	Value	Conference Leader	Value
Assist/Turnover Ratio (353 ranked)	309	16	0.60	UConn	2.04	Kentucky	1.46
Assists Per Game (353 ranked)	341	16	9.6	Kansas St.	22.2	Oklahoma	21.9
Bench Points Per Game (353 ranked)	267	15	15.4	South Carolina	41.8	South Carolina	41.8
Blocks Per Game (353 ranked)	146	12	3.2	Southern California	6.9	Kentucky	6.7
Field Goal Percentage (353 ranked)	196	16	40.2	Richmond	51.2	Texas	48.4
Field Goal Percentage Defense (353 ranked)	273	14	42.2	UC Davis	32.6	South Carolina	34.2
Fouls Per Game (353 ranked)	20	2	13.6	NC State	12.1	South Carolina	13.5
Free Throw Attempts Per Game (353 ranked)	94	9	18.04	Jacksonville	26.39	Texas	22.92
Free Throw Percentage (353 ranked)	40	3	76.1	UC Santa Barbara	82.3	Vanderbilt	77.8
Free Throws Made Per Game (353 ranked)	46	6	13.72	Jacksonville	18.04	Texas	17.40
Rebound Margin (353 ranked)	336	16	-7.5	UCLA	15.8	LSU	14.0
Rebounds (Defensive) Per Game (353 ranked)	115	9	26.0	Troy	33.4	Oklahoma	32.8
Rebounds (Offensive) Per Game (353 ranked)	297	16	9.4	Grambling	19.8	Tennessee	19.0
Rebounds Per Game (349 ranked)	227	15	35.40	Troy	50.08	LSU	47.68
Scoring Defense (353 ranked)	348	16	77.6	UNC Greensboro	51.8	Ole Miss	54.5
Scoring Margin (349 ranked)	299	16	-8.2	Texas	27.9	Texas	27.9
Scoring Offense (353 ranked)	102	13	69.4	Florida St.	92.9	Tennessee	90.6
Steals Per Game (353 ranked)	341	16	5.4	Longwood	15.0	Tennessee	12.5
Three Point Attempts Per Game (353 ranked)	50	4	23.8	Tennessee	32.9	Tennessee	32.9
Three Point Percentage (353 ranked)	184	14	31.0	Notre Dame	41.2	Alabama	37.9
Three Point Percentage Defense (353 ranked)	331	16	34.7	Northwestern St.	23.7	Kentucky	27.2
Three Pointers Per Game (353 ranked)	74	5	7.4	Tennessee	10.9	Tennessee	10.9
Turnover Margin (353 ranked)	296	15	-2.56	Ohio St.	10.77	Texas	9.36
Turnovers Forced Per Game (353 ranked)	321	16	13.48	Longwood	26.35	Tennessee	23.68
Turnovers Per Game (353 ranked)	158	10	16.0	Colorado St.	9.1	South Carolina	12.5
Winning Percentage (353 ranked)	278	16	36.0	UCLA	100.0	LSU	96.0



## Individual Ranking Summary

Statistic	Player	National Rank	Conference Rank	Value	National Leader	Value	Conference Leader	Value
Assist/Turnover Ratio (249 ranked)					Kaylah Ivey, Boston College	3.50	Raven Johnson, South Carolina	3.33
Assists (147 ranked)	Izzy Higginbottom	113	10	90	Serena Sundell, Kansas St.	170	Georgia Amoores, Kentucky Rori Harmon, Texas	157 157
Assists Per Game (250 ranked)	Izzy Higginbottom	177	14	3.6	Georgia Amoores, Kentucky	7.5	Georgia Amoores, Kentucky	7.5
Blocks (146 ranked)	Jenna Lawrence	96	8	29	Anastasiia Boldyreva, Middle Tenn.	77	Clara Strack, Kentucky	49
Blocks Per Game (246 ranked)	Jenna Lawrence	130	8	1.16	Anastasiia Boldyreva, Middle Tenn.	3.35	Clara Strack, Kentucky	2.33
Double Doubles (46 ranked)					Aneesah Morrow, LSU	22	Aneesah Morrow, LSU	22
Field Goal Attempts (150 ranked)	Izzy Higginbottom	4	1	421	Nya Robertson, SMU	455	Izzy Higginbottom, Arkansas	421
Field Goal Percentage (250 ranked)	Izzy Higginbottom	128	17	46.6	Isnelle Natabou, FIU	70.6	Madina Okot, Mississippi St.	67.0
Field Goals (150 ranked)	Izzy Higginbottom	5	2	196	Audi Crooks, Iowa St.	227	Khamil Pierre, Vanderbilt	203
Free Throw Attempts (142 ranked)	Izzy Higginbottom	2	1	204	S'Mya Nichols, Kansas	224	Izzy Higginbottom, Arkansas	204
Free Throw Percentage (250 ranked)	Izzy Higginbottom	14	1	90.7	Teresa Seppala, Siena	97.0	Izzy Higginbottom, Arkansas	90.7
Free Throws (144 ranked)	Izzy Higginbottom	1	1	185	Izzy Higginbottom, Arkansas	185	Izzy Higginbottom, Arkansas	185
Minutes Per Game (150 ranked)	Izzy Higginbottom	89	2	34.00	Mackenzie Amalia, Eastern Mich.	38.39	Georgia Amoores, Kentucky	36.06
Points (200 ranked)	Izzy Higginbottom	1	1	609	Izzy Higginbottom, Arkansas	609	Izzy Higginbottom, Arkansas	609
Points Per Game (250 ranked)	Izzy Higginbottom	3	1	24.4	Ta'Niya Latson, Florida St.	26.2	Izzy Higginbottom, Arkansas	24.4
Rebounds (146 ranked)	Vera Ojenuwa	123	9	171	Aneesah Morrow, LSU	355	Aneesah Morrow, LSU	355
Rebounds (Defensive) Per Game (30 ranked)					Laura Ziegler, Saint Joseph's	10.1	Aneesah Morrow, LSU	8.8
Rebounds (Offensive) Per Game (30 ranked)					Aneesah Morrow, LSU	5.4	Aneesah Morrow, LSU	5.4
Rebounds Per Game (250 ranked)	Vera Ojenuwa	228	13	6.8	Aneesah Morrow, LSU	14.2	Aneesah Morrow, LSU	14.2
Steals (133 ranked)					Kiki McIntyre, Longwood	93	Talaysia Cooper, Tennessee Khamil Pierre, Vanderbilt	71 71
Steals Per Game (248 ranked)					Megan McConnell, Duquesne	4.18	Talaysia Cooper, Tennessee	3.23
Three Point Attempts (148 ranked)					Ioanna Krimili, California	191	Aaliyah Nye, Alabama	183
Three Point Percentage (173 ranked)	Kiki Smith	53	6	40.2	T'yana Todd, Boston College	50.4	Dazia Lawrence, Kentucky	45.3
Three Pointers (148 ranked)	Kiki Smith	115	12	47	Madison Conner, TCU	86	Aaliyah Nye, Alabama	82
Three Pointers Per Game (246 ranked)	Kiki Smith	128	12	2.14	Alyssa Durazo-Frescas, Grand Canyon	3.95	Aaliyah Nye, Alabama	3.42
Triple Doubles (5 ranked)					Olivia Miles, Notre Dame	3	Liv McGill, Florida Payton Verhulst, Oklahoma	1 1





**Arkansas Women's Basketball  
Individual Career Summaries  
All games**

**ARCHER, Maryn**

				Field Goals		3-Point		F-Throws		Rebounds				Scoring						
SEASON	TEAM	GP-GS	MIN/AVG	FG-FGA	FG%	3FG-3FGA	3FG%	FT-FTA	FT%	OFF	DEF	TOT	AVG	PF-FO	A	TO	BLK	STL	PTS	AVG
2024-25	AR	15-0	53/3.6	3-12	.250	1-1	1.000	9-16	.563	1	5	6	0.4	5-0	1	5	0	2	16	1.1
<b>TOTAL</b>		<b>15-0</b>	<b>53/3.6</b>	<b>3-12</b>	<b>.250</b>	<b>1-1</b>	<b>1.000</b>	<b>9-16</b>	<b>.563</b>	<b>1</b>	<b>5</b>	<b>6</b>	<b>0.4</b>	<b>5-0</b>	<b>1</b>	<b>5</b>	<b>0</b>	<b>2</b>	<b>16</b>	<b>1.1</b>

**Single Game Highs**

Statistic	Value	
Points	7	vs Southeast Mo. St. 12/08/24
Rebounds	2	vs Oral Roberts 11/21/24
Assists	1	vs Southeast Mo. St. 12/08/24
Steals	1	vs Florida 02/03/25, at Mississippi St. 02/06/25
FG Made	2	vs Southeast Mo. St. 12/08/24
FG Attempts	4	vs Southeast Mo. St. 12/08/24
3FG Made	1	at Mississippi St. 02/06/25
3FG Attempts	1	at Mississippi St. 02/06/25
FT Made	3	vs Southeast Mo. St. 12/08/24, at Kentucky 01/26/25
FT Attempts	4	vs Southeast Mo. St. 12/08/24, at Kentucky 01/26/25

**BATES, Jada**

				Field Goals		3-Point		F-Throws		Rebounds				Scoring						
SEASON	TEAM	GP-GS	MIN/AVG	FG-FGA	FG%	3FG-3FGA	3FG%	FT-FTA	FT%	OFF	DEF	TOT	AVG	PF-FO	A	TO	BLK	STL	PTS	AVG
2024-25	AR	23-0	286/12.4	14-43	.326	9-27	.333	5-10	.500	4	19	23	1.0	8-0	7	13	5	4	42	1.8
<b>TOTAL</b>		<b>23-0</b>	<b>286/12.4</b>	<b>14-43</b>	<b>.326</b>	<b>9-27</b>	<b>.333</b>	<b>5-10</b>	<b>.500</b>	<b>4</b>	<b>19</b>	<b>23</b>	<b>1.0</b>	<b>8-0</b>	<b>7</b>	<b>13</b>	<b>5</b>	<b>4</b>	<b>42</b>	<b>1.8</b>

**Single Game Highs**

Statistic	Value	
Points	9	at UCLA 11/17/24
Rebounds	3	at UCLA 11/17/24, vs Fairfield 11/04/24, at Little Rock 11/11/24
Assists	2	vs Boston College 12/05/24, vs Fairfield 11/04/24
Steals	1	4 times
Blocks	1	5 times
FG Made	3	at UCLA 11/17/24
FG Attempts	7	at UCLA 11/17/24
3FG Made	3	at UCLA 11/17/24
3FG Attempts	7	at UCLA 11/17/24
FT Made	3	vs Texas Tech 12/15/24
FT Attempts	4	vs Texas Tech 12/15/24



**Arkansas Women's Basketball  
Individual Career Summaries  
All games**

**GALEA, Danika**

				Field Goals		3-Point		F-Throws		Rebounds									Scoring	
SEASON	TEAM	GP-GS	MIN/AVG	FG-FGA	FG%	3FG-3FGA	3FG%	FT-FTA	FT%	OFF	DEF	TOT	AVG	PF-FO	A	TO	BLK	STL	PTS	AVG
2024-25	AR	22-0	261/11.9	35-62	.565	2-9	.222	13-18	.722	19	22	41	1.9	43-3	5	25	7	5	85	3.9
<b>TOTAL</b>		<b>22-0</b>	<b>261/11.9</b>	<b>35-62</b>	<b>.565</b>	<b>2-9</b>	<b>.222</b>	<b>13-18</b>	<b>.722</b>	<b>19</b>	<b>22</b>	<b>41</b>	<b>1.9</b>	<b>43-3</b>	<b>5</b>	<b>25</b>	<b>7</b>	<b>5</b>	<b>85</b>	<b>3.9</b>

**Single Game Highs**

Statistic	Value	
Points	10	vs Troy 12/19/24, vs Southeast Mo. St. 12/08/24, vs UT Arlington 11/14/24
Rebounds	6	vs UT Arlington 11/14/24
Assists	2	at Kentucky 01/26/25
Steals	1	5 times
Blocks	2	vs Texas A&M 01/30/25
FG Made	5	vs Troy 12/19/24
FG Attempts	7	vs UT Arlington 11/14/24
3FG Made	2	vs Liberty 12/18/24
3FG Attempts	5	vs Liberty 12/18/24
FT Made	4	vs East Texas A&M 11/08/24
FT Attempts	4	vs East Texas A&M 11/08/24, at Mississippi St. 02/06/25

**HIGGINBOTTOM, Izzy**

				Field Goals		3-Point		F-Throws		Rebounds									Scoring	
SEASON	TEAM	GP-GS	MIN/AVG	FG-FGA	FG%	3FG-3FGA	3FG%	FT-FTA	FT%	OFF	DEF	TOT	AVG	PF-FO	A	TO	BLK	STL	PTS	AVG
2021-22	MO	27-0	492/18.2	56-146	.384	21-57	.368	29-31	.935	17	17	34	1.3	32-0	32	26	1	11	162	6.0
2022-23	ASU	29-25	897/30.9	163-418	.390	37-125	.296	102-112	.911	25	64	89	3.1	47-1	98	66	2	53	465	16.0
2023-24	ASU	26-25	968/37.2	183-396	.462	36-98	.367	175-192	.911	22	83	105	4.0	39-0	95	55	4	35	577	22.2
2024-25	AR	25-25	850/34.0	196-421	.466	32-82	.390	185-204	.907	12	94	106	4.2	37-1	90	98	4	30	609	24.4
<b>TOTAL FOR AR</b>		<b>25-25</b>	<b>850/34.0</b>	<b>196-421</b>	<b>.466</b>	<b>32-82</b>	<b>.390</b>	<b>185-204</b>	<b>.907</b>	<b>12</b>	<b>94</b>	<b>106</b>	<b>4.2</b>	<b>37-1</b>	<b>90</b>	<b>98</b>	<b>4</b>	<b>30</b>	<b>609</b>	<b>24.4</b>
<b>TOTAL</b>		<b>107-75</b>	<b>3208/30.0</b>	<b>598-1381</b>	<b>.433</b>	<b>126-362</b>	<b>.348</b>	<b>491-539</b>	<b>.911</b>	<b>76</b>	<b>258</b>	<b>334</b>	<b>3.1</b>	<b>155-2</b>	<b>315</b>	<b>245</b>	<b>11</b>	<b>129</b>	<b>1813</b>	<b>16.9</b>

**Single Game Highs**

Statistic	Value	
Points	40	vs Florida 02/03/25
Rebounds	10	vs Texas A&M 01/30/25
Assists	9	vs Bowling Green 11/30/24, at McNeese 11/29/22
Steals	6	at Coastal Carolina 02/02/23
Blocks	1	11 times
FG Made	14	vs Boston College 12/05/24
FG Attempts	31	at Troy 01/27/24
3FG Made	5	vs North Ala. 12/14/23
3FG Attempts	9	vs Marshall 01/28/23, vs Oklahoma 11/22/22
FT Made	19	vs Old Dominion 02/03/24
FT Attempts	20	vs Old Dominion 02/03/24





**Arkansas Women's Basketball  
Individual Career Summaries  
All games**

**JOHNSON, Karley**

				Field Goals		3-Point		F-Throws		Rebounds								Scoring		
SEASON	TEAM	GP-GS	MIN/AVG	FG-FGA	FG%	3FG-3FGA	3FG%	FT-FTA	FT%	OFF	DEF	TOT	AVG	PF-FO	A	TO	BLK	STL	PTS	AVG
2022-23	AR	10-0	26/2.6	0-1	.000	0-0	.000	1-2	.500	1	1	2	0.2	1-0	1	0	0	3	1	0.1
2023-24	AR	19-5	339/17.8	19-53	.358	8-29	.276	17-30	.567	13	21	34	1.8	29-0	5	7	1	7	63	3.3
2024-25	AR	23-2	320/13.9	21-55	.382	1-10	.100	17-24	.708	20	47	67	2.9	29-0	12	14	2	13	60	2.6
<b>TOTAL</b>		<b>52-7</b>	<b>686/13.2</b>	<b>40-109</b>	<b>.367</b>	<b>9-39</b>	<b>.231</b>	<b>35-56</b>	<b>.625</b>	<b>34</b>	<b>69</b>	<b>103</b>	<b>2.0</b>	<b>59-0</b>	<b>18</b>	<b>21</b>	<b>3</b>	<b>23</b>	<b>124</b>	<b>2.4</b>

**Single Game Highs**

Statistic	Value	
Points	14	vs Kentucky 01/25/24, at Vanderbilt 01/23/25
Rebounds	10	vs UT Arlington 11/14/24
Assists	3	at Florida 02/08/24, vs Arkansas St. 11/24/24
Steals	3	vs Arkansas St. 11/24/24
Blocks	2	vs Bowling Green 11/30/24
FG Made	6	at Vanderbilt 01/23/25
FG Attempts	8	at Vanderbilt 01/23/25
3FG Made	2	vs Kentucky 01/25/24, at Tulsa 03/21/24
3FG Attempts	4	at Missouri 01/28/24, vs Vanderbilt 02/25/24
FT Made	4	vs Kentucky 01/25/24
FT Attempts	6	vs Kentucky 01/25/24

**KEATS, Carly**

				Field Goals		3-Point		F-Throws		Rebounds								Scoring		
SEASON	TEAM	GP-GS	MIN/AVG	FG-FGA	FG%	3FG-3FGA	3FG%	FT-FTA	FT%	OFF	DEF	TOT	AVG	PF-FO	A	TO	BLK	STL	PTS	AVG
2023-24	AR	29-10	641/22.1	64-203	.315	31-122	.254	18-23	.783	5	33	38	1.3	23-0	18	23	4	9	177	6.1
2024-25	AR	23-21	545/23.7	68-197	.345	39-123	.317	15-16	.938	1	38	39	1.7	9-0	17	31	3	5	190	8.3
<b>TOTAL</b>		<b>52-31</b>	<b>1186/22.8</b>	<b>132-400</b>	<b>.330</b>	<b>70-245</b>	<b>.286</b>	<b>33-39</b>	<b>.846</b>	<b>6</b>	<b>71</b>	<b>77</b>	<b>1.5</b>	<b>32-0</b>	<b>35</b>	<b>54</b>	<b>7</b>	<b>14</b>	<b>367</b>	<b>7.1</b>

**Single Game Highs**

Statistic	Value	
Points	19	vs Southeast Mo. St. 12/08/24
Rebounds	5	at UCLA 11/17/24, vs Central Ark. 12/29/24
Assists	4	vs Auburn 03/07/24
Steals	2	vs ULM 11/07/23, vs Kentucky 01/25/24, vs South Carolina 02/29/24
Blocks	2	vs UIC 12/21/23
FG Made	7	vs Georgia 01/07/24
FG Attempts	16	vs Georgia 01/07/24
3FG Made	5	vs Southeast Mo. St. 12/08/24
3FG Attempts	11	vs LSU 01/02/25
FT Made	4	vs ULM 11/07/23, at Texas 01/05/25
FT Attempts	5	vs ULM 11/07/23, vs South Carolina 02/29/24



**Arkansas Women's Basketball  
Individual Career Summaries  
All games**

**LAWRENCE, Jenna**

				Field Goals		3-Point		F-Throws		Rebounds									Scoring	
SEASON	TEAM	GP-GS	MIN/AVG	FG-FGA	FG%	3FG-3FGA	3FG%	FT-FTA	FT%	OFF	DEF	TOT	AVG	PF-FO	A	TO	BLK	STL	PTS	AVG
2023-24	AR	24-2	279/11.6	21-53	.396	13-42	.310	5-8	.625	15	46	61	2.5	25-0	5	10	10	7	60	2.5
2024-25	AR	25-20	614/24.6	60-171	.351	31-117	.265	16-19	.842	28	111	139	5.6	40-1	8	19	29	18	167	6.7
<b>TOTAL</b>		<b>49-22</b>	<b>893/18.2</b>	<b>81-224</b>	<b>.362</b>	<b>44-159</b>	<b>.277</b>	<b>21-27</b>	<b>.778</b>	<b>43</b>	<b>157</b>	<b>200</b>	<b>4.1</b>	<b>65-1</b>	<b>13</b>	<b>29</b>	<b>39</b>	<b>25</b>	<b>227</b>	<b>4.6</b>

**Single Game Highs**

Statistic	Value	
Points	21	vs Bowling Green 11/30/24
Rebounds	12	vs UT Arlington 11/14/24
Assists	2	at UCLA 11/17/24
Steals	3	vs Arkansas St. 11/24/24, at Texas 01/05/25
Blocks	5	vs Bowling Green 11/30/24
FG Made	8	vs Bowling Green 11/30/24
FG Attempts	14	vs Bowling Green 11/30/24
3FG Made	5	vs Bowling Green 11/30/24
3FG Attempts	10	vs Bowling Green 11/30/24, vs East Texas A&M 11/08/24
FT Made	4	vs Troy 12/19/24
FT Attempts	5	vs Troy 12/19/24

**LINDSEY, Loren**

				Field Goals		3-Point		F-Throws		Rebounds									Scoring	
SEASON	TEAM	GP-GS	MIN/AVG	FG-FGA	FG%	3FG-3FGA	3FG%	FT-FTA	FT%	OFF	DEF	TOT	AVG	PF-FO	A	TO	BLK	STL	PTS	AVG
2022-23	AR	9-0	17/1.9	0-0	.000	0-0	.000	0-0	.000	0	1	1	0.1	0-0	0	0	0	0	0	0.0
2023-24	AR	1-0	4/3.6	0-0	.000	0-0	.000	0-0	.000	0	0	0	0.0	0-0	1	0	0	0	0	0.0
2024-25	AR	5-0	22/4.4	0-3	.000	0-2	.000	0-0	.000	0	2	2	0.4	3-0	2	0	0	1	0	0.0
<b>TOTAL</b>		<b>15-0</b>	<b>42/2.8</b>	<b>0-3</b>	<b>.000</b>	<b>0-2</b>	<b>.000</b>	<b>0-0</b>	<b>.000</b>	<b>0</b>	<b>3</b>	<b>3</b>	<b>0.2</b>	<b>3-0</b>	<b>3</b>	<b>0</b>	<b>0</b>	<b>1</b>	<b>0</b>	<b>0.0</b>

**Single Game Highs**

Statistic	Value	
Rebounds	2	vs Southeast Mo. St. 12/08/24
Assists	1	vs Little Rock 11/14/23, at UCLA 11/17/24, vs UT Arlington 11/14/24
Steals	1	vs Southeast Mo. St. 12/08/24
FG Attempts	2	vs Southeast Mo. St. 12/08/24
3FG Attempts	2	vs Southeast Mo. St. 12/08/24



**Arkansas Women's Basketball  
Individual Career Summaries  
All games**

**OJENUWA, Vera**

				Field Goals		3-Point		F-Throws		Rebounds									Scoring	
SEASON	TEAM	GP-GS	MIN/AVG	FG-FGA	FG%	3FG-3FGA	3FG%	FT-FTA	FT%	OFF	DEF	TOT	AVG	PF-FO	A	TO	BLK	STL	PTS	AVG
2024-25	AR	25-25	576/23.0	69-151	.457	3-11	.273	36-62	.581	62	109	171	6.8	76-5	14	52	16	20	177	7.1
<b>TOTAL</b>		<b>25-25</b>	<b>576/23.0</b>	<b>69-151</b>	<b>.457</b>	<b>3-11</b>	<b>.273</b>	<b>36-62</b>	<b>.581</b>	<b>62</b>	<b>109</b>	<b>171</b>	<b>6.8</b>	<b>76-5</b>	<b>14</b>	<b>52</b>	<b>16</b>	<b>20</b>	<b>177</b>	<b>7.1</b>

**Single Game Highs**

Statistic	Value	
Points	20	vs Arkansas St. 11/24/24
Rebounds	14	vs Southeast Mo. St. 12/08/24
Assists	2	vs Arkansas St. 11/24/24, vs East Texas A&M 11/08/24, vs Central Ark. 12/29/24
Steals	2	6 times
Blocks	2	at UCLA 11/17/24, vs Fairfield 11/04/24
FG Made	8	vs Arkansas St. 11/24/24
FG Attempts	12	vs Arkansas St. 11/24/24
3FG Made	1	vs Bowling Green 11/30/24, vs Texas A&M 01/30/25, vs Central Ark. 12/29/24
3FG Attempts	2	at UCLA 11/17/24, at Kentucky 01/26/25
FT Made	6	vs East Texas A&M 11/08/24
FT Attempts	9	vs East Texas A&M 11/08/24

**PAANANEN, Pinja**

				Field Goals		3-Point		F-Throws		Rebounds									Scoring	
SEASON	TEAM	GP-GS	MIN/AVG	FG-FGA	FG%	3FG-3FGA	3FG%	FT-FTA	FT%	OFF	DEF	TOT	AVG	PF-FO	A	TO	BLK	STL	PTS	AVG
2024-25	AR	22-0	218/9.9	12-37	.324	6-25	.240	5-7	.714	8	28	36	1.6	11-0	5	9	6	5	35	1.6
<b>TOTAL</b>		<b>22-0</b>	<b>218/9.9</b>	<b>12-37</b>	<b>.324</b>	<b>6-25</b>	<b>.240</b>	<b>5-7</b>	<b>.714</b>	<b>8</b>	<b>28</b>	<b>36</b>	<b>1.6</b>	<b>11-0</b>	<b>5</b>	<b>9</b>	<b>6</b>	<b>5</b>	<b>35</b>	<b>1.6</b>

**Single Game Highs**

Statistic	Value	
Points	6	vs Bowling Green 11/30/24, vs UT Arlington 11/14/24
Rebounds	5	at Little Rock 11/11/24, vs Fairfield 11/04/24
Assists	1	5 times
Steals	1	5 times
Blocks	2	vs Southeast Mo. St. 12/08/24, vs UT Arlington 11/14/24
FG Made	2	vs Bowling Green 11/30/24, vs UT Arlington 11/14/24
FG Attempts	6	vs Florida 02/03/25
3FG Made	2	vs UT Arlington 11/14/24
3FG Attempts	4	vs Arkansas St. 11/24/24, vs Florida 02/03/25
FT Made	2	vs Central Ark. 12/29/24
FT Attempts	2	vs Bowling Green 11/30/24, at Texas 01/05/25, vs Central Ark. 12/29/24



**Arkansas Women's Basketball  
Individual Career Summaries  
All games**

**ROGERS, Ella**

				Field Goals		3-Point		F-Throws		Rebounds									Scoring		
SEASON	TEAM	GP-GS	MIN/AVG	FG-FGA	FG%	3FG-3FGA	3FG%	FT-FTA	FT%	OFF	DEF	TOT	AVG	PF-FO	A	TO	BLK	STL	PTS	AVG	
2024-25	AR	1-0	2/2.4	0-0	.000	0-0	.000	0-0	.000	0	0	0	0.0	0-0	0	0	0	0	0	0	0.0
<b>TOTAL</b>		<b>1-0</b>	<b>2/2.4</b>	<b>0-0</b>	<b>.000</b>	<b>0-0</b>	<b>.000</b>	<b>0-0</b>	<b>.000</b>	<b>0</b>	<b>0</b>	<b>0</b>	<b>0.0</b>	<b>0-0</b>	<b>0</b>	<b>0</b>	<b>0</b>	<b>0</b>	<b>0</b>	<b>0</b>	<b>0.0</b>

**SMITH, Kiki**

				Field Goals		3-Point		F-Throws		Rebounds									Scoring	
SEASON	TEAM	GP-GS	MIN/AVG	FG-FGA	FG%	3FG-3FGA	3FG%	FT-FTA	FT%	OFF	DEF	TOT	AVG	PF-FO	A	TO	BLK	STL	PTS	AVG
2024-25	AR	22-22	642/29.2	81-195	.415	47-117	.402	21-29	.724	8	38	46	2.1	35-0	49	49	5	14	230	10.5
<b>TOTAL</b>		<b>22-22</b>	<b>642/29.2</b>	<b>81-195</b>	<b>.415</b>	<b>47-117</b>	<b>.402</b>	<b>21-29</b>	<b>.724</b>	<b>8</b>	<b>38</b>	<b>46</b>	<b>2.1</b>	<b>35-0</b>	<b>49</b>	<b>49</b>	<b>5</b>	<b>14</b>	<b>230</b>	<b>10.5</b>

**Single Game Highs**

Statistic	Value	
Points	23	vs Alabama 01/19/25
Rebounds	4	5 times
Assists	5	vs Bowling Green 11/30/24, vs Arkansas St. 11/24/24, vs Central Ark. 12/29/24
Steals	3	vs Troy 12/19/24
Blocks	1	5 times
FG Made	8	vs East Texas A&M 11/08/24, vs Alabama 01/19/25
FG Attempts	18	at Little Rock 11/11/24
3FG Made	4	7 times
3FG Attempts	12	at Little Rock 11/11/24
FT Made	4	vs Oral Roberts 11/21/24, vs Boston College 12/05/24
FT Attempts	6	vs Oral Roberts 11/21/24



**Arkansas Women's Basketball  
Individual Career Summaries  
All games**

**STOTJIN, Phoenix**

				Field Goals		3-Point		F-Throws		Rebounds									Scoring	
SEASON	TEAM	GP-GS	MIN/AVG	FG-FGA	FG%	3FG-3FGA	3FG%	FT-FTA	FT%	OFF	DEF	TOT	AVG	PF-FO	A	TO	BLK	STL	PTS	AVG
2024-25	AR	14-5	317/22.7	33-107	.308	11-55	.200	10-22	.455	5	10	15	1.1	14-0	24	39	1	9	87	6.2
<b>TOTAL</b>		<b>14-5</b>	<b>317/22.7</b>	<b>33-107</b>	<b>.308</b>	<b>11-55</b>	<b>.200</b>	<b>10-22</b>	<b>.455</b>	<b>5</b>	<b>10</b>	<b>15</b>	<b>1.1</b>	<b>14-0</b>	<b>24</b>	<b>39</b>	<b>1</b>	<b>9</b>	<b>87</b>	<b>6.2</b>

**Single Game Highs**

Statistic	Value	
Points	12	vs Central Ark. 12/29/24, vs Texas Tech 12/15/24
Rebounds	6	vs Central Ark. 12/29/24
Assists	4	vs Alabama 01/19/25, vs Central Ark. 12/29/24
Steals	2	at Mississippi St. 02/06/25
Blocks	1	vs Florida 02/03/25
FG Made	4	vs Texas Tech 12/15/24, vs Alabama 01/19/25
FG Attempts	13	vs Florida 02/03/25, vs Central Ark. 12/29/24
3FG Made	3	vs Texas Tech 12/15/24, vs Alabama 01/19/25
3FG Attempts	8	vs Troy 12/19/24
FT Made	5	vs Central Ark. 12/29/24
FT Attempts	9	vs Central Ark. 12/29/24

**SÁNCHEZ CERQUEIRA, Cristina**

				Field Goals		3-Point		F-Throws		Rebounds									Scoring	
SEASON	TEAM	GP-GS	MIN/AVG	FG-FGA	FG%	3FG-3FGA	3FG%	FT-FTA	FT%	OFF	DEF	TOT	AVG	PF-FO	A	TO	BLK	STL	PTS	AVG
2023-24	AR	20-0	90/4.5	5-22	.227	0-4	.000	1-2	.500	6	14	20	1.0	15-0	2	6	3	0	11	0.6
2024-25	AR	23-5	307/13.3	12-47	.255	3-17	.176	11-24	.458	18	71	89	3.9	30-1	7	28	3	8	38	1.7
<b>TOTAL</b>		<b>43-5</b>	<b>397/9.2</b>	<b>17-69</b>	<b>.246</b>	<b>3-21</b>	<b>.143</b>	<b>12-26</b>	<b>.462</b>	<b>24</b>	<b>85</b>	<b>109</b>	<b>2.5</b>	<b>45-1</b>	<b>9</b>	<b>34</b>	<b>6</b>	<b>8</b>	<b>49</b>	<b>1.1</b>

**Single Game Highs**

Statistic	Value	
Points	9	vs Florida 02/03/25
Rebounds	10	vs Central Ark. 12/29/24
Assists	2	vs Florida 02/03/25, at Vanderbilt 01/23/25
Steals	2	vs Southeast Mo. St. 12/08/24, vs Florida 02/03/25
Blocks	2	vs Boston College 12/05/24
FG Made	4	vs Florida 02/03/25
FG Attempts	8	vs Florida 02/03/25
3FG Made	1	vs Florida 02/03/25, at Kentucky 01/26/25, vs Central Ark. 12/29/24
3FG Attempts	4	at Kentucky 01/26/25
FT Made	2	4 times
FT Attempts	3	vs Florida 02/03/25, vs Alabama 01/19/25



2024-25 Arkansas Women's Basketball  
Individual Game-by-Game  
All games

#0 ROGERS, Ella

Opponent	Date	GS	MIN	Total		3-Pointers		Free throws		Rebounds				PF	A	TO	BLK	STL	PTS	AVG
				FG-FGA	PCT	3FG-3FGA	PCT	FT-FTA	PCT	OFF	DEF	TOT	AVG							
Florida	02/03/2025		02:21	0-0	.000	0-0	.000	0-0	.000	0	0	0	0.0	0	0	0	0	0	0	0.0
<b>Totals</b>		<b>0</b>	<b>02:21</b>	<b>0-0</b>	<b>.000</b>	<b>0-0</b>	<b>.000</b>	<b>0-0</b>	<b>.000</b>	<b>0</b>	<b>0</b>	<b>0</b>	<b>0.0</b>	<b>0</b>	<b>0</b>	<b>0</b>	<b>0</b>	<b>0</b>	<b>0</b>	<b>0.0</b>

Player Averages

Games Played	Minutes/game	Points/game	FG Pct	3FG Pct	FT Pct	Rebounds/game	Assists/game	Turnovers/game	Assist/Turnover ratio	Steals/game	Blocks/game
1	2.4	0.0	0.0	0.0	0.0	0.0	0.0	0.0	0.0	0.0	0.0



**2024-25 Arkansas Women's Basketball  
Individual Game-by-Game  
All games**

**#1 STOTJIN, Phoenix**

Opponent	Date	GS	MIN	Total		3-Pointers		Free throws		Rebounds				PF	A	TO	BLK	STL	PTS	AVG
				FG-FGA	PCT	3FG-3FGA	PCT	FT-FTA	PCT	OFF	DEF	TOT	AVG							
Texas Tech	12/15/2024		20:25	4-9	.444	3-6	.500	1-1	1.000	0	0	0	0.0	1	1	2	0	0	12	12.0
vs Liberty	12/18/2024		20:51	3-8	.375	1-4	.250	0-0	.000	1	0	1	0.5	0	1	2	0	1	7	9.5
vs Troy	12/19/2024		15:39	1-10	.100	1-8	.125	0-0	.000	0	1	1	0.7	2	2	1	0	0	3	7.3
Central Ark.	12/29/2024		21:52	3-13	.231	1-7	.143	5-9	.556	2	4	6	2.0	0	4	4	0	0	12	8.5
LSU	01/02/2025		20:39	2-7	.286	1-4	.250	0-0	.000	0	0	0	1.6	2	2	6	0	1	5	7.8
at Texas	01/05/2025		21:57	3-7	.429	0-1	.000	0-0	.000	0	1	1	1.5	2	1	4	0	0	6	7.5
at Auburn	01/09/2025		24:00	2-7	.286	0-3	.000	0-0	.000	1	1	2	1.6	1	2	2	0	1	4	7.0
Tennessee	01/12/2025		13:35	0-0	.000	0-0	.000	3-4	.750	0	1	1	1.5	2	0	4	0	1	3	6.5
Alabama	01/19/2025		21:16	4-10	.400	3-6	.500	0-2	.000	1	0	1	1.4	0	4	1	0	1	11	7.0
at Vanderbilt	01/23/2025	*	20:31	3-9	.333	1-3	.333	1-2	.500	0	0	0	1.3	0	0	6	0	1	8	7.1
at Kentucky	01/26/2025	*	14:42	0-1	.000	0-1	.000	0-0	.000	0	0	0	1.2	0	1	2	0	0	0	6.5
Texas A&M	01/30/2025	*	29:29	2-3	.667	0-1	.000	0-2	.000	0	0	0	1.1	2	1	1	0	0	4	6.3
Florida	02/03/2025	*	37:48	3-13	.231	0-7	.000	0-2	.000	0	0	0	1.0	1	3	0	1	1	6	6.2
at Mississippi St.	02/06/2025	*	34:24	3-10	.300	0-4	.000	0-0	.000	0	2	2	1.1	1	2	4	0	2	6	6.2
<b>Totals</b>		<b>5</b>	<b>317:09</b>	<b>33-107</b>	<b>.308</b>	<b>11-55</b>	<b>.200</b>	<b>10-22</b>	<b>.455</b>	<b>5</b>	<b>10</b>	<b>15</b>	<b>1.1</b>	<b>14</b>	<b>24</b>	<b>39</b>	<b>1</b>	<b>9</b>	<b>87</b>	<b>6.2</b>

**Player Averages**

Games Played	Minutes/game	Points/game	FG Pct	3FG Pct	FT Pct	Rebounds/game	Assists/game	Turnovers/game	Assist/Turnover ratio	Steals/game	Blocks/game
14	22.7	6.2	30.8	20.0	45.5	1.1	1.7	2.8	0.6	0.6	0.1



**2024-25 Arkansas Women's Basketball  
Individual Game-by-Game  
All games**

**#2 SMITH, Kiki**

Opponent	Date	GS	MIN	Total		3-Pointers		Free throws		Rebounds				PF	A	TO	BLK	STL	PTS	AVG	
				FG-FGA	PCT	3FG-3FGA	PCT	FT-FTA	PCT	OFF	DEF	TOT	AVG								
Fairfield	11/04/2024	*	34:16	5-10	.500	4-6	.667	0-0	.000	0	2	2	2.0	0	3	2	0	0	14	14.0	
East Texas A&M	11/08/2024	*	34:41	8-9	.889	4-5	.800	2-3	.667	0	2	2	2.0	1	1	1	0	0	22	18.0	
at Little Rock	11/11/2024	*	39:37	6-18	.333	4-12	.333	0-1	.000	0	3	3	2.3	2	0	3	0	0	16	17.3	
UT Arlington	11/14/2024	*	30:47	2-10	.200	1-5	.200	0-0	.000	1	2	3	2.5	1	3	0	1	0	5	14.3	
at UCLA	11/17/2024	*	26:52	3-7	.429	1-5	.200	1-2	.500	0	0	0	2.0	3	2	1	0	0	8	13.0	
Oral Roberts	11/21/2024	*	33:43	6-15	.400	4-10	.400	4-6	.667	1	3	4	2.3	3	2	8	0	2	20	14.2	
Arkansas St.	11/24/2024	*	32:07	5-8	.625	3-5	.600	2-2	1.000	0	1	1	2.1	0	5	4	1	0	15	14.3	
vs Oklahoma St.	11/29/2024	*	35:42	6-14	.429	2-4	.500	0-0	.000	1	2	3	2.3	2	2	0	0	0	14	14.3	
vs Bowling Green	11/30/2024	*	37:50	4-10	.400	3-6	.500	0-0	.000	0	0	0	2.0	0	5	1	0	0	11	13.9	
Boston College	12/05/2024	*	36:21	5-10	.500	1-3	.333	4-5	.800	0	1	1	1.9	2	3	5	0	1	15	14.0	
Southeast Mo. St.	12/08/2024	*	27:13	1-5	.200	0-2	.000	2-2	1.000	1	3	4	2.1	1	4	2	1	1	4	13.1	
Texas Tech	12/15/2024	*	26:55	2-8	.250	2-7	.286	0-0	.000	0	1	1	2.0	2	1	3	0	1	6	12.5	
vs Liberty	12/18/2024	*	23:21	0-4	.000	0-2	.000	0-0	.000	0	2	2	2.0	1	1	2	0	1	0	11.5	
vs Troy	12/19/2024	*	29:56	4-11	.364	4-8	.500	1-2	.500	2	2	4	2.1	3	3	2	0	3	13	11.6	
Central Ark.	12/29/2024	*	30:16	4-7	.571	4-7	.571	0-0	.000	1	3	4	2.3	0	5	3	1	1	12	11.7	
LSU	01/02/2025	*	28:01	1-6	.167	1-5	.200	0-0	.000	0	1	1	2.2	1	3	1	0	2	3	11.1	
at Texas	01/05/2025	*	27:44	2-6	.333	1-3	.333	0-0	.000	0	1	1	2.1	3	2	3	0	0	5	10.8	
at Auburn	01/09/2025	*	23:13	4-6	.667	1-2	.500	0-1	.000	0	2	2	2.1	4	0	1	0	0	9	10.7	
Tennessee	01/12/2025	*	25:39	2-7	.286	1-6	.167	2-2	1.000	0	2	2	2.1	3	2	3	1	1	7	10.5	
Alabama	01/19/2025	*	29:52	8-15	.533	4-9	.444	3-3	1.000	1	3	4	2.2	0	0	1	0	1	23	11.1	
at Vanderbilt	01/23/2025	*	17:37	2-6	.333	1-3	.333	0-0	.000	0	1	1	2.1	2	0	3	0	0	5	10.8	
at Kentucky	01/26/2025	*	10:14	1-3	.333	1-2	.500	0-0	.000	0	1	1	2.1	1	2	0	0	0	3	10.5	
<b>Totals</b>			<b>22</b>	<b>641:58</b>	<b>81-195</b>	<b>.415</b>	<b>47-117</b>	<b>.402</b>	<b>21-29</b>	<b>.724</b>	<b>8</b>	<b>38</b>	<b>46</b>	<b>2.1</b>	<b>35</b>	<b>49</b>	<b>49</b>	<b>5</b>	<b>14</b>	<b>230</b>	<b>10.5</b>

**Player Averages**

Games Played	Minutes/ game	Points/ game	FG Pct	3FG Pct	FT Pct	Rebounds/ game	Assists/ game	Turnovers/ game	Assist/Turnover ratio	Steals/ game	Blocks/ game
22	29.2	10.5	41.5	40.2	72.4	2.1	2.2	2.2	1.0	0.6	0.2





**2024-25 Arkansas Women's Basketball  
Individual Game-by-Game  
All games**

**#3 HIGGINBOTTOM, Izzy**

Opponent	Date	GS	MIN	Total		3-Pointers		Free throws		Rebounds				PF	A	TO	BLK	STL	PTS	AVG
				FG-FGA	PCT	3FG-3FGA	PCT	FT-FTA	PCT	OFF	DEF	TOT	AVG							
Fairfield	11/04/2024	*	36:02	7-17	.412	0-1	.000	8-10	.800	0	1	1	1.0	1	2	7	0	1	22	22.0
East Texas A&M	11/08/2024	*	30:48	7-11	.636	1-2	.500	4-4	1.000	1	6	7	4.0	1	3	5	0	0	19	20.5
at Little Rock	11/11/2024	*	43:13	6-14	.429	1-5	.200	11-11	1.000	0	4	4	4.0	1	6	1	1	1	24	21.7
UT Arlington	11/14/2024	*	30:04	10-23	.435	3-6	.500	6-7	.857	1	4	5	4.3	1	6	2	0	0	29	23.5
at UCLA	11/17/2024	*	33:30	5-18	.278	1-7	.143	4-4	1.000	1	2	3	4.0	2	3	3	0	0	15	21.8
Oral Roberts	11/21/2024	*	34:44	6-15	.400	2-3	.667	13-15	.867	0	2	2	3.7	1	5	2	0	1	27	22.7
Arkansas St.	11/24/2024	*	35:34	7-13	.538	0-1	.000	1-3	.333	0	8	8	4.3	1	5	3	0	2	15	21.6
vs Oklahoma St.	11/29/2024	*	33:23	8-16	.500	1-2	.500	9-10	.900	0	2	2	4.0	2	3	5	0	1	26	22.1
vs Bowling Green	11/30/2024	*	38:46	7-15	.467	0-0	.000	12-12	1.000	1	3	4	4.0	2	9	1	1	1	26	22.6
Boston College	12/05/2024	*	38:02	14-23	.609	0-1	.000	10-11	.909	0	4	4	4.0	2	2	3	0	3	38	24.1
Southeast Mo. St.	12/08/2024	*	26:56	6-15	.400	1-3	.333	5-5	1.000	0	6	6	4.2	0	3	3	0	0	18	23.5
Texas Tech	12/15/2024	*	35:12	9-14	.643	1-1	1.000	7-8	.875	0	2	2	4.0	3	1	7	0	3	26	23.8
vs Liberty	12/18/2024	*	35:07	8-18	.444	1-6	.167	7-7	1.000	2	4	6	4.2	4	3	3	0	1	24	23.8
vs Troy	12/19/2024	*	35:16	7-19	.368	2-4	.500	3-3	1.000	1	3	4	4.1	2	7	4	0	2	19	23.4
Central Ark.	12/29/2024	*	23:34	9-14	.643	1-2	.500	7-9	.778	2	1	3	4.1	1	4	2	0	2	26	23.6
LSU	01/02/2025	*	32:14	10-21	.476	1-3	.333	6-6	1.000	0	2	2	3.9	1	2	4	1	1	27	23.8
at Texas	01/05/2025	*	31:45	7-14	.500	1-2	.500	8-8	1.000	0	4	4	3.9	2	2	4	0	1	23	23.8
at Auburn	01/09/2025	*	39:31	13-20	.650	3-5	.600	7-9	.778	1	3	4	3.9	1	2	7	0	2	36	24.4
Tennessee	01/12/2025	*	33:40	8-20	.400	2-6	.333	8-9	.889	1	5	6	4.1	0	2	6	0	1	26	24.5
Alabama	01/19/2025	*	26:32	2-11	.182	0-0	.000	1-2	.500	0	3	3	4.0	2	2	3	1	0	5	23.6
at Vanderbilt	01/23/2025	*	30:57	2-6	.333	1-3	.333	2-2	1.000	0	5	5	4.0	2	4	8	0	0	7	22.8
at Kentucky	01/26/2025	*	35:42	10-25	.400	3-7	.429	9-10	.900	0	2	2	4.0	0	3	3	0	1	32	23.2
Texas A&M	01/30/2025	*	40:00	10-21	.476	2-4	.500	11-13	.846	1	9	10	4.2	0	7	2	0	2	33	23.6
Florida	02/03/2025	*	37:00	12-25	.480	3-6	.500	13-13	1.000	0	7	7	4.3	0	4	3	0	1	40	24.3
at Mississippi St.	02/06/2025	*	32:31	6-13	.462	1-2	.500	13-13	1.000	0	2	2	4.2	5	0	7	0	3	26	24.4
<b>Totals</b>			<b>25 850:04</b>	<b>196-421</b>	<b>.466</b>	<b>32-82</b>	<b>.390</b>	<b>185-204</b>	<b>.907</b>	<b>12</b>	<b>94</b>	<b>106</b>	<b>4.2</b>	<b>37</b>	<b>90</b>	<b>98</b>	<b>4</b>	<b>30</b>	<b>609</b>	<b>24.4</b>

**Player Averages**

Games Played	Minutes/game	Points/game	FG Pct	3FG Pct	FT Pct	Rebounds/game	Assists/game	Turnovers/game	Assist/Turnover ratio	Steals/game	Blocks/game
25	34.0	24.4	46.6	39.0	90.7	4.2	3.6	3.9	0.9	1.2	0.2



**2024-25 Arkansas Women's Basketball  
Individual Game-by-Game  
All games**

**#10 SÁNCHEZ CERQUEIRA, Cristina**

Opponent	Date	GS	MIN	Total		3-Pointers		Free throws		Rebounds				PF	A	TO	BLK	STL	PTS	AVG
				FG-FGA	PCT	3FG-3FGA	PCT	FT-FTA	PCT	OFF	DEF	TOT	AVG							
Fairfield	11/04/2024		00:35	0-0	.000	0-0	.000	0-0	.000	0	0	0	0.0	0	0	0	0	0	0	0.0
East Texas A&M	11/08/2024		08:26	0-1	.000	0-0	.000	0-0	.000	0	4	4	2.0	0	0	2	0	0	0	0.0
at Little Rock	11/11/2024		00:05	0-0	.000	0-0	.000	0-0	.000	0	0	0	1.3	0	0	0	0	0	0	0.0
UT Arlington	11/14/2024		03:54	0-0	.000	0-0	.000	0-2	.000	0	2	2	1.5	0	0	2	0	0	0	0.0
at UCLA	11/17/2024		02:16	0-1	.000	0-1	.000	0-0	.000	0	0	0	1.2	0	0	0	1	0	0	0.0
Oral Roberts	11/21/2024		01:56	1-1	1.000	0-0	.000	0-1	.000	0	1	1	1.2	0	0	2	0	0	2	0.3
vs Oklahoma St.	11/29/2024		01:13	0-1	.000	0-1	.000	0-0	.000	0	0	0	1.0	0	0	0	0	0	0	0.3
Boston College	12/05/2024		13:36	0-1	.000	0-0	.000	0-0	.000	1	4	5	1.5	1	0	0	2	1	0	0.3
Southeast Mo. St.	12/08/2024		11:51	0-2	.000	0-1	.000	1-2	.500	1	4	5	1.9	0	1	1	0	2	1	0.3
Texas Tech	12/15/2024		18:01	0-0	.000	0-0	.000	0-0	.000	1	3	4	2.1	3	0	0	0	0	0	0.3
vs Liberty	12/18/2024		08:53	0-1	.000	0-0	.000	0-0	.000	0	2	2	2.1	1	0	0	0	0	0	0.3
vs Troy	12/19/2024		17:01	1-4	.250	0-1	.000	2-2	1.000	2	7	9	2.7	1	0	1	0	0	4	0.6
Central Ark.	12/29/2024		15:52	1-2	.500	1-1	1.000	0-2	.000	2	8	10	3.2	3	0	0	0	0	3	0.8
LSU	01/02/2025		16:41	0-3	.000	0-1	.000	0-0	.000	4	3	7	3.5	2	1	1	0	0	0	0.7
at Texas	01/05/2025		19:10	0-1	.000	0-0	.000	1-2	.500	0	2	2	3.4	3	0	3	0	0	1	0.7
at Auburn	01/09/2025		22:03	0-0	.000	0-0	.000	2-2	1.000	0	2	2	3.3	2	0	1	0	1	2	0.8
Tennessee	01/12/2025		16:25	1-3	.333	0-0	.000	2-2	1.000	1	1	2	3.2	1	0	1	0	1	4	1.0
Alabama	01/19/2025		17:59	0-0	.000	0-0	.000	2-3	.667	1	5	6	3.4	1	1	3	0	0	2	1.1
at Vanderbilt	01/23/2025	*	26:54	1-4	.250	0-1	.000	0-0	.000	2	6	8	3.6	2	2	2	0	0	2	1.1
at Kentucky	01/26/2025	*	22:50	1-6	.167	1-4	.250	1-2	.500	0	5	5	3.7	5	0	0	0	1	4	1.3
Texas A&M	01/30/2025	*	15:32	1-2	.500	0-1	.000	0-0	.000	0	6	6	3.8	4	0	4	0	0	2	1.3
Florida	02/03/2025	*	23:55	4-8	.500	1-3	.333	0-3	.000	3	4	7	4.0	1	2	3	0	2	9	1.6
at Mississippi St.	02/06/2025	*	21:35	1-6	.167	0-2	.000	0-1	.000	0	2	2	3.9	0	0	2	0	0	2	1.7
<b>Totals</b>		<b>5</b>	<b>306:43</b>	<b>12-47</b>	<b>.255</b>	<b>3-17</b>	<b>.176</b>	<b>11-24</b>	<b>.458</b>	<b>18</b>	<b>71</b>	<b>89</b>	<b>3.9</b>	<b>30</b>	<b>7</b>	<b>28</b>	<b>3</b>	<b>8</b>	<b>38</b>	<b>1.7</b>

**Player Averages**

Games Played	Minutes/game	Points/game	FG Pct	3FG Pct	FT Pct	Rebounds/game	Assists/game	Turnovers/game	Assist/Turnover ratio	Steals/game	Blocks/game
23	13.3	1.7	25.5	17.6	45.8	3.9	0.3	1.2	0.3	0.3	0.1



**2024-25 Arkansas Women's Basketball  
Individual Game-by-Game  
All games**

**#15 BATES, Jada**

Opponent	Date	GS	MIN	Total		3-Pointers		Free throws		Rebounds				PF	A	TO	BLK	STL	PTS	AVG
				FG-FGA	PCT	3FG-3FGA	PCT	FT-FTA	PCT	OFF	DEF	TOT	AVG							
Fairfield	11/04/2024		18:10	1-4	.250	1-3	.333	0-0	.000	1	2	3	3.0	1	2	2	1	0	3	3.0
East Texas A&M	11/08/2024		14:25	1-1	1.000	1-1	1.000	0-0	.000	0	2	2	2.5	0	1	0	0	0	3	3.0
at Little Rock	11/11/2024		26:42	2-4	.500	2-3	.667	0-0	.000	1	2	3	2.7	1	0	1	1	0	6	4.0
UT Arlington	11/14/2024		18:26	2-4	.500	0-1	.000	0-1	.000	0	1	1	2.3	0	0	1	1	0	4	4.0
at UCLA	11/17/2024		23:09	3-7	.429	3-7	.429	0-0	.000	0	3	3	2.4	0	1	2	0	0	9	5.0
Oral Roberts	11/21/2024		11:54	0-2	.000	0-1	.000	0-0	.000	1	1	2	2.3	1	0	0	1	0	0	4.2
Arkansas St.	11/24/2024		09:58	0-2	.000	0-0	.000	0-0	.000	0	0	0	2.0	0	0	0	0	0	0	3.6
vs Oklahoma St.	11/29/2024		13:46	0-4	.000	0-2	.000	0-2	.000	0	0	0	1.8	0	0	1	0	0	0	3.1
vs Bowling Green	11/30/2024		02:11	0-0	.000	0-0	.000	0-0	.000	0	0	0	1.6	0	0	0	0	0	0	2.8
Boston College	12/05/2024		25:56	2-5	.400	1-3	.333	0-0	.000	0	1	1	1.5	1	2	1	0	1	5	3.0
Southeast Mo. St.	12/08/2024		17:03	0-2	.000	0-2	.000	0-0	.000	0	2	2	1.5	1	0	1	1	0	0	2.7
Texas Tech	12/15/2024		07:29	0-1	.000	0-1	.000	3-4	.750	0	0	0	1.4	0	0	1	0	1	3	2.8
vs Troy	12/19/2024		04:27	0-0	.000	0-0	.000	0-0	.000	0	0	0	1.3	0	0	0	0	0	0	2.5
Central Ark.	12/29/2024		08:34	1-1	1.000	1-1	1.000	0-0	.000	0	1	1	1.3	1	0	0	0	0	3	2.6
LSU	01/02/2025		03:36	0-0	.000	0-0	.000	0-0	.000	0	0	0	1.2	0	0	0	0	0	0	2.4
at Texas	01/05/2025		03:37	0-0	.000	0-0	.000	0-0	.000	0	1	1	1.2	0	0	0	0	0	0	2.3
at Auburn	01/09/2025		04:42	0-0	.000	0-0	.000	0-0	.000	0	0	0	1.1	1	0	0	0	0	0	2.1
Tennessee	01/12/2025		04:26	0-0	.000	0-0	.000	0-0	.000	0	1	1	1.1	0	0	0	0	0	0	2.0
Alabama	01/19/2025		16:23	0-2	.000	0-1	.000	2-2	1.000	0	0	0	1.1	0	0	0	0	0	2	2.0
at Kentucky	01/26/2025		07:37	0-0	.000	0-0	.000	0-0	.000	0	1	1	1.1	0	1	1	0	0	0	1.9
Texas A&M	01/30/2025		10:20	1-3	.333	0-1	.000	0-0	.000	1	1	2	1.1	1	0	2	0	0	2	1.9
Florida	02/03/2025		13:57	1-1	1.000	0-0	.000	0-1	.000	0	0	0	1.0	0	0	0	0	1	2	1.9
at Mississippi St.	02/06/2025		19:01	0-0	.000	0-0	.000	0-0	.000	0	0	0	1.0	0	0	0	0	1	0	1.8
<b>Totals</b>		<b>0</b>	<b>285:49</b>	<b>14-43</b>	<b>.326</b>	<b>9-27</b>	<b>.333</b>	<b>5-10</b>	<b>.500</b>	<b>4</b>	<b>19</b>	<b>23</b>	<b>1.0</b>	<b>8</b>	<b>7</b>	<b>13</b>	<b>5</b>	<b>4</b>	<b>42</b>	<b>1.8</b>

**Player Averages**

Games Played	Minutes/game	Points/game	FG Pct	3FG Pct	FT Pct	Rebounds/game	Assists/game	Turnovers/game	Assist/Turnover ratio	Steals/game	Blocks/game
23	12.4	1.8	32.6	33.3	50.0	1.0	0.3	0.6	0.5	0.2	0.2



**2024-25 Arkansas Women's Basketball  
Individual Game-by-Game  
All games**

**#16 PAANANEN, Pinja**

Opponent	Date	GS	MIN	Total		3-Pointers		Free throws		Rebounds				PF	A	TO	BLK	STL	PTS	AVG
				FG-FGA	PCT	3FG-3FGA	PCT	FT-FTA	PCT	OFF	DEF	TOT	AVG							
Fairfield	11/04/2024		17:06	1-1	1.000	1-1	1.000	0-0	.000	2	3	5	5.0	0	1	1	1	0	3	3.0
East Texas A&M	11/08/2024		10:27	1-4	.250	0-3	.000	0-0	.000	0	2	2	3.5	0	0	0	0	0	2	2.5
at Little Rock	11/11/2024		19:14	0-4	.000	0-2	.000	0-0	.000	0	5	5	4.0	2	1	1	0	0	0	1.7
UT Arlington	11/14/2024		12:07	2-2	1.000	2-2	1.000	0-0	.000	2	2	4	4.0	2	0	2	2	0	6	2.8
at UCLA	11/17/2024		14:19	1-2	.500	0-1	.000	1-1	1.000	0	2	2	3.6	0	0	1	0	1	3	2.8
Oral Roberts	11/21/2024		04:08	1-1	1.000	0-0	.000	0-0	.000	2	0	2	3.3	1	1	0	0	0	2	2.7
Arkansas St.	11/24/2024		06:24	0-4	.000	0-4	.000	0-0	.000	0	3	3	3.3	1	0	0	1	1	0	2.3
vs Oklahoma St.	11/29/2024		15:42	1-1	1.000	0-0	.000	0-0	.000	0	3	3	3.3	1	0	1	0	1	2	2.3
vs Bowling Green	11/30/2024		25:46	2-5	.400	1-3	.333	1-2	.500	0	2	2	3.1	0	0	0	0	0	6	2.7
Boston College	12/05/2024		04:58	0-0	.000	0-0	.000	0-0	.000	0	0	0	2.8	0	1	1	0	0	0	2.4
Southeast Mo. St.	12/08/2024		16:40	1-3	.333	0-2	.000	0-0	.000	0	3	3	2.8	0	1	0	2	1	2	2.4
Texas Tech	12/15/2024		03:20	0-0	.000	0-0	.000	0-0	.000	0	0	0	2.6	0	0	2	0	0	0	2.2
vs Liberty	12/18/2024		16:09	1-2	.500	1-2	.500	0-0	.000	0	0	0	2.4	1	0	0	0	1	3	2.2
vs Troy	12/19/2024		02:07	0-1	.000	0-1	.000	0-0	.000	0	0	0	2.2	0	0	0	0	0	0	2.1
Central Ark.	12/29/2024		02:29	0-0	.000	0-0	.000	2-2	1.000	2	1	3	2.3	0	0	0	0	0	2	2.1
LSU	01/02/2025		07:03	0-0	.000	0-0	.000	0-0	.000	0	0	0	2.1	0	0	0	0	0	0	1.9
at Texas	01/05/2025		09:48	0-0	.000	0-0	.000	1-2	.500	0	1	1	2.1	1	0	0	0	0	1	1.9
at Auburn	01/09/2025		01:40	0-0	.000	0-0	.000	0-0	.000	0	0	0	1.9	0	0	0	0	0	0	1.8
Tennessee	01/12/2025		04:43	0-1	.000	0-0	.000	0-0	.000	0	0	0	1.8	0	0	0	0	0	0	1.7
Alabama	01/19/2025		10:00	0-0	.000	0-0	.000	0-0	.000	0	0	0	1.8	1	0	0	0	0	0	1.6
at Kentucky	01/26/2025		04:00	0-0	.000	0-0	.000	0-0	.000	0	1	1	1.7	0	0	0	0	0	0	1.5
Florida	02/03/2025		10:04	1-6	.167	1-4	.250	0-0	.000	0	0	0	1.6	1	0	0	0	0	3	1.6
<b>Totals</b>		<b>0</b>	<b>218:14</b>	<b>12-37</b>	<b>.324</b>	<b>6-25</b>	<b>.240</b>	<b>5-7</b>	<b>.714</b>	<b>8</b>	<b>28</b>	<b>36</b>	<b>1.6</b>	<b>11</b>	<b>5</b>	<b>9</b>	<b>6</b>	<b>5</b>	<b>35</b>	<b>1.6</b>

**Player Averages**

Games Played	Minutes/ game	Points/ game	FG Pct	3FG Pct	FT Pct	Rebounds/ game	Assists/ game	Turnovers/ game	Assist/Turnover ratio	Steals/ game	Blocks/ game
22	9.9	1.6	32.4	24.0	71.4	1.6	0.2	0.4	0.6	0.2	0.3



**2024-25 Arkansas Women's Basketball  
Individual Game-by-Game  
All games**

**#20 JOHNSON, Karley**

Opponent	Date	GS	MIN	Total		3-Pointers		Free throws		Rebounds				PF	A	TO	BLK	STL	PTS	AVG
				FG-FGA	PCT	3FG-3FGA	PCT	FT-FTA	PCT	OFF	DEF	TOT	AVG							
East Texas A&M	11/08/2024		14:11	0-1	.000	0-0	.000	3-4	.750	2	4	6	6.0	0	1	0	0	0	3	3.0
at Little Rock	11/11/2024		13:12	0-2	.000	0-0	.000	1-2	.500	1	1	2	4.0	4	0	1	0	0	1	2.0
UT Arlington	11/14/2024		12:39	2-4	.500	0-0	.000	2-2	1.000	3	7	10	6.0	1	0	0	0	0	6	3.3
at UCLA	11/17/2024		07:35	0-0	.000	0-0	.000	0-0	.000	0	2	2	5.0	1	0	1	0	0	0	2.5
Oral Roberts	11/21/2024		17:18	2-6	.333	0-1	.000	0-0	.000	1	2	3	4.6	3	0	0	0	1	4	2.8
Arkansas St.	11/24/2024		19:10	1-5	.200	0-2	.000	0-0	.000	1	6	7	5.0	3	3	2	0	3	2	2.7
vs Oklahoma St.	11/29/2024		20:36	1-3	.333	0-0	.000	1-2	.500	1	0	1	4.4	1	0	0	0	0	3	2.7
vs Bowling Green	11/30/2024		17:22	0-1	.000	0-1	.000	0-0	.000	0	7	7	4.8	2	1	1	2	1	0	2.4
Southeast Mo. St.	12/08/2024		07:51	1-3	.333	0-1	.000	3-3	1.000	2	1	3	4.6	0	0	1	0	0	5	2.7
Texas Tech	12/15/2024		03:55	0-0	.000	0-0	.000	0-0	.000	0	0	0	4.1	1	0	0	0	0	0	2.4
vs Liberty	12/18/2024		13:29	1-1	1.000	0-0	.000	1-2	.500	0	0	0	3.7	1	0	0	0	1	3	2.5
vs Troy	12/19/2024		09:06	0-1	.000	0-0	.000	0-0	.000	0	1	1	3.5	1	0	0	0	1	0	2.3
Central Ark.	12/29/2024		03:25	0-0	.000	0-0	.000	0-0	.000	0	0	0	3.2	0	0	0	0	0	0	2.1
LSU	01/02/2025		05:37	0-1	.000	0-0	.000	0-0	.000	2	0	2	3.1	1	0	1	0	0	0	1.9
at Texas	01/05/2025		03:14	0-0	.000	0-0	.000	0-0	.000	0	0	0	2.9	0	0	0	0	0	0	1.8
at Auburn	01/09/2025		10:54	1-1	1.000	0-0	.000	0-0	.000	1	2	3	2.9	0	0	0	0	0	2	1.8
Tennessee	01/12/2025		15:12	1-1	1.000	0-0	.000	0-0	.000	0	0	0	2.8	3	1	1	0	0	2	1.8
Alabama	01/19/2025		08:14	0-0	.000	0-0	.000	3-4	.750	1	1	2	2.7	0	0	1	0	0	3	1.9
at Vanderbilt	01/23/2025		24:10	6-8	.750	1-2	.500	1-3	.333	1	2	3	2.7	1	1	0	0	2	14	2.5
at Kentucky	01/26/2025		21:07	0-2	.000	0-0	.000	0-0	.000	0	3	3	2.8	0	1	1	0	2	0	2.4
Texas A&M	01/30/2025		27:39	2-4	.500	0-1	.000	2-2	1.000	1	2	3	2.8	3	2	1	0	0	6	2.6
Florida	02/03/2025	*	23:51	0-6	.000	0-1	.000	0-0	.000	2	3	5	2.9	1	0	0	0	0	0	2.5
at Mississippi St.	02/06/2025	*	20:37	3-5	.600	0-1	.000	0-0	.000	1	3	4	2.9	2	2	3	0	2	6	2.6
<b>Totals</b>		<b>2</b>	<b>320:23</b>	<b>21-55</b>	<b>.382</b>	<b>1-10</b>	<b>.100</b>	<b>17-24</b>	<b>.708</b>	<b>20</b>	<b>47</b>	<b>67</b>	<b>2.9</b>	<b>29</b>	<b>12</b>	<b>14</b>	<b>2</b>	<b>13</b>	<b>60</b>	<b>2.6</b>

**Player Averages**

Games Played	Minutes/ game	Points/ game	FG Pct	3FG Pct	FT Pct	Rebounds/ game	Assists/ game	Turnovers/ game	Assist/Turnover ratio	Steals/ game	Blocks/ game
23	13.9	2.6	38.2	10.0	70.8	2.9	0.5	0.6	0.9	0.6	0.1



**2024-25 Arkansas Women's Basketball  
Individual Game-by-Game  
All games**

**#21 LINDSEY, Loren**

Opponent	Date	GS	MIN	Total		3-Pointers		Free throws		Rebounds				PF	A	TO	BLK	STL	PTS	AVG
				FG-FGA	PCT	3FG-3FGA	PCT	FT-FTA	PCT	OFF	DEF	TOT	AVG							
East Texas A&M	11/08/2024		02:00	0-1	.000	0-0	.000	0-0	.000	0	0	0	0.0	0	0	0	0	0	0	0.0
UT Arlington	11/14/2024		03:38	0-0	.000	0-0	.000	0-0	.000	0	0	0	0.0	0	1	0	0	0	0	0.0
at UCLA	11/17/2024		02:16	0-0	.000	0-0	.000	0-0	.000	0	0	0	0.0	1	1	0	0	0	0	0.0
Oral Roberts	11/21/2024		03:24	0-0	.000	0-0	.000	0-0	.000	0	0	0	0.0	1	0	0	0	0	0	0.0
Southeast Mo. St.	12/08/2024		10:44	0-2	.000	0-2	.000	0-0	.000	0	2	2	0.4	1	0	0	0	1	0	0.0
<b>Totals</b>		<b>0</b>	<b>22:02</b>	<b>0-3</b>	<b>.000</b>	<b>0-2</b>	<b>.000</b>	<b>0-0</b>	<b>.000</b>	<b>0</b>	<b>2</b>	<b>2</b>	<b>0.4</b>	<b>3</b>	<b>2</b>	<b>0</b>	<b>0</b>	<b>1</b>	<b>0</b>	<b>0.0</b>

**Player Averages**

Games Played	Minutes/game	Points/game	FG Pct	3FG Pct	FT Pct	Rebounds/game	Assists/game	Turnovers/game	Assist/Turnover ratio	Steals/game	Blocks/game
5	4.4	0.0	0.0	0.0	0.0	0.4	0.4	0.0	2.0	0.2	0.0



**2024-25 Arkansas Women's Basketball  
Individual Game-by-Game  
All games**

**#22 OJENUWA, Vera**

Opponent	Date	GS	MIN	Total		3-Pointers		Free throws		Rebounds				PF	A	TO	BLK	STL	PTS	AVG	
				FG-FGA	PCT	3FG-3FGA	PCT	FT-FTA	PCT	OFF	DEF	TOT	AVG								
Fairfield	11/04/2024	*	27:39	4-8	.500	0-0	.000	1-1	1.000	1	4	5	5.0	0	1	0	2	0	9	9.0	
East Texas A&M	11/08/2024	*	21:34	5-10	.500	0-0	.000	6-9	.667	2	5	7	6.0	4	2	1	0	1	16	12.5	
at Little Rock	11/11/2024	*	20:46	5-8	.625	0-0	.000	1-2	.500	2	9	11	7.7	5	1	4	0	0	11	12.0	
UT Arlington	11/14/2024	*	21:59	3-7	.429	0-0	.000	0-1	.000	3	3	6	7.3	3	1	3	1	1	6	10.5	
at UCLA	11/17/2024	*	15:20	1-4	.250	0-2	.000	2-2	1.000	2	1	3	6.4	5	1	2	2	0	4	9.2	
Oral Roberts	11/21/2024	*	31:56	3-7	.429	0-0	.000	0-0	.000	4	7	11	7.2	1	1	0	0	2	6	8.7	
Arkansas St.	11/24/2024	*	31:49	8-12	.667	0-0	.000	4-5	.800	3	7	10	7.6	4	2	4	1	0	20	10.3	
vs Oklahoma St.	11/29/2024	*	25:59	1-5	.200	0-1	.000	1-2	.500	1	5	6	7.4	4	0	3	1	1	3	9.4	
vs Bowling Green	11/30/2024	*	14:39	2-4	.500	1-1	1.000	0-0	.000	0	2	2	6.8	5	0	2	1	0	5	8.9	
Boston College	12/05/2024	*	26:57	3-5	.600	0-0	.000	2-5	.400	5	5	10	7.1	4	0	2	0	1	8	8.8	
Southeast Mo. St.	12/08/2024	*	19:24	5-7	.714	0-1	.000	3-4	.750	4	10	14	7.7	2	1	0	0	1	13	9.2	
Texas Tech	12/15/2024	*	33:20	4-9	.444	0-0	.000	4-7	.571	8	3	11	8.0	4	0	3	0	0	12	9.4	
vs Liberty	12/18/2024	*	25:49	1-4	.250	0-1	.000	0-0	.000	2	4	6	7.8	1	1	7	1	2	2	8.8	
vs Troy	12/19/2024	*	25:26	3-6	.500	0-0	.000	0-0	.000	3	4	7	7.8	2	0	2	0	0	6	8.6	
Central Ark.	12/29/2024	*	27:11	5-8	.625	1-1	1.000	1-2	.500	1	8	9	7.9	4	2	2	1	2	12	8.9	
LSU	01/02/2025	*	22:54	2-8	.250	0-0	.000	0-0	.000	4	4	8	7.9	2	0	4	1	2	4	8.6	
at Texas	01/05/2025	*	09:32	0-3	.000	0-0	.000	2-4	.500	3	1	4	7.6	5	0	1	0	0	2	8.2	
at Auburn	01/09/2025	*	22:56	0-2	.000	0-0	.000	1-4	.250	2	2	4	7.4	5	0	1	0	2	1	7.8	
Tennessee	01/12/2025	*	26:33	1-2	.500	0-1	.000	2-6	.333	1	5	6	7.4	1	1	2	1	1	4	7.6	
Alabama	01/19/2025	*	20:41	5-10	.500	0-0	.000	2-2	1.000	2	3	5	7.3	4	0	0	1	0	12	7.8	
at Vanderbilt	01/23/2025	*	29:31	2-6	.333	0-0	.000	0-0	.000	4	4	8	7.3	1	0	1	1	1	4	7.6	
at Kentucky	01/26/2025	*	11:10	0-2	.000	0-2	.000	0-0	.000	1	3	4	7.1	2	0	1	1	0	0	7.3	
Texas A&M	01/30/2025	*	26:18	3-5	.600	1-1	1.000	2-2	1.000	1	5	6	7.1	2	0	4	0	1	9	7.3	
Florida	02/03/2025	*	15:02	1-4	.250	0-0	.000	2-4	.500	2	1	3	6.9	3	0	1	0	0	4	7.2	
at Mississippi St.	02/06/2025	*	21:05	2-5	.400	0-0	.000	0-0	.000	1	4	5	6.8	3	0	2	1	2	4	7.1	
<b>Totals</b>			<b>25</b>	<b>575:31</b>	<b>69-151</b>	<b>.457</b>	<b>3-11</b>	<b>.273</b>	<b>36-62</b>	<b>.581</b>	<b>62</b>	<b>109</b>	<b>171</b>	<b>6.8</b>	<b>76</b>	<b>14</b>	<b>52</b>	<b>16</b>	<b>20</b>	<b>177</b>	<b>7.1</b>

**Player Averages**

Games Played	Minutes/game	Points/game	FG Pct	3FG Pct	FT Pct	Rebounds/game	Assists/game	Turnovers/game	Assist/Turnover ratio	Steals/game	Blocks/game
25	23.0	7.1	45.7	27.3	58.1	6.8	0.6	2.1	0.3	0.8	0.6



**2024-25 Arkansas Women's Basketball  
Individual Game-by-Game  
All games**

**#23 KEATS, Carly**

Opponent	Date	GS	MIN	Total		3-Pointers		Free throws		Rebounds				PF	A	TO	BLK	STL	PTS	AVG
				FG-FGA	PCT	3FG-3FGA	PCT	FT-FTA	PCT	OFF	DEF	TOT	AVG							
Fairfield	11/04/2024	*	31:32	2-10	.200	1-7	.143	0-0	.000	0	0	0	0.0	0	1	2	0	1	5	5.0
East Texas A&M	11/08/2024	*	20:27	2-5	.400	1-3	.333	0-0	.000	0	2	2	1.0	0	0	1	1	0	5	5.0
at Little Rock	11/11/2024	*	20:35	1-5	.200	1-3	.333	1-2	.500	0	1	1	1.0	0	0	0	0	0	4	4.7
UT Arlington	11/14/2024	*	22:23	4-8	.500	3-6	.500	2-2	1.000	0	2	2	1.3	1	0	1	0	1	13	6.8
at UCLA	11/17/2024	*	32:28	4-15	.267	2-10	.200	0-0	.000	0	5	5	2.0	1	1	2	0	1	10	7.4
Oral Roberts	11/21/2024	*	22:57	2-8	.250	0-3	.000	0-0	.000	0	1	1	1.8	0	1	1	0	0	4	6.8
Arkansas St.	11/24/2024	*	14:30	3-8	.375	2-6	.333	0-0	.000	0	0	0	1.6	0	0	1	0	0	8	7.0
vs Oklahoma St.	11/29/2024	*	20:00	0-6	.000	0-3	.000	0-0	.000	0	1	1	1.5	0	1	2	1	0	0	6.1
vs Bowling Green	11/30/2024	*	23:51	4-7	.571	1-4	.250	0-0	.000	0	1	1	1.4	0	0	0	1	0	9	6.4
Boston College	12/05/2024	*	19:23	2-8	.250	1-3	.333	0-0	.000	0	0	0	1.3	0	1	0	0	0	5	6.3
Southeast Mo. St.	12/08/2024	*	22:22	6-13	.462	5-8	.625	2-2	1.000	0	3	3	1.5	0	1	3	0	1	19	7.5
Texas Tech	12/15/2024	*	26:07	3-7	.429	1-4	.250	2-2	1.000	0	2	2	1.5	0	3	1	0	0	9	7.6
vs Liberty	12/18/2024	*	27:12	4-8	.500	1-3	.333	2-2	1.000	0	0	0	1.4	1	1	0	0	0	11	7.8
vs Troy	12/19/2024	*	25:36	1-8	.125	1-6	.167	0-0	.000	0	3	3	1.5	0	2	1	0	0	3	7.5
Central Ark.	12/29/2024	*	32:19	3-10	.300	2-5	.400	0-0	.000	0	5	5	1.7	2	2	0	0	1	8	7.5
LSU	01/02/2025	*	29:53	6-14	.429	4-11	.364	2-2	1.000	1	3	4	1.9	2	0	1	0	0	18	8.2
at Texas	01/05/2025	*	30:10	3-6	.500	1-3	.333	4-4	1.000	0	4	4	2.0	1	0	2	0	0	11	8.4
at Auburn	01/09/2025	*	17:40	1-8	.125	1-7	.143	0-0	.000	0	2	2	2.0	0	0	4	0	0	3	8.1
Tennessee	01/12/2025	*	26:12	4-8	.500	2-5	.400	0-0	.000	0	1	1	1.9	1	1	4	0	0	10	8.2
Alabama	01/19/2025	*	16:26	1-5	.200	0-3	.000	0-0	.000	0	0	0	1.9	0	0	0	0	0	2	7.9
at Vanderbilt	01/23/2025		24:49	6-15	.400	4-10	.400	0-0	.000	0	0	0	1.8	0	1	2	0	0	16	8.2
at Kentucky	01/26/2025		25:46	5-12	.417	4-7	.571	0-0	.000	0	2	2	1.8	0	1	3	0	0	14	8.5
Texas A&M	01/30/2025	*	12:32	1-3	.333	1-3	.333	0-0	.000	0	0	0	1.7	0	0	0	0	0	3	8.3
<b>Totals</b>			<b>21 545:10</b>	<b>68-197</b>	<b>.345</b>	<b>39-123</b>	<b>.317</b>	<b>15-16</b>	<b>.938</b>	<b>1</b>	<b>38</b>	<b>39</b>	<b>1.7</b>	<b>9</b>	<b>17</b>	<b>31</b>	<b>3</b>	<b>5</b>	<b>190</b>	<b>8.3</b>

**Player Averages**

Games Played	Minutes/ game	Points/ game	FG Pct	3FG Pct	FT Pct	Rebounds/ game	Assists/ game	Turnovers/ game	Assist/Turnover ratio	Steals/ game	Blocks/ game
23	23.7	8.3	34.5	31.7	93.8	1.7	0.7	1.3	0.5	0.2	0.1





**2024-25 Arkansas Women's Basketball  
Individual Game-by-Game  
All games**

**#25 GALEA, Danika**

Opponent	Date	GS	MIN	Total		3-Pointers		Free throws		Rebounds				PF	A	TO	BLK	STL	PTS	AVG
				FG-FGA	PCT	3FG-3FGA	PCT	FT-FTA	PCT	OFF	DEF	TOT	AVG							
Fairfield	11/04/2024		00:35	0-0	.000	0-0	.000	0-0	.000	0	0	0	0.0	0	0	0	0	0	0	0.0
East Texas A&M	11/08/2024		10:40	0-3	.000	0-0	.000	4-4	1.000	0	1	1	0.5	3	0	3	0	0	4	2.0
at Little Rock	11/11/2024		16:54	2-2	1.000	0-0	.000	0-0	.000	0	3	3	1.3	5	1	3	0	1	4	2.7
UT Arlington	11/14/2024		14:07	4-7	.571	0-0	.000	2-2	1.000	4	2	6	2.5	4	1	1	0	0	10	4.5
at UCLA	11/17/2024		13:10	1-5	.200	0-2	.000	0-0	.000	0	0	0	2.0	5	0	2	0	0	2	4.0
Oral Roberts	11/21/2024		08:04	1-2	.500	0-0	.000	0-0	.000	0	0	0	1.7	2	1	1	0	0	2	3.7
Arkansas St.	11/24/2024		08:11	3-4	.750	0-0	.000	2-2	1.000	2	0	2	1.7	1	0	0	1	0	8	4.3
Southeast Mo. St.	12/08/2024		13:43	4-5	.800	0-0	.000	2-2	1.000	2	2	4	2.0	1	0	0	1	1	10	5.0
Texas Tech	12/15/2024		06:36	1-1	1.000	0-0	.000	0-0	.000	0	1	1	1.9	0	0	0	0	0	2	4.7
vs Liberty	12/18/2024		14:11	3-6	.500	2-5	.400	0-0	.000	1	3	4	2.1	2	0	0	0	0	8	5.0
vs Troy	12/19/2024		14:34	5-5	1.000	0-0	.000	0-2	.000	1	0	1	2.0	1	0	1	1	0	10	5.5
Central Ark.	12/29/2024		08:10	0-0	.000	0-0	.000	0-0	.000	1	0	1	1.9	1	0	0	1	1	0	5.0
LSU	01/02/2025		08:58	1-2	.500	0-0	.000	0-0	.000	1	0	1	1.8	0	0	1	0	1	2	4.8
at Texas	01/05/2025		12:19	2-3	.667	0-0	.000	1-2	.500	0	1	1	1.8	5	0	1	0	1	5	4.8
at Auburn	01/09/2025		17:04	1-3	.333	0-1	.000	0-0	.000	0	2	2	1.8	3	0	4	0	0	2	4.6
Tennessee	01/12/2025		13:27	2-2	1.000	0-0	.000	0-0	.000	1	1	2	1.8	2	0	0	0	0	4	4.6
Alabama	01/19/2025		17:13	1-3	.333	0-0	.000	0-0	.000	0	0	0	1.7	1	0	0	1	0	2	4.4
at Vanderbilt	01/23/2025		10:29	1-3	.333	0-1	.000	0-0	.000	2	1	3	1.8	0	0	2	0	0	2	4.3
at Kentucky	01/26/2025		14:60	0-1	.000	0-0	.000	0-0	.000	1	0	1	1.7	0	2	1	0	0	0	4.1
Texas A&M	01/30/2025		13:42	1-1	1.000	0-0	.000	0-0	.000	0	2	2	1.8	2	0	1	2	0	2	4.0
Florida	02/03/2025		04:46	0-0	.000	0-0	.000	0-0	.000	0	1	1	1.7	3	0	0	0	0	0	3.8
at Mississippi St.	02/06/2025		18:55	2-4	.500	0-0	.000	2-4	.500	3	2	5	1.9	2	0	4	0	0	6	3.9
<b>Totals</b>		<b>0</b>	<b>260:49</b>	<b>35-62</b>	<b>.565</b>	<b>2-9</b>	<b>.222</b>	<b>13-18</b>	<b>.722</b>	<b>19</b>	<b>22</b>	<b>41</b>	<b>1.9</b>	<b>43</b>	<b>5</b>	<b>25</b>	<b>7</b>	<b>5</b>	<b>85</b>	<b>3.9</b>

**Player Averages**

Games Played	Minutes/ game	Points/ game	FG Pct	3FG Pct	FT Pct	Rebounds/ game	Assists/ game	Turnovers/ game	Assist/Turnover ratio	Steals/ game	Blocks/ game
22	11.9	3.9	56.5	22.2	72.2	1.9	0.2	1.1	0.2	0.2	0.3



**2024-25 Arkansas Women's Basketball  
Individual Game-by-Game  
All games**

**#34 LAWRENCE, Jenna**

Opponent	Date	GS	MIN	Total		3-Pointers		Free throws		Rebounds				PF	A	TO	BLK	STL	PTS	AVG
				FG-FGA	PCT	3FG-3FGA	PCT	FT-FTA	PCT	OFF	DEF	TOT	AVG							
Fairfield	11/04/2024	*	34:05	3-10	.300	2-9	.222	3-3	1.000	2	8	10	10.0	1	0	0	0	0	11	11.0
East Texas A&M	11/08/2024	*	28:53	3-11	.273	2-10	.200	2-2	1.000	0	10	10	10.0	1	1	1	0	1	10	10.5
at Little Rock	11/11/2024	*	24:43	2-6	.333	1-4	.250	0-0	.000	2	5	7	9.0	2	0	1	1	0	5	8.7
UT Arlington	11/14/2024	*	26:02	5-7	.714	4-5	.800	0-0	.000	1	11	12	9.8	0	0	2	1	0	14	10.0
at UCLA	11/17/2024	*	27:20	0-4	.000	0-4	.000	1-2	.500	2	3	5	8.8	2	2	1	0	0	1	8.2
Oral Roberts	11/21/2024	*	27:02	2-6	.333	2-4	.500	0-0	.000	0	2	2	7.7	1	0	1	2	0	6	7.8
Arkansas St.	11/24/2024	*	33:36	3-11	.273	2-9	.222	0-0	.000	1	9	10	8.0	1	1	1	3	3	8	7.9
vs Oklahoma St.	11/29/2024	*	32:04	2-9	.222	1-6	.167	3-4	.750	1	10	11	8.4	3	0	1	1	0	8	7.9
vs Bowling Green	11/30/2024	*	39:35	8-14	.571	5-10	.500	0-0	.000	1	3	4	7.9	1	0	2	5	2	21	9.3
Boston College	12/05/2024	*	34:28	1-4	.250	0-1	.000	2-2	1.000	3	2	5	7.6	4	0	0	2	1	4	8.8
Southeast Mo. St.	12/08/2024	*	18:22	2-5	.400	1-3	.333	0-0	.000	0	4	4	7.3	0	0	1	0	0	5	8.5
Texas Tech	12/15/2024	*	18:39	1-4	.250	0-2	.000	0-0	.000	3	2	5	7.1	1	0	0	0	0	2	7.9
vs Liberty	12/18/2024	*	14:58	1-3	.333	1-3	.333	0-0	.000	2	3	5	6.9	0	0	0	1	0	3	7.5
vs Troy	12/19/2024	*	20:52	3-8	.375	1-5	.200	4-5	.800	1	7	8	7.0	1	0	1	2	0	11	7.8
Central Ark.	12/29/2024	*	26:18	4-9	.444	0-3	.000	1-1	1.000	2	3	5	6.9	1	1	1	1	1	9	7.9
LSU	01/02/2025	*	21:25	2-5	.400	1-2	.500	0-0	.000	1	2	3	6.6	4	0	1	0	2	5	7.7
at Texas	01/05/2025	*	29:11	1-5	.200	0-3	.000	0-0	.000	1	3	4	6.5	3	1	3	0	3	2	7.4
at Auburn	01/09/2025	*	16:17	0-2	.000	0-2	.000	0-0	.000	0	1	1	6.2	2	0	0	0	1	0	6.9
Tennessee	01/12/2025	*	18:52	1-5	.200	0-3	.000	0-0	.000	0	0	0	5.8	1	0	0	1	0	2	6.7
Alabama	01/19/2025	*	14:07	0-5	.000	0-0	.000	0-0	.000	3	1	4	5.8	1	1	0	1	1	0	6.4
at Vanderbilt	01/23/2025		12:07	1-2	.500	0-1	.000	0-0	.000	0	0	0	5.5	0	0	0	0	1	2	6.1
at Kentucky	01/26/2025		26:05	5-9	.556	3-6	.500	0-0	.000	0	6	6	5.5	5	0	1	3	0	13	6.5
Texas A&M	01/30/2025		24:28	4-10	.400	3-9	.333	0-0	.000	0	8	8	5.6	2	0	1	3	0	11	6.7
Florida	02/03/2025		26:13	5-12	.417	2-9	.222	0-0	.000	2	4	6	5.6	2	1	0	2	1	12	6.9
at Mississippi St.	02/06/2025		18:25	1-5	.200	0-4	.000	0-0	.000	0	4	4	5.6	1	0	0	0	1	2	6.7
<b>Totals</b>			<b>20 614:07</b>	<b>60-171</b>	<b>.351</b>	<b>31-117</b>	<b>.265</b>	<b>16-19</b>	<b>.842</b>	<b>28</b>	<b>111</b>	<b>139</b>	<b>5.6</b>	<b>40</b>	<b>8</b>	<b>19</b>	<b>29</b>	<b>18</b>	<b>167</b>	<b>6.7</b>

**Player Averages**

Games Played	Minutes/ game	Points/ game	FG Pct	3FG Pct	FT Pct	Rebounds/ game	Assists/ game	Turnovers/ game	Assist/Turnover ratio	Steals/ game	Blocks/ game
25	24.6	6.7	35.1	26.5	84.2	5.6	0.3	0.8	0.4	0.7	1.2



**2024-25 Arkansas Women's Basketball  
Individual Game-by-Game  
All games**

**#44 ARCHER, Maryn**

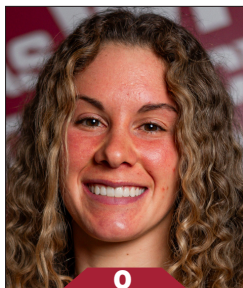
Opponent	Date	GS	MIN	Total		3-Pointers		Free throws		Rebounds				PF	A	TO	BLK	STL	PTS	AVG
				FG-FGA	PCT	3FG-3FGA	PCT	FT-FTA	PCT	OFF	DEF	TOT	AVG							
East Texas A&M	11/08/2024		03:28	0-0	.000	0-0	.000	0-0	.000	0	1	1	1.0	0	0	1	0	0	0	0.0
UT Arlington	11/14/2024		03:54	0-2	.000	0-0	.000	0-2	.000	0	0	0	0.5	2	0	0	0	0	0	0.0
at UCLA	11/17/2024		01:45	0-0	.000	0-0	.000	0-0	.000	0	0	0	0.3	0	0	0	0	0	0	0.0
Oral Roberts	11/21/2024		02:54	0-2	.000	0-0	.000	0-0	.000	0	2	2	0.8	0	0	1	0	0	0	0.0
Arkansas St.	11/24/2024		00:18	0-0	.000	0-0	.000	0-0	.000	0	0	0	0.6	0	0	0	0	0	0	0.0
vs Oklahoma St.	11/29/2024		01:35	0-0	.000	0-0	.000	0-0	.000	0	0	0	0.5	0	0	0	0	0	0	0.0
Boston College	12/05/2024		00:17	0-0	.000	0-0	.000	0-0	.000	0	0	0	0.4	0	0	0	0	0	0	0.0
Southeast Mo. St.	12/08/2024		07:51	2-4	.500	0-0	.000	3-4	.750	0	0	0	0.4	1	1	1	0	0	7	0.9
at Texas	01/05/2025		01:33	0-0	.000	0-0	.000	0-0	.000	0	0	0	0.3	0	0	1	0	0	0	0.8
Tennessee	01/12/2025		01:16	0-0	.000	0-0	.000	1-2	.500	0	0	0	0.3	0	0	0	0	0	1	0.8
Alabama	01/19/2025		01:17	0-0	.000	0-0	.000	0-0	.000	0	0	0	0.3	1	0	0	0	0	0	0.7
at Vanderbilt	01/23/2025		02:55	0-1	.000	0-0	.000	0-0	.000	0	0	0	0.3	0	0	0	0	0	0	0.7
at Kentucky	01/26/2025		05:47	0-0	.000	0-0	.000	3-4	.750	1	0	1	0.3	0	0	1	0	0	3	0.8
Florida	02/03/2025		05:03	0-1	.000	0-0	.000	2-2	1.000	0	1	1	0.4	1	0	0	0	1	2	0.9
at Mississippi St.	02/06/2025		13:26	1-2	.500	1-1	1.000	0-2	.000	0	1	1	0.4	0	0	0	0	1	3	1.1
<b>Totals</b>		<b>0</b>	<b>53:19</b>	<b>3-12</b>	<b>.250</b>	<b>1-1</b>	<b>1.000</b>	<b>9-16</b>	<b>.563</b>	<b>1</b>	<b>5</b>	<b>6</b>	<b>0.4</b>	<b>5</b>	<b>1</b>	<b>5</b>	<b>0</b>	<b>2</b>	<b>16</b>	<b>1.1</b>

**Player Averages**

Games Played	Minutes/ game	Points/ game	FG Pct	3FG Pct	FT Pct	Rebounds/ game	Assists/ game	Turnovers/ game	Assist/Turnover ratio	Steals/ game	Blocks/ game
15	3.6	1.1	25.0	100.0	56.3	0.4	0.1	0.3	0.2	0.1	0.0



# RAZORBACKS



0

**Ella Rogers**  
Sr. | 5-8 | G  
Granville, Ohio



1

**Phoenix Stotijn**  
Fr. | 5-9 | G  
Amsterdam, Netherlands



2

**Kiki Smith**  
So. | 5-7 | G  
Topeka, Kan.



3

**Izzy Higginbottom**  
Sr. | 5-7 | G  
Batesville, Ark.



10

**Cristina Sánchez Cerqueira**  
So. | 6-1 | F  
Granada, Spain



15

**Jada Bates**  
Fr. | 6-3 | G  
Powder Springs, Ga.



16

**Pinja Paananen**  
Fr. | 6-2 | F  
Laukaa, Finland



20

**Karley Johnson**  
Jr. | 5-9 | G  
Oklahoma City, Okla.



21

**Loren Lindsey**  
R-So. | 5-11 | G  
Fayetteville, Ark.



22

**Vera Ojenuwa**  
So. | 6-4 | F  
Delta State, Nigeria



23

**Carly Keats**  
Jr. | 5-8 | G  
Philadelphia, Miss.



25

**Danika Galea**  
Fr. | 6-3 | C  
St. Paul's Bay, Malta



34

**Jenna Lawrence**  
So. | 6-3 | F  
Melbourne, Ark.



44

**Maryn Archer**  
R-Fr. | 5-7 | G  
Derby, Kan.