

# ARKANSAS

## WOMEN'S BASKETBALL

Sunday, February 23, 2025 • 2:00 p.m. CT • SEC Network+ • Bud Walton Arena (19,200) • Fayetteville, Ark.

### Info



**SEC Network+**  
Josh Haley, Play-by-Play  
Matt Zimmerman, Analyst



**Live Stats**  
arkansas.statbroadcast.com

### 2024-25 Schedule (9-19, 2-11 SEC)

#### NOVEMBER

4	Fairfield	L, 81-67
8	East Texas A&M	W, 84-65
11	at Little Rock	W, 71-60 OT
14	UT-Arlington	W, 93-65
17	at #5 UCLA	L, 101-52
21	Oral Roberts	L, 94-73
24	Arkansas State	W, 76-60
29	vs. Oklahoma State^	L, 70-56
30	vs. Bowling Green^	L, 79-78

#### DECEMBER

5	Boston College	W, 75-64
8	SEMO	W, 84-45
15	Texas Tech	L, 75-72
18	vs. Liberty\$	L, 75-61
19	vs. Troy\$	L, 77-69
29	Central Arkansas	W, 87-70

#### JANUARY

2	#6 LSU*	L, 98-64
5	at #5 Texas*	L, 90-56
9	at Auburn*	W, 59-58
12	#16 Tennessee*	L, 93-63
19	#19 Alabama*	L, 94-62
23	at Vanderbilt*	L, 101-60
26	at #11 Kentucky*	L, 89-69
30	Texas A&M*	W, 72-51

#### FEBRUARY

3	Florida*	L, 108-78
6	at Mississippi State*	L, 78-55
9	at Georgia*	L, 62-61
13	Ole Miss*	L, 89-50
20	at #6 South Carolina*	L, 95-55
23	#16 Oklahoma*	2:00 p.m.
27	Missouri*	6:30 p.m.

#### MARCH

2	at Texas A&M*	2:00 p.m.
5-9	SEC Tournament	Greenville, S.C.

All times Central; Home games in **BOLD**  
\* - SEC Game

^ - Daytona Beach Classic (Daytona, Fla.)

\$ - Cherokee Invite (Cherokee, N.C.)



VS



#16 Oklahoma

Arkansas

Record: 20-6 (8-5 SEC)

Head Coach: Jennie Baranczyk

Overall Record: 286-128 (13th)

Record at Oklahoma: 94-32 (4th)

Rankings: AP: 16 Coaches: 16 NET: 15

Record: 9-19 (2-11 SEC)

Head Coach: Mike Neighbors

Overall Record: 245-152 (12th)

Record at Arkansas: 147-111 (8th)

Rankings: AP: NR Coaches: NR NET: 139

### Let's Get Into It

#### NEIGHBORHOOD WATCH

Arkansas has faced eight ranked teams this season and seven in its last 12 games: then-No. 5 UCLA, No. 6 LSU, No. 5 Texas, No. 16 Tennessee, No. 19 Alabama, No. 11 Kentucky and No. 6 South Carolina. The Razorbacks will face No. 16 Oklahoma on Sunday.

The Hogs played in two regular season tournaments this year: the Daytona Beach Classic and the Cherokee Invitational. Arkansas went a combined 0-4 with losses to Oklahoma State, Bowling Green, Liberty and Toledo.

#### INSIDE THIS MATCHUP

Oklahoma and Arkansas are slated to compete for the 19th time in series history. The Sooners hold a 10-8 advantage but Arkansas won the last meeting, 71-64, in 2014. This will be the first conference game between the two schools since 1992.

Arkansas' record against: 8-10

In Fayetteville: 4-2

In Norman: 3-7

Neutral: 1-1

#### S.O.S

According to WarrenNolan.com, Arkansas posts the 14th strongest schedule in the country.

The only SEC teams ahead of the Hogs are top-ranked South Carolina, #3 Texas and #10 Tennessee

13 of Arkansas' opponents appear in the SOS top 50: #1 SC, #3 Texas, #5 UCLA, #10 TENN, #22 OU, #23 LSU, #25 Texas A&M, #28 AUB, #31 MIZZ, #36 TTU, #37 ALA, #40 VAN, #49 KEN

The Hogs also have the fourth highest opponent win percentage in the SEC at .640 (440-248)

#### ON THE A&M WIN

Arkansas captured its first SEC home win after a 72-51 win against Texas A&M

The 21-point victory is Arkansas' largest in SEC play and the second largest margin this season behind the 27 point win over UT-Arlington

Mike Neighbors picked up his 50th SEC win at Arkansas

Izzy Higginbottom picked up her third SEC game with at least 30 points and led all scorers with 34

The senior also grabbed 10 rebounds and picked up her first career double-double

The Hogs shot an SEC-play best 48.1% (25-52) from the field

Arkansas sent out its third unique starting lineup this season after Kiki Smith sustained an ankle injury during practice

#### CHALLENGE WON

The Razorbacks snapped a two-game losing streak after taking down Boston College, 75-64, in this year's SEC/ACC Challenge. The Hogs improved to 2-0 in the Challenge with the first win coming against Florida State last season

Izzy Higginbottom had a career night with new highs in points (38) and field goals (14). The senior from Batesville went 10-11 from the free throw line to help secure the win

Kiki Smith assisted Higginbottom with her eighth 10+ performance of the season and had 15 of the Hogs' points. The duo combined for 53 of the team's 75 points (71%)

Vera Ojenuwa entered double figures in rebounds for the fourth time this season and led Arkansas with 10.

#### SKEATS-SKEAT!!

Juco product Carly Keats went from being one of the first players off the bench to a starter, earning nine starting nods last season

After missing four games in 2023-24 with

## Quick Facts

### GENERAL INFORMATION

Location.....Fayetteville, Arkansas  
 Founded.....1871  
 Enrollment.....33,610  
 Nickname.....Razorbacks  
 School Colors.....Cardinal (PMS 202) and White  
 Conference.....Southeastern  
 Arena (Capacity).....Bud Walton Arena (19,200)  
 System President.....Lt. Gen. (ret) Jay Silveria (USAFA '86)  
 Chancellor.....Dr. Charles Robinson (Houston)  
 Athletic Director.....Hunter Yurachek (Guilford College '90)  
 SWA.....Derita Dawkins (James Madison)  
 Faculty Athletic Rep.....Dr. Paul Adams (LSU)  
 Sport Administrator.....Derita Dawkins (James Madison)  
 Athletics Website.....ArkansasRazorbacks.com  
 Ticket Office Phone.....1-800-982-HOGS  
 Athletic Department Phone.....(479) 575-6533

### TEAM INFORMATION

Starters Returning/Lost.....0/5  
 2023 Overall Record.....18-15  
 2023 Conference Record/Finish.....6-10/T-9th

### PROGRAM HISTORY

Seasons.....49  
 All-Time Record.....882-595  
 SEC Record.....182-305  
 Conference Championships.....2 (SWC)  
 NCAA Tournament Appearances.....13 (Last: 2022)  
 NCAA Tournament Record.....14-13  
 SEC Tournament Appearances.....33  
 SEC Tournament Record.....19-33

### COACHING/SUPPORT STAFF

Head Coach.....Mike Neighbors (Arkansas '93)  
 Career Record.....245-152  
 Record at Arkansas.....147-111  
 Assoc. Head Coach.....Todd Schaefer (Thomas More '95)  
 Assistant Coach.....Lacey Goldwire (Oklahoma State '10)  
 Assistant Coach.....Nick Bradford (Kansas '01)  
 Director of Operations.....Amber Shirey (Arkansas '92)  
 Student-Athlete Development Jayci Stone (Kansas State '08)  
 Athletic Trainer.....Simone Rush (Alabama '15)  
 Strength & Conditioning.....Tyler Beckman (North Dakota '13)  
 Video Coordinator.....Evan Johnston (Arkansas '22)  
 Graduate Assistant.....Sasha Goforth

### COMMUNICATIONS

Asst. Dir. of Communications.....Fuller Birch  
 Cell Phone.....(479) 790-9426  
 Office Phone.....(479) 575-3401  
 Office Fax.....(479) 575-7481  
 Office E-mail.....fdbirch@uark.edu  
 Athletics Website.....ArkansasRazorbacks.com  
 Mailing Address.....P.O. Box 7777, Fayetteville, AR 72702  
 Shipping Address.....350 N. Razorback Rd., Fayetteville, AR, 72701



Izzy Higginbottom sits in the jump seat on one of Arkansas' charter flights. Higginbottom's dad is an aerial firefighter and also flies for the Arkansas Game and Fish Commission.

a broken nose, made her return vs. Missouri at home, having logged 11 points with two 3-pointers off the bench in 25 minutes

■ This season, Keats got hot against SEMO with a career high 19 points. She tied her previous career high of 16 points in the second quarter alone. She also set a new career high with 5 3-pointers made

■ Recorded eight double-digit scoring games and five with 3+ 3-pointers made, while scoring double digits in seven of 12 SEC contests to log 8.8 points per game in league games

■ Named an All-Region 23 Team at Jones College, making 55 3-pointers for a 34.8 percentage and averaging 9.7 points, 3.7 rebounds and 3.5 assists per game

■ Big in Jones winning its seventh straight region crown to punch a ticket to the NJCAA DI Tournament and an Elite 8 appearance

### REPPIN' HER HOME STATE

■ Jenna Lawrence was a four-star prospect and No. 61 overall player in the 2023 HoopGurlz Recruiting Rankings

■ Coming off her first career double-double (10 pts, 11 rbd) against Fairfield, she followed it up with another double-double (10 pts, 10 rbd) against East Texas A&M on Nov. 8 and had a career night against UT-Arlington (14 pts, 12 rebs, 4 3s)

■ Lawrence had another career night against Bowling Green, with highs in points (21) and 3s made (5)

■ After a cold streak through the start of conference play, Lawrence went 3-9 from beyond the arc against Texas A&M and grabbed nine rebounds to finish with 11 & 9

■ In her first career start, registered a career-high 13 points, five rebounds, one assist and one block in a career-high 35 minutes played vs. Auburn in the SEC Tournament last season

■ Logged 13 3-pointers in 42 attempts for a .310 mark last season

■ Led Farmington High School to a 4A girls state championship, being named the MVP after averaging 18.7 points and 7.1 rebounds per game as a senior

### IZZY MONEY

■ Senior guard Izzy Higginbottom, a transfer from Arkansas State and Batesville, Ark. native, is making an immediate impact for the Hogs

■ Higginbottom has been the Hogs' leading scorer in 22 games (Fairfield, Little Rock, UTA, UCLA, ORU, OSU, BGSU, BC, TTU, LIB, Troy, UCA, LSU, Texas, AUB, TENN, UK, A&M, FLA, MSST, UGA, OM) this season

■ She also leads the team and the SEC in FT%, going 201-223 (.901) from the charity stripe. Higginbottom leads the SEC and ranks third in the NCAA in FTA (223) and ranks second in the NCAA with 201 FTM.

■ She's been perfect from the line in 13 games (ETA&M, LR, UCLA, BGSU, SEMO, LU, Troy, LSU, Texas, VAN, FLA, MSST, OM) this season.

■ She has cemented herself as one of the

best scorers in the NCAA through the first 28 games and ranks No. 5 in the country and first in the SEC in points per game (23.6), ahead of Vanderbilt's Mikayla Blakes (23.4).

■ Higginbottom scored 25+ points in three straight games, dating back to Nov. 29's game against Oklahoma State. She scored 26 against the Cowgirls, 26 against Bowling Green and 38 against Boston College. Higginbottom is just the third Arkansas player to accomplish the feat in the last 25 years. Chelsea Dungee was the most recent in 2018.

■ Izzy has the second most 25+ point games in the NCAA (14 games) behind Florida State's Ta'Niya Latson:

Rk	Player	Team	Season	Count
1	Ta'Niya Latson	Florida State	2024-25	15
2	Izzy Higginbottom	Arkansas	2024-25	14
3	Grace Larkins	South Dakota	2024-25	13
4	Audi Crooks	Iowa State	2024-25	12
5	Juju Watkins	Southern California	2024-25	11
6	Kelsey Ransom	Georgetown	2024-25	10
7	Hannah Hidalgo	Notre Dame	2024-25	10
8	Yvonne Ejin	Gonzaga	2024-25	9
9	Molly Kaiser	New Mexico State	2024-25	9
10	Katelyn Young	Murray State	2024-25	9

■ Higginbottom also leads the SEC and ranks third in the NCAA in 30+ point games with 5.

■ Against Boston College, Higginbottom scored a career-high 38 points, then the most points in a game for Arkansas since Dungee dropped 41 points at Auburn in 2019.

■ With the 38 points from the BC game and 18 points against SEMO, Higginbottom was named Co-SEC Player of the Week. She's the first Razorback to win the weekly honor since 2022.

■ With 26 points against Tennessee,

### WHAT'S HE SAYIN'?

Trying to figure out what Coach Neighbors is saying on the bench? Don't worry - he has a language all his own.

Coach Neighbors plays Positionless Basketball. Instead of having guards, forwards and centers, he has Rabbits, Rackers, Locks and Dragons.



Rabbits run the floor and look to score quickly with a layup.



Rackers bring the ball up the floor and are trying to get to the rack.



Locks, generally good three-point shooters, are trying to win the race to the corners.



The Dragon is the last player down the court, dragging behind the others.

Higginbottom had 19 straight games in double figures and is the first Hog to accomplish the feat (at least 15 straight) since Amber Ramirez



did it in 2021-22.

■ Higginbottom picked up her second 30+ game of the season after she dropped 36 points at Auburn on Jan. 9. It's tied for the seventh-most points in an SEC game so far this season. It's also the seventh most by a Razorback player in an SEC game and was the most since Erynn Barnum scored 37 points against Ole Miss.

■ She dropped her 3rd 30+ point game of the season on Jan. 26 at No. 11 Kentucky and led all scorers with 32 points and followed it up with her third 30+ point game in SEC play on Jan. 30 against Texas A&M (33 points)

■ In the first game of February, against Florida, she scored her first 40 point game and became just the fourth Razorback to score 40 points in a game in program history and was four points shy of tying the single-game record. It's tied for the fourth-most points in an SEC game this season. She is one of 18 players in the NCAA to score at least 40 points in a game and one of 13 in the NCAA to score at least 40 points in a conference game this season. She's also tied for the 12th-highest scoring game this year.

■ She snapped her three-game 30+-point game streak, the longest in program history, after dropping 26 points at Mississippi State on Feb. 6.

### IZZY IN SEC PLAY

■ Higginbottom currently has 38% of Arkansas points in SEC play (307 out of 804 points) and 61% (94 out of 154 free throws) of the Hogs' made free throws. The next closest player (Vera Ojenuwa) has 13 FTs

■ On a league scale, Higginbottom ranks second in the SEC in scoring average (23.6) behind Vanderbilt's Mikayla Blakes (28.0) and second in FT% at 90.4% (94-104)

■ She also has one 40 point game, four 30+ point games and eight 25+ point games in league play. She leads the SEC in all three categories.

### IZZY & SINGLE SEASON RECORDS

■ Higginbottom is in the hunt of several single-season program records:

	Higginbottom has	Record is
Points	661 (#3)	759 C. Dungee
Avg.	23.6 (#1)	23.1 S. Wallace
FT%	.901 (#2)	.923 A. Ramirez
FTM	201 (#2)	229 C. Dungee
FTA	223 (#3)	275 C. Dungee

### TRIPLE-DOUBLE WATCH

■ Against Texas A&M on Jan. 30, Izzy Higginbottom was three assists short of Arkansas' first triple-double since 2009.

■ Higginbottom finished with 33 points, 10 rebounds and 7 assists

■ C'eira Ricketts has the program's only triple-double: 14 points, 13 rebounds and 12 assists in a 70-61 loss against SEC-champ Auburn on Jan.

18, 2009

### IZZY'S A-STATE SNAPSHOT

■ Named a 2023 All-Sun Belt First Team selection following a historical junior season with the Red Wolves ... One of 10 semifinalists for the Becky Hammon Mid-Major Player of the Year ... Logged 22.2 points per game, which led the conference and was No. 8 in the NCAA, all while shooting 46.2 percent from the field and 36.7 percent from beyond the arc ... Led the league in free throws made (175), which was No. 2 in the nation during the regular season, and free throw attempts (192), seventh most in the NCAA ... Only player to average at least seven free throws per game on 90 percent efficiency from the free throw line since Elana Delle Donne in 2010-11 ... Registered seven 30+ point performances, including a career-high 35 points against South Alabama, and became a 1,000-point scorer this past season

### SPANISH SPECIAL

■ Arkansas WBB's seventh-ever international player in Cristina Sanchez Cerqueira is a member of the Spanish National Team

■ Played almost nine minutes in Arkansas' first win of the season, against East Texas A&M

■ Netted first collegiate three pointer and recorded a career high 10 rebounds in Arkansas' win over Central Arkansas

■ Made first start earlier this season against Vanderbilt and has started in every game since (8 games)

■ Represents her country in 3x3 tournaments, including just recently at the FIBA 3x3 World Cup in Debrecen, Hungary

■ With Segle XXI, played in 26 games, averaging 6.4 points, 5.4 rebounds and 1.3 steals per game last season

### PHENOM PHOENIX

■ 2023 Fall signee Phoenix Stotijn enrolled early in January 2024 to Arkansas, and is a member of the Netherlands National Team

■ Did not play in the second half of the 2023-24 season, but practiced with the team

■ The 5-9 combo guard of the Netherlands played for Triple Threat, logging 13.6 points, 3.6 rebounds and 1.5 steals per game in the team's eight games

■ Made her long awaited debut on Sunday against Texas Tech. The Dutch native settled in in the second half and shot 3-6 from three and converted her lone free throw attempt. Stotijn finished with 12 points and played just over 20 minutes.

■ Recorded another 12 points, along with 5 rebounds, to be one of the Hogs' five players in double figures for Arkansas' win over Central Arkansas

■ Her mother, Anouk, is a Dutch singer-songwriter with many albums topping the Dutch charts, most of them going Platinum and several debuting in the No. 1 position. Dubbed the "Adele of the Netherlands" by Mike Neighbors

### OUR RECORD WHEN...

Overall	9-19
Home / Away / Neutral	7-8/2-7/0-4
SEC	2-11
Home / Away	1-5/1-6
White Uniforms	7-6
White w/ Pink Uniforms	1-1
Cardinal Uniforms	1-8
Anthracite Uniforms	0-1
Turquoise Uniforms	0-2
Pink Uniforms	0-1

### LEADS/QUARTERS/HALFTIME/OT

Leading after the 1st quarter	3-2
Leading after the 2nd quarter/Half	5-1
Leading after the 3rd quarter	6-1
Leading at the half, home	5-0
Leading at the half, road/neutral	0-1
Tied at the half, home	.....
Tied at the half, road/neutral	.....
Games decided by 5 points or fewer	1-3
Games decided by 10 points or fewer	1-4
Leading with 5:00 left	9-1
Leading with 2:00 left	8-1
Overtime games	1-0

### OFFENSE

Scoring less than 70 points	1-15
Scoring 70-79 points	4-4
Scoring 80-89 points	3-0
Scoring 90-99 points	1-0
Scoring 100+ points	.....
2 Players Or Less in Double Figures	2-10
3 Players in Double Figures	3-8
4 Players in Double Figures	3-1
5 Players in Double Figures	1-0
5+ Players in Double Figures	.....
When shooting 50 percent or higher	.....
When shooting less than 50 percent	9-19

### REBOUNDING/TURNOVERS

When outrebounding opponent	6-0
When outrebounded	3-19
When rebounds are even	.....
When grabbing 10+ offensive reb	5-8
When forcing 15+ turnovers	5-5
When committing less than 15 turnovers	4-10
When committing 15+ turnovers	5-9

### Top Scorers (Includes Ties)

Higginbottom	Fairfield, Little Rock, UTA, UCLA, ORU, OSU
.....	BGSU, BC, TTU, LIB, Troy, UCA, LSU, Texas, AUB, TEN,
.....	KEN, A&M, FLA, MSST, UGA, OM
Smith	East Texas A&M, ALA, SC
Ojenuwa	Ark. St.
Keats	SEMO, VAN

### Top Rebounders (Includes Ties)

Lawrence	Fairfield, East Texas A&M, UTA, UCLA, Ark. St.
.....	OSU, Texas, KEN
Ojenuwa	Little Rock, ORU, Ark. St., BC, SEMO, TTU, LIB,
.....	LSU, Texas, AUB, TEN, VAN, MSST, UGA, OM
Johnson	BGSU
Higginbottom	LIB, Texas, AUB, TEN, A&M, FLA
Sanchez-Cerqueira	Troy, UCA, ALA, VAN, FLA, SC
Keats	Texas
Galea	MSST

### Months

November	4-5
December	3-3
January	2-6
February	0-5
March	.....



## CONSISTENCY IN THE NEIGHBORS' ERA

■ Head coach Mike Neighbors has led the program to consistency, now entering his eighth season at the helm

■ Guided his teams to six straight postseason berths (including 2020 season, where team would have been lock for NCAA Tournament)

■ With the postseason appearance in the WBIT last season, Neighbors matched the program record of six consecutive postseason qualifications, tying with his mentor Gary Blair

## UNITED NATIONS

■ The 2024-25 roster features five international players from five different countries: Phoenix Stotijn (The Netherlands), Cristina Sanchez (Spain), Pinja Paananen (Finland), Vera Ojenuwa (Nigeria) and Danika Galea (Malta).

■ How to say "Go Hogs" in each language  
 Finnish: Menkää Siat  
 Dutch: Ga Varkens  
 Maltese: Mur Hniezer  
 Spanish: ¡Vamos cerdos!

## KIKI FOR THREE

■ Sophomore guard Kiki Smith has established herself as a consistent scoring threat for Arkansas.

■ The Topeka, Kan. native has 10+ points in 12 of 23 games and has started all but one game.

■ Smith paced Arkansas with 22 points in first win of the season against East Texas A&M. Went 8-9 from FG, lone miss was in 4Q. Against Alabama, Smith scored a season and game high 23 points, going 8-15 from FG and 4-9 from 3

■ From beyond the arc, Kiki ranked seventh in the SEC and 63rd in the NCAA with 47 3s before being sidelined with an ankle injury

■ After missing 5 games, Kiki returned to the court in Arkansas' contest at South Carolina, where she led the Hogs with 18 points and went 4-8 from three point land

■ Named the 2024 NJCAA DI WBB Player of the Year and First Team All-American at Hutchinson CC

■ Started in all 37 games, logging 17.6 points per game on 55.9 percent from the field (237-for-424), 44.4 percent from beyond the arc (82-for-103) and 79.6 percent from the free throw line (82-for-103)

## SLOBBERING HOG

■ After a 17-year absence, the beloved "Slobbering Hog" logo has returned to center court for Razorback basketball.

■ The "Slobbering Hog" return was made possible after Arkansas AD Hunter Yurachek set out a challenge to Razorback fans to raise money for NIL to bring the logo back.

■ Best research indicates the "Slobbering



## In The SEC Standings

	CONFERENCE					OVERALL					Streak	vs. T10	vs. T25	SEC FINISHES LAST 16 YEARS
	W-L	Pct.	H	A		W-L	Pct.	H	A	N				
Texas	12-1	.923	7-0	5-1		26-2	.929	14-0	8-2	4-0	W10	6-2	9-2	2023-24.....T9
South Carolina	12-1	.923	7-0	5-1		24-3	.889	13-1	6-2	5-0	W1	5-3	9-3	2022-23.....8th
LSU	11-2	.846	7-0	4-2		26-2	.929	17-0	5-2	4-0	W1	0-2	4-2	2021-22.....T8
Kentucky	10-3	.769	5-1	5-2		21-4	.840	13-1	6-3	2-0	W2	0-1	4-2	2020-21.....T5
Alabama	8-5	.615	4-2	4-3		21-6	.778	11-2	6-4	4-0	L1	0-2	1-4	2019-20.....T3
Oklahoma	8-5	.615	5-2	3-3		20-6	.769	12-2	6-3	2-1	W4	0-3	3-5	2018-19.....10th
Ole Miss	8-5	.615	3-3	5-2		17-8	.680	10-3	6-3	1-2	L1	1-3	2-6	2017-18.....T12
Tennessee	7-6	.538	4-3	3-3		20-6	.769	13-3	4-3	3-0	W3	1-5	3-5	2016-17.....14th
Vanderbilt	6-7	.462	3-3	3-4		19-8	.704	12-3	6-4	1-1	L1	0-2	2-4	2015-16.....10th
Florida	5-8	.385	2-4	3-4		14-13	.519	10-5	4-5	0-3	W2	0-2	0-7	2014-15.....T9
Mississippi State	5-8	.385	3-3	2-5		18-9	.667	9-3	5-6	4-0	L1	1-2	1-5	2013-14.....8th
Auburn	3-10	.231	3-4	0-6		12-14	.462	8-5	2-8	2-1	L3	0-3	0-8	2012-13.....T11
Texas A&M	3-10	.231	3-4	0-6		10-15	.400	9-6	0-7	1-2	L7	0-4	2-8	2011-12.....T8
Georgia	2-11	.154	2-4	0-7		10-17	.370	8-7	0-8	2-2	L2	0-3	0-6	2010-11.....T4
Missouri	2-11	.154	1-5	1-6		13-15	.464	10-8	2-6	1-1	L2	0-3	0-8	2009-10.....9th
Arkansas	2-11	.154	1-5	1-6		9-19	.321	7-8	2-7	0-4	L5	0-4	0-7	2008-09.....T11

## Game-by-Game Starters

### OPPONENT

	1	2	3	4	5
Fairfield	K. Smith	Higginbottom	Keats	Lawrence	Ojenuwa
East Texas A&M	K. Smith	Higginbottom	Keats	Lawrence	Ojenuwa
Little Rock	K. Smith	Higginbottom	Keats	Lawrence	Ojenuwa
UT-Arlington	K. Smith	Higginbottom	Keats	Lawrence	Ojenuwa
UCLA	K. Smith	Higginbottom	Keats	Lawrence	Ojenuwa
Oral Roberts	K. Smith	Higginbottom	Keats	Lawrence	Ojenuwa
Arkansas State	K. Smith	Higginbottom	Keats	Lawrence	Ojenuwa
Oklahoma State	K. Smith	Higginbottom	Keats	Lawrence	Ojenuwa
Bowling Green	K. Smith	Higginbottom	Keats	Lawrence	Ojenuwa
Boston College	K. Smith	Higginbottom	Keats	Lawrence	Ojenuwa
SEMO	K. Smith	Higginbottom	Keats	Lawrence	Ojenuwa
Texas Tech	K. Smith	Higginbottom	Keats	Lawrence	Ojenuwa
Liberty	K. Smith	Higginbottom	Keats	Lawrence	Ojenuwa
Troy	K. Smith	Higginbottom	Keats	Lawrence	Ojenuwa
Central Arkansas	K. Smith	Higginbottom	Keats	Lawrence	Ojenuwa
LSU	K. Smith	Higginbottom	Keats	Lawrence	Ojenuwa
Texas	K. Smith	Higginbottom	Keats	Lawrence	Ojenuwa
Auburn	K. Smith	Higginbottom	Keats	Lawrence	Ojenuwa
Tennessee	K. Smith	Higginbottom	Keats	Lawrence	Ojenuwa
Alabama	K. Smith	Higginbottom	Keats	Lawrence	Ojenuwa
Vanderbilt	K. Smith	Higginbottom	Stotijn	Sanchez	Ojenuwa
Kentucky	K. Smith	Higginbottom	Stotijn	Sanchez	Ojenuwa
Texas A&M	Keats	Higginbottom	Stotijn	Sanchez	Ojenuwa
Florida	Johnson	Higginbottom	Stotijn	Sanchez	Ojenuwa
Mississippi State	Johnson	Higginbottom	Stotijn	Sanchez	Ojenuwa
Georgia	Johnson	Higginbottom	Stotijn	Sanchez	Ojenuwa
Ole Miss	Johnson	Higginbottom	Stotijn	Sanchez	Ojenuwa
South Carolina	Johnson	Higginbottom	Stotijn	Sanchez	Ojenuwa

### Record with each lineup

K. Smith, Higginbottom, Keats, Lawrence, Ojenuwa: 8-12  
 K. Smith, Higginbottom, Stotijn, Sanchez, Ojenuwa: 0-2  
 Keats, Higginbottom, Stotijn, Sanchez, Ojenuwa: 1-0  
 Johnson, Higginbottom, Stotijn, Sanchez, Ojenuwa: 0-5

Hog" made its first appearance for the 1974-75 season in Barnhill Arena for men's head coach Eddie Sutton's first season. (h/t Mike Cawood)

## AVAILABILITY REPORT

■ The SEC has implemented game-by-game availability reports for football, men's basketball, women's basketball and baseball for the 2024-25 season

■ For basketball and baseball, reports are filed the night before the game, with an update on game day.

■ Players are designated as "available," "probable," "questionable," "doubtful," or "out" before game day; and as "available," "game time decision," or "out" on game day.

■ Penalties for inaccurate or late reports range from \$25,000 - \$100,000 for football and up to \$15,000 - \$25,000 for basketball and baseball.

■ Arkansas remained fully available until Kiki Smith became the first Razorback to appear on the report prior to the Jan. 30 game against Texas A&M. Smith was listed as "questionable" in the initial report and "out" in the game day update.





# SINGLE SEASON

# RECORDS

## POINTS

1. CHELSEA DUNGEE - 759
2. SHELLY WALLACE - 692
3. BETTYE FISCUS - 655
4. IZZY HIGGINBOTTOM - 651
5. SHAMEKA CHRISTON - 611
6. CHELSEA DUNGEE - 603
7. DELMONICA DeHORNEY - 583
8. DELMONICA DeHORNEY - 581
9. ERYNN BARNUM - 555
10. BETTYE FISCUS - 554

## SCORING AVG

1. IZZY HIGGINBOTTOM - 24.1
2. SHELLY WALLACE - 23.1
3. CHELSEA DUNGEE - 22.3
4. TALIAH SCOTT - 22.1
5. SHAMEKA CHRISTON - 21.8
6. CHELSEA DUNGEE - 20.5
7. DELMONICA DeHORNEY - 20.0
8. BETTYE FISCUS - 19.8
9. BETTYE FISCUS - 18.7
10. BETTYE FISCUS - 18.3

## FREE THROWS

1. CHELSEA DUNGEE - 229
2. IZZY HIGGINBOTTOM - 198
3. CHELSEA DUNGEE - 177
4. CHELSEA DUNGEE - 146
- ERYNN BARNUM - 132
6. KELSEY BROOKS - 132
7. MAKAYLA DANIELS - 129
8. SAMARA SPENCER - 128
9. SHAMEKA CHRISTON - 126
10. MALICA MONK - 114

## FTA

1. CHELSEA DUNGEE - 275
2. CHELSEA DUNGEE - 224
3. IZZY HIGGINBOTTOM - 219
4. ERYNN BARNUM - 205
5. KELSEY BROOKS - 199
6. CHELSEA DUNGEE - 189
7. SAMARA SPENCER - 182
8. SAMARA SPENCER - 173
9. MAKAYLA DANIELS - 168
10. SHAMEKA CHRISTON - 166

## FT%

1. AMBER RAMIREZ - .923
2. IZZY HIGGINBOTTOM - .904
3. CHRISTY SMITH - .899
4. CHARITY FORD - .873
5. INDIA LEWIS - .853
6. CHRISSEY CARR - .852
7. MCKENZIE ADAMS - .844
8. TALIAH SCOTT - .838
9. ALEXIS TOLEFREE - .833
- CHELSEA DUNGEE - .833

## FGM

1. SHELLY WALLACE - 267
2. BETTYE FISCUS - 236
3. CHELSEA DUNGEE - 232
4. DELMONICA DeHORNEY - 227
5. SHAMEKA CHRISTON - 219
6. DELMONICA DeHORNEY - 219
- BETTYE FISCUS - 219
8. IZZY HIGGINBOTTOM - 210
9. ERYNN BARNUM - 205
10. KARYN KARLIN - 198

## FGA

1. CHELSEA DUNGEE - 574
2. SHAMEKA CHRISTON - 500
3. MALICA MONK - 488
4. BETTYE FISCUS - 486
5. IZZY HIGGINBOTTOM - 473
6. SAMARA SPENCER - 459
7. CHELSEA DUNGEE - 458
8. C'EIRA RICKETTS - 449
9. BETTYE FISCUS - 439
10. CHELSEA DUNGEE - 434



**2024-2025 ARKANSAS RAZORBACKS WOMEN'S BASKETBALL**

<b>No.</b>	<b>Name</b>	<b>Pos.</b>	<b>Class</b>	<b>Ht.</b>	<b>Hometown (Previous School)</b>
0	Ella Rogers	G	Sr.	5-8	Granville, Ohio (Granville HS)
1	Phoenix Stotijn	G	Fr.	5-9	Amsterdam, Netherlands
2	Kiki Smith	G	So.	5-7	Topeka, Kan. (Topeka HS/Hutchinson CC)
3	Izzy Higginbottom	G	Sr.	5-7	Batesville, Ark. (Batesville HS/Missouri/Arkansas St.)
10	Cristina Sanchez Cerqueira	F	So.	6-1	Granada, Spain (Segle XXI)
15	Jada Bates	G	Fr.	6-3	Powder Springs, Ga. (McEachern HS)
16	Pinja Paananen	F	Fr.	6-2	Laukaa, Finland (Jyväskylä Basketball Academy)
20	Karley Johnson	G	Jr.	5-9	Oklahoma City, Okla. (Mustang HS)
21	Loren Lindsay	G	R-So.	5-11	Fayetteville, Ark. (Fayetteville HS)
22	Vera Ojenuwa	F	So.	6-4	Delta State, Nigeria (Orhuwhorun/Barton CC)
23	Carly Keats	G	Jr.	5-8	Philadelphia, Miss. (Neshoba Central HS/Jones College)
25	Danika Galea	C	Fr.	6-3	St. Paul's Bay, Malta
34	Jenna Lawrence	F	So.	6-3	Melbourne, Ark. (Farmington HS)
44	Maryn Archer	G	R-Fr.	5-7	Derby, Kan. (Derby HS)

**COACHES AND SUPPORT STAFF**

Head Coach: Mike Neighbors, 8<sup>th</sup> Season

Associate Head Coach: Todd Schaefer, 8<sup>th</sup> Season

Assistant Coach: Lacey Goldwire, 6<sup>th</sup> Season

Assistant Coach: Nick Bradford 1<sup>st</sup> Season

Director of Women's Basketball Operations: Amber Shirey, 37<sup>th</sup> Season

Director of Student-Athlete Development: Jayci Stone, 3<sup>rd</sup> Season

Special Assistant to the Head Coach/Director of Video: Evan Johnston, 2<sup>nd</sup> Season

Head Athletic Trainer: Simone Rush, 5<sup>th</sup> season

Strength & Conditioning Coach: Tyler Beckman, 4<sup>th</sup> season

**PRONUNCIATION GUIDE**

#1 Phoenix Stotijn	Stow-Tine
#16 Pinja Paananen	PIN-ya PAH-ne-nen
#22 Vera Ojenuwa	oh-JEN-you-wuh
#25 Danika Galea	Danica gall-EE-yuh
#44 Maryn Archer	mare-in
Laukaa, Finland	LOW (like ow)-kuh
Granada, Spain	grey-nah-duh



## Road to Greenville (Through games of February 20)



**2025 SEC Tournament**  
**Greenville, S.C. - Bon Secours Wellness Arena**  
**March 5-9**

### FIRST ROUND

#### Wednesday, March 5

11:00 a.m.	Game 1 - Seed #16 vs. Seed #9	SEC Network
	Game 2 - Seed #13 vs. Seed #12	SEC Network
6:00 p.m.	Game 3 - Seed #15 vs. Seed #10	SEC Network
	Game 4 - Seed #14 vs. Seed #11	SEC Network

### SECOND ROUND

#### Thursday, March 6

11:00 a.m.	Game 5 - Seed #8 vs. Game 1 winner	SEC Network
	Game 6 - Seed #5 vs. Game 2 winner	SEC Network
6:00 p.m.	Game 7 - Seed #7 vs. Game 3 winner	SEC Network
	Game 8 - Seed #6 vs. Game 4 winner	SEC Network

### QUARTERFINALS

#### Friday, March 7

Noon	Game 9 - Seed #1 vs. Game 5 winner	ESPN2
	Game 10 - Seed #4 vs. Game 6 winner	ESPN2
6:00 p.m.	Game 11 - Seed #2 vs. Game 7 winner	SEC Network
	Game 12 - Seed #3 vs. Game 8 winner	SEC Network

### SEMIFINALS

#### Saturday, March 8

4:30 p.m.	Game 13 - Game 9 winner vs. Game 10 winner	ESPN2
	Game 14 - Game 11 winner vs. Game 12 winner	ESPN2

### CHAMPIONSHIP

#### Sunday, March 9

3:00 p.m.	Game 15 - Game 13 winner vs. Game 14 winner	ESPN
-----------	---	------

All times **EASTERN** and subject to change. The second game in a session will begin 25 minutes following the conclusion of previous game.

Below is the breakdown of the 2025 SEC Tournament seeds *if the season ended on February 20*.

Seeding	Record	Games Remaining
1. Texas*	12-1	@UG, @MS, UF
South Carolina*	12-1	@VU, @UM, UK
3. LSU	11-2	@UK, @UA, UM
4. Kentucky	10-3	LS, UT, @SC
5. Alabama%	8-5	AU, LS, @OK
Oklahoma%	8-5	@AR, @UF, UA
7. Ole Miss%	8-5	MO, SC, @LS
9. Tennessee	7-6	@UF, @UK, UG
8. Vanderbilt	6-7	SC, AM, @MO
10. Florida^	5-8	UT, OK, @TX
11. Mississippi State^	5-8	AM, TX, AU
13. Auburn@	3-10	@UA, @UG, MS
12. Texas A&M@	3-10	@MS, @VU, AR
14. Georgia#	2-11	TX, AU, UT
15. Missouri#	2-11	@UM, @AR, VU
Arkansas#	2-11	OK, MO, @AM

\* — TX and SC split their games and have defeated all other opponents, therefore tie cannot be broken at this time. % — UA and OK have not played but both defeated UM, therefore UA and OK cannot be broken but UM would be No. 7 seed. ^ — UF defeated MS head-to-head making the Gators the No. 10 seed. @ — AU defeated AM head-to-head, therefore is the No. 13 seed. # — UG defeated MO and AR head-to-head, which makes UG No. 14 seed. MO and AR have not played yet, therefore that tie cannot be broken.

#### SEC Tournament Tie-Breaker Procedures

Teams will be seeded No. 1 through No. 16 in the SEC Women's Basketball Tournament bracket based upon the final regular season Conference standings. Teams that finished No. 1 through No. 4 in the final regular season standings shall receive first and second round byes while teams that finish No. 5 through No. 8 will receive first round byes.

1. Two-Team Tie. The following procedure will be used in the following order until the tie is broken:

- Won-lost results of head-to-head competition between the two teams.
- Won-lost record of the two teams versus the No. 1 seed (and proceeding through the No. 14 seed, if necessary).
- Coin flip by the Commissioner.

2. Three-Team Tie (or more). When three or more teams are tied, the following procedure will be used in the following order until the tie is broken. If two teams remain tied after a tiebreaker provision, the two-team tiebreaker formula will be used.

- Best winning percentage of games played among the tied teams (Example: Team A is 3-1, Team B is 2-2 and Team C is 1-3 – Team A would be seeded highest, Team B second-highest and Team C lowest of the three).
- Best winning percentage of the tied teams versus the No. 1 seed (and proceeding through the No. 14 seed, if necessary).
- If two teams remain, coin flip by the Commissioner.
- If three or more teams remain, draw by the Commissioner.



# Last Time...

## OFFENSE

Scored 110+ .....	110, vs. Providence (11-16-98)
Scored 100+ points at home .....	100, vs. LA Tech (12-7-23)
Scored 100+ points on the road .....	108, at Ole Miss (2-16-20)   108, Baylor (3-6-91)
Scored 90-99 points .....	93 vs. UT-Arlington (11/14/24)
Scored 90+ points at home .....	93 vs. UT-Arlington (11/14/24)
Scored 90+ points on the road .....	93, at Little Rock (11-20-22)
Scored 80-89 points .....	87 vs. UCA (12/29/24)
Scored 80-89 points at home .....	87 vs. UCA (12/29/24)
Scored 80-89 points on the road .....	81, at Florida (2-8-23)
Scored 35+ points in a quarter .....	36 vs. UT-Arlington (11/14/24)
Was held to 50-59 .....	55 at No. 6 South Carolina (2/20/25)
Was held to 49-40 .....	48, vs. Auburn (3-7-24)
Was held to 39-20 .....	34, at LSU, 2-7-19
Was held to 20 or less .....	N/A
Made 40+ field goals .....	40, vs. Central Arkansas (12-13-20)
Made 17+ three-point field goals .....	19, vs. Alabama (2-28-21)
Made 10+ three-point field goals .....	11 at No. 6 South Carolina (2/20/25)
Did not make 3-pointer (since 1986) .....	0-10, at LSU, (2-7-19)
Made 30 free throws .....	30 (30-39), vs. No. 4 Baylor (12-6-20)
Made 25 free throws .....	25 (25-35), vs. Vanderbilt (1-16-23)
Shot 50-59 or better .....	55.4, vs. LA Tech (12-7-23)
Shot 60 percent or better .....	62.5 (30-48), vs. Little Rock (11-20-22)
Held to less than 30 percent .....	286 (18-63) at #5 UCLA (11/17/24)
Held to less than 20 percent .....	182 (10-55), vs. No. 6 Tennessee (1-8-12; L, 38-69)
Had 20 or more assists in a game .....	20, vs. LA Tech (3-16-23)

## DEFENSE

Allowed 100 points .....	108 vs. Florida (2/3/25)
Allowed 80-99 points .....	95 at No. 6 South Carolina (2/20/25)
Held opponent to 40-49 points .....	45 vs. SEMO (12/8/24)
Held opponent to 39-30 .....	36, vs. Little Rock (11-14-23)
Held an SEC opponent under 50 points in 3 cons. games .....	47, vs. Auburn (1-29-15; W, 52-47), Alabama (2-1-15; W, 53-42), No. 24/21 Georgia (2-9-15; W, 54-48)
Held opponent to 29 points or less .....	23, vs. Binghamton, 11-30-13
Held an opponent under 15 points in a half .....	15 vs. Texas A&M (1/30/25)
Held an opponent to 2 points in a quarter .....	2, vs. UCA (12-13-20)
Held opponent under 15 field goals .....	14, vs. Little Rock (11-14-23)
Held opponent to less than 30 percent shooting .....	27.7 (18-65) vs. Texas A&M (1/30/25)
Held opponent to less than 20 percent shooting .....	19.7 (13-66), vs. Northwestern State (12-15-19)
Held opponent under 15 percent from 3-point .....	11.1 (2-18) vs. Oklahoma State (11/29/24)
Opponent did not make a 3-pointer .....	0, at Kentucky (1-4-24)
Had 70+ rebounds .....	74, vs. Mississippi Valley State (11-24-89)
Had 60-69 rebounds .....	64, vs. Prairie View A&M (12-16-18)
Had 50-59 rebounds .....	54 vs. SEMO (12/8/24)
Had 10 or more blocked shots in a game .....	10 vs. Bowling Green (11/30/24)
Had 20 or more steals in a game .....	20, vs. ORU (11-13-13)
Had 15 or more steals in a game .....	18, vs. UT Martin (12-29-19)
Forced 25+ turnovers in a game .....	28, vs. Northern Arizona (11-24-22)

## OTHER

Won an overtime game .....	71-60 vs. Little Rock, 11/11/24
Lost an overtime game .....	76-73, vs. Ole Miss (1-29-23)
Won a double overtime game .....	73-72, vs. Florida (1-29-12)
Lost a double overtime game .....	N/A
Won a triple overtime game .....	91-80, Win in 3OT, 2-10-13, at Alabama
Won at the buzzer .....	60-59, vs. Illinois (Maryam Dauda, 12-20-23)
Played consecutive OT games .....	1-24-16 at Auburn (lost); 1-28-16 vs. Florida (lost)
Won a game after being down 15+ points .....	11/11/24 at Little Rock (16 point deficit)
Won regular season tournament .....	Paradise Jam (St. Thomas, U.S. Virgin Islands, Nov. 24-26, 2022)

Defeated ranked team .....	71-58, at No. 15 Florida State (11-30-23)
Defeated a ranked team on the road .....	71-58, at No. 15 Florida State (11-30-23)
All-time SEC win streak .....	8 games (1-15-12: Auburn through 2-15-12: at Auburn)
All-time SEC home win streak .....	5 games (1-15-12: Auburn -- 2-9-12: South Carolina)
.....	5 games (1-14-21: Florida -- 2-28-21: Alabama)

## A RAZORBACK PLAYER ...

Scored 20-24 points .....	24, Izzy Higginbottom at Georgia (2/9/25)
Scored 25-29 points .....	26, Izzy Higginbottom at Mississippi State (2/6/25)
Scored 30-34 points .....	33, Izzy Higginbottom vs. Texas A&M (1/30/25)
Scored 35-39 points .....	36, Izzy Higginbottom at Auburn (1/9/25)
Scored 40+ points .....	40, Izzy Higginbottom vs. Florida (2/3/25)
Scored 40+ points in an SEC game .....	40, Izzy Higginbottom vs. Florida (2/3/25)
Scored 35+ points in an SEC game .....	36, Izzy Higginbottom at Auburn (1/9/25)
Scored 30+ points in three straight games .....	Izzy Higginbottom (KEN 32, A&M 34, FLA 40) (2025)
Scored 20+ points 10 times in a season .....	Izzy Higginbottom (17x   2024-25)
Taliah Scott (13x   2023-24), Chelsea Dungee (17x   2020-21), Chelsea Dungee (11x   2019-20) & Chelsea Dungee (20x   2018-19)	
Double figures in 15 consecutive games (season) .....	Jessica Jackson, 11/11/16, LSU 1-8-17 Chelsea Dungee, 26 games, (2018-19 & 2019-20) Chelsea Dungee, 31 games, (2019-20 & 2020-21) Amber Ramirez, 16 games (2021-22) Izzy Higginbottom, 19 games (2024-25)
Five players scored double figures in 1 game .....	vs. UCA (12/29/24) Higginbottom (26), Ojenuwa (12), Smith (12), Stotijn (12), Sanchez Cerqueira (10 rebs)
Five starters in double figures .....	vs. Kentucky (1-25-24) Daniels (22), Dauda (16), Johnson (14), Keats (14), Spencer (13)
Seven players scored in double figures in 1 game .....	vs. Northwestern State (11-9-18) (Tolefree 19, Galden 16, Monk 12, Dumba 11, Dungee 11, Thomas 11, Williams 10)
Made 10+ field goals in a game .....	12, Izzy Higginbottom vs. Florida (2/3/25)
Attempted 20+ field goals in a game .....	29, Izzy Higginbottom at Georgia (2/9/25)
Made 10+ free throws in a game .....	13, Izzy Higginbottom at Mississippi State (2/6/25)
Made 10+ free throws in a quarter .....	Izzy Higginbottom, 10 in the 1st quarter at Mississippi State (2/6/25)
Made 30+ free throws in a row .....	Izzy Higginbottom, 34 vs. A&M, FLA, MSST, UGA (2025)
Made 7 or more 3-pt FG in a game .....	8, Saylor Poffenbarger, at Missouri (1-28-24)
Attempted 10 or more 3-pt FG in a game .....	10, Carly Keats at Vanderbilt (1/23/25)
Had 10-14 rebounds .....	10, Izzy Higginbottom vs. Texas A&M (1/30/25)
Had 15-19 rebounds .....	17, Saylor Poffenbarger, vs. Georgia (1-7-24)
Had 20+ rebounds .....	23, Saylor Poffenbarger, at No. 15 Florida State (11-30-23) (school record)
Had 10 offensive reb - Records go back to 05-06 .....	11, Melissa Wolff vs. New Orleans (1-30-15)
Had 10+ defensive reb - Records go back to 05-06 .....	10, Vera Ojenuwa vs. SEMO (12/8/24)
Had 10+ assists .....	11, Samara Spencer, vs. LA Tech (3-16-23)
Had 10+ assists in consecutive games .....	Jailyn Mason (11 vs. HBU, 12-28-16 and 10 at Ole Miss, 1-1-17) & Calli Berna (11 vs. No. 10/8 Kentucky, 2/7/13 and 11 at Alabama, 2/10/13)
Had 5+ blocks in a game .....	5, Jenna Lawrence vs. Bowling Green (11/30/24)
Had 10+ blocks in a game .....	10, Maryam Dauda, at Alabama (1-14-24) (school record)
Had 5 or more steals in a game .....	5, Makayla Daniels, vs. Georgia (1-7-24)
Had a double-double .....	33 points and 10 rebounds, Izzy Higginbottom vs. Texas A&M (1/30/25)
Had a double-double in two consecutive games .....	Vera Ojenuwa vs. SEMO (12/9/24) and Texas Tech (12/15/24)
.....	13 pts & 14 rbd vs. SEMO (12/8/24)/12 pts & 11 rbd vs. Texas Tech (12/15/24)
Had two players record a double-double .....	Samara Spencer (31 pts/14 reb) & Maryam Dauda (12 rbd/10blks), at Alabama (1-14-24)
Had seven double-doubles in a season .....	Saylor Poffenbarger, 8, 2023-24 (MSU @FSU, LA TECH, UAPB, UIC, UGA, BAMA, @UF)
Had 10+ double-doubles in a season .....	2006-07, Lauren Ervin (14)
Had a triple-double .....	14 pts, 13 rbd, 12 asts, C'eira Ricketts vs. Auburn (1-18-09)





## MORE ABOUT MIKE

Hometown: Greenwood, Ark. (Greenwood HS)  
 Family: Daughter Abby; Sons Alec, Bowen and Barrett; granddaughter Emzey  
 Alma Mater: Arkansas, 1993

## NEIGHBORS BY THE NUMBERS

245 Wins (245-152, 12 seasons)  
 16 Signed McDonalds' All-Americans  
 12 Years as a head coach  
 9 Postseason appearances  
 5 Players drafted in the WNBA (HC)  
 1 Final Four appearance

## LEARN MORE

Sign up for Mike Neighbors' newsletter and listen to his podcasts at [CoachNeighbors.com](http://CoachNeighbors.com)



## NABES FAVES

### TOP 10 MOVIES

1. A Few Good Men
2. The Hunt For Red October
3. The Silence Of The Lambs
4. Hoosiers
5. O Brother, Where Art Thou?
6. Moneyball
7. Top Gun
8. Zero Dark Thirty
9. The Lion King
10. Purple Rain

See the entire list here: <http://imdb.to/2roy-aEO>

### TOP 10 SONGS

1. Sweet Child O' Mine (Guns N' Roses)
2. You Shook Me All Night Long (AC/DC)
3. Man In The Mirror (Michael Jackson)
4. Amarillo By Morning (George Strait)
5. Jessie's Girl (Rick Springfield)
6. Hysteria (Def Leppard)
7. Fishin' In The Dark (Nitty Gritty Dirt Band)
8. The Ballad of Curtis Loew (Lynyrd Skynyrd)
9. Wanted Dead Or Alive (Bon Jovi)
10. Let's Go Crazy (Prince)

### TOP 10 TV SHOWS

1. West Wing (first three seasons)
2. Ted Lasso
3. The Wire
4. Breaking Bad
5. Seinfeld
6. The Newsroom
7. Prison Break
8. Arrested Development
9. Game of Thrones
10. The Goldbergs



# MIKE NEIGHBORS

Eighth Season  
 Career Record: 245-152 (12) | Arkansas Record: 147-111 (8)

Arkansas women's basketball has been transformed into a nationally recognized program in seven years thanks to head coach Mike Neighbors. During his time back home at his alma mater, Neighbors has guided his Hogs to the best seven-year period of sustained success in program history with 138 wins and six postseason qualifications in that time. The proof of his success, and the success of his system, lies in the numbers - Neighbors has accumulated 242 wins during his 12 seasons as a head coach, the most of any Power 5 head coaches in 10 or fewer seasons, as well as one of only two NCAA Division I Head Coaches.

Entering his eighth season on the bench for Arkansas, the program is coming off its sixth consecutive winning season, sixth straight postseason appearance (if including the 2020 NCAA Tournament had it not been cancelled due to the COVID-19 pandemic, as Arkansas was a lock to make the Big Dance).

In 2022-23, the Hogs started out the season 13-0, which was tied for the second-best start in program history. Going into Mid-December, the Hogs were ranked as high as No. 17 in the AP Poll. The Hogs won another SEC Tournament game in comeback fashion versus Missouri to make it to the quarterfinals and hold the best winning percentage in the SEC Tournament among all coaches in Arkansas history with an 8-6 record. Continuing into postseason, Arkansas became the automatic bid out of the SEC to the Postseason WNIT, making it to the Great 8, while being able to host three of its four games at Bud Walton Arena. Neighbors led the Hogs to two All-SEC selections, including Second Team choice Erynn Barnum, who was also on the Midseason Top 10 List for the Katrina McClain Award, as well as All-Freshman selection Saylor Poffenbarger, who broke a school record for five SEC Freshman of the Week accolades. The Hogs finished the season with 24 wins, which tied for the most in the Neighbors' era and matches the fourth most in a single season in program history. Additionally, four players averaged double digits in scoring, the most in the Southeastern Conference.

Prior to Arkansas, Neighbors guided Washington to four seasons of unprecedented success, highlighted by the 2016 NCAA Final Four and two NCAA Sweet 16 appearances. Neighbors was an assistant for the Huskies prior to this promotion and also has had stops at Xavier, Tulsa, Colorado and Arkansas as an assistant.

A native of Greenwood, Arkansas, Neighbors received his associate degree at the University of Arkansas - Fort Smith and his bachelor's degree from the University of Arkansas in 1993. Neighbors is married to Jayci Stone. He has four children, a daughter, Abby and three sons, Alec, Bowen and Barrett, as well as a granddaughter, Emzey.

## TIMELINE

- Bentonville HS Head Coach 1994-98
- Cabot HS Head Coach 1998-99
- Arkansas Director of Ops 1999-01
- Tulsa Univ. Assistant Coach 2001-05
- Univ. of Colorado Assistant Coach 2005-06
- Univ. of Arkansas Assistant Coach 2006-07
- Xavier Assistant Coach 2007-11
- Univ. of Washington Assistant Coach 2011-13
- Univ. of Washington Head Coach 2013-17
- Univ. of Arkansas Head Coach 2017-present

## COACHING HISTORY

### University of Washington

Year	Overall	Pac-12	Finish
2013-14	20-14 (.588)	10-8 (.556)	6
2014-15	23-10 (.697)	11-7 (.611)	5
2015-16	26-11 (.703)	11-7 (.611)	5
2016-17	29-6 (.829)	15-3 (.833)	T2
UW	98-41 (.705)	47-25 (.662)	

### University of Arkansas

Year	Overall	SEC	Finish
2017-18	13-18 (.419)	3-13 (.188)	T11
2018-19	22-15 (.611)	6-10 (.375)	10
2019-20	24-8 (.750)	10-6 (.625)	T3
2020-21	19-9 (.679)	9-6 (.600)	T5
2021-22	18-14 (.563)	7-9 (.438)	T8
2022-23	24-13 (.649)	7-9 (.438)	8
2023-24	18-15 (.545)	6-10 (.375)	T9
2024-25	9-19 (.321)	2-11 (.154)	-
Ark	147-111 (.570)	50-74 (.403)	8 yrs
Totals	245-152 (.617)	97-99 (.495)	12 yrs

## COACHING DEVELOPMENT

Coach	w/Nabes	Now
Adia Barnes	'14-15	HC Arizona
Adam Call	'14	AC George Washington
Morgan Valley	'16	AC UConn
Todd Schaefer	'16-Pres.	AHC Arkansas
Chelsea Dungee	'18-21	AC Troy
Evan Johnston	'18-22	Special Ast. to HC Arkansas

## PLAYER DEVELOPMENT

YEAR	UNIVERSITY	PLAYER	ROUND	OVERALL	TEAM NOTE
2021	Arkansas	Chelsea Dungee	1	5	Dallas Wings ! @
2021	Arkansas	Destiny Slocum	2	14	Las Vegas Aces ! @
2021	Arizona	Aari McDonald	1	3	Atlanta Dream @
2017	Washington	Kelsey Plum	1	1	San Antonio Stars ! @ Las Vegas Aces
	Washington	Chantel Osahor	2	21	Chicago Sky ! @
2016	Washington	Talia Walton	3	29	Los Angeles Sparks ! @
2011	Xavier	Amber Harris	1	4	Minnesota Lynx ! #
	Xavier	Ta'Shia Phillips	1	8	Atlanta Dream ! #
	TAMU/UAFS	Tanisha Smith	2	22	Seattle Storm #
	Colorado	Brittany Spears	2	19	Phoenix Mercury *
2009	Arkansas	Shameka Christon	1	5	New York Liberty \$
2008	Arkansas	Lauren Ervin	3	37	Connecticut Sun ! #
2006	Tulsa	Megan Moody	-	-	Houston Comets Free Agent #
2003	Tulsa	Allison Curtin	1	12	Houston Comets ! # Traded to Detroit Shock
	Arkansas	Dana Cherry	2	23	Charlotte Sting \$

\*- Signed but did not coach

!- At the school when player was drafted

@- Worked with player as a head coach

#- Worked with player as an assistant coach

\$- Worked with player as other (GA, etc)

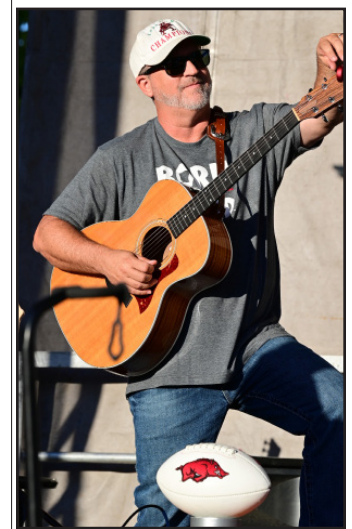


**MORE NABES FACTS**

- **Movies:** His expansive movie collection includes digital, disk and VHS copies. Did you know he used to work at BlockBuster? On a related note, he also collects books that have been turned into movies.
- **Baseballs autographed by movie stars:** Ask him about this collection - talk about some good stories.
- **Lunch Boxes:** Coach collects tin lunch boxes that he carried to school and has them displayed in his home. His first lunch box had KISS on it.
- **Hamilton:** Nabes is a huge Hamilton fan, and routinely quotes the Broadway musical to players, fans and media alike.
- **Athens City Champion:** Coach stumbled upon a dart tournament while on a trip to Athens, Georgia. He joined in and was one of the two-man winning team.
- **Ask him about shoes, music, movies, guitars, basket-ball nostalgia - just about anything!**



NEIGHBORS VS.	W	-	L						
Abilene Christian	2		0	Fresno State	2	0	New Mexico State	1	0
Alabama	6		4	Furman	1	0	New Orleans	1	0
Arizona State	2		6	Georgia	2	8	Northern Arizona	1	0
Arizona	6		0	Grambling State	2	0	Northwestern State	2	0
Arkansas State	4		0	Grand Canyon	1	0	Notre Dame	0	1
Auburn	9		2	Hartford	1	0	<b>Oklahoma</b>	<b>1</b>	<b>2</b>
Baylor	1		0	Hawai'i	1	0	Oklahoma State	0	1
Belmont	2		0	Houston	2	0	Ole Miss	5	5
Boise State	1		0	Idaho	1	0	Oral Roberts	5	1
Boston College	1		0	Illinois	1	0	Oregon State	1	6
Bowling Green	0		1	Iowa State	0	1	Oregon	5	4
BYU	1		0	Jackson State	2	0	Pennsylvania	1	0
California	5		4	Kansas	0	2	Pittsburgh	1	1
Central Arkansas	5		0	Kansas State	2	0	Portland	3	1
Central Florida	0		1	Kent State	1	0	Prairie View A&M	1	0
Charlotte	1		0	Kentucky	3	7	Saint Mary's	0	1
Clemson	1		0	Lamar	1	0	Sam Houston	2	0
Colorado State	1		0	Liberty	0	1	Samford	2	0
Colorado	9		0	Little Rock	5	0	San Diego State	2	0
Connecticut	1		1	Louisiana-Monroe	3	0	San Diego	1	0
Creighton	1		1	Louisiana Tech	2	0	Santa Clara	1	0
CSUN	1		0	LSU	3	6	Savannah State	1	0
DePaul	0		1	Marquette	0	1	Seattle	4	0
East Texas A&M	1		0	McNeese State	1	0	SEMO	1	0
Eastern Washington	1		0	Maryland	1	1	SFA	1	0
Fairfield	0		1	Miami	0	1	SMU	2	0
Florida State	2		0	Mississippi State	3	8	South Carolina	1	12
Florida	4		5	Missouri	14	4	South Dakota	2	0
FGCU	1		0	Montana State	2	0	Stanford	3	5
Fordham	1		0	Missouri State	1	0	Stony Brook	1	0
				Nebraska	1	1	Syracuse	0	2
							Tarleton State	1	0
							TCU	0	1
							Tennessee	2	7
							Tennessee Martin	1	0
							Tennessee State	1	0
							Tennessee Tech	1	0
							Texas	0	1
							Texas A&M	5	9
							Texas Tech	2	1
							Troy	1	1
							Tulsa	4	1
							UAB	1	0
							UAPB	3	1
							UC Irvine	1	0
							UC Riverside	2	0
							UCLA	4	4
							UIC	1	0
							UIW	1	0
							USC	6	0
							USF	0	1
							Utah	7	4
							UT-Arlington	3	0
							UTEP	0	2
							Vanderbilt	4	5
							Wake Forest	1	0
							Washington State	5	3
							Weber State	1	0
							Wisconsin	4	0
							Wright State	0	1
							Yale	1	0



## Last Meeting's **Box Score**



**Official Basketball Box Score -- Game Totals -- Final Statistics**  
**Oklahoma vs AR**  
 12/21/14 3:18pm at North Little Rock, Ark. (Verizon Arena)



### Oklahoma 64 • 5-5

##	Player	c/g	Total			3-Ptr			Rebounds			PF	TP	A	TO	Blk	Stl	Min
			FG-FGA	FG-FGA	FT-FTA	FG-FGA	FG-FGA	FT-FTA	Off	Def	Tot							
00	Pierre-Louis, Vionise	c	0-4	0-0	0-0	0-0	0-0	0-0	2	0	2	1	0	0	1	3	1	13
01	Kornet, Nicole	g	2-4	0-0	7-8	0-0	0-0	0-0	0	6	6	5	11	0	0	0	1	12
21	Ortiz, Gabbi	g	2-7	0-3	1-2	0-0	0-0	0-0	1	3	4	4	5	2	1	0	1	37
24	Campbell, Sharane	g	2-6	0-0	5-7	0-0	0-0	0-0	1	4	5	4	9	0	4	0	2	33
32	Williams, LaNesia	g	3-7	0-0	0-2	0-0	0-0	0-0	1	1	2	3	6	0	1	0	0	18
10	Little, Peyton		2-8	0-2	0-0	0-0	0-0	0-0	1	1	2	3	4	3	2	0	3	24
11	Wyatt, Derica		2-6	2-5	1-2	0-0	0-0	0-0	0	2	2	1	7	0	1	0	0	18
23	Manning, Maddie		0-2	0-1	2-2	0-0	0-0	0-0	1	0	1	1	2	0	0	0	0	7
25	Carter, Gioya		3-7	0-0	3-4	0-0	0-0	0-0	1	1	2	5	9	0	1	0	2	17
30	Treece, McKenna		5-10	0-0	1-2	0-0	0-0	0-0	1	3	4	3	11	0	2	2	0	21
Team									3	1	4							
Totals			21-61	2-11	20-29	0-0	0-0	0-0	12	22	34	30	64	5	13	5	10	200

FG % 1st Half: 9-29 31.0% 2nd half: 12-32 37.5% Game: 21-61 34.4%  
 3FG % 1st Half: 2-6 33.3% 2nd half: 0-5 0.0% Game: 2-11 18.2%  
 FT % 1st Half: 11-15 73.3% 2nd half: 9-14 64.3% Game: 20-29 69.0%

Deadball Rebounds 7,4

### AR 71 • 9-2

##	Player	f/g	Total			3-Ptr			Rebounds			PF	TP	A	TO	Blk	Stl	Min
			FG-FGA	FG-FGA	FT-FTA	FG-FGA	FG-FGA	FT-FTA	Off	Def	Tot							
00	JACKSON, Jessica	f	8-16	1-5	6-7	0-0	0-0	0-0	0	7	7	3	23	0	4	0	0	36
33	WOLFF, Melissa	f	3-8	0-0	0-0	0-0	0-0	0-0	4	5	9	3	6	0	0	0	4	39
42	BOWEN, Jhasmin	f	3-3	0-0	3-9	0-0	0-0	0-0	2	4	6	3	9	1	0	0	2	24
11	BERNA, Calli	g	1-3	0-1	1-2	0-0	0-0	0-0	0	3	3	4	3	4	5	0	0	24
15	BROOKS, Kelsey	g	6-16	1-5	11-20	0-0	0-0	0-0	1	5	6	4	24	2	4	2	2	40
14	BOSTAD, McKinley		1-4	1-4	0-0	0-0	0-0	0-0	1	0	1	2	3	2	2	0	0	20
25	BAILEY, Joey		0-0	0-0	0-0	0-0	0-0	0-0	0	0	0	2	0	0	1	1	0	4
32	WEST, Khadijah		1-2	0-0	1-4	0-0	0-0	0-0	1	4	5	1	3	0	0	4	0	13
Team									2	1	3							
Totals			23-52	3-15	22-42	0-0	0-0	0-0	11	29	40	22	71	9	16	7	8	200

FG % 1st Half: 14-34 41.2% 2nd half: 9-18 50.0% Game: 23-52 44.2%  
 3FG % 1st Half: 2-11 18.2% 2nd half: 1-4 25.0% Game: 3-15 20.0%  
 FT % 1st Half: 7-16 43.8% 2nd half: 15-26 57.7% Game: 22-42 52.4%

Deadball Rebounds 12,1

Officials: Lisa Mattingly, Michael McConnell, Kylie Galloway

Technical fouls: Oklahoma-None. AR-None.

Attendance: 3689

Fouled Out: OU #25 Carter at 3:28 in 2nd Half

OU #1 Kornet at 0:16.9 in 2nd half

Score by periods	1st	2nd	Total
Oklahoma	31	33	<b>64</b>
AR	37	34	<b>71</b>



# Overall Stats

## Game Records

Record	Overall	Home	Away	Neutral
ALL GAMES	9-19	7-8	2-7	0-4
CONFERENCE	2-11	1-5	1-6	0-0
NON-CONFERENCE	7-8	6-3	1-1	0-4

## Score by Periods

Team	1st	2nd	3rd	4th	OT	TOT
Arkansas	419	495	487	490	11	1902
Opponents	591	525	579	492	0	2187

## Team Box Score

No.	Player				Total		3-Point		F-Throw		Rebounds											
		GP-GS	MIN	AVG	FG-FGA	FG%	3FG-3FGA	3FG%	FT-FTA	FT%	OFF	DEF	TOT	AVG	PF	DQ	A	TO	BLK	STL	PTS	AVG
3	HIGGINBOTTOM, Izzy	28-28	961:08	34.3	213-490	.435	34-95	.358	201-223	.901	13	105	118	4.2	39	1	101	105	6	34	661	23.6
2	SMITH, Kiki	23-22	663:09	28.8	88-208	.423	51-125	.408	21-29	.724	8	40	48	2.1	36	0	50	51	5	15	248	10.8
23	KEATS, Carly	26-21	573:44	22.1	71-204	.348	39-126	.310	15-16	.938	1	38	39	1.5	9	0	17	31	3	5	196	7.5
22	OJENUWA, Vera	28-28	635:49	22.7	77-169	.456	4-14	.286	38-64	.594	67	119	186	6.6	89	6	14	53	18	20	196	7.0
1	STOTJIN, Phoenix	17-8	413:09	24.3	40-128	.313	15-68	.221	12-25	.480	5	15	20	1.2	16	0	34	47	1	11	107	6.3
34	LAWRENCE, Jenna	28-20	657:22	23.5	63-185	.341	32-128	.250	16-19	.842	29	115	144	5.1	43	1	8	22	32	18	174	6.2
25	GALEA, Danika	25-0	316:59	12.7	39-75	.520	2-13	.154	13-18	.722	23	29	52	2.1	46	3	7	30	10	5	93	3.7
20	JOHNSON, Karley	26-5	380:15	14.6	25-63	.397	2-14	.143	20-31	.645	23	54	77	3.0	35	0	15	15	3	15	72	2.8
10	SÁNCHEZ CERQUEIRA, Cristina	26-8	376:14	14.5	17-63	.270	5-24	.208	12-25	.480	20	82	102	3.9	36	1	11	34	6	10	51	2.0
15	BATES, Jada	26-0	321:33	12.4	17-49	.347	11-31	.355	5-12	.417	4	21	25	1.0	10	0	8	13	5	4	50	1.9
16	PAANANEN, Pinja	24-0	228:59	9.5	13-40	.325	7-28	.250	5-7	.714	10	29	39	1.6	12	0	5	10	6	5	38	1.6
44	ARCHER, Maryn	17-0	59:31	3.5	3-15	.200	1-1	1.000	9-16	.563	1	5	6	0.4	5	0	1	6	0	2	16	0.9
21	LINDSEY, Loren	5-0	22:02	4.4	0-3	.000	0-2	.000	0-0	.000	0	2	2	0.4	3	0	2	0	0	1	0	0.0
0	ROGERS, Ella	2-0	03:44	1.9	0-0	.000	0-0	.000	0-0	.000	0	0	0	0.0	1	0	0	0	1	0	0	0.0
Team											62	64	126					21				
<b>Total</b>		<b>28</b>	<b>5614</b>		<b>666-1692</b>	<b>.394</b>	<b>203-669</b>	<b>.303</b>	<b>367-485</b>	<b>.757</b>	<b>266</b>	<b>718</b>	<b>984</b>	<b>35.1</b>	<b>380</b>	<b>12</b>	<b>273</b>	<b>438</b>	<b>96</b>	<b>145</b>	<b>1902</b>	<b>67.9</b>
<b>Opponents</b>		<b>28</b>	<b>5635</b>		<b>842-1979</b>	<b>.425</b>	<b>219-620</b>	<b>.353</b>	<b>284-403</b>	<b>.705</b>	<b>450</b>	<b>775</b>	<b>1225</b>	<b>43.8</b>	<b>478</b>	<b>3</b>	<b>456</b>	<b>369</b>	<b>149</b>	<b>232</b>	<b>2187</b>	<b>78.1</b>

## Team Statistics

	AR	OPP
<b>Scoring</b>	<b>1902</b>	<b>2187</b>
Points per game	67.9	78.1
Scoring margin	-10.2	-
<b>Field goals-att</b>	<b>666-1692</b>	<b>842-1979</b>
Field goal pct	.394	.425
<b>3 point fg-att</b>	<b>203-669</b>	<b>219-620</b>
3-point FG pct	.303	.353
3-pt FG made per game	7.3	7.8
<b>Free throws-att</b>	<b>367-485</b>	<b>284-403</b>
Free throw pct	.757	.705
F-Throws made per game	13.1	10.1
<b>Rebounds</b>	<b>984</b>	<b>1225</b>
Rebounds per game	35.1	43.8
Rebounding margin	-8.6	-
<b>Assists</b>	<b>273</b>	<b>456</b>
Assists per game	9.8	16.3
<b>Turnovers</b>	<b>438</b>	<b>369</b>
Turnovers per game	15.6	13.2
Turnover margin	-2.5	-
Assist/turnover ratio	0.6	1.2
<b>Steals</b>	<b>145</b>	<b>232</b>
Steals per game	5.2	8.3
<b>Blocks</b>	<b>96</b>	<b>149</b>
Blocks per game	3.4	5.3
<b>Winning streak</b>	<b>0</b>	<b>-</b>
Home win streak	0	-
<b>Attendance</b>	<b>49271</b>	<b>49044</b>
Home games-Avg/Game	15-3285	9-5449
Neutral site-Avg/Game	-	4-383

## Team Results

Date	Opponent		Score	Att.
11/04/2024	Fairfield	L	67-81	2034
11/08/2024	East Texas A&M	W	84-65	12267
11/11/2024	at Little Rock	Wot	71-60	1255
11/14/2024	UT Arlington	W	93-65	2221
11/17/2024	at UCLA	L	52-101	2255
11/21/2024	Oral Roberts	L	73-94	2277
11/24/2024	Arkansas St.	W	76-60	2548
11/29/2024	vs Oklahoma St.	L	56-70	145
11/30/2024	vs Bowling Green	L	78-79	105
12/05/2024	Boston College	W	75-64	2252
12/08/2024	Southeast Mo. St.	W	84-45	2609
12/15/2024	Texas Tech	L	72-75	2511
12/18/2024	vs Liberty	L	61-75	719
12/19/2024	vs Troy	L	69-77	563
12/29/2024	Central Ark.	W	87-70	2976
01/02/2025	LSU	L	64-98	3985
01/05/2025	at Texas	L	56-90	8113
01/09/2025	at Auburn	W	59-58	2791
01/12/2025	Tennessee	L	63-93	3072
01/19/2025	Alabama	L	62-94	3093
01/23/2025	at Vanderbilt	L	60-101	3500
01/26/2025	at Kentucky	L	69-89	4870
01/30/2025	Texas A&M	W	72-51	2558
02/03/2025	Florida	L	78-108	2243
02/06/2025	at Mississippi St.	L	55-78	6588
02/09/2025	at Georgia	L	61-62	3034
02/13/2025	Ole Miss	L	50-89	2625
02/20/2025	at South Carolina	L	55-95	16638



# SEC Stats

## Game Records

Record	Overall	Home	Away	Neutral
ALL GAMES	2-11	1-5	1-6	0-0
CONFERENCE	2-11	1-5	1-6	0-0
NON-CONFERENCE	0-0	0-0	0-0	0-0

## Score by Periods

Team	1st	2nd	3rd	4th	OT	TOT
Arkansas	175	212	202	215	0	804
Opponents	285	294	282	245	0	1106

## Team Box Score

No.	Player				Total		3-Point		F-Throw		Rebounds											
		GP-GS	MIN	AVG	FG-FGA	FG%	3FG-3FGA	3FG%	FT-FTA	FT%	OFF	DEF	TOT	AVG	PF	DQ	A	TO	BLK	STL	PTS	AVG
3	HIGGINBOTTOM, Izzy	13-13	450:57	34.7	97-245	.396	19-51	.373	94-104	.904	4	53	57	4.4	15	1	39	54	4	16	307	23.6
2	SMITH, Kiki	8-7	183:32	22.9	27-62	.435	14-38	.368	5-6	.833	1	13	14	1.8	15	0	10	14	1	5	73	9.1
23	KEATS, Carly	11-6	212:02	19.3	30-78	.385	17-52	.327	6-6	1.000	1	12	13	1.2	4	0	3	16	0	0	83	7.5
1	STOTJIN, Phoenix	13-8	334:21	25.7	29-88	.330	9-43	.209	6-15	.400	2	10	12	0.9	13	0	26	38	1	10	73	5.6
22	OJENUWA, Vera	13-13	266:01	20.5	24-65	.369	2-7	.286	13-24	.542	26	42	68	5.2	41	3	1	18	8	9	63	4.8
34	LAWRENCE, Jenna	13-5	250:25	19.3	23-74	.311	10-50	.200	0-0	.000	8	33	41	3.2	24	1	3	9	13	10	56	4.3
20	JOHNSON, Karley	13-5	220:26	17.0	17-36	.472	2-9	.222	9-16	.563	12	23	35	2.7	17	0	10	9	1	8	45	3.5
10	SÁNCHEZ CERQUEIRA, Cristina	13-8	272:35	21.0	14-49	.286	4-19	.211	9-16	.563	13	47	60	4.6	27	1	10	26	3	7	41	3.2
25	GALEA, Danika	13-0	188:03	14.5	15-35	.429	0-6	.000	3-6	.500	12	17	29	2.2	21	1	4	19	6	2	33	2.5
15	BATES, Jada	12-0	119:23	9.9	5-12	.417	2-6	.333	2-5	.400	1	6	7	0.6	4	0	2	3	0	2	14	1.2
44	ARCHER, Maryn	9-0	37:29	4.2	1-7	.143	1-1	1.000	6-10	.600	1	2	3	0.3	2	0	0	3	0	2	9	1.0
16	PAANANEN, Pinja	9-0	58:03	6.5	2-10	.200	2-7	.286	1-2	.500	2	3	5	0.6	4	0	0	1	0	0	7	0.8
0	ROGERS, Ella	2-0	03:44	1.9	0-0	.000	0-0	.000	0-0	.000	0	0	0	0.0	1	0	0	0	1	0	0	0.0
Team											35	27	62					13				
<b>Total</b>		<b>13</b>	<b>2597</b>		<b>284-761</b>	<b>.373</b>	<b>82-289</b>	<b>.284</b>	<b>154-210</b>	<b>.733</b>	<b>118</b>	<b>288</b>	<b>406</b>	<b>31.2</b>	<b>188</b>	<b>7</b>	<b>108</b>	<b>223</b>	<b>38</b>	<b>71</b>	<b>804</b>	<b>61.8</b>
<b>Opponents</b>		<b>13</b>	<b>2600</b>		<b>422-906</b>	<b>.466</b>	<b>112-273</b>	<b>.410</b>	<b>150-212</b>	<b>.708</b>	<b>213</b>	<b>369</b>	<b>582</b>	<b>44.8</b>	<b>214</b>	<b>1</b>	<b>242</b>	<b>173</b>	<b>70</b>	<b>123</b>	<b>1106</b>	<b>85.1</b>

## Team Statistics

	AR	OPP
<b>Scoring</b>	<b>804</b>	<b>1106</b>
Points per game	61.8	85.1
Scoring margin	-23.2	-
<b>Field goals-att</b>	<b>284-761</b>	<b>422-906</b>
Field goal pct	.373	.466
<b>3 point fg-att</b>	<b>82-289</b>	<b>112-273</b>
3-point FG pct	.284	.410
3-pt FG made per game	6.3	8.6
<b>Free throws-att</b>	<b>154-210</b>	<b>150-212</b>
Free throw pct	.733	.708
F-Throws made per game	11.8	11.5
<b>Rebounds</b>	<b>406</b>	<b>582</b>
Rebounds per game	31.2	44.8
Rebounding margin	-13.5	-
<b>Assists</b>	<b>108</b>	<b>242</b>
Assists per game	8.3	18.6
<b>Turnovers</b>	<b>223</b>	<b>173</b>
Turnovers per game	17.2	13.3
Turnover margin	-3.8	-
Assist/turnover ratio	0.5	1.4
<b>Steals</b>	<b>71</b>	<b>123</b>
Steals per game	5.5	9.5
<b>Blocks</b>	<b>38</b>	<b>70</b>
Blocks per game	2.9	5.4
<b>Winning streak</b>	<b>0</b>	<b>-</b>
Home win streak	0	-
<b>Attendance</b>	<b>17576</b>	<b>45534</b>
Home games-Avg/Game	6-2929	7-6505
Neutral site-Avg/Game	-	0-0

## Team Results

Date	Opponent		Score	Att.
01/02/2025	LSU	L	64-98	3985
01/05/2025	at Texas	L	56-90	8113
01/09/2025	at Auburn	W	59-58	2791
01/12/2025	Tennessee	L	63-93	3072
01/19/2025	Alabama	L	62-94	3093
01/23/2025	at Vanderbilt	L	60-101	3500
01/26/2025	at Kentucky	L	69-89	4870
01/30/2025	Texas A&M	W	72-51	2558
02/03/2025	Florida	L	78-108	2243
02/06/2025	at Mississippi St.	L	55-78	6588
02/09/2025	at Georgia	L	61-62	3034
02/13/2025	Ole Miss	L	50-89	2625
02/20/2025	at South Carolina	L	55-95	16638



# Specialty Stats

## ARKANSAS/OPPONENT

Opponent	Result	Pts Off TO	Pts in Paint	2nd Chance	Fast Break	Bench	Ties	Lead Chng	Ark Largest Lead	Best Ark Run	Opp Largest Lead	Opp Best Run	Ark Led	Opp Led				
Fairfield	L, 81-67	18/21	24/40	13/9	5/17	6/32	3	1	5	6:25	1st	8-0	24	3:43	3rd	9-0	5:13	33:35
East Texas A&M	W, 84-65	9/10	28/20	6/10	14/5	12/35	0	0	26	2:26	4th	9-0	0	-	-	10-0	39:46	0:00
Little Rock	W, 71-60 OT	12/7	26/30	9/9	5/7	11/2	2	1	11	1:29	OT	11-0	16	6:03	3rd	10-0	5:22	37:34
UT-Arlington	W, 93-65	9/12	42/40	25/8	20/13	26/13	3	5	34	4:27	4th	13-0	4	7:43	1st	6-0	29:09	8:12
#5 UCLA	L, 101-52	8/27	16/54	11/28	4/18	14/27	0	0	0	10:00	1st	9-0	53	6:30	4th	12-0	0:00	39:22
Oral Roberts	L, 94-73	14/21	28/34	8/12	10/6	10/32	1	1	3	9:22	1st	7-0	25	6:05	4th	12-0	0:14	38:35
Arkansas State	W, 76-60	13/19	38/28	16/14	12/6	10/42	8	9	16	0:18	4th	9-0	6	2:51	1st	8-0	20:28	15:40
Oklahoma State	L, 70-56	15/15	24/54	6/13	4/8	5/29	3	0	0	10:00	1st	7-0	14	1:12	3rd	9-0	0:00	37:20
Bowling Green	L, 79-78	18/4	16/44	0/15	0/0	6/9	4	9	14	8:59	3rd	6-0	4	2:42	4th	8-0	31:46	5:45
Boston College	W, 75-64	18/6	36/36	10/19	19/5	5/35	3	11	11	1:22	4th	14-0	8	9:47	2nd	6-0	10:05	27:39
SEMO	W, 84-45	17/3	39/12	19/6	11/2	25/22	2	6	43	2:10	4th	26-0	12	9:26	3rd	8-0	27:53	10:28
Texas Tech	L, 75-72	20/18	30/42	18/15	5/5	17/21	4	7	8	4:16	1st	7-0	11	7:47	3rd	13-0	9:22	29:30
Liberty	L, 75-61	14/9	22/38	4/11	9/4	21/14	4	4	1	4:37	3rd	8-0	19	9:28	2nd	9-0	0:58	36:55
Troy	L, 77-69	13/13	32/44	14/12	11/24	17/17	1	2	2	8:23	3rd	8-0	10	2:42	3rd	9-0	1:28	37:02
Central Arkansas	W, 87-70	19/6	34/16	18/12	17/5	20/18	5	9	26	4:37	3rd	19-0	3	9:44	1st	6-0	32:03	5:45
LSU	L, 98-64	15/34	44/24	10/24	2/36	7/41	0	0	0	0:00	1st	8-0	49	9:46	4th	14-0	0:00	39:22
Texas	L, 90-56	8/32	22/52	4/28	5/16	13/41	2	1	2	8:44	1st	6-0	34	0:35	4th	9-0	0:22	36:42
Auburn	W, 59-58	12/20	34/26	5/14	2/9	10/7	5	1	5	4:53	4th	7-0	14	8:05	2nd	10-0	5:19	31:02
Tennessee	L, 93-63	2/28	22/40	8/21	10/22	14/29	2	2	3	7:53	1st	8-0	33	1:54	4th	9-0	2:17	36:21
Alabama	L, 94-62	9/20	18/44	7/20	0/7	20/26	2	2	3	8:01	1st	7-0	33	0:35	4th	14-0	0:19	38:11
Vanderbilt	L, 101-60	13/20	24/40	12/9	13/22	34/24	0	0	0	0:00	1st	9-0	45	3:20	4th	11-0	0:00	39:32
Kentucky	L, 89-68	7/19	18/32	6/11	1/10	30/12	0	0	0	0:00	1st	8-0	27	2:12	3rd	12-0	0:00	39:38
Texas A&M	W, 72-51	16/10	24/18	9/5	9/7	21/7	1	0	21	0:29	4th	10-0	0	0:00	1st	6-0	38:04	0:00
Florida	L, 108-78	8/6	34/50	8/13	8/22	19/43	2	1	2	9:43	1st	5-0	33	1:06	4th	13-0	0:54	38:12
Mississippi State	L, 78-55	14/27	28/44	5/15	14/12	11/17	0	0	0	10:00	1st	7-0	27	4:05	4th	10-0	0:00	39:38
Georgia	L, 62-61	12/12	30/38	17/8	2/10	4/26	4	6	8	4:35	1st	10-0	9	0:05	2nd	8-0	10:38	26:55
Ole Miss	L, 89-50	5/17	26/44	2/13	5/15	15/45	1	1	2	8:10	1st	7-0	45	5:17	4th	13-0	0:13	37:34



# Arkansas High/Low

## Arkansas - Game Highs

<b>POINTS</b>	93		UT Arlington (11/14/2024)
	87		Central Ark. (12/29/2024)
	84		Southeast Mo. St. (12/08/2024)
	84		East Texas A&M (11/08/2024)
	78		Florida (02/03/2025)
	78		vs Bowling Green (N) (11/30/2024)
<b>FIELD GOALS MADE</b>	34		UT Arlington (11/14/2024)
	30		Central Ark. (12/29/2024)
	30		Arkansas St. (11/24/2024)
<b>FIELD GOAL ATTEMPTS</b>	76		Florida (02/03/2025)
	74		UT Arlington (11/14/2024)
<b>FIELD GOAL PERCENTAGE</b>	.482	(27-56)	Boston College (12/05/2024)
	.482	(27-56)	vs Bowling Green (N) (11/30/2024)
<b>3 PT FG MADE</b>	13		UT Arlington (11/14/2024)
	12		at Kentucky (01/26/2025)
<b>3 PT FG ATTEMPTS</b>	39		at UCLA (11/17/2024)
	35		at South Carolina (02/20/2025)
<b>3 PT FG PERCENTAGE</b>	.520	(13-25)	UT Arlington (11/14/2024)
	.440	(11-25)	vs Bowling Green (N) (11/30/2024)
<b>FREE THROWS MADE</b>	21		Southeast Mo. St. (12/08/2024)
	21		East Texas A&M (11/08/2024)
<b>FREE THROW ATTEMPTS</b>	26		East Texas A&M (11/08/2024)
	25		Florida (02/03/2025)
	25		Tennessee (01/12/2025)
	25		Central Ark. (12/29/2024)
<b>FREE THROW PERCENTAGE</b>	1.000	(8-8)	LSU (01/02/2025)
	.929	(13-14)	vs Bowling Green (N) (11/30/2024)
<b>REBOUNDS</b>	56		UT Arlington (11/14/2024)
	54		Southeast Mo. St. (12/08/2024)
<b>ASSISTS</b>	18		Central Ark. (12/29/2024)
	16		Arkansas St. (11/24/2024)
<b>STEALS</b>	12		at Mississippi St. (02/06/2025)
	9		LSU (01/02/2025)
	9		Arkansas St. (11/24/2024)
<b>BLOCKED SHOTS</b>	10		vs Bowling Green (N) (11/30/2024)
	7		Arkansas St. (11/24/2024)
<b>TURNOVERS</b>	26		at Vanderbilt (01/23/2025)
	25		at Texas (01/05/2025)
<b>FOULS</b>	25		at Texas (01/05/2025)
	22		at Little Rock (11/11/2024)

## Arkansas - Game Lows

<b>POINTS</b>	50		Ole Miss (02/13/2025)
	52		at UCLA (11/17/2024)
	55		at South Carolina (02/20/2025)
	55		at Mississippi St. (02/06/2025)
	56		at Texas (01/05/2025)
	56		vs Oklahoma St. (N) (11/29/2024)
<b>FIELD GOALS MADE</b>	18		at Texas (01/05/2025)
	18		at UCLA (11/17/2024)
<b>FIELD GOAL ATTEMPTS</b>	45		at Texas (01/05/2025)
	49		Tennessee (01/12/2025)
	49		at Auburn (01/09/2025)
<b>FIELD GOAL PERCENTAGE</b>	.286	(18-63)	at UCLA (11/17/2024)
	.322	(19-59)	vs Oklahoma St. (N) (11/29/2024)
<b>3 PT FG MADE</b>	2		Ole Miss (02/13/2025)
	2		at Mississippi St. (02/06/2025)
<b>3 PT FG ATTEMPTS</b>	11		Boston College (12/05/2024)
	12		at Texas (01/05/2025)
<b>3 PT FG PERCENTAGE</b>	.091	(2-22)	Ole Miss (02/13/2025)
	.143	(2-14)	at Mississippi St. (02/06/2025)
<b>FREE THROWS MADE</b>	4		at South Carolina (02/20/2025)
	4		at Vanderbilt (01/23/2025)
<b>FREE THROW ATTEMPTS</b>	5		at South Carolina (02/20/2025)
	7		at Vanderbilt (01/23/2025)
<b>FREE THROW PERCENTAGE</b>	.571	(4-7)	at Vanderbilt (01/23/2025)
	.625	(10-16)	at Auburn (01/09/2025)
<b>REBOUNDS</b>	23		vs Bowling Green (N) (11/30/2024)
	25		at Auburn (01/09/2025)
<b>ASSISTS</b>	4		at Mississippi St. (02/06/2025)
	4		at Auburn (01/09/2025)
<b>STEALS</b>	2		Ole Miss (02/13/2025)
	2		at UCLA (11/17/2024)
	2		UT Arlington (11/14/2024)
	2		at Little Rock (11/11/2024)
	2		East Texas A&M (11/08/2024)
	2		Fairfield (11/04/2024)
<b>BLOCKED SHOTS</b>	0		at Auburn (01/09/2025)
	0		at Texas (01/05/2025)
	0		Texas Tech (12/15/2024)
<b>TURNOVERS</b>	7		Florida (02/03/2025)
	8		vs Bowling Green (N) (11/30/2024)
<b>FOULS</b>	3		Fairfield (11/04/2024)
	6		Ole Miss (02/13/2025)



# Opponent High/Low

## Opponent - Game Highs

<b>POINTS</b>	108		Florida (02/03/2025)
	101		at Vanderbilt (01/23/2025)
	101		at UCLA (11/17/2024)
	98		LSU (01/02/2025)
	95		at South Carolina (02/20/2025)
<b>FIELD GOALS MADE</b>	43		Florida (02/03/2025)
	39		at Vanderbilt (01/23/2025)
	39		LSU (01/02/2025)
<b>FIELD GOAL ATTEMPTS</b>	84		at UCLA (11/17/2024)
	82		at South Carolina (02/20/2025)
	82		vs Troy (N) (12/19/2024)
<b>FIELD GOAL PERCENTAGE</b>	.566	(43-76)	Florida (02/03/2025)
	.565	(39-69)	at Vanderbilt (01/23/2025)
<b>3 PT FG MADE</b>	13		Florida (02/03/2025)
	13		at Kentucky (01/26/2025)
	13		at Vanderbilt (01/23/2025)
	13		Central Ark. (12/29/2024)
	13		Fairfield (11/04/2024)
<b>3 PT FG ATTEMPTS</b>	35		Central Ark. (12/29/2024)
	35		Arkansas St. (11/24/2024)
<b>3 PT FG PERCENTAGE</b>	.591	(13-22)	Florida (02/03/2025)
	.520	(13-25)	at Vanderbilt (01/23/2025)
<b>FREE THROWS MADE</b>	21		Texas Tech (12/15/2024)
	19		at Auburn (01/09/2025)
	19		at Texas (01/05/2025)
<b>FREE THROW ATTEMPTS</b>	27		at Auburn (01/09/2025)
	26		at Texas (01/05/2025)
<b>FREE THROW PERCENTAGE</b>	1.000	(2-2)	Fairfield (11/04/2024)
	.889	(16-18)	Oral Roberts (11/21/2024)
<b>REBOUNDS</b>	65		at UCLA (11/17/2024)
	57		at South Carolina (02/20/2025)
	57		vs Troy (N) (12/19/2024)
<b>ASSISTS</b>	27		at South Carolina (02/20/2025)
	22		Ole Miss (02/13/2025)
	22		Florida (02/03/2025)
	22		at UCLA (11/17/2024)
<b>STEALS</b>	17		at Vanderbilt (01/23/2025)
	15		Tennessee (01/12/2025)
<b>BLOCKED SHOTS</b>	11		vs Oklahoma St. (N) (11/29/2024)
	10		at Kentucky (01/26/2025)
<b>TURNOVERS</b>	22		at Auburn (01/09/2025)
	18		at Mississippi St. (02/06/2025)
	18		Texas Tech (12/15/2024)
	18		Southeast Mo. St. (12/08/2024)
<b>FOULS</b>	27		Tennessee (01/12/2025)
	21		Texas Tech (12/15/2024)
	21		Boston College (12/05/2024)

## Opponent - Game Lows

<b>POINTS</b>	45		Southeast Mo. St. (12/08/2024)
	51		Texas A&M (01/30/2025)
	58		at Auburn (01/09/2025)
	60		Arkansas St. (11/24/2024)
	60		at Little Rock (11/11/2024)
<b>FIELD GOALS MADE</b>	17		Southeast Mo. St. (12/08/2024)
	18		Texas A&M (01/30/2025)
<b>FIELD GOAL ATTEMPTS</b>	47		at Auburn (01/09/2025)
	54		Texas Tech (12/15/2024)
<b>FIELD GOAL PERCENTAGE</b>	.270	(17-63)	Southeast Mo. St. (12/08/2024)
	.277	(18-65)	Texas A&M (01/30/2025)
<b>3 PT FG MADE</b>	1		at Auburn (01/09/2025)
	1		UT Arlington (11/14/2024)
<b>3 PT FG ATTEMPTS</b>	10		UT Arlington (11/14/2024)
	10		at Little Rock (11/11/2024)
<b>3 PT FG PERCENTAGE</b>	.091	(1-11)	at Auburn (01/09/2025)
	.100	(1-10)	UT Arlington (11/14/2024)
<b>FREE THROWS MADE</b>	1		Southeast Mo. St. (12/08/2024)
	2		Fairfield (11/04/2024)
<b>FREE THROW ATTEMPTS</b>	2		Southeast Mo. St. (12/08/2024)
	2		Fairfield (11/04/2024)
<b>FREE THROW PERCENTAGE</b>	.375	(3-8)	at Mississippi St. (02/06/2025)
	.409	(9-22)	at Little Rock (11/11/2024)
<b>REBOUNDS</b>	29		Southeast Mo. St. (12/08/2024)
	33		Texas Tech (12/15/2024)
<b>ASSISTS</b>	8		at Little Rock (11/11/2024)
	9		East Texas A&M (11/08/2024)
<b>STEALS</b>	1		vs Bowling Green (N) (11/30/2024)
	2		Florida (02/03/2025)
<b>BLOCKED SHOTS</b>	1		Central Ark. (12/29/2024)
	2		Texas A&M (01/30/2025)
	2		vs Bowling Green (N) (11/30/2024)
<b>TURNOVERS</b>	7		Ole Miss (02/13/2025)
	8		at South Carolina (02/20/2025)
<b>FOULS</b>	10		vs Liberty (N) (12/18/2024)
	11		at South Carolina (02/20/2025)
	11		LSU (01/02/2025)
	11		vs Bowling Green (N) (11/30/2024)





## Category Leaders

### Points

##	Player	G	Pts	Pts/G
3	Higginbottom, Izzy	28	661	23.6
2	Smith, Kiki	23	248	10.8
23	Keats, Carly	26	196	7.5
22	Ojenuwa, Vera	28	196	7.0
34	Lawrence, Jenna	28	174	6.2
1	Stotjin, Phoenix	17	107	6.3
25	Galea, Danika	25	93	3.7
20	Johnson, Karley	26	72	2.8
10	Sánchez Cerqueira, Cristina	26	51	2.0
15	Bates, Jada	26	50	1.9
16	Paananen, Pinja	24	38	1.6
44	Archer, Maryn	17	16	0.9

### Scoring Average

##	Player	G	Pts	Pts/G
3	Higginbottom, Izzy	28	661	23.6
2	Smith, Kiki	23	248	10.8
23	Keats, Carly	26	196	7.5
22	Ojenuwa, Vera	28	196	7.0
1	Stotjin, Phoenix	17	107	6.3
34	Lawrence, Jenna	28	174	6.2
25	Galea, Danika	25	93	3.7
20	Johnson, Karley	26	72	2.8
10	Sánchez Cerqueira, Cristina	26	51	2.0
15	Bates, Jada	26	50	1.9
16	Paananen, Pinja	24	38	1.6
44	Archer, Maryn	17	16	0.9

### Field Goal Percentage

##	Player	FG	Att	Pct
25	Galea, Danika	39	75	.520
22	Ojenuwa, Vera	77	169	.456
3	Higginbottom, Izzy	213	490	.435
2	Smith, Kiki	88	208	.423
20	Johnson, Karley	25	63	.397
23	Keats, Carly	71	204	.348
15	Bates, Jada	17	49	.347
34	Lawrence, Jenna	63	185	.341
16	Paananen, Pinja	13	40	.325
1	Stotjin, Phoenix	40	128	.313
10	Sánchez Cerqueira, Cristina	17	63	.270
44	Archer, Maryn	3	15	.200

### Field Goal Attempts

##	Player	G	Att	Att/G
3	Higginbottom, Izzy	28	490	17.5
2	Smith, Kiki	23	208	9.0
23	Keats, Carly	26	204	7.8
34	Lawrence, Jenna	28	185	6.6
22	Ojenuwa, Vera	28	169	6.0

### Field Goals Made

##	Player	G	Made	Made/G
3	Higginbottom, Izzy	28	213	7.6
2	Smith, Kiki	23	88	3.8
22	Ojenuwa, Vera	28	77	2.8
23	Keats, Carly	26	71	2.7
34	Lawrence, Jenna	28	63	2.3

### 3-Point FG Percentage

##	Player	3FG	Att	Pct
44	Archer, Maryn	1	1	1.000
2	Smith, Kiki	51	125	.408
3	Higginbottom, Izzy	34	95	.358
15	Bates, Jada	11	31	.355
23	Keats, Carly	39	126	.310
22	Ojenuwa, Vera	4	14	.286
34	Lawrence, Jenna	32	128	.250
16	Paananen, Pinja	7	28	.250
1	Stotjin, Phoenix	15	68	.221
10	Sánchez Cerqueira, Cristina	5	24	.208
25	Galea, Danika	2	13	.154
20	Johnson, Karley	2	14	.143

### 3-Point FG Attempts

##	Player	G	Att	Att/G
34	Lawrence, Jenna	28	128	4.6
23	Keats, Carly	26	126	4.8
2	Smith, Kiki	23	125	5.4
3	Higginbottom, Izzy	28	95	3.4
1	Stotjin, Phoenix	17	68	4.0

### 3-Point FG Made

##	Player	G	Made	Made/G
2	Smith, Kiki	23	51	2.2
23	Keats, Carly	26	39	1.5
3	Higginbottom, Izzy	28	34	1.2
34	Lawrence, Jenna	28	32	1.1
1	Stotjin, Phoenix	17	15	0.9



## Category Leaders

### Free Throw Percentage

##	Player	Made	Att	Pct
23	Keats, Carly	15	16	.938
3	Higginbottom, Izzy	201	223	.901
34	Lawrence, Jenna	16	19	.842
2	Smith, Kiki	21	29	.724
25	Galea, Danika	13	18	.722
16	Paananen, Pinja	5	7	.714
20	Johnson, Karley	20	31	.645
22	Ojenuwa, Vera	38	64	.594
44	Archer, Maryn	9	16	.563
1	Stotjin, Phoenix	12	25	.480
10	Sánchez Cerqueira, Cristina	12	25	.480
15	Bates, Jada	5	12	.417

### Rebounds

##	Player	G	Reb	Reb/G
22	Ojenuwa, Vera	28	186	6.6
34	Lawrence, Jenna	28	144	5.1
3	Higginbottom, Izzy	28	118	4.2
10	Sánchez Cerqueira, Cristina	26	102	3.9
20	Johnson, Karley	26	77	3.0

### Rebounds Average

##	Player	G	Reb	Reb/G
22	Ojenuwa, Vera	28	186	6.6
34	Lawrence, Jenna	28	144	5.1
3	Higginbottom, Izzy	28	118	4.2
10	Sánchez Cerqueira, Cristina	26	102	3.9
20	Johnson, Karley	26	77	3.0

### Offensive Rebounds

##	Player	G	OReb	OReb/G
22	Ojenuwa, Vera	28	67	2.4
34	Lawrence, Jenna	28	29	1.0
25	Galea, Danika	25	23	0.9
20	Johnson, Karley	26	23	0.9
10	Sánchez Cerqueira, Cristina	26	20	0.8

### Defensive Rebounds

##	Player	G	DReb	DReb/G
22	Ojenuwa, Vera	28	119	4.3
34	Lawrence, Jenna	28	115	4.1
3	Higginbottom, Izzy	28	105	3.8
10	Sánchez Cerqueira, Cristina	26	82	3.2
20	Johnson, Karley	26	54	2.1

### Fouls

##	Player	G	PF	PF/G
22	Ojenuwa, Vera	28	89	3.2
25	Galea, Danika	25	46	1.8
34	Lawrence, Jenna	28	43	1.5
3	Higginbottom, Izzy	28	39	1.4
2	Smith, Kiki	23	36	1.6

### Foul Outs

##	Player	G	FO
22	Ojenuwa, Vera	28	6
25	Galea, Danika	25	3
3	Higginbottom, Izzy	28	1
34	Lawrence, Jenna	28	1
10	Sánchez Cerqueira, Cristina	26	1

### Free Throw Attempts

##	Player	G	Att	Att/G
3	Higginbottom, Izzy	28	223	8.0
22	Ojenuwa, Vera	28	64	2.3
20	Johnson, Karley	26	31	1.2
2	Smith, Kiki	23	29	1.3
1	Stotjin, Phoenix	17	25	1.5

### Free Throws Made

##	Player	G	Made	Made/G
3	Higginbottom, Izzy	28	201	7.2
22	Ojenuwa, Vera	28	38	1.4
2	Smith, Kiki	23	21	0.9
20	Johnson, Karley	26	20	0.8
34	Lawrence, Jenna	28	16	0.6

### Assists

##	Player	G	Ast	Ast/G
3	Higginbottom, Izzy	28	101	3.6
2	Smith, Kiki	23	50	2.2
1	Stotjin, Phoenix	17	34	2.0
23	Keats, Carly	26	17	0.7
20	Johnson, Karley	26	15	0.6

### Steals

##	Player	G	Stl	Stl/G
3	Higginbottom, Izzy	28	34	1.2
22	Ojenuwa, Vera	28	20	0.7
34	Lawrence, Jenna	28	18	0.6
2	Smith, Kiki	23	15	0.7
20	Johnson, Karley	26	15	0.6

### Blocked Shots

##	Player	G	Blk	Blk/G
34	Lawrence, Jenna	28	32	1.1
22	Ojenuwa, Vera	28	18	0.6
25	Galea, Danika	25	10	0.4
3	Higginbottom, Izzy	28	6	0.2
10	Sánchez Cerqueira, Cristina	26	6	0.2

### Minutes

##	Player	G	Min	Min/G
3	Higginbottom, Izzy	28	961	34:20
2	Smith, Kiki	23	663	28:50
34	Lawrence, Jenna	28	657	23:29
22	Ojenuwa, Vera	28	636	22:42
23	Keats, Carly	26	574	22:04

### Turnovers

##	Player	G	TO	TO/G
3	Higginbottom, Izzy	28	105	3.8
22	Ojenuwa, Vera	28	53	1.9
2	Smith, Kiki	23	51	2.2
1	Stotjin, Phoenix	17	47	2.8
10	Sánchez Cerqueira, Cristina	26	34	1.3



## Player Highs Analysis

### Arkansas - Individual Game Highs

<b>POINTS</b>	40		Izzy Higginbottom vs Florida (02/03/2025)
	38		Izzy Higginbottom vs Boston College (12/05/2024)
	36		Izzy Higginbottom at Auburn (01/09/2025)
	33		Izzy Higginbottom vs Texas A&M (01/30/2025)
	32		Izzy Higginbottom at Kentucky (01/26/2025)
<b>FIELD GOALS MADE</b>	14		Izzy Higginbottom vs Boston College (12/05/2024)
	13		Izzy Higginbottom at Auburn (01/09/2025)
<b>FIELD GOAL ATTEMPTS</b>	29		Izzy Higginbottom at Georgia (02/09/2025)
	25		Izzy Higginbottom vs Florida (02/03/2025)
	25		Izzy Higginbottom at Kentucky (01/26/2025)
<b>FIELD GOAL PERCENTAGE (min 5 made)</b>	1.000	(5-5)	Danika Galea vs Troy (N) (12/19/2024)
	.889	(8-9)	Kiki Smith vs East Texas A&M (11/08/2024)
<b>3 PT FG MADE</b>	5		Carly Keats vs Southeast Mo. St. (12/08/2024)
	5		Jenna Lawrence vs Bowling Green (N) (11/30/2024)
<b>3 PT FG ATTEMPTS</b>	12		Kiki Smith at Little Rock (11/11/2024)
	11		Carly Keats vs LSU (01/02/2025)
<b>3 PT FG PERCENTAGE (min 2 made)</b>	1.000	(2-2)	Jada Bates at South Carolina (02/20/2025)
	1.000	(2-2)	Pinja Paananen vs UT Arlington (11/14/2024)
<b>FREE THROWS MADE</b>	13		Izzy Higginbottom at Mississippi St. (02/06/2025)
	13		Izzy Higginbottom vs Florida (02/03/2025)
	13		Izzy Higginbottom vs Oral Roberts (11/21/2024)
<b>FREE THROW ATTEMPTS</b>	15		Izzy Higginbottom vs Oral Roberts (11/21/2024)
	13		Izzy Higginbottom at Mississippi St. (02/06/2025)
	13		Izzy Higginbottom vs Florida (02/03/2025)
	13		Izzy Higginbottom vs Texas A&M (01/30/2025)
<b>FREE THROW PERCENTAGE (min 3 made)</b>	1.000	(13-13)	Izzy Higginbottom at Mississippi St. (02/06/2025)
	1.000	(13-13)	Izzy Higginbottom vs Florida (02/03/2025)
	1.000	(12-12)	Izzy Higginbottom vs Bowling Green (N) (11/30/2024)
	1.000	(11-11)	Izzy Higginbottom at Little Rock (11/11/2024)
	1.000	(8-8)	Izzy Higginbottom at Texas (01/05/2025)
	1.000	(7-7)	Izzy Higginbottom vs Liberty (N) (12/18/2024)
	1.000	(6-6)	Izzy Higginbottom vs LSU (01/02/2025)
	1.000	(5-5)	Izzy Higginbottom vs Southeast Mo. St. (12/08/2024)
	1.000	(4-4)	Izzy Higginbottom vs Ole Miss (02/13/2025)
	1.000	(4-4)	Carly Keats at Texas (01/05/2025)
	1.000	(4-4)	Izzy Higginbottom at UCLA (11/17/2024)
	1.000	(4-4)	Danika Galea vs East Texas A&M (11/08/2024)
	1.000	(4-4)	Izzy Higginbottom vs East Texas A&M (11/08/2024)
	1.000	(3-3)	Kiki Smith vs Alabama (01/19/2025)
	1.000	(3-3)	Izzy Higginbottom vs Troy (N) (12/19/2024)
1.000	(3-3)	Karley Johnson vs Southeast Mo. St. (12/08/2024)	
1.000	(3-3)	Jenna Lawrence vs Fairfield (11/04/2024)	
<b>REBOUNDS</b>	14		Vera Ojenuwa vs Southeast Mo. St. (12/08/2024)
	12		Jenna Lawrence vs UT Arlington (11/14/2024)
<b>ASSISTS</b>	9		Izzy Higginbottom vs Bowling Green (N) (11/30/2024)
	7		Izzy Higginbottom vs Texas A&M (01/30/2025)
	7		Izzy Higginbottom vs Troy (N) (12/19/2024)
<b>STEALS</b>	3		Izzy Higginbottom at Mississippi St. (02/06/2025)
	3		Jenna Lawrence at Texas (01/05/2025)
	3		Kiki Smith vs Troy (N) (12/19/2024)
	3		Izzy Higginbottom vs Texas Tech (12/15/2024)
	3		Izzy Higginbottom vs Boston College (12/05/2024)
	3		Karley Johnson vs Arkansas St. (11/24/2024)
	3		Jenna Lawrence vs Arkansas St. (11/24/2024)



## Opponent Player Highs **Analysis**

### Opponent - Individual Game Highs

<b>POINTS</b>	25		Bailey Maupin vs Texas Tech (12/15/2024)
	25		Paige Kohler vs Bowling Green (N) (11/30/2024)
	24		Mikayla Blakes at Vanderbilt (01/23/2025)
	23		Zay Dyer vs Troy (N) (12/19/2024)
	23		Jalei Oglesby vs Oral Roberts (11/21/2024)
	23		Taleyah Jones vs Oral Roberts (11/21/2024)
	23		Timea Gardiner at UCLA (11/17/2024)
<b>FIELD GOALS MADE</b>	11		Zay Dyer vs Troy (N) (12/19/2024)
	9		Erika Porter vs Bowling Green (N) (11/30/2024)
	9		Paige Kohler vs Bowling Green (N) (11/30/2024)
	9		Jalei Oglesby vs Oral Roberts (11/21/2024)
	9		Faith Lee at Little Rock (11/11/2024)
<b>FIELD GOAL ATTEMPTS</b>	28		Zay Dyer vs Troy (N) (12/19/2024)
	25		Faith Lee at Little Rock (11/11/2024)
<b>FIELD GOAL PERCENTAGE (min 5 made)</b>	.857	(6-7)	Me'Arah O'Neal vs Florida (02/03/2025)
	.778	(7-9)	Zee Spearman vs Tennessee (01/12/2025)
	.778	(7-9)	Justice Carlton at Texas (01/05/2025)
<b>3 PT FG MADE</b>	7		Paige Kohler vs Bowling Green (N) (11/30/2024)
	7		Timea Gardiner at UCLA (11/17/2024)
<b>3 PT FG ATTEMPTS</b>	12		Timea Gardiner at UCLA (11/17/2024)
	9		Kinley Fisher vs Central Ark. (12/29/2024)
	9		Bree Stephens vs Central Ark. (12/29/2024)
	9		Paige Kohler vs Bowling Green (N) (11/30/2024)
	9		Taleyah Jones vs Oral Roberts (11/21/2024)
	9		Emily Robinson vs Oral Roberts (11/21/2024)
<b>3 PT FG PERCENTAGE (min 2 made)</b>	1.000	(3-3)	Zee Spearman vs Tennessee (01/12/2025)
	1.000	(2-2)	Kenza Salgues vs Florida (02/03/2025)
	1.000	(2-2)	Daviane Mindoudi vs Florida (02/03/2025)
	1.000	(2-2)	Madison Greene at Vanderbilt (01/23/2025)
	1.000	(2-2)	Brianna Jackson vs Troy (N) (12/19/2024)
	1.000	(2-2)	Jillian Huerter vs Fairfield (11/04/2024)
<b>FREE THROWS MADE</b>	9		Bailey Maupin vs Texas Tech (12/15/2024)
	8		DeYona Gaston at Auburn (01/09/2025)
	8		Jasmine Shavers vs Texas Tech (12/15/2024)
<b>FREE THROW ATTEMPTS</b>	12		Bailey Maupin vs Texas Tech (12/15/2024)
	10		DeYona Gaston at Auburn (01/09/2025)
	10		Kyla Oldacre at Texas (01/05/2025)
<b>FREE THROW PERCENTAGE (min 3 made)</b>	1.000	(8-8)	Jasmine Shavers vs Texas Tech (12/15/2024)
	1.000	(5-5)	Jordan Hodges vs Liberty (N) (12/18/2024)
	1.000	(5-5)	Jalei Oglesby vs Oral Roberts (11/21/2024)
	1.000	(5-5)	Taleyah Jones vs Oral Roberts (11/21/2024)
	1.000	(4-4)	Chloe Kitts at South Carolina (02/20/2025)
	1.000	(4-4)	Trinity Turner at Georgia (02/09/2025)
	1.000	(4-4)	Georgia Amooore at Kentucky (01/26/2025)
	1.000	(4-4)	Mikayla Blakes at Vanderbilt (01/23/2025)
	1.000	(4-4)	Flau'Jae Johnson vs LSU (01/02/2025)
	1.000	(4-4)	Jadyn Wooten vs Oklahoma St. (N) (11/29/2024)
	1.000	(4-4)	Jasmine Payne vs East Texas A&M (11/08/2024)
	1.000	(3-3)	Ra Shaya Kyle vs Florida (02/03/2025)
	1.000	(3-3)	Me'Arah O'Neal vs Florida (02/03/2025)
	1.000	(3-3)	Jewel Spear vs Tennessee (01/12/2025)
	1.000	(3-3)	Mikaylah Williams vs LSU (01/02/2025)
	1.000	(3-3)	Jalynn Bristow vs Texas Tech (12/15/2024)
1.000	(3-3)	Angela Dugalić at UCLA (11/17/2024)	



## Team Game-by-Game

Opponent	Date	Score		Total		3-Pointers		Free throws		Rebounds										
				FG-FGA	PCT	3FG-3FGA	PCT	FT-FTA	PCT	OFF	DEF	TOT	AVG	PF	A	TO	BLK	STL	PTS	AVG
Fairfield	11/04/2024	67-81	L	23-60	.383	9-27	.333	12-14	.857	8	23	31	31.0	3	10	14	4	2	67	67.0
East Texas A&M	11/08/2024	84-65	W	27-57	.474	9-24	.375	21-26	.808	6	40	46	38.5	10	9	16	1	2	84	75.5
at Little Rock	11/11/2024	71-60	Wot	24-63	.381	9-29	.310	14-18	.778	7	34	41	39.3	22	9	16	3	2	71	74.0
UT Arlington	11/14/2024	93-65	W	34-74	.459	13-25	.520	12-19	.632	16	40	56	43.5	15	12	14	6	2	93	78.8
at UCLA	11/17/2024	52-101	L	18-63	.286	7-39	.179	9-11	.818	7	20	27	40.2	20	11	18	3	2	52	73.4
Oral Roberts	11/21/2024	73-94	L	24-65	.369	8-22	.364	17-22	.773	12	24	36	39.5	14	11	16	3	6	73	73.3
Arkansas St.	11/24/2024	76-60	W	30-67	.448	7-27	.259	9-12	.750	11	37	48	40.7	11	16	16	7	9	76	73.7
vs Oklahoma St.	11/29/2024	56-70	L	19-59	.322	4-19	.211	14-20	.700	8	26	34	39.9	13	6	14	3	3	56	71.5
vs Bowling Green	11/30/2024	78-79	L	27-56	.482	11-25	.440	13-14	.929	3	20	23	38.0	10	15	8	10	4	78	72.2
Boston College	12/05/2024	75-64	W	27-56	.482	3-11	.273	18-23	.783	10	23	33	37.5	14	9	12	4	8	75	72.5
Southeast Mo. St.	12/08/2024	84-45	W	28-66	.424	7-25	.280	21-24	.875	14	40	54	39.0	7	12	13	5	8	84	73.5
Texas Tech	12/15/2024	72-75	L	24-53	.453	7-21	.333	17-22	.773	12	16	28	38.1	15	6	19	0	5	72	73.4
vs Liberty	12/18/2024	61-75	L	22-55	.400	7-26	.269	10-11	.909	9	21	30	37.5	12	7	14	2	7	61	72.5
vs Troy	12/19/2024	69-77	L	25-73	.342	9-33	.273	10-14	.714	12	32	44	37.9	13	14	13	3	6	69	72.2
Central Ark.	12/29/2024	87-70	W	30-64	.469	11-27	.407	16-25	.640	13	34	47	38.5	13	18	12	4	8	87	73.2
LSU	01/02/2025	64-98	L	24-67	.358	8-26	.308	8-8	1.000	15	17	32	38.1	15	8	21	2	9	64	72.6
at Texas	01/05/2025	56-90	L	18-45	.400	3-12	.250	17-22	.773	7	20	27	37.5	25	6	25	0	5	56	71.6
at Auburn	01/09/2025	59-58	W	22-49	.449	5-20	.250	10-16	.625	6	19	25	36.8	19	4	21	0	7	59	70.9
Tennessee	01/12/2025	63-93	L	20-49	.408	5-21	.238	18-25	.720	6	20	26	36.2	14	7	22	3	5	63	70.5
Alabama	01/19/2025	62-94	L	21-61	.344	7-19	.368	13-18	.722	11	18	29	35.9	11	8	11	4	3	62	70.1
at Vanderbilt	01/23/2025	60-101	L	24-60	.400	8-24	.333	4-7	.571	12	21	33	35.7	8	8	26	1	5	60	69.6
at Kentucky	01/26/2025	69-89	L	22-61	.361	12-29	.414	13-16	.813	4	26	30	35.5	13	11	14	4	4	69	69.6
Texas A&M	01/30/2025	72-51	W	25-52	.481	7-21	.333	15-19	.789	6	35	41	35.7	16	10	16	5	3	72	69.7
Florida	02/03/2025	78-108	L	27-76	.355	7-30	.233	17-25	.680	14	21	35	35.7	13	10	7	3	7	78	70.0
at Mississippi St.	02/06/2025	55-78	L	19-50	.380	2-14	.143	15-20	.750	7	22	29	35.4	14	4	23	1	12	55	69.4
at Georgia	02/09/2025	61-62	L	21-65	.323	5-16	.313	14-20	.700	17	25	42	35.7	19	10	12	6	5	61	69.1
Ole Miss	02/13/2025	50-89	L	21-64	.328	2-22	.091	6-9	.667	7	22	29	35.4	6	9	10	5	2	50	68.4
at South Carolina	02/20/2025	55-95	L	20-62	.323	11-35	.314	4-5	.800	6	22	28	35.1	15	13	15	4	4	55	67.9
<b>Total</b>		<b>1902</b>		<b>666-1692</b>	<b>.394</b>	<b>203-669</b>	<b>.303</b>	<b>367-485</b>	<b>.757</b>	<b>266</b>	<b>718</b>	<b>984</b>	<b>35.1</b>	<b>380</b>	<b>273</b>	<b>438</b>	<b>96</b>	<b>145</b>	<b>1902</b>	<b>67.9</b>
Opponents		2187		842-1979	.425	219-620	.353	284-403	.705	450	775	1225	43.8	478	456	369	149	232	2187	78.1

### Arkansas Averages

Games Played	Points/game	FG Pct	3FG Pct	FT Pct	Rebounds/game	Assists/game	Turnovers/game	Assist/Turnover ratio	Steals/game	Blocks/game
28	67.9	39.4	30.3	75.7	35.1	9.8	15.6	0.6	5.2	3.4



## Opponent Game-by-Game

Opponent	Date	Score		Total		3-Pointers		Free throws		Rebounds											
				FG-FGA	PCT	3FG-3FGA	PCT	FT-FTA	PCT	OFF	DEF	TOT	AVG	PF	A	TO	BLK	STL	PTS	AVG	
Fairfield	11/04/2024	67-81	L	33-68	.485	13-30	.433	2-2	1.000	11	29	40	40.0	17	21	12	4	8	81	81.0	
East Texas A&M	11/08/2024	84-65	W	25-80	.313	8-29	.276	7-9	.778	15	25	40	40.0	20	9	9	4	6	65	73.0	
at Little Rock	11/11/2024	71-60	Wot	24-74	.324	3-10	.300	9-22	.409	16	28	44	41.3	21	8	9	4	4	60	68.7	
UT Arlington	11/14/2024	93-65	W	28-75	.373	1-10	.100	8-17	.471	11	28	39	40.8	21	15	10	9	7	65	67.8	
at UCLA	11/17/2024	52-101	L	37-84	.440	10-34	.294	17-22	.773	29	36	65	45.6	17	22	11	5	8	101	74.4	
Oral Roberts	11/21/2024	73-94	L	34-70	.486	10-27	.370	16-18	.889	11	30	41	44.8	19	17	15	8	8	94	77.7	
Arkansas St.	11/24/2024	76-60	W	23-74	.311	9-35	.257	5-7	.714	14	28	42	44.4	14	12	14	5	9	60	75.1	
vs Oklahoma St.	11/29/2024	56-70	L	30-73	.411	2-18	.111	8-10	.800	17	31	48	44.9	17	10	10	11	8	70	74.5	
vs Bowling Green	11/30/2024	78-79	L	32-68	.471	10-21	.476	5-7	.714	16	25	41	44.4	11	19	13	2	1	79	75.0	
Boston College	12/05/2024	75-64	W	27-73	.370	6-27	.222	4-7	.571	24	20	44	44.4	21	15	17	5	9	64	73.9	
Southeast Mo. St.	12/08/2024	84-45	W	17-63	.270	10-26	.385	1-2	.500	6	23	29	43.0	20	12	18	8	8	45	71.3	
Texas Tech	12/15/2024	72-75	L	26-54	.481	2-11	.182	21-25	.840	15	18	33	42.2	21	13	18	5	11	75	71.6	
vs Liberty	12/18/2024	61-75	L	28-65	.431	4-15	.267	15-18	.833	16	24	40	42.0	10	12	13	3	7	75	71.8	
vs Troy	12/19/2024	69-77	L	32-82	.390	6-19	.316	7-10	.700	20	37	57	43.1	15	15	11	5	11	77	72.2	
Central Ark.	12/29/2024	87-70	W	24-70	.343	13-35	.371	9-15	.600	16	24	40	42.9	20	14	16	1	4	70	72.1	
LSU	01/02/2025	64-98	L	39-78	.500	9-23	.391	11-13	.846	21	27	48	43.2	11	21	17	6	14	98	73.7	
at Texas	01/05/2025	56-90	L	33-75	.440	5-15	.333	19-26	.731	25	21	46	43.4	16	20	12	5	11	90	74.6	
at Auburn	01/09/2025	59-58	W	19-47	.404	1-11	.091	19-27	.704	11	24	35	42.9	15	13	22	3	10	58	73.7	
Tennessee	01/12/2025	63-93	L	35-77	.455	12-34	.353	11-17	.647	21	22	43	42.9	27	20	13	3	15	93	74.7	
Alabama	01/19/2025	62-94	L	35-70	.500	11-22	.500	13-17	.765	17	29	46	43.1	16	19	9	6	5	94	75.7	
at Vanderbilt	01/23/2025	60-101	L	39-69	.565	13-25	.520	10-12	.833	11	24	35	42.7	12	21	14	4	17	101	76.9	
at Kentucky	01/26/2025	69-89	L	30-63	.476	13-28	.464	16-22	.727	10	34	44	42.7	17	17	11	10	8	89	77.5	
Texas A&M	01/30/2025	72-51	W	18-65	.277	5-22	.227	10-15	.667	14	23	37	42.5	20	10	13	2	6	51	76.3	
Florida	02/03/2025	78-108	L	43-76	.566	13-22	.591	9-11	.818	12	40	52	42.9	19	22	12	6	2	108	77.6	
at Mississippi St.	02/06/2025	55-78	L	33-70	.471	9-21	.429	3-8	.375	17	26	43	42.9	19	18	18	6	14	78	77.6	
at Georgia	02/09/2025	61-62	L	24-59	.407	3-11	.273	11-20	.550	15	28	43	42.9	19	12	17	8	5	62	77.0	
Ole Miss	02/13/2025	50-89	L	37-75	.493	10-21	.476	5-9	.556	16	37	53	43.3	12	22	7	6	8	89	77.5	
at South Carolina	02/20/2025	55-95	L	37-82	.451	8-18	.444	13-15	.867	23	34	57	43.8	11	27	8	5	8	95	78.1	
<b>Total</b>		<b>2187</b>		<b>842-1979</b>	<b>.425</b>	<b>219-620</b>	<b>.353</b>	<b>284-403</b>	<b>.705</b>	<b>450</b>	<b>775</b>	<b>1225</b>	<b>43.8</b>	<b>478</b>	<b>456</b>	<b>369</b>	<b>149</b>	<b>232</b>	<b>2187</b>	<b>78.1</b>	
Arkansas		1902		666-1692	.394	203-669	.303	367-485	.757	266	718	984	35.1	380	273	438	96	145	1902	67.9	

### Opponents Averages

Games Played	Points/game	FG Pct	3FG Pct	FT Pct	Rebounds/game	Assists/game	Turnovers/game	Assist/Turnover ratio	Steals/game	Blocks/game
28	78.1	42.5	35.3	70.5	43.8	16.3	13.2	1.2	8.3	5.3



## Team Ranking Summary

Statistic	National Rank	Conference Rank	Value	National Leader	Value	Conference Leader	Value
Assist/Turnover Ratio (353 ranked)	299	16	0.62	UConn	1.94	South Carolina	1.40
Assists Per Game (353 ranked)	337	16	9.8	Kansas St.	21.9	Oklahoma	21.7
Bench Points Per Game (353 ranked)	248	14	15.5	South Carolina	42.1	South Carolina	42.1
Blocks Per Game (353 ranked)	112	11	3.4	Southern California	7.2	Kentucky	7.0
Field Goal Percentage (353 ranked)	231	16	39.4	UConn	50.8	Texas	47.4
Field Goal Percentage Defense (353 ranked)	281	13	42.5	Middle Tenn.	32.9	South Carolina	34.8
Fouls Per Game (353 ranked)	21	2	13.6	Lafayette	11.9	South Carolina	13.6
Free Throw Attempts Per Game (353 ranked)	128	12	17.32	Jacksonville	25.63	Texas	22.61
Free Throw Percentage (353 ranked)	51	5	75.7	UC Santa Barbara	81.7	Vanderbilt	78.3
Free Throws Made Per Game (353 ranked)	72	9	13.11	Jacksonville	17.67	Texas	17.29
Rebound Margin (353 ranked)	339	16	-8.6	UCLA	14.2	Oklahoma	12.8
Rebounds (Defensive) Per Game (353 ranked)	126	8	25.6	Troy	33.1	Oklahoma	32.1
Rebounds (Offensive) Per Game (353 ranked)	290	15	9.5	Grambling	19.0	LSU	17.9
Rebounds Per Game (349 ranked)	227	15	35.14	Troy	49.43	LSU	47.11
Scoring Defense (353 ranked)	349	16	78.1	Harvard	50.9	Ole Miss	55.4
Scoring Margin (349 ranked)	312	16	-10.2	UConn	29.0	Texas	26.0
Scoring Offense (353 ranked)	125	14	67.9	Florida St.	90.0	Tennessee	89.9
Steals Per Game (353 ranked)	344	16	5.2	West Virginia	14.6	Vanderbilt	12.6
Three Point Attempts Per Game (353 ranked)	47	4	23.9	Arkansas St.	31.8	Tennessee	31.0
Three Point Percentage (353 ranked)	212	15	30.3	Notre Dame	41.4	Alabama	39.1
Three Point Percentage Defense (353 ranked)	340	16	35.3	Northwestern St.	24.6	Kentucky	26.4
Three Pointers Per Game (353 ranked)	83	5	7.3	Tennessee	10.5	Tennessee	10.5
Turnover Margin (353 ranked)	289	15	-2.46	Ohio St.	10.50	Texas	8.64
Turnovers Forced Per Game (353 ranked)	327	16	13.18	Longwood	25.22	Tennessee	22.46
Turnovers Per Game (353 ranked)	145	10	15.6	Colorado St.	9.1	South Carolina	12.0
Winning Percentage (353 ranked)	290	16	32.1	UCLA	96.2	LSU Texas	92.9 92.9



## Individual Ranking Summary

Statistic	Player	National Rank	Conference Rank	Value	National Leader	Value	Conference Leader	Value
Assist/Turnover Ratio (250 ranked)					Kiara Jackson, UNLV	3.70	Raven Johnson, South Carolina	3.15
Assists (146 ranked)	Izzy Higginbottom	130	8	101	Serena Sundell, Kansas St.	196	Georgia Amooore, Kentucky	177
Assists Per Game (250 ranked)	Izzy Higginbottom	179	14	3.6	Katie Dinnebier, Drake	7.4	Georgia Amooore, Kentucky	7.1
Blocks (143 ranked)	Jenna Lawrence	103	8	32	Anastasiia Boldyreva, Middle Tenn.	92	Clara Strack, Kentucky	64
Blocks Per Game (249 ranked)	Jenna Lawrence	136	8	1.14	Anastasiia Boldyreva, Middle Tenn.	3.54	Clara Strack, Kentucky	2.56
Double Doubles (49 ranked)					Aneesah Morrow, LSU	24	Aneesah Morrow, LSU	24
Field Goal Attempts (148 ranked)	Izzy Higginbottom	3	1	490	Grace Larkins, South Dakota	509	Izzy Higginbottom, Arkansas	490
Field Goal Percentage (250 ranked)	Izzy Higginbottom	176	20	43.5	Isnelle Natabou, FIU	70.3	Madina Okot, Mississippi St.	67.2
Field Goals (150 ranked)	Izzy Higginbottom	7	3	213	Audi Crooks, Iowa St.	256	Khamil Pierre, Vanderbilt	225
Free Throw Attempts (149 ranked)	Izzy Higginbottom	3	1	223	S'Mya Nichols, Kansas	244	Izzy Higginbottom, Arkansas	223
Free Throw Percentage (250 ranked)	Izzy Higginbottom	12	1	90.1	Teresa Seppala, Siena	94.7	Izzy Higginbottom, Arkansas	90.1
Free Throws (145 ranked)	Izzy Higginbottom	2	1	201	S'Mya Nichols, Kansas	203	Izzy Higginbottom, Arkansas	201
Minutes Per Game (150 ranked)	Izzy Higginbottom	74	2	34.33	Mackenzie Amalia, Eastern Mich.	38.39	Georgia Amooore, Kentucky	36.11
Points (199 ranked)	Izzy Higginbottom	2	1	661	Grace Larkins, South Dakota	673	Izzy Higginbottom, Arkansas	661
Points Per Game (249 ranked)	Izzy Higginbottom	5	1	23.6	Ta'Niya Latson, Florida St.	26.2	Izzy Higginbottom, Arkansas	23.6
Rebounds (148 ranked)					Aneesah Morrow, LSU	389	Aneesah Morrow, LSU	389
Rebounds (Defensive) Per Game (30 ranked)					Laura Ziegler, Saint Joseph's	9.7	Aneesah Morrow, LSU	9.0
Rebounds (Offensive) Per Game (29 ranked)					Aneesah Morrow, LSU	5.4	Aneesah Morrow, LSU	5.4
Rebounds Per Game (249 ranked)					Aneesah Morrow, LSU	14.4	Aneesah Morrow, LSU	14.4
Steals (144 ranked)					Kiki McIntyre, Longwood	109	Talaysia Cooper, Tennessee	83
Steals Per Game (250 ranked)					Megan McConnell, Duquesne	4.08	Talaysia Cooper, Tennessee	3.19
Three Point Attempts (149 ranked)					Ioanna Krimili, California	223	Aaliyah Nye, Alabama	202
Three Point Percentage (170 ranked)	Kiki Smith	40	4	40.8	T'Yana Todd, Boston College	48.5	Aaliyah Nye, Alabama	44.6
Three Pointers (145 ranked)					Madison Conner, TCU	101	Aaliyah Nye, Alabama	90
Three Pointers Per Game (249 ranked)	Kiki Smith	90	7	2.22	Alyssa Durazo-Frescas, Grand Canyon	3.87	Aaliyah Nye, Alabama	3.33
Triple Doubles (5 ranked)					Olivia Miles, Notre Dame	3	Liv McGill, Florida Payton Verhulst, Oklahoma	1 1







**Arkansas Women's Basketball  
Individual Career Summaries  
All games**

**ARCHER, Maryn**

				Field Goals		3-Point		F-Throws		Rebounds				Scoring						
SEASON	TEAM	GP-GS	MIN/AVG	FG-FGA	FG%	3FG-3FGA	3FG%	FT-FTA	FT%	OFF	DEF	TOT	AVG	PF-FO	A	TO	BLK	STL	PTS	AVG
2024-25	AR	17-0	60/3.5	3-15	.200	1-1	1.000	9-16	.563	1	5	6	0.4	5-0	1	6	0	2	16	0.9
<b>TOTAL</b>		<b>17-0</b>	<b>60/3.5</b>	<b>3-15</b>	<b>.200</b>	<b>1-1</b>	<b>1.000</b>	<b>9-16</b>	<b>.563</b>	<b>1</b>	<b>5</b>	<b>6</b>	<b>0.4</b>	<b>5-0</b>	<b>1</b>	<b>6</b>	<b>0</b>	<b>2</b>	<b>16</b>	<b>0.9</b>

**Single Game Highs**

Statistic	Value	
Points	7	vs Southeast Mo. St. 12/08/24
Rebounds	2	vs Oral Roberts 11/21/24
Assists	1	vs Southeast Mo. St. 12/08/24
Steals	1	vs Florida 02/03/25, at Mississippi St. 02/06/25
FG Made	2	vs Southeast Mo. St. 12/08/24
FG Attempts	4	vs Southeast Mo. St. 12/08/24
3FG Made	1	at Mississippi St. 02/06/25
3FG Attempts	1	at Mississippi St. 02/06/25
FT Made	3	vs Southeast Mo. St. 12/08/24, at Kentucky 01/26/25
FT Attempts	4	vs Southeast Mo. St. 12/08/24, at Kentucky 01/26/25

**BATES, Jada**

				Field Goals		3-Point		F-Throws		Rebounds				Scoring						
SEASON	TEAM	GP-GS	MIN/AVG	FG-FGA	FG%	3FG-3FGA	3FG%	FT-FTA	FT%	OFF	DEF	TOT	AVG	PF-FO	A	TO	BLK	STL	PTS	AVG
2024-25	AR	26-0	322/12.4	17-49	.347	11-31	.355	5-12	.417	4	21	25	1.0	10-0	8	13	5	4	50	1.9
<b>TOTAL</b>		<b>26-0</b>	<b>322/12.4</b>	<b>17-49</b>	<b>.347</b>	<b>11-31</b>	<b>.355</b>	<b>5-12</b>	<b>.417</b>	<b>4</b>	<b>21</b>	<b>25</b>	<b>1.0</b>	<b>10-0</b>	<b>8</b>	<b>13</b>	<b>5</b>	<b>4</b>	<b>50</b>	<b>1.9</b>

**Single Game Highs**

Statistic	Value	
Points	9	at UCLA 11/17/24
Rebounds	3	at UCLA 11/17/24, vs Fairfield 11/04/24, at Little Rock 11/11/24
Assists	2	vs Boston College 12/05/24, vs Fairfield 11/04/24
Steals	1	4 times
Blocks	1	5 times
FG Made	3	at UCLA 11/17/24
FG Attempts	7	at UCLA 11/17/24
3FG Made	3	at UCLA 11/17/24
3FG Attempts	7	at UCLA 11/17/24
FT Made	3	vs Texas Tech 12/15/24
FT Attempts	4	vs Texas Tech 12/15/24



**Arkansas Women's Basketball  
Individual Career Summaries  
All games**

**GALEA, Danika**

				Field Goals		3-Point		F-Throws		Rebounds									Scoring	
SEASON	TEAM	GP-GS	MIN/AVG	FG-FGA	FG%	3FG-3FGA	3FG%	FT-FTA	FT%	OFF	DEF	TOT	AVG	PF-FO	A	TO	BLK	STL	PTS	AVG
2024-25	AR	25-0	317/12.7	39-75	.520	2-13	.154	13-18	.722	23	29	52	2.1	46-3	7	30	10	5	93	3.7
<b>TOTAL</b>		<b>25-0</b>	<b>317/12.7</b>	<b>39-75</b>	<b>.520</b>	<b>2-13</b>	<b>.154</b>	<b>13-18</b>	<b>.722</b>	<b>23</b>	<b>29</b>	<b>52</b>	<b>2.1</b>	<b>46-3</b>	<b>7</b>	<b>30</b>	<b>10</b>	<b>5</b>	<b>93</b>	<b>3.7</b>

**Single Game Highs**

Statistic	Value	
Points	10	vs Troy 12/19/24, vs Southeast Mo. St. 12/08/24, vs UT Arlington 11/14/24
Rebounds	6	vs UT Arlington 11/14/24
Assists	2	at Kentucky 01/26/25
Steals	1	5 times
Blocks	2	vs Texas A&M 01/30/25, at Georgia 02/09/25
FG Made	5	vs Troy 12/19/24
FG Attempts	7	vs UT Arlington 11/14/24
3FG Made	2	vs Liberty 12/18/24
3FG Attempts	5	vs Liberty 12/18/24
FT Made	4	vs East Texas A&M 11/08/24
FT Attempts	4	vs East Texas A&M 11/08/24, at Mississippi St. 02/06/25

**HIGGINBOTTOM, Izzy**

				Field Goals		3-Point		F-Throws		Rebounds									Scoring	
SEASON	TEAM	GP-GS	MIN/AVG	FG-FGA	FG%	3FG-3FGA	3FG%	FT-FTA	FT%	OFF	DEF	TOT	AVG	PF-FO	A	TO	BLK	STL	PTS	AVG
2021-22	MO	27-0	492/18.2	56-146	.384	21-57	.368	29-31	.935	17	17	34	1.3	32-0	32	26	1	11	162	6.0
2022-23	ASU	29-25	897/30.9	163-418	.390	37-125	.296	102-112	.911	25	64	89	3.1	47-1	98	66	2	53	465	16.0
2023-24	ASU	26-25	968/37.2	183-396	.462	36-98	.367	175-192	.911	22	83	105	4.0	39-0	95	55	4	35	577	22.2
2024-25	AR	28-28	961/34.3	213-490	.435	34-95	.358	201-223	.901	13	105	118	4.2	39-1	101	105	6	34	661	23.6
<b>TOTAL FOR AR</b>		<b>28-28</b>	<b>961/34.3</b>	<b>213-490</b>	<b>.435</b>	<b>34-95</b>	<b>.358</b>	<b>201-223</b>	<b>.901</b>	<b>13</b>	<b>105</b>	<b>118</b>	<b>4.2</b>	<b>39-1</b>	<b>101</b>	<b>105</b>	<b>6</b>	<b>34</b>	<b>661</b>	<b>23.6</b>
<b>TOTAL</b>		<b>110-78</b>	<b>3319/30.2</b>	<b>615-1450</b>	<b>.424</b>	<b>128-375</b>	<b>.341</b>	<b>507-558</b>	<b>.909</b>	<b>77</b>	<b>269</b>	<b>346</b>	<b>3.1</b>	<b>157-2</b>	<b>326</b>	<b>252</b>	<b>13</b>	<b>133</b>	<b>1865</b>	<b>17.0</b>

**Single Game Highs**

Statistic	Value	
Points	40	vs Florida 02/03/25
Rebounds	10	vs Texas A&M 01/30/25
Assists	9	vs Bowling Green 11/30/24, at McNeese 11/29/22
Steals	6	at Coastal Carolina 02/02/23
Blocks	1	13 times
FG Made	14	vs Boston College 12/05/24
FG Attempts	31	at Troy 01/27/24
3FG Made	5	vs North Ala. 12/14/23
3FG Attempts	9	vs Marshall 01/28/23, vs Oklahoma 11/22/22
FT Made	19	vs Old Dominion 02/03/24
FT Attempts	20	vs Old Dominion 02/03/24



**JOHNSON, Karley**

SEASON	TEAM	GP-GS	MIN/AVG	Field Goals		3-Point		F-Throws		Rebounds				Scoring						
				FG-FGA	FG%	3FG-3FGA	3FG%	FT-FTA	FT%	OFF	DEF	TOT	AVG	PF-FO	A	TO	BLK	STL	PTS	AVG
2022-23	AR	10-0	26/2.6	0-1	.000	0-0	.000	1-2	.500	1	1	2	0.2	1-0	1	0	0	3	1	0.1
2023-24	AR	19-5	339/17.8	19-53	.358	8-29	.276	17-30	.567	13	21	34	1.8	29-0	5	7	1	7	63	3.3
2024-25	AR	26-5	380/14.6	25-63	.397	2-14	.143	20-31	.645	23	54	77	3.0	35-0	15	15	3	15	72	2.8
<b>TOTAL</b>		<b>55-10</b>	<b>746/13.6</b>	<b>44-117</b>	<b>.376</b>	<b>10-43</b>	<b>.233</b>	<b>38-63</b>	<b>.603</b>	<b>37</b>	<b>76</b>	<b>113</b>	<b>2.1</b>	<b>65-0</b>	<b>21</b>	<b>22</b>	<b>4</b>	<b>25</b>	<b>136</b>	<b>2.5</b>

**Single Game Highs**

Statistic	Value	
Points	14	vs Kentucky 01/25/24, at Vanderbilt 01/23/25
Rebounds	10	vs UT Arlington 11/14/24
Assists	3	at Florida 02/08/24, vs Arkansas St. 11/24/24
Steals	3	vs Arkansas St. 11/24/24
Blocks	2	vs Bowling Green 11/30/24
FG Made	6	at Vanderbilt 01/23/25
FG Attempts	8	at Vanderbilt 01/23/25
3FG Made	2	vs Kentucky 01/25/24, at Tulsa 03/21/24
3FG Attempts	4	at Missouri 01/28/24, vs Vanderbilt 02/25/24
FT Made	4	vs Kentucky 01/25/24
FT Attempts	7	at Georgia 02/09/25

**KEATS, Carly**

SEASON	TEAM	GP-GS	MIN/AVG	Field Goals		3-Point		F-Throws		Rebounds				Scoring						
				FG-FGA	FG%	3FG-3FGA	3FG%	FT-FTA	FT%	OFF	DEF	TOT	AVG	PF-FO	A	TO	BLK	STL	PTS	AVG
2023-24	AR	29-10	641/22.1	64-203	.315	31-122	.254	18-23	.783	5	33	38	1.3	23-0	18	23	4	9	177	6.1
2024-25	AR	26-21	574/22.1	71-204	.348	39-126	.310	15-16	.938	1	38	39	1.5	9-0	17	31	3	5	196	7.5
<b>TOTAL</b>		<b>55-31</b>	<b>1214/22.1</b>	<b>135-407</b>	<b>.332</b>	<b>70-248</b>	<b>.282</b>	<b>33-39</b>	<b>.846</b>	<b>6</b>	<b>71</b>	<b>77</b>	<b>1.4</b>	<b>32-0</b>	<b>35</b>	<b>54</b>	<b>7</b>	<b>14</b>	<b>373</b>	<b>6.8</b>

**Single Game Highs**

Statistic	Value	
Points	19	vs Southeast Mo. St. 12/08/24
Rebounds	5	at UCLA 11/17/24, vs Central Ark. 12/29/24
Assists	4	vs Auburn 03/07/24
Steals	2	vs South Carolina 02/29/24, vs Kentucky 01/25/24, vs ULM 11/07/23
Blocks	2	vs UIC 12/21/23
FG Made	7	vs Georgia 01/07/24
FG Attempts	16	vs Georgia 01/07/24
3FG Made	5	vs Southeast Mo. St. 12/08/24
3FG Attempts	11	vs LSU 01/02/25
FT Made	4	vs ULM 11/07/23, at Texas 01/05/25
FT Attempts	5	vs ULM 11/07/23, vs South Carolina 02/29/24



**Arkansas Women's Basketball  
Individual Career Summaries  
All games**

**LAWRENCE, Jenna**

				Field Goals		3-Point		F-Throws		Rebounds									Scoring	
SEASON	TEAM	GP-GS	MIN/AVG	FG-FGA	FG%	3FG-3FGA	3FG%	FT-FTA	FT%	OFF	DEF	TOT	AVG	PF-FO	A	TO	BLK	STL	PTS	AVG
2023-24	AR	24-2	279/11.6	21-53	.396	13-42	.310	5-8	.625	15	46	61	2.5	25-0	5	10	10	7	60	2.5
2024-25	AR	28-20	657/23.5	63-185	.341	32-128	.250	16-19	.842	29	115	144	5.1	43-1	8	22	32	18	174	6.2
<b>TOTAL</b>		<b>52-22</b>	<b>936/18.0</b>	<b>84-238</b>	<b>.353</b>	<b>45-170</b>	<b>.265</b>	<b>21-27</b>	<b>.778</b>	<b>44</b>	<b>161</b>	<b>205</b>	<b>3.9</b>	<b>68-1</b>	<b>13</b>	<b>32</b>	<b>42</b>	<b>25</b>	<b>234</b>	<b>4.5</b>

**Single Game Highs**

Statistic	Value	
Points	21	vs Bowling Green 11/30/24
Rebounds	12	vs UT Arlington 11/14/24
Assists	2	at UCLA 11/17/24
Steals	3	vs Arkansas St. 11/24/24, at Texas 01/05/25
Blocks	5	vs Bowling Green 11/30/24
FG Made	8	vs Bowling Green 11/30/24
FG Attempts	14	vs Bowling Green 11/30/24
3FG Made	5	vs Bowling Green 11/30/24
3FG Attempts	10	vs Bowling Green 11/30/24, vs East Texas A&M 11/08/24
FT Made	4	vs Troy 12/19/24
FT Attempts	5	vs Troy 12/19/24

**LINDSEY, Loren**

				Field Goals		3-Point		F-Throws		Rebounds									Scoring	
SEASON	TEAM	GP-GS	MIN/AVG	FG-FGA	FG%	3FG-3FGA	3FG%	FT-FTA	FT%	OFF	DEF	TOT	AVG	PF-FO	A	TO	BLK	STL	PTS	AVG
2022-23	AR	9-0	17/1.9	0-0	.000	0-0	.000	0-0	.000	0	1	1	0.1	0-0	0	0	0	0	0	0.0
2023-24	AR	1-0	4/3.6	0-0	.000	0-0	.000	0-0	.000	0	0	0	0.0	0-0	1	0	0	0	0	0.0
2024-25	AR	5-0	22/4.4	0-3	.000	0-2	.000	0-0	.000	0	2	2	0.4	3-0	2	0	0	1	0	0.0
<b>TOTAL</b>		<b>15-0</b>	<b>42/2.8</b>	<b>0-3</b>	<b>.000</b>	<b>0-2</b>	<b>.000</b>	<b>0-0</b>	<b>.000</b>	<b>0</b>	<b>3</b>	<b>3</b>	<b>0.2</b>	<b>3-0</b>	<b>3</b>	<b>0</b>	<b>0</b>	<b>1</b>	<b>0</b>	<b>0.0</b>

**Single Game Highs**

Statistic	Value	
Rebounds	2	vs Southeast Mo. St. 12/08/24
Assists	1	vs Little Rock 11/14/23, at UCLA 11/17/24, vs UT Arlington 11/14/24
Steals	1	vs Southeast Mo. St. 12/08/24
FG Attempts	2	vs Southeast Mo. St. 12/08/24
3FG Attempts	2	vs Southeast Mo. St. 12/08/24



**Arkansas Women's Basketball  
Individual Career Summaries  
All games**

**OJENUWA, Vera**

				Field Goals		3-Point		F-Throws		Rebounds									Scoring	
SEASON	TEAM	GP-GS	MIN/AVG	FG-FGA	FG%	3FG-3FGA	3FG%	FT-FTA	FT%	OFF	DEF	TOT	AVG	PF-FO	A	TO	BLK	STL	PTS	AVG
2024-25	AR	28-28	636/22.7	77-169	.456	4-14	.286	38-64	.594	67	119	186	6.6	89-6	14	53	18	20	196	7.0
<b>TOTAL</b>		<b>28-28</b>	<b>636/22.7</b>	<b>77-169</b>	<b>.456</b>	<b>4-14</b>	<b>.286</b>	<b>38-64</b>	<b>.594</b>	<b>67</b>	<b>119</b>	<b>186</b>	<b>6.6</b>	<b>89-6</b>	<b>14</b>	<b>53</b>	<b>18</b>	<b>20</b>	<b>196</b>	<b>7.0</b>

**Single Game Highs**

Statistic	Value	
Points	20	vs Arkansas St. 11/24/24
Rebounds	14	vs Southeast Mo. St. 12/08/24
Assists	2	vs Arkansas St. 11/24/24, vs East Texas A&M 11/08/24, vs Central Ark. 12/29/24
Steals	2	6 times
Blocks	2	at UCLA 11/17/24, at Georgia 02/09/25, vs Fairfield 11/04/24
FG Made	8	vs Arkansas St. 11/24/24
FG Attempts	12	vs Arkansas St. 11/24/24
3FG Made	1	4 times
3FG Attempts	2	vs Ole Miss 02/13/25, at UCLA 11/17/24, at Kentucky 01/26/25
FT Made	6	vs East Texas A&M 11/08/24
FT Attempts	9	vs East Texas A&M 11/08/24

**PAANANEN, Pinja**

				Field Goals		3-Point		F-Throws		Rebounds									Scoring	
SEASON	TEAM	GP-GS	MIN/AVG	FG-FGA	FG%	3FG-3FGA	3FG%	FT-FTA	FT%	OFF	DEF	TOT	AVG	PF-FO	A	TO	BLK	STL	PTS	AVG
2024-25	AR	24-0	229/9.5	13-40	.325	7-28	.250	5-7	.714	10	29	39	1.6	12-0	5	10	6	5	38	1.6
<b>TOTAL</b>		<b>24-0</b>	<b>229/9.5</b>	<b>13-40</b>	<b>.325</b>	<b>7-28</b>	<b>.250</b>	<b>5-7</b>	<b>.714</b>	<b>10</b>	<b>29</b>	<b>39</b>	<b>1.6</b>	<b>12-0</b>	<b>5</b>	<b>10</b>	<b>6</b>	<b>5</b>	<b>38</b>	<b>1.6</b>

**Single Game Highs**

Statistic	Value	
Points	6	vs Bowling Green 11/30/24, vs UT Arlington 11/14/24
Rebounds	5	at Little Rock 11/11/24, vs Fairfield 11/04/24
Assists	1	5 times
Steals	1	5 times
Blocks	2	vs Southeast Mo. St. 12/08/24, vs UT Arlington 11/14/24
FG Made	2	vs Bowling Green 11/30/24, vs UT Arlington 11/14/24
FG Attempts	6	vs Florida 02/03/25
3FG Made	2	vs UT Arlington 11/14/24
3FG Attempts	4	vs Arkansas St. 11/24/24, vs Florida 02/03/25
FT Made	2	vs Central Ark. 12/29/24
FT Attempts	2	vs Bowling Green 11/30/24, at Texas 01/05/25, vs Central Ark. 12/29/24



**Arkansas Women's Basketball  
Individual Career Summaries  
All games**

**ROGERS, Ella**

				Field Goals		3-Point		F-Throws		Rebounds				Scoring						
SEASON	TEAM	GP-GS	MIN/AVG	FG-FGA	FG%	3FG-3FGA	3FG%	FT-FTA	FT%	OFF	DEF	TOT	AVG	PF-FO	A	TO	BLK	STL	PTS	AVG
2024-25	AR	2-0	4/1.9	0-0	.000	0-0	.000	0-0	.000	0	0	0	0.0	1-0	0	0	1	0	0	0.0
<b>TOTAL</b>		<b>2-0</b>	<b>4/1.9</b>	<b>0-0</b>	<b>.000</b>	<b>0-0</b>	<b>.000</b>	<b>0-0</b>	<b>.000</b>	<b>0</b>	<b>0</b>	<b>0</b>	<b>0.0</b>	<b>1-0</b>	<b>0</b>	<b>0</b>	<b>1</b>	<b>0</b>	<b>0</b>	<b>0.0</b>

**Single Game Highs**

Statistic	Value
Blocks	1 vs Ole Miss 02/13/25

**SMITH, Kiki**

				Field Goals		3-Point		F-Throws		Rebounds				Scoring						
SEASON	TEAM	GP-GS	MIN/AVG	FG-FGA	FG%	3FG-3FGA	3FG%	FT-FTA	FT%	OFF	DEF	TOT	AVG	PF-FO	A	TO	BLK	STL	PTS	AVG
2024-25	AR	23-22	663/28.8	88-208	.423	51-125	.408	21-29	.724	8	40	48	2.1	36-0	50	51	5	15	248	10.8
<b>TOTAL</b>		<b>23-22</b>	<b>663/28.8</b>	<b>88-208</b>	<b>.423</b>	<b>51-125</b>	<b>.408</b>	<b>21-29</b>	<b>.724</b>	<b>8</b>	<b>40</b>	<b>48</b>	<b>2.1</b>	<b>36-0</b>	<b>50</b>	<b>51</b>	<b>5</b>	<b>15</b>	<b>248</b>	<b>10.8</b>

**Single Game Highs**

Statistic	Value
Points	23 vs Alabama 01/19/25
Rebounds	4 5 times
Assists	5 vs Bowling Green 11/30/24, vs Arkansas St. 11/24/24, vs Central Ark. 12/29/24
Steals	3 vs Troy 12/19/24
Blocks	1 5 times
FG Made	8 vs East Texas A&M 11/08/24, vs Alabama 01/19/25
FG Attempts	18 at Little Rock 11/11/24
3FG Made	4 8 times
3FG Attempts	12 at Little Rock 11/11/24
FT Made	4 vs Oral Roberts 11/21/24, vs Boston College 12/05/24
FT Attempts	6 vs Oral Roberts 11/21/24



**STOTJIN, Phoenix**

				Field Goals		3-Point		F-Throws		Rebounds									Scoring	
SEASON	TEAM	GP-GS	MIN/AVG	FG-FGA	FG%	3FG-3FGA	3FG%	FT-FTA	FT%	OFF	DEF	TOT	AVG	PF-FO	A	TO	BLK	STL	PTS	AVG
2024-25	AR	17-8	413/24.3	40-128	.313	15-68	.221	12-25	.480	5	15	20	1.2	16-0	34	47	1	11	107	6.3
<b>TOTAL</b>		<b>17-8</b>	<b>413/24.3</b>	<b>40-128</b>	<b>.313</b>	<b>15-68</b>	<b>.221</b>	<b>12-25</b>	<b>.480</b>	<b>5</b>	<b>15</b>	<b>20</b>	<b>1.2</b>	<b>16-0</b>	<b>34</b>	<b>47</b>	<b>1</b>	<b>11</b>	<b>107</b>	<b>6.3</b>

**Single Game Highs**

Statistic	Value	
Points	12	vs Central Ark. 12/29/24, vs Texas Tech 12/15/24
Rebounds	6	vs Central Ark. 12/29/24
Assists	5	at South Carolina 02/20/25
Steals	2	at South Carolina 02/20/25, at Mississippi St. 02/06/25
Blocks	1	vs Florida 02/03/25
FG Made	4	vs Texas Tech 12/15/24, vs Alabama 01/19/25
FG Attempts	13	vs Florida 02/03/25, vs Central Ark. 12/29/24
3FG Made	3	vs Texas Tech 12/15/24, vs Alabama 01/19/25
3FG Attempts	8	vs Troy 12/19/24
FT Made	5	vs Central Ark. 12/29/24
FT Attempts	9	vs Central Ark. 12/29/24

**SÁNCHEZ CERQUEIRA, Cristina**

				Field Goals		3-Point		F-Throws		Rebounds									Scoring	
SEASON	TEAM	GP-GS	MIN/AVG	FG-FGA	FG%	3FG-3FGA	3FG%	FT-FTA	FT%	OFF	DEF	TOT	AVG	PF-FO	A	TO	BLK	STL	PTS	AVG
2023-24	AR	20-0	90/4.5	5-22	.227	0-4	.000	1-2	.500	6	14	20	1.0	15-0	2	6	3	0	11	0.6
2024-25	AR	26-8	376/14.5	17-63	.270	5-24	.208	12-25	.480	20	82	102	3.9	36-1	11	34	6	10	51	2.0
<b>TOTAL</b>		<b>46-8</b>	<b>466/10.1</b>	<b>22-85</b>	<b>.259</b>	<b>5-28</b>	<b>.179</b>	<b>13-27</b>	<b>.481</b>	<b>26</b>	<b>96</b>	<b>122</b>	<b>2.7</b>	<b>51-1</b>	<b>13</b>	<b>40</b>	<b>9</b>	<b>10</b>	<b>62</b>	<b>1.3</b>

**Single Game Highs**

Statistic	Value	
Points	9	vs Florida 02/03/25
Rebounds	10	vs Central Ark. 12/29/24
Assists	2	vs Florida 02/03/25, at Vanderbilt 01/23/25, at Georgia 02/09/25
Steals	2	vs Southeast Mo. St. 12/08/24, vs Florida 02/03/25, at Georgia 02/09/25
Blocks	2	at South Carolina 02/20/25, vs Boston College 12/05/24
FG Made	4	vs Florida 02/03/25
FG Attempts	8	vs Florida 02/03/25
3FG Made	1	5 times
3FG Attempts	4	at Kentucky 01/26/25
FT Made	2	4 times
FT Attempts	3	vs Florida 02/03/25, vs Alabama 01/19/25



2024-25 Arkansas Women's Basketball  
Individual Game-by-Game  
All games

#0 ROGERS, Ella

Opponent	Date	GS	MIN	Total		3-Pointers		Free throws		Rebounds				PF	A	TO	BLK	STL	PTS	AVG
				FG-FGA	PCT	3FG-3FGA	PCT	FT-FTA	PCT	OFF	DEF	TOT	AVG							
Florida	02/03/2025		02:21	0-0	.000	0-0	.000	0-0	.000	0	0	0	0.0	0	0	0	0	0	0	0.0
Ole Miss	02/13/2025		01:23	0-0	.000	0-0	.000	0-0	.000	0	0	0	0.0	1	0	0	1	0	0	0.0
<b>Totals</b>		<b>0</b>	<b>03:44</b>	<b>0-0</b>	<b>.000</b>	<b>0-0</b>	<b>.000</b>	<b>0-0</b>	<b>.000</b>	<b>0</b>	<b>0</b>	<b>0</b>	<b>0.0</b>	<b>1</b>	<b>0</b>	<b>0</b>	<b>1</b>	<b>0</b>	<b>0</b>	<b>0.0</b>

Player Averages

Games Played	Minutes/game	Points/game	FG Pct	3FG Pct	FT Pct	Rebounds/game	Assists/game	Turnovers/game	Assist/Turnover ratio	Steals/game	Blocks/game
2	1.9	0.0	0.0	0.0	0.0	0.0	0.0	0.0	0.0	0.0	0.5





**2024-25 Arkansas Women's Basketball  
Individual Game-by-Game  
All games**

**#1 STOTJIN, Phoenix**

Opponent	Date	GS	MIN	Total		3-Pointers		Free throws		Rebounds				PF	A	TO	BLK	STL	PTS	AVG
				FG-FGA	PCT	3FG-3FGA	PCT	FT-FTA	PCT	OFF	DEF	TOT	AVG							
Texas Tech	12/15/2024		20:25	4-9	.444	3-6	.500	1-1	1.000	0	0	0	0.0	1	1	2	0	0	12	12.0
vs Liberty	12/18/2024		20:51	3-8	.375	1-4	.250	0-0	.000	1	0	1	0.5	0	1	2	0	1	7	9.5
vs Troy	12/19/2024		15:39	1-10	.100	1-8	.125	0-0	.000	0	1	1	0.7	2	2	1	0	0	3	7.3
Central Ark.	12/29/2024		21:52	3-13	.231	1-7	.143	5-9	.556	2	4	6	2.0	0	4	4	0	0	12	8.5
LSU	01/02/2025		20:39	2-7	.286	1-4	.250	0-0	.000	0	0	0	1.6	2	2	6	0	1	5	7.8
at Texas	01/05/2025		21:57	3-7	.429	0-1	.000	0-0	.000	0	1	1	1.5	2	1	4	0	0	6	7.5
at Auburn	01/09/2025		24:00	2-7	.286	0-3	.000	0-0	.000	1	1	2	1.6	1	2	2	0	1	4	7.0
Tennessee	01/12/2025		13:35	0-0	.000	0-0	.000	3-4	.750	0	1	1	1.5	2	0	4	0	1	3	6.5
Alabama	01/19/2025		21:16	4-10	.400	3-6	.500	0-2	.000	1	0	1	1.4	0	4	1	0	1	11	7.0
at Vanderbilt	01/23/2025	*	20:31	3-9	.333	1-3	.333	1-2	.500	0	0	0	1.3	0	0	6	0	1	8	7.1
at Kentucky	01/26/2025	*	14:42	0-1	.000	0-1	.000	0-0	.000	0	0	0	1.2	0	1	2	0	0	0	6.5
Texas A&M	01/30/2025	*	29:29	2-3	.667	0-1	.000	0-2	.000	0	0	0	1.1	2	1	1	0	0	4	6.3
Florida	02/03/2025	*	37:48	3-13	.231	0-7	.000	0-2	.000	0	0	0	1.0	1	3	0	1	1	6	6.2
at Mississippi St.	02/06/2025	*	34:24	3-10	.300	0-4	.000	0-0	.000	0	2	2	1.1	1	2	4	0	2	6	6.2
at Georgia	02/09/2025	*	36:17	2-7	.286	1-4	.250	0-0	.000	0	2	2	1.1	2	2	2	0	0	5	6.1
Ole Miss	02/13/2025	*	28:14	2-4	.500	1-2	.500	1-2	.500	0	2	2	1.2	0	3	2	0	0	6	6.1
at South Carolina	02/20/2025	*	31:28	3-10	.300	2-7	.286	1-1	1.000	0	1	1	1.2	0	5	4	0	2	9	6.3
<b>Totals</b>		<b>8</b>	<b>413:09</b>	<b>40-128</b>	<b>.313</b>	<b>15-68</b>	<b>.221</b>	<b>12-25</b>	<b>.480</b>	<b>5</b>	<b>15</b>	<b>20</b>	<b>1.2</b>	<b>16</b>	<b>34</b>	<b>47</b>	<b>1</b>	<b>11</b>	<b>107</b>	<b>6.3</b>

**Player Averages**

Games Played	Minutes/ game	Points/ game	FG Pct	3FG Pct	FT Pct	Rebounds/ game	Assists/ game	Turnovers/ game	Assist/Turnover ratio	Steals/ game	Blocks/ game
17	24.3	6.3	31.3	22.1	48.0	1.2	2.0	2.8	0.7	0.6	0.1



**2024-25 Arkansas Women's Basketball  
Individual Game-by-Game  
All games**

**#2 SMITH, Kiki**

Opponent	Date	GS	MIN	Total		3-Pointers		Free throws		Rebounds				PF	A	TO	BLK	STL	PTS	AVG	
				FG-FGA	PCT	3FG-3FGA	PCT	FT-FTA	PCT	OFF	DEF	TOT	AVG								
Fairfield	11/04/2024	*	34:16	5-10	.500	4-6	.667	0-0	.000	0	2	2	2.0	0	3	2	0	0	14	14.0	
East Texas A&M	11/08/2024	*	34:41	8-9	.889	4-5	.800	2-3	.667	0	2	2	2.0	1	1	1	0	0	22	18.0	
at Little Rock	11/11/2024	*	39:37	6-18	.333	4-12	.333	0-1	.000	0	3	3	2.3	2	0	3	0	0	16	17.3	
UT Arlington	11/14/2024	*	30:47	2-10	.200	1-5	.200	0-0	.000	1	2	3	2.5	1	3	0	1	0	5	14.3	
at UCLA	11/17/2024	*	26:52	3-7	.429	1-5	.200	1-2	.500	0	0	0	2.0	3	2	1	0	0	8	13.0	
Oral Roberts	11/21/2024	*	33:43	6-15	.400	4-10	.400	4-6	.667	1	3	4	2.3	3	2	8	0	2	20	14.2	
Arkansas St.	11/24/2024	*	32:07	5-8	.625	3-5	.600	2-2	1.000	0	1	1	2.1	0	5	4	1	0	15	14.3	
vs Oklahoma St.	11/29/2024	*	35:42	6-14	.429	2-4	.500	0-0	.000	1	2	3	2.3	2	2	0	0	0	14	14.3	
vs Bowling Green	11/30/2024	*	37:50	4-10	.400	3-6	.500	0-0	.000	0	0	0	2.0	0	5	1	0	0	11	13.9	
Boston College	12/05/2024	*	36:21	5-10	.500	1-3	.333	4-5	.800	0	1	1	1.9	2	3	5	0	1	15	14.0	
Southeast Mo. St.	12/08/2024	*	27:13	1-5	.200	0-2	.000	2-2	1.000	1	3	4	2.1	1	4	2	1	1	4	13.1	
Texas Tech	12/15/2024	*	26:55	2-8	.250	2-7	.286	0-0	.000	0	1	1	2.0	2	1	3	0	1	6	12.5	
vs Liberty	12/18/2024	*	23:21	0-4	.000	0-2	.000	0-0	.000	0	2	2	2.0	1	1	2	0	1	0	11.5	
vs Troy	12/19/2024	*	29:56	4-11	.364	4-8	.500	1-2	.500	2	2	4	2.1	3	3	2	0	3	13	11.6	
Central Ark.	12/29/2024	*	30:16	4-7	.571	4-7	.571	0-0	.000	1	3	4	2.3	0	5	3	1	1	12	11.7	
LSU	01/02/2025	*	28:01	1-6	.167	1-5	.200	0-0	.000	0	1	1	2.2	1	3	1	0	2	3	11.1	
at Texas	01/05/2025	*	27:44	2-6	.333	1-3	.333	0-0	.000	0	1	1	2.1	3	2	3	0	0	5	10.8	
at Auburn	01/09/2025	*	23:13	4-6	.667	1-2	.500	0-1	.000	0	2	2	2.1	4	0	1	0	0	9	10.7	
Tennessee	01/12/2025	*	25:39	2-7	.286	1-6	.167	2-2	1.000	0	2	2	2.1	3	2	3	1	1	7	10.5	
Alabama	01/19/2025	*	29:52	8-15	.533	4-9	.444	3-3	1.000	1	3	4	2.2	0	0	1	0	1	23	11.1	
at Vanderbilt	01/23/2025	*	17:37	2-6	.333	1-3	.333	0-0	.000	0	1	1	2.1	2	0	3	0	0	5	10.8	
at Kentucky	01/26/2025	*	10:14	1-3	.333	1-2	.500	0-0	.000	0	1	1	2.1	1	2	0	0	0	3	10.5	
at South Carolina	02/20/2025		21:12	7-13	.538	4-8	.500	0-0	.000	0	2	2	2.1	1	1	2	0	1	18	10.8	
<b>Totals</b>			<b>22</b>	<b>663:09</b>	<b>88-208</b>	<b>.423</b>	<b>51-125</b>	<b>.408</b>	<b>21-29</b>	<b>.724</b>	<b>8</b>	<b>40</b>	<b>48</b>	<b>2.1</b>	<b>36</b>	<b>50</b>	<b>51</b>	<b>5</b>	<b>15</b>	<b>248</b>	<b>10.8</b>

**Player Averages**

Games Played	Minutes/game	Points/game	FG Pct	3FG Pct	FT Pct	Rebounds/game	Assists/game	Turnovers/game	Assist/Turnover ratio	Steals/game	Blocks/game
23	28.8	10.8	42.3	40.8	72.4	2.1	2.2	2.2	1.0	0.7	0.2



**2024-25 Arkansas Women's Basketball  
Individual Game-by-Game  
All games**

**#3 HIGGINBOTTOM, Izzy**

Opponent	Date	GS	MIN	Total		3-Pointers		Free throws		Rebounds				PF	A	TO	BLK	STL	PTS	AVG
				FG-FGA	PCT	3FG-3FGA	PCT	FT-FTA	PCT	OFF	DEF	TOT	AVG							
Fairfield	11/04/2024	*	36:02	7-17	.412	0-1	.000	8-10	.800	0	1	1	1.0	1	2	7	0	1	22	22.0
East Texas A&M	11/08/2024	*	30:48	7-11	.636	1-2	.500	4-4	1.000	1	6	7	4.0	1	3	5	0	0	19	20.5
at Little Rock	11/11/2024	*	43:13	6-14	.429	1-5	.200	11-11	1.000	0	4	4	4.0	1	6	1	1	1	24	21.7
UT Arlington	11/14/2024	*	30:04	10-23	.435	3-6	.500	6-7	.857	1	4	5	4.3	1	6	2	0	0	29	23.5
at UCLA	11/17/2024	*	33:30	5-18	.278	1-7	.143	4-4	1.000	1	2	3	4.0	2	3	3	0	0	15	21.8
Oral Roberts	11/21/2024	*	34:44	6-15	.400	2-3	.667	13-15	.867	0	2	2	3.7	1	5	2	0	1	27	22.7
Arkansas St.	11/24/2024	*	35:34	7-13	.538	0-1	.000	1-3	.333	0	8	8	4.3	1	5	3	0	2	15	21.6
vs Oklahoma St.	11/29/2024	*	33:23	8-16	.500	1-2	.500	9-10	.900	0	2	2	4.0	2	3	5	0	1	26	22.1
vs Bowling Green	11/30/2024	*	38:46	7-15	.467	0-0	.000	12-12	1.000	1	3	4	4.0	2	9	1	1	1	26	22.6
Boston College	12/05/2024	*	38:02	14-23	.609	0-1	.000	10-11	.909	0	4	4	4.0	2	2	3	0	3	38	24.1
Southeast Mo. St.	12/08/2024	*	26:56	6-15	.400	1-3	.333	5-5	1.000	0	6	6	4.2	0	3	3	0	0	18	23.5
Texas Tech	12/15/2024	*	35:12	9-14	.643	1-1	1.000	7-8	.875	0	2	2	4.0	3	1	7	0	3	26	23.8
vs Liberty	12/18/2024	*	35:07	8-18	.444	1-6	.167	7-7	1.000	2	4	6	4.2	4	3	3	0	1	24	23.8
vs Troy	12/19/2024	*	35:16	7-19	.368	2-4	.500	3-3	1.000	1	3	4	4.1	2	7	4	0	2	19	23.4
Central Ark.	12/29/2024	*	23:34	9-14	.643	1-2	.500	7-9	.778	2	1	3	4.1	1	4	2	0	2	26	23.6
LSU	01/02/2025	*	32:14	10-21	.476	1-3	.333	6-6	1.000	0	2	2	3.9	1	2	4	1	1	27	23.8
at Texas	01/05/2025	*	31:45	7-14	.500	1-2	.500	8-8	1.000	0	4	4	3.9	2	2	4	0	1	23	23.8
at Auburn	01/09/2025	*	39:31	13-20	.650	3-5	.600	7-9	.778	1	3	4	3.9	1	2	7	0	2	36	24.4
Tennessee	01/12/2025	*	33:40	8-20	.400	2-6	.333	8-9	.889	1	5	6	4.1	0	2	6	0	1	26	24.5
Alabama	01/19/2025	*	26:32	2-11	.182	0-0	.000	1-2	.500	0	3	3	4.0	2	2	3	1	0	5	23.6
at Vanderbilt	01/23/2025	*	30:57	2-6	.333	1-3	.333	2-2	1.000	0	5	5	4.0	2	4	8	0	0	7	22.8
at Kentucky	01/26/2025	*	35:42	10-25	.400	3-7	.429	9-10	.900	0	2	2	4.0	0	3	3	0	1	32	23.2
Texas A&M	01/30/2025	*	40:00	10-21	.476	2-4	.500	11-13	.846	1	9	10	4.2	0	7	2	0	2	33	23.6
Florida	02/03/2025	*	37:00	12-25	.480	3-6	.500	13-13	1.000	0	7	7	4.3	0	4	3	0	1	40	24.3
at Mississippi St.	02/06/2025	*	32:31	6-13	.462	1-2	.500	13-13	1.000	0	2	2	4.2	5	0	7	0	3	26	24.4
at Georgia	02/09/2025	*	40:00	7-29	.241	1-4	.250	9-11	.818	1	5	6	4.3	1	4	0	0	2	24	24.3
Ole Miss	02/13/2025	*	36:20	7-23	.304	0-4	.000	4-4	1.000	0	4	4	4.3	0	2	3	1	1	18	24.1
at South Carolina	02/20/2025	*	34:44	3-17	.176	1-5	.200	3-4	.750	0	2	2	4.2	1	5	4	1	1	10	23.6
<b>Totals</b>			<b>28</b>	<b>961:08</b>	<b>.435</b>	<b>34-95</b>	<b>.358</b>	<b>201-223</b>	<b>.901</b>	<b>13</b>	<b>105</b>	<b>118</b>	<b>4.2</b>	<b>39</b>	<b>101</b>	<b>105</b>	<b>6</b>	<b>34</b>	<b>661</b>	<b>23.6</b>

**Player Averages**

Games Played	Minutes/game	Points/game	FG Pct	3FG Pct	FT Pct	Rebounds/game	Assists/game	Turnovers/game	Assist/Turnover ratio	Steals/game	Blocks/game
28	34.3	23.6	43.5	35.8	90.1	4.2	3.6	3.8	1.0	1.2	0.2



**2024-25 Arkansas Women's Basketball  
Individual Game-by-Game  
All games**

**#10 SÁNCHEZ CERQUEIRA, Cristina**

Opponent	Date	GS	MIN	Total		3-Pointers		Free throws		Rebounds				PF	A	TO	BLK	STL	PTS	AVG
				FG-FGA	PCT	3FG-3FGA	PCT	FT-FTA	PCT	OFF	DEF	TOT	AVG							
Fairfield	11/04/2024		00:35	0-0	.000	0-0	.000	0-0	.000	0	0	0	0.0	0	0	0	0	0	0	0.0
East Texas A&M	11/08/2024		08:26	0-1	.000	0-0	.000	0-0	.000	0	4	4	2.0	0	0	2	0	0	0	0.0
at Little Rock	11/11/2024		00:05	0-0	.000	0-0	.000	0-0	.000	0	0	0	1.3	0	0	0	0	0	0.0	
UT Arlington	11/14/2024		03:54	0-0	.000	0-0	.000	0-2	.000	0	2	2	1.5	0	0	2	0	0	0.0	
at UCLA	11/17/2024		02:16	0-1	.000	0-1	.000	0-0	.000	0	0	0	1.2	0	0	0	1	0	0.0	
Oral Roberts	11/21/2024		01:56	1-1	1.000	0-0	.000	0-1	.000	0	1	1	1.2	0	0	2	0	0	2 0.3	
vs Oklahoma St.	11/29/2024		01:13	0-1	.000	0-1	.000	0-0	.000	0	0	0	1.0	0	0	0	0	0	0 0.3	
Boston College	12/05/2024		13:36	0-1	.000	0-0	.000	0-0	.000	1	4	5	1.5	1	0	0	2	1	0 0.3	
Southeast Mo. St.	12/08/2024		11:51	0-2	.000	0-1	.000	1-2	.500	1	4	5	1.9	0	1	1	0	2	1 0.3	
Texas Tech	12/15/2024		18:01	0-0	.000	0-0	.000	0-0	.000	1	3	4	2.1	3	0	0	0	0	0 0.3	
vs Liberty	12/18/2024		08:53	0-1	.000	0-0	.000	0-0	.000	0	2	2	2.1	1	0	0	0	0	0 0.3	
vs Troy	12/19/2024		17:01	1-4	.250	0-1	.000	2-2	1.000	2	7	9	2.7	1	0	1	0	0	4 0.6	
Central Ark.	12/29/2024		15:52	1-2	.500	1-1	1.000	0-2	.000	2	8	10	3.2	3	0	0	0	0	3 0.8	
LSU	01/02/2025		16:41	0-3	.000	0-1	.000	0-0	.000	4	3	7	3.5	2	1	1	0	0	0 0.7	
at Texas	01/05/2025		19:10	0-1	.000	0-0	.000	1-2	.500	0	2	2	3.4	3	0	3	0	0	1 0.7	
at Auburn	01/09/2025		22:03	0-0	.000	0-0	.000	2-2	1.000	0	2	2	3.3	2	0	1	0	1	2 0.8	
Tennessee	01/12/2025		16:25	1-3	.333	0-0	.000	2-2	1.000	1	1	2	3.2	1	0	1	0	1	4 1.0	
Alabama	01/19/2025		17:59	0-0	.000	0-0	.000	2-3	.667	1	5	6	3.4	1	1	3	0	0	2 1.1	
at Vanderbilt	01/23/2025	*	26:54	1-4	.250	0-1	.000	0-0	.000	2	6	8	3.6	2	2	2	0	0	2 1.1	
at Kentucky	01/26/2025	*	22:50	1-6	.167	1-4	.250	1-2	.500	0	5	5	3.7	5	0	0	0	1	4 1.3	
Texas A&M	01/30/2025	*	15:32	1-2	.500	0-1	.000	0-0	.000	0	6	6	3.8	4	0	4	0	0	2 1.3	
Florida	02/03/2025	*	23:55	4-8	.500	1-3	.333	0-3	.000	3	4	7	4.0	1	2	3	0	2	9 1.6	
at Mississippi St.	02/06/2025	*	21:35	1-6	.167	0-2	.000	0-1	.000	0	2	2	3.9	0	0	2	0	0	2 1.7	
at Georgia	02/09/2025	*	30:31	1-6	.167	1-3	.333	0-0	.000	2	4	6	4.0	3	2	3	0	2	3 1.7	
Ole Miss	02/13/2025	*	18:04	2-4	.500	0-1	.000	1-1	1.000	0	2	2	3.9	1	1	1	1	0	5 1.8	
at South Carolina	02/20/2025	*	20:56	2-6	.333	1-3	.333	0-0	.000	0	5	5	3.9	2	1	2	2	0	5 2.0	
<b>Totals</b>		<b>8</b>	<b>376:14</b>	<b>17-63</b>	<b>.270</b>	<b>5-24</b>	<b>.208</b>	<b>12-25</b>	<b>.480</b>	<b>20</b>	<b>82</b>	<b>102</b>	<b>3.9</b>	<b>36</b>	<b>11</b>	<b>34</b>	<b>6</b>	<b>10</b>	<b>51</b>	<b>2.0</b>

**Player Averages**

Games Played	Minutes/game	Points/game	FG Pct	3FG Pct	FT Pct	Rebounds/game	Assists/game	Turnovers/game	Assist/Turnover ratio	Steals/game	Blocks/game
26	14.5	2.0	27.0	20.8	48.0	3.9	0.4	1.3	0.3	0.4	0.2



**2024-25 Arkansas Women's Basketball  
Individual Game-by-Game  
All games**

**#15 BATES, Jada**

Opponent	Date	GS	MIN	Total		3-Pointers		Free throws		Rebounds				PF	A	TO	BLK	STL	PTS	AVG
				FG-FGA	PCT	3FG-3FGA	PCT	FT-FTA	PCT	OFF	DEF	TOT	AVG							
Fairfield	11/04/2024		18:10	1-4	.250	1-3	.333	0-0	.000	1	2	3	3.0	1	2	2	1	0	3	3.0
East Texas A&M	11/08/2024		14:25	1-1	1.000	1-1	1.000	0-0	.000	0	2	2	2.5	0	1	0	0	0	3	3.0
at Little Rock	11/11/2024		26:42	2-4	.500	2-3	.667	0-0	.000	1	2	3	2.7	1	0	1	1	0	6	4.0
UT Arlington	11/14/2024		18:26	2-4	.500	0-1	.000	0-1	.000	0	1	1	2.3	0	0	1	1	0	4	4.0
at UCLA	11/17/2024		23:09	3-7	.429	3-7	.429	0-0	.000	0	3	3	2.4	0	1	2	0	0	9	5.0
Oral Roberts	11/21/2024		11:54	0-2	.000	0-1	.000	0-0	.000	1	1	2	2.3	1	0	0	1	0	0	4.2
Arkansas St.	11/24/2024		09:58	0-2	.000	0-0	.000	0-0	.000	0	0	0	2.0	0	0	0	0	0	0	3.6
vs Oklahoma St.	11/29/2024		13:46	0-4	.000	0-2	.000	0-2	.000	0	0	0	1.8	0	0	1	0	0	0	3.1
vs Bowling Green	11/30/2024		02:11	0-0	.000	0-0	.000	0-0	.000	0	0	0	1.6	0	0	0	0	0	0	2.8
Boston College	12/05/2024		25:56	2-5	.400	1-3	.333	0-0	.000	0	1	1	1.5	1	2	1	0	1	5	3.0
Southeast Mo. St.	12/08/2024		17:03	0-2	.000	0-2	.000	0-0	.000	0	2	2	1.5	1	0	1	1	0	0	2.7
Texas Tech	12/15/2024		07:29	0-1	.000	0-1	.000	3-4	.750	0	0	0	1.4	0	0	1	0	1	3	2.8
vs Troy	12/19/2024		04:27	0-0	.000	0-0	.000	0-0	.000	0	0	0	1.3	0	0	0	0	0	0	2.5
Central Ark.	12/29/2024		08:34	1-1	1.000	1-1	1.000	0-0	.000	0	1	1	1.3	1	0	0	0	0	3	2.6
LSU	01/02/2025		03:36	0-0	.000	0-0	.000	0-0	.000	0	0	0	1.2	0	0	0	0	0	0	2.4
at Texas	01/05/2025		03:37	0-0	.000	0-0	.000	0-0	.000	0	1	1	1.2	0	0	0	0	0	0	2.3
at Auburn	01/09/2025		04:42	0-0	.000	0-0	.000	0-0	.000	0	0	0	1.1	1	0	0	0	0	0	2.1
Tennessee	01/12/2025		04:26	0-0	.000	0-0	.000	0-0	.000	0	1	1	1.1	0	0	0	0	0	0	2.0
Alabama	01/19/2025		16:23	0-2	.000	0-1	.000	2-2	1.000	0	0	0	1.1	0	0	0	0	0	2	2.0
at Kentucky	01/26/2025		07:37	0-0	.000	0-0	.000	0-0	.000	0	1	1	1.1	0	1	1	0	0	0	1.9
Texas A&M	01/30/2025		10:20	1-3	.333	0-1	.000	0-0	.000	1	1	2	1.1	1	0	2	0	0	2	1.9
Florida	02/03/2025		13:57	1-1	1.000	0-0	.000	0-1	.000	0	0	0	1.0	0	0	0	0	1	2	1.9
at Mississippi St.	02/06/2025		19:01	0-0	.000	0-0	.000	0-0	.000	0	0	0	1.0	0	0	0	0	1	0	1.8
at Georgia	02/09/2025		06:47	0-1	.000	0-0	.000	0-0	.000	0	1	1	1.0	1	0	0	0	0	0	1.8
Ole Miss	02/13/2025		22:02	1-3	.333	0-2	.000	0-2	.000	0	1	1	1.0	0	1	0	0	0	2	1.8
at South Carolina	02/20/2025		06:55	2-2	1.000	2-2	1.000	0-0	.000	0	0	0	1.0	1	0	0	0	0	6	1.9
<b>Totals</b>		<b>0</b>	<b>321:33</b>	<b>17-49</b>	<b>.347</b>	<b>11-31</b>	<b>.355</b>	<b>5-12</b>	<b>.417</b>	<b>4</b>	<b>21</b>	<b>25</b>	<b>1.0</b>	<b>10</b>	<b>8</b>	<b>13</b>	<b>5</b>	<b>4</b>	<b>50</b>	<b>1.9</b>

**Player Averages**

Games Played	Minutes/ game	Points/ game	FG Pct	3FG Pct	FT Pct	Rebounds/ game	Assists/ game	Turnovers/ game	Assist/Turnover ratio	Steals/ game	Blocks/ game
26	12.4	1.9	34.7	35.5	41.7	1.0	0.3	0.5	0.6	0.2	0.2



**2024-25 Arkansas Women's Basketball  
Individual Game-by-Game  
All games**

**#16 PAANANEN, Pinja**

Opponent	Date	GS	MIN	Total		3-Pointers		Free throws		Rebounds				PF	A	TO	BLK	STL	PTS	AVG
				FG-FGA	PCT	3FG-3FGA	PCT	FT-FTA	PCT	OFF	DEF	TOT	AVG							
Fairfield	11/04/2024		17:06	1-1	1.000	1-1	1.000	0-0	.000	2	3	5	5.0	0	1	1	1	0	3	3.0
East Texas A&M	11/08/2024		10:27	1-4	.250	0-3	.000	0-0	.000	0	2	2	3.5	0	0	0	0	0	2	2.5
at Little Rock	11/11/2024		19:14	0-4	.000	0-2	.000	0-0	.000	0	5	5	4.0	2	1	1	0	0	0	1.7
UT Arlington	11/14/2024		12:07	2-2	1.000	2-2	1.000	0-0	.000	2	2	4	4.0	2	0	2	2	0	6	2.8
at UCLA	11/17/2024		14:19	1-2	.500	0-1	.000	1-1	1.000	0	2	2	3.6	0	0	1	0	1	3	2.8
Oral Roberts	11/21/2024		04:08	1-1	1.000	0-0	.000	0-0	.000	2	0	2	3.3	1	1	0	0	0	2	2.7
Arkansas St.	11/24/2024		06:24	0-4	.000	0-4	.000	0-0	.000	0	3	3	3.3	1	0	0	1	1	0	2.3
vs Oklahoma St.	11/29/2024		15:42	1-1	1.000	0-0	.000	0-0	.000	0	3	3	3.3	1	0	1	0	1	2	2.3
vs Bowling Green	11/30/2024		25:46	2-5	.400	1-3	.333	1-2	.500	0	2	2	3.1	0	0	0	0	0	6	2.7
Boston College	12/05/2024		04:58	0-0	.000	0-0	.000	0-0	.000	0	0	0	2.8	0	1	1	0	0	0	2.4
Southeast Mo. St.	12/08/2024		16:40	1-3	.333	0-2	.000	0-0	.000	0	3	3	2.8	0	1	0	2	1	2	2.4
Texas Tech	12/15/2024		03:20	0-0	.000	0-0	.000	0-0	.000	0	0	0	2.6	0	0	2	0	0	0	2.2
vs Liberty	12/18/2024		16:09	1-2	.500	1-2	.500	0-0	.000	0	0	0	2.4	1	0	0	0	1	3	2.2
vs Troy	12/19/2024		02:07	0-1	.000	0-1	.000	0-0	.000	0	0	0	2.2	0	0	0	0	0	0	2.1
Central Ark.	12/29/2024		02:29	0-0	.000	0-0	.000	2-2	1.000	2	1	3	2.3	0	0	0	0	0	2	2.1
LSU	01/02/2025		07:03	0-0	.000	0-0	.000	0-0	.000	0	0	0	2.1	0	0	0	0	0	0	1.9
at Texas	01/05/2025		09:48	0-0	.000	0-0	.000	1-2	.500	0	1	1	2.1	1	0	0	0	0	1	1.9
at Auburn	01/09/2025		01:40	0-0	.000	0-0	.000	0-0	.000	0	0	0	1.9	0	0	0	0	0	0	1.8
Tennessee	01/12/2025		04:43	0-1	.000	0-0	.000	0-0	.000	0	0	0	1.8	0	0	0	0	0	0	1.7
Alabama	01/19/2025		10:00	0-0	.000	0-0	.000	0-0	.000	0	0	0	1.8	1	0	0	0	0	0	1.6
at Kentucky	01/26/2025		04:00	0-0	.000	0-0	.000	0-0	.000	0	1	1	1.7	0	0	0	0	0	0	1.5
Florida	02/03/2025		10:04	1-6	.167	1-4	.250	0-0	.000	0	0	0	1.6	1	0	0	0	0	3	1.6
Ole Miss	02/13/2025		02:38	0-0	.000	0-0	.000	0-0	.000	0	0	0	1.6	0	0	0	0	0	0	1.5
at South Carolina	02/20/2025		08:07	1-3	.333	1-3	.333	0-0	.000	2	1	3	1.6	1	0	1	0	0	3	1.6
<b>Totals</b>		<b>0</b>	<b>228:59</b>	<b>13-40</b>	<b>.325</b>	<b>7-28</b>	<b>.250</b>	<b>5-7</b>	<b>.714</b>	<b>10</b>	<b>29</b>	<b>39</b>	<b>1.6</b>	<b>12</b>	<b>5</b>	<b>10</b>	<b>6</b>	<b>5</b>	<b>38</b>	<b>1.6</b>

**Player Averages**

Games Played	Minutes/game	Points/game	FG Pct	3FG Pct	FT Pct	Rebounds/game	Assists/game	Turnovers/game	Assist/Turnover ratio	Steals/game	Blocks/game
24	9.5	1.6	32.5	25.0	71.4	1.6	0.2	0.4	0.5	0.2	0.3



**2024-25 Arkansas Women's Basketball  
Individual Game-by-Game  
All games**

**#20 JOHNSON, Karley**

Opponent	Date	GS	MIN	Total		3-Pointers		Free throws		Rebounds				PF	A	TO	BLK	STL	PTS	AVG
				FG-FGA	PCT	3FG-3FGA	PCT	FT-FTA	PCT	OFF	DEF	TOT	AVG							
East Texas A&M	11/08/2024		14:11	0-1	.000	0-0	.000	3-4	.750	2	4	6	6.0	0	1	0	0	0	3	3.0
at Little Rock	11/11/2024		13:12	0-2	.000	0-0	.000	1-2	.500	1	1	2	4.0	4	0	1	0	0	1	2.0
UT Arlington	11/14/2024		12:39	2-4	.500	0-0	.000	2-2	1.000	3	7	10	6.0	1	0	0	0	0	6	3.3
at UCLA	11/17/2024		07:35	0-0	.000	0-0	.000	0-0	.000	0	2	2	5.0	1	0	1	0	0	0	2.5
Oral Roberts	11/21/2024		17:18	2-6	.333	0-1	.000	0-0	.000	1	2	3	4.6	3	0	0	0	1	4	2.8
Arkansas St.	11/24/2024		19:10	1-5	.200	0-2	.000	0-0	.000	1	6	7	5.0	3	3	2	0	3	2	2.7
vs Oklahoma St.	11/29/2024		20:36	1-3	.333	0-0	.000	1-2	.500	1	0	1	4.4	1	0	0	0	0	3	2.7
vs Bowling Green	11/30/2024		17:22	0-1	.000	0-1	.000	0-0	.000	0	7	7	4.8	2	1	1	2	1	0	2.4
Southeast Mo. St.	12/08/2024		07:51	1-3	.333	0-1	.000	3-3	1.000	2	1	3	4.6	0	0	1	0	0	5	2.7
Texas Tech	12/15/2024		03:55	0-0	.000	0-0	.000	0-0	.000	0	0	0	4.1	1	0	0	0	0	0	2.4
vs Liberty	12/18/2024		13:29	1-1	1.000	0-0	.000	1-2	.500	0	0	0	3.7	1	0	0	0	1	3	2.5
vs Troy	12/19/2024		09:06	0-1	.000	0-0	.000	0-0	.000	0	1	1	3.5	1	0	0	0	1	0	2.3
Central Ark.	12/29/2024		03:25	0-0	.000	0-0	.000	0-0	.000	0	0	0	3.2	0	0	0	0	0	0	2.1
LSU	01/02/2025		05:37	0-1	.000	0-0	.000	0-0	.000	2	0	2	3.1	1	0	1	0	0	0	1.9
at Texas	01/05/2025		03:14	0-0	.000	0-0	.000	0-0	.000	0	0	0	2.9	0	0	0	0	0	0	1.8
at Auburn	01/09/2025		10:54	1-1	1.000	0-0	.000	0-0	.000	1	2	3	2.9	0	0	0	0	0	2	1.8
Tennessee	01/12/2025		15:12	1-1	1.000	0-0	.000	0-0	.000	0	0	0	2.8	3	1	1	0	0	2	1.8
Alabama	01/19/2025		08:14	0-0	.000	0-0	.000	3-4	.750	1	1	2	2.7	0	0	1	0	0	3	1.9
at Vanderbilt	01/23/2025		24:10	6-8	.750	1-2	.500	1-3	.333	1	2	3	2.7	1	1	0	0	2	14	2.5
at Kentucky	01/26/2025		21:07	0-2	.000	0-0	.000	0-0	.000	0	3	3	2.8	0	1	1	0	2	0	2.4
Texas A&M	01/30/2025		27:39	2-4	.500	0-1	.000	2-2	1.000	1	2	3	2.8	3	2	1	0	0	6	2.6
Florida	02/03/2025	*	23:51	0-6	.000	0-1	.000	0-0	.000	2	3	5	2.9	1	0	0	0	0	0	2.5
at Mississippi St.	02/06/2025	*	20:37	3-5	.600	0-1	.000	0-0	.000	1	3	4	2.9	2	2	3	0	2	6	2.6
at Georgia	02/09/2025	*	29:53	4-5	.800	1-2	.500	3-7	.429	3	3	6	3.0	4	1	1	0	1	12	3.0
Ole Miss	02/13/2025	*	13:36	0-3	.000	0-2	.000	0-0	.000	0	2	2	3.0	0	1	0	0	1	0	2.9
at South Carolina	02/20/2025	*	16:23	0-0	.000	0-0	.000	0-0	.000	0	2	2	3.0	2	1	0	1	0	0	2.8
<b>Totals</b>		<b>5</b>	<b>380:15</b>	<b>25-63</b>	<b>.397</b>	<b>2-14</b>	<b>.143</b>	<b>20-31</b>	<b>.645</b>	<b>23</b>	<b>54</b>	<b>77</b>	<b>3.0</b>	<b>35</b>	<b>15</b>	<b>15</b>	<b>3</b>	<b>15</b>	<b>72</b>	<b>2.8</b>

**Player Averages**

Games Played	Minutes/ game	Points/ game	FG Pct	3FG Pct	FT Pct	Rebounds/ game	Assists/ game	Turnovers/ game	Assist/Turnover ratio	Steals/ game	Blocks/ game
26	14.6	2.8	39.7	14.3	64.5	3.0	0.6	0.6	1.0	0.6	0.1



2024-25 Arkansas Women's Basketball  
Individual Game-by-Game  
All games

#21 LINDSEY, Loren

Opponent	Date	GS	MIN	Total		3-Pointers		Free throws		Rebounds				PF	A	TO	BLK	STL	PTS	AVG
				FG-FGA	PCT	3FG-3FGA	PCT	FT-FTA	PCT	OFF	DEF	TOT	AVG							
East Texas A&M	11/08/2024		02:00	0-1	.000	0-0	.000	0-0	.000	0	0	0	0.0	0	0	0	0	0	0	0.0
UT Arlington	11/14/2024		03:38	0-0	.000	0-0	.000	0-0	.000	0	0	0	0.0	0	1	0	0	0	0	0.0
at UCLA	11/17/2024		02:16	0-0	.000	0-0	.000	0-0	.000	0	0	0	0.0	1	1	0	0	0	0	0.0
Oral Roberts	11/21/2024		03:24	0-0	.000	0-0	.000	0-0	.000	0	0	0	0.0	1	0	0	0	0	0	0.0
Southeast Mo. St.	12/08/2024		10:44	0-2	.000	0-2	.000	0-0	.000	0	2	2	0.4	1	0	0	0	1	0	0.0
<b>Totals</b>		<b>0</b>	<b>22:02</b>	<b>0-3</b>	<b>.000</b>	<b>0-2</b>	<b>.000</b>	<b>0-0</b>	<b>.000</b>	<b>0</b>	<b>2</b>	<b>2</b>	<b>0.4</b>	<b>3</b>	<b>2</b>	<b>0</b>	<b>0</b>	<b>1</b>	<b>0</b>	<b>0.0</b>

Player Averages

Games Played	Minutes/game	Points/game	FG Pct	3FG Pct	FT Pct	Rebounds/game	Assists/game	Turnovers/game	Assist/Turnover ratio	Steals/game	Blocks/game
5	4.4	0.0	0.0	0.0	0.0	0.4	0.4	0.0	2.0	0.2	0.0





**2024-25 Arkansas Women's Basketball  
Individual Game-by-Game  
All games**

**#22 OJENUWA, Vera**

Opponent	Date	GS	MIN	Total		3-Pointers		Free throws		Rebounds				PF	A	TO	BLK	STL	PTS	AVG	
				FG-FGA	PCT	3FG-3FGA	PCT	FT-FTA	PCT	OFF	DEF	TOT	AVG								
Fairfield	11/04/2024	*	27:39	4-8	.500	0-0	.000	1-1	1.000	1	4	5	5.0	0	1	0	2	0	9	9.0	
East Texas A&M	11/08/2024	*	21:34	5-10	.500	0-0	.000	6-9	.667	2	5	7	6.0	4	2	1	0	1	16	12.5	
at Little Rock	11/11/2024	*	20:46	5-8	.625	0-0	.000	1-2	.500	2	9	11	7.7	5	1	4	0	0	11	12.0	
UT Arlington	11/14/2024	*	21:59	3-7	.429	0-0	.000	0-1	.000	3	3	6	7.3	3	1	3	1	1	6	10.5	
at UCLA	11/17/2024	*	15:20	1-4	.250	0-2	.000	2-2	1.000	2	1	3	6.4	5	1	2	2	0	4	9.2	
Oral Roberts	11/21/2024	*	31:56	3-7	.429	0-0	.000	0-0	.000	4	7	11	7.2	1	1	0	0	2	6	8.7	
Arkansas St.	11/24/2024	*	31:49	8-12	.667	0-0	.000	4-5	.800	3	7	10	7.6	4	2	4	1	0	20	10.3	
vs Oklahoma St.	11/29/2024	*	25:59	1-5	.200	0-1	.000	1-2	.500	1	5	6	7.4	4	0	3	1	1	3	9.4	
vs Bowling Green	11/30/2024	*	14:39	2-4	.500	1-1	1.000	0-0	.000	0	2	2	6.8	5	0	2	1	0	5	8.9	
Boston College	12/05/2024	*	26:57	3-5	.600	0-0	.000	2-5	.400	5	5	10	7.1	4	0	2	0	1	8	8.8	
Southeast Mo. St.	12/08/2024	*	19:24	5-7	.714	0-1	.000	3-4	.750	4	10	14	7.7	2	1	0	0	1	13	9.2	
Texas Tech	12/15/2024	*	33:20	4-9	.444	0-0	.000	4-7	.571	8	3	11	8.0	4	0	3	0	0	12	9.4	
vs Liberty	12/18/2024	*	25:49	1-4	.250	0-1	.000	0-0	.000	2	4	6	7.8	1	1	7	1	2	2	8.8	
vs Troy	12/19/2024	*	25:26	3-6	.500	0-0	.000	0-0	.000	3	4	7	7.8	2	0	2	0	0	6	8.6	
Central Ark.	12/29/2024	*	27:11	5-8	.625	1-1	1.000	1-2	.500	1	8	9	7.9	4	2	2	1	2	12	8.9	
LSU	01/02/2025	*	22:54	2-8	.250	0-0	.000	0-0	.000	4	4	8	7.9	2	0	4	1	2	4	8.6	
at Texas	01/05/2025	*	09:32	0-3	.000	0-0	.000	2-4	.500	3	1	4	7.6	5	0	1	0	0	2	8.2	
at Auburn	01/09/2025	*	22:56	0-2	.000	0-0	.000	1-4	.250	2	2	4	7.4	5	0	1	0	2	1	7.8	
Tennessee	01/12/2025	*	26:33	1-2	.500	0-1	.000	2-6	.333	1	5	6	7.4	1	1	2	1	1	4	7.6	
Alabama	01/19/2025	*	20:41	5-10	.500	0-0	.000	2-2	1.000	2	3	5	7.3	4	0	0	1	0	12	7.8	
at Vanderbilt	01/23/2025	*	29:31	2-6	.333	0-0	.000	0-0	.000	4	4	8	7.3	1	0	1	1	1	4	7.6	
at Kentucky	01/26/2025	*	11:10	0-2	.000	0-2	.000	0-0	.000	1	3	4	7.1	2	0	1	1	0	0	7.3	
Texas A&M	01/30/2025	*	26:18	3-5	.600	1-1	1.000	2-2	1.000	1	5	6	7.1	2	0	4	0	1	9	7.3	
Florida	02/03/2025	*	15:02	1-4	.250	0-0	.000	2-4	.500	2	1	3	6.9	3	0	1	0	0	4	7.2	
at Mississippi St.	02/06/2025	*	21:05	2-5	.400	0-0	.000	0-0	.000	1	4	5	6.8	3	0	2	1	2	4	7.1	
at Georgia	02/09/2025	*	22:01	5-9	.556	1-1	1.000	2-2	1.000	3	4	7	6.8	4	0	1	2	0	13	7.3	
Ole Miss	02/13/2025	*	23:03	3-9	.333	0-2	.000	0-0	.000	2	5	7	6.9	4	0	0	0	0	6	7.3	
at South Carolina	02/20/2025	*	15:15	0-0	.000	0-0	.000	0-0	.000	0	1	1	6.6	5	0	0	0	0	0	7.0	
<b>Totals</b>			<b>28</b>	<b>635:49</b>	<b>77-169</b>	<b>.456</b>	<b>4-14</b>	<b>.286</b>	<b>38-64</b>	<b>.594</b>	<b>67</b>	<b>119</b>	<b>186</b>	<b>6.6</b>	<b>89</b>	<b>14</b>	<b>53</b>	<b>18</b>	<b>20</b>	<b>196</b>	<b>7.0</b>

**Player Averages**

Games Played	Minutes/ game	Points/ game	FG Pct	3FG Pct	FT Pct	Rebounds/ game	Assists/ game	Turnovers/ game	Assist/Turnover ratio	Steals/ game	Blocks/ game
28	22.7	7.0	45.6	28.6	59.4	6.6	0.5	1.9	0.3	0.7	0.6



**2024-25 Arkansas Women's Basketball  
Individual Game-by-Game  
All games**

**#23 KEATS, Carly**

Opponent	Date	GS	MIN	Total		3-Pointers		Free throws		Rebounds				PF	A	TO	BLK	STL	PTS	AVG
				FG-FGA	PCT	3FG-3FGA	PCT	FT-FTA	PCT	OFF	DEF	TOT	AVG							
Fairfield	11/04/2024	*	31:32	2-10	.200	1-7	.143	0-0	.000	0	0	0	0.0	0	1	2	0	1	5	5.0
East Texas A&M	11/08/2024	*	20:27	2-5	.400	1-3	.333	0-0	.000	0	2	2	1.0	0	0	1	1	0	5	5.0
at Little Rock	11/11/2024	*	20:35	1-5	.200	1-3	.333	1-2	.500	0	1	1	1.0	0	0	0	0	0	4	4.7
UT Arlington	11/14/2024	*	22:23	4-8	.500	3-6	.500	2-2	1.000	0	2	2	1.3	1	0	1	0	1	13	6.8
at UCLA	11/17/2024	*	32:28	4-15	.267	2-10	.200	0-0	.000	0	5	5	2.0	1	1	2	0	1	10	7.4
Oral Roberts	11/21/2024	*	22:57	2-8	.250	0-3	.000	0-0	.000	0	1	1	1.8	0	1	1	0	0	4	6.8
Arkansas St.	11/24/2024	*	14:30	3-8	.375	2-6	.333	0-0	.000	0	0	0	1.6	0	0	1	0	0	8	7.0
vs Oklahoma St.	11/29/2024	*	20:00	0-6	.000	0-3	.000	0-0	.000	0	1	1	1.5	0	1	2	1	0	0	6.1
vs Bowling Green	11/30/2024	*	23:51	4-7	.571	1-4	.250	0-0	.000	0	1	1	1.4	0	0	0	1	0	9	6.4
Boston College	12/05/2024	*	19:23	2-8	.250	1-3	.333	0-0	.000	0	0	0	1.3	0	1	0	0	0	5	6.3
Southeast Mo. St.	12/08/2024	*	22:22	6-13	.462	5-8	.625	2-2	1.000	0	3	3	1.5	0	1	3	0	1	19	7.5
Texas Tech	12/15/2024	*	26:07	3-7	.429	1-4	.250	2-2	1.000	0	2	2	1.5	0	3	1	0	0	9	7.6
vs Liberty	12/18/2024	*	27:12	4-8	.500	1-3	.333	2-2	1.000	0	0	0	1.4	1	1	0	0	0	11	7.8
vs Troy	12/19/2024	*	25:36	1-8	.125	1-6	.167	0-0	.000	0	3	3	1.5	0	2	1	0	0	3	7.5
Central Ark.	12/29/2024	*	32:19	3-10	.300	2-5	.400	0-0	.000	0	5	5	1.7	2	2	0	0	1	8	7.5
LSU	01/02/2025	*	29:53	6-14	.429	4-11	.364	2-2	1.000	1	3	4	1.9	2	0	1	0	0	18	8.2
at Texas	01/05/2025	*	30:10	3-6	.500	1-3	.333	4-4	1.000	0	4	4	2.0	1	0	2	0	0	11	8.4
at Auburn	01/09/2025	*	17:40	1-8	.125	1-7	.143	0-0	.000	0	2	2	2.0	0	0	4	0	0	3	8.1
Tennessee	01/12/2025	*	26:12	4-8	.500	2-5	.400	0-0	.000	0	1	1	1.9	1	1	4	0	0	10	8.2
Alabama	01/19/2025	*	16:26	1-5	.200	0-3	.000	0-0	.000	0	0	0	1.9	0	0	0	0	0	2	7.9
at Vanderbilt	01/23/2025		24:49	6-15	.400	4-10	.400	0-0	.000	0	0	0	1.8	0	1	2	0	0	16	8.2
at Kentucky	01/26/2025		25:46	5-12	.417	4-7	.571	0-0	.000	0	2	2	1.8	0	1	3	0	0	14	8.5
Texas A&M	01/30/2025	*	12:32	1-3	.333	1-3	.333	0-0	.000	0	0	0	1.7	0	0	0	0	0	3	8.3
at Georgia	02/09/2025		04:31	0-0	.000	0-0	.000	0-0	.000	0	0	0	1.6	0	0	0	0	0	0	7.9
Ole Miss	02/13/2025		14:45	3-6	.500	0-2	.000	0-0	.000	0	0	0	1.6	0	0	0	0	0	6	7.8
at South Carolina	02/20/2025		09:18	0-1	.000	0-1	.000	0-0	.000	0	0	0	1.5	0	0	0	0	0	0	7.5
<b>Totals</b>			<b>21 573:44</b>	<b>71-204</b>	<b>.348</b>	<b>39-126</b>	<b>.310</b>	<b>15-16</b>	<b>.938</b>	<b>1</b>	<b>38</b>	<b>39</b>	<b>1.5</b>	<b>9</b>	<b>17</b>	<b>31</b>	<b>3</b>	<b>5</b>	<b>196</b>	<b>7.5</b>

**Player Averages**

Games Played	Minutes/game	Points/game	FG Pct	3FG Pct	FT Pct	Rebounds/game	Assists/game	Turnovers/game	Assist/Turnover ratio	Steals/game	Blocks/game
26	22.1	7.5	34.8	31.0	93.8	1.5	0.7	1.2	0.5	0.2	0.1



**2024-25 Arkansas Women's Basketball  
Individual Game-by-Game  
All games**

**#25 GALEA, Danika**

Opponent	Date	GS	MIN	Total		3-Pointers		Free throws		Rebounds				PF	A	TO	BLK	STL	PTS	AVG
				FG-FGA	PCT	3FG-3FGA	PCT	FT-FTA	PCT	OFF	DEF	TOT	AVG							
Fairfield	11/04/2024		00:35	0-0	.000	0-0	.000	0-0	.000	0	0	0	0.0	0	0	0	0	0	0	0.0
East Texas A&M	11/08/2024		10:40	0-3	.000	0-0	.000	4-4	1.000	0	1	1	0.5	3	0	3	0	0	4	2.0
at Little Rock	11/11/2024		16:54	2-2	1.000	0-0	.000	0-0	.000	0	3	3	1.3	5	1	3	0	1	4	2.7
UT Arlington	11/14/2024		14:07	4-7	.571	0-0	.000	2-2	1.000	4	2	6	2.5	4	1	1	0	0	10	4.5
at UCLA	11/17/2024		13:10	1-5	.200	0-2	.000	0-0	.000	0	0	0	2.0	5	0	2	0	0	2	4.0
Oral Roberts	11/21/2024		08:04	1-2	.500	0-0	.000	0-0	.000	0	0	0	1.7	2	1	1	0	0	2	3.7
Arkansas St.	11/24/2024		08:11	3-4	.750	0-0	.000	2-2	1.000	2	0	2	1.7	1	0	0	1	0	8	4.3
Southeast Mo. St.	12/08/2024		13:43	4-5	.800	0-0	.000	2-2	1.000	2	2	4	2.0	1	0	0	1	1	10	5.0
Texas Tech	12/15/2024		06:36	1-1	1.000	0-0	.000	0-0	.000	0	1	1	1.9	0	0	0	0	0	2	4.7
vs Liberty	12/18/2024		14:11	3-6	.500	2-5	.400	0-0	.000	1	3	4	2.1	2	0	0	0	0	8	5.0
vs Troy	12/19/2024		14:34	5-5	1.000	0-0	.000	0-2	.000	1	0	1	2.0	1	0	1	1	0	10	5.5
Central Ark.	12/29/2024		08:10	0-0	.000	0-0	.000	0-0	.000	1	0	1	1.9	1	0	0	1	1	0	5.0
LSU	01/02/2025		08:58	1-2	.500	0-0	.000	0-0	.000	1	0	1	1.8	0	0	1	0	1	2	4.8
at Texas	01/05/2025		12:19	2-3	.667	0-0	.000	1-2	.500	0	1	1	1.8	5	0	1	0	1	5	4.8
at Auburn	01/09/2025		17:04	1-3	.333	0-1	.000	0-0	.000	0	2	2	1.8	3	0	4	0	0	2	4.6
Tennessee	01/12/2025		13:27	2-2	1.000	0-0	.000	0-0	.000	1	1	2	1.8	2	0	0	0	0	4	4.6
Alabama	01/19/2025		17:13	1-3	.333	0-0	.000	0-0	.000	0	0	0	1.7	1	0	0	1	0	2	4.4
at Vanderbilt	01/23/2025		10:29	1-3	.333	0-1	.000	0-0	.000	2	1	3	1.8	0	0	2	0	0	2	4.3
at Kentucky	01/26/2025		14:60	0-1	.000	0-0	.000	0-0	.000	1	0	1	1.7	0	2	1	0	0	0	4.1
Texas A&M	01/30/2025		13:42	1-1	1.000	0-0	.000	0-0	.000	0	2	2	1.8	2	0	1	2	0	2	4.0
Florida	02/03/2025		04:46	0-0	.000	0-0	.000	0-0	.000	0	1	1	1.7	3	0	0	0	0	0	3.8
at Mississippi St.	02/06/2025		18:55	2-4	.500	0-0	.000	2-4	.500	3	2	5	1.9	2	0	4	0	0	6	3.9
at Georgia	02/09/2025		17:59	2-4	.500	0-0	.000	0-0	.000	2	1	3	1.9	2	1	3	2	0	4	3.9
Ole Miss	02/13/2025		16:57	1-4	.250	0-2	.000	0-0	.000	2	3	5	2.0	0	1	1	1	0	2	3.8
at South Carolina	02/20/2025		21:14	1-5	.200	0-2	.000	0-0	.000	0	3	3	2.1	1	0	1	0	0	2	3.7
<b>Totals</b>		<b>0</b>	<b>316:59</b>	<b>39-75</b>	<b>.520</b>	<b>2-13</b>	<b>.154</b>	<b>13-18</b>	<b>.722</b>	<b>23</b>	<b>29</b>	<b>52</b>	<b>2.1</b>	<b>46</b>	<b>7</b>	<b>30</b>	<b>10</b>	<b>5</b>	<b>93</b>	<b>3.7</b>

**Player Averages**

Games Played	Minutes/game	Points/game	FG Pct	3FG Pct	FT Pct	Rebounds/game	Assists/game	Turnovers/game	Assist/Turnover ratio	Steals/game	Blocks/game
25	12.7	3.7	52.0	15.4	72.2	2.1	0.3	1.2	0.2	0.2	0.4



**2024-25 Arkansas Women's Basketball  
Individual Game-by-Game  
All games**

**#34 LAWRENCE, Jenna**

Opponent	Date	GS	MIN	Total		3-Pointers		Free throws		Rebounds				PF	A	TO	BLK	STL	PTS	AVG
				FG-FGA	PCT	3FG-3FGA	PCT	FT-FTA	PCT	OFF	DEF	TOT	AVG							
Fairfield	11/04/2024	*	34:05	3-10	.300	2-9	.222	3-3	1.000	2	8	10	10.0	1	0	0	0	0	11	11.0
East Texas A&M	11/08/2024	*	28:53	3-11	.273	2-10	.200	2-2	1.000	0	10	10	10.0	1	1	1	0	1	10	10.5
at Little Rock	11/11/2024	*	24:43	2-6	.333	1-4	.250	0-0	.000	2	5	7	9.0	2	0	1	1	0	5	8.7
UT Arlington	11/14/2024	*	26:02	5-7	.714	4-5	.800	0-0	.000	1	11	12	9.8	0	0	2	1	0	14	10.0
at UCLA	11/17/2024	*	27:20	0-4	.000	0-4	.000	1-2	.500	2	3	5	8.8	2	2	1	0	0	1	8.2
Oral Roberts	11/21/2024	*	27:02	2-6	.333	2-4	.500	0-0	.000	0	2	2	7.7	1	0	1	2	0	6	7.8
Arkansas St.	11/24/2024	*	33:36	3-11	.273	2-9	.222	0-0	.000	1	9	10	8.0	1	1	1	3	3	8	7.9
vs Oklahoma St.	11/29/2024	*	32:04	2-9	.222	1-6	.167	3-4	.750	1	10	11	8.4	3	0	1	1	0	8	7.9
vs Bowling Green	11/30/2024	*	39:35	8-14	.571	5-10	.500	0-0	.000	1	3	4	7.9	1	0	2	5	2	21	9.3
Boston College	12/05/2024	*	34:28	1-4	.250	0-1	.000	2-2	1.000	3	2	5	7.6	4	0	0	2	1	4	8.8
Southeast Mo. St.	12/08/2024	*	18:22	2-5	.400	1-3	.333	0-0	.000	0	4	4	7.3	0	0	1	0	0	5	8.5
Texas Tech	12/15/2024	*	18:39	1-4	.250	0-2	.000	0-0	.000	3	2	5	7.1	1	0	0	0	0	2	7.9
vs Liberty	12/18/2024	*	14:58	1-3	.333	1-3	.333	0-0	.000	2	3	5	6.9	0	0	0	1	0	3	7.5
vs Troy	12/19/2024	*	20:52	3-8	.375	1-5	.200	4-5	.800	1	7	8	7.0	1	0	1	2	0	11	7.8
Central Ark.	12/29/2024	*	26:18	4-9	.444	0-3	.000	1-1	1.000	2	3	5	6.9	1	1	1	1	1	9	7.9
LSU	01/02/2025	*	21:25	2-5	.400	1-2	.500	0-0	.000	1	2	3	6.6	4	0	1	0	2	5	7.7
at Texas	01/05/2025	*	29:11	1-5	.200	0-3	.000	0-0	.000	1	3	4	6.5	3	1	3	0	3	2	7.4
at Auburn	01/09/2025	*	16:17	0-2	.000	0-2	.000	0-0	.000	0	1	1	6.2	2	0	0	0	1	0	6.9
Tennessee	01/12/2025	*	18:52	1-5	.200	0-3	.000	0-0	.000	0	0	0	5.8	1	0	0	1	0	2	6.7
Alabama	01/19/2025	*	14:07	0-5	.000	0-0	.000	0-0	.000	3	1	4	5.8	1	1	0	1	1	0	6.4
at Vanderbilt	01/23/2025		12:07	1-2	.500	0-1	.000	0-0	.000	0	0	0	5.5	0	0	0	0	1	2	6.1
at Kentucky	01/26/2025		26:05	5-9	.556	3-6	.500	0-0	.000	0	6	6	5.5	5	0	1	3	0	13	6.5
Texas A&M	01/30/2025		24:28	4-10	.400	3-9	.333	0-0	.000	0	8	8	5.6	2	0	1	3	0	11	6.7
Florida	02/03/2025		26:13	5-12	.417	2-9	.222	0-0	.000	2	4	6	5.6	2	1	0	2	1	12	6.9
at Mississippi St.	02/06/2025		18:25	1-5	.200	0-4	.000	0-0	.000	0	4	4	5.6	1	0	0	0	1	2	6.7
at Georgia	02/09/2025		09:29	0-3	.000	0-2	.000	0-0	.000	1	1	2	5.4	2	0	2	2	0	0	6.4
Ole Miss	02/13/2025		19:18	2-6	.333	1-5	.200	0-0	.000	0	1	1	5.3	0	0	1	1	0	5	6.4
at South Carolina	02/20/2025		14:29	1-5	.200	0-4	.000	0-0	.000	0	2	2	5.1	1	0	0	0	0	2	6.2
<b>Totals</b>			<b>20 657:22</b>	<b>63-185</b>	<b>.341</b>	<b>32-128</b>	<b>.250</b>	<b>16-19</b>	<b>.842</b>	<b>29</b>	<b>115</b>	<b>144</b>	<b>5.1</b>	<b>43</b>	<b>8</b>	<b>22</b>	<b>32</b>	<b>18</b>	<b>174</b>	<b>6.2</b>

**Player Averages**

Games Played	Minutes/game	Points/game	FG Pct	3FG Pct	FT Pct	Rebounds/game	Assists/game	Turnovers/game	Assist/Turnover ratio	Steals/game	Blocks/game
28	23.5	6.2	34.1	25.0	84.2	5.1	0.3	0.8	0.4	0.6	1.1



**2024-25 Arkansas Women's Basketball  
Individual Game-by-Game  
All games**

**#44 ARCHER, Maryn**

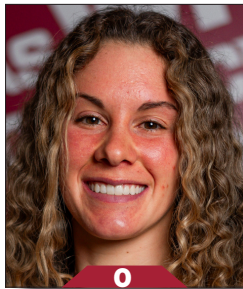
Opponent	Date	GS	MIN	Total		3-Pointers		Free throws		Rebounds				PF	A	TO	BLK	STL	PTS	AVG
				FG-FGA	PCT	3FG-3FGA	PCT	FT-FTA	PCT	OFF	DEF	TOT	AVG							
East Texas A&M	11/08/2024		03:28	0-0	.000	0-0	.000	0-0	.000	0	1	1	1.0	0	0	1	0	0	0	0.0
UT Arlington	11/14/2024		03:54	0-2	.000	0-0	.000	0-2	.000	0	0	0	0.5	2	0	0	0	0	0	0.0
at UCLA	11/17/2024		01:45	0-0	.000	0-0	.000	0-0	.000	0	0	0	0.3	0	0	0	0	0	0	0.0
Oral Roberts	11/21/2024		02:54	0-2	.000	0-0	.000	0-0	.000	0	2	2	0.8	0	0	1	0	0	0	0.0
Arkansas St.	11/24/2024		00:18	0-0	.000	0-0	.000	0-0	.000	0	0	0	0.6	0	0	0	0	0	0	0.0
vs Oklahoma St.	11/29/2024		01:35	0-0	.000	0-0	.000	0-0	.000	0	0	0	0.5	0	0	0	0	0	0	0.0
Boston College	12/05/2024		00:17	0-0	.000	0-0	.000	0-0	.000	0	0	0	0.4	0	0	0	0	0	0	0.0
Southeast Mo. St.	12/08/2024		07:51	2-4	.500	0-0	.000	3-4	.750	0	0	0	0.4	1	1	1	0	0	7	0.9
at Texas	01/05/2025		01:33	0-0	.000	0-0	.000	0-0	.000	0	0	0	0.3	0	0	1	0	0	0	0.8
Tennessee	01/12/2025		01:16	0-0	.000	0-0	.000	1-2	.500	0	0	0	0.3	0	0	0	0	0	1	0.8
Alabama	01/19/2025		01:17	0-0	.000	0-0	.000	0-0	.000	0	0	0	0.3	1	0	0	0	0	0	0.7
at Vanderbilt	01/23/2025		02:55	0-1	.000	0-0	.000	0-0	.000	0	0	0	0.3	0	0	0	0	0	0	0.7
at Kentucky	01/26/2025		05:47	0-0	.000	0-0	.000	3-4	.750	1	0	1	0.3	0	0	1	0	0	3	0.8
Florida	02/03/2025		05:03	0-1	.000	0-0	.000	2-2	1.000	0	1	1	0.4	1	0	0	0	1	2	0.9
at Mississippi St.	02/06/2025		13:26	1-2	.500	1-1	1.000	0-2	.000	0	1	1	0.4	0	0	0	0	1	3	1.1
at Georgia	02/09/2025		02:32	0-1	.000	0-0	.000	0-0	.000	0	0	0	0.4	0	0	0	0	0	0	1.0
Ole Miss	02/13/2025		03:40	0-2	.000	0-0	.000	0-0	.000	0	0	0	0.4	0	0	1	0	0	0	0.9
<b>Totals</b>		<b>0</b>	<b>59:31</b>	<b>3-15</b>	<b>.200</b>	<b>1-1</b>	<b>1.000</b>	<b>9-16</b>	<b>.563</b>	<b>1</b>	<b>5</b>	<b>6</b>	<b>0.4</b>	<b>5</b>	<b>1</b>	<b>6</b>	<b>0</b>	<b>2</b>	<b>16</b>	<b>0.9</b>

**Player Averages**

Games Played	Minutes/game	Points/game	FG Pct	3FG Pct	FT Pct	Rebounds/game	Assists/game	Turnovers/game	Assist/Turnover ratio	Steals/game	Blocks/game
17	3.5	0.9	20.0	100.0	56.3	0.4	0.1	0.4	0.2	0.1	0.0



# RAZORBACKS



0

**Ella Rogers**  
Sr. | 5-8 | G  
Granville, Ohio



1

**Phoenix Stotijn**  
Fr. | 5-9 | G  
Amsterdam, Netherlands



2

**Kiki Smith**  
So. | 5-7 | G  
Topeka, Kan.



3

**Izzy Higginbottom**  
Sr. | 5-7 | G  
Batesville, Ark.



10

**Cristina Sánchez Cerqueira**  
So. | 6-1 | F  
Granada, Spain



15

**Jada Bates**  
Fr. | 6-3 | G  
Powder Springs, Ga.



16

**Pinja Paananen**  
Fr. | 6-2 | F  
Laukaa, Finland



20

**Karley Johnson**  
Jr. | 5-9 | G  
Oklahoma City, Okla.



21

**Loren Lindsey**  
R-So. | 5-11 | G  
Fayetteville, Ark.



22

**Vera Ojenuwa**  
So. | 6-4 | F  
Delta State, Nigeria



23

**Carly Keats**  
Jr. | 5-8 | G  
Philadelphia, Miss.



25

**Danika Galea**  
Fr. | 6-3 | C  
St. Paul's Bay, Malta



34

**Jenna Lawrence**  
So. | 6-3 | F  
Melbourne, Ark.



44

**Maryn Archer**  
R-Fr. | 5-7 | G  
Derby, Kan.