

ARKANSAS

WOMEN'S BASKETBALL

Wednesday, March 5, 2025 • 12:30 p.m. CT • SEC Network • Bon Secours Wellness Arena (15,000) • 2025 SEC Tournament

Info



SEC Network
Sam Gore, Play-by-Play
Steffi Sorensen, Analyst



Live Stats
arkansas.statbroadcast.com

2024-25 Schedule (10-21, 3-13 SEC)

NOVEMBER

4	Fairfield	L, 81-67
8	East Texas A&M	W, 84-65
11	at Little Rock	W, 71-60 OT
14	UT-Arlington	W, 93-65
17	at #5 UCLA	L, 101-52
21	Oral Roberts	L, 94-73
24	Arkansas State	W, 76-60
29	vs. Oklahoma State^	L, 70-56
30	vs. Bowling Green^	L, 79-78

DECEMBER

5	Boston College	W, 75-64
8	SEMO	W, 84-45
15	Texas Tech	L, 75-72
18	vs. Liberty\$	L, 75-61
19	vs. Troy\$	L, 77-69
29	Central Arkansas	W, 87-70

JANUARY

2	#6 LSU*	L, 98-64
5	at #5 Texas*	L, 90-56
9	at Auburn*	W, 59-58
12	#16 Tennessee*	L, 93-63
19	#19 Alabama*	L, 94-62
23	at Vanderbilt*	L, 101-60
26	at #11 Kentucky*	L, 89-69
30	Texas A&M*	W, 72-51

FEBRUARY

3	Florida*	L, 108-78
6	at Mississippi State*	L, 78-55
9	at Georgia*	L, 62-61
13	Ole Miss*	L, 89-50
20	at #6 South Carolina*	L, 95-55
23	#16 Oklahoma*	L, 94-54
27	Missouri*	L, 75-73

MARCH

2	at Texas A&M*	W, 80-71.
5	vs. 12-seed Georgia"	12:30 p.m.

All times Central; Home games in **BOLD**
* - SEC Game

^ - Daytona Beach Classic (Daytona, Fla.)
\$ - Cherokee Invite (Cherokee, N.C.)
" - SEC Tournament (Greenville, S.C.)



12-seed Georgia

Record: 12-18 (4-12 SEC)
Head Coach: Katie Abrahamson-Henderson
Overall Record: 418-205 (20th)
Record at Georgia: 46-48 (3rd)
Rankings: AP: NR **Coaches:** NR **NET:** 107



13-seed Arkansas

Record: 10-21 (3-13 SEC)
Head Coach: Mike Neighbors
Overall Record: 246-154 (12th)
Record at Arkansas: 148-113 (8th)
Rankings: AP: NR **Coaches:** NR **NET:** 138

Let's Get Into It

NEIGHBORHOOD WATCH

■ Arkansas has faced eight ranked teams this season and seven in its last 13 games: then-No. 5 UCLA, No. 6 LSU, No. 5 Texas, No. 16 Tennessee, No. 19 Alabama, No. 11 Kentucky, No. 6 South Carolina and No. 16 Oklahoma.
■ The Hogs played in two regular season tournaments this year: the Daytona Beach Classic and the Cherokee Invitational. Arkansas went a combined 0-4 with losses to Oklahoma State, Bowling Green, Liberty and Toledo.

QUICK SEC TOURNEY INFO

■ 34th appearance, 19-33 record
■ First time as a 13 seed since 2018
■ Last time Arkansas played Georgia in the SECT was 2019. The Hogs won 86-76

INSIDE THIS MATCHUP

■ This is the 47th all-time meeting between Georgia and Arkansas. The Bulldogs lead it 39-7
■ The Razorbacks and Bulldogs last met in February in Athens, where Georgia picked up a last-second 62-61 win.
■ Arkansas hasn't faced Georgia in the SEC Tournament since 2019. The Hogs won the second round matchup, 86-76, led by Chelsea Dungee's 31 points. Five Razorbacks finished in double figures
■ Arkansas' record against: 7-39
In Fayetteville: 4-16
In Athens: 2-19
Neutral: 1-3
SECT: 1-3

S.O.S

■ According to WarrenNolan.com, Arkansas posts the 18th strongest schedule in the country.
■ The only SEC teams ahead of the Hogs are top-ranked South Carolina, #4 Texas, #12 Tennessee and #17 LSU

■ 13 of Arkansas' opponents appear in the SOS top 50: #1 SC, #3 UCLA, #4 Texas, #12 TENN, #17 LSU, #25 OU, #26 UK, #30 AL, #31 A&M, #34 AUB, #36 MIZ, #39 VAN, #40 TTU
■ The Hogs also have the fifth highest opponent win percentage in the SEC at .595 (529-324)

ON THE A&M WIN

■ Arkansas captured its third SEC win after a 80-71 win at Texas A&M
■ Arkansas snapped an 8 game losing streak in College Station that went back to 1991
■ Izzy Higginbottom (27 pts) picked up her NCAA-leading 16th game with at least 25 points
■ Higginbottom passed Dungee's single-season free throws record after netting 19 free throws against Texas A&M. She also set the new program record for most free throws in a game
■ Texas A&M was the only team Arkansas played twice in SEC play this season. Arkansas won the first game, in Fayetteville, 72-51.
■ Arkansas picked up its first win with the lineup of Higginbottom, Karley Johnson, Phoenix Stotijn, Cristina Sanchez Cerqueira and Vera Ojenuwa
■ The win pushed the Razorbacks up to a 13-seed in the SEC Tournament. Arkansas was picked to finish last in the preseason polls

CHALLENGE WON

■ The Razorbacks snapped a two-game losing streak after taking down Boston College, 75-64, in this year's SEC/ACC Challenge. The Hogs improved to 2-0 in the Challenge with the first win coming against Florida State last season
■ Izzy Higginbottom had a career night with new highs in points (38) and field goals (14). The senior from Batesville went 10-11 from the free throw line to help secure the win
■ Kiki Smith assisted Higginbottom with her eighth 10+ performance of the season and had 15 of the Hogs' points. The duo combined for 53

Quick Facts

GENERAL INFORMATION

Location.....Fayetteville, Arkansas
 Founded.....1871
 Enrollment.....33,610
 Nickname.....Razorbacks
 School Colors.....Cardinal (PMS 202) and White
 Conference.....Southeastern
 Arena (Capacity).....Bud Walton Arena (19,200)
 System President.....Lt. Gen. (ret) Jay Silveria (USAFA '86)
 Chancellor.....Dr. Charles Robinson (Houston)
 Athletic Director.....Hunter Yurachek (Guilford College '90)
 SWA.....Derita Dawkins (James Madison)
 Faculty Athletic Rep.....Dr. Paul Adams (LSU)
 Sport Administrator.....Derita Dawkins (James Madison)
 Athletics Website.....ArkansasRazorbacks.com
 Ticket Office Phone.....1-800-982-HOGS
 Athletic Department Phone.....(479) 575-6533

TEAM INFORMATION

Starters Returning/Lost.....0/5
 2023 Overall Record.....18-15
 2023 Conference Record/Finish.....6-10/T-9th

PROGRAM HISTORY

Seasons.....49
 All-Time Record.....883-597
 SEC Record.....183-307
 Conference Championships.....2 (SWC)
 NCAA Tournament Appearances.....13 (Last: 2022)
 NCAA Tournament Record.....14-13
 SEC Tournament Appearances.....34
 SEC Tournament Record.....19-33

COACHING/SUPPORT STAFF

Head Coach.....Mike Neighbors (Arkansas '93)
 Career Record.....246-154
 Record at Arkansas.....148-113
 Assoc. Head Coach.....Todd Schaefer (Thomas More '95)
 Assistant Coach.....Lacey Goldwire (Oklahoma State '10)
 Assistant Coach.....Nick Bradford (Kansas '01)
 Director of Operations.....Amber Shirey (Arkansas '92)
 Student-Athlete Development Jayci Stone (Kansas State '08)
 Athletic Trainer.....Simone Rush (Alabama '15)
 Strength & Conditioning.....Tyler Beckman (North Dakota '13)
 Video Coordinator.....Evan Johnston (Arkansas '22)
 Graduate Assistant.....Sasha Goforth

COMMUNICATIONS

Asst. Dir. of Communications.....Fuller Birch
 Cell Phone:.....(479) 790-9426
 Office Phone:.....(479) 575-3401
 Office Fax:.....(479) 575-7481
 Office E-mail:.....fdbirch@uark.edu
 Athletics Website:.....ArkansasRazorbacks.com
 Mailing Address:.....P.O. Box 7777, Fayetteville, AR 72702
 Shipping Address:.....350 N. Razorback Rd., Fayetteville, AR, 72701



Izzy Higginbottom sits in the jump seat on one of Arkansas' charter flights. Higginbottom's dad is an aerial firefighter and also flies for the Arkansas Game and Fish Commission.

of the team's 75 points (71%)

■ Vera Ojenuwa entered double figures in rebounds for the fourth time this season and led Arkansas with 10.

SKEATS-SKEAT!!

■ Juco product Carly Keats went from being one of the first players off the bench to a starter, earning nine starting nods last season

■ After missing four games in 2023-24 with a broken nose, made her return vs. Missouri at home, having logged 11 points with two 3-pointers off the bench in 25 minutes

■ This season, Keats got hot against SEMO with a career high 19 points. She tied her previous career high of 16 points in the second quarter alone. She also set a new career high with 5 3-pointers made

■ Keats missed two games due to a concussion: vs. Florida on Feb. 3 and at Mississippi State on Feb. 6

■ Last season, she recorded eight double-digit scoring games and five with 3+ 3-pointers made, while scoring double digits in seven of 12 SEC contests to log 8.8 points per game in league games

■ Named an All-Region 23 Team at Jones College, making 55 3-pointers for a 34.8 percentage and averaging 9.7 points, 3.7 rebounds and 3.5 assists per game

■ Big in Jones winning its seventh straight region crown to punch a ticket to the NJCAA DI Tournament and an Elite 8 appearance

REPPIN' HER HOME STATE

■ Jenna Lawrence was a four-star prospect and No. 61 overall player in the 2023 HoopGurlz Recruiting Rankings

■ Coming off her first career double-double (10 pts, 11 rbd) against Fairfield, she followed it up with another double-double (10 pts, 10 rbd) against East Texas A&M on Nov. 8 and had a career night against UT-Arlington (14 pts, 12 rebs, 4 3s)

■ Lawrence had another career night against Bowling Green, with highs in points (21) and 3s made (5)

■ After a cold streak through the start of conference play, Lawrence went 3-9 from beyond the arc against Texas A&M and grabbed nine rebounds to finish with 11 & 9

■ Last season in her first career start, registered a career-high 13 points, five rebounds, one assist and one block in a career-high 35 minutes played vs. Auburn in the SEC Tournament last season

■ Logged 13 3-pointers in 42 attempts for a .310 mark last season

■ Led Farmington High School to a 4A girls state championship, being named the MVP after averaging 18.7 points and 7.1 rebounds per game as a senior

IZZY MONEY

■ Senior guard Izzy Higginbottom, a transfer from Arkansas State and Batesville, Ark. native,

is making an immediate impact for the Hogs

■ Higginbottom has been the Hogs' leading scorer in 25 games (Fairfield, Little Rock, UTA, UCLA, ORU, OSU, BGSU, BC, TTU, LIB, Troy, UCA, LSU, Texas, AUB, TENN, UK, A&M, FLA, MSST, UGA, OM, OU, MIZ, A&M) this season

■ She also leads the team and the SEC in FT%, going 230-260 (.904) from the charity stripe. Higginbottom leads the NCAA in FTA (260) and leads the NCAA with 235 FTM.

■ She's been perfect from the line in 14 games (ETA&M, LR, UCLA, BGSU, SEMO, LU, Troy, LSU, Texas, VAN, FLA, MSST, OM, OU) this season.

■ She has cemented herself as one of the best scorers in the NCAA through the first 31 games and ranks No. 5 in the country and first in the SEC in points per game (23.9), ahead of Vanderbilt's Mikayla Blakes (23.1).

■ Higginbottom scored 25+ points in three straight games, dating back to Nov. 29's game against Oklahoma State. She scored 26 against the Cowgirls, 26 against Bowling Green and 38 against Boston College. Higginbottom is just the third Arkansas player to accomplish the feat in the last 25 years. Chelsea Dungee was the most recent in 2018.

■ Izzy has the most 25+ point games in the NCAA (15 games):

Rk	Player	Team	Season	Count
1	Izzy Higginbottom	Arkansas	2024-25	16
2	Ta'Niya Latson	Florida State	2024-25	15
3	Grace Larkins	South Dakota	2024-25	14
4	Audi Crooks	Iowa State	2024-25	14
5	Juju Watkins	Southern California	2024-25	12
6	Kelsey Ransom	Georgetown	2024-25	11
7	Katie Dinnebler	Drake	2024-25	11
8	Hannah Hidalgo	Notre Dame	2024-25	11
9	DeYona Gaston	Auburn	2024-25	11
10	Katelyn Young	Murray State	2024-25	10

WHAT'S HE SAYIN'?

Trying to figure out what Coach Neighbors is saying on the bench? Don't worry - he has a language all his own.

Coach Neighbors plays Positionless Basketball. Instead of having guards, forwards and centers, he has Rabbits, Rackers, Locks and Dragons.



Rabbits run the floor and look to score quickly with a layup.



Rackers bring the ball up the floor and are trying to get to the rack.



Locks, generally good three-point shooters, are trying to win the race to the corners.



The Dragon is the last player down the court, dragging behind the others.



■ Higginbottom also leads the SEC and ranks third in the NCAA in 30+ point games with 6.

■ Against Boston College, Higginbottom scored a career-high 38 points, then the most points in a game for Arkansas since Dungee dropped 41 points at Auburn in 2019.

■ With the 38 points from the BC game and 18 points against SEMO, Higginbottom was named Co-SEC Player of the Week. She's the first Razorback to win the weekly honor since 2022.

■ With 26 points against Tennessee, Higginbottom had 19 straight games in double figures and is the first Hog to accomplish the feat (at least 15 straight) since Amber Ramirez did it in 2021-22.

■ Higginbottom picked up her second 30+ game of the season after she dropped 36 points at Auburn on Jan. 9. It's tied for the seventh-most points in an SEC game so far this season. It's also the seventh most by a Razorback player in an SEC game and was the most since Erynn Barnum scored 37 points against Ole Miss.

■ She dropped her 3rd 30+ point game of the season on Jan. 26 at No. 11 Kentucky and led all scorers with 32 points and followed it up with her third 30+ point game in SEC play on Jan. 30 against Texas A&M (33 points)

■ In the first game of February, against Florida, she scored her first 40 point game and became just the fourth Razorback to score 40 points in a game in program history and was four points shy of tying the single-game record. It's tied for the fourth-most points in an SEC game this season. She is one of 18 players in the NCAA to score at least 40 points in a game and one of 13 in the NCAA to score at least 40 points in a conference game this season. She's also tied for the 12th-highest scoring game this year.

■ She snapped her three-game 30+-point game streak, the longest in program history, after dropping 26 points at Mississippi State on Feb. 6. Izzy picked up her 6th 30+-point game against Missouri on Feb. 27 and scored 32.

■ In the second game against Texas A&M, Higginbottom set the program record for most free throws in a game with 19 and free throws attempted with 21. The previous FTM record was set by Chelsea Dungee in 2021 and the FTA record set by Kelsey Brooks in 2014. Her 19 free throws against A&M are the fourth most in a game this season, the second most in an SEC game this year and the most in an Arkansas game all-time. She drew 13 fouls.

■ She's the 44th player to have at least 19 FTs since 2002-03 (random year but the database goes back that far) and only the second SEC player to have at least 19 in a conference game since 2002-03. The first time was coincidentally in February when Mikayla Blakes had 23 at Auburn.

■ After Sunday's game at Texas A&M, she leads the NCAA in points (742, next closest is Grace Larkins with 719) and free throws (235, next closest is S'Mya Nichols with 216)

SOME OTHER IZZY TOTALS (NCAA RANK)

- 29 games in double figures (T3rd)
- 22 games with 20+ (3rd)
- 16 games with 25+ (1st)
- 6 games with 30+ (T3rd)

IZZY IN SEC PLAY

■ Higginbottom had 38% of Arkansas points in SEC play (388 out of 1011 points) and 58% (120 out of 206 free throws) of the Hogs' made free throws. The next closest player (Vera Ojenuwa) had 17 FTs

■ On a league scale, Higginbottom ranked second in the SEC in scoring average (24.3) behind Vanderbilt's Mikayla Blakes (26.9) and first in FT% at 90.8% (109-120)

■ She also had one 40 point game, five 30+ point games and nine 25+ point games in league play.

IZZY & SINGLE SEASON RECORDS

■ Higginbottom is in the hunt of several single-season program records (more on page 6):

	Higginbottom has	Record is/was
Points	742 (#2)	759 C. Dungee
Avg.	23.9 (#1)	23.1 S. Wallace
FT%	.904 (#2)	.923 A. Ramirez
FTM	235 (#1)	229 C. Dungee
FTA	260 (#2)	275 C. Dungee

■ Higginbottom can score 0 points in Arkansas' game against Georgia and still be the single-season leader with 23.2 ppg.

■ She is 17 points away from tying Dungee's record of 759 in 2019 (the year Arkansas last made it to the SEC Tournament finals). Dungee played in 37 games compared to Izzy's 32.

TRIPLE-DOUBLE WATCH

■ Against Texas A&M on Jan. 30, Izzy Higginbottom was three assists short of Arkansas' first triple-double since 2009.

■ Higginbottom finished with 33 points, 10 rebounds and 7 assists

■ C'eira Ricketts has the program's only triple-double: 14 points, 13 rebounds and 12 assists in a 70-61 loss against SEC-champ Auburn on Jan. 18, 2009

SOME FACTS

■ The last time the SEC's leading scorer was not a 1st team All-SEC member was Arkansas' Jessica Jackson in 2015 and that has only happened twice (first time was the year before)

■ In the 44 years of All-SEC teams, the leading scorer has been left off once, Daisy Casher (Mississippi State) in 1985. That was before there were two All-SEC teams

■ Since 1988, the first year of two All-SEC teams, the leading scorer has never been left off either the 1st or 2nd team

■ Izzy Higginbottom is the first SEC scoring

OUR RECORD WHEN...

Overall	10-21
Home / Away / Neutral	7-10/3-7/0-4
SEC	3-13
Home / Away	1-7/2-6
White Uniforms	7-9
White w/ Pink Uniforms	1-1
Cardinal Uniforms	2-8
Anthracite Uniforms	0-1
Turquoise Uniforms	0-2
Pink Uniforms	0-1

LEADS/QUARTERS/HALFTIME/OT

Leading after the 1st quarter	3-3
Leading after the 2nd quarter/Half	5-2
Leading after the 3rd quarter	6-2
Leading at the half, home	5-1
Leading at the half, road/neutral	0-1
Tied at the half, home	
Tied at the half, road/neutral	1-0
Games decided by 5 points or fewer	1-4
Games decided by 10 points or fewer	2-5
Leading with 5:00 left	10-2
Leading with 2:00 left	9-2
Overtime games	1-0

OFFENSE

Scoring less than 70 points	1-15
Scoring 70-79 points	4-5
Scoring 80-89 points	4-0
Scoring 90-99 points	1-0
Scoring 100+ points	
2 Players Or Less in Double Figures	2-12
3 Players in Double Figures	4-8
4 Players in Double Figures	3-1
5 Players in Double Figures	1-0
5+ Players in Double Figures	
When shooting 50 percent or higher	
When shooting less than 50 percent	10-21

REBOUNDING/TURNOVERS

When outrebounding opponent	6-0
When outrebounded	4-21
When rebounds are even	
When grabbing 10+ offensive reb.	5-9
When forcing 15+ turnovers	6-5
When committing less than 15 turnovers	5-11
When committing 15+ turnovers	5-10

Top Scorers (Includes Ties)

Higginbottom	Fairfield, Little Rock, UTA, UCLA, ORU, OSU
BGSU, BC, TTU, LIB, Troy, UCA, LSU, Texas, AUB, TEN,
KEN, A&M, FLA, MSST, UGA, OM, OU, MIZ, A&M
SmithEast Texas A&M, ALA, SC
OjenuwaArk. St.
KeatsSEMO, VAN

Top Rebounders (Includes Ties)

LawrenceFairfield, East Texas A&M, UTA, UCLA, Ark. St.
OSU, Texas, KEN
OjenuwaLittle Rock, ORU, Ark. St., BC, SEMO, TTU, LIB,
	LSU, Texas, AUB, TEN, VAN, MSST, UGA, OM
JohnsonBGSU
HigginbottomLIB, Texas, AUB, TEN, A&M, FLA, OU, MIZ
	Sanchez-Cerqueira
Troy, UCA, ALA, VAN, FLA, SC, A&M
KeatsTexas
GaleaMSST

Months

November	4-5
December	3-3
January	2-6
February	0-7
March	1-0



leader to not be named All-SEC since the league started publishing two All-SEC teams in 1988

IZZY'S A-STATE SNAPSHOT

■ Named a 2023 All-Sun Belt First Team selection following a historical junior season with the Red Wolves ... One of 10 semifinalists for the Becky Hammon Mid-Major Player of the Year ... Logged 22.2 points per game, which led the conference and was No. 8 in the NCAA, all while shooting 46.2 percent from the field and 36.7 percent from beyond the arc ... Led the league in free throws made (175), which was No. 2 in the nation during the regular season, and free throw attempts (192), seventh most in the NCAA ... Only player to average at least seven free throws per game on 90 percent efficiency from the free throw line since Elana Delle Donne in 2010-11 ... Registered seven 30+ point performances, including a career-high 35 points against South Alabama, and became a 1,000-point scorer this past season

SPANISH SPECIAL

■ Arkansas WBB's seventh-ever international player in Cristina Sanchez Cerqueira is a member of the Spanish National Team
 ■ Played almost nine minutes in Arkansas' first win of the season, against East Texas A&M
 ■ Netted first collegiate three pointer and recorded a career high 10 rebounds in Arkansas' win over Central Arkansas
 ■ Made first start earlier this season against Vanderbilt and has started in every game since (11 games)
 ■ Averaging 4.9 rebounds in SEC play, the second most on the team
 ■ Led Arkansas with 7 rebounds at Texas A&M and netted 2 threes in almost 36 minutes
 ■ Represents her country in 3x3 tournaments, including just recently at the FIBA 3x3 World Cup in Debrecen, Hungary
 ■ With Segle XXI, played in 26 games, averaging 6.4 points, 5.4 rebounds and 1.3 steals per game last season

PHENOM PHOENIX

■ 2023 Fall signee Phoenix Stotijn enrolled early in January 2024 to Arkansas, and is a member of the Netherlands National Team
 ■ Did not play in the second half of the 2023-24 season, but practiced with the team
 ■ The 5-9 combo guard of the Netherlands played for Triple Threat, logging 13.6 points, 3.6 rebounds and 1.5 steals per game in the team's eight games
 ■ Made her long awaited debut against Texas Tech on Dec. 15. The Dutch native settled in in the second half and shot 3-6 from three and converted her lone free throw attempt. Stotijn finished with 12 points and played just over 20 minutes.
 ■ Recorded another 12 points, along with 5 rebounds, to be one of the Hogs' five players in double figures for Arkansas' win over Central Arkansas

In The Standings

	CONFERENCE					OVERALL					Streak	vs. T10	vs. T25	SEC FINISHES LAST 16 YEARS
	W-L	Pct.	H	A	W-L	Pct.	H	A	N					
South Carolina ^A	15-1	.938	8-0	7-1	27-3	.900	14-1	8-2	5-0	W4	5-3	10-3	2024-25.....13th	
Texas ^A	15-1	.938	8-0	7-1	29-2	.935	15-0	10-2	4-0	W13	6-2	9-2	2023-24.....T9	
LSU	12-4	.750	7-1	5-3	27-4	.871	17-1	6-3	4-0	L2	0-2	5-3	2022-23.....8th	
Kentucky	11-5	.687	6-2	5-3	22-6	.786	14-2	6-4	2-0	L1	0-3	5-4	2021-22.....T8	
Oklahoma	11-5	.687	6-2	5-3	23-6	.793	13-2	8-3	2-1	W7	0-3	4-5	2020-21.....T5	
Alabama	10-6	.625	6-2	4-4	23-7	.767	13-2	6-5	4-0	L1	1-2	2-5	2019-20.....T3	
Ole Miss	10-6	.625	4-4	6-2	19-9	.679	11-4	7-3	1-2	W1	2-4	3-7	2018-19.....10th	
Vanderbilt	8-8	.500	4-4	4-4	21-9	.700	13-4	7-4	1-1	W2	0-3	2-5	2017-18.....T12	
Tennessee	8-8	.500	4-4	4-4	21-8	.724	13-4	5-4	3-0	L2	1-5	3-6	2016-17.....14th	
Mississippi State	7-9	.438	4-4	3-5	20-10	.667	10-4	6-6	4-0	W1	1-3	1-6	2015-16.....10th	
Florida	5-11	.313	2-6	3-5	14-16	.467	10-7	4-6	0-3	L3	0-3	0-10	2014-15.....T9	
Georgia	4-12	.250	3-5	1-7	12-18	.400	9-8	1-8	2-2	W2	0-4	1-7	2013-14.....8th	
Arkansas	3-13	.188	1-7	2-6	10-21	.323	7-10	3-7	0-4	W1	0-4	0-8	2012-13.....T11	
Auburn	3-13	.188	3-5	0-8	12-17	.414	8-6	2-10	2-1	L6	0-3	0-9	2011-12.....T8	
Missouri	3-13	.188	1-6	2-7	14-17	.452	10-9	3-7	1-1	L1	0-3	0-8	2010-11.....T4	
Texas A&M	3-13	.188	3-5	0-8	10-18	.357	9-7	0-9	1-2	L10	0-4	2-8	2009-10.....9th	

Game-by-Game Starters

OPPONENT

	1	2	3	4	5
Fairfield	K. Smith	Higginbottom	Keats	Lawrence	Ojenuwa
East Texas A&M	K. Smith	Higginbottom	Keats	Lawrence	Ojenuwa
Little Rock	K. Smith	Higginbottom	Keats	Lawrence	Ojenuwa
UT-Arlington	K. Smith	Higginbottom	Keats	Lawrence	Ojenuwa
UCLA	K. Smith	Higginbottom	Keats	Lawrence	Ojenuwa
Oral Roberts	K. Smith	Higginbottom	Keats	Lawrence	Ojenuwa
Arkansas State	K. Smith	Higginbottom	Keats	Lawrence	Ojenuwa
Oklahoma State	K. Smith	Higginbottom	Keats	Lawrence	Ojenuwa
Bowling Green	K. Smith	Higginbottom	Keats	Lawrence	Ojenuwa
Boston College	K. Smith	Higginbottom	Keats	Lawrence	Ojenuwa
SEMO	K. Smith	Higginbottom	Keats	Lawrence	Ojenuwa
Texas Tech	K. Smith	Higginbottom	Keats	Lawrence	Ojenuwa
Liberty	K. Smith	Higginbottom	Keats	Lawrence	Ojenuwa
Troy	K. Smith	Higginbottom	Keats	Lawrence	Ojenuwa
Central Arkansas	K. Smith	Higginbottom	Keats	Lawrence	Ojenuwa
LSU	K. Smith	Higginbottom	Keats	Lawrence	Ojenuwa
Texas	K. Smith	Higginbottom	Keats	Lawrence	Ojenuwa
Auburn	K. Smith	Higginbottom	Keats	Lawrence	Ojenuwa
Tennessee	K. Smith	Higginbottom	Keats	Lawrence	Ojenuwa
Alabama	K. Smith	Higginbottom	Keats	Lawrence	Ojenuwa
Vanderbilt	K. Smith	Higginbottom	Stotijn	Sanchez	Ojenuwa
Kentucky	K. Smith	Higginbottom	Stotijn	Sanchez	Ojenuwa
Texas A&M	Keats	Higginbottom	Stotijn	Sanchez	Ojenuwa
Florida	Johnson	Higginbottom	Stotijn	Sanchez	Ojenuwa
Mississippi State	Johnson	Higginbottom	Stotijn	Sanchez	Ojenuwa
Georgia	Johnson	Higginbottom	Stotijn	Sanchez	Ojenuwa
Ole Miss	Johnson	Higginbottom	Stotijn	Sanchez	Ojenuwa
South Carolina	Johnson	Higginbottom	Stotijn	Sanchez	Ojenuwa
Oklahoma	Johnson	Higginbottom	Stotijn	Sanchez	Ojenuwa
Missouri	Johnson	Higginbottom	Stotijn	Sanchez	Ojenuwa
Texas A&M	Johnson	Higginbottom	Stotijn	Sanchez	Ojenuwa

Record with each lineup

K. Smith, Higginbottom, Keats, Lawrence, Ojenuwa: 8-12
 K. Smith, Higginbottom, Stotijn, Sanchez, Ojenuwa: 0-2
 Keats, Higginbottom, Stotijn, Sanchez, Ojenuwa: 1-0
 Johnson, Higginbottom, Stotijn, Sanchez, Ojenuwa: 1-7

■ Had a breakout game in Arkansas' second contest against Texas A&M. Scored a career high 23 points and shot 5-7 from beyond the arc.
 ■ Stotijn was key in pushing Arkansas' lead to 20 against the Aggies and finished +19 with four rebounds, 4 assists and 2 blocks
 ■ Her mother, Anouk, is a Dutch singer-songwriter with many albums topping the Dutch charts, most of them going Platinum and several debuting in the No. 1 position. Dubbed the "Adele of the Netherlands" by Mike Neighbors

CONSISTENCY IN THE NEIGHBORS' ERA

■ Head coach Mike Neighbors has led the program to consistency, now entering his eighth season at the helm
 ■ Guided his teams to six straight postseason berths (including 2020 season, where team would have been lock for NCAA Tournament)
 ■ With the postseason appearance in the WBIT last season, Neighbors matched the program record of six consecutive postseason qualifications, tying with his mentor Gary Blair



SEC Tournament Bracket



UNITED NATIONS

- The 2024-25 roster features five international players from five different countries: Phoenix Stotijn (The Netherlands), Cristina Sanchez (Spain), Pinja Paananen (Finland), Vera Ojenuwa (Nigeria) and Danika Galea (Malta).
- How to say "Go Hogs" in each language
 - Finnish: Menkää Siat
 - Dutch: Ga Varkens
 - Maltese: Mur Hniezer
 - Spanish: ¡Vamos cerdos!

KIKI FOR THREE

- Sophomore guard Kiki Smith has established herself as a consistent scoring threat for Arkansas The Topeka, Kan. native has 10+ points in 13 of 26 games
- Smith paced Arkansas with 22 points in first win of the season against East Texas A&M. Went 8-9 from FG, lone miss was in 4Q. Against Alabama, Smith scored a season and game high 23 points, going 8-15 from FG and 4-9 from 3
- From beyond the arc, Kiki ranked seventh in the SEC and 63rd in the NCAA with 47 3s before being sidelined with an ankle injury
- After missing 5 games, Kiki returned to the court in Arkansas' contest at South Carolina, where she led the Hogs with 18 points and went 4-8 from three point land
- Against Texas A&M, Smith picked up her 13th game in double figures after scoring 14 points in almost 22 minute. She went 5-7 from the field and 4-6 from beyond the arc. She was a key contributor in the third quarter, which Arkansas won 24-9.
- Named the 2024 NJCAA DI WBB Player of the Year and First Team All-American at Hutch. CC
- Started in all 37 games, logging 17.6 points per game on 55.9 percent from the field (237-for-424), 44.4 percent from beyond the arc (82-for-103) and 79.6 percent from the free throw line (82-for-103)

AVAILABILITY REPORT

- The SEC has implemented game-by-game availability reports for football, men's basketball, women's basketball and baseball for the 2024-25 season
- For basketball and baseball, reports are filed the night before the game, with an update on game day.
- Players are designated as "available," "probable," "questionable," "doubtful," or "out" before game day; and as "available," "game time decision," or "out" on game day.
- Penalties for inaccurate or late reports range from \$25,000 - \$100,000 for football and up to

Arkansas as a...	Arkansas against a...
1-seed: 0-0	1-seed: 0-5
2-seed: 0-0	2-seed: 3-3
3-seed: 0-0	3-seed: 1-3
4-seed: 0-0	4-seed: 1-1
5-seed: 4-2	5-seed: 0-2
6-seed: 0-1	6-seed: 1-3
7-seed: 6-5	7-seed: 0-6
8-seed: 2-4	8-seed: 2-4
9-seed: 1-5	9-seed: 2-2
10-seed: 3-9	10-seed: 5-0
11-seed: 1-4	11-seed: 0-2
12-seed: 0-1	12-seed: 3-0
13-seed: 1-1	13-seed: 1-0
14-seed: 0-0	14-seed: 0-1
15-seed: 0-0	15-seed: 0-0
16-seed: 0-0	16-seed: 0-0

\$15,000 - \$25,000 for basketball and baseball.

- Arkansas remained fully available until Kiki Smith became the first Razorback to appear on the report prior to the Jan. 30 game against Texas A&M. Smith was listed as "questionable" in the initial report and "out" in the game day update.



SEC TOURNAMENT RECORDS

SEC TOURNAMENT HISTORY

Beginning with its inception on Feb. 7, 1980, and through 1986, the tournament was held at campus sites. The tournament was then sent to Albany, Georgia, which served as the site for six years from 1987-92. The tournament then moved to Chattanooga, Tennessee, where it was held from 1993-00, with the exception of 1998 when the tournament moved to Columbus, Georgia.

Since 2001, the tournament has enjoyed many new sites, including Memphis, Nashville, North Little Rock, Arkansas, Greenville, South Carolina and Duluth, Georgia.

SEC TOURNAMENT FACT

The SEC was the first conference ever to televise every game of its post-season Women's Basketball Tournament.

SEC TOURNAMENT CHANGES

The 2012-13 season marked the second time in SEC history the Women's Basketball Tournament underwent a format change. The tournament, which had been a four-day event featuring 12 teams since 1992, expanded to 14 teams, adding an extra day of competition. The addition of a day to the tournament featured two additional contests played on Wednesday. Seeds 11 through 14 competed in the opening games of the bracket, with the rest of the event continuing on Thursday. The tournament expanded again in 2025 with the addition of Oklahoma and Texas. Seeds 9 through 16 play in the first round.

SEC TOURNAMENT RESULTS

1992 (Albany, Ga.) 11 Seed	
First round	I. Kentucky, 79-63
1993 (Chattanooga, Tenn.) 10 Seed	
First round	I. Georgia, 84-73
1994 (Chattanooga, Tenn.) 9 Seed	
First round	I. Georgia, 84-62
1995 (Chattanooga, Tenn.) 5 Seed	
First round	d. South Carolina, 80-70
Second round	I. #16 Alabama, 86-72
1996 (Chattanooga, Tenn.) 10 Seed	
First round	I. Ole Miss, 76-73
1997 (Chattanooga, Tenn.) 7 Seed	
First round	d. Kentucky, 71-60
Second round	I. #7 Alabama, 85-63
1998 (Columbus, Ga.) 7 Seed	
First round	d. Auburn, 59-43
Second round	I. #10 Florida, 63-49
1999 (Chattanooga, Tenn.) 11 Seed	
First round	I. Mississippi State, 79-70
2000 (Chattanooga, Tenn.) 10 Seed	
First round	I. Florida, 96-86
2001 (Memphis, Tenn.) 7 Seed	
First round	d. Mississippi State, 94-76
Second round	d. #10 Florida, 78-69
Semifinals	I. #6 Georgia, 63-44
2002 (Nashville, Tenn.) 7 Seed	
First round	d. Ole Miss, 78-68
Second round	d. #12 South Carolina, 79-61
Semifinals	I. #6 Vanderbilt, 81-78
2003 (Little Rock, Ark.) 7 Seed	
First round	d. Alabama, 53-48
Second round	I. #6 LSU 78-72
2004 (Nashville, Tenn.) 9 Seed	
First round	I. Mississippi State, 79-74
2005 (Greenville, S.C.) 11 Seed	
First round	d. Mississippi State, 80-73
Second round	I. #20 Vanderbilt, 79-60

2006 (Little Rock, Ark.) 9 Seed	
First round	I. Ole Miss, 94-64
2007 (Duluth, Ga.) 10 Seed	
First round	I. Kentucky, 72-57
2008 (Nashville, Tenn.) 11 Seed	
First round	I. Auburn, 73-51
2009 (Little Rock, Ark.) 8 Seed	
First round	I. Ole Miss, 65-60
2010 (Duluth, Ga.) 12 Seed	
First round	I. Vanderbilt, 65-64 (OT)
2011 (Nashville, Tenn.) 9 Seed	
First round	I. Florida, 68-59
2012 (Nashville, Tenn.) 5 Seed	
First round	d. Ole Miss, 67-47
Second round	I. LSU, 41-40
2013 (Duluth, Ga.) 8 Seed	
First round	bye
Second round	I. Florida, 64-59 (OT)
2014 (Duluth, Ga.) 11 Seed	
First round	I. Ole Miss, 62-63
2015 (Little Rock, Ark.) 9 Seed	
First round	bye
Second round	d. Ole Miss, 72-61
Quarterfinals	I. #3 South Carolina, 58-36
2016 (Jacksonville, Fla.) 10 Seed	
First round	bye
Second round	I. Tennessee, 68-51
2017 (Jacksonville, Fla.) 10 Seed	
First round	I. Florida, 71-61
2018 (Nashville, Tenn.) 13 Seed	
First round	d. Vanderbilt, 88-76
Second round	I. #15 Texas A&M, 82-52
2019 (Greenville, SC) 10 Seed	
First round	bye
Second round	d. Georgia, 86-76
Quarterfinals	d. #12 South Carolina, 95-89
Semifinals	d. #17 Texas A&M, 58-51
Finals	I. #5 Mississippi State, 101-70

2020 (Greenville, SC) 5 Seed	
First round	bye
Second round	d. Auburn, 90-68
Quarterfinals	d. #15 Texas A&M, 67-66
Semifinals	I. #1 South Carolina, 90-64
2021 (Greenville, SC) 6 Seed	
First round	bye
Second round	I. Ole Miss, 69-60
2022 (Nashville, Tenn.) 8 Seed	
First round	bye
Second round	d. Missouri, 61-52 (OT)
Quarterfinals	I. #1 South Carolina, 76-54
2023 (Greenville, S.C.) 8 Seed	
First round	bye
Second round	d. Missouri, 85-74
Quarterfinals	I. #1 South Carolina, 93-66
2024 (Greenville, S.C.) 10 Seed	
First round	bye
Second round	I. Auburn, 67-48

MISCELLANEOUS

South Carolina	3-4
Ole Miss	3-5
Missouri	2-0
Texas A&M	2-1
Auburn	2-2
Mississippi State	2-3
Alabama	1-2
Kentucky	1-2
Georgia	1-3
Vanderbilt	1-3
Florida	1-5
Tennessee	0-1
LSU	0-2
Total	19-33



PREVIOUS SEC WOMEN'S BASKETBALL TOURNAMENT SITES:

Fourteen cities have hosted: Albany, Ga. (1987-1992); Athens, Ga. (1984, 1986); Baton Rouge, La. (1981); Chattanooga, Tenn. (1993-1997, 1999-2000); Columbus, Ga. (1998); Duluth, Ga. (2007, 2010, 2013, 2014); Greenville, S.C. (2005, 2017-2020, 2023-25); Jacksonville, Fla. (2016); Knoxville, Tenn. (1980, 1983); Lexington, Ky. (1982); Memphis, Tenn. (2001); Nashville, Tenn. (2002, 2004, 2008, 2011, 2012, 2018, 2022); North Little Rock, Ark. (2003, 2006, 2009, 2015); and Oxford, Miss. (1985).

SEC TOURNAMENT RECORDS

INDIVIDUAL RECORDS

Points: 40, Shameka Christon (vs. Vanderbilt, 3/2/02)
Points by Opponent: 44, LaToya Thomas, Mississippi State (3/1/01)
Field Goals: 16, Shameka Christon (vs. Vanderbilt, 3/2/02)
Field Goal Attempts: 23, Shameka Christon (vs. LSU, 3/7/03 & vs. Vanderbilt, 3/2/02)
Field Goal Pct.: .786 (11–14), Chrissy Carr (vs. Missouri, 3/2/23)
Three-Point Field Goals: 7, Alexis Tolefree (vs. Auburn, 3/5/20)
Three-Point Attempts: 15, Alexis Tolefree (vs. Auburn, 3/5/20)
Three-Point Pct.: .750 (6–8), Chrissy Carr (vs. Missouri, 3/2/23)
.750 (3–4), Lyndsay Harris (vs. Ole Miss, 3/1/12)
Free Throws: 13, Chelsea Dungee (vs. #12 South Carolina, 3/8/19)
Free Throw Att.: 13 Chelsea Dungee (vs. #12 South Carolina, 3/8/19)
Free Throw Pct. (min 10 att.): 13–13 Chelsea Dungee (vs. #12 South Carolina, 3/8/19)
1.000 (10–10), Christy Smith (vs. Alabama, 3/4/95)
Rebounds: 14, Makayla Daniels (vs. Missouri, 3/3/22)
Rebounds by Opponent: 19, Jennifer Humphrey, Kentucky (3/1/07)
Assists: 12, Amy Wright (vs. Mississippi State, 3/1/01)
Blocked Shots: 5, Sasha Goforth (vs. Missouri, 3/3/22)
Turnovers: 7, Brittney Vaughn (vs. Kentucky, 3/1/07)
Steals: 6, Shea Henderson (vs. Georgia, 3/4/94)
6, C'eira Ricketts (vs. Florida, 3/3/11)
Minutes Played: 45, Sasha Goforth (vs. Missouri, 3/3/22–0T)
45, Amber Ramirez (vs. Missouri, 3/3/22–0T)
45, Charity Ford (vs. Vanderbilt, 3/4/10–0T)
40, Jailyn Mason (vs. Vanderbilt, 2/28/18)
40, Kelsey Brooks (vs. #3/3 South Carolina, 3/6/15)
40, Calli Berna (vs. Ole Miss, 3/5/15, vs. Ole Miss, 3/5/14; vs. #3/3 South Carolina, 3/6/15; and vs. Florida, 3/7/13)
40, Dominique Washington (vs. Kentucky, 3/1/07)
40, Christy Smith (vs. Alabama (3/4/95) & South Carolina, 3/3/95)

TEAM RECORDS

Points

Game, High: 95 vs. #12 South Carolina, 3/8/19
Game, Low: 36 vs. #3/3 South Carolina, 3/6/15
Opponent High: 101 #5 Mississippi State, 3/10/19
Half, High: (2nd) 53 vs. Auburn, 3/5/20
(1st) 48 vs. Georgia, 3/7/19
(1st) 48 vs. Florida, 3/2/00
Half, Low: 13 (1st) vs. Georgia, 3/3/01

Field Goals

High: 39 vs. Mississippi State, 3/1/01
Low: 11 vs. #3/3 South Carolina, 3/6/15

Field Goal Attempts

High: 81 vs. No. 15 Texas A&M, 3/1/18
81 vs. Ole Miss, 3/2/06
Low: 41 vs. #3/3 South Carolina, 3/6/15

Field Goal Percentage

High: .561 (32–57) vs. Georgia, 3/7/19
Low: .193 (11–57), vs. #3/3 South Carolina, 3/6/15
Opponent, High: .750 by Georgia, 3/5/93
Opponent, Low: .299 by Missouri, 3/3/22

Three-Point Field Goals

High: 17 vs. Auburn, 3/5/20
Low: 1 vs. Florida, 2/28/98

Three-Point Field Goal Attempts

High: 42 vs. Auburn, 3/5/20
Low: 8 vs. Kentucky, 3/1/07
8, LSU, 3/7/03

Three-Point Field Goal Percentage

High: .500 (11–22), vs. #12 South Carolina, 3/8/19
.500 (9–18), vs. Ole Miss, 3/2/12
Low: .070 vs. Florida, 2/27/98
Opponent, High: .750 by Georgia, 3/5/93
Opponent, Low: .100 (1–10) by Ole Miss, 3/5/14

Free Throws Made

High: 29 vs. South Carolina, 3/3/95
Low: 3 vs. Florida, 3/7/13

Free Throw Attempts

High: 35 vs. Ole Miss, 3/5/15
Low: 6 vs. Florida, 3/7/13
6 vs. Kentucky, 3/1/07

Free Throw Percentage

High: .889 vs. Mississippi State, 3/1/01
Low: .556 vs. Ole Miss, 3/5/14
.556 vs. Kentucky, 3/6/92
Opponent, High: 1.000 by South Carolina, 3/3/95
Opponent, Low: 45.5 (5–11) by Georgia, 3/7/19

Rebounds

Rebounds, High: 49 vs. Ole Miss, 3/2/06
Rebounds, Low: 20 vs. Auburn, 3/6/08
Offensive, High: 18 vs. Ole Miss, 3/2/06
Offensive, Low: 6 vs. Auburn, 3/7/24
Defensive, High: 37 vs. Missouri, 3/3/22
Defensive, Low: 12 vs. Florida, 3/2/00
Opponent, High: 63 by No. 15 Texas A&M, 3/1/18
Opponent, Low: 26 by Mississippi State, 3/4/04

Assists

High: 25 vs. Auburn, 3/5/20
25 vs. Vanderbilt, 2/28/18
Low: 5 vs. LSU, 3/2/12

Blocked Shots

High: 11 vs. South Carolina, 3/4/22
Low: 0 vs. LSU, 3/2/12
0 vs. Florida, 3/2/00

Steals

High: 13 vs. Kentucky, 3/6/92
Low: 3, vs. Auburn, 3/7/24*

Turnovers

High: 22 vs. Mississippi State, 3/4/04
Low: 4 vs. Vanderbilt, 3/2/02

* – most recent



SINGLE SEASON

RECORDS



POINTS

1. CHELSEA DUNGEE - 759
2. IZZY HIGGINBOTTOM - 742
3. SHELLY WALLACE - 692
4. BETTYE FISCUS - 655
5. SHAMEKA CHRISTON - 611
6. CHELSEA DUNGEE - 603
7. DELMONICA DeHORNEY - 583
8. DELMONICA DeHORNEY - 581
9. ERYNN BARNUM - 555
10. BETTYE FISCUS - 554

SCORING AVG

1. IZZY HIGGINBOTTOM - 23.9
2. SHELLY WALLACE - 23.1
3. CHELSEA DUNGEE - 22.3
4. TALIAH SCOTT - 22.1
5. SHAMEKA CHRISTON - 21.8
6. CHELSEA DUNGEE - 20.5
7. DELMONICA DeHORNEY - 20.0
8. BETTYE FISCUS - 19.8
9. BETTYE FISCUS - 18.7
10. BETTYE FISCUS - 18.3

FREE THROWS

1. IZZY HIGGINBOTTOM - 235
2. CHELSEA DUNGEE - 229
3. CHELSEA DUNGEE - 177
4. CHELSEA DUNGEE - 146
5. ERYNN BARNUM - 132
6. KELSEY BROOKS - 132
7. MAKAYLA DANIELS - 129
8. SAMARA SPENCER - 128
9. SHAMEKA CHRISTON - 126
10. MALICA MONK - 114

FTA

1. CHELSEA DUNGEE - 275
2. IZZY HIGGINBOTTOM - 260
3. CHELSEA DUNGEE - 224
4. ERYNN BARNUM - 205
5. KELSEY BROOKS - 199
6. CHELSEA DUNGEE - 189
7. SAMARA SPENCER - 182
8. SAMARA SPENCER - 173
9. MAKAYLA DANIELS - 168
10. SHAMEKA CHRISTON - 166

FT%

1. AMBER RAMIREZ - .923
2. IZZY HIGGINBOTTOM - .904
3. CHRISTY SMITH - .899
4. CHARITY FORD - .873
5. INDIA LEWIS - .853
6. CHRISSEY CARR - .852
7. MCKENZIE ADAMS - .844
8. TALIAH SCOTT - .838
9. ALEXIS TOLEFREE - .833
- CHELSEA DUNGEE - .833

FGM

1. SHELLY WALLACE - 267
2. IZZY HIGGINBOTTOM - 236
- BETTYE FISCUS - 236
4. CHELSEA DUNGEE - 232
5. DELMONICA DeHORNEY - 227
6. SHAMEKA CHRISTON - 219
- DELMONICA DeHORNEY - 219
- BETTYE FISCUS - 219
9. ERYNN BARNUM - 205
10. KARYN KARLIN - 198

FGA

1. CHELSEA DUNGEE - 574
2. IZZY HIGGINBOTTOM - 554
3. SHAMEKA CHRISTON - 500
4. MALICA MONK - 488
5. BETTYE FISCUS - 486
6. SAMARA SPENCER - 459
7. CHELSEA DUNGEE - 458
8. C'EIRA RICKETTS - 449
9. BETTYE FISCUS - 439
10. CHELSEA DUNGEE - 434



2024-2025 ARKANSAS RAZORBACKS WOMEN'S BASKETBALL

No.	Name	Pos.	Class	Ht.	Hometown (Previous School)
0	Ella Rogers	G	Sr.	5-8	Granville, Ohio (Granville HS)
1	Phoenix Stotijn	G	Fr.	5-9	Amsterdam, Netherlands
2	Kiki Smith	G	So.	5-7	Topeka, Kan. (Topeka HS/Hutchinson CC)
3	Izzy Higginbottom	G	Sr.	5-7	Batesville, Ark. (Batesville HS/Missouri/Arkansas St.)
10	Cristina Sanchez Cerqueira	F	So.	6-1	Granada, Spain (Segle XXI)
15	Jada Bates	G	Fr.	6-3	Powder Springs, Ga. (McEachern HS)
16	Pinja Paananen	F	Fr.	6-2	Laukaa, Finland (Jyväskylä Basketball Academy)
20	Karley Johnson	G	Jr.	5-9	Oklahoma City, Okla. (Mustang HS)
21	Loren Lindsay	G	R-So.	5-11	Fayetteville, Ark. (Fayetteville HS)
22	Vera Ojenuwa	F	So.	6-4	Delta State, Nigeria (Orhuwhorun/Barton CC)
23	Carly Keats	G	Jr.	5-8	Philadelphia, Miss. (Neshoba Central HS/Jones College)
25	Danika Galea	C	Fr.	6-3	St. Paul's Bay, Malta
34	Jenna Lawrence	F	So.	6-3	Melbourne, Ark. (Farmington HS)
44	Maryn Archer	G	R-Fr.	5-7	Derby, Kan. (Derby HS)

COACHES AND SUPPORT STAFF

Head Coach: Mike Neighbors, 8th Season

Associate Head Coach: Todd Schaefer, 8th Season

Assistant Coach: Lacey Goldwire, 6th Season

Assistant Coach: Nick Bradford 1st Season

Director of Women's Basketball Operations: Amber Shirey, 37th Season

Director of Student-Athlete Development: Jayci Stone, 3rd Season

Special Assistant to the Head Coach/Director of Video: Evan Johnston, 2nd Season

Head Athletic Trainer: Simone Rush, 5th season

Strength & Conditioning Coach: Tyler Beckman, 4th season

PRONUNCIATION GUIDE

#1 Phoenix Stotijn	Stow-Tine
#16 Pinja Paananen	PIN-ya PAH-ne-nen
#22 Vera Ojenuwa	oh-JEN-you-wuh
#25 Danika Galea	Danica gall-EE-yuh
#44 Maryn Archer	mare-in
Laukaa, Finland	LOW (like ow)-kuh
Granada, Spain	grey-nah-duh



Last Time...

OFFENSE

Scored 110+	110, vs. Providence (11-16-98)
Scored 100+ points at home	100, vs. LA Tech (12-7-23)
Scored 100+ points on the road	108, at Ole Miss (2-16-20) 108, Baylor (3-6-91)
Scored 90-99 points	93 vs. UT-Arlington (11/14/24)
Scored 90+ points at home	93 vs. UT-Arlington (11/14/24)
Scored 90+ points on the road	93, at Little Rock (11-20-22)
Scored 80-89 points	80 at Texas A&M (3/2/25)
Scored 80-89 points at home	87 vs. UCA (12/29/24)
Scored 80-89 points on the road	80 at Texas A&M (3/2/25)
Scored 35+ points in a quarter	36 vs. UT-Arlington (11/14/24)
Was held to 50-59	55 at No. 6 South Carolina (2/20/25)
Was held to 49-40	48, vs. Auburn (3-7-24)
Was held to 39-20	34, at LSU, 2-7-19
Was held to 20 or less	N/A
Made 40+ field goals	40, vs. Central Arkansas (12-13-20)
Made 17+ three-point field goals	19, vs. Alabama (2-28-21)
Made 10+ three-point field goals	13 at Texas A&M (3/2/25)
Did not make 3-pointer (since 1986)	0-10, at LSU, (2-7-19)
Made 30 free throws	30 (30-39), vs. No. 4 Baylor (12-6-20)
Made 25 free throws	25 (25-28) at Texas A&M (3/2/25)
Shot 50-59 or better	55.4, vs. LA Tech (12-7-23)
Shot 60 percent or better	62.5% (30-48), vs. Little Rock (11-20-22)
Held to less than 30 percent	27.7% (18-65) vs. #16 Oklahoma (2/24/25)
Held to less than 20 percent	18.2% (10-55), vs. No. 6 Tennessee (1-8-12; L, 38-69)
Had 20 or more assists in a game	20, vs. LA Tech (3-16-23)

DEFENSE

Allowed 100 points	108 vs. Florida (2/3/25)
Allowed 80-99 points	95 at No. 6 South Carolina (2/20/25)
Held opponent to 40-49 points	45 vs. SEMO (12/8/24)
Held opponent to 39-30	36, vs. Little Rock (11-14-23)
Held an SEC opponent under 50 points in 3 cons. games	47, vs. Auburn (1-29-15; W, 52-47), Alabama (2-1-15; W, 53-42), No. 24/21 Georgia (2-9-15; W, 54-48)
Held opponent to 29 points or less	23, vs. Binghamton, 11-30-13
Held an opponent under 15 points in a half	15 vs. Texas A&M (1/30/25)
Held an opponent to 2 points in a quarter	2, vs. UCA (12-13-20)
Held opponent under 15 field goals	14, vs. Little Rock (11-14-23)
Held opponent to less than 30 percent shooting	27.7 (18-65) vs. Texas A&M (1/30/25)
Held opponent to less than 20 percent shooting	19.7 (13-66), vs. Northwestern State (12-15-19)
Held opponent under 15 percent from 3-point	11.1 (2-18) vs. Oklahoma State (11/29/24)
Opponent did not make a 3-pointer	0, at Kentucky (1-4-24)
Had 70+ rebounds	74, vs. Mississippi Valley State (11-24-89)
Had 60-69 rebounds	64, vs. Prairie View A&M (12-16-18)
Had 50-59 rebounds	54 vs. SEMO (12/8/24)
Had 10 or more blocked shots in a game	10 vs. Bowling Green (11/30/24)
Had 20 or more steals in a game	20, vs. ORU (11-13-13)
Had 15 or more steals in a game	18, vs. UT Martin (12-29-19)
Forced 25+ turnovers in a game	28, vs. Northern Arizona (11-24-22)

OTHER

Won an overtime game	71-60 vs. Little Rock, 11/11/24
Lost an overtime game	76-73, vs. Ole Miss (1-29-23)
Won a double overtime game	73-72, vs. Florida (1-29-12)
Lost a double overtime game	N/A
Won a triple overtime game	91-80, Win in 3OT, 2-10-13, at Alabama
Won at the buzzer	60-59, vs. Illinois (Maryam Dauda, 12-20-23)
Played consecutive OT games	1-24-16 at Auburn (lost); 1-28-16 vs. Florida (lost)
Won a game after being down 15+ points	11/11/24 at Little Rock (16 point deficit)
Won an SEC game after being down 14+ points	at Texas A&M (3/2/25) (14-point deficit)
Won regular season tournament	Paradise Jam (St. Thomas, U.S. Virgin Islands, Nov. 24-26, 2022)

Defeated ranked team	71-58, at No. 15 Florida State (11-30-23)
Defeated a ranked team on the road	71-58, at No. 15 Florida State (11-30-23)
All-time SEC win streak	8 games (1-15-12: Auburn through 2-15-12: at Auburn)
All-time SEC home win streak	5 games (1-15-12: Auburn -- 2-9-12: South Carolina)
.....	5 games (1-14-21: Florida -- 2-28-21: Alabama)

A RAZORBACK PLAYER ...

Scored 20-24 points	23, Phoenix Stotijn at Texas A&M (3/2/25)
Scored 25-29 points	27, Izzy Higginbottom at Texas A&M (3/2/25)
Scored 30-34 points	32, Izzy Higginbottom vs. Missouri (2/27/25)
Scored 35-39 points	36, Izzy Higginbottom at Auburn (1/9/25)
Scored 40+ points	40, Izzy Higginbottom vs. Florida (2/3/25)
Scored 40+ points in an SEC game	40, Izzy Higginbottom vs. Florida (2/3/25)
Scored 35+ points in an SEC game	36, Izzy Higginbottom at Auburn (1/9/25)
Scored 30+ points in three straight games	Izzy Higginbottom (KEN 32, A&M 34, FLA 40) (2025)
Scored 20+ points 10 times in a season	Izzy Higginbottom (22x 2024-25)
Taliah Scott (13x 2023-24), Chelsea Dungee (17x 2020-21), Chelsea Dungee (11x 2019-20) & Chelsea Dungee (20x 2018-19)	
Double figures in 15 consecutive games (season)	Jessica Jackson, 11/11/16, LSU 1-8-17
.....	Chelsea Dungee, 26 games, (2018-19 & 2019-20)
.....	Chelsea Dungee, 31 games, (2019-20 & 2020-21)
.....	Amber Ramirez, 16 games (2021-22)
.....	Izzy Higginbottom, 19 games (2024-25)
Five players scored double figures in 1 game	vs. UCA (12/29/24)
.....	Higginbottom (26), Ojenuwa (12), Smith (12), Stotijn (12), Sanchez Cerqueira (10 rebs)
Five starters in double figures	vs. Kentucky (1-25-24)
.....	Daniels (22), Dauda (16), Johnson (14), Keats (14), Spencer (13)
Seven players scored in double figures in 1 game	vs. Northwestern State (11-9-18)
.....	(Tolefree 19, Gaulden 16, Monk 12, Doumbia 11, Dungee 11, Thomas 11, Williams 10)
Made 10+ field goals in a game	12, Izzy Higginbottom vs. Florida (2/3/25)
Attempted 20+ field goals in a game	21, Izzy Higginbottom vs. Missouri (2/27/25)
Made 10+ free throws in a game	13, Izzy Higginbottom at Mississippi State (2/6/25)
Made 15+ free throws in a game	19, at Texas A&M (3/2/25) (school record)
Made 10+ free throws in a quarter	Izzy Higginbottom, 10 in the 1st quarter at Mississippi State (2/6/25)
Made 30+ free throws in a row	Izzy Higginbottom, 34 vs. A&M, FLA, MSST, UGA (2025)
Made 7 or more 3-pt FG in a game	8, Saylor Poffenbarger, at Missouri (1-28-24)
Attempted 10 or more 3-pt FG in a game	10, Carly Keats at Vanderbilt (1/23/25)
Had 10-14 rebounds	10, Izzy Higginbottom vs. Texas A&M (1/30/25)
Had 15-19 rebounds	17, Saylor Poffenbarger, vs. Georgia (1-7-24)
Had 20+ rebounds	23, Saylor Poffenbarger, at No. 15 Florida State (11-30-23) (school record)
Had 10 offensive reb - Records go back to 05-06	11, Melissa Wolff vs. New Orleans (1-30-15)
Had 10+ defensive reb - Records go back to 05-06	10, Vera Ojenuwa vs. SEMO (12/8/24)
Had 10+ assists	11, Samara Spencer, vs. LA Tech (3-16-23)
Had 10+ assists in consecutive games	Jailyn Mason (11 vs. HBU, 12-28-16 and 10 at Ole
.....	Miss, 1-1-17) & Calli Berna (11 vs. No. 10/8 Kentucky, 2/7/13 and 11 at Alabama, 2/10/13)
Had 5+ blocks in a game	5, Jenna Lawrence vs. Bowling Green (11/30/24)
Had 10+ blocks in a game	10, Maryam Dauda, at Alabama (1-14-24) (school record)
Had 5 or more steals in a game	5, Makayla Daniels, vs. Georgia (1-7-24)
Had a double-double	33 points and 10 rebounds, Izzy Higginbottom vs. Texas A&M (1/30/25)
Had a double-double in two consecutive games	Vera Ojenuwa vs. SEMO (12/9/24) and Texas Tech (12/15/24)
.....	13 pts & 14 rbd vs. SEMO (12/8/24)/12 pts & 11 rbd vs. Texas Tech (12/15/24)
Had two players record a double-double	Samara Spencer (31 pts/14 reb) &
.....	Maryam Dauda (12 rbd/10blks), at Alabama (1-14-24)
Had seven double-doubles in a season	Saylor Poffenbarger, 8, 2023-24
.....	(MSU @FSU, LA TECH, UAPB, UIC, UGA, BAMA, @UF)
Had 10+ double-doubles in a season	2006-07, Lauren Ervin (14)
Had a triple-double	14 pts, 13 rbd, 12 asts, C'eira Ricketts vs. Auburn (1-18-09)



MORE ABOUT MIKE

Hometown: Greenwood, Ark. (Greenwood HS)
 Family: Daughter Abby; Sons Alec, Bowen and Barrett; granddaughter Emzey
 Alma Mater: Arkansas, 1993

NEIGHBORS BY THE NUMBERS

246 Wins (246-154, 12 seasons)
 16 Signed McDonald's All-Americans
 12 Years as a head coach
 9 Postseason appearances
 5 Players drafted in the WNBA (HC)
 1 Final Four appearance

LEARN MORE

Sign up for Mike Neighbors' newsletter and listen to his podcasts at CoachNeighbors.com



NABES FAVES

TOP 10 MOVIES

1. A Few Good Men
2. The Hunt For Red October
3. The Silence Of The Lambs
4. Hoosiers
5. O Brother, Where Art Thou?
6. Moneyball
7. Top Gun
8. Zero Dark Thirty
9. The Lion King
10. Purple Rain

See the entire list here: <http://imdb.to/2roy-aEO>

TOP 10 SONGS

1. Sweet Child O' Mine (Guns N' Roses)
2. You Shook Me All Night Long (AC/DC)
3. Man In The Mirror (Michael Jackson)
4. Amarillo By Morning (George Strait)
5. Jessie's Girl (Rick Springfield)
6. Hysteria (Def Leppard)
7. Fishin' In The Dark (Nitty Gritty Dirt Band)
8. The Ballad of Curtis Loew (Lynyrd Skynyrd)
9. Wanted Dead Or Alive (Bon Jovi)
10. Let's Go Crazy (Prince)

TOP 10 TV SHOWS

1. West Wing (first three seasons)
2. Ted Lasso
3. The Wire
4. Breaking Bad
5. Seinfeld
6. The Newsroom
7. Prison Break
8. Arrested Development
9. Game of Thrones
10. The Goldbergs



MIKE NEIGHBORS

Eighth Season
 Career Record: 246-154 (12) | Arkansas Record: 148-113 (8)

Arkansas women's basketball has been transformed into a nationally recognized program in seven years thanks to head coach Mike Neighbors. During his time back home at his alma mater, Neighbors has guided his Hogs to the best seven-year period of sustained success in program history with 138 wins and six postseason qualifications in that time. The proof of his success, and the success of his system, lies in the numbers - Neighbors has accumulated 242 wins during his 12 seasons as a head coach, the most of any Power 5 head coaches in 10 or fewer seasons, as well as one of only two NCAA Division I Head Coaches.

Entering his eighth season on the bench for Arkansas, the program is coming off its sixth consecutive winning season, sixth straight postseason appearance (if including the 2020 NCAA Tournament had it not been cancelled due to the COVID-19 pandemic, as Arkansas was a lock to make the Big Dance).

In 2022-23, the Hogs started out the season 13-0, which was tied for the second-best start in program history. Going into Mid-December, the Hogs were ranked as high as No. 17 in the AP Poll. The Hogs won another SEC Tournament game in comeback fashion versus Missouri to make it to the quarterfinals and hold the best winning percentage in the SEC Tournament among all coaches in Arkansas history with an 8-6 record. Continuing into postseason, Arkansas became the automatic bid out of the SEC to the Post-season WNIT, making it to the Great 8, while being able to host three of its four games at Bud Walton Arena. Neighbors led the Hogs to two All-SEC selections, including Second Team choice Erynn Barnum, who was also on the Midseason Top 10 List for the Katrina McClain Award, as well as All-Freshman selection Saylor Poffenbarger, who broke a school record for five SEC Freshman of the Week accolades. The Hogs finished the season with 24 wins, which tied for the most in the Neighbors' era and matches the fourth most in a single season in program history. Additionally, four players averaged double digits in scoring, the most in the Southeastern Conference.

Prior to Arkansas, Neighbors guided Washington to four seasons of unprecedented success, highlighted by the 2016 NCAA Final Four and two NCAA Sweet 16 appearances. Neighbors was an assistant for the Huskies prior to this promotion and also has had stops at Xavier, Tulsa, Colorado and Arkansas as an assistant.

A native of Greenwood, Arkansas, Neighbors received his associate degree at the University of Arkansas - Fort Smith and his bachelor's degree from the University of Arkansas in 1993. Neighbors is married to Jayci Stone. He has four children, a daughter, Abby and three sons, Alec, Bowen and Barrett, as well as a granddaughter, Emzey.

TIMELINE

- Bentonville HS Head Coach 1994-98
- Cabot HS Head Coach 1998-99
- Arkansas Director of Ops 1999-01
- Tulsa Univ. Assistant Coach 2001-05
- Univ. of Colorado Assistant Coach 2005-06
- Univ. of Arkansas Assistant Coach 2006-07
- Xavier Assistant Coach 2007-11
- Univ. of Washington Assistant Coach 2011-13
- Univ. of Washington Head Coach 2013-17
- Univ. of Arkansas Head Coach 2017-present

COACHING HISTORY

University of Washington

Year	Overall	Pac-12	Finish
2013-14	20-14 (.588)	10-8 (.556)	6
2014-15	23-10 (.697)	11-7 (.611)	5
2015-16	26-11 (.703)	11-7 (.611)	5
2016-17	29-6 (.829)	15-3 (.833)	T2
UW	98-41 (.705)	47-25 (.662)	

University of Arkansas

Year	Overall	SEC	Finish
2017-18	13-18 (.419)	3-13 (.188)	T11
2018-19	22-15 (.611)	6-10 (.375)	10
2019-20	24-8 (.750)	10-6 (.625)	T3
2020-21	19-9 (.679)	9-6 (.600)	T5
2021-22	18-14 (.563)	7-9 (.438)	T8
2022-23	24-13 (.649)	7-9 (.438)	8
2023-24	18-15 (.545)	6-10 (.375)	T9
2024-25	10-21 (.323)	3-13 (.188)	13
Ark	148-113 (.567)	51-76 (.402)	8 yrs
Totals	246-154 (.615)	98-101 (.492)	12 yrs

COACHING DEVELOPMENT

Coach	w/Nabes	Now
Adia Barnes	'14-15	HC Arizona
Adam Call	'14	AC George Washington
Morgan Valley	'16	AC UConn
Todd Schaefer	'16-Pres.	AHC Arkansas
Chelsea Dungee	'18-21	AC Troy
Evan Johnston	'18-22	Special Ast. to HC Arkansas

PLAYER DEVELOPMENT

YEAR	UNIVERSITY	PLAYER	ROUND	OVERALL	TEAM NOTE
2021	Arkansas	Chelsea Dungee	1	5	Dallas Wings ! @
2021	Arkansas	Destiny Slocum	2	14	Las Vegas Aces ! @
2021	Arizona	Aari McDonald	1	3	Atlanta Dream @
2017	Washington	Kelsey Plum	1	1	San Antonio Stars ! @ Las Vegas Aces
	Washington	Chantel Osahor	2	21	Chicago Sky ! @
2016	Washington	Talia Walton	3	29	Los Angeles Sparks ! @
2011	Xavier	Amber Harris	1	4	Minnesota Lynx ! #
	Xavier	Ta'Shia Phillips	1	8	Atlanta Dream ! #
	TAMU/UAFS	Tanisha Smith	2	22	Seattle Storm #
	Colorado	Brittany Spears	2	19	Phoenix Mercury *
2009	Arkansas	Shameka Christon	1	5	New York Liberty \$
2008	Arkansas	Lauren Ervin	3	37	Connecticut Sun ! #
2006	Tulsa	Megan Moody	-	-	Houston Comets Free Agent #
2003	Tulsa	Allison Curtin	1	12	Houston Comets ! # Traded to Detroit Shock
	Arkansas	Dana Cherry	2	23	Charlotte Sting \$

*- Signed but did not coach

!- At the school when player was drafted

@- Worked with player as a head coach

#- Worked with player as an assistant coach

\$- Worked with player as other (GA, etc)

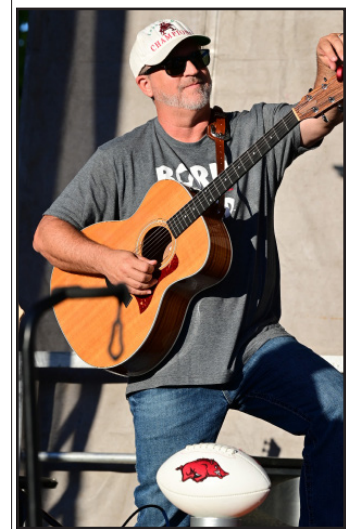


MORE NABES FACTS

- **Movies:** His expansive movie collection includes digital, disk and VHS copies. Did you know he used to work at BlockBuster? On a related note, he also collects books that have been turned into movies.
- **Baseballs autographed by movie stars:** Ask him about this collection - talk about some good stories.
- **Lunch Boxes:** Coach collects tin lunch boxes that he carried to school and has them displayed in his home. His first lunch box had KISS on it.
- **Hamilton:** Nabes is a huge Hamilton fan, and routinely quotes the Broadway musical to players, fans and media alike.
- **Athens City Champion:** Coach stumbled upon a dart tournament while on a trip to Athens, Georgia. He joined in and was one of the two-man winning team.
- **Ask him about shoes, music, movies, guitars, basket-ball nostalgia - just about anything!**



NEIGHBORS VS.	W - L				
Abilene Christian	2 0	Fresno State	2 0	New Mexico State	1 0
Alabama	6 4	Furman	1 0	New Orleans	1 0
Arizona State	2 6	Georgia	2 8	Northern Arizona	1 0
Arizona	6 0	Grambling State	2 0	Northwestern State	2 0
Arkansas State	4 0	Grand Canyon	1 0	Notre Dame	0 1
Auburn	9 2	Hartford	1 0	Oklahoma	1 3
Baylor	1 0	Hawai'i	1 0	Oklahoma State	0 1
Belmont	2 0	Houston	2 0	Ole Miss	5 5
Boise State	1 0	Idaho	1 0	Oral Roberts	5 1
Boston College	1 0	Illinois	1 0	Oregon State	1 6
Bowling Green	0 1	Iowa State	0 1	Oregon	5 4
BYU	1 0	Jackson State	2 0	Pennsylvania	1 0
California	5 4	Kansas	0 2	Pittsburgh	1 1
Central Arkansas	5 0	Kansas State	2 0	Portland	3 1
Central Florida	0 1	Kent State	1 0	Prairie View A&M	1 0
Charlotte	1 0	Kentucky	3 7	Saint Mary's	0 1
Clemson	1 0	Lamar	1 0	Sam Houston	2 0
Colorado State	1 0	Liberty	0 1	Samford	2 0
Colorado	9 0	Little Rock	5 0	San Diego State	2 0
Connecticut	1 1	Louisiana-Monroe	3 0	San Diego	1 0
Creighton	1 1	Louisiana Tech	2 0	Santa Clara	1 0
CSUN	1 0	LSU	3 6	Savannah State	1 0
DePaul	0 1	Marquette	0 1	Seattle	4 0
East Texas A&M	1 0	McNeese State	1 0	SEMO	1 0
Eastern Washington	1 0	Maryland	1 1	SFA	1 0
Fairfield	0 1	Miami	0 1	SMU	2 0
Florida State	2 0	Mississippi State	3 8	South Carolina	1 12
Florida	4 5	Missouri	14 5	South Dakota	2 0
FGCU	1 0	Montana State	2 0	Stanford	3 5
Fordham	1 0	Missouri State	1 0	Stony Brook	1 0
		Nebraska	1 1	Syracuse	0 2
				Tarleton State	1 0
				TCU	0 1
				Tennessee	2 7
				Tennessee Martin	1 0
				Tennessee State	1 0
				Tennessee Tech	1 0
				Texas	0 1
				Texas A&M	6 9
				Texas Tech	2 1
				Troy	1 1
				Tulsa	4 1
				UAB	1 0
				UAPB	3 1
				UC Irvine	1 0
				UC Riverside	2 0
				UCLA	4 4
				UIC	1 0
				UIW	1 0
				USC	6 0
				USF	0 1
				Utah	7 4
				UT-Arlington	3 0
				UTEP	0 2
				Vanderbilt	4 5
				Wake Forest	1 0
				Washington State	5 3
				Weber State	1 0
				Wisconsin	4 0
				Wright State	0 1
				Yale	1 0



Last Meeting's Box Score



Official Basketball Box Score - Final
Arkansas at Georgia
 02/09/25 Stegeman Coliseum, Athens
 2024-25 Women's Basketball

Game Time: 12:00 PM
 Game Duration: 2:03
 Attendance: 3,034

Officials: Angelica Suffren, Maggie Tieman, Denise Brooks

Arkansas - 61

Record: 9-17 (2-9)

NO.	Name	C/G	Min	FG	3P	FT	Rebounds			Fouls		TP	AS	TO	ST	Blocks		+/-
				M-A	M-A	M-A	OR	DR	TOT	PF	FD					BS	BA	
22	Vera Ojenuwa	C	22:01	5-9	1-1	2-2	3	4	7	4	1	13	0	1	0	2	3	1
1	Phoenix Stotjin	G	36:17	2-7	1-4	0-0	0	2	2	2	3	5	2	2	0	0	1	4
3	Izzy Higginbottom	G	40:00	7-29	1-4	9-11	1	5	6	1	8	24	4	0	2	0	2	-1
10	Cristina Sánchez Cerqueira	G	30:31	1-6	1-3	0-0	2	4	6	3	3	3	2	3	2	0	0	5
20	Karley Johnson	G	29:53	4-5	1-2	3-7	3	3	6	4	4	12	1	1	1	0	0	3
25	Danika Galea		17:59	2-4	0-0	0-0	2	1	3	2	0	4	1	3	0	2	1	-2
15	Jada Bates		06:47	0-1	0-0	0-0	0	1	1	1	0	0	0	0	0	0	0	-1
34	Jenna Lawrence		09:29	0-3	0-2	0-0	1	1	2	2	0	0	0	2	0	2	1	-6
23	Carly Keats		04:31	0-0	0-0	0-0	0	0	0	0	0	0	0	0	0	0	0	-4
44	Maryn Archer		02:32	0-1	0-0	0-0	0	0	0	0	0	0	0	0	0	0	0	-4
Team							5	4	9			0			0			
Totals				21-65	5-16	14-20	17	25	42	19	19	61	10	12	5	6	8	-1

Technical Fouls::NONE

Shooting By Period		
1 st FG%	5-13	38.5%
3PT%	1-5	20.0%
FT%	3-4	75%
2 nd FG%	4-19	21.1%
3PT%	0-3	0.0%
FT%	3-4	75%
3 rd FG%	3-17	17.6%
3PT%	0-3	0.0%
FT%	6-9	66.7%
4 th FG%	9-16	56.3%
3PT%	4-5	80.0%
FT%	2-3	66.7%
GM FG%	21-65	32.3%
3PT%	5-16	31.3%
FT%	14-20	70.0%

Dead Ball Rebounds: 4, 0

Georgia - 62

Record: 10-15 (2-9)

NO.	Name	C/G	Min	FG	3P	FT	Rebounds			Fouls		TP	AS	TO	ST	Blocks		+/-
				M-A	M-A	M-A	OR	DR	TOT	PF	FD					BS	BA	
21	Fatima Diakhate	C	27:16	2-4	0-0	1-4	1	4	5	1	3	5	0	1	2	5	0	1
0	Trinity Turner	G	34:06	4-12	0-2	4-4	1	2	3	3	2	12	5	5	0	0	0	10
1	Asia Avinger	G	27:14	1-4	0-1	2-4	1	4	5	4	4	4	4	1	0	0	0	-2
12	Roxane Makolo	G	33:05	5-11	0-2	0-2	3	4	7	4	1	10	1	2	2	0	1	-6
23	Summer Davis	G	17:33	2-5	1-3	0-0	0	3	3	0	0	5	0	2	0	0	0	-1
10	De'Mauri Flournoy		24:46	3-7	2-3	0-0	0	2	2	2	2	8	0	2	0	2	1	4
4	Miyah Verse		09:03	1-2	0-0	0-1	3	2	5	1	1	2	1	2	0	0	0	-8
33	Mia Woolfolk		26:57	6-14	0-0	4-5	6	4	10	4	6	16	1	2	1	1	4	7
Team							0	3	3			0			0			
Totals				24-59	3-11	11-20	15	28	43	19	19	62	12	17	5	8	6	1

Technical Fouls::NONE

Shooting By Period		
1 st FG%	3-15	20.0%
3PT%	1-3	33.3%
FT%	3-4	75%
2 nd FG%	11-17	64.7%
3PT%	2-3	66.7%
FT%	0-1	0%
3 rd FG%	3-14	21.4%
3PT%	0-4	0.0%
FT%	1-6	16.7%
4 th FG%	7-13	53.8%
3PT%	0-1	0.0%
FT%	7-9	77.8%
GM FG%	24-59	40.7%
3PT%	3-11	27.3%
FT%	11-20	55.0%

Dead Ball Rebounds: 4, 1

	Ark	UGA
Biggest lead	8 (1 st 4:35)	9 (2 nd 0:05)
Best Scoring Run	10 (1 st 4:35)	8 (2 nd 3:13)
Lead Changes	6	
Times Tied	4	
Time with Lead	10:38	26:55

	Ark	UGA
Points from		
Turnovers	12	12
Paint	30	38
Second Chance	17	8
Fast Breaks	2	10
Bench	4	26

	Period by Period Scoring				
	1st	2nd	3rd	4th	TOT
Ark	14	11	12	24	61
UGA	10	24	7	21	62



Overall Stats

Game Records

Record	Overall	Home	Away	Neutral
ALL GAMES	10-21	7-10	3-7	0-4
CONFERENCE	3-13	1-7	2-6	0-0
NON-CONFERENCE	7-8	6-3	1-1	0-4

Score by Periods

Team	1st	2nd	3rd	4th	OT	TOT
Arkansas	462	550	541	545	11	2109
Opponents	654	564	637	572	0	2427

Team Box Score

No.	Player				Total		3-Point		F-Throw		Rebounds											
		GP-GS	MIN	AVG	FG-FGA	FG%	3FG-3FGA	3FG%	FT-FTA	FT%	OFF	DEF	TOT	AVG	PF	DQ	A	TO	BLK	STL	PTS	AVG
3	HIGGINBOTTOM, Izzy	31-31	1075:51	34.7	236-554	.426	35-106	.330	235-260	.904	15	126	141	4.5	44	1	115	117	7	37	742	23.9
2	SMITH, Kiki	26-22	707:24	27.2	96-225	.427	57-139	.410	21-29	.724	8	41	49	1.9	37	0	53	54	5	16	270	10.4
23	KEATS, Carly	29-21	612:56	21.1	76-220	.345	41-138	.297	15-16	.938	1	40	41	1.4	9	0	18	32	3	6	208	7.2
1	STOTJIN, Phoenix	20-11	507:37	25.4	50-155	.323	23-87	.264	19-36	.528	5	22	27	1.4	20	0	41	53	4	13	142	7.1
22	OJENUWA, Vera	31-31	690:08	22.3	81-181	.448	7-21	.333	42-68	.618	71	127	198	6.4	100	7	14	55	21	21	211	6.8
34	LAWRENCE, Jenna	31-20	689:36	22.2	65-193	.337	34-136	.250	18-21	.857	30	121	151	4.9	47	1	8	24	34	19	182	5.9
25	GALEA, Danika	28-0	375:47	13.4	45-89	.506	3-17	.176	13-18	.722	28	36	64	2.3	52	3	8	31	10	6	106	3.8
20	JOHNSON, Karley	29-8	437:29	15.1	27-71	.380	3-19	.158	21-33	.636	25	63	88	3.0	39	0	17	16	3	20	78	2.7
10	SÁNCHEZ CERQUEIRA, Cristina	29-11	458:52	15.8	21-76	.276	8-31	.258	14-29	.483	21	99	120	4.1	42	1	14	41	7	12	64	2.2
15	BATES, Jada	28-0	334:16	11.9	17-52	.327	11-32	.344	5-14	.357	4	23	27	1.0	11	0	8	15	6	4	50	1.8
16	PAANANEN, Pinja	26-0	234:57	9.0	13-40	.325	7-28	.250	7-9	.778	10	31	41	1.6	13	0	5	12	6	5	40	1.5
44	ARCHER, Maryn	18-0	61:36	3.4	3-16	.188	1-1	1.000	9-16	.563	1	5	6	0.3	5	0	1	6	0	2	16	0.9
21	LINDSEY, Loren	5-0	22:02	4.4	0-3	.000	0-2	.000	0-0	.000	0	2	2	0.4	3	0	2	0	0	1	0	0.0
0	ROGERS, Ella	3-0	05:07	1.7	0-0	.000	0-0	.000	0-0	.000	0	0	0	0.0	1	0	0	0	1	0	0	0.0
Team											69	70	139						22			
Total		31	6214		730-1875	.389	230-757	.304	419-549	.763	288	806	1094	35.3	423	13	304	478	107	162	2109	68.0
Opponents		31	6235		933-2200	.424	246-702	.350	315-445	.708	496	873	1369	44.2	534	3	512	410	158	253	2427	78.3

Team Statistics

	AR	OPP
Scoring	2109	2427
Points per game	68.0	78.3
Scoring margin	-10.3	-
Field goals-att	730-1875	933-2200
Field goal pct	.389	.424
3 point fg-att	230-757	246-702
3-point FG pct	.304	.350
3-pt FG made per game	7.4	7.9
Free throws-att	419-549	315-445
Free throw pct	.763	.708
F-Throws made per game	13.5	10.2
Rebounds	1094	1369
Rebounds per game	35.3	44.2
Rebounding margin	-8.9	-
Assists	304	512
Assists per game	9.8	16.5
Turnovers	478	410
Turnovers per game	15.4	13.2
Turnover margin	-2.2	-
Assist/turnover ratio	0.6	1.2
Steals	162	253
Steals per game	5.2	8.2
Blocks	107	158
Blocks per game	3.5	5.1
Winning streak	1	-
Home win streak	0	-
Attendance	57363	52680
Home games-Avg/Game	17-3374	10-5268
Neutral site-Avg/Game	-	4-383

Team Results

Date	Opponent		Score	Att.
11/04/2024	Fairfield	L	67-81	2034
11/08/2024	East Texas A&M	W	84-65	12267
11/11/2024	at Little Rock	Wot	71-60	1255
11/14/2024	UT Arlington	W	93-65	2221
11/17/2024	at UCLA	L	52-101	2255
11/21/2024	Oral Roberts	L	73-94	2277
11/24/2024	Arkansas St.	W	76-60	2548
11/29/2024	vs Oklahoma St.	L	56-70	145
11/30/2024	vs Bowling Green	L	78-79	105
12/05/2024	Boston College	W	75-64	2252
12/08/2024	Southeast Mo. St.	W	84-45	2609
12/15/2024	Texas Tech	L	72-75	2511
12/18/2024	vs Liberty	L	61-75	719
12/19/2024	vs Troy	L	69-77	563
12/29/2024	Central Ark.	W	87-70	2976
01/02/2025	LSU	L	64-98	3985
01/05/2025	at Texas	L	56-90	8113
01/09/2025	at Auburn	W	59-58	2791
01/12/2025	Tennessee	L	63-93	3072
01/19/2025	Alabama	L	62-94	3093
01/23/2025	at Vanderbilt	L	60-101	3500
01/26/2025	at Kentucky	L	69-89	4870
01/30/2025	Texas A&M	W	72-51	2558
02/03/2025	Florida	L	78-108	2243
02/06/2025	at Mississippi St.	L	55-78	6588
02/09/2025	at Georgia	L	61-62	3034
02/13/2025	Ole Miss	L	50-89	2625
02/20/2025	at South Carolina	L	55-95	16638
02/23/2025	Oklahoma	L	54-94	4214
02/27/2025	Missouri	L	73-75	3878
03/02/2025	at Texas A&M	W	80-71	3636



SEC Stats

Game Records

Record	Overall	Home	Away	Neutral
ALL GAMES	3-13	1-7	2-6	0-0
CONFERENCE	3-13	1-7	2-6	0-0
NON-CONFERENCE	0-0	0-0	0-0	0-0

Score by Periods

Team	1st	2nd	3rd	4th	OT	TOT
Arkansas	218	267	256	270	0	1011
Opponents	348	333	340	325	0	1346

Team Box Score

No.	Player				Total		3-Point		F-Throw		Rebounds											
		GP-GS	MIN	AVG	FG-FGA	FG%	3FG-3FGA	3FG%	FT-FTA	FT%	OFF	DEF	TOT	AVG	PF	DQ	A	TO	BLK	STL	PTS	AVG
3	HIGGINBOTTOM, Izzy	16-16	565:41	35.4	120-309	.388	20-62	.323	128-141	.908	6	74	80	5.0	20	1	53	66	5	19	388	24.3
2	SMITH, Kiki	11-7	227:47	20.7	35-79	.443	20-52	.385	5-6	.833	1	14	15	1.4	16	0	13	17	1	6	95	8.6
23	KEATS, Carly	14-6	251:13	17.9	35-94	.372	19-64	.297	6-6	1.000	1	14	15	1.1	4	0	4	17	0	1	95	6.8
1	STOTJIN, Phoenix	16-11	428:49	26.8	39-115	.339	17-62	.274	13-26	.500	2	17	19	1.2	17	0	33	44	4	12	108	6.8
22	OJENUWA, Vera	16-16	320:20	20.0	28-77	.364	5-14	.357	17-28	.607	30	50	80	5.0	52	4	1	20	11	10	78	4.9
34	LAWRENCE, Jenna	16-5	282:39	17.7	25-82	.305	12-58	.207	2-2	1.000	9	39	48	3.0	28	1	3	11	15	11	64	4.0
10	SÁNCHEZ CERQUEIRA, Cristina	16-11	355:12	22.2	18-62	.290	7-26	.269	11-20	.550	14	64	78	4.9	33	1	13	33	4	9	54	3.4
20	JOHNSON, Karley	16-8	277:40	17.4	19-44	.432	3-14	.214	10-18	.556	14	32	46	2.9	21	0	12	10	1	13	51	3.2
25	GALEA, Danika	16-0	246:51	15.4	21-49	.429	1-10	.100	3-6	.500	17	24	41	2.6	27	1	5	20	6	3	46	2.9
15	BATES, Jada	14-0	132:06	9.4	5-15	.333	2-7	.286	2-7	.286	1	8	9	0.6	5	0	2	5	1	2	14	1.0
44	ARCHER, Maryn	10-0	39:34	4.0	1-8	.125	1-1	1.000	6-10	.600	1	2	3	0.3	2	0	0	3	0	2	9	0.9
16	PAANANEN, Pinja	11-0	64:02	5.8	2-10	.200	2-7	.286	3-4	.750	2	5	7	0.6	5	0	0	3	0	0	9	0.8
0	ROGERS, Ella	3-0	05:07	1.7	0-0	.000	0-0	.000	0-0	.000	0	0	0	0.0	1	0	0	0	1	0	0	0.0
Team											42	33	75					14				
Total		16	3197		348-944	.369	109-377	.289	206-274	.752	140	376	516	32.3	231	8	139	263	49	88	1011	63.2
Opponents		16	3200		513-1127	.455	139-355	.392	181-254	.713	259	467	726	45.4	270	1	298	214	79	144	1346	84.1

Team Statistics

	AR	OPP
Scoring	1011	1346
Points per game	63.2	84.1
Scoring margin	-20.9	-
Field goals-att	348-944	513-1127
Field goal pct	.369	.455
3 point fg-att	109-377	139-355
3-point FG pct	.289	.392
3-pt FG made per game	6.8	8.7
Free throws-att	206-274	181-254
Free throw pct	.752	.713
F-Throws made per game	12.9	11.3
Rebounds	516	726
Rebounds per game	32.3	45.4
Rebounding margin	-13.1	-
Assists	139	298
Assists per game	8.7	18.6
Turnovers	263	214
Turnovers per game	16.4	13.4
Turnover margin	-3.1	-
Assist/turnover ratio	0.5	1.4
Steals	88	144
Steals per game	5.5	9.0
Blocks	49	79
Blocks per game	3.1	4.9
Winning streak	1	-
Home win streak	0	-
Attendance	25668	49170
Home games-Avg/Game	8-3209	8-6146
Neutral site-Avg/Game	-	0-0

Team Results

Date	Opponent	Score	Att.
01/02/2025	LSU	L 64-98	3985
01/05/2025	at Texas	L 56-90	8113
01/09/2025	at Auburn	W 59-58	2791
01/12/2025	Tennessee	L 63-93	3072
01/19/2025	Alabama	L 62-94	3093
01/23/2025	at Vanderbilt	L 60-101	3500
01/26/2025	at Kentucky	L 69-89	4870
01/30/2025	Texas A&M	W 72-51	2558
02/03/2025	Florida	L 78-108	2243
02/06/2025	at Mississippi St.	L 55-78	6588
02/09/2025	at Georgia	L 61-62	3034
02/13/2025	Ole Miss	L 50-89	2625
02/20/2025	at South Carolina	L 55-95	16638
02/23/2025	Oklahoma	L 54-94	4214
02/27/2025	Missouri	L 73-75	3878
03/02/2025	at Texas A&M	W 80-71	3636



Specialty Stats

ARKANSAS/OPPONENT

Opponent	Result	Pts Off TO	Pts in Paint	2nd Chance	Fast Break	Bench	Ties	Lead Chng	Ark Largest Lead	Best Ark Run	Opp Largest Lead	Opp Best Run	Ark Led	Opp Led				
Fairfield	L, 81-67	18/21	24/40	13/9	5/17	6/32	3	1	5	6:25	1st	8-0	24	3:43	3rd	9-0	5:13	33:35
East Texas A&M	W, 84-65	9/10	28/20	6/10	14/5	12/35	0	0	26	2:26	4th	9-0	0	-	-	10-0	39:46	0:00
Little Rock	W, 71-60 OT	12/7	26/30	9/9	5/7	11/2	2	1	11	1:29	OT	11-0	16	6:03	3rd	10-0	5:22	37:34
UT-Arlington	W, 93-65	9/12	42/40	25/8	20/13	26/13	3	5	34	4:27	4th	13-0	4	7:43	1st	6-0	29:09	8:12
#5 UCLA	L, 101-52	8/27	16/54	11/28	4/18	14/27	0	0	0	10:00	1st	9-0	53	6:30	4th	12-0	0:00	39:22
Oral Roberts	L, 94-73	14/21	28/34	8/12	10/6	10/32	1	1	3	9:22	1st	7-0	25	6:05	4th	12-0	0:14	38:35
Arkansas State	W, 76-60	13/19	38/28	16/14	12/6	10/42	8	9	16	0:18	4th	9-0	6	2:51	1st	8-0	20:28	15:40
Oklahoma State	L, 70-56	15/15	24/54	6/13	4/8	5/29	3	0	0	10:00	1st	7-0	14	1:12	3rd	9-0	0:00	37:20
Bowling Green	L, 79-78	18/4	16/44	0/15	0/0	6/9	4	9	14	8:59	3rd	6-0	4	2:42	4th	8-0	31:46	5:45
Boston College	W, 75-64	18/6	36/36	10/19	19/5	5/35	3	11	11	1:22	4th	14-0	8	9:47	2nd	6-0	10:05	27:39
SEMO	W, 84-45	17/3	39/12	19/6	11/2	25/22	2	6	43	2:10	4th	26-0	12	9:26	3rd	8-0	27:53	10:28
Texas Tech	L, 75-72	20/18	30/42	18/15	5/5	17/21	4	7	8	4:16	1st	7-0	11	7:47	3rd	13-0	9:22	29:30
Liberty	L, 75-61	14/9	22/38	4/11	9/4	21/14	4	4	1	4:37	3rd	8-0	19	9:28	2nd	9-0	0:58	36:55
Troy	L, 77-69	13/13	32/44	14/12	11/24	17/17	1	2	2	8:23	3rd	8-0	10	2:42	3rd	9-0	1:28	37:02
Central Arkansas	W, 87-70	19/6	34/16	18/12	17/5	20/18	5	9	26	4:37	3rd	19-0	3	9:44	1st	6-0	32:03	5:45
LSU	L, 98-64	15/34	44/24	10/24	2/36	7/41	0	0	0	0:00	1st	8-0	49	9:46	4th	14-0	0:00	39:22
Texas	L, 90-56	8/32	22/52	4/28	5/16	13/41	2	1	2	8:44	1st	6-0	34	0:35	4th	9-0	0:22	36:42
Auburn	W, 59-58	12/20	34/26	5/14	2/9	10/7	5	1	5	4:53	4th	7-0	14	8:05	2nd	10-0	5:19	31:02
Tennessee	L, 93-63	2/28	22/40	8/21	10/22	14/29	2	2	3	7:53	1st	8-0	33	1:54	4th	9-0	2:17	36:21
Alabama	L, 94-62	9/20	18/44	7/20	0/7	20/26	2	2	3	8:01	1st	7-0	33	0:35	4th	14-0	0:19	38:11
Vanderbilt	L, 101-60	13/20	24/40	12/9	13/22	34/24	0	0	0	0:00	1st	9-0	45	3:20	4th	11-0	0:00	39:32
Kentucky	L, 89-68	7/19	18/32	6/11	1/10	30/12	0	0	0	0:00	1st	8-0	27	2:12	3rd	12-0	0:00	39:38
Texas A&M	W, 72-51	16/10	24/18	9/5	9/7	21/7	1	0	21	0:29	4th	10-0	0	0:00	1st	6-0	38:04	0:00
Florida	L, 108-78	8/6	34/50	8/13	8/22	19/43	2	1	2	9:43	1st	5-0	33	1:06	4th	13-0	0:54	38:12
Mississippi State	L, 78-55	14/27	28/44	5/15	14/12	11/17	0	0	0	10:00	1st	7-0	27	4:05	4th	10-0	0:00	39:38
Georgia	L, 62-61	12/12	30/38	17/8	2/10	4/26	4	6	8	4:35	1st	10-0	9	0:05	2nd	8-0	10:38	26:55
Ole Miss	L, 89-50	5/17	26/44	2/13	5/15	15/45	1	1	2	8:10	1st	7-0	45	5:17	4th	13-0	0:13	37:34
South Carolina	L, 95-55	2/22	10/48	3/14	10/33	31/56	1	0	0	10:00	1st	5-0	42	2:17	4th	16-0	0:00	38:53
Oklahoma	L, 94-54	14/22	18/46	5/15	19/20	11/19	1	1	3	9:33	1st	6-0	40	1:05	4th	15-0	0:10	38:36
Missouri	L, 75-73	6/9	32/24	11/17	16/9	27/31	15	14	8	3:02	2nd	6-0	5	5:51	1st	9-0	27:12	5:03
Texas A&M	W, 80-71	12/16	16/36	5/15	13/0	19/21	2	3	20	6:27	4th	10-0	14	0:32	1st	9-0	18:56	15:03



Arkansas High/Low

Arkansas - Game Highs

POINTS	93		UT Arlington (11/14/2024)
	87		Central Ark. (12/29/2024)
	84		Southeast Mo. St. (12/08/2024)
	84		East Texas A&M (11/08/2024)
	80		at Texas A&M (03/02/2025)
FIELD GOALS MADE	34		UT Arlington (11/14/2024)
	30		Central Ark. (12/29/2024)
	30		Arkansas St. (11/24/2024)
FIELD GOAL ATTEMPTS	76		Florida (02/03/2025)
	74		UT Arlington (11/14/2024)
FIELD GOAL PERCENTAGE	.482	(27-56)	Boston College (12/05/2024)
	.482	(27-56)	vs Bowling Green (N) (11/30/2024)
3 PT FG MADE	13		at Texas A&M (03/02/2025)
	13		UT Arlington (11/14/2024)
3 PT FG ATTEMPTS	39		at UCLA (11/17/2024)
	35		at South Carolina (02/20/2025)
3 PT FG PERCENTAGE	.520	(13-25)	UT Arlington (11/14/2024)
	.481	(13-27)	at Texas A&M (03/02/2025)
FREE THROWS MADE	25		at Texas A&M (03/02/2025)
	21		Southeast Mo. St. (12/08/2024)
	21		East Texas A&M (11/08/2024)
FREE THROW ATTEMPTS	28		at Texas A&M (03/02/2025)
	26		East Texas A&M (11/08/2024)
FREE THROW PERCENTAGE	1.000	(8-8)	LSU (01/02/2025)
	.929	(13-14)	vs Bowling Green (N) (11/30/2024)
REBOUNDS	56		UT Arlington (11/14/2024)
	54		Southeast Mo. St. (12/08/2024)
ASSISTS	18		Central Ark. (12/29/2024)
	16		Arkansas St. (11/24/2024)
STEALS	12		at Mississippi St. (02/06/2025)
	9		LSU (01/02/2025)
	9		Arkansas St. (11/24/2024)
BLOCKED SHOTS	10		vs Bowling Green (N) (11/30/2024)
	7		Arkansas St. (11/24/2024)
TURNOVERS	26		at Vanderbilt (01/23/2025)
	25		at Texas (01/05/2025)
FOULS	25		at Texas (01/05/2025)
	22		at Little Rock (11/11/2024)

Arkansas - Game Lows

POINTS	50		Ole Miss (02/13/2025)
	52		at UCLA (11/17/2024)
	54		Oklahoma (02/23/2025)
	55		at South Carolina (02/20/2025)
	55		at Mississippi St. (02/06/2025)
FIELD GOALS MADE	18		Oklahoma (02/23/2025)
	18		at Texas (01/05/2025)
	18		at UCLA (11/17/2024)
FIELD GOAL ATTEMPTS	45		at Texas (01/05/2025)
	49		Tennessee (01/12/2025)
	49		at Auburn (01/09/2025)
FIELD GOAL PERCENTAGE	.277	(18-65)	Oklahoma (02/23/2025)
	.286	(18-63)	at UCLA (11/17/2024)
3 PT FG MADE	2		Ole Miss (02/13/2025)
	2		at Mississippi St. (02/06/2025)
3 PT FG ATTEMPTS	11		Boston College (12/05/2024)
	12		at Texas (01/05/2025)
3 PT FG PERCENTAGE	.091	(2-22)	Ole Miss (02/13/2025)
	.143	(2-14)	at Mississippi St. (02/06/2025)
FREE THROWS MADE	4		at South Carolina (02/20/2025)
	4		at Vanderbilt (01/23/2025)
FREE THROW ATTEMPTS	5		at South Carolina (02/20/2025)
	7		at Vanderbilt (01/23/2025)
FREE THROW PERCENTAGE	.571	(4-7)	at Vanderbilt (01/23/2025)
	.625	(10-16)	at Auburn (01/09/2025)
REBOUNDS	23		vs Bowling Green (N) (11/30/2024)
	25		at Auburn (01/09/2025)
ASSISTS	4		at Mississippi St. (02/06/2025)
	4		at Auburn (01/09/2025)
STEALS	2		Ole Miss (02/13/2025)
	2		at UCLA (11/17/2024)
	2		UT Arlington (11/14/2024)
	2		at Little Rock (11/11/2024)
	2		East Texas A&M (11/08/2024)
	2		Fairfield (11/04/2024)
BLOCKED SHOTS	0		at Auburn (01/09/2025)
	0		at Texas (01/05/2025)
	0		Texas Tech (12/15/2024)
TURNOVERS	6		Missouri (02/27/2025)
	7		Florida (02/03/2025)
FOULS	3		Fairfield (11/04/2024)
	6		Ole Miss (02/13/2025)



Opponent High/Low

Opponent - Game Highs

POINTS	108		Florida (02/03/2025)
	101		at Vanderbilt (01/23/2025)
	101		at UCLA (11/17/2024)
	98		LSU (01/02/2025)
	95		at South Carolina (02/20/2025)
FIELD GOALS MADE	43		Florida (02/03/2025)
	39		at Vanderbilt (01/23/2025)
	39		LSU (01/02/2025)
FIELD GOAL ATTEMPTS	84		at UCLA (11/17/2024)
	82		Oklahoma (02/23/2025)
	82		at South Carolina (02/20/2025)
	82		vs Troy (N) (12/19/2024)
FIELD GOAL PERCENTAGE	.566	(43-76)	Florida (02/03/2025)
	.565	(39-69)	at Vanderbilt (01/23/2025)
3 PT FG MADE	13		Florida (02/03/2025)
	13		at Kentucky (01/26/2025)
	13		at Vanderbilt (01/23/2025)
	13		Central Ark. (12/29/2024)
	13		Fairfield (11/04/2024)
3 PT FG ATTEMPTS	36		Oklahoma (02/23/2025)
	35		Central Ark. (12/29/2024)
	35		Arkansas St. (11/24/2024)
3 PT FG PERCENTAGE	.591	(13-22)	Florida (02/03/2025)
	.520	(13-25)	at Vanderbilt (01/23/2025)
FREE THROWS MADE	21		Texas Tech (12/15/2024)
	19		at Auburn (01/09/2025)
	19		at Texas (01/05/2025)
FREE THROW ATTEMPTS	27		at Auburn (01/09/2025)
	26		at Texas (01/05/2025)
FREE THROW PERCENTAGE	1.000	(2-2)	Fairfield (11/04/2024)
	.889	(16-18)	Oral Roberts (11/21/2024)
REBOUNDS	65		at UCLA (11/17/2024)
	57		at South Carolina (02/20/2025)
	57		vs Troy (N) (12/19/2024)
ASSISTS	27		Oklahoma (02/23/2025)
	27		at South Carolina (02/20/2025)
STEALS	17		at Vanderbilt (01/23/2025)
	15		Tennessee (01/12/2025)
BLOCKED SHOTS	11		vs Oklahoma St. (N) (11/29/2024)
	10		at Kentucky (01/26/2025)
TURNOVERS	22		at Auburn (01/09/2025)
	18		at Mississippi St. (02/06/2025)
	18		Texas Tech (12/15/2024)
	18		Southeast Mo. St. (12/08/2024)
FOULS	27		Tennessee (01/12/2025)
	21		Texas Tech (12/15/2024)
	21		Boston College (12/05/2024)

Opponent - Game Lows

POINTS	45		Southeast Mo. St. (12/08/2024)
	51		Texas A&M (01/30/2025)
	58		at Auburn (01/09/2025)
	60		Arkansas St. (11/24/2024)
	60		at Little Rock (11/11/2024)
FIELD GOALS MADE	17		Southeast Mo. St. (12/08/2024)
	18		Texas A&M (01/30/2025)
FIELD GOAL ATTEMPTS	47		at Auburn (01/09/2025)
	54		Texas Tech (12/15/2024)
FIELD GOAL PERCENTAGE	.270	(17-63)	Southeast Mo. St. (12/08/2024)
	.277	(18-65)	Texas A&M (01/30/2025)
3 PT FG MADE	1		at Auburn (01/09/2025)
	1		UT Arlington (11/14/2024)
3 PT FG ATTEMPTS	10		UT Arlington (11/14/2024)
	10		at Little Rock (11/11/2024)
3 PT FG PERCENTAGE	.091	(1-11)	at Auburn (01/09/2025)
	.100	(1-10)	UT Arlington (11/14/2024)
FREE THROWS MADE	1		Southeast Mo. St. (12/08/2024)
	2		Fairfield (11/04/2024)
FREE THROW ATTEMPTS	2		Southeast Mo. St. (12/08/2024)
	2		Fairfield (11/04/2024)
FREE THROW PERCENTAGE	.375	(3-8)	at Mississippi St. (02/06/2025)
	.409	(9-22)	at Little Rock (11/11/2024)
REBOUNDS	29		Southeast Mo. St. (12/08/2024)
	33		Texas Tech (12/15/2024)
ASSISTS	8		at Little Rock (11/11/2024)
	9		East Texas A&M (11/08/2024)
STEALS	1		vs Bowling Green (N) (11/30/2024)
	2		Florida (02/03/2025)
BLOCKED SHOTS	1		Central Ark. (12/29/2024)
	2		at Texas A&M (03/02/2025)
	2		Texas A&M (01/30/2025)
	2		vs Bowling Green (N) (11/30/2024)
TURNOVERS	7		Ole Miss (02/13/2025)
	8		at South Carolina (02/20/2025)
FOULS	10		vs Liberty (N) (12/18/2024)
	11		at South Carolina (02/20/2025)
	11		LSU (01/02/2025)
	11		vs Bowling Green (N) (11/30/2024)



Category Leaders

Points

##	Player	G	Pts	Pts/G
3	Higginbottom, Izzy	31	742	23.9
2	Smith, Kiki	26	270	10.4
22	Ojenuwa, Vera	31	211	6.8
23	Keats, Carly	29	208	7.2
34	Lawrence, Jenna	31	182	5.9
1	Stotjin, Phoenix	20	142	7.1
25	Galea, Danika	28	106	3.8
20	Johnson, Karley	29	78	2.7
10	Sánchez Cerqueira, Cristina	29	64	2.2
15	Bates, Jada	28	50	1.8
16	Paananen, Pinja	26	40	1.5
44	Archer, Maryn	18	16	0.9

Scoring Average

##	Player	G	Pts	Pts/G
3	Higginbottom, Izzy	31	742	23.9
2	Smith, Kiki	26	270	10.4
23	Keats, Carly	29	208	7.2
1	Stotjin, Phoenix	20	142	7.1
22	Ojenuwa, Vera	31	211	6.8
34	Lawrence, Jenna	31	182	5.9
25	Galea, Danika	28	106	3.8
20	Johnson, Karley	29	78	2.7
10	Sánchez Cerqueira, Cristina	29	64	2.2
15	Bates, Jada	28	50	1.8
16	Paananen, Pinja	26	40	1.5
44	Archer, Maryn	18	16	0.9

Field Goal Percentage

##	Player	FG	Att	Pct
25	Galea, Danika	45	89	.506
22	Ojenuwa, Vera	81	181	.448
2	Smith, Kiki	96	225	.427
3	Higginbottom, Izzy	236	554	.426
20	Johnson, Karley	27	71	.380
23	Keats, Carly	76	220	.345
34	Lawrence, Jenna	65	193	.337
15	Bates, Jada	17	52	.327
16	Paananen, Pinja	13	40	.325
1	Stotjin, Phoenix	50	155	.323
10	Sánchez Cerqueira, Cristina	21	76	.276
44	Archer, Maryn	3	16	.188

Field Goal Attempts

##	Player	G	Att	Att/G
3	Higginbottom, Izzy	31	554	17.9
2	Smith, Kiki	26	225	8.7
23	Keats, Carly	29	220	7.6
34	Lawrence, Jenna	31	193	6.2
22	Ojenuwa, Vera	31	181	5.8

Field Goals Made

##	Player	G	Made	Made/G
3	Higginbottom, Izzy	31	236	7.6
2	Smith, Kiki	26	96	3.7
22	Ojenuwa, Vera	31	81	2.6
23	Keats, Carly	29	76	2.6
34	Lawrence, Jenna	31	65	2.1

3-Point FG Percentage

##	Player	3FG	Att	Pct
44	Archer, Maryn	1	1	1.000
2	Smith, Kiki	57	139	.410
15	Bates, Jada	11	32	.344
22	Ojenuwa, Vera	7	21	.333
3	Higginbottom, Izzy	35	106	.330
23	Keats, Carly	41	138	.297
1	Stotjin, Phoenix	23	87	.264
10	Sánchez Cerqueira, Cristina	8	31	.258
34	Lawrence, Jenna	34	136	.250
16	Paananen, Pinja	7	28	.250
25	Galea, Danika	3	17	.176
20	Johnson, Karley	3	19	.158

3-Point FG Attempts

##	Player	G	Att	Att/G
2	Smith, Kiki	26	139	5.3
23	Keats, Carly	29	138	4.8
34	Lawrence, Jenna	31	136	4.4
3	Higginbottom, Izzy	31	106	3.4
1	Stotjin, Phoenix	20	87	4.4

3-Point FG Made

##	Player	G	Made	Made/G
2	Smith, Kiki	26	57	2.2
23	Keats, Carly	29	41	1.4
3	Higginbottom, Izzy	31	35	1.1
34	Lawrence, Jenna	31	34	1.1
1	Stotjin, Phoenix	20	23	1.2



Category Leaders

Free Throw Percentage

##	Player	Made	Att	Pct
23	Keats, Carly	15	16	.938
3	Higginbottom, Izzy	235	260	.904
34	Lawrence, Jenna	18	21	.857
16	Paananen, Pinja	7	9	.778
2	Smith, Kiki	21	29	.724
25	Galea, Danika	13	18	.722
20	Johnson, Karley	21	33	.636
22	Ojenuwa, Vera	42	68	.618
44	Archer, Maryn	9	16	.563
1	Stotjin, Phoenix	19	36	.528
10	Sánchez Cerqueira, Cristina	14	29	.483
15	Bates, Jada	5	14	.357

Rebounds

##	Player	G	Reb	Reb/G
22	Ojenuwa, Vera	31	198	6.4
34	Lawrence, Jenna	31	151	4.9
3	Higginbottom, Izzy	31	141	4.5
10	Sánchez Cerqueira, Cristina	29	120	4.1
20	Johnson, Karley	29	88	3.0

Rebounds Average

##	Player	G	Reb	Reb/G
22	Ojenuwa, Vera	31	198	6.4
34	Lawrence, Jenna	31	151	4.9
3	Higginbottom, Izzy	31	141	4.5
10	Sánchez Cerqueira, Cristina	29	120	4.1
20	Johnson, Karley	29	88	3.0

Offensive Rebounds

##	Player	G	OReb	OReb/G
22	Ojenuwa, Vera	31	71	2.3
34	Lawrence, Jenna	31	30	1.0
25	Galea, Danika	28	28	1.0
20	Johnson, Karley	29	25	0.9
10	Sánchez Cerqueira, Cristina	29	21	0.7

Defensive Rebounds

##	Player	G	DReb	DReb/G
22	Ojenuwa, Vera	31	127	4.1
3	Higginbottom, Izzy	31	126	4.1
34	Lawrence, Jenna	31	121	3.9
10	Sánchez Cerqueira, Cristina	29	99	3.4
20	Johnson, Karley	29	63	2.2

Fouls

##	Player	G	PF	PF/G
22	Ojenuwa, Vera	31	100	3.2
25	Galea, Danika	28	52	1.9
34	Lawrence, Jenna	31	47	1.5
3	Higginbottom, Izzy	31	44	1.4
10	Sánchez Cerqueira, Cristina	29	42	1.4

Foul Outs

##	Player	G	FO
22	Ojenuwa, Vera	31	7
25	Galea, Danika	28	3
3	Higginbottom, Izzy	31	1
34	Lawrence, Jenna	31	1
10	Sánchez Cerqueira, Cristina	29	1

Free Throw Attempts

##	Player	G	Att	Att/G
3	Higginbottom, Izzy	31	260	8.4
22	Ojenuwa, Vera	31	68	2.2
1	Stotjin, Phoenix	20	36	1.8
20	Johnson, Karley	29	33	1.1
2	Smith, Kiki	26	29	1.1

Free Throws Made

##	Player	G	Made	Made/G
3	Higginbottom, Izzy	31	235	7.6
22	Ojenuwa, Vera	31	42	1.4
2	Smith, Kiki	26	21	0.8
20	Johnson, Karley	29	21	0.7
1	Stotjin, Phoenix	20	19	1.0

Assists

##	Player	G	Ast	Ast/G
3	Higginbottom, Izzy	31	115	3.7
2	Smith, Kiki	26	53	2.0
1	Stotjin, Phoenix	20	41	2.1
23	Keats, Carly	29	18	0.6
20	Johnson, Karley	29	17	0.6

Steals

##	Player	G	Stl	Stl/G
3	Higginbottom, Izzy	31	37	1.2
22	Ojenuwa, Vera	31	21	0.7
20	Johnson, Karley	29	20	0.7
34	Lawrence, Jenna	31	19	0.6
2	Smith, Kiki	26	16	0.6

Blocked Shots

##	Player	G	Blk	Blk/G
34	Lawrence, Jenna	31	34	1.1
22	Ojenuwa, Vera	31	21	0.7
25	Galea, Danika	28	10	0.4
3	Higginbottom, Izzy	31	7	0.2
10	Sánchez Cerqueira, Cristina	29	7	0.2

Minutes

##	Player	G	Min	Min/G
3	Higginbottom, Izzy	31	1076	34:42
2	Smith, Kiki	26	707	27:12
22	Ojenuwa, Vera	31	690	22:16
34	Lawrence, Jenna	31	690	22:15
23	Keats, Carly	29	613	21:08

Turnovers

##	Player	G	TO	TO/G
3	Higginbottom, Izzy	31	117	3.8
22	Ojenuwa, Vera	31	55	1.8
2	Smith, Kiki	26	54	2.1
1	Stotjin, Phoenix	20	53	2.7
10	Sánchez Cerqueira, Cristina	29	41	1.4



Player Highs Analysis

Arkansas - Individual Game Highs

POINTS	40		Izzy Higginbottom vs Florida (02/03/2025)
	38		Izzy Higginbottom vs Boston College (12/05/2024)
	36		Izzy Higginbottom at Auburn (01/09/2025)
	33		Izzy Higginbottom vs Texas A&M (01/30/2025)
	32		Izzy Higginbottom vs Missouri (02/27/2025)
	32		Izzy Higginbottom at Kentucky (01/26/2025)
FIELD GOALS MADE	14		Izzy Higginbottom vs Boston College (12/05/2024)
	13		Izzy Higginbottom at Auburn (01/09/2025)
FIELD GOAL ATTEMPTS	29		Izzy Higginbottom at Georgia (02/09/2025)
	27		Izzy Higginbottom vs Missouri (02/27/2025)
FIELD GOAL PERCENTAGE (min 5 made)	1.000	(5-5)	Danika Galea vs Troy (N) (12/19/2024)
	.889	(8-9)	Kiki Smith vs East Texas A&M (11/08/2024)
3 PT FG MADE	5		Phoenix Stotjin at Texas A&M (03/02/2025)
	5		Carly Keats vs Southeast Mo. St. (12/08/2024)
	5		Jenna Lawrence vs Bowling Green (N) (11/30/2024)
3 PT FG ATTEMPTS	12		Kiki Smith at Little Rock (11/11/2024)
	11		Carly Keats vs LSU (01/02/2025)
3 PT FG PERCENTAGE (min 2 made)	1.000	(2-2)	Vera Ojenuwa vs Oklahoma (02/23/2025)
	1.000	(2-2)	Jada Bates at South Carolina (02/20/2025)
	1.000	(2-2)	Pinja Paananen vs UT Arlington (11/14/2024)
FREE THROWS MADE	19		Izzy Higginbottom at Texas A&M (03/02/2025)
	13		Izzy Higginbottom at Mississippi St. (02/06/2025)
	13		Izzy Higginbottom vs Florida (02/03/2025)
	13		Izzy Higginbottom vs Oral Roberts (11/21/2024)
FREE THROW ATTEMPTS	21		Izzy Higginbottom at Texas A&M (03/02/2025)
	15		Izzy Higginbottom vs Oral Roberts (11/21/2024)
FREE THROW PERCENTAGE (min 3 made)	1.000	(13-13)	Izzy Higginbottom at Mississippi St. (02/06/2025)
	1.000	(13-13)	Izzy Higginbottom vs Florida (02/03/2025)
	1.000	(12-12)	Izzy Higginbottom vs Bowling Green (N) (11/30/2024)
	1.000	(11-11)	Izzy Higginbottom at Little Rock (11/11/2024)
	1.000	(8-8)	Izzy Higginbottom at Texas (01/05/2025)
	1.000	(7-7)	Izzy Higginbottom vs Liberty (N) (12/18/2024)
	1.000	(6-6)	Izzy Higginbottom vs LSU (01/02/2025)
	1.000	(5-5)	Izzy Higginbottom vs Oklahoma (02/23/2025)
	1.000	(5-5)	Izzy Higginbottom vs Southeast Mo. St. (12/08/2024)
	1.000	(4-4)	Izzy Higginbottom vs Ole Miss (02/13/2025)
	1.000	(4-4)	Carly Keats at Texas (01/05/2025)
	1.000	(4-4)	Izzy Higginbottom at UCLA (11/17/2024)
	1.000	(4-4)	Danika Galea vs East Texas A&M (11/08/2024)
	1.000	(4-4)	Izzy Higginbottom vs East Texas A&M (11/08/2024)
	1.000	(3-3)	Kiki Smith vs Alabama (01/19/2025)
	1.000	(3-3)	Izzy Higginbottom vs Troy (N) (12/19/2024)
1.000	(3-3)	Karley Johnson vs Southeast Mo. St. (12/08/2024)	
1.000	(3-3)	Jenna Lawrence vs Fairfield (11/04/2024)	
REBOUNDS	14		Vera Ojenuwa vs Southeast Mo. St. (12/08/2024)
	12		Jenna Lawrence vs UT Arlington (11/14/2024)
ASSISTS	9		Izzy Higginbottom vs Bowling Green (N) (11/30/2024)
	7		Izzy Higginbottom vs Texas A&M (01/30/2025)
	7		Izzy Higginbottom vs Troy (N) (12/19/2024)



Opponent Player Highs Analysis

Opponent - Individual Game Highs

POINTS	30		Raegan Beers vs Oklahoma (02/23/2025)
	25		Bailey Maupin vs Texas Tech (12/15/2024)
	25		Paige Kohler vs Bowling Green (N) (11/30/2024)
	24		Mikayla Blakes at Vanderbilt (01/23/2025)
	23		Zay Dyer vs Troy (N) (12/19/2024)
	23		Jalei Oglesby vs Oral Roberts (11/21/2024)
	23		Taleyah Jones vs Oral Roberts (11/21/2024)
	23		Timea Gardiner at UCLA (11/17/2024)
FIELD GOALS MADE	12		Raegan Beers vs Oklahoma (02/23/2025)
	11		Zay Dyer vs Troy (N) (12/19/2024)
FIELD GOAL ATTEMPTS	28		Zay Dyer vs Troy (N) (12/19/2024)
	25		Faith Lee at Little Rock (11/11/2024)
FIELD GOAL PERCENTAGE (min 5 made)	.857	(12-14)	Raegan Beers vs Oklahoma (02/23/2025)
	.857	(6-7)	Me'Arah O'Neal vs Florida (02/03/2025)
3 PT FG MADE	7		Paige Kohler vs Bowling Green (N) (11/30/2024)
	7		Timea Gardiner at UCLA (11/17/2024)
3 PT FG ATTEMPTS	12		Timea Gardiner at UCLA (11/17/2024)
	9		Kinley Fisher vs Central Ark. (12/29/2024)
	9		Bree Stephens vs Central Ark. (12/29/2024)
	9		Paige Kohler vs Bowling Green (N) (11/30/2024)
	9		Taleyah Jones vs Oral Roberts (11/21/2024)
	9		Emily Robinson vs Oral Roberts (11/21/2024)
3 PT FG PERCENTAGE (min 2 made)	1.000	(3-3)	Raegan Beers vs Oklahoma (02/23/2025)
	1.000	(3-3)	Zee Spearman vs Tennessee (01/12/2025)
	1.000	(2-2)	Kenza Salgues vs Florida (02/03/2025)
	1.000	(2-2)	Daviane Mindoudi vs Florida (02/03/2025)
	1.000	(2-2)	Madison Greene at Vanderbilt (01/23/2025)
	1.000	(2-2)	Brianna Jackson vs Troy (N) (12/19/2024)
	1.000	(2-2)	Jillian Huerter vs Fairfield (11/04/2024)
FREE THROWS MADE	9		Bailey Maupin vs Texas Tech (12/15/2024)
	8		DeYona Gaston at Auburn (01/09/2025)
	8		Jasmine Shavers vs Texas Tech (12/15/2024)
FREE THROW ATTEMPTS	12		Bailey Maupin vs Texas Tech (12/15/2024)
	10		Laniah Randle vs Missouri (02/27/2025)
	10		DeYona Gaston at Auburn (01/09/2025)
	10		Kyla Oldacre at Texas (01/05/2025)
FREE THROW PERCENTAGE (min 3 made)	1.000	(8-8)	Jasmine Shavers vs Texas Tech (12/15/2024)
	1.000	(5-5)	Jordan Hodges vs Liberty (N) (12/18/2024)
	1.000	(5-5)	Jalei Oglesby vs Oral Roberts (11/21/2024)
	1.000	(5-5)	Taleyah Jones vs Oral Roberts (11/21/2024)
	1.000	(4-4)	Grace Slaughter vs Missouri (02/27/2025)
	1.000	(4-4)	Chloe Kitts at South Carolina (02/20/2025)
	1.000	(4-4)	Trinity Turner at Georgia (02/09/2025)
	1.000	(4-4)	Georgia Amooore at Kentucky (01/26/2025)
	1.000	(4-4)	Mikayla Blakes at Vanderbilt (01/23/2025)
	1.000	(4-4)	Flau'Jae Johnson vs LSU (01/02/2025)
	1.000	(4-4)	Jadyn Wooten vs Oklahoma St. (N) (11/29/2024)
	1.000	(4-4)	Jasmine Payne vs East Texas A&M (11/08/2024)
	1.000	(3-3)	Ra Shaya Kyle vs Florida (02/03/2025)
	1.000	(3-3)	Me'Arah O'Neal vs Florida (02/03/2025)
	1.000	(3-3)	Jewel Spear vs Tennessee (01/12/2025)
	1.000	(3-3)	Mikaylah Williams vs LSU (01/02/2025)
	1.000	(3-3)	Jalynn Bristow vs Texas Tech (12/15/2024)
	1.000	(3-3)	Angela Dugalić at UCLA (11/17/2024)



Team Game-by-Game

Opponent	Date	Score	L	Total		3-Pointers		Free throws		Rebounds				PF	A	TO	BLK	STL	PTS	AVG
				FG-FGA	PCT	3FG-3FGA	PCT	FT-FTA	PCT	OFF	DEF	TOT	AVG							
Fairfield	11/04/2024	67-81	L	23-60	.383	9-27	.333	12-14	.857	8	23	31	31.0	3	10	14	4	2	67	67.0
East Texas A&M	11/08/2024	84-65	W	27-57	.474	9-24	.375	21-26	.808	6	40	46	38.5	10	9	16	1	2	84	75.5
at Little Rock	11/11/2024	71-60	Wot	24-63	.381	9-29	.310	14-18	.778	7	34	41	39.3	22	9	16	3	2	71	74.0
UT Arlington	11/14/2024	93-65	W	34-74	.459	13-25	.520	12-19	.632	16	40	56	43.5	15	12	14	6	2	93	78.8
at UCLA	11/17/2024	52-101	L	18-63	.286	7-39	.179	9-11	.818	7	20	27	40.2	20	11	18	3	2	52	73.4
Oral Roberts	11/21/2024	73-94	L	24-65	.369	8-22	.364	17-22	.773	12	24	36	39.5	14	11	16	3	6	73	73.3
Arkansas St.	11/24/2024	76-60	W	30-67	.448	7-27	.259	9-12	.750	11	37	48	40.7	11	16	16	7	9	76	73.7
vs Oklahoma St.	11/29/2024	56-70	L	19-59	.322	4-19	.211	14-20	.700	8	26	34	39.9	13	6	14	3	3	56	71.5
vs Bowling Green	11/30/2024	78-79	L	27-56	.482	11-25	.440	13-14	.929	3	20	23	38.0	10	15	8	10	4	78	72.2
Boston College	12/05/2024	75-64	W	27-56	.482	3-11	.273	18-23	.783	10	23	33	37.5	14	9	12	4	8	75	72.5
Southeast Mo. St.	12/08/2024	84-45	W	28-66	.424	7-25	.280	21-24	.875	14	40	54	39.0	7	12	13	5	8	84	73.5
Texas Tech	12/15/2024	72-75	L	24-53	.453	7-21	.333	17-22	.773	12	16	28	38.1	15	6	19	0	5	72	73.4
vs Liberty	12/18/2024	61-75	L	22-55	.400	7-26	.269	10-11	.909	9	21	30	37.5	12	7	14	2	7	61	72.5
vs Troy	12/19/2024	69-77	L	25-73	.342	9-33	.273	10-14	.714	12	32	44	37.9	13	14	13	3	6	69	72.2
Central Ark.	12/29/2024	87-70	W	30-64	.469	11-27	.407	16-25	.640	13	34	47	38.5	13	18	12	4	8	87	73.2
LSU	01/02/2025	64-98	L	24-67	.358	8-26	.308	8-8	1.000	15	17	32	38.1	15	8	21	2	9	64	72.6
at Texas	01/05/2025	56-90	L	18-45	.400	3-12	.250	17-22	.773	7	20	27	37.5	25	6	25	0	5	56	71.6
at Auburn	01/09/2025	59-58	W	22-49	.449	5-20	.250	10-16	.625	6	19	25	36.8	19	4	21	0	7	59	70.9
Tennessee	01/12/2025	63-93	L	20-49	.408	5-21	.238	18-25	.720	6	20	26	36.2	14	7	22	3	5	63	70.5
Alabama	01/19/2025	62-94	L	21-61	.344	7-19	.368	13-18	.722	11	18	29	35.9	11	8	11	4	3	62	70.1
at Vanderbilt	01/23/2025	60-101	L	24-60	.400	8-24	.333	4-7	.571	12	21	33	35.7	8	8	26	1	5	60	69.6
at Kentucky	01/26/2025	69-89	L	22-61	.361	12-29	.414	13-16	.813	4	26	30	35.5	13	11	14	4	4	69	69.6
Texas A&M	01/30/2025	72-51	W	25-52	.481	7-21	.333	15-19	.789	6	35	41	35.7	16	10	16	5	3	72	69.7
Florida	02/03/2025	78-108	L	27-76	.355	7-30	.233	17-25	.680	14	21	35	35.7	13	10	7	3	7	78	70.0
at Mississippi St.	02/06/2025	55-78	L	19-50	.380	2-14	.143	15-20	.750	7	22	29	35.4	14	4	23	1	12	55	69.4
at Georgia	02/09/2025	61-62	L	21-65	.323	5-16	.313	14-20	.700	17	25	42	35.7	19	10	12	6	5	61	69.1
Ole Miss	02/13/2025	50-89	L	21-64	.328	2-22	.091	6-9	.667	7	22	29	35.4	6	9	10	5	2	50	68.4
at South Carolina	02/20/2025	55-95	L	20-62	.323	11-35	.314	4-5	.800	6	22	28	35.1	15	13	15	4	4	55	67.9
Oklahoma	02/23/2025	54-94	L	18-65	.277	8-30	.267	10-15	.667	8	32	40	35.3	11	8	20	4	3	54	67.4
Missouri	02/27/2025	73-75	L	25-67	.373	6-31	.194	17-21	.810	11	27	38	35.4	14	10	6	3	6	73	67.6
at Texas A&M	03/02/2025	80-71	W	21-51	.412	13-27	.481	25-28	.893	3	29	32	35.3	18	13	14	4	8	80	68.0
Total		2109		730-1875	.389	230-757	.304	419-549	.763	288	806	1094	35.3	423	304	478	107	162	2109	68.0
Opponents		2427		933-2200	.424	246-702	.350	315-445	.708	496	873	1369	44.2	534	512	410	158	253	2427	78.3

Arkansas Averages

Games Played	Points/game	FG Pct	3FG Pct	FT Pct	Rebounds/game	Assists/game	Turnovers/game	Assist/Turnover ratio	Steals/game	Blocks/game
31	68.0	38.9	30.4	76.3	35.3	9.8	15.4	0.6	5.2	3.5



Opponent Game-by-Game

Opponent	Date	Score		Total		3-Pointers		Free throws		Rebounds											
				FG-FGA	PCT	3FG-3FGA	PCT	FT-FTA	PCT	OFF	DEF	TOT	AVG	PF	A	TO	BLK	STL	PTS	AVG	
Fairfield	11/04/2024	67-81	L	33-68	.485	13-30	.433	2-2	1.000	11	29	40	40.0	17	21	12	4	8	81	81.0	
East Texas A&M	11/08/2024	84-65	W	25-80	.313	8-29	.276	7-9	.778	15	25	40	40.0	20	9	9	4	6	65	73.0	
at Little Rock	11/11/2024	71-60	Wot	24-74	.324	3-10	.300	9-22	.409	16	28	44	41.3	21	8	9	4	4	60	68.7	
UT Arlington	11/14/2024	93-65	W	28-75	.373	1-10	.100	8-17	.471	11	28	39	40.8	21	15	10	9	7	65	67.8	
at UCLA	11/17/2024	52-101	L	37-84	.440	10-34	.294	17-22	.773	29	36	65	45.6	17	22	11	5	8	101	74.4	
Oral Roberts	11/21/2024	73-94	L	34-70	.486	10-27	.370	16-18	.889	11	30	41	44.8	19	17	15	8	8	94	77.7	
Arkansas St.	11/24/2024	76-60	W	23-74	.311	9-35	.257	5-7	.714	14	28	42	44.4	14	12	14	5	9	60	75.1	
vs Oklahoma St.	11/29/2024	56-70	L	30-73	.411	2-18	.111	8-10	.800	17	31	48	44.9	17	10	10	11	8	70	74.5	
vs Bowling Green	11/30/2024	78-79	L	32-68	.471	10-21	.476	5-7	.714	16	25	41	44.4	11	19	13	2	1	79	75.0	
Boston College	12/05/2024	75-64	W	27-73	.370	6-27	.222	4-7	.571	24	20	44	44.4	21	15	17	5	9	64	73.9	
Southeast Mo. St.	12/08/2024	84-45	W	17-63	.270	10-26	.385	1-2	.500	6	23	29	43.0	20	12	18	8	8	45	71.3	
Texas Tech	12/15/2024	72-75	L	26-54	.481	2-11	.182	21-25	.840	15	18	33	42.2	21	13	18	5	11	75	71.6	
vs Liberty	12/18/2024	61-75	L	28-65	.431	4-15	.267	15-18	.833	16	24	40	42.0	10	12	13	3	7	75	71.8	
vs Troy	12/19/2024	69-77	L	32-82	.390	6-19	.316	7-10	.700	20	37	57	43.1	15	15	11	5	11	77	72.2	
Central Ark.	12/29/2024	87-70	W	24-70	.343	13-35	.371	9-15	.600	16	24	40	42.9	20	14	16	1	4	70	72.1	
LSU	01/02/2025	64-98	L	39-78	.500	9-23	.391	11-13	.846	21	27	48	43.2	11	21	17	6	14	98	73.7	
at Texas	01/05/2025	56-90	L	33-75	.440	5-15	.333	19-26	.731	25	21	46	43.4	16	20	12	5	11	90	74.6	
at Auburn	01/09/2025	59-58	W	19-47	.404	1-11	.091	19-27	.704	11	24	35	42.9	15	13	22	3	10	58	73.7	
Tennessee	01/12/2025	63-93	L	35-77	.455	12-34	.353	11-17	.647	21	22	43	42.9	27	20	13	3	15	93	74.7	
Alabama	01/19/2025	62-94	L	35-70	.500	11-22	.500	13-17	.765	17	29	46	43.1	16	19	9	6	5	94	75.7	
at Vanderbilt	01/23/2025	60-101	L	39-69	.565	13-25	.520	10-12	.833	11	24	35	42.7	12	21	14	4	17	101	76.9	
at Kentucky	01/26/2025	69-89	L	30-63	.476	13-28	.464	16-22	.727	10	34	44	42.7	17	17	11	10	8	89	77.5	
Texas A&M	01/30/2025	72-51	W	18-65	.277	5-22	.227	10-15	.667	14	23	37	42.5	20	10	13	2	6	51	76.3	
Florida	02/03/2025	78-108	L	43-76	.566	13-22	.591	9-11	.818	12	40	52	42.9	19	22	12	6	2	108	77.6	
at Mississippi St.	02/06/2025	55-78	L	33-70	.471	9-21	.429	3-8	.375	17	26	43	42.9	19	18	18	6	14	78	77.6	
at Georgia	02/09/2025	61-62	L	24-59	.407	3-11	.273	11-20	.550	15	28	43	42.9	19	12	17	8	5	62	77.0	
Ole Miss	02/13/2025	50-89	L	37-75	.493	10-21	.476	5-9	.556	16	37	53	43.3	12	22	7	6	8	89	77.5	
at South Carolina	02/20/2025	55-95	L	37-82	.451	8-18	.444	13-15	.867	23	34	57	43.8	11	27	8	5	8	95	78.1	
Oklahoma	02/23/2025	54-94	L	37-82	.451	12-36	.333	8-10	.800	14	40	54	44.1	18	27	14	3	10	94	78.7	
Missouri	02/27/2025	73-75	L	26-66	.394	8-25	.320	15-20	.750	15	31	46	44.2	18	14	12	4	3	75	78.5	
at Texas A&M	03/02/2025	80-71	W	28-73	.384	7-21	.333	8-12	.667	17	27	44	44.2	20	15	15	2	8	71	78.3	
Total		2427		933-2200	.424	246-702	.350	315-445	.708	496	873	1369	44.2	534	512	410	158	253	2427	78.3	
Arkansas		2109		730-1875	.389	230-757	.304	419-549	.763	288	806	1094	35.3	423	304	478	107	162	2109	68.0	

Opponents Averages

Games Played	Points/game	FG Pct	3FG Pct	FT Pct	Rebounds/game	Assists/game	Turnovers/game	Assist/Turnover ratio	Steals/game	Blocks/game
31	78.3	42.4	35.0	70.8	44.2	16.5	13.2	1.2	8.2	5.1



Team Ranking Summary

Statistic	National Rank	Conference Rank	Value	National Leader	Value	Conference Leader	Value
Assist/Turnover Ratio (353 ranked)	295	16	0.64	UConn	1.97	South Carolina	1.39
Assists Per Game (353 ranked)	333	16	9.8	Oklahoma	21.9	Oklahoma	21.9
Bench Points Per Game (353 ranked)	236	13	15.8	South Carolina	41.7	South Carolina	41.7
Blocks Per Game (353 ranked)	109	11	3.5	Southern California	7.1	Kentucky	7.0
Field Goal Percentage (353 ranked)	249	16	38.9	UConn	51.2	Oklahoma	47.1
Field Goal Percentage Defense (353 ranked)	274	13	42.4	Middle Tenn.	32.2	South Carolina	35.0
Fouls Per Game (353 ranked)	19	2	13.6	Lafayette	12.0	South Carolina	13.6
Free Throw Attempts Per Game (353 ranked)	106	8	17.71	Jacksonville	25.30	LSU	22.23
Free Throw Percentage (353 ranked)	38	3	76.3	UC Santa Barbara	81.9	Vanderbilt	78.3
Free Throws Made Per Game (353 ranked)	52	6	13.52	Jacksonville	17.60	Texas	16.77
Rebound Margin (353 ranked)	344	16	-8.9	UCLA	13.5	Oklahoma	12.8
Rebounds (Defensive) Per Game (353 ranked)	108	8	26.0	Troy	32.8	Oklahoma	32.6
Rebounds (Offensive) Per Game (353 ranked)	296	16	9.3	Grambling	18.6	LSU	17.4
Rebounds Per Game (349 ranked)	224	15	35.29	Troy	49.00	Oklahoma	47.03
Scoring Defense (353 ranked)	350	16	78.3	Middle Tenn.	51.6	Texas	55.6
Scoring Margin (349 ranked)	312	16	-10.3	UConn	29.2	Texas	25.4
Scoring Offense (353 ranked)	119	14	68.0	Florida St.	88.2	Tennessee	87.9
Steals Per Game (353 ranked)	344	16	5.2	Montana St.	14.6	Vanderbilt	12.8
Three Point Attempts Per Game (353 ranked)	41	4	24.4	Arkansas St.	32.4	Tennessee	30.8
Three Point Percentage (353 ranked)	212	14	30.4	Notre Dame	40.3	Alabama	39.1
Three Point Percentage Defense (353 ranked)	337	16	35.0	James Madison	25.3	Kentucky	26.2
Three Pointers Per Game (353 ranked)	72	5	7.4	Arkansas St.	10.6	Tennessee	10.2
Turnover Margin (353 ranked)	277	14	-2.19	Col. of Charleston	10.37	Texas	8.42
Turnovers Forced Per Game (353 ranked)	321	15	13.23	Longwood	24.87	Tennessee	22.28
Turnovers Per Game (353 ranked)	142	9	15.4	Colorado St.	8.9	South Carolina	12.0
Winning Percentage (353 ranked)	290	16	32.3	Texas	93.5	Texas	93.5



Individual Ranking Summary

Statistic	Player	National Rank	Conference Rank	Value	National Leader	Value	Conference Leader	Value
Assist/Turnover Ratio (249 ranked)					Paige Bueckers, UConn	3.69	Rori Harmon, Texas	3.15
Assists (149 ranked)	Izzy Higginbottom	108	8	115	Serena Sundell, Kansas St.	220	Georgia Amooore, Kentucky	192
Assists Per Game (250 ranked)	Izzy Higginbottom	152	11	3.7	Katie Dinnebier, Drake	7.5	Georgia Amooore, Kentucky	6.9
Blocks (138 ranked)	Jenna Lawrence	118	8	34	Anastasiia Boldyreva, Middle Tenn.	106	Clara Strack, Kentucky	70
Blocks Per Game (250 ranked)	Jenna Lawrence	157	9	1.10	Anastasiia Boldyreva, Middle Tenn.	3.66	Clara Strack, Kentucky	2.50
Double Doubles (49 ranked)					Aneesah Morrow, LSU	26	Aneesah Morrow, LSU	26
Field Goal Attempts (149 ranked)	Izzy Higginbottom	1	1	554	Izzy Higginbottom, Arkansas	554	Izzy Higginbottom, Arkansas	554
Field Goal Percentage (250 ranked)	Izzy Higginbottom	198	20	42.6	Raegan Beers, Oklahoma	68.4	Raegan Beers, Oklahoma	68.4
Field Goals (147 ranked)	Izzy Higginbottom	6	3	236	Audi Crooks, Iowa St.	285	Khamil Pierre, Vanderbilt	252
Free Throw Attempts (149 ranked)	Izzy Higginbottom	1	1	260	Izzy Higginbottom, Arkansas	260	Izzy Higginbottom, Arkansas	260
Free Throw Percentage (250 ranked)	Izzy Higginbottom	10	1	90.4	Teresa Seppala, Siena	95.3	Izzy Higginbottom, Arkansas	90.4
Free Throws (145 ranked)	Izzy Higginbottom	1	1	235	Izzy Higginbottom, Arkansas	235	Izzy Higginbottom, Arkansas	235
Minutes Per Game (150 ranked)	Izzy Higginbottom	64	2	34.71	Sigrun Olafsdottir, Chattanooga	38.32	Georgia Amooore, Kentucky	36.22
Points (200 ranked)	Izzy Higginbottom	1	1	742	Izzy Higginbottom, Arkansas	742	Izzy Higginbottom, Arkansas	742
Points Per Game (250 ranked)	Izzy Higginbottom	5	1	23.9	Ta'Niya Latson, Florida St.	25.4	Izzy Higginbottom, Arkansas	23.9
Rebounds (150 ranked)					Aneesah Morrow, LSU	420	Aneesah Morrow, LSU	420
Rebounds (Defensive) Per Game (30 ranked)					Fatmata Janneh, Saint Peter's	9.4	Aneesah Morrow, LSU	8.7
Rebounds (Offensive) Per Game (30 ranked)					Aneesah Morrow, LSU	5.3	Aneesah Morrow, LSU	5.3
Rebounds Per Game (250 ranked)					Aneesah Morrow, LSU	14.0	Aneesah Morrow, LSU	14.0
Steals (142 ranked)					Kiki McIntyre, Longwood	121	Talaysia Cooper, Tennessee	88
Steals Per Game (249 ranked)					Kiki McIntyre, Longwood	4.03	Talaysia Cooper, Tennessee	3.03
Three Point Attempts (149 ranked)					Ioanna Krimili, California	245	Aaliyah Nye, Alabama	223
Three Point Percentage (169 ranked)	Kiki Smith	36	5	41.0	Lauren Ross, Purdue Fort Wayne	47.7	Aaliyah Nye, Alabama	45.7
Three Pointers (149 ranked)	Kiki Smith	149	11	57	Madison Conner, TCU	108	Aaliyah Nye, Alabama	102
Three Pointers Per Game (248 ranked)	Kiki Smith	104	8	2.19	Alyssa Durazo-Frescas, Grand Canyon	4.04	Aaliyah Nye, Alabama	3.40
Triple Doubles (5 ranked)					Olivia Miles, Notre Dame	3	Liv McGill, Florida Chloe Kitts, South Carolina Payton Verhulst, Oklahoma	1 1 1





**Arkansas Women's Basketball
Individual Career Summaries
All games**

ARCHER, Maryn

				Field Goals		3-Point		F-Throws		Rebounds				Scoring						
SEASON	TEAM	GP-GS	MIN/AVG	FG-FGA	FG%	3FG-3FGA	3FG%	FT-FTA	FT%	OFF	DEF	TOT	AVG	PF-FO	A	TO	BLK	STL	PTS	AVG
2024-25	AR	18-0	62/3.4	3-16	.188	1-1	1.000	9-16	.563	1	5	6	0.3	5-0	1	6	0	2	16	0.9
TOTAL		18-0	62/3.4	3-16	.188	1-1	1.000	9-16	.563	1	5	6	0.3	5-0	1	6	0	2	16	0.9

Single Game Highs

Statistic	Value	
Points	7	vs Southeast Mo. St. 12/08/24
Rebounds	2	vs Oral Roberts 11/21/24
Assists	1	vs Southeast Mo. St. 12/08/24
Steals	1	vs Florida 02/03/25, at Mississippi St. 02/06/25
FG Made	2	vs Southeast Mo. St. 12/08/24
FG Attempts	4	vs Southeast Mo. St. 12/08/24
3FG Made	1	at Mississippi St. 02/06/25
3FG Attempts	1	at Mississippi St. 02/06/25
FT Made	3	vs Southeast Mo. St. 12/08/24, at Kentucky 01/26/25
FT Attempts	4	vs Southeast Mo. St. 12/08/24, at Kentucky 01/26/25

BATES, Jada

				Field Goals		3-Point		F-Throws		Rebounds				Scoring						
SEASON	TEAM	GP-GS	MIN/AVG	FG-FGA	FG%	3FG-3FGA	3FG%	FT-FTA	FT%	OFF	DEF	TOT	AVG	PF-FO	A	TO	BLK	STL	PTS	AVG
2024-25	AR	28-0	334/11.9	17-52	.327	11-32	.344	5-14	.357	4	23	27	1.0	11-0	8	15	6	4	50	1.8
TOTAL		28-0	334/11.9	17-52	.327	11-32	.344	5-14	.357	4	23	27	1.0	11-0	8	15	6	4	50	1.8

Single Game Highs

Statistic	Value	
Points	9	at UCLA 11/17/24
Rebounds	3	vs Fairfield 11/04/24, at UCLA 11/17/24, at Little Rock 11/11/24
Assists	2	vs Boston College 12/05/24, vs Fairfield 11/04/24
Steals	1	4 times
Blocks	1	6 times
FG Made	3	at UCLA 11/17/24
FG Attempts	7	at UCLA 11/17/24
3FG Made	3	at UCLA 11/17/24
3FG Attempts	7	at UCLA 11/17/24
FT Made	3	vs Texas Tech 12/15/24
FT Attempts	4	vs Texas Tech 12/15/24



**Arkansas Women's Basketball
Individual Career Summaries
All games**

GALEA, Danika

				Field Goals		3-Point		F-Throws		Rebounds				Scoring						
SEASON	TEAM	GP-GS	MIN/AVG	FG-FGA	FG%	3FG-3FGA	3FG%	FT-FTA	FT%	OFF	DEF	TOT	AVG	PF-FO	A	TO	BLK	STL	PTS	AVG
2024-25	AR	28-0	376/13.4	45-89	.506	3-17	.176	13-18	.722	28	36	64	2.3	52-3	8	31	10	6	106	3.8
TOTAL		28-0	376/13.4	45-89	.506	3-17	.176	13-18	.722	28	36	64	2.3	52-3	8	31	10	6	106	3.8

Single Game Highs

Statistic	Value	
Points	10	vs Troy 12/19/24, vs Southeast Mo. St. 12/08/24, vs UT Arlington 11/14/24
Rebounds	6	at Texas A&M 03/02/25, vs UT Arlington 11/14/24
Assists	2	at Kentucky 01/26/25
Steals	1	6 times
Blocks	2	vs Texas A&M 01/30/25, at Georgia 02/09/25
FG Made	5	vs Troy 12/19/24
FG Attempts	7	vs Oklahoma 02/23/25, vs UT Arlington 11/14/24
3FG Made	2	vs Liberty 12/18/24
3FG Attempts	5	vs Liberty 12/18/24
FT Made	4	vs East Texas A&M 11/08/24
FT Attempts	4	vs East Texas A&M 11/08/24, at Mississippi St. 02/06/25

HIGGINBOTTOM, Izzy

				Field Goals		3-Point		F-Throws		Rebounds				Scoring						
SEASON	TEAM	GP-GS	MIN/AVG	FG-FGA	FG%	3FG-3FGA	3FG%	FT-FTA	FT%	OFF	DEF	TOT	AVG	PF-FO	A	TO	BLK	STL	PTS	AVG
2021-22	MO	27-0	492/18.2	56-146	.384	21-57	.368	29-31	.935	17	17	34	1.3	32-0	32	26	1	11	162	6.0
2022-23	ASU	29-25	897/30.9	163-418	.390	37-125	.296	102-112	.911	25	64	89	3.1	47-1	98	66	2	53	465	16.0
2023-24	ASU	26-25	968/37.2	183-396	.462	36-98	.367	175-192	.911	22	83	105	4.0	39-0	95	55	4	35	577	22.2
2024-25	AR	31-31	1076/34.7	236-554	.426	35-106	.330	235-260	.904	15	126	141	4.5	44-1	115	117	7	37	742	23.9
TOTAL FOR AR		31-31	1076/34.7	236-554	.426	35-106	.330	235-260	.904	15	126	141	4.5	44-1	115	117	7	37	742	23.9
TOTAL		113-81	3433/30.4	638-1514	.421	129-386	.334	541-595	.909	79	290	369	3.3	162-2	340	264	14	136	1946	17.2

Single Game Highs

Statistic	Value	
Points	40	vs Florida 02/03/25
Rebounds	10	vs Texas A&M 01/30/25
Assists	9	vs Bowling Green 11/30/24, at McNeese 11/29/22
Steals	6	at Coastal Carolina 02/02/23
Blocks	1	14 times
FG Made	14	vs Boston College 12/05/24
FG Attempts	31	at Troy 01/27/24
3FG Made	5	vs North Ala. 12/14/23
3FG Attempts	9	vs Marshall 01/28/23, vs Oklahoma 11/22/22
FT Made	19	at Texas A&M 03/02/25, vs Old Dominion 02/03/24
FT Attempts	21	at Texas A&M 03/02/25



JOHNSON, Karley

SEASON	TEAM	GP-GS	MIN/AVG	Field Goals		3-Point		F-Throws		Rebounds				Scoring						
				FG-FGA	FG%	3FG-3FGA	3FG%	FT-FTA	FT%	OFF	DEF	TOT	AVG	PF-FO	A	TO	BLK	STL	PTS	AVG
2022-23	AR	10-0	26/2.6	0-1	.000	0-0	.000	1-2	.500	1	1	2	0.2	1-0	1	0	0	3	1	0.1
2023-24	AR	19-5	339/17.8	19-53	.358	8-29	.276	17-30	.567	13	21	34	1.8	29-0	5	7	1	7	63	3.3
2024-25	AR	29-8	437/15.1	27-71	.380	3-19	.158	21-33	.636	25	63	88	3.0	39-0	17	16	3	20	78	2.7
TOTAL		58-13	803/13.8	46-125	.368	11-48	.229	39-65	.600	39	85	124	2.1	69-0	23	23	4	30	142	2.4

Single Game Highs

Statistic	Value	
Points	14	vs Kentucky 01/25/24, at Vanderbilt 01/23/25
Rebounds	10	vs UT Arlington 11/14/24
Assists	3	at Florida 02/08/24, vs Arkansas St. 11/24/24
Steals	3	vs Arkansas St. 11/24/24, at Texas A&M 03/02/25
Blocks	2	vs Bowling Green 11/30/24
FG Made	6	at Vanderbilt 01/23/25
FG Attempts	8	at Vanderbilt 01/23/25
3FG Made	2	vs Kentucky 01/25/24, at Tulsa 03/21/24
3FG Attempts	4	at Missouri 01/28/24, vs Vanderbilt 02/25/24
FT Made	4	vs Kentucky 01/25/24
FT Attempts	7	at Georgia 02/09/25

KEATS, Carly

SEASON	TEAM	GP-GS	MIN/AVG	Field Goals		3-Point		F-Throws		Rebounds				Scoring						
				FG-FGA	FG%	3FG-3FGA	3FG%	FT-FTA	FT%	OFF	DEF	TOT	AVG	PF-FO	A	TO	BLK	STL	PTS	AVG
2023-24	AR	29-10	641/22.1	64-203	.315	31-122	.254	18-23	.783	5	33	38	1.3	23-0	18	23	4	9	177	6.1
2024-25	AR	29-21	613/21.1	76-220	.345	41-138	.297	15-16	.938	1	40	41	1.4	9-0	18	32	3	6	208	7.2
TOTAL		58-31	1254/21.6	140-423	.331	72-260	.277	33-39	.846	6	73	79	1.4	32-0	36	55	7	15	385	6.6

Single Game Highs

Statistic	Value	
Points	19	vs Southeast Mo. St. 12/08/24
Rebounds	5	at UCLA 11/17/24, vs Central Ark. 12/29/24
Assists	4	vs Auburn 03/07/24
Steals	2	vs South Carolina 02/29/24, vs Kentucky 01/25/24, vs ULM 11/07/23
Blocks	2	vs UIC 12/21/23
FG Made	7	vs Georgia 01/07/24
FG Attempts	16	vs Georgia 01/07/24
3FG Made	5	vs Southeast Mo. St. 12/08/24
3FG Attempts	11	vs LSU 01/02/25
FT Made	4	vs ULM 11/07/23, at Texas 01/05/25
FT Attempts	5	vs ULM 11/07/23, vs South Carolina 02/29/24



**Arkansas Women's Basketball
Individual Career Summaries
All games**

LAWRENCE, Jenna

				Field Goals		3-Point		F-Throws		Rebounds									Scoring	
SEASON	TEAM	GP-GS	MIN/AVG	FG-FGA	FG%	3FG-3FGA	3FG%	FT-FTA	FT%	OFF	DEF	TOT	AVG	PF-FO	A	TO	BLK	STL	PTS	AVG
2023-24	AR	24-2	279/11.6	21-53	.396	13-42	.310	5-8	.625	15	46	61	2.5	25-0	5	10	10	7	60	2.5
2024-25	AR	31-20	690/22.2	65-193	.337	34-136	.250	18-21	.857	30	121	151	4.9	47-1	8	24	34	19	182	5.9
TOTAL		55-22	969/17.6	86-246	.350	47-178	.264	23-29	.793	45	167	212	3.9	72-1	13	34	44	26	242	4.4

Single Game Highs

Statistic	Value	
Points	21	vs Bowling Green 11/30/24
Rebounds	12	vs UT Arlington 11/14/24
Assists	2	at UCLA 11/17/24
Steals	3	vs Arkansas St. 11/24/24, at Texas 01/05/25
Blocks	5	vs Bowling Green 11/30/24
FG Made	8	vs Bowling Green 11/30/24
FG Attempts	14	vs Bowling Green 11/30/24
3FG Made	5	vs Bowling Green 11/30/24
3FG Attempts	10	vs East Texas A&M 11/08/24, vs Bowling Green 11/30/24
FT Made	4	vs Troy 12/19/24
FT Attempts	5	vs Troy 12/19/24

LINDSEY, Loren

				Field Goals		3-Point		F-Throws		Rebounds									Scoring	
SEASON	TEAM	GP-GS	MIN/AVG	FG-FGA	FG%	3FG-3FGA	3FG%	FT-FTA	FT%	OFF	DEF	TOT	AVG	PF-FO	A	TO	BLK	STL	PTS	AVG
2022-23	AR	9-0	17/1.9	0-0	.000	0-0	.000	0-0	.000	0	1	1	0.1	0-0	0	0	0	0	0	0.0
2023-24	AR	1-0	4/3.6	0-0	.000	0-0	.000	0-0	.000	0	0	0	0.0	0-0	1	0	0	0	0	0.0
2024-25	AR	5-0	22/4.4	0-3	.000	0-2	.000	0-0	.000	0	2	2	0.4	3-0	2	0	0	1	0	0.0
TOTAL		15-0	42/2.8	0-3	.000	0-2	.000	0-0	.000	0	3	3	0.2	3-0	3	0	0	1	0	0.0

Single Game Highs

Statistic	Value	
Rebounds	2	vs Southeast Mo. St. 12/08/24
Assists	1	vs Little Rock 11/14/23, at UCLA 11/17/24, vs UT Arlington 11/14/24
Steals	1	vs Southeast Mo. St. 12/08/24
FG Attempts	2	vs Southeast Mo. St. 12/08/24
3FG Attempts	2	vs Southeast Mo. St. 12/08/24



**Arkansas Women's Basketball
Individual Career Summaries
All games**

OJENUWA, Vera

				Field Goals		3-Point		F-Throws		Rebounds									Scoring	
SEASON	TEAM	GP-GS	MIN/AVG	FG-FGA	FG%	3FG-3FGA	3FG%	FT-FTA	FT%	OFF	DEF	TOT	AVG	PF-FO	A	TO	BLK	STL	PTS	AVG
2024-25	AR	31-31	690/22.3	81-181	.448	7-21	.333	42-68	.618	71	127	198	6.4	100-7	14	55	21	21	211	6.8
TOTAL		31-31	690/22.3	81-181	.448	7-21	.333	42-68	.618	71	127	198	6.4	100-7	14	55	21	21	211	6.8

Single Game Highs

Statistic	Value	
Points	20	vs Arkansas St. 11/24/24
Rebounds	14	vs Southeast Mo. St. 12/08/24
Assists	2	vs Arkansas St. 11/24/24, vs East Texas A&M 11/08/24, vs Central Ark. 12/29/24
Steals	2	6 times
Blocks	2	4 times
FG Made	8	vs Arkansas St. 11/24/24
FG Attempts	12	vs Arkansas St. 11/24/24
3FG Made	2	vs Oklahoma 02/23/25
3FG Attempts	4	at Texas A&M 03/02/25
FT Made	6	vs East Texas A&M 11/08/24
FT Attempts	9	vs East Texas A&M 11/08/24

PAANANEN, Pinja

				Field Goals		3-Point		F-Throws		Rebounds									Scoring	
SEASON	TEAM	GP-GS	MIN/AVG	FG-FGA	FG%	3FG-3FGA	3FG%	FT-FTA	FT%	OFF	DEF	TOT	AVG	PF-FO	A	TO	BLK	STL	PTS	AVG
2024-25	AR	26-0	235/9.0	13-40	.325	7-28	.250	7-9	.778	10	31	41	1.6	13-0	5	12	6	5	40	1.5
TOTAL		26-0	235/9.0	13-40	.325	7-28	.250	7-9	.778	10	31	41	1.6	13-0	5	12	6	5	40	1.5

Single Game Highs

Statistic	Value	
Points	6	vs Bowling Green 11/30/24, vs UT Arlington 11/14/24
Rebounds	5	at Little Rock 11/11/24, vs Fairfield 11/04/24
Assists	1	5 times
Steals	1	5 times
Blocks	2	vs Southeast Mo. St. 12/08/24, vs UT Arlington 11/14/24
FG Made	2	vs Bowling Green 11/30/24, vs UT Arlington 11/14/24
FG Attempts	6	vs Florida 02/03/25
3FG Made	2	vs UT Arlington 11/14/24
3FG Attempts	4	vs Arkansas St. 11/24/24, vs Florida 02/03/25
FT Made	2	vs Missouri 02/27/25, vs Central Ark. 12/29/24
FT Attempts	2	4 times



ROGERS, Ella

				Field Goals		3-Point		F-Throws		Rebounds								Scoring		
SEASON	TEAM	GP-GS	MIN/AVG	FG-FGA	FG%	3FG-3FGA	3FG%	FT-FTA	FT%	OFF	DEF	TOT	AVG	PF-FO	A	TO	BLK	STL	PTS	AVG
2024-25	AR	3-0	5/1.7	0-0	.000	0-0	.000	0-0	.000	0	0	0	0.0	1-0	0	0	1	0	0	0.0
TOTAL		3-0	5/1.7	0-0	.000	0-0	.000	0-0	.000	0	0	0	0.0	1-0	0	0	1	0	0	0.0

Single Game Highs

Statistic	Value
Blocks	1 vs Ole Miss 02/13/25

SMITH, Kiki

				Field Goals		3-Point		F-Throws		Rebounds								Scoring		
SEASON	TEAM	GP-GS	MIN/AVG	FG-FGA	FG%	3FG-3FGA	3FG%	FT-FTA	FT%	OFF	DEF	TOT	AVG	PF-FO	A	TO	BLK	STL	PTS	AVG
2024-25	AR	26-22	707/27.2	96-225	.427	57-139	.410	21-29	.724	8	41	49	1.9	37-0	53	54	5	16	270	10.4
TOTAL		26-22	707/27.2	96-225	.427	57-139	.410	21-29	.724	8	41	49	1.9	37-0	53	54	5	16	270	10.4

Single Game Highs

Statistic	Value
Points	23 vs Alabama 01/19/25
Rebounds	4 5 times
Assists	5 vs Bowling Green 11/30/24, vs Arkansas St. 11/24/24, vs Central Ark. 12/29/24
Steals	3 vs Troy 12/19/24
Blocks	1 5 times
FG Made	8 vs East Texas A&M 11/08/24, vs Alabama 01/19/25
FG Attempts	18 at Little Rock 11/11/24
3FG Made	4 9 times
3FG Attempts	12 at Little Rock 11/11/24
FT Made	4 vs Oral Roberts 11/21/24, vs Boston College 12/05/24
FT Attempts	6 vs Oral Roberts 11/21/24



STOTJIN, Phoenix

				Field Goals		3-Point		F-Throws		Rebounds									Scoring	
SEASON	TEAM	GP-GS	MIN/AVG	FG-FGA	FG%	3FG-3FGA	3FG%	FT-FTA	FT%	OFF	DEF	TOT	AVG	PF-FO	A	TO	BLK	STL	PTS	AVG
2024-25	AR	20-11	508/25.4	50-155	.323	23-87	.264	19-36	.528	5	22	27	1.4	20-0	41	53	4	13	142	7.1
TOTAL		20-11	508/25.4	50-155	.323	23-87	.264	19-36	.528	5	22	27	1.4	20-0	41	53	4	13	142	7.1

Single Game Highs

Statistic	Value	
Points	23	at Texas A&M 03/02/25
Rebounds	6	vs Central Ark. 12/29/24
Assists	5	at South Carolina 02/20/25
Steals	2	at South Carolina 02/20/25, at Mississippi St. 02/06/25
Blocks	2	at Texas A&M 03/02/25
FG Made	7	at Texas A&M 03/02/25
FG Attempts	13	at Texas A&M 03/02/25, vs Florida 02/03/25, vs Central Ark. 12/29/24
3FG Made	5	at Texas A&M 03/02/25
3FG Attempts	8	vs Troy 12/19/24
FT Made	5	vs Central Ark. 12/29/24
FT Attempts	9	vs Central Ark. 12/29/24

SÁNCHEZ CERQUEIRA, Cristina

				Field Goals		3-Point		F-Throws		Rebounds									Scoring	
SEASON	TEAM	GP-GS	MIN/AVG	FG-FGA	FG%	3FG-3FGA	3FG%	FT-FTA	FT%	OFF	DEF	TOT	AVG	PF-FO	A	TO	BLK	STL	PTS	AVG
2023-24	AR	20-0	90/4.5	5-22	.227	0-4	.000	1-2	.500	6	14	20	1.0	15-0	2	6	3	0	11	0.6
2024-25	AR	29-11	459/15.8	21-76	.276	8-31	.258	14-29	.483	21	99	120	4.1	42-1	14	41	7	12	64	2.2
TOTAL		49-11	549/11.2	26-98	.265	8-35	.229	15-31	.484	27	113	140	2.9	57-1	16	47	10	12	75	1.5

Single Game Highs

Statistic	Value	
Points	9	vs Florida 02/03/25
Rebounds	10	vs Central Ark. 12/29/24
Assists	2	4 times
Steals	2	vs Southeast Mo. St. 12/08/24, vs Florida 02/03/25, at Georgia 02/09/25
Blocks	2	at South Carolina 02/20/25, vs Boston College 12/05/24
FG Made	4	vs Florida 02/03/25
FG Attempts	8	vs Florida 02/03/25
3FG Made	2	at Texas A&M 03/02/25
3FG Attempts	4	at Texas A&M 03/02/25, at Kentucky 01/26/25
FT Made	2	5 times
FT Attempts	4	vs Missouri 02/27/25



2024-25 Arkansas Women's Basketball
Individual Game-by-Game
All games

#0 ROGERS, Ella

Opponent	Date	GS	MIN	Total		3-Pointers		Free throws		Rebounds				PF	A	TO	BLK	STL	PTS	AVG
				FG-FGA	PCT	3FG-3FGA	PCT	FT-FTA	PCT	OFF	DEF	TOT	AVG							
Florida	02/03/2025		02:21	0-0	.000	0-0	.000	0-0	.000	0	0	0	0.0	0	0	0	0	0	0	0.0
Ole Miss	02/13/2025		01:23	0-0	.000	0-0	.000	0-0	.000	0	0	0	0.0	1	0	0	1	0	0	0.0
Oklahoma	02/23/2025		01:23	0-0	.000	0-0	.000	0-0	.000	0	0	0	0.0	0	0	0	0	0	0	0.0
Totals		0	05:07	0-0	.000	0-0	.000	0-0	.000	0	0	0	0.0	1	0	0	1	0	0	0.0

Player Averages

Games Played	Minutes/game	Points/game	FG Pct	3FG Pct	FT Pct	Rebounds/game	Assists/game	Turnovers/game	Assist/Turnover ratio	Steals/game	Blocks/game
3	1.7	0.0	0.0	0.0	0.0	0.0	0.0	0.0	0.0	0.0	0.3



**2024-25 Arkansas Women's Basketball
Individual Game-by-Game
All games**

#1 STOTJIN, Phoenix

Opponent	Date	GS	MIN	Total		3-Pointers		Free throws		Rebounds				PF	A	TO	BLK	STL	PTS	AVG
				FG-FGA	PCT	3FG-3FGA	PCT	FT-FTA	PCT	OFF	DEF	TOT	AVG							
Texas Tech	12/15/2024		20:25	4-9	.444	3-6	.500	1-1	1.000	0	0	0	0.0	1	1	2	0	0	12	12.0
vs Liberty	12/18/2024		20:51	3-8	.375	1-4	.250	0-0	.000	1	0	1	0.5	0	1	2	0	1	7	9.5
vs Troy	12/19/2024		15:39	1-10	.100	1-8	.125	0-0	.000	0	1	1	0.7	2	2	1	0	0	3	7.3
Central Ark.	12/29/2024		21:52	3-13	.231	1-7	.143	5-9	.556	2	4	6	2.0	0	4	4	0	0	12	8.5
LSU	01/02/2025		20:39	2-7	.286	1-4	.250	0-0	.000	0	0	0	1.6	2	2	6	0	1	5	7.8
at Texas	01/05/2025		21:57	3-7	.429	0-1	.000	0-0	.000	0	1	1	1.5	2	1	4	0	0	6	7.5
at Auburn	01/09/2025		24:00	2-7	.286	0-3	.000	0-0	.000	1	1	2	1.6	1	2	2	0	1	4	7.0
Tennessee	01/12/2025		13:35	0-0	.000	0-0	.000	3-4	.750	0	1	1	1.5	2	0	4	0	1	3	6.5
Alabama	01/19/2025		21:16	4-10	.400	3-6	.500	0-2	.000	1	0	1	1.4	0	4	1	0	1	11	7.0
at Vanderbilt	01/23/2025	*	20:31	3-9	.333	1-3	.333	1-2	.500	0	0	0	1.3	0	0	6	0	1	8	7.1
at Kentucky	01/26/2025	*	14:42	0-1	.000	0-1	.000	0-0	.000	0	0	0	1.2	0	1	2	0	0	0	6.5
Texas A&M	01/30/2025	*	29:29	2-3	.667	0-1	.000	0-2	.000	0	0	0	1.1	2	1	1	0	0	4	6.3
Florida	02/03/2025	*	37:48	3-13	.231	0-7	.000	0-2	.000	0	0	0	1.0	1	3	0	1	1	6	6.2
at Mississippi St.	02/06/2025	*	34:24	3-10	.300	0-4	.000	0-0	.000	0	2	2	1.1	1	2	4	0	2	6	6.2
at Georgia	02/09/2025	*	36:17	2-7	.286	1-4	.250	0-0	.000	0	2	2	1.1	2	2	2	0	0	5	6.1
Ole Miss	02/13/2025	*	28:14	2-4	.500	1-2	.500	1-2	.500	0	2	2	1.2	0	3	2	0	0	6	6.1
at South Carolina	02/20/2025	*	31:28	3-10	.300	2-7	.286	1-1	1.000	0	1	1	1.2	0	5	4	0	2	9	6.3
Oklahoma	02/23/2025	*	29:18	2-7	.286	2-5	.400	2-4	.500	0	2	2	1.2	1	2	4	1	1	8	6.4
Missouri	02/27/2025	*	32:09	1-7	.143	1-7	.143	1-2	.500	0	1	1	1.2	2	1	1	0	0	4	6.3
at Texas A&M	03/02/2025	*	33:01	7-13	.538	5-7	.714	4-5	.800	0	4	4	1.4	1	4	1	2	1	23	7.1
Totals		11	507:37	50-155	.323	23-87	.264	19-36	.528	5	22	27	1.4	20	41	53	4	13	142	7.1

Player Averages

Games Played	Minutes/game	Points/game	FG Pct	3FG Pct	FT Pct	Rebounds/game	Assists/game	Turnovers/game	Assist/Turnover ratio	Steals/game	Blocks/game
20	25.4	7.1	32.3	26.4	52.8	1.4	2.1	2.7	0.8	0.7	0.2



**2024-25 Arkansas Women's Basketball
Individual Game-by-Game
All games**

#2 SMITH, Kiki

Opponent	Date	GS	MIN	Total		3-Pointers		Free throws		Rebounds				PF	A	TO	BLK	STL	PTS	AVG	
				FG-FGA	PCT	3FG-3FGA	PCT	FT-FTA	PCT	OFF	DEF	TOT	AVG								
Fairfield	11/04/2024	*	34:16	5-10	.500	4-6	.667	0-0	.000	0	2	2	2.0	0	3	2	0	0	14	14.0	
East Texas A&M	11/08/2024	*	34:41	8-9	.889	4-5	.800	2-3	.667	0	2	2	2.0	1	1	1	0	0	22	18.0	
at Little Rock	11/11/2024	*	39:37	6-18	.333	4-12	.333	0-1	.000	0	3	3	2.3	2	0	3	0	0	16	17.3	
UT Arlington	11/14/2024	*	30:47	2-10	.200	1-5	.200	0-0	.000	1	2	3	2.5	1	3	0	1	0	5	14.3	
at UCLA	11/17/2024	*	26:52	3-7	.429	1-5	.200	1-2	.500	0	0	0	2.0	3	2	1	0	0	8	13.0	
Oral Roberts	11/21/2024	*	33:43	6-15	.400	4-10	.400	4-6	.667	1	3	4	2.3	3	2	8	0	2	20	14.2	
Arkansas St.	11/24/2024	*	32:07	5-8	.625	3-5	.600	2-2	1.000	0	1	1	2.1	0	5	4	1	0	15	14.3	
vs Oklahoma St.	11/29/2024	*	35:42	6-14	.429	2-4	.500	0-0	.000	1	2	3	2.3	2	2	0	0	0	14	14.3	
vs Bowling Green	11/30/2024	*	37:50	4-10	.400	3-6	.500	0-0	.000	0	0	0	2.0	0	5	1	0	0	11	13.9	
Boston College	12/05/2024	*	36:21	5-10	.500	1-3	.333	4-5	.800	0	1	1	1.9	2	3	5	0	1	15	14.0	
Southeast Mo. St.	12/08/2024	*	27:13	1-5	.200	0-2	.000	2-2	1.000	1	3	4	2.1	1	4	2	1	1	4	13.1	
Texas Tech	12/15/2024	*	26:55	2-8	.250	2-7	.286	0-0	.000	0	1	1	2.0	2	1	3	0	1	6	12.5	
vs Liberty	12/18/2024	*	23:21	0-4	.000	0-2	.000	0-0	.000	0	2	2	2.0	1	1	2	0	1	0	11.5	
vs Troy	12/19/2024	*	29:56	4-11	.364	4-8	.500	1-2	.500	2	2	4	2.1	3	3	2	0	3	13	11.6	
Central Ark.	12/29/2024	*	30:16	4-7	.571	4-7	.571	0-0	.000	1	3	4	2.3	0	5	3	1	1	12	11.7	
LSU	01/02/2025	*	28:01	1-6	.167	1-5	.200	0-0	.000	0	1	1	2.2	1	3	1	0	2	3	11.1	
at Texas	01/05/2025	*	27:44	2-6	.333	1-3	.333	0-0	.000	0	1	1	2.1	3	2	3	0	0	5	10.8	
at Auburn	01/09/2025	*	23:13	4-6	.667	1-2	.500	0-1	.000	0	2	2	2.1	4	0	1	0	0	9	10.7	
Tennessee	01/12/2025	*	25:39	2-7	.286	1-6	.167	2-2	1.000	0	2	2	2.1	3	2	3	1	1	7	10.5	
Alabama	01/19/2025	*	29:52	8-15	.533	4-9	.444	3-3	1.000	1	3	4	2.2	0	0	1	0	1	23	11.1	
at Vanderbilt	01/23/2025	*	17:37	2-6	.333	1-3	.333	0-0	.000	0	1	1	2.1	2	0	3	0	0	5	10.8	
at Kentucky	01/26/2025	*	10:14	1-3	.333	1-2	.500	0-0	.000	0	1	1	2.1	1	2	0	0	0	3	10.5	
at South Carolina	02/20/2025		21:12	7-13	.538	4-8	.500	0-0	.000	0	2	2	2.1	1	1	2	0	1	18	10.8	
Oklahoma	02/23/2025		09:49	0-5	.000	0-4	.000	0-0	.000	0	1	1	2.0	0	2	1	0	0	0	10.3	
Missouri	02/27/2025		12:36	3-5	.600	2-4	.500	0-0	.000	0	0	0	2.0	1	1	1	0	1	8	10.2	
at Texas A&M	03/02/2025		21:50	5-7	.714	4-6	.667	0-0	.000	0	0	0	1.9	0	0	1	0	0	14	10.4	
Totals			22	707:24	96-225	.427	57-139	.410	21-29	.724	8	41	49	1.9	37	53	54	5	16	270	10.4

Player Averages

Games Played	Minutes/ game	Points/ game	FG Pct	3FG Pct	FT Pct	Rebounds/ game	Assists/ game	Turnovers/ game	Assist/Turnover ratio	Steals/ game	Blocks/ game
26	27.2	10.4	42.7	41.0	72.4	1.9	2.0	2.1	1.0	0.6	0.2



**2024-25 Arkansas Women's Basketball
Individual Game-by-Game
All games**

#3 HIGGINBOTTOM, Izzy

Opponent	Date	GS	MIN	Total		3-Pointers		Free throws		Rebounds				PF	A	TO	BLK	STL	PTS	AVG
				FG-FGA	PCT	3FG-3FGA	PCT	FT-FTA	PCT	OFF	DEF	TOT	AVG							
Fairfield	11/04/2024	*	36:02	7-17	.412	0-1	.000	8-10	.800	0	1	1	1.0	1	2	7	0	1	22	22.0
East Texas A&M	11/08/2024	*	30:48	7-11	.636	1-2	.500	4-4	1.000	1	6	7	4.0	1	3	5	0	0	19	20.5
at Little Rock	11/11/2024	*	43:13	6-14	.429	1-5	.200	11-11	1.000	0	4	4	4.0	1	6	1	1	1	24	21.7
UT Arlington	11/14/2024	*	30:04	10-23	.435	3-6	.500	6-7	.857	1	4	5	4.3	1	6	2	0	0	29	23.5
at UCLA	11/17/2024	*	33:30	5-18	.278	1-7	.143	4-4	1.000	1	2	3	4.0	2	3	3	0	0	15	21.8
Oral Roberts	11/21/2024	*	34:44	6-15	.400	2-3	.667	13-15	.867	0	2	2	3.7	1	5	2	0	1	27	22.7
Arkansas St.	11/24/2024	*	35:34	7-13	.538	0-1	.000	1-3	.333	0	8	8	4.3	1	5	3	0	2	15	21.6
vs Oklahoma St.	11/29/2024	*	33:23	8-16	.500	1-2	.500	9-10	.900	0	2	2	4.0	2	3	5	0	1	26	22.1
vs Bowling Green	11/30/2024	*	38:46	7-15	.467	0-0	.000	12-12	1.000	1	3	4	4.0	2	9	1	1	1	26	22.6
Boston College	12/05/2024	*	38:02	14-23	.609	0-1	.000	10-11	.909	0	4	4	4.0	2	2	3	0	3	38	24.1
Southeast Mo. St.	12/08/2024	*	26:56	6-15	.400	1-3	.333	5-5	1.000	0	6	6	4.2	0	3	3	0	0	18	23.5
Texas Tech	12/15/2024	*	35:12	9-14	.643	1-1	1.000	7-8	.875	0	2	2	4.0	3	1	7	0	3	26	23.8
vs Liberty	12/18/2024	*	35:07	8-18	.444	1-6	.167	7-7	1.000	2	4	6	4.2	4	3	3	0	1	24	23.8
vs Troy	12/19/2024	*	35:16	7-19	.368	2-4	.500	3-3	1.000	1	3	4	4.1	2	7	4	0	2	19	23.4
Central Ark.	12/29/2024	*	23:34	9-14	.643	1-2	.500	7-9	.778	2	1	3	4.1	1	4	2	0	2	26	23.6
LSU	01/02/2025	*	32:14	10-21	.476	1-3	.333	6-6	1.000	0	2	2	3.9	1	2	4	1	1	27	23.8
at Texas	01/05/2025	*	31:45	7-14	.500	1-2	.500	8-8	1.000	0	4	4	3.9	2	2	4	0	1	23	23.8
at Auburn	01/09/2025	*	39:31	13-20	.650	3-5	.600	7-9	.778	1	3	4	3.9	1	2	7	0	2	36	24.4
Tennessee	01/12/2025	*	33:40	8-20	.400	2-6	.333	8-9	.889	1	5	6	4.1	0	2	6	0	1	26	24.5
Alabama	01/19/2025	*	26:32	2-11	.182	0-0	.000	1-2	.500	0	3	3	4.0	2	2	3	1	0	5	23.6
at Vanderbilt	01/23/2025	*	30:57	2-6	.333	1-3	.333	2-2	1.000	0	5	5	4.0	2	4	8	0	0	7	22.8
at Kentucky	01/26/2025	*	35:42	10-25	.400	3-7	.429	9-10	.900	0	2	2	4.0	0	3	3	0	1	32	23.2
Texas A&M	01/30/2025	*	40:00	10-21	.476	2-4	.500	11-13	.846	1	9	10	4.2	0	7	2	0	2	33	23.6
Florida	02/03/2025	*	37:00	12-25	.480	3-6	.500	13-13	1.000	0	7	7	4.3	0	4	3	0	1	40	24.3
at Mississippi St.	02/06/2025	*	32:31	6-13	.462	1-2	.500	13-13	1.000	0	2	2	4.2	5	0	7	0	3	26	24.4
at Georgia	02/09/2025	*	40:00	7-29	.241	1-4	.250	9-11	.818	1	5	6	4.3	1	4	0	0	2	24	24.3
Ole Miss	02/13/2025	*	36:20	7-23	.304	0-4	.000	4-4	1.000	0	4	4	4.3	0	2	3	1	1	18	24.1
at South Carolina	02/20/2025	*	34:44	3-17	.176	1-5	.200	3-4	.750	0	2	2	4.2	1	5	4	1	1	10	23.6
Oklahoma	02/23/2025	*	34:44	8-21	.381	1-4	.250	5-5	1.000	1	7	8	4.3	0	4	5	0	1	22	23.6
Missouri	02/27/2025	*	40:00	11-27	.407	0-5	.000	10-11	.909	1	8	9	4.5	2	5	2	0	0	32	23.8
at Texas A&M	03/02/2025	*	40:00	4-16	.250	0-2	.000	19-21	.905	0	6	6	4.5	3	5	5	1	2	27	23.9
Totals		31	1075:51	236-554	.426	35-106	.330	235-260	.904	15	126	141	4.5	44	115	117	7	37	742	23.9

Player Averages

Games Played	Minutes/game	Points/game	FG Pct	3FG Pct	FT Pct	Rebounds/game	Assists/game	Turnovers/game	Assist/Turnover ratio	Steals/game	Blocks/game
31	34.7	23.9	42.6	33.0	90.4	4.5	3.7	3.8	1.0	1.2	0.2



**2024-25 Arkansas Women's Basketball
Individual Game-by-Game
All games**

#10 SÁNCHEZ CERQUEIRA, Cristina

Opponent	Date	GS	MIN	Total		3-Pointers		Free throws		Rebounds				PF	A	TO	BLK	STL	PTS	AVG
				FG-FGA	PCT	3FG-3FGA	PCT	FT-FTA	PCT	OFF	DEF	TOT	AVG							
Fairfield	11/04/2024		00:35	0-0	.000	0-0	.000	0-0	.000	0	0	0	0.0	0	0	0	0	0	0	0.0
East Texas A&M	11/08/2024		08:26	0-1	.000	0-0	.000	0-0	.000	0	4	4	2.0	0	0	2	0	0	0	0.0
at Little Rock	11/11/2024		00:05	0-0	.000	0-0	.000	0-0	.000	0	0	0	1.3	0	0	0	0	0	0	0.0
UT Arlington	11/14/2024		03:54	0-0	.000	0-0	.000	0-2	.000	0	2	2	1.5	0	0	2	0	0	0	0.0
at UCLA	11/17/2024		02:16	0-1	.000	0-1	.000	0-0	.000	0	0	0	1.2	0	0	0	1	0	0	0.0
Oral Roberts	11/21/2024		01:56	1-1	1.000	0-0	.000	0-1	.000	0	1	1	1.2	0	0	2	0	0	2	0.3
vs Oklahoma St.	11/29/2024		01:13	0-1	.000	0-1	.000	0-0	.000	0	0	0	1.0	0	0	0	0	0	0	0.3
Boston College	12/05/2024		13:36	0-1	.000	0-0	.000	0-0	.000	1	4	5	1.5	1	0	0	2	1	0	0.3
Southeast Mo. St.	12/08/2024		11:51	0-2	.000	0-1	.000	1-2	.500	1	4	5	1.9	0	1	1	0	2	1	0.3
Texas Tech	12/15/2024		18:01	0-0	.000	0-0	.000	0-0	.000	1	3	4	2.1	3	0	0	0	0	0	0.3
vs Liberty	12/18/2024		08:53	0-1	.000	0-0	.000	0-0	.000	0	2	2	2.1	1	0	0	0	0	0	0.3
vs Troy	12/19/2024		17:01	1-4	.250	0-1	.000	2-2	1.000	2	7	9	2.7	1	0	1	0	0	4	0.6
Central Ark.	12/29/2024		15:52	1-2	.500	1-1	1.000	0-2	.000	2	8	10	3.2	3	0	0	0	0	3	0.8
LSU	01/02/2025		16:41	0-3	.000	0-1	.000	0-0	.000	4	3	7	3.5	2	1	1	0	0	0	0.7
at Texas	01/05/2025		19:10	0-1	.000	0-0	.000	1-2	.500	0	2	2	3.4	3	0	3	0	0	1	0.7
at Auburn	01/09/2025		22:03	0-0	.000	0-0	.000	2-2	1.000	0	2	2	3.3	2	0	1	0	1	2	0.8
Tennessee	01/12/2025		16:25	1-3	.333	0-0	.000	2-2	1.000	1	1	2	3.2	1	0	1	0	1	4	1.0
Alabama	01/19/2025		17:59	0-0	.000	0-0	.000	2-3	.667	1	5	6	3.4	1	1	3	0	0	2	1.1
at Vanderbilt	01/23/2025	*	26:54	1-4	.250	0-1	.000	0-0	.000	2	6	8	3.6	2	2	2	0	0	2	1.1
at Kentucky	01/26/2025	*	22:50	1-6	.167	1-4	.250	1-2	.500	0	5	5	3.7	5	0	0	0	1	4	1.3
Texas A&M	01/30/2025	*	15:32	1-2	.500	0-1	.000	0-0	.000	0	6	6	3.8	4	0	4	0	0	2	1.3
Florida	02/03/2025	*	23:55	4-8	.500	1-3	.333	0-3	.000	3	4	7	4.0	1	2	3	0	2	9	1.6
at Mississippi St.	02/06/2025	*	21:35	1-6	.167	0-2	.000	0-1	.000	0	2	2	3.9	0	0	2	0	0	2	1.7
at Georgia	02/09/2025	*	30:31	1-6	.167	1-3	.333	0-0	.000	2	4	6	4.0	3	2	3	0	2	3	1.7
Ole Miss	02/13/2025	*	18:04	2-4	.500	0-1	.000	1-1	1.000	0	2	2	3.9	1	1	1	1	0	5	1.8
at South Carolina	02/20/2025	*	20:56	2-6	.333	1-3	.333	0-0	.000	0	5	5	3.9	2	1	2	2	0	5	2.0
Oklahoma	02/23/2025	*	17:03	1-5	.200	1-2	.500	0-0	.000	1	3	4	3.9	1	0	3	0	0	3	2.0
Missouri	02/27/2025	*	30:03	1-4	.250	0-1	.000	2-4	.500	0	7	7	4.0	3	1	1	1	1	4	2.1
at Texas A&M	03/02/2025	*	35:31	2-4	.500	2-4	.500	0-0	.000	0	7	7	4.1	2	2	3	0	1	6	2.2
Totals		11	458:52	21-76	.276	8-31	.258	14-29	.483	21	99	120	4.1	42	14	41	7	12	64	2.2

Player Averages

Games Played	Minutes/game	Points/game	FG Pct	3FG Pct	FT Pct	Rebounds/game	Assists/game	Turnovers/game	Assist/Turnover ratio	Steals/game	Blocks/game
29	15.8	2.2	27.6	25.8	48.3	4.1	0.5	1.4	0.3	0.4	0.2



**2024-25 Arkansas Women's Basketball
Individual Game-by-Game
All games**

#15 BATES, Jada

Opponent	Date	GS	MIN	Total		3-Pointers		Free throws		Rebounds				PF	A	TO	BLK	STL	PTS	AVG
				FG-FGA	PCT	3FG-3FGA	PCT	FT-FTA	PCT	OFF	DEF	TOT	AVG							
Fairfield	11/04/2024		18:10	1-4	.250	1-3	.333	0-0	.000	1	2	3	3.0	1	2	2	1	0	3	3.0
East Texas A&M	11/08/2024		14:25	1-1	1.000	1-1	1.000	0-0	.000	0	2	2	2.5	0	1	0	0	0	3	3.0
at Little Rock	11/11/2024		26:42	2-4	.500	2-3	.667	0-0	.000	1	2	3	2.7	1	0	1	1	0	6	4.0
UT Arlington	11/14/2024		18:26	2-4	.500	0-1	.000	0-1	.000	0	1	1	2.3	0	0	1	1	0	4	4.0
at UCLA	11/17/2024		23:09	3-7	.429	3-7	.429	0-0	.000	0	3	3	2.4	0	1	2	0	0	9	5.0
Oral Roberts	11/21/2024		11:54	0-2	.000	0-1	.000	0-0	.000	1	1	2	2.3	1	0	0	1	0	0	4.2
Arkansas St.	11/24/2024		09:58	0-2	.000	0-0	.000	0-0	.000	0	0	0	2.0	0	0	0	0	0	0	3.6
vs Oklahoma St.	11/29/2024		13:46	0-4	.000	0-2	.000	0-2	.000	0	0	0	1.8	0	0	1	0	0	0	3.1
vs Bowling Green	11/30/2024		02:11	0-0	.000	0-0	.000	0-0	.000	0	0	0	1.6	0	0	0	0	0	0	2.8
Boston College	12/05/2024		25:56	2-5	.400	1-3	.333	0-0	.000	0	1	1	1.5	1	2	1	0	1	5	3.0
Southeast Mo. St.	12/08/2024		17:03	0-2	.000	0-2	.000	0-0	.000	0	2	2	1.5	1	0	1	1	0	0	2.7
Texas Tech	12/15/2024		07:29	0-1	.000	0-1	.000	3-4	.750	0	0	0	1.4	0	0	1	0	1	3	2.8
vs Troy	12/19/2024		04:27	0-0	.000	0-0	.000	0-0	.000	0	0	0	1.3	0	0	0	0	0	0	2.5
Central Ark.	12/29/2024		08:34	1-1	1.000	1-1	1.000	0-0	.000	0	1	1	1.3	1	0	0	0	0	3	2.6
LSU	01/02/2025		03:36	0-0	.000	0-0	.000	0-0	.000	0	0	0	1.2	0	0	0	0	0	0	2.4
at Texas	01/05/2025		03:37	0-0	.000	0-0	.000	0-0	.000	0	1	1	1.2	0	0	0	0	0	0	2.3
at Auburn	01/09/2025		04:42	0-0	.000	0-0	.000	0-0	.000	0	0	0	1.1	1	0	0	0	0	0	2.1
Tennessee	01/12/2025		04:26	0-0	.000	0-0	.000	0-0	.000	0	1	1	1.1	0	0	0	0	0	0	2.0
Alabama	01/19/2025		16:23	0-2	.000	0-1	.000	2-2	1.000	0	0	0	1.1	0	0	0	0	0	2	2.0
at Kentucky	01/26/2025		07:37	0-0	.000	0-0	.000	0-0	.000	0	1	1	1.1	0	1	1	0	0	0	1.9
Texas A&M	01/30/2025		10:20	1-3	.333	0-1	.000	0-0	.000	1	1	2	1.1	1	0	2	0	0	2	1.9
Florida	02/03/2025		13:57	1-1	1.000	0-0	.000	0-1	.000	0	0	0	1.0	0	0	0	0	1	2	1.9
at Mississippi St.	02/06/2025		19:01	0-0	.000	0-0	.000	0-0	.000	0	0	0	1.0	0	0	0	0	1	0	1.8
at Georgia	02/09/2025		06:47	0-1	.000	0-0	.000	0-0	.000	0	1	1	1.0	1	0	0	0	0	0	1.8
Ole Miss	02/13/2025		22:02	1-3	.333	0-2	.000	0-2	.000	0	1	1	1.0	0	1	0	0	0	2	1.8
at South Carolina	02/20/2025		06:55	2-2	1.000	2-2	1.000	0-0	.000	0	0	0	1.0	1	0	0	0	0	6	1.9
Oklahoma	02/23/2025		11:11	0-3	.000	0-1	.000	0-2	.000	0	2	2	1.0	0	0	2	1	0	0	1.9
Missouri	02/27/2025		01:32	0-0	.000	0-0	.000	0-0	.000	0	0	0	1.0	1	0	0	0	0	0	1.8
Totals		0	334:16	17-52	.327	11-32	.344	5-14	.357	4	23	27	1.0	11	8	15	6	4	50	1.8

Player Averages

Games Played	Minutes/game	Points/game	FG Pct	3FG Pct	FT Pct	Rebounds/game	Assists/game	Turnovers/game	Assist/Turnover ratio	Steals/game	Blocks/game
28	11.9	1.8	32.7	34.4	35.7	1.0	0.3	0.5	0.5	0.1	0.2



**2024-25 Arkansas Women's Basketball
Individual Game-by-Game
All games**

#16 PAANANEN, Pinja

Opponent	Date	GS	MIN	Total		3-Pointers		Free throws		Rebounds				PF	A	TO	BLK	STL	PTS	AVG
				FG-FGA	PCT	3FG-3FGA	PCT	FT-FTA	PCT	OFF	DEF	TOT	AVG							
Fairfield	11/04/2024		17:06	1-1	1.000	1-1	1.000	0-0	.000	2	3	5	5.0	0	1	1	1	0	3	3.0
East Texas A&M	11/08/2024		10:27	1-4	.250	0-3	.000	0-0	.000	0	2	2	3.5	0	0	0	0	0	2	2.5
at Little Rock	11/11/2024		19:14	0-4	.000	0-2	.000	0-0	.000	0	5	5	4.0	2	1	1	0	0	0	1.7
UT Arlington	11/14/2024		12:07	2-2	1.000	2-2	1.000	0-0	.000	2	2	4	4.0	2	0	2	2	0	6	2.8
at UCLA	11/17/2024		14:19	1-2	.500	0-1	.000	1-1	1.000	0	2	2	3.6	0	0	1	0	1	3	2.8
Oral Roberts	11/21/2024		04:08	1-1	1.000	0-0	.000	0-0	.000	2	0	2	3.3	1	1	0	0	0	2	2.7
Arkansas St.	11/24/2024		06:24	0-4	.000	0-4	.000	0-0	.000	0	3	3	3.3	1	0	0	1	1	0	2.3
vs Oklahoma St.	11/29/2024		15:42	1-1	1.000	0-0	.000	0-0	.000	0	3	3	3.3	1	0	1	0	1	2	2.3
vs Bowling Green	11/30/2024		25:46	2-5	.400	1-3	.333	1-2	.500	0	2	2	3.1	0	0	0	0	0	6	2.7
Boston College	12/05/2024		04:58	0-0	.000	0-0	.000	0-0	.000	0	0	0	2.8	0	1	1	0	0	0	2.4
Southeast Mo. St.	12/08/2024		16:40	1-3	.333	0-2	.000	0-0	.000	0	3	3	2.8	0	1	0	2	1	2	2.4
Texas Tech	12/15/2024		03:20	0-0	.000	0-0	.000	0-0	.000	0	0	0	2.6	0	0	2	0	0	0	2.2
vs Liberty	12/18/2024		16:09	1-2	.500	1-2	.500	0-0	.000	0	0	0	2.4	1	0	0	0	1	3	2.2
vs Troy	12/19/2024		02:07	0-1	.000	0-1	.000	0-0	.000	0	0	0	2.2	0	0	0	0	0	0	2.1
Central Ark.	12/29/2024		02:29	0-0	.000	0-0	.000	2-2	1.000	2	1	3	2.3	0	0	0	0	0	2	2.1
LSU	01/02/2025		07:03	0-0	.000	0-0	.000	0-0	.000	0	0	0	2.1	0	0	0	0	0	0	1.9
at Texas	01/05/2025		09:48	0-0	.000	0-0	.000	1-2	.500	0	1	1	2.1	1	0	0	0	0	1	1.9
at Auburn	01/09/2025		01:40	0-0	.000	0-0	.000	0-0	.000	0	0	0	1.9	0	0	0	0	0	0	1.8
Tennessee	01/12/2025		04:43	0-1	.000	0-0	.000	0-0	.000	0	0	0	1.8	0	0	0	0	0	0	1.7
Alabama	01/19/2025		10:00	0-0	.000	0-0	.000	0-0	.000	0	0	0	1.8	1	0	0	0	0	0	1.6
at Kentucky	01/26/2025		04:00	0-0	.000	0-0	.000	0-0	.000	0	1	1	1.7	0	0	0	0	0	0	1.5
Florida	02/03/2025		10:04	1-6	.167	1-4	.250	0-0	.000	0	0	0	1.6	1	0	0	0	0	3	1.6
Ole Miss	02/13/2025		02:38	0-0	.000	0-0	.000	0-0	.000	0	0	0	1.6	0	0	0	0	0	0	1.5
at South Carolina	02/20/2025		08:07	1-3	.333	1-3	.333	0-0	.000	2	1	3	1.6	1	0	1	0	0	3	1.6
Oklahoma	02/23/2025		03:32	0-0	.000	0-0	.000	0-0	.000	0	2	2	1.6	1	0	1	0	0	0	1.5
Missouri	02/27/2025		02:26	0-0	.000	0-0	.000	2-2	1.000	0	0	0	1.6	0	0	1	0	0	2	1.5
Totals		0	234:57	13-40	.325	7-28	.250	7-9	.778	10	31	41	1.6	13	5	12	6	5	40	1.5

Player Averages

Games Played	Minutes/ game	Points/ game	FG Pct	3FG Pct	FT Pct	Rebounds/ game	Assists/ game	Turnovers/ game	Assist/Turnover ratio	Steals/ game	Blocks/ game
26	9.0	1.5	32.5	25.0	77.8	1.6	0.2	0.5	0.4	0.2	0.2



**2024-25 Arkansas Women's Basketball
Individual Game-by-Game
All games**

#20 JOHNSON, Karley

Opponent	Date	GS	MIN	Total		3-Pointers		Free throws		Rebounds				PF	A	TO	BLK	STL	PTS	AVG
				FG-FGA	PCT	3FG-3FGA	PCT	FT-FTA	PCT	OFF	DEF	TOT	AVG							
East Texas A&M	11/08/2024		14:11	0-1	.000	0-0	.000	3-4	.750	2	4	6	6.0	0	1	0	0	0	3	3.0
at Little Rock	11/11/2024		13:12	0-2	.000	0-0	.000	1-2	.500	1	1	2	4.0	4	0	1	0	0	1	2.0
UT Arlington	11/14/2024		12:39	2-4	.500	0-0	.000	2-2	1.000	3	7	10	6.0	1	0	0	0	0	6	3.3
at UCLA	11/17/2024		07:35	0-0	.000	0-0	.000	0-0	.000	0	2	2	5.0	1	0	1	0	0	0	2.5
Oral Roberts	11/21/2024		17:18	2-6	.333	0-1	.000	0-0	.000	1	2	3	4.6	3	0	0	0	1	4	2.8
Arkansas St.	11/24/2024		19:10	1-5	.200	0-2	.000	0-0	.000	1	6	7	5.0	3	3	2	0	3	2	2.7
vs Oklahoma St.	11/29/2024		20:36	1-3	.333	0-0	.000	1-2	.500	1	0	1	4.4	1	0	0	0	0	3	2.7
vs Bowling Green	11/30/2024		17:22	0-1	.000	0-1	.000	0-0	.000	0	7	7	4.8	2	1	1	2	1	0	2.4
Southeast Mo. St.	12/08/2024		07:51	1-3	.333	0-1	.000	3-3	1.000	2	1	3	4.6	0	0	1	0	0	5	2.7
Texas Tech	12/15/2024		03:55	0-0	.000	0-0	.000	0-0	.000	0	0	0	4.1	1	0	0	0	0	0	2.4
vs Liberty	12/18/2024		13:29	1-1	1.000	0-0	.000	1-2	.500	0	0	0	3.7	1	0	0	0	1	3	2.5
vs Troy	12/19/2024		09:06	0-1	.000	0-0	.000	0-0	.000	0	1	1	3.5	1	0	0	0	1	0	2.3
Central Ark.	12/29/2024		03:25	0-0	.000	0-0	.000	0-0	.000	0	0	0	3.2	0	0	0	0	0	0	2.1
LSU	01/02/2025		05:37	0-1	.000	0-0	.000	0-0	.000	2	0	2	3.1	1	0	1	0	0	0	1.9
at Texas	01/05/2025		03:14	0-0	.000	0-0	.000	0-0	.000	0	0	0	2.9	0	0	0	0	0	0	1.8
at Auburn	01/09/2025		10:54	1-1	1.000	0-0	.000	0-0	.000	1	2	3	2.9	0	0	0	0	0	2	1.8
Tennessee	01/12/2025		15:12	1-1	1.000	0-0	.000	0-0	.000	0	0	0	2.8	3	1	1	0	0	2	1.8
Alabama	01/19/2025		08:14	0-0	.000	0-0	.000	3-4	.750	1	1	2	2.7	0	0	1	0	0	3	1.9
at Vanderbilt	01/23/2025		24:10	6-8	.750	1-2	.500	1-3	.333	1	2	3	2.7	1	1	0	0	2	14	2.5
at Kentucky	01/26/2025		21:07	0-2	.000	0-0	.000	0-0	.000	0	3	3	2.8	0	1	1	0	2	0	2.4
Texas A&M	01/30/2025		27:39	2-4	.500	0-1	.000	2-2	1.000	1	2	3	2.8	3	2	1	0	0	6	2.6
Florida	02/03/2025	*	23:51	0-6	.000	0-1	.000	0-0	.000	2	3	5	2.9	1	0	0	0	0	0	2.5
at Mississippi St.	02/06/2025	*	20:37	3-5	.600	0-1	.000	0-0	.000	1	3	4	2.9	2	2	3	0	2	6	2.6
at Georgia	02/09/2025	*	29:53	4-5	.800	1-2	.500	3-7	.429	3	3	6	3.0	4	1	1	0	1	12	3.0
Ole Miss	02/13/2025	*	13:36	0-3	.000	0-2	.000	0-0	.000	0	2	2	3.0	0	1	0	0	1	0	2.9
at South Carolina	02/20/2025	*	16:23	0-0	.000	0-0	.000	0-0	.000	0	2	2	3.0	2	1	0	1	0	0	2.8
Oklahoma	02/23/2025	*	17:49	1-2	.500	1-1	1.000	1-2	.500	1	2	3	3.0	1	0	1	0	0	4	2.8
Missouri	02/27/2025	*	23:09	1-5	.200	0-3	.000	0-0	.000	1	4	5	3.0	2	2	0	0	2	2	2.8
at Texas A&M	03/02/2025	*	16:16	0-1	.000	0-1	.000	0-0	.000	0	3	3	3.0	1	0	0	0	3	0	2.7
Totals		8	437:29	27-71	.380	3-19	.158	21-33	.636	25	63	88	3.0	39	17	16	3	20	78	2.7

Player Averages

Games Played	Minutes/ game	Points/ game	FG Pct	3FG Pct	FT Pct	Rebounds/ game	Assists/ game	Turnovers/ game	Assist/Turnover ratio	Steals/ game	Blocks/ game
29	15.1	2.7	38.0	15.8	63.6	3.0	0.6	0.6	1.1	0.7	0.1



2024-25 Arkansas Women's Basketball
Individual Game-by-Game
All games

#21 LINDSEY, Loren

Opponent	Date	GS	MIN	Total		3-Pointers		Free throws		Rebounds				PF	A	TO	BLK	STL	PTS	AVG
				FG-FGA	PCT	3FG-3FGA	PCT	FT-FTA	PCT	OFF	DEF	TOT	AVG							
East Texas A&M	11/08/2024		02:00	0-1	.000	0-0	.000	0-0	.000	0	0	0	0.0	0	0	0	0	0	0	0.0
UT Arlington	11/14/2024		03:38	0-0	.000	0-0	.000	0-0	.000	0	0	0	0.0	0	1	0	0	0	0	0.0
at UCLA	11/17/2024		02:16	0-0	.000	0-0	.000	0-0	.000	0	0	0	0.0	1	1	0	0	0	0	0.0
Oral Roberts	11/21/2024		03:24	0-0	.000	0-0	.000	0-0	.000	0	0	0	0.0	1	0	0	0	0	0	0.0
Southeast Mo. St.	12/08/2024		10:44	0-2	.000	0-2	.000	0-0	.000	0	2	2	0.4	1	0	0	0	1	0	0.0
Totals		0	22:02	0-3	.000	0-2	.000	0-0	.000	0	2	2	0.4	3	2	0	0	1	0	0.0

Player Averages

Games Played	Minutes/game	Points/game	FG Pct	3FG Pct	FT Pct	Rebounds/game	Assists/game	Turnovers/game	Assist/Turnover ratio	Steals/game	Blocks/game
5	4.4	0.0	0.0	0.0	0.0	0.4	0.4	0.0	2.0	0.2	0.0



**2024-25 Arkansas Women's Basketball
Individual Game-by-Game
All games**

#22 OJENUWA, Vera

Opponent	Date	GS	MIN	Total		3-Pointers		Free throws		Rebounds				PF	A	TO	BLK	STL	PTS	AVG
				FG-FGA	PCT	3FG-3FGA	PCT	FT-FTA	PCT	OFF	DEF	TOT	AVG							
Fairfield	11/04/2024	*	27:39	4-8	.500	0-0	.000	1-1	1.000	1	4	5	5.0	0	1	0	2	0	9	9.0
East Texas A&M	11/08/2024	*	21:34	5-10	.500	0-0	.000	6-9	.667	2	5	7	6.0	4	2	1	0	1	16	12.5
at Little Rock	11/11/2024	*	20:46	5-8	.625	0-0	.000	1-2	.500	2	9	11	7.7	5	1	4	0	0	11	12.0
UT Arlington	11/14/2024	*	21:59	3-7	.429	0-0	.000	0-1	.000	3	3	6	7.3	3	1	3	1	1	6	10.5
at UCLA	11/17/2024	*	15:20	1-4	.250	0-2	.000	2-2	1.000	2	1	3	6.4	5	1	2	2	0	4	9.2
Oral Roberts	11/21/2024	*	31:56	3-7	.429	0-0	.000	0-0	.000	4	7	11	7.2	1	1	0	0	2	6	8.7
Arkansas St.	11/24/2024	*	31:49	8-12	.667	0-0	.000	4-5	.800	3	7	10	7.6	4	2	4	1	0	20	10.3
vs Oklahoma St.	11/29/2024	*	25:59	1-5	.200	0-1	.000	1-2	.500	1	5	6	7.4	4	0	3	1	1	3	9.4
vs Bowling Green	11/30/2024	*	14:39	2-4	.500	1-1	1.000	0-0	.000	0	2	2	6.8	5	0	2	1	0	5	8.9
Boston College	12/05/2024	*	26:57	3-5	.600	0-0	.000	2-5	.400	5	5	10	7.1	4	0	2	0	1	8	8.8
Southeast Mo. St.	12/08/2024	*	19:24	5-7	.714	0-1	.000	3-4	.750	4	10	14	7.7	2	1	0	0	1	13	9.2
Texas Tech	12/15/2024	*	33:20	4-9	.444	0-0	.000	4-7	.571	8	3	11	8.0	4	0	3	0	0	12	9.4
vs Liberty	12/18/2024	*	25:49	1-4	.250	0-1	.000	0-0	.000	2	4	6	7.8	1	1	7	1	2	2	8.8
vs Troy	12/19/2024	*	25:26	3-6	.500	0-0	.000	0-0	.000	3	4	7	7.8	2	0	2	0	0	6	8.6
Central Ark.	12/29/2024	*	27:11	5-8	.625	1-1	1.000	1-2	.500	1	8	9	7.9	4	2	2	1	2	12	8.9
LSU	01/02/2025	*	22:54	2-8	.250	0-0	.000	0-0	.000	4	4	8	7.9	2	0	4	1	2	4	8.6
at Texas	01/05/2025	*	09:32	0-3	.000	0-0	.000	2-4	.500	3	1	4	7.6	5	0	1	0	0	2	8.2
at Auburn	01/09/2025	*	22:56	0-2	.000	0-0	.000	1-4	.250	2	2	4	7.4	5	0	1	0	2	1	7.8
Tennessee	01/12/2025	*	26:33	1-2	.500	0-1	.000	2-6	.333	1	5	6	7.4	1	1	2	1	1	4	7.6
Alabama	01/19/2025	*	20:41	5-10	.500	0-0	.000	2-2	1.000	2	3	5	7.3	4	0	0	1	0	12	7.8
at Vanderbilt	01/23/2025	*	29:31	2-6	.333	0-0	.000	0-0	.000	4	4	8	7.3	1	0	1	1	1	4	7.6
at Kentucky	01/26/2025	*	11:10	0-2	.000	0-2	.000	0-0	.000	1	3	4	7.1	2	0	1	1	0	0	7.3
Texas A&M	01/30/2025	*	26:18	3-5	.600	1-1	1.000	2-2	1.000	1	5	6	7.1	2	0	4	0	1	9	7.3
Florida	02/03/2025	*	15:02	1-4	.250	0-0	.000	2-4	.500	2	1	3	6.9	3	0	1	0	0	4	7.2
at Mississippi St.	02/06/2025	*	21:05	2-5	.400	0-0	.000	0-0	.000	1	4	5	6.8	3	0	2	1	2	4	7.1
at Georgia	02/09/2025	*	22:01	5-9	.556	1-1	1.000	2-2	1.000	3	4	7	6.8	4	0	1	2	0	13	7.3
Ole Miss	02/13/2025	*	23:03	3-9	.333	0-2	.000	0-0	.000	2	5	7	6.9	4	0	0	0	0	6	7.3
at South Carolina	02/20/2025	*	15:15	0-0	.000	0-0	.000	0-0	.000	0	1	1	6.6	5	0	0	0	0	0	7.0
Oklahoma	02/23/2025	*	17:10	2-5	.400	2-2	1.000	0-0	.000	0	2	2	6.5	3	0	1	0	0	6	7.0
Missouri	02/27/2025	*	23:46	1-3	.333	0-1	.000	2-2	1.000	4	4	8	6.5	3	0	0	2	1	4	6.9
at Texas A&M	03/02/2025	*	13:23	1-4	.250	1-4	.250	2-2	1.000	0	2	2	6.4	5	0	1	1	0	5	6.8
Totals			31	690:08	.448	81-181	.333	42-68	.618	71	127	198	6.4	100	14	55	21	21	211	6.8

Player Averages

Games Played	Minutes/ game	Points/ game	FG Pct	3FG Pct	FT Pct	Rebounds/ game	Assists/ game	Turnovers/ game	Assist/Turnover ratio	Steals/ game	Blocks/ game
31	22.3	6.8	44.8	33.3	61.8	6.4	0.5	1.8	0.3	0.7	0.7



**2024-25 Arkansas Women's Basketball
Individual Game-by-Game
All games**

#23 KEATS, Carly

Opponent	Date	GS	MIN	Total		3-Pointers		Free throws		Rebounds				PF	A	TO	BLK	STL	PTS	AVG
				FG-FGA	PCT	3FG-3FGA	PCT	FT-FTA	PCT	OFF	DEF	TOT	AVG							
Fairfield	11/04/2024	*	31:32	2-10	.200	1-7	.143	0-0	.000	0	0	0	0.0	0	1	2	0	1	5	5.0
East Texas A&M	11/08/2024	*	20:27	2-5	.400	1-3	.333	0-0	.000	0	2	2	1.0	0	0	1	1	0	5	5.0
at Little Rock	11/11/2024	*	20:35	1-5	.200	1-3	.333	1-2	.500	0	1	1	1.0	0	0	0	0	4	4.7	
UT Arlington	11/14/2024	*	22:23	4-8	.500	3-6	.500	2-2	1.000	0	2	2	1.3	1	0	1	0	1	13	6.8
at UCLA	11/17/2024	*	32:28	4-15	.267	2-10	.200	0-0	.000	0	5	5	2.0	1	1	2	0	1	10	7.4
Oral Roberts	11/21/2024	*	22:57	2-8	.250	0-3	.000	0-0	.000	0	1	1	1.8	0	1	1	0	0	4	6.8
Arkansas St.	11/24/2024	*	14:30	3-8	.375	2-6	.333	0-0	.000	0	0	0	1.6	0	0	1	0	0	8	7.0
vs Oklahoma St.	11/29/2024	*	20:00	0-6	.000	0-3	.000	0-0	.000	0	1	1	1.5	0	1	2	1	0	0	6.1
vs Bowling Green	11/30/2024	*	23:51	4-7	.571	1-4	.250	0-0	.000	0	1	1	1.4	0	0	0	1	0	9	6.4
Boston College	12/05/2024	*	19:23	2-8	.250	1-3	.333	0-0	.000	0	0	0	1.3	0	1	0	0	0	5	6.3
Southeast Mo. St.	12/08/2024	*	22:22	6-13	.462	5-8	.625	2-2	1.000	0	3	3	1.5	0	1	3	0	1	19	7.5
Texas Tech	12/15/2024	*	26:07	3-7	.429	1-4	.250	2-2	1.000	0	2	2	1.5	0	3	1	0	0	9	7.6
vs Liberty	12/18/2024	*	27:12	4-8	.500	1-3	.333	2-2	1.000	0	0	0	1.4	1	1	0	0	0	11	7.8
vs Troy	12/19/2024	*	25:36	1-8	.125	1-6	.167	0-0	.000	0	3	3	1.5	0	2	1	0	0	3	7.5
Central Ark.	12/29/2024	*	32:19	3-10	.300	2-5	.400	0-0	.000	0	5	5	1.7	2	2	0	0	1	8	7.5
LSU	01/02/2025	*	29:53	6-14	.429	4-11	.364	2-2	1.000	1	3	4	1.9	2	0	1	0	0	18	8.2
at Texas	01/05/2025	*	30:10	3-6	.500	1-3	.333	4-4	1.000	0	4	4	2.0	1	0	2	0	0	11	8.4
at Auburn	01/09/2025	*	17:40	1-8	.125	1-7	.143	0-0	.000	0	2	2	2.0	0	0	4	0	0	3	8.1
Tennessee	01/12/2025	*	26:12	4-8	.500	2-5	.400	0-0	.000	0	1	1	1.9	1	1	4	0	0	10	8.2
Alabama	01/19/2025	*	16:26	1-5	.200	0-3	.000	0-0	.000	0	0	0	1.9	0	0	0	0	0	2	7.9
at Vanderbilt	01/23/2025		24:49	6-15	.400	4-10	.400	0-0	.000	0	0	0	1.8	0	1	2	0	0	16	8.2
at Kentucky	01/26/2025		25:46	5-12	.417	4-7	.571	0-0	.000	0	2	2	1.8	0	1	3	0	0	14	8.5
Texas A&M	01/30/2025	*	12:32	1-3	.333	1-3	.333	0-0	.000	0	0	0	1.7	0	0	0	0	0	3	8.3
at Georgia	02/09/2025		04:31	0-0	.000	0-0	.000	0-0	.000	0	0	0	1.6	0	0	0	0	0	0	7.9
Ole Miss	02/13/2025		14:45	3-6	.500	0-2	.000	0-0	.000	0	0	0	1.6	0	0	0	0	0	6	7.8
at South Carolina	02/20/2025		09:18	0-1	.000	0-1	.000	0-0	.000	0	0	0	1.5	0	0	0	0	0	0	7.5
Oklahoma	02/23/2025		13:41	0-4	.000	0-4	.000	0-0	.000	0	0	0	1.4	0	0	1	0	0	0	7.3
Missouri	02/27/2025		16:38	5-11	.455	2-7	.286	0-0	.000	0	2	2	1.5	0	0	0	0	1	12	7.4
at Texas A&M	03/02/2025		08:53	0-1	.000	0-1	.000	0-0	.000	0	0	0	1.4	0	1	0	0	0	0	7.2
Totals			21 612:56	76-220	.345	41-138	.297	15-16	.938	1	40	41	1.4	9	18	32	3	6	208	7.2

Player Averages

Games Played	Minutes/game	Points/game	FG Pct	3FG Pct	FT Pct	Rebounds/game	Assists/game	Turnovers/game	Assist/Turnover ratio	Steals/game	Blocks/game
29	21.1	7.2	34.5	29.7	93.8	1.4	0.6	1.1	0.6	0.2	0.1



**2024-25 Arkansas Women's Basketball
Individual Game-by-Game
All games**

#25 GALEA, Danika

Opponent	Date	GS	MIN	Total		3-Pointers		Free throws		Rebounds				PF	A	TO	BLK	STL	PTS	AVG
				FG-FGA	PCT	3FG-3FGA	PCT	FT-FTA	PCT	OFF	DEF	TOT	AVG							
Fairfield	11/04/2024		00:35	0-0	.000	0-0	.000	0-0	.000	0	0	0	0.0	0	0	0	0	0	0	0.0
East Texas A&M	11/08/2024		10:40	0-3	.000	0-0	.000	4-4	1.000	0	1	1	0.5	3	0	3	0	0	4	2.0
at Little Rock	11/11/2024		16:54	2-2	1.000	0-0	.000	0-0	.000	0	3	3	1.3	5	1	3	0	1	4	2.7
UT Arlington	11/14/2024		14:07	4-7	.571	0-0	.000	2-2	1.000	4	2	6	2.5	4	1	1	0	0	10	4.5
at UCLA	11/17/2024		13:10	1-5	.200	0-2	.000	0-0	.000	0	0	0	2.0	5	0	2	0	0	2	4.0
Oral Roberts	11/21/2024		08:04	1-2	.500	0-0	.000	0-0	.000	0	0	0	1.7	2	1	1	0	0	2	3.7
Arkansas St.	11/24/2024		08:11	3-4	.750	0-0	.000	2-2	1.000	2	0	2	1.7	1	0	0	1	0	8	4.3
Southeast Mo. St.	12/08/2024		13:43	4-5	.800	0-0	.000	2-2	1.000	2	2	4	2.0	1	0	0	1	1	10	5.0
Texas Tech	12/15/2024		06:36	1-1	1.000	0-0	.000	0-0	.000	0	1	1	1.9	0	0	0	0	0	2	4.7
vs Liberty	12/18/2024		14:11	3-6	.500	2-5	.400	0-0	.000	1	3	4	2.1	2	0	0	0	0	8	5.0
vs Troy	12/19/2024		14:34	5-5	1.000	0-0	.000	0-2	.000	1	0	1	2.0	1	0	1	1	0	10	5.5
Central Ark.	12/29/2024		08:10	0-0	.000	0-0	.000	0-0	.000	1	0	1	1.9	1	0	0	1	1	0	5.0
LSU	01/02/2025		08:58	1-2	.500	0-0	.000	0-0	.000	1	0	1	1.8	0	0	1	0	1	2	4.8
at Texas	01/05/2025		12:19	2-3	.667	0-0	.000	1-2	.500	0	1	1	1.8	5	0	1	0	1	5	4.8
at Auburn	01/09/2025		17:04	1-3	.333	0-1	.000	0-0	.000	0	2	2	1.8	3	0	4	0	0	2	4.6
Tennessee	01/12/2025		13:27	2-2	1.000	0-0	.000	0-0	.000	1	1	2	1.8	2	0	0	0	0	4	4.6
Alabama	01/19/2025		17:13	1-3	.333	0-0	.000	0-0	.000	0	0	0	1.7	1	0	0	1	0	2	4.4
at Vanderbilt	01/23/2025		10:29	1-3	.333	0-1	.000	0-0	.000	2	1	3	1.8	0	0	2	0	0	2	4.3
at Kentucky	01/26/2025		14:60	0-1	.000	0-0	.000	0-0	.000	1	0	1	1.7	0	2	1	0	0	0	4.1
Texas A&M	01/30/2025		13:42	1-1	1.000	0-0	.000	0-0	.000	0	2	2	1.8	2	0	1	2	0	2	4.0
Florida	02/03/2025		04:46	0-0	.000	0-0	.000	0-0	.000	0	1	1	1.7	3	0	0	0	0	0	3.8
at Mississippi St.	02/06/2025		18:55	2-4	.500	0-0	.000	2-4	.500	3	2	5	1.9	2	0	4	0	0	6	3.9
at Georgia	02/09/2025		17:59	2-4	.500	0-0	.000	0-0	.000	2	1	3	1.9	2	1	3	2	0	4	3.9
Ole Miss	02/13/2025		16:57	1-4	.250	0-2	.000	0-0	.000	2	3	5	2.0	0	1	1	1	0	2	3.8
at South Carolina	02/20/2025		21:14	1-5	.200	0-2	.000	0-0	.000	0	3	3	2.1	1	0	1	0	0	2	3.7
Oklahoma	02/23/2025		20:58	3-7	.429	0-2	.000	0-0	.000	1	4	5	2.2	2	0	0	0	0	6	3.8
Missouri	02/27/2025		11:13	1-2	.500	0-0	.000	0-0	.000	1	0	1	2.1	0	0	0	0	0	2	3.7
at Texas A&M	03/02/2025		26:37	2-5	.400	1-2	.500	0-0	.000	3	3	6	2.3	4	1	1	0	1	5	3.8
Totals		0	375:47	45-89	.506	3-17	.176	13-18	.722	28	36	64	2.3	52	8	31	10	6	106	3.8

Player Averages

Games Played	Minutes/game	Points/game	FG Pct	3FG Pct	FT Pct	Rebounds/game	Assists/game	Turnovers/game	Assist/Turnover ratio	Steals/game	Blocks/game
28	13.4	3.8	50.6	17.6	72.2	2.3	0.3	1.1	0.3	0.2	0.4



**2024-25 Arkansas Women's Basketball
Individual Game-by-Game
All games**

#34 LAWRENCE, Jenna

Opponent	Date	GS	MIN	Total		3-Pointers		Free throws		Rebounds				PF	A	TO	BLK	STL	PTS	AVG
				FG-FGA	PCT	3FG-3FGA	PCT	FT-FTA	PCT	OFF	DEF	TOT	AVG							
Fairfield	11/04/2024	*	34:05	3-10	.300	2-9	.222	3-3	1.000	2	8	10	10.0	1	0	0	0	0	11	11.0
East Texas A&M	11/08/2024	*	28:53	3-11	.273	2-10	.200	2-2	1.000	0	10	10	10.0	1	1	1	0	1	10	10.5
at Little Rock	11/11/2024	*	24:43	2-6	.333	1-4	.250	0-0	.000	2	5	7	9.0	2	0	1	1	0	5	8.7
UT Arlington	11/14/2024	*	26:02	5-7	.714	4-5	.800	0-0	.000	1	11	12	9.8	0	0	2	1	0	14	10.0
at UCLA	11/17/2024	*	27:20	0-4	.000	0-4	.000	1-2	.500	2	3	5	8.8	2	2	1	0	0	1	8.2
Oral Roberts	11/21/2024	*	27:02	2-6	.333	2-4	.500	0-0	.000	0	2	2	7.7	1	0	1	2	0	6	7.8
Arkansas St.	11/24/2024	*	33:36	3-11	.273	2-9	.222	0-0	.000	1	9	10	8.0	1	1	1	3	3	8	7.9
vs Oklahoma St.	11/29/2024	*	32:04	2-9	.222	1-6	.167	3-4	.750	1	10	11	8.4	3	0	1	1	0	8	7.9
vs Bowling Green	11/30/2024	*	39:35	8-14	.571	5-10	.500	0-0	.000	1	3	4	7.9	1	0	2	5	2	21	9.3
Boston College	12/05/2024	*	34:28	1-4	.250	0-1	.000	2-2	1.000	3	2	5	7.6	4	0	0	2	1	4	8.8
Southeast Mo. St.	12/08/2024	*	18:22	2-5	.400	1-3	.333	0-0	.000	0	4	4	7.3	0	0	1	0	0	5	8.5
Texas Tech	12/15/2024	*	18:39	1-4	.250	0-2	.000	0-0	.000	3	2	5	7.1	1	0	0	0	0	2	7.9
vs Liberty	12/18/2024	*	14:58	1-3	.333	1-3	.333	0-0	.000	2	3	5	6.9	0	0	0	1	0	3	7.5
vs Troy	12/19/2024	*	20:52	3-8	.375	1-5	.200	4-5	.800	1	7	8	7.0	1	0	1	2	0	11	7.8
Central Ark.	12/29/2024	*	26:18	4-9	.444	0-3	.000	1-1	1.000	2	3	5	6.9	1	1	1	1	1	9	7.9
LSU	01/02/2025	*	21:25	2-5	.400	1-2	.500	0-0	.000	1	2	3	6.6	4	0	1	0	2	5	7.7
at Texas	01/05/2025	*	29:11	1-5	.200	0-3	.000	0-0	.000	1	3	4	6.5	3	1	3	0	3	2	7.4
at Auburn	01/09/2025	*	16:17	0-2	.000	0-2	.000	0-0	.000	0	1	1	6.2	2	0	0	0	1	0	6.9
Tennessee	01/12/2025	*	18:52	1-5	.200	0-3	.000	0-0	.000	0	0	0	5.8	1	0	0	1	0	2	6.7
Alabama	01/19/2025	*	14:07	0-5	.000	0-0	.000	0-0	.000	3	1	4	5.8	1	1	0	1	1	0	6.4
at Vanderbilt	01/23/2025		12:07	1-2	.500	0-1	.000	0-0	.000	0	0	0	5.5	0	0	0	0	1	2	6.1
at Kentucky	01/26/2025		26:05	5-9	.556	3-6	.500	0-0	.000	0	6	6	5.5	5	0	1	3	0	13	6.5
Texas A&M	01/30/2025		24:28	4-10	.400	3-9	.333	0-0	.000	0	8	8	5.6	2	0	1	3	0	11	6.7
Florida	02/03/2025		26:13	5-12	.417	2-9	.222	0-0	.000	2	4	6	5.6	2	1	0	2	1	12	6.9
at Mississippi St.	02/06/2025		18:25	1-5	.200	0-4	.000	0-0	.000	0	4	4	5.6	1	0	0	0	1	2	6.7
at Georgia	02/09/2025		09:29	0-3	.000	0-2	.000	0-0	.000	1	1	2	5.4	2	0	2	2	0	0	6.4
Ole Miss	02/13/2025		19:18	2-6	.333	1-5	.200	0-0	.000	0	1	1	5.3	0	0	1	1	0	5	6.4
at South Carolina	02/20/2025		14:29	1-5	.200	0-4	.000	0-0	.000	0	2	2	5.1	1	0	0	0	0	2	6.2
Oklahoma	02/23/2025		21:17	1-5	.200	1-5	.200	2-2	1.000	1	5	6	5.2	2	0	1	2	1	5	6.2
Missouri	02/27/2025		06:28	1-3	.333	1-3	.333	0-0	.000	0	0	0	5.0	0	0	0	0	0	3	6.1
at Texas A&M	03/02/2025		04:29	0-0	.000	0-0	.000	0-0	.000	0	1	1	4.9	2	0	1	0	0	0	5.9
Totals			20 689:36	65-193	.337	34-136	.250	18-21	.857	30	121	151	4.9	47	8	24	34	19	182	5.9

Player Averages

Games Played	Minutes/ game	Points/ game	FG Pct	3FG Pct	FT Pct	Rebounds/ game	Assists/ game	Turnovers/ game	Assist/Turnover ratio	Steals/ game	Blocks/ game
31	22.2	5.9	33.7	25.0	85.7	4.9	0.3	0.8	0.3	0.6	1.1



**2024-25 Arkansas Women's Basketball
Individual Game-by-Game
All games**

#44 ARCHER, Maryn

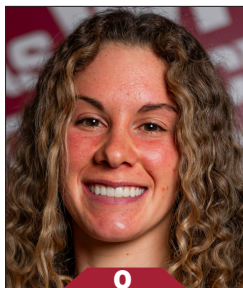
Opponent	Date	GS	MIN	Total		3-Pointers		Free throws		Rebounds				PF	A	TO	BLK	STL	PTS	AVG
				FG-FGA	PCT	3FG-3FGA	PCT	FT-FTA	PCT	OFF	DEF	TOT	AVG							
East Texas A&M	11/08/2024		03:28	0-0	.000	0-0	.000	0-0	.000	0	1	1	1.0	0	0	1	0	0	0	0.0
UT Arlington	11/14/2024		03:54	0-2	.000	0-0	.000	0-2	.000	0	0	0	0.5	2	0	0	0	0	0	0.0
at UCLA	11/17/2024		01:45	0-0	.000	0-0	.000	0-0	.000	0	0	0	0.3	0	0	0	0	0	0	0.0
Oral Roberts	11/21/2024		02:54	0-2	.000	0-0	.000	0-0	.000	0	2	2	0.8	0	0	1	0	0	0	0.0
Arkansas St.	11/24/2024		00:18	0-0	.000	0-0	.000	0-0	.000	0	0	0	0.6	0	0	0	0	0	0	0.0
vs Oklahoma St.	11/29/2024		01:35	0-0	.000	0-0	.000	0-0	.000	0	0	0	0.5	0	0	0	0	0	0	0.0
Boston College	12/05/2024		00:17	0-0	.000	0-0	.000	0-0	.000	0	0	0	0.4	0	0	0	0	0	0	0.0
Southeast Mo. St.	12/08/2024		07:51	2-4	.500	0-0	.000	3-4	.750	0	0	0	0.4	1	1	1	0	0	7	0.9
at Texas	01/05/2025		01:33	0-0	.000	0-0	.000	0-0	.000	0	0	0	0.3	0	0	1	0	0	0	0.8
Tennessee	01/12/2025		01:16	0-0	.000	0-0	.000	1-2	.500	0	0	0	0.3	0	0	0	0	0	1	0.8
Alabama	01/19/2025		01:17	0-0	.000	0-0	.000	0-0	.000	0	0	0	0.3	1	0	0	0	0	0	0.7
at Vanderbilt	01/23/2025		02:55	0-1	.000	0-0	.000	0-0	.000	0	0	0	0.3	0	0	0	0	0	0	0.7
at Kentucky	01/26/2025		05:47	0-0	.000	0-0	.000	3-4	.750	1	0	1	0.3	0	0	1	0	0	3	0.8
Florida	02/03/2025		05:03	0-1	.000	0-0	.000	2-2	1.000	0	1	1	0.4	1	0	0	0	1	2	0.9
at Mississippi St.	02/06/2025		13:26	1-2	.500	1-1	1.000	0-2	.000	0	1	1	0.4	0	0	0	0	1	3	1.1
at Georgia	02/09/2025		02:32	0-1	.000	0-0	.000	0-0	.000	0	0	0	0.4	0	0	0	0	0	0	1.0
Ole Miss	02/13/2025		03:40	0-2	.000	0-0	.000	0-0	.000	0	0	0	0.4	0	0	1	0	0	0	0.9
Oklahoma	02/23/2025		02:05	0-1	.000	0-0	.000	0-0	.000	0	0	0	0.3	0	0	0	0	0	0	0.9
Totals		0	61:36	3-16	.188	1-1	1.000	9-16	.563	1	5	6	0.3	5	1	6	0	2	16	0.9

Player Averages

Games Played	Minutes/game	Points/game	FG Pct	3FG Pct	FT Pct	Rebounds/game	Assists/game	Turnovers/game	Assist/Turnover ratio	Steals/game	Blocks/game
18	3.4	0.9	18.8	100.0	56.3	0.3	0.1	0.3	0.2	0.1	0.0



RAZORBACKS



0

Ella Rogers
Sr. | 5-8 | G
Granville, Ohio



1

Phoenix Stotijn
Fr. | 5-9 | G
Amsterdam, Netherlands



2

Kiki Smith
So. | 5-7 | G
Topeka, Kan.



3

Izzy Higginbottom
Sr. | 5-7 | G
Batesville, Ark.



10

Cristina Sánchez Cerqueira
So. | 6-1 | F
Granada, Spain



15

Jada Bates
Fr. | 6-3 | G
Powder Springs, Ga.



16

Pinja Paananen
Fr. | 6-2 | F
Laukaa, Finland



20

Karley Johnson
Jr. | 5-9 | G
Oklahoma City, Okla.



21

Loren Lindsey
R-So. | 5-11 | G
Fayetteville, Ark.



22

Vera Ojenuwa
So. | 6-4 | F
Delta State, Nigeria



23

Carly Keats
Jr. | 5-8 | G
Philadelphia, Miss.



25

Danika Galea
Fr. | 6-3 | C
St. Paul's Bay, Malta



34

Jenna Lawrence
So. | 6-3 | F
Melbourne, Ark.



44

Maryn Archer
R-Fr. | 5-7 | G
Derby, Kan.