



ARKANSAS
Gymnastics

MEET NOTES



2025

MEET 10 **AT KENTUCKY** MARCH 7, 2025

THE SCHEDULE

OVERALL: 7-7 | SEC: 2-4 | H: 4-1 | A: 0-3 | N: 3-3

JAN. 11	SFM COLLEGIATE QUAD		4th, 195.875
JAN. 17	AT AUBURN	AUBURN, ALA.	L, 196.250
JAN. 20	ARKANSAS TRI-MEET (DENVER, TWU)		
	BUD WALTON ARENA		1st, 197.000
JAN. 24	VS LSU	BUD WALTON ARENA	6:45 W, 196.875
JAN. 31	AT OKLAHOMA	NORMAN, OKLA.	8:00 L, 195.975
FEB. 7	VS FLORIDA	BUD WALTON ARENA	5:45 W, 197.175
FEB. 14	AT GEORGIA	ATHENS, GA.	6:00 L, 197.050
FEB. 21	METROPLEX CHALLENGE (ARIZONA, OREGON STATE, SEMO)		
	FORT WORTH		7:15 1st, 196.400
FEB. 28	VS ALABAMA	BUD WALTON ARENA	6:15 L, 197.425
MAR. 7	AT KENTUCKY	LEXINGTON, KY.	6:00 SEC NETWORK+
MAR. 14	VS MISSOURI	BUD WALTON ARENA	6:45 SEC NETWORK+
MAR. 22	SEC CHAMPIONSHIPS		
	BIRMINGHAM, ALA.	TBA	SEC NETWORK
APR. 2-6	NCAA REGIONALS		
	TUSCALOOSA, STATE COLLEGE, SALT LAKE CITY, SEATTLE		
APRIL 17-19	NCAA CHAMPIONSHIPS		
	DICKIES ARENA, FORT WORTH		

NUMBERS TO KNOW

14

Years since Arkansas' last victory in Lexington over the Wildcats

197.050

The Gymbacks' road high on the season, set at Georgia on Feb. 14

196.425

Arkansas' average score at road SEC meets so far

6

Times that Gymbacks appear in the top 50 individual rankings across all events, with two spots each on vault and floor

FOLLOW THE SHOW

TWITTER	@RAZORBACKGYM
INSTAGRAM	@RAZORBACKGYM
FACEBOOK	ARKANSAS RAZORBACK GYMNASTICS

MEET
10



vs KENTUCKY IN LEXINGTON

MARCH 7, 2025 AT 6:00 PM (CT)

HISTORIC MEMORIAL COLISEUM
LIVE SCORING: VIRTUUS
WATCH: SEC NETWORK+

GYMBACK NOTABLES

Gymbacks Gets Season High 197.425 in Loss to Alabama

Despite taking a loss in the standings, the No. 16 Gymbacks made huge strides in their meet against No. 17 Alabama at Bud Walton Arena as they recorded a season high 197.425 score to the Crimson Tide's 197.650. Freshman Joscelyn Roberson had a standout meet as she posted 9.925+ scores on both beam and floor, which earned her titles on the events. Her 9.975 on floor matched the program record and the freshman individual record on the event. Her mark helped pushed the Gymbacks to a new season high of 49.650 on floor, which is the third highest on the event in program history. Arkansas also collected five more top three finishes on each event. Freshman Ja'Leigh Lang and sophomore Hailey Klein tied for second on vault (9.900), senior Maddie Jones tied for third on bars (9.925) and floor (9.950) and Kalyxta Gamiao tied for second on beam (9.900). A total of 8,578 fans were in attendance, the fifth-highest tally in program history.

Arkansas Wins Metroplex Challenge, Collects Another Top 10 Victory

The Gymbacks made their fifth appearance at the Metroplex Challenge on Feb. 21 and won the meet for the first time ever as Arkansas defeated Arizona, Oregon State and SEMO on the night with a team score of 196.400. No. 19 Arizona came in second to the Gymbacks with a 196.125, and Oregon State came in third with a 196.025, cementing Arkansas' third victory over a top 10 opponent this season. SEMO rounded out the team standings in fourth with a score of 192.350. Freshman Joscelyn Roberson earned a 39.300 all-around score, which put her in second behind elite teammate Jade Carey. Roberson notched another two top three finishes as well: she tied for second on beam with a mark of 9.875 and tied for second on floor with a 9.900 score. Senior Kalyxta Gamiao also had a solid night with top three finishes on both of her events. She matched Roberson's 9.875 on beam to tie for second and earned a 9.875 on floor, placing her in third.

Gymbacks Notch Highest Road Score of the Season in Close Loss to Georgia

While the No. 11 GymDogs snapped a six-match win streak for the No. 15 Gymbacks against Georgia, Arkansas did earn its season high road score of 197.050 on Feb. 14 in Athens. The team score was the third of 197+ for the Gymbacks through seven meets and second straight. The Hogs also set a new season high on beam in the meet with an event score of 49.450. Freshman Joscelyn Roberson posted an all-around score of 49.450, her second straight meet with the mark. She earned a career high 9.900 on vault in the second rotation, which also secured the first vault title of her collegiate career. Sophomore and Georgia native Priscilla Park got a 9.925 on beam, which tied for first and is a new season high for her.

Razorbacks Set New Season High, Defeat No. 2 for the Second Time in 2025

The No. 15 Gymbacks hosted the No. 2 team in the country for the second time this season and yet again came away with the victory as they took down Florida 197.175-196.625 on February 7. The team score was a new season high and Arkansas also registered new bests on vault (49.300) and bars (49.400) to help push toward the win. Graduate transfer Mati Waligora had a great night with shares of two event titles on bars (9.950) and floor (9.925). Both scores matched her personal bests and were the highest in her Arkansas career so far. Freshman Joscelyn Roberson collected the beam title with a 9.900 mark, her second of the season. She has now scored 9.900+ on beam in four of six meets for Arkansas. She also came in second all-around with a total score of 39.450. Redshirt junior Frankie Price rounded out the titles on the night as she matched Waligora's 9.925 on floor for her fourth win on the event this season. A total of 7,341 fans were in attendance Friday, Arkansas' sixth-highest turnout in program history.

Gymbacks Fall to No. 1 Oklahoma on the Road

The No. 13 Gymbacks had their first-ever SEC match-up with the No. 1 Oklahoma Sooners on Jan. 31 and suffered their second loss of the SEC slate, 197.825-195.975. Freshman Joscelyn Roberson closed the meet with a 9.925 on beam, Arkansas' highest score of the night, and tied for second in the event. The Gymbacks did go 49+ on three of four events, but just couldn't overpower the home team, who scored 49.300+ on every apparatus. Arkansas is now 3-5 on the season and 1-2 in conference competition.

-->

BY THE NUMBERS (BY NQS)

	VAULT	BARS	BEAM	FLOOR	TEAM
ARKANSAS	49.190	49.190	49.170	49.410	196.775
KENTUCKY	49.265	49.210	49.315	49.350	197.085

MEET 10 AT KENTUCKY MARCH 7, 2025

ALPHABETICAL ROSTER

NAME	CLASS	HOMETOWN	CLUB GYM/PREV. SCHOOL
Chandler Buntin	Sophomore	Collierville, Tenn.	ConXion Gymnastics
Grace Drexler	Freshman	Stratford, Wis.	Twin City Twisters
Reese Drotar	Junior	Los Gatos, Calif.	Airbone Gymnastics
Dakota Essenpries	Sophomore	Adrian, Mo.	Missouri Elite Gymnastics
Kaitlyn Ewald	Graduate	Newburgh, Ind.	In The Zone/Illinois
Kalyxta Gamiao	Senior	Honolulu, Hawaii	Hawaiian Island Twisters
Maddie Jones	Senior	Charlotte, N.C.	Southeastern Gymnastics
Hailey Klein	Sophomore	Lake Forest, Ill.	Legacy Elite Gymnastics
Ja'Leigh Lang	Freshman	East Palo Alto, Calif.	San Mateo Gymnastics
Priscilla Park	Sophomore	Atlanta, Ga.	Georgia Elite Gymnastics
Frankie Price	R-Junior	Dallas, Texas	Texas Dreams Gymnastics
Joscelyn Roberson	Freshman	Texarkana, Texas	World Champions Centre
Sadie Smith	Freshman	Gig Harbor, Wash.	Ascend Gymnastics
Leah Smith	Senior	Houston, Texas	World Champions Centre
Cally Swaney	Junior	Belmont, N.C.	First in Flight
Mati Waligora	Graduate	Rochester, Mich.	Olympia Gymnastics Academy/Alabama
Cami Weaver	R-Junior	Pelham, Ala.	Legacy Gymnastics
Julianna Weeks	Freshman	Charlotte, N.C.	Everest Gymnastics
Lauren Williams	Junior	Rogers, Ark.	Aspire Gymnastics

BY STATE

ALABAMA	
Cami Weaver	Pelham
ARKANSAS	
Lauren Williams	Rogers
CALIFORNIA	
Reese Drotar	Los Gatos
Ja'Leigh Lang	East Palo Alto
GEORGIA	
Priscilla Park	Atlanta
HAWAII	
Kalyxta Gamiao	Honolulu
ILLINOIS	
Hailey Klein	Lake Forest
INDIANA	
Kaitlyn Ewald	Newburgh
MICHIGAN	
Mati Waligora	Rochester
MISSOURI	
Dakota Essenpries	Adrian
NORTH CAROLINA	
Maddie Jones	Charlotte
Cally Swaney	Belmont
Julianna Weeks	Charlotte
TENNESSEE	
Chandler Buntin	Collierville
TEXAS	
Frankie Price	Dallas
Joscelyn Roberson	Texarkana
Leah Smith	Houston
WASHINGTON	
Sadie Smith	Gig Harbor
WISCONSIN	
Grace Drexler	Stratford

COACHING STAFF

TITLE	NAME	EXPERIENCE	ALMA MATER
Head Coach	Jordyn Wieber	Sixth Season	UCLA, '17
Assistant Coach	Chris Brooks	Sixth Season	Oklahoma, '09
Assistant Coach	Kyla Ross	Fourth Season	UCLA, '20
Assistant Coach	Catelyn Branson	Third Season	Nebraska, '19
Student Assistant Coach	Kiara Gianfagna	First Season	Arkansas, '23
Trainer	Kaitlyn Hocutt	Third Season	Ohio State, '19
Strength & Conditioning	Whitney Smith	11th Season	Arkansas, '10
Director of Operations	Meagan Blair	First Season	Wisconsin, '20



CHANDLER BUNTIN
SO | COLLIERVILLE,
TENN.



GRACE DREXLER
FR | STRATFORD,
WIS.



REESE DROTAR
JR | LOS GATOS,
CALIF.



DAKOTA ESSENPRIES
SO | ADRIAN, MO.



KAITY EWALD
GR | NEWBURGH,
IND.



KALYXTA GAMIAO
SR | HONOLULU,
HAWAII



MADDIE JONES
SR | CHARLOTTE,
N.C.



HAILEY KLEIN
SO | LAKE FOREST,
ILL.



JA'LEIGH LANG
FR | EAST PALO
ALTO, CALIF.



PRISCILLA PARK
SO | ATLANTA, GA.



FRANKIE PRICE
R-JR | DALLAS,
TEXAS



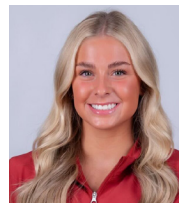
JOSCELYN ROBERSION
FR | TEXARKANA,
TEXAS



LEAH SMITH
SR | HOUSTON,
TEXAS



SADIE SMITH
FR | GIG HARBOR,
WASH.



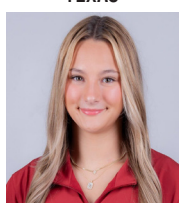
CALLY SWANEY
JR | BELMONT, N.C.



MATI WALIGORA
GR | ROCHESTER,
MICH.



CAMI WEAVER
R-JR | PELHAM,
ALA.



JULIANNA WEEKS
FR | CHARLOTTE,
N.C.



LAUREN WILLIAMS
JR | ROGERS, ARK.

BY CLASS

FRESHMEN (5)	
Grace Drexler	Freshman
Ja'Leigh Lang	Freshman
Joscelyn Roberson	Freshman
Sadie Smith	Freshman
Julianna Weeks	Freshman
SOPHOMORES (4)	
Chandler Buntin	Sophomore
Dakota Essenpries	Sophomore
Hailey Klein	Sophomore
Priscilla Park	Sophomore
JUNIORS (5)	
Reese Drotar	Junior
Cally Swaney	Junior
Lauren Williams	Junior
Frankie Price	R-Junior
Cami Weaver	R-Junior
SENIORS/GRADUATES (5)	
Kalyxta Gamiao	Senior
Maddie Jones	Senior
Leah Smith	Senior
Kaitlyn Ewald	Graduate
Mati Waligora	Graduate

PRONUNCIATIONS

Reese Drotar	DRO-tar
Dakota Essenpries	Essen-PRICE
Kalyxta Gamiao	Callista GAH-meow
Ja'Leigh Lang	juh-LEE
Joscelyn Roberson	ROB-erson (not robe)
Mati Waligora	walla-GORE-uh
Cally Swaney	SWAY-knee
Julianna Weeks	juli-ANN-uh
Jordyn Wieber	WEE-bur

RTN TOP 25

NO.	TEAM	NQS	AVG.	HIGH
1	Oklahoma	197.915	197.920	198.075
2	LSU	197.710	197.531	198.125
3	UCLA	197.525	197.247	197.950
4	Florida	197.480	197.353	198.125
5	Utah	197.465	197.286	198.075
6	California	197.345	197.183	197.775
7	Missouri	197.230	197.050	197.725
8	Michigan State	197.220	197.092	197.500
9	Kentucky	197.085	197.034	197.300
10	Georgia	197.065	196.934	197.350
11	Oregon State	197.010	196.761	197.600
12	Stanford	197.000	196.772	197.400
13	Auburn	196.965	196.869	197.750
14	Alabama	196.940	196.844	197.650
15	Minnesota	196.930	196.575	197.375
16	Arkansas	196.775	196.669	197.425
17	Michigan	196.770	196.461	197.100
18	Denver	196.680	196.356	197.525
19	Nebraska	196.380	196.036	196.750
20	NC State	196.270	196.022	197.025
21	Southern Utah	196.205	195.800	196.650
22	Arizona	196.180	195.969	196.775
23	Ohio State	196.165	196.088	196.650
24	North Carolina	196.125	195.981	196.675
25	Arizona State	196.065	195.925	196.600

SEC teams in bold

WXW EVENT RANKINGS

WEEK	TEAM	VT	UB	BB	FX
Preseason	8	--	--	--	--
Jan. 13	17	T15	T13	T47	2
Jan. 20	17	15	19	25	T6
Jan. 27	13	T10	17	21	3
Feb. 3	15	T11	20	20	4
Feb. 10	15	10	18	20	5
Feb. 17	14	11	18	16	6
Feb. 24	16	T9	T17	18	8
March 3	16	T12	17	16	9

IND. EVENT RANKINGS (TOP 50)

Gymback	AA	VT	UB	BB	FX
Chandler Buntin	--	--	--	--	--
Grace Drexler	--	--	--	--	--
Reese Drotar	--	--	--	--	--
Dakota Essenpries	--	--	--	--	--
Kaitlyn Ewald	--	--	--	--	--
Kalyxta Gamiao	--	--	--	--	--
Maddie Jones	--	--	T29	--	--
Hailey Klein	--	--	--	--	--
Ja'Leigh Lang	--	T33	--	--	--
Priscilla Park	--	--	--	--	--
Frankie Price	--	--	--	--	T24
Joscelyn Roberson	T23	T43	--	T9	T16
Sadie Smith	--	--	--	--	--
Leah Smith	--	--	--	--	--
Cally Swaney	--	--	--	--	--
Mati Waligora	--	--	--	--	--
Cami Weaver	--	--	--	--	--
Julianna Weeks	--	--	--	--	--
Lauren Williams	--	--	--	--	--

NOTEBOOK CONTINUED

Gymbacks Take Down No. 2 LSU on Friday for First Conference Win

In front of nearly 10,000 fans, the No. 17 Gymbacks brought down the house at Bud Walton Arena on Jan. 24 as they defeated the reigning national champion and No. 2 LSU Tigers. The upset was the biggest of the Wieber era and the highest-ranked since Arkansas took down No. 1 Florida in 2011. The Gymbacks set a new season high on bars with a score of 49.250 and hit a mark of 49.525 for the second consecutive meet. Freshman Joscelyn Roberson won the all-around with a score of 39.350, the third all-around crown of her young career. Redshirt junior Frankie Price won floor for the second meet in a row with a 9.950 and received a 10 from one judge. Arkansas had 9,874 fans in attendance, third-highest in program history, and set a new student attendance record of 1,705.

Arkansas Collects First Two Wins, 197 Score in Home Opener

After two consecutive road meets, the No. 17 Gymbacks competed at Bud Walton Arena for the first time in 2025 on Jan. 20 and had their best showing of the season as they scored 197.000 and defeated both No. 16 Denver and Texas Woman's. Arkansas got at least a share of the event title on three of four apparatuses and freshman Joscelyn Roberson earned her second all-around title in three meets with a 39.350 score. The Gymbacks got over the 197 hump in the meet after setting a program record for 197+ marks last season with 11. Arkansas also had seven 9.9+ individual tallies, the most in a meet so far in 2025. Four of those 9.9+ scores came on floor, where the Gymbacks earned a season-high 49.525, which also ties for the third-highest team floor score in the country.

Roberson, Price Collect Event Titles, Gymbacks Fall to Tigers

The Arkansas gymnastics team made improvements from week one at its first SEC dual meet against Auburn, but the Tigers ultimately came away victorious, 196.700-196.250. Freshman Joscelyn Roberson had another great performance and collected two event titles on beam and floor. Her 9.925 on beam was new a career high, and her 39.275 all-around score placed her in second. Roberson and Frankie Price both scored 9.850 on floor, which put them in a five-way tie for gold on the event. After counting a fall in their opening meet, the Gymbacks bounced back big on beam with a 49.225 event score, which tied Auburn and was their best rotation of the night.

Gymbacks Take Fourth, Roberson Ties for All-Around Title in Season Opener

Arkansas gymnastics opened the 2025 slate in Oklahoma City on Jan. 11 at the Sprouts Farmers Market Collegiate Quad and took fourth in the session with a score of 195.875. UCLA took the session title with a 197.550, Kentucky came in second with a 196.500, and Ohio State placed third with a 196.425 score. Freshman Joscelyn Roberson had an excellent NCAA debut and tied for first in the all-around with a score of 39.475, the second-highest ever by any rookie Gymback. She also tied for second on floor, behind only her Team USA counterpart Jordan Chiles of UCLA.

Gymbacks Check in at No. 8 in Preseason Poll

Coming off the best season in head coach Jordyn Wieber's tenure, expectations are high for the Gymbacks in 2025 as the team has been voted No. 8 in the Women's College Gymnastics Association preseason coaches poll. The ranking is the highest in an opening poll during Wieber's tenure, first in the top 10, and fifth in the top 15. Arkansas concluded the 2024 slate ranked No. 7 in the country after the Gymbacks qualified for their first nationals under Wieber and first

since 2018. Over the course of the season, the Gymbacks set and broke their team program score record three times. They reached their peak on March 15 against Nebraska with a 198.100, the first 198 ever for Arkansas. The team also set new event records on vault (49.550), beam (49.575), and floor (49.725). The team ultimately tallied 11 total scores of 197+, a new program single season record by six, and compiled a 15-15-1 record, the most wins since 2012 and most in Wieber's tenure. The Gymbacks had a 4-2-1 record in SEC competition, the most conference victories since 2016. Arkansas only loses two key routines from last season heading into 2025 and returns a wealth of talent including All-Americans Reese Drotar (bars), Leah Smith (vault) and Cami Weaver (vault). Floor regular season All-American and All-SEC honoree Frankie Price will be back for another season of fan favorite gymnastics, and fellow all-conference teammates Maddie Jones, Hailey Klein and Lauren Williams will also play big roles for the Gymbacks. The team's new additions are sure to make a big impact, starting with incoming freshman Joscelyn Roberson. Roberson served as a traveling alternate for Team USA at the 2024 Paris Olympics, the first gymnast to ever represent Arkansas at the games. En route to Paris, she had an excellent showing at Olympic Trials with back-to-back personal high all-around scores of 55.475 and 55.500. She placed sixth overall with a combined score of 110.975, finished in fourth place on vault and floor and tied for first on beam. Roberson is 2023 world champion, 2023 U.S. vault champion. Since her senior debut in 2022, Roberson has earned 23 top 10 finishes across eight domestic competitions and 11 in her four international assignments with Team USA. Grace Drexler, Ja'Leigh Lang, Sadie Smith and Julianna Weeks join Joscelyn in the freshman class, and Arkansas has also added two graduate transfers in the off-season, Kaity Ewald and Mati Waligora. All seven provide a wealth of expertise on all events to ensure that the Gymbacks continue 2024's success into the new season. Arkansas will also take its talents to a bigger stage this season as the Hogs are set to host all five of their home meets at Bud Walton Arena. Razorback Nation did not disappoint in its support for gymnastics in 2024, starting with a new season ticket record of 2,480. Arkansas recorded a total regular season attendance of 35,367 across five meets and has room to expand on that number with a larger venue and marquee SEC opponents like defending national champions LSU, Florida, Alabama and Mizzou.

Arkansas Gymnastics Inks No. 2 2025 Signing Class

The Gymbacks welcomed six new members to the squad on Signing Day, an impressive class ranked No. 2 in the country by College Gym News. Avalon Campbell, Allison Cucci, Avery King, Addison Bare, Bradley Burton and Riley Jandorf will head to The Hill next year and allow Arkansas to reload, rather than rebuild. Campbell, Cucci, and King are all rated five-star recruits by CGN, and Bare and Burton will arrive as four stars. Jandorf continues a local connection for the program as a Bentonville native. "This 2025 class is stacked with talent, competitiveness, camaraderie, and passion for this Arkansas program," head coach Jordyn Wieber said. "Each of them brings a level of difficulty and excellence through their gymnastics and their character that will undoubtedly make this program better. They are eager to get here and help us win championships."

TEAM SCORES

DATE	VAULT	BARS	BEAM	FLOOR	TOTAL	2-ROT. SCORE	3-ROT. SCORE
JAN. 11	48.975	49.025	48.400	49.475	195.875	98.000	146.400
JAN. 17	49.075	48.925	49.225	49.025	196.250	98.000	147.025
JAN. 20	49.275	49.050	49.150	49.525	197.000	98.325	147.475
JAN. 24	49.250	49.250	48.850	49.525	196.875	98.500	147.350
JAN. 31	49.050	48.850	49.075	49.000	195.975	97.900	146.900
FEB. 07	49.300	49.400	49.025	49.450	197.175	98.700	147.725
FEB. 14	49.075	49.300	49.450	49.225	197.050	98.375	147.600
FEB. 21	49.275	49.175	48.650	49.300	196.400	98.400	147.050
FEB. 28	49.200	49.200	49.375	49.650	197.425	98.400	147.775
MAR. 07							
MAR. 14							

IND. EVENT TITLES

NAME	VT	UB	BB	FX	AA
Chandler Buntin	--	--	--	--	--
Grace Drexler	--	--	--	--	--
Reese Drotar	--	--	--	--	--
Dakota Essenspries	--	--	--	--	--
Kaitlyn Ewald	--	--	--	--	--
Kalyxta Gamiao	--	--	--	--	--
Maddie Jones	--	1	--	--	--
Hailey Klein	--	--	--	--	--
Ja'Leigh Lang	--	--	--	--	--
Priscilla Park	--	--	1	--	--
Frankie Price	--	--	--	4	--
Joscelyn Roberson	1	--	3	2	4
Sadie Smith	--	--	--	--	--
Leah Smith	--	--	--	--	--
Cally Swaney	--	--	--	--	--
Mati Waligora	--	1	--	1	--
Cami Weaver	1	--	--	--	--
Julianna Weeks	--	--	--	--	--
Lauren Williams	--	--	--	--	--

INDIVIDUAL LEADERS

DATE	VAULT	BARS	BEAM	FLOOR	AA
JAN. 11	Roberson, 9.875	KE/MJ/JR, 9.825	Park, 9.875	Roberson, 9.950	Roberson, 39.475
JAN. 17	DE/JL/JR/CW, 9.825	Ewald, 9.825	Roberson, 9.925	FP/JR, 9.850	Roberson, 39.275
JAN. 20	Weaver, 9.900	Jones, 9.850	Roberson, 9.900	Price, 9.950	Roberson, 39.350
JAN. 24	DE/JR/CW, 9.875	PP/MW, 9.875	Weaver, 9.825	Price, 9.950	Roberson, 39.350
JAN. 31	Smith, 9.850	Smith, 9.850	Roberson, 9.925	Price, 9.875	--
FEB. 07	Lang, 9.900	Waligora, 9.950	Roberson, 9.900	FP/MW, 9.925	Roberson, 39.450
FEB. 14	Roberson, 9.900	Jones, 9.925	Park, 9.925	Waligora, 9.900	Roberson, 39.450
FEB. 21	Price, 9.900	Jones, 9.900	KG/JR, 9.875	Roberson, 9.900	Roberson, 39.300
FEB. 28	HK/JL, 9.900	Jones, 9.925	Roberson, 9.925	Roberson, 9.975	--

MAR. 07
MAR. 14

2025 AWARDS

NAME	AWARD
------	-------

THE LAST TIME ARKANSAS

Scored a 196 or higher at home	196.875 vs. No. 2 LSU (1/25)
Scored a 196 or higher on the road	196.250 at No. 12 Auburn (1/17/25)
Scored a 197 or higher at home	197.425 vs. No. 17 Alabama (2/28/25)
Scored a 197 or higher on the road	197.050 at No. 11 Georgia (2/14/25)
Scored a 198 or higher	198.100 vs. No. 29 Nebraska (3/15/24)
Won a home meet	vs. No. 2 Florida (2/7/25)
Won a road meet	at No. 13 Missouri (3/3/24)
Won a neutral site meet	Metroplex Challenge (2/21/25)
Lost a home meet	vs. No. 17 Alabama (2/28/25)
Lost a road meet	at No. 11 Georgia (2/14/25)
Lost a neutral site meet	4th of 4, SFM Collegiate Quad (1/11/25)
Won a conference meet	vs. No. 2 Florida (2/7/25)
Won a home conference meet	vs. No. 2 Florida (2/7/25)
Won a road conference meet	at No. 13 Missouri (3/3/24)
Lost a home conference meet	vs. No. 17 Alabama (2/28/25)
Lost a road conference meet	at No. 11 Georgia (2/14/25)
Won the All-Around title at home	Joscelyn Roberson, 39.350 vs. No. 2 LSU (1/24/25)
Won the All-Around title on the road	Joscelyn Roberson, 39.450 at No. 11 Georgia (2/14/25)
Won the Vault title at home	Cami Weaver, 9.900, Arkansas Tri-Meet (1/20/25)
Won the Vault title on the road	Joscelyn Roberson, 9.900 at No. 11 Georgia (2/14/25)
Won the Bars title at home	Mati Waligora, 9.950 vs. No. 2 Florida (2/7/25)
Won the Bars title on the road	Maddie Jones, 9.925 at No. 13 Missouri (3/3/24)
Won the Beam title at home	Joscelyn Roberson, 9.925 vs. No. 17 Alabama (2/28/25)
Won the Beam title on the road	Priscilla Park, 9.925 at No. 11 Georgia (2/14/25)
Won the Floor title at home	Joscelyn Roberson, 9.975 vs. No. 17 Alabama (2/28/25)
Won the Floor title on the road	Frankie Price & Joscelyn Roberson, 9.850 at No. 12 Auburn (1/17/25)
Had an All-American	Reese Drotar (6th, UB), Leah Smith (13th, VT), Cami Weaver (13th, VT), 2024
Had an NCAA Individual appearance	Norah Flatley & Lauren Williams, 2023

*postseason meets not included in home/road stats

GYMBACK MAJORS

NAME	MAJOR
Chandler Buntin	Exercise Science
Grace Drexler	Anthropology
Reese Drotar	Communications
Dakota Essenspries	Business
Kaitlyn Ewald	Operations Management (MS)
Kalyxta Gamiao	Multimedia Storytelling & Production
Maddie Jones	Supply Chain + Marketing
Hailey Klein	Business
Ja'Leigh Lang	Psychology
Priscilla Park	Communications
Frankie Price	Interdisciplinary Studies (MA)
Joscelyn Roberson	Exercise Science
Sadie Smith	Business
Leah Smith	Public Health
Cally Swaney	Public Health
Mati Waligora	Operations Management (MS)
Cami Weaver	Operations Management (MS)
Julianna Weeks	Psychology
Lauren Williams	Communications

THE SERIES

>> Kentucky is one of only two SEC opponents that Arkansas is on the winning side of its series with at 28-17

>> The Gymbacks faced the Wildcats a whopping four times in 2024 and went 3-1 in those meetings. But the last time Arkansas beat Kentucky in Lexington was in 2011

>> Alabama has the upper hand on bars with an NQS of 49.225 to Arkansas' 49.160, but Arkansas has the advantage on vault, beam and floor

KENTUCKY (28-17)

DATE	W/L	SCORE	LOCATION
2/7/03	W	194.475-192.825	Lexington, Ky. *FIRST WIN
3/29/03	L	194.850-194.875	Birmingham, Ala. (SEC)
1/16/04	W	196.225-195.200	Fayetteville, Ark.
3/20/04	W	194.825-193.850	Duluth, Ga. (SEC)
1/14/05	W	194.925-193.575	Lexington, Ky.
3/26/05	W	195.325-193.800	Duluth, Ga. (SEC)
2/24/06	W	196.350-196.250	Fayetteville, Ark.
3/25/06	W	194.650-191.150	Birmingham, Ala. (SEC)
2/23/07	W	195.850-193.650	Lexington, Ky.
3/31/07	W	194.550-194.000	Little Rock (SEC)
2/15/08	W	195.675-195.175	Fayetteville, Ark.
3/29/08	W	194.650-194.025	Duluth, Ga. (SEC)
2/6/09	W	195.075-194.500	Lexington, Ky.
3/21/09	W	195.650-195.000	Nashville, Tenn. (SEC)
1/29/10	W	196.750-195.325	Fayetteville, Ark.
3/26/10	W	195.275-194.800	Jacksonville, Fla. (SEC)
1/21/11	W	194.975-193.525	Lexington, Ky.
3/19/11	W	195.800-193.950	Birmingham, Ala. (SEC)
1/13/12	W	196.650-191.975	Fayetteville, Ark.
3/24/12	L	194.175-194.350	Duluth, Ga. (SEC)
1/18/13	L	193.075-195.000	Lexington, Ky.
3/23/13	W	196.400-194.600	Little Rock (SEC)
2/21/14	W	197.100-195.975	Fayetteville, Ark.
3/22/14	L	194.900-195.075	Birmingham, Ala. (SEC)
2/20/15	L	195.750-194.825	Lexington, Ky.
3/21/15	W	195.950-195.025	Duluth, Ga. (SEC)
2/26/16	W	197.225-196.700	Fayetteville, Ark.
3/19/16	W	196.500-196.250	Little Rock (SEC)
3/3/17	L	196.525-195.275	Lexington, Ky.
3/18/17	L	196.625-194.900	Jacksonville, Fla. (SEC)
1/12/18	L	196.525-196.950	Fayetteville, Ark.
3/24/18	L	196.425-196.550	St. Louis (SEC)
1/18/19	L	195.275-193.875	Lexington, Ky.
3/23/19	W	196.475-196.225	New Orleans, La. (SEC)
1/24/20	L	196.750-196.650	Fayetteville, Ark.
2/12/21	L	197.000-196.675	Lexington, Ky.
3/20/21	L	196.825-195.600	Huntsville, Ala. (SEC)
2/11/22	L	196.700-195.675	Fayetteville, Ark.
3/19/22	W	196.450-196.350	Birmingham, Ala. (SEC)
2/17/23	L	195.400-197.875	Lexington, Ky.
3/18/23	L	196.825-197.675	Duluth, Ga. (SEC)
2/23/24	W	197.400-197.150	Fayetteville, Ark.
3/23/24	L	197.600-197.050	New Orleans, La. (SEC)
4/4/24	W	197.325-197.100	Fayetteville Regional
4/6/24	W	197.825-197.475	Fayetteville Regional Final

SEC STANDINGS

TEAM	SEC	PCT	OVERALL	PCT	HOME	AWAY	NEUTRAL	NQS	HIGH
Oklahoma	6-1	.857	13-1	.923	4-0	2-1	7-0	197.915	198.075
LSU	5-1	.833	9-2	.818	4-0	3-1	2-1	197.710	198.125
Missouri	3-3	.500	11-4	.733	8-0	1-4	5-0	197.230	197.725
Florida	3-3	.500	8-3	.727	6-0	1-3	1-0	197.480	198.125
Auburn	3-3	.500	10-4	.714	3-1	1-2	6-1	196.965	197.750
Georgia	3-3	.500	5-5	.500	4-0	0-4	1-1	197.065	197.350
Arkansas	2-4	.333	7-7	.500	3-1	0-3	4-3	196.775	197.425
Kentucky	2-4	.333	5-4	.500	3-1	0-3	2-1	197.085	197.300
Alabama	1-6	.143	4-6	.400	1-3	1-2	2-1	196.940	197.650

LINEUPS AND SCORES BY MEET

VAULT

DATE	1	2	3	4	5	6	TEAM
JAN. 11	Weaver, 9.750	Smith, 9.825	Price, 9.600	Roberson, 9.825	Essenpries, 9.850	Park, 9.675	48.975
JAN. 17	Weaver, 9.825	Price, 9.700	Smith, 9.775	Lang, 9.825	Essenpries, 9.825	Roberson, 9.825	49.075
JAN. 20	Weaver, 9.900	Price, 9.800	Smith, 9.875	Lang, 9.850	Essenpries, 9.850	Roberson, 9.775	49.275
JAN. 24	Weaver, 9.875	Smith, 9.800	Lang, 9.825	Essenpries, 9.875	Roberson, 9.875	Klein, 9.800	49.250
JAN. 31	Weaver, 9.775	Smith, 9.850	Lang, 9.800	Essenpries, 9.825	Roberson, 9.750	Price, 9.800	49.050
FEB. 07	Weaver, 9.850	Lang, 9.900	Drexler, 9.875	Roberson, 9.875	Essenpries, 9.725	Klein, 9.800	49.300
FEB. 14	Weaver, 9.750	Lang, 9.850	Essenpries, 9.700	Drexler, 9.075	Roberson, 9.900	Price, 9.875	49.075
FEB. 21	Weaver, 9.875	Lang, 9.875	Drexler, 9.825	Roberson, 9.800	Klein, 9.250	Price, 9.900	49.275
FEB. 28	Weaver, 9.800	Lang, 9.900	Drexler, 9.150	Essenpries, 9.775	Klein, 9.900	Price, 9.825	49.200
MAR. 07							
MAR. 14							

BARS

DATE	1	2	3	4	5	6	TEAM
JAN. 11	Roberson, 9.825	Ewald, 9.825	Swaney, 9.725	Park, 9.750	Waligora, 9.800	Jones, 9.825	49.025
JAN. 17	Roberson, 9.675	Ewald, 9.825	Smith, 9.775	Park, 9.800	Waligora, 9.800	Jones, 9.725	48.925
JAN. 20	Roberson, 9.750	Ewald, 9.800	Swaney, 9.825	Park, 9.750	Jones, 9.850	Waligora, 9.825	49.050
JAN. 24	Roberson, 9.850	Swaney, 9.675	Ewald, 9.825	Park, 9.875	Jones, 9.825	Waligora, 9.875	49.250
JAN. 31	Swaney, 9.700	Smith, 9.850	Ewald, 9.775	Park, 9.775	Jones, 9.750	Waligora, 9.250	48.850
FEB. 07	Roberson, 9.800	Swaney, 9.900	Ewald, 9.825	Park, 9.800	Jones, 9.925	Waligora, 9.950	49.400
FEB. 14	Roberson, 9.850	Swaney, 9.775	Ewald, 9.800	Park, 9.825	Jones, 9.925	Waligora, 9.900	49.300
FEB. 21	Roberson, 9.725	Swaney, 9.825	Ewald, 9.825	Park, 9.875	Jones, 9.900	Waligora, 9.750	49.175
FEB. 28	Roberson, 9.750	Swaney, 9.725	Ewald, 9.875	Park, 9.775	Jones, 9.925	Waligora, 9.875	49.200
MAR. 07							
MAR. 14							

BEAM

DATE	1	2	3	4	5	6	TEAM
JAN. 11	Gamiao, 9.825	Jones, 9.825	Park, 9.875	Klein, 9.050	Swaney, 9.025	Roberson, 9.825	48.400
JAN. 17	Gamiao, 9.850	Jones, 9.825	Park, 9.825	Weaver, 9.775	Swaney, 9.800	Roberson, 9.925	49.225
JAN. 20	Gamiao, 9.875	Jones, 9.700	Park, 9.800	Weaver, 9.850	Swaney, 9.725	Roberson, 9.900	49.150
JAN. 24	Gamiao, 9.800	Jones, 9.625	Park, 9.725	Weaver, 9.825	Swaney, 9.800	Roberson, 9.700	48.850
JAN. 31	Gamiao, 9.750	Jones, 9.700	Park, 9.800	Swaney, 9.775	Weaver, 9.825	Roberson, 9.925	49.075
FEB. 07	Gamiao, 9.825	Ewald, 9.675	Park, 9.825	Waligora, 9.175	Weaver, 9.800	Roberson, 9.900	49.025
FEB. 14	Gamiao, 9.875	Waligora, 9.900	Park, 9.925	Klein, 9.825	Weaver, 9.850	Roberson, 9.900	49.450
FEB. 21	Gamiao, 9.875	Jones, 9.000	Park, 9.825	Waligora, 9.850	Weaver, 9.225	Roberson, 9.875	48.650
FEB. 28	Gamiao, 9.900	Waligora, 9.875	Park, 9.800	Swaney, 9.825	Weaver, 9.850	Roberson, 9.925	49.375
MAR. 07							
MAR. 14							

FLOOR

DATE	1	2	3	4	5	6	TEAM
JAN. 11	Gamiao, 9.875	Jones, 9.875	Smith, 9.875	Williams, 9.875	Roberson, 9.950	Price, 9.875	49.475
JAN. 17	Gamiao, 9.775	Klein, 9.800	Jones, 9.750	Smith, 9.750	Roberson, 9.850	Price, 9.850	49.025
JAN. 20	Gamiao, 9.850	Klein, 9.850	Jones, 9.900	Smith, 9.900	Roberson, 9.925	Price, 9.950	49.525
JAN. 24	Gamiao, 9.850	Klein, 9.825	Jones, 9.875	Smith, 9.925	Roberson, 9.925	Price, 9.950	49.525
JAN. 31	Gamiao, 9.525	Klein, 9.775	Jones, 9.850	Smith, 9.750	Roberson, 9.750	Price, 9.875	49.000
FEB. 07	Gamiao, 9.825	Klein, 9.850	Jones, 9.875	Waligora, 9.925	Roberson, 9.875	Price, 9.925	49.450
FEB. 14	Gamiao, 9.825	Klein, 9.825	Jones, 9.175	Waligora, 9.900	Roberson, 9.800	Price, 9.875	49.225
FEB. 21	Gamiao, 9.875	Klein, 9.850	Jones, 9.825	Waligora, 9.850	Roberson, 9.900	Price, 9.825	49.300
FEB. 28	Gamiao, 9.850	Klein, 9.900	Jones, 9.950	Waligora, 9.925	Roberson, 9.975	Price, 9.900	49.650
MAR. 07							
MAR. 14							

TOP SCORES BY CLASS

FRESHMAN

GYMNAST	SCORE	DATE	OPPONENT
Hailey Klein	9.975	3/15/24	No. 29 Nebraska

UNEVEN BARS

GYMNAST	SCORE	DATE	OPPONENT
Reese Drotar	9.950	2/17/23	At No. 11 Kentucky
Paige Zaziski	9.950	3/13/15	No. 8 UCLA

BALANCE BEAM

GYMNAST	SCORE	DATE	OPPONENT
Priscilla Park	9.975	2/2/24	at No. 5 LSU
Sophia Carter	9.975	1/26/18	No. 10 Georgia
Sophia Carter	9.975	3/2/18	No. 36 Arizona

FLOOR EXERCISE

GYMNAST	SCORE	DATE	OPPONENT
Joscelyn Roberson	9.975	2/28/25	No. 17 Alabama

ALL-AROUND

GYMNAST	SCORE	DATE	OPPONENT
Sarah Shaffer	39.500	3/16/18	Arkansas Tri Meet

SOPHOMORE/R-FRESHMAN

GYMNAST	SCORE	DATE	OPPONENT
Lauren Williams	9.950	4/4/24	Fayetteville Regional Semi
Leah Smith	9.950*	2/17/23	At No. 11 Kentucky
Makenzie Sedlacek	9.950	2/17/23	At No. 11 Kentucky
Amanda Wellick	9.950	2/13/15	No. 6 Alabama
Amanda Wellick	9.950	1/16/15	Arkansas Tri Meet
Katherine Grable	9.950	1/20/12	No. 25 LSU
Jaime Pisani	9.950	3/6/10	No. 22 Minnesota
Jaime Pisani	9.950	2/5/10	No. 16 Auburn

UNEVEN BARS

GYMNAST	SCORE	DATE	OPPONENT
Reese Drotar	9.975	3/15/24	No. 29 Nebraska
Hailey Garner	9.975	3/16/18	Arkansas Tri Meet

BALANCE BEAM

GYMNAST	SCORE	DATE	OPPONENT
Cami Weaver	9.950	1/20/23	At No. 7 Auburn
Bailey Lovett	9.950	3/5/21	At No. 12 Auburn
Michaela Burton	9.950	1/26/18	No. 10 Georgia
Jessica Yamzon	9.950	1/26/18	No. 10 Georgia
Katherine Grable	9.950	4/21/12	NCAA Semifinal II
Katie Hardman	9.950	3/12/04	At No. 11 Arizona

FLOOR EXERCISE

GYMNAST	SCORE	DATE	OPPONENT
Frankie Price	9.975	2/17/23	At No. 11 Kentucky

ALL-AROUND

GYMNAST	SCORE	DATE	OPPONENT
Katherine Grable	39.725	1/20/12	No. 25 LSU

*denotes a perfect score of 9.950 for Yurchenko full

JUNIOR/R-SOPHOMORE

GYMNAST	SCORE	DATE	OPPONENT
Kennedy Hambrick	9.975	2/19/21	No. 25 Missouri
Michelle Stout	9.975	4/16/09	NCAA Semifinal II

UNEVEN BARS

GYMNAST	SCORE	DATE	OPPONENT
Kennedy Hambrick	9.950	4/3/21	Tuscaloosa Regional Final

BALANCE BEAM

GYMNAST	SCORE	DATE	OPPONENT
Kalyxta Gamiao	9.950	4/6/24	Fayetteville Regional Final
Kennedy Hambrick	9.950	2/26/21	No. 7 Alabama
Kennedy Hambrick	9.950	2/19/21	No. 25 Missouri
Michaela Burton	9.950	2/15/19	No. 11 Auburn

FLOOR EXERCISE

GYMNAST	SCORE	DATE	OPPONENT
Maddie Jones	9.975	3/15/24	No. 29 Nebraska
Frankie Price	9.975	2/23/24	No. 6 Kentucky

ALL-AROUND

GYMNAST	SCORE	DATE	OPPONENT
Kennedy Hambrick	39.750	2/19/21	No. 25 Missouri

SENIOR/GRADUATE

GYMNAST	SCORE	DATE	OPPONENT
Katherine Grable	9.975	4/20/14	NCAA Event Finals

UNEVEN BARS

GYMNAST	SCORE	DATE	OPPONENT
Mati Waligora	9.950	2/7/25	No. 2 Florida
Sarah Shaffer	9.950	3/31/22	Norman Regional
Sarah Shaffer	9.950	3/6/22	Elevate The Stage
Maggie O'Hara	9.950	1/14/22	No. 8 Auburn
Maggie O'Hara	9.950	2/26/21	No. 7 Alabama
Maggie O'Hara	9.950	1/15/21	No. 5 LSU
Braie Speed	9.950	3/16/18	Arkansas Tri Meet
Jaime Pisani	9.950	1/20/12	No. 25 LSU

BALANCE BEAM

Gymnast	Score	Date	Opponent
Norah Flatley	9.975	2/24/23	No. 15 Missouri
Kennedy Hambrick	9.975	2/6/22	No. 58 SEMO

FLOOR EXERCISE

Gymnast	Score	Date	Opponent
Katherine Grable	9.975	3/14/14	No. 2 Oklahoma
Jaime Pisani	9.975	2/3/12	No. 13 Auburn

ALL-AROUND

Gymnast	Score	Date	Opponent
Katherine Grable	39.725	2/21/14	No. 31 Kentucky
Jaime Pisani	39.725	2/2/12	No. 13 Auburn

INDIVIDUAL RECORDS

VAULT

SCORE	GYMNAST	DATE (LAST)	OPPONENT
9.975	Hailey Klein	3/15/24	No. 29 Nebraska
	Kennedy Hambrick	2/19/21	No. 25 Missouri
	Katherine Grable	4/20/14	NCAA Event Finals
	Michelle Stout	4/16/09	NCAA Semifinal I
9.950	Leah Smith* (2x)	4/6/24	Fayetteville Regional Final
	Lauren Williams	4/4/24	Fayetteville Regional Semi
	Makenzie Sedlacek	2/17/23	at No. 11 Kentucky
	Kennedy Hambrick	3/5/21	at No. 12 Auburn
	Amanda Wellick (2x)	2/13/15	Arkansas Tri-Meet
	Heather Elswick	1/16/15	No. 6 Alabama
	Katherine Grable (7x)	4/18/14	NCAA Semifinal II
	Jaime Pisani (3x)	3/16/12	at No. 16 Missouri
	Casey Jo Magee (2x)	3/1/10	No. 2 Oklahoma
	Michelle Stout	2/9/07	No. 1 Florida
9.925	Leah Smith (2x)	3/10/24	No. 1 Oklahoma
	Lauren Williams (5x)	3/10/24	No. 1 Oklahoma
	Cami Weaver	2/23/24	No. 6 Kentucky
	Amanda Elswick	3/13/22	Denver Quad
	Kennedy Hambrick (3x)	3/13/22	Denver Quad
	Savannah Pennese	3/13/22	Denver Quad
	Sarah Shaffer (2x)	3/13/22	Denver Quad
	Braie Speed	2/23/18	at No. 5 Florida

23 additional scores of 9.925 occurred 2009–2017
 *denotes a perfect score of 9.950 for Yurchenko full

BALANCE BEAM

SCORE	GYMNAST	DATE (LAST)	OPPONENT
9.975	Priscilla Park	2/2/24	at No. 5 LSU
	Norah Flatley	2/24/23	No. 14 Missouri
	Kennedy Hambrick	2/6/22	No. 58 SEMO
	Sophia Carter (2x)	3/2/18	No. 36 Arizona
9.950	Kalyxta Gamiao	4/6/24	Fayetteville Regional Final
	Norah Flatley	3/30/23	Norman Regional Semi
	Cami Weaver	1/20/23	at No. 7 Auburn
	Amanda Elswick (2x)	3/4/22	at No. 7 Alabama
	Kennedy Hambrick (3x)	1/14/22	No. 8 Auburn
	Bailey Lovett	3/5/21	at No. 12 Auburn
	Micaela Burton (2x)	2/5/19	at No. 11 Auburn
	Jessica Yamzon	1/26/18	No. 11 Georgia
	Katherine Grable	4/20/12	NCAA Semifinal II
	Jaime Pisani (2x)	4/20/12	NCAA Semifinal II
	Casey Jo Magee (3x)	3/19/10	No. 2 Oklahoma
	Katie Hardman	3/12/04	at No. 11 Arizona
9.9375	Norah Flatley	4/13/23	NCAA Semifinal II
9.925	Joscelyn Roberson (3x)	2/28/25	No. 17 Alabama
	Priscilla Park	2/14/25	at No. 11 Georgia
	Sirena Linton (2x)	4/6/24	Fayetteville Regional Final
	Cally Swaney (2x)	4/4/24	Fayetteville Regional Semi
	Maddie Jones	3/3/24	at No. 13 Missouri
	Hailey Klein (3x)	3/23/24	at SEC Championships
	Cami Weaver (4x)	3/23/24	at SEC Championships
	Kalyxta Gamiao (2x)	1/19/24	at No. 3 Alabama
	Norah Flatley	3/5/23	at No. 18 Georgia
	Amanda Elswick (2x)	2/20/22	at No. 10 Mizzou w/LSU
	Kennedy Hambrick (6x)	1/28/22	at No. 4 Florida
	Bailey Lovett (2x)	1/28/22	at No. 4 Florida
	Maggie O'Hara (2x)	1/22/21	No. 1 Florida
	Sophia Carter (2x)	2/7/20	No. 10 Georgia

16 additional scores of 9.925 occurred 2009–2018



MEET 10 AT KENTUCKY MARCH 7, 2025

UNEVEN BARS

SCORE	GYMNAST	DATE (LAST)	OPPONENT
9.975	Reese Drotar	3/15/24	No. 29 Nebraska
	Hailey Garner	3/16/18	Arkansas Tri
9.950	Mati Waligora	2/7/25	No. 2 Florida
	Reese Drotar (2x)	4/6/24	Fayetteville Regional Final
	Maddie Jones (3x)	2/23/24	No. 6 Kentucky
	Sarah Shaffer (2x)	3/31/22	Norman Regional Semi
	Maggie O'Hara (3x)	1/14/22	No. 8 Auburn
	Kennedy Hambrick (2x)	4/3/21	Tuscaloosa Regional Final
	Braie Speed (2x)	3/16/18	Arkansas Tri
	Emily Peacock	2/24/06	No. 18 Kentucky
	Jaime Pisani	1/20/12	No. 25 LSU
	Paige Zaziski	3/13/15	No. 8 UCLA
9.925	Maddie Jones (5x)	2/28/25	No. 17 Alabama
	Reese Drotar (3x)	4/18/24	NCAA Semifinal I
	Leah Smith	3/15/24	No. 29 Nebraska
	Priscilla Park	1/19/24	at No. 3 Alabama
	Norah Flatley (2x)	3/10/23	No. 19 Minnesota
	Kennedy Hambrick (3x)	3/6/22	Elevate the Stage
	Sarah Shaffer (2x)	2/6/22	No. 58 SEMO
	Jensen Scalzo (2x)	1/14/22	No. 8 Auburn
	Maggie O'Hara (2x)	4/16/21	NCAA Championships
	Hailey Garner (3x)	3/16/19	Arkansas Quad
	Michaela Burton	3/8/19	Elevate The Stage
	Sydney Laird	3/2/18	No. 36 Arizona

13 additional scores of 9.925 occurred 2009–2017

FLOOR EXERCISE

SCORE	GYMNAST	DATE (LAST)	OPPONENT
9.975	Joscelyn Roberson	2/28/25	No. 17 Alabama
	Maddie Jones	3/15/24	No. 29 Nebraska
	Frankie Price (2x)	2/23/24	No. 16 Kentucky
	Katherine Grable	3/14/14	No. 2 Oklahoma
	Jaime Pisani	2/3/12	No. 13 Auburn
9.9625	Katherine Grable	4/20/14	NCAA Event Finals
9.950	Frankie Price (9x)	1/24/25	No. 2 LSU
	Joscelyn Roberson	1/11/25	SFM Collegiate Quad
	Leah Smith (2x)	3/15/24	No. 29 Nebraska
	Lauren Williams (8x)	3/15/24	at No. 29 Nebraska
	Maddie Jones	2/23/24	No. 6 Kentucky
	Kennedy Hambrick (3x)	2/6/22	No. 58 SEMO
	Sophia Carter (9x)	3/20/21	SEC Championships
	Bailey Lovett (3x)	3/5/21	at No. 12 Auburn
	Sarah Shaffer	3/16/18	Arkansas Tri
	Amanda Wellick (2x)	2/26/16	No. 23 Kentucky
	Katherine Grable (13x)	4/18/14	NCAA Event Semifinals
	Jaime Pisani (11x)	3/16/12	at No. 16 Missouri
	Casey Jo Magee	3/12/10	No. 40 Pittsburgh
	Rachel Barnett (2x)	2/6/04	No. 14 LSU
9.925	Frankie Price (5x)	2/7/25	No. 2 Florida
	Mati Waligora	2/7/25	No. 2 Florida
	Joscelyn Roberson (2x)	1/24/25	No. 2 LSU
	Leah Smith (3x)	1/24/25	No. 2 LSU
	Lauren Williams (6x)	3/10/24	No. 1 Oklahoma
	Maddie Jones (4x)	3/3/24	at No. 13 Missouri
	Norah Flatley	3/10/23	No. 19 Minnesota
	Madison Hickey (2x)	2/24/23	No. 14 Missouri
	Sophia Carter (9x)	4/2/21	Tuscaloosa Regional Semi
	Kennedy Hambrick (3x)	2/25/22	No. 26 Georgia
	Bailey Lovett (4x)	4/2/22	Norman Regional Final
	Abby Johnston	2/26/21	No. 7 Alabama
	Sarah Shaffer (4x)	2/26/21	No. 7 Alabama

37 additional scores of 9.925 occurred 2009–2020

ALL-AROUND

SCORE	GYMNAST	DATE (LAST)	OPPONENT
39.750	Kennedy Hambrick	2/19/21	No. 25 Missouri
39.725	Katherine Grable (2x)	2/22/14	No. 31 Kentucky
	Jaime Pisani	2/3/12	No. 13 Auburn
39.700	Kennedy Hambrick	3/5/21	at No. 12 Auburn
39.675	Katherine Grable	4/5/14	Fayetteville Regional
	Jaime Pisani	3/2/12	No. 18 Minnesota
	Casey Jo Magee	3/19/10	No. 2 Oklahoma
39.650	Katherine Grable	4/6/13	NCAA Regional
	Casey Jo Magee	3/19/10	No. 2 Oklahoma
39.625	Katherine Grable (3x)	3/14/14	No. 2 Oklahoma
	Jaime Pisani (2x)	4/20/12	NCAA Champ. SII
	Casey Jo Magee (2x)	3/12/10	No. 40 Pittsburgh
39.6125	Kennedy Hambrick	4/16/21	NCAA Championships
39.600	Kennedy Hambrick	2/7/20	No. 10 Georgia
	Amanda Wellick	2/26/16	No. 23 Kentucky
	Katherine Grable	3/1/14	at No. 6 Georgia
	Jaime Pisani (3x)	3/16/12	at No. 16 Missouri
	Casey Jo Magee	4/10/10	NCAA Champ. SII

TEAM RECORDS

VAULT

SCORE	DATE	OPPONENT
1. 49.550	3/15/24	No. 29 Nebraska
2. 49.525	2/17/23	at No. 11 Kentucky
3. 49.500	3/13/22	Denver Quad
4. 49.450	1/31/14	No. 12 Auburn
	4/21/12	at NCAA Super Six
	4/16/09	at NCAA Championship
	2/20/09	No. 3 Georgia
8. 49.425	1/19/24	at No. 3 Alabama
	2/6/15	No. 2 Florida
	2/22/13	No. 4 Alabama

UNEVEN BARS

SCORE	DATE	OPPONENT
1. 49.575	3/2/18	No. 36 Arizona
2. 49.550	1/14/22	No. 8 Auburn
	3/16/18	Arkansas Tri
	2/26/16	No. 23 Kentucky
5. 49.525	3/15/24	No. 29 Nebraska
6. 49.500	3/6/22	Elevate the Stage
7. 49.475	3/5/23	at No. 18 Georgia
8. 49.450	4/6/24	Fayetteville Regional Final
	3/31/22	Norman Regional
	2/9/18	No. 15 Auburn
	1/20/12	No. 25 LSU

BALANCE BEAM

SCORE	DATE	OPPONENT
1. 49.575	3/3/24	at No. 13 Missouri
2. 49.525	4/6/24	Fayetteville Regional Final
	2/24/23	No. 14 Missouri
4. 49.475	1/28/22	at No. 4 Florida
5. 49.450	2/14/25	at No. 11 Georgia
	3/23/24	at SEC Championships
	2/4/24	at No. 5 LSU
	4/20/12	NCAA Super Six
9. 49.425	1/26/18	No. 11 Georgia
10. 49.400	1/19/24	at No. 3 Alabama
	2/19/21	No. 25 Missouri
	3/2/18	No. 36 Arizona
	3/16/07	at No. 23 Arizona St

FLOOR EXERCISE

SCORE	DATE	OPPONENT
1. 49.725	3/15/24	No. 29 Nebraska
2. 49.675	2/23/24	No. 6 Kentucky
3. 49.650	2/28/25	No. 17 Alabama
4. 49.600	3/10/24	No. 1 Oklahoma
	1/16/15	No. 6 Alabama
6. 49.575	2/19/24	at TWU Quad
	1/12/24	No. 15 Georgia
	1/27/23	No. 8 LSU
	2/26/21	No. 7 Alabama
	2/19/21	No. 25 Missouri

TEAM TOTAL

SCORE	DATE	OPPONENT
1. 198.100	3/15/24	No. 29 Nebraska
2. 197.825	4/6/24	Fayetteville Regional Final
3. 197.650	3/3/24	No. 13 Missouri
4. 197.525	1/19/24	at No. 3 Alabama
5. 197.475	1/27/23	No. 8 LSU
6. 197.425	2/28/25	No. 17 Alabama
	3/5/21	at No. 12 Auburn
8. 197.400	2/23/24	No. 6 Kentucky
	2/3/23	No. 2 Florida
10. 197.375	2/19/24	TWU Quad



HOGS AT HOME



RECORD ON THE HILL

YEAR	HOME RECORD
2003	0-5
2004	8-3
2005	1-5
2006	3-2
2007	6-3
2008	3-2
2009	4-1
2010	4-1-1
2011	4-1
2012	4-2
2013	4-3-1
2014	3-3
2015	5-4
2016	3-2
2017	3-3
2018	5-1
2019	3-4
2020	1-3
2021	1-3
2022	2-3
2023	1-4
2024	4-1
2025	4-1

ATTENDANCE HISTORY

YEAR	AVG ATTENDANCE (RANK)
2003	4,739 (4 TH)
2004	4,401 (4 TH)
2005	3,413 (6 TH)
2006	2,474 (11 TH)
2007	2,318 (12 TH)
2008	2,190 (15 TH)
2009	2,587 (10 TH)
2010	2,505 (11 TH)
2011	2,384 (11 TH)
2012	3,081 (8 TH)
2013	3,440 (10 TH)
2014	3,235 (9 TH)
2015	2,930 (11 TH)
2016	3,427 (9 TH)
2017	3,797 (9 TH)
2018	3,876 (9 TH)
2019	3,057 (16 TH)
2020	5,415 (9 TH)
2021	1,241 (6 TH)*
2022	4,966 (7 TH **
2023	7,324 (7 TH **
2024	7,073 (10 TH **
2025	7,843**

TOP 10 MEET ATTENDANCE

ATT.	DATE	OPPONENT
1. 11,031*	2/3/23	#8 Florida
2. 10,345*	1/14/22	#8 Auburn
3. 9,874*	1/24/25	#2 LSU
4. 9,771*	3/10/24	#1 Oklahoma
5. 8,578*	2/28/25	#17 Alabama
6. 8,218*	3/10/23	#19 Minnesota
7. 7,342*	3/15/24	#29 Nebraska
8. 7,341*	2/7/25	#2 Florida
9. 7,147	1/26/24	#13 Auburn
	1/27/23	#8 LSU

*Meet held at Bud Walton Arena

*2021 attendance data skewed due to COVID limited capacity protocols

**includes meets at Bud Walton Arena

TEAM HOME HIGH SCORES

OPPONENT	DATE	Vault	Bars	Beam	Floor	Total
1. #29 Nebraska*	3/15/24	49.550	49.525	49.300	49.725	198.100
2. #8 LSU	1/27/23	49.300	49.350	49.250	49.575	197.475
3. #17 Alabama*	2/28/25	49.200	49.200	49.375	49.650	197.425
4. #6 Kentucky	2/23/24	49.400	49.375	49.500	49.675	197.400
#2 Florida*	2/3/23	49.275	49.300	49.350	49.250	197.400
6. #25 Missouri	2/19/21	49.350	49.025	49.400	49.575	197.350
7. Arkansas Tri	3/16/18	49.025	49.550	49.350	49.375	197.300
8. #1 Florida	1/22/21	49.150	49.375	49.350	49.375	197.250
9. #1 Oklahoma*	3/10/24	49.350	49.025	49.300	49.600	197.275
#36 Arizona	3/2/18	48.975	49.575	49.400	49.325	197.275

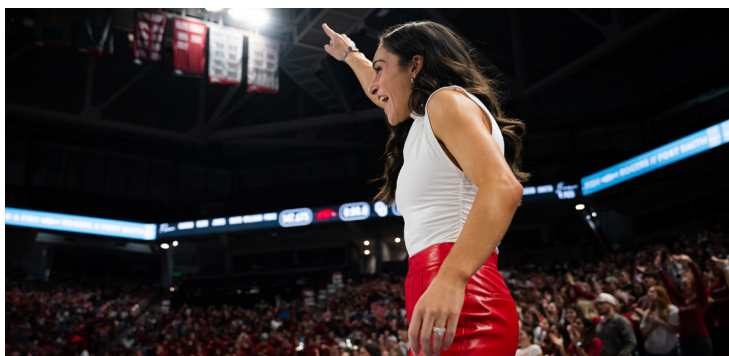
*Meet held at Bud Walton Arena

INDIVIDUAL HOME RECORDS

EVENT	ATHLETE	OPPONENT	DATE	SCORE
Vault	Hailey Klein	#29 Nebraska	3/15/24	9.975
Bars	Reese Drotar	#29 Nebraska	3/15/24	9.975
Beam	Hailey Garner	Arkansas Tri-Meet	3/16/18	9.975
	Norah Flatley	#14 Missouri	2/24/23	9.975
	Kennedy Hambrick	#58 SEMO	2/6/22	9.975
	Sophia Carter	#36 Arizona	3/2/18	9.975
	Sophia Carter	#11 Georgia	1/26/18	9.975
Floor	Joscelyn Roberson	#17 Alabama	2/28/25	9.975
	Maddie Jones	#29 Nebraska	3/15/24	9.975
	Frankie Price	#6 Kentucky	2/23/24	9.975
	Katherine Grable	#2 Oklahoma	3/14/14	9.975
	Jaime Pisani	#13 Auburn	2/3/12	9.975
AA	Kennedy Hambrick	#25 Missouri	2/19/21	39.750

JORDYN WIEBER

SIXTH-YEAR HEAD COACH



Olympic gold medalist Jordyn Wieber was introduced as the head coach of the Arkansas Women's Gymnastics program on Wednesday, April 24, 2019, by Vice Chancellor and Director of Athletics Hunter Yurachek.

Season five was the best yet for Wieber in her tenure, as she led the Gymps to their first NCAA Championships team appearance in eight years in 2024. Arkansas finished seventh of eighth to conclude the season ranked No. 7, the highest final rank for the team since 2012.

Sophomore Reese Drotar earned First Team All-America honors on bars with a sixth place finished and matched the program NCAA Championships bars record with a score of 9.925. Leah Smith and Cami Weaver garnered Second Team honors on vault as they tied for 13th overall with matching scores of 9.8875. Wieber has now coached six athletes to 10 All-America honors over the last five years, at least one each season dating back to 2021.

The road to Fort Worth began in Fayetteville as the Hogs hosted regional competition for the first time in seven years, and Arkansas set a then-regional high of 197.325 to advance to the final. With a nationals berth on the line, the Gymps punched their ticket with a new regional high of 197.825, also the second-best score in program history.

Arkansas began the postseason at SEC Championships, where the Gymps placed sixth with a score of 197.050, the first time ever scoring 197+ at the event and a new program best at SECs. Six athletes earned All-SEC honors: Lauren Williams on vault, Hailey Klein and Cami Weaver on beam, and Maddie Jones, Frankie Price and Leah Smith on floor. Six ties the program record for Gymps on the All-SEC list in a single season, and is the most under Wieber so far.

The season was filled with milestones for the program, including seven of the top 10 program high scores for Arkansas, including a new best of 198.100 set on March 15. Prior to that, the Gymps set and broke their program score record two other times, and finished 2024 with 11 marks of 197+, the most in a single season by six.

Arkansas also set new event records on vault (49.550), beam (49.575) and floor (49.725) in 2024, and five athletes matched the program-high 9.975 individual scores across all four events: Hailey Klein on vault, Reese Drotar on bars, Priscilla Park on beam and Maddie Jones and Frankie Price on floor.

The Gymps compiled an 8-6-1 regular season record and 15-15-1 record overall, the most wins for the program since 2012. Arkansas went 4-2-1 in SEC competition, the most conference victories in eight years, another high for Wieber in her fifth season at the helm.

Continuing to develop Arkansas as a premier program in all aspects, Wieber spearheaded marketing and promotions efforts for five home meets, including two at Bud Walton Arena, for a total season attendance of 35,367, ninth-best in the country. Barnhill Arena saw a sold out meet for the second consecutive season in 2024, and Arkansas' 6,084 average fans across three meets at Barnhill is a new venue record. For the past three seasons, Arkansas has set new program season ticket sales records, this time 2,480 in 2024.

During her fourth season in 2023, Wieber guided the Gymps to their 19th consecutive regional appearance. The team set a then-Onew regional team score record of 197.275, and a new regional floor record of 49.500. The team finished the year ranked 17th in the country, maintaining the program's 18-year streak in the top 20.

Graduate transfer Norah Flatley and freshman Lauren Williams both earned berths to the NCAA Championships as individuals, extending Wieber's unblemished national appearance streak in each eligible year. Flatley earned her fourth All-American honor at the event on balance beam with a score of 9.9375, which is the best-ever score by a Gymp as an individual beam qualifier.

Arkansas' 196.825 at SEC Championships in 2023 and placed seventh. Five Gymps earned All-SEC or All-SEC Freshman honors at the meet: Norah Flatley (VT, FX, AA), Lauren Williams (VT, FX), Reese Drotar (UB), Frankie Price (VT) and Cami Weaver (VT).

The Gymps continued to grow their fanbase with new single meet (11,031), home single season (36,619), and average attendance (7,324) records in 2023,

the latter two ranking sixth and seventh in the country. Arkansas also sold out Barnhill Arena for the first time in program history on Jan. 27, when 7,147 fans were in the building to watch the Hogs take down the LSU Tigers.

Wieber has coached four regular-season All-Americans in Sophia Carter (2020), Maggie O'Hara (2021), Kennedy Hambrick (2020, 2021) and Frankie Price (2024). Hambrick became the new all-around score record holder (39.750) during the 2021 season, a record that had gone unbroken for seven years prior. Under her guidance in and out of the gym, the Gymps were awarded the Arkansas Athletics Lee Spencer Cup for the first time ever in 2022, which is awarded to the team that earns the most points in the areas of personal and career development, community engagement, and academic and athletic excellence. Arkansas also saw its first SEC Scholar-Athlete of the Year in 10 years in 2022 with Bailey Lovett.

The Gymps earned their first-ever spot in the SEC night session in 2021 and advanced to the NCAA regional final after scoring a 197.250 on day one. In total, Arkansas registered five scores of 197.000 or better in 2021, for the first time in program history.

In 2020, the Gymps ranked as high as fourth in the nation on floor and finished the season ninth in the nation. Arkansas scored a 49.00 or higher in 14 of 16 events over the course of four home meets, nearly 90 percent of all events.

The Razorbacks' success on floor helped them lock in back-to-back SEC wins against No. 20 Missouri and No. 10 Georgia midway through the season. The consecutive wins marked the first time since 2017 that Arkansas won two-straight conference meets and consecutive meets against a ranked opponent.

Arkansas saw six Gymps wrap up the 2020 season ranked in the top 100 by Road to Nationals in at least one event, with four Hogs finishing with multiple top 100 rankings. With Wieber's lead, Arkansas won 27 event titles through 10 meets. Hambrick finished the season with the most individual titles among the Gymps, securing 11 event titles including a team-high four all-around titles.

The first home meet of the Wieber era was held on Jan. 17 against No. 3 Denver, bringing a then-record crowd of 6,714 fans to Barnhill Arena. On Feb. 21, Coach Wieber and her Arkansas squad hosted Auburn for a Women's Empowerment Meet, the first of its kind in NCAA gymnastics and now an annual tradition for the Gymps.

Wieber wrapped up her third season as a volunteer assistant coach at UCLA and her sixth with the program in 2019, assisting the team in a variety of roles during her first three years in Westwood following her Olympic career. Wieber coached the Bruins on floor exercise, an event in which UCLA finished the 2018 and 2019 regular seasons ranked No. 1 in the nation. In 2019, the Bruins recorded scores of 49.5 or better in 11 of 14 meets, averaging a national-best 49.604 on floor. Four Bruins earned regular season All-America honors in the event - Katelyn Ohashi, Kyla Ross, Gracie Kramer and Felicia Hano. At the 2019 NCAA Championships, Wieber coached future Arkansas assistant Ross to the individual floor title with a score of 9.950, the program's second in as many years. After winning their semifinal session with a 197.650, UCLA finished third overall in the finals.

The 2018 Bruins scored 49.4 or higher in 11 meets and 49.6 or higher in three meets, including a national season-high of 49.775 set on Feb. 25. She and her fellow UCLA coaches were named the 2018 West Region Assistant Coaches of the Year, as they helped lead the Bruins to Pac-12, NCAA regional and NCAA national titles.

Wieber, who has been a vocal advocate for safe sport, has won many awards in the past several years, including the Arthur Ashe Courage Award at the ESPYs, the Rising Star Award by the Los Angeles Business Journal, and the Giant Steps A Hero Among Us Award.

A member of the "Fierce Five" United States squad that won team gold at the 2012 Olympics, Wieber was a two-time U.S. all-around champion (2011 and 2012) and the 2011 World all-around champion. Her illustrious elite career included three medals (all-around and team gold, beam bronze) at the 2011 World Championships, four U.S. senior national titles (all-around, bars and floor in 2011 and all-around in 2012). She was also the 2008 U.S. junior all-around, vault and floor exercise champion and the American Cup all-around champion in 2009, 2011 and 2012. She dominated the competition at the 2010 Pacific Rim Championships, winning four gold medals (all-around, uneven bars, floor exercise, team) and one silver (vault). In her first international competition at the 2007 Junior Pan American Championships, she won gold medals on uneven bars and balance beam, silver in the all-around and bronze on floor exercise. Wieber officially retired from competitive gymnastics in 2015.

Wieber, from DeWitt, Mich., graduated from UCLA in 2017 with a degree in Psychology. She was a 2016 inductee into the Greater Lansing Sports Hall of Fame, a 2021 Michigan Sports Hall of Fame Inductee and is also a member of the USA Gymnastics Hall of Fame.

MEET 10 AT KENTUCKY MARCH 7, 2025

GYMBACK ROUTINES/CAREER HIGHS

CHANDLER BUNTIN

BARS

Ray
Bail
Full pirouette
Double back dismount
SEASON/CAREER HIGH: --/--

GRACE DREXLER

VAULT

Yurchenko 1.5
SEASON/CAREER HIGH: 9.875/9.875

FLOOR

Front through + RO BHS + 2.5
Double back
Front lay + front full
SEASON/CAREER HIGH: --/--

REESE DROTAR

BARS

Maloney
Bail
Double LO dismount
SEASON/CAREER HIGH: --/9.975

DAKOTA ESSENPRIES

VAULT

Yurchenko 1.5
SEASON/CAREER HIGH: 9.875/9.875

BARS

Piked jaeger
Bail
DLO dismount
SEASON/CAREER HIGH: --/9.875

FLOOR

Double pike
1.5 front layout
Double tuck
SEASON/CAREER HIGH: --/--

KAITLYN EWALD

BARS

Straddle jaeger
Pak
DLO dismount
SEASON/CAREER HIGH: 9.875/9.950

BEAM

One arm BHS + BHS
Switch leap + LOSO
Full turn
Split jump + standing switch + straddle
quarter
Rudi dismount
SEASON/CAREER HIGH: 9.675/9.875

KALYXTA GAMIAO

VAULT

Yurchenko full
SEASON/CAREER HIGH: --/--

BEAM

Standing LO + LO
Side somi
Switch leap + split jump
Full turn
RO 1.5 dismount
SEASON/CAREER HIGH: 9.900/9.950

FLOOR

Double pike
1.5 step out + RO BHS + double full
Switch half + popa
Double tuck
SEASON/CAREER HIGH: 9.875/9.900

MADDIE JONES

BARS

Piked jaeger
Pak salto
DLO dismount
SEASON/CAREER HIGH: 9.925/9.950

BEAM

Handstand front walkover mount
Front aerial + BHS + BHS
Full turn
Split jump + stag jump
Front LO full dismount
SEASON/CAREER HIGH: 9.875/9.925

FLOOR

Front double full
Switch ring + switch half
1.5 + front LO
Front HS + rudi
SEASON/CAREER HIGH: 9.950/9.975

HAILEY KLEIN

VAULT

Yurchenko 1.5
SEASON/CAREER HIGH: 9.900/9.975

BEAM

Straddle split mount
Side aerial + LOSO
Switch leap + straddle jump
Full turn
LO 1.5 dismount
SEASON/CAREER HIGH: 9.825/9.925

FLOOR

Front tuck stepout + RO BHS + double
back tuck
Switch side half + straddle + straddle
Shushanova
Front LO + front full
SEASON/CAREER HIGH: 9.900/9.900

JA'LEIGH LANG

VAULT

Yurchenko full
SEASON/CAREER HIGH: 9.900/9.900

FLOOR

Double pike
Switch ring + switch half
Front LO + front full
Double tuck
SEASON/CAREER HIGH: --/--

PRISCILLA PARK

VAULT

Yurchenko 1.5
SEASON/CAREER HIGH: 9.675/9.850

BARS

Toe-on toe-off + Ray
Pak salto
DLO dismount
SEASON/CAREER HIGH: 9.875/9.925

BEAM

BHS catch mount
Full turn
BHS + layout stepout
Switch leap + switch leap
Side aerial + LO 1.5 dismount
SEASON/CAREER HIGH: 9.925/9.975

FRANKIE PRICE

VAULT

Yurchenko full
SEASON/CAREER HIGH: 9.900/9.900

FLOOR

DLO
Switch side + popa + popa
Front LO + front full
SEASON/CAREER HIGH: 9.950/9.975

JOSCELYN ROBERSON

VAULT

Yurchenko half on, front layout half off
SEASON/CAREER HIGH: 9.900/9.900

BARS

Clear hip
Maloney + pak
DLO dismount
SEASON/CAREER HIGH: 9.850/9.850

BEAM

Beat jump + pike jump
Switch leap + back tuck
Full turn
Side aerial + LO
Punch front full dismount
SEASON/CAREER HIGH: 9.925/9.925

FLOOR

DLO
Switch side + popa
Front layout through + RO BHS + double
tuck
SEASON/CAREER HIGH: 9.950/9.950

GYMBACK ROUTINES/CAREER HIGHS

SADIE SMITH

BARS

Toe blind
Piked jaeger
Bail

DLO dismount

SEASON/CAREER HIGH: --/--

LEAH SMITH

VAULT

Yurchenko full

SEASON/CAREER HIGH: 9.875/9.950

BARS

Toe-on toe-off + Maloney
Bail

DLO dismount

SEASON/CAREER HIGH: 9.850/9.925

FLOOR

Front LOSO + RO BHS + double tuck

Switch side half + straddle

Double pike

SEASON/CAREER HIGH: 9.925/9.950

CALLY SWANEY

BARS

Toe-on toe-off + Maloney

Pak salto

DLO dismount

SEASON/CAREER HIGH: 9.900/9.900

BEAM

Full turn

BHS + BHS + LO

Split jump + ring jump

Cartwheel + gainer full dismount

SEASON/CAREER HIGH: 9.825/9.925

FLOOR

DLO

Switch leap + switch half ring

Front LO + front full

SEASON/CAREER HIGH: --/--

MATI WALIGORA

BARS

Jaeger + overshoot

DLO dismount

SEASON/CAREER HIGH: 9.950/9.950

BEAM

Full turn

BHS + LO

Side aerial

Split jump + tuck full

RO 1.5 dismount

SEASON/CAREER HIGH: 9.900/9.925

FLOOR

Front LO + front double full

Tour jete + wolf full

1.5 + LO

SEASON/CAREER HIGH: 9.925/9.925

CAMI WEAVER

VAULT

Yurchenko full

SEASON/CAREER HIGH: 9.900/9.925

BARS

Straddle jaeger

Pak salto

DLO dismount

SEASON/CAREER HIGH: --/9.925

BEAM

BHS + LOSO

Straddle jump + ring jump

Side aerial

Full turn

RO 1.5 dismount

SEASON/CAREER HIGH: 9.850/9.950

FLOOR

Double pike

RO 1.5 + LO

Tour jete half + popa

Double tuck

SEASON/CAREER HIGH: --/--

JULIANNA WEEKS

BARS

Jaeger

Bail

DLO dismount

SEASON/CAREER HIGH: --/--

LAUREN WILLIAMS

FLOOR

Full-in

1.5 + LO

Double tuck

SEASON/CAREER HIGH: 9.875/9.950

KEY

LO - Layout

LOSO - Layout stepout

RO - Round-off

BHS - Back handspring