

# MISSOURI

## 2025 SOCCER GAME NOTES



X @MIZZOUSOCCER

f /MIZZOUSOCCER

WWW.MUTIGERS.COM

SOCCER

### 2025 SCHEDULE/RESULTS

#### AUGUST

6	KANSAS STATE	T, 1-1
14	SOUTH DAKOTA STATE	T, 1-1
20	YOUNGSTOWN STATE	W, 5-0
24	AT No. 23 SAINT LOUIS	L, 0-1
28	AT No. 15 MEMPHIS	L, 1-2
31	AT MISSOURI STATE	W, 2-0

#### SEPTEMBER

4	ILLINOIS	L, 0-2
7	KANSAS CITY	W, 1-0
12	TEXAS *	W, 3-1
18	No. 5 TENNESSEE *	L, 0-2
21	AT KENTUCKY *	L, 0-1
26	No. 15 MISSISSIPPI STATE *	L, 0-3

#### OCTOBER

2	LSU	L, 0-1
5	ALABAMA *	L, 0-3
10	AT No. 21 VANDERBILT *	L, 0-2
16	AT TEXAS A&M *	L, 1-2
19	No. 11 ARKANSAS *	2 PM
26	AT AUBURN	2 PM

#### NOVEMBER

2-9	SEC TOURNAMENT	TBD
-----	----------------	-----

\* denotes a conference opponent

### UNIVERSITY OF MISSOURI

#### UNIVERSITY INFO

Location	Columbia, Mo.
Founded	1839
Enrollment	31,041
Nickname	Tigers
Colors	Old Gold and Black
Stadium (Capacity)	Walton Stadium (2,500)
Conference	Southeastern
2024 Record	5-10-2
SEC Record	3-6-1

#### UNIVERSITY STAFF

President & Chancellor	Dr. Mun Y. Choi
Director of Athletics	Laird Veatch
Department Phone	573-882-6501
Ticket Office Phone	573-884-7297

### STRATEGIC COMMUNICATIONS

#### STRATEGIC COMMUNICATIONS

Soccer Contact	Ryan Cullinane
Cell Phone	727-735-8297
E-Mail	rcullinane@missouri.edu

#### SOCIAL MEDIA

X	@MizzouSoccer
Instagram	@MizzouSoccer
Facebook	Facebook.com/MizzouSoccer
Website	mutigers.com

GAME  
16

### MISSOURI

4-10-1 | 1-7-0 SEC | RPI: 92

SUNDAY, OCT. 19, 2025 • 2 P.M. CT • WALTON STADIUM • COLUMBIA, MO.

### No. 11 ARKANSAS

8-3-3 | 6-1-1 SEC | RPI: 17



#### MISSOURI TIGERS

**Head Coach** Stefanie Golan  
**Record at Mizzou** 26-47-10 (Fifth Year)  
**Overall Record** 151-129-44 (16th Year)



#### ARKANSAS RAZORBACKS

**Head Coach** Colby Hale  
**Record at School** 198-85-3 (15th Year)  
**Overall Record** 198-85-3 (15th Year)

#### GAME INFORMATION

**Facility** Audrey J. Walton Stadium  
**Capacity** 1,500  
**TV SEC Network+**  
**Series Record** 3-9-0  
**On Road** 1-5-0  
**At Home** 2-3-0  
**Last Meeting** September 22, 2024 - L, 8-2 in Columbia

### MATCH NOTES

#### SERIES BREAKDOWN

Mizzou soccer returns to Columbia for its final Southeastern Conference home contest and senior day against No. 11 Arkansas on Sunday, October 19, at Audrey J. Walton Stadium at 2 p.m. This marks the 13th meeting between the programs, where Mizzou is seeking its third win at home.

#### PREGAME PRESS

- Missouri enters its 16th contest of the 2025 season after a 2-1 loss at Texas A&M on Thursday, October 16.
- With the result against Texas on September 12, Mizzou won its 10th SEC home opener since joining the conference in 2012.
- Emily Derucki** scored her first goal of the year to cap off Mizzou's 3-1 win over Texas.
- Mia Yang** scored her first career goal in the team's game at No. 15 Memphis on Thursday, August 28, in the 41st minute to tie the score at 1-1. She was assisted by **Landis Canada**, who recorded the second dime of her career.
- Mia Devrouax** scored the first goal of her collegiate career during the 82nd minute against Youngstown State on Wednesday, August 20.
- Senior **Hailey Chambliss** recorded her first goal in the Black & Gold in the 79th minute versus Youngstown State and followed it up with a second just 48 seconds later, marking the first multi-goal game by a Tiger since Leah Selm tallied two against Oklahoma on October 18, 2024.
- Missouri added 11 shots in the second period against YSU to close the game in a total of 20, the most recorded in a game since posting 26 against SEMO on September 9, 2024.
- Gates for the match will open at 12:45 p.m. with the Senior Day ceremony slated for 1 p.m.
- Specialty Senior Day posters are available to fans upon entry.
- Fans are invited to bring their dogs to the match for Pups on the Pitch.
- Postgame autographs with the Mizzou soccer team will be available following the conclusion of the match.
- The Voodoo Sno Food Truck will be on site with treats and refreshments throughout the afternoon.

### STARTING XI VS. TEXAS A&M

POS.	#	NAME	CL	HOMETOWN/PREVIOUS SCHOOL
GK	1	KATE PHILLIPS	JR.	FISHERS, IND. / CATHEDRAL
D	3	MIA YANG	JR.	LEAWOOD, KAN. / BLUE VALLEY
D	7	BELLA CARRILLO	SR.	FRISCO, TEXAS / CENETENNIAL
M	10	MONICA BRAUNER	SO.	KANSAS CITY, MO. / ACELLUS
D	13	MORGAN MEADOR	R-SO.	BALLWIN, MO. / MARQUETTE
D	15	SHANIA SPRIGGS	JR.	LOGANVILLE, GA. / LOGANVILLE
F	16	JESSICA LARSON	SR.	O'FALLON, MO. / ST. DOMINIC
F	17	EMILY DERUCKI	SO.	WILDWOOD, MO. / LAFAYETTE
M	24	ALY BRYANT	FR.	LAKE ST. LOUIS, MO. / TIMBERLAND
M	28	OLIVIA CHIANELLI	JR.	ARLINGTON HEIGHTS, ILL. / JOHN HERSEY
F	31	MIA DEVROUX	SO.	FLORISSANT, MO. / WHITFIELD

**QUICK FACTS**

2024 Overall Record	5-10-2
2024 SEC Record	3-6-1
Letterwinners Returning	18
Letterwinners Lost	9
Starters Returning	8
Starters Lost	3
Newcomers	11

**COACHING STAFF**

Head Coach	Stefanie Golan (Fifth season)
Alma Mater	Duke, 2001
Career Record	151-129-44
Record at Mizzou	26-47-10
SEC Record	10-32-3
Associate Head Coach	Kelsey Wys
Alma Mater	Florida State, 2013
Associate Head Coach	Renee Horton
Alma Mater	South Florida, 2000
Assistant Coach	Austen Parker
Alma Mater	Mid-America Christian, 2021
Director of Operations	Molly Kuhbacher
Alma Mater	Wyoming, 2021

**HISTORY**

First varsity season	1996
All-Time Record	280-263-49
All-Time Home Record	210-117 [19]
All-Time Record at Walton Stadium	210-117 [19]
NCAA Appearances	7
1999, 2003, 2007, 2008, 2012, 2014, 2016	
Last NCAA Opponent	Mississippi State (L, 3-0)
	NCAA First Round

**SOUTHEASTERN CONFERENCE**

	SEC				OVERALL		
	W	L	T	PTS	W	L	T
#11 Arkansas	6	1	1	19	8	3	3
#4 Tennessee	5	1	2	17	11	1	3
#19 Georgia	5	1	2	17	9	3	4
#21 Vanderbilt	5	2	1	16	11	3	1
#8 South Carolina	4	1	3	15	10	1	4
(RV) LSU	4	2	2	14	9	5	2
Kentucky	4	2	2	14	10	4	2
(RV) Mississippi State	4	3	1	13	9	4	1
Alabama	4	4	0	12	10	5	1
Florida	2	2	4	10	6	5	4
Oklahoma	2	3	3	9	9	3	4
Auburn	1	3	4	7	5	5	4
Texas A&M	2	5	1	7	5	6	4
<b>Missouri</b>	<b>1</b>	<b>7</b>	<b>0</b>	<b>3</b>	<b>4</b>	<b>10</b>	<b>1</b>
Texas	1	7	0	3	3	11	1
Ole Miss	0	6	2	2	4	7	2

**PRONUNCIATION GUIDE**

Addison Colangelo	cole-angel-o
Ava Lamothe	la-moth
Monica Brauner	brawn-er
Morgan Meador	meh-dor
Emily Derucki	da-ruck-ee
Jasira Gates	ja-sarah
Ana DiMaria	Ah-nuh
Elena Zuchowski	zoo-cow-ski
Hailey Chambliss	Cham-bliss
Olivia Chianelli	shy-ah-nelli
Mia Devroux	dev-row

**2025 MIZZOU SOCCER ROSTER****NUMERICAL ROSTER**

#	NAME	CL	POS	HT	HOMETOWN / PREVIOUS SCHOOL
0	Addison Colangelo	Fr.	GK	6-1	Broomfield, Colo.
1	Kate Phillips	Jr.	GK	5-8	Fishers, Ind.
2	Brianna Buels	Jr.	F	5-7	Indianapolis, Ind.
3	Mia Yang	Jr.	D	5-7	Leawood, Kan.
4	Callaway Combs	So.	D	5-6	Eureka, Mo.
5	Landry Hopkins	Fr.	F/M	5-7	Dardenne Prairie, Mo.
6	Madison Hendershott	R-So.	M	5-9	Columbia, Mo.
7	Bella Carrillo	Sr.	D	5-5	Frisco, Texas
9	Ava Lamothe	Fr.	D	5-9	Lenexa, Kan.
10	Monica Brauner	R-So.	M	5-4	Kansas City, Mo.
11	Autumn Jackson	R-So.	D	5-6	O'Fallon, Mo. / Saint Louis
12	Kelby Dansby	Fr.	D	5-6	Mesquite, Texas
13	Morgan Meador	R-So.	D	5-8	Ballwin, Mo.
14	Morgan Schaefer	R-So.	M	5-7	Bentonville, Ark.
15	Shania Spriggs	Jr.	M/D	5-10	Loganville, Ga.
16	Jessica Larson	Sr.	F	5-5	O'Fallon, Mo.
17	Emily Derucki	So.	F	5-9	Wildwood, Mo.
18	Jasira Gates	Fr.	D	5-4	Saint Louis, Mo.
19	Ana DiMaria	Jr.	F/M	5-4	Fenton, Mo.
20	Ava Vetter	So.	M	5-6	Clayton, Mo.
22	Riley Wilkerson	R-So.	GK	5-9	San Luis Obispo, Calif. / Cal Poly
23	Elena Zuchowski	Sr.	M	5-2	Wales, Wis.
24	Aly Bryant	Fr.	M	5-6	Lake Saint Louis, Mo.
25	Landis Canada	So.	F	5-9	Fenton, Mich.
26	Keegan Good	Sr.	M	5-4	Parkville, Mo.
27	Hailey Chambliss	Sr.	M	6-6	Eureka, Mo.
28	Olivia Chianelli	Jr.	M	5-6	Arlington Heights, Ill.
29	McKenna Moran	Jr.	M	5-6	Rowlett, Texas
30	Mallory McGuire	So.	M/F	5-2	Brookfield, Wis.
31	Mia Devroux	So.	F	5-1	Florissant, Mo.

**ALPHABETICAL ROSTER**

#	NAME	CL	POS.	HT	HOMETOWN / HS / PREVIOUS SCHOOL
24	Aly Bryant	Fr.	M	5-6	Lake Saint Louis, Mo.
10	Monica Brauner	R-So.	M	5-4	Kansas City, Mo.
7	Bella Carrillo	Sr.	D	5-5	Frisco, Texas
27	Hailey Chambliss	Sr.	M	6-6	Eureka, Mo.
28	Olivia Chianelli	Jr.	M	5-6	Arlington Heights, Ill.
0	Addison Colangelo	Fr.	GK	6-1	Broomfield, Colo.
25	Landis Canada	So.	F	5-9	Fenton, Mich.
4	Callaway Combs	So.	D	5-6	Eureka, Mo.
12	Kelby Dansby	Fr.	D	5-6	Mesquite, Texas
31	Mia Devroux	So.	F	5-1	Florissant, Mo.
19	Ana DiMaria	Jr.	F/M	5-4	Fenton, Mo.
17	Emily Derucki	So.	F	5-9	Wildwood, Mo.
2	Brianna Buels	Jr.	F	5-7	Indianapolis, Ind.
18	Jasira Gates	Fr.	D	5-4	Saint Louis, Mo.
26	Keegan Good	Sr.	M	5-4	Parkville, Mo.
6	Madison Hendershott	R-So.	M	5-9	Columbia, Mo.
5	Landry Hopkins	Fr.	F/M	5-7	Dardenne Prairie, Mo.
11	Autumn Jackson	R-So.	D	5-6	O'Fallon, Mo. / Saint Louis
9	Ava Lamothe	Fr.	D	5-9	Lenexa, Kan.
16	Jessica Larson	Sr.	F	5-5	O'Fallon, Mo.
13	Morgan Meador	R-So.	D	5-8	Ballwin, Mo.
30	Mallory McGuire	So.	M/F	5-2	Brookfield, Wis.
29	McKenna Moran	Jr.	M	5-6	Rowlett, Texas
1	Kate Phillips	Jr.	GK	5-8	Fishers, Ind.
14	Morgan Schaefer	R-So.	M	5-7	Bentonville, Ark.
15	Shania Spriggs	Jr.	M/D	5-10	Loganville, Ga.
20	Ava Vetter	So.	M	5-6	Clayton, Mo.
22	Riley Wilkerson	R-So.	GK	5-9	San Luis Obispo, Calif. / Cal Poly
3	Mia Yang	Jr.	D	5-7	Leawood, Kan.
23	Elena Zuchowski	Sr.	M	5-2	Wales, Wis.

**NOTING THE TIGERS**

**TAKING THE PITCH**

- Missouri enters its 30th season of competition in 2025.
- The Tigers were voted to finish 15th in the SEC by the league’s coaches. Arkansas was selected to win the regular season, followed by Texas, South Carolina, Georgia and Tennessee.
- Mizzou’s 2025 slate features a competitive schedule, ranking 10th nationally in cumulative opponent win percentage.

**SENIOR DAY SENDOFF**

- Mizzou will recognize five seniors prior to Saturday’s home finale vs. No. 11 Arkansas: Hailey Chambliss, Bella Carrillo, Keegan Good, Jessica Larson and Elena Zuchowski.
- The group has combined for 200+ career appearances in the Black and Gold, anchoring the Tigers’ lineup over the past four seasons.
- Chambliss (Eureka, Mo.) transferred from Missouri State and has tallied multiple goals this season, including a two-goal performance vs. Youngstown State [Aug. 20].
- Carrillo (Frisco, Texas) has started more than 50 matches and contributed seven career assists, earning three straight SEC Academic Honor Roll selections.
- Good (Parkville, Mo.) has logged over 3,600 career minutes and six goals, highlighted by a two-goal outing vs. Kansas as a freshman.
- Larson (O’Fallon, Mo.) has played in 60+ matches with key goals against Kansas (2023) and Ole Miss (2024) while providing leadership across the midfield and back line.
- Zuchowski (Wales, Wis.) has appeared in 40 career matches with goals vs. Florida (2022) and Omaha (2023) and is recognized for her consistency in possession.
- The 2025 senior class leaves behind a legacy of leadership, versatility and academic excellence, helping define the culture under head coach Stefanie Golan.
- Saturday marks Mizzou’s final regular-season home match before closing the year on the road.

**PHANTASTIC PHILLIPS**

- The Tigers’ starting goalkeeper **Kate Phillips** is off to the best start of her career in 2025, ranking among the top-10 goalies in the SEC in multiple categories.
- The Fishers, Indiana, native ranks second in the SEC in saves (48) and saves per game (3.43).
- She also ranks tied for eighth in the conference in shutouts (3) and ninth in both shutouts per game (0.21) and save percentage (.716).
- Phillips has given up one or fewer goals in eight matches this season.

**SCOUTING THE OPPONENT**

- Arkansas enters the game against Mizzou with an 8-3-3 record, most recently topping Alabama, 3-1, at home Thursday.
- Arkansas was picked to win SEC by the league’s coaches heading into the season.
- Seven Razorbacks made the SEC Preseason Watch

List: Erin Bailey, Kennedy Ball, Bella Field, Mak Malham, Keegan Smith, Zoe Susi and Avery Wren.

- Arkansas wrapped up the 2024 season 16-2-3. The team ended its season in the Sweet 16 of the NCAA Tournament, falling to three-seed and No. 14 Stanford, 1-1 (4-2 PKs).
- The Razorbacks and Tigers have both taken on Vanderbilt, Texas A&M, Mississippi State and Alabama this season.

**LAST TIME OUT**

- Mizzou fell 2-1 at Texas A&M on Thursday in College Station.
- The Tigers erased an early deficit with a first-half equalizer before the Aggies pulled ahead on a second-half penalty.
- Chianelli converted a penalty kick in the 45th minute – her second goal of the season – to tie the match at 1-1 heading into halftime.
- Texas A&M regained the lead in the 72nd minute on a penalty kick.
- Mizzou tallied 10 second-half shots and four corner kicks while pushing for a late equalizer.
- Phillips matched her season-high with six saves, including three in each half.
- Canada led the Tigers with two shots on goal; Moran and Chianelli each added one.

**TIGERS TOP TEXAS**

- Mizzou opened SEC play with a 3-1 win over Texas, earning the program’s 10th SEC home-opening victory.
- After winning by a pair of goals, Mizzou notched its sixth SEC opening-victory by multiple goals and first since 2017.
- Goals came from **Brianna Buels**, Chianelli and Derucki, with assists credited to Chambliss (2) and Carrillo.
- Chianelli scored in the 27th minute, Buels doubled the lead in the 56th, and Derucki sealed the result in the 84th after Texas pulled one back.
- Senior goalkeeper Phillips made a key second-half save, facing 12 total shots and stopping one of two on target.

**WATCH LIST SZN**

- Buels, Canada, Derucki, **Keegan Good**, **Morgan Meador** and **Mia Yang** were all named to the 2025 SEC Soccer Preseason Watchlist.
- Good notched her second recognition on the list while the other five Tigers are first-time honorees.

**SIDELINE STAFF**

- Golan made two staff additions this offseason, bringing in associate head coach Renee Horton from West Georgia and Austen Parker from North Texas to coach goalkeepers.
- Horton joins Mizzou Soccer as Associate Head Coach after serving in the same role at West Georgia, with prior stops at Georgia, USC, Xavier, Lander and South Florida.
- Parker joins Mizzou after one season at North Texas, with previous coaching stops at Central Oklahoma, Southwestern Christian and in Oklahoma

**2025 TEAM STATS**

MIZ		ARK
4-10-1	OVERALL RECORD	8-3-3
1-7-0	Conf. Record	6-1-1
3-4-1	Home Record	5-2-1
1-6-0	Away Record	3-1-2
0-0-0	Neutral Record	0-0-0
14	Goals	29
0.93	Goals Per Game	2.07
144	Shots	182
9.60	Shots Per Game	13.00
0.097	Shots Percentage	.159
64-144	Shots on Goal	86-182
0.444	Shots on Goal Percentage	.473
8	Yellow Cards	22
0	Red Cards	1
13	Assists	21
54	Saves	65
174	Fouls	189
68	Corner Kicks	71
1-1	Penalty Kicks: Goals-Attempts	0-0

NOTING THE TIGERS

RANK	POINTS
1. NOTRE DAME (8)	200
2. STANFORD	192
3. VIRGINIA	182
4. TENNESSEE	171
5. IOWA	165
6. MEMPHIS	148
7. FLORIDA STATE	139
8. SOUTH CAROLINA	138
9. DUKE	137
10. BAYLOR	131
11. ARKANSAS	116
12. TEXAS TECH	115
13. GEORGETOWN	92
14. TCU	86
15. WISCONSIN	82
16. MICHIGAN STATE	73
T-17. WAKRE FOREST	69
T-17. WASHINGTON	69
19. GEORGIA	67
20. XAVIER	46
T-21. VANDERBILT	37
T-21. COLORADO	37
T-23. NORTH CAROLINA	23
T-23. WEST VIRGINIA	23
25. OHIO STATE	22

**ALSO RECEIVING VOTES:** MISSISSIPPI STATE (14), LOUISVILLE (12), ILLINOIS (4), PEPPERDINE (4), CALIFORNIA (3), LSU (3)  
*ITALICS DENOTES 2025 OPPONENT*

club soccer.

**FACILITY FACELIFT**

- The University of Missouri Department of Athletics received a generous philanthropic gift from Audrey J. Walton to fund enhancements to Mizzou’s Audrey J. Walton Track and Field and Soccer Stadium, it was announced on Jan. 29, 2025.
- Walton’s gift is one of the largest in Mizzou Athletics history and the largest ever dedicated to support Olympic sports.
- The project includes a new natural grass soccer playing field and field subsurface improvements.

**CHAMBLIS’ NEW SUPPORT SYSTEM**

- Chamblis scored her first goals as a Tiger against Youngstown State.
- She redshirted in the 2024 season due to the birth of her daughter, Oakley.
- The junior returned to the team for the spring exhibitions. Her two goals ranked tied as the second-most scored in a single game in the conference this season through four games.
- Chambliss recorded the first multi-assist game of her career in the Tigers’ 3-1 victory over Texas on Friday, September 12, leading to goals from Chianelli and Derucki.

**DESIGNING HER FUTURE**

- Monica Brauner** is a Textile and Apparel Management major; she has previously studied architecture and holds a minor in the field.
- She’s designed and created her own clothing as part of her coursework.
- Draws inspiration from fashion’s ability to communicate identity and values through dress.
- Aspires to work in the fashion industry on sewing, pattern making, and garment development, with a long-term dream of launching her own sustainable, timeless brand.

**RILEY WILKERSON - WORLD TRAVELER**

- Redshirt sophomore **Riley Wilerkson** is an avid traveler, having made trips to Kauai, Costa Rica (twice), Aruba (twice), France, and Serbia.
- She attended the 2019 FIFA Women’s World Cup in France.
- Wilkeron has upcoming trips that include England (Thanksgiving 2025) and the Bahamas (New Year’s 2026).

**SERVING BEYOND SOCCER**

- Morgan Schaefer** is an active leader in Mizzou’s Med-Letes group, alongside teammates Yang and Good.
- She helped to relaunch Caleb’s Pitch, a program that partners Mizzou Athletics with Children’s Hospital patients to create syringe art in honor of Caleb, who passed away from cancer at a young age.
- She also finds time to volunteer weekly at The Crossing Church, serving as a preschool team leader when not competing.
- She continues to give back to the community with

Caring Hearts and Hands of Columbia, supporting hospice patients alongside teammate Mia Yang.

**GENERATIONS OF GREATNESS**

- Ana DiMaria** comes from a family stacked with soccer standouts: grandfather, parents, and all three siblings have played at elite levels.
- Grandfather Tom DiMaria: All-American GK at Quincy, pro with St. Louis Frogs, St. Louis Soccer Hall of Fame inductee (2015).
- Father Jeff DiMaria: All-American at Saint Louis, pro with Colorado Rapids (MLS) and St. Louis Steamers/Ambush (MISL); SLU Hall of Fame (2007).
- Mother Sara DiMaria: Loyola Chicago standout, 45 career points – among program’s top attackers.
- Brother Jack: Freshman MF at Saint Louis; former St. Louis CITY SC Academy & CITY2 player; Class of 2025 top recruit.
- Sister Maddie: No. 1 prospect in the Class of 2027; first freshman to win Gatorade National Girls Soccer Player of the Year; member of USYNT U15 (Concacaf Champs), U16 & U17; two-time Missouri Gatorade Player of the Year (2023-25).
- Brother Thomas: Midfielder with St. Louis CITY SC Academy U16; USYNT prospect.

**HORSEPOWER AT HOME**

- Landry Hopkins** comes from a family with a passion for horse racing – her family owns Proverbs Stable.
- Family’s horse, Diva Las Vegas, won her maiden race at Fairmount Park on Sept. 6, pulling away to win by 2 ½ lengths.
- Racing has become a family affair, with Hopkins and her sisters often visiting Diva at the track.
- The Hopkins family recently purchased a second thoroughbred, Serene Empress, at the Keeneland Yearling Sale in Lexington, Ky.

**POISE UNDER PRESSURE**

- Phillips earned Mizzou’s starting goalkeeper role this season after splitting time in 2024 and is pursuing a medical redshirt from a freshman-year ankle injury.
- She is known for her poise under pressure, serving as a vocal leader who commands the back line and consistently celebrates her teammates’ big plays.
- Before every match, her mom reminds her to “be brave,” a message Phillips has carried with her throughout her career.
- She comes from a family of athletes, with three brothers who played college baseball and a great-grandfather who lettered in football and baseball at Iowa during the famed 1939 “Ironmen” season.



**0**  
**ADDISON COLANGELO**  
Fr. GK 6'1"  
Broomfield, Colo.



**1**  
**KATE PHILLIPS**  
Jr. GK 5'8"  
Fishers, Ind.



**2**  
**BRIANNA BUELS**  
R-So. F 5'7"  
Indianapolis, Ind.



**3**  
**MIA YANG**  
Jr. D 5'7"  
Leawood, Kan.



**4**  
**CALLAWAY COMBS**  
So. D 5'6"  
Eureka, Mo.



**LANDRY HOPKINS**  
Fr. F/M 5'7"  
Dardenne Prairie, Mo.



**6**  
**MADISON HENDERSHOTT**  
R-So. M 5'9"  
Columbia, Mo.



**7**  
**BELLA CARRILLO**  
Sr. D 5'6"  
Frisco, Texas



**9**  
**AVA LAMOTHE**  
Fr. D 5'9"  
Lenexa, Kan.



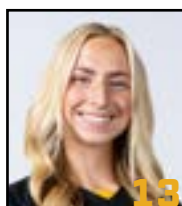
**10**  
**MONICA BRAUNER**  
R-So. M 5'4"  
Kansas City, Mo.



**11**  
**AUTUMN JACKSON**  
R-So. D 5'5"  
O'Fallon, Mo.



**12**  
**KELBY DANSBY**  
Fr. D 5'8"  
Mesquite, Texas



**13**  
**MORGAN MEADOR**  
R-So. D 5'8"  
Ballwin, Mo.



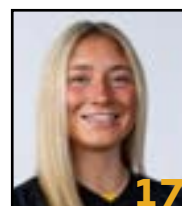
**14**  
**MORGAN SCHAEFFER**  
R-So. M 5'7"  
Bentonville, Ark.



**15**  
**SHANIA SPRIGGS**  
Jr. D 5'10"  
Loganville, Ga.



**16**  
**JESSICA LARSON**  
Sr. F 5'5"  
O'Fallon, Mo.



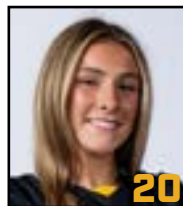
**17**  
**EMILY DERUCKI**  
So. F 5'9"  
Wildwood, Mo.



**18**  
**JASIRA GATES**  
Fr. D 5'4"  
St. Louis, Mo.



**19**  
**ANA DIMARIA**  
Jr. F 5'4"  
Fenton, Mo.



**20**  
**AVA VETTER**  
So. M 5'6"  
Clayton, Mo.



**22**  
**RILEY WILKERSON**  
R-So. GK 5'9"  
San Luis Obispo, Calif.



**23**  
**ELENA ZUCHOWSKI**  
Sr. M 5'2"  
Wales, Wis.



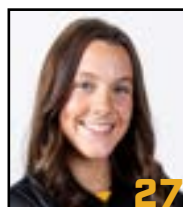
**24**  
**ALY BRYANT**  
Fr. F 5'9"  
Fenton, Mich.



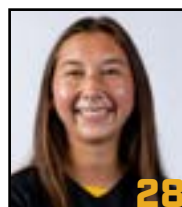
**25**  
**LANDIS CANADA**  
So. F 5'9"  
Fenton, Mich.



**26**  
**KEEGAN GOOD**  
Sr. M 5'4"  
Parkville, Mo.



**27**  
**HAILEY CHAMBLISS**  
Sr. M 5'6"  
Eureka, Mo.



**28**  
**OLIVIA CHIANELLI**  
Jr. M 5'6"  
Arlington Heights, Ill.



**29**  
**MCKENNA MORAN**  
So. M 5'6"  
Rowlett, Texas



**31**  
**MIA DEVROUX**  
So. F 5'1"  
Florissant, Mo.



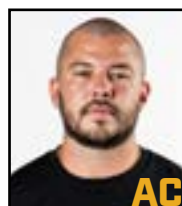
**HG**  
**STEFANIE GOLAN**  
Fifth Season  
Duke, 2001



**AHC**  
**RENEE HORTON**  
First Season  
South Florida, 2000



**AHC**  
**KELSEY WYS**  
Fourth Season  
Florida State, 2013



**AC**  
**AUSTEN PARKER**  
First Season  
Mid-America Christian, 2021



**OPS**  
**MOLLY KUHBACHER**  
Second Season  
Wyoming, 2021

HEAD COACH  
**STEFANIE GOLAN**

FIFTH YEAR • DUKE '01



**PERSONAL INFORMATION**

**Born:** July 9, 1968  
**Hometown:** St. Charles, Mo.  
**Children:** Travis, Max  
**Education:** Duke, 2001 // Northeastern, 2012  
**Twitter** @MIZCoachGolan

**LEADING THE WAY**

Stefanie Golan, a St. Charles, Missouri native, was named the University of Missouri's second women's soccer head coach in May 2021.

The 2025 season will be Golan's 17th as a head coach and fifth at Missouri. In 16 seasons, she has totaled a 147-119-43 (.545) career record.

During the 2024 season, Golan guided Milena Fischer to an All-SEC Third Team appearance after the senior tallied six goals and an assist.

In 2023, Golan directed Kylee Simmons to First Team All-SEC honors after the forward led the SEC in points (24), points per game (1.41), goals (11) and goals per game (.65). Simmons scored 11 goals on 29 shots on goal, finishing 18th in the country in shot accuracy (.630).

In addition, Simmons, Jenna Bartels, Milena Fischer and Leah Selm were named to the College Sports Communicators Academic All-District Team for their combined performance on the field and in the classroom.

During the 2022 campaign, Golan's Tigers garnered two all-conference selections as defender Grace Pettit was named to the All-SEC Second Team while Bella Hollenbach landed on the All-SEC Freshman Team.

In her first season at the helm, Golan led the Tigers to an upset of No. 13 Ole Miss while Fischer claimed All-SEC Freshman Team recognition.

**BEFORE THE ROAR**

Golan came to Mizzou after spending nine seasons building a championship program at the University of Minnesota.

In nine seasons as head coach at Minnesota (2012-2020), Golan fashioned a 92-64-24 (.578) record with four NCAA Tournament appearances, one Big Ten regular-season title, a pair of Big Ten Tournament championships and eight winning seasons.

Leading the Gophers to the 2018 Big Ten Tournament Title, Golan's squad ran through the tournament without allowing a single goal after entering as the seventh seed. With qualification secured for the NCAA Tournament, Minnesota upset Auburn 2-0 in the first round before falling to the UCLA Bruins in the second round of play.

Golan earned her 100th career win against Utah State on Sept. 8, 2017. The milestone came in the form of a 5-0 defeat of the Aggies in her nine seasons as a head coach.

Named Big Ten Coach of the Year in 2016, Golan led Minnesota to a 16-3-4 record and the program's first sweep of the Big Ten regular-season and tournament titles. The Gophers finished the 2016 campaign ranked in the Top 15 nationally after earning the highest national ranking in program history at No. 8. That squad also boasted the Big Ten Forward of the Year in Simone Kolander and the Big Ten Defender of the Year in Rashida Beal, who earned All-America honors and later drafted by FC Kansas City.

Golan guided the 2015 Gophers to the second round of the NCAA Tournament for the first time since 2010 and a 12-7-3 record. The program was ranked as high as No. 11 during the season, and Kolander earned the first of two Big Ten Forward of the Year honors.

Before moving to the Twin Cities to guide the Minnesota program, Golan sept five and a half

years at Army West Point, serving as the associate head coach in 2007 and 2008. In three years as the head coach, 2009-11, she led the team to a 33-18-10 record and the program's second-ever NCAA Tournament appearance in 2011.

After debuting as the Black Knights' head coach in 2009, Golan's 2010 squad registered the program's highest win total since 1996 with its 14-4-3 record. It allowed just six goals on the season en route to a share of the Patriot League's regular-season championship. In her final season at West Point, Army went 12-4-5 and won the 2011 Patriot League Tournament title with a thrilling 2-0 win over arch-rival Navy to earn the second-ever NCAA Tournament appearance in program history.

Prior to joining the Army West Point staff, Golan served as an assistant coach at the University of Pittsburgh and the University of Evansville after launching her career as a graduate assistant at Mercer University. The St. Charles native is an active member of the NSCAA and a former Chair of the NSCAA Great Lakes Region for the organization's All-America Committee.

**GOLAN PLAYING DAYS**

Golan earned a soccer scholarship to Duke University (Stefanie Kraay), where she played 56 games from 1997-2001 and helped lead the team to four NCAA Tournament appearances. The former Blue Devil earned a Bachelor of Arts in political science in 2001 before adding a master's in sports leadership from Northeastern University in 2012.

**PERSONAL**

Golan has two sons, Travis and Max, and a pair of dogs, Sarge and Captain.

**COACHING CAREER**

YEAR	SCHOOL	POSITION
2002	Mercer	Graduate Assistant
2003-05	Evansville	Assistant Coach
2006-08	Pittsburgh	Assistant Coach
2009-11	Army	Head Coach
2012-20	Minnesota	Head Coach
2021-pres.	Missouri	Head Coach

**HEAD COACHING RECORD**

YEAR	SCHOOL	OVERALL	CONF.	NOTABLE
2009	Army	7-10 (.421)	Patriot	-
2010	Army	14-4 (.738)	Patriot	-
2011	Army	12-4 (.690)	Patriot	NCAA First Round
2012	Minnesota	11-7 (.600)	Big Ten	-
2013	Minnesota	11-8 (.571)	Big Ten	NCAA First Round
2014	Minnesota	11-9 (.548)	Big Ten	-
2015	Minnesota	12-7 (.614)	Big Ten	NCAA Second Round
2016	Minnesota	16-3 (.783)	Big Ten	NCAA First Round
2017	Minnesota	11-5 (.658)	Big Ten	-
2018	Minnesota	12-9 (.565)	Big Ten	NCAA Second Round
2019	Minnesota	3-12 (.263)	Big Ten	-
2020	Minnesota	5-4 (.542)	Big Ten	-
2021	Missouri	7-10 (.412)	SEC	-
2022	Missouri	5-8-4 (.412)	SEC	-
2023	Missouri	5-9-3 (.382)	SEC	-
2024	Missouri	5-10-2 (.357)	SEC	-
2025	Missouri	4-10-1 (.300)	SEC	-
<b>TOTALS</b>	Army	33-18-10		
	Minnesota	92-64-24		
	Missouri	26-47-10		
	<b>CAREER</b>	<b>151-129-44</b>		

**AUDREY J. WALTON STADIUM**



**BUILT: 1996 RENOVATED: 2004 CAPACITY: 2,500 OVERALL RECORD: 210-115**

**FACILITY NOTES**

- Audrey J. Walton Track-Soccer Stadium was opened in 1996 following a generous \$1 million donation by Mrs. Walton. In 1998, renovations to the complex increased the maximum seating capacity to 2,500 fans per game.
- As the Tiger program grew in popularity, the stadium warranted another upgrade in a lighting project completed in 2001. Various supporters donated \$160,000 to install a state of the art lighting system. Rejuvenating the facility in 2004, the Mizzou Athletic Department completed a field turf project replenishing the playing field with new Bermuda sod. The facility will soon be rennovated again thanks to Walton's generous donation.
- The Audrey J. Walton Track-Soccer Stadium has played host to five conference championships and five NCAA soccer tournaments.
- The Tigers set the Missouri all-time attendance record opening the 2001 home season against Memphis. Playing their first night game, the Tigers welcomed 1,926 fans.

**WALTON STADIUM GAME RECORDS**

CATAGORY	STAT	GAME
GOALS	12	VS. LITTLE ROCK (10/28/01)
ASSISTS	9	TWICE
POINTS	33	VS. LITTLE ROCK (10/28/01)
SHOTS	41	VS. NW STATE (9/8/06)
SHOT %	37%	VS. TEXAS A&M (10/19/04)
SOG	19	VS. NORTHERN IOWA (9/25/09)
SOG %	100%	VS. NORTHWESTERN (1996)
CORNERS	15	VS. VANDERBILT (9/23/12)
PK	2	VS. MARQUETTE (40T) (11/10/99)
FOULS	29	VS. MARQUETTE (40T) (11/10/99)
SAVES	15	VS. KANSAS (10/21/2011)
GA	8	VS. NEBRASKA (1996)
SA	0	THREE TIMES

**WALTON STADIUM SEASON RECORDS**

CATAGORY	STAT	GAME
GOALS	42	2001
ASSISTS	40	2001
POINTS	124	2001
SHOTS	307	2008
SOG	140	2001
SOG %	69.9%	1998
CORNER KICKS	93	2012
PENALTY KICKS	3	1999
FOULS	188	1999
SAVES	69	1999
VICTORIES	10	2008
SHUTOUTS	7	2008
GAA	0.60	2008
GPG AVG	4.6	2001
PPG AVG.	13.7	2001
MOST GOALS ALLOWED	28	1996



**2025-26 Missouri Women's Soccer  
Overall Team Statistics  
All games**

Page 1/1  
as of Oct 17, 2025

**Game Records**

Overall	Conference	Home	Away	Neutral
4 - 10 - 1	1 - 7 - 0	3 - 4 - 1	1 - 6 - 0	0 - 0 - 0

**Team statistics**

	MO	OPP
<b>SHOT STATISTICS</b>		
Goals-Shot attempts	14-144	21-170
Goals scored per game	0.93	1.4
Shot pct.	.097	.124
Shots on goal-Attempts	64-144	75-170
SOG pct.	.444	.441
Shots/Game	9.6	11.3
Assists	13	14
<b>GOAL BREAKDOWN</b>		
Total Goals	14	21
Penalty	1	2
Unassisted	-	-
Overtime	0	0
Goals scored average	0.93	1.4
<b>CORNER KICKS</b>	68	52
<b>PENALTY KICKS</b>	1-1	2-2
<b>OFFSIDES</b>	35	27
<b>PENALTIES</b>		
Fouls	174	127
Yellow cards	8	13
Red cards	0	0
<b>ATTENDANCE</b>		
Total	3408	8579
Dates/Avg Per Date	8/426	7/1226
Neutral Site #/Avg	0/0	-

**Goals by Periods**

Team	1st	2nd	OT1	OT2	TOTAL
MO	7	7	0	0	14
Opponents	10	11	0	0	21

**Corners by Periods**

Team	1st	2nd	OT1	OT2	TOTAL
MO	31	37	0	0	68
Opponents	31	21	0	0	52

**Shots by Periods**

Team	1st	2nd	OT1	OT2	TOTAL
MO	54	90	0	0	144
Opponents	86	84	0	0	170

**Fouls by Periods**

Team	1st	2nd	OT1	OT2	TOTAL
MO	78	96	0	0	174
Opponents	53	74	0	0	127

**Saves by Periods**

Team	1st	2nd	OT1	OT2	TOTAL
MO	27	28	0	0	55
Opponents	17	33	0	0	50

**Offsides by Periods**

Team	1st	2nd	OT1	OT2	TOTAL
MO	17	18	0	0	35
Opponents	16	11	0	0	27





**2025-26 Missouri Women's Soccer  
Team Game-by-Game  
All games**

Page 1/1  
as of Oct 17, 2025

Date	Opponent	Score	G	A	Pts	Sh	Sh%	Sog	Sog%	GW	GT	UA	OT	PK-Att	YC	RC	MIN
08/14/2025	South Dakota St.	1-1	1	1	3	6	.167	2	.333	0	0	-	0	0-0	0	0	153
08/20/2025	Youngstown St.	5-0	5	5	15	20	.250	8	.400	1	0	-	0	0-0	1	0	143
08/24/2025	at Saint Louis	0-1	0	0	0	7	.000	1	.143	0	0	-	0	0-0	0	0	114
08/28/2025	at Memphis	1-2	1	1	3	10	.100	3	.300	0	0	-	0	0-0	0	0	116
08/31/2025	at Missouri St.	2-0	2	1	5	16	.125	10	.625	1	0	-	0	0-0	2	0	128
09/04/2025	Illinois	0-2	0	0	0	9	.000	5	.556	0	0	-	0	0-0	0	0	183
09/07/2025	Kansas City	1-0	1	1	3	19	.053	7	.368	1	0	-	0	0-0	0	0	139
09/12/2025	Texas	3-1	3	4	10	10	.300	5	.500	1	0	-	0	0-0	0	0	172
09/18/2025	Tennessee	0-2	0	0	0	5	.000	3	.600	0	0	-	0	0-0	0	0	137
09/21/2025	at Kentucky	0-1	0	0	0	5	.000	2	.400	0	0	-	0	0-0	0	0	117
09/26/2025	Mississippi St.	0-3	0	0	0	7	.000	2	.286	0	0	-	0	0-0	0	0	145
10/02/2025	at LSU	0-1	0	0	0	6	.000	2	.333	0	0	-	0	0-0	1	0	116
10/05/2025	Alabama	0-3	0	0	0	6	.000	5	.833	0	0	-	0	0-0	2	0	161
10/10/2025	at Vanderbilt	0-2	0	0	0	5	.000	1	.200	0	0	-	0	0-0	1	0	113
10/16/2025	at Texas A&M	1-2	1	0	2	13	.077	8	.615	0	0	-	0	1-1	1	0	127
<b>Totals</b>		<b>14-21</b>	<b>14</b>	<b>13</b>	<b>41</b>	<b>144</b>	<b>.097</b>	<b>64</b>	<b>.444</b>	-	-	-	<b>0</b>	<b>1-1</b>	<b>8</b>	<b>0</b>	<b>2064</b>
<b>Opponents</b>			<b>21</b>	<b>14</b>	<b>56</b>	<b>170</b>	<b>.124</b>	<b>75</b>	<b>.441</b>	-	-	-	<b>0</b>	<b>2-2</b>	<b>13</b>	<b>0</b>	-

**TEAM PER-GAME**

Games played	Shots per game	Goals per game	Assists per game	Points per game
15	9.60	0.93	0.87	2.73

Date	Opponent	Score	Minutes	GA	GAAvg	Saves	Save%	W	L	T	SHO
08/14/2025	South Dakota St.	1-1	90:00	1	1.00	4	.800	0	0	1	0
08/20/2025	Youngstown St.	5-0	90:00	0	0.00	2	1.000	1	0	0	1
08/24/2025	at Saint Louis	0-1	90:00	1	1.00	4	.800	0	1	0	0
08/28/2025	at Memphis	1-2	90:00	2	2.00	3	.600	0	1	0	0
08/31/2025	at Missouri St.	2-0	90:00	0	0.00	2	1.000	1	0	0	1
09/04/2025	Illinois	0-2	90:00	2	2.00	2	.500	0	1	0	0
09/07/2025	Kansas City	1-0	90:00	0	0.00	1	1.000	1	0	0	1
09/12/2025	Texas	3-1	90:00	1	1.00	1	.500	1	0	0	0
09/18/2025	Tennessee	0-2	90:00	2	2.00	7	.778	0	1	0	0
09/21/2025	at Kentucky	0-1	90:00	1	1.00	4	.800	0	1	0	0
09/26/2025	Mississippi St.	0-3	90:00	3	3.00	4	.571	0	1	0	0
10/02/2025	at LSU	0-1	90:00	1	1.00	6	.857	0	1	0	0
10/05/2025	Alabama	0-3	90:00	3	3.00	3	.500	0	1	0	0
10/10/2025	at Vanderbilt	0-2	90:00	2	2.00	6	.750	0	1	0	0
10/16/2025	at Texas A&M	1-2	90:00	2	2.00	6	.750	0	1	0	0
<b>Totals</b>		<b>14-21</b>	<b>1350:00</b>	<b>21</b>	<b>1.40</b>	<b>55</b>	<b>.724</b>	<b>4</b>	<b>10</b>	<b>1</b>	<b>3</b>
<b>Opponents</b>			<b>1350:00</b>	<b>14</b>	<b>1.40</b>	<b>50</b>	<b>.781</b>	<b>10</b>	<b>4</b>	<b>1</b>	<b>8</b>